

Clarke &
Simpson

Auctions



*Art Deco, 20th Century
Design & Retro*

Monday 2nd November at 10am

Special Notices for Purchasers

Certain lots are catalogued as (A.F.), damaged, restored, etc., however the absence of any such notice does not imply that the piece is free from defects, nor does it indicate that other defects are not also present. Mention is not made of breakage, cracks, chips or any damage which can be noted by careful inspection, therefore, intending purchasers MUST, in all cases, be responsible for determining the condition of lots themselves.

Special attention is drawn to the Conditions of Sale printed at the back of this catalogue.

Estimates

Presale estimates are intended only as a guide for intending purchasers, are given in good faith and subject to revision.

Condition Reports

Clarke & Simpson are happy to give a Condition Report on the physical condition of goods, this will be provided on behalf of the seller on the understanding that Clarke & Simpson are not entering into a contract with you in respect of the Condition Report and accordingly does not assume responsibility to you in respect of it. All lots are available for your own inspection or for inspection by an expert instructed by you, therefore These Condition reports are for guidance only and all lots are sold "as found" (see our standard Terms and Conditions of Sale).

Commission Bids

The auctioneers will be pleased to execute bids for those unable to attend the sale. Lots will be purchased at the lowest bid the room bidding or any reserves will allow. In the event of identical bids, the earliest bid received will take precedence. There must always be a maximum limit indicated. Buy or unlimited bids will not be accepted. Commission bids placed by telephone are accepted at the client's risk. We urge our clients to place such commission bids before the start of the sale. All such commissions are left entirely at the buyer's risk.

Telephone Bids

Requests for telephone bidding must be registered with the auctioneer before the start of the sale. Whilst every effort will be made to execute telephone bidding, the auctioneers cannot be held responsible for any default or neglect in connection with this service. All such arrangements therefore are made entirely at the prospective buyer's risk.

Registration

All prospective buyers must register their name and address at our auction office and collect a numbered bidding card before the sale commences. If you are a successful purchaser please ensure that your number can be seen by the auctioneer and that it is your number that is called out at the fall of the hammer. Should there be any doubts as to the price or buyer, please draw the auctioneer's attention to it before the next lot is offered.

Value Added Tax

The symbol * after any lot number indicates that Value Added Tax is payable by the buyer on the "hammer price".

Auctioneers' Margin Scheme

The Auctioneers Margin Scheme allows auctioneers to sell items without VAT on the hammer price. Under the margin scheme an amount equivalent to VAT at the current rate is added to the buyer's premium. This amount cannot be refunded. The VAT element will not be shown separately on the buyer's invoice.

Buyers' Premium

A buyer's premium of 15% plus VAT will be added to the hammer price of each lot.

Payment and Clearance

Payment can be made during or immediately after the sale by the following methods:

Cash (up to a maximum of £12,000 including VAT in accordance with Money Laundering Regulations 2007).

Debit Cards

Credit Cards (not American Express) Please note there will be a surcharge of 2.5% plus VAT for the use of these cards. We will not release goods for a period of 72 hours unless the cardholder attends the saleroom in person and presents the cards used for the transaction with proof of ID.

Bank Transfer - Account Name: Clarke and Simpson Auctions Limited

Account Number: Account No: 33222276

Sort Code: 20-98-07

We do not accept cheques unless by prior arrangement.

Attribution of Pictures and Drawings

Every effort is made to ensure the accuracy of any statement as to authorship, attribution, origin, date, age, provenance and condition of any lot whether or not such statement forms part of the description of any such lot. Whether any such statement is made orally or in the catalogue it is an expression of opinion and not to be taken as being or implying any warranties or representations of facts by the auctioneers. Each buyer by making a bid for a lot acknowledges that he has satisfied himself fully as to the attribution and condition of the lot.

- a) The forename(s) (or full stops where not known) and surname of an artist indicates in our opinion a work by the artist.
- b) The initials of the forename(s) and the surname of the artist indicates in our opinion a work of the period of the artist which may be wholly or in part his work.
- c) The surname of the artist indicates in our opinion a work of the school or by one of the followers of the artist or in his style and of uncertain date.
- d) *Signed, Dated, Inscribed* indicates in our opinion work signed/dated/inscribed by the artist.
- e) *Bears signature* indicates in our opinion that this is not the signature of the artist.
- f) *Attributed to* may be used to denote a traditional attribution based on style.
- g) *Manner of* indicates in our opinion a work executed in the artist/craftsman's style but of a later date.
- h) *After* indicates in our opinion a copy (of any date) of work of an artist or craftsman.

The addition of a question mark after any of the cataloguing terms above indicates an element of doubt.

**Clarke &
Simpson**

Auctions

*Art Deco, 20th Century Design
& Retro*

*Monday 2nd November 2015
at 10am*

Viewing:

Saturday 31st October 9am - 12noon

Morning of Sale from 8.30am

Enquiries:

James Shand, Auctioneer & Valuer

Geoffrey Barfoot, Auction Room Manager & Valuer

Buyers' Premium:

15% plus VAT

Please see www.the-saleroom.com

for further images

the-saleroom.com



Campsea Ashe
Nr Wickham Market
Suffolk IP13 0PS
Tel: 01728 746323 Fax: 01728 748173
Email: auctions@clarkeandsimpson.co.uk
www.clarkeandsimpson.co.uk



Lot 10

1
A pair of Art Deco style silver plated candlesticks, 20cm. £10 - £20

2
A car mascot in the form of a stylised bird, 33cm. £10 - £20

3
A car mascot in the form of a stylised bird, 33cm. £10 - £20

4
A cleaver in the form of a fox, 28cm. £10 - £20

5
A Swedish weather station, 14.5cm high. £10 - £20

6
An Airguide weather station, 12.5cm. £10 - £20

7
A pair of Art Deco chromed brass candlesticks, raised on circular stepped base, 18cm. £10 - £20

8
A pair of chromed zigzag candlesticks, 17cm. £10 - £20

9
A cast metal model of an ocean liner, 37cm. £10 - £20

10
A Lemar ice bucket, in the form of an apple and two soda syphons. £20 - £30

11
A pair of Art Deco chrome and perspex door handles, 32.5cm. £10 - £20

12
A brass Egyptian revival figure on onyx base, 16cm. £5 - £10

13
A brass Egyptian revival figure on onyx base, 9cm. £5 - £10

14
A brass Egyptian revival figure on onyx base, 13.5cm. £5 - £10

15
A stainless steel and perspex three branch candelabra, 19cm high in extremes. £10 - £20

16
A pair of two branch silver plated candlesticks, 16.5cm. £10 - £20

17
An Art Deco style table lamp, the base decorated with an antelope, 16.5cm. £10 - £20

18
An Abdulla illuminated advertising sign, 30.5cm. £30 - £40

19
An aquarium table lamp, - sold as collector's item, 25cm. £5 - £10

20
A collection of various magic lantern slides. £10 - £20

21
An Art Deco companion set. £10 - £20

22
An Art Deco oil lamp. £10 - £20

23
A wooden telephone sign, 59.5cm x 9cm. £10 - £20

24
A Mabel Lucy Attwell 'Household Wants List', 31.5cm x 15cm. £10 - 20

25
A double sided Esso advertising sign, 30cm diameter. £40 - £60

26
An industrial illuminated wall clock, 47.5cm x 51cm. £50 - 70

27
A Goblin Teasmaid - sold as collector's item. £5 - £10

28
A 110v 'Handy Hannah', electric knife sharpener - sold as collector's item. £20 - 30

29
A Sears Sunbeam lamp - sold as collector's item. £20 - 30

30
An Art Deco enamel electric heater - sold as collector's item, 43cm. £20 - £30

31
An Amersham pub skittles game. £10 - £20

32
A theatre spot light - sold as collector's item, 58cm in extremes. £20 - £30

33
A Vintage suitcase, 36cm x 58cm. £5 - £10

34
Mary Gundry, pencil signed limited edition print, 'Games on Gun Hill, Southwold', 14/300, 22cm x 28cm; another signed limited edition print, 79/200, 21cm x 27cm; another pencil signed limited edition print 'Children Crabbing, Walberswick, 203/300, 21cm x 28cm. £40 - £60

35
Mary Gundry, pencil signed limited edition print, depicting a young boy seated on a brick wall, 225/250, 23cm x 30cm. £20 - £30



Lot 15



Lot 16



Lot 25



Lot 36

36

John Hall Thorpe, 1874 - 1947, wood cut print 'Marigolds', pencil signed and titled, 24.5cm x 30.5cm (not laid down and contained in later frame). £80 - £120

37

A framed lithograph print 'Beauty Gained Is Love Retained', 64cm x 18cm. £10 - £20

38

An American Telechron red Bakelite cased wall clock, 16cm. £10 - £20

39

Pat Maclaurin, oil on canvas 'Meze In Winter', signed bottom left corner, 34.5cm x 44cm, gallery label verso. £225 - £340

40

Caroline McAdam Clark, watercolour 'An Arched Doorway', signed and dated bottom right corner 1985, 38cm x 28.5cm. £80 - £120

41

John Andrew Bawtree, oil on board 'Crinkle, Crinkle Wall To The Vinyard At Sibton, Spring 1982', signed bottom right corner, 15.5cm x 19cm. £20 - £40

42

Michael Carlo, pencil signed silk screen print 'Snow Track', 20/36, signed and dated 1983, 18cm x 23cm. £10 - £20

43

A Shell advertising print 'The Leading Line', 44cm x 72cm. £20 - £30

44

An Orient Express advertising poster print, 60cm x 45cm. £20 - £30

45

A wooden and galvanised plaque depicting a sailing boat, entitled 'Ocean', 60cm x 40cm in extremes. £10 - £20

46

A near pair of 1960s children's chairs, 60cm. £20 - £30

47

A 1960s child's chair, 63cm. £10 - £20

48

A 1960s child's chair, 60cm. £10 - £20

49

A 1970s child's chair, 55cm. £5 - £10

50

A pair of children's cane chairs, 50cm. £10 - £20

51

A large wall hanging depicting a mythical creature, possibly a Manticore, indistinctly signed or titled to the reverse and dated 1978, 232cm x 279cm. £100 - £200

52

Ian McGugan, oil on canvas entitled 'Quartette', 101cm x 101cm. £200 - £300

53

A Vintage wooden sledge. £10 - £20

54

A Vintage wooden sledge. £10 - £20

55

A Vintage wooden sledge. £10 - £20

56

A Vintage wooden sledge. £10 - £20

57

A Vintage wooden sledge. £10 - £20

58

A Vintage wooden sledge. £10 - £20

59

A Vintage wooden sledge. £10 - £20

60

A Vintage wooden sledge. £10 - 20

61

Maryanne Nichols, wrought iron and fibre-glass garden urn, 230cm. £40 - £60

62

Nick Deans, 1950 - 1991, bronze fibre resin sculpture of a female raised on concrete base, 168cm. £800 - £1200

63

A print on canvas depicting twelve cassette tapes, 60cm x 60cm. £10 - £20

64

A brass pendant light fitting, 80cm, with opaque glass shade 40cm diameter. £40 - £60

65

A Tiffany style table lamp, 59cm in extremes and a set of six matching wall light shades, 27cm each. £100 - £150

66

A bronze model of a discus thrower, stamped WR 94 and raised on marble base, 22cm high in extremes. £20 - £40

67

A bronze group depicting 'Mother And Child', initialled N and raised on marble base, 27cm high in extremes. £20 - £40

68

A bronze stylised figure raised on marble base, 35cm. £10 - £20

69

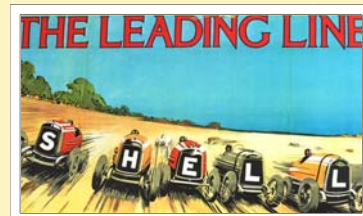
A bronze stylised figure of a male, 38cm. £20 - £30

70

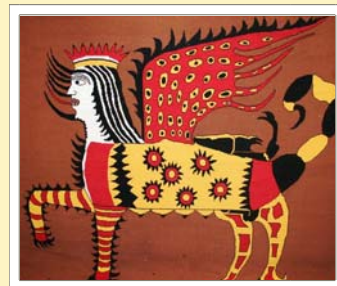
Two bronze candlesticks, 33cm. £10 - £20



Lot 41



Lot 43



Lot 51



Lot 52



Lot 63



Lot 80

71

An Art Deco case of cutlery comprising six butter knives; six coffee spoons and a pair of sugar tongs. £20 - £30

72

Three modern silver plated toast racks.

£30 - £45

73

An Art Deco style silver plated three piece teaset. £40 - £60

74

A bronzed resin figure of a reclining male,

unsigned, 65cm. £150 - £225

75

R Lalique glass bowl with floral decorated rim,

etched to base R Lalique, France (AF) several large chips to top rim, 33cm. £50 - £75

76

An Art Nouveau style etched glass claret jug

with silver plate handle, 28cm. £30 - £45

77

Dr Christopher dresser style glass and silver

plated mounted claret jug, 21cm. £50 - £75

78

A narrow Art glass vase, indistinctly signed to

base, 38cm. £30 - £45

79

A Royal Doulton model of a racehorse

'Mr Frisk', raised on wooden base, 22.5cm high in extremes. £30 - £45

80

A Beswick model 'The Highwayman' by Albert

Hallam, raised on turned wooden base, 35cm high in extremes. £300 - £450

81

A Spencers of Bromsgrove blue glass soda

syphon, converted to a table lamp, 27cm and an Art glass vase with spiral decoration, indistinctly signed to base, 12cm. £10 - £20

82

An unusual mid 20th Century Murano

iridescent glass jug, possibly Barovier Toso, 20cm. £30 - £45

83

A Murano Scavo glass vase, 16.5cm and a green

and yellow Sommerso vase, 20cm. £10 - £20

84

A Franz porcelain ewer decorated with

dragonflies, 33cm. £20 - £30

85

An Art Deco bubble infused amethyst glass

vase (possibly Loetz), 21cm and a heavy cased glass bowl with coloured enamels, 18cm.

£20 - £30



Lot 91



Lot 93

86

A large Vintage cased glass polka dot vase; a Murano orange and clear glass model bird and a Vintage Murano ruby and gold glass bowl (3).

£40 - £60

87

David Sibanda, a green hardstone model of an elephant, AF, 19cm. £40 - £60

88

A rock crystal model of a skull, 12.5cm.

£100 - £150

89

A Bernard Rooke pottery vase, decorated with circular projections, initialled BR, 17.5cm.

£20 - £30

90

A Moorcroft pottery 'Hibiscus' oval bowl,

decorated with a tube lined red and yellow flowers on deep blue ground, green painted signature to

base and stamped Moorcroft, Made In England,

23cm. £60 - £80

91

A Moorcroft pottery 'Clematis Bowl' decorated

with tube lined flowerheads on deep blue ground, stamped to base Moorcroft, Made In England,

16cm diameter. £60 - £80

92

A Moorcroft pottery 'Hibiscus' table lamp,

decorated with tube lined coral coloured Hibiscus on ivory ground, stamped to base Moorcroft,

Made In England, 21cm. £40 - £60

93

A Moorcroft pottery 'Anemone' table lamp,

decorated with tube lined flowers on deep blue ground, stamped to base, Moorcroft, Made In

England, 17cm. £60 - £80

94

A Moorcroft pottery 'Hibiscus' table lamp,

decorated with tube lined pale blue Hibiscus on deep blue ground, stamped to base, Moorcroft,

Made In England, 17cm. £60 - £80

95

A Moorcroft pottery 'Fresia' table lamp,

decorated with tube lined flowers on ivory

ground, stamped to base, Moorcroft, Made In England, 15cm. £40 - £50

96

A collection of West German and other

pottery vases, a Prinknash pottery tankard with original label; and a graduated set of three

jardinières (11). £30 - £40

97

A brass crucifix, 49cm. £10 - £20

98

A Bernard Rooke pottery vase, decorated with insects, unsigned, 11.5cm and another Bernard Rooke pottery vase decorated with owls amongst foliage, unsigned, 13cm. £10 - £20

99

A West German pottery style twin handled vase, decorated with running glaze, impress number to base 3051, 34cm and another pottery vase, impress mark to base, 28cm. £40 - £60

100

An Art Deco Royal Doulton 'Radiance' patterned part teaset comprising teapot; hot water jug; a sugar bowl; five cups; six saucers and a twin handled sugar bowl. £40 - £60

101

A graduated pair of cocktail shakers in the form of penguins, 19cm and 23 cm. £10 - £15

102

An Art Deco style figure in the form of a female ice skater, raised on marble base, 29cm high in extremes. £75 - £115

103

A Daum green and amethyst glass dish decorated with flower heads and leaves, signed to base, Daum, France, 19cm in extremes with original box. £50 - £75

104

A Christian Dior blue glass pedestal bowl, signed to base, 18cm diameter with original box. £50 - £75

105

Six various Vaseline glass shades. £100 - £150

106

An aluminium leather and stud decorated trunk. £50 - £75

107

An aluminium leather and stud decorated trunk. £50 - £75

108

An aluminium leather and stud decorated trunk. £50 - £75

109

A collection of books to include 'Cufflinks; Lea Stein Jewellery'; Art Deco and other figures; a Sylvac companion; a Judith Miller 'Art Deco Collector's Guide, The Jewellery of René Lalique'; Poole pottery and various others. £40 - £60

110

A bevel edged wall mirror in carved oak frame with Celtic design, 47cm x 43cm including frame. £40 - £60

111

Keith Cowlam, limited edition print 'Rosemary's Bath', pencil signed and dated 1979, titled and numbered 7/9, 51cm x 78cm. £10 - £20

112

Keith Cowlan limited edition print 'Red Melon' pencil signed and dated 1980, titled and numbered 5/20, 59cm x 79cm. £10 - £20

113

A chalk and vermilion print depicting a female, 86cm x 56cm. £20 - £30

114

A mixed media study of a windmill, unsigned, 52cm x 35cm. £40 - £60

115

R Pinto, oil on board still life study of flowers, 59cm x 40cm. £20 - £30

116

Patience Arnold, watercolour of figures standing by piano, signed and dated top right corner 1939, 40cm x 35cm. £40 - £60

117

Keith Cowlam, limited edition print 'Midnight Men', pencil signed and dated '78, titled and numbered 5/5, 25cm x 25cm. £10 - £20

118

Keith Cowlam, limited edition print 'Small Seated Bowler', pencil signed and dated 1980, titled and numbered 3/4, 27.5cm x 27cm. £10 - £20

119

Keith Cowlam, limited edition print 'Brief Encounter', pencil signed and dated '78, titled and numbered 3/15, 9cm x 10cm. £10 - £20

120

Glynn Thomas, pencil signed limited edition print 'Pond', titled and numbered 80/150, 10cm diameter. £10 - £20

121

Keith Cowlam, limited edition print 'The Bowling Green', pencil signed and dated '79, titled and numbered 1/10, 51cm x 63cm. £20 - £30

122

A pencil signed limited edition print abstract study, indistinctly signed, numbered 7/250, 52cm x 67cm. £20 - £30

123

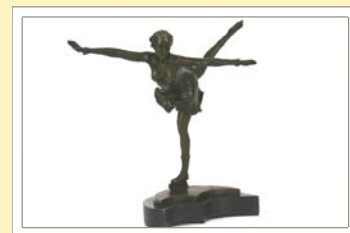
Harold F Collinson, two pencil signed coloured etchings, 39cm x 30cm and 42cm x 29cm. £50 - £75

124

B Long, mixed media abstract study, 58cm x 49cm. £10 - £20



Lot 94



Lot 102



Lot 103



Lot 106



Lot 114



Lot 127



Lot 131



Lot 136



Lot 137



Lot 138

125

B Long, mixed media abstract study, 59cm x 49cm. £10 - £20

126

A marquetry panel depicting a Queen, 63cm x 40cm. £10 - £20

127

Lawrence James Isherwood, 1917 - 1988, oil on board abstract study, signed Isherwood bottom left corner, 24.5cm x 34cm. £300 - £400

128

An oil on canvas abstract study of figures and trees, unsigned, 49cm x 69cm. £20 - £40

129

A print 'Fantasy Nudes', framed and glazed 68cm x 49cm. £20 - £40

130

Dario Modena, oil on canvas entitled 'Posto Per Sostare', signed bottom left corner, 49cm x 69cm. £50 - £75

131

J Wilkinson, set of four framed oil on canvas 'Miracle In Autumn And Spring', 50cm x 60cm each. £100 - £200

132

Ray Barry, oil on board abstract study entitled 'Stargate', 24.5cm x 34cm. £20 - £30

133

Mike Bernstein, limited edition print depicting Liza Minelli in Cabaret, facsimile signature 64/100, 40cm x 30cm. £20 - £30

134

Ray Barry, oil on board abstract study, untitled, initialled R B top left corner, 39cm x 49cm. £20 - £30

135

Ray Barry, oil on board abstract study entitled 'Icons', initialled bottom right corner, 29cm x 29cm. £20 - £30

136

A pair of framed and glazed paintings depicting various figures, possibly on newspaper, each signed Lumbat, 18cm x 24cm each. £40 - £60

137

Two watercolour studies depicting stylised figures, each initialled F.E.N. dated '68, 30cm x 20cm each. £20 - £40

138

A 20th Century oil on canvas 'Cubist Study', unsigned, 38cm x 28cm. £20 - £30

139

A 1960s oil abstract study of a face, unsigned, 19cm x 15cm. £10 - £20

140

Giles Norman, two pencil signed black and white photographic prints, 18.5cm x 12cm. £10 - £20

141

Barbara Law, two watercolour studies of nude females, each signed, 23cm x 17cm and 25cm x 17cm. £80 - £120

142

Jennifer Andrews, watercolour study 'Stormy Sea, North Cornwall' pencil signed bottom right corner, 13cm x 17.5cm. £10 - £20

143

A French WW1 print in frame, subscribed to The Third National Defence Loan, 34.5cm x 26cm. £40 - £60

144

Barrie Houghton, mixed media study entitled 'October Sea', 19cm x 29cm. £80 - £120

145

Michael Carlow, watercolour study entitled 'Bend In The Stream', signed bottom right corner and dated '02, 19cm x 26cm. £60 - £90

146

An early Oxshott Studio pottery vase by Denise Wren, converted to a table lamp, 17cm. £10 - £20

147

An Art Deco mixed marble clock, with applied metal decoration of fruit and leaves, 25cm high. £45 - £70

148

A clear glass dish of free form, 35cm diameter in extremes and a clear glass vase with frilled rim, 21cm. £10 - £20

149

A large Art glass bowl of free form decorated with multicoloured streaks, 23cm high in extremes. £30 - £45

150

A Bakelite cased electric mantel clock, 15cm. £25 - £40

151

A mid 20th Century tiled crucifix AF, initialled bottom right corner, 31cm. £10 - £20

152

An Art glass vase of free form, 50cm in extremes. £20 - £30

153

Two polychrome glass fish ornaments, 31cm and 35 cm. £20 - £30

154

A Bernard Rooke pottery decanter and stopper, initialled B R, 27cm and a set of four similar goblets, 11cm. £20 - £40

155

Five Garrod and Co. Regent plate goblets with gilded interiors, mark to base Garrod and Co Ltd, 112 Regent Street, London, W1; Regent plate, 15.5cm, one AF. £30 - £40

156

A bronze Art Deco style figure raised on rouge marble base, 54cm in extremes. £90 - £135

157

A pair of chromed Art Deco style adjustable table lamps and shades, 67cm. £40 - £60

158

A Poole pottery Delphis jardinière, mark to base Poole, England 653, 14.5cm. £20 - £30

159

An Art Deco style mixed marble clock garniture, 55cm high in extremes. £200 - £300

160

A German pottery jug with original label, Scheurich, 37.5cm. £25 - £40

161

An Art Deco style figural table lamp with circular glass shade, 64cm in extremes. £360 - £540

162

An Art Deco style mixed marble clock set mounted with two cherubs, 38cm high in extremes AF. £125 - £190

163

An Art Deco style figural table lamp with circular glass shade, 50cm high in extremes. £30 - £45

164

A pair of block glass table lamps and shades, 60cm in extremes. £50 - £75

165

An Art Deco style mixed marble clock garniture, the clock decorated with two females, 35cm high in extremes. £350 - £525

166

A pair of pottery model pigs with glass eyes, 14.5cm high. £20 - £30

167

An Art Deco style mixed marble clock garniture, clock decorated with cherub riding chariot of flowers and two tigers, 41cm high in extremes. £225 - £340

168

A clear glass dish of free form inset with bronze plaque depicting stylised figures, 28.5cm in extremes. £10 - £20

169

An Art Deco style figural table lamp with circular glass shade, 49cm. £30 - £45

170

An Art Deco style mixed marble clock garniture, 36cm AF. £100 - £150

171

An Art Deco style figural table lamp with circular glass shade, 57cm high in extremes. £30 - £45

172

A G plan style light oak chest fitted three drawers, 87cm high, 81cm wide, 48cm deep. £30 - £40

173

A G plan style light oak dressing chest fitted three long and four short drawers, 73cm high, 124cm wide, 48cm deep. £30 - £40

174

A late Victorian yew wood and walnut mirrored back sideboard, fitted three drawers above two cupboard doors and drop front cupboard and raised on ring turned supports, 100cm high, 145cm high including mirrored back, 127cm wide, 48cm deep. £100 - £150

175

A G plan chest fitted six drawers, 103cm high, 56cm wide, 45cm deep. £40 - £60

176

A G plan sideboard fitted four drawers and flanked by four cupboard doors, 80cm high, 213cm wide, 46cm deep. £60 - £80

177

A G plan style sideboard fitted four drawers beside tambour shutter, 88cm high, 160cm wide, 50cm deep. £40 - £60

178

A G plan style teak sideboard fitted four drawers and three cupboard doors, 78cm high, 199cm wide, 46cm deep. £60 - £80

179

A G plan style teak sideboard fitted four drawers flanked by tambour shutters, 80cm high, 210cm wide, 50cm deep. £60 - £80

180

A light Ercol sideboard fitted two door cupboard above single drawer beside further cupboard door with internal cutlery tray, 81cm high, 114cm wide, 48cm deep. £200 - £300

181

A white and pale green painted two door kitchen cupboard, 176cm high, 44cm wide, 40cm deep. £20 - £40

182

A modern door with stained glass panel depicting a kingfisher, panel 172cm x 62.5cm, door size 198cm x 83cm. £40 - £60



Lot 152



Lot 156



Lot 159



Lot 169



Lot 170



Lot 185

183

A Heal and Son of London limed oak triple wardrobe, 183cm high, 160cm wide, 53cm deep. £100 - £150

184

Heal and Son of London limed oak chest fitted with an arrangement of four short drawers over four long drawers, 123cm high, 99cm wide, 48cm deep. £100 - £200

185

Leonard Wyburd style mirrored door bathroom cabinet, 60cm high, 40cm wide, 15cm deep. £30 - £40

186

A pottery bowl decorated with female figures, signed Wichai, 26cm diameter. £40 - £60

187

An oak and mirrored hall stand with attached coat hooks and under seat storage flanked by stick stands, 177cm high, 63cm wide. £30 - £40

188

A 1950s Eastham meat safe/fridge (non electrical) 90cm high, 56cm wide, 42cm deep. £30 - £40

189

A light Ercol bookcase, 156cm high, 64cm wide, 34cm deep. £100 - £150

190

A leather model of a horse, 37cm. £10 - £20

191

An Arts and Crafts copper tray; a carved wooden tray decorated with flowers and leaves and a small oak and inlaid folding stool. £20- £40

192

A Ladderax unit comprising a three drawer chest; a cupboard with sliding doors and two book shelves. £20 - £40

193

A Ladderax unit comprising three drawer chest and glazed cabinet. £20 - £40

194

A Ladderex unit comprising three drawer chest, a drop front cupboard and cupboard with sliding doors. £20 - £40

195

A Ladderax unit comprising drop front cupboard, book shelf and single drawer. £20 - £40

196

A Ladderax unit comprising three drawer chest, drop front cupboard and cupboard with sliding doors. £20 - £40

197

An Art Deco mixed marble clock garniture, clock 21cm high. £50 - £75

198

A Roberts Rambler radio; another Roberts radio with carrying case and a Fidelity record player - sold as collector's item. £20 - £40

199

Omman Jun Danish rosewood living room suite comprising bookcase enclosed by two glazed doors and raised on base fitted two drawers above cupboard doors; another bookcase the top section enclosed by cupboard door above two adjustable shelves and raised on single cupboard base, another unit fitted with a drop front door enclosing fitted interior raised on base fitted two drawers, two cupboard doors and a matching two tier tea trolley. £200 - £400

200

A 1978 MGB Roadster rubber bumper model, present lady owner for the last thirty five years. Full body restoration and respray by local garage completed 2007. Door gaps and boot need adjustment. Engine and brakes require attention. MOT due 11/2/16. Hood and interior need finishing. Exhaust requires re-hanging. The odometer reads 17,889. Suggest removal by trailer or transporter. £4000 - £6000

201

A collection of 20th Century ceramics to include a Bing and Grondahl bowl; Hornsea and other vases; a character jug; a money box in the form of an owl (22). £20 - £30

202

A collection of French enamel ware to include three storage jars; butter dish and cover and a coffee pot. £40 - £60

203

A clear cased Art glass dish of star form, 18cm diameter. £10 - £15

204

An old English pewter four piece teaset, comprising teapot, a hot water jug, a cream jug and sugar bowl. £25 - £40

205

A cruet set in the form of an ocean liner, 19cm. £25 - £40

206

A pair of Art Deco marble bookends, 12cm. £10 - 15

207

A crackle glaze bookend in the form of a squirrel, stamped Fontinelle, 15cm. £10 - £15

208

A large Murano or Bohemia glass vase, circa 1960s, 23 cm. £50 - £75



Lot 186



Lot 197



Lot 200



Lot 208

209

G Wornell Brown, crackle glazed vase and cover, 12.5cm; a similar dish, 13cm diameter and a red and white glazed pottery dish, 14cm diameter. £10 - £20

210

Two large Vintage Murano Mandruzzato glass vases, one with original label, 20.5cm and similar bowl, 12.5cm in diameter. £50 - £75

211

Dr Christopher Dresser Linthorpe bowl in the Japanese style, with impressed facsimile signature Model S14 HT, 13.5cm diameter and a Linthorpe Benham Froud chamber stick, 17.5cm diameter. £60 - £90

212

A Mdina Studio glass vase, circa 1970, signed to base, 18cm; another Mdina glass vase, again signed to base, 14.5cm and a Mdina paperweight, 5cm (3). £40 - £60

213

Two Whitefriars style textured glass vases, 8.5cm. £10 - £20

214

A Tiffany and Co. clear glass bowl, 21cm diameter. £20 - £30

215

A Latticino glass dish of triangular form, 11cm. £20 - £30

216

A large Murano Bianco Rosso vase, possibly Salviati, circa 1940, 18.5cm. £50 - £75

217

A Salviati Murano glass bowl; a mottled glass vase and a Latticino decanter with white metal mounted stopper and rim, 15.5cm. £50 - £75

218

An unusual iridescent glass tortoise, possibly Bohemia or Murano. £30 - £45

219

A cranberry and clear glass Jack in the Pulpit vase, 34cm in extremes. £40 - £60

220

A Caithness glass vase, 11.5cm and a Vaseline glass basket, 19cm. £20 - £30

221

Two glass handkerchief vases, 11cm and 14.5cm. £20 - £30

222

A Vaseline glass twin handled vase, 9cm and an Art glass vase, 12.5cm. £20 - £30

223

A Loetz style iridescent glass vase with applied green glass decoration, 13cm. £10 - £20

224

A Loetz style iridescent green glass vase, 11.5cm and a Pallme Konig or Loetz style vase AF, 15cm. £20 - £30

225

A Vaseline glass Jack in the Pulpit style vase, 15.5cm. £20 - £30

226

A red clear cased glass vase with enamel decoration of butterflies, 13cm. £20 - £40

227

A Bretby pottery green glazed vase, stamped to base Bretby, 23.5cm. £10 - £20

228

A Moorcroft pottery vase decorated with tube lined flowers, mark to base, Moorcroft Made In England, circa '93, 15.5cm. £60 - £80

229

A pair of Doulton Lambeth vases with stylised floral decoration, various impress marks and initials to base, 28.5cm. £50 - £80

230

A Sanganer pottery vase, mark to base, India Laxmi Colony Sanganer Art by K C Doraya 1987, 20cm. £40 - £60

231

A Zsolnay Pecs gilt heightened vase, various impress marks and numbers to base, 21cm. £40 - £60

232

A 1970s hand sewn poncho. £50 - £75

233

A Pepsi advertising wall clock, 45cm x 30cm. £30 - £40

234

An Art Deco chromed fire guard and coalbox. £15 - £25

235

A 1950s umbrella stand in the form of an umbrella, 78cm high in extremes. £5 - £10

236

An Art Deco oak veneered fire screen. £5 - £10

237

A cocktail shaker and related accessories in the form of a golf bag and clubs, 31.5cm. £50 - £75

238

A Bernard Rooke pottery vase decorated with owls amongst foliage, unsigned, 30.5cm. £30 - £40

239

A bronze figure in the form of a seated male playing a cello, 24cm. £10 - £20

240

An Art Nouveau style bust of a young female, 36cm. £35 - £55



Lot 216



Lot 219



Lot 228



Lot 229



Lot 230



Lot 231



Lot 242



Lot 245



Lot 246



Lot 256



Lot 263

241

Six Wedgwood 'Persephone' patterned bowls, designed by Eric Ravilious, 23cm diameter.

£20 - £40

242

A pair of pottery vases decorated with tube lined grapes and vine leaves, unmarked, 25cm.

£40 - £60

243

A Kersey pottery tray, teapot, cream jug and sugar bowl and a Kersey pottery four piece cruet set on tray. £30 - £40

244

A collection of various sized Home Pride figures, most in the form of containers (14).

£20 - £30

245

A pair of over painted prints on canvas, depicting females 100cm x 70cm. Back Cover Image. £40 - £60

246

Designed by Richard Guyatt, five Wedgwood Royal Commemorative mugs. £40 - £60

247

H J Wood, Burslem floral decorated vase, stamped to base 808, 19.5cm. £20 - £30

248

A Caithness iridescent glass bowl, with original label, 11.5cm. £10 - £20

249

A Poole pottery Delphis jardinière, mark to base Poole England 74, 18.5cm. £20 - £40

250

A pair of Susie Cooper 'Woodlands' pattern spiral shaped tureens and covers, 14cm each. £70 - £105

251

Design by Richard Guyatt, six Wedgwood Royal Commemorative mugs; two Wedgwood Silver Jubilee tankards, portrait and design by Snowden; two other Wedgwood Royal Commemorative tankards designed by Norman Wilson (10) some with original boxes. £60 - £80

252

A Cobridge stoneware dish; a collection of various Studio pottery coffeeware; a West German pottery jug; two Torquay pottery style soup bowls; Picquot ware cream jug and sugar bowl; a Midwinter style craft fashion shaped gravy boat and two other vases. £10 - £20

253

Hugh Wallis, oblong copper tray with stylised floral decoration, initialled H W, 54cm and another Hugh Wallis oval copper tray decorated with stylised flowers, stamped H W, 55cm. £20 - £40

254

Two pieces of American parachute silk, one marked Philadelphia Ordnance District Champion Pants Mfg Co. Lot number 22994, 5 April 1942, approximately 10' wide; the other piece converted to dress. £25 - £40

255

A 1950s magazine rack, 35cm. £5 - £10

256

Hans C Andersen, pair of Danish teak circular tables raised on trefoil base each stamped underneath Made In Denmark design by Hans C Andersen, 45cm high, 36cm diameter (repaired). £60 - £80

257

An Art Deco mosaic tiled panel depicting dancers containing in limed oak frame, 47cm x 54cm. £20 - £30

258

A pair of Art Nouveau 'Glasgow Rose' stained glass windows, 30cm x 45cm. £60 - £90

259

A collection of Studio pottery to include unusual shaped planters; various teaware; Slipware decorated dishes etc. £20 - £30

260

An Art Deco style cordial set comprising jug and four glasses. £20 - £30

261

A JS and S brass circular tray, border decorated with stylised flowers, 31cm diameter and an Arts and Crafts copper spot hammered three piece teaset comprising teapot, cream jug and sugar bowl, each impress marked with a crown above crossed arrows and two JS and S copper dishes each decorated with a shield, 12cm diameter each. £40 - £60

262

A Studio pottery twin handled vase and cover, 39cm in extremes; an oval twin handled dish with Tenmoku style glaze, 7cm high; a Studio pottery jug with applied initials to the interior C L and M N W, 17cm; a Studio pottery vase, indistinctly signed to base, 13.5cm; an unusual Studio pottery mug with iron and string handle, impress mark to base, 10cm (5). £20 - £40

263

David Somerville, oil on canvas 'Snake Boy', 86cm, x 76cm together with a signed catalogue 'David Somerville Stories From The Urban Jungle'. £500 - £750

264

Danka Napiorkowska, pencil signed artist's proof entitled 'Buttercups II', 75cm x 52 cm. £25 - £40

265

Two mid 20th Century Masketeer wall plaques in the form of flying ducks or geese, 54cm.

£20 - £30

266

A Bernard Rooke pottery six section standard lamp, decorated with leaves and insects, signed to base B Rooke, 114cm with original shade.

£60 - £80

267

A retro adjustable standard lamp, 140cm.

£10 - £20

268

An Art Deco chrome and mirrored glass standard lamp table, 177cm in extremes.

£40 - £60

269

A Bernard Rooke pottery eight sectioned standard lamp, decorated with circular and square projections, stamped Rooke, 105cm with original shade. £60 - £80

270

Jonathan Shaw, pencil signed limited edition print 'Carmen 8/500'; another Jonathan Shaw, pencil signed limited edition print 'Maria 8/500', 37cm x 28cm each. £20 - £30

271

Simon Drew, pencil signed print 'Joseph and His Goat of Many Colours' and another Simon Drew, signed print 'To Live At All Is Miracle Enough', 22.5cm x 32cm. £20 - £30

272

Keith Johnson, watercolour study depicting a village church. £40 - £60

273

Keith Johnson, watercolour study of coastal scene, possibly Cromer, 37cm x 54cm. £40 - £60

274

Keith Johnson, watercolour study of coastal scene, possibly Sherringham, 37cm x 54cm.

£40 - £60

275

A Studio pottery vase, impress mark, possibly D H and a Slipware decorated dish, 18cm diameter. £30 - £40

276

A Goldscheider bust of a young female, stamped to the reverse Goldscheider Wien 1296 2521 36, stamped under the shoulder, Reproduction Reservee (AF) 57cm. £100 - £200

277

J Wanzenried Thoun Swiss pottery charger, the border decorated with portrait Randles, 60cm diameter. £100 - £200

278

A large pottery charger decorated with white and blue flowers on pale blue ground, 45cm diameter. £40 - £60

279

W A S Benson, brass adjustable table lamp raised on tripod base, stamp to the base Benson, fitted with Vaseline glass shade, 35cm.

£250 - £375

280

An Art Deco yellow metal and enamel decorated brooch, 3.5cm. £20 - £30

281

A gold mounted cheroot holder initialed G S and W S, 7.5cm in fitted case. £20 - £40

282

An Omega stainless steel cased wrist watch, 3cm diameter with later strap. £80 - £120

283

A silver tie clip; a pair of 9ct gold on silver cufflinks and two dress studs. £20 - £40

284

An R E H Goldpoint pen; two R E H propelling pencils and a multi coloured propelling pencil. £40 - £60

285

An R E H Goldpoint pen; a Yar o lead rolled gold propelling pencil; a Rhodium plated propelling pencil; a Parker fountain pen; and a Parker ballpoint pen (5). £40 - £60

286

A leather wallet containing eighteen brass collar stays. £20 - £40

287

A silver key ring Birmingham 2000 and a silver shoe horn, London 2003. £30 - £40

288

A Must De Cartier cigar cutter, stamped 'Made In France 10555' with leather wallet and a Colibri cigarette lighter. £40 - £60

289

A pair of Massino Dutti cufflinks; a pair of Art Deco cufflinks with blue and black enamel decoration and another pair of cufflinks with blue and red enamel decoration. £20 - £30

290

Two pairs of cufflinks decorated with horse's heads and a pair of cufflinks decorated with stylised golfers. £10 - £20

291

A pair of 9ct gold on silver cufflinks; a pair of 925 silver cufflinks and a pair of gold on silver cufflinks. £20 - £30



Lot 270



Lot 273



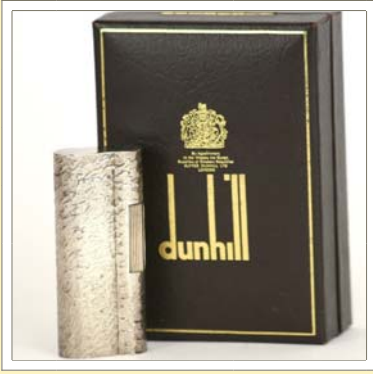
Lot 276



Lot 279



Lot 280



Lot 292



Lot 297



Lot 307



Lot 310



Lot 318

292

A Dunhill cigarette lighter, mark to base 'Dunhill 20 microns D81655' Made In England, in original box. £40 - £60

293

A 9ct gold on silver ring with rising sun decoration; a 925 Art Deco style ring set with garnet and a 9ct gold ring (3). £20 - £30

294

A silver card case, Chester 1929. £20 - £40

295

A heavy 925 Art Deco style ring; a 925 silver and blue enamelled decorated ring; a sterling silver Art Deco design ring and a 14ct white gold ring marked 585 (4). £20 - £40

296

Five pairs of cufflinks decorated with dogs. £30 - £40

297

A pair of 925 sterling silver semi precious stone set cufflinks and a pair of blue enamel rising sun cufflinks. £20 - £40

298

Four 925 silver blue and green enamel decorated cufflinks. £20 - £40

299

A 9ct gold bar brooch; a brooch in the form of an aeroplane; an Art Deco style tie clip; two Art Deco style bar brooches and three others. £40 - £60

300

A pair of yellow metal cufflinks, marks rubbed. £80 - £120

301

A 9ct gold signet ring. £20 - £40

302

A 9ct gold signet ring. £20 - £40

303

An Art Deco tortoiseshell effect combination compact. £20 - £30

304

An Art Deco shagreen effect combination compact. £20 - £30

305

Three Art Deco cigarette cases. £20 - £30

306

A silver fob watch and key. £45 - £70

307

A 9ct gold diamond set cluster ring. £400- £600

308

A French Art Deco 'Beauty Full' combination compact. £20 - £40

309

An Art Deco stamp book case; shopping list; visiting card case and a Ronson cigarette lighter (4). £20 - £40

310

A collection of early plastic and other scarf clips and brooches. £40 - £60

311

A collection of early plastic brooches and clips (6). £20 - £40

312

A white metal brooch in the form of an animal's head, eyes inset with green stones and another brooch in the form of a parrot. £20 - £30

313

An enamel decorated brooch in the form of a trapeze artist and an oval porcelain brooch decorated with portrait of an Art Deco female. £20 - £30

314

A pair of solid silver cufflinks and a pair of blue and white enamel on silver cufflinks. £20 - £40

315

A sterling silver marquise set ring; two marquise set brooches and three pairs of earrings. £40 - £60

316

A Swarovski heart shaped pendant hung to a chain. £10 - £20

317

A silver snap bangle; a 925 silver bracelet set with amethyst coloured stones; a white metal charm bracelet and a pendant hung to chain. £30 - £40

318

A Swarovski necklace hung with leaf shaped pendants. £30- £40

319

An 18ct white and yellow gold heart shaped pendant set with diamonds and hung to an 18ct white gold chain; a 9ct gold ring and a 9ct gold heart shaped bracelet. £100 - £200

320

A 9ct gold cross pendant set with green stone, hung to a 9ct gold fine link chain. £20 - £40

321

A 9ct white and yellow gold cross pendant set with diamonds, hung to a 9ct gold fine link chain. £20 - £40

322

A 9ct white and yellow gold pendant set with diamond and emerald coloured stone, hung to 9ct gold fine link chain. £20 - £40

323

A 22ct gold wedding band; a 9ct gold ring;
a 15ct gold bar brooch and a pair of sterling silver
cufflinks. £50 - £60

324

A collection of decorative brooches, four in the
form of birds and another in the form of a panda.
£20 - £30

325

Three decorative brooches in the form of
penguins. £10 - £20

326

**In the style of Rennie Mackintosh, 925
sterling silver pendant**, hung to fine link chain
and similar sterling silver ring. £10 - £20

327

**A lady's Edox Genevez gold plated wrist
watch**, with original box and guarantee.
£100 - £150

328

An 18ct white gold necklace, set with white
stones and simulated pearl. £150 - £200

329

A Krosno heavy clear glass vase, 10.5cm; a
Caithness glass vase, 9.5cm; a Phoenician Malta
glass vase, 9.5cm and a Mailing 'Daisy' patterned
twin handled bowl, 10cm diameter. £20 - £40

330

An Art Deco desk calendar; a new Bond
Easiflow 333 fountain pen and another fountain
pen. £20 - £40

331

A Smiths ringer timer with original box.
£10 - £20

332

**A Studio pottery teapot with Tenmoku glaze
and cane swing handle**, impress mark to base;
an Aylesford vase and a miniature Studio pottery
vase. £10 - £15

333

Two Teign Valley glass paperweights with
original box and another glass paperweight in the
form of a snail. £20 - £30

334

A Lalique crystal glass dish of circular form,
decorated with a squirrel, 10cm diameter, with
original label and a Portieux French glass cabbage
leaf bowl, 16cm diameter. £20 - £30

335

**A collection of green plastic and other dressing
table items** to include Thurston of London green
Bakelite powder bowl and a Dubarry powder
bowl etc. £20 - £30

336

Four Vintage handbags. £30 - £40

337

A silver plated cocktail shaker, 22.5cm.
£30 - £40

338

An Asprey glass dressing table jar with silver
and blue enamel lid, London 1939, 4cm high.
£20 - £30

339

A silver and blue enamel cigarette case,
Birmingham 1934, 8cm. £40 - £60

340

A silver and blue enamel compact, Birmingham
1934, 8cm. £40 - £60

341

An Art Nouveau style silver photo frame with
stylised floral decoration, Sheffield 1989, 25cm x
25cm. £40 - £60

342

**A collection of silver and pink enamel dressing
table items** to include hand mirror and four
brushes, Birmingham 1937. £60 - £80

343

A silver Royal Commemorative plate limited
edition 695/700, London 1972, 19cm diameter.
£40 - £60

344

A silver 'The Churchill Centenary Trust Plate,
1974, 365 (filled) 20cm diameter. £40 - £60

345

A cased set of six silver teaspoons, Sheffield
1932. £20 - £30

346

**A sterling silver Eastern white metal and
wooden lined cigarette box**, 16cm wide.
£30 - £50

347

**A magnifying glass, the handle in the form of
a golf bag and clubs**, 23cm and an ice cream
scoop, the handle in the form of a penguin,
17.5cm. £30 - £45

348

**A Mappin and Webb silver Royal
Commemorative goblet**, London 1972, 14.5cm
with original box. £40 - £60

349

An Littala glass flask designed by Tapio
Wirkkala, with original sticker, signed to base T
W; a Scandanavian Art glass vase and a blue clear
cased bowl, 6cm (3). £20 - £30

350

**A Tallent bust in the form of Winston
Churchill** with removable cigar match striker,
21.5cm. £40 - £60



Lot 327



Lot 331



Lot 343



Lot 348



Lot 350



Lot 358

351

Swaine Adeney Brigg of London brown leather handbag, 16cm x 22.5cm. £30 - £40

352

A Vintage beadwork evening bag, 12cm x 20cm. £30 - £45

353

A Vintage beadwork evening bag, 21cm x 17cm. £30 - £45

354

A Tough Nut nut cracker in the form of a sailor, 19.5cm. £20 - £40

355

A 1920s black lace flapper. £20 - £30

356

A postcard album and contents to include Mabel Lucy Attwell cards and two unusual postcards depicting cats and dogs with internal squeakers. £40 - £60

357

A miniature Petifax camera, 3.5cm x 5.5cm with leather carrying case. £20 - £30

358

A Carl Zeiss Ikon Countax Camera R35327 with leather carrying case. £80 - £120

359

A Leica DRP Ernest Leitz Wetzlar camera 255645 with leather carrying case. £100 - £200

360

A 1960s Wedgwood blue and clear glass centre bowl and a heavy spiral Art glass vase and another with white trailing decoration. £20 - £30

361

An early Murano aquarium glass bowl, 14cm diameter and two others possibly by Alfredo Barbini. £40 - £60

362

Three Parkside cast metal flying duck wall plaques. £20 - £30

363

Attributed to Dr Christopher Dresser, pair of James Dixon and Sons serving spoons and a James Dixon electro plated cooling stand. £20 - £30

364

A Lakeland Industries Borrowdale Arts and Crafts spot hammered bowl, 21.5cm diameter. £10 - £20

365

A Rayne Vintage handbag and a Leder Locher clutch bag. £30 - £40

366

A granite glass bowl and an Art glass seabird vase. £20 - £30

367

A carved wooden fertility doll, 26.5cm. £10 - £20

368

A Keswick Industrial School Of Arts stainless steel tray, stamped underneath X483, 30.5cm x 20.5cm and a silver plated Art Deco style twin handled bowl, 18cm diameter. £10 - £20

369

A pewter Art Nouveau style bottle coaster, 10cm diameter. £10 - £20

370

A green onyx pin dish mounted with bronze model of a bear, 5.5cm high. £10 - £20

371

A green glass box and cover in the form of a tortoise, 22cm long in extremes. £20 - £40

372

A bronze figure modeled as a stylised ballet dancer, 26cm high in extremes. £20 - £30

373

A bronze figure modelled as a stylised figure indistinctly signed, 22cm. £10 - £20

374

A My Lady English pewter spot hammered circular bowl. stamped to base My Lady English Hand Hammered Pewter 804, 23cm diameter. £10 - £20

375

A Beswick style model of a dog marked 'Made In England', 14.5cm high. £20 - £30

376

A Marbel Belgium stone Art figure of a stylised musician, 17cm. £20 - £40

377

A chrome table lighter in the form of a rocket raised on ball joint and hexagonal base, mark beneath 'Planet Made In England' design 876561, 27cm. £50 - £75

378

A 1960s Kienzle Everdate German desk clock, 7.5cm high. £20 - £30

379

An amber glass bowl of hexagonal form, decorated with kingfishers, 21cm diameter. £20 - £40

380

A cut throat razor, the blade decorated with Masonic design, 16cm in extremes. £20 - £30

381

An early 20th Century hand painted miniature portrait on ivory with info verso, 10cm x 8cm. £100 - £150

382

An Art Deco Spelter figure modelled as a runner, 22cm. £50 - £75



Lot 359



Lot 371



Lot 377



Lot 382

383

A Vintage mahogany and leather 'bottoms up' cigarette box, with original labels, 8.5cm x 14.5cm. £10 - £20

384

An Arts and Crafts copper jug with silver rim, marks rubbed, possibly London 1894, 17.5cm. £30 - £40

385

A bronze model of a stylised horse raised on marble base, 18.5cm high in extremes. £55 - £85

386

A WMF Bauhaus design three branch candelabra, 42cm. £20 - £40

387

Three turned metal candlesticks of wasted form, stamped to base HK, 14.5cm. £10 - £20

388

A bronze photo frame stand decorated with two stylised figures and a bronze figure modelled as a seated stylised figure, raised on marble base, 11cm. £10 - £20

389

A WMF silver plate on copper vase, possibly circa 1930s, 18.5cm. £10 - £20

390

A WMF style three branch candelabra, 12.5cm high in extremes. £10 - £20

391

A WMF style three branch candelabra, 13.5cm. £10 - £20

392

A bronze group modelled as three stylised figures, raised on marble base and another bronze group depicting two stylised figures, again raised on marble base, 10cm. £20 - £30

393

A Mdina glass vase with applied decoration, signed to base, 19.5cm and a smaller Mdina style vase, unsigned, 11cm. £30 - £50

394

A glass paperweight in the form of an apple; A Uredale glass paperweight and a Liskerad glass paperweight, 8cm (3). £30 - £40

395

A Vaseline glass vase in the form of a tower, 8cm high and matching curved glass vase. £30 - £40

396

A Ruskin pottery vase of trumpet form with yellow glaze, impressed to base Ruskin, England, 17cm. £40 - £60

397

A Ruskin pottery vase with orange lustre glaze, impressed to base Ruskin England, 1915, 15.5cm. £40 - £60

398

A Royal Brierley Art glass vase with original label and mark to base, 17.5cm. £40 - £60

399

A Royal Brierley Art glass vase with original label, mark to base, 13cm and a smaller similar, 10cm. £40 - £60

400

A Wedgwood glass paperweight in the form of a mushroom; a clear glass paperweight in the form of a squirrel; a Bohemia bubble infused amber and clear glass paperweight and two others (5). £20 - £40

401

A collection of faux tortoiseshell dressing table items. £10 - £20

402

A gold and silver coloured metal handbag, 24cm. £20 - £30

403

A collection of various hat tins. £20 - £30

404

A 1940s Parklane carry all, inset with coloured stones, 11cm; an Art Deco Princess combination compact, 9.5cm and a Parco of Paris combination compact, 10cm. £20 - £40

405

A mid 20th Century pewter spot hammered dish of free form, unmarked, 26cm in extreme. £10 - £20

406

A box of various hat pins. £20 - £30

407

An Evans carry all with original bag and box, 17cm. £30 - £45

408

A box of various hat pins. £20 - £30

409

A Moorcroft pottery dish decorated with tube lined flower on green ground, with original label to base, 11.5cm diameter. £60 - £90

410

A Sylvac model dog, marked to base Sylvac Made In England 1207 RD number 77850, 19.5cm. £20 - £30

411

A CG Scottish glass scent bottle and stopper, stopper initialled D H, with original label to base, 14.5cm. £20 - £40



Lot 384



Lot 385



Lot 393



Lot 402



Lot 407



Lot 413

412

A glass paperweight decorated with hunting scenes, surrounded by cane border, 5.5cm.

£20 - £30

413

A Millefiori paperweight decorated with various coloured canes, dated to the underside 1980, initialled P, 6.5cm diameter. £40 - £60

414

A faceted glass Millefiori paperweight with date cane 1977, initialled I, 17.5cm diameter.

£40 - £60

415

A faceted Millefiori paperweight, the canes arranged in the form of a butterfly with date cane 1982, initial I, etched to base 146.750, 7.5cm diameter. £40 - £60

416

A faceted glass Millefiori paperweight, decorated with tightly packed canes, having date cane for 1976, initialled I, 8cm diameter.

£40 - £60

417

A Moorcroft pottery 'Pomegranite' fruit bowl, with tube lined decoration of fruit and berries to the exterior, having silver plated rim and deep blue interior, green signature to base, stamped Moorcroft Made In England, M13, circa 1920/30, 22cm diameter. £400 - £600

418

A Moorcroft pottery vase decorated with tube lined berries and flowers on ivory ground, circa 2000, stamped Moorcroft Made in Stoke on Trent, England, 24cm. £200 - £300

419

A large Mdina glass chalis, after original design by Michael Harris, signed to base Mdina, 19cm.

£20 - £30

420

A Burleigh ware Royal Commemorative mug 'The Coronation Of King Edward VIII', designed and model by Dame Laura Knight, 8cm. £20 - £40

421

A Burleigh ware Royal Commemorative beaker, 'Edward The VIII Coronation, May 12, 1937, 10.5cm and a Burleigh ware Royal Commemorative mug to commemorate the Silver Jubilee, King George V and Queen Mary, 10cm.

£20 - £30

422

An amethyst clear cased glass vase of oval form, 17cm and a smoked glass vase, 16.5cm.

£20 - £40

423

'A God Speed The Plough' mug, 10cm.

£20 - £30

424

A Carter Stabler Adams Poole pottery jug, typically decorated with colourful flowers on off white ground, 11.5cm. £20 - £30

425

A Royal Commemorative mug 'The Coronation Of King George and Queen Elizabeth' designed and modelled by Dame Laura Knight, 8cm. £20 - £40

426

A Moorcroft Tudric 'Pomegranate' compot, the bowl decorated with tube lined fruit and berries, the pewter base stamped 'Made In England, Tudric, Moorcroft 01339, 7cm high, 11cm diameter (hairline crack). £40 - £60

427

A Troika pottery vase with incised circular and square decoration, signed to base Troika, 17cm.

£60 - £90

428

A Gouda pottery twin handled vase, indistinct marks to base, 15.5cm. £20 - £30

429

A Moorcroft style vase, decorated with tube lined stylised flowers on blue ground, 20cm. £20 - £30

430

A Clarice Cliff vase with relief decoration of flowers, marked to base Clarice Cliff England, Newport Pottery Co. England 899, 15cm. £60 - £80

431

A Moorcroft 'Flamminian' ware vase, circa 1910, made for Liberty and co. 23.5cm. £200 - £300

432

A Murano Sommerso glass swan, possibly Barbini, 18cm and a Murano multi coloured glass vase, 15cm. £20 - £30

433

A Portmeirion pottery HMS Endeavour 1770 - 1970 mug, 10.5 cm. £10 - £20

434

Two Wedgwood Thurrock Urban District Royal Commemorative mugs, 12 May 1937, 8.5cm. £10 - £20

435

Liuli Living, four multi coloured glass sake glasses, in original box each signed to base and dated 2014, 5cm each. £40 - £60



Lot 417



Lot 418



Lot 426



Lot 427

436

A Clarice Cliff floral decorated sugar bowl, lacking cover, mark to base Clarice Cliff Newport Pottery Co. England, 7cm. £20 - £30

437

A Gouda pottery bowl, various marks to base and two original labels (AF), 27.5cm in diameter. £10 - £20

438

A Royal Doulton Dewars Whisky jug, decorated with scene of a stag with original stopper, 21cm in extremes. £20 - £40

439

A Doulton Lambeth jug, 20cm; a **Doulton Lambeth Slaters patent tobacco jar** lacking lid AF, 11cm; a **Doulton Lambeth vase** with applied floral decoration and a **Lovique ware bowl** with floral decoration, 8cm diameter (4) (some damage). £20 - £40

440

A Poole pottery Delphis bowl, mark to base England "87, 15cm diameter. £10 - £20

441

A Royal Karona Swedish glass paperweight, mark to base RSPB Svensktglass, 1975 limited edition 4000 Sweden, signed Lisa Larson, 12.5cm and two glass paperweights in the form of world globes, 8cm each. £10 - £20

442

A glass paperweight in the form of a stylised owl, 11.5cm. £10 - £20

443

A clear glass Latticino style bowl of free form, 13cm and an Art glass vase, 7cm. £20 - £30

444

A green hardstone carving in the form of a rhinoceros, 11.5cm. £20 - £30

445

Three Vintage handbags. £30 - £40

446

A Richard Hudnut circular compact, another Richard Hudnut compact with stylised floral design; another inscribed Gold Coast, 1944; two Tokalon circular compacts and two others (7). £20 - £30

447

A Ton-ton Lucite compact with sterling silver clasp, 11.5cm and five various early plastic circular compacts. £20 - £30

448

Four various glass powder bowls. £10 - £20

449

An ivory powder bowl and cover, 4cm; a combined compact pouch bag and another pouch bag. £20 - £30

450

Three Vintage handbags and a clutch bag. £30 - £40

451

Three Wedgwood style graduated glass candle stands, 14cm, 21cm and 30cm. £30 - £40

452

A Poole pottery dish of curved form, typically decorated with colourful flowers on white ground, 45cm in extremes. £20 - £30

453

A Rosenthal jug with Art Nouveau style floral decoration, 31cm. £20 - £30

454

A Cranston pottery vase with stylised floral decoration on mottled ground, 30cm and a Denby vase with stylised floral decoration, 27cm. £40 - £60

455

A Studio pottery vase, impressed G, 26cm; another Studio pottery vase, initialled L P, 15cm and another Studio pottery vase, initialled mark to base M E with incised decoration, 16.5 cm. £60 - £80

456

A Bewley pottery hand painted floral decorated jug, 18cm. £20 - £30

457

H Brannam Barum, Studio pottery jug having fish head spout and incised motto 'All Earthen Ware Is Dust And Clay, And Dust And Clay Is Every Man, And If You Can't Be Easy, Well Just Be Easy As You Can, O Some Have Thin Venetian Glass, From Which To Drink Their Foreign Cheer, But Gives Us Jugs Of Barum Ware and Cider Made In Devonshire' 14.5cm signed and dated to base 1896. £50 - £80

458

H Brannam Barum Studio pottery jug in the form of a frog, signed and dated 1910 RD44561, 8cm. £40 - £60

459

A mottled glass light shade and two other floral decorated glass light shades. £10 - £20

460

Two Art Deco mottled glass light shades, 28cm diameter each. £20 - £40

461

Elizabeth Organ, mixed media still life study entitled 'Dried Flowers', signed and dated bottom right corner, 1980, 50cm x 36cm. £30 - £45



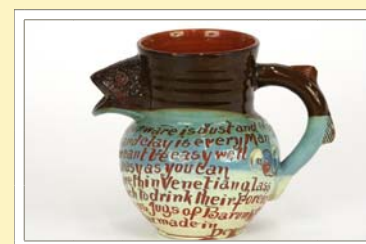
Lot 431



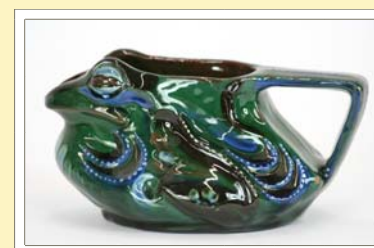
Lot 435



Lot 451



Lot 457



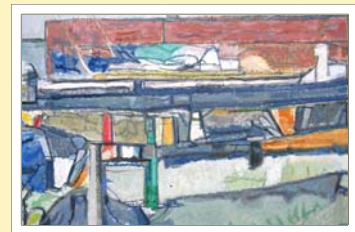
Lot 458



Lot 462



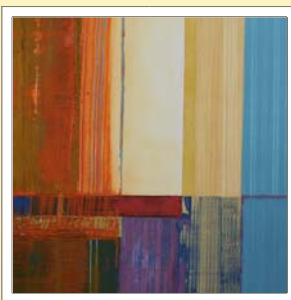
Lot 464



Lot 486



Lot 487



Lot 488



Lot 490

462

Jamie Hewlett, limited edition print 'Noodle' 118/600 unsigned, back stamp bottom left corner 'Pictures On Wallsdotcom', 35cm x 49cm. £100 - £150

463

V Greene, pair of watercolour studies depicting golfers, 29cm x 17.5cm. £20 - £40

464

A large Studio pottery table lamp of circular form topped with model village, 42cm. £150 - £200

465

A collection of Art Deco glassware to include a green glass dressing table tray and pair of matching candlesticks decorated with butterflies; an amber glass vase; a blue glass vase of diamond form and a circular dish. £20 - £30

466

A pottery vase decorated with red and brown glaze, 30cm and another pottery vase decorated with green glaze, 31cm. £10 - £20

467

A collection of Limoges 'Haviland' teaware comprising teapot, sugar bowl, cream jug, twelve saucers, ten cups. £20 - £40

468

An Art Deco glass cordial set decorated with gilt and red bands, comprising jug and six glasses. £20 - £30

469

A pair of Rye pottery vases, 27cm; a blue and white pottery vase, impress mark to base; a Honor Hussey pottery vase and a Beswick shaped planter, mark to base Beswick England 1989. £20 - £30

470

A collection of J & G Meakin Studio 'Poppy' patterned coffeeware, comprising two coffee pots, four side plates, ten saucers, ten cups, two sugar bowls and two cream jugs. £20 - £40

471

Two unusual porcelain containers in the form of horses' hooves, one AF, 4cm. £5 - £10

472

A Royal Worcester James Hadley figure of a Chinaman, AF, unsigned mark to base Royal Worcester, 17cm. £10 - £20

473

An F B Rogers, silver plated ice bucket, 33cm. £20 - 30

474

A late Victorian carved oak coal purdonium, 60cm high, 36cm wide, 37cm deep. £20 - £40

475

A Thonet style bentwood hat, coat and stick stand, 200cm in extremes. £60 - £80

476

A G plan style light oak veneered corner dressing table, fitted central drawer, flanked by cupboards, 71cm high, 104cm wide, 42cm deep. £20 - £30

477

A leather wine box, the lid enclosing an ice bucket and compartment for two bottles above two drawers, 35cm high, 32.5cm wide, 22cm deep. £110 - £165

478

A Vintage horse racing game, 32.5cm x 32.5cm. £40 - £60

479

G plan light oak three drawer dressing chest, the top drawer enclosing a folding mirror and fitted compartments, 84cm high, 76cm wide, 46cm deep and matching bedside cupboard fitted single drawer above. £60 - £90

480

Two Leonard Wyburd style bedroom chairs, 73cm and 80cm. £20 - £40

481

A Danish style teak side table fitted single drawer and raised on square tapering supports, 71cm high, 68.5 cm wide, 36.5cm deep. £40 - £60

482

A Picquot ware four piece teaset on tray. £20 - £40

483

An Art Deco style mixed wood veneer console table fitted single drawer, 87cm high, 120.5cm wide, 30cm deep. £150 - £225

484

A limed oak George VI coronation stool, stamped to the underside (re-upholstered), 47cm. £20 - £30

485

A pair of Ercol stick back elbow chairs, 108cm high. £60 - £80

486

A M Pringle, oil on board 'Harbour Master's Hut' initialled and dated 2001 to bottom right corner with information verso, 50cm x 60.5cm. £100 - £200

487

Jill Barthorpe, oil on canvas 'Tulips And Onions', 76cm x 51cm, unsigned with info verso. £200 - £300

488

John Irvin, oil on canvas abstract study, signed and dated '02 to the reverse, 61cm x 61cm. £100 - £200

489

A teak compact folding desk, doors enclosing fitted interior and pull out drop leaf writing surface, 112cm high, 83cm wide, 53cm deep (opened 160cm wide). £40 - £60

490

A pottery model of a stylised bull, with all over blue and turquoise glaze, signed to base 'Jema Holland '79', 18cm high. £20 - £30

491

An Art Deco style three tier side table, 72cm high, 70cm wide, 39cm deep. £50 - £75

492

A large Studio pottery vase with Tenmoku glaze, indistinct impress mark to the base of the handle, 36cm. £40 - £60

493

An Art Deco style blonde maple veneered console table, 85cm high, 121cm wide, 42cm deep. £150 - £225

494

A leather covered stationery box, the folding lid enclosing fitted interior fitted two drawers, with further drawer below, flanked by brass carrying handles, 24cm high, 38.5cm wide, 22cm deep. £100 - £150

495

A carved wooden box and cover with stylised floral and leaf decoration, 8cm high, 33cm wide, 18cm deep. £20 - £40

496

A walnut quarter veneered circular occasional table raised on baluster column, 80cm diameter. £60 - £80

497

A Tiffany style table lamp, shade decorated with dragonflies, 60cm high. £50 - £75

498

A light Ercol drop leaf dining table, 72cm high, 123cm x 112cm extended. £100 - £200

499

A collection of 20th Century glassware to include Dartington, Caithness etc. (20). £40 - £60

500

A collection of 20th Century Studio pottery to include a barrel with tape, impressed initial G; Rye pottery and other vases; Slipware decorated dishes etc. (11). £40 - £60

501

A G plan style teak circular extending dining table, 76cm high, 122cm diameter. £40 - £60

502

A brass Pricket candlestick, 28cm in extremes. £20 - £30

503

An Art Deco wooden two handled tray decorated with a view of Nice, 22cm x 31cm. £10 - £20

504

A Karim Rashid Umbra, four branch candelabra, 22.5cm. £20 - £30

505

A modern design chrome table lamp with pierced white shade, 52.5cm. £65 - £100

506

A mirrored glass jewellery casket, 25cm high, 37cm wide. £25 - £40

507

A Danish style teak and tiled topped coffee table, 40cm high, 128cm wide, 44cm deep.

£20 - £30

508

An Art Deco walnut firescreen, 72cm x 53cm. £20 - £30

509

An Art Deco style blonde maple console table fitted two drawers, with marquetry inlaid top, 83cm high, 114cm wide, 40cm deep. £150 - £225

510

An Art Nouveau style figural table lamp and shade, 62cm in extremes. £20 - £40

511

An Art Deco style figural table lamp, raised on simulated marble base, 48cm. Front Cover Image. £20 - £40

512

A pair of Art Deco style figural table lamps, 52cm in extremes. £40 - £60

513

A rosewood dressing table with lift up section enclosing mirror and fitted interior, fitted single drawer below, raised on round tapering supports, 70cm high, 110cm wide, 65cm deep (Vendor purchased this item from Heals in the 1970s).

£100 - £200

514

An Art Deco style burr wood veneered console table fitted single drawer, 84.5cm high, 119cm wide, 38cm deep. £150 - £225

515

A modern John Lewis beech drop leaf kitchen table and four folding integral chairs.

£100 - £150



Lot 494



Lot 504



Lot 511



Lot 512



Lot 513



Lot 517

516

A teak circular dining table and set of four matching chairs in the style of Hans Olsen, circa 1960, 74cm high, 120cm diameter. £100 - £200

517

A stainless steel fruit basket in the form of stylised flowers, designed by Monika Mulder, 42cm diameter. £20 - £30

518

A graduated set of three circular leather covered hat boxes, 21.5cm, 25.5cm and 30.5cm diameter. £110 - £165

519

An Art Deco style porcelain bust, raised on simulated marble base, 55cm. £35 - £55

520

An ornate bronze two branch candelabra, 36cm. £20 - £30

521

A carved hardwood model horse, 46.5cm. £10 - £20

522

A Crown Devon Art Deco wall pocket, 21cm. £10 - £15

523

An Ercol drop leaf dining table, 72cm high, 125cm x 113cm extended and a set of four matching stick back chairs. £80 - £120

524

A modern design black glass occasional table of angular form, 44cm high, 60cm wide, 60cm deep. £30 - £45

525

An ornate wrought iron and Travertine marble coffee table inset with beveled glass panel, 53cm high, 71cm x 71cm. £80 - £120

526

A 1930s portable wind up gramophone. £15 - £25

527

A Studio pottery bowl, interior with impressed decoration, 35.5cm diameter, hand written label to base Hepton Mallet Bath and West. £40 - £60

528

A Thomas German porcelain coffee set comprising coffee pot, cream jug, sugar bowl, six cups, six saucers. £30 - £40

529

A Burleigh ware bowl, decorated with polar bears on orange and black ground, 26cm diameter. £30 - £40

530

A Saltings pottery Penrhynde decanter and stopper and set of six goblets. £30 - £40

531

A Nathan teak sideboard fitted three drawers and three cupboard doors, 78cm high, 183cm wide, 45cm deep. £40 - £60

532

A 1950s formica top drop leaf kitchen table, 76.5cm high, 90cm x 76cm extended. £20 - £40

533

A Studio pottery cheese dish and cover and two Studio pottery casserole dishes. £20 - £30

534

A Studio pottery coffee set comprising coffee pot, cream jug, sugar bowl and six cups. £20 - £30

535

A Kersey pottery jug and set of six goblets. £20 - £30

536

A Meredew teak dressing chest fitted six drawers, 71.5cm high, 142cm wide, 40cm deep. £30 - £40

537

An Art Deco mixed marble mantel clock decorated with Spelter female holding a dove and having Marty clock movement with key and pendulum, 29cm high in extremes. £45 - £70

538

An Art Deco statue of a footballer signed Vrament raised on marble base, 39.5cm. £100 - £150

539

An Art Deco mixed marble clock decorated with Spelter female holding two doves, signed Sega, key and pendulum (AF) 16cm. £45 - £70

540

A G plan style teak circular coffee table inset with glass top, 46cm high, 84cm diameter. £20 - £30

541

A Cheney Vintage suitcase, 71cm x 47cm. £20 - £40

542

A cane peacock chair, 136cm. £20 - £40

543

A coffee table having brass and copper stud work top raised on ring turned supports, 43cm high, 71cm x 71cm. £20 - £40

544

An Art Nouveau style chamber pot, 23cm diameter. £10 - £20

545

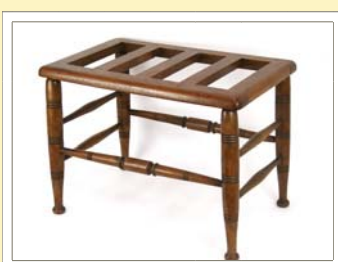
A Danish style teak coffee table having cane under tier, 43cm high, 127cm wide, 45cm deep. £20 - £30



Lot 519



Lot 538



Lot 548

546

A H McIntosh and Co. teak occasional table with original label to base, stamped 2265, 46cm high, 63cm wide, 44cm deep. £20 - £30

547

A nest of three dark Ercol occasional tables. £20 - £30

548

An early 20th Century luggage stand raised on ring turned supports with original label Smee and Coby Furniture Manufacturers, London, 46cm high, 63cm wide, 40cm deep. £40 - £60

549

A nest of three G plan style teak occasional tables, the largest with tiled top. £40 - £60

550

An oak spinning chair stamped Ben Setter Totnes, 81cm. £20 - £40

551

An oak Arts and Crafts type sewing box with lift up top and single drawer below, 62cm high, 44cm wide, 26cm deep. £40 - £60

552

A pair of chrome framed brown leather upholstered office reception chairs, 90cm. £40 - £60

553

Four Caithness coloured glass vases, a cranberry tinted glass vase and a Bohemia lead crystal vase, some with original boxes. £40 - £60

554

A golden oak Arts and Crafts style magazine rack, hand written to base 'Hand Made Original Design, Grenville C Mason, 1963, 31cm high. £20 - £30

555

A light Ercol oval two tier coffee table, 44cm high, 100cm x 83cm. £60 - £80

556

A G plan style teak circular extending dining table, 73cm high, 218cm x 121cm extended and a set of eight teak slat back chairs, six standard, two carvers. £100 - £200

557

An Aberdeen Art Gallery poster, 76cm x 51cm. £10 - £20

558

A Hayward Gallery, London poster Neue Sachlichkeit and German Realism Of The Twenties', 76cm x 51cm. £10 - £20

559

A British Museum Michelangelo Drawings poster, 76cm x 51cm and another 'A Record Of Victorian London Drawing' by John Crowther Guild Hall Art Gallery, Kings Street, 50.5cm x 38cm. £20 - £30

560

A Museum Of Mankind 'Masks From Mexico' poster, 76cm x 51cm. £10 - £20

561

A British Museum '20th June - 5th October 1975' T'ang Buddhist painting poster, 76cm x 51cm. £10 - £20

562

A collection of Beswick 'Ballet' dinner and teaware comprising two tureens and stands, six plates, twelve side plates, six saucers, five cups, serving dish, sauceboat, cream jug, dessert serving bowl and six smaller bowls. £60 - £80

563

A collection of Burleigh ware Art Deco dinnerware, shape number 772000 comprising two tureens, three graduated meat plates, a sauceboat, six dinner plates, six smaller plates and five side plates. £40 - £60

564

A collection of Shorter and Son fish serving plates, four large, four small. £20 - £40

565

A Danish style teak two tier coffee table with plate glass top, 44cm high, 112cm wide, 43cm deep. £30 - £40

566

An Art Deco walnut and dining table AF, 72cm high, 170cm wide, 93cm deep. £60 - £90

567

An early 20th Century brass twin handled vase with stylised floral decoration, 35.5cm and a pair of similar brass vases, 30.5cm. £20 - 40

568

A Picquot ware four piece teaset on tray. £20 - £40

569

A Lilly Bollinger champagne bath with inscription, 29cm high, 64 cm wide. £60 - £90

570

A mirrored glass tray, 34cm x 46cm. £25 - £40

571

A Day Dream ice bucket in the form of an apple, mark to base Made In Australia, 24cm high in extremes and a chromed juicer, 39cm. £20 - £30



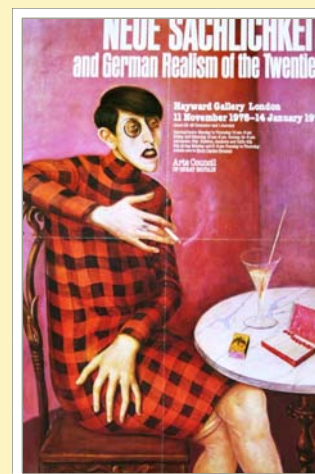
Lot 550



Lot 551



Lot 554



Lot 558



Lot 575

572

A 1960s metal framed and teak two tier trolley, 55cm high, 75cm wide, 35cm deep. £10 - £20

573

A chrome and black plastic tub chair on adjustable base, 89cm. £20 - £30

574

A Travertine marble coffee table, 43cm high, 130cm wide, 76cm deep. £30 - £40

575

A graduated pair of airport suitcases and a smaller similar case. £40 - £60

576

A mid 20th Century metal framed fully adjustable chair, possibly a dentist's chair. £40 - £60

577

A pair of early 20th Century Art Deco wooden framed and upholstered tub chairs, 69cm. £150 - £225

578

A Swedish teak extending dining table, 73cm high, 173cm x 110cm extended, stamped Ab Seffle Mobelfabrik Saffle Design Arkitektm.a.a Tov and Edv Kindt Larsen, Made In Sweden and a set of four similar chairs. £80 - £120

579

An LNER 'Over The Forth To The North' travel poster, 48cm x 60cm and 'The Upper Gallery, Whitechapel The Revealing Plant' poster, 59cm x 40cm. £20 - £30

580

A large ceiling light fitting of ball shape decorated with prism glass drops, 49cm diameter. £200 - £300

581

An HMV Cavendish Art Deco electric fan heater - sold as collector's item, 27cm. £25 - £40

582

An Art Deco plaster figure 'Madame Satan', 39cm. £20 - £30

583

A Mackintosh style three piece teaset on tray, the coffee pot mark to the base with a Heron. £40 - £60

584

A St Clement pottery model of a pheasant, signed C H Lemanceau, 33cm with original St Clements label. £50 - £75

585

A set of six Danish style teak ladder back dining chairs, 83cm. £60 - £80

586

A golden oak Arts and Crafts type sprung rocking chair frame, 90cm. £20 - £40

587

A pair of early 20th Century brown leatherette upholstered armchairs AF. £40 - £60

588

A bentwood and cane seated rocking chair, stamp to base Fische Tchechoslov AF. £20 - £40

589

A set of four light Ercol dining chairs, two standards, two carvers, 97cm. £100 - £200

590

A Lloyd loom Lusty armchair with original label to base, 69cm. £30 - £45

591

An early 20th Century brown leatherette upholstered three piece suite comprising two seater settee and pair of matching armchairs, 79cm. £100 - £150

592

After F Priess, Spelter and ivorine figure raised on marble base (AF), hands replaced, 37cm. £40 - £60

593

Attributed to Max Le Verrier bronze figure of a female ball dancer raised on green onyx base, 27.5cm in extremes. £300 - £450

594

A silvered copper plaque depicting leaping antelope, 16.5cm x 50cm circa 1920s contained in black wooden frame. £200 - £300

595

A coloured print depicting the Statue Of Liberty with view of Manhattan in the far ground, 43cm x 79cm. £10 - £20

596

An Art Deco enamel fairground sign, 38cm x 122cm. £20 - £30

597

An enamel Cinzano advertising thermometer, 75cm x 22cm. £50 - £75

598

A framed pencil sketch study of a nude, indistinctly signed, 29cm x 41cm. £10 - £15

599

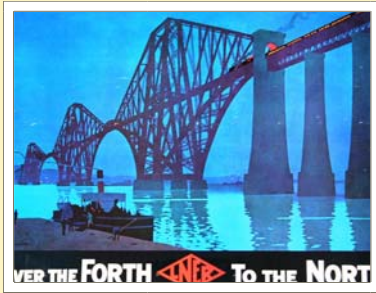
Two Vanity Fair spy prints 'Oxford Cricket' and 'Mr Horace Hutchinson', 35cm x 21cm. £60 - £90

600

Two Vanity Fair spy prints 'The Irish Secretary Jodhpore' 34cm x 21cm each. £60 - £90

601

Two Vanity Fair spy prints 'Podge' and 'She', 34cm x 21cm each. £60 - £90



Lot 579



Lot 583



Lot 593

602

An Art Deco French brass wall light with frosted glass panel, signed G Leley, 22cm x 19cm in extremes and another Art Deco French wall light with frosted glass shade AF, 21cm x 17.5cm. £40 - £60

603

A pair of French Art Deco wall lights with frosted glass shades, having stylised floral decoration, shades 10.5cm diameter. £100 - £150

604

An Art Deco brass and lucite table lamp with opaque glass shade, 45cm. £800 - £120

605

An Art Deco burr walnut unit with drop front writing surface enclosing fitted interior above cupboard doors enclosing fitted interior beside glazed cupboard with adjustable shelves, 114cm high, 109cm wide, 43cm deep. £200 - £300

606

A design by Charles and Ray Eames for Herman Miller, a rosewood veneered and black leather button down upholstered lounge chair and matching footstool. The footstool frame support marked 938-029 671. £800 - £1200



Lot 597



Lot 603



Lot 606

Next Antique & Fine Art Auction to be held

Wednesday 2nd December 2015

Closing dates for entries 6th November 2015

Christmas Poultry Sale Monday 21st December

Clarke & Simpson

Auctions

Clarke and Simpson are pleased to offer a packaging and shipping service worldwide through "the-saleroom.com Delivery Service". The professional team will pack and ship items from very small non-breakables such as jewellery and coins though to larger and more fragile items such as paintings and works of art. Shipping and insurance is at the buyer's expense. Shipping payment must be made to "the-saleroom.com Delivery Service" prior to departure and excludes local duties and taxes. Please note that Clarke and Simpson do not pack or ship items - all requests are sent to our specialist handlers at "the-saleroom.com Delivery Service" who can be contacted directly via delivery@atgmedia.com

the-saleroom.com
delivery service



Droite de Suite Royalty Charges

From 14th February 2006, all United Kingdom Art Market professionals (which includes auctioneers) are required to collect a royalty payment for all qualifying Works of Art. Under new legislation which came into effect on the 1st January 2012, this applies to living artists and those who have died in the last 70 years. This payment is calculated on qualifying Works of Art which are sold for a hammer price more than the UK sterling equivalent of €1,000 (the UK sterling equivalent will fluctuate in line with prevailing interest rates calculated by the Artist's Resale Right Service Hub, based on the European Central Bank reference rate published at 2.15pm on the day of the sale, and can be found on www.dacs.org.uk).

All items in this catalogue that are marked "✓" are potentially qualifying items, and the royalty charge will apply if the hammer price is more than UK sterling equivalent of €1,000. The royalty charge will be added to purchase invoices, and must be paid before items can be cleared. All royalty charges are paid to the design and Artists Copyright Society (DACS) by the auctioneers and no handling costs or additional fees with respect to these charges will be retained by the auctioneer. The royalty charge for qualifying items which achieve a hammer price of more than the UK sterling equivalent of €1,000, but less than the UK sterling equivalent of €50,000 is 4%. For qualifying items that sell for more than the UK equivalent of €50,000 a sliding scale of royalty charges will apply. For a complete list of the royalty charges and threshold levels please refer to www.dacs.org.uk. There is no VAT payable on this royalty charge.

TERMS AND CONDITIONS OF SALE

1. INTRODUCTION

The following defining terms are used in these conditions:-

“Auction”	Means any auction conducted by Clarke and Simpson Auctions Ltd. either at the premises owned by them or elsewhere (including any internet based auction);
“Auctioneer”	Means Clarke and Simpson Auctions Ltd. authorised auctioneer as appropriate;
“Bidder”	Means a bidder at an auction, including the bidders personally present at the venue and those bidding by telephone or over the internet or otherwise;
“Buyer”	Means the bidder whose bid was the last bid when the auctioneer concludes the bidding;
“Conditions”	Means these Terms and Conditions of Sale;
“Hammer Price”	Means the level of bidding reached (at or above any reserve) when the auctioneer brings the bidding to a close;

2. DESCRIPTION

No warranty is given or implied by the description in the catalogue. Each lot is sold in its condition at the time of sale with all faults, defects, imperfections and errors of description (if any). Whilst every endeavour has been made to describe the items adequately and properly, the purchaser shall deem to have inspected the lot at time of purchase. All catalogues and seller's and buyer's guides are for information only and do not form part of the contract.

3. STATUTORY REQUIREMENTS

Purchasers will be deemed to have satisfied themselves prior to purchasing regarding current legal requirements (e.g. Health & Safety at Work Act) and it is expressly brought to the bidders attention that equipment in the sale may not necessarily comply with such regulations. Any purchaser shall satisfy himself as to any statutory requirement for the use of any item and no liability shall rest with the vendors nor the Auctioneers.

4. THE AUCTION

All auctions are conducted at the absolute discretion of the auctioneer. The auctioneer shall conduct the auction with reasonable skill and care. The vendor reserves the right to sell subject to reserve price in respect of all lots. What constitutes a bid shall be at the absolute discretion of the auctioneer, acting with appropriate skill and care. The auctioneer shall have the right to refuse any bid in all cases but most notably when such a bid does not exceed the previous bid by at least 10% or such a proportion as the auctioneer shall in his absolute discretion direct. Where two or more bids at the same level are simultaneously received by the auctioneer, the auctioneer at his absolute discretion shall determine which bid to prefer. Subject to the foregoing where two or more bids are at the same level are simultaneously received by the auctioneer, the bid submitted in the room shall take preference over a bid submitted by telephone or internet at the same level. Any bid made or attempted by telephone or over the internet will only be deemed to have been made if received by the auctioneer. The auctioneer reserves the right to withdraw, consolidate or divide any lot or lots or submit them in any order that they desire. The auctioneer has the right at his absolute discretion to refuse admission to his premises or attendance at (or participation in) any auction by any person. In the case of any dispute, the auctioneer shall be sole arbitrator in any matters arising during or out of the sale.

5. BIDDERS

All bidders will be required to register their particulars, bidders attending in person and those accompanying them may be required to provide photo ID and separate confirmation of address prior to viewing or taking any part of the sale and before entering any part of the premises to view. All bidders accept full liability for all bids submitted. Subject to the clause in this document headed “The Auction”, the highest bidder at the close of bidding shall be the buyer. Any dispute about a bid shall be settled at the auctioneer's absolute discretion.

Bidders are all deemed to act as principles unless there is prior written acknowledgement by Clarke and Simpson Auctions Ltd. that a bidder is acting as an agent for a named principle. Bidders are strongly encouraged to attend the auction in person. The bidders shall be responsible for any decision to bid for a particular lot and shall be deemed to have carefully inspected and satisfied themselves as to condition, neither Clarke and Simpson Auctions Ltd., their employees or agents shall be responsible for any neglect or default in doing or failing to do so. Bidders will be given ample opportunity to view and inspect before the sale and prospective buyers must satisfy themselves as to all matters.

6. DEFAULT

Clarke and Simpson Auctions Ltd. shall act as agent of the vendor only. Any contracts for the sale of a lot shall be formed between the vendor and the buyer. As agent only Clarke and Simpson Auctions Ltd. shall not be responsible for default by the vendor or the buyer. If any lot is not paid for in full and taken away in accordance with these conditions, or there is any other breach of the conditions, then Clarke and Simpson Auctions Ltd. as agents for vendor shall at its absolute discretion and without prejudice to any other rights it may have, be entitled to exercise all or any of the following rights and remedies:-

- 6.1 to proceed against the buyer for any action of debt or damages for breach of contract;
- 6.2 to rescind the sale of that lot or lots sold by Clarke and Simpson Auctions Ltd. to a defaulting buyer;
- 6.3 to resell the lot (by auction or private treaty) in which case the defaulting buyer shall be responsible for any resulting deficiency in the total amount due (after crediting any part payment and adding any resale costs), any possible surplus so arising shall belong to the vendor;
- 6.4 to remove, store and insure the lot at the expense of the defaulting buyer and, in the case of storage, the location of such storage shall be at Clarke and Simpson Auctions Ltd. discretion;
- 6.5 to charge interest at a rate not exceeding 2% per month of the total amount due to the extent that it remains unpaid for more than two working days after the sale;
- 6.6 to retain that or any lot sold to the defaulting buyer until the buyer pays the total amount due;
- 6.7 to reject or ignore bids from the defaulting buyer at future auctions or to impose conditions before any such bids are accepted;
- 6.8 to apply any proceeds of sale for any other lots due or in the future becoming due to the defaulting buyer towards the settlement of the total remaining due.

7. INDEMNITIES, PENALTIES AND LIMITATIONS OF LIABILITY

Purchasers shall pay for any damage done by themselves or their agents during the removal of their lots. Attendance at the sale shall be at the risk of those attending in respect of both themselves and to their goods and vehicles.

Any indemnity under these conditions will extend to all actions, costs, expenses, claims and demand whatsoever suffered or incurred by the person entitled to the benefit of it and Clarke and Simpson Auctions Ltd. declare themselves to be a trustee of the benefit of such indemnity so far as it is expressed to be the benefit of its employees and agents.

Whilst Clarke and Simpson Auctions Ltd. endeavour to ensure that the information on their websites is correct, they do not warranty the accuracy and completeness of the material on their website. Also Clarke and Simpson Auctions Ltd. can make changes to the material on their website, or alter the products and prices described on it, at any time without notice. The material on the website may be out of date, Clarke and Simpson Auctions Ltd. make no commitment to update such material. All material on the websites is provided "as is" without any conditions, warranties or other terms at any time. Accordingly to the maximum extent permitted by law, the website is provided to all parties on the basis that Clarke and Simpson Auctions Ltd. exclude all representations, warranties, conditions and other terms which, but for this legal notice, might have effect in relation to the website.

8. ELECTRICAL SAFETY REGULATIONS

All electrical lots are subject to electrical safety regulations and fall within "the low voltage electrical equipment (safety) regulations 1989" – all items have been pat tested for safety but are not guaranteed in working order.

9. GENERAL MATTERS

Any notice to any buyer, vendor, bidder or viewer may be given by first class mail or email in which case it shall be deemed to have been received by the addressee forty eight hours after posting or sending. All notices to Clarke and Simpson Auctions Ltd. must be sent in writing and email is not acceptable. Any indulgence extended to any person by Clarke and Simpson Auctions Ltd., notwithstanding the strict terms of these conditions or the terms of consignment, shall affect the position at the relevant time only and the respect of that particular concession only; in all other respects these conditions shall be construed as having full force and effect. These conditions and any disputes or claims arising out or in connection with them or their subject matter or formation (including non-contractual disputes or claims) are governed by and construed in accordance with the law of England. The parties irrevocably agree that the courts of England have exclusive jurisdiction to settle any dispute or claim that arises out of or in connection with the agreement or its subject matter or formation (including non-contractual disputes or claims).

10. PUBLICITY

Any catalogue and buyer and seller guides are provided for information only and do not form part of these conditions. The catalogue and the buyer and seller guides may contain additional terms and conditions. Clarke and Simpson Auctions Ltd. reserve the right to use any photographs, background information and research for publicity purposes both before and after the sale.

11. THE PURCHASE PRICE AND PAYMENT ARRANGEMENTS

There is a buyer's premium 15% plus VAT payable in respect of the sale. Any purchases made via "www.the-saleroom.com" or "www.ibidder.com" shall be subject to an administration charge of 3% plus VAT on the price.

Preferred payment is cash, bankers draft or personal debit card. Such cards may only be used on a chip and pin basis with the owner present. No payment will be accepted by telephone over the internet. There will be an administration charge of 2.5% plus VAT for the use of credit cards or international debit cards. Payment by cheque will only be acceptable subject to prior arrangement. No lot will be removed from the sale until any cheque has cleared unless a suitable bank reference addressed to the auctioneer is supplied. Payment is due on the day of the sale. Cash in excess of £10,500 (including V.A.T.) will not be accepted from any one person, this is not allowed due to Money Laundering Regulations 2007. All money received will be held in Clarke & Simpson Auctions Ltd. Clients Account at Barclays Bank plc, Martlesham Heath, Ipswich, Suffolk. Account Number 40484059. Sort Code 20 98 07. Clarke and Simpson Auctions Ltd. have no responsibility for any lot between the close of bidding and payment being made and subsequent collection. Please note all policy regarding payment will be enforced and suitable arrangements must be made.

12. REMOVAL OF LOTS

The ownership of any lot purchased shall not pass to the relevant buyer until they have made payment in full to Clarke and Simpson Auctions Ltd. of the total amount due.

The buyer shall at their own risk and expense take away any lot that they have purchased and paid for not later than two working days following the day of the auction after which they shall be responsible for any removal, storage and insurance charges.

Any lots not collected within three months of the date of sale will be resold by the auctioneer and all proceeds will be retained by the auctioneer to cover storage costs.

13. NUMBER BIDDING

This will be used for speed and efficiency as in all our sales. All prospective purchasers must complete a registration form and register in the office on the viewday or morning of sale to receive a number for bidding. PLEASE ALSO NOTE THAT PHOTO ID AND ADDITIONAL CONFIRMATION OF ADDRESS WILL BE REQUIRED.

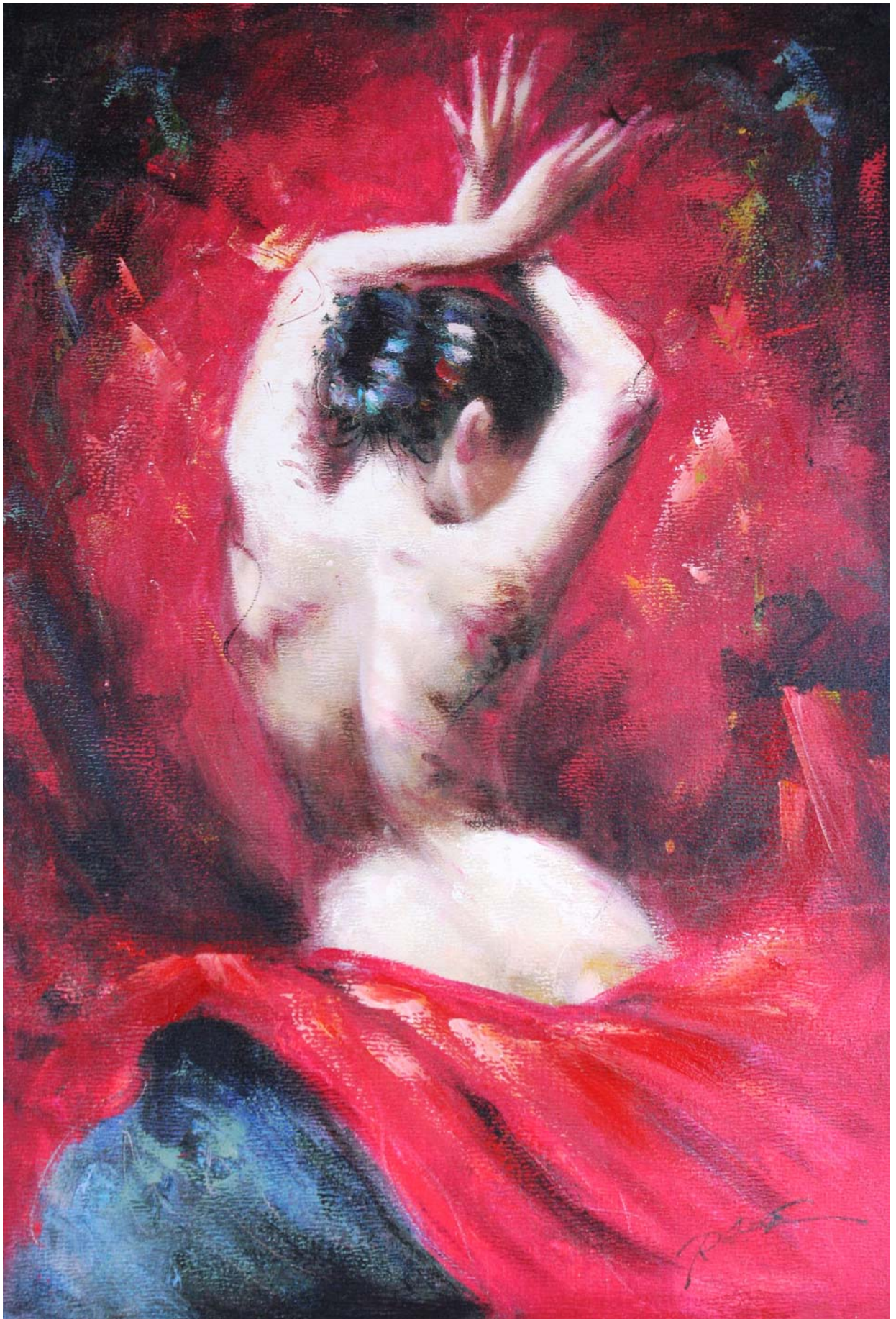
14. ONLINE BIDDING

Clarke & Simpson Auctions Ltd., on occasions, offer an online bidding service via the-saleroom.com and ibidder.com for bidders who cannot attend the sale for some sales.

In completing the bidder registration on www.the-saleroom.com or ibidder.com and providing your credit card details and, unless alternative arrangements are agreed with Clarke & Simpson Auctions Ltd.:

1. authorise Clarke & Simpson Auctions Ltd., if they so wish, to charge the credit card given in part or full payment, including all fees, for items successfully purchased in the auction via www.the-saleroom.com or ibidder.com, and
2. confirm that you are authorised to provide these credit card details to Clarke & Simpson Auctions Ltd. through www.the-saleroom.com or ibidder.com and agree that Clarke & Simpson Auctions Ltd. are entitled to ship the goods to the card holder name and card holder address provided in fulfilment of the sale.

Please note that any lots purchased via the-saleroom.com or ibidder.com live auction service will be subject to an additional 3% buyer's premium + VAT at the rate imposed on the hammer price



Clarke & Simpson Auction Centre, Campsea Ashe
Nr Wickham Market, Suffolk IP13 0PS
T: 01728 746323 E: auctions@clarkeandsimpson.co.uk
www.clarkeandsimpson.co.uk