



Clarke &
Simpson

Selected Antiques & Fine Art

Wednesday 5th October 2016 at 10.00 am

THE
*Monday
Sale*



ROOM 2
NOW LIVE ONLINE
EVERY WEEK AT

the-saleroom.com

Over 800 lots every week, to include cottage
antiques & modern furniture, household
appliances & garden machinery.

Viewing prior, and every Saturday 9am - 12noon

Refreshments available from the Tea Room

The catalogue for the Monday Sale will be available every Friday
on our website - www.clarkeandsimpson.co.uk

Clarke &
Simpson

Auctions

Selected Antiques & Fine Art

Wednesday 5th October 2016
at 10 am

Order of Sale:

Ceramics and Glass	1- 91
Silver and Plate	92-125
Jewellery	130-159
Objects and Collectables	165-299A
Pictures and Prints	300-377
Rugs and Furniture	380-489

Viewing:

Saturday 1st October, 9 am - 12 noon
Monday 3rd October, 2 pm - 8 pm
Tuesday 4th October, 10 am - 4 pm
Morning of Sale from 8.30 am

Enquiries:

Geoffrey Barfoot, Auction Room Manager and Valuer
James Shand, Auctioneer and Valuer

Buyer's Premium:

15% plus VAT

Catalogue Price:

£4.00 (£4.50 post paid)

Please see www.the-saleroom.com
for further images



Campsea Ashe
Nr. Wickham Market
Suffolk IP13 0PS
Tel: (01728) 746323 Fax: (01728) 748173
Email: auctions@clarkeandsimpson.co.uk
www.clarkeandsimpson.co.uk

the-saleroom.com

Special Notices for Purchasers

Certain lots are catalogued as (A.F.), damaged, restored, etc., however the absence of any such notice does not imply that the piece is free from defects, nor does it indicate that other defects are not also present. Mention is not made of breakage, cracks, chips or any damage which can be noted by careful inspection, therefore, intending purchasers MUST, in all cases, be responsible for determining the condition of lots themselves.

Special attention is drawn to the Conditions of Sale printed at the back of this catalogue.

Estimates

Presale estimates are intended only as a guide for intending purchasers, are given in good faith and subject to revision.

Condition Reports

Clarke and Simpson are unable to guarantee that requests for condition reports/images received after the close of the viewing on the day prior to auction, will be responded to. Clarke and Simpson are happy to give a Condition Report on the physical condition of goods, this will be provided on behalf of the seller on the understanding that Clarke and Simpson are not entering into a contract with you in respect of the Condition Report and accordingly does not assume responsibility to you in respect of it. All lots are available for your own inspection or for inspection by an expert instructed by you, therefore these Condition reports are for guidance only and all lots are sold "as found".

Commission Bids

The auctioneers will be pleased to execute bids for those unable to attend the sale. Lots will be purchased at the lowest bid the room bidding or any reserves will allow. In the event of identical bids, the earliest bid received will take precedence. There must always be a maximum limit indicated. Buy or unlimited bids will not be accepted. Commission bids placed by telephone are accepted at the client's risk. We urge our clients to place such commission bids before the start of the sale. All such commissions are left entirely at the buyer's risk.

Telephone Bids

Please refer to conditions of sale printed at the back of this catalogue.

Registration

All prospective buyers must register their name and address at our auction office and collect a numbered bidding card before the sale commences. If you are a successful purchaser please ensure that your number can be seen by the auctioneer and that it is your number that is called out at the fall of the hammer. Should there be any doubts as to the price or buyer, please draw the auctioneer's attention to it before the next lot is offered.

Value Added Tax

The symbol * after any lot number indicates that Value Added Tax is payable by the buyer on the "hammer price".

Auctioneers Margin Scheme

The Auctioneers Margin Scheme allows auctioneers to sell items without VAT on the hammer price. Under the margin scheme an amount equivalent to VAT at the current rate is added to the buyer's premium. This amount cannot be refunded. The VAT element will not be shown separately on the buyer's invoice.

Buyers Premium

A buyer's premium of 15% plus VAT will be added to the hammer price of each lot.

Payment and Clearance

Payment can be made during or immediately after the sale by the following methods:

Cash (up to a maximum of £12,000 including VAT in accordance with Money Laundering Regulations 2007).

Debit Cards

Credit Cards (not American Express) Please note there will be a surcharge of 2.5% plus VAT for the use of these cards. We will not release goods for a period of 72 hours unless the cardholder attends the saleroom in person and presents the cards used for the transaction with proof of ID.

Bank Transfer - Account Name: Clarke and Simpson Auctions Limited

Account Number: Account No: 33222276

Bank: Barclays Bank PLC

Sort Code: 20-98-07

We do not accept cheques unless by prior arrangement.

Packaging and shipping service.

All requests are sent to our specialist handlers at:

"the-saleroom.com Delivery Service" who can be contacted directly via delivery@atgmedia.com

Attribution of Pictures and Drawings

Every effort is made to ensure the accuracy of any statement as to authorship, attribution, origin, date, age, provenance and condition of any lot whether or not such statement forms part of the description of any such lot. Whether any such statement is made orally or in the catalogue it is an expression of opinion and not to be taken as being or implying any warranties or representations of facts by the auctioneers. Each buyer by making a bid for a lot acknowledges that he has satisfied himself fully as to the attribution and condition of the lot.

- a) The forename(s) (or full stops where not known) and surname of an artist indicates in our opinion a work by the artist.
- b) The initials of the forename(s) and the surname of the artist indicates in our opinion a work of the period of the artist which may be wholly or in part his work.
- c) The surname of the artist indicates in our opinion a work of the school or by one of the followers of the artist or in his style and of uncertain date.
- d) *Signed, Dated, Inscribed* indicates in our opinion work signed/dated/inscribed by the artist.
- e) *Bears signature* indicates in our opinion that this is not the signature of the artist.
- f) *Attributed to* may be used to denote a traditional attribution based on style.
- g) *Manner of* indicates in our opinion a work executed in the artist/craftsman's style but of a later date.
- h) *After* indicates in our opinion a copy (of any date) of work of an artist or craftsman.

The addition of a question mark after any of the cataloguing terms above indicates an element of doubt.

Ceramics and Glass

1
An unusual Dresden porcelain miniature scent bottle, with dog and bird decoration, 6cm high
£30 - 60

2
A 19th Century KPM porcelain figure, of a crowned boy holding a brass trident, 12cm high; a 19th Century porcelain figure of a young girl carrying flowers with under-glazed blue Hoscht wheel mark to the base, 11cm high; and a 19th Century Derby porcelain figure of a young girl seated on a square cushion, 9.5cm high, (3)
£100 - 150

3
A 19th Century Vienna porcelain vase, the painted oval panel depicting Ruth, signed Wagner, heightened in gilt, 8cm high; a small circular porcelain plaque brooch of a young girl with jewelled headband contained within a white metal mount, 3.5cm dia.; and oval porcelain plaque depicting head and shoulders study of a young girl in gilt Florentine frame; and a porcelain plaque depicting a young boy in Tyrolean clothes, contained in a gilded foliate easel frame, (4)
£100 - 150

4
A rare late 18th Century Worcester porcelain blue and white cup; a pair of 18th Century porcelain double lipped sauce boats with loop handles, 19.5cm long; and an 18th Century English porcelain leaf shaped pickle dish, (4)
£80 - 120

5
A Royal Worcester pedestal rose bowl, of baluster shape, having finely painted rose decoration to the cream ground, heightened in green and gilt, 13cm high x 15cm dia. overall
£40 - 60

6
A 19th Century Chinese famille rose tankard, 13cm high
£60 - 80

7
A 19th Century Staffordshire spill vase, in the form of a couple and dog seated by a tree stump; a Staffordshire lion and bocage group; a group depicting seated shepherdess; a pair of figures depicting youth with a bird's nest; and maiden with pitcher and mug; and various Staffordshire animal figures
£60 - 100

8
A pair of Victorian Staffordshire figures, depicting Queen Victoria and Prince Albert; a Staffordshire hollow figure depicting a clergyman; various other small Staffordshire and other figures etc.
£60 - 100

9
A 19th Century Nelson commemorative plate, 23.5cm dia.
£40 - 60

10
An 18th Century Chinese Qianlong dish, decorated in the European manner with a scene of Rebecca and her companions at the well, painted in coloured enamels and heightened in gilt, 22.5cm dia., (some damage)
£100 - 200

11
A late 19th Century German porcelain figure of Napoleon on horse back, 40cm high; and a print of the same study, (2)
£100 - 150

12
A life size cream glazed pottery model of a Saluki hound, 98cm high
£60 - 100

13
A 19th Century Parian ware bust, of the Duke of Wellington, raised on a circular socle base, 28.5cm high; and a small Parian ware bust of Wordsworth, 17cm high, (2)
£40 - 60

14
An antique blue hour glass shaped decanter, with white metal stopper, 21.5cm high
£20 - 40

15
A pair of 19th Century Staffordshire groups, depicting figures riding goats with baskets of poses, 18.5cm high
£40 - 60

16
A Chinese Sancai glazed baluster vase, decorated with dragons and dogs of Fo, 48cm high
£150 - 250

17
A Chinese celadon ground table lamp base, of baluster form, having gilded mounts, 53cm high overall
£60 - 80

18
A Chinese sang de boeuf table lamp base, 44.5cm high
£60 - 80

19
A pair of glazed pottery figures of pug dogs, 24cm high
£20 - 40

20
A late 19th Century continental terracotta figure, of a maiden, signed Le Fevre and impressed Bearn Jasperse & Sie, Atelier d'art, Bruxelles, 58cm high
£50 - 80

21
A pair of early 19th Century Miles Mason tea cups and saucers, patterns 424 and 461
£40 - 60

22
A late 18th Century Derby puce mark teapot, with gilt heightened decoration; a similar circular plate with central crest of a wild boar; and a similar square dessert plate
£40 - 60

23
A 19th Century German porcelain figure of Falstaff, in brightly coloured attire, reclining against a floral encrusted tree stump, on gilt heightened scrolled base, (sword hand AF and other damage), 41cm high; a smaller example, (sword missing and other damage), 39cm high; and another, 22cm high, AF (3)
£200 - 400

24
Seven various ruby glasses, mostly with vine etched decoration; a pair of Victorian green glass carafes with enamel decoration; a glass table epergne; a Victorian decanter; and a gilt decorated liqueur decanter and two glasses
£40 - 60



Lot 5



Lot 11



Lot 16



Lot 20



Lot 25

25
A pair of 19th Century Capodimonte porcelain twin handled urns, and covers, decorated with raised figures and cherubs with leaf and ribbon ornamentation, 46cm high £100 - 150

26
A Royal Doulton commemorative jug, the coronation of Edward VII and Queen Alexandra 1902, 19cm high £40 - 60

27
A Capodimonte porcelain figure of a classical maiden, stood on gilt Romanesque type plinth, 27cm high £20 - 40

28
An unusual Japanese porcelain charger, having raised enamel decoration of birds and foliage, 31cm dia. £40 - 60

29
A pair of Victorian opaline, enamel and semi precious stone inset baluster vases, 35.5cm high, AF £20 - 40

30
A ruby glass table lamp, of faceted baluster form, having brass mounts, 55cm high, AF £30 - 60

31
A 19th Century stoneware harvest jug, with copper rim, 20cm high £20 - 40

32
A 19th Century stoneware harvest jug, 23cm high £20 - 40

33
A Walton type Staffordshire group, depicting male and female gardeners seated on a tree stump, 22cm high £30 - 50

34
A 19th Century Staffordshire figure, of Lady Godiva, 25cm £40 - 60

35
A large Wedgwood campana shaped vase, with raised vine leaf and floral decoration, detachable flowerholder, 34.5cm overall £40 - 60

36
A pair of Staffordshire figure groups, "Grandmother and Grandfather", 20cm high £30 - 50

37
A set of 12 Tudor cut glass champagne saucers £40 - 60

38
A hob-nail cut glass tall jug, of narrow proportions, 35cm high; a pink tinted cut glass celery vase decorated with bull-rushes and raised on a clear star cut circular base, 21.5cm high; a 19th Century hob-nail cut pedestal sweet meat jar, 14.5cm high; a triple ring neck decanter and a pair of blue glass beakers, (6) £60 - 100

39
A part suite of hob nail cut glassware, to include four wine glasses, nine port glasses, three sherry glasses, a similar ringed neck decanter; and a claret jug £30 - 50

40
Five Georgian blue, green and brown glass claret flacons, with white metal and plated mounts £40 - 60

41
A Wedgwood blue and white meat dish, decorated with long horn cattle; an "Italian lakes" pattern Victorian blue and white meat plate; and a "Wild Rose" pattern similar, (3) £30 - 60

42
A Victorian terracotta figure, of a mother and child, 63cm high £100 - 150

43
A pair of Losol ware oval meat plates, with blue vine decorated borders, 45.5cm; a Ridgeways blue and white floral pattern meat plate, 40cm; a Worcester soup dish decorated in the oriental manner; a small 18th Century bird beak creamer; and a section of Blue John mounted on a plinth etc. (part lot to be viewed in cabinet) £40 - 60

44
A Chinese famille rose decorated bowl, of large proportions, the interior painted with flowers and carp, six character mark to base, 38cm dia. £50 - 80

45
A Prattware pot lid, "The seven ages of man"; another "Hauling the trawl", (unframed); another "The Enthusiast" and "The Picnic", AF, (4) £20 - 40

46
A Prattware pot lid, "A false move", 13cm dia. in ebonised frame £20 - 30

47
A Prattware pot lid, "Uncle Toby", another "Doctor Johnson" and another "On Guard", 10cm dia. in ebonised frames £30 - 50

48
An early 20th Century cased set of six Royal Crown Derby Imari pattern coffee cans and saucers £80 - 120

49
A Prattware paste pot and lid, "Strasburg"; a Prattware pot lid, "The Ning Po River"; another "Bear Shooting" and another "The Shrimpers", (4) £20 - 40

50
A 19th Century Chinese baluster vase, profusely decorated with hawthorn blossom, domed lid surmounted by a finial, six character mark to base, 30cm high £100 - 200

51
A pair of 19th Century Davenport porcelain twin handled urns, decorated with scenic panels and foliage, heightened in gilt, (lids missing), 20cm wide overall x 12cm high; and a Victorian porcelain jardiniere in the form of a swan, (3) £40 - 60

52
A 19th Century Prattware pot lid, "The Village Wedding"; another "The Shrimpers"; another "The Wolf and the lamb" and an un-named example depicting cattle and figures outside a cottage, (4) £20 - 40



Lot 42



Lot 50



Lot 53

- 53**
A 19th Century Chinese blue and white baluster vase, decorated exotic birds, butterflies and blossom, 45.5cm high £100 - 200
- 54**
Four 19th Century Japanese blue and white plates, having scalloped rims, scenic borders and central panels of symbols, bearing labels stating that they were presented to Josiah Austen, assistant surgeon Royal Navy, by the governor of a Japanese province on the occasion of signing a treaty for opening five trading posts in Japan, (one AF) £100 - 200
- 55**
A Prattware pot lid, "The snow drift"; another "Alas poor Bruin" and another "Dangerous skating", (3) £30 - 40
- 56**
A Sunderland lustreware baluster jug, decorated motif of a sailing ship and romantic verses, 17cm high; a Sunderland lustre frog mug decorated with the mariner's compass, 12cm; a copper lustre vine decorated mug; and a copper lustre goblet decorated rural scenes, (4) £80 - 120
- 57**
Seven Antique Indian terracotta figures, dressed in national costume £80 - 120
- 58**
A Staffordshire figure group, depicting Joseph and Mary escape to Egypt, AF; a large Staffordshire figure group depicting a couple riding a chariot, 30cm high; and a small Staffordshire group depicting boy with dog and dove, (3) £40 - 60
- 59**
A 19th Century Staffordshire figure of Garibaldi, with attendant horse, stood on naturalist base, 37cm high overall and a Victorian coloured print of the same study, (2) £40 - 60
- 60**
A Royal Crown Derby oval blue and white porcelain plaque, in the Delft style depicting fishing boats, 32.5cm x 23cm £30 - 60
- 61**
A 19th Century Chinese moss green glazed porcelain censer, raised on three scrolled mask feet, 15cm high x 16cm wide in extremes £40 - 60
- 62**
An 18th Century Chinese polychrome decorated plate, painted cranes and flowers; and three 19th Century Cantonese plates decorated goldfish, butterflies, birds and flowers, (4) £150 - 250
- 63**
An early 19th Century Pearlware dish, decorated with Indian scenes, depicting an elephant and temple; a Creamware tulip vase decorated in the Delft style, 8cm high; and a pair of 19th Century saucers with floral decoration, (4) £30 - 50
- 64**
A Lowestoft baluster sparrow beak cream jug, decorated in the Chinese manner, 10.5cm high £80 - 120
- 65**
A 19th Century Sevres coffee can, painted with a panel depicting a young girl feeding chickens, on rich blue and gilt heightened ground, 7.5cm, AF £20 - 40
- 66**
An unusual 19th Century Chinese blue and white porcelain censer, with cover and stand, decorated dragons and flaming pearls amongst clouds, surmounted by a kylin finial, 22cm high £200 - 300
- 67**
A Royal Worcester coffee cup and saucer, decorated with fruit, by T. Lockyer; another with pheasant decoration; a similarly decorated cylindrical posy vase; and a baluster shaped example decorated with foliate sprays on a bluish ivory ground, (4) £60 - 100
- 68**
An unusual 18th Century Chinese en grisaille decorated plate, depicting a Dutch merchant, "Petrus Boudaan", having central portrait and armorial crest, gilt heightened foliate decoration, 22.5cm £200 - 300
- 69**
A French porcelain gilt metal mounted hinged snuff box, decorated in the Chinese manner, 10cm long £30 - 50
- 70**
A Yi Xing red ware teapot and bowl, decorated symbols; a larger teapot with loop handles and a pair of square section baluster vases with enamel decoration of symbols and birds, 17cm high, (5) £30 - 60
- 71**
A Chinese porcelain blue and white cylindrical brush pot, painted with figures in various pursuits, 15.5cm high £80 - 120
- 72**
A late 18th Century Chinese porcelain blue and white bowl of waisted form, decorated with dragon amongst clouds, 9.4cm high x 14cm dia.; and a 19th Century Chinese blue and white porcelain baluster vase, the neck decorated with applied lizards, 9.5cm high, (2) £100 - 200
- 73**
A pair of late 19th Century German porcelain figures, depicting a maid and youth dancing; another pair depicting an actress and musician; another depicting a stately lady and gentleman in lace trimmed costume, (6) £60 - 80
- 74**
A collection of various continental porcelain bird and animal ornaments £40 - 60
- 75**
A Staffordshire figure group, "The Widow"; another of "Red Riding Hood" and a spill holder in the form of a tree stump on floral encrusted base decorated with lambs, (3) £20 - 40
- 76**
A 19th Century octagonal Chinese blue and white plaque, decorated with dragons and flaming pearls, 25.5cm dia. overall; together with unassociated carved hardwood plate stand, (2) £80 - 120



Lot 59



Lot 66



Lot 68



Lot 76



Lot 85



Lot 86



Lot 88



Lot 90

77

A Japanese Imaricylindrical vase; a pair of Japanese plates decorated with exotic birds; a pair of Samson baluster vases decorated in the Chinese armorial style; Mason's ironstone jug, AF; two items of slag glass etc. £30 - 50

78

An 18th Century English Delft ware charger, decorated central floral spray within hatched and foliate panel borders, (AF), 37cm dia. £60 - 80

79

A Victorian cranberry glass posy basket, with frilled rim and clear glass arched handle, 18cm high £80 - 120

80

A Royal Doulton figure, "Good King Wenceslas" HN2118, 23.5cm high; and a Royal Doulton Dickens series jug depicting "Poor Jo and Fat Boy", (2) £40 - 60

81

A quantity of 18th Century Delft tiles, depicting fishermen £100 - 150

82

A quantity of 18th Century Delft tiles, depicting cottages and buildings £100 - 150

83

A 19th Century Moore Bros. porcelain floral encrusted jardiniere; an Amherst Japan pattern pedestal fruit bowl; a continental figural tobacco jar in the form of a lady taking a pinch of snuff; a pair of German porcelain figures depicting maid and youth, dancer and musician; various other porcelain items; two 19th Century glass rummers etc., (some damage) £60 - 100

84

A Rhenish ware style bellamine type flagon, with blue glazed floral motif, 45cm high £40 - 60

85

A Westerwald stoneware spirit barrel, the lid surmounted by a seated figure, having raised decoration of vine leaves, soldiers and heraldic shields, 40cm high £40 - 60

86

An Isnic pottery pierced shallow bowl, having floral decoration within a shaped border, 38cm dia.; an Eastern pottery circular shallow bowl with red and green floral decoration, 37cm dia.; a small bowl with floral decoration and carved hardwood associated stand, (4) £40 - 60

87

A blue and white Chinese crackle ware shallow bowl, decorated exotic birds and foliage, 41cm dia.; another with green glazed foliate decoration and red glazed symbols, 38cm dia.; a Chinese leaf shaped dish, AF; and other nominal items £40 - 60

88

An Antique Whieldon ware pepper pot, in the form of a crouching man, 12cm high £30 - 50

89

A Victorian cranberry glass and enameled baluster jug, having clear glass handle, 26.5cm high £60 - 100

90

A 19th Century Chinese Canton teapot, decorated figures, flowers, birds and butterflies, in coloured enamels, 12cm high £30 - 60

91

A Victorian oval blue and white transfer printed meat plate, decorated in the Asiatic pheasant pattern; a Willow pattern meat plate; a Spode Willow pattern cheese stand; a Booths "British Scenery" pattern platter; and other items £30 - 60

Silver and Plate

92

A large 19th Century Sheffield plated tray, of rococo design, with foliate cast borders and handles raised on scrolled shell feet, 79cm £150 - 250

93

A 19th Century plated pedestal mustard pot, with blue glass liner; a Victorian claret jug with engraved foliate decoration and pewter mounts; and a plate mounted preserve jar on stand, (3) £30 - 50

94

A 19th Century continental white metal chalice and cover, decorated with raised flowerheads, 31cm high £100 - 200

95

Nine 19th Century silver handled steel bladed dinner knives, bearing family crests £20 - 40

96

A pair of silver knife rests; a George III silver sifter spoon; an unusual Sterling silver invalid spoon and a continental spoon, (5) £80 - 120

97

A George III silver spoon, with marrow scoop handle, possibly London 1787, and a George III Irish silver Fiddle pattern tablespoon, initialed to the back IDG, bearing family crest, Dublin 1809, (2) £80 - 120

98

An 18th Century silver chamberstick, in the form of a sword hilt, 10cm long £80 - 120

99

An Edwardian silver Aladin's lamp table cigar lighter, London 1908, 12cm long £30 - 50

100

A 19th Century Chinese silver mug, profusely decorated bamboo shoots and birds with central vacant cartouche, 11.5cm £100 - 150

101

An Edwardian silver two handled sugar bowl, London 1910; and a silver two handled trophy cup, 10cm high, London 1909, (2) £60 - 100

102

A George V silver cream jug, having gadrooned border, scrolled handle, raised on a oval stepped foot, Birmingham 1930, 16cm long £40 - 60

103

An unusual Art Deco period plated toast rack, by Asprey, London, with spirit heater stand and hotplate, 14.5cm wide x 19cm high £40 - 60

104
A George II silver pear shaped cream jug, with foliate embossed decoration, raised on three pad feet, *London 1756*, 9.5cm high £40 - 60

105
Two Edwardian silver bon bon dishes, of pierced circular form, *Birmingham 1908* £40 - 60

106
A Victorian silver card case, having foliate engraved and engine turned decoration around a central cartouche, 10cm, *Birmingham 1863* £40 - 60

107
A George V silver domed top cigarette box, with engine turned decoration, raised on bun feet, 11cm wide, *Birmingham 1928* £50 - 80

108
A George III silver pie crust bordered waiter, raised on three claw and ball feet, *London 1781*, 16.5cm dia., AF £80 - 120

109
A continental white metal snuff box, the hinged lid decorated with a romantic panel within foliate scroll surround, gilded interior, 9cm £80 - 100

110
A pair of continental silver ornate oval dishes, with oak leaf panels and pierced shell decoration within scrolled handles, raised on foliate feet, .800 mark, 37cm long £200 - 400

111
A pair of silver decanter labels, with cast vine borders, "Sherry" and "Brandy", *London 1968* £60 - 80

112
A Georgian Scottish silver caddy spoon, with shell shaped bowl and bright cut decoration to the handle £20 - 40

113
A silver decanter label, with raised foliate decoration, "Sherry"; another of plain design; two plated decanter labels and an enamel decanter label "Gin", (5) £20 - 30

114
An Edwardian silver mounted glass scent bottle, with spot hammered decoration; two similar tidy jars; a Victorian blue faceted glass doubled-ended scent bottle; a Victorian green glass scent bottle with white metal foliate mounts; a pair of cut glass and silver mounted circular salts; a silver mounted sugar shaker; a silver backed hand mirror; a silver and tortoise shell mounted brush and a cased shoe horn boot pull and button hook set £60 - 80

115
A silver sauce boat, by Mappin & Webb, having serrated border and scrolled handle, raised on three hoof feet, 16cm long, *Birmingham 1932*, 4ozs. £40 - 60

116
A silver mug, by Walker & Hall, of plain design, raised on a circular spread foot, 10.5cm high, 6ozs., *Sheffield 1908* £50 - 80

117
A small George V silver tankard, decorated with a monogram and inscribed "February 4th 1921", hallmarked for *Sheffield 1917*, 7.5cm high, 3ozs. £40 - 60

118
A modern silver goblet, raised on baluster stem and circular reeded spread foot, 14cm high, 6.5ozs. £50 - 80

119
A George III silver cream jug, having reeded border decoration and loop handle, *London 1795*, 12cm high overall, 4ozs. £50 - 80

120
A silver cream jug, in the Georgian style, having reeded border and loop handle, 11cm high overall, *London 1936*, 4ozs. £40 - 60

121
An early 18th Century silver tankard, later converted to a cream jug and embossed with foliate decoration, central cartouche bearing a family crest and monogram and inscribed "From Sir David Wood KCB", 10cm high, possibly *Newcastle 1727*, 7ozs. £200 - 250

122
A large collection of various Georgian and Victorian silver teaspoons; three Georgian tablespoons; four various silver napkin rings etc. approx. 30ozs. £200 - 300

123
A garniture of plated three branch candelabras £30 - 50

124
A Continental white metal dressing table set, stamped .800, contained in a fitted case, AF £40 - 60

125
A small Edwardian rectangular silver photograph frame, *London 1905*; a heart shaped silver mounted photograph frame, *Birmingham 1899*; a Victorian silver photograph frame with foliate scroll and mask decoration, *London 1887*, AF; a large white metal photograph frame stamped Sterling; a circular silver salt, *Chester 1904*; and a silver pepperette, *Birmingham 1915*, (6) £60 - 100

126-129
No Lots

Jewellery

130
A mid 20th Century 9 carat gold gent's wrist watch, by Weingarten £150 - 250

131
A silver and enamel Art Deco compact; a white metal Danish serving spoon; an Art Deco ladies gold cased wrist watch; and three amber coloured pendants hung to fine link chains £30 - 50

132
Various beads; a filigree work white metal bracelet and brooch; various costume jewellery etc. £20 - 40



Lot 100



Lot 103



Lot 109



Lot 114



Lot 149

133
A Victorian gold seed pearl and tourmaline set bar brooch; 22 carat gold wedding band, (worn); 18 carat gold and platinum solitaire ring; 18 carat gold three stone ring; various other dress rings and nominal items of jewellery £60 - 80

134
A 1912 half sovereign £60 - 100

135
A 9 carat gold Masonic pendant, hung to T bar and clip; 9 carat gold locket hung to a fine link chain; a small oval 9 carat gold locket with dove decoration; a 9 carat gold bar brooch, approx. 21gms; and a silver Masonic pendant £100 - 150

136
A 9 carat gold circular locket, with engine turned decoration, hung to a fine link chain, approx. 15gms £100 - 150

137
A 9 carat gold watch chain, with elongated links, approx. 32gms £300 - 350

138
An 18 carat gold buckle ring; an 18 carat gold ring set with a single stone; an 18 carat gold signet ring; and a 22 carat gold wedding band £200 - 300

139
A continental white metal gent's pocket watch, with engine turned decoration and vacant cartouche to the back cover; a continental fob watch, AF; and a silver watch chain, (3) £40 - 60

140
A Niello ware Siamese brooch; a similar pendant; a Victorian arrow brooch; various other silver and white metal brooches, badges etc. £40 - 60

141
Three 1930's yellow metal ladies wrist watches, of Art Deco design; a small 9 carat gold ladies wrist watch hung to a leather strap; and another wrist watch set to an expanding bracelet, (5) £100 - 150

142
A collection of 33 various silver, white and yellow metal dress rings; and a set of cultured pearls £200 - 300

143
A 9 carat gold mounted diamond ring, set with a central tablet of 9 square cut diamonds and 8 graduated diamonds to the shoulders, diamond weight approx. 2 carats £500 - 700

144
An amber coloured necklace, of graduated square segment form; and a faceted cherry coloured similar, (2) £40 - 60

145
A gent's 9 carat gold Omega wrist watch, on expanding strap, cased £200 - 300

146
A Chinese white, yellow metal and enamel decorated nail guard brooch, set with coral and turquoise; and a Chinese circular silver gilt and stone set brooch, (2) £100 - 150

147
A silver gilt cased perfume phial, having crown motif, by the Goldsmiths & Silversmiths Company, London, probably 1913, 10.5cm long, in fitted leather and silk lined case £60 - 100

148
An 18 carat gold band, approx. 5.9gms £250 - 350

149
A gilt and enamel decorated pendant, presented to Councillor Miss M. Moses J.P., mayor of Stepney, 1931/1932 £40 - 60

150
A yellow metal bar brooch, set three faceted white stones; a small bar brooch with seed pearl motif; and a yellow metal tie pin set white stones in the form of a question mark, (3) £60 - 100

151
A white metal Art Nouveau pendant, set green and pink stones and enamel borders, (colours of the Suffragette movement), hung to a fine link chain £100 - 150

152
A white metal pendant, in the Egyptian revival taste with Ibis head design, wings of Plique-a-jour enamel, central cornelain bordered with marcasite and hung to a fine link chain £100 - 150

153
An 18 carat white gold and platinum apple green jade brooch, in the form of a Chinese junk, set with diamonds, rubies, sapphire and emeralds, contained in a Harrods box £300 - 500

154
An 18 carat gold dress ring, set with a turquoise cabouchon £80 - 120

155
A silver Art Nouveau pendant, decorated turquoise and other coloured enamels and set with a central blister pearl, hung to a fine link chain £100 - 150

156
A 9 carat gold and diamond set cluster ring, with three central faceted green stones £100 - 150

157
A 15 carat gold ring, set central sapphire surrounded by diamonds £100 - 150

158
A Bee brooch, decorated turquoise stones and moon stones with articulated wings £100 - 150

159
A finely painted pair of enamel portrait brooches, the borders inset with white stones, made from two Victorian bracelet clasps £100 - 150

160-164
No Lots

Objects and Collectables

165
A 19th Century ivory and ebony column barometer, by Adams, Crawford Street, London, 23cm high £60 - 100



Lot 151

136
A 9 carat gold circular locket, with engine turned decoration, hung to a fine link chain, approx. 15gms £100 - 150

137
A 9 carat gold watch chain, with elongated links, approx. 32gms £300 - 350

138
An 18 carat gold buckle ring; an 18 carat gold ring set with a single stone; an 18 carat gold signet ring; and a 22 carat gold wedding band £200 - 300

139
A continental white metal gent's pocket watch, with engine turned decoration and vacant cartouche to the back cover; a continental fob watch, AF; and a silver watch chain, (3) £40 - 60

140
A Niello ware Siamese brooch; a similar pendant; a Victorian arrow brooch; various other silver and white metal brooches, badges etc. £40 - 60

141
Three 1930's yellow metal ladies wrist watches, of Art Deco design; a small 9 carat gold ladies wrist watch hung to a leather strap; and another wrist watch set to an expanding bracelet, (5) £100 - 150

142
A collection of 33 various silver, white and yellow metal dress rings; and a set of cultured pearls £200 - 300

143
A 9 carat gold mounted diamond ring, set with a central tablet of 9 square cut diamonds and 8 graduated diamonds to the shoulders, diamond weight approx. 2 carats £500 - 700

144
An amber coloured necklace, of graduated square segment form; and a faceted cherry coloured similar, (2) £40 - 60

145
A gent's 9 carat gold Omega wrist watch, on expanding strap, cased £200 - 300

146
A Chinese white, yellow metal and enamel decorated nail guard brooch, set with coral and turquoise; and a Chinese circular silver gilt and stone set brooch, (2) £100 - 150

147
A silver gilt cased perfume phial, having crown motif, by the Goldsmiths & Silversmiths Company, London, probably 1913, 10.5cm long, in fitted leather and silk lined case £60 - 100

148
An 18 carat gold band, approx. 5.9gms £250 - 350

149
A gilt and enamel decorated pendant, presented to Councillor Miss M. Moses J.P., mayor of Stepney, 1931/1932 £40 - 60

150
A yellow metal bar brooch, set three faceted white stones; a small bar brooch with seed pearl motif; and a yellow metal tie pin set white stones in the form of a question mark, (3) £60 - 100

151
A white metal Art Nouveau pendant, set green and pink stones and enamel borders, (colours of the Suffragette movement), hung to a fine link chain £100 - 150

152
A white metal pendant, in the Egyptian revival taste with Ibis head design, wings of Plique-a-jour enamel, central cornelain bordered with marcasite and hung to a fine link chain £100 - 150

153
An 18 carat white gold and platinum apple green jade brooch, in the form of a Chinese junk, set with diamonds, rubies, sapphire and emeralds, contained in a Harrods box £300 - 500

154
An 18 carat gold dress ring, set with a turquoise cabouchon £80 - 120

155
A silver Art Nouveau pendant, decorated turquoise and other coloured enamels and set with a central blister pearl, hung to a fine link chain £100 - 150

156
A 9 carat gold and diamond set cluster ring, with three central faceted green stones £100 - 150

157
A 15 carat gold ring, set central sapphire surrounded by diamonds £100 - 150

158
A Bee brooch, decorated turquoise stones and moon stones with articulated wings £100 - 150

159
A finely painted pair of enamel portrait brooches, the borders inset with white stones, made from two Victorian bracelet clasps £100 - 150

160-164
No Lots

Objects and Collectables

165
A 19th Century ivory and ebony column barometer, by Adams, Crawford Street, London, 23cm high £60 - 100



Lot 152

136
A 9 carat gold circular locket, with engine turned decoration, hung to a fine link chain, approx. 15gms £100 - 150

137
A 9 carat gold watch chain, with elongated links, approx. 32gms £300 - 350

138
An 18 carat gold buckle ring; an 18 carat gold ring set with a single stone; an 18 carat gold signet ring; and a 22 carat gold wedding band £200 - 300

139
A continental white metal gent's pocket watch, with engine turned decoration and vacant cartouche to the back cover; a continental fob watch, AF; and a silver watch chain, (3) £40 - 60

140
A Niello ware Siamese brooch; a similar pendant; a Victorian arrow brooch; various other silver and white metal brooches, badges etc. £40 - 60

141
Three 1930's yellow metal ladies wrist watches, of Art Deco design; a small 9 carat gold ladies wrist watch hung to a leather strap; and another wrist watch set to an expanding bracelet, (5) £100 - 150

142
A collection of 33 various silver, white and yellow metal dress rings; and a set of cultured pearls £200 - 300

143
A 9 carat gold mounted diamond ring, set with a central tablet of 9 square cut diamonds and 8 graduated diamonds to the shoulders, diamond weight approx. 2 carats £500 - 700

144
An amber coloured necklace, of graduated square segment form; and a faceted cherry coloured similar, (2) £40 - 60

145
A gent's 9 carat gold Omega wrist watch, on expanding strap, cased £200 - 300

146
A Chinese white, yellow metal and enamel decorated nail guard brooch, set with coral and turquoise; and a Chinese circular silver gilt and stone set brooch, (2) £100 - 150

147
A silver gilt cased perfume phial, having crown motif, by the Goldsmiths & Silversmiths Company, London, probably 1913, 10.5cm long, in fitted leather and silk lined case £60 - 100

148
An 18 carat gold band, approx. 5.9gms £250 - 350

149
A gilt and enamel decorated pendant, presented to Councillor Miss M. Moses J.P., mayor of Stepney, 1931/1932 £40 - 60

150
A yellow metal bar brooch, set three faceted white stones; a small bar brooch with seed pearl motif; and a yellow metal tie pin set white stones in the form of a question mark, (3) £60 - 100

151
A white metal Art Nouveau pendant, set green and pink stones and enamel borders, (colours of the Suffragette movement), hung to a fine link chain £100 - 150

152
A white metal pendant, in the Egyptian revival taste with Ibis head design, wings of Plique-a-jour enamel, central cornelain bordered with marcasite and hung to a fine link chain £100 - 150

153
An 18 carat white gold and platinum apple green jade brooch, in the form of a Chinese junk, set with diamonds, rubies, sapphire and emeralds, contained in a Harrods box £300 - 500

154
An 18 carat gold dress ring, set with a turquoise cabouchon £80 - 120

155
A silver Art Nouveau pendant, decorated turquoise and other coloured enamels and set with a central blister pearl, hung to a fine link chain £100 - 150

156
A 9 carat gold and diamond set cluster ring, with three central faceted green stones £100 - 150

157
A 15 carat gold ring, set central sapphire surrounded by diamonds £100 - 150

158
A Bee brooch, decorated turquoise stones and moon stones with articulated wings £100 - 150

159
A finely painted pair of enamel portrait brooches, the borders inset with white stones, made from two Victorian bracelet clasps £100 - 150

160-164
No Lots

Objects and Collectables

165
A 19th Century ivory and ebony column barometer, by Adams, Crawford Street, London, 23cm high £60 - 100



Lot 158

166
A 19th Century ivory and steel corkscrew, (brush missing), 14.5cm *£40 - 60*

167
A 19th Century oriental lacquered sewing box, the partitioned interior containing some ivory sewing accessories and a similar design tea caddy, (2) *£60 - 100*

168
C.H.B., study of hounds in rural landscapes, a pair, pencil signed watercolours, (unframed), 15.5cm x 23.5cm *£40 - 60*

169
An unusual late Georgian tea caddy, encrusted with shells on a mahogany base, two compartment interior, raised on bun feet, 18.5cm wide *£100 - 150*

170
A rare 16th Century portrait miniature of a gentleman, painted on copper, engraved verso "Antoni Von Haymb Aeta 26, Ano 1516", within a white metal frame *£300 - 500*

171
A small early 20th Century Swiss circular desk clock, in ormolu type case, having enameled dial *£80 - 120*

172
A 19th Century French ivory etui, containing white and yellow metal implements *£250 - 350*

173
A 1920's ebony dressing table tray; a glass Art Deco design scent bottle; an Egyptian pendant; two propelling pencils; leather cased glass scent bottle; two oriental combs and a cinnabar lacquer tray *£40 - 60*

174
A 19th Century Staffordshire enamel patchbox, AF; a papier mache snuff box; an Antique metal tinder box and striker; miniature wooden plane; a plated champagne tap; a brass barrel tap; three Antique iron candle snuffers; a miniature print on fabric depicting Windsor castle in circular ebonised frame; another miniature print depicting cherubs; a soapstone teapot AF etc. *£60 - 100*

175
A small leather cased and silver mounted carriage clock, hallmarked for 1884, the circular white Roman numeral enameled dial inscribed "Thornhill & Co., London", 7cm high *£80 - 120*

176
A Victorian brass cased carriage clock, with alarm movement, contained in a leather carrying case *£80 - 120*

177
A 19th Century scarlet and natural tortoise shell brass inlaid circular box and cover, with central mother of pearl inlaid panel, 10cm dia. *£60 - 100*

178
A pair of 19th Century Chinese circular ivory pots, the covers engraved with monkeys and elephants, 6.5cm dia. *£30 - 50*

179
A 19th Century ormolu and Pietra Dura lobed dish, having central panel surrounded by 8 small oval panels, 23cm dia. *£100 - 150*

180
A 19th Century carved ivory opera glass *£40 - 60*

181
An 18th Century steel double ended powder or shot dispenser, 8cm long *£20 - 40*

182
An 18th Century calf hide and leather mounted cylindrical snuff box, with white metal escutheons and cartouche, 7cm long *£40 - 60*

183
An Antique clay pipe bowl, in the form of a naval figure, possibly Nelson, with ebony stem and another bowl in the form of a bearded gentleman, impressed C.Crop, London, (2) *£40 - 60*

184
A 19th Century brass Lancashire snuff box, 8cm long *£30 - 50*

185
A 19th Century mussel shell and white metal mounted snuff box, having leaf decoration, 6.5cm long; and a Cowrie shell and an electro plate mounted similar, 9cm long, (2) *£60 - 100*

186
An 18th Century treen pipe tamper, in the form of a greyhound killing a hare, 9cm long *£80 - 120*

187
A scarlet tortoise shell and ivory trinket casket, 11.5cm long *£40 - 60*

188
An opaline glass and yellow metal mounted scent bottle, having foliate engraved decoration, contained in a leather and fabric lined case *£40 - 60*

189
A late 19th Century carved ivory easel photograph frame, bearing label for Shopard Berne, 17cm *£40 - 60*

190
A cold painted bronze menu holder, in the form of a salmon *£60 - 80*

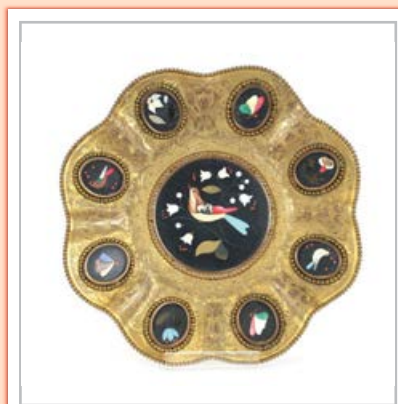
191
Two cold painted bronze menu holders, one in the form of a duck, the other in the form of a goose, on onyx bases *£80 - 100*

192
An unusual Mexican seated terracotta figure, 25cm high *£100 - 150*

193
A carved ivory Cantonese card case, decorated in relief with figures and pagodas; a pair of Antique Chinese ivory seated figures etc. *£60 - 80*

194
A pair of 17th Century pine ecclesiastical figures, 22cm high *£150 - 250*

195
A rare and unusual carved wooden Roof Boss, 15th Century in form and depicting a gentleman's head with leaf surround, 20cm x 19cm overall *£400 - 600*



Lot 179



Lot 184



Lot 186



Lot 195



Lot 224

196
A 17th Century carved walnut doll, 18.5cm high
£50 - 80

197
A 19th Century hand written Koran, in tooled leather wrap-around case
£300 - 500

198
British War Ships of the Royal Navy, published by the Illustrated London News
£20 - 40

199
An early 20th Century photograph album, originally from a Norfolk family
£30 - 50

200
A quantity of 19th Century leather bound books, including Lockhart's "Life of Scott" and Carlyle's work
£40 - 60

201
A mahogany cased sextant, by Stebbing Buist & Co., of Southampton
£100 - 200

202
An Antique carved wooden wash board, having foliate and roundel decoration, 19cm long
£80 - 120

203
A 19th Century hardwood ball headed African throwing club, of typical form, 46cm long
£120 - 160

204
A 1913 bayonet in leather and metal mounted scabbard, the blade 43cm long
£30 - 50

205
A World War II bayonet, 30.5cm long
£20 - 40

206
A 19th Century French bayonet, stamped to the guard "B45690", brass grip, curved blade 56.5cm long
£30 - 60

207
A walking stick, the handle carved in the form of a dog's head, 90cm long
£30 - 50

208
Margaret Mee, Brazilian Bromeliads, folio edition
£30 - 50

209
A walnut and inlaid cased polyphon, by Imhof & Mukle, 110 New Oxford Street, London, 58cm wide x 34cm high, complete with 38 disks
£200 - 400

210
An etched glass and brass mounted three light hanging hall lantern, having foliate and fruit decoration, 40cm
£40 - 60

211
An Art Nouveau design gilded brass four light electrolier, fitted frosted ribbed shades and a large central flambe shade
£100 - 150

212
An Art Deco design brass and bronzed effect 8 branch chandelier, having Vaseline glass tapering shades
£30 - 60

213
A framed and glazed arrangement of various moths, butterflies and scarab beetles, 44cm x 34cm
£50 - 80

214
A 19th Century sampler, decorated flowers and verse, dated 1834, 41cm x 29cm
£30 - 50

215
A 19th Century mahogany boxwood and ebony strung banjo barometer, surmounted by a broken arch pediment and brass finial, conch shell inlaid decoration, 90cm
£70 - 100

216
A 19th Century ebonised and mother of pearl inlaid three compartment tea caddy, complete with glass mixing bowl, 32cm long
£40 - 60

217
A bronze Benin style head, 26.5cm high
£40 - 60

218
A 19th Century Spelter bust, depicting a Greek warrior god, raised on circular marble plinth, 22.5cm high
£30 - 50

219
A Broadhurst, Clarkson & Co. mahogany cased brass microscope
£40 - 60

220
An 18th Century Lignum Vitae pestle and mortar, the pestle 24cm long, the mortar 17cm high x 15cm dia.
£150 - 250

221
A pair of 19th Century mahogany candlesticks, having brass sconces and reeded columns, raised on circular bases, 31cm high
£40 - 60

222
A set of 12 Antique pewter plates, all with touch marks, 23.5cm dia.
£50 - 80

223
A Victorian walnut and brass mounted stationery cabinet, of sloping form, the interior divisions enclosed by a pair of doors above single drawer, 38cm wide x 31.5cm high
£60 - 100

224
A 19th Century French tortoise shell and cut brass inlaid mantel clock, in the manner of Boulle, circular foliate decorated gilded dial with enamel Roman numerals supporting an 8 day movement striking on a gong, surmounted by a floral finial, 43cm high overall
£100 - 200

225
A 19th Century sampler, decorated with alphabet, verse, birds and symbols, dated 1890, 46cm x 60cm, contained in an ornate gilt frame
£60 - 100

226
An Indian carved hardwood leaf and tied ribbon decorated applique, 73cm
£20 - 40

227
A 19th Century ormolu candlestick, converted to a table lamp; and another similar, (2)
£40 - 60

228
An early Chinese bronze censer, of bulbous form, having dragon applied decoration to the body, raised on tripod feet, six character mark to base, 26cm wide overall x 24cm high
£300 - 500



Lot 230



Lot 232



Lot 238

229
An Edwardian oak two handled tea tray, having plated central plaque, 54cm wide £20 - 40

230
A 19th Century French ebonised tortoise shell and cut brass inlaid mantel clock, having circular enameled dial with blue Roman numerals, supporting an 8 day movement striking on a bell, 32cm high £100 - 150

231
A pair of 19th Century bronze wall brackets, with twin branch candle holders, decorated with winged maidens, 31cm high £200 - 300

232
A 19th Century bronze figure group, depicting a woman and child reclining on rocks with an anchor, raised on oval marble base, 47cm high x 40cm wide overall £100 - 200

233
A small oval Victorian burr walnut framed wall mirror, with Verre eglomise decoration, 32cm £30 - 50

234
A 19th Century walnut and brass mounted writing box, the lid inset with a plaque inscribed "Presented to W.G. Collins by his fellow workmen at John Fowler & Co. as a token of respect, 19th May 1900", 35.4cm wide £50 - 80

235
A Victorian black marble cased mantel clock, of architectural design, surmounted by turned finials, decorated with Corinthian columns, circular enamel dial with visual escapement, the 8 day movement striking on a gong, 40cm long x 41cm high £40 - 60

236
A violin, bearing paper label for Martin Fuguer, dated 1927, 37.5cm, complete with a bow in baize lined walnut case £60 - 100

237
A cloisonne circular plaque, decorated with dragons and foliage, 37cm dia. £60 - 80

238
A late 19th Century American brass four glass mantel clock, having circular painted dial supporting an 8 day movement striking on a gong with Mercury adjustable pendulum, 7cm wide x 28cm high £100 - 150

239
An armorial plaque, depicting a unicorn £30 - 50

240
An Victorian table oil lamp, having brass Corinthian column, yellow opaque glass shell decorated reservoir with a tinted flared shade, 77cm high £300 - 400

241
A small bronze campana shaped urn, 13cm high; a pair of smaller similar depicting the Warwick vase; a bronze Romanesque urn and cover; a Spelter log shaped posy vase and an oriental Spelter figure of a seated deity with animals, (6) £60 - 80

242
An early 20th Century plate on copper cased timepiece, of lancet shape, raised on bun feet, 18.5cm high £20 - 40

243
A cast iron campana shaped garden urn, raised on a separate floral decorated plinth base, 79cm high overall £60 - 100

244
A 19th Century imposing gilt metal desk stand, having central lion surmount flanked by cut glass inkwells and scrolled handles, fitted with a single drawer and raised on bun feet, 41cm overall £60 - 100

245
A 19th Century French bronze figure, depicting young man harvesting grapes, 51.5cm high £120 - 180

246
An Anglo Indian ivory and bone inlaid desk stand, of Vizagapatam style; and two Eastern inlaid trinket boxes, (3) £30 - 50

247
An Antique pewter church warden's beaker, inscribed "R. Peddie, W. Tennent, C. Ling, E. Hogg 1707", 17cm high £20 - 40

248
A circular brass tazza, with raised foliate embossed decoration; and a pair of brass five branch candelabra, 42cm high, (3) £40 - 60

249
A 19th Century French rouge marble and Spelter clock garniture, decorated maiden, cherubs, dolphins and shells, clock with gilded circular filigree work dial by E. Doyen, supporting an 8 day movement striking on a bell, flanked by a pair of four branch candelabra, 66cm high, (some damage) £100 - 150

250
A bronze figure of a naked girl, seated on a rock, raised on a circular black marble plinth, 67cm high £80 - 120

251
A large 19th Century Middle Eastern brass tray, 74cm dia. £60 - 80

252
Four various brass embossed jardinières £40 - 60

253
A pair of Victorian brass fire implement rests, 24cm long x 39cm high £20 - 40

254
A Victorian burr walnut cased regulator wall clock, the circular brass and enamel dial with Roman numerals, supporting an 8 day movement striking on a gong, 76cm overall £100 - 200

255
A pair of floral embossed brass diamond shaped wall mirrors, having circular bevelled plates above twin candle sconces £30 - 50



Lot 244



Lot 245



Lot 249



Lot 250



Lot 259

256

A pair of circular brass jardinières, of baluster form with raised floral decoration and an Art Nouveau brass stationery casket, 21cm long, (3) £30 - 50

257

A gilt table lamp base, with ram's mask and floral swag decoration on a marble plinth, 62.5cm overall £40 - 60

258

A well carved 19th Century Chinese wooden figure of Ho Tei standing on a sack; and a late 19th Century Chinese wooden figure of a seated dignitary, (2) £60 - 80

259

A late 18th Century ribbed ivory and tortoise shell tea caddy, of octagonal form, the lid surmounted by a white metal loop handle, 14cm high £400 - 600

260

A Regency rosewood desk top quill stand, having ring turned decoration, on quartered platform base, 13cm wide x 17cm high £120 - 160

261

A Chinese bronze censer, of oblong baluster form, surmounted by loop handles and raised on four rounded tapering feet, incised seal mark to base, 14cm long £100 - 150

262

A Blue John baluster vase, 13.5cm high and a hardstone egg, set to a marble base, 14cm long overall, (2) £60 - 80

263

A 19th Century Chinese carved amethyst snuff bottle, in the form of a fruit, 6.5cm long; and a celadon glazed flask shaped snuff bottle, 8cm high, (2) £100 - 150

264

A rock crystal Buddha; and various hardstone ornaments, (7) £40 - 60

265

A 19th Century Chinese bronze incense burner, in the form of a scholar seated on a giant carp, 19cm high x 22cm long £40 - 60

266

A 19th Century Chinese carved wooden figure, of a long haired dancing man, stood on a toad, 29cm high; and an early 20th Century hinged cloisonne box decorated foliate scrolls, 10cm long, (2) £30 - 50

267

A late 18th/early 19th Century Chinese bronze censer, raised on three feet, having loop handles, dragon decoration, incised square seal mark to the base, 16cm dia. x 15cm high £200 - 300

268

A brass Art Nouveau style coal bin, the domed lid surmounted by a turned finial flanked by ring carrying handles and raised on pad feet, 60cm high x 34.5cm dia. £30 - 50

269

A Victorian circular pierced brass trivet, raised on a tripod stand, 28cm dia. x 32cm high £20 - 40

270

A 17th Century bronze cauldron, of baluster form, flanked by angular loop handles with cast foundry mark, 25cm high x 26cm dia. overall £200 - 300

271

A 19th Century brass foliate embossed lamp standard, in the form of a large pricket candlestick, raised on a triform base, 125cm high £80 - 120

272

An Eastern brass plaque, with elephant decoration; a pair of Indian foliate engraved brass baluster vases; and a circular brass tray with lobed border and figure and animal decoration to the centre £40 - 60

273

A pair of Victorian brass implement stands, having fluted decoration, 22cm long x 28cm high £20 - 40

274

An Antique African wooden headrest, well patinated with plaited leather strap, 17cm high x 20.5cm wide overall £50 - 80

275

A 19th Century carved mahogany plant trough, decorated shells and foliate scrolls above a central motif of crossed pipes, 57cm long £40 - 60

276

Twelve 19th Century Chinese paintings, on pith paper, depicting dignitaries and warriors, each measuring 19cm x 13.5cm, (some AF) £80 - 120

277

A pair of Victorian cast iron rain water hoppers, dated 1845, 68cm high £80 - 120

278

A cast iron lion ornament, 64cm long x 36cm high; and another of a unicorn, (2) £80 - 120

279

A Victorian brass door stop, in the form of a lion rampant, 33cm high; and two Victorian brass doorstops with loop handles, (3) £40 - 60

280

A 19th Century brass fender, 124cm long £30 - 50

281

A Victorian Gothic oak hanging wall cabinet, enclosing carved ivory figure of Christ on the cross, cabinet 40cm high overall, ivory figure of Christ 24cm £300 - 500

282

A pair of Antique Chinese decorated wooden panels, depicting exotic birds and foliage, 57cm x 41cm, contained in gilt mock bamboo frames £30 - 50

283

A 19th Century mahogany and inlaid banjo barometer, by Toynoni & Vanoni, of Shepton Mallett, having conch shell and floral inlaid paterae with silvered dials, 97cm £100 - 150



Lot 260



Lot 261



Lot 274

284

An 18th Century Italian oak reliquary cabinet, the arched top with foliate crestings above columns with carved capitols, 62cm wide x 61cm high
£250 - 350

285

A 19th Century tortoise shell mounted triptych dressing table mirror, 66cm high
£700 - 900

286

A pair of imposing 19th Century gilt plaster wall brackets, decorated bacchanalian masks and trailing vine leaves, (some damage), 40cm high x 30cm wide
£40 - 60

287

A 19th Century mother of pearl and silk hand painted fan, decorated flowers and bees, (framed and glazed)
£40 - 60

288

A pair of Chinese silk panels, depicting birds and foliage, 60cm x 19cm; and a pair of smaller similar, 13cm x 13.5cm
£40 - 60

289

An old saw fish bill or rostrum, 110cm long
£80 - 120

290

A Luristan bronze spear head; a Luristan arrow head; a Greek bronze barbed arrow head; another similar; and a Roman spear head, (5)
£60 - 100

291

An early blue glass storage jar, possibly Roman, (possibly 2nd Century AD), 22.5cm high
£40 - 60

292

A Greek Apulian pottery handle cup, possibly 4th Century B.C., 12.5cm
£20 - 40

293

A black glazed Apulian terracotta footed dish, South Italy 4th Century, 13.3cm; and an ancient Greek Apulian ware black glazed baluster jug, 7cm high, (2)
£4 - 60

294

A brightly coloured painted terracotta pitcher, reportedly Cretian 4th Century, decorated with dolphins, 26.5cm high; a Minoan jug, painted with dolphins, 12cm high; and a similar baluster vase with spiral twist handles, 15cm high, (3)
£60 - 80

295

A Holy lands Greek period terracotta bowl, 11.5cm dia.
£30 - 50

296

A Hoi An Cargo shallow bowl, possibly 15th Century, 13cm dia.
£20 - 40

297

A Tek Sing Cargo porcelain bowl, 16cm dia. x 7cm high
£30 - 50

298

A Hoi An shipwreck glazed pottery jarlett, 6.5cm high
£30 - 50

299

A Chinese blue and white glazed pottery snuff bottle, 8cm; and a Canton miniature baluster vase, 10.5cm high, (2)
£40 - 60

299A

A Chinese blue and white plate, decorated dragon amongst flaming pearls and clouds, six character mark to base

Pictures and Prints

300

R. Pembery, a pair of seascapes depicting fishing vessels, signed oils on board, 20cm x 25cm
£200 - 400

301

After Thomas Sydney Cooper, study of cattle in river landscape, bears signature, oil on canvas, 51cm x 77cm, contained in a decorative gilt frame
£300 - 400

302

Attributed to Samuel Raven, study of dog and puppies, unsigned oil on panel, 11cm x 14cm
£30 - 60

303

Cavendish Morton, interior study at Snape Maltings, signed watercolour, dated 1967, 36.5cm x 54cm
£150 - 250

304

19th Century English school, portrait study of Mary Cowden, half length, unsigned oil on canvas, 29.5cm x 25cm
£80 - 120

305

William Benner, study of a harbour scene with fishing boats, signed watercolour, 36cm x 49cm
£60 - 100

306

A 19th Century sand picture, after Zobel, depicting a moorland study of pigs and donkey in a paddock, 40cm x 54cm, contained in a birds eye maple frame
£50 - 80

307

Mid 20th Century German school, study of a ballerina dancing in a grand opera house, indistinctly signed oil on canvas, bearing Dortmund label verso, 59cm x 39cm
£120 - 160

308

Late 19th Century Italian school, study of Venice with ships and fisherfolk and gondola in the near ground, indistinctly signed watercolour, 35cm x 55cm
£60 - 100

309

19th Century school, seascape with vessels in heavy seas, port in the far ground, indistinctly signed oil on canvas dated 1862, 34cm x 56cm
£200 - 400

310

L. Busie're, "The cricket boy", coloured mezzotint after the original by F. Cotes, pencil signature and back stamp to the margin, image 54cm x 37cm
£40 - 60

311

Late 18th Century Provincial school, portrait study of a lady wearing lace trimmed bonnet, 60cm x 50cm
£400 - 600



Lot 278



Lot 300 (part)



Lot 301



Lot 304



Lot 318

312
Attributed to Joseph Rev. Adams, (American),
 18th Century lakeland scene with a figure and
 ruins in the foreground, signed oil on canvas,
 29cm x 28cm £200 - 300

313
J.A.H. James, study of country lane, signed oil on
 board, dated 94, 24cm x 31cm £20 - 30

314
Mid Victorian school, portrait of a lady and
 gentleman, unsigned watercolours, a pair, 30cm x
 26cm £60 - 100

315
Sydney Yates Johnson, study of children in a field,
 cottage and pond nearby, signed with incised
 signature, oil on canvas, 41cm x 61cm £250 - 350

316
Vincenzo Blatter, 1843-1913, a street scene with
 figures and a book seller, signed watercolour, 36cm
 x 27cm £60 - 80

317
Manner of the Rev. Woodly Brown, 19th Century,
 extensive landscape study with a figure by a pond,
 farm and woodland nearby, unsigned oil on canvas,
 50cm x 60cm, contained in a birds eye maple
 veneer frame £40 - 60

318
H. Habrken, study of rabbits chewing on
 cabbage leaves, signed oil on board, 19cm x 24cm
 £60 - 100

319
19th Century naive school, portrait study of a
 seated child holding flowers, unsigned oil on
 canvas, 75cm x 62cm £200 - 400

320
Phyliss Morgans "Evening Light, The Blyth",
 signed oil on board, 15cm x 20cm £60 - 100

321
Troy Kinney, (American), pencil signed etching
 "Pas de Trois"; another entitled "The Fairy Wand";
 and a larger etching of a semi naked reclining
 figure numbered 29/45, (3) £80 - 120

322
Troy Kinney, (American), pencil signed etching
 entitled "April"; and another entitled "Tartola
 Valencia" numbered 85/100 £60 - 80

323
Early 19th Century school, training horses in
 expansive landscape with farmhouse nearby, the
 cart inscribed John Martal, Bricett, Suffolk, 91cm
 x 147cm - See Front Cover Illustration £600 - 800

324
19th Century coloured print, depicting the Red
 Lion at Kilborn £20 - 40

325
A 19th Century textile three dimensional picture,
 depicting an interior domestic scene, 18.5cm x
 23.5cm, contained in a birds eye maple frame
 £30 - 50

326
Scottish school, late 19th Century, coastal scene
 with fishermen; and another depicting horse
 drawn tumbrel on a beach, monogrammed oils on
 board, a pair, 10cm x 20cm £120 - 160

327
Italian school 19th Century, interior scenes with
 monks, a pair, unsigned oils on canvas, 29cm x
 38cm £50 - 80

328
Thomas Bush Hardy, 1848-1897, small
 watercolour depicting Broadstairs, Kent with ships
 at sea coming into a harbour wall, 10cm x 11.5cm
 £40 - 60

329
**An early 19th Century aquatint of a horse and
 sheep**, stood in farmland, 46cm x 59cm £50 - 80

330
George M. Rennie, highland scene with figure
 herding sheep along a mountain path, signed oil
 on canvas, 42cm x 76cm £200 - 400

331
Early 20th Century study, sailing dingy on a river,
 indistinctly signed oil on canvas, 48cm x 38cm
 £30 - 50

332
Charles Knight, study of the Sussex Coast, signed
 watercolour, 22cm x 36cm; and Charles Knight
 pencil signed lithograph of a farmyard scene,
 13.5cm x 12.5cm, (2) N.B. inherited originally
 from the brother of Charles Knight, the Rev. John
 Knight by the current vendor £100 - 150

333
Leonard Russell Squirrell, pencil signed etching
 depicting a street scene, dated 1935 £40 - 60

334
D'epinay, study of a hound's head, signed oil on
 canvas, dated 1841, 42cm x 49cm £120 - 160

335
**Two 18th Century framed adjoining maps of
 London**, by Johanne Rocquis £300 - 400

336
A coloured map of Essex, divided into hundreds
 £40 - 60

337
David Roberts, lithograph study of Cairo from
 the West; and another study of Medinet Habu
 Thebes, (2) £80 - 120

338
Doctor Robert Thornton, "from the Temple of
 Flora", the pontic rhododendron, aquatint, printed
 in colours after Henderson by Caldwell, some
 additional hand colouring, 48cm x 38cm; together
 with "The American Cowslip" after Henderson by
 Warner, (a pair) £400 - 600

339
E.R. Smythe, "The Cottage", oil on canvas, 35cm
 x 30cm £200 - 300

340
W.R. Huss?, study of a figure eating from a bowl,
 indistinctly signed watercolour and body colour,
 50cm x 40cm, mounted and unframed £200 - 300



Lot 329



Lot 330



Lot 347

341
J. Van Lil, Dutch interior scene, signed and dated oil on panel, 40.5cm x 50cm £250 - 350

342
E. Rose Black, Irish scene with lake and mountains in the far ground, figures outside a cottage in the fore ground, 22.5cm x 31.5cm £30 - 60

343
A 19th Century coloured caricature, "The Glutton" £20 - 40

344
Edward Walker, study of chickens, calves and a farmer outside of cottages, signed pastel, 27cm x 36cm £40 - 60

345
Attributed to R. Mortimer, two unframed studies depicting trains and carriages at speed, watercolours on board, 37.5cm x 51cm, (2) £40 - 60

346
R. Mortimer, study of an LNER class 4-6-2 steam locomotive, "Dominion of Canada", signed and dated 1967, oil on board, 40cm x 49.5cm £80 - 120

347
R. Mortimer 1962, study of a Great Eastern Railway class T19 2-4-0, the engine depicted circa 1900, signed with initials and dated 1962, also inscribed verso, 35.5cm x 45.5cm, unframed £50 - 100

348
19th Century school, study of three figures, possibly Dante and Beatrice, unsigned oil on wooden panel, 74cm x 107cm, in gilt and ebonised Dutch style frame £800 - 1,200

349
A. Dunington, "Changing pasture, Glen Nuish, Arran", highland scene with long horn cattle being driven across a stone bridge, mist shrouded mountains in the far ground, signed oil on canvas dated 1901, 77cm x 127cm £300 - 500

350
19th Century English school, study of a game larder, unsigned oil on wooden panel, 29cm x 21cm £150 - 250

351
R. Thomas, Dutch coastal study with fishing vessels approaching a harbour, signed watercolour, 24.5cm x 37cm £100 - 150

352
Henry Stannard, RBA, study of sheep being herded past thatched cottages on a country lane, signed watercolour, 34cm x 49cm £300 - 500

353
Audrey Dallas-Simpson, 1925-1984, study of a camp fire with three children, signed oil on canvas, Frost & Reed label verso, 76cm x 63cm £150 - 250

354
Emily Lachlan White, 1928-1908, study of Bredfield House, Suffolk, watercolour, 29cm x 39.5cm £40 - 60

355
Phyllis Morgans "Cloud over the Blyth", signed oil on canvas, 30cm x 40cm £100 - 150

356
Charlie Churchyard, study of young boy with dog and dead game walking along a path with river nearby, (probably the Deben), initialed watercolour, dated 1889, 64cm x 39cm £100 - 200

357
Study of the Bell and Steelyard, Woodbridge, probably by Charles Churchyard, 15cm x 10.5cm; and another study, probably by the same hand, of the Shire Hall, Market Hill, Woodbridge, unsigned watercolour, 9.5cm x 12cm, (2) £60 - 100

358
Churchyard, study of Ipswich Road, Woodbridge, with the Cherry Tree Inn, donkey and cart and figure in the fore ground, unsigned watercolour, 14cm x 20.5cm; and another study possibly Charlie Churchyard depicting Abbey and Church, Woodbridge, unsigned watercolour, 15cm x 19cm, (2) £80 - 120

359
Attributed W. Hart, study of a bridge across a river, possibly Glevering, unsigned oil, 17.5cm x 13.5cm; and after Churchyard, study of a harvesting scene with cottages nearby, 16cm x 21.5cm, (2) £40 - 60

360
After Thomas Churchyard, study of the Deben near Woodbridge, with boats on the river and buildings on the fore short, unsigned watercolour, 13cm x 24.5cm; and a similar study, probably by one of the Churchyard family, unsigned watercolour, 13cm x 20cm, (2) £40 - 60

361
Attributed to T. Churchyard, study of Brightwell Hill, unsigned watercolour, information written verso, 33cm x 42cm £100 - 200

362
E.R. Smythe, pencil preliminary sketch, bears signature and also sketch of a sleeping dog verso, 10cm x 13cm £60 - 80

363
John Eyre, circa 1888, study of the town of Ely and the cathedral from the river, watercolour, 41cm x 62cm £100 - 200

364
Follower of J.S. Gilpin, "The Day's bag", white horse, dogs, gun and shot game by a cottage door, unsigned oil on canvas, 51cm x 41cm £250 - 350

365
Dutch school, winter town scene with figures, unsigned oil on canvas, 76cm x 62cm £250 - 350

366
James Hardy, 20th Century study of Merchant ships off of Connecticut, North American coast, signed oil on canvas laid on board, 50cm x 73cm £150 - 250

367
John Fulleylove, 1845-1908, study of St. Mark's square Venice, signed watercolour, 18cm x 26.5cm; another similar study; and another of cathedral interior, 27.5cm x 20cm, (3) £200 - 300



Lot 348



Lot 351



Lot 361



Lot 366



Lot 370



Lot 371



Lot 372 (a pair)

368
Reginald Jones, study of a woodland pond, signed watercolour, 25cm x 35.5cm £40 - 60

369
After Tucker, study of a highland lake scene, signed watercolour, 26cm x 35.5cm £40 - 60

370
Miles Birket Foster, "A mill on the Teign, Devon", oil on canvas, monogrammed, 25cm x 20cm £300 - 400

371
19th Century school, study of a child with attendant dog and cattle on a hillside, monogrammed ACM 1882, watercolour, 13cm x 18.5cm £60 - 100

372
Christopher Mark Maskell, rural studies, a pair, depicting a cottage and duck pond and cattle being herded along a track, 22.5cm x 27cm £100 - 150

373
Jan Moortel, 1650-1719, study of fruit and flowers on a ledge, unsigned oil on metal panel, 30cm x 22cm £2,000 - 4,000

374
20th Century school, portrait study of a child and her dog, indistinctly signed pastel, dated 1926, contained in an ornate gilt frame, 58cm x 46cm £100 - 150

375
No lot

376
Henry Hilton, a study of Llyn, Crafnant, and Llyn Geirconydel, signed watercolours, dated 1884, 13cm x 22cm, framed as one £60 - 80

377
George Miller, (20th Century), study of lapwings on marshland, signed watercolour dated 1977 £60 - 100

378-379
No Lots

Rugs and Furniture

380
A Chinese runner, having multi floral decoration on a blue ground, 91cm x 256cm £40 - 60

381
An old Eastern runner, with central field of stylised flowers on a predominately red and blue ground, 89cm x 330cm £80 - 120

382
An Eastern runner, having central field of stylised leaf motifs within multi borders, on predominately mushroom and ochre ground, 100cm x 340cm £80 - 120

383
An Eastern rug, having central medallion shaped field of flowers within stylised borders on a predominately red ground, 195cm x 99cm £40 - 60

384
An Eastern prayer rug, with stylised decoration on a blue, red and orange ground, 115cm x 70cm £30 - 60

385
A good quality Chinese rug, having raised decoration of birds and flowers within Greek key borders, 152cm x 245cm £100 - 150

386
A Kashan rug, having central medallion and allover floral pattern on a red and deep blue ground, 197cm x 128cm £350 - 450

387
A good quality Indian Kaimuri rug, having allover stylised floral decoration on a predominately blue, mushroom and ochre ground, 271cm x 186cm £60 - 80

388
An Eastern pattern rug, decorated with floral central medallion and stylised field within geometric borders, on a blue and ochre ground, 250cm x 160cm wide; another similar, 244cm x 154cm, and a smaller matching rug, 210cm x 122cm, (3) £80 - 120

389
An Eastern rug, of Caucasian design, decorated central linked medallions within stylised floral borders, on a predominately ochre ground, also decorated in yellow and blues, 187cm x 290cm £100 - 150

390
An old Caucasian rug, having central medallion and stylised floral motifs on a predominately red and blue ground, AF, 125cm x 89cm; and an old Eastern rug with allover stylised floral decoration, 165cm x 135cm, (2) £40 - 60

391
A near pair of Eastern rugs, having central lozenge shape medallions within stylised floral borders, on predominately mushroom, blue and ochre grounds, 153cm x 90cm; and another similar with central lozenge shaped medallion on predominately orange and blue ground, 160cm x 96cm, (3) £100 - 150

392
A Kashan rug, of Josucan design, circa 1930's, diamond shaped central medallions on an ivory ground with a continuous main border and two subsidiary borders within guard stripes, 204cm x 133cm £200 - 300

393
A Kelim type rug, having a central field of stylised motifs within multi geometric and Greek key borders, on a predominately red and blue ground, 145cm x 200cm £60 - 80

394
An early 19th Century mahogany and cross-banded chest, of two short and three long drawers, raised on a shaped apron and bracket feet, 109cm wide £150 - 250

395
A George III mahogany chest, fitted four long graduated drawers beneath a brushing slide, having oval brass embossed handles and back plates, raised on bracket feet, 94cm wide £300 - 400

396
A George III walnut chest, fitted two short and three long graduated cock beaded drawers, raised on bracket feet, 108cm wide *£200 - 400*

397
A George III oak and cross-banded chest, of two short and three long drawers, fitted with brass acorn drop handles, raised on a shaped apron and bracket feet, 103cm wide *£100 - 200*

398
A 19th Century gilt framed oval wall mirror, having garland and swag decoration, 91cm high overall *£100 - 200*

399
A late Victorian oak writing table, surmounted by a raised shelf, fitted with four short drawers and surmounted by a pierced brass gallery, leather writing surface above three frieze drawers, raised on ring turned supports terminating in brass castors, 105cm wide *£100 - 150*

400
An 18th Century and later gilt framed wall mirror, having a scroll arch pediment with central eagle surmount, foliate and cherub mask scrolls, 96cm x 50cm *£300 - 500*

401
A 19th Century continental walnut side cabinet, having a faux grey marble top above single drawer and cupboard below, enclosed by a pair of arched paneled doors, raised on bun feet, 95cm wide *£100 - 150*

402
A 20th Century painted and gilt heightened chest, of three long drawers, decorated in the chinoiserie manner with overhanging concave top, raised on bracket supports, 107cm wide; and a matching wall mirror, 76cm x 102cm, (2) *£100 - 150*

403
An 18th Century oak side table, the over hanging top raised on turned bobbin supports united by stretchers, 84cm wide *£100 - 150*

404
A George III mahogany, boxwood strung and rosewood cross-banded bow fronted sideboard, fitted with a central drawer flanked by deep drawers, later fitted with removable cutlery trays, raised on six tapering supports terminating in spade feet, 185cm wide *£300 - 500*

405
An Edwardian rosewood and inlaid drawing room side cabinet, having shelved and mirrored back, central bow fronted cupboard flanked by open shelves, raised on square supports and turned feet, united by an under-tier, 138cm wide x 210cm high *£100 - 200*

406
A mahogany Biedermeier side cabinet, fitted with a single drawer and cupboards below, having brass mask handles, oval escutcheons and applied decoration, flanked by half columns and raised on bun feet, 105cm wide *£500 - 700*

407
A 19th Century gilt framed wall mirror, with applied foliate scroll and urn decoration, 130cm x 68cm overall *£100 - 200*

408
An 18th Century walnut and cross-banded kneehole writing desk, fitted with a long central drawer above three short drawers to each pedestal around a central cupboard, raised on ogee bracket supports, 77cm wide *£200 - 400*

409
A George III mahogany tray top wash stand, of small proportions, fitted with a central drawer flanked by dummy drawers and raised on tapering ring turned supports united by an under-tier, 62cm wide *£100 - 200*

410
A miniature mahogany and satinwood cross-banded secretaire bookcase, in the Georgian style, having a glazed upper section, writing drawer with slide and three long drawers below, raised on a shaped apron and bracket supports, 55cm wide x 136cm high *£100 - 200*

411
A 19th Century mahogany satinwood cross-banded corner cupboard, the upper section enclosed by a pair of glazed astragal doors, with cupboards below, approx. 110cm wide x 235cm high *£200 - 400*

412
A Victorian gilt framed overmantel mirror, of arched waisted form, 132cm x 106cm in extremes *£60 - 100*

413
An Edwardian mahogany Art Nouveau dressing table, by Heal & Co., having swing mirror above two short drawers and shelves, two long drawers below, raised on tapering reeded supports united by an under-tier, terminating in brass caps and porcelain castors, 122cm wide *£100 - 200*

414
A George III mahogany hanging corner cupboard, with inlaid frieze above shaped interior shelves and small drawers, enclosed by a pair of arched fielded paneled doors, 94cm wide x 113cm high *£100 - 200*

415
A Victorian mahogany breakfront wardrobe, surmounted by a stepped pediment above hanging compartments, sliding trays and drawers, enclosed by a central mirrored panel door, flanked by arched fielded paneled doors, raised on platform plinth, 230cm wide *£200 - 400*

416
A George III oak bureau, the fall front opening to reveal a fitted interior, two short and three long graduated drawers below, raised on bracket feet, 91cm wide *£100 - 150*

417
A Georgian mahogany linen press, the upper section fitted with sliding trays, enclosed by a pair of moulded panel doors above two short and three long drawers, raised on bracket feet, 127cm wide *£200 - 300*



Lot 373



Lot 408



Lot 409



Lot 410



Lot 420

418
A late Victorian walnut bookcase, the upper section fitted adjustable shelves enclosed by a pair of glazed doors, two drawers and shelf below enclosed by a pair of Art Nouveau carved paneled doors, raised on a platform plinth, 126cm wide
£60 - 80



Lot 430

419
A Victorian mahogany dressing table, in the aesthetic movement style, of breakfront form surmounted by a swing mirror, candle sconces and short drawers, four drawers to each pedestal flanking two short central drawers above a cushioned lifting compartment, 156cm wide
£200 - 400



Lot 435

420
An 18th Century walnut chest on stand, fitted with a blind frieze drawer above an arrangement of drawers and pigeon-holes around a central cupboard, single drawer below, raised on turned baluster columns and wavy cross-stretchers, 96cm wide x 148cm high
£400 - 600

421
A Georgian mahogany long case clock, the arched hood surmounted by brass orb finials, enclosing a brass dial, inscribed "John Philip of Brighton", supporting an 8 day movement, full length trunk panel door, 220cm high
£200 - 400

422
An early 19th Century gilt framed three section chimney mirror, having urn and garland decoration, 70cm x 110cm overall
£60 - 100

423
A 19th Century mahogany and boxwood strung sideboard, fitted three frieze drawers, raised on a stand with square tapering supports, terminating in brass caps and castors united by stretchers, 166cm wide, (formerly a square piano)
£50 - 80

424
An Antique oak coffer, having carved panel front, raised on square section supports, 144cm wide
£100 - 150

425
A Regency rosewood satinwood cross-banded and brass strung card table, the fold-over top raised on a square column above quatrefoil base, terminating in scrolled feet, 92cm wide
£80 - 120

426
An early 19th Century mahogany long case clock, the hood surmounted by a swan neck pediment, enclosing a painted dial inscribed "Wm Panton, Aylth", supporting an 8 day movement above a trunk panel door, box base, terminating in bracket feet, 220cm high
£150 - 250

427
A pair of George III design mahogany tray top bedside cupboards, enclosed by tambour shutters, pull-out drawer sections below, raised on square chamfered supports, 50cm wide
£200 - 300

428
A Victorian mahogany work table, fitted with a single drawer and raised on a turned baluster column and circular base, terminating in three scrolled feet, 50cm wide
£60 - 100



Lot 442

429
A set of six George IV mahogany bar back dining chairs, with upholstered stuff-over seats, raised on ring turned tapering supports, (four standards, 2 elbows)
£200 - 400

430
A 20th Century mahogany desk chair, of large proportions, the shaped rail back above upholstered stuff-over seat, raised on shaped supports terminating in brass castors
£40 - 60

431
A 19th Century oak box commode, lifting top above triple dummy drawer fronts, raised on bracket feet, 50cm wide
£20 - 30

432
A 19th Century mahogany kneehole writing desk, having leather inset top above three frieze drawers and three drawers to each pedestal, raised on platform plinths, 135cm wide x 61cm deep
£200 - 400

433
An Antique elm spindle back elbow chair, with rush seat, raised on ring turned supports united by stretchers
£30 - 60

434
A set of four 19th Century walnut bobbin turned chairs, with upholstered drop-in seats
£40 - 60

435
A George III mahogany elbow chair, in the Chippendale manner, having shaped cresting rail, pierced splat back, scrolled outswept arms above an upholstered tapestry seat and raised on square section supports
£80 - 120

436
A pair of Antique South Yorkshire type oak side chairs, having foliate carved backs and solid seats, raised on turned front supports
£60 - 100

437
A 17th Century oak marriage chest, initialed and dated 1677, having foliate carved and paneled front, with two short drawers to the base, raised on square section supports, 143cm wide
£150 - 250

438
An 18th Century oak coffer, with plain triple panel lid above a carved front, raised on square section supports, 133cm wide
£150 - 250

439
Seven mahogany Chippendale design dining chairs, having shaped cresting rails and pierced splat backs, striped upholstered drop-in seats, raised on square section supports united by stretchers
£400 - 600

440
A Georgian mahogany drop leaf dining table, raised on six ring turned tapering supports, terminating in brass caps and castors, 114cm x 166cm extended
£60 - 100

441
An Antique oak gate leg dining table, with rounded drop leaves, raised on turned baluster columns and club feet, fitted with a single end drawer, 90cm wide
£40 - 60

442

A Victorian mahogany work table, having fold-over swivel top above two short drawers and pull-out silks well below, raised on turned baluster end supports terminating in bun feet united by a ring turned stretcher, 51cm wide £150 - 250

443

A large Victorian mahogany extending dining table, with pull-out action and four additional leaves, raised on turned baluster supports terminating in brass caps and castors, 131cm x 336cm fully extended £300 - 400

444

A set of six Regency mahogany bar back dining chairs, with upholstered drop-in seats, raised on Sabre supports £300 - 500

445

A Victorian walnut work table, the canted corner top opening to reveal a partitioned interior with silks well below, raised on turned baluster column and quadruple splay, 44cm wide £60 - 100

446

A 19th Century bamboo armchair, in the Brighton Pavilion style £150 - 250

447

An Antique French fruitwood draw leaf dining table, raised on tapering fluted supports, 87.5cm x 370cm fully extended £600 - 800

448

An 18th Century oak coffer, the lid opening to reveal a candle box interior above a square iron lock plate, raised on style end supports, 100cm wide £100 - 200

449

A Victorian mahogany nest of pigeon-holes, surmounted by a tray top and enclosed by drop flaps, 75cm wide x 26cm high £80 - 120

450

A George III mahogany drop leaf work table, fitted two short drawers and opposing dummy drawers, with turned brass pulls, raised on ring turned tapering supports terminating in brass castors, 64cm £50 - 80

451

An Antique carved oak side table, fitted with a single drawer, raised on a shaped frieze and turned baluster supports united by stretchers, 84cm wide £100 - 150

452

An Antique oak gate leg dining table, having rounded drop leaves, raised on turned baluster supports united by square stretchers, terminating in club feet, 106cm x 129cm £100 - 150

453

An early 19th Century mahogany fold-over tea table, the D shaped top raised above a single blind drawer and raised on ring turned tapering supports, 90cm wide £80 - 120

454

An 18th Century oak side table, with overhanging top above a single drawer with geometric moulded panels, brass acorn drop handles and engraved escutcheon, raised on turned baluster supports and stretchers, 103cm wide £100 - 150

455

A nest of four Chinese hardwood occasional tables, of curved form, pierced frieze with carved fruit and foliate decoration, raised on square section in-swept supports united by stretchers, 49cm wide in extremes x 73cm high, (one table AF) £60 - 100

456

An early 19th Century walnut side table, fitted single drawer, raised on spiral twist supports united by a wavy cross-stretcher, 59.5cm wide £100 - 150

457

A Georgian mahogany occasional table, the circular snap top raised on a baluster turned column and tripod base, 58cm dia. £60 - 100

458

A 19th Century mahogany coaching table, raised on rounded tapering supports, 86cm £40 - 60

459

A late Victorian carved oak fold-over corner tea table, having profuse foliate scroll decoration, raised on cabriole supports, 89cm wide £60 - 80

460

A mahogany D end triple pillar dining table, in the Regency style, raised on turned baluster supports above reeded legs terminating in brass caps and castors, fitted with three extra leaves, 107cm x 300cm £400 - 600

461

A Victorian rosewood oval snap top supper table, raised on octagonal baluster column, quadruple splay terminating in foliate scroll feet and white porcelain castors, 146cm wide x 109cm deep £100 - 150

462

A Georgian mahogany tray top night commode, raised on square section supports, 56cm wide £40 - 60

463

A 19th Century French walnut and cross-banded bedstead, the head and foot board with cream painted foliate decoration, raised on squat cabriole supports, 154cm wide £300 - 400

464

A Victorian burr walnut oval loo table, the quarter veneered tilt top raised on a carved turned baluster column and quadruple splay terminating in porcelain castors, 146cm £80 - 120

465

An early 19th Century mahogany card table, having D shaped fold-over top, raised on a turned baluster column and quadruple splay, terminating in brass caps and castors, 92cm wide £200 - 400

466

A Regency mahogany sewing table, with rounded drop flaps above a partitioned drawer and pull-out silks well, raised on a square tapering column and quatrefoil platform base, terminating in scrolled supports and brass castors, 83cm wide overall £200 - 300



Lot 444 (part)



Lot 446



Lot 451



Lot 456



Lot 468

467

A 19th Century mahogany work table, the rectangular top above two drawers, raised on octagonal column and quatrefoil base terminating in bun feet, 47cm wide x 43cm deep £100 - 150

468

A Chinese carved hardwood cache pot stand, having marble inset top above a foliate pierced frieze and outswept supports, 47cm high x 32cm dia. overall £100 - 150

469

A Georgian mahogany occasional table, the dished tilt top raised on a ring turned baluster column and tripod base, 44.5cm dia. £80 - 120

470

An Aesthetic movement table, designed by E.W. Godwin, and stamped James Schoolbred & Co., having rectangular gilt bordered top and under-tier, raised on ring turned rounded tapering supports and disk feet, 43cm wide x 66cm high £200 - 300

471

An Edwardian mahogany framed armchair, upholstered in floral printed art nouveau design tapestry; a smaller similar chair; and a foot stool, raised on cabriole supports and claw and ball feet upholstered en suite, (3) £100 - 150

472

A Victorian rosewood occasional table, raised on a spiral column and trefoil base, terminating in scrolled supports, 50cm dia. £60 - 100

473

A good quality reproduction mahogany triple pillar dining table, manufactured by Titchmarsh & Goodwin, the D end top having three extra leaves, raised on turned columns, quatrefoil splays terminating in brass caps and castors, 122cm x 420cm £400 - 600

474

A set of eight Edwardian inlaid mahogany dining chairs, in the George I style, with vase splat backs, upholstered drop-in seats, raised on cabriole front supports £200 - 400

475

An Edwardian oak pedestal writing desk, the leather inset top fitted with three drawers above six pedestal drawers, raised on platform plinths, 137cm wide £150 - 250

476

A 19th Century mahogany and ebony strung table cabinet, fitted with a configuration of five short, long and shallow drawers with sunken brass handles, 56.5cm x 55cm, detachable top and base £100 - 200

477

A Georgian mahogany Pembroke table, fitted single end drawer, rounded drop leaves, raised on square tapering supports and spayed feet, 84cm £50 - 80

478

An early 19th Century mahogany Pembroke table, having rounded drop leaves, single end drawer and opposing dummy drawer, raised on square tapering supports terminating in brass caps and castors, 84cm wide £100 - 150

479

A small Antique oak box, on stand, the lifting lid opening to reveal a shallow compartment with two drawers below, raised on a shaped apron and square tapering supports, possibly Welsh, 38.5cm wide x 66cm high £60 - 80

480

A 19th Century and later oak and mahogany occasional table, the circular top raised on a baluster turned column and tripod base, terminating in castors, 77cm dia. £60 - 80

481

A George III mahogany hat stand, the up-swept arms interspersed by brass rings to a turned baluster column and tripod base, terminating in brass ball feet, 179cm high £400 - 600

482

A pair of 19th Century oak tray top bedside cupboards, raised on square section supports, 46cm wide £80 - 120

483

A Victorian walnut inlaid and gilt metal mounted pier cabinet, the interior fabric lined shelves enclosed by a glazed panel door, raised on a platform plinth and bracket feet, 76cm wide x 182cm high £100 - 200

484

A 19th Century walnut and ormolu mounted bureau plat, of serpentine shape fitted three frieze drawers, raised on shaped supports terminating in sabots, 147cm wide x 72.5cm deep £800 - 1,200

485

A 19th Century oriental lacquered sewing table, the lid decorated with peacocks amongst gilt and mother of pearl heightened foliage lifting to reveal a partitioned interior, raised on baluster turned supports and shaped block feet united by a stretcher, 47cm wide £100 - 150

486

A 19th Century continental walnut chest, of four long graduated drawers within canted angles and raised on bracket feet, 115cm wide £100 - 200

487

An 18th Century carved walnut overmantel, having profuse foliate and berry decoration, flanked by a figure with a cross and another with a sword, 153cm wide £150 - 250

488

A George III mahogany demi lune sideboard, the radially veneered top above a single drawer, cupboard below enclosed by a pair of tambour shutters, flanked by deep cupboards with mock drawer fronts, raised on square tapering supports terminating in spade feet, 129cm wide £200 - 300

489

A Victorian walnut and inlaid bow front credenza, having gilt metal mounts, the fabric lined end shelves enclosed by curved glazed doors, central cupboard flanked by pillars, raised on a platform base terminating in bun feet, 164cm wide £500 - 800



Lot 476



Lot 484



Lot 489



Mendlesham £1,250,000

A stunning Elizabethan manor house & separate oak framed 'party barn', together with formal gardens & grounds extending to nearly six acres, in a delightful rural setting. **Ref: 5590**



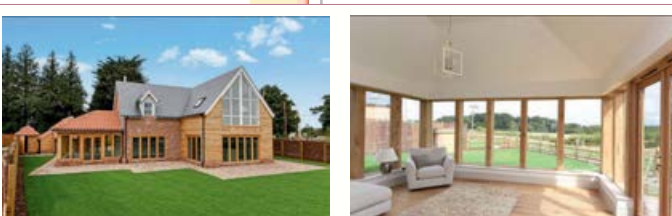
Mickfield, Nr Debenham £950,000

A Grade II Listed farmhouse requiring complete renovation, along with traditional & more modern farm buildings, located in the most superb standalone position, with grounds of over 16 acres. **Ref: 5585**



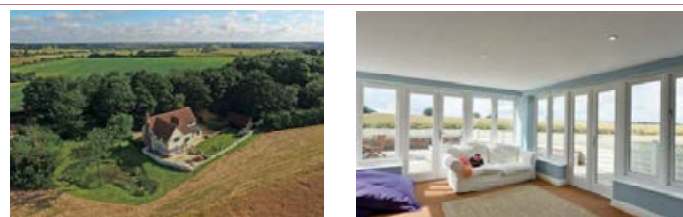
Woodbridge £900,000

A five bedroom detached house standing in wonderful hidden gardens of half an acre, adjacent to Fitzgerald/Pytches Road & within walking distance of all Woodbridge has to offer. **Ref: 5571**



Monewden, Nr Framlingham £750,000

A stunning new 4 bedroom house in the most superb rural yet convenient position enjoying undulating field views. Double cart lodge and bricked paved parking. Garden. **Ref: 5617**



Winston, Nr Debenham £695,000

An attractive period-style five bedroom house enjoying a tranquil setting, along a no-through lane. 29' sitting room, dining room, garden room, kitchen, cloak & utility. Cart lodge/garage, store & office. $\frac{3}{4}$ of an acre. **Ref: 5581**



Elmsett, Nr Hadleigh £650,000

An impressive 5 bedroom farmhouse requiring full modernisation, standing in a stunning position within the Parish of Elmsett. Meadows and grounds, in all, extending to over 2 acres. **Ref: 5609**

Next Antique & Fine Art Auction to be held Wednesday 7th December, 2016

Clarke & Simpson

Auctions

Closing date for entries 11th November, 2016

Droite de Suite Royalty Charges

From 14th February, 2006 all United Kingdom Art Market professionals (which includes auctioneers) are required to collect a royalty payment for all qualifying Works of Art. Under new legislation which came into effect on the 1st January, 2012, this applies to living artists and those who have died in the last 70 years. This payment is calculated on qualifying Works of Art which are sold for a hammer price more than the UK sterling equivalent of €1,000 (the UK sterling equivalent will fluctuate in line with prevailing exchange rates calculated by the Artist's Resale Right Service Hub, based on the European Central Bank reference rate published at 2.15pm on the day of the sale, and can be found on www.dacs.org.uk).

All items in this catalogue that are marked "✓" are potentially qualifying items, and the royalty charge will apply if the hammer price is more than UK sterling equivalent of €1,000. The royalty charge will be added to purchase invoices, and must be paid before items can be cleared. All royalty charges are paid to the Design and Artists Copyright Society ("DACS") by the auctioneers and no handling costs or additional fees with respect to these charges will be retained by the auctioneer.

The royalty charge for qualifying items which achieve a hammer price of more than the UK sterling equivalent of €1,000, but less than the UK sterling equivalent of €50,000 is 4%. For qualifying items that sell for more than the UK equivalent of €50,000 a sliding scale of royalty charges will apply. For a complete list of the royalty charges and threshold levels please refer to www.dacs.org.uk. There is no VAT payable on this royalty charge.

Dear Purchaser

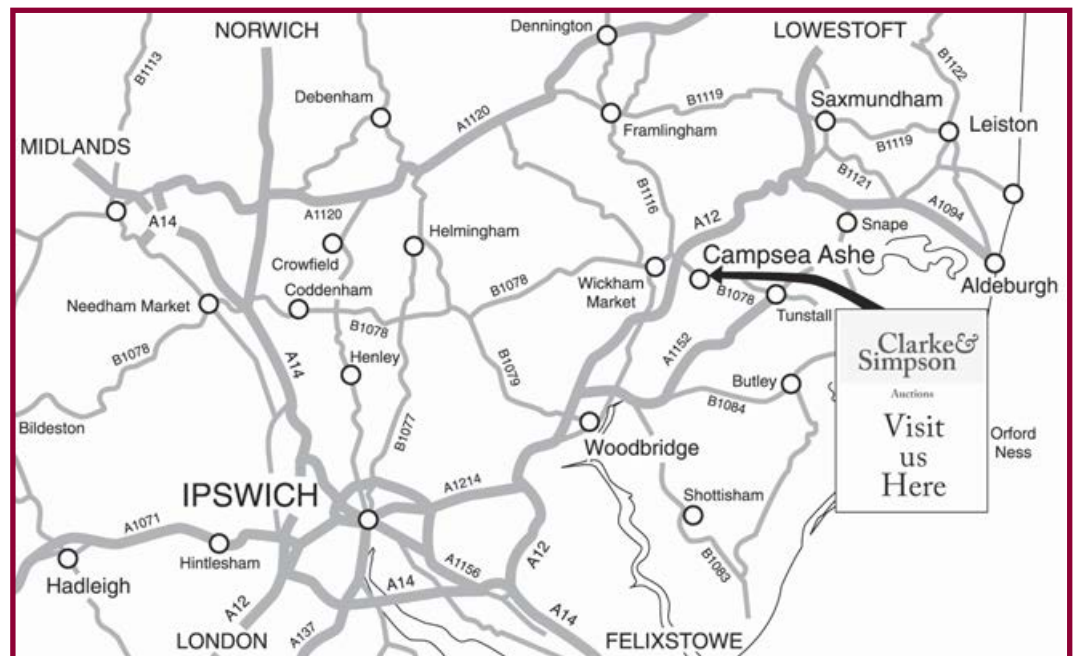
Clarke and Simpson are pleased to offer a packing and shipping service worldwide through "the-saleroom.com Delivery Service". The professional team will pack and ship items from very small non-breakables such as jewellery and coins through to larger and more fragile items such as paintings and works of art. Shipping and insurance is at the buyer's expense. Shipping payment must be made to 'the-saleroom.com Delivery Service' prior to departure and excludes local duties and taxes. Please note that Clarke and Simpson do not pack or ship items - all requests are sent to our specialist handlers at "the-saleroom.com Delivery Service" who can be contacted directly via delivery@atgmedia.com

the-saleroom.com
delivery service



Directions

We are just off the A12 north of Wickham Market on the B1078 road to Orford.



TERMS AND CONDITIONS OF SALE

1. INTRODUCTION

The following defining terms are used in these conditions:-

“Auction”	Means any auction conducted by Clarke and Simpson Auctions Ltd. either at the premises owned by them or elsewhere (including any internet based auction);
“Auctioneer”	Means Clarke and Simpson Auctions Ltd. authorised auctioneer as appropriate;
“Bidder”	Means a bidder at an auction, including the bidders personally present at the venue and those bidding by telephone or over the internet or otherwise;
“Buyer”	Means the bidder whose bid was the last bid when the auctioneer concludes the bidding;
“Conditions”	Means these Terms and Conditions of Sale;
“Hammer Price”	Means the level of bidding reached (at or above any reserve) when the auctioneer brings the bidding to a close;
“Lot”	Means any property accepted by Clarke and Simpson Auctions Ltd. for offer at auction;

2. DESCRIPTION

No warranty is given or implied by the description in the catalogue. Each lot is sold in its condition at the time of sale with all faults, defects, imperfections and errors of description (if any). Whilst every endeavour has been made to describe the items adequately and properly, the purchaser shall deem to have inspected the lot at time of purchase. All catalogues and seller's and buyer's guides are for information only and do not form part of the contract.

3. STATUTORY REQUIREMENTS

Purchasers will be deemed to have satisfied themselves prior to purchasing regarding current legal requirements (e.g. Health & Safety at Work Act) and it is expressly brought to the bidders attention that equipment in the sale may not necessarily comply with such regulations. Any purchaser shall satisfy himself as to any statutory requirement for the use of any item and no liability shall rest with the vendors nor the Auctioneers.

4. THE AUCTION

All auctions are conducted at the absolute discretion of the auctioneer. The auctioneer shall conduct the auction with reasonable skill and care. The vendor reserves the right to sell subject to reserve price in respect of all lots. What constitutes a bid shall be at the absolute discretion of the auctioneer, acting with appropriate skill and care. The auctioneer shall have the right to refuse any bid in all cases but most notably when such a bid does not exceed the previous bid by at least 10% or such a proportion as the auctioneer shall in his absolute discretion direct. Where two or more bids at the same level are simultaneously received by the auctioneer, the auctioneer at his absolute discretion shall determine which bid to prefer. Subject to the foregoing where two or more bids are at the same level are simultaneously received by the auctioneer, the bid submitted in the room shall take preference over a bid submitted by telephone or internet at the same level. Any bid made or attempted by telephone or over the internet will only be deemed to have been made if received by the auctioneer. The auctioneer reserves the right to withdraw, consolidate or divide any lot or lots or submit them in any order that they desire. The auctioneer has the right at his absolute discretion to refuse admission to his premises or attendance at (or participation in) any auction by any person. In the case of any dispute, the auctioneer shall be sole arbitrator in any matters arising during or out of the sale.

5. BIDDERS

All bidders will be required to register their particulars, bidders attending in person and those accompanying them may be required to provide photo ID and separate confirmation of address prior to viewing or taking any part of the sale and before entering any part of the premises to view. All bidders accept full liability for all bids submitted. Subject to the clause in this document headed “The Auction”, the highest bidder at the close of bidding shall be the buyer. Any dispute about a bid shall be settled at the auctioneer's absolute discretion. Bidders are all deemed to act as principal unless there is prior written acknowledgement by Clarke and Simpson Auctions Ltd. that a bidder is acting as an agent for a named principal. Bidders are strongly encouraged to attend the auction in person. The bidders shall be responsible for any decision to bid for a particular lot and shall be deemed to have carefully inspected and satisfied themselves as to condition, neither Clarke and Simpson Auctions Ltd., their employees or agents shall be responsible for any neglect or default in doing or failing to do so. Bidders will be given ample opportunity to view and inspect before the sale and prospective buyers must satisfy themselves as to all matters.

6. DEFAULT

Clarke and Simpson Auctions Ltd. shall act as agent of the vendor only. Any contracts for the sale of a lot shall be formed between the vendor and the buyer. As agent only Clarke and Simpson Auctions Ltd. shall not be responsible for default by the vendor or the buyer. If any lot is not paid for in full and taken away in accordance with these conditions, or there is any other breach of the conditions, then Clarke and Simpson Auctions Ltd. as agents for vendor shall at its absolute discretion and without prejudice to any other rights it may have, be entitled to exercise all or any of the following rights and remedies:-

- 6.1 to proceed against the buyer for any action of debt or damages for breach of contract;
- 6.2 to rescind the sale of that lot or lots sold by Clarke and Simpson Auctions Ltd. to a defaulting buyer;
- 6.3 to resell the lot (by auction or private treaty) in which case the defaulting buyer shall be responsible for any resulting deficiency in the total amount due (after crediting any part payment and adding any resale costs), any possible surplus so arising shall belong to the vendor;
- 6.4 to remove, store and insure the lot at the expense of the defaulting buyer and, in the case of storage, the location of such storage shall be at Clarke and Simpson Auctions Ltd. discretion;
- 6.5 to charge interest at a rate not exceeding 2% per month of the total amount due to the extent that it remains unpaid for more than two working days after the sale;
- 6.6 to retain that or any lot sold to the defaulting buyer until the buyer pays the total amount due;
- 6.7 to reject or ignore bids from the defaulting buyer at future auctions or to impose conditions before any such bids are accepted;
- 6.8 to apply any proceeds of sale for any other lots due or in the future becoming due to the defaulting buyer towards the settlement of the total remaining due.

7. INDEMNITIES, PENALTIES AND LIMITATIONS OF LIABILITY

Purchasers shall pay for any damage done by themselves or their agents during the removal of their lots. Attendance at the sale shall be at the risk of those attending in respect of both themselves and to their goods and vehicles.

Any indemnity under these conditions will extend to all actions, costs, expenses, claims and demand whatsoever suffered or incurred by the person entitled to the benefit of it and Clarke and Simpson Auctions Ltd. declare themselves to be a trustee of the benefit of such indemnity so far as it is expressed to be the benefit of its employees and agents.

Whilst Clarke and Simpson Auctions Ltd. endeavour to ensure that the information on their websites is correct, they do not warrant the accuracy and completeness of the material on their website. Also Clarke and Simpson Auctions Ltd. can make changes to the material on their website, or alter the products and prices described on it, at any time without notice. The material on the website may be out of date, Clarke and Simpson Auctions Ltd. make no commitment to update such material. All material on the websites is provided "as is" without any conditions, warranties or other terms at any time. Accordingly to the maximum extent permitted by law, the website is provided to all parties on the basis that Clarke and Simpson Auctions Ltd. exclude all representations, warranties, conditions and other terms which, but for this legal notice, might have effect in relation to the website.

8. ELECTRICAL SAFETY REGULATIONS

All electrical lots are subject to electrical safety regulations and fall within "the low voltage electrical equipment (safety) regulations 1989" – all items have been pat tested for safety but are not guaranteed in working order.

9. GENERAL MATTERS

Any notice to any buyer, vendor, bidder or viewer may be given by first class mail or email in which case it shall be deemed to have been received by the addressee forty eight hours after posting or sending. All notices to Clarke and Simpson Auctions Ltd. must be sent in writing and email is not acceptable. Any indulgence extended to any person by Clarke and Simpson Auctions Ltd., notwithstanding the strict terms of these conditions or the terms of consignment, shall affect the position at the relevant time only and the respect of that particular concession only; in all other respects these conditions shall be construed as having full force and effect. These conditions and any disputes or claims arising out or in connection with them or their subject matter or formation (including non-contractual disputes or claims) are governed by and construed in accordance with the law of England. The parties irrevocably agree that the courts of England have exclusive jurisdiction to settle any dispute or claim that arises out of or in connection with the agreement or its subject matter or formation (including non-contractual disputes or claims).

10. PUBLICITY

Any catalogue and buyer and seller guides are provided for information only and do not form part of these conditions. The catalogue and the buyer and seller guides may contain additional terms and conditions. Clarke and Simpson Auctions Ltd. reserve the right to use any photographs, background information and research for publicity purposes both before and after the sale.

11. THE PURCHASE PRICE AND PAYMENT ARRANGEMENTS

There is a buyer's premium 15% plus VAT payable in respect of the sale. Any purchases made via "www.the-saleroom.com" shall be subject to an administration charge of 3% plus VAT on the price. Preferred payment is cash, bankers draft or personal debit card. Such cards may only be used on a chip and pin basis with the owner present. No payment will be accepted by telephone. There will be an administration charge of 2.5% plus VAT for the use of credit cards or international debit cards. Payment by cheque will only be acceptable subject to prior arrangement. No lot will be removed from the sale until any cheque has cleared unless a suitable bank reference

addressed to the auctioneer is supplied. Payment is due on the day of the sale. Cash in excess of £12,000 (including V.A.T.) will not be accepted from any one person, this is not allowed due to Money Laundering Regulations 2007. All money received will be held in Clarke & Simpson Auctions Ltd. Clients Account at Barclays Bank plc, Framlingham, Suffolk. Account Number 33222276. Sort Code 20 98 07. Clarke and Simpson Auctions Ltd. have no responsibility for any lot between the close of bidding and payment being made and subsequent collection. Please note all policy regarding payment will be enforced and suitable arrangements must be made.

12. REMOVAL OF LOTS

The ownership of any lot purchased shall not pass to the relevant buyer until they have made payment in full to Clarke and Simpson Auctions Ltd. of the total amount due. The buyer shall at their own risk and expense take away any lot that they have purchased and paid for not later than two working days following the day of the auction after which they shall be responsible for any removal, storage and insurance charges. Any lots not collected within three months of the date of sale will be resold by the auctioneer and all proceeds will be retained by the auctioneer to cover storage costs.

13. NUMBER BIDDING

This will be used for speed and efficiency as in all our sales. All prospective purchasers must complete a registration form and register in the office on the viewday or morning of sale to receive a number for bidding. PLEASE ALSO NOTE THAT PHOTO ID AND ADDITIONAL CONFIRMATION OF ADDRESS WILL BE REQUIRED.

14. TELEPHONE BIDDING

We offer a telephone bidding service where possible but this service can never be guaranteed. No applications for telephone bids will be accepted after the end of the viewing prior to sale day for any sale. All potential telephone bidders must provide a valid landline number and email address for us to send terms and conditions prior to phone bidding. No phone bids will be accepted for any lot with a lower guide figure of less than £100.

All those who wish to bid by telephone will be expected to deposit the minimum guide for all lots that they wish to bid upon into the Clients Account for Clarke and Simpson Auctions Ltd before the sale starts. In the event of default, this sum shall be retained as part payment or any part may be retained to recover losses under clause 6 of these Terms and Conditions. We will expect payment of the balance owing by BACS on the following day, any payment not met within five working days will result in the forfeiture of the deposit paid.

15. ONLINE BIDDING

Clarke & Simpson Auctions Ltd., on occasions, offer an online bidding service via the-saleroom.com for bidders who cannot attend the sale. In completing the bidder registration on www.the-saleroom.com and providing your credit card details and, unless alternative arrangements are agreed with Clarke & Simpson Auctions Ltd.:

- 1 authorise Clarke & Simpson Auctions Ltd., if they so wish, to charge the credit card given in part or full payment, including all fees, for items successfully purchased in the auction via www.the-saleroom.com, and
- 2 confirm that you are authorised to provide these credit card details to Clarke & Simpson Auctions Ltd. through www.the-saleroom.com and agree that Clarke & Simpson Auctions Ltd. are entitled to ship the goods to the card holder name and card holder address provided in fulfilment of the sale.

Please note that any lots purchased via the-saleroom.com auction service will be subject to an additional 3% charge + VAT at the rate imposed on the hammer price

Clarke &
Simpson

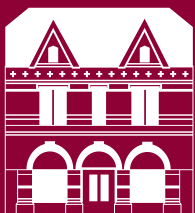


*Find
more than a
keyhole view*

at www.clarkeandsimpson.co.uk

T: 01728 621200





Clarke and Simpson Auction Centre
Campsea Ashe
Nr. Wickham Market
Suffolk IP13 0PS
Tel: (01728) 746323 Fax: (01728) 748173
Email: auctions@clarkeandsimpson.co.uk
www.clarkeandsimpson.co.uk