



Clarke &
Simpson

Selected Antiques & Fine Art

Wednesday 19th July 2017 at 10 am

THE *Monday* *Sale*

Over 800 lots every week,
to include cottage antiques &
modern furniture, household
appliances & garden machinery.

Everything but the kitchen sink,
and occasionally even those!

Viewing prior, and
every Saturday 9am - 12noon

Refreshments available
from the Tea Room

Room 2 now live online
every week at the the-saleroom.com

Clarke &
Simpson



Clarke & Simpson Auction Centre

 CandSAuctions  @CandSAuctions

www.clarkeandsimpson.co.uk 01728 746323

Campsea Ashe,
Nr Wickham Market,
Suffolk IP13 0PS

Clarke & Simpson

Auctions

Selected Antiques & Fine Art

Wednesday 19th July 2017
at 10 am

Order of Sale:

Ceramics and Glass	1-96
Silver and Plate	110-154
Jewellery, Coins and Watches	159-191
Objects and Collectables	192-313
Pictures and Prints	314-419
Furniture	425-513

Viewing:

Saturday 15th July, 9 am - 12 noon
Monday 17th July, 2 pm - 8 pm
Tuesday 18th July, 10 am - 4 pm
Morning of Sale from 8.30 am



@CandSAuctions



CandSAuctions



Campsea Ashe
Nr. Wickham Market
Suffolk IP13 0PS
Tel: (01728) 746323 Fax: (01728) 748173
Email: auctions@clarkeandsimpson.co.uk
www.clarkeandsimpson.co.uk

Online bidding via:

the-saleroom.com

Special Notices for Purchasers

Certain lots are catalogued as (A.F.), damaged, restored, etc., however the absence of any such notice does not imply that the piece is free from defects, nor does it indicate that other defects are not also present. Mention is not made of breakage, cracks, chips or any damage which can be noted by careful inspection, therefore, intending purchasers MUST, in all cases, be responsible for determining the condition of lots themselves.

Special attention is drawn to the Conditions of Sale printed at the back of this catalogue.

Estimates

Presale estimates are intended only as a guide for intending purchasers, are given in good faith and subject to revision.

Condition Reports

Clarke and Simpson are unable to guarantee that requests for condition reports/images received after the close of the viewing on the day prior to auction, will be responded to. Clarke and Simpson are happy to give a Condition Report on the physical condition of goods, this will be provided on behalf of the seller on the understanding that Clarke and Simpson are not entering into a contract with you in respect of the Condition Report and accordingly does not assume responsibility to you in respect of it. All lots are available for your own inspection or for inspection by an expert instructed by you, therefore these Condition reports are for guidance only and all lots are sold "as found".

Commission Bids

The auctioneers will be pleased to execute bids for those unable to attend the sale. Lots will be purchased at the lowest bid the room bidding or any reserves will allow. In the event of identical bids, the earliest bid received will take precedence. There must always be a maximum limit indicated. Buy or unlimited bids will not be accepted. Commission bids placed by telephone are accepted at the client's risk. We urge our clients to place such commission bids before the start of the sale. All such commissions are left entirely at the buyer's risk.

Telephone Bids

Please refer to conditions of sale printed at the back of this catalogue.

Registration

All prospective buyers must register their name and address at our auction office and collect a numbered bidding card before the sale commences. If you are a successful purchaser please ensure that your number can be seen by the auctioneer and that it is your number that is called out at the fall of the hammer. Should there be any doubts as to the price or buyer, please draw the auctioneer's attention to it before the next lot is offered.

Value Added Tax

The symbol * after any lot number indicates that Value Added Tax is payable by the buyer on the "hammer price".

Auctioneers Margin Scheme

The Auctioneers Margin Scheme allows auctioneers to sell items without VAT on the hammer price. Under the margin scheme an amount equivalent to VAT at the current rate is added to the buyer's premium. This amount cannot be refunded. The VAT element will not be shown separately on the buyer's invoice.

Buyer's Premium

A buyer's premium of 18% plus VAT will be added to the hammer price of each lot.

Please note that any lots purchased via the-saleroom.com auction service will be subject to an additional 3% charge + VAT at the rate imposed on the hammer price.

Payment

Payment can be made during or immediately after the sale by the following methods:

Cash (up to a maximum of £12,000 including VAT in accordance with Money Laundering Regulations 2007).

Debit Cards

Credit Cards (not American Express) Please note there will be a surcharge of 2.5% plus VAT for the use of these cards. We will not release goods for a period of 72 hours unless the cardholder attends the saleroom in person and presents the cards used for the transaction with proof of ID.

Bank Transfer - Account Name: Clarke and Simpson Auctions Limited

Account Number: Account No: 83428591

Bank: Barclays Bank PLC

Sort Code: 20-98-07

We do not accept cheques unless by prior arrangement.

Packaging and shipping service.

All requests are sent to our specialist handlers at:

"the-saleroom.com Delivery Service" who can be contacted directly via delivery@atgmedia.com

Attribution of Pictures and Drawings

Every effort is made to ensure the accuracy of any statement as to authorship, attribution, origin, date, age, provenance and condition of any lot whether or not such statement forms part of the description of any such lot. Whether any such statement is made orally or in the catalogue it is an expression of opinion and not to be taken as being or implying any warranties or representations of facts by the auctioneers. Each buyer by making a bid for a lot acknowledges that he has satisfied himself fully as to the attribution and condition of the lot.

- a) The forename(s) (or full stops where not known) and surname of an artist indicates in our opinion a work by the artist.
- b) The initials of the forename(s) and the surname of the artist indicates in our opinion a work of the period of the artist which may be wholly or in part his work.
- c) The surname of the artist indicates in our opinion a work of the school or by one of the followers of the artist or in his style and of uncertain date.
- d) *Signed, Dated, Inscribed* indicates in our opinion work signed/dated/inscribed by the artist.
- e) *Bears signature* indicates in our opinion that this is not the signature of the artist.
- f) *Attributed to* may be used to denote a traditional attribution based on style.
- g) *Manner of* indicates in our opinion a work executed in the artist/craftsman's style but of a later date.
- h) *After* indicates in our opinion a copy (of any date) of work of an artist or craftsman.

The addition of a question mark after any of the cataloguing terms above indicates an element of doubt.

Ceramics and Glass

1
A 19th Century Chinese porcelain Canton vase, painted with figures, birds and butterflies, heightened in gilt, 37cm high £20 - 30 †

2
A Chinese blue and white porcelain cylindrical brush pot, painted with decoration of dignitaries and attendants in landscape, 16cm dia. x 16cm high £80 - 120 †

3
A Locke & Co. Worcester cabinet plate, with painted decoration of a peacock on bluish ivory ground, 20cm dia. £20 - 40 †

4
A Dutch pottery plaque, depicting woman and child seated on a shoreline with boats in the background, signed E. Vervcer, 32cm x 20cm £30 - 60 †

5
A 19th Century English pottery treacle glazed Toby jug and cover, 24cm high; and a 19th Century English stoneware jug decorated with hunting scenes, 10cm high, (2) £20 - 30 †

6
A rare and large Royal Doulton silver mounted Tyg, decorated with panels of British Soldiers in various pursuits, impressed marks dated 1883, silver rim, *Sheffield 1883*, 17cm high £80 - 120 †

7
A Doulton Lambeth stoneware tankard, of waisted cylindrical form, decorated with footballers, a runner and a shot putter, circa 1905, 15cm high £200 - 300 †

8
A good quality Sevres biscuit group, depicting three Putti at play, incised Sevres mark and signed "Clodion 1738-1814", 15.5cm high £60 - 100 †

9
An 18th Century blue and white two handled barbers bowl, with interior drainer, decorated with flowers, mark to base, 27cm dia. £120 - 180 †

10
A pair of late 19th/early 20th Century Continental porcelain vases, having rose decoration heightened in gilt, 19cm high £40 - 60 †

11
A large 19th Century Chinese porcelain blue and white brush pot, of slightly tapering form, decorated with panels of precious objects, 22cm high x 23.5cm dia. £100 - 200 †

12
A 17th Century stoneware Bellarmine, the bulbous body with mask and moulded prunts decoration with loop handle, 36.5cm high £150 - 250 †

13
A pair of 19th Century blue and white transfer printed meat plates, decorated in the oriental manner, 47cm £40 - 60 †

14
A 19th Century glass, with etched decoration of a fishing boat, 16cm high; and an amber glass vase with etched decoration of a sailing ship, 18cm high, (2) £40 - 60 †

15
A 19th Century faience desk stand, decorated in brightly coloured enamel, floral sprays, 26cm wide; and a pair of faience knife rests in the form of recumbent dogs, AF, 8cm long, (3) £40 - 60 †

16
A collection of Wanli shipwreck cargo ceramics; and a book "The Wanli shipwreck and it's ceramic cargo", (5) £40 - 60 †

17
A small Victorian porcelain Toby jug; a Dresden taper stick, AF; and a small oval floral decorated shallow dish, AF, (3) £40 - 60 †

18
A Victorian copper lustre large mug, having blue band decorated with flowers; three similar jugs and three other pieces, (some damage), (7) £20 - 40 †

19
A part suite of early 20th Century etched glassware, comprising finger bowls, decanter, various wine glasses etc. £20 - 40 †

20
An early 20th Century Copeland part dessert service, with green and ivory banded borders, heightened in gilt, central floral reserves and a pair of Booth's floral decorated plates etc., (11) £20 - 40 †

21
Six glass sundae dishes with silvered loop handles; a cut glass five piece cruet set; and three tall stem liqueur glasses with coloured bowls £20 - 40 †

22
A quantity of Adderleys "Dresden" pattern teaware, 50cm high, (25) £30 - 50 †

23
A Sitzendorf floral encrusted candelabra, 50cm high; and a pair of similar porcelain figures of a minstrel and attendant beauty, 23cm high £100 - 150 †

24
Two 19th Century Chinese graduated meat platters, decorated with flowers and objects around a central motif, 50cm in extremes; two smaller similar plates and a matching baluster jug decorated flowers and central pagoda with wrythen handle, AF, (5) £40 - 60 †

25
An 18th Century Worcester teapot, decorated in the Chinese manner, under-glazed blue crescent mark to base, 19cm long x 12cm high £40 - 60 †



Lot 1



Lot 6



Lot 7



Lot 12



Lot 37

26
A Nankin Cargo tea bowl, having floral and pagoda decoration; a late 18th Century English porcelain tea bowl and saucer; and a Newhall design saucer, (4) £40 - 60 †

27
Jessie Whiteman, a porcelain cake plate, breakfast cup and saucer, tea cup and saucer, all decorated with scenes of Framlingham Castle £40 - 60 †

28
A Bloor Derby teapot, having gilt floral decoration on a pink ground, 26cm £20 - 40 †

29
An 18th Century glass fish bowl, of globular form, raised on a circular spread foot £60 - 80 †

30
A pair of 18th Century Delft plates, decorated with a river scene with cottage and kiln, floral borders, (one AF), 22.5cm dia.; and an 18th Century Chinese blue and white octagonal plate, AF, (3) £40 - 60 †

31
Three Antique wine glasses, with vine etched decoration and spiral stems; two others similar and a plain example, (6) £30 - 60 †

32
A pair of Continental porcelain busts, depicting a bearded man with a sack and a woman carrying a sheaf of corn and a sickle, 15cm high £40 - 60 †

33
A Beswick Beatrix Potter figure, "foxy whiskered gentleman", having gilt back stamp, 12.5cm high £30 - 50 †

34
A Moorcroft "Pomegranate" pattern vase, of squat baluster form, 9cm high £40 - 60 †

35
A Worcester "Pine cone" pattern charger, with scallop border, 38cm dia., crescent mark to base £100 - 150 †

36
A Worcester "Pine cone" pattern charger, with scallop border, crescent mark to base, 38cm £100 - 150 †

37
An 18th Century Chinese blue and white shallow dish, having scalloped border, decorated birds, fruit and foliate segment panels around a similar central scene with birds, 35.5cm dia., (some damage) £80 - 120 †

38
An 18th Century Chinese blue and white charger, decorated with flowers, 39cm dia. £100 - 150 †

39
A 19th Century brown glass and plate mounted claret jug, with floral painted decoration, 23cm high £30 - 50 †

40
A 19th Century majolica ware water jug, decorated with figures making merry, 23cm high £30 - 40 †

41
A quantity of Royal Crown Derby porcelain, to include posy vases, coffee cans, miniature teapot, plates etc. £100 - 150 †

42
Five various Imari scallop bordered plates £60 - 80 †

43
A large 19th Century Japanese Imari charger, decorated in the traditional manner, heightened in gilt, 47cm dia., (some damage) £60 - 80 †

44
A porcelain and gilt metal model of an Egret, standing amongst reeds and lilies, raised on ebonised plinth, 64cm high £40 - 60 †

45
Two Victorian Wedgwood oval game dishes, decorated hare, rabbits, pheasants and other birds amongst trailing vines, 23cm £60 - 100 †

46
A pair of Chinese famille jaune vases, profusely decorated with dragons, clouds and flaming pearls, 62cm high £100 - 200 †

47
A large 19th Century Masonic etched glass goblet, decorated with various symbols, raised on a baluster stem and circular spread foot, 19cm dia. x 24cm high £100 - 200 †

48
A 19th Century blue and white tea bowl and saucer, decorated in the Fence pattern; and a Chinese shallow dish with four character mark to base, (3) £40 - 60 †

49
Eleven Coalport dessert plates, having floral spray decoration within green and gilt heightened borders £20 - 30 †

50
A pair of 19th Century Chinese "tobacco leaf" patterned platters, 39cm £300 - 500 †

51
Two 19th Century Thai covered pots, decorated in brightly coloured enamels with flaming pearls, flowers and figures, 10cm high £20 - 30 †

52
Two Chinese earthenware Tang style female figures, 24cm and 22cm high £20 - 30 †

53
A Chinese blue and white porcelain pruned decorated baluster vase, with four character mark to base, 23cm high; a similar small ginger jar; a Delft blue and white baluster vase decorated with windmills and flowers; and an oriental design baluster table lamp base on circular wooden stand, 38cm high, (4) £20 - 30 †



Lot 38



Lot 39



Lot 40

- 54**
A large 19th Century Middle Eastern baluster vase, polychrome decorated with figures and flowers, 50cm high, AF £60 - 80 †
- 55**
An 18th Century Delft ware charger, decorated with a scene of a seated oriental lady beneath a parasol, within floral border, 36.5cm dia. AF £40 - 60 †
- 56**
Various 19th Century and later Spode blue and white transfer decorated china, some AF, (7) £40 - 60 †
- 57**
A Staffordshire flatback figure group, "Prince and Princess"; and a larger example depicting a woman selling fish, (2) £60 - 80 †
- 58**
A small 19th Century glass Tazza, raised on a spiral stem and circular spread foot; and various Victorian and later table glassware, (20) £40 - 60 †
- 59**
A pair of Copeland late Spode Queen Victoria Diamond Jubilee commemorative mugs; a Doulton stoneware Queen Victoria Diamond Jubilee commemorative beaker and a pair of Diamond Jubilee commemorative etched ale glasses, (4) £40 - 60 †
- 60**
A Rockingham design 19th Century porcelain tea set, having painted foliate spray decoration, heightened in gilt, (26) £60 - 100 †
- 61**
A blue and white twin handled frog mug, decorated with scenes of figures drinking and inscribed "Willy Brewed a peck'o malt" and another majolica type similar, (2) £60 - 100 †
- 62**
A Wood & Sons of Burslem limited edition Toby jug, of Martha Gunn; another of The Squire, another lided jug of Toby Philpott, and a Tony Wood example, (4) £60 - 80 †
- 63**
Three pairs of various Staffordshire spaniels and two single examples (8) £60 - 80 †
- 64**
A pair of Staffordshire spaniel ornaments, 26cm high and three other single examples, (5) £20 - 40 †
- 65**
A pair of Staffordshire milking groups; a Staffordshire cow and calf figure group; and another depicting a greyhound, (4) £20 - 40 †
- 66**
A Staffordshire group depicting spaniels on a barrel; a pair of highland Staffordshire figural groups in boats; and two others, (5) £40 - 60 †
- 67**
Seven various Staffordshire figure groups £40 - 60 †
- 68**
Three various sized pairs of Staffordshire spaniels; and three single examples, (7) £40 - 60 †
- 69**
A Staffordshire flatback figure of a sailor, entitled "Britain's Glory"; another of Red Riding Hood; another of Dick Turpin, (AF); and another of shepherd and shepherdess, (AF), (4) £30 - 50 †
- 70**
Six various Staffordshire spill holders £40 - 60 †
- 71**
A Ralph Wood type Toby jug, with sponge decoration, AF; another similar; another depicting Uncle Toby taking a pinch of snuff, AF; and another similar, (4) £30 - 50 †
- 72**
A Japanese Satsuma ware box and cover, decorated with figureheads and foliage, signature to base, 12cm £40 - 60 †
- 73**
Two white porcelain wall sconces, decorated with cherubs, ribbons and cornucopia, AF £20 - 40 †
- 74**
A 19th Century Chinese blue and white baluster vase, flanked by Kylin handles, decorated with cockerel and prunus, 43cm high £100 - 150 †
- 75**
A collection of 19th Century Bristol green glasses £30 - 50 †
- 76**
A cut glass decanter, with star and hobnail decoration, mounted with a silver collar; a pair of cut glass triple ring neck decanters; another similar and two silver decanter labels, "Rum" and "Sherry" £50 - 60 †
- 77**
A pair of 19th Century Chinese famille verte baluster vases, decorated with scenes of figures and pagodas, 24cm high, AF £40 - 60 †
- 78**
A Sampson porcelain study of Uncle Toby; and three Staffordshire similar, (some damage), (4) £40 - 60 †
- 79**
A Staffordshire flatback figure group, of a couple, 33cm high; A Staffordshire highland clock group, 35cm high; a Staffordshire watch holder, decorated three maidens and doves, AF; and a similar style Staffordshire spill holder, (4) £40 - 60 †
- 80**
A large cut glass pendant light fitting, having brass mounts, 35cm high £80 - 120 †
- 81**
A pair of 20th Century Chinese Canton baluster floor vases, profusely decorated with figures and flowers in coloured enamels, 93cm high £300 - 400 †



Lot 44



Lot 50



Lot 72



Lot 74



Lot 83

82
A pair of 19th Century Chinese Canton cylindrical vases, decorated with figures, birds and butterflies, 26.5cm high; and a similarly decorated Canton bowl, 22cm dia., (restored), (3) £60 - 80 †

83
A Samson famille rose and armorial decorated baluster vase, 37.5cm high £40 - 60 †

84
A large cut glass pedestal vase, decorated swags, flowers and stars, raised on a circular spread foot, 29.5cm high £20 - 40 †

85
A pair of 19th Century Samson porcelain figures, of seated ladies surrounded by flowers; another similar pair of young boys; four various other Continental porcelain figures; and a floral encrusted 19th Century German porcelain jardinière with cherub decoration, (damaged), (9) £60 - 100 †

86
A Sunderland lustre ware baluster jug, decorated with a ship and verse, 20cm high £40 - 60 †

87
A 19th Century Chinese Canton jardinière, decorated in brightly coloured enamels in traditional manner with figures, flowers, birds and butterflies, 24cm dia. x 15cm high £40 - 60 †

88
A 19th Century "Amherst Japan" ironstone pedestal fruit bowl; two Japanese Imari pattern dishes; and a Victorian porcelain shallow dish decorated in the Chinese manner, (4) £40 - 60 †

89
A 19th Century porcelain tureen and cover, having painted floral spray decoration, the acanthus handles heightened in gilt and raised on a circular spread foot, 34cm dia. overall x 29cm high £40 - 60 †

90
An 18th Century pottery oil jar, of baluster form, having faint slipware decoration, 40cm high £100 - 150 †

91
A large 19th Century Masonic baluster jug, having black and white transfer decoration of Masonic symbols and verse, 27.5cm high £60 - 100 †

92
A 19th Century Pearlware Masonic jug, Torbay Lodge 277, decorated with various symbols, of baluster form with a continuous stylised floral band and scrolled handle, 21cm high £60 - 100 †

93
A 19th Century Staffordshire pottery Masonic mug, decorated with various symbols and inscription, green glazed scroll handle and rim, 15cm high £40 - 60 †



Lot 91



Lot 92



Lot 93

94
A Royal Doulton miniature character jug, "Drake"; and five various commemorative mugs £10 - 20 †

95
A slipware shallow dish, with stylised decoration, 46cm x 37cm £40 - 60 †

96
A Continental porcelain table centre piece, in the Dresden style having floral encrusted cherub and maiden decoration to the column supporting an oval pierced basket, 48cm high; and a smaller similar example, 33cm high, (2) £60 - 100 †

97-109
No Lots

Silver and Plate

110
A plated entree dish, on spirit heater stand; a similar style chafing dish; various plated items to include toast rack, cocktail shaker, sauce boat etc. £40 - 60 †

111
A large electro plated Tyg, having foliate engraved decoration and glass base; three plated salvers; a comport; an entree dish and a table centre piece base etc. £40 - 60 †

112
An Aynsley porcelain and silver mounted set of coffee cans and saucers, Birmingham 1920, (some damage), cased £60 - 80 †

113
A late Victorian oak cased cutlery canteen box, and contents of various plated cutlery, mostly beaded Old English pattern; a quantity of steel bladed bone handled knives, napkin rings, asparagus holders etc. £80 - 120 †

114
A Victorian cut glass and hallmarked lemonade jug, having insert for Ice, 27cm high, hallmarked for Birmingham 1890 £250 - 350 †

115
A red leather and sterling silver mounted stationery box, and matching writing folder, profusely decorated foliate scrolls and exotic birds, having central cartouche with monograms, stationery casket 30cm wide x 22cm high, the folder 30cm x 24cm, (2) £250 - 350 †

116
A quantity of various electro plated ware, to include coffee pot, hot water jug, comport, oval drinks tray, butter dish etc. £60 - 80 †

117
A 19th Century Sheffield plated Samovar, flanked by ram's head mask handles and raised on hoof supports, 48cm high £40 - 60 †

118
A cased part set of Limoges porcelain and silver mounted coffee cans and saucers, hallmarked *Birmingham 1924*, (four cups and one saucer missing) £40 - 60 †

119
A cased set of 6 Limoges and silver mounted coffee cans and saucers, (one cup missing), hallmarked for *Birmingham 1925*, and six similar spoons, contained in a fitted case £60 - 100 †

120
An Eastern white metal bowl, the body with floral decorated panels; a pair of similar design covered bowls, AF; another similar; and six Eastern white metal ashtrays, (10) £40 - 60 †

121
A 19th Century French silver desk stand, by Desire Jouannet, the central ink pot in the form of a garden urn with flowers and ram's head mask decoration, pierced gallery with raised foliate scroll decoration, 26cm wide £200 - 400 †

122
A set of four Victorian silver candlesticks, of baluster form, having scrolled foliate decoration, *Sheffield 1843*, 25cm high £400 - 600 †

123
A small early French silver teapot, finely worked and standing on three hoof feet, Paris standard mark, 13cm high £100 - 150 †

124
A pair of silver baluster candlesticks, having raised foliate decoration, *Birmingham 1973*, 19cm high, (bases loaded); and a modern silver spill vase, 20cm high, (3) £60 - 100 †

125
A large Indian white metal rose bowl, continuous band of decoration depicting figures on elephants hunting tigers and other animals, above raised floral scrolls on a circular pedestal foot, 25cm dia. £100 - 200 †

126
A Victorian silver butter knife; a silver child's pusher spoon, two silver napkin rings and other nominal silver items £30 - 40 †

127
An Edwardian silver backed hand mirror, decorated with foliate scrolls, *Birmingham 1902*; another plainer similar with foliate engraved decoration, *Birmingham 1916*; and a matching hair brush, (3) £30 - 50 †

128
A collection of various silver and plated napkin rings; a silver drum shaped mustard pot; a silver pepperette; plated cruet items; a cased set of six bean top coffee spoons; and a bone handled pickle fork etc. £30 - 50 †

129
A Victorian silver sauce ladle, with foliate embossed decoration, makers mark GA, *London 1872* £40 - 60 †

130
A pair of George V silver Old English pattern sauce ladles, *Sheffield 1911*, monogrammed £40 - 60 †

131
Three various Dutch spoons, the bowls decorated with figures and rural scenes, having windmill terminals; a similarly decorated three pronged fork, a larger spoon having pierced handle and crest terminal; a coin set pin dish and a small white metal ashtray, dated 7/4/39, (7) £40 - 60 †

132
An Edwardian silver backed hand mirror, having winged cherub decoration, AF, *Birmingham 1905*; a pair of silver shell shaped butter dishes, AF, *London 1904*; two silver shell shaped salts, *Sheffield 1905*; a silver napkin ring; and a silver mounted nail buffer etc., (9) £60 - 80 †

133
Four George III silver Fiddle pattern table spoons, *London 1808*; three George III silver Fiddle pattern table forks, *London 1818*; various other cutlery, tea and condiment spoons etc. approx. 27ozs. £150 - 250 †

134
A Birks Sterling baluster sugar shaker; a pair of Birks Sterling circular salts and a tea strainer, (4) £60 - 80 †

135
A Victorian silver baluster shaped ale mug, having engraved fern and ivy leaf decoration, raised on a circular spread foot, *Birmingham 1879*, 14cm high, 6ozs. £60 - 80 †

136
An Art Deco silver sauce boat, of panelled form, with loop handle, *Birmingham 1936*, 4.5ozs. £40 - 60 †

137
A small 18th Century pomander, monogrammed to the top, makers mark SE, 3cm high £40 - 60 †

138
A circular silver and tortoise shell mounted trinket box, raised on shaped supports, *London 1919*; and a small oval silver snuff box of plain form, *Birmingham 1911* £60 - 80 †

139
A 9 carat gold mounted hair brush, having engine turned decoration, 12cm £60 - 100 †

140
An oak and silver mounted twin compartment table cigarette box, 24.5cm long £20 - 40 †

141
An early 20th Century silver trinket casket, of serpentine shape, the engine turned lid opening to reveal a plush lined interior, raised on cabriole supports, probably *Birmingham 1910*, 12.5cm long £100 - 150 †

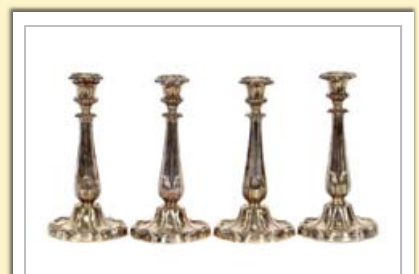
142
An Art Deco design silver engine turned cigarette case, *Birmingham 1933*; and a Niello ware cheroot case, stamped Sena Sterling .925, (2) £60 - 80 †



Lot 115



Lot 121



Lot 122



Lot 125



Lot 162

143
An Edwardian silver folding cigarette case, having foliate engraved decoration and monogrammed cartouche with inscription, *Birmingham 1904*; and an Edwardian silver Vesta case monogrammed, *Birmingham 1906*, (2) £40 - 60 †

144
A pair of Edwardian silver heart shaped toast racks, *Sheffield 1909* £40 - 60 †

145
A collection of various silver and Eastern white metal dressing table and manicure items £60 - 80 †

146
An Edwardian silver hot milk jug, of tapering cylindrical form with wooden handle and lift, decorated with family crest, 17cm high, *Sheffield 1903*, 11ozs., 17cm high £80 - 120 †

147
A pair of glass silver mounted and mother of pearl pepper pots; a Victorian silver foliate engraved napkin ring and a similar with thistle decoration and monogram, (marks indistinct), (4) £20 - 30 †

148
A George V silver three piece tea set, of half fluted body design, *Birmingham 1916*, approx. 36ozs. gross £250 - 350 †

149
A Victorian silver baluster coffee pot, having foliate engraved decoration and family crest with central cartouche, maker E.&J. Barnard, retailed by Widdowson & Veale, The Strand, *London 1861*, 25cm high, 28ozs. £200 - 300 †

150
A pair of Eastern white metal platters, having foliate engraved decoration; four Indian white metal napkin rings; and a similar tea strainer, (7) £40 - 60 †

151
A pair of American dwarf candlesticks, raised on circular weighted bases, 10cm high £30 - 50 †

152
A George III silver coffee pot, *London 1798*, maker possibly John Mumms, having foliate engraved decoration and wooden handle, 22cm high, AF £300 - 400 †

153
A circular silver pin dish, *Sheffield 1977*; and a sterling "Lifelong" propelling pencil, (2) £30 - 50 †

154
A Birks Sterling pie crust bordered two handled drinks tray, having presentation inscription, 54cm overall, 46ozs. £200 - 400 †

155-158
No Lots



Lot 168

Jewellery, Coins and Watches

159
A collection of various amber coloured bead necklaces £40 - 60 †

160
A quantity of various commemorative Crowns, to include Queen Mother's Silver Centenary, Queen's Silver Jubilee, 2002 £5 coin, post war shillings and two shilling pieces etc. £40 - 60 †

161
Two 9 carat gold wedding bands; a 9 carat gold cross and fine link chain; and a pair of 18 carat gold ear studs set white stones, approx. 14.6gms gross £100 - 200 †

162
A 19th Century silver "straight line" lever pocket watch, by A. & V. Bourquin; and a small engraved pocket watch, the case hallmarked for *Birmingham 1884*, (2) £30 - 50 †

163
A pearl necklace, with 9 carat gold clasp; and another similar, (2) £60 - 80 †

164
A white metal and three stone diamond ring; and a white metal pink and white stone set dress ring, (2) £100 - 200 †

165
A platinum wedding band, 2.5gm £40 - 60 †

166
A 9ct gold bracelet, with elongated links, 20gm £200 - 300 †

167
A 9ct gold bracelet, set coloured stones, 21cm long, 19gm £200 - 300 †

168
A Cartier travelling alarm clock, in fitted case, having black enamel banded decoration £150 - 250 †

169
An 18 carat gold sapphire and diamond set ring £100 - 150 †

170
A nine carat gold baby brooch, approx. 3.1gms; and a yellow metal and seed pearl set floral brooch, (2) £40 - 60 †

171
An 18 carat gold ring, set with white and red stones £60 - 80 †

172
A yellow metal pearl and amethyst set brooch £40 - 60 †

173
A small wooden box, containing a plated pocket watch; an Art Deco gentleman's wrist watch; and a quantity of various old coinage etc. £20 - 40 †



Lot 193



Lot 194

174

A small late Victorian silver fob watch, having foliate engraved decoration and enamelled dial; and a continental white metal cased pocket watch with seconds subsidiary dials, (2) £60 - 80 †

175

Three various 9ct gold bands; two 9ct gold earrings etc. 9.5gms £80 - 120 †

176

A silver and hardstone decorated Celtic design cloak style brooch £20 - 30 †

177

An 1887 half sovereign, with yellow metal mount, 4gms; an 1868 one dollar coin, 1.5gms; a yellow metal pendant and an early coin or token, (4) £100 - 150 †

178

A pair of Antique silver folding spectacles £30 - 50 †

179

A similar pair £30 - 50 †

180

A pair of Antique tortoise shell and white metal mounted folding spectacles £20 - 40 †

181

A pair of Edwardian mother of pearl mounted lorgnettes £30 - 50 †

182

A Queen Elizabeth II half sovereign 2001 £80 - 120 †

183

A Queen Elizabeth II sovereign 2001 £180 - 220 †

184

A George V sovereign 1913 £180 - 220 †

185

An Edward VII sovereign 1904 £180 - 220 †

186

A Victorian sovereign 1898 £200 - 220 †

187

A Victorian sovereign 1892 £200 - 220 †

188

A Victorian sovereign 1882 £200 - 220 †

189

A string of faceted agate beads; a string of amber coloured beads and another, AF £40 - 60 †

190

An amber coloured necklace pendant and brooch £40 - 60 †

191

A late Victorian gold stick pin brooch, set with a single turquoise £30 - 50 †

Objects and Collectables

192

A 19th Century bronze and polychrome enamel icon, depicting a Saint, 25cm x 16cm £60 - 80 †

193

A finely painted 19th Century enamelled cylindrical scent bottle with stopper, decorated with a shepherdess in landscape, 9cm long £60 - 80 †

194

A small late 19th/early 20th Century gilt bronze figure group, depicting two Continental ladies in traditional dress, raised on a wood base, 14cm high £20 - 30 †

195

A 19th Century miniature portrait of a gentleman on ivory, contained in a period papier-mâché frame £40 - 60 †

196

A pair of late 19th Century Chinese ivory spill vases, intricately carved with dragons and foliage, 10cm high £40 - 60 †

197

A Chinese mottled green jade carved vase, and cover, flanked by elephant head and ring handles, 22cm high £120 - 180 †

198

A small 19th Century Chinese cloisonne oblong dish, decorated with a butterfly and large flower; and a carved wood figure of Guan Yin, (2) £40 - 60 †

199

A Dutch white metal trinket casket, raised decoration of classical figures and foliage, 10cm long; and contents to include various commemorative Dutch medallions etc. £60 - 100 †

200

A Continental white metal trinket box, of navette shape, the lid embossed with merrymaking figures in a tavern interior and country scenes to the sides, raised on four ball feet, the hinged lid opening to reveal a plain interior, 15cm long £40 - 60 †

201

A Continental gilded metal and glass circular powder box and cover, decorated in blue enamel with filigree work and a central amber coloured faceted stone to the lid, 10cm dia. £60 - 100 †

202

A wooden and gilded metal model of a field cannon, 18cm long £20 - 40 †

203

A 19th Century micro mosaic plaque, depicting a gondolier in front of St. Mark's Square, Venice, 10cm x 14cm £350 - 450 †



Lot 178



Lot 199



Lot 200



Lot 201



Lot 203



Lot 211

204

A small Continental glass and white metal mounted scent flask, having filigree work and Niello type decoration, with hinged lid, 12cm long; a white metal filigree work chamberstick; a pair of vine decorated grape scissors; and a white metal ashtray decorated with a tavern scene, (4)
£40 - 60 †

205

An Edwardian brass double photograph frame, with ornate foliate pierced decoration, on an easel stand, 29cm long overall £70 - 100 †

206

A Meerschaum cigarette holder in the form of a pipe, with equestrian decoration, in original case £40 - 60 †

207

A Victorian enamel beaker, celebrating Queen Victoria's Diamond Jubilee £30 - 50 †

208

A pair of 19th Century carved ivory panels, depicting rustic figures in ebonised and brass mounted miniature frames £60 - 80 †

209

19th Century school, oval portrait miniature of a young lady; and another of a lady wearing a floral bonnet, contained in ebonised brass mounted frames, (2) £40 - 60 †

210

A brass cased carriage clock, retailed by Mappin & Webb having white enamel Roman numeral dial, angular swing handle, 14cm high £60 - 100 †

211

A 19th Century circular tortoise shell and gilt metal mounted box and cover, the lid decorated with a miniature portrait of a young gentleman, 6.5cm dia.; a 19th Century Continental porcelain oval box and cover, the hinged lid decorated with a scene of a courting couple within gilt foliage, 8cm long; and an Indian papier-mâché box and cover with elephant decoration, (3) £100 - 200 †

212

A Chinese carved ivory puzzle ball, AF; and a small carved ivory puzzle ball seal, (2) £40 - 60 †

213

A spinach green jade bowl, 13.5cm dia.; and a small grey hardstone bowl, 5.5cm dia., (2) £60 - 100 †

214

Various RAF Bentwaters USAF badges, White House Christmas 1991 commemorative brass decoration, a Russian boxed enamel pocket watch etc. £20 - 40 †

215

A collection of fountain pens to include, boxed Sheaffer, Parker etc.; and a silver money clip £30 - 50 †

216

A 19th Century sailor's shell valentine workbox, fitted with a mirrored interior applied with shells overall; together with another similar box, circular sailor's shell picture etc. £100 - 200 †

217

A Japanese carved ivory tusk, with dragon decoration, 61cm long £200 - 300 †

218

A set of miniature bone dominoes, contained in a carved nut holder; a set of miniature bone dice contained in a carved netsuke type nut holder; and a wooden cylindrical needle case £40 - 60 †

219

An unusual Antique boxwood carved plaster mould, finely detailed and bearing date 1380, 34cm long £40 - 60 †

220

A metal skull Vesta case; an ivory and white metal mounted hand mirror; a carved bone bracelet etc. £40 - 60 †

221

An album of postcards, mostly early 20th Century depicting Ipswich scenes £50 - 80 †

222

An album of various early 20th Century postcards £30 - 50 †

223

A collection of various coral pieces £20 - 40 †

224

A collection of various Edward VIII ephemera, including First Day Covers, "Windsor Wedding Day", (France), Morocco Agencies etc. £40 - 60 †

225

An edition of the first Aldeburgh Festival Programme 1948, and a 1949 & 50 edition, (3) £50 - 80 †

226

An early 19th Century carved wooden wall bracket, in the form of a canopy with swag and garland decoration, 23cm £70 - 100 †

227

A Japanese elm and bronzed smoker's cabinet, having pierced foliate decoration and swing handles (one AF), 19cm high £100 - 150 †

228

A 19th Century Chinese painted and gilded wood column on stand, carved with figures, blossom and calligraphy, old paper label verso stating "Ancestral column", 56cm high £60 - 100 †

229

A set of five glass chemist jars, with original gilded labels £30 - 50 †

230

An oriental flared bronze vase, decorated with calligraphy to the side of base, circa late 18th/early 19th Century, 12cm high £150 - 250 †



Lot 227



Lot 230



Lot 238

231
An oriental bronze baluster vase, having beast handles, raised on a circular spread foot, 27cm high; and a Chinese ginger jar, (2) £40 - 60 †

232
A 19th Century gilt Florentine picture frame, containing an old photograph, 30cm x 23cm in extremes £20 - 40 †

233
A Heubach and Koppelsdorf bisque headed doll, 48cm; and a Kammer and Reinhardt for Simon and Halbig porcelain headed doll, 46cm, (2) £200 - 300 †

234
Three various Armand Marseille bisque headed dolls £100 - 200 †

235
A brass cased bulk head clock, by Prescott Clock Company, Prescott, 21cm dia. £40 - 60 †

236
A 19th Century gilded brass mantel clock, of architectural form, circular enamel dial with filigree decoration, flanked by corinthian columns, 8 day French movement, 30cm high £120 - 180 †

237
A cased and preserved arrangement of two humming birds, amongst foliage, in ebonised and glazed bow fronted hanging case, 32cm overall £30 - 50 †

238
A Victorian wax and fabric floral and fruit arrangement, under glass dome, raised on an ebonised plinth, 46cm high £60 - 100 †

239
An old leather shield, decorated with four raised brass bosses; an axe with leather bound handle and an ethnic wooden club, 59cm long, (3) £100 - 150 †

240
A 19th Century ormolu and Sevres style porcelain mounted mantel clock, stamped to the reverse "Phillipe Mourey", the circular cherub decorated dial with Roman numerals supporting an 8 day movement striking on a bell, the case decorated with a central urn and garlands above ribbons and swags, 40cm high £300 - 400 †

241
A 19th Century woolwork picture, depicting a castle, 36cm x 57cm, contained in a maple frame £60 - 100 †

242
A 19th Century gilded Spelter timepiece, decorated with figures and foliage, under a glass dome, raised on ebonised plinth, 40cm high overall £40 - 60 †

243
A late Victorian oak smoker's cabinet, of inverted breakfront form, fitted three partitioned drawers and enclosed by a door with central arched glass bevelled plate, flanked by corinthian columns with gilt metal capitals, 30cm high x 26cm wide £60 - 100 †

244
An early 20th Century mahogany cased chiming mantel clock, having silvered dial, striking on a gong, 36cm high £60 - 100 †

245
Of East Surrey Regiment interest, a woolwork regimental picture depicting battles and flags of the regiment, contained in a bird's eye maple frame, 48cm x 62cm £60 - 100 †

246
A George III Mulberry wood specimen cabinet, fitted 16 drawers, 31cm wide x 31cm high £150 - 250 †

247
A Regency mahogany and boxwood strung three compartment tea caddy, of sarcophagus form, raised on brass ball feet, 28cm £40 - 60 †

248
A 19th Century rosewood and mother of pearl mounted toilet box, with interior glass and electro plate mounted fittings, 30cm wide £60 - 80 †

249
A Victorian mahogany miniature chest, fitted two short and two long drawers with turned brass pull handles, raised on bracket feet, 30cm wide x 21cm high £60 - 80 †

250
A French tortoise shell and cut brass inlaid mantel clock, in the manner of Boulle, with circular enamelled Roman dial supporting an 8 day movement striking on a gong, 33cm high £200 - 300 †

251
A Victorian burr walnut miniature chest, of two short and two long drawers, raised on a platform plinth, 32cm wide x 31cm high £40 - 60 †

252
A mother of pearl decorated tray; a circular Japanese lacquer box and cover; a Japanese cloisonne box and cover; a shagreen cigarette box and a leather covered similar, (5) £40 - 60 †

253
A Chinese carved ivory card case, decorated in relief with figures and foliage £40 - 60 †

254
A Continental porcelain mother of pearl and gilt metal mounted circular box, the hinged lid decorated with a classical Mediterranean scene, 6cm dia. £40 - 60 †

255
A carved Chinese hardwood graduated display stand, having pierced foliate decoration, 38cm high x 46cm wide overall £200 - 300 †

256
A Chinese bronze censer, raised on four shaped supports, incised mark to base, 12cm dia. x 19cm high £200 - 300 †



Lot 240



Lot 251



Lot 255



Lot 256



Lot 265

257

A 20th Century Chinese Jade Koro, the cover surmounted by a Kylin, flanked by beast handles and raised on squat shaped feet, 15cm high
£300 - 400 †

258

A Chinese gilded bronze study of a seated Buddha, 11cm high
£20 - 30 †

259

A papier-mâché pen box, the lid decorated with a First World War battle scene, AF, 20cm long
£20 - 30 †

260

Two Chinese Republic period painted scrolls, one depicting warriors, the other depicting pagodas and figures beside a river
£50 - 80 †

261

An ornately carved 18th Century section of banister, with original paintwork, 123cm long
£60 - 80 †

262

A Dutch brass 8 branch chandelier, 74cm high
£120 - 160 †

263

A Gothic revival oak framed and painted slate altar screen, in the Pugin style, the panel painted with a cross centred with IHS, each arm with a quatrefoil depicting the four evangelists, also decorated with gilt stars, the oak frame with a pierced apron centred with a further panel carved with IHS, 148cm wide x 158cm high
£400 - 600 †

264

An early 19th Century sampler, by Betsey Maria Morgan, dated 1837, 42cm x 33cm
£70 - 100 †

265

A scale model of a schooner, fully rigged with carved wooden hull, on stand, 94cm long
£150 - 250 †

266

An Edwardian satinwood oval tea tray, having shaped gallery border and brass carrying handles, 64cm wide
£30 - 50 †

267

Six Chinese paintings on pith paper, depicting studies of figures carrying lanterns and in conversation, 10cm x 7cm
£60 - 100 †

268

An Oriental carved lacquer box and cover, with foliate decoration; a lacquered baluster vase; four small circular pots; and a small cherry amber coloured figure of a seated Buddha
£40 - 60 †

269

A collection of Chinese mother of pearl gaming counters; and a collection of mother of pearl teaspoons
£40 - 60 †

270

An Oriental bronze incense burner, in the form of a seated bird, on associated hardwood stand, 17cm long
£20 - 40 †

271

An early 20th Century brass column oil lamp, having cut glass font and etched shade, 67cm high
£60 - 100 †

272

A small 19th Century slate and pietra dura decorated circular table top, inlaid with flowers, 32cm dia.
£100 - 150 †

273

A pair of Benares brass jardinières; two smaller similar; a larger example; a copper kettle etc., (10)
£30 - 60 †

274

A 19th Century elm and inlaid candlebox, 50cm
£40 - 60 †

275

A brass telescope by Cox of London, in fitted mahogany case, 82cm long
£100 - 200 †

276

An Arts & Crafts design copper and brass coal bin, 37cm dia. x 38cm high
£40 - 60 †

277

A pair of cast iron fire dogs, of rustic tapering form, 52cm long x 60cm high
£20 - 30 †

278

Two Antique copper boiling pans, with loop handles; and a copper 1 gallon baluster measure by Tonge of Boston, (3)

279

A Xylophone, on an oak two tier stand, 51cm wide x 70cm high
£40 - 60 †

280

A 19th Century Japanese carved ivory figure of a crouching man, with child seated on his back, AF; and various other mostly Indian carved ivory figures etc.
£100 - 200 †

281

Two Oceanic fishing spears, 195cm long and a similar bow, (3)
£50 - 80 †

282

A Victorian ebonised wall clock, of regulator type, 87cm
£40 - 60 †

283

A pair of 19th Century woolwork embroidered face screens, with turned boxwood and gilt decorated handles
£60 - 100 †

284

A mother of pearl and ivory fan, having painted decoration of a Romany girl playing a guitar; a boa feather fan; and a pierced ivory fan with painted central panel, (some damage), (3)
£40 - 60 †

285

A Regency papier-mâché coaster; a treen bottle shaped nutmeg grater; a small doll's house chair with decorated panel; a circular cloisonne box and cover, AF; an ivory paper knife; a small whistle etc.
£40 - 60 †

286

A 19th Century needlepoint embroidery, depicting a religious scene, 31cm x 45cm, contained in an ornate gilt frame
£40 - 60 †



Lot 272



Lot 274



Lot 286

287
A Victorian Admiral Fitzroy's barometer, in oak case, 95cm £60 - 100 †

288
A mahogany and chequer-banded stick barometer, 100cm £60 - 100 †

289
A brass cased lantern clock, 32cm high; raised on a carved oak bracket £100 - 150 †

290
A 19th Century Dutch wall clock, surmounted by an arched hood, decorated with lions and foliate scrolls, the painted dial with Roman numerals and scenic decoration, flanked by mermaids, 72cm £200 - 300 †

291
A quantity of early newspapers and periodicals, 1805 onwards to include: Ipswich and Yarmouth weekly, Lynn Herald advertiser etc. £40 - 60 †

292
Twelve early 18th Century hand written documents £40 - 60 †

293
A 19th Century green stained tortoise shell and ivory strung two compartment tea caddy, having white metal cartouche and escutcheon, 16.5cm wide £100 - 150 †

294
A 19th Century mother of pearl card case £40 - 60 †

295
A George III brass and steel footman, raised on cabriole front supports, flanked by turned carrying handles, with acorn finial decoration, 54cm wide overall £80 - 120 †

296
An Antique flintlock fowling piece, with integral ramrod, 197cm long overall; together with a copper and brass banded powder flask, AF, (2) £60 - 100 †

297
A Chinese silk embroidered panel, 69cm x 36cm; a pair of smaller similar, decorated Dogs of Fo and foliage, 57cm x 20cm; and another, (4) £80 - 120 †

298
A large aluminium table lamp, with ornate silk lined shade, circa 1920's £60 - 80 †

299
A large map of the city of London and Westminster, on linen; and a large view of Edinburgh 1886, (2) £60 - 100 †

300
A Persian bronze and white metal circular tray, with allover engraved decoration of flowers and animals, 80cm dia. £80 - 120 †

301
A run of Rapin's History of England, leather bound £100 - 200 †

302
Green's English People; Tacitus, 2 volumes; Wandering Scholar; Gifford's The Marine Botanist; and various others, (10) £40 - 60 †

303
A collection of Antiquarian leather bound books, to include Curious Myths of the Middle Ages, Boutell's Heraldry, Jevons Greek Literature, Travels with a donkey in the Cevennes by Stephenson, numerous others, (17) £40 - 60 †

304
Gilbert White's Selborne Bowdler Sharp, 2 volumes; The Life of Stephenson by Balfour, Tennyson a Memoire etc., (10) £40 - 60 †

305
A collection of various leather bound works, to include Le Morte d'arthur, 2 volumes, Xenophon's Cyropedia, Sage The Higher Criticism, Dollinger First Age of Christianity, and various others, (13) £40 - 60 †

306
Four leather bound volumes, The History of Rome and numerous other leather bound volumes, (20) £100 - 150 †

307
Eight leather bound volumes, Periods of European History, 4 leather bound volumes Short Studies of Great Subjects and 12 leather bound volumes by James Anthony Froude, (20) £80 - 120 †

308
Sixteen leather bound volumes, by W. Harrison Ainsworth; and 6 leather bound volumes by William Edward Hartpole Lucky, (22) £100 - 150 †

309
H.G. Wells, 21 volumes; and numerous other leather bound volumes, (45) £100 - 150 †

310
The Gun and it's development, with notes on shooting by W.W. Greener £20 - 30 †

311
A leather bound volume New Improvements of Planting and Gardening, by Richard Bradley; a leather bound volume Bolton's Last Learned Worke, 2 leather bound volumes Prescotts Works, (4) £40 - 60 †

312
Twelve leather bound volumes, The History of England by James Anthony Froude; and 11 leather bound volumes Disraelis Works, (23) £100 - 150 †

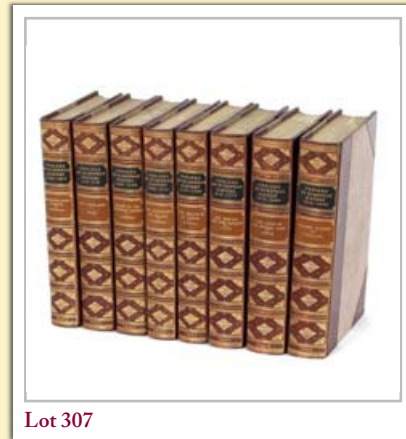
313
Five leather bound volumes, History of Ireland by Lecky; 3 leather bound volumes The English and Ireland, by James Anthony Froude; and 7 leather bound volumes of The History of England by Lecky, (15) £40 - 60 †



Lot 293



Lot 295



Lot 307



Lot 312

Pictures and Prints



Lot 319

314
John White Abbott, study of Southgate Exon, pencil and wash study, dated 10th August 1808, 10cm x 13cm £40 - 60 †

315
Late 19th/early 20th Century, Chinese school, portrait of a seated dignitary, watercolour on fabric, image 30cm x 20cm £40 - 60 †

316
W. Trent of Ipswich, circa 1860, study of Dunham Reach Farm, near Ipswich, signed pencil sketch, 19cm x 24cm £40 - 60 †

317
R. Cook, country study with figure wandering along a farm track, unsigned oil on canvas, 21cm x 29cm £40 - 60 †

318
19th Century school, still life study with fruit, unsigned oil on canvas, 25cm x 30cm £40 - 60 †

319
V. Loren, Continental scene of a park with sea in the far ground, signed watercolour, 43cm x 30cm £40 - 60 †

320
A 19th Century oval miniature portrait of a gentleman, contained in gilt frame; another of a lady wearing a fur stole and evening gown; and a 19th Century school oval miniature portrait of a seated gentleman, unsigned watercolours (3) £40 - 60 †

321
C. Stephenson Mole, the railway engine "Mons Mega at speed", signed oil on canvas, 49cm x 76cm; and another "The engine C188 crossing a viaduct", signed oil on canvas, 26cm x 35.5cm, (2) £50 - 100 †

322
English school, mid 20th Century, five studies of female nudes in red chalk £30 - 50 †

323
English school, a pair of unsigned oils on canvas depicting ducks with a watching fox, 35cm x 25cm £60 - 80 †

324
18th Century school, allegorical study depicting Tobit and the angel Raphael, unsigned oil on canvas, 29m x 37cm £200 - 400 †

325
S. Stanfield, study of sailing boats with rock and castle in the far ground, signed watercolour, 12cm x 17cm £20 - 40 †

326
Attributed to Myles Birkett Foster, study of a family reclining on a river bank with attendant dog and sheep, watercolour and monogrammed FB, 17cm x 25cm £100 - 150 †

327
A.W. Derby, 1897, a pair of country scenes depicting cottages beside a river, signed oils on board, 26cm x 34cm £80 - 120 †

328
A.M. Minter, still life study, signed oil on canvas, 55cm x 40cm £40 - 60 †

329
Attributed to Thomas Churchyard, study of boats on the Deben with Tide Mill in the far ground, unsigned watercolour, 14cm x 19cm £60 - 100 †

330
Thomas Churchyard, view of the Deben from the Croft, Melton, 14cm x 19cm £200 - 300 †

331
C.W., study of the river at Woodbridge with sailing barges and figures, initialled watercolour, 22cm x 30cm, contained in a maple frame £40 - 60 †

332
Attributed to George Morland, study of a stable interior with lame horse, oil on canvas, bears signature, 29cm x 39cm £200 - 400 †

333
J. Howe, "The Village Blacksmith", signed oil on canvas, 40cm x 30cm £20 - 30 †

334
After George Rope, study of a hunter in riverside pasture, unsigned oil on board, 25cm x 34cm, (bears inscription verso) £100 - 150 †

335
19th Century English school, study of a Man o War and other sailing ships on a rough sea, unsigned watercolour, 24cm x 33cm £40 - 60 †

336
E. Ramsay, study of figures shell fishing on a beach, signed watercolour dated 97, 25cm x 44cm £40 - 60 †

337
David Cox, study of fishing boats at sea, quay and cliffs in the far ground, pencil signed watercolour, 31cm x 42cm £60 - 100 †

338
Attributed to Turner Wynn, naive school, study of "Rydal Mere Lake District"; and "Early Morning" Goring on Thames, 35cm x 53cm, (a pair) £70 - 100 †

339
D. Hewitt, marine study with Man o War and various other ships, port in the far ground, signed oil on canvas, 50cm x 76cm £200 - 300 †

340
J.L. Pickering, harvest scene, signed oil on board dated 1885, 22cm x 43cm £200 - 400 †

341
Leonard Russell Squirrell, a pencil signed etching of Alnwick Castle, 20cm x 33cm £80 - 120 †



Lot 324



Lot 330



Lot 339



Lot 340

342
R. Kell, study of the barge "Spinaways", signed oil on board, 44cm x 71cm £60 - 100 †

343
K. Newton, 20th Century school, still life study, signed oil on canvas, 50cm x 60cm £60 - 100 †

344
After J. Ward, engraved by Reeve, "Vivid and the water witch off Orfordness in the breeze", plate 45cm x 68cm £40 - 60 †

345
R. Robert, a pair, studies of the rescue of the ship Indian Chief by the Bradford Lifeboat vessel and the steam tug Vulcan off Goodwin Sands, signed oils on canvas, 61cm x 107cm £800 - 1,000 †

346
John Moore of Ipswich, study of fishing vessels at sunset, oil on canvas, 19cm x 23cm £400 - 600 †

347
19th Century school, study of a shepherd with sheep and goats on a grassy hill looking out to sea, unsigned oil on panel, 17cm x 22cm £150 - 250 †

348
John Moore of Ipswich, fishing vessels in heavy seas, oil on canvas, 24cm x 35cm £600 - 800 †

349
Thomas Churchyard (1798-1865), study of a country lane, possibly Melton, watercolour, 15cm x 20cm £400 - 600 †

350
Thomas Churchyard (1798-1865), study of Tunstall church, watercolour, 15cm x 19cm £400 - 600 †

351
G. Barber, naive school study of the Lowestoft trawler "Concord", off the jetty at Southwold, signed oil on board, 33.5cm x 45cm £40 - 60 †

352
19th Century English school, country scenes, a pair, depicting cottages by a river, indistinctly signed, oils on canvas, 45cm x 35cm £100 - 150 †

353
Late 19th Century school, highland loch study and another of a waterfall, a pair, unsigned oils on board, 45cm x 35cm £100 - 150 †

354
Elmer Keene, late 19th Century, study of a coastal scene with figures musselsing by a beached fishing boat, signed oil on board, 29cm x 44cm £120 - 160 †

355
Frances E. Jamieson, Walton Village, Somerset and near Broxbourne, Herts, both signed with Jamieson's pseudonym A. Ramus, oil on canvas, a pair, 30cm x 50cm £50 - 100 †

356
Hugh McKenzie, study of the National Gallery Trafalgar Square, London and St. Martin in the Fields, The Strand, London, signed watercolours, 27cm x 35cm and 29cm x 43.5cm, (2) £50 - 100 †

357
After William Collins, fisherman mending his net, unsigned oil on canvas, 44cm x 34cm £50 - 80 †

358
Benjamin Haydon, a collection of pencil figure studies, framed and glazed, 17cm x 14cm £40 - 60 †

359
C.H. MacAndrew, study of a fishing harbour at dusk, signed oil on canvas dated 1901, 34cm x 50cm £200 - 400 †

360
J.H. Young, study of a woodland river landscape, signed oil on canvas, 102cm x 85cm £60 - 100 †

361
19th Century school, study of a country farmhouse, unsigned watercolour, 25cm x 34cm; and another by the same hand of figures in a street, 29cm x 27cm, (2) £60 - 100 †

362
A watercolour design for a proposed overmantel panel, at Graham House 1934, indistinctly signed, 28cm x 26cm £20 - 40 †

363
Samuel Read (1815-1883), view of Westgate Street, Ipswich, showing the Suffolk Hotel, signed watercolour, see information verso, 37cm x 54cm, (AF) £60 - 100 †

364
Frederick Brett Russell (1815-1864), study of Major Turner's house, Westgate Street, Ipswich, (demolished to make Museum Street, 1835), unsigned watercolour, 34cm x 47cm N.B. see information verso £200 - 300 †

365
Philip Collingwood Priestley (B. 1901), study of Wells cathedral and town, signed watercolour, 38cm x 55cm £100 - 150 †

366
M. Holbert, study of figures in a street, unsigned watercolour, 18.5cm x 27cm £20 - 40 †

367
19th Century school, study of a school and chapel with village and church in the far ground, unsigned pencil, 14cm x 20cm; and two prints of Stowmarket, (3) £20 - 40 †

368
John Billinghamurst, study of a country farmhouse, unsigned watercolour, 24cm x 34cm, (gallery label verso, Simon Carter Gallery, Woodbridge) £40 - 60 †



Lot 345



Lot 348



Lot 349



Lot 350



Lot 364



Lot 375



Lot 381



Lot 382



Lot 391



Lot 397

369

Geoff Pleasance, study of Stephen's Lane, Ipswich, signed watercolour, dated 1976, 36cm x 23cm; another of the corner of Silent Street, Ipswich, 1976, 20cm x 33cm; another of Grimwade Street, Ipswich, 1977, 24cm x 34cm, (3) £60 - 100 †

370

E. Pocke, study of Wolsey's Gateway, Ipswich, signed watercolour, 38cm x 26cm £80 - 120 †

371

H. Davey, etching of Trinity Lodge, Back hamlet, Ipswich, 18cm x 25cm £40 - 60 †

372

Elsie Radcliffe, "Dedham, a scene by the river", signed watercolour dated 1921, 18cm x 25cm £40 - 60 †

373

Alfred John Billingham, study of parkland with town in the far ground, unsigned watercolour, 24.5cm x 30.5cm, (gallery label verso Simon Carter Gallery, Woodbridge) £40 - 60 †

374

Bernard Barton, Woodbridge poet, framed and glazed poem about Woodbridge, dated February 18th 1841 £30 - 50 †

375

19th Century school, study of Old Tower Church, Ipswich, with figures walking along the street, unsigned watercolour, 32cm x 25.5cm £40 - 60 †

376

A collection of hand coloured prints, depicting birds, animals, costumes etc. £60 - 100 †

377

A folio of various watercolours, prints, drawings etc. £40 - 60 †

378

A collection of various prints and watercolours of flowers £40 - 60 †

379

A folio collection of Raymond Richardson, to include a large quantity of his work £200 - 400 †

380

A collection of Eastern, Italian and other 19th Century photographs £40 - 60 †

381

A. Melzer, study of a country scene with cattle being herded along a path by a figure, cottage and river nearby, signed oil on canvas, 49cm x 80cm £300 - 400 †

382

19th Century school, portrait study of a young woman with flowers in her hair, unsigned oil on canvas, 42cm x 33cm £100 - 150 †

383

19th Century Continental school, study of a figure in ermine trimmed cape holding a dagger, unsigned oil on canvas, 70cm x 52cm £800 - 1,200 †

384

Murray Macdonald, highland scene with cattle by a river, mist shrouded mountains in the far ground, signed watercolour, dated 1898, 38cm x 54cm £150 - 250 †

385

T.L. Rowbotham, study of a shepherdess in red cloak crossing a bridge over a river, attendant flock nearby, signed watercolour, dated 1865 and numbered 680, 18cm x 43cm £100 - 200 †

386

19th Century school, study of a figure fishing by a lake, monogrammed and dated 1858, 31cm x 47cm £30 - 50 †

387

19th Century school, study of buildings and woodland, unsigned watercolour, 42cm x 54cm £20 - 30 †

388

19th Century school, pastel portrait study of Lady Logan, framed as an oval, 65cm x 53cm £40 - 60 †

389

19th Century school, figure fishing in a river, monogrammed and inscribed "River Brathay", dated 1889, 25.5cm x 36.5cm £20 - 40 †

390

W.S. Pierpoint, study of St. Margaret's Church and Ancient House; and another courtyard of the Ancient House, a pair, signed watercolours, dated 1920, (2) £20 - 30 †

391

English school, study of a sailing ship at sea with other boats and harbour in the far ground, unsigned oil on canvas, 55cm x 75cm £250 - 300 †

392

Late 19th Century Continental school, study of figures beside a lake with town in the far ground, indistinctly signed oil on board, 29cm x 39cm £40 - 60 †

393

19th Century school, study of an English Civil war skirmish scene, unsigned oil on panel, 20cm x 13cm £100 - 150 †

394

Phyllis Morgans, "Path to the Ferry, Walberswick"; and "Summer scene The Blyth", signed oils on board, a pair, 14cm x 19.5cm £60 - 100 †

395

19th Century school, miniature portrait study of a lady seated wearing a blue dress, unsigned watercolour, 16cm x 11cm £40 - 60 †

396

William Matthews 1946, study of a black retriever, signed oil on canvas, 36cm x 50cm £60 - 100 †

397
John Clayton Adams, country landscape study with cattle watering in a river, mountains in the far ground, signed oil on canvas, 49cm x 75cm
£400 - 600 †

398
C. Vickers, rural studies, a pair, signed oils on canvas, 40cm x 60cm
£100 - 150 †

399
19th Century school, study of a clergyman, unsigned watercolour, 24cm x 18cm
£40 - 60 †

400
Naive school, study of a large sheep, unsigned oil on canvas, 25cm x 30cm
£40 - 60 †

401
A pair of oriental paintings on silk, depicting figures working in the fields, 27cm x 41cm
£40 - 60 †

402
Study of Knights jousting, watercolour with pencil inscription and label verso, inscribed "Sir John Barnard KT from the Military Roll of Arms temp Henry VI script British Museum 4205", 20cm x 30cm
£40 - 60 †

403
E.F. Holte, summer river scene and study of a country house and garden, signed oils on board, a pair, 25cm x 38cm, (2)
£50 - 100 †

404
Piranesi, black and white engraving, full plate, "Scala Di Palmi XL", 38cm x 45cm
£30 - 50 †

405
Attributed to W.S. Coleman, "The Goldfish bowl", signed oil on canvas, 75cm x 31cm, Old label verso stated painting was for Pears annual Christmas 1893
£160 - 200 †

406
After Maskell, a pair of country scenes, depicting fields, barn and cattle, 10cm x 17cm; another rural study, unsigned oil on card, 18cm x 28cm, unframed; and another, AF, (4)
£40 - 60 †

407
19th Century English school, Steeplechasing scene, unsigned oil on panel, 12cm x 17cm
£40 - 60 †

408
Hubert Sattler, (Austrian), 1817-1904, a view of the ruin of Freudenberg and another of the Matterhorn, oils on panel, 10.5cm x 16cm and 13cm x 9cm, (2)
£120 - 160 †

409
Henry B. Wilcocks, a pair of late 19th Century studies of a village scene and a horse drawn hay wagon, signed oils on canvas, 39cm x 29cm
£120 - 160 †

410
English school 19th Century, landscape study with a peasant girl holding a sickle and sheaf of corn, unsigned oil on canvas, 35cm x 26cm
£60 - 80 †

411
C. Hudson, mid 19th Century wooded river landscape with figures fishing from a bridge, signed oil on canvas, 43cm x 35cm
£50 - 80 †

412
Arthur Briscoe, 1873-1943, study of a four masted clipper ship under full sail, pencil signed lithograph, 40cm x 59cm
£50 - 80 †

413
McAlpine, seascape with vessels at sundown, signed oil on panel, unframed, 28cm x 47cm; and a companion depicting vessels and figures in a harbour, signed oil on panel, (framed); and W.C. Knell, fishing vessels on a rough sea, signed oil on panel, inscribed verso on a paper label "On the Medway", by W.C. Knell, 20cm x 47cm, AF, (in need of restoration), (3)
£100 - 150 †

414
Renaat Bosschaert, pencil signed etching depicting a Tower and buildings above a river, unframed but mounted, 18cm x 18cm
£20 - 40 †

415 ✓
John Knapp Fisher (1931-2015), a view near Ramsholt, Suffolk, signed oil on board, dated 1963, 39cm x 79cm
£800 - 1,200 †

416
After Zucchers, portrait of Mary Queen of Scots, unsigned oil on panel, 27cm x 19cm
£400 - 600 †

417
Edward Robert Smythe (1810-1899), study of a young gypsy family camping in woodland with attendant donkey and dog, cottage and figures in the far ground, signed oil on canvas, 60cm x 90cm
See Cover Illustration
£1,500 - 2,000 †

418 ✓
Henry Macbeth Raeburn (1860-1947), study of Toledo Ferry, signed watercolour, 36cm x 48cm
£1,200 - 1,500 †

419
After J.F. Herring, engraved by C. Hunt, study of "Chorister", winner of the Great St. Ledger Stakes at Doncaster, 1831; and another "The Queen of Trumps", winner of the Oaks and Great St. Ledger Stakes, 1835, (2)
£1,000 - 1,500 †

420-424
No Lots



Lot 409



Lot 415



Lot 416



Lot 418



Lot 419

Lots marked with ✓ please refer to Droite de Suite Royalty charges on page 22

† Each lot is subject to a Buyer's Premium of 18% + VAT (21.6%)

Furniture

425

A Regency style circular gilt convex wall mirror, with ebonised surround and ball decoration, 34cm dia. overall £20 - 30 †

426

A late Victorian carved oak spinning stool, with foliate decoration; an oak occasional table, the oblong top raised on shaped end supports united by a pegged stretcher; a carved oak two tier occasional table, raised on turned supports; an oak cane seated dressing stool, raised on turned supports united by spiral turned stretchers; and a Victorian mahogany bidet frame, (5) £40 - 60 †

427

An Edwardian walnut Sutherland tea table, 62cm £20 - 40 †

428

An Antique carved mahogany dressing stool, with upholstered lift-out seat, raised on square tapering supports united by a stretcher, 45cm wide £40 - 60 †

429

An 18th Century brass and cast iron fire grate, of serpentine form, flanked by bold brass finials, 110cm wide £200 - 400 †

430

A 19th Century mahogany cross-banded and boxwood strung bow fronted chest, of two short and three long graduated drawers, raised on turned supports, 102cm wide £60 - 80 †

431

An 18th Century oak bureau, the fall front opening to reveal an interior arrangement of drawers, pigeon-holes and a central cupboard above a sunken well, two short and two long drawers below, raised on bracket feet, 92cm wide £100 - 200 †

432

A reproduction walnut chest on chest, the upper section fitted two short and three long drawers above a brushing slide and three drawers below, raised on a shaped apron and bracket supports, 60cm wide £60 - 100 †

433

A small Victorian rosewood and leather inset occasional table, with circular top, raised on octagonal column and triform base, terminating in bun feet, 42cm dia. x 35cm high £50 - 80 †

434

A George III mahogany bachelor's chest, of small proportions, fitted with a brushing slide above four long graduated drawers, raised on bracket feet, 78cm wide £150 - 250 †

435

A George III mahogany bureau, the fall front opening to reveal a stepped interior arrangement of drawers and pigeon-holes around a central cupboard, flanked by secret compartments, three long and two short drawers below, raised on bracket feet, 86cm wide £100 - 200 †

436

A 19th Century Continental walnut boxwood and satinwood strung commode chest, fitted three long graduated drawers, raised on a platform plinth and claw supports, 122cm wide £100 - 200 †

437

A Georgian mahogany chest, of two short and three long graduated drawers, 108cm wide £80 - 120 †

438

A George III mahogany chest, fitted two short and three long drawers, raised on bracket feet, 103cm wide £100 - 150 †

439

A George III mahogany boxwood strung and cross-banded chest, of two short and four long graduated drawers, raised on bracket feet, 109cm wide £150 - 250 †

440

A Georgian oak and mahogany cross-banded bureau, the fall front opening to reveal a fitted interior of drawers and pigeon-holes around a central cupboard, four long graduated drawers below, raised on bracket feet, 92cm wide £60 - 100 †

441

A large Victorian leather and brass mounted folio stand £70 - 100 †

442

A Victorian leather and brass mounted folding folio stand £60 - 80 †

443

A 19th Century Continental figured mahogany corner cabinet, the brass banded top above a single drawer, the interior shelves enclosed by cushion framed glazed panel door, 90cm wide x 152cm high overall £150 - 250 †

444

A 19th Century mahogany breakfront bookcase, the upper section enclosed by four astragal glazed doors, two short and two long drawers below, flanked by cupboards, 246cm wide x 218cm high £300 - 400 †

445

A George III mahogany hanging wall shelf, 88cm wide x 69cm high £60 - 80 †

446

An oak long case clock, by Isaac Cockeram of Downham, having brass and steel spandril dial, seconds subsidiary and date aperture, full length trunk door raised on a box base, shaped apron and bracket feet, 198cm high £200 - 400 †



Lot 434



Lot 438



Lot 453



Lot 456

447

An unusual 18th Century long case clock, by J.N.O. Fisher, Lowestoft, (Loestoft), having steel and spandril dial with foliate engraved decoration, Roman numeral chapter ring, 30 hour movement above a long trunk panel door and box base, 230cm *£200 - 400 †*

448

A 19th Century gilt framed and bevelled edge wall mirror, in the rococo manner, profusely decorated foliate scrolls, 80cm x 95cm in extremes *£100 - 150 †*

449

An early 19th Century oak and mahogany cross-banded long case clock, having arched hood surmounted by turned finials, the painted dial with a "Sacred to Lord Nelson" panel, inscribed "Bennett, Debenham", supporting an 8 day movement above a lancet shaped trunk panel door, raised on bracket feet, 216cm high *£200 - 300 †*

450

A 19th Century mahogany framed pier mirror, the frieze with gilt metal lion mask and garland embellishment above turned column and breakfront base, 155cm x 70cm *£150 - 250 †*

451

A Victorian pine framed wall mirror, with leaf carved decoration, 119cm x 65cm *£120 - 160 †*

452

A decorative gilt framed hall mirror, having mirrored slip panels, 155cm x 70cm in extremes *£40 - 60 †*

453

An early 19th Century figured mahogany long case clock, by Henry Cox of London, the arched hood with a scroll pediment and reeded columns enclosing a painted dial with moon phase arch, shaped trunk panel door within turned pilasters, raised on a box base and bracket feet, 230cm high *£400 - 600 †*

454

An oak long case clock, by John Calver, of Woodbridge, brass spandril dial with steel chapter ring and date aperture, full length trunk door, raised on a box base, 209cm high *£200 - 400 †*

455

A long case clock, by William Mayhew of Woodbridge, brass spandril dial with a steel chapter ring, Roman numerals and single hand, 30 hour movement, arched full length trunk door, raised on a box base, 192cm *£200 - 400 †*

456

A Victorian burr walnut serpentine shaped Whatnot/Canterbury, surmounted by a pierced gallery and raised on turned supports, with single drawer to base, raised on bun feet, 59cm wide x 82cm high *£80 - 120 †*

457

A 19th Century mahogany D shaped foldover tea table, raised on ring turned tapering supports, terminating in brass feet, 122.5cm wide *£40 - 60 †*

458

An Antique oak Wainscot chair, having carved cresting rail and panelled back, solid seat, raised on baluster turned supports united by stretchers *£100 - 150 †*

459

An Edwardian carved mahogany armchair, with primrose brocade upholstered back panel, arm rests and seat, raised on turned fluted front supports *£60 - 80 †*

460

A 19th Century elm slat back kitchen elbow chair, raised on ring turned supports united by an H stretcher *£60 - 80 †*

461

A George III mahogany framed elbow chair, in the French manner, raised on turned and fluted front supports, (in need of re-upholstery) *£100 - 200 †*

462

A set of four late Victorian mahogany dining chairs, with shaped cresting rails, pierced foliate back splats, upholstered stuff-over seats, raised on cabriole front supports *£80 - 120 †*

463

An elm Yorkshire style winged rocking chair, with bobbin railed back and stretchers, rush work seat on turned supports *£60 - 80 †*

464

A set of four 1930's oak dining chairs, having cane panelled backs within spiral turned columns, upholstered drop-in seats raised on stretchered supports *£40 - 60 †*

465

An Antique elm and yew wood comb back elbow chair, raised on turned tapering supports united by an H stretcher *£60 - 100 †*

466

A pair of George III mahogany Chippendale design side chairs, having shaped cresting rails and pierced splat backs, needlepoint upholstered drop-in seats raised on square chamfered supports united by H stretchers *£50 - 80 †*

467

A 19th Century elm seated stick back Windsor chair, having pierced central splat, raised on ring turned supports united by an H stretcher *£80 - 120 †*

468

A George III mahogany, boxwood strung and satinwood inlaid elliptical corner cupboard, the interior shelves enclosed by a pair of doors hung to brass butterfly hinges, 83cm wide overall x 122cm high *£150 - 250 †*

469

A Georgian oak pad foot dining table, having rounded drop leaves, 104cm wide *£60 - 100 †*

470

An Antique oak coffer, having foliate carved frieze and triple panelled front, raised on square section supports, 107cm wide *£100 - 150 †*



Lot 462



Lot 463



Lot 466



Lot 467



471
An oak long case clock, by George Maynard of Melford, square brass dial with steel chapter ring and foliate engraved decoration, 8 day movement, 187cm high £200 - 400 †

472
An Antique oak coffer, having quadruple linen fold panel front, raised on block supports, 135cm £100 - 200 †

473
An 18th Century oak mule chest, having profuse carved panelled front above two geometrically moulded drawers and square section supports, 128cm wide £200 - 300 †

474
A 19th Century mahogany and boxwood strung pedestal supper table, fitted single end drawer and opposing dummy drawer, the rounded drop leaves raised on quadruple splay, terminating in brass caps and castors, 120cm wide £60 - 100 †

475
A 19th Century mahogany snap top supper table, raised on a ring turned column and tripod base, terminating in castors, the top 105cm x 76cm £60 - 80 †

476
An 18th Century oak coffer, having carved triple panel front, raised on square section supports, 124cm wide £100 - 200 †

477
An 18th Century oak mule chest, having triple fielded panel front above two short drawers, raised on bracket supports, 126cm wide £100 - 150 †

478
A 19th Century mahogany circular snap top breakfast table, raised on a rectangular column and circular base, terminating in claw feet and castors, 118cm dia. £100 - 200 †

479
A Victorian burr walnut revolving book table, raised on turned column and tripod base £60 - 80 †

480
A Victorian rosewood pole screen, the cartouche shaped banner with needlepoint decoration of flowers, raised on a baluster fluted column and circular base, terminating in scrolled feet £60 - 80 †

481
A 19th Century Sorrento ware two tier occasional table, of circular form, the top inlaid with a scene of a girl on a donkey and attendant male carrying a basket, bottom tier decorated with a coronet and inscribed "Charlie", raised on three bobbin turned tapering legs, 44cm dia. x 62cm high £40 - 60 †

482
A pair of early 20th Century oak elbow chairs, (possibly Cotswold school style), with pleated back splats, upholstered drop-in seats, outswept arms above cabriole supports £40 - 60 †

483
An Edwardian mahogany Sutherland tea table, raised on pierced end supports, 61cm £40 - 60 †

484
A 19th Century ebonised and scagliola decorated circular occasional table, raised on a turned column and triform base, terminating in scrolled feet, bearing label for "Estcourt Antiquaire, Paris Plage, P de C", numbered to the base 96185, 63cm dia. £500 - 600 †

485
A 19th Century French kingwood chequer-banded and parquetry two tier occasional table, with brass banding and fitted with a single drawer, raised on square tapering supports terminating in sabots, 61cm wide x 76cm high £250 - 350 †

486
An Antique elm gate leg dining table, having rounded drop leaves, single end drawer raised on turned baluster supports united by stretchers, 128cm wide £60 - 100 †

487
A George III oak side table, fitted with single drawer and raised on square section supports, 82cm wide £120 - 160 †

488
A set of six early 19th Century mahogany bar back dining chairs, the upholstered serpentine seats raised on baluster turned tapering front supports £120 - 160 †

489
A Georgian carved oak lowboy, fitted three drawers and raised on cabriole supports and pad feet, 75cm wide £100 - 150 †

490
A walnut and herringbone banded reproduction bureau, in the 18th Century style, the fall front opening to reveal a fitted interior with two drawers below, raised on a stand with cup and cover supports, united by wavy cross-stretchers and raised on bun feet, 58cm wide £50 - 80 †

491
A 19th Century carved oak pedestal table, raised on acanthus carved quadruple splay, 68cm wide £40 - 60 †

492
A 19th Century mahogany Pembroke table, fitted single end drawer and opposing dummy drawer, raised on square section tapering supports terminating in brass caps and castors, 77cm £60 - 80 †

493
An Antique oak gateleg dining table, fitted single end drawer, rounded drop leaves, raised on spiral supports, 120cm £60 - 100 †

494
A 19th Century mahogany and satinwood cross-banded Pembroke table, fitted single end drawer with opposing dummy drawer, rounded drop leaves, raised on square tapering supports terminating in brass caps and castors, 77cm wide £60 - 80 †



Lot 481



Lot 484



Lot 485

495
An 18th Century Dutch walnut and chequer-banded cabinet on stand, surmounted by a broken arch pediment above a pair of urn inlaid cupboards enclosing drawers around a central cupboard, the later stand raised on tapering supports fitted with a frieze drawer, 92cm wide x 47cm deep x 170cm high *£400 - 600 †*

496
A 17th Century oak wall panel, having arched foliate carved decoration, 220cm wide x 110cm high *£200 - 400 †*

497
A 19th Century mahogany corner washstand, of bow fronted form, fitted central drawer flanked by dummy drawers, raised on outswept supports, 61cm wide overall *£40 - 60 †*

498
A 19th Century rosewood Sutherland table, raised on turned column supports and block ends, terminating in bun feet and castors, 91cm *£60 - 100 †*

499
A 19th Century figured mahogany sewing table, having foldover top above two drawers with pull-out silks well below, raised on baluster turned end supports, terminating in shaped block stretchers and bun feet, united by a turned cross stretcher, 51cm wide *£100 - 150 †*

500
An Antique carved oak dining/serving table, the thick top raised on bold baluster carved supports, 177.5cm x 79.5cm, (later adapted) *£100 - 200 †*

501
A 19th Century mahogany pedestal desk, of breakfront form, fitted three drawers above a central cupboard, flanked by six pedestal drawers and raised on a platform plinth, 153cm wide *£100 - 200 †*

502
A William IV mahogany window seat, with turned baluster scroll end, raised on octagonal section tapering supports, with loose squab cushion, 120cm long *£70 - 100 †*

503
A Chinese carved camphor wood chest, of small proportions, decorated in relief with domestic scenes, birds and foliage, flanked by side carrying handles, 46cm wide, raised on a later stand *£100 - 150 †*

504
A Victorian rosewood and cross-banded sewing table, fitted with a single side drawer and pull-out silks well below, raised on shaped and carved end supports united by a turned cross-stretcher, 49.5cm wide *£60 - 80 †*

505
A small Georgian mahogany tripod table, the circular top raised on a turned baluster column, 51cm dia. *£60 - 100 †*

506
An early 20th Century carved oak log box, the hinged sloping lid profusely decorated with leaves and fruit, raised on ball feet, 47cm wide x 48cm high *£40 - 60 †*

507
A Victorian walnut Canterbury, fitted with a single drawer to the base, raised on turned column supports terminating in white porcelain castors, 51cm wide *£80 - 120 †*

508
An Antique oak joint stool, the over hanging top raised on baluster turned supports united by stretchers, 41cm *£40 - 60 †*

509
An Antique oak joint stool, the over hanging top raised above a carved frieze and turned baluster supports united by stretchers, 43cm wide *£60 - 100 †*

510
A Georgian walnut framed wing back armchair, upholstered in floral brocade, outswept arms and loose cushion, raised on cabriole front supports and swept back supports, united by turned stretchers *£100 - 200 †*

511
A Chinese rosewood low occasional table, having geometric carved frieze on rounded outswept supports, 80cm wide *£100 - 200 †*

512
A quartet of carved Chinese rosewood occasional tables, with foliate and berry decoration, raised on rounded stretchered supports, 51cm wide in extremes *£200 - 400 †*

513
A 19th Century continental walnut Bureau de dame, surmounted by a brass gallery and applied foliate gilt metal decoration, the tambour front opening to reveal an interior arrangement of drawers and pigeon-holes, pull-out writing surface above three drawers, raised on French cabriole supports terminating in sabots, 87cm wide x 121cm high *£200 - 300 †*



Lot 489



Lot 495



Lot 509



Lot 513

Next Antique & Fine Art Auction to be held Wednesday 4th October, 2017

Clarke & Simpson

Auctions

Closing date for entries 8th September, 2017

Droite de Suite Royalty Charges

From 14th February, 2006 all United Kingdom Art Market professionals (which includes auctioneers) are required to collect a royalty payment for all qualifying Works of Art. Under new legislation which came into effect on the 1st January, 2012, this applies to living artists and those who have died in the last 70 years. This payment is calculated on qualifying Works of Art which are sold for a hammer price more than the UK sterling equivalent of €1,000 (the UK sterling equivalent will fluctuate in line with prevailing exchange rates calculated by the Artist's Resale Right Service Hub, based on the European Central Bank reference rate published at 2.15pm on the day of the sale, and can be found on www.dacs.org.uk).

All items in this catalogue that are marked "✓" are potentially qualifying items, and the royalty charge will apply if the hammer price is more than UK sterling equivalent of €1,000. The royalty charge will be added to purchase invoices, and must be paid before items can be cleared. All royalty charges are paid to the Design and Artists Copyright Society ("DACS") by the auctioneers and no handling costs or additional fees with respect to these charges will be retained by the auctioneer.

The royalty charge for qualifying items which achieve a hammer price of more than the UK sterling equivalent of €1,000, but less than the UK sterling equivalent of €50,000 is 4%. For qualifying items that sell for more than the UK equivalent of €50,000 a sliding scale of royalty charges will apply. For a complete list of the royalty charges and threshold levels please refer to www.dacs.org.uk. There is no VAT payable on this royalty charge.

Dear Purchaser

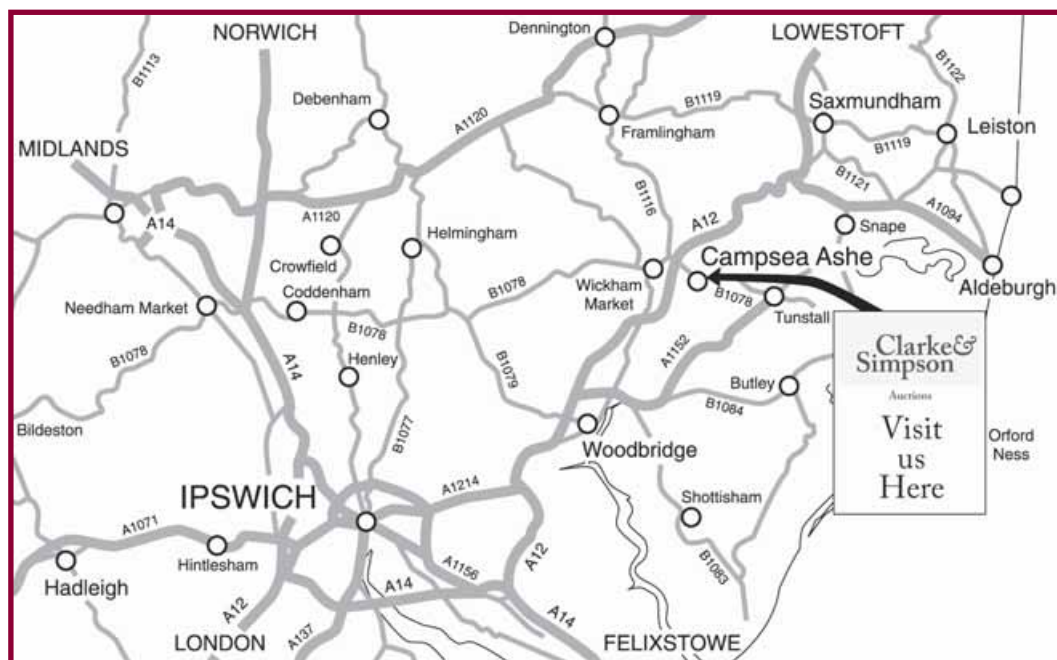
Clarke and Simpson are pleased to offer a packing and shipping service worldwide through "the-saleroom.com Delivery Service". The professional team will pack and ship items from very small non-breakables such as jewellery and coins through to larger and more fragile items such as paintings and works of art. Shipping and insurance is at the buyer's expense. Shipping payment must be made to 'the-saleroom.com Delivery Service' prior to departure and excludes local duties and taxes. Please note that Clarke and Simpson do not pack or ship items - all requests are sent to our specialist handlers at "the-saleroom.com Delivery Service" who can be contacted directly via delivery@atgmedia.com

the-saleroom.com
delivery service



Directions

We are just off the A12 north of Wickham Market on the B1078 road to Orford.



TERMS AND CONDITIONS OF SALE

1. INTRODUCTION

The following defining terms are used in these conditions:-

“Auction”	Means any auction conducted by Clarke and Simpson Auctions Ltd. either at the premises owned by them or elsewhere (including any internet based auction);
“Auctioneer”	Means Clarke and Simpson Auctions Ltd. authorised auctioneer as appropriate;
“Bidder”	Means a bidder at an auction, including the bidders personally present at the venue and those bidding by telephone or over the internet or otherwise;
“Buyer”	Means the bidder whose bid was the last bid when the auctioneer concludes the bidding;
“Conditions”	Means these Terms and Conditions of Sale;
“Hammer Price”	Means the level of bidding reached (at or above any reserve) when the auctioneer brings the bidding to a close;
“Lot”	Means any property accepted by Clarke and Simpson Auctions Ltd. for offer at auction;

2. DESCRIPTION

No warranty is given or implied by the description in the catalogue. Each lot is sold in its condition at the time of sale with all faults, defects, imperfections and errors of description (if any). Whilst every endeavour has been made to describe the items adequately and properly, the purchaser shall deem to have inspected the lot at time of purchase. All catalogues and seller's and buyer's guides are for information only and do not form part of the contract.

3. STATUTORY REQUIREMENTS

Purchasers will be deemed to have satisfied themselves prior to purchasing regarding current legal requirements (e.g. Health & Safety at Work Act) and it is expressly brought to the bidders attention that equipment in the sale may not necessarily comply with such regulations. Any purchaser shall satisfy himself as to any statutory requirement for the use of any item and no liability shall rest with the vendors nor the Auctioneers.

4. THE AUCTION

All auctions are conducted at the absolute discretion of the auctioneer. The auctioneer shall conduct the auction with reasonable skill and care. The vendor reserves the right to sell subject to reserve price in respect of all lots. What constitutes a bid shall be at the absolute discretion of the auctioneer, acting with appropriate skill and care. The auctioneer shall have the right to refuse any bid in all cases but most notably when such a bid does not exceed the previous bid by at least 10% or such a proportion as the auctioneer shall in his absolute discretion direct. Where two or more bids at the same level are simultaneously received by the auctioneer, the auctioneer at his absolute discretion shall determine which bid to prefer. Subject to the foregoing where two or more bids are at the same level are simultaneously received by the auctioneer, the bid submitted in the room shall take preference over a bid submitted by telephone or internet at the same level. Any bid made or attempted by telephone or over the internet will only be deemed to have been made if received by the auctioneer. The auctioneer reserves the right to withdraw, consolidate or divide any lot or lots or submit them in any order that they desire. The auctioneer has the right at his absolute discretion to refuse admission to his premises or attendance at (or participation in) any auction by any person. In the case of any dispute, the auctioneer shall be sole arbitrator in any matters arising during or out of the sale.

5. BIDDERS

All bidders will be required to register their particulars, bidders attending in person and those accompanying them may be required to provide photo ID and separate confirmation of address prior to viewing or taking any part of the sale and before entering any part of the premises to view. All bidders accept full liability for all bids submitted. Subject to the clause in this document headed “The Auction”, the highest bidder at the close of bidding shall be the buyer. Any dispute about a bid shall be settled at the auctioneer's absolute discretion. Bidders are all deemed to act as principal unless there is prior written acknowledgement by Clarke and Simpson Auctions Ltd. that a bidder is acting as an agent for a named principal. Bidders are strongly encouraged to attend the auction in person. The bidders shall be responsible for any decision to bid for a particular lot and shall be deemed to have carefully inspected and satisfied themselves as to condition, neither Clarke and Simpson Auctions Ltd., their employees or agents shall be responsible for any neglect or default in doing or failing to do so. Bidders will be given ample opportunity to view and inspect before the sale and prospective buyers must satisfy themselves as to all matters.

6. DEFAULT

Clarke and Simpson Auctions Ltd. shall act as agent of the vendor only. Any contracts for the sale of a lot shall be formed between the vendor and the buyer. As agent only Clarke and Simpson Auctions Ltd. shall not be responsible for default by the vendor or the buyer. If any lot is not paid for in full and taken away in accordance with these conditions, or there is any other breach of the conditions, then Clarke and Simpson Auctions Ltd. as agents for vendor shall at its absolute discretion and without prejudice to any other rights it may have, be entitled to exercise all or any of the following rights and remedies:-

- 6.1 to proceed against the buyer for any action of debt or damages for breach of contract;
- 6.2 to rescind the sale of that lot or lots sold by Clarke and Simpson Auctions Ltd. to a defaulting buyer;
- 6.3 to resell the lot (by auction or private treaty) in which case the defaulting buyer shall be responsible for any resulting deficiency in the total amount due (after crediting any part payment and adding any resale costs), any possible surplus so arising shall belong to the vendor;
- 6.4 to remove, store and insure the lot at the expense of the defaulting buyer and, in the case of storage, the location of such storage shall be at Clarke and Simpson Auctions Ltd. discretion;
- 6.5 to charge interest at a rate not exceeding 2% per month of the total amount due to the extent that it remains unpaid for more than two working days after the sale;
- 6.6 to retain that or any lot sold to the defaulting buyer until the buyer pays the total amount due;
- 6.7 to reject or ignore bids from the defaulting buyer at future auctions or to impose conditions before any such bids are accepted;
- 6.8 to apply any proceeds of sale for any other lots due or in the future becoming due to the defaulting buyer towards the settlement of the total remaining due.

7. INDEMNITIES, PENALTIES AND LIMITATIONS OF LIABILITY

Purchasers shall pay for any damage done by themselves or their agents during the removal of their lots. Attendance at the sale shall be at the risk of those attending in respect of both themselves and to their goods and vehicles.

Any indemnity under these conditions will extend to all actions, costs, expenses, claims and demand whatsoever suffered or incurred by the person entitled to the benefit of it and Clarke and Simpson Auctions Ltd. declare themselves to be a trustee of the benefit of such indemnity so far as it is expressed to be the benefit of its employees and agents.

Whilst Clarke and Simpson Auctions Ltd. endeavour to ensure that the information on their websites is correct, they do not warrant the accuracy and completeness of the material on their website. Also Clarke and Simpson Auctions Ltd. can make changes to the material on their website, or alter the products and prices described on it, at any time without notice. The material on the website may be out of date, Clarke and Simpson Auctions Ltd. make no commitment to update such material. All material on the websites is provided "as is" without any conditions, warranties or other terms at any time. Accordingly to the maximum extent permitted by law, the website is provided to all parties on the basis that Clarke and Simpson Auctions Ltd. exclude all representations, warranties, conditions and other terms which, but for this legal notice, might have effect in relation to the website.

8. ELECTRICAL SAFETY REGULATIONS

All electrical lots are subject to electrical safety regulations and fall within "the low voltage electrical equipment (safety) regulations 1989" – all items have been pat tested for safety but are not guaranteed in working order.

9. GENERAL MATTERS

Any notice to any buyer, vendor, bidder or viewer may be given by first class mail or email in which case it shall be deemed to have been received by the addressee forty eight hours after posting or sending. All notices to Clarke and Simpson Auctions Ltd. must be sent in writing and email is not acceptable. Any indulgence extended to any person by Clarke and Simpson Auctions Ltd., notwithstanding the strict terms of these conditions or the terms of consignment, shall affect the position at the relevant time only and the respect of that particular concession only; in all other respects these conditions shall be construed as having full force and effect. These conditions and any disputes or claims arising out or in connection with them or their subject matter or formation (including non-contractual disputes or claims) are governed by and construed in accordance with the law of England. The parties irrevocably agree that the courts of England have exclusive jurisdiction to settle any dispute or claim that arises out of or in connection with the agreement or its subject matter or formation (including non-contractual disputes or claims).

10. PUBLICITY

Any catalogue and buyer and seller guides are provided for information only and do not form part of these conditions. The catalogue and the buyer and seller guides may contain additional terms and conditions. Clarke and Simpson Auctions Ltd. reserve the right to use any photographs, background information and research for publicity purposes both before and after the sale.

11. THE PURCHASE PRICE AND PAYMENT ARRANGEMENTS

There is a buyer's premium 18% plus VAT payable in respect of the sale. Any purchases made via "www.the-saleroom.com" shall be subject to an administration charge of 3% plus VAT on the price. Preferred payment is cash, bankers draft or personal debit card. Such cards may only be used on a chip and pin basis with the owner present. No payment will be accepted by telephone. There will be an administration charge of 2.5% plus VAT for the use of credit cards or international debit cards. Payment by cheque will only be acceptable subject to prior arrangement. No lot will be removed from the sale until any cheque has cleared unless a suitable bank reference

addressed to the auctioneer is supplied. Payment is due on the day of the sale. Cash in excess of £12,000 (including V.A.T.) will not be accepted from any one person, this is not allowed due to Money Laundering Regulations 2007. All money received will be held in Clarke & Simpson Auctions Ltd. Clients Account at Barclays Bank plc, Framlingham, Suffolk. Account Number 33222276. Sort Code 20 98 07. Clarke and Simpson Auctions Ltd. have no responsibility for any lot between the close of bidding and payment being made and subsequent collection. Please note all policy regarding payment will be enforced and suitable arrangements must be made.

12. REMOVAL OF LOTS

The ownership of any lot purchased shall not pass to the relevant buyer until they have made payment in full to Clarke and Simpson Auctions Ltd. of the total amount due. The buyer shall at their own risk and expense take away any lot that they have purchased and paid for not later than two working days following the day of the auction after which they shall be responsible for any removal, storage and insurance charges. Any lots not collected within three months of the date of sale will be resold by the auctioneer and all proceeds will be retained by the auctioneer to cover storage costs.

13. NUMBER BIDDING

This will be used for speed and efficiency as in all our sales. All prospective purchasers must complete a registration form and register in the office on the viewday or morning of sale to receive a number for bidding. PLEASE ALSO NOTE THAT PHOTO ID AND ADDITIONAL CONFIRMATION OF ADDRESS WILL BE REQUIRED.

14. TELEPHONE BIDDING

We offer a telephone bidding service where possible but this service can never be guaranteed. No applications for telephone bids will be accepted after the end of the viewing prior to sale day for any sale. All potential telephone bidders must provide a valid landline number and email address for us to send terms and conditions prior to phone bidding. No phone bids will be accepted for any lot with a lower guide figure of less than £100.

All those who wish to bid by telephone will be expected to deposit the minimum guide for all lots that they wish to bid upon into the Clients Account for Clarke and Simpson Auctions Ltd before the sale starts. In the event of default, this sum shall be retained as part payment or any part may be retained to recover losses under clause 6 of these Terms and Conditions. We will expect payment of the balance owing by BACS on the following day, any payment not met within five working days will result in the forfeiture of the deposit paid.

15. ONLINE BIDDING

Clarke & Simpson Auctions Ltd., on occasions, offer an online bidding service via the-saleroom.com for bidders who cannot attend the sale. In completing the bidder registration on www.the-saleroom.com and providing your credit card details and, unless alternative arrangements are agreed with Clarke & Simpson Auctions Ltd.:

- 1 authorise Clarke & Simpson Auctions Ltd., if they so wish, to charge the credit card given in part or full payment, including all fees, for items successfully purchased in the auction via www.the-saleroom.com, and
- 2 confirm that you are authorised to provide these credit card details to Clarke & Simpson Auctions Ltd. through www.the-saleroom.com and agree that Clarke & Simpson Auctions Ltd. are entitled to ship the goods to the card holder name and card holder address provided in fulfilment of the sale.

Please note that any lots purchased via the-saleroom.com auction service will be subject to an additional 3% charge + VAT at the rate imposed on the hammer price



Framlingham - £700,000

A former granary tucked away and offering spacious accommodation of 2,500 sq ft comprising reception hall, open plan kitchen/dining/living room, sitting room and cloakroom; 5 bedrooms, low maintenance landscaped gardens and parking. **Ref: 5718**



Beddingfield £685,000

An impressive and spacious five bedroom barn conversion with stunning main reception area set in over 2 acres on the outskirts of the village. **Ref: 5518**



Barham £610,000

An impressive new four bedroom house in a delightful rural location within the Parish of Coddenham. **Ref: 5737**



Wilby £555,000

An impressive and individual new house, extending to approximately 2,300 sq.ft. **Ref: 5628**



Cratfield £475,000

A 3/4 bedroom detached house with fabulous open plan kitchen/dining room, in a rural setting with outstanding field views. **Ref: 5757**



Cratfield £465,000

A superb, extended five bedroom family house with well proportioned accommodation in a rural village location. **Ref: 5777**



Creting St. Mary £445,000

A 19th Century four double bedroom house, that has recently undergone a programme of refurbishment. **Ref: 5770**



Cratfield £350,000

A well maintained detached 3 bedroom bungalow, presented in pristine condition, situated in the rural village of Cratfield. **Ref: 5654**



Bedfield £245,000

An enchanting 2 bedroom terraced cottage backing onto farmland at the rear, situated in a lovely location in Bedfield. **Ref: 5722**



Sibton £195,000

A 2 bedroom mid-terrace house with parking on this new development of just 7 homes. **Ref: 5692/2**



Clarke and Simpson Auction Centre
Campsea Ashe
Nr. Wickham Market
Suffolk IP13 0PS
Tel: (01728) 746323 Fax: (01728) 748173
Email: auctions@clarkeandsimpson.co.uk
www.clarkeandsimpson.co.uk