

An impressionistic painting of a boat on a river. The boat is in the foreground, painted with vibrant reds and oranges. A person is visible in the boat, looking towards the background. The water is a deep, bright blue. In the background, there is a large, yellowish-brown cliff or wall. The sky is a clear, light blue. The overall style is expressive and colorful, characteristic of the Impressionist movement.

Clarke &
Simpson

*Art Deco, 20th Century
Design & Retro*

Monday 19th June at 9.30am

Special Notices for Purchasers

Certain lots are catalogued as (A.F.), damaged, restored, etc., however the absence of any such notice does not imply that the piece is free from defects, nor does it indicate that other defects are not also present.

Mention is not made of breakage, cracks, chips or any damage which can be noted by careful inspection, therefore, intending purchasers MUST, in all cases, be responsible for determining the condition of lots themselves.

Special attention is drawn to the Conditions of Sale

printed at the back of this catalogue.

Estimates

Presale estimates are intended only as a guide for intending purchasers, are given in good faith and subject to revision.

Condition Reports

Clarke and Simpson are unable to guarantee that requests for condition reports/images received after the close of the viewing on the day prior to auction, will be responded to.

Clarke and Simpson are happy to give a Condition Report on the physical condition of goods, this will be provided on behalf of the seller on the understanding that Clarke and Simpson are not entering into a contract with you in respect of the Condition Report and accordingly does not assume responsibility to you in respect of it. All lots are available for your own inspection or for inspection by an expert instructed by you, therefore these Condition reports are for guidance only and all lots are sold "as found".

Commission Bids

The auctioneers will be pleased to execute bids for those unable to attend the sale. Lots will be purchased at the lowest bid the room bidding or any reserves will allow. In the event of identical bids, the earliest bid received will take precedence. There must always be a maximum limit indicated. Buy or unlimited bids will not be accepted. Commission bids placed by telephone are accepted at the client's risk. We urge our clients to place such commission bids before the start of the sale. All such commissions are left entirely at the buyer's risk.

Telephone Bids

Please refer to conditions printed at the back of this catalogue.

Registration

All prospective buyers must register their name and address at our auction office and collect a numbered bidding card before the sale commences. If you are a successful purchaser please ensure that your number can be seen by the auctioneer and that it is your number that is called out at the fall of the hammer. Should there be any doubts as to the price or buyer, please draw the

auctioneer's attention to it before the next lot is offered.

Value Added Tax

The symbol * after any lot number indicates that Value Added Tax is payable by the buyer on the "hammer price".

Auctioneers' Margin Scheme

The Auctioneers Margin Scheme allows auctioneers to sell items without VAT on the hammer price. Under the margin scheme an amount equivalent to VAT at the current rate is added to the buyer's premium.

This amount cannot be refunded. The VAT element will not be shown separately on the buyer's invoice.

Buyers' Premium

A buyer's premium of 15% plus VAT will be added to the hammer price of each lot.

Please note that any lots purchased via the-saleroom.com auction service will be subject to an additional 3% charge + VAT at the rate imposed on the hammer price.

Payment

Payment can be made during or immediately after the sale by the following methods:

Cash (up to a maximum of £12,000 including VAT in accordance with Money Laundering Regulations 2007).

Debit Cards

Credit Cards (not American Express) Please note there will be a surcharge of 2.5% plus VAT for the use of these cards. We will not release goods for a period of 72 hours unless the cardholder attends the sale-room in person and presents the cards used for the transaction with proof of ID.

Bank Transfer - Account Name: Clarke and Simpson Auctions Limited

Account Number: Account No: 83428591

Sort Code: 20-98-07

We do not accept cheques unless by prior arrangement.

Attribution of Pictures and Drawings

Every effort is made to ensure the accuracy of any statement as to authorship, attribution, origin, date, age, provenance and condition of any lot whether or not such statement forms part of the description of any such lot. Whether any such statement is made orally or in the catalogue it is an expression of opinion and not to be taken as being or implying any warranties or representations of facts by the auctioneers. Each buyer by making a bid for a lot acknowledges that he has satisfied himself fully as to the attribution and condition of the lot.

- a) The forename(s) (or full stops where not known) and surname of an artist indicates in our opinion a work by the artist.
- b) The initials of the forename(s) and the surname of the artist indicates in our opinion a work of the period of the artist which may be wholly or in part his work.
- c) The surname of the artist indicates in our opinion a work of the school or by one of the followers of the artist or in his style and of uncertain date.
- d) *Signed, Dated, Inscribed* indicates in our opinion work signed/dated/inscribed by the artist.
- e) *Bears signature* indicates in our opinion that this is not the signature of the artist.
- f) *Attributed to* may be used to denote a traditional attribution based on style.
- g) *Manner of* indicates in our opinion a work executed in the artist/craftsman's style but of a later date.
- h) *After* indicates in our opinion a copy (of any date) of work of an artist or craftsman.

The addition of a question mark after any of the cataloguing terms above indicates an element of doubt.

**Clarke &
Simpson**

Auctions

*Art Deco, 20th Century Design
& Retro*

*Monday 19th June 2017
at 9.30am*

Viewing:

Saturday 17th June 9am - 12noon

Morning of Sale from 8.30am

Enquiries:

James Shand, Auctioneer & Valuer

Geoffrey Barfoot, Auction Room Manager & Valuer

Buyers' Premium:

15% plus VAT

the-saleroom.com

Please see www.the-saleroom.com



Campsea Ashe
Nr Wickham Market
Suffolk IP13 0PS
Tel: 01728 746323 Fax: 01728 748173
Email: auctions@clarkeandsimpson.co.uk
www.clarkeandsimpson.co.uk



@CandSAuctions



CandSAuctions



Lot 16

1
An Art Deco style figural lamp base, in the form of a semi-naked seated girl, 14.5cm high. £5- £10

2
A model of the Empire State building, 12cm high. £5- £10

3
A chrome desk thermometer, 11cm high. £5- £10

4
A Vintage black Bakelite telephone. £5- £10

5
An Art Deco style jeweller's magnifying glass, 26cm high. £10-£20

6
Two cocktail shakers, 23cm and 20cm. £5- £10

7
A "Route 66" novelty clock. £10-£20

8
An Art Deco design metal desk lamp. £30-£40

9
A pair of cast "Esso" male and female moneyboxes, 10cm high. £20-£30

10
An Art Deco Barbola type fan shaped mirror, 20cm x 36cm. £5-£10

11
An Art Deco large desk top pencil sharpener, 11cm high. £30-£40

12
A pottery novelty kitchen wall clock, in the form of a mushroom. £5-£10

13
An Art Deco design figure of a semi-naked girl, 22cm high. £10-£20

14
An Art Deco design figure of a dancing girl, 27cm high. £10-£20

15
An Art Deco design figure of hoop girl, 21cm high. £10-£20

16
Jonathan Keep, Art Pottery charger with stylised blue enamel decoration, stamped verso "Keep 84", 49cm dia. £30-£50. See illustration.

17
An Art Nouveau style brass easel mirror; and two similar design hand mirrors, (3). £20-£30

18
A copper Art Deco style plaque, depicting a naked girl seated on rocks, 37cm x 20cm. £5-£10

19
An Arts & Crafts design copper chamber stick, with raised decoration, 19cm dia.; and an Art Nouveau design copper crumb tray, (2). £20-£30. See illustration.

20
Archimede Seguso, mid 20th Century Murano glass bowl, heavily cased in clear glass with engraved signature, 27cm. £40-£60

21
A French illuminating advertising sign, for Ricard, 70cm. £20-£30

22
A Daum glass vase, of freeform design, 39cm long. £40-£60

23
A pair of blue and green glass cylindrical vases, 28.5cm high x 13cm dia. £40-£60. See illustration.

24
An Art Nouveau shaped copper tray, with raised ivy leaf decoration, 60cm long. £40-£60. See illustration.

25
A green glazed pottery shell shaped wall vase; and a Dartmouth cream pottery example, (2). £10-£20

26
A Muurla Finland Art glass vase, of crimped form, 18cm high. £20-£40

27
Two heavy Art Glass candle holders, of circular form, one with red and blue swirl decoration; a frosted glass beaker vase; and a Venetian style red glass vase with applied floral decoration, (4). £30-£50

28
An Art glass circular fruit dish, having central brass boss depicting stylised figures; and a large glass dish of square form, (2). £40-£60

29
A Beldray oval copper shallow dish, with raised border decoration; and a circular Arts & Crafts design copper tray with crimped border and raised floral decoration, 29cm dia., (2). £30-£50

30
Theronda Hoffman, study of Walberswick, acrylic on paper, signed and dated 2015, 18cm x 28cm. £40-£60

31
After Henry Mann Livens, study of figures, unsigned pencil and pastel, 18cm x 15cm. £10-£20

32
20th Century mixed media study of a lady in a woodland clearing, with applied silk evening dress, 27cm x 17cm. £20-£30

33
An erotic print, depicting entwined lovers, after Tamara de Lempicka, 29cm x 19cm. £10-£20

34
An Art Deco watercolour, depicting landscape scene, by Hubert Cowers, 29cm x 10.5cm. £10-£20



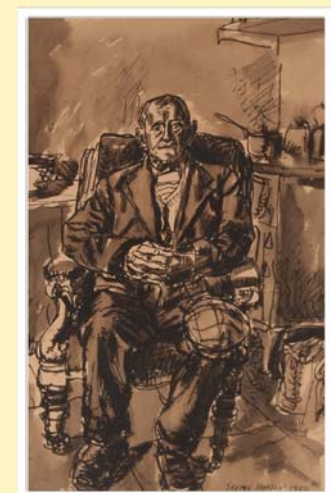
Lot 19



Lot 23



Lot 24



Lot 41

35

20th Century school, study of Christ with crown of thorns, indistinctly pencil signed, dated 63, 49.5cm x 39cm. £10-£20

36

A late 19th Century painted Oxford style framed mirror, having foliate motif, 53cm x 43cm in extremes. £10-£20

37

Gerry Colk, signed abstract oil, dated 2014, 68cm x 36cm, unframed. £10-£20

38

An Art Deco bevelled edge wall mirror, having chrome mounts, 41cm x 65cm. £10-£20

39

Tyga Hanmer, study of figures with fishing boats in a small harbour, pencil signed watercolour dated 1980, 23.5cm x 33cm. £10-£20

40

Kehinde Balogun, "Togetherness", signed oil with pencil inscription on the mount, 52cm x 32cm. £30-£40

41

George Hooper, 1910-1944, (British), study of a seated gentleman in a kitchen, signed watercolour, dated 1944, 47cm x 31cm. £40-£60. See illustration.

42

Elizabeth Cozmian Leoward, Arts School courtyard, Norwich, mixed media, 39cm x 22.5cm. £30-£40. See illustration.

43

Swain, black and white print of a seated woman in a field, image 16cm x 12cm. £10-£20

44

Yvonne Newby, study of shoreline with figures and cottages, signed watercolour, 24cm x 40cm. £10-£20

45

Ranga, continental street scene with figures, signed oil on canvas, 48cm x 39cm. £10-£20

46

Charles Read, study of World War I aircraft, signed oil on board, 22cm x 49cm. £20-£30

47

20th Century school, study of a reclining nude, unsigned watercolour, 23cm x 43cm; another by the same hand depicting semi naked woman reclining on a chair, 38cm x 29cm; a pencil signed Russell Flint print, "The sleeping beauty"; and another print depicting a semi naked reclining girl, (4). £60-£100

48 ✓

Scottie Wilson, 1889-1972, "Vase of Peace", ink and crayon study, signed bottom right, label verso, 33cm x 24.5cm. £100-£150

49 ✓

Scottie Wilson, 1889-1972, "Ducks Paradise", ink and crayon, signed, 38cm x 25cm. £100-£150

50

L. Robert, late 20th Century, a pair of Egyptianesque studies, signed oils on canvas, 60cm x 50cm. £10-£20

51

20th Century school, indistinctly signed, study of clowns, oil on canvas, 59cm x 49cm, contained in a limed oak frame; and another depicting orchids, indistinctly signed and dated, 59cm x 64cm, (2). £20-£40

52

An Art Deco design coloured print of a girl driving a car, "Etre a la mode", 54cm x 84cm. £10-£20

53

A collection of six various suitcases, to include Globe Trotter. £40-£60

54 ✓

Doris (Michail Papageorgiou), 1896-1987, study of a figure feeding chickens in a village setting, signed oil on canvas, 58cm x 78cm. £200-£300. See illustration.

55 ✓

Doris (Michail Papageorgiou), 1896-1987, study depicting cattle and rainbow, signed oil on canvas, 69cm x 118cm. £300-£400. See illustration.

56

P.N. Juguna, ethnic Batik on fabric depicting two warriors, 90cm x 44cm. £10-£20

57

Coloured print, "Flying Down To Rio", 77cm x 59cm. £10-£20

58

A coloured poster print, depicting a Brooklands Motor Racing programme, 95cm x 67cm. £80-£120

59

A coloured poster print, depicting a Brooklands Race programme from the 1930's, 95cm x 67cm. £80-£120

60 ✓

Gorki Bollar, study of figures in a garden before a large house, possibly a Foreign Embassy, signed oil on board, 102cm x 98cm. £1,200-£1,500. See illustration.

61 ✓

Eric Scott, oil on canvas depicting a man holding a scantily clad woman aloft, signed oil on canvas, 131cm x 87cm. £1,000-£1,500. See illustration.

62 ✓

Colin Moss, study of a nude woman, dated verso 1974, signed oil on canvas, 32cm x 62cm. £400-£600



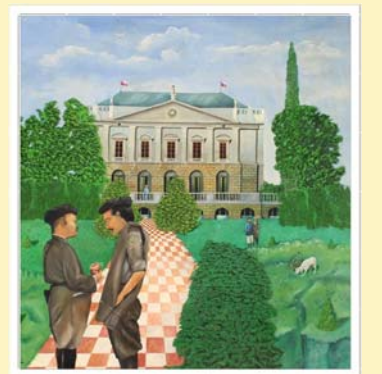
Lot 42



Lot 54



Lot 55



Lot 60



Lot 61



Lot 75



Lot 77



Lot 81



Lot 85



Lot 102

63

A large vintage leather travelling trunk, 84cm x 52cm. £60-£80

64

A quantity of Denby, 1960's / 70's stoneware dinner and coffeeware. £40-£60

65

A three section tile picture, of Madonna and child; and an enamel decorated similar, (2). £20-£40

66

An ebony ivory mounted and brass crucifix, raised on a circular stepped base, 27cm high. £10-£20

67

A bronze study of Christ, 46cm long. £20-£40

68

A Victorian oval plaster relief plaque, depicting a boy and girl embracing, the boy carrying fruit contained in a convex ebony frame, 75cm x 62cm in extremes. £60-£100

69

An "Elvisly Yours" illuminating guitar shaped clock. £20-£30

70

K Minns, study of a garden statue, acrylic on board, signed and dated '02, 51cm x 33cm. £40-£60

71

J Hellen, abstract study, signed acrylic, dated July 2003, 50cm x 40cm. £40-£60

72

Peter Clarke, "The Family" signed oil on board, 60cm x 50cm. £40-£60

73

A pair of limited edition coloured prints, by John Doyle of Greshams School, Holt. £20-£30

74

J Osborne, study of The Canal Bridge, Hungerford, signed and dated 1948, 22cm x 32cm; and 20th Century school study of a church by a river, unsigned watercolour, 15cm x 12cm (2). £20-£40

75

Susan French, (20th Century) "Dorset Farm Cats", signed oil on board, 25cm x 30cm. £30-£50. See illustration.

76

A print of a Great Western Railway poster, "The Service Between Marlborough and Calne Railway Stations", 84cm x 61cm. £20-£40

77

R.R, abstract study signed watercolour dated 2000, 49cm x 68cm. £20-£40. See illustration.

78

A brass electrolier, having five mottled glass shades. £40-£60

79

A pair of Vaseline glass lampshades. £30-£50

80

A Hobo Art stand up clown "Charlie" limited edition 4/250. £200-£250

81

A four branch pendant electric light fitting, having four flambÃ© glass shades. £40-£60. See illustration.

82

A Bang & Olufsen banana phone. £40-£60

83

Three pencil signed prints, "Aldeburgh Beach, Yellow Horned Poppy", unframed but mounted. £30-£50

84

An blonde Ercol stick back rocking chair. £80-£120

85

A mahogany Mckintosh design stick back elbow chair. £40-£60. See illustration.

86

19th Century school, study of a man in Shakespearean costume, initialled watercolour, 13.5cm x 8.5cm. £20-£40

87

Brian Argent Smith, study of a group of people seated on a blanket, signed watercolour, 13cm x 17cm. £30-£60

88

V J Parr, study of a seated naked woman, signed pencil and watercolour, 29cm x 20cm. £20-£40

89

20th Century French woodblock print of a young girl, pencil signed to mount, indistinct signature dated '73, 30cm x 16cm. £20-£40

90

Alfred Reginald Thompson ARA, a pair of studies of figures in theatrical costumes, watercolours labels verso, 9cm x 4cm. £20-£40

91

Hector McDonald Sutton 1903-1978, study of a man playing harmonica, pencil and body colour, 10cm x 8cm. £10-£20

92

David Mouse Cooper, study of a dogs head, signed pastel, 26cm x 18.5cm. £10-£20

93

Bernard Rooke, study of musicians, pencil signed watercolour, 22.5cm x 15cm, see label verso. £20-£40

94

After J F Millet, study of work horses, unsigned charcoal sketch, 15cm x 32cm. £20-£40

95

David Greenall, "Spring Norfolk" mixed media study, 17cm x 19cm, see label verso. £40-£60

96

D M '91 (David Milner), study of an angel with flowers, initialled oil on board, 35.5cm x 25.5cm. £40-£60

97

Late 20th Century school, study of roses, indistinctly signed oil on board, 25cm x 20cm. £40-£60

98

An oak Art Deco hanging wall cupboard with integral mirror and shelf, the door having carved foliate decoration, 39cm x 35cm overall. £20-£30

99

E Millicent Rhodes Exhibited 1926-1932, plaster plaque of Venus in oak frame, 21cm dia. AF, see labels verso. £30-£50

100

Honor Hussey, Butley Pottery bowl having lustre decoration flanked by loop fish handles, 20cm dia.; and a Royal Doulton jug with Art Nouveau floral decoration AF (2). £20-£40

101

H Wier overpainted print, study of chickens in decorative frame and mount, 19cm x 14cm. £20-£40

102

Jill Hodgson (GRH), mixed media study of a 1960's room setting, initialled and dated 2011, 29.5cm x 29.5cm. £40-£60. See illustration.

103 ✓

Doris (Michail Papageorgiou) 1896-1987, study of a girl feeding chickens, signed oil on canvas, 60cm x 88cm. £300-£500. See illustration.

104

An Art Deco oak long case clock, having three train chiming movement. £50-£80

105

Matta Poro?, limited edition etching "The Boy", pencil signed to mount 1998, 1/10, image 15cm x 20cm. £40-£60

106

An early 20th Century brass fire screen, decorated with a heron amongst reeds flanked by lily pads and other flowers, surmounted by a carrying handle, 67cm wide x 96cm high. £40-£60. See illustration.

107 ✓

John Hubbard, born 1931, "Mineral Landscape" oil on paper, see label verso, 58cm x 79cm. £100-£200. See illustration.

108

A cabin trunk, with Cunard Line label, and metal studded decoration, 92cm wide. £40-£60

109

A pair of grey painted pyramid chests, fitted six drawers each, 102cm high. £80-£120

110

A cast metal door stop, in the form of a Dutch girl on stepped base, 53cm high. £30-£50

111

A stoneware stylised bust of a Pharaoh, 23cm high. £30-£50

112

A pair of heavy glass diamond shaped paperweights. £30-£50

113

An Art Deco chrome based table lamp, with mottled glass stylised shade, 48cm high overall. £40-£60

114 ✓

Doris (Michail Papageorgiou) 1896-1987, study of buildings beside the sea with mountainous background, signed oil on canvas, 69cm x 118cm. £200-£400

115

George Barbier French 1882-1932, watercolour study of a naked girl holding a Cupid in her left hand, signed, 21cm x 28cm. £100-£200. See illustration.

116

20th Century school, abstract study "The Promise of Spring", oil on board, 30cm x 40cm. £30-£50

117

20th Century Continental school, study of a village street scene, unsigned oil on board, 29cm x 39cm. £20-£40

118

Avriol Innes, study entitled "Towards The Aravali Hills", signed oil on panel, Gallery label verso. £60-£100

119

An Edwardian satin ash dressing table, stamped Gillows of Lancaster, 92cm wide. £60-£80

120

A Smiths Bakelite mantel clock. £20-£40

121

A W.M.F. plated twin branch pricket candlestick; another W.M.F. twin sconce candle holder; and a Bauhaus design three light candle holder, (3). £30-£50

122

A bespoke made satin wood, cherry wood and inlaid escritoire, the fall front opening to reveal a fitted interior, raised on a base with square section tapering supports united by stretchers, 85cm wide x 116cm high. £200-£300. See illustration

123 ✓

Doris (Michail Papageorgiou) 1896 - 1987, study of a mountainside village with sea in the far ground, signed oil on canvas, 61cm x 103cm. £200-£400



Lot 103



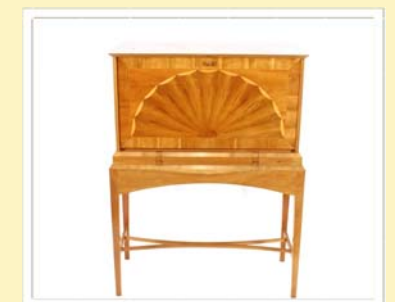
Lot 106



Lot 107



Lot 115



Lot 122



Lot 125



Lot 148



Lot 149



Lot 162



Lot 174

124

A Rosenthal Pottery stein with pewter lid; another similar with raised flower head decoration; and an Art Pottery tapering jug decorated with a women in night attire (3). £20-£40

125

An early 20th Century Shannon filing cabinet, fitted twelve drawers with a central locking mechanism carved decorated frieze and fluted side pillars raised on a platform plinth, having brass label inscribed, "Manufactured By The Shannon File Co. Ltd", 62cm wide x 98cm high x 47cm deep. £200-£400. See illustration

126 ✓

Doris (Michail Papageorgiou) 1896 - 1987, a study of pheasants in forest landscape, signed oil on canvas, 50cm x 101cm. £300-£400

127

A chrome figure of a ballerina of stylised form, raised on a circular base, 40cm high; and another similar of a ball dancer, 29.5cm high (2). £20-£40

128

A Doulton Pottery jardinière, decorated with continuous band of country scenes on a deep blue ground, makers mark F.J. 17cm high x 25cm dia. Overall. £60-£100

129

A pair of chrome plated brutalist design style candle holders. £20-£40

130

Moorcroft for Liberty, a blue glazed jardinière of baluster form, with crimped flared rim, 15cm high x 18cm dia. Af. £20-£40

131

F J Salfeld, study of a naked native girl seated outside a dwelling with snake, iguana, and exotic bird, signed oil on board, dated 1961, 55cm x 63cm. £20-£40

132

Ramsey Gibb, "Lost Heathland Orford", signed oil on board, 38cm x 81cm, Gallery label verso for the Francis Kyle Gallery, Maddox Street, London. £100-£150

133

A brass based Arts & Crafts design oil lamp, having clear glass font and etched shade. £40-£60

134

Two chrome plated modernist figural candle holders. £20-£30

135

A Lebus oak chest, of four long drawers of serpentine shape, raised on rounded tapering supports, 77cm wide. £40-£60

136 ✓

Doris (Michail Papageorgiou) 1896 - 1987, study of figures in boats, buildings in the far ground, signed oil on board, 47cm x 68cm. £200-£300. See front cover.

137

Millie Jackson, study of a fishing village, signed oil on canvas, 35cm x 55cm; and a companion painting depicting a village scene with figures and lake, (a pair). £50-£80

138

A teak Austen Suite chest of six graduated drawers, 64cm wide. £60-£80

139

A G-plan type light wood chest, of five long drawers raised on square tapering supports, 77cm wide. £40-£60

140

A plated W.M.F. fruit bowl; a similar toast rack, butter dish, a brass Art Nouveau style crumb tray and brush; and an enamel decorated copper shallow dish with fish decoration, (6). £20-£40

141

A Keswick School of Industrial Arts brass vase, 14cm. £20-£40

142

A brass Trench Art posy vase; a similar ash tray; and a brass model of an anchor (3). £20-£40

143

A pair of plated W.M.F. oval bread baskets. £20-£40

144

A W.M.F. circular copper tray, having raised foliate decoration on three brass ball feet, 32cm dia. £20-£40

145

A pair of brass and copper Art Deco twin handled vases, 28.5cm high. £20-£40

146

A G-plan type chest, of five long drawers raised on rounded tapering supports, 68.5cm wide. £40-£60

147 ✓

Doris (Michail Papageorgiou) 1896 - 1987, study of a figure standing by a tree, sea in the far ground, signed oil on board, 48cm x 68cm. £100-£150

148

Anthony Day, 20th Century British, "Late Spring Lode" signed gouache dated 1979, 48cm x 69cm. £40-£60. See illustration

149

Anthony Day, 20th Century British, "July Water II", signed gouache, 52cm x 69cm. £40-£60. See illustration

150

A photograph of a seated Winston Churchill, 29cm x 24cm. £20-£40

151
20th Century school, study of river barges, indistinctly signed watercolour, 35cm x 23cm. £40-£60

152
Elizabeth Sorrell, 20th Century study of a porcelain figure amongst vases of flowers, signed watercolour, 25cm x 20cm. £30-£50

153
Eugeni Yvgeng, study of a St Petersburg Garden, oil on canvas, 33cm x 40cm. £150-£200

154
An Art Deco chrome plated table lamp, in the form of an urn, 35cm high. £20-£30

155
An Avalon light wood chest, of six drawers raised on square section supports 61.5cm wide. £40-£60

156
A teak G-plan type chest fitted four long drawers, with sunken handles raised on platform base, 75.5cm wide. £40-£60

157
A pair of Arts & Crafts painted wooden candlesticks of octagonal form, with stylised designs, 30cm high. £40-£60

158
A large Art Pottery faux iridescent square shaped dish, 30cm. £20-£40

159
Jenny Aguttes, portrait study inscribed "Broad 1977", 57cm x 39cm. £20-£40

160
William Timyn, profile studies of a terrier rabbiting, signed charcoal, and pastel, 23cm x 30cm. £40-£60

161
Norah Howarth, study of Jack Russell terriers in profile, Gallery label verso, signed pencil and pastel, 31cm x 35.5cm. £40-£60

162
Thomas Alfred Liverton, study of "The Somme near Crotty", signed watercolour, 36cm x 55cm. £60-£100. See illustration.

163
An etching of Chopin, indistinctly pencil signed, image 31cm x 24cm. £10-£20

164
A G-plan type teak chest, fitted four long drawers with crescent shaped handles raised on square tapering supports, 77cm. £40-£60

165
Two stylised brass figures of dancers, 35cm high. £20-£40

166
A circular brass Arts & Crafts style dish, with raised rose head decoration, 29cm dia. £20-£30

167
An ethnic wooden stylised figure raised on oblong base, 38cm. £20-£40

168
An ethnic bronzed stylised figure of elongated form, 29cm high. £10-£20

169
A bronzed stylised figure of a dancing girl, 33cm high. £10-£20

170
A bronzed stylised dancing group, 31cm high. £20-£30

171
A Clythie marble bust. £40-£60

172
A pair of lion bookends. £50-£80

173
A G-plan light oak chest, fitted five long drawers raised on a platform plinth, 76cm wide. £80-£120

174
Anthony King, study of Venice, signed watercolour, 36cm x 52cm. £60-£100. See illustration

175
A Batik depicting a giant turtle amongst fruit and foliage, 41cm. £20-£40

176 ✓
Michael J Loates, study of a barn owl, signed watercolour dated 1976, 37cm x 28cm in extremes. £350-£450. See illustration

177 ✓
Michael J Loates, study of osprey and pike on a loch, signed watercolour dated 1977, 37cm x 28cm in extremes. £350-£450. See illustration

178 ✓
James Longueville, study of Cley next to the Sea, signed pastel, 36cm x 54cm. £60-£100. See illustration

179
Three wooden duck ornaments, all wearing decorative painted boots, 49cm high. £40-£60

180
A G-plan type chest fitted four long drawers, raised on a metal square section stand, 92cm wide. £40-£60

181
H J Jackson, limited edition print "Red Retirement" pencil signed to mount, dated 1963, 3/8, 33cm x 52cm. £40-£60

182 ✓
Michael J Loates, study of a hummingbird and butterfly amongst fruit, signed watercolour, 38cm x 30cm. £350-£450. See illustration

183
A G-plan type tall chest, of six drawers raised on square tapering supports, 76cm wide x 120cm high. £40-£60

184
A pair of brass candlesticks, having tapering columns on stepped bases, 29cm high. £10-£20



Lot 176



Lot 177



Lot 178



Lot 182



Lot 187



Lot 188



Lot 201



Lot 214



Lot 233

185

A bronzed double dogs head group, raised on a stepped plinth, 43cm long x 29cm high. £80-£120

186

Gene Murray, American coloured print of parrots, pencil signed limited edition 79/900; and another numbered 508/800, (2). £60-£80

187

20th Century school, study of Thames river barges, indistinctly signed watercolour, 26cm x 36cm. £20-£40. See illustration.

188

20th Century school, study of a seated man, unsigned crayon and pastel, 29cm x 39cm. £20-£40. See illustration.

189

A G-plan type tall chest of seven drawers, raised on rounded tapering supports 61cm wide x 137cm high. £60-£100

190

A Chesterton electronic Whittnower mantel clock. £80-£120

191

A pair of Art Deco style book ends, in the form of naked ladies, 23cm high. £20-£40

192

Julie Harris, costume Design from Sleeping Beauty, "The Staircase and The Spinning Wheel", signed watercolour and mixed medium, 52cm x 37cm. £20-£40

193

Julie Harris, costume design from Cinderella, "The Slipper", signed watercolour, 29cm x 31cm. £20-£40

194

An Art Deco oak and macassar ebony framed bevel edged wall mirror. £10-£20

195

A pair of Machine Age cast book ends, in the form of crouching naked figures, 15cm high. £50-£60

196

An early 20th Century Viennese Rudolph Podany Tranzforgruppe porcelain figure group, depicting three dancing maidens, 35cm high AF. £40-£60

197

An Art Deco walnut cocktail cabinet, with mirrored pull out slide and cupboards to base, 102cm wide x 144cm high. £40-£60

198

David Milner, "The Piano In The Room" and "The Room", abstract oils a pair, 20cm x 29cm. £20-£40

199

20th Century school, heath land study, oil on board, 35cm x 25cm. £10-£20

200

Study of a fashionable lady in long blue satin dress, unsigned watercolour, 30cm x 20cm. £20-£30

201

20th Century school, (possibly Barrie Houghton), abstract study figures in a marsh land, unsigned watercolour 47cm x 55cm. £40-£60. See illustration.

202

An Art Deco design book shaped coffee table, 88cm wide. £100-£200

203

A light oak six sectional bookcase, enclosed by glazed sliding doors. £80-£120

204

A Simplex seven section bookcase, enclosed by glazed sliding doors. £100-£200

205

A Seeburgh Stereo 160 jukebox, (sold as a collector's item). £200-£300

206

A Stag gentleman's wardrobe, retailed by Grange of London, 91cm wide. £40-£60,

207

A Stag chest, fitted six graduated drawers with loop handles, raised on square section supports, 76cm. £40-£60

208

A Stag bedside cupboard, fitted with a single drawer, raised on square section supports, 38cm wide. £20-£40

209

A G-plan wardrobe, fitted with three shelves and two drawers raised on rounded brass mounted supports, 92cm. £30-£50

210

A silvered greyhound model, 46cm high. £30-£50

211

A mirrored grey painted and metal mounted door, 150cm x 42cm. £40-£60

212

A white painted hall mirror, with foliate arched top and bevelled plate, 180cm x 56cm. £50-£80

213

An ascetic movement ebonised cabinet, with glazed and mirrored back fitted three drawers above under-tiers raised on turned column supports, 107cm wide. £60-£80

214

E.J.T., study of flowers, initialled oil on board, 37cm x 50cm. £20-£30. See illustration.

215

Still life study depicting flowers in a vase, 58cm x 48cm. £10-£20

216

E.J.T., still life study depicting vase of flowers on a yellow table cloth, initialled oil on board, 48cm x 59cm. £20-£30

217

Anthony Osler, study of vessels at sea, signed watercolour, 32cm x 48cm. £60-£100

218 ✓

Doris (Michail Papageorgiou) 1896 - 1987, study of tree with yellow flowers along a woodland path, signed oil on board, 49cm x 33cm. £100-£150

219

A large decorative square section wall mirror, 122cm x 76cm. £80-£120

220

An embroidered picture of flowers, with gilt thread and beaded decoration, initialed JJ, 57cm x 71cm. £20-£30

221

T Yahcob, still life study of fruit, signed oil on canvas dated 1950, 41cm x 50cm. £30-£50

222

A 1960's style wood and circular section decorative wall mirror, 119cm. £80-£120

223

A 1930's study of roses, unsigned watercolour, 16.5cm x 30cm. £10-£20

224

G Huffman?, study of seascape indistinctly signed and dated 68, oil on board, 45cm x 59cm. £10-£20

225

A large silvered framed cushion shaped mirror, 160cm x 70cm. £100-£150

226 ✓

Doris (Michail Papageorgiou) 1896 - 1987, study of a seascape, signed oil on board, 48cm x 68cm. £100-£200

227

A pencil study depicting Icarus, 30cm x 39cm. £10-£20

228

A large decorative black and clear glass Art Deco design mirror, 150cm x 111cm. £100-£200

229

After Leonard Russel Squirrell, coloured print *Ridleys' Tavern Street and Dial Lane Ipswich*. £10-£20

230

After Leonard Russell Squirrell print, Cornhill Ipswich from Golden Lion Hotel. £10-£20

231

20th Century school, Mediterranean coastal study with fishing boats, indistinctly signed oil on canvas, 49cm x 39cm. £20-£40

232

A pair of tubular metal and brass mounted picture frames, 55cm x 43cm. £20-£40

233

A Whitefriars design blue glass vase, with swirled decoration and a nobbly effect example (2). £20-£40. See illustration.

234

A Glasform iridescent baluster vase, signed to base, J. Ditchfield 1988, 26cm. £150-£200. See illustration.

235

A Glasform apple, 16cm. £40-£60

236

An Art Deco cameo glass lamp base, decorated figures in gondola on a lake with trailing flowers, indistinctly signed, 23cm high. £40-£60

237

An Art Nouveau style pewter vase, with raised floral decoration and scrolled handles, 25cm high. £30-£50

238

A 1950's Murano Alabastro glass bird, probably by Archamede Segudo, 26cm high. £15-£25

239

A pair of silver and green glass candlesticks, London 1905, 23cm high. £350-£450

240 ✓

Lorenzl, Art Deco bronze figure of a naked dancing girl, signed, raised on a conical plinth, 28.5cm high overall. £200-£300. See illustration.

241

A blue glass and plate mounted claret jug, in the form of a bear, 23cm high. £150-£250. See illustration.

242

A ruby glass and plate mounted claret jug, 33cm high. £80-£120

243

An Arts & Crafts Newlyn copper vase, typically decorated with two fish, seaweed and a shell, 25cm high. £100-£150

244

A Mdina glass vase, 20cm high. £50-£80

245

An Art Deco green glass baluster vase, having silvered applied elongated shell decoration beneath a flared rim, 14cm. £20-£40

246

A Clarice Cliff, Newport Pottery budgerigar design baluster vase, 23cm high. £60-£100. See illustration.

247 ✓

Doris (Michail Papageorgiou) 1896 - 1987, study of olive trees by the sea, signed oil on canvas, 78cm x 107cm. £300-£400

248

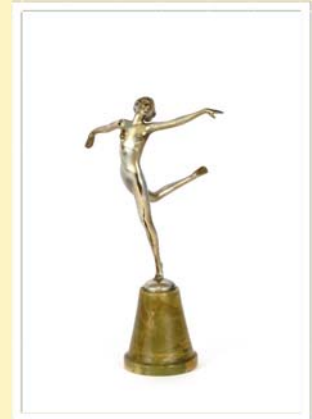
After August Moreaux, 19th Century painted spelter figure of a female grape harvester entitled "Vendangeuse", 50cm high. £30-£60

249

A Bernard Rooke pottery three light candle holder, with raised floral decoration, 10.5cm high. £30-£50



Lot 234



Lot 240



Lot 241



Lot 246



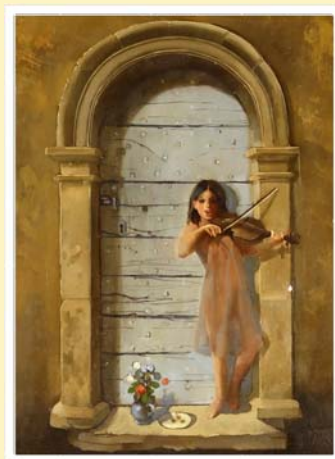
Lot 260



Lot 271



Lot 272



Lot 277



Lot 285

250

A cream glazed Le Manceau group, 35cm long. £50-£80

251

A Royal Doulton baluster jug, with stylised floral decoration; a Decorro style blaster vase; a Fen Pottery jardinière; a painted metal jardinière; and a continental pottery two handled vase with enamel floral decoration (5). £20-£40

252

An early 20th Century brass and bevel glass panelled firescreen, 73cm high. £10-£20

253

Reg Snook, study of ducks, signed watercolour dated 1973, 63cm x 62cm. £40-£60

254

Reg Snook, study of a seated bird on a branch with beak open awaiting food, signed and dated 1974, 22cm x 17cm. £10-£20

255

Reg Snook, study of teal, signed watercolour, 50cm x 70cm. £30-£50

256

A pair of Alfred Gratien design oval plated wine coolers. £50-£80

257

An Art Deco Bakelite and chrome cased weather station. £30-£50

258

A 1920's cranberry baluster glass jug, with frilled rim and clear glass handle, 20cm high. £20-£30

259

A clear cased vase by J Barton, 21cm high. £20-£30

260

A Mihai Topescu berry vase from the Orient range, 22cm. £100-£150. See illustration.

261

Attributed to Dr Christopher Dresser, a black glazed aesthetic movement teapot with oriental style gilt decoration, possibly manufactured by Minton's. £20-£40

262

Attributed to Dr Christopher Dresser, a Watcombe Pottery and blue enamel decorated terracotta teapot, stamped makers mark; together with a Victorian blue glass jug in the manner of Dr Christopher Dresser, (2). £80-£120

263

An oak and brass banded barrel; and a green spirit barrel on stand (2). £20-£40

264

A rustic wooden and metal drinking vessel; a wooden barrel shaped container with lid; and a continental carved wooden flask (3). £20-£40

265

An Art Deco mottled glass pendant light shade; and a coloured leaded glass panel (2). £20-£40

266

A pair of E Radford jugs, with painted floral decoration; and a pair of floral decorated dishes. £20-£30

267

A pair of chinoiserie decorated red and gilt lamp bases, 54cm high. £80-£120

268

An Art Deco oak smokers cabinet. £15-£25

269

Two Bernard Rooke frog figures; a field mouse group; a squirrel and an owl (5). £20-£40

270

A large Murano glass Onesto vase, 39cm high. £50-£60

271

An Art Deco Spelter figure of a reclining lady, raised on a black marble plinth, signed to plinth "Uriano", 32cm overall. £60-£100. See illustration.

272

An Art Deco design marble and onyx table display, mounted with a patinated spelter figure of a lady holding a dove, 30cm long 33cm high overall. £100-£150. See illustration.

273

20th Century school portrait study of a man holding a book, unsigned oil on canvas, 77cm x 63cm. £10-£20

274

Reg Snook, study of various seabirds, wading birds and birds of prey, signed watercolour dated 1976, 78cm x 108cm. £40-£60

275

Jane German, a signed pastel (in monogramme) of geese, mounted but unframed, 52cm x 32cm. £40-£60

276

An oak Art Deco wall mounted barometer, mirror and brush set, 64cm high. £20-£30

277

Ewen, study of a young violinist stood in a doorway, signed oil on canvas dated 1993, 41cm x 31cm. £40-£60

278

A large bronze bust of a classical maiden, 87cm high. £1,000-£1,500

279

A pair of Venetian design etched glass wall mirrors, 79cm x 46cm. £80-£120

280

Fyffe Chrsitie, study of a seated nude figure half turned, signed charcoal and crayon dated 1976, 54cm x 37cm. £60-£100

- 281** ✓
Doris (Michail Papageorgiou) 1896 - 1987, study of mountainous landscape and buildings, 76cm x 103cm. £300-£400
- 282**
Jennifer Andrews, stormy seas North Cornwall, signed watercolour, 14cm x 17.5cm. £30-£50
- 283**
Margaret Glass, rural landscape pastel study, initialled M.R.G. 25cm x 37cm. £200-£300
- 284**
A pair of six section mirrored panels, 43cm x 56cm. £20-£40
- 285**
A spot hammered copper and wrought metal fireguard, having raised flower head decoration in the Art Nouveau manner, 72cm high. £40-£60. See illustration.
- 286**
A pair of Art Nouveau design brass and wrought metal fire dogs, 36cm high. £20-£40
- 287**
H.M.Mason, Cretan landscape, oil on board, 44cm x 60cm. £10-£20
- 288** ✓
Doris (Michail Papageorgiou) 1896 - 1987, study of fish, signed oil on board, 48cm x 69cm. £200-£300. See illustration.
- 289** ✓
Doris (Michail Papageorgiou) 1896 - 1987, figures by the sea, signed oil on board, 48cm x 68cm. £200-£400
- 290**
A large Italian Art Deco design bevel edged frameless wall mirror, 100cm x 110cm. £30-£50
- 291**
B Long, three various abstract studies. £30-£50
- 292**
Cecil Howard Lay, signed etching the Martello Tower, 13cm x 19cm. £10-£20
- 293**
A Nigerian study of figures and exotic birds, indistinctly signed, mixed media, 20cm x 28cm. £10-£20
- 294**
Terence Warren, pencil signed limited edition print "Snow Study" 16/100 dated 1986, 25cm x 17cm. £10-£20
- 295**
Charles Jaques, "Breton Girl" charcoal study heightened in white, 26cm x 16cm. £40-£60
- 296**
Susan Horsfield, "Peloponnese Geese and Water" pencil signed watercolour dated 1980, 14cm x 21cm. £40-£60

- 297**
Avriol Innes, "Orange Turban" oil on panel, Gallery label verso, 17cm x 23cm. £40-£60
- 298**
C.E. Irene Livingstone, "Blind Boy", label verso Glasgow Educational Art Union 1928, 18cm x 33cm. £30-£40
- 299**
Modernist study of musicians, pencil sketch indistinctly signed, 19cm x 26cm. £10-£20
- 300**
Early 20th Century school, indistinctly signed portrait study entitled "Jean ?", June 1915, 19cm x 15cm. £10-£20
- 301**
20th Century continental school, beach study with figures initialled A.H. oil on panel, 7cm x 15cm. £20-£30
- 302**
Gordon Russell Ltd, catalogue and price list. £5-£10
- 303**
A cased set of "Elizabethan" 1950's synthetic dress pearls. £10-£20
- 304**
Six silver Art Nouveau buttons, Birmingham 1902, makers mark JG; six continental silver buttons with English import marks, Chester 1901, makers mark BM; four enamelled decorated buttons; and various others. £60-£100. See illustration.
- 305**
A lead flat back figure of a boxer, 24cm. £10-£20
- 306**
A Liberty's style Art Deco plated and enamel decorated block glass ink well, 8cm high. £40-£60. See illustration.
- 307**
A silver and enamel decorated cigarette case, Hallmarked for Birmingham 1927. £100-£150. See illustration.
- 308**
A white metal and enamel decorated butterfly brooch; and two Art Deco faux ivory butterfly decorated paperclips. £20-£30
- 309**
A string of amber coloured large beads. £40-£60
- 310**
A cased set of Wills Woodbine dominoes. £10-£20
- 311**
A Georg Jensen sauce ladle, with stylised floral motif to the tapering handle. £150-£200
- 312**
A pair of Georg Jensen servers. £120-£160



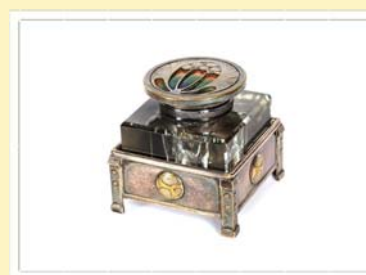
Lot 288



Lot 300



Lot 304



Lot 306



Lot 307



Lot 323

313

A white metal and amber coloured panelled bracelet. £20-£30

314

A white metal and millefiori panel dress ring. £15-£25

315

A white metal and malachite set dress ring. £15-£25

316

A white metal and jadeite set dress ring, with filigree decoration. £15-£25

317

A white metal and opal set dress ring. £15-£25

318

A white metal and green stone set pendant, with foliate scroll decoration. £20-£40

319

A white metal and cameo set pendant. £15-£25

320

A white metal and malachite set pendant. £15-£25

321

A pin cushion in the form of a jockey's cap. £25-£35

322

A pair of white metal and opal coloured ear-rings. £15-£25

323

A white metal heart shaped pendant set faceted pink stone. £20-£40. See illustration.

324

A white metal and multi-coloured stone bangle. £30-£50. See illustration.

325

A white metal and turquoise set bracelet. £25-£35

326

A white metal coral and mother of pearl set bracelet. £30-£50

327

Twelve W.M.F. coffee spoons; eleven matching teaspoons; 4 cake forks; and a pair of sugar nips. £40-£60

328

An Art Deco vintage blue bead necklace; and two Bakelite bangles. £15-£20

329

A Bakelite expanding bracelet; and a brooch in the form of an insect (2). £10-£20

330

A white metal and micro mosaic decorated crucifix, 12cm long. £40-£60

331

A Ducati enamel motorcycle badge. £10-£20. See illustration.

332

A Rolex Oyster perpetual date wrist watch, with a later Seiko strap. £400-£600.

See illustration.

333

A Cartier of London yellow and white metal clip, set sapphires and diamonds, 4.5cm x 3cm, 31gms in total weight. £2,000-£3,000. See illustration.

334

A Scottish school Arts & Crafts fruit wood crumb tray and brush, with geometric inlaid decoration, (2). £15-£25

335

An Art Nouveau style pewter inlaid cigar box, 22cm long; and a carved two compartment cigarette box, (2). £15-£25

336

Stuart Whitesman, for Russell Bromley, a pair of Champagne patent leather shoes with aluminium heels and backs, size 5. £20-£30

337

A 1950's vintage leather lizard effect handbag. £15-£25

338

A Louis Vuitton laptop holder. £220-£260

339

A Crown Devon Pegasus jar and cover; and a Spanish white metal cup and saucer. £10-£20

340

An Art Deco Bakelite photograph frame, containing a post-card and two compacts. £10-£20

341

A small silver sweetmeat stand, with pierced border and scaled body decoration by Mappin & Webb; and a circular white metal shallow dish with rope twist border (2). £20-£40

342

A silver plated and green enamel decorated Art Deco design dressing table set; and a Danish Sterling mounted wooden cigarette pot. £20-£40

343

A small figure of a girl dressed as a medieval knight, 17cm. £20-£30

344

An Art Deco design table lamp, decorated with a fawn and tree stump on a marble base. £20-£30

345

A bronze bust of Beethoven, 11cm high. £10-£20. See illustration.

346

A chrome car mascot, of a winged lady on a marble base, 13cm high. £5-£10



Lot 324



Lot 331



Lot 332



Lot 333



Lot 345

347
An Arts & Crafts design pewter kettle, having angular handle, the body and lid inset with enamel decoration, 21cm high. £40-£60. See illustration.

348
A good quality early 20th Century etched and cut glass biscuit barrel, having plated mounts and swing handle, the lid surmounted by an ivory acorn finial, 17cm high. £30-£50

349
A 19th Century bronze ink stand of sarcophagus form, surmounted by Napoleon's hat, raised on claw feet and marble plinth, 13cm high 11cm long. £40-£60

350
A heavy cut and etched Swedish glass vase, of ovoid form decorated butterflies and foliage, 23cm high. £20-£40

351
A plated two bottle oil and vinegar stand, marked "Argentor". £10-£20

352
A glass paperweight, with blue and white flecked decoration. £10-£20

353
A Japy Bakelite cased mantel clock. £70-£100. See illustration.

354
An Art Deco onyx cased mantel timepiece, the oval dial inscribed D.E.P. £40-£60

355
A Jaz Bakelite cased mantel clock, with alarm movement. £70-£100. See illustration.

356
A Keswick School of Industrial Arts spot hammered coppered bowl, having continuous decoration of ducks, 14cm dia. 8cm high; a Mawson of Keswick copper tidy pot with stylised decoration; a similar small copper pin dish; and a cylindrical copper jug with brass handle and lid, (4). £40-£60

357
An album of Louis Wain, and other post-cards. £200-£300. See illustration.

358
A bronzed stylised ornament, in the form of figures on a bridge; and another (2). £10-£20

359
A seven piece silver and enamel Art Deco dressing table set, London 1936. £40-£60

360
A small Art Deco and faux enamel decorated easel dressing table mirror. £10-£20

361
A Technofix tin plate racing game, (boxed). £20-£40

362
Eight Glasform mushroom shaped paperweights. £40-£60

363
An amethyst glass and gold splash decorated bowl, of crimped form. £10-£20

364
An Andrew Holmes (Border Art Glass) vase, 13cm high. £20-£40

365
A mirrored glass trinket casket, 19cm. £10-£20

366
Six Glasform coloured paperweights in the form of pears; and two apples, (8). £40-£60

367
A Murano red glass figure of an elephant, with trunk raised aloft, 18cm high. £10-£20

368
A Burmese glass posy vase, with crimped border, hand painted by Janet Sindle Duker. £40-£60

369
A good quality cut and green flash glass powder bowl and cover, with white metal band and handle - some damage. £20-£40. See illustration.

370
A 20th Century heavy glass and silvered metal overlaid tankard, decorated leaves and fruit, 14.5cm. £20-£40

371
Three early 20th Century finely cut finger bowls on stands, (chipped). £10-£20

372
A small Tenmoku glazed Studio Pottery posy vase, 8cm high. £10-£20

373
A Vasart style green glass beaker vase, 15cm high; a lustre glass ewer with raised tube decoration, 19cm high; and a similar small baluster jug with raised flower head decoration - some damage, (3). £20-£30

374
Three Lalique style crystal glass bowls, having raised flower head decoration. £250-£350

375
Three Lalique style glass bird ornaments. £150-£250

376
A Tiffany iridescent glass bowl of crimped form, marked to base L.C.T R.4690, some damage, 15.5cm dia. £20-£30. See illustration.



Lot 347



Lot 353



Lot 355



Lot 357



Lot 369



Lot 376



Lot 388



Lot 391



Lot 392



Lot 393



Lot 395

377

A Lalique style glass knife rest, decorated with a squirrel AF; and an iridescent glass bowl with crimped border (2) - some damage. £10-£20

378

A Studio Pottery beaker vase, bearing mark to base, 14cm high. £10-£20

379

A vintage native American earthenware bowl, with geometric decoration. £20-£30

380

Robert Tenorio, vintage signed Santo Domingo Pueblo vase with geometric decoration, signed and inscribed to base. £30-£50

381

A Ronnesc of Sweden glass owl ornament. £10-£20

382

A frosted glass figure of a seated mermaid, 8cm high; a Lalique glass model of a Champagne cork 5cm high; a small glass model of a bird; and another glass ornament with etched decoration of birds amongst foliage AF (4). £20-£40

383

A Tiffany & Co. cut glass box and cover, 16cm long. £10-£20

384

Six various items of Lalique style glass, to include dishes, flower heads etc. £100-£150

385

Donald and Jacqueline Mills, a flaring conical bowl, marked to base D.J.M. 14cm dia. Overall £20-£30

386

A Clarice Cliff Bizarre preserve pot, in the form of an orange; and a circular Clarice Cliff pot pourrie bowl, the lid decorated with a swallow, (2). £30-£50

387

A blue glass and white metal overlaid globular scent bottle, stopper AF; and a blue, green and lustre decorated conical shaped paperweight (2). £20-£30

388

A Studio Pottery brown glazed flask shaped vase, possible St Ives mark for Bernard Leach, 22cm high. £60-£100. See illustration.

389

A Troika vase, 18cm high. £40-£60

390

A Poole Pottery baluster vase, incise mark to base and stamped E.D. 13cm high; and two Poole Pottery bowls (3). £40-£60

391

Pambos Michlis, terracotta study of a woman's head, 25cm high. £20-£30. See illustration.

392

A Clarice Cliff "My Garden" sugar shaker, 15cm high. £40-£60. See illustration.

393

A Coroma Pottery ewer, brightly coloured floral decoration, 17cm high. £10-£20. See illustration.

394

Two Clarice Cliff "Biarritz" rectangular side plates; a Clarice Cliff sugar bowl with floral design, and a bonbon dish with sunflower design, (4). £30-£50

395

Wilfred Norton pottery bust of a young girl, 17cm high. £20-£40. See illustration.

396

A Doulton Lambeth ewer with hinged plated lid, raised floral decoration, dated 1886, 23cm high. £40-£60

397

A pair of Clarice Cliff "Crocus" pattern salt and pepper pots; a "Crocus" pattern mustard pot; a "Crocus" pattern sugar bowl; and a preserve pot with orange geometric design, (5). £40-£60

398

Wilfred Norton, a pottery model of a reclining naked girl; and a pottery figure of a Polar Bear (2). £10-£20

399

A Marbell of Belgium stone art figure group, of mother and child with blue glass roundel decoration, 18cm high. £20-£30

400

A Beswick porcelain figure "Farmer Potatoes"; a Beswick figure of a calf; a study of a hunter; and another of a longhorn bull AF, (4). £20-£40

401

A pair of Shelley black glazed Art Nouveau vases, 19cm high. £10-£20

402

A 1930's lustre decorated pottery jardinière, in the Royal Lancastrian style, 14cm high. £20-£30

403

A painted wooden head sculpture on a square tapering plinth; and a burr wood circular box and cover, (2). £10-£20

404

A pair of Dutch Gouda Pottery Art Nouveau vases, having brightly coloured stylised decoration, 18cm high; and a Crown Devon Fieldings ware baluster vase with orange, yellow and grey stylised decoration (3). £10-£20

405
Three various Studio Pottery bowls; and a brightly coloured hand made continental bowl (4). £20-£30

406
A pair of Swedish Art Pottery birds, by Fischer Stengods; two pottery figures of quail; a Home Art model of a seated hen; and a Caille French pottery hen (6). £20-£40

407
Four various items of Poole Pottery. £20-£30

408
A continental white metal oval easel dressing table mirror, with border leaf decoration raised on scrolled feet, 34cm x 28cm. £40-£60

409
A set of 5 Beswick flying ducks. £80-£120

410
A Falcon ware flying duck. £20-£40

411
A G-plan style teak chest, fitted six drawers, 107cm high x 77cm wide x 44cm deep. £60-£80

412
A Bernard Rooke pottery table lamp, stamped Rooker, 24cm high. £20-£30

413
A Clarice Cliff three piece cruet set. £20-£40

414
D Hazelwood, signed and dated 68, oil on board, 61cm x 60cm. £80 - £120

415
Doris (Michail Papagerogiou) 1896-1987, study of sea and mountains, signed oil on board, 37cm x 48cm. £60-£100. See illustration.

416
A teak G-plan style knee hole desk, fitted two short drawers and raised on square stretched supports 100cm wide. £40-£60

417
A pair of teak G-plan style bedside cupboards. £30-£50

418
An oak tambour front trolley cabinet with pull out slides, 46cm wide. £15-£25

419
A double sided four door low cupboard, 49cm wide. £5-£10

420
A carved walnut fire screen, decorated with a central panel of a peacock within floral scrolled borders, 43cm wide x 69cm high. £10-£20. See illustration.

421
A large table lamp, the base in the form of an old earthenware olive oil bottle, 95cm high overall. £20-£30

422
An unusual rustic elm bench, 120cm long. £40-£60

423
A teak two tier tea trolley raised on castors, 75cm wide. £20-£30

424
A leather oblong box with detachable lid, 31cm wide. £60-£80

425
A silvered model of a bulldog, 30cm long. £40-£60

426
A black wood and chrome triform shaped occasional table; and an oblong similar (2). £20-£30

427
A carved oriental figure of a fisherman, 69cm high. £20-£30

428
A nest of teak G-plan design coffee tables. £40-£60

429
An ethnic face mask; a large white metal ethnic bangle; and an ethnic comb, (3). £20-£30

430
A Newhall Boumier ware pink lustre and blue floral decorated shallow dish, 31cm. £20-£30. See illustration.

431
A nest of three teak G-plan design coffee tables. £20-£40

432
A 1950's walnut display cabinet, enclosed by glazed panelled doors, and raised on shaped feet, 123cm wide. £20-£40

433
An Art Deco marble clock garniture. £40-£60

434
A pair of Art Deco chrome candlesticks, in the form of naked ladies. £10-£20

435
A teak rise and fall coffee / dining table, raised on metal base, 140cm wide. £40-£60

436
A pair of Lily Bollinger design oval plated wine coolers. £60-£80

437
A leather and plate mounted picnic hamper, having hinged lid and side carrying handles, 45cm wide. £200-£300. See illustration.



Lot 415



Lot 420



Lot 422



Lot 430



Lot 437



Lot 440

438
A leather waste paper bin. £30-£40

439
A G-plan two seater settee, with charcoal grey upholstery raised on rounded tapering front supports. £60-£100

440
A pair of retro swivel tub shaped easy chairs, raised on metal bases. £80-£120. See illustration.

441
A mahogany oblong coffee table, raised on square tapering supports, 110cm wide. £10-£20

442
A Steiff Tierleben panther. £20-£40

443
A 1960's/70's mahogany two tier coffee table, raised on rounded supports, 107cm wide. £20-£40

444
A painted and gilt plaster figure of Christ, 59cm high; and another of infant and lamb, 30cm high, (2). £20-£40

445
A 1930's oak open front bookcase of pegged construction, 55cm wide. £30-£50

446
A teak G-plan design oblong coffee table, 127cm wide. £20-£40

447
A large W.M.F. twin handled tray, 66cm wide. £100-£150. See illustration.

448
A nest of G-plan design graduated coffee tables. £40-£60

449
An oriental carved hardwood table lamp, with decoration of bird and elephant. £20-£40

450
A teak G-plan type coffee table, raised on rounded section supports, 107cm wide. £20-£40

451
An octagonal marble coffee table, 88cm. £60-£80

452
A Monika Mulder chrome fruit basket, 43cm dia. £10-£20. See illustration.

453
A light oak Art Deco circular two tier occasional table, 60cm dia. £30-£50

454
A 1960's/70's elm sideboard fitted seven drawers, raised on square section supports, 148cm wide. £40-£60

455
A green glazed Burleigh ware flower holder; a green glazed Crown Devon baluster water jug with rib decoration; a floral decorated Art Deco design fruit set; a green glazed Portuguese Pottery hors d'oeuvres dish; a white glazed salt and pepper pot etc. £20-£30

456
An illuminating world globe. £10-£20

457
A Tiffany style table lamp. £10-£20

458
A G-plan type teak sideboard, fitted nine drawers raised on sleigh supports, 150cm wide. £30-£50

459
A Wedgwood part dinner service, comprising tureens, meat plates, and dinner plates. £60-£80

460
Two decorated earthenware bowls, and a jug, (3). £10-£20

461
A G-plan design three drawer chest, raised on rounded ebonised and brass mounted tapering supports, 76cm. £20-£40

462
An Art Deco painted plaster figure of a recumbent Alsatian, 49cm. £10-£20

463
A G-plan style teak and Formica two tier coffee table, with reversible top, 102cm. £20-£40

464
20th Century school, study of a kitchen work surface with bottles and pans, unsigned oil on board 46cm x 61cm. £20-£30

465
A 1960's teak sideboard, fitted three central drawers, flanked by cupboards on tapering square section supports, 183cm wide. £20-£40

466
A pair of copper lanterns, of hexagonal form, 64cm high. £50-£80. See illustration.

467
A Crown Ducal "Rosemary" pattern coffee pot; a Shorter & Son floral decorated vase; an Art Deco design cheese dish; a Royal Crown Staffordshire trio; a Royal Doulton beaker vase; an Art Deco design soap dish; and various other items. £20-£30

468
An Art Deco Bakelite and chrome floor standing ash tray. £20-£30. See illustration.

469
An oak Art Deco barometer. £5-£10



Lot 447



Lot 452



Lot 466



Lot 468

470

A nest of three G-plan design teak and tile top coffee tables. £30-£50

471

A nest of three G-plan design coffee tables. £30-£50

472

A pair of Lily Bollinger type oval plated Champagne coolers. £60-£80

473

A box of vintage fashion, to include two Berkertex dresses, size 12 & 14; handbags etc. £10-£20

474

A G-plan design teak oblong coffee table, raised on square section tapering supports, 161cm. £40-£60

475

A vintage swivel tub shaped office chair, on chrome base. £20-£40. See illustration.

476

An Art Deco design mahogany drinks cabinet, with fall front cupboards below, raised on squat cabriole supports 63cm wide. £40-£60

477

A good quality early 20th Century elm towel rail. £30-£50

478

A nest of three teak coffee tables. £20-£40

479

A vintage leather covered model of a galloping horse, 40cm long. £20-£40

480

A nest of three G-plan design teak coffee tables, raised on sleigh supports. £30-£50

481

A silvered model of a French bulldog. £30-£50

482

A pair of Gratien style oval plated wine coolers. £50-£80

483

A nest of three G-plan design coffee tables, raised on square section supports. £30-£50

484

A nest of three G-plan design coffee tables, one with tiled top, raised on sleigh supports. £30-£50

485

A Bernard Rooke table lamp, having raised stylised decoration complete with shade. £30-£50

486

A large Bernard Rooke table lamp, complete with shade. £50-£80. See illustration.

487

A nest of three G-plan design graduated coffee tables, raised on shaped supports.

£30-£50

488

An Ercol coffee table. £40-£60

489

An Art Deco Cotswold style oak dressing table mirror, with stamped mark for the Air Ministry. £20-£30

490

A 1960's/70's G-plan design tile top two tier coffee table, 110cm wide. £10-£20

491

Two Nickelby shop mannequins. £10-£20

492

A G-plan design coffee table, raised on N supports, united by a stretcher, 153cm.

£20-£40

493

David Hughes, "Deep Blue Sea 2", signed oil on canvas dated 2010. £40-£60

494

An Art Deco rocking chair, with side lever action, bowed arms, upholstered in multi coloured brocade with roundel decoration. £100-£150

495

An Art Deco rocking chair, with side lever action, bowed arms, upholstered in multi coloured brocade with roundel decoration. £100-£150. See illustration.

496

A set of five bent wood dining chairs. £60-£100. See illustration.

497

A white metal standard lamp, in the style of Louis Poulson, 125cm high. £50-£80

498

Two black leather McIntosh style chrome framed armchairs. £60-£80. See illustration.

499

A light elm Ercol oblong dining table, raised on tapering square section support; and a set of six stick back dining chairs. £100-£200

500

A Ridgeway Potteries Homemaker part dinner / tea service. £40-£60

501

A set of four Ercol style stick back corner dining chairs. £20-£40

502

A large plaster figure group depicting girl with dog, 59cm long. £50-£70

503

A nest of teak coffee tables, comprising of large oblong example and four folding examples. £20-£40



Lot 475



Lot 486



Lot 495



Lot 496



Lot 498



Lot 509

504

An Italian "Alessi" Jasper Morrison chrome and plastic circular occasional table. £5-£10

505

A teak G-plan design two tier coffee table, raised on rounded tapering supports, 120cm. £40-£60

506

A nest of teak coffee tables, comprising oblong a large example, and four folding smaller examples. £40-£60

507

A pair of Vico Magistree 1960's elbow chairs, with rush seats. £40-£60

508

Art Deco marble mantel clock, with bronzed wolf surmount, 50cm long.

£60-£80

509

A late 19th Century brass oil lamp, raised on a four column base and square plinth, having ruby hobnail cut reservoir, the pink tinted shade with foliate etched decoration, having two chimneys. £200-£300.

See illustration.

510

A Susie Cooper "Polka Dot" coffee set. £40-£60

511

A nest of three teak and tile top coffee tables. £30-£50

512

A 1970's hardwood oval coffee table, on square section supports, 93cm wide. £20-£40

513

Three graduated wooden trays. £30-£50

514

A heavy oak Art Deco period table, possibly Heals having associated glass top, 62cm high. £40-£60. See illustration.

515

A large heavy cut glass and brass mounted table lamp, raised on a marble plinth, 68cm high overall. £100-£150

516

A light Ercol kitchen dining table, raised on rounded tapering out swept supports, 146cm x 74cm. £120-£160

517

A McIntosh extending rosewood dining table, 236cm x 92cm, and a set of eight matching ladder back chairs, (with Cites certificate). £100-£200

518

A set of five retro stacking chairs. £20-£40

519

An Art Deco design table lamp, in the form of a ball girl, 55cm high. £40-£60

520

An Art Deco design table lamp, in the form of a dancing ball girl raised on a circular marblised plinth, 57cm high.

£40-£60

521

A silver plated novelty decanter set, in the form of a parrot in a cage. £300-£400

522

A 1930's Royal Doulton part coffee service, in the "Sarafan" pattern. £50-£80

523

A Royal Winton "Golden Age" coffee set. £20-£40

524

A Danish Schionning & Elgaard style teak extending dining table, having draw leaf action, 87cm x 230cm extended.

£100-£200

525

A set of six Danish Schionning & Elgaard style teak bar back dining chairs, raised on rounded supports, label to base. £100-£150. See illustration.

526

A plated divers helmet. £80-£120

527

An Art Deco rocking chair, with side locking handle, upholstered in old gold Draylon. £50-£80

528

A French design grey painted elbow chair, upholstered in diamante crushed velvet. £50-£80

529

A French design grey painted elbow chair, upholstered in diamante crushed velvet.

£50-£80

530

A G-plan style leather upholstered three seater settee. £100-£200

531

A black painted French design elbow chair, with Union Jack upholstery.

£60-£100. See illustration.

532

A black painted French design elbow chair, with Union Jack upholstery. £60-£100

533

An Art Deco design figure, of a dancing girl raised on a rouge and black marble stepped base, 48cm high. £100-£150

534

An Art Deco design figure, of a dancing girl raised on a rouge and black marble stepped base, 48cm high. £100-£150



Lot 514



Lot 525



Lot 531

535

A Susie Cooper fine bone china "Black Fruit" coffee set. £40-£60

536

A large bronze Spirit of Ecstasy figure, on circular marble plinth, 67cm high. £400-£600. See illustration.

537

A Danish rosewood dining suite, by Mobelfabrik comprising draw leaf extending dining table 87cm x 242cm fully extended; a sideboard fitted interior shelves and sliding cutlery trays enclosed by three doors with label Skovby Mobelfabrik, 153cm long; a set of six dining chairs with arch backs and central splats with label Uldum Mobelfabrik; and a pair of similar elbow chairs stamped made in Denmark.

£500-£800

538

A Troika wheel vase, 11.5cm dia. £60 - £80. See illustration



Lot 536



Lot 538

Clarke and Simpson are pleased to offer a packaging and shipping service worldwide through "the-saleroom.com Delivery Service". The professional team will pack and ship items from very small non-breakables such as jewellery and coins through to larger and more fragile items such as paintings and works of art. Shipping and insurance is at the buyer's expense. Shipping payment must be made to "the-saleroom.com Delivery Service" prior to departure and excludes local duties and taxes. Please note that Clarke and Simpson do not pack or ship items - all requests are sent to our specialist handlers at "the-saleroom.com Delivery Service"

the-saleroom.com
delivery service



Droite de Suite Royalty Charges

From 14th February 2006, all United Kingdom Art Market professionals (which includes auctioneers) are required to collect a royalty payment for all qualifying Works of Art. Under new legislation which came into effect on the 1st January 2012, this applies to living artists and those who have died in the last 70 years. This payment is calculated on qualifying Works of Art which are sold for a hammer price more than the UK sterling equivalent of €1,000 (the UK sterling equivalent will fluctuate in line with prevailing interest rates calculated by the Artist's Resale Right Service Hub, based on the European Central Bank reference rate published at 2.15pm on the day of the sale, and can be found on www.dacs.org.uk).

All items in this catalogue that are marked "✓" are potentially qualifying items, and the royalty charge will apply if the hammer price is more than UK sterling equivalent of €1,000. The royalty charge will be added to purchase invoices, and must be paid before items can be cleared. All royalty charges are paid to the design and Artists Copyright Society (DACS) by the auctioneers and no handling costs or additional fees with respect to these charges will be retained by the auctioneer.



Lot 54 - refer to Page 5



Lot 103 - refer to page 7

Michail (Doris) Papageorgio

Born in Athens in 1896 and died in 1987. He studied painting at various Paris artists' workshops. He worked first as a designer and cartoonist in various magazines (1913 - 1916). In the late 20's he left for Paris, where he stayed until 1930. when he returned to Athens established immediately by all art critics as an important modernist artist. He painted with a restless pearshaped touch and with strong tonal variations, bringing light into a few parts of the composition, and leaving large areas midtones and shadows. He presented his work in solo and group exhibitions, Athens, Paris 1926, Venice Biennale 1936 Pan 1948.

Forthcoming Auction

Antique & Fine Art

Clarke &
Simpson

Auctions



Edward Robert Smythe (1810 - 1899)

Study of a young gipsy family, signed oil on canvas 59cm x 89cm. Estimate £1,500 - £2,000

One of the many lots already entered in our next
Selected Antiques and Fine Art Auction 19th July.

Closing date for entries 23rd June

Edward Robert Smythe

1810 - 1899

Edward Robert Smythe was one of the foremost painters of the Suffolk School. After early aspirations of a military life he became an artist, and worked in Ipswich alongside artists such as Robert Burrows, and his brother Thomas (1825 - 1906). In 1840 Smythe moved to Norwich, and is said to have worked with John Sell Cotman. He was undoubtedly influenced by several Norwich School artists, such as his friend Fredrick Ladbrooke. His work attracted commissions from eminent patrons such as the Earl of Cardigan, and the Greene family.

Exhibited: Royal Academy 1850 - 1861

Clarke & Simpson

Auctions

Next Rural Bygones

Saturday 8th July

Date for entries has closed

Next Antique & Fine Art

Wednesday 19th July

Closing date for entries 23rd June

Next Art Deco, Design & Retro

Monday 4th September

Closing date for entries 4th August

Rural Bygones

Saturday 16th September

Closing date for entries 4th August

Antique & Fine Art

Wednesday 4th October

Closing date for entries 8th September

Farm Machinery

Saturday 21st October

Closing date for entries 8th September

THE *Monday* *Sale*

Over 800 lots every week,
to include cottage antiques &
modern furniture, household
appliances & garden
machinery.

Everything but the kitchen
sink, and occasionally
even those!

Viewing prior, and
every Saturday 9am - 12noon

Refreshments available
from the Tea Room

Room 2 now live online
every week at the the-saleroom.com

Clarke & Simpson Auction Centre
f CandSAuctions t @CandSAuctions
www.clarkeandsimpson.co.uk 01728 746323

Clarke &
Simpson



Campsea Ashe,
Nr Wickham Market,
Suffolk IP13 0PS

TERMS AND CONDITIONS OF SALE

1. INTRODUCTION

The following defining terms are used in these conditions:-

“Auction”	Means any auction conducted by Clarke and Simpson Auctions Ltd. either at the premises owned by them or elsewhere (including any internet based auction);
“Auctioneer”	Means Clarke and Simpson Auctions Ltd. authorised auctioneer as appropriate;
“Bidder”	Means a bidder at an auction, including the bidders personally present at the venue and those bidding by telephone or over the internet or otherwise;
“Buyer”	Means the bidder whose bid was the last bid when the auctioneer concludes the bidding;
“Conditions”	Means these Terms and Conditions of Sale;
“Hammer Price”	Means the level of bidding reached (at or above any reserve) when the auctioneer brings the bidding to a close;
“Lot”	Means any property accepted by Clarke and Simpson Auctions Ltd. for offer at auction;

2. DESCRIPTION

No warranty is given or implied by the description in the catalogue. Each lot is sold in its condition at the time of sale with all faults, defects, imperfections and errors of description (if any). Whilst every endeavour has been made to describe the items adequately and properly, the purchaser shall deem to have inspected the lot at time of purchase. All catalogues and seller's and buyer's guides are for information only and do not form part of the contract.

3. STATUTORY REQUIREMENTS

Purchasers will be deemed to have satisfied themselves prior to purchasing regarding current legal requirements (e.g. Health & Safety at Work Act) and it is expressly brought to the bidders attention that equipment in the sale may not necessarily comply with such regulations. Any purchaser shall satisfy himself as to any statutory requirement for the use of any item and no liability shall rest with the vendors nor the Auctioneers.

4. THE AUCTION

All auctions are conducted at the absolute discretion of the auctioneer. The auctioneer shall conduct the auction with reasonable skill and care. The vendor reserves the right to sell subject to reserve price in respect of all lots. What constitutes a bid shall be at the absolute discretion of the auctioneer, acting with appropriate skill and care. The auctioneer shall have the right to refuse any bid in all cases but most notably when such a bid does not exceed the previous bid by at least 10% or such a proportion as the auctioneer shall in his absolute discretion direct. Where two or more bids at the same level are simultaneously received by the auctioneer, the auctioneer at his absolute discretion shall determine which bid to prefer. Subject to the foregoing where two or more bids are at the same level are simultaneously received by the auctioneer, the bid submitted in the room shall take preference over a bid submitted by telephone or internet at the same level. Any bid made or attempted by telephone or over the internet will only be deemed to have been made if received by the auctioneer.

The auctioneer reserves the right to withdraw, consolidate or divide any lot or lots or submit them in any order that they desire. The auctioneer has the right at his absolute discretion to refuse admission to his premises or

attendance at (or participation in) any auction by any person. In the case of any dispute, the auctioneer shall be sole arbitrator in any matters arising during or out of the sale.

5. BIDDERS

All bidders will be required to register their particulars, bidders attending in person and those accompanying them may be required to provide photo ID and separate confirmation of address prior to viewing or taking any part of the sale and before entering any part of the premises to view. All bidders accept full liability for all bids submitted. Subject to the clause in this document headed “The Auction”, the highest bidder at the close of bidding shall be the buyer. Any dispute about a bid shall be settled at the auctioneer's absolute discretion. Bidders are all deemed to act as principal unless there is prior written acknowledgement by Clarke and Simpson Auctions Ltd. that a bidder is acting as an agent for a named principal. Bidders are strongly encouraged to attend the auction in person. The bidders shall be responsible for any decision to bid for a particular lot and shall be deemed to have carefully inspected and satisfied themselves as to condition, neither Clarke and Simpson Auctions Ltd., their employees or agents shall be responsible for any neglect or default in doing or failing to do so. Bidders will be given ample opportunity to view and inspect before the sale and prospective buyers must satisfy themselves as to all matters.

6. DEFAULT

Clarke and Simpson Auctions Ltd. shall act as agent of the vendor only. Any contracts for the sale of a lot shall be formed between the vendor and the buyer. As agent only Clarke and Simpson Auctions Ltd. shall not be responsible for default by the vendor or the buyer. If any lot is not paid for in full and taken away in accordance with these conditions, or there is any other breach of the conditions, then Clarke and Simpson Auctions Ltd. as agents for vendor shall at its absolute discretion and without prejudice to any other rights it may have, be entitled to exercise all or any of the following rights and remedies:-

- 6.1 to proceed against the buyer for any action of debt or damages for breach of contract;
- 6.2 to rescind the sale of that lot or lots sold by Clarke and Simpson Auctions Ltd. to a defaulting buyer;
- 6.3 to resell the lot (by auction or private treaty) in which case the defaulting buyer shall be responsible for any resulting deficiency in the total amount due (after crediting any part payment and adding any resale costs), any possible surplus so arising shall belong to the vendor;
- 6.4 to remove, store and insure the lot at the expense of the defaulting buyer and, in the case of storage, the location of such storage shall be at Clarke and Simpson Auctions Ltd. discretion;
- 6.5 to charge interest at a rate not exceeding 2% per month of the total amount due to the extent that it remains unpaid for more than two working days after the sale;
- 6.6 to retain that or any lot sold to the defaulting buyer until the buyer pays the total amount due;
- 6.7 to reject or ignore bids from the defaulting buyer at future auctions or to impose conditions before any such bids are accepted;
- 6.8 to apply any proceeds of sale for any other lots due or in the future becoming due to the defaulting buyer towards the settlement of the total remaining due.

7. INDEMNITIES, PENALTIES AND LIMITATIONS OF LIABILITY

Purchasers shall pay for any damage done by themselves or their agents during the removal of their lots. Attendance at the sale shall be at the risk of those attending in respect of both themselves and to their goods and vehicles.

Any indemnity under these conditions will extend to all actions, costs, expenses, claims and demand whatsoever suffered or incurred by the person entitled to the benefit of it and Clarke and Simpson Auctions Ltd. declare themselves to be a trustee of the benefit of such indemnity so far as it is expressed to be the benefit of its employees and agents.

Whilst Clarke and Simpson Auctions Ltd. endeavour to ensure that the information on their websites is correct, they do not warrant the accuracy and completeness of the material on their website. Also Clarke and Simpson Auctions Ltd. can make changes to the material on their website, or alter the products and prices described on it, at any time without notice. The material on the website may be out of date, Clarke and Simpson Auctions Ltd. make no commitment to update such material. All material on the websites is provided "as is" without any conditions, warranties or other terms at any time. Accordingly to the maximum extent permitted by law, the website is provided to all parties on the basis that Clarke and Simpson Auctions Ltd. exclude all representations, warranties, conditions and other terms which, but for this legal notice, might have effect in relation to the website.

8. ELECTRICAL SAFETY REGULATIONS

All electrical lots are subject to electrical safety regulations and fall within "the low voltage electrical equipment (safety) regulations 1989" – all items have been pat tested for safety but are not guaranteed in working order.

9. GENERAL MATTERS

Any notice to any buyer, vendor, bidder or viewer may be given by first class mail or email in which case it shall be deemed to have been received by the addressee forty eight hours after posting or sending. All notices to Clarke and Simpson Auctions Ltd. must be sent in writing and email is not acceptable. Any indulgence extended to any person by Clarke and Simpson Auctions Ltd., notwithstanding the strict terms of these conditions or the terms of consignment, shall affect the position at the relevant time only and the respect of that particular concession only; in all other respects these conditions shall be construed as having full force and effect. These conditions and any disputes or claims arising out of or in connection with them or their subject matter or formation (including non-contractual disputes or claims) are governed by and construed in accordance with the law of England. The parties irrevocably agree that the courts of England have exclusive jurisdiction to settle any dispute or claim that arises out of or in connection with the agreement or its subject matter or formation (including non-contractual disputes or claims).

10. PUBLICITY

Any catalogue and buyer and seller guides are provided for information only and do not form part of these conditions. The catalogue and the buyer and seller guides may contain additional terms and conditions. Clarke and Simpson Auctions Ltd. reserve the right to use any photographs, background information and research for publicity purposes both before and after the sale.

11. THE PURCHASE PRICE AND PAYMENT ARRANGEMENTS

There is a buyer's premium 15% plus VAT payable in respect of the sale. Any purchases made via "www.the-saleroom.com" shall be subject to an administration charge Administration charge of 3% plus VAT on the price. Preferred payment is cash, bankers draft or personal debit card. Such cards may only be used on a chip and pin basis with the owner present. No payment will be accepted by telephone. There will be an administration charge of 2.5% plus VAT for the use of credit cards or international debit cards.

Payment by cheque will only be acceptable subject to prior arrangement. No lot will be removed from the sale until any cheque has cleared unless a suitable bank reference addressed to the auctioneer is supplied. Payment is due on the day of the sale. Cash in excess of £12,000 (including V.A.T.) will not be accepted from any one person, this is not allowed due to Money Laundering Regulations 2007. All money received will be held in Clarke & Simpson Auctions Ltd. Clients Account at Barclays Bank plc,

Framlingham, Suffolk. Account Number 33222276. Sort Code 20 98 07. Clarke and Simpson Auctions Ltd. have no responsibility for any lot between the close of bidding and payment being made and subsequent collection. Please note all policy regarding payment will be enforced and suitable arrangements must be made.

12. REMOVAL OF LOTS

The ownership of any lot purchased shall not pass to the relevant buyer until they have made payment in full to Clarke and Simpson Auctions Ltd. of the total amount due. The buyer shall at their own risk and expense take away any lot that they have

purchased and paid for not later than two working days following the day of the auction after which they shall be responsible for any removal, storage and insurance charges. Any lots not collected within three months of the date of sale will be resold by the auctioneer and all proceeds will be retained by the auctioneer to cover storage costs.

13. NUMBER BIDDING

This will be used for speed and efficiency as in all our sales. All prospective purchasers must complete a registration form and register in the office on the viewday or morning of sale to receive a number for bidding. PLEASE ALSO NOTE THAT PHOTO ID AND ADDITIONAL CONFIRMATION OF ADDRESS WILL BE REQUIRED.

14. TELEPHONE BIDDING

We offer a telephone bidding service where possible but this service can never be guaranteed. No applications for telephone bids will be accepted after the end of the viewing prior to sale day for any sale. All potential telephone bidders must provide a valid landline number and email address for us to send terms and conditions prior to phone bidding. No phone bids will be accepted for any lot with a lower guide figure of less than £100.

All those who wish to bid by telephone will be expected to deposit the minimum guide for all lots that they wish to bid upon into the Clients Account for Clarke and Simpson Auctions Ltd before the sale starts. In the event of default, this sum shall be retained as part payment or any part may be retained to recover losses under clause 6 of these Terms and Conditions. We will expect payment of the balance owing by BACS on the following day, any payment not met within five working days will result in the forfeiture of the deposit paid.

15. ONLINE BIDDING

Clarke & Simpson Auctions Ltd., on occasions, offer an online bidding service via the-saleroom.com for bidders who cannot attend the sale. In completing the bidder registration on www.the-saleroom.com and providing your credit card details and, unless alternative arrangements are agreed with Clarke & Simpson Auctions Ltd.:

1. authorise Clarke & Simpson Auctions Ltd., if they so wish, to charge the credit card given in part or full payment, including all fees, for items successfully purchased in the auction via www.the-saleroom.com, and
2. confirm that you are authorised to provide these credit card details to Clarke & Simpson Auctions Ltd. through www.the-saleroom.com and agree that Clarke & Simpson Auctions Ltd. are entitled to ship the goods to the card holder name and card holder address provided in fulfilment of the sale.

Please note that any lots purchased via the-saleroom.com auction service will be subject to an additional 3% charge + VAT at the rate imposed on the hammer price



Clarke & Simpson Auction Centre, Campsea Ashe

Nr Wickham Market, Suffolk IP13 0PS

T: 01728 746323 E: auctions@clarkeandsimpson.co.uk