

Clarke &  
Simpson



Selected Antiques & Fine Art

Wednesday 17th May 2017 at 10 am

# THE *Monday* *Sale*

Over 800 lots every week,  
to include cottage antiques &  
modern furniture, household  
appliances & garden machinery.

Everything but the kitchen sink,  
and occasionally even those!

Viewing prior, and  
every Saturday 9am - 12noon

Refreshments available  
from the Tea Room

Room 2 now live online  
every week at the [the-saleroom.com](http://the-saleroom.com)

Clarke &  
Simpson



Clarke & Simpson Auction Centre

 CandSAuctions  @CandSAuctions

[www.clarkeandsimpson.co.uk](http://www.clarkeandsimpson.co.uk) 01728 746323

Campsea Ashe,  
Nr Wickham Market,  
Suffolk IP13 0PS

# Clarke & Simpson

Auctions

## Selected Antiques & Fine Art

Wednesday 17th May 2017  
at 10 am

### Order of Sale:

Ceramics and Glass	1-105
Silver and Plate	115-184
Jewellery	190-222
Objects and Collectables	230-393
Pictures and Prints	398-449
Rugs and Furniture	453-567

### Viewing:

Saturday 13th May, 9 am - 12 noon  
Monday 15th May, 2 pm - 8 pm  
Tuesday 16th May, 10 am - 4 pm  
Morning of Sale from 8.30 am

 @CandSAuctions

 CandSAuctions



Campsea Ashe  
Nr. Wickham Market  
Suffolk IP13 0PS  
Tel: (01728) 746323 Fax: (01728) 748173  
Email: [auctions@clarkeandsimpson.co.uk](mailto:auctions@clarkeandsimpson.co.uk)  
[www.clarkeandsimpson.co.uk](http://www.clarkeandsimpson.co.uk)

Online bidding via:

[the-saleroom.com](http://the-saleroom.com)

## Special Notices for Purchasers

Certain lots are catalogued as (A.F.), damaged, restored, etc., however the absence of any such notice does not imply that the piece is free from defects, nor does it indicate that other defects are not also present. Mention is not made of breakage, cracks, chips or any damage which can be noted by careful inspection, therefore, intending purchasers MUST, in all cases, be responsible for determining the condition of lots themselves.

**Special attention is drawn to the Conditions of Sale printed at the back of this catalogue.**

### Estimates

Presale estimates are intended only as a guide for intending purchasers, are given in good faith and subject to revision.

### Condition Reports

Clarke and Simpson are unable to guarantee that requests for condition reports/images received after the close of the viewing on the day prior to auction, will be responded to. Clarke and Simpson are happy to give a Condition Report on the physical condition of goods, this will be provided on behalf of the seller on the understanding that Clarke and Simpson are not entering into a contract with you in respect of the Condition Report and accordingly does not assume responsibility to you in respect of it. All lots are available for your own inspection or for inspection by an expert instructed by you, therefore these Condition reports are for guidance only and all lots are sold "as found".

### Commission Bids

The auctioneers will be pleased to execute bids for those unable to attend the sale. Lots will be purchased at the lowest bid the room bidding or any reserves will allow. In the event of identical bids, the earliest bid received will take precedence. There must always be a maximum limit indicated. Buy or unlimited bids will not be accepted. Commission bids placed by telephone are accepted at the client's risk. We urge our clients to place such commission bids before the start of the sale. All such commissions are left entirely at the buyer's risk.

### Telephone Bids

Please refer to conditions of sale printed at the back of this catalogue.

### Registration

All prospective buyers must register their name and address at our auction office and collect a numbered bidding card before the sale commences. If you are a successful purchaser please ensure that your number can be seen by the auctioneer and that it is your number that is called out at the fall of the hammer. Should there be any doubts as to the price or buyer, please draw the auctioneer's attention to it before the next lot is offered.

### Value Added Tax

The symbol \* after any lot number indicates that Value Added Tax is payable by the buyer on the "hammer price".

### Auctioneers Margin Scheme

The Auctioneers Margin Scheme allows auctioneers to sell items without VAT on the hammer price. Under the margin scheme an amount equivalent to VAT at the current rate is added to the buyer's premium. This amount cannot be refunded. The VAT element will not be shown separately on the buyer's invoice.

### Buyer's Premium

**A buyer's premium of 15% plus VAT will be added to the hammer price of each lot.**

**Please note that any lots purchased via the-saleroom.com auction service will be subject to an additional 3% charge + VAT at the rate imposed on the hammer price.**

### Payment

Payment can be made during or immediately after the sale by the following methods:

Cash (up to a maximum of £12,000 including VAT in accordance with Money Laundering Regulations 2007).

Debit Cards

Credit Cards (not American Express) Please note there will be a surcharge of 2.5% plus VAT for the use of these cards. We will not release goods for a period of 72 hours unless the cardholder attends the saleroom in person and presents the cards used for the transaction with proof of ID.

Bank Transfer - Account Name: Clarke and Simpson Auctions Limited

Account Number: Account No: 83428591

Bank: Barclays Bank PLC

Sort Code: 20-98-07

We do not accept cheques unless by prior arrangement.

### Packaging and shipping service.

All requests are sent to our specialist handlers at:

"the-saleroom.com Delivery Service" who can be contacted directly via [delivery@atgmedia.com](mailto:delivery@atgmedia.com)

### Attribution of Pictures and Drawings

Every effort is made to ensure the accuracy of any statement as to authorship, attribution, origin, date, age, provenance and condition of any lot whether or not such statement forms part of the description of any such lot. Whether any such statement is made orally or in the catalogue it is an expression of opinion and not to be taken as being or implying any warranties or representations of facts by the auctioneers. Each buyer by making a bid for a lot acknowledges that he has satisfied himself fully as to the attribution and condition of the lot.

- a) The forename(s) (or full stops where not known) and surname of an artist indicates in our opinion a work by the artist.
- b) The initials of the forename(s) and the surname of the artist indicates in our opinion a work of the period of the artist which may be wholly or in part his work.
- c) The surname of the artist indicates in our opinion a work of the school or by one of the followers of the artist or in his style and of uncertain date.
- d) *Signed, Dated, Inscribed* indicates in our opinion work signed/dated/inscribed by the artist.
- e) *Bears signature* indicates in our opinion that this is not the signature of the artist.
- f) *Attributed to* may be used to denote a traditional attribution based on style.
- g) *Manner of* indicates in our opinion a work executed in the artist/craftsman's style but of a later date.
- h) *After* indicates in our opinion a copy (of any date) of work of an artist or craftsman.

The addition of a question mark after any of the cataloguing terms above indicates an element of doubt.

## Ceramics and Glass

1

A Chinese Jiaqing oval plate, decorated river scene, 26cm; a Qianlong platter, 25.5cm; and various other 18th Century Chinese platters, (7) £200 - 300 †

2

A large collection of various 18th & 19th Century tea bowls and saucers, (46) £100 - 150 †

3

A 19th Century Chinese ovoid vase and cover, decorated figures, clouds and foliage, 22cm high £60 - 80 †

4

A small Imari pattern onion shaped vase, 7cm high; a Chinese blue and white baluster vase, AF, 22cm high; and a glazed pottery oriental vase, with raised figural decoration, (3) £20 - 40 †

5

A part suite of early 20th Century etched glassware, comprising finger bowls, decanter, and various wine glasses etc. £40 - 60 †

6

A set of six 19th Century graduated Masons ironstone oriental pattern jugs £200 - 300 †

7

A large Masons ironstone meat plate, decorated in the Imari pattern, 56cm wide £60 - 100 †

8

A Victorian oval plaster relief plaque, depicting boy and girl embracing, the boy carrying fruit, contained in a convex ebony frame, 75cm x 62cm in extremes £100 - 200 †

9

A quantity of Adderleys "Dresden" pattern teaware, (25) £40 - 60 †

10

A Locke & Co. Worcester cabinet plate, with painted decoration of a peacock on blush ivory ground, 20cm dia. £30 - 50 †

11

A 19th Century Sevres style hinged box, the cover decorated with a scene of a romantic couple heightened in pink and gilt; a matching hand mirror and a 19th Century porcelain cabinet plate, decorated flowers and bee on a rich blue ground, inscribed verso "Orchid.odon Toglossum Cervatessi", 24cm dia., (3) £40 - 60 †

12

A pair of 19th Century cranberry and gilt over laid glass lustres, with 9 floral painted panels and 9 cut prism drops, 31cm high £250 - 350 †

13

A Royal Worcester cup and saucer, decorated with birds amongst foliage, by Powell £40 - 60 †

14

A Royal Doulton figurine, "Primroses" HN1617, 17cm high £30 - 50 †

15

A Royal Worcester cream jug, having painted floral decoration on a cream ground, heightened in gilt, 15cm high £40 - 60 †

16

A Masons ironstone "Fruit Basket" pattern teapot £20 - 30 †

17

A collection of late 18th Century Worcester, and other porcelain tea bowls and saucers, (some damage) £100 - 150 †

18

A collection of various late 18th Century English porcelain cups and tea bowls, (mostly AF) £40 - 60 †

19

An 18th Century Worcester Fence pattern tea bowl; and similar saucer; another 18th Century tea bowl and saucer, decorated with Chinese fishing scene; another; and two 18th Century English porcelain shallow dishes, (8) £60 - 100 †

20

An unusual faience whistle, decorated with a figure and flowers, 7cm £20 - 40 †

21

An 18th Century English porcelain blue and white strainer, decorated in the Chinese manner; a later similar; an 18th Century blue and white pickle dish of leaf shape; and a similar period spoon tray, decorated with Chinese fisherfolk, 16.5cm long, (4) £40 - 60 †

22

An early Lowestoft bowl, bearing old paper label "Robert Brownley pattern 1770", 10cm dia. x 5.8cm high £40 - 60 †

23

A late 18th Century Worcester bird beak cream jug, decorated with Chinese buildings and trees, 8cm high; another similar jug, AF; and three various other 18th Century cream jugs, mostly (damaged), (5) £80 - 120 †

24

A Samson porcelain figure group, depicting a pipe player and dog standing before a floral encrusted tree, raised on rockwork base, 20cm high; and a 19th Century Coalport style study of a peacock, on floral encrusted base heightened in gilt, 18cm high, (2) £80 - 120 †

25

An 18th Century blue and white English porcelain teapot and cover, decorated in the Worcester pattern, unmarked, 14cm high £60 - 80 †



Lot 7



Lot 10



Lot 12



Lot 24



Lot 34

**26**  
A Samson porcelain bowl and cover, of fluted form with famille rose and armorial decoration; a similarly decorated porcelain tea caddy and a celadon crackle-glaze baluster vase, (3) £40 - 60 †

**27**  
An 18th Century Worcester blue and white teapot, having floral and butterfly decoration, the domed lid with flowerhead finial; a smaller similar, decorated with Chinese river scene; another decorated flowers, AF; a Worcester mustard pot and cover, AF; and a collection of four various teapot and sucrier lids, (8) £100 - 200 †

**28**  
A Worcester "Pine cone" pattern charger, with scallop border, 38cm dia., crescent mark to base £150 - 250 †

**29**  
A Worcester "Pine cone" pattern charger, with a scallop border, crescent mark to base, 38cm £150 - 250 †

**30**  
An 18th Century Worcester coffee can, decorated in the Chinese manner, 6cm high; another similar; and a 19th Century Flight Barr & Barr floral decorated tea cup and saucer, (3) £60 - 80 †

**31**  
An 18th Century Worcester shallow saucer dish, with fruit and flower decoration, crescent mark to base, 12cm dia.; and another similar, (2) £40 - 60 †

**32**  
A Chinese blue and white baluster vase, decorated with figures and foliage, 11cm high; a sang de boeuf baluster bottle vase, 14cm high; and a celadon ground vase, 16.5cm high, (3) £40 - 60 †

**33**  
A pair of 19th Century blue and white English porcelain sweet meat baskets, decorated in the Chinese manner, having scallop borders and pierced handles, 12cm dia. overall; and an 18th Century Worcester draining dish in the pine cone pattern, 20cm dia., (3) £80 - 120 †

**34**  
A 19th Century Metlach type ewer, having heraldic raised decoration with silver mount to the neck, 31cm high £40 - 60 †

**35**  
A pottery tobacco jar; a large Victorian pottery jug with floral decoration; 4 smaller similar jugs; and a floral decorated Rockingham design teapot, (7) £20 - 30 †

**36**  
A small Victorian porcelain Toby jug; a Dresden taper stick, AF; and a small oval floral decorated shallow dish, AF, (3) £20 - 30 †

**37**  
A Victorian copper lustre large mug, having blue band decorated with flowers; three similar jugs and three other pieces, (some damage), (7) £40 - 60 †

**38**  
A German porcelain Meissen style charger, having floral spray decoration and gilt border, 32cm dia. £20 - 40 †

**39**  
Two Victorian blue and white Staffordshire meat platters £20 - 30 †

**40**  
A 19th Century Gilles Jeune vase, having foliate decoration on a cream and pink ground, heightened in gilt, 21cm high £20 - 40 †

**41**  
A 19th century Coalport style floral encrusted vase, having pierced flared rim, flanked by handles heightened in gilt, 25cm high £20 - 40 †

**42**  
A pair of 19th Century Dresden multi coloured glazed porcelain figures, decorated floral bocage, 41cm high £200 - 400 †

**43**  
A pair of late 19th Century Japanese satsuma vases, of traditional form, profusely decorated with foliage and peacocks, heightened in gilt, signed to base, 26cm high £80 - 120 †

**44**  
A pair of Majolica type plant holders, in the form of fierce Dogs of Fo, 30cm high £60 - 80 †

**45**  
Two 19th Century Chinese graduated meat platters, decorated with flowers and objects around a central motif, 50cm in extremes; two smaller similar plates and a matching baluster jug, decorated with flowers and central pagoda with wrythen handle, AF, (5) £80 - 100 †

**46**  
A Chinese porcelain garden seat, decorated with flowers and butterflies on a turquoise ground, 40cm high x 25cm dia. £40 - 60 †

**47**  
A Chinese famille rose decorated jardinière, 40cm dia. x 39cm high, on hardwood folding stand £30 - 50 †

**48**  
A pair of Chinese famille jaune vases, profusely decorated with dragons, clouds and flaming pearls, 62cm high £200 - 400 †

**49**  
A Majolica type ewer, with dragon and mask head handle, decorated with panels of cherubs and semi naked maidens, raised on circular spread foot, 56cm high overall £60 - 100 †

**50**  
A large Antique earthenware baluster floor vase, with loop handles, 104cm high £60 - 100 †

**51**  
Two white porcelain wall sconces, decorated with cherubs, ribbons and cornucopia, AF £40 - 60 †



Lot 40



Lot 42



Lot 43

- 52**  
A large and imposing pair of Italian Majolica type pottery figures of seated dogs, 109cm high  
£500 - 800 †
- 53**  
A 19th Century Meissen tea cup, decorated with a Romantic scene; a similar saucer with flower and fruit decoration; various other continental porcelain cups and saucers; early 19th Century English pottery mug, inscribed "When this you see Remember"; two 19th Century pottery jugs etc., (11)  
£20 - 40 †
- 54**  
A 19th Century Chinese chocolate pot and cover, AF; a collection of various 19th Century Chinese and other saucer dishes and a tea bowl and saucer, (some damage), (18)  
£20 - 40 †
- 55**  
A set of 8 Dresden pattern coffee cups and saucers; and a pair of continental porcelain pierced border plates, having foliate spray decoration, (9)  
£20 - 40 †
- 56**  
A late 18th/early 19th Century blue and white English porcelain mug, unmarked, 14.5cm high; a blue and white porcelain beaker with flower and insect decoration, 9.4cm high; a Worcester bowl, decorated with the fence pattern, crescent mark to base, 9cm dia.; and a Victorian china blue and white bowl, (4)  
£60 - 80 †
- 57**  
An 18th Century English porcelain scallop shaped serving dish, probably Worcester, decorated with flowers, fruit and insects; and a pair of matching scallop bordered shallow dishes, (3)  
£80 - 120 †
- 58**  
A collection of various 18th Century and later Worcester and other tea bowls, saucers and cups, (11)  
£60 - 100 †
- 59**  
A late 18th Century English blue and white porcelain scallop bordered plate, decorated in the Chinese manner with various objects and artifacts, 22cm dia.; and four similar shallow bowls, (5)  
£100 - 150 †
- 60**  
A Coalport Imari pattern tea set, (46)  
£60 - 100 †
- 61**  
A Staffordshire pottery two handled frog mug, inscribed "The Willy Brood, a peck of malt"; another; two Staffordshire figure groups and two Staffordshire castle spill holders, (6)  
£30 - 50 †
- 62**  
A Nankin Cargo tea bowl and saucer; a pair of famille rose decorated octagonal plates; two similar plates; an armorial decorated plate and a Canton saucer dish, (some damage), (8)  
£60 - 100 †
- 63**  
Eight 19th Century cut glass finger bowls; and three 19th Century cut glass ice plates, (11)  
£40 - 60 †
- 64**  
Ten 19th Century continental porcelain covered cups, having fruit finials, trailing foliage heightened in gilt; together with a matching table stand and an armorial decorated cup, (16)  
£40 - 60 †
- 65**  
A 19th Century Chinese famille rose decorated part tea set; and various other items of Chinese teaware, (some damage), (15)  
£40 - 60 †
- 66**  
A 19th Century hobnail cut triple ring neck decanter; a similar claret jug; a maul shape decanter with thumb press decoration and triple ring neck; and a 19th Century etched glass beaker, AF, (4)  
£40 - 60 †
- 67**  
A Staffordshire figure group, "Tam O Shanter" and "Souder Johnny", 28cm high  
£40 - 60 †
- 68**  
A 19th Century German porcelain candelabra, decorated with a maiden and cherub with floral encrusted trailing foliage, 54cm high; and two continental porcelain figures, (3)  
£60 - 100 †
- 69**  
A pair of cartouche shaped Victorian porcelain wall plaques, Genevese pattern, 33cm x 27cm in extremes  
£100 - 150 †
- 70**  
A Delft plaque, by H.W. Mesdag, depicting fishing vessels on a moonlit sea, 30cm x 20cm; and another depicting a snow bound canal scene, 24cm x 19cm, (2)  
£100 - 150 †
- 71**  
A Dutch pottery plaque, depicting woman and child seated on a shoreline with boats in the background, signed E Vervcer, 32cm x 20cm  
£40 - 60 †
- 72**  
An early 20th Century Copeland part dessert service, with green and ivory banded borders, heightened in gilt, central floral reserves; and a pair of Booths floral decorated plates etc., (11)  
£20 - 40 †
- 73**  
A 19th Century continental porcelain figure, depicting a lady carrying a child in a basket, 15.5cm  
£80 - 120 †
- 74**  
A Meissen porcelain figure of a cherub, entitled "Felicite", 20cm high  
£200 - 300 †
- 75**  
A continental porcelain figure group, depicting Mercury with cherub and cockerel, 21cm high  
£80 - 120 †



Lot 69



Lot 70



Lot 71



Lot 86

**76**  
**Three German porcelain figures**, depicting young maidens in various poses, 21cm, (some damage) £80 - 120 †

**77**  
**A continental porcelain figure group**, impressed to the base D & TL, depicting a courting couple with floral encrusted decoration, 21cm high £80 - 120 †

**78**  
**A German porcelain figure of a boy drummer;** another of a maiden holding grapes; small study of a seated cherub with basket; two Italian porcelain figure groups; and a German porcelain lamp, (6) £80 - 120 †

**79**  
**A 19th Century glass pedestal goblet**, having gilt entwined monogram decoration, 18.5cm dia. x 21.5cm high £20 - 40 †

**80**  
**Six glass sundae dishes with silvered loop handles;** a cut glass five piece cruet set and three tall stem liqueur glasses with coloured bowls £40 - 60 †

**81**  
**A part suite of mid 20th Century glassware**, with gold leaf banded decoration, comprising 2 decanters with faceted stoppers, 32cm high, 7 champagne saucers, 4 small and 1 large wine glass, and 6 sherry glasses £40 - 60 †

**82**  
**A Worcester Royal Porcelain Works charger**, decorated "The Witches Frolic" from the Ingoldsby Legends, 40cm dia. £20 - 40 †

**83**  
**A large and unusual circular Wedgwood creamware dish and drainer**, with matching triform shaped draining dish, raised on tapering cone feet, with green painted foliate borders, pattern number 1051, (3) £80 - 120 †

**84**  
**Six various 18th Century Delft plates** £50 - 100 †

**85**  
**A Holscht tea cup**, with fruit and flower painted decoration, with gilt heightened scroll handle; a similarly decorated Meissen saucer; and a Richard Briggs & Co., scenic decorated breakfast cup and saucer, (4) £30 - 50 †

**86**  
**A fine quality 19th Century Derby cabinet plate**, painted with flowers upon a window ledge within shaped rich blue border, heightened in gilt, inscribed to the reverse "F. Rouse.sen", 24cm dia. £80 - 120 †

**87**  
**A late 19th Century Bohemian ruby etched glass jewellery casket**, decorated with cherubs and vines, 12.5cm wide x 11cm high, (some damage) £100 - 200 †

**88**  
**An 18th Century Worcester baluster milk jug**, having scrolled moulded handle, decorated with pine cones and butterflies, 20cm high £60 - 100 †

**89**  
**A set of seven Kangshi period octagonal tea bowls**, with foliate decoration; and five matching saucers £80 - 120 †

**90**  
**A 19th Century Chinese porcelain copper red and under-glazed blue decorated twin handle vase**, having six character mark square seal to base, 40cm high £300 - 500 †

**91**  
**A 19th Century Staffordshire figure**, entitled "Death of the Lion Queen", the group modelled as Ellen Bright wearing a jacket and kilt with recumbent lion and standing leopard, 37cm high £250 - 350 †

**92**  
**A pair of glazed pottery Tang style horses**, 55cm long x 52cm high £60 - 80 †

**93**  
**A 19th Century Chinese blue and white mug**, with dragon handle, AF; a 19th Century Chinese bowl profusely decorated with ochre birds and foliage, heightened in gilt; various similarly decorated teaware; famille rose decorated cream jug etc. £40 - 60 †

**94**  
**A 19th Century Chinese porcelain blue and white charger**, decorated with prunus blossom, 37.5cm dia. £40 - 60 †

**95**  
**A small 17th Century stoneware bellarmine jug**, of typical form, 22cm high £100 - 150 †

**96**  
**A late 18th Century Chinese porcelain chocolate pot**, the cover with fruit and flower finial, the body sparsely decorated in the famille rose palette with wrythen handle, 24cm high; and a Chinese porcelain celadon green double gourd shaped vase, 26cm high, (2) £100 - 150 †

**97**  
**A blue and white transfer printed chestnut basket**, stamped Leeds Pottery; and a mask spouted porcelain jug, decorated in cobalt blue and gilt, (2) £70 - 90 †

**98**  
**A 19th Century Chinese octagonal hot plate**, decorated with pagodas and a river, AF; a similarly decorated 19th Century Chinese platter; a Chinese circular blue and white bowl, decorated with a river scene; similar oval bowl; various other Chinese plates and saucer dishes, (13) £60 - 100 †

**99**  
**A 19th Century Japanese porcelain square section bottle vase**, converted to a table lamp £30 - 50 †



Lot 90



Lot 91



Lot 94



**100**  
A pair of Chinese Imari pattern vases and covers, raised on hardwood stands, 50cm overall  
£100 - 150 †

**101**  
An unusual oriental blue glazed arrow vase, raised on an ormolu base, 46.5cm high  
£250 - 350 †

**102**  
A pair of Crown Devon vases, having panels by Stuart of Peacocks heightened in gilt, 34cm high  
£40 - 60 †

**103**  
A pair of 20th Century Chinese Canton baluster floor vases, profusely decorated with figures and flowers in coloured enamels, 93cm high  
£400 - 600 †

**104**  
A pair of large and imposing Italian Majolica type pottery figures of seated dogs, 113cm high  
£500 - 800 †

**105**  
A large pair of 20th Century Chinese blue and white porcelain floor vases, profusely decorated with birds and blossom, flanked by pierced scrolled handles, 131cm high  
£600 - 800 †

**106-114**  
No Lots

## Silver and Plate

**115**  
A Rogers Bros. plated American tea kettle on spirit heater stand, 37cm  
£60 - 80 †

**116**  
An oval plate on copper entree dish, having acanthus border and detachable handle; an oval vine decorated serving dish; various other plated serving dishes; and a pair of oval plated entree dishes, (7)  
£40 - 60 †

**117**  
A pair of 19th Century Sheffield plate candlesticks, of neo classical design, 28cm high  
£30 - 50 †

**118**  
An American plated cocktail shaker, with revolving ingredients, manufactured by Napier, USA, 27cm high  
£40 - 60 †

**119**  
An Austrian glass and silver plate mounted claret jug, in the form of a cockatoo, 27cm high  
£100 - 200 †

**120**  
A quantity of various electro plated ware, to include an oval foliate engraved fruit basket, two plated tureens, a tankard, various salvers, muffin dish, sugar scuttle etc.  
£40 - 60 †

**121**  
A quantity of various plated ware, to include a pair of coasters, oval sauce tureen and stand, toast racks, coffee pots; oval gallery drinks tray etc.  
£40 - 60 †

**122**  
Two plated entree dishes, with beaded borders and detachable keys; a plated fruit basket; three plated casserole holders; and various cutlery etc.  
£30 - 50 †

**123**  
A cased set of six silver handled fruit knives; a cased pair of plated and mother of pearl handled fish servers; a mahogany cased set of plated fish knives with mother of pearl handles; and various other nominal plated items etc.  
£40 - 60 †

**124**  
A pair of silver backed hair brushes, of Art Deco design; a similar plated cigarette case; a silver cigarette case; various silver handled manicure items; a silver preserve spoon and other nominal items of silver and plate etc.  
£40 - 60 †

**125**  
A plated Art Nouveau leaf shaped tray, with matching sugar bowl and cream jug; a plated asparagus stand and servers; and an unusual plated egg serving spoon, (6)  
£30 - 50 †

**126**  
A Victorian plated three piece tea set, of cushion shape, raised on ball and claw feet  
£60 - 80 †

**127**  
A Victorian electro plated coffee pot, having foliate engraved decoration and ivory finial to the lid, 27cm  
£20 - 40 †

**128**  
An Edwardian silver compot, having foliate embossed and pierced panel decoration, 24cm dia., Sheffield 1902, approx. 13ozs.  
£100 - 150 †

**129**  
An Edwardian three piece silver tea set, Birmingham 1902-1905, approx. 29ozs. gross  
£250 - 350 †

**130**  
A silver trophy cup, having central raised band, Birmingham 1905, 4ozs.; a pair of Edwardian silver spill vases by Walker & Hall, Chester 1906, and a cased silver egg cup and spoon, Birmingham 1939, (5)  
£60 - 80 †

**131**  
Four Eastern white metal (probably Indian) baluster posy vases; a smaller similar; a small goblet with raised animal and floral decoration; a pair of capstan shaped pepper pots; and a white metal tea infuser, (9)  
£40 - 60 †

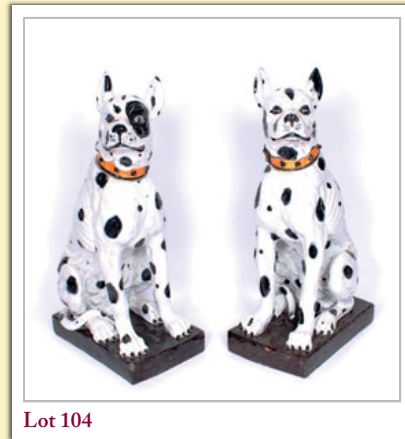
**132**  
An Indian white metal bowl, having profuse foliate decoration; a similar small pierced shallow dish; and 6 various similar posy vases, (8)  
£60 - 100 †



Lot 101



Lot 102



Lot 104



Lot 105



Lot 133

133

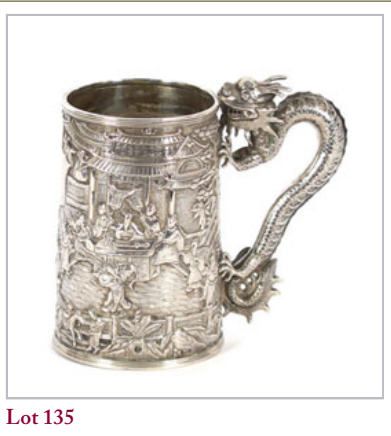
A Siamese white metal bowl, profusely decorated with figures and foliage; a smaller similar, (probably Indian); and a similar lobed shape bowl, decorated with hunters and animals beneath pierced foliate panels and raised on scrolled fish feet, (3) £60 - 80 †

134

An Indian white metal baluster cream jug, decorated with elephants and foliage; and two smaller similar cream jugs, (3) £60 - 100 †

135

A Chinese white metal tankard, having dragon decorated handle and profuse body decoration of warriors and an interior court scene, 14.5cm high £200 - 300 †



Lot 135

136

A large Eastern white metal goblet, decorated with deities, exotic birds and various figures, raised on a tapering stem and circular spread foot, 27cm high x 14cm dia. £200 - 300 †

137

An American three piece coffee set, having foliate embossed decoration, raised on scrolled pad feet £200 - 400 †

138

Three George III silver Old English pattern tablespoons; a pair of Fiddle pattern similar, monogrammed; a pair of large plated serving spoons; and an electro plated and leather mounted hip flask, (8) £40 - 60 †



Lot 136

139

A silver presentation salver, having pie crust border, raised on three scrolled feet, Sheffield 1923, 31cm dia., 30ozs. £250 - 350 †

140

A silver trophy cup; for Corviglia ski club, London 1936; a smaller trophy cup, Birmingham 1935, 7ozs.; and a silver mounted photograph frame, (3) £40 - 60 †

141

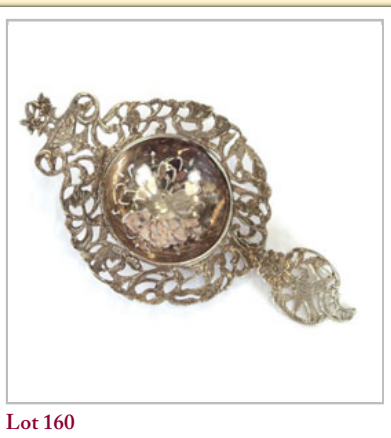
A Victorian silver coaster, having pierced foliate borders and wooden base; and an American Sterling pierced basket, 18cm dia., (2) £80 - 120 †

142

A cased set of six silver handled tea knives, various silver and white metal spoons and forks; a plated double ended marrow scoop; and other nominal items £40 - 60 †

143

A pair of George III silver oval pedestal salts, probably London 1772; a pair of Georgian circular salts with foliate decoration and raised on hoof feet, marks indistinct and AF; a Victorian silver vase shaped pepper pot; another later example; a pair of silver baluster peppers; various other cruet items; silver and plated condiment spoons etc. £60 - 100 †



Lot 160

144

An American Sterling fruit slice, by Crosby & Morse, having foliate engraved decoration; 7 similar shell fish picks; a pair of 19th Century white metal sugar tongs; various silver and plated cutlery etc. £30 - 50 †

145

A Victorian silver cream jug, having foliate engraved decoration and gilded interior, London 1880; a silver cream jug with serrated border, flying C scroll handle and raised on pad feet, Chester 1918; a silver cream jug with half fluted body decoration and presentation inscription for 1906, (marks rubbed); and a small continental white metal cream jug with coin insert to the base, (4) £60 - 80 †

146

A George V silver photograph frame, with embossed decoration to the rectangular surround; two smaller circular photograph frames; and a small oval example, (4) £40 - 60 †

147

An Art Nouveau silver photograph frame, having circular aperture, decorated with Irises and scrolls, Birmingham 1903, maker Mark Zimmerman, 19.5cm x 10cm £40 - 60 †

148

A Victorian silver photograph frame, of shaped rectangular form, embossed with foliate scrolls, easel back, 20cm x 14cm; and a similar smaller frame, 18cm x 11cm, 1898, (2) £60 - 100 †

149

A Victorian silver foliate engraved Christening mug, Birmingham 1885; a pair of cased silver shell shaped salts; and a cased set of four plated salts etc., AF £40 - 60 †

150

A Chinese white metal card case, decorated with figures in an exotic landscape with vacant cartouche to the front and profuse bamboo shoot and bird decoration to the reverse; and two Eastern white metal matchbox holders, (3) £40 - 60 †

151

An early 20th Century silver bon bon dish, of lobed pierced form, Birmingham 1912; and a small Edwardian silver foliate embossed pin dish, Birmingham 1902, (2) £40 - 60 †

152

An unusual sterling vase, in the form of a torso, stamped Sterling and YTK, numbered 347, 8cm high £80 - 100 †

153

Fourteen Sterling novelty place settings, marked "Siam Sterling", in the form of animals, buildings and figures £150 - 250 †

154

An American white metal mug, having foliate engraved decoration and central cartouche, inscribed "Elizabeth Camp Brunsen from EDC"; and a toddy ladle with coin inset bowl and whale-bone twist handle, (2) £60 - 80 †

155

A Victorian cased silver Fiddle and shell patterned Christening spoon and fork, London 1845/1847; a silver child's pusher, London 1919; and a white metal spoon with beaded pattern, (4) £40 - 60 †

156

A pair of Edwardian silver salts, Birmingham 1902; three pieces of silver backed dressing table ware; and a silver napkin ring, (6) £40 - 60 †

157

An Edwardian cut glass and silver mounted scent bottle, 18cm high £40 - 60 †

158

A large pint sized cut glass and sterling mounted hip flask, with monogrammed detachable cup, 19.5cm £50 - 80 †

159

A cased silver preserve set, comprising a butter knife, and two jam spades, Sheffield 1889-1890; a cased set of white metal and enamel cockerel decorated cocktail sticks; a pair of continental gilded metal figural decorated fancy spoons; various silver teaspoons; a preserve spade and a Victorian silver fork etc. £40 - 60 †

160

A continental white metal tea strainer, having pierced foliate and bird decoration, 16cm, marks indistinct £20 - 40 †

161

A silver hinged box, of cartouche shape with gilded interior and presentation inscription, engine turned decoration to the outside, Birmingham 1928, 11cm long £60 - 80 †

162

A continental white metal cigarette case, having gilded interior with presentation inscription, the hinged lid monogrammed TP; together with a Victorian silver Vesta case, London 1889, (2) £60 - 80 †

163

A Samson Mordan & Co., "Man in the moon" silver book mark; and another with Chinese cymbal terminal, (2) £50 - 80 †

164

Four silver bladed fish knives, and four matching forks, hallmarked for London 1875 and 1888, with finely carved ivory handles, decorated with Hindu deities and mythological beasts £200 - 300 †

165

A Victorian silver wine vessel, with foliate embossed handle above a baluster body with gilded interior, raised on circular spread foot, London 1902, 18cm overall £80 - 120 †

166

An oval silver vinaigrette, marks indistinct; a continental white metal small hinged box with figure and foliate decoration; and another having floral decoration and dove finial, (3) £60 - 80 †

167

A George III silver mug, of octagonal form, with foliate engraved decoration and acanthus scroll handle, probably Newcastle 1797; and a George V Britannia standard silver mug with ringed decoration and central monogram, presentation inscription 1914, hallmarked London 1909, (2) £60 - 100 †

168

A George III silver basting spoon, of Old English pattern, monogrammed, London 1774 £40 - 60 †

169

An American white metal cushion shaped teapot, and matching sucrier, by Stanwood & Harris of Boston, the lids decorated with recumbent hounds £80 - 120 †

170

A small silver foliate embossed patchbox, Birmingham 1898; an oval hinged similar, Birmingham 1899; a foliate decorated white metal hinged box; an oval continental white metal example with gilded interior and line decoration; and small and silver mounted tidy jar, (5) £40 - 60 †

171

A George III silver wine funnel, London 1791, AF; a small white metal tasting cup; a Georgian silver vine and mask decorated decanter label, "Brandy"; a modern silver decanter label, "Whisky"; and an oval plated example, "Sloe Gin", (5) £40 - 60 †

172

A George III silver baluster mug, foliate embossed with later presentation inscription, London 1783, 12cm high, 10ozs. £100 - 200 †

173

A Victorian cut glass scent bottle, green tinted of tapering form, possibly Birmingham 1878, 13.5cm £40 - 60 †

174

A pair of George III silver coasters, having turned wooden bases, pierced sides with bright cut decoration, London 1801, 13cm dia. £200 - 300 †

175

A George III silver dessert basket, of shaped rectangular form, having gadrooned borders and floral embossed decoration with swing handle, raised on a pedestal foot, London 1808, marks rubbed, 30cm x 24cm, 22ozs. £200 - 300 †

176

A Victorian silver Chatelaine, London 1896, maker Wm. Comyns, attached with a silver mounted penknife, a pair of scissors in a sheath, a retractable pencil and a small silvered metal chain link purse £100 - 200 †



Lot 172



Lot 174



Lot 175



Lot 176



Lot 190

**177**  
A part silver backed dressing table set, comprising four brushes decorated in the Art Nouveau style, *Birmingham 1901*, and another table brush, *Birmingham 1899*, (5) £40 - 60 †

**178**  
An Edwardian silver dressing table mirror, profusely embossed with foliate scrolls, mask and flowerheads, vacant cartouche, having easel back, *Chester 1901*, maker James Deakin, 47cm x 36cm £200 - 400 †

**179**  
A pair of American dwarf candlesticks, on circular weighted bases, 10cm high £40 - 60 †

**180**  
A Prelude American sterling cream jug and sucrier; and similar oval stand with foliate decorated border, (3) £60 - 100 †

**181**  
Eight various silver and white metal thimbles; a small silver Vesta case; an Eastern white metal matchbox holder; silver bladed and mother of pearl folding knife; another smaller similar; two pierced buckles; a silver mounted prayer book with cherub decoration; various other items etc. £60 - 80 †

**182**  
Eleven silver and enamel presentation spoons, having greyhound head terminals, the case with inscription "Catford Stadium, the 111th Catford Trophy 28th February 1935, Won by Brodsted", hallmarked *Birmingham 1934* £30 - 60 †

**183**  
A small silver foliate engraved Vesta case; a white metal Art Nouveau design part chatelaine; and a silver bullet shaped cigarette holder case, AF £40 - 60 †

**184**  
A white metal shallow dish, decorated with a double headed eagle £20 - 40 †

**185-189**  
No Lots



Lot 194

**193**  
A Victorian oval cameo brooch; a cameo set bracelet; various filigree work items; 3 stick pins etc. £40 - 60 †

**194**  
Two strands of Vintage amber coloured beads £140 - 180 †

**195**  
An 18 carat gold opal and chip diamond set ring; an 18 carat gold wedding band; a yellow metal and white stone set eternity ring; a yellow metal and red stone set cluster ring etc. £100 - 150 †

**196**  
An oval silver foliate engraved locket, hung to a white metal chain; a silver thimble; a silver brooch, AF; and a micro mosaic decorated oval hinged box, (5) £30 - 50 †

**197**  
A Victorian yellow metal oval cameo brooch, depicting head and shoulders study of a lady with flowers in her hair £30 - 50 †

**198**  
A ladies 9 carat gold cased Rolex wrist watch, with expandable strap £40 - 60 †

**199**  
Three 22 carat gold plain wedding bands, approx. 7.7gms £150 - 200 †

**200**  
A plated Waltham pocket watch, retailed by Henry Bedford £20 - 40 †

**201**  
An Edwardian circular silver Vesta case, monogrammed SM, *Birmingham 1906* £20 - 40 †

**202**  
A pair of silver Art Nouveau buttons, depicting ladies heads in profile, *Birmingham 1901*; and a pair of Sterling and enamel Art Nouveau similar buttons £40 - 60 †

**203**  
An S. Mordan & Co. 9 carat gold retractable pipe router; a white metal foliate engraved retractable pencil with integral penknife; a 9 carat gold mounted cheroot holder with amber mouth piece; and an ebonised cigarette holder with 9 carat gold mount, (4) £40 - 60 †

**204**  
A quantity of amber and amber coloured stones £40 - 60 †

**205**  
A 9 carat gold and pearl set star brooch; a continental gilt metal snap bangle; a Victorian shell cameo brooch, AF; a filigree work and green hardstone set pendant; a white metal and marcasite ladies cocktail watch; a yellow metal Avia ladies watch; various other costume jewellery etc. contained in a canter-lever jewellery box £80 - 120 †



Lot 197

## Jewellery

**190**  
A circular white metal locket, foliate engraved and monogrammed, inscribed "Christmas 1894" £30 - 50 †

**191**  
An 18 carat gold wedding band, with inscription; another 18 carat gold wedding band with beaded decoration; a yellow metal signet ring; various part ear-rings etc. £40 - 60 †

**192**  
A collection of Georgian and Victorian silver crowns; half crowns, shillings, sixpences and other silver coinage etc. £150 - 250 †



Lot 200

206

A yellow metal stick pin, set with a solitaire diamond of approx. 1/2 carat; another yellow metal stick pin set solitaire diamond approx. 1/4 carat; and an 18 carat gold diamond and red stone set stick pin of horseshoe shape, 6gms total, (3)  
£150 - 250 †

207

A 9 carat gold bar brooch; a pair of 9 carat gold ear-rings; a yellow metal fine link necklace, 4gms total and a 22 carat gold wedding band, 3gms  
£100 - 150 †

208

A 9 carat gold gent's ring, AF; two small 9 carat gold rings; a 9 carat gold wide band ring; a 9 carat gold cameo ring; a yellow metal wedding band; and a yellow metal ring marked K18, (7)  
£250 - 350 †

209

A triple string pearl necklace, with white and yellow metal clasp, set with diamonds; a yellow metal bracelet, AF; and a yellow metal clasp, (3)  
£40 - 60 †

210

A yellow metal ring, marked 750, set with diamonds and a green stone; a yellow metal solitaire diamond ring; and a 9 carat gold cameo ring, 8gms total, (3)  
£80 - 120 †

211

A white metal ring, set with a central blue cabochon stone flanked by diamonds; and a yellow metal ring set with a single white stone, (2)  
£40 - 60 †

212

A cameo brooch, with yellow metal mount; an oval brooch set with amethyst coloured stones; a claw pendant with yellow metal mount; an oval glass fronted locket, AF; and an amber coloured pendant, (5)  
£60 - 80 †

213

Two Eastern white metal bangles; a pair of Eastern filigree work white metal ear-rings; various other costume jewellery; a small collection of semi precious stones; two silver bladed and mother of pearl mounted folding fruit knives etc.  
£40 - 60 †

214

A yellow metal and engine turned decorated sectional cigarette holder, with amber mouth piece and end section, cased; and a Victorian yellow metal and seed pearl decorated bar brooch, AF  
£30 - 60 †

215

A yellow metal chain, approx. 76cm long, 37gms total  
£250 - 350 †

216

A 9 carat gold RAF brooch; a 9 carat gold RAF bracelet and a stick pin, 14gms total, (3)  
£100 - 150 †

217

A yellow metal bangle; a 9 carat gold ID bracelet; and a 9 carat gold bracelet with 15 carat gold clasp, 34gms total, (3)  
£200 - 300 †

218

A pair of yellow metal cuff-links, stamped 750, 16gms; and a pair of 9 carat gold cuff-links, 7gms  
£250 - 350 †

219

A yellow metal bracelet, marked 750; a similar necklace; and a ring, 56gms total, (3)  
£800 - 1,200 †

220

An 1887 half sovereign with yellow metal mount, 4gms; an 1868 one dollar coin, 1.5gms; a yellow metal pendant and an early coin or token, (4)  
£150 - 250 †

221

A ladies 9 carat gold Omega wrist watch; and two Omega watch boxes  
£30 - 50 †

222

Two oval white metal foliate engraved lockets; a white metal bar brooch; an oval foliate and bird decorated white metal brooch; an ebonised brooch with painted portrait panel; two agate mounted brooches; a filigree work and enamel white and yellow metal bracelet; a yellow metal coin set brooch; a bar brooch; two others etc.  
£60 - 100 †

223-229

No Lots

## Objects and Collectables

230

A brass cased carriage clock, having corinthian column decoration, striking movement with repeat button, 14cm high  
£200 - 300 †

231

A brass cased carriage clock, having striking movement, stamped R & Co., Paris, white enamel Roman numeral dial, 11cm high  
£150 - 250 †

232

A miniature brass cased carriage timepiece, contained in a fitted leather carrying case, white enamel Roman numeral dial, 10cm high overall  
£30 - 50 †

233

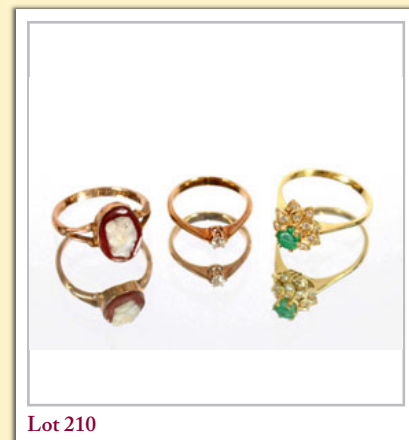
A pair of miniature yellow metal Stanhope type opera glasses; a pair of ivory similar inscribed Bordeaux; a pair of miniature scissors; a penknife and other items  
£20 - 40 †

234

A set of 19th Century brass and steel travelling scales, in mahogany box  
£40 - 60 †

235

A red stained and natural ivory travelling chess set, contained in a folding wooden box  
£20 - 40 †



Lot 210



Lot 215



Lot 230



Lot 231



Lot 236

**236**  
A Staunton chess set, in mahogany case  
£200 - 300 †

**237**  
A 19th Century rosewood sewing box, having mother of pearl inlay, complete with contents to include: a rosewood sewing clamp, a horn cotton holder, ivory pin cushion, four coquilla nut carvings etc.  
£80 - 120 †

**238**  
A 19th Century French bronze sarcophagus shaped encrrier, 13cm high x 11cm long  
£100 - 200 †

**239**  
A 19th Century Limoges style plaque, after Francois Lemoyne, "Hercules and Cacus", contained in a faux walnut Dutch style stipple frame, 12cm x 15.5cm, AF  
£100 - 200 †

**240**  
A 19th Century sailor's shell Valentine work box, fitted with a mirrored interior, applied with shells overall; together with another similar box circular sailor's shell picture, etc.  
£300 - 500 †

**241**  
A fan, with floral painted silkwork panels and ivory sticks; another decorated with birds and butterflies; a faux mother of pearl example, AF; and a faux tortoise shell feather decorated fan, (4)  
£30 - 50 †

**242**  
A small Chinese bronze baluster vase, having raised floral decoration, 9.5cm high; a bronze study of Ganesh, 12cm high; and a small enamel decorated posy basket, (3)  
£40 - 60 †

**243**  
A Victorian iron letter clip, in the form of a birds head with cut garnet eyes  
£60 - 80 †

**244**  
A Victorian beadwork bag, with "Man-o-War" and floral decoration  
£40 - 60 †

**245**  
An Ancient Egyptian bronze winged beetle pendant; together with a blue and green faience type necklace  
£40 - 60 †

**246**  
A late 19th Century unusual primitive wood carving, of a girl, modelled as a letter opener, 34cm  
£30 - 50 †

**247**  
An interesting album of Suffolk postcards  
£20 - 40 †

**248**  
An Eastern white metal prayer wheel, AF; a silvered baby's rattle, AF; various other objects to include an agate handled paper holder, two plated decanter labels, silver cased penknife etc.  
£40 - 60 †

**249**  
An early 20th Century Northumberland heart shaped willow and whale-bone marriage basket, 17cm  
£60 - 100 †

**250**  
A 19th Century Grand Tour type micro mosaic plaque, depicting medieval port scene, 4.5cm x 7cm  
£30 - 50 †

**251**  
A 17th Century white metal combined seal and holy water container, formed as a study of the Virgin Mary holding the infant Christ, possibly Spanish  
£200 - 300 †

**252**  
A spinach green jade bowl, 13.5cm dia.; and a small grey hardstone bowl, 5.5cm dia., (2)  
£60 - 100 †

**253**  
A 19th Century continental papier-mâché snuff box, the hinged lid painted with a female beauty, the interior inscribed Le Roman, 9.3cm  
£30 - 50 †

**254**  
A 19th Century black and gilt silhouette, of a fashionable lady; and two similar gentlemen, in ebonised and brass mounted frames  
£40 - 60 †

**255**  
A 19th Century black and gilt silhouette of a lady, wearing a bonnet; and two similar studies of gentlemen  
£40 - 60 †

**256**  
A bronze figure of a young boy, with his hands in his pockets, raised on a green marble base, 21cm high overall  
£50 - 80 †

**257**  
A 19th Century South East Asian Keris, of typical form and two Keris carved wooden grips  
£40 - 60 †

**258**  
A Chinese engraved brass and copper lined box, decorated with mountains and pagodas; a carved ivory puzzle ball, AF; and a small carved ivory puzzle ball seal, (3)  
£40 - 60 †

**259**  
A 19th Century Russian wooden icon, typically painted with three saints, 31cm x 23cm  
£150 - 250 †

**260**  
A pair of Yi Sing vases, having enamel painted decoration of cranes and foliage, 17cm high; a Chinese blue and white box and cover having stylised floral decoration; and two Japanese dolls  
£20 - 40 †

**261**  
A Bakelite and brass mounted Pixie fishing reel  
£40 - 60 †

**262**  
A walnut and brass patent fishing reel, 13cm dia.  
£40 - 60 †



Lot 250



Lot 253



Lot 256

**263**  
A collection of various Antique keys £30 - 50 †

**264**  
A 17th Century church lock and key £40 - 60 †

**265**  
A Japanese carved ivory tusk, with dragon decoration, 61cm long £40 - 60 †

**266**  
An Antique Indian ivory box, 22cm wide, AF £20 - 30 †

**267**  
A Simon & Halbig porcelain doll's head; another stamped SFBJ Paris; a German example; two pine articulated dolls, AF etc. £40 - 60 †

**268**  
A vintage "Felix the cat" figure, 34cm £40 - 60 †

**269**  
A 19th Century marble figure of a young child, holding a bird's nest, AF, 61cm long £100 - 150 †

**270**  
A mahogany decanter box, 45cm wide £20 - 40 †

**271**  
A quantity of various Antique pewter, including a large broad rim charger, various plates, tankards, coffee pot etc. £60 - 100 †

**272**  
A 19th Century mahogany and brass mounted writing box, fitted sunken side carrying handles and vacant cartouche, 28cm wide £30 - 50 †

**273**  
A Victorian walnut trinket box, with brass inlaid decoration, 28cm wide; and another with mother of pearl inlay, 27.5cm wide, (2) £30 - 50 †

**274**  
A pair of brass and iron models of military field cannon, 47cm long £150 - 200 †

**275**  
An oriental carved hardwood figure, of a reclining Joss man with a dragon, 38cm long £20 - 40 †

**276**  
The Devils Walk, illustrated by Landseer £20 - 40 †

**277**  
A Chinese bronzed pot, with gold splash decoration, seal mark to base; a Chinese metal token; a small yellow metal example; a terracotta figure of an immortal and an Eastern bronze token decorated with a stylised figure of a goat, (5) £80 - 120 †

**278**  
An Antique fruitwood box, flanked by brass carrying handles and raised on bracket supports, 47cm wide £40 - 60 †

**279**  
A Queen Victoria Diamond Jubilee commemorative oak book slide, decorated with plated crown and 1837-1897 motif, 38cm £30 - 50 †

**280**  
A painted and carved wooden fierce tribal mask, having glass eyes, 36cm £40 - 60 †

**281**  
A 19th Century wicker fisherman's creel £60 - 100 †

**282**  
A Hardy split cane fishing rod £40 - 60 †

**283**  
An Army dress sword, with pierced basket hilt and shagreen grip handle, complete with leather scabbard, foliate engraved blade, 100cm long overall £40 - 60 †

**284**  
A Japanese sword, with an embossed brass Tsuba, decorated with a warrior, bound faux shagreen handle, complete with scabbard £40 - 60 †

**285**  
An Antique saw fish bill or rostrum, 130cm long £200 - 300 †

**286**  
An Antique North African flintlock rifle, with integral ramrod, 176cm long £100 - 200 †

**287**  
An Antique North African flintlock rifle, with integral ramrod, the lock with foliate engraved decoration, 166cm long £100 - 150 †

**288**  
An Antique flintlock blunderbuss, with integral ramrod, 113cm long overall £100 - 200 †

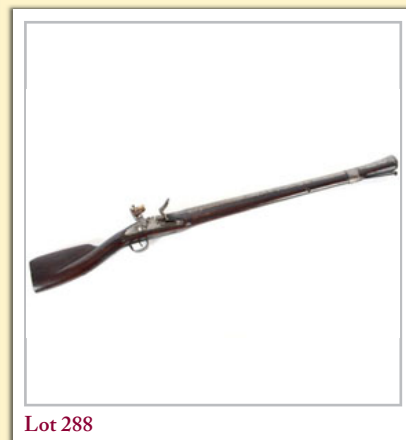
**289**  
An Antique percussion pistol, with integral ramrod, brass mounts, the lock inscribed "Tower", 50cm long £100 - 150 †

**290**  
A percussion pistol, with integral ramrod, steel and brass mounts with foliate engraved decoration, 41cm £80 - 120 †

**291**  
An Antique percussion pistol, with integral ramrod, the lock inscribed "Tower", 41cm long overall £80 - 120 †

**292**  
An Antique flintlock pistol, probably of Eastern origin with white metal applied decoration and engraved barrel, 48cm long £100 - 150 †

**293**  
Two carved African hardwood table lamps, in the form of native heads, 43cm high £30 - 50 †



Lot 288



Lot 290



Lot 291



Lot 292



Lot 313

294

A carved ebony figure of a crouching man; another of a figure playing drums; a seated naked female figure and two others, (5) £40 - 60 †

295

An oriental hardwood table lamp base, in the form of a Sage with staff, attendant deer and a crane, 68cm high; and a carved hardwood Eastern bust, 40cm high, (2) £40 - 60 †

296

A well carved ebony double headed group; another of a native lady carrying a baby on her back; another similar; and another of a man playing a native drum, (4) £40 - 60 †

297

A carved ethnic softwood fertility figure, 50cm high; another similar, 46cm high; another carved fertility figure in the form of a kneeling naked woman, 39cm high; and two others, (5) £60 - 100 †

298

A carved hardwood figure group, depicting a man and woman semi naked, 58cm high £20 - 40 †

299

A carved ebony figure of a man eating from a bowl; another similar; another of a woman carrying large gourd on her back; and another of a kneeling woman with basket on her head, (4) £40 - 60 †

300

A figural root carving, 45cm high; another of figures embracing, 41cm high; and various other hardwood and ebony carvings, (7) £60 - 80 †

301

A pair of carved ebony heads; another carved head with flatback wearing fancy headdress and ear-rings; a smaller similar example; and two others, (6) £60 - 100 †

302

Six carved African ebony figures, engaged in domestic duties £60 - 100 †

303

A carved Eastern hardwood figure of an elephant; a Bali head; another carved Eastern figure of a deity and three carved hardwood masks, (6) £40 - 60 †

304

Eight various carved hardwood African figures, mostly of native women £80 - 120 †

305

Seven various well carved ebony and hardwood native heads, mostly wearing fancy headdress £60 - 100 †

306

Five various carved ebony heads and figures £60 - 80 †

307

A carved ebony study of a rhinoceros; a well carved ebony head and six various others, mostly with fancy headdress, (8) £80 - 120 †

308

A carved hardwood bust of a bearded man, inset with mother of pearl roundels; and a well carved hardwood mask, (2) £40 - 60 †

309

A machette in leather scabbard; a horn vessel; various fly whisks; an ethnic drum etc. £20 - 40 †

310

Various African carved hardwood and ebony wall masks; and profiles; a folding jardinière stand etc. £20 - 40 †

311

A carved ebony fid; a small naive carved ebony tribal figure; a horn beaker; two deer horns; two carved horn figures of storks; wooden paper-knives etc. £20 - 40 †

312

Three carved African ebony figures of warriors; and a hardwood example of an elder leaning on his staff, (4) £40 - 60 †

313

A large carved hardwood bust, of a naked tribes woman with fancy headdress, 67cm high; and a root carving depicting heads in the form of a tree, 76cm, (2) £40 - 60 †

314

A large collection of various sized ebony elephants, including an ebony bridge £100 - 150 †

315

A pair of carved African hardwood studies of a lion and lioness, on raised bases, 28cm high x 28cm long £60 - 80 †

316

A pair of carved African ebony heads, 24cm high; and another similar, (3) £40 - 60 †

317

A pair of carved African hardwood book-ends, in the form of male and female figures, 23cm high; and another smaller pair with elongated ear-rings, 22cm high £40 - 60 †

318

Nine various ebony and hardwood carved figures of African warriors; and elders with their staffs £40 - 60 †

319

A collection of six various decorative carved Ethnic masks £40 - 60 †

320

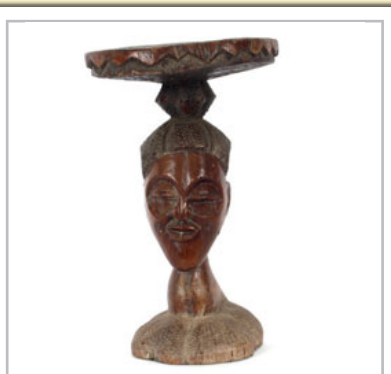
An unusual carved African hardwood stool, in the form of a woman with basket on her head, 47cm high x 29cm dia.; and a carved folding root wood table stand, (2) £40 - 60 †



Lot 315



Lot 316



Lot 320



Lot 321



**321**  
A carved African ebony head, depicting a young woman in fancy headdress 48cm high; a smaller similar, 40cm high; and another 32cm high, (3)  
£60 - 100 †

**322**  
A Kenyan carved wooden figure, of a seated naked girl; various carved and painted ethnic figures etc.  
£20 - 40 †

**323**  
A collection of twelve carved ebony and hardwood Benin type heads  
£60 - 80 †

**324**  
A heavy carved ebony figure, of a man wearing a fez; another of a bearded man and various other carved ethnic heads, (6)  
£40 - 60 †

**325**  
Fourteen various Benin type carved ebony heads, of small size  
£40 - 60 †

**326**  
Fourteen various carved African ebony and hardwood male heads  
£40 - 60 †

**327**  
Seven carved African ebony female busts  
£60 - 100 †

**328**  
Four carved ebony female heads  
£60 - 80 †

**329**  
A carved African ebony head, of a man inscribed to the base "Betsileo"; two similar carved ebony heads; and three larger female heads, (6)  
£60 - 100 †

**330**  
Six various well carved ebony and hardwood native heads, male and female  
£60 - 100 †

**331**  
Five carved ebony and hardwood African male heads, one inscribed "Antandray"  
£60 - 100 †

**332**  
Three tribal wooden and metal long spears; a carved wooden example; and a native shield, (5)  
£40 - 60 †

**333**  
A throwing club, possibly Australian Aboriginal Waddy, 51cm long  
£200 - 400 †

**334**  
A Fijian root stock club, (vunikau), of traditional form with hatched decoration to the handle and carved terminal, 106cm long  
£400 - 600 †

**335**  
Johnson's Dictionary, 4 volumes, leather bound; three red leather bound volumes of Shakespeare and various other leather bound works, (12)  
£40 - 60 †

**336**  
Book of the household, leather bound; Concise Universal Encyclopaedia; and All around the World, First series, (3)  
£30 - 50 †

**337**  
A ship's barograph, in mahogany and brass mounted case  
£100 - 150 †

**338**  
Various items of copper ware, including a post horn, a hunting horn, a car horn, large oval pan, cream skimmer etc., (11)  
£40 - 60 †

**339**  
A late 19th early 20th Century mahogany and satinwood inlaid balloon shaped mantel clock, the silvered circular Roman numeral dial supporting a single fusee movement, raised on brass bracket supports, 44cm high  
£200 - 300 †

**340**  
An Antique elm and oak deed box, iron bound with side carrying handles, brass escutcheon inscribed "Captain William & Sarah Kidd, their box", 37.5cm wide x 27cm high  
£60 - 100 †

**341**  
A Victorian relief plaster plaque, having foliate decoration in golden oak stepped frame and gilt mount, 37cm overall  
£40 - 60 †

**342**  
A 19th Century rosewood sarcophagus shaped two compartment tea caddy, 19cm  
£20 - 40 †

**343**  
A George III mahogany and satinwood inlaid decanter box, fitted four square glass bottles and a drinking glass  
£300 - 400 †

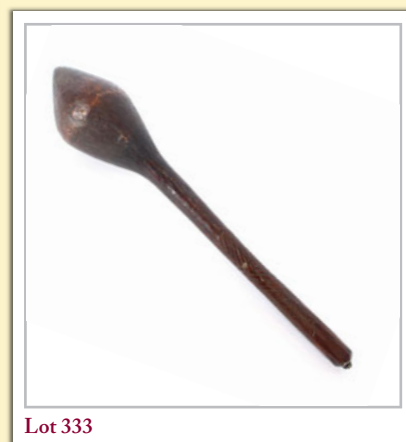
**344**  
A pair of fine quality oriental brass candle stands, having foliate engraved decoration, raised adjustable back shields and integral wick snips, on baluster supports and wide dish bases, 69cm high  
£200 - 400 †

**345**  
A Victorian ebonised walking cane, with foliate decorated silver handle, hallmarked for London 1922  
£40 - 60 †

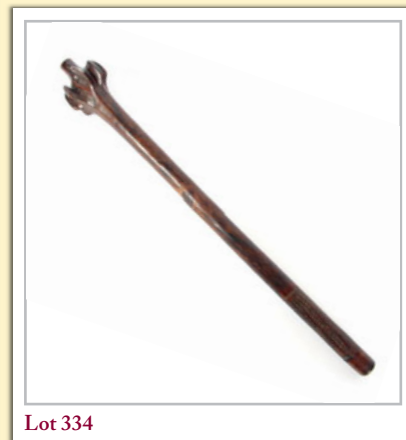
**346**  
A Victorian walking cane, with Eastern white metal foliate embossed handle; and an ebonised example with leaf decorated plate on copper handle, (2)  
£40 - 60 †

**347**  
A propeller hub barometer, 41cm wide x 27.5cm high  
£40 - 60 †

**348**  
A 19th Century French ormolu cut brass and enamel decorated bracket clock, the circular enamel dial with blue Roman numerals, inscribed "Orange a Versaille", supporting an 8 day movement, striking on a bell, inscribed to the backplate FLOURNOIS, Paris, 86cm, (see front cover illustration)  
£600 - 800 †



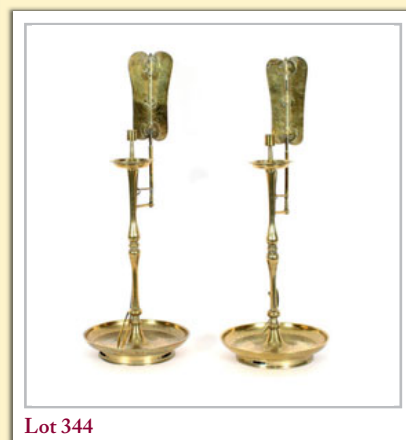
Lot 333



Lot 334



Lot 343



Lot 344



Lot 349

**349**  
A pair of oriental gilt bronzed Dogs of Fo, 31cm high £80 - 120 †

**350**  
A Chinese brass baluster vase, with raised dragon and foliate decoration, seal mark to base, 25cm high £30 - 60 †

**351**  
A George III mahogany and chequer-banded three compartment tea caddy, the domed top fitted brass carrying handle, raised on ogee bracket feet, 25cm wide £80 - 120 †

**352**  
A Victorian maple framed religious embroidery, 51cm x 44cm £40 - 60 †

**353**  
A 19th Century gilded Spelter French mantel clock, having Sevres style porcelain panels, decorated with a figure of a seated maiden, circular Roman numeral dial supporting an 8 day movement striking on a bell, raised on an ebonised plinth, 32cm high x 40cm long, AF £40 - 60 †

**354**  
A run of Chambers Encyclopaedia, leather bound and a Kelly's Directory of Merchants, Manufacturers and Shippers, (11) £30 - 50 †

**355**  
A large 19th Century Chinese export black lacquer papier-mâché tea caddy, enclosing a twin canister pewter interior, 38cm wide x 26cm high £60 - 100 †

**356**  
A brass ship's stick barometer, on gimble support, the silvered dial inscribed "R.N. Desterro, Lisbon", 94cm £150 - 250 †

**357**  
A mixed marble jewellery casket, with foliate decorated panels, plush lined interior, 29.5cm £80 - 120 †

**358**  
A large Edwardian carved oak chiming mantel clock, with brass spandrelled and steel dial, 56cm high x 36cm wide £200 - 300 †

**359**  
An 18th Century brass engraved and pierced warming pan, having steel loop handle, 112cm £30 - 60 †

**360**  
An Antique bronze English skillet, the handle stamped "Wasborough", 17cm high x 40cm long overall £40 - 60 †

**361**  
An oriental enamel hexagonal box; a pair of cloisonne vases and a famille rose plate, (4) £40 - 60 †

**362**  
A bronze model of an elephant, with it's trunk raised aloft, 73cm long x 79cm high £100 - 200 †

**363**  
A small 17th Century Chinese pear shaped bronze vase, with elephant head and ring handles; and a small Chinese champleve and bronze three legged censer with wooden lid, (2) £200 - 300 †

**364**  
A well carved Chinese green jade vase and cover, with dog of Fo finial, flanked by mask handles, 24cm high £150 - 250 †

**365**  
A small 19th Century Japanese bronze vase, inlaid with yellow metal, white metal and copper; and a 19th Century Japanese cloisonne Koro and cover, (2) £60 - 100 †

**366**  
A pair of Japanese bronze figures, of Samurai fighting, raised on carved pierced hardwood bases, 29cm high £150 - 250 †

**367**  
An Antique copper 5 gallon jug £40 - 60 †

**368**  
A carved ebony walking stick, with elephant's head handle; another with carved horse's head handle; various Victorian walking sticks and canes; parasol etc. £40 - 60 †

**369**  
An Antique elm dairy bowl, 70cm dia. overall £60 - 80 †

**370**  
A quantity of 17th Century cast iron numbers and letters £60 - 80 †

**371**  
An Antique circular wooden maize bowl, 36cm dia. £40 - 60 †

**372**  
A 19th Century steel and cast iron door porter, of claw form with loop handle, stamped to the reserve W.T. & S.Rd, 37cm high £50 - 80 †

**373**  
A pair of copper and steel fire dogs; and various brass and steel fire implements £40 - 60 †

**374**  
A 19th Century Japan lacquered tea caddy, with pewter interior canister; a similar workbox; and an oriental lacquered circular box with interior tray, (3) £20 - 40 †

**375**  
A 17th Century oak carving of a European lady; and two circular carved wood dough moulds, (3) £80 - 120 †

**376**  
A pair of oriental cloisonne baluster vases, converted to table lamps £40 - 60 †

**377**  
A 19th Century Italian marble and alabaster bust, of a young maiden entitled "Modestia", signed Prof. G. Bessi, 26cm £40 - 60 †



Lot 358



Lot 362



Lot 364

**378**  
A pair of late 19th Century blue ground Japanese cloisonne vases, 25cm high £60 - 80 †

**379**  
An oriental cloisonne bowl, having profuse dragon decorated, raised on a carved pierced hardwood stand, 31cm dia. £30 - 50 †

**380**  
A bronze figure of a seated Buddha, 88cm high £600 - 800 †

**381**  
A large Middle Eastern copper kettle, having all over embossed and engraved decoration, mounted warriors and a continuous band of Islamic script, 30cm high x 42cm dia. overall £80 - 120 †

**382**  
A 19th Century brass planter, having raised foliate decoration, scrolled supports flanked by lion mask ring carrying handles, 73cm wide £80 - 120 †

**383**  
A set of steel and brass mounted fire irons £20 - 40 †

**384**  
A knobkerrie; two carved ethnic walking sticks; and a naively carved staff, (4) £40 - 60 †

**385**  
A Victorian Admiral Fitzroy's barometer, in oak case, 95cm £100 - 150 †

**386**  
An Edwardian walnut aneroid barometer/thermometer £20 - 40 †

**387**  
A 19th Century mahogany and inlaid banjo barometer, by Toynoni & Vanoni of Shepton Mallett, having conch shell and floral inlaid paterae, with silvered dial, 97cm £40 - 60 †

**388**  
A 19th Century mahogany drop dial wall clock, by James McCabe, London, convex dial and single fusee movement, AF, 38cm dia. £100 - 150 †

**389**  
A Middle Eastern bronze and white metal circular tray, with all over engraved decoration of flowers and animals, 80cm dia. £80 - 120 †

**390**  
An 18th Century needlework framed wall mirror, with bevelled plate and arched top, 64cm x 43cm overall £60 - 80 †

**391**  
Two African carved ebony figures, depicting tribal women; two stylised elongated carved figures; and a modern hardwood stand in the form of a semi-naked woman balancing a basket on her head, (5) £60 - 100 †

**392**  
Various Antique carved oak panels, turned column mouldings etc. £40 - 60 †

**393**  
A 19th Century French gilded brass clock garniture, with four light candelabra, the 8 day movement by Japy Freres £150 - 250 †

**394-397**  
No Lots

## Pictures and Prints

**398**  
Coste, 19th Century school, oil on panel depicting dead game, signed and dated 1848, 15cm x 20cm £150 - 250 †

**399**  
Cyrus Cuneo, (1879-1916), study "He stumbled forward and caught her by the wrist", signed watercolour and crayon, various labels verso, 26.5cm x 24cm £100 - 200 †

**400**  
20th Century Copenhagen school, indistinctly signed watercolour depicting a moonlit river scene, 30cm x 46cm £30 - 50 †

**401**  
Two Chinese landscape paintings on silk, inscribed various calligraphy and seal marks, 80cm x 40cm £60 - 100 †

**402 ✓**  
Sario, still life study depicting lobster, oysters, and a pantry interior, signed oil on canvas, 64cm x 92cm, contained in a decorative gilt frame £200 - 300 †

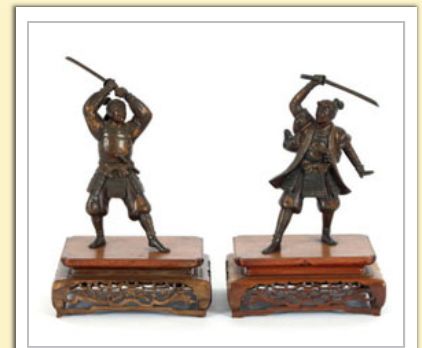
**403**  
19th Century school, pastel portrait study of Lady Logan, framed as an oval, 65cm x 53cm £80 - 120 †

**404**  
T.L. Rowbotham, study of a shepherdess in red cloak crossing a bridge over a river, attendant flock nearby, signed watercolour, dated 1865 and numbered 680, 18cm x 43cm £150 - 250 †

**405**  
19th Century school, study of a figure fishing by a lake, monogrammed and dated September 1858, 31cm x 47cm £40 - 60 †

**406**  
19th Century school, figure fishing in a river, monogrammed and inscribed, "River Brathay", dated 1889, 25.5cm x 36.5cm £40 - 60 †

**407**  
19th Century school, study of buildings and woodland, unsigned watercolour, 42cm x 54cm £30 - 50 †



Lot 366



Lot 378



Lot 382



Lot 398



Lot 402

Lots marked with ✓ please refer to Droite de Suite Royalty charges on page 30

† Each lot is subject to a Buyer's Premium of 15% + VAT (18%)



Lot 411

**408**  
**Victorian school**, head and shoulders portrait study of a gentleman, unsigned oil on canvas, 75cm x 61cm £100 - 200 †

**409**  
**19th Century school**, watercolour study of cattle in a river, figures on the bank and ruined castle in the far ground, unsigned watercolour, 24cm x 34.5cm £40 - 60 †

**410**  
**J.W. Carmichael**, study of fisherfolk seated on rocks by a river, signed watercolour, 25cm x 37cm £40 - 60 †

**411**  
**English school, early 19th Century**, portrait of Charles Marsham 2nd Earl of Romney, 1777-1845, half length, seated, oil on canvas, 92cm x 71cm; together with Armand Mathey, after Sir Thomas Gainsborough, "The Marsham children", engraving signed in pencil and published 1905, (2) £400 - 600 †

**412**  
**C. Vickers**, rural studies, a pair, signed oils on canvas, 40cm x 60cm £250 - 350 †

**413**  
**A 19th Century burr walnut picture frame**, containing a coloured print after George Moorland, 89cm x 71cm overall £80 - 120 †

**414**  
**Harden Sydney Melville**, study of a timber wagon outside a cottage in rural landscape, oil on canvas, 77cm x 128cm £150 - 250 †

**415**  
**A. Melzer**, study of a country scene with cattle being herded along a path by figure, cottage and river nearby, signed oil on canvas, 49cm x 80cm £200 - 300 †

**416**  
**A set of six signed Japanese woodblock prints**, depicting flowers, ducks, landscapes etc. £80 - 120 †

**417**  
**19th Century school**, study of Naples, oil on canvas, 29.5cm x 39cm, label verso referring to the fact that it was painted by the Great Grandmother of Beazeley £40 - 60 †

**418**  
**J.A.H. James**, study of Brockenhurst in the New Forest, Hampshire, signed oil on board, 24cm x 31cm £30 - 50 †

**419**  
**David Cox Jr.**, landscape study with figures, watercolour, 21cm x 34cm £60 - 100 †

**420**  
**David Law**, river landscape, signed watercolour, 24cm x 34cm £30 - 50 †

**421**  
**W.S. Pierpoint**, study of St. Margaret's Church and Ancient House; and another courtyard of the Ancient House, a pair, signed watercolours, dated 1920 £40 - 60 †

**422**  
**Oliver Clare, (1853-1927)**, still life study with pelargoniums in a pot and a birds nest with eggs, signed oil on canvas, 24cm x 19cm £200 - 300 †

**423**  
**Edwin Frederick Holme**, country cottage and a house by a river, a pair, oils on board, signed and dated 1902 £80 - 120 †

**424 ✓**  
**James Hardy, 20th Century**, study of merchant ships off the North American coast, signed oil on canvas laid on board, 48cm x 68cm £200 - 300 †

**425**  
**An Antique map**, by Bowen, of Suffolk divided into hundreds, 55cm x 73cm £40 - 60 †

**426**  
**An Antique coloured map**, by Ogilby, the Roads from Chelmsford in Essex; a small coloured map of Suffolk; and another depicting a plan of streets and roads in London, (3) £80 - 120 †

**427**  
**19th Century school**, three humorous sporting studies, unsigned watercolours, 12cm x 18.5cm £80 - 120 †

**428**  
**19th Century continental school**, study of a figure in ermine trimmed cape holding a dagger, unsigned oil on canvas, 70cm x 52cm £1,000 - 1,500 †

**429**  
**20th Century Russian school**, Sergei Tymakov, portrait study of a man with cap, signed and dated 1948, 41.5cm x 29cm £40 - 60 †

**430**  
**J. Carter R.B.S.A.**, study of Halford Mill, Warwickshire, signed watercolour, 58cm x 60cm, contained in an Art Deco style glazed frame £20 - 40 †

**431**  
**A finely painted 19th Century Chinese watercolour**, of Buddha, 120cm x 45cm £250 - 350 †

**432**  
**C.E. Gordon Stuart**, study of ladies standing outside of a house on cobbles, signed oil on canvas, dated 1887, 61cm x 30.5cm £50 - 80 †

**433**  
**Johann Toussyn, (German 1608-1660)**, Hagar and the Angel, signed and dated 1638, oil on board, 23.5cm x 17cm, contained in a carved gilt wood frame £800 - 1,200 †



Lot 415



Lot 417



Lot 440



Lot 446

Lots marked with ✓ please refer to Droite de Suite Royalty charges on page 30

† Each lot is subject to a Buyer's Premium of 15% + VAT (18%)

434

**Murray Macdonald**, highland scene with cattle by a river, mist shrouded mountains in the far ground, signed watercolour, dated 1898, 38cm x 54cm

£200 - 400 †

435

**19th Century school**, study of an elderly man, possibly a Chelsea Pensioner, studying the Naval and Military Gazette, unsigned oil on canvas, 75cm x 62cm, contained in a decorative gilt frame

£200 - 300 †

436

**James Russell**, study of a gentleman at the end of the day's shoot, stood by a gate post with gun and day's bag, signed oil on canvas, 60cm x 50cm, (see back cover illustration)

£400 - 600 †

437

**A silkwork embroidered map of England and Wales**, decorated with corner vignettes, 56cm x 46cm

£40 - 60 †

438

**J. Holland**, study of a ploughing team with sea and buildings in the far ground, signed pencil and pastel, 74cm x 50cm

£60 - 100 †

439

**E. Spall**, 19th Century school, a pair, study of figures by cottages, oils on canvas, 17.5cm x 26cm

£100 - 150 †

440

**T.E. Smythe**, study of Fore Hamlet, Ipswich, signed oil on canvas, 22cm x 30cm

£200 - 300 †

441

**E.K. Redmire**, seascape study with fishing vessels, coast and windmill in the far ground, signed oil on board, 21cm x 27cm

£100 - 200 †

442

**H. Watson**, late Victorian school, still life study of lobster and lemons on a dish with champagne bottle, signed oil on canvas, 34cm x 26cm, contained in a decorative gilt frame

£200 - 300 †

443

**John Moore of Ipswich**, (1820-1902), study of fishing vessels in heavy seas, signed oil on board, 23cm x 25cm

£300 - 400 †

444

**Leonard Russell Squirrell**, pencil signed etching, Wolsey's Gate, Ipswich, 22cm x 17cm

£60 - 80 †

445

**E. Pococke**, four small Ipswich studies including Christchurch Hall, signed watercolours

£40 - 60 †

446

**19th Century school**, study of a huntsman and hounds in a stable, unsigned oil on canvas, 33cm x 44cm

£400 - 600 †

447

**George Wright**, (1860-1942), studies of foxhounds, a pair, signed oils on canvas

£600 - 800 †

448

**R. Roberts**, a pair, studies of the rescue of the ship "Indian Chief" by the "Bradford" Lifeboat vessel and the steam tug "Vulcan" off Goodwin sands, signed oils on canvas, 61cm x 107cm

£800 - 1,200 †

449

**Attributed to Sir Augustus Wall Callcott R.A.**, (1779-1844), "Trowse Meadows, Norwich", unsigned oil on canvas, 34cm x 50cm. Gallery label verso "Pettus House, Elm Hill, Norwich"

£1000 - 1500 †

450-452

No Lots

## Rugs and Furniture

453

**An Eastern rug**, having allover stylised floral decoration on a predominantly red ground, 212cm x 141cm

£80 - 120 †

454

**An Eastern rug**, with central field of stylised motifs within geometric border, 184cm x 112cm

£40 - 60 †

455

**An Eastern rug**, with an allover stylised floral field within geometric borders on a predominantly red ground, 212cm x 117cm

£40 - 60 †

456

**A Bokhara rug**, of traditional form, decorated with three rows of guls, on a brick red ground, 160cm x 146cm

£60 - 100 †

457

**An Eastern rug**, deep blue ground and allover foliate motifs, in red and blue, 203cm x 126cm

£60 - 100 †

458

**An old Caucasian rug**, having central stylised lozenge field within geometric multi borders, on predominantly red and blue ground, 246cm x 159cm

£100 - 150 †

459

**An old Caucasian rug**, having central linked medallions within geometric and stylised floral borders, on predominantly blue and red ground, 236cm x 133cm

£100 - 150 †

460

**A 19th Century brass studded and leather bound camphorwood chest**, (handles missing), 90cm wide

£400 - 600 †

461

**An 18th Century oak shelved and boarded dresser rack**, fitted cupboards beneath a pierced frieze, 187cm wide x 109cm high

£100 - 200 †



Lot 447



Lot 448



Lot 449

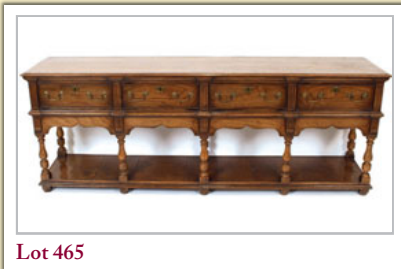
Lots marked with ✓ please refer to Droite de Suite Royalty charges on page 30

† Each lot is subject to a Buyer's Premium of 15% + VAT (18%)



Lot 464

**462**  
An early 19th Century mahogany Scottish long case clock, circular silvered dial with Roman numerals, seconds subsidiary and date dials, by Bryson of Dalkeith, supporting an 8 day movement striking on a bell, 210cm high  
£400 - 600 †



Lot 465

**463**  
An early 19th Century oak and mahogany cross-banded long case clock, having arched hood surmounted by turned finials, the painted dial with a "Sacred to Lord Nelson" panel, inscribed "Bennett, Debenham", supporting an 8 day movement above a lancet shaped trunk panel door, raised on bracket feet, 216cm high £300 - 400 †



Lot 466

**464**  
A 19th Century carved Japanese hardwood side cabinet, decorated with figures of monkeys having open shelves, cupboards and drawers below, enclosed by profuse bird and foliate decorated panels, the reduced base having pierced frieze, on square section supports, 129cm wide x 130cm high  
£1,000 - 1,500 †

**465**  
A large oak and elm dresser base, in the 18th Century manner, fitted four long drawers, raised on turned baluster supports united by a pot board and terminating in block feet, 214cm wide  
£400 - 600 †



Lot 468

**466**  
An 18th Century walnut and boxwood strung chest, fitted two short and two long drawers, raised on bracket feet, 98cm wide £400 - 600 †

**467**  
A 19th Century continental walnut boxwood and satinwood strung commode chest, fitted three long graduated drawers, raised on a platform plinth and claw supports, 122cm wide  
£200 - 400 †

**468**  
An 18th Century mahogany and walnut dressing chest, the top drawer with fitted interior, three long drawers below, raised on bracket feet, 94cm wide  
£400 - 600 †

**469**  
A Georgian mahogany bow fronted chest, of two short and three long drawers, 100cm wide  
£80 - 100 †

**470**  
A 19th Century gilt framed gesso wall mirror, in the early Georgian style with acanthus scroll and rosette cresting, inverted scallop shell apron, (formerly with arcade arms, plate damaged and cresting loose), 132cm high x 69cm wide  
£800 - 1,200 †

**471**  
A George III mahogany chest, of large size, fitted two short and three long graduated drawers, raised on bracket feet, 130cm wide  
£150 - 250 †

**472**  
A George III mahogany bureau, the fall front opening to reveal a stepped fitted interior arrangement of drawers and pigeon-holes around a central cupboard, flanked by secret compartments, three long and two short drawer below, raised on bracket feet, 86cm wide  
£200 - 400 †

**473**  
A George III oak, mahogany cross-banded and conch shell inlaid bureau, the fall front opening to reveal an interior arrangement of drawers and pigeon-holes around a central cupboard, two short and three long graduated drawers below, raised on bracket feet, 99cm wide  
£150 - 250 †

**474**  
A Georgian mahogany bureau, of small proportions, the hinged fall opening to reveal an interior arrangement of drawers and pigeon-holes around a central cupboard, 4 long graduated drawers below, raised on bracket feet, 67cm wide  
£100 - 150 †

**475**  
A 19th Century figured mahogany chest, fitted blind frieze drawer and three graduated drawers under, flanked by foliate carved columns and raised on bun feet, 110cm wide  
£150 - 250 †

**476**  
A 20th Century oak dwarf bookcase, the adjustable shelves enclosed by a pair of glazed panelled doors, on plinth base, 117cm wide x 107cm high  
£100 - 150 †

**477**  
A large 18th Century oak and mahogany cross-banded standing corner cupboard, the upper shelves enclosed by a pair of arched fielded panel doors above a single drawer, pull-out slide and cupboards below, raised on a platform plinth, fitted brass H hinges and butterfly escutcheons and backplates, 145cm wide x 238cm high  
£400 - 600 †

**478**  
An Edwardian mahogany serpentine fronted china display cabinet, the shelves enclosed by curved panelled doors and sides, within reeded columns, carved acanthus tapering reeded supports united by an under-tier, 116cm wide x 194cm high  
£200 - 300 †

**479**  
An 18th Century style walnut chest on chest, the upper section fitted four long graduated drawers above a brushing slide with three drawers below, raised on a shaped apron and bracket feet, 56cm wide x 149cm high  
£100 - 150 †

**480**  
A mahogany bookcase on cupboard, of small proportions, the upper adjustable shelves enclosed by a glazed tracery door above a single drawer, raised on bracket feet, 54cm wide x 172cm high  
£100 - 200 †

**481**  
An early 19th Century mahogany federal commode chest, the rounded rectangular moulded top with outset fluted pilasters, two short and three long drawers, raised on baluster turned supports, 118cm wide £200 - 400 †

**482**  
A Georgian mahogany bow fronted chest, of three long drawers, raised on a shaped apron and bracket feet, 100cm wide £100 - 150 †

**483**  
A George III mahogany breakfront secretaire bookcase, the upper adjustable shelves enclosed by four glazed panelled doors, central fitted writing drawer flanked by mock drawer front cupboards, with cupboard below, on a platform plinth, 180cm wide £300 - 500 †

**484**  
An 18th Century oak coffer, with quadruple panelled front, raised on square section supports, 152cm wide £200 - 400 †

**485**  
A George III mahogany linen press, the upper section fitted four sliding trays, two short and two long drawers below, raised on bracket feet, 130cm wide £200 - 300 †

**486**  
A Regency rosewood and brass inlaid bookcase, fitted with six adjustable shelves above double cupboard base, raised on a platform plinth, 182cm wide x 189cm high £150 - 250 †

**487**  
An early 20th Century mahogany bureau bookcase, the upper adjustable shelves enclosed by a pair of glazed astragal doors, the fall front opening to reveal an interior arrangement of drawers and pigeon-holes, two short and two long drawers below, raised on bracket feet, 94cm wide £100 - 150 †

**488**  
An early 20th Century oak bookcase on cupboard, the upper section fitted adjustable shelves and enclosed by a pair of glazed panelled doors, two drawers below, raised on bracket feet, 113cm wide £150 - 250 †

**489**  
A small oak dresser, in the 18th Century style, having shelved and boarded back, three short and two long drawers below, above an arched frieze, raised on central baluster column flanked by chamfered supports, united by a pot board, 91cm wide x 165cm high £150 - 250 †

**490**  
A 19th Century mahogany long case clock, the arched hood surmounted by turned finials and enclosing a painted dial with rolling moon phase and ship aperture, 8 day movement, by William Bullock of Bradford, 230cm £300 - 400 †

**491**  
An 18th Century oak hall settle, having panelled back and box seat, 112cm wide x 139cm high £300 - 400 †

**492**  
A mahogany fret carved wall mirror, in the Chippendale manner, having satinwood paterae and gilt foliate motif, AF £40 - 60 †

**493**  
A George III mahogany, boxwood strung and satinwood inlaid elliptical corner cupboard, the interior shelves enclosed by a pair of doors hung to brass butterfly hinges, 83cm wide overall x 122cm high £150 - 250 †

**494**  
A 19th Century yew wood and elm Windsor chair, having pieced splat back, shaped seat, raised on turned supports united by a crinoline stretcher £80 - 120 †

**495**  
Seven Georgian mahogany rail back dining chairs, upholstered stuff-over seats raised on square section tapering supports united by stretchers, (six standards, one elbow) £100 - 200 †

**496**  
A 19th Century mahogany tea table, the foldover swivel top raised on a hexagonal column and quatrefoil base, terminating in acanthus scrolled supports and castors, 90cm wide £80 - 120 †

**497**  
A 19th Century mahogany D shaped foldover tea table, raised on ring turned tapering supports, terminating in brass feet, 122.5cm wide £60 - 80 †

**498**  
A 19th Century mahogany dressing table, fitted five drawers and raised on platform end supports, terminating in bun feet, united by a stretcher, 122cm wide £250 - 350 †

**499**  
An Antique oak side table, fitted with a single drawer, raised on slender rounded supports, terminating in pad feet, 68cm wide £60 - 100 †

**500**  
A 19th Century mahogany and satinwood strung foldover tea table, raised on square tapering supports, 89cm wide £100 - 150 †

**501**  
A set of six Antique oak dining chairs, in the Country Chippendale manner, having shaped cresting rails, pierced splat backs, upholstered drop-in seats, raised on square chamfered stretchered supports £150 - 250 †

**502**  
A 19th Century mahogany supper table, having rounded drop leaves, single end drawer and opposing dummy drawer, on a ring turned column and quadruple splay, terminating in brass caps and castors, 91cm £150 - 250 †



Lot 489



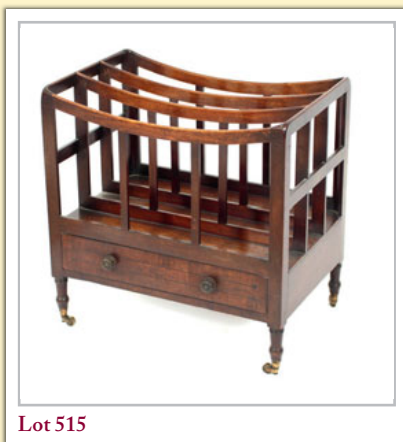
Lot 491



Lot 494



Lot 501



Lot 515

**503**

A set of 12 mahogany dining chairs, in the Chippendale manner, having pierced splat backs, upholstered drop in seats, raised on square chamfered supports united by stretchers  
£300 - 500 †

**504**

A Victorian walnut pedestal writing desk, having raised upper section, fitted with 8 short drawers, hinged lid opening to reveal an interior with drawer and pigeon-holes, 3 frieze drawers and 3 drawers to each pedestal, raised on platform plinth, 137cm  
£200 - 300 †

**505**

A 19th Century mahogany D end extending dining table, raised on square tapering supports, fitted with drop leaf centre section, 220cm x 106cm  
£100 - 150 †

**506**

A Victorian walnut trumpet shaped sewing table, the hinged top lifting to reveal a partitioned interior, raised on foliate carved tripod base  
£60 - 80 †

**507**

A 19th Century mahogany snap top occasional table, raised on a ring turned baluster column and tripod base, the top 77cm x 56cm  
£60 - 100 †

**508**

A Chinese carved hardwood plant stand, the shaped top inset with rouge marble, foliate frieze, the legs terminating in claw and ball feet, 42cm dia.  
£80 - 120 †

**509**

A Georgian mahogany Chippendale design elbow chair, having pierced splat back, outswept arms, upholstered drop-in seat, raised on square chamfered supports  
£40 - 60 †

**510**

A William IV mahogany tub shaped chair, raised on turned and fluted front supports  
£80 - 120 †

**511**

A Victorian walnut framed spoon back nursing chair, having foliate and fruit carved cresting, raised on cabriole front supports; and a foot stool, (2)  
£80 - 120 †

**512**

An Edwardian carved mahogany armchair, with primrose brocade upholstered back panel, arm rests and seat, raised on turned fluted front supports  
£60 - 80 †

**513**

A George III mahogany framed elbow chair, in the French manner, raised on turned and fluted front supports, (in need of re-upholstery)  
£200 - 400 †

**514**

An oak refectory type dining table, the plank top raised on turned baluster supports, united by an H stretcher, 228cm x 90cm  
£300 - 400 †

**515**

A 19th Century mahogany three division Canterbury, fitted single drawer to base and raised on turned supports terminating in brass castors, 52.5cm wide  
£80 - 120 †

**516**

An oak joint stool, in the 17th Century manner, oblong top raised on turned baluster supports united by stretchers, 44cm  
£50 - 80 †

**517**

A Victorian mahogany work table, the hinged top opening to reveal a partitioned interior with silks well below, raised on turned baluster column and quadruple scrolled supports, 45.5cm wide  
£60 - 80 †

**518**

An oak joint stool, in the 17th Century manner, the rectangular top raised on turned baluster supports united by stretchers and terminating in block feet, 43cm  
£50 - 80 †

**519**

An Antique oak and mahogany cabinet on stand, (later adapted), the upper adjustable shelves enclosed by a pair of glazed panelled doors above two short drawers, one long and two short drawers to the base, raised on square chamfered supports, 72cm wide x 149cm high  
£60 - 80 †

**520**

A Georgian mahogany bureau, the fall front opening to reveal an interior arrangement of drawers and pigeon-holes around a central cupboard, four long graduated drawers below, raised on bracket feet, 107cm wide  
£150 - 250 †

**521**

Two oak Jacobean style carver chairs, having foliate decoration, cane back and seat panels above a cherub decorated stretcher and scrolled front supports, (one seat in need of re-caning)  
£60 - 100 †

**522**

An Edwardian mahogany framed two seater salon settee, with reeded baluster arm supports and front legs, AF  
£50 - 80 †

**523**

A chinoiserie decorated wall mirror, of oblong shape, 89cm x 53cm  
£40 - 60 †

**524**

A 19th Century mahogany snap top supper table, raised on a ring turned column and tripod base, terminating in castors, the top 105cm x 76cm  
£80 - 120 †

**525**

A good quality reproduction oak drop leaf occasional table  
£20 - 40 †

**526**

A walnut and oak cheval mirror, surmounted by turned finials, with cushion frame, 47cm x 135cm overall  
£30 - 50 †



Lot 516



Lot 518



Lot 535



527

A 19th Century mahogany snap top occasional table, raised on baluster turned column and tripod base, 80cm £80 - 120 †

528

A 19th Century mahogany open fronted alcove bookcase, 126cm wide x 122cm high £100 - 150 †

529

A 19th Century mahogany D end extending dining table, with central leaf, raised on ring turned tapering supports terminating in brass caps and castors, 148cm x 107cm £60 - 100 †

530

A 19th Century mahogany sewing table, fitted two drawers, flanked by drop leaves, raised on a central square column and scrolled quatrefoil base terminating in brass castors, 80cm wide £60 - 100 †

531

A Victorian mahogany extending dining table, fitted with two extra leaves and raised on baluster fluted supports, terminating in castors, 113cm high x 220cm long £200 - 300 †

532

A 19th Century mahogany rectangular snap top occasional table, raised on a turned baluster column and tripod base, 58cm £50 - 60 †

533

A 19th Century mahogany tripod occasional table, raised on turned baluster column, the top 53cm dia. £40 - 60 †

534

An Antique oak gate leg dining table, the rounded drop leaves raised on turned baluster supports united by stretchers, fitted single end drawer, 120cm £60 - 80 †

535

A 19th Century mahogany spice cupboard, fitted seven interior drawers enclosed by a fielded panel door, single drawer below, on a shaped apron and bracket feet, 44cm wide x 71cm high £100 - 200 †

536

A good quality reproduction oak chest, in the 18th Century style, of small proportions, fitted two short and three long drawers, raised on bracket feet, 51cm wide x 32cm deep x 60cm high £100 - 200 †

537

A 19th Century mahogany circular snap top dining table, raised on an octagonal tapering column and triform base, terminating in bun feet and castors, 135cm dia. £100 - 150 †

538

A 19th Century continental walnut planter, having fluted and carved leaf decoration, raised on claw feet, 90cm wide £150 - 250 †

539

A 19th Century mahogany drop leaf side table, raised on turned baluster column and triform base terminating in scrolled feet £40 - 60 †

540

A good quality Ipswich oak hall cupboard, having carved Gothic style panels and central shelf, enclosed by a single door, raised on stile supports, 86cm wide x 92cm high £80 - 120 †

541

An Antique elm rustic bench, raised on square section supports, 107cm wide £60 - 100 †

542

A good quality reproduction oak gate leg coffee table, the rounded drop leaves raised on turned supports united by stretchers, 58.5cm wide £40 - 60 †

543

A late 19th Century mahogany and satinwood banded armchair, with floral stamped brocade upholstery, raised on square tapering supports, terminating in brass caps and porcelain castors; and a similar period mahogany and boxwood strung bedroom chair, (2) £50 - 80 †

544

A golden oak Globe Wernicke bookcase, three graduated sections, raised on a platform plinth, 88cm wide x 124cm high £150 - 250 †

545

An 18th Century style walnut and cross-banded bureau, the fall front opening to reveal a shaped interior arrangement of drawers and pigeon-holes flanking a central cupboard with secret pull-out compartments, four long graduated drawers below, raised on bracket feet, 76.5cm wide £80 - 120 †

546

A 19th Century mahogany cross-banded and boxwood strung bow fronted chest, of two short and three long graduated drawers, raised on turned supports, 102cm wide £100 - 150 †

547

A Georgian pine mule chest, the hinged lid opening to reveal candlebox interior, having moulded panelled fronts and sides, two short drawers to the base, raised on bracket feet, 116cm wide £150 - 250 †

548

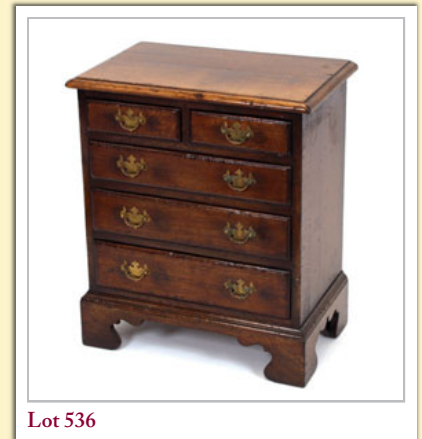
A 19th Century mahogany chest, fitted two short and three long drawers, raised on turned supports, 101cm wide £100 - 150 †

549

A pair of Edwardian mahogany bedroom chairs, by Oetzmann & Co., Hampstead Road, London, the backs with lightly carved stylised decoration, decorated turned finials, upholstered stuff-over seats, raised on ring turned tapering front supports £30 - 40 †



Lot 535



Lot 536



Lot 538



Lot 549



Lot 564

**550**

A Victorian mahogany twin pedestal writing desk, the top with green leather insert above three frieze drawers and six drawers below, 120cm wide  
£200 - 400 †

**551**

A satin birch veneered twin pedestal writing desk, with leather inset top above three frieze drawers and cupboards to each pedestal, 109cm wide x 53cm deep  
£100 - 150 †

**552**

A 19th Century circular mahogany tripod table, raised on a turned and fluted baluster column, 82cm dia.  
£180 - 220 †

**553**

A Victorian mahogany chiffonier, the raised shelved back with foliate carved decoration, concave blind frieze drawer below, the shelf enclosed by a pair of arched panelled doors, raised on a platform plinth, 94cm wide  
£50 - 80 †

**554**

A 19th Century rosewood chiffonier, fitted with two frieze drawers above a single shelf, enclosed by a pair of pleated linen panel doors, flanked by acanthus scrolls, raised on bun feet, 106cm wide  
£200 - 300 †

**555**

A Georgian oak and mahogany banded chest, of two short and two long drawers, raised on bracket feet, 94cm  
£100 - 200 †

**556**

A Georgian oak pad foot dining table, having rounded drop leaves, 104cm  
£60 - 100 †

**557**

A 19th Century mahogany side table, fitted with a single drawer, raised on turned tapering supports terminating in brass caps and castors, 76cm  
£60 - 80 †

**558**

A George III mahogany side table, fitted with a single drawer and raised on square tapering supports, 92cm wide, AF  
£40 - 60 †

**559**

A 19th Century mahogany and satinwood cross-banded Pembroke table, of bow fronted shape, rounded drop leaves, single end drawer, raised on square tapering supports, 80cm  
£60 - 100 †

**560**

An Antique carved oak coffer, the panelled lid opening to reveal a candlebox interior, square iron lockplate and carved front, raised on block supports, 98cm wide  
£100 - 200 †

**561**

An Antique carved oak, (later adapted), dining/serving table, the thick top raised on bold baluster foliate carved supports, 177.5cm x 79.5cm  
£200 - 300 †

**562**

A matched set of ten 19th Century mahogany dining chairs, probably American, with fluted bar vertical splats, close button upholstered seats on tapering fluted legs, comprising 8 standards and two carvers, (some restoration)  
£400 - 600 †

**563**

A 19th Century mahogany elbow chair, probably American, with pierced back, reeded scroll arms, cane seat, raised on turned and fluted supports, and a matching standard chair, (2)  
£80 - 120 †

**564**

An unusual 17th Century and later oak mule chest, the frieze carved with "Sir John de Gybons dole for ye poore of hallowes" "Man shall not live by bread alone bvt by everie worde that proceedeth ovt of the movth of ye lord", the hinged lid opening to reveal a candlebox interior, long drawer below flanked by figures and raised stylised panels on block supports, 111cm wide  
£600 - 800 †

**565**

A Regency gilt pier mirror, of breakfront form, the plate within reeded half columns, 122cm x 81cm overall  
£100 - 200 †

**566**

A Victorian mahogany writing desk, having galleried top above three frieze drawers and three drawers to each pedestal, raised on platform plinths, 121cm wide  
£250 - 350 †

**567**

An 18th Century Dutch walnut and chequer-banded cabinet on stand, broken arch pediment above a pair of urn inlaid cupboard doors, enclosing drawers around a central cupboard, the later stand raised on tapering supports, fitted with a frieze drawer, 92cm wide x 47cm deep x 170cm high  
£800 - 1,000 †



Lot 567

Chartered Surveyors / Estate Agents

Clarke &  
Simpson

# FRAMLINGHAM LIVESTOCK ASSOCIATION

FOUNDED 1893



The 124th  
Framlingham Horse Show  
Saturday 15th July 2017  
On the Castle Meadow Framlingham  
A Quintessentially English Occasion

## Collective Sale of Combines, Tractors, Plant, Vehicles, Machinery and Spares

Saturday 27th May 2017

Sale One commencing at 9.00am

Sale Two commencing at 9.30am

Clarke & Simpson Auction Centre, Campsea Ashe, Nr Wickham Market, Suffolk. IP13 0PS

Viewing: Friday 26th May from 2.30pm to 5.30pm and on the morning of sale from 8am



Lot 980



Lot 1026



Lot 1211



Lot 1231

Live online bidding at both sales available via

**i-bidder.com**

Tea Shop open for refreshments on viewing and sale days  
Free on site parking available



**Clarke and Simpson**

Well Close Square  
Framlingham  
Suffolk  
IP13 9DU  
T: 01728 621200  
F: 01728 724667

Opus House  
Elm Farm Park  
Thurston  
Suffolk  
IP31 3SH  
T: 01359 230514

*And The London Office*  
40 St James Street  
London SW1A 1NS  
email@clarkeandsimpson.co.uk  
www.clarkeandsimpson.co.uk

# Special Sales Calendar

## 2017

Clarke &  
Simpson

FINE ART - 17th May, 2017

FARM MACHINERY - 27th May, 2017

ART DECO, DESIGN & RETRO - 19th June, 2017

RURAL BYGONES - 8th July, 2017

FINE ART - 19th July, 2017

ART DECO, DESIGN & RETRO - 4th September, 2017

RURAL BYGONES - 16th September, 2017

FINE ART - 4th October, 2017

FARM MACHINERY - 21st October, 2017

ART DECO, DESIGN & RETRO - 30th October, 2017

FINE ART - 6th December, 2017



Campsea Ashe  
Nr. Wickham Market  
Suffolk IP13 0PS  
Tel: (01728) 746323 Fax: (01728) 748173  
Email: [auctions@clarkeandsimpson.co.uk](mailto:auctions@clarkeandsimpson.co.uk)  
[www.clarkeandsimpson.co.uk](http://www.clarkeandsimpson.co.uk)



## Sproughton - £1,395,000

A stunning Grade II Listed former rectory, located in the centre of the village & extending to nearly 7,000 square feet in all, with outbuildings & landscaped gardens of over an acre. Currently subdivided to provide 4 separate dwellings but with scope to be converted back to 1. **Ref: 5697**



## Iken £1,250,000

A substantial & historic Suffolk house, along with an adjoining cottage & studio, standing in over 3.5 acres within the Heritage Coast. The House - Hallway, drawing room, study, sitting room & snug. Kitchen & dining room. 5 bedrooms, 2 with en-suites & family bathroom. **Ref: 5705**



## Saxtead £650,000

A single-storey dwelling with open plan kitchen/dining room, standing in grounds of 1 acre on Saxtead Green. **Ref: 5734**



## Barham £570,000

A stunning contemporary new house in a rural location within the Parish of Coddendam. **Ref: 5737**



## Sibton £550,000

A 5 bedroom detached house with a double garage on a development of 7 new homes in the village of Sibton. **Ref: 5692**



## Peasenhall £445,000

An extremely well maintained & presented 4 bedroom detached house, in the pretty village of Peasenhall. **Ref: 5680**



## Dennington £235,000

A 3 bedroom semi-detached house, now requiring updating & refurbishment. **Ref: 5736**



## Framlingham £235,000

A refurbished 2 bedroom detached bungalow with garage and parking n Framlingham. **Ref: 5656**



## Badingham £215,000

A semi-detached 3 bedroom cottage in a pleasant position in Badingham. **Ref: 5693**



## Sibton £195,000

A 2 bedroom mid terrace house with parking on a development of 7 new homes in the village of Sibton. **Ref: 5692**



## Great Glemham - £675,000

A charming Grade II Listed former farmhouse, with annexe & traditional Suffolk barn, set in a delightful rural position with grounds of over 0.5 of an acre. **Ref: 5704**



## Bromeswell £650,000

An individual, detached 4 bedroom house, standing in a wonderful location with mature gardens & woodland, extending to 1.5 acres, within the village of Bromeswell, 3 miles from Woodbridge. **Ref: 5723**



## Eye £410,000

An impressive Grade II Listed townhouse with separate apartment, range of outbuildings & delightful courtyard garden in Eye. **Ref: 5607**



## Cratfield £395,000

A beautifully presented 4 bedroom, detached, modern house in the centre of Cratfield. **Ref: 5733**



## Framlingham £285,000

A 3 bedroom detached house, on the outskirts of the town, yet within walking distance of the shops and Market Hill. **Ref: 5699**



## Framlingham £274,950

A period style, modern, 2 bedroom detached cottage situated within walking distance of all Framlingham has to offer. **Ref: 5567**



## Earl Soham £250,000

A charming detached 2 bedroom cottage located in the centre of the village of Earl Soham. **Ref: 5720**



## Woodbridge £185,000

A ground floor 1 bedroom flat, forming part of the popular Elmhurst Court development for the over 55's. **Ref: 5647**



## Wickham Market £185,000

A pretty Victorian 2 bedroom mid-terraced cottage, tucked away close to the Church, requiring some updating. **Ref: 5725**



## Saxmundham £185,000

A 3 bedroom semi-detached house situated on the outskirts of the market town of Saxmundham. **Ref: 5726**

# Next Antique & Fine Art Auction to be held Wednesday 19th July, 2017

# Clarke & Simpson

Auctions

Closing date for entries 23rd June, 2017

## *Droite de Suite Royalty Charges*

From 14th February, 2006 all United Kingdom Art Market professionals (which includes auctioneers) are required to collect a royalty payment for all qualifying Works of Art. Under new legislation which came into effect on the 1st January, 2012, this applies to living artists and those who have died in the last 70 years. This payment is calculated on qualifying Works of Art which are sold for a hammer price more than the UK sterling equivalent of €1,000 (the UK sterling equivalent will fluctuate in line with prevailing exchange rates calculated by the Artist's Resale Right Service Hub, based on the European Central Bank reference rate published at 2.15pm on the day of the sale, and can be found on [www.dacs.org.uk](http://www.dacs.org.uk)).

All items in this catalogue that are marked "✓" are potentially qualifying items, and the royalty charge will apply if the hammer price is more than UK sterling equivalent of €1,000. The royalty charge will be added to purchase invoices, and must be paid before items can be cleared. All royalty charges are paid to the Design and Artists Copyright Society ("DACS") by the auctioneers and no handling costs or additional fees with respect to these charges will be retained by the auctioneer.

The royalty charge for qualifying items which achieve a hammer price of more than the UK sterling equivalent of €1,000, but less than the UK sterling equivalent of €50,000 is 4%. For qualifying items that sell for more than the UK equivalent of €50,000 a sliding scale of royalty charges will apply. For a complete list of the royalty charges and threshold levels please refer to [www.dacs.org.uk](http://www.dacs.org.uk). There is no VAT payable on this royalty charge.

## *Dear Purchaser*

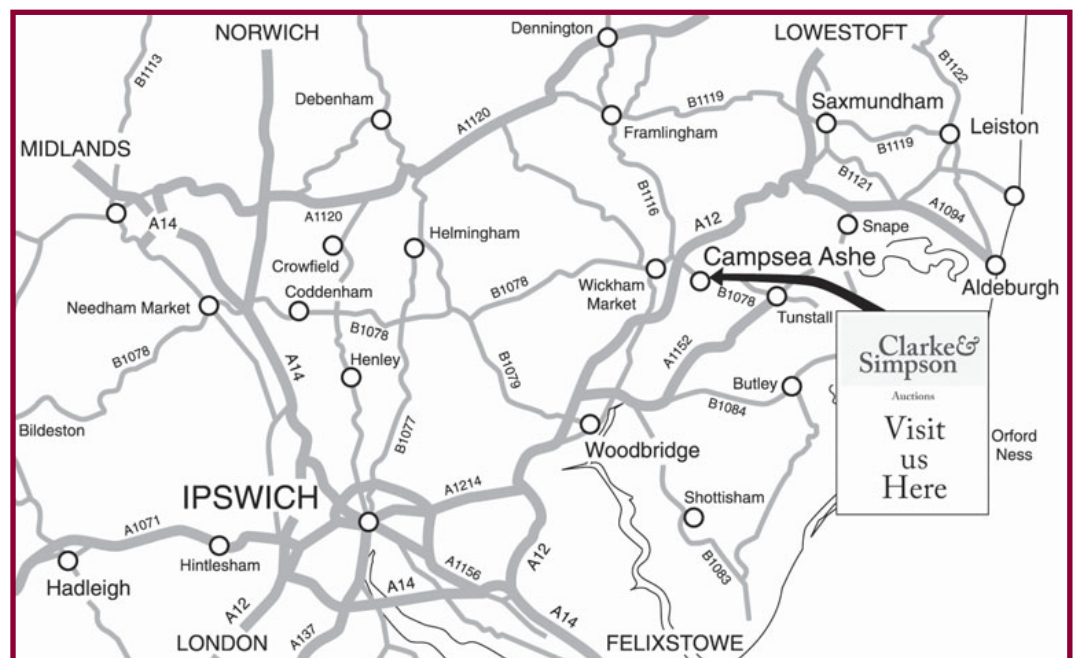
Clarke and Simpson are pleased to offer a packing and shipping service worldwide through "the-saleroom.com Delivery Service". The professional team will pack and ship items from very small non-breakables such as jewellery and coins through to larger and more fragile items such as paintings and works of art. Shipping and insurance is at the buyer's expense. Shipping payment must be made to 'the-saleroom.com Delivery Service' prior to departure and excludes local duties and taxes. Please note that Clarke and Simpson do not pack or ship items - all requests are sent to our specialist handlers at "the-saleroom.com Delivery Service" who can be contacted directly via [delivery@atgmedia.com](mailto:delivery@atgmedia.com)

the-saleroom.com  
delivery service



## *Directions*

We are just off the A12 north of Wickham Market on the B1078 road to Orford.





# TERMS AND CONDITIONS OF SALE

## 1. INTRODUCTION

The following defining terms are used in these conditions:-

“Auction”	Means any auction conducted by Clarke and Simpson Auctions Ltd. either at the premises owned by them or elsewhere (including any internet based auction);
“Auctioneer”	Means Clarke and Simpson Auctions Ltd. authorised auctioneer as appropriate;
“Bidder”	Means a bidder at an auction, including the bidders personally present at the venue and those bidding by telephone or over the internet or otherwise;
“Buyer”	Means the bidder whose bid was the last bid when the auctioneer concludes the bidding;
“Conditions”	Means these Terms and Conditions of Sale;
“Hammer Price”	Means the level of bidding reached (at or above any reserve) when the auctioneer brings the bidding to a close;
“Lot”	Means any property accepted by Clarke and Simpson Auctions Ltd. for offer at auction;

## 2. DESCRIPTION

No warranty is given or implied by the description in the catalogue. Each lot is sold in its condition at the time of sale with all faults, defects, imperfections and errors of description (if any). Whilst every endeavour has been made to describe the items adequately and properly, the purchaser shall deem to have inspected the lot at time of purchase. All catalogues and seller's and buyer's guides are for information only and do not form part of the contract.

## 3. STATUTORY REQUIREMENTS

Purchasers will be deemed to have satisfied themselves prior to purchasing regarding current legal requirements (e.g. Health & Safety at Work Act) and it is expressly brought to the bidders attention that equipment in the sale may not necessarily comply with such regulations. Any purchaser shall satisfy himself as to any statutory requirement for the use of any item and no liability shall rest with the vendors nor the Auctioneers.

## 4. THE AUCTION

All auctions are conducted at the absolute discretion of the auctioneer. The auctioneer shall conduct the auction with reasonable skill and care. The vendor reserves the right to sell subject to reserve price in respect of all lots. What constitutes a bid shall be at the absolute discretion of the auctioneer, acting with appropriate skill and care. The auctioneer shall have the right to refuse any bid in all cases but most notably when such a bid does not exceed the previous bid by at least 10% or such a proportion as the auctioneer shall in his absolute discretion direct. Where two or more bids at the same level are simultaneously received by the auctioneer, the auctioneer at his absolute discretion shall determine which bid to prefer. Subject to the foregoing where two or more bids are at the same level are simultaneously received by the auctioneer, the bid submitted in the room shall take preference over a bid submitted by telephone or internet at the same level. Any bid made or attempted by telephone or over the internet will only be deemed to have been made if received by the auctioneer. The auctioneer reserves the right to withdraw, consolidate or divide any lot or lots or submit them in any order that they desire. The auctioneer has the right at his absolute discretion to refuse admission to his premises or attendance at (or participation in) any auction by any person. In the case of any dispute, the auctioneer shall be sole arbitrator in any matters arising during or out of the sale.

## 5. BIDDERS

All bidders will be required to register their particulars, bidders attending in person and those accompanying them may be required to provide photo ID and separate confirmation of address prior to viewing or taking any part of the sale and before entering any part of the premises to view. All bidders accept full liability for all bids submitted. Subject to the clause in this document headed “The Auction”, the highest bidder at the close of bidding shall be the buyer. Any dispute about a bid shall be settled at the auctioneer's absolute discretion. Bidders are all deemed to act as principal unless there is prior written acknowledgement by Clarke and Simpson Auctions Ltd. that a bidder is acting as an agent for a named principal. Bidders are strongly encouraged to attend the auction in person. The bidders shall be responsible for any decision to bid for a particular lot and shall be deemed to have carefully inspected and satisfied themselves as to condition, neither Clarke and Simpson Auctions Ltd., their employees or agents shall be responsible for any neglect or default in doing or failing to do so. Bidders will be given ample opportunity to view and inspect before the sale and prospective buyers must satisfy themselves as to all matters.

## 6. DEFAULT

Clarke and Simpson Auctions Ltd. shall act as agent of the vendor only. Any contracts for the sale of a lot shall be formed between the vendor and the buyer. As agent only Clarke and Simpson Auctions Ltd. shall not be responsible for default by the vendor or the buyer. If any lot is not paid for in full and taken away in accordance with these conditions, or there is any other breach of the conditions, then Clarke and Simpson Auctions Ltd. as agents for vendor shall at its absolute discretion and without prejudice to any other rights it may have, be entitled to exercise all or any of the following rights and remedies:-

- 6.1 to proceed against the buyer for any action of debt or damages for breach of contract;
- 6.2 to rescind the sale of that lot or lots sold by Clarke and Simpson Auctions Ltd. to a defaulting buyer;
- 6.3 to resell the lot (by auction or private treaty) in which case the defaulting buyer shall be responsible for any resulting deficiency in the total amount due (after crediting any part payment and adding any resale costs), any possible surplus so arising shall belong to the vendor;
- 6.4 to remove, store and insure the lot at the expense of the defaulting buyer and, in the case of storage, the location of such storage shall be at Clarke and Simpson Auctions Ltd. discretion;
- 6.5 to charge interest at a rate not exceeding 2% per month of the total amount due to the extent that it remains unpaid for more than two working days after the sale;
- 6.6 to retain that or any lot sold to the defaulting buyer until the buyer pays the total amount due;
- 6.7 to reject or ignore bids from the defaulting buyer at future auctions or to impose conditions before any such bids are accepted;
- 6.8 to apply any proceeds of sale for any other lots due or in the future becoming due to the defaulting buyer towards the settlement of the total remaining due.

## 7. INDEMNITIES, PENALTIES AND LIMITATIONS OF LIABILITY

Purchasers shall pay for any damage done by themselves or their agents during the removal of their lots. Attendance at the sale shall be at the risk of those attending in respect of both themselves and to their goods and vehicles.

Any indemnity under these conditions will extend to all actions,

costs, expenses, claims and demand whatsoever suffered or incurred by the person entitled to the benefit of it and Clarke and Simpson Auctions Ltd. declare themselves to be a trustee of the benefit of such indemnity so far as it is expressed to be the benefit of its employees and agents.

Whilst Clarke and Simpson Auctions Ltd. endeavour to ensure that the information on their websites is correct, they do not warrant the accuracy and completeness of the material on their website. Also Clarke and Simpson Auctions Ltd. can make changes to the material on their website, or alter the products and prices described on it, at any time without notice. The material on the website may be out of date, Clarke and Simpson Auctions Ltd. make no commitment to update such material. All material on the websites is provided "as is" without any conditions, warranties or other terms at any time. Accordingly to the maximum extent permitted by law, the website is provided to all parties on the basis that Clarke and Simpson Auctions Ltd. exclude all representations, warranties, conditions and other terms which, but for this legal notice, might have effect in relation to the website.

## 8. ELECTRICAL SAFETY REGULATIONS

All electrical lots are subject to electrical safety regulations and fall within "the low voltage electrical equipment (safety) regulations 1989" – all items have been pat tested for safety but are not guaranteed in working order.

## 9. GENERAL MATTERS

Any notice to any buyer, vendor, bidder or viewer may be given by first class mail or email in which case it shall be deemed to have been received by the addressee forty eight hours after posting or sending. All notices to Clarke and Simpson Auctions Ltd. must be sent in writing and email is not acceptable. Any indulgence extended to any person by Clarke and Simpson Auctions Ltd., notwithstanding the strict terms of these conditions or the terms of consignment, shall affect the position at the relevant time only and the respect of that particular concession only; in all other respects these conditions shall be construed as having full force and effect. These conditions and any disputes or claims arising out or in connection with them or their subject matter or formation (including non-contractual disputes or claims) are governed by and construed in accordance with the law of England. The parties irrevocably agree that the courts of England have exclusive jurisdiction to settle any dispute or claim that arises out of or in connection with the agreement or its subject matter or formation (including non-contractual disputes or claims).

## 10. PUBLICITY

Any catalogue and buyer and seller guides are provided for information only and do not form part of these conditions. The catalogue and the buyer and seller guides may contain additional terms and conditions. Clarke and Simpson Auctions Ltd. reserve the right to use any photographs, background information and research for publicity purposes both before and after the sale.

## 11. THE PURCHASE PRICE AND PAYMENT ARRANGEMENTS

There is a buyer's premium 15% plus VAT payable in respect of the sale. Any purchases made via "www.the-saleroom.com" shall be subject to an administration charge of 3% plus VAT on the price. Preferred payment is cash, bankers draft or personal debit card. Such cards may only be used on a chip and pin basis with the owner present. No payment will be accepted by telephone. There will be an administration charge of 2.5% plus VAT for the use of credit cards or international debit cards. Payment by cheque will only be acceptable subject to prior arrangement. No lot will be removed from the sale until any cheque has cleared unless a suitable bank reference addressed to the auctioneer is supplied. Payment is due on the day of

the sale. Cash in excess of £12,000 (including V.A.T.) will not be accepted from any one person, this is not allowed due to Money Laundering Regulations 2007. All money received will be held in Clarke & Simpson Auctions Ltd. Clients Account at Barclays Bank plc, Framlingham, Suffolk. Account Number 33222276. Sort Code 209807. Clarke and Simpson Auctions Ltd. have no responsibility for any lot between the close of bidding and payment being made and subsequent collection. Please note all policy regarding payment will be enforced and suitable arrangements must be made.

## 12. REMOVAL OF LOTS

The ownership of any lot purchased shall not pass to the relevant buyer until they have made payment in full to Clarke and Simpson Auctions Ltd. of the total amount due. The buyer shall at their own risk and expense take away any lot that they have purchased and paid for not later than two working days following the day of the auction after which they shall be responsible for any removal, storage and insurance charges. Any lots not collected within three months of the date of sale will be resold by the auctioneer and all proceeds will be retained by the auctioneer to cover storage costs.

## 13. NUMBER BIDDING

This will be used for speed and efficiency as in all our sales. All prospective purchasers must complete a registration form and register in the office on the viewday or morning of sale to receive a number for bidding. PLEASE ALSO NOTE THAT PHOTO ID AND ADDITIONAL CONFIRMATION OF ADDRESS WILL BE REQUIRED.

## 14. TELEPHONE BIDDING

We offer a telephone bidding service where possible but this service can never be guaranteed. No applications for telephone bids will be accepted after the end of the viewing prior to sale day for any sale. All potential telephone bidders must provide a valid landline number and email address for us to send terms and conditions prior to phone bidding. No phone bids will be accepted for any lot with a lower guide figure of less than £100.

All those who wish to bid by telephone will be expected to deposit the minimum guide for all lots that they wish to bid upon into the Clients Account for Clarke and Simpson Auctions Ltd before the sale starts. In the event of default, this sum shall be retained as part payment or any part may be retained to recover losses under clause 6 of these Terms and Conditions. We will expect payment of the balance owing by BACS on the following day, any payment not met within five working days will result in the forfeiture of the deposit paid.

## 15. ONLINE BIDDING

Clarke & Simpson Auctions Ltd., on occasions, offer an online bidding service via the-saleroom.com for bidders who cannot attend the sale. In completing the bidder registration on www.the-saleroom.com and providing your credit card details and, unless alternative arrangements are agreed with Clarke & Simpson Auctions Ltd.:

- 1 authorise Clarke & Simpson Auctions Ltd., if they so wish, to charge the credit card given in part or full payment, including all fees, for items successfully purchased in the auction via www.the-saleroom.com, and
- 2 confirm that you are authorised to provide these credit card details to Clarke & Simpson Auctions Ltd. through www.the-saleroom.com and agree that Clarke & Simpson Auctions Ltd. are entitled to ship the goods to the card holder name and card holder address provided in fulfilment of the sale.

**Please note that any lots purchased via the-saleroom.com auction service will be subject to an additional 3% charge + VAT at the rate imposed on the hammer price**

Clarke &  
Simpson



*Find  
more than a  
keyhole view*

at [www.clarkeandsimpson.co.uk](http://www.clarkeandsimpson.co.uk)

T: 01728 621200





Clarke and Simpson Auction Centre  
Campsea Ashe  
Nr. Wickham Market  
Suffolk IP13 0PS  
Tel: (01728) 746323 Fax: (01728) 748173  
Email: [auctions@clarkeandsimpson.co.uk](mailto:auctions@clarkeandsimpson.co.uk)  
[www.clarkeandsimpson.co.uk](http://www.clarkeandsimpson.co.uk)