

Clarke &
Simpson

Auctions



*Art Deco, 20th Century
Design & Retro*

Monday 10th April at 9.30am

Special Notices for Purchasers

Certain lots are catalogued as (A.F.), damaged, restored, etc., however the absence of any such notice does not imply that the piece is free from defects, nor does it indicate that other defects are not also present.

Mention is not made of breakage, cracks, chips or any damage which can be noted by careful inspection, therefore, intending purchasers **MUST**, in all cases, be responsible for determining the condition of lots themselves.

Special attention is drawn to the Conditions of Sale printed at the back of this catalogue.

Estimates

Presale estimates are intended only as a guide for intending purchasers, are given in good faith and subject to revision.

Condition Reports

Clarke and Simpson are unable to guarantee that requests for condition reports/images received after the close of the viewing on the day prior to auction, will be responded to.

Clarke and Simpson are happy to give a Condition Report on the physical condition of goods, this will be provided on behalf of the seller on the understanding that Clarke and Simpson are not entering into a contract with you in respect of the Condition Report and accordingly does not assume responsibility to you in respect of it. All lots are available for your own inspection or for inspection by an expert instructed by you, therefore these Condition reports are for guidance only and all lots are sold "as found".

Commission Bids

The auctioneers will be pleased to execute bids for those unable to attend the sale. Lots will be purchased at the lowest bid the room bidding or any reserves will allow. In the event of identical bids, the earliest bid received will take precedence. There must always be a maximum limit indicated. Buy or unlimited bids will not be accepted. Commission bids placed by telephone are accepted at the client's risk. We urge our clients to place such commission bids before the start of the sale. All such commissions are left entirely at the buyer's risk.

Telephone Bids

Please refer to conditions printed at the back of this catalogue.

Registration

All prospective buyers must register their name and address at our auction office and collect a numbered bidding card before the sale commences. If you are a successful purchaser please ensure that your number can be seen by the auctioneer and that it is your number that is called out at the fall of the hammer. Should there be any doubts as to the price or buyer, please draw the

auctioneer's attention to it before the next lot is offered.

Value Added Tax

The symbol * after any lot number indicates that Value Added Tax is payable by the buyer on the "hammer price".

Auctioneers' Margin Scheme

The Auctioneers Margin Scheme allows auctioneers to sell items without VAT on the hammer price. Under the margin scheme an amount equivalent to VAT at the current rate is added to the buyer's premium.

This amount cannot be refunded. The VAT element will not be shown separately on the buyer's invoice.

Buyers' Premium

A buyer's premium of 15% plus VAT will be added to the hammer price of each lot.

Please note that any lots purchased via the-saleroom.com auction service will be subject to an additional 3% charge + VAT at the rate imposed on the hammer price.

Payment

Payment can be made during or immediately after the sale by the following methods:

Cash (up to a maximum of £12,000 including VAT in accordance with Money Laundering Regulations 2007).

Debit Cards

Credit Cards (not American Express) Please note there will be a surcharge of 2.5% plus VAT for the use of these cards. We will not release goods for a period of 72 hours unless the cardholder attends the saleroom in person and presents the cards used for the transaction with proof of ID.

Bank Transfer - Account Name: Clarke and Simpson Auctions Limited

Account Number: Account No: 83428591

Sort Code: 20-98-07

We do not accept cheques unless by prior arrangement.

Attribution of Pictures and Drawings

Every effort is made to ensure the accuracy of any statement as to authorship, attribution, origin, date, age, provenance and condition of any lot whether or not such statement forms part of the description of any such lot. Whether any such statement is made orally or in the catalogue it is an expression of opinion and not to be taken as being or implying any warranties or representations of facts by the auctioneers. Each buyer by making a bid for a lot acknowledges that he has satisfied himself fully as to the attribution and condition of the lot.

- a) The forename(s) (or full stops where not known) and surname of an artist indicates in our opinion a work by the artist.
- b) The initials of the forename(s) and the surname of the artist indicates in our opinion a work of the period of the artist which may be wholly or in part his work.
- c) The surname of the artist indicates in our opinion a work of the school or by one of the followers of the artist or in his style and of uncertain date.
- d) *Signed, Dated, Inscribed* indicates in our opinion work signed/dated/inscribed by the artist.
- e) *Bears signature* indicates in our opinion that this is not the signature of the artist.
- f) *Attributed to* may be used to denote a traditional attribution based on style.
- g) *Manner of* indicates in our opinion a work executed in the artist/craftsman's style but of a later date.
- h) *After* indicates in our opinion a copy (of any date) of work of an artist or craftsman.

The addition of a question mark after any of the cataloguing terms above indicates an element of doubt.

Clarke & Simpson

Auctions

Art Deco, 20th Century Design & Retro

Monday 10th April 2017

at 9.30am

Viewing:

Saturday 8th April 9am - 12noon

Morning of Sale from 8.30am

Enquiries:

James Shand, Auctioneer & Valuer

Geoffrey Barfoot, Auction Room Manager & Valuer

Buyers' Premium:

15% plus VAT

the-saleroom.com

Please see www.the-saleroom.com



Campsea Ashe
Nr Wickham Market
Suffolk IP13 0PS
Tel: 01728 746323 Fax: 01728 748173
Email: auctions@clarkeandsimpson.co.uk
www.clarkeandsimpson.co.uk



@CandSAuctions



CandSAuctions



Lot 4



Lot 6



Lot 9



Lot 21



Lot 22

1
A green patinated Art Deco bronze figure of a tambourine girl, on black marble base, 43cm high overall. £200-£250

2
A pair of gilded classical nude figures, raised on circular marble plinths, 27cm high. £40-£60

3
A pair of Art Deco design cold painted Spelter "Mirror Girls", on circular black plinths, 43cm high overall. £40-£60

4
A Spelter figure of an Alsatian, on marble base, 31.5cm long overall. £30-£40. See illustration.

5
A cold painted match striker, in the form of running Borzoi dogs, 31.5cm long overall. £80-£120

6
An Art Deco table lamp, in the form of a semi naked girl holding a garland of flowers, with green glass curved shade behind and raised on an oedonesque plinth, 43cm long. £400-£600. See illustration.

7
A Spelter group of deer, raised on oblong marble plinth, 40cm long. £20-£30

8
An Art Deco style Spelter figure, depicting "Diana the Huntress", 28cm high. £10-£20

9
After Lorenzl, cold painted Spelter figure of a dancing girl, on green marble base, 24cm high. £150-£200. See illustration.

10
An Art Deco table lamp, in the form of two standing nude girls, 28.5cm long x 24cm high. £300-£400

11
An Art Deco style match striker, after Lorenzl, in the form of a nude girl balanced on a ball, 24cm high. £50-£60

12
Another similar, 21cm high. £120-£150

13
A chrome Art Deco style two tier cake stand, supported by a nude dancing girl. £10-£20

14
An illuminated Coca Cola advertising sign, 43cm long. £10-£20

15
A seated bronze study of a nude girl, on marble plinth, 15cm high. £10-£20

16
An aluminium stylised figure of a dancing girl, 33cm high. £20-£30

17
An Art Deco bronze and enamel crucifix, 38cm. £30-£40

18
Hugh Wallace, Art Deco spot hammered copper tray, with floral decoration, impressed mark HW, 23cm dia. £20-£40

19
A pair of shagreen effect Art Deco book-ends. £20-£30

20
A chrome and bakelite wall clock, 18cm dia. £20-£30

21
An Arts & Crafts copper kettle, on brass spirit heater stand, having wicker handle. £20-£40. See illustration.

22
L. Rania, Art Nouveau pewter lidded jug with floral decoration and stylised handle, 34cm high. £40-£60. See illustration.

23
An Art Nouveau design easel mirror. £40-£60

24
An Arts & Crafts spot hammered pewter jardiniere, raised on scrolled supports, stamped English Pewter 01029, presentation date of 1913, 27cm dia. overall x 16cm high. £50-£80

25
A Walker & Hall plated salver, having bird and foliate engraved decoration; and a plated square box and cover, (2). £20-£40

26
An Art Nouveau copper tea kettle, raised on a spirit heater stand. £20-£30

27
A glass and plate mounted cocktail mixing shaker, 27cm high. £20-£30

28
A green plastic cased retro wall clock, 33cm dia. £10-£20

29
A stylised bronze figure of a golfer, 26cm high. £10-£20

30
A stylised bronze figure of an elongated man, on black plinth, 28cm high. £10-£20

31
A bronze figure, depicting three stylised figures with out-stretched arms, 24cm long. £10-£20

32
A stylised bronze figure of a dancing couple, 13cm long; and a bronze modernist study of two athletes, raised on marble plinth, 23cm high (2). £20-£30

33
A bronze circular modernist design ornament, depicting flowerheads raised on a marble base, 35cm high. £10-£20

34
A bronze modernist style group, depicting a couple seated on a bench, 19cm long. £10-£20

35
A G-plan style mirror, with integral shelf, 115cm x 46cm. £30-£40

36
A large Italian Art Deco design bevelled edge frameless wall mirror, 100cm x 110cm. £40-£60

37
A set of three shop mannequins, male, female and child. £30-£40

38
An Autobridge playing board. £20-£30

39
A London, Midland & Scottish Railway Company advertising sign. £20-£30

40
Doctor A Wood Smith, "Cherries", excepted and hung at the 5th Irish salon of photography Dublin 1935. £10-£20

41
Richard Cox, acrylic study of Levington Creek, 22cm x 52cm. £40-£60

42
Ray Burgoyne, untitled mixed media painting on board, signed and dated 2016, 33cm x 25cm. £40-£60

43
Maggi Hambling, "Heron Watching", artist proof, pencil signed to the mount, dated 2009. £500-£700

44
Jelly Green, White Cosmos, watercolour on paper, signed and dated 2014, 28.5cm x 20cm. £60-£80

45
Theronda Hoffman, study of Walberswick, acrylic on paper, signed and dated 2015, 18cm x 28cm. £60-£100

46
Jennifer Andrews, Stormy seas North Cornwall, signed watercolour, 14cm x 17.5cm. £40-£60

47
Margaret Glass, rural landscape pastel study, initialed MRG, 25cm x 37cm. £200-£300

48 ✓
Scottie Wilson 1889-1972, mask, ink and crayon, signed to the bottom right, 25cm x 13cm. £100-£200

49 ✓
Scottie Wilson 1889-1972, mask, ink and crayon, signed bottom right, 22cm x 13cm. £100-£200. See illustration.

50 ✓
Scottie Wilson 1889-1972, mask, ink and crayon, signed bottom right, 19cm x 15cm. £100-£200

51 ✓
Scottie Wilson 1889-1972, mask, ink and crayon, signed bottom right 26cm x 18cm. £100-£200

52 ✓
Scottie Wilson 1889-1972, mask, ink and crayon, signed Scottie bottom right, 13cm x 11cm. £100-£150

53 ✓
Scottie Wilson 1889-1972, spiraling foliage and birds, crayon, signed 50cm x 62cm. £300-£400

54 ✓
Scottie Wilson 1889-1972, "Ducks Paradise", ink and crayon, signed, 38cm x 25cm. £200-£300

55 ✓
Scottie Wilson 1889-1972, "Bird Song", signed mixed media study, used as a design for Unicef Greetings Card, gallery labels verso, 32cm x 25cm. £200-£300. See illustration.

56 ✓
Scottie Wilson 1889-1972, mixed media study depicting swans, butterflies, exotic birds and fishes, signed bottom right, 38.5cm x 26cm. £200-£300

57 ✓
Scottie Wilson 1889-1972, "Black Vase", mixed media study, signed bottom right, 38cm x 25.5cm. £200-£300

58 ✓
Scottie Wilson 1889-1972, birds and fish, mixed media study, signed bottom right, 36.5cm x 22.5cm. £200-£300

59 ✓
Scottie Wilson 1889-1972, crab pincers and foliate scrolls, mixed media study, signed bottom right, pencil inscription verso, "Scottie Wilson June 1948", 48cm x 36cm. £300-£400. See illustration.

60 ✓
Scottie Wilson 1889-1972, study of butterflies and birds, ink and crayon, signed bottom right, 36cm x 25cm. £200-£300

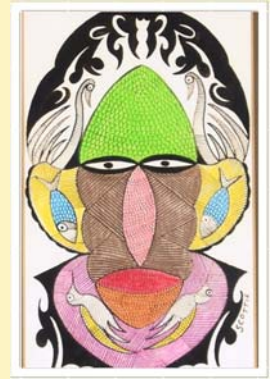
61 ✓
Scottie Wilson 1889-1972, study of birds head's and fish, ink and crayon, 31cm x 28cm. See annotation verso. £300-£400

62 ✓
Scottie Wilson 1889-1972, "Vase of Peace", ink and crayon study, signed bottom right, label verso, 33cm x 24.5cm £200-£300

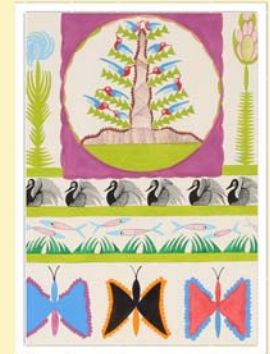
63 ✓
Scottie Wilson 1889-1972, mask, ink and crayon study, signed bottom right, 22.5cm x 19cm. £100-£200. See illustration.

64 ✓
Scottie Wilson 1889-1972, circular study of fish and bird heads, ink and crayon, signed, 22cm dia. £200-£300. See illustration.

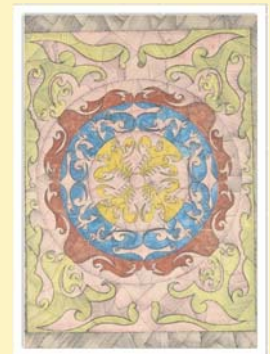
65
Robert Sadler, "White Flower" acrylic on board, see studio exhibition label verso, dated 1989, 41cm x 30cm. £60-£100



Lot 49



Lot 55



Lot 59



Lot 63



Lot 64



Lot 87

66
Walter Crane, a pair of original 19th Century fairytale lithographs, signed with monogram in the image, 15cm x 15cm. £10-£20

67
Phillipa Dawling, 20th Century, "View Andalucia", watercolour, initialed PD 87, 50cm x 72cm. £50-£80

68
20th Century school, study of a view through a window, unsigned oil on canvas, 69cm x 91cm. £30-£50

69
A limited edition print, depicting "The Cell" by Nelson Mandella, 1/1500. £20-£30

70
A limited edition print, "The window" by Nelson Mandella, 1/1500. £20-£30

71
A modern abstract print, indistinctly signed in pencil to the mount. £10-£20

72
An old leopard skin and head rug. £60-£100

73
A 1960's Casa Pupo rug. £20-£40

74 ✓
Scottie Wilson 1889-1972, large print on fabric depicting birds and foliage within panels, 70cm x 118cm. £100-£200

75
Dowman?, abstract palette knife on canvas, 76cm x 51cm. £10-£20

76
An Art Deco oak long case clock, having three train chiming movement. £60-£100

77
An Art Deco faux burr walnut cased grandmother clock/radio £30-£50

78
A 1960's satin birch coffee table, the top of tapering form raised on rounded screw on legs, 88cm. £20-£40

79
A painted metal model of a sailor, circa 1970's, 95cm high. £20-£30

80
Two modern glass decanters; a similar design oil bottle; another; and a heavy glass fruit bowl (5). £20-£40

81
A copper lustre decorated vase; a wooden and brass mounted twin branch candleholder; and a pair of Antique brass candlesticks (4). £10-£20

82
A cased set of 12 glass coasters; and a boxed set of 12 glass knife rests. £10-£20

83
An oak and bronze crucifix. £10-£20

84
A large Susie Cooper charger, with pale green and white crescent decoration, 46cm dia. £20-£30

85
A Susie Cooper shallow bowl, having pale green incised decoration, inscribed verso "Susie Cooper 1932", 21.5cm dia. £20-£30

86
A Bernard Rooke leaf pattern vase, 30cm high. £20-£30

87
A Doulton Carrara Lambeth baluster vase, having pierced decoration and twist handles, impressed to base EDL 497, 31cm high. £20-£40. See illustration.

88
An oak and bronze crucifix. £10-£20

89
Two carved wooden crucifix; and a hardwood stylised figure of the Madonna, (3). £10-£20

90
An Arts & Crafts design spot hammered copper and brass oil lamp. £10-£20. See illustration.

91
A Studio pottery vase, of ribbed pinched form, 16cm high; two smaller similar vases; and a pottery hollow study of an apple, (4). £10-£20

92
A Veuve clicquot orange plastic champagne bucket; and two Mumm champagne similar. £20-£30

93
Two brass trench art foliate decorated shell case vases; and two Chinese brass vases, (4). £20-£40

94
A Whitefriars style blue glass bottle vase; and a coloured glass paperweight and a similar heavy glass posy bowl, both indistinctly signed, (3). £10-£20. See illustration.

95
A Marbell stylised figure group; a Stone art model of an elephant; another similar; and a Trentham Artware lustre decorated study of a duck, (4). £10-£20

96
A stylised carved wooden figure group, of an embracing couple; and another of three seated monkeys (2). £10-£20

97
A WMF plated three light candleholder, 42cm long; and a single similar (2). £20-£30

98
A WMF plated and wooden mounted three light candleholder; and two others (3). £20-£30



Lot 90



Lot 94



Lot 106

99

A carved hardwood figure of a fisherman, with net and catch, 30cm; and a carved hardwood figure of a female, 57cm (2). £20-£30

100

A Studio pottery vase, having flared rim with blue glaze, inscribed to base Keramill Keruska, 24cm high; and an alabaster table lamp and shade AF, 32cm (2). £10-£20

101

A Karim Rashid for Umbra steel candelabra, 23cm high and a smaller similar example (2). £40-£60

102

An amber glass vase, of crimped form; an Italian green glass goblet vase a multi coloured glass posy basket with clear glass handle, and a ruby glass vase with spiked decoration, (4). £20-£40

103

A plated champagne bucket, having brass drop handles; an oval WMF bread basket and a rectangular similar, (3). £20-£40

104

A brass and fruitwood candlestick, with spiral column, spot hammered decoration to the base and drip pan, 34cm high. £20-£40

105

A Rosenthal crystal goblet; an FM glass rockwork model; a heavy glass designer candleholder; a mauve tinted oval glass fruit dish; a glass specimen vase etc. (7). £20-£40

106 ✓

Scottie Wilson 1889-1972, hand painted plate decorated in black and white with a tree and birds, 26cm dia., framed and glazed. £100-£200. See illustration.

107 ✓

Scottie Wilson 1889-1972, hand painted plate decorated in black and white with a tree and birds, 26cm dia., framed and glazed. £100-£200

108 ✓

Scottie Wilson 1889-1972, hand painted plate "Peaceful Village", (blue) VI, 31cm overall, framed and glazed. £100-£200. See illustration.

109 ✓

Scottie Wilson 1889-1972, hand painted plate decorated in black and white with swans and other birds on a tree, 26cm dia. £100-£200

110 ✓

Scottie Wilson 1889-1972, hand painted plate decorated in green and black with birds, swans and castles, within a stylised foliate border, 26cm dia. £100-£200. See illustration.

111 ✓

Scottie Wilson 1889-1972, hand painted oval plate decorated in beige and cream with birds on a black tree, 30cm, framed and glazed. £100-£200

112 ✓

Scottie Wilson 1889-1972, hand painted oval platter decorated in black, grey and green with swans, fish, trees and castles, 40cm x 31cm in extremes, framed and glazed. £100-£200. See illustration.

113 ✓

Scottie Wilson 1889-1972, hand painted oval platter with flowers, swans and fishes, signed Scottie, 35cm, framed and glazed. £100-£200

114

A box containing a Vintage Harrods leather handbag; three pairs of Vintage Sunglasses including an early 1970's Piave Italian pair together with a collection of Vintage bangles and a Papworth leather briefcase. £10-£20

115

Archimede Seguso, mid 20th Century Murano glass bowl, heavily cased in clear glass with engraved signature, 27cm. £60-£100

116

A Daum glass vase of free form design, 39cm long. £50-£80

117

A brass based Arts & Crafts design oil lamp, having clear glass font and etched shade. £60-£80

118

Richard Renforth, painting on black glass plate of a butterfly; and another of a jigsaw (2). £20-£40

119

A collection of early 20th Century pottery, to include a Burmantofts turquoise posy vase, AF; a Doulton silicone ware jardinière; a Goldcroft Bristol jardinière; a Royal Stanley ware fruit decorated vase etc. (7). £60-£80

120

A Murano glass vase, signed Pino Signorette, 31cm. £150-£200

121

A Tiffany design coloured glass lamp, having mushroom shade and baluster body, 37cm high. £60-£100

122

A Studio pottery bottle shaped vase, 20cm high; and a grey Studio pottery vase with angular flared neck, 17cm high; a Gouda pottery bowl and cover and a matching baluster vase, (4). £20-£30

123

A silvered table lamp, in the form of a stylised gentleman, 50cm high. £20-£40

124

A pair of Art Deco style wall masks, one AF. £10-£20

125

A bronze bust of Napoleon, signed Lecomte, raised on a marble plinth, 36cm high. £100-£200. See illustration.



Lot 108



Lot 110



Lot 112



Lot 125



Lot 142



Lot 143



Lot 146



Lot 147



Lot 162

126

A bronzed novelty clock, in the form of an airman, 37cm high. £20-£30

126a

An Art Deco metal clock, decorated with two panthers, 16cm high. £80-120

127

An Art Deco wooden and metal wall mounting coat rack, 52cm. £10-£20

128

A collection of Scottie Wilson for Royal Worcester Crown ware, comprising coffee pot, pair of dessert bowls, mustard pot, pair of dinner plates and a tea plate (6). £40-£60

129

Scottie Wilson for Royal Worcester Crown ware, a swan, castle and tree decorated plate; and a fish and swan decorated trio (4). £30-£50

130

An Orrefors glass vase, of paneled tapering form, decorated with a nude female and dove, on hexagonal foot, 23.5cm high. £20-£40

131

An Orrefors glass decanter, having etched decoration of a building with initialed stopper, 26.5cm high. £20-£40

132

A collection of 8 various continental pottery vases and other items. £10-£20

133

A blue Furse theatre lamp. £40-£60

134

A silver plated novelty decanter set, in the form of a parrot in a cage. £300-£400

135

A Bernard Rooke pottery planter, decorated with foliage and butterflies, 94cm high. £60-£100

136

A teak metamorphic corner bookcase/ cocktail cabinet, 114cm wide in extremes. £30-£50

137

A G plan style wall mirror. £10-£20

138

A Nathan teak corner cupboard, 102cm wide. £10-£20

139 ✓

Scottie Wilson 1889-1972, hand painted oval platter decorated with central bird, 39cm x 33cm, framed and glazed. £100-£200

140 ✓

Scottie Wilson 1889-1972, hand painted oval plate, decorated in black with fishes, flowers, swans and a castle, 36cm x 27cm. £100-£200

141 ✓

Scottie Wilson 1889-1972, hand painted plate decorated in black and white with castles, swans and birds, framed and glazed, 26cm dia., dedication verso. £100-£200

142 ✓

Scottie Wilson 1889-1972, hand painted plate decorated with a green central tree and birds within cream and brown glazed border, 25cm dia., framed and glazed. £100-£200. See illustration.

143 ✓

Scottie Wilson 1889-1972, hand painted plate decorated in green and yellow depicting a tree and birds, 30cm dia. framed and glazed. £100-£200. See illustration & front cover.

144

A small collection of Scottie Wilson ephemera, including a photograph, a gallery poster, the Life and Work of Scottie Wilson, "It's All Writ Out For You" by George Melly, with signature and annotation, "A Tribe Of One" Great Naive painters of the British Isles, by George Melly with signature and annotation etc. £40-£60

145

An Art Deco period study of a seated lady, unsigned watercolour and two "Chocolate Box Prints", (3). £20-£40

146

An Art Deco Macassar ebony and chrome mounted cocktail cabinet, fitted with cupboards, drawers and pull-out slide, raised on square section supports, 140cm wide x 125cm high. £300-£500. See illustration.

147

A bronze study of a reclining suspended nude, on black marble plinth, 55cm long overall. £200-£300. See illustration.

148

An amethyst tinted and clear glass spill vase/candlestick, inscribed to base "Biot" and impressed EM, 50cm high. £20-£40

149

A pink tinted vase, by Joye Colbeck, with etched decoration, 37cm high. £20-£40

150

A collection of 1950s, 60s and 70s kitchenalia, including plastic, Formica, Tupperware examples etc. £10-£20

151

An Art Deco over-painted print of a reclining lady, in black lace dress with long pearl necklace. £10-£20

152

Moira Doggett, study of figures amongst clouds and foliage, signed oil on canvas, 76cm x 64cm. £20-£40

153

Henry Mann Livens, study of a woman feeding children, charcoal and crayon, unsigned, 35cm x 23cm. £20-£40

154

After Hall Thorpe, a pair of coloured prints, "The pick of the garden" and "A cottage posy". £10-£20

155

John S. Goodall, study of children and dog beside a river; and another by the same artist depicting figures in a tearoom, signed watercolours, a pair, framed as one, 14cm x 18cm. £20-£40

156

Robert Sadler, landscape study, signed acrylic on board, 11cm x 27cm. £40-£60

157 ✓

Colin Moss, study of a nude woman, dated verso 1974, signed oil on canvas, 32cm x 62cm. £400-£600

158

A WMF Kora glass bowl, 35.5cm dia. £80-£120

159

A large coloured Studio glass vase, by Steve James, 30cm high. £20-£40

160

A Monart glass shallow bowl, bearing paper label, 26cm dia. £60-£80

161

A large Murano Fratelly Toso vase, 49cm high. £30-£50

162

A Stag mahogany and blue finish sideboard, fitted three drawers flanked by cupboards, raised on rounded supports, 185cm long. £300-£500

163

A child's wicker tub chair; a wicker and bamboo magazine rack; and a bamboo and wicker hanging coat rack (3). £10-£20

164

A Bernard Rooke table lamp, decorated with oak leaves, acorns and squirrels. £20-£40

165

A Bernard Rooke vase, of circular pierced form, decorated with butterflies and two Bernard Rooke pottery studies of squirrels (3). £20-£30

166

A Bernard Rooke pottery jardiniere stand, with leaf decoration, 99cm high. £40-£60

167

A pair of grey painted pyramid chests, fitted six drawers each, 102cm high. £80-£120

168 ✓

Hugh Webster, 20th Century, study of a coastal scene, signed oil on panel, 29cm x 37cm. £20-£40. See illustration.

169

J.V., study of a Martello Tower, initialed oil on panel, 34cm x 45cm. £30-£50

170

J.V., study of figures walking on a coastal path, initialed oil on panel, 34cm x 45cm. £30-£50

171 ✓

John Anthony Park 1880-1962, studies of Pin Mill, signed oils on board, a pair, information verso 32cm x 39cm. £400-£600. See illustration.

172

An etching, figures on a tree lined road, monogrammed bottom right, 30cm x 39cm. £20-£40

173 ✓

Pierre le Faguay, bronze study of a huntress, her bow raised aloft, 67cm high. £1,500-£2,000. See back cover.

174

After Augustus Moreau, Spelter table lamp base in the form of "Forgeron", surmounted by a glass flambe shade, 66cm high. £40-£60

175

A blue Art Glass fruit bowl, 32cm in extremes. £20-£40

176

A cold painted Spelter figure, of a semi naked archer, entitled "Le Personnel Reconnaissant", raised on a veined marble base, signed to marble G Darny, 52cm long overall. £100-£150. See illustration.

177

A Royal Worcester vase, having painted panels of pheasants on a deep blue and cream ground, the elongated flared neck with stylised decoration, raised on a circular foot, circa 1892, 32cm high. £40-£60

178

A light oak Art Deco chest, the top blind drawer fitted with a mirror, three drawers under, 93cm wide. £60-£80

179 ✓

Earl Alexander of Tunis, study of Costa Brava, signed oil on canvas, dated 1956, 44cm x 59cm; together with "The paintings of Field Marshall Earl Alexander of Tunis", with an introduction by Edward Seago, signed on the frontis page by Seago; together with a letter. £100-£200. See illustration.

180

John Tennant, pencil signed limited edition print, "Red Shanks in Spring", 11/95, dated 1975, 34cm x 40cm. £40-£60. See illustration.

181

Raymond Jackson, (J.A.K.), a pencil signed humorous cartoon, "The Good News Is The Police Are On Their Way - The Bad News Is They Are From West Yorkshire". £20-£40

182

J.V. study of a figure fishing in the rain, initialed oil on board, 34cm x 45cm. £30-£50



Lot 168



Lot 171



Lot 176



Lot 179



Lot 180



Lot 206

183

An Art Deco light oak dressing table, having shaped bevelled mirror above a stepped arrangement of drawers, 116cm. £40-£60

184

A Tudric Liberty 5 piece spot hammered tea set and tray. £100-£200

185

John and Sylvia Reed for Stag, a chest of three long drawers, raised on rounded tapering supports, 66cm wide. £30-£50

186

John and Sylvia Reed for Stag, a chest of three long drawers, raised on rounded tapering supports, 66cm wide. £30-£50

187

After Hall Thorpe, coloured print of flowers and catkins in a vase; and another similar, (2). £20-£30

188

A framed travel poster, "Southend and West Cliff on Sea, For Sea Breezes", 29cm x 17.5cm; a Dutch coloured print in oak frame; and a Japanese print on fabric, (3). £10-£20

189

A French golfing print, "Byrrh"; and a smaller humorous golfing print, "The Bunker", (2). £20-£30

190

Bryan Illsley, flowers in a vase, signed, oil on panel, dated verso 1969, 40cm x 29cm. £20-£30

191

An Art Deco period needlework, depicting a maiden watering a garden, "With the kiss of the sun for Pardon and the song of birds for Mirth one is nearer Gods heart in the garden than anywhere else on earth". £10-£20

192

A French Art Deco design painted metal double sided travel board. £30-£50

193

An Art Deco style metal advertising poster, for Newcastle Ale. £10-£20

194

An Art Deco style metal advertising poster, for Newcastle Ale. £10-£20

195

Alan Armitage, study of street scene, signed watercolour, 38cm x 63cm; and another study by the same artist of houses, figures and cars in a cul-de-sac, (2). £10-£20

196

A 1960's wooden tambour roll top sewing box, on rounded tapering supports, 57cm. £30-£50

197

An Art Deco plaster figure group, depicting a semi naked woman running with a dog, 70cm long overall. £40-£60

198

A Picquot ware five piece tea set. £20-£40

199

A French free form glass centre piece; and a glass lamp base (2). £20-£40

200

A Louis Wain print of cats. £40-£60

201

A Louis Wain print of dogs. £60-£80

202

A Heals oak chest, of two short and two long drawers, raised on bun feet, 92cm wide. £100-£150

203

A white plaster bust, of a young woman, raised on wooden plinth, 55cm high overall. £20-£40

204

A terracotta bust, of a young woman, 28cm high. £20-£40

205

A G-plan light oak and painted chest, of two shallow and three long graduated drawers, 77cm wide. £40-£60

206

Timothy Easton, winter triptych, signed and dated 1991, 29cm x 35cm. £100-£200. See illustration.

207

Susan French, "Dorset cats", signed oil on board, 25cm x 31cm. £40-£60

208

20th Century abstract portrait, unsigned watercolour, 15cm x 15cm mounted in a broad wooden frame. £15-£25

209

Mid 20th Century school, study of a semi naked girl wearing a veil and flowers in her hair, indistinctly signed oil on canvas, 34cm x 26cm. £20-£40. See illustration.

210

English school 20th Century, still life, unsigned watercolour, 36cm x 46cm. £15-£25. See illustration.

211

A. Cobb, late 19th Century, study of a kitten, signed oil on canvas, 36cm x 27cm, contained in a bird's eye maple frame. £20-£40

212

20th Century school, Venetian scene, unsigned palette knife on canvas 39cm x 29cm. £40-£60

213

An Art Deco watercolour, depicting a fashion plate, with text, 33cm x 20cm. £20-£30

214

An early 20th Century Fox film poster, for "Vision" Empire theatre London, 42cm x 27cm. £20-£30



Lot 209



Lot 210



Lot 216

215

R. Madrazo, study of a vase of flowers, oil on canvas, 63cm x 77cm, signature verso. £200-£300

216

Trevor Lawrence, study of busy street scene and market, signed oil on canvas, dated 1971, 59cm x 44cm. £40-£60.

See illustration.

217

Bernard Rooke, abstract study, signed mixed media, 50cm x 62cm. £40-£60

218

Tu Two Too, abstract study, oil on paper laid down on board, 74cm x 73cm. £15-£25

219

After Henry Mann Livens, study of figures, unsigned pencil and pastel, 18cm x 15cm. £20-£40

220

Anna Zinkeisen, theatrical sketch, unsigned pencil and crayon, 23cm x 28cm. £40-£60. See illustration.

221

Anna Zinkeisen, sketch of a child sat on a grassy knoll surrounded by birds, unsigned crayon and pencil sketch, 21cm x 16cm. £40-£60

222

Anna Zinkeisen, pencil and crayon sketch depicting medieval scene, unsigned, 19cm x 21cm. £40-£60

223

An Art Deco period study of a young girl, entitled "Greetings to Lord Barnby from a young Philippino friend from the Philippines", signed watercolour, inscribed A.Dixon 1934 Manilla, 32cm x 20cm. £20-£40

224

20th Century continental school, street scene, unsigned palette knife on board, 24cm x 29cm. £20-£40

225

Moravy, a pair of studies of young children, signed oils on canvas, 29cm x 23cm; and another similar by Corelli, (3). £20-£40

226

Connie Winn, study of flowers, signed oil on canvas, 61cm x 50cm. £80-£120. See illustration.

227

Connie Winn, study of a house and garden with figures, signed oil on canvas, 35cm x 59cm. £80-£120. See illustration.

228

A pair of Art Deco ribbed glass ceiling lights, 30cm dia. £40-£60

229

A pair of Bernard Rooke pottery speakers, 33cm high. £80-£120. See illustration.

230

An unusual oak chest, of five drawers, by Waring & Gillow, with pull-out slide to each side, 106cm wide. £40-£60

231

An Art Deco oak and copper mounted fire screen, decorated with scenes of sailing ships, 96cm wide. £40-£60

232

A teak G Plan three door sideboard, 142cm wide. £20-£40

233

An Art Deco marble clock garniture. £40-£60

234

An Art Deco brass and coloured glass oil lamp, 79cm high overall. £60-£80

235

An Art Deco marble clock garniture. £40-£60

236

Anna Ravenscroft, an early signed and dated wood block print depicting wild life, signed in the image and dated 1976, pencil signed to margin, artist's proof. £40-£60

237

20th Century school, watercolour study of a nude female, unsigned, 65cm x 49cm. £20-£40

238

A Yorkshire Railway poster print. £80-£120

239

A Younger Limited teak sideboard, fitted double cupboards and four central drawers, raised on square tapering supports, 198cm wide. £60-£100

240

Three heavy 1960's Art Glass vases, probably Czech. £10-£20

241

A 1970's hors d'oeuvres dish; a Thermos flask; and two Thermos jugs. £10-£20

242

A quantity of various Studio pottery, including John Leach, early Colin Pearson, together with miscellaneous glass and other items (25). £10-£20

243

A nest of G Plan coffee tables, 54cm wide in extremes. £40-£60

244

A 1960's/70's G-plan design tile top two tier coffee table, 110cm wide. £20-£40

245

A teak two tier tea trolley, 71cm wide. £20-£40

246

A pair of 1960's full length lined curtains. £10-£20



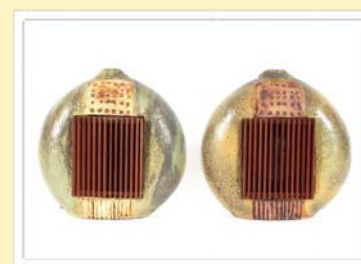
Lot 220



Lot 226



Lot 227



Lot 229



Lot 254

247

A vintage 1960's Holmes of Norwich metallic patent copper handbag; and another 1960's Holmes green Kelly bag. £20-£30

248

Three vintage kilts, including Scott of Aberdeen and Highland Home wool examples, size 16. £10-£20

249

A Uniflex chest, of six drawers, 76cm wide. £40-£60

250

A double side four door low cupboard, 49cm wide. £10-£20

251

Jane German, a signed pastel, (in monogram) of Geese, mounted but unframed, 52cm x 32cm. £40-£60

252

English school 20th Century, oil on canvas, study of swans on blue water, 35cm x 72cm. £15-£25

253

Two Art Deco mirrored picture frames. £10-£20

254

A pair of modern oils on canvas, depicting stylised clowns, one playing a musical instrument, indistinctly signed, 59cm x 49cm. £20-£40. See illustration.

255

A leather and brass club fender, 175cm. £60-£100

256

A suitcase, containing vintage dresses etc. including Carnegie of London. £20-£30

257

An unusual glass and perspex long coffee table, 136cm long. £30-£40

258

A collection of various Bossons wall plaques. £40-£60

259

An early 20th Century light oak chiffonier, in the aesthetic movement style, having raised mirrored back shelf, four drawers below above a cupboard and recess, raised on turned supports, 115cm wide x 146cm high. £100-£150. See illustration.

260

20th Century school, study of two stylised nude figures, unsigned oil, 50cm x 39cm unframed. £20-£40

261

A pastel study, of a crouching nude female, (faded); pencil signed print of a semi naked female; oil on canvas of a woodland glade; and a continental print of a peasant girl, (4). £20-£30

262

An advertising print, for F.H. Ayers "Manufacturer of Billiard tables, Bagatelle boards etc". 46cm x 64cm. £10-£20

263

A needlepoint embroidery, inscribed verso, "La dame a la 'Licorne' G. Delcroix", 18cm x 19cm. £10-£20. See illustration.

264

After Paynton, 1970's print of Don Quixote and Sancho Panza, 54cm x 74cm. £10-£20. See illustration.

265

A teak Ladderax type unit, fitted shelves and cupboard, 90cm wide. £100-£200

266

A retro steel and painted bookshelf, fitted numerous adjustable shelves, 110cm wide. £100-£150

267

An aesthetic movement ebonised cabinet, with glazed and mirrored back, fitted three drawers above under-tiers, raised on turned columns, 107cm wide. £80-£120

268

A teak folding desk, 84cm wide. £40-£60

269

Two large lacquered tea trays, decorated with exotic birds. £30-£50

270

An Art Nouveau iron and brass adjustable floor standing oil lamp, complete with iridescent glass shade. £100-£150

271

Oman, a pair of modern oils depicting stylised Knights; another; and another similar depicting musicians, 60cm x 49cm (4). £20-£40

272

B. Long, a pair of modern brightly coloured stylised abstract paintings, 60cm x 50cm. £10-£20

273

William, modern study of a cycle race, signed oil on canvas, 50cm x 60cm. £10-£20

274

20th Century school, study of a busy continental street scene, unsigned palette knife on canvas, 50cm x 40cm. £10-£20

275

A modern abstract study of a clown, unsigned oil on canvas, 69cm x 58cm; and 20th Century study of a forest, indistinctly signed, 44cm x 23cm, (2). £10-£20. See illustration.

276

A golden oak Globe Wernicke six section bookcase, (base, plinth missing), 87cm wide x 186cm high. £200-£300

277

A golden oak Globe Wernicke five section bookcase, 87cm wide x 194cm high. £200-£300

278

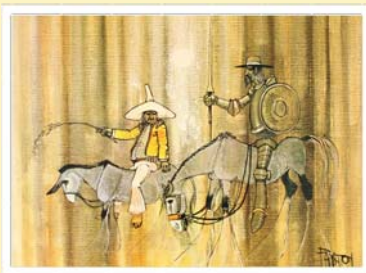
A golden oak Globe Wernicke five section bookcase, 87cm wide x 202cm high. £200-£300



Lot 259



Lot 263



Lot 264

279

A pair of Babycham glasses; two bottles of Babycham and a plastic Bambi (5). £10-£20

280

A pair of Royal Doulton blue and gilt children's ware vases, of tapering form, 30cm high. £150-£250

281

A pair of Art Deco figural porcelain scent bottles, and a matching powder jar and cover. £30-£40

282

An Art Deco style silvered wall clock. £10-£20

283

A large Art Deco cinema type clock, 54cm. £200-£300. See illustration.

284

A large bronze figure group, depicting a Bedouin and naked girl, on red marble platform plinth, 68cm high. £450-£550

285

An Art Nouveau design bronze, depicting a young girl reclining against a wall, 66cm high. £700-£900

286

A leather oblong box, with detachable lid. £60-£80

287

A leather and plate mounted picnic hamper, having hinged lid and side carrying handles, 45cm wide. £200-£300. See illustration.

288

A Burmantofts green pottery jardiniere stand, 60cm high. £40-£60

289

A Walt Disney poster, depicting the Mickey Mouse Show, 99cm x 69cm. £20-£30

290

Three Victorian glazed tiles, with raised floral decoration. £30-£50

291

A Shorter & Sons fish serving set. £30-£50

292

A West German pottery baluster vase, 24cm; a Bay West German pottery jug, 19cm; and a similar flower holder 16cm (3). £10-£20

293

A Carlton ware salad bowl; and servers. £30-£50

294

An early 20th Century pottery baluster vase, profusely decorated with foliage on a green and brown ground, 33cm high. £20-£30. See illustration.

295

A Royal Doulton stoneware vase, decorated with leaves on a green and blue ground, 26cm high. £30-£50

296

A Royal Doulton stoneware baluster vase, having raised foliate decoration on a blue and mottled green ground, the base with incised mark EA, 37cm high. £50-£70

297

An Art Deco design table lamp, in the form of a ball girl, 57cm high. £40-£50

298

A poster for "Gone with the Wind", 70cm x 100cm. £20-£30

299

A pair of Bristol blue style glass and white metal mounted decanters, with vine decoration, 34cm high. £80-£120

300

An Art Deco design bronzed figure of a dancing girl, on stepped marble base, 39cm high. £60-£100. See illustration.

301

An Art Deco design table lamp, in the form of a dancing girl with yellow cape, 46cm high. £45-£55

302

A Rock Crystal model of a skull, 14cm high. £100-£150

303

An Art Deco design lamp, in the form of a ball girl, 54cm high. £35-£45

304

A pair of Alfred Gratien design oval plated wine coolers. £50-£80

305

A decorative Italian glass baluster table lamp, decorated with orange streaks, 58cm high. £20-£30

306

A collection of 10 various Sylvac and other pottery rabbits, of varying sizes. £40-£60

307

A continental circular glass dish, with central bronzed embossed stylised insert, 32cm dia.; another smaller similar with a plated insert, 26cm dia.; and an iridescent glass dish, 33cm dia.(3). £30-£50

308

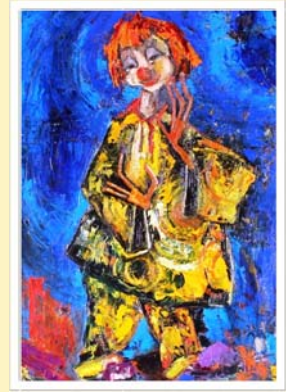
A circular blue glazed French Art pottery bowl, stamped DA, 31.5cm dia.; and a brown glazed French pottery vase with pierced decoration, 19.5cm high, (2). £20-£40

309

A green glass foliate decorated flower bowl, with central holder in the form of a semi naked lady; and a similar shallow dish with crimped border. £10-£20

310

An Art Deco green tinted lemonade set. £10-£20



Lot 275



Lot 283



Lot 287



Lot 294



Lot 300



Lot 319

311

Five various Royal Doulton series plates, including "The Doctor", "The Hunting Man", "Old Bob" etc. £40-£60

312

A collection of various Maling ware. £60-£100

313

A glass and leaded star shaped pendant light fitting. £20-£30

314

A pair of bronze plaques depicting Jesus and Mary, set on an oak mounts; and a smaller similar pair (4). £40-£60

315

A Louis Wain cat print. £30-£40

316

Two vintage telephones. £30-£40

317

An Art Deco style bronzed figure of a dancing girl, raised on a marble base, 55cm overall. £100-£150

318

A silvered model of a French bulldog, 30cm long. £35-£55

319

A Trench Art brass shell case dinner gong, hung to an oak stand, complete with beater. £20-£40. See illustration.

320

A plated cocktail shaker, in the form of a lighthouse, 34cm high. £80-£120

321

A Phillips 10" globe. £20-£30. See illustration.

322

An Art Deco style bronzed figure of a dancing girl, raised on stepped marble base, 47cm high. £100-£150

323

A Liberty's copper oval bevelled edge wall mirror, with fruit and floral raised decoration. £100-£200

324

A West German pottery baluster vase, having decoration of charioteers, 53cm high. £20-£30. See illustration.

325

An Art Deco green tinted vase, with bubble decoration, 23cm high; a blue frosted flower vase with integral holder, 19cm high; another with leaf decoration, 22cm high; and a blue tinted glass fruit bowl decorated with butterflies, 33cm dia. (3). £20-£30

326

A Baseball glove. £10-£20

327

Two tile decorated crucifix; and a brass similar (3). £20-£30

328

A gilt decorated easel picture frame, containing a risque photographic print. £10-£20

329

A silvered model of a seated leopard, 52cm high. £30-£50. See illustration.

330

A silvered model of a bulldog, 50cm long. £50-£80. See illustration.

331

A Walt Disney poster, depicting Sleeping Beauty and Treasure Island, 69cm x 79cm. £20-£30

332

An Art Deco oak and macassar ebony framed bevelled edge wall mirror. £20-£40

333

An Italian gilt framed wall mirror, with floral decoration, 74cm x 52cm. £20-£40

334

A 1930's oak framed fire screen by Liberty, with silk work floral embroidered panel

335

An Italian frameless bevelled edge wall mirror, with stylised decoration, 61cm x 65cm. £20-£40

336

A 19th Century red marble column, with foliate and mask ormolu mounts, 120cm high. £400-£600

337

An Art Deco chrome plated table lamp, in the form of an urn, 35cm high. £30-£50. See illustration.

338

An Art Deco frameless wall mirror, 33cm x 56cm. £20-£40

339

Alan Armitage, three watercolour studies of houses. £20-£40

340

An Art Deco oak framed bevelled edge wall mirror, 72cm x 45cm. £20-£40

341

A chrome Art Deco design uplighter. £30-£40

342

An Art Deco chrome uplighter, with original shade £80-£120

343

An Italian frameless wall mirror, with stylised decoration, 67cm x 40cm; and another similar 69cm x 51cm (2). £30-£50

344

An Art Deco design chrome standard lamp, raised on a square stepped mahogany base with tassel shade. £30-£40

345 ✓

John Buckland Wright 1897 - 1954, study of a girl seated on a bed combing her hair, unsigned charcoal, info verso: together with "Etching and Engraving, Techniques and Modern Trend", 44cm x 29cm. £200-£300

346

A brass and buttoned upholstered club fender, 153cm long. £80-£120



Lot 321



Lot 324



Lot 329



Lot 330

347

A Murano glass dolphin, 49cm long.
£30-£40

348

A 1960's Portmeirion "Phoenix" pattern
coffee set. £20-£30

349

Two retro Ericsson of Sweden plastic
phones. £20-£40. See illustration.

350

A Timlec Bakelite cased electric mantel
clock. £10-£20

351

An Art Deco oak and ebony chiming
mantel clock. £20-£40. See illustration.

352

A set of eight chrome plated bookends,
decorated with stylised figures. £20-£40

353

A pair of Art Deco style book-ends, in the
form of a Dachshund. £10-£20

354

A rare and unusual Empire State building
Shyvers Multi Phone Jukebox selector,
43cm high. £100-£150. See illustration.

355

A Chesterton electronic Wittnauer mantel
clock. £80-£120

356

An Arthur Wood "Garden Wall" flower
basket. £20-£30

357

A Poole pottery black and red running
glaze decorated baluster vase, 20cm high.
£20-£40

358

A Burleigh ware leaf decorated jug; and a
Beswick black and cream glazed baluster
vase with leaf decoration, (2). £20-£40

359

A. J. Jongkbeere carved panel of
Christ, 40cm x 30cm. £20-£40

360

An Art Deco silver engine turned
decorated cigarette case, with presentation
inscription for 1932; and a South African
stinkwood cigarette case, (2). £40-£60

361

A Crown Devon Pegasus jar and cover;
and a Spanish white metal mounted coffee
cup and saucer (2). £10-£20

362

An Art Deco design marble and onyx
table display, mounted with a patinated
Spelter figure of a lady holding a dove, 30cm
long x 33cm high overall. £150-£200.
See illustration.

363

A pair of oak Arts & Crafts design
candlesticks, 20cm high. £40-£60

364

A Ysart blue glass baluster vase, 22cm; a
green glass similar, 18cm; and a similar jug
with clear glass handle, 19cm high AF, (3).
£40-£60

365

A glass and enamel prunus decorated fruit
bowl, signed Delvaux, 18 Rue Royal, Paris,
29cm dia. £100-£150

366

A French opalescent glass fruit bowl,
24cm dia.; and a similar opalescent glass
bowl on chrome stand (2). £60-£80

367

A pair of oak and twist decorated Arts &
Crafts design candlesticks, with brass
sconces, 28cm high. £60-£80

368

An electro plated vase shaped table lamp,
with engraved decoration and blue tinted
frilled glass shade. £20-£40

369

An electro plated baluster table oil lamp;
and a spare glass chimney. £20-£40

370

A silver plated WMF Art Nouveau style
two handled bowl. £100-£150

371

An Arts & Crafts spot hammered pewter
bowl, by James Dixon; a pewter spot
hammered baluster vase; and a plated Arts &
Crafts design two handled pedestal dish (3).
£50-£80

372

A Royal Doulton golfing series plate,
"Give losers leave to speak and winners to
laugh", 26cm dia. £30-£40

373

A boxed French card game, "Nain Jaune".
£30-£50

374

A set of three Beswick graduated flying
pheasant wall ornaments. £60-£80

375

A set of five Beswick graduated flying
duck wall ornaments. £100-£150

376

An Art Deco design clear and black glass
scent bottle, of fan shape, 23cm. £60-£80

377

An Art Deco design clear and amber glass
scent bottle, of fan shape, 24cm. £50-£60

378

A pair of heavy glass diamond shaped
paper-weights. £30-£50

379

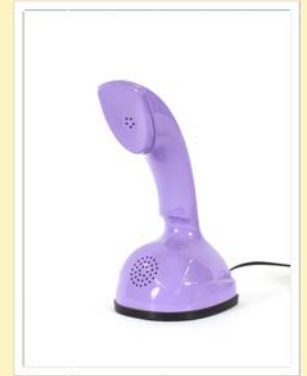
A modern Kosta heavy glass cylindrical
decanter, 30cm high. £20-£30

380

A Studio pottery baluster jug; and a
similarly decorated ovoid shaped vase (2).
£20-£30



Lot 337



Lot 349



Lot 351



Lot 354



Lot 362



Lot 386

381

An Art Deco pewter and marble table lamp, in the form of a girl balancing a lamp on her feet, 40cm high. £30-£50

382

A set of six Crystal Lalique plates, boxed. £150-£200

383

A pair of fine quality glass stands in the form of flowers retailed by Liberty, signed and dated to base, 29cm. £40-£60

384

Three fine quality glass stands in the form of flowers, each signed and dated to base, retailed by Liberty, the tallest 34.5cm high in extremes. £40-£60

385

Three fine quality glass stands each signed and dated to base, retailed by Liberty, the tallest 31cm high in extremes. £40-£60

386

An iridescent glass jardinière, signed and dated to base, 14.5cm high. £40-£60. See illustration.

387

An iridescent glass comport, signed and dated to base, 18cm high in extremes. £40-£60. See illustration.

388

An iridescent and clear glass jardinière, signed to base "Isle of Wight Glass, England 1992" 1/1, 18cm high. £40-£60

389

Otto Hoffmann, German 1885 - 1915, bronze study of a sword dancer modelled as semi-naked female, raised on black marble base, signed O Hoffmann, circa 1920, 32cm high in extremes. £500-£600. See illustration.

390

Josef Lorenzl, for Goldscheider, "The Butterfly Girl" modelled as female with arms raised, to display dress decorated with spider web and insects, marked to base, 30cm high (damage to left hand). £200-£400. See illustration.

391

Albert Carrier Belleuse 1824 -1887, ivory and gilt bronze figure "The Reader", signed to base, label to the socle "La Priere Par Carrier Belleuse Grand Prix Du Salon", 25cm high (damage to the right hand), raised on later un-associated base. £400-£600. See illustration.

392

An 18ct gold emerald and diamond set ring of Art Deco design. £100-£200

393

Two boxes of jewellery, to include various bead necklaces, and a bangle. £20-£40

394

A yellow metal opal set ring. £40-£60



Lot 387



Lot 389



Lot 390



Lot 391

395

A necklace set with turquoise coloured stones, and a pair of matching ear-rings; another necklace of floral design and pair of matching ear-rings. £20-£40

396

An 18ct white gold diamond and sapphire set cross over ring. £150-£250

397

A yellow metal stick pin; two pairs of cuff-links; two Art Deco design brooches; and a boxed set of studs and pair of matching cuff-links. £60-£80.

398

A boxed set of white metal and enamel decorated cocktail sticks. £30-£40

399

Six white metal and enamel cocktail sticks, the handles in the form of roosters. £40-£50

400

An amber coloured pendant, in white metal mount. £25-£35

401

A white metal three section snuff box, with later applied enamel decoration of risque scenes. £60-£80

402

A pin cushion, in the form of a jockey's cap. £25-£35

403

A Sterling silver double stamp case, with enamel decoration. £60-£80

404

A white metal cigarette case, marked 900 with later applied enamel decoration. £100-£150

405

A silver vesta case, with later applied enamel decoration. £80-£120

406

A white metal pendant, marked 925 in the form of female head set with various coloured stones and hung to chain. £40-£60

407

A white metal pin, in the form of a peacock set with red stone. £20-£30

408

A Swarovski necklace, with box. £50-£60

409

A box containing filigree work butterfly brooches, Scottish style brooches and various others. £30-£40

410

A Religious plaque, signed Ruffany, set to wooden easel stand with mother of pearl and brass inlaid decoration. £20-£30

411

Liberty & Co. pair of Sterling silver and enamel clip on ear-rings; and pair of similar cuff-links. £40-£60.

412

Three brass novelty vesta cases, in the form of dogs head, pig, and owl. £75-£95

413
A Georg Jensen 925 silver pendant brooch of circular form, marked to the reverse Georg Jensen 925 Denmark No. 285, approx. 4.5cm dia. £40-£60. See illustration.

414
A Danish 925 silver oval brooch, set with amber coloured stone; and three other brooches. £40-£60

415
An 18ct gold and platinum diamond set ring. £70-£100

416
A circular silver compact, having later applied enamel decoration. £80-£120

417
A silver vesta case, with later applied enamel decoration. £75-£95

418
A cranberry glass scent bottle, the lid in the form of an owl. £75-£95

419
A Bulova 10ct gold plated wrist watch; and a Helbros wrist watch. £40-£60

420
A string of cherry amber coloured beads. £50-£60

421
A Lalique glass Aztec bowl, 27cm dia. £80-£120

422
A Vallon opalescent glass bowl, decorated with cherries 24cm dia. £80-£120

423
A quantity of WMF cutlery. £40-£60

424
A cased set of six plated teaspoons, with stylised decoration to the handles. £5-£10

425
A Tiffany Studios New York copper and brass clip, having pierced foliate decoration; and a pair of similar pierced blotter mounts. £40-£60

426
An unusual plated belt, the hand forged links decorated with Roman and Greek figureheads and emblems. £50-£80

427
An unusual late Victorian ebony and paste set ladies compact, the hinged lid inset with a mirror having rope handle and tassel. £10-£20.

428
A vintage snake skin handbag. £20-£40

429
A Louis Vuitton bag. £20-£30.

430
William Tolliday, mixed media study, signed and dated 1971, 20cm x 15cm. £100-£200. See illustration.

431
A satinwood cigarette box, decorated with a dog, signed Jan; and a matching matchbox holder (2). £20-£30.

432
A cast metal Art Nouveau baluster vase, 20cm high. £10-£20

433
A Vienna bronze style study of boxing frogs. £80-£120

434
A faux shagreen pear shaped tea caddy, 18cm high. £100-£150

435
A silver plated cruet, in the form of a violin. £40-£60

436
An onyx dish of circular form, surmounted by a cold painted figure of a Turkish boy. £80-£120

437
A crystal Lalique figure, depicting two girls. £80-£120

438
A small Lalique crystal study of a bird. £80-£120

439
A crystal Lalique eagle head. £300-£400. See illustration.

440
Two Baccarat glass model duck ornaments. £100-£150

441
A plated Art Deco design teapot. £40-£60

442
A Victorian green glass paperweight, with interior decoration of a cherub, 12cm high. £20-£40

443
A chrome car mascot, of a horse and jockey. £20-£40

444 ✓
A Lorenzl cold painted bronze and ivory figure of a young girl, signed R Lor, standing on a green onyx base, 22.5cm high. £800-£1,200. See illustration.

445 ✓
A Lorenzl cold painted bronze and ivory figure of a dancing girl, signed to base Lorenzl and raised on a green onyx plinth. 28.5cm high. £800-£1,200. See illustration.

446
A collection of six various glass paperweights. £60-£80

447
A plated posy vase by Hukin & Heath, having flared rim and spot hammered body decoration, 9cm high. £20-£30

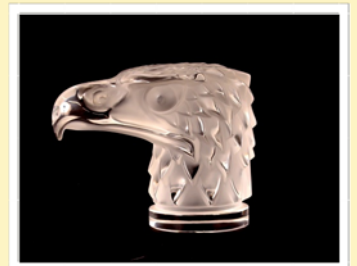
448
A collection of various Sylvac, fauna and other rabbit ornaments, posy vases etc. £20-£40



Lot 413



Lot 430



Lot 439



Lot 444



Lot 445



Lot 459

449

Five various coloured glass paperweights. £40-£60

450

A Lalique design glass vase, decorated with birds, 19cm high. £200-£300

451

A large Lalique style two handled vase, 19cm high. £150-£200

452

A collection of six various glass paperweights. £30-£50

453

A Crown Devon cornucopia shaped wall pocket vase. £20-£40

454

A graduated set of three Crown Devon Fieldings jugs. £20-£40

455

A collection of five various Millefiori glass paperweights. £60-£100

456

An Isle of Wight glass beaker vase, an ovoid coloured glass vase; and an blue and a green glass square pot (3). £20-£40

457

A Murano glass owl figure, 16cm high. £20-£30

458

A boxed Lalique miniature set of scent bottles. £20-£40

459

An Opera Glass Studios cylindrical vase, an Isle of Wight cylinder vase; an oval glass scent bottle of baluster form; and an Isle of Wight glass paperweight (4). £30-£40. See illustration.

460

A Lalique glass bowl, with leaf decorated border. £150-£200

461

A Lalique design Coty bottle, 25cm high. £40-£60

462

An iridescent glass baluster vase, on green glass angled supports; and a green iridescent glass vase (2). £20-£40

463

Attributed to Alfredo Barbini, an unusual Murano glass duck internally decorated with metallic oxides, circa 1950's £20-£30

464

A Pukeberg of Sweden, glass model of a ship; and a Mayflower glass study of a whale mounted on a rock work base (2). £20-£30

465

An Uranium glass honey pot, in the form of a beehive. £20-£30

466

An amethyst glass and gold splash decorated bowl, of crimped form. £10-£20

467

A blue Swedish glass goblet vase; an Austrian ruby flash and gilt rimmed beaker vase; a 20th Century French pink glass vase with figural and flower decoration; and a blue Polish Adam Jabronski glass oil burner (4). £30-£50

468

Dr Christopher Dresser, a Benham And Froud coffee pot, stamped manufacturers mark, registration number and retailers applied brass label. £100-£150. See illustration.

469

A plated and amber glass fish decanter, 36cm long. £150-£200

470

A 19th Century style bronze figure, of a man carrying a child, the hinged head opening to reveal an inkwell, 21cm high. £150-£250

471

A white metal and pink enamel decorated four piece dressing table set, AF. £200-£300

472

A Ysart green glass posy vase; and another similar (2). £30-£50

473

A bronze desk stand, in the form of an owl seated on a feather. £100-£150

474

A silver plated and blue glass claret jug, in the form of a double headed duck, 38cm long. £150-£250

475

A Royal Doulton flambé model of an elephant, 18cm long - trunk AF. £10-£20

476

A Royal Doulton flambé study of a seated fox, 11cm high. £20-£40

477

A Royal Doulton flambé figure of a seated cat, 13cm high. £20-£40

478

A Poole pottery orange and yellow fruit decorated shallow dish, 27cm dia. £20-£40. See illustration.

479

Donald and Jacqueline Mills, a flaring conical bowl mark to base DJM, 14cm dia. Overall. £30-£40. See illustration.

480

A Royal Lancastrian vase, by Thomas Radford, impressed 8185ETR, 15cm. £20-£30

481

A Troika vase, 18cm high. £60-£80 See illustration.

482

A Doulton blue and white baluster vase, decorated with children, 19cm high. £50-£80



Lot 468



Lot 478



Lot 479



Lot 481

483

Two blue and white Doulton vases, decorated young children and rural scenes, 20cm and 18cm high respectively. £60-£80

484

A Carltonware Kang Hsi baluster vase, 21cm high. £40-£60. See illustration.

485

Four various Royal Doulton blue and white vases, decorated scenes of children and the countryside. £100-£150

486

A Clarice Cliff "Bizarre" octagonal shaped posy vase, 9cm high. £60-£80. See illustration.

487

Four various items of Poole pottery. £40-£60

488

A Royal Doulton oval plaque, depicting mother and child walking in the countryside, 27cm; and a smaller example of two seated children 13cm x 10cm (2). £100-£150

489

A garniture of three Ruskin vases - some damage. £30-£50

490

A pair of Watcombe pottery vases, with floral decoration, 21cm high. £20-£40

491

A pair of black and clear glass fan shaped scent bottles, in the Art Deco style £30-£50

492

Attributed to Dr Christopher Dresser, a black glazed aesthetic movement teapot with oriental gilt decoration - possible Mintons. £20-£30

493

Attributed to Dr Christopher Dresser, a Watcombe pottery blue enamel terracotta teapot, stamped makers mark; together with a Victorian blue glass jug in the manner of Dr Christopher Dresser (2). £80-£120

494

Two Sylvac rabbits, 15cm. £20-£40

495

A pair of Sylvac rabbit decorated book ends. £20-£40

496

A Clarice Cliff teapot, stamped to the base "Greetings From Canada", decorated Red Indians and deer. £40-£60. See illustration.

497

A Clarice Cliff "Bizarre" preserve pot, in the form of an orange; and a circular Clarice Cliff pot pourri bowl, the lid decorated with a swallow (2). £60-£100

498

An Arts & Crafts spot hammered pewter candlestick, 19cm high. £20-£40

499

A large blue glass baluster vase, 60cm high; a pale blue overpainted glass baluster vase, 44cm high; and a Loco glass lamp base (3). £30-£50

500

An Ercol coffee table, fitted two drawers and under tier, 76cm wide. £100-£150

501

H Hatch, a pair of humorous silhouette studies depicting young children playing, 12cm x 17cm. £20-£30

502

D.M. an early 20th Century silhouette picture, depicting young children playing, 10cm x 14cm. £20-£30

503

Helena W E Kleyne-Hend, humorous pen and ink study of children being chased by a farmer and goose, signed 17cm x 29cm. £20-£30

504

Humorous canine study, by W M Logsd, dated January 1915 "Beauty Unadorned Is Adorned The Most", 15.5cm x 17cm. £20-£30

505

A Risque Art Deco print, depicting nuns in a garden, monogrammed top right indistinct, 21cm x 16cm. £20-£40

506

Liberty & Co of London, an oak two tier occasional table raised on turned columns and block supports, 50cm. £80-£120

507

A Victorian cast iron pub table, having later circular mahogany top, the base with mask foliate and gilded decoration terminating in claw feet, 63cm dia. x 75cm high. £80-£120

508

An Art Deco burr wood desk stand, and matching blotter (2). £30-£40. See illustration.

509

J Foster, abstract oil on board, 28cm x 20cm. £20-£30

510

A pair of 1950's Italian Paolo Buffa bedside cabinets, 49cm wide. £100-£150

511

A light Ercol kitchen dining table, raised on rounded tapering outswept supports, 146cm x 74cm. £120-£160

512

A large blue glass platter, 50cm dia. £20-£40. See illustration.

513

Nine pieces of Murano glassware. £30-£50

514

A large G-plan teak chest, fitted eight drawers, 162cm wide. £50-£80



Lot 484



Lot 486



Lot 496



Lot 508



Lot 512



Lot 538

515

Six various coloured glass vases. £30-£50.

516

A teak two tier side table, fitted single drawer, 59cm wide. £20-£30

517

An Alastair Hardie signed Studio pottery bowl; together with two unusual Studio Pottery jugs, various marks (3). £15-£25

518

An Art Deco design fruit wood dressing stool. £20-£40

519

A large teak G-plan style sideboard, fitted double cupboards and three drawers, raised on square tapering stretched supports, 183cm wide. £40-£60

520

A Bavarian floral and gilt decorated dinner service. £30-£50

521

A Bramante matt grey extending dining table, 175cm x 90cm (extending to 265cm). £200-£400

522

A G-plan design teak sideboard, enclosed by sliding doors raised on tapering supports, 137cm wide. £40-£60

523

A quantity of Wedgwood Susie Cooper "Corn Poppy" tea and coffee ware. £40-£60

524

A quantity of fine bone china Susie Cooper "Solera" teaware. £20-£30

525

A quantity of Susie Cooper Production Crown Works Burslem dinnerware, to include two Art Deco design tureens, graduated meat plates etc. £40-£60

526

A quantity of fine bone china Susie Cooper "Reverie" coffee ware. £20-£40

527

Six Royal Doulton "Bluestone" coffee cans and saucers; and five Holly Hobbie tea plates. £10-£20

528

Six various coloured Art Glass vases. £20-£40

529

A Nathan teak sideboard, fitted recess and cupboards below, 102cm wide. £20-£30

530

A Villeroy & Boch cut glass decanter; and a Financial Times Centenary Commemorative cut glass decanter (2). £20-£40

531

A teak serpentine fronted sideboard, fitted three central drawers flanked by cupboards on out swept supports, 140cm wide. £30-£50

532

Five items of Murano and Studio glassware. £15-£30

533

A 1970's teak two tier tea trolley, 72cm wide. £20-£30

534

A metal and beveled glass two tier coffee table, 117cm wide. £20-£40

535

A cross framed dressing stool. £10-£20

536

A pair of early 20th Century coloured humorous prints, "The Bath" and "The Lovers". £10-£20

537

A 1930's oak octagonal two tier occasional table. £10-£20

538

A set of four Danish rosewood Sibast stick back elbow chairs. £400-£600. See illustration.

539

An octagonal marble top coffee table, 88cm. £100-£150

540

An Arts & Crafts design octagonal painted window table. £40-£60

541

A large Poole pottery red glazed charger, having brightly coloured, stylised decoration, 41cm dia. £40-£60. See illustration.

542

Cecil Aldin, a pair of pencil signed coloured sporting prints "The Twelfth" and "Slipped", unframed. £20-£40. See illustration.

543

A decorative carved hardwood three tier side table, with profuse leaf decoration, 45cm wide. £40-£60. See illustration.

544

A teak G-plan style kneehole desk, fitted two short drawers and raised on square stretcher supports, 100cm wide. £40-£60

545

A quantity of J & G Meakin "Poppy" patterned china, to include coffee pot, dinner plates, tureen, tea plates, cups, saucers etc. (24). £20-£40

546

A Minton Art Deco luncheon set, comprising bowls, plates and dishes (14). £10-£20

547

A large quantity of Denby stoneware; "Arabesque" patterned tea and dinnerware. £60-£100

548

A G-plan extending dining table; and a set of six matching ladderback chairs. £100-£200

549

A pair of decorative silvered wings, 72cm long. £50-£80. See illustration.



Lot 541



Lot 542



Lot 542



Lot 543

550

An elm refectory style kitchen table; and a set of six matching shield back chairs. £100-£200

551

Two oriental lacquered tea trays; and a Japanese lacquered and ivory mounted panel (3). £30-£50

552

A Bang & Olufson BeoCentre 7007; complete with speakers and boxes. £200-£300

553

A 1970's hardwood hi-fi / television stand, 139cm wide. £60-£100

554

A pair of wood and chrome mounted 1960's design table lamps. £60-£100

555

Frank Thrower, for Dartington, a large glass goblet and original box; a Tapio Wirkkala glass and three other pieces (5). £20-£30

556

Ten items of various glassware, comprising ice pail, two large vases, large fruit bowl, spill vases, eagle ornament etc. £20-£40

557

Thirteen items of Art Glassware, to include vases, sugar bowl, covered goblet etc. £30-£40

558

A Danish teak extending dining table, raised on a pedestal base, complete with two extra leaves, 200cm x 100cm. £40-£60

559

A set of four light elm stick back corner kitchen chairs. £40-£60

560

A pair of 1970's Eames type swivel armchairs. £60-£100

561

An Art Deco walnut and satin birch hall table, 123cm wide. £40-£60. See illustration.

562

An oak tambour front trolley cabinet, with pull out slides, 46cm wide. £20-£40

563

A 1970's hardwood low record cabinet, raised on castors, 80cm wide. £20-£30

564

A teak G-plan dressing table, fitted four drawers and raised on sleigh supports, 153cm wide. £40-£60

565

A G-plan design tile top coffee table. £10-£20

566

A pair of copper and glass lanterns. £50-£80

567

An oak cased Art Deco mantel clock, with eight day striking movement; a walnut cased Art Deco mantel clock with chiming movement; and a Smiths mantel clock with presentation plaque (3). £40-£60

568

A Luterma bent wood elbow chair. £10-£20

569

A G-plan teak and glass coffee table, fitted undertier and raised on square section supports, 137cm long. £20-£40

570

A leather waste paper bin. £30-£50

571

A pair of Lily Bollinger type oval plated Champagne coolers. £60-£80

572

A small collection of mostly 1970's 45rpm records. £20-£30

573

A vintage records storage box, and contents of various long playing records. £20-£40

574

A large quantity of LP records, mostly classical and easy listening. £20-£40

575

A set of six oak Arts & Crafts design dining chairs, four standards, two elbows. £80-£120. See illustration.

576

A floral upholstered Danish Art Deco Banana sofa. £150-£200

577

A blue upholstered Art Deco Danish Banana sofa. £200-£300

578

A set of six Tommy dining chairs, upholstered in brown leather. £80-£120

579

A Heals Library "Book" chair, with integral bookshelf and drop flap. £600-£800. See illustration.

580

A pair of Ercol stick back armchairs. £50-£80

581

A chrome plated divers helmet. £80-£120

581a

A vintage Teddy bear. £20-£40

582

A collection of four well loved vintage Teddy bears, some in need of attention. £60-£100

583

A pair of oak 1930's armchairs, upholstered in floral stamped tapestry. £20-£40



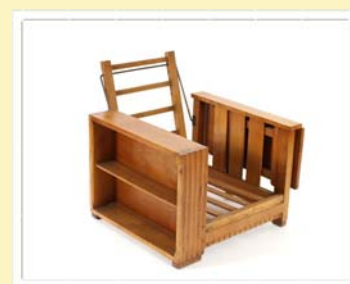
Lot 549



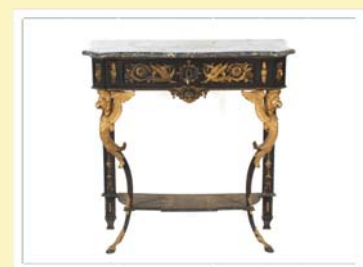
Lot 561



Lot 575



Lot 579



Lot 584



Lot 603

584

A late 19th Century gilded cast iron and marble topped console table, having raised classical decoration, phoenix head supports, terminating in hoof feet, 86cm wide. £100-£200. See illustration.

585

An Art Deco oak circular three tier coffee table, 60cms dia. £30-£50.

586

A light oak G-plan bedside cupboard, 30cm wide. £40-£60

587

A white metal standard lamp, in the style Louis Poulson, 33cm wide x 47cm deep. £50-£80

588

A pair of oak three drawer bedside chests. £30-£50

589

A teak record cabinet with concertina folding doors. £20-£30

590

A large WMF twin handled tray. £100-£150

591

A Parker Knoll rocking chair. £20-£30

592

A pair of teak G-plan style bedside cupboards. £30-£50

593

An Art Deco oak smokers cabinet. £15-£25.

594

An Arts & Crafts design oak jardinière stand, the square top inset with a tile picture of a Dutch boy and seated dog, 40cm wide. £20-£40

595

An Art Deco walnut and cross banded metamorphic tea trolley, 79cm. £50-£80

596

A chrome and glass trolley, with magazine rack base; and a mahogany valet stand (2). £10-£20

597

A nest of G-plan design coffee tables, with fold over swivel top, 75cm wide. £40-£60

598

A quantity of Burslem Susie Cooper production dinnerware. £40-£60

599

A quantity of Wood & Sons Susie Cooper design dinnerware. £40-£60

600

A quantity of Susie Cooper "Daffodil" pattern dinnerware. £40-£60

601

A quantity of Susie Cooper "Hazelwood" pattern dinnerware. £40-£60

602

A McIntosh extending dining table, 236cm x 92cm; and a set of eight matching ladder back dining chairs. £100-£200

603

An oak Arts & Crafts design circular occasional table, 75cm dia. £100-£150. See illustration.

604

A Monika Mulder, metalware pierced fruit bowl, 42cm dia. £20-£40

605

A metal framed and black topped triangular form occasional table; and an oblong similar (2). £40-£60

606

An Art Deco walnut five drawer music cabinet, raised on U shaped supports and ball feet, 55cm wide. £80-£120. See illustration.

607

An early 20th Century oak pedestal writing desk, by Holland & Sons, leather inset top above three frieze drawers and three drawers to each pedestal, 129cm wide. £200-£400. See illustration.

608

A quantity of Susie Cooper Crownworks Burslem Art Deco dinnerware, comprising vegetable tureens, sauce boat and stand, meat platter dinner plates, cups, saucers etc. £60-£100

609

A quantity of Susie Cooper Crownworks Burslem dinnerware, comprising tureen, platters, dinner plates etc. £40-£60

610

A rosewood Robert Heritage for Archie Shine dining suite, comprising D end dining table, 240cm long x 110cm deep; a long sideboard fitted four drawers above an integral wine rack, enclosed by sliding doors and raised on rounded supports, 211cm; and a set of six chairs, four standards, two elbows. £400-£600. See illustration.

611

A Seeburgh Stereo 160 Juke Box. £400-£600



Lot 606



Lot 607



Lot 610

Clarke & Simpson

Auctions

Next Antique & Fine Art Auction to be held
Wednesday 17th May 2017

Closing dates for entries 21st April

Next Art Deco, 20th Century Design & Retro
Monday 19th June 2017

Closing date for entries 19th May

Farm Machinery

Saturday 27th May 2017

Closing date for entries 13th April

Clarke and Simpson are pleased to offer a packaging and shipping service worldwide through

"the-saleroom.com Delivery Service". The professional team will pack and ship items from very small non-breakables such as jewellery and coins through to larger and more fragile items such as paintings and works of art. Shipping and insurance is at the buyer's expense. Shipping payment must be made to

"the-saleroom.com Delivery Service" prior to departure and excludes local duties and taxes. Please note that Clarke and Simpson do not pack or ship items - all

requests are sent to our specialist handlers at "the-saleroom.com Delivery Service" who can be contacted directly via delivery@atgmeadia.com

the-saleroom.com
delivery service



Droite de Suite Royalty Charges

From 14th February 2006, all United Kingdom Art Market professionals (which includes auctioneers) are required to collect a royalty payment for all qualifying Works of Art. Under new legislation which came into effect on the 1st January 2012, this applies to living artists and those who have died in the last 70 years. This payment is calculated on qualifying Works of Art which are sold for a hammer price more than the UK sterling equivalent of €1,000 (the UK sterling equivalent will fluctuate in line with prevailing interest rates calculated by the Artist's Resale Right Service Hub, based on the European Central Bank reference rate published at 2.15pm on the day of the sale, and can be found on www.dacs.org.uk).

All items in this catalogue that are marked "✓" are potentially qualifying items, and the royalty charge will apply if the hammer price is more than UK sterling equivalent of €1,000. The royalty charge will be added to purchase invoices, and must be paid before items can be cleared. All royalty charges are paid to the design and Artists Copyright Society (DACS) by the auctioneers and no handling costs or additional fees with respect to these charges will be retained by the auctioneer.

The royalty charge for qualifying items which achieve a hammer price of more than the UK sterling equivalent of €1,000, but less than the UK sterling equivalent of €50,000 is 4%. For qualifying items that sell for more than the UK equivalent of €50,000 a sliding scale of royalty charges will apply. For a complete list of the royalty charges and threshold levels please refer to www.dacs.org.uk. There is no VAT payable on this royalty charge.

Collective Machinery Auction
Saturday 27th May 2017
Campsea Ashe, Suffolk

Entries invited. Closing date 13th April 2017



Live online bidding across both rings via

i-bidder.com

Clarke & Simpson, Well Close Square, Framlingham, Suffolk IP13 9DU

T: 01728 621200

www.clarkeandsimpson.co.uk

THE *Monday* *Sale*

Over 800 lots every week,
to include cottage antiques &
modern furniture, household
appliances & garden
machinery.

Everything but the kitchen
sink, and occasionally
even those!

Viewing prior, and
every Saturday 9am - 12noon

Refreshments available
from the Tea Room

Room 2 now live online
every week at the the-saleroom.com

Clarke & Simpson Auction Centre

 CandSAuctions  @CandSAuctions

www.clarkeandsimpson.co.uk 01728 746323

Clarke &
Simpson



Campsea Ashe,
Nr Wickham Market,
Suffolk IP13 0PS

TERMS AND CONDITIONS OF SALE

1. INTRODUCTION

The following defining terms are used in these conditions:-

“Auction”	Means any auction conducted by Clarke and Simpson Auctions Ltd. either at the premises owned by them or elsewhere (including any internet based auction);
“Auctioneer”	Means Clarke and Simpson Auctions Ltd. authorised auctioneer as appropriate;
“Bidder”	Means a bidder at an auction, including the bidders personally present at the venue and those bidding by telephone or over the internet or otherwise;
“Buyer”	Means the bidder whose bid was the last bid when the auctioneer concludes the bidding;
“Conditions”	Means these Terms and Conditions of Sale;
“Hammer Price”	Means the level of bidding reached (at or above any reserve) when the auctioneer brings the bidding to a close;
“Lot”	Means any property accepted by Clarke and Simpson Auctions Ltd. for offer at auction;

2. DESCRIPTION

No warranty is given or implied by the description in the catalogue. Each lot is sold in its condition at the time of sale with all faults, defects, imperfections and errors of description (if any). Whilst every endeavour has been made to describe the items adequately and properly, the purchaser shall deem to have inspected the lot at time of purchase. All catalogues and seller's and buyer's guides are for information only and do not form part of the contract.

3. STATUTORY REQUIREMENTS

Purchasers will be deemed to have satisfied themselves prior to purchasing regarding current legal requirements (e.g. Health & Safety at Work Act) and it is expressly brought to the bidders attention that equipment in the sale may not necessarily comply with such regulations. Any purchaser shall satisfy himself as to any statutory requirement for the use of any item and no liability shall rest with the vendors nor the Auctioneers.

4. THE AUCTION

All auctions are conducted at the absolute discretion of the auctioneer. The auctioneer shall conduct the auction with reasonable skill and care. The vendor reserves the right to sell subject to reserve price in respect of all lots. What constitutes a bid shall be at the absolute discretion of the auctioneer, acting with appropriate skill and care. The auctioneer shall have the right to refuse any bid in all cases but most notably when such a bid does not exceed the previous bid by at least 10% or such a proportion as the auctioneer shall in his absolute discretion direct. Where two or more bids at the same level are simultaneously received by the auctioneer, the auctioneer at his absolute discretion shall determine which bid to prefer. Subject to the foregoing where two or more bids are at the same level are simultaneously received by the auctioneer, the bid submitted in the room shall take preference over a bid submitted by telephone or internet at the same level. Any bid made or attempted by telephone or over the internet will only be deemed to have been made if received by the auctioneer.

The auctioneer reserves the right to withdraw, consolidate or divide any lot or lots or submit them in any order that they desire. The auctioneer has the right at his absolute discretion to refuse admission to his premises or

attendance at (or participation in) any auction by any person. In the case of any dispute, the auctioneer shall be sole arbitrator in any matters arising during or out of the sale.

5. BIDDERS

All bidders will be required to register their particulars, bidders attending in person and those accompanying them may be required to provide photo ID and separate confirmation of address prior to viewing or taking any part of the sale and before entering any part of the premises to view. All bidders accept full liability for all bids submitted. Subject to the clause in this document headed “The Auction”, the highest bidder at the close of bidding shall be the buyer. Any dispute about a bid shall be settled at the auctioneer's absolute discretion. Bidders are all deemed to act as principal unless there is prior

written acknowledgement by Clarke and Simpson Auctions Ltd. that a bidder is acting as an agent for a named principal. Bidders are strongly encouraged to attend the auction in person. The bidders shall be responsible for any

decision to bid for a particular lot and shall be deemed to have carefully inspected and satisfied themselves as to condition, neither Clarke and

Simpson Auctions Ltd., their employees or agents shall be responsible for any neglect or default in doing or failing to do so. Bidders will be given ample opportunity to view and inspect before the sale and prospective buyers must satisfy themselves as to all matters.

6. DEFAULT

Clarke and Simpson Auctions Ltd. shall act as agent of the vendor only. Any contracts for the sale of a lot shall be formed between the vendor and the buyer. As agent only Clarke and Simpson Auctions Ltd. shall not be responsible for default by the vendor or the buyer. If any lot is not paid for in full and taken away in accordance with these conditions, or there is any other breach of the conditions, then Clarke and Simpson Auctions Ltd. as agents for vendor shall at its absolute discretion and without prejudice to any other rights it may have, be entitled to exercise all or any of the following rights and remedies:-

- 6.1 to proceed against the buyer for any action of debt or damages for breach of contract;
- 6.2 to rescind the sale of that lot or lots sold by Clarke and Simpson Auctions Ltd. to a defaulting buyer;
- 6.3 to resell the lot (by auction or private treaty) in which case the defaulting buyer shall be responsible for any resulting deficiency in the total amount due (after crediting any part payment and adding any resale costs), any possible surplus so arising shall belong to the vendor;
- 6.4 to remove, store and insure the lot at the expense of the defaulting buyer and, in the case of storage, the location of such storage shall be at Clarke and Simpson Auctions Ltd. discretion;
- 6.5 to charge interest at a rate not exceeding 2% per month of the total amount due to the extent that it remains unpaid for more than two working days after the sale;
- 6.6 to retain that or any lot sold to the defaulting buyer until the buyer pays the total amount due;
- 6.7 to reject or ignore bids from the defaulting buyer at future auctions or to impose conditions before any such bids are accepted;
- 6.8 to apply any proceeds of sale for any other lots due or in the future becoming due to the defaulting buyer towards the settlement of the total remaining due.

7. INDEMNITIES, PENALTIES AND LIMITATIONS OF LIABILITY

Purchasers shall pay for any damage done by themselves or their agents during the removal of their lots. Attendance at the sale shall be at the risk of those attending in respect of both themselves and to their goods and vehicles.

Any indemnity under these conditions will extend to all actions, costs, expenses, claims and demand whatsoever suffered or incurred by the person entitled to the benefit of it and Clarke and Simpson Auctions Ltd. declare themselves to be a trustee of the benefit of such indemnity so far as it is expressed to be the benefit of its employees and agents.

Whilst Clarke and Simpson Auctions Ltd. endeavour to ensure that the information on their websites is correct, they do not warrant the accuracy and completeness of the material on their website. Also Clarke and Simpson Auctions Ltd. can make changes to the material on their website, or alter the products and prices described on it, at any time without notice. The material on the website may be out of date, Clarke and Simpson Auctions Ltd. make no commitment to update such material. All material on the websites is provided "as is" without any conditions, warranties or other terms at any time. Accordingly to the maximum extent permitted by law, the website is provided to all parties on the basis that Clarke and Simpson Auctions Ltd. exclude all representations, warranties, conditions and other terms which, but for this legal notice, might have effect in relation to the website.

8. ELECTRICAL SAFETY REGULATIONS

All electrical lots are subject to electrical safety regulations and fall within "the low voltage electrical equipment (safety) regulations 1989" – all items have been pat tested for safety but are not guaranteed in working order.

9. GENERAL MATTERS

Any notice to any buyer, vendor, bidder or viewer may be given by first class mail or email in which case it shall be deemed to have been received by the addressee forty eight hours after posting or sending. All notices to Clarke and Simpson Auctions Ltd. must be sent in writing and email is not acceptable. Any indulgence extended to any person by Clarke and Simpson Auctions Ltd., notwithstanding the strict terms of these conditions or the terms of consignment, shall affect the position at the relevant time only and the respect of that particular concession only; in all other respects these conditions shall be construed as having full force and effect. These conditions and any disputes or claims arising out or in connection with them or their subject matter or formation (including non-contractual disputes or claims) are governed by and construed in accordance with the law of England. The parties irrevocably agree that the courts of England have exclusive jurisdiction to settle any dispute or claim that arises out of or in connection with the agreement or its subject matter or formation (including non-contractual disputes or claims).

10. PUBLICITY

Any catalogue and buyer and seller guides are provided for information only and do not form part of these conditions. The catalogue and the buyer and seller guides may contain additional terms and conditions. Clarke and Simpson Auctions Ltd. reserve the right to use any photographs, background information and research for publicity purposes both before and after the sale.

11. THE PURCHASE PRICE AND PAYMENT ARRANGEMENTS

There is a buyer's premium 15% plus VAT payable in respect of the sale. Any purchases made via "www.the-saleroom.com" shall be subject to an administration charge Administration charge of 3% plus VAT on the price. Preferred payment is cash, bankers draft or personal debit card. Such cards may only be used on a chip and pin basis with the owner present. No payment will be accepted by telephone. There will be an administration charge of 2.5% plus VAT for the use of credit cards or international debit cards.

Payment by cheque will only be acceptable subject to prior arrangement. No lot will be removed from the sale until any cheque has cleared unless a suitable bank reference addressed to the auctioneer is supplied. Payment is due on the day of the sale. Cash in excess of £12,000 (including V.A.T.) will not be accepted from any one person, this is not allowed due to Money Laundering Regulations 2007. All money received will be held in Clarke & Simpson Auctions Ltd. Clients Account at Barclays Bank plc,

Framlingham, Suffolk. Account Number 33222276. Sort Code 20 98 07. Clarke and Simpson Auctions Ltd. have no responsibility for any lot between the close of bidding and payment being made and subsequent collection. Please note all policy regarding payment will be enforced and suitable arrangements must be made.

12. REMOVAL OF LOTS

The ownership of any lot purchased shall not pass to the relevant buyer until they have made payment in full to Clarke and Simpson Auctions Ltd. of the total amount due. The buyer shall at their own risk and expense take away any lot that they have

purchased and paid for not later than two working days following the day of the auction after which they shall be responsible for any removal, storage and insurance charges. Any lots not collected within three months of the date of sale will be resold by the auctioneer and all proceeds will be retained by the auctioneer to cover storage costs.

13. NUMBER BIDDING

This will be used for speed and efficiency as in all our sales. All prospective purchasers must complete a registration form and register in the office on the viewday or morning of sale to receive a number for bidding. PLEASE ALSO NOTE THAT PHOTO ID AND ADDITIONAL CONFIRMATION OF ADDRESS WILL BE

REQUIRED.

14. TELEPHONE BIDDING

We offer a telephone bidding service where possible but this service can never be guaranteed. No applications for telephone bids will be accepted after the end of the viewing prior to sale day for any sale. All potential telephone bidders must provide a valid

landline number and email address for us to send terms and conditions prior to phone

bidding. No phone bids will be accepted for any lot with a lower guide figure of less than £100.

All those who wish to bid by telephone will be expected to deposit the minimum guide for all lots that they wish to bid upon into the Clients Account for Clarke and Simpson Auctions Ltd before the sale starts. In the event of default, this sum shall be retained as part payment or any part may be retained to recover losses under clause 6 of these Terms and Conditions. We will expect payment of the balance owing by BACS on the following day, any payment not met within five working days will result in the forfeiture of the deposit paid.

15. ONLINE BIDDING

Clarke & Simpson Auctions Ltd., on occasions, offer an online bidding service via the-saleroom.com for bidders who cannot attend the sale. In completing the bidder

registration on www.the-saleroom.com and providing your credit card details and, unless alternative arrangements are agreed with Clarke & Simpson Auctions Ltd.:

1. authorise Clarke & Simpson Auctions Ltd., if they so wish, to charge the credit card given in part or full payment, including all fees, for items successfully purchased in the auction via www.the-saleroom.com, and
2. confirm that you are authorised to provide these credit card details to Clarke & Simpson Auctions Ltd. through www.the-saleroom.com and agree that Clarke & Simpson Auctions Ltd. are entitled to ship the goods to the card holder name and card holder address provided in fulfilment of the sale.

Please note that any lots purchased via the-saleroom.com auction service will be subject to an additional 3% charge + VAT at the rate imposed on the hammer price



Clarke & Simpson Auction Centre, Campsea Ashe

Nr Wickham Market, Suffolk IP13 0PS

T: 01728 746323 E: auctions@clarkeandsimpson.co.uk

www.clarkeandsimpson.co.uk