

Clarke &  
Simpson



Selected Antiques & Fine Art

Wednesday 15th March 2017 at 10 am

# THE *Monday* *Sale*

Over 800 lots every week,  
to include cottage antiques &  
modern furniture, household  
appliances & garden machinery.

Everything but the kitchen sink,  
and occasionally even those!

Viewing prior, and  
every Saturday 9am - 12noon

Refreshments available  
from the Tea Room

Room 2 now live online  
every week at the [the-saleroom.com](http://the-saleroom.com)

Clarke &  
Simpson



Clarke & Simpson Auction Centre

 CandSAuctions  @CandSAuctions

[www.clarkeandsimpson.co.uk](http://www.clarkeandsimpson.co.uk) 01728 746323

Campsea Ashe,  
Nr Wickham Market,  
Suffolk IP13 0PS

# Clarke & Simpson

Auctions

## Selected Antiques & Fine Art

Wednesday 15th March 2017  
at 10 am

### Order of Sale:

|                          |         |
|--------------------------|---------|
| Ceramics and Glass       | 1-124   |
| Silver and Plate         | 125-185 |
| Jewellery                | 186-278 |
| Objects and Collectables | 287-477 |
| Pictures and Prints      | 478-547 |
| Furniture                | 552-659 |

To include items from BBC's

# flog it!

### Viewing:

Saturday 11th March, 9 am - 12 noon  
Monday 13th March, 2 pm - 8 pm  
Tuesday 14th March, 10 am - 4 pm  
Morning of Sale from 8.30 am



@CandSAuctions



CandSAuctions



Campsea Ashe  
Nr. Wickham Market  
Suffolk IP13 0PS  
Tel: (01728) 746323 Fax: (01728) 748173  
Email: [auctions@clarkeandsimpson.co.uk](mailto:auctions@clarkeandsimpson.co.uk)  
[www.clarkeandsimpson.co.uk](http://www.clarkeandsimpson.co.uk)

Online bidding via:

[the-saleroom.com](http://the-saleroom.com)

## Special Notices for Purchasers

Certain lots are catalogued as (A.F.), damaged, restored, etc., however the absence of any such notice does not imply that the piece is free from defects, nor does it indicate that other defects are not also present. Mention is not made of breakage, cracks, chips or any damage which can be noted by careful inspection, therefore, intending purchasers MUST, in all cases, be responsible for determining the condition of lots themselves.

**Special attention is drawn to the Conditions of Sale printed at the back of this catalogue.**

### Estimates

Presale estimates are intended only as a guide for intending purchasers, are given in good faith and subject to revision.

### Condition Reports

Clarke and Simpson are unable to guarantee that requests for condition reports/images received after the close of the viewing on the day prior to auction, will be responded to. Clarke and Simpson are happy to give a Condition Report on the physical condition of goods, this will be provided on behalf of the seller on the understanding that Clarke and Simpson are not entering into a contract with you in respect of the Condition Report and accordingly does not assume responsibility to you in respect of it. All lots are available for your own inspection or for inspection by an expert instructed by you, therefore these Condition reports are for guidance only and all lots are sold "as found".

### Commission Bids

The auctioneers will be pleased to execute bids for those unable to attend the sale. Lots will be purchased at the lowest bid the room bidding or any reserves will allow. In the event of identical bids, the earliest bid received will take precedence. There must always be a maximum limit indicated. Buy or unlimited bids will not be accepted. Commission bids placed by telephone are accepted at the client's risk. We urge our clients to place such commission bids before the start of the sale. All such commissions are left entirely at the buyer's risk.

### Telephone Bids

Please refer to conditions of sale printed at the back of this catalogue.

### Registration

All prospective buyers must register their name and address at our auction office and collect a numbered bidding card before the sale commences. If you are a successful purchaser please ensure that your number can be seen by the auctioneer and that it is your number that is called out at the fall of the hammer. Should there be any doubts as to the price or buyer, please draw the auctioneer's attention to it before the next lot is offered.

### Value Added Tax

The symbol \* after any lot number indicates that Value Added Tax is payable by the buyer on the "hammer price".

### Auctioneers Margin Scheme

The Auctioneers Margin Scheme allows auctioneers to sell items without VAT on the hammer price. Under the margin scheme an amount equivalent to VAT at the current rate is added to the buyer's premium. This amount cannot be refunded. The VAT element will not be shown separately on the buyer's invoice.

### Buyer's Premium

**A buyer's premium of 15% plus VAT will be added to the hammer price of each lot.**

**Please note that any lots purchased via the-saleroom.com auction service will be subject to an additional 3% charge + VAT at the rate imposed on the hammer price.**

### Payment

Payment can be made during or immediately after the sale by the following methods:

Cash (up to a maximum of £12,000 including VAT in accordance with Money Laundering Regulations 2007).

Debit Cards

Credit Cards (not American Express) Please note there will be a surcharge of 2.5% plus VAT for the use of these cards. We will not release goods for a period of 72 hours unless the cardholder attends the saleroom in person and presents the cards used for the transaction with proof of ID.

Bank Transfer - Account Name: Clarke and Simpson Auctions Limited

Account Number: Account No: 83428591

Bank: Barclays Bank PLC

Sort Code: 20-98-07

We do not accept cheques unless by prior arrangement.

### Packaging and shipping service.

All requests are sent to our specialist handlers at:

"the-saleroom.com Delivery Service" who can be contacted directly via [delivery@atgmedia.com](mailto:delivery@atgmedia.com)

### Attribution of Pictures and Drawings

Every effort is made to ensure the accuracy of any statement as to authorship, attribution, origin, date, age, provenance and condition of any lot whether or not such statement forms part of the description of any such lot. Whether any such statement is made orally or in the catalogue it is an expression of opinion and not to be taken as being or implying any warranties or representations of facts by the auctioneers. Each buyer by making a bid for a lot acknowledges that he has satisfied himself fully as to the attribution and condition of the lot.

- a) The forename(s) (or full stops where not known) and surname of an artist indicates in our opinion a work by the artist.
- b) The initials of the forename(s) and the surname of the artist indicates in our opinion a work of the period of the artist which may be wholly or in part his work.
- c) The surname of the artist indicates in our opinion a work of the school or by one of the followers of the artist or in his style and of uncertain date.
- d) *Signed, Dated, Inscribed* indicates in our opinion work signed/dated/inscribed by the artist.
- e) *Bears signature* indicates in our opinion that this is not the signature of the artist.
- f) *Attributed to* may be used to denote a traditional attribution based on style.
- g) *Manner of* indicates in our opinion a work executed in the artist/craftsman's style but of a later date.
- h) *After* indicates in our opinion a copy (of any date) of work of an artist or craftsman.

The addition of a question mark after any of the cataloguing terms above indicates an element of doubt.

## Ceramics and Glass

- 1**  
A Royal Crown Derby Imari pattern part tea set  
£150 - 250 †
- 2**  
A pair of Doulton cabinet plates, decorated with flowerheads within scallop borders, heightened in gilt, 23cm dia.; and another similar with blue border, 23cm dia., (3)  
£20 - 40 †
- 3**  
A pair of decorative continental pottery and gilded cherub candlesticks, 25cm high; and another smaller pair of candlesticks having floral decoration to the columns, 17.5cm high, (4)  
£30 - 60 †
- 4**  
A good quality Queen's Burmese glass table epergne, the posy holders with foldover rims profusely decorated flowers, clear glass stems with scrolled leaf shape glass ornamentation, raised on a circular mirrored plateau, 31cm high  
£800 - 1,200 †
- 5**  
A continental porcelain table centre piece, in the Dresden style, having floral encrusted cherub and maiden decoration to the column, supporting an oval pierced basket, 48cm high x 33cm wide overall; and a smaller similar example, 33cm high x 24cm dia., (2)  
£60 - 100 †
- 6**  
A large continental porcelain fruit basket, decorated with leaves within a pierced border, 34cm  
£20 - 40 †
- 7**  
A 19th Century copper lustre jug, decorated with Masonic emblems and verse and a ship inscribed "Northumberland 74", 25cm high  
£60 - 100 †
- 8**  
An etched glass decanter, decorated with Masonic emblems, 24.5cm high  
£20 - 40 †
- 9**  
A pair of 19th Century Meissen cabinet plates, decorated with exotic birds within swags and garlands of flowers, heightened in gilt, 24cm dia.  
£60 - 80 †
- 10**  
A 19th Century Bargeware teapot, decorated with birds and flowers, inscribed "A Present to a Friend", 32cm high  
£40 - 60 †
- 11**  
A collection of 5 various 19th Century Staffordshire flatback figures  
£100 - 150 †
- 12**  
A Chinese cream and blue glazed baluster vase, with raised cloud, bird and foliate decoration, 29cm high; and a glazed earthenware jar with faint blue stylised decoration, 20cm high, (2)  
£100 - 150 †
- 13**  
A Canton bottle vase, decorated with panels of figures, insects, birds and foliage heightened in gilt, 21cm high; and a Chinese blue and white cylinder vase, decorated prunus blossom, four character mark to base, 15cm high, (2)  
£40 - 60 †
- 14**  
A pair of 19th Century Chinese Canton baluster vases, profusely decorated with panels of figures, birds, foliage and butterflies, heightened in gilt with applied dragon decoration, flanked by kylin handles, 62.5cm high, (some damage)  
£200 - 400 †
- 15**  
A Chinese Redware teapot, with bamboo effect decoration to the handle spout and lid finial, seal marke to base, 20cm  
£20 - 30 †
- 16**  
A pair of Delft ware plaques, of cartouche shape, decorated with windmills and barges, 20cm x 18.5cm  
£40 - 60 †
- 17**  
An overlaid glass baluster vase, having floral decoration on a blue and cream ground, 22cm high  
£40 - 60 †
- 18**  
A pair of 19th Century blue opaque glass vases, decorated dancing cherubs within foliate cartouche, 30cm high  
£40 - 60 †
- 19**  
A large Satsuma baluster vase, profusely decorated with figures and foliage heightened in gilt, flanked by elephant head handles, converted to a table lamp, 66cm high  
£250 - 350 †
- 20**  
A Japanese Imari scallop bordered plate, decorated in traditional manner, 30cm dia.; and a smaller example with pierced border, 23cm dia., (2)  
£40 - 60 †
- 21**  
A pair of Meissen style baluster vases, of large proportions, the lids surmounted by cherubs and coronets above seated maidens with baskets of flowers, decorated panels of figures, raised on separate scrolled bases, 72cm high, (some damage)  
£400 - 600 †
- 22**  
A German porcelain figure of a lady, standing before a floral encrusted tree stump, surmounted by a parrot in cage, 31cm high; and a cherub decorated floral encrusted wall bracket, 19cm high, (2), (some damage)  
£20 - 40 †
- 23**  
A pair of Doulton Slater's patent baluster vases, 21cm high  
£30 - 50 †



Lot 4



Lot 10



Lot 15



Lot 19



Lot 24

**24**  
A 19th Century Bohemian goblet, having overlaid portrait and floral panels, profuse gilt foliate scrolls on a baluster column and spread foot, 35cm high, (damaged); a Victorian blue opaque glass vase and cover of baluster form with floral decoration, 44cm high; and a similar baluster vase with enameled decoration of birds and foliage, 34cm high, (3)  
£40 - 60 †

**25**  
A Royal Worcester baluster cream jug, decorated with fruit, by W.B., gilded handle and interior, 10cm high, circa 1927  
£100 - 150 †

**26**  
A Canton baluster vase, decorated in the traditional manner with figures, foliage and birds, 57cm high, (reduced)  
£100 - 150 †

**27**  
A 19th Century Coalport type floral encrusted vase, heightened in gilt, 40cm high  
£40 - 60 †

**28**  
A Victorian salt glazed teapot, of large size, having ivy leaf and fern decoration, with pewter lid, AF, 22cm high  
£20 - 40 †

**29**  
A Japanese Imari pattern bottle vase, 34cm high  
£30 - 50 †

**30**  
A 19th Century Sitzendorf porcelain figure, of a young man standing in front of a tree stump, 22cm high  
£30 - 60 †

**31**  
A Japanese Satsuma ware baluster vase, profusely decorated with exotic birds and foliage on a blue ground, 35cm high  
£40 - 60 †

**32**  
A pair of Wedgwood porcelain cabinet plates, having gilt trailing foliage decoration on a red ground; a Coalport similar retailed by Davis Collimore & Co. Broadway, New York; a Sevres style cabinet plate with pierced border and floral decoration on a blue and gilt ground; and a pair of Samson porcelain plates with exotic bird decoration, (6)  
£30 - 60 †

**33**  
A continental porcelain three handled vase, having exotic bird and foliate decoration on three paw feet; a continental jardinière decorated with panels of young children amongst foliage on a deep green ground; and a modern Portuguese porcelain vase, (3)  
£20 - 40 †

**34**  
Three novelty china teapots, Mr Pickwick, Jack Tar and Manxman, (3)  
£30 - 50 †

**35**  
A Moorcroft pottery Anemone decorated vase, circa 1955-60, 11cm high  
£60 - 100 †

**36**  
A collection of six various 19th Century teapots, to include a famille rose decorated example, Coalport style Imari pattern example, Wedgwood Basalt, three others; and a Victorian part child's tea set  
£30 - 60 †

**37**  
Three Prattware pot lids, "The Enthusiast", "The Village Wedding" and "The Shrimpers"; and an alabaster applique depicting mask, tambourine, club and laurel leaf, (4)  
£40 - 60 †

**38**  
A pair of Royal Crown Derby Imari pattern dinner plates, pattern no. 1128; a similar side plate; a pair of Royal Crown Derby cabinet plates with gilt pheasant and turkey decoration on a deep red ground; and a Royal Crown Derby "Old Avesbury" part breakfast set, (11)  
£40 - 60 †

**39**  
A Bohemian ruby glass and pewter claret jug, decorated with foliate scrolls, 44cm high, and four matching goblets  
£80 - 120 †

**40**  
A continental porcelain goblet, in the Capo di monte style, decorated Bacchanalian scenes, gilded interior, raised on a brass mounted circular spread foot, 17cm high; a 19th Century continental porcelain baluster vase with figural and scenic panels flanked by swan neck handles, heightened in gilt, 18cm high; a Sevres style urn shaped vase with floral decoration on a pink and gilt ground, 11cm high, and a faience ware gourd shaped blue and white vase, 25.5cm high, (4)  
£40 - 60 †

**41**  
A Royal Worcester vase, having painted panels of pheasants on a deep blue and cream ground, the elongated flared neck with stylised decoration, raised on a circular foot, circa 1892, 32cm high, AF  
£60 - 100 †

**42**  
A Chinese style small foot bath, decorated with hunting dogs and foliate exterior heightened in gilt flanked by side carrying handles, interior decoration of fish, 46cms  
£20 - 40 †

**43**  
A 20th Century continental porcelain jardinière, supported by gilt metal cherubs on oval plinth base, having foliate spray bird and animal decoration, 27cm high  
£30 - 40 †

**44**  
A Newhall part tea service, pattern 142, circa 1800, comprising teapot and lid, three coffee cups and two saucers  
£80 - 100 †

**45**  
A Moorcroft pottery baluster vase, in the Pomegranate pattern, circa 1925-30, 11cm high x 13cm dia. overall  
£150 - 250 †

**46**  
A pair of Victorian copper lustre jugs, 13cm high; a smaller similar with decorated central band, 8.5cm high; and a copper lustre tankard, 12cm high, (4)  
£30 - 50 †

**47**  
A pair of naive Victorian Staffordshire cow and calf spill holders, 23cm long x 19cm high  
£200 - 300 †



Lot 39



Lot 53



Lot 55

- 48**  
A small oriental Imari pattern onion shaped vase, 7cm high; a Chinese blue and white baluster vase, AF, 22cm high; and a glazed pottery oriental vase with raised figural decoration, (3) £30 - 50 †
- 49**  
A Samson porcelain floral decorated jardinière, having pierced body flanked by scrolled handles, 23cm dia. overall x 12cm high; a Meissen style oval porcelain serving dish decorated with parrots and foliage, heightened in gilt, 32.5cm; and a German porcelain floral decorated fruit basket, having pierced basketwork sides and scrolled handles, 26cm, (3) £60 - 100 †
- 50**  
Three modern Dresden miniature coffee cans and saucers; a 19th Century German porcelain chocolate cup, similar period cup and cover, peppercorn; a modern German porcelain jar and various modern Japanese ceramics £40 - 60 †
- 51**  
A continental porcelain oval fruit basket, having floral encrusted decoration and pierced sides, flanked by loop handles, 34cm; and a Vienna style porcelain oval fruit basket, having cornucopia posy holders to each corner, pierced sides and foliate spray decoration heightened in gilt, 29cm, (2) £60 - 100 †
- 52**  
A 19th Century Chinese shallow dish, decorated in the Imari palette with six character mark to base, 19.5cm dia.; and a Chinese shallow bowl decorated figures and script, character mark to base, 20cm dia. (2) £60 - 80 †
- 53**  
A 19th Century Chinese famille rose baluster jar, having pierced hardwood cover and stand, 29cm high £100 - 200 †
- 54**  
A cut glass and silver mounted celery jar; and cut glass liqueur, (2) £20 - 30 †
- 55**  
An unusual early 19th Century terracotta ware cream jug, patented by Booth & Co., Staffordshire, May 23rd 1839, decorated with foliate sprays and raised bronzed effect cameos, turquoise glazed interior, scroll handle, 14cm long £60 - 80 †
- 56**  
A rare Staffordshire figure group, "Grapplers" depicting semi naked wrestlers with a red cloak, on oval floral encrusted base, 30cm high overall £1,000 - 1,500 †
- 57**  
A Royal Worcester baluster shaped pot pourri vase and cover, having painted panel decoration of fruit by E. Townsend, heightened in gilt, 26.5cm high; a pair of matching trumpet shaped posy vases, similarly decorated, 23cm high; and a fruit decorated tea cup and saucer, also decorated by E. Townsend, (5) £300 - 400 †
- 58**  
An Antique Italian pottery drug jar, of baluster form, decorated continuous band of flowers and inscribed "H Caya Bella", 20cm high £100 - 200 †
- 59**  
A Moorcroft pottery mottled red glazed bowl, impress mark to base, 15.5cm £100 - 150 †
- 60**  
An early 20th Century Viennese Rudolf Podany Tanzforgruppe porcelain figure group, depicting three dancing maidens, 35cm high, AF £60 - 80 †
- 61**  
A 19th Century Brownfields vase, decorated in the Japanese style, 14.5cm high £40 - 60 †
- 62**  
An 18th Century Worcester tea cup and saucer, decorated with blue and white foliage £60 - 80 †
- 63**  
An 18th Century Worcester tea bowl and saucer, with blue floral and insect decoration £50 - 60 †
- 64**  
A 19th Century Staffordshire pastille burner house; and a salt glazed pottery moneybox house, (2) £30 - 50 †
- 65**  
A Dresden floral decorated leaf shaped dish, with foliate spray decoration heightened in gilt, 13cms £20 - 40 †
- 66**  
A 19th Century blanc de chine porcelain menu holder, in the form of a reclining Putto, 5cm high £30 - 50 †
- 67**  
A 19th Century Staffordshire figure group, depicting a birds nesting scene, 13cm high £30 - 50 †
- 68**  
A Royal Doulton equestrian group, "The Squire" HN1814, 25cm high x 20cm long overall £40 - 60 †
- 69**  
A pair of 19th Century Derby porcelain figures, depicting rotund gentleman, raised on circular naturalistic bases, 12cm high; a Bloor Derby figure of a seated Turk, AF, 14cm high; and an early 19th Century English porcelain figure of courtier, AF, (4) £100 - 150 †
- 70**  
A Victorian Pedlar doll, dressed in cloak and hood carrying a wicker tray displaying her wares, 33cm long £180 - 250 †
- 71**  
A Chinese famille rose decorated ginger jar, cover missing, 24cm high £40 - 60 †
- 72**  
A cut glass toilet jug and bowl, with hob nail decoration £20 - 40 †



Lot 56



Lot 57



Lot 58



Lot 71



Lot 81

**73**  
A heavy cut glass flower vase, of waisted design with hob-nail decoration, 30cm high x 30cm dia.; a cut glass fruit basket decorated with flowers, 28cm high; and a circular heavy cut glass vase, 27.5cm dia., (border chipped), (3) £60 - 80 †

**74**  
A large Antique pottery Bellarmine, 49cm high £80 - 120 †

**75**  
A small 17th Century pottery Bellarmine jug, 28cm high £150 - 200 †

**76**  
Three Victorian graduated salt glazed baluster jugs £30 - 50 †

**77**  
A set of six vine etched glass finger bowls, one AF £30 - 50 †

**78**  
A campana shaped cut glass vase, 20cm high x 19cm dia.; and a cut glass comport raised on a baluster frosted stem and circular spread star cut base, 24cm dia. x 20cm high, (2) £40 - 60 †

**79**  
A suite of cut glass tableware, of hobnail and floral design, comprising 6 each large tumblers, small tumblers, ports and sherries; and five other similar conical shaped glasses £40 - 60 †

**80**  
A collection of table glassware, to include six 18th Century design tall wine glasses, etched champagne saucers, etched decanter, pair of candle holders etc. £40 - 60 †

**81**  
A 17th Century English Delft wet drug jar, of baluster form with reeded handle, inscribed "S. Capill-Ven" (Syrup of Maidenhair), with all over floral decoration, raised on a circular spread foot, (chips to spout), 23cm high £500 - 700 †

**82**  
A large Westerwald pottery flagon, having blue floral decoration, 44cm wide; and two smaller similar jugs, 23cm high, (3) £100 - 150 †

**83**  
A large 17th Century Westerwald ewer, with incised foliate decoration and cartouche dated 1679, 43cm high £180 - 220 †

**84**  
A pair of Chinese Canton pattern plates, depicting figures in an exotic garden setting, 37cm dia. £40 - 60 †

**85**  
A 19th Century famille rose vase, decorated with birds and foliage, (lid missing), 20cm high £40 - 60 †

**86**  
Two Antique stoneware glazed flagons, and a later example by Doulton Lambeth, (3) £30 - 50 †

**87**  
An unusual Coalport porcelain Samovar/Lazy Susanne, decorated in the Chinese manner, complete with six cups and saucers, cream jug and sugar bowl £40 - 60 †

**88**  
A large Chinese baluster vase, profusely decorated with deer in a mountainous forest, red glazed scrolled handles, 50cm high £100 - 200 †

**89**  
A Limoges porcelain part dessert set, comprising fruit bowl, two serving plates, 12 dessert plates, decorated rich foliate sprays heightened in gilt within shaped borders £60 - 100 †

**90**  
Four 19th Century Tonquin ironstone china platters, 27.5cm £60 - 100 †

**91**  
Three Chinese blue and white plates, decorated with central baskets of flowers within foliate borders, seal mark to base, 22cm dia. £30 - 50 †

**92**  
Eleven 19th Century Coalport style porcelain plates, depicting Scottish lochs and rural scenes, 22cm dia. £60 - 80 †

**93**  
A quantity of Porcelaine Royale items, decorated in the Sevres style, comprising part dressing table set, jardinière, candle holders, plant pots and a pair of covered vases £100 - 150 †

**94**  
A Noritake part dessert service, the central panels decorated river scenes within gilt heightened foliate borders £40 - 60 †

**95**  
A 1930's German porcelain Art Deco figurine, depicting a lady dancing, 27cm high £100 - 150 †

**96**  
An Antique Chinese baluster blue and white vase, converted to a table lamp and a pair of celadon ground vases, (3) £20 - 30 †

**97**  
A pair of Edwardian jardinières, decorated with panels after Angelica Kauffman, 20cm dia. x 18cm high £20 - 40 †

**98**  
A pair of Chinese style blue and white baluster vases and covers, profusely decorated with birds and blossom, 40cm high £40 - 60 †

**99**  
A continental porcelain portrait plate, depicting Ruben's wife, within scalloped and foliate scroll borders, 32cm dia. £20 - 40 †

**100**  
A Dresden type easel framed porcelain mirror, with cherub and floral encrusted decoration; and another similar wall mirror, (2) £40 - 60 †

**101**  
A Japanese Imari charger, having scallop border, 40cm dia. £30 - 50 †



Lot 85



Lot 95



Lot 105



**102**  
A Chinese octagonal blue and white brush pot  
£80 - 120 †

**103**  
A Chinese shallow porcelain bowl, decorated with prunus, six character mark to base, 23cm dia.  
£100 - 150 †

**104**  
A pair of Cantonese sauce boats, decorated with figures, foliage, birds and insects, raised on circular spread feet, 18cm  
£80 - 120 †

**105**  
A 19th Century Chinese famille juane plate, decorated with dragons and blossom in a central field, the outer border with vignettes of birds and flowers, 25cm  
£30 - 60 †

**106**  
A Chinese shallow yellow ground bowl, with six character mark to base, 16cm dia.  
£80 - 120 †

**107**  
A graduated set of three flying Guinness Toucans, by Carltonware  
£50 - 80 †

**108**  
A Carltonware Guinness Toucan advertising lamp base, GA/2178, 24cm high  
£50 - 80 †

**109**  
A boxed set of "Beatles Bobb'n Head car mascots", in original box, circa 1964  
£300 - 500 †

**110**  
A 19th Century Sevres style hinged box, the cover decorated with a scene of a romantic couple, heightened in pink and gilt; and a matching hand mirror, (2)  
£80 - 120 †

**111**  
A 19th Century porcelain cabinet plate, decorated flowers and bee on a rich blue ground, heightened in gilt, inscribed verso "Orchid.odon Toglossum. Cervatessi", 24cm dia.  
£40 - 60 †

**112**  
Three various Japanese Imari ware plates  
£30 - 50 †

**113**  
A Sevres porcelain posy vase, having floral and ribbon decoration, raised on a circular white metal foot, 12.5cm high  
£40 - 60 †

**114**  
A large Worcester style blue and white teapot, decorated in the "Fence" pattern, 20cm high  
£100 - 200 †

**115**  
An 18th Century Worcester butter boat, having leaf moulded body and floral decoration, 7cm in extremes  
£60 - 80 †

**116**  
An 18th Century Worcester butter boat, with moulded flowerhead feet and angular handle, blue and white floral spray decoration, 7cm in extremes  
£60 - 80 †

**117**  
An 18th Century Worcester shallow saucer dish, with fruit and flower decoration, crescent mark to base, 12cm dia.; and another similar, 12cm dia., (2)  
£60 - 80 †

**118**  
An 18th Century Worcester tea bowl, decorated with a Chinese figure amongst foliage  
£60 - 80 †

**119**  
An 18th Century Worcester blue and white bird beak cream jug, decorated with floral sprays, crescent mark to the circular raised foot, 9cm high  
£60 - 80 †

**120**  
A Worcester shallow dish, having pine cone decoration within a scalloped border, 19.5cm dia.  
£50 - 80 †

**121**  
An 18th Century Worcester shallow dish, having scallop border and allover leaf pattern in segments, 7.5cm dia.  
£50 - 80 †

**122**  
An 18th Century Worcester bowl, having fluted moulded body with floral spray decoration, the centre with a pattern of a fisherman, 20cm dia.  
£100 - 150 †

**123**  
A Worcester "Pine cone" pattern charger, with scallop border, 38cm dia., crescent mark to base  
£200 - 400 †

**124**  
A Worcester "Pine cone" pattern charger, with scallop border, 38cm dia., crescent mark to base  
£200 - 400 †

## Silver and Plate

**125**  
A pair of late 19th Century plated country house hot water urns, of vase shape, the domed lids surmounted by turned finials above raised leaf decoration, stylised floral frieze flanked by loop handles, taps below with spirit heater bases, raised on square gadrooned plinths terminating in ball feet, 59cm high, complete with original pine and baize lined carrying boxes  
£800 - 1,200 †

**126**  
A silver plated wine cooler, of baluster form, decorated foliate scrolls and vacant cartouche, 34cm high  
£80 - 120 †

**127**  
An Indian white metal tea set and tray, decorated figures, animals and foliage, 75ozs. total weight  
£100 - 150 †

**128**  
A pair of plate on copper twin branch candelabra, with foliate embossed decoration  
£20 - 40 †

**129**  
A plated ice bucket, by Walker & Hall, 25cm x 22cm dia. overall  
£40 - 60 †



Lot 114



Lot 123



Lot 124



Lot 125



Lot 137

**130**

A large Victorian plated Samovar, having profuse foliate scroll decoration and vacant cartouches, 52cm high £40 - 60 †

**131**

An electro plated four piece tea set, with gadroon border and an oval foliate engraved two handled tea tray £40 - 60 †

**132**

A silver plated desk stand; a toast rack; hip flask; two pewter tankards; a cake stand; and various other items £30 - 50 †

**133**

An oval plated on copper entree dish, having acanthus border and attachable handle; an oval vine decorated serving dish; various other plated serving dishes and a pair of oval plated entree dishes £60 - 80 †

**134**

A pair of Sheffield plated candlesticks, having gadroon decoration, raised on circular spread feet, 27cm high £30 - 50 †

**135**

An Art Deco silver and blue enamel cigarette case, the gilded interior inscribed, "Wishing you the best of luck from your girls, August 4th 1928", hallmarked *Birmingham 1928* £70 - 100 †

**136**

An 18th Century continental white metal snuff box, of cartouche shape, having gilded interior, the lid with decoration of figures and foliage, (worn), with presentation inscription to the under-side, reading "Presented to Thomas F. Chapel, 22 Stanley Gardens, London by George Yardley, he bought it from a farmer in Sweden who professed to be certain that it was at least 200 years old", unmarked, 6.5cm long £60 - 100 †

**137**

A silver hinged oblong box, having profuse decoration of hunting dogs pursuing a wild boar amongst woodland, hallmarked *Sheffield 1909*, 8.5cm long £60 - 80 †

**138**

A pair of silver shell shaped salts, *Birmingham 1919* £30 - 50 †

**139**

A William IV silver caddy spoon, *London 1833* £30 - 50 †

**140**

A continental white metal beaker, 8cm high £50 - 80 †

**141**

A pair of modern circular silver scallop bordered dishes, 6ozs. £50 - 60 †

**142**

A continental white metal wine taster, of small proportions, bearing monogram, 800 mark £20 - 30 †

**143**

An oriental white metal mirror; a miniature white metal model of a rake; a small white metal spoon; and a continental white metal figure of a street vendor, (4) £30 - 50 †

**144**

An 18th Century Dutch silver spoon, the bowl decorated with a rural scene, pierced twist handle and ship terminal, 20cm long £40 - 60 †

**145**

A late Victorian silver Vesta case, decorated with figure of a golfer and inscribed "E.B.G.S. May 20th 1902", monogrammed verso, hallmarked *Chester 1899* £80 - 120 †

**146**

A silver and enamel vesta case, the central panel decorated with a boxer dog £80 - 120 †

**147**

A silver coffee pot, by Asprey & Co., having wooden scroll handle, the domed hinged lid surmounted by a knob finial, 17cm high, 15ozs., *Birmingham 1937* £150 - 250 †

**148**

A late Victorian silver six division toast rack, *London 1897*, 9ozs. £100 - 150 †

**149**

A cut glass and silver mounted perfume atomiser; and two continental white metal boxes, (3) £20 - 40 †

**150**

A silver tankard, *Birmingham 1941*, 14ozs. £100 - 150 †

**151**

A Chinese silver five piece dressing table set, having profuse raised dragon decoration with central monogram, comprising hand mirror, two brushes, comb and powder jar £100 - 150 †

**152**

A silver coffee pot, of octagonal tapering form, having wooden handle and lift, 19cm high, *Birmingham 1939*, 17ozs. gross £100 - 150 †

**153**

A Chinese silver cigarette case, having raised dragon decoration £50 - 80 †

**154**

A George III silver cream jug, having floral engraved decoration and harp shaped handle, raised on ball feet, *London* (date letter indistinct) £40 - 60 †

**155**

A late Victorian cased silver bachelor's tea set, of panelled form, the teapot with wooden handle and lift, *London 1894*, 12ozs. total weight £150 - 200 †

**156**

A silver cased travelling timepiece, with a white enamel dial, green Arabic numerals contained within a fitted square hinged case by Neal & Sons Ltd., *Birmingham 1933*, 9cm wide £180 - 220 †

**157**

Four various glass and silver mounted flat coasters, (some damaged) £40 - 60 †



Lot 155



Lot 156



Lot 161

**158**  
A pair of Victorian silver Old English pattern fish servers, with beaded decoration, makers mark GA, London 1861 £80 - 120 †

**159**  
A continental white metal tea strainer, having pierced foliate and bird decoration, 16cm, marks indistinct £30 - 50 †

**160**  
An Edwardian silver bowl, having serrated border and beaded decoration, with Masonic inscription, Birmingham 1907, 3ozs. £40 - 60 †

**161**  
A pair of Victorian silver serving spoons, profusely decorated with grape vines, having shaped terminals and twist stems, London 1890 £80 - 120 †

**162**  
Six silver coffee spoons, Sheffield 1944; and five silver teaspoons, Sheffield 1926, 5.8ozs £40 - 60 †

**163**  
A Georgian silver toddy ladle, with whalebone twist handle; and three various plated serving spoons £30 - 40 †

**164**  
A plate on copper five piece cruet set £20 - 40 †

**165**  
Six silver condiment spoons; a silver sifter spoon; six silver handled knives; sugar tongs etc., 8.4ozs. total £80 - 120 †

**166**  
A cased pair of silver napkin rings; two other silver napkin rings; silver shell shaped dish; silver pepper pot; silver and cut glass bowl; and a silver mounted sugar shaker, (8) £80 - 120 †

**167**  
An Indian white metal bowl, having profuse foliate scrolled decoration, possibly Raj Kutch, 19cm dia. £200 - 300 †

**168**  
A silver quaiche, having angular twin handles, raised on circular base, bearing presentation inscription, 7ozs. £50 - 60 †

**169**  
A pair of Georgian silver berry spoons, London 1804, 4ozs. £30 - 40 †

**170**  
A silver drum shaped mustard pot, Birmingham 1918, 4ozs. £30 - 40 †

**171**  
An Edwardian silver four division toast rack, Sheffield 1902, 4.3ozs. £30 - 40 †

**172**  
A circular silver bowl, of plain form, raised on a circular line decorated spread foot, Sheffield 1944, 13ozs. £100 - 150 †

**173**  
A late Victorian silver posy pot, by the Goldsmiths & Silversmiths Company, having foliate embossed decoration, raised on three claw and ball feet, inscribed "L.B. from H.B. Xmas 1898", hallmarked for London 1898, 8cm dia., 9.5cm high, 6ozs. £70 - 100 †

**174**  
A small early George V silver dressing table tray, with foliate embossed decoration and central cartouche, Sheffield 1912, 27cm long £60 - 100 †

**175**  
A silver sauce boat, in the early Georgian style, having beaded border and flying C scroll handle, raised on three hoof feet, 8ozs. £60 - 80 †

**176**  
A Victorian silver tankard, having beaded borders, stylised floral decoration, engraved to the base, "from J.M.B. 11th 9, 1942", hallmarked London 1871, 12ozs. £100 - 150 †

**177**  
Five Victorian silver Kings pattern dessert forks; and four silver Kings pattern dessert spoons, (various dates); three silver napkin rings; four continental silver gilt and enamel decorated coffee spoons; three silver napkin rings; a continental silver and enamel decorated sifter spoon; various silver teaspoons; and a Victorian baby's rattle, (incomplete and damaged) £100 - 150 †

**178**  
A cased set of six silver bladed and mother of pearl handled fruit knives; a cased set of six silver coffee spoons; a part case of four silver handled lobster picks; a cased set of six silver teaspoons; white metal spoons etc. £60 - 80 †

**179**  
A large quantity of cased and boxed silver plated cutlery £50 - 80 †

**180**  
A Victorian silver trophy cup, having embossed foliate decoration, the cartouche inscribed "Aberdeenshire Coarsing Club, The Open Stakes, gained by Flying Dutchman", London 1852, 23cm high, 17ozs. £100 - 200 †

**181**  
A modern silver gilt racing trophy, "The Magnet Cup", having leaf decoration with finial to the lid, raised on a circular spread foot, London 1959, 29cm high, 20.67ozs., AF £150 - 250 †

**182**  
A George III silver baluster coffee pot, with foliate embossed decoration, cartouche inscribed with family crests, blackwood handle, London dated letter indistinct, 29.5cm high, 25ozs. £700 - 800 †

**183**  
A white metal side pouring chocolate pot, of baluster form, with blackwood turned wooden handle, marks indistinct, 20cm high £200 - 400 †



Lot 176



Lot 180



Lot 181



Lot 182



Lot 196

**184**  
A continental white metal baluster tankard, having half fluted body decoration, the scroll handle decorated cornucopia, on circular spread foot, 13cm high overall £150 - 250 †

**185**  
Four various silver trophy cups; and a plated similar complete with blackwood and other stands £40 - 60 †

## Jewellery

**186**  
A 9 carat gold ladies wrist watch, having circular enamel dial and expanding bracelet strap, hallmarked 1914 £120 - 180 †

**187**  
A silver cased pocket watch, "ACME Lever" by H. Samuel, Manchester, hung to a silver watch chain with accompanying silver shield shaped fob medallion; and a smaller watch chain £100 - 150 †

**188**  
A silver pear cased pocket watch, foliate engraved dial with yellow metal Roman numerals £100 - 150 †

**189**  
A 9 carat gold and blue stone inset leopard brooch; and two 9 carat gold ladies wrist watches £60 - 100 †

**190**  
A 9 carat gold ladies Rolex precision wrist watch, on expanding bracelet strap, with original case and box £200 - 300 †

**191**  
A 9 carat gold ladies Tudor wrist watch £80 - 120 †

**192**  
Four various 9 carat gold ladies wrist watches £100 - 150 †

**193**  
A ladies 9 carat gold cased Omega wrist watch; an Everite 9 carat gold cased ladies watch and an Accurist 9 carat gold cased watch, (3) £150 - 250 †

**194**  
An unusual plated belt, the hand forged links decorated with Roman and Greek figure heads and emblems £100 - 150 †

**195**  
A silver and mother of pearl folding fruit knife, by Walker & Hall, Sheffield 1910 £20 - 40 †

**196**  
An 18 carat gold ladies fob watch, with engraved foliate decoration and Roman numeral dial, complete with key £120 - 180 †

**197**  
An 18 carat gold diamond and sapphire cross-over ring £150 - 200 †

**198**  
A Victorian yellow metal oval cameo brooch, depicting head and shoulders study of a lady with flowers in her hair £40 - 60 †

**199**  
An 18 carat gold wedding band; two 9 carat gold signet rings; a 9 carat gold wedding band; three various gold dress rings; a 9 carat gold oval locket etc., 20.6gms gross £100 - 200 †

**200**  
A 14 carat white gold ring, set with a central black pearl between diamond shoulders £200 - 300 †

**201**  
A 19th Century yellow metal and opal set pendant bar brooch £40 - 60 †

**202**  
A silver fob pendant; a yellow metal fob pendant; various Victorian brooches; two bracelets; a Wedgwood pendant; and a Wedgwood pendant in 9 carat gold mount £60 - 80 †

**203**  
A 9 carat gold necklace, hung with yellow metal pendant set blue stone; a 9 carat gold jade pendant hung to a yellow metal chain; and a 9 carat gold and blue stone bracelet, (3) £80 - 120 †

**204**  
A 9 carat gold bracelet, set various stones and padlock clasp, 15.3gms total weight £100 - 150 †

**205**  
A jade and yellow metal mounted insect brooch, set with an opal £40 - 60 †

**206**  
A 9 carat gold brooch, set with an opal and three 9 carat gold cameo brooches £80 - 120 †

**207**  
A Victorian yellow metal brooch, with mother of pearl decorated panel depicting a lake scene with castle ruins; and four various Victorian yellow metal brooches £100 - 150 †

**208**  
A Victorian yellow metal brooch, set with central amethyst coloured faceted stone; an oval portrait brooch depicting a young girl in a bonnet, signed "Sebes"; a Wedgwood cameo brooch; and a small yellow metal pendant £40 - 60 †

**209**  
An early 20th Century yellow metal bar brooch, decorated with a pearl and white stone set bee £100 - 150 †

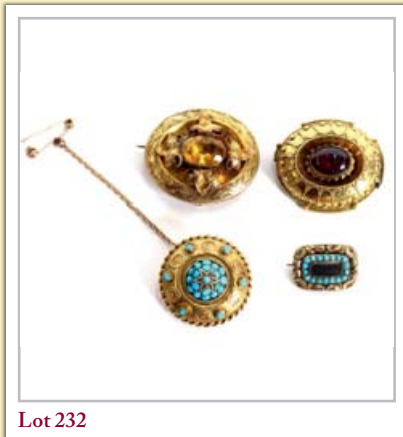
**210**  
A 14 carat gold and red stone cluster ring; and a 9 carat gold amethyst set floral cluster ring, (2) £50 - 60 †

**211**  
Two 9 carat gold opal set rings £40 - 60 †

**212**  
A yellow metal ring, set with pale blue stone; a gold opal set ring; and a gold ring set opals and turquoise stones £60 - 80 †



Lot 219



Lot 232



Lot 233

**213**  
A 9 carat gold ring, set with three yellow stones; and a gold ring set amethyst and pearls £40 - 60 †

**214**  
A Victorian yellow metal cameo brooch, of large size, depicting profile of a lady in evening dress with ringlets in her hair, the frame with twist decoration and leaf motifs, 7cms £40 - 60 †

**215**  
A yellow metal seed pearl, mother of pearl and garnet set brooch; a bar brooch decorated with a paste set "A"; and a yellow metal ring set with a cabochon green stone, (3) £40 - 60 †

**216**  
A small 9 carat gold bar brooch, inset with seed pearls £30 - 50 †

**217**  
A 15 carat gold snap bangle, with pierced and beaded decoration with central seed pearl set horseshoe motif £60 - 80 †

**218**  
A miniature portrait pendant brooch, decorated scene of a young gentleman wearing stock and hunting jacket £40 - 60 †

**219**  
An Edwardian classical style circular brooch, inset with a portrait of a lady in evening dress and pearls, surrounded by 16 small diamonds £200 - 300 †

**220**  
A Macintosh collection silver brooch, in the shape of a coronet; a sterling silver Celtic style brooch; another similar set purple faceted stone; another similar; a floral encrusted brooch and a metalware trinket box £40 - 60 †

**221**  
A yellow metal and coral necklace, with pair of matching ear-rings; and a collection of various malachite and other hardstone beads etc. £60 - 100 †

**222**  
An 18 carat gold opal and white stone cross-over ring; an 18 carat gold ring set with central faceted citrine style stone surrounded by small white stones; and an 18 carat gold and white stone cluster ring, (3) £80 - 120 †

**223**  
A 9 carat gold opal cluster ring; a 9 carat gold diamond and blue stone dress ring; and a 9 carat gold blue stone set cluster dress ring, (3) £80 - 120 †

**224**  
A 9 carat gold pearl and white stone dress ring; a 9 carat gold dress ring set emerald coloured and white stones; and a yellow metal similar, (3) £80 - 120 †

**225**  
A 14 carat and white stone cluster dress ring; a 10 carat white gold ring set white and amber coloured stones; and a 10 carat gold ring set with a smoky quartz, (3) £80 - 120 †

**226**  
A 9 carat gold oval locket, on 9 carat gold chain, 21.3gms total weight £80 - 120 †

**227**  
A 9 carat gold and opal set pendant; a pair of similar drop ear-rings; and two other pairs of opal mounted ear-rings £40 - 60 †

**228**  
A 9 carat gold bow shaped pendant, set small pink stones and a pair of similar drop ear-rings £40 - 60 †

**229**  
A cross shaped pendant brooch, set with a topaz and turquoise £150 - 200 †

**230**  
A quantity of various 9 carat gold and 9 carat gold mounted ear-rings £200 - 300 †

**231**  
A 9 carat gold opal and diamond set snap bangle, 10.6gms total weight £150 - 250 †

**232**  
A yellow metal filigree work oval brooch, set central cabochon red stone, having memorial panel to the reverse; a circular yellow metal brooch set turquoise; another set central amber faceted stone with foliate decoration; and a small late Victorian memorial brooch set turquoise, (4) £100 - 150 †

**233**  
A 9 carat gold ruby set bar brooch; a 9 carat gold scrolled brooch decorated rubies and opals; and a larger similar inset with amethyst coloured stones and seed pearls, (3) £60 - 80 †

**234**  
An Edwardian 14 carat gold floral scroll brooch, set with a central cabochon amethyst surrounded by small opals and enamel scrolls; an oval pendant with enamel decoration of a young girl; two dress brooches and a spherical shaped pendant set multi coloured stones, (5) £80 - 120 †

**235**  
A 9 carat gold mounted bracelet, set faceted blue stones; a pair of matching ear-rings; and a similar 9 carat gold pendant, (4) £60 - 100 †

**236**  
A 9 carat gold mounted cameo bracelet; matching ring and ear-rings £40 - 60 †

**237**  
A 9 carat gold locket, with engine turned decoration £30 - 50 †

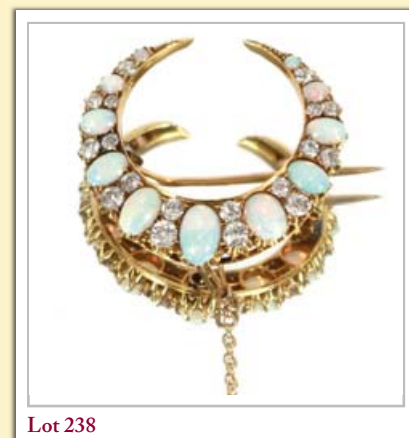
**238**  
A yellow metal crescent shaped brooch, set opals and diamonds £100 - 200 †

**239**  
A Victorian yellow metal and micro mosaic circular brooch, central panel decorated with a beetle, filigree work to the border £150 - 200 †

**240**  
A yellow metal and opal set star shaped pendant, hung to a fine link chain; and a pair of matching ear-rings £40 - 60 †



Lot 234



Lot 238



Lot 247

**241**  
A 9 carat gold snap bangle, set with faceted pale blue stones £100 - 150 †

**242**  
A 9 carat gold bracelet, set with turquoise stones, 15.9gms total weight; and a silver gilt and jadite set bracelet, (2) £100 - 150 †

**243**  
An 18 carat gold and opal five stone ring, (stones worn) £80 - 120 †

**244**  
A yellow metal ruby and diamond set dress ring £80 - 120 †

**245**  
An 18 carat white gold sapphire and diamond set half eternity ring £100 - 150 †

**246**  
An 18 carat gold and turquoise dress ring £80 - 120 †

**247**  
A yellow metal and amethyst coloured stone bracelet, set to filigree work mounts £200 - 300 †

**248**  
Five various yellow metal dress rings £40 - 60 †

**249**  
Three gold and South African diamond set collar studs, in original box, stamped F. Mason Jeweller, Freemantel, Western Australia £60 - 80 †

**250**  
Four various 9 carat gold dress rings, set various coloured stones £80 - 120 †

**251**  
Three 9 carat gold dress rings, set faceted amber coloured stones; and another set five graduated ruby coloured stones £80 - 120 †

**252**  
Four various 9 carat gold dress rings, set amethyst coloured stones £80 - 120 †

**253**  
Four 9 carat gold dress rings, all set pale blue and white stones £80 - 120 †

**254**  
A Victorian yellow metal cameo brooch, decorated with an angel and child £60 - 100 †

**255**  
A 9 carat gold amethyst and seed pearl set bracelet, with filigree work decoration; a yellow metal and amethyst scroll bracelet; and a 9 carat gold pendant set cabochon red stone, (3) £150 - 250 †

**256**  
A 9 carat gold and amethyst set bracelet; a yellow metal bracelet set with pearls and green and citrine type stones; and a yellow metal gated bracelet decorated panels of elephants, (3) £200 - 300 †

**257**  
A yellow metal necklace, marked "15", having twist links, 72cm long, 55.9gms total weight £400 - 600 †

**258**  
A yellow metal locket, with buckle decoration hung to a 9 carat gold chain, 22.7gms total weight £150 - 250 †

**259**  
A late Victorian gold stick pin brooch, set with a single turquoise £60 - 80 †

**260**  
A 9 carat gold opal and garnet set scrolled pendant, hung to a fine link chain £200 - 400 †

**261**  
A large opal pendant, hung to a 9 carat gold chain; and a pair of similar ear-rings, total weight 26.9gms £400 - 600 †

**262**  
A 9 carat gold snap bangle; a 9 carat gold rope twist decorated necklace; and a 9 carat gold fine link necklace set to a barrel clasp, 33.9gms £250 - 350 †

**263**  
Two 9 carat gold necklaces, 37.5gms £250 - 350 †

**264**  
A 9 carat gold necklace, with knot and elongated shaped links, 35.5gms total weight £250 - 350 †

**265**  
A 9 carat gold necklace, with twist and elongated shaped links, 39.5gms £250 - 350 †

**266**  
A 9 carat gold round locket, with foliate engraved decoration hung to a 9 carat gold chain, 11.6gms total weight £80 - 120 †

**267**  
A 9 carat gold sapphire and diamond bangle, total weight 14.4gms £100 - 200 †

**268**  
An 18 carat gold amethyst and diamond set cluster ring £200 - 300 †

**269**  
An 18 carat gold and diamond 12 stone cluster ring £200 - 300 †

**270**  
A Victorian opal, ruby and diamond set brooch £100 - 200 †

**271**  
An 18 carat gold lady's solitaire diamond ring £250 - 350 †

**272**  
A yellow metal Victorian arrow and horseshoe brooch, set with diamonds £200 - 400 †

**273**  
An 18 carat gold and diamond daisy shaped cluster ring £200 - 400 †

**274**  
An 18 carat gold diamond and sapphire dress ring £200 - 300 †

**275**  
An 18 carat gold five stone diamond ring £150 - 250 †



Lot 264



Lot 267



Lot 270

**276**  
An 18 carat gold gent's diamond solitaire ring, approx. 2 carats £800 - 1,200 †

**277**  
A 9 carat gold racing trophy, inscribed "Doncaster cup 1962, Bonnard", having stylised floral decoration to the domed cover and column, engraved with a crest "Comfort Et Liesse", raised on a spread foot, inscribed to the underside "Made by R. Stone, designed by A. Lucas of E Silver (BS) Ltd., supplied by Skinner & Robinson, Doncaster", 30cm high, approx. 781gms £7,000 - 8,000 †

**278**  
An 18 carat white gold and pink tourmaline set ring, size N 1/2, overall weight 6.6gms, complete with original receipt £200 - 400 †

**279-286**  
No Lots

## Objects & Collectables

**287**  
A 19th Century Limoges style plaque, after Francois Lemoyne, "Hercules and Cacus", contained in a faux walnut Dutch style stipple frame, 12cm x 15.5cm £300 - 500 †

**288**  
An 18th Century Battersea enamel patchbox, of waisted form, decorated with scenic views on a pink and cream ground, 7cm, AF; another later smaller circular enamel patchbox with hinged lid and gilded interior; a porcelain similar; and a small papier-mâché snuff box, (4) £100 - 150 †

**289**  
A cranberry glass night lamp, in the form of an owl's head, 13cm high £20 - 40 †

**290**  
A quantity of red stained and natural ivory chess pieces, contained in a pine box £40 - 60 †

**291**  
An unusual Antique carved ivory tryptich, of globe form, carved in relief with religious scene, AF, 6cm dia. £40 - 60 †

**292**  
An Antique German horn snuff box, of oval form, with inscription and decoration to lid, 6cm £40 - 60 †

**293**  
A miniature ivory chess set, and draughts set, contained in decorated chequered box £40 - 60 †

**294**  
A small carved Chinese ivory figure, AF; an ivory pot, AF; a carved ivory graduated necklace etc. £40 - 60 †

**295**  
A fine early 19th Century tortoise shell and ivory sewing casket, with music movement; variety of silver and yellow metal mounted fittings, raised on claw and ball feet and flanked by lion mask ring handles, 20cm wide £1,000 - 1,500 †

**296**  
A Regency scarlet tortoise shell and yellow metal mounted tea caddy, interior converted, the domed panelled lid initialled "MCR" with foliate scroll decoration, raised on bun feet and flanked by loop handles, 19.5cm £1,000 - 1,500 †

**297**  
A pair of jade and hardstone plaques, depicting figures in exotic garden landscapes, contained in pierced hardwood frames, 20cm x 15.5cm overall £250 - 350 †

**298**  
A 19th Century ivory handled corkscrew, 19cm overall £200 - 400 †

**299**  
A brass cased carriage timepiece, having white enamel Roman numeral dial, height 11cm £40 - 60 †

**300**  
A small brass cased carriage clock, having circular white enamel dial and seconds subsidiary, stamped D.H. to the backplate, 12.5cm high £80 - 120 †

**301**  
A miniature brass cased carriage timepiece, contained in a fitted leather carrying case, white enamel Roman numeral dial, 10cm high overall £80 - 120 †

**302**  
A brass cased carriage clock, of large size, retailed by Mappin Bros. of Cheapside, bearing inscription "With best wishes from the Nurses Guy's Institution Xmas 1902", striking movement, 17.5cm overall £100 - 150 †

**303**  
A brass cased carriage clock, retailed by Bracher & Sydenham, Reading, white enamel Roman numeral dial, striking movement, 18cm high overall £80 - 120 †

**304**  
A brass cased carriage clock, retailed by Goldsmiths Company, Regent Street, London, white enamel Roman numeral dial, striking repeat movement, 18cm high overall £100 - 150 †

**305**  
A brass cased carriage clock, retailed by J.W. Benson, Ludgate Hill, having striking repeat movement, white enamel Roman numeral dial, 16cm high £80 - 120 †

**306**  
A brass cased carriage timepiece, decorated reeded columns and foliate frieze beneath a swing handle, circular enamel dial, 16cm high overall £40 - 60 †

**307**  
A jade and hardstone mounted picture frame, 26.5cm x 21cm overall £200 - 300 †



Lot 272



Lot 277



Lot 295



Lot 296



Lot 298



Lot 308

**308**  
A micro mosaic plaque, depicting five classical grand tour type scenes, 12cm x 16cm £400 - 600 †

**309**  
A pair of oriental cloisonne bird ornaments, 39cm long £200 - 400 †

**310**  
A collection of Military memorabilia, relating to Private Thomas Alfred Jones V.C., D.C.M., to include a silver presentation cigarette case and a 1914 Gift to the Troops box, various newspaper cuttings etc. £100 - 200 †

**311**  
Three Delprado lead soldier figures, Sir John Codrington, standard bearer to Henry V, a Trooper Napoleon's Imperial Guard and Officer 5th Dragoons Delagardia £20 - 30 †

**312**  
An Edward VII South Africa medal, with bars, "South Africa 1901 and 1902, awarded to 4421 Corp. Jordan, Suffolk Regiment" £50 - 80 †

**313**  
A Queen Victoria South Africa medal, 1899/1900, bars for Transvaal, Orange Free State and Cape Colony, awarded to "4421 Corp. J.W. Jordan, 1st Suffolk Regiment" £50 - 80 †

**314**  
A collection of six U.S. Military brass buttons, cased £30 - 50 †

**315**  
A nickel and ebonised military cigarette box, for the Devonshire Regiment, 18.5cm £30 - 50 †

**316**  
A collection of various commemorative and silver coinage £40 - 60 †

**317**  
A rare Camera form Peter Pan gramophone, to play 4" records £200 - 300 †

**318**  
A pair of Yi Sing vases, having enamel painted decoration of cranes and foliage, 17cm high; a Chinese blue and white box and cover having stylised floral decoration; and two Japanese dolls £20 - 40 †

**319**  
A large Bristol blue glass rolling pin, 79cm long £20 - 40 †

**320**  
A 19th Century Royal Navy sword, straight double edged engraved blade, by Matthews of Portsea, brass mounted scabbard with knot and oil skin outer carrying case, length of blade 75cm £300 - 400 †

**321**  
A 19th Century bayonet, by Wilkinson, double edge blade, 30cm in length, complete with scabbard £60 - 80 †

**322**  
A Hardy split cane fishing rod, no. 84663 and a system 2 reel £40 - 60 †



Lot 312



Lot 313



Lot 320

**323**  
A collection of various Magic Lantern slides £100 - 150 †

**324**  
A theodolite in fitted case, by Buff & Buff, Massachusetts, circa 1900 £300 - 400 †

**325**  
A Gray-Nicolls cricket bat, signed by members of the England and Rest of the World teams including Ray Illingworth, Colin Cowdrey, Geoff Boycott, John Snow, Keith Fletcher, Clive Lloyd, Graham Pollock, Mike Procter, Barry Richards and others £100 - 200 †

**326**  
An Antique sawfish bill or rostrum, 111cm long £100 - 200 †

**327**  
An MBE awarded to Richard George Norrell, for work with the R.N.I.B. and Talking Newspapers for the Blind, old newspaper cuttings and further information £50 - 70 †

**328**  
An 18th Century iron log turning tool, with twist decoration and pierced pommel handle, 120cm long £50 - 80 †

**329**  
An Antique deer skin covered trunk, fitted with iron handle and hasp, leather and studded decoration, 36cm £40 - 60 †

**330**  
A Victorian floral painting on porcelain, signed N. Laurie 1913, 64cm x 39cm £20 - 30 †

**331**  
A collection of military books, including The Guards division in the Great War, Headlam 2 volumes; T.E. Lawrence Revolt in the Desert; 71 years of a Guardsman Life, General Sir George Hickson; and others, (7) £40 - 60 †

**332**  
Kelly's Directory of Merchants, Manufacturers and Shippers £40 - 60 †

**333**  
Sir Woodbine Parish K.C.H. and early days in Australia, the honorable Nina L.K. Shuttleworth; Alaska an Empire in the making, Underwood; Lost Tales, Lost Cities, Forsett, (3) £30 - 50 †

**334**  
Boy's Own, volumes 1 and 2, part leather bound, dated 1864; The Scouts book Nonsense verses the Oxford Annual for Scouts and others £40 - 60 †

**335**  
Mickey Mouse, Silly Symphonies, published by Dean & Sons £30 - 50 †

**336**  
Heroes of History; The complete Limerick book; Dinky Circus; The book of Old Ballads; Prayers at Vailima, Robert Louis Stevenson and others, (9) £40 - 60 †

**337**  
A run of the Tauchnitz edition, Collection of British and American authors £20 - 40 †



**338**  
Two original "Lovejoy" T.V. series scripts and a film schedule £20 - 30 †

**339**  
Manual of Mineralogy and Lithology, Dana; and The History of Boxing, Trevor C. Wignall, 2 volumes £20 - 40 †

**340**  
Brown's Bible, 2 volumes, leather bound £20 - 40 †

**341**  
The Sea Fisherman, by Wilcox; and Game-Bag and Creel, by W.G. Dobie, (2) £10 - 20 †

**342**  
History of England, by Hulme, 8 volumes; History of England, Smollett, 5 volumes; Goldsmiths History of England, 4 volumes; Chambers Information, 2 volumes, (19) £40 - 60 †

**343**  
A run of Chambers Encyclopedia, leather bound £30 - 50 †

**344**  
An Austrian terracotta relief plaque, depicting the fisherman and the nymph, contained in a domed glazed case and pine plinth, 84cm x 70cm overall £80 - 120 †

**345**  
An 18th Century continental silk and metal thread embroidery, depicting a monstace within a cherub and lamb decorated cartouche, 72cm x 59cm overall £300 - 500 †

**346**  
A Victorian walnut trinket box, with brass inlaid decoration, 28cm wide; and another with mother of pearl inlay, 27.5cm wide, (2) £40 - 60 †

**347**  
A 19th Century mahogany and satinwood strung workbox, of casket shape, raised on brass ball feet, 27.5cm wide £40 - 60 †

**348**  
A 19th Century mahogany and brass mounted writing box, fitted sunken side carrying handles and vacant cartouche, 28cm wide £40 - 60 †

**349**  
A 19th Century mahogany and brass mounted ballot box, fitted two small drawers, 29cm high x 25.5cm wide x 19cm deep £300 - 400 †

**350**  
A good quality 16 inch Hammond's Physical globe, with brass meridian ring, raised on reeded mahogany Duncan Phyfe style tripod stand terminating in brass claw supports, 100cm high £400 - 600 †

**351**  
An ormolu four sconce hanging light, 33cm dia.; and two similar curtain swags £40 - 60 †

**352**  
A 19th Century silhouette picture of young children, in black and gilt beaded frame; a silhouette picture of a gentleman in ebonised and brass acorn mounted frame; and a smaller example, AF £30 - 40 †

**353**  
Early 19th Century school, miniature watercolour study of The Royal Crescent, contained in an circular alabaster frame, 14cm dia. overall £30 - 40 †

**354**  
A Victorian leather and brass bound bible £20 - 40 †

**355**  
After Cary, "a map of Suffolk from the best authorities"; and an Antique coloured map of Middlesex, (2) £40 - 60 †

**356**  
The Birds of the British Isles, T.A. Coward, 3 volumes £30 - 50 †

**357**  
The British Bird Book, by Kirkman, 4 volumes £40 - 60 †

**358**  
A late Victorian green leather covered photograph album, embossed with flowers having gilt metal clasp and containing photographs of the Cole family £40 - 60 †

**359**  
The book of Common Prayer and Administrations of the Sacraments, printed by Wright and Gill, 1770, inscribed to the front cover, "George Cole March 1st 1863"; Fleetwood's Life of Christ, leather bound, inscribed in the fly leaf with names, dates of birth of the family of John Lepper; Notes Explanatory and Practical on the New Testament by the Rev. Albert Barnes, 2 vols., with inscription of the family of John Cole 1861, (4) £40 - 60 †

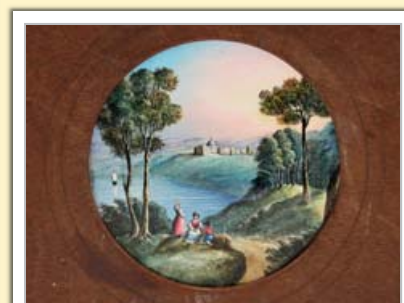
**360**  
An autograph book, including signatures of various celebrities and sportsmen including Eric Morecambe and Ernie Wise, The Shadows, Lester Piggott and various other jockeys, Bobby Robson signed Ipswich Town ticket etc. £40 - 60 †

**361**  
A gilt metal cased timepiece, with modern movement, 33cm high £20 - 40 †

**362**  
A 19th Century French gilded Spelter mantel clock, having figural and foliate decoration, 32cm high £40 - 60 †

**363**  
An oriental carved hardwood figure, of a reclining joss man with dragon, 38cm long £40 - 60 †

**364**  
A Chinese cinnabar lacquer circular box and cover, decorated figures in a landscape, 17cm dia. £40 - 60 †



Lot 323



Lot 349



Lot 350



Lot 357



Lot 370

**365**

A brass and cloisonne decorated mantel clock, in temple style case, having circular dial supporting an 8 day movement striking on a gong, 30cm high x 23cm wide £200 - 300 †

**366**

A 19th Century French rococo style brass cased mantel clock, having cherub and foliate decoration, circular white enamel dials supporting an 8 day movement, striking on a gong, 46cm high £60 - 80 †

**367**

A pair of gilded brass figural candlesticks, in the form of seated maidens holding sconces aloft on pierced bases, 32cm high £20 - 40 †

**368**

A Victorian burr walnut trinket box, the domed top with sunken handle, inscribed "Winnie from Arthur, September 11th 1891", 28cm £20 - 40 †

**369**

A 19th Century Swiss music box, the rosewood inlaid case decorated with music instruments playing eight airs, retailed by William Whiteley of London, 53cm £400 - 600 †

**370**

A Victorian burr walnut and inlaid cuckoo mantel clock, having applied carved foliate decoration, circular Roman numeral dial supporting an 8 day double fusee movement, 46cm high x 33cm wide £200 - 300 †

**371**

A Heuer Master Time 8 day dashboard timepiece, 5.5cm dia. £300 - 500 †

**372**

A French faux tortoise shell and gilt metal mounted mantel clock, having Sevres style panels, the circular white enamel dial with Roman numerals supporting an 8 day movement striking on a bell, 30cm high x 35cm wide £250 - 350 †

**373**

An oriental cloisonne baluster vase, decorated with butterflies, 15cm high £40 - 60 †

**374**

A 19th Century French green marble and gilt metal mounted mantel clock, decorated with a central urn and applied foliage, circular dial supporting an 8 day movement striking on a bell, 39cm £80 - 120 †

**375**

A bronze lamp, raised on a floral decorated column and quatrefoil plinth with mask and claw decoration, 87cm high £200 - 300 †

**376**

After Fra Angelico, a 19th Century Florentine gilt panel, painted with a figure of an angel with trumpet, contained in a Gothic style frame having pierced decoration and spiral columns, 50cm x 20cm overall £300 - 500 †

**377**

A 19th Century white glazed hollow pottery figure group, depicting mother, baby and dog, 10cm high, contained in a Gothic style carved oak and silk lined display case £20 - 40 †

**378**

An Islamic white metal bowl; an Eastern brass bowl and cover; a small bronze bell; and a copper dish, (4) £10 - 20 †

**379**

A Chinese bronze baluster vase, the figural and floral decoration flanked by elephant handles, seal mark to base, 26cm high £30 - 50 †

**380**

A fine 19th Century ormolu and bronze timepiece, in the form of a sedan chair being carried by cherubs, on oval base, signed Aug Moreau, 25cm high x 22cm long overall - See Front Cover Illustration £600 - 800 †

**381**

A marble and gilt metal four glass mantel clock, the circular Roman numeral dial supporting an 8 day movement striking on a gong, 37cm high x 22cm wide £250 - 350 †

**382**

A Glasgow bus/tram ticket machine, manufactured by Ticket Issue Machines Ltd., contained in an original case £150 - 200 †

**383**

A 19th Century gilt four glass French mantel clock, decorated foliate scrolls with a central urn finial, the circular silvered and enamelled dial with 8 day movement striking on a gong, raised on a gilt plinth, having mercury adjustable pendulum, 40cm high £100 - 200 †

**384**

A ship's bulk head clock, in chromed brass case, mounted on a circular oak plinth, 25cm dia. overall £100 - 150 †

**385**

A 19th Century French marble and enamel decorated mantel clock, with applied gilt metal embellishments, the circular dial supporting an 8 day movement striking on a bell, by Jappy Freres, 30.5cm high £60 - 80 †

**386**

A 19th Century gilt picture frame, contained in a wooden glazed outer case £20 - 40 †

**387**

An early 20th Century silkwork panel, of the English Coat of Arms with applied crown, ship sails and ensigns, worked by Himamura Nagasaki, 41cm x 39cm, contained in a maple frame £60 - 80 †

**388**

A late 19th Century woolwork embroidery of a yacht, entitled "Gypsy", 31cm x 36cm £20 - 40 †

**389**

A Victorian woolwork embroidery, of a galleon at sea, 63cm x 62cm, contained in a mahogany frame £40 - 60 †

**390**

A plated jewellery casket, of sarcophagus shape, having profuse foliate decoration, raised on four paw feet, 22cm long £30 - 50 †



Lot 371



Lot 372



Lot 394

**391**  
An early 18th Century brass warming pan, decorated with figurehead, scrolling flowers and vacant cartouche, steel and brass mounted handle, 106cm *£60 - 80 †*

**392**  
A miniature mahogany bow fronted chest, fitted two short and one long drawer, raised on bracket feet, 26cm wide x 24.5cm high *£20 - 40 †*

**393**  
An old rustic cider barrel, complete with cork bung and carrying chain, 29cm dia. x 32cm high *£40 - 60 †*

**394**  
A 19th Century coromandel and brass mounted stationery slope, with Bramah lock, 35.5cm wide *£80 - 120 †*

**395**  
A 19th Century coromandel and brass mounted stationery box, having hinged compartment flanked by inkwells, foldout writing surface and pigeon-holes below, 38cm wide x 22cm high *£120 - 160 †*

**396**  
An Art Nouveau terracotta figure, in the manner of Goldscheider depicting a young girl in floral dress and adorned with jewellery, four pigeons balanced on her shoulders, 100cm high, (restored) - See Back Cover Illustration *£200 - 400 †*

**397**  
A carved hardwood Indian figure group, 28cm high *£100 - 150 †*

**398**  
A 19th Century rosewood sarcophagus shaped two compartment tea caddy, having aperture for mixing bowl, raised on bun feet, 32cm wide *£30 - 60 †*

**399**  
A 19th Century bronze figure, depicting a cherub riding a turtle, signed Bouret, 26cm long x 24cm high *£300 - 500 †*

**400**  
A painted cast iron novelty moneybox, in the form of a bird feeding its young in a nest, inscribed to base, "Patent 1883", 22cm long *£200 - 400 †*

**401**  
Four various carriage clock traveling cases *£20 - 30 †*

**402**  
An Edwardian oval plated and glass gallery drinks tray, 56.5cm *£20 - 40 †*

**403**  
A large bronze figure, of a maiden with a water pitcher, raised on a rockwork base, 68cm high *£400 - 600 †*

**404**  
A wooden and brass mounted snooker cue tip fastener; a boxed collection of Thurstons parlor skittles comprising 9 white and 2 black; and a boxed collection of Thurstons boxwood numbered counters *£20 - 30 †*

**405**  
A Victorian copper distillery funnel, 40cm high *£50 - 80 †*

**406**  
Three Antique steel and brass gin traps, maker W.H. Lane *£40 - 60 †*

**407**  
A 19th Century silk and woolwork embroidered picture, depicting exotic bird amongst foliage, 31cm x 40cm *£50 - 80 †*

**408**  
A 19th Century oceanic "gun-stock" club, 98cm long *£100 - 150 †*

**409**  
Three early 19th Century pewter chargers *£100 - 150 †*

**410**  
A large two handled Japanese bronze jardinière, bearing signature, having panels decorated with birds and flowers, flanked by twin handles on a circular base, 34cm dia. overall x 27cm high *£200 - 300 †*

**411**  
A pewter litre flagon, the lid inscribed AVR; a larger similar with foliate engraved decoration and inscription; three Antique pewter hot water plates; three scallop bordered pewter plates and a tankard (9) *£40 - 60 †*

**412**  
A 19th Century French gilt metal mantel clock, having profuse foliate decoration, circular blue enamelled Roman numeral dial above a visual pendulum aperture, 8 day movement striking on a bell, 26cm high *£40 - 60 †*

**413**  
A Victorian mahogany two compartment cutlery tray, fitted with a central brass swing handle, 37cm *£20 - 40 †*

**414**  
A pair of 19th Century carved teeen plaques, depicting a Moon face, 30cm dia. *£200 - 300 †*

**415**  
An Antique flintlock pistol, by Richards, Strand, London, brass cannon shaped barrel and engraved steel lock, fitted integral ramrod, 36cm long overall, A/F *£80 - 120 †*

**416**  
A Victorian cased display of butterflies *£80 - 120 †*

**417**  
A small boxwood figure of a Chinese dignitary, 19cm high *£20 - 40 †*

**418**  
A fine early 19th Century rosewood sewing box, and various contents to include ivory clamps, silver thimbles, pin cushions etc. *£250 - 350 †*

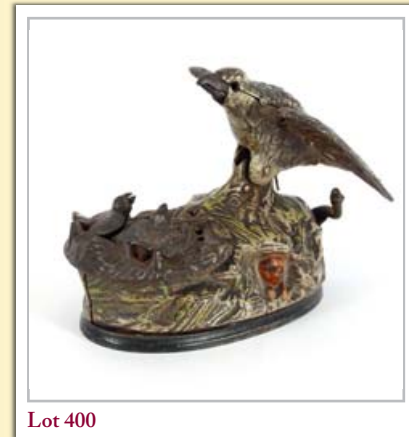
**419**  
A painted bronze figure of a bulldog, the head opening to reveal an inkwell, 14cm high *£100 - 150 †*



Lot 395



Lot 399



Lot 400



Lot 414



Lot 423

**420**  
A small bronze censer, with gold coloured splash decoration £100 - 150 †

**421**  
A Chinese bronze censer, raised on three scrolled legs, flanked by loop carrying handles, 18cm dia. overall x 17cm high £100 - 150 †

**422**  
A Chinese seated bronze figure, with faded gilt decoration, 23cm high £100 - 150 †

**423**  
A pair of Japanese Meiji period lacquered and ivory figures, raised on carved wooden bases, AF, 41cm high £300 - 500 †

**424**  
An electro plated urn shape reading lamp, complete with shade £20 - 30 †

**425**  
Mid 20th Century gilt metal and onyx twin light reading lamp, shade AF £30 - 50 †

**426**  
An Aboriginal Tjuringa, having carved decoration, 47cm long £300 - 500 †

**427**  
An Antique brass boiling pan, with iron loop handle; a brass side pouring saucepan with iron handle and a larger example, (3) £40 - 60 †

**428**  
A pair of painted and gilded Santos type figures, 64cm high £200 - 300 †

**429**  
An old polychrome decorated Santos type figure, AF, 67cm high £100 - 150 †

**430**  
An Antique copper ladle, with turned wooden handle; a copper jardinière with fluted body decoration; and a 19th Century pewter lidded flagon, (3) £30 - 60 †

**431**  
A graduated set of eight bell weights £40 - 60 †

**432**  
A pair of oriental cloisonne jars and covers, decorated flowerheads and insects, 28cm high £40 - 60 †

**433**  
A pair of Antique metalware chestnut urns, of elliptical form, the lids terminating in acorn finials flanked by lion mask ring handles, raised on oval spread bases, AF, 34cm high £30 - 50 †

**434**  
Two Chinese embroidered rank badges, with dragon, floral and bird decoration £40 - 60 †

**435**  
A white metal model of a sailing ship, entitled "Flying Cloud", on faux black marble base, 36cm long £200 - 300 †

**436**  
A pair of brass and iron models of military field cannon, 47cm long £150 - 200 †



Lot 435



Lot 436



Lot 433

**437**  
A Royal Humane Society silver large type medal or "pocket watch" medal, contained in a fitted leather case, dated 1806, awarded to Dom. Morris; of Nelson interest, a wooden token box containing five white metal Nelson commemorative tokens for Aboukir, St. Vincent, Copenhagen and two for Trafalgar; a Nelson commemorative medal inscribed with the names of Aboukir, Copenhagen and Cadiz, decorated with a winged figure of Victoria; and an 1812 three shilling bank token £200 - 300 †

**438**  
An Admiral Fitzroy's Storm barometer, patent no. 623, by Negretti & Zambra £200 - 300 †

**439**  
A Victorian copper preserve pan, with loop handles, 47cm overall £20 - 40 †

**440**  
A 19th Century marble mortar, 31cm dia. overall £40 - 60 †

**441**  
A large 19th Century copper boiling pan, with iron handles, 57cm dia. overall £50 - 80 †

**442**  
An Edwardian walnut aneroid barometer/thermometer £40 - 60 †

**443**  
A 19th Century mahogany and inlaid banjo barometer, by Toynoni & Vanoni of Shepton Mallett, having conch shell and floral inlaid paterae with silvered dial, 97cm £60 - 80 †

**444**  
A pair of Georgian Repousse coppered wall mirrors, having bevelled plates, foliate scrolled pediments, 59cm x 33cm overall, (AF) £80 - 120 †

**445**  
An unusual ceramic scholar's rock, 29cm long £80 - 120 †

**446**  
A large Chinese carved hardwood figure of a Sage, stood on a rockwork base, with smaller figure below, on circular stand, 104cm high £200 - 300 †

**447**  
A Chinese carved bamboo Libation cup, profusely decorated with flowerheads, with branch handle, 5.8cm high x 7.5cm long overall £300 - 500 †

**448**  
John Ogilby, coloured map, "The road from Bristol to Chester", 37cm x 45cm £50 - 80 †

**449**  
A Victorian gilt picture frame, decorated with foliate scrolls and shells to the corner, 78cm x 68cm overall £100 - 150 †

**450**  
A George III satinwood inlaid oval tea tray, having conch shell central panel flanked by handles, 56cm wide £80 - 120 †

**451**  
A mahogany decanter box, 45cm wide £30 - 50 †

- 452**  
A mahogany brazer of basket form, having brass insert, raised on a circular base terminating in ball feet, 39cm dia. £70 - 100 †
- 453**  
A George III mahogany brass bound coopered plate bucket, with swing handle, 36cm dia. £500 - 800 †
- 454**  
A Georgian mahogany knife box, of Arc en arbelette form, (interior missing), 23cm wide x 38cm high £100 - 200 †
- 455**  
A Victorian light oak lazy susan, 56cm dia. £40 - 60 †
- 456**  
A 19th Century red marble column, with foliate and mask ormolu mounts, 120cm high £400 - 600 †
- 457**  
A Lachenal & Co., concertina, patent number 4752, circa 1848, having 47 pegs, contained in a fitted mahogany hexagonal case £800 - 1,200 †
- 458**  
19th Century school, study of birds seated around a nest on a branch, unsigned watercolour, 20cm x 27cm, contained in a decorative foliate gilt inner frame, and a mahogany and plush lined outer case £40 - 60 †
- 459**  
A 19th Century Delft tile picture, depicting figure on horseback brandishing a rapier with kneeling figures in front, inscription to the bottom right hand corner, set in later oak frame, 86cm x 71cm overall £200 - 400 †
- 460**  
A Jumeau Bebe porcelain headed doll, complete with silk dress and under clothes; and a small Armand Marseille black doll, (2) £200 - 300 †
- 461**  
A Gallery of portraits by Helleu, published by Edward Arnold; and a folder of Landscapes of Cambridge by Constantin Uhde £40 - 60 †
- 462**  
The Night Flyers, a series of moth pictures, published Paul Jerrard & Son, Fleet Street, London, in faux burr walnut and gilt heightened boards complete with 10 full page lithograph plates £300 - 400 †
- 463**  
A 19th Century carved ivory fan, having painted lace panels £40 - 60 †
- 464**  
An Antique copper, of large size, raised on later associated scroll supports, 68cm dia. x 57cm high £200 - 300 †
- 465**  
An early 19th Century Egermann's factory Lithyalin glass casket, with gilt metal mounts, 17cm wide x 13cm high £200 - 300 †
- 466**  
An Antique fruitwood box, flanked by brass carrying handles and raised on bracket supports, 47cm wide £60 - 100 †
- 467**  
An interesting collection of various Corgi, Dinky, Matchbox and other toys, including "Man from Uncle Thrush Buster", "Batmobile" and others, mostly in original boxes £300 - 400 †
- 468**  
An 18th Century sampler, depicting verse, flowers and deer, worked by Anne Lealand, 1770, 33cm x 28cm, (worn) £20 - 40 †
- 469**  
A Japanese cloisonne Ando plaque, depicting a flowerhead, in a contemporary frame, 24cm x 24cm £80 - 120 †
- 470**  
John Sell Cotman, a folder containing Normandy etchings £30 - 50 †
- 471**  
Holmes Winter, three various watercolour studies £30 - 50 †
- 472**  
Gordan Davies, folder containing various engravings £20 - 40 †
- 473**  
John Sell Cotman, collection of Notre Dame etchings, in a folder £30 - 50 †
- 474**  
Gordan Davies, folder containing various life drawings £20 - 40 †
- 475**  
An Antique coloured map, after Eman Bowen, Suffolk divided with it's hundreds, 56cm x 73cm; and a coloured engraving depicting Burlington House in Piccadilly, (2) £40 - 60 †
- 476**  
A woolwork embroidered picture, depicting flowers and birds, 57cm x 49cm £20 - 40 †
- 477**  
A Malacca and nickel mounted ceremonial military marching mace, surmounted by a crown and decorated with thistles, 140cm long £100 - 150 †

## Pictures & Prints

- 478**  
A pair of Victorian circular coloured prints, depicting young maidens, contained in gilt Florentine foliate and shell pierced frames, 76cm dia. £100 - 200 †
- 479**  
19th Century school, study of figures on horseback in a wooded landscape, unsigned oil on canvas, 45cm x 57cm £100 - 200 †



Lot 454



Lot 457



Lot 467



Lot 478



Lot 510



Lot 511



Lot 512

480

Cecil Aldin, pencil signed coloured print depicting lady and dog in an evening street, back stamp to margin, 54cm x 28cm £80 - 120 †

481

Cecil Aldin, pencil signed print depicting a London street scene, back stamp to margin, 54cm x 28cm £80 - 120 †

482

Doctor Robert Thornton, from the Temple of Flora, "The pontic rhododendron", aquatint printed in colours after Henderson by Cordwell, some additional hand colouring, 48cm x 38cm; together with "The American Cowslip", after Henderson by Warner, (a pair) £200 - 300 †

483

W.F. Burton, study of sailing barge race off Pin Mill, signed oil on board dated 1965, 50cm x 75cm £40 - 60 †

484

After David Tenniers, a reverse painting on glass depicting three figures seated in a tavern smoking pipes, 16cm x 14cm, mounted in an arched frame £40 - 60 †

485

After James Pollard, coloured print "Arrival of the stage coach"; and another similar, "Stage coach", (2) £60 - 100 †

486

Leonard Russell Squirell, etching of Alnwick Castle, 22cm x 35cm £80 - 120 †

487

A Vintage 1940's silk dress, made from parachute silk and a quantity of novelty risque napkins and mats £40 - 60 †

488

Late 19th Century school, head and shoulders study of a gypsy woman, unsigned oil on canvas, 44cm x 34cm £20 - 40 †

489

After George Rope of Blaxhall, pencil drawing of a horse, 8cm x 13cm; and another of horse's head, 10cm x 14cm, (2) £20 - 40 †

490

Rees Teesdale, study of boats, fishermen and huts on a beach, signed watercolour, 29cm x 44cm £30 - 50 †

491

William James Muller, sepia study of a castle with figures in the foreground, 45cm x 34cm £20 - 40 †

492

George Cuitt, the Younger, study of Culloden Tower, Richmond, Yorkshire, pencil drawing, see information verso, 10cm x 15cm £20 - 40 †

493

J. Miller, study of a canal scene with boats and figures and cottages, signed watercolour, dated 1889, 24cm x 41cm £40 - 60 †

494

E.M. Clarke 1907, a lakeland view with figures in a rowing boat, signed and dated oil on canvas, 70cm x 91cm £50 - 100 †

495

After J.M.W. Turner, a pair of lithographs, "Hastings & Dover" with inscriptions, 54cm x 69cm £40 - 60 †

496

A pair of late 19th Century naive school paintings, depicting country scenes, unsigned oils on canvas, contained in a pair of light oak frames, 32cm x 50cm £60 - 80 †

497 ✓

Ed Sheeran, signed artwork depicting a cat, dated 2016, 15cm x 15cm £400 - 600 †

498

18th Century school, study of holy family, unsigned oil on copper, 22cm x 17cm, contained in a gilt frame £100 - 200 †

499

19th Century school, portrait study of a young gentleman, unsigned oil on canvas, 75cm x 62cm £200 - 400 †

500

James Hardy, 20th Century, two warships at anchor, oil on canvas laid on board, 50cm x 60cm £200 - 300 †

501

James Hardy, 20th Century, a war ship ablaze, signed oil on canvas laid on board, 45cm x 60cm £200 - 300 †

502

Follower of Sir Alfred Munnings, sketch of horses grazing, oil on board, 20cm x 30cm £50 - 100 †

503

Attributed to G.G. Beazeley, view of Birkenhead Abbey, inscribed on a label verso, unsigned oil on canvas, 26cm x 35cm £50 - 80 †

504

18th Century continental school, a herdsman and his family, oil on canvas, 28cm x 37cm £300 - 500 †

505

Attributed to Harry Clifford Pilsbury, portrait of a seated young girl with a bow in her hair, unsigned oil on board, 29cm x 21cm £80 - 120 †

506

Garman Morris, study of sailing ships at sunset, signed watercolour, mounted and framed in the round, 30cm dia. £100 - 150 †

507

18th Century continental school, after Raphael, study of the Alba Madonna, unsigned oil on canvas, 45cm x 42cm, contained in a gilded foliate decorated cushion frame £400 - 600 †

508

F. Parr, study of Clovelly, signed watercolour, 36cm x 24cm £80 - 120 †

Lots marked with ✓ please refer to Droite de Suite Royalty charges on page 28

† Each lot is subject to a Buyer's Premium of 15% + VAT (18%)

**509**  
Jack Cox, study of a Norfolk coastal scene, signed pen and ink drawing, 12.5cm x 25cm £80 - 120 †

**510**  
19th Century school, studies of a game larder, unsigned oils on canvas, 30cm x 24.5cm, (a pair) £400 - 600 †

**511 ✓**  
Mary Dawson Elwell, 1874-1952, study of a lake scene, signed oil on panel, dated 1945, 26cm x 34cm £300 - 500 †

**512 ✓**  
Fred W. Elwell, study of a lake with town in the back ground and mountainous landscape beyond, signed oil on board, 30cm x 40cm £300 - 500 †

**513**  
19th Century school, study of sailing vessels at sea, indistinctly signed oil on board, 20cm x 29cm £100 - 150 †

**514**  
Connie Winn, study of a house and garden with figures, signed oil on canvas, 35cm x 59cm £150 - 200 †

**515**  
Connie Winn, study of flowers, signed oil on canvas, 61cm x 50cm £150 - 250 †

**516**  
Connie Winn, "Evening Light", signed oil on board, 55cm x 57cm £150 - 250 †

**517**  
Oriental school, study of figures in conversation in landscape setting with large bamboo trees and rocks all around, watercolour, 116cm x 44cm £50 - 80 †

**518**  
A Chinese watercolour, depicting figures in a landscape, 116cm x 44cm £50 - 80 †

**519**  
20th Century school, study of the "Temple of Heaven", Peking, unsigned watercolour; and a companion of "White Dagdra Peittae", 22cm x 11cm £60 - 100 †

**520**  
19th Century Italian school, portrait of the Madonna, unsigned oil on canvas, 76cm x 58cm £200 - 400 †

**521**  
After Le Brun, a pair of portrait studies of young ladies in 17th Century dress, one inscribed verso, "Firenze 8 Macheo 1912", 47cm x 35cm £100 - 200 †

**522**  
19th Century school, study of a man walking in a snow bound country landscape with attendant dog smoking a pipe, unsigned oil, 55cm x 39cm; and a companion study of a woodman, (2) £100 - 200 †

**523**  
Late 19th Century Suffolk school, a pair of rural landscapes depicting figure by a cottage and river; and a companion figure fishing on a river with sailing boats and castle in the far ground, unsigned oils on canvas, 49cm x 60cm £100 - 150 †

**524**  
19th Century school, study of horses in a forest as lightning strikes, unsigned oil on canvas, 27cm x 37cm, contained in a decorative gilt frame £100 - 200 †

**525**  
A 19th Century coloured Mezzotint, after Sir Joshua Reynolds, entitled "Simplicity", contained in a figured walnut and cross-banded frame, 26.5cm x 18cm £20 - 40 †

**526**  
Three 19th Century Mezzotints, after Angelica Kaffmann, entitled "Jupiter & Calista, and Cupid" (2), in silver painted frames £60 - 80 †

**527**  
R. Madrazo, study of a vase of flowers, oil on canvas, 63cm x 77cm, signature verso £280 - 320 †

**528**  
A Wilde Parsons, (1854-1931), study of fishermen on a shore with boats and lobster pots, signed watercolour dated 1901, 52cm x 74cm £200 - 300 †

**529**  
Roland Green, study of a kestrel seated on a branch amongst foliage, signed watercolour, 29cm x 21.5cm £50 - 80 †

**530**  
Harry Becker, etching of cottages, 16cm x 26cm £150 - 200 †

**531**  
Harry Becker, etching of fields, 16cm x 30cm £150 - 200 †

**532**  
William Daniell, Castles Sinclair and Girmijo at Caithness, coloured etching, 22.5cm x 30cm £30 - 50 †

**533**  
Fred Taylor, study of figures walking along a village street, signed watercolour, dated 03, 25cm x 34cm £20 - 40 †

**534**  
Two Victorian coloured prints, depicting vignettes of famous jockeys £60 - 100 †

**535**  
19th Century school, still life study, unsigned oil on panel, 37cm x 50cm £60 - 100 †

**536**  
J. Carter R.B.S.A., mid 20th Century watercolour, fisherman's huts at Walberswick, signed and dated 1952, in a glazed frame, 40cm x 49cm £40 - 60 †

**537**  
J. Carter R.B.S.A., study of Halford Mill, Warwickshire, signed watercolour, 58cm x 60cm, contained in an Art Deco style glazed frame £40 - 60 †



Lot 520



Lot 522



Lot 529

Lots marked with ✓ please refer to Droite de Suite Royalty charges on page 28

† Each lot is subject to a Buyer's Premium of 15% + VAT (18%)



Lot 541



Lot 543



Lot 544

538

A Chinese scroll painting, depicting figures and trees in a landscape £50 - 80 †

539

H.E. Tozer, (1870-1940), heavy waves crashing around a rock with seagulls swooping, signed oil on canvas, 40cm x 60cm £250 - 350 †

540

Adrian Collaert, an engraving depicting wild fowl in wintry landscape £20 - 40 †

541

John W. Buxton Knight, (1842-1908), a pair of studies depicting the Hop Harvest, signed oils on canvas, dated 1879, 36cm x 76cm £400 - 600 †

542

Wendy Reeves, study of pheasants in flight from a woodland, signed oil on canvas, 50cm x 75cm £100 - 150 †

543

Anton Mauve, (1838-1888), Haigh school, study of woman and child gathering wood on a country path, signed oil on canvas, 100cm x 74cm £800 - 1,200 †

544

A. Melzer, study of a country scene with cattle being herded along a path by a figure, cottage and river nearby, signed oil on canvas, 49cm x 80cm £200 - 400 †

545

19th Century school, study of a seated cherub painting, unsigned oil on panel, in deep gilt reeded frame, 15cm x 19cm £60 - 80 †

546 ✓

John Knapp-Fisher, 1931-2015, rural landscape study, watercolour, signed and dated 1963, 28cm x 50cm £3,500 - 4,500 †

547 ✓

John Knapp-Fisher, 1931-2015, landscape study with church tower in the far ground, signed watercolour, dated 1963, 27cm x 49cm £3,500 - 4,500 †

548-551

No Lots

## Furniture

552

An Eastern Bokhara type rug, having central stylised lozenge motifs and geometric borders on predominately ochre ground, 145cm x 102cm £60 - 100 †

553

An Eastern rug, of Bokhara type having central field with stylised flowers within geometric borders, on a deep red ground, 194cm x 125cm £60 - 100 †

554

A good quality Chinese rug, having raised decoration of birds and flowers within Greek key borders £80 - 120 †

555

An old Kelim runner, with central stylised lozenge motifs, 125cm x 320cm £60 - 100 †

556

An Eastern rug, of Caucasian design, having central linked medallions within stylised borders on a red ground, 180cm x 300cm £100 - 150 †

557

An Eastern carpet, having central lozenge shaped medallion within stylised multi borders on a predominantly red and blue ground, 342cm x 249cm £100 - 150 †

558

An Eastern carpet, having central stylised floral medallion within geometric multi borders on predominantly red, beige and blue ground, 291cm x 204cm £100 - 150 †

559

An oak long case clock, the hood enclosing a 30 hour movement with brass spandrel dial £350 - 450 †

560

A 19th Century mahogany work table, the shaped top lifting to reveal a fitted maple lined interior, raised on floral scrolled columns and triform platform, terminating in scrolled feet, 57cm wide £80 - 120 †

561

A late 19th Century mahogany Bonheur de jour, by Maple & Co., the raised back with central cylinder front revealing partitioned interior, flanked by two short drawers above a leather inset writing surface, two short and two long drawers below, raised on carved cabriole supports terminating in castors, 107cm wide £200 - 300 †

562

A Chinese hardwood side chair, having curved central splat, raised on square stretchered supports £40 - 60 †

563

A Victorian mahogany bow fronted chest, of two short and three long drawers, raised on squat turned supports, 103cm wide £100 - 150 †

564

A 19th Century mahogany chest, of two short and two long drawers, raised on a shaped apron and squat bracket supports, 100cm wide £100 - 150 †

565

A 19th Century figured mahogany continental chest, of four long graduated drawers, raised on carved foliate supports and fitted gilded brass handles and escutcheons, 105cm wide £100 - 150 †

566

An Antique oak bureau, fitted two short over three long drawers, the fall front opening to reveal an interior of drawers and pigeon-holes, raised on bracket feet, 89cm wide £100 - 200 †

567

A Georgian mahogany Chippendale style wall mirror, with fret carved frame and gilt Ho Ho bird decoration £40 - 60 †

Lots marked with ✓ please refer to Droite de Suite Royalty charges on page 28

† Each lot is subject to a Buyer's Premium of 15% + VAT (18%)



568

An oak chest, in the Jacobean manner, fitted two short and three long geometric moulded drawers, raised on bracket feet, 90cm wide £100 - 150 †

569

A 19th Century mahogany chest, of two short and three long graduated drawers, raised on bracket feet, 117cm wide £100 - 200 †

570

A Victorian mahogany pedestal dressing table, the raised back fitted with an arched swing mirror within foliate scroll arms above two nests of four trinket drawers, central drawer below flanked by 8 pedestal drawers, 110cm wide £100 - 200 †

571

A George III mahogany chest, of two short and three long drawers within reeded angles, raised on bracket feet, 113cm wide £100 - 200 †

572

An Edwardian mahogany and satinwood cross-banded dressing chest, of small proportions having octagonal bevelled mirror on scrolled arms, two drawers under, raised on square supports terminating in brass caps and castors, 61cm wide £40 - 60 †

573

A George III mahogany bureau, the fall flap opening to reveal a fitted interior, four long graduated drawers below on bracket feet, 91.5cm wide £100 - 200 †

574

A 19th Century mahogany display cabinet, on associated stand, fitted seven sliding trays, enclosed by a pair of glazed quarter panel doors, raised on ring turned tapering supports, 80cm wide x 135cm high £150 - 250 †

575

A mahogany foot stool, in the early Georgian manner having needlepoint upholstered seat, raised on cabriole supports and claw and ball feet, 56cm £40 - 60 †

576

A burr walnut veneered chest, of early 18th Century design, cross-banded and herring bone inlaid top above two short and three long drawers raised on bracket feet, 99cm wide £100 - 200 †

577

A George III mahogany bow fronted chest, of two short and three long graduated drawers, raised on bracket feet, 107cm wide £150 - 250 †

578

A Victorian mahogany bookcase, having applied carved foliate decoration, the upper section surmounted by a cushion moulded cornice above adjustable shelves, enclosed by a pair of glazed arched panelled doors, cupboard below, raised on a platform plinth, 147cm wide £100 - 200 †

579

A 19th Century mahogany and satinwood cross-banded corner cupboard, the upper section enclosed by a pair of glazed astragal doors with cupboards below, approx. 110cm wide x 235cm high £100 - 150 †

580

A William IV mahogany secretaire side cabinet, having tray top, the secretaire drawer fitted with an arrangement of short drawers and pigeon-holes above three cupboards below, raised on a platform plinth, 140cm wide £200 - 300 †

581

A large oval gilt framed wall mirror, surmounted by fruit and scrolling leaves, 99cm wide x 90cm high £80 - 120 †

582

A Victorian figured mahogany secretaire chiffonier, having raised shelf back, decorated foliate scrolls, the secretaire drawer opening to reveal a pigeon-hole interior, shelf below enclosed by a pair of arched panelled doors, flanked by ring turned columns. raised on a platform plinth, 80cm wide £200 - 300 †

583

A walnut free-standing corner cupboard, with glazed six panel door to the shelved upper part and panelled door below, 66cm wide x 194cm high £40 - 60 †

584

A 19th Century Flemish style carved oak bookcase on cupboard, profusely decorated with foliate scrolls, masks and panels of dead game, the upper adjustable shelves enclosed by a pair of glazed panelled doors, raised on scrolled lion passant supports, two short drawers and cupboards below, on inverted breakfront plinth terminating in bun feet, 135cm wide x 250cm high £200 - 400 †

585

A Regency rosewood and brass inlaid bookcase, fitted with six adjustable shelves above double cupboard base, raised on a platform plinth, 182cm wide x 189cm high £200 - 400 †

586

A 19th Century four fold gilt wood boudoir screen, having silk panels decorated with swans and foliage, 184cm high £250 - 350 †

587

An 18th Century oak dresser, with shelved and boarded cupboard back, fitted three deep drawers to the base, brass acorn drop handles, shaped frieze raised on turned and block supports, 161cm £400 - 600 †

588

A George III mahogany linen press, the upper section fitted five sliding trays, enclosed by a pair of ebony strung doors above two short and two long drawers, raised on bun feet, 128cm wide £200 - 300 †

589

A Georgian mahogany hanging wardrobe, fitted with an interior drawer, enclosed by a pair of moulded doors with mock drawer fronts, (in need of restoration), 140cm wide £100 - 200 †



Lot 546



Lot 547



Lot 560



Lot 561



Lot 599

**590**  
A 19th Century oak and mahogany long case clock, the hood surmounted with a broken arch pediment above a foliate decorated frieze, flanked by turned columns enclosing a painted dial with rolling moon phase aperture supporting an 8 day movement above trunk panel door and box base, 213cm high *£300 - 400 †*

**591**  
A 19th Century walnut and gilt framed overmantel mirror, the bevelled plate within foliate scroll decoration, 120cm wide *£80 - 100 †*

**592**  
A 19th Century gilt framed oval wall mirror, 109cm x 80cm in extremes *£80 - 120 †*

**593**  
A Chinese carved hardwood cache pot stand, having circular marble insert, foliate carved pierced frieze on bowed supports, 90cm high *£150 - 200 †*

**594**  
A quartetto of lacquered oriental design occasional tables *£50 - 80 †*

**595**  
An Antique oak and mahogany cross-banded hanging corner cupboard, the interior shelves enclosed by a single fielded panelled door, 68cm wide overall x 98cm high *£40 - 60 †*

**596**  
A 19th Century oak serving table, fitted two drawers above an under-tier, raised on square fluted carved supports and block feet, 146cm wide *£200 - 400 †*

**597**  
A set of six Victorian mahogany hoop back dining chairs, having foliate and fruit carved central motif, upholstered stuff-over serpentine seats raised on turned tapering fluted supports *£100 - 150 †*

**598**  
A set of seven mahogany Chippendale design dining chairs, having shaped cresting rails and pierced splat backs, striped upholstered drop-in seats, raised on square section supports united by stretchers *£200 - 300 †*

**599**  
A pair of mahogany Chippendale style elbow chairs, having carved pierced backs, upholstered drop-in seats, the scrolled arms raised above shell shoulders and cabriole supports terminating in claw and ball feet *£60 - 100 †*

**600**  
A George III oak hanging corner display cabinet, surmounted by a scroll arched pediment flanking a brass reeded finial, the interior shaped shelves enclosed by an astragal glazed panel door, 104cm high x 58cm wide overall *£60 - 100 †*

**601**  
An Edwardian oak dressing table, fitted two frieze drawers above a shaped under-tier on shell carved cabriole legs and metal castors, 108cm wide *£40 - 60 †*

**602**  
A 19th Century mahogany serpentine fronted sideboard, fitted central drawer flanked by cupboards, raised on tapering supports and spade feet, 150cm wide *£40 - 60 †*

**603**  
A Georgian mahogany tea table, with oblong foldover top above a short drawer, raised on square chamfered supports, 81cm wide *£50 - 80 †*

**604**  
A Victorian mahogany extending dining table, with wind-out action, fitted two extra leaves, raised on turned tapering reeded supports, terminating in brass caps and castors, 115cm x 222cm *£200 - 400 †*

**605**  
A set of eight early 19th Century mahogany bar back dining chairs, having solid seats, raised on turned tapering front supports and sabre back supports, comprising 6 standards and 2 elbows *£300 - 500 †*

**606**  
A set of six Suffolk fruitwood rail back dining chairs, the solid elm seats raised on square tapering supports united by stretchers *£100 - 200 †*

**607**  
A 19th Century Florentine torchere, with cream painted decoration and mirrored panels, raised on a foliate scroll base, 118cm high *£50 - 80 †*

**608**  
An 18th Century continental gilt wood and silvered carved torchere, 128cm high *£350 - 450 †*

**609**  
A 19th Century mahogany bedside cupboard, enclosed by a single panelled door, raised on turned tapering supports, 41cm wide *£40 - 60 †*

**610**  
A 19th Century mahogany bow fronted sideboard, fitted with a single drawer flanked by cupboards, raised on square tapering supports and spade feet, 123cm wide *£40 - 60 †*

**611**  
An 18th Century oak coffer, having triple panel lid above a carved frieze and iron lockplate, double lozenge panel front, raised on block supports, 104cm *£100 - 200 †*

**612**  
A pair of Edwardian mahogany hall chairs, with foliate carved panelled backs and scrolled cresting rails, raised on ring turned tapering supports and peg feet *£30 - 50 †*

**613**  
A set of three Edwardian mahogany Chippendale style side chairs, the arched pierced backs above upholstered stuff-over seats, raised on outswept slender front supports *£30 - 50 †*

**614**  
A William IV mahogany Bergere chair, having scrolled arms above a needlepoint squab cushion, raised on serpentine seat and turned fluted tapering front supports terminating in brass castors *£200 - 300 †*



Lot 605

**594**  
A quartetto of lacquered oriental design occasional tables *£50 - 80 †*

**595**  
An Antique oak and mahogany cross-banded hanging corner cupboard, the interior shelves enclosed by a single fielded panelled door, 68cm wide overall x 98cm high *£40 - 60 †*

**596**  
A 19th Century oak serving table, fitted two drawers above an under-tier, raised on square fluted carved supports and block feet, 146cm wide *£200 - 400 †*

**597**  
A set of six Victorian mahogany hoop back dining chairs, having foliate and fruit carved central motif, upholstered stuff-over serpentine seats raised on turned tapering fluted supports *£100 - 150 †*

**598**  
A set of seven mahogany Chippendale design dining chairs, having shaped cresting rails and pierced splat backs, striped upholstered drop-in seats, raised on square section supports united by stretchers *£200 - 300 †*

**599**  
A pair of mahogany Chippendale style elbow chairs, having carved pierced backs, upholstered drop-in seats, the scrolled arms raised above shell shoulders and cabriole supports terminating in claw and ball feet *£60 - 100 †*

**600**  
A George III oak hanging corner display cabinet, surmounted by a scroll arched pediment flanking a brass reeded finial, the interior shaped shelves enclosed by an astragal glazed panel door, 104cm high x 58cm wide overall *£60 - 100 †*

**601**  
An Edwardian oak dressing table, fitted two frieze drawers above a shaped under-tier on shell carved cabriole legs and metal castors, 108cm wide *£40 - 60 †*



Lot 614

**597**  
A set of six Victorian mahogany hoop back dining chairs, having foliate and fruit carved central motif, upholstered stuff-over serpentine seats raised on turned tapering fluted supports *£100 - 150 †*

**598**  
A set of seven mahogany Chippendale design dining chairs, having shaped cresting rails and pierced splat backs, striped upholstered drop-in seats, raised on square section supports united by stretchers *£200 - 300 †*

**599**  
A pair of mahogany Chippendale style elbow chairs, having carved pierced backs, upholstered drop-in seats, the scrolled arms raised above shell shoulders and cabriole supports terminating in claw and ball feet *£60 - 100 †*

**600**  
A George III oak hanging corner display cabinet, surmounted by a scroll arched pediment flanking a brass reeded finial, the interior shaped shelves enclosed by an astragal glazed panel door, 104cm high x 58cm wide overall *£60 - 100 †*

**601**  
An Edwardian oak dressing table, fitted two frieze drawers above a shaped under-tier on shell carved cabriole legs and metal castors, 108cm wide *£40 - 60 †*



Lot 617

**615**  
A pair of Chinese hardwood elbow chairs, with profuse pierced carved foliate decoration, solid seats raised on square supports and stretchers  
£300 - 500 †

**616**  
A mahogany Chinese Chippendale design side chair, having ribbon pierced central splat, upholstered drop-in seat, raised on square chamfered supports  
£20 - 40 †

**617**  
A Victorian mahogany framed spoon back armchair, having buttoned brown leather upholstery, foliate decoration to the cresting rail, scroll arms above a serpentine seat, terminating in cabriole supports and brass castors  
£100 - 200 †

**618**  
A Georgian mahogany gentleman's wash stand, the foldover top opening to reveal a partitioned interior with pull-up mirror section, drawers and cupboards below, flanked by brass carrying handles and raised on square tapering supports, 77cm wide  
£40 - 60 †

**619**  
An Edwardian oak pedestal writing desk, with leather inset top above three frieze drawers and six pedestal drawers, raised on platform plinths, 107cm wide  
£100 - 200 †

**620**  
A 19th Century walnut and gilt metal mounted bijouterie table, the hinged bevelled glass lid opening to reveal a printed silk lined interior, raised on square tapering supports terminating in gilded sabots, 60cm wide  
£80 - 120 †

**621**  
A Victorian walnut double chair back settee, with buttoned floral printed brocade upholstery, raised on carved cabriole supports  
£200 - 400 †

**622**  
A circular rosewood occasional table, raised on leaf carved tapering central column and quatrefoil base, terminating in scrolled feet, 60cm dia.  
£40 - 60 †

**623**  
A Victorian rosewood chiffonier, the raised back surmounted by a spindle gallery and raised on turned supports, single blind frieze drawer above shelf enclosed by a pair of arched fabric panelled doors, raised on a platform plinth, 105cm wide x 124cm high  
£200 - 400 †

**624**  
A George III mahogany secretaire chest, the fall front opening to reveal an interior arrangement of drawers and pigeon-holes around a central cupboard, two short and three long drawers below, 126cm wide  
£200 - 400 †

**625**  
An 18th Century carved oak coffer, the lid opening to reveal a candlebox interior, carved and inlaid panelled front on square supports, 115cm wide  
£150 - 250 †

**626**  
A 19th Century mahogany sideboard, of demi lune shape, fitted central drawer flanked by cupboards, raised on square tapering supports and spade feet, 119cm wide  
£60 - 100 †

**627**  
An Antique walnut swing toilet mirror, the bevelled plate in cushioned frame, raised on square reeded arms surmounted by brass finials, the inverted box base fitted three drawers with ivory handles and raised on bracket feet, 43cm wide x 69cm high  
£80 - 120 †

**628**  
A Victorian mahogany extending dining table, fitted with two extra leaves and raised on baluster fluted supports, terminating in castors, 113cm wide x 220cm long  
£300 - 500 †

**629**  
A set of six Regency style mahogany dining chairs, having foliate carved bar backs, upholstered drop-in seats, raised on turned tapering fluted supports  
£150 - 250 †

**630**  
A mahogany urn stand, of Chippendale design, the tray top above pull-out candle slide, raised on square slender tapering supports united by a cross stretcher, 34cm wide x 73cm high  
£100 - 150 †

**631**  
A Victorian design carved oak folding church chair  
£40 - 60 †

**632**  
A 19th Century mahogany tray top bedside cupboard, enclosed by a single door, drawer below, raised on square tapering supports, 29cm wide x 82cm high  
£40 - 60 †

**633**  
A nest of 20th Century Chinese hardwood occasional tables, 51cms in extremes  
£60 - 100 †

**634**  
An early 20th Century mahogany centre table, having foliate carved and gadroon border, raised on cabriole supports terminating in ball and claw feet, 96cm  
£60 - 100 †

**635**  
A 19th Century mahogany serving table, of serpentine shape, raised on rounded tapering supports and pad feet, 130cm wide  
£80 - 120 †

**636**  
A Victorian mahogany card table, the kidney shaped foldover top raised on turned column and scrolled supports united by a ring turned and fluted cross-stretcher, 89cm wide  
£200 - 300 †

**637**  
A 19th Century mahogany swing toilet mirror, with two drawer box base, raised on bracket feet, 50cm wide  
£30 - 50 †

**638**  
A 19th Century rosewood Sutherland tea table, raised on turned tapering supports terminating in brass caps and castors, 97cm x 91cm  
£80 - 120 †



Lot 620



Lot 622



Lot 623



Lot 634



Lot 647

**639**  
A 19th Century mahogany swing frame toilet mirror, raised on reeded arms, surmounted by brass finials, 69cm wide £40 - 60 †

**640**  
A Victorian upholstered nursing chair, with button back, serpentine fronted seat, on French style cabriole legs terminating in porcelain castors £40 - 60 †

**641**  
An Edwardian inlaid mahogany graduated folding cake stand £40 - 60 †

**642**  
A 19th Century mahogany tilt top supper table, raised on an octagonal tapering column and triform base, terminating in scrolled feet and castors, 86cm dia. £100 - 150 †

**643**  
A 19th Century mahogany three tier buffet, of small proportions, raised on turned baluster columns, terminating in peg feet, 67cm wide x 86cm high x 39cm deep £100 - 200 †

**644**  
An Antique oak mule chest, the hinged top above five fielded arched panels and two drawers below, raised on bracket supports, 144cm wide x 83cm high x 57cm deep £100 - 200 †

**645**  
A 19th Century mahogany swing toilet mirror, the oblong plate raised in a ring turned stand with foliate carved crested pediment and turned finials, 77cm high x 54cm wide £40 - 60 †



Lot 649

**646**  
A 19th Century elm Windsor chair, having pierced central splat, solid seat raised on ring turned supports united by an H stretcher £80 - 120 †

**647**  
A William IV mahogany teapoy, fitted two interior compartments, raised on a turned fluted column and circular base, terminating in scrolled feet, 49cm wide £100 - 200 †

**648**  
A 19th Century mahogany Davenport, the sloping hinged lid opening to reveal an interior of drawers, four long drawers to the side beneath a pen and inkwell drawer, opposing drop flap raised on turned front supports and inverted platform base terminating in bun feet, 56cm wide £100 - 200 †

**649**  
A Victorian rosewood sarcophagus shaped teapoy, the hinged lid opening to reveal an interior comprising two tea canisters and two cut glass mixing bowls, raised on a baluster fluted column, quatrefoil base and scrolled feet, terminating in castors, 40cm wide x 74cm high £150 - 250 †



Lot 653



Lot 659

**650**  
A Victorian mahogany Partner's desk, the leatherette inset top fitted with an arrangement of six drawers with three drawers to each pedestal, opposing end cupboards, raised on oblong platform plinths, terminating in castors, 155cm wide x 103cm deep £200 - 300 †

**651**  
A 19th Century mahogany torchere stand, raised on a turned baluster fluted column, terminating in tripod base £40 - 60 †

**652**  
A William IV rosewood Davenport, of small proportions, the sliding top surmounted by a pierced brass gallery, sloping front opening to reveal an interior fitted with two short drawers, four long drawers and slide with opposing dummy drawers, raised on turned tapering supports terminating in brass castors, 43cm wide x 54cm deep x 80cm high £350 - 450 †

**653**  
A 19th Century carved Chinese hardwood centre table, the shaped top raised above a foliate pierced frieze and dragon entwined central column, terminating in claw triform base, 57cm x 57cm £400 - 600 †

**654**  
A 19th Century mahogany and satinwood strung bedside cupboard, fitted shallow and deep drawers, with central cupboard, raised on square tapering supports terminating in brass caps and castors, 51cm wide £80 - 120 †

**655**  
A George III style mahogany bureau, of small proportions, the fall front opening to reveal a serpentine interior arrangement of drawers and pigeon-holes around a central cupboard, four long graduated drawers below, raised on ogee bracket supports, 72cm wide £100 - 150 †

**656**  
A 19th Century mahogany cross-framed dressing stool, having central turned stretcher, terminating in scrolled feet, 46cm wide £40 - 60 †

**657**  
A George III mahogany chest, of small proportions, fitted two short and two long drawers within fluted columns, raised on bracket feet, 78.5cm wide £200 - 300 †

**658**  
A George III mahogany chest, of small proportions, the canted corner top above two short and three long graduated drawers, raised on bracket feet, 66cm wide £200 - 400 †

**659**  
A George III mahogany serpentine fronted chest, fitted four long graduated drawers within marquetry decorated stiles, the top drawer fitted with a baize lined brushing slide, raised on bracket feet, 106cm wide £400 - 600 †

# Special Sales Calendar

## 2017

Clarke &  
Simpson

ART DECO, DESIGN & RETRO - 10th April, 2017

FINE ART - 17th May, 2017

FARM MACHINERY - 27th May, 2017

ART DECO, DESIGN & RETRO - 19th June, 2017

RURAL BYGONES - 8th July, 2017

FINE ART - 19th July, 2017

ART DECO, DESIGN & RETRO - 4th September, 2017

RURAL BYGONES - 16th September, 2017

FINE ART - 4th October, 2017

FARM MACHINERY - 21st October, 2017

ART DECO, DESIGN & RETRO - 30th October, 2017

FINE ART - 6th December, 2017



Campsea Ashe  
Nr. Wickham Market  
Suffolk IP13 0PS  
Tel: (01728) 746323 Fax: (01728) 748173  
Email: [auctions@clarkeandsimpson.co.uk](mailto:auctions@clarkeandsimpson.co.uk)  
[www.clarkeandsimpson.co.uk](http://www.clarkeandsimpson.co.uk)

# Next Antique & Fine Art Auction to be held Wednesday 17th May, 2017

# Clarke & Simpson

Auctions

Closing date for entries 21st April, 2017

## *Droite de Suite Royalty Charges*

From 14th February, 2006 all United Kingdom Art Market professionals (which includes auctioneers) are required to collect a royalty payment for all qualifying Works of Art. Under new legislation which came into effect on the 1st January, 2012, this applies to living artists and those who have died in the last 70 years. This payment is calculated on qualifying Works of Art which are sold for a hammer price more than the UK sterling equivalent of €1,000 (the UK sterling equivalent will fluctuate in line with prevailing exchange rates calculated by the Artist's Resale Right Service Hub, based on the European Central Bank reference rate published at 2.15pm on the day of the sale, and can be found on [www.dacs.org.uk](http://www.dacs.org.uk)).

All items in this catalogue that are marked "✓" are potentially qualifying items, and the royalty charge will apply if the hammer price is more than UK sterling equivalent of €1,000. The royalty charge will be added to purchase invoices, and must be paid before items can be cleared. All royalty charges are paid to the Design and Artists Copyright Society ("DACS") by the auctioneers and no handling costs or additional fees with respect to these charges will be retained by the auctioneer.

The royalty charge for qualifying items which achieve a hammer price of more than the UK sterling equivalent of €1,000, but less than the UK sterling equivalent of €50,000 is 4%. For qualifying items that sell for more than the UK equivalent of €50,000 a sliding scale of royalty charges will apply. For a complete list of the royalty charges and threshold levels please refer to [www.dacs.org.uk](http://www.dacs.org.uk). There is no VAT payable on this royalty charge.

## *Dear Purchaser*

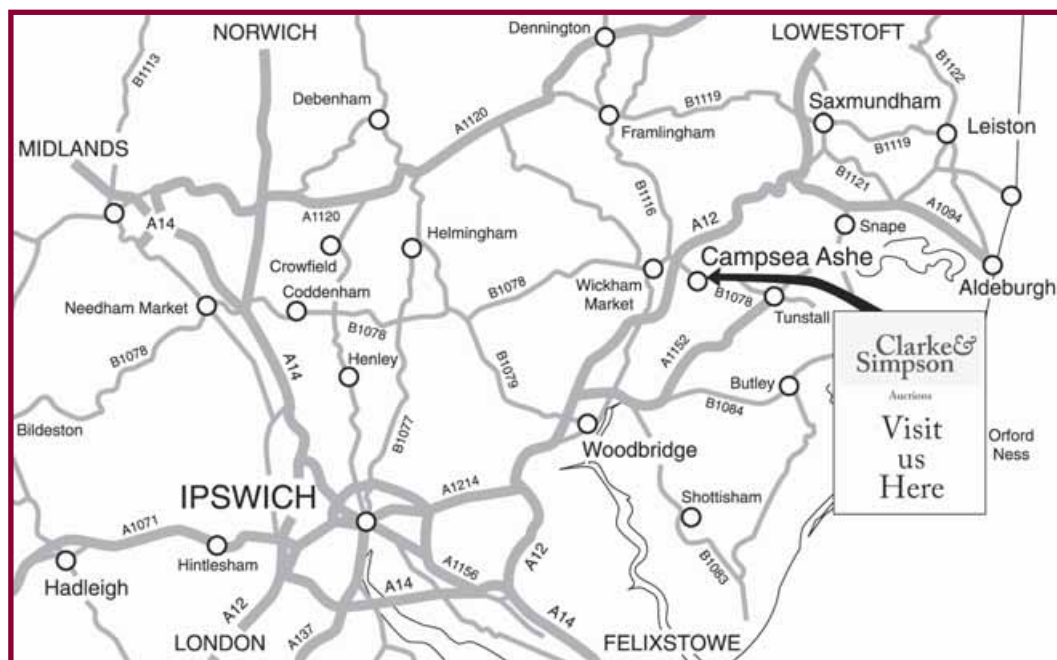
Clarke and Simpson are pleased to offer a packing and shipping service worldwide through "the-saleroom.com Delivery Service". The professional team will pack and ship items from very small non-breakables such as jewellery and coins through to larger and more fragile items such as paintings and works of art. Shipping and insurance is at the buyer's expense. Shipping payment must be made to 'the-saleroom.com Delivery Service' prior to departure and excludes local duties and taxes. Please note that Clarke and Simpson do not pack or ship items - all requests are sent to our specialist handlers at "the-saleroom.com Delivery Service" who can be contacted directly via [delivery@atgmedia.com](mailto:delivery@atgmedia.com)

the-saleroom.com  
delivery service



## *Directions*

We are just off the A12 north of Wickham Market on the B1078 road to Orford.





## Mendlesham - £1,250,000

A stunning seven bedroom Elizabethan manor house & separate oak framed 'party barn', together with formal gardens & grounds extending to nearly 6 acres, in a delightful rural setting, with stables & stable yard, double garage & tack room, workshop/store and summerhouse. **Ref: 5590**



## Mickfield - £950,000

A Grade II Listed farmhouse requiring complete renovation, along with two traditional Suffolk barns & more modern farm buildings, located in the most superb standalone position, with gardens, grounds and meadows of over 16 acres. **Ref: 5585**



## Wickham Market - £615,000

A stunning Grade II Listed Georgian townhouse, in the centre of the popular village of Wickham Market, set beside All Saints Church. Gardens to front & rear, courtyard, garaging and external storage. **Ref: 5637**



## Eye - £575,000

A single storey characterful country home with three reception rooms, three bedrooms and annexe, standing in attractive and mature grounds of an acre on the outskirts of Eye. Studio, workshop and store. EPC = E **Ref: 5658**



## Peasenhall - £475,000

An extremely well maintained and presented four bedroom detached house, situated in the pretty village of Peasenhall. Integral garage, two parking spaces. Garden to front and rear. EPC = D **Ref: 5680**



## Framlingham £295,000

A three bedroom detached house, situated on the outskirts of the town, yet within walking distance of the shops and Market Hill. Gardens to front and rear, and ample parking for approximately five cars. EPC = C **Ref: 5699**



## Bedingfield - £700,000

An impressive and spacious five bedroom barn conversion with stunning main reception area, set in over 2 acres on the outskirts of the village. Annexe, double cartlodge & workshop. Gardens & grounds, including a paddock, extending to approx. 2.25 acres. **Ref: 5518**



## Monk Soham £675,000

A spacious six bedroom country house with two bedroom annexe, standing in a rural position within grounds of 1.25 acres. Vaulted master bedroom with en-suite shower room. Ample parking. Store shed/workshop and stables. EPC = D **Ref: 5653**



## Dennington £545,000

A beautifully presented former mill house on the outskirts of the village with delightful gardens incorporating the base of the old windmill. Three first floor bedrooms plus attic room & storage area. Former granary building and old barn; in all over 0.3 of an acre. EPC = F **Ref: 5610**



## Snape £425,000

A stunning three bedroom house, recently completely renovated to an extremely high standard, in an enviable location in the centre of Snape. Studio with shower room. Large driveway, secure garage and landscaped garden. EPC = D **Ref: 5591**



## Fressingfield - £395,000

A superbly presented four bedroom house forming part of the Carpenters Yard development, only a short distance from the centre of the well served village of Fressingfield. EPC = B **Ref: 5675**



## Framlingham £325,000

A well maintained three bedroom detached bungalow, located in the popular market town of Framlingham within walking distance of the town centre. Gardens to front and rear, single garage with electrically operated



# TERMS AND CONDITIONS OF SALE

## 1. INTRODUCTION

The following defining terms are used in these conditions:-

|                |   |
|----------------|---|
| “Auction”      | Means any auction conducted by Clarke and Simpson Auctions Ltd. either at the premises owned by them or elsewhere (including any internet based auction); |
| “Auctioneer”   | Means Clarke and Simpson Auctions Ltd. authorised auctioneer as appropriate;  |
| “Bidder”       | Means a bidder at an auction, including the bidders personally present at the venue and those bidding by telephone or over the internet or otherwise;     |
| “Buyer”        | Means the bidder whose bid was the last bid when the auctioneer concludes the bidding;  |
| “Conditions”   | Means these Terms and Conditions of Sale;   |
| “Hammer Price” | Means the level of bidding reached (at or above any reserve) when the auctioneer brings the bidding to a close;   |
| “Lot”          | Means any property accepted by Clarke and Simpson Auctions Ltd. for offer at auction;   |

## 2. DESCRIPTION

No warranty is given or implied by the description in the catalogue. Each lot is sold in its condition at the time of sale with all faults, defects, imperfections and errors of description (if any). Whilst every endeavour has been made to describe the items adequately and properly, the purchaser shall deem to have inspected the lot at time of purchase. All catalogues and seller's and buyer's guides are for information only and do not form part of the contract.

## 3. STATUTORY REQUIREMENTS

Purchasers will be deemed to have satisfied themselves prior to purchasing regarding current legal requirements (e.g. Health & Safety at Work Act) and it is expressly brought to the bidders attention that equipment in the sale may not necessarily comply with such regulations. Any purchaser shall satisfy himself as to any statutory requirement for the use of any item and no liability shall rest with the vendors nor the Auctioneers.

## 4. THE AUCTION

All auctions are conducted at the absolute discretion of the auctioneer. The auctioneer shall conduct the auction with reasonable skill and care. The vendor reserves the right to sell subject to reserve price in respect of all lots. What constitutes a bid shall be at the absolute discretion of the auctioneer, acting with appropriate skill and care. The auctioneer shall have the right to refuse any bid in all cases but most notably when such a bid does not exceed the previous bid by at least 10% or such a proportion as the auctioneer shall in his absolute discretion direct. Where two or more bids at the same level are simultaneously received by the auctioneer, the auctioneer at his absolute discretion shall determine which bid to prefer. Subject to the foregoing where two or more bids are at the same level are simultaneously received by the auctioneer, the bid submitted in the room shall take preference over a bid submitted by telephone or internet at the same level. Any bid made or attempted by telephone or over the internet will only be deemed to have been made if received by the auctioneer. The auctioneer reserves the right to withdraw, consolidate or divide any lot or lots or submit them in any order that they desire. The auctioneer has the right at his absolute discretion to refuse admission to his premises or attendance at (or participation in) any auction by any person. In the case of any dispute, the auctioneer shall be sole arbitrator in any matters arising during or out of the sale.

## 5. BIDDERS

All bidders will be required to register their particulars, bidders attending in person and those accompanying them may be required to provide photo ID and separate confirmation of address prior to viewing or taking any part of the sale and before entering any part of the premises to view. All bidders accept full liability for all bids submitted. Subject to the clause in this document headed “The Auction”, the highest bidder at the close of bidding shall be the buyer. Any dispute about a bid shall be settled at the auctioneer's absolute discretion. Bidders are all deemed to act as principal unless there is prior written acknowledgement by Clarke and Simpson Auctions Ltd. that a bidder is acting as an agent for a named principal. Bidders are strongly encouraged to attend the auction in person. The bidders shall be responsible for any decision to bid for a particular lot and shall be deemed to have carefully inspected and satisfied themselves as to condition, neither Clarke and Simpson Auctions Ltd., their employees or agents shall be responsible for any neglect or default in doing or failing to do so. Bidders will be given ample opportunity to view and inspect before the sale and prospective buyers must satisfy themselves as to all matters.

## 6. DEFAULT

Clarke and Simpson Auctions Ltd. shall act as agent of the vendor only. Any contracts for the sale of a lot shall be formed between the vendor and the buyer. As agent only Clarke and Simpson Auctions Ltd. shall not be responsible for default by the vendor or the buyer. If any lot is not paid for in full and taken away in accordance with these conditions, or there is any other breach of the conditions, then Clarke and Simpson Auctions Ltd. as agents for vendor shall at its absolute discretion and without prejudice to any other rights it may have, be entitled to exercise all or any of the following rights and remedies:-

- 6.1 to proceed against the buyer for any action of debt or damages for breach of contract;
- 6.2 to rescind the sale of that lot or lots sold by Clarke and Simpson Auctions Ltd. to a defaulting buyer;
- 6.3 to resell the lot (by auction or private treaty) in which case the defaulting buyer shall be responsible for any resulting deficiency in the total amount due (after crediting any part payment and adding any resale costs), any possible surplus so arising shall belong to the vendor;
- 6.4 to remove, store and insure the lot at the expense of the defaulting buyer and, in the case of storage, the location of such storage shall be at Clarke and Simpson Auctions Ltd. discretion;
- 6.5 to charge interest at a rate not exceeding 2% per month of the total amount due to the extent that it remains unpaid for more than two working days after the sale;
- 6.6 to retain that or any lot sold to the defaulting buyer until the buyer pays the total amount due;
- 6.7 to reject or ignore bids from the defaulting buyer at future auctions or to impose conditions before any such bids are accepted;
- 6.8 to apply any proceeds of sale for any other lots due or in the future becoming due to the defaulting buyer towards the settlement of the total remaining due.

## 7. INDEMNITIES, PENALTIES AND LIMITATIONS OF LIABILITY

Purchasers shall pay for any damage done by themselves or their agents during the removal of their lots. Attendance at the sale shall be at the risk of those attending in respect of both themselves and to their goods and vehicles.

Any indemnity under these conditions will extend to all actions, costs, expenses, claims and demand whatsoever suffered or incurred by the person entitled to the benefit of it and Clarke and Simpson Auctions Ltd. declare themselves to be a trustee of the benefit of such indemnity so far as it is expressed to be the benefit of its employees and agents.

Whilst Clarke and Simpson Auctions Ltd. endeavour to ensure that the information on their websites is correct, they do not warrant the accuracy and completeness of the material on their website. Also Clarke and Simpson Auctions Ltd. can make changes to the material on their website, or alter the products and prices described on it, at any time without notice. The material on the website may be out of date, Clarke and Simpson Auctions Ltd. make no commitment to update such material. All material on the websites is provided "as is" without any conditions, warranties or other terms at any time. Accordingly to the maximum extent permitted by law, the website is provided to all parties on the basis that Clarke and Simpson Auctions Ltd. exclude all representations, warranties, conditions and other terms which, but for this legal notice, might have effect in relation to the website.

## 8. ELECTRICAL SAFETY REGULATIONS

All electrical lots are subject to electrical safety regulations and fall within "the low voltage electrical equipment (safety) regulations 1989" – all items have been pat tested for safety but are not guaranteed in working order.

## 9. GENERAL MATTERS

Any notice to any buyer, vendor, bidder or viewer may be given by first class mail or email in which case it shall be deemed to have been received by the addressee forty eight hours after posting or sending. All notices to Clarke and Simpson Auctions Ltd. must be sent in writing and email is not acceptable. Any indulgence extended to any person by Clarke and Simpson Auctions Ltd., notwithstanding the strict terms of these conditions or the terms of consignment, shall affect the position at the relevant time only and the respect of that particular concession only; in all other respects these conditions shall be construed as having full force and effect. These conditions and any disputes or claims arising out or in connection with them or their subject matter or formation (including non-contractual disputes or claims) are governed by and construed in accordance with the law of England. The parties irrevocably agree that the courts of England have exclusive jurisdiction to settle any dispute or claim that arises out of or in connection with the agreement or its subject matter or formation (including non-contractual disputes or claims).

## 10. PUBLICITY

Any catalogue and buyer and seller guides are provided for information only and do not form part of these conditions. The catalogue and the buyer and seller guides may contain additional terms and conditions. Clarke and Simpson Auctions Ltd. reserve the right to use any photographs, background information and research for publicity purposes both before and after the sale.

## 11. THE PURCHASE PRICE AND PAYMENT ARRANGEMENTS

There is a buyer's premium 15% plus VAT payable in respect of the sale. Any purchases made via "www.the-saleroom.com" shall be subject to an administration charge of 3% plus VAT on the price. Preferred payment is cash, bankers draft or personal debit card. Such cards may only be used on a chip and pin basis with the owner present. No payment will be accepted by telephone. There will be an administration charge of 2.5% plus VAT for the use of credit cards or international debit cards. Payment by cheque will only be acceptable subject to prior arrangement. No lot will be removed from the sale until any cheque has cleared unless a suitable bank reference

addressed to the auctioneer is supplied. Payment is due on the day of the sale. Cash in excess of £12,000 (including V.A.T.) will not be accepted from any one person, this is not allowed due to Money Laundering Regulations 2007. All money received will be held in Clarke & Simpson Auctions Ltd. Clients Account at Barclays Bank plc, Framlingham, Suffolk. Account Number 33222276. Sort Code 20 98 07. Clarke and Simpson Auctions Ltd. have no responsibility for any lot between the close of bidding and payment being made and subsequent collection. Please note all policy regarding payment will be enforced and suitable arrangements must be made.

## 12. REMOVAL OF LOTS

The ownership of any lot purchased shall not pass to the relevant buyer until they have made payment in full to Clarke and Simpson Auctions Ltd. of the total amount due. The buyer shall at their own risk and expense take away any lot that they have purchased and paid for not later than two working days following the day of the auction after which they shall be responsible for any removal, storage and insurance charges. Any lots not collected within three months of the date of sale will be resold by the auctioneer and all proceeds will be retained by the auctioneer to cover storage costs.

## 13. NUMBER BIDDING

This will be used for speed and efficiency as in all our sales. All prospective purchasers must complete a registration form and register in the office on the viewday or morning of sale to receive a number for bidding. PLEASE ALSO NOTE THAT PHOTO ID AND ADDITIONAL CONFIRMATION OF ADDRESS WILL BE REQUIRED.

## 14. TELEPHONE BIDDING

We offer a telephone bidding service where possible but this service can never be guaranteed. No applications for telephone bids will be accepted after the end of the viewing prior to sale day for any sale. All potential telephone bidders must provide a valid landline number and email address for us to send terms and conditions prior to phone bidding. No phone bids will be accepted for any lot with a lower guide figure of less than £100.

All those who wish to bid by telephone will be expected to deposit the minimum guide for all lots that they wish to bid upon into the Clients Account for Clarke and Simpson Auctions Ltd before the sale starts. In the event of default, this sum shall be retained as part payment or any part may be retained to recover losses under clause 6 of these Terms and Conditions. We will expect payment of the balance owing by BACS on the following day, any payment not met within five working days will result in the forfeiture of the deposit paid.

## 15. ONLINE BIDDING

Clarke & Simpson Auctions Ltd., on occasions, offer an online bidding service via the-saleroom.com for bidders who cannot attend the sale. In completing the bidder registration on www.the-saleroom.com and providing your credit card details and, unless alternative arrangements are agreed with Clarke & Simpson Auctions Ltd.:

- 1 authorise Clarke & Simpson Auctions Ltd., if they so wish, to charge the credit card given in part or full payment, including all fees, for items successfully purchased in the auction via www.the-saleroom.com, and
- 2 confirm that you are authorised to provide these credit card details to Clarke & Simpson Auctions Ltd. through www.the-saleroom.com and agree that Clarke & Simpson Auctions Ltd. are entitled to ship the goods to the card holder name and card holder address provided in fulfilment of the sale.

**Please note that any lots purchased via the-saleroom.com auction service will be subject to an additional 3% charge + VAT at the rate imposed on the hammer price**

Clarke &  
Simpson



*Find  
more than a  
keyhole view*

at [www.clarkeandsimpson.co.uk](http://www.clarkeandsimpson.co.uk)

T: 01728 621200



Clarke and Simpson Auction Centre  
Campsea Ashe  
Nr. Wickham Market  
Suffolk IP13 0PS  
Tel: (01728) 746323 Fax: (01728) 748173  
Email: [auctions@clarkeandsimpson.co.uk](mailto:auctions@clarkeandsimpson.co.uk)  
[www.clarkeandsimpson.co.uk](http://www.clarkeandsimpson.co.uk)