

Clarke &
Simpson



*Art Deco, 20th Century
Design & Retro*

Monday 4th September at 10.00am

Special Notices for Purchasers

Certain lots are catalogued as (A.F.), damaged, restored, etc., however the absence of any such notice does not imply that the piece is free from defects, nor does it indicate that other defects are not also present.

Mention is not made of breakage, cracks, chips or any damage which can be noted by careful inspection, therefore, intending purchasers MUST, in all cases, be responsible for determining the condition of lots themselves.

Special attention is drawn to the Conditions of Sale printed at the back of this catalogue.

Estimates

Presale estimates are intended only as a guide for intending purchasers, are given in good faith and subject to revision.

Condition Reports

Clarke and Simpson are unable to guarantee that requests for condition reports/images received after the close of the viewing on the day prior to auction, will be responded to.

Clarke and Simpson are happy to give a Condition Report on the physical condition of goods, this will be provided on behalf of the seller on the understanding that Clarke and Simpson are not entering into a contract with you in respect of the Condition Report and accordingly does not assume responsibility to you in respect of it. All lots are available for your own inspection or for inspection by an expert instructed by you, therefore these Condition reports are for guidance only and all lots are sold "as found".

Commission Bids

The auctioneers will be pleased to execute bids for those unable to attend the sale. Lots will be purchased at the lowest bid the room bidding or any reserves will allow. In the event of identical bids, the earliest bid received will take precedence. There must always be a maximum limit indicated. Buy or unlimited bids will not be accepted. Commission bids placed by telephone are accepted at the client's risk. We urge our clients to place such commission bids before the start of the sale. All such commissions are left entirely at the buyer's risk.

Telephone Bids

Please refer to conditions printed at the back of this catalogue.

Registration

All prospective buyers must register their name and address at our auction office and collect a numbered bidding card before the sale commences. If you are a successful purchaser please ensure that your number can be seen by the auctioneer and that it is your number that is called out at the fall of the hammer. Should there be any doubts as to the price or buyer, please draw the auctioneer's attention to it before the next lot is offered.

Value Added Tax

The symbol * after any lot number indicates that Value Added Tax is payable by the buyer on the "hammer price".

Auctioneers' Margin Scheme

The Auctioneers Margin Scheme allows auctioneers to sell items without VAT on the hammer price. Under the margin scheme an amount equivalent to VAT at the current rate is added to the buyer's premium.

This amount cannot be refunded. The VAT element will not be shown separately on the buyer's invoice.

Buyers' Premium

A buyer's premium of 18% plus VAT will be added to the hammer price of each lot.

Please note that any lots purchased via the-saleroom.com auction service will be subject to an additional 3% charge + VAT at the rate imposed on the hammer price.

Payment

Payment can be made during or immediately after the sale by the following methods:

Cash (up to a maximum of £12,000 including VAT in accordance with Money Laundering Regulations 2007).

Debit Cards

Credit Cards (not American Express) Please note there will be a surcharge of 2.5% plus VAT for the use of these cards. We will not release goods for a period of 72 hours unless the cardholder attends the saleroom in person and presents the cards used for the transaction with proof of ID.

Bank Transfer - Account Name: Clarke and Simpson Auctions Limited

Account Number: Account No: 83428591

Sort Code: 20-98-07

We do not accept cheques unless by prior arrangement.

Attribution of Pictures and Drawings

Every effort is made to ensure the accuracy of any statement as to authorship, attribution, origin, date, age, provenance and condition of any lot whether or not such statement forms part of the description of any such lot. Whether any such statement is made orally or in the catalogue it is an expression of opinion and not to be taken as being or implying any warranties or representations of facts by the auctioneers. Each buyer by making a bid for a lot acknowledges that he has satisfied himself fully as to the attribution and condition of the lot.

- a) The forename(s) (or full stops where not known) and surname of an artist indicates in our opinion a work by the artist.
- b) The initials of the forename(s) and the surname of the artist indicates in our opinion a work of the period of the artist which may be wholly or in part his work.
- c) The surname of the artist indicates in our opinion a work of the school or by one of the followers of the artist or in his style and of uncertain date.
- d) *Signed, Dated, Inscribed* indicates in our opinion work signed/dated/inscribed by the artist.
- e) *Bears signature* indicates in our opinion that this is not the signature of the artist.
- f) *Attributed to* may be used to denote a traditional attribution based on style.
- g) *Manner of* indicates in our opinion a work executed in the artist/craftsman's style but of a later date.
- h) *After* indicates in our opinion a copy (of any date) of work of an artist or craftsman.

The addition of a question mark after any of the cataloguing terms above indicates an element of doubt.

Clarke & Simpson

Auctions

Art Deco, 20th Century Design & Retro

*Monday 4th September 2017
at 10.00am*

Viewing:

Saturday 2nd September 9am - 12noon
Morning of Sale from 8.30am

Enquiries:

James Shand, Auctioneer & Valuer
Geoffrey Barfoot, Auction Room Manager & Valuer

Buyers' Premium:

18% plus VAT

Please see www.the-saleroom.com
for further images

the-saleroom.com



Campsea Ashe
Nr Wickham Market
Suffolk IP13 0PS
Tel: 01728 746323 Fax: 01728 748173
Email: auctions@clarkeandsimpson.co.uk
www.clarkeandsimpson.co.uk



@CandSAuctions



CandSAuctions



Lot 10



Lot 17



Lot 22



Lot 24



Lot 25

1
A chrome plated Art Deco style cocktail shaker; and an ice bucket. £20-£30

2
A brass Art Deco design cocktail shaker. £20-£30

3
Four various Bernard Rooke pottery vases, and posy bowls. £20-£30

4
A chrome plated cruet set, in the form of an ocean liner. £10-£20

5
An Art Deco design chrome egg cruet. £10-£20

6
An Art Deco design fireside lighter, in the form of a knight. £10-£20

7
A Metamec mantel clock. £10-£20

8
An Art Deco twin handled chrome plated and faux ivory drinks tray, the central panel decorated with a print of a semi naked girl. £5-£10

9
An Art Deco metal Sunburst mirror. £10-£20

10
Three Art Deco pottery water jugs. £10-£20. See illustration.

11
An Art Deco Royal Staffordshire pottery honey glaze "Springtime" biscuit barrel. £10-£20

12
An amber glass Art Deco flower vase, (chipped), 26cm high. £10-£20

13
An Art Deco gilded Spelter Lorenzl type lamp base, in the form of a semi naked dancing girl on alabaster base, (for restoration), 36cm high. £70-£100

14
An Art Deco chrome plated strut clock. £10-£20

15
An Art Deco plated candelabra, 28cm high. £10-£20

16
An Art Deco chrome based lamp/clock, 22cm high. £20-£30

17
An Art Deco style leather stuffed Scottie dog door stop, 26cm high x 29cm long. £10-£20. See illustration.

18
An Art Deco chrome framed bevelled edge wall mirror, 46cm x 69cm in extremes. £20-£30

19
Four various Bernard Rooke pottery vases, and an ashtray. £40-£60

20
An Old Hall stainless steel four piece tea set, a similar butter dish, egg cups etc. £10-£20

21
A small Revelation suitcase, with various luggage labels for, BOAC, Cunard etc. £20-£30

22
E.V. 49, study of dancers, initialed and dated watercolour, 32cm x 24cm. £40-£60. See illustration.

23
M.L., "Footpath to the bridge", initialed crayon and pastel, dated December 1970, 24cm x 37cm. £20-£40

24
Owen Waters, study of a Suffolk landscape, signed oil on board, 38cm x 50cm. £40-£60. See illustration.

25
Owen Waters, study entitled "Buckenham", pastoral study with cattle watering, signed oil on board, 20cm x 28cm. £40-£60. See illustration.

26
After John Piper, coloured print depicting Snape Maltings. £40-£60

27
Colin Moss, study of a nude woman, dated verso 1974, signed oil on canvas, 32cm x 62cm. £200-£300

28
An Art Deco chrome standard lamp, (for re-wiring). £40-£60

29
A large brass fire guard, enclosed by glass panels and with wire mesh backing, 124cm x 93cm in extremes. £150-£250

30
An Art Deco walnut headboard, with integral bedside cupboards and lights, 260cm. £100-£200

31
An Art Deco wooden and chrome mounted coat stand. £50-£70

32
A 1970's full sized female mannequin. £50-£70

33
A gilt Starburst wall clock. £10-£20

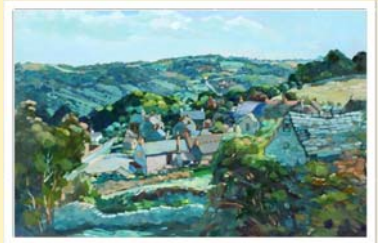
- 34**
An Art Deco design glazed pottery jardiniere stand, 69cm high. £40-£60
- 35**
A large square and circular segment wall mirror, 119cm x 120cm in extremes. £80-£120
- 36**
Anff?, study of a harbour scene, inscribed verso "URK Holland", indistinctly signed and dated 1963, 50cm x 76cm. £40-£60. See illustration.
- 37**
20th Century school, study of a stag in woodland, oil on canvas, signed in pencil verso E Fairhurst. 56cm x 66cm. £40-£60. See illustration.
- 38**
20th Century school, still life study depicting flowers in a vase, unsigned oil on canvas, 72cm x 54cm. £40-£60
- 39**
Peter Lockwood, 1926-1996, study of Dartmoor, signed oil on canvas, 40cm x 60cm. £40-£60
- 40**
Peter Lockwood, 1926-1996, study of a wintry landscape, probably Derbyshire area, signed oil on board, 39cm x 60cm. £40-£60
- 41**
Peter Lockwood, 1926-1996, study of a Dales village, signed oil on board, 39cm x 59cm. £40-£60 See illustration.
- 42**
Peter Lockwood, 1926-1996, Dales study, signed oil on board, 39cm x 59cm. £40-£60
- 43**
Peter Lockwood, 1926-1996, study of figures in a Dales stream, signed oil on board dated 1987, 39cm x 59cm. £40-£60. See illustration.
- 44**
A life sized rubber and composition mannequin, depicting the notorious murderer John Christie, dressed in prison clothes and handcuffs with a walking stick, complete with folding chair. £500-£600
- 45**
A brown glazed Studio pottery vase, of squat form, impressed to the base MJL '15, 24cm dia. overall x 14cm high; and another blue glazed example, 20cm high, (2). £40-£60
- 46**
A brown glazed pottery shallow bowl, with flowerhead decoration, 22cm dia.; and a Crown Ducal green glazed baluster jug of ribbed floral design, 21cm high, (2). £20-£40
- 47**
A large decorative blue glass cylindrical bottle, 76cm high. £30-£40
- 48**
A Denby stoneware baluster vase, having leaf decoration, 33cm high. £20-£40
- 49**
An early 20th Century electro plated square section vase, profusely decorated with fish, raised on square stepped feet and shell motifs, 29cm high. £40-£60
- 50**
A Studio stoneware pottery vase, of flared form, having stylised leaf decoration and ribbed ground, 19.5cm dia. £20-£30
- 51**
A cased silver and enamel decorated dressing table set, with matching candlesticks and powder bowl. £80-£120
- 52**
A pair of brass Art Deco design adjustable wall lights, with frosted glass frilled shades. £40-£60
- 53**
James P. Power, study of a Cornish fishing village, signed watercolour, 27cm x 37cm. £80-£120. See illustration.
- 54**
James P. Power, study of a Cornish fishing village street scene, signed watercolour, 28cm x 38cm. £80-£120. See illustration.
- 55**
A 1930's oak adjustable armchair. £40-£60
- 56**
A pair of Scandart easy chairs. £40-£60
- 57**
20th Century French wood block print of a young girl, pencil signed to mount, indistinct signature dated 73, 30cm x 16cm. £10-£20
- 58**
A set of eight limited edition Rijk Heuff car prints. £80-£100



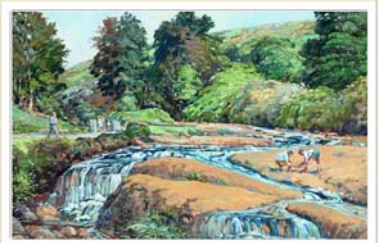
Lot 36



Lot 37



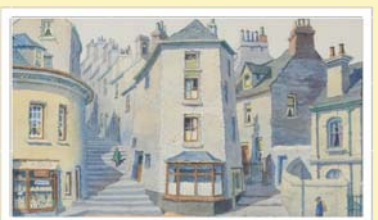
Lot 41



Lot 43



Lot 53



Lot 54



Lot 69



Lot 75



Lot 76



Lot 77



Lot 79

59

S. Webster, drawing on slate of a mountainous landscape, signed and dated 06, 26cm x 41cm overall. £10-£20

60

19th Century school, study of a man in Shakespearean costume, initialed watercolour, 13.5cm x 8.5cm. £20-£30

61

Hector McDonald Sutton, 1903-1978, study of a man playing harmonica, pencil and body colour, 10cm x 8cm. £10-£20

62

Susan Horsfield, "Peloponnese Geese and water", pencil signed watercolour dated 1980, 14cm x 21cm. £20-£40

63

C.E. Irene Livingstone, "Blind Boy", label verso "Glasgow Educational Art Union 1928", 18cm x 33cm. £20-£40

64

C. Baker, "Equus Burchelli" limited edition pencil signed print, 108/208. £20-£30

65

Annie Williams, pencil signed feline print entitled "Toffee". £10-£20

66

Terrance Warren, pencil signed limited edition print, Snow study, 16/100 dated 1986, 25cm x 17cm. £10-£20

67

A Revelation picnic set. £30-£50

68

A G-plan design chest, of five long drawers, with curved handles, raised on outswept supports, 82cm wide x 118cm high. £40-£60

69

An Art Deco French marble mantel clock, the silvered oblong dial inscribed "Prieur Brest", 43cm long x 25cm high. £40-£60. See illustration.

70

A G-plan design curved dressing table, fitted three short and two long drawers, raised on square section supports, 114cm wide. £40-£60

71

A collection of various Caithness and other modern coloured glassware. £20-£30

72

A walnut two section bookcase, with glazed up and over doors, 87cm wide x 100cm high. £40-£60

73

A Canadian Art Deco design plated tea kettle, matching sucrier and cream jug. £30-£50

74

A walnut two section bookcase, enclosed by two glazed up and over doors, 87cm wide x 100cm high. £40-£60

75

Lot 20th Century charcoal and crayon study of a seated dancing girl, 34cm x 25cm. £40-£60. See illustration.

76

Gill Hodgson, (GRH), mixed media study of 1960's room setting, initialed and dated 2011, 29.5cm square. £30-£50. See illustration.

77

Marek Zulawski, study of a lake scene with fishing boats, signed oil on canvas, 33cm x 43cm. £200-£300. See illustration.

78

Verity Wookey, study of a houseboat at Melton, Suffolk, signed watercolour, 35cm x 39cm. £20-£40

79

David Britton, beach scene with huts and fishing boat, signed oil on canvas, 50cm x 60cm. £40-£60. See illustration.

80

David Britton, study of a walled house, signed oil on panel, 60cm x 55cm. £40-£60

81

David Britton, Moonlit study of cottages, signed oil on board, 46cm x 51cm. £40-£60. See illustration.

82

Theronda Hoffman, study of Walberswick, acrylic on paper, signed and dated 2015, 18cm x 28cm. £20-£40

83

A pair of machine age book-ends, in the form of crouching nude female figures, 15cm. £50-£70

84

A large Sylvac style green pottery rabbit, 26cm high. £20-£40

- 85**
A collection of 9 pieces of various Carlton ware. £40-£60
- 86**
An Edwardian satin ash dressing table, stamped Gillows of Lancaster, 92cm wide. £40-£60
- 87**
An Art Deco design walnut side cabinet, having central rise and fall cocktail compartment, above central cupboards flanked by full length bow fronted end cupboards, 123cm wide x 108cm high. £40-£60
- 88**
An Art Deco design mahogany display cabinet, raised on cabriole claw and ball supports, 113cm wide. £75-£100
- 89**
An Art Deco marble clock garniture. £30-£50
- 90**
A G-plan design sideboard, having raised back section, three long drawers flanked by cupboard, on blackwood tapering supports, 137cm. £20-£40
- 91**
20th Century school, still life study of flowers in a pot, unsigned oil on board, 60cm x 53cm. £20-£40
- 92**
Indistinctly signed 20th Century school, study of flowers in a vase, watercolour, 60cm x 37cm. £20-£40
- 93**
Peter Scott, coloured print of ducks in flight, pencil signed with Trade Guild stamp to the margin. £40-£60
- 94**
Peter Burman, winter landscape study with church and other buildings, signed oil on board, 34cm x 44cm. £40-£60. See illustration.
- 95**
Early 20th Century school, study of Barnard Castle, unsigned oil, 21cm x 34cm. £20-£40
- 96**
J. Harburn, still life study, signed oil on board, 49cm x 38cm. £40-£60
- 97**
Eric Slater, "Cuckmere Haven" pencil signed print, signed and dated 1924, 25cm x 30cm. £100-£200. See illustration.
- 98**
Thomas Alfred Liverton, study of the Somme near Croy, signed watercolour, 36cm x 55cm. £40-£60
- 99**
An Art Deco walnut and inlaid chiming mantel clock. £20-£30
- 100**
A 19th Century bronze study of a Mercury, seated on a rock, 29cm high; and another similar depicting Narcissus, 24cm high. £100-£200
- 101**
An Art Deco walnut cocktail cabinet, with glazed upper section and serpentine shaped base, 95cm wide. £60-£80
- 102**
A Smiths walnut cased mantel clock. £10-£20
- 103**
A Burleigh ironstone head figure, 22cm high. £20-£40
- 104**
A cold painted bronze and spelter Art Deco group, depicting female warrior and deer, raised on a mixed marble base, 84cm long overall. £200-£300. See illustration.
- 105**
An Art Deco design table mirror, in the form of a seated semi naked girl on stepped marble and onyx base, 21cm high. £20-£30
- 106**
A G-plan design teak sideboard, fitted three blind frieze drawers and cupboards under, raised on sleigh supports, 170cm. £30-£50
- 107**
Leslie Salts, study of a young African tribes woman, signed oil on board, dated 1971, 53cm x 39cm. £20-£40
- 108**
Jon Pryke, study of a figure stood on the fore shore, signed oil on board, 60cm x 88cm. £250-£350
- 109**
Anthony King, study of Venice, signed watercolour, 36cm x 52cm. £40-£60. See illustration.
- 110**
Elizabeth Cozmian Leoward, Arts School courtyard, Norwich, mixed media study, 39cm x 22.5cm. £20-£30



Lot 81



Lot 94



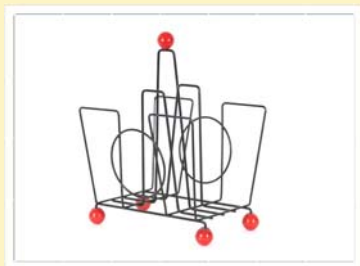
Lot 97



Lot 104



Lot 109



Lot 118



Lot 120



Lot 127



Lot 129



Lot 139

111
Wilfred Huggins, pencil signed etching, continental scene with figures embracing in exotic garden setting with peacock, 27cm x 44cm. £20-£40

112
Tatton Winter, pencil signed etching depicting a shepherd herding sheep along a country path, 30cm x 37cm. £20-£40

113
Wilfred Huggins, pencil signed coloured etching depicting figures minding sheep on a hillside, 44cm x 28cm. £40-£60

114
J. Elford Stone, watercolour study depicting sailing boats on a river, signed, 43cm x 33cm. £20-£40

115
J. Elford Stone, study of sailing boats at dusk, signed oil on canvas, 39cm x 49cm. £20-£40

116
A Richard Hornby teak sideboard, fitted double cupboards flanked by four drawers, 191cm wide. £200-£300

117
An Arts & Crafts design copper three handled bowl; a copper cauldron shaped bowl; and a three piece Arts & Crafts design copper tea set comprising side pouring teapot, sucrier and cream jug. £30-£50

118
A 1950/60's magazine rack. £10-£20 See illustration.

119
A Corona Special typewriter. £40-£60

120
An Art Nouveau painted metal crumb tray and wooden brush. £20-£30. See illustration.

121
A Hobo Art standup clown "Charlie", limited edition 4/250. £50-£80

122
A G-plan corner unit. £20-£40

123
A late 19th Century aesthetic movement style mahogany chiffonier, having raised mirror back above two short drawers, interior adjustable shelves enclosed by a pair of glazed bevelled paneled doors, two

drawers to the base, raised on square section supports, 97cm wide x 163cm high. £80-£120

124
A G-plan design teak television cabinet, 84cm wide. £20-£40

125
A large black and clear glass decorated fan shaped scent bottle, and stopper, 23cm high. £60-£80

126
A large clear and amber glass decorated fan shaped scent bottle, 23cm high. £60-£80

127
A Fulham pottery stone glazed jardiniere, having raised floral decoration, 26cm dia. x 21cm high. £40-£60. See illustration.

128
A bronzed double dog's head sculpture, 45cm. £80-£120

129
A fabric embroidered study of a cat, 43cm. £20-£40. See illustration.

130
Brenda Mitchell, "Summer scarecrow", pastel study, 34cm x 52cm. £20-£40

131
Pointillage fruit, watercolour, unsigned, 31cm x 42cm. £20-£40

132
Amber Rose, abstract study of leaves, pencil signed, 32cm x 27cm. £40-£60

133
H.G. Gandy, study of a Chinese junk at sea, signed watercolour, 32cm x 24cm. £40-£60

134
Jennifer Hannaford, pencil signed limited edition coloured etching, "Snape across the reeds" 2/50, 35cm x 51cm. £40-£60

135
Sarah Brownie, pencil signed etching, "Three oaks" 6/35, 30cm x 23cm. £40-£60

136
Verity Wookey, pencil signed artist's proof, "Bullock at the gate", 19.5cm x 25cm. £10-£20

137
Verity Wookey, artist's proof, "The river in flood", pencil signed, 16cm x 20cm. £10-£20

138
Verity Wookey, pencil signed limited edition etching, "Deben Wreck fading light" 7/30

139
Magrane, brightly coloured still life study, signed oil, 53cm x 67cm. £60-£100. See illustration.

140
Mat?, still life study, mixed media, indistinctly signed, 27cm x 21cm. £20-£30

141
J. Lubbock, study of fungi, palette knife on board, signed and dated 74, 29cm x 39cm. £40-£60

142
20th Century abstract study, "Harbour Lights", oil on board, 61cm x 61cm. £20-£30

143
A cold painted cast metal table lighter, in the form of a seated Bulldog, stamped underneath Austria, 15cm; and a machine age design heavy cast figure of a standing Bulldog, stamped Mack, design patent 87931, 14cm high, (2). £50-£80

144
A large green moulded glass vase, with stylised floral panels, 33cm high; a glass vase with blue ribbed swirling decoration, 28cm high; 9 various other vases and bowls. £40-£60

145
A Brannam type twin handled blue glazed vase; two Wimborne pottery vases and various other pottery vases and jardinières. £40-£60

146
Five various items of Bernard Rooke pottery; and an Upchurch baluster vase. £60-£80

147
Walter E. Spradbery, (1889-1969), "Distant Sark from Guernsey", signed watercolour, 32.5cm x 46cm. £60-£80

148
A large Broadstairs pottery bowl; two Chris Ashton pottery side pouring bowls; and five other pieces of Studio pottery. £40-£60

149
A Wedgwood Clarice Cliff collection Bon Jour pastel melon sugar shaker, boxed; and four Wedgwood Clarice Cliff centenary Red Tree pattern coasters, boxed. £40-£60

150
An Arts & Crafts design copper candle tray, with scrolled fish decoration. £20-£30

151
Capello, study of cottages and a country path, signed oil on canvas, 49cm x 60cm. £10-£20. See illustration.

152
An Art Deco alabaster and spelter lamp, in the form of a naked lady with outstretched arms, 48cm high overall. £80-£120

153
An Art Deco green painted Pixie Girl table lamp, with globular moulded glass shade, 35cm high. £150-£200

154
A large Art Deco plaster figure of Dianna the Huntress, with dog, 72cm. £10-£20. See illustration.

155
An Art Deco bronze figure of a diver, on marble plinth base, with coloured glass river effect panel, 41cm. £150-£200. See illustration.

156
An Art Deco style lamp, in the form of a girl balancing a globe on her feet, 43cm high. £50-£70

157
A small theatre spot light style table lamp, raised on a wooden base. £50-£80. See illustration.

158
A jewellery box, containing various dress rings and other costume jewellery. £40-£60

159
A pearl multi strand necklace; various jade pendants etc. £40-£60

160
A large white metal dress ring, set amber coloured stone; another set oval opalescent stone; and a 19th Century seal ring, (3). £30-£50. See illustration.

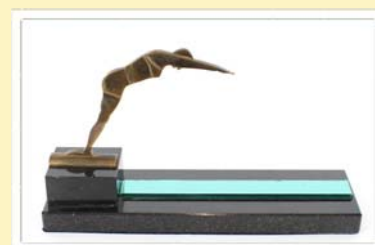
161
A pair of 9 carat gold hoop ear-rings; a pair of larger similar; another pair with white stone set barrel clasps; a stick pin with garnet and seed pearl decoration; and a fine link chain etc. £40-£60



Lot 151



Lot 154



Lot 155



Lot 157



Lot 160



Lot 176



Lot 193



Lot 202



Lot 203



Lot 206

162

A 14 carat gold filigree decorated dress ring; a yellow metal signet ring; a pair of pendant ear-rings set seed pearl drops; two yellow metal bangles; a pair of hoop ear-rings etc. £40-£60

163

A white metal and coral decorated dress ring. £20-£30

164

A white metal oval pendant, decorated with Leda and the swan. £20-£30

165

A white metal triangular pendant set amber coloured stone. £10-£20

166

A white metal Art Nouveau pendant. £10-£20

167

A pair of white metal and amethyst coloured shell decorated ear-rings. £10-£20

168

A white metal cameo ring. £15-£20

169

A white metal and pink stone heart shaped pendant . £15-£20

170

A white metal and ruby coloured dress ring. £15-£20

171

A white metal ring, inset with a miniature of a young girl. £15-£20

172

A white metal and opal coloured dress ring, with pierced decoration. £15-£20

173

A white metal and ruby coloured cluster ring. £15-£20

174

A white metal and agate set bracelet. £15-£20

175

A "necessaire d'urgence", containing 8 glass scent phials with interior label "Laboratoires Fraisse, Paris". £10-£20

176

A silver and tortoise shell strutt clock. £40-£60. See illustration.

177

A Dunhill lighter/paper knife; and a Clifton leather twin cigar case. £30-£50

178

A white metal and amber coloured bracelet. £20-£30

179

A white metal and turquoise set bracelet. £20-£30

180

A three piece Goldstone coloured ear-ring and pendant set. £15-£20

181

A white metal and jade ear-ring and pendant set. £15-£20

182

A white metal and black stone double heart shaped bangle. £25-£35

183

A 9 carat gold necklace, set with turquoise stone £200-£300

184

A yellow metal diamond set bar brooch. £60-£80

185

Two white metal and turquoise coloured pendants. £20-£30

186

A Les Must de Cartier silver gilt cased wrist watch, marked to the reverse "Cartier Paris 525 Argent" numbered 3 072369, in Cartier box with paperwork. £100-£200

187

An American sterling cigarette case, stamped Sterling 14k, with yellow metal banded and engine turned decoration. £80-£120

188

A silver cigarette case, with enamel decoration of butterfly dancing girls, dated 1927. £80-£120

189

A tray of costume jewellery. £20-£30

190

A tray containing various bead necklaces, costume jewellery etc. £30-£50

191

Various costume brooches etc. £20-£40

192

A tray containing various dress pendants, necklaces etc. £20-£40

193

A Tudric spot hammered dish, of shaped form, no: 01497, 30cm. £40-£60. See illustration.

194

A silver engine turned decorated cigarette box, 11cm long. £40-£60

195

Three boxed sets of cutlery.

£10-£20

196

A pair of copper Art Nouveau handles. £10-£20

197

A 1920's runner bean slicer. £10-£20

198

A large quantity of various costume jewellery. £20-£40

199

A large quantity of various costume jewellery; a shoe shaped ring stand; various trinket boxes etc. £20-£40

200

A pair of cased black and clear glass fan shaped scent bottles. £20-£40

201

A plated Art Deco design cocktail shaker; and an etched glass and plate mounted similar. £10-£20

202

A Jaz Bakelite cased mantel clock, with alarm movement. £70-£100. See illustration.

203

An Arts & Crafts design pewter kettle, having angular handle, the body and lid inset with enamel decorated panels, 21cm high. £20-£40. See illustration.

204

A pair of Danish brass candlesticks, stamped Torrenorskov & Co. £30-£50

205

An Art Deco onyx cased mantel timepiece, the oval dial inscribed B.E.P. £40-£60

206

A Japy Bakelite cased mantel clock. £70-£100. See illustration.

207

An amethyst glass and gold splash decorated bowl, of crimped form. £10-£20

208

An Art Deco cameo glass table lamp base, decorated with figures in a gondola on a lake with trailing flowers, indistinctly signed, 23cm high. £20-£40. See illustration.

209

A Studio pottery brown glazed flask shaped vase, possibly St. Ives mark for Bernard Leach, 22cm high. £30-£50

210

Donald and Jacqueline Mills, a flaring conical bowl, marked to base DGM, 14cm dia. Overall. £10-£20 See illustration

211

A small rock crystal skull. £40-£60

212

A Mdina glass baluster vase, 12.5cm high See Illustration

213

A Murano red glass figure of an elephant, with trunk raised aloft, 18cm high. £10-£20

214

A silver Art Nouveau design photograph frame. £50-£80

215

A small silver Art Nouveau design photograph frame. £40-£60

216

A pair of Copeland late Spode Queen Victoria Diamond Jubilee commemorative mugs; a Doulton stoneware Queen Victoria Diamond Jubilee commemorative beaker; and a pair of Diamond Jubilee commemorative etched ale glasses. £20-£30

217

A pair of Spelter Art Nouveau style posy holders. £20-£30

218

Five various coloured glass paperweights; and a coloured glass posy vase. £20-£40

219

A set of five graduated Beswick flying ducks £80-£120

220

A Beswick duck, 23cm high; another similar, 13cm high; and a smaller example, (neck restored). £20-£40

221

A blue glass and electro plate mounted double duck shaped claret jug. £150-£200

222

A green glass and electro plate mounted claret jug, in the form of a parrot. £150-£250. See illustration.

223

A clear and black glass decorated fan shaped scent bottle. £20-£40

224

A yellow tinted glass and electroplate mounted claret jug, in the form of a bird of prey. £150-£200



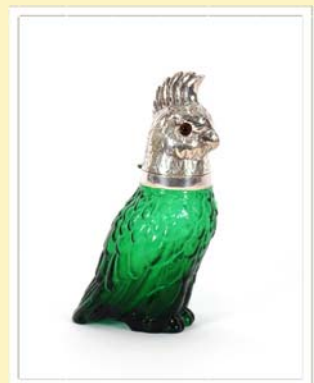
Lot 208



Lot 210



Lot 212



Lot 222



Lot 227



Lot 231

225

Wilfred Norton, a pottery bust of a young girl, 17cm high. £20-£30

226

Two Laura Knight George VI coronation commemorative mugs. £20-£40

227

A Clarice Cliff "Gay Day" pattern preserve pot. £20-£40. See illustration.

228

A porcelain model of a spaniel carrying a duck in its mouth, (minor chip). £20-£40

229

An Art Deco design blue tinted glass plate, having continuous band of bird decoration and central motif of two birds seated on a branch. £20-£30

230

Francis Winter, pencil signed limited edition etching, of a wren seated on a branch, 50cm x 75cm. £10-£20

231

Three Clarice Cliff plates. £120-£160. See illustration.

232

A 19th Century glass with etched decoration of a fishing boat, 16cm high; and an amber glass vase with etched decoration of a sailing ship, 18cm high. £20-£40

233

A Geographia 8 inch terrestrial globe, on stand. £20-£40

234

A Christopher Dresser style copper and brass kettle, with black wood handle; a Steinicken & Lohr Munchen triform dish; a Keswick School of Industrial Arts copper beaker; a rectangular spot hammered copper pin tray; and an Art Nouveau crumb scoop and brush £20-£40

235

A silver cased travelling timepiece, with a white enamel dial, green Arabic numerals, contained within a fitted square hinged case, by Neal & Sons Ltd., Birmingham 1933, 9cm. £150-£250. See illustration.

236

A pair of Stag bedside chests, 44cm wide. £40-£60

237

A Stag chest of four long graduated drawers, 77cm wide. £40-£60

238

A teak effect narrow bookcase, 44cm wide x 180cm high. £20-£40

239

A 1920's oak and leaded glass bookcase, the adjustable shelves above a cupboard base, raised on platform plinth 99cm wide. £40-£60

240

A Heal & Sons oak dresser, having raised back above two drawers and cupboards below on bracket feet, 137cm wide. £400-£600

241

A plated 5 o'clock tea kettle on spirit heater stand; and a plated circular muffin dish retailed by Hamilton & Inches, Edinburgh. £40-£60

242

An Art Deco marble clock garniture. £50-£60

243

A G-plan design teak hi-fi unit, 49cm wide. £20-£40

244

A Yoxford pottery blue glazed vase, of baluster form with flared neck, impress mark B.D. to the base, 50cm high. £20-£40. See illustration.

245

A pair of glass square section table lamps, raised on metaware plinths, 56cm high. £60-£80

246

An Art Deco Bakelite desk lamp/tidy. £30-£50

247

A G-plan design teak three drawer chest, raised on sleigh supports, 81cm wide. £40-£60

248

A 1960's steel kitchen cabinet, fitted two short drawers with cupboards under, 107cm wide. £40-£60

249

A pair of Art Deco design marble table lamps, raised on stepped bases, 42cm high. £40-£60

250

A 1930's moulded glass decanter, registration no. 808435; and a 1960's Sylvac diamond shaped flower vase. £20-£30

251

Tatton Winter, a pair of pencil signed coloured engravings depicting rural screens in decorative green and cream gilt heightened frames. £40-£60



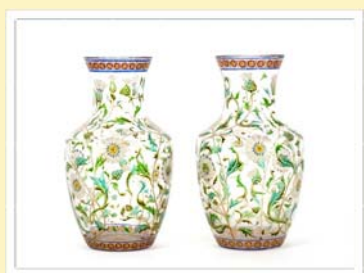
Lot 235



Lot 244



Lot 253



Lot 261

252

An Art Deco phenolic and chrome table lamp, with white opaque glass shade. £150-£200

253

A modernist ceramic clock garniture, stamped M.W. Wasmule. £30-£50. See illustration.

254

An Art Deco polychromed figure of Eve, raised on a square plinth, 30cm high. £100-£150

255

An Art Deco marble clock garniture. £50-£80

256

A G-plan dresser, raised upper section enclosed by three doors above a recess, three drawers below flanking cupboards and raised on square section supports, 160cm wide x 147cm high. £40-£60

257

A G-plan design dresser, having glazed upper section with open shelves and cupboard below, two drawers and cupboards to the base, 130cm wide x 175cm high. £40-£60

258

Five graduated enamel storage jars. £20-£40

259

A decorative silvered scull. £10-£20

260

A pair of leather storage boxes. £60-£80

261

A pair of late 19th Century baluster glass vases, with enamelled decoration of thistles and flower heads, 29cm high. £100-£150. See back cover.

262

A Carltonware baluster vase, having lustre decoration on a blue ground, 20cm high. £40-£60

263

After Lorenzl, a cold painted spelter figure of a skater raised on a diamond shaped marble base, 22cm high. £180-£220. See illustration.

264

A pair of unsigned Lorenzl cold painted spelter figures of dancing girls, 23cm high. £180-£220. See illustration.

265

An Art Deco spelter figure of a Belgian fireman, raised on an oblong marble base, 25cm high. £40-£60

266

A WMF plated bon-bon dish, of oval form with glass liner. £20-£30

267

A 1950's circular pink enamelled decorated struck clock. £20-£40

268

An Art Deco green enamel circular 8 day clock. £20-£40

269

A table cigarette lighter, in the form of an early aeroplane, 18cm long. £30-£40

270

An Art Deco cold painted bronze ball girl, raised on a spiked base and circular marble plinth, 33cm high overall. £300-£400. See illustration.

271

Orla May, brown and red abstract painting, 15cm square. £20-£40

272

A novelty Bats Motel advertising sign. £10-£20

273

A wrought iron fire screen, decorated with a central Heraldic crest, 69cm x 49cm overall. £30-£50

274

A nest of three G-plan style bowed coffee tables, 61cm wide overall. £20-£40

275

A nest of G-plan design coffee tables, 54cm wide overall. £20-£40

276

A Marilyn neon lit radio. £50-£70

277

A large Murano glass Onesto vase, 39cm high. £40-£60. See illustration.

278

A pair of blue glass decanters, with pierced vine decoration to the necks and stoppers. £70-£100

279

A cast metal door stop in the form of a Dutch girl, raised on a stepped base, 53cm high. £20-£30

280

A large Art Deco pink tinted glass wall mirror, with decoration of an antelope, 107cm x 89cm. £40-£60

281

An Art Deco style wall mirror, 64cm. £30-£50

282

Six large Murano glass fish. £60-£80



Lot 263



Lot 264



Lot 270



Lot 277



Lot 284



Lot 288

283

An Art Deco Pierrot clock, 46cm long AF. £30-£60

284

A 1930's green ceramic pheasant study, signed C.H.Lemanceau - base restored, 47cm. £10-£20. See illustration.



Lot 295

285

A collection of Hillstonia Grotto china, comprising four jugs, two bowls and a pair of wall pockets. £30-£60

286

A pair of 1960's glass and chrome light shades. £20-£30

287

A large square panelled Art Deco design mirror, 75cm x 120cm. £80-£120

288

An Art Deco spelter figure group, depicting a seated woman with ivory hands and face and an attendant Amhurst pheasant, raised on an oval marble plinth, 58cm long. £40-£60. See illustration.

289

A 1950's red glass baluster vase, 33cm high. £10-£20

290

An Art Nouveau design figure of a seated semi-naked dancing girl, 41cm high - chip to base. £20-£40

291

An oxidised Copper Veritas oil lamp; a spot hammered pewter teapot; and a pewter jug. £10-£20

292

A silvered model of a scull. £20-£40

293

A vintage signed photograph of Tyrone Power, contained in a leather easel frame. £40-£60

294

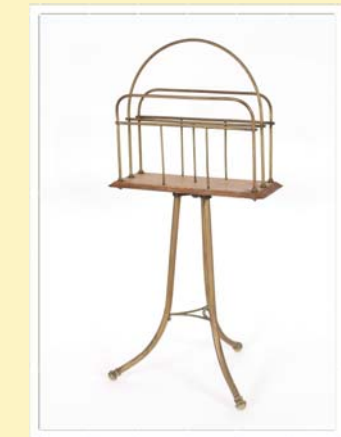
An Art Deco design Arthur Wood butter dish and cover; a pair of Maling ware tea bowls; and a Staffordshire fruit decorated posy vase. £10-£20

295

An Edwardian ornate brass coal helmet, with integral shovel. £30-£50 See illustration

296

An Edwardian Arts & Crafts design mahogany overmantel mirror, 89cm wide. £40-£60



Lot 297



Lot 305



Lot 318

297

An Edwardian oak and brass mounted revolving music stand. £10-£20 See illustration

298

An oak Art Deco long case clock, having three train movement. £200-£300

299

A large and decorative circular convex wall mirror, 139cm dia. £250-£350

300

An Art Deco walnut shaped side cabinet, fitted drawers and cupboard, 58cm wide. £20-£40

301

A chrome and glass Art Deco two tier tea trolley. £50-£80

302

A large Art Deco design Venetian glass wall mirror, 149cm x 111cm. £100-£150

303

Reginald Green, a pair of pencil signed coloured etching depicting loch scenes; E H Barlow, three pencil signed coloured etching depicting fishing vessels, (5). £40-£60

304

A Myatt Son & Co. Art Deco water jug; and a book "The Hulton Getty Picture Collection" depicting photographs from the 1930's. £10-£20

305

A Clarice Cliff "Crocus" patterned milk jug. £40-£60 See illustration

306

A Victorian Vaseline glass oil lamp shade. £60-£80

307

A good quality teak oval coffee table, raised on twin pillar supports, 123cm wide. £20-£40

308

A 1960's Formica topped two tier coffee table, 112cm. £20-£40

309

A G-plan style oblong coffee table, with tiled insert, 130cm long. £10-£20

310

A 1970's design polished wood two tier coffee table, 106cm long. £10-£20

311

A G-plan design two drawer low chest, raised on tapering square section out swept supports, 76cm wide. £30-£50

312

A pair of continental cream decorated four drawer bedside chests, of circular form. £20-£40

313

A silver pine Studio pottery bowl; a Studio pottery terracotta vase of cushion shape; and a late Victorian blue glazed jardinière AF. £10-£20

314

A Meredew dressing table, having triple mirror back four drawers under and raised on sleigh supports, 153cm. £40-£60

315

A G-plan design sideboard, fitted six drawers, raised on square section supports, 168cm. £10-£20

316

A set of nine Garrison enamel storage tins. £40-£60

317

A G-plan design sideboard of curved form, fitted three blind frieze drawers, and three deep drawers under, raised on square section tapering supports, 153cm. £20-£40

318

A Bernard Rooke, square section vase with raised stylised decoration, 34cm high; and a Bernard Rooke barrel shaped jardinière 16cm dia. x 21cm high. £20-£40. See illustration.

319

An early 20th Century glazed terracotta figure of a seated girl, AF 49cm high. £20-£40. See illustration.

320

A G-plan design curved sideboard, fitted two central drawers flanked by cupboards, raised on rounded tapering supports, 133cm wide. £20-£30

321

A Scandinavian design green glazed vase; and a Welsh pottery vase AF (2). £10-£20

322

A Tudric Liberty pewter four piece tea set, numbered 01535, on tray numbered 025. £30-£50. See illustration.

323

A large Benard Rooke pottery jardinière, 29cm dia. in extremes, 23cm high. £20-£40. See illustration.

324

A Younger Volnay pull out extending dining table, raised on tapering square

section supports, 211cm x 81cm extended. £50-£60

325

A set of six Younger Volnay dining chairs, having rail backs, upholstered seats raised on square section tapering supports, four standards, two elbows. £50-£60

326

A Younger Volnay sideboard, fitted four central drawers flanked by deep cupboards, and raised on square section supports, 168cm. £100-£200

327

A retro style mirrored radio. £15-£25

328

A vintage Angle Poise lamp. £40-£60

329

A Younger bureau, the fall front opening to reveal a fitted interior with three graduated drawers below, raised on square section tapering supports, 77cm wide. £40-£60

330

A Stag dressing table, fitted four long drawers flanked by four short drawers and an adjustable mirror, 117cm. £30-£50

331

A G-plan design teak rise and fall coffee / dining table, 122cm. £20-£40

332

A Martin & Hall plated tureen, in the Christopher Dresser style; and a pair of plated dwarf candlesticks. £30-£50

333

A Bernard Rooke pottery vase, of oval form decorated butterflies and flowers, 19cm high. £20-£40

334

An oak octagonal two tier occasional table, in the Arts & Crafts style. £30-£50

335

An Ercol two tier coffee table, with integral carrying handles to the top, 71cm long. £30-£50. See illustration.

336

An unusual teak storage unit, with integral carrying handles, 91cm wide. £40-£60

337

A G-plan design three drawer chest, raised on rounded tapering supports, 68cm wide. £20-£40



Lot 318



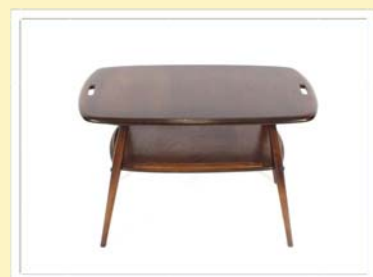
Lot 319



Lot 322



Lot 323



Lot 335



Lot 344



Lot 347



Lot 365



Lot 370

338

A copper and brass Arts & Crafts design tea kettle on stand; and a decorative copper circular tray. £20-£40

339

A 1970's onyx telephone, on stand. £20-£40

340

A G-plan type low bookcase, with glass sliding doors and open end shelves, 130cm wide. £20-£40

341

A pair of Heals style suede and leather tubular framed tub chairs. £50-£60

342

A set of four oak Art Nouveau dining chairs, with upholstered seats raised on square section front supports. £30-£50

343

A set of five G-plan dining chairs. £50-£60

344

A set of four Tromborg Mobelfabrik teak dining chairs. £200-£300. See illustration.

345

A modern design light wood chrome and leather upholstered swivel office chair. £40-£60

346

A Studio style chrome standard lamp, on tripod base. £30-£50

347

A chrome framed circa. 1970's swivel office chair. £20-£30. See illustration.

348

A Tiffany design floor lamp. £100-£150

349

A Tiffany design floor lamp. £100-£150

350

A G-plan design low cupboard, raised on rounded tapering supports, 82cm. £20-£40

351

A Studio style spot light lamp, on folding tripod base. £40-£60

352

A set of five light oak Art Nouveau design dining chairs, upholstered stuff over seats raised on cabriole front supports. £30-£50

353

A large brown upholstered settee, raised on bun front supports. £100-£150

354

A matching two seater armchair. £100-£150

355

A matching large upholstered stool, raised on bun feet. £60-£100

356

A modern faux rosewood and plate glass two tier coffee table, 100cm long x 60cm deep. £40-£60

357

A leather cased lantern, with loop handle, 50cm high. £40-£60. See illustration.

358

A G-plan design chest, fitted four long graduated drawers on tapering octagonal section supports, 85cm. £30-£50

359

A pair of Art Deco lampshades. £20-£40

360

A large electroplated punch bowl, with stag head handles. £40-£60

361

A large Polish glass baluster vase, minor chip to rim, 56cm high. £20-£30

362

A plated cocktail shaker, in the form of a lighthouse. £80-£120

363

A heavy light oak extending dining table, raised on square section supports, 150cm wide x 85cm deep. £100-£150

364

A set of four heavy oak ladder back dining chairs, with leather upholstered seats. £60-£100

365

A chrome finish three drawer chest. £80-£120. See illustration.

366

A mirrored glass tray. £30-£50

367

A modern light wood three drawer bedside chest, raised on square section supports, 45cm. £30-£50

368

A Stag writing desk, by John and Sylvia Reid fitted three drawers, 89cm wide. £40-£60

369

A Tiffany design table lamp. £80-£120

370

An unusual modernist stylised nude figure, raised on a black plinth. 83cm high. £30-£50 See illustration

371

A plated bird cage decanter set. £300-£400

372

A light wood open fronted long bookcase, fitted with a single drawer, raised on ebonised and brassed tapering supports, 99cm long. £20-£30

373

A Danish rosewood dining suite by Mobelfabrik, comprising draw leaf extending dining table, 87cm x 242cm fully extended; a sideboard fitted interior shelves and sliding cutlery trays enclosed by three doors, with label for Skovby Mobelfabrik, 153cm long; a set of six dining chairs with arch backs and central splats, with label for Uldum Mobelfabrik; and a pair of similar elbow chairs stamped "Made In Denmark". £500-£800. See illustration.

374

A nest of three G-plan occasional tables, comprising oblong larger table, and two small square tables, 98cm long overall. £40-£60

375

Two G-plan occasional tables, and a larger similar with tile inset top. £30-£50

376

An Arkana table and four chairs. £100-£150

377

A pair of Lily Bollinger type oval Champagne baths. £60-£100

378

A large bronze "Spirit of Ecstasy" figure, raised on a stepped circular marble base. £400-£600. See illustration.

379

A G-plan design dressing stool. £20-£40

380

A G-plan circular coffee table with plate glass top, 84cm dia. £40-£60

381

An oak circular occasional table, having copper tray insert, 70cm dia. £40-£60

382

Two Michael Arnoult Peg Lev 1968 leather and Brazilian rosewood armchairs, (with Cites certificate). £700-£1,000. See illustration.

383

A large oval plate glass and marble column coffee table, 129cm. £200-£300

384

A pair of silvered wings. £50-£80

385

An early 20th Century carved oak log box, the hinged sloping lid profusely decorated leaves and fruit, raised on ball feet, 47cm wide x 48cm high. £30-£50

386

A G-plan type record cabinet, enclosed by a pair of doors. £10-£20

387

A Danish open fronted bookcase of tall proportions, 75cm wide x 183cm high. £40-£60

388

An elm refectory dining table and a pair of matching benches, raised on shaped end supports united by cross stretchers and pegs. £100-£200

389

A leather Champagne hamper. £150-£250

390

A pair of Lily Bollinger style champagne coolers. £120-£160

391

An early 20th Century mahogany pedestal desk, fitted three frieze drawers above cupboard and pedestal drawers, raised on square section supports united by undertiers, 120cm AF. £40-£60

392

A bronze Art Deco style study of a female skater. £80-£120

393

A gramophone with chrome horn. £40-£60

394

A bronze study of a semi-naked girl, seated on a black marble plinth £80-£120. See illustration.

395

A plated three piece tea set with beaded decoration, and a pair of sugar tongs. £20-£30



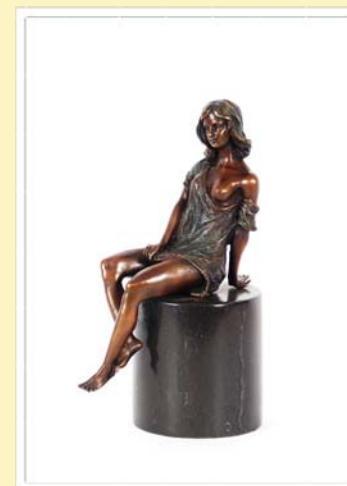
Lot 373



Lot 378



Lot 382



Lot 394



Lot 402

396

A large terracotta pottery vase, with incised floral decoration, 35cm.

£20-£40

397

A spot hammered four piece pewter teaset.

£20-£40

398

A G-plan style light wood chest fitted three long drawers, 91cm wide.

£20-£40

399

A vintage Angle Poise lamp.

£20-£40

400

Attributed to Dr Christopher Dresser, a Watcombe pottery and blue enamelled decorated terracotta teapot, stamped with makers; together with a Victorian blue glass jug in the manner of Dr Christopher Dresser

£80-£120

401

A pair of plated cocktail shakers in the form of penguins.

£30-£50

402

A plated bottle stand in the form of a gun carriage.

£20-£30. See illustration.

403

A G-plan design teak writing cabinet, the upper section fitted shelves and cupboard, pull out slide and three drawers below raised on rounded tapering supports, 84cm wide.

£30-£50

404

A leather jewellery box.

£50-£60

405

A wrought metal standard lamp AF.

£10-£20

406

A G-plan design teak bureau, fitted three long drawers and raised in square section supports 81cm wide.

£20-£30

407

An oak cased Art Deco mantel clock, of Odeonesque shape.

£10-£20.

See illustration.

408

An Art Deco bird cage, on stand.

£20-£30

409

A G-plan design dressing table fitted six drawers, and raised on square section tapering supports, 163cm.

£20-£40

410

A vintage Angle Poise style lamp.

£20-£40

411

Four graduated enamelled storage jars.

£20-£40

412

A vintage Angle Poise style lamp.

£20-£40

413

A light oak Art Deco circular two tier occasional table, 60cm dia.

£30-£50.

See illustration.

414

A chrome and glass table lamp.

£40-£60

415

A small teak two tier occasional table, 58cm wide.

£20-£40

416

A pair of G-plan design light wood bedside cupboards, 36cm.

£20-£30

417

Two various Sylvac vases, and a Sylvac jug.

£15-£25

418

A G-plan design low chest, fitted two drawers, 76cm wide.

£20-£40

419

A G-plan type oblong two tier coffee table, 122cm.

£20-£40

420

A marble oblong coffee table, 120cm.

£10-£20

421

A G-plan design chest of four long drawers, raised on square section tapering supports, 82cm wide.

£10-£20

422

A 1960's novelty Pink Panther table lamp.

£20-£30

423

A Poole pottery shell.

£10-£20

424

A G-plan design cheval mirror.

£20-£40

425

A G-plan design low bookcase, fitted open adjustable end shelves and central double cupboard, 130cm.

£20-£40

426

Bang & Olufsen Beo Centre 7000, with remote and pair of speakers.

£60-£80

427

A G-plan design oblong coffee table, with magazine rack undertier, 111cm.

£10-£20



Lot 407



Lot 413



Lot 448



Lot 450

428

A colonial pith helmet contained in tin hat box, inscribed A J Cordy.

£20-£30

429

A Pye vintage radio, 50cm wide x 38cm high. £30-£50

430

A Meredew chest of four long drawers, raised on rounded supports, 76cm wide. £30-£50

431

A Staples Ladderax unit fitted drawers, glazed shelves and gentleman's wardrobe, 184cm wide x 201cm high.

£100-£200

432

A glass and plated cocktail shaker, of panelled form, 26cm high. £25-£35

433

Matta Poro, limited edition etching, "The Boy", pencil signed to mount

1998, 1/10 image, 15cm x 20cm

£20-£30

434

L.R., 20th Century continental harbour scene depicting figures in a fishing boat, intalated oil on board, 26cm x 37cm. £20-£30

435

A Citizen Independent watch with case. £20-£30

436

An Infantry Gent's quartz wrist watch. £20-£30

437

A Citizen Eco Drive chronograph gent's watch, in fitted case. £30-£40

438

An Elysee gent's watch in fitted case. £20-£30

439

A quantity of various gent's cuff-links; a money clip etc. £10-£20

440

An gents Ingersol Duo wrist watch, in fitted case. £20-£40

441

A Ballantine gent's wrist watch. £20-£40

442

An Original Grain gent's wrist watch, in fitted case. £20-£40

443

Various dress cuff-links. £20-£30

444

Three pairs of novelty cuff-links.

£20-£30

445

A quantity of various gent's dress rings. £20-£40

446

A Lindberg & Goldman gent's automatic wrist watch, in fitted box.

£30-£40

447

A Concord Mach II gents Limited Edition wrist watch, in fitted case.

£20-£40

448

A Lukado gent's wrist watch, in fitted case. £30-£40 See illustration

449

A Lukado gent's wrist watch, in fitted case. £30-£40

450

An Accurist Greenwich commemorative gent's wrist watch, in fitted case. £20-£40. See illustration.

451

An Aomel watch in fitted case. £30-£40. See illustration.

452

A Haas & Cie gent's watch, in fitted case. £30-£40

453

A Heuer Autavia watch. £200-£300. See illustration.

454

A 9ct gold ID bracelet, approx. 25gms. £150-£200

455

A 9ct gold ring set with a green stone, 6gms; and a 9ct gold and chip diamond gent's ring, 8gms. £80-£120

456

A Rolex Oyster perpetual date, model 15000, serial no. R263943, circa. 1988, engraved to the reverse E. John Sharman, no papers. £1,500-£2,000. See illustration.

457

A Rolex Submariner Oyster perpetual date, 16610, caliber 3135, L938511, circa. 1989, no box or papers, needs service. £ 3,000 - £4,000.

See front cover.

458

A 1960's Casa Pupo rug. £20-£30

459

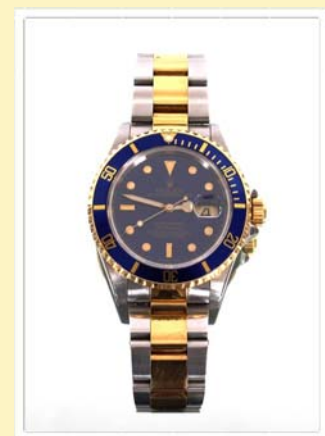
An Art Nouveau inlaid panel, 24cm x 132cm. £70-£100



Lot 451



Lot 453



Lot 457



Lot 456



Lot 464



Lot 465



Lot 467

460
A Geneve yellow metal cased wrist watch, marked 14k, with twin tone bracelet, clasp marked 14k, approx. 61gms total weight. £800-£1,200

461
A yellow metal five stone diamond ring, the centre stone approx. 3/4 of a carat, flanked by two baguette cut diamonds flanked by further smaller diamonds, marked 750, approx. 5gms total weight. £800-£1,200

462
A three stone ring set central ruby, flanked by diamonds, approx. total diamond weight 0.42 carat, marked 750, approx. 6gms total weight. £400-£500

463
A white metal black and white diamond set ring, stamped 585; and a pair of matching ear-rings also stamped 585. £500-£800

464
A yellow metal Tanzanite and Diamond dress ring, set four oval cut Tanzanites surrounded by Diamonds, stamped 750, approx. total weight 10gms. £800-£1,200 See illustration

465
A modern white metal square diamond cluster ring, set centre stone, approx. 1 carat, surrounded by 12 smaller stones, totaling approx. 1.2 carat, stamped 750, overall weight approx. 9gms. £2,500-£3,000 See illustration

466
A pair of yellow and white metal ruby and diamond set ear-rings, stamped 750; and a yellow and white metal ruby and diamond cross-over ring, approx. total weight 11gms. £600-£800

467
A Rolls Royce radiator grill decanter, by Ruddspeed Ltd., 19.5cm high. £80-£120 See illustration

468
An unusual shape oversize teak Danish coffee table, with makers label verso, label reads "Foro Stolefabrik" £40 - £60

Clarke and Simpson are pleased to offer a packaging and shipping service worldwide through "the-saleroom.com Delivery Service". The professional team will pack and ship items from very small non-breakables such as jewellery and coins though to larger and more fragile items such as paintings and works of art. Shipping and insurance is at the buyer's expense. Shipping payment must be made to "the-saleroom.com Delivery Service" prior to departure and excludes local duties and taxes. Please note that Clarke and Simpson do not pack or ship items - all requests are sent to our specialist handlers at "the-saleroom.com Delivery Service"

the-saleroom.com
delivery service



Droite de Suite Royalty Charges

From 14th February 2006, all United Kingdom Art Market professionals (which includes auctioneers) are required to collect a royalty payment for all qualifying Works of Art. Under new legislation which came into effect on the 1st January 2012, this applies to living artists and those who have died in the last 70 years. This payment is calculated on qualifying Works of Art which are sold for a hammer price more than the UK sterling equivalent of €1,000 (the UK sterling equivalent will fluctuate in line with prevailing interest rates calculated by the Artist's Resale Right Service Hub, based on the European Central Bank reference rate published at 2.15pm on the day of the sale, and can be found on www.dacs.org.uk).

All items in this catalogue that are marked "✓" are potentially qualifying items, and the royalty charge will apply if the hammer price is more than UK sterling equivalent of €1,000. The royalty charge will be added to purchase invoices, and must be paid before items can be cleared. All royalty charges are paid to the design and Artists Copyright Society (DACS) by the auctioneers and no handling costs or additional fees with respect to these charges will be retained by the auctioneer.

Forthcoming Auctions

Rural Bygones
Saturday 16th September
Entries closed

Antique & Fine Art
Wednesday 4th October
Closing date for entries 8th September

Farm Machinery
Saturday 21st October
Closing date for entries 8th September

Art Deco, 20th Century Design & Retro
Monday 30th October
Closing date 6th October

Antique & Fine Art
Wednesday 6th December
Closing date for entries 10th November

TERMS AND CONDITIONS OF SALE

1. INTRODUCTION

The following defining terms are used in these conditions:-

“Auction”	Means any auction conducted by Clarke and Simpson Auctions Ltd. either at the premises owned by them or elsewhere (including any internet based auction);
“Auctioneer”	Means Clarke and Simpson Auctions Ltd. authorised auctioneer as appropriate;
“Bidder”	Means a bidder at an auction, including the bidders personally present at the venue and those bidding by telephone or over the internet or otherwise;
“Buyer”	Means the bidder whose bid was the last bid when the auctioneer concludes the bidding;
“Conditions”	Means these Terms and Conditions of Sale;
“Hammer Price”	Means the level of bidding reached (at or above any reserve) when the auctioneer brings the bidding to a close;
“Lot”	Means any property accepted by Clarke and Simpson Auctions Ltd. for offer at auction;

2. DESCRIPTION

No warranty is given or implied by the description in the catalogue. Each lot is sold in its condition at the time of sale with all faults, defects, imperfections and errors of description (if any). Whilst every endeavour has been made to describe the items adequately and properly, the purchaser shall deem to have inspected the lot at time of purchase. All catalogues and seller's and buyer's guides are for information only and do not form part of the contract.

3. STATUTORY REQUIREMENTS

Purchasers will be deemed to have satisfied themselves prior to purchasing regarding current legal requirements (e.g. Health & Safety at Work Act) and it is expressly brought to the bidders attention that equipment in the sale may not necessarily comply with such regulations. Any purchaser shall satisfy himself as to any statutory requirement for the use of any item and no liability shall rest with the vendors nor the Auctioneers.

4. THE AUCTION

All auctions are conducted at the absolute discretion of the auctioneer. The auctioneer shall conduct the auction with reasonable skill and care. The vendor reserves the right to sell subject to reserve price in respect of all lots. What constitutes a bid shall be at the absolute discretion of the auctioneer, acting with appropriate skill and care. The auctioneer shall have the right to refuse any bid in all cases but most notably when such a bid does not exceed the previous bid by at least 10% or such a proportion as the auctioneer shall in his absolute discretion direct. Where two or more bids at the same level are simultaneously received by the auctioneer, the auctioneer at his absolute discretion shall determine which bid to prefer. Subject to the foregoing where two or more bids are at the same level are simultaneously received by the auctioneer, the bid submitted in the room shall take preference over a bid submitted by telephone or internet at the same level. Any bid made or attempted by telephone or over the internet will only be deemed to have been made if received by the auctioneer.

The auctioneer reserves the right to withdraw, consolidate or divide any lot or lots or submit them in any order that they desire. The auctioneer has the right at his absolute discretion to refuse admission to his premises or attendance at (or participation in) any auction by any person. In the case of any dispute, the auctioneer shall be sole arbitrator in any matters arising during or out of the sale.

5. BIDDERS

All bidders will be required to register their particulars, bidders attending in person and those accompanying them may be required to provide photo ID and separate confirmation of address prior to viewing or taking any part of the sale and before entering any part of the premises to view. All bidders accept full liability for all bids submitted. Subject to the clause in this document headed “The Auction”, the highest bidder at the close of bidding shall be the buyer. Any dispute about a bid shall be settled at the auctioneer's absolute discretion. Bidders are all deemed to act as principal unless there is prior written acknowledgement by Clarke and Simpson Auctions Ltd. that a bidder is acting as an agent for a named principal. Bidders are strongly encouraged to attend the auction in person. The bidders shall be responsible for any decision to bid for a particular lot and shall be deemed to have carefully inspected and satisfied themselves as to condition, neither Clarke and Simpson Auctions Ltd., their employees or agents shall be responsible for any neglect or default in doing or failing to do so. Bidders will be given ample opportunity to view and inspect before the sale and prospective buyers must satisfy themselves as to all matters.

6. DEFAULT

Clarke and Simpson Auctions Ltd. shall act as agent of the vendor only. Any contracts for the sale of a lot shall be formed between the vendor and the buyer. As agent only Clarke and Simpson Auctions Ltd. shall not be responsible for default by the vendor or the buyer. If any lot is not paid for in full and taken away in accordance with these conditions, or there is any other breach of the conditions, then Clarke and Simpson Auctions Ltd. as agents for vendor shall at its absolute discretion and without prejudice to any other rights it may have, be entitled to exercise all or any of the following rights and remedies:-

- 6.1 to proceed against the buyer for any action of debt or damages for breach of contract;
- 6.2 to rescind the sale of that lot or lots sold by Clarke and Simpson Auctions Ltd. to a defaulting buyer;
- 6.3 to resell the lot (by auction or private treaty) in which case the defaulting buyer shall be responsible for any resulting deficiency in the total amount due (after crediting any part payment and adding any resale costs), any possible surplus so arising shall belong to the vendor;
- 6.4 to remove, store and insure the lot at the expense of the defaulting buyer and, in the case of storage, the location of such storage shall be at Clarke and Simpson Auctions Ltd. discretion;
- 6.5 to charge interest at a rate not exceeding 2% per month of the total amount due to the extent that it remains unpaid for more than two working days after the sale;
- 6.6 to retain that or any lot sold to the defaulting buyer until the buyer pays the total amount due;
- 6.7 to reject or ignore bids from the defaulting buyer at future auctions or to impose conditions before any such bids are accepted;
- 6.8 to apply any proceeds of sale for any other lots due or in the future becoming due to the defaulting buyer towards the settlement of the total remaining due.

7. INDEMNITIES, PENALTIES AND LIMITATIONS OF LIABILITY

Purchasers shall pay for any damage done by themselves or their agents during the removal of their lots. Attendance at the sale shall be at the risk of those attending in respect of both themselves and to their goods and vehicles.

Any indemnity under these conditions will extend to all actions, costs, expenses, claims and demand whatsoever suffered or incurred by the person entitled to the benefit of it and Clarke and Simpson Auctions Ltd. declare themselves to be a trustee of the benefit of such indemnity so far as it is expressed to be the benefit of its employees and agents.

Whilst Clarke and Simpson Auctions Ltd. endeavour to ensure that the information on their websites is correct, they do not warrant the accuracy and completeness of the material on their website. Also Clarke and Simpson Auctions Ltd. can make changes to the material on their website, or alter the products and prices described on it, at any time without notice. The material on the website may be out of date, Clarke and Simpson Auctions Ltd. make no commitment to update such material. All material on the websites is provided "as is" without any conditions, warranties or other terms at any time. Accordingly to the maximum extent permitted by law, the website is provided to all parties on the basis that Clarke and Simpson Auctions Ltd. exclude all representations, warranties, conditions and other terms which, but for this legal notice, might have effect in relation to the website.

8. ELECTRICAL SAFETY REGULATIONS

All electrical lots are subject to electrical safety regulations and fall within "the low voltage electrical equipment (safety) regulations 1989" – all items have been pat tested for safety but are not guaranteed in working order.

9. GENERAL MATTERS

Any notice to any buyer, vendor, bidder or viewer may be given by first class mail or email in which case it shall be deemed to have been received by the addressee forty eight hours after posting or sending. All notices to Clarke and Simpson Auctions Ltd. must be sent in writing and email is not acceptable. Any indulgence extended to any person by Clarke and Simpson Auctions Ltd., notwithstanding the strict terms of these conditions or the terms of consignment, shall affect the position at the relevant time only and the respect of that particular concession only; in all other respects these conditions shall be construed as having full force and effect. These conditions and any disputes or claims arising out of or in connection with them or their subject matter or formation (including non-contractual disputes or claims) are governed by and construed in accordance with the law of England. The parties irrevocably agree that the courts of England have exclusive jurisdiction to settle any dispute or claim that arises out of or in connection with the agreement or its subject matter or formation (including non-contractual disputes or claims).

10. PUBLICITY

Any catalogue and buyer and seller guides are provided for information only and do not form part of these conditions. The catalogue and the buyer and seller guides may contain additional terms and conditions. Clarke and Simpson Auctions Ltd. reserve the right to use any photographs, background information and research for publicity purposes both before and after the sale.

11. THE PURCHASE PRICE AND PAYMENT ARRANGEMENTS

There is a buyer's premium 15% plus VAT payable in respect of the sale. Any purchases made via "www.the-saleroom.com" shall be subject to an administration charge Administration charge of 3% plus VAT on the price. Preferred payment is cash, bankers draft or personal debit card. Such cards may only be used on a chip and pin basis with the owner present. No payment will be accepted by telephone. There will be an administration charge of 2.5% plus VAT for the use of credit cards or international debit cards.

Payment by cheque will only be acceptable subject to prior arrangement. No lot will be removed from the sale until any cheque has cleared unless a suitable bank reference addressed to the auctioneer is supplied. Payment is due on the day of the sale. Cash in excess of £12,000 (including V.A.T.) will not be accepted from any one person, this is not allowed due to Money Laundering Regulations 2007. All money received will be held in Clarke & Simpson Auctions Ltd. Clients Account at Barclays Bank plc, Framlingham, Suffolk. Account Number 33222276. Sort Code 20 98 07. Clarke and Simpson Auctions Ltd. have no responsibility for any lot between the close of bidding and payment being made and subsequent collection. Please note all policy regarding payment will be enforced and suitable arrangements must be made.

12. REMOVAL OF LOTS

The ownership of any lot purchased shall not pass to the relevant buyer until they have made payment in full to Clarke and Simpson Auctions Ltd. of the total amount due. The buyer shall at their own risk and expense take away any lot that they have purchased and paid for not later than two working days following the day of the auction after which they shall be responsible for any removal, storage and insurance charges. Any lots not collected within three months of the date of sale will be resold by the auctioneer and all proceeds will be retained by the auctioneer to cover storage costs.

13. NUMBER BIDDING

This will be used for speed and efficiency as in all our sales. All prospective purchasers must complete a registration form and register in the office on the viewday or morning of sale to receive a number for bidding. PLEASE ALSO NOTE THAT PHOTO ID AND ADDITIONAL CONFIRMATION OF ADDRESS WILL BE REQUIRED.

14. TELEPHONE BIDDING

We offer a telephone bidding service where possible but this service can never be guaranteed. No applications for telephone bids will be accepted after the end of the viewing prior to sale day for any sale. All potential telephone bidders must provide a valid landline number and email address for us to send terms and conditions prior to phone bidding. No phone bids will be accepted for any lot with a lower guide figure of less than £100.

All those who wish to bid by telephone will be expected to deposit the minimum guide for all lots that they wish to bid upon into the Clients Account for Clarke and Simpson Auctions Ltd before the sale starts. In the event of default, this sum shall be retained as part payment or any part may be retained to recover losses under clause 6 of these Terms and Conditions. We will expect payment of the balance owing by BACS on the following day, any payment not met within five working days will result in the forfeiture of the deposit paid.

15. ONLINE BIDDING

Clarke & Simpson Auctions Ltd., on occasions, offer an online bidding service via the-saleroom.com for bidders who cannot attend the sale. In completing the bidder registration on www.the-saleroom.com and providing your credit card details and, unless alternative arrangements are agreed with Clarke & Simpson Auctions Ltd.:

1. authorise Clarke & Simpson Auctions Ltd., if they so wish, to charge the credit card given in part or full payment, including all fees, for items successfully purchased in the auction via www.the-saleroom.com, and
2. confirm that you are authorised to provide these credit card details to Clarke & Simpson Auctions Ltd. through www.the-saleroom.com and agree that Clarke & Simpson Auctions Ltd. are entitled to ship the goods to the card holder name and card holder address provided in fulfilment of the sale.

Please note that any lots purchased via the-saleroom.com auction service will be subject to an additional 3% charge + VAT at the rate imposed on the hammer price



Clarke & Simpson Auction Centre, Campsea Ashe

Nr Wickham Market, Suffolk IP13 0PS

T: 01728 746323 E: auctions@clarkeandsimpson.co.uk

www.clarkeandsimpson.co.uk