

Clarke &
Simpson

Selected Antiques & Fine Art

Wednesday 6th December 2017 at 10 am



THE *Monday* *Sale*

Over 800 lots every week,
to include cottage antiques &
modern furniture, household
appliances & garden machinery.

Everything but the kitchen sink,
and occasionally even those!

Viewing prior, and
every Saturday 9am - 12noon

Refreshments available
from the Tea Room

Room 2 now live online
every week at the the-saleroom.com

Clarke &
Simpson



Clarke & Simpson Auction Centre

 CandSAuctions  @CandSAuctions

www.clarkeandsimpson.co.uk 01728 746323

Campsea Ashe,
Nr Wickham Market,
Suffolk IP13 0PS

Clarke & Simpson

Auctions

Selected Antiques & Fine Art

Wednesday 6th December 2017
at 10 am

Order of Sale:

Ceramics and Glass	1-81
Silver and Plate	87-167
Jewellery	168-214
Objects and Collectables	225-403
Pictures and Prints	414-508
Rugs and Furniture	518-637

Viewing:

Saturday 2nd December, 9 am - 12 noon
Monday 4th December, 2 pm - 8 pm
Tuesday 5th December, 10 am - 4 pm
Morning of Sale from 8.30 am



@CandSAuctions



CandSAuctions



Campsea Ashe
Nr. Wickham Market
Suffolk IP13 0PS
Tel: (01728) 746323 Fax: (01728) 748173
Email: auctions@clarkeandsimpson.co.uk
www.clarkeandsimpson.co.uk

Online bidding via:

the-saleroom.com

Special Notices for Purchasers

Certain lots are catalogued as (A.F.), damaged, restored, etc., however the absence of any such notice does not imply that the piece is free from defects, nor does it indicate that other defects are not also present. Mention is not made of breakage, cracks, chips or any damage which can be noted by careful inspection, therefore, intending purchasers MUST, in all cases, be responsible for determining the condition of lots themselves.

Special attention is drawn to the Conditions of Sale printed at the back of this catalogue.

Estimates

Presale estimates are intended only as a guide for intending purchasers, are given in good faith and subject to revision.

Condition Reports

Clarke and Simpson are unable to guarantee that requests for condition reports/images received after the close of the viewing on the day prior to auction, will be responded to. Clarke and Simpson are happy to give a Condition Report on the physical condition of goods, this will be provided on behalf of the seller on the understanding that Clarke and Simpson are not entering into a contract with you in respect of the Condition Report and accordingly does not assume responsibility to you in respect of it. All lots are available for your own inspection or for inspection by an expert instructed by you, therefore these Condition reports are for guidance only and all lots are sold "as found".

Commission Bids

The auctioneers will be pleased to execute bids for those unable to attend the sale. Lots will be purchased at the lowest bid the room bidding or any reserves will allow. In the event of identical bids, the earliest bid received will take precedence. There must always be a maximum limit indicated. Buy or unlimited bids will not be accepted. Commission bids placed by telephone are accepted at the client's risk. We urge our clients to place such commission bids before the start of the sale. All such commissions are left entirely at the buyer's risk.

Telephone Bids

Please refer to conditions of sale printed at the back of this catalogue.

Registration

All prospective buyers must register their name and address at our auction office and collect a numbered bidding card before the sale commences. If you are a successful purchaser please ensure that your number can be seen by the auctioneer and that it is your number that is called out at the fall of the hammer. Should there be any doubts as to the price or buyer, please draw the auctioneer's attention to it before the next lot is offered.

Value Added Tax

The symbol * after any lot number indicates that Value Added Tax is payable by the buyer on the "hammer price".

Auctioneers Margin Scheme

The Auctioneers Margin Scheme allows auctioneers to sell items without VAT on the hammer price. Under the margin scheme an amount equivalent to VAT at the current rate is added to the buyer's premium. This amount cannot be refunded. The VAT element will not be shown separately on the buyer's invoice.

Buyer's Premium

A buyer's premium of 18% plus VAT will be added to the hammer price of each lot.

Please note that any lots purchased via the-saleroom.com auction service will be subject to an additional 3% charge + VAT at the rate imposed on the hammer price.

Payment

Payment can be made during or immediately after the sale by the following methods:

Cash (up to a maximum of £12,000 including VAT in accordance with Money Laundering Regulations 2007).

Debit Cards

Credit Cards (not American Express) Please note there will be a surcharge of 2.5% plus VAT for the use of these cards. We will not release goods for a period of 72 hours unless the cardholder attends the saleroom in person and presents the cards used for the transaction with proof of ID.

Bank Transfer - Account Name: Clarke and Simpson Auctions Limited

Account Number: Account No: 83428591

Bank: Barclays Bank PLC

Sort Code: 20-98-07

We do not accept cheques unless by prior arrangement.

Packaging and shipping service.

All requests are sent to our specialist handlers at:

"the-saleroom.com Delivery Service" who can be contacted directly via delivery@atgmedia.com

Attribution of Pictures and Drawings

Every effort is made to ensure the accuracy of any statement as to authorship, attribution, origin, date, age, provenance and condition of any lot whether or not such statement forms part of the description of any such lot. Whether any such statement is made orally or in the catalogue it is an expression of opinion and not to be taken as being or implying any warranties or representations of facts by the auctioneers. Each buyer by making a bid for a lot acknowledges that he has satisfied himself fully as to the attribution and condition of the lot.

- a) The forename(s) (or full stops where not known) and surname of an artist indicates in our opinion a work by the artist.
- b) The initials of the forename(s) and the surname of the artist indicates in our opinion a work of the period of the artist which may be wholly or in part his work.
- c) The surname of the artist indicates in our opinion a work of the school or by one of the followers of the artist or in his style and of uncertain date.
- d) *Signed, Dated, Inscribed* indicates in our opinion work signed/dated/inscribed by the artist.
- e) *Bears signature* indicates in our opinion that this is not the signature of the artist.
- f) *Attributed to* may be used to denote a traditional attribution based on style.
- g) *Manner of* indicates in our opinion a work executed in the artist/craftsman's style but of a later date.
- h) *After* indicates in our opinion a copy (of any date) of work of an artist or craftsman.

The addition of a question mark after any of the cataloguing terms above indicates an element of doubt.

Ceramics and Glass

- 1**
Four hand painted Minton's cabinet plates, made for Tiffany & Co., New York, each plate decorated with fish, including trout, pike and whiting, signed J.E. Dean, 22.5cm dia. £120 - 180 †
- 2**
A pair of Sevres baluster vases, decorated with foliate trellis heightened in gilt, 19cm high, (lids missing) £60 - 100 †
- 3**
A 19th Century Masons ironstone baluster jug, having branch handle, 10cm high; another similar with serpent handle, 11cm high, (2) £20 - 40 †
- 4**
A Japanese Satsuma ware baluster vase, 10cm high; and an earthenware cup, possibly BC, (2) £40 - 60 †
- 5**
A continental porcelain hinged box, the lid decorated with an exotic pheasant, foliate spray decoration to the interior and apple green exterior, 9.5cm £30 - 50 †
- 6**
A pair of black glazed and gilt heightened pottery cats, stamped to base "Cheltenham 17.7.31 MGJ", 20cm high £20 - 40 †
- 7**
A 19th Century French porcelain patchbox, the lid painted with a scene of a couple in a country landscape, continuous floral decoration, stamped on the base, "Lille 1767" £30 - 50 †
- 8**
A Staffordshire enamel oval hinged patchbox, having floral spray decoration on a pale blue ground, 6cm £30 - 50 †
- 9**
A Royal Crown Derby Mansion House Dwarf, with hat, advertising "Auction of Elegant Household Furniture", 17cm high; and another, his hat advertising "Theatre Royal, Haymarket", 19cm high, (2) £300 - 400 †
- 10**
A Doulton Flambe ware study of a recumbent cat, 10cm long £30 - 50 †
- 11**
A Royal Crown Derby figure, of a seated cat, 14cm high £40 - 60 †
- 12**
A 19th Century commemorative mug, inscribed "Remember Man thou glass runs out like liquor all amain, Then pour most just thy life throughout, For't can't be filled again", 9.2cm £40 - 60 †
- 13**
A faience ware ewer, decorated with a continuous band of animals, having pinched neck and angular handle, 15cm high; and a continental pottery and flower decorated moneybox, 12cm high, (2) £40 - 60 †
- 14**
A stone glazed pottery model of a font, 13cm high x 12.5cm dia. £30 - 50 †
- 15**
A Sung dynasty celadon ground vase, of panelled baluster form, 22cm high £60 - 80 †
- 16**
Two Miles Mason cups and saucers, circa 1810, patterns 488 and 284 £40 - 60 †
- 17**
A collection of various Victorian nursery plates, (21) £60 - 100 †
- 18**
A Worcester "pine cone" pattern charger, with scallop border, crescent mark to base, 38cm dia. £60 - 80 †
- 19**
A Staffordshire flatback figure group, depicting young children with shells and fish, 19cm high; and another of a highland shepherdess, 28cm high, (2) £20 - 40 †
- 20**
A Shelley tea set, having floral spray decoration £40 - 60 †
- 21**
A Royal Crown Derby trio; a Royal Crown Derby coffee can and saucer; a Spode tea cup and saucer; a Shelley Royal commemorative mug; Foley china Royal commemorative tea cup and saucer; and various other teaware, (15) £30 - 50 †
- 22**
A pair of 19th Century Derby Imari pattern wall plates; and a pair of Japanese Imari pattern plates, (4) £20 - 40 †
- 23**
A Ridgways salt glazed baluster milk jug, AF; a relief moulded teapot decorated with branches and flowers; an oriental pottery teapot; a blue glass baluster vase with enamel decoration; an opaque glass posy basket; and a Mauchline ware pot and cover, decorated Exeter Cathedral and contents of buttons, (6) £40 - 60 †
- 24**
A King William IV and Queen Adelaide Royal commemorative baluster jug, 21cm high £40 - 60 †
- 25**
A Lowestoft Redgrave pattern tea bowl and saucer £60 - 100 †



Lot 5



Lot 7



Lot 8



Lot 9



Lot 37

26
A Lowestoft Thomas Curtis tea bowl; and a Worcester floral pattern tea bowl, (chip to rim), (2) £40 - 60 †

27
A 19th Century Chinese Canton travelling teapot, decorated with figures, insects, birds and foliage, 18cm high £40 - 60 †

28
A continental porcelain hinged trinket box, the lid decorated with a scene of seated ladies and all over floral decoration heightened in gilt, on a turquoise ground, 14cm £40 - 60 †

29
A pair of Staffordshire seated spaniels, having gilt collars and chains, 28cm high; and a matched pair, 26cm high, (some damage), (4) £40 - 60 †

30
A pair of Staffordshire spaniels, with pink lustre decoration, 24cm high; and three other examples, (some damage), (5) £30 - 60 †

31
An Oriental black slate plaque, profusely decorated with birds, foliage, dragons and buildings, having central removable panel decorated with a seated deity, (some damage); a Chinese blue and white crackle glazed brush pot, decorated with figures; a pair of Chinese blue and white jardinières, having prunus decoration; and a seated ivory figure, (5) £40 - 60 †

32
Four various Staffordshire spill holder ornaments, (some damage); and a Staffordshire figure group depicting a courting couple, (5) £30 - 60 †

33
A Staffordshire spill vase, in the form of milkmaid and cow; another depicting dancers; and a Staffordshire clock group, (3) £30 - 50 †

34
A Staffordshire figure group, depicting a seated maiden pouring drink for a traveller; and another figure group depicting seated couple in blue jackets, (2) £30 - 50 †

35
A Staffordshire flatback figure group, depicting a highland couple seated beneath an arbour, 37cm high; a smaller example; a Staffordshire spill vase in the form of a stag being hunted by a hound, with floral encrusted decoration and bird's nest; and a Staffordshire flatback spill holder in the form of a figure with cornucopia, (4), (some damage) £40 - 60 †

36
A pair of Staffordshire spaniel ornaments, with red and white patches and gilt collars; two similar, all numbered No.6; and a larger similar example, (5) £40 - 60 †

37
A pair of Art Deco blue and ruby glass decorated twin handled wine coolers, having silver mounts, hallmarked for London 1927, 20cm high, AF £40 - 60 †

38
Two Newhall teapots; and a sucrier, circa 1800's, patterns 956 and Trench Mortar, (3) £40 - 60 †

39
A fine quality Chinese porcelain iron red decorated baluster vase, painted with large figures of sages and boys, square iron red seal mark of Jiaqing to base, raised on a wooden stand, 38cm high £250 - 350 †

40
An 18th Century Chinese polychrome decorated ginger jar, 21cm high; and a Chinese pottery brown glazed squat shaped jar with embossed decoration, 15cm high, (2) £80 - 120 †

41
A continental blue glazed porcelain flagon, having raised floral and berry decoration, the lid with pewter thumb piece, surmounted by a seated figure, 42cm high £40 - 60 †

42
A cut glass circular powder bowl and cover; a cut glass pedestal salt and various other small cut glass dishes, (9) £30 - 50 †

43
A collection of 19th Century Nursery Rhyme plates and others, including "Long Live Caroline", (8), some damage £40 - 60 †

44
A Staffordshire spaniel ornament, 30cm high; a glazed pottery mug with blue banded decoration, 12cm high; a Dresden porcelain floral decorated coffee can and saucer; and a Victorian white glazed relief moulded jug, (4) £40 - 60 †

45
A continental porcelain figure of a seated pug dog; a continental porcelain figure group of two seated orientals; a posy vase with cat decoration; a preserve pot with cat decoration etc., (6) £40 - 60 †

46
A pair of Victorian Staffordshire flatback seated spaniel figures, with liver coloured patches, 31cm high £40 - 60 †

47
Four various late 19th Century continental porcelain figures; and four Staffordshire examples, (mostly AF), (8) £40 - 60 †

48
A pair of Staffordshire spill vases, in the form of seated spaniels; and another in the form of cow and calf standing in front of a tree stump, (3), (some restoration) £30 - 50 †



Lot 39



Lot 40



Lot 41

49
Eight various Victorian porcelain named mugs
£20 - 40 †

50
A pair of Staffordshire floral encrusted spill
holders, in the form of sheep, 13cm high; a pair of
Sampson porcelain figures of recumbent sheep;
two others; and a porcelain rabbit ornament, (AF),
(6) £40 - 60 †

51
A pair of Staffordshire models of dogs, carrying
baskets of posies, 18.5cm high; and another pair
depicting dogs carrying baskets of puppies, 20cm
high, (one AF); a single smaller example; and a
continental porcelain souvenir example, (6)
£40 - 60 †

52
Six various Staffordshire cow creamers £40 - 60 †

53
A Bohemian cut glass pedestal goblet, having
hobnail decoration with central engraved panel
and inscription, 23cm high £30 - 60 †

54
An Ottoman blue and enamel glass rosewater
sprinkler, 27cm high; an Ottoman pottery jug
with incised decoration, 12cm high; and an
Ottoman cylindrical pen or document case, having
floral decoration, 13cm long, circa 19th Century,
(3) £60 - 100 †

55
A moulded glass Lalique vase, decorated with
flowers, 16cm high £120 - 160 †

56
A 19th Century French opaque glass baluster
vase, in the Baccarat style, having raised leaf
decoration, 33cm high £100 - 150 †

57
Six various Chinese blue and white ginger jars,
with hawthorn decoration £30 - 50 †

58
A rare and unusual Isnik baluster vase, of ovoid
form, having black stylised decoration on a
turquoise ground, probably 17th Century, 21cm
high £200 - 300 †

59
A heavy cut glass wine cooler, 22.5cm high; and a
cut glass claret jug, 29.5cm high, (2) £40 - 60 †

60
A glazed pottery lion mask wall bracket, 30cm
high £20 - 30 †

61
A glazed pottery foot bath; and contents of
various imitation fruit £20 - 40 †

62
A Chinese bottle vase, decorated with foliage and
heightened in gilt, 26cm high; and a Chinese
crackleglaze jar of ovoid form, decorated with
floral sprays and stylised borders, 17cm high, (2)
£100 - 150 †

63
A pair of blue and green glazed Barum Devon Art
Pottery cats, 23cm high £30 - 50 †

64
A collection of various Chinese porcelain, to
include enamel decorated ginger jar and plates, a
celadon ground censer, two ginger jars, (lids
missing), a Straits wine cup, decorated with
coloured enamels and a lacquered japanned tea
tray £30 - 50 †

65
A pair of 19th Century Chinese porcelain
octagonal jardinières, having red seal mark to the
base, 22cm £200 - 400 †

66
A 19th Century glazed pottery barrel shaped
mug, with floral decoration to the body and blue
foliate decoration to the handle and spout, 17cm
high; and a faience ware plate having orange and
blue foliate decoration within a hatched border,
23cm dia., (2) £30 - 50 †

67
A Noritake Goldmere pattern dinner, tea and
coffee service, for 6 persons £100 - 200 †

68
A Chinese blue and white table lamp base,
decorated with figures and landscape, raised on a
circular carved hardwood pierced base, 33cm high;
and another similar decorated artifacts and flowers
on a celadon ground, (2) £200 - 300 †

69
A pair of decorative glass obelisks, raised on
square stepped bases, 55.5cm high £40 - 60 †

70
A Bernard Palissy ware French majolica comport,
in the form of Putti supporting a shell, circa 1890,
36cm high x 27cm dia. overall £200 - 300 †

71
A heavy cut glass water jug, 21cm high; and a
heavy cut glass biscuit jar of hexagonal form, the
cover surmounted by a faceted knob finial, 19cm
overall, (2) £40 - 60 †

72
A 19th Century Chinese porcelain baluster mug,
having enamelled decoration of figures and birds,
14cm high, AF; a famille rose bowl, 14cm dia.; a
similar octagonal plate decorated with artifacts,
19cm dia.; a covered bowl; and another similar, (5)
£40 - 60 †



Lot 56



Lot 58



Lot 62



Lot 70



Lot 75

73
Five late 18th Century Chinese porcelain cups; a famille rose decorated shallow dish; a saucer dish and a shallow squat similar, raised on stem foot, (8) £40 - 60 †

74
A 19th Century porcelain shallow bowl, the yellow rim with blue sprig decoration; three porcelain spill vases; various tea bowls; a Derby floral decorated cup and saucer; and two baluster jugs, (11), some AF £30 - 50 †

75
A pair of Victorian blue satin glass oil lamps and shades, raised on brass candlestick bases, 48cm high £40 - 60 †

76
A pair of Antique green glass drug jars, 34cm high £60 - 100 †

77
A Royal Lancastrian vase and cover, decorated with fishes, (cover restored), 16cm high £60 - 100 †

78
A Staffordshire spill vase, in the form of a cow reclining against a tree stump, on floral encrusted naturalistic base, 34cm long x 27cm high, AF £40 - 60 †

79
A Wahliiss Royal Vienna Art Nouveau ewer, in the form of a young maiden picking apples from a tree, heightened in gilt with raised floral decoration to the outswept base, 58cm high £100 - 200 †

80
A pair of 19th Century Sevres porcelain and gilt metal mounted vases, having central scenic painted panels, raised enamelled and gilt decoration on a turquoise ground, the crown shaped lids surmounted by gilt flowers, raised on octagonal bases, 65cm high (one lid damaged and repaired) £200 - 400 †

81
An early 19th Century Botanical cabinet plate, "Jacobean Lily", probably Coalport, having leaf and gilded border decoration and central painted reserve, 23cm dia. £30 - 50 †

82-86
No Lots

Silver and Plate

87
An electro plated gallery drink's tray, with foliate engraved decoration, gadroon loop handles, raised on ball and claw feet, 58cm long £20 - 40 †

88
A cased set of six silver and enamel decorated teaspoons, by Liberty & Co., Birmingham 1935 £100 - 150 †

89
A cased set of four Victorian silver urn shaped salts, by Charles Stewart Harris, with shell shaped spoons, London 1883, in silk lined fitted case £250 - 350 †

90
A cased set of six each plated fruit knives and forks, with ivorine handles, retailed by Mappin & Webb £20 - 30 †

91
A 19th Century plate on copper lidded jug, decorated with classic maidens, 19cm high £40 - 60 †

92
A Victorian electro plated ink stand, having central spill vase holder in the form of a figure slaying a dragon, flanked by square glass bottles, having foliate engraved decoration, raised on ball feet, 23cm high x 28cm wide £60 - 80 †

93
An unusual Italian terracotta vase, encased in silver plated copper, decorated with bacchanalian figures and amorous pursuits, 24cm high £80 - 120 †

94
A large plated meat dish cover, decorated with family crest; an oval plated meat dish and six plated table forks £30 - 50 †

95
A Victorian Sheffield plated urn, the lid with beaded decoration and turned finial, flanked by loop handles raised on scrolled feet, 41cm high £40 - 60 †

96
A pair of Sheffield plated candlesticks, having raised stylised decoration on oval bases, (converted to table lamps), 33cm high £40 - 60 †

97
A small rectangular plate on copper salver; a plated fish slice; a crumb scoop; a basting spoon; a soup ladle and Stilton scoop; various other mixed plated ware, modern tankards etc. £40 - 60 †

98
A plated two bottle cruet stand, of shaped form, having pierced gallery and foliate scroll handle, raised on four foliate scrolled feet, 20cm long x 27cm high £20 - 40 †

99
An Edwardian silver rose bowl, of baluster form, having stylised handles, raised on a circular spread foot, London 1908, 17cm high overall x 28cm dia. overall, 26ozs. £200 - 300 †



Lot 77



Lot 79



Lot 80

100

A Victorian silver bachelor's tea set, having raised body decoration, *London 1888/1891, 27ozs.*

£200 - 300 †

101

A five bottle silver cruet stand, having pierced body decoration and foliate scroll central handle, the claw and ball feet marked HB, possibly Hester Bateman, various marks to the silver mounts on the cruet bottles; together with a similar cruet bottle

£200 - 400 †

102

A pair of 19th Century silver candlesticks, having gadroon border decoration, raised on circular stepped loaded bases, possibly *Sheffield 1807*, marks rubbed, 21.5cm high

£100 - 150 †

103

A late Victorian silver two handled sugar bowl, with half fluted body decoration, *London 1899*; and a matching double lipped creamer, (2)

£80 - 120 †

104

A four piece silver tea set, of baluster shape, decorated with a foliate engraved band and vacant cartouche, the hot water jug and teapot with blackwood handles and lift, *Sheffield 1947/48*, total weight 60ozs.

£400 - 500 †

105

A pair of modern silver candlesticks, raised on octagonal stylised bases, with presentation inscription, *Birmingham 1965*, (bases weighted)

£30 - 50 †

106

A modern silver bowl, of plain form with reeded band decoration to the broad rim, *London 1968*, 8ozs., 16.5cm dia.

£50 - 80 †

107

A late Victorian silver salver, having shaped beaded border and central family crest, with presentation inscription, raised on three claw and ball supports, *Sheffield 1893*, 16ozs., 25.5cm dia.

£100 - 150 †

108

A pair of Edwardian silver shell shaped dishes, by Elkington & Co., 11.5cm, *London 1907* £40 - 60 †

109

A white metal mesh ladies evening purse

£40 - 60 †

110

An Art Nouveau French silver plated Vesta case, bears signature

£40 - 60 †

111

A George III Scottish silver sugar sifter, and a Scottish silver sauce ladle, (2)

£80 - 120 †

112

A cased set of 12 silver bladed and bone handled fish knives, *Sheffield 1913*

£40 - 60 †

113

A collection of various silver teaspoons; condiment spoons; a pair of sugar nips; preserve spade etc.

£40 - 60 †

114

A set of 16 George III silver bone handled dinner forks, bearing family crest, *London 1795*; twelve smaller forks; two others and a quantity of Kings pattern fish knives and forks and six silver handled tea knives

£200 - 400 †

115

A George V silver rectangular photograph frame, with floral embossed border and easel support, *Birmingham 1921*; and a smaller plain ditto, *Birmingham 1916*, (2)

£40 - 60 †

116

A George V silver plain photograph frame, the arched top engraved with a greyhound crest, *London 1918*

£40 - 60 †

117

A horn handled three piece carving set, (cased)

£20 - 40 †

118

A plated cruet frame, containing three cut glass bottles; two plated beakers, having foliate decoration; two Sheffield plate cream jugs of helmet shape; and a small plated tray with pierced gallery, (7)

£40 - 60 †

119

A late Victorian silver handled button hook and shoe horn, *London 1897*; a silver backed hand mirror with profuse foliate scroll decoration; a silver candlestick; a white metal posy vase; a silver decanter label "Lisbon"; pewter flask etc.

£40 - 60 †

120

A George V small silver photograph frame, 1912; a circular ditto; and another smaller, *Birmingham 1919* and *1901*, (3)

£40 - 60 †

121

A Victorian silver desk stand, fitted two cut glass baluster shaped ink bottles, surrounded by a garland decorated pierced gallery, raised on scroll feet, *London 1877*, 24cm long

£100 - 150 †

122

A George V silver presentation salver, having pie crust border, raised on three scrolled feet, 25.5cm dia. 19ozs., *Sheffield 1928*

£100 - 150 †

123

A set of six each Edwardian silver bladed and mother of pearl handled fruit knives and forks, *Sheffield 1908*

£60 - 80 †

124

A late Victorian double lipped cream jug, of baluster form, flanked by loop handles, 10cm high, *Sheffield 1899*; and a plated Kings pattern sifter spoon, (2)

£30 - 50 †



Lot 91



Lot 93



Lot 99



Lot 121



Lot 129

125

A pair of late Victorian silver pierced bon bon dishes, *Birmingham 1900*, AF; another with pierced border and shell decoration, *Birmingham 1897*; and a silver shell shaped dish, *Birmingham 1934*, (4) £40 - 60 †

126

A George III silver cream jug, of helmet shape, *London 1785*, marks rubbed, 14cm high £40 - 60 †

127

A George III silver oval salt, with pierced body decoration, raised on ball and claw feet, bearing family crest, complete with blue glass liner, *London 1774*; a late Victorian silver foliate embossed mustard pot, *Chester 1900*; and a silver pepper pot, *London 1900*, (3) £60 - 80 †

128

A pair of late Victorian silver fruit servers, bearing monograms, having porcelain handles decorated with birds and foliage, AF £30 - 60 †

129

An early 20th Century silver cased travelling timepiece, the circular white enamel dial having seconds subsidiary, surmounted by a carrying handle, hallmarks indistinct, 11cm high overall £60 - 100 †

130

A Victorian silver card case, having foliate engraved decoration and monogrammed cartouche, *Birmingham 1856* £40 - 60 †

131

A silver Art Nouveau 925 mark napkin ring; two electro plated Art Nouveau design salts with blue glass liners; two small silver photograph frames and a silver mounted Art Nouveau decorated brush, (6) £50 - 80 †

132

A late Victorian silver sucrier, with half fluted body decoration, *London 1893*; together with a plated sifter spoon, (2) £40 - 60 †

133

A George III silver meat skewer, *London 1810*; and three plated examples, (4) £80 - 120 †

134

An Edwardian silver pin cushion, in the form of a pig, *Birmingham 1905* £40 - 60 †

135

A Chinese silver cigarette case, embossed with dragon and enamelled pearl, AF £100 - 150 †

136

A pair of Edwardian glass and silver mounted whisky noggins, the lids initialled "G", hallmarks for *London 1907*, 10cm high £80 - 120 †

137

A George II silver pounce pot, of tankard shape, having domed lid and loop handle, *London 1750*, 7cm high £60 - 100 †

138

A continental white metal crescent shaped pill box, with foliate decoration, 5.4cm long £40 - 60 †

139

An Edwardian silver oblong snuff box, with gadroon border decoration, 10cm long, *Birmingham 1908* £40 - 60 †

140

Nine silver seal end coffee spoons £20 - 40 †

141

Two silver golfing related teaspoons £10 - 20 †

142

Three silver golfing related teaspoons £20 - 30 †

143

A heavy plated on copper easel mirror, richly embossed with putti and flowers, with tied ribbon surmount, 28cm x 23cm £40 - 60 †

144

A Georgian white metal Toddy ladle, having whalebone twist handle £30 - 60 †

145

A silver Capstan shaped ink well, *Birmingham 1925*, 12.5cm dia. £40 - 60 †

146

An Edwardian Irish silver cream jug, of helmet shape, profusely embossed with birds, animals and flowers, raised on three lion mask claw feet, 10cm high, *Dublin 1902*, 5ozs. £60 - 80 †

147

A late Victorian silver two handled sucrier, having foliate and animal embossed decoration, raised on three lion mask claw feet, 11cm high, 7ozs., *London 1897* £60 - 80 †

148

A George III silver card tray, with pie crust and shell border, foliate engraved decoration, raised on three hoof feet, *London 1762*, 17cm dia., 6.5ozs. £100 - 150 †

149

A cased set of 10 silver trefid end teaspoons, *Birmingham 1940* £30 - 50 †

150

A cased pair of silver baluster shaped peppers, by the Goldsmiths & Silversmiths Company, *London 1904* £40 - 60 †

151

A silver Capstan shaped ink well, 18cm dia., (marks indistinct) £40 - 60 †

152

A silver compot, having pierced and shaped outline, 23cm dia., *Sheffield 1946*; and a silver bon bon dish, raised on scrolled feet, *Sheffield 1918*, 14cm dia., 13ozs., (2) £80 - 100 †



Lot 134



Lot 138



Lot 147

153
An oval silver bon bon basket, by Mappin & Webb, *London 1925*; and a pair of silver candlesticks, *Birmingham 1905*, (3) £30 - 50 †

154
A late Victorian silver sucrier, having half fluted body decoration, flanked by angular handles, 10ozs. 20.5cm, *London 1890* £800 - 120 †

155
A pair of silver sauce boats, having reeded rims and loop handles, raised on oval bases, *Birmingham 1938*, 7ozs. £60 - 80 †

156
A Victorian silver decanter label, "Gin"; another "Brandy"; a Georgian example "Port"; two others and a pair of modern silver coasters, (7) £80 - 120 †

157
A heavy modern silver goblet, dated for *London 1998*, 10ozs. 13.5cm high £60 - 80 †

158
An Edward VII silver photograph frame, with arched top, engine turned engraving and easel support, *Birmingham 1909* £60 - 80 †

159
An Edward VII silver embossed photograph frame, in the Art Nouveau manner, *Birmingham 1906* £40 - 60 †

160
An Edward VII silver Christening set, comprising spoon and fork in fitted case, *Sheffield 1908* £40 - 60 †

161
A late Victorian silver hip flask, with hinged lid, *London 1900* £60 - 80 †

162
An Art Deco silver and enamel circular ring box, *Birmingham 1931*, 7.5cm dia.; a silver mounted scent bottle; a tidy jar and hat pin jar, all inscribed "Nellie"; and a small silver and engine turned decorated patchbox, (5) £60 - 80 †

163
A white metal cruet base, having pierced decoration; a white metal syrup ladle; a white metal letter opener decorated signs of the Zodiac and a pair of silver sugar tongs, (4) £30 - 50 †

164
A pair of George III silver Fiddle pattern sauce ladles, bearing family crest, *London 1809*; and an Old English pattern example from the same date, (3) £40 - 60 †

165
A George V oval silver ring box, the lid with engine turned decoration, monogrammed to the front, *London 1927*, 13cm £40 - 60 †

166
An 18th Century coconut and unmarked white metal mounted sucrier and cream jug, having foliate decoration and initialled MN to the rim, raised on lion mask and paw supports £100 - 200 †

167
A late Victorian silver sugar bowl, of small size, with half fluted body decoration, maker Alexander Clarke, Oxford Street, London, hallmarked for *Sheffield 1896*; a small silver shell shaped dish, *Sheffield 1899*; and four Indian white metal bowls, (6) £40 - 60 †

Jewellery

168
A 22 carat gold wedding band, approx. 4.8gms; and a yellow metal and bloodstone set swivel fob, (2) £120 - 160 †

169
A platinum wedding band, approx. total weight 2.7gms; and a yellow metal foliate engraved locket, (2) £100 - 150 †

170
A yellow metal pearl and diamond set cameo pendant brooch, total weight 29gms, 9.5cm x 4cm, contained in a fitted leather case £1,000 - 1,500 †

171
A 14 carat gold ladies fob watch, with yellow metal chain, approx. 35gms total weight £150 - 200 †

172
An 18 carat gold gent's pocket watch, numbered to the dial 1634, engraved to the movement Molyneux & Sons, London, 5cm dial, hung to a 9 carat gold chain; and an S. Mordan 9 carat gold propelling pencil £800 - 1,200 †

173
An 18 carat gold cased ladies wrist watch, with rolled gold strap, approx. 21gms total £100 - 200 †

174
A yellow metal swivel fob, set to a yellow metal chain, approx. 25gms total; and two yellow metal necklaces, approx. 7.8gms total £300 - 400 †

175
A yellow metal star shaped pearl and single diamond set brooch, approx. total weight 10gms £100 - 200 †

176
A yellow and white metal bar brooch, set with a single diamond, approx. 3/4 carat, approx. 4.2gms total weight £300 - 500 †



Lot 166



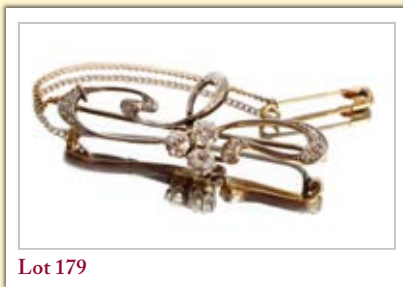
Lot 170



Lot 172



Lot 175



Lot 179

177
A white metal circular brooch, set three diamonds, approx. 1/4 carat each, approx. total diamond weight 3/4 carat, approx. 6gms total weight
£200 - 300 †

178
A pair of 9 carat gold cuff-links; a 9 carat gold bar brooch; a 9 carat gold gatelink bracelet, approx. 21gms total weight; and a pair of yellow metal and diamond set cuff-links
£200 - 250 †

179
A yellow and white metal Art Nouveau type diamond set brooch, set three approx. 1/4 carat diamonds and further smaller diamonds, total weight approx. 5.7gms
£200 - 400 †

180
A yellow and white metal diamond set pendant; and a similar brooch, total weight 9.5gms
£100 - 200 †

181
A yellow metal horseshoe and horn shaped brooch, set with 11 graduated diamonds, approx. total weight 5.8gms
£200 - 400 †

182
An 18 carat gold pearl and diamond set ring, (missing two pearls), approx. 3.2gms; a 15 carat gold pearl and green stone set pendant, hung to a fine link chain, approx. 5gms total weight; a yellow metal pearl set horseshoe brooch, approx. 4.5gms; a yellow metal bar brooch, named "Anne", approx. 3.9gms; and a yellow metal bar brooch set with a single pearl, approx. 2.5gms
£150 - 200 †

183
Two paste set cocktail watches; three pairs of paste set ear-rings and various other costume jewellery
£100 - 150 †

184
A collection of simulated pearl necklaces
£100 - 150 †

185
A 9 carat gold and amethyst set ring
£50 - 100 †

186
A 18 carat gold three stone diamond ring
£100 - 150 †

187
An 18 carat gold and diamond set ring
£100 - 150 †

188
A 9 carat gold and diamond set cross-over ring
£40 - 60 †

189
An Antique Austro-Hungarian silver ring, with coloured stones, marks inside the band
£25 - 35

190
An Antique Austro-Hungarian silver ring, set coloured stones, marks to the outside band
£25 - 35

191
An 18 carat gold and carved citrine ring, of flower shape and set diamond
£150 - 250 †

192
A 9 carat gold sapphire and diamond set ring
£80 - 120 †

193
A piece of amber with insect inclusion
£30 - 50 †

194
An 18 carat gold Star shaped diamond ring
£200 - 300 †

195
A 9 carat gold and diamond set ring
£50 - 60 †

196
A pair of pearl set drop ear-rings; and a pair of paste set ear-rings etc.
£20 - 40 †

197
A diamond and pearl set cross-over ring, with leaf motif
£40 - 60 †

198
A diamond and sapphire ring, set to a 9 carat gold mount
£60 - 100 †

199
A yellow metal oval cameo brooch, having pierced rope twist border decoration, with central panel of a young maiden
£30 - 50 †

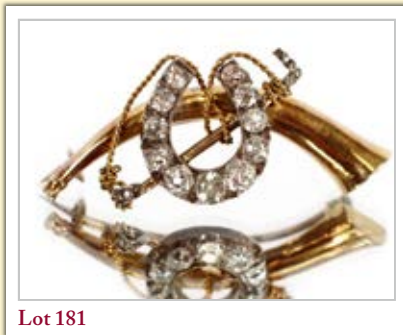
200
A pair of diamond set stud ear-rings
£120 - 160 †

201
A 1974 gold sovereign, set to a 9 carat gold mount and hung to a double link chain
£350 - 450 †

202
A fine quality Chinese silver cuff bangle, decorated with deity flanked by dragons and precious objects below, stamped "Silver, China", 10cm high
£100 - 200 †

203
A gold and coral set brooch; a coral twist bracelet; three intaglios depicting Wellington, George III and another
£100 - 150 †

204
A yellow metal, seed pearl and enamel decorated pendant; a yellow metal thimble with enamel and seed pearl decoration; two oriental white metal miniature figure groups of boats; another of a bullock cart; a silver heart shaped part locket, AF etc.
£40 - 60 †



Lot 181



Lot 201



Lot 211

205
A 1911 silver and yellow metal thimble, decorated with a coaching scene; a mystic crystal item; a pair of cuff-links etc. £90 - 120 †

206
Two gold plated Hunter pocket watches; and an Elgin open faced pocket watch with engine turned decoration; and a ladies 9 carat gold wrist watch, (4) £40 - 60 †

207
A small 9 carat gold and crystal stick pin, inset with a pennant; and a circular yellow metal nautical brooch, (2) £40 - 60 †

208
A white and yellow metal bar brooch, set single faceted diamond £100 - 200 †

209
A double string of graduated pearls, set to a white metal and stone set clasp; a pair of pearl and coral set ear studs; a pair of imitation pearl ear clips and an Art Deco style dress clip £40 - 60 †

210
An Omega gun metal cased gent's half Hunter pocket watch; and two watch chains £40 - 60 †

211
Two Russian Saint Stanislaus yellow metal and enamel medals £100 - 200 †

212
A silver pencil holder, by Hyams, New Bond Street; a silver bird ornament and two Victorian rose embossed buttons £20 - 40 †

213
A yellow metal and hardstone set vinaigrette; a small white metal hinged casket containing an ebonised button and a white metal thimble £40 - 60 †

214
A small collection of 1 penny, 2 penny, 3 penny and 4 penny silver coins £40 - 60 †

215-224
No Lots

Objects and Collectables

225
A World War I military medal British War Medal and Victory medal with various Sporting medals etc., to 86493 PTE E. Miles, with set of service papers £500 - 600 †

226
A World War I Casualty pair and plaque, with badges to 15524 PTE John Henry Morris, 9th Battalion Suffolk Regiment K, born Lowestoft, Suffolk £200 - 300 †

227
A World War I officers British War Medal and Victory medal, to 2nd Lieutenant/Captain Norman Hugh Mathews, Suffolk Regiment; and MGC, 12 BN, formed Bury St. Edmunds, with set of officers service papers £180 - 220 †

228
QSA with clasps, OFS/CC and KSA clasps SA02, SA 01 to 4255 PTE J. Burns of the Cheshire Regiment, with service papers £200 - 300 †

229
Queens Korea and UN Korea medals, to 21124565 GNR P. Fallon R.A. £150 - 200 †

230
A box of various military hat badges £100 - 150 †

231
A collection of miscellaneous early English coinage; a silver penny from the Lower Apley, Lincolnshire hoard, various tokens, crowns etc. £40 - 80 †

232
A pair of George III silver spurs, London 1776 £60 - 80 †

233
An 18th Century flintlock box lock pistol, signed Trigg, London to the lock, 15cm overall £300 - 400 †

234
A 19th Century Pepper box revolver, with engraved decoration to the frame, 19cm overall £300 - 400 †

235
A 19th Century percussion box lock pistol, the lock signed Conway, Manchester, 16cm overall £200 - 300 †

236
An 18th Century flintlock box lock pistol, signed Busby, 15cm overall £300 - 400 †

237
An early 20th Century brass cased military travelling compass, in fitted leather case; and a smaller pocket compass, (2) £40 - 60 †

238
A silvered novelty table lighter, in the form of a seated monkey with hinged head, raised on a pile of books and holding a skull, 17cm high £80 - 120 †

239
A plated salt, in the form of a ram drinking from a pail with loop handle, 15cm long x 13.5cm high £50 - 80 †

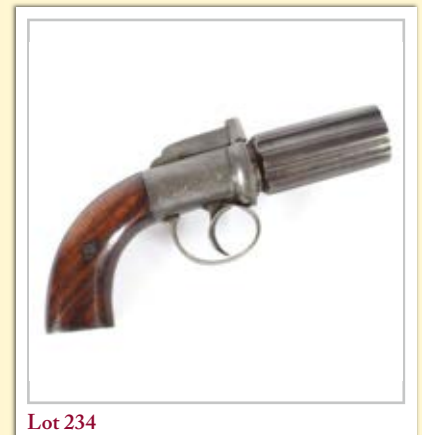
240
An unusual Antique brass and steel patent miniature saw, 13.5cm long £40 - 60 †



Lot 225



Lot 227



Lot 234



Lot 236



Lot 246

241
A set of 19th Century brass sovereign scales, inscribed "R.S. Dansie", 12.5cm long £40 - 60 †

242
A Fluorspar hardstone baluster vase, with a ribboned body, 13cm high £60 - 80 †

243
A cherry amber coloured snuff bottle, of baluster form, 7cm high £40 - 60 †

244
Raphael Maklouf, (born 1927), small bronze figure depicting a young child holding a ball, initialled and dated 1985, 15cm high £40 - 60 †

245
A bronzed figural balance scale, on foliate embossed plinth, terminating in ball feet, 15cm long x 15cm high £60 - 80 †

246
An unusual 19th Century miniature Suit of Armour, in the 16th Century style, 29cm long £200 - 300 †

247
A set of Victorian brass letter scales and weights £20 - 30 †

248
A 19th Century leather covered trinket casket, having gilt metal escutcheon and paw feet, 15.5cm long £30 - 50 †

249
A bronzed postal balance, of classical design, 21cm high £60 - 80 †

250
A soapstone carving of an Immortal, 17cm high £30 - 50 †

251
A 19th Century Chinese jade carving, of a recumbent animal with young, on wooden stand with original paper label £120 - 160 †

252
A Japanese white metal and enamel baluster vase, decorated with prunus, 10cm high; and another similar, 9cm high, (2) £40 - 60 †

253
A cold painted figure of a horse and jockey, 11cm long x 9cm high £20 - 40 †

254
A William III bronze weight, together with a Lusitania medal, (2) £25 - 35 †

255
A Victorian brass carriage clock, dated 14th February 1880, complete with key, 13cm high £50 - 60 †

256
A cased Dupont gold plated cigarette lighter £60 - 100 †

257
A circular brass travelling compass, 9cm dia. £40 - 60 †

258
An early 19th Century carved bone miniature set of dominoes, contained in a case, the lid decorated with cats playing dominoes, 8cm long £80 - 120 †

259
An ivory folding rule; and an ivory date column with turned finial, 11cm high, (2) £60 - 100 †

260
A small bamboo box, with sliding cover, enclosing six coloured ivory dice; a circular ebony toilet jar with screw-on cover; a turned rosewood dice shaker; an Eastern carved seal; and three various small circular boxes and covers, (7) £40 - 60 †

261
A 19th Century rosewood two division letter rack, having pierced decoration, 17cm x 10cm; and a Victorian silver mounted horn beaker, hallmarked for Birmingham 1883, 10.5cm high, (2) £40 - 60 †

262
A brass cased carriage timepiece, with floral enamel decoration and filigree work to the case, the circular white enamel dial stamped "Hamilton & Co., Calcutta", 14cm £50 - 80 †

263
A continental white metal Singing Bird music box, profusely decorated with flowers and cherubs, 10.5cm long £100 - 150 †

264
A Singing Bird automaton, under glass dome, 19cm high £80 - 120 †

265
A Renaissance style bronze Satyr mask lamp, raised on a bold talon claw base, 17cm high £100 - 150 †

266
A rare and unusual scrimshaw worked Ostrich egg, profusely decorated with sailing ships, scenery, whales and figures, 13cm high £100 - 200 †

267
A 19th Century horn beaker, with silver rim and glass base, 14.5cm £50 - 80 †

268
A late Victorian ebony spirit level, with brass mounts, 29cm long and a walnut and brass mounted similar, with eye piece and level to one end, 21.5cm, (2) £30 - 50 †

269
A mahogany case, containing cut throat razor, scalpel, tweezers etc.; and a leather cased razor strop £20 - 40 †



Lot 253



Lot 263



Lot 266

270
A set of Georgian mahogany cased steel folding scales, having ivory pans, (weights incomplete), the case having inlaid paterae and chequer banding, bearing label Young & Son, Scale Makers to His Majesty, 5 Bear Street, Leicester Square, London £40 - 60 †

271
A Regula leather cased camera, complete with some accessories; and a cased Ulca miniature camera, AF £20 - 40 †

272
A Staunton pattern chess set, contained in a pine storage box with sliding lid £60 - 80 †

273
A Japanese bronze figure of a recumbent cow, 22cm long £40 - 60 †

274
An Eastern white metal, yellow metal and semi precious stone decorated prayer wheel, 29cm £40 - 60 †

275
A Victorian enamelled and gilt metal mounted scent bottle, the lid inset with a faceted blue stone; a porcelain scent bottle, having printed decoration of romantic scene and floral border; and two oriental hardstone fasteners, (4) £40 - 60 †

276
A pair of gilt metal and ivory candlesticks, 11cm high £50 - 80 †

277
An Antique horn beaker, having scrimmed decoration depicting a ship, 11cm high; and a small inlaid stamp box, 4cm, (2) £25 - 35 †

278
A pair of miniature Bugles, inscribed "Balacava October 25th 1854"; three various cap badges etc. £30 - 50 †

279
A gilded brass cased pocket barometer, the outer travelling case, AF £60 - 80 †

280
A gilded brass pocket barometer, in leather folding outer case £80 - 120 †

281
A leather cased brass compass £60 - 80 †

282
A miniature brass and enamel panelled carriage clock, of oval form, decorated with figures of children catching butterflies, 7cm high £100 - 150 †

283
An Antique miniature globe, on ebonised stand £80 - 120 †

284
An oriental carved ivory puzzle ball, raised on an elephant base; and a Chinese glass snuff bottle decorated with figures in a garden, (2) £50 - 80 †

285
A small hand coloured oval engraving, entitled "Soldiers Farewell", contained in an embossed brass frame; a small oval miniature on porcelain plaque of a silhouette depicting an 18th Century courtier; and a coloured print of a young woman with large bonnet and pink ribbon, contained in a brass frame, (3) £40 - 60 †

286
Three 19th Century unusual wax profile miniatures, depicting cherubs chariot racing and cherubs carrying a ram £40 - 60 †

287
A pair of wax profile miniatures, head and shoulders study of young noble women, inscribed "De Medici" and impressed "Maria" and "Eleonora", contained in ebonised circular frames, 11cm dia. overall, (some damage); and another depicting head and shoulders profile of a young nobleman in red and gilt livery, contained in a circular mahogany frame, 16cm dia., (3) £60 - 100 †

288
A pair of portrait miniatures, depicting young ladies, one with lace collar and jewels, contained in circular fruitwood and brass mounted frames, 9.5cm dia. overall £100 - 150 †

289
A 19th Century oval portrait miniature, of a young lady with blue headdress, signed "Hoppner", contained in ebonised and brass mounted frame, 7.5cm x 6cm £80 - 120 †

290
A 19th Century oval portrait miniature, of a young gentleman wearing frock coat and white stock, 7.5cm x 5.5cm overall, contained in an ebonised and brass mounted frame £40 - 60 †

291
An oval portrait miniature, depicting a young woman with white ribbon in her hair, wearing coral beads, contained in a yellow metal pendant frame, 7cm x 6cm £100 - 150 †

292
A 19th Century oval Jasperware porcelain plaque, depicting profile head and shoulders of a Georgian bewigged gentleman, contained in an unmarked white metal and floral decorated frame, 10cm x 7.5cm overall £60 - 100 †

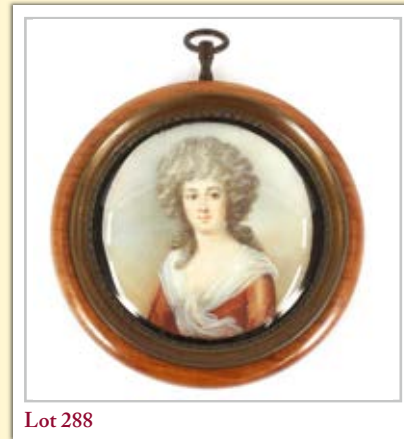
293
A profile head and shoulders study, of Charles I, contained in a maple frame, 20cm x 16.5cm £60 - 100 †



Lot 282



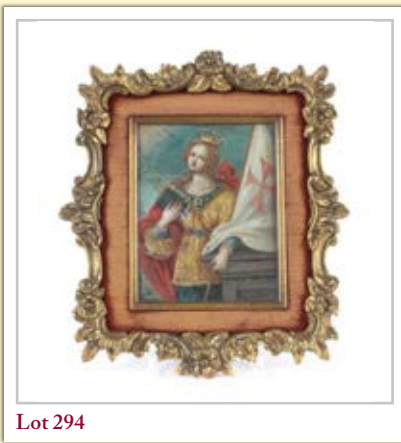
Lot 283



Lot 288



Lot 291



Lot 294

294
A miniature painting, depicting a woman warrior clutching arrows and a book, and holding the flag of St. George, possibly Joan of Arc, unsigned oil, contained in a decorative gilded brass and fabric lined frame, 9.5cm x 7cm £100 - 200 †

295
A 19th Century oval portrait miniature, of a young girl with white silk headdress, bears indistinct initials, 6.6cm x 5cm, contained in a tortoiseshell, brass, ebony and bone mounted frame £100 - 150 †

296
A miniature oval enamel study of a sailing ship, 3cm x 4cm, contained in a broad mahogany frame and gilt mount £40 - 60 †

297
An oval portrait miniature, study of a young seated lady in Elizabethan costume, possibly Queen Elizabeth I, contained in a faux ivory and tortoiseshell frame £40 - 60 †

298
19th Century school, oval portrait miniature of a lady wearing lace trimmed bonnet, contained in an ebonised and brass mounted frame £40 - 60 †

299
An Edwardian oval miniature portrait print, of a young lady, contained in a gilded brass floral embossed frame; a miniature print of the Madonna; and a faux ivory cased miniature with painted head and shoulders study of an Elizabethan figure, in circular ebonised frame, (3) £40 - 60 †

300
19th Century school, oval miniature portrait of a young woman with lace dress and blue ribbon in her hair, contained in a foliate embossed silver frame, hallmarked for Birmingham 1901, AF, total measurements 9cm x 7.5cm £40 - 60 †

301
Three hunting Stevengraphs, "The Meet", "Full Cry" and "The Death" £30 - 50 †

302
A Stevengraph, "The Lady Godiva procession" £20 - 30 †

303
Two Stevengraphs, "The Start" and "The First Point" £20 - 30 †

304
A Stevengraph, "For Life or Death" £20 - 30 †

305
A pair of Stevengraphs, "The Present Time" and "The Good Old Days" £20 - 30 †

306
A Stevengraph, "Crystal Palace"; another "Are you Ready", "The Bull Fight" and another "The Empire makers General Baden Powell", (4) £30 - 50 †

307
A Stevengraph, "Call to the rescue" £20 - 30 †

308
Two framed and glazed Horse Racing Stevengraphs, "The Start" and "The Finish" £30 - 50 †

309
An Oriental carved hardstone figure group, depicting an immortal accompanied by a child riding a deer and a crane, on a pierced hardwood base, 24cm high £30 - 50 †

310
An early 20th Century continental ebony and satinwood inlaid picture frame, with stylised motifs, containing a Dutch print of a lady digging, 29.5cm x 15cm £40 - 60 †

311
A vintage bottle of Bulloch Lade & Co. "Old Rarity" rare blended Scotch whisky; and a quart bottle of Ballantine's 12 year old blended Scotch whisky, (2) £80 - 120 †

312
A bottle of vintage Haig "Dimple" blended Scotch whisky; and a bottle of 86 proof Ambassadors vintage 12 year old blended Scotch whisky, (2) £80 - 120 †

313
A boxed bottle of Exshaw No. 1 Tres Rare Grande Champagne Premier Cru Cognac £80 - 120 †

314
An oak cased barograph, by Jno. C. Scarborough, Ipswich & Colchester, the stand fitted chart drawer and charts, 39cm £100 - 200 †

315
A French model 1866 sabre bayonet £60 - 80 †

316
A German World War I officers sword, with engraved named blade £100 - 150 †

317
A 19th Century continental Cavalry officers sword, in metal scabbard £150 - 200 †

318
A Victorian 1842 pattern Constabulary Carbine, the lock dated 1843, stamped with a crown and WR, military proof marks to the barrel, various stock markings and stamped 69 on the brass butt plate, 106cm overall £500 - 600 †

319
A "Brown Bess" flintlock musket, with India pattern stock, plain lock in need of light restoration, 138cm overall £500 - 600 †

320
A British 1842 pattern Sea Service percussion pistol, inscribed "Tower VR", lock belt hook, action weak, 30cm overall £400 - 500 †



Lot 295



Lot 314



Lot 316

- 321**
An early 19th Century Turkish flintlock pistol, having carved stock, engraved brass furniture and engraved steel barrel, 42.5cm long overall
£350 - 450 †
- 322**
A Belgium sea service flintlock pistol, circa 1800, no barrel, AF; and an early Confederate Civil war percussion pocket pistol, no barrel, AF, (2)
£200 - 300 †
- 323**
A mid 19th Century Prussian percussion military pistol, officially converted from flintlock, having steel furniture, inspectors stamp behind the hammer, 35cm long overall
£300 - 400 †
- 324**
A French model 1842 percussion military pistol, with signed lock, various inspectors stamps to the brass furniture and various stock markings, 35cm long overall
£350 - 450 †
- 325**
A large and interesting collection of glass stereoscopic views, contained in a fitted walnut box
£100 - 150 †
- 326**
A mahogany cased brass microscope, with accessories and spare lenses; together with an extensive collection of interesting slides, contained in two cases
£200 - 300 †
- 327**
A late 19th Century ivory handled parasol, having brass collar, stamped "Verdier", in silk and lace; and another with tasselled fringe, the white metal collar inscribed "Sangsters", (2)
£80 - 120 †
- 328**
A brass telescope, by Crichton
£100 - 150 †
- 329**
A stereoscopic viewer, and a large quantity of stereoscopic slides
£150 - 200 †
- 330**
A "Live Steam" Bowman locomotive
£60 - 80 †
- 331**
A set of ethnic arrows and a quiver
£20 - 40 †
- 332**
A 9 carat gold mounted hunting whip, by Swaine & Adeney of London, with horn handle
£60 - 80 †
- 333**
A large and interesting early 20th Century postcard album, containing many postcards, pictorial views, humorous, landmarks etc.
£50 - 80 †
- 334**
A 17th Century Antique carved ivory knife handle, in the form of the figure of Justice, 10cm long
£150 - 250 †
- 335**
An ornately carved hardwood Burmese frame, profusely decorated with beasts, figures and foliage, inset with a central oval bevelled mirror, 60cm x 48cm
£100 - 150 †
- 336**
A 19th Century carved ivory Cantonese fan
£100 - 150 †
- 337**
An Antique crystal scent bottle, with yellow metal mount, AF, 10cm long
£60 - 80 †
- 338**
A pair of 18th Century metalware and brass mounted adjustable candlesticks, raised on circular spread bases, 24cm high
£60 - 80 †
- 339**
Eight volumes of E. Benezit Dictionary of Painters and Sculptors, French 1966
£50 - 80 †
- 340**
Two brass period design wall lights, having scrolled leaf decoration and pink tinted glass shades
£30 - 50 †
- 341**
An early 20th Century gilt metal table lamp, having leaf and ram's head mask decoration, raised on a circular base and scroll feet, 48cm high overall
£30 - 50 †
- 342**
A Christopher Wray seven branch brass pendant light fitting, having pink tinted shades, one AF
£30 - 50 †
- 343**
An Antique elephant's foot stick stand
£180 - 220 †
- 344**
Two vintage crocodile skins
£200 - 300 †
- 345**
Charles Dickens, a run of 11 volumes, bound in original red Morocco with marbled boards, including sketches by Boz, Great Expectations, Bleak House etc. various illustrators, published Chapman & Hall 1865
£30 - 50 †
- 346**
An Edwardian oak cased mantel timepiece, decorated with columns and garlands with visual pendulum, 25cm high
£40 - 60 †
- 347**
A 19th Century coromandel and brass mounted decanter box, opening to reveal four square cut decanters, one AF, the hinged lid fitted with a single glass, flanked by sunken side carrying handles, 27cm high x 26cm wide
£80 - 120 †
- 348**
A Victorian mahogany banjo shaped barometer
£40 - 60 †



Lot 321



Lot 330



Lot 335



Lot 347



Lot 349

349
A 19th Century French tortoise shell and cut brass inlaid mantel clock, in the manner of Boulle, having foliate gilt circular dial with blue Roman numerals, supporting an 8 day movement striking on a bell, 40cm high £100 - 200 †

350
A 19th Century Chinese bronze vase, of baluster form, in the archaic style, 21cm high £60 - 80 †

351
A circular thermometer, by Peabody Massachusetts; and a brass cased magnifying stand, (2) £20 - 30 †

352
A 19th Century gilded mantel clock, with foliate scroll decoration and figure of a scholar, possibly Shakespeare, circular white enamel Roman numeral dial supporting an 8 day movement, under glass dome and raised on ebonised plinth £200 - 300 †

353
An oak cased water gauge, by Duke & Ockenden Ltd., 35.5cm high £40 - 60 †

354
A model of a four masted steel barque, contained in glazed case, 62.5cm long x 33.5cm high overall £60 - 100 †

355
A brass mounted ship's wheel, dated 1915, by Brown Bros. of Edinburgh £100 - 150 †

356
A set of brass scales, on mahogany single drawer stand, 37cm wide x 48cm high £40 - 60 †

357
A late Victorian walnut book rack, with Tunbridge ware inlaid panel and pierced folding ends, 45cm x 24cm £60 - 100 †

358
A Victorian photograph of Framlingham College, 23cm x 29.5cm; and another of Framlingham Castle £40 - 60 †

359
A 19th Century rosewood and brass inlaid writing box, 40cm wide £40 - 60 †

360
A 19th Century Dieppe carved ivory mirror, decorated with sea creatures and inscribed "Sgotorum", 84cm x 51cm in extremes £400 - 600 †

361
A pair of decorative glass and metalware triple branch wall lights, with bird and urn central decoration, flowers and prisms set to the branches, 51cm high overall £200 - 300 †

362
A Blickensderfer No.5 typewriter, in leather case £200 - 300 †

363
An oak cased barograph, the case fitted chart drawer to base, 38.5cm long £300 - 500 †

364
A Victorian mahogany miniature half tester bed, 60cm long x 57cm high £80 - 120 †

365
A set of Victorian brass shop scales, complete with weights, on mahogany plinth £80 - 120 †

366
A pair of 19th Century Japanese cloisonne vases, depicting grass and blossom, signature on base, 18.5cm high £120 - 160 †

367
A pair of 19th Century Japanese cloisonne vases, decorated with dragons, 15cm high £80 - 120 †

368
A 19th Century Chinese bronze vase, of slender form, 25cm high £60 - 80 †

369
A bronze profile figure of Autumn, 38cm £40 - 60 †

370
A vintage Veterinary horse gag, by Arnold & Sons £20 - 40 †

371
A 19th Century papier-mâché tray, having gilt foliate decoration, 75cm x 57cm; and a smaller example, 35cm x 26cm, (2) £100 - 150 †

372
A Japanese hand painted scroll picture, depicting birds, contained in original box £120 - 160 †

373
An Anglo Indian ebony and quill decorated box, 20cm £30 - 50 †

374
A Newlyn style hammered copper bowl, having fish decoration £60 - 80 †

375
A Chinese hardwood carving of a bird, converted to a table lamp, 36cm high £60 - 80 †

376
A Chinese hardwood carving of a street vendor, converted to a table lamp, 49cm high £100 - 150 †

377
A leather case containing Ordnance Survey maps, circa 1910 £100 - 150 †

378
A gilded brass relief profile of Wellington, mounted on an oval mahogany plaque; and a plated crest depicting a unicorn on fabric covered shield shaped plaque, (2) £50 - 80 †



Lot 352

353
An oak cased water gauge, by Duke & Ockenden Ltd., 35.5cm high £40 - 60 †

354
A model of a four masted steel barque, contained in glazed case, 62.5cm long x 33.5cm high overall £60 - 100 †

355
A brass mounted ship's wheel, dated 1915, by Brown Bros. of Edinburgh £100 - 150 †

356
A set of brass scales, on mahogany single drawer stand, 37cm wide x 48cm high £40 - 60 †

357
A late Victorian walnut book rack, with Tunbridge ware inlaid panel and pierced folding ends, 45cm x 24cm £60 - 100 †

358
A Victorian photograph of Framlingham College, 23cm x 29.5cm; and another of Framlingham Castle £40 - 60 †

359
A 19th Century rosewood and brass inlaid writing box, 40cm wide £40 - 60 †

360
A 19th Century Dieppe carved ivory mirror, decorated with sea creatures and inscribed "Sgotorum", 84cm x 51cm in extremes £400 - 600 †

361
A pair of decorative glass and metalware triple branch wall lights, with bird and urn central decoration, flowers and prisms set to the branches, 51cm high overall £200 - 300 †

362
A Blickensderfer No.5 typewriter, in leather case £200 - 300 †



Lot 363

353
An oak cased water gauge, by Duke & Ockenden Ltd., 35.5cm high £40 - 60 †

354
A model of a four masted steel barque, contained in glazed case, 62.5cm long x 33.5cm high overall £60 - 100 †

355
A brass mounted ship's wheel, dated 1915, by Brown Bros. of Edinburgh £100 - 150 †

356
A set of brass scales, on mahogany single drawer stand, 37cm wide x 48cm high £40 - 60 †

357
A late Victorian walnut book rack, with Tunbridge ware inlaid panel and pierced folding ends, 45cm x 24cm £60 - 100 †

358
A Victorian photograph of Framlingham College, 23cm x 29.5cm; and another of Framlingham Castle £40 - 60 †

359
A 19th Century rosewood and brass inlaid writing box, 40cm wide £40 - 60 †

360
A 19th Century Dieppe carved ivory mirror, decorated with sea creatures and inscribed "Sgotorum", 84cm x 51cm in extremes £400 - 600 †

361
A pair of decorative glass and metalware triple branch wall lights, with bird and urn central decoration, flowers and prisms set to the branches, 51cm high overall £200 - 300 †

362
A Blickensderfer No.5 typewriter, in leather case £200 - 300 †



Lot 364

379
A miniature Breton oak dresser, 24cm wide x 36cm high £60 - 80 †

380
A Regency leather and brass mounted jewellery casket, raised on ball feet, 25.5cm £40 - 60 †

381
An Irish inlaid yew wood box, the lid decorated with central panel of a castle, within stylised chequered decoration, 32cm £40 - 60 †

382
An Antique tooled leather mounted stationery box, the fall front opening to reveal a lined interior with cash and address books £100 - 150 †

383
A bronze figure, depicting a young girl carrying a basket, 45cm high £100 - 150 †

384
A Tibetan embossed copper panel, depicting deities, 35cm x 30cm £40 - 60 †

385
A Victorian wax and dried flower arrangement, under glass dome and raised on an ebonised plinth, 41cm high £40 - 60 †

386
A Victorian woolwork flower display, under glass dome, raised on gilt plinth, 33cm high £40 - 60 †

387
A Victorian wax flower display, under glass dome and raised on a circular ebonised plinth, 40cm high £40 - 60 †

388
An old Pedlar doll, under glass dome and raised on an ebonised plinth, 39cm high £40 - 60 †

389
An Antique cricket match print/ticket, dated 1744, 16cm x 12.5cm £40 - 60 †

390
A 19th Century papier-mâché and mother of pearl tea caddy, AF, 20cm wide £20 - 40 †

391
A brass hearth stand, having pierced decoration, raised on turned supports, 17.5cm; and a copper and enamelled lined jug, by W.A.S. Benson, 14cm high, (2) £40 - 60 †

392
A model of the Cutty Sark, in glazed illuminating case, 97cm x 123cm overall £200 - 300 †

393
A Sheraton period mahogany cross-banded and chequer strung knife box, of arc-en-arbelette form, interior altered, 23cm wide x 36cm high £100 - 150 †

394
A 19th Century rosewood sarcophagus shaped tea caddy, flanked by ring handles and raised on bun feet, (interior missing), 36cm £40 - 60 †

395
A Georgian mahogany and satinwood cross-banded three section tea caddy, 30cm wide £40 - 60 †

396
A 19th Century mahogany sarcophagus shaped three section tea caddy, flanked by lion mask ring handles and raised on paw feet, 30cm wide £60 - 80 †

397
A 19th Century mahogany sarcophagus shaped three compartment tea caddy, flanked by turned handles and raised on bun feet, fitted with a glass mixing bowl, 30cm £40 - 60 †

398
A 19th Century carved walnut box, the hinged lid decorated with cherubs above raised foliate panels, 34cm wide x 17cm high £60 - 100 †

399
A table cloth, autographed and then embroidered with numerous names from the world of music, including Anthony Van Kampen, Wilfred Parry, Adrian Bolt, Charles Groves and others £100 - 200 †

400
A set of three 19th Century polished steel fire implements £30 - 50 †

401
A Directoire bronzed wall clock, having raised foliate enamel decoration, circular silvered dial supporting an 8 day movement striking on a bell, 49cm dia. overall £100 - 200 †

402
A 19th Century walking stick, having yellow metal and bronze knob handle with stylised floral decoration; a hardwood walking cane with white metal Niello ware decoration and ivory terminal; another walking cane with inlaid enamel decoration and crook shaped handle; a Malacca cane with silver knob handle; and a collection of various Country House riding crops and sticks £100 - 150 †

403
A 19th Century gilded Spelter and alabaster French mantel clock, surmounted by figures of a boy and girl carrying a doll and a duck, with pierced foliate decoration the circular enamel Roman numeral dial, stamped Hirou, supporting an 8 day movement striking on a bell, 44cm high £80 - 120 †

404-413
No Lots



Lot 382



Lot 388



Lot 393



Lot 401



Lot 418



Lot 420



Lot 423



Lot 426

Pictures and Prints

414

Five various coloured George Morland engravings, "Stable amusement", "The Fern Gatherers", "Breaking the Ice", "The Thatcher", and one other, contained in maple frames, (5) £80 - 120 †

415

19th Century school, study of a lady wearing lace bonnet, unsigned oil on canvas, 77cm x 64cm, (unframed) £40 - 60 †

416

19th Century school, study of a young girl in blue dress, unsigned oil on canvas, 103cm x 58cm, (unframed) £40 - 60 †

417

After George Morland, coloured print "The Fern Gatherers"; and another "Selling Peas", (2) £50 - 80 †

418

After George Morland, study of a woman peering into a cattle shed with young calves and pigeons, oil on board, 44cm x 52cm £100 - 150 †

419

Attributed to J.C. Ibbetson, 1792, study of figures around a camp fire, unsigned watercolour, mounted as an oval, 32cm x 24.5cm £40 - 60 †

420

H.P. Herbert, 1876, study of a seated Abbot asleep beside his lunch with attendant Maggie, signed and dated watercolour, 22cm x 16cm, in decorative gilt frame £40 - 60 †

421

A.D. Roosenbach Dutch frozen canal study, signed oil on board, 20cm x 24cm £150 - 250 †

422

Attributed to Samuel H. Baker, study of working horses and figures by a pond, 16cm x 24cm £100 - 150 †

423

19th Century school, study of figures walking along a country path towards a cottage at sunset, rolling countryside in the far ground, unsigned oil on milled board, 16cm x 20cm, contained in an ornate gilt frame £60 - 100 †

424

Josephine Culverwell, study of a continental market scene, signed watercolour, 36cm x 25.5cm £40 - 60 †

425

19th Century school, study of cattle and figures standing outside a farmhouse, unsigned oil on canvas, 35cm x 42cm £80 - 120 †

426

A 19th Century oval coloured print, "Apollo and the Muses", in black and gilt mount and gadrooned oval gilt frame; and another classical study in gilt foliate frame, (2) £40 - 60 †

427

19th Century school, portrait study of a seated lady with terrier dog, mounted as an oval, unsigned watercolour, 20.5cm x 15cm in extremes, contained in a decorative stylised floral gilt frame £40 - 60 †

428

19th Century school, portrait study of a young girl wearing linen cap and matching bow to her dress, unsigned crayon and pastel drawing, 31cm x 23cm £40 - 60 †

429

19th Century school, study of stags beside a highland river, unsigned watercolour, 27cm x 15cm £40 - 60 †

430

After George Morland, a pair of studies of country cottage and a wayside Inn, crayon and pencil drawings, framed as ovals, 9cm x 13cm £40 - 60 †

431

K. Swift, "At the Cottage door", study of seated mother and children, signed pencil drawing, framed as an oval, 24.5cm x 20cm in extremes £40 - 60 †

432

Leonard Russell Squirrell, pencil signed dry point etching, "On Essex loch, evening Chelmsford" 13.5cm x 25.5cm £100 - 150 †

433

Sydney S. Wilson, coloured aquatint of a young beauty, pencil signed on mount, 37.5cm x 24.5cm £40 - 60 †

434

After Wilson, 19th Century coloured mezzotint, of a fashionable lady, mounted as an oval in decorative gilt frame £20 - 40 †

435

After Angelica Kauffman, coloured mezzotint "Ceres"; and another "Cupid no more shall hearts betray", (2) £20 - 40 †

436

After Northcote, a pair of coloured mezzotints, "Country girl of Tuscany" and "Blind girl of the environs of Rome", contained in black and gilt frames, (2) £40 - 60 †

437

After George Morland, black and white print depicting a cart driver; another of a seated farm worker; and another depicting dogs, (3) £40 - 60 †

- 438**
A black and white engraving, "Morland's Woodman", contained in black and gilt frame
£20 - 40 †
- 439**
F.E. Jamieson, 1895-1950, Maritime scene, signed watercolour, 29cm x 38cm
£20 - 30 †
- 440**
Vernon Ward, 1905-1985, a signed limited edition 1950's print, pencil signed to margin and numbered 2/500
£20 - 30 †
- 441**
M. Gibb, early 20th Century oil on canvas, study of a horse's head, unsigned, 44cm x 39cm, contained in a gilt frame, see label verso
£40 - 60 †
- 442**
19th Century school, study of a cavalry officer in dress uniform, unsigned oil on board, 45cm x 35cm
£60 - 80 †
- 443**
A Japanese wood block print, Utagawa Hiroshige "Ferry boats at Arai"
£40 - 60 †
- 444**
Joseph Pimm, interior study of Worcester Cathedral, pencil artist's proof with back stamp to margin, plate 38cm x 27cm; and after David Roberts, Church of St. Paul, Antwerp, pencil signed aquatint by T. Hamilton Crawford, plate 47cm x 35cm, (2)
£40 - 60 †
- 445**
Attributed to Thomas Churchyard, (1798-1865), study of a harvest landscape with cottages and windmill in the far ground, unsigned watercolour, 38cm x 26cm
£100 - 200 †
- 446**
Attributed to Frank Dadd, 1851-1929, "Punch and Judy Show", unsigned watercolour, 68cm x 80cm
£100 - 200 †
- 447**
19th Century school, landscape study with a young girl holding a hayrake, unsigned watercolour, 19cm x 13cm, contained in a decorative gilt glazed frame
£60 - 80 †
- 448**
A 19th Century French mezzotint, depicting a head and shoulder portrait of a fashionable lady, in gilt and plaster decorated frame having tied ribbon surmount, 37cm x 30.5cm
£40 - 60 †
- 449**
Thomas Churchyard, (1798-1865), study of the Maybush Inn and view of the river Deben at Waldringfield, watercolour, 19cm x 14cm. Illustrated page 49 "The Search for Thomas Churchyard by Robert Blake"
£400 - 600 †
- 450**
Ogilby, "The road from Ipswich to Norwich", 33.5cm x 45cm
£60 - 100 †
- 451**
Fred Brett Russell, study of Dog's Head Street, Ipswich, signed watercolour, 31cm x 25cm
£100 - 150 †
- 452**
A 19th Century print of Framlingham Castle, after Hooper; another of Leiston Abbey; and a Masonic map of Suffolk, (3)
£40 - 60 †
- 453**
A.M. Macdonald, 19th Century, study of a young girl stood in the kitchen with attendant kitten lapping a bowl of milk, signed oil on canvas, dated 1887, 45.5cm x 30cm
£100 - 150 †
- 454**
A.M. Macdonald, 19th Century, study of a young girl taking refreshments to the corn field, signed oil on canvas, 45cm x 30cm
£100 - 150 †
- 455**
Attributed to Edward Ladell, (1821-1886), still life study of peaches, grapes and leaves around a bird's nest, monogrammed oil on board, 24.5cm x 30cm, contained in an ornate gilt frame
£300 - 400 †
- 456**
19th Century school, study of a sailing ship with other ships and lighthouse in the far ground, unsigned gouache, 46cm x 63cm
£60 - 80 †
- 457**
19th Century English school, study of pansies, unsigned oil on board, 19cm x 30cm
£40 - 60 †
- 458**
19th Century school, attributed to D.A. Teupken, study of the steam ship Pierremont in heavy seas, unsigned watercolour, 31cm x 63cm, contained in a maple frame
£80 - 120 †
- 459**
Attributed to William Henry Pearson, "Off the Galloper Sand", study of sailing vessel in heavy seas, watercolour, 33cm x 41cm
£40 - 60 †
- 460**
I. Berain, 17th Century copper plate engraving of a classical ornamental design, 37cm x 25cm
£40 - 60 †
- 461**
J. Gillray, "The Bullstrode Siren", satirical hand coloured print after Humphrey, St. James Street, 35cm x 25.5cm
£80 - 120 †
- 462**
Peter Scott, pencil signed black and white etching, "Geese in Flight", 22.5cm x 34.5cm
£40 - 60 †
- 463**
Attributed to John Constable, "Scene at Wansford Bridge", unsigned watercolour sketch, contained in a printed mount, inscribed "At Wansford Bridge 1832 John Constable R.A. sketch book for 1832 John Winter Jones Collection", size of watercolour 15.5cm x 23cm
£100 - 150 †



Lot 445



Lot 446



Lot 449



Lot 465

464
Teresa Kegg, study of flowers and ferns, signed watercolour, 62cm x 25cm £40 - 60 †

465
C. Whympers, study of a heron and kingfishers on a river, signed watercolour, 25cm x 35cm £100 - 150 †

466
After Zobel, a sand picture depicting two dogs in a woodland river, 30cm x 37cm, contained in a gilt frame £100 - 200 †

467
19th Century painted portrait on porcelain plaque, study of a seated gentleman, 19cm x 17cm, contained in gilt frame £100 - 150 †

468
19th Century school, pencil and wash drawings depicting young peasant children, 25cm x 19cm £30 - 50 †

469
19th Century school, portrait study of a Bedouin, unsigned oil on canvas, 46cm x 35.5cm, contained in a gilt frame £150 - 250 †

470
19th Century school, portrait study of three young children with picnic hamper in a wooded glade, unsigned watercolour, 50cm x 40cm, contained in an ornate gilt frame £50 - 80 †

471
P.W. Adam, study of an elegant lady strolling in a Parisian park, signed oil on board, also inscribed verso, Paris, 50cm x 40cm £200 - 300 †

472
Attributed to H.J. Yeend King, 1855-1924, landscape study with a woman and geese by a stream, oil on canvas, 34cm x 24cm £80 - 120 †

473
Manner of J.F. Herring Jnr., farmyard scene, oil on panel, signed 20cm x 25cm £80 - 120 †

474
Late 19th Century English school, study of a spaniel with a duck, unsigned oil on canvas, 29cm x 33cm, framed as an oval £80 - 120 †

475
Frederick Hines, active 1875-1928, coastal scene with a mother and child on a path, signed watercolour 27cm x 37cm £40 - 60 †

476
George Harris, 19th Century, study of a river landscape with cattle watering, signed oil on board, 29cm x 44cm £80 - 120 †

477
20th Century continental school, study of poultry in a landscape, unsigned oil on canvas, 49cm x 70cm £80 - 120 †

478
Mid 19th Century English school, study of an avenue of trees with figures on a path, unsigned oil on canvas, 60cm x 45cm £150 - 200 †

479
Manner of George Morland, early 19th Century, study of a gypsy encampment, oil on canvas, 63cm x 77cm, unframed £100 - 150 †

480
Robert Taylor, "Spitfire" commemorative print, signed by Group Captain Douglas Bader and Air Vice Marshal Johnnie Johnson £40 - 80 †

481
Robert Taylor, "Duel of Eagles", commemorative print 40th Anniversary Battle of Britain, pencil signed by Douglas Bader and Adolf Galland £40 - 80 †

482
Barry Price, commemorative print RAF Vulcan Mark B2, pencil signed by the crew £40 - 80 †

483
Eric H. Day, commemorative print of the Vulcan display team, signed on the margin by members of the team £40 - 80 †

484
Charles William Farley, portrait study of a clown, oil on canvas, 48cm x 38cm £60 - 100 †

485
Manner of Sir Alfred Munnings, "The Otter Hunt", oil on board, 50cm x 82cm £40 - 80 †

486
19th Century English school, portrait study of a young girl, oil on canvas, as an oval, 40cm x 36cm overall £80 - 100 †

487
Manner of Oliver Clare, still life study with fruit, 25cm x 35cm £100 - 200 †

488
A set of six Cecil Aldin coloured hunting prints, contained in broad oak frames £300 - 500 †

489 ✓
Terance James Bond, study of a Nuthatch seated on a branch, signed, 35.5cm x 26.5cm £500 - 600 †

490
A.L.H.K., 19th Century, study of the Moot Hall, Aldeburgh, initialled watercolour, 25cm x 36.5cm £100 - 150 †

491
Mervyn Pearson, study of America's Cup contenders racing off the Needles, signed watercolour, 28cm x 52cm £150 - 250 †

492
Christopher Mark Maskell, a pair, studies of Billingsford Mill and Mendham Mill, initialled oils on canvas, 21cm x 29cm £100 - 150 †



Lot 466



Lot 489



Lot 491

493
A **George Morland print**, "Evening or the Sportman's return", in black and gilt mount and frame; and another "The Cottage fireside", (2) £40 - 60 †

494
George Morland coloured print, "Dancing Dogs"; and another "Guinea Pigs", (2) £40 - 60 †

495
A **George Morland coloured print**, in simulated burr walnut frame, "Morning or the Higglers preparing for market"; and another "Nurse and children in the fields", (2) £40 - 60 †

496
A **George Morland coloured print**, depicting shepherd and shepherdess with their flock; and a black and white print depicting a farmyard scene, (2) £40 - 60 †

497
Late 19th Century school, moorland study, unsigned watercolour, 25.5cm x 35.5cm £20 - 40 †

498
A **George Morland**, black and white print of a stable interior; and another "The Woodcutters", (2) £30 - 50 †

499
After **George Morland**, "Feeding the Pigs", 43cm x 52cm £40 - 60 †

500
A **George Morland print**, "A visit to the child at Nurse"; another "Cottages"; another "Poultry Market"; and "The Barn Door", (5), some damage £30 - 50 †

501
A **19th Century coloured lithograph**, depicting a view of the City of Cambridge £40 - 60 †

502
After **Hamilton**, oval black and white print, "Apple Picking"; another Bartolozzi style print, cherubs with a bird's nest; and an oval coloured print of mother and child in decorative gilt frame, (3) £20 - 40 †

503
After **George Morland**, study of a stable interior with figures and cattle, unsigned oil on canvas, 29cm x 43cm £150 - 250 †

504
Henry George Todd, (1847-1898), still life study depicting fruit and a pottery jug on a ledge, signed and dated 1884, 36.5cm x 31cm £400 - 600 †

505
19th Century Suffolk School, study of a pond beside a windmill with countryside and further windmill in the far ground, unsigned oil on board, 39cm x 49cm £60 - 100 †

506
After **Eloise Harriet Stannard**, a pair of still life studies depicting fruit, flowers and bird's nest on a ledge, unsigned oils on board, 26.5cm x 21cm £400 - 600 †

507
After **Frost**, "The Old Market Cross, Ipswich", unsigned oil on canvas, 28cm x 37cm (see cover illustration) £200 - 400 †

508
19th Century school, large family portrait study depicting brother and sister with coastal landscape behind, possibly New Brighton, the brother seated with an open book, unsigned oil on canvas, 126cm x 100cm, contained in an ornate gilt frame £1,000 - 1,500 †

509-517
No Lots

Rugs and Furniture

518
Five mahogany Chippendale design dining chairs, labelled for J.A.S. Shoobred & Co., having carved wheat and floral decoration to the backs, upholstered drop-in seats, raised on square section supports, (5 standards, 1 elbow) £100 - 150 †

519
A **mahogany Chinese Chippendale design elbow chair**, having pierced back, upholstered drop-in seat, raised on fret carved square stretched supports £40 - 60 †

520
An **Antique Chinese painted and lacquered chest**, fitted with an arrangement of six drawers above a foliate decorated frieze and square section supports, 93cm wide £200 - 300 †

521
An **18th Century walnut and cross-banded chest**, of two short and three long drawers, raised on bracket feet, 98cm wide £200 - 400 †

522
An **Antique carved oak wall mirror**, with profuse foliate scroll and shell decoration, with bevelled plate, 78cm x 64cm £40 - 60 †

523
A **George III mahogany chest**, fitted four long graduated drawers beneath a brushing slide, raised on bracket feet, 100cm wide £100 - 200 †

524
A **mahogany fret carved Chippendale style wall mirror**, 73cm £30 - 50 †

525
A **19th Century mahogany D end side table**, raised on square section supports, 125cm wide £40 - 60 †



Lot 504



Lot 506



Lot 507



Lot 508



Lot 526

526

A good quality walnut and cross-banded serpentine fronted chest, of four long drawers, raised on bracket feet, 78cm wide £100 - 200 †

527

A Regency mahogany secretaire chiffonier, having raised and shelved back, fitted writing drawer with an arrangement of pigeon-holes and small drawers, the shelves below enclosed by a pair of pleated silk panelled doors and raised on fluted bun feet, 85cm wide £200 - 400 †

528

A Japanese Meiji period lacquer and gilt decorated Shodhana cabinet, fitted with drawers and shelves, decorated with panels of figures, birds and flowers, having foliate engraved metal mounts, 105cm wide x 106cm high, raised on a much later wooden stand £1,500 - 2,000 †



Lot 528

529

An 18th Century walnut and boxwood strung chest, fitted two short and two long drawers, raised on bracket feet, 98cm wide £300 - 400 †

530

A Victorian figured mahogany swing toilet mirror, the oblong plate raised on scrolled bird and claw arms, inverted breakfront base, fitted with drop flap compartment and flanked by drawers, 68cm wide £60 - 80 †

531

An 18th Century walnut bureau, the fall front opening to reveal an interior arrangement of drawers and pigeon-holes around a central mirrored cupboard, two short and two long drawers below, raised on bracket feet, 92cm wide £200 - 300 †



Lot 540

532

An 18th Century oak bureau, the fall front opening to reveal a stepped interior arrangement of drawers and pigeon-holes around a central cupboard, sunken well below with two short and two long drawers, raised on bracket feet, 84cm wide £100 - 150 †

533

A Georgian mahogany secretaire chest, having fitted writing drawer above four long graduated drawers, raised on bracket feet, 87cm wide £100 - 150 †

534

A 20th Century oak china display cabinet, the adjustable glass shelves enclosed by panelled doors, raised on baluster turned and block supports, terminating in bun feet, 140cm wide x 130cm high £60 - 80 †

535

A walnut cross-banded and inlaid chest, fitted two short and three long drawers, raised on bracket supports, 107cm wide x 112cm high £350 - 450 †



Lot 550

536

A 19th Century ebonised and satinwood strung pier cabinet, having gilt metal embellishments and central Sevres style plaque, the interior shelves enclosed by a glazed panel door, raised on turned supports, 77cm wide x 109cm high £100 - 150 †

537

An Edwardian carved mahogany dwarf breakfront bookcase, having foliate and dragon carved frieze above central open adjustable shelves, flanked by further shelves enclosed by glazed panelled doors, raised on square section supports, 244cm wide x 52.5cm deep x 122cm high £200 - 400 †

538

An Antique walnut and cross-banded low boy, fitted two long drawers, raised on cabriole supports and pad feet, AF, 79cm wide £100 - 150 †

539

An oak four section Globe Wernicke bookcase, having leaded glazed doors, raised on a platform plinth, 90cm wide x 141cm high £200 - 400 †

540

A walnut and cross-banded hall table, fitted four drawers and raised on square chamfered supports, 121cm wide £200 - 300 †

541

A Victorian mahogany bookcase, the upper adjustable shelves enclosed by a pair of glazed panelled doors, single drawer below above a cupboard base, raised on platform plinth, 101cm wide x 208cm high £150 - 250 †

542

A Georgian mahogany linen press, the upper section converted to a hanging wardrobe above two short and two long drawers below, raised on bracket feet, 133cm wide £100 - 200 †

543

A Regency gilt pier mirror, having inverted breakfront pediment with ball decoration above a mask frieze flanked by stars, ebonised reeded slip frame within cluster columns, 115cm x 65cm overall £100 - 200 †

544

A Victorian mahogany bookcase, the upper adjustable shelves enclosed by a pair of glazed panelled doors, single drawer below above arched cupboards and raised on a platform plinth, 100cm wide x 218cm high £150 - 250 †

545

An 18th Century style walnut and cross-banded cupboard on chest, the upper shelves enclosed by a pair of cross-banded doors, two short and three long graduated drawers below, raised on bracket feet, 93cm wide £300 - 400 †

546

An 18th Century and later continental cabinet on stand, the upper section fitted shelves and drawers and enclosed by a pair of Italianate decorated doors depicting figures in landscapes, three drawers to the base section, raised on scrolled supports united by wavy stretchers and terminating in bun feet, 167cm wide x 208cm high £200 - 400 †

547

An Antique oak dresser, having shelved and boarded plate rack, above two short drawers with brass acorn drop handles, shaped frieze below raised on turned and block supports, 147cm wide x 176cm high £100 - 200 †

548

An 18th Century lacquered and painted chinoiserie decorated long case clock, the hood in need of attention, enclosing a floral painted dial, inscribed "Brice", supporting an 8 day movement, the full length trunk door fitted with a coloured glass bull's eye, raised on a box base, 198cm wide, AF £100 - 200 †

549

A 19th Century oval gilt framed segment panel wall mirror, 97cm x 60cm overall £80 - 120 †

550

An 18th Century rosewood, ebony and bone inlaid continental table cabinet, fitted with a central cupboard enclosing three short drawers, surrounded by 10 further drawers having profuse foliate decoration, raised on bracket feet, 97cm wide x 53cm high £400 - 600 †

551

A 19th Century mahogany hanging bookshelf, having six adjustable shelves and three shallow drawers under, 117cm wide x 70cm high £80 - 120 †

552

A Regency gilt pier mirror, with inverted breakfront pediment, decorated with a frieze of scholars and Latin inscription, flanked by fluted columns, 96cm x 74cm in extremes £150 - 250 †

553

A 19th Century gilt framed pier mirror, having swag and garland decoration, ebonised reeded slip panel enclosing the bevelled plate, 87cm x 51cm £100 - 150 †

554

Thomas Barker of Framlingham, oak long case clock, enclosing a floral painted dial supporting an 8 day movement, full length trunk panelled door, flanked by fluted columns, raised on a box base and bracket feet, 210cm high £300 - 400 †

555

A circular gilt framed wall mirror, in the Regency manner, having ball decoration and ebonised slip, 32cm dia. £40 - 60 †

556

An 18th Century oak dresser base, fitted four central drawers flanked by long drawers and cupboards, raised on bracket feet, fitted turned knob handles and ivory escutcheons, 157cm wide £200 - 400 †

557

A Victorian mahogany cot, having cane sides and raised on turned supports terminating in castors £100 - 150 †

558

A Victorian walnut sewing table, the lid opening to reveal a partitioned interior above a silks well, raised on turned baluster fluted supports, united by a stretcher, terminating in scrolled feet and porcelain castors, 53cm wide; together with a collection of various sewing items to include: ivory clamps, pin cushions, thimble holder and a small collection of Mauchline ware etc. £100 - 200 †

559

An Antique oak gate leg dining table, having thick rounded drop leaves, raised on spiral turned supports, united by square stretchers and blocks, terminating in rounded feet, 120cm wide £150 - 250 †

560

A set of six Victorian carved oak dining chairs, the tall backs profusely decorated with foliage and birds, with floral upholstered panels and seats, raised on turned fluted supports, united by stretchers £250 - 350 †

561

A small Afghan Bokhara carpet, 331cm x 232cm £60 - 80 †

562

An Eastern wool rug, of Caucasian design, the central stylised field surrounded by geometric borders on a predominantly red and blue ground, 202cm x 114cm £40 - 60 †

563

A Bokhara rug, of traditional pattern, 246cm x 155cm £40 - 60 †

564

A leopard skin rug, bearing label for E. Gerrard & Sons, Naturalists and Furriers, College Place, London, 245cm x 151cm in extremes £60 - 100 †

565

A Bokhara rug, of traditional design, 217cm x 101cm £40 - 60 †

566

An Eastern wool rug, "Tree of Life" design on a predominantly pale blue and brown ground, 202cm x 124cm £40 - 60 †

567

An Eastern wool rug, having linked lozenge decoration and stylised motifs, on a predominantly brown ground, 170cm x 95cm £40 - 60 †



Lot 554



Lot 556



Lot 558



Lot 575

568

An Eastern rug, decorated with three central panels with stylised emblems, with geometric border surround, on red ochre and green ground, 227cm x 127cm £40 - 60 †

569

A mahogany and brass three tier standard lamp, with adjustable central column, each tier raised on turned supports, terminating in outswept feet, 32cm wide x 143cm high £100 - 150 †

570

An 18th Century style oyster veneered walnut wall mirror, having deep cushion frame, 59cm x 53cm overall £150 - 250 †

571

An Eastern hardwood and mother of pearl inlaid wall shelf, having carved decoration, 70cm high x 36.5cm wide £40 - 60 †

572

A George III mahogany chest, of two short and three long drawers, fitted ornate brass handles, raised on ogee bracket supports, 98cm wide £150 - 200 †

573

A good quality reproduction walnut pedestal writing desk, having leather top above three frieze drawers with three short drawers to each pedestal, mounted with pierced brass butterfly handles, raised on bracket feet, 120cm wide £100 - 200 †

574

A gilt framed three section chimney mirror, surmounted by urn and tied ribbon pediment, with ram's head mask frieze below, leaf decoration to the frame, 69cm x 85cm overall £60 - 100 †

575

A Victorian mahogany work table, fitted with a single drawer above silks well, raised on a baluster turned column and clover leaf shaped base, terminating in claw feet, 56cm wide £100 - 150 †

576

A George III mahogany Pembroke table, with bow fronted ends, fitted single drawer, raised on square tapering supports terminating in brass caps and castors, 82cm £180 - 220 †

577

A set of eight elm ladder back dining chairs, having rush seats, raised on rounded tapering supports united by turned stretchers, (6 standards, 2 elbows) £150 - 200 †

578

A 19th Century mahogany wash stand, with folding top, fitted drawers and cupboards below and inset with a blue and white wash bowl, 70cm wide overall x 124cm high £40 - 60 †

579

An 18th Century oak coffer, having carved frieze and triple panelled front, raised on square section supports, 124cm wide £100 - 150 †

580

A Victorian carved oak metamorphic library chair £60 - 100 †

581

A Georgian mahogany armchair, in the Hepplewhite manner, with upholstered back, arm rests and serpentine fronted seat, raised on turned fluted tapering supports £150 - 200 †

582

An 18th Century oak mule chest, having triple fielded panelled front above two drawers, raised on square section supports, 136cm wide £200 - 300 †

583

An Antique mahogany gate leg dining table, having rounded drop leaves above two single end drawers, raised on turned columns and breganza feet, 92cm x 102cm fully extended £60 - 100 †

584

A satinwood and cross-banded hall table, of narrow proportions, fitted five drawers and raised on square chamfered supports, 107cm wide £150 - 250 †

585

A yew wood and elm Mendlesham chair, of traditional form £200 - 300 †

586

A set of six Edwardian walnut dining chairs, having carved shaped cresting rails, pink dralon upholstered seats and backs, raised on turned tapering front supports £100 - 150 †

587

An early 20th Century mahogany music seat, flanked by turned handles, the upholstered seat opening to reveal a compartment, raised on cabriole supports, 76cm wide £40 - 60 †

588

A George III mahogany elbow chair, having Prince of Wales plume motif and lyre splat back, upholstered stuff-over seat raised on square tapering reeded supports, terminating in spade feet and a similar chair, upholstered en suite, (2) £100 - 150 †

589

A Hepplewhite style mahogany elbow chair, with arched cresting rail, central splat of urn and garlands, leather upholstered drop-in seat, raised on square tapering fluted front supports £80 - 120 †

590

A yew wood and elm Mendlesham chair, of traditional form £200 - 300 †

591

A Victorian mahogany metamorphic step/library chair £60 - 100 †



Lot 580



Lot 581

592
A 19th Century mahogany reading table, with central ratchet adjustable slope, raised on turned baluster supports and cabriole feet, 115cm long
£200 - 300 †

593
An Antique oak corner table, the triform folding top raised on turned baluster supports united by stretchers, 73cm wide
£60 - 80 †

594
An Edwardian oak writing table, with green leather and gilt insert, single drawer below, raised on ring turned tapering supports, terminating in castors, 91cm wide
£60 - 80 †

595
A 19th Century mahogany cross-banded and satinwood strung pedestal side cabinet, the upper section enclosed by a tambour shutter door with pull-out cellaret drawer below, 53cm wide x 81cm high x 48.5cm deep
£60 - 100 †

596
An 18th Century oak side table, fitted with a single drawer, raised on turned baluster supports united by stretchers, 76cm wide
£100 - 200 †

597
A Victorian rosewood stretcher table, the serpentine shaped top raised on baluster turned end columns, united by a pierced wavy stretcher, terminating in scrolled feet and brass castors, 132cm wide
£80 - 120 †

598
An Antique oak centre table, having carved frieze raised on baluster fluted supports terminating in blocks and united by stretchers, 81cm wide
£100 - 150 †

599
A set of six Empire style mahogany dining chairs, having raised gilt symbols of torches, ribbons and flowers, red silkwork upholstered backs and seats, raised on tapering front supports and castors
£150 - 200 †

600
A 19th Century mahogany two tier corner wash stand, 53cm wide
£20 - 40 †

601
A good quality Victorian figured walnut dwarf bookcase, the adjustable shelves enclosed by three glazed panelled doors and raised on a platform plinth, 159cm wide x 103cm high
£300 - 400 †

602
A George III style mahogany D end dining table, raised on twin pillars terminating in brass caps and castors, 106cm x 254cm
£200 - 300 †

603
An 18th Century lacquered bow fronted corner cupboard, with chinoiserie decoration to the double doors, 61cm wide x 92cm high
£40 - 60 †

604
A walnut and oak cheval mirror, surmounted by turned finials, with cushion frame, 47cm x 135cm overall
£80 - 120 †

605
A Victorian walnut and satinwood inlaid oval loo table, raised on turned columns and quadruple splay with carved leaf decoration terminating in castors, 117cm
£60 - 80 †

606
A Victorian burr walnut and ebony cross-banded card table, the oblong foldover swivel top raised on four columns and central platform, terminating in scroll feet and castors, 90cm wide
£100 - 150 †

607
A 19th Century metamorphic child's yew wood high chair, having mahogany back rail, upholstered stuff-over seat, raised on ring turned supports
£250 - 350 †

608
A circular Japan lacquered occasional table, having dished top, raised on a turned column and quatrefoil base
£40 - 60 †

609
A circular mahogany occasional table, having etched mirrored top and raised on carved shell shoulders and cabriole supports, terminating in ball and claw feet, 53cm dia.
£40 - 60 †

610
An Edwardian mahogany boxwood strung and satinwood cross-banded bijouterie table, raised on square tapering supports united by an under-tier, the hinged lid opening to reveal a fabric lined interior, 61cm wide
£60 - 100 †

611
A French cast iron circular occasional table, with raised leaf decoration, marble inset top, 61cm dia. x 73cm high
£100 - 150 †

612
A large Victorian mahogany extending dining table, fitted two extra leaves and raised on turned tapering supports terminating in brass caps and castors, 126cm x 260cm extended
£200 - 400 †

613
A 19th Century mahogany writing table, the rectangular leather inset top raised on shaped end supports, 77cm wide
£40 - 60 †

614
A George III mahogany card table, the foldover swivel top raised on a blind cut frieze above chamfered supports, 92cm wide
£100 - 150 †

615
An Edwardian oak pedestal writing desk, with green and gilt leather inset top above three frieze drawers, with 6 short drawers to the pedestals, raised on platform plinths terminating in brass castors, 122cm wide x 64cm deep
£250 - 350 †



Lot 585



Lot 589



Lot 601



Lot 610



Lot 627

616
An 18th Century mahogany and gilt decorated wall mirror, in the Chippendale manner, having Ho Ho bird surmount, 77cm wide x 110cm high
£100 - 150 †

617
A good quality reproduction yew wood sofa table, fitted two short drawers, raised on shaped end supports terminating in brass claw caps and castors, 84cm wide
£80 - 100 †

618
A 19th Century mahogany Pembroke table, fitted single end drawer and opposing dummy drawer, raised on ring turned tapering supports, 88cm wide
£40 - 60 †

619
A Georgian mahogany tray top bedside cupboard, raised on square chamfered supports, 59cm wide x 71cm high
£100 - 150 †

620
A mahogany cased Challen baby grand piano, raised on square tapering supports terminating in brass caps and castors, 140cm
£100 - 200 †

621
A 19th Century mahogany fold-over tea table, the rectangular top above a single drawer, raised on square tapering supports, 84cm wide
£60 - 80 †

622
A large and unusual Eastern carved hardwood folding dining table, the leaf shaped top with pierced floral centre, raised on bold cabriole supports, 154cm dia.
£100 - 200 †

623
A William IV circular figured mahogany supper table, the radially veneered snap top raised on a fluted tapering column and triform base, terminating in acanthus scroll feet, 130cm dia.
£300 - 400 †

624
A decorative gilt framed wall mirror, surmounted by a panel depicting a country landscape, within a foliate scroll shell decorated frame, AF, 76cm x 45cm in extremes
£40 - 60 †

625
A Regency gilt and ebonised pier mirror, having inverted pediment, frieze decorated with a figure of summer and cherubs gathering sheaves of corn, flanked by Egyptianesque pillar columns terminating in feet, 104cm x 64cm in extremes
£200 - 300 †

626
A Regency mahogany and satinwood cross-banded card table, the D shaped foldover swivel top raised on a baluster turned central column and leaf carved quadruple splay, terminating in reeded legs with brass caps and castors, 90cm wide
£100 - 150 †

627
A late Victorian mahogany Country House stick stand, having five divisions and raised on ring turned columns and peg feet, 84cm wide
£80 - 120 †

628
An Antique elm settle, having scrolled back and arms, the solid seat above a single central drawer, raised on square section tapering supports, 174cm wide
£200 - 400 †

629
A Middle Eastern chest, having lozenge shaped inlaid decoration, 79cm wide, (some inlay missing)
£40 - 60 †

630
A mahogany window seat, having scrolled ends, raised on ring turned tapering supports and peg feet, 106cm wide
£120 - 160 †

631
An oak panelled half tester single bed, complete with drapes
£100 - 150 †

632
An oak panelled half tester single bed, complete with drapes
£100 - 150 †

633
A 19th Century satinwood and burr walnut octagonal work table, raised on tapering column and quatrefoil base, terminating in bun feet, 55cm wide
£200 - 300 †

634
A good quality mahogany and cross-banded serpentine fronted chest, fitted four long graduated drawers and brushing slide, 61cm wide
£60 - 80 †

635
A continental walnut and marquetry decorated bureau plat, fitted three drawers and raised on shaped supports, with gilt metal mounts and sabots, 138cm wide
£100 - 150 †

636
A fruitwood window seat, having scrolled ends and raised on turned fluted tapering supports, 177cm long
£200 - 300 †

637
A large 19th Century mahogany writing desk, having green leather inset top above three frieze drawers and raised on ring turned tapering supports, 182cm wide
£200 - 300 †



Lot 629



Lot 633



Lot 635

Special Sales Calendar 2018

Clarke &
Simpson

RURAL BYGONES - 24th February, 2018 - *Closing date: 19th January*

FINE ART - 7th March, 2018 - *Closing date: 9th February*

ART DECO, DESIGN & RETRO - 9th April, 2018 - *Closing date: 16th March*

FINE ART - 16th May, 2018 - *Closing date: 20th April*

FARM MACHINERY - 26th May, 2018 - *Closing date: 13th April*

ART DECO, DESIGN & RETRO - 18th June, 2018 - *Closing date: 25th May*

RURAL BYGONES - 14th July, 2018 - *Closing date: 15th June*

FINE ART - 25th July, 2018 - *Closing date: 29th June*

ART DECO, DESIGN & RETRO - 3rd September, 2018 - *Closing date: 3rd August*

RURAL BYGONES - 8th September, 2018 - *Closing date: 10th August*

FINE ART - 3rd October, 2018 - *Closing date: 7th September*

FARM MACHINERY - 20th October, 2018 - *Closing date: 7th September*

ART DECO, DESIGN & RETRO - 29th October, 2018 - *Closing date: 5th October*

FINE ART - 5th December, 2018 - *Closing date: 9th November*



Campsea Ashe
Nr. Wickham Market
Suffolk IP13 0PS
Tel: (01728) 746323 Fax: (01728) 748173
Email: auctions@clarkeandsimpson.co.uk
www.clarkeandsimpson.co.uk

Next Antique & Fine Art Auction to be held Wednesday 7th March, 2018

Clarke & Simpson

Auctions

Closing date for entries Friday 9th February, 2018

Droite de Suite Royalty Charges

From 14th February, 2006 all United Kingdom Art Market professionals (which includes auctioneers) are required to collect a royalty payment for all qualifying Works of Art. Under new legislation which came into effect on the 1st January, 2012, this applies to living artists and those who have died in the last 70 years. This payment is calculated on qualifying Works of Art which are sold for a hammer price more than the UK sterling equivalent of €1,000 (the UK sterling equivalent will fluctuate in line with prevailing exchange rates calculated by the Artist's Resale Right Service Hub, based on the European Central Bank reference rate published at 2.15pm on the day of the sale, and can be found on www.dacs.org.uk).

All items in this catalogue that are marked "✓" are potentially qualifying items, and the royalty charge will apply if the hammer price is more than UK sterling equivalent of €1,000. The royalty charge will be added to purchase invoices, and must be paid before items can be cleared. All royalty charges are paid to the Design and Artists Copyright Society ("DACS") by the auctioneers and no handling costs or additional fees with respect to these charges will be retained by the auctioneer.

The royalty charge for qualifying items which achieve a hammer price of more than the UK sterling equivalent of €1,000, but less than the UK sterling equivalent of €50,000 is 4%. For qualifying items that sell for more than the UK equivalent of €50,000 a sliding scale of royalty charges will apply. For a complete list of the royalty charges and threshold levels please refer to www.dacs.org.uk. There is no VAT payable on this royalty charge.

Dear Purchaser

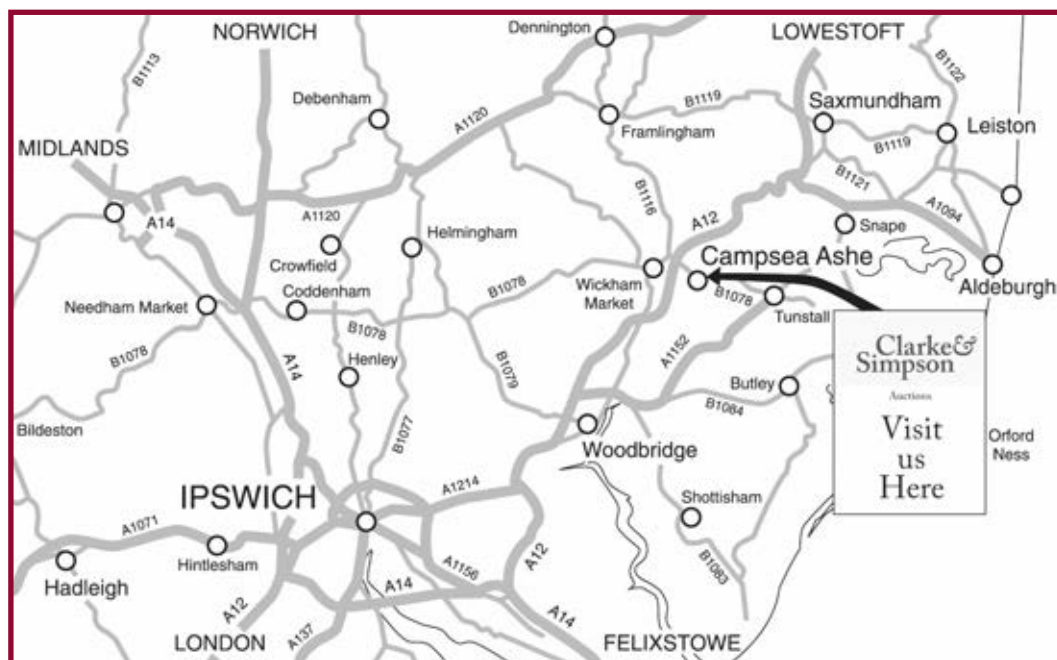
Clarke and Simpson are pleased to offer a packing and shipping service worldwide through "the-saleroom.com Delivery Service". The professional team will pack and ship items from very small non-breakables such as jewellery and coins through to larger and more fragile items such as paintings and works of art. Shipping and insurance is at the buyer's expense. Shipping payment must be made to 'the-saleroom.com Delivery Service' prior to departure and excludes local duties and taxes. Please note that Clarke and Simpson do not pack or ship items - all requests are sent to our specialist handlers at "the-saleroom.com Delivery Service" who can be contacted directly via delivery@atgmedia.com

the-saleroom.com
delivery service



Directions

We are just off the A12 north of Wickham Market on the B1078 road to Orford.



TERMS AND CONDITIONS OF SALE

1. INTRODUCTION

The following defining terms are used in these conditions:-

“Auction”	Means any auction conducted by Clarke and Simpson Auctions Ltd. either at the premises owned by them or elsewhere (including any internet based auction);
“Auctioneer”	Means Clarke and Simpson Auctions Ltd. authorised auctioneer as appropriate;
“Bidder”	Means a bidder at an auction, including the bidders personally present at the venue and those bidding by telephone or over the internet or otherwise;
“Buyer”	Means the bidder whose bid was the last bid when the auctioneer concludes the bidding;
“Conditions”	Means these Terms and Conditions of Sale;
“Hammer Price”	Means the level of bidding reached (at or above any reserve) when the auctioneer brings the bidding to a close;
“Lot”	Means any property accepted by Clarke and Simpson Auctions Ltd. for offer at auction;

2. DESCRIPTION

No warranty is given or implied by the description in the catalogue. Each lot is sold in its condition at the time of sale with all faults, defects, imperfections and errors of description (if any). Whilst every endeavour has been made to describe the items adequately and properly, the purchaser shall deem to have inspected the lot at time of purchase. All catalogues and seller's and buyer's guides are for information only and do not form part of the contract.

3. STATUTORY REQUIREMENTS

Purchasers will be deemed to have satisfied themselves prior to purchasing regarding current legal requirements (e.g. Health & Safety at Work Act) and it is expressly brought to the bidders attention that equipment in the sale may not necessarily comply with such regulations. Any purchaser shall satisfy himself as to any statutory requirement for the use of any item and no liability shall rest with the vendors nor the Auctioneers.

4. THE AUCTION

All auctions are conducted at the absolute discretion of the auctioneer. The auctioneer shall conduct the auction with reasonable skill and care. The vendor reserves the right to sell subject to reserve price in respect of all lots. What constitutes a bid shall be at the absolute discretion of the auctioneer, acting with appropriate skill and care. The auctioneer shall have the right to refuse any bid in all cases but most notably when such a bid does not exceed the previous bid by at least 10% or such a proportion as the auctioneer shall in his absolute discretion direct. Where two or more bids at the same level are simultaneously received by the auctioneer, the auctioneer at his absolute discretion shall determine which bid to prefer. Subject to the foregoing where two or more bids are at the same level are simultaneously received by the auctioneer, the bid submitted in the room shall take preference over a bid submitted by telephone or internet at the same level. Any bid made or attempted by telephone or over the internet will only be deemed to have been made if received by the auctioneer. The auctioneer reserves the right to withdraw, consolidate or divide any lot or lots or submit them in any order that they desire. The auctioneer has the right at his absolute discretion to refuse admission to his premises or attendance at (or participation in) any auction by any person. In the case of any dispute, the auctioneer shall be sole arbitrator in any matters arising during or out of the sale.

5. BIDDERS

All bidders will be required to register their particulars, bidders attending in person and those accompanying them may be required to provide photo ID and separate confirmation of address prior to viewing or taking any part of the sale and before entering any part of the premises to view. All bidders accept full liability for all bids submitted. Subject to the clause in this document headed “The Auction”, the highest bidder at the close of bidding shall be the buyer. Any dispute about a bid shall be settled at the auctioneer's absolute discretion. Bidders are all deemed to act as principal unless there is prior written acknowledgement by Clarke and Simpson Auctions Ltd. that a bidder is acting as an agent for a named principal. Bidders are strongly encouraged to attend the auction in person. The bidders shall be responsible for any decision to bid for a particular lot and shall be deemed to have carefully inspected and satisfied themselves as to condition, neither Clarke and Simpson Auctions Ltd., their employees or agents shall be responsible for any neglect or default in doing or failing to do so. Bidders will be given ample opportunity to view and inspect before the sale and prospective buyers must satisfy themselves as to all matters.

6. DEFAULT

Clarke and Simpson Auctions Ltd. shall act as agent of the vendor only. Any contracts for the sale of a lot shall be formed between the vendor and the buyer. As agent only Clarke and Simpson Auctions Ltd. shall not be responsible for default by the vendor or the buyer. If any lot is not paid for in full and taken away in accordance with these conditions, or there is any other breach of the conditions, then Clarke and Simpson Auctions Ltd. as agents for vendor shall at its absolute discretion and without prejudice to any other rights it may have, be entitled to exercise all or any of the following rights and remedies:-

- 6.1 to proceed against the buyer for any action of debt or damages for breach of contract;
- 6.2 to rescind the sale of that lot or lots sold by Clarke and Simpson Auctions Ltd. to a defaulting buyer;
- 6.3 to resell the lot (by auction or private treaty) in which case the defaulting buyer shall be responsible for any resulting deficiency in the total amount due (after crediting any part payment and adding any resale costs), any possible surplus so arising shall belong to the vendor;
- 6.4 to remove, store and insure the lot at the expense of the defaulting buyer and, in the case of storage, the location of such storage shall be at Clarke and Simpson Auctions Ltd. discretion;
- 6.5 to charge interest at a rate not exceeding 2% per month of the total amount due to the extent that it remains unpaid for more than two working days after the sale;
- 6.6 to retain that or any lot sold to the defaulting buyer until the buyer pays the total amount due;
- 6.7 to reject or ignore bids from the defaulting buyer at future auctions or to impose conditions before any such bids are accepted;
- 6.8 to apply any proceeds of sale for any other lots due or in the future becoming due to the defaulting buyer towards the settlement of the total remaining due.

7. INDEMNITIES, PENALTIES AND LIMITATIONS OF LIABILITY

Purchasers shall pay for any damage done by themselves or their agents during the removal of their lots. Attendance at the sale shall be at the risk of those attending in respect of both themselves and to their goods and vehicles.

Any indemnity under these conditions will extend to all actions, costs, expenses, claims and demand whatsoever suffered or incurred by the person entitled to the benefit of it and Clarke and Simpson Auctions Ltd. declare themselves to be a trustee of the benefit of such indemnity so far as it is expressed to be the benefit of its employees and agents.

Whilst Clarke and Simpson Auctions Ltd. endeavour to ensure that the information on their websites is correct, they do not warrant the accuracy and completeness of the material on their website. Also Clarke and Simpson Auctions Ltd. can make changes to the material on their website, or alter the products and prices described on it, at any time without notice. The material on the website may be out of date, Clarke and Simpson Auctions Ltd. make no commitment to update such material. All material on the websites is provided "as is" without any conditions, warranties or other terms at any time. Accordingly to the maximum extent permitted by law, the website is provided to all parties on the basis that Clarke and Simpson Auctions Ltd. exclude all representations, warranties, conditions and other terms which, but for this legal notice, might have effect in relation to the website.

8. ELECTRICAL SAFETY REGULATIONS

All electrical lots are subject to electrical safety regulations and fall within "the low voltage electrical equipment (safety) regulations 1989" – all items have been pat tested for safety but are not guaranteed in working order.

9. GENERAL MATTERS

Any notice to any buyer, vendor, bidder or viewer may be given by first class mail or email in which case it shall be deemed to have been received by the addressee forty eight hours after posting or sending. All notices to Clarke and Simpson Auctions Ltd. must be sent in writing and email is not acceptable. Any indulgence extended to any person by Clarke and Simpson Auctions Ltd., notwithstanding the strict terms of these conditions or the terms of consignment, shall affect the position at the relevant time only and the respect of that particular concession only; in all other respects these conditions shall be construed as having full force and effect. These conditions and any disputes or claims arising out or in connection with them or their subject matter or formation (including non-contractual disputes or claims) are governed by and construed in accordance with the law of England. The parties irrevocably agree that the courts of England have exclusive jurisdiction to settle any dispute or claim that arises out of or in connection with the agreement or its subject matter or formation (including non-contractual disputes or claims).

10. PUBLICITY

Any catalogue and buyer and seller guides are provided for information only and do not form part of these conditions. The catalogue and the buyer and seller guides may contain additional terms and conditions. Clarke and Simpson Auctions Ltd. reserve the right to use any photographs, background information and research for publicity purposes both before and after the sale.

11. THE PURCHASE PRICE AND PAYMENT ARRANGEMENTS

There is a buyer's premium 18% plus VAT payable in respect of the sale. Any purchases made via "www.the-saleroom.com" shall be subject to an administration charge of 3% plus VAT on the price. Preferred payment is cash, bankers draft or personal debit card. Such cards may only be used on a chip and pin basis with the owner present. No payment will be accepted by telephone. There will be an administration charge of 2.5% plus VAT for the use of credit cards or international debit cards. Payment by cheque will only be acceptable subject to prior arrangement. No lot will be removed from the sale until any cheque has cleared unless a suitable bank reference

addressed to the auctioneer is supplied. Payment is due on the day of the sale. Cash in excess of £12,000 (including V.A.T.) will not be accepted from any one person, this is not allowed due to Money Laundering Regulations 2007. All money received will be held in Clarke & Simpson Auctions Ltd. Clients Account at Barclays Bank plc, Framlingham, Suffolk. Account Number 33222276. Sort Code 20 98 07. Clarke and Simpson Auctions Ltd. have no responsibility for any lot between the close of bidding and payment being made and subsequent collection. Please note all policy regarding payment will be enforced and suitable arrangements must be made.

12. REMOVAL OF LOTS

The ownership of any lot purchased shall not pass to the relevant buyer until they have made payment in full to Clarke and Simpson Auctions Ltd. of the total amount due. The buyer shall at their own risk and expense take away any lot that they have purchased and paid for not later than two working days following the day of the auction after which they shall be responsible for any removal, storage and insurance charges. Any lots not collected within three months of the date of sale will be resold by the auctioneer and all proceeds will be retained by the auctioneer to cover storage costs.

13. NUMBER BIDDING

This will be used for speed and efficiency as in all our sales. All prospective purchasers must complete a registration form and register in the office on the viewday or morning of sale to receive a number for bidding. PLEASE ALSO NOTE THAT PHOTO ID AND ADDITIONAL CONFIRMATION OF ADDRESS WILL BE REQUIRED.

14. TELEPHONE BIDDING

We offer a telephone bidding service where possible but this service can never be guaranteed. No applications for telephone bids will be accepted after the end of the viewing prior to sale day for any sale. All potential telephone bidders must provide a valid landline number and email address for us to send terms and conditions prior to phone bidding. No phone bids will be accepted for any lot with a lower guide figure of less than £100.

All those who wish to bid by telephone will be expected to deposit the minimum guide for all lots that they wish to bid upon into the Clients Account for Clarke and Simpson Auctions Ltd before the sale starts. In the event of default, this sum shall be retained as part payment or any part may be retained to recover losses under clause 6 of these Terms and Conditions. We will expect payment of the balance owing by BACS on the following day, any payment not met within five working days will result in the forfeiture of the deposit paid.

15. ONLINE BIDDING

Clarke & Simpson Auctions Ltd., on occasions, offer an online bidding service via the-saleroom.com for bidders who cannot attend the sale. In completing the bidder registration on www.the-saleroom.com and providing your credit card details and, unless alternative arrangements are agreed with Clarke & Simpson Auctions Ltd.:

- 1 authorise Clarke & Simpson Auctions Ltd., if they so wish, to charge the credit card given in part or full payment, including all fees, for items successfully purchased in the auction via www.the-saleroom.com, and
- 2 confirm that you are authorised to provide these credit card details to Clarke & Simpson Auctions Ltd. through www.the-saleroom.com and agree that Clarke & Simpson Auctions Ltd. are entitled to ship the goods to the card holder name and card holder address provided in fulfilment of the sale.

Please note that any lots purchased via the-saleroom.com auction service will be subject to an additional 3% charge + VAT at the rate imposed on the hammer price



Mendlesham - £1,150,000

A stunning Elizabethan manor house & separate oak framed 'party barn', together with formal gardens & grounds extending to nearly six acres.
Ref: 5590



Little Bealings - £995,000

A fully renovated & extended bungalow of over 3,000 sq ft, sitting in mature grounds of approximately an acre, within the parish of Little Bealings, 3 miles from both Ipswich & Woodbridge.
Ref: 5857



Yoxford £650,000

A spacious Grade II Listed five bedroom house in the centre of the well regarded village of Yoxford.
Ref: 5778



Dennington £525,000

A beautifully presented former mill house on the outskirts of the village with delightful gardens of over 1/3 acre. **Ref: 5610**



Debenham £500,000

A unique Grade II Listed house with 42' 'Long Room'. Courtyard garden and garaging.
Ref: 5751



Cratfield £475,000

A 3/4 bedroom detached house with fabulous open plan kitchen/dining room, in a lovely rural setting with field views **Ref: 5757**



Blaxhall £427,500

A stunning new three bedroom house with excellent 'green' credentials, built to exacting standards. **Ref: 5538**



Dennington £335,000

A charming cottage in a delightful rural location, that now warrants complete renovation and refurbishment. **Ref: 5796**



Owls Green £315,000

A renovated, three double bedroom detached bungalow standing in a pleasant setting with gardens and off-road parking. **Ref: 5839**



Heveningham £275,000

A surprisingly spacious semi-detached 2/3 bedroom cottage with delightful garden at the rear. **Ref: 5730**



Playford - £1,300,000

A superb parkland estate with attractive 6,000 sq. ft red brick farmhouse with scope to be fully renovated, domestic and agricultural buildings, along with gardens and grounds of over 58 acres which include a 5 acre mere. **Ref: 5732**



Framlingham - £675,000

A most impressive five bedroom house, with garaging, extending to approximately 3,000 sq ft, on Millers Way, Framlingham, and built by Hopkins & Moore. **Ref: 5827**



Parham £535,000

An impressive Grade II Listed former farmhouse, in an accessible location, with gardens 7 grounds of approx. 3 acres **Ref: 5848**



Framlingham £515,000

An impressive and spacious three/four bedroom detached house, on the outskirts of the historic market town of Framlingham. **Ref: 5464**



Saxmundham £495,000

A four bedroom cottage, occupying a delightful rural location, yet only a short distance from Saxmundham. **Ref: 5739**



Charsfield £435,000

A delightful 2/3 bedroom detached cottage, situated in a lovely rural location with gardens of approx. one third of an acre. **Ref: 5846**



Leiston £375,000

A substantial 5 bedroom former vicarage with large gardens, set along a quiet road, just outside the centre of town. **Ref: 5833**



Wilby £330,000

A well maintained, 3 bedroom detached family home, overlooking the church in the rural village of Wilby **Ref: 5855**



Bedingfield £295,000

A detached three bedroom bungalow situated in a pleasant position within the centre of the village of Bedingfield **Ref: 5843**



Bedfield £215,000

A pretty two bedroom terraced cottage with lovely views over farmland, situated on the outskirts of Bedfield. **Ref: 5791**

Clarke &
Simpson



*Find
more than a
keyhole view*

at www.clarkeandsimpson.co.uk

T: 01728 621200



Clarke and Simpson Auction Centre
Campsea Ashe
Nr. Wickham Market
Suffolk IP13 0PS
Tel: (01728) 746323 Fax: (01728) 748173
Email: auctions@clarkeandsimpson.co.uk
www.clarkeandsimpson.co.uk