

Clarke &
Simpson



Selected Antiques & Fine Art

Wednesday 7th March 2018 at 10 am



Framlingham £695,000

A spacious four bedroom detached house within walking distance of the centre of Framlingham. Gardens extending to approximately 0.25 acres. **Ref: 5870**



Peasenhall £635,000

A substantial 5/6 bedroom family house in a plot of nearly an acre, close to the centre of the pretty and popular village of Peasenhall. **Ref: 5737**



Saxmundham £625,000

A spacious detached bungalow situated in grounds of half an acre, in a secluded setting within the heart of Saxmundham. **Ref: 5306**



Earl Soham £625,000

A fine timbered former farmhouse, in a prominent position just outside Framlingham, with grounds of over an acre. **Ref: 5246**



Barham £610,000

An impressive new four bedroom house in a delightful rural location within the parish of Coddtenham **Ref: 5737**



Worlingworth £525,000

A most attractive Grade II Listed former farmhouse, with lovely gardens extending to three quarters of an acre. **Ref: 5825**



Bromeswell £525,000

An exciting opportunity to acquire a house requiring complete renovation in the centre of Bromeswell. **Ref: 5850**



Framlingham £515,000

An impressive and spacious 3/4 bedroom detached house, on the outskirts of the historic town of Framlingham **Ref: 5464**



Earl Soham £357,500

An attractive Grade II Listed village house situated in the heart of Earl Soham, within walking distance of pub and shop. **Ref: 5818**



Mellis £315,000

A detached 4 bedroom house located within the village of Mellis. No forward chain. **Ref: 5791**

Clarke & Simpson

Auctions

Selected Antiques & Fine Art

Wednesday 7th March 2018
at 10 am

Order of Sale:

Ceramics and Glass	1-111
Silver and Plate	113-208
Jewellery	218-245
Objects and Collectables	250-406
Pictures and Prints	410-478
Rugs & Furniture	485-567

Viewing:

Saturday 3rd March, 9 am - 12 noon
Monday 5th March, 2 pm - 8 pm
Tuesday 6th March, 10 am - 4 pm
Morning of Sale from 8.30 am



@CandSAuctions



CandSAuctions



Campsea Ashe
Nr. Wickham Market
Suffolk IP13 0PS
Tel: (01728) 746323 Fax: (01728) 748173
Email: auctions@clarkeandsimpson.co.uk
www.clarkeandsimpson.co.uk

Online bidding via:

the saleroom
The home of art & antiques auctions

Special Notices for Purchasers

Certain lots are catalogued as (A.F.), damaged, restored, etc., however the absence of any such notice does not imply that the piece is free from defects, nor does it indicate that other defects are not also present. Mention is not made of breakage, cracks, chips or any damage which can be noted by careful inspection, therefore, intending purchasers MUST, in all cases, be responsible for determining the condition of lots themselves.

Special attention is drawn to the Conditions of Sale printed at the back of this catalogue.

Estimates

Presale estimates are intended only as a guide for intending purchasers, are given in good faith and subject to revision.

Condition Reports

Clarke and Simpson are unable to guarantee that requests for condition reports/images received after the close of the viewing on the day prior to auction, will be responded to. Clarke and Simpson are happy to give a Condition Report on the physical condition of goods, this will be provided on behalf of the seller on the understanding that Clarke and Simpson are not entering into a contract with you in respect of the Condition Report and accordingly does not assume responsibility to you in respect of it. All lots are available for your own inspection or for inspection by an expert instructed by you, therefore these Condition reports are for guidance only and all lots are sold "as found".

Commission Bids

The auctioneers will be pleased to execute bids for those unable to attend the sale. Lots will be purchased at the lowest bid the room bidding or any reserves will allow. In the event of identical bids, the earliest bid received will take precedence. There must always be a maximum limit indicated. Buy or unlimited bids will not be accepted. Commission bids placed by telephone are accepted at the client's risk. We urge our clients to place such commission bids before the start of the sale. All such commissions are left entirely at the buyer's risk.

Telephone Bids

Please refer to conditions of sale printed at the back of this catalogue.

Registration

All prospective buyers must register their name and address at our auction office and collect a numbered bidding card before the sale commences. If you are a successful purchaser please ensure that your number can be seen by the auctioneer and that it is your number that is called out at the fall of the hammer. Should there be any doubts as to the price or buyer, please draw the auctioneer's attention to it before the next lot is offered.

Value Added Tax

The symbol * after any lot number indicates that Value Added Tax is payable by the buyer on the "hammer price".

Auctioneers Margin Scheme

The Auctioneers Margin Scheme allows auctioneers to sell items without VAT on the hammer price. Under the margin scheme an amount equivalent to VAT at the current rate is added to the buyer's premium. This amount cannot be refunded. The VAT element will not be shown separately on the buyer's invoice.

Buyer's Premium

A buyer's premium of 18% plus VAT will be added to the hammer price of each lot.

Please note that any lots purchased via the-saleroom.com auction service will be subject to an additional 3% charge + VAT at the rate imposed on the hammer price.

Payment

Payment can be made during or immediately after the sale by the following methods:

- i) Bank Transfer – Account name: Clarke and Simpson Auctions Limited
Account No: 83428591
Sort Code: 20-98-07
- ii) Personal Debit Card
- iii) Bankers Draft
- iv) Cash (up to a maximum of £7,500 including VAT in accordance with Money Laundering Regulations 2007)

We do not accept cheques unless by prior arrangement.

Attribution of Pictures and Drawings

Every effort is made to ensure the accuracy of any statement as to authorship, attribution, origin, date, age, provenance and condition of any lot whether or not such statement forms part of the description of any such lot. Whether any such statement is made orally or in the catalogue it is an expression of opinion and not to be taken as being or implying any warranties or representations of facts by the auctioneers. Each buyer by making a bid for a lot acknowledges that he has satisfied himself fully as to the attribution and condition of the lot.

- a) The forename(s) (or full stops where not known) and surname of an artist indicates in our opinion a work by the artist.
- b) The initials of the forename(s) and the surname of the artist indicates in our opinion a work of the period of the artist which may be wholly or in part his work.
- c) The surname of the artist indicates in our opinion a work of the school or by one of the followers of the artist or in his style and of uncertain date.
- d) *Signed, Dated, Inscribed* indicates in our opinion work signed/dated/inscribed by the artist.
- e) *Bears signature* indicates in our opinion that this is not the signature of the artist.
- f) *Attributed to* may be used to denote a traditional attribution based on style.
- g) *Manner of* indicates in our opinion a work executed in the artist/craftsman's style but of a later date.
- h) *After* indicates in our opinion a copy (of any date) of work of an artist or craftsman.

The addition of a question mark after any of the cataloguing terms above indicates an element of doubt.

Ceramics & Glass

1
A Wedgwood basalt ware model of a Grecian urn, 6cm high; a similar small pot and cover decorated with a winged beast; a pair of bisque ware studies of children seated on cushions; two 19th Century continental porcelain cologne bottles; a Parian ware study of Shakespeare and a Derby ink stand, AF, etc. £40 - 60 †

2
An 18th Century English porcelain blue and white mustard pot, AF; a Worcester saucer dish; a Worcester leaf shaped pickle dish; a Cream ware similar; a Willow pattern cow creamer; various English and oriental saucer dishes, 18th Century teapot etc. £40 - 60 †

3
A Victorian satin glass posy basket, with frilled rim; a similar baluster vase; a mottled glass ewer; and other coloured glassware, (6) £20 - 40 †

4
A 19th Century commemorative plate, relating to Intemperance; another depicting Elijah fed by Ravens; various other nursery and commemorative plates, (some damage), (6) £40 - 60 †

5
Six various 18th Century Delft plates and shallow dishes; and a faience ware shaped serving dish, AF £40 - 60 †

6
A pair of 19th Century lustre decorated pierced border plates; two famille rose plates; various 19th Century continental and English porcelain plates etc. £40 - 60 †

7
A 19th Century pearl ware jug, decorated scenes of children at play, 21cm high; a lustre ware jug with vine decoration; a lustre decorated teapot; and a 19th Century Willow pattern teapot, AF, (4) £20 - 40 †

8
An Isnic blue glazed baluster vase, having stylised decoration, 18cm high £40 - 60 †

9
A mixed lot containing various Chinese, Japanese and English 19th Century and later porcelain, (11) £20 - 40 †

10
A 17th Century South East Asian celadon glazed bowl, decorated to the interior with flowerhead and cloud scrolls, raised on a circular short foot, 28cm dia. £200 - 400 †

11
A russet brown glazed and painted Meiping vase, of baluster tapering form, bearing label to the base: Oriental Ceramics Society 1949 Exhibition, also with collection label for Lord Rolf Cunliffe, (not Zhou Chou but of later period), 37cm high £100 - 200 †

12
A Chinese blue and white table lamp base, decorated with figures and landscapes, raised on a circular carved hardwood pierced base, 33cm high; and another similar decorated artefacts and flowers on a celadon ground, (2) £100 - 200 †

13
A 19th Century Chinese crackle glazed baluster vase and cover, the domed lid surmounted by a Kylin, 34cm high, AF £30 - 50 †

14
A Canton porcelain bowl, decorated with leaves, flowerheads and butterflies, 30.5cm dia. £150 - 200 †

15
A Waterford cut glass pedestal fruit bowl, with hob-nail decoration, raised on a faceted column and spread foot, 25cm dia. x 20cm high £40 - 60 †

16
A Victorian relief moulded baluster jug, by W.R. Argos of Cobridge, having Greek key border and leaf decoration, 12cm high; a smaller example by Tiverton of Cobridge, 19.5cm high, (2) £20 - 40 †

17
A pair of Staffordshire pottery figures, in the manner of Elijah Wood, comprising seated biblical figures with floral bogage behind, raised on square plinths with blue sponge work decoration, 28cm high £50 - 80 †

18
A continental blue glazed porcelain flagon, having raised floral and berry decoration, the lid with pewter thumb piece, surmounted by seated figure, 42cm high £30 - 40 †

19
A Chinese blanc de chine figure of a scholar, raised on a hardwood stand, 44cm high overall, AF; a blanc de chine study of Guan Yin seated amongst lily pads and foliage, 22cm high; another study of Guan Yin with infants and dragon, 23cm high, (3) £60 - 80 †

20
A pair of 19th Century Canton vases, profusely decorated with figures, insects and foliage, raised on a pair of carved hardwood circular bases, AF, 25.5cm overall; and a Kutani bottle vase, 33cm high £40 - 60 †

21
A pair of Meissen chargers, profusely decorated with birds, butterflies and other insects, within a gilt foliate decorated shaped border, 34cm dia £150 - 250 †

22
A 19th Century Chinese green glazed baluster vase, with applied coloured flower decoration, 35cm high £200 - 300 †

23
A Chinese Yi Sing teapot, of tapering form decorated calligraphy; and another with raised flower and animal decoration, twist handle, (lid missing), (2) £100 - 150 †

24
A large pair of Belgian pottery Art vases, decorated green, blue and brown running glazes with applied coiled eels, 52cm high £60 - 100 †

25
A 19th Century Chinese famille verte bowl, decorated river scenes, flowers and objects, 31cm dia. £80 - 120 †

26
A Japanese Imari fruit bowl, of fluted form, decorated in the traditional manner, 25cm dia. £20 - 40 †



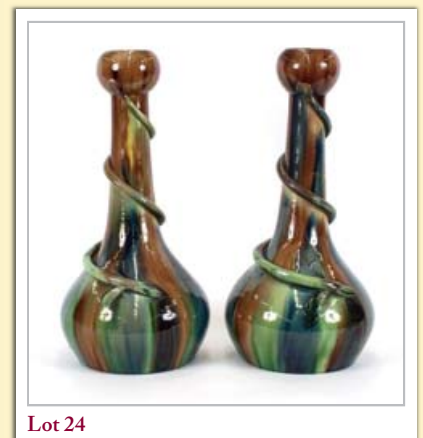
Lot 11



Lot 14



Lot 22



Lot 24



Lot 33

27
A Victorian Majolica ware sardine dish and cover, having leaf decoration and fish finial to the lid
£20 - 30 †

28
A Victorian cheese dish, having floral decoration and branch shaped handle, 25cm
£30 - 50 †

29
An early 19th Century Chinese blue and white teapot, the lid with fruit finial having body decoration of pagoda and river scenes with a wrythen handle, 15cm high
£120 - 160 †

30
A Chinese famille verte ginger jar and cover, with figural decoration, 21cm high
£40 - 60 †

31
A cut glass powder bowl and cover; a cut glass pedestal salt; various small glass dishes etc., (9)
£20 - 30 †

32
A pair of 19th Century Chinese saucer dishes, decorated with dragons and flaming pearls within shaped borders, one with red under-glazed seal mark to base, the other with a four character mark; and a pair of similar dishes with circular dragon motifs and flaming pearls, 8.5cm dia., (4)
£60 - 100 †

33
A large Majolica vase, decorated with a figure of a Griffin with coloured clouds and foliage scrolls, on a deep blue ground, having green mottled interior, AF, 71cm high
£100 - 150 †

34
A pair of large Chinese baluster vases, decorated with flowers on a black ground, 31cm high
£80 - 120 †

35
A large 19th Century Staffordshire figure, depicting Garibaldi beside his horse, 38.5cm high
£100 - 200 †

36
A 19th Century Chinese famille verte baluster vase, of hexagonal form, decorated with figures in an exotic garden and flowers, 32cm high
£200 - 300 †

37
A Victorian Parian ware type commemorative jug, for Prince Albert, 25cm high
£20 - 40 †

38
An Imari bottle vase, decorated in the traditional manner, 31cm high
£40 - 60 †

39
An 18th Century Delft polychrome charger, having floral decoration, 35cm dia., AF
£80 - 120 †

40
A large Victorian pottery toilet jug, decorated with hummingbirds
£20 - 30 †

41
A Booth's silicone china reading lamp, decorated with panels of exotic birds on a Royal blue scaled ground, heightened in gilt with butterflies and flowers, 38cm high excluding the pleated shade
£30 - 50 †

42
A set of 36 wine glasses, with hob-nail cut and split decoration, signed Lalique, France
£500 - 800 †

43
A Victorian fruit compot and matching plates, AF
£20 - 30 †

44
A collection of 19th Century Meissen floral decorated tea ware, cross sword marks to base
£100 - 200 †

45
A large quantity of Copeland Spode Italian pattern dinner and tea ware, to include soup tureen, vegetable tureens, cups, saucers, ramekins, dinner and tea plates, cruet items etc.
£100 - 150 †

46
Two continental porcelain figures of soldiers, inscribed "LEPIC AND NEY", 26cm high
£30 - 50 †

47
A German porcelain chocolate cup and cover, with classical decoration, inscribed "Henri IV"; a continental porcelain figure group of cherubs seated on a couch playing musical instruments; a Staffordshire seated dog and a Staffordshire cat, (4)
£40 - 60 †

48
A Chinese blue and white baluster vase, having all over floral decoration, 26cm high; and a Chinese ginger jar with figural decoration and four character mark to base, 14cm high, (2)
£100 - 150 †

49
An 18th Century Chinese teapot, with floral decoration and flower finial to the domed lid
£80 - 120 †

50
A good quality hob-nail cut decanter, having three sections and faceted stoppers, 28cm high
£100 - 150 †

51
An unusual oriental pottery flask, decorated with blossom and calligraphy, having side spout and elongated neck, impressed seal mark to base, 23cm high
£40 - 60 †

52
A pair of Prattware baluster vases, profusely decorated with flowers on a black and ochre ground, 15.5cm high
£30 - 50 †

53
A pair of 19th Century Samson porcelain figures, depicting Neptune and Europa, 30cm high
£200 - 300 †

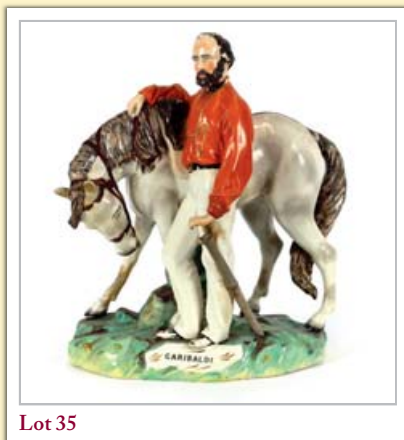
54
An Art Nouveau enamel glass bowl, of waisted form, 14cm high x 24cm dia. overall
£60 - 80 †

55
George Bacchus & Sons, vitrified enamel opalescent glass vase, circa 1850, 20cm high
£100 - 150 †

56
A Cantagalli style Mailica ewer, decorated with figures, foliage and mask, 32cm high
£50 - 80 †

57
A 19th Century Copeland double salt, in the form of a maiden with baskets, 15cm long x 15cm high
£50 - 80 †

58
A pair of 19th Century cut glass candlesticks, having faceted baluster columns and circular spread feet, 21cm high
£40 - 60 †



Lot 35



Lot 53



Lot 54

- 59**
A Ridgways salt glazed baluster milk jug, AF; a relief moulded teapot decorated with branches and flowers; an oriental pottery teapot; a blue glass baluster vase with enamel decoration; an opaque glass posy basket and a Mauchline ware pot and cover decorated with Exeter Cathedral and contents of various buttons, (6) £30 - 40 †
- 60**
Two 18th Century Chinese porcelain polychrome decorated figures of seated dignitaries, possibly Chien Lung, 22cm high £150 - 250 †
- 61**
A Chinese baluster vase, with elongated neck, decorated with floral sprays and raised symbols, 43cm high £150 - 200 †
- 62**
A Chinese blue and white baluster vase, decorated with river scenes and stylised flowers, AF, 36cm high £50 - 80 †
- 63**
A Chinese cylindrical shaped vase, decorated with dragons, clouds and flaming pearls, 36cm high, four character mark to base, AF £50 - 80 †
- 64**
A Majolica ware vase, inscribed to the base "A. Montenon G.M" decorated cherubs and beasts and flanked by serpentine and mask head handles, 40cm high £200 - 300 †
- 65**
A Japanese Sumida Gawa vase, of baluster form having raised figural decoration depicting young boys climbing a tree, 30cm high £250 - 350 †
- 66**
A Staffordshire spaniel ornament, 30cm high; a glazed pottery mug with blue banded decoration, 12cm high; a Dresden porcelain floral decorated coffee can and saucer; and a Victorian white glazed relief moulded jug, (4) £20 - 40 †
- 67**
A Doulton style pottery flagon, having plated lid and thumb piece, the body decorated with shepherds and sheep amongst landscape, 32cm high £100 - 150 †
- 68**
A cased Spode Copelands china "Old Concorde" set of six each coffee cans and saucers £80 - 120 †
- 69**
A Staffordshire flatback figure group, depicting a highland couple seated beneath an arbour, 37cm high; a smaller example; a Staffordshire spill vase in the form of a Stag being hunted by a hound with floral encrusted decoration and bird nest; and a Staffordshire flatback spill holder in the form of a figure with cornucopia, (4), (some damage) £30 - 40 †
- 70**
A Chinese square section white glazed vase, decorated calligraphy and raised on a wooden stand, 38cm high £80 - 120 †
- 71**
A Wedgwood Majolica Mermaid mantel clock, 36cm high £100 - 200 †
- 72**
A Chinese bottle vase, decorated with foliage and heightened in gilt, 26cm high; and a Chinese crackle glaze jar of ovoid form decorated with floral sprays and stylised borders, 17cm high £60 - 80 †
- 73**
A Chinese blue and white charger, having blossom decoration, 35.5cm dia.; and a crackle glazed baluster vase and cover, (2), 16cm high £60 - 80 †
- 74**
An 18th Century Derby bow pot, floral decorated and having a central band, (mis-fired and cracked), AF, 18cm long £20 - 40 †
- 75**
A named 19th Century jug, possibly Sunderland, for Thomas Toys 1827, "Success to the Coal Trade", 20cm high £100 - 150 †
- 76**
An English Creamware type jug, commemorating the Marquis of Wellington and "Success to the Wooden Walls" of England, 17cm high £100 - 150 †
- 77**
A 19th Century cut glass scent bottle, having white metal mounts and hinged lid, complete with stopper, 10cm long £40 - 60 †
- 78**
A pair of 19th Century Chinese decorated coffee cans £30 - 50 †
- 79**
A Chinese plate, decorated with a central panel depicting a beast with flaming pearls within a ochre foliate border, 25cm dia. £30 - 50 †
- 80**
A Dresden porcelain figure of a cherub, with floral garlands, 14.5cm high; and another depicting a gallant carrying posies, 15.5cm high, (2) £40 - 60 †
- 81**
A 20th Century Dresden porcelain mantel clock, having floral encrusted decoration, 22cm high £40 - 60 †
- 82**
A 19th Century continental porcelain tobacco box, in the form of a bull dog's head with pewter mounts, 12cm long £100 - 200 †
- 83**
A Galle Cameo glass powder bowl and cover, having lily decoration, 17cm dia. £150 - 200 †
- 84**
A pair of 19th Century opaque glass spill vases, decorated with oval portrait panels of children on a rich blue ground, heightened in gilt, 23cm high £30 - 50 †
- 85**
A Victorian glass obelisk shaped thermometer, 7.5cm high; and an Antique green glass baluster vessel having painted decoration of a coaching scene, 13cm high, (2) £30 - 50 †
- 86**
A large 18th Century English drinking glass, with trumpet shaped bowl, tear stem and circular spread foot, 20.5cm high £80 - 120 †
- 87**
A fine 18th Century creamware mug, decorated with lilac, iron red, black and yellow, depicting an oriental scene, in the manner of David Rhodes, 15cm high £100 - 150 †
- 88**
A Chinese inside painted snuff bottle, decorated with rural scenes and figures, 7.5cm high £40 - 60 †



Lot 64



Lot 71



Lot 82



Lot 83



Lot 96

89
An 18th Century Chinese armorial tea bowl, 9cm dia. x 5cm high £40 - 60 †

90
A pair of Meissen figurines, one depicting a young maiden playing a lute, AF, and the other depicting a maiden with dove staff and exotic bird, 16cm high; and a pair of 19th Century German porcelain posy holders in the form of musicians having floral encrusted decoration, 21cm high, (4) £40 - 60 †

91
A Royal Crown Derby Mansion House dwarf, with hat advertising "Auction of Elegant Household Furniture", 17cm high; and another, his hat advertising "Theatre Royal, Haymarket", 19cm high, (2) £250 - 350 †

92
Three 19th Century Chinese blue and white plates £25 - 35 †

93
A Japanese Satsuma ware baluster vase, 10cm; and an earthenware cup, possibly BC, (2) £30 - 40 †

94
A pair of 19th Century German porcelain figure groups, depicting musicians and peasant figures; and another pair depicting a musician and street vendor, (4) £40 - 60 †

95
A 19th Century Chinese blue and white bowl, decorated with figures in a garden, four character mark to base, 9.5cm dia. x 10cm high £200 - 300 †

96
Two late 18th Century/early 19th Century Kutahya pottery bowls, with floral and dragon decoration, 23cm dia., (some damage) £200 - 300 †

97
A 19th Century Meissen plate, with painted floral spray decoration within a shaped gilt border, 14cm dia. £40 - 60 †

98
A late 18th/early 19th Century Chinese flambe ware bowl, 13cm dia. x 7cm high £100 - 200 †

99
An Antique tin glazed pottery drug jar, of baluster form with foliate decoration, 21cm high £100 - 150 †

100
A 19th Century "God speed the plough" mug £10 - 20 †

101
A pair of Chinese Export dessert plates, tobacco leaf pattern £30 - 50 †

102
A Japanese Satsuma ware baluster vase, decorated with figures and landscape, 16.5cm high £80 - 120 †

103
An 18th Century tea bowl and saucer; and one other tea bowl, (3) £30 - 50 †

104
A large Minton's tile, "Dignity and Impudence" after Landseer, 20.5cm square £20 - 40 †

105
A collection of various Staffordshire spaniels, and other ornaments, (some damage) £60 - 100 †



Lot 96



Lot 99



Lot 102

106
Four pairs of Victorian Staffordshire black and white spaniel ornaments, and a larger single example £80 - 120 †

107
A pair of Staffordshire spaniel ornaments, with liver coloured patches and gilt collars and chains; a smaller similar pair and a single similar £40 - 60 †

108
An 18th Century blanc de chine porcelain model of a pug dog, possibly Bow; together with an Antique blanc de chine figure of a King Charles spaniel, (2) £30 - 50 †

109
A large and unusual Chinese terracotta mythical horse, possibly Northern Wei period, 43cm high £80 - 120 †

110
Two Antique Chinese blue and white porcelain vases, with applied dragon decoration; an Antique jar with six character mark; and a wine or tea vessel supported on Buddha feet, (4) £20 - 30 †

111
A 19th Century Chinese baluster vase, decorated in coloured enamels with floral sprays, under glazed square seal mark to base and wax seal mark, 22cm high £50 - 80 †

112-114
No Lots

Silver & Plate

113
A pair of Victorian horn handled and silver mounted carvers, with foliate decoration and various other carving sets £40 - 60 †

114
Two cased horn handled carving sets; two pairs of plated knife rests; and five bone handled steel bladed dinner knives £20 - 40 †

115
A quantity of various plated ware, to include biscuit barrel, fruit comports, entree dish, salvers, coaster etc. £40 - 60 †

116
A miscellaneous collection of various electro plated ware, to include entree dishes, a cased fruit serving set, a cased set of six napkin rings, cruet items, teapot, photograph frames etc. £40 - 60 †

117
A small rectangular plate on copper salver; a plated fish slice; a crumb scoop; a basting spoon; a soup ladle; a stilton scoop, various other mixed plated ware, modern tankards etc. £20 - 30 †

118
A collection of miscellaneous plated ware, to include a circular soup tureen and cover by Walker & Hall, a plated tea kettle on spirit heater stand, an oval plated entree dish, an open plated serving dish, a pair of spill vases, cutlery, an Art Nouveau design fruit basket with green glass liner etc. £60 - 80 †

119
A circular plated card tray, having beaded border raised on ball and claw supports; two plated hot water jugs; and a plated baluster vase (4) £20 - 40 †

120

An electro plated four branch candelabra, by Elkington & Co., surmounted by an ostrich finial, the arms and columns decorated with scrolled acanthus leaves, 77cm high £100 - 150 †

121

A silver mounted three piece cruet; a silver photo frame; a small glass bowl with silver rim; and a plated baluster coffee pot, (4) £90 - 120 †

122

An Edwardian three piece silver tea set, by Walker & Hall, of baluster form, having raised beaded border, the teapot with blackwood handle and lift, Sheffield 1904/6, approx. 33ozs. gross £200 - 300 †

123

A five bottle silver cruet, having pierced body decoration and foliate scroll central handle, the claw and ball feet marked HB, possibly Hester Bateman, various marks to the silver mounts on the cruet bottles; together with a smaller similar cruet bottle £150 - 200 †

124

An Edwardian four piece silver tea/coffee set, of baluster form, decorated with reeded bands and leaves, raised on ball feet, teapot and coffee pot with wooden handles and lifts, London 1901, 1902 and 1904, 54ozs. gross £300 - 400 †

125

A small plated hand bell; a plated taper stick holder; a pair of cased nut crackers; a pair of plated sugar tongs and six plated cake forks in fitted case £20 - 30 †

126

A pair of Sheffield plated salts, of oval pedestal form with blue glass liners; and a plated pepper mill £20 - 30 †

127

A set of four George III silver candlesticks, having gadroon border decoration, Sheffield 1815, marks rubbed, 30cm high £400 - 600 †

128

A 19th Century continental white and gilt metal salt, of campana shape, 7cm dia. x 4.5cm high; a continental white metal cream jug with embossed decoration; a silver twin handled strainer, hallmarked for Chester 1895; and a Victorian silver baby's rattle by George Unite, (4) £80 - 120 †

129

A silver fruit slice, by Aspreys of London, hallmarked for Sheffield 1952; and a pair of plated grape scissors, (2) £30 - 50 †

130

Eight American Sterling silver oyster dishes £70 - 100 †

131

A Japanese cigarette case, decorated with river scene, marked Sterling £40 - 60 †

132

A silver Tasse de Vin, and three silver pin dishes, (4) £30 - 50 †

133

A Chinese silver bowl, having raised decoration of lilies and rushes with vacant cartouche, on a circular raised foot, 13.2cm dia. x 7.5cm high £150 - 200 †

134

A pair of cast plated bowls, having raised foliate and vine decoration with cherubs and masks, gilded interiors, 14cm dia. x 9.5cm high, (probably American) £30 - 50 †

135

An electro plated entree dish, with gadroon borders and detachable key; and a quantity of various steel bladed knives £20 - 40 †

136

Six crested silver teaspoons, Birmingham 1930; a large silver Apostle spoon, London 1906; two silver spoons, London 1862; and a figural decorated Dutch silver spoon £80 - 120 †

137

A pair of cased silver napkin rings, Birmingham 1924 £20 - 40 †

138

A modern silver coaster, with pierced sides and turned wooden base £20 - 30 †

139

An early 20th Century silver cased travelling timepiece, the circular white enamel dial having seconds subsidiary surmounted by a carrying handle, hallmarks indistinct, 11cm high overall £40 - 60 †

140

A good quality plated argyle, having wicker bound handle, the hinged lid surmounted by a knopped finial, 14cm high £50 - 80 †

141

A cased set of six silver coffee spoons, Birmingham 1924; and a set of six similar, Sheffield 1916 £30 - 50 †

142

A small oval silver ring box, (damaged), Birmingham 1917; a silver matchbox holder with golf club motif; a pair of oval silver salts with associated spoons and three silver mounted photograph frames £40 - 60 †

143

An Edward VII silver Christening set, comprising fork and spoon in fitted case, Sheffield 1908 £30 - 50 †

144

A cased silver cruet, by Mappin & Webb, Birmingham 1930 £40 - 60 †

145

A white metal bachelor's teapot, with wooden handle and lift; and an Indian white metal cream jug with bird finial, (2) £80 - 120 †

146

A George III silver card tray, having pie crust beaded border, central crest raised on three claw and ball feet, 21cm dia., 11ozs., London 1821 £100 - 200 †

147

A Russian silver and enamel Kovsh, circa 1880, 10cm long £700 - 1,000 †

148

A cased pair of late Victorian silver napkin rings, with foliate engraved decoration, Sheffield 1896 £60 - 80 †

149

An Edwardian silver entree dish, of shaped form with reeded banded decoration and detachable key, London 1909, 25cm long, 37ozs. gross £250 - 350 †



Lot 120



Lot 124



Lot 127



Lot 140



Lot 146



Lot 147



Lot 149

150
A cased set of six each silver and mother of pearl handled fruit knives and forks, *Sheffield 1931* £60 - 80 †

151
A plated cruet frame, with three cut glass bottles; two plated beakers; two Sheffield plate cream jugs of helmet shape; and a similar small tray with pierced gallery £20 - 30 †

152
A cased set of six silver cake forks, *Birmingham 1934*; and a continental white metal pickle fork £20 - 30 †

153
A 6 piece silver engine turned decorated dressing table set, *Birmingham 1916* £40 - 60 †

154
A silver backed dressing table set, with spot hammered decoration and central monogram, *London 1912* £40 - 60 †

155
A cased set of six plated cake forks and server, by Elkington & Co. £20 - 30 †

156
A mixed lot of various items to include: a pair of plated knife rests, three pairs of silver and plated sugar tongs, various spoons, yellow metal and paste jewellery items etc. £20 - 40 †

157
A George V silver four piece cruet, *Birmingham 1918*; and two associated silver condiment spoons £40 - 60 †

158
A silver Kings pattern Stilton scoop, bearing family crest, *London 1903* £40 - 60 †

159
A plated Old English pattern basting spoon, bearing monogram £10 - 20 †

160
A silver salver, having shaped border and raised on four scrolled feet, *Birmingham 1930*, 23ozs. £150 - 250 †

161
A silver presentation card tray, having pie crust border, raised on three scrolled feet, various inscriptions, *Sheffield 1938*, 12ozs. £80 - 120 †

162
Two Edwardian circular silver bon bon dishes, with reeded decoration, *Sheffield 1906 and 1907* £40 - 60 †

163
A pair of Edwardian pierced silver circular bon bon dishes, having foliate scroll and cherub decoration, *Birmingham 1902* £40 - 60 †

164
A square block glass ink well, the silver hinged lid hallmarked for *Birmingham 1937*, inset with an oval turquoise stone, 8cm £60 - 100 †

165
A pair of Georgian silver sugar tongs, with bright cut decoration and a George III silver dessert spoon, bearing crest, *London 1799* £25 - 45 †

166
A George III silver baluster cream jug, with reeded loop handle, *London 1802* £90 - 120 †

167
A large faceted glass travelling spirit flask, having silver cap, hallmarked for *London 1879*, with detachable plated drinking cup, 19cm £40 - 60 †

168
A late Victorian glass and silver mounted hunting flask, of tapering elongated form, hallmarked for *Birmingham 1893*, 22cm long £40 - 60 †

169
A George V silver toast rack, *Birmingham 1926*; a Dutch caddy spoon; and a large continental white metal spoon decorated with cherubs, (3) £50 - 80 †

170
An Eastern filigree work card case, having foliate decoration, 8.5cm £30 - 40 †

171
Six Georgian silver teaspoons; and a Dutch white metal coaster with turned wooden base £80 - 120 †

172
A pair of Victorian silver berry spoons, *London 1864* £40 - 60 †

173
A pair of cased Edwardian silver spoons, by Mappin & Webb, the scrolled handles bearing monogram, *Sheffield 1901/1902* £40 - 60 †

174
A Black Starr and Frost Sterling bowl, having gilded interior and reeded border decoration, 18cm dia. £60 - 100 †

175
A late Victorian silver tea caddy, of baluster shape with embossed floral and shell decoration, raised on four claw feet, *Chester 1898*, 14cm high £80 - 120 †

176
A Sterling sugar bowl and cream jug, of octagonal form with fluted decoration £40 - 60 †

177
A Victorian hob-nail cut glass and silver mounted scent bottle, hallmarked for *Chester 1898* £20 - 30 †

178
A late Victorian silver backed hand mirror and matching brush, decorated with profuse foliate scrolls and monogram cartouche, *Birmingham 1900/1901*; two similar brushes; various nominal silver items; white metal foliate embossed hat pin stand; Eastern white metal egg cup; various teaspoons, butter knife etc. £40 - 60 †

179
A cased set of 12 silver teaspoons and sugar tongs, *Sheffield 1946* £40 - 60 †

180
A cased silver Christening set, comprising of a spoon and fork, *London 1938*; and a pair of plated fish servers by Walker & Hall with ivory handles £30 - 50 †

181
A small Edwardian three piece silver cruet, having foliate pierced sides and raised on scrolled feet, *Birmingham 1906*; two silver decanter labels, "Whisky" and "Brandy"; and two silver sifter spoons, (7) £40 - 60 †

182
A George V silver twin compartment cheroot case, *Chester 1913*, 13cm long £40 - 60 †



Lot 164



Lot 170



Lot 175

183
A George III silver helmet shaped cream jug, with embossed floral decoration, *London 1809*, 15cm high £60 - 80 †

184
A George III silver oval sugar basket, of pedestal form having reeded swing handle, foliate engraved body with central cartouche, decorated with a crest, raised on an oval stepped foot, maker WS, *London 1795*, 16.5cm £100 - 150 †

185
A George V silver cigarette case, with engine turned decoration, initialled F, *Birmingham 1930*, 18cm x 9cm £60 - 80 †

186
A George III silver pap boat by Peter & Ann Bateman, *London 1803*, 12cm long £100 - 150 †

187
Three various continental white metal serving spoons, one inscribed 1833 £40 - 60 †

188
A silver baluster cream jug, *Sheffield 1938*; and a silver tea strainer, *Birmingham 1933*, (2) £40 - 60 †

189
A late Victorian silver pedestal sugar bowl, *Sheffield 1898*; a pair of late Victorian silver fruit servers, *Birmingham 1898*; a pair of silver napkin rings with foliate engraved decoration, *Chester 1912*; and a silver trophy cup, 10ozs. £80 - 120 †

190
No Lot

191
A white metal and glass shallow dish, with gadroon border; two plated shallow dishes; a pair of Georgian silver sugar tongs; a pair of later smaller examples; and a plated pickle fork, (6) £20 - 30 †

192
A late Victorian silver sugar bowl, with raised foliate decoration on a circular foot, *Sheffield 1898*, 11cm dia. £30 - 50 †

193
A silver cream jug, by Mappin & Webb, of panelled form having C scroll handle, *Birmingham 1914* £30 - 60 †

194
Two small silver swing handled bon bon baskets, *London 1912*; a silver mustard, *Sheffield 1899*; two silver topped tidy jars; and a silver cigarette case, (5) £80 - 120 †

195
A Victorian silver rose bowl, having profuse foliate scroll decoration and vacant cartouche, raised on a circular spread foot, 13cm high, *London 1889*, approx. 17ozs. £120 - 150 †

196
Eight various George IV, William IV and Victorian silver Fiddle pattern teaspoons; two Old English pattern teaspoons; five various Georgian silver Old English pattern tablespoons; four William IV and Victorian silver Fiddle pattern dessert spoons; three William IV Fiddle pattern dessert forks, monogrammed; and three various Fiddle pattern table forks, approx. 33ozs. £150 - 250 †

197
A cased set of six silver teaspoons, and matching sugar tongs, *London 1934*; and a cased set of six Art Nouveau design coffee spoons, *Birmingham 1927* £40 - 60 †

198
An Edwardian silver pepper mill, *Birmingham 1906*, 9cm high; and a similar salt mill, *Birmingham 1902*, 7cm high, (2) £40 - 60 †

199
A Victorian engraved silver tankard, having profuse foliate engraved decoration and monogrammed cartouche, 8.5cm, approx. 7ozs, *London 1872* £40 - 60 †

200
A silver compact, with oval enamel plaque depicting a young lady wearing beads and headdress £40 - 60 †

201
A pair of George III silver shoe buckles, (probably *London 1791*) £60 - 100 †

202
An Art Deco silver four piece tea/coffee service, and matching tray, *Birmingham 1938*, monogrammed, approx. 100ozs. £800 - 1,200 †

203
A Victorian silver sovereign case, *Birmingham 1898*, bearing monogram; an ivory and silver handled paper knife; a silver cigarette holder case containing a 9 carat gold mounted amber cigarette holder; a silver spoon inscribed "Sally"; and a silver handled button hook, (6) £80 - 120 †

204
A George III swing handled bon bon basket, with foliate engraved decoration and cartouche with monogram, beaded border, raised on an oval foot, *London 1786*, 13cm wide, 5.5ozs. £100 - 150 †

205
A George III silver teapot on stand, the teapot having foliate engraved decoration and cartouche with monogram, wooden handle and ivory lift, the stand with foliate border raised on scrolled feet, *London 1795*, 19ozs. gross £300 - 400 †

206
A late Victorian silver teapot, of half fluted body design with wooden handle and lift, *London 1898*, 16ozs. overall £60 - 100 †

207
A late Victorian silver baluster coffee pot, the domed lid surmounted by a turned finial, wooden scrolled handle, 22cm high, *London 1899*, 22ozs. gross £150 - 250 †

208
A silver goblet, having gilded interior, raised on a baluster stem and spread foot, *Birmingham 1972* £50 - 80 †

209-217
No Lots

Jewellery

218
A large amber and silver mounted pendant, hung to a fine link chain; and an Edwardian silver pearl and stone set pendant on chain, (2) £60 - 80 †



Lot 195



Lot 199



Lot 202



Lot 206



Lot 207



Lot 220

219
A Sampson Mordan 9 carat gold pencil holder; a collection of 9 carat gold and other dress studs; a pair of 9 carat gold cuff-links etc., contained in a leather jewellery box £300 - 400 †

220
A white metal Art Deco design diamond set double clip brooch, 4cm £400 - 600 †

221
A yellow metal and enamel egg shaped pendant £80 - 120 †

222
A yellow and white metal ring, set with five diamonds, approx. 1 carat diamond, total weight, 2.5 gms £500 - 800 †

223
A Victorian gold Roman mosaic decorated bracelet; and a natural crystal stone £120 - 160 †

224
An 18 carat gold diamond and sapphire ring; and a 9 carat gold mounted diamond ring, (2) £100 - 150 †

225
No Lot

226
A pearl necklace, with white gold clasp; and a Victorian gold and garnet set brooch, (2) £130 - 180 †

227
A yellow metal retractable pencil £60 - 80 †

228
A 19th Century fob seal, the crystal inset inscribed "Time discovers Truth" £40 - 60 †

229
A collection of 9 and 18 carat gold dress studs £100 - 150 †

230
A 9 carat gold diamond and emerald set ring £100 - 150 †

231
An 18 carat gold and diamond set ring £100 - 150 †

232
A collection of various simulated pearl necklaces £80 - 120 †

233
A 15 carat gold turquoise and seed pearl set bracelet; a matching bar brooch and another 9 carat gold bar brooch, (in case) £400 - 500 †

234
A platinum wedding band, approx. total weight 2.7gms; and a yellow metal foliate engraved locket, (2) £80 - 120 †

235
A Dutch silver snuff box, of oval form, the hinged lid decorated with figures, 6.5cm long £40 - 60 †

236
An Omega gun cased gent's half hunter pocket watch, and two watch chains £30 - 40 †

237
A George V silver matchbook holder, Birmingham 1927; and a modern silver napkin holder, (2) £20 - 40 †

238
A stainless steel Tudor Oyster Prince wrist watch £200 - 300 †

239
A Russian silver and enamel decorated salt, raised on ball feet; and a similar spoon with filigree work decoration and twist stem, (2) £80 - 120 †

240
An American "Elgin" yellow metal Hunter pocket watch, with white enamel dial, the case with finely engraved foliate decoration £80 - 120 †

241
A coral necklace, set to white metal mount £60 - 80 †

242
A 10 carat gold and diamond set cross-over ring £60 - 100 †

243
A 9 carat gold diamond and green stone set ring £60 - 100 †

244
A pair of Georg Jensen drop ear-rings £50 - 80 †

245
An 18 carat gold diamond and Tanzanite set ring, boxed and with certificate £200 - 300 †

246-249
No Lots

Objects & Collectables

250
A Chinese gilt metal figure of a war god; and a small cloisonne baluster vase, 13cm high, (2) £20 - 40 †

251
A Tibetan bronze figure, of a seated deity, 16cm high £40 - 60 †

252
A Japanese stoneware baluster vase, decorated with circular motif panels; an inlaid metalware vase and a pottery cup with incised decoration, AF, (3) £20 - 40 †

253
A Japanese bronze censer, 11.5cm dia. x 10cm high; and a Japanese bronze baluster vase, 16cm high, (2) £80 - 120 †

254
Ten Chinese jade cups, of small size £30 - 50 †

255
A cased collection of 19th Century watch plates, converted to buttons; a filigree work buckle and a yellow metal watch key in the form of a sword £40 - 60 †

256
A contemporary burr yew wood desk stand, 28cm £20 - 30 †

257
A 19th Century gilt and amethyst glass seal, with hinged compartment; and a blue glass scent bottle with embossed white metal cap, (2) £40 - 60 †

258
19th Century school, portrait study of a seated lady with broad rimmed hat and ribbons, in Sterling frame, inscribed "The Young Countess of Beauvais", 11cm x 9cm £60 - 80 †



Lot 221



Lot 233



Lot 245

- 259**
An Antique circular brass snuff box, the lid decorated with armorial crest; an oval snuff box; and an oblong similar with combination dials
£40 - 60 †
- 260**
A 19th Century brass barrel cork screw, with ivory handle, inscribed "Wild Days, Marlbro Arms Hotel", the barrel decorated with royal cypher
£80 - 120 †
- 261**
A carved horn ethnic figure, 12cm high; a smaller similar and two others, (4)
£100 - 200 †
- 262**
A pair of 19th Century gilded brass candlesticks, decorated with figures of three seated dogs to the circular stepped bases, 19cm high
£50 - 80 †
- 263**
A 20th Century automaton, depicting a bird in a cage, the fabric covered base fitted with a single drawer, 20cm high x 19cm long
£100 - 200 †
- 264**
A Tunbridge ware small workbox, with hinged lid, 13cm long
£30 - 50 †
- 265**
A brass folding needle case, by W. Avery & Son, Redditch, opening to reveal four needle compartments and contents of needles, having raised foliate decoration and inscribed "The Stella Golden needle case"
£100 - 150 †
- 266**
A gilded brass needle case of folding book form, inscribed "Beatrice patent"
£100 - 150 †
- 267**
A circular ivory dressing table jar, inset with a white metal coronet to the lid, 9cm dia. x 8.5cm high
£30 - 60 †
- 268**
A finely carved cinnabar lacquer enamel and brass oblong box, 15cm
£40 - 60 †
- 269**
A 19th Century oriental bronze figure of a cockerel, 8cm high
£40 - 60 †
- 270**
A 19th Century oriental bronze figure of a tortoise, 14cm long
£40 - 60 †
- 271**
A 19th Century papier-mâché box, the hinged lid decorated with a rural scene, 17cm
£40 - 60 †
- 272**
A bronze figural ink well, in the Mannerist style
£120 - 180 †
- 273**
An Agate bowl, an Agate cup and seven similar miniature cups
£40 - 60 †
- 274**
An Eastern brass hand bell; and a hardstone figure of a Kylin, 10cm high, (2)
£20 - 30 †
- 275**
A leather cased gilt metal pocket barometer, by Hemenstall, Dublin
£40 - 60 †
- 276**
An unusual white metal miniature circular shield or guard, having beaded decoration, 8cm dia.
£40 - 60 †
- 277**
An iron Tsuba, with foliate decoration, 8cm dia.
£40 - 60 †
- 278**
An Antique coconut and white metal mounted bowl, raised on three lion mask and claw feet, 8cm dia. x 8.5cm high
£80 - 120 †
- 279**
A pair of Antique steel Coronation scissors, decorated with pictures of Edward VII and Queen Alexandra; an Antique steel folding cork screw; and a circular horn box, (3)
£30 - 60 †
- 280**
A 19th Century polychrome decorated Chinese moulded porcelain snuff bottle, painted with Shi Shi dogs, four character iron red seal marks to base and a carved Cornelian stopper, 7cm high
£40 - 60 †
- 281**
An oriental snuff bottle, decorated with raised figures of dignitaries, clouds and foliage with turquoise coloured hardstone stopper, 8cm high
£50 - 80 †
- 282**
A Victorian brass cased carriage timepiece, bearing inscription for the 14th February 1880, white enamel dial with Roman numerals, surmounted by a swing handle, 12.5cm high, complete with key
£30 - 50 †
- 283**
A silver pill box, of circular form with tortoise shell mounts; a similar miniature hand mirror; a tortoise shell snuff box, AF; and a circular tortoise shell snuff box, AF, (4)
£40 - 60 †
- 284**
A 19th Century small oval glass plaque, painted with figures in a landscape, in a gilt frame; and a Stevengraph entitled "The Good Old Days", (2)
£30 - 50 †
- 285**
A pair of 18th Century intricately carved oriental toggles, AF
£40 - 60 †
- 286**
An Antique carved wooden biscuit mould, decorated with figures and animals, 38cm long
£30 - 40 †
- 287**
A Sestrel table clock, by Henry Brown & Son, Barking, Essex, 9cm overall
£20 - 30 †
- 288**
A fine pair of 19th Century Qajar steel and yellow metal Damascene decorated scissors, 23cm long; and a small Cairoware mixed metal measure, 5cm high, (2)
£80 - 120 †
- 289**
An 18th Century mahogany elliptical tea caddy, the lid with oval shell paterae, chequer banded, 16cm
£120 - 140 †
- 290**
Two similar Antique carved Italian Cameo shells, decorated with panels of classical maidens
£80 - 120 †
- 291**
An enamelled car mascot, in the form of a blue swallow
£20 - 40 †
- 292**
Three brass cased Antique compasses
£20 - 40 †



Lot 260



Lot 262



Lot 263



Lot 264



Lot 272



Lot 307

293
A bronze walking stick handle, in the form of a parrot, 13.5cm long; and a cast iron door knocker in the form of a key £20 - 30 †

294
An apple green Chinese jade bangle £30 - 50 †

295
A portrait miniature of the Honourable Rev. G.J. Noel, contained in an ebonised brass mounted frame £50 - 80 †

296
An oval portrait miniature of Mademoiselle Tasen, contained in ebonised frame £50 - 80 †

297
A Chinese brass trinket box, having celadon jade panel and cut crystal decoration to the border, 8cm £30 - 50 †



Lot 308

298
A well carved Chinese jade carving, of two temple dogs, 10cm £40 - 60 †

299
A 19th Century Corsican bone handled folding knife £70 - 100 †

300
A Regula leather cased camera, complete with some accessories; and a small Ulca miniature camera, AF £20 - 30 †

301
A 19th Century yellow metal Cornelian fob seal; a small agate seal; an ivory handled desk seal; a square metalware seal etc., (5) £60 - 100 †

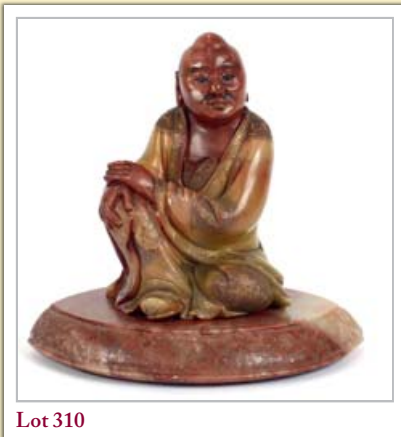
302
An Antique Japanese carved ivory figure of an ivory carver, raised on a hardwood plinth, 8.5cm overall £40 - 60 †

303
A Japanese carved ivory Okimono of a family group, 5cm high £40 - 60 †

304
Three various carved ivory and bone Netsuke £60 - 100 †

305
A jade two handled cup, decorated symbols with angular handles complete with carved hardwood cover, 12cm long x 8cm high overall £60 - 100 †

306
Four various carved hardwood Netsukes; a carved hardwood figure group depicting mother and child; a carved hardwood Netsuke in the form of a dog of fo, and a small painted wooden group, (6) £60 - 80 †

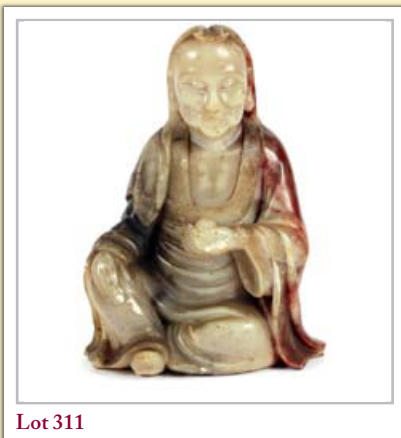


Lot 310

307
A 19th Century Chinese carved hardstone figure of a seated woman and child, foliate decoration and seed pearls to her cloak, on detachable stand, 13cm high overall *Illustrated on Back Cover* £100 - 200 †

308
A carved hardstone Scholar's rock, decorated foliage and animals on carved hardwood stand, 19cm long x 15cm high £100 - 200 †

309
Four carved pink hardstone figures of scholars, raised on separate rockwork effect bases, 27cm high £100 - 200 †



Lot 311

310
A Chinese carved hardstone figure of a seated man, with finely etched floral decoration to his cloak, on separate oval base, 15cm high £40 - 60 †

311
A Chinese carved hardstone seated figure of a man and attendant Dog of Fo, 10cm high; another of an immortal, 12cm high; and another with finely decorated cloak, (3) *Part illustrated* £100 - 200 †

312
A Chinese carved hardstone Dog of Fo, 19cm high; another of a deity, 14cm high; and a small soapstone figure, (3) £60 - 80 †

313
An Antiquarian book, Tryals for High Treason including those of Thomas Walcot, William Hone, William Lord Russell, John Rous and William Blagg, including a pamphlet "King Charles his Tryal" £40 - 60 †

314
A 1938 German book on Farm Machinery, by Rud Sack with early illustrations £15 - 30 †

315
A natural and stained ivory chess set, contained in a Japanese bronzed box with profuse dragon and foliate decoration £40 - 60 †

316
A set of brass scales, set to a mahogany single drawer base; various weights etc. £30 - 50 †

317
An Antique brass student's ejector candlestick, 40cm high; and two pairs of cloisonne and enamel vases £40 - 60 †

318
A set of 19th Century mahogany cased brass folding scales; a wooden shoe shaped ornament; a boxwood and brass mounted folding rule; another smaller; an Antique wooden dice game; a horn mounted eye glass etc. £40 - 60 †

319
A collection of stained ivory chess pieces £60 - 100 †

320
A 19th Century papier-mâché and mother of pearl inlaid tea caddy, 20cm wide, (lid AF) £40 - 60 †

321
An Antique pierced brass box, with swing handle, the front initialled "MF", 28cm £20 - 30 †

322
A carved wooden watch holder, in the Black Forest manner, AF; an inlaid and painted compass case; and two small decorated ivory pots £20 - 40 †

323
A Planimeter, made by Hounsfield, in original box, circa 1930's £60 - 80 †

324
A chromed morse code key, by Vibroplex, New York £60 - 80 †

325
An ebony walking stick, with 18 carat gold foliate knob handle, 92cm long £30 - 50 †

326
A 19th Century Chinese walking stick, with cloisonne handle, 92cm long £30 - 50 †

327
A pair of Eastern carved wooden and brass inlaid flintlock pistols, 47cm overall £60 - 80 †

328
Chinese carved ivory chess pieces, depicting figures, (incomplete), contained in a fabric lined case £100 - 150 †

329
A Beam compass, in original box with invoice dated 1962 £40 - 60 †

330
A leather cased naval telescope, by Heath & Co. £100 - 150 †

331
An Antique Russian sword, curved blade and brass mounts, 67cm long overall £40 - 60 †

332
A Scottish Dirk, the white metal and leather cased scabbard containing a small knife and fork, 43cm long overall £200 - 400 †

333
A pair of 16th Century carved walnut pilasters, with figural foliate and fruit decoration, 70cm long £120 - 160 †

334
A Sheraton period mahogany cross-banded and chequer strung knife box, of arc-en-arlette form, the interior altered, 23cm wide x 36cm high £200 - 300 †

335
A 19th Century gilded Spelter and alabaster French mantel clock, surmounted by figures of a boy and girl carrying a doll and duck, with pierced foliate decoration, the circular enamel Roman numeral dial stamped "Hirou", supporting an 8 day movement striking on a bell, 44cm high £60 - 80 †

336
An Antique French carved wooden candlebox, having raised foliate and fruit decoration; and a small carved oak corbel, decorated with an angels face, (2) £40 - 60 †

337
A George III mahogany tea caddy, the hinged lid opening to reveal a triple compartment interior, brass handle and escutcheon, raised on bracket feet, 24cm £40 - 60 †

338
A cloisonne baluster vase, 26cm high; and another with domed cover, 24cm high, (2) £20 - 40 †

339
A 19th Century Boulle work desk stand, fitted with two glass ink bottles and raised on bun feet, 36cm wide £100 - 150 †

340
A pair of carved wooden African figures, 16cm high £20 - 40 †

341
A 19th Century Vizagapatam sewing box, with bone and ivory inlaid decoration, the lid with mirrored interior revealing various compartments, some accessories, 33.5cm wide, AF £250 - 350 †

342
An oriental carved hardwood figure of a seated deity, 30cm high £40 - 60 †

343
A late Victorian oak and metal mounted three bottle Tantalus, 33cm wide x 31cm high £150 - 250 †

344
A pair of railway lamps, broad arrow mark, circa 1944, 32cm high £60 - 80 †

345
A Chinese soapstone supper set, with foliate etched decoration £30 - 50 †

346
A Victorian mahogany Lazy Susan, 53cm dia. £60 - 80 †

347
An Antique Venetian wall mirror, having floral decoration, AF, 72cm x 35cm overall £20 - 40 †

348
A 19th Century rosewood and brass mounted writing box, 45.5cm wide £150 - 200 †

349
An Edwardian inlaid mahogany two handled gallery tray, in the Sheraton manner, 68cm wide £50 - 80 †

350
An Antique carved oak panel, depicting an allegorical study, 23cm x 29cm overall £80 - 120 †

351
A small Antique carved oak panel, depicting profile study of a gentleman, 15cm x 12cm overall £30 - 50 †

352
A large carved wooden ethnic face mask, 57cm £20 - 40 †

353
A collection of ivory, bone and wooden sewing items, to include tape measures, and pin cushions etc. £40 - 60 †

354
An oak miniature model of a half tester bed, 31cm long x 37cm high £40 - 60 †

355
Two silver mounted tidy jars; a cut glass and silver mounted scent bottle, (lid missing); a miniature white metal propelling pencil; a larger example decorated with a coronet; an agate handle; and a plated chamberstick £20 - 30 †

356
A wooden and iron model of a naval cannon, 33cm long; and another of an artillery field cannon, 39cm long overall, (2) £100 - 150 †

357
An Eastern carved hardwood folding writing box, with sandal wood interior, 39cm wide; and a small Eastern carved hardwood trinket box, (2) £60 - 100 †

358
A collection of various ephemera and documents, some on velum, relating to the Manor of Wivenhoe etc. £40 - 60 †

359
A copy of "The Terrier of Woodbridge", dated 1811, AF; "The Poll for members of Parliament for the Borough of Colchester" dated 1747; and a booklet "Steel's Life of the Royal Navy", AF £20 - 30 †



Lot 332



Lot 343



Lot 354



Lot 356



Lot 367

360
An unusual hand written journal from a signal station, dated 1807 and contained in a hand worked cloth binding with various symbols and decoration £40 - 60 †

361
A 19th Century box, in the form of an Antiquarian book and contents of 12 various Grand Tour type intaglios £40 - 60 †

362
A George III copper coffee pot, with turned wooden side pouring handle, 25cm high £40 - 60 †

363
An Ethiopian Oromo skin covered shield, circa 1900, 21cm dia. £200 - 300 †

364
A 19th Century Chinese ivory section model of a pagoda, 55cm high £60 - 100 †

365
A 19th Century Chinese Champeve enamel and brass incense burner, in the form of a pheasant, 34cm long £30 - 50 †

366
An Ashanti bronze box and cover, of drum form, decorated with applied figures of musicians, 15cm high £30 - 50 †

367
A fine quality 19th Century Japanese specimen cabinet, with parquetry and lacquered decoration, fitted 7 drawers, raised on a shaped apron and bracket feet, 36.5cm wide x 60cm high, signed £150 - 250 †

368
An inlaid Chinese bronze censer, flanked by elephant handles and raised on three tapering legs, 30cm wide overall x 18cm high £40 - 60 †

369
A 19th Century Chinese carved hardwood figure of a dignitary in armour, raised on a rockwork base, 29cm high £40 - 60 †

370
A Chinese bronzed and yellow metal overlaid baluster vase, decorated with calligraphy and raised exotic birds amongst foliage, 20cm high £50 - 80 †

371
An oriental wooden brass inlaid walking cane/measuring stick, 98cm long £100 - 150 †

372
A 19th Century gilt metal urn and cover, decorated with cherubs and doves, 33cm high £100 - 200 †

373
A Goldschieder type painted cast metal figure of a banjo playing minstrel, seated on a chair, 64cm high £100 - 200 †

374
A rococo design gilt metal chandelier, decorated with cherubs £100 - 200 †

375
A 19th Century elephant foot stick stand, 39cm high £80 - 120 †

376
Three carved wooden ethnic figures £40 - 60 †

377
An Antique copper jelly mould £20 - 40 †

378
Two Antique Eastern brass and copper bowls, having filigree work decoration £20 - 40 †

379
A 19th Century brass and ebony crucifix, 16cm £20 - 40 †

380
A small Indian bronze figure, of a semi naked kneeling deity, 12cm high £30 - 50 †

381
Two Eastern engraved brass temple bells £20 - 40 †

382
A Chinese carved hardwood wall shelf, profusely decorated with flowers and birds, 46cm x 30cm £20 - 40 †

383
Two volumes Ipswich Past and Present; and Ipswich in 1894, (3) £80 - 120 †

384
Suffolk Stud Book, Herman Biddell 1880 £40 - 60 †

385
Four brass fire implements; and an iron and brass curb £20 - 40 †

386
A 19th Century brass and steel fire grate, of shaped form with turned brass finials and foliate pierced front, 93cm wide £80 - 120 †

387
An oval Toleware coal bucket, 36cm dia. overall x 27cm high £100 - 150 †

388
A set of eight lignum vitae bowling woods and a jack, contained in a pine box inscribed "Slazengers 1903" £80 - 120 †

389
A pair of vintage leather boots, complete with wooden trees, by Faulkner & Son, London, Camberley and Cambridge £80 - 120 †

390
A Victorian pine cased Admiral Fitzroy's barometer, with clock insert, 147cm high £100 - 200 †

391
A 19th Century mahogany and boxwood strung banjo barometer, surmounted by a scrolled arch pediment and brass finial, silvered dials and convex mirror, 100cm £100 - 150 †

392
A 19th Century mahogany banjo shaped barometer, with silvered foliate engraved dial, surmounted by a brass finial and scroll arch pediment, 96cm £60 - 100 †

393
George Etherington of London, a table clock in ebonised case, fitted with brass carrying handle to the domed top above a glazed door enclosing silvered Roman numeral chapter ring with date aperture and mock pendulum, subsidiary strike silent dial, twin fusee movement, 36cm high £3,000 - 5,000 †



Lot 370



Lot 372



Lot 393

394
A large 18th Century French bracket clock, in the manner of Boulle, having tortoise shell and cut brass inlaid decoration with ormolu mounts, the circular enamel Roman numeral dial signed Guiot, Paris, supporting an 8 day movement striking on a bell, raised on scrolled feet, the bracket with mask head mounts and foliate motifs, 88cm high excluding the bracket *Illustrated on Front Cover*
£4,000 - 6,000 †

395
A 19th Century woolwork embroidery, depicting a young child and a lamb in woodland setting, 72cm x 50cm
£40 - 60 †

396
A 19th Century woolwork ship picture, 48cm x 62cm, contained in a broad mahogany frame
£100 - 200 †

397
A rare 17th Century Swiss rectangular armorial stained glass panel, with coat of arms and German inscription dated 1681, 43cm x 33.5cm
£200 - 300 †

398
An African Zulu spear, with copper bindings to the shaft, 180cm long
£40 - 60 †

399
A 19th Century oval portrait miniature of a young gentleman; and two humorous cat prints after Louis Wain, (3)
£20 - 30 †

400
Six 19th Century Japanese woodblock prints, (unframed)
£120 - 160 †

401
A vintage Swiss mechanical travelling clock, in gilt engraved case
£20 - 30 †

402
Five volumes "The Modern Physician"; together with Noel Coward's "Pomp and Circumstance" First Edition and other books
£10 - 20 †

403
A 1960's bronzed stone sculpture, of a young girl wearing a sou'wester, initialled and dated SWSCH 66, 23cm high
£30 - 50 †

404
A Chinese bronze figure of an ox, 11cm long
£20 - 30 †

405
An elm bread trough; an Antique carved wooden food vessel; and a treen tankard with white metal mounts, (3)
£20 - 30 †

406
A late 19th Century brass mounted wall mirror, having foliate embossed decoration and folding candle sconces, 39cm x 23cm
£30 - 50 †

407-409
No Lots

Pictures & Prints

410
Henry Livens, 1848-1943, "A Lane Dorking, Surrey", signed oil on canvas, 61cm x 51cm
£100 - 200 †

Lots marked with ✓ please refer to Droite de Suite Royalty charges on page 22

† Each lot is subject to a Buyer's Premium of 18% + VAT (21.6%)

411
Henry Livens, 1848-1943, "A Cornfield Surrey", signed oil on canvas, 61cm x 51cm
£100 - 200 †

412
An 18th Century reverse painting on glass, depicting Frederick III King of Prussia; another depicting Britannia celebrating "Queen Caroline's victory over her enemies 1820"; another similar depicting a young boy and dogs in country landscape entitled "Damien"; 19th Century school naive study of a figure punting on a river; and two prints, (6)
£60 - 100 †

413
19th Century school, a pair of marine studies depicting ships and fishermen on a coast line, unsigned oils on board, 13.5cm x 20.1cm
£100 - 200 †

414
William Stephen Coleman, 1829-1904, study of children fishing by a pond, watercolour, signed and dated 1861, 24cm x 36cm
£300 - 400 †

415
Edwin Hayes, 1820-1904, study entitled "Dutch boats ashore", 36cm x 54cm
£200 - 400 †

416
William Lionel Wyllie, 1851-1931, pencil signed etching, study of boats, 30cm x 45cm
£100 - 200 †

417
Samuel Prout, study of a continental cathedral with figures outside, signed watercolour, 52.5cm x 36cm
£100 - 200 †

418
19th Century school, study of figures punting on a river, unsigned oil on board, 12.5cm x 14cm
£40 - 60 †

419
A 19th Century humorous coloured engraving, entitled "A Hero of the Turf and his Agent", 28cm x 21cm
£40 - 60 †

420
M.D. Pryor, study of a race horse and jockey, signed oil on board, 18.5cm x 25.5cm
£30 - 50 †

421
A George Morland coloured print, in simulated burr walnut frame, "Morning or the Higglers preparing for market"; and another "Nurse and Children in the fields", (2)
£20 - 40 †

422
A George Morland print, "Evening or the Sportsman's return", in black and gilt mount and frame; and another "The Cottage fireside", (2)
£20 - 40 †

423
After George Morland, black and white print depicting a cart driver; another of a seated farm worker; and another depicting dogs, (3)
£30 - 40 †

424
Five various coloured George Morland engravings, "Stable amusement", "The Fern Gatherers", "Breaking the Ice", "The Thatcher" and one other, contained in maple frames, (5)
£80 - 120 †

425
19th Century school, study of cattle and figures standing outside a farm house, unsigned oil on canvas, 35cm x 42cm
£50 - 80 †



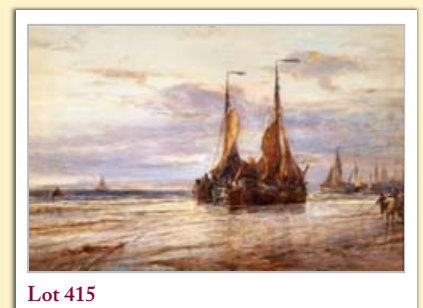
Lot 394



Lot 413



Lot 414



Lot 415



Lot 439



Lot 451



Lot 452

426

A collection of various 19th Century and later prints and photographs, relating to Hastings and Sussex £30 - 50 †

427

J. Crisall, 1807, two small watercolour studies and another mounted as one; various unframed watercolours etc. £20 - 40 †

428

Edward Leslie Badham, (British 1873-1944), study of a river barge at a wharf, signed oil on canvas laid on card, 35.5cm x 45cm; various unframed watercolours by Badham; and other works unsigned by probably but the same hand mostly of Hastings scenes, a collection £80 - 120 †

429

Edward Leslie Badham, (British 1873-1944), study of a windmill, signed watercolour dated 1931, 33cm x 39cm; another of a street scene, unsigned; and another depicting sailing vessels on a river, (3) £100 - 150 †

430

Edward Leslie Badham, (British 1873-1944), study near Hastings depicting river barges, buildings and windmill in the far ground, signed oil on board, 34cm x 44cm; and another probably by the same hand depicting beach scene with fishing vessels and huts and town in the far ground, unsigned oil on board, 29.5cm x 39.5cm; and another of a street scene depicting large town houses with balconies, unsigned oil on board, 40cm x 49cm, (3) £200 - 300 †

431

A pencil signed etching of the Westgate Ipswich, 22cm x 29cm £20 - 30 †

432

Albert Ribbans, (1903-1966), study of "Stoke Bridge, Ipswich, washed away April 12th 1818"; and another Stoke Bridge 1818-1924, signed monochrome watercolours, 17cm x 26cm, (2) £100 - 200 †

433

George Frost, pencil drawing, "The Orwell 1836", 11.5cm x 17cm; and another "Flowton Brook", 11.5cm x 14.5cm. Information verso, (2) £100 - 200 †

434

A set of twelve Chinese paintings on rice paper, depicting tradesmen and street vendors, each measuring 13.5cm £100 - 200 †

435

W.A. Southon, study of the entrance to Tollemache Brewery, Upper Brook Street, Ipswich, (ex. Peter Skully collection), signed watercolour, 24.5cm x 17cm £80 - 120 †

436

Albert Ribbans, (1903-1966), study of the Deben at Woodbridge, signed watercolour, 30cm x 37.5cm £80 - 120 †

437

After George Morland, coloured print "The Fern Gatherers"; and another "Selling Peas", (2) £40 - 60 †

438

Frederick Brett Russell, study of Dog's Head Street, Ipswich, signed watercolour, 31cm x 25cm £60 - 80 †

439

After Eloise Harriet Stannard, a pair of still life studies depicting fruit, flowers and bird's nest on a ledge, unsigned oils on board, 26.5cm x 21cm £300 - 400 †

440

Henry George Todd, 1847-1898, still life study depicting fruit and pottery jug on a ledge, signed and dated 1884, 36.5cm x 31cm £300 - 400 †

441

After Northcote, a pair of coloured mezzotints, "Country girl of Tuscany"; and "Blind girl of the environs of Rome", contained in black and gilt frames, (2) £20 - 30 †

442

Attributed to Thomas Churchyard, 1798-1865, study of a harvest landscape with church tower and windmill to the far ground, watercolour, 38cm x 26cm £50 - 80 †

443

19th Century school, portrait study of a young girl wearing a linen cap and matching bow to her dress, unsigned crayon and pastel drawing £30 - 40 †

444

Peter Biegel, (1913-1988), steeple chasing scene with inscription, initialled pencil sketch, image 20cm x 37cm; and another similar, 28.5cm x 29cm, (2) £80 - 120 †

445

A small bronze oval plaque, depicting a lady's head in profile, found in Songsters Meadow, Great Bardfield, Essex in 1954; a circular print after Wheatley depicting children at play; and a print after Hogarth "The election canvassing for Votes", (3) £20 - 40 †

446

19th Century school, study of Stags beside a highland river, unsigned watercolour, 27cm x 15cm £30 - 40 †

447

Kay Swift, "At the Cottage Door", study of a seated mother and children, signed pencil drawing, framed as an oval, 24.5cm x 20cm in extremes £30 - 40 †

448

Attributed to J.C. Ibbetson, 1792, study of figures around a camp fire, unsigned watercolour, mounted as an oval, 32cm x 24.5cm £30 - 50 †

449

After George Morland, study of a woman peering into a cattle shed with young calves and pigeons nearby, unsigned oil on board, 44cm x 52cm £60 - 80 †

450

19th Century school, landscape study with trees and heathland, unsigned oil on canvas, 56cm x 94cm £60 - 100 †

451

Peter Burman, study of Salthouse, Norfolk, signed oil on board, 41cm x 61cm £150 - 250 †

452

Peter Burman, landscape scene, signed oil on board, 39cm x 60cm £150 - 250 †

453

Peter Burman, "The Fish Stall, Venice", signed oil on board, 39cm x 29cm £100 - 150 †

- 454**
Peter Burman, "The Market", signed oil on board, 33cm x 50cm £100 - 150 †
- 455**
Late 19th/early 20th Century school, study of a nude man, unsigned oil on canvas, 57cm x 46cm, unframed £100 - 150 †
- 456**
Two framed and glazed collections of World War I silk postcards, sent from the Somme during 1914-18 by medical officer to his wife in Framlingham, 44 in total £200 - 300 †
- 457**
Tai Wo, (Hong Kong artist), study of a cat seated amongst foliage and butterflies, watercolour with seal mark and signatures, 38cm x 58cm £100 - 150 †
- 458**
A collection of aquatints and engravings of Orford £50 - 80 †
- 459**
Martin Hardie, study of Orford Castle, watercolour dated to mount 1937, 33cm x 48cm £100 - 150 †
- 460**
Gauguin, still life study, signed oil on board, 57.5cm x 65.5cm £120 - 160 †
- 461**
19th Century school, portrait study of an elegant seated lady and terrier, unsigned oil on canvas, 101cm x 75cm £100 - 200 †
- 462**
A.B. Franke, a pair of studies depicting 18th Century figures in a library and a drawing room, signed oils on board, 18cm x 23.5cm, (2) £200 - 300 †
- 463**
Sydney S. Wilson, coloured aquatint of a young beauty, pencil signed on mount, 37.5cm x 24.5cm £30 - 40 †
- 464**
19th Century school, study of gun dogs beside the days bag, indistinctly signed oil on canvas dated 1886, 91cm x 60cm £100 - 150 †
- 465✓**
Pam Masco, "Back Canal, Venice", signed oil on canvas, 54cm x 70cm £300 - 400 †
- 466**
19th Century school, study of a sailing ship with other ships and lighthouse in the far ground, unsigned gouache, 46cm x 63cm £40 - 60 †
- 467**
19th Century school, study of a cart and horses in country landscape, indistinctly signed watercolour, 37cm x 53cm (unframed) £30 - 50 †
- 468**
After George Morland, study of stable interior with figures and cattle, unsigned oil on canvas, 29cm x 43cm £100 - 150 †
- 469**
Elinor Astbury, "Shiram" signed watercolour, 16cm x 12cm, label verso for Oliver & Phillips £15 - 25 †
- 470**
A collection of various local Suffolk prints, mostly relating to Orford £60 - 100 †

- 471**
A large collection of unframed 19th Century prints and engravings, relating mostly to the Orford area £60 - 100 †
- 472**
After Biggs, "Sunday morning" a cottage family going to church, and "Saturday evening return from labour", a pair, coloured prints, (2) £20 - 40 †
- 473**
A collection of Wheatley's Cries of London prints, unframed £40 - 60 †
- 474**
After W.H. Overend, a pair of coloured prints depicting lifeboat rescues; after F. Dadd, another similar; and a coloured print after C.J. Staniland "The pitiless sea", (4) £30 - 40 †
- 475**
Sydney E. Wilson, a collection of pencil signed coloured prints of 19th Century ladies £40 - 60 †
- 476**
19th Century school, oval portrait study of a young beauty, possibly Spanish, unsigned watercolour, mounted in an oval gilt frame, 22cm x 18cm £30 - 50 †
- 477**
Victorian school, a portrait study of Mrs Whitchurch, circa 1845, unsigned watercolour, 14cm x 11cm, contained in a gilt frame £40 - 60 †
- 478**
Late 18th Century school, a pair of portrait studies of Joseph Whitchurch and Ann Whitchurch, unsigned oils on board, 13cm x 10cm overall, contained in gilt frames £60 - 100 †
- 479-484**
No Lots

Rugs & Furniture

- 485**
An old Eastern rug, central panel decorated with stylised animals and flowers within geometric border predominately red and blue ground, (in need of attention), 216cm x 114cm; and another rug with central medallion with floral borders on blue and beige ground, AF, 180cm x 102cm, (2) £40 - 60 †
- 486**
An Antique Caucasian prayer rug, having stylised central field within geometric borders, AF, 190cm x 117cm £40 - 60 †
- 487**
An old Chinese rug, decorated with a central field of stylised animals and symbols, within a stylised border, 121cm x 172cm £40 - 60 †
- 488**
An Eastern runner, having central hooked field within geometric stylised borders on predominately red, blue and orange ground, 110cm x 230cm £60 - 100 †
- 489**
A Chinese sculptured rug, approx. 12ft x 12ft £60 - 100 †



Lot 461



Lot 462



Lot 464

Lots marked with ✓ please refer to Droite de Suite Royalty charges on page 22

† Each lot is subject to a Buyer's Premium of 18% + VAT (21.6%)



Lot 500

490
A 19th Century ebonised and satinwood strung pier cabinet, having gilt metal embellishments and central Sevres style panel, the interior shelves enclosed by a glazed panelled door, raised on turned supports, 77cm wide x 109cm high
£100 - 150 †

491
An Antique oak long case clock, having painted dial, 30 hour movement striking on a bell, by Beale of Salisbury, full length trunk door, raised on a box base and bracket feet, 180cm high
£200 - 300 †

492
A 19th Century mahogany long case clock, the hood with broken arch pediment enclosing a painted dial, 8 day movement, the trunk panelled door flanked by fluted half columns, raised on a box base and bracket supports, 230cm high
£100 - 200 †

493
A small mahogany framed Chippendale style wall mirror, with fret carved decoration, 48cm x 34cm in extremes
£20 - 30 †

494
A walnut and inlaid chest, fitted three long graduated drawers, decorated starburst motifs, raised on bracket supports, 111cm wide
£350 - 450 †

495
An oyster veneered cushion framed wall mirror, in the 18th Century style, 60cm x 54cm
£150 - 250 †

496
A Victorian ebonised, satinwood strung and inlaid credenza, of small size, the inverted breakfront top surmounted by a pierced brass gallery, blue Jasper ware plaques below depicting classical maidens, gilt metal embellishments, and raised on bun feet, 89cm wide x 107cm high
£800 - 1,200 †

497
A 19th Century mahogany chest, fitted five short drawers above three long graduated drawers, raised on a shaped apron and bracket feet, 130cm wide
£100 - 150 †

498
A Georgian mahogany chest, fitted two short and three long drawers, raised on bracket supports, 96cm wide
£100 - 150 †

499
An Antique oak and mahogany cross-banded long case clock, the square brass spandrel dial by Foden of Congleton, supporting an 8 day movement
£200 - 400 †

500
An Antique oak joint stool, the rectangular top raised on turned baluster columns and block feet, united by stretchers, 44cm
£60 - 80 †

501
A George III mahogany chest, of two short and three long graduated drawers, raised on bracket feet, 110cm wide
£100 - 150 †

502
A 19th Century mahogany bow fronted chest, of two short and three long graduated drawers, fitted turned bun handles with mother of pearl inserts, raised on turned supports, 88cm wide
£60 - 80 †



Lot 505

503
A mahogany bureau, of small proportions, fall front opening to reveal an interior arrangement of drawers and pigeon-holes around a central cupboard, four long graduated drawers below within fluted columns, raised on ogee bracket supports, 58cm wide
£100 - 150 †

504
A Japanese Meiji period lacquer and gilt decorated Shodhana cabinet, fitted with drawers and shelves, decorated with panels of figures, birds and flowers having foliate engraved metal mounts, 105cm wide x 106cm high; raised on a much later wooden stand
£1,500 - 2,000 †

505
An 18th Century walnut and boxwood strung chest, fitted two short and two long drawers, raised on bracket feet, 98cm wide
£300 - 400 †

506
An unusual early 19th Century pollard oak apprentice piece table cabinet, constructed with timber from the Fairlop oak in Hainault forest, fitted four short and two long drawers enclosed by cross-banded doors, flanked by gilded carrying handles and raised on bun feet, 38cm wide x 38cm high, (with old relevant newspaper cuttings)
£200 - 400 †

507
A George III mahogany bureau, the fall front opening to reveal an interior arrangement of drawers and pigeon-holes, four long graduated drawers below, raised on bracket feet, 107cm wide
£100 - 150 †

508
A Victorian rosewood breakfront credenza, the fabric lined shelves enclosed by three glazed panelled doors, central columns above a platform plinth, 138cm wide x 37cm deep x 91cm high
£100 - 200 †

509
A 19th Century continental mahogany cylinder bureau, the fall front opening to reveal an interior arrangement of drawers around a central inlaid compartment, four long drawers below, raised on a shaped apron and bracket feet, 94cm wide
£100 - 200 †

510
A 19th Century continental mahogany tall chest, fitted seven long drawers raised on a platform plinth, 104cm wide x 151cm high
£200 - 300 †

511
A 19th Century mahogany secretaire bookcase, surmounted by a stepped pediment, the upper adjustable shelves enclosed by a pair of glazed tracery doors, fitted writing drawer and cupboards below, raised on bracket feet, 120cm wide
£100 - 150 †

512
An Antique oak corner cupboard, the interior shelves enclosed by a six panel door, raised on cabriole supports, 120cm wide x 185cm high
£100 - 200 †

513
A good quality Victorian figured mahogany wardrobe, fitted with tall end sections flanking a central section of sliding trays enclosed by fabric lined doors with mirror above and white marble top, raised on a breakfront plinth, 210cm wide
£400 - 600 †



Lot 506



Lot 518

514

An Edwardian inlaid mahogany display cabinet, the fabric lined shelves enclosed by a bow fronted central door, raised on square tapering supports and spade feet, united by an under-tier, 130cm wide £100 - 150 †

515

A good quality mahogany display cabinet, the interior glass shelves enclosed by a pair of glazed tracery doors, raised on a foliate carved stand terminating in cabriole supports and claw and ball feet, 126cm wide x 200cm high £100 - 200 †

516

A pair of mahogany and inlaid cupboards, the panelled doors decorated central oval paterae, raised on platform plinths, 80cm wide x 172cm high £100 - 200 †

517

An Antique oak and mahogany cross-banded dresser, with shelved and boarded back, fitted cupboards, drawers and alcoves, three drawers to the base above a shaped frieze and raised on square section supports, 197cm wide £300 - 400 †

518

An 18th Century oak long case clock, the hood surmounted by orb finials enclosing 30 hour movement and brass dial, inscribed "Stringer, Stockport" above a full length trunk panelled door, 220cm high £300 - 400 †

519

A 19th Century oval gilt framed overmantel mirror, having rope twist border and scrolls, 71cm x 117cm £200 - 300 †

520

An 18th Century oak long case clock, by Addison of Thirsk, the brass spandrel dial with foliate scrolls supporting an 8 day movement above a full length trunk panel door, raised on a box base and bracket feet, 214cm £200 - 400 †

521

A 19th Century mahogany and cross-banded drop leaf work table, fitted two drawers and raised on a turned column with quatrefoil base, terminating in bun feet, 79cm wide £60 - 100 †

522

A set of 19th Century mahogany and brass graduated wall shelves, impressed with the number 3723, 88cm wide x 61cm high £60 - 80 †

523

An Antique elm dough bin, (converted), raised on turned supports united by stretchers, 127cm wide £60 - 100 †

524

A 19th Century mahogany chest, having pine sides, fitted three long drawers with turned bun handles, raised on spool feet, 91cm wide £80 - 120 †

525

A Victorian rosewood nursing chair, with floral needlepoint upholstery, serpentine seat raised on cabriole supports £60 - 80 †

526

An Edwardian mahogany and inlaid bevelled edge wall mirror, in the Chippendale manner, the fret carved frame decorated with gilt, ho ho bird, 94cm x 53cm in extremes £40 - 60 †

527

A 19th Century mahogany framed stool, the floral upholstered seat raised on chamfered stretchered supports £20 - 40 †

528

A Regency rosewood and cross-banded card table, having fold-over swivel top, raised on a square tapering central column and quadruple splay, terminating in brass caps and castors, 90cm wide £80 - 120 †

529

A late Victorian mahogany chiffonier, with carved raised back, serpentine shaped top above a single blind frieze drawer and cupboards below, raised on a platform base, 103cm wide £150 - 250 †

530

A Georgian oak bureau, the fall front opening to reveal a fitted interior with drawers and pigeon-holes around a central well, two short and two long drawers below, raised on bracket feet, 93cm wide £80 - 120 †

531

A 19th Century mahogany side table, fitted five short drawers and raised on tapering fluted supports, terminating in castors, 96cm wide £80 - 120 †

532

An early 20th Century walnut display cabinet, the interior shelves enclosed by a central glazed panelled door, raised on carved cabriole supports terminating in claw and ball feet, 108cm wide £40 - 60 †

533

A Victorian papier-mâché circular tilt top occasional table, with chess board top £80 - 120 †

534

An Edwardian rosewood, boxwood strung and inlaid occasional table, with folding flaps, 55cm wide £40 - 60 †

535

An early 19th Century mahogany pole screen, with floral embroidered banner, raised on a turned and fluted column and triform base, terminating in bun feet £20 - 40 †

536

An Antique elm single drop leaf occasional table, raised on square supports, 70cm wide £20 - 40 †

537

A good quality oak open fronted bookcase, fitted four adjustable shelves, raised on a platform plinth, 122cm wide x 160cm high £250 - 350 †

538

A Victorian burr walnut side cabinet, the interior shelves enclosed by a pair of brass grill and fabric doors, raised on a platform plinth, 126cm wide x 138cm high £200 - 400 †

539

A satinwood bow fronted hall table, fitted three frieze drawers and raised on square tapering supports, 153cm wide £300 - 400 †

540

An Edwardian mahogany cutlery table, the upper section fitted two drawers, containing some plated cutlery and flanked by locking pillars and brass carrying handles, the table stand base fitted with a single drawer raised on square section supports terminating in brass caps and castors united by a stretcher, 63cm wide overall x 105cm high £100 - 150 †

541

A late Victorian oak Wellington type specimen chest, fitted nine drawers with locking side pillars, raised on a platform plinth, 36cm wide x 76cm high £300 - 400 †



Lot 520



Lot 525



Lot 540



Lot 541



Lot 550

542
A pair of walnut and cross-banded side tables, fitted single drawers, raised on turned tapering fluted supports terminating in peg feet, 52cm wide
£300 - 400 †

543
An Antique carved oak coffer, with profuse foliate and fruit decorated front, the lock plate bears date 1641, 114cm wide
£100 - 150 †

544
A George III style mahogany D end extending dining table, raised on twin pillars terminating in brass caps and castors, 106cm x 254cm fully extended
£200 - 300 †

545
An oak window seat, in the Regency style, having scroll ends, raised on turned fluted tapering supports and peg feet, 126cm wide
£200 - 300 †

546
A carved hardwood settle, with foliate decorated back above spindle columns, lift-up seat, raised on square section supports, 116cm long
£60 - 100 †

547
A mahogany long window seat, in the Regency style, having turned scrolled ends raised on turned fluted tapering supports and peg feet, 153cm wide
£200 - 300 †

548
An 18th Century oak tripod table, raised on a turned baluster column, 38cm dia. and an Antique country stick back dining chair with rush seat, (2)
£20 - 30 †

549
An Eastern inlaid domed top trunk, decorated with stylised motifs and flanked by gilt metal carrying handles, 80cm wide
£60 - 80 †

550
An 18th Century oak single drawer side table, the overhanging top above a shaped frieze, raised on rounded tapering legs and pad feet, 65cm wide
£80 - 120 †

551
An Eastern inlaid trunk, decorated with stylised motifs and chequer-banding, 89cm wide
£40 - 60 †

552
A mahogany D shaped foldover tea table, raised on square section tapering supports, 84cm wide
£40 - 60 †

553
A 19th Century mahogany two tier corner washstand, 53cm wide
£20 - 40 †

554
A walnut oyster veneered side table, in the 18th Century style, fitted single drawer, raised on spiral turned supports united by stretchers, 89cm wide
£150 - 250 †

555
A 19th Century mahogany bow fronted chest, of two short and three long graduated drawers, raised on a shaped apron and bracket feet, 104cm wide
£100 - 150 †

556
A George III mahogany and boxwood strung chest, of two short and three long drawers, raised on ogee bracket supports, 124cm wide
£100 - 150 †

557
A George III mahogany cross-banded and boxwood strung chest, of two short and three long graduated drawers, raised on bracket feet, 95cm wide
£100 - 150 †

558
A 19th Century mahogany bow fronted chest, of two short and three long graduated drawers, raised on a shaped apron and bracket supports, 94cm
£100 - 150 †

559
A Victorian mahogany round cornered chest, of narrow proportions, fitted five long graduated drawers, 75cm wide
£100 - 150 †

560
A Victorian walnut Davenport writing desk, the sloping lid opening to reveal a four drawer interior, beneath a hinged stationery box, four drawers to the side with opposing dummy drawers, raised on fluted and floral carved columns, inverted platform base terminating in bun feet and castors, 59cm wide
£100 - 150 †

561
A quartetto of Chinese rosewood graduated occasional tables, having pierced and fruit foliate friezes, raised on rounded slender supports united by stretchers, 49cm in extremes
£100 - 200 †

562
An inlaid mahogany sideboard, fitted four long central drawers flanked by cupboards, decorated with oval paterae, raised on a platform plinth, 180cm wide x 102cm high
£100 - 200 †

563
A late Victorian walnut extending dining table, the canted corner top fitted with extra leaves and raised on turned fluted supports, terminating in castors, 120cm x 236cm
£60 - 100 †

564
A pair of Edwardian walnut single beds, having shaped headboards and footboards, 93cm wide x 206cm long
£80 - 120 †

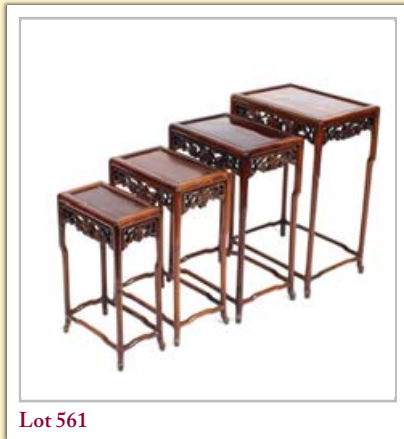
565
An oak three section Globe Wernicke bookcase, fitted single drawer to the base, 87cm wide x 129cm high
£100 - 150 †

566
A continental rosewood and walnut two tier bedside table, surmounted by a marble top, single drawer and cupboard below, raised on turned supports terminating in castors, 41cm wide x 85cm high
£80 - 120 †

567
A rosewood and walnut cross-banded chest, of narrow proportions, fitted six drawers with marble inset top, raised on a shaped apron and castors, 42cm wide x 97cm high
£80 - 120 †



Lot 551



Lot 561



Lot 566

Special Sales Calendar 2018

Clarke &
Simpson

ART DECO, DESIGN & RETRO - 9th April, 2018 - *Closing date: 16th March*

FINE ART - 16th May, 2018 - *Closing date: 20th April*

FARM MACHINERY - 26th May, 2018 - *Closing date: 13th April*

ART DECO, DESIGN & RETRO - 18th June, 2018 - *Closing date: 25th May*

RURAL BYGONES - 14th July, 2018 - *Closing date: 15th June*

FINE ART - 25th July, 2018 - *Closing date: 29th June*

ART DECO, DESIGN & RETRO - 3rd September, 2018 - *Closing date: 3rd August*

RURAL BYGONES - 8th September, 2018 - *Closing date: 10th August*

FINE ART - 3rd October, 2018 - *Closing date: 7th September*

FARM MACHINERY - 20th October, 2018 - *Closing date: 7th September*

ART DECO, DESIGN & RETRO - 29th October, 2018 - *Closing date: 5th October*

FINE ART - 5th December, 2018 - *Closing date: 9th November*



Campsea Ashe
Nr. Wickham Market
Suffolk IP13 0PS
Tel: (01728) 746323 Fax: (01728) 748173
Email: auctions@clarkeandsimpson.co.uk
www.clarkeandsimpson.co.uk

Next Antique & Fine Art Auction to be held Wednesday 16th May, 2018

Clarke & Simpson

Auctions

Closing date for entries Friday 20th April, 2018

Droite de Suite Royalty Charges

From 14th February, 2006 all United Kingdom Art Market professionals (which includes auctioneers) are required to collect a royalty payment for all qualifying Works of Art. Under new legislation which came into effect on the 1st January, 2012, this applies to living artists and those who have died in the last 70 years. This payment is calculated on qualifying Works of Art which are sold for a hammer price more than the UK sterling equivalent of €1,000 (the UK sterling equivalent will fluctuate in line with prevailing exchange rates calculated by the Artist's Resale Right Service Hub, based on the European Central Bank reference rate published at 2.15pm on the day of the sale, and can be found on www.dacs.org.uk).

All items in this catalogue that are marked "✓" are potentially qualifying items, and the royalty charge will apply if the hammer price is more than UK sterling equivalent of €1,000. The royalty charge will be added to purchase invoices, and must be paid before items can be cleared. All royalty charges are paid to the Design and Artists Copyright Society ("DACS") by the auctioneers and no handling costs or additional fees with respect to these charges will be retained by the auctioneer.

The royalty charge for qualifying items which achieve a hammer price of more than the UK sterling equivalent of €1,000, but less than the UK sterling equivalent of €50,000 is 4%. For qualifying items that sell for more than the UK equivalent of €50,000 a sliding scale of royalty charges will apply. For a complete list of the royalty charges and threshold levels please refer to www.dacs.org.uk. There is no VAT payable on this royalty charge.

Dear Purchaser

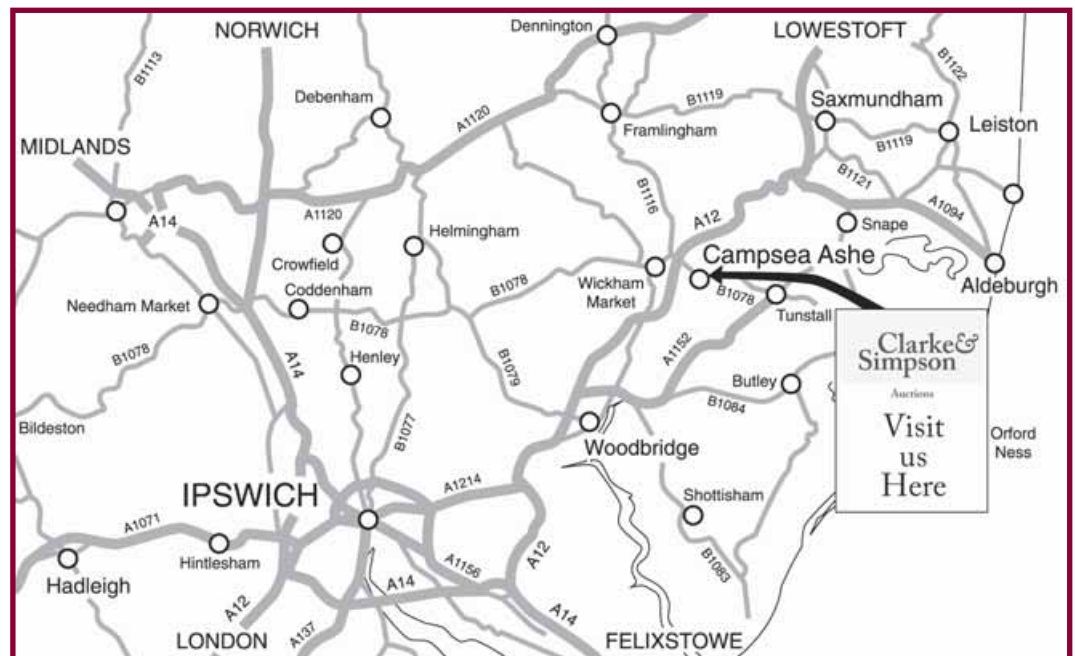
Clarke and Simpson are pleased to offer a packing and shipping service worldwide through "the-saleroom.com Delivery Service". The professional team will pack and ship items from very small non-breakables such as jewellery and coins through to larger and more fragile items such as paintings and works of art. Shipping and insurance is at the buyer's expense. Shipping payment must be made to 'the-saleroom.com Delivery Service' prior to departure and excludes local duties and taxes. Please note that Clarke and Simpson do not pack or ship items - all requests are sent to our specialist handlers at "the-saleroom.com Delivery Service" who can be contacted directly via delivery@atgmedia.com

the-saleroom.com
delivery service



Directions

We are just off the A12 north of Wickham Market on the B1078 road to Orford.



TERMS AND CONDITIONS OF SALE

1. INTRODUCTION

The following defining terms are used in these conditions:-

“Auction”	Means any auction conducted by Clarke and Simpson Auctions Ltd. either at the premises owned by them or elsewhere (including any internet based auction);
“Auctioneer”	Means Clarke and Simpson Auctions Ltd. authorised auctioneer as appropriate;
“Bidder”	Means a bidder at an auction, including the bidders personally present at the venue and those bidding by telephone or over the internet or otherwise;
“Buyer”	Means the bidder whose bid was the last bid when the auctioneer concludes the bidding;
“Conditions”	Means these Terms and Conditions of Sale;
“Hammer Price”	Means the level of bidding reached (at or above any reserve) when the auctioneer brings the bidding to a close;
“Lot”	Means any property accepted by Clarke and Simpson Auctions Ltd. for offer at auction;

2. DESCRIPTION

No warranty is given or implied by the description in the catalogue. Each lot is sold in its condition at the time of sale with all faults, defects, imperfections and errors of description (if any). Whilst every endeavour has been made to describe the items adequately and properly, the purchaser shall deem to have inspected the lot at time of purchase. All catalogues and seller's and buyer's guides are for information only and do not form part of the contract.

3. STATUTORY REQUIREMENTS

Purchasers will be deemed to have satisfied themselves prior to purchasing regarding current legal requirements (e.g. Health & Safety at Work Act) and it is expressly brought to the bidders attention that equipment in the sale may not necessarily comply with such regulations. Any purchaser shall satisfy himself as to any statutory requirement for the use of any item and no liability shall rest with the vendors nor the Auctioneers.

4. THE AUCTION

All auctions are conducted at the absolute discretion of the auctioneer. The auctioneer shall conduct the auction with reasonable skill and care. The vendor reserves the right to sell subject to reserve price in respect of all lots. What constitutes a bid shall be at the absolute discretion of the auctioneer, acting with appropriate skill and care. The auctioneer shall have the right to refuse any bid in all cases but most notably when such a bid does not exceed the previous bid by at least 10% or such a proportion as the auctioneer shall in his absolute discretion direct. Where two or more bids at the same level are simultaneously received by the auctioneer, the auctioneer at his absolute discretion shall determine which bid to prefer. Subject to the foregoing where two or more bids are at the same level are simultaneously received by the auctioneer, the bid submitted in the room shall take preference over a bid submitted by telephone or internet at the same level. Any bid made or attempted by telephone or over the internet will only be deemed to have been made if received by the auctioneer. The auctioneer reserves the right to withdraw, consolidate or divide any lot or lots or submit them in any order that they desire. The auctioneer has the right at his absolute discretion to refuse admission to his premises or attendance at (or participation in) any auction by any person. In the case of any dispute, the auctioneer shall be sole arbitrator in any matters arising during or out of the sale.

5. BIDDERS

All bidders will be required to register their particulars, bidders attending in person and those accompanying them may be required to provide photo ID and separate confirmation of address prior to viewing or taking any part of the sale and before entering any part of the premises to view. All bidders accept full liability for all bids submitted. Subject to the clause in this document headed “The Auction”, the highest bidder at the close of bidding shall be the buyer. Any dispute about a bid shall be settled at the auctioneer's absolute discretion. Bidders are all deemed to act as principal unless there is prior written acknowledgement by Clarke and Simpson Auctions Ltd. that a bidder is acting as an agent for a named principal. Bidders are strongly encouraged to attend the auction in person. The bidders shall be responsible for any decision to bid for a particular lot and shall be deemed to have carefully inspected and satisfied themselves as to condition, neither Clarke and Simpson Auctions Ltd., their employees or agents shall be responsible for any neglect or default in doing or failing to do so. Bidders will be given ample opportunity to view and inspect before the sale and prospective buyers must satisfy themselves as to all matters.

6. DEFAULT

Clarke and Simpson Auctions Ltd. shall act as agent of the vendor only. Any contracts for the sale of a lot shall be formed between the vendor and the buyer. As agent only Clarke and Simpson Auctions Ltd. shall not be responsible for default by the vendor or the buyer. If any lot is not paid for in full and taken away in accordance with these conditions, or there is any other breach of the conditions, then Clarke and Simpson Auctions Ltd. as agents for vendor shall at its absolute discretion and without prejudice to any other rights it may have, be entitled to exercise all or any of the following rights and remedies:-

- 6.1 to proceed against the buyer for any action of debt or damages for breach of contract;
- 6.2 to rescind the sale of that lot or lots sold by Clarke and Simpson Auctions Ltd. to a defaulting buyer;
- 6.3 to resell the lot (by auction or private treaty) in which case the defaulting buyer shall be responsible for any resulting deficiency in the total amount due (after crediting any part payment and adding any resale costs), any possible surplus so arising shall belong to the vendor;
- 6.4 to remove, store and insure the lot at the expense of the defaulting buyer and, in the case of storage, the location of such storage shall be at Clarke and Simpson Auctions Ltd. discretion;
- 6.5 to charge interest at a rate not exceeding 2% per month of the total amount due to the extent that it remains unpaid for more than two working days after the sale;
- 6.6 to retain that or any lot sold to the defaulting buyer until the buyer pays the total amount due;
- 6.7 to reject or ignore bids from the defaulting buyer at future auctions or to impose conditions before any such bids are accepted;
- 6.8 to apply any proceeds of sale for any other lots due or in the future becoming due to the defaulting buyer towards the settlement of the total remaining due.

7. INDEMNITIES, PENALTIES AND LIMITATIONS OF LIABILITY

Purchasers shall pay for any damage done by themselves or their agents during the removal of their lots. Attendance at the sale shall be at the risk of those attending in respect of both themselves and to their goods and vehicles.

Any indemnity under these conditions will extend to all actions, costs, expenses, claims and demand whatsoever suffered or incurred by the person entitled to the benefit of it and Clarke and Simpson Auctions Ltd. declare themselves to be a trustee of the benefit of such indemnity so far as it is expressed to be the benefit of its employees and agents.

Whilst Clarke and Simpson Auctions Ltd. endeavour to ensure that the information on their websites is correct, they do not warrant the accuracy and completeness of the material on their website. Also Clarke and Simpson Auctions Ltd. can make changes to the material on their website, or alter the products and prices described on it, at any time without notice. The material on the website may be out of date, Clarke and Simpson Auctions Ltd. make no commitment to update such material. All material on the websites is provided "as is" without any conditions, warranties or other terms at any time. Accordingly to the maximum extent permitted by law, the website is provided to all parties on the basis that Clarke and Simpson Auctions Ltd. exclude all representations, warranties, conditions and other terms which, but for this legal notice, might have effect in relation to the website.

8. ELECTRICAL SAFETY REGULATIONS

All electrical lots are subject to electrical safety regulations and fall within "the low voltage electrical equipment (safety) regulations 1989" – all items have been pat tested for safety but are not guaranteed in working order.

9. GENERAL MATTERS

Any notice to any buyer, vendor, bidder or viewer may be given by first class mail or email in which case it shall be deemed to have been received by the addressee forty eight hours after posting or sending. All notices to Clarke and Simpson Auctions Ltd. must be sent in writing and email is not acceptable. Any indulgence extended to any person by Clarke and Simpson Auctions Ltd., notwithstanding the strict terms of these conditions or the terms of consignment, shall affect the position at the relevant time only and the respect of that particular concession only; in all other respects these conditions shall be construed as having full force and effect. These conditions and any disputes or claims arising out or in connection with them or their subject matter or formation (including non-contractual disputes or claims) are governed by and construed in accordance with the law of England. The parties irrevocably agree that the courts of England have exclusive jurisdiction to settle any dispute or claim that arises out of or in connection with the agreement or its subject matter or formation (including non-contractual disputes or claims).

10. PUBLICITY

Any catalogue and buyer and seller guides are provided for information only and do not form part of these conditions. The catalogue and the buyer and seller guides may contain additional terms and conditions. Clarke and Simpson Auctions Ltd. reserve the right to use any photographs, background information and research for publicity purposes both before and after the sale.

11. THE PURCHASE PRICE AND PAYMENT ARRANGEMENTS

There is a buyers premium of 18% plus VAT payable in respect of the sale. Any purchase made via "www.the-saleroom.com" shall be subject to an administration charge of 3% plus VAT on the price. Payment is to be by Bank Transfer, Bankers Draft, cash or personal debit card. Such cards may only be used on a chip and pin basis with the owner present. No payment will be accepted by telephone. Payment by cheque will only be acceptable subject to prior arrangement. No items may be removed from the sale until cleared funds have been received. Payment is due on the day of the sale. Cash in excess of £7,500 (including V.A.T.) will not be accepted from any one person, this is

in accordance with Money Laundering Regulations 2007. All money received will be held in Clarke and Simpson Auction Ltd. Clients account at Barclays Bank Plc. Framlingham, Suffolk. Account No: 83428591, Sort Code 20-98-07. Clarke and Simpson Auctions Ltd. have no responsibility for any lot between the close of bidding and payment being made and subsequent collection. Please note all policy regarding payment will be enforced and suitable arrangements must be made.

12. REMOVAL OF LOTS

The ownership of any lot purchased shall not pass to the relevant buyer until they have made payment in full to Clarke and Simpson Auctions Ltd. of the total amount due. The buyer shall at their own risk and expense take away any lot that they have purchased and paid for not later than two working days following the day of the auction after which they shall be responsible for any removal, storage and insurance charges. Any lots not collected within three months of the date of sale will be resold by the auctioneer and all proceeds will be retained by the auctioneer to cover storage costs.

13. NUMBER BIDDING

This will be used for speed and efficiency as in all our sales. All prospective purchasers must complete a registration form and register in the office on the viewday or morning of sale to receive a number for bidding. PLEASE ALSO NOTE THAT PHOTO ID AND ADDITIONAL CONFIRMATION OF ADDRESS WILL BE REQUIRED.

14. TELEPHONE BIDDING

We offer a telephone bidding service where possible but this service can never be guaranteed. No applications for telephone bids will be accepted after the end of the viewing prior to sale day for any sale. All potential telephone bidders must provide a valid landline number and email address for us to send terms and conditions prior to phone bidding. No phone bids will be accepted for any lot with a lower guide figure of less than £100.

All those who wish to bid by telephone will be expected to deposit the minimum guide for all lots that they wish to bid upon into the Clients Account for Clarke and Simpson Auctions Ltd before the sale starts. In the event of default, this sum shall be retained as part payment or any part may be retained to recover losses under clause 6 of these Terms and Conditions. We will expect payment of the balance owing by BACS on the following day, any payment not met within five working days will result in the forfeiture of the deposit paid.

15. ONLINE BIDDING

Clarke & Simpson Auctions Ltd., on occasions, offer an online bidding service via the-saleroom.com for bidders who cannot attend the sale. In completing the bidder registration on www.the-saleroom.com and providing your card details and, unless alternative arrangements are agreed with Clarke & Simpson Auctions Ltd.:

- 1 authorise Clarke & Simpson Auctions Ltd., if they so wish, to charge the card given in part or full payment, including all fees, for items successfully purchased in the auction via www.the-saleroom.com, and
- 2 confirm that you are authorised to provide these card details to Clarke & Simpson Auctions Ltd. through www.the-saleroom.com and agree that Clarke & Simpson Auctions Ltd. are entitled to ship the goods to the card holder name and card holder address provided in fulfilment of the sale.

Please note that any lots purchased via the-saleroom.com auction service will be subject to an additional 3% charge + VAT at the rate imposed on the hammer price



Little Bealings - £995,000

A fully renovated & extended bungalow of over 3,000 sq ft, sitting in mature grounds of approximately an acre, within the parish of Little Bealings, 3 miles from both Ipswich & Woodbridge.

Ref: 5857



Leiston- £750,000

A four bedroom house with yard and 20,000 sq ft of former agricultural buildings, along with 10.5 acres in a pleasant position close to the Suffolk Heritage Coast.

Ref: 5865



Yoxford £650,000

A spacious Grade II Listed five bedroom house in the centre of the well regarded village of Yoxford.

Ref: 5778



Dennington £525,000

A beautifully presented former mill house on the outskirts of the village with delightful gardens of over 1/3 acre. Ref: 5610



Cratfield £475,000

A 3/4 bedroom detached house with fabulous open plan kitchen/dining room, in a lovely rural setting with field views Ref: 5757



Framlingham £450,000

A spacious 4 bedroom detached property situated within walking distance of the centre of Framlingham Ref: 5076



Laxfield £365,000

A charming Victorian former gate house, 2/3 bedrooms, with purpose built studio, in a plot of approx. 0.25 acres Ref: 5883



Wilby £330,000

A well maintained 3 bedroom detached family home, with good sized gardens, in the rural village of Wilby. Ref: 5855



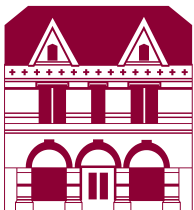
Owls Green £315,000

A renovated, three double bedroom detached bungalow standing in a pleasant setting with gardens and off-road parking. Ref: 5839



Wickham Market £225,000

An extremely pretty 2 bedroom end of terrace cottage, presented to a high standard, in the popular village of Wickham Market. Ref: 5888



Clarke and Simpson Auction Centre
Campsea Ashe
Nr. Wickham Market
Suffolk IP13 0PS
Tel: (01728) 746323 Fax: (01728) 748173
Email: auctions@clarkeandsimpson.co.uk
www.clarkeandsimpson.co.uk