

Clarke &  
Simpson



*Art Deco, 20th Century  
Design & Retro*

Monday 9th April at 9.30am

Clarke &  
Simpson

Auctions

# Forthcoming Auctions

Antique & Fine Art

Wednesday 16th May

Closing date for entries 20th April

Collective Machinery

Saturday 26th May

Closing date for entries 26th April

Art Deco, 20th Century Design & Retro

Monday 18th June

Closing date for entries 25th May

Domestic & Rural Bygones & Collectors Vehicles

Saturday 14th July

Closing date for entries 15th June

Antique & Fine Art

Wednesday 25th July

Closing date for entries 29th July

Clarke &  
Simpson

Auctions

*Art Deco, 20th Century Design  
& Retro*

*Monday 9th April 2018  
at 9.30am*

Viewing:

Saturday 7th April 9am - 12noon

Morning of Sale from 8.30am

Enquiries:

James Shand, Auctioneer & Valuer

Geoffrey Barfoot, Auction Centre Manager & Valuer

Buyers' Premium:

18% plus VAT

Please see [www.the-saleroom.com](http://www.the-saleroom.com)

for further images

**the saleroom**  
The home of art & antiques auctions

Special attention is drawn to the  
Conditions of Sale printed at the back of  
this catalogue.



Campsea Ashe  
Nr Wickham Market  
Suffolk IP13 0PS  
Tel: 01728 746323 Fax: 01728 748173  
Email: [auctions@clarkeandsimpson.co.uk](mailto:auctions@clarkeandsimpson.co.uk)  
[www.clarkeandsimpson.co.uk](http://www.clarkeandsimpson.co.uk)



@CandSAuctions



CandSAuctions



Lot 6



Lot 12



Lot 13



Lot 14



Lot 19

**1**  
A 1920's plated cocktail shaker, "Jerry's", 31cm high. £20-£30

**2**  
A pair of Art Deco design plated baluster vases, with spot hammered decoration, 23cm high. £20-£30

**3**  
A green onyx and brass mounted Art Deco design mantel clock, 18cm high. £10-£20

**4**  
An Art Deco design metalware cigarette box, raised on stepped bracket supports, 13cm. £20-£30

**5**  
A pair of silver plated Art Deco match holders / ash trays, probably from a cruise liner. £10-£20

**6**  
An Art Deco design dressing table mirror, decorated with a painted figure of a dancing girl, 30cm long. £80-£120. See illustration.

**7**  
A Bakelite radio by Sobel, radiator model, 22.5cm x 22cm high. £50-£60

**8**  
An Art Deco design spelter figure of a kneeling nude girl, on marble base, 21cm high. £20-£30

**9**  
A heavy brass ash tray, decorated with a figure of a standing nude girl. £10-£20

**10**  
A Crown Devon Fieldings musical jug, "Widdicombe Fair"; a Crown Devon Fieldings musical mug "Killarney, The Irish Jaunting Car"; and a Royal Doulton musical tankard "The Irish Jig" (3). £30-£50

**11**  
Sixteen items of Ridgway "Homemaker" china. £20-£40

**12 ü**  
Tessa Newcombe born 1955, "The Tea Shop" initialled oil on board, 29.2cm x 19.6cm, label verso. £400-£600. See illustration.

**13 ü**  
Joe Rimini, "A Summer's Day", signed oil on canvas, 20cm x 24.5cm. £100-£200. See illustration.

**14 ü**  
Andrea Peters, "Down The Street", signed oil on board, 20cm x 24.5cm. £40-£60. See illustration.

**15**  
A quantity of T G Green Cornishware, to include jugs, cups, tureens, meat plate etc. £20-£40

**16**  
A quantity of miscellaneous Retro items, to include embroideries, beaded evening bag, boxed handkerchiefs, old telephone, Retro eiderdown etc. £20-£30

**17**  
A J.S & S. copper two handled Celtic Knot design drinks tray, with spot hammered central field, 64cm x 27cm. £10-£20

**18**  
An amber Art Glass vase, of ribbed design, 21cm high; a large blue tinted glass vase, 24cm high; and a dark glass example, 20cm high (3). £40-£60

**19**  
A modern Art Deco design figure of a dancing girl, 40cm high. £25-£40. See illustration.

**20**  
A large blue Art Glass ribbed bowl, 26cm dia. x 18cm high. £20-£40

**21**  
An Art Deco design mirrored breakfast tray; and another smaller similar decorated with a scene of Nice (2). £10-£20

**22**  
A Monart style green glass baluster vase, with gilt swirled decoration, 24cm high. £40-£60

**23**  
An Art Glass vase, of bell shape with amber coiled decoration, 24cm high. £20-£40

**24**  
A French Pierrefouds vase, decorated with blue running glazes, 30cm high (restoration to one leaf). £20-£40

**25**  
William J Wilson for Whitefriars, a large pedestal glass bowl with presentation inscription, 26.5cm dia. x 19.5cm high. £20-£40

**26**  
A Vogue advertising mirror. £10-£20

**27**  
A pair of Art Deco wooden based photograph frames. £20-£30

**28**  
A Czechoslovakian porcelain dressing table set, with floral decoration. £10-£20

**29**  
An Autobridge playing board. £10-£20

**30**  
Attributed to Dr Christopher Dresser, a roll of vintage wall paper. £40-£60

**31**  
A vintage debonair silver patent leather Kelly bag; together with a snakeskin handbag; and two leather crocodile effect bags (4). £20-£30

**32**  
A cast iron door stop, in the form of a stylised cat, 25cm high. £20-£30

**33**  
A vintage red and black HMV Art Deco design room heater. £60-£80

**34**  
A collection of 1930's Art Deco school posters. £20-£40

**35**  
A quantity of various pendant light fittings. £10-£20

**36**  
A metalware and opaque glass pendant ceiling light. £10-£20

**37 ü**  
F Aquillo, a collection of unframed acrylic and crayon studies depicting vintage cars, figures etc. in a folio. £30-£50

**38 ü**  
F Aquillo, study of two Spanish figures, one drinking wine from a carafe, inscription to mount, signed, 58.5cm x 37.5cm. £30-£50

**39 ü**  
F Aquillo, five various framed and glazed studies depicting Don Quixote, another nobleman, a man lighting his pipe, a bull; and a grotesque beast, signed. £100-£150

**40**  
An Art Deco frosted glass pendant ceiling light fitting. £40-£60

**41**  
A flat weave rug, with stylised decoration; another with striped decoration; a woollen rug; and a hammock (4). £20-£30

- 42**  
A flat weave rug, with stylised decoration.  
£10-£20
- 43**  
A large Venetian design wall mirror, having shaped borders 181cm x 90cm. £100-£150
- 44 ✓**  
K Hinwood 1973, study of an artist painting in fields, signed and dated oil on canvas, 51cm x 60cm. £40-£60
- 45 ✓**  
K Hinwood 1952, still life study signed oil on canvas, 61cm x 50cm in decorative gilt frame label verso "The Mall Gallery". £50-£80
- 46 ✓**  
Abstract study, "Waterloo Station 1962", palette knife on board, 62cm x 116cm. £40-£60
- 47**  
An Art Deco wrought iron and frosted glass ceiling light. £80-£120
- 48 ✓**  
John D Thomson, "Sky Skip", signed oil on canvas, 94cm x 122cm. £100-£200.  
See illustration.
- 49 ✓**  
John D Thomson, "Fog Pond", signed oil on canvas, 95cm x 122cm. £100-£200.  
See illustration.
- 50**  
W F Burton, study of Beachy head, signed oil on board dated 1966, 61.5cm x 91.5cm (unframed). £20-£40
- 51**  
A mixed media study of a clown mask.  
£10-£20
- 52 ✓**  
John Salvana 1873 - 1956, study entitled "Cloud Shadows Wyong North Coast, NSW", 24cm x 39cm. £40-£60. See illustration.
- 53**  
Lamorna Good, continental landscape study, oil on board label verso, 40cm x 30cm. £40-£60
- 54**  
Style of Connie Winn, study of trees watercolour, 55cm x 38cm. £40-£60
- 55**  
Helen Beresford, signed print study of an alleyway. £20-£40
- 56 ✓**  
Alexander Merrie Hardie RWA 1910 - 1989, "Summer in Rosshire", signed and dated oil 1986, information verso, 44cm x 56cm. £100-£200. See illustration.
- 57**  
Rite Gregg, reproduction of original oil "Hat With A Rose". £20-£40
- 58**  
"The Jolly Roger", indistinctly pencil signed limited edition print 26/70. £20-£40
- 59**  
Carmen Renwick, pencil signed study of birds amongst trees with fields in the far ground, 39cm x 50cm. £40-£60
- 60 ✓**  
Elizabeth Ridgway ARBSA, portrait study entitled "Winter Solstice", 29cm x 34cm. £100-£200
- 61**  
Style of Diago Valazquez, portrait study "J", framed as an oval. £100-£200
- 62**  
Headwig, still life study depicting flowers in a blue glass vase, signed oil on canvas, 79cm x 51cm. £40-£60
- 63 ✓**  
E Brennecke 1964, landscape study oil on board, 58cm x 79cm. £40-£60
- 64**  
Caroline Arber, photographic print depicting children playing in an old car. £10-£20
- 65 ✓**  
Mamela, crayon and pastel study of a musician, signed, 64cm x 54cm. £30-£50
- 66**  
K Swingard, pencil portrait inscribed with slogans, 60cm x 45cm. £20-£40
- 67 ✓**  
P.R.S. '73, brightly coloured still life study, initialled oil on board, 80cm x 70cm, contained in a decorative gilt frame. £40-£60
- 68**  
Style of Doug Fitch, slipware charger, having stylised decoration on a mottled yellow, green and brown ground, 36.5cm dia. £20-£40
- 69**  
A Bang & Olfson Beogram 3000. £100-£150
- 70**  
An Art Nouveau style brass framed easel mirror, 33cm x 25cm. £20-£30
- 71**  
A tile picture depicting young shepherd girl and sheep, 26.5cm x 35.5cm. £20-£40
- 72**  
A 1960's pottery plaque, depicting seated birds on a branch 44cm x 34cm overall. £20-£30
- 73**  
Two glass modernist fruit dishes, with raised central figural bronzed plaques. £20-£40
- 74**  
Three George Barbier style Art Deco theatrical scene watercolours, unsigned 14cm x 21cm. £60-£100. See illustration.
- 75**  
An Art Deco marble clock set. £40-£60
- 76**  
A Leonardo mirrored wall clock. £50-£80
- 77**  
A Spiderman comic Liquid Art picture. £40-£60
- 78**  
A Marilyn Monroe Liquid Art picture. £40-£60
- 79**  
A square metal industrial style wall mirror, 92cm<sup>2</sup> overall. £150-£250
- 80**  
Richard Bawden, study of a church with nearby monument, lithograph, 64.5cm x 46cm. £40-£60. See illustration.
- 81 ✓**  
Helena Marham, "Pierhead Liverpool", pencil signed limited edition print, 42cm x 51cm, 75/100. £60-£80
- 82 ✓**  
Helena Marham, Everton from Brosdie, pencil signed limited edition print, 56/100, 42cm x 56cm. £60-£80
- 83**  
A pair of green glazed Poole pottery style baluster vases, 20cm high. £20-£40



Lot 48



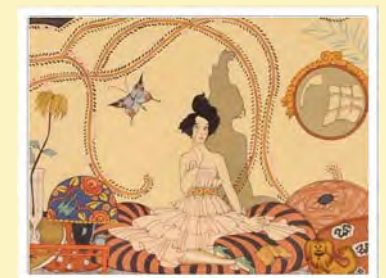
Lot 49



Lot 52



Lot 56



Lot 74



Lot 80



Lot 117



Lot 118



Lot 119



Lot 120



Lot 135

**84**

A pair of Belgian pottery candlesticks, with looped triple handles, decorated blue, brown and green running glazes, 38cms. £20-£40

**85**

A Bretby pottery yellow glazed leaf decorated jardinière, 18cm dia. 14cm high; and another blue glazed similar with raised leaf decoration, 17cm high 22cm dia. (2). £20-£40

**86**

An Ashtead pottery figure, of a semi naked girl holding a sheaf of corn, 21cm high AF; and an Art Deco pottery profile study of a girls head wearing cloak 17cm high (2). £20-£40

**87**

A Venetian decanter and four matching glasses, having etched decoration and blue glass collars. £20-£40

**88**

A Nachtman signed glass vase, of stylised hobnail design, 24.5cm. £20-£40

**89**

Two Orrefors glasses, raised on gilt coloured stems, 19cm high. £20-£30

**90**

Three Orrefors glass cocktail glasses, with blue decorated stems designed by Erika Lagerbielle. £40-£60

**91**

A West German pottery baluster vase; a triform shaped dish; a circular Portuguese Studio Pottery charger; and a Mobach two handled lustre decorated dish (4). £20-£40

**92**

A modernist bronzed stylised figure group of two dancers, signed Cawo, 24cm high; another of three figures with their arms outstretched, 23cm long; and another of an athlete raised on a marble plinth, 13cm high (3). £40-£60

**93**

A Retro ladies umbrella. £10-£20

**94**

A modernist bronze figure group of stylised form on onyx base, 22cm high; another of a naked maiden 16cm high (2). £20-£40

**95**

A 20th Century pottery tile, with raised foliate and gilt heightened decoration, 18.5cm. £20-£30

**96**

A Mobach Studio Pottery vase, with hooped decoration; two others; and a Studio Pottery pitcher (4). £20-£30

**97**

A modernist bronzed figure of a footballer; and another of a musician on black wood plinth (2). £20-£40

**98**

A glazed pottery tobacco jar, in the form of a seated military figure AF, 28cm high. £10-£20

**99**

A pair of onyx owl ornaments, 14cm high; and a pair of green onyx stylised horses head ornaments, 14.5cm. £20-£30

**100**

A crocodile skin effect handbag. £10-£20

**101**

A vintage copper and brass dial telephone. £20-£40

**102**

Two silk ladies scarves - one Chanel. £10-£20

**103**

A green glass Whitefriars style vase, of triform shape 25cm high; and an amethyst glass similar of ovoid form, 19cm high (2). £20-£30

**104**

A WMF plated Ikora fruit dish, of oblong form; and another similar (2). £20-£40

**105**

A Holmegaard heavy glass circular bowl, 32cm dia. £40-£60

**106**

A Retro design table lamp on tripod base. £20-£30

**107**

A decorative display unit / television stand in the form of Atlas, 110cm wide x 90cm high.

£40-£60

**108**

A collection of mostly Langham and Murano coloured glass snail ornaments; and a frosted glass conch shell (8). £40-£60

**109**

A collection of mostly Langham glass coloured cat and dog ornaments, (13).

£40-£60

**110**

A collection of coloured glass bird ornaments, including Paul Miller for Langham; Maltese and other examples (12). £40-£60

**111**

A cranberry glass cream jug; a pink tinted gilt and enamel decorated glass liqueur set; various coloured glass vases etc. (20) £20-£40

**112**

A collection of mostly Langham glass coloured animal ornaments; a pair of Alum Bay glass ornaments etc. (12). £40-£60

**113**

A collection of various Murano, Langham and other glass ornaments, to include paperweights, vases, posy baskets etc. (20).

£40-£60

**114**

A collection of mostly Langham coloured glass bird ornaments, and others (18). £40-£60

**115**

A collection of Caithness, Langham and other coloured glass paperweights (18). £40-£60

**116**

A tortoiseshell coloured glass posy vase, in the form of a shopping bag; various Mdina and other coloured glass vases (11). £40-£60

**117**

A Murano glass Millifiore baluster vase with flared neck, clear glass handles and petal base; three similar paperweights and two posy vases (6). £40-£60. See illustration.

**118**

A collection of Paul Miller, and other Langham glass paperweights (19). £40-£60. See illustration.

**119**

A collection of Langham glass, and other bird ornaments (16). £40-£60. See illustration.

**120**

Seven Paul Miller, and other coloured glass frog ornaments. £40-£60. See illustration.

121

A collection of Paul Miller, and other Langham glass fruit paperweights; a Wedgwood glass mushroom shaped paperweight etc. (15). £40-£60

122

Six Langham pink glass pig ornaments; and four other examples (10). £60-£80

123

A collection of Langham and Murano glass dolphin and fish ornaments (16). £40-£60

124

Five Langham glass duck and swan ornaments; and a Murano glass example (6). £60-£100

125

A collection of ruby Wedgwood glass animal and fruit paperweights; and a mottled blue glass fish ornament (11). £40-£60

126

A collection of Langham glass chicken, cockerel and turkey ornaments (9). £40-£60

127

A collection of Langham glass duck and bird ornaments (11). £40-£60

128

A Pino Signoretto Murano glass group of parrots, 27cm high. £60-£100

129

A large Latticino glass fruit bowl, cream, ruby and gold swirled decoration, 39cm dia. £80-£120

130

A Danish pottery face vase, having green and yellow floral decoration, 33cm high. £40-£60

131

A collection of sixteen various Langham coloured glass paperweights. £60-£100

132

A collection of Caithness and Strathearn Milliflore glass paperweights (10). £40-£60

133

A Paul Miller for Langham glass heavy fish ornament, 31cm high. £40-£60

134

A Rubelli Murano glass ornament, depicting three coloured birds seated on a branch, 30cm long 18cm high. £60-£100

135

A heavy Murano coloured glass flower vase, signed G Tosi, 29cm high. £30-£50  
See front cover illustration.

136

Gian Signoretto, heavy Murano glass figure study heightened in gilt, 35cm in original box. £100-£150. See illustration.

137

Ten Murano glass flower decorated paperweights. £60-£100

138

Three Badioli Murano glass beakers, 12cm high. £40-£60

139

A Murano Eli Vetri D'Arte Formentello, coloured glass beaker vase, 20cm high. £60-£80

140

A Murano glass Eli Vetri D'Arte Formentello, beaker vase with brightly coloured decoration complete with certificate and original box, 21cm high. £60-£80

141

A Murano glass beaker vase, by F & M Ballarin, signed to base, having brightly coloured panel decoration, 23.5cm high. £60-£80. See illustration.

142

A Murano glass bottle vase, by Franko Moretti having green coiled decoration to the curved neck above floral encircled motifs, 34cm high with original box. £100-£150.  
See illustration.

143

A Murano glass baluster vase, by F & M Ballarin, having brightly coloured swirled decoration with certificate and box, 27cm high. £60-£80

144

A Murano glass baluster vase, with brightly coloured swirled decoration beneath a flared rim, 23.5cm high. £60-£80

145

A Murano glass cylindrical vase, by Zecchin, having brightly coloured overlaid enamel decoration, 24cm high, with original box. £60-£80

146

A Murano glass vase of ovoid form, having gilt splash decoration and circular coloured motifs flanked by clear glass handles, signed to base with original box, 23cm high. £60-£80

147

A Murano glass tall decanter, with spike shaped stopper and swirled multi coloured decoration, 47cm high. £60-£80

148

A Murano glass vase, in the form of a tied sack having tinted green and red segment decoration heightened in gilt, 25cm high. £60-£80

149

A heavy Murano glass baluster vase, with overlaid raised coloured decoration, silvered splash decoration to the body beneath a raised red glass rim by Pauly & Co. 27cm high. £100-£200

150

A green and blue Murano glass figure, depicting an entwined couple by Badioli, 32cm high, signature to base. £100-£150

151

A large Murano red glass vase, having flared rim with applied gilt pierced escutcheon decoration, signed to base, 28cm high. £100-£150

152

A large heavy Murano glass vase, of oval shape decorated with malachite colours, signed to base, 31cm high. £100-£200. See illustration.

153

A large Murano glass ovoid decanter by Marino Santi, having foliate encrusted stopper and interior floral decoration, signed to base 26cm high. £100-£200

154

A large heavy Murano Luxury glass baluster vase, having orange segment decoration, signed to base, 38cm high. £100-£200

155

A Murano glass leaf shaped dish, having multi coloured decoration, 25cm. £20-£40

156

A Murano glass leaf shaped dish, with multi coloured decoration, 27cm. £20-£40

157

Four Murano glass Millifiore decorated posy vases. £20-£40



Lot 136



Lot 141



Lot 142



Lot 152



Lot 180



Lot 181



Lot 184



Lot 185



Lot 208

**158**

Two Langham glass puffins; two other exotic birds; an owl on rockwork base; and two penguins (7). £100-£200

**159**

A collection of seven Murano glass beakers, mostly with Millifiore decoration. £40-£60

**160**

A tall blue tinted Murano glass baluster vase, 35cm high; a block glass and pink tinted vase by Alessandro Mandruzzato, 24cm high; another Mandruzzato vase of faceted frosted form; a smaller similar; and a ruby tinted similar (5). £60-£100

**161**

Paul Miller for Langham glass, study of a guillemot, 23cm high; another 25cm high; three studies of kingfishers; and a smaller similar (6). £100-£150

**162**

Four various items of Studio Pottery. £20-£40

**163**

A collection of Langham glass animal ornaments, to include rabbits and squirrels (14). £40-£60

**164**

A Langham glass study of a badger; another of a recumbent fawn; a seated monkey; a cat etc. (5). £100-£150

**165**

Paul Miller for Langham glass, study of an otter; two rhinos; a seated panda; and other animals (8). £80-£120

**166**

Eight Murano Cenedese glass figures, including swans and squirrels. £80-£120

**167**

A collection of Langham, Wedgwood, and Murano glass elephant ornaments etc. (12). £80-£120

**168**

A Murano glass OBALL ewer, with ruby tinted decoration, 27cm high; another OBALL vase of tapering form with green and blue tinted decoration, 26cm high; and another similar with elongated slender neck, 30cm high (3). £60-£100

**169**

A Langham glass study of a seated cat; another by Paul Miller of a turtle; a frog ornament; and various others (7). £60-£100

**170**

A Murano Formia heavy glass vase with mottled decoration, 20cm high; and a Murano glass leaf shaped ornament with multi coloured decoration and swirls, 24cm high. £40-£60

**171**

A Murano glass baluster vase, with blue streaked decoration 23cm high; and a heavy Murano sculpture with entwined decoration, 37cm high, signed to base (2). £60-£80

**172**

A Lavorazione green glass free form vase, with raised decoration, 30cm high. £40-£60

**173**

An Alum Bay, Isle of Wight glass vase, with pinched neck, 24cm high. £20-£40

**174**

Six various Langham glass studies of foxes. £80-£120

**175**

A collection of twelve English and Scottish glass paperweights, having bubble and floral decoration. £60-£100

**176**

A Scavo glass cylindrical green tinted vase, signed to base "Cenedese", 23cm high. £40-£60

**177**

A Murano Scavo glass vase, of elongated flower shape, signed to the base "Cenedese", 29cm high. £40-£60

**178**

A Murano Scavo glass twin handled baluster vase, pink tinted, 25cm high. £40-£60

**179**

A Murano Scavo glass orange tinted bottle vase, bearing signature to base, 25cm high. £30-£50

**180**

A Murano blue Scavo glass vase, of panelled form, signed to base, 18cm high. £60-£80. See illustration.

**181**

Three Murano coloured glass clown ornaments. £20-£40. See illustration.

**182**

Four coloured glass paperweights, of varying size all with fish and underwater flower decoration, one with Murano label. £80-£120

**183**

A Murano Scavo glass baluster jug, signed Cenedese, 23cm high. £40-£60

**184**

A Murano Scavo glass bottle vase, of ribbed multi coloured form, signed "Cenedese" to the base, 34cm high. £40-£60. See illustration.

**185**

A Murano Scavo glass orange tinted decanter, of large form, signed "Cenedese" to the base, 35cm high. £60-£100. See illustration.

**186**

A Murano Scavo glass pink tinted Cologne flask, having paper label verso for "Cenedese", 20cm high. £40-£60

**187**

A Murano Scavo glass blue tinted flask and stopper, signed "Cenedese" to the base, 21cm high. £40-£60

**188**

A Murano Scavo glass vase of baluster form, with applied rim decoration, 13 high. £20-£40

**189**

A Murano Scavo glass baluster vase, blue tinted with clear glass handles 13cm high. £20-£40

**190**

A Murano Scavo glass baluster scent flask, signed and with paper label "Cenedese", 11cm high. £30-£50

**191**

A Murano Scavo glass baluster vase, with Pruntz decoration, labelled Seguso, 15cm high. £20-£40

**192**

Three Murano glass paperweights, of varying size decorated flowers and motifs. £30-£50

**193**

Christopher Humphries, two pencil signed prints contained in pine frames. £10-£20

**194**

Elder, "Pretty In Purple", signed watercolour on Indian paper, 27cm x 17.5cm. £60-£100



**195 ✓**  
Margaret Glass, rural study signed and dated 1976, 25cm x 37cm. £100-£200

**196**  
Simione, Mediterranean scenes, a pair, signed watercolours, 24cm x 33.5cm. £40-£60

**197**  
Ciza, modernist school, indistinctly signed line paintings of reclining nude figures, 30cm x 30cm. £100-£150

**198 ✓**  
Neville William Cayley, Australian 1887-1950, study of birds seated on branch, signed watercolour, 36cm x 25cm. £100-£200

**199**  
An Art Deco spot hammered copper framed wall mirror, with oval bevel edged plate, 70cm x 45cm. £40-£60

**200 ✓**  
Jean Clark 1902-1999, "Cool Morning On The Deben" watercolour signed in pencil, 27cm x 36cm, see gallery label verso and exhibition catalogue. £100-£150

**201**  
Stanley Orchart, "Crofts On The Island of Lewis, Scotland", signed watercolour, 18cm x 24cm. £20-£40

**202 ✓**  
Modernist abstract study, indistinctly signed oil 82cm x 58cm. £20-£40

**203**  
A Retro bevel edged hall mirror. £20-£30

**204**  
After Gustav Klimt, print of a nude girl. £10-£20

**205**  
A G-plan design teak chest, of four drawers raised on square tapering supports, 79cm wide. £30-£50

**206**  
A G-plan design teak chest, of four drawers raised on square tapering supports, 79cm wide. £20-£40

**207**  
A G-plan design teak sideboard, fitted three cupboards flanked by three drawers and raised on rounded tapering supports, 210cm wide. £40-£60

**208**  
A light Ercol sideboard, fitted cupboards and drawers under - damaged to one handle, 130cm long. £50-£80. See illustration.

**209**  
An oak and walnut Art Deco dressing table, fitted with a large circular mirror above drawers and compartments, raised on carved shaped front supports, 121cm wide. £40-£60

**210**  
An Ethnic bronze plaque, depicting a figure head raised on circular copper base, 30cm high. £20-£40

**211**  
A large Art Glass blue and green tinted baluster vase, 31cm high; and a mottled green glass similar, with flared rim 33cm high (2). £20-£40

**212**  
A collection of various Murano and other coloured glass posy vases, scent bottles etc. (9). £20-£40

**213**  
An Art Deco plaster figure of a semi-naked lady, 38cm high. £20-£40

**214**  
An Art Deco plaster figure of a semi naked dancing girl, on stepped base, 36cm high. £20-£30

**215**  
A Victorian Duplex oil lamp, raised on cast iron stylised foliate base with milk glass font, 48cm overall. £20-£40

**216**  
A large red Art Glass vase, having gold splash decoration, 40cm high; and a green and amber tinted heavy glass vase of tapering from 20cm high (2). £20-£40

**217**  
A pair of Art Nouveau tinted glass vases, having floral enamelled decoration and swallows, heightened in gilt, 38cm high. £60-£100. See illustration.

**218**  
A pair of Alpha and Omega marble bookends. £10-£20

**219**  
A plated Champagne bucket, with side carrying handles, 21cm high complete with six glasses. £20-£40

**220**  
A plated letter rack. £15-£20

**221**  
A glass and plated claret jug, the lid with lion motif, 29cm high. £60-£80

**222**  
A pair of plated cocktail shakers, in the form of penguins, 23cm high. £25-£35

**223**  
A Huntley & Palmers biscuit tin, of lantern form, 25cm high. £20-£40

**224**  
A pair of Doulton baluster vases, with leaf decoration, 41cm high. £60-£100. See illustration.

**225**  
A Doulton jardinière of baluster form, with leaf decoration, 19cm dia. 20cm high. £30-£50

**226**  
A Studio Pottery jug of baluster form, with incised signature, 24cm high. £20-£40

**227**  
A silvered figure of a leopard, 51cm high. £30-£50

**228**  
Valerie Armstrong, pencil signed print "Watching The Weather" 45cm x 55cm. £40-£60

**229 ✓**  
20th Century school, study of a figure fishing on a river bank, unsigned watercolour, 36cm x 47cm. £20-£40

**230 ✓**  
A N Sargant, study of a farm, signed watercolour dated 1977, 35.5cm x 45cm. £20-£30

**231 ✓**  
Stanley Orchart, dock scene, signed watercolour, 36cm x 50cm. £100-£200. See illustration.

**232**  
Thomas Goldsworth Dutton, flourished 1845-1879, study of sailing ships probably on the Solent, signed watercolour 33cm x 43cm. £200-£400. See illustration.

**233**  
Stanley Orchart, "Sea Princess in dry dock Southampton, April 1983", signed watercolour, 37cm x 51cm. £100-£200. See illustration



Lot 217



Lot 224



Lot 231



Lot 232



Lot 233



Lot 248

**234 ✓**  
John William Good, study of Little Wenham Hall, signed and dated 1956, 26.5cm x 36cm. £40-£60

**235 ✓**  
John William Good, study on Erwarton Church, signed watercolour, 28cm x 37cm. £40-£60

**236 ✓**  
Marek Zulawski, study of a lake scene with fishing boats, signed oil on canvas, 33cm x 43cm. £100-£200

**237**  
A Mickey Mouse limited edition print, "Leap Into The Millennium with Mickey" 295/1000. £20-£30

**238**  
Circle of Edward Ardizzone, study of Saxtead Mill, gouache and watercolour, unsigned 54cm x 35cm. £50-£80

**239**  
John Croft, "Boat at Aldeburgh", unsigned watercolour, label verso, 12cm x 17cm. £20-£30

**240**  
Terry Bestwick, East Anglian school, "Sea Through The Trees", watercolour see label verso, 20cm x 24cm. £15-£25

**241**  
Claud Dambreville, Haitian born 1934 "Marchandes" signed oil on canvas, label and information verso, 50cm x 40cm. £150-£250

**242 ✓**  
Philip Tyler, "Floating Man", oil on canvas inscribed verso, 59cm x 59cm. £40-£60

**243 ✓**  
Philip Tyler, "The Dream of Icarus", signed acrylic, gallery label and information verso, 58cm x 58cm. £60-£100

**244 ✓**  
John Pryke, study of a figure stood on the foreshore, signed oil on board, 60cm x 88cm. £200-£300

**245 ✓**  
John B R Hinchcliffe, study of a crouching nude female, signed watercolour, dated 1984, 27cm x 50cm. £60-£80

**246 ✓**  
L. Wang-Kemp, study of Southwold harbour, signed watercolour, 30cm x 39cm. £20-£40

**247 ✓**  
Alex Butler, study of Lowestoft, signed watercolour, 33cm x 46cm. £20-£40

**248 ✓**  
L. Wang-Kemp, "Twilight Westminster", signed watercolour, 34cm x 50cm. £20-£40. See illustration.

**249**  
A green glass cylindrical vase, by Oliver Malle mouche; a Murano square section vase with streaked decoration; a multi coloured glass posy vase in the form of a boot; a Murano glass circular plate; various other coloured glass vases etc. (8). £30-£50

**250**  
A collection of various Carnival glassware, including vases, cake stands, etc. £20-£30

**251**  
An Art Deco style table lamp, decorated with figures of wrestlers beneath a globe shade, 36cm high overall. £20-£30

**252**  
A chrome and green glass Art Deco comport. £10-£20

**253**  
A late Victorian glazed pottery fruit bowl, with raised enamel floral decoration and plated rim; and a 1960's pottery and leather clad oval dish decorated with children (2). £20-£40

**254**  
A bronze figure of a ballerina, arms outstretched raised on a marble plinth, 28cm high. £40-£60

**255**  
A bronze figure of a dancing ballerina, her hand held aloft, 30cm high. £40-£60

**256**  
An alabaster bust, depicting a female head with flowing hair, 34cm high 40cm long overall. £40-£60. See illustration.

**257**  
A Poole Pottery limited edition commemorative plate, for The Thomas Hardy Festival, Dorchester, July 1968, No.52/250, 42cm dia. £40-£60. See illustration.

**258**  
A light Ercol sideboard, fitted cupboards and two drawers to the base, 129cm wide. £150-£200. See illustration.

**259**  
A teak G-plan design sideboard, fitted three central drawers flanked by cupboards, raised on square tapering supports, 183cm wide. £40-£60

**260**  
A Meredew light wood chest, fitted five drawers, 77cm wide. £40-£60

**261**  
A light oak Stag Art Deco design dressing table, with mirrored back, three drawers below, 89cm wide. £20-£40

**262**  
A matching Stag chest, fitted with three long drawers and raised on rounded tapering supports, 81cm wide. £20-£40

**263**  
A Heals style light oak compact wardrobe, 91cm wide x 130cm high. £80-£120

**264**  
A Ladderax type shelving unit. £20-£40

**265**  
A quantity of T G Green Cornishware, to include storage jars, cheese dish and cover, salt box etc. £40-£60

**266**  
A silver plated four piece teaset, with half fluted body design. £20-£30

**267**  
A quantity of T G Green Cornishware, to include flour, sugar and salt shakers, vinegar and oil bottles, egg cups, various cruet items etc. £40-£60

**268**  
A quantity of Denby Greenwheat dinnerware, designed by A Colledge. £30-£50

**269**  
A leather watch case, 26cm long. £40-£60

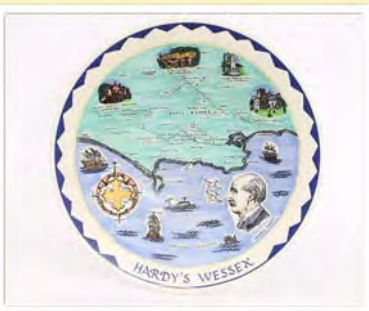
**270**  
A leather jewellery box, 21cm long. £45-£55

**271**  
A Studio Pottery shallow dish with cat decoration; and a Winstanley model of a seated cat signed to base (2). £20-£30

**272**  
A pair of Art Deco chrome and glass demi-lune shaped wall light shades. £40-£60



Lot 256



Lot 257



Lot 258



Lot 273

273

An Art Deco table lamp, in the form of a gilded nude female holding a globe aloft. £50-£80. See illustration.

274

Seven Denby dinner plates, having leaf decoration. £20-£30

275

A glass display head, 28cm high. £20-£30

276

B Long, mixed media study of stylised figures, 63cm x 51cm. £10-£20

277 ✓

Ernest Joules Renoux, 1863-1932, study of figures on a river bank with bridge and buildings beyond, signed oil on canvas entitled verso No.136 Le Pont Solferino et Gare Dorsay, 37cm x 45cm. £400-£600

278 ✓

Ian Houston, born 1934, "The Lieutenant In Evening Sunlight (Hon Fleur)", 36cm x 51cm. £200-£400

279 ✓

Ian Houston, "Calm Morning Treboule", signed oil on board, 24.5cm x 34.5cm. £200-£400. See illustration.

280 ✓

Mervyn, study of a Middle Eastern street scene, signed oil on canvas, 38cm x 54cm contained in a stripped pine frame. £30-£50

281 ✓

Ian Houston born 1934, "The Harbour Douamenez 1974", signed oil on board, 40cm x 61cm. £200-£400

282 ✓

Robert Sadler, "Girl in a Landscape" signed acrylic on board, studio exhibition label verso 1986, 25cm x 30cm. £60-£100. See illustration.

283 ✓

Robert Sadler, "Red Flowers", signed acrylic on board, studio exhibition label 1989, 36cm x 26cm. £60-£80

284 ✓

Ian Houston born 1934, fishing boats unloading catch (possibly Dunwich) signed oil on board, 21cm x 26cm. £200-£300

285 ✓

Ian Houston born 1934, barns in the snow at Happisburgh 21cm x 26cm unsigned oil on board, inscribed verso. £200-£300

286

20th Century school, study of a young woman seated on a park bench, unsigned crayon and pastel, 29cm x 22.5cm. £20-£30

287

Three modern prints on canvas, depicting Art Deco scenes (unframed). £10-£20

288

Kate Davie, study of a bedroom interior, signed watercolour, 43cm x 30cm. £40-£60

289

Kate Davie, bedroom interior signed watercolour, 28cm x 21cm. £20-£40

290

A large framed poster print, "Butlins, Clacton on Sea". £40-£60

291

A copper framed bevelled wall mirror, in the Art Deco style 52cm x 67cm overall. £20-£40

292 ✓

Richard Dent 1971, painting on enamel "London's Pride", 31cm x 92cm. £40-£60

293 ✓

Richard Dent, "Highland Fair", painting on enamel 31cm x 93cm. £40-£60

294

Edward Bawden, "The White Greyhound of Richmond", limited edition lithograph 520/2000, label verso, 25cm x 19.5cm. £40-£60. See illustration.

295

Joseph Kirkpatrick, coloured print depicting work horses hauling logs with attendant workers, 20cm x 27cm. £20-£40

296 ✓

Peter Lely 1964, gouache study of trees, 49.5cm x 54cm. £30-£60

297

Study of the Tomb of Sir John Neville Deraby, unsigned oil, information verso, 35cm x 25cm. £20-£30

298

John Howard, sunset study Isles of Scilly, initialled pastel information verso, 20.5cm x 20cm. £60-£80

299

An Art Deco wooden framed and bevel edged wall mirror, 41cm x 73cm in extremes. £30-£50

300

A Heal's 1950's gentleman's maple and mahogany dressing chest, the doors opening to reveal interior arrangement of drawers and shelves, raised on turned tapering supports united by a cross stretcher 94cm wide x 168cm high. £100-£200

301

A Heal's maple and mahogany gent's wardrobe, 93cm wide; and matching hanging wardrobe 124cm wide (2). £100-£200

302

A maple and mahogany Heal's dressing table, 109cm wide; a swing mirror; and a stool. £100-£200. See illustration.

303

An early 20th Century light oak and leaded glazed bureau bookcase, the fall front opening to reveal and interior arrangement of drawers and pigeon holes, three drawers below, raised on bun feet, 76cm wide. £60-£80

304

A G-plan style teak hall stand, with mirrored back, drawer and cupboards below, 76cm wide. £50-£70

305

An Edwardian walnut Art Nouveau design three section wardrobe, enclosed by mirrored panel doors fitted two drawers below, raised on bracket feet 173cm wide; and a matching dressing chest having swing mirror and trinket drawer above two short and two long drawers, 107cm wide (2). £80-£120

306

A part Ladderax unit, comprising one teak ladder, one cupboard, shelves, corner shelves, and corner post. £60-£100

307

A large continental armoire, enclosed by pair of doors with mother of pearl inlaid panels, two drawers below, raised on shaped base, 174cm wide. £40-£60

308

A pair of continental bedroom chairs, the bar backs with mother of pearl inlaid panels raised on square tapering supports. £20-£40. See illustration.



Lot 279



Lot 282



Lot 294



Lot 302



Lot 308



Lot 326



Lot 329



Lot 330



Lot 334



Lot 337

**309**

A pair of continental bedside cupboards, fitted pull out slides and single drawer above recess and cupboard below, 40cm wide.

£40-£60

**310**

A continental breakfront dressing table, having triple bevelled mirrored back, slides and single drawers above a bow front centre section flanked by cupboards with inlaid mother of pearl decoration, 135cm wide. £40-£60

**311**

A Dinatron record player. £20-£30

**312**

A silvered model of a unicorn, 31cm long, 25cm high. £20-£30

**313**

A silvered figure of a seated Buddha, 33cm high. £20-£30

**314**

A pair of decorative wooden candlesticks and candles, with painted floral decoration, 36cm high; and a glazed plaster posy holder in the form of a camel. £20-£40

**315**

Four William Whiteley seafood plates, probably Minton. £20-£30

**316**

A large glass egg shaped sculpture, signature to base. £20-£40

**317**

A silver plated epergne holder. £10-£20

**318**

A large carved fish ornament, 45cm high. £20-£30

**319**

A cast iron boot pull, in the form of a reclining lady. £10-£20

**320**

An Art Deco fruit bowl, with stylised floral decoration and chrome mount, 23cm dia. £10-£20

**321**

A gilded metal star burst convex wall mirror, 46cm dia overall. £30-£40

**322**

A mid-20th Century zig-zag patterned coat rack. £10-£20

**323**

A pair of terracotta wall plaques, decorated classical figure heads in profile, 49cm x 33cm. £40-£60

**324**

John Whitfield Taylor, humorous cartoon entitled "Air and Water"; and a coloured print after Eugène Boudin of bathing huts and figures (2). £20-£40

**325 ✓**

Pamela Scacchi, study of a reclining naked girl 42cm x 52cm, label verso. £40-£60

**326**

Three various Murano coloured glass scent bottles. £40-£60. See illustration.

**327**

A Murano glass mauve tinted model of a duck, signed Lucio Zanetti, 17cm high; and a Murano green glass model of a seated rabbit, 14cm high (2). £40-£60

**328**

A Murano white and gilt glass figure of a lady, in evening dress and broad rimmed hat, 28cm high. £20-£40

**329**

A Murano glass baluster vase, with Millefiori decoration, 17cm high. £30-£50.

See illustration.

**330**

A Ballarin Murano baluster glass vase, signed to base, 13cm high. £40-£60. See illustration.

**331**

A Murano glass ewer, with raised blue glass and Millefiori decoration, 23cm high; and a Murano glass baluster vase with bell shaped neck, 18cm high (2). £40-£60

**332**

A Murano glass twin handled baluster vase, with Latticino type and gilt decoration, 13cm high; and two Murano beakers (3). £40-£60

**333**

Two Murano glass beaker vases, with multicoloured swirl decoration, signed to base, 11cm high. £40-£60

**334**

A Murano overlaid glass vase, with elongated neck and flared rim, 29cm high, initialled to base R.C.R. £40-£60. See illustration.

**335**

A Murano ruby goblet, having gilded twist stem, signed to base; and a similar Cornucopia shaped posy holder (2). £30-£40

**336**

A Murano handkerchief type posy vase; a blue and white glass baluster vase; and a Eugenio Ferro & Co. beaker with Latticino type decoration (3). £40-£60

**337**

Three Murano glass flasks, having scroll twisted necks and multicoloured swirl decoration by F & M Ballarin (one stopper missing). £30-£50. See illustration.

**338**

A F & M Ballarin baluster vase, with elongated neck; another similar and four scent bottles (6). £40-£60

**339**

Three Murano glass beakers, with multicoloured chequered decoration by F & M Ballarin; and four similar shot glasses (7). £30-£40

**340**

Three Murano glass shoe posy holders. £30-£50

**341**

Three various Murano glass scent bottles, by F & M Ballarin. £40-£60. See illustration.

**342**

A pair of Murano glass Ballarin beakers, with multicoloured chequered decoration; a similar baluster vase; and a similar shot glass (4). £40-£60

**343**

Two Ballarin pinched glass beakers; and two other beakers (4). £40-£60

**344**

A collection of various coloured glass duck ornaments, Paul Miller for Langham and others (10). £60-£80

**345**

A collection of twelve various Langham and other coloured glass paperweights. £80-£120

**346**

A collection of various Murano glassware, to include baluster vase, candle holders, paperweights etc. (8). £60-£80

**347**

A collection of eight Langham glass paperweights. £80-£120

**348**  
A Bakelite cased Bush radio. £30-£50

**349**  
A Bakelite cased Bush radio. £30-£50

**350**  
A set of scales, by Vandome & Hard Ltd, London complete with brass weights. £40-£60

**351**  
An oak menu case, 52cm x 47cm. £20-£30

**352**  
A Colour Scene Liquid Art picture, depicting a city skyline. £65-£100

**353**  
A pair of Crown Ducal novelty teapots, in the form of seated cats having black and orange decoration; and a Wood & sons "Pussyfoot" cat teapot AF (3). £40-£60

**354**  
A Murano Fazzoletto tinted iridescent glass vase, with flared rim 35cm high. £30-£50

**355**  
A Melting Pot glass works Robin Smith Geoff Walker vase; and another 30cm high (2). £30-£50

**356**  
A Kamei Jack In The Pulpit vase, 17cm high. £15-£25

**357**  
An egg sculpture for Ikea, by Bjorn Ronquist, 20cm high. £20-£40

**358**  
A pink glazed pottery candlestick, in the form of a seated cat, 24cm high. £20-£40

**359**  
A Wemyss style green glazed pottery cat, 35cm high. £40-£60. See illustration.

**360**  
A Wemyss pink glazed cat, seated in the upright position, green eyes, some damage 34cm high. £60-£100. See illustration.

**361**  
A Wemyss style black glazed cat, 33cm high. £40-£60. See illustration.

**362**  
A white glazed pottery cat, wall posy holder 25cm long. £20-£40

**363**  
A bronzed eagle head, raised on an oboling plinth, 20cm high. £40-£60

**364**  
A collection of eight T G Green Cornishware storage jars (some lids missing). £60-£100

**365 ✓**  
Robert Sadler, "Girl With Red Scarf" acrylic on panel, label verso, Studio Exhibition 1980 100cm x 79cm. £60-£80.

**366**  
A blue and white stylised floral decorated shallow pottery dish; a stoneware plant holder; and two Isnic style decorated bowls (4). £10-£20

**367**  
A cream glazed Studio Pottery bowl, with ribbed body and gilt and blue thin line decoration; a shallow Studio Pottery bowl; and a glazed colander (3). £20-£30

**368**  
A green glass elephant paperweight; a ruby and yellow tinted baluster vase; a green glass paperweight in the form of a globe; and a large coloured glass dump with fish decoration (4). £20-£40

**369**  
A large silvered pottery candle holder. £20-£30

**370**  
An Alessi plated oval bread basket; and six stainless steel ice cream dishes. £10-£20

**371**  
A Lalique crystal suite of 33 pieces, to include glasses and a jug. £250-£350

**372**  
A collection of T G Green Cornishware jugs, of varying size. £40-£60

**373**  
A heavy blue and mauve tinted oval glass fruit bowl, 31cm dia.; and an Art Glass cylindrical vase 19cm high. £20-£40

**374**  
Seven T G Green Cornishware storage jars. £40-£60

**375**  
A brass mounted ostrich egg, table centrepiece, 26cm high. £40-£60

**376**  
Ten T G Green Cornishware herb jars. £40-£60

**377**  
A Murano Flavio Poli vase; another; and two Aseda Jack In The Pulpit vases (4). £20-£40

**378**  
A Winstanley Pottery hare, 39cm high. £40-£60

**379**  
A pair of Alum Bay glass Jack In The Pulpit vases; various Murano glass posy vases etc. £40-£60

**380**  
A Winstanley Pottery hare, 39cm high. £40-£60

**381**  
A large heavy Art Glass vase, with scroll decoration, 23.5cm high; and a milky glass Orrefors vase of slender form, 31cm high. £20-£40

**382**  
A Winstanley Pottery hare, 39cm high. £40-£60

**383**  
A silvered unicorn head ornament. £25-£35

**384**  
An Art Nouveau design brass fender. £20-£40

**385**  
A brass and copper divers helmet. £80-£120

**386**  
A bronze figure of a terrier, 56cm long 37cm high. £120-£160

**387**  
A pair of vintage two tone shoes. £20-£30

**388 ✓**  
Hills, study of a reclining boy, signed oil on board 75cm x 91cm. £40-£60

**389**  
A beaten copper plaque depicting Rubens, 50cm dia. £10-£20

**390**  
A Retro zig-zag coat rack. £10-£20

**391**  
Roberto Burle Marks, signed limited edition lithograph "Macunaima 1" 59/66, 53cm x 79cm. £125-£155

**392**  
A brass Art Deco design wall plaque, depicting a youth and a kneeling girl, 76cm x 39cm. £20-£40



Lot 341



Lot 359



Lot 360



Lot 361



Lot 401

393

Pam Masco, "Back Canal, Venice" signed oil on canvas 54cm x 70cm. £200-£300

394

A Victorian Art Nouveau Majolica type jardinière on stand, having raised foliate decoration on a pink and blue ground.

£100-£200

395

A Doulton Art Nouveau jardinière on stand, with raised floral and beaded decoration (some damage to base), 109cm high. £100-£150

396

A Bernard Rooke pottery standard lamp column, 97cm high. £40-£60

397

A Venetian design decorative wall mirror, with coloured slip panels, 120cm x 76cm. £60-£80

398

A Venetian design decorative wall mirror, with coloured slip panels, 120cm x 76cm. £60-£80

399

A green Bakelite Metamec wall clock. £10-£20

400

An Art Deco chrome extending shop display stand. £20-£30

401

A Martin & Co. Ed Sheeran "X" Signature Edition guitar, signed by Ed Sheeran with a Martin & Co gig bag. £2,500-£3,500 See back cover illustration.

402

Leon Underwood, British 1890-1975 "Diver" pencil signed lino cut limited edition 6/25, image 39cm x 29cm. £200-£400

403

An Art Deco opaque glass pendant ceiling light, having raised floral decoration, 58cm dia. £200-£300

404

A collection of Goebel, Langham, and other glass ornaments, depicting Teddy bears and owls (12). £80-£120

405

A collection of Murano, Wedgwood, and other glass figures, of penguins, polar bears, dolphins, and seals (11). £60-£100

406

A collection of Langham, Goebel, and other glass paperweights (12). £60-£100

407

A female pottery torso vase, in the style of Raoh Schorr, 29cm high. £40-£60. See illustration.

408

A Zsolnay Pecs, baluster vase decorated flower heads, heightened in gilt, 37cm high. £200-£300. See illustration.

409

A continental pottery Riveira baluster vase, having stylised floral decoration, 32cm high. £40-£60

410

A leather cased ice bucket and tongs. £50-£80

411

A graduated set of three ruby tinted block glass posy vases. £20-£40

412

Two ebonised walking canes, with white metal handles. £20-£40

413

A pair of WMF Bauhaus plated candle holders, 8cm high 11.5cm long overall.

£20-£30

414

A wooden articulated artists lay model, 23cm high. £20-£40

415

A plated Dunhill cigarette lighter, patent No.143752 having engine turned finish, and monogrammed E.M.M.; and another cigarette lighter by Flaminaire Paris (2). £40-£60

416

A silver and mesh ladies evening purse. £50-£80

417

A silver comport, having foliate shaped border, central presentation inscription by walker & Hall, Sheffield 1954 14oz. £80-£120

418

Two pairs of Art Nouveau plated forks and spoons. £20-£30

419

A decorative crystal and simulated pearl necklace. £25-£35

420

A 9ct gold bangle, approx. 17gms. £100-£150

421

A small Charles Horner silver and enamel brooch, with foliate scroll decoration. £20-£30

422

A gold bar brooch, set central blue stones. £30-£50

423

A Danish white metal dress ring, designed by Per Gram, and set three graduated pale coloured stones; and a silver bangle (2). £30-£50

424

A cased set of 18ct gold and onyx cuff-links and dress studs, retailed by Selfridge London. £60-£100

425

A cased set of 9ct gold and mother of pearl cuff-links and dress studs, retailed by Selfridge London; and a cased 15ct gold dress stud set with a pearl; and a plated similar. £60-£100

426

A pair of 9ct gold oval cuff-links, with engine turned decoration in a Harrods box. £80-£120

427

An Art Deco silver cigarette box, with engine turned decoration, London 1934. £60-£100

428

A Swiss gilt and pink enamel decorated strut clock, having central decoration of a lake scene, 8cm high. £40-£60. See illustration.

429

A Danish silver brooch, of stylised leaf design by Herman Stensbed. £30-£50

430

A cased yellow metal Cartier ball point pen. £40-£60

431

A cased Parker 9ct gold ball point pen. £60-£100

432

A silver Lampada Trado badge; and two filigree work Eastern brooches. £30-£50

433

A Norwegian silver and green enamel decorated flower brooch. £60-£80. See illustration.



Lot 407



Lot 408



Lot 428



Lot 433

**434**  
A yellow metal and green stone set linked bracelet. £150-£200

**435**  
A yellow metal and enamel decorated bee brooch. £60-£80. See illustration.

**436**  
An Art Deco design yellow metal and enamel decorated brooch, depicting a lady walking a dog. £5-£10

**437**  
A Georg Jensen bracelet; and a Celtic design white metal linked bracelet. £100-£150

**438**  
Two Art Deco silver engine turned cigarette cases. £60-£100

**439**  
A collection of various racing trophies, relating to A.J. Butterworth, including a silver two handled trophy cup with enamel crest for the Bugatti Owners Club, Prescott open hill climb, 17th July 1949; a plated first Bentley race Gransden 1947 with enamel Vintage Sports Car Club badge; and various other trophies (8). £100-£150

**440**  
A Bakelite Metronome by Taktell. £20-£40

**441**  
A Jaz alarm clock; and a Jaz travelling clock (2). £80-£120

**442**  
A Keswick School of Industrial Art plated ladle, with hand forged decoration. £30-£50

**443**  
A WMF plated cream jug and matching sugar bowl (2). £20-£30

**444**  
A pair of silver plated salts, in the form of frogs pulling shells. £30-£50

**445**  
A Scandinavian silver beaker, having floral decoration 14.5cm high. £40-£60. See illustration.

**446**  
A pair of silver spot hammered twin handled spill vases, Birmingham 1938, 11cm high. £40-£60. See illustration.

**447**  
A bronze Speed Nymph car mascot, on later wooden plinth. £70-£90

**448**  
An Art Deco chromed plated breakfast set. £10-£20

**449**  
An Art Deco chromed breakfast set, with figural decoration. £10-£20

**450**  
A theatrical make-up box; and a 1930's vanity case (2). £20-£40

**451**  
A cased set of Art Deco design tea knives, with Bakelite handles. £5-£10

**452**  
M Buffet, a white metal necklace with stylised decoration. £20-£30

**453**  
A copper and brass Art Deco cruet, in the form of a liner. £10-£20

**454**  
Tom Greenshields, resin bronzed figure of a seated nude girl, 15cm high. £60-£100

**455**  
A leather trinket box, by Liberty having gilt decoration, 11cm. £10-£20

**456**  
An Eastern brass condiment set, mounted with coloured stones. £10-£20

**457**  
A cased set of six silver and enamel coffee spoons, in fan shaped box. £40-£60

**458**  
A collection of various Tatler humorous cartoons and others. £20-£30

**459**  
A folder of various sketch advertising prints. £20-£30

**460**  
A WMF Bauhaus two light candle stand, 32cm long. £20-£30

**461**  
A cased vanity set, with blue enamel decoration. £20-£40

**462**  
An Art Deco three piece plated teaset. £10-£20

**463**  
A pair of cased plated fish servers, with foliate engraved decoration; a glass posy vase with silver rim; a glass and plated sugar shaker; and a circular plated coaster. £20-£30

**464**  
A green glass and electroplate mounted claret jug, in the form of a parrot, 25cm high. £120-£160

**465**  
A Smiths Bakelite cased electric mantel clock. £20-£30

**466**  
An enamel decorated white metal photograph frame. £80-£120

**467**  
An enamel decorated white metal double photograph frame. £40-£60

**468**  
A white metal and enamel decorated photograph frame, with butterfly decoration. £80-£120

**469**  
A blue glass and electroplate mounted claret jug, in the form of twin ducks, 39cm long overall. £120-£160

**470**  
A pair of silver plated dog salts. £30-£50

**471**  
A novelty wooden tea caddy, in the form of a melon 15cm high. £100-£150

**472**  
A decorative amber coloured skull, 14cm high. £50-£80. See illustration.

**473**  
A French cut glass scent bottle, 14cm high. £30-£50

**474**  
Three vintage glass coloured paperweights, one inscribed "Hunyadi Janos". £20-£30

**475**  
An Art Nouveau Austrian iridescent glass vase; together with an unusual glass vase attributed to Kirschner (2). £40-£60

**476**  
A Tiffany style iridescent glass vase, of bell shape 11cm high. £20-£40. See illustration.

**477**  
A Loetz style green iridescent glass vase, with raised rib decoration, 9.5cm high. £20-£40



Lot 435



Lot 445



Lot 446



Lot 472



Lot 476



Lot 489

**478**

A quantity of various coloured glass paperweights; glass scent bottle; model of a cat etc. (9). £20-£40

**479**

Kosta Boda, Eric Hoglund blue glass bowl. £20-£30

**480**

A Beijing double gourd vase, with white metal decoration, 10cm high. £20-£30

**481**

A Beijing double gourd vase, with white metal decoration, 10cm high. £20-£30

**482**

A Victorian opaque glass biscuit barrel, with plated mounts and floral decoration. £20-£40

**483**

A Baccarat glass paperweight, decorated with multicoloured broken canes; and a Waterford paperweight with floral decoration (2). £40-£60

**484**

An opaque glass car mascot, in the form of a semi-naked woman with flowing hair, 22cm long overall, 14cm high on a black glass base. £70-£90

**485**

A signed Sabino glass figure, of a bird 8.5cm high 7cm long. £20-£40

**486**

A Lalique style frosted glass scent bottle, with bird finial, 11cm high. £20-£40

**487**

A Lalique glass shallow bowl, with raised flower head decoration, stamped R Lalique, France 25.5cm dia. £100-£200

**488**

A Murano glass vase, decorated coloured flowers on a mottled blue ground, 19cm high. £40-£60

**489**

A Whitefriars streaky knobbly glass vase, 15cm high. £80-£120. See illustration.

**490**

A Whitefriars green tinted streaky knobbly glass vase, 18cm high. £80-£120. See illustration.

**491**

A Segvso Murano commemorative plaque, in fitted box; a Barovier & Toso Murano glass plaque in box; and a Murano glass pen (3). £20-£30

**492**

A Zecchin Venice green tinted vase, with white overlaid collar, 19cm high; a mauve tinted baluster example 14cm high with certificates. £40-£60

**493**

A Pauly & Co. small glass flask, with white streaked decoration, 16cm. £20-£30

**494**

A Liberty boxed Murano glass paperweight, limited edition number 155/300. £20-£40

**495**

A Murano glass paperweight, decorated with a scene of a gun dog retrieving a duck; and a Whitefriars glass paperweight with pink swirled decoration (2). £40-£60

**496**

A Murano glass baluster vase, with pale blue loop handles and circular base, 18cm high. £20-£30

**497**

A F&M Ballarin Murano glass shallow dish, with coloured segment decoration; and another with swirled decoration (2). £20-£40

**498**

A Flavio Poli Murano triple Sommerso teardrop sculpture, 17cm high; and another similar (2). £60-£80

**499**

A Murano glass green tinted baluster vase, by Moretti Carlo 11.5cm high. £20-£30

**500**

A Murano glass twin handled baluster vase, with flared neck, multi coloured decoration on a blue ground, 24cm high; and another with scrolled red glass handles, 20cm high (2). £20-£40

**501**

A Murano brown tinted ovoid glass vase, with grey stylised decoration; and a squat baluster vase with mottled decoration and brown glass handles, stamped to base F.L. 13cm high (2). £20-£40

**502**

A blue glass beaker vase, with stylised decoration by Eugenio Ferro & Co., 13cm high. £20-£40

**503**

Three various Neo glass paperweights with dragonfly decoration, by K Heaton. £40-£60

**504**

A Lalique glass bell, with dove decoration 14cm high; and a Venetian style glass bell (2). £20-£30

**505**

A Mdina glass paperweight, in the form of a sea horse; and two other paperweights. £20-£30

**506**

A Murano style glass paperweight, in the form of an apple with coloured glass decoration. £10-£20

**507**

Keith Murray, for Wedgwood, a Matt Straw mug; and another similar, 12cm high - some damage (2). £20-£40

**508**

A Laura Knight Burleighware, King Edward VIII Coronation mug, 8cm high. £20-£40

**509**

A Wade giraffe vase, 10cm high. £25-£35

**510**

A Moorcroft "Pomegranate" patterned vase, 11cm high. £100-£150.

**511**

A Thoune owl decorated vase, 17cm high. £20-£30

**512**

A Moorcroft "Anemone" patterned bowl, 16cm dia. £80-£120

**513**

A Gallé style pottery cat, probably Mosanic, seated in an upright position decorated with blue flowers and hearts on a green ground, 20cm high - some restoration. £50-£80. See illustration.

**514**

A Mosanic pottery cat in the Gallé style, decorated hearts and flowers on a yellow ground, signed in blue on the underside - some damage 23cm high. £50-£80. See illustration.

**515**

A Crown Devon Fielding "Champion Crackley Supreme Again" wall plaque, 15cm. £30-£50



Lot 490



Lot 513



Lot 514



- 516**  
A Studio Pottery bowl marked K.M., possibly Kate Malone 24cm dia. £40-£60. See illustration.
- 517**  
A blue cubist elephant, 25cm long 16cm high. £20-£30. See illustration.
- 518**  
A Doulton Slaters Patent teapot, with floral decoration, 15cm high. £20-£30
- 519**  
A Moorcroft "Anemone" patterned pin dish, 12cm dia. £20-£40
- 520**  
A Faience ware wall posy holder, in the form of a recumbent cat; and a Mosanic Gallé style figure of a cat seated upright with floral decoration, 15cm high AF. £60-£80
- 521**  
A Moorcroft baluster posy vase, 10cm high. £40-£60
- 522**  
A pair of decorative Finnish glass candlesticks, of shaped form fitting together to form one 21.5cm high; and a heavy Scandinavian glass circular bowl by Tapio Wirkkala with raised stylised decoration, 11cm dia. (2). £40-£60
- 523**  
A Studio Pottery bowl, bearing indistinct signature, possibly R Godfrey Ashdown dated 1982, 24cm dia. £20-£40
- 524**  
A 1960's shell decorated desk stand; a trefoil shaped enamel dish with dragon and floral decoration; and a mother of pearl decorated Stratton compact (3). £10-£20
- 525**  
A Gouda Holland circular tray, with floral decoration, 28.5cm. £20-£30. See illustration.
- 526**  
A Murano glass paperweight, in the form of a fish tank; and another similar (2). £10-£20
- 527**  
A Murano glass goblet, of agate colour raised on a twist column and spread foot, 23cm high. £20-£40
- 528**  
A Charles Sucsan pottery tile, decorated flowers in a vase. £10-£20
- 529**  
A collection of Westminster crystal ornaments, posy vases etc. £20-£40
- 530**  
Three various Murano glass paperweights, with bubble and coloured flower decoration. £30-£50
- 531**  
Three Murano glass paperweights with, Millefiore decoration. £30-£50
- 532**  
A rock crystal skull, 10cm overall. £40-£60
- 533**  
Four various Millefiore Murano glass paperweights. £40-£60
- 534**  
Cecil Leslie, "The New Moon" print, image 25cm x 20cm. £40-£60
- 535**  
Coté, a pair of oval framed coloured prints, "Pets" and "French Dolls". £80-£120
- 536**  
A Liberty's needlepoint wall hanging, 3.05m x 2.44m. £200-£300
- 537**  
A Retro style rocking chair, on tubular metal base. £20-£40
- 538**  
A teak G-plan design sewing table, with fold over top and drop down silks and wool compartment raised on end stretcher supports, 40cm wide. £20-£40
- 539**  
A nest of three teak graduated coffee tables, 61cm wide in extremes. £20-£40
- 540**  
A large Studio Pottery wash bowl, signed to base "Abington Pottery" and initialled with a "B", 37cm dia. £20-£30. See illustration.
- 541**  
A small oak refectory style table, raised on shaped end supports united by pegged stretcher, 91cm wide. £40-£60
- 542**  
An Art Deco travelling toilet case, having enamel decorated bottles and brush set; and another cased Bakelite brush set. £40-£60
- 543**  
A circular red leather covered drinks tray, 39cm dia. £10-£20
- 544**  
A Heals design walnut dining table, raised on angled end supports, 197cm wide x 98cm wide. £100-£150
- 545**  
A Retro folding two tier tea trolley. £10-£20
- 546**  
Two vintage Australian aboriginal paintings, framed and glazed with details verso. £15-£25
- 547**  
A vintage pink floral Laura Ashley cotton dress; together with three other vintage sun dresses (4). £15-£25
- 548**  
A rare early 1960's vintage Laura Ashley block printed "Daisy" patterned cotton dress; together with a Finnish Vanessa Tampella cotton skirt; and Laura Ashley sun dress (3). £30-£50
- 549**  
A 40 piece 1960's vintage Roberts & Dore canteen of cutlery. £15-£25
- 550**  
Three vintage glass light shades; and two painted metal light shades (5). £10-£20
- 551**  
A massively blown 1960's vintage Art Glass vase, in cobalt blue and pink tinted base, 29cm high. £30-£50. See illustration.
- 552**  
A large Art Deco Fulham Pottery vase, designed by Constance Spry impress marks, 38cm overall. £20-£30
- 553**  
A collection of vintage Studio Pottery, including St Ives Leach Pottery, Colin Kelum, a Colin Pearson mug etc. (11) - some AF. £15-£25
- 554**  
A Bitossi blue ceramic money box; together with two vintage Italian vases (3). £10-£20



Lot 516



Lot 517



Lot 525



Lot 540



Lot 551



Lot 569

**555**

A small collection of hand painted Studio Pottery, including a bowl by Heidi Onielle, vintage Studio teapot etc. £15-£25

**556**

Three vintage tea trays, and other plastic kitchen wares etc. £10-£20

**557**

Various vintage kitchenwares, including six Hornsea and two Holcombe pottery storage jars etc. £10-£20

**558**

A G-plan design oval teak extending dining table, 180cm long. £40-£60

**559**

A set of six teak ladder back G-plan style dining chairs. £40-£60

**560**

A circular dining table and four chairs, in the style of David Rowland for Howe. £60-£80

**561**

A collection of 20th Century glassware, to include numerous coloured posy vases, a large frosted glass comport, moulded glass vases, fruit bowls, scent bottles etc. £20-£40

**562**

A pair of teak single drawer bedside tables, raised on square tapering supports, 38cm wide. £20-£40

**563**

A pair of green Toleware style tea canisters, 40cm high. £70-£100

**564**

A continental mahogany knee-hole writing desk, of curved form fitted drawers, cupboards and open shelves, 143cm wide. £40-£60

**565**

An Art Deco style bronze figure of a dancing girl, raised on stepped marble base, 49cm high. £100-£150

**566**

A quantity of various china, including Carltonware and Wedgwood Susie Cooper design. £20-£30

**567**

A classical marble style bust, of a veiled lady on circular black plinth, 35cm high. £40-£60

**568**

A plated Art Deco style three piece teaset, on stand. £120-£160

**569**

A Retro plastic statue of a bathing beauty, 89cm high. £30-£50. See illustration.

**570**

A classical marble style bust, of a maiden 35cm high. £40-£60

**571**

An Art Deco style bronze figure of a dancing girl, raised on a marble plinth, 66cm high. £100-£150

**572**

A nest of three teak tile top coffee tables, 55cm wide in extremes. £20-£40

**573**

A Retro glass and mirrored top coffee table, on rounded tapering black supports, 75cm. £20-£40

**574**

A 1980's Interview magazine, featuring Michael Jackson. £20-£30

**575 ✓**

Michael Potter, two pencil signed studies depicting antique Chinese porcelain objects, 36cm x 48cm contained in blue painted reeded frames. £60-£100

**576**

A nest of three teak graduated coffetables, 66cm wide. £10-£20

**577**

A leather and brass mounted picnic hamper, 45cm wide 37cm high. £100-£200

**578**

A South American redwood desk, by Jarabosky, the overhanging top raised on a pair of three drawer pedestals, 183cm wide x 96cm deep. £400-£600

**579**

A Monika Mulder fruit bowl, of pierced floral design, 43cm dia. £20-£40

**580**

A classical style bust of a Roman figure, 84cm high. £100-£200. See illustration.

**581**

A WMF Ikora glass bowl, 38cm dia. £40-£60

**582**

A large block glass and amber decorated fan shaped scent bottle, and stopper 22cm high. £60-£80

**583**

A large block glass and black decorated fan shaped scent bottle, 23cm high. £60-£80

**584**

A pair of plated Rococo style five light candelabra, 49cm high. £300-£400

**585**

Twelve miscellaneous Art Deco auction catalogues. £10-£20

**586**

No lot

**587**

A Crusader golden oak office desk, fitted four drawers and raised on square tapering supports, 151cm wide. £60-£100

**588**

A bronzed double greyhound head ornament, raised to a black stepped plinth, 50cm overall. £80-£120

**589**

An Art Deco style bronze figure of a semi-naked dancing girl, raised on a stepped marble plinth, 49cm high. £100-£150

**590**

Three leather horse models. £20-£30

**591**

A large bronzed spelter table lamp, in the form of a naked woman, her arms outstretched holding the lamp, and balanced on a ball with stepped octagonal base, 88cm high. £80-£120. See illustration.

**592**

An Art Deco style bronze figure of a diver, raised on square marble base, 23cm high. £60-£80

**593**

An Art Deco style bronze figure of a young boy on skis, raised on marble square plinth, 29cm high. £50-£80. See illustration.

**594**

A 1960's plated music rack, having faux onyx handle. £20-£30

**595**

A nest of three Ercol coffee tables, 111cm in extremes. £30-£50

**596**

A pair of decorative gilt wood lamp columns, 76cm high. £80-£120



Lot 580



Lot 591



Lot 593

597

A pair of Alfred Gratien design wine coolers. £30-£50

598

A dark Ercol stick back armchair. £20-£30

599

A G-plan style extending dining table, 148cm x 83cm. £40-£60

600

A set of four teak G-plan style ladder back dining chairs. £40-£60

601

A collection of various mid-20th Century coloured glassware, to include vases, hock glasses, posy bowls etc. £20-£30

602

A quantity of various pottery dinnerware, including Denby etc. £10-£20

603

A Carnival glass fruit bowl, a pair of amber tinted glass vases, an Art Deco fruit set, a green glass and enamel decorated water jug etc. £10-£20

604

Two Edwardian folding salon chairs - one AF; together with a quantity of upholstery material. £40-£60

605

A G-plan design teak rise and fall coffee / dining table, 140cm long. £40-£60

606

A quantity of T G Green Cornishware teapots, milk jug, coffee pots etc. £20-£40

607

Two wooden crucifix; and a carved hardwood African figure (3). £20-£40

608

A Bernard Rooke table lamp base; a Bernard Rooke decanter; and various other items of Bernard Rooke pottery (7) some AF. £20-£40

609

Two Bernard Rooke table lamps, with original shades. £20-£40

610

A 1970's teak stereo / record stand. £10-£20

611

A Bang & Olfsen Beo Centre 9000. £100-£150

612

A 1970's teak two tier coffee table, raised on shaped end supports with wicker undertier, 130cm. £20-£30

613

A quantity of various pottery tea and dinnerware, vases, two wall clocks, glass serving dishes etc. £10-£20. See illustration.

614

An Eames type cream leather upholstered swivel chair, and matching stool. £40-£60

615

A set of nine white stacking chairs, Team GB House London 2012 Olympics. £60-£80

616

A ply and metal child's chair. £10-£20

617

A 1960's style plastic and tubular metal elbow chair. £40-£60

618

A Hans Olsen for Frem Rojle set of four Danish teak dining chairs. £100-£200. See illustration.

619

An Edwardian folding salon chair. £20-£30

620

A Martini advertising sign. £10-£20

621

A Martini advertising sign. £10-£20

622

An Art Deco two seater settee, upholstered in jazz age type velor. £40-£60

623

A bent wood stick back elbow chair, and a 1930's low armchair with cane back AF (2). £20-£30

624

A pair of Louis Roederer style wine coolers. £30-£60

625

J S Peterson, limited edition print; Nicholas Barham, limited edition print of Burnham Overy Staithes; and another by Steven Whittle "A Winters Day" (3). £20-£30

626

A 1960's light oak sewing table, of stepped form raised on square outswept supports, 75cm. £20-£30. See illustration.

627

A Heals light wood towel rail, 71cm. £30-£50

628

A Retro child's high chair. £40-£60

629

A Danish rosewood D end extending dining table, fitted two extra leaves, 260cm x 120cm. £100-£200

630

A light Ercol pebble shaped coffee table, 65cm. £40-£60. See illustration.

631

A set of six 1930's folding dining chairs, having arched backs and decorated ply seats and back rails. £40-£60. See illustration.

632

A nest of three teak and tile topped G-plan style coffee tables, 49cm in extremes. £10-£20

633

A collection of various amethyst glass vases etc. £30-£50

634

A pair of red Toleware style obelisks, decorated in the chinoiserie manner, 55cm high. £60-£80

635

A Shelley baby's bowl, 20cm dia. £10-£20

636

A Perrier-Jouet Champagne bucket. £10-£20

637

A large silver plated punch bowl, with vine decoration, 38cm dia. x 28cm high. £80-£120

638

An Art Deco blue frosted glass rose bowl, and holder. £10-£20

639

A pair of black octagonal Toleware style tea canisters, decorated in the chinoiserie manner, 39cm high. £80-£120

640

A large ruby tinted free form flower holder, 63cm long. £20-£30

641

A pair of heavy cut glass fruit bowls; a tinted glass fruit bowl, various vases, candlestick, French crystal ornaments etc. £20-£40

642

A quantity of unframed sporting posters. £30-£50

643

A painted Ercol three seater sofa. £500-£800



Lot 613



Lot 618



Lot 626



Lot 630



Lot 631



Lot 658



Lot 660

**644**

A large Art Deco bronze standard lamp, with raised stylised decoration 185cm high overall. £300-£500

**645**

A 1970's teak long coffee table, raised on rounded tapering supports, 150cm long. £20-£30

**646**

Four wooden booted duck ornaments. £50-£80

**647**

An Ercol three seater settee. £80-£120

**648**

A pair of Lily Bolinger style Champagne coolers. £60-£80

**649**

A Carlton china teaset, with floral decoration heightened in gilt. £20-£30

**650**

A Crown Ducal "Orange Blossom" decorated part dinner / tea service. £50-£80

**651**

A light Ercol dining table, with two extensions, 239cm fully extended. £150-£200

**652**

Ten Ercol stick back dining chairs, to include eight standards and two elbows. £100-£200

**653**

A set of four Ercol stick back dining chairs. £40-£60

**654**

An Ercol stick back armchair. £40-£60

**655**

An Ercol low stick back armchair. £30-£50

**656**

Five Ercol stick back dining chairs, four standards, one elbow. £100-£150

**657**

A Kandya chair, design No.871266. £40-£60

**658**

A set of four Tapiovaara for Laukaan Puu, 1960's pine and black wood bar back dining chairs. £100-£200. See illustration.

**659**

A 1930's pine shoe shine stool, 35.5cm. £20-£30

**660**

A set of twelve Liberty's oak dining chairs, the arched rail backs flanked by turned finials, floral print upholstered drop in seats raised on turned block supports united by stretchers, ten standards, two elbows. £600-£800. See illustration.

Special attention is drawn to the Conditions of Sale printed at the back of this catalogue.

Clarke and Simpson are pleased to offer a packaging and shipping service worldwide though

"the-saleroom.com Delivery Service". The professional team will pack and ship items from very small non-breakables such as jewellery and coins though to larger and more fragile items such as paintings and works of art. Shipping and insurance is at the buyer's expense. Shipping payment must be made to "the-saleroom.com Delivery Service" prior to departure and excludes local duties and taxes. Please note that Clarke and Simpson do not pack or ship items - all requests are sent to our specialist handlers at "the-saleroom.com Delivery Service"

the-saleroom.com  
delivery service



# Property to shout about

## Chartered Surveyors & Estate Agents For all your property needs

Based in Framlingham, we deal with property throughout Suffolk and beyond, with our Estate Management department acting for clients across the UK. We pride ourselves on our dedicated, personal and professional service.

Residential Sales & Lettings  
Land Agency & Professional Consultancy  
Development, Commercial Sales & Lettings  
Property & Machinery Auctions  
Fine Art & Chattels  
Estate Management

www.clarkeandsimpson.co.uk T: 01728 724200

# Clarke & Simpson



# TERMS AND CONDITIONS OF SALE

## 1. INTRODUCTION

The following defining terms are used in these conditions:-

“Auction”	Means any auction conducted by Clarke and Simpson Auctions Ltd. either at the premises owned by them or elsewhere (including any internet based auction);
“Auctioneer”	Means Clarke and Simpson Auctions Ltd. authorised auctioneer as appropriate;
“Bidder”	Means a bidder at an auction, including the bidders personally present at the venue and those bidding by telephone or over the internet or otherwise;
“Buyer”	Means the bidder whose bid was the last bid when the auctioneer concludes the bidding;
“Conditions”	Means these Terms and Conditions of Sale;
“Hammer Price”	Means the level of bidding reached (at or above any reserve) when the auctioneer brings the bidding to a close;
“Lot”	Means any property accepted by Clarke and Simpson Auctions Ltd. for offer at auction;

## 2. DESCRIPTION

No warranty is given or implied by the description in the catalogue. Each lot is sold in its condition at the time of sale with all faults, defects, imperfections and errors of description (if any). Whilst every endeavour has been made to describe the items adequately and properly, the purchaser shall deem to have inspected the lot at time of purchase. All catalogues and seller's and buyer's guides are for information only and do not form part of the contract.

## 3. STATUTORY REQUIREMENTS

Purchasers will be deemed to have satisfied themselves prior to purchasing regarding current legal requirements (e.g. Health & Safety at Work Act) and it is expressly brought to the bidders attention that equipment in the sale may not necessarily comply with such regulations. Any purchaser shall satisfy himself as to any statutory requirement for the use of any item and no liability shall rest with the vendors nor the Auctioneers.

## 4. THE AUCTION

All auctions are conducted at the absolute discretion of the auctioneer. The auctioneer shall conduct the auction with reasonable skill and care. The vendor reserves the right to sell subject to reserve price in respect of all lots. What constitutes a bid shall be at the absolute discretion of the auctioneer, acting with appropriate skill and care. The auctioneer shall have the right to refuse any bid in all cases but most notably when such a bid does not exceed the previous bid by at least 10% or such a proportion as the auctioneer shall in his absolute discretion direct. Where two or more bids at the same level are simultaneously received by the auctioneer, the auctioneer at his absolute discretion shall determine which bid to prefer. Subject to the foregoing where two or more bids are at the same level are simultaneously received by the auctioneer, the bid submitted in the room shall take preference over a bid submitted by telephone or internet at the same level. Any bid made or attempted by telephone or over the internet will only be deemed to have been made if received by the auctioneer. The auctioneer reserves the right to withdraw, consolidate or divide any lot or lots or submit them in any order that they desire. The auctioneer has the right at his absolute discretion to refuse admission to his premises or at-

tendance at (or participation in) any auction by any person. In the case of any dispute, the auctioneer shall be sole arbitrator in any matters arising during or out of the sale.

## 5. BIDDERS

All bidders will be required to register their particulars, bidders attending in person and those accompanying them may be required to provide photo ID and separate confirmation of address prior to viewing or taking any part of the sale and before entering any part of the premises to view. All bidders accept full liability for all bids submitted. Subject to the clause in this document headed “The Auction”, the highest bidder at the close of bidding shall be the buyer. Any dispute about a bid shall be settled at the auctioneer's absolute discretion.

Bidders are all deemed to act as principles unless there is prior written acknowledgement by Clarke and Simpson Auctions Ltd. that a bidder is acting as an agent for a named principle. Bidders are strongly encouraged to attend the auction in person. The bidders shall be responsible for any decision to bid for a particular lot and shall be deemed to have carefully inspected and satisfied themselves as to condition, neither Clarke and Simpson Auctions Ltd., their employees or agents shall be responsible for any neglect or default in doing or failing to do so. Bidders will be given ample opportunity to view and inspect before the sale and prospective buyers must satisfy themselves as to all matters.

## 6. DEFAULT

Clarke and Simpson Auctions Ltd. shall act as agent of the vendor only. Any contracts for the sale of a lot shall be formed between the vendor and the buyer. As agent only Clarke and Simpson Auctions Ltd. shall not be responsible for default by the vendor or the buyer. If any lot is not paid for in full and taken away in accordance with these conditions, or there is any other breach of the conditions, then Clarke and Simpson Auctions Ltd. as agents for vendor shall at its absolute discretion and without prejudice to any other rights it may have, be entitled to exercise all or any of the following rights and remedies:-

- 6.1 to proceed against the buyer for any action of debt or damages for breach of contract;
- 6.2 to rescind the sale of that lot or lots sold by Clarke and Simpson Auctions Ltd. to a defaulting buyer;
- 6.3 to resell the lot (by auction or private treaty) in which case the defaulting buyer shall be responsible for any resulting deficiency in the total amount due (after crediting any part payment and adding any resale costs), any possible surplus so arising shall belong to the vendor;
- 6.4 to remove, store and insure the lot at the expense of the defaulting buyer and, in the case of storage, the location of such storage shall be at Clarke and Simpson Auctions Ltd. discretion;
- 6.5 to charge interest at a rate not exceeding 2% per month of the total amount due to the extent that it remains unpaid for more than two working days after the sale;
- 6.6 to retain that or any lot sold to the defaulting buyer until the buyer pays the total amount due;
- 6.7 to reject or ignore bids from the defaulting buyer at future auctions or to impose conditions before any such bids are accepted;
- 6.8 to apply any proceeds of sale for any other lots due or in the future becoming due to the defaulting buyer towards the settlement of the total remaining due.

## **7. INDEMNITIES, PENALTIES AND LIMITATIONS OF LIABILITY**

Purchasers shall pay for any damage done by themselves or their agents during the removal of their lots. Attendance at the sale shall be at the risk of those attending in respect of both themselves and to their goods and vehicles.

Any indemnity under these conditions will extend to all actions, costs, expenses, claims and demand whatsoever suffered or incurred by the person entitled to the benefit of it and Clarke and Simpson Auctions Ltd. declare themselves to be a trustee of the benefit of such indemnity so far as it is expressed to be the benefit of its employees and agents.

Whilst Clarke and Simpson Auctions Ltd. endeavour to ensure that the information on their websites is correct, they do not warrant the accuracy and completeness of the material on their website. Also Clarke and Simpson Auctions Ltd. can make changes to the material on their website, or alter the products and prices described on it, at any time without notice. The material on the website may be out of date, Clarke and Simpson Auctions Ltd. make no commitment to update such material. All material on the websites is provided "as is" without any conditions, warranties or other terms at any time. Accordingly to the maximum extent permitted by law, the website is provided to all parties on the basis that Clarke and Simpson Auctions Ltd. exclude all representations, warranties, conditions and other terms which, but for this legal notice, might have effect in relation to the website.

## **8. ELECTRICAL SAFETY REGULATIONS**

All electrical lots are subject to electrical safety regulations and fall within "the low voltage electrical equipment (safety) regulations 1989" – all items have been pat tested for safety but are not guaranteed in working order.

## **9. GENERAL MATTERS**

Any notice to any buyer, vendor, bidder or viewer may be given by first class mail or email in which case it shall be deemed to have been received by the addressee forty eight hours after posting or sending. All notices to Clarke and Simpson Auctions Ltd. must be sent in writing and email is not acceptable. Any indulgence extended to any person by Clarke and Simpson Auctions Ltd., notwithstanding the strict terms of these conditions or the terms of consignment, shall affect the position at the relevant time only and the respect of that particular concession only; in all other respects these conditions shall be construed as having full force and effect. These conditions and any disputes or claims arising out or in connection with them or their subject matter or formation (including non-contractual disputes or claims) are governed by and construed in accordance with the law of England. The parties irrevocably agree that the courts of England have exclusive jurisdiction to settle any dispute or claim that arises out of or in connection with the agreement or its subject matter or formation (including non-contractual disputes or claims).

## **10. PUBLICITY**

Any catalogue and buyer and seller guides are provided for information only and do not form part of these conditions. The catalogue and the buyer and seller guides may contain additional terms and conditions. Clarke and Simpson Auctions Ltd. reserve the right to use any photographs, background information and research for publicity purposes both before and after the sale.

## **11. THE PURCHASE PRICE AND PAYMENT ARRANGEMENTS**

There is a buyer's premium 18% plus VAT payable in respect of the sale. Any purchases made via "www.the-saleroom.com" or "[www.ibidder.com](http://www.ibidder.com)" shall be subject to an administration charge of 3% plus VAT on the price.

Preferred payment is cash, bank transfer or personal debit card. Such cards may only be used on a chip and pin basis with the owner present. No payment over £350 will be accepted by telephone. Payment will be accepted online via our secure e commerce account. We do not accept credit cards or international debit cards. Payment by cheque will only be acceptable subject to prior arrangement. No lot will be removed from the sale until any cheque has cleared. Payment is due on the day of the sale. Cash in excess of £7,500 (including V.A.T.) will not be accepted from any one person, this is not allowed due to Money Laundering Regulations 2007. All money received will be held in Clarke & Simpson Auctions Ltd. Clients No 2 Account at Barclays Bank plc, Martlesham Heath, Ipswich, Suffolk. Account Number 83428591. Sort Code 20 98 07. Clarke and Simpson Auctions Ltd. have no responsibility for any lot between the close of bidding and payment being made and subsequent collection. All payments from overseas buyers shall be made by Bank Transfer and bank fees paid in addition. Please note all policy regarding payment will be enforced and suitable arrangements must be made.

## **12. REMOVAL OF LOTS**

The ownership of any lot purchased shall not pass to the relevant buyer until they have made payment in full to Clarke and Simpson Auctions Ltd. of the total amount due including any storage due.

The buyer shall at their own risk and expense take away any lot that they have purchased and paid for not later than two working days following the day of the auction after which they shall be responsible for any removal, storage and insurance charges.

Any lots not collected within four weeks of the date of sale will be resold by the auctioneer and all proceeds will be retained by the auctioneer to cover storage costs.

## **13. NUMBER BIDDING**

This will be used for speed and efficiency as in all our sales. All prospective purchasers must complete a registration form and register in the office on the viewday or morning of sale to receive a number for bidding.

**PLEASE ALSO NOTE THAT PHOTO ID AND ADDITIONAL CONFIRMATION OF ADDRESS WILL BE REQUIRED.**

## **14. ONLINE BIDDING**

Clarke & Simpson Auctions Ltd. offer an online bidding service via the-saleroom.com and ibidder.com for bidders who cannot attend the sale.

In completing the bidder registration on [www.the-saleroom.com](http://www.the-saleroom.com) or [ibidder.com](http://ibidder.com) and providing your payment card details and, unless alternative arrangements are agreed with Clarke & Simpson Auctions Ltd.:

1. authorise Clarke & Simpson Auctions Ltd., if they so wish, to charge the payment card given in part or full payment, including all fees, for items successfully purchased in the auction via [www.the-saleroom.com](http://www.the-saleroom.com) or [ibidder.com](http://ibidder.com), and
2. confirm that you are authorised to provide these payment card details to Clarke & Simpson Auctions Ltd. through [www.the-saleroom.com](http://www.the-saleroom.com) or [ibidder.com](http://ibidder.com) and agree that Clarke & Simpson Auctions Ltd. are entitled to ship the goods to the card holder name and card holder address provided in fulfilment of the sale.

**Please note that any lots purchased via the-saleroom.com or ibidder.com live auction service will be subject to an additional 3% buyer's premium + VAT at the rate imposed on the hammer price.**

## 15. TELEPHONE BIDDING

We offer a telephone bidding service where possible, but this service can never be guaranteed. No applications for telephone bids will be accepted after the end of the viewing prior to sale day for any sale. All potential telephone bidders must provide a valid landline number and email address and agrees that they have read and understood the Terms and Conditions. No phone bids will be accepted for any lot with a lower guide figure of less than £100.

All those who wish to bid by telephone will be expected to deposit the minimum guide for all lots that they wish to bid upon into the Clients Account for Clarke and Simpson Auctions Ltd before the sale starts. This payment is not acceptable by card. In the event of default, this sum shall be retained as part payment or any part may be retained to recover losses under clause 6 of these Terms and Conditions. We will expect payment of the balance owing by BACS on the following day, any payment not met within five working days will result in the forfeiture of the deposit paid.

## 16. AT FAULT (A.F.) LOTS

Certain lots are catalogued at (A.F.), damaged, restored etc., however the absence of any such notice does not imply that the piece is free from defects, nor does it indicate that other defects are not also present. Mention is not made of breakage, cracks, chips or any damage which can be noted by careful inspection, therefore, intending purchasers MUST, in all cases, be responsible for determining the condition of the lots themselves.

## 17. ESTIMATES

Presale estimates are intended only as a guide for intending purchasers, are given in good faith and subject to revision.

## 18. CONDITION REPORTS

Clarke and Simpson are unable to guarantee that requests for condition reports/images received after close of the viewing on the day prior to auction, will be responded to. Clarke and Simpson are happy to give a Condition Report on the physical condition of goods, this will be provided on behalf of the seller on the understanding that Clarke and Simpson are not entering into a contract with you in respect of the Condition Report and accordingly does not assume responsibility to you in respect of it. All lots are available for your own inspection or for inspection by an expert instructed by you, therefore these Condition Reports are for guidance only and all lots are sold "as found". Condition reports do not form part of a contract.

## 19. COMMISSION BIDS

The auctioneers will be pleased to execute bids for those unable to attend the sale. Lots will be purchased at the lowest bid the room bidding or any reserves will allow. In the event of identical bids, the earliest bid received will take precedence. There must always be a maximum limit indicated. Buy or unlimited bids will not be accepted. Commission bids placed by telephone are accepted at the client's risk. We urge our clients to place such bids before the start of the sale. All such commissions are left entirely at the buyer's risk.

## 20. VALUE ADDED TAX

The symbol \* after any lot number indicates that Value Added Tax is payable by the buyer on the hammer price.

## 21. AUCTIONEERS MARGIN SCHEME

The Auctioneers Margin Scheme allows auctioneers to sell items without VAT on the hammer price. Under the margin scheme an amount equivalent to VAT at the current rate is added to the buyer's premium. This amount cannot be refunded. The VAT element will not be shown separately on the buyer's invoice.

## 22. ATTRIBUTION OF PICTURES AND DRAWINGS

Every effort is made to ensure the accuracy of any statements as to authorship, attribution, origin, date, age, provenance and condition of any lot whether or not such statement forms part of the description of any such lot. Whether any such statement is made orally or in the catalogue it is an expression of opinion and not to be taken as being or implying any warranties or representations of facts by the auctioneers. Each buyer by making a bid for a lot acknowledges that he has satisfied himself fully as to the attribution and condition of the lot. The following is for guidance only and does not form part of a contract.

- A. The forename (s) (or full stops where not known) and surname of an artist indicates in our opinion a work by the artist.
- B. The initials of the forename (s) and the surname of the artist indicates in our opinion a work of the period of the artist which may be wholly or in part his work.
- C. The surname of the artist indicates in our opinion a work of the school or by one of the followers of the artist or in his style and of uncertain date.
- D. *Signed, Dated, Inscribed* indicated in our opinion work signed/dated/inscribed by the artist.
- E. *Bears signature* indicates in our opinion that this is not the signature of the artist.
- F. *Attributed to* may be used to denote a traditional attribution based on style.
- G. *Manner of* indicates in our opinion a work executed in the artist/craftman's style but of a later date.
- H. *After* indicates in our opinion a copy (of any date) of work of an artist or craftsman.

The addition of a question mark after any of the cataloguing terms above indicates an element of doubt.

## 23. DRIOTE DE SUITE ROYALTY CHARGES

All United Kingdom Art Market professionals (which includes auctioneers) are required to collect a royalty payment for all qualifying Works of Art. This applies to living artists and those who have died in the last 70 years. This payment is calculated on qualifying Works of Art which are sold for a hammer price more than the UK sterling equivalent of €1,000 (the UK sterling equivalent will fluctuate in line with prevailing interest rates calculated by the Artist's Resale Right Service Hub, based on the European Central Bank reference rate published at 2.15pm on the day of the sale, and can be found on [www.dacs.org.uk](http://www.dacs.org.uk)).

All items in this catalogue that are marked "✓" are potentially qualifying items, and the royalty charge will apply if the hammer price is more than UK sterling equivalent of €1,000. The royalty charge will be added to purchase invoices, and must be paid before items can be cleared. All royalty charges are paid to the design and Artists Copyright Society (DACS) by the auctioneers and no handling costs or additional fees with respect to these charges will be retained by the auctioneer. This charge may also be applicable to lots not marked "✓" and buyers must satisfy themselves.

The royalty charge for qualifying items which achieve a hammer price of more than the UK sterling equivalent of €1,000, but less than the UK sterling equivalent of €50,000 is 4%. For qualifying items that sell for more than the UK equivalent of €50,000 a sliding scale of royalty charges will apply. For a complete list of the royalty charges and threshold levels please refer to [www.dacs.org.uk](http://www.dacs.org.uk). There is no VAT payable on this royalty charge.

We are pleased to support  
Dennington Village Hall by offering  
this signed guitar donated by  
Mr Ed Sheeran



Clarke & Simpson Auction Centre, Campsea Ashe  
Nr Wickham Market, Suffolk IP13 0PS  
T: 01728 746323 E: [auctions@clarkeandsimpson.co.uk](mailto:auctions@clarkeandsimpson.co.uk)  
[www.clarkeandsimpson.co.uk](http://www.clarkeandsimpson.co.uk)