

Clarke &
Simpson



*Art Deco, 20th Century
Design & Retro*

Monday 30th October at 9.30am

Special Notices for Purchasers

Certain lots are catalogued as (A.F.), damaged, restored, etc., however the absence of any such notice does not imply that the piece is free from defects, nor does it indicate that other defects are not also present.

Mention is not made of breakage, cracks, chips or any damage which can be noted by careful inspection, therefore, intending purchasers MUST, in all cases, be responsible for determining the condition of lots themselves.

Special attention is drawn to the Conditions of Sale printed at the back of this catalogue.

Estimates

Presale estimates are intended only as a guide for intending purchasers, are given in good faith and subject to revision.

Condition Reports

Clarke and Simpson are unable to guarantee that requests for condition reports/images received after the close of the viewing on the day prior to auction, will be responded to.

Clarke and Simpson are happy to give a Condition Report on the physical condition of goods, this will be provided on behalf of the seller on the understanding that Clarke and Simpson are not entering into a contract with you in respect of the Condition Report and accordingly does not assume responsibility to you in respect of it. All lots are available for your own inspection or for inspection by an expert instructed by you, therefore these Condition reports are for guidance only and all lots are sold "as found".

Commission Bids

The auctioneers will be pleased to execute bids for those unable to attend the sale. Lots will be purchased at the lowest bid the room bidding or any reserves will allow. In the event of identical bids, the earliest bid received will take precedence. There must always be a maximum limit indicated. Buy or unlimited bids will not be accepted. Commission bids placed by telephone are accepted at the client's risk. We urge our clients to place such commission bids before the start of the sale. All such commissions are left entirely at the buyer's risk.

Telephone Bids

Please refer to conditions printed at the back of this catalogue.

Registration

All prospective buyers must register their name and address at our auction office and collect a numbered bidding card before the sale commences. If you are a successful purchaser please ensure that your number can be seen by the auctioneer and that it is your number that is called out at the fall of the hammer. Should there be any doubts as to the price or buyer, please draw the auctioneer's attention to it before the next lot is offered.

Value Added Tax

The symbol * after any lot number indicates that Value Added Tax is payable by the buyer on the "hammer price".

Auctioneers' Margin Scheme

The Auctioneers Margin Scheme allows auctioneers to sell items without VAT on the hammer price. Under the margin scheme an amount equivalent to VAT at the current rate is added to the buyer's premium.

This amount cannot be refunded. The VAT element will not be shown separately on the buyer's invoice.

Buyers' Premium

A buyer's premium of 18% plus VAT will be added to the hammer price of each lot.

Please note that any lots purchased via the-saleroom.com auction service will be subject to an additional 3% charge + VAT at the rate imposed on the hammer price.

Payment

Payment can be made during or immediately after the sale by the following methods:

Cash (up to a maximum of £12,000 including VAT in accordance with Money Laundering Regulations 2007).

Debit Cards

Credit Cards (not American Express) Please note there will be a surcharge of 2.5% plus VAT for the use of these cards. We will not release goods for a period of 72 hours unless the cardholder attends the saleroom in person and presents the cards used for the transaction with proof of ID.

Bank Transfer - Account Name: Clarke and Simpson Auctions Limited

Account Number: Account No: 83428591

Sort Code: 20-98-07

We do not accept cheques unless by prior arrangement.

Attribution of Pictures and Drawings

Every effort is made to ensure the accuracy of any statement as to authorship, attribution, origin, date, age, provenance and condition of any lot whether or not such statement forms part of the description of any such lot. Whether any such statement is made orally or in the catalogue it is an expression of opinion and not to be taken as being or implying any warranties or representations of facts by the auctioneers. Each buyer by making a bid for a lot acknowledges that he has satisfied himself fully as to the attribution and condition of the lot.

- a) The forename(s) (or full stops where not known) and surname of an artist indicates in our opinion a work by the artist.
- b) The initials of the forename(s) and the surname of the artist indicates in our opinion a work of the period of the artist which may be wholly or in part his work.
- c) The surname of the artist indicates in our opinion a work of the school or by one of the followers of the artist or in his style and of uncertain date.
- d) *Signed, Dated, Inscribed* indicates in our opinion work signed/dated/inscribed by the artist.
- e) *Bears signature* indicates in our opinion that this is not the signature of the artist.
- f) *Attributed to* may be used to denote a traditional attribution based on style.
- g) *Manner of* indicates in our opinion a work executed in the artist/craftsman's style but of a later date.
- h) *After* indicates in our opinion a copy (of any date) of work of an artist or craftsman.

The addition of a question mark after any of the cataloguing terms above indicates an element of doubt.

Clarke & Simpson

Auctions

Art Deco, 20th Century Design & Retro

Monday 30th October 2017

at 9.30am

Viewing:

Saturday 28th October 9am - 12noon

Morning of Sale from 8.30am

Enquiries:

James Shand, Auctioneer & Valuer

Geoffrey Barfoot, Auction Room Manager & Valuer

Buyers' Premium:

18% plus VAT

the-saleroom.com

Please see www.the-saleroom.com



Campsea Ashe
Nr Wickham Market
Suffolk IP13 0PS
Tel: 01728 746323 Fax: 01728 748173
Email: auctions@clarkeandsimpson.co.uk
www.clarkeandsimpson.co.uk



@CandSAuctions



CandSAuctions



Lot 4

1
A green "Frank Art" painted figural table lamp, 34cm overall. £40-£60

2
A late 19th Century Thoune pottery cup and saucer, decorated with abstract birds; and an Art Nouveau tile stand (2). £15-£25

3
A large Art Deco cut glass vase, an Art Deco heavy glass bowl; and a pair of cameo glass tumblers, (4). £15-£25

4
An Art Nouveau brass crumb tray and brush. £20-£30. See illustration.

5
An Arts & Crafts style beaten copper jardinière, having floral embossed decoration and flared rim, 28.5cm dia., 21cm high. £20-£40

6
A plated Art Deco design egg cruet. £15-£25

7
A Black Forest type carved wooden tazza, having musical movement to base, 24.5cm. £20-£40

8
An early 20th Century carved fretwork miniature long case clock, inscribed in ink to the base E.A.M. 1921, 36cm high. £40-£60. See illustration.

9
Barbara Long, still life Impasto inscribed verso, framed and glazed. £15-£25. See illustration.

10
Jennifer Giles, three framed and glazed studies of butterflies, signed pastel drawings, artists labels verso. £15-£25

11
An unusual ethnographic signed tribal art folding wooden stand. £10-£20

12
A bronzed car mascot, in the form of a winged lady raised on marble base, 16cm high. £10-£20

13
An Arts & Crafts spot hammered copper tray, of shaped form with stylised foliate decoration; a smaller similar; a copper posy vase; and a brass poker on stand, (5). £20-£40

14
A decorative glass hanging light shade, painted with scenes of women collection water from a fountain, 33cm high. £50-£80

15
An ivory coloured pyramid telephone. £20-£30

16
An Art Deco semi circular shaped chrome and glass wall light. £10-£20

17
An Art Deco design chrome and glass oblong wall light. £10-£20

18
An Art Deco design plated cocktail shaker, and an ice bucket, (2). £10-£20

19
A illuminated Art Deco "Jesus" picture / mirror. £10-£20

20
A bronzed car mascot, in the form of an eagle on marble plinth, 10cm. £10-£20

21
An English Arts & Crafts painted panel, decorated with a Japanese woman, 76.5cm x 27.5cm. £200-£300. See illustration.

22
An Art Deco vintage signed watercolour of Venice, and another by the same hand dated 1939 and 1928, (2). £10-£20. See illustration.

23
A pair of Art Deco wooden and glass photograph frames. £10-£20

24
A Bernard Rooke pottery wall plaque, 31cm x 25cm. £20-£40

25
A pair of wooden and painted models of mallard ducks. £15-£25

26
A Winchcombe pottery casserole, together with a Sgraffito decorated Studio bowl; and three other Studio pottery items (impressed marks), (5). £15-£25

27
Early 20th Century school, impressionist style study head and shoulders portrait of a young woman in blue dress, unsigned oil, 23cm x 15cm. £20-£30

28
A Stelton Denmark brass table centrepiece. £10-£20

29
A plated cocktail shaker, of Art Deco design, 14cm high. £20-£40

30
A large green onyx and brass mounted lamp base. £5-£10

31
A bronzed and brass Corinthian column table lamp base. £5-£10

32
A pair of Art Deco wooden and glass photograph frames. £10-£20

33
An Art Deco wooden and chrome mounted photograph frame; and a walnut and oak similar, (2). £10-£20



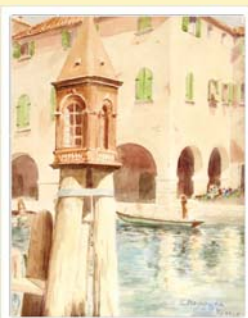
Lot 8



Lot 9



Lot 21



Lot 22

34

A vintage **Swan & Edgar** lizard effect Kelly bag; together with another black leather handbag; two faux skin bags; and other vintage leather purses etc. - some AF.

£15-£25

35

A pair of **Italian made** vintage Wellington Boots, together with three umbrellas.

£15-£25

36

A 1960's vintage **Mary Quant** shirt blouse for Viyella House. £10-£20

37

A bolt of 1960's vintage **Francis Price Rangoon** printed cotton fabric, together with a single 1960's full printed curtain.

£10-£20

38

A pair of 1960's vibrant orange, blue and brown floral curtains, marked to Salvage, woven and printed in England. £20-£30

39

A **Louis Vuitton style** shopping bag.

£40-£60

40

An **Art Deco brass topped** Dutch occasional table, 50cm dia. £20-£30

41

A nest of three teak **G-plan** style coffee tables, raised on shaped end supports. £20-£30

42

A nest of three teak **G-plan** type coffee tables, raised on square section tapering supports. £20-£40

43

A nest of three teak **G-plan** design coffee tables, raised on square tapering supports. £20-£40

44

A single vintage **Art Deco / early 1950's** gold embroidered curtain. £10-£20

45

Attributed to **Dr Christopher Dresser or Owen Jones**, a rare complete roll of Victorian vintage wallpaper. £40-£60

46

A single abstract woven 1960's curtain in orange and gold. £10-£20

47

A quantity of **BBC drama** series Tenko literature, contained in a filing box.

£50-£60

48

Peter Lockwood 1926 - 1996, study of a wintry landscape, probably Derbyshire Dales area, signed oil on board, 39cm x 60cm. £20-£40. See illustration.

49

Peter Lockwood 1926 - 1996, study of figure in a Dales stream, signed oil on board dated 1987. £20-£40. See illustration.

50

Peter Lockwood 1926 - 1996, study of Dartmoor, signed oil on canvas, 40cm x 60cm. £20-£40. See illustration.

51

Rachel Clay, study of flowers and objects on a window ledge, signed oil on canvas, dated 1961, 51cm x 60cm. £20-£30. See illustration.

52

Rachel Clay, study of cartwheels, oil on canvas, 50cm x 60cm. £10-£20

53

Rachel Clay, still life study, signed oil on canvas dated 1966, 76cm x 62.5cm. £20-£40

54

After Koto Asuda, coloured print of a harbour scene, circa 1960's. £10-£20

55

M.K.W., late 19th early 20th Century school, study of a woodland path, initialed oil on canvas, 35cm x 49cm. £40-£60. See illustration.

56

Rachel Clay, still life study, signed oil on canvas, dated 1965, 45.5cm x 34cm. £20-£30

57

20th Century school, study of fields with town and sea in the far ground, unsigned oil on board, 41cm x 60.5cm. £20-£30

58

Rachel Clay, study of continental walled garden scene, signed oil on canvas dated 1962, 40cm x 60cm. £20-£30

59

Rachel Clay, study of a continental lake scene with village in the fore ground, signed oil on canvas, 30cm x 40cm. £20-£30

60

A vintage 1960's **Miss Polly at Polly Peck**, printed cotton mini dress by Sybil Zelker, original labels. £10-£20

61

A 1960's vintage woven long sleeve dress, approx. size 16. £10-£20

62

Giorgio Armani, an original Italian silk lady's jacket with labels. £15-£25

63

Nancy Mac, a retro 1950's vintage style silk mix dress. £10-£20

64

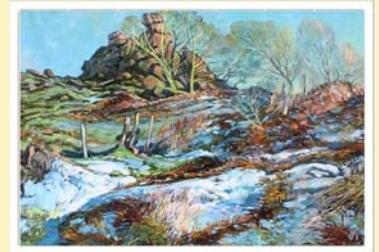
Stephens Bros. a Retro 1940's vintage style cotton shirt dress . £10-£20

65

A vintage leather full length motoring coat. £100-£150

66

A Vintage leather motoring cap, goggles and gauntlets. £20-£40



Lot 48



Lot 49



Lot 50



Lot 51



Lot 55



Lot 68

67

Ozzie Clarke, full length cobalt blue dress; together with a 1970's style maxi dress; vintage 1970's paisley dress; and a Wolsey Lonbardi metallic weave skirt (4). £20-£40

68

Six nautical decorated scatter cushions. £20-£30. See illustration.

69

Two boxes of comic Marvel and Judge Dread magazines. £20-£40

70

A nest of three teak G-plan design coffee tables. £20-£40

71

A nest of three teak and tile top G-plan style coffee tables. £20-£40

72

A British tile top coffee table by Englander of Darbyshire, 95cm x 48cm. £20-£40

73

An Art Deco walnut bedside cabinet, having drop flap compartment and cupboards below, fitted Bakelite handles, 48cm wide. £10-£20

74

J. Lesaux, early 20th school study of children playing on the coast, signed oil on canvas, 51cm x 44.5cm. £100-£150. See illustration.

75

L Lavant, study of figures on a beach, signed oil on canvas, 49.5cm x 59cm. £100-£150. See illustration.

76

Doris (Michail Papageorgiou), 1896-1987, study of olive trees by the sea, signed oil on canvas, 78cm x 107cm. £100-£150

77

Doris (Michail Papageorgiou), 1896-1987, study depicting cattle and rainbow, signed oil on canvas, 69cm x 118cm. £100-£150

78

Two painted and carved wooden mannequins of young nude females, 101cm high and 94cm high AF. £60-£80

79

A bronze figure of a pixie holding lily leaves, 78cm high. £300-£400. See illustration.

80

A larger similar, 100cm high. £300-£400

81

A bronze figure of a seated pixie holding large lily pad, 43cm high. £300-£400

82

An early 20th Century mahogany twin pedestal writing desk, fitted central drawer flanked by eight drawers, and raised on pedestal plinths, fitted brass aesthetic movement design drop handles, 122cm wide. £100-£200

83

A brightly coloured tapestry depicting a French hunting scene, approx. 200cm x 144cm; and a pair of similar panels 162cm x 67cm, (3). £100-£200

84

An Art Nouveau brass coal bin; having floral decoration, 53.5cm wide. £30-£60. See illustration.

85

A Christopher Wray seven branch brass light fitting, having pink tinted shades, one AF. £40-£60

86

A Danish two seat stick back sofa; and a matching armchair, (2). £150-£200

87

A teak G-plan design three drawer chest, 79cm. £20-£40

88

A quantity of various Coronation ephemera. £20-£40

89

Last series of Blakes 7 continuity photos and various literature and ephemera. £100-£200

90

A vintage Mappin & Webb Art Deco lizard effect handbag; and a 1940's Marks & Spencer's ostrich effect bag with original labels, (2). £20-£30

91

A teak G-plan design record cabinet, having drop front raised on square tapering supports, 100cm. £20-£30

92

A 1960's French Pillivuyt porcelain casserole or tureen, 25cm. £10-£20

93

An unusual Art Nouveau pottery jardinière, decorated in gilt and raised enamels with bird of paradise and bee, 19cm dia. in extremes, 15cm high. £20-£30

94

An unusual Art Deco Grays pottery for Heals hand decorated dinner plate, with black Heals of London, England back stamp. £15-£20

95

A native American or African tribal art glass bead decorated vase, and a circular earthenware bowl (2). £15-£25

96

A boxed 1970's French amber glass set of coffee cups and saucers. £25-£35

97

A Halix 1930's cream and amber lidded powder bowl. £25-£35

98

A 1950's oriental wooden and decorated cigarette holder / dispenser. £10-£20

99

A 1952 US Army Korean War period beaker. £10-£20



Lot 74



Lot 75



Lot 79



Lot 84

100

A French Art Deco plated and glass hors d'oeuvres dish. £40-£60

101

A large silvered Art Nouveau style photograph frame, with maiden and floral decoration, 41cm x 26cm overall. £20-£30

102

A Selfridges plated hot water jug; a Sadler white glazed teapot; a Wadeheath blue glazed coffee pot AF; and a porcelain and plated mounted biscuit barrel decorated desert scenes. £10-£20

103

A Sarreguemines green glazed fish shaped serving dish, and matching sauce boat, (2). £10-£20

104

A Cloud glass rose bowl; a brown Sowerby glass celery vase; a Sowerby Irish vase etc. £20-£30

105

A Genalex star burst wall clock. £20-£30

106

Rachel Clay, study of a field with caravans parked, town in the far ground, indistinctly sign oil on board, 37.5cm x 50cm. £20-£30

107

Rachel Clay, study of sailing boats, signed oil on board, dated 1968, 45cm x 57cm. £20-£30

108

Rachel Clay, Thames Embankment scene with power station in the far ground, signed watercolor, dated 2/6/61, 26.5cm x 37cm. £20-£30

109

1960's study of a busy street scene with figures, unsigned oil on canvas, inscribed verso "drawn R Clay, painted Ruskowbe", 41cm x 53cm. £10-£20. See illustration.

110

Otto Thamer, pencil signed etching of a sailing boat, 21cm x 20cm. £10-£20

111

Early 20th Century school, study of a tree lined country lane with cottages in the far ground, unsigned oil 29cm x 44.5cm. £20-£40

112

Early 20th Century school, portrait study of a young girl in pink dress, unsigned oil on canvas, 60cm x 50cm. £30-£60

113

Rachel Clay, study of rooftops in a seaside town, 50cm x 40cm. £30-£60. See illustration.

114

After Margaret W. Tarrant, coloured nursery print, "Wandering Minstrels". £10-£20. See illustration.

115

An Ercol dressing chest fitted swing mirror above three long drawers, 93cm wide. £40-£60

116

A G-plan style chest of two short and three long drawers, raised on rounded tapering supports, 84cm wide. £40-£60

117

A decorative Japanese black and red lacquer gilt decorated set of five goblets, on a circular tray. £20-£40

118

An Art Deco Bakelite cased mantel clock. £10-£20

119

An Art Deco circular chrome mounted mantel clock. £10-£20

120

A G-plan type teak writing desk with fall front above three long drawers, raised on shaped supports, 91cm. £20-£40

121

A pair of oriental ginger jars, profusely decorated coloured enamel flowers and fruit. £10-£20

122

A Ekco green Bakelite radio. £20-£40. See illustration.

123

A light oak G-plan style four drawer chest raised on rounded tapering supports, 76cm wide. £20-£40

124

An Art Deco clock / table lamp, in the form of a lighthouse and boat, 41cm long. £20-£30. See illustration.

125

A pair of oriental style Tolware octagonal tea canisters, decorated in the chinoiserie manner, 37cm. £80-£120

126

A 1950's sideboard, fitted drawers, central drinks compartment, flanked by cupboards on black wood and brass rounded tapering supports, 152cm wide. £40-£60

127

An Art Deco oak and chrome Metamec mantel clock. £20-£30

128

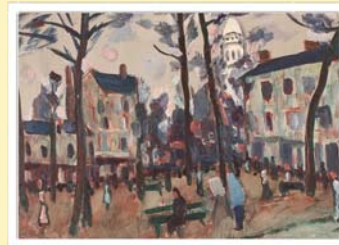
A novelty bronzed pilot clock, 36cm high. £100-£150

129

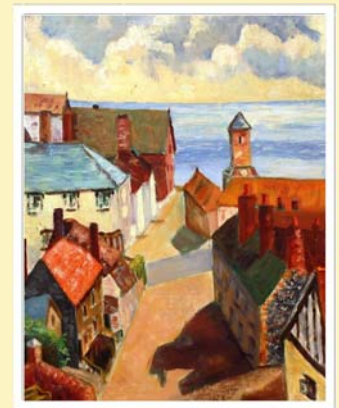
A Flaxman Wade Heath wall plate, decorated flowers and birds, 31cm dia. £20-£40

130

A Poole pottery dish by Anne Godfrey (Lloyd), shape 91, and a circular Poole pottery shallow bowl, (2) initialled, AF. £20-£40



Lot 109



Lot 113



Lot 114



Lot 122



Lot 124



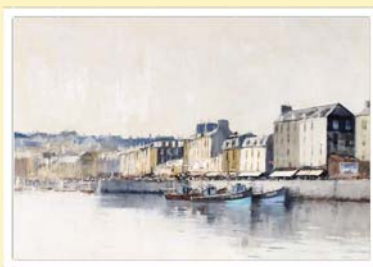
Lot 132



Lot 151



Lot 166



Lot 169



Lot 170

131

A Wedgwood Clarice Cliff Centenary limited edition plate, "Etna". £50-£80

132

A Wedgwood Clarice Cliff "Bizarre" design plate. £50-£80. See illustration.

133

A Wedgwood Clarice Cliff "Bizarre" design plate. £50-£80

134

A 1960's sideboard by A.C.W.S. Coop, 164cm wide. £40-£60

135

A 1960's Ultra radiogram, 123cm wide. £40-£60

136

A pair of retro design lamps. £20-£40

137

A Beautility sideboard, 183.5cm wide. £40-£60

138

A hardwood table lamp, of stylised design with tasseled pink shade. £20-£30

139

A silvered Buddha head, 38cm high. £20-£40

140

A "Tattoo's Removed" saw, 63cm long. £20-£30

141

A pair of oriental style bronzed lamps, with raised dog of fo decoration, 39cm high. £60-£80

142

An Art Deco design glass and plate mounted cocktail shaker. £20-£40

143

A bronze erotic figure depicting a naked girl, kneeling on a chair, 37cm high. £100-£150

144

A teak G-plan design knee hole dressing table fitted four drawers, and raised on square tapering supports, 152cm wide. £20-£40

145

Two Art Deco design "Ball Girl" table lamps, raised on stepped amber coloured bases, 55cm. £70-£100

146

A bronze study of a fox, on rockwork style base and plinth, 30cm high. £100-£150

147

A pair of oval Alfred Gratein style plated wine coolers. £50-£80

148

An abstract style bronze nude figure, 37cm high. £100-£150

149

A teak effect G-plan style sideboard, fitted four drawers raised on rounded tapering supports, 122cm wide. £20-£40

150

A Parian style female bust, 31cm high. £50-£80

151 ✓

Ian Houston born 1934, "The Lieutenant In Evening Sunlight (Honfleur)", 36cm x 51cm. £400-£600. See illustration.

152

Ernest Jules Renoux 1863 - 1932, study of figures on a riverbank with bridge and buildings beyond, signed oil on canvas, entitled "Verso No. 136 Le Pont Solferino et Gare Dorsay", 37cm x 45cm. £600-£800

153

Mervyn, study of a Middle Eastern street scene, signed oil on canvas, 38cm x 54cm contained in stripped pine frame. £40-£60

154

20th Century school, study of a young woman seated on a park bench, unsigned crayon and pastel, 29cm x 22.5cm. £40-£60

155

Elder "Pretty In Purple", signed watercolour on Indian paper, 27cm x 17.5cm. £60-£100

156

Abrazo, "Winter Rose, October", pencil signed etching. £10-£20

157

Laume, pencil signed limited edition of a continental street scene 5/10, 25cm x 39cm. £40-£60

158

Vivien Morer 2006, "Tallen De Guilames" 4/6 limited edition print, 30cm x 49cm. £30-£50

159

Nicole Harris, "Hibiscus In Fuerteventura" signed watercolour, 24.5cm x 34.5cm. £20-£30

160

Chambers 2004, charcoal study of a nude, 42cm x 30cm. £20-£30

161

20th Century school, study of a seated lady, unsigned crayon and pastel on cardboard, 55cm x 70cm. £10-£20

162

G Stewart, study of figures on a beach in Barbados, signed oil on canvas, 22cm x 29cm. £20-£30

163

Peter Scott, pencil signed etching "Geese In Flight", 22.5cm x 34.5cm. £60-£100

164

E.V.'49, study of dancers, initialed and dated watercolour, 32cm x 24cm. £20-£40

165

John Piper, coloured print depicting Snape Maltings. £10-£20

166

Marek Zulawski, study of a lake scene with fishing boats, signed oil on canvas, 33cm x 43cm. £200-£300. See illustration.

167

Indistinctly signed in pencil, etching, dated 1982, depicting dark woodland and mountainous landscape, 40cm x 28cm. £40-£60

168

Leonard Baskin (American), pencil signed montage of dogs. £100-£150

169 ✓

Ian Houston born 1934, "The Harbour Douarnenez, 1974", signed oil on board, 40cm x 61cm. £400-£600. See illustration.

170

Peter Burman born 1950, landscape study, signed watercolour, 54cm x 75cm. £100-£150. See illustration.

171 ✓

Hugh Boycott Brown 1909 - 1990, study of river barges and other sailing vessels at sea, signed oil on board, 44cm x 59cm. £250-£350. See illustration.

172

An Art Deco walnut bedside cabinet, enclosed by a single door, 37cm wide. £40-£60. See illustration.

173

An Art Deco German made sideboard, fitted three central drawers, flanked by cupboards raised on square supports, 115cm wide. £40-£60

174

A world globe on stand. £10-£20

175

An HMV record player. £20-£30

176

A mid-20th Century wire work magazine rack. £15-£20

177

A 1960's G-plan sideboard from the Fresco range, designed by V.B. Wilkins, 152.5cm wide. £60-£80

178

A leather model of a hippo, 46cm long. £60-£100

179

An Art Deco marble mantel clock by Jacques, decorated with a spelter figure of a recumbent panther, 46cm long. £30-£50. See illustration.

180

Susie Cooper, a white glazed baluster vase, 19cm high. £20-£30

181

A teak sideboard designed by Richard Hornby, 153cm wide. £60-£100

182

A Sasaki shallow glass dish, having deep etched decoration of a swan, 32cm dia. £60-£80

183

A heavy cut glass punch bowl, 42cm dia. £20-£40

184

A Liberty & Co. Tudric Arts & Crafts pewter tea set; and a Tudric mustard pot with original green glass liner. £20-£30

185

A large Dartington glass vase, 25cm high; and three Whitefriars style coloured glass vases (4). £20-£40

186

A 1960's vintage Smiths slate clock; a plated toast rack; and a metal sculpture, (3). £15-£25

187

A bronze coloured plaster bust of a young child, impress to plinth D Bruccini & Co. London No.28/57, 35cm high. £40-£60. See illustration.

188

A Langham glass charger, with orange tinted rim, 34.5cm dia.; and two Carnival glass fruit bowls, (2). £20-£40

189

A teak G-plan design sideboard, fitted central drawers flanked by double cupboard and drop flap drinks compartment, raised on square section supports, 204cm wide. £60-£100

190

A circular teak G-plan design coffee table, the top inset with four bevelled glass segments, 88cm dia. £20-£30. See illustration.

191

A large Italian marble topped coffee table, raised on bronzed rounded supports, 139cm. £200-£300

192

A large oval plate glass and marble column coffee table, 129cm. £100-£200

193

A continental coffee table with marble and onyx inset top, raised on rounded tapering club shaped supports, 124cm wide. £40-£60

194

A bronzed double dogs head sculpture, 40cm long. £80-£120

195

A pair of glass conical shaped table lamp bases, 33.5cm high. £40-£60

196

Four 1960's design floor lamps. £100-£150

197

An embroidered multi coloured bird wall hanging. £20-£30

198

After Tretchikoff, "The Weeping Rose", 63cm x 50cm. £20-£40

199]

A collection of various Art Books, Esquire magazines etc. £10-£20

200

A set of five Beswick graduated flying ducks. £80-£120



Lot 171



Lot 172



Lot 179



Lot 187



Lot 190



Lot 201



Lot 222



Lot 223



Lot 232



Lot 233

201

A Perspex framed photograph, depicting a turquoise coloured camper van, 78cm x 54cm. £10-£20. See illustration.

202

Vivien Foster, "Winter landscape with red jug"; "Night piece with green moon"; and four various other abstract studies, (6).

£40-£60

203

A 1970's teak wall unit, enclosed by glazed doors with drawers below, 91cm wide x 162cm high. £20-£30

204

A 1970's teak corner cupboard, enclosed by a pair of glazed doors, 77cm wide overall x 127cm high. £20-£40

205

A Parian style bust of a pilot, raised on marblised column, 26cm high. £40-£60

206

A 1970's teak cabinet, having glazed upper section and cupboards to base, 90cm wide x 155cm high. £20-£40

207

Three Blue Mountain pottery animal ornaments. £10-£20

208

A pair of bronzed candlesticks in the form of foxes, 18cm high. £100-£150

209

A French four piece tea set, of baluster form. £50-£80

210

A Portwood furniture wall unit, fitted open shelves drawers, and drop flap compartment 102cm wide x 164.5cm high. £30-£50

211

A 1960's teak side table, 61.5cm wide. £10-£20

212

A teak "Home Office" folding writing desk, 82cm wide x 54cm deep x 113cm high. £40-£60

213

Veronica Wood, 1970's print framed and glazed 51cm x 62cm. £20-£30

214

Edwin Harris, country landscape, signed watercolor 75.5cm x 57cm. £40-£60

215

A framed and glazed Gilbert & George Tate Modern Exhibition poster, 87cm x 67cm. £20-£30

216

A larger similar. £20-£30

217

After Sir William Russel Flint, nude profile studies 12cm x 20cm. £10-£20

218

F.B.Wright, pair of pencil signed limited edition etchings, framed as one "classical"; Hilary Paynter limited edition print "The Wall" 52/100; and two floral prints, (4).

£20-£40

219

Two abstract floral prints. £10-£20

220

20th Century school, study of Cornhill Ipswich, indistinctly signed watercolour 18.5cm x 22.5cm. £20-£30

221 ✓

Keith Baynes, study of "Riquewhir Alsace", France, signed watercolour dated 1973, 25.5cm x 30cm. £200-£300

222 ✓

John Pryke, study of a figure stood on the foreshore, signed oil on board, 60cm x 88cm. £250-£350. See illustration.

223

Eastwood '66, abstract study depicting fish, signed oil on board, 73.5cm x 50cm. £40-£60. See illustration.

224

J Lubback, study of fungi, pallet knife on board, signed and dated '74, 29cm x 39cm. £20-£30

225

Colin Moss, study of a nude woman, dated verso 1974, signed oil on canvas, 32cm x 62cm. £200-£300

226

A framed and glazed floor plan of a city bank. £10-£20

227

Paula Couling, "An Evening By The Avon", signed oil on canvas, 30cm x 40cm. £40-£60

228

John Yardley, study of The Bell at Wylve, signed watercolour, 33cm x 47cm. £80-£120

229

Leslie H Moore, study of Barton Broad, signed watercolour, 38cm x 55.5cm. £100-£150

230

After S.C.Hiele, coloured print "Lying Nude" Z.B.'67; coloured print "Musician Amsterdam"; and an indistinctly signed watercolour of a ballerina (3). £30-£50

231

A.M.T. 1928, study of Walberswick watercolour 25.5cm x 37cm (foxed). £20-£40

232

John Doman-Turner, "The Kissing Bridge, Walberswick", unsigned watercolour, 25.5cm x 34cm. £100-£200 See illustration.

233

Francis Bowyer, "Storm Clouds over Walberswick", signed watercolour, 32cm x 44cm. £40-£60. See illustration

234
Jane Taylor, "Children By The Sea"
signed watercolour, 17cm x 26cm.
£20-£40

235
Tucker, still life study, signed oil on
canvas dated 1970, 76cm x 49cm.
£40-£60

236
Christo & Jean Claude, 9 swatches of
"The Gates" fabric New York, framed and
glazed. £20-£30

237
A framed and glazed dot picture, pencil
signed Steven Griffin 2017. £10-£20.
See illustration.

238
A set of eight limited edition Rijk Heuff
car prints. £50-£80

239
Doris (Michail Papageorgiou), 1896-
1987, study of mountainous landscape and
building, 76cm x 103cm. £100-£150

240
Doris (Michail Papageorgiou), 1896-
1987, study of a figure feeding chickens in a
village setting, signed oil on canvas, 58cm x
78cm. £100-£150. See illustration.

241
Doris (Michail Papageorgiou), 1896-
1987, study of a seascape, signed oil on
board, 48cm x 68cm. £100-£150

242
A grey painted window mirror. £50-£80

243
A grey painted arched door mirror.
£60-£80

244
A teak "Home Office" folding desk, 18cm
wide. £40-£60

245
An Ercol dresser, having shelved and
boarded back, four central drawers flanked
by cupboards. £100-£150

246
An Ercol sideboard, fitted two drawers
and cupboards under, 119cm. £80-£120

247
An Ercol D end extending dining table,
200cm x 112cm; and a set of eight matching
ladder back chairs. £100-£200

248
A teak G-plan style six drawer chest,
64cm wide. £20-£40

249
A teak G-plan style kneehole dressing
table, having triple mirrored back and six
drawers. £40-£60

250
A teak G-plan style gentleman's
wardrobe, enclosed by sliding doors, 91cm
wide. £20-£40

251
An Art Deco birds eye maple gent's
double wardrobe, by Wrighton 92cm wide.
£60-£80

252
A pair of Arts & Crafts oak galleon
decorated fire bellows. £100-£150

253
A Lalique Moissac vase, 13.5cm high x
16cm dia. Overall. £250-£350.
See illustration.

254
Two Venetian glass comports, raised on
scrolled stems and circular spread feet.
£20-£40

255
An Italian glass baluster vase, having
floral decoration on a yellow ground, 26cm
high. £60-£100

256
A Royal Doulton figurine, "The Sketch
Girl 444" (some damage to the toys), 18cm
high. £100-£200. See illustration.

257
A Murano glass clown decanter, 27cm
high. £20-£40

258
Four Wedgwood Keith Murray design
yellow ground mugs, 12cm high. £80-£120

259
A Danish Kastrup glass decanter of
pinched form, 25cm, with paper label.
£20-£40

260
A Wedgwood glass candle stand, 28cm
high; and a Venetian glass comport with
blue tinted rim, 19cm high (2). £40-£60

261
A set of six antique glass rummers, raised
on faceted baluster stems. £20-£40

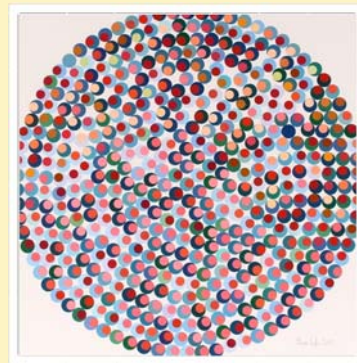
262
A small Studio multi coloured glass
baluster vase, 12cm high. £10-£20

263
A Caithness mauve tinted glass vase,
having etched decoration of a stag, 89cm; a
Caithness Moulin Rouge paperweight; and a
French crystal glass powder bowl and cover
(3). £30-£60

264
An Edwardian hobnail cut glass and silver
mounted claret jug, by the Goldsmiths &
Silversmiths Co., hallmarked London
1905, 19cm high. £80-£120. See illustration.

265
A Lalique "Hardi" vase, signed Lalique
France. £200-£300

266
A Latticino type pale blue wine glass with
spiral twist stem; and another with etched
foliate decoration, (2). £10-£20



Lot 237



Lot 240



Lot 253



Lot 256



Lot 264



Lot 270



Lot 277



Lot 278



Lot 283



Lot 312

267

A late Victorian novelty glass and silver mounted locking decanter, Birmingham 1898; a silver decanter label "Sherry"; and a plated label "G"; together with a plated lever padlock. £60-£100

268

A Lalique style glass baluster vase, decorated with birds. £100-£150

269

Two Lalique style glass graduated bowls, having leaf decoration to the rims. £100-£150

270

An unusual mauve and pink painted wooden sculpture. £10-£20. See illustration.

271

A pair of cut glass and silver mounted spill vases; a Vincenza bag shaped blue glass posy vase; various other coloured glassware etc. £40-£60

272

A plated cocktail shaker, with integral mixing menu. £20-£40

273

A large Art Deco design clear and black glass fan shaped scent bottle. £50-£80

274

A large Art Deco design clear and pink glass fan shaped scent bottle. £50-£80

275

A Vidor "My Lady Anne" boxed radio. £20-£40

276

A Murano glass swan posy holder; and a green glass similar (2). £20-£40

277

A blue cased Murano glass vase. £20-£40. See illustration.

278

A Doulton stoneware baluster vase, decorated raised floral panels on a mottled green ground, initialed E.B. to the base, 27cm. £30-£50. See illustration.

279

Two 1970's Italian soda syphons. £25-£35

280

An unusual 1930's Russian circus acrobat toy. £60-£80

281

A Royal Winton vase; a Crown Devon vase; and a Doulton baluster vase with flower and fruit decoration AF, (3). £20-£40

282

A set of six German hock glasses, with ringed green baluster stems. £10-£20

283

A Mihai Topescu Cambra vase. £120-£160. See illustration.

284

A Poole pottery baluster vase, stylised decoration on a mottled brown ground, 31cm high. £20-£40

285

A Studio pottery brown glazed bowl; and two Studio pottery baluster jugs (3). £20-£40

286

A vintage carved African tribal art mask; together with an antique Australian Aboriginal boomerang with poker work decoration inscribed "Swan Hill Pioneer Settlement", (2). £30-£50

287

A red vintage Scavro glass vase; together with an early R Stennet Wilson Wedgwood paperweight; and a signed Studio glass ewer, (3). £10-£20

288

A Bernard Rooke vase, having raised stylised decoration; a smaller similar with butterfly decoration; and a mug, (3). £20-£40

289

A BYRRH menu card. £15-£20

290

Two 1940's Beatrix Potter decorated tin children's tea trays. £10-£20

291

A pair of 1960's twin wall lights. £10-£20

292

A teak two tier coffee table, 90cm wide. £10-£20

293

A square metal industrial style wall mirror, 90cms x 86cms. £150-£250

294

A large chrome wall light, 36cms long. £40-£60

295

An Art Deco barometer, with storm glass; and another wall mounting barometer, (2). £20-£30

296

An Edwardian inlaid mahogany timepiece; two Bakelite mantel clocks; and an oak cased clock. £20-£30

297

A Victorian sunflower pattern pottery oil lamp, with etched glass shade AF. £10-£20

298

A set of four Japanese erotic prints. £80-£120

299

A pair of large gilt wood lamp bases, 90cm. £80-£120

300

A large Art Deco design square segment wall mirror, 76cms x 119cms. £100-£150

301

An Art Deco chrome and faux tortoiseshell folding tea trolley, 68cms. £25-£35

302

A large Venetian design wall mirror, having shaped borders, 180cm x 90cm. £100-£150

303

A teak G-plan design coffee table, 117cms long. £40-£60

304

An Art Deco design armchair, by Donghia, John Hutton design. £40-£60

305

A large Art Deco square section mirror, with black glass slip panels and roundel decoration, 151cm x 111cm. £80-£120

306

A large Studio pottery platter, indistinctly signed verso; a Ruskin pottery coffee can and saucer; Van Briggle Studio pottery bowl and matching vase; and three other items, (7). £20-£40

307

A Vee Jay Records Beatles album, bearing signature for the band members; and another album "Introducing The Beatles" (2). £40-£60

308

A pair of Vaseline glass light shades. £20-£40

309

A modern crystal prism drop light fitting. £80-£120

310

An Art Deco design table mirror, in the form of a dancing lady on marble plinth, 28cms. £20-£30

311

A Henry Winterman's shop cigar display case, 38cms x 27cms. £20-£30

312

A Leica M2 camera, and various accessories including spare lens, carrying case etc. £100-£200. See illustration.

313

An Art Deco amber coloured bead necklace, with flower head motifs; and a similar buckle brooch. £40-£60.

See illustration.

314

A gold and garnet set pendant hung to a fine link chain. £40-£60. See illustration,

315

A yellow metal necklace, of woven design, marked 916 with 9 carat gold clasp, 19gms; and a yellow metal fine link necklace, 3gms, (2). £300-£500

316

An 18ct gold diamond and pale blue stone set ring; and an 18ct gold and platinum diamond and blue stone set ring, (2). £100-£150. See illustration.

317

A 1911 gold sovereign. £180-£220

318

A cased pair of 9ct gold cuff-links with engine turned decoration, approx. 6.3gms. £40-£60

319

A 22ct gold wedding band, approx. 5.7gms; a small 9ct gold chain with padlock clasp; a 9ct gold signet ring AF; a 9ct gold bar brooch approx. 5.7gms; and a white metal cross on fine link chain., £100-£150

320

An Art Deco design Thompson Wilkins yellow metal wrist watch, on expanding strap. £10-£20

321

A "Dunlop 2" Brevette fob watch, number 107244. £100-£150. See illustration.

322

A silver Art Nouveau 925 mark napkin ring; two electroplated Art Nouveau design salts with blue glass liners; two small silver photograph frames; and a silver mounted Art Nouveau decorated brush, (6). £40-£60

323

A vintage Bulova wrist watch in original case. £150-£250

324

A cased set of six silver gilt and variously coloured enamel coffee spoons, with pierced coronet terminals. £20-£40

325

A cased set of silver and enamel decorated coffee spoons, with seal end terminals. £20-£40

326

An 18ct gold and platinum round diamond cluster ring. £80-£120

327

A 9ct two colour gold bracelet; and a 9ct gold fine link neck chain, approx 10.7gms, (2). £100-£150

328

A 9ct gold curb link chain, approx 12.3gms. £100-£150

329

A 9ct gold charm bracelet, gross weight approx. 37.4gms total. £300-£400.

See illustration.

330

A gold signet ring, set oval bloodstone and a pair of oval onyx set yellow metal cuff-links. £100-£150

331

An 18ct gold wedding band, with hatched decoration; a 9ct gold ring set with a single pearl; and a 9ct gold filigree work ring set oval onyx panel. £100-£150

332

An Arts & Crafts Sterling silver and jade green enamel brooch; together with an antique white metal bracelet set with cabochon green chrysoprase; and a pair of vintage Art Deco green ear-rings. £50-£80

333

Four Charles Horner silver hat pins. £80-£120



Lot 313



Lot 314



Lot 316



Lot 321



Lot 329



Lot 336

334

A Dunhill "Rollagas" lighter, in original fitted case. £20-£40

335

A white metal, black and white diamond set ring, stamped 585; and a pair of matching ear-rings also stamped 585. £300-£500

336

A modern white metal square diamond cluster ring, set central stone, approx. 1 carat, surrounded by 12 smaller stones totaling approx. 1.2 carat, stamped 750, overall weight approx. 9gms. £1,800-£2,200. See illustration.

337

A three stone ring, set central ruby flanked by diamonds, approx. total diamond weight 0.42 carat, marked 750, approx. 6gms total weight. £250-£350

338

A pair of yellow and white metal ruby and diamond set ear-rings, stamped 750; and a yellow and white metal ruby and diamond cross-over ring, approx. total weight 11 gms. £300-£500

339

A Georg Jensen salt, having stylised floral handle and blue glass liner. £20-£40

340

A Victorian silver brooch, having pierced foliate and cherub decoration. £40-£60. See illustration.

341

An unmarked white metal Art Nouveau brooch, with female head and foliate scroll decoration. £20-£40. See illustration.

342

A string of Jade coloured beads. £30-£50

343

A white metal and enamel decorated Art Nouveau design pendant. £30-£50

344

A white metal and enamel heart shape Vesta. £40-£60

345

A white metal owl sovereign case. £40-£60

346

A white metal and coral coloured floral cluster ring. £15-£25

347

A small oval white metal pill box, decorated with a panel of horse and rider. £30-£50

348

A small white metal stamp case. £20-£30

349

A white metal and moonstone type dress ring. £20-£30

350

A white metal and turquoise set pendant. £20-£30

351

A white metal and enamel decorated butterfly brooch. £30-£50. See illustration.

352

A white metal and multi-coloured stone pendant. £20-£30

353

A large Indian white metal table cigarette box, with presentation inscription and numerous signatures, 25cm long. £40-£60

354

A silver Art Deco cigarette case, with engine turned decoration and monogram. £20-£40

355

A Vintage Michaelson Danish silver leaf brooch and original box, having stamp marks. £30-£50

356

A 1990's Longines wrist watch. £50-£80

357

A silver cased carriage clock, by Liberty & Co., the blue and green circular enamel dial reading "FESTINA LENTE", surmounted by an angular swing handle and raised on four bun feet, hallmarked for Birmingham 1907, numbered 5302, 10cm high including the handle. £1,000-£1,500. See illustration.

358

A white metal Teddy Bear child's rattle. £40-£60

359

A silver cigarette case, decorated with later oval enamel panel of a horse's head. £100-£150

360

A silver cheroot case, having later enamel panel decoration of a naked girl playing a mandolin, 12.5cms. £250-£350

361

A silver cased travelling timepiece, with white enamel dial, green Arabic numerals, contained within a fitted square hinged case, by Neal & Sons Ltd., Birmingham 1933, 9cms. £150-£250

362

A Lalique Dahlia dressing table jar and cover, 9cm dia. £60-£80

363

A Waltham marine chronometer, in fitted mahogany and brass mounted case. £200-£400

364

A cased silver mounted manicure set; various silver mounted dressing table items etc. £60-£100

365

A cased three piece silver mounted dressing table set. £40-£60

366

A collection of Art Deco table knives, contained in two cases. £15-£20



Lot 340



Lot 341



Lot 351



Lot 357

367

A four piece silver backed dressing table set. £40-£60

368

A decorative crystal necklace. £50-£80

369

A pair of plated salts, in the form of frogs pulling shells. £40-£60

370

A pair of plated salts, in the form of seated dogs with their food bowls. £40-£60

371

A Georg Jensen bottle opener. £80-£120

372

A quantity of various silver backed dressing table items; a cut glass and silver mounted tidy jar; three silver topped glass bottles; three silver napkin rings and a matchbox holder. £150-£250

373

A bronzed inkwell, in the form of a dog and puppies, 13cms. £60-£80

374

A bronzed figure of a girl lifting her skirt, 16cms. £50-£80

375

A carved Art Deco Bakelite bangle; together with coral pink and jade green bangles and a boxed Art Deco brush and comb set. £15-£25

376

A silver tankard, with lined body decoration, Sheffield 1945, 11ozs. £80-£100. See illustration.

377

A 1920's frosted glass and electro plate mounted ice bucket, with bear decoration to the handles. £60-£80

378

A cut glass and electro plate mounted perfume atomiser; an amethyst glass perfume bottle with ribbed decoration; and a glass perfume bottle for Guerlain Apres L'Ondee, Paris, (3). £40-£60

379

Hugo Berger Goberg attributed, an unusual Arts & Crafts wrought iron oil lamp in the form of a fire breathing dragon. £30-£50

380

A spot hammered Art Deco pewter three piece tea set. £20-£40

381

A rare Arts & Crafts copper and brass jardiniere, designed by Arthur Dixon, circa 1900, stamped marks. £50-£80. See illustration.

382

A ruby Art glass bell shaped vase; a green and pink ribbed overlaid glass vase; a small green glass tankard; and a millefiore type baluster two handled vase, (4). £20-£40

383

A WMF inkwell, decorated with leaves and berries, 20cm. £60-£80. See illustration.

384

A WMF style group, (possibly a lid or surmount), in the form of a child and dog. £20-£40

385

A WMF style tray, numbered 240, profusely decorated with foliate scrolls and flowerheads with a central panel of a semi-naked maiden and cherub, 32cms. £20-£30

386

A Swiza mantel clock, 10 cm high. £10-£20

387

A Schuco clockwork dog. £20-£40

388

A Nora Wellings doll. £10-£20

389

A pair of bronzed book-ends, in the form of red Indian heads, registration mark verso, 14cm high. £60-£80

390

A tea caddy, in the form of a pear. £100-£150

391

An unusual bronze bust, in the form of a native figurehead, 8cms high. £40-£60

392

Tom Greenshields, resin bronzed figure of a seated nude girl, 15cm high. £100-£200. See illustration.

393

An Art Deco six piece white metal cruet. £20-£40

394

A WMF Art Nouveau dish holder, with profuse pierced ivy and berry decoration; and a similar twin handled comport, (2). £30-£40

395

A plated desk stand, in the form of a Norfolk golfer flanked by a golf ball shaped inkwells and pen rest. £80-£120. See illustration.

396

A 1930's Bakelite desk stand; and a Bakelite match-holder. £20-£40

397

A 1930's draught set, contained in ebony box; a cased set of dominoes etc. £20-£40

398

A pair of Carl Zeiss binoculars, cased. £20-£40

399

A beadwork Art Deco ladies evening bag and belt. £40-£60

400

A plated three piece cruet, of golf ball form; and a golf ball decorated double ended spirit measure. £10-£20



Lot 376



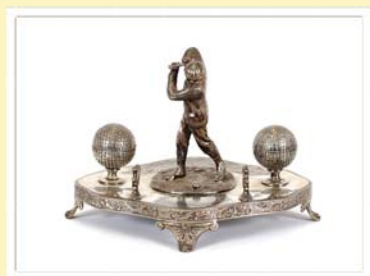
Lot 381



Lot 383



Lot 392



Lot 395



Lot 401

401

A Lorenzl style spelter figure, on marble plinth base, 22cm, AF. £20-£30.

See illustration.

402

A novelty brass Vesta case, in the form of a pig; and another of a horseshoe, (2).

£40-£60

403

A jade style Dog of Fo seal. £40-£60

404

A white metal and jade style ear-ring and pendant set. £20-£40

405

A Bally leather handbag, together with a Vintage snake skin clutch bag with original chain, (2). £15-£25

406

Rachael Sumner, an original handpainted silk tie, decorated with mallards; and another vintage painted silk tie by Mary Sumner, (2). £20-£30

407

A Liberty of London silk tie, (unworn with tags); and two vintage Berketex ties. £10-£20

408

Two Hugo Boss silk ties. £10-£20

409

Two vintage Eros leather handbags, with original labels and care instructions. £15-£25

410

A Murano glass fish shaped paper-weight; two pairs of amethyst glass spill vases; a Whitefriars type shallow bowl; and a wine glass, (7). £10-£20

411

John Chipperfield, shallow Studio pottery bowl with swirled floral decoration. £20-£30

412

C.F.A. Voysey, designer, an Alice in Wonderland handpainted tile stand.

£20-£30

413

An Art Nouveau Austrian iridescent glass vase; together with another unusual glass vase attributed to Marie Kirschner for Loetz, (2). £50-£80

414

An Art Deco Mellaware pottery Toby jug, in the form of Mr Punch, 18cm high. £10-£20

415

A turquoise glazed Studio pottery bottle vase, 22cms high. £20-£30

416

An unusual French Art Nouveau porcelain vase, decorated in raised gilt with bees, possibly by Emile Galle, 9cms high. £15-£25

417

A Poole pottery Delphis dish, shape 82, by Anita Lawrence, 44cm. £20-£40

418

A Poole pottery Delphis dish, shape 82, 43cms. £20-£30

419

An Art Deco racing car teapot, having silver lustre decoration, 25cm long. £60-£80

420

A blue tinted glass baluster vase, inscribed to the base "The Foundry 86"; 10cms high; and a coloured glass scent bottle in the oriental style, 10.5cms high, (2). £20-£40

421

A Millefiore glass paper-weight, having central gilt decoration of a kneeling maiden amongst flowers and butterflies; and two other modern glass paper-weights, (3). £20-£40

422

A pair of Kosta World Wild Life Fund limited edition glass models of seals. £20-£40

423

A Poole pottery Delphis plate, decorated by Angela Wyburgh, 27cms dia. £20-£40. See illustration.

424

A Poole pottery Delphis shallow dish, having brightly coloured decoration, 27cms dia. £20-£40. See illustration.

425

A Poole pottery shape 3 plate, by Sally Campbell, 20.5cms dia. £20-£40

426

A Poole pottery shape 4a plate, by Valerie Pulham, circa 1974, 25.5cms dia. £20-£40. See illustration.

427

A Poole pottery beaker shaped vase, by Carole Holden, 15cms high; a Poole pottery Delphis shallow dish, shape 56, 16cms dia.; and a Poole pottery pedestal dish, 14.5cms dia., (3). £40-£60

428

A Poole pottery Aegean rectangular dish; a Delphis ware similar by Rosina St Clare; a pair of triform shaped Poole pottery dishes by Janet Laid; and a circular dish, (5). £40-£60

429

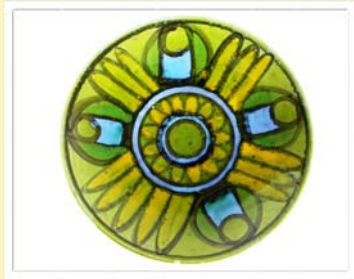
A Poole pottery Delphis ware shallow dish, decorated by Loretta Lee, circa 1970; and two others, (3). £20-£40

430

A Bristol Longline kitchenware pouring bowl, decorated with kitchen utensils; and a Gray's pottery handpainted plate with floral decoration, (2). £40-£60

431

An Art Deco Gobel pottery face mask, depicting a young girl with rose in her collar and ribbon to her hat, impressed mark to the reverse and stamped F.X.47, 21cms. £50-£80



Lot 423



Lot 424



Lot 426



Lot 432

432

A Royal Dux Art Deco figure of a young girl, with brightly coloured trousers and hat, 16cms high. £80-£120. See illustration.

433

A German porcelain Art Deco figure, depicting a dancing girl, 23cm high. £80-£120. See illustration.

434

A William Goebel porcelain wall plaque, depicting a dancing girl in flowing dress with black surround, impressed mark to base, 24cms dia. £100-£150. See illustration.

435

A Czechoslovakian handpainted porcelain face mask, depicting a girl with orange collar, 17cms. £50-£80. See illustration.

436

A Goebel porcelain face mask, depicting a girl with checked scarf and hat, impressed mark verso, F.X.63/2, 18cms. £50-£80

437

A continental porcelain Art Deco face mask, 18cms. £50-£80

438

A Langley ware porcelain face mask, depicting young girl with an orange collar, 18.5cms. £50-£80

439

A Royal Lancastrian baluster vase, having blue stylised decoration on a grey ground. £20-£40

440

Two Whitefriars design nobbled glass vases; and two heavy glass tinted shallow bowls, (4). £20-£40

441

A Charlotte Rhead baluster vase, by Crown Ducal, pattern number 152, signed to base, 15cms high. £40-£60. See illustration.

442

Five early 20th Century liqueur glasses, having painted decoration of flowers on faceted stems. £20-£30

443

A Vaseline glass shallow bowl; and a Latticino glass bottle vase, (2). £20-£30

444

A Shelley cream jug, with stylised floral decoration on black ground; and a small white metal overlaid pottery spill vase, 8cms high, (2). £20-£40

445

A Colin Hawkins for William Yeoward, ribbed yellow glass vase, 12cms high. £20-£40

446

A Moncrieff Monart glass vase, with original label to base, 18cms high. £60-£80

447

A Crown Devon pottery model of a golfing caddy, 9cms high. £10-£20

448

A Caithness apple paper-weight; and another, (2). £20-£40

449

A large blue glazed pottery rabbit, 22cms long; and a small Zsolney rabbit eating a leaf, 10cms, (2). £40-£60

450

A green glazed ginger jar and cover, with raised lily pad and bird decoration; and an unusual pottery baluster jug by Bernard Rackham, with inscription to base dated London 1935. £40-£60

451

A Crown Devon posy decorated butter dish and cover; and a continental porcelain mug decorated with cottages, the base with translucent study of a boy and dog, (2). £15-£20

452

A Poole pottery Delphis ware vase, having stylised decoration on an orange ground, 8cms high. £10-£20

453

A set of 12 Ercuis crystal napkin rings, boxed. £40-£60

454

A Clarice Cliff Goldstone vase, 20.5cms high. £30-£40

455

A Wilkinson Staffordshire pottery Memory Lane jardiniere; and a Arabesque pattern cake plate, by John Guildford, (2). £30-£40

456

A Clarice Cliff Crocus pattern tea cup; a Clarice Cliff circular preserve dish, (lid missing); a Lovatts green glazed wall pocket with bird and floral decoration; and two Art Deco figures, AF. £60-£80

457

A Clarice Cliff Celtic Harvest preserve pot, with chrome plated cover. £15-£25

458

Two Art Deco porcelain figure dishes. £60-£80

459

A chrome table lighter in the form of a fighter jet. £30-£40

460

An Art Deco walnut cased Beau-Decca radiogram, 75cms high. £300-£500

461

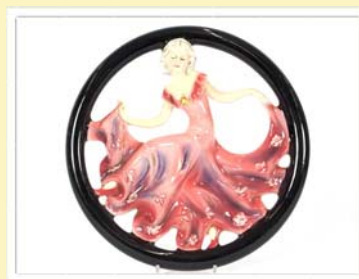
An Art Nouveau inlaid panel, 24cms x 132cms. £80-£120

462

A pair of painted Spelter Marley horses, after Coustou, 53cms high. £50-£100.



Lot 433



Lot 434



Lot 435



Lot 441



Lot 470



Lot 477



Lot 478



Lot 479



Lot 482

463

Doris (Michail Papageorgiou), 1896-1987, study of fish, signed oil on board, 48cms x 69cms. £100-£150

464

Doris (Michail Papageorgiou), 1896-1987, figures by the sea, signed oil on board, 48cms x 68cms. £100-£150

465

Phil Griffin, pencil signed limited edition lithograph, "Level Two". £20-£30

466

An octagonal brass framed wall mirror. £30-£50

467

Peter Scott, coloured print of ducks in flight, pencil signed with trade guild stamp to the margin. £30-£50

468

James P. Power, study of a Cornish fishing village, signed watercolour, 27cms x 37cms. £60-£80

469

James P. Power, study of a Cornish fishing village, street scene, signed watercolour, 28cms x 38cms. £60-£80

470

20th Century school, oil on canvas, still life study, 54cms x 45cms. £20-£30. See illustration.

471

An original surrealist abstract oil painting on canvas, depicting an ice skater, 76cms x 55cms. £20-£30

472

Louis Rosan, a large coloured print of La Rochelle, inscribed to mount, Red Cross Picture Library, in vintage oak frame. £15-£25

473

Tommy Lowry Tjapultjarri, a framed and glazed Australian Aboriginal painting Exhibition poster 1987. £15-£25

474

Robert Sadler, girl with red scarf, acrylic on panel, label verso Studio Exhibition 1980, 100cms x 79cms. £80-£120

475

Robert Sadler, "Long Boat Ascot 1986", signed acrylic on board, Studio Exhibition label 1987 verso, 26cms x 19cms. £100-£150. See back cover illustration.

476

Anne Wallace, "Fishing boat Dieppe", signed watercolour, 14cms x 18cms. £20-£40

477

Robert Sadler, girl in a landscape, signed acrylic on board, Studio Exhibition label verso 1986, 25cms x 30cms. £80-£120. See illustration.

478 ✓ Ian Houston, born 1934, "Barns in the snow, Happisburgh", 21cms x 26cms, unsigned oil on board. £300-£400. See illustration.

479 ✓

Ian Houston, born 1934, fishing boats unloading catch, possibly Dunwich, signed oil on board, 21cms x 26cms. £300-£400. See illustration.

480

Connie Winn, "Peaceful surroundings", 27cms x 20cms. £80-£120

481

Robert Sadler, "Marsh Farm", signed acrylic on board, Studio Exhibition label 1981, 30cms x 40cms. £100-£150

482 ✓

Ian Houston, "Calm morning Treboul", signed oil on board, 24.5cms x 34.5cms. £400-£600. See illustration.

483

Hercules Brabazon Brabazon, (1821-1906), preparatory watercolour sketch entitled "The sunny garden", pencil signed with initials HBB, 13cms x 18cms. £100-£200

484

Robert Sadler, "Red Flowers", signed acrylic on board, Studio Exhibition label 1989, 36cms x 26cms. £80-£120

485

Robert Sadler, abstract study, signed acrylic on board, 36cms x 25.5cms. £80-£120

486

Robert Sadler, "Girl Four", signed acrylic on board, Studio Exhibition 1980, 38cms x 28cms. £100-£150. See illustration.

487

Morris Sheppard, "Mossy branch at Reynaldston", signed oil on board, 19cms x 13cms. £60-£80

488

A set of six chrome and perspex dining chairs. £80-£120. See illustration.

489

A pair of traditional wing back easy chairs, upholstered in gold coloured dralon. £40-£60

490

A set of four teak G plan design ladderback chairs. £40-£60

491

A set of six G plan design slat back dining chairs, (four standards and two elbows). £60-£100

492

A set of six brown leather upholstered "Tommy" dining chairs. £30-£50

493

A set of six Gordon Russell design office chairs. £40-£60

494

A 1960's walnut tea trolley, with detachable tray top. £10-£20

495

A 1960's teak coffee table, raised on rounded tapering supports and copper feet. £10-£20

496

A pair of Ercol stick back child's chairs. £40-£60

497

An Art Deco octagonal mahogany two tier occasional table. £10-£20

498

A light Ercol extending dining table, fitted two extra leaves, 222cms long x 90cms deep. £100-£200

499

A 1960's J & G Meakin Studio tea and dinner service. £15-£25

500

A 1930's oak reclining armchair, with ratchet adjustable back. £40-£60

501

A black leather armchair, on castors. £20-£40

502

A teak G plan design bookcase, the adjustable shelf enclosed by glazed sliding doors with drawers below, 109cms wide. £20-£40

503

A 1970's teak coffee table, with under-tier, raised on rounded tapering supports. £10-£20

504

A 1970's teak coffee table, raised on blackwood under-tier base. £10-£20

505

A vintage brown leather and chrome office chair. £40-£60. See illustration.

506

A 1950's sideboard, fitted four drawers and double cupboard, 153cms wide. £40-£60

507

A brass bird cage. £40-£60

508

Three various wooden duck ornaments. £40-£60

509

A decorative brass three light table lamp, with brown metal shade; and another similar, (2). £20-£40

510

A Beautility sideboard, fitted central drinks compartment and flanked by cupboards, raised on square tapering supports, 161cms. £20-£40

511

A vintage signed photograph of Tyrone Power, contained in leather easel frame. £40-£60

512

Doris (Michail Papageorgiou), 1896-1987, study of buildings beside the sea with mountainous background, signed oil on canvas, 69cms x 118cms. £100-£150

513

Doris (Michail Papageorgiou), 1896-1987, study of a mountainous village with sea in the far ground, signed oil on canvas, 61cms x 103cms. £100-£150

514

Doris (Michail Papageorgiou), 1896-1987, study of pheasants in forest landscape, signed oil on canvas, 50cms x 101cms. £60-£80

515

A teak G plan design folding desk, with interior shelves and trays, 121cms. £20-£40

516

A KB cream Bakelite radio. £40-£60

517

An Ecko cream Bakelite radio. £40-£60

518

A Urania Art Nouveau pewter basket, decorated with cherries, having loop handle, 35.5cm. £20-£40

519

A Burleigh ware Zenith breakfast set, having floral decoration. £25-£35

520

A French Art Deco pottery fruit bowl, with floral spray decoration. £10-£20

521

An Art Deco Betzy Augeron pottery vase, having pierced body and floral decoration. £30-£50

522

A teak G plan television cabinet, 81.5cms wide. £10-£20

523

A vintage mid 20th Century large industrial angle poise lamp. £30-£50

524

A light elm Ercol extending dining table, with extra leaf, 163cms wide x 112cms deep. £70-£100

525

A set of four light Ercol stickback dining chairs. £80-£120

526

Doris (Michail Papageorgiou), 1896-1987, study of figures in boats, buildings in the far ground, signed oil on board, 47cms x 68cms. £100-£150

527

Doris (Michail Papageorgiou), 1896-1987, study of figure standing by a tree, sea in the far ground, signed oil on board, 48cms x 68cms. £100-£150

528

A 1970's Italian folding chair. £100-£150. See illustration.



Lot 486



Lot 488



Lot 505



Lot 525



Lot 528

529

A large Art Deco design brass and opaque glass light fitting, 80cms dia. £100-£150

530

A teak G plan style coffee table, with under-tier and a smaller example with curved ends, (2). £10-£20

531

A light oak G plan style three drawer bedside chest. £20-£30

532

A handpainted 1920's Wedgwood dish; an Art Deco Sgraffito decorated vase; two Scottish handpainted side plates; and an early Collard Honiton bowl. £10-£20

533

A teak G plan design dressing table, fitted four drawers and raised on rounded tapering supports, 125cms wide. £20-£40

534

A pair of black chinoiserie decorated wall pockets. £40-£60

535

A table lamp, in the form of a Vespa. £60-£100. See illustration.

536

A teak G plan style sideboard, having drop flap, mirrored drinks compartment, display cabinet enclosed by glazed sliding doors and shelves below enclosed by tambour doors, raised on square tapering supports, 123cms wide. £20-£40

537

A metalware perfume atomiser; a wig powder pot; a flask etc. £10-£20

538

A French wooden and brass mounted coffee grinder, by Coulaux & Co. £40-£60

539

A teak G plan design oblong coffee table, raised on open end supports united by an under-tier. £10-£20

540

A pair of light Ercol stickback kitchen chairs. £20-£40

541

A teak G plan extending dining table, 202cms x 119cms; and a set of 8 matching dining chairs, (six standards and two elbows). £100-£200

542

Two Toleware type lamp bases. £40-£60

543

Bruce Nauman, American, "Body Pressure 1972", framed and glazed text, 75cms x 58.5cms. £10-£20

544

A pair of tall Bretby pottery vases, of cream colour with raised leaf decoration, 51cms. £100-£150

545

A tall pottery figure depicting a partly naked woman, sheltering under a cloak,

75cms high. £20-£40. See illustration.

546

A Minton "Summer" pottery charger, 42.5cms dia. £40-£60. See illustration.

547

Otto Drews, Berlin charger, painted with Iznik design, 36cms dia. £50-£80

548

An unusual spot hammered copper shaped dish, having stylised decoration, 48cm. £20-£40

549

A heavy white painted circular occasional table, raised on rounded supports, 59.5cms dia. £20-£40

550

An Art Deco design circular two tier occasional table, with radially veneered top, 61cms dia. £20-£30

551

A pair of Lily Bollinger style champagne coolers. £60-£80

552

A teak G plan design low occasional table, with pull-out coffee table and end compartment, 88cms wide. £20-£40

553

A 1960's teak two tier tea trolley, having lift-out tray top. £10-£20

554

A pair of walnut and marble French Art Deco bedside cabinets. £150-£200.

555

A 1950's light wood extending coffee/occasional table, 132cms fully extended, stamped to the base 925 Foreign. £20-£30

556

Three retro spot table lamps, mounted on a block base. £10-£20

557

A pair of Ercol stickback child's chairs. £20-£40. See illustration.

558

A teak G plan design D end extending dining table, with extra leaf, 200cms x 107cms fully extended; and a set of 8 matching slat back dining chairs, (six standards and two elbows). £100-£200

559

A Susie Cooper dinner service, having foliate spray decoration within green band, comprising soup cups and lids, side plates, dinner plates, serving plates etc. £60-£80

560

A teak G plan design drop leaf dining table, raised on shaped end supports, 91cms x 133cms. £30-£50

561

A teak G plan design two tier tea trolley, with foldover top, 72cms. £20-£30

562

A Swedish black adjustable floor lamp. £10-£20



Lot 535



Lot 545



Lot 546

563

A faux walnut and steel kitchen table, 90cms x 180cms. £40-£60

564

A set of four teak G plan design rail back dining chairs. £20-£40

565

A decorative glass circular occasional table, raised on a spiral stepped column and circular base, 61cms dia. x 51cms high. £60-£80

566

A decorative bevelled glass hall table, raised on stepped end supports, 110cms wide. £60-£80

567

A G plan teak tile top coffee table, of oblong shape, 123cms. £20-£40

568

A silvered model of a greyhound, 47cms high. £50-£80

569

A pair of light Ercol stickback kitchen chairs. £20-£40

570

A set of four beech and chrome retro stacking chairs. £40-£60

571

A pair of light Ercol stickback elbow chairs. £80-£120

572

An oak Arts & Crafts design railback three seater bench, raised on square section supports united by stretchers, 126cms wide. £100-£150. See illustration.

573

A pair of aluminium and leather deep seated armchairs. £900-£1,200

574

An Art Deco oak floor standing shelving unit, 62cms wide. £10-£20

575

A 1930's faded leather deep seated club armchair. £300-£500. See illustration.

576

An Art Deco light oak magazine rack/occasional table, 65cms wide overall x 60cms high. £30-£50

577

An unusual Art Deco "rise and fall" cocktail table, of circular form, 72cms dia. £100-£150. See illustration.

578

A 1960's occasional/coffee table nest, designed by Poul Hundevad, 62cms. £20-£40

579

A set of four Tromborg Mobelfabrik teak dining chairs. £200-£400

580

A 1960's/70's teak effect sideboard, fitted central drawers flanked by double cupboards, raised on rounded tapering supports, 176cms. £40-£60

581

A Marcel Breuer Wassily type leather and chrome easy chair £250-£450.

582

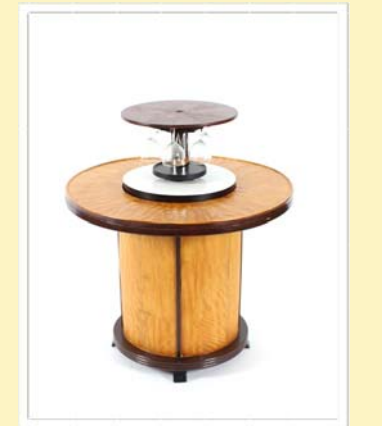
A Marcel Breuer Wassily type leather and chrome easy chair. £250-£450



Lot 572



Lot 575



Lot 577

Clarke and Simpson are pleased to offer a packaging and shipping service worldwide though

"the-saleroom.com Delivery Service". The professional team will pack and ship items from very small non-breakables such as jewellery and coins though to larger and more fragile items such as paintings and works of art. Shipping and insurance is at the buyer's expense. Shipping payment must be made to

"the-saleroom.com Delivery Service" prior to departure and excludes local duties and taxes. Please note that Clarke and Simpson do not pack or

the-saleroom.com
delivery service



Droite de Suite Royalty Charges

From 14th February 2006, all United Kingdom Art Market professionals (which includes auctioneers) are required to collect a royalty payment for all qualifying Works of Art. Under new legislation which came into effect on the 1st January 2012, this applies to living artists and those who have died in the last 70 years. This payment is calculated on qualifying Works of Art which are sold for a hammer price more than the UK sterling equivalent of €1,000 (the UK sterling equivalent will fluctuate in line with prevailing interest rates calculated by the Artist's Resale Right Service Hub, based on the European Central Bank reference rate published at 2.15pm on the day of the sale, and can be found on www.dacs.org.uk).

All items in this catalogue that are marked "✓" are potentially qualifying items, and the royalty charge will apply if the hammer price is more than UK sterling equivalent of €1,000. The royalty charge will be added to purchase invoices, and must be paid before items can be cleared. All royalty charges are paid to the design and Artists Copyright Society (DACS) by the auctioneers and no handling costs or additional fees with respect to

TERMS AND CONDITIONS OF SALE

1. INTRODUCTION

The following defining terms are used in these conditions:-

“Auction”	Means any auction conducted by Clarke and Simpson Auctions Ltd. either at the premises owned by them or elsewhere (including any internet based auction);
“Auctioneer”	Means Clarke and Simpson Auctions Ltd. authorised auctioneer as appropriate;
“Bidder”	Means a bidder at an auction, including the bidders personally present at the venue and those bidding by telephone or over the internet or otherwise;
“Buyer”	Means the bidder whose bid was the last bid when the auctioneer concludes the bidding;
“Conditions”	Means these Terms and Conditions of Sale;
“Hammer Price”	Means the level of bidding reached (at or above any reserve) when the auctioneer brings the bidding to a close;
“Lot”	Means any property accepted by Clarke and Simpson Auctions Ltd. for offer at auction;

2. DESCRIPTION

No warranty is given or implied by the description in the catalogue. Each lot is sold in its condition at the time of sale with all faults, defects, imperfections and errors of description (if any). Whilst every endeavour has been made to describe the items adequately and properly, the purchaser shall deem to have inspected the lot at time of purchase. All catalogues and seller's and buyer's guides are for information only and do not form part of the contract.

3. STATUTORY REQUIREMENTS

Purchasers will be deemed to have satisfied themselves prior to purchasing regarding current legal requirements (e.g. Health & Safety at Work Act) and it is expressly brought to the bidders attention that equipment in the sale may not necessarily comply with such regulations. Any purchaser shall satisfy himself as to any statutory requirement for the use of any item and no liability shall rest with the vendors nor the Auctioneers.

4. THE AUCTION

All auctions are conducted at the absolute discretion of the auctioneer. The auctioneer shall conduct the auction with reasonable skill and care. The vendor reserves the right to sell subject to reserve price in respect of all lots. What constitutes a bid shall be at the absolute discretion of the auctioneer, acting with appropriate skill and care. The auctioneer shall have the right to refuse any bid in all cases but most notably when such a bid does not exceed the previous bid by at least 10% or such a proportion as the auctioneer shall in his absolute discretion direct. Where two or more bids at the same level are simultaneously received by the auctioneer, the auctioneer at his absolute discretion shall determine which bid to prefer. Subject to the foregoing where two or more bids are at the same level are simultaneously received by the auctioneer, the bid submitted in the room shall take preference over a bid submitted by telephone or internet at the same level. Any bid made or attempted by telephone or over the internet will only be deemed to have been made if received by the auctioneer.

The auctioneer reserves the right to withdraw, consolidate or divide any lot or lots or submit them in any order that they desire. The auctioneer has the right at his absolute discretion to refuse admission to his premises or attendance at (or participation in) any auction by any person. In the case of any dispute, the auctioneer shall be sole arbitrator in any matters arising during or out of the sale.

5. BIDDERS

All bidders will be required to register their particulars, bidders attending in person and those accompanying them may be required to provide photo ID and separate confirmation of address prior to viewing or taking any part of the sale and before entering any part of the premises to view. All bidders accept full liability for all bids submitted. Subject to the clause in this document headed “The Auction”, the highest bidder at the close of bidding shall be the buyer. Any dispute about a bid shall be settled at the auctioneer's absolute discretion. Bidders are all deemed to act as principal unless there is prior written acknowledgement by Clarke and Simpson Auctions Ltd. that a bidder is acting as an agent for a named principal. Bidders are strongly encouraged to attend the auction in person. The bidders shall be responsible for any decision to bid for a particular lot and shall be deemed to have carefully inspected and satisfied themselves as to condition, neither Clarke and Simpson Auctions Ltd., their employees or agents shall be responsible for any neglect or default in doing or failing to do so. Bidders will be given ample opportunity to view and inspect before the sale and prospective buyers must satisfy themselves as to all matters.

6. DEFAULT

Clarke and Simpson Auctions Ltd. shall act as agent of the vendor only. Any contracts for the sale of a lot shall be formed between the vendor and the buyer. As agent only Clarke and Simpson Auctions Ltd. shall not be responsible for default by the vendor or the buyer. If any lot is not paid for in full and taken away in accordance with these conditions, or there is any other breach of the conditions, then Clarke and Simpson Auctions Ltd. as agents for vendor shall at its absolute discretion and without prejudice to any other rights it may have, be entitled to exercise all or any of the following rights and remedies:-

- 6.1 to proceed against the buyer for any action of debt or damages for breach of contract;
- 6.2 to rescind the sale of that lot or lots sold by Clarke and Simpson Auctions Ltd. to a defaulting buyer;
- 6.3 to resell the lot (by auction or private treaty) in which case the defaulting buyer shall be responsible for any resulting deficiency in the total amount due (after crediting any part payment and adding any resale costs), any possible surplus so arising shall belong to the vendor;
- 6.4 to remove, store and insure the lot at the expense of the defaulting buyer and, in the case of storage, the location of such storage shall be at Clarke and Simpson Auctions Ltd. discretion;
- 6.5 to charge interest at a rate not exceeding 2% per month of the total amount due to the extent that it remains unpaid for more than two working days after the sale;
- 6.6 to retain that or any lot sold to the defaulting buyer until the buyer pays the total amount due;
- 6.7 to reject or ignore bids from the defaulting buyer at future auctions or to impose conditions before any such bids are accepted;
- 6.8 to apply any proceeds of sale for any other lots due or in the future becoming due to the defaulting buyer towards the settlement of the total remaining due.

7. INDEMNITIES, PENALTIES AND LIMITATIONS OF LIABILITY

Purchasers shall pay for any damage done by themselves or their agents during the removal of their lots. Attendance at the sale shall be at the risk of those attending in respect of both themselves and to their goods and vehicles.

Any indemnity under these conditions will extend to all actions, costs, expenses, claims and demand whatsoever suffered or incurred by the person entitled to the benefit of it and Clarke and Simpson Auctions Ltd. declare themselves to be a trustee of the benefit of such indemnity so far as it is expressed to be the benefit of its employees and agents.

Whilst Clarke and Simpson Auctions Ltd. endeavour to ensure that the information on their websites is correct, they do not warrant the accuracy and completeness of the material on their website. Also Clarke and Simpson Auctions Ltd. can make changes to the material on their website, or alter the products and prices described on it, at any time without notice. The material on the website may be out of date, Clarke and Simpson Auctions Ltd. make no commitment to update such material. All material on the websites is provided "as is" without any conditions, warranties or other terms at any time. Accordingly to the maximum extent permitted by law, the website is provided to all parties on the basis that Clarke and Simpson Auctions Ltd. exclude all representations, warranties, conditions and other terms which, but for this legal notice, might have effect in relation to the website.

8. ELECTRICAL SAFETY REGULATIONS

All electrical lots are subject to electrical safety regulations and fall within "the low voltage electrical equipment (safety) regulations 1989" – all items have been pat tested for safety but are not guaranteed in working order.

9. GENERAL MATTERS

Any notice to any buyer, vendor, bidder or viewer may be given by first class mail or email in which case it shall be deemed to have been received by the addressee forty eight hours after posting or sending. All notices to Clarke and Simpson Auctions Ltd. must be sent in writing and email is not acceptable. Any indulgence extended to any person by Clarke and Simpson Auctions Ltd., notwithstanding the strict terms of these conditions or the terms of consignment, shall affect the position at the relevant time only and the respect of that particular concession only; in all other respects these conditions shall be construed as having full force and effect. These conditions and any disputes or claims arising out or in connection with them or their subject matter or formation (including non-contractual disputes or claims) are governed by and construed in accordance with the law of England. The parties irrevocably agree that the courts of England have exclusive jurisdiction to settle any dispute or claim that arises out of or in connection with the agreement or its subject matter or formation (including non-contractual disputes or claims).

10. PUBLICITY

Any catalogue and buyer and seller guides are provided for information only and do not form part of these conditions. The catalogue and the buyer and seller guides may contain additional terms and conditions. Clarke and Simpson Auctions Ltd. reserve the right to use any photographs, background information and research for publicity purposes both before and after the sale.

11. THE PURCHASE PRICE AND PAYMENT ARRANGEMENTS

There is a buyer's premium 15% plus VAT payable in respect of the sale. Any purchases made via "www.the-saleroom.com" shall be subject to an administration charge Administration charge of 3% plus VAT on the price. Preferred payment is cash, bankers draft or personal debit card. Such cards may only be used on a chip and pin basis with the owner present. No payment will be accepted by telephone. There will be an administration charge of 2.5% plus VAT for the use of credit cards or international debit cards.

Payment by cheque will only be acceptable subject to prior arrangement. No lot will be removed from the sale until any cheque has cleared unless a suitable bank reference addressed to the auctioneer is supplied. Payment is due on the day of the sale. Cash in excess of £12,000 (including V.A.T.) will not be accepted from any one person, this is not allowed due to Money Laundering Regulations 2007. All money received will be held in Clarke & Simpson Auctions Ltd. Clients Account at Barclays Bank plc, Framlingham, Suffolk. Account Number 33222276. Sort Code 20 98 07. Clarke and Simpson Auctions Ltd. have no responsibility for any lot between the close of bidding and payment being made and subsequent collection. Please note all policy regarding payment will be enforced and suitable arrangements must be made.

12. REMOVAL OF LOTS

The ownership of any lot purchased shall not pass to the relevant buyer until they have made payment in full to Clarke and Simpson Auctions Ltd. of the total amount due. The buyer shall at their own risk and expense take away any lot that they have purchased and paid for not later than two working days following the day of the auction after which they shall be responsible for any removal, storage and insurance charges. Any lots not collected within three months of the date of sale will be resold by the auctioneer and all proceeds will be retained by the auctioneer to cover storage costs.

13. NUMBER BIDDING

This will be used for speed and efficiency as in all our sales. All prospective purchasers must complete a registration form and register in the office on the viewday or morning of sale to receive a number for bidding. PLEASE ALSO NOTE THAT PHOTO ID AND ADDITIONAL CONFIRMATION OF ADDRESS WILL BE REQUIRED.

14. TELEPHONE BIDDING

We offer a telephone bidding service where possible but this service can never be guaranteed. No applications for telephone bids will be accepted after the end of the viewing prior to sale day for any sale. All potential telephone bidders must provide a valid landline number and email address for us to send terms and conditions prior to phone bidding. No phone bids will be accepted for any lot with a lower guide figure of less than £100.

All those who wish to bid by telephone will be expected to deposit the minimum guide for all lots that they wish to bid upon into the Clients Account for Clarke and Simpson Auctions Ltd before the sale starts. In the event of default, this sum shall be retained as part payment or any part may be retained to recover losses under clause 6 of these Terms and Conditions. We will expect payment of the balance owing by BACS on the following day, any payment not met within five working days will result in the forfeiture of the deposit paid.

15. ONLINE BIDDING

Clarke & Simpson Auctions Ltd., on occasions, offer an online bidding service via the-saleroom.com for bidders who cannot attend the sale. In completing the bidder registration on www.the-saleroom.com and providing your credit card details and, unless alternative arrangements are agreed with Clarke & Simpson Auctions Ltd.:

1. authorise Clarke & Simpson Auctions Ltd., if they so wish, to charge the credit card given in part or full payment, including all fees, for items successfully purchased in the auction via www.the-saleroom.com, and
2. confirm that you are authorised to provide these credit card details to Clarke & Simpson Auctions Ltd. through www.the-saleroom.com and agree that Clarke & Simpson Auctions Ltd. are entitled to ship the goods to the card holder name and card holder address provided in fulfilment of the sale.

Please note that any lots purchased via the-saleroom.com auction service will be subject to an additional 3% charge + VAT at the rate imposed on the hammer price



Clarke & Simpson Auction Centre, Campsea Ashe

Nr Wickham Market, Suffolk IP13 0PS

T: 01728 746323 E: auctions@clarkeandsimpson.co.uk

www.clarkeandsimpson.co.uk