



Clarke &
Simpson

Selected Antiques & Fine Art

Wednesday 28th July 2021 at 10 am

**Clarke &
Simpson**

Auctions

Always open..



Valuation

Probate & other valuations
Call-in service 6 days a week

Special sales

Antiques & Fine Arts
Art Deco & Retro
Domestic & Rural Bygones
Agricultural Collective

General Monday sale

Bespoke sales
In 2020 our lots sold to 30 countries
and registered buyers from over 50
Acting as agents for household clearances

Can't make it?
All auctions are available
for online bidding via
the-saleroom.com
or **i-bidder.com**



Clarke & Simpson Auction Centre,
Campsea Ashe, Nr Wickham Market,
Suffolk IP13 0PS T: 01728 746323

www.clarkeandsimpson.co.uk

f CandSAuctions **t** @CandSAuctions

Clarke & Simpson

Auctions

Selected Antiques & Fine Art

Wednesday 28th July 2021
at 10 am

Order of Sale:

Ceramics and Glass	1 – 91
Silver & Plate	95 – 164
Jewellery	170 – 187
Objects & Collectables	188 – 348B
Paintings	349 – 474
Furniture & Rugs	475 – 583

Viewing:

Saturday 24th July, 9am – 12 noon
Monday 26th July, 2pm – 7pm
Tuesday 27th July, 10am – 4pm
Wednesday 28th July from 8:30am



@CandSAuctions



CandSAuctions



Campsea Ashe
Nr. Wickham Market
Suffolk IP13 0PS
Tel: (01728) 746323 Fax: (01728) 748173
Email: auctions@clarkeandsimpson.co.uk
www.clarkeandsimpson.co.uk

Online bidding via:

BID ONLINE

thesaleroom.com

The home of art & antiques auctions

Art Deco, 20th Century Design & Retro

Next Auction 4th September 2021



BID ONLINE

thesaleroom.com

The home of art & antiques auctions

Entries Invited
Closing Date 13th August

Clarke & Simpson Auctions, Campsea Ashe, Suffolk

www.clarkeandsimpson.co.uk / 01728 746323

Ceramics and Glass

1

A pair of 19th Century Chinese famille rose vases, of baluster form decorated exotic birds, 34cm high (no lids) £100 - 200 †

2

A pair of 19th Century Chinese crackle glazed baluster vases and covers, decorated with warriors, 22cm high £60 - 80 †

3

An 18th Century blue and white Worcester baluster cream jug and lid, 12cm high AF; three similar period tea bowls; and two transfer printed cups £40 - 60 †

4

A pair of 18th Century Delft vases, decorated in the Chinese manner, 30cm high AF £40 - 60 †

5

An unusual stoneware whistle, in the form of a bird; a 19th Century blue and white baluster cream jug with rural scenic decoration, 9cm high; a German porcelain chocolate cup and cover AF; and a small Chinese tea bowl (4) £30 - 40 †

6

A garniture of Royal Doulton baluster vases and covers, decorated with rural scenes and castle ruins by J.H.Plant, tallest vase 25cm, smallest vase 20cm, some damage (3) £100 - 150 †

7

A continental porcelain hinged box and cover, decorated foliate sprays, the lid with central cartouche depicting romantic scene, 8.5cm; and 19th Century porcelain ink well with flower decoration and matching pounce pot (3) £30 - 50 †

8

A Kashan turquoise and black pottery vase, circa Iran probably 13th Century, 27cm high £150 - 250 †

9

An early 19th Century Wedgwood jasper ware pot pourri urn and cover, 20cm high £40 - 60 †

10

A 19th Century Meissen saucer, decorated with a scene of Dresden; a similar cup with cherub decoration and a tea cup decorated with figure of a man playing the flute, blue underglaze beehive mark to base (3) £40 - 60 †

11

A pair of continental pottery figures, of a man and woman in period costume, the man taking a pinch of snuff, the woman carrying a posy bag, 33cm high £30 - 50 †

12

An unusual Brethby pottery figure, "After The Battle" depicting a bandaged dog, 23cm high £40 - 60 †

13

A German porcelain bottle vase, having profuse foliate decoration and gilt stopper, 25cm high £40 - 60 †

14

A pair of Art Nouveau amphora type Austrian iris ewers, having scrolled handles, 51cm high £200 - 300 †

15

A Faience ware small tureen, in the form of a chicken monogrammed A.B. to the base, 21cm high £30 - 50 †

16

A pair of 19th Century German porcelain candelabra, having floral encrusted decoration and raised on columns supported by maidens and cherubs, 36cm high; and a similar candelabra, the base decorated with a maiden in period costume (3) £40 - 60 †

17

A pair of antique Bristol Blue decanters; and a pair of green similar (one stopper missing) (4) £120 - 150 †

18

A Sindh Indian pottery twin handled vase, painted with blue and white decoration, circa 1900, 43cm high £40 - 60 †

19

An 18th Century continental pottery charger, the raised central boss decorated with a river scene, portraits vignettes and foliate scrolls to the border on a predominately yellow and blue ground, 42.5cm dia. AF £60 - 100 †

20

A pair of Samson porcelain figure groups, depicting floral encrusted cherubs riding goats and sheep, 24cm high £100 - 150 †

21

A Moore & Co. blanc de chine and gilt table centre piece, in the form of a large flower head held aloft by cherubs; two smaller similar centrepieces; and a Moore & Co. four section posy pot with gilded branch, berry and leaf decoration (4) AF £100 - 150 †



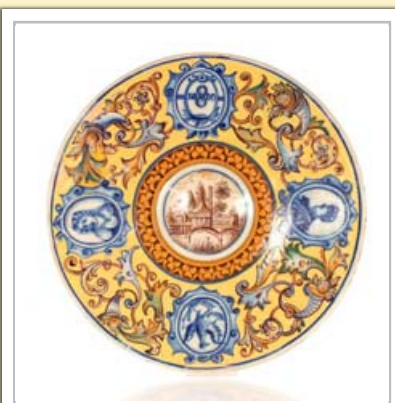
Lot 1



Lot 12



Lot 18



Lot 19



Lot 27



Lot 30



Lot 39

22

A 19th Century blue and white meat plate, decorated in the Chinese manner 47.5cm; and a 19th Century Indian curl pattern meat plate with drainer, 53cm (2) £40 - 60 †

23

A Davenport "Wild Rose" pattern meat plate, 45cm; and a Staffordshire stoneware Willow pattern comport (2) £30 - 50 †

24

A collection of various 19th Century English decorative plates, including "Wild Rose" pattern, "Piping Shepherd", "Buffalo" pattern etc. £40 - 60 †

25

A Victorian blue jasperware cheese dish and cover, 27cm dia. £120 - 180 †

26

A pair of Meissen type Gardner figures, 10cm high; a pair of 19th Century German porcelain salts with cherubs and romantic panel decoration 13cm high; and a 19th Century continental porcelain table centrepiece AF and restored, 32cm high (5) £100 - 150 †

27

A pair of Delft plates decorated flowers, 23cm dia. AF £20 - 40 †

28

An 18th Century tea set, in the Rockingham style having painted foliate decoration within gilt trailing vine leaf borders, including cream jug, sucrier and slops bowl £40 - 60 †

29

A large Doulton pottery goblet shaped vase, on marble plinth, 29cm high £30 - 50 †

30

An antique earthenware baluster vase, with applied white metal mounts, having foliate engrave decoration, flanked by twin handles, running green glazes, 28cm high with unassociated pierced wooden stand £60 - 80 †

31

A Spode "Provence" part dinner, tea and coffee service, comprising various sized plates, soup bowls, dessert bowls, serving plates, dishes, cruets etc. £60 - 100 †

32

An Oriental porcelain vase of baluster form, decorated birds and foliate, 31cm high £40 - 60 †

33

A Chinese blue and white porcelain vase, four character mark to base, 20cm high AF £20 - 30 †

34

A Continental blanc de chine porcelain oil lamp, in the form of an owl with white opaque shade, 43cm high £50 - 80 †

35

A 19th Century Chinese famille rose bowl, 23cm dia. and a famille rose tea caddy 12.5cm high (2) £40 - 60 †

36

A Chinese ochre and gilt decorated bowl, of waisted form painted with foliate scrolls, blue underglaze character seal mark to base, 19cm dia. £60 - 80 †

37

A famille rose Canton bowl, painted scroll mark to base, 24.5cm dia. £40 - 60 †

38

A Spode "Felspar" porcelain oval dish, decorated scenic panels; two 19th Century silver lustre baluster jugs with vine and floral decoration; and a continental porcelain teapot with gilt decoration (4) £30 - 40 †

39

Three rare late 18th Century Delft "Merryman" plates, No.2,3 and 5, central cartouche each inscribed with a portion of the Merryman verse with crown above flanked by Griffins, 22cm dia. £1,000 - 1,500 †

40

A fine 18th Century English Delftware tulip charger, painted in blue green, red and yellow with a central stylised tulip flanked by two other flowers growing from a palisade of grasses, the rim with interspersed leaves and flower heads, 33cm dia. £800 - 1,200 †

41

A rare early 18th Century English Delftware dish, painted with a stylised hare with a squirrels tail, birds flying overhead, the rim with scroll and dark borders, 22cm dia. £600 - 800 †

42

A collection of various Victorian tiles (11) £80 - 120 †

43

A set of eight vine etched wine glasses; five hobnail cut and thumb pressed decorated tumblers; and four similar (17) £40 - 60 †

- 44**
Eleven 19th Century green knop stemmed wine glasses £60 - 80 †
- 45**
A pair of 19th Century Chinese bottle vases, having all over floral decoration, 27cm high; and a Kang Xi baluster vase decorated with eagle crest and foliage, 19cm high, AF (3) £100 - 150 †
- 46**
A Victorian willow pattern slops pail, 25cm high £30 - 40 †
- 47**
A Sevres porcelain plate, depicting romantic couple in woodland AF and chipped to border; an early 19th Century Coalport style stand decorated with a country house; various Derby, Copeland and other Victorian cabinet and dessert plates mostly with botanical decoration £40 - 60 †
- 48**
A Don pottery blue and white transfer decorated plate, "Italian Scenes"; a Spode "Caramanian" series plate; a Davenport "Mare and Foal" pattern and various others (8) £100 - 150 †
- 49**
A Davenport chinoiserie "Fence" pattern plate; a Wedgwood blue and white transfer "China Garden" pattern plate; Meir "Wild Rose" pattern and various others including Copeland and Garrett "The Fox and The Lion" pattern (8) £100 - 150 †
- 50**
A collection of various small 19th Century blue and white transfer printed plates, including Ridgway, "Indian Temple", Spode, "One Hundred Antiques" pattern, Pountney, Allies "Dromedary" pattern and various others (11) £60 - 80 †
- 51**
A Meissen porcelain group, depicting Summer season, another of winter AF and restored, and a pair of early 20th Century porcelain match holders in the form of street vendors (4) £60 - 100 †
- 52**
A blue and white willow pattern Ashworth Bros. bullet shaped teapot; a Chinese pattern cup and saucer; another similar; various blue and white ware to include Worcester, Masons, Delftware etc. £40 - 60 †
- 53**
A rare early 19th Century Sevres porcelain gilded sauce boat, in the form of a swan, First Empire mark 1804-1809 in red, date signed for 1804, 10.5cm high £100 - 200 †
- 54**
A Chamberlains Worcester part tea service, circa 1810, comprising teapot, tea and coffee cups and saucers £60 - 80 †
- 55**
A 19th Century Chinese octagonal plate, decorated flowers, birds and hatched border, 22cm dia. £20 - 30 †
- 56**
Five 19th Century Chinese blue and white plates, decorated with squirrels amongst bamboo shoots, 23cm dia. £200 - 300 †
- 57**
A Faienceware Cornucopia shape hanging wall posy holder, with bird and floral decoration, 32cm £30 - 50 †
- 58**
A Victorian glass rummer, 15cm high £20 - 40 †
- 59**
Three pairs of various sized Victorian Staffordshire Dalmatians £60 - 80 †
- 60**
An unusual 19th Century Sunderland lustreware frog mug; another 19th Century English pottery frog mug; a Wedgwood Jasperware milk jug, with plated mount and lid; two Newhall pattern tea cups; and a small lustreware mug (6) £40 - 60 †
- 61**
A small 19th Century Staffordshire blue and white teapot, having floral decoration; a Chinese Nanking octagonal shallow dish; two Japanese teapots; two Japanese sucriers; a pair of 18th century Chinese saucer dishes; and a Chinese famille noir ginger jar and cover (9) £60 - 80 †
- 62**
An English porcelain small shallow dish, decorated in the Chinese manner; a stone china shell dessert dish decorated Italian ruins; various other 19th Century blue and white transfer printed dishes and plates (30) £60 - 80 †
- 63**
Various Victorian ironstone and stone china plates and dishes (24) £60 - 80 †
- 64**
A 20th Century Japanese charger, decorated figures in exotic garden setting within prunus border, 31cm dia. £10 - 20 †



Lot 40



Lot 41



Lot 45



Lot 56



Lot 70



Lot 73



Lot 76



Lot 84

65
A Staffordshire figure "Gin and Water", 22cm high; another Staffordshire figure depicting a couple in front of a flowering tree stump, 17cm high; and a continental porcelain figure of a young maiden reclining against tree stump, 12cm high (3) £40 - 60 †

66
A Japanese Satsuma ware koro, decorated figures in landscapes, gilt seal mark to base, 19cm dia. £40 - 60 †

67
An unusual 19th Century Willow pattern mug, with divider; a Willow pattern knife rest; a Willow pattern sugar shaker; and a Spode "Gothic Castle" pattern sauce tureen (4) £40 - 60 †

68
A large Prattware pot lid, decorated scene of "The Hop Queen" by W.F. Witherington RA, 17cm dia. £20 - 40 †

69
A Worcester blue and white tea bowl, decorated Ho Ho birds, crescent mark to base; and a similar period pearlware dish decorated Pagoda pattern (2) £40 - 60 †

70
A Chinese famille rose ewer, with bands of scrolling foliate decoration, gilded interior and handle, square four character seal mark to base with attached wax seal, 19cm high £100 - 200 †

71
A rare Lowestoft porcelain mug, painted in the style traditionally associated with Thomas Curtis, circa 1785-1790, 12cm high, cracked and riveted £60 - 100 †

72
A pottery replica Aztec style portrait head and stirrup spout vessel, 23cm high £20 - 30 †

73
A pottery replica Aztec style bird figure vessel, with stirrup spout, 10cm high x 14cm long £20 - 30 †

74
A small 18th Century Chinese flambé water pot, AF, 7cm high £100 - 150 †

75
A Tiffany Favrite style iridescent glass vase, decorated with trees, bears signature to base, 16cm high £60 - 80 †

76
A pair of Royal Worcester baluster vases, decorated scenes of sheep grazing in rural landscapes by Harry Davis, (lids AF), 22cm high £600 - 800 †

77
An 18th Century drinking glass, with a trumpet shaped bowl above plain stem raised to a conical domed and folded foot, circa 1750, height, 17.2cm £80 - 120 †

78
An 18th Century drinking glass, with an ovoid shaped bowl above plain stem raised to a conical domed and folded foot, height 15.7cm £80 - 120 †

79
An 18th Century drinking glass, with bell shaped bowl above plain teardrop stem, raised on a conical domed and folded foot, circa 1730, height 19cm £100 - 150 †

80
An 18th Century drinking glass, with trumpet shaped bowl above plain teardrop stem, raised to a plain conical foot, circa 1730, height 15.2cm £40 - 60 †

81
An 18th Century drinking glass, the trumpet shaped bowl above double air twisted stem raised to a conical and folded foot, circa 1740, height 17.2cm £80 - 120 †

82
An 18th Century drinking glass, circa 1750 with a bell shaped bowl above a plain teardrop stem, height 15cm £70 - 100 †

83
Two cased sets of six each Royal Worcester black and gilt coffee cups and saucers; together with six each silver gilt spoons retailed by Finnigans Manchester and Liverpool £200 - 300 †

84
A Goldscheider bust, of a young maiden with flowers in her tressed hair, marked and impressed to the reverse, 65cm high £400 - 600 †

85
A W. H. Goss, model of Shakespeare's house; another "A Window in Thrums"; another "Manx Cottage"; and another "Anne Hathaway's Cottage" (4) £40 - 60 †

86
A pair of Meissen blanc de chine posy vases, in the form of children with baskets, having floral encrusted trailing decoration, 22cm high £40 - 60 †

- 87**
A Victorian Staffordshire figure, of The Prince of Wales, 27cm high; and another of Milton, 25cm high, AF (2) £20 - 40 †
- 88**
A continental pottery owl jug AF; a Belleek porcelain vase in the form an owl; a Beswick study of an owl; and three others (6) £20 - 40 †
- 89**
A Venetian style coloured glass model of a galleon, under glass dome and raised on circular ebonised plinth, 24cm high £20 - 40 †
- 90**
A 19th Century Venetian glass and micro mosaic easel mirror, raised on a gilt scroll base, 49cm x 37cm £600 - 800 †
- 91**
A Flight Barr and Barr meat plate, having gilt heightened thistle decoration within turquoise border, 52cm £40 - 60 †
- 92-94**
No Lots

Silver & Plate

- 95**
A rare silver cigarette box, inscribed "G.B. Cockburn from the Naval Aviators, May 1911", inscribed with various signatures; together with an envelope of research £400 - 600 †
- 96**
A silver cigarette case, with inscription to "Mr H.O. Houchen, by the Management and Staff of Air Work general Trading Co.Ltd. with Best Wishes 19/12/1936"; together with a piece of metal from the Whitley RAF Heavy Bomber, and information £200 - 400 †
- 97**
An Edwardian silver hunting horn, by Weir & Sons, Dublin 1906, 26cm; and a copper and plated similar by Swain and Adeney, Piccadilly, London (2) £100 - 200 †
- 98**
An early 19th Century plated inkstand, in the Chippendale manner having pierced fret work body, glass bottles and slide out base on splayed pointed pad feet, indistinct marks to the fret work, 17cm long £40 - 60 †
- 99**
A pair of white metal baluster candlesticks, 28cm high £40 - 60 †
- 100**
A vintage polished metal sandwich tin; a similar wafer case; and a circular pot and cover (3) £20 - 30 †
- 101**
A mahogany cased carving set, with steel blades, ivory handles and silver mounts; and a plated and ivory handled set of fish servers £40 - 60 †
- 102**
A silver mounted photograph frame, Hallmarked for Birmingham 1924 and enclosing a black and white print of Lord Byron; another silver mounted photograph frame with scrolling foliage and vacant cartouche; and a plated similar (3) £40 - 60 †
- 103**
A cased set of six plated and stainless steel fruit knives; a cased set of six plated cake forks; six plated fruit spoons and serving spoon; a cased set of six plated tea spoons; and a cased set of six each cake knives and forks with mother of pearl handles £20 - 40 †
- 104**
A six bottle plated cruet; and a plated teapot (2) £30 - 40 †
- 105**
A cased Arthur Price & Co. 38 piece cutlery set £20 - 40 †
- 106**
An Art Nouveau table centrepiece, in the form of a semi naked maiden sat in a tree on scrolled and pierced base, impressed No.429 to the underside, 46cm long x 39cm high £120 - 160 †
- 107**
A W.M.F. four piece coffee set, having trailing foliate decoration and a similar twin handled tray (5) £300 - 400 †
- 108**
An Art Nouveau three light candelabra, in the form of a maiden with outstretched arms on mask and foliate scroll spread foot, 57cm high £150 - 250 †
- 109**
A walnut cutlery case and contents, of silver and plated cutlery etc. £60 - 80 †
- 110**
A canteen of various silver "Fiddle" pattern flatware, George IV, William IV and Victorian; also various plated items, steel bladed knives etc. £200 - 400 †



Lot 98



Lot 106



Lot 107



Lot 108



Lot 117



Lot 127



Lot 130



Lot 141

111

A pair of oval plated entrée dishes, another with beaded border; plated coffee pot and miscellaneous other plated items £40 - 60 †

112

A trumpet shaped silver spill vase; a pair of Sterling silver candlesticks, (bases weighted); another pair of white metal candlesticks; various plated items to include entrée dishes, candle holders etc. £40 - 60 †

113

A collection of various silver and plated condiment spoons £20 - 30 †

114

A Middle Eastern white metal coffee pot, of treble baluster form; a plated hot water jug; and an Elkington plaque depicting a tavern scene (3) £30 - 50 †

115

An oval silver and tortoiseshell jewellery box, and two silver cigarette boxes (3) £100 - 150 †

116

A plated George Butler of Sheffield canteen of Kings pattern cutlery; and other items; two silver handled cake and carving knives etc. £30 - 40 †

117

A late Victorian silver tea kettle, on spirit heater stand *Sheffield 1900*, total weight approx. 45oz £400 - 600 †

118

Various Georgian and later silver flatware, including table forks, table spoons, teaspoons etc. weighable silver 33oz; and a quantity of various plated flatware etc. £200 - 300 †

119

A silver pin cushion, *Birmingham 1917*; a collection of various silver teaspoons, condiment spoons and sugar nips; a white metal and velvet belt having pierced foliate links; and six heavy plated napkin rings £40 - 60 †

120

Six silver and enamel bean topped coffee spoons AF; three enamel condiment spoons; two 19th Century continental gilt anointing spoons with figure terminals; a Toddy ladle with twist handle; a silver cased bell; two silver cruet items; an ash tray etc. £40 - 60 †

121

Five silver bladed fruit knives; various plated fish knives and forks; a pair of finely engraved plated and mother of pearl handled fish servers; and various other cutlery items etc. £30 - 40 †

122

A silver octagonal mustard pot, *Chester 1919*; a small circular silver salt with blue glass liner *Birmingham 1919*; an Edwardian silver hat pin, date letters indistinct; a miniature book of common prayer, having silver cover with angel decoration *Birmingham 1904*; a plated Art Nouveau brooch; a small white metal scent flask; a silver handle button hook etc. £40 - 60 †

123

A silver matched four piece tea and coffee set, by Aitken Bros. coffee pot, *Sheffield 1908*, tea pot sugar bowl and cream jug 1917, having foliate and ribbon tied decoration, the tea pot and coffee pot with black wood handle and lift, 37oz; and an un-associated silver spoon £300 - 400 †

124

A late Victorian silver three piece tea set, having gadrooned borders and raised foliate decoration, the teapot with black wood handle and lift, on ball feet, *London 1897*, 27oz £250 - 350 †

125

A cased set of six silver coffee spoons, with leaf terminals; a cased set of six bone handled tea knives; and a cased set of six each bone handled fish knives and forks £20 - 30 †

126

A cased plated tea serving set, comprising six teaspoons, sugar tongs, two preserve spades, a bread fork and butter knife £30 - 40 †

127

A leather cased late Victorian silver hip flask, with detachable cup and screw top, initialled W.G.R. 1893, the outer case bearing silver monogram £100 - 150 †

128

A set of three continental white metal easel photograph frames, having foliate borders and ribbon tied surmounts, .800 standard, 15cm x 9cm £150 - 200 †

129

A pair of Edwardian Adam design silver candlesticks, having raised foliate and figure decoration, 22cm high, *Sheffield 1901* £150 - 200 †

130

A silver three piece bachelors tea set, having beaded border decoration, the teapot with wooden handle and lift, *Chester 1936*, 22oz £200 - 300 †

131

An Edwardian silver sugar shaker, of baluster fluted form surmounted by a flambé finial, 19cm high, *London 1907* £80 - 120 †

132

Four late Victorian silver salts, with matching spoons having embossed foliate decoration and pierced handles, *London 1893* £160 - 200 †

133

A horses hoof plated desk paperweight, inscribed "Piet S. Africa, February 1900 - February 1901" £40 - 60 †

134

A 20th Century silver gilt Masonic chalice, with engraved decoration 2397 Columbia, 15.5cm high, 9oz £100 - 150 †

135

A late Victorian silver teapot, with half fluted body design, black wood handle and lift, *Sheffield 1892* £100 - 150 †

136

A quantity of various silver and plated spoons etc. £40 - 60 †

137

A globular cut glass scent bottle, having silver mount, *London 1899* £40 - 60 †

138

A pair of silver and mother of pearl knife rests, *Chester 1909* £50 - 80 †

139

A set of six silver pierced bonbon dishes, *Chester 1912* £40 - 60 †

140

A silver cased and wood lined cigarette box, with engine turned decoration, *London 1926*, 19cm long £40 - 60 †

141

A Victorian silver teapot, having all over foliate scroll decoration around a central cartouche with monogrammes, *London 1844*, 13cm high, 17oz £180 - 220 †

142

A Victorian silver hot water jug, having foliate engraved decoration the hinged lid surmounted by a finial raised on scroll supports, *London 1874*, 27cm high, 25oz £250 - 350 †

143

A pair of Edwardian cased silver shell shaped butter dishes, by Elkington & Co., *Birmingham 1908* £60 - 100 †

144

A silver shell shaped butter dish, three silver berry decorated teaspoons; a similar dessert spoon; a silver sifter spoon; a condiment spoon; an unusual silver cased shaving brush; and a small silver trophy £60 - 100 †

145

An Art Nouveau W.M.F. style plated inkwell, of iris shape on a pool edge complete with inkwell and liner, 25cm £100 - 200 †

146

A pair of Georgian trencher salts, marks indistinct £40 - 60 †

147

A pair of cased silver seal end serving spoons, *London 1923* £60 - 100 †

148

A silver napkin ring, and two white metal pill boxes £30 - 40 †

149

An Edwardian three piece silver tea set, with reeded decoration, the teapot with black wood handle and lift, *Sheffield 1901/2*, 39oz £200 - 300 †

150

A set of six silver goblets, of tapering form raised on circular spread beaded bases by Alex Clarke & Co., *Sheffield 1968*, 24oz £200 - 300 †

151

A modern silver sugar bowl, *Birmingham 1971*; a small silver beaker, *Chester 1921*; and two cruet items (4) £40 - 60 †

152

A mid-20th Century silver chocolate pot, having domed lid surmounted by turned finial, wooden scrolled handle, 15oz £100 - 150 †

153

A cut glass and silver mounted cocktail shaker, Hallmarked for *Birmingham 1927* £60 - 80 †

154

A late Victorian cut glass and silver mounted claret jug, Hallmarked for *London 1899*, the body will foliate etched and cartouche decoration, the mount with embossed floral scrolls and initials, the hinged lid with acorn shaped finial, 21cm high N.B. vendor reports originally from Wytham Abbey, Oxfordshire, the ffennell family £300 - 400 †

155

A quantity of various silver and plated teaspoons, sugar tongs, fancy spoons etc. £40 - 60 †



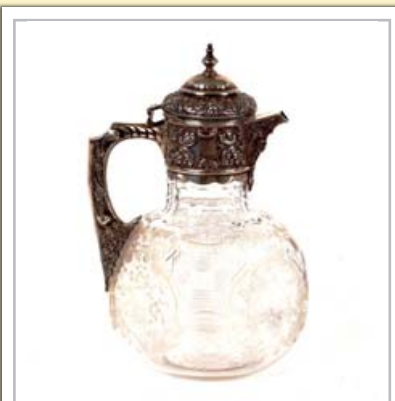
Lot 142



Lot 149



Lot 152



Lot 154



Lot 170



Lot 172



Lot 177



Lot 180

156

A glass pin jar, with embossed silver mount; a miniature silver and enamel decorated mirror; and two button hooks (4) £20 - 40 †

157

A three piece silver condiment set, having shaped borders and pierced sides, blue glass liners, by Aitken Bros. Sheffield 1917-1918 £40 - 60 †

158

A cased button hook and shoe horn set, having floral embossed silver handles, Birmingham 1910; a steel button hook with spot hammered decoration to the silver handle, Chester 1906; and a longer example with chased silver handle (4) £40 - 60 †

159

A collection of various silver teaspoons; a pair of 18th Century silver berry spoons, marks rubbed; a silver fork etc. 24oz £200 - 300 †

160

A Georgian silver toddy ladle with twist handle; a George IV silver caddy spoon; a Georgian silver berry spoon (marks rubbed) later embossed; a George II silver sauce ladle; a silver apostle handled fancy spoon; various teaspoons; silver baby trowel etc. £60 - 80 †

161

A silver tea strainer, Birmingham 1971; a small silver bonbon dish Birmingham 1920; an oval plated serving dish and two division similar; a plated tea pot stand and a toast rack £30 - 50 †

162

An Anton Michelsen Copenhagen, Danish silver and enamel pepper pot, with matching salt and spoon; and a silver mounted dogs head brooch (4) £40 - 60 †

163

A pair of late Victorian silver dwarf candlesticks, having scrolled and fluted decoration, raised on octagonal stepped bases, Sheffield 1900, 13cm high £40 - 60 †

164

A composite suite of George III silver "Fiddle" pattern flatware, bearing family crest, various dates and makers including William Eley, William Fearn, and William Chawner, comprising 26 table spoons, 24 table forks, 6 dessert spoons, 5 dessert forks, a pair of basting spoons; soup ladle and sauce ladle, dates ranging from 1799 - 1811, total weight approx. 162oz £1,800 - 2,200 †

165-169

No Lots

Jewellery

170

A white metal diamond set stick pin of arrow shape, 3.8gms total weight £200 - 400 †

171

A 15ct gold bow brooch, 5.5gms £100 - 200 †

172

An Art Deco white metal bar brooch, set with an arrangement of six diamonds graduating down from ¼ carat, four smaller diamonds, an arrangement of chip diamonds and five sapphires, 6gms total weight contained in John Hall & Co. of Manchester case £600 - 800 †

173

A 15ct gold and enamel Royal Welsh Fusiliers badge, 5gms, contained in a John Hall & Co. of Manchester case £80 - 120 †

174

A white metal cross pendant, set sapphires and diamonds hung to a white metal fine link chain, contained in John Hall & Co. of Manchester case £400 - 600 †

175

An Art Deco white metal diamond and pearl set brooch, with four interchangeable enamel backings contained in fitted case for Finnigans Ltd of Manchester and Liverpool £300 - 400 †

176

A white metal possibly platinum (marks rubbed) wrist watch, with diamond set bezel in J.W. Benson Ltd. case (crown missing) £200 - 300 †

177

A late 19th Century Russian yellow metal and white metal brooch, in the form of three grapes set with diamonds, 13.5gms total weight £300 - 500 †

178

An Austrian 14ct gold Figaro necklace, with fox head Hallmark, 18.5gms £400 - 600 †

179

An old mine cut diamond measuring approx. 10mm x 8mm x 4mm in modern white metal setting; a section of ring set small diamonds AF; and a rock crystal buckle £600 - 800 †

180

A yellow metal and enamel decorated mourning pendant, in the form of a Bible, containing hair panels, French inscription to the back dated 1857, 26gms £100 - 200 †

181

A solitaire diamond ring, the white metal band marked PLA set with approx 1½ carat diamond, size M½, 3.5gms total weight £600 - 800 †

182

A diamond pendant, having yellow metal and white metal mounts set with approx. 1½ carat centre stone surround with an arrangement of six ¼ carat diamonds, one ¼ carat diamond to the loop, three pear cut diamonds suspended beneath and further smaller diamonds throughout, 10.5gms total weight and contained in a fitted box by Hunt & Roskell Ltd Late Storr & Mortimer London £3,000 - 4,000 †

183

A string of vintage butterscotch amber beads, with 9ct gold clasp, 46cm long overall; and five loose amber pebbles £100 - 200 †

184

A string of 31 amber beads, weighing approx. 73.1gms, 67cm long £400 - 600 †

185

An early 19th Century gold fob seal, with carved hard stone intaglio of a classical male head £100 - 150 †

186

An early 19th Century yellow metal fob seal, with carved agate intaglio possibly King George III £40 - 60 †

187

A Queen Elizabeth II gold sovereign, 1968 £300 - 320 †

Objects & Collectables

188

A pair of 18th Century miniature portraits, possibly Elizabeth I and Walter Raleigh contained in pierced foliate gilt Florentine frames £400 - 600 †

189

A 19th Century carved ivory puzzle ball on stand £100 - 200 †

190

A Dunhill table lighter, No.737418 in original box £200 - 400 †

191

A brass cased carriage timepiece, 13cm high overall £30 - 50 †

192

A Victorian horn and brass mounted folding magnifying glass, and another similar AF £20 - 40 †

193

A First World War leather cased compass, by J Lizars, Glasgow and Edinburgh £100 - 150 †

194

A late 18th Century curly horn snuff mull, the hinged lid with white metal mount bearing initials R.B. together with a hand written Robert Burns related note, 6cm £150 - 250 †

195

A Dunhill silver plated "Rollagas" lighter, in fitted case £100 - 150 †

196

A cold painted bronze model of a deer, 8cm long x 7cm high £40 - 60 †

197

A small carved wooden quaich, with basket weave decoration and silver mount, 9cm £30 - 50 †

198

Attributed to Angelica Kauffman, miniature portrait study of a lady, inscribed verso "Duchess D'York by A.K. Angelica Kauffman 1793", 11.5cm x 9cm in a velum covered foliate decorated frame, measuring 14.5cm x 11.5cm overall £400 - 600 †

199

A tortoiseshell page turner, 32cm long £40 - 60 †

200

A pair of Indian miniature paintings, contained in foliate carved frames £150 - 250 †

201

A quantity of various treen items, including a pair of dice shakers; small boxes; a hinged trinket box, and various contents etc. £40 - 60 †

202

Three small wooden and leather mounted brass field telescopes £50 - 80 †

203

Two WW1 medals, awarded to S-20999 Pte J.F.B. Watson Seaforth Highlanders; and two Seaforth Highlander badges £40 - 60 †

204

A 19th Century carved lime wood figure of a cow, 17cm long £40 - 60 †



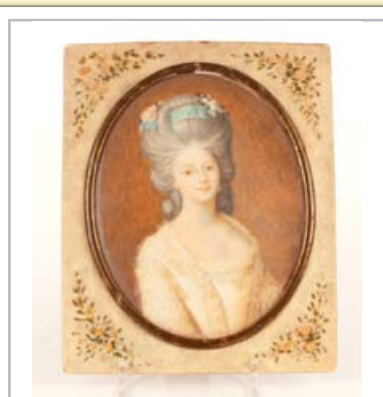
Lot 182



Lot 190



Lot 196



Lot 198



Lot 214



Lot 221



Lot 233



Lot 234

205

A Georgian mahogany sarcophagus shaped tea caddy, 22cm long AF; a Crown Staffordshire chinoiserie decorated cigarette box retailed by T Goode & Co. AF; and a small stamp casket with marbled covering AF (3) £30 - 40 †

206

A leather crocodile effect cased pocket barometer, by Asprey of London, 8.5cm dia. £40 - 60 †

207

A Victorian black marble and gilt decorated paperweight, in the form of a book; and a pair of silver wishbone sugar nips (2) £30 - 40 †

208

Attributed to Sampson Townsend Roch, miniature portrait study of Francis George Hamilton, wearing blue frock coat and stock contained in ebonised and brass mounted frame £100 - 150 †

209

A Sterling silver fountain pen, by Sheaffer, USA £30 - 50 †

210

Albert James Phillips, portrait study of an elderly gentleman in plush lined folding case £20 - 40 †

211

A carved Japanese ivory figure group, with seal mark to base, 13cm high; and a small Chinese ivory figure at prayer, 5cm high (2) £40 - 60 †

212

A collection of various ivory boxes; ivory cup and ball game AF; glove stretchers etc. £60 - 100 †

213

A fine gold Damascened powder horn, probably Zand Iran circa 19th Century, one end with ram head terminal, the other with cap operated by metal fixture and a wooden stand, 15cm long £500 - 800 †

214

A Toledo gold and silver Damascened box, circa 18th Century, 8.5cm £100 - 200 †

215

A lavender jade carving of Guan Yin, on a small wood stand 11cm high overall £40 - 60 †

216

A finely engraved 19th Century Sino Tibetan brass bowl and cover, 15cm high; and a small gilt brass figure of Ho Tei, 7.5cm high (2) £40 - 60 †

217

An antique double spouted brass cooking pot, swing handle for suspension; and a brass pricket candlestick, 38cm high (2) £30 - 50 †

218

A Chinese bronze Buddha, of typical form, 36cm high £150 - 250 †

219

A Chinese stone seal, of square form; a cylindrical seal with temple dog finial; and a carved horn seal in the form of a dog, 8.5cm high (3) £50 - 80 †

220

Two antique Japanese pierced iron Tsuba; and a finely painted small lacquered box and cover with fitted metal interior (3) £60 - 100 †

221

A 19th Century tortoiseshell and white metal mounted trinket casket, having pierced foliate and cherub decorated mounts and strap hinges, 19cm long x 12cm deep, lid AF £40 - 60 †

222

A cut glass and gilt metal tiered chandelier £30 - 40 †

223

A decorative velvet and gilt thread table cover, decorated exotic birds and foliage £20 - 40 †

224

A carved soapstone figure of an immortal, on wooden base, 16.5cm high £20 - 30 †

225

An Oriental carved soapstone figure, of an immortal with staff, 13cm high £20 - 40 †

226

An Art Nouveau carved wooden hanging picture frame, 23cm x 31cm overall £30 - 50 †

227

A Chinese hardwood and brass mounted vanity box, having carrying handles and Chinese lock, 32cm x 24cm £200 - 300 †

227A

A 19th Century Chinese bronze censer, of large size, flanked by loop handles having raised decoration of river scenes on three tapering supports, 31cm dia. x 21.5cm high £200 - 300 †

228

Two Indian oval miniature portraits of the Taj Mahal, framed as one £60 - 80 †

229
Fourteen 19th Century Chinese paintings on pith or rice paper, depicting domestic and rural scenes, 18cm x 11cm *£100 - 200 †*

230
A Chinese Yixing red pottery pewter and brass mounted teapot, having dragon decoration with swing handle *£30 - 50 †*

231
A pair of 19th Century alabaster figures, depicting athletes, 35cm high *£40 - 60 †*

232
A 17th Century carved wood figure, of a saint, 29.5cm high *£100 - 150 †*

233
A satin wood cased lyre shaped mantel clock, by J C Jenners & Son London, 35cm high *£200 - 300 †*

234
A burr walnut cased mantel clock, having chiming movement by Mallory of Bath, the brass and silvered dial inscribed Tempest Fugit, the case surmounted by a carrying handle, 40cm high overall *£200 - 400 †*

235
A brass skeleton clock, by Thwaites & Reed Ltd, under glass dome and set on onyx base, striking on a bell 29cm high *£100 - 200 †*

236
A mahogany rosewood and satinwood inlaid folding chess board, with backgammon to the interior, 46cm wide x 26cm deep *£100 - 150 †*

237
A Georgian mahogany and inlaid knife box, of arc-en-arbelette form, the lid decorated with a conch shell paterae, fitted interior, 33cm high x 19.5cm wide *£300 - 350 †*

238
A 19th Century mahogany stationery box, fitted various divisions and secret drawer, labelled for F. Waller, Stationer and Bookseller, 49 Fleet Street, 38cm wide *£100 - 150 †*

239
A small copper and brass oil lamp, with Corinthian column, complete with chimney, 40cm high overall *£20 - 40 †*

240
A brass cased striking carriage clock, with repeat movement having circular white enamel Roman numeral dial, 18cm high *£200 - 300 †*

241
A pair of spelter and marble comports, 19.5cm high *£30 - 50 †*

242
An oriental soapstone baluster vase, 21.5cm high *£20 - 40 †*

243
A gilded Art Nouveau bust, depicting a young maiden with flowers in her hair, 47cm high *£300 - 400 †*

244
A 19th Century mahogany and brass inlaid bracket clock, by Leach of Romsey, eight day movement striking on a bell, having circular white enamel dial, foliate carved cresting raised on ball feet, 44.5cm high x 29cm wide overall *£500 - 800 †*

245
A Japanese lacquered and painted puzzle box, 26cm x 21cm *£30 - 50 †*

246
A Victorian papier mâché two compartment tea caddy, 19.5cm wide *£40 - 60 †*

247
An African carved wooden fertility statue, with an elongated paddle head in kneeling position, 46cm high; together with another African fertility statue, 26cm high (2) *£50 - 70 †*

248
A Corinthian column plated oil lamp, having clear glass dimpled reservoir and blue tinted and engraved tulip shade, 79cm overall *£400 - 600 †*

249
A small key wind Swiss music box, playing four airs, 26.5cm *£400 - 600 †*

250
A Nichol Freres 12 air mandoline Expression music box, Damme 3115 Piece No.46008, in rosewood and inlaid case, 76cm long *£1,600 - 2,000 †*

251
A miniature mahogany bureau, the fall front revealing a fitted interior above three graduated drawers, 32.5cm wide x 31cm high *£250 - 350 †*

252
A 19th Century papier mâché lacquered and mother of pearl inlaid writing slope, 40cm x 28cm *£200 - 300 †*



Lot 237



Lot 243



Lot 244



Lot 251



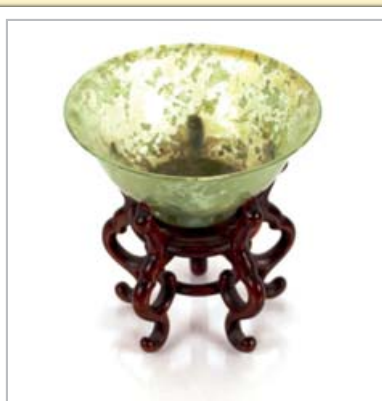
Lot 253



Lot 257



Lot 259



Lot 261

253

A Georgian mahogany and rosewood cross banded knife box, of arc-en-arbelette form, 40.5cm high x 43cm wide overall £200 - 400 †

254

A Victorian circular walnut footstool, with beaded upholstery raised on turned supports, 30cm dia. £30 - 50 †

255

British Salmonidae, by Sir W Jardine Bart, Grand Folio Edition 1979 £40 - 60 †

256

An oak Gothic revival style sliding book rack, 62cm £20 - 40 †

257

A 19th Century mahogany and brass mounted bracket clock, the domed case surmounted by a carrying handle, by Vigne of London, the silvered dial with Roman numerals, date aperture and second sweep, brass engraved foliate back plate, the eight day movement striking on a bell, 44cm high £200 - 300 †

258

A rare and unusual Trench Art memorial crucifix, dated 1914 made from WW1 shell cases etc. inscribed "Belgium 1914", 98cm high £200 - 300 †

259

An Ormolu and enamel clock garniture, the clock surmounted by a urn finial, circular dial supporting an eight day movement striking on a gong, raised on fluted bun feet, 40cm high, flanked by a pair of baluster urns with cherub mask decoration, 26cm high £100 - 150 †

260

Photographic History of Southwold 1907, limited edition No.44 £150 - 200 †

261

A green jade bowl, 10cm dia. on carved hardwood stand £20 - 40 †

262

A jade figure of a seated woman, on carved hardwood stand AF; a carved ivory bust; and two jade fish ornaments (4) £20 - 40 †

263

Niels Holm 1806-1933, pottery sculpture of a naked archer holding brass bow and arrow, dated 1893, 105cm high, arm damaged and restored £300 - 500 †

264

A 19th Century scumbled pine table top primitive chest, containing two short and two long graduated drawers with associated white porcelain handles and feet, 30cm wide x 34cm high £60 - 100 †

265

A collection of six late 19th Century Chinese bronze scroll weights, depicting various figures and mystics; a 19th Century brass Chinese small hinged container with chain and tamper terminal; and a glass snuff bottle contained in a carved wooden box £30 - 50 †

266

An unusual 19th Century teeen apothecary's pill slab, having four deep dishes and spade shaped handle, 24cm £40 - 60 †

267

A late 19th / early 20th Century Chinese carved amethyst Dog of Fo, together with a pierced wooden stand 8cm long £20 - 30 †

268

A 19th Century Chinese bronzed table screen, having enamel central panel and splayed feet, 15cm high, decorated character script; and a late 19th Century Kut Hing dragon decorated teak box, 12cm (2) £20 - 40 †

269

Three plain Chinese jade bracelets, and a carved pendant £20 - 30 †

270

A veined marble paperweight, in the form of a sphere £20 - 30 †

271

41 Volumes of early 20th Century Shakespeare's Plays, in red Morocco type bindings heightened in gilt, published by J.M. Dent £50 - 70 †

272

A Victorian mahogany apprentice piece, miniature chest, the top with rounded corners and moulded edge containing two short and two long drawers on bun feet, 16.5cm wide x 18.5cm high overall £80 - 120 †

273

ELF, an amusing set of eight Boer War character watercolours forming a story, depicting a kilted soldier and an African Native, unframed, each 9cm sq. £50 - 70 †

274

A 17th Century oil, possibly on copper sheet, double sided icon with mother and child with auroras contained in oval gilt fret frame, 21cm x 15cm, in need of restoration £40 - 60 †

275

A pair of Chinese enamel and Ormolu mounted pots and covers, of globular form with leaf and branch bases, 12cm high £100 - 150 †

276

A 19th Century bronze mythical horse figure, on platform plinth, 12.5cm long overall £40 - 60 †

277

An unusual four part tobacco box; vesta, ash tray etc. in the form of a used artillery shell, copper with white metal interior, 24cm high £80 - 120 †

278

Mid 19th Century portrait miniature of a young lady, bust length in oval frame, 6cm x 5cm; together with another miniature of a wiggled young gentleman, oval (2) £50 - 70 †

279

A collection of five Chinese glass snuff bottles, with various painted decoration, various shapes and subject matter £20 - 30 †

280

A 19th Century watercolour depicting a Heraldic device in arched gilt foliate frame, "Ne Vile Velis", family signature to verso, 16cm x 14cm; together with another painted Heraldic device (2) £60 - 100 †

281

An early 20th Century Portuguese filigree silver gilt cigarette case, with scrolls and two bands of enamel work, flowers and leaves, three sets of marks on the body and clasp, probably "Gondomar Porto" (1913- 1938), 833 Standard £80 - 120 †

282

A collection of five Chinese glass snuff bottles, the bodies with various painted decoration, shapes and subject matter £20 - 30 †

283

A 20th Century Chinese porcelain snuff bottle and stopper, of lobed outline, painted red four character marks £30 - 40 †

284

A Chinese Peking glass snuff bottle, the body overlaid in blue depicting an exotic long tailed pheasant; together with another Chinese overlaid red and painted snuff bottle of cylindrical form (2) £30 - 50 †

285

An early 19th Century silver pendant, presented by Lt. Col. John R. Stotherd for Skill At Arms, dated 17th August 1806, for the First Essex Legion £300 - 400 †

286

An unusual large medallion, commemorating Abdul Medjid-Khan Empereur Des Ottomans commemorating Crimean War Battle of the Danube and Black Sea £400 - 600 †

287

An oval Bilston enamel patch box, depicting prize fighters AF £120 - 150 †

288

A rare and unusual silver mustard pot, relating to Colmans Norwich, "A Souvenir of a Visit to Carrow Works" circa 1905/6, complete with blue glass liner £100 - 150 †

289

Three Kelly's Norfolk, Suffolk and Cambridge Directories 1888, 1892, 1925 £20 - 30 †

290

Two Staffordshire pottery reference books £10 - 20 †

291

Four porcelain and pottery reference books, including "The Dictionary of Blue and White printed Pottery", "Geoffrey A Godden British Porcelain", "Williams Antique Blue and White Spode", and "W. L. Little Staffordshire Blue" £10 - 20 †

292

A collection of 18th and 19th Century pewter, to include baluster quart tankard, a baluster lidded jug, salts, small dishes etc. £40 - 60 †

293

Two interesting continental pewter pitchers, with swing handles and spouts of octagonal form decorated with rural scenes, 28cm high £60 - 80 †

294

A Kositos advertising poster, framed and glazed, 39cm x 54cm £40 - 60 †

295

E.M. Hood, an unusual 20th Century needlework picture of a mountainous pasture scene, label to the reverse "Exhibition of English Needlework Past and Present February 19th to March 12th 1934", 58cm x 54cm £60 - 100 †

296

A mahogany folding boot jack, and pulls £100 - 150 †

297

A Khanja Jambyo, Indian sword in white metal, wood and horn mounted scabbard £100 - 150 †



Lot 272



Lot 281



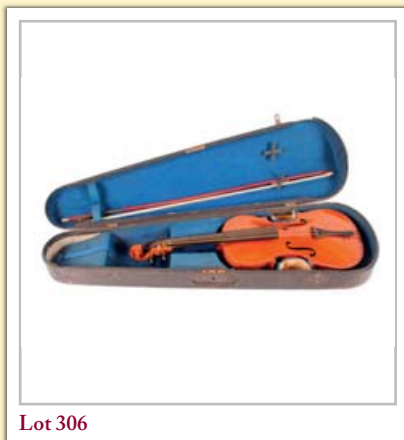
Lot 287



Lot 297



Lot 305



Lot 306



Lot 315



Lot 319

298

A Zulu club, and three various Victorian and later walking sticks £90 - 120 †

299

A 19th Century continental pewter flagon, decorated with figure of a blacksmith at work, having hinged lid and scrolled handle, 34cm high; and a later pewter stein with foliate thumbpiece and profuse mask decoration, the hinged lid surmounted by a figure, 29cm high (2) £40 - 60 †

300

A 19th Century pewter lidded flagon, having attached chain hanger, the lid embossed and decorated with a fruit thumbpiece, scrolled handle raised on circular spread foot, 30cm high £40 - 60 †

301

A pewter flagon, with wriggle work decoration, inscribed L. Amberge, the lid with finial thumbpiece above scrolled handle, 27cm high £40 - 60 †

302

A floral pottery and pewter mounted stein, the lid with baluster finial thumbpiece and inscribed M.N.1737, 28cm high; and a smaller similar example, 25cm high AF (2) £40 - 60 †

303

Two Nailsea type glass walking canes, 97cm long £50 - 80 †

304

A pair of Italian carved silvered wooden alter candlesticks, in the 17th Century Venetian style, 45cm high; together with another slightly larger similar, 48cm high (3) £60 - 80 †

305

A violin in crocodile case, label Joseph Guarnerius Fecit Crenomal Ano 1720 IHS £300 - 500 †

306

A 19th Century half size violin and bow, in case, 56cm long £40 - 60 †

307

An embossed brass jardinière, having lion mask handles raised on ball and claw feet, 40cm long x 20cm high £30 - 50 †

308

A General History and Description of the County of Suffolk, and Pattersons Roads of England and Wales, and part of Scotland (2) £50 - 80 †

309

The Abbe Gaultier's Complete Course of Geography by Means of Instructive Games £80 - 120 †

310

Two old Atlases £50 - 80 †

311

Theodore Hamblin Ltd of London, WW1 period stereoscopic viewer and cards £100 - 200 †

312

Keith Prowse & Co. 48 Cheapside London, an unusual Flutina Accordion £50 - 80 †

313

Views of Perry Bar Hall, and a volume of sketches by Morland dedicated to H.W. Bunbury £40 - 60 †

314

Drawings by Frederick Remington, including signed letter on the inside cover £60 - 100 †

315

An Eastern white metal bowl, of lobed form having profuse pierced and engraved foliate decoration raised on a hardwood stand, 24cm dia. x 22.5cm high overall £40 - 60 †

316

A cased ship diorama, 49cm x 85cm overall £100 - 200 †

317

A pair of steel fire dogs, 27.5cm high £30 - 50 †

318

A cast iron figure of a cherub, 30cm high £25 - 40 †

319

An ormolu and marble clock garniture, the enamel dial and eight day movement in drum shaped case supported on columns with foliate and pineapple finials, 39cm high; flanked by a pair of baluster urns with scroll handles, 26cm high £80 - 120 †

320

A set of three 19th Century steel fire irons, with turned finials £50 - 80 †

321

A pair of Victorian brass fire tongs and matching shovel; and a single brass and cast iron implement rest (3) £30 - 50 †

322

A brass and steel footman, flanked by side carrying handles and raised on bold circular pierced supports, 46cm wide overall £40 - 60 †

323

An antique brass footman, having pierced decoration and raised on bold cabriole front supports, 44cm wide £40 - 60 †

324

A set of 19th Century polished steel fire irons £100 - 150 †

325

An Edwardian oak and brass mounted revolving book or magazine stand; and a smaller similar (2) £100 - 150 †

326

A set of 19th Century brass fire implements, with twist handles and tapering finials £40 - 60 †

327

A quantity of various ebony dressing table items, including scent bottle holder, trinket box, ring stand, watch stand, tray etc.; and a silver mounted button hook £20 - 40 †

328

A green marble and gilt metal mounted clock garniture, the clock with circular enamelled floral dial supporting an eight day movement, surmounted by an urn and raised on scrolled bracket feet, 40cm high, flanked by a pair of five light candelabra, 42cm high £80 - 120 †

329

A Victorian rosewood sarcophagus shaped tea caddy, fitted single compartment and glass mixing bowl, raised on bun feet, 25.5cm £80 - 120 †

330

A 19th Century ornate bronze mantel clock, with eight day movement striking on a bell, a circular foliate engraved dial with blue enamel Roman numerals, 44cm high £350 - 450 †

331

A daguerreotype photograph, of a late Victorian gentleman in carved and push lined folding frame £40 - 60 †

332

A small painted wooden box, the lid inset with an enamelled panel of a young girl wearing red bonnet £20 - 30 †

333

A late 19th / early 20th Century brass bulkhead ships clock, in the form of a ships wheel with enamelled dial, Roman numerals and two winding holes striking on a bell, indistinctly inscribed to the rear of the dial with names and dates 1898 and 1926, the back plates inscribed 63 R.N., 30cm dia. overall £100 - 200 †

334

An unusual hanging folding triptych mirror, gilt metal mounted in ebonised frame, decorated figures at the Village pump and apple picking, stamped "Brev LB" patent no.182633 26th September 1876, 23.5cm £40 - 60 †

335

A French Rococo design gilt metal fireplace set, comprising extending fender, implement rests, and implements £150 - 250 †

336

A large 19th Century velum covered ledger and diary, dated 1851 and inscribed "At Butcombe" £50 - 80 †

337

A large folio bound volume, "Peintures de Vases Antiques", Paris 1808 £80 - 120 †

338

A leopard skin £80 - 120 †

339

A Paisley shawl of traditional pattern, approx. 11' x 6' £100 - 150 †

340

An English Civil War style Blackjack Costrel, of teardrop form naively engraved with a thistle crown and Soltaire "C.R." for Charles I and the Scottish family name Athole who were associated with the Battle of Tippermuir 1644, 18cm £100 - 200 †

341

H. P. Reghoe, miniature study of lovers in a woodland clearing, signed watercolour in walnut frame; a pair of miniature portraits depicting young man and woman in ribbon tied decorated frames; and three other miniature portraits (6) £40 - 60 †

342

A Swiss music box, playing eight airs in inlaid case and striking on three bells, 41cm wide x 23cm high x 28cm deep £300 - 400 †

343

A carved oak pew end figure, possibly 16th Century having weighted base, 21cm high £60 - 80 †



Lot 328



Lot 329



Lot 330



Lot 332



Lot 350



Lot 353



Lot 354



Lot 370

344

A pair of 19th Century Japanese lacquer and shibayama panels, decorated birds and foliage, 60cm x 37cm overall; and a large similar example with signature seal, 75.5cm x 44cm (3) £60 - 100 †

345

A bronze Joan of Arc lamp, signed J. Monier, complete with silk shade, 95cm high overall, originally purchased from Liberty £300 - 400 †

346

A 19th Century French marble and gilt metal mounted mantel clock, of large proportions, the architectural style case with mask and cherub decoration, circular Roman numeral dial with visual escapement, 49cm high x 50cm wide £100 - 150 †

347

A 19th Century French marble cased mantel clock, of architectural form, having malachite inserts, the circular white enamel Roman numeral dial with visual escapement, 8 day movement striking on a bell, 38.5cm high x 41.5cm wide £100 - 150 †

348

A pair of Victorian decorated wall mirrors, one with figure of recumbent lion amongst foliage; the other with a tiger contained in decorative gilt pierced frames, 79cm x 108cm overall £300 - 400 †

348A

A pine framed hanging triptych mirror, decorated with prints of interior scenes AF £20 - 40 †

348B

A 19th Century sampler, decorated with alphabet, numbers and a figure of a shepherd and shepherdess, worked by Margaret Harland 1806 £100 - 150 †

Paintings

349

Jurgen Gorg, pair of pencil signed limited edition etchings in gilt frames, 32cm x 24cm £100 - 150 †

350

Continental school, study of man with clay pipe and foaming flagon of ale, unsigned oil on canvas, 59cm x 49cm £100 - 200 †

351

A coloured print, of "The Grand Bazaar Istanbul" £30 - 50 †

352

Charles D'Oyly, eight lithographs, Indian scenes; and six other Indian prints depicting Calcutta scenes (14) £400 - 600 †

353

Thakur Ganga Singh Indian 1895-1970, seven botanical studies, signed watercolours and dated 1944/45, 45cm x 35cm £1,000 - 1,500 †

354

19th Century school, study of a continental canal scene with boats, figures and buildings, 34cm x 55cm £100 - 150 †

355

After William Faden, an antique map of the "County of Suffolk", 56cm x 77cm £60 - 100 †

356

R André, study of the River Alde Suffolk, initialled and dated 1896, watercolour, 24.5cm x 38.5 £40 - 60 †

357

A pair of French marine lithographs £20 - 30 †

358

Study of Milan Cathedral, watercolour label verso, 16cm x 21cm £40 - 60 †

359

A set of four 19th Century prints, depicting Indian park and zoo scenes, plates 19cm x 27.5cm £40 - 60 †

360

After Edward Orme, engraving after Stadler, "Thorndon Essex" £30 - 50 †

361

A pair of engravings, "View of Millbank, on the Thames", after Laporte; and a view looking up the River Thames to Richmond Bridge £40 - 60 †

362

After Bigg, pair of coloured engravings, figures outside cottages, in pine frames £40 - 60 †

363

Louis Pinhorn, flourished 1870-1897, study of Chichester Harbour, initialled watercolour, 13cm x 17.5cm £40 - 60 †

364

Late 19th Century school, study of a windmill with boat in fore ground on the mill pond, unsigned watercolour in decorative gilt frame, 40cm x 32cm £40 - 60 †

365

Charles Morris Senior 1869, river landscape with a watermill and figures in a boat, signed and dated oil on canvas, 29cm x 45cm £120 - 180 †

366

W. H. Pearson, "Off Dieppe" signed watercolour, 26cm x 66cm £50 - 80 †

367

An antique engraving, "Apollo and the Four Seasons" after Wilson, dated 1794, plate 44cm x 54cm £60 - 80 †

368

Leonard F Sutton, "Herne Hill" signed oil on board, 48cm x 58cm £60 - 80 †

369

Leonard F Sutton, still life with copper kettle, signed oil on board, 48cm x 58cm £60 - 80 †

370

Study of "The Old Bridge" at Ayr, Scotland, watercolour indistinctly signed Exhibition label to verso, 32cm x 50cm £100 - 150 †

371

Chinese watercolour, depicting a bird on blossom laden branch, signed, 43cm x 30cm £40 - 60 †

372

A circular Chinese embroidered panel, depicting vases of flowers in amongst a foliate border, 23.5cm dia.; and another possibly from a Mandarins cloak depicting flowers on a black ground with continuous foliate border, 47cm x 32cm (2) £40 - 60 †

373

A Chinese silk work embroidered panel, depicting exotic bird on a branch, 70cm x 33cm £40 - 60 †

374

A Chinese painting on silk panel, depicting bird on branch, with signature, 91cm x 32.5cm £30 - 50 †

375

A Chinese Peking embroidered panel, depicting flowers within trailing foliate border, 58cm x 26.5cm £40 - 60 †

376

An Oriental embroidered silk work panel, depicting flowers and butterfly, 39cm x 16cm; and another similar, 51.5cm x 17.5cm £40 - 60 †

377

Emily Rebecca Prinsep, flourished 1813-1854, "Heathlands Near Sevenoaks Kent", initialled watercolour, 11cm x 8.5cm £20 - 30 †

378

A set of six Victorian prints of children, label verso "Christies Newhall Vault, ex lot 318" £30 - 50 †

379

Louis Pinhorn Wood, exhibited 1870-1891, "Three Keld Near Keswick 1890", label verso, pencil inscribed watercolour, 22cm x 29cm £40 - 60 †

380

Late 19th Century school, study of a piper, unsigned watercolour, 13cm x 9.5cm in mahogany frame £30 - 50 †

381

19th Century school, pair of watercolours depicting sheep being herded in mountainous landscapes, 24cm x 37cm; and another by the same hand depicting figures alighting from a Gondola in mountainous river landscape (3) £60 - 80 †

382

William Verner Longe 1857-1924, study of a bird with inscription "I Shot This Bird On The Marshes By Lighthouse", watercolour, signed and dated 1874, 22cm x 28cm £40 - 60 †

383

William Verner Longe 1857-1924, study of landing stage on the River Alde at Blackheath, signed and dated June 1915, watercolour, 23cm x 32cm £20 - 40 †

384

William Verner Longe 1857-1924, hunting study "Full Cry" signed watercolour, 32cm x 43.5cm £100 - 200 †

385

William Verner Longe 1857-1924, hunting scene "Gone Away", signed watercolour 21cm x 27.5cm £80 - 120 †

386

William Verner Longe 1857-1924, study of huntsman entitled "Coming Home", signed watercolour, 21cm x 26.5cm £60 - 100 †

387

Cipriani, etching of cherubs in a fountain, published by Boydell Cheapside London £20 - 40 †

388

W Carter, study of a country cottage with geese outside, 17cm x 12.5cm; and Jay Williams study of country cottages with chickens outside, 16.5cm x 24cm (2) £60 - 80 †

389

19th Century English school, monogramme C.F.H. "A Summer Storm" watercolour dated 1881, 23cm x 33.5cm £50 - 80 †



Lot 372



Lot 385



Lot 386



Lot 389



Lot 392



Lot 393



Lot 395



Lot 405

390

Linnell, Lawrence G. Exhibited 1909-1926, study of a bluebell wood, signed watercolour, 23.5cm x 24.5cm £20 - 40 †

391

George Hall, "Village of Corfe, Dorset" signed watercolour, 26.5cm x 37cm £60 - 80 †

392

Manner of Peter De Wynt, river scene with moored barges and distant Cathedral view, unsigned watercolour £120 - 180 †

393

20th Century continental school, summer flowers in a glass vase resting on a marble ledge, unsigned oil on board, 45cm x 37cm £100 - 200 †

394

Victorian school, "The Field Workers Rest", oil on board, 20cm x 31cm £60 - 100 †

395

S. Day, travellers passing an old oak tree, signed and dated 1857, oil on canvas, tondo 28.5cm £120 - 180 †

396

Sidney A Driver, "Tranquil Summer River" with a wooden bridge and cottages, signed and dated 1933, 25cm x 34cm £80 - 120 †

397

J. Box, 20th Century study of a prize pig in a sty, signed oil on canvas laid on wood board, 21cm x 25cm £100 - 150 †

398

Late 19th / early 20th Century school, study of a cottage beside a river with river barge nearby, watercolour, 12cm x 24cm £40 - 60 †

399

Continental school, study of a busy market scene, unsigned watercolour, 25cm x 31cm; and another similar by the same hand showing different view of a town market, 25cm x 34cm (2) £60 - 80 †

400

19th Century school, study of a rural scene, unsigned oil on canvas, 30cm x 24cm; and another of a Highland Loch scene with figures in a boat, 28cm x 45cm (2) £40 - 60 †

401

Roger Desoutter RSMA, "The William O Snow Leaving Boston", signed oil on canvas, 50cm x 75cm £100 - 200 †

402

Deryck Foster RSMA born 1924, "Canopia, In The Thames", signed watercolour, 17cm x 24cm £60 - 100 †

403

William Lionel Wyllie, pencil signed etching of the Captain Falcon Scott ship Discovery, plate 27cm x 38cm £100 - 150 †

404

William Minshall Birchall (1884-1941), study of a North Atlantic clipper, signed watercolour dated 1929, 34.5cm x 50cm £100 - 200 †

405

E Tufnell, study of a patrol boat, signed watercolour, 26cm x 36cm £40 - 60 †

406

William Minshall Birchall (1884-1941), "Flying Her Code Number" signed and dated 1925, 26cm x 18cm £60 - 100 †

407

B Harrison, study of a four funnelled ocean liner, possibly R.M.S. Lucania with tug boats in attendance, signed watercolour dated 1909 16cm x 23cm £70 - 100 †

408

20th Century East Anglian school, view of a river barge moored to the side of wooden buildings with flags, oil on canvas, 24cm x 34cm £30 - 50 †

409

English Marine, naive school study of a 19th century three masted war ship off Cape Town with Table Mountain beyond, unsigned watercolour, 34cm x 64cm £20 - 30 †

410

A set of five late 19th Century Chinese watercolours, on textile depicting children, adults and elders at play with script and red stamped seal mark, both horizontal and vertical images, 22cm x 19cm £60 - 100 †

411

English school, 19th Century study of a female child flower seller, oil on canvas applied onto another, 30cm x 25cm unframed £80 - 120 †

412

Hamilton Chapman, study of sheep and shepherd, signed watercolour dated 1918, 25cm x 38.5cm £60 - 80 †

413

19th Century school, watercolour study of a figure walking along a country path; a late 19th Century school watercolour study of a busy continental street scene; a small watercolour study of a continental port, signed W.Payne; a rosewood framed etching "Le Chariot"; and a 19th Century Dutch style reverse painting on glass (5)

£60 - 100 †

414

Caroline Dean (British Contemporary), "Girl Attending to her Hair", Chinese ink on grass paper, 47cm x 41cm

£500 - 800 †

415

E.H.Hall, in the style of Sir Edwin Landseer, profile study of an Irish deerhound, signed oil on board, 34cm x 27cm

£40 - 60 †

416

An early 20th Century English naive school, study of an muzzled terrier before a stable door, oil on board, 18cm x 14cm

£40 - 60 †

417

S. Alett, study of poultry in a stable setting, oil on panel mounted, 10cm x 18cm

£20 - 30 †

418

19th Century French school, still life study of summer flowers in an urn, raised on marble ledge, oil on canvas, 59cm x 46cm

£100 - 150 †

419

George Aczel, still life of flowers in a vase, oil on canvas signed, 64cm x 49cm

£100 - 150 †

420

James Webb 1825-1895, fisherfolk and vessels in the river Rotter near Rotterdam, oil on panel, signed twice and dated 1877-78, also inscribed in original gilt frame, 31cm x 51cm

£700 - 800 †

421

C.W. Williamson, 19th Century "The Grover, a Three Masted Barque out of Liverpool on the Valpariso Chilli run", oil on canvas, signed and inscribed, unframed, 60cm x 80cm

£300 - 500 †

422

Attributed to J.C. Nattes, circa 1765-1822 a pencil sketch inscribed "Sand Pit Aspley" with figures and horse, 25cm x 35.5cm

£40 - 60 †

423

Attributed to George Frost, study of a farmyard, unsigned pencil sketch label verso, 12.5cm x 17.5; and 19th Century school pencil sketch of a farm in a valley with church on hill, 14cm x 16cm (2)

£40 - 60 †

424

Attributed to J Curstall 1767-1847, study of a waterfall, unsigned pencil and watercolour, 19cm x 23.5cm

£20 - 40 †

425

William Parrs, study of fisherman hauling in the nets, unsigned watercolour, 27cm x 42.5cm; and another by the same artist depicting figures walking along a lakeside path, unsigned watercolour, 29cm x 44.5cm

£40 - 60 †

426

Stump, watercolour children birds nesting, signed, 32.5cm x 24.5cm

£20 - 30 †

427

L. Mayer, study of Holbrook, watercolour, 24cm x 35.5cm label verso

£40 - 60 †

428

Attributed to George James Rowe 1804-1883, study of Wilford Hollows, watercolour, 20cm x 30cm

£20 - 40 †

429

19th Century school, study of Borthwick Castle with figures crossing the moat bridge, indistinctly signed watercolour, dated 1892, 13cm x 18.5cm

£20 - 40 †

430

19th Century school, pencil sketch of an elderly lady with broom, 17cm x 13cm; and after Claud Chatelain, faint pencil sketch figures by a river (2)

£40 - 60 †

431

A Persian double sided manuscript, framed and glazed, 17cm x 24.5cm

£40 - 60 †

432

John, pastel study of a seated early 20th Century girl, signed, 29cm x 22cm

£20 - 30 †

433

An antique French print after Boucher, "Pensent-Ils Au Raisin?"

£40 - 60 †

434

19th Century school, study of highland long horn cattle on a misty mountainside, 29cm x 50cm

£100 - 150 †

435

George Armfield 1808-1893, study of two terriers stalking a rodent, oil on canvas, 48cm x 60cm

£400 - 600 †

436

V.M Long, study of exterior of a country house with rocky landscape in the far ground, 26cm x 35cm

£30 - 50 †



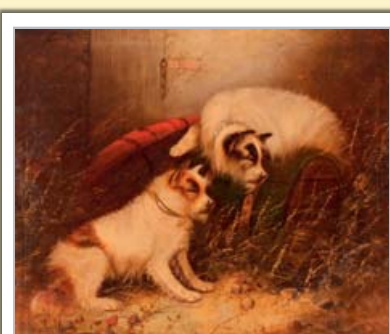
Lot 407



Lot 411



Lot 416



Lot 435



Lot 448

437
19th Century school, study of a deer in woodland river, unsigned oil, 35cm x 41cm £100 - 150 †

438
Frank Gresley 1855-1938, Derbyshire scene with figure of a woman stood on a bridge over a stream, signed watercolour, 26cm x 34.5cm £100 - 150 †

439
18th Century Dutch school, study of figures in a tavern interior, unsigned oil on board, 25cm x 29cm £100 - 150 †

440
19th Century English school, portrait study of a seated lady believed to be Dora Roberts beside a table with flowers and Chinese vase, unsigned watercolour mounted as an oval, 25cm x 19cm £40 - 60 †

441
Gerald Norden, primroses in a basket, signed oil on board, 14cm x 16.5cm £40 - 60 †

442
Margaret Angus, "Flowers In A White Jug", oil on canvas label verso, 40cm x 34cm
NB. Margaret Angus exhibited at the Royal Academy and with the New English Art Club in the 1930's £250 - 350 †

443
A.P. Cole, study of a monk seated with a meal studied by three envious cats, signed oil on board inscribed "Paris Dec 1900", 40cm x 26cm £300 - 400 †

444
A framed and glazed coat of arms, pertaining to Robert Craw of Eastreston, Scotland, 22cm x 18cm £40 - 60 †

445
Three 19th Century cock fighting prints, (unframed) £40 - 60 †

446
Dan Murray Smith, two watercolours depicting bullfinches and a thrush £40 - 60 †

447
Melzer, study of farmer and cattle beside a river, cottage in far ground, signed oil on canvas, 50cm x 80cm in decorative gilt frame £300 - 400 †

448
After E.R. Smythe, study of a tethered donkey, unsigned oil on panel, 20cm x 21cm £100 - 200 †



Lot 449



Lot 457



Lot 458

449
19th Century Dutch school, study of a young girl seated in a kitchen interior with doves around her feet, unsigned oil on tin, 20.5cm x 16cm £200 - 300 †

450
Andre De Moller, Suffolk coastal scene oil on canvas with dedication verso, 24.5cm x 29cm £200 - 300 †

451
John Moore of Ipswich 1820-1902, "Bredfield Lane Looking to Melton", signed oil on panel, 18cm x 22cm £200 - 400 †

452
Robert Burrows of Ipswich 1810-1883, study of figures with boat on the foreshore, signed oil on canvas, 24cm x 19cm, inscribed to frame Allen Bequest 1931-1928 £200 - 400 †

453
Attributed to John Sell Cotman, study of The Norman Entrance to South Burlingham Church, pencil sketch bears signature, 15cm x 15cm £200 - 300 †

453A
E. Adams, Suffolk school watercolour of The Bucks Horn in Belstead, signed 13cm x 18cm; and another of a cottage at Bentley (2) £30 - 50 †

453B
A collection of Ipswich prints, to include after Fred Russell, "The Ancient House", three small engravings "Scene on the River Orwell", "Ipswich and the Church of St Lawrence", "Stoke Park"; four small engravings of the First Steeple Chase on record 15cm x 17cm in mahogany frames and a coloured print "Boot and Saddle, Cornhill Ipswich 1643" (9) £40 - 60 †

454
19th Century Suffolk school, Study of woman and child walking along a country path, farm and cottages in the background, indistinctly signed oil on canvas, 23.5cm x 30cm £200 - 400 †

455
Robert Burrows 1810-1883, "The Tryst", signed oil on board, 17.5cm x 15cm £300 - 500 †

456
John Moore 1820-1902, study of a large house with meadow and cattle to the fore ground, signed oil, 25.5cm x 31cm £400 - 600 †

457
E.R. Smythe 1810-1899, study of John Gilpin galloping on his horse pursued by hounds heading towards a rural cottage, signed oil on canvas, 50cm x 88cm £600 - 800 †

458

John Moore of Ipswich 1820-1902, study of a shipwreck in raging storm, signed oil on canvas, 40cm x 60cm. Cover illustration £600 - 800 †

459

After George Romney, 19th Century school, portrait study of Richard Burn co-author of the history of Cumberland and Westmorland, 75cm x 62cm, oil on canvas, bears inscription and signature, label verso relating to the bequest of the picture to William Lowther by Col. Burn £400 - 600 †

460

Dutch school, 19th Century study of figures drinking and smoking in an interior, oval oil on metal panel, 20cm x 16cm £100 - 150 †

461

A. Onslow 1878, study of the three masted square rigged Royal Navy gun ship off the coast, oil on board, signed and dated '78, 16cm x 26cm £150 - 250 †

462

Continental school, 18th Century, a hilly Italianate river landscape with figures fishing, oil on copper, 18cm x 25cm £150 - 250 †

463

A Persian painting, depicting hunting scene in inlaid decorative frame; another similar; another Persian painting depicting ladies in a garden; and a work on lacquered panel of a dancing girl (4) £100 - 200 †

464

After Thomas Blinks, "Here They Come" study of fox hounds searching for their quarry, oil on wooden panel heightened in white, 43cm x 25cm £50 - 70 †

465

"Maggie", "Annie Forest was Surrounded", watercolour dated 10; book illustration; together with another book illustration entitled "As Hester Was preparing For Her Visit", 23cm x 20cm (2) £30 - 50 †

466

William Verner Longe 1857-1924, steeple chase scene signed watercolour dated 1891, 19cm x 36cm £40 - 60 †

467

Sixth Earl of Essex, study of Florence, signed and dated January 1851 watercolour, 12cm x 17.5cm £40 - 60 †

468

Lota Bowen SWA 1872-1934, study of The Venice Lagoon dated 1915, 29cm x 49cm £70 - 90 †

469

Henry John Sylvester Stannard 1870-1951, study of a rural cottage, watercolour, 24cm x 34cm £80 - 120 †

470

19th Century Suffolk school, study of working horses and ploughman resting, unsigned oil on board, 12cm x 15cm £40 - 60 †

471

Dutch school late 17th / early 18th Century scene, of a bawdy tavern interior, unsigned oil on panel, 28cm x 45cm in ebonised frame £300 - 500 †

472

A terracotta jug, and contents of paintbrushes and a metal part paint box belonging to the Artist Seymour Lucas R.A.; together with a Lucas bookplate dated 1985 £100 - 200 †

472A

Edward Pococke 1843-1901, three small watercolour studies depicting part of Old Palace Ipswich, the Shire Hall, Hall Yard, Ipswich, and another The Quay (3) £60 - 100 †

473

Edward Pococke 1843-1901, study of Stoke Bridge, Ipswich, signed watercolour, 18cm x 26.5cm £100 - 150 †

473A

Edward Pococke 1843-1901, pair of studies of the Old Kings Arms, Ipswich, signed watercolours £40 - 60 †

474

Edward Pococke 1843-1901, study of The Eagle, Foundry Street, Ipswich, signed watercolour, 12.5cm x 17.5cm £60 - 80 †

Furniture & Rugs

475

A fine quality Isfahan rug, 203cm x 130cm £200 - 300 †

476

An unusual antique oak narrow storage cupboard, enclosed by a single carved door decorated metal studs and strap hinges with iron lock plate and hasp, 63cm wide x 130cm high £100 - 150 †

477

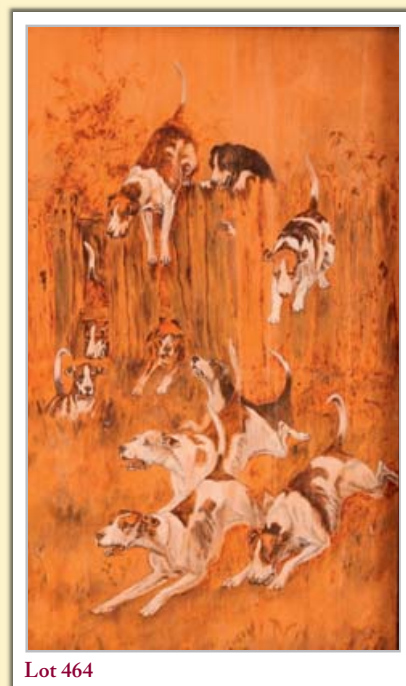
An Edwardian inlaid mahogany corner cupboard, the upper shaped shelves enclosed by a glazed panelled door and surmounted by a scroll arch pediment, cupboard below raised on bracket feet, 59cm wide x 205cm high £60 - 100 †



Lot 461



Lot 462



Lot 464



Lot 474



Lot 486

478

A George III mahogany bureau bookcase, the upper adjustable shelves enclosed by a pair of glazed panelled doors, the fall front opening to reveal an interior arrangement of pigeon holes, two short and three long drawers below raised on bracket feet, flanked by carrying handles, 106cm wide x 220cm high £200 - 400 †

479

No Lot

480

A George III mahogany chest on chest, the upper section fitted two short and three long drawers beneath a stepped cornice, three drawers below raised on bracket feet, 112cm wide x 180cm high £200 - 300 †

481

A Georgian mahogany bureau, the fall front opening to reveal an interior arrangement of drawers and pigeon holes, three long drawers below on bracket feet, 92cm wide £50 - 80 †

482

A Victorian mahogany break front bookcase, the upper adjustable shelves enclosed by four geometrically glazed panelled doors, the base section enclosed by four moulded panel doors on a platform plinth, 247cm wide x 212cm high £300 - 400 †

483

A carved oak joint stool, raised on baluster turned supports united by stretchers, 97cm wide £60 - 80 †

484

A 19th Century gilt framed triple chimney mirror, with ball decoration to the shaped pediment, ebonised reeded slip panels flanked by twist columns, 61cm x 145cm £150 - 250 †

485

A late 19th / early 20th century mahogany serpentine fronted sideboard, fitted central cutlery drawer flanked by cupboards and raised on square tapering supports and spade feet, 151cm wide £50 - 80 †

486

A French walnut and marble topped bedside cabinet, fitted single drawer and drop front compartment raised on foliate carved cabriole supports, 42cm wide x 80cm high £60 - 80 †

487

A 19th Century mahogany chest, of two short and three long drawers cut in two sections and raised on bracket feet, 93cm wide x 48cm deep x 100cm high £60 - 100 †

488

A 19th Century mahogany two tier whatnot, fitted two drawers and raised on turned column supports, 61cm wide x 90cm high £60 - 80 †

489

A pair of 19th Century mahogany Adam design dining chairs, having cane seats and circular panel backs £60 - 80 †

490

A 19th Century mahogany fold over tea table, the rectangular top with foliate carved frieze raised on square section supports, 91cm wide £100 - 150 †

491

A French mahogany and satin wood strung side cabinet, surmounted by a marble top fitted single drawer with cupboard below, flanked by gilt metal embellishments, 43cm wide x 87cm high £40 - 60 †

492

An Edwardian mahogany side table, fitted with single drawer, raised on square tapering supports, 75cm wide £40 - 60 †

493

A French walnut rosewood cross banded and inlaid side cabinet, surmounted by a marble top with single drawer and cupboard below, flanked by columns and gilt metal capitals, raised on rounded tapering supports, 46cm wide x 80cm high £60 - 80 †

494

A George III and later marquetry inlaid mahogany long case clock, the domed hood with three brass finials above a central panel inlaid with a rams head above fluted columns enclosing a brass dial with silvered chapter ring, pierced foliate spandrels date aperture and subsidiary seconds, inscribed Benjamin Wilson London, the trunk with profusely inlaid arched door within brass inlaid quartered columns, box base raised on bracket feet, 252cm high £600 - 800 †

495

A 19th Century mahogany tilt top occasional table, raised on tripod base, the top 60cm wide £40 - 60 †

496

A 19th elm and yew wood Windsor elbow chair £60 - 100 †

497

An antique gilt framed wall mirror, having foliate scroll decoration, 61cm x 70cm £200 - 300 †



Lot 489



Lot 491



Lot 496

498

An early 20th Century mahogany framed wing back armchair, in the George III manner, upholstered in tan buttoned leather and raised on carved cabriole front supports terminating in claw and ball feet *£200 - 400 †*

499

A 19th Century mahogany and cross banded secretaire chest, the writing drawer with interior arrangement of drawers and pigeon holes above three long graduated drawers raised on turned supports, 105cm wide *£100 - 150 †*

500

A Georgian mahogany and chequer banded bow front chest, of two short and three long drawers raised on bracket feet, 103cm wide *£100 - 150 †*

501

A walnut bureau, in the 18th Century Dutch style, the fall front opening to reveal and interior of drawers, pigeon holes, and a cupboard around a sunken well, three long drawers below, raised on bold claw and ball feet, 83cm wide *£100 - 150 †*

502

A 19th Century mahogany chiffonier, having raised back, two drawers and cupboards under on turned supports, 104cm wide *£100 - 150 †*

503

A lacquered cabinet on stand, with chinoiserie decoration, brass mounts and hinges, the doors opening to reveal an interior arrangement of six drawers around a central cupboard, the stand raised on chamfered supports united by gilt brackets, 74cm wide x 143cm high *£200 - 400 †*

504

An 18th Century oak chest, of four drawers with geometric moulded panel fronts, brass handles and escutcheons, 93cm wide *£200 - 400 †*

505

An 18th Century burr yew wood and walnut bureau, the fall front opening to reveal an interior arrangement of drawers and pigeon holes around a central cupboard, four long graduated drawers below raised on bracket feet, 91cm wide *£400 - 600 †*

506

An Edwardian walnut and marble topped washstand, the raised back with Art Nouveau design tiles, fitted drawers, cupboards and recess under, 130cm wide *£60 - 80 †*

507

An 18th Century Italian walnut commode, of serpentine shape, the drawers with rosewood cross banding, brass handles and escutcheons, raised on turned supports, 126cm wide *£500 - 800 †*

508

A George III mahogany chest, of two short and three long drawers raised on bracket feet with reeded canted angles, 102cm wide *£100 - 200 †*

509

A 19th Century gilt pier mirror, the breakfront pediment with ball decoration, barley twist columns to the side, 86cm high x 58cm wide *£100 - 150 †*

510

An antique walnut cushion framed wall mirror, 55cm x 51cm *£200 - 300 †*

511

A 19th Century mahogany chest, of four long graduated drawers raised on bracket feet, 95cm wide *£100 - 150 †*

512

An 18th Century style walnut cross banded and boxwood strung chest, of two short and three long drawers raised on bracket feet, 98cm wide x 100cm high x 54cm deep *£250 - 350 †*

513

A mahogany and satinwood cross banded chest, fitted three drawers raised on bracket feet, 75cm wide x 54cm deep x 88cm high *£100 - 200 †*

514

A 19th Century mahogany bookcase on stand, the upper section fitted adjustable shelves enclosed by glazed panelled doors, three drawers below raised on turned cup and cover supports united by wavy stretchers, 76cm wide x 161cm high *£100 - 150 †*

515

A 19th Century mahogany chest, of four long graduated drawers cut in two sections within pine sides raised on bracket feet, 92cm wide x 46cm deep x 104cm high *£80 - 120 †*

516

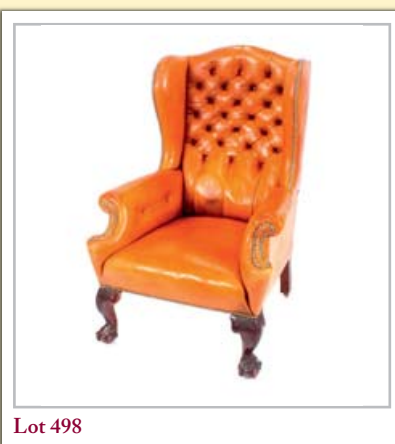
A 19th Century mahogany side table, fitted with a single drawer raised on square chamfered supports, 92cm wide *£100 - 150 †*

517

A 19th Century mahogany pedestal drop leaf supper table, fitted end drawers raised on a quadruple splay base, 101cm x 122cm extended *£150 - 250 †*

518

An antique oak bachelors chest, having fold over top supported by pull out slides, three graduated drawers below raised on bracket feet, 64cm wide *£100 - 200 †*



Lot 498



Lot 501



Lot 503



Lot 507



Lot 520



Lot 522



Lot 531



Lot 537

519

An Edwardian mahogany and satin wood cross banded occasional table, tapering square supports united by an under tier, 56.5cm wide £40 - 60 †

520

A set of eight 19th Century elm Yorkshire spindle back dining chairs, with rush seats raised on rounded supports and club feet, united by turned stretchers £400 - 600 †

521

An 18th Century oak refectory table, the plank top raised on baluster turned supports united by stretchers, 77cm x 240cm £600 - 800 †

522

A set of six Victorian mahogany balloon back dining chairs, having upholstered serpentine seats raised on turned tapering supports £100 - 200 †

523

An unusual antique pine dough bin/food hutch, 116cm wide x 58cm deep x 78cm high £200 - 300 †

524

An 18th Century oak coffer, having inlaid triple panel front and two drawers below, 108cm wide £100 - 200 †

525

A 19th Century bobbin framed nursing chair, with cane panel seat £30 - 50 †

526

A pair of Victorian and later mahogany bedside cabinets, fitted single drawers, cupboards below enclosed by arched panelled doors raised on platform supports, 41cm wide x 40.5cm deep x 72cm high £250 - 350 †

527

A Victorian mahogany pole screen, having circular needlepoint banner raised on a turned fluted and foliate carved column, terminating in tripod base with bun feet, 148cm high £80 - 120 †

528

An antique oak demi-lune side table, raised on turned baluster supports united by stretchers, 77cm wide £80 - 120 †

529

Five George III mahogany dining chairs, having reeded pierced backs, upholstered stuff over seats, raised on ring turned tapering front supports, AF £60 - 100 †

530

No Lot

531

A pair of French rosewood and king wood cross banded side cabinets, of shaped form fitted three drawers and raised on cabriole supports, 33cm wide x 73cm deep £60 - 80 †

532

A mahogany satin wood cross banded and inlaid pew, having shaped ends, 86cm wide x 96cm high £200 - 300 †

533

A 19th Century walnut and boxwood strung bookcase, the adjustable shelves enclosed by a pair of glazed panelled doors, 95cm wide x 104cm high x 39cm deep £50 - 80 †

534

An 18th Century walnut and cross banded side table, fitted three drawers raised on baluster turned cup and cover supports united by wavy stretchers and terminating in bun feet, 121cm wide x 57cm deep £400 - 600 †

535

An antique oak gate leg tea table, rounded drop leaves raised on turned supports united by stretchers (single drawer missing), 90cm wide £40 - 60 †

536

An Edwardian chaise lounge, and matching pair of deep seated easy chairs upholstered en suite in beige Dralon, raised on turned tapering supports and castors £200 - 300 †

537

A pair of early 20th Century carved oak Glastonbury chairs, of traditional form £150 - 250 †

538

A Victorian mahogany scroll end sofa, having carved decoration and raised on turned baluster supports, upholstered in floral printed Damask, 190cm long overall £200 - 400 †

539

A Victorian golden oak and ebonised pedestal writing desk, the leather inset top above three frieze drawers with six drawers to the pedestals, 134cm wide £200 - 300 †

540

A 19th Century mahogany fold over tea table, raised on square tapering supports and spade feet, 90cm £80 - 120 †

541

A 19th Century mahogany fold over tea table, fitted with a single drawer raised on tapering supports and spade feet, 103cm wide £60 - 80 †

542

A 19th Century mahogany and satin wood inlaid occasional table, having central fan paterae raised on turned baluster column and tripod base, 50cm £60 - 100 †

543

A pair of mahogany and walnut cross banded bedside chests, fitted four drawers with brass drop handles, the old drawer fronts stamped J.A.S. Shoolbred & Co., 40cm wide x 79cm high x 38cm deep
£450 - 650 †

544

An early 20th Century carved mahogany oval extending dining table, in the Chippendale manner, having gadrooned border raised on foliate shoulders and cabriole supports terminating in claw and ball feet and castors, with extra leaf, 105cm x 168cm extended
£80 - 120 †

545

A set of four Edwardian mahogany boxwood strung and marquetry decorated salon chairs, with needlepoint upholstered seats raised on square tapering supports
£80 - 120 †

546

A pair of Victorian mahogany pedestals, fitted shelves and trays enclosed by moulded panel doors raised on platform plinths, 50cm wide x 79cm high
£100 - 150 †

547

A Victorian mahogany side table, fitted two short drawers and raised on turned tapering supports, 91cm wide
£60 - 80 †

548

An unusual Persian painted low table, with lifting compartment secured by an iron hasp, raised on shaped supports and wooden wheels, 135cm wide x 66cm deep x 47cm high
£200 - 300 †

549

An antique oak refectory dining table, the planked top raised on baluster cup and cover supports unite by stretchers, 91cm x 242cm
£400 - 600 †

550

An Eastern Liberty style hexagonal inlaid occasional table, 34cm wide overall x 48cm high
£50 - 80 †

551

A set of 19th Century graduated fruit wood wall shelves, raised on turned baluster columns with ebonised rings, 76cm wide x 71cm high overall
£50 - 80 †

552

A mahogany and satinwood cross banded open fronted bookcase, raised on a platform plinth, 150cm wide x 33cm deep overall x 101cm high
£200 - 300 †

553

A 19th Century rosewood stool, with needlework seat, scrolled supports united by a turned cross stretcher, 46cm
£80 - 120 †

554

An antique Anglo/Indian leather and brass mounted camphor lined box, with stud decoration, 60cm wide
£120 - 160 †

555

An Eastern carved and inlaid octagonal low table, profusely decorated with scenes of village life, raised on elephant trunk supports, 91cm dia. x 51cm high
£150 - 250 †

556

A 19th Century rosewood and marquetry inlaid bureau de dame, surmounted by a pierced gallery, the fall front opening to reveal an interior arrangement of drawers and sunken well raised on cabriole supports with gilt metal mounts and sabots, 66cm wide
£800 - 1,000 †

557

A 19th Century walnut Canterbury whatnot, having pierced gallery raised on barleytwist supports, drawer to base raised on turned supports and castors 56cm wide x 99cm high overall
£80 - 120 †

558

An early 19th Century yew wood and elm stick back Windsor chair, having shaped seat raised on crinoline stretcher AF
£60 - 100 †

559

An oak Regency style window seat, with scrolled armrests raised on turned tapering supports and pegged feet, 90cm wide
£150 - 250 †

560

A walnut cross banded and herringbone strung three drawer hall table, raised on reeded tapering supports, 106cm wide x 44cm deep x 78cm high
£250 - 350 †

561

A mahogany extending dining table, in the Victorian manner fitted extra leaf and raised on baluster fluted supports, terminating in brass caps and castors, 107cm x 207cm extended
£200 - 400 †

562

A matched set of eight mahogany bar back dining chairs, having red Dralon upholstered seats
£200 - 400 †

563

A pair of oval cream and gilt decorated lamp tables, with marble inset tops raised on turned tapering reeded supports, united by cross stretchers, 72cm wide
£100 - 200 †

564

A 19th Century elm and pine kitchen table, fitted pull out slide, raised on square section supports united by stretchers, 177cm long x 75cm wide, 76.5cm high
£400 - 600 †



Lot 555



Lot 556



Lot 557



Lot 558



Lot 569

565

A Victorian elm seated smokers bow elbow chair
£60 - 80 †

566

An 19th Century oak and mahogany cross banded side table, fitted one shallow and two dummy drawers raised on square section tapering supports, 81cm wide
£60 - 80 †

567

A 19th Century rosewood sewing table, having rounded drop flaps above a single drawer and pull out silks bag, raised on "U" shaped support, square waisted column and quatrefoil base terminating in brass claw caps and castors, 52cm wide x 48cm deep
£100 - 150 †

568

An Edwardian rosewood satinwood strung and ivory inlaid occasional table, the rectangular top raised on a turned column and triform base, 64cm x 41cm
£100 - 200 †

569

A Victorian burr walnut Harlequin piano top Davenport, the pop up back section surmounted by a pierced gallery, pull out writing slope, inkwell section beneath two short drawers, three side drawers and opposing dummy drawers, raised on turned columns and inverted platform plinth terminating in castors, 58cm wide x 99cm high. NB. Vendor reports - originally purchased from Duke of Hamilton estate sale, and restored by Mr D Hill at Wickham Market
£400 - 600 †

570

An early 20th Century mahogany pedestal writing desk, having leather inset top and three frieze drawers, six drawers to the pedestal raised on platform plinths, 151cm wide x 90.5cm deep x 76cm high overall
£200 - 400 †

571

A 19th Century ebonised walnut cross banded and boxwood strung bow front credenza, the central door inset with an oval Serves type porcelain panel depicting romantic couple, flanked by glazed display shelves and columns raised on an inverted platform plinth base, 150cm wide x 107cm high
£300 - 500 †

572

An 18th Century oak dresser base, fitted three drawers and cupboards below with moulded panel fronts and raised on bracket feet, 183cm
£200 - 300 †

573

A 19th Century mahogany and brass pole screen, having embroidered panel of a bird amongst foliage on carved fluted tripod base
£40 - 60 †

574

A decorative Japanese lacquer and hardstone four fold screen, 183cm high
£200 - 300 †

575

A large bespoke oak freestanding double corner cupboard, the upper shelves enclosed by a pair of fielded quarter panel doors, single drawer and dummy drawers below, with cupboard to base raised on bracket feet, 145cm wide overall x 215cm high
£200 - 300 †

576

A set of six Regency mahogany brass inlaid dining chairs, having ball and rail backs, loose squab cushions on sabre front supports
£200 - 300 †

577

A bespoke craftsman made light oak refectory dining table, the plank top raised on bold baluster columns united by stretchers, 123cm wide x 245cm long x 80cm high
£300 - 400 †

578

A pair of 18th Century style pier mirrors, the pediments with breakfront outline, gilt urns and ball decoration flanked by leaf tied reeded columns, 156cm x 78cm
£400 - 600 †

579

A French cream painted commode, surmounted by a marble top, having blind frieze drawer with two drawers below, with profuse applied and carved foliate and urn decoration raised on turned tapering supports, 134cm wide
£500 - 600 †

580

A large 18th Century style cream and gilt wall mirror; the frieze with gilt leaf decoration flanked by half capital reeded columns, 178cm high x 104cm wide
£400 - 500 †

581

A 19th Century mahogany Chippendale style side chair, with pierced splat back above needlepoint upholstered drop in seat, raised on cabriole supports and claw and ball feet
£20 - 30 †

582

A walnut side chair in the Queen Anne style, with vase splat back, leatherette upholstered drop in seat raised on cabriole supports; and a cabriole legged dressing stool with needlepoint upholstered seat (2)
£40 - 60 †

583

A 19th Century wing back child's chair, in the French taste, painted and with needlepoint upholstered seat, arm rests and back, raised on turned tapering front supports; and a matching serpentine stool
£300 - 500 †



Lot 571



Lot 581



Lot 583

TERMS AND CONDITIONS OF SALE 1. INTRODUCTION

1. INTRODUCTION

The following defining terms are used in these conditions:-

"Auction"	Means any auction conducted by Clarke and Simpson Auctions Ltd. either at the premises owned by them or elsewhere (including any internet based auction);
"Auctioneer"	Means Clarke and Simpson Auctions Ltd. authorised auctioneer as appropriate;
"Bidder"	Means a bidder at an auction, including the bidders personally present at the venue and those bidding by telephone or over the internet or otherwise;
"Buyer"	Means the bidder whose bid was the last bid when the auctioneer concludes the bidding; "Conditions" Means these Terms and Conditions of Sale;
"Hammer Price"	Means the level of bidding reached (at or above any reserve) when the auctioneer brings the bidding to a close;
"Lot"	Means any property accepted by Clarke and Simpson Auctions Ltd. for offer at auction;

2. DESCRIPTION

No warranty is given or implied by the description in the catalogue. Each lot is sold in its condition at the time of sale with all faults, defects, imperfections and errors of description (if any). Whilst every endeavour has been made to describe the items adequately and properly, the purchaser shall deem to have inspected the lot at time of purchase. All catalogues and seller's and buyer's guides are for information only and do not form part of the contract.

3. STATUTORY REQUIREMENTS

Purchasers will be deemed to have satisfied themselves prior to purchasing regarding current legal requirements (e.g. Health & Safety at Work Act) and it is expressly brought to the bidders attention that equipment in the sale may not necessarily comply with such regulations. Any purchaser shall satisfy himself as to any statutory requirement for the use of any item and no liability shall rest with the vendors nor the Auctioneers.

4. THE AUCTION All auctions are conducted at the absolute discretion of the auctioneer. The auctioneer shall conduct the auction with reasonable skill and care. The vendor reserves the right to sell subject to reserve price in respect of all lots. What constitutes a bid shall be at the absolute discretion of the auctioneer, acting with appropriate skill and care. The auctioneer shall have the right to refuse any bid in all cases but most notably when such a bid does not exceed the previous bid by at least 10% or such a proportion as the auctioneer shall in his absolute discretion direct. Where two or more bids at the same level are simultaneously received by the auctioneer, the auctioneer at his absolute discretion shall determine which bid to prefer. Subject to the foregoing where two or more bids are at the same level are simultaneously received by the auctioneer, the bid submitted in the room shall take preference over a bid submitted by telephone or internet at the same level. Any bid made or attempted by telephone or over the internet will only be deemed to have been made if received by the auctioneer. The auctioneer reserves the right to withdraw, consolidate or divide any lot or lots or submit them in any order that they desire. The auctioneer has the right at his absolute discretion to refuse admission to his premises or attendance at (or participation in) any auction by any person. In the case of any dispute, the auctioneer shall be sole arbitrator in any matters arising during or out of the sale.

5. BIDDERS

All bidders will be required to register their particulars, bidders attending in person and those accompanying them will be required to provide photo ID and separate confirmation of address prior to viewing or taking any part of the sale and before entering any part of the premises to view. All bidders accept full liability for all bids submitted. Subject to the clause in this document headed "The Auction", the highest bidder at the close of bidding shall be the buyer. Any dispute about a bid shall be settled at the auctioneer's absolute discretion. Bidders are all deemed to act as principals unless there is prior written acknowledgement by Clarke and Simpson Auctions Ltd. that a bidder is acting as an agent for a named principle. Bidders are strongly encouraged to attend the auction in person. The bidders shall be responsible for any decision to bid for a

particular lot and shall be deemed to have carefully inspected and satisfied themselves as to condition, neither Clarke and Simpson Auctions Ltd., their employees or agents shall be responsible for any neglect or default in doing or failing to do so. Bidders will be given ample opportunity to view and inspect before the sale and prospective buyers must satisfy themselves as to all matters.

6. DEFAULT

Clarke and Simpson Auctions Ltd. shall act as agent of the vendor only. Any contracts for the sale of a lot shall be formed between the vendor and the buyer. As agent, only Clarke and Simpson Auctions Ltd. shall not be responsible for default by the vendor or the buyer. If any lot is not paid for in full and taken away in accordance with these conditions, or there is any other breach of the conditions, then Clarke and Simpson Auctions Ltd. as agents for vendor shall at its absolute discretion and without prejudice to any other rights it may have, be entitled to exercise all or any of the following rights and remedies:-

- 6.1 to proceed against the buyer for any action of debt or damages for breach of contract;
- 6.2 to rescind the sale of that lot or lots sold by Clarke and Simpson Auctions Ltd. to a defaulting buyer;
- 6.3 to resell the lot (by auction or private treaty) in which case the defaulting buyer shall be responsible for any resulting deficiency in the total amount due (after crediting any part payment and adding any resale costs), any possible surplus so arising shall belong to the vendor;
- 6.4 to remove, store and insure the lot at the expense of the defaulting buyer and, in the case of storage, the location of such storage shall be at Clarke and Simpson Auctions Ltd. discretion;
- 6.5 to charge interest at a rate not exceeding 2% per month of the total amount due to the extent that it remains unpaid for more than two working days after the sale;
- 6.6 to retain that or any lot sold to the defaulting buyer until the buyer pays the total amount due;
- 6.7 to reject or ignore bids from the defaulting buyer at future auctions or to impose conditions before any such bids are accepted;
- 6.8 to apply any proceeds of sale for any other lots due or in the future becoming due to the defaulting buyer towards the settlement of the total remaining due.

7. INDEMNITIES, PENALTIES AND LIMITATIONS OF LIABILITY

Purchasers shall pay for any damage done by themselves or their agents during the removal of their lots. Attendance at the sale shall be at the risk of those attending in respect of both themselves and to their goods and vehicles.

Any indemnity under these conditions will extend to all actions, costs, expenses, claims and demand whatsoever suffered or incurred by the person entitled to the benefit of it and Clarke and Simpson Auctions Ltd. declare themselves to be a trustee of the benefit of such indemnity so far as it is expressed to be the benefit of its employees and agents.

Whilst Clarke and Simpson Auctions Ltd. endeavour to ensure that the information on their websites is correct, they do not warrant the accuracy and completeness of the material on their website. Also, Clarke and Simpson Auctions Ltd. can make changes to the material on their website, or alter the products and prices described on it, at any time without notice. The material on the website may be out of date, Clarke and Simpson Auctions Ltd. make no commitment to update such material. All material on the websites is provided "as is" without any conditions, warranties or other terms at any time. Accordingly, to the maximum extent permitted by law, the website is provided to all parties on the basis that Clarke and Simpson Auctions Ltd. exclude all representations, warranties, conditions and other terms which, but for this legal notice, might have effect in relation to the website.

8. ELECTRICAL SAFETY REGULATIONS

All electrical lots are subject to electrical safety regulations and fall within “the low voltage electrical equipment (safety) regulations 1989” – all items have been pat tested for safety but are not guaranteed in working order.

9. GENERAL MATTERS

Any notice to any buyer, vendor, bidder or viewer may be given by first class mail or email in which case it shall be deemed to have been received by the addressee forty-eight hours after posting or sending. All notices to Clarke and Simpson Auctions Ltd. must be sent in writing and email is not acceptable. Any indulgence extended to any person by Clarke and Simpson Auctions Ltd., notwithstanding the strict terms of these conditions or the terms of consignment, shall affect the position at the relevant time only and the respect of that particular concession only; in all other respects these conditions shall be construed as having~ full force and effect. These conditions and any disputes or claims arising out or in connection with them or their subject matter or formation (including non-contractual disputes or claims) are governed by and construed in accordance with the law of England. The parties irrevocably agree that the courts of England have exclusive jurisdiction to settle any dispute or claim that arises out of or in connection with the agreement or its subject matter or formation (including non-contractual disputes or claims).

10. PUBLICITY

Any catalogue and buyer and seller guides are provided for information only and do not form part of these conditions. The catalogue and the buyer and seller guides may contain additional terms and conditions. Clarke and Simpson Auctions Ltd. reserve the right to use any photographs, background information and research for publicity purposes both before and after the sale.

11. THE PURCHASE PRICE AND PAYMENT ARRANGEMENTS

There is a buyer's premium 18% plus VAT payable in respect of the sale. Any purchases made via “www.the-saleroom.com” or “www.ibidder.com” shall be subject to an administration charge of 5% plus VAT on the price. Preferred payment is cash, bank transfer or personal debit card. Such cards may only be used on a chip and pin basis with the owner present. No payment over £350 will be accepted by telephone. Payment will be accepted online via our secure e commerce account. We do not accept credit cards or international debit cards. Payment by cheque will only be acceptable subject to prior arrangement. No lot will be removed from the sale until any cheque has cleared.

Payment is due on the day of the sale. Cash in excess of £7,500 (including V.A.T.) will not be accepted from any one person, this is not allowed due to Money Laundering Regulations 2007. All money received will be held in Clarke & Simpson Auctions Ltd. Clients No 2 Account at Barclays Bank plc, Framlingham, Ipswich, Suffolk. Account Number 83428591. Sort Code 20 98 07. Clarke and Simpson Auctions Ltd. have no responsibility for any lot between the close of bidding and payment being made and subsequent collection. All payments from overseas buyers shall be made by Bank Transfer and bank fees paid in addition. Please note all policy regarding payment will be enforced and suitable arrangements must be made.

12. REMOVAL OF LOTS

The ownership of any lot purchased shall not pass to the relevant buyer until they have made payment in full to Clarke and Simpson Auctions Ltd. of the total amount due including any storage due.

The buyer shall at their own risk and expense take away any lot that they have purchased and paid for, not later than seven days following the day of the auction.

Any purchaser shall be responsible for removal and insurance and lots stored and storage charges. All lots sold shall be subject to the following storage charges after seven days from the sale:

7-14 days	25% of the lot value + VAT	or £7.50+VAT per lot
	whichever is the greater	
14-21 days	50% of the lot value + VAT	or £15 +VAT per lot
	whichever is the greater	
21-28 days	75% of the lot value + VAT	or £22.50 + VAT per lot
	whichever is the greater	

Any lots not collected after 35 days will be re-sold with immediate effect on behalf of the purchaser and the proceeds of the sale retained in lieu of outstanding storage charges. The policy shall be rigorously enforced and no lots shall be collected unless outstanding storage charges are met.

13. NUMBER BIDDING

This will be used for speed and efficiency as in all our sales. All prospective purchasers must complete a registration form and register in the office on the view day or morning of sale to receive a number for bidding.

Please also note that photo ID and additional confirmation of address will be required.

14. ONLINE BIDDING

Clarke & Simpson Auctions Ltd. offer an online bidding service via the-saleroom.com and ibidder.com for bidders who cannot attend the sale. In completing the bidder registration on www.the-saleroom.com or ibidder.com and providing your payment card details and, unless alternative arrangements are agreed with Clarke & Simpson Auctions Ltd.:

1. authorise Clarke & Simpson Auctions Ltd., if they so wish, to charge the payment card given in part or full payment, including all fees, for items successfully purchased in the auction via www.the-saleroom.com or ibidder.com, and
2. confirm that you are authorised to provide these payment card details to Clarke & Simpson Auctions Ltd. through www.the-saleroom.com or ibidder.com and agree that Clarke & Simpson Auctions Ltd. are entitled to ship the goods to the card holder name and card holder address provided in fulfilment of the sale.

Please note that any lots purchased via the-saleroom.com or ibidder.com live auction service will be subject to an additional 5% buyer's premium + VAT at the rate imposed on the hammer price.

15. TELEPHONE BIDDING

We offer a telephone bidding service where possible, but this service can never be guaranteed. No applications for telephone bids will be accepted after the end of the viewing prior to sale day for any sale. All potential telephone bidders must provide a valid landline number and email address and agrees that they have read and understood the Terms and Conditions and satisfied themselves regarding any lot in accordance with these Terms and Conditions. No phone bids will be accepted for any lot with a lower guide figure of less than £100.

All those who wish to bid by telephone will be expected to deposit an amount determined by Clarke and Simpson Auctions Limited and not less than the minimum guide for all lots that they wish to bid upon into the Clients Account for Clarke and Simpson Auctions Ltd before the sale starts. This payment is not acceptable by card. In the event of default, this sum shall be retained as part payment or any part may be retained to recover losses under clause 6 of these Terms and Conditions. We will expect payment of the balance owing by BACS on the following day, any payment not met within five working days will result in the forfeiture of the deposit paid.

16. AT FAULT (A.F.) LOTS

Certain lots are catalogued at (A.F.), damaged, restored etc., however the absence of any such notice does not imply that the piece is free from defects, nor does it indicate that other defects are not also present. Mention is not made of breakage, cracks, chips or any damage which can be noted by careful inspection, therefore, intending purchasers MUST, in all cases, be responsible for determining the condition of the lots themselves.

17. ESTIMATES

Presale estimates are intended only as a guide for intending purchasers, are given in good faith and subject to revision.

18. CONDITION REPORTS

Clarke and Simpson are unable to guarantee that requests for condition reports/images received will be responded to. Clarke and Simpson are happy to give a Condition Report where possible on the physical condition of goods, this will be provided on behalf of the seller on the understanding that Clarke and Simpson are not entering into a contract with you in respect of the Condition Report and accordingly does not assume responsibility to you in respect of it. All lots are available for your own inspection or for inspection by an expert instructed by you, therefore these Condition Reports are for guidance only and all lots are sold “as found”. Condition reports do not form part of a contract.

19. COMMISSION BIDS

The auctioneers will be pleased to execute bids for those unable to attend the sale. Lots will be purchased at the lowest bid the room bidding or any reserves will allow. In the event of identical bids, the earliest bid received will take precedence. There must always be a maximum limit indicated. Buy or unlimited bids will not be accepted. Commission bids placed by telephone are accepted at the client's risk. We urge our clients to place such bids before the start of the sale. All such commissions are left entirely at the buyer's risk.

20. VALUE ADDED TAX

The symbol * after any lot number indicates that Value Added Tax is payable by the buyer on the hammer price.

21. AUCTIONEERS MARGIN SCHEME

The Auctioneers Margin Scheme allows auctioneers to sell items without VAT on the hammer price. Under the margin scheme an amount equivalent to VAT at the current rate is added to the buyer's premium. This amount cannot be refunded. The VAT element will not be shown separately on the buyer's invoice. This VAT is not recoverable as Import Tax.

22. ATTRIBUTION OF PICTURES AND DRAWINGS

Every effort is made to ensure the accuracy of any statements as to authorship, attribution, origin, date, age, provenance and condition of any lot whether or not such statement forms part of the description of any such lot. Whether any such statement is made orally or in the catalogue it is an expression of opinion and not to be taken as being or implying any warranties or representations of facts by the auctioneers. Each buyer by making a bid for a lot acknowledges that he has satisfied himself fully as to the attribution and condition of the lot. The following is for guidance only and does not form part of a contract.

A. The forename (s) (or full stops where not known) and surname of an artist indicates in our opinion a work by the artist.

B. The initials of the forename (s) and the surname of the artist indicates in our opinion a work of the period of the artist which may be wholly or in part his work.

C. The surname of the artist indicates in our opinion a work of the school or by one of the followers of the artist or in his style and of uncertain date.

D. *Signed, Dated, Inscribed* indicated in our opinion work signed/dated/inscribed by the artist.

E. *Bears signature* indicates in our opinion that this is not the signature of the artist.

F. *Attributed to* may be used to denote a traditional attribution based on style.

G. *Manner of* indicates in our opinion a work executed in the artist/craftman's style but of a later date.

H. *After* indicates in our opinion a copy (of any date) of work of an artist or craftsman.

The addition of a question mark after any of the cataloguing terms above indicates an element of doubt.

23. DRIOTE DE SUITE ROYALTY CHARGES

All United Kingdom Art Market professionals (which includes auctioneers) are required to collect a royalty payment for all qualifying Works of Art. This applies to living artists and those who have died in the last 70 years. This payment is calculated on qualifying Works of Art which are sold for a hammer price more than the UK sterling equivalent of €1,000 (the UK sterling equivalent will fluctuate in line with prevailing interest rates calculated by the Artist's Resale Right Service Hub, based on the European Central Bank reference rate published at 2.15pm on the day of the sale, and can be found on www.dacs.org.uk).

All items in this catalogue that are marked "✓" are potentially qualifying items, and the royalty charge will apply if the hammer price is more than UK sterling equivalent of €1,000. The royalty charge will be added to purchase invoices and must be paid before items can be cleared. All royalty charges are paid to the design and Artists Copyright Society (DACS) by the auctioneers and no handling costs or additional fees with respect to these charges will be retained by the auctioneer. This charge may also be applicable to lots not marked "✓" and buyers must satisfy themselves.

The royalty charge for qualifying items which achieve a hammer price of more than the UK sterling equivalent of €1,000, but less than the UK sterling equivalent of €50,000 is 4%. For qualifying items that sell for more than the UK equivalent of €50,000 a sliding scale of royalty charges will apply. For a complete list of the royalty charges and threshold levels please refer to www.dacs.org.uk. There is no VAT payable on this royalty charge.

24. ENDANGERED SPECIES

Lots sold at auction may include endangered or other species of wildlife and plant life, for example ivory, tortoiseshell, crocodile skin, whale bone, ebony or rosewood. Some countries restrict or prohibit import or export of objects containing these materials or require a licence/permit for their movement (e.g. a CITES Licence). Prior to bidding on a lot which may include these or similar materials, buyers must familiarise themselves with the relevant laws and regulations regarding their movement.

25. JEWELLERY

Gemstones are often treated to enhance colour and improve appearance. They may be heated or treated by oil or resin to intensify the colour and transparency. Other techniques like dyeing, irradiation, coating and impregnation can also be used. Buyers must be aware that unless the catalogue specifically states otherwise then the stone is natural, buyers must assume that any treatment may not be permanent, and that special care may be needed in the future.

26. EXPORT

Any lot purchased at auction may be subject to export restrictions and may require a licence for export out of the United Kingdom. The buyer is responsible for obtaining any licences that may be required (including any licence that may be required for import into the destination country) – any denial of such a licence will not be grounds for the buyer to cancel the purchase.

27. THIRD PARTY LIABILITY

All members of the public on Clarke and Simpson Auctions premises are there at their own risk and must note the layout of the buildings and site and the appropriate security arrangements. Accordingly, neither the Auctioneer nor its employees or agents shall incur liability for death or personal injury (except as required by law) or similarly for the safety of persons visiting the premises.

28. CONSIGNMENT

All sellers will have received a copy of Clarke & Simpson Auctions Terms regarding consignment of lots for sale and these Terms and Conditions should be read in accordance with this consignment documentation.



Debenham £795,000

On an exclusive new development of just eight houses, Plot 6 is an impressive four bedroom detached house occupying a stunning site just a short distance from the centre of Debenham

Ref: 6631/6



Swilland OIEO £600,000

An immaculately presented, extended, three bedroom detached bungalow, located on the outskirts of the popular village of Swilland.

Ref: 6663



Framlingham £590,000

An impressive four bedroom detached house with stylish kitchen and orangery, close to the centre of Framlingham

Ref: 6661



Orford £550,000

A detached three bedroom house located within walking distance of all Orford has to offer.

Ref: 6598



Wickham Market OIEO

£500,000 A spacious, well appointed, 3 bedroom detached bungalow occupying a generous plot

Ref: 6671



Debenham £395,000

A 3 bedroom semi-detached house on this exclusive new development of just eight impressive houses.

Ref: 6631/1



Framlingham £365,000

An elegant three/four bedroom mid-terraced town house, close to the heart of Framlingham.

Ref: 6637



Framlingham £275,000

An immaculate two bedroom semi-detached bungalow in a quiet residential location.

Ref: 6672



Framlingham £250,000

A spacious two bedroom apartment extending to over 1,000 sq ft occupying a central position in Framlingham.

Ref: 6653



Halesworth from £220,000

Blyth Vale, an outstanding collection of 2, 3 & 4 bedroom stylish new homes, by the award-winning Hopkins Homes

Ref: 6446



Laxfield OIEO £750,000

A spacious, detached modern house located in grounds of 1.5 acres in a rural position within the Parish of Laxfield. **Ref: 6618**



Debenham £750,000

An impressive new four bedroom detached house, on this exclusive development of just eight houses, a short distance from the centre of Debenham **Ref: 6631/5**



Halesworth OIEO £550,000

A rare & exciting opportunity to acquire a principle townhouse that requires complete renovation & refurbishment. **Ref: 6518**



Wickham Market OIEO £525,000

An immaculately maintained, spacious 4 bedroom detached family home **Ref: 6660**



Laxfield £399,000

A brand new three bedroom semi-detached house, forming part of this exclusive development. **Ref: 6412**



Debenham £375,000

A two bedroom semi-detached house occupying a stunning site a short distance from the centre of Debenham **Ref: 6631/3**



Woodbridge £325,000

An elegant two bedroom ground floor apartment on the popular Malt Yard development **Ref: 6340**



Framlingham £272,500

A mid-terrace three storey town house, presented to a particularly high standard. **Ref: 6589**



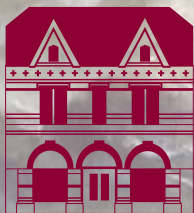
Framlingham £235,000

A mid-terrace house used as three flats with potential to achieve circa £1,725 pcm. **Ref: 6603**



Framlingham £160,000

A one bedroom first floor flat situated in a convenient position within the popular town of Framlingham **Ref: 6668**



Clarke and Simpson Auction Centre
Campsea Ashe
Nr. Wickham Market
Suffolk IP13 0PS
Tel: (01728) 746323 Fax: (01728) 748173
Email: auctions@clarkeandsimpson.co.uk
www.clarkeandsimpson.co.uk