

Clarke &
Simpson



Selected Antiques & Fine Art

Wednesday 12th May 2021 at 9 am

Clarke & Simpson

Auctions

Always open..



Valuation

Probate & other valuations
Call-in service 6 days a week

Special sales

Antiques & Fine Arts
Art Deco & Retro
Domestic & Rural Bygones
Agricultural Collective

General Monday sale

Bespoke sales
In 2020 our lots sold to 30 countries
and registered buyers from over 50
Acting as agents for household clearances

Can't make it?
All auctions are available
for online bidding via
the-saleroom.com
or **i-bidder.com**



Clarke & Simpson Auction Centre,
Campsea Ashe, Nr Wickham Market,
Suffolk IP13 0PS T: 01728 746323

www.clarkeandsimpson.co.uk

CandSAuctions @CandSAuctions

Clarke & Simpson

Auctions

Selected Antiques & Fine Art

Wednesday 12th May 2021
at 9 am

Order of Sale:

Ceramics and Glass	1-156
Silver and Plate	170-258
Jewellery	264-350
Objects and Collectables	354-604
Pictures and Prints	607-697
Rugs and Furniture	698-891

Viewing:

Saturday 8th May, 9 am - 12 noon
Monday 10th May, 2 pm - 7 pm
Tuesday 11th May, 10 am - 4 pm
Morning of Sale from 8.30 am



@CandSAuctions



CandSAuctions



Campsea Ashe
Nr. Wickham Market
Suffolk IP13 0PS
Tel: (01728) 746323 Fax: (01728) 748173
Email: auctions@clarkeandsimpson.co.uk
www.clarkeandsimpson.co.uk

Online bidding via:

the saleroom
The home of art & antiques auctions

Timed Online Collective Machinery Auction

Clarke & Simpson Auction Centre, Campsea Ashe,
Nr Wickham Market, Suffolk. IP13 0PS

In excess of 1,200 lots to include tractors, plant,
vehicles, implements & trailers; together with a large
range of livestock & workshop equipment, tools,
models, literature & spares

Bidding via www.i-bidder.com & www.bispotter.co.uk opens 9am
Wednesday 19th May & closes from 9am Monday 24th May

Viewing 9am - 4pm on
Friday 21st May & Saturday 22nd May

Please see our website for online catalogue



www.clarkeandsimpson.co.uk

Ceramics and Glass

1

A pair of 19th Century Chinese blue and white porcelain jars, profusely decorated dragon, clouds and flaming pearls, 19cm high £100 - 150 †

2

A pair of late 18th Century Delft chargers, central panel decorated with a ho ho bird, surrounded by trailing foliage and shaped border, 34cm dia. £100 - 200 †

3

A pair of Chinese shallow bowls, decorated foliate borders and central panels of figures in garden settings, six character mark to the bases, one AF and restored, 34cm dia. £100 - 200 †

4

A large 19th Century Chinese Floral vase, decorated warriors and foliage, reduced in height and AF £40 - 60 †

5

A large Imari baluster table lamp, 54cm high AF £40 - 60 †

6

A Victorian Staffordshire preaching figure group, "The Vicar and Moses", 23cm high £40 - 60 †

7

A Victorian Staffordshire figure group, "Uncle Tom and Eva", 18cm £30 - 50 †

8

A pair of Victorian Staffordshire spill holders, in the form of a maid and youth with oversized dogs, 14cm high £30 - 50 †

9

A Victorian Staffordshire flat back figure group, depicting seated couple with a parrot, 26cm high £30 - 50 †

10

A Victorian Staffordshire figure, "Prince of Wales"; and another of "Spurgeon" (2) £40 - 60 †

11

A Victorian Staffordshire figure of Shakespeare, 19cm high; and another of Milton, 20cm high (2) £40 - 60 †

12

A Victorian Staffordshire figure, of a highland maid with greyhound; another "Mora"; and a seated figure of a lute player wearing pantaloons (3) £40 - 60 †

13

A Staffordshire figure, "Oh Nanny, Going With Me"; another of a highland gardening couple; and another "Grandma Hope" (3) £40 - 60 †

14

A Staffordshire figure, "Mrs & Mr Caudle"; and another "Gin and Water" (2) £30 - 50 †

15

Four various Staffordshire spill holders £40 - 60 †

16

A Staffordshire figure, of man with plumed hat and ermine trimmed cape, 23cm high; a sugar shaker in the form of a policeman, 15cm high; a hollow figure of Prince Albert, 15cm high; and another of a lady (4) £40 - 60 †

17

A Staffordshire flat back figure, Girl on a Horse with Attendant Groom, 31cm high; and another Staffordshire equestrian figure Tom King (2) £30 - 40 †

18

A Staffordshire figure, of a sailor seated by a barrel; a Staffordshire tobacco jar in the form of Toby Philpott; a brown glazed money box in the form of a seated figure; and a 19th Century porcelain figure of a baby in cradle (4) £40 - 60 †

19

A collection of thirteen Victorian faring ornaments £100 - 150 †

20

A French porcelain figure, of a musketeer in brightly coloured livery on naturalistic base, heightened in gilt, 32cm high, under glaze blue mark to base £180 - 220 †

21

After Heubach, porcelain figure of a dancing girl, 38cm high £80 - 120 †

22

A Royal Copenhagen porcelain study of a Mandarin duck, signed P.Cerdd, 20cm high, 20cm long overall £150 - 250 †

23

A Royal Worcester figurine, modelled by F G Doughty "Scotland"; another "Sunshine" and another "Mischief" (3) £60 - 100 †

24

A pair of Victorian bisque ware posy holders, in the form of two girls with floral encrusted dresses, 22cm high £40 - 60 †

25

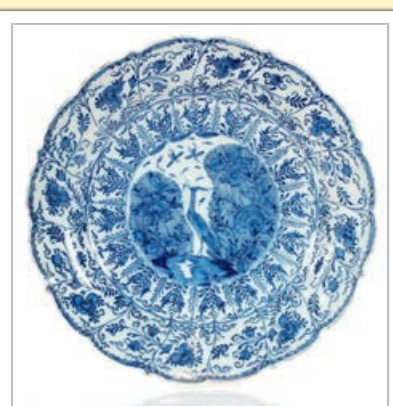
Three Victorian porcelain nodding figures; and a seated China man figure with waving hand (4) £40 - 60 †

26

Six various 19th Century German porcelain figures, depicting street vendors, musicians, and a lady with fan, various sizes, 17cm - 13cm £100 - 150 †

27

A 19th Century Samson porcelain figure, of a street vendor, 18cm high; and a German porcelain figure of a hunter in brightly coloured clothes, 21cm (2) £40 - 60 †



Lot 2



Lot 20



Lot 21



Lot 22



Lot 32



Lot 38



Lot 42



Lot 44

28

A pair of Dresden urns, profuse floral encrusted decoration and rams head masks, 19cm high
£40 - 60 †

29

A 19th Century German porcelain figure, of a lady carrying a tea tray, floral decorated and heightened in gilt, 20cm high; and four other various porcelain figures (5)
£40 - 60 †

30

A pair of 19th Century porcelain figures, depicting shepherd and shepherdess, with floral encrusted decoration, 14cm high (some damage)
£30 - 50 †

31

A pair of Victorian Staffordshire flat back spill holders, in the form of cows being milked, 22cm high, 24cm long
£40 - 60 †

32

A 18th Century Japanese porcelain barbers bowl, under glazed blue and iron red decoration with gilding, 27.5cm in extremes
£150 - 200 †

33

A pair of 19th Century German porcelain figures, depicting street vendors in brightly coloured clothes, raised on floral encrusted gilt heightened bases, 30cm high
£100 - 150 †

34

A pair of 19th Century Japanese Imari porcelain vases and covers, the ribbed bodies painted with panels depicting vases and flowers in the typical palette, 35cm high
£150 - 250 †

35

A 19th Century ruby and overlaid glass baluster vase, with profuse floral decoration, 29cm high; a pair of 19th Century opaque glass ewers with floral decoration heightened in gilt AF; and a small overlaid glass vase heightened in gilt, 17cm high (4)
£40 - 60 †

36

A pair of cranberry glass trumpet shaped spill vases, with plated stands, 18cm; a large cranberry and clear glass decorated spill vase, 27cm high; and a smaller similar, 19cm high (3)
£40 - 60 †

37

A cut glass and silver mounted decanter, with silver "Whisky" label; two other hobnail cut ring neck decanters, one with plated coaster; and a pair of Bristol blue and gilt decorated decanters (stoppers missing) (6)
£40 - 60 †

38

A pair of continental porcelain pug dogs, raised on brass plinth bases, 19cm high
£100 - 150 †

39

A pair of cranberry vases, with blue enamel floral decoration heightened in gilt, 23cm high
£20 - 40 †

40

A set of four cranberry and clear glass pedestal salts; a pair of posy vases with flared rims; and two other cranberry glass pots (8)
£20 - 40 †

41

A 19th Century continental porcelain table centrepiece, in the form of semi-naked cherubs resting on a tree stump (AF); a 19th Century German porcelain figure of a piper; and a rose pattern pot pourrie vase of ornate form heightened in gilt (AF) (3)
£60 - 100 †

42

A glazed earthenware albarello, decorated with an oval panel of a priest surrounded by foliate scrolls with yellow, blue and green glazes, of waisted form 23cm high
£200 - 300 †

43

A Kutani double gourd shaped vase, decorated beasts and symbols, 26cm high
£40 - 60 †

44

A mid-20th Century Italian pottery figure of a cockerel, 42cm
£40 - 60 †

45

A pair of 19th Century willow pattern chestnut baskets 21cm; and a 19th Century blue and white baluster coffee pot 27cm (AF) (3)
£40 - 60 †

46

A 19th Century nursery plate, having cherub decoration within an orange sponged border, 18cm
£20 - 40 †

47

A 19th Century German porcelain wall pocket, of Cornucopia form having cherub decoration, heightened in gilt, 24cm overall; And four bland de chine figures etc. (6)
£60 - 100 †

48

A 19th Century Chinese blue and white porcelain cylindrical vase, decorated figures, prunus and bamboo leaves, 36cm high; and a smaller example having profuse figural and flower decoration, four character mark to base, 30cm high (AF) (2)
£60 - 100 †

49

An 18th Century blue and white English porcelain mug, decorated in the Chinese manner; a baluster milk jug decorated oriental scenes; a Caughley baluster jug with floral decoration; and a sparrow beak cream jug (4)
£40 - 60 †

50

A 19th Century transfer printed miniature tea cup and saucer, decorated rural scenes; a similar cup; a pair of transfer printed sweetmeat dishes; a butter dish by Copeland & Garrett; and a saucer dish (7)
£40 - 60 †

51

A pair of Chinese Famille Rose ginger jars, and covers raised on carved hardwood stands, 20cm high
£40 - 60 †

- 52**
A pair of Meissen blanc de chine posy vases, in the form of children with baskets, having floral encrusted trailing decoration, 22cm high
£100 - 150 †
- 53**
A Royal Doulton Francis Drake jug, No.428, 27cm high, with certificate
£60 - 80 †
- 54**
A Song Dynasty Chinese white glazed pottery vase, the body with two temple lion bosses, 23cm high
£100 - 200 †
- 55**
A Chinese porcelain blue and white bottle vase, with dragon design decoration, six character Wan Li mark to base, 19cm high
£100 - 200 †
- 56**
A late 18th Century leaf moulded jug, of Worcester design with grotesque mask, baluster body, C and S scroll handle painted blue flowers heightened in gilt, 15cm
£40 - 60 †
- 57**
A 19th Century bubble glass bowl, painted with a stag hunting scene in landscape, figures on horseback and hounds, possibly Scottish, 15cm dia.
£30 - 50 †
- 58**
A pair of Victorian pale green opaque glass lustre vases, having painted foliate spray decoration heightened in gilt, 31cm high
£50 - 80 †
- 59**
A pair of Japanese Imari patterned ginger jars and covers, with inner lids surmounted by bamboo finials, 16cm high
£40 - 60 †
- 60**
A Victorian Staffordshire spill holder, in the form of cow and suckling calf, 29cm high, 22cm long; and another with attendant dairy maid 27cm long, 25cm high (2)
£40 - 60 †
- 61**
A pair of Victorian Staffordshire cow figures, with attendant herdsman and milkmaid, 16cm long, 17cm high
£40 - 60 †
- 62**
An 18th Century Delftware charger, decorated trees and fence, 36cm dia.; an 18th Century delft plate decorated flowers and trees on a terrace, 31cm dia.; and an 18th Century Delftware plate depicting Chinaman and exotic birds, 30.5cm dia. (3)
£100 - 200 †
- 63**
An overlaid green glass baluster table lamp, on gilded base, 33cm high (without shade)
£40 - 60 †
- 64**
A continental porcelain figure, of a boy throwing snowballs; various other English and continental porcelain figures etc. (10)
£60 - 100 †
- 65**
W H Goss, model of Shakespeare's house; another "A Window in Thrums"; another "Manx Cottage" and another model of "Anne Hathaway's Cottage" (4)
£60 - 100 †
- 66**
Seven various Staffordshire pastille burner cottages
£80 - 120 †
- 67**
Five various Staffordshire pastel burner cottages; and a Staffordshire flat back study of Pot Ash Farm (6)
£40 - 60 †
- 68**
Two 19th Century floral decorated porcelain chamber sticks; a miniature porcelain jug and basin; a Faience ware baluster blue and white ewer with scenic decoration and monogram AF; a Victorian porcelain crinoline lady jar and cover; and various other ceramics
£20 - 40 †
- 69**
A rare Delftware blue and white plate, decorated with the initials "E" + "H" and dated 1738, 20cm dia. (design corresponds with other plates which were produced for Quakers, hence the simplicity of the design), chips to border and crack
£500 - 700 †
- 70**
A very rare set of five Delftware blue and white marriage plates, probably London, dated 1690, each painted on the rim with a large cartouche formed by griffins, a coronet and a grotesque head issuing tasselled swags and enclosing the inscription "E.R.C 1690", 22cm dia. (some damage)
£2,000 - 3,000 †
- 71**
A Staffordshire pottery yellow and black sponge decorated figure of seated cat, and various other cat ornaments, including a pair of Samson examples (10)
£40 - 60 †
- 72**
A continental pottery owl jug, (AF); a Belleek porcelain vase in the form of an owl; a Beswick study of an owl; and three others (6)
£40 - 60 †
- 73**
A 19th Century porcelain model of a recumbent lion; and a smaller similar heightened in gilt (2)
£40 - 60 †
- 74**
A Staffordshire quill holder, in the form of two spaniels; and two other black and white spaniel ornaments (3)
£30 - 50 †
- 75**
A pair of Staffordshire Dalmatians; a single similar; three other Staffordshire dog ornaments; and a sheep etc. (2)
£30 - 50 †
- 76**
A 19th Century Staffordshire cow creamer, and milk maid group (lid missing); and a Staffordshire model of a zebra (9)
£20 - 40 †



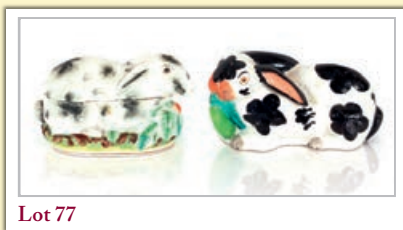
Lot 53



Lot 62



Lot 70



Lot 77

77
A Staffordshire figure of a rabbit, eating a lettuce leaf, black and white patch decoration, 25cm long; and a similar rabbit tureen, 22cm long (2)
£80 - 120 †

78
A pair of bisque ware hen ornaments, a Copenhagen rabbit group; a Copenhagen study of a penguin and various other bird ornaments etc. (20)
£30 - 50 †

79
A pair of Meissen porcelain figure groups AF, 16cm high; a Meissen style figural candelabra having floral encrusted decoration in the form of a seated cherub; a late 19th Century German porcelain posy vase decorated young children and floral encrusted trailing foliage; and an English porcelain pot pourrie vase and cover having floral decoration (some damage) (5)
£60 - 100 †

80
A 19th Century Volkstedt figure group table oil lamp, having red tinted opaque leaf moulded glass reservoir and shade AF
£40 - 60 †

81
A Delft baluster shouldered vase, decorated with a central panel of a church within foliate surround, 21cm high
£40 - 60 †

82
A Chinese blue and white porcelain baluster vase, the lid surmounted by a Kylin finial, decorated trailing foliage, 25cm high; and a small Chinese blue and white bowl decorated pagodas and river scene, under glaze blue mark to base, 11cm dia. (2)
£60 - 80 †

83
A 19th Century Chinese sang de boeuf pottery vase, of baluster form, 34cm high
£100 - 200 †

84
A Chinese Famille Verte porcelain and Ormolu mounted table lamp, 28cm high
£100 - 150 †

85
A Chinese Famille Rose decorated porcelain lamp base, 28cm high
£100 - 150 †

86
An Imari umbrella stand, and some contents 61cm high
£40 - 60 †

87
A pair of Victorian cranberry glass claret jugs, having reeded clear glass handles and faceted stoppers, 27cm high
£40 - 60 †

88
A Japanese Imari baluster vase, of octagonal form, the lid surmounted by a Kylin, eight character mark to base, 35cm high; and another Japanese Imari baluster vase, 26cm high (2)
£60 - 100 †

89
An Imari baluster vase, the cover surmounted by a Kylin, 20cm high; and a small Imari baluster vase and cover, 13cm high
£40 - 60 †

90
A Royal Worcester baluster vase, of lobed form, the lid surmounted by an acanthus handle, complete with stand, painted foliate spray decoration on an ivory ground, heightened in gilt, 18cm high
£80 - 120 †

91
A pair of 19th Century Chinese blue and white baluster vases, decorated with figures, four character marks to base, the covers surmounted by Kylin finials, 20cm high (AF); and a cylindrical Chinese vase profusely decorated with figures carrying an urn amongst foliage and birds, 21cm high (3)
£100 - 150 †

92
Two cranberry baluster milk jugs, having clear glass handles; and a cranberry and clear glass covered sucrier (3)
£30 - 40 †

93
A Ming Dynasty Chinese blue and white porcelain vase, of Mei Ping shape with floral decoration circa. 15th Century, reduced neck, 28cm high
£400 - 600 †

94
An oriental blue and white baluster vase, decorated figures riding birds and other animals, clouds and stylised foliage, 22cm high
£40 - 60 †

95
A pair of Minton baluster vases, having rich gilt foliate scroll decoration, 18cm high; and a Victorian teapot on stand decorated in the Japanese manner, handle AF and restored (3)
£40 - 60 †

96
A 18th Century Chinese Famille Rose bowl, (AF); a Chinese tea caddy; a sparrow beak jug decorated river and pagoda scenes; coffee can; and a pagoda decorated sauce boat (AF) (5)
£40 - 60 †

97
A 19th Century Chinese Famille Noir baluster vase, profusely decorated prunus, 45.5cm high
£60 - 100 †

98
A Japanese porcelain baluster vase, having floral scroll decoration heightened in gilt on a rich blue ground, mark to base, 22cm high
£40 - 60 †

99
A collection of miscellaneous table glassware etc.
£40 - 60 †

100
A Goldscheider bust, signed Nelson, depicting a young maiden, 62cm high, impressed and stamped to the reverse
£350 - 450 †

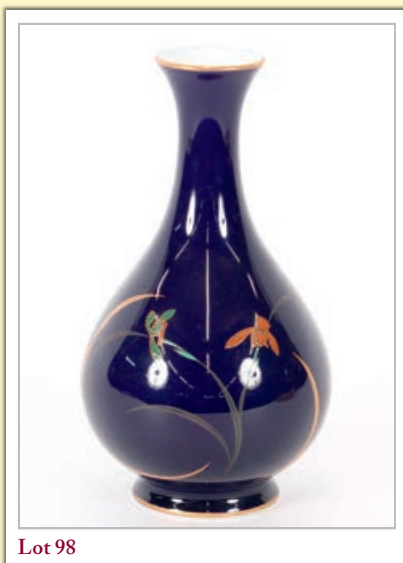
101
A Tiffany Favril and lustre Art Glass vase, signed L.C. Tiffany 52073, 16cm high
£40 - 60 †



Lot 90



Lot 97



Lot 98

102

A Daum Nancy and Majorelle, glass and bronze Art Deco vase, 20.5cm long, 16.5cm high, N.B. featured page 46 All Colour book of Art Deco, by Dan Klein £600 - 800 †

103

A Japanese Imari scallop bordered charger; a Japanese blue and white plate decorated birds amongst foliage; and a Canton shallow dish decorated in the traditional manner with figures birds, insects, and Famille Rose (some damage) (3) £40 - 60 †

104

A Japanese Arita ware porcelain charger, of large size, the yellow plateau painted with birds amongst foliage with black enamel borders, impress seal mark to the reverse, 41cm £40 - 60 †

105

A pair of 19th Century Japanese Imari baluster vases and covers, surmounted by Kylin finials, segment decoration in the traditional pattern, heightened in gilt (AF), 27cm high £40 - 60 †

106

A pair of Kutani baluster vases, decorated exotic garden scenes with birds and foliage heightened in gilt, 34cm high £40 - 60 †

107

A pair of white opaque glass lustre vases, with gilt heightened foliate sprays, hung with spike shaped prism drops, 25cm high £50 - 80 †

108

A 19th Century Chinese Canton bowl, decorated in the traditional palette, with Famille Rose, birds and insects around panels of exotic interiors, 28cm dia. £40 - 60 †

109

A mixed collection of seven 18th & 19th Century Chinese, Delft and English blue and white porcelain plates, (some damage); and a Japanese baluster vase and cover £40 - 60 †

110

A large continental pottery jardinière, polychrome decoration of birds and foliage, ochre under glaze mark to base, 46cm wide, 25cm high overall £200 - 400 †

111

A 19th Century transfer printed "Nanking Semi China" pedestal fruit dish; a 19th Century blue and white two handled cup decorated country scenes; and a blue and white pedestal fruit bowl (3) £40 - 60 †

112

A pair of 19th Century Chinese crackle glaze baluster vases, profusely decorated birds and foliage, the covers with knob finials, four character seal mark to base, 27cm high (some damage) £60 - 80 †

113

Three Victorian blue and white "Willow" pattern meat pates; and various other blue and white "Willow" pattern plates £200 - 300 †

114

Thirteen 19th Century continental porcelain shallow dessert dishes, having shaped basket weave borders and painted foliate spray decoration, under glaze blue Beehive mark, 24cm dia. £200 - 300 †

115

A 19th Century Canton Famille Rose bowl, decorated birds and stylised motifs heightened in gilt, 41cm dia. £100 - 200 †

116

A Japanese Imari baluster oil lamp, having gilded metal mounts, 41cm high overall £100 - 150 †

117

An oriental Imari patterned figure of a lady, raised on unassociated plinth, 32cm high £100 - 200 †

118

A Dresden porcelain figure, of a seated dog, 31cm long x 21cm high £100 - 150 †

119

A Winstanley pottery model of a seated hare, 39cm high overall £50 - 80 †

120

A Winstanley pottery model of a seated hare, 30cm high overall £40 - 60 †

121

A Winstanley pottery model of a seated hare, 27cm high overall £40 - 60 †

122

A Winstanley pottery model of a seated hare, 37cm high £50 - 80 †

123

A Goldscheider pottery figure of a seated lady, in blue dress, her foot resting on a cushion on plinth base, 35cm high £200 - 300 †

124

An 18th Century Chinese teapot, decorated figures in an exotic garden; and another with flower finial to the lid, decorated figures and objects AF (2) £40 - 60 †

125

A Lowestoft tea bowl and saucer; another similar tea bowl; and four other 18th and 19th Century tea bowls (7) £40 - 60 †

126

An early Persian green glass bottle, with serpent coiled decoration, 23cm high; and a Persian blue glass pitcher with line coiled decoration to the flared neck, 16cm high (2) £80 - 120 †

127

Three pairs of graduated Victorian black and white spaniel ornaments £100 - 200 †



Lot 100



Lot 102



Lot 103



Lot 112



Lot 126



Lot 128

128

A late 18th Century Delft ware plate, decorated in the Chinese manner, 30cm dia. £40 - 60 †

129

A Victorian blue and white transfer decorated toilet jug and basin, by Copeland; and a Davenport blue and white transfer printed meat plate decorated Abbey ruins AF (3) £20 - 40 †

130

A pair of brown and white Staffordshire spaniel ornaments, heightened in gilt; a pair of copper lustre decorated Staffordshire spaniel ornaments; and two others (6) £60 - 80 †

131

A Minton Majolica game pie dish and cover, decorated gun dog and shooting apparel to the lid, the body with hare, pheasant and trailing ivy, twist rustic handles on claw feet, 36cm (some damage); and a smaller Wedgwood example decorated with game and foliage, 24cm AF; and a small oval Victorian pottery tureen, the lid decorated with a recumbent cow, 18cm AF (3) £100 - 200 †

132

A Moore porcelain table oil lamp, profusely decorated with cherubs playing musical instruments and floral encrusted trailing foliage, 44cm high £50 - 80 †

133

A 19th Century Chinese blue and white platter, 44cm AF and riveted; and five various Chinese octagonal blue and white plates decorated river and pagoda scenes £40 - 60 †

134

A Victorian Masons ironstone Imari pattern toilet set, comprising jug, bowl, pail, soap dish, and chamber pot (5) £80 - 120 †

135

A 19th Century Austrian porcelain plate, decorated cherubs and semi-naked female on a rich blue and gilt heightened ground AF; a pair of botanical decorated plates; a 19th Century rose patterned Swansea plate; a Minton Japanese crane decorated tea plate; a 19th Century Napoleon at Waterloo Commemorative plate; and a pair of Victorian pierced border floral decorated plates £60 - 80 †

136

A 19th Century Dresden porcelain table oil lamp, the reservoir supported by four cherubs with profuse foliate encrusted decoration, 55cm high £50 - 80 †

137

A Fabergé ruby glass and gilt decorated egg £60 - 80 †

138

A Nanking cargo tea bowl and saucer £40 - 60 †

139

A small 19th Century Chinese porcelain saucer dish, with under glazed blue, egg, spinach, and aubergine colours AF; and a similarly coloured scholars brush rest, 14cm (2) £60 - 80 †

140

A rare Meissen porcelain teapot, of squat bullet shape and octagonal spout, the body decorated in the Tischen Muster pattern in under glazed blue, purple, iron, red, green, yellow and gold, circa 1735 / 1740, height 10cm, under glazed blue cross swords mark and star £100 - 200 †

141

A Lowestoft sauce boat, 20cm long (AF); two 18th Century blue and white coffee cups; a Worcester shallow tea bowl; a miniature transfer printed teapot and a pearlware type shallow bowl decorated with a rural scene (6) £60 - 80 †

142

Four various Millefiori glass paperweights, and one other £100 - 150 †

143

An Hispano Moresque Earthenware deep charger, having pink lustre decoration of a mythical bird, and other stylised birds amongst foliage, 38cm, possibly 17th Century, AF and restored £200 - 400 †

144

A pair of Meissen "Onion" pattern candlesticks, 24cm high £200 - 300 †

145

A Royal Worcester model of Prince's Grace and foal, modelled by Doris Lindner, limited edition 634/750, 24cm long, 21cm high £100 - 150 †

146

A 19th Century porcelain figure, depicting a seated maiden in brightly coloured pantaloons and cap with tassel, 24cm high £20 - 40 †

147

A porcelain and gilt metal mounted table lamp, decorated with a central band of cherubs, linked with garlands on a rouge ground, pierced scroll work base, 50cm high overall (converted to electricity) £30 - 40 †

148

Franz, white porcelain vase decorated figure of a maiden amongst foliage, 36cm high £30 - 40 †

149

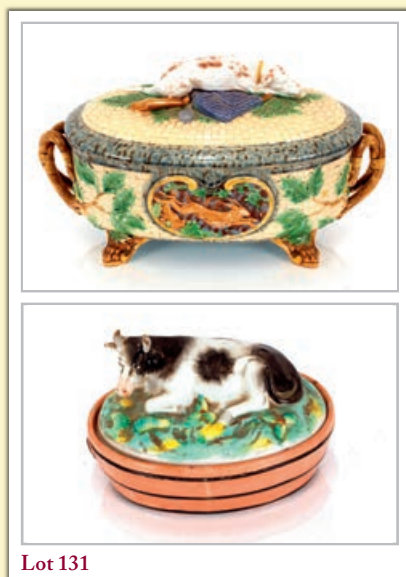
Three hobnail cut ring neck decanters, having mushroom stoppers; and a baluster shaped cut glass decanter with spike shaped stopped (4) £40 - 60 †

150

Two Art Deco glass fledgling birds, signed A. Walter Nancy, 10cm high £1,200 - 1,500 †

151

A collection of various 18th Century and later Delft tiles, decorated animals, figures and sailing vessels £100 - 150 †



Lot 131



Lot 137

152

A Japanese porcelain figural table lamp, raised on a hardwood base, 55cm high overall £40 - 60 †

153

A Royal Dux porcelain centrepiece, in the form of a maiden seated on a large shell, 37cm high AF £40 - 60 †

154

Four French Faience ware plates, decorated mushrooms and fungi, shaped blue rim borders, 26.5cm dia. £20 - 40 †

155

Two Staffordshire pottery cow creamers, having floral decoration, 17cm long x 11cm high, some damage £20 - 40 †

156

A fine pair of 19th Century French blue opaque glass vases, with enamelled decoration of birds and foliage heightened in gilt, 30cm high £200 - 300 †

Silver and Plate

170

An Orfeurerie St. Medard cased fork and spoon set £20 - 30 †

171

A glass and electroplate mounted claret jug, the hinged lid surmounted by a lion with shield, having Bacchanalian mask and vine decoration above an acanthus scroll handle, 27cm high £60 - 80 †

172

A 19th Century Sheffield plated desk stand, having gadrooned and shell decorated border fitted with a central chamber stick flanked by inkwell and pounce pot, raised on claw and ball feet, 27cm £40 - 60 †

173

A Victorian plated five o'clock tea kettle, on spirit heater stand £40 - 60 †

174

A pair of electroplated pass over candlesticks, 35cm high £60 - 80 †

175

An Art Nouveau WMF cedar lined cigarette box, with foliate decoration, 17cm long overall £100 - 150 †

176

An Art Nouveau plated desk stand, in the form of an iris on a pool edge, in the manner of WMF, complete with inkwell and liner, 25cm £100 - 150 †

177

A pair of Art Nouveau plated WMF twin branch candelabra, with pierced foliate decoration, 30cm high £150 - 250 †

178

An Art Nouveau WMF bottle holder, decorated foliate scrolls, 21cm high £100 - 150 †

179

An Art Nouveau WMF wine cooler, decorated with a naked female leaning over a rock pool amongst swirling foliage, 26cm high £250 - 350 †

180

A Victorian plated biscuit barrel, with lion mask ring handles; and two plated salvers (3) £30 - 50 †

181

A plated entrée dish, with gadrooned border; another with foliate decorated border; and a plated hot dish raised on scrolled supports (3) £40 - 60 †

182

An ornate Edwardian silver salver, having shell and foliate cast borders raised on three pierced and scrolled feet, by Oldfields Ltd, Silversmiths Liverpool, *Sheffield 1906*, 50cm dia. 73oz £600 - 800 †

183

A German 800 mark tea set, of fluted form, comprising teapot, hot water jug, milk jug, sucrier, and swing handled bowl on a circular monogrammed tray, dated 1888-1897, total weight 74oz £350 - 450 †

184

A late Victorian silver heart shaped easel mirror, by William Comyns, having pierced foliate decoration of birds and flowers around a heart shaped bevelled plate, *London 1897*, 32cm x 24cm overall £200 - 400 †

185

A plain late Victorian silver cushion framed easel photograph frame, *London 1899*, 30cm x 25cm £60 - 100 †

186

A large Edwardian silver mounted easel dressing table mirror, with profuse foliate scroll decoration and central cartouche, 20cm x 34cm £200 - 300 †

187

An oak cutlery canteen and contents, of various Fiddle pattern and Old English pattern flat ware, mostly George III and Victorian, approx. 50oz £500 - 600 †

188

A cased canteen of modern Kings pattern silver cutlery, to include carving set, fish serving set, twelve place settings, weighable silver approx. 110oz £1,000 - 1,500 †

189

A silver pedestal fruit compot, having gadrooned edge and pierced border, *Birmingham 1936*, retailed by Harrods, 22.5cm dia.; and a small continental white metal pin dish decorated with figure on a bridge (2) £60 - 80 †



Lot 176



Lot 178



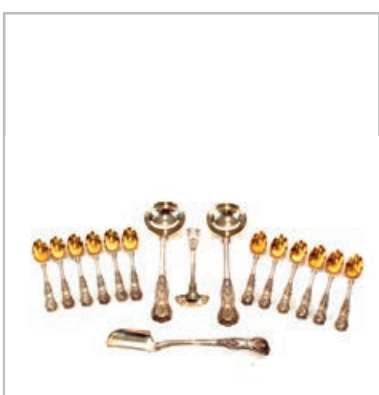
Lot 179



Lot 182



Lot 194



Lot 199



Lot 201



Lot 206

190

A George III Scottish silver soup ladle, of Old English pattern bearing monogram, *Edinburgh 1802* £100 - 150 †

191

An Art Deco design silver engine turned decorated cigarette case, with presentation inscription; a small silver trumpet shaped posy vase AF; a circular pin dish decorated with crest of the Ark Royal; three silver condiment spoons; and a pair of plated knife rests (7) £40 - 60 †

192

A silver foliate embossed pin tray, decorated monogram date letter indistinct, 20cm long; a quantity of filigree work Eastern spoons; two silver egg cups; a Georgian silver toddy ladle AF; a silver trophy cup; and a Dutch caddy spoon etc. £60 - 80 †

193

A late 18th / early 19th Century silver and turned rosewood handled toddy ladle, with gilded interior to bowl, makers mark J.S. 39cm long £60 - 100 †

194

An Edwardian silver teapot, by James Dixon & Sons Sheffield, having shaped foliate border and acanthus scroll handle, *Sheffield 1909*, 27oz £250 - 350 †

195

George III silver cream jug, having foliate embossed decoration, raised on ball feet having gilded interior, *London 1809* £60 - 80 †

196

A Victorian baluster milk jug, having rich foliate decoration around a monogrammed cartouche, double C scroll handle on circular spread foot, *London 1855*, 12cm high, 5oz £100 - 150 †

197

A George II silver side pouring brandy saucepan, having turned ebonised handle (Probably William Shaw & William Priest) circa 1749, 19cm long overall, 7oz £150 - 250 †

198

A Victorian Kings pattern silver soup ladle, *Sheffield 1898* £40 - 60 †

199

A late Victorian silver Kings pattern Stilton scoop, *Birmingham 1898*; two Kings pattern sauce ladles, *Birmingham 1894* and 1897; a sifter spoon, 1894; and twelve matching teaspoons, 1894/7 with Coronet crest all by Elkington & Co. 24oz £200 - 400 †

200

A George III silver gravy spoon, *London 1792*; and a George III silver basting spoon, *London 1790* with crest (2) £150 - 200 †

201

A continental silver trinket box, profusely decorated with Bacchanalian cherubs, locking hinged lid raised on ball feet, import marks for *Sheffield 1923*, 17.5cm long £150 - 250 †

202

A George III silver soup ladle of Old English pattern, date letter indistinct; and a silver George III Fiddle pattern basting spoon, *London 1778* (2) £100 - 200 †

203

A small George V silver trinket box, in the shape of a table cabinet by Mappin & Webb, *Birmingham 1912* £40 - 60 †

204

A George III silver caddy spoon, *London 1809*, and various silver condiment spoons £40 - 60 †

205

A continental silver sucrier, decorated Fleurs de Lys, foliate scrolls and profile heads, 12cm £40 - 60 †

206

A silver coffee pot, in the George II style, the domed lid surmounted by a finial, scroll thumbpiece and wooden handle decorated with a crest, *London 1912*, 22cm high, 22oz gross £200 - 300 †

207

A cased set of twelve silver Trefid end Rat Tail teaspoons, and matching sugar tongs in fitted case by Harrods, *London 1915* £60 - 80 †

208

A cased set of twelve silver teaspoons, with pierced terminals, *Birmingham 1925* £40 - 60 †

209

A pair of Edwardian silver peppers, in fitted box by Walker & Hall, *Sheffield 1901*; and a Dutch silver beaker (2) £60 - 100 †

210

An antique English Hallmarked silver figure of Bacchus, on a turned wooden socle, 13.5cm high overall £150 - 200 †

211

An Edwardian ornate silver rectangular shape box, *Birmingham 1901*; and a square shaped ornate box, probably *London 1905* (2) £80 - 120 †

212

A pair of late 19th Century hand made Chinese silver spoons, fashioned as lilies, seal marks and makers initials Y.L., 19cm long £100 - 150 †

213

An antique Dutch silver hand mirror, lacking glass; and an antique Dutch silver love spoon (2) £80 - 120 †

214

An ornate Edwardian silver sugar caster, *Chester 1901*, 22.5cm high £100 - 200 †

215

A George V silver four piece tea set, of cushion form having gadrooned borders, the teapot and baluster hot water jug with ivory insulation strips to the handles, *Sheffield 1915*, approx. 66oz £600 - 800 †

216

A large quantity of various Georgian and Victorian silver flatware, plated flatware etc. weighable silver 42oz £400 - 500 †

217

An Edwardian cased set of six silver teaspoons, and matching sugar tongs, *Sheffield 1903* £60 - 80 †

218

A Victorian silver dressing table tray, having Greek key border and hatched decoration, bearing monogram and dated 1862 - 1887, 14ozs, 30.5cm x 26cm £100 - 200 †

219

A late Victorian cased silver part manicure set, including a double ended medicine spoon, pen knife, rule, various nail picks and files £100 - 150 †

220

A small George V silver cream jug, having shell decorated hoof feet and flying C scroll handle, *Birmingham 1914*, 4oz £30 - 40 †

221

An Edwardian three piece silver tea set, with raised foliate garland and swag decoration, gilded interior, the teapot with black wood handle and lift, *London 1909*, 38oz gross £400 - 500 †

222

A pair of George III silver sauce ladles, of Onslow pattern, probably 1764 £80 - 120 †

223

An Edwardian silver sardine slice and fork, *Sheffield 1908* £20 - 40 †

224

A pair of 19th Century scissor action sugar nips, (unmarked) £20 - 30 †

225

A white metal sugar pail, with pierced foliate decoration, swing handle and blue glass liner, 10cm high overall £40 - 60 †

226

A George V circular silver hinged trinket box, *Birmingham 1912* £40 - 60 †

227

An Edwardian silver mounted photograph frame, with embossed foliate surround, *Birmingham 1904*, 20cm x 18cm overall £60 - 80 †

228

An Edwardian silver mounted photograph frame, with embossed foliate decoration, *Birmingham 1902*, 18cm x 13cm overall £40 - 60 †

229

A hobnail cut glass globular scent bottle, having floral embossed silver mount, Hallmarked for *Birmingham 1901*; and another similar (2) £100 - 150 †

230

A quantity of various silver mounted manicure items; a small silver pin tray; and a white metal; ring stand in the form of a stag and tree £60 - 100 †

231

A late Victorian silver foliate embossed fruit basket, having swing handle and raised on ball feet, *Birmingham 1898*, 16oz £150 - 250 †

232

Seven various silver napkin rings, 10oz £60 - 100 †

233

A five piece silver and enamel dressing table set, *London 1947* £40 - 60 †

234

A late Victorian silver heart shaped photograph frame, *Birmingham 1898*, 17cm x 13.5cm overall £60 - 80 †

235

An Edwardian silver heart shaped photograph frame, *London 1902*, 17.5cm x 13.5cm overall £60 - 80 †

236

A pair of late Victorian silver dwarf candlesticks, having Campana shaped sconces on square stepped bead decorated bases, *Sheffield 1888*, 11cm high £60 - 80 †

237

A late Victorian cut glass globular scent bottle, with silver mount and lid, having whorled decoration, *London 1894*; and a small cut glass scent bottle (no top) (2) £30 - 40 †

238

A late Victorian silver cream jug, of baluster panelled form, *Birmingham 1892*, 12.5cm £40 - 60 †

239

A late Victorian silver mounted easel photograph frame, having profuse foliate scroll decoration around a central cartouche, *Birmingham 1896*, 23cm x 17cm overall £40 - 60 †

240

A late Victorian silver mounted easel photograph frame, having profuse foliate scroll decoration and central monogrammed cartouche, *Birmingham 1899*, 21cm x 15cm overall £40 - 60 †

241

A cased set of six Victorian silver salts, by Mappin & Webb having raised acorn and leaf decoration; together with six twig pattern spoons, *London 1893* £150 - 250 †

242

A late 19th early 20th Century silver bon bon dish, having mask garland and pierced floral decoration, Hallmarked for Chester date letter indistinct, 11.5cm long, 4.5oz £60 - 80 †



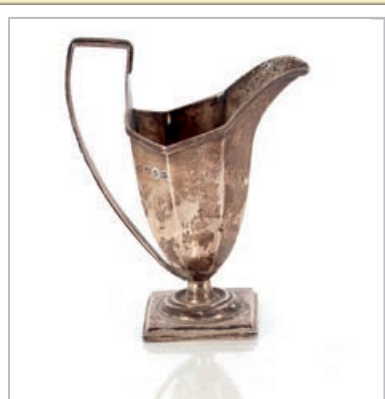
Lot 221



Lot 229



Lot 231



Lot 238



Lot 243

243

A Victorian oval silver hinged lidded box, with rich Cornucopia bird and cherub decoration, *London 1885*, 15.5cm long, 10.5oz £200 - 300 †

244

A pair of Edwardian embossed silver bon bon dishes, raised foliate decoration, *Sheffield 1904*; and a pair of late Victorian silver spill vases, having pierced foliate scroll decoration and flared necks raised on circular stepped bases by William Comyns, *London 1898*, 15cm high (4) £100 - 200 †

245

A pair of George V silver baluster candlesticks, raised on circular reeded loaded bases, 26cm high, *Birmingham 1919* £100 - 150 †

246

A late Victorian silver card tray, by John Dixon & Sons, *Sheffield 1890*, having foliate engraved decoration beaded and shell border raised on four claw and ball feet; and a silver presentation card tray with inscription, having pie crust border raised on three hoof feet, *Sheffield 1927*, 22oz (2) £200 - 250 †

247

Eight George III silver Old English pattern dessert forks, various dates and makers, 10oz £100 - 150 †

248

A pair of Edwardian silver baluster candlesticks, of panelled shaped form, *Sheffield 1906*, 23cm high £100 - 150 †

249

A 19th Century continental silver hinged box, of cartouche shape decorated with cherubs in a landscape and foliate scrolls, English import marks, *London 1900*, 13.5cm long £300 - 400 †

250

An Edwardian silver pedestal fruit dish, makers mark H W & Co., having foliate pierced border, knop stem and circular spread foot, *London 1902*, 21cm dia. 16.5cm high, 17oz £150 - 200 †

251

A small Edwardian oval silver dressing table tidy tray, by Walker & Hall, *Sheffield 1902* £40 - 60 †

252

A late Victorian silver dressing table tray, with foliate embossed decoration and gadrooned border, *London 1898*, 26cm x 18cm, 10oz £100 - 200 †

253

An Art Deco design silver dressing table tray, with shaped border and engine turned central decoration, *Birmingham 1930*, 29cm x 21cm, 12oz £120 - 160 †

254

A late Victorian silver backed dressing table hand mirror, with rich foliate embossed decoration, *Birmingham 1908*; and two similar brushes *London Hallmarked* (3) £40 - 60 †

255

A silver mounted and cut glass dressing table tidy, with foliate embossed lid; and two others similar (3) £60 - 80 †

256

A set of six George III Old English pattern table spoons, Hallmarked for *London 1790*, bearing family crest, 15oz £150 - 200 †

257

A collection of various 19th Century silver Fiddle pattern flatware, including five Edinburgh dessert forks, various dates and makers, 39oz £400 - 500 †

258

A quantity of silver handled table and dessert knives, a modern silver cased perfume spray; and a novelty pen cigarette lighter £40 - 60 †

Jewellery

264

A Sterling silver ring, set with an opal and another (2) £60 - 80 †

265

A walnut and inlaid trinket box, residual contents to include a white metal hair comb, ivory necklace, Eastern chain, brooches etc. £60 - 80 †

266

A large quantity of various costume jewellery, jewellery parts, watches etc. £60 - 100 †

267

An early 20th Century silver purse, with engine turned decoration hung to a fine link chain, *Birmingham 1919*; a silver Sovereign and half Sovereign case, *Chester 1913*; a silver Sovereign / vesta case; a silver vesta case with green hardstone clover leaf decoration; and a brass vesta case / cigar cutter (5) £150 - 200 †

268

A 9ct gold chain with clip, approx. 25.9gms £350 - 450 †

269

A pair of 18ct white gold sapphire and chipped diamond set ear-rings £100 - 150 †

270

A small 9ct gold six stone diamond set ring £100 - 150 †

271

A 18ct gold sapphire and diamond set ring £150 - 250 †

272

15ct gold circular brooch, inset with three chip diamonds, memorial panel to the reverse £80 - 120 †

273

A diamond and turquoise set bee brooch, having yellow metal mounts, 4.5cm x 3cm, (contained in an Anderson 165 High Street, Elgin box) £800 - 1,200 †



Lot 245



Lot 249



Lot 250

274

A white metal pendant set eleven various size diamonds, 2.5gms total weight £400 - 600 †

275

A 9ct gold long guard chain, approx. 29.3gms £400 - 500 †

276

A 9ct gold sapphire set crescent brooch £150 - 250 †

277

A yellow metal ruby set necklace; and a ruby and diamond set cross shaped brooch £100 - 150 †

278

A 9ct gold guard chain, approx. 32gms £400 - 500 †

279

A Victorian 15ct gold bar brooch, having beaded and filigree work decoration set central diamond £200 - 300 †

280

A white metal marcasite and enamel decorated dragonfly brooch, 6.5cm x 8.5cm £100 - 150 †

281

A 9ct gold gated bracelet, with padlock clasp, 18gms £250 - 350 †

282

A 9ct gold mesh bracelet, approx. 14gms £200 - 300 †

283

A white metal and enamel decorated articulated fish pendant, hung to a fine link chain £100 - 150 †

284

An Essex type crystal pendant, depicting a terrier hung to a 9ct gold chain with barrel clasp £200 - 300 †

285

A 9ct gold charm, in the form of an elephant, approx. 11.7gms £120 - 180 †

286

A pale green hard stone graduated necklace, with yellow metal filigree work clasp £100 - 150 †

287

A white gold and diamond bow shaped cluster ring £200 - 300 †

288

An 18ct gold and platinum diamond set crossover ring £300 - 400 †

289

A 9ct gold ruby and diamond set ring £100 - 150 †

290

A ladies lapel watch in two colour gold, chip diamond inset decoration to the back, hung to a turquoise mounted bow clip £150 - 200 †

291

A 9ct gold and diamond set floral design bar brooch £60 - 100 †

292

A yellow metal and diamond three stone set ring £100 - 150 †

293

A yellow metal diamond and ruby set spray brooch, of cornucopia shape £200 - 400 †

294

A white metal and diamond set brooch, in the form of a swallow and crescent £200 - 400 †

295

A 9ct gold and enamel RAF wings brooch £150 - 250 †

296

A yellow metal diamond and sapphire set line brooch £150 - 250 †

297

A yellow metal diamond and sapphire set line brooch £250 - 350 †

298

A William III 1700 Guinea converted to a pendant £200 - 300 †

299

A yellow metal locket, hung to a fine link chain with barrel clasp, inset green and white stones £150 - 250 †

300

A white metal and malachite set circular brooch; an 800 mark owl brooch set turquoise stones; a 9ct gold St.Christopher pendant; a yellow metal and amethyst coloured stone set drop ear-ring; a white metal tie pin etc. £100 - 150 †

301

A gold aquamarine and pink stone set pendant, hung to a fine link chain; a yellow metal and coral set brooch; a yellow metal dragonfly brooch, set with a blue stone; and a 9ct gold oval brooch inset with a hardstone panel of a cat (4) £100 - 200 †

302

A yellow metal and amethyst set brooch; another set citrine; a jade pendant; a memorial brooch; a 9ct gold ladies wrist watch; an elephant brooch etc. £100 - 200 †

303

A gold chain, approx. 28.7gms £350 - 450 †

304

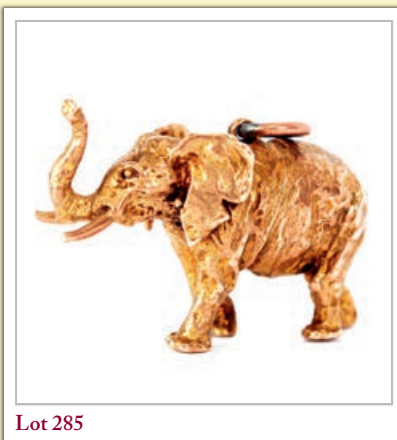
A 9ct gold ring with pierced link decoration; and a similar design bangle, 8gms; and a 9ct white gold band 3.3gms (3) £100 - 150 †

305

A yellow metal watch chain, and T bar, set with a cornelian fob and decorated with a filigree work roundel 10gms gross weight £60 - 80 †



Lot 273



Lot 285



Lot 293



Lot 299



Lot 312

306

Two 22ct gold wedding bands; and a 22ct gold ring (stone absent), 16.2gms (3) £400 - 500 †

307

An 18ct gold and amethyst set five stone ring £80 - 120 †

308

A 9ct gold watch with plated strap; a 9ct gold watch AF; and a gold watch strap 7.8gms (3) £150 - 250 †

309

A platinum and diamond three stone ring, approx. 3.8gms total weight £150 - 250 †

310

A small 9ct gold bracelet with padlock clasp, 4.5gms £40 - 60 †

311

A 9ct gold necklace, approx. 20gms £250 - 350 †

312

A long gold guard chain, approx. 39.2gms £500 - 600 †

313

A yellow metal Egyptian style brooch, with scarab beetle type insert in fitted case for Wales and McCulloch; and a decorative white metal and amethyst coloured stone set brooch of large circular size (2) £40 - 60 †

314

Four various yellow metal Victorian cameo brooches £200 - 400 †

315

A 9ct gold cross pendant, on 9ct gold chain, 7gms total weight £80 - 120 †

316

A 9ct gold bracelet, 8gms total weight £60 - 80 †

317

A silver Sovereign case £20 - 40 †

318

A white metal pocket watch, with yellow and white metal chain and key £40 - 60 †

319

A yellow metal watch chain, with T bar and locket in the form of a book, 22gms total weight £200 - 300 †

320

A 9ct gold ring, set with a 1903 full Sovereign approx. 10.gms total weight £300 - 400 †

321

A yellow metal necklace, 28gms and a matching bracelet, 11gms unmarked £300 - 400 †

322

A yellow metal necklace marked 18, 42gms £400 - 600 †

323

A yellow metal ring, approx. 5gms; and a 9ct gold ring set garnet coloured stone, approx. 5gms (2) £80 - 120 †

324

Three 9ct gold rings, 10.5gms total weight; and a yellow metal ring (marks rubbed) 6gms (4) £200 - 300 †

325

A gold plated farthing bracelet, a Sterling silver ring and similar brooch; a 9ct gold stick pin; two other stick pins; a 9ct gold pendant hung to a fine link chain; and a pair of matching ear-rings etc. £60 - 80 †

326

An 18ct gold ring, set five small graduated diamonds, 3gms total weight; a yellow metal ring marked 585, 6.5gms; and an eternity ring set with white stones (3) £100 - 200 †

327

An 18ct gold and platinum solitaire diamond ring, 2.5gms total weight £60 - 80 †

328

A 19th Century carved ivory brooch, depicting head and shoulders profile study of a lady within vine leaf surround, contained in a Mappin & Webb jewellery box £40 - 60 †

329

A Victorian silver cased pocket watch, bearing presentation inscription to "Sgt. W Skam, by President of R.A.Mess, Gibraltar 1889", Hallmarked for London 1879; a white metal fob watch with enamelled back panel depicting a young girl with flowers in her hair; a gun metal pocket watch; a plated pocket watch AF; and a ladies Sekonda wrist watch (5) £100 - 150 †

330

A 9ct gold snap bangle, approx. 9.5gms £100 - 150 †

331

A 9ct gold ring AF, approx. 1gm; a yellow metal ring (marks rubbed) with illusion set diamond, 3.5gms total weight; an 18ct gold sapphire and diamond chip set ring AF, total weight, 2gms; a costume bracelet; a yellow metal pendant set with blue stone; and a drop pendant set with white stones (6) £80 - 120 †

332

A 9ct gold gate link bracelet AF, with padlock clasp, total weight 10gms £100 - 150 †

333

A 9ct gold Figaro necklace, 8.2gms £80 - 120 †

334

A yellow metal pendant, set with smoky quartz and hung to a 9ct gold rope twist chain £40 - 60 †

335

A 9ct gold watch chain, 29.5gms £350 - 400 †



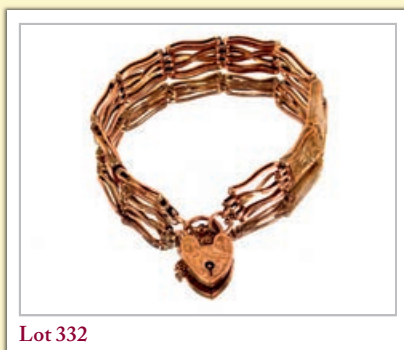
Lot 315



Lot 320



Lot 324



Lot 332

336
A 22ct gold wedding band, 3.5gms £80 - 120 †

337
An 18ct gold solitaire diamond ring, 5.5gms total weight £150 - 200 †

338
An 18ct gold and diamond three stone diamond ring, total weight 2gms £100 - 150 †

339
An Edwardian half sovereign, dated 1907 £120 - 160 †

340
Various 9ct gold bracelets; a pair of ear-rings; cuff-links etc. £100 - 150 †

341
A 22ct gold wedding band, approx. 5.3gms £150 - 250 †

342
A gold ring (marks rubbed), with illusion set diamond and red stones; an 18ct gold ring set blue stone flanked by illusion set diamonds; a yellow metal eternity ring set red and white stones; a pair of 9ct gold hoop ear-rings; a yellow metal bar brooch set white stone; a 9ct gold heart shaped pendant; a 9ct gold cross pendant hung to a fine link chain; a gold backed locket on chain; a 9ct gold backed locket etc. £200 - 400 †

343
A yellow metal and black onyx bar brooch, set central diamond; various Eastern yellow metal ear-rings; a yellow metal wedding band; and a gent's 9ct gold signet ring AF £60 - 80 †

344
A Beve 9ct gold wrist watch, with 9ct gold strap; and an Avia 9ct gold ladies wrist watch AF with attached 9ct gold safety chain, total weight 29.7gms (2) £200 - 300 †

345
A yellow metal cartouche shaped brooch, inset with three cabochon red stones; a yellow metal brooch set agate stone and pull out needle and thread; and a yellow metal porcelain panelled brooch etc. £60 - 80 †

346
A platinum and chip diamond set cocktail watch £100 - 200 †

347
A long string of vintage Baroque pearls, secured by a 14ct white gold clasp, 78cm long (boxed) £60 - 100 †

348
A 10K multicoloured diamond ring £250 - 350 †

349
A Hallmarked 18ct gold three stone diamond ring, the central stone approx. ¾carat, the two side stone approx. ¼carat each £500 - 700 †

350
A 9ct gold and ruby five stone ring £50 - 80 †

Objects and Collectables

354
A silver pin cushion, in the form of a pig, English import marks on filled base; a copper pig pin cushion; a plated pig vesta; and a pewter similar (4) £20 - 40 †

355
A small silver pin cushion, in the form of a greyhound on circular base £20 - 40 †

356
A continental silver model of a Savonarola chair, 5cm high, English imports marks *London 1901*; a miniature white metal lidded tankard; a miniature silver cup by Mappin & Webb, *Birmingham 1928*; and a candlestick (4) £40 - 60 †

357
A silver owl decorated place card holder, Birmingham 1906; a silver model of a perched owl (makers mark indistinct) filled base; and an oriental white metal study of an owl with turquoise eyes (3) £60 - 100 †

358
A small Victorian silver barrel shaped pounce pot, 4.5cm high, *London 1862* £30 - 50 †

359
A miniature silver flour dredger, Birmingham 1896; a miniature silver tyg Hallmarked for Chester (date letter indistinct); and a continental white metal hinged box, having foliate and engine turned decoration (3) £40 - 60 †

360
A silver elephant pin cushion, Birmingham 1906, 6cm long £30 - 50 †

361
A silver pin cushion, in the form of a hedgehog, Birmingham 1903; £40 - 60 †

362
A silver pepperette, in the form of a chick, *Chester 1899*; another similar *Chester 1906*; and another silver model of a chick with detachable head, *Chester 1905* (3) £40 - 60 †

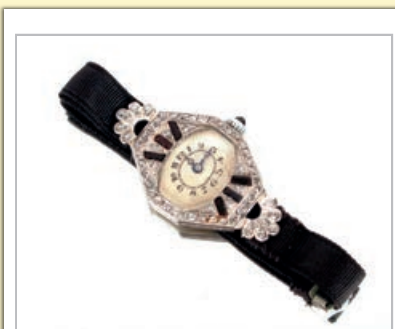
363
A pair of white metal pepperettes, in the form of seated Teddy Bears £20 - 40 †

364
A miniature silver chair, commemorating Sir Francis Drake, Registration Mark 575125, Hallmarked for *Birmingham 1912*; a continental silver miniature settee with cherub decoration (marks indistinct); and a Dutch silver model of a cabriole legged chair, English import marks (3) £60 - 80 †

365
A continental silver character jug, in the form of Mr Punch, English import marks, 5cm high; and a small continental white metal sauce boat (AF) (2) £40 - 60 †



Lot 335



Lot 346



Lot 355



Lot 360



Lot 365



Lot 373



Lot 375



Lot 389



Lot 400



Lot 405

366

A pair of silver pepperettes, in the form of chicks, Chester 1907 £20 - 30 †

367

A pair of silver pepperettes, in the form of boxing hares £20 - 40 †

368

A miniature silver model of a Cheshire cat, Birmingham 1908; an unmarked white metal miniature pin cushion in the form of a chick; a white metal miniature Jack in the Box; a bronze hare ornament and various other white metal and other animals etc. £50 - 80 †

369

A carved Black Forest style bear bottle stopper; two other small bear figures; a brass pin cushion in the form of a guinea pig; various other small animal ornaments etc. (9) £40 - 60 †

370

After P J Mene, bronze study of a muntjac on weighted base, 19cm long, 10cm high; a gilded study of a stag, 19cm long, 16cm high; and a smaller cold painted study of a stag, 8cm long, 12cm high (3) £60 - 80 †

371

A cold painted bronze study of a Dachshund, sleeping on cushions, 9.5cm £40 - 60 †

372

A Victorian plated ink stand, in the form of an owl with glass eyes, 18cm high £40 - 60 †

373

A Victorian cast brass inkwell, in the form of a begging dog, having hinged lid, 14cm high £40 - 60 †

374

An oriental bronze figure of a carp, 9cm long; a green hard stone figure of a seated cat; a pink hard stone figure of a reclining cat; a Buddha ornament; an Indian elephant god ornament; a cloisonné Netsuke of an owl; and various other items etc. £50 - 80 †

375

A cold painted bronze study of a Dachshund, 10cm long £40 - 60 †

376

A Victorian gilded metal desk stand, in the form of a birds nest on marble plinth, 10cm high, 10cm dia. overall (plinth AF) £20 - 40 †

377

A pair of spelter owl salt and pepper pots, 8cm high £20 - 30 †

378

A small gilded metal vesta case, in the form of an owl with glass eyes; and a small brass vesta in the form of an elephants head (2) £30 - 50 †

379

A cold painted bronze study of a pheasant, 15cm long; and a larger bronze pheasant ornament after J Moigniez, 17cm long, 12cm high (2) £40 - 60 †

380

A cold painted bronze study of a fox hound; a desk paperweight in the form of a brass setter on onyx base; a plated pepper in the form of a begging dog; a bronze study of a reclining pug; a bronze terrier; and other dog figures (7) £50 - 80 †

381

A cold painted bronze parrot, a cold painted bronze duck; and another of a chick (3) £40 - 60 †

382

A small 19th Century circular enamel patch box, the lid inscribed "Though Absent Not Forgotten", 2.5cm dia.; an ebonised and white metal inlaid snuff box; and a miniature silver chamber stick, Birmingham 1904 (3) £40 - 60 †

383

A Victorian mahogany artists paintbox, and contents with fitted drawer containing ceramic mixing palette etc. £40 - 60 †

384

A Staunton chess box, and contents of Jaques and Staunton chess pieces £200 - 300 †

385

A Japanese photograph album and contents £200 - 300 †

386

A 19th Century silhouette miniature, of a young man wearing a cap, printed label to verso "Cut With Common Scissors, by Master Hubbard aged 13 years Without Drawing or Machine" in ebonised and brass mounted frame; another similar of a lady wearing lace cap; and an early 19th Century miniature portrait of gentleman in frock coat in ebonised and brass mounted frame (3) £60 - 100 †

387

A 19th Century oval Berlin type porcelain plaque, depicting head and shoulders portrait of a young woman in profile, 9cm x 6.5cm £100 - 150 †

388

19th Century school, oval portrait study of a young woman wearing tiara in a gilded filigree work diamond shaped frame £100 - 150 †

389

A Berlin type porcelain plaque, depicting Madonna and Child in Florentine gilt frame, the panel 14.5cm dia. overall, frame 30cm x 30cm in extremes £150 - 250 †

390

19th Century school, miniature portrait study of a seated young lady with ringlets in her hair, unsigned 13cm x 10.5cm in brass slip frame £60 - 80 †

391

H P Reghoe, miniature study of lovers in a woodland clearing, signed watercolour in walnut frame; a pair of miniature portraits depicting young man and woman in ribbon tied frames; and three other miniature portraits (6) £100 - 200 †

392

An oval portrait miniature, depicting Napoleon; another of Josephine; and another of a young beauty wearing jewelled headdress in faux ivory frames (3) £100 - 200 †

393

19th Century school, oval portrait miniature of a young lady with lace collar; and another similar contained in gilt frames (a pair), label verso for Foord Carver and Gilder, 103 Wardour Street (2) £100 - 200 †

394

Late 19th Century painting, on porcelain panel depicting a flower girl, 22cm x 16cm £100 - 150 †

395

19th Century oval silk work embroidery, of a shepherdess, inscribed "Mary Jefferies" verso in gilt frame, 24cm x 17.5cm £40 - 60 †

396

Royal Flying Corps. WW1 period 9ct gold sweet heart brooch; an RAF silver sweetheart brooch; and a Royal Artillery silver sweetheart brooch (3) £90 - 120 †

397

Royal Flying Corps cloth wings £80 - 120 †

398

A miniature tin plate Shell tanker, circa. 1925-1930 in good condition with key and in working order, 10cm long £160 - 200 †

399

An antique Ethiopian stone carved icon, with hinged doors £100 - 150 †

400

World War One period two Royal Flying Corps. silver and enamel place settings, Birmingham 1915, maker Rowell, Oxford £250 - 350 †

401

A 19th Century Oriental censer, and cover of square form, the shoulders with silver wire inlay, the sides with animals of the Zodiac decoration, 11.5cm high £100 - 150 †

402

A gilded hard metal Tibetan Buddha, with coloured stone inlay seated on a Lotus base, 22cm high £120 - 180 †

403

A late 19th Century brass cased carriage clock, with enamelled dial and Roman numerals, by Charles Frodsham & CIE Paris Numbered 19367 to dial and backplate, eight day movement, 14cm high £100 - 200 †

404

A 19th Century brass and carved shell cameo etui, 15cm high £40 - 60 †

405

A small Tunbridge ware trinket or sewing box, the hinged lid decorated with a scene of a recumbent dog, paper lined interior, 13.5cm £40 - 60 †

406

A small Tunbridge ware sewing box, with wooden swing handle, 15cm £40 - 60 †

407

A 19th Century walnut and rosewood sewing box, complete with some white metal and mother of pearl fittings £100 - 200 †

408

A 19th Century rosewood and Tunbridge decorated rectangular trinket box, bearing label for T Barton, Late Nye Manufacturer Tunbridge Wells, 24cm £40 - 60 †

409

A Victorian papier-mâché and mother of pearl inlaid two compartment tea caddy, 20cm wide, 12cm high £40 - 60 †

410

A Victorian papier-mâché two compartment tea caddy, 17cm wide, 12cm high £40 - 60 †

411

A 19th Century tortoiseshell and white metal strung two compartment tea caddy, of sarcophagus shape 18cm wide x 15cm high £300 - 400 †

412

A cast metal and tortoiseshell table bell, in the form of a turtle AF £40 - 60 †

413

A French brass cased carriage timepiece, impressed to the back plate R & Co. Made in Paris, having filigree work decoration, white enamel Roman numeral dial, 16cm high including handle £100 - 150 †

414

A 19th Century brass easel folding miniature portrait frame, the hinged lid inset with a foliate Pietra Dura panel, 14cm high £100 - 150 †

415

A brass cased carriage clock, the movement striking on a gong with repeat button, Roman numeral chapter ring, and foliate silvered dial and side panels surmounted by an angular handle, 9cm high overall £100 - 200 †

416

A Leica camera, No.538734 £100 - 200 †

417

A green hardstone malachite and mother of pearl inlaid shallow bowl, 15.5cm dia. £20 - 40 †



Lot 406



Lot 411



Lot 412



Lot 414



Lot 415



Lot 416



Lot 442



Lot 447



Lot 448



Lot 450

418
A Jaques of London turned wooden chess set; and an old slate cribbage board £300 - 400 †

419
A pair of small spinach jade cups, of tapering form, 5cm high, 6cm dia. overall, contained in a fitted box £60 - 100 †

420
Two Egyptian type stone scarab beetles, 9cm long £20 - 40 †

421
An antique iron and bronze figure; and an antique Betel nut cutter handle £20 - 40 †

422
A Goerz of Berlin barometer, 23cm high £40 - 60 †

423
A rare miniature version of the "Whole Book of Psalms", collated by T Lomas Sternhold, John Hopkins and others for the Company of Stationers 1639, in Stuart design needlework binding, 3½" x 2" £300 - 500 †

424
A pair of Blue John urns, of baluster form raised on black marble bases, 15cm high £200 - 300 †

425
A Regency tortoiseshell pill box, with a hinged lid; a Victorian inlaid folding cribbage board / box; and a small carved wooden box "St Moritz" (3) £30 - 50 †

426
A pair of circular brass storage jars, having swing framed handles, 8cm £20 - 30 †

427
A Treen box and lid, with reeded decoration, 7cm dia.; and another bulbous shaped Treen jar and cover, 7cm high (2) £20 - 30 †

428
A collection of seven pewter spoons, in the 17th Century style, having pear shaped bowls £40 - 60 †

429
A Middle Eastern micro mosaic match box holder, and similar cigarette holder (2) £20 - 40 †

430
An early 20th Century millefiori paperweight, with spiral canes interspersed with other typical canes, emanating from a central boss, partly polishes pontil mark; together with a miniature Litchfield style iridescent pear shaped paperweight (2) £30 - 50 †

431
An early 20th Century bronzed desk cigarette box, of square form with Regency style decoration, mahogany lined interior, 10cm £20 - 30 †

432
A figured walnut and inlaid folding travelling chess set £20 - 30 †

433
A large pine primitive table shoe snuff box, 21cm long; together with another smaller, 11cm long (2) £30 - 50 †

434
A late 19th Century carved Black Forest table shoe snuff, with hinged lid decorated with flowers and leaves, bows and laces, 14cm £40 - 60 †

436
A German Third Reich white metal ring, with helmeted head, and SS emblem having oak leaves and acorn shoulders £40 - 60 †

437
A Victorian brass novelty perfume flask, in the form of a fish, with screw stopper £20 - 30 †

438
A Japanese carved ivory Netsuke, of a recumbent ox, signed with character marks £20 - 30 †

439
A Georgian carved ivory wedding ring, inset with rose yellow metal and boss work inlay; and two others (3) £30 - 50 †

440
An early 19th Century French gilt metal ladies necessaire box, in the form of a shoe, in the manner of Alfonse Giroux, with hinged lid, 10cm £40 - 60 †

441
A quantity of various books to include, eighteen volumes of Constables "Miscellany of Original and Selected Publications"; the "Private Correspondence of Horace Wapole, Vols 1,2,3,&4; Phoenix Britannicus Vol. 1, published by J Morgan, leather bound; Hudibras by Samuel Butler; Scott's Visit to Paris 1814 etc. £100 - 150 †

442
A late Victorian games compendium, comprising turned wooden chess and draughts set, bone and ebony dominoes, an Escalado set, numerous counters, card games, table croquet etc. contained in a fitted two drawer mahogany box, 40cm wide x 24cm high £200 - 400 †

443
J M Barrie's, "Peter and Wendy", illustrations by Edmund Blampied £50 - 80 †

444
A collection of various 19th Century silhouettes and frames £30 - 50 †

445
A pair of early 20th Century brass twin branch wall lights, in the 18th Century Dutch style, 30cm high £30 - 50 †

446

An unusual Japanese spelter pen tray, having warrior and foliate scroll decoration inset with a compass, 27cm
£20 - 30 †

447

An 18th Century brass lantern clock, of traditional form, the dial with circular Roman numeral chapter ring, pierced decoration, initialled P.T.M. and raised on turned feet, (AF and in need of restoration, one side panel missing, detached bell and strap)
£100 - 200 †

448

A 19th Century tortoiseshell and ivory mounted two compartment tea caddy, of serpentine shape, 20cm long, 13cm high
£200 - 300 †

449

A 19th Century unframed sampler, worked by Elizabeth Oldham 1847, decorated alphabet, birds and trees
£20 - 40 †

450

An unusual 18th Century mahogany cased bracket clock, with brass foliate engraved dial, with steel chapter ring and subsidiary dials, with associated single fusee movement, (AF and in need of restoration) the case surmounted by a handle, 64cm high overall, the dial measuring 34cm x 23cm in extremes
£200 - 400 †

451

A 19th Century portrait miniature, of Mrs Anne Fawcett wearing dark dress with lace trimmed collar in ebonised and brass mounted frame; another miniature of a Gainsborough type lady in ebonised and brass mounted frame; and a similar of a gentleman wearing frock coat (3)
£60 - 80 †

452

Five miniature portraits, including Nelson and Napoleon contained in faux ivory and tortoiseshell frames (5)
£40 - 60 †

453

A large ebony elephant, 57cm long x 42cm high overall AF
£40 - 60 †

454

A contemporary light wood and brass mounted nine drawer trinket cabinet, with locking bar mechanism, 35.5cm wide x 43cm high
£40 - 60 †

455

A fine silver Russian icon, "The Holy Mother and Child" Oklad by Pavel Ouchinnikof, 22.5cm x 18cm in later mahogany plush lined display case
£3,000 - 4,000 †

456

A collection of Suffolk stud books, various dates 1892-1940's
£80 - 120 †

457

A pair of vintage Ormolu and brass twin branch wall sconces, 43cm high
£80 - 120 †

458

An 18th Century late Safavid tinned copper bowl, the vertical sides engraved with panels of script and various leaf and flower designs, 31cm high, 37cm diameter
£60 - 100 †

459

A framed wool work embroidery, "Today Is The First Day Of The Rest Of Your Life"; and another modern embroidery "Antiques" (2)
£10 - 20 †

460

A leaded and stained glass oval panel, depicting a young beauty wearing a yellow cloak and with pink bow in her hair, 31cm x 27cm in extremes
£200 - 300 †

461

A leaded and stained glass oval panel, depicting a portrait of Elizabeth I, described "Elizabeth Regina", 30cm x 24cm in extremes
£200 - 300 †

462

A Christoleum picture, depicting a lady sewing with attendant infant in cot, 25cm x 17cm in a plush lined gilt and ebonised frame
£150 - 250 †

463

A 19th Century sampler, depicting birds, foliage and religious text by Henrietta Day, October 23rd 1840, 40cm x 32cm
£250 - 350 †

464

An early 19th Century sampler, worked by Elizabeth twinning aged 10 years old 1829, 42.5cm x 33cm
£250 - 350 †

465

A Chinese watercolour on silk, depicting flowers in antique vases within a foliate border, 37cm x 40cm
£200 - 300 †

466

A small Chinese Fluorspar brush washer; and an octagonal Chinese hardstone seal carved with a dragon, four character marks to base (2)
£40 - 60 †

467

A vintage Chinese amethyst carving, of a fruit with trailing leaves attached with a later white metal loop for suspension; and an opal carving of Ho Tei (2)
£40 - 60 †

468

Two 18th Century / 19th Century Tibetan copper and brass circular lime containers
£40 - 60 †

469

A brass lantern clock, with eight day movement striking on a bell
£100 - 200 †

470

A rosewood cased stick barometer, by Negretti & Zambra having ivory scale, 92cm
£100 - 150 †

471

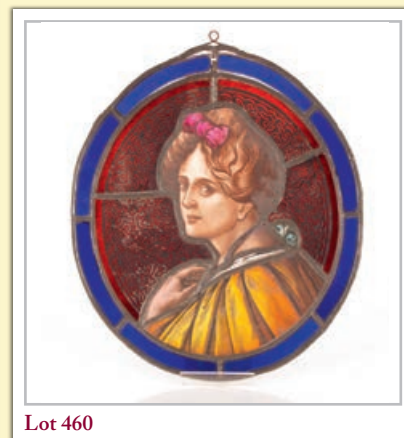
A Victorian walnut cased regulator type wall clock, with adjustable pendulum, circular Roman numeral enamel and brass mounted dial, 105cm
£100 - 150 †



Lot 454



Lot 455



Lot 460



Lot 461



Lot 487



Lot 488



Lot 489



Lot 490



Lot 491

472

A 19th Century mahogany and inlaid banjo shaped barometer / thermometer, surmounted by scroll arch pediment fitted with a convex mirror, by V Martinelli & Son, 94cm £100 - 150 †

473

A 19th Century mahogany and chequer strung stick barometer, by Ortelly & Co. Derby, 97cm £100 - 200 †

474

A 19th Century mahogany banjo barometer, having silvered dials by J Currotty, 97cm £100 - 200 †

475

A 19th Century marble and Ormulo mounted column, 115cm high AF £200 - 300 †

476

A volume of "Browns Inquiries", part leather and marbled bound date 1672 £100 - 200 †

477

A quantity of miscellaneous books, including Art, Suffolk Churches, Proust, Wagner etc. £40 - 60 †

478

A pair of spelter figures, depicting a maid and youth AF, 32cm high £20 - 30 †

479

A pair of antique white metal figures, of grouse mounted on a hardstone rock work effect base, 9.5cm high £60 - 80 †

480

A pair of oak pricket candlesticks, with 17th Century elements having metal spikes and turned knopped columns on circular platform bases, 42cm high £60 - 80 †

481

A mahogany book carrier, in the Regency style, the three quarter gallery united by balustrades and stiff leaf scroll uprights, 42cm wide £50 - 70 †

482

An early 20th Century Eastern brass and engraved model of a ceremonial war horse, on an ebonised base, 24cm high £40 - 60 †

483

A pair of Victorian bell metal ecclesiastical candle sticks, in a plain 17th Century style, dished sconces and ring turned out swept circular bases, 20cm high £40 - 60 †

484

A pair of early / mid 18th Century brass candlesticks, having knopped baluster columns on petal bases, 18cm high £50 - 80 †

485

A pair of Chinese gilt metal and cloisonné relief work ginger jars, covers and wooden stands decorated with scrolling floral designs and flower heads, 17cm high £40 - 60 †

486

A pair of Sevres style porcelain and gilt metal mounted baluster table lamps, decorated rural scenes with figures, 43cm high including shades £150 - 250 †

487

A 19th Century gilded and Sevres style porcelain panel decorated French mantel clock, surmounted by an urn finial, eight day movement striking on a bell, raised on a gilt plinth, the Roman numeral dial and panels decorated foliate sprays, cherubs and rural scene, 45cm high overall £150 - 250 †

488

Early 19th Century mahogany and brass mounted bracket clock, by Mann of London silvered dial with strike silent and second subsidiary, eight day movement striking on a bell, raised on brass ogee feet, 42cm including carrying handle £400 - 600 †

489

A 19th Century mahogany and brass bracket clock, by Amyot & Bennett Norwich, with silvered Roman numeral dial, 45cm high including carrying handle £400 - 600 †

490

A 19th Century brass and enamel four glass mantel clock, the temple shaped case supporting a circular dial for Edward Ewen Paris, eight day movement with mercury adjustable pendulum striking on a gong, 34cm high £100 - 200 †

491

A 19th Century wooden carving, depicting a basket of flowers, 40cm high, 47cm wide in extremes £80 - 120 †

492

A late 19th Century Black Forest photograph frame, complete with three photographs of a Victorian family, having pierced foliate surround, 27cm x 22cm £40 - 60 †

493

A carved oak corbel, of an angel, 28cm, possibly 16th Century £100 - 200 †

494

A W.T. Avery Ltd. of Birmingham, wooden and brass mounted "Elegant Personal Weighing Machine", complete with brass height measure and weights, 135cm high £300 - 400 †

495

A set of W.T. Avery Ltd. brass and mahogany inlaid postal scales, with faux ivory charge scale, 37cm long overall £20 - 40 †

496

A Swiss music box, playing twelve airs in inlaid case, 63cm long £300 - 500 †

497

A primitive stone head carving, set to a wooden block plinth, 28cm high £60 - 80 †

498

A painted plaster Maquette of Venus, with a dolphin, 37cm x 23cm in extremes £100 - 200 †

499

A carved oak pew end figure, possibly 16th Century, having weighted base, 21cm high, £100 - 150 †

500

A brown leather and stitched Costrel, of barrel form in the 17th Century style by A.R.Dennis St.Eval, Cornwall, 20cm long £50 - 70 †

501

A mahogany and spelter mantel clock, in the form of a sphere with cherub surmounts raised on a four Corinthian column stand, 32cm high £40 - 60 †

502

An ethnic wooden head rest, 22cm long, 18cm high £40 - 60 †

503

A Chinese bronze seated Buddha, 24cm high £250 - 350 †

504

A Victorian papier maché and mother of pearl inlaid writing slope, 34cm wide, 28cm deep, 10cm high in extremes £60 - 80 †

505

A 19th Century faux walnut sarcophagus shaped tea caddy, (no interior); and a small lacquered box with mother of pearl figure decoration (2) £20 - 40 †

506

A 19th Century Tunbridge ware sewing box, with lift out tray, the hinged lid decorated with Abbey ruins and profuse floral borders on disc feet, 25cm wide £60 - 80 †

507

A 19th Century rosewood sewing box, having brass inlaid decoration raised on claw feet, 25cm wide £60 - 80 †

508

A Swiss music box playing eight airs, in inlaid case and striking on three bells, 41cm wide x 23cm high x 28cm deep £400 - 600 †

509

A 19th Century mahogany boxwood strung and satinwood inlaid knife box, of Arc en Arbellette form, 22cm wide, 39cm high £80 - 120 †

510

A pair of Art Deco design celestial and terrestrial globe bookends, by Philips £40 - 60 †

511

An Art Deco design table lamp, complete with Tiffany style shade, 60cm high £80 - 120 †

512

A pair of 20th century cloisonné bowls and covers, profusely decorated flowerheads in relief, 17cm high, 21cm dia. overall £40 - 60 †

513

An antique bronze seated figure of Buddha, 22cm high £80 - 120 †

514

A coopered fire bucket, having rope handle; a smaller similar; and a brass bell inscribed "Rosemary Groningen 1954" (3) £100 - 200 †

515

A collection of various unusual Ethnic masks £200 - 300 †

516

A collection of various unusual Ethnic masks £200 - 300 †

517

A 19th Century marble and gilded spelter mantel clock, surmounted by a bronze cupid, 26cm high £100 - 200 †

518

An unusual Chinese green hardstone brush pot, decorated figures in relief with six character and seal mark, 16cm high, 14.5 cm wide in extremes £250 - 300 †

519

An 18th Century Islamic bronze shallow bowl, with indistinct script border and Arabesques to the plateau, 25cm dia. £30 - 50 †

520

A Georgian style wooden tea caddy, in the form of an apple, the hinged lid with metal stalk and escutcheon, 14cm high £50 - 70 †

521

A 19th Century Chinese bronze censer, having swing handle, the pierced lid with a dragon handle, six character mark to base, 16.5cm high overall, 14cm dia. £200 - 300 †

522

A Victorian antique copper and brass mounted quart mug, 18cm high; and a large antique iron key (2) £20 - 40 †

523

A 19th Century Chinese bronze vase, with flared neck above temple dog handles and engraved roundel, the baluster base raised on a circular spread foot, 25cm high, 22cm dia. £50 - 80 †

524

A Victorian brass oil lamp, having floral enamelled pink glass reservoir and tinted shade, 65cm high £100 - 150 †

525

A 19th Century brass and bronze mantel clock, in the form of an elephant, the drum shaped eight day movement and circular enamel dial striking on a bell, 24cm high, 23cm long overall £100 - 200 †



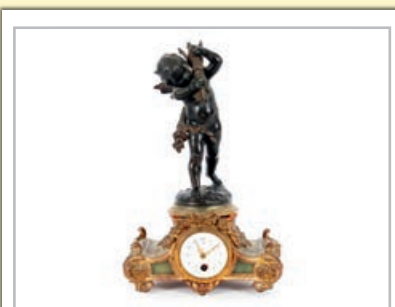
Lot 502



Lot 506



Lot 509



Lot 517



Lot 525



Lot 528



Lot 531



Lot 540



Lot 544

526

An oak cased miniature grandfather clock timepiece, 28cm high £60 - 80 †

527

A pair of cloisonné baluster table lamps, with stylised elephant handles, 23cm high (not including shades) £40 - 60 †

528

A 19th Century spelter Bull baiting group, 29cm long, 20cm high £40 - 60 †

529

Richard Duke of London, violin, stamped to the reverse, 58cm long with two metal tipped and mother of pearl decorated bows, contained in a music case by J.P.Guivier & Co. £300 - 400 †

530

A Japanese cloisonné plate, decorate quail amongst foliage; two miniature teapots; a vase and cover; and a cylindrical box and cover (5) £40 - 60 †

531

A late 19th early 20th Century Chinese cloisonné vase and cover, the ovoid body and flat lid decorated with millefiori, 20cm high £60 - 80 †

532

A collection of various early to mid 20th Century Indian gouaches, on material depicting Mughal and Indian religious scenes, assorted sizes unframed £40 - 60 †

533

A collection of various early to mid 20th Century gouaches, on material depicting horses in ceremonial trappings and decorative material patterns, unframed, largest 170cm x 60cm £40 - 60 †

534

An early 20th Century carved golden oak "Meeting in Session" stand, surmounted by Buffalo horns and copper candle sconces with revolving board below, painted with Strict Order and Liberty Hall, flanked by spiral columns on a platform plinth, 51cm wide £60 - 100 †

535

A German painted wooden sewing or trinket box, the lid decorated with a rural scene and verse, 47cm £60 - 100 †

536

A Middle Eastern micro mosaic inlaid jewellery box, having stellar and bone ornament, 25cm wide £20 - 40 †

537

Three various vintage Teddy bears; a modern Steiff Teddy bear; a miniature example with certificate; another; and a straw boater (7) £100 - 150 †

538

A Victorian sampler, worked by Eliza Waller, decorated birds and flowers with religious text, 35cm x 29cm in scumbled frame £100 - 150 †

539

A cased and preserved humming bird, under glass dome, 26cm high overall £40 - 60 †

540

An arrangement of various birds, set amongst foliage under glass dome on circular wood plinth, 48cm high overall £60 - 100 †

541

A small oriental bronze dish, having Greek key decoration on a carved base, 6cm dia. £50 - 80 †

542

A Chinese bronze censer, with archaic decoration raised on a carved hardwood base AF, 13cm high £200 - 300 †

543

A Chinese carved white jade censer, with ring mask beast handles and lid, 13.5cm wide x 10cm high on an associated carved wooden stand £600 - 800 †

544

A George III mahogany and brass coopered two division cutlery tray, having tin liners and brass loop handle, 42cm long £60 - 100 †

545

A pair of unusual carved oak wall hangings, in the 17th Century style depicting mythical rampant serpents, 54cm overall £40 - 60 †

546

A Regency plasterwork relief plaque, depicting fruit in a basket, 31cm x 27cm overall £80 - 120 †

547

A continental carved gilt wood and mirrored table lamp base, of baluster vase form with acanthus scroll handles, 40cm high overall £40 - 60 †

548

An unusual tailors dummy, of small size, 89cm AF; and a painted metal sign depicting an angle with trumpet 51cm (2) £40 - 60 †

549

A Civil War period US Army leather satchel, with fitted interior £80 - 120 †

550

A collection of four early to mid 20th Century Indian and Chinese gouaches on material, depicting monkeys, mongoose and landscape scene unframed largest 120cm x 97cm £40 - 60 †

551

A collection of four large early to mid 20th Century Indian gouaches on material, depicting various religious scenes, unframed, largest 149cm x 49cm £30 - 50 †

552

A collection of seven early to mid 20th Century Indian gouaches on material, depicting elephants in ceremonial trappings, unframed, the largest 120cm x 92cm £40 - 60 †

553

A collection of eight early to mid 20th Century Indian gouaches on material, depicting various exotic birds to include an owl, unframed largest 129cm x 66cm £50 - 70 †

554

A green stained walking stick, with carved parrot handle £40 - 60 †

555

A Victorian walking stick, with carved ivory owl handle £40 - 60 †

556

A hardwood walking stick, having white metal inlaid decoration £40 - 60 †

557

A burr wood walking stick, with silver collar £40 - 60 †

558

An unusual Edwardian walking cane, the carved handle in the form of a ducks head with glass eyes and opening bill £40 - 60 †

559

A rustic walking cane, having white metal band, the head carved in the form of a boxer dog £30 - 50 †

560

A Victorian ebonised walking stick, of tapering form having foliate engraved silver band and handle £60 - 80 †

561

An oriental carved ivory handled parasol, profusely decorated foliage and animals £80 - 120 †

562

A cane parasol, the silver handle in the form of a dog £60 - 100 †

563

A carved hardwood oriental jardinière stand, fitted with a single drawer, 30cm wide, 25cm high AF £30 - 50 †

564

A 19th Century tinsel picture, depicting Mr G Bennett as King in Hamlet, contained in a maple frame; and Mr Connor as Pizarro in mahogany frame £70 - 100 †

565

Three Prattware pot lids, "Village Wedding", "The Shrimpers" and "Rabbit Shooting" £30 - 40 †

566

A late 18th / early 19th Century painting on silk, depicting cherub and dog in parkland setting surrounded by garlands and flowers, 17cm x 20cm £60 - 80 †

567

A 19th Century reverse glass picture, depicting semi-naked maiden with anchor £20 - 40 †

568

Four various Chinese and Middle Eastern carved ivory figures £40 - 60 †

569

A circular carved ivory box and cover, having raised decoration; a Chinese carved ivory figure of a Deity; an Egyptian type figure; and a similar profile figure (4) £40 - 60 †

570

A carved Chinese ivory puzzle ball £20 - 40 †

571

A Chinese carved ivory and white metal needle case, two others and a faux ivory gent's grooming kit (4) £40 - 60 †

572

A carved ivory figure of a war horse, 9cm long, 8cm high £20 - 40 †

573

Three various carved ivory paper knives; a shoe horn in the form of a horses hoof; a pair of ivory glove stretchers and a spoon (6) £40 - 60 †

574

A collection of various carved ivory elephants; a napkin ring; and a figure of a wolf £30 - 50 †

575

A carved ivory study of a ceremonial bullock cart; and another of an elephant ride (2) £40 - 60 †

576

A carved Chinese ivory puzzle ball figure, 14cm high; a smaller similar 8cm high; and a figure of a lady carrying a fan, 7.5cm high (3) £40 - 60 †

577

A carved ivory figure of a dignitary carrying a sceptre, on carved hardwood base, 18cm high; a carved ivory figure of a maiden standing on plinth; and a small Japanese carved ivory figure of a maiden carrying a fan (3) £40 - 60 †

578

An Indian ivory figure, of a goddess 19cm high; and a smaller example 11cm high AF (2) £30 - 40 †

579

A Japanese carved ivory figure group, depicting fisherman and boy, 18cm high; another incomplete and AF 20cm high; another depicting man wearing a hat, 19cm high; and another of a street vendor 16cm high (4) £80 - 120 †

580

A late 17th / early 18th Century chinoiserie panel, of lacquered wood painted with birds, insects and flowers 49cm x 61cm framed £40 - 60 †

581

An antique Indian steel Tulwar sword, of typical form in a later wood and canvas scabbard 93cm long overall £40 - 60 †

582

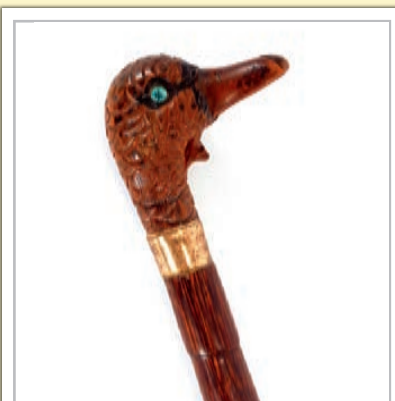
An antique copper coal scuttle, and a quantity of various iron and brass fire implements including toasting forks and shovels £20 - 40 †



Lot 554



Lot 556



Lot 558



Lot 560



Lot 589



Lot 590



Lot 598



Lot 604



Lot 620

583

A copper coal helmet, and various iron and brass fire implements including a log fork £20 - 40 †

584

A cast iron and brass mounted companion stand, complete with four implements £20 - 40 †

585

A carved wooden primitive statue, 76cm high £40 - 60 †

586

Two Victorian copper kettles; a Victorian copper coal helmet; a brass chestnut roaster; two toasting forks etc. £60 - 100 †

587

A quantity of various oriental carved hardwood vase and plate stands £40 - 60 †

588

Eight antique graduated copper measures, 4 gallons to 1 gill £100 - 200 †

589

A 19th Century brass and copper doorstop, of scrolled form, 27cm high £30 - 50 †

590

A Victorian cast iron and mottled doorstop, in the form of a hound or gundog on projecting moulded platform base, indistinct registration mark, 32cm high £40 - 60 †

591

A Victorian cast iron stick stand, in the form of a bird with outstretched wings, 69cm high £60 - 100 †

592

A pair of 19th Century papier-mâché coasters, 19cm dia. £20 - 30 †

593

A Latticino type coloured glass model of a galleon, under glass dome raised on circular ebonised plinth, 24cm high £60 - 80 †

594

Three Middle Eastern and Indian copper and brass antique trays, of various designs and sizes, the largest 50cm wide £30 - 50 †

595

Four volumes "The Tatler of Lucubration's of Isaac Bickerstaff Esq", printed in Dublin for Whitestone, leather bound £100 - 200 †

596

A Venetian glass easel dressing table mirror, with applied floral scrolls and etched foliate border, 67cm high £60 - 80 †

597

A Solomon Islands club, with a spatulate blade, 75cm long £100 - 150 †

598

A Zulu club, with segmented bulbous head terminal, 56cm long £80 - 120 †

599

A tray of miscellaneous items including, a hand held music box; a small wooden gavel; a plated chamber stick; a felt doll etc. £40 - 60 †

600

A quantity of ivory and ebony elephants; and two china examples etc. £20 - 30 †

601

An Art Deco carved wooden dog clock, 16cm high £60 - 80 †

602

A brass and leather mounted three draw telescope £30 - 50 †

603

A pair of 19th Century Japanese lacquer and shibayama panels, decorated birds and foliage, 60cm x 37cm overall; and a large similar example with signature seal, 75.5cm x 44cm overall £100 - 200 †

604

An early 20th Century bronze figure, of a semi-naked winged female clasping a laurel wreath, signed A. Bofill, with foundry stamp raised on circular marble plinth, 82cm high overall £300 - 500 †

Pictures and Prints

607

A large collection of equestrian coloured prints, depicting famous horses with their lineage verso £100 - 200 †

608

Late 19th Century school, pair of studies depicting fishing boats at sea, unsigned oils on board, 15cm x 20.5cm £100 - 200 †

609

Marion Broom, oval still life study, signed watercolour, 40cm x 49cm in decorative gilt frame £40 - 60 †

610

C.W., "Meditation" initialled watercolour and pencil dated 1966, 26cm x 36cm £30 - 50 †

611

Thomas Alfred Liverton 1907-1973, "railway Siding at Romney Marsh", signed watercolour label verso for The Phoenix Gallery £60 - 100 †

612

Frederick Hans Haargensen 1877-1943, Dockyard study possibly Grimsby, charcoal on paper, 64cm x 40cm £40 - 60 †

613

Frederick Hans Haargensen 1877-1943, study of a steam train, charcoal on paper, 4x8cm x 62cm £40 - 60 †

614

No Lot

615

David Cox, pair, studies of figures on a beach, signed pastels £20 - 30 †

616

Bradford Rudge, British Exhibited 1840-1883, pastoral scene with figures of sheep and dwellings, watercolour framed and glazed, 70cm x 53cm overall £50 - 80 †

617

J Stannard, a pair of studies depicting rural scenes with cattle watering, Tondo 15cm in decorative gilt frames £40 - 60 †

618

Peter Burman, abstract landscape study, signed watercolour, 12cm x 28cm £80 - 120 †

619

C Slade, "Evening Tide Maldon", signed pastel, 18cm dia. £100 - 200 †

620

R. W. Milliken, study of partridges in winter, signed watercolour, 53cm x 72cm £400 - 600 †

621

Sir James Naunton Wingate 1846-1924, "At Fairlie, Ayrshire" signed oil, 25cm x 34cm, label verso "The Fine Art Society Ltd." dated October 1960 £200 - 400 †

622

Robert Morden, coloured map of Essex, 35cm x 41.5cm £30 - 50 †

623

A pair of Eastern watercolours, with text contained in gilt mock bamboo frames, image 21.5cm x 13.5cm £60 - 100 †

624

Thomas Liverton, RBA 1907-1973, landscape study depicting buildings and cattle in remote setting, signed watercolour, 36cm x 54cm £50 - 60 †

625

Albert Ernest Marks British 1865-1901, study of sailing boats on the Thames, a pair, signed watercolours £100 - 200 †

626

Enaid Jones 1888-1978, two Conte crayon portraits studies, a pair, 17.5cm x 15cm £40 - 60 †

627

Richard Murray 1902-1984, study of the Grand Union Canal, signed and dated '38, label verso purchased Sally Hunter Fine Arts Ltd. 23cm x 29cm £100 - 200 †

628

A pair of reverse paintings on glass, depicting a young girl wearing a bonnet and silk dress, and a companion depicting a young woman, oval 36cm x 25cm £50 - 70 †

629

A set of four painted silhouetted and heightened miniature portraits, of early 1800's Naval Officers, 11cm x 7cm £30 - 50 †

630

A small oil on panel depicting kittens drinking from a bowl £60 - 80 †

631

A pair of 19th Century coloured stipple engravings after Bartolozzi, depicting young male and female shepherds mounted in ebonised and gilt line slips and circular frames, 13cm £30 - 50 †

632

An oval Regency coloured engraving, of three young beauties in gilt frame; another of Mother and Child outside of a cottage in oval gilt beaded frame; and a small circular coloured engraving depicting Lady and Galant buying wears from a street vendor (3) £50 - 80 †

633

Snaffles, pencil signed print of "The Bonnie Blue Bonnets, Frae Ower The Border" back stamp to margin AF; Snaffles print inscribed to margin Le75; another "A Heilan Lad"; another "Wipers" and another "Jock" (5) £200 - 400 †

634

E.E.W., after Thomas Faed, a pair of interior scenes depicting family and young children, initialled oils on canvas, 29cm x 19cm £60 - 100 †

635

Four Japanese watercolours on silk, studies of birds amongst blossom with signatures, 60cm x 20cm £100 - 150 †

636

Dutch school, late 17th / early 18th Century scene of a bawdy tavern interior, unsigned oil on panel, 28cm x 45cm £400 - 600 †

637

Manner of François Boucher, a late 18th Century chalk drawing of mythological scene with female nudes, unframed, 34cm x 48cm £120 - 150 †

638

Charles Rowbotham, pencil signed small coloured etching of Helford Creek; and a pencil signed print after Sanders of Lord Byron "Sometimes" (2) £30 - 40 †

639

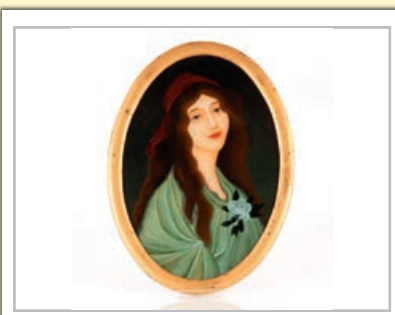
An Eastern watercolour on fabric, depicting an exotic bird perched on leaf and blossom laden branch, 56cm x 81cm (possibly Indian) in maple frame, some damage to frame £40 - 60 †

640

19th Century school, study of woman and child walking on a snowbound path, indistinctly monogrammed oil on canvas, 45cm x 34.5cm contained in a decorative gilt frame £100 - 200 †



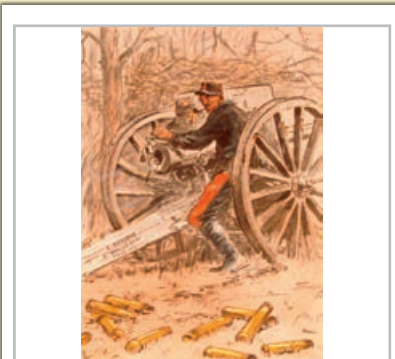
Lot 626



Lot 628



Lot 628



Lot 633



Lot 636



Lot 650



Lot 657



Lot 658



Lot 665

641

James Matthews, "At West Clandon, Surrey", signed watercolour, 24cm x 54cm £100 - 150 †

642

Indistinctly signed miniature oval watercolour study, depicting two birds seated on a branch, 10cm x 8cm in extremes, contained in an oak frame £40 - 60 †

643

Frederick Schiller Cozzens, six American Yacht artist proof prints numbered labels verso £100 - 200 †

644

Sylvester Stannard, "Winter Scene", signed watercolour, 17cm x 13cm £40 - 60 †

645

John Crank, "Reed Bunting" signed watercolour, 35cm x 26cm £40 - 60 †

646

John Crank, study of Great Tit and chicks on a branch, signed watercolour, 35cm x 24cm £40 - 60 †

647

Jean Wilson, rural landscape study, signed oil on board, 1964, 46cm x 60cm £40 - 60 †

648

James Wright, study of farm buildings, signed oil on canvas, 35cm x 57cm £40 - 60 †

649

Wilfred C Sutton, study of figures on a river bank, cottage in the far ground, signed oil on board, 40cm x 49cm £40 - 60 †

650 ✓

Cavendish Morton 1911 - 2015, rural Suffolk scene, signed and dated 1972, oil on board, 28cm x 39cm £200 - 400 †

651

Jack R Mould 1925 - 1998, views of "Polperro" and "Mousehole, Cornwall", oils on artists board, both signed with initials inscribed and dated 1981 verso, each 11.5cm x 16.5cm £60 - 80 †

652

Jack R Mould 1925-1998, Cornish views and another, oils on artists boards, signed with initials, 11.5cm x 16.5cm (3) £60 - 80 †

653

Charles Spencer, mid 20th Century oil on canvas of an elegantly dressed gentleman with wild hair and eyes, signed, 60cm x 50cm £200 - 300 †

654

Miguel Filho 1892-1952, sailing vessels in a calm sea by moon light, oil on canvas, signed 64cm x 44cm £80 - 120 †

655

William Van Dan Berghe, woodland scene with cattle watering, signed oil on canvas, unframed 50cm x 65cm £60 - 80 †

656

Murray McDonald, flourished 1889-1910, view of "Loch Gail Head" with a landing stage and dinghy in the fore ground, mountains beyond, oil on canvas, signed and dated 1899, also inscribed verso, 18cm x 26cm £160 - 260 †

657

J McIntyre 1906, still life of cut flowers and scissors, oil on board signed and dated verso, 35cm x 50cm £80 - 120 †

658

David Baxter of Norwich born 1942, "The Tide Mill at Woodbridge", oil on board, signed with initials, 15cm x 19cm £60 - 100 †

659

19th Century English school, study of a terrier after rabbits, oil on canvas, 19cm x 24cm £100 - 150 †

660

William E Ellis 1869-1923, hilly river landscape with figures on a path and angler, oil on canvas laid on panel, signed 22cm x 33cm £120 - 160 †

661

William E Eliss 1869-1923, mountainous scene in Wales with figures by a cottage in the fore ground, oil on canvas laid on board, signed 22cm x 33cm £150 - 250 †

662

Mid 19th Century English school, study of a terrier, unsigned oil on canvas, 19cm x 24cm £250 - 350 †

663

Manner of Eloise Stannard, a 19th Century oil on canvas, still life and fruit, 34cm x 44cm £150 - 250 †

664

19th Century Dutch school, still life study of summer flowers, oil on panel unframed, 43cm x 30cm £220 - 320 †

665

19th Century continental school, study of a bull mastiff, "Fritz", oil on canvas indistinctly signed 58cm x 79cm £250 - 350 †

666

Lucien Besche 1851-1901, "Military Officer" watercolour signed and inscribed, 26cm x 18cm £40 - 60 †

667

Early 20th Century English school, study of the Lowestoft Trawler Caslea LT46, in choppy seas off Yarmouth, The Smiths Knoll lightship beyond, oil on board inscribed and dated 1911, 40cm x 50cm £80 - 120 †

668

James L W Gozzard 1888-1950, children playing with a toy boat in a rock pool, oil on board signed 22cm x 30cm £100 - 150 †

669

English school, mid 20th Century study of The Grand Canal Venice, unsigned oil on panel, 20cm x 25cm £60 - 80 †

670

Francis E Jamieson 1895-1950, scene on the lower reaches of the Thames, oil on canvas, 40cm x 60cm £120 - 180 †

671

After Boulton, and engraved by Whelfsell, "The Durham Ox" plate 52cm x 60cm £60 - 100 †

672

Fores, portraits of prize cattle, "The Everingham Short Horned Prize Cow", after W H Davis engraved by Harris £40 - 60 †

673

A John Speede map, of Buckingham Shyre and Shire town described, plate 39cm x 52cm £40 - 60 †

674

A John Speede map, of Suffolk, plate 39cm x 52cm with hundreds and the description of Suffolk verso £40 - 60 †

675

An attractive pair of 19th Century Japanese woodblock prints, Geisha in Attendance and at a tea ceremony, 34cm x 45cm overall £40 - 60 †

676

Christopher Maskell 1846 - 1933, pair of rural scenes depicting cottages and fields, initialled oils on board, 12cm x 19cm; and a smaller pair, 9cm x 16.5cm £40 - 60 †

677

G Miller, study of fishing boats, fisherman and nets at Aldeburgh, signed watercolour, 17cm x 22cm £20 - 30 †

678

John Moore of Ipswich 1820-1902, study of a rural cottage with sea and boats in the far ground, signed oil on board 19cm x 29cm £200 - 300 †

679

19th Century Suffolk school, study of working horses and ploughman resting, unsigned oil on board, 12cm x 18.5cm £60 - 80 †

680

Hunt, pair of studies depicting chickens and other farm animals in a barn, signed oils on board, 19cm x 24cm £40 - 60 †

681

19th Century school, a pair of rural studies depicting travellers on country path, 20cm x 24cm £100 - 150 †

682

E.A. late 19th early 20th Century school, study of a young girl with kittens in a wicker pram opening a parasol, initialled watercolour, 22cm x 15.5cm £40 - 60 †

683

20th Century school, study of a rabbit eating fruit leaves, unsigned oil 26.5cm x 34cm £40 - 60 †

684

19th Century school, study of figures feeding geese in a farmyard, indistinctly signed oil on canvas, 29cm x 44.5cm £60 - 100 †

685

Christopher Maskell 1846 - 1933, study of fishing vessels coming into harbour, signed oil on canvas, 30cm x 40cm £100 - 150 †

686

James Hughes Clayton, study of country cottages with figures and animals outside, signed watercolours, a pair, 36cm x 52cm £200 - 300 †

687

Christopher Maskell 1846 - 1933, seascape study with fishing vessels in heavy swell, initialled oil on canvas, 22cm x 29cm; and a companion painting depicting a rural farmyard, initialled oil on canvas, 24.5cm x 29.5cm (2) £150 - 250 †

688

19th Century school, study of work horses resting in a field with attendant workers, unsigned oil on board, 36cm x 51cm in gilt frame £60 - 80 †

689

J Heffer, study of a gypsy encampment at dusk, signed oil on canvas, dated 1913, 41cm x 53cm £150 - 250 †

690

19th Century school, pair of studies depicting rural scenes by a river, one in moonlight, unsigned oils on board, 20cm x 18cm £20 - 40 †

691

Late 19th Century Suffolk school, study of cattle watering, with farm and figures beyond, figures rowing on a river in the far ground, unsigned oil on canvas, 53cm x 70cm, contained in a decorative gilt frame £100 - 150 †

692

W Stone, (possibly William) coastal scene with figures on a beach launching fishing vessel, cottages and figures nearby, signed oil on canvas 50cm x 74cm £200 - 400 †

693

Henry John Sylvester Stannard 1870 - 1951, study of a flower seller, signed watercolour, 25.5cm x 35cm £100 - 200 †

694

Henry John Sylvester Stannard 1870-1951, study of a rural cottage, 24cm x 34cm £150 - 250 †



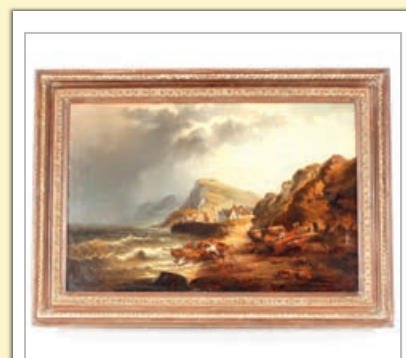
Lot 678



Lot 680



Lot 681



Lot 692



Lot 695



Lot 696



Lot 697



Lot 718



Lot 727

695

G Stuart, portrait study "The Rt. Hon. Lady Erskine", bears signature and date 1821, oil on panel, 34cm x 28cm, contained in gilt frame
£400 - 600 †

696

John Moore of Ipswich 1820-1902, study of fishing vessels at sea, signed oil on board, 34cm x 50cm
£2,000 - 3,000 †

697

John Moore of Ipswich 1820-1902, expansive seascape study oil on canvas, depicting fishing vessels in heavy seas. 61cm x 90cm
£1,000 - 1,500 †

Rugs and Furniture

698

A Caucasian or Anatolian Kelim rug, with two hooked medallions within powder blue lozenge and ivory running dog borders, 170cm x 110cm
£50 - 100 †

699

An Eastern wool rug, decorated with linked central lozenges and profuse stylised floral surround on predominately red and blue ground, 242cm x 148cm
£100 - 200 †

700

A Middle Eastern floral pattern rug, having lozenge decoration within multi floral borders on a predominately blue and red ground, 196cm x 132cm
£60 - 100 †

701

A Middle Eastern rug, having multi floral stylised decoration on a deep red and blue ground, 195cm x 123cm
£100 - 150 †

702

A Middle Eastern floral pattern rug, having profuse floral decoration on a red and blue ground, 210cm x 137cm
£60 - 100 †

703

A small Bokhara carpet, of traditional design on brick red ground, 204cm x 283cm
£100 - 150 †

704

A Middle Eastern small carpet, having profuse floral design on predominately red and blue ground, 280cm x 206cm
£100 - 200 †

705

An Eastern flat weave runner, of traditional design, 263cm x 197cm
£60 - 100 †

706

A Turkish floral pattern rug, approx. 276cm x 208cm
£60 - 80 †

707

A Middle Eastern rug, of Caucasian design predominately red and blue ground, 152cm x 111cm
£60 - 100 †

708

A Middle Eastern rug, of Kashan type multi floral decoration on a predominately blue and green ground, 182cm x 123cm
£100 - 200 †

709

A Middle Eastern rug, of multi floral stylised pattern on predominately red ground, 140cm x 98cm
£40 - 60 †

710

A Middle Eastern rug, of multi floral pattern on predominately red and blue ground within stylised borders, 191cm x 147cm
£60 - 100 †

711

An Eastern rug, of Caucasian design, 222cm x 124cm
£60 - 80 †

712

A Middle Eastern flat weave rug, of Caucasian design, 262cm x 154cm
£60 - 80 †

713

A Middle Eastern rug, Caucasian pattern, 184cm x 158cm
£40 - 60 †

714

A Middle Eastern rug, of Caucasian design on a predominately pink and blue bordered ground, 203cm x 145cm
£40 - 60 †

715

A Middle Eastern flat weave rug, on predominately orange ground with stylised floral decoration, 255cm x 134cm
£40 - 60 †

716

An antique oak court cupboard, the upper section surmounted by a canopy above fielded panel doors and three shallow drawers, three deeper drawers and cupboards below raised on square section supports, 170cm wide x 184cm high
£100 - 200 †

717

A George III oak side table, fitted with a single drawer raised on square chamfered supports, 71cm wide
£60 - 80 †

718

A small teak and camphor wood brass bound travelling chest, 70cm wide
£150 - 200 †

719

A 19th Century mahogany bow front chest, two short over two long drawers, raised on a shaped apron and bracket feet, 92cm wide
£100 - 150 †

720

An antique carved oak settle, the detachable shaped panelled back profusely decorated with beasts and foliate scrolls, lifting seat and box base with further panels carved with roundels and lozenges, raised on square supports, 185cm wide x 152cm high in extremes
£200 - 300 †

721

A 19th Century walnut and marquetry display cabinet, the interior shelves enclosed by a pair of glazed arched panelled doors, gilt metal mounts raised on square plinth £150 - 200 †

722

A Regency style gilt convex wall mirror, with eagle surmount and ball decoration above acanthus scroll, 65cm overall £60 - 80 †

723

A 19th Century mahogany long case clock, by William Jefferies of Maldon, the arched hood surmounted by brass orb finials and enclosing a brass foliate engraved dial with rocking ship movement inscribed "Tempus Fugit", supporting an eight day movement, trunk panel door above a box base raised on shaped apron and bracket supports, 230cm high overall £400 - 600 †

724

A 19th Century mahogany and ebonised boxwood strung and crossbanded long case clock, the arched hood surmounted by three brass finials, enclosing a circular dial with embossed brass surmount decorated figures and flowers, eight day movement, the trunk panel door flanked by turned finials, 228cm high overall £200 - 400 †

725

A George III mahogany long case clock, By J Gullock of Rochford, the hood surmounted by a carved pediment and flanked by reeded columns with brass capitals, enclosing a brass spandrel dial with steel chapter rings, 8 day movement striking on a bell, date and strike silent subsidiary, the case with arched trunk panelled door raised on a box base and bracket feet, 210cm high £200 - 400 †

726

A Georgian mahogany grandfather clock, the brass dial signed William Nickals of Wells, eight day movement striking on a bell, 220cm high £400 - 600 †

727

A heavily carved Flemish style settle, the back with triple panels decorated with tavern figures, lift up box seat compartment flanked by bold scrolled lion and ball arms, masks foliate scrolls and fruit to the base, raised on shaped supports, 162cm wide £500 - 600 †

728

A decorative Japanese lacquer and hardstone four fold screen £300 - 400 †

729

A 19th Century burr walnut ebonised and gilt metal mounted break front credenza, decorated with Sevres type porcelain panels, central cupboard flanked by glazed display shelves with turned columns raised on a platform plinth and bun feet, 187cm wide x 114cm high x 47cm deep in extremes £600 - 800 †

730

A good quality brass and copper Corinthian column standard lamp, raised on bold claw supports complete with shade, 183cm high overall £80 - 120 †

731

A 19th Century mahogany side table, of small proportions fitted two drawers, raised on square tapering legs and spade feet, 51cm wide £80 - 120 †

732

A George III mahogany and satin wood cross banded side table, fitted with a single drawer raised on slender supports united by an under tier, 50cm wide £100 - 200 †

733

A 19th Century mahogany and satin wood strung work table, of octagonal form, the lifting top revealing a partitioned interior fitted two drawers below and raised on ring turned tapering supports, terminating in brass castors, 58cm wide x 74cm high £100 - 200 †

734

An ornate brass wall mirror, with foliate head decoration, bevelled plate, 90cm x 57cm in extremes £40 - 60 †

735

A 19th Century walnut framed wall mirror, having gilt foliate slip and bevelled plate, 70cm x 60cm overall £40 - 60 †

736

A George III mahogany fret carved wall mirror, in the Chippendale manner, surmounted by gilt eagle surmount, 90cm x 52cm £100 - 200 †

737

An Art Nouveau mahogany satin wood crossbanded and inlaid display cabinet, having raised mirrored back shelf, central marquetry panel flanked by velvet lined shelves and enclosed by glazed bowed doors, raised on square tapering supports and spade feet united by stretchers, probably by Shapland & Petter, 122cm wide x 160cm high £300 - 400 †

738

A 19th Century mahogany bow fronted chest, of two short and three long drawers raised on a shaped apron and bracket feet, 105cm wide £100 - 200 †

739

An 18th Century oak chest, fitted four long graduated moulded front drawers with brass drop handles and embossed escutcheons, raised on bracket feet, 96cm wide £200 - 400 †



Lot 729



Lot 731



Lot 732



Lot 733



Lot 743

740

A late Victorian mahogany china display cabinet, the central fabric lined shelves enclosed by a glazed panelled door, flanked by bow fronted cupboards and further cupboards below, open mirrored shelves raised on turned fluted columns, the whole decorated with swags and garlands raised on a shaped apron and cabriole supports, 150cm wide overall, 186cm high £300 - 400 †

741

A 19th Century mahogany serpentine fronted chest, fitted brushing slide and three long graduated drawers, raised on bracket feet, 97cm wide £200 - 400 †

742

A 19th Century mahogany serving cabinet, fitted with two short drawers above a pull out slide, cupboards below enclosing a sliding tray flanked by brass carrying handles, 122cm wide £100 - 200 †

743

A 19th Century Chinese carved lacquered and gilt wood panel, decorated figures and foliage in relief, 198cm wide, 57cm high £100 - 200 †

744

A George III mahogany bureau, the fall front opening to reveal an interior arrangement of drawers and pigeon holes around a central cupboard, fitted four long graduated drawers below, raised on bracket feet, 91cm wide £100 - 200 †

745

A Georgian oak and chequer banded bureau, the fall front opening to reveal an interior arrangement of drawers and pigeonholes above a sunken well, two short and two long drawers below, raised on bracket feet, 90cm wide £200 - 300 †

746

A 19th Century oak dresser base, fitted central cupboard enclosed by a fielded arched panelled door, flanked by two drawers and further cupboards, raised on bracket supports, 175cm wide £200 - 300 †

747

A Georgian mahogany bureau, the fall front opening to reveal an interior of drawers and pigeon holes, three long drawers below raised on bracket feet, 91cm wide £60 - 100 †

748

A 19th Century mahogany chest, fitted two short and two long drawers, raised on turned supports, 100cm wide £100 - 150 †

749

A 19th Century mahogany chest, fitted two short and two long drawers raised on shaped apron and bracket supports, 92cm wide £100 - 150 †

750

A late 18th Century satinwood Pembroke table, in the manner of Gillows, the oval king wood banded top above a single cross banded and mahogany lined bow front drawer, raised on square tapering supports with ebonised stringing and spade feet, 79cm x 104cm open £700 - 1,000 †

751

A 19th Century style mahogany cheval mirror, supported by turned fluted and blind fret columns, the plate with acanthus scroll surmount and fluted surround, 183cm high, 72cm wide £200 - 400 †

752

A 19th Century mahogany and brass mounted occasional table, the circular top raised on a turned and fluted column, terminating in triform base and scrolled feet, 35cm dia. x 74cm high £100 - 150 †

753

An Art Deco mahogany and pine press cupboard, hand written label to the interior "Token Hand Made Furniture, Designed by Betty Joel, Made at Token Works, 1929", having fitted interior shelves and enclosed by a pair of panel doors, the base fitted two drawers set with oblong stepped handles raised on fluted square section supports, 152cm wide overall x 200cm high x 60cm deep £600 - 800 †

754

A 19th Century light oak chequer banded and inlaid freestanding corner display cabinet, the upper shaped shelves enclosed by a glazed panelled door above central drawer and cupboards below raised on bracket feet, 100cm wide overall 214 cm high £150 - 250 †

755

An antique oak coffer or rapier chest, of small proportions, the lid hung to iron strap hinges, square iron lock plate raised on style end supports, 99cm wide £100 - 150 †

756

A Georgian mahogany circular snap top tea table, raised on a ring turned baluster column and tripod base, 68cm dia. £140 - 200 †

757

A Victorian papier-mâché and mother of pearl decorated tilt top chess table, raised on baluster column and segment circular foot, the top 60cm dia. overall £80 - 120 †

758

A reproduction yew wood miniature tall boy chest, fitted eight drawers raised on a shaped apron and bracket feet, 47cm wide, 129cm high £100 - 150 †

759

An antique carved oak chest fitted three long graduated drawers, 77cm wide £200 - 300 †



Lot 750



Lot 751



Lot 752



Lot 756

760

A 19th Century mahogany oblong snap top occasional table, raised on turned baluster column and tripod base, the top 61cm x 46cm

£100 - 150 †

761

A 19th Century circular oak snap top occasional table, raised on baluster column and tripod base, 74cm dia.

£120 - 180 †

762

An Edwardian inlaid mahogany bureau bookcase, the upper adjustable shelves enclosed by a pair of glazed astragal doors, the fall front opening to reveal a fitted interior, four drawers below, raised on bracket feet, 91cm wide x 210cm high

£100 - 200 †

763

A 19th Century walnut hanging wardrobe, fitted two drawers to base and raised on bracket feet, in need of restoration, 101cm wide x 194cm high

£100 - 150 †

764

An 18th Century oak dresser, having shelved and boarded plate rack above three frieze drawers, central short drawer and dummy drawers below, flanked by cupboards raised on square section supports, 151cm wide x 190cm high

£800 - 1,000 †

765

A large and imposing bespoke refectory table, by Edwin Turner of Gislingham, in the Tudor style, the detachable planked top raised on bold baluster turned supports and block feet, united by cross stretchers, 322cm x 154cm

£1,000 - 1,500 †

766

A set of twelve Tudor style bespoke oak dining chairs, with leather upholstered seats and studded backs, raised on carved cup and cover supports united by stretchers, ten standards, two elbows

£800 - 1,200 †

767

A large bespoke oak free standing double corner cupboard, the upper shelves enclosed by a pair of fielded quarter panel doors, single drawer and dummy drawers below with cupboard to base, raised on bracket feet, 145cm wide overall, 215cm high

£400 - 600 †

768

A 19th Century mahogany tallboy, the upper section surmounted by a stepped cornice above two short and three long drawers, with three further long drawers to the base, raised on bracket feet, 120cm wide

£200 - 300 †

769

A 19th Century mahogany bookcase, the upper shelves enclosed by a pair of glazed arch panelled doors, the pediment inlaid with a stain wood urn, cupboards below enclosed by sliding doors on a platform plinth, 121cm wide x 198cm high

£100 - 200 †

770

A late 18th Century lacquered and chinoiserie decorated long case clock, the hood surmounted by a pagoda pediment and brass finials, enclosing a brass spandrel dial and eight day movement by Thomas Moore Ipswich, arched trunk panelled door raised on a box base and platform plinths, 240cm high in extremes

£800 - 1,000 †

771

A Chinese hardwood jardinière stand, the shaped beaded top with marble insert raised on foliate and beast carved supports, 33cm dia. in extremes, 60cm high

£100 - 200 †

772

A Victorian rosewood four division Canterbury, fitted with single drawer raised on turned supports terminating in castors, 49cm wide

£100 - 150 †

773

A 19th Century mahogany box commode, raised on square section supports, 46cm wide, 48cm deep, 50cm high

£30 - 50 †

774

A George III mahogany long case clock, the eight day movement and brass moon face dial by Higdon of Wells surmounted by an arched hood with brass orb finials, trunk panel door within canted reeded stiles raised on a box base and platform, 217cm high overall

£500 - 600 †

775

A 19th Century carved mahogany sideboard. by Holland & Sons, having gadrooned border, central drawer and frieze with profuse shell and foliage decoration above double cupboard base, flanked by lion mask monopodia, on inverted platform plinth, 150cm wide

£150 - 250 †

776

A 19th Century mahogany occasional table, the square top raised on a turned baluster column, the circular base terminating in three scrolled feet, 54cm wide x 66cm high

£40 - 60 †

777

A 19th Century oval gilt framed wall mirror, surmounted by a leaf and ribbon pediment 100cm x 65cm in extremes

£100 - 150 †

778

A Japanese style lacquered and gilt decorated chest, fitted eight drawers, having brass mounts raised on shaped apron and bracket feet, 112cm wide x 41cm deep x 78cm high

£200 - 300 †

779

A pair of burr oak and rosewood crossbanded bedside chests, fitted pull out slides and three drawers, 38cm wide x 72cm high x 37cm deep

£500 - 700 †

780

A walnut oyster veneered chest, of two short and three long graduated drawers, raised on bun feet, 64cm wide x 43cm deep x 77cm high

£400 - 600 †



Lot 759



Lot 771



Lot 779



Lot 780



Lot 781

781

A Georgian mahogany circular tilt top tea table, raised on turned baluster column and tripod base, 74cm dia. £100 - 200 †

782

A Victorian walnut serpentine fronted card table, raised on a baluster column with carved quadruple splay terminating in castors, 94cm wide £100 - 150 †

783

A pair of mahogany and satin wood cross banded lamp tables, fitted single drawers, raised on square tapering supports and spade feet, 61cm wide £400 - 600 †

784

A 19th Century mahogany chest, fitted two short and three long drawers raised on bun feet £100 - 200 †

785

A pair of walnut bedside chests, fitted four drawers, 30cm wide x 32cm deep x 67cm high £300 - 400 †



Lot 798

786

An oak window seat, in the early 19th Century style, having rolled ends raised on rounded tapering supports, 91cm wide £100 - 150 †

787

A mahogany three drawer trinket chest, raised on bun feet, 36cm wide x 21cm deep x 30cm high £40 - 60 †

788

An antique oak chest, converted to a coffer, dummy drawer and single drawer below, the hinged lid raised on bracket feet, 110cm wide £100 - 200 †



Lot 807

789

A pair of 19th Century carved mahogany baluster jardinières £40 - 60 †

790

An antique oak dresser base, fitted two geometric moulded panel drawers, raised on barleytwist supports united by a pot board, 132cm wide x 45cm deep x 88cm high £200 - 400 †



Lot 810

791

A pair of Chinese lacquered and gilt decorative columns, decorated symbols and foliage £200 - 300 †

792

An Edwardian mahogany framed salon settee, upholstered in green buttoned Dralon, raised on cabriole supports, 137cm wide £60 - 80 †

793

A 19th Century mahogany Chippendale design elbow chair, having pierced central back splat, upholstered drop in seat raised on square chamfered supports £40 - 60 †



Lot 812

794

William Orpwood of Ipswich, oak long case clock, the hood surmounted by gilt orb finials, 8 day movement striking on a bell £300 - 400 †

795

An Edwardian inlaid mahogany oval tea tray, having central conch shell patterae flanked by brass handles £40 - 60 †

796

A pair of Chinese lozenge shape cachepot stands, with marble inset tops £40 - 60 †

797

A 19th Century brass and wirework tall fender, raised on ball supports £100 - 200 †

798

An Edwardian mahogany and satinwood inlaid seven piece parlour suite, upholstered in floral patterned green Dralon £400 - 600 †

799

A mahogany open fronted bookcase, fitted two adjustable shelves, raised on a platform plinth base, 106cm wide x 107cm high £250 - 350 †

800

A walnut hall table, fitted four drawers and raised on reeded tapering supports, 133cm wide £350 - 450 †

801

A mahogany window seat, in the Regency style, having rolled ends raised on turned tapering supports, 105cm wide £150 - 250 †

802

An oak dresser plate rack, shelved and with boarded back, fitted two small cupboards and two small drawers below, 143cm wide x 113cm high £100 - 200 †

803

An antique carved oak dresser, of breakfront form, the upper section profusely decorated with flowers, fruits and masks with glazed shelves, cupboard to the base similarly decorated, 18th Century or earlier elements, 155cm wide x 202cm high x 55cm deep £400 - 600 †

804

An antique oak hanging corner cupboard, the interior shelves enclosed by a single panelled door, 70cm wide x 91cm high £40 - 60 †

805

A 19th Century mahogany bow front chest of two short and two long drawers, of small proportions, raised on shaped open and bracket feet, 77.5cm wide £60 - 100 †

806

A George III oak side table, fitted with a single drawer raised on rounded tapering supports and pad feet £60 - 100 †

807

A 19th Century mahogany teapoy, of sarcophagus shape, the hinged lid revealing interior compartments and later glass mixing bowl, raised on a square tapering column and quatrefoil base terminating in brass caps and castors, 40cm wide x 76cm high £100 - 200 †

808

A set of six Regency mahogany brass inlaid dining chairs, having ball and rail backs, loose swab cushions on sabre front supports £300 - 500 †

809

A Victorian walnut armchair, with carved foliate decoration and pale foliate stamped brocade upholstered seat, armrests and back panel, raised on turned supports terminating in castors £40 - 60 †

810

A set of six 19th Century carved mahogany dining chairs, with upholstered drop in seats, raised on turned and reeded front supports £300 - 400 †

811

A 19th Century French style cream decorated armchair, having foliate carved decoration, floral linen upholstered seat, back and armrests on cabriole supports £100 - 150 †

812

A 19th Century mahogany elbow chair, having upholstered seat, back and armrests, raised on cabriole supports £100 - 200 †

813

A 19th Century mahogany and brass pole screen, having embroidered panel of a bird amongst foliate on a carved fluted tripod base £60 - 100 †

814

A large mahogany extending dining table, in the Victorian style fitted with four extra leaves, wind-out action raised on turned baluster legs terminating in brass caps and castors, 126cm by 360cm fully extended £600 - 800 †

815

A set of six Victorian mahogany cabriole legged dining chairs, having upholstered stuff over seats in grey foliate stamped Damask; and a similar pair of dining chairs upholstered en suite (8) £200 - 400 †

816

A set of four elm seated stick and wheel back dining chairs £100 - 150 †

817

A Victorian mahogany swing toilet mirror, the arched plate supported on scrolled arms on a platform plinth fitted with folding brass candle sconces £40 - 60 †

818

An antique oak coffer, having triple panelled carved front raised on square section supports, 130cm wide £150 - 200 †

819

A 19th Century mahogany tray top night commode, 55cm wide £60 - 80 †

820

An antique rustic pine refectory table, raised on trestle ends united by a pegged stretcher, 121cm wide £100 - 150 †

821

A 19th Century mahogany stool, with upholstered drop in seat raised on turned supports, 52cm £30 - 50 †

822

An antique oak drop leaf dining table, fitted end drawers, the rectangular leaves raised on rounded swing supports and pad feet, 117cm £80 - 120 †

823

A Georgian mahogany swing toilet mirror, the shaped plate with gilt slip, raised on a three drawer box base and bracket supports, 41cm wide x 62cm high £80 - 120 †

824

A Victorian mahogany cheval mirror, the plate raised on octagonal tapering columns and inverted platform plinth terminating in scrolled feet and castors, 80cm wide x 148cm high £200 - 300 †

825

A late 19th Century French parquetry decorated two tier occasional table, raised on square columns and shaped supports terminating in sabots, the lower tier with pierced brass gallery, 43cm dia. x 72cm high £200 - 300 †

826

A late Victorian walnut framed deep seated easy chair, upholstered in old gold Dralon raised on turned front supports, terminating in castors £60 - 80 †

827

A Venetian octagonal glass wall mirror, having decorated slip panels, 73cm x 57cm in extremes £60 - 80 †

828

A Victorian walnut framed settee, of serpentine form, upholstered in gold button Dralon raised on carved cabriole supports terminating in brass castors, 194cm wide £100 - 200 †

829

A late Victorian mahogany framed easy chair, with brightly coloured buttoned upholstery raised on turned front supports terminating in castors £60 - 80 †

830

A 19th Century mahogany pole screen, the needlepoint embroidered banner depicting parrot set amongst foliage on a brass adjustable column, cluster column base and triform support, terminating in turned feet £80 - 120 †



Lot 823



Lot 824



Lot 825



Lot 830



Lot 851



Lot 852



Lot 854



Lot 856

831

An Edwardian mahogany, satin wood cross banded and inlaid Sutherland table, 61cm
£30 - 50 †

832

A 19th Century mahogany supper table, fitted single end drawer, the rounded drop leaves raised on a ring turned baluster column and quadruple splay terminating in brass caps and castors, 92cm
£150 - 250 †

833

A 19th Century mahogany side table, fitted with a single drawer, raised on ring turned tapering supports, 81cm wide
£100 - 150 †

834

An 18th Century oak gate leg dining table, fitted with a single end drawer, raised on turned baluster supports, united by stretchers, 121cm wide
£100 - 150 †

835

A 19th Century mahogany fold over games table, fitted three drawers under, the central drawer marked for backgammon, raised on square chamfered supports, 91cm
£100 - 150 †

836

A late 19th Century mahogany swing frame toilet mirror, bearing label "Designed and Executed by Bartholomew & Fletcher, London", 62cm wide
£20 - 40 †

837

A mid-20th Century golden oak dwarf buffet cupboard, 84cm wide x 89cm high
£100 - 150 †

838

A 19th Century mahogany and boxwood strung toilet mirror, raised on a two drawer box base and bracket feet, 47cm wide, 50cm high
£40 - 60 †

839

A 19th Century mahogany framed wing back armchair, raised on bold carved mask supports terminating in hairy claw feet
£200 - 400 †

840

An Edwardian wing back armchair, raised on square tapering supports terminating in brass caps and castors
£20 - 40 †

841

A Victorian mahogany framed spoon back armchair, upholstered in green buttoned Dralon, raised on cabriole front supports
£50 - 80 †

842

A Victorian rosewood framed spoon back nursing chair, upholstered in green buttoned Dralon, raised on carved cabriole front supports terminating in brass castors
£50 - 80 †

843

A Regency mahogany supper table, the rectangular top raised on a turned column and reeded quadruple splay, 91cm x 152cm
£300 - 400 †

844

A Georgian oak chest, fitted two short and three long drawers, raised on bracket feet 93cm wide
£100 - 150 †

845

A set of five 19th Century elm seated rail back dining chairs, raised on square section supports united by stretchers
£80 - 120 †

846

A Victorian rosewood circular snap top dining table, raised on a turned baluster column and triform base
£100 - 200 †

847

A set of four 19th Century mahogany bar back dining chairs, having upholstered drop in seats, raised on turned and fluted front supports
£100 - 150 †

848

A bespoke craftsman made light oak refectory dining table, the planked top raised on bold baluster columns united by stretchers, 123cm wide x 245cm long x 80cm high
£400 - 600 †

849

A Victorian mahogany box commode, with fold up arm rests, 55cm
£20 - 40 †

850

A 19th Century teak and brass bound camphor wood lined trunk, 100cm wide
£100 - 200 †

851

A circular mahogany wine table, the dished top raised on turned column and tripod base, 34cm dia. x 62cm high
£30 - 50 †

852

A mahogany occasional table, with circular gallery top raised on leaf carved baluster column and tripod base, terminating in claw and ball feet, 47cm dia. x 65cm high
£60 - 80 †

853

A 19th Century mahogany three tier what not, fitted single drawer to base raised on turned supports, terminating in castors, 62cm wide x 100cm high
£60 - 100 †

854

A George III mahogany two tier dumb waiter, raised on baluster turned column and tripod base terminating in pad feet and castors
£100 - 200 †

855

An Edwardian mahogany inlaid and chequered banded display / music cabinet, the display shelf enclosed by a pair of glazed panel doors with four drop front drawers under, raised on square tapering terminating in spade feet, 55cm wide x 125cm high overall
£80 - 120 †

856

A 19th Century four tier mahogany what not, raised on turned columns, with ratchet adjustable top, 46cm wide, 126cm high
£200 - 300 †

857

A 19th Century mahogany circular snap top tea table, raised on a turned fluted baluster column and tripod base, 77cm dia £100 - 150 †

858

A 19th Century mahogany and boxwood strung two tier corner wash stand, raised on out swept supports united by an under tier, fitted single drawer and mock drawers below £20 - 40 †

859

An Edwardian mahogany boxwood strung and chequer banded kidney shaped dressing stool, fitted under tier and raised on square section tapering support £40 - 60 †

860

A 19th Century mahogany card table, raised on ring turned tapering supports terminating in castors, 92cm wide (in need of restoration) £60 - 100 †

861

A small 19th Century mahogany and inlaid games table, having octagonal chequer board top raised on turned column and tripod base; and a Victorian walnut and rosewood inlaid circular topped games table raised on barleytwist column and tripod base (2) £40 - 60 †

862

A George III mahogany triple fold over card and tea table, fitted single drawer raised on lappet shoulders, rounded tapering supports terminating in pad feet, £300 - 400 †

863

A 19th Century mahogany two tier night stand, fitted single drawer raised on chamfered supports united by an under tier, 34cm wide, 77cm high £20 - 40 †

864

An oak gate leg tea table, the rounded drop leaves raised on turned baluster supports, 60cm £40 - 60 †

865

A 19th Century mahogany Partners writing table, fitted six opposing frieze drawers and raised on turned baluster supports terminating in brass caps and porcelain castors, 120cm x 180cm £600 - 800 †

866

A 19th Century mahogany circular occasional table, the dish top raised on a turned baluster column and tripod base, 47.5cm dia. £100 - 150 †

867

A 19th Century yew wood and elm high back Windsor chair, the pierced central splat and shaped seat raised on turned supports united by a crinoline stretcher (splat restored) £150 - 250 †

868

A pair of Edwardian inlaid bedroom chairs, raised on cabriole supports £40 - 60 †

869

An unusual antique carved oak elbow chair, decorated profuse foliate scrolls around a central mask, box seat, scrolled arms raised on turned supports, inscribed William Crawhall 1825-1878 (nephew of Joseph Crawhall, who worked for Thomas Hall Tweedie, Granger Street, Newcastle on Tyne, wood carver and guildler) £200 - 300 †

870

A 19th Century mahogany drop leaf writing table, having lifting top, the interior with pen tray and inkwell compartment, ratchet missing, raised on ring turned tapering supports, 49cm x 42cm AF £30 - 40 †

871

A 19th Century elm stick back elbow chair, the shaped seat raised on turned supports united by an H stretcher £100 - 150 †

872

A carved walnut Glastonbury type chair, the scrolled back with beast terminals, acanthus leaf decoration to the scrolled arms above solid seat on shaped supports £100 - 150 †

873

An oak joint stool, raised on baluster supports united by stretchers, 38cm wide, 46cm high £40 - 60 †

874

A pair of George III Irish mahogany hall chairs, the shaped backs with Greek key motifs and painted central family crest, the circular seats raised on reeded sabre supports (some old repairs) £600 - 800 †

875

An antique oak gate leg dining table, fitted single end drawer, rounded drop leaves raised on turned supports terminating in Braganza type feet, 87cm £100 - 150 †

876

A 19th Century mahogany side table, fitted single drawer raised on square section tapering supports, 112cm wide £40 - 60 †

877

A small mahogany demi-lune fold over tea table, raised on rounded tapering supports and pad feet, 45cm wide £60 - 80 †

878

A Georgian mahogany circular snap top tea table, raised on a turned baluster column and tripod base, 68cm dia. £100 - 150 †

879

A Victorian button back nursing chair, with serpentine seat raised on turned tapering supports terminating in castors £40 - 60 †

880

A Victorian mahogany circular extending dining table, raised on baluster column and quadruple scrolled base with extra leaf, 290cm fully extended £200 - 400 †



Lot 862



Lot 869



Lot 872



Lot 874



881
A Victorian burr walnut piano top Davenport, having pop up stationery section, 59cm wide x 93cm high £400 - 600 †



882
A Victorian carved walnut footstool, with Dralon upholstery; and another similar with needlepoint seat (2) £40 - 60 †

883
A pair of 19th Century burr walnut footstools, with upholstered tops and raised on brass ball feet, 28cm wide £40 - 60 †

884
An Edwardian rosewood and inlaid two tier drop leaf tea trolley, raised on turned columns above an under tier with gallery out swept legs terminating in castors £100 - 150 †

885
A late 18th / early 19th Century gilt overmantel mirror, with eagle surmount and turned column and leaf decoration, raised on ball supports, 60cm x 87cm £200 - 300 †

886
A 19th Century gilt framed triple chimney mirror, with ball decoration to the shaped pediment, ebonised reeded slip panels flanked by twist columns £200 - 300 †

887
A large 18th Century Italian hall table, surmounted by a Sienna Scagliola marble top, raised on carved Corinthian capitals and columns, united by solid under tier, 141cm wide x 72cm deep x 78cm high £400 - 600 †

888
A 19th Century mahogany framed armchair, upholstered seat, back and armrests raised on reeded columns and tapering legs terminating in brass claw supports £100 - 150 †

889
A Victorian inlaid walnut octagonal trumpet work table, the hinged lid opening to reveal a partitioned interior raised on carved baluster column and tripod base £100 - 150 †

890
An Edwardian mahogany and boxwood strung occasional table, fitted two short drawers, raised on slender supports, united by a cross stretcher, 35cm wide x 76cm high £60 - 80 †

891
An Edwardian rosewood and box wood strung bow fronted writing table, fitted five frieze drawers, raised on square tapering legs terminating in castors, 89cm £100 - 200 †



Lot 884



Lot 889

TERMS AND CONDITIONS OF SALE 1. INTRODUCTION

1. INTRODUCTION

The following defining terms are used in these conditions:-

"Auction"	Means any auction conducted by Clarke and Simpson Auctions Ltd. either at the premises owned by them or elsewhere (including any internet based auction);
"Auctioneer"	Means Clarke and Simpson Auctions Ltd. authorised auctioneer as appropriate;
"Bidder"	Means a bidder at an auction, including the bidders personally present at the venue and those bidding by telephone or over the internet or otherwise;
"Buyer"	Means the bidder whose bid was the last bid when the auctioneer concludes the bidding; "Conditions" Means these Terms and Conditions of Sale;
"Hammer Price"	Means the level of bidding reached (at or above any reserve) when the auctioneer brings the bidding to a close;
"Lot"	Means any property accepted by Clarke and Simpson Auctions Ltd. for offer at auction;

2. DESCRIPTION

No warranty is given or implied by the description in the catalogue. Each lot is sold in its condition at the time of sale with all faults, defects, imperfections and errors of description (if any). Whilst every endeavour has been made to describe the items adequately and properly, the purchaser shall deem to have inspected the lot at time of purchase. All catalogues and seller's and buyer's guides are for information only and do not form part of the contract.

3. STATUTORY REQUIREMENTS

Purchasers will be deemed to have satisfied themselves prior to purchasing regarding current legal requirements (e.g. Health & Safety at Work Act) and it is expressly brought to the bidders attention that equipment in the sale may not necessarily comply with such regulations. Any purchaser shall satisfy himself as to any statutory requirement for the use of any item and no liability shall rest with the vendors nor the Auctioneers.

4. THE AUCTION All auctions are conducted at the absolute discretion of the auctioneer. The auctioneer shall conduct the auction with reasonable skill and care. The vendor reserves the right to sell subject to reserve price in respect of all lots. What constitutes a bid shall be at the absolute discretion of the auctioneer, acting with appropriate skill and care. The auctioneer shall have the right to refuse any bid in all cases but most notably when such a bid does not exceed the previous bid by at least 10% or such a proportion as the auctioneer shall in his absolute discretion direct. Where two or more bids at the same level are simultaneously received by the auctioneer, the auctioneer at his absolute discretion shall determine which bid to prefer. Subject to the foregoing where two or more bids are at the same level are simultaneously received by the auctioneer, the bid submitted in the room shall take preference over a bid submitted by telephone or internet at the same level. Any bid made or attempted by telephone or over the internet will only be deemed to have been made if received by the auctioneer. The auctioneer reserves the right to withdraw, consolidate or divide any lot or lots or submit them in any order that they desire. The auctioneer has the right at his absolute discretion to refuse admission to his premises or attendance at (or participation in) any auction by any person. In the case of any dispute, the auctioneer shall be sole arbitrator in any matters arising during or out of the sale.

5. BIDDERS

All bidders will be required to register their particulars, bidders attending in person and those accompanying them will be required to provide photo ID and separate confirmation of address prior to viewing or taking any part of the sale and before entering any part of the premises to view. All bidders accept full liability for all bids submitted. Subject to the clause in this document headed "The Auction", the highest bidder at the close of bidding shall be the buyer. Any dispute about a bid shall be settled at the auctioneer's absolute discretion. Bidders are all deemed to act as principles unless there is prior written acknowledgement by Clarke and Simpson Auctions Ltd. that a bidder is acting as an agent for a named principle. Bidders are strongly encouraged to attend the auction in person. The bidders shall be responsible for any decision to bid for a

particular lot and shall be deemed to have carefully inspected and satisfied themselves as to condition, neither Clarke and Simpson Auctions Ltd., their employees or agents shall be responsible for any neglect or default in doing or failing to do so. Bidders will be given ample opportunity to view and inspect before the sale and prospective buyers must satisfy themselves as to all matters.

6. DEFAULT

Clarke and Simpson Auctions Ltd. shall act as agent of the vendor only. Any contracts for the sale of a lot shall be formed between the vendor and the buyer. As agent, only Clarke and Simpson Auctions Ltd. shall not be responsible for default by the vendor or the buyer. If any lot is not paid for in full and taken away in accordance with these conditions, or there is any other breach of the conditions, then Clarke and Simpson Auctions Ltd. as agents for vendor shall at its absolute discretion and without prejudice to any other rights it may have, be entitled to exercise all or any of the following rights and remedies:-

- 6.1 to proceed against the buyer for any action of debt or damages for breach of contract;
- 6.2 to rescind the sale of that lot or lots sold by Clarke and Simpson Auctions Ltd. to a defaulting buyer;
- 6.3 to resell the lot (by auction or private treaty) in which case the defaulting buyer shall be responsible for any resulting deficiency in the total amount due (after crediting any part payment and adding any resale costs), any possible surplus so arising shall belong to the vendor;
- 6.4 to remove, store and insure the lot at the expense of the defaulting buyer and, in the case of storage, the location of such storage shall be at Clarke and Simpson Auctions Ltd. discretion;
- 6.5 to charge interest at a rate not exceeding 2% per month of the total amount due to the extent that it remains unpaid for more than two working days after the sale;
- 6.6 to retain that or any lot sold to the defaulting buyer until the buyer pays the total amount due;
- 6.7 to reject or ignore bids from the defaulting buyer at future auctions or to impose conditions before any such bids are accepted;
- 6.8 to apply any proceeds of sale for any other lots due or in the future becoming due to the defaulting buyer towards the settlement of the total remaining due.

7. INDEMNITIES, PENALTIES AND LIMITATIONS OF LIABILITY

Purchasers shall pay for any damage done by themselves or their agents during the removal of their lots. Attendance at the sale shall be at the risk of those attending in respect of both themselves and to their goods and vehicles.

Any indemnity under these conditions will extend to all actions, costs, expenses, claims and demand whatsoever suffered or incurred by the person entitled to the benefit of it and Clarke and Simpson Auctions Ltd. declare themselves to be a trustee of the benefit of such indemnity so far as it is expressed to be the benefit of its employees and agents.

Whilst Clarke and Simpson Auctions Ltd. endeavour to ensure that the information on their websites is correct, they do not warrant the accuracy and completeness of the material on their website. Also, Clarke and Simpson Auctions Ltd. can make changes to the material on their website, or alter the products and prices described on it, at any time without notice. The material on the website may be out of date, Clarke and Simpson Auctions Ltd. make no commitment to update such material. All material on the websites is provided "as is" without any conditions, warranties or other terms at any time. Accordingly, to the maximum extent permitted by law, the website is provided to all parties on the basis that Clarke and Simpson Auctions Ltd. exclude all representations, warranties, conditions and other terms which, but for this legal notice, might have effect in relation to the website.

8. ELECTRICAL SAFETY REGULATIONS

All electrical lots are subject to electrical safety regulations and fall within "the low voltage electrical equipment (safety) regulations 1989" – all items have been pat tested for safety but are not guaranteed in working order.

9. GENERAL MATTERS

Any notice to any buyer, vendor, bidder or viewer may be given by first class mail or email in which case it shall be deemed to have been received by the addressee forty-eight hours after posting or sending. All notices to Clarke and Simpson Auctions Ltd. must be sent in writing and email is not acceptable. Any indulgence extended to any person by Clarke and Simpson Auctions Ltd., notwithstanding the strict terms of these conditions or the terms of consignment, shall affect the position at the relevant time only and the respect of that particular concession only; in all other respects these conditions shall be construed as having~ full force and effect. These conditions and any disputes or claims arising out or in connection with them or their subject matter or formation (including non-contractual disputes or claims) are governed by and construed in accordance with the law of England. The parties irrevocably agree that the courts of England have exclusive jurisdiction to settle any dispute or claim that arises out of or in connection with the agreement or its subject matter or formation (including non-contractual disputes or claims).

10. PUBLICITY

Any catalogue and buyer and seller guides are provided for information only and do not form part of these conditions. The catalogue and the buyer and seller guides may contain additional terms and conditions. Clarke and Simpson Auctions Ltd. reserve the right to use any photographs, background information and research for publicity purposes both before and after the sale.

11. THE PURCHASE PRICE AND PAYMENT ARRANGEMENTS

There is a buyer's premium 18% plus VAT payable in respect of the sale. Any purchases made via "www.the-saleroom.com" or "www.ibidder.com" shall be subject to an administration charge of 5% plus VAT on the price. Preferred payment is cash, bank transfer or personal debit card. Such cards may only be used on a chip and pin basis with the owner present. No payment over £350 will be accepted by telephone. Payment will be accepted online via our secure e commerce account. We do not accept credit cards or international debit cards. Payment by cheque will only be acceptable subject to prior arrangement. No lot will be removed from the sale until any cheque has cleared.

Payment is due on the day of the sale. Cash in excess of £7,500 (including V.A.T.) will not be accepted from any one person, this is not allowed due to Money Laundering Regulations 2007. All money received will be held in Clarke & Simpson Auctions Ltd. Clients No 2 Account at Barclays Bank plc, Framlingham, Ipswich, Suffolk. Account Number 83428591. Sort Code 20 98 07. Clarke and Simpson Auctions Ltd. have no responsibility for any lot between the close of bidding and payment being made and subsequent collection. All payments from overseas buyers shall be made by Bank Transfer and bank fees paid in addition. Please note all policy regarding payment will be enforced and suitable arrangements must be made.

12. REMOVAL OF LOTS

The ownership of any lot purchased shall not pass to the relevant buyer until they have made payment in full to Clarke and Simpson Auctions Ltd. of the total amount due including any storage due.

The buyer shall at their own risk and expense take away any lot that they have purchased and paid for, not later than seven days following the day of the auction.

Any purchaser shall be responsible for removal and insurance and lots stored and storage charges. All lots sold shall be subject to the following storage charges after seven days from the sale:

7-14 days	25% of the lot value + VAT whichever is the greater	or £7.50+VAT per lot
14-21 days	50% of the lot value + VAT whichever is the greater	or £15 +VAT per lot
21-28 days	75% of the lot value + VAT whichever is the greater	or £22.50 + VAT per lot

Any lots not collected after 35 days will be re-sold with immediate effect on behalf of the purchaser and the proceeds of the sale retained in lieu of outstanding storage charges. The policy shall be rigorously enforced and no lots shall be collected unless outstanding storage charges are met.

13. NUMBER BIDDING

This will be used for speed and efficiency as in all our sales. All prospective purchasers must complete a registration form and register in the office on the view day or morning of sale to receive a number for bidding.

Please also note that photo ID and additional confirmation of address will be required.

14. ONLINE BIDDING

Clarke & Simpson Auctions Ltd. offer an online bidding service via the-saleroom.com and ibidder.com for bidders who cannot attend the sale. In completing the bidder registration on www.the-saleroom.com or ibidder.com and providing your payment card details and, unless alternative arrangements are agreed with Clarke & Simpson Auctions Ltd.:

1. authorise Clarke & Simpson Auctions Ltd., if they so wish, to charge the payment card given in part or full payment, including all fees, for items successfully purchased in the auction via www.the-saleroom.com or ibidder.com, and
2. confirm that you are authorised to provide these payment card details to Clarke & Simpson Auctions Ltd. through www.the-saleroom.com or ibidder.com and agree that Clarke & Simpson Auctions Ltd. are entitled to ship the goods to the card holder name and card holder address provided in fulfilment of the sale.

Please note that any lots purchased via the-saleroom.com or ibidder.com live auction service will be subject to an additional 5% buyer's premium + VAT at the rate imposed on the hammer price.

15. TELEPHONE BIDDING

We offer a telephone bidding service where possible, but this service can never be guaranteed. No applications for telephone bids will be accepted after the end of the viewing prior to sale day for any sale. All potential telephone bidders must provide a valid landline number and email address and agrees that they have read and understood the Terms and Conditions and satisfied themselves regarding any lot in accordance with these Terms and Conditions. No phone bids will be accepted for any lot with a lower guide figure of less than £100.

All those who wish to bid by telephone will be expected to deposit an amount determined by Clarke and Simpson Auctions Limited and not less than the minimum guide for all lots that they wish to bid upon into the Clients Account for Clarke and Simpson Auctions Ltd before the sale starts. This payment is not acceptable by card. In the event of default, this sum shall be retained as part payment or any part may be retained to recover losses under clause 6 of these Terms and Conditions. We will expect payment of the balance owing by BACS on the following day, any payment not met within five working days will result in the forfeiture of the deposit paid.

16. AT FAULT (A.F.) LOTS

Certain lots are catalogued at (A.F.), damaged, restored etc., however the absence of any such notice does not imply that the piece is free from defects, nor does it indicate that other defects are not also present. Mention is not made of breakage, cracks, chips or any damage which can be noted by careful inspection, therefore, intending purchasers MUST, in all cases, be responsible for determining the condition of the lots themselves.

17. ESTIMATES

Presale estimates are intended only as a guide for intending purchasers, are given in good faith and subject to revision.

18. CONDITION REPORTS

Clarke and Simpson are unable to guarantee that requests for condition reports/images received will be responded to. Clarke and Simpson are happy to give a Condition Report where possible on the physical condition of goods, this will be provided on behalf of the seller on the understanding that Clarke and Simpson are not entering into a contract with you in respect of the Condition Report and accordingly does not assume responsibility to you in respect of it. All lots are available for your own inspection or for inspection by an expert instructed by you, therefore these Condition Reports are for guidance only and all lots are sold "as found". Condition reports do not form part of a contract.

19. COMMISSION BIDS

The auctioneers will be pleased to execute bids for those unable to attend the sale. Lots will be purchased at the lowest bid the room bidding or any reserves will allow. In the event of identical bids, the earliest bid received will take precedence. There must always be a maximum limit indicated. Buy or unlimited bids will not be accepted. Commission bids placed by telephone are accepted at the client's risk. We urge our clients to place such bids before the start of the sale. All such commissions are left entirely at the buyer's risk.

20. VALUE ADDED TAX

The symbol * after any lot number indicates that Value Added Tax is payable by the buyer on the hammer price.

21. AUCTIONEERS MARGIN SCHEME

The Auctioneers Margin Scheme allows auctioneers to sell items without VAT on the hammer price. Under the margin scheme an amount equivalent to VAT at the current rate is added to the buyer's premium. This amount cannot be refunded. The VAT element will not be shown separately on the buyer's invoice. This VAT is not recoverable as Import Tax.

22. ATTRIBUTION OF PICTURES AND DRAWINGS

Every effort is made to ensure the accuracy of any statements as to authorship, attribution, origin, date, age, provenance and condition of any lot whether or not such statement forms part of the description of any such lot. Whether any such statement is made orally or in the catalogue it is an expression of opinion and not to be taken as being or implying any warranties or representations of facts by the auctioneers. Each buyer by making a bid for a lot acknowledges that he has satisfied himself fully as to the attribution and condition of the lot. The following is for guidance only and does not form part of a contract.

A. The forename (s) (or full stops where not known) and surname of an artist indicates in our opinion a work by the artist.

B. The initials of the forename (s) and the surname of the artist indicates in our opinion a work of the period of the artist which may be wholly or in part his work.

C. The surname of the artist indicates in our opinion a work of the school or by one of the followers of the artist or in his style and of uncertain date.

D. *Signed, Dated, Inscribed* indicated in our opinion work signed/dated/inscribed by the artist.

E. *Bears signature* indicates in our opinion that this is not the signature of the artist.

F. *Attributed to* may be used to denote a traditional attribution based on style.

G. *Manner of* indicates in our opinion a work executed in the artist/craftman's style but of a later date.

H. *After* indicates in our opinion a copy (of any date) of work of an artist or craftsman.

The addition of a question mark after any of the cataloguing terms above indicates an element of doubt.

23. DRIOTE DE SUITE ROYALTY CHARGES

All United Kingdom Art Market professionals (which includes auctioneers) are required to collect a royalty payment for all qualifying Works of Art. This applies to living artists and those who have died in the last 70 years. This payment is calculated on qualifying Works of Art which are sold for a hammer price more than the UK sterling equivalent of €1,000 (the UK sterling equivalent will fluctuate in line with prevailing interest rates calculated by the Artist's Resale Right Service Hub, based on the European Central Bank reference rate published at 2.15pm on the day of the sale, and can be found on www.dacs.org.uk).

All items in this catalogue that are marked "✓" are potentially qualifying items, and the royalty charge will apply if the hammer price is more than UK sterling equivalent of €1,000. The royalty charge will be added to purchase invoices and must be paid before items can be cleared. All royalty charges are paid to the design and Artists Copyright Society (DACS) by the auctioneers and no handling costs or additional fees with respect to these charges will be retained by the auctioneer. This charge may also be applicable to lots not marked "✓" and buyers must satisfy themselves.

The royalty charge for qualifying items which achieve a hammer price of more than the UK sterling equivalent of €1,000, but less than the UK sterling equivalent of €50,000 is 4%. For qualifying items that sell for more than the UK equivalent of €50,000 a sliding scale of royalty charges will apply. For a complete list of the royalty charges and threshold levels please refer to www.dacs.org.uk. There is no VAT payable on this royalty charge.

24. ENDANGERED SPECIES

Lots sold at auction may include endangered or other species of wildlife and plant life, for example ivory, tortoiseshell, crocodile skin, whale bone, ebony or rosewood. Some countries restrict or prohibit import or export of objects containing these materials or require a licence/permit for their movement (e.g. a CITES Licence). Prior to bidding on a lot which may include these or similar materials, buyers must familiarise themselves with the relevant laws and regulations regarding their movement.

25. JEWELLERY

Gemstones are often treated to enhance colour and improve appearance. They may be heated or treated by oil or resin to intensify the colour and transparency. Other techniques like dyeing, irradiation, coating and impregnation can also be used. Buyers must be aware that unless the catalogue specifically states otherwise then the stone is natural, buyers must assume that any treatment may not be permanent, and that special care may be needed in the future.

26. EXPORT

Any lot purchased at auction may be subject to export restrictions and may require a licence for export out of the United Kingdom. The buyer is responsible for obtaining any licences that may be required (including any licence that may be required for import into the destination country) – any denial of such a licence will not be grounds for the buyer to cancel the purchase.

27. THIRD PARTY LIABILITY

All members of the public on Clarke and Simpson Auctions premises are there at their own risk and must note the layout of the buildings and site and the appropriate security arrangements. Accordingly, neither the Auctioneer nor its employees or agents shall incur liability for death or personal injury (except as required by law) or similarly for the safety of persons visiting the premises.

28. CONSIGNMENT

All sellers will have received a copy of Clarke & Simpson Auctions Terms regarding consignment of lots for sale and these Terms and Conditions should be read in accordance with this consignment documentation.



Framlingham £995,000

A highly impressive and recently refurbished Edwardian house with ample off-road parking and west facing garden, within walking distance of the centre of Framlingham

Ref: 6617



St. James South Elmham £585,000

A spacious 1980s brick house standing in a pretty rural village setting within grounds of approximately three quarters of an acre.

Ref: 6586



Hacheston £395,000

A three bedroom single-storey 1930s dwelling located a short distance from Wickham Market

Ref: 6501



Pettaugh £325,000

An extended, three-bedroom, modern semi-detached cottage with stunning rural views

Ref: 6286



Framlingham £325,000

Leasehold

A mixed use investment opportunity in the centre of Framlingham. **Ref: 6526**



Framlingham £295,000

A modern 3 bedroom mid-terraced townhouse located on the popular Castle Keep development

Ref: 6564



Laxfield £280,000

A well presented, two-bedroom detached bungalow situated in a quiet cul-de-sac location

Ref: 6616



Debenham £250,000

A charming two/three bedroom semidetached period cottage with views over the countryside to the front **Ref: 6579**



Knodishall £235,000

A charming two-bedroom semi-detached period cottage located along a quiet road. **Ref: 6588**



Halesworth from £220,000

Blyth Vale, an outstanding collection of 2, 3 & 4 bedroom stylish new homes, by the award-winning Hopkins Homes

Ref: 6446



Laxfield OIEO £750,000

A spacious, detached modern house located in grounds of 1.5 acres in a rural position within the Parish of Laxfield. **Ref: 6618**



Framlingham £525,000

A handsome, refurbished detached four bedroom period house with off road parking, situated in the centre of Framlingham. **Ref: 6574**



Yoxford £515,000

An exclusive development of two four bedroom houses, being built to exacting standards and within reach of the Heritage Coast. **Ref: 6609**



Campsea Ashe £325,000

An impressive, recently built three bedroom detached house in the centre of the village, close to Wickham Market. **Ref: 6615**



Melton £325,000

An elegant two-bedroom ground floor apartment on the popular Malt Yard development. **Ref: 6340**



Saxmundham £305,000

An exceptionally well presented and appointed three/four bedroom townhouse, **Ref: 6594**



Bawdsey £250,000

A serviced plot with planning permission for a contemporary chalet style house that will have glimpses of the sea. **Ref: 6627**



Rendlesham £250,000

A four bedroom mid-terraced house located on Hercules Road in an established and popular development. **Ref: 6613**



Melton £190,000

A one-bedroom ground floor apartment located a short walk from the centre of the popular town of Woodbridge. **Ref: 6591**



Woodbridge £60,000

A first floor bedsit apartment located on the outskirts of the popular riverside town of Woodbridge. **Ref: 6557**



Clarke and Simpson Auction Centre
Campsea Ashe
Nr. Wickham Market
Suffolk IP13 0PS
Tel: (01728) 746323 Fax: (01728) 748173
Email: auctions@clarkeandsimpson.co.uk
www.clarkeandsimpson.co.uk