



Clarke &  
Simpson

Selected Antiques & Fine Art

Wednesday 4th March 2020 at 10 am

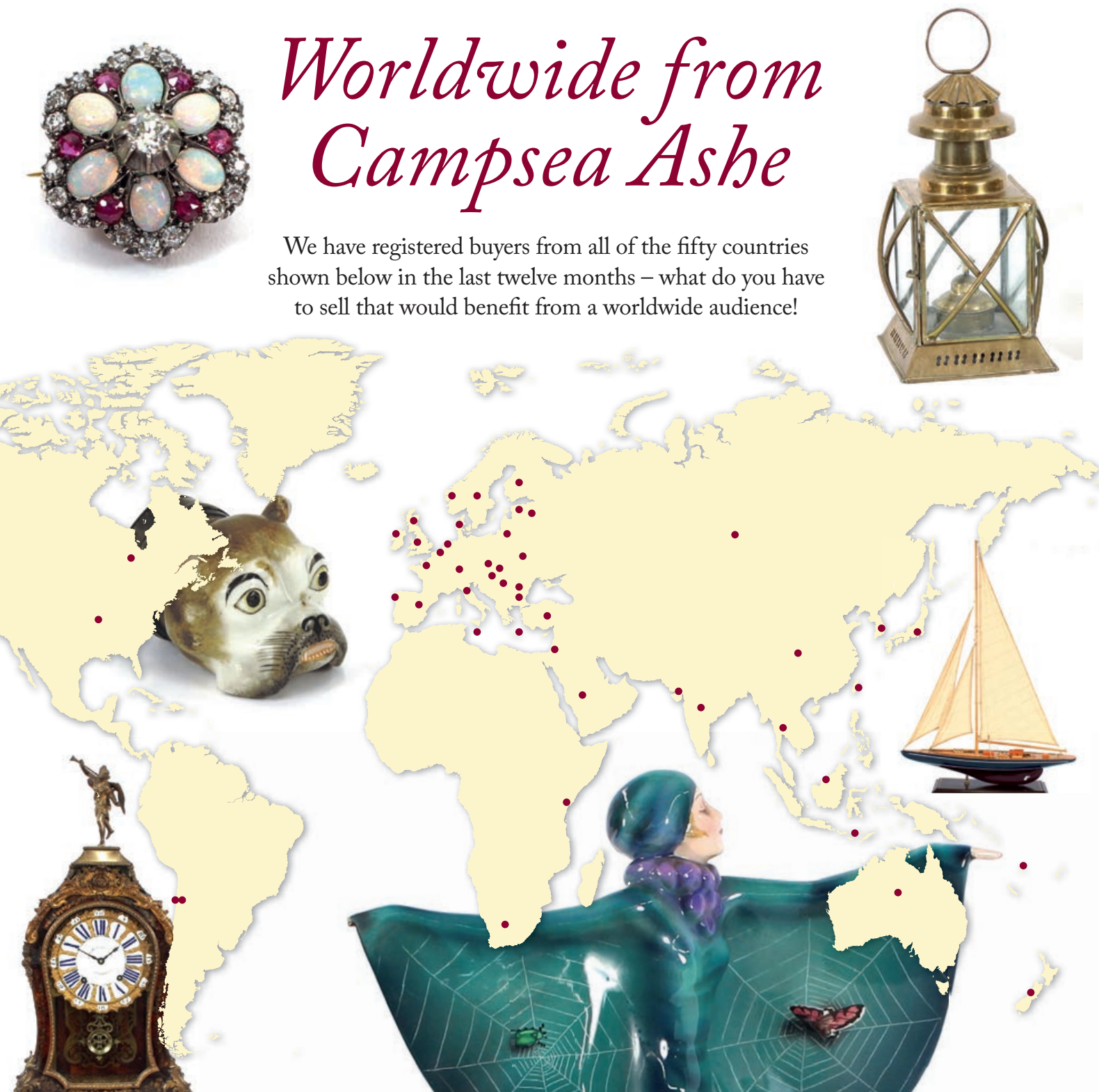


Auctions

Clarke &  
Simpson

# *Worldwide from Campsea Ashe*

We have registered buyers from all of the fifty countries shown below in the last twelve months – what do you have to sell that would benefit from a worldwide audience!



# Clarke & Simpson

Auctions

## Selected Antiques & Fine Art

Wednesday 4th March 2020  
at 10 am

### Order of Sale:

Ceramics and Glass	1-114
Silver and Plate	119-211
Jewellery	215-248
Objects and Collectables	249-425
Pictures and Prints	435-514
Rugs and Furniture	520-648

### Viewing:

Saturday 29th February, 9 am - 12 noon  
Monday 2nd March, 2 pm - 7 pm  
Tuesday 3rd March, 10 am - 4 pm  
Morning of Sale from 8.30 am



@CandSAuctions



CandSAuctions



Campsea Ashe  
Nr. Wickham Market  
Suffolk IP13 0PS  
Tel: (01728) 746323 Fax: (01728) 748173  
Email: [auctions@clarkeandsimpson.co.uk](mailto:auctions@clarkeandsimpson.co.uk)  
[www.clarkeandsimpson.co.uk](http://www.clarkeandsimpson.co.uk)

Online bidding via:

**the saleroom**  
The home of art & antiques auctions

# Special Sales Calendar

## 2020

Clarke &  
Simpson

RURAL BYGONES

22nd February, 2020

ANTIQUES & FINE ART

4th March, 2020

ART DECO &

20th CENTURY DESIGN

4th April, 2020

ANTIQUES & FINE ART

13th May, 2020

FARM MACHINERY

23rd May, 2020

ART DECO &

20th CENTURY DESIGN

13th June, 2020

RURAL BYGONES

11th July, 2020

ANTIQUES & FINE ART

22nd July, 2020

ART DECO &

20th CENTURY DESIGN

5th September, 2020

RURAL BYGONES

12th September, 2020

ANTIQUES & FINE ART

7th October, 2020

FARM MACHINERY

17th October, 2020

ART DECO &

20th CENTURY DESIGN

7th November, 2020

ANTIQUES & FINE ART

9th December, 2020



Campsea Ashe  
Nr. Wickham Market  
Suffolk IP13 0PS  
Tel: (01728) 746323 Fax: (01728) 748173  
Email: [auctions@clarkeandsimpson.co.uk](mailto:auctions@clarkeandsimpson.co.uk)  
[www.clarkeandsimpson.co.uk](http://www.clarkeandsimpson.co.uk)

## Ceramics and Glass

1

A 19th Century Chinese dragon decorated octagonal bowl, seal mark to base, 19.5cm  
£60 - 100 †

2

A Continental porcelain figure group, depicting children playing on a see-saw with floral encrusted decoration, AF  
£20 - 40 †

3

A 19th Century silver lustre baluster jug, decorated with panels of country house and parkland, 16cm high  
£30 - 50 †

4

A pair of Bloor Derby porcelain spill vases, decorated with rural figures heightened in gilt, 12cm high  
£60 - 100 †

5

A Coalport miniature cup and saucer, with painted foliate spray decoration; a Royal Crown Derby miniature cauldron; a Worcester two handled cup and a Worcester miniature posy basket, (4)  
£30 - 50 †

6

A pair of Continental porcelain figures, depicting a shepherdess and a huntsman standing in front of floral encrusted trees, on naturalistic bases, 24cm high  
£60 - 100 †

7

A collection of eleven English and Continental porcelain figures, some AF  
£100 - 150 †

8

A Copeland blue and white pap boat; a Chinese blue and white octagonal tea bowl; a pair of Chinese saucers; and a Japanese salt, (5)  
£40 - 60 †

9

A brown glazed pottery Gin flask, in the form of a mermaid, 21cm  
£50 - 100 †

10

A heavy etched glass goblet, decorated with a balustraded garden and central urn, 15cm  
£20 - 30 †

11

A 19th Century glass bell shaped bowl and cotton twist stem, 19cm  
£20 - 30 †

12

A Chinese celadon ground dish, in the form of a Kingfisher seated on a lily pad, 15cm; a celadon figure of a recumbent horse, AF, 16cm; and a German porcelain stein with pewter mount, 20cm, (3)  
£40 - 60 †

13

An amber glass perfume bottle, of baluster form having floral stylised white metal collar, 20cm high  
£50 - 80 †

14

A 19th Century Continental bisque ware figure, of a scantily clad maiden, 37cm high  
£40 - 60 †

15

A 19th Century Parian ware figure, of a semi draped maiden holding fruit, raised on an oval plinth, 42.5cm high  
£30 - 50 †

16

A small etched glass lamp, raised on a white metal circular base, 17cm  
£30 - 40 †

17

A Chinese celadon ground baluster vase, having under-glazed blue character mark to base, 37cm high  
£100 - 150 †

18

A good quality cut glass chestnut jar and cover, having split decoration, raised on a circular foot, 35cm high  
£30 - 50 †

19

A pair of 19th Century Chinese baluster vases, decorated in coloured enamels with scenes of warriors fighting, bronzed raised decoration to the borders with dogs of fo, 45cm high  
£300 - 400 †

20

A pair of Continental porcelain figures, depicting cherubs, 25cm high  
£30 - 50 †

21

A pair of Continental porcelain figural candlesticks, in the form of a maid and youth, raised on shaped foliate encrusted bases, 30cm high  
£30 - 50 †

22

A Continental porcelain baluster vase, decorated with panels of maiden and cherub on a pale blue ground, heightened in gilt foliate scrolls, raised on an ormolu circular base, 37cm high  
£40 - 60 †

23

A glass column table oil lamp, of faceted form, on oak plinth base, 70cm high overall  
£60 - 100 †

24

A pair of cut glass and silver mounted decanters, having raised foliate decoration, 33cm  
£60 - 80 †

25

A large bubbled glass dump; a cut glass decanter and plated whisky label; cut glass water jug and a heavy blue glass similar, (5)  
£20 - 40 †

26

Four 19th Century Continental porcelain dessert plates, decorated with cherubs and maidens; and a pair of English porcelain plates, decorated with castles scene, (6)  
£40 - 60 †

27

A Royal Dux figure, depicting a deity with pan pipes, 44cm high  
£150 - 250 †

28

A Continental porcelain twin handled vase, of baluster shape, the lid surmounted by a pineapple finial, decorated panel of sheep, on a rich blue ground heightened in gilt, 39cm  
£40 - 60 †

29

A Royal Dux porcelain figure, depicting a shepherd boy with pipes, AF, 30cm high  
£20 - 40 †



Lot 17



Lot 19



Lot 27



Lot 28





Lot 30



Lot 32



Lot 39



Lot 43

**30**  
A pair of 19th Century Meissen baluster vases, having decoration depicting rural scenes on primrose ground, heightened in gilt, 30cm high  
£100 - 200 †

**31**  
A pair of Imari chargers, having scallop borders and decorated in the traditional manner heightened in gilt, 30cm dia.  
£30 - 50 †

**32**  
A Chinese charger, decorated with butterflies and flowers on a green ground, 35cm dia.  
£30 - 50 †

**33**  
A 19th Century German porcelain table centre piece, decorated with children climbing a floral encrusted tree, basket above, 22cm dia. x 33cm high  
£150 - 200 †

**34**  
A Continental porcelain posy holder, in the form of a boy with barrel and grape hod; and two Continental porcelain figures, (3)  
£40 - 60 †

**35**  
A Dresden porcelain chocolate cup and saucer; a German porcelain shallow tea cup; a famille rose decorated tea cup and saucer etc., (6)  
£40 - 60 †

**36**  
A 19th Century Berlin porcelain baluster jug, having fruit and flower decoration, AF; various other English and Continental porcelain items, Japanese Kutani ginger jar, similar vase, (mostly damaged), (9)  
£40 - 60 †

**37**  
A collection of various Staffordshire and other pastille burner cottages, and gatehouses, (26)  
£60 - 100 †

**38**  
A Victorian ruby glass inkwell, on circular dished stand, 19cm dia.  
£40 - 60 †

**39**  
A 19th Century Dresden baluster vase and cover, decorated with foliate sprays on a yellow ground, 24cm high  
£40 - 60 †

**40**  
A 19th Century Dresden porcelain liqueur stand, decorated with port scenes, figures and foliate scrolls, heightened in gilt  
£100 - 200 †

**41**  
A quantity of 19th Century and later glasses  
£40 - 60 †

**42**  
A pair of Staffordshire spaniel ornaments, 31cm high; and a smaller similar pair, 20cm high  
£40 - 60 †

**43**  
A 19th Century Westerwald type pottery ewer, having raised foliate decoration, bird beak spout and central crest, 47cm high  
£40 - 60 †

**44**  
A Minton majolica posy holder, in the form of a cherub seated on a dolphin, 17.5cm high, AF  
£30 - 50 †

**45**  
A set of three Royal Doulton graduated Beefeater character jugs  
£20 - 30 †

**46**  
A pair of Sampson baluster vases, with famille rose decoration and family crest, flanked by Satyr mask and serpent handles, 25cm high  
£100 - 200 †

**47**  
Six Royal Crown Derby coffee cans and saucers; and a Meissen design blue and white part tea and coffee set  
£40 - 60 †

**48**  
A Continental porcelain figure group, depicting young boys playing marbles; a figural match holder; and a posy vase in the form of a figure with a large clam shell, (3)  
£30 - 40 †

**49**  
A Victorian hand painted dressing table set  
£20 - 30 †

**50**  
A collection of Royal Worcester porcelain posy vases, having floral decoration on blush and ivory grounds; and a blanc de chine Worcester jug, (6)  
£50 - 80 †

**51**  
A Beswick "Merry Wives of Windsor" jug; and a musical Toby jug, (2)  
£20 - 30 †

**52**  
Various Chinese blue and white plates and dishes; a Delft plate etc., (some damage), (16)  
£60 - 80 †

**53**  
An Imari pattern shallow bowl, decorated with panels of foliage and symbols, heightened in gilt, 37cm  
£60 - 80 †

**54**  
A pair of 19th Century Dresden cherub decorated candelabra, 44cm high, AF  
£100 - 150 †

**55**  
A 19th Century Chinese shallow dish, having floral decoration, 39cm dia., AF  
£60 - 100 †

**56**  
A Wedgwood Florentine pattern part dinner/tea set, 48 pieces  
£80 - 120 †

**57**  
A large quantity of Copeland Spode "Newbury Port" pattern dinner, tea and breakfast ware, to include: tea cups, coffee cups and cans, soup bowls, tea and dinner plates, coffee pot etc.  
£100 - 150 †

**58**  
A quantity of 19th Century Derby Imari pattern teaware, including cups, saucers, slops bowls, teapot, sucrier etc., (25)  
£100 - 150 †

**59**  
A Crown Derby Imari pattern Lazy Susan, with scalloped border, 47.5cm dia., AF  
£40 - 60 †

† Each lot is subject to a Buyer's Premium of 18% + VAT (21.6%)

- 60**  
A Coalport type tea set, having floral spray decoration on a rich blue ground, heightened in gilt, comprising cups, saucers, teapot, slops bowl, sucrier etc., (46) £100 - 150 †
- 61**  
A Wedgwood lustre ware shallow bowl, decorated with butterflies within a chinoiserie border, painted decoration of butterflies to the reverse and inscribed "Manufactured for James Powell and Sons, Whitefriars Glass Works, 11 Conduit Street, London", AF, 32cm dia. £40 - 60 †
- 62**  
A Moorcroft pottery table lamp, Magnolia pattern, complete with shade £80 - 120 †
- 63**  
A Moorcroft pottery table lamp, Magnolia pattern, complete with shade £80 - 120 †
- 64**  
A Victorian opaque china "Ceylon" pattern part dessert set, (9) £60 - 100 †
- 65**  
Three 19th Century Chinese graduated meat platters £60 - 80 †
- 66**  
A pair of 19th Century Caughley style octagonal blue and white plates, decorated in the Chinese manner, 23cm dia. £20 - 30 †
- 67**  
A Continental porcelain figure of a young maiden, in mauve rose decorated flowing dress, 24cm high £20 - 40 †
- 68**  
A Coalport floral encrusted tea kettle on stand, matching sucrier and cover; and a pair of posy vases, (4) £100 - 150 †
- 69**  
A Rockingham porcelain chamberstick, with gilt foliate decoration on a blue ground; a Chinese blue and white tea bowl and a faience style two handled dish with crest of Rouen, (3) £20 - 40 †
- 70**  
A Royal Doulton porcelain coffee set, with raised fox and riding whip decoration, (9) £100 - 150 †
- 71**  
A Meissen porcelain figure group, depicting a lady seated by a table with basket of flowers; another of a seated lady with a bird in cage, AF; and a smaller Meissen figure of a lady seated feeding a dog, (3) £100 - 150 †
- 72**  
A pair of continental porcelain figure groups, depicting shepherd and shepherdess; and various others, (8) £60 - 80 †
- 73**  
A Staffordshire figure of a seated gentleman; another depicting highland lady with sheep; a figure group of a couple drinking; greyhound ornament etc., (8) £60 - 100 †
- 74**  
A 19th Century porcelain part dessert service, comprising 16 plates and 3 various compots, (some damage) £100 - 150 †
- 75**  
A pair of Belleek urns, decorated with cherubs in the sea, raised on scroll and shell bases, 27cm high x 21cm dia. £100 - 200 †
- 76**  
A Chinese porcelain Dog of Fo, having raised decoration, 24cm long and a Dog of Fo fighting group, 24cm high x 29cm long, AF, (2) £60 - 100 †
- 77**  
A collection of various Victorian majolica ware jugs; serving plates, jardinière, teapot etc., (21) £60 - 100 †
- 78**  
A Bodley tea for two set, having blossom branch decoration and stylised bamboo shaped handles, complete with rectangular tea tray, 37cm £50 - 80 †
- 79**  
Two glass wine funnels; and a collection of various Victorian and later table glassware £30 - 40 †
- 80**  
A 19th Century Berlin porcelain part dessert set, comprising 12 pierced border plates, and three oval serving plates, decorated with romantic rural scenes, heightened in gilt; and three matching dwarf candlesticks, (18) £100 - 150 †
- 81**  
A 19th Century Pearlware bowl, inscribed "one bowl more"; a circular Pearlware charger with stylised floral decoration and scallop rim; three 18th Century Delftware scenic plates; English pottery teapot with swan finial; Chinese blue and white charger and a two handled bowl and cover, (some damage), (9) £60 - 100 †
- 82**  
A collection of various Staffordshire flatback spill holders, and other figures, (8) £60 - 100 †
- 83**  
A 19th Century Parian ware figurine, depicting a seated girl with dog entitled "Go to sleep" by J. Durham Copeland, published by Art Union of London, 47cm high £100 - 200 †
- 84**  
An Antique Staffordshire figure of Elijah and the Raven; and various other porcelain figures, (10) £60 - 80 †
- 85**  
An oak framed William de Morgan tile, depicting two facing peacocks, Merton Abbey, 21.5cm x 21.5cm £100 - 200 †
- 86**  
Thirty various souvenir crested china post boxes, various makes £30 - 50 †
- 87**  
Eighteen various crested china post boxes, numerous sizes, various makers £20 - 40 †



Lot 46



Lot 55



Lot 59



Lot 68



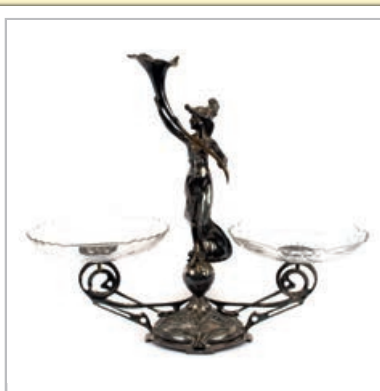
Lot 91



Lot 95



Lot 103



Lot 123

88

A collection of forty various crested china post boxes, various sizes and makers £40 - 60 †

89

A collection of forty crested china post boxes, various sizes and makers £40 - 60 †

90

A collection of numerous crested china items to include: 3 W.H. Goss sack bottles of Dartmoor, Clovelly and Shoreham, another, various other objects including Arcadian, Goss and other makes £40 - 60 †

91

A collection of various Ipswich related souvenir crested china items, to include a Carlton HMS Dreadnought, an arc, a top hat, Goss Tig and various others £60 - 100 †

92

A W.H. Goss crested china Woodbridge horseshoe, a Shelley similar, a Shelley teapot stand, three Shelley Woodbridge crested plates and an Arcadian example £20 - 40 †

93

A collection of Woodbridge crested teaware, to include cups and saucers, cake plates, cream jugs, Willow, Shelley, Foley and other examples, (light blue crest) £60 - 100 †

94

A large and interesting collection of Woodbridge crested souvenir china, (light blue crest) to include: Tuscan, Shelley, Goss and other examples £80 - 120 †

95

A collection of Woodbridge crested china items, (dark blue crest) to include: Arcadian, Swan china and numerous other examples £60 - 100 †

96

A collection of thirty various crested china post boxes, various makers £30 - 50 †

97

A small collection of Woodbridge crested china items, to include Seckford Hospital, Edward VII Coronation examples etc. £30 - 50 †

98

A collection of various Woodbridge crested china items, (mostly red crest) to include: Milton porcelain, Willow, and Arcadian examples £30 - 50 †

99

A collection of various crested china items to include: Toby jugs, chambersticks, top hat etc., including Goss, Arcadian and other examples £30 - 50 †

100

A collection of Woodbridge crested china items, (red crest) to include: Lifeboat, fish, numerous jugs and vases etc. £30 - 50 †

101

A collection of various Woodbridge crested china items, (red crest), to include, Top hat and Victorian vases etc. £40 - 60 †

102

A small collection of numerous Ipswich crested china items, to include Goss etc. £20 - 40 †

103

A collection of Woodbridge and other crested china items to include: a bust of John Bull, a Cannon, Burn's Chair and others £40 - 60 †

104

A collection of crested china bottles, various manufactures including Shelley and Arcadian, numerous "one Special Scotch" examples £30 - 50 †

105

A collection of numerous crested china bottles, including Shelley, Carlton and Arcadian examples, some "One Special Scotch" £60 - 100 †

106

A Ralph Wood type Staffordshire figure of "Elijah and the Raven", 26cm high; and another of "The Widow", 22cm high, (2) £60 - 100 †

107

A Staffordshire figure, "Garibaldi"; another "David Garrick", another "Wellington" and another "Nelson", (4) £40 - 60 †

108

A Staffordshire spill holder, in the form of nesting swans; another in the form of a girl seated with a dog; another depicting country couple on floral encrusted base; and a flatback watch-holder group, (4) £40 - 60 †

109

A pair of Staffordshire cow groups, depicting farmer and milkmaid £40 - 60 †

110

A Staffordshire group "Eva" and "Uncle Tom"; another "Wesley preaching"; a sugar shaker in the form of Uncle Toby and a Pearlware figure of a lady and baby seated on a goat, (4) £60 - 80 †

111

A Wood & Hulm of Burslem Queen Victoria Diamond Jubilee mug; another similar, a Nailsea celebration of Queen Victoria's Diamond Jubilee and various other Victoria Jubilee commemorative mugs, (18) £40 - 60 †

112

A George V Coronation Tig; a George V Coronation mug retailed by Harrods; and various other George V Coronation commemorative mugs, (10) £40 - 60 †

113

Various Edward VII Coronation mugs; and an Edward VII "In Memoriam" commemorative mug, (8) £40 - 60 †

114

A Dame Laura Knight design Coronation mug for Edward VIII; another for George VI and Queen Elizabeth; a Woods Ivory ware example by Dame Laura Knight; and a large collection of various Edward VIII, George VI, Queen Elizabeth II and later Coronation and commemorative mugs £60 - 80 †



115-118

No Lots

## Silver and Plate

119

A mahogany cased canteen of plated cutlery, by John Rodgers, Sheffield £100 - 150 †

120

A cased set of silver gilt and enamel decorated coffee spoons; a cased silver pusher and spoon; and a plated Christening tankard £50 - 60 †

121

A Victorian oak cased three piece carving set, having horn handles and silver ferrules £60 - 80 †

122

A Mappin & Webb plated tea kettle on stand; a pair of plated side pouring coffee pots; various entree dishes and other plated items etc. £60 - 100 †

123

A large Art Nouveau silver plate and etched glass table epergne, in the form of a scantily clad maiden holding a flowerhead aloft, the scrolled pierced arms supporting circular glass fruit dishes, 56cm high x 66cm wide £200 - 300 †

124

Two Victorian mahogany cased sets of fish knives and forks; and a cased set of 12 each plated fruit knives and forks £40 - 60 †

125

A Victorian electro plated spirit kettle and burner on stand, in the early Georgian style with wrythen globular body on cabriole legs and scallop shell feet £40 - 60 †

126

A four piece plated tea/coffee set, by John Turton; a large oval plated fruit bowl; a pair of plated Corinthian column candlesticks by Mappin & Webb and a pair of ebony and ivory mounted candlesticks £70 - 100 †

127

A Victorian plated seven bottle table cruet, in the rococo style, (some damage) £60 - 80 †

128

An etched glass and plated biscuit barrel, on stand; and a plate on copper swing handled fruit basket, (2) £30 - 50 †

129

A pair of silver backed Art Nouveau brushes, and two silver backed hand mirrors £40 - 60 †

130

A cut glass and silver mounted inkwell; a cut glass perfume atomiser; and an oblong cut glass tidy jar with white metal lid £30 - 50 †

131

A rectangular silver mounted photograph frame; a small Art Nouveau design silver frame and two others £40 - 60 †

132

A small Victorian silver twin bon bon dish, having pierced decoration; a cut glass and silver mounted sugar shaker; a silver tankard; a plated Vesta case etc. £40 - 60 †

133

A Continental white metal pin dish, decorated crests; two silver napkin rings; a silver hat pin stand and miscellaneous other items £40 - 60 †

134

A late Victorian silver cream jug, of small size with foliate embossed decoration and flying C scroll handle, *Chester 1898*; and a small Georgian sifter spoon, (2) £40 - 60 †

135

Five various silver and white metal thimbles; and a silver candle snuffer with turned wooden handle, (6) £30 - 50 †

136

A George V silver cream jug, having acanthus flying C scroll handle and raised on three hoof feet, *Birmingham 1934* £30 - 50 †

137

Three George IV silver Fiddle pattern dessert spoons, *London 1828*; six Victorian silver teaspoons, *London 1883*; five silver Fiddle pattern dessert forks, various dates, and a collection of various silver Georgian and later silver tea and coffee spoons, approx. 28ozs. £100 - 200 †

138

A pair of Victorian silver knife rests, *London 1897*; a silver pepper dredger, *Birmingham 1888*; a pair of plated salts and a mustard pot etc. £30 - 50 †

139

A late Victorian silver mounted leather jewellery casket, with raised floral embossed decoration and vacant cartouche, *Chester 1900*, 24.5cm £100 - 150 †

140

A cased set of six silver teaspoons, having shaped terminals, *Sheffield 1925*; and five silver rat-tail teaspoons, *London 1899* £30 - 50 †

141

A pair of Edwardian silver salts, of hexagonal gadrooned form, *London 1904* £60 - 80 †

142

A George III silver teapot, having raised foliate embossed decoration and vacant cartouche, ivory handle and lift, on ball feet, *London 1816* £100 - 200 †

143

An Edwardian silver rose bowl, decorated with a crest, half fluted body decoration on a circular spread foot, 22cm dia., 18ozs. £100 - 150 †



Lot 125



Lot 136



Lot 139



Lot 142

† Each lot is subject to a Buyer's Premium of 18% + VAT (21.6%)

Selected Antiques and Fine Art 7



Lot 155



Lot 158



Lot 161



Lot 169

144

An Edwardian silver baluster cream jug, raised on three pad feet, *Birmingham 1904*; a Continental white metal sugar bowl of fluted form, raised on ball feet; a plated cream jug; an ebony and silver banded pepper mill; and two other cruet items, (6) £40 - 60 †

145

A circular silver dish, with enamel pennant decoration and presentation inscription; a silver clover leaf shaped pin dish; a small silver menu holder; a silver and tortoiseshell patchbox and other small items, (6) £60 - 80 †

146

A pair of silver baluster candlesticks, *Birmingham 1976*, 15cm high £20 - 40 †

147

A pair of plated chamber sticks, having beaded border decoration and integral snuffers, bearing family crests £30 - 40 †

148

A George III Old English pattern tablespoon, by Peter and William Bateman, *London 1797*; and a George III Fiddle pattern example, *London 1812* (2) £40 - 60 †

149

A George III silver baluster pepper pot; a William IV silver topped dressing table jar, *London 1832*; and a silver topped tidy box with cherub decoration, hallmarked for Birmingham £30 - 40 †

150

A George III silver strainer, *London 1812* £20 - 40 †

151

A William IV silver snuff box, with line decoration and initialled cartouche; another with gilded interior and monogrammed lid, makers mark TS Birmingham; and another by William Pitts, *Birmingham 1791*, (3) £80 - 120 †

152

A George III silver mug, with floral and fruit embossed decoration and vacant cartouche, *London 1797* £40 - 60 †

153

A cut glass and silver mounted preserve jar; a small circular glass jar having silver engine turned top, decorated with enamelled Royal Insignia; circular white metal dish with medallion insert; and a pair of unusual plated mussels £50 - 80 †

154

A glass and electro plated baluster claret jug, 29cm high £40 - 60 †

155

A small George III silver card tray, with foliate engraved field surrounding a monogram and shell border, raised on three hoof feet, *London 1763* £60 - 80 †

156

A silver four division toast rack, *Sheffield 1934*; and a small silver card tray, *Sheffield 1935*, (2) £150 - 200 †

157

A William IV Scottish silver Fiddle pattern fish slice, *Glasgow 1838* £40 - 60 †

158

An Edwardian silver trophy cup on stand, 9ozs., *London 1908* £120 - 180 †

159

A George V silver dish, *Birmingham 1912*; and a George III silver wine funnel filter, hallmarked for *London 1803*, (2) £80 - 120 †

160

A silver and blue glass sugar shaker; and a silver baluster shaped sugar shaker, AF, (2) £60 - 80 †

161

A silver engine turned cigarette case, *Birmingham 1941* £40 - 60 †

162

Four Various silver mounted photograph frames £60 - 80 †

163

A quantity of silver backed dressing table ware £40 - 60 †

164

A collection of various silver and plated cruet items £60 - 100 †

165

An unmarked white metal oblong cigarette case, with presentation inscription and a white metal hinged box of cartouche shape, (2) £60 - 80 †

166

A glass and silver mounted biscuit barrel; and a Continental white metal goblet, (2) £60 - 100 †

167

Ten various silver and plated napkin rings £40 - 60 †

168

No Lot

169

An Edwardian silver teapot, of oval form with reeded band decoration, wooden handle and lift, *London 1904*, 16ozs. gross £100 - 150 †

170

A glass and silver mounted individual whisky noggin, together with spirit label; a silver quaiche; a silver cream jug raised on hoof feet; a small silver Christening mug with engraved decoration and six white metal liqueur goblets, AF £70 - 100 †

171

A Victorian silver baby's rattle, AF; a silver purse; a silver bladed and mother of pearl handled folding knife; two decanter labels; a swizzle stick, a circular ink well etc. £40 - 60 †

172

A Victorian silver spike shaped scent bottle; and a plain cylindrical scent bottle, (stopped missing), (2) £40 - 60 †

173

A silver sovereign case/Vesta; three various silver Vesta cases and a plated Dunhill lighter, (5)  
£80 - 120 †

174

An Art Deco plated side pouring Cafe au lait set, by Asprey & Co.  
£40 - 60 †

175

A collection of miscellaneous items, to include cut glass and silver mounted dressing table tidy, a glass and silver mounted toilet jar, Continental white metal salt, silver mounted pen-knife, folding spectacles, various silver and plated spoons, silver pusher spoon, pens etc.  
£40 - 60 †

176

A canteen of plated Du Barry pattern flatware  
£100 - 150 †

177

A set of twelve each plate and bone handled fish knives and forks, contained in a mahogany and brass mounted case  
£30 - 50 †

178

A modern white metal model of a boat, (cased)  
£40 - 60 †

179

A three piece Indian white metal tea set, with stylised decoration, the teapot having wooden handle and lift; and a pair of Georgian silver sugar tongs  
£80 - 120 †

180

An Indian white metal scroll holder, enclosing silk banner, inscribed from "Staff of Marshall's, Madras", raised on recumbent beast supports  
£100 - 150 †

181

A four piece Art Deco design dressing table set, with engine turned decoration  
£40 - 60 †

182

A silver cigarette case; various silver and mother of pearl handled fruit knives, AF; a plated wine tastier; a Daimler Benz white metal paper knife etc.  
£40 - 60 †

183

A pair of plated fish servers; a plated coaster; various silver and plated fancy spoons etc.  
£40 - 60 †

184

A white metal Indian salver, with presentation inscription  
£80 - 120 †

185

A cased set of six each silver handled fruit knives and forks; and a plated six division toast rack  
£30 - 50 †

186

A Victorian plated three section chafing dish, having turned ebonised handle  
£30 - 50 †

187

Six silver hallmarked buttons in original box; and a pair of red enamel/silver/glass condiments, in original box  
£50 - 80 †

188

A George V silver sauce boat, in the early Georgian style, having gadroon border, flying C scroll handle and shell feet, London 1913  
£80 - 120 †

189

Six Middle Eastern white metal spoons, the bowls with decoration of Jerusalem and desert scenes, having camel terminals  
£20 - 40 †

190

An enamel decorated spoon, the bowl with decoration of Gibraltar; another decorated Rome and a smaller example with pyramid and sphinx decoration  
£20 - 40 †

191

Three pairs of ornate silver menu holders; an Edwardian silver shield shaped mirror with garland and swag surmount, London 1905; and a rectangular silver photograph frame with agate inserts, London 1915  
£200 - 300 †

192

A Continental white metal spoon, with figural decorated stem, the bowl embossed with buildings and inscription; and two Continental enamel scenic decorated souvenir spoons  
£20 - 40 †

193

Three decorative enamel souvenir spoons  
£20 - 40 †

194

A silver toast rack, London 1905; an Edwardian silver matchbox holder with cherub head decoration; a silver dwarf candlestick; an Edwardian silver pierced cherub decorated cup holder, Birmingham 1904; and a pair of Continental circular monogrammed white metal dishes, (6)  
£40 - 60 †

195

A pair of mid Victorian silver sauce ladles, date letter indistinct; a George IV silver butter knife and a pair of silver sandwich servers, Sheffield 1912, (4)  
£60 - 100 †

196

A pair of foliate engraved plated fish servers, having ivory handles, in original silk lined case; and a silver baluster sugar castor  
£90 - 120 †

197

A cased silver cream jug and sugar castor, Birmingham 1940  
£100 - 150 †

198

An Edwardian silver cigarette box, by the Goldsmiths & Silversmiths Company, having profuse foliate embossed decoration, 14.5cm long  
£100 - 150 †

199

A Georgian silver wine funnel, London 1799  
£60 - 80 †

200

A late Victorian block glass and silver mounted inkwell, Sheffield 1899; and a Continental white metal feather shaped pen, (2)  
£80 - 120 †



Lot 184



Lot 188



Lot 198



Lot 200

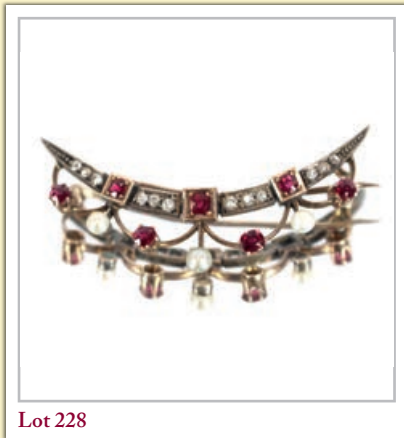




Lot 202



Lot 227



Lot 228



Lot 237

201

A silver cigarette box, *Birmingham 1913*, 9cm  
£30 – 50 †

202

A George V silver bottle stand, having ribbon tied shaped borders and raised on bun feet, 17.5cm high, *Birmingham 1910* £100 – 150 †

203

A pair of Victorian silver Fiddle pattern fish servers, having foliate engraved decoration, cased £100 – 150 †

204

Six each silver bladed fruit knives and forks £100 – 150 †

205

A cased silver bladed bone handled knife; a plated card tray; a plated swing handle fruit basket with engraved decoration; and a revolving breakfast dish, (4) £40 – 60 †

206

A collection of Mappin & Webb steel bladed bone handled dinner knives etc. £20 – 30 †

207

A quantity of plated Kings pattern flatware; a plated fish slice etc. £30 – 50 †

208

A pair of George III silver circular salts, marks rubbed; a silver baluster pepperette; various plated cruet items; various Continental white metal liqueur cups; three decanter labels; oval plated tray etc. £60 – 100 †

209

Six each silver and bone handled fruit knives and forks, *Birmingham 1803*; five silver handled butter knives and a pair of plated fish servers £60 – 80 †

210

A late Victorian silver travelling pocket watch case, with foliate scroll decoration, *Birmingham 1900*; a cut glass and silver mounted dressing table tidy jar with embossed decoration, inscribed "Eva"; and a silver napkin ring, (3) £40 – 60 †

211

A silver hip flask, by Asprey of Bond Street, having screw hinged top, monogram decoration with crest, *London 1911* £100 – 150 †

212-214

No Lots

## Jewellery

215

Six Antique Russian white metal spoons; and a Victorian agate anchor brooch, (7) £50 – 80 †

216

Four filigree butterfly brooches; together with a large piece of amber, approx. 2½ozs. £70 – 100 †

217

A multi stone diamond cluster ring £100 – 150 †

218

A 9 carat gold sapphire and diamond ring £150 – 250 †

219

A 9 carat gold single stone set diamond ring £70 – 100 †

220

A sapphire and diamond cluster ring; and a five stone diamond set ring, (2) £150 – 250 †

221

A 9 carat gold boat shaped diamond ring £250 – 350 †

222

A diamond set eternity ring £300 – 400 †

223

A 9 carat gold diamond set ring £100 – 150 †

224

An 18 carat gold old cut boat shaped diamond cluster ring £400 – 500 †

225

A three stone diamond 18 carat gold ring £300 – 400 †

226

An 18 carat gold boat shaped diamond cluster ring, hallmarked 1918 £300 – 400 †

227

A mid 19th Century Russian silver box, marked for St. Petersburg Imperial Goldsmith, Andrei Ignatiev, 1834-1849, silversmith to Tsar Nicholas 1st, front embossed with Cossacks on horseback, the base decorated with flags and trophies, 6.5cm £200 – 300 †

228

A 9 carat gold crescent bar brooch, set with rubies and diamonds £300 – 400 †

229

An Asprey of London 9 carat gold matchbox holder, approx. 16.7gms; and a small silver thimble, (2) £150 – 200 †

230

An 18 carat gold diamond and pearl set ring £100 – 150 †

231

No Lot

232

A Victorian silver and ivory Aide-Memoire, with ship engraving, *Birmingham 1889* £40 – 80 †

233

A 9 carat gold ladies wrist watch, on expanding bracelet strap; and a silver cased ladies wrist watch with enamel dial, (2) £40 – 60 †

234

A Grand Tour type pietra dura cross; a yellow metal brooch inset with agate panel; various bar brooches; paste set dress brooches etc. £40 – 60 †

235

A pair of unmarked yellow metal Art Deco design circular ear-rings, inset with cabochon amethyst stones £40 - 60 †

236

A circular micro mosaic brooch, inscribed "Roma"; various small brooches, pendants, fine link chain etc. £60 - 80 †

237

A Chinese carved jade pendant £60 - 80 †

238

A collection of various bead necklaces, including ivory, hardstone, cherry amber coloured etc. £40 - 60 †

239

A quantity of various beads; costume jewellery etc. £40 - 60 †

240

An unusual Chinese white metal graduating ring collar, decorated with dragons and studs £50 - 100 †

241

A circular silver compact, with engine turned decoration; circular glass and silver mounted tidy jar; and two faux tortoiseshell compacts, (4) £60 - 80 †

242

A Victorian silver vinaigrette; and a modern silver and enamel decorated patchbox, (2) £80 - 120 †

243

Four Antique white metal coins, converted to buttons £20 - 40 †

244

A George III silver cased pocket watch, by G.P. Saddleton, no. 12745 £100 - 200 †

245

An 18 carat gold coral and diamond set ring £200 - 300 †

246

A 9 carat gold horseshoe and seed pearl set ring £80 - 120 †

247

A yellow metal ring, set rows of baguette diamonds alternating with 4 brilliant cut diamonds in squares, approx. total weight 9gms, (2 stones missing) £800 - 1200 †

248

An 18 carat gold ring, set approx. ¾ carat diamond with diamond set shoulders, flanked by two 18 carat white gold and diamond set eternity rings, approx. total weight 9gms, (one stone missing), AF £1500 - 2000 †

## Objects and Collectables

249

An early 19th Century horn beaker, with silver rim and scrimmed decoration of a sailing ship, dated 1804 £150 - 200 †

250

Doubleday, bronze study of a kneeling nude female reading a book, numbered 4/9, 17cm long, raised on a wooden plinth, 12cm high overall £60 - 80 †

251

A brass cased carriage timepiece, having white enamel Roman numeral dial, angular swing handle, 16cm high overall £40 - 60 †

252

An Antique horn and Sheffield plate mounted beaker, with scrimmed decoration of a sailing ship, 14cm high £80 - 120 †

253

A pair of Queen Victoria Diamond Jubilee commemorative enamel beakers; and an unusual brown pottery moneybox in the form of a miniature chest of drawers, (3) £70 - 100 †

254

A very fine 19th Century folding chess/backgammon board, beautifully decorated together with two matching dice shakers, (possibly Kashmir) £400 - 600 †

255

An ivory mounted egg shaped Etui, with white metal fittings, (incomplete); various Netsukes; carved bone items etc. £60 - 100 †

256

A classical style plaque, in simulated maple frame and a miniature portrait study in faux ivory and tortoiseshell frame, inscribed verso "Samuel Massé", (2) £20 - 40 †

257

An Antique Dutch brass tobacco box, of oval form; and another of elongated octagonal form, AF, (2) £40 - 60 †

258

Various silver Art Nouveau buttons; various other buttons; two Chinese coin brooches etc. £60 - 80 †

259

An Egypt Star medal 1882, various military cap badges, Eastern pendants etc. £40 - 60 †

260

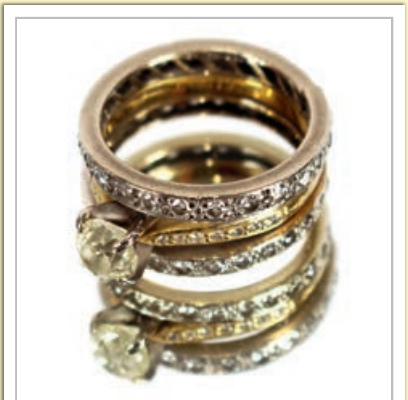
An early 19th Century horn beaker, with silver rim, having scrimmed decoration, dated 1804 £150 - 200 †

261

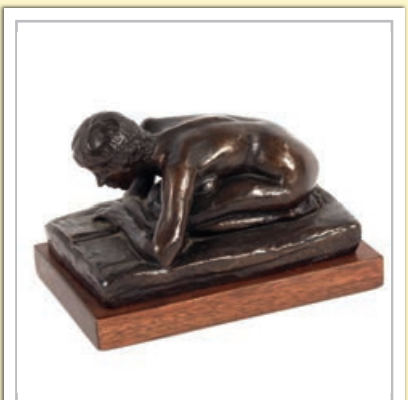
Five 1930's "Motor Cars for Hire" adverts, from Portmadoc £15 - 20 †



Lot 247



Lot 248



Lot 250



Lot 254



Lot 263

262

Nine various cold painted bronze and other miniature figures, including dachshund, pig, frog, cat, huntsman with dogs and horse etc.

£100 - 150 +

263

A 19th Century Chinese Canton carved ivory card case, decorated and inscribed with Napoleon's house and tomb, amongst relief decoration of foliage and figures, 11.8cm x 7.7cm

£500 - 600 +

264

A 19th Century Continental porcelain scissor holder, having port decoration, heightened in gilt; and a small oval enamel patchbox, inscribed "A Trifle from Ramsgate" AF, (2)

£60 - 100 +

265

A 19th Century circular papier-mâché snuff box, the lid decorated with a bearded figure

£30 - 50 +

266

A miniature silver gilt carriage clock, contained in a leather folding travelling case

£200 - 400 +

267

An Indian white metal baluster cream jug, profusely decorated with figures and foliage; and a porcelain figure of a horse and jockey, (2)

£30 - 50 +

268

A miniature Antique wooden plane, together with an Antique wood and ivory mounted stethoscope, (2)

£50 - 80 +

269

An ivory ceremonial gavel, with turned handle, 17cm long

£80 - 120 +

270

A small 19th Century unframed sampler, worked by Emma Ann Darby, October 12th 1831, 31.5cm x 25cm

£30 - 50 +

271

A jade and silver mounted two handled bowl and cover, the lid surmounted by a fruit finial and flanked by stylised pierced handles, hallmarked for London 1907

£200 - 300 +

272

An ivory necessaire, with some fittings, bearing white metal plaque with inscription

£100 - 200 +

273

A 1930's/40's tinsplate clockwork car

£20 - 50 +

274

An unusual Antique brass inkwell, in the form of a 7lb weight, 10cm high

£30 - 50 +

275

A walnut and chinoiserie decorated table clock, 19.5cm long x 14.5cm high

£40 - 60 +

276

Two Antique horn beakers, having white metal mounts and shield plaques with finely scrimmed motifs of ships, 11cm high

£60 - 100 +

277

A brass cased French carriage clock, with enamel Roman numeral dial, contained in leather travelling case, complete with key

£60 - 80 +

278

A pair of treen and bone whist indicators

£20 - 40 +

279

An Oriental decorated trinket box, contents to include numerous painted Indian counters; a Kashmiri hinged box and cover; a cinnabar lacquer tray; similar box etc.

£60 - 80 +

280

A cased carved Indian sandalwood chess set

£60 - 80 +

281

A Chinese bronze libation vessel, raised on three tapering supports, 18cm high

£40 - 60 +

282

An Iraqi white metal and Niello work paper-knife, in the form of a dagger with camels and architectural decoration, indistinct Arabic marks

£30 - 50 +

283

A 19th Century Scottish horn snuff box; and another 19th Century plated heart shaped snuff box, (2)

£30 - 50 +

284

A 19th Century tortoiseshell patch box, of circular form with mirror inset lid, 5cm dia.

£20 - 30 +

285

An early 19th Century enamel patchbox, painted with figures before a country house with waisted body, 6cm dia.

£30 - 50 +

286

An Indian silver bud vase, decorated with figures before a hut

£20 - 30 +

287

A 19th Century Kashmir box, with contents of turned wooden chessmen

£40 - 60 +

288

A pair of Oriental cloisonne shallow bowls, having prunus decoration, 14cm dia.

£30 - 50 +

289

A Russian papier-mâché snuff box, decorated with a scene of a troika, AF; an Oriental papier-mâché posy holder; a Tartanware string box; a Mauchline type snuff box decorated with a shooting scene and presentation plaque etc.

£40 - 60 +

290

A mahogany cased carriage clock, with ebony banding and brass swing handle, the enamel dial inscribed "Exhibited by Crohe Hw, Typke, Wigmore Street, London, No. 4536"

£100 - 150 +



Lot 265



Lot 266



Lot 271



**291**

A Chinese bronze censer, with raised decoration of figures and symbols, flanked by beast handles, the lid surmounted by a kylin, seal mark to base, 13cm high £60 - 80 †

**292**

A crocodile skin cased travelling clock and barometer, by J.C. Vickery, Regent Street, AF; and a travelling watch by Asprey, Bond Street, in folding case, (2) £60 - 100 †

**293**

An oriental glass snuff bottle, hung to a tasselled cord; and a miniature oriental cloisonne teapot, (2) £30 - 60 †

**294**

An Antique wooden box, with mother of pearl plaque inset to the lid, engraved with ship surrounded by turquoise beading £50 - 100 †

**295**

A silver heart shaped photograph frame, by Mappin & Webb, London 1894; and a miniature portrait on ivory of a lady with lace cap and shawl, indistinctly signed, in gilt easel frame, (2) £250 - 300 †

**296**

A brass Gorget - Grande Guerre 1914-1918 £20 - 40 †

**297**

An Antique figure of Buddha, AF, 15cm £100 - 200 †

**298**

An Antique carved coconut pedestal bowl, 18cm £50 - 80 †

**299**

An Antique carved Japanese ivory sectional figure of a street vendor, on circular base, AF; and an Indian carved ivory figure of a fisherman, (2) £80 - 120 †

**300**

A 19th Century fruitwood travelling watch case, of temple form £100 - 150 †

**301**

A finely engraved Continental white metal pocket watch, with foliate and cartouche decoration in silver and a tortoise shell case, London 1916, by Galona, inscribed "Karl Schneider Reichenbach, Germany", (2) £60 - 80 †

**302**

An Antique carved ivory figure of an immortal, carrying a gourd and staff, on wooden plinth; an ivory elephant ornament and a Chinese carved soapstone figure group, (3) £40 - 60 †

**303**

Two 19th Century portrait miniatures, in ebonised and brass frames £50 - 80 †

**304**

C.F. Bulkley, 1812-1869, study of men fighting on a mountain path with young girl between them, signed watercolour, unframed, 15cm x 19cm £40 - 60 †

**305**

A pair of carved wooden novelty figural nut crackers £40 - 60 †

**306**

An ivory cased perpetual calendar £20 - 40 †

**307**

An Antique leather scent casket, having brass swing handle and fitted three glass bottles, 16cm £40 - 60 †

**308**

An oval miniature portrait, study of a young beauty, in plush frame; three coloured prints depicting children; and a pair of silhouettes, (5) £40 - 60 †

**309**

A Russian papier-mâché hinged box, the cover decorated with Cossack and horses; two small modern Russian lacquered boxes; and an Oriental lacquered hinged two compartment box, (4) £30 - 60 †

**310**

Three treen Folk Art hand carved spoons £20 - 30 †

**311**

A small Persian painting on bone panel, decorated with figures in an interior £60 - 80 †

**312**

An ivory sector, and other drawing instruments £30 - 50 †

**313**

An Ethnic carved wooden elliptical bowl, raised on short legs with zig zag edge decoration, possibly Oceanic £30 - 40 †

**314**

A late 18th/early 19th Century treen Fisherman's priest £30 - 50 †

**315**

A German U-boat 7x50 blc binoculars, rubber armour intact; together with a German World II North Sea chart £600 - 800 †

**316**

A pair of German Kriegsmarine 7x50 beh binoculars, rubber armour intact; together with a sailor's shirt £200 - 300 †

**317**

A pair of Barr & Stroud Model CF41 7x binoculars, Barr & Stroud, Glasgow & London; Bino Prism No. Mark II x6 binoculars, cased; and Monocular Prismatic No.3 Mark II binoculars, cased, AF, (3) £50 - 80 †

**318**

A pair of Barr & Stroud Model CF41 7x binoculars, Barr & Stroud, Glasgow & London, cased £40 - 60 †

**319**

A pair of NIL Bino Prism No.5 Model III x7 binoculars, 1943, Nottingham Instruments Ltd., cased £40 - 60 †



Lot 274



Lot 304



Lot 315



Lot 316



Lot 337



Lot 354



Lot 363



Lot 365

320

A pair of U.S. Navy Bureau of Ships Mark 1 Model 2 7x50 binoculars, 1942, Bausch & Lomb Optical Co., Rochester, case marked REL Canada  
£40 - 60 †

321

A pair of Bino Prism No.5 Model Mark 2 x7 binoculars, cased  
£40 - 60 †

322

A pair of Barr & Stroud Model CF41 7x binoculars, Barr & Stroud, Glasgow & London, cased  
£40 - 60 †

323

A pair of Ross Bino Prism No.5 Model IV x7 binoculars, Ross of London, cased  
£40 - 60 †

324

A pair of Ross Stepmur 10x50 binoculars, Ross of London, cased  
£40 - 60 †

325

A pair of German Dienstglas 10x50 binoculars, by Ernst Leitz, Wetzlar, dated 1941 on strap, cased  
£40 - 60 †

326

A pair of U.S. Navy Bureau of Aeronautics Mark 21 SARD 7x50 binoculars, Square D Company, New York, cased  
£40 - 60 †

327

A pair of U.S. Navy Bureau of Ships Mark 1 Model 1 7x50 binoculars, 1940 Bausch & Lomb Optical Co. Rochester, cased  
£40 - 60 †

328

A pair of Barr & Stroud Model CG46 15x binoculars, Barr & Stroud, Glasgow & London, cased  
£40 - 60 †

329

A pair of German Kriegsmarine DF 7x50 binoculars, case marked  
£80 - 120 †

330

NIL Bino Prism No.5 Model V x7 binoculars, 1944, Nottingham Instrument Ltd., cased  
£40 - 60 †

331

No Lot

332

A quantity of various Antiquarian leather bound books, to include Waverley novels, Loudon's Arboretum and other works including Shakespeare, National History of French painting etc.  
£100 - 150 †

333

A quantity of various Antiquarian leather bound books, including Imperial Lexicon, Ben Johnson's Works, Liddell & Scott's Greek English Lexicon, Evelyn diaries etc.  
£100 - 150 †

334

Various bound annual volumes of the Penny Magazine, 1832-1842, (with gaps), The Penny Encyclopaedia, various volumes, Boswells Journal of London, Holland and Switzerland and others  
£30 - 40 †

335

A quantity of Antiquarian leather bound books, to include Dickens Works, Henry's Exposition, Gallery of engravings and various others  
£100 - 150 †

336

A large quantity of Antiquarian leather bound books, including R.J. Minney, Clive Lydekker The Royal National History, Picturesque Europe, History of French etching, Shakespeare etc.  
£100 - 150 †

337

A Victorian Tunbridge ware table cabinet, fitted with four drawers and enclosed by a pair of floral decorated doors, raised on a cushion plinth and disk feet, 24.5cm wide x 21.5cm high  
£100 - 150 †

338

A pair of 19th Century ruby glass and gilt metal baluster candlesticks, with raised foliate decoration, 25cm high  
£100 - 150 †

339

An Oriental carved hardwood figure of a reclining Joss man, with dragon, 39cm long  
£30 - 50 †

340

A 19th Century black marble and malachite inlaid mantel clock, circular white enamel dial with visual escapement, 8 day movement striking on a bell  
£60 - 100 †

341

A Victorian papier-mâché and gilt decorated desk stand; an Ethnic paper-knife; an Oriental lacquered and mother of pearl trinket box with figure decoration; and a folding Acme tie press decorated in the chinoiserie manner, (4)  
£40 - 60 †

342

A 19th Century papier-mâché tea tray, decorated with a central panel of a soldier and family outside of a cottage, gilt stylised decoration, 59cm x 43cm  
£40 - 60 †

343

A pair of Chinese bronze urns, with raised stylised floral decoration, flanked by beast handles, 27.5cm high  
£80 - 120 †

344

A 19th Century rosewood and mother of pearl inlaid workbox, 31cm  
£30 - 50 †

345

A 19th Century mahogany sarcophagus shaped workbox, having partitioned interior, 35cm  
£40 - 60 †

346

A Chinese brass censer, with continuous dragon and cloud decoration, seal mark to base, 20cm dia.  
£60 - 80 †

347

A Chinese mandarin's cloak  
£100 - 150 †

348

A wooden and lead lined tobacco jar, by Dunhill, 16cm dia. x 19cm high  
£40 - 60 †



# Advance Notice

2nd & 3rd June 2020

Suffolk & Essex



Major two-day dispersal sale of  
machinery off 20,000 acres

On behalf of Strutt & Parker (Farms) Ltd, due to change of  
company ownership and farming policy

Catalogues available four weeks prior to the sale

Live on-line bidding via **i-bidder.com**



[www.clarkeandsimpson.co.uk](http://www.clarkeandsimpson.co.uk)

01728 621200



# Collective Machinery Auction

Clarke and Simpson Auction Centre

Campsea Ashe, Suffolk

Saturday 23rd May 2020

Entries invited – closing date 9th April 2020

- East Anglia's largest 'direct from farm' auction
- Competitive commission rates
- Live on-line bidding via i-bidder.com
- Extensive marketing both online and in the press
- Hard standing site, large buildings and car parks
- Illustrated colour catalogue
- National and international buyers



[www.clarkeandsimpson.co.uk](http://www.clarkeandsimpson.co.uk)

01728 621200

**349**

An Oriental lacquered cardbox; a walnut brass mounted trinket box; a Shillelagh and four carved hardwood vase stands, (7) £40 - 60 †

**350**

A Victorian ebonised bone and brass mounted extending book rack; and a Victorian papier-mâché and mother of pearl inlaid sewing box, (2) £40 - 60 †

**351**

An Ethnic ebonised and wire bound cosh, 34cm, AF £20 - 30 †

**352**

A Victorian walnut and ebonised desk stand, with block glass inkwell; and a papier-mâché and mother of pearl decorated desk stand, (2) £40 - 60 †

**353**

A pair of Victorian papier-mâché and mother of pearl swing handled fruit baskets, and a papier-mâché comport with lacquered decoration of birds and foliage, (3) £40 - 60 †

**354**

An oak cased Barograph by Negretti & Zambra, 38cm long (*Illustrated on page 14*) £200 - 300 †

**355**

A pair of Chinese cloisonne vases, decorated with dragons and flaming pearls, seal mark to bases, 33cm high; together with a pair of carved wooden stands £80 - 120 †

**356**

A Vienna style bronze group of Bedouins with a camel, 20cm high £50 - 80 †

**357**

An Eastern metal shallow dish, with foliate engraved decoration, 31cm dia. £30 - 50 †

**358**

An Edwardian mahogany two handled tea tray, 53cm £30 - 50 †

**359**

A large plated alms dish, having central armorial crest, 51cm dia. £40 - 60 †

**360**

A 19th Century mahogany and brass mounted two compartment tea caddy, complete with glass mixing bowl, 33cm £40 - 60 †

**361**

A 19th Century Victorian mahogany rectangular two compartment tea caddy, 32cm wide £60 - 100 †

**362**

An early brass clock movement, by William Ray of Sudbury, having single hand striking on a bell, AF £80 - 120 †

**363**

A Short & Mason Barograph, contained in an oak fitted case with chart drawer and charts, 36.5cm (*Illustrated on page 14*) £250 - 350 †

**364**

A 19th Century miniature mahogany chest, of two short and three long drawers, raised on a platform plinth, 20cm wide x 26cm high £60 - 80 †

**365**

A 19th Century ebonised and ormolu mounted mantel clock, 8 day movement striking on a gong, circular white enamel Roman numeral dial, AF, 30cm high (*Illustrated on page 14*) £60 - 100 †

**366**

A late 19th Century Aesthetic movement design ebonised mantel clock, having circular floral painted porcelain dial, 8 day movement striking on a gong, 35cm high £60 - 100 †

**367**

A pair of 20th Century Chinese cloisonne baluster vases, decorated with flowerheads on a blue ground, 24cm high £40 - 60 †

**368**

A Barograph, by Baird & Tatlock, London, in mahogany case, with charts, 35cm long £100 - 150 †

**369**

A Victorian alabaster and enamel mantel clock, surmounted by an urn, 8 day movement striking on a bell, 40cm high £30 - 50 †

**370**

A pair of Japanese cloisonne chargers, decorated with flowers, birds and symbols, 35.5cm dia. £60 - 100 †

**371**

A bronzed bust of Orpheus, by Blüsché, 65cm high £100 - 200 †

**372**

A pair of large gilt metal ecclesiastical candlesticks, in the 17th Century Venetian style, raised on trefoil bases and paw feet, 62cm high £60 - 100 †

**373**

A Georgian mahogany cheese coaster, of curved form, raised on brass barrel castors, 41cm long £100 - 150 †

**374**

A Sheraton period mahogany and boxwood strung knife box, of serpentine shape, 39cm high x 23.5cm wide (*Back Cover illustration*) £200 - 300 †

**375**

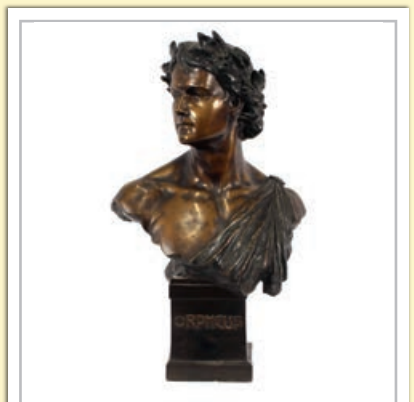
A 19th Century Japanese lacquered table trinket cabinet, fitted various drawers and enclosed by a pair of bird decorated doors, 27cm high x 29cm wide £40 - 60 †

**376**

A carved Eastern hardwood figure of a fisherman; another of a dancing maiden; and a smaller example of a boy with ducks, (3) £30 - 50 †

**377**

A large Japanese cloisonne baluster vase, decorated with flowers and geese on a pink ground, 34cm high, (some damage) £40 - 60 †



Lot 371



Lot 373



Lot 374



Lot 375



Lot 378



Lot 381



Lot 390



Lot 394

**378**  
A pair of 19th Century mahogany and brass candlesticks, raised on fluted baluster columns and circular stepped bases, 37cm high £60 - 100 †

**379**  
A South American hardwood and inlaid butterfly wing tea tray, 53cm x 33cm £20 - 30 †

**380**  
A Waterloo silk fringed shawl £60 - 100 †

**381**  
A 19th Century walnut and inlaid workbox, 23cm £40 - 60 †

**382**  
A pair of 19th Century Chinese bronze vases, of ovoid form, decorated and flanked by simulated bamboo handles, 17cm high £30 - 50 †

**383**  
A mid 18th Century seamed brass candlestick, with tapered knopped stem and petal style base, 17.5cm high £40 - 60 †

**384**  
A pair of Persian white metal rose water sprinklers, with elongated necks and square bodies, raised on circular bases, 27cm high £20 - 30 †

**385**  
A 19th Century burr yew and boxwood inlaid workbox, of domed form, the lid AF, 24cm £40 - 60 †

**386**  
A Victorian cased brass level, by T.B. Winter & Son £60 - 100 †

**387**  
A boxed clinometer by E.R. Watts & Son, circa 1943 £40 - 60 †

**388**  
A Victorian naturalistic knobbly blackthorn walking cane, 91cm long £40 - 60 †

**389**  
A 19th Century sabre, having basket hilt, 96cm long overall, AF £40 - 60 †

**390**  
A 19th Century dress sword, having engraved blade, leather scabbard with brass mounts and scroll handle, helmet terminal, 94cm overall £40 - 60 †

**391**  
An Edwardian parasol, having carved bone dog's head handle; a malacca cane walking stick with horn handle and another part parasol, AF, (3) £40 - 60 †

**392**  
A 1903 pattern bayonet, 45cm long overall £30 - 40 †

**393**  
A military dress sword, by Wilkinson, having foliate engraved blade, basket hilt and wired shagreen grip, in leather scabbard, 112cm long overall £40 - 60 †

**394**  
A good quality 18th Century Indo-Persian match-lock musket, with octagonal barrel, silvered damascened decoration, carved ivory action, cover and butt plate with silvered boss decoration; and two sling swivels. Steel ramrod. Approx. length barrel 111cm overall x 159cm £800 - 1,200 †

**395**  
A violin, labelled "The Maidstone" by Murdock & Co., London, 60cm overall £150 - 250 †

**396**  
A Chinese bronze vase table lamp £40 - 60 †

**397**  
Jacques Antoine Theodore Coinchon, a large bronze figure of a seated shepherd with bagpipes, 43cm high £200 - 300 †

**398**  
An Oriental carved hardwood figural table lamp, 50cm high overall £40 - 60 †

**399**  
A silvered figure, depicting horse and jockey on marble plinth, 27cm £30 - 50 †

**400**  
Two Eastern gilt metal goblets, with floral decoration, indistinct script to bases £30 - 50 †

**401**  
A pair of mid 19th Century gilt metal dwarf candlesticks, with guilloche and foliate designs, 15cm high £30 - 50 †

**402**  
A pair of 19th Century Turkish tinned copper vases, in the 17th Century Ottoman style, with baluster faceted bodies, 21cm high £40 - 60 †

**403**  
An early 20th Century ormolu letter rack, in the rococo taste, with two green enamel panels, 15cm high £30 - 50 †

**404**  
A 19th Century tinned copper Turkish dish and cover; a similar jug; a vase and two other items, (5) £30 - 50 †

**405**  
A 19th Century lacquered gilded metal Architectural frame, with angular pediment within twin floral headed columns, platform base, raised on bun feet, 65cm high £60 - 80 †

**406**  
A pair of cast iron appliques, depicting lion and a unicorn £100 - 200 †

**407**  
A pair of 19th Century silkwork embroidered panels, depicting parrots seated on branches, in black and gilt mounts and gilded frames £60 - 100 †

**408**  
A pair of Venetian giltwood candlesticks, in the 17th Century style, with metal prickets, floral and angular columns and trefoil splayed bases, 66cm high £60 - 80 †



409

A 19th Century black marble and gilt metal mounted mantel clock, with circular Roman numeral dial inscribed "Howell James & Co., Maker to the Queen", AF £30 - 50 †

410

An Antique copper circular jardinière, flanked by brass lion mask handles and raised on paw feet, 40cm dia. £40 - 60 †

411

A Dutch ebonised basket, having brass liner, raised on circular base and turned feet, 37cm dia. overall x 48cm high £30 - 50 †

412

A circular bronze pedestal dish, 30cm dia. x 12.5cm high £20 - 40 †

413

An Edwardian postcard album, and contents of approx. 300, mostly scenic postcards £40 - 60 †

414

British Game Birds and Wild Fowl, by B.R. Morris, two volumes £300 - 400 †

415

A 19th Century rosewood bow fronted cased stick barometer, by Troughton & Simms, London £200 - 400 †

416

A 19th Century mahogany and boxwood strung banjo wheel barometer, 120cm £80 - 120 †

417

A late Victorian mahogany and silver toasting fork, hallmarked for London 1901, 83cm long £40 - 60 †

418

An Antique wooden pull-a-long horse, (in need of restoration) £40 - 60 †

419

A travelling toilet case, and contents of silver mounted jars and brushes by Walker & Hall; and another with part silver mounted toilet jars, (2) £60 - 100 †

420

A Finnigan's leather cased travelling toilet set, and contents of faux tortoiseshell and silver mounted fitments £50 - 60 †

421

A set of Antique mahogany and brass mounted fire bellows £80 - 120 †

422

A Hornby engine and coal wagon; a Meccano engine; 8 various wagons; signal-level crossing/buffers; a railway platform named "Widford"; a tunnel and selection of track £60 - 80 †

423

An Antique steel and copper fender; a late 19th Century copper fender; a set of three steel and brass fire implements; and other fireplace accoutrements £60 - 80 †

424

A large mahogany wheel barometer, by Tarell, Northampton, fitted with a fusee clock by Durrant of Byfield, also fitted dry/damp meter, thermometer and level, 116cm £300 - 500 †

425

A 19th Century tortoiseshell and cut brass and ormolu inlaid French mantel clock, surmounted by a gilded winged messenger, circular enamel Roman numeral dial, 8 day movement striking on a bell, by Larse of Paris, 101cm high £400 - 600 †

426-434

No Lots

## Pictures and Prints

435

A Chinese watercolour, depicting birds amongst flowers with calligraphy to the silk margins, 111cm x 45cm overall £100 - 150 †

436

J.G. Bingley, study of rabbits in a woodland clearing, monogrammed watercolour, 23cm x 34.5cm £30 - 40 †

437

P. Graham, study of cattle in a highland landscape, signed oil on board, 27cm x 40cm £100 - 200 †

438

19th Century English school, study of children picnicking, nearby cattle in expansive landscape, monogrammed oil on board, dated 1878, 25cm x 35cm £100 - 200 †

439

19th Century school, study of Valetta harbour with figures and farm animals in the fore ground, ships in the harbour, indistinctly signed, 29cm x 74cm £200 - 400 †

440

19th Century Dutch school, study of figures and horses outside of an Inn, unsigned oil on metal panel, 28cm x 33cm, contained in a decorative gilt frame £200 - 300 †

441

After Henry Alken, a set of four engravings, "The First Steeple Chase on Record" £60 - 100 †

442

Christopher Maskell, 19th Century school, study of sailing vessels at sunset, oil on canvas, 29cm x 23cm £60 - 100 †

443

Alfred Munnings, pencil signed print, portrait of Major Bouch with the Belvoir Hounds £40 - 60 †

444

19th Century school, portrait study of a young girl praying, unsigned oil on canvas, 51cm x 40cm overall £40 - 60 †



Lot 397



Lot 411



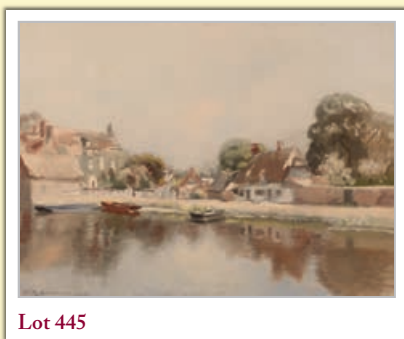
Lot 425



Lot 440

Lots marked ✓ please refer to Droit de Suite royalty charges in Terms and Conditions

† Each lot is subject to a Buyer's Premium of 18% + VAT (21.6%)



Lot 445



Lot 450



Lot 457



Lot 462

445

**John Lockhead, R.B.A.**, river scene with boats in the fore ground and cottages, signed oil, 30cm x 39cm £250 – 350 †

446

**Harold Knight**, 1874-1961, study of Thames river scene with barges and figures, and Waterloo bridge in the far ground, signed oil on canvas, 19cm x 39.5cm £100 – 150 †

447

**Benjamin Williams Leader**, sheep in the lambing pen, pencil sketch, information verso, 13cm x 17.5cm £60 – 80 †

448

**Martin Hardie**, study of a river with boats and ruined building, signed watercolour, 26.5cm x 36.5cm £40 – 60 †

449

**19th Century school**, study of mice on an onion, unsigned oil on canvas, 24cm x 31cm £60 – 80 †

450

**Allan Douglas Davidson, 1873-1932**, study of a nude in interior setting, signed oil on panel £400 – 600 †

451

**H.G.E. Stinson**, study of a pantry with game and fruit, signed oil on canvas, 45cm x 65cm £40 – 60 †

452

**A 19th Century sampler**, worked by Isabella Irving, aged 14 years, 1835, decorated text, alphabet and flowers, 41cm x 34cm £30 – 50 †

453

**A sampler**, worked by Mary Clarke, aged 10, 1833, with religious text, flowers, people and birds, 46cm x 44cm, contained in a simulated pine frame £60 – 100 †

454

**Alfred Taylor**, study of a young girl holding a kitten, signed watercolour, mounted as an oval, 28cm x 24cm in extremes, contained in a foliate gilt frame £60 – 80 †

455

**19th Century school**, study of a cardinal, unsigned watercolour, 35cm x 25cm £100 – 150 †

456

**Fanny Walker**, study of Booth Ferry House, Yorkshire, initialled watercolour, dated 1870, extensive information verso, 29.5cm x 44cm £40 – 60 †

457

**20th Century school**, Continental harbour scene, possibly Greece, indistinctly signed oil on canvas, 26.5cm x 34cm £60 – 100 †

458

**Paul Marny**, study of Chateauneuf, Brittany; and companion Vannes, Brittany, signed watercolours, a pair, 27cm x 40cm £200 – 300 †

459

**18th Century school**, study of Miss Fleetwood after S. Dowman, indistinctly signed pencil and crayon, information verso £40 – 60 †

460

**A 19th Century decorative coloured print**, of Napoleon on horseback leading his army, contained in mahogany and gilt embellished frame £50 – 60 †

461

**20th Century school**, study of wind-swept trees with town in the far ground, indistinctly signed watercolour, 34cm x 30cm £20 – 40 †

462

**20th Century Greek school**, study of a harbour scene, indistinctly signed and dated watercolour, 1965, 30cm x 38cm; and another by the same hand depicting woman leading a donkey, (2) £80 – 120 †

463

**19th Century school**, study of a church interior, monogrammed, watercolour, dated 1877, 50cm x 69cm £40 – 60 †

464

**An engraving of Major General Sir Robert Henry Dick of Tullymet**; another of Sir James Earle; and a military portrait print after Morton, (3) £40 – 60 †

465

**The Laws of the Noble Game of Cricket**, published by John Wallis, Warwick Square, London, in black and gilt frame £20 – 30 †

466

**Three lithograph prints**, of Crimean War battles, "2nd Charge of the Guards", "Sketch in the interior of the Mamelon Vert" and "The interior of the Redan" £40 – 60 †

467

**John Burman, born 1936**, study of Holkham Bay, Norfolk circa 1987, signed watercolour, 20cm x 30cm £40 – 60 †

468

**John Burman, born 1936**, Brecks, Norfolk, signed oil on board, 25cm x 33cm £80 – 120 †

469

**John Burman, born 1936**, study of the tower of Royal Hospital school, Holbrook, with buildings and fields in the near ground, signed oil on board, 34cm x 58cm £100 – 150 †

470

**A.J. Andrews, 1889**, after John Moore, 19th Century seascape depicting fishing boat in heavy swell, unsigned oil on board, 14cm x 19.5cm £30 – 50 †

471

**J.E. Andrews of Ipswich**, in the manner of John Moore, seascapes with fishing boats in a stiff breeze, unsigned oils on board, inscription verso, 29cm x 40cm, a pair £100 – 150 †

472

**M. Payne**, study of waves breaking on a shoreline, signed oil on canvas, 46cm x 61cm £60 - 100 †

473

**Arthur Reginald Andrews**, Ipswich, year 2000, oil on board depicting vessels at sea with harbour and windmill in the far ground, signed, 44.5cm x 54cm £40 - 60 †

474

**19th Century school**, indistinctly signed, a pair of studies depicting horses and dogs in highland landscape, oils on canvas, 45cm x 35cm £150 - 200 †

475

**Fores's National Sports**, "Steeple chase cracks", plate 53cm x 111cm £100 - 200 †

476

**La Chassau Renard**, coloured fox hunting print £30 - 50 †

477

**Eugene**, study of an Italian interior scene with mother and children sewing, signed oil on canvas, 70cm x 50cm £200 - 300 †

478

**Arthur Reginald Andrews**, after John Constable, rural landscape with figures and cattle, signed oil on board, dated 1993, 55cm x 76cm £60 - 100 †

479

**19th Century school**, two pencil sketches depicting rotund gentlemen, attributed to George Frost, pencil sketch of rural landscape; another of Framlingham Castle and two other pictures £60 - 100 †

480

**H.W. Hellings**, collection of pencil sketches and prints, Suffolk and Norfolk views £100 - 200 †

481

**Arthur Reginald Andrews**, 2012, rural landscape, signed and dated 2012, oil on board, 54cm x 86cm £60 - 100 †

482

**Arthur Reginald Andrews**, 2006, expansive landscape depicting cattle in a wooded valley, signed and dated, oil on board, 103cm x 91cm £60 - 100 †

483

**Arthur Reginald Andrews**, 1985, after John Constable, "The White Horse", signed and dated oil on board, 66cm x 92cm £60 - 100 †

484

**F. Storey**, study of figures in a street with church in the background, signed watercolour, dated 1862, 61cm x 42cm £100 - 150 †

485

**David Green**, Hayley Wood, April 93, oil on board, 19cm x 25cm; and David Green, study of a pool, Bedfordshire, dated 1978, signed watercolour, 25.5cm x 36cm, (2) £50 - 80 †

486

**J. Box**, 20th Century, study of a pig in a sty, signed oil on canvas laid on board, 21cm x 25.5cm £80 - 120 †

487

**Charles Hardaker**, winter marshland study, signed oil on board, 37cm x 42cm £50 - 80 †

488

**Manner of John McWhirter**, misty landscape, indistinctly signed oil on board, 14.5cm x 19cm £50 - 100 †

489

**Manner of Edwin Henry Boddington**, figures by a wooded and rocky waterfall with bridge beyond, oil on board, 23cm x 28cm £100 - 150 †

490

**Tom Caspers**, 20th Century, still lifes with fruit in hedgerows, signed oils on canvas, a pair, 19cm x 25cm £80 - 120 †

491

**Manner of Charles Napier Hemy**, a busy harbour with steam ships and barges, oil on canvas, 23cm x 33cm £50 - 80 †

492

**Henry Barlow Carter**, sailing vessels off a harbour in storm, watercolour, 21cm x 31cm £60 - 80 †

493

**A Baxter print of the Duke of Wellington** £20 - 40 †

494

**George Baxter**, 1804-1867, study of Lizzie Chilman, signed watercolour, oval, 25.5cm x 20cm in extremes £60 - 80 †

495

**Charles Thomas Bale**, 1866-1895, still life study of fruit, game and artefacts on a wooden ledge, signed oil on canvas, 60cm x 50cm £150 - 250 †

496

**William Ayrton**, 1861-1916, study of a rural river scene, signed watercolour, dated 1902, 37cm x 54cm £50 - 80 †

497

**William Ayrton**, 1861-1916, study of a rural river scene, signed watercolour, dated 1903, 37cm x 54cm £50 - 80 †

498

**William Ayrton**, 1861-1916, study of a rural river scene, signed watercolour, dated 1906, 36cm x 54cm £50 - 80 †

499

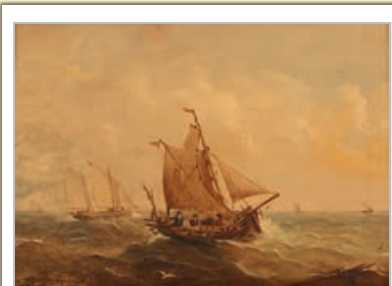
**Edwin Butler/Edward Britian**, a pair of rural studies depicting cottages beside a river, signed oils on canvas, 30cm x 25cm £100 - 150 †

500

**19th Century school**, study of a seated young woman darning socks, oil on canvas, monogrammed TCB 1864, 34.5cm x 29cm £60 - 80 †



Lot 463



Lot 471



Lot 477



Lot 495





Lot 510



Lot 513



Lot 535



Lot 536

501

A. Coleman, rural landscape with figures by a cottage, river, cattle and hills in the far ground, signed oil on canvas dated 1885, 40cm x 50cm  
£60 - 80 +

502

J. Vane, 1876, oil on board, study of figures outside and Inn with attendant dog and donkey, 31cm x 48cm  
£100 - 150 +

503

Francis Sinclair, study of an Irish cottage with figure and donkey, signed oil on canvas, 40cm x 40cm  
£30 - 50 +

504

19th Century school, a pair of studies depicting boats and figures on a lake, unsigned oils on board, 12.5cm x 15cm, contained in decorative gilt frames  
£80 - 120 +

505

An oriental scroll painting  
£60 - 80 +

506

19th Century school, oval portrait study of a lady, unsigned oil on board, framed as an oval, 37cm x 26cm  
£20 - 30 +

507

Arthur Reginald Andrews, after Thomas Gainsborough, view of Cornard Village, signed oil on board, dated 2005, 71cm x 152cm  
£60 - 100 +

508

Arthur Reginald Andrews, after John Constable, study of Salisbury Cathedral, oil on board, 88cm x 112cm  
£60 - 100 +

509

Arthur Reginald Andrews, after John Constable, expansive rural landscape with figures and sheep, church in the far ground, signed oil on board, dated 2011, 143cm x 120cm  
£60 - 100 +

510

A.R. Andrews, a grained and painted oval plaque depicting urn and flowers, 48cm x 38cm in extremes, labels verso, Royal Academy Exhibition 1990  
£80 - 120 +

511

G.L. Hall, "The hollow Ocean Ridges roaring into Cataracts", signed watercolour, 55cm x 99cm  
£100 - 200 +

512

Marion Edwards, study of a young child gathering wood along a stream path, signed watercolour, in arched mount, 46cm x 35cm in extremes, contained in decorative gilt frame  
£40 - 60 +

513

Geoffrey Douglas Giles, 1857-1941, equestrian portrait depicting lady riding side saddle with attendant dog, signed oil on canvas, 61cm x 50cm (Front Cover illustration)  
£1,000 - 1,500 +

514

20th Century Chinese school, gouache study of a naked woman and child, 82cm x 22cm  
£60 - 80 +

515-519

No Lots

## Rugs and Furtniure

520

A small Eastern mat, having stylised decoration on a deep red ground, 84cm x 66cm  
£20 - 30 +

521

A small Eastern rug, having stylised floral decoration on a red ground, 103cm x 55cm  
£20 - 40 +

522

An old Caucasian flat weave rug, in need of restoration, 105cm x 75cm; and a Caucasian style saddle bag rug, 112cm x 56cm, (2)  
£30 - 50 +

523

Four Eastern rug cushions  
£40 - 60 +

524

An Eastern style rug, in the Tehran style, decorated floral scrolls and animals, on a brown ground, 196cm x 140cm  
£40 - 60 +

525

A Kashan type rug, with allover floral decoration on a pink and blue ground, 202cm x 130cm  
£60 - 100 +

526

An Eastern rug in the Caucasian pattern, with linked central lozenges and stylised foliate motifs on a deep red and blue ground, 154cm x 105cm  
£40 - 60 +

527

A Kashan type rug, with allover floral, animal and object decoration, on blue and red ground within floral multi borders, 188cm x 132cm  
£60 - 100 +

528

A large Eastern rug, allover floral decoration and central medallion, 240cm x 168cm  
£60 - 100 +

529

An Eastern prayer rug, having stylised multi borders, 115cm x 75cm  
£40 - 60 +

530

An Eastern rug, having central gul decoration on an ochre ground, 145cm x 76cm  
£30 - 50 +

531

A Kashan type rug, with multi stylised floral field, flat weave ends, on a deep red ground, 193cm x 130cm  
£100 - 150 +

532

An Eastern Kashan type rug, with stylised multi floral decoration on a beige ground, 220cm x 138cm  
£100 - 150 +

533

An Eastern rug, with multi stylised floral decoration, flat weave ends, 184cm x 113cm  
£60 - 100 +

**534**

A Kashan type rug, having foliate hook decoration within multi floral borders, on red, blue and beige ground, 216cm x 136cm £100 - 150 †

**535**

A good quality 19th Century burr walnut, satinwood banded and marquetry inlaid occasional table, ormolu mounts to the circular top, column and scrolled feet, 62cm dia. x 70cm high £300 - 400 †

**536**

A 19th Century walnut inlaid and gilt metal mounted credenza, the fabric lined end shelves enclosed by a pair of bowed glazed doors, central cupboard, raised on tapering supports, 117cm wide x 107cm high £200 - 400 †

**537**

A pair of decorative marblised and painted classical columns, 119cm high £200 - 300 †

**538**

A Victorian mahogany tilt top occasional table, raised on barley twist column and tripod base £40 - 60 †

**539**

A Victorian mahogany card table, the rectangular foldover swivel top raised on octagonal column and quatrefoil base, terminating in castors, 81cm wide £50 - 100 †

**540**

A Georgian mahogany and satinwood strung long case clock, painted dial and 8 day movement beneath a pagoda shaped hood, inscribed to the trunk door, "This clock is by Todd of Hull", raised on bracket feet, 232cm £200 - 300 †

**541**

A 19th Century teak and brass bound military chest, fitted two short and three long drawers, in two sections, flanked by iron carrying handles and raised on bun feet, 105cm wide £300 - 400 †

**542**

An 18th Century Dutch marquetry cylinder bureau, the front opening to reveal an interior arrangement of drawers and pull-out writing surface, three drawers below, raised on bracket feet, in two sections, 115cm wide £800 - 1,000 †

**543**

19th Century mahogany chiffonier, the interior shelves enclosed by a pair of moulded panelled doors flanked by scrolled monopodia and fluted pilasters, raised on breakfront platform base, 132cm wide £100 - 200 †

**544**

An 18th Century Dutch marquetry commode, of serpentine shape, profusely decorated with trailing foliage, fitted four drawers flanked by end cupboards, raised on square section supports, 83cm wide £300 - 400 †

**545**

A Georgian oak chest, fitted two short and three long graduated drawers, raised on bracket feet, 109cm wide £80 - 120 †

**546**

An Antique carved oak bureau, the fall front opening to reveal an interior arrangement of drawers and pigeon-holes around a central well, two short and two long drawers below, raised on bracket feet, 77cm wide £80 - 120 †

**547**

A 19th Century oak chest, fitted two short and three long graduated drawers, raised on bracket feet £100 - 150 †

**548**

An Edwardian inlaid mahogany display cabinet, the fabric lined shelves enclosed by bowed glazed doors and raised on square tapering supports terminating in spade feet, 130cm wide x 154cm high £100 - 150 †

**549**

An oak Jacobean style chest, fitted three long moulded panelled drawers with brass acorn drop handles, raised on bun feet, 93cm £100 - 150 †

**550**

An 18th Century walnut chest on stand, the upper section fitted two short and three long graduated drawers with an arrangement of three drawers to the stand above an arched frieze, baluster cup and cover supports united by stretchers terminating in bun feet, 102cm wide x 145cm high £400 - 600 †

**551**

An 18th Century walnut bureau, the fall front opening to reveal an interior arrangement of drawers, pigeon-holes and central cupboard, above a sunken well, two short and two long drawers below, raised on bracket feet, 94cm wide £100 - 150 †

**552**

A late 19th Century mahogany display cabinet, in the revived Chippendale style, having pierced pediment and blind cut decoration, interior shelves enclosed by a pair of glazed panelled doors, two bow fronted drawers below, raised on square tapering supports united by an under-tier, 77cm wide £200 - 300 †

**553**

An 18th Century walnut and cross-banded chest, on stand, fitted two short and three long drawers above single drawer to the base, raised on bracket feet, 97cm wide x 116cm high £200 - 300 †

**554**

An Antique oak bureau, the fall front opening to reveal an interior arrangement of drawers, two short and three long drawers below, raised on bracket feet, 94cm wide £60 - 100 †

**555**

An 18th Century walnut and gilt wall mirror, of breakfront outline, 80cm x 57cm overall, label verso William Brown, Carver and Gilder, Carlisle, AF £100 - 150 †

**556**

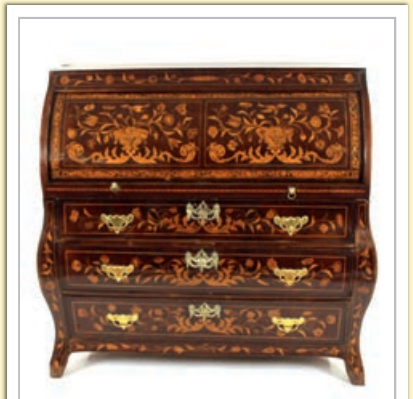
A 19th Century mahogany and gilt fret carved wall mirror, in the Chippendale manner, having bevelled plate, 58cm x 37cm; and a smaller similar, 52cm x 35cm, (2) £80 - 120 †



Lot 537



Lot 541



Lot 542



Lot 544



Lot 557

**557**  
A pair of Antique mahogany folding library steps  
£60 - 100 †

**558**  
A late Victorian rosewood chiffonier, having raised mirrored back, bow fronted base with curved glazed cupboards, raised on scrolled supports with an under-tier, 122cm wide  
£100 - 150 †

**559**  
An 18th Century walnut tallboy, the upper section surmounted by a stepped cornice, three short and three long drawers below, the lower section fitted three long drawers, all with brass drop handles, pierced butterfly back-plates and escutcheons, raised on bracket supports, 105cm wide x 181cm high  
£200 - 300 †

**560**  
A 19th Century figured mahogany and gilt metal mounted secrétaire a abbatant, with a marble top above single frieze drawer, the fall front opening to reveal a fitted interior, three long drawers below, raised on square section supports, 97cm wide x 141cm high  
£100 - 200 †

**561**  
An Edwardian mahogany and satinwood cross-banded combination wardrobe, hanging compartment enclosed by a mirrored door, central shelves enclosed by a pair of moulded panelled doors, two short and four long drawers below, 160cm wide  
£60 - 100 †

**562**  
An Edwardian mahogany four fold draught screen, having partly glazed and fabric lined panels  
£80 - 120 †

**563**  
A good quality oak standing corner cabinet, the upper display shelves enclosed by a pair of glazed panelled doors, cupboards below, 130cm wide  
£60 - 80 †

**564**  
A near pair of Edwardian mahogany and satinwood cross-banded china display cabinets, in two sections, fitted two short drawers and enclosed by two pairs of glazed doors, raised on bracket feet, 75cm wide x 172cm high  
£300 - 500 †

**565**  
A George III mahogany and boxwood strung bureau bookcase, the associated glazed top fitted adjustable shelves above a fall front opening to reveal a fitted interior, four long drawers below, raised on bracket feet, 109cm wide  
£80 - 120 †

**566**  
An Antique oak press cupboard, enclosed by a pair of fielded panelled doors above three panel base, raised on square section supports, 148cm wide x 184cm high, formally from the Moot Hall, Aldeburgh  
£100 - 200 †

**567**  
A George III mahogany tallboy, the upper section fitted two short and three long drawers, three drawers below raised on bracket feet, 122cm wide  
£300 - 400 †

**568**  
A George III mahogany long case clock, by John Matheny Shaston, (Shaftesbury), brass spandrel dial enclosed by an arched hood, full length trunk panel door, raised on bracket feet, 220cm high  
£400 - 600 †

**569**  
A 19th Century oak hanging wall display shelf, 83cm x 39cm  
£30 - 50 †

**570**  
A Victorian papier-mâché and mother of pearl decorated occasional table, 70cm in extremes  
£100 - 150 †

**571**  
An 18th Century walnut and marquetry long case clock, by Andrew Dunlop, London, the arched fret carved hood flanked by spiral turned columns, brass spandrel dial with steel chapter rings, full length trunk panel door profusely inlaid with flowers and birds, 237cm high  
£2,000 - 3,000 †

**572**  
A Victorian mahogany serving table, raised on turned and fluted front supports, 157cm wide  
£60 - 100 †

**573**  
An Antique oak side table, raised on baluster turned supports and stretchers, 64cm  
£100 - 150 †

**574**  
A 19th Century mahogany and gilt dwarf bookcase, raised on baluster column supports, 142cm wide x 83cm high  
£300 - 400 †

**575**  
A Victorian mahogany pedestal sideboard, fitted with a long central drawer flanked by cupboards and shallow drawers to the pedestals, raised on turned supports, 232cm wide  
£100 - 150 †

**576**  
An Antique oak refectory table, raised on turned baluster supports united by stretchers, 90cm x 257cm, formerly from the Moot Hall, Aldeburgh  
£200 - 300 †

**577**  
A 19th Century mahogany snap top supper table, the rectangular top raised on a turned baluster column and triple splay, terminating in brass caps and castors, 120cm wide  
£60 - 100 †

**578**  
A 19th Century mahogany demi lune and inlaid foldover card table, raised on square tapering supports, 92cm  
£60 - 80 †

**579**  
A "rise and fall" quarter size snooker dining table, by Riley, complete with four leaves and accessories  
£200 - 400 †



Lot 580



Lot 589



Lot 591



**580**

A Victorian burr walnut sewing table, the rectangular quarter veneered top opening to reveal a partitioned interior above silks well on acanthus carved quadruple supports £100 - 150 †

**581**

A Georgian mahogany occasional table, the rectangular snap top raised on turned column and triple reeded splay, 77cm x 58cm £80 - 120 †

**582**

A small 19th Century walnut framed cabriole legged foot stool, £40 - 60 †

**583**

An Antique pine cradle £60 - 80 †

**584**

A Victorian mahogany three tier buffet, raised on baluster turned supports, terminating in brass caps and castors, 137cm £100 - 150 †

**585**

A 19th Century Padouk wood circular snap top tripod table, 80cm dia. £80 - 120 †

**586**

An Edwardian mahogany and inlaid three tier folding cake stand £30 - 40 †

**587**

A 19th Century mahogany fluted torchere stand, raised on square plinth; and another similar with circular top £50 - 60 †

**588**

A Victorian light oak dwarf breakfront bookcase, fitted adjustable shelves and raised on a platform plinth, 183cm wide x 110cm high x 33cm deep in extremes £100 - 200 †

**589**

A Victorian rosewood nursing chair, having needlepoint upholstered seat and back panel, flanked by barley twist supports £40 - 60 †

**590**

A set of eight mahogany Chippendale design dining chairs, six standards and two elbows £100 - 200 †

**591**

A set of twelve 19th Century mahogany dining chairs, with arched cresting rails, upholstered stuff over seats, raised on cabriole front supports £400 - 600 †

**592**

A set of four mahogany Sheraton style dining chairs, having shaped cresting rails, Prince of Wales plume motif backs, upholstered stuff-over seats, raised on cabriole front supports £40 - 60 †

**593**

A pair of mahogany Chippendale style dining chairs, having pierced splat backs, upholstered drop-in seats, raised on square section chamfered supports £50 - 80 †

**594**

A set of six 19th Century mahogany dining chairs, having turned cresting rails above cross-banded tablets and vertical rails, needlepoint upholstered drop-in seats on turned tapering front supports united by cross-stretchers £100 - 150 †

**595**

An unusual pair of fruitwood figural hall chairs, in the form of a man and woman, solid shaped seats raised on bobbin turned tapering supports £80 - 120 †

**596**

A 19th Century mahogany torchere, raised on fluted column and tripod base £40 - 60 †

**597**

A Victorian mahogany extending dining table, having foldover end section and extra leaves, raised on ring turned tapering supports terminating in brass caps and castors, 130cm x 280cm fully extended £300 - 500 †

**598**

A 19th Century Dutch marquetry curved stool, raised on cabriole supports and claw and ball feet £300 - 400 †

**599**

A set of six 19th Century mahogany Hepplewhite style dining chairs, with arched cresting rails, pieced splat backs and upholstered drop-in seats and raised on square section stretchered supports £100 - 150 †

**600**

A French style gilt wing back salon armchair, having leaf decoration, with floral printed damask upholstery, raised on cabriole front supports £100 - 150 †

**601**

A pair of Edwardian circular inlaid mahogany occasional tables, raised on square tapering supports, plate glass tops, 58cm dia. £100 - 150 †

**602**

Howard & Sons, a walnut framed deep seated easy chair, raised on ring turned tapering front supports and terminating in brass caps and castors, square back supports, stamped "Howard & Sons Ltd. Berners Street", Numbered 164307359 £700 - 1,000 †

**603**

A late 19th/early 20th Century mahogany framed porter's type barrel back chair, upholstered in beige dralon, raised on cabriole front supports terminating in castors £80 - 120 †

**604**

An Edwardian mahogany saloon elbow chair, having carved cresting rail and pierced splat back, dralon upholstered stuff-over seat, raised on cabriole supports £30 - 50 †

**605**

A walnut elbow chair, in the George II style, having carved foliate decoration, vase splat back upholstered drop-in seat, raised on cabriole supports terminating in claw and ball feet £60 - 100 †



Lot 595



Lot 598



Lot 600



Lot 603



Lot 608



Lot 614



Lot 618



Lot 620

606

A Victorian walnut Peer cabinet, with inlaid decoration and gilt metal mounts, enclosed by a single glazed door, raised on a platform plinth, 78cm wide x 105cm high £100 - 200 †

607

An Antique elm elbow chair, in the Chippendale manner, having pierced splat back and needlepoint upholstered drop-in seat, raised on square section supports united by stretchers £40 - 60 †

608

A 19th Century yew wood Windsor chair, having elm seat raised on turned supports united by a crinoline stretcher £80 - 120 †

609

A Victorian rosewood foldover games table, of small proportions, the rectangular swivel top raised on an octagonal column and quatrefoil base, terminating in bun feet, 50cm wide £60 - 80 †

610

A walnut and herringbone banded side table, of small proportions, fitted four drawers and raised on chamfered supports, 87cm wide £200 - 300 †

611

A pair of walnut and herringbone banded three drawer bedside chests, 41cm wide x 44cm deep x 48cm high £400 - 500 †

612

A Georgian mahogany occasional table, the oval dished top raised on turned column and tripod base, 50cm wide overall £60 - 100 †

613

A pair of walnut and herringbone banded side tables, fitted single drawers, raised on turned tapering fluted supports, 47cm wide £350 - 450 †

614

An Edwardian mahogany and satinwood inlaid folding writing table, fitted with leather lined interior, by Finnigians, Manchester, 63cm wide £80 - 120 †

615

A Georgian mahogany occasional table, with circular dished top, raised on turned column and tripod base, 48.5cm dia., AF £60 - 100 †

616

A Regency rosewood and brass inlaid card table, with foldover swivel top, raised on a turned baluster column, quadruple splay terminating in brass foliate caps and castors, 91cm wide £300 - 400 †

617

A 19th Century rosewood foldover games table, the swivel top above a single drawer, raised on pierced shaped end supports, terminating in bun feet united by a turned stretcher, 52.5cm wide £200 - 300 †

618

A near pair of carved oak occasional tables, having oval stylised leaf border tops, raised on cabriole supports with acanthus decoration, terminating in claw feet, 60cm £100 - 200 †

619

A mahogany extending dining table, fitted three extra leaves, raised on turned tapering fluted supports, 136cm x 300cm fully extended £300 - 400 †

620

An Oriental hardwood and mother of pearl inlaid circular occasional table, profusely decorated with flowers, butterflies and objects, raised on a baluster column and dragon carved supports, 85cm dia. £200 - 300 †

621

A pair of 19th Century mahogany dressing stools, raised on turned supports £100 - 150 †

622

An Antique oak bench, having shaped end supports united by a stretcher, 84cm wide £60 - 80 †

623

A Victorian carved oak work table, the hinged lid opening to reveal a partitioned interior, all over foliate decoration, raised on turned columns and shaped end supports, united by a stretcher, bearing label for Longman & Co., London, Tottenham Court Road, 55cm wide £60 - 80 †

624

A George III mahogany tea table, the rectangular foldover top raised on rounded tapering legs and pad feet, 72cm wide £60 - 100 †

625

An Oriental relief carved camphorwood trunk, 89cm wide £60 - 100 †

626

A Georgian mahogany and brass bound wine cooler, of octagonal form, zinc lined partitioned interior, flanked by carrying handles, raised on square tapering supports, 47cm wide overall x 68cm high £300 - 400 †

627

A 19th Century mahogany rectangular occasional table, raised on spindle supports united by stretchers, 66cm wide £60 - 80 †

628

A mahogany window seat, in the Regency style, raised on turned tapering supports and peg feet, 107cm wide £150 - 250 †

629

A mahogany scroll back easy chair, upholstered in brown leather and raised on shaped supports; and a matching stool, (2) £80 - 120 †

630

A small carved elm chest, having iron hasp and lockplate, 48cm wide £60 - 100 †

631

An Edwardian mahogany writing desk, having raised back, fitted mirrored panel and two short drawers, leatherette inset writing surface above two drawers and pierced frieze, raised on cabriole supports terminating in castors, 107cm wide £100 - 150 †

632

A 19th Century mahogany drop leaf dining table, raised on baluster turned tapering supports, terminating in castors, 107cm wide £40 - 60 †

633

An Antique oak gate leg dining table, raised on baluster turned supports terminating in club feet, 107cm wide £50 - 100 †

634

A Georgian mahogany tray top bedside cupboard, enclosed by a single door, fitted deep drawer below, raised on square section supports, 48cm wide £60 - 100 †

635

A Chinese rosewood altar table, with rounded ends and carved and pierced decoration, on square section supports united by stretchers, 118cm wide £100 - 200 †

636

An Antique oak side table, fitted single drawer, raised on turned supports, 70cm wide £80 - 120 †

637

A 19th Century mahogany bow fronted swing toilet mirror, fitted three drawers to the base, 51cm £30 - 40 †

638

A Georgian mahogany tray top night commode, 60cm wide £60 - 100 †

639

A Victorian rosewood library table, fitted two blind frieze drawers, raised on lyre shaped end supports, terminating in claw feet, 124cm wide x 64cm deep £100 - 200 †

640

An Antique oak side table, fitted single long moulded panelled drawer, raised on turned baluster supports united by stretchers, terminating in rounded tapering feet, 100cm wide, formerly from the Moot Hall, Aldeburgh £80 - 120 †

641

A 19th Century oak side table, fitted with a single drawer, raised on square tapering supports, 74.5cm wide; and another similar 78.5cm wide, (2) £60 - 100 †

642

A Regency mahogany hall chair, having shield shaped back, raised on sabre supports £80 - 120 †

643

A Georgian mahogany tripod table, with rectangular tilt top on vase turned column, 77cm £60 - 100 †

644

A Victorian walnut octagonal trumpet shaped work table, the hinged lid opening to reveal interior compartments and central silks well, raised on a baluster column and carved tripod base £100 - 150 †

645

A Georgian mahogany knee-hole desk, fitted with long frieze drawer, blind drawer and central cupboard, flanked by six short drawers and raised on bracket supports, 77cm wide £200 - 300 †

646

A Victorian walnut sewing table, the shaped quarter veneered top lifting to reveal a partitioned interior and silks well, raised on turned baluster supports and acanthus carved scrolled feet, terminating in white porcelain castors, 52cm wide £80 - 120 †

647

A 19th Century mahogany pedestal partner's desk, the red and gilt leather inset top fitted six opposing drawers with cupboards and six drawers to the pedestals, raised on platform plinths and castors, 152cm wide x 105cm deep £200 - 300 †

648

A Regency style carved and decorated country house mirror, with scroll arch pediment above a classical Romanesque frieze, foliate scrolls and figures to the sides, 212cm x 173cm £300 - 400 †



Lot 623



Lot 626



Lot 645



Lot 646



## TERMS AND CONDITIONS OF SALE

### 1. INTRODUCTION

The following defining terms are used in these conditions:-

“Auction”	Means any auction conducted by Clarke and Simpson Auctions Ltd. either at the premises owned by them or elsewhere (including any internet based auction);
“Auctioneer”	Means Clarke and Simpson Auctions Ltd. authorised auctioneer as appropriate;
“Bidder”	Means a bidder at an auction, including the bidders personally present at the venue and those bidding by telephone or over the internet or otherwise;
“Buyer”	Means the bidder whose bid was the last bid when the auctioneer concludes the bidding; “Conditions” Means these Terms and Conditions of Sale;
“Hammer Price”	Means the level of bidding reached (at or above any reserve) when the auctioneer brings the bidding to a close;
“Lot”	Means any property accepted by Clarke and Simpson Auctions Ltd. for offer at auction;

### 2. DESCRIPTION

No warranty is given or implied by the description in the catalogue. Each lot is sold in its condition at the time of sale with all faults, defects, imperfections and errors of description (if any). Whilst every endeavour has been made to describe the items adequately and properly, the purchaser shall deem to have inspected the lot at time of purchase. All catalogues and seller's and buyer's guides are for information only and do not form part of the contract.

### 3. STATUTORY REQUIREMENTS

Purchasers will be deemed to have satisfied themselves prior to purchasing regarding current legal requirements (e.g. Health & Safety at Work Act) and it is expressly brought to the bidders attention that equipment in the sale may not necessarily comply with such regulations. Any purchaser shall satisfy himself as to any statutory requirement for the use of any item and no liability shall rest with the vendors nor the Auctioneers.

**4. THE AUCTION** All auctions are conducted at the absolute discretion of the auctioneer. The auctioneer shall conduct the auction with reasonable skill and care. The vendor reserves the right to sell subject to reserve price in respect of all lots. What constitutes a bid shall be at the absolute discretion of the auctioneer, acting with appropriate skill and care. The auctioneer shall have the right to refuse any bid in all cases but most notably when such a bid does not exceed the previous bid by at least 10% or such a proportion as the auctioneer shall in his absolute discretion direct. Where two or more bids at the same level are simultaneously received by the auctioneer, the auctioneer at his absolute discretion shall determine which bid to prefer. Subject to the foregoing where two or more bids are at the same level are simultaneously received by the auctioneer, the bid submitted in the room shall take preference over a bid submitted by telephone or internet at the same level. Any bid made or attempted by telephone or over the internet will only be deemed to have been made if received by the auctioneer. The auctioneer reserves the right to withdraw, consolidate or divide any lot or lots or submit them in any order that they desire. The auctioneer has the right at his absolute discretion to refuse admission to his premises or attendance at (or participation in) any auction by any person. In the case of any dispute, the auctioneer shall be sole arbitrator in any matters arising during or out of the sale.

### 5. BIDDERS

All bidders will be required to register their particulars, bidders attending in person and those accompanying them will be required to provide photo ID and separate confirmation of address prior to viewing or taking any part of the sale and before entering any part of the premises to view. All bidders accept full liability for all bids submitted. Subject to the clause in this document headed “The Auction”, the highest bidder at the close of bidding shall be the buyer. Any dispute about a bid shall be settled at the auctioneer's absolute discretion. Bidders are all deemed to act as principals unless there is prior written acknowledgement by Clarke and Simpson Auctions Ltd. that a bidder is acting as an agent for a named principal. Bidders are strongly encouraged to attend the auction in person. The bidders shall be responsible for any decision to bid for a

particular lot and shall be deemed to have carefully inspected and satisfied themselves as to condition, neither Clarke and Simpson Auctions Ltd., their employees or agents shall be responsible for any neglect or default in doing or failing to do so. Bidders will be given ample opportunity to view and inspect before the sale and prospective buyers must satisfy themselves as to all matters.

### 6. DEFAULT

Clarke and Simpson Auctions Ltd. shall act as agent of the vendor only. Any contracts for the sale of a lot shall be formed between the vendor and the buyer. As agent, only Clarke and Simpson Auctions Ltd. shall not be responsible for default by the vendor or the buyer. If any lot is not paid for in full and taken away in accordance with these conditions, or there is any other breach of the conditions, then Clarke and Simpson Auctions Ltd. as agents for vendor shall at its absolute discretion and without prejudice to any other rights it may have, be entitled to exercise all or any of the following rights and remedies:-

- 6.1 to proceed against the buyer for any action of debt or damages for breach of contract;
- 6.2 to rescind the sale of that lot or lots sold by Clarke and Simpson Auctions Ltd. to a defaulting buyer;
- 6.3 to resell the lot (by auction or private treaty) in which case the defaulting buyer shall be responsible for any resulting deficiency in the total amount due (after crediting any part payment and adding any resale costs), any possible surplus so arising shall belong to the vendor;
- 6.4 to remove, store and insure the lot at the expense of the defaulting buyer and, in the case of storage, the location of such storage shall be at Clarke and Simpson Auctions Ltd. discretion;
- 6.5 to charge interest at a rate not exceeding 2% per month of the total amount due to the extent that it remains unpaid for more than two working days after the sale;
- 6.6 to retain that or any lot sold to the defaulting buyer until the buyer pays the total amount due;
- 6.7 to reject or ignore bids from the defaulting buyer at future auctions or to impose conditions before any such bids are accepted;
- 6.8 to apply any proceeds of sale for any other lots due or in the future becoming due to the defaulting buyer towards the settlement of the total remaining due.

### 7. INDEMNITIES, PENALTIES AND LIMITATIONS OF LIABILITY

Purchasers shall pay for any damage done by themselves or their agents during the removal of their lots. Attendance at the sale shall be at the risk of those attending in respect of both themselves and to their goods and vehicles.

Any indemnity under these conditions will extend to all actions, costs, expenses, claims and demand whatsoever suffered or incurred by the person entitled to the benefit of it and Clarke and Simpson Auctions Ltd. declare themselves to be a trustee of the benefit of such indemnity so far as it is expressed to be the benefit of its employees and agents.

Whilst Clarke and Simpson Auctions Ltd. endeavour to ensure that the information on their websites is correct, they do not warrant the accuracy and completeness of the material on their website. Also, Clarke and Simpson Auctions Ltd. can make changes to the material on their website, or alter the products and prices described on it, at any time without notice. The material on the website may be out of date, Clarke and Simpson Auctions Ltd. make no commitment to update such material. All material on the websites is provided “as is” without any conditions, warranties or other terms at any time. Accordingly, to the maximum extent permitted by law, the website is provided to all parties on the basis that Clarke and Simpson Auctions Ltd. exclude all representations, warranties, conditions and other terms which, but for this legal notice, might have effect in relation to the website.

## 8. ELECTRICAL SAFETY REGULATIONS

All electrical lots are subject to electrical safety regulations and fall within "the low voltage electrical equipment (safety) regulations 1989" – all items have been pat tested for safety but are not guaranteed in working order.

## 9. GENERAL MATTERS

Any notice to any buyer, vendor, bidder or viewer may be given by first class mail or email in which case it shall be deemed to have been received by the addressee forty-eight hours after posting or sending. All notices to Clarke and Simpson Auctions Ltd. must be sent in writing and email is not acceptable. Any indulgence extended to any person by Clarke and Simpson Auctions Ltd., notwithstanding the strict terms of these conditions or the terms of consignment, shall affect the position at the relevant time only and the respect of that particular concession only; in all other respects these conditions shall be construed as having~ full force and effect. These conditions and any disputes or claims arising out or in connection with them or their subject matter or formation (including non-contractual disputes or claims) are governed by and construed in accordance with the law of England. The parties irrevocably agree that the courts of England have exclusive jurisdiction to settle any dispute or claim that arises out of or in connection with the agreement or its subject matter or formation (including non-contractual disputes or claims).

## 10. PUBLICITY

Any catalogue and buyer and seller guides are provided for information only and do not form part of these conditions. The catalogue and the buyer and seller guides may contain additional terms and conditions. Clarke and Simpson Auctions Ltd. reserve the right to use any photographs, background information and research for publicity purposes both before and after the sale.

## 11. THE PURCHASE PRICE AND PAYMENT ARRANGEMENTS

There is a buyer's premium 18% plus VAT payable in respect of the sale. Any purchases made via "www.the-saleroom.com" or "www.ibidder.com" shall be subject to an administration charge of 5% plus VAT on the price. Preferred payment is cash, bank transfer or personal debit card. Such cards may only be used on a chip and pin basis with the owner present. No payment over £350` will be accepted by telephone. Payment will be accepted online via our secure e commerce account. We do not accept credit cards or international debit cards. Payment by cheque will only be acceptable subject to prior arrangement. No lot will be removed from the sale until any cheque has cleared.

Payment is due on the day of the sale. Cash in excess of £7,500 (including V.A.T.) will not be accepted from any one person, this is not allowed due to Money Laundering Regulations 2007. All money received will be held in Clarke & Simpson Auctions Ltd. Clients No 2 Account at Barclays Bank plc, Framlingham, Ipswich, Suffolk. Account Number 83428591. Sort Code 20 98 07. Clarke and Simpson Auctions Ltd. have no responsibility for any lot between the close of bidding and payment being made and subsequent collection. All payments from overseas buyers shall be made by Bank Transfer and bank fees paid in addition. Please note all policy regarding payment will be enforced and suitable arrangements must be made.

## 12. REMOVAL OF LOTS

The ownership of any lot purchased shall not pass to the relevant buyer until they have made payment in full to Clarke and Simpson Auctions Ltd. of the total amount due including any storage due.

The buyer shall at their own risk and expense take away any lot that they have purchased and paid for, not later than seven days following the day of the auction.

Any purchaser shall be responsible for removal and insurance and lots stored and storage charges. All lots sold shall be subject to the following storage charges after seven days from the sale:

7-14 days	25% of the lot value + VAT	or £7.50+VAT per lot
	whichever is the greater	
14-21 days	50% of the lot value + VAT	or £15 +VAT per lot
	whichever is the greater	
21-28 days	75% of the lot value + VAT	or £22.50 + VAT per lot
	whichever is the greater	

Any lots not collected after 35 days will be re-sold with immediate effect on behalf of the purchaser and the proceeds of the sale retained in lieu of outstanding storage charges. The policy shall be rigorously enforced and no lots shall be collected unless outstanding storage charges are met.

## 13. NUMBER BIDDING

This will be used for speed and efficiency as in all our sales. All prospective purchasers must complete a registration form and register in the office on the view day or morning of sale to receive a number for bidding.

**Please also note that photo ID and additional confirmation of address will be required.**

## 14. ONLINE BIDDING

Clarke & Simpson Auctions Ltd. offer an online bidding service via the-saleroom.com and ibidder.com for bidders who cannot attend the sale. In completing the bidder registration on www.the-saleroom.com or ibidder.com and providing your payment card details and, unless alternative arrangements are agreed with Clarke & Simpson Auctions Ltd.:

1. authorise Clarke & Simpson Auctions Ltd., if they so wish, to charge the payment card given in part or full payment, including all fees, for items successfully purchased in the auction via www.the-saleroom.com or ibidder.com, and
2. confirm that you are authorised to provide these payment card details to Clarke & Simpson Auctions Ltd. through www.the-saleroom.com or ibidder.com and agree that Clarke & Simpson Auctions Ltd. are entitled to ship the goods to the card holder name and card holder address provided in fulfilment of the sale.

**Please note that any lots purchased via the-saleroom.com or ibidder.com live auction service will be subject to an additional 5% buyer's premium + VAT at the rate imposed on the hammer price.**

## 15. TELEPHONE BIDDING

We offer a telephone bidding service where possible, but this service can never be guaranteed. No applications for telephone bids will be accepted after the end of the viewing prior to sale day for any sale. All potential telephone bidders must provide a valid landline number and email address and agrees that they have read and understood the Terms and Conditions and satisfied themselves regarding any lot in accordance with these Terms and Conditions. No phone bids will be accepted for any lot with a lower guide figure of less than £100.

All those who wish to bid by telephone will be expected to deposit an amount determined by Clarke and Simpson Auctions Limited and not less than the minimum guide for all lots that they wish to bid upon into the Clients Account for Clarke and Simpson Auctions Ltd before the sale starts. This payment is not acceptable by card. In the event of default, this sum shall be retained as part payment or any part may be retained to recover losses under clause 6 of these Terms and Conditions. We will expect payment of the balance owing by BACS on the following day, any payment not met within five working days will result in the forfeiture of the deposit paid.

## 16. AT FAULT (A.F.) LOTS

Certain lots are catalogued at (A.F.), damaged, restored etc., however the absence of any such notice does not imply that the piece is free from defects, nor does it indicate that other defects are not also present. Mention is not made of breakage, cracks, chips or any damage which can be noted by careful inspection, therefore, intending purchasers MUST, in all cases, be responsible for determining the condition of the lots themselves.

## 17. ESTIMATES

Presale estimates are intended only as a guide for intending purchasers, are given in good faith and subject to revision.

## 18. CONDITION REPORTS

Clarke and Simpson are unable to guarantee that requests for condition reports/images received will be responded to. Clarke and Simpson are happy to give a Condition Report where possible on the physical condition of goods, this will be provided on behalf of the seller on the understanding that Clarke and Simpson are not entering into a contract with you in respect of the Condition Report and accordingly does not assume responsibility to you in respect of it. All lots are available for your own inspection or for inspection by an expert instructed by you, therefore these Condition Reports are for guidance only and all lots are sold "as found". Condition reports do not form part of a contract.

## 19. COMMISSION BIDS

The auctioneers will be pleased to execute bids for those unable to attend the sale. Lots will be purchased at the lowest bid the room bidding or any reserves will allow. In the event of identical bids, the earliest bid received will take precedence. There must always be a maximum limit indicated. Buy or unlimited bids will not be accepted. Commission bids placed by telephone are accepted at the client's risk. We urge our clients to place such bids before the start of the sale. All such commissions are left entirely at the buyer's risk.

## 20. VALUE ADDED TAX

The symbol \* after any lot number indicates that Value Added Tax is payable by the buyer on the hammer price.

## 21. AUCTIONEERS MARGIN SCHEME

The Auctioneers Margin Scheme allows auctioneers to sell items without VAT on the hammer price. Under the margin scheme an amount equivalent to VAT at the current rate is added to the buyer's premium. This amount cannot be refunded. The VAT element will not be shown separately on the buyer's invoice. This VAT is not recoverable as Import Tax.

## 22. ATTRIBUTION OF PICTURES AND DRAWINGS

Every effort is made to ensure the accuracy of any statements as to authorship, attribution, origin, date, age, provenance and condition of any lot whether or not such statement forms part of the description of any such lot. Whether any such statement is made orally or in the catalogue it is an expression of opinion and not to be taken as being or implying any warranties or representations of facts by the auctioneers. Each buyer by making a bid for a lot acknowledges that he has satisfied himself fully as to the attribution and condition of the lot. The following is for guidance only and does not form part of a contract.

A. The forename (s) (or full stops where not known) and surname of an artist indicates in our opinion a work by the artist.

B. The initials of the forename (s) and the surname of the artist indicates in our opinion a work of the period of the artist which may be wholly or in part his work.

C. The surname of the artist indicates in our opinion a work of the school or by one of the followers of the artist or in his style and of uncertain date.

D. *Signed, Dated, Inscribed* indicated in our opinion work signed/dated/inscribed by the artist.

E. *Bears signature* indicates in our opinion that this is not the signature of the artist.

F. *Attributed to* may be used to denote a traditional attribution based on style.

G. *Manner of* indicates in our opinion a work executed in the artist/craftman's style but of a later date.

H. *After* indicates in our opinion a copy (of any date) of work of an artist or craftsman.

The addition of a question mark after any of the cataloguing terms above indicates an element of doubt.

## 23. DRIOTE DE SUITE ROYALTY CHARGES

All United Kingdom Art Market professionals (which includes auctioneers) are required to collect a royalty payment for all qualifying Works of Art. This applies to living artists and those who have died in the last 70 years. This payment is calculated on qualifying Works of Art which are sold for a hammer price more than the UK sterling equivalent of €1,000 (the UK sterling equivalent will fluctuate in line with prevailing interest rates calculated by the Artist's Resale Right Service Hub, based on the European Central Bank reference rate published at 2.15pm on the day of the sale, and can be found on [www.dacs.org.uk](http://www.dacs.org.uk)).

All items in this catalogue that are marked "✓" are potentially qualifying items, and the royalty charge will apply if the hammer price is more than UK sterling equivalent of €1,000. The royalty charge will be added to purchase invoices and must be paid before items can be cleared. All royalty charges are paid to the design and Artists Copyright Society (DACS) by the auctioneers and no handling costs or additional fees with respect to these charges will be retained by the auctioneer. This charge may also be applicable to lots not marked "✓" and buyers must satisfy themselves.

The royalty charge for qualifying items which achieve a hammer price of more than the UK sterling equivalent of €1,000, but less than the UK sterling equivalent of €50,000 is 4%. For qualifying items that sell for more than the UK equivalent of €50,000 a sliding scale of royalty charges will apply. For a complete list of the royalty charges and threshold levels please refer to [www.dacs.org.uk](http://www.dacs.org.uk). There is no VAT payable on this royalty charge.

## 24. ENDANGERED SPECIES

Lots sold at auction may include endangered or other species of wildlife and plant life, for example ivory, tortoiseshell, crocodile skin, whale bone, ebony or rosewood. Some countries restrict or prohibit import or export of objects containing these materials or require a licence/permit for their movement (e.g. a CITES Licence). Prior to bidding on a lot which may include these or similar materials, buyers must familiarise themselves with the relevant laws and regulations regarding their movement.

## 25. JEWELLERY

Gemstones are often treated to enhance colour and improve appearance. They may be heated or treated by oil or resin to intensify the colour and transparency. Other techniques like dying, irradiation, coating and impregnation can also be used. Buyers must be aware that unless the catalogue specifically states otherwise then the stone is natural, buyers must assume that any treatment may not be permanent, and that special care may be needed in the future.

## 26. EXPORT

Any lot purchased at auction may be subject to export restrictions and may require a licence for export out of the United Kingdom. The buyer is responsible for obtaining any licences that may be required (including any licence that may be required for import into the destination country) – any denial of such a licence will not be grounds for the buyer to cancel the purchase.

## 27. THIRD PARTY LIABILITY

All members of the public on Clarke and Simpson Auctions premises are there at their own risk and must note the layout of the buildings and site and the appropriate security arrangements. Accordingly, neither the Auctioneer nor its employees or agents shall incur liability for death or personal injury (except as required by law) or similarly for the safety or persons visiting the premises.

## 28. CONSIGNMENT

All sellers will have received a copy of Clarke & Simpson Auctions Terms regarding consignment of lots for sale and these Terms and Conditions should be read in accordance with this consignment documentation.





## Ilketshall St Andrew £795,000

An impressive barn conversion together with a successful business centre generating an income of over £30,000 per annum, in a rural location to the north of Halesworth. **Ref: 5864**



## Blaxhall £595,000

A beautifully presented three bedroom cottage with stables, outbuildings and paddock, extending to nearly an acre in all. **Ref: 6344**



## Badingham £547,500

A beautifully maintained four bedroom detached house standing in landscaped gardens of over half an acre. **Ref: 6328**



## Bedfield £425,000

An exceptionally well maintained bungalow, in the middle of a large plot of approximately 0.27 acres. **Ref: 6093**



## Fressingfield £400,000

An immaculately well-presented, four bedroom, detached family home in the heart of the popular village of Fressingfield. **Ref: 6338**



## Brandeston £385,000

A versatile three bedroom chalet house situated in the heart of the popular village of Brandeston. **Ref: 6345**



## Dennington £295,000

An impressive two/three bedroom spacious bungalow, in the centre of the charming village of Dennington. **Ref: 6319**



## Middleton £280,000

A stunning two bedroom semi-detached cottage, located in the desirable village of Middleton. **Ref: 6348**



## Worlingworth £249,950

A charming two-bedroom end-terraced cottage in the heart of the village of Worlingworth. **Ref: 6361**



## Debenham £245,000

A charming Grade II listed semi-detached cottage located in the heart of the popular village of Debenham. **Ref: 6341**





## Orford £850,000

An elegant village house set within the heart of the desirable village of Orford.

**Ref: 6324**



## Denham £740,000

A delightful Grade II Listed former farmhouse, with good range of outbuildings, that have planning to be converted to a separate dwelling, in gardens and grounds extending to over 5 acres, in the rural village of Denham.

**Ref: 6258**



## Cretingham £595,000

An idyllic, four bedroom, detached cottage in a standalone position with grounds of approximately an acre. **Ref: 6362**



## Leiston £495,000

A substantial former guest house, extending to over 4,000 square feet, that now requires renovation and refurbishment. **Ref: 6337**



## Orford £435,000

A charming two bedroom end-of-terrace period cottage located in the popular coastal village of Orford. **Ref: 6270**



## Bedfield £419,000

A four bedroom newly built house in an attractive period style but with contemporary features. **Ref: 6208**



## Halesworth £395,000

A charming & elegant three/four bedroom end-of-terrace Georgian townhouse, a short walk from the centre of Halesworth. **Ref: 6336**



## Melton £350,000

An elegant two-bedroom ground floor apartment on the popular Malt Yard development. **Ref: 6340**



## Dennington £315,000

A charming 3 bedroom chalet-style dwelling located in the heart of the popular village of Dennington. **Ref: 6312**



## Eye £245,000

A 2/3 bedroom detached chalet bungalow, now requiring some updating, a short walk from the centre of the market town of Eye. **Ref: 6323**

**Clarke &  
Simpson**

Auctions

*Always open..*



### Valuation

Probate & other valuations  
Call-in service 6 days a week

### Special sales

Antiques & Fine Arts  
Art Deco & Retro  
Domestic & Rural Bygones  
Agricultural Collective

### General Monday sale

Bespoke sales  
In 2019 our lots sold to 30 countries  
and registered buyers from over 50  
Acting as agents for household clearances

Can't make it?  
All auctions are available  
for online bidding via  
**the-saleroom.com**  
or **i-bidder.com**



Clarke & Simpson Auction Centre,  
Campsea Ashe, Nr Wickham Market,  
Suffolk IP13 0PS T: 01728 746323

[www.clarkeandsimpson.co.uk](http://www.clarkeandsimpson.co.uk)

**f** CandSAuctions **t** @CandSAuctions





Clarke and Simpson Auction Centre  
Campsea Ashe  
Nr. Wickham Market  
Suffolk IP13 0PS  
Tel: (01728) 746323 Fax: (01728) 748173  
Email: [auctions@clarkeandsimpson.co.uk](mailto:auctions@clarkeandsimpson.co.uk)  
[www.clarkeandsimpson.co.uk](http://www.clarkeandsimpson.co.uk)