



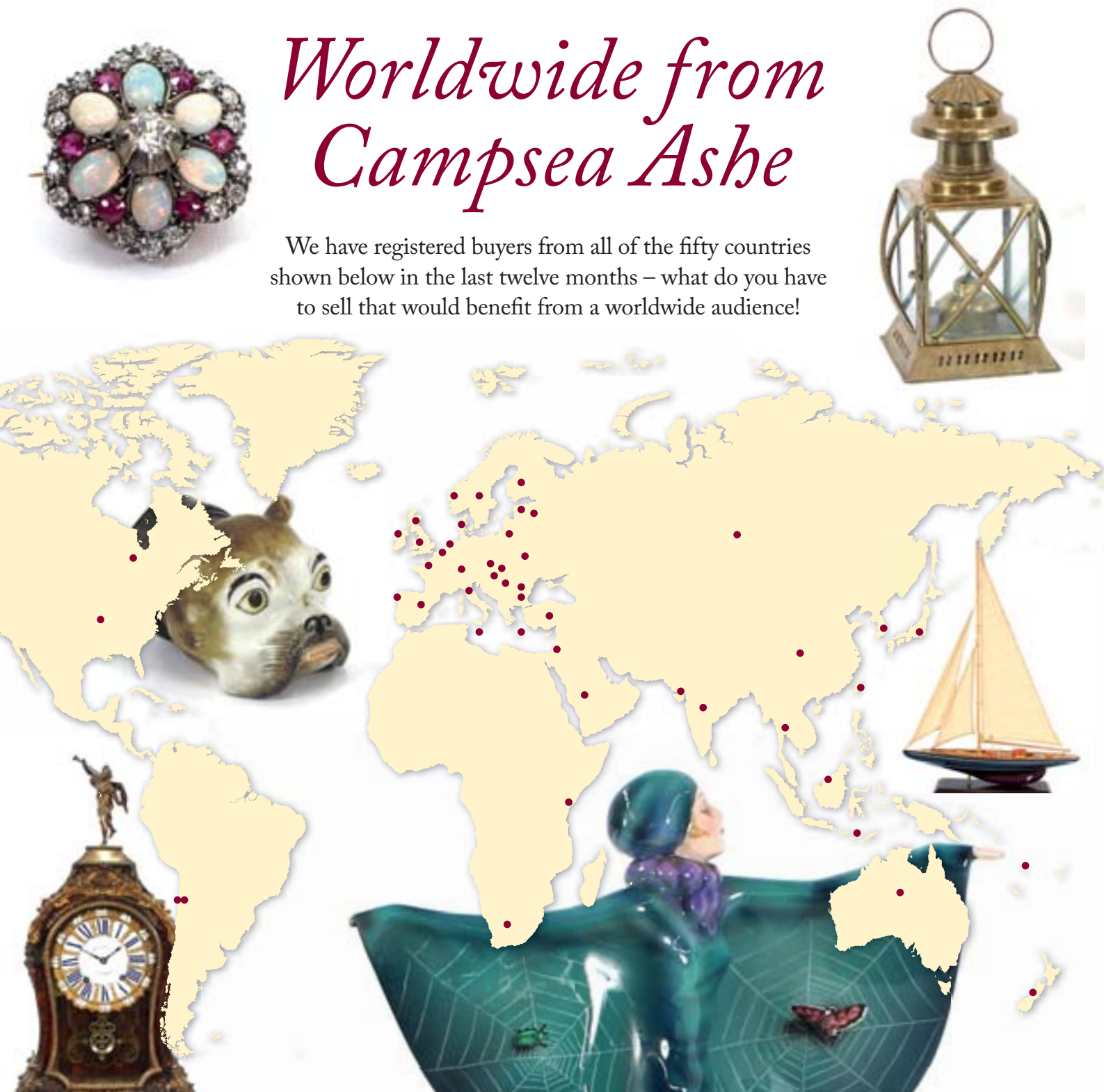
Clarke &
Simpson

Selected Antiques & Fine Art

Wednesday 6th March 2019 at 10 am

Worldwide from Campsea Ashe

We have registered buyers from all of the fifty countries shown below in the last twelve months – what do you have to sell that would benefit from a worldwide audience!



Clarke & Simpson

Auctions

Selected Antiques & Fine Art

Wednesday 6th March 2019
at 10 am

Order of Sale:

Ceramics and Glass	1-52
Silver and Plate	62-131
Jewellery	140-193
Objects and Collectables	194-330
Pictures and Prints	331-425
Rugs and Furniture	426-553

Viewing:

Saturday 2nd March, 9 am - 12 noon
Monday 4th March, 2 pm - 7 pm
Tuesday 5th March, 10 am - 4 pm
Morning of Sale from 8.30 am



@CandSAuctions



CandSAuctions



Campsea Ashe
Nr. Wickham Market
Suffolk IP13 0PS
Tel: (01728) 746323 Fax: (01728) 748173
Email: auctions@clarkeandsimpson.co.uk
www.clarkeandsimpson.co.uk

Online bidding via:

the saleroom
The home of art & antiques auctions

Special Sales Calendar 2019

Clarke &
Simpson

ART DECO, DESIGN & RETRO

8th April, 2019

FINE ART

15th May, 2019

FARM MACHINERY

25th May, 2019

ART DECO, DESIGN & RETRO

17th June, 2019

RURAL BYGONES

13th July, 2019

FINE ART

24th July, 2019

ART DECO, DESIGN & RETRO

2nd September, 2019

RURAL BYGONES

7th September, 2019

FINE ART

9th October, 2019

FARM MACHINERY

26th October

ART DECO, DESIGN & RETRO

4th November, 2019

FINE ART

4th December, 2019



Campsea Ashe
Nr. Wickham Market
Suffolk IP13 0PS
Tel: (01728) 746323 Fax: (01728) 748173
Email: auctions@clarkeandsimpson.co.uk
www.clarkeandsimpson.co.uk

Ceramics and Glass

1

A rare pair of 18th Century Japanese porcelain deep dishes, painted in the Imari palette, Jiajing mark to base, 23cm dia. £80 - 120 †

2

A finely painted Japanese porcelain under-glazed blue and copper red Hirado teapot, six character mark to the under-side of the lid, 9cm high x 11cm dia. overall £60 - 100 †

3

Three 18th Century Worcester blue and white saucers, decorated in the fence pattern and a pair of similar tea bowls, (5) £80 - 120 †

4

A pair of Chinese blue and white porcelain salts, decorated with bats, river scenes and prunus, raised on stem bases, and a ginger jar, 10cm dia. x 7cm high, (3) £60 - 100 †

5

A Royal Worcester bowl, having scenic decoration and crescent mark to base, 15.5cm dia.; and a Worcester mug decorated in the Chinese pattern, 15cm high, AF, (2) £40 - 60 †

6

A 19th Century French pottery and gilt metal desk stand, surmounted by pierced pounce pot and lidded inkwell, with removable reservoirs, shaped dish below, raised on a garland decorated base with outswept claw feet, 21cm wide £50 - 80 †

7

A pair of Chinese yellow glazed and under-glazed blue rectangular dishes, decorated with a figure walking in a river with bird and lantern amongst foliage, four character marks to bases, 21.4cm long £30 - 50 †

8

A Chinese crackle glaze tea canister and cover, painted with flowers, butterflies and moths, 16cm high £30 - 50 †

9

A Chinese milky glass vase, painted with children at play, character mark to base, 19cm high £20 - 30 †

10

A 19th Century Chinese miniature vase; a miniature plate and an archaic Chinese green glazed jar, (3) £30 - 50 †

11

A late 19th Century Paris porcelain circular box, decorated with flowerheads on a blue ground, 5cm dia. £20 - 30 †

12

A late 18th Century Bilston or Battersea enamel double patchbox, painted to the interior and exterior with figures and Georgian courting couples amongst trees, some en grisaille decoration, 8cm £100 - 200 †

13

A pair of late 19th/early 20th Century Meissen porcelain cube salts, decorated in blue, cross swords and incised marks; and a terracotta plaque of a gentleman, (3) £20 - 30 †

14

A pair of late 19th/early 20th Century Kutani vases, of ovoid baluster form, profusely decorated in reds with large flowerheads and butterflies, heightened in gilt, character marks to base, 22cm high £30 - 50 †

15

Two 19th Century brown glass flasks, having loop handles, 20cm high £20 - 40 †

16

A Galle cameo glass vase, with floral decoration, 14cm high £120 - 160 †

17

A Beswick study of a Leghorn cockerel, 26cm high £60 - 80 †

18

An Antique possibly 14th/15th Century Celadon vase, with incised decoration, probably Sawankhalok Kilns, 20cm high, (damage to neck ring), printed collector's label to the base, 16cm high £40 - 60 †

19

A 19th Century pottery and enamel decorated jardinière, having profuse panels of butterflies amongst foliage, raised on three lion mask feet, 22cm dia. x 19cm high £30 - 50 †

20

A 19th Century Chinese blue and white baluster vase and cover, decorated with figures and prunus, six character mark to base, 35cm high £200 - 300 †

21

A late 19th Century porcelain pot and cover, decorated with scene of an inn and windmill in the far ground AF, 12cm high £20 - 40 †

22

A Victorian salt glazed jug, by T & R Boote with Gothic style decoration and pewter lid; and a George Jones & Sons blue and white shallow bowl (2) £20 - 30 †

23

Three 19th Century Chinese famille rose dishes, having carp decoration heightened in gilt, (some damage) £40 - 60 †

24

An Antique dated slip ware baluster vase, with floral and heart decoration, bearing date 1858, 15cm high £20 - 40 †

25

A Persian green decorated glass Mosque lantern, of baluster form, heightened in gilt, 31cm high £70 - 100 †

26

A fine large Italian Majolica baluster vase, signed Ginori to base, flanked by scrolled serpent handles and grotesque masks, decoration of phoenix, figures and flowers, raised on a circular spread pedestal foot, 65cm high £400 - 600 †

27

Eight Antique drinking glasses, and a Bristol blue enamelled bottle vase, (9) £20 - 30 †

28

A 19th Century Staffordshire Partware pot lid, "The Enthusiast"; and five others, in circular mahogany frames £100 - 150 †



Lot 6



Lot 20



Lot 25



Lot 26



Lot 29



Lot 31



Lot 32



Lot 39

29

A 19th Century Chinese vase, decorated with birds amongst foliage on a green ground, (lacking lid), 36cm high £100 - 150 †

30

A large Antique Chinese blue and white porcelain meat plate, with painted decoration of pheasants in a garden, 40cm £20 - 30 †

31

A 19th Century Chinese Canton baluster vase, decorated with figures in interiors and exotic gardens, heightened with gilt, dragons and dogs of fo, 44cm high £80 - 120 †

32

A large and imposing pair of Continental porcelain vases, the panels decorated with figures of soldiers on horseback, foliate gilt heightened decoration on a blue ground, flanked by scroll handles, 80cm high £400 - 600 †

33

A part suite of thumb pressed patterned glassware, various similar glasses etc. £40 - 60 †

34

A pair of 18th Century Delft plates, having foliate decoration, 22.5cm dia.; a pair of 19th Century Chinese famille rose shallow dishes, 23cm dia.; various Oriental teaware etc. (mostly AF), (15) £60 - 100 †

35

A pair of 19th Century Chinese porcelain Rouleau vases, painted with overall iron red decoration with bats, flowers and symbols, 23cm high £120 - 180 †

36

An Antique green glass bottle, with recessed base, 25.5cm dia. £30 - 50 †

37

A Doulton Harvest ware mug, with silver rim £30 - 50 †

38

A Victorian cranberry glass table epergne, 55cm high, (some damage) £80 - 120 †

39

A Mosanic Galle style bulldog, decorated blue heart shaped motifs on a yellow glazed ground with glass eyes, 31cm high £300 - 400 †

40

Two small Plichta pig ornaments, decorated thistles and shamrock £30 - 40 †

41

An old terracotta figure of lady carrying child, with water pot balanced on her head, 30cm high £40 - 60 †

42

A set of eight 19th Century glass tumblers; various etched glass tumblers; Champagne flutes, saucers etc. £40 - 60 †

43

An early 19th Century Spode teapot on stand, having floral decoration heightened in gilt; a Chamberlain's Worcester sucrier and cover, having floral spray decoration; and a Newhall teapot on stand with moulded floral decoration and gilt banding, (3) £40 - 60 †

44

A Chamberlain's Worcester teapot, having blue and gilt decoration; similar cream jug and an early 19th Century white and gilt decorated teapot AF, (3) £40 - 60 †

45

A pair of 19th Century vine etched glass decanters, with faceted stoppers, 26cm high; large pair of Victorian glass decanters, 35cm high; a cut glass and silver mounted decanter; another cut glass decanter; a 19th Century cut glass sweetmeat dish; a pair of spiral twist decorated glasses and a silver decanter label £60 - 80 †

46

A collection of various Victorian coloured glassware, including cranberry and amethyst examples, comprising various jugs, vases, decanters etc. £15 - 30 †

47

A pair of 19th Century Japanese floor vases, decorated with exotic birds, foliage and scenic panels, flared necks with shaped rims, 75cm high, (some damage) £40 - 60 †

48

A Bloor Derby cabinet plate, having painted decoration of foliate sprays on a rich blue ground heightened in gilt; a Chelsea type octagonal serving dish with foliate spray decoration; an Adderley & Co., floral decorated cabinet plate; a Chamberlain's Worcester type cabinet plate; an early 19th Century slops bowl and a modern mug, (6) £40 - 60 †

49

A Minton dessert plate, having floral spray decoration within pierced lattice work border, 24cm dia.; and an early 19th Century shallow dish, possibly Coalport, floral painted central reserve with lobed blue basket work border heightened in gilt, 25cm dia., (2) £40 - 60 †

50

A pair of 19th Century hob-nail cut triple ring neck decanters, 26cm high; a single similar; various cut table glassware etc. £60 - 100 †

51

A Copeland Parian ware figure, depicting Ruth carrying sheaves of corn, 48cm high £100 - 150 †

52

An early 20th Century Satsuma pottery suite of 7 sweetmeat dishes, by Gyokozan, each decorated with a god of happiness, the centre dish with makers mark, the satellite dishes with painted marks, on carved wooden stand N.B. with various paperwork relating to the item from 1953 sent as a gift from Korea with card box applied with paper label £100 - 200 †

53-61

No Lots

Silver and Plate

62

A cased set of six silver tea spoons; a cased set of six silver bean end coffee spoons; a silver pepperette; two small silver patch boxes; a silver mounted toilet jar; plated chamber stick; various other plated items etc. £40 - 60 †

- 63**
A collection of Continental white metal and silver teaspoons, fancy spoons etc., one with Art Nouveau enamel decoration £40 - 60 †
- 64**
An Art Deco silver plated fruit bowl, of swept form, flanked to either end by composite ivory coloured handles, 30cm long £30 - 50 †
- 65**
A set of 12 each silver plated fish knives and forks, with foliate decoration, contained in a walnut, ebonised and boxwood strung case £30 - 40 †
- 66**
A cased pair of Victorian plated fish servers, having foliate decoration and silver ferrules £40 - 60 †
- 67**
A pair of George III silver tablespoons, with bright cut decoration and monogram, *London 1799*; and an Art Deco silver spoon, initialled A and dated 1904-1929, hallmarked *Sheffield 1929*, possibly by Thomas Bradbury & Sons £50 - 60 †
- 68**
An Eastern white metal pepper pot and mustard, 7cm high; and a Chinese white metal cauldron shaped salt with continuous dragon decoration, (3) £20 - 40 †
- 69**
A modern silver photograph frame, with cherub decoration £30 - 50 †
- 70**
Five pieces of silver and Continental white metal dressing tableware, comprising mirror and brushes £30 - 50 †
- 71**
An Edwardian silver sugar bowl, *Chester 1907*; a pair of white metal Art Nouveau decorated sugar nips; a large pair of plated similar; a silver condiment spoon; a silver handled shoe horn; a silver mounted bottle stop; a mother of pearl handled butter knife and a glass lavender water phial with enamel decoration, (7) £20 - 40 †
- 72**
An Art Nouveau decorated silver photograph frame £40 - 60 †
- 73**
A silver photograph frame, with beaded border and oval centre £30 - 40 †
- 74**
A silver easel photograph frame, with shaped border £40 - 60 †
- 75**
A George III silver table salt, maker William Simmons, *London 1785*, and a silver baluster sugar caster, *Chester hallmarks, 17cm high, (2)* £100 - 150 †
- 76**
Three various pairs of Victorian silver and plated sugar tongs £30 - 50 †
- 77**
A plated Keswick School of Arts spill vase, having fish decorated band on a spot hammered finish; and a small continental white metal beaker inscribed, (2) £30 - 50 †
- 78**
A George V silver Christening mug, of plain form *Birmingham 1913*; and a silver six division toast rack *Birmingham 1931, (2)* £40 - 60 †
- 79**
A pair of Antique Sterling silver candlesticks, by Gorham & Co., U.S.A., 24cm high £150 - 200 †
- 80**
An oval George III silver pierced salt, with blue glass liner raised on ball and claw feet; a Georgian silver condiment spoon; a teaspoon; a seal end coffee spoon etc. £40 - 60 †
- 81**
A large Samson Mordan silver Vesta, *London 1894*, having central entwined monogram, 6.5cm x 5cm; and a 19th Century unmarked white metal scent bottle, decorated with Putti at play, originally possibly for a chatelaine, (2) £70 - 100 †
- 82**
A small Georg Jensen round silver brooch, stamped "Sterling Denmark 52" with Jensen box; a large "Danecraft" Sterling silver brooch depicting a flying duck and reeds; and a silver and onyx Sterling brooch, stamped Germany, (3) £80 - 120 †
- 83**
A Victorian silver card case, with overall fern decoration, maker George Unite, *Birmingham 1889* £80 - 120 †
- 84**
A silver and enamel compact, brightly decorated with sprigs of red roses, 7.5cm dia. £70 - 100 †
- 85**
A George III silver sugar castor, of baluster form, maker Robert Hennell, *London 1810, 16cm high* £80 - 120 †
- 86**
A silver sauce boat, *Sheffield 1935* with serrated border raised on three scrolled feet; and a silver cream jug *Birmingham 1904 (2)* £40 - 60 †
- 87**
A pair of Tiffany & Co., New York comports, marked Sterling silver 925-1000, having raised foliate and shell decoration within a beaded border, 31.3ozs. 19.5cm dia. £400 - 600 †
- 88**
A Tiffany & Co. Sterling silver bowl, 20cm dia. x 10cm high £100 - 150 †
- 89**
A silver mustard pot and salt, in the Georgian style, *London 1965*; and a similar design plated salt, (3) £40 - 60 †
- 90**
A silver engine turned decorated cigarette box, wood lined interior, presentation inscription, raised on stepped feet, *Birmingham 1959, 16cm long* £40 - 60 †
- 91**
A George V silver circular bowl, with presentation inscription, flanked by stylised loop handles and raised on a circular spread foot, by Mappin & Webb, *Sheffield 1922* £60 - 80 †
- 92**
A pair of late Victorian glass and silver mounted scent bottles, of waisted form with foliate decoration, *Birmingham 1898, (lacking stoppers)* £40 - 60 †



Lot 79



Lot 83



Lot 84



Lot 87



Lot 99



Lot 100



Lot 103



Lot 104

93

A George III silver oval mustard pot, having Greek key border and foliate decoration, blue glass liner, *London 1804* £50 - 80 †

94

A pair of Edwardian silver circular strainers, with pierced body decoration and handles, *Birmingham 1901* £40 - 60 †

95

A pair of Edwardian pierced silver circular bon bon dishes, initialled, *Birmingham 1908*, 14cm dia. £30 - 40 †

96

A modern silver sauce boat, having reeded border decoration on oval spread foot, *Sheffield 1967* £60 - 80 †

97

A modern silver wine funnel, *London 1967* £60 - 80 †

98

A small pair of late Victorian silver bon bon dishes, having foliate pierced decoration, *London 1893*, 8cm dia. £30 - 50 †

99

A George III silver snuff box, of hinged oval form, the interior presentation inscription "Gift by P. May to Alexander May 1794", makers mark SP, *Birmingham 1792* £100 - 200 †

100

A William IV silver snuff box, the lid cast with scenes of horses and dogs, engine turned decoration and vacant cartouche below, makers mark ES, *Birmingham 1835* £200 - 300 †

101

A Continental silver beaker, with presentation inscription, 14cm high £30 - 50 †

102

A George III silver cream jug, with line body decoration and crest, *London 1801* £30 - 50 †

103

A part suite of Albert pattern Victorian silver flatware, various dates and makers, comprising: a pair of basting spoons, a pair of sauce ladles; six table forks; six tablespoons; six teaspoons; five condiment spoons and a single fish knife, 70ozs. £800 - 1,200 †

104

A part suite of George III Coburg pattern cutlery, by Paul Storr, comprising: six table forks; five tablespoons; six dessert spoons; six silver bladed dinner knives and six steel bladed dinner knives, *London 1816, 1817, 1818*, weighable silver 63ozs. £800 - 1,200 †

105

A George II Old English pattern tablespoon, later initialled, *London 1752*; another *London 1749*, with family crest; a George III example, 1770; another similar and two others, marks indistinct, 12 ozs., (6) £100 - 150 †

106

Six various George II and George III silver Old English pattern tablespoons, some initialled and crested, various dates and makers, 10ozs. £100 - 150 †

107

Four George II silver Old English pattern tablespoons, possibly *London 1746*, 9ozs. £80 - 100 †

108

Three George III lace back Old English pattern tablespoon, initialled BHG, *London 1768*; three others dated *London 1751*; and four Georgian teaspoons, marks indistinct, 12ozs., (10) £100 - 150 †

109

A pair of George II silver dessert spoons, possibly *London 1753*, initialled B; and three others similar, marks indistinct, (5) £40 - 60 †

110

Ten George III silver Old English pattern dessert spoons, various dates and makers; six George III silver teaspoons, *London 1809* and four others, 14ozs. £100 - 150 †

111

A George III silver baluster coffee pot, maker Samuel Hennell, half fluted body design with monogram, wooden handle and ivory lift, *London 1811*, 20cm high overall, 23ozs. gross £300 - 400 †

112

A George III silver teapot, with fluted decoration, raised on ball feet, *London 1813*, 29cm long x 15cm high £200 - 400 †

113

A pair of George II silver tablespoons, with bright cut decoration, *London 1741*; a George II Old English pattern tablespoon, initialled MF, *London 1750*; another 1768; another 1771; and a smaller example, date letter indistinct, 16ozs., (6) £100 - 150 †

114

A set of six George III silver dessert spoons, *London 1813/14* £60 - 80 †

115

A set of six George III Old English pattern silver three pronged forks, with entwined monogram and family crest to the reverse, *London 1802*, 11ozs. £100 - 150 †

116

Five Edwardian silver handled steel bladed dinner knives, of large size, *Sheffield 1908*; six smaller examples and six silver handled Kings pattern knives £80 - 120 †

117

A set of twelve silver handled steel bladed dinner knives £80 - 120 †

118

A George III silver Fiddle pattern serving fork, of large size, *London 1809* £40 - 60 †

119

A George III silver basting spoon, by Hester Bateman, *London 1784* £80 - 120 †

120

A George III silver Onslow pattern soup ladle, *London 1815* £60 - 100 †

121

A George III silver Fiddle pattern soup ladle, *London 1811* £60 - 100 †

122

A pair of George III silver decanter labels, *Edinburgh 1817*, "Port" and "Sherry"; and three Sheffield plated decanter labels £40 - 60 †

123

Ten George III Old English pattern tablespoons, various dates and makers, 20ozs. £200 - 300 †

124
A George I silver Old English pattern rat-tail spoon, *London 1724*; another of the same date; another *London 1725*; and two others, marks rubbed, (5) £100 - 150 †

125
A pair of George III silver sauce ladles, *London 1808* £30 - 50 †

126
Four George III Old English pattern table forks, *London 1815*; and three others, various dates, 13ozs., (7) £100 - 150 †

127
Five George III silver Old English pattern dessert forks, *London 1809*; four George IV examples, *London 1829*; and three others, *London 1823*, 14ozs., (12) £100 - 150 †

128
Six George III silver Old English pattern table forks, various dates, 13ozs. £100 - 150 †

129
A set of six George III Old English pattern teaspoons, *London 1806*; and four others, *London 1803* £60 - 80 †

130
A pair of George II cast silver candlesticks, having floral and shell decoration, with detachable sconces, *London 1753*, 22cm high £1,000 - 1,500 †

131
A 19th Century Continental silver oval box, with gilded divided interior, the hinged lid and body with line and ribbed decoration, 9.5cm £100 - 150 †

132-139
No Lots

Jewellery

140
A 9 carat gold two stone emerald and diamond ring; a silver and enamel ring and a silver and amber ring, (3) £60 - 100 †

141
An 18 carat gold three stone ruby and diamond ring £70 - 100 †

142
An 18 carat gold and diamond set ring £60 - 100 †

143
A silver and moss agate set ring; a silver and Lapis Lazuli ring; and a silver gilt crystal ring, (3) £40 - 60 †

144
A small enamel patch box, the lid decorated with a figure galloping on horseback; a miniature filigree work model of a car and a large agate and silver mounted pendant £60 - 80 †

145
An Antique carved pink jade fish £30 - 50 †

146
An unusual pair of white metal Teddy Bear ear-rings £30 - 60 †

147
A large silver and pink stone set dress ring £25 - 45 †

148
A 9 carat gold three stone emerald and diamond ring £50 - 80 †

149
A 9 carat gold emerald and diamond cluster ring £60 - 80 †

150
A 9 carat gold diamond and Chinese character ring £80 - 120 †

151
A 9 carat gold and amethyst set ring £50 - 80 †

152
A silver and Lapis Lazuli set ring £30 - 50 †

153
A 9 carat gold three stone amethyst set ring £50 - 80 †

154
A silver and Chrysoprase dress ring £30 - 50 †

155
A 15 carat gold four stone amber ring £50 - 80 †

156
A gold solitaire diamond ring £60 - 80 †

157
A silver and green gemstone set ring, of navette shape £30 - 50 †

158
A large 9 stone silver mounted ring £30 - 50 †

159
A gilt metal and jade bracelet £30 - 50 †

160
A pair of 18 carat gold diamond and mother of pearl set dress studs £60 - 80 †

161
A cabochon gemstone and yellow metal tie pin, in original box £30 - 50 †

162
A collection of various enamel buttons, brooches etc. £40 - 60 †

163
A yellow metal ear-ring, marked 750 4gms; two 9ct gold rings 5gms total; a 9ct gold mounted stick pin; two others and a yellow metal brooch etc. £100 - 200 †

164
Two Art Deco style brooches £40 - 60 †

165
A white metal sapphire and diamond ring; a white metal diamond set ring; and a white metal sapphire and diamond combination ring £200 - 300 †

166
A yellow metal ring; and a platinum wedding band 3gms £80 - 120 †

167
Two 22ct gold wedding bands, 14.5gms; an 18ct gold wedding band 6gms; and a 9ct gold wedding band 1.5gms £200 - 300 †

168
A 9 carat gold lady's wrist watch, by Girard Perregaux £60 - 80 †



Lot 118



Lot 119



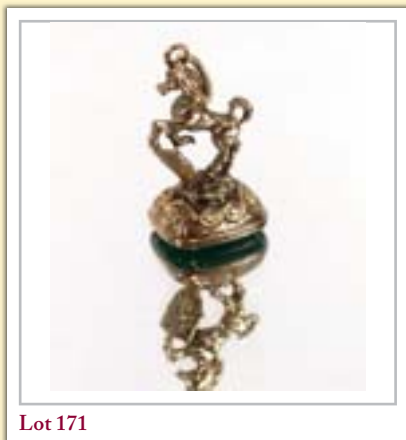
Lot 120



Lot 130



Lot 170



Lot 171



Lot 176



Lot 180

169

A 9 carat gold bar brooch, mounted with seed pearls and central pale green stone; a seed pearl and blue enamel decorated brooch; an enamel and seed pearl double heart shaped bar brooch, AF; a yellow metal brooch with central green hardstone and amethyst coloured surrounds; and another etc. £40 - 60 †

170

A Victorian oval yellow metal locket, decorated with entwined monograms; and another with foliate engraved decoration and vacant cartouche, hung to a fine link chain, (2) £40 - 60 †

171

A 19th Century yellow metal fob seal, in the form of a horse and shield, inset with green hardstone £80 - 120 †

172

A 14ct gold Tourmaline set pendant £50 - 80 †

173

A Victorian yellow metal pierced and scrolled brooch, broad set with three faceted stones £80 - 120 †

174

An 18 carat gold sapphire and diamond dress ring £500 - 800 †

175

A Georgian oval solitaire diamond ring £500 - 800 †

176

A pair of 19th Century Sterling silver lorgnettes, having foliate gilded decoration, 15cm long overall £60 - 100 †

177

A 19th Century yellow metal mourning brooch, with a decorative panel formed from hair, scrolled surround with pendant and clip fixing £80 - 120 †

178

A Chinese hardstone and yellow metal elephant pendant, with white stone eye; a 925 mark butterfly brooch with moonstones; and another pendant with enamel and white stones £30 - 50 †

179

A large 19th Century carved cameo shell of Mary carrying the cross, in a heavy gold frame, stamped 9 carat £180 - 220 †

180

A well carved cameo, of a young maiden wearing diamond necklace, in a 14k white gold frame £180 - 220 †

181

A 19th Century carved cameo shell brooch, depicting classical maiden, contained in an intricate gold frame, stamped 14k £120 - 180 †

182

A 19th Century cameo shell portrait brooch, of the Royal Consort Prince Albert, in 9 carat gold frame £150 - 250 †

183

A 9 carat gold emerald and diamond chip crescent brooch; and a vintage 10k white gold and ruby filigree work brooch, (2) £120 - 180 †

184

An Antique 18 carat gold opal and ruby bug brooch, (cased) £350 - 450 †

185

An Antique gold oval brooch, set with 50 cut diamonds £200 - 400 †

186

An 18ct gold Tourmaline and diamond ring £100 - 150 †

187

A white metal and diamond cluster ring, set with approx. 1 carat round cut diamond within a surround of 8 smaller diamonds, approx. total diamond weight 2 carats, 3gms total weight £2,500 - 3,500 †

188

A vintage Swiss Bucherer mechanical dress watch, with plated bracelet, circa 1970's £20 - 30 †

Objects and Collectables

194

An Antique Chinese jade 14k gold mounted pendant; a jade bangle and an old wooden snuff box, (3) £40 - 60 †

195

A collection of numerous Victorian and later clay pipes £40 - 60 †

196

A collection of various Bavarian pipes, including Meerschaum examples, one in the form of a deer slot, and various others £80 - 120 †

197

Nine various pipes, with carved figurehead bowls, including a French example with cow's head, having bone horns and white metal mounts; another similar stamped RAOB; three carved wooden examples with faces; a lion head example; two Moor's heads etc. £60 - 100 †

198

An unopened Vintage packet of Churchman's Celebrated Counter Shag; a vintage Dawson's lozenge box; various items of smoking paraphernalia to include pipe rests, pipe reems and tampers; and a Johnnie Walker advertising tape measure £30 - 50 †

199

A small collection of various Victorian and later bent stem pipes £40 - 60 †

200

A collection of various pipes, to include: Briar, leather cased, other examples with Meerschaum type bowls, some with amber stems etc. £40 - 60 †

201

An interesting small collection of various cigarette and cheroot holders, including: silver, and yellow metal mounted examples; an Art Deco retractable example; another carved from a deer slot; various decorative carved pipe bowls, opium pipes etc. £60 - 100 †

202

Various small pipes and cigarette holders, including an example in the form of a wheelbarrow, a Meerschaum type decorated with a fox, another with horse and hound, various pipes with carved claw decoration etc. £40 - 60 †

- 203**
A Victorian Church Warden pipe, having white metal mounts and amber stem, contained in a leather case together with a carved ivory cigarette holder £40 - 60 †
- 204**
A long stem clay pipe, decorated with a moor's head; another similar with carved wooden stem; another with bone stem; and two others £40 - 60 †
- 205**
An Antique horn snuff mull, having white metal mounts £40 - 60 †
- 206**
A carved wooden parasol handle, in the form of a dog's head with glass eyes; an Oriental horn handle with embossed white metal mount; a porcelain walking cane handle; an ivory similar; an Antique miniature bayonet; three silver bladed penknives; two others; and a small collection of cigarette lighters etc. £40 - 60 †
- 207**
A small collection of various miniature items, including: a bone whistle, an agate seal, miniature telescope, miniature plumb bob etc. £30 - 40 †
- 208**
An Oriental lacquered glove box and contents of various ivory and bone sewing items, mother of pearl paper knife etc. £60 - 80 †
- 209**
A small white metal and ivory card case £50 - 80 †
- 210**
A 19th Century circular French ivory box, decorated with heart motifs and inscription; a Chinese carved ivory box and cover with relief decoration of foliage and buildings; and a 19th Century white and yellow metal box inset with coins £100 - 200 †
- 211**
A 19th Century mahogany and parquetry decorated apprentice piece chest, of two short and one long drawer, 15cm wide x 10.5cm high x 14cm deep £100 - 150 †
- 212**
An album of postcards, including Titanic, Whitestar and Cunard Liners £100 - 150 †
- 213**
A brass theodolite, with white metal scale, by Street of London £250 - 350 †
- 214**
A cut glass and silver mounted claret jug, by Asprey of Bond Street, with original box and carrying bag £300 - 400 †
- 215**
A small Victorian hand held cylindrical music box, playing two airs, having printed label decoration £30 - 50 †
- 216**
A Victorian mother of pearl card case; and an Oriental tortoiseshell and lacquer similar (2) £60 - 80 †
- 217**
An early 20th Century walking stick, with crook handle and foliate engraved silver mounts, Henry Perkins & Sons, London 1920 £20 - 30 †
- 218**
A walking cane with silver handle £20 - 30 †
- 219**
A blackwood walking cane, with silver handle, London 1923 £20 - 30 †
- 220**
An Oriental hardwood walking cane, with ivory and mother of pearl inlaid handle, decorated with a long tailed monkey, flowers and insects £160 - 180 †
- 221**
Three carved ivory Netsuke £100 - 200 †
- 222**
A 19th Century horn and blonde tortoiseshell snuff box, and two papier-mâché and mother of pearl inlaid snuff boxes, (3) £40 - 60 †
- 223**
A brass cased carriage timepiece, 12cm high £40 - 60 †
- 224**
A large brass cased carriage clock, with alarm movement striking on a bell, 16cm overall £60 - 80 †
- 225**
An Antique dress belt, with embroidered decoration and enamel buckle; and a two piece enamel belt buckle etc. £30 - 50 †
- 226**
An Oriental celadon hardstone necklace, having yellow metal filigree work clasp £50 - 80 †
- 227**
A pair of 19th Century gilt and bronze campana shaped urns, 13cm high £30 - 50 †
- 228**
An Antique pierced and carved ivory model of a Mosque, complete with glass dome and ebonised stand; and another ebonised stand, AF £20 - 30 †
- 229**
A 19th Century fan, having carved, pierced and decorated ivory sticks, painted silk decoration of classical garden scenes with figures, garlands and panels of musical instruments; and a painted bone stick fan, having floral decoration, AF, (2) £100 - 150 †
- 230**
An unusual 19th Century wooden and white metal mounted musical glove box, having stylised foliate corners, central cartouche and swing handle, with blue buttoned silk lined interior, raised on ball feet, 30cm long, the movement playing two airs £50 - 80 †
- 231**
A Russian silver and enamel spoon, stamped to bowl, 14cm long £100 - 150 †
- 232**
A 19th Century oval miniature portrait, of an elderly lady in black dress and white lace cap, contained in a yellow metal frame £80 - 120 †
- 233**
A 19th Century miniature portrait, of a gentleman in black coat and hat, contained in an ebonised and brass mounted frame with coronet motif, label verso relating to The Matthews family £60 - 100 †
- 234**
World War I, two medals to Pte. W.E. Milton of the Suffolk regiment together with a German WW2 interesting identity book and medal £60 - 80 †



Lot 181



Lot 186



Lot 213



Lot 231



Lot 242



Lot 246



Lot 256



Lot 261

235

Two World War I medals, for 3919 Pte. E. Parnell, Essex Regiment and a King George V and Queen Mary Silver Jubilee medal £60 - 80 †

236

Two World War I medals, to 3551 Pte. F.E. Smith, R.A., M.C., and also Suffolk Regiment N.B. Transferred as a stretcher bearer medical orderly Invasion of Palestine £50 - 80 †

237

A very interesting and well written diary of the Bungay Horse racing course 1848, point-to-point and relative documents etc. £250 - 350 †

238

An Indian panel, inlaid and decorated with a scene of a polo match, 11cm x 20cm £20 - 40 †

239

A Chinese treen bamboo and marquetry inlaid cylindrical insect box, 18cm high; and another similar inset with ancient Chinese coin, 10cm high, (2) £40 - 60 †

240

A brass and turquoise chip decorated toothpick box; a similar circular lidded box and perfume bottle; and a modern shoe horn, surmounted by an owl with glass eyes and a brass covered dish, (5) £30 - 50 †

241

A Great War related wall mirror, in the form of a Lifebuoy ring, inscribed and painted for HMS Tiger with naval and union flags within a roped surround, 26cm £40 - 60 †

242

A pair of 19th Century Pietra Dura panels, depicting buildings amongst village scenes and trees, picked out in a variety of specimen marbles on slate backing, oval, 8.5cm x 10.5cm in extremes £60 - 100 †

243

A 19th Century Italian Pietra Dura panel, depicting a figure and house before a landscape and trees, picked out with various specimen marbles on slate backing and border, 9cm x 12.5cm £40 - 60 †

244

A late 19th/early 20th Century Islamic brass wall mirror, with floral and arabesque scroll decoration, gilt mark to verso in Arabic script, 26cm x 17cm £30 - 50 †

245

A pair of Japanese cloisonne pheasant ornaments, with elongated tails, decorated variety of colours, 20cm £40 - 60 †

246

A 19th Century silvered model of a bull dog, 11cm £30 - 50 †

247

A cast iron moneybox, amusingly entitled "Professor Pug Frogs Amazing Bicycle Feat", painted and decorated, 28cm long £30 - 50 †

248

A late 19th/early 20th Century Arts & Crafts copper oval serving tray, decorated with bark ornament, 42cm long £20 - 30 †

249

A Victorian needlework picture, depicting various leaves and flowers, circular, 25cm dia. £30 - 50 †

250

Two small cloisonne boxes and covers, in the form of exotic birds, and another similar in the form of a duck £30 - 50 †

251

A 20th Century Black Forest type pin cushion, in the form of an eagle owl with glass eyes, circular pad for pins, standing on a book plinth, 10cm high £30 - 50 †

252

A Russian black lacquer painted and decorated patchbox, decorated figures and Troika, signed and dated, 7.5cm £20 - 30 †

253

A Ruskin pottery high fired tablet, of ovoid shape, glazed in swirling greens and blues, impressed marks "Ruskin England", 6cm x 13cm £30 - 50 †

254

An early 20th Century ivory and horn letter opener, in the form of a scimitar, 27cm long £20 - 30 †

255

A 19th Century treen Welsh love spoon, having hearts, chain and padlock decoration, 24cm long £20 - 30 †

256

A Victorian silver and tortoiseshell desk letter clip, having sprung wishbone holder, on heart shaped base, decorated with pierced ribbon tied designs, by Henry Atkins, London 1901 £70 - 100 †

257

Three Russian white metal and enamel Vodka shot beakers, with gilded interiors, marks to base £20 - 30 †

258

A pair of carved coconut boxes, with removable lids and nut finials, 10cm high £20 - 40 †

259

A Victorian pewter pepper, in the form of an owl with glass eyes, 8cm high £20 - 30 †

260

A 20th Century tortoiseshell cased magnifying loupe £30 - 50 †

261

A Victorian leather and brass bound photograph album, the cover inset with coloured miniatures of architectural scenes, possibly around Dublin, 14cm x 12cm £30 - 50 †

262

A Victorian silver plated owl shaped pepper, with amber glass eyes and chase work feathers, 7.5cm high £70 - 100 †

263

A Chinese cloisonne censer/box, with removable cover, in the form of a recumbent stylised exotic Goose, having gilt beak, edges and feet, 13cm high £30 - 50 †

264

An Arts & Crafts design oval spot hammered tray, decorated with white metal stylised bosses, 46cm £20 - 30 †

265

A circular copper tray, having continuous floral border and central crest, 30cm dia. £10 - 20 †

266

A cylindrical lacquered box and cover, the lid painted with a scene of fighting figures; a circular wooden box and cover with floral decoration; a plated oblong box and a fabric and pewter covered similar, (4) £20 - 30 †

267

An Oriental silkwork panel, depicting peacocks and another depicting exotic pheasants, 51cm x 51cm £80 - 120 †

268

A Japanese Happi coat £40 - 60 †

269

Two Oriental silkwork scrolls £100 - 200 †

270

Four Florentine wooden panels, decorated with medieval scenes, heightened in gilt £20 - 30 †

271

An Oriental design blue and white fabric panel, contained in a pine and gilt metal mounted frame £10 - 20 †

272

A late 19th Century copper Arts & Crafts barometer, having a white enamel scale plate within a Celtic roundel beaten surround, possibly Scottish, 30cm dia. £40 - 60 †

273

A brass and Tolware style six branch chandelier, of Empire design £100 - 150 †

274

A 19th Century French brass and porcelain cased mantel clock, surmounted by floral and fruit finials above Corinthian columns and panels decorated with figures, Arabic numeral dial, with 8 day movement striking on a gong, 34cm high £500 - 800 †

275

A cased plated flute, by Boosey & Hawkes £130 - 160 †

276

A Jacobs biscuit tin, with flower and bird decoration, 17cm high £30 - 50 †

277

A 19th Century French brass cased four glass mantel clock, with 8 day movement striking on a bell, Mercury adjustable pendulum, by A.D. Mougin, complete with keys, 23.5cm high £150 - 250 †

278

Fox's leather bound book of Martyrs, with brass binding and clasps, AF £20 - 40 †

279

A Victorian family Bible £40 - 60 †

280

Emile Louis Picault 1833 - 1915, metalware sculpture work produced for The Art Union of London, First Prize 1903, signed to base with details verso on a marble plinth, 35cm high £50 - 80 †

281

A bronze figure of a seated musician, on rouge marble plinth base, signed Stella, 30cm high overall £100 - 150 †

282

A 19th Century gilded and porcelain panel French mantel clock, surmounted by an urn finial above Roman numeral foliate dial and romantic panel, 8 day movement striking on a bell, 43cm high £200 - 300 †

283

A Victorian brass column oil lamp, having clear glass reservoir and opaque shade, 80cm high £80 - 120 †

284

An Antique Chinese Cloisonné baluster vase, 10cm high; and a pair of craved hard wood figures of immortals 21cm high £20 - 40 †

285

A 20th Century novelty natural form coconut ice bucket, having plated handle, 21cm high £30 - 50 †

286

An Antique painted bronze model of a well bucket, 16cm high, 13cm dia. £30 - 50 †

287

An Antique carved fruitwood wall bracket, in the form of a monarch's head, 34cm £200 - 300 †

288

A Victorian mahogany cased drop dial wall clock, having circular painted Roman numeral dial and visual pendulum, 84cm £100 - 150 †

289

An Oriental bronze baluster vase, with raised decoration of birds and flowerheads on a circular spread foot, with seal signature, 23cm high £30 - 50 †

290

An Eastern brass vase, with engraved decoration, the base inscribed "Kinco"; an Eastern cylindrical brass box and cover having embossed foliate decoration of figures and flowers; and a small rectangular brass and enamel hinged box, (3) £20 - 30 †

291

An Oriental bronzed figure, depicting a young seated Buddha, 25cm high £30 - 50 †

292

A brass column table oil lamp, having pink opaque glass foliate reservoir and tinted Vaseline glass shade, 72cm high overall £150 - 250 †

293

A 19th Century brass clock garniture, decorated in relief with panels of foliage and figures, the clock with 8 day movement striking on a gong £150 - 250 †

294

A 19th Century carved wooden study of an infant, 60cm high, (some damage) £150 - 250 †

295

A Victorian brass preserve pan, flanked by turned handles, 36cm dia. £20 - 40 †

296

A good quality unusual gilt bronze book cover, having pierced foliate decoration and heraldic crests, 38cm x 24cm £100 - 200 †

297

A Scandinavian pine and painted decorated miniature Marriage Box, the hinged lid with simulated dentil edge, flowerheads and leaves, dated 1938, on a shaped plinth £40 - 60 †



Lot 274



Lot 277



Lot 282



Lot 293



Lot 302



Lot 307



Lot 324



Lot 325

298

A pair of Georgian carved gilt wood eagle pediments, with outswept wings perched on branches, 35cm in extremes £40 - 60 †

299

A Victorian golden oak Tantalus, having plated mounts and three square hob-nail cut decanters, 37.5cm wide x 32cm high £60 - 80 †

300

A Victorian rosewood vanity box, the hinged lid revealing a fitted interior with plated lidded jars and containers, removable tray and sprung jewellery drawer to side, 31cm £60 - 100 †

301

A Victorian black lacquered and mother of pearl inlaid box, with contents of numerous ivory and bone counters £40 - 60 †

302

A Victorian oak Tantalus, having brass mounts fitted with three square cut bottles, 36cm wide, 32cm high £100 - 150 †

303

A decorative alabaster jardinière stand, having turned and fluted column on octagonal base, 103cm high £60 - 80 †

304

A Victorian cast iron heater, having pierced decoration between carrying handles, 79cm high £40 - 60 †

305

A Victorian cast iron and enamel heater, having foliate pierced decoration raised on scroll feet, 100cm high £40 - 60 †

306

A late Victorian dolls half tester bed, 43cm long x 42cm high £40 - 60 †

307

A French kingwood and gilt metal mounted mantel clock, surmounted by pierced foliate finial above acanthus scrolled and cherub mask, the circular blue enamelled Roman numeral dial with 8 day movement striking on a bell, raised on foliate scroll feet, 59cm high £400 - 600 †

308

A Victorian needlepoint and beadwork embroidery, depicting flowers, 80cm x 64cm £40 - 60 †

309

A Victorian needlepoint and painted embroidery, depicting flowers contained in birds eye maple frame, 60cm x 45cm £40 - 60 †

310

A miniature oak lectern; and two miniature bibles £40 - 60 †

311

A Japanese cloisonne vase and cover, with gold coloured ground, bird, butterfly and floral decoration, 16cm high. Possibly by Namikawa Yasuyuki, (slight damage to foot) £100 - 150 †

312

A Victorian bronze doorstop, in the form of Mr Punch and Toby, 32cm high £60 - 100 †

313

Two vintage African carved wooden tribal boxes £20 - 30 †

314

An Antique painted rustic wooden panel, decorated with medieval figures, 55cm x 113cm overall £150 - 200 †

315

A Chinese cast iron teapot; and a bronze censer, raised on three supports, AF, (2) £100 - 150 †

316

A Toleware gilded tea caddy, in the form of a pear; another in the form of an apple, both raised on a carved stand £30 - 50 †

317

A finely woven 19th Century woolwork picture, depicting two sailing ships in full sail, contained in a glazed maple frame, 51cm x 63cm £100 - 200 †

318

A 16th/17th Century Colonial Dutch turned brass pricket candlestick, with large circular central drip pan, 26cm high £150 - 250 †

319

A carved Antique stone roundel, depicting a holy youth holding an anchor, surrounded by floral scroll, 30cm dia. £30 - 50 †

320

A finely carved and well patinated wooden sceptre, with carved birds, roundels and snake, possibly Northern European, 87cm long £150 - 250 †

321

Two 19th Century South Pacific Island hand clubs, one of sword shape, the other of torpedo shape with incised and lime filled decoration, (2) £120 - 180 †

322

A finely modelled Antique ship in a bottle, depicting a three mast Man-O-War, 31cm £40 - 60 †

323

A 19th Century wooden nautical themed boat shaped drinks tray, fitted brass anchor handles and central white metal motif, 57cm £100 - 150 †

324

A pair of Sheraton period mahogany, rosewood cross-banded and satinwood strung knife boxes, of arc en arquette form, 37cm high x 22cm wide £400 - 600 †

325

A large 19th Century mahogany cased mantel clock, surmounted by a coiled serpent handle, the brass and silvered dial with foliate scrolls, 8 day double fusee movement striking on a gong, the case enclosed by pierced brass grills and flanked by foliate mask ring drop handles, the base with brass sphinx terminating in stepped bracket feet, 66cm high, 37cm wide *See back cover illustration.* £800 - 1,200 †

326

A Regency silk work picture, depicting biblical scene, framed as an oval in black and gilt mount, 39cm x 44cm £40 - 60 †

327

An early 19th Century sampler, decorated verse, trees and buildings, worked by Mary Holmes aged 12 years, 1827, 43cm x 40cm £60 - 80 †

328

A leather cased pocket barometer, by J.H. Steward of London £60 - 100 †

329
A small 19th Century brass cased pocket
barometer £40 - 60 †

330
A Victorian golden oak desk stand, having plated
mounts, block glass inkwells and looped carrying
handle, 32cm wide £40 - 60 †

Pictures and Prints

331
John Bates Noel, (1870-1927), "On the Conway",
signed watercolour, 26cm x 37cm, unframed
£40 - 60 †

332
Henry Bright, (1810-1873), study of a figure in
rural landscape, pencil signed and dated 1875,
27cm x 36.5cm £100 - 200 †

333
Attributed to John Alfred Wheeler Snr., study of
Ossian with jockey up and owner in landscape,
unsigned watercolour, 28cm x 36cm.
Provenance: Duke and Duchess of Hamilton by
descent to the current vendor
N.B. see lot 55 The Racing Sale, Sotheby's 13th
November, 1996 for similar study, oil on canvas
£600 - 800 †

333A
19th Century school, figure in a wintry landscape,
indistinctly signed oil on canvas, 42cm x 58cm
£100 - 200 †

334
Pencil signed artists proof of the Laughing
Cavalier, 27.5cm x 19cm overall, contained in a
black and gilt frame £40 - 60 †

335
After J. Ward, coloured print depicting "Vivid and
Waterwitch off Orford Ness in a breeze",
contained in a maple frame £60 - 80 †

336
Nicholas Baur, Marine study with sailing vessels
anchored near a beach, figures unloading boats,
unsigned oil on canvas, 63cm x 76cm £400 - 600 †

337
A Japanese coloured wood cut, in three sections
depicting Geisha girls in exotic garden terrace,
36cm x 75cm, inscription verso relating to
"Toyokuni" £100 - 150 †

338
John Bates Noel, 1870 -1927, landscape study,
signed watercolour, 24.5cm x 34.5cm. Label verso,
Gray & Sons, Carlisle £20 - 40 †

339
Frank Paton, set of four hand coloured prints,
each with a vignette decorated surround depicting
many different recreational activities, each signed
in pencil, image 10cm x 15cm £40 - 60 †

340
After Myles Birkett Foster, study of a woman
drawing water from the well with attendant
kittens, monogrammed watercolour, 13.5cm x
9cm, contained in a decorative gilt frame
£60 - 100 †

341
A folio of unframed Antique engravings,
including "Temple Du Jerusalem", "Temple de
Salomon" and others, with elevations and plans,
and French and Dutch ceremonial engravings etc.
£40 - 60 †

342
19th Century engraving of the arched rock on the
coast of New Zealand, with vignettes of a New
Zealand chief and warrior, 29.5cm x 20cm
£20 - 40 †

343
18th Century Dutch school, still life study of
flowers on a ledge, unsigned oil on canvas, 46cm x
35cm, in a simulated walnut and ebonised cushion
frame £80 - 120 †

344
Carl Becker, a large portrait study of Canon
Miller, signed oil on canvas, 140cm x 110cm
£150 - 250 †

345
Arnold Bird, 19th Century landscape study with
figures in the fore ground, boats on a loch and
castle in the far ground, signed oil on canvas, 54cm
x 72cm, contained in a decorative frame
£100 - 150 †

346
Naive school, study of a large brown coloured cow
in landscape, unsigned oil on board, 40cm x 50cm
£40 - 60 †

347
Manner of Warren Kimble, "Two Roosters", naive
North American folk Art composition, oil on
wooden boards, 30cm x 61cm £40 - 60 †

348
19th Century school, study of figures and cattle in
a rural landscape, unsigned oil on canvas, 46cm x
76cm £200 - 300 †

349
John Sell Cotman, study of Castle Rising,
Norfolk, etching £20 - 40 †

350
Peter Campbell, study of an owl, pencil signed
woodcut £20 - 40 †

351
Elsie V. Cole, (1885-1968), St. Peter Mancroft
church, Norwich, pencil signed etching £20 - 40 †

352
Michael Burghers, (1647-1727), Pembroke
College, Oxford, engraving, 46cm x 57cm
£20 - 40 †

353
Malcolm Osborne, R.A., The Old Bridge at
Wurzburg, pencil signed etching, 15.5cm x
27.5cm £60 - 80 †

354
Alfred Blundell, study of water meadows, signed
oil on board, 50cm x 60cm £30 - 50 †

355
William Henry Crome, (1806-1873), "Near
Woodbridge, Suffolk", signed oil on panel, 58cm x
73cm £400 - 600 †

356
19th Century Dutch school, study of fishing
vessels in heavy seas alongside a quay, indistinctly
signed watercolour, 16cm x 21cm £120 - 160 †





Lot 357



Lot 366



Lot 369



Lot 370

357
T Crawshaw circa 1860's, landscape study depicting figures on a riverside path, signed oil on board, 36cm dia. in decorative gilt foliate frame
£200 - 300 †

358
James Govier, A.R.C.A., (1910-1974), The Village Shop, ink and watercolour study, 40cm x 25cm
£60 - 80 †

359
James Govier, A.R.C.A., (1910-1974), The letter, oil on board, (exhibited Christchurch Mansion), 33.1cm x 25.5cm, information and labels verso
£50 - 80 †

360
John O'Connor, A.R.C.A., woodcut study of a vintage aeroplane and parachute
£30 - 40 †

361
Eileen Soper, study of Muntjac deer, 12cm x 20cm
£40 - 60 †

362
Edwardian portrait study of a young lady, unsigned oil on canvas, 40cm x 30cm
£30 - 50 †

363
James Govier, A.R.C.A., (1910-1974), study of cows amongst trees, oil on card, 30cm x 40cm
£40 - 60 †

364
20th Century school, study of bridge and church at Ufford, oil on canvas, initialled CW, 30cm x 35cm
£40 - 50 †

365
George Rushton, (1869-1948), study of a farm and river view with another view verso, signed watercolour, 25cm x 36cm
£50 - 80 †

366
Felicien Rops, (Belgian 1833-1898), portrait study of a lady in lace dress, 59cm x 48cm
£400 - 600 †

367
A Chinese ink sketch of a horse, signed and inscribed "Kart", 60cm x 27cm
£40 - 60 †

368
W. Appleton, (British 19th Century), watercolour study of a Cornish Coastal scene with fishing vessels; and another of a river scene, signed watercolours, a pair, 13cm x 35cm
£40 - 60 †

369
19th Century school, oval study of figures in front of a watermill, rural landscape in the background, unsigned oil on board, 18.5cm x 27cm
£40 - 60 †

370
Anna Airy, pencil signed etching, "Apple Blossom", circa 1915, with dedication inscription, 14cm x 14cm
£200 - 300 †

371
Leonard Russell Squirrell, pencil signed aquatint of a Continental town dated 1931, 25cm x 34cm
£100 - 200 †

372
Leonard Russell Squirrell, pencil signed aquatint "A Shadowed Corner in Marseilles", 28cm x 35cm
£100 - 200 †

373
Leonard Russell Squirrell, aquatint depicting figure and cattle in a gorge with windmill in the background, 23cm x 31cm
£100 - 200 †

374
After Sutherland, a set of four coloured shooting prints; and a pencil signed limited edition etching of a college, (5)
£40 - 60 †

375
Follower of John Constable, a 19th Century study of a country scene with peasant crossing a rickety bridge over a stream, unsigned oil on canvas, 31cm x 37cm
£80 - 120 †

376
Frank Geere, (1931-1991), study of the head of Desert Orchid, signed oil on canvas, 28cm x 38cm
£100 - 150 †

377
Johan Acton Butt, (died 1891), a river landscape with a silver birch tree in the fore ground, signed oil on canvas, inscribed verso, 45cm x 35cm
£60 - 100 †

378
19th Century Continental school, expansive landscape with ruins, clock tower and figures in the fore ground, mountains in the back ground, unsigned oil on canvas, 63cm x 74cm
£400 - 600 †

379
Chinese school 19th Century, a three masted Brigantine in heavy seas, oil on canvas, 63cm x 85cm
£100 - 150 †

380
Tom Lewsey act. 1940-1967, "The Ages of Steam and Sail", oil on canvas laid on board, signed, 36cm x 46cm
£80 - 120 †

381
Alfred Saunders, study of a figure forking hay, oil on board, 22cm x 29cm
£80 - 120 †

382
Alfred W Saunders, "Broadland Dredger", signed oil on board, 20cm x 27cm
£80 - 120 †

383
Alfred William Saunders, "Broadlands at Sunset", signed oil on board, 20cm x 27cm
£80 - 120 †

384
English school, circa 1900, study of a North African beech scene with local figures, unsigned watercolour, 30cm x 47cm
£60 - 100 †

385
Charles Morris Senior, (1828-1870), country scene with cottage by a stream, signed oil on canvas, 34cm x 44cm
£100 - 150 †

386
J. Whitmore, study of a short horn bull in rural landscape, signed oil on canvas laid on board, 24cm x 35cm
£200 - 300 †

387
English school early 20th Century, study of a prize bull standing in a landscape, oil on canvas laid on board, 42cm x 55cm, contained in a maple frame
£150 - 250 †

388
A large quantity of mainly 19th Century unframed oils, watercolours, drawings and prints
£40 - 60 †

389
19th Century Dutch school, moonlit river scene, landscape with a windmill, unsigned oil on panel, unframed, 11cm x 19cm
£40 - 60 †

Lots marked ✓ please refer to Droit de Suite royalty charges in Terms and Conditions
† Each lot is subject to a Buyer's Premium of 18% + VAT (21.6%)

390

Van Veen, study of a man with horse and cart on the beach, boats and town in the far ground, signed oil on canvas, 25cm x 34.5cm £200 - 300 †

391

20th Century school, study of a figure fishing with meadows and church in the far ground, unsigned watercolour, 23cm x 30cm £30 - 50 †

392

B. Martin, study of a Cornish fishing village, signed watercolour, 25cm x 35cm; and **R. Walker**, study of a sandy beach, fishing vessel and mountains in the far ground, 21cm x 31cm, in identical gilt frames (2) £100 - 150 †

393

Henrietta Broadley, study of Edinburgh Castle with busy street scene below, circa 1852, 30cm x 23cm contained in a broad rosewood frame £100 - 150 †

394

After Frederick Russell, coloured engraving "The Ancient House Ipswich" £20 - 30 †

395

Shirley Carnt, "Late Evening Wiverton", signed oil on board, 29cm x 39cm £100 - 150 †

396

Arthur Perigal RSA, "Loch Linnhe at Ballachulish", watercolour, 28cm x 43cm £80 - 120 †

397

Arthur Perigal, study of Glen Nevis, signed watercolour, 31cm x 51cm £60 - 80 †

398

19th Century school, seascape with fishing boats and steam tug in heavy swell, lighthouse and town in the far ground, indistinctly signed oil on canvas, 50cm x 75cm £200 - 400 †

399

Joseph Denovan Adams, (1842-1896), Study of highland calf and chicken in a barn, signed oil on board, 41cm x 31cm *See front cover illustration* £500 - 800 †

400

Brian C Day, study of pheasants in a snowy landscape 26.5cm x 36.5cm; another by the same hand, study of pheasants in an autumn wood 27cm x 37cm; and another similar by the same hand, 30cm x 23cm, (3) £40 - 60 †

401

J. Kinnear, (1846-1917), "An Evening on the Forth", signed watercolour, 49cm x 75cm £300 - 500 †

402

J. J., study of pheasants amongst foliage, signed watercolour, 46cm x 112cm £40 - 60 †

403

19th Century English school, study of an expansive rural landscape with figure and chickens walking along a country path outside of a cottage, indistinctly signed bottom right dated 1866, oil on canvas, 50cm x 75cm £300 - 400 †

404

James Paterson, study of buildings with tall church spire in the middle ground; signed watercolour dated 1927, 43cm x 35cm £20 - 40 †

405

H Earp, study of a man with red cap and young girl holding lantern, pencil signed drawing 39cm x 30cm £40 - 60 †

406

19th Century school, marine study of sailing vessels in heavy sea, jetty and figures in the far ground, 25cm x 37cm £40 - 60 †

407

L R Ward, a study of a fisherman on a rural river, signed oil on board dated 1872, 30cm x 50cm £80 - 120 †

408

B Russell, still life study depicting trout and creel, signed oil on canvas, 40cm x 60cm £40 - 60 †

409

Zsobò, still life study a pair depicting fruit on a ledge, signed oils on board, 12cm x 17cm, contained in faux walnut frames £30 - 50 †

410

19th Century school, portrait study figure of a young woman with her hand raised, unsigned oil on canvas, 49cm x 39cm £40 - 50 †

411

John Leach, hand coloured humorous hunting caricature "A Capital Finish", 42.5cm x 62.5cm; and another "Gone Away" (2) £100 - 150 †

412

W Collingwood Smith, "In The Highlands", signed watercolour, 34cm x 50cm £60 - 100 †

413

J G Philip, "The Avon Above Bristol" watercolour dated 1846, 33cm x 50cm £40 - 60 †

414

After Edward Robert Smythe, study of figures outside a rural cottage, unsigned oil on canvas, 91cm x 70cm £300 - 500 †

415

Robert Gallon, (1845-1925), "On the Stour, Canterbury", signed oil on canvas, 27cm x 16.5cm £600 - 800 †

416

Sam Bough, 19th Century Scottish, study of fishing vessels on a loch with crofters cottages nearby, signed watercolour, dated 1858, 14cm x 22cm £200 - 300 †

417

Sam Bough, 19th Century Scottish, study of a village scene with figures and cottages, signed watercolour, 14cm x 22cm £200 - 300 †

418

Belle, Newlyn school style study of fisher folk on a beach, signed oil on board, 40cm x 29cm, contained in a decorative gilt frame £40 - 60 †

419

Hercules Brabazon Brabazon, study of a gateway to a souk, near Manfalut, North Africa, initialled watercolour, 18.5cm x 23.5cm £50 - 100 †

420

Early 20th Century Chinese school, study of a bird and peonies, signed watercolour on silk, 40cm x 28cm £50 - 80 †

421

J J Bell, study of an Edinburgh street scene, signed oil on board, 11cm x 11cm £100 - 150 †



Lot 378



Lot 395



Lot 398



Lot 399



Lot 430



Lot 433



Lot 444



Lot 449

422

Leopold Rivers, study of a Harvesting scene, signed watercolour, 25cm x 37cm, label verso, originally purchased at the auction of the contents of Haddiscoe Hall £60 - 80 †

423

Elliott, study of rough seas on rocky coastline at Newquay, signed watercolour, 18cm x 38cm £60 - 80 †

424

Sir Henry Edward Bunbury, Continental study of figures on a mountain path over-looking a river and town, watercolour, information verso, 17cm x 27cm £100 - 150 †

425

C.J. Keats, "On the Avon", a pair of signed watercolours, 30cm x 50cm £200 - 300 †

Rugs and Furniture

426

An Afghan red pattern rug, 145cm x 92cm £60 - 80 †

427

An Afghan red pattern rug, 181cm x 128cm £60 - 80 †

428

A large Turkish rug, of traditional design with stylised motifs on a beige and pink ground £100 - 150 †

429

An Antique circular mahogany bevelled edge wall mirror £20 - 30 †

430

A Tees & Co. of Montreal walnut revolving bookcase, of large proportions, 60cm wide x 141cm high £250 - 350 †

431

A Chinese hardwood and ivory inlaid two tier occasional table, decorated figures, buildings and foliage, raised on square tapering supports, 66cm wide £40 - 60 †

432

A 19th Century mahogany fold-over tea table, the rectangular top raised on square tapering supports, 91cm wide £40 - 60 †

433

A Georgian oak and mahogany low boy, fitted three short drawers, raised on square tapering supports and spade feet, 77cm wide £100 - 150 †

434

An unusual Georgian oak clock dresser, having shelved and boarded back, three drawers below, raised on a shaped apron and cabriole supports, the clock by Edward Wickstead of Wolverhampton, having brass spandrel dial, eight day movement striking on a bell, trunk door below, 190cm wide x 230cm high £600 - 800 †

435

An Antique elm floor standing corner cupboard, enclosed by moulded panelled doors, the side panels with pierced and roundel decoration, raised on a plinth base, 210cm high x 115cm wide overall £80 - 120 †

436

An 18th Century oak two door hanging cupboard, enclosed by fielded panels, two drawers to the base, 136cm wide x 283cm high £300 - 400 †

437

A 19th Century mahogany Chippendale style wall mirror, the fret carved pediment with gilt Ho Ho bird decoration, 61cm x 43cm in extremes £40 - 60 †

438

An Edwardian gilt wood three fold boudoir screen, having ribbon tied decoration, glass panels above silk stripe panels £40 - 60 †

439

An 18th Century style oyster veneered cushion framed wall mirror, 58cm x 53cm £200 - 400 †

440

A 19th Century mahogany bookcase, the upper section enclosed by a pair of glazed arched panelled doors with cupboards below raised on ogee bracket feet, 113cm wide x 208cm high £200 - 300 †

441

An 18th Century walnut and herringbone banded chest on stand, fitted long frieze drawer above three short and three deep drawers with an arrangement of drawers to the base, 107cm wide x 139cm high £300 - 400 †

442

A George III mahogany tall boy, the upper section fitted two short and three long graduated drawers with three long drawers to the base, raised on a shaped apron and bracket supports, 112cm wide x 195cm high £300 - 400 †

443

An oak long case clock, the arched hood enclosing a painted dial, inscribed "Carley, Thetford", 8 day movement, trunk panel door below, raised on a box base, 221cm high £200 - 300 †

444

An Antique brass and leather club fender, 132cm wide £150 - 250 †

445

A 19th Century mahogany and glazed hanging corner display cabinet £30 - 50 †

446

George Johnson of Grantham, 30 hour long case clock, the painted dial with floral and bird decoration, the oak and mahogany cross-banded case surmounted by a scroll arched pediment with central orb, 210cm high £150 - 250 †

447

A walnut and cross banded demi-lune shaped hall table, fitted two short drawers and raised on turned tapering fluted supports, 110cm wide £250 - 350 †

448

An 18th Century American domed trunk, iron bound, flanked by carrying handles, 116cm wide £200 - 300 †

449

A mahogany long case clock, by Thompson of Woodbridge, the painted dial surmounted by a rocking ship mechanism, 8 day movement striking on a bell, full length trunk panel door raised on a box base, the hood flanked by Corinthian columns and brass capitals, arched pediment surmounted by turned finials, 210cm high, (Philip Thompson, 1807-1830, Thororoughfare, Woodbridge)

£400 - 600 †

450

An oak three tier Globe Wernicke style sectional bookcase, 88cm wide x 118cm high; another similar; and a matching corner section bookcase, 76cm wide overall x 118cm high

£200 - 300 †

451

An 18th Century carved oak bible box, having leaf decorated frieze, 59cm wide

£80 - 120 †

452

A mahogany long case clock, by Ellicott of London, having brass and silvered dial, eight day movement striking on a bell, arched trunk door on box base, 211cm high

£600 - 800 †

453

A mahogany and satinwood cross-banded long case clock, the painted dial inscribed "Jos. Irish Havant", with 8 day movement striking on a bell, full length trunk panel door, 210cm high

£300 - 400 †

454

A Victorian oak pedestal writing desk, the leatherette inset top fitted three drawers, with three short drawers to each pedestal, with opposing cupboards raised on platform plinths, 140cm wide

£100 - 200 †

455

A Victorian ebonised and walnut cross-banded bow front credenza, the centre section enclosed by a pair of glazed panelled doors, curved glazed doors to the end sections, raised on a shaped platform plinth, decorated with foliate heart shaped motifs and gilt metal banding, 154cm wide

£300 - 400 †

456

An Antique oak chest, in two sections, fitted four long drawers with geometric moulded panel fronts and brass pear-drop handles, raised on peg feet, 90cm wide x 97cm high x 53cm deep, (in need of some attention)

£100 - 200 †

457

A good quality reproduction oak chest, of small proportions, fitted two short and three long drawers, raised on bun feet, 75cm wide

£100 - 150 †

458

An Antique joined oak box on stand, the lid opening to reveal a fabric lined interior above mock moulded panel drawer front, with two short drawers below, fitted brass pear-drop handles, the stand raised on baluster supports united by stretchers terminating in block feet, 79cm wide

£150 - 250 †

459

An 18th Century oak chest, fitted two short and four long graduated drawers, raised on bracket feet, 100cm wide

£250 - 350 †

460

An Antique oak dole or food cupboard, enclosed by two pairs of geometric panelled doors around a central single drawer, raised on block supports, 101cm wide

£200 - 250 †

461

A Georgian mahogany and elm chest, fitted two short and three long drawers, raised on bracket feet, 97cm wide

£80 - 120 †

462

A Globe Wernicke style mahogany three section bookcase, 87cm wide x 138cm high

£80 - 120 †

463

A 19th Century mahogany chest, of two short and three long drawers, raised on bun feet, 102cm wide

£80 - 120 †

464

A 19th Century mahogany bureau, the fall front opening to reveal an interior arrangement of drawers and pigeon-holes around a central cupboard, four long graduated drawers below, raised on bracket feet, 102cm wide, AF

£100 - 150 †

465

A 19th Century mahogany bow fronted chest, fitted three long drawers, raised on turned supports, 88cm wide

£60 - 100 †

466

An 18th Century style walnut and cross banded side table, fitted single drawer and raised on bobbin turned supports, 85cm wide

£200 - 300 †

467

A Regency circular gilt framed and bevel edged wall mirror, with eagle surmount and acanthus scroll decoration, 113cm x 75cm overall

£200 - 300 †

468

A 19th Century mahogany cross-banded and marquetry inlaid bureau, the fall front opening to reveal an interior arrangement of drawers around a central cupboard, four long graduated drawers below, raised on bracket feet, 92cm wide

£250 - 350 †

469

An Antique oak and pine dresser, of shallow proportions, having open plate rack above three drawers, the shaped apron raised on turned baluster supports united by a pot board, 150cm wide x 188cm high

£100 - 200 †

470

A mahogany Chippendale style fret carved wall mirror, having gilt Ho Ho bird motif, 75cm x 52cm in extremes

£40 - 60 †

471

A walnut Chippendale style fret carved wall mirror, with gilt foliate surround, 77cm x 52cm

£30 - 50 †

472

A mid 19th Century German mahogany fall front secretaire desk, the raised upper section fitted with a drawer above turned finials and blind frieze drawer, the fall front opening to reveal a fully fitted concave interior of drawers and central cupboard, two drawers and one long frieze drawer below, raised on turned supports flanked by spiral columns. Provenance with cabinet. 180cm high x 116cm wide

£600 - 800 †



Lot 452



Lot 455



Lot 466



Lot 468

Lots marked ✓ please refer to Droit de Suite royalty charges in Terms and Conditions

† Each lot is subject to a Buyer's Premium of 18% + VAT (21.6%)



Lot 475

473

A 1930's oak cheval mirror, raised on a barley twist stand and outswept feet, terminating in castors, 164cm high x 63cm wide overall

£40 - 60 †

474

An Antique oak court cupboard, the upper section surmounted by a canopy above fielded panelled doors and three shallow drawers, three drawers and cupboards below, raised on square section supports, 170cm wide x 187cm high

£250 - 350 †

475

A set of eight 19th Century carved mahogany dining chairs, in the Chippendale manner, having leather upholstered drop-in seats, raised on carved shoulders, cabriole supports terminating in claw and ball feet, (six standards, two elbows)

£200 - 300 †



Lot 493

476

A late 19th Century mahogany rectangular occasional table, raised on spindle supports united by stretchers, 66cm wide

£20 - 40 †

477

A 19th Century mahogany side table, fitted three drawers above a shaped apron and raised on tapering square section supports, 75cm wide

£80 - 120 †

478

A Georgian mahogany and satinwood strung Pembroke table, fitted single end drawer, raised on tapering supports terminating in brass caps and castors, 84cm wide

£30 - 50 †

479

A set of six late 19th Century French walnut dining chairs, having green leather and brass stud upholstery, raised on turned supports united by H stretchers

£400 - 600 †

480

A set of nine oak and rush seated ladder back dining chairs, raised on slender stretchered supports

£60 - 100 †

481

An Antique oak Wainscot chair, the carved roundel decorated back rail above plain panel and solid seat, raised on turned baluster columns united by stretchers, terminating in block feet

£150 - 250 †



Lot 500

482

A George III mahogany dining chair, having carved swag decoration to the rail back, floral upholstered stuff-over seat, raised on square section tapering supports, terminating in spade feet

£30 - 50 †

483

A 19th Century French gilt framed side chair, the shaped back with foliate cresting, floral upholstered seat and back raised on cabriole supports

£30 - 50 †

484

A pair of 19th Century carved mahogany elbow chairs, having shaped and pierced lyre backs, upholstered stuff-over seats, raised on square tapering supports

£60 - 80 †

485

An Antique oak hall chair, with panel back above solid seat, raised on block turned supports united by stretchers

£30 - 50 †



Lot 510

486

A Victorian rose wood graduated corner whatnot, having pierced and carved foliate decoration raised on scroll feet, 131cm high, 52cm wide in extremes

£80 - 120 †

487

A 17th Century oak coffer, the plank top above a foliate carved frieze, inset with initials "HM" with iron lock-plate, quadruple panel front raised on square section supports, 145cm wide

£100 - 200 †

488

A good quality reproduction oak pedestal writing desk, fitted seven geometric moulded panel drawers and raised on bun feet, 108cm wide

£100 - 150 †

489

An Antique oak Wainscot chair, with lozenge and roundel carved panel back, scrolled arms above solid seat, raised on baluster turned supports

£150 - 250 †

490

A French mahogany framed armchair, having rouge Dralon upholstered back, seat and arm rests, raised on cabriole front supports

£80 - 120 †

491

A 19th Century mahogany footstool, having needlepoint upholstered top, raised on a gadrooned frieze and bun supports, 38cm wide

£20 - 40 †

492

A 19th Century French style cream and gilt decorated elbow chair, having needlepoint upholstered seat back and arm rests, raised on shaped front supports

£80 - 120 †

493

A 19th Century French cream and gilt decorated salon easy chair, the shaped back with foliate cresting, floral striped upholstered seat and back raised on cabriole front supports

£100 - 150 †

494

A Victorian carved mahogany chaise longue, the scrolled back with acanthus decoration, raised on bold baluster supports and castors

£100 - 200 †

495

A 19th Century mahogany bedside cupboard, enclosed by single fielded panel door above shallow drawer, raised on square chamfered supports, 40cm wide

£40 - 60 †

496

A 19th Century walnut side table, the shallow tray top raised on shell shoulders and cabriole supports terminating in ball and claw feet, 63cm wide

£60 - 100 †

497

A 19th Century mahogany swing toilet mirror, the oblong plate raised on tapering arms surmounted by brass finials, three drawer box base raised on bracket supports, 42cm wide x 60cm high

£40 - 60 †

498

A Victorian mahogany extending dining table, raised on turned baluster supports terminating in brass caps and castors, complete with three extra leaves, 239cm x 120cm full extended

£100 - 200 †

499

A set of six Victorian mahogany balloon back dining chairs, with upholstered drop-in seats, raised on turned tapering supports, stamped "Reilly's patent" £100 - 200 †

500

An Antique oak Bible box on stand, the hinged lid above a square iron lock-plate and carved frieze, dated 1643, raised on bobbin turned supports united by wavy stretchers, 63cm wide £200 - 400 †

501

A Victorian rosewood spoon back armchair, the cresting rail with pierced foliate decoration, needlepoint upholstered back, seat, and armrests, raised on cabriole supports £100 - 200 †

502

A 19th Century mahogany side table, fitted with a single drawer, raised on square tapering supports, 76cm wide £40 - 60 †

503

A 19th Century mahogany side table, fitted two short drawers above a shaped apron, raised on square tapering supports, 81cm wide £40 - 60 †

504

A 19th Century wooden and brass coopered stick stand, having lion mask handles, 78cm high x 24cm dia. £60 - 100 †

505

Three 19th Century elm seated stick and wheelback elbow chairs £40 - 60 †

506

An Antique oak coffer, with square iron lock-plate and foliate carved front, single drawer to base, fitted with brass pear-drop handles, raised on bun feet, 85cm wide £150 - 250 †

507

An Antique oak side table, fitted single drawer with iron lock-plate and brass pear-drop handles, raised on barley twist supports and bobbin stretchers, 84cm wide £100 - 150 †

508

A Victorian mahogany two drawer writing table, raised on tapering reeded supports terminating in castors, 115cm wide £150 - 200 †

509

A late Victorian mahogany swing frame toilet mirror, the bevel plate raised on tapering reeded arms with two drawer box base, 57cm wide x 74cm high £40 - 60 †

510

A decorative Continental oak and leather bound chest, in the medieval style, having painted panels depicting court scenes and monks, raised on shaped peg end supports, 90cm wide x 67cm high x 41cm deep £100 - 200 †

511

A mahogany dressing stool with needlepoint upholstered drop-in seat, raised on cabriole supports and pad feet; and a mahogany kidney shaped dressing stool, (2) £30 - 40 †

512

A 19th Century mahogany framed barrel back armchair, raised on turned front supports with floral linen loose cover £60 - 100 †

513

A 19th Century gilt and cream decorated twin seat salon settee, having foliate decoration, striped upholstered seat and back raised on turned fluted supports, 133cm long £100 - 150 †

514

A 19th Century mahogany framed wing back armchair, raised on square tapering supports, united by stretchers £30 - 50 †

515

An Edwardian mahogany sewing table, the folding top opening to reveal a silk lined and fitted interior, raised on slender outswept supports, 39cm wide £30 - 50 †

516

A 19th Century mahogany drop leaf dining table, raised on ring turned tapering supports, 104cm wide £80 - 120 †

517

A carved mahogany stool, with needlepoint upholstered drop in seat, raised on carved shell shoulders, cabriole supports and claw and ball feet £40 - 60 †

518

An Antique gilt and painted wall mirror, with foliate decoration and later plate, 72cm x 60cm £150 - 250 †

519

An Edwardian satinwood and cross-banded oval occasional table, raised on square tapering supports, 68cm £30 - 60 †

520

A Victorian rosewood music seat/Canterbury, the upholstered lifting top opening to reveal a fitted interior flanked by spiral turned columns, single drawer below terminating in castors, 58cm wide x 51cm high £60 - 100 †

521

A large Victorian carved mahogany breakfront pedestal sideboard, fitted central drawer flanked by deep cupboards, raised on platform plinths, 237cm wide x 78cm deep £200 - 300 †

522

A 19th Century mahogany two tier corner washstand, fitted with a central drawer raised on out swept supports, 53cm wide overall x 101cm high £30 - 50 †

523

A set of eight early 20th Century mahogany dining chairs, having pierced backs, leather upholstered drop in seats raised on square tapering supports united by stretchers £100 - 150 †

524

An Antique elm and yew wood stick back elbow chair, raised on turned tapering supports united by a H stretcher £40 - 60 †

525

A Victorian mahogany sewing table, fitted two short drawers, raised on turned supports terminating in peg feet, 45cm wide £50 - 80 †

526

A pair of mahogany cross banded and boxwood strung side tables, fitted single drawers raised on square tapering supports terminating in spade feet, 65cm wide £80 - 120 †



Lot 513



Lot 517



Lot 525



Lot 526



Lot 531

527

A 19th Century oak blanket box, flanked by brass carrying handles and raised on a platform plinth, 68cm wide £50 - 80 †

528

A 19th Century mahogany drop leaf spider leg tea table, terminating in pad feet, 89cm x 89cm fully extended £40 - 60 †

529

A 19th Century oak and elm dough bin, raised on baluster turned supports united by stretchers, 82cm wide £60 - 80 †

530

An Edwardian mahogany window table, having shaped top above carved frieze, slender cabriole supports united by an under-tier, 43cm wide £30 - 50 †

531

A Georgian elm and walnut low boy, fitted one long and three short drawers above a shaped apron, raised on square chamfered supports, 78cm wide £200 - 300 †

532

A 19th Century mahogany pie crust bordered snap top occasional table, raised on a foliate carved baluster column and tripod base, 69cm dia. £80 - 120 †

533

A 17th Century and later oak side table, the overhanging top above single drawer, raised on baluster turned and block supports, 93cm wide £200 - 300 †

534

A Georgian mahogany rectangular snap top occasional table, raised on a turned baluster column and triple splay £60 - 100 †

535

An Edwardian mahogany corner washstand, fitted single drawer below, raised on outswept supports united by an under-tier, 70cm wide x 117cm high in extremes; and a Copeland Spode floral decorated toilet set £30 - 50 †

536

An Antique oak low boy, the over hanging top above three short drawers and a shaped arched frieze, raised on square section supports, 81cm wide £100 - 200 †

537

An 18th Century walnut card table, the shaped foldover top baize lined with sunken counter wells, single drawer below with concertina action, raised on rounded tapering supports and pad feet, 88cm wide £400 - 600 †

538

A 19th Century mahogany serving table, concave front, raised on ring turned tapering supports, 165cm wide £100 - 200 †

539

A walnut and cross banded hall table, fitted five short drawers and raised on square chamfered supports, 100cm wide £200 - 250 †

540

A pair Sheraton revival mahogany and inlaid oval urn stands, having pull out candle slides raised on out swept tapering supports united by wavy cross stretchers, 36cm wide overall, 73 cm high £400 - 600 †



Lot 540



Lot 552



Lot 553

541

A Regency style mahogany window seat, having scrolled ends raised on turned tapering supports and peg feet, 120cm wide £200 - 300 †

542

A Victorian mahogany tray top bedside cupboard, enclosed by a single panelled door raised on turned tapering supports, 40cm wide £30 - 50 †

543

A mahogany wine table, having pie crust border top, raised on a turned baluster column and foliate carved tripod base, terminating in claw and ball supports, 45cm dia. £30 - 50 †

544

A 19th Century mahogany cross-banded and boxwood strung washstand, the hinged top opening to reveal a pull-up mirror and interior compartment, cupboards and drawers below, raised on square chamfered supports united by a pierced under-tier, 53cm wide £80 - 120 †

545

A George III style mahogany wine table, having pie crust border top, raised on a foliate carved and fluted baluster column, tripod base terminating in claw and ball supports, 36cm dia. £30 - 40 †

546

A 19th Century continental boudoir stool, having cane panel ends and seat with floral upholstered squab cushion, raised on turned fluted supports, 75cm wide £80 - 120 †

547

A set of three elm seated Suffolk ball back dining chairs, and a similar elbow chair, (4) £60 - 80 †

548

A 19th Century gilt framed boudoir stool, having curved ends raised on turned tapering fluted supports, 100cm wide £80 - 120 †

549

An Antique oak refectory table, raised on baluster cup and cover supports united by stretchers, 90cm x 240cm £400 - 600 †

550

A large Victorian mahogany extending dining table, fitted five extra leaves, raised on bold baluster carved supports, terminating in brass caps and castors, 132cm x 353cm fully extended £400 - 600 †

551

19th Century gilt framed wall mirror, profusely decorated with foliate scrolls, 133cm x 89cm in extremes £100 - 150 †

552

A carved oak Jacobean overmantel, the three sections decorated with various scenes including a man with a ruff around his neck holding a bible, reputedly Thomas Earl of Surrey, central panel showing a feast with angels, servant and dog underneath a table and the wife Francis Countess of Surrey, surmounted by a biblical text, "Be not forgetful to entertain strangers as they may be angels unaware", 57cm x 179cm. Originally purchased from Kenninghall Place, near Banham, Norfolk £3,000 - 5,000 †

553

A 19th Century yew wood and elm Windsor chair, with arched stick back and central pierced splat, raised on ring turned supports united by a crinoline stretcher, 111cm high £200 - 300 †

TERMS AND CONDITIONS OF SALE

1. INTRODUCTION

The following defining terms are used in these conditions:-

“Auction”	Means any auction conducted by Clarke and Simpson Auctions Ltd. either at the premises owned by them or elsewhere (including any internet based auction);
“Auctioneer”	Means Clarke and Simpson Auctions Ltd. authorised auctioneer as appropriate;
“Bidder”	Means a bidder at an auction, including the bidders personally present at the venue and those bidding by telephone or over the internet or otherwise;
“Buyer”	Means the bidder whose bid was the last bid when the auctioneer concludes the bidding;
“Conditions”	Means these Terms and Conditions of Sale;
“Hammer Price”	Means the level of bidding reached (at or above any reserve) when the auctioneer brings the bidding to a close;
“Lot”	Means any property accepted by Clarke and Simpson Auctions Ltd. for offer at auction;

2. DESCRIPTION

No warranty is given or implied by the description in the catalogue. Each lot is sold in its condition at the time of sale with all faults, defects, imperfections and errors of description (if any). Whilst every endeavour has been made to describe the items adequately and properly, the purchaser shall deem to have inspected the lot at time of purchase. All catalogues and seller's and buyer's guides are for information only and do not form part of the contract.

3. STATUTORY REQUIREMENTS

Purchasers will be deemed to have satisfied themselves prior to purchasing regarding current legal requirements (e.g. Health & Safety at Work Act) and it is expressly brought to the bidders attention that equipment in the sale may not necessarily comply with such regulations. Any purchaser shall satisfy himself as to any statutory requirement for the use of any item and no liability shall rest with the vendors nor the Auctioneers.

4. THE AUCTION

All auctions are conducted at the absolute discretion of the auctioneer. The auctioneer shall conduct the auction with reasonable skill and care. The vendor reserves the right to sell subject to reserve price in respect of all lots. What constitutes a bid shall be at the absolute discretion of the auctioneer, acting with appropriate skill and care. The auctioneer shall have the right to refuse any bid in all cases but most notably when such a bid does not exceed the previous bid by at least 10% or such a proportion as the auctioneer shall in his absolute discretion direct. Where two or more bids at the same level are simultaneously received by the auctioneer, the auctioneer at his absolute discretion shall determine which bid to prefer. Subject to the foregoing where two or more bids are at the same level are simultaneously received by the auctioneer, the bid submitted in the room shall take preference over a bid submitted by telephone or internet at the same level. Any bid made or attempted by telephone or over the internet will only be deemed to have been made if received by the auctioneer. The auctioneer reserves the right to withdraw, consolidate or divide any lot or lots or submit them in any order that they desire. The auctioneer has the right at his absolute discretion to refuse admission to his premises or attendance at (or participation in) any auction by any person. In the case of any dispute, the auctioneer shall be sole arbitrator in any matters arising during or out of the sale.

5. BIDDERS

All bidders will be required to register their particulars, bidders attending in person and those accompanying them will be required to provide photo ID and separate confirmation of address prior to viewing or taking any part of the sale and before entering any part of the premises to view. All bidders accept full liability for all bids submitted. Subject to the clause in this document headed “The Auction”, the highest bidder at the close of bidding shall be the buyer. Any dispute about a bid shall be settled at the auctioneer's absolute discretion. Bidders are all deemed to act as principles unless there is prior written acknowledgement by Clarke and Simpson Auctions Ltd. that a bidder is acting as an agent for a

named principle. Bidders are strongly encouraged to attend the auction in person. The bidders shall be responsible for any decision to bid for a particular lot and shall be deemed to have carefully inspected and satisfied themselves as to condition, neither Clarke and Simpson Auctions Ltd., their employees or agents shall be responsible for any neglect or default in doing or failing to do so. Bidders will be given ample opportunity to view and inspect before the sale and prospective buyers must satisfy themselves as to all matters.

6. DEFAULT

Clarke and Simpson Auctions Ltd. shall act as agent of the vendor only. Any contracts for the sale of a lot shall be formed between the vendor and the buyer. As agent, only Clarke and Simpson Auctions Ltd. shall not be responsible for default by the vendor or the buyer. If any lot is not paid for in full and taken away in accordance with these conditions, or there is any other breach of the conditions, then Clarke and Simpson Auctions Ltd. as agents for vendor shall at its absolute discretion and without prejudice to any other rights it may have, be entitled to exercise all or any of the following rights and remedies:-

- 6.1 to proceed against the buyer for any action of debt or damages for breach of contract;
- 6.2 to rescind the sale of that lot or lots sold by Clarke and Simpson Auctions Ltd. to a defaulting buyer;
- 6.3 to resell the lot (by auction or private treaty) in which case the defaulting buyer shall be responsible for any resulting deficiency in the total amount due (after crediting any part payment and adding any resale costs), any possible surplus so arising shall belong to the vendor;
- 6.4 to remove, store and insure the lot at the expense of the defaulting buyer and, in the case of storage, the location of such storage shall be at Clarke and Simpson Auctions Ltd. discretion;
- 6.5 to charge interest at a rate not exceeding 2% per month of the total amount due to the extent that it remains unpaid for more than two working days after the sale;
- 6.6 to retain that or any lot sold to the defaulting buyer until the buyer pays the total amount due;
- 6.7 to reject or ignore bids from the defaulting buyer at future auctions or to impose conditions before any such bids are accepted;
- 6.8 to apply any proceeds of sale for any other lots due or in the future becoming due to the defaulting buyer towards the settlement of the total remaining due.

7. INDEMNITIES, PENALTIES AND LIMITATIONS OF LIABILITY

Purchasers shall pay for any damage done by themselves or their agents during the removal of their lots. Attendance at the sale shall be at the risk of those attending in respect of both themselves and to their goods and vehicles.

Any indemnity under these conditions will extend to all actions, costs, expenses, claims and demand whatsoever suffered or incurred by the person entitled to the benefit of it and Clarke and Simpson Auctions Ltd. declare themselves to be a trustee of the benefit of such indemnity so far as it is expressed to be the benefit of its employees and agents.

Whilst Clarke and Simpson Auctions Ltd. endeavour to ensure that the information on their websites is correct, they do not warrant the accuracy and completeness of the material on their website. Also, Clarke and Simpson Auctions Ltd. can make changes to the material on their website, or alter the products and prices described on it, at any time without notice. The material on the website may be out of date, Clarke and Simpson Auctions Ltd. make no commitment to update such material. All material on the websites is provided “as is” without any conditions, warranties or other terms at any time. Accordingly, to the maximum extent permitted by law, the website is provided to all parties on the basis that Clarke and Simpson Auctions Ltd. exclude all representations, warranties, conditions and other terms which, but for this legal notice, might have effect in relation to the website.

8. ELECTRICAL SAFETY REGULATIONS

All electrical lots are subject to electrical safety regulations and fall within “the low voltage electrical equipment (safety) regulations 1989” – all items have been pat tested for safety but are not guaranteed in working order.

9. GENERAL MATTERS

Any notice to any buyer, vendor, bidder or viewer may be given by first class mail or email in which case it shall be deemed to have been received by the addressee forty-eight hours after posting or sending. All notices to Clarke and Simpson Auctions Ltd. must be sent in writing and email is not acceptable. Any indulgence extended to any person by Clarke and Simpson Auctions Ltd., notwithstanding the strict terms of these conditions or the terms of consignment, shall affect the position at the relevant time only and the respect of that particular concession only; in all other respects these conditions shall be construed as having full force and effect. These conditions and any disputes or claims arising out or in connection with them or their subject matter or formation (including non-contractual disputes or claims) are governed by and construed in accordance with the law of England. The parties irrevocably agree that the courts of England have exclusive jurisdiction to settle any dispute or claim that arises out of or in connection with the agreement or its subject matter or formation (including non-contractual disputes or claims).

10. PUBLICITY

Any catalogue and buyer and seller guides are provided for information only and do not form part of these conditions. The catalogue and the buyer and seller guides may contain additional terms and conditions. Clarke and Simpson Auctions Ltd. reserve the right to use any photographs, background information and research for publicity purposes both before and after the sale.

11. THE PURCHASE PRICE AND PAYMENT ARRANGEMENTS

There is a buyer's premium 18% plus VAT payable in respect of the sale. Any purchases made via “www.the-saleroom.com” or “www.ibidder.com” shall be subject to an administration charge of 5% plus VAT on the price.

Preferred payment is cash, bank transfer or personal debit card. Such cards may only be used on a chip and pin basis with the owner present. No payment over £350 will be accepted by telephone. Payment will be accepted online via our secure e commerce account. We do not accept credit cards or international debit cards. Payment by cheque will only be acceptable subject to prior arrangement. No lot will be removed from the sale until any cheque has cleared.

Payment is due on the day of the sale. Cash in excess of £7,500 (including V.A.T.) will not be accepted from any one person, this is not allowed due to Money Laundering Regulations 2007. All money received will be held in Clarke & Simpson Auctions Ltd. Clients No 2 Account at Barclays Bank plc, Framlingham, Ipswich, Suffolk. Account Number 83428591. Sort Code 20 98 07. Clarke and Simpson Auctions Ltd. have no responsibility for any lot between the close of bidding and payment being made and subsequent collection. All payments from overseas buyers shall be made by Bank Transfer and bank fees paid in addition. Please note all policy regarding payment will be enforced and suitable arrangements must be made.

12. REMOVAL OF LOTS

The ownership of any lot purchased shall not pass to the relevant buyer until they have made payment in full to Clarke and Simpson Auctions Ltd. of the total amount due including any storage due.

The buyer shall at their own risk and expense take away any lot that they have purchased and paid for not later than two working days following the day of the auction after which they shall be responsible for any removal, storage and insurance charges.

Any lots not collected within four weeks of the date of sale will be resold by the auctioneer and all proceeds will be retained by the auctioneer to cover storage costs.

13. NUMBER BIDDING

This will be used for speed and efficiency as in all our sales. All prospective purchasers must complete a registration form and register in the office on the view day or morning of sale to receive a number for bidding.

Please also note that photo ID and additional confirmation of address will be required.

14. ONLINE BIDDING

Clarke & Simpson Auctions Ltd. offer an online bidding service via the-saleroom.com and ibidder.com for bidders who cannot attend the sale. In completing the bidder registration on www.the-saleroom.com or ibidder.com and providing your payment card details and, unless alternative arrangements are agreed with Clarke & Simpson Auctions Ltd.:

1. authorise Clarke & Simpson Auctions Ltd., if they so wish, to charge the payment card given in part or full payment, including all fees, for items successfully purchased in the auction via www.the-saleroom.com or ibidder.com, and
2. confirm that you are authorised to provide these payment card details to Clarke & Simpson Auctions Ltd. through www.the-saleroom.com or ibidder.com and agree that Clarke & Simpson Auctions Ltd. are entitled to ship the goods to the card holder name and card holder address provided in fulfilment of the sale.

Please note that any lots purchased via the-saleroom.com or ibidder.com live auction service will be subject to an additional 5% buyer's premium + VAT at the rate imposed on the hammer price.

15. TELEPHONE BIDDING

We offer a telephone bidding service where possible, but this service can never be guaranteed. No applications for telephone bids will be accepted after the end of the viewing prior to sale day for any sale. All potential telephone bidders must provide a valid landline number and email address and agrees that they have read and understood the Terms and Conditions and satisfied themselves regarding any lot in accordance with these Terms and Conditions. No phone bids will be accepted for any lot with a lower guide figure of less than £100.

All those who wish to bid by telephone will be expected to deposit an amount determined by Clarke and Simpson Auctions Limited and not less than the minimum guide for all lots that they wish to bid upon into the Clients Account for Clarke and Simpson Auctions Ltd before the sale starts. This payment is not acceptable by card.

In the event of default, this sum shall be retained as part payment or any part may be retained to recover losses under clause 6 of these Terms and Conditions. We will expect payment of the balance owing by BACS on the following day, any payment not met within five working days will result in the forfeiture of the deposit paid.

16. AT FAULT (A.F.) LOTS

Certain lots are catalogued at (A.F.), damaged, restored etc., however the absence of any such notice does not imply that the piece is free from defects, nor does it indicate that other defects are not also present. Mention is not made of breakage, cracks, chips or any damage which can be noted by careful inspection, therefore, intending purchasers MUST, in all cases, be responsible for determining the condition of the lots themselves.

17. ESTIMATES

Presale estimates are intended only as a guide for intending purchasers, are given in good faith and subject to revision.

18. CONDITION REPORTS

Clarke and Simpson are unable to guarantee that requests for condition reports/images received will be responded to. Clarke and Simpson are happy to give a Condition Report where possible on the physical condition of goods, this will be provided on behalf of the seller on the understanding that Clarke and Simpson are not entering into a contract with you in respect of the Condition Report and accordingly does not assume responsibility to you in respect of it. All lots are available for your own inspection or for inspection by an expert instructed by you, therefore these Condition Reports are for guidance only and all lots are sold “as found”. Condition reports do not form part of a contract.

19. COMMISSION BIDS

The auctioneers will be pleased to execute bids for those unable to attend the sale. Lots will be purchased at the lowest bid the room bidding or any reserves will allow. In the event of identical bids, the earliest bid received will take precedence. There must always be a maximum limit indicated. Buy or unlimited bids will not be accepted. Commission bids placed by telephone are accepted at the client's risk. We urge our clients to place such bids before the start of the sale. All such commissions are left entirely at the buyer's risk.

20. VALUE ADDED TAX

The symbol * after any lot number indicates that Value Added Tax is payable by the buyer on the hammer price.

21. AUCTIONEERS MARGIN SCHEME

The Auctioneers Margin Scheme allows auctioneers to sell items without VAT on the hammer price. Under the margin scheme an amount equivalent to VAT at the current rate is added to the buyer's premium. This amount cannot be refunded. The VAT element will not be shown separately on the buyer's invoice. This VAT is not recoverable as Import Tax.

22. ATTRIBUTION OF PICTURES AND DRAWINGS

Every effort is made to ensure the accuracy of any statements as to authorship, attribution, origin, date, age, provenance and condition of any lot whether or not such statement forms part of the description of any such lot. Whether any such statement is made orally or in the catalogue it is an expression of opinion and not to be taken as being or implying any warranties or representations of facts by the auctioneers. Each buyer by making a bid for a lot acknowledges that he has satisfied himself fully as to the attribution and condition of the lot. The following is for guidance only and does not form part of a contract.

A. The forename (s) (or full stops where not known) and surname of an artist indicates in our opinion a work by the artist.

B. The initials of the forename (s) and the surname of the artist indicates in our opinion a work of the period of the artist which may be wholly or in part his work.

C. The surname of the artist indicates in our opinion a work of the school or by one of the followers of the artist or in his style and of uncertain date.

D. *Signed, Dated, Inscribed* indicated in our opinion work signed/dated/inscribed by the artist.

E. *Bears signature* indicates in our opinion that this is not the signature of the artist.

F. *Attributed to* may be used to denote a traditional attribution based on style.

G. *Manner of* indicates in our opinion a work executed in the artist/craftman's style but of a later date.

H. *After* indicates in our opinion a copy (of any date) of work of an artist or craftsman.

The addition of a question mark after any of the cataloguing terms above indicates an element of doubt.

23. DRIOTE DE SUITE ROYALTY CHARGES

All United Kingdom Art Market professionals (which includes auctioneers) are required to collect a royalty payment for all qualifying Works of Art. This applies to living artists and those who have died in the last 70 years. This payment is calculated on qualifying Works of Art which are sold for a hammer price more than the UK sterling equivalent of €1,000 (the UK sterling equivalent will fluctuate in line with prevailing interest rates calculated by the Artist's Resale Right Service Hub, based on the European Central Bank reference rate published at 2.15pm on the day of the sale, and can be found on www.dacs.org.uk).

All items in this catalogue that are marked "✓" are potentially qualifying items, and the royalty charge will apply if the hammer price is more than UK sterling equivalent of €1,000. The royalty charge will be added to purchase invoices and must be paid before items can be cleared. All royalty charges are paid to the design and Artists Copyright Society (DACS) by the auctioneers and no handling costs or additional fees with respect to these charges will be retained by the auctioneer. This charge may also be applicable to lots not marked "✓" and buyers must satisfy themselves.

The royalty charge for qualifying items which achieve a hammer price of more than the UK sterling equivalent of €1,000, but less than the UK sterling equivalent of €50,000 is 4%. For qualifying items that sell for more than the UK equivalent of €50,000 a sliding scale of royalty charges will apply. For a complete list of the royalty charges and threshold levels please refer to www.dacs.org.uk. There is no VAT payable on this royalty charge.

24. ENDANGERED SPECIES

Lots sold at auction may include endangered or other species of wildlife and plant life, for example ivory, tortoiseshell, crocodile skin, whale bone, ebony or rosewood. Some countries restrict or prohibit import or export of objects containing these materials or require a licence/permit for their movement (e.g. a CITES Licence). Prior to bidding on a lot which may include these or similar materials, buyers must familiarise themselves with the relevant laws and regulations regarding their movement.

25. JEWELLERY

Gemstones are often treated to enhance colour and improve appearance. They may be heated or treated by oil or resin to intensify the colour and transparency. Other techniques like dying, irradiation, coating and impregnation can also be used. Buyers must be aware that unless the catalogue specifically states otherwise then the stone is natural, buyers must assume that any treatment may not be permanent, and that special care may be needed in the future.

26. EXPORT

Any lot purchased at auction may be subject to export restrictions and may require a licence for export out of the United Kingdom. The buyer is responsible for obtaining any licences that may be required (including any licence that may be required for import into the destination country) – any denial of such a licence will not be grounds for the buyer to cancel the purchase.

27. THIRD PARTY LIABILITY

All members of the public on Clarke and Simpson Auctions premises are there at their own risk and must note the layout of the buildings and site and the appropriate security arrangements. Accordingly, neither the Auctioneer nor its employees or agents shall incur liability for death or personal injury (except as required by law) or similarly for the safety of persons visiting the premises.

28. CONSIGNMENT

All sellers will have received a copy of Clarke & Simpson Auctions Terms regarding consignment of lots for sale and these Terms and Conditions should be read in accordance with this consignment documentation.



Worlingworth £1,950,000

A commanding listed hall, along with three secondary dwellings, substantial equestrian facilities, free-range egg production unit, agricultural buildings & over 75 acres of land. **Ref: 6073**



Parham £895,000

A most impressive & historic 6 bedroom house located in a standalone position within the parish of Parham, just south of Framlingham. **Ref: 6102**



Orford £750,000

An attractive, brick-built, detached, four bedroom house enjoying far reaching views over the fields. **Ref: 5940**



Sibton £550,000

An impressive village house with field views, within walking distance of shops and the public house, and 8 miles from the coast. **Ref: 6099**



Horham £535,000

An extremely impressive four bedroom new house backing onto open farmland in the centre of the village of Horham. **Ref: 6079**



Stradbroke £495,000

A four/five bedroom detached house offering 2,100 sq ft of accommodation, sitting on a plot of over a quarter of an acre. **Ref: 6106**



Bedfield £425,000

An exceptionally well maintained and beautifully presented bungalow, sitting in a large plot of approx. 0.27 acre. **Ref: 6093**



Hoo £379,500

A charming two bedroom semi-detached Victorian cottage with grounds approaching a third of an acre in a rural location. **Ref: 6026**



Monewden £280,000

A charming, two bedroom, detached cottage within the centre of Monewden, near Brandeston. **Ref: 6083**



Great Finborough £235,000

An impressive three bedroom end-of-terrace house within walking distance of the primary school and the village pub. **Ref: 6088**



Grundisburgh £895,000

A prominent five bedroom Grade II Listed village house, in the centre of Grundisburgh, with stunning contemporary extension to the rear, occupying a large plot and offering annexe accommodation. **Ref: 6095**



Bromeswell £750,000

A spacious four bedroom bungalow and newly built two bedroom holiday let, with gardens and grounds of 1.3 acres, within the Parish of Bromeswell set between Woodbridge and the Heritage Coast. **Ref: 6090**



Eye £645,000

A Grade II listed Suffolk farmhouse, along with a two bed annexe barn conversion set in lovely grounds of 3.5 acres. **Ref: 6065**



Tannington £550,000

A handsome farmhouse now requiring modernisation & refurbishment, in a rural position. **Ref: 6084**



Kettleburgh £500,000

A most attractive Victorian school converted into a fabulous house within the village of Kettleburgh. **Ref: 5771**



Dennington £495,000

A detached three-bedroom bungalow, along with Suffolk barn, in a standalone position with grounds of over 3 acres. **Ref: 6097**



Framlingham £295,000

An extended three/four bedroom semi-detached house in excellent condition. **Ref: 6101**



Framlingham £244,995

A brand new, 3 bedroom terraced house, forming part of Hopkins Homes award winning Prospect Place development. **Ref: 6067**



Great Glemham £239,950

A charming two bedroom semi-detached Grade II Listed cottage in the centre of this sought after village. **Ref: 6085**



Framlingham £150,000

A surprisingly spacious first floor apartment with allocated parking, within walking distance of the Market Hill and shops. **Ref: 6105**



Clarke and Simpson Auction Centre
Campsea Ashe
Nr. Wickham Market
Suffolk IP13 0PS
Tel: (01728) 746323 Fax: (01728) 748173
Email: auctions@clarkeandsimpson.co.uk
www.clarkeandsimpson.co.uk