



Clarke &
Simpson

Selected Antiques & Fine Art

Wednesday 27th July 2022 at 10 am

Clarke &
Simpson

Auctions

Always open..



Valuation

Probate & other valuations
Call-in service 6 days a week

Special sales

Antiques & Fine Arts
Art Deco & Retro
Domestic & Rural Bygones
Agricultural Collective

General Monday sale

Bespoke sales
In 2020 our lots sold to 30 countries
and registered buyers from over 50
Acting as agents for household clearances

Can't make it?

All auctions are available
for online bidding via
the-saleroom.com
or **i-bidder.com**



Clarke & Simpson Auction Centre,
Campsea Ashe, Nr Wickham Market,
Suffolk IP13 0PS T: 01728 746323

www.clarkeandsimpson.co.uk

CandSAuctions @CandSAuctions

Clarke & Simpson

Auctions

Selected Antiques & Fine Art

Wednesday 27th July 2022
at 10 am

Order of Sale:

Ceramics & Glass	1- 101
Silver, Plate & Jewellery	110-163
A Single Owner Collection of Antiquities & Curios	170-331
Objects & Collectables	332-438
Pictures & Prints	440-488
Clocks	489-535
Rugs & Furniture	537-644

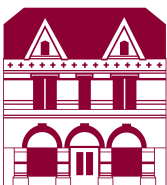
Viewing:

Saturday 23rd July, 9am – 12 noon
Monday 25th July, 2pm – 7 pm
Tuesday 26th July 10am – 4 pm
Morning of the Sale from 8:30 am

 CandSAuctions

 @CandSAuctions

 CandSAuctions



Campsea Ashe
Nr. Wickham Market
Suffolk IP13 0PS
Tel: (01728) 746323
Email: auctions@clarkeandsimpson.co.uk
www.clarkeandsimpson.co.uk

BID ONLINE

thesaleroom.com

The home of art & antiques auctions

Special Sales Calendar 2022

Art Deco, 20th Century Design & Retro
3rd September | Closing date 12th August

Domestic & Rural Bygones
17th September | Closing date 12th August

Selected Antiques & Fine Art
5th October | Closing date 9th September

Collective Farm Machinery & Plant
October | Closing date 9th September

Art Deco, 20th Century Design & Retro
5th November | Closing date 14th October

Selected Antiques & Fine Art
7th December | Closing date 11th November

Ceramics & Glass

- 1**
A quantity of Royal Worcester "Regency ware", and other dinnerware £60 - 100 †
- 2**
A 19th Century Chinese shallow dish, having floral decoration, 30.3cm dia. £60 - 80 †
- 3**
An 18th Century Chinese blue and white bowl, decorated with river and mountain scenes AF; a blue and white bird decorated umbrella spill AF; a Chinese shallow dish and a famille rose bird decorated plate (4) £20 - 40 †
- 4**
A pair of Victorian white opaque glass baluster vases, with enamelled floral decoration, 21cm high £20 - 30 †
- 5**
A pair of Paris porcelain gilt vases, each decorated with scenes of horses and riders in rural landscape (one AF), 26.5cm high £100 - 200 †
- 6**
An 18th Century Salopian ware fluted slops bowl, decorated riverbank scenes and foliage, 15.5cm dia. x 8cm high £40 - 60 †
- 7**
A Lowestoft tea pot, in the "Curtis" pattern circa 1780, 14.5cm high £200 - 400 †
- 8**
A brightly enamelled yellow ground Chinese porcelain oblong dish, painted with a central flower head amongst lotus flowers and bats, Shou Characters 18th / 19th Century, 23.5cm long £100 - 200 †
- 9**
A 19th Century Chinese shallow bowl, central decoration depicting a bamboo garden within floral spray border, 23cm dia.; a Chinese shallow dish with central flower head surrounded by trailing foliage, four character mark to base, 17.5cm dia.; and a small Oriental dish decorated clouds and dragon (3) £60 - 100 †
- 10**
Seven various Japanese Imari scallop bordered plates; a similar bowl; a 19th Century octagonal charger; and a shaped dish similarly decorated (11) £100 - 200 †
- 11**
A Chinese shallow dish, profusely decorated flowers, 22.5cm dia. £30 - 50 † AF
- 12**
A 19th Century Chinese octagonal blue and white plate, centred decoration of a deer amongst trees within floral border, 31cm dia. £40 - 60 †
- 13**
A 19th Century Chinese plate, decorated central dragon and flaming pearls within a foliate border with vignettes of artefacts, 27cm dia. £40 - 60 †
- 14**
A large 19th Century Chinese blue and white bowl, decorated foliage and butterflies, 30cm dia. (restored) £20 - 40 †
- 15**
A Royal Bonn blue and white pottery planter, having all over floral decoration, 28.5cm dia. x 25cm high £20 - 40 †
- 16**
A pair of Chinese famille rose decorated jardinières, of rectangular form, 24cm wide x 16cm deep, raised on carved hardwood stands, 11cm high overall £100 - 200 †
- 17**
A Kang Shi tea bowl; another Chinese tea bowl; and three small later period Chinese bowls £100 - 150 †
- 18**
A large 19th Century Chinese blue and white charger, central scenes of trees in a garden, having stylised floral borders, 38cm dia. £80 - 120 †
- 19**
A large 19th Century Chinese blue and white charger, decorated with a central scene of objects on a table in a garden setting, floral surround, 38cm dia. £80 - 120 †
- 20**
A small 19th Century bisque ware figure, of a seated nodding Oriental; and a Japanese tea pot of small size with bird decoration AF (2) £40 - 60 †
- 21**
A Parian type bust, of Dante, 23cm high £20 - 40 †
- 22**
A Victorian Staffordshire figure of Shakespeare, 46cm high £40 - 60 †
- 23**
A Limoges dinner service, decorated children at play and foliate scrolls heightened in gilt; and a Noritake pedestal fruit bowl £100 - 200 †
- 24**
Four 19th Century Derby cabinet plates, some AF £20 - 40 †



Lot 5



Lot 8



Lot 15



Lot 22



Lot 31

25
Six 19th Century Derby plates, with painted floral decoration within basket weave and gilt heightened borders, 24cm dia. £40 - 60 †

26
A 19th Century Derby "In Italy" shallow dish £20 - 40 †

27
A 19th Century Derby yellow ground shallow dish; and three 19th Century Derby yellow and gilt decorated plates (4) £20 - 30 †

28
A 19th Century Derby saucer dish, with gilt floral spray decoration and blue border; another of fluted form; and a small Derby cabinet plate with gilt foliate scrolls and cartouche with painted flowers on a blue ground (3) £20 - 30 †

29
A 19th Century Coalport porcelain coffee can, with gilt decoration; another decorated gilt floral chain and two others decorated with figures in Italianate landscape scenes(4) £20 - 30 †

30
A 19th Century coffee can, with black and white decoration of Italian rural scene, gilt banded; another decorated rural scene; another decorated rural scene with gilt banding; and a further example depicting a Victorian nursery scene (4) £20 - 30 †

31
An 18th Century Delftware charger, decorated flowers and vase within continuous foliate and stylised border, 34.5cm dia.; and a shallow 18th century Delftware dish decorated with scene of a Chinese lady sheltering under a parasol amongst trees and foliage, 21cm both AF (2) £40 - 60 †

32
A Japanese baluster vase, having all over floral decoration, 24cm high, AF £20 - 30 †

33
A collection of nine 18th and 19th Century Chinese and other tea bowls, and a cup £40 - 60 †

34
A Chinese blue and white pedestal bowl, having prunus decoration, 16cm dia. x 9cm high £30 - 50 †

35
A Chinese jar, decorated rural scene depicting figures by a river, mountains in far ground, 24cm high; and a smaller example decorated houses and trees AF (2) £40 - 60 †



Lot 40

36
A 19th Century Chinese bowl, decorated with river scene with figures and pagoda, four character mark to base, 18cm dia. AF £40 - 60 †

37
An Oriental shallow dish, decorated bird and foliage, character mark to base, 15.5cm £40 - 60 †

38
A 19th Century Chinese blue and white scallop border plate, having scenic decoration with river and pagodas, 23cm dia.; three Chinese shallow saucer dishes; a smaller saucer dish and a bowl with gilt heightened border (6) £60 - 100 †

39
A Chinese Celadon ground vase, decorated with roundels depicting dragons and glazed white dot bands to the base and foot, six character mark to base, 17cm high £100 - 150 †

40
A Celadon ground baluster vase, having raised foliate decoration, probably Ming 15th Century, 25cm high £200 - 300 †

41
A late 18th Century English famille rose decorated shallow dish, inscribed to the underside N298; and a fluted slops bowl with polychrome and gilt decoration AF (2) £20 - 40 †

42
Two 19th Century English print ware plates, decorated rural scenes; and two Victorian blue and white china sauce ladles(4) £30 - 50 †

43
A set of three glass vases, and a matching oval bowl with gilt wheat ear decoration £20 - 40 †

44
A green tinted glass bottle, with etched decoration of an Ethnic figure drumming, (stopper AF), 13.5cm high £30 - 50 †

45
A 19th Century glass claret jug, with Mary Gregory style decoration of a boy running with a flower stem AF; a glass vinegar bottle; five shallow glass dishes and a heavy good quality cut glass oval fruit bowl £40 - 60 †

46
A 19th Century pottery spirit barrel, decorated Royal Cipher and impressed "1", later converted to a table lamp £20 - 30 †

47
A collection of four late 19th Century Chinese blue and white porcelain inkwells, three square and one hexagonal example £30 - 40 †



Lot 49



Lot 50

- 48**
A Chinese matted Celadon type glazed censer, of compressed baluster form with blue hint running glaze on three spade stud feet, possibly indistinguishable character marks, 14cm dia. £30 - 40 †
- 49**
A 19th Century Chinese blue and white baluster vase, decorated scenes with figures amongst trees and rocks, 26cm high £300 - 400 †
- 50**
An 18th Century London Delftware charger, painted in iron red, yellow, green and blue, decorated with a Chinese boy in a rocky landscape within a single blue line border and foliate scrolls, 36cm dia. £150 - 250 †
- 51**
A mid 18th Century Bristol Delftware charger, painted in blue with two Oriental figures in conversation within a Chinese landscape, 33cm dia. £100 - 200 †
- 52**
A mid 18th Century Bristol Delftware polychrome charger, decorated with a figure beside a tree with buildings in the far ground, rabbits in the foreground within a Bianco Sopra Bianco painted border, 36cm dia. £70 - 100 †
- 53**
A mid 18th Century Bristol Delftware charger, painted in blue with an Oriental figure and diving bird surrounded by a blue line border with Chinese type landscape, 33cm dia. £100 - 150 †
- 54**
A large Dutch Delft polychrome plaque, painted with buildings, figures and bridge scene, 57cm x 49cm £150 - 250 †
- 55**
A Chinese Sang de Boeuf glazed brush pot, of cylindrical form, quite plain, six character marks to base, 14cm high £50 - 70 †
- 56**
A Chinese famille rose brush washer, of compressed form having an overturned rim with heart devices, painted with three lady's with a table beside a tree, painted red seal mark, 26cm dia. £40 - 60 †
- 57**
A mid 20th Century Japanese satsuma type fruit bowl, decorated with three warriors and horse, the exterior with floral reserves, red signature, also marked foreign, 25cm dia. £50 - 70 †
- 58**
A Celadon Mystery water dropper, with mythical beast spout, serpent tail handle, the body in relief above a pierced base, 11cm high £40 - 60 †
- 59**
A Chinese famille rose vase, of baluster form decorated with enamels of blossom and small branches with square blue seal mark, 23cm high £80 - 120 †
- 60**
A Chinese celadon glazed water dropper, of baluster form with upswept spout and dragon handle, moulded fluted body, 20cm high £20 - 30 †
- 61**
A Chinese running flambé glazed vase, of hexagonal baluster form, impress four character mark, 17cm high £30 - 50 †
- 62**
An 18th Century Chinese mug, under glazed blue and iron reds, unglazed base, 10cm high £80 - 120 †
- 63**
A near pair of Chinese porcelain hexagonal cricket cages, with reticulated sides, 8cm high £20 - 30 †
- 64**
A pair of Chinese blanc de china censers and covers, in the form of squat Foo Lions with pierced eyes and mouths, 10cm high £40 - 60 †
- 65**
A Chinese baluster vase, decorated with two dragons amongst foliage, four character marks to base, 13cm high; a Prunus vase; and a green glazed vase with yellow dragons and Phoenix (3) £40 - 60 †
- 66**
A Chinese blanc de chine group of a young boy and mythical creature, on naturalistic rock base, 19cm high £30 - 50 †
- 67**
A late 19th Century Canton miniature jar and cover, decorated with figures and foliage on associated Canton box and cover; a ginger jar with two ring mark and a small vase £20 - 30 †
- 68**
A late 18th Century Chinese porcelain spoon tray, of undulating form, unglazed base, 13cm £40 - 60 †
- 69**
A Chinese saucer dish, decorated with a central sailing ship panel within a Western figure and ship border, red square seal mark, 26cm dia. £40 - 60 †
- 70**
A Chinese bottle vase, with green and jun type brown blotched glaze, the lower quarter with moulded designs, indistinct marks, 24cm high £40 - 60 †



Lot 51



Lot 54



Lot 60



Lot 61



Lot 76

71
A Chinese Sang de Boeuf and speckled glazed vase, on slender baluster form raised seal to base, 25cm high £40 - 60 †

72
A Chinese blue and white ginger jar and cover, painted in the prunus pattern with underglaze double ring, and four character marks, 14cm high (4) £60 - 80 †

73
A Chinese vase, of slender ovoid form, painted in underglaze blue having a warrior with sword drawn and large dragon guarding a flaming pearl in a landscape with six character and double ring marks, 26cm high £40 - 60 †

74
A Japanese Meiji period Satsuma vase, of squat form unusually with a background decorated with landscapes in gilt, rectangular gilt and red seal mark, 10cm high £40 - 60 †

75
An early 20th Century Chinese porcelain plaque, the polar white ground decorated with painted enamels depicting peacock and peahen perched amongst foliage with character marks, 17cm x 25cm £40 - 60 †

76
A large Chinese yellow glaze and under glaze blue vase, of Mei Ping outline, decorated with a dragon and chasing a pearl amongst clouds, six character mark to the body, 43cm high £40 - 60 †

77
A Chinese famille rose jardinière on stand, painted with eight figures in conversation, both pieces with red square seal mark, 16cm high £60 - 100 †

78
A pair of Chinese painted under glazed blue and white bottle vases and lids, each decorated with Foo lions at play and undulating ribbons, 19cm high £30 - 50 †

79
A late 19th / early 20th Century Chinese porcelain brush pot, the cylindrical body painted in enamels with a praying mantis on flowers and leaves, calligraphy to the body having signature to base, 14cm high £40 - 60 †

80
Large Chinese blue and white jar and cover, of waisted form painted with exotic birds and butterflies amongst flower heads, leaves and rocks, four character marks to base, 42cm high £80 - 120 †



Lot 80



Lot 81



Lot 85

81
A Chinese vase of hexagonal baluster form, decorated in enamels with interior scene and triumphant scene to verso, flanked by cylindrical handles, red square seal mark, 28cm high £40 - 60 †

82
A pair of Chinese oversized ginger jars and covers, with floral scroll designs, 22cm high £60 - 80 †

83
Two Chinese scholars brush pots, each with pierced lids decorated with famille rose interiors and foliage scenes, each with a different red seal mark, 12cm dia. £30 - 50 †

84
A late 18th Century Chinese famille rose loving cup, with two panels of figures in conversation flanked by moulded dragon handles (possibly originally with cover) 15cm wide maximum £40 - 60 †

85
A Chinese blue and white double gourd shaped vase, with all over tight scroll work emanating from flower heads, blue square seal mark to base, 30cm high £40 - 60 †

86
A pair of Chinese Sang de Boeuf and partial Celadon glazed vases, of bottle form, one with repaired neck, 16cm high £30 - 50 †

87
A Chinese blue and white undulating tray, with lake, boat and mountainous scene, six character mark, 22cm £40 - 60 †

88
A matching collection of five Chinese blue and white pedestal salts, each on tapering stems £40 - 60 †

89
A pair of Chinese pottery Foo lions, each with mischievous expressions applied with pipe work to replicate fur, each with double seal marks, 15cm high £40 - 60 †

90
A 19th Century Chinese pottery and miniature Celadon glazed moon flask, each side with a central motif and radiating designs, 6cm high; another small blue and white miniature moon flask; a porcelain snuff bottle; and an Oriental pottery miniature plate (4) £20 - 30 †

91
A late Ming Dynasty blue and white bowl, painted with flower heads and landscapes, 22cm dia. £80 - 120 †

92

An 18th Century Chinese porcelain famille rose armorial plate, of octagonal form with Latin script "Nunquam Non Paratus", 22cm wide £60 - 100 †

93

A rare 18th Century Pratt ware pottery oval wall plaque, depicting a female Bacchanalian figure, 19.5cm high; and a smaller oblong Pratt ware plaque of a female painted in typical colours 8.5cm (2) £80 - 120 †

94

A large pair of Victorian Masons ironstone mugs, having serpent handles (some damage); an Ironstone pattern saucer; and a similarly decorated Chamberlains Worcester plate (4) £40 - 60 †

95

A 19th Century mug, decorated with a panel depicting a rural church on blue ground heightened in gilt; a pair of Spode coffee cans; a Spode blue and white cup AF; and a 19th Century cup and saucer monochrome decoration of rural scenes (8) £40 - 60 †

96

A pair of Meissen cabinet plates, decorated insects and birds; and a Dresden comport decorated floral panels and courting couples (3) £100 - 150 †

97

A 19th Century Derby porcelain figure, of a cobblers wife on a goat AF £60 - 80 †

98

A pair of late 18th Century Staffordshire square based figures, "Simon and Partner" £80 - 120 †

99

A 19th Century Staffordshire figure, of a man in Arbour £40 - 60 †

100

An 18th Century Liverpool porcelain bowl, decorated Chinese scenes and central motif "Another And Then" AF; a continental pottery fluted bowl AF; two blue and white soap dishes; and a Victorian Temperance mug £40 - 60 †

101

A Victorian "Wild Rose" pattern meat plate, 48cm AF £20 - 30 †

102-109

No Lots

Silver, Plate & Jewellery

110

A French white metal ladle; a plated "Old English" pattern ladle; and various plated items to include egg cruet, muffin dish, sauce boats, two handled tray etc. £40 - 60 †

111

A small George V silver boat shaped bon bon dish, engraved with a family crest, Hallmarked for London 1912; a small silver cylindrical pot and cover Birmingham 1919 AF; a cut glass scent bottle with silver mount; and two pierced silver bon bon dishes (5) £40 - 60 †

112

A modern silver four piece tea / coffee set, of panelled form with black handles and lifts, Sheffield 1972, 54oz £500 - 600 †

113

A Victorian silver sugar bowl, with pierced foliate decoration, central monogram, shaped beaded border with swing handle, raised on a fluted pierced foot, complete with blue glass liner, Sheffield 1854, 13cm high x 13cm dia. overall £100 - 150 †

114

An Irish silver gravy boat, by West & Son of Dublin, having beaded border and raised on three shell feet, vine scroll handle with bird terminal, 7oz, 17cm long £70 - 100 †

115

An Edwardian silver pedestal dish, with shaped segment borders raised on a circular stepped base, Sheffield 1904, 13oz, 24cm dia. £100 - 150 †

116

A George V six baluster tankard, having acanthus decorated C scroll handle raised on a stepped spread foot, Birmingham 1928, 8oz, 12cm high £60 - 80 †

117

A Victorian silver baluster cream jug, with foliate engraved decoration initialled and later inscribed, London 1843, 7oz, 13.5cm high £60 - 80 †

118

An Edwardian silver pedestal fruit basket, decorated garlands and swags, raised on an oval spread foot with flower head decoration, inscribed "Hollisley Bay Labour Colony, Imperial Fruit Show 1929, Presented by Abol Ltd", Hallmarked for Chester 1903, 26oz, 32.5cm long in extremes x 19.5cm high £250 - 350 †

119

Three pairs of various Georgian and later silver sugar tongs £60 - 80 †



Lot 93



Lot 115



Lot 116



Lot 118



Lot 141

120

A George III salver, having pie crust and shall border raised on three hoof feet, probably by Ebenezer Coker, *London 1768*, 26cm dia.
£250 - 350 †

121

A George V silver baluster cream jug, *Chester 1921*; and another silver cream jug with half fluted body design, *Sheffield 1965* (2) £40 - 60 †

122

A cased set of six Art Deco silver handled fruit knives; a pair of cased silver serviette rings monogrammed; two others; and a glass and silver mounted match striker (11) £40 - 60 †

123

A pair of George III silver "Old English" pattern table spoons, probably by Peter and Anne Bateman, bearing monogram, *London 1794*, and another pair with bright cut decoration, makers mark G.W. *London 1807* (4) £60 - 80 †

124

A set of six Victorian silver teaspoons, "Old English" pattern monogrammed *London 1883* £30 - 50 †

125

A silver Art Deco trophy, with presentation inscription, *Chester 1929*; a small silver sugar bowl, *Sheffield 1901*; and Eastern white metal bowl with embossed decoration; a small circular and enamel patch box AF; an oval plated bon bon dish; and six small plated saucepans (11) £40 - 60 †

126

A mahogany cased set of twelve each fish knives and forks; a part set of fish knives and forks; a part set of mother of pearl handled fruit knives and forks; a cased set of six Walker & Hall plated soup spoons; two pairs of cased plated fish servers; a cased set of four plated knife rests; and a pair of plated asparagus tongs £50 - 100 †

127

A collection of various Georgian, Victorian and later sauce ladles, sifter spoons, condiment spoons, tea spoons etc. £80 - 120 †

128

A pair of small late Victorian silver salts, of fluted design with gilded interiors, *Birmingham 1893*; a single circular salt *Sheffield 1885*; and six silver salt spoons; and an Edwardian silver four division toast rack, *Birmingham 1903* (10) £40 - 60 †

129

A plated ice bucket by Elkington & Co., having reeded bands and loop handles, 17.5cm dia. overall, 19cm high £40 - 60 †



Lot 142



Lot 144



Lot 146

130

A plated tea kettle, on spirit heater stand of squat form with black wood handle, 24cm high £20 - 40 †

131

A collection of miscellaneous silver sugar tongs £80 - 120 †

132

A silver beaker, having presentation for The Puckeridge Hunt 1923, Puppy Judging, Hallmarked for *London 1903*, 6.5oz £60 - 80 †

133

A silver handled cake knife, decorated figures and foliage £20 - 30 †

134

Five modern silver decanter labels £40 - 60 †

135

A cased set of six silver seal end coffee spoons, *Sheffield 1930* £30 - 50 †

136

A cased set of six silver "Rat Tail" patterned tea spoons and sugar tongs, *Sheffield 1917* £30 - 50 †

137

A cased set of six "Old English" pattern silver coffee spoons, *Sheffield 1936*, retailed by J. Ramsey £30 - 50 †

138

A George III silver toddy ladle, with whalebone twist handle; and a unmarked white metal similar (2) £40 - 60 †

139

A Rustfri spoon with pierced terminal £10 - 20 †

140

An early 20th Century silver mug, with monogrammed and date 1893-1918, Hallmarked for *Sheffield 1904*, by Mappin & Webb, 10oz £100 - 150 †

141

A part suite of George V silver flatware, probably by Daniel & Arter, comprising six table forks, ten dessert forks, and six dessert spoons, *Birmingham 1935* and *1939*, 48oz £400 - 600 †

142

Six each "Old English" pattern silver dessert forks and spoons; and six matching dinner forks *London 1936*, 32oz £300 - 400 †

143

An octagonal silver snuff box, with ship engraving to the lid, marks for John Osment 1829, Exeter; and a George III Exeter spoon by Richard Ferris 1792 (2) £100 - 150 †

144
An Edwardian engraved oval silver snuff box, decorated with swags and musical instruments, Chester 1909, 9.5cm £70 - 100 †

145
A Rococo style silver snuff box, engraved with initials W.P. to the underside and dated 1763, Hallmarks for London 1758, 7cm £120 - 180 †

146
A Victorian silver cucumber saw, with wooden handle in fitted leather case by Heath & Middleton, Birmingham 1892, 16.5cm long overall £350 - 400 †

147
A Hallmarked silver Stilton scoop, Birmingham 1991, boxed; and a Chinese scoop for testing ripeness (2) £30 - 40 †

148
An Edwardian silver hand mirror, Hallmarked for Chester 1903; and a Sterling silver and glass circular trivet 15cm wide (2) £50 - 80 †

149
A small silver model of a Maltese sailing boat, with wooden base; and a Chinese white metal model of a junk with wood base (2) £30 - 50 †

150
An antique open faced pocket watch, the silver case Hallmarked for Birmingham 1884, movement by G.E. Frodsham, London on an antique silver Hallmarked watch chain £70 - 100 †

151
A horn and silver beaker, by Mappin & Webb, London 1900; another 1897; and a horn beaker with silver plated mounts, the tallest measuring 14cm high (3) £40 - 60 †

152
A ladies 9ct gold wrist watch, on mesh strap; another ladies wrist watch; two other watches; a silver cased Victorian pocket watch AF; a pocket watch movement; a silver buckle etc. £100 - 150 †

153
Two Victorian horn and silver mounted beakers, 21cm and 14cm high £100 - 150 †

154
A George III double ended marrow scoop, London 1810; a Victorian silver bladed butter knife and a pair of white metal spring action sugar tongs (3) £40 - 60 †

155
A contemporary 18ct white and yellow gold necklace £400 - 600 †

156
A pair of glass silver and tortoiseshell mounted scent bottles, one AF £30 - 50 †

157
The Medalllic History of London, silver 50 coin set by Franklin Mint Ltd. £600 - 800 †

158
The Royal Society For The Protections of Birds, silver spoon collection, cased £150 - 150 †

159
An Arts & Crafts opal and baroque pearl set pendant, decorated with trailing silver ivy leaves, hung to a fine link chain £100 - 150 †

160
A well graded large pearl necklace consisting of 63 pearls, set to an 18ct gold sapphire and diamond clasp, 67cm long £200 - 300 †

161
An 9ct gold aquamarine pendant, hung to a 9ct gold chain £80 - 120 †

162
A silver trophy cup, by Walker & Hall Sheffield 1936, inscribed for "The Mellis District Bowls Challenge Cup" 23cm high, 19oz £150 - 250 †

163
An 18th Century coconut and white metal mounted cup, raised on baluster stem and stepped spread foot, makers mark E.C. 16.5cm high £400 - 600 †

164-169
No Lots

A Single Owner Collection of Antiquities & Curios

170
A 19th Century bronze cherub mask; two bronze lion mask appliques and a lead griffin appliqué (4) £40 - 60 †

171
A Georgian glass and white metal mounted cruet bottle; a white metal long handled spoon with foliate engraved decoration and a glass and silver mounted toilet jar (3) £40 - 60 †

172
A pair of 19th Century Oriental bronze toad figures, 8cm long £40 - 60 †



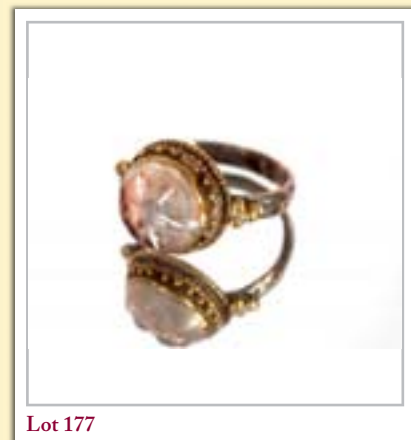
Lot 159



Lot 161



Lot 176



Lot 177



Lot 182

173
A Victorian Burgess style brass candlestick; an 18th Century brass petal based candlestick and another (3) £40 - 60 †

174
A small collection of antiquities, including an Egyptian bronze figure; a Romanesque bust etc. £40 - 60 †

175
A pair of gilded Rococo style serving spoons; two white metal skewers and various other metal wares etc. £40 - 60 †

176
An early yellow metal and stone mounted cross, hung to a fine yellow metal chain £50 - 100 †

177
An antique Seljuk white metal and stone mounted finger ring £50 - 100 †

178
A collection of various bronze figures, other metal wares; an Ojime bead; a meteorite; fragment etc. £40 - 60 †

179
An early 20th Century Folk Art toy horse £40 - 60 †

180
An Anglo Indian rosewood carving of a mermaid, 55cm long, 19th Century or earlier £60 - 80 †

181
A collection of brass, copper, bronze and white metal Eastern pots and vases, including a small brass Kendi £40 - 60 †

182
17th Century school, painting on leather depicting the head of Christ, image 28cm x 21cm contained in an antique gilt frame (incomplete) £200 - 400 †

183
A collection of various wines and spirits, to include Péres Chartreux Liqueur, Cognac Fine Champagne A L'Orange etc. £40 - 60 †

184
Two early European pottery slipware bowls, 33cm x 29cm dia. respectively £40 - 60 †

185
An ancient Cypriot type twin handled pottery vessel, 24cm high £100 - 200 †

186
A small Elamite pottery vessel, 11cm high £40 - 60 †

187
An early jasper stoneware bowl; and three various stoneware dishes £40 - 60 †

188
A pair of Kashmiri type boat shaped bowls; an Ethnic wooden club; various Eastern wooden items; lacquered box etc. £40 - 60 †

189
An early Oriental green pottery bowl, impressed Calligraphy mark; a Canton baluster vase; a Canton shallow dish; a Chinese pedestal salt; and a blue and white tea cup (5) £40 - 60 †

190
An 18th Century Delft blue and grey beer jug, a Delft floral decorated plate AF; a blue and white Faience type model of a rhinoceros; and a Quimper egg cup (4) £40 - 60 †

191
A George II English pewter flagon with wriggle work decoration bearing date for 1743, 24cm high overall £40 - 60 †

192
An early 20th Century Thames barge in a bottle ornament, 43cm high £30 - 50 †

193
A Medieval brown glazed pottery Wheat beer jug, inscription to the base; and two early pottery baluster twin handled vases (3) £50 - 100 †

194
An antique horn shot flask; various other horn items; Treen snuff box; brass pub snuff box for "The Prince of Wales, Twickenham"; and other collectables etc. £50 - 80 †

195
A large and unusual hewn alabaster bowl, 57cm dia. £60 - 80 †

196
An 18th Century Ormolu stand; an antique brass alms dish; a brass two handled bowl; finials etc. £40 - 60 †

197
Two 19th Century coloured leaded glass panels, 38cm x 29cm £40 - 60 †

198
A large early bronze cauldron, possible 17th Century, 31cm dia. x 27cm high £100 - 200 †

199
Two Islamic brass jardinières, with foliate decoration £20 - 40 †

200
A graduated set of five antique brass bell weights; and two bronze weights (7) £40 - 60 †



Lot 185



Lot 186



Lot 191

- 201**
A French Toleware lantern; an iron and brass chamber stick with shade; a cow bell; and an unusual iron and brass mounted leather strap (4)
£40 - 60 †
- 202**
A small quantity of sheeted gold leaf £20 - 40 †
- 203**
Attributed to Dame Laura Knight, study of circus performers, pencil sketch, unsigned, 16.5cm x 10cm, unframed £40 - 60 †
- 204**
Victorian school, portrait of a young woman with ringlets in her hair, unsigned chalk and pencil, unframed 22.5cm x 18.5cm £20 - 40 †
- 205**
A collection of interesting 17th Century and later prints, maps, and etchings £40 - 60 †
- 206**
A folio of mainly 20th Century watercolours, drawings and prints; and a small Religious watercolour, framed £40 - 60 †
- 207**
Elizabeth Lyness N.D.D., a folio of mainly unframed prints and a framed and glazed watercolour of an angel £40 - 60 †
- 208**
Manner of J.M.W. Turner, small 19th Century study of vessels and figures on a beach, watercolour, 8.5cm x 10cm £20 - 40 †
- 209**
A collection of ephemera relating to the World War I Mesopotamia Campaign, including maps £40 - 60 †
- 210**
A Chinese Republic Period porcelain panel, decorated birds and foliage with signature and seal marks, in lacquered and gilt decorated frame, 72cm x 29cm overall £60 - 80 †
- 211**
A 16th Century French Baroque panel, with cherub head decoration, 107cm x 24cm £100 - 200 †
- 212**
An 18th Century carved and gilt wood bed cresting, of foliate design, 126cm x 60cm in extremes £100 - 200 †
- 213**
A 19th Century French bronze framed bevel edged wall mirror, with cherub and mask decoration, 43cm x 35cm £30 - 50 †
- 214**
A 19th Century gilt framed cartouche shaped wall mirror, with scallop cresting, 86cm x 58cm in extremes £40 - 60 †
- 215**
An early 20th Century gilt framed wall mirror, with foliate etched plate, 66cm x 45cm overall £40 - 60 †
- 216**
A late Medieval Gothic carved oak panel, of composite form, 73cm x 29cm in extremes £100 - 200 †
- 217**
Circle of Alan Ramsey, late 18th Century portrait study of a gentleman, oil on canvas, 50cm x 45cm £300 - 500 †
- 218**
19th Century school, watercolour study of a farmyard scene with church in far ground, unsigned 23cm x 30cm £20 - 40 †
- 219**
Three 19th Century Grand Tour gouache studies of muses, 23cm x 18cm £100 - 150 †
- 220**
Circle of Walter Richard Sickert, study of a gentleman standing on a busy street, chalk and charcoal unsigned, 43cm x 30cm £50 - 80 †
- 221**
A collection of seven various 18th Century and later prints £60 - 80 †
- 222**
Winifred Austen, 1876-1964, pencil signed etching of a long eared owl seated on a branch, image 34cm x 20.5cm £30 - 60 †
- 223**
A rare and unusual framed autograph of Queen Catherine Cornaro of Cyprus 1470 £50 - 100 †
- 224**
A Victorian framed and glazed Kendal & Dent Greenwich Meantime chart £20 - 40 †
- 225**
18th Century continental school, study of a female with attendant cherub and dolphin, unsigned watercolour in arched mount, 35cm x 26cm £50 - 100 †
- 226**
A rare and unusual Coptic framed fabric fragment, embroidered with museum stock number (possibly circa 1000AD) £200 - 300 †
- 227**
Four various framed architectural and scenic engravings £20 - 40 †



Lot 197



Lot 198



Lot 217



Lot 231



Lot 253

228
An early framed and glazed Coptic textile fragment, (possibly Egypto-Arabic circa 1000AD) £100 - 200 †

229
20th Century British school, portrait study of a man, unsigned charcoal and chalk, 37cm x 28cm £40 - 60 †

230
Two small interesting pen and ink classical drawings, 8cm x 7cm £20 - 40 †

231
An antique large walnut shallow bowl, on brass revolving stand, 56cm dia. x 57cm high overall £40 - 60 †

232
Manner of Ragnar Sandberg, pencil signed etchings 6/20 and 7/20, image 31cm x 19cm £40 - 60 †

233
20th Century Indian school, gouache study of a celebration, signed S. Schander, dated 1954, 38cm x 47cm £100 - 200 †

234
Attributed to Jan Griffier I, study of a Capriccio with distant mountains inscription verso, oil on panel, 14.5cm x 18cm £200 - 400 †

235
A Wedgwood black basalt oval plaque, depicting a maiden in maple frame, gilt mount, 13.5cm x 8.5cm £40 - 60 †

236
Early 18th Century framed tapestry panel, 24cm x 17.5cm contained in a decorative gilt frame £40 - 60 †

237
Attributed to Leonard Russell Squirrell, pencil sketch of three herons, label verso, unsigned 16cm x 21cm £40 - 60 †

238
20th Century Naïve school, (possibly American) study of figures in a farmyard, unsigned oil on canvas, 44cm x 58cm £50 - 100 †

239
A 19th Century lacquered and chinoiserie panel, depicting figures in an exotic garden, pagodas in the far ground, 84cm x 100cm £60 - 100 †

240
Indian Provincial school, study of figures in various sketches possibly Rajasthan 17th Century, 24cm x 34cm £60 - 100 †

241
An early tapestry fragment, (possibly 17th Century) 75cm x 49cm contained in gilt frame £60 - 100 †

242
Early 20th Century English school, study of a Pierrot, unsigned oil on panel, 45cm x 35cm £40 - 60 †

243
Japanese school, Meiji period study of a bird of prey, signed watercolour, 26cm x 20cm £40 - 60 †

244
19th Century English school, study of figures in a church interior, (possibly a baptism), unsigned watercolour, 29cm x 23cm £30 - 50 †

245
After The Old Master, chalk study of three women; and two other sepia Old Master style prints (3) £40 - 60 †

246
Three various 18th Century steel engravings, including portrait of Cornelius Van Der Geest £40 - 60 †

247
Framed Old Master print of The Nativity; and an engraving of a Holy Procession (2) £40 - 60 †

248
Cuzco school, study of a nobleman on horseback, oil on board, 61cm x 50cm £100 - 200 †

249
20th Century school, large ceramic bust "Spirit Guide", 34cm high £20 - 40 †

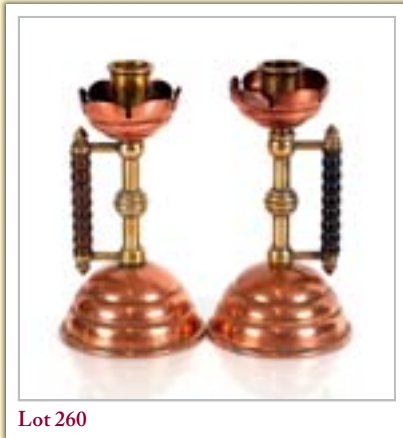
250
A large Tibetan bronze figure of a Goddess, 44cm high £80 - 120 †

251
Manner of Haganear, a small white metal figure of a dancer 12cm high £40 - 60 †

252
After Alberto Giacometti, bronze study of a warrior, 38cm high detached from marble plinth £40 - 60 †

253
Attributed to Dr Christopher Dresser, a Victorian brass baptismal ewer AF, 42cm high £40 - 60 †

254
Early 20th Century plaster Maquette of a child's face, 22cm £20 - 40 †



Lot 260



Lot 261



Lot 265

255
18th Century European carved wooden figure of a saint, with white metal Corona, 59cm high (Illustrated on Back Cover) £300 - 500 †

256
An Arts & Crafts copper and steel Youghal A.M.W. rush light, 25cm high £30 - 50 †

257
A Chinese Archaistic bronze Zun, in the form of a bird (missing lid), 16cm high £40 - 60 †

258
An antique Burmese bronze temple bell, 34cm x 24cm £30 - 50 †

259
A 19th Century carved oak relief panel, of Anthony Van Dyke, 44cm £100 - 200 †

260
Attributed to Dr Christopher Dresser, a pair of brass and copper candlesticks, having turned wood handles, 16cm high £40 - 60 †

261
A late 18th Century white metal wax jack holder, having pierced design, 26cm long £60 - 100 †

262
A 19th Century cased bronze figure group, depicting a naked female and leopard on oblong plinth, 18cm high x 13cm long £40 - 60 †

263
After the Antique a cast bronze figure of an athlete, 25cm high £60 - 80 †

264
An early 20th Century shop counter bell £20 - 40 †

265
A Chinese filled bronze figure of an immortal, seated on the back of a rhinoceros, 4 character mark to base, 19cm high x 17cm long £60 - 100 †

266
After the Antique a bronze model of a naked youth, holding a torch mounted on later plinth, 28cm high overall £40 - 60 †

267
An early carved limestone Christian portico figure, 18cm high £40 - 60 †

268
A primitive wood carved figure, depicting a female hydra possibly African on later stepped plinth, 47cm high overall £40 - 60 †

269
A Tibetan cast bronze figure of a female Goddess, 29cm high £100 - 200 †

270
A Tibetan brass kettle, having foliate decoration and swing handle, 31cm high £40 - 60 †

271
A Tibetan brass and copper tea pot, of baluster form with raised flower head decoration and fruit finial, 25cm high £40 - 60 †

272
A Chinese bronze figure of a Buddha, having character mark to base, 20cm high £40 - 60 †

273
A 17th Century carved wooden Saint figure, 19cm high; and a small wooden figure of a child on marble plinth, 14cm high AF (2) £60 - 80 †

274
A Chinese carved soapstone figure of a seated immortal, 7.5cm high; and another standing figure 8.5cm high (2) £20 - 40 †

275
A small Chinese Jadeite water dropper, 11cm long £50 - 100 †

276
Ferdinand Lugerth, bronze figure of a lady with fan, signed to base, 12cm high £40 - 60 †

277
A carved stone Yoni of the Goddess, 20cm long £40 - 60 †

278
A large turquoise glazed Egyptian Shabti figure, 34cm high £100 - 200 †

279
A 19th Century enamel glass wafer jar, 16cm high £40 - 60 †

280
A primitive carved wooden figure group, (possibly depicting Disciples), 22cm high £40 - 60 †

281
A Chinese carved malachite figure, of a reclining lady amongst foliage, raised on a marble plinth, 13cm long overall, 12cm high £50 - 80 †

282
An early 20th Century silver trumpet shaped bud vase, by Mappin & Webb, having pierced decoration, London 1911, 27cm high £40 - 60 †

283
A White Star Line plated hot milk jug; and a printing block depicting the sinking Titanic (2) £20 - 40 †



Lot 275



Lot 276



Lot 278



Lot 288



Lot 294

284
An early blown glass pot, 9cm high; an antique green glass bottle, 24cm high; and a small example 14cm high (3) £60 - 100 †

285
An Italian glazed terracotta sculptural figure of a male, holding a vine decorated urn aloft AF, 33cm high £40 - 60 †

286
A Japanese Meiji Period Butsudan or Buddhist Altar shrine £100 - 200 †

287
An antique continental brass carriage foot warmer, with foliate and pierced decoration £30 - 60 †

288
An 18th Century Russian silver plate on copper icon, of large size, having figures, inscriptions and foliate scrolls, 50cm x 40cm £200 - 400 †

289
Three 16th Century carved oak Romaine panels, depicting two male and one female figureheads amongst scrolls, 44cm x 17cm £400 - 600 †

290
A Chinese bronze archaic cloisonné decorated baluster vase, AF £20 - 40 †

291
Two white metal slave bangles; and a bronze similar (probably African) (3) £60 - 80 †

292
A 19th Century Anglo Indian carved hardwood frame, profusely decorated temples and foliage, 51cm x 29cm £100 - 200 †

293
A 20th Century carved Shona stone mask, 37cm £40 - 60 †

294
A 19th Century white metal Holy Water stoop, in the form of The Crucifixion; and a cased white metal and mother of pearl crucifix AF £50 - 100 †

295
An unusual Indian bronze metamorphic incense burner, in the form of a flower head, 11cm high £40 - 60 †

296
A Baroque wood carving, depicting a dancing cherub with tambourine, 46cm high overall £60 - 80 †

297
A Culpeper type brass microscope, AF, 28cm high £40 - 60 †

298
An early carved granite figure of a Saint, (possibly Norman Period), 32cm high £200 - 400 †

299
An early carved stone corbel, depicting a Saint, 21cm x 20cm in extremes £60 - 100 †

300
An 18th Century oval portrait miniature, of a gentleman in white stock and blue coat, the wooden frame with inlaid decoration £100 - 150 †

301
A Limoges miniature enamel portrait, of a Saint, signed R. Philippon £60 - 100 †

302
19th Century school, miniature bust length portrait of a lady with flowers in her hair, contained in oval ebonised frame £40 - 60 †

303
A 19th Century Ethiopian Gurage head rest, 16cm high in extremes £40 - 60 †

304
Walter Awlson Born 1949, Raku glazed naked female figure study raised on circular marble plinth, 55cm high £100 - 200 †

305
A 19th Century Naïve brass and iron money bank, 20cm high £40 - 60 †

306
19th Century Florentine school, pair of studies depicting nesting birds, oval oils on panel, 22cm x 17cm in extremes £80 - 120 †

307
An 18th Century carved wooden printing block, depicting a Saint, 38cm x 26cm £80 - 120 †

308
A 19th Century silvered mercury glass pendant, with stylised decoration, 36cm £40 - 60 †

309
A Chinese archaic pottery vase, with fish decoration having character marks to base, 22cm high £40 - 60 †

310
An early European pottery oil jar, having raised decoration and scroll handles AF, 37cm high overall £100 - 200 †

311
An early carved wooden Transum, with applied metal Royal cipher (possibly 17th Century), 75cm long £60 - 100 †



Lot 296



Lot 297



Lot 300

312
A Japanese Meiji period root carving, of an immortal on later base AF, 35cm high overall
£40 - 60 †

313
A Baroque carved wooden finial, depicting four angels on later marble plinth base, 22cm high overall
£40 - 60 †

314
A Tibetan wooden concertina prayer book
£20 - 40 †

315
Two early turned wooden bowls, 27cm dia.
£40 - 60 †

316
A Naïve carved wood figure, on later metal stand (possibly from the family of Lucien Freud) label to the reverse, 23cm high
£40 - 60 †

317
An early Indian carved wood figure, of a Goddess, 17cm high; and a Thai carved wooden figure of a lion dog, 16cm high (2)
£20 - 40 †

318
A Buddhist carved wooden fragment, depicting deities in niches, 44cm high
£50 - 60 †

319
Three various Ashanti carved wooden fertility dolls, the largest 46cm high
£60 - 80 †

320
A bronze model of a seated figure, 25cm high
£20 - 40 †

321
An early limestone carved head figure, 26cm x 26cm overall
£100 - 150 †

322
A 17th Century bronze mortar, having raised figural decoration to the sides, 15cm dia. x 11cm high; and a small 17th Century bronze hand mortar 8cm high
£60 - 100 †

323
A pitch pine folding metamorphic library ladder / pole, 230cm long
£40 - 60 †

324
A 19th Century mahogany drop leaf dining table, the rounded drop leaves raised on square section supports, terminating in brass caps and castors, 126cm wide
£40 - 60 †

325
An 18th Century oak bureau, of small proportions, fitted brass side carrying handles, the fall front opening to reveal in interior arrangement of drawers and pigeon holes and sunken well, two short and two long drawers below, raised on bracket feet, 61cm wide
£100 - 200 †

326
A Georgian mahogany and cross banded serpentine fronted tea table, the rectangular fold over top supported on square section swing supports, 89cm wide
£60 - 100 †

327
A pair of Chinese elm elbow chairs, having shaped splat backs, out swept arms on solid seats raised on square section stretchered supports
£100 - 200 †

328
An 18th Century Bavarian carved hall chair, having beast carved and pierced back, solid seat raised on tapering fluted supports
£40 - 60 †

329
A 19th Century mahogany rail back elbow chair, with upholstered stuff over seat, raised on ring turned supports
£30 - 50 †

330
A 19th Century elm ladder back side chair, having solid seat raised on rounded supports and pad feet, united by stretchers
£20 - 30 †

331
An antique iron Dutch style nine light ceiling lantern
£60 - 80 †

332
A large Victorian embroidery, depicting a seated courting couple, contained in a period moulded cushion frame, 129cm x 94cm
£100 - 200 †

Objects & Collectables

333
A 19th Century miniature portrait, of a lady wearing a lace cap and blue dress, (faded), contained in an ebonised and gilt frame
£20 - 30 †

334
A late 19th / early 20th Century treen coracle paddle, or stirrer, possibly Welsh, 123cm long
£40 - 60 †

335
An early 20th Century blue lacquer and chinoiserie decorated desk clock, of arched form by Mortimer & Ricks Paignton, on gilt swept bracket feet, 15cm
£60 - 100 †



Lot 304



Lot 310



Lot 312



Lot 320



Lot 356

336

An Oriental painting on silk, depicting a leaping fish and two further fish below with signature and seal mark, 178cm x 58cm contained in a box

£40 - 70 †

337

A pair of unusual late 19th Century Japanese stoneware Hyousatsu (name plate), each with double characters, 17cm x 11cm

£20 - 30 †

338

A Chinese wooden and metal bound dressing table box, the hinged lid opening to reveal a hinged mirrored interior, 15cm wide

£20 - 30 †

339

A Chinese cinnabar lacquer box and cover, of square outline decorated with a dragon amongst foliage, 8cm

£20 - 30 †

340

A pair of Chinese cinnabar lacquered vases, on wooden stands of baluster form with blue enamel interiors decorated floral reserves, 16cm high

£50 - 80 †

341

An Oriental carved wooden ark, with hinged angle lid and all over lozenge devices, 30cm

£40 - 60 †

342

An 18th Century primitive stool / preparation stand, with a narrow knife marked and worn single piece top on square and spade supports, united by stretchers, possibly Welsh

£40 - 70 †

343

An early 19th Century Tibetan metal Gau (travelling shrine) of ogee arched form with recessed Deity seated, the whole with floral designs, loops for belt attachment, 13cm high

£50 - 80 †

344

A 19th Century Chinese Paktong incense stick holder, with dragon tip, double urns below, supported by an elephant, square and short cabriole feet, seal mark, 25cm high

£40 - 60 †

345

A pair of cinnabar lacquered style double gourd shaped vases, bearing gilt four character marks

£30 - 40 †

346

A near pair of Chinese bronze ribbed globular censers, each with large square seal marks, 9cm high

£40 - 60 †

347

An early 20th Century metal Indo / Persian perfume flask, of flattened oval form with over coloured enamel floral designs and white metal lines on a lozenge base, 15cm high

£40 - 60 †

348

A 19th Century possibly Anglo / Chinese cinnabar lacquered box and cover, of elongated octagonal form, the lift off lid having a swept pagoda tiled roof with panels below of European dragons and foliage scrolled designs, 25cm

£40 - 60 †

349

A pair of Chinese bronze models of Kylin, on plinth bases 12cm high

£80 - 120 †

350

A 19th Century French red rock and leather tobacco pouch, decorated with smoking motifs verso with a port scene, 13cm

£20 - 30 †

351

A collection of 1920's / 30's and later photographs, to include native African women, views of Egypt, South Korea, Kenya, India and others

£20 - 30 †

352

A mid 19th Century Ladies souvenir Paris book, the chased metal surround painted miniature possibly of La Bourse building, silk lined interior, diary and calendar for 1846, 10cm

£30 - 40 †

353

A pair of late Victorian Macabre Prisoner of War bone vases, with spiral and polished bodies on oak and walnut bases, dated and initialled 29cm and 25cm high

£50 - 80 †

354

A Chinese bronze model of a Kylin, 19cm high

£20 - 30 †

355

A Chinese carved green hard stone Pixiu, on undulating wooden stand, 14cm

£40 - 60 †

356

A late 19th Century Chinese carved wooden architectural frame, the pagoda type edge and twin opening doors flanked by cluster columns and dragon heads bellow, 46cm

£30 - 50 †

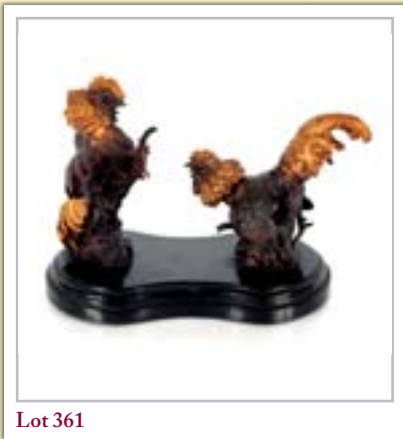
357

A late 19th Century Chinese carved wooden vase, on stand decorated with peacocks and all over foliage, the dished circular top on Kylin and Deity trefoil shaped base, 40cm in extremes

£70 - 100 †



Lot 358



Lot 361



Lot 363

358
A late 19th / early 20th Century Japanese cloisonné charger, the blue field decorated cranes beside a stream within a floral border, 30cm dia. £70 - 100 †

359
A Chinese bronze model of a Xiezhi galloping, 15cm long, mark to tail £20 - 30 †

360
A Chinese cherry coloured amber type seated Buddha, holding fruit 6cm high; a carved turquoise Foo Lion and a carved stone pig (3) £20 - 30 †

361
After P.J. Mené, bronze group depicting two fighting cockerels heightened in gilt to the heads and tails on shaped Ashford stone style plinth, 24cm £30 - 50 †

362
A Chinese carved hardwood and pieced table screen, decorated animals, lake, landscapes, bridge and pagodas, mother of pearl various signatures and seal marks, 32cm high £30 - 50 †

363
A Chinese cinnabar lacquered circular box and cover, decorated in relief with a dragon and similar frieze, 8cm dia. £20 - 30 †

364
A Chinese green lacquer and chinoiserie dressing table box, with lift up mirror interior and drawer below, flanked by carrying handles, 15cm wide £40 - 60 †

365
A Chinese red lacquer and chinoiserie decorated dressing table box, opening to reveal a mirror with drawer below, 12cm wide £30 - 50 †

366
A pair of 19th Century Chinese bronze miniature censers, each flanked by upswept strap handles on three pointed feet, seal marks, 7cm dia.; and another similar (3) £40 - 60 †

367
A Chinese bronze censer of square section, key decorated frieze and dragons below on short cabriole supports, square seal mark to base, 12cm high £60 - 100 †

368
A Chinese golden hardstone bowl, with applied metal mounts, square seal mark to base, 11cm dia. £20 - 30 †

369
A Japanese Meiji period bronze vase, of baluster form flanked by dragon handles and birds below on hipped cabriole supports, headed by turtles on pierced circular base, 42cm high £50 - 100 †

370
A Chinese carved Bowenite / hardstone study of a water buffalo, the largest beast standing upon clouds with a dark calf looking upwards to the parent, raised on a carved pierced hardwood stand, carved from single stone, 16cm high £60 - 100 †

371
An impressive pair of 19th Century Paktong altar incense burners, each with double bowls emanating from dragons tail entwined stems and two twin heads below on circular bases, 55cm high £100 - 200 †

372
An ornate vintage small brass mirror, 44cm high £30 - 50 †

373
Three brass Eastern oil lamps, with loop carrying handles, fitted with wick trimmers on chains £100 - 150 †

374
A Victorian cast iron door stop, in the form of a hunter and dog, 26cm high £20 - 40 †

375
A 19th Century walnut and mother of pearl inlaid necessaire, having sloping hinged lid with some yellow metal mounted fittings etc. £100 - 150 †

376
A rosewood and brass bound artists paint box, by Ackermann & Co. £100 - 150 †

377
A Georgian mahogany and box wood strung hinged box £10 - 20 †

378
A Georgian mahogany and cross banded tea caddy, with shell inlaid decoration £15 - 20 †

379
A 19th Century miniature portrait of Mrs Colebrook, in ebonised and gilt frame £100 - 150 †

380
A 19th Century fruitwood candle box, 28cm high £20 - 40 †

381
A small late 19th Century rosewood and white metal banded tray, for calling cards, 14cm £20 - 30 †



Lot 367



Lot 380



Lot 390



Lot 391



Lot 407

382
A heavy 19th Century glass inkwell, with gilt metal lid £40 - 60 †

383
A late 19th / early 20th Century oval miniature portrait of gentleman in walnut and ebonised frame £20 - 30 †

384
A small bronze Roman type toga pin; and a hanging oil lamp (2) £10 - 20 †

385
An antique Russian brass hanging oil lamp, with figure head decoration AF; various brass items; miniature bronze pot; a small pewter lidded pot and a small 19th Century oval brass tobacco box engraved with a ship AF etc £40 - 60 †

386
An 18th Century flintlock pistol, with brass mounts £20 - 30 †

387
Two spelter figures of cherubs, in the Rococo manner holding aloft candle sconces converted to electricity £30 - 50 †

388
A set of twelve 20th Century cloisonné cups on wooden stands, decorated with a variety of flowers and leaves and coloured backgrounds £30 - 40 †

389
A Continental bronzed spelter figural planter, in the form of a jester holding a torch aloft, 61cm high £30 - 40 †

390
A Victorian cast iron umbrella / stick stand, with gilt decoration £50 - 80 †

391
A Barograph, by S Leighton of Lancaster, fitted with a chart drawer and raised on ogee supports, 37.5cm wide overall x 21cm high £100 - 200 †

392
A Black Forest type carved wooden figure, of a mountain goat, 47cm high £60 - 100 †

393
A 19th Century Papier Mâché cylindrical box and cover, (possibly for documents) with painted decoration of a tiger chasing a deer, within a foliate scroll surround, heightened in gilt, possibly Indo/Persian, 40cm high x 9.5cm dia. £60 - 100 †

394
A carved mahogany wall bracket, in the form of a bird holding a leaf in it's mouth surrounded by foliage, 36cm wide overall x 24cm high £80 - 120 †

395
Five volumes "Despatches Of The Marquis of Wellesley" £200 - 400 †

396
Aldeburgh Anthology, limited edition 69/100, signed copy £200 - 300 †

397
A 19th Century Anglo / Indian writing slope, fitted fold out interior, pen trays and inkwells £60 - 80 †

398
An Indian brass inlaid teak trinket box, having divisional lift out tray, flanked by side carrying handles, 40cm wide £40 - 60 †

399
A pair of antique brass ejector candlesticks, raised on ring turned columns with petal bases, 20cm high £20 - 40 †

400
A brass cased telescope, by J.H. Steward, The Strand London in leather carrying case £40 - 60 †

401
A brass cased pressure gauge, by Pallant, 51 The Strand, London, in outer leather carrying case £30 - 50 †

402
A pair of antique carved walnut book ends, depicting seated man with tankard of foaming ale, and a lady reading a book, 20cm high £100 - 150 †

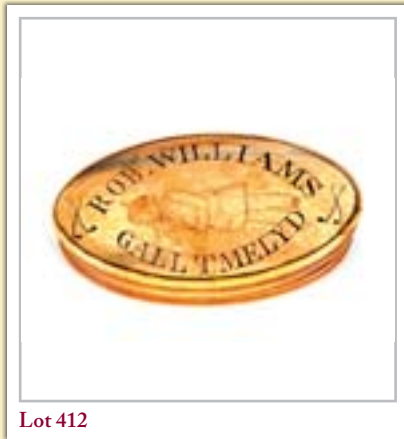
403
A 19th Century rosewood and boxwood strung tea caddy, of sarcophagus shape, the hinged lid opening to reveal a fitted interior with two tea compartments flanked by brass drop handles, and raised on claw feet, 32cm £80 - 120 †

404
A small fruitwood covered pot, containing miniature bone domino set £60 - 100 †

405
A 19th Century rosewood banjo shaped wheel barometer, having silvered dials and convex mirror panel by Singleton of Ipswich, 105cm £100 - 150 †



Lot 411



Lot 412



Lot 418

406
A pair of 18th Century Italian gilt wood and silvered pricket candlesticks, raised on tri form plinths and scrolled feet, 65cm high £150 - 250 †

407
An antique brass door porter, in the form of a foxes head with riding whip handle, 37cm high £30 - 50 †

408
A Victorian wax fruit arrangement, under glass dome raised on an ebonised plinth, 40cm high £40 - 60 †

409
A Victorian arrangement of coral and sea shells, under a glass dome, 32cm high £40 - 60 †

410
A Georgian nut shell and silver mounted punch ladle, with whalebone twist handle, 30cm long £60 - 80 †

411
A 19th Century lime wood and gilt carved cherub, with spreading wings, 47cm wide overall £150 - 250 †

412
A 19th Century horn oval shaped snuff box, inscribed "Robert Williams Melyten and Miner" dated 1850, 10cm £80 - 120 †

413
A pair of 17th Century carved walnut Putti terminals, 17cm £100 - 150 †

414
A 17th Century large Lignum Vitae dumb bell shaped pestle, 41cm long £80 - 120 †

415
A pair of Chinese brass baluster vases, having coiled dragon decoration to the necks above engraved foliate panels, impressed character marks to the base, 20cm high £40 - 60 †

416
A Fijian Islands ceremonial fork; a Pacific wood spoon carved with figure and a Solomon Islands long spouted vessel, the stylised handle with horned beast motif (3) £150 - 250 †

417
A 18th Century Chinese bamboo carving of a laughing man, holding toad in his right hand, 19cm high £250 - 350 †

418
A 19th Century Chinese bronze vase, having rope twist handles supported by a coiled dragon, 17.5cm high £80 - 120 †

419
A heavy gauge 19th Century Japanese bronze wine pot and cover, the spout with animal head terminal, the cover with floral finial, seal mark to base, 20.5cm high £80 - 120 †

420
A Chinese bronze seated Buddha figure, 26cm high £120 - 180 †

421
A Beijing glass red and white overlaid snuff bottle; and two finely carved nut beads (3) £100 - 200 †

422
A Georgian mahogany writing box, fitted sunken brass carrying handles, the upper section with hinged lid opening to reveal a partitioned interior, two writing drawers below, 30cm wide x 25cm deep x 19cm high £100 - 200 †

423
Martin Knowelden, bronze study of a running hare, 33cm long on wooden plinth £60 - 100 †

424
A 20th Century cased microscope, by Watsons £30 - 50 †

425
A Victorian mahogany cased microscope, by Abraham & Dancer Optical, Mathematical and Philosophical Instrument Makers, Manchester with spare lenses and accessories; and a collection of mahogany cased slides £200 - 300 †

426
A Chinese bronze twin handled baluster vase, with engraved dragon decoration and raised bosses £20 - 30 †

427
A small metal cased music box, by Nicole Freres, the lid having transfer decoration of an alpine scene, 10cm x 6cm £250 - 350 †

428
An Icon, depicting Christ with hand raised and orb, gilt riza with inscriptions and symbols, 18cm x 15cm overall £60 - 100 †

429
A bronze figure of Avalokitesvara, 22cm high £100 - 200 †

430
Two Japanese coloured prints, each depicting a dog in the snow and summer landscape, a variety of seal marks, both unframed, approx. 88cm x 44cm £60 - 80 †



Lot 423



Lot 427



Lot 429



Lot 436



Lot 448



Lot 449



Lot 452



Lot 458

431
A pair of Victorian embroidered pictures, depicting man and woman in rural setting contained in birds eye maple frames, 35cm x 35cm in extremes £40 - 60 †

432
A Victorian wool work picture of a spaniel, contained in rosewood frame, 40cm x 45cm in extremes £40 - 60 †

433
A South Seas carved wooden paddle, 88cm long, the head 45cm dia. £100 - 150 †

434
A Victorian cast iron stick stand, having pierced foliate decoration, 64cm high £100 - 150 †

435
An early 20th Century ships compass, by B Cooke & Son Hull, 23cm dia. £80 - 120 †

436
Two very small Japanese Meiji period enamel on white metal vases, the larger with signature to base, 10cm and 9cm high respectively £60 - 80 †

437
A Victorian cut out silhouette picture, depicting ladies taking tea, 23cm x 28cm £40 - 60 †

438
A 19th Century mahogany and box wood strung banjo barometer thermometer, the silvered dials having central convex mirrored panel, 88cm £30 - 60 †

439
No Lot

Pictures & Prints

440
Frank Brangwyn 1867-1943, lithograph entitled "A Pit rescue", sold by The Folio Society, Collector's Corner London, image 22cm x 30cm; and a 19th Century French etching signed in pencil and numbered 71/200 (2) £40 - 60 †

441
Four Japanese Buddhist Missionary rubbings £100 - 200 †

442
Late 19th Century school, Terraced Street Scenes believed to be Tower Ramparts, Ipswich, unsigned oils on board, 37cm x 41cm £100 - 150 †

443
Leonard Russell Squirrell 1893-1979, "The Washing Place, Sospel, France", mezzotint, plate 15cm x 24.5cm £200 - 300 †

444
Leonard Russell Squirrell 1893-1979, etching of "Lady Street, Lavenham", plate 19cm x 22cm £200 - 250 †

445
An 18th Century hand coloured engraving, of the South East Prospect of Newcastle Upon Tyne; and a coloured print, view of The Port and Town of Newcastle Upon Tyne (2) £100 - 200 †

446
A 19th Century engraving, "Cambridge Castle" £20 - 30 †

447
19th Century Suffolk school, studies of rural scenes depicting ploughing and harvest, indistinctly signed oils on canvas 22cm x 30cm (3) £100 - 150 †

448
Cavendish Morton 1911-2015, "Autumn Decoration" signed watercolour dated 1962, 53cm x 73cm £300 - 400 †

449
19th Century continental school, study of Madonna and Child, unsigned oil on panel inscription verso and dealers seal for John Leech Art Dealer Auckland £60 - 100 †

450
George Oyston, rural cottages a pair, signed watercolours, 25cm x 36cm £60 - 80 †

451
John Ogilby, coloured map "London to Yarmouth" and another "King's Lynn to Harwich" (2) £100 - 200 †

452
After J. Stark and F.G. White, "Castle By A Wooded River", oil on canvas 81.5cm x 114cm £100 - 150 †

453
A Clarence, study of young girls picking wild flowers, watercolour 22cm x 35.5cm £40 - 60 †

454
J.H. Lewis, studies of gun dogs with game, oval oils on board (4), 22cm x 16cm £50 - 80 †

455
A. Marlow, pastoral landscape depicting shepherd and sheep, signed watercolour, unframed image, 34.5cm x 49.5cm £40 - 60 †

456
English school, study of Christ, oil on panel,
71cm x 53.5cm £60 - 100 †

457
William Clarke Eddington, an extensive
Lakeland view, signed watercolour, 38cm x 71cm
unframed £20 - 40 †

458
Emilio Grecco, 20th Century still life study,
flowers in vases, oil on wood board, 50cm x 61cm
£80 - 120 †

459
After William Morris, watercolour by Louis
Davis of flowers, signed with a seal and dated
1916, 71cm x 50cm £250 - 350 †

460
Seozis, study of a girl with parrot, pencil signed
and dated '41, watercolour 30cm x 22cm
£150 - 250 †

461
Philip Connard R.A., 1873 - 1951, "Preening
Swan" circa 1930 watercolour sketch, label verso,
from the artists daughter with inscription, 23.5cm
x 30cm £300 - 400 †

462
Attributed to John Taylor, circa 1755, a pair of
portrait sketches of gentleman and lady in
parkland setting, contained in oval gilt frames,
interesting label and annotation verso, 16cm x
13cm £80 - 120 †

463
Thomas Spinks 1847-1927, river landscape with
cattle watering, oil on canvas, signed, 38cm x 58cm
£120 - 180 †

464
Continental school, 18th Century portrait of a
gentleman, oil on canvas, 44cm x 35cm
£200 - 300 †

465
Albert Ludovici 1820-1894, girl and goat
walking in woodland, oil on board, monogrammed
and dated 1879, 27cm x 47cm £100 - 200 †

466
Eugene Verboekhoven 17898-1881, study of
figures and animals near tower ruins, oil on panel,
signed, 33cm x 43cm £100 - 150 †

467
Fred Morgan 1847-1927, "Pam And her Pets" oil
on canvas, signed, 65cm x 41cm £150 - 250 †

468
English school, late 18th Century pair of oval
portraits depicting ladies, each 28cm x 22cm
£140 - 180 †

469
Scottish school, 19th Century "Scotch Drinking
Heads" pair of oils on panel inscribed verso, 18cm
x 13cm £80 - 120 †

470
William Burgess, watercolour study of a military
caravan £100 - 200 †

471
A 19th Century Chinese scroll picture, depicting
a mountainous landscape £100 - 200 †

472
A Japanese woodblock print, depicting figures in a
garden with large parasol, overlooked by a figure
in vignette, seal marks and signatures, plate 38cm
x 52cm £60 - 100 †

473
Edward Armfield, 1817-1896, studies of a terrier
with rabbit and spaniel with pheasant, signed oils
on board, 14cm x 22cm £100 - 150 †

474
Joan Hassal, black and white etching of harvest
mice; an etching of the "Puppet Master"; four
coloured prints after Richard Parkes Bonnington;
Peter Dewint etc.; two fashion prints; and a print
of Maidstone (8) £30 - 50 †

475
A Medici Society print, after Rayburn "Mrs.
Lauzun"; an antique engraving French cathedral
interior; E.J. Maybery etching of Norwich
Cathedral; a coloured antique engraving of a galley
ship and a coloured print of "The Soho" paddle
steamer (5) £30 - 50 †

476
19th Century school, study of sailing vessels in
heavy seas, unsigned oil on board, 28cm x 35cm
£100 - 20 †

477
Charles Fouqueray, a pair of prints depicting
Russian military uniforms circa 1914-18
£20 - 30 †

478
Late 19th Century school, study of a coastal scene
with sailing vessel, mountains in the far ground,
unsigned oil on canvas, 30cm x 40cm £40 - 60 †

479
19th Century school, study of horse and cart and
oxen loading at a maltings, unsigned watercolour,
24.5cm x 34cm £40 - 60 †



Lot 470



Lot 480



Lot 486



Lot 487



Lot 508

480
20th Century school, still life study of a pottery jugs, fruit and platter on a table, indistinctly signed oil on canvas, 36cm x 45.5cm £40 - 60 †

481
19th Century school, study of sailing vessels, unsigned watercolour; and another of a vessel a ground being towed by horse and carts, 17cm x 54cm (2) £40 - 60 †

482
Gareth Lewis, "E.S.II 1991", oil on canvas, 22.5cm x 15.5cm £40 - 60 †

483
S.C. Bosper, "A Summer Market, Brittany" signed watercolour, 12.5cm x 19cm £40 - 60 †

484
George James Rowe 1807-1883, "Evening" watercolour study, 6cm x 17.5cm £60 - 80 †

485
A pair of late Victorian portraits, of an elderly man and woman framed as ovals in gilt frames (frames AF), 27cm x 22cm £40 - 60 †

486
J. Laurence Hart, 1830-1907, study of a windmill with cattle and farm buildings in the fore ground, signed watercolour, 91cm x 60cm (Illustrated on Front Cover) £100 - 200 †

487
19th Century school, a pair of oils on board depicting rural coastal scenes, indistinctly signed bottom right, 23cm x 33cm, contained in gilt frames £100 - 200 †

488
Chinese school, mid 20th Century three oils on board depicting junk boats at sea before coastline, ovals 15cm x 19cm (3) £60 - 80 †

Clocks

489
A 19th Century rosewood and mother of pearl and brass inlaid carriage clock, by Petonie Leon Paris, striking on a bell £60 - 80 †

490
A late 19th Century rosewood and mother of pearl decorated mantel clock, AF £20 - 40 †

491
A brass carriage clock, with white enamel Roman numeral dial, 11cm high; and another similar, enamel dial AF (2) £60 - 80 †

492
A French brass carriage clock, Roman numeral dial, 11.5cm high AF £40 - 60 †

493
A brass carriage clock, with striking gong movement, circular enamel dial, 12cm high with outer carrying case AF £40 - 60 †

494
A brass cased carriage timepiece, with white enamel Roman numeral dial, 13.5cm high £40 - 60 †

495
A brass carriage timepiece, having white enamel Roman numeral dial, 11.5cm high £40 - 60 †

496
A brass cased carriage clock, with alarm movement, impressed to the reverse R. & Co. Paris, 11cm high £60 - 80 †

497
A brass carriage clock, with alarm movement, stamped to the back plate H. J. with bird motif, 13cm high £100 - 200 †

498
A brass and enamel panelled carriage clock, decorated romantic and gural scenes, 11cm high £60 - 100 †

499
A brass cased carriage clock, with enamel panels inscribed "Lagrosse, Lyon", with alarm movement striking on a bell, 12cm high £60 - 100 †

500
A brass cased and enamel panelled carriage clock, decoration of exotic birds, the reverse stamped E.H., 11cm high £60 - 100 †

501
A 19th Century mahogany twin fusée drop dial wall clock, having 8 day movement striking on a bell, white enamel Roman numeral dial 30cm dia. (in need of restoration) £100 - 200 †

502
A late 19th early 20th Century mahogany cased bracket clock, the brass Roman numeral dial with chime silent and fast / slow subsidiaries, surmounted by a brass carrying handle, 8 day movement striking on a gong, 37cm high (in need of restoration) £40 - 60 †

503
A Regency bracket clock, the domed case with brass carrying handle above pierced grills, circular Roman numeral dial supporting an 8 day movement, striking on a bell, 37cm high (in need of restoration) £100 - 200 †



Lot 511



Lot 514



Lot 515

504

A 19th Century mahogany balloon cased mantel clock, by Barraud & Lund Cornhill London, having silvered Roman numeral dial, No.1974, the 8 day movement with gong strike, 41cm high (in need of restoration) £60 - 100 †

505

An early 19th Century mahogany and brass cased bracket clock, the circular enamel Roman numeral dial supporting an eight day movement with bell, flanked by lion mask handles and pierced Gothic panels raised on ball feet (in need of restoration) £60 - 100 †

506

A Regency mahogany brass inlaid bracket clock, having single fusée movement, the circular painted Roman numeral dial inscribed Bullen Hemphall, the case with fluted pediment surmounted by a pineapple finial, 53cm high (in need of restoration) £60 - 80 †

507

A small rosewood cased mantel timepiece, inscribed V.A.P. Brevete to the reverse £40 - 60 †

508

A 19th Century rosewood bracket clock, with carved foliate decoration, arched top above a circular enamel dial, 8 day movement striking on a bell, raised on bun feet, 47cm high x 32cm wide overall £400 - 600 †

509

A 19th Century rosewood and mother of pearl inlaid bracket timepiece, having circular silvered dial by Ebenezer Fisher, Ellesmere, flanked by brass carrying handles raised on bun feet, 36cm high £200 - 300 †

510

A 19th Century mahogany cased mantel clock, 8 day movement striking on a bell, circular brass Roman numeral dial for James Murray Royal Exchange London No.1247, 31cm high £80 - 120 †

511

A French brass mantel clock, decorated figures and masks, the domed top surmounted by a flambé finial, circular Roman numeral dial supporting an eight day movement, striking on a bell, raised on a demi-lune plinth of bracket supports, 46cm high £350 - 450 †

512

Jasper Lugg of Gloucester, small rosewood cased bracket clock having brass spandrel dial and steel chapter ring, the stepped base surmounted by a carrying handle, 26cm high x 20cm wide overall £600 - 800 †

513

A French gilt metal small Cartel type timepiece, of small size in the Rococo manner, having circular floral enamel dial, set to a plush wall mounting, 21cm £60 - 100 †

514

A 19th Century brass four glass mantel clock, with circular white enamel Roman numeral dial supporting an eight day movement striking on a gong, mercury adjust pendulum, 30cm high £150 - 250 †

515

A 19th Century black marble cased mantel clock, by Parkinson & Frodsham, Change Alley Cornhill, the brass dial with foliate engraved decoration and surrounded by signs of the Zodiac, 26cm high £40 - 60 †

516

A 19th Century skeleton clock, having fusée movement, steel chapter ring under glass dome, 48cm high overall £300 - 400 †

517

A 19th Century brass skeleton clock, having steel chapter ring, the movement striking on a top bell under glass dome, 35cm high £200 - 300 †

518

A small brass skeleton clock, striking on a bell under glass dome, 22cm high £200 - 300 †

519

A late 19th / early 20th Century carved mahogany chiming bracket clock, brass chased dial with steel chapter ring, slow / fast and strike silent subsidiaries, raised on bracket feet, 26cm wide x 37cm high £200 - 300 †

520

A Victorian marble clock garniture, the clock having visual pendulum and escapement, 8 day movement striking on a bell, decorated with brass classical scenes and Corinthian columns, 48cm high overall, flanked by a pair of pedestals, 27cm high £100 - 150 †

521

A green marble and spelter clock garniture, the clock surmounted by a figure holding a torch aloft, circular floral enamel decorated dial with 8 day movement flanked by cherub decorated candle holders, the whole raised on gilt Rococo style supports, 66cm high in extremes £100 - 150 †

522

A mahogany miniature bracket clock, in the George III style surmounted by a brass carrying handle above an ogee moulded pediment on gilt claw and ball feet, the brass dial with pierced spandrels and silver chapter ring, 26cm high £60 - 100 †



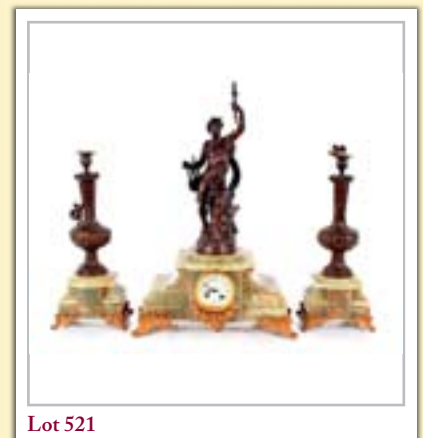
Lot 516



Lot 517



Lot 520



Lot 521



Lot 528

523

A **George III mahogany longcase clock**, the arched hood surmounted by brass orb finials and flanked by spiral turned columns with capitals and brass spandrel dial inscribed Samuel Pearce, Honiton, strike silent, seconds and date subsidiary, 8 day movement striking on a bell, 235cm high
£200 - 400 †

524

A **Georgian mahogany satin wood strung and cross banded long case clock**, the hood surmounted by a scroll arch pediment above reeded columns enclosing a brass and steel arched dial with rolling moon face and spandrels, by Henry Cross of Bristol, 8 day movement striking on a bell, trunk door flanked by fluted pillasters, 222cm high
£300 - 400 †



Lot 529

525

A **Georgian mahogany longcase clock**, the hood having scroll arch pediment and enclosing a painted dial inscribed W. Hepton, North Allerton, 8 day movement striking on a bell, 212cm high
£200 - 400 †

526

A **Longcase clock**, by William Allan of Beith, the painted arched dial decorated with figures, seconds and date subsidiary above a full length trunk panel door raised on a box base, 204cm high
£200 - 300 †

527

An **early 19th Century longcase clock**, by Hugh Brodie of London, having circular white enamel dial supporting an 8 day movement striking on a bell, full length trunk panel door over box base and plinth, the hood surmounted by foliate cresting, 205cm high
£300 - 400 †



Lot 532

528

An **oak longcase clock**, by Benjamin Reeves of Lamberhurst, having square brass spandrel dial and steel chapter ring, 30 hour movement, full length trunk panel door raised on a box plinth and bracket supports, the stepped hood flanked by half pilasters with gilt capitals, 198cm high
£200 - 400 †

529

A **Georgian oak longcase clock**, by George Maynard Melford, the hood surmounted by three gilt orbs above a shaped pediment, blind frieze and gilt Corinthian columns enclosing a brass spandrel dial with 30 hour movement, trunk panel door raised on a box base terminating in plinth, 218cm high
£200 - 400 †



Lot 535

530

A **Georgian oak and mahogany longcase clock**, the arched hood enclosing a brass spandrel dial and steel chapter ring, with eagle motif, inscribed Thomas Steward, Barnett, the 8 day movement striking on a bell, the full length trunk panel door on box base, 203cm high
£200 - 300 †

531

A **Georgian mahogany longcase clock**, with painted dial and 30 hour movement, 194cm high
£100 - 150 †

532

A **18th Century brass lantern clock**, by Nathaniel Hedge, Colchester, single hand, the movement striking on a bell, dial 25cm x 17.5cm in extremes
£200 - 300 †

533

A **mahogany boxwood strung and chequer banded longcase clock**, the hood surmounted by a scroll arched pediment and brass orb finial, floral painted dial E. Jones, Bristol supporting an eight day movement, the box base raised on bracket feet, 201cm high
£200 - 300 †

534

A **mahogany longcase clock**, by Garland of Plymouth, the arched hood surmounted by orb finials, flanked by barley twist columns and enclosing a steel dial with foliate engraving and figure of Neptune decoration, with 8 day alarm movement striking on a bell, full length trunk panel door flanked by spiral pilasters on a box base, 200cm high
£200 - 400 †

535

An **19th Century walnut cased mantel clock**, by Frank Woodward of Derby, the circular brass dial supporting an 8 day fusee movement, visual pendulum below, 52cm high
£60 - 100 †

536

No Lot

Rugs & Furniture

537

A **Persian rug**, having central medallion, multi floral field and borders on predominately cream and red ground, 280cm x 183cm
£200 - 300 †

538

A **large Eastern carpet**, plain field within foliate border on beige, orange and red ground, 410cm x 330cm
£100 - 200 †

539

A **19th Century mahogany butler's tray**, on folding stand, 76cm x 51cm
£60 - 100 †

540

A **19th Century satin ash chest**, of two short and two long drawers, raised on bracket feet, 73cm wide
£40 - 60 †

541
A mahogany and gilt Chippendale design wall mirror, surmounted by an eagle finial above acanthus scrolls, 90cm x 47cm overall £200 - 300 †

542
An early 18th Century walnut chest, of three long drawers with box wood inlay raised on a low stand with square tapering supports and shaped frieze, 85cm wide £100 - 150 †

543
A Victorian satin walnut pedestal writing desk, fitted three frieze drawers above three drawers to each pedestal, raised on platform plinths, 151cm wide x 50cm deep x 75cm high £300 - 400 †

544
A Georgian mahogany commode chest, fitted two double deep drawers, raised on bracket supports, 64cm wide x 46cm deep x 71cm high £100 - 150 †

545
A Jacobean design carved oak buffet cupboard, style of Titchmarsh & Goodwin, 109cm wide, 79cm high £150 - 200 †

546
A walnut Chippendale design fret carved wall mirror, with gilt central motif and cushion frieze, 78cm x 39cm £60 - 100 †

547
A Georgian mahogany and satin wood cross banded bow fronted chest, fitted two short and three long drawers raised on a shaped apron and bracket supports, 103cm wide £100 - 200 †

548
An 18th Century walnut serpentine double dressing table mirror, fitted with five drawers raised on ball supports, 45cm wide x 76cm high £100 - 150 †

549
A Victorian rosewood chiffonier, of serpentine shape, the mirrored back with vine and leaf decoration, shelves below enclosed by panelled doors on a platform plinth within scrolled brackets, 136cm wide £100 - 200 †

550
A 19th Century mahogany two drawer chest, of small proportions fitted round brass embossed handles raised on bracket feet, 78cm wide x 44cm deep x 78cm high £80 - 120 †

551
An 18th Century oak Bible box, with square iron lock plate and hasp above a carved front panel, 56cm wide x 37cm deep x 23cm high £100 - 150 †

552
An early 20th Century, oak sideboard, with raised panel back, cupboards and drawers below, 148cm wide x 59cm deep x 142cm high £40 - 60 †

553
A Victorian mahogany tray top writing table, fitted two short drawers, 117cm wide £300 - 400 †

554
An early 20th Century oak serving table, having raised shaped back above two short drawers, raised on baluster columns united by an under tier, 152cm wide x 128cm high £100 - 150 †

555
An 18th Century walnut three drawer chest, on stand, the stand fitted with a pull out slide and pistol drawer, raised on turned cup and cover supports united by wavy stretchers and terminating in bun feet, 110cm wide x 144cm high £300 - 400 †

556
An Edwardian inlaid mahogany child's chair, the central splat having foliate decoration, chequered upholstered seat panel raised on out swept supports united by turned stretchers £40 - 60 †

557
A 19th Century mahogany elbow chair, having rectangular tablet above central rope twist rail, needlepoint upholstered drop in seat, scrolled arms raised on sabre supports £60 - 80 †

558
A pair of Oriental red and black lacquered lamp tables, 46cm x 30cm £40 - 60 †

559
A Georgian oak chest on stand, the upper section fitted two short and three long graduated drawers, with three drawers to the stand raised on a shaped apron and cabriole supports, 103cm wide x 158cm high x 56cm deep £200 - 400 †

560
A Victorian rosewood pole screen, having floral embroidered octagonal banner raised on turned and fluted column, supported on triform base and bun feet, 140cm high £40 - 60 †

561
A Victorian walnut long footstool, with needlepoint upholstered top raised on fluted black ceramic bun feet, 123cm wide £40 - 60 †

562
An early 20th Century oak sideboard, in the revived Jacobean manner, fitted central drawers flanked by cupboards with moulded panels, the raised back supported on turned baluster cup and cover columns, 185cm wide £100 - 200 †



Lot 540



Lot 543



Lot 547



Lot 553



Lot 573

563

A Victorian mahogany footstool, with embroidered upholstered top raised on fluted bun feet; and a small footstool with out swept supports (2) £40 - 60 †

564

A Georgian mahogany bureau, the fall front opening to reveal a fitted interior above four long graduated drawers raised on bracket supports, 85cm wide £100 - 150 †

565

A late Victorian mahogany bookcase, the upper section with adjustable shelves and enclosed by a pair of glazed panelled doors above single shallow drawer and dummy drawer, shelves below enclosed by a pair of moulded panelled doors and raised on platform plinth, 128cm wide x 240cm high £200 - 400 †

566

A 19th Century mahogany linen press, the upper section fitted with sliding trays, two short and two long drawers below raised on bracket feet, 107cm wide x 161cm high £200 - 300 †

567

A Victorian mahogany secretaire bookcase, the upper adjustable shelves enclosed by a pair of glazed panelled doors, writing drawer below above a cupboard base, raised on platform plinth, 95cm wide x 43cm deep x 186cm high £150 - 200 †

568

A good quality oak dresser, the shelved and boarded upper section fitted two short drawers, three drawers and cupboard below with carved panels, 170cm wide x 195cm high £200 - 400 †

569

A French kingwood, satinwood and chequer banded vitrine, having gilt metal mounts, bowed ends, interior shelves enclosed by a glazed bevelled panel door raised on tapering supports, 120cm wide x 200cm high £200 - 300 †

570

A Victorian mahogany bookcase, the adjustable shelves enclosed by a pair of glazed panelled doors raised on a plinth base, 114cm wide x 37cm deep x 107cm high £60 - 80 †

571

An antique carved oak coffer, with triple lozenge panelled front raised on bracket supports, 121cm wide £150 - 200 †

572

A round occasional table, made of Macrocarpa wood from fallen tree at Sudbourne Hall after the 1987 Great Storm, raised on four square section supports beneath shaped friezes, 70cm dia. x 70cm high £120 - 180 †

573

A 19th Century burr walnut and inlaid credenza, the central cupboard flanked by glazed bowed doors enclosing display shelved raised on a platform plinth terminating in bun feet, 148cm wide x 107cm high £200 - 300 †

574

A 19th Century rosewood library table, fitted two frieze drawers and opposing dummy drawers raised on an octagonal tapering column and tri form base terminating in scrolled feet, 137cm wide x 70cm deep £200 - 400 †

575

An unusual Victorian rosewood pole screen, of arrow form, having beaded shield shaped banner raised on tripod base, 115cm high £30 - 50 †

576

A 19th Century French mahogany and gilt wood mounted circular occasional table, with marble top raised on bowed supports united by an under tier, 44cm dia. x 77cm high £100 - 150 †

577

An oak filing cabinet, fitted two deep drawers, mock door fronts raised on bracket feet, 55.5cm wide x 58.5cm deep x 83cm high £40 - 60 †

578

A small mahogany circular topped occasional table, raised on a spiral turned column, circular stepped platform plinth on claw feet, 41cm dia. x 44cm high £120 - 150 †

579

An Edwardian writing table, with leather inset top above three drawers on square tapering legs and castors, 92cm wide £40 - 60 †

580

A Victorian walnut and cross banded work table, fitted two partitioned drawers raised on turned supports and shaped feet, 61cm wide x 76cm high £100 - 200 †

581

A Georgian mahogany side table, fitted two drawers and raised on square tapering supports terminating in spade feet, 99cm wide £100 - 150 †

582

A 19th Century walnut and marquetry inlaid pier cabinet, having gilt metal mounts, interior shelves enclosed by a single arched panelled door raised on a platform plinth, 22.5cm wide x 113cm high £200 - 400 †

583

A Victorian mahogany tray table, with galleried integral handles raised on turned tapering supports and peg feet, 60cm wide 43cm deep, 33cm high overall £30 - 60 †



Lot 576



Lot 578



Lot 582

584

A Victorian mahogany cylinder bureau, with tray top above a fall opening to reveal an interior arrangement of drawers and pigeon holes with pull out writing slide, fitted drawers and slides to the pedestals enclosed by a pair of panelled doors and raised on platform plinths, 133cm wide x 70cm deep x 115cm high

£100 - 200 †

585

A late Victorian carved oak extending dining table, with two extra leaves, wind-out action, raised on turned baluster supports and castors, 239cm x 120cm fully extended; and a set of six matching high back dining chairs with leather upholstered seats and back panels

£300 - 400 †

586

A 19th Century oak circular snap top dining table, raised on shaped centre column and triple splay with carved acanthus moulding terminating in fluted bun feet, 139cm dia.

£200 - 400 †

587

A mid-Victorian mahogany work table, drop leaves above two drawers raised on square tapering column and quatrefoil base terminating in scrolled feet, 43cm x 44cm

£60 - 100 †

588

A 19th Century mahogany and fruitwood ball back elbow chair, the solid seat raised on sabre section supports united by stretchers

£40 - 60 †

589

An unusual early 19th Century brass inlaid rosewood armchair, having ribbon tied cresting above lyre splat raised on reeded turned front supports

£80 - 120 †

590

A large 17th Century giltwood pricket candlestick, raised on a tri form base, 109cm high

£150 - 250 †

591

A Georgian style mahogany butler's tray table, raised on chamfered legs united by a cross stretcher, 75cm wide

£40 - 60 †

592

A Georgian mahogany snap top pie crust bordered occasional table, raised on birdcage baluster column and tripod base, with carved decoration terminating in scrolled foot, 74cm dia.

£100 - 150 †

593

A Georgian style mahogany occasional table, the galleried top raised on chamfered supports united by a pierced cross stretcher, 73cm x 47cm x 64cm high (one small section of gallery moulding missing)

£40 - 60 †

594

An Oriental carved two tier occasional table, with profuse leaf decoration, 44cm wide x 72cm high

£30 - 50 †

595

A mahogany serving table, the fold over top supported on pull out runners, two short and two long green baize lined drawers below, square section supports united by an under tier, 60cm wide

£60 - 100 †

596

A Victorian rosewood card table, the rectangular fold over swivel top raised on octagonal tapering column, quatrefoil base supported on bun feet and castors, 92cm wide

£100 - 200 †

597

A good quality oak refectory draw leaf dining table, having carved frieze raised on baluster turned supports united by a stretcher, 107cm x 335cm

£400 - 600 †

598

A 19th Century rosewood card table, the rectangular fold over swivel top raised on square tapered column and quatrefoil base, terminating in four scrolled legs with brass claw caps and castors, 90cm wide

£50 - 80 †

599

A George III mahogany and rosewood cross banded demi-lune card table, raised on square tapering supports and spade feet, 91cm wide

£40 - 60 †

600

A 19th Century mahogany floor standing corner cupboard, the upper shelves enclosed by a pair of glazed astragal doors, double cupboards below raised on bracket supports, 103cm wide x 202cm high

£40 - 60 †

601

A Georgian mahogany Chippendales design elbow chair, shaped cresting rail with pierced vase splat back above needlepoint drop in seat raised on cabriole supports and pad feet

£40 - 60 †

602

An early 20th Century oak roll top desk, the S shaped top fitted with tambour shutter enclosing an interior arrangement of drawers and pigeon holes, four drawers and slides to each pedestal, fitted with a brass plaque "Presented to H. Malcolm Fraser Esq. B.A., from the Vicar of Dudley, Church Wardens and Congregation, April 1916" and a matching oak revolving desk chair (2)

£300 - 400 †

603

A large oak refectory table, with thick plank top raised on shaped end supports united by a stretcher, 123cm x 308cm, the top 7cm thick

£600 - 800 †



Lot 592



Lot 595



Lot 604



Lot 605



Lot 619

604

A set of ten oak ladder back and rush seated dining chairs, raised on rounded tapering supports and stretchers *£300 - 500 †*

605

A mahogany chest of small proportions, fitted four long drawers raised on bracket feet, 45cm wide x 85cm high *£40 - 60 †*

606

An good quality Edwardian mahogany dwarf bookcase, the adjustable shelves enclosed by a pair of glazed panelled doors flanked by turned columns, 123cm wide x 121cm high x 35cm deep *£150 - 250 †*

607

A Georgian mahogany hanging corner cupboard, enclosed by a panelled door *£150 - 250 †*

608

An oak refectory table, raised on baluster turned supports united by stretchers, 97cm x 235cm *£200 - 400 †*

609

A late Victorian mahogany wind out extending dining table, with extra leaf and raised on cabriole supports, 181cm wide x 105cm, raised on cabriole supports *£100 - 150 †*

610

An 18th Century oak mule chest, with fielded panel front above three base drawers, 130cm wide *£80 - 120 †*

611

A 19th Century camphor wood and brass bound Campaign trunk, 104cm wide x 59cm deep x 51cm high *£100 - 200 †*

612

A Georgian mahogany and ebony strung elliptical hanging corner cupboard, enclosed by a pair of doors with brass beading, 76cm wide x 107cm high *£60 - 100 †*

613

A Georgian mahogany tripod table, the rectangular tilt top raised on a ring turned column and triple splay, 83cm x 49cm *£100 - 150 †*

614

A nest of three graduated walnut coffee tables, having painted decoration raised on turned spindle supports, 53cm wide in extremes *£40 - 60 †*

615

A mahogany circular occasional table, raised on turned pedestal base, circular platform plinth on three scrolled feet, 47.5cm dia. x 71cm high *£50 - 80 †*

616

An antique elm side cabinet, fitted with a single drawer and cupboards below raised on bracket feet, 64cm wide *£40 - 60 †*

617

An Italian carved wooden and gilt wood lamp standard, 107cm high *£40 - 60 †*

618

A 19th Century mahogany ottoman / silver chest, with upholstered padded top, single drawer below raised on bun feet, 65cm wide *£40 - 60 †*

619

A small Victorian circular walnut footstool, on scrolled supports, 32cm dia. *£20 - 30 †*

620

A pair of walnut elbow chairs, in the 18th Century style, having upholstered shaped backs and seats, raised on carved cabriole supports terminating in pad feet *£100 - 200 †*

621

An antique Italian gilt wood framed mirror, of cartouche shape with foliate scrolled decoration, 89cm x 55cm overall *£50 - 80 †*

622

A Victorian walnut and gilt decorated clover leaf topped occasional table, raised on turned columns terminating in out swept supports, claw and ball feet, 62cm high x 51cm deep overall *£100 - 200 †*

623

An Edwardian inlaid salon settee, green Dralon upholstered seat back and arm rest, raised on square tapering supports and spade feet terminating in castors *£60 - 80 †*

624

A mahogany framed Georgian design two seater hump back settee, raised on square tapering supports, 148cm *£100 - 150 †*

625

A cherry wood draw leaf extending dining table, raised on square tapering supports, 107cm x 270cm fully extended *£300 - 400 †*

626

A pair of oak Carolean style high back elbow chairs, with pierced cresting, cane panelled backs and seats, scrolled arms above an arched foliate frieze, the turned supports terminating in scrolled terminals *£60 - 80 †*

627

A pair of Regency simulated rosewood side chairs, with brass inlaid decoration, cane seats and sabre supports *£50 - 80 †*



Lot 623



Lot 626



Lot 627

628
A 19th Century mahogany framed open armchair, raised on turned and fluted legs £100 - 150 †

629
A set of five Victorian mahogany dining chairs, having carved central rails, upholstered stuff over serpentine seats raised on cabriole front supports £100 - 150 †

630
An early 20th Century oak bookcase, the adjustable shelves enclosed by a pair of glazed panel doors raised on bracket feet, 97cm wide £40 - 60 †

631
A late Victorian rosewood and marquetry inlaid china display cabinet, enclosed by a pair of partly glazed bevelled doors, raised on turned tapering supports, 92cm wide x 102cm high £150 - 200 †

632
A 19th Century gilt overmantel mirror, having foliate decoration, 96cm x 115cm £150 - 200 †

633
A 19th Century walnut serpentine card table, the fold over top raised above floral carved shaped frieze and cabriole supports, 84cm wide £100 - 150 †

634
An Antique oak throne chair, having carved and pierced cresting with central crown motif flanked by large acorn finials above naïve figural pillars and central embroidered arched panels depicting figures in rural landscape, acanthus scroll arms terminating in beast heads, solid seat raised on turned supports united by stretchers £100 - 200 †

635
A 18th Century walnut side table of serpentine shape, the boxwood strung and cross banded top opening to reveal a compartment with two short drawers below raised on cabriole supports, 62cm wide x 72cm high £60 - 80 †

636
A set of six Victorian mahogany balloon back dining chairs, having carved foliate motifs to the back, upholstered stuff over serpentine seats raised on turned baluster fluted front supports £100 - 200 †

637
A brass standard lamp, raised on square stepped plinth, 149cm high £30 - 50 †

638
A pair of burr oak and cross banded lamp tables, fitted single drawers and raised on turned tapering supports, 52cm wide x 47cm deep x 77cm high £600 - 800 †

639
A pair of yew wood cross banded bedside chests, fitted brushing slides and four graduated drawers, 39cm wide x 37cm deep x 75cm high £500 - 700 †

640
A pair of burr walnut cross banded and inlaid bedside chests, fitted four drawers raised on platform plinths, 44cm wide x 40cm deep x 73cm high £600 - 800 †

641
A walnut hall table, fitted four drawers raised on ring turned tapering supports and peg feet, 125cm wide x 32cm deep x 77cm high £500 - 700 †

642
A burr oak and cross banded open fronted bookcase, fitted two shelves, 91cm wide x 31cm deep x 95cm high £300 - 400 †

643
A George II style inlaid walnut low boy, fitted three drawers above a shaped apron, raised on carved cabriole supports terminating in scrolled feet, 91cm wide x 54cm deep x 77cm high £500 - 700 †

644
A pair of small inlaid walnut lamp tables, fitted single drawers, raised on out swept slender supports united by a cross stretcher, 50cm wide x 50cm deep x 57cm high £300 - 500 †



Lot 628



Lot 634



Lot 635



Lot 636

Collective Farm Machinery & Plant October 2022 - Entries Invited



East Anglia's largest direct from farm collective auction

Clarke & Simpson Auctions, Campsea Ashe, Suffolk

www.clarkeandsimpson.co.uk | 01728 746323

Art Deco, 20th Century Design & Retro

Next Auction 3rd September 2022



BID ONLINE

thesaleroom.com

The home of art & antiques auctions

Entries Invited
Closing Date 12th August

Clarke & Simpson Auctions, Campsea Ashe, Suffolk

www.clarkeandsimpson.co.uk | 01728 746323

Notes

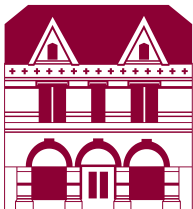
Clarke &
Simpson



Property to shout about

Chartered Surveyors & Estate Agents
For all your property needs

Chartered Surveyors
Residential Sales & Lettings
Development, Commercial Sales & Lettings
Fine Art & Chattels
Land Agency & Professional Consultancy
Estate Management
Property & Machinery Auctions



Clarke and Simpson Auction Centre
Campsea Ashe
Nr. Wickham Market
Suffolk IP13 0PS
Tel: (01728) 746323
Email: auctions@clarkeandsimpson.co.uk
www.clarkeandsimpson.co.uk