

Clarke &  
Simpson



*Art Deco, 20th Century  
Design & Retro*

Monday 29th October at 10am

Auctions

Clarke &  
Simpson

# *Worldwide from Campsea Ashe*



We have registered buyers from all of the fifty countries shown below in the last twelve months – what do you have to sell that would benefit from a worldwide audience!



Clarke & Simpson Auction Centre, Campsea Ashe, Nr Wickham Market, Suffolk IP13 0PS T: 01728 746323  
[www.clarkeandsimpson.co.uk](http://www.clarkeandsimpson.co.uk)  CandSAuctions  @CandSAuctions

# Clarke & Simpson

Auctions

## *Art Deco, 20th Century Design & Retro*

*Monday 29th October 2018  
at 10am*

### Viewing:

Saturday 27th October 9am - 12noon  
Morning of Sale from 8.30am

### Enquiries:

James Shand, Auctioneer & Valuer  
Geoffrey Barfoot, Auction Centre Manager & Valuer

### Buyers' Premium:

18% plus VAT

Please see [www.the-saleroom.com](http://www.the-saleroom.com)  
for further images

**the saleroom**  
The home of art & antiques auctions

Special attention is drawn to the  
Conditions of Sale printed at the back of  
this catalogue.



Campsea Ashe  
Nr Wickham Market  
Suffolk IP13 0PS  
Tel: 01728 746323 Fax: 01728 748173  
Email: [auctions@clarkeandsimpson.co.uk](mailto:auctions@clarkeandsimpson.co.uk)  
[www.clarkeandsimpson.co.uk](http://www.clarkeandsimpson.co.uk)



@CandSAuctions



CandSAuctions





Lot 2



Lot 5



Lot 8



Lot 25



Lot 29

**1**  
An aluminium and composite large sign advertising Pontiac Cars, 22cm x 118cm. £50-£80

**2**  
A metal ware Art Deco style globe, with aeroplane decoration. £10-£20. See illustration.

**3**  
A chrome and red Bakelite ice bucket, in the Art Deco style. £20-£30

**4**  
A leather covered album and contents of aircraft design and symbols, dated 1937. £20-£30

**5**  
A spelter figure of a polar bear, on marble base, 14cm high. £10-£20. See illustration.

**6**  
An Art Deco design Egyptian Revival figure of a warrior, on onyx plinth numbered verso 37/400, 23cm high. £20-£30

**7**  
An Art Deco design plated wine cooler, 13cm high. £10-£20

**8**  
An Art Deco chromed cupid table lamp, with tinted flambé shade, 14cm high. £30-£50. See illustration.

**9**  
A 1930's decorated metal ware Christmas tree stand, 18cm high. £30-£40

**10**  
A bronze Art Deco style candlestick, in the form of a naked reclining girl, 23cm high. £20-£30

**11**  
A WW2 period unusual Bakelite based map reading lamp, (used in the black out). £30-£50

**12**  
A mid-Century Odeon style chrome wall light. £20-£30

**13**  
A French Art Deco design desk barometer, 19cm long x 15cm high. £10-£20

**14**  
A chrome based circular extension speaker. £10-£20

**15**  
A green onyx wall mounting barometer. £10-£20

**16**  
A "Fifty" 1960's/70's style battery radio. £10-£20

**17**  
A Smiths Bakelite cased electric mantel clock. £20-£30

**18**  
An Art Deco design Pifco bed light, in green Bakelite with mains adapter. £10-£20

**19**  
A 1970's chrome and green Angle Poise style lamp. £30-£40

**20**  
A Barber Health Master lamp, model 365. £20-£30

**21**  
An ivory coloured pyramid 1950's telephone (AF). £40-£60

**22**  
A German Lampette adjustable desk lamp. £30-£40

**23**  
A cubist style dog, 27cm long. £10-£20

**24**  
A 1960's/70's style large white plastic nude girl table lamp. £20-£30

**25**  
A marble pin tray, with stylised chrome leaping greyhound decoration. £40-£60. See illustration.

**26**  
A pair of spelter and marble bookends, in the form of deer. £10-£20

**27**  
An Art Deco green and yellow metal APL electric wall clock. £15-£20

**28**  
A set of Art Deco design chrome coat hooks (ex Railway station). £20-£30

**29**  
A late Victorian marble and brass mounted three compartment box, with cedar lined interior, AF, 27cm long. £20-£40. See illustration.

**30**  
A continental metal ware multi coloured retro Lemonade set with spot hammered decoration. £20-£30

**31**  
A Ferranti Art Deco Bakelite cased radio. £40-£60. See illustration.

**32**  
A Minton pottery figure of a cockatoo, 35cm high. £20-£40

**33**  
A 1950's green and cream metal ware expanding wall light. £70-£100

**34**  
A large Art Deco inlaid wooden tea tray, having chrome mounts, 55cm long. £10-£20

**35**  
A McVities shop counter advertising sign, circa 1950's. £30-£50

**36**  
A Mouseman cheese board, 38cm long. £80-£120

**37**

**A German green glazed hand basin, with mixer tap.** £20-£30

**38**

**An Isnik pottery shallow bowl, having green, cream, blue and yellow stylised decoration, 41cm dia.** £10-£20

**39**

**An Art Deco design burr wood letter rack, 31cm long; and a wooden and spelter camel ornament.** £60-£80

**40**

**An Art Deco plated cocktail shaker; an Art Deco soda syphon, and a box of Sparklets.** £20-£30

**41**

**A Veritas oil lamp.** £10-£20

**42**

**An Art Deco French model of two pheasants, raised on a marble base, 36cm wide in extremes.** £30-£40

**43**

**A blue and white "Abbey" china bowl; and three smaller similar.** £20-£30

**44**

**A Tiffany style coloured glass vase, of trumpet shape, 19.5cm high.** £20-£30

**45**

**A Wolfard blown glass oil lamp, 30cm high.** £40-£60

**46**

**A Royal Copenhagen Fajance dish, 168/2884, 22.5cm.** £10-£20

**47**

**A Royal Copenhagen Fajance shallow dish, 870/2885 22.5cm.** £10-£20

**48**

**A Royal Copenhagen Fajance shallow dish, 780/2883 17cm.** £10-£20

**49**

**An Art Nouveau pottery baluster vase, flanked by bowed handles decorated running glazes, 24.5cm high.** £10-£20.  
See illustration.

**50**

**Five various Gouda pottery vases; and a similar candlestick.** £180-£220

**51**

**An American copper humidor, 21cm high.** £10-£20

**52**

**A Clarice Cliff leaf shaped dish; two flower troughs; and a plaster Art Deco design mask (4).** £90-£120

**53**

**A large silvered key ornament.** £20-£30

**54**

**A Portmeirion Phoenix coffee set.** £40-£60

**55**

**A Blue Mountain pottery dog.** £35-£55

**56**

**An Art Deco design green marble three piece clock set.** £50-£80

**57**

**Four magnifying glasses.** £20-£30

**58**

**A pair of Alfred Gratan type wine coolers.** £30-£50

**59**

**A pair of Meissen style angel decorated comports.** £60-£80

**60**

**A pair of classical style white glazed plaques, contained in gilt frames.** £50-£60

**61**

**An Art Glass vase with red and black swirl decoration, 24cm high.** £20-£40

**62**

**A Murano glass pink and blue tinted vase, of tapering slender form, 29cm high.** £10-£20

**63**

**A Danish beech framed and pale green upholstered three seater settee, 180cm.** £40-£60

**64**

**A large decorative fish wall appliqué, 138cm long.** £20-£30

**65**

**A pair of decorative silvered angel wings.** £50-£60

**66**

**Clifford Fishwick, "Topsham Boat Sheds", oil on panel dated 1989, 9cm x 15cm.** £50-£80

**67**

**Jeremy Fraser, oil on board "Metamorphosis" inscribed verso, 18cm x 23cm.** £50-£80

**68 ✓**

**John Burman, "Evening Light, Pin Mill", oil on board 28cm x 38cm.** £300-£400

**69 ✓**

**John Burman, "Spring Flowers", oil on board, 36cm x 28cm.** £300-£400.  
See illustration.

**70 ✓**

**Peter Jander, oil on board study of a country road, probably in the highlands, signed, 79cm x 100cm.** £40-£60

**71 ✓**

**Peter Jander, study of a country floral garden, signed oil on board, 80cm x 100cm.** £40-£60. See illustration.

**72 ✓**

**Peter Jander, study of a woodland path, signed oil on board, 74cm x 150cm.** £40-£60

**73 ✓**

**Peter Jander, study of ponies grazing, signed oil on board, 40cm x 55cm.** £30-£50. See illustration.



Lot 31



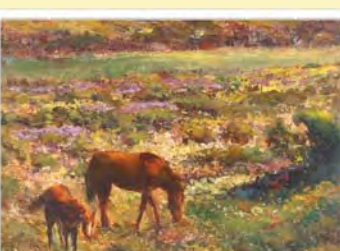
Lot 49



Lot 69



Lot 71



Lot 73





Lot 74



Lot 92



Lot 108



Lot 111



Lot 114

74 ✓

**Peter Jander**, oil on board study of a highland landscape, 21cm x 34cm. £20-£30. See illustration.

75 ✓

**Peter Jander**, study of a highland river scene with cottage in the fore ground, signed watercolour, 33cm x 44cm £20-£40

76

A bevelled glass and decorated heart shaped wall mirror. £60-£80

77

A 1940's Danish beech and upholstered armchair, having fluted arms and raised on tapering metal tipped supports. £50-£80

78

A teak G-plan design knee hole desk, fitted four drawers and raised on rounded tapering supports, 121cm wide. £20-£40

79

A 1960's/70's chrome and moulded glass five branch pendant light fitting. £30-£40

80

An Art Deco design walnut cased canteen of plated cutlery. £40-£60

81

A plated double bottle coaster, with cherub decoration. £80-£120

82

A Lily Bolinger Champagne cooler. £30-£50

83

A silvered filigree work heart shaped lantern. £30-£50

84

A white glazed china figure of a Buddha. £20-£40

85

A silvered model of a standing bull dog. £30-£40

86

A silvered framed foliate decorated mirror, 120cm x 88cm. £80-£120

87

A wooden model "Lover" duck ornament. £20-£30

88

A Brookes vintage car trunk, 82cm wide. £30-£50

89

A Myer coffee table. £10-£20

90

An early 20th Century oak folding writing table. £60-£80

91

A Parisian papier maché mannequin, 114cm high. £130-£160

92

A good quality Art Deco period cabin / steamer trunk, fitted six graduated drawers, fold out coat hanger etc., bearing triangular labels embossed with stork and cradle motif, 138cm high overall. £100-£200. See illustration.

93

A vintage 1960's/70's hand made dress in pink green and gold sparkly Lurex. £20-£30

94

A vintage Laura Ashley full length tartan wool checked dress, size 14. £15-£25

95

A Janet Ibbotson suede and leather ware ladies jacket. £50-£80

96

A vintage Liberty's dress, size 14. £20-£40

97

A pair of Paul Smith 1940's vintage style wool chequered trousers, W36. £15-£25

98

A vintage hand made heavy cotton lace trim dress. £15-£25

99

A 1960's vintage Ganex Kagan mustard coloured gentleman's winter coat, Large size. £15-£25

100

A tailor's dummy, circa 1950's/60's. £120-£160

101

A G-plan nest of tile top coffee tables. £60-£80

102

A Liberty needlepoint wall hanging/ carpet, florally decorated, 3.05m x 2.44m. £100-£150

103

A continental multi fuel Art Deco design enamelled stove, having chrome mounts, 35cm wide x 53cm high. £180-£220

104

An Art Deco chrome and pink frosted glass pendant light. £20-£40

105

A dumb waiter, in the form of a suited monkey, 101cm high. £120-£180

106

A chrome plated cylindrical coal bin. £10-£20

107

An Art Deco light oak sideboard, of breakfront form enclosed by four doors and raised on cup and cupboard supports, 123cm wide. £40-£60

108

An French Art Deco marble clock garniture. £80-£120. See illustration.

**109**

**A pair of gilt cherub wall lights**, in the Rococo manner decorated flowers and objects, 75cm. £500-£800

**110**

**An Art Deco walnut china display cabinet**, enclosed by leaded glazed doors raised on bracket supports, 90cm wide x 123cm high. £30-£50

**111**

**George Soper**, pencil signed etching "The Caddy", 15cm x 20cm. £80-£120. See illustration.

**112**

**A teak framed G-plan style hall mirror**. £10-£20

**113**

**A decorative mirrored and diamanté wall clock**. £50-£80

**114 ✓**

**W M Fryer**, study of an old seafarer and children studying a boat, signed watercolour, 31cm x 43cm. £100-£200. See illustration.

**115**

**A classical style bust of Diana the Huntress**, 35cm high. £40-£60

**116**

**A bronzed horse and jockey figure**, 29cm long overall x 17cm high. £15-£20

**117**

**A classical style bust of Daniel**, 26cm high overall. £40-£60

**118**

**A plated cocktail shaker**, in the form of a penguin, 27cm high; and another similar cocktail jug, 31cm high (2). £40-£60

**119**

**An Art Deco oak dentists cabinet**, 79cm wide x 172cm high. £150-£200

**120**

**A triptych of John Piper prints**, depicting church towers. £40-£60

**121**

**A Renoux limited edition coloured print**, depicting a French street scene 154/250 plate 32cm x 61cm. £50-£80

**122**

**A Billy Smarts Circus advertising poster circa. 1930's**, 72cm x 49cm. £50-£80

**123**

**An Art Deco circular coffee table**, 55cm dia. £20-£30

**124**

**An Art Deco two tier plant stand of tapering form**, 78cm high. £10-£20

**125**

**After L.S.Lowry**, coloured print "Street Scene and March". £20-£40

**126**

**W.F.Burton**, study of river barges and other boats at Pin Mill on the River Orwell, signed oil on board, dated 1973, 50cm x 80cm. £50-£80. See illustration.

**127**

**W.F.Burton**, study of a river barge and other vessels on the River Orwell, signed oil on board dated 1970, 50cm x 75cm. £50-£80. See illustration.

**128**

**Two Murano glass egg shaped paperweights**, and a bowl with crimped border. £15-£25

**129**

**An Art Deco plaster figure of a semi naked dancing girl**, 39cm high. £40-£60. See illustration.

**130**

**A pair of ornate glass baluster sweetmeat jars and covers**, 42cm high. £60-£80

**131**

**A late 19th early 20th Century carved mahogany dressing table**, by Maple & Co. 129cm wide. £150-£200

**132**

**A late 19th early 20th Century carved mahogany washstand**, with marble top by Maple & Co. 129cm wide. £150-£200

**133**

**A pair of Leonardo Collection boxing hares**. £40-£60

**134**

**Andrew Grant Curtis**, study of a highland loch scene, signed oil on canvas oval 49cm x 39cm in extremes, contained in a decorative gilt frame. £50-£80

**135**

**Charles Francis**, study of a river barge at sunset, signed oil on board, 43cm x 59cm. £50-£80

**136 ✓**

**Sean O'Connor**, "Barney's Sheep, Dunloe, Killarney", signed watercolour 28cm x 38cm. £20-£30

**137 ✓**

**José McKinnon**, "Flintham Fantasy", signed watercolour 55cm x 70cm. £40-£60

**138 ✓**

**José McKinnon**, study entitled "Waiting For their Wings", exhibition label verso, signed oil on canvas, 60cm x 75cm. £40-£60

**139 ✓**

**Kathleen M Crow**, gouache study "The Pass", 41cm x 45cm. £40-£60

**140 ✓**

**José McKinnon**, "Night Enfolding", signed oil on canvas, gallery label verso, 59cm x 59cm. £100-£150. See illustration.

**141 ✓**

**José McKinnon**, "The Yellow Vase" mixed media study, 44cm x 35cm. £20-£40

**142 ✓**

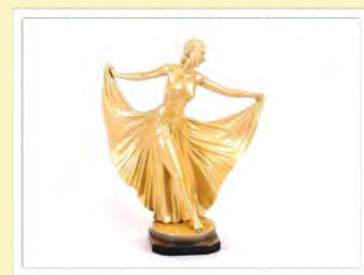
**José McKinnon**, "Daybreak At Polperro" signed oil on board, 40cm x 70cm, inscribed verso "Winner of the Evening Post Artist of the Year Award 1997". £40-£60



Lot 126



Lot 127



Lot 129



Lot 140



Lot 142





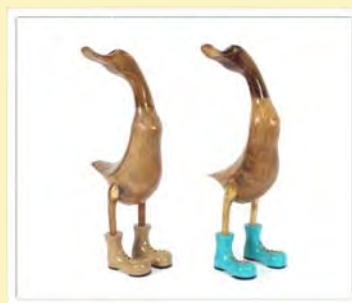
Lot 145



Lot 147



Lot 150



Lot 171



Lot 173

**143 ✓**

**José McKinnon**, country scene with riverside path, signed watercolour 35cm x 45cm. £20-£30

**144 ✓**

**José McKinnon**, "Keeper's Cottage", signed crayon and pastel, 32cm x 52cm. £20-£30

**145 ✓**

**José McKinnon**, "Waking Day", signed oil, 43cm x 53cm, gallery label verso Mel Galleries 1996. £100-£150.

See illustration.

**146 ✓**

**José McKinnon**, "Mountains Near Crathie", signed watercolour, 34cm x 52cm. £20-£30

**147 ✓**

**José McKinnon**, "Royal Reflections" signed watercolour, 39cm x 59cm. £40-£60. See illustration.

**148 ✓**

**José McKinnon**, "Early Shift" oil on board, 56cm x 45cm. £60-£80

**149**

**James Swan**, pencils signed etching "Winter In Lincoln Park". £20-£30

**150**

**A Bob Dylan poster**, advertising "The Picnic Concert at Blackbushe Aerodrome", 88cm x 61cm. £40-£60. See illustration.

**151**

**20th Century school**, after Tamara De Lempicka, study of a young beauty wearing broad rimmed hat, gloves and green dress, unsigned oil, 61cm x 51cm. £40-£60. See back cover illustration.

**152**

**Three pieces of French Art Glass Robert Bleiss F D Jou and Clement Boucheron.** £20-£40

**153**

**Three glass "Fire" vases by Soger of Thiers France.** £40-£60

**154**

**Six Various West German and continental pottery jugs and vases.** £20-£40

**155**

**A modern light wood chest of three drawers**, 80cm wide. £10-£20

**156**

**A pair of Royal Worcester comports**, decorated musicians, dogs and trailing foliage modelled by G Toft, 38cm high, AF. £40-£60

**157**

**A set of three graduated jugs**, decorated garden scenes by Anchor Stoke on Trent. £20-£30

**158**

**Four various Sylvac jardinières; and a Sylvac jug.** £30-£40

**159**

**Three pieces of British Art Glass**, by Andrew Holmes, J Bartum, and an Alum Bay example. £20-£30

**160**

**Six large Dartington glass tumblers.** £10-£20

**161**

**A Shelly Regent shaped trio**, decorated in "Bands and Shade" pattern. £40-£60

**162**

**A Fieldings Crown Devon jug**, with brightly coloured segment decoration. £30-£50

**163**

**A Foley "Wisteria" patterned cup**, saucer and plate; and two Burleigh ware Espresso cups and saucers. £20-£40

**164**

**A Sylvac green flower head decorated jug.** £20-£30

**165**

**A Royal Lancastrian Lapis ware shallow dish circa. 1930.** £20-£30

**166**

**A Royal Lancastrian bowl**, decorated in eggshell blue, stamped to base E.B. £20-£30

**167**

**A G-plan teak sideboard**, fitted double cupboards and four central drawers raised on rounded tapering supports, 213cm. £80-£120

**168**

**A faux gilt wall mirror**, in the Rococo style; and an oval bevel edged wall mirror. £10-£20

**169**

**A large teak G-plan sideboard**, fitted double cupboards and four central drawers raised on rounded tapering stretched supports, 210cm wide. £80-£120

**170**

**A circular cast iron framed segment wall mirror**, dia. 47cm. £10-£20

**171**

**A pair of wooden duck ornaments**, 61cm high. £50-£60. See illustration.

**172**

**A Bernard Rooke decanter**, and six mead cups; and a covered sugar bowl. £40-£60

**173**

**A large West German pottery pitcher**, having band of stylised decoration, 49cm high. £40-£60. See illustration.

**174**

**An Art Deco spot hammered pewter three piece tea set.** £10-£20. See illustration.

**175**

**Glynn Thomas**, limited edition etching "Southwold" No.4/175. £40-£60. See illustration.



**176**

A railway poster print, "The New Golden Arrow, Pulman". £10-£20

**177**

A 1970's picture mirror, depicting a naked girl with flowers. £20-£30

**178**

A Halifax Building Society wall hanging plaque, circa. 1930's. £30-£40

**179**

Two brightly coloured West German pottery bowls; a small baluster oil jug; a pipe stand; and two dishes. £20-£30

**180**

A Henriot green glass Champagne bucket. £30-£40

**181**

Two vintage carbide cycle lamps. £20-£30

**182**

A vintage blue glass Parisian soda syphon. £50-£80. See illustration.

**183**

A Remploi cylinder bureau, 76cm wide. £60-£80

**184**

A teak five drawer dressing table, having bevelled mirror and matching stool. £20-£40

**185**

An Ercol sideboard, 129cm wide. £60-£80

**186**

A Stag design wardrobe, having central mirrored panel, 137cm wide. £20-£30

**187**

A 1920's oak corner cabinet, with label for Liberty of London. £50-£80

**188**

An Art Deco walnut china display cabinet, enclosed by a pair of glazed panel doors raised on out swept supports, 80cm wide. £30-£50

**189**

An Art Deco oak standard lamp. £20-£30

**190**

An Art Deco spot hammered pewter four piece tea set. £10-£20

**191**

Three West German pottery multi coloured dishes. £15-£20

**192**

Eight French porcelain kitchen storage jars and pots of Art Deco design. £80-£120

**193**

A glass wine cooler; a pink tinted stylised vase; and an amber glass lemonade set. £20-£30

**194**

A set of 1970's avocado dishes and spoons. £40-£60

**195**

A large mauve tinted soda glass bottle and stopper; a Murano type multi coloured glass vase; and an oval heavy glass dish. £10-£20

**196**

Four vintage miniature cups and saucers, displayed on a decorative blue and white dish, including Booths, Real Old Willow, Grindley, and Wentworth three piece set. £30-£50

**197**

Seven Art Deco large Champagne saucers. £10-£20

**198**

Six boxed Moser glass Mozart glasses. £50-£80

**199**

Six large Moser glass Mozart glasses. £60-£80

**200**

A G-plan design pedestal desk. £20-£30

**201**

An unusual wrought iron wine rack, in the form of a cello, 193cm high x 80cm wide overall. £250-£350. See illustration.

**202**

A Gaylaydie burr, yew, boxwood and ivory strung three section wardrobe fitted double hanging compartment and sliding trays, raised on square tapering supports, 170cm wide. £100-£200

**203**

A retro teak graduated wall unit, fitted cupboard and four drawers to the base, 116cm wide x 156cm high. £20-£40

**204**

A teak O'Donnell design coffee table. £20-£30

**205**

An oak Arts & Crafts design wardrobe, having applied copper foliate decoration, central mirrored door above single drawer to base, 108cm wide overall. £200-£300

**206**

A 1950's light oak wardrobe, 93cm wide. £10-£20

**207**

A birds eye maple Wrighton gentleman's wardrobe, fitted with compartments and hanging section, 92cm wide. £40-£60

**208**

A Craven A cigarette advertising wall clock. £80-£120. See illustration.

**209**

A Royal Doulton "Tower of London" jug, "It Keeps It's Solemn Watch and Ward" limited production of 5000, 25cm high. £80-£120

**210**

A Royal Winton musical tankard, playing and decorated with the Floral Dance. £25-£35



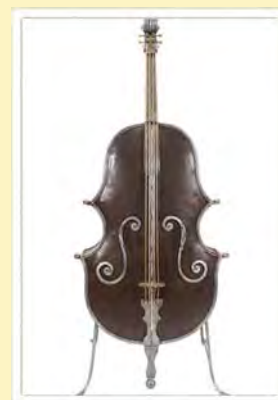
Lot 174



Lot 175



Lot 182



Lot 201



Lot 208



Lot 212



Lot 213



Lot 215



Lot 219



Lot 263

**211**

A Troika baluster vase, having stylised central band, 27cm high. £30-£40

**212**

A Troika square section vase, 23cm high. £60-£80. See illustration.

**213**

A Moorcroft baluster vase, 28cm high. £80-£120. See illustration.

**214**

A jardiniere, stamped to base C.M. Golfe Juan A.M. (Clement Massier) Alpes Martimes, 22cm dia. x 16cm high. £40-£60

**215**

A Troika slab shaped vase, 18cm high. £200-£300. See illustration.

**216**

A Trokia slab shaped bottle vase, 20cm high. £200-£300

**217**

A Trokia slab shaped vase, 18cm high. £200-£300

**218**

A glass Kosta Boda owl ornament. £15-£20

**219**

A Doulton Lambeth baluster vase, decorated by Florence Barlow, impress WCL, dated 1883, 23cm high. £100-£150. See illustration.

**220**

A pair of Doulton stoneware baluster vases, having stylised flower head decoration on a mottled green ground, 26cm high. £80-£120

**221**

A set of three graduated Royal Doulton jugs, having raised flower head decoration on a blue and green ground. £40-£60

**222**

A blue glass Chribska vase, by Josef Hospodka, and a red similar, 25cm and 21cm high respectively. £20-£30

**223**

A pair of Daum boxed glass salts and spoons; and a large clear heavy glass bowl. £20-£30

**224**

Two Whitefriars glass vases. £25-£35

**225**

A pair of Louis Roderer style Champagne coolers. £30-£50

**226**

A pair of decorative glass table lamps. £30-£50

**227**

A set of six graduated French enamel storage jars. £40-£60

**228**

A large West German pottery picther, with bird and flower decoration, 40cm high. £35-£55

**229**

A West German pottery jardiniere on stand. £15-£20

**230**

A Carltonware Rouge Royale dish, with chinoiserie decoration; and a pair of Carltonware floral decorated mugs. £20-£30

**231**

Three West German pottery jugs, and a vase. £20-£30

**232**

A Bernard Rooke pottery table lamp; and a Bernard Rooke posy holder. £20-£40

**233**

A large cast metal Art Deco design Christmas Tree stand. £20-£30

**234**

A smaller similar. £5-£10

**235**

A metal 1930's Christmas Tree stand decorated with three gnomes. £40-£60

**236**

A smaller similar. £20-£30

**237**

An unusual Art Deco design metal display stand of circular form. £40-£60

**238**

An Art Deco Cinema Foyer wall lamp. £70-£90

**239**

A large Art Deco vintage Langley pottery vase, with Scrafitto decoration, 25cm high. £10-£20

**240**

Six French enamel graduated storage pots, with red and white banded decoration. £30-£40

**241**

Three large tinted glass brandy balloons; and a china figure, of a clinging cat. £10-£20

**242**

Three various Murano glass vases. £20-£30

**243**

A large Blue Mountain pottery baluster vase, 32cm ; and a Blue Mountain pottery triform shaped ash tray, 25cm. £20-£30

**244**

A pair of Blue Mountain pottery rearing horses, 23cm high. £20-£30

**245**

An Orrefors glass vase; a Caithness vase; and a Murano example (3). £20-£30

**246**

A quantity of Poole pottery Twin Tone dinnerware. £20-£30

**247**

A glass and plated claret jug, 22cm high. £50-£60



**248**

A graduated set of retro aluminium saucepans. £15-£20

**249**

A collection of enamel ware kitchen items, including coffee pots, saucepan, urn etc. £50-£80

**250**

Bernard Rooke, study of an Orchestra in full flow, signed oil, 85cm x 78cm. £80-£120

**251 ✓**

Peter Jander, study of an expansive continental landscape, possibly South Africa, signed oil, 75cm x 96cm. £60-£80

**252**

A graduated set of five French enamel storage jars. £40-£60

**253**

An Orrefors glass bowl; an Ittala bowl (Tapio Wirkkala); and a Holmgaard owl money box. £30-£50

**254**

A large Jasba pottery jug, with medieval style panel decoration. £20-£30

**255**

Six various coloured glass vases including Murano examples. £20-£30

**256**

A vintage Siemens Bakelite hairdryer. £10-£20

**257**

A Vienna style bronze Arabic tower ornament. £250-£350

**258**

Two Blue Mountain pottery duck figures. £10-£20

**259**

Four framed bird decorated tiles by H & R Johnson. £10-£20

**260**

A large continental pottery jug, decorated with scenes of musketeers, 36cm high. £10-£20

**261**

A large classical style twin handled vase, with scenic decoration, 46cm high overall. £20-£30

**262**

A cast iron stick stand. £50-£80

**263**

A 1950's/60's Triang pedal car "The Duke". £160-£200. See illustration.

**264**

Two retro floor standing ash trays. £30-£50

**265**

A Murano glass splash centrepiece. £20-£30

**266**

A French crystal glass centrepiece. £20-£30

**267 ✓**

Jose McKinnon, "Nocturne" signed oil on canvas, 80cm x 102cm. £100-£200.

See illustration.

**268 ✓**

Nancy Bailey, study of cottages beside a river, signed oil on board, 46cm x 94cm. £100-£200. See illustration.

**269 ✓**

John Riddle, study of "The Market Place, Valenca Majorca", signed oil on canvas, 63cm x 77cm. £40-£60. See illustration.

**270**

A Danish teak sideboard, enclosed by sliding doors raised on rounded tapering supports, 90cm wide. £60-£80

**271**

Another similar. £60-£80

**272**

Mary Ellis, "Old Kilns" gouache study, 17cm x 12cm. £10-£20

**273**

A large West German pottery table lamp and floral shade. £20-£30

**274**

A 1970's table lamp with wool work decorated shade. £10-£20.

**275**

G E Treweek, study of a Cornish beach, signed watercolour, 30cm x 43cm; and another similar study unsigned, 28cm x 44cm (2). £30-£50

**276**

A Dedon blue weave armchair.

£150-£250. See illustration.

**277 ✓**

Jose McKinnon, "Autumn By The River", signed watercolour, 25cm x 33cm. £20-£30

**278 ✓**

Jose McKinnon, "Auntumn Sunset", signed watercolour, 21cm x 24cm. £10-£20

**279 ✓**

Jose McKinnon, "Blue Bottle" signed watercolour, 30cm x 21cm. £10-£20.

**280 ✓**

Leslie Goodwin, landscape study signed watercolour, 21cm x 23cm. £10-£20

**281 ✓**

Jose McKinnon, pallet knife on board, continental street scene, 21cm x 31cm, contained in a stripped pine frame. £10-£20

**282 ✓**

Zillah Bird, "The Plaid Shawl", signed oil on canvas, 50cm x 40cm. £20-£30

**283 ✓**

Jose McKinnon, "The Watcher, 31cm x 41cm. £10-£20

**284 ✓**

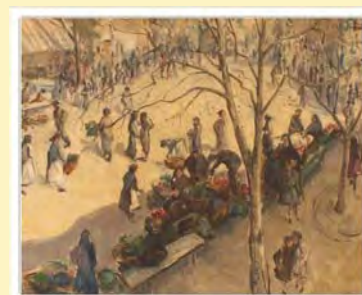
Jose McKinnon, "Study In Grey" of flowers in a vase, signed oil on board, 50cm x 40cm. £20-£30. See illustration.



Lot 267



Lot 268



Lot 269



Lot 276



Lot 284



Lot 289

**285 ✓**

**Jose McKinnon, "Spring",** signed pastel study, 27cm x 39cm. £10-£20

**286 ✓**

**Jose McKinnon,** study of river and rocks, signed watercolour, 14cm x 27cm. £10-£20

**287**

**A red Angle Poise type lamp;** and another. £30-£50

**288**

**A retro glass hanging ceiling light,** with floral decoration. £10-£20

**289**

**A Victorian silver trophy cup,** having profuse foliate embossed decoration, scroll handles above a mask and dolphin entwined column, gilded interior, domed lid mounted with a figure of Mercury, London 1883, set to a stepped black wood plinth, 58cm high, (bearing later presentation inscription for the Victoria Hotel Challenge Trophy). £400-£600. See illustration.

**290**

**A vintage mid-20th Century African tribal art carving,** depicting a kneeling female figure, 37cm high. £30-£50

**291**

**A pair of Art Nouveau design fabric panels contained in pine gilt metal mounted frames,** 29cm x 24cm overall. £10-£20

**292**

**A pair of Irish impressionist oils on canvas,** depicting landscape studies, one indistinctly signed, 23cm x 26cm. £20-£30

**293**

**Kenneth James Saterlay, "Summer Evening",** signed oil on canvas, 17cm x 24.5cm. £40-£60

**294**

**Kenneth James Saterlay, "Pimpernel",** signed oil on canvas, 25cm x 17cm. £40-£60

**295**

**After Renai Gruan, "Cinzaro" advertising print.** £10-£20

**296**

**Robert R. Greenhalf,** limited edition print, "Partridges". £10-£20

**297**

**An 18 piece Continental white metal cutlery canteen,** contained in a wooden presentation box. £60-£80

**298**

**A Michael Kors handbag .** £10-£20

**299**

**A Michael Kors handbag and purse.** £20-£30. See illustration.

**300**

**A Michael Kors handbag .** £10-£20

**301**

**A Venezia Collection Zebrano wood veneered extending dining table with centre leaf,** 231cm x 102cm extended; a set of eight stained beech matching chairs and cabinet, the upper section enclosed by sliding glass doors above two drawers and two cupboard doors, 204cm high. £400-£600

**302**

**A collection of 10 various Parker fountain pens,** including 51, 61 and 45 models and others. £60-£100

**303**

**A Parker 65 fountain pen,** black and 12 carat rolled gold cap; and four others. £60-£80

**304**

**A Parker 21 fountain pen,** grey with stainless steel cap; and four others. £40-£60

**305**

**13 various Parker fountain pens,** including model 51 and others, rolled gold and stainless steel caps, predominately blue bodies. £40-£60

**306**

**7 stainless steel Parker pens,** including model 45, Frontier and model 64. £40-£60

**307**

**6 Parker fountain pens,** including model 45 and others, mainly stainless steel caps and black bodies. £40-£60

**308**

**A small mahogany collector's chest,** containing 35 various Parker fountain and other pens including a yellow metal propelling pencil. £80-£120

**309**

**A Parker French gold model pen;** another Industria Argentina and a Parker Sonet. £40-£60

**310**

**A Parker 51, in 12 carat rolled gold case;** a Parker Lucky Curve No.2; and another Parker yellow metal fountain pen, (3). £30-£50

**311**

**A Parker Challenger fountain pen;** a Challenger deluxe example; a Geo S. Parker pen made in Canada; a Parker Televisor; and a Parker Challenger, (5). £50-£80. See illustration.

**312**

**A Parker Vacumatic patent no. 52;** and three other examples. £40-£60. See illustration.

**313**

**A Parker Sonet fountain pen,** yellow metal clip and band; and three other stainless steel cased examples. £30-£50

**314**

**A Parker Duofold;** early Parker Vacumatic; another similar; a small Parker Duofold, (Canada); and a larger example. £40-£60



Lot 299



Lot 311



Lot 312



Lot 315



**315**

**A Parker Duofold with stripped finish;** a Parker Vacumatic; a Parker Lucky Curve, Toronto Canada; and a larger similar. £40-£60. See illustration.

**316**

**A Parker Duofold;** a Parker fountain pen with 18 carat gold nip; and a fountain pen by Avery C. Barrow, San Antonio, Texas. £60-£100. See illustration.

**317**

**A collection of various fountain pen adverts,** and ephemera relating to the previous lots. £40-£60

**318**

**A fountain pen display case,** 60cm x 43cm; and a quantity of various pen boxes and accessories. £20-£40

**319**

**A wooden "Lovers Ducks" figure group.** £20-£30

**320**

**A Continental white metal bread basket,** of oval pierced design, 32cm. £80-£120

**321**

**A large silver tasting cup,** by the Goldsmiths & Silversmiths Company, having spot hammered decoration and pierced stylised handle, London 191. £100-£150

**322**

**A silver twin handled bowl,** by Albert Edward Jones, Birmingham 1916. £120-£160

**323**

**A silver caddy spoon,** by Albert Edward Jones of heart shape with spot hammered decoration, Birmingham 1914. £120-£160

**324**

**A large plated table lighter,** with stylised decoration; a leather covered example and a Ronson lighter. £20-£30

**325**

**A WMF style Art Nouveau comport;** a small Pewter Art Nouveau decorated jug; and a copper and brass repousse decorated teapot. £30-£50

**326**

**An Art Nouveau pendant,** in the form of a lady's head with attached mirror. £60-£80

**327**

**An Art Nouveau bookmark,** with female figure-head decoration; and a similar style yellow metal brooch. £30-£40. See illustration.

**328**

**A Werkstatte Hagenauer Wien pair of Art Deco nickel plated ice tongs,** in the form of a stylised monkey. £50-£80

**329**

**A large Art Deco Iona silver brooch,** in the manner of Alexander Ritchie, Glasgow hallmarks. £30-£50

**330**

**A Vintage Native American white metal hand-worked cuff,** with natural turquoise stone. £50-£80

**331**

**A cased Rado wrist watch.** £150-£250. See illustration.

**332**

**A silver letter opener,** hallmarked Chester 1822, with ivorine handle and presentation inscription December 2nd 1927. £50-£70

**333**

**Two Betty Johnson pendants,** hung to fine link chains. £10-£20

**334**

**Two plated pocket watches.** £30-£60

**335**

**A late Victorian sovereign,** dated 1901. £180-£220

**336**

**A George V half sovereign,** set to a 9 carat gold mount, hung to fine link chain. £80-£120

**337**

**A George V sovereign,** dated 1912. £200-£300

**338**

**An Edwardian VII half sovereign,** dated 1905. £100-£150

**339**

**A Mont Blanc ballpoint pen,** "Meisterstück". £100-£150. See illustration.

**340**

**A 9 carat gold cased wrist watch.** £50-£60

**341**

**A silver wrist watch,** in fitted box. £20-£40

**342**

**Asprey,** London, a pair of silver cream jugs having serrated borders, flying C scroll handles, raised on hoof feet, London 1936. £60-£80

**343**

**A silver Christening mug,** Sheffield 1938, by Walker & Hall. £40-£60

**344**

**Asprey,** London, a pair of silver sauce boats, having reeded border decoration, flying C scroll handles, on hoof feet, London 1913. £60-£80

**345**

**An unusual Art Deco cherry-red Bakelite and silver ink stand,** having original liners and pen, Sheffield 1917. £80-£120. See illustration.

**346**

**A Georg Jensen silver caddy spoon,** having beaded scroll handle, initialled GJ and GJ Ltd., stamped Sterling, Denmark. £40-£60

**347**

**An Edwardian silver caddy spoon,** Chester 1906; and a Georgian silver caddy spoon with bright cut decoration and crest. £30-£40



Lot 316



Lot 327



Lot 331



Lot 339



Lot 345



Lot 353



Lot 355



Lot 366



Lot 371



Lot 372

**348**

A pair of George VI silver toast racks, Birmingham 1937; a large example, Sheffield 1933; and a small silver wirework toast rack, (4). £60-£100

**349**

Three silver decanter labels, Sherry, Claret and Port. £60-£80

**350**

A collection of various silver flatware, including sugar tongs, condiment spoons, sifter spoon, jam spoon etc. £40-£60

**351**

Five various silver serviette rings; a silver tankard shaped mustard pot; a silver cased cigarette box; a silver foliate and figural embossed pin tray; and two Mappin & Webb silver entree dish handles. £60-£100

**352**

An Edwardian silver three piece cruet, with garland and swag decoration, Birmingham 1902; and a three piece silver cruet, London 1936. £40-£60

**353**

An Edwardian silver porringer, with stylised floral decoration and ring handles, London 1904, 8ozs. £60-£100.

See illustration.

**354**

A George V silver porringer, of plain form, angular handles, raised on a reeded spread foot, Birmingham 1913, 8ozs. £60-£100

**355**

An Edwardian silver cased carriage timepiece, with swing handle, raised on ball feet, 12cm high overall. £80-£120.

See illustration.

**356**

A silver Queen's Jubilee spoon, with trefid end; and a set of six silver trefid end teaspoons, initialled W. £20-£30

**357**

A pair of silver bon bon dishes, of octagonal form with pierced border decoration, Sheffield 1943. £40-£60

**358**

A cased set of six silver coffee spoons, with trefid ends, Sheffield 1972. £20-£30

**359**

A set of six silver seal end coffee spoons, London 1937, retailed by Waring & Gillow. £20-£30

**360**

Three pairs of silver dwarf candlesticks; and three Sheffield plate chambersticks. £40-£60

**361**

A George V silver baluster cream jug, Birmingham 1934; a small silver Christening mug, London 1937; a small silver cream jug, Birmingham 1901; a silver sugar bowl with floral decoration, Sheffield 1896; and a plated pedestal cream jug. £60-£80

**362**

An Edwardian silver oval fruit basket, with inscription, Sheffield 1904. £80-£120

**363**

Two Vintage silk ties, for Etro Milano and Michaelsons. £5-£10

**364**

A theatrical make-up box; and a leather vanity handbag with contents. £10-£20

**365**

A Rolleiflex SLR35E camera. £40-£60

**366**

A Microcord camera. £40-£60.

See illustration.

**367**

A Zeiss Ikon Compur camera. £40-£60

**368**

A Zeiss Ikon Compur camera. £60-£80

**369**

An Agfa 2840306 camera. £60-£80

**370**

A Nagel Ibsor DRP camera. £40-£60

**371**

An Ensign Carbine tropical model camera. £60-£80. See illustration.

**372**

An F. Decker Munchen Compur camera. £40-£60. See illustration.

**373**

A collection of various Rollei camera manuals and handbooks; together with various ephemera. £20-£30

**374**

A small bronzed bust, of an Art Nouveau lady, 15cm high. £10-£20. See illustration.

**375**

An Art Deco ivory figure, of a kneeling naked girl, raised on an onyx plinth, 10cm high overall. £100-£200

**376**

A WMF pen tray, decorated with kneeling figure and flowers, 26cm long. £40-£60

**377**

A Mappin & Webb lady's evening bag, of Art Deco design with diamante clasp and comb, mirror and knife. £20-£30

**378**

An Art Deco design perspex and metal table lighter. £10-£20

**379**

A Mappin & Webb plated and amethyst glass preserve pot, in the form of a bee, with spoon, 20cm long, AF. £40-£60. See illustration.

**380**

A tinplate American toy train, and carriages. £50-£70

**381**

A plated rococo design tea caddy, with hinged lid, 14cm high. £30-£50



**382**

**An unusual plated spirit barrel**, supported by a bear reclining on a sledge, 20cm high. £50-£80

**383**

**A gilt mini carriage clock**. £50-£80

**384**

**A gilt double mini carriage clock/ barometer**. £100-£150

**385**

**An Art Deco design mantel clock**, in the form of an aeroplane propeller, raised on a blackwood plinth, 30cm long overall x 10cm high. £40-£60

**386**

**A large wooden cigarette box**, with embossed metal lid; and a smaller similar, the lid decorated with galleons. £10-£20

**387**

**A white metal and enamel decorated easel photograph frame**, in the Art Nouveau style. £70-£80

**388**

**A white metal and enamel decorated easel photograph frame**, decorated in the Art Nouveau style with butterflies and flowers. £70-£80

**389**

**A small white metal and enamel decorated double photograph frame**, in the Arts & Crafts style. £40-£60

**390**

**A metal and enamel decorated Art Nouveau style photograph frame**. £20-£30

**391**

**A silver mounted photograph frame**, richly embossed with cherubs and flowerheads. £20-£30

**392**

**A small oval gilt mounted photograph frame**, enclosing a printed panel with chinoiserie decoration. £10-£20

**393**

**A silk scarf**, in fitted box, inscribed "Sea the Stars, Paris". £20-£40

**394**

**A white porcelain vase**, with overlaid white metal decoration, depicting figures, 19cm high. £10-£20

**395**

**A Loetz style iridescent glass bowl**, raised on pedestal foot, 20cm dia. x 14.5cm high. £20-£30

**396**

**A boxed set of Arabia Kastehelmi glass coasters**. £10-£20

**397**

**A Myott & Co., Art Deco biscuit barrel**, with wicker handle. £10-£20

**398**

**A Lorna Bailey Old Ellgreave pottery "Circus" pattern coffee pot**. £20-£30. See illustration.

**399**

**An Art Deco design red and black glass decorated cocktail pourer**, 21cm high. £20-£30

**400**

**Three Murano glass bowls**; Salviati eventurine, la Murrina W Millefiorre, and Cose belle, Cose rare. £30-£50

**401**

**Eleven Royal Crown Derby paper-weights**, in the form of various animals and birds. £200-£300

**402**

**A pair of Vintage Venetian Murano opaline glass vases**, with applied blue foot-rims, 19.5cm high. £30-£50

**403**

**A pair of Whitefriars blue glass circular bowls**, 13cm dia. £20-£30

**404**

**A Denby style shallow bowl**, with leaf decoration, raised on a circular foot, 23.5cm dia. £20-£40

**405**

**An Art Deco baluster jug**, decorated with trees and greenery, on a yellow ground, 17cm high. £15-£20

**406**

**Two Clarice Cliff Celtic Harvest preserve pots**. £30-£50

**407**

**A pair of Art Deco design clear and black glass scent bottles**, 13cm high. £40-£60

**408**

**A Lalique Copellia hinged oval box**, having raised floral decoration, 17cm. £100-£150

**409**

**A Royal Staffordshire Clarice Cliff oval flower vase**, 23cm long overall. £40-£60

**410**

**A Wedgwood Clarice Cliff design dancing couple**, 20cm high. £50-£80. See illustration.

**411**

**A William Goebel porcelain plaque**, depicting a dancing girl. £50-£80. See illustration.

**412**

**A pair of Wade Heath baluster jugs**, of ribbed design, decorated green and light brown running glazes, 18cm high. £20-£30

**413**

**A pair of Art Nouveau green pottery vases**, impressed to base AP121, 19cm high. £20-£30



Lot 374



Lot 379



Lot 398



Lot 410



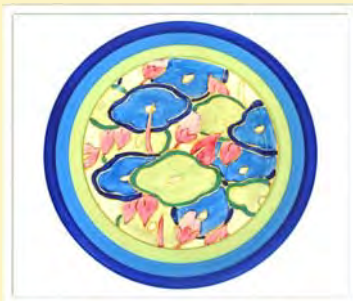
Lot 411



Lot 416



Lot 420



Lot 423



Lot 424



Lot 430



Lot 434

**414**

A Lapaix oval porcelain hinged box, the lid decorated with an Art Deco country scene; and a quantity of small ornaments. £40-£60

**415**

A French Art Glass vase, having ribbed swirled decoration, 19cm high x 14cm dia. overall. £40-£60

**416**

A Whitefriars blue glass baluster vase, with stylised star motifs, 16cm high. £40-£60. See illustration.

**417**

A small Lalique glass dish, having frosted handles, 15cm. £30-£50

**418**

An Art Deco design coloured glass perfume bottle, 13cm high. £20-£30

**419**

A Clarice Cliff sugar shaker, 14cm high. £100-£150

**420**

A Clarice Cliff "Bizarre" plate, 23cm dia. £150-£200. See illustration.

**421**

A Millefibre glass paperweight, with thumb press decoration. £20-£40

**422**

A Clarice Cliff "Delecia" cup and saucer. £80-£120

**423**

A Clarice Cliff "Bizarre" plate, 25cm dia. £150-£250. See illustration.

**424**

A Charlotte Rhead Crown Ducal baluster vase, with ribbed floral decoration, 21cm high. £40-£60. See illustration.

**425**

A Royal Doulton figure, "Mendicant" HN1365, 19cm high. £40-£60

**426**

An Art Deco porcelain figure of a dancing girl. £50-£80

**427**

A ruby Art Glass vase, of whorled design, on a circular spread foot, 18cm high. £20-£30

**428**

A Mexican blue glazed tankard, decorated with fanciful scenes, 13cm high. £20-£40

**429**

A Kolbrun Bjorgolf Sdottir for Kogga pottery bowl, decorated with stylised birds, 11cm dia. £20-£40

**430**

A Troika pottery marmalade pot, by Linda Taylor, 10cm high. £60-£80. See illustration.

**431**

A pencil signed limited edition print, by Mick Gorleston of King Charles spaniels, 64/850. £20-£40

**432**

A limited edition print, by Patrick A. Oxenham, depicting hedgehogs, 290/500. £20-£40

**433**

Patrick A. Oxenham, pencil signed limited edition print, depicting Otter and cubs, 361/500. £20-£40

**434**

A Troeds, Bjarnum of Sweden teak sideboard, fitted four central drawers flanked by cupboards enclosed by sliding doors, raised on square section supports, 190cm high. £100-£150. See illustration.

**435**

Three various Art Glass vases, with mottled decoration. £10-£20

**436**

A bronzed figure, depicting a semi naked girl seated on a tree stump, raised on black marble base, 44cm high. £100-£150

**437**

A large Art Glass vase, decorated with a clear glass spiral on a mottled black ground, bears signature, 32cm high. £30-£50. See illustration.

**438**

An Art Deco style bronzed figure, of a dancing girl, on circular plinth base, 50cm high. £60-£80

**439**

A large Royal Doulton stoneware baluster vase, profusely decorated with flowers and fruit, on a blue and brown ground, 34cm high. £40-£60

**440**

A large silvered skull ornament. £20-£40

**441**

A large amber and clear glass Art Deco design scent bottle, 24cm high. £50-£80

**442**

An Art Deco bronzed figure, of a dancing girl, on rouge marble base, 63cm high. £100-£150

**443**

A Studio pottery baluster vase, having incised floral decoration, signature to base and label Sayat Nova Gallery, London, 23cm high. £40-£60

**444**

A heavy glass diamond shaped paperweight. £15-£20

**445**

A silvered Spirit of Ecstasy figure, raised on circular marble plinth, 35cm high. £100-£150

**446**

An Art Deco design figure, of a dancing girl, after Chiparus, raised on a stepped marble plinth, 49cm high. £100-£150

**447**

A pair of gilt decorated pineapple ornaments, 50cm high. £60-£80



**448**

**A set of twelve 1970s French pottery oyster plates.** £120-£150

**449**

**A teak G-plan design long sideboard,** fitted drawers and cupboards, raised on rounded tapering supports, 185cm long. £40-£60

**450**

**A teak G-plan design sideboard,** fitted six drawers, raised on square tapering supports, 157cm wide. £20-£40

**451**

**A large teak G-plan type sideboard,** fitted three drawers, central cupboards and drop flap drinks compartment, raised on square tapering supports, 183cm. £40-£60

**452**

**An Art Nouveau design bronzed effect table lamp,** in the form of a maiden holding a flower, 46cm high overall. £20-£30

**453**

**A Uniflex teak dressing chest,** fitted with mirror above drop flap compartment, flanked by three drawers raised on rounded tapering supports, 49cm wide. £20-£30

**454**

**A quantity of Crown Ducal "Orange Tree" teaware.** £10-£20

**455**

**A T.G. Green Cornish ware flour dredger;** a sugar shaker; a vinegar bottle; a "ground ginger" jar; and an egg cup. £40-£60

**456**

**A nest of three teak G-plan design coffee tables,** 61cm in extremes. £20-£40

**457**

**A Danish Art Deco design deep seated armchair,** upholstered in green striped brocade. £20-£40

**458**

**A pair of Art Deco deep seated easy chairs,** upholstered in yellow damask. £30-£50

**459**

**A pair of Art Deco design Danish tub shaped easy chairs,** upholstered in pink velour. £40-£60

**460**

**A large Meredew teak sideboard,** fitted four central drawers, flanked by cupboards and raised on rounded tapering supports, 216cm wide. £60-£80

**461**

**A pair of chinoiserie decorated tea canisters,** of octagonal form, 37cm high. £80-£120. See illustration.

**462**

**A set of eight French pottery oyster plates.** £50-£80

**463**

**A Danish style low sideboard,** enclosed by three pairs of flushed panelled doors, raised on metal tubular supports, 177cm long. £40-£60

**464**

**A retro white laminate side chair.** £40-£60

**465**

**A teak Morris of Glasgow sideboard,** fitted three drawers and double cupboards, raised on rounded tapering supports, 170cm wide. £30-£50

**466**

**A French pottery oyster set.** £40-£60. See illustration.

**467**

**Two George VI Coronation chairs and stools;** and a red cloth bound book "The Coronation of their Majesties King George VI and Queen Elizabeth, Westminster Hall, Friday 7th May, 1937"; together with a letter of introduction to Sir Gordon Cosmo Touche Bart. £200-£300. See illustration.

**468**

**A Toleware type waste bin,** decorated in the chinoiserie manner, 30cm long x 32cm high. £40-£50

**469**

**A Danish teak bookcase,** having drop flap compartment and open shelves, raised on rounded tapering supports, 90cm wide x 125cm high. £40-£60

**470**

**A teak open fronted bookcase,** raised on steel legs, 102cm wide x 119cm high. £30-£40

**471**

**Four framed and glazed Nursery Fable coloured prints,** by L. Leslie Brooke; and two unframed Nursery Rhyme prints, "The House that Jack Built". £10-£20. See illustration.

**472**

**Two pairs of marble column shaped book-ends.** £10-£20

**473**

**A 1920s oak square top two tier occasional table,** raised on rounded supports and club feet, 59cm. £10-£20

**474**

**A large West German pottery lamp base.** £15-£20

**475**

**Two coffee grinders.** £20-£30

**476**

**A pair of Vintage wooden shoe trees.** £10-£20

**477**

**Two oval copper pans,** having brass carrying handles. £20-£30



Lot 437



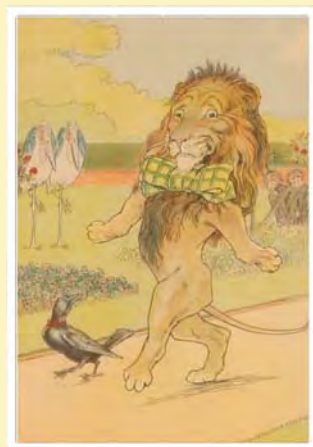
Lot 461



Lot 466



Lot 467



Lot 471





Lot 480



Lot 487



Lot 503



Lot 508



Lot 509

**478**

A pair of oak effect and inlaid console tables, 170cm wide x 90cm high x 40cm deep. £80-£120

**479**

A set of eight Longchamp pottery oyster plates. £40-£60.

**480**

An unusual designer wooden table lamp. £50-£80. See illustration.

**481**

A pair of wood and chrome table lamps. £50-£80

**482**

A West German pottery vase, decorated with brown running glazes, 41cm high. £15-£20

**483**

A West German pottery vase, having hooped brown and blue glazed decoration, 38cm high. £15-£20

**484**

A West German large pottery floral decorated jug, 45cm high. £20-£30

**485**

A West German pottery brown glazed baluster jug, 36cm high. £20-£40

**486**

A Vintage mirrored topped occasional table, raised on black supports, 75cm long. £10-£20

**487**

An Arts & Crafts design oak bench. £150-£200. See illustration.

**488**

A Nathan teak nest of occasional tables. £25-£35

**489**

A set of four Danish teak dining chairs, with upholstered seats and backs. £30-£50

**490**

A Paul Strand black and white photographic print, possibly South American indigenous tribes people. £10-£20

**491**

A large Kelim upholstered stool, raised on turned supports. £80-£120

**492**

A large teak G-plan design coffee table. £20-£30

**493**

A Danish teak pedestal writing desk, fitted four drawers and raised on rounded tapering supports, 130cm wide. £40-£60

**494**

A French brown glazed pottery asparagus set. £60-£80

**495**

A Pornic Paimpol pottery fish serving plate, and six side plates. £60-£80

**496**

A nest of three teak G-plan occasional tables. £30-£50

**497**

A teak and tile top oblong coffee table, 124cm. £20-£40

**498**

An Ercol coffee table, with magazine rack under-tier. £50-£80

**499**

A large pair of decorative silvered pineapple ornaments, 52cm. £60-£80

**500**

A decorative mirrored jewellery chest, fitted two drawers, 31cm wide x 19cm high. £25-£35

**501**

A nest of three teak G-plan design coffee tables, 74cm wide in extremes. £20-£40

**502**

A Parker Knoll teak low occasional table, fitted two drawers, 101cm wide. £20-£30

**503**

A yew wood effect Console hall table, fitted with a single drawer, 120cm wide. £150-£250. See illustration.

**504**

A yew wood effect Console type hall table, raised on a double U shaped base, 120cm long. £150-£250

**505**

A light oak pedestal writing desk, fitted three drawers, 159cm wide. £50-£80

**506**

A wooden Lovers duck ornament. £20-£30

**507**

An Art Deco design bronzed figure of a dancing girl, 42cm high. £60-£80

**508**

An "Austin" Art Deco design figure of a lady, with broad rimmed hat and attendant seated dog, 47cm high. £40-£60. See illustration.

**509**

A bronzed metalware clock ornament, after E. Villanis, depicting a seated naked woman at a fountain, 60cm high. £100-£200. See illustration.

**510**

An Art Nouveau bust, (George Coudray), from the French Universal Exhibition, Paris 1900, depicting young girl with flowers in her hair, 40cm high, AF. £100-£200. See front cover illustration.

**511**

A bronzed Art Deco figure of a dancing girl, on rouge marble stepped base, 40cm high. £60-£80

**512**

A Danish teak coffee table, having rounded ends, pull-out drinks compartment and extending slide, 80cm wide. £40-£60

**513**

A pair of 1940's wing back armchairs, upholstered in pink floral stamped velour. £40-£60

**514**

A G-plan teak oval coffee table, with later glass insert. £50-£80

**515**

A Majorelle style Art Nouveau mahogany two tier occasional table, of triform shape. £50-£80. See illustration.

**516**

A nest of three G-plan design teak coffee tables, 74cm in extremes. £20-£40

**517**

A Nathan teak Pandora box coffee table. £50-£80. See illustration.

**518**

A 1950's French lady's wool overcoat. £10-£20

**519**

A 1930's oak draw leaf dining table, and four matching chairs. £80-£120

**520**

A quantity of Parrot & Co., Coronet ware, Art Deco design dinnerware; and a quantity of Mid Winter floral pattern dinnerware. £20-£30

**521**

A Laura Ashley coffee table, with floral decorated border and outswept supports, 120cm wide. £30-£50. See illustration.

**522**

An Eileen Gray chrome and glass circular occasional table. £25-£35. See illustration.

**523**

A pair of large plated five light candelabra, 92cm high. £80-£120

**524**

A circa 1970's chrome chair lamp, complete with black shade. £30-£50

**525**

A teak G-plan D end extending dining table, complete with extra leaf, 110cm x 200cm extended. £40-£60

**526**

A set of six G-Plan teak slat back dining chairs. £40-£60

**527**

A Phoenix china floral decorated tea set, by Thomas Forester & Sons Ltd. £20-£30

**528**

Four various Murano glass dishes. £25-£35

**529**

A green patinated octagonal lantern. £30-£50. See illustration.

**530**

A Heathcote china "The Lea" part tea set. £20-£30

**531**

A green cut glass and plate mounted casket, 30cm wide x 21cm high. £100-£150

**532**

An Art Deco oak and ash bedside cupboard, 36cm wide. £30-£50

**533**

A brown leather tub chair. £15-£20

**534**

A nest of three teak occasional tables, raised on square tapering supports, 53cm wide in extremes. £30-£50

**535**

A simulated rosewood folding tea trolley. £25-£35

**536**

A walnut and cross-banded shaped two tier coffee table. £25-£35

**537**

A G-plan teak extending dining table, 113cm x 200cm fully extended; and a set of six matching dining chairs including two elbow chairs with leather upholstered seats and backs. £100-£200

**538**

A pair of Toleware style table lamp bases, decorated in the chinoiserie manner, 60cm high. £100-£150

**539**

A large plated punch bowl, with grape decoration, 39cm dia. £80-£120

**540**

A Martin Turner sycamore decorated bowl, 29cm dia. £20-£30

**541**

A French peaked hat. £15-£20

**542**

An Arts & Crafts decorated table lamp and shade; and a small oak baluster table lamp and shade. £80-£120

**543**

Two Wedgwood Friendship Salem plates. £20-£30

**544**

A Poole pottery hors d'oeuvre dish. £10-£20

**545**

A decorative painted side chair, with fan shaped back, raised on cabriole front supports. £20-£30

**546**

A teak two tier corner unit. £20-£30

**547**

A pair of Scottish Arts & Crafts oak side chairs, designed by E.A. Taylor for Wylie & Lockhead of Glasgow. £50-£80



Lot 515



Lot 517



Lot 521



Lot 522



Lot 529



Lot 548

**548**

A pair of Blackamoor type four light candelabra table lamps, 95cm high. £200-£300. See illustration.

**549**

A large brown glazed West German baluster vase, 50cm high. £20-£30

**550**

A pair of Nesta Studio pottery vases. £20-£30

**551**

Two teak two tier tea trolleys. £15-£20

**552**

A modern three seater settee with printed Art Nouveau design floral decoration. £30-£50

**553**

A large circular leather foot stool. £60-£80

**554**

Another similar. £60-£80

**555**

A large modern design deep seated easy chair, raised on square tapering supports. £40-£60

**556**

A G-plan oval extending dining table, with extra leaf, 89cm x 200cm extended and a matching set of five rail back chairs, including one carver and another carver chair with upholstered seat and back. £80-£120

**557**

A teak drop-leaf tea trolley, raised on castors. £10-£20

**558**

A Danish beech framed three seater settee, upholstered in stylised floral morquette. £20-£40

**559**

An electro plated two bottle wine cooler. £20-£30

**560**

A set of six French chrome and crocodile effect upholstered kitchen chairs. £50-£60

**561**

A set of six modern design light wood chapel chairs. £60-£100

**562**

A pair of rustic design yew wood and wrought metal armchairs. £450-£550

**563**

A Danish teak low armchair, with leather upholstered loose cushions. £50-£80. See illustration.

**564**

A pair of 1930's/40's oak and leather upholstered deep seated armchairs, having brass stud decoration, oak splat side rails, raised on turned front supports terminating in castors. £500-£600

**565**

A Swedish black leather "Move" lounge and a foot stool by Nelo. £250-£350.

See illustration.

**566**

A pair of glass urns; and a vase. £15-£20

**567**

An Arts & Crafts brass frame wall mirror, 35cm x 27cm. £10-£20



Lot 563



Lot 565

Special attention is drawn to the Conditions of Sale printed at the back of this catalogue.

Clarke and Simpson are pleased to offer a packaging and shipping service worldwide through "the-saleroom.com Delivery Service". The professional team will pack and ship items from very small non-breakables such as jewellery and coins through to larger and more fragile items such as paintings and works of art. Shipping and insurance is at the buyer's expense.

Shipping payment must be made to "the-saleroom.com Delivery Service" prior to departure and excludes local duties and taxes. Please note that Clarke and Simpson do not pack or ship items - all requests are sent to our specialist handlers at "the-saleroom.com Delivery Service" who can be

the-saleroom.com  
delivery service





# TERMS AND CONDITIONS OF SALE

## 1. INTRODUCTION

The following defining terms are used in these conditions:-

“Auction”	Means any auction conducted by Clarke and Simpson Auctions Ltd. either at the premises owned by them or elsewhere (including any internet based auction);
“Auctioneer”	Means Clarke and Simpson Auctions Ltd. authorised auctioneer as appropriate;
“Bidder”	Means a bidder at an auction, including the bidders personally present at the venue and those bidding by telephone or over the internet or otherwise;
“Buyer”	Means the bidder whose bid was the last bid when the auctioneer concludes the bidding;
“Conditions”	Means these Terms and Conditions of Sale;
“Hammer Price”	Means the level of bidding reached (at or above any reserve) when the auctioneer brings the bidding to a close;
“Lot”	Means any property accepted by Clarke and Simpson Auctions Ltd. for offer at auction;

## 2. DESCRIPTION

No warranty is given or implied by the description in the catalogue. Each lot is sold in its condition at the time of sale with all faults, defects, imperfections and errors of description (if any). Whilst every endeavour has been made to describe the items adequately and properly, the purchaser shall deem to have inspected the lot at time of purchase. All catalogues and seller's and buyer's guides are for information only and do not form part of the contract.

## 3. STATUTORY REQUIREMENTS

Purchasers will be deemed to have satisfied themselves prior to purchasing regarding current legal requirements (e.g. Health & Safety at Work Act) and it is expressly brought to the bidders attention that equipment in the sale may not necessarily comply with such regulations. Any purchaser shall satisfy himself as to any statutory requirement for the use of any item and no liability shall rest with the vendors nor the Auctioneers.

## 4. THE AUCTION

All auctions are conducted at the absolute discretion of the auctioneer. The auctioneer shall conduct the auction with reasonable skill and care. The vendor reserves the right to sell subject to reserve price in respect of all lots. What constitutes a bid shall be at the absolute discretion of the auctioneer, acting with appropriate skill and care. The auctioneer shall have the right to refuse any bid in all cases but most notably when such a bid does not exceed the previous bid by at least 10% or such a proportion as the auctioneer shall in his absolute discretion direct. Where two or more bids at the same level are simultaneously received by the auctioneer, the auctioneer at his absolute discretion shall determine which bid to prefer. Subject to the foregoing where two or more bids are at the same level are simultaneously received by the auctioneer, the bid submitted in the room shall take preference over a bid submitted by telephone or internet at the same level. Any bid made or attempted by telephone or over the internet will only be deemed to have been made if received by the auctioneer. The auctioneer reserves the right to withdraw, consolidate or divide any lot or lots or submit them in any order that they desire. The auctioneer has the

right at his absolute discretion to refuse admission to his premises or attendance at (or participation in) any auction by any person. In the case of any dispute, the auctioneer shall be sole arbitrator in any matters arising during or out of the sale.

## 5. BIDDERS

All bidders will be required to register their particulars, bidders attending in person and those accompanying them may be required to provide photo ID and separate confirmation of address prior to viewing or taking any part of the sale and before entering any part of the premises to view. All bidders accept full liability for all bids submitted. Subject to the clause in this document headed “The Auction”, the highest bidder at the close of bidding shall be the buyer. Any dispute about a bid shall be settled at the auctioneer's absolute discretion.

Bidders are all deemed to act as principles unless there is prior written acknowledgement by Clarke and Simpson Auctions Ltd. that a bidder is acting as an agent for a named principle. Bidders are strongly encouraged to attend the auction in person. The bidders shall be responsible for any decision to bid for a particular lot and shall be deemed to have carefully inspected and satisfied themselves as to condition, neither Clarke and Simpson Auctions Ltd., their employees or agents shall be responsible for any neglect or default in doing or failing to do so. Bidders will be given ample opportunity to view and inspect before the sale and prospective buyers must satisfy themselves as to all matters.

## 6. DEFAULT

Clarke and Simpson Auctions Ltd. shall act as agent of the vendor only. Any contracts for the sale of a lot shall be formed between the vendor and the buyer. As agent only Clarke and Simpson Auctions Ltd. shall not be responsible for default by the vendor or the buyer. If any lot is not paid for in full and taken away in accordance with these conditions, or there is any other breach of the conditions, then Clarke and Simpson Auctions Ltd. as agents for vendor shall at its absolute discretion and without prejudice to any other rights it may have, be entitled to exercise all or any of the following rights and remedies:-

- 6.1 to proceed against the buyer for any action of debt or damages for breach of contract;
- 6.2 to rescind the sale of that lot or lots sold by Clarke and Simpson Auctions Ltd. to a defaulting buyer;
- 6.3 to resell the lot (by auction or private treaty) in which case the defaulting buyer shall be responsible for any resulting deficiency in the total amount due (after crediting any part payment and adding any resale costs), any possible surplus so arising shall belong to the vendor;
- 6.4 to remove, store and insure the lot at the expense of the defaulting buyer and, in the case of storage, the location of such storage shall be at Clarke and Simpson Auctions Ltd. discretion;
- 6.5 to charge interest at a rate not exceeding 2% per month of the total amount due to the extent that it remains unpaid for more than two working days after the sale;
- 6.6 to retain that or any lot sold to the defaulting buyer until the buyer pays the total amount due;
- 6.7 to reject or ignore bids from the defaulting buyer at future auctions or to impose conditions before any such bids are accepted;
- 6.8 to apply any proceeds of sale for any other lots due or in the future becoming due to the defaulting buyer towards the settlement of the total remaining due.

## **7. INDEMNITIES, PENALTIES AND LIMITATIONS OF LIABILITY**

Purchasers shall pay for any damage done by themselves or their agents during the removal of their lots. Attendance at the sale shall be at the risk of those attending in respect of both themselves and to their goods and vehicles.

Any indemnity under these conditions will extend to all actions, costs, expenses, claims and demand whatsoever suffered or incurred by the person entitled to the benefit of it and Clarke and Simpson Auctions Ltd. declare themselves to be a trustee of the benefit of such indemnity so far as it is expressed to be the benefit of its employees and agents.

Whilst Clarke and Simpson Auctions Ltd. endeavour to ensure that the information on their websites is correct, they do not warranty the accuracy and completeness of the material on their website. Also Clarke and Simpson Auctions Ltd. can make changes to the material on their website, or alter the products and prices described on it, at any time without notice. The material on the website may be out of date, Clarke and Simpson Auctions Ltd. make no commitment to update such material. All material on the websites is provided "as is" without any conditions, warranties or other terms at any time. Accordingly to the maximum extent permitted by law, the website is provided to all parties on the basis that Clarke and Simpson Auctions Ltd. exclude all representations, warranties, conditions and other terms which, but for this legal notice, might have effect in relation to the website.

## **8. ELECTRICAL SAFETY REGULATIONS**

All electrical lots are subject to electrical safety regulations and fall within "the low voltage electrical equipment (safety) regulations 1989" – all items have been pat tested for safety but are not guaranteed in working order.

## **9. GENERAL MATTERS**

Any notice to any buyer, vendor, bidder or viewer may be given by first class mail or email in which case it shall be deemed to have been received by the addressee forty eight hours after posting or sending. All notices to Clarke and Simpson Auctions Ltd. must be sent in writing and email is not acceptable. Any indulgence extended to any person by Clarke and Simpson Auctions Ltd., notwithstanding the strict terms of these conditions or the terms of consignment, shall affect the position at the relevant time only and the respect of that particular concession only; in all other respects these conditions shall be construed as having full force and effect. These conditions and any disputes or claims arising out or in connection with them or their subject matter or formation (including non-contractual disputes or claims) are governed by and construed in accordance with the law of England. The parties irrevocably agree that the courts of England have exclusive jurisdiction to settle any dispute or claim that arises out of or in connection with the agreement or its subject matter or formation (including non-contractual disputes or claims).

## **10. PUBLICITY**

Any catalogue and buyer and seller guides are provided for information only and do not form part of these conditions. The catalogue and the buyer and seller guides may contain additional terms and conditions. Clarke and Simpson Auctions Ltd. reserve the right to use any photographs, background information and research for publicity purposes both before and after the sale.

## **11. THE PURCHASE PRICE AND PAYMENT ARRANGEMENTS**

There is a buyer's premium 18% plus VAT payable in respect of the sale. Any purchases made via "[www.the-saleroom.com](http://www.the-saleroom.com)" or "[www.ibidder.com](http://www.ibidder.com)" shall be subject to an administration charge of 3% plus VAT on the price.

Preferred payment is cash, bank transfer or personal debit card. Such cards may only be used on a chip and pin basis with the owner present. No payment over £350 will be accepted by telephone. Payment will be accepted online via our secure e commerce account. We do not accept credit cards or international debit cards. Payment by cheque will only be acceptable subject to prior arrangement. No lot will be removed from the sale until any cheque has cleared. Payment is due on the day of the sale. Cash in excess of £7,500 (including V.A.T.) will not be accepted from any one person, this is not allowed due to Money Laundering Regulations 2007. All money received will be held in Clarke & Simpson Auctions Ltd. Clients No 2 Account at Barclays Bank plc, Framlingham, Suffolk. Account Number 83428591. Sort Code 20 98 07. Clarke and Simpson Auctions Ltd. have no responsibility for any lot between the close of bidding and payment being made and subsequent collection. All payments from overseas buyers shall be made by Bank Transfer and bank fees paid in addition. Please note all policy regarding payment will be enforced and suitable arrangements must be made.

## **12. REMOVAL OF LOTS**

The ownership of any lot purchased shall not pass to the relevant buyer until they have made payment in full to Clarke and Simpson Auctions Ltd. of the total amount due including any storage due.

The buyer shall at their own risk and expense take away any lot that they have purchased and paid for not later than two working days following the day of the auction after which they shall be responsible for any removal, storage and insurance charges.

Any lots not collected within four weeks of the date of sale will be resold by the auctioneer and all proceeds will be retained by the auctioneer to cover storage costs.

## **13. NUMBER BIDDING**

This will be used for speed and efficiency as in all our sales. All prospective purchasers must complete a registration form and register in the office on the viewday or morning of sale to receive a number for bidding.

PLEASE ALSO NOTE THAT PHOTO ID AND ADDITIONAL CONFIRMATION OF ADDRESS WILL BE REQUIRED.

## **14. ONLINE BIDDING**

Clarke & Simpson Auctions Ltd. offer an online bidding service via the-saleroom.com and ibidder.com for bidders who cannot attend the sale.

In completing the bidder registration on [www.the-saleroom.com](http://www.the-saleroom.com) or [ibidder.com](http://ibidder.com) and providing your payment card details and, unless alternative arrangements are agreed with Clarke & Simpson Auctions Ltd.:

1. authorise Clarke & Simpson Auctions Ltd., if they so wish, to charge the payment card given in part or full payment, including all fees, for items successfully purchased in the auction via [www.the-saleroom.com](http://www.the-saleroom.com) or [ibidder.com](http://ibidder.com), and
2. confirm that you are authorised to provide these payment card details to Clarke & Simpson Auctions Ltd. through [www.the-saleroom.com](http://www.the-saleroom.com) or [ibidder.com](http://ibidder.com) and agree that Clarke & Simpson Auctions Ltd. are entitled to ship the goods to the card holder name and card holder address provided in fulfilment of the sale.

**Please note that any lots purchased via the-saleroom.com or ibidder.com live auction service will be subject to an additional 3% buyer's premium + VAT at the rate imposed on the hammer price.**

## 15. TELEPHONE BIDDING

We offer a telephone bidding service where possible, but this service can never be guaranteed. No applications for telephone bids will be accepted after the end of the viewing prior to sale day for any sale. All potential telephone bidders must provide a valid landline number and email address and agrees that they have read and understood the Terms and Conditions. No phone bids will be accepted for any lot with a lower guide figure of less than £100.

All those who wish to bid by telephone will be expected to deposit the minimum guide for all lots that they wish to bid upon into the Clients Account for Clarke and Simpson Auctions Ltd before the sale starts. This payment is not acceptable by card. In the event of default, this sum shall be retained as part payment or any part may be retained to recover losses under clause 6 of these Terms and Conditions. We will expect payment of the balance owing by BACS on the following day, any payment not met within five working days will result in the forfeiture of the deposit paid.

## 16. AT FAULT (A.F.) LOTS

Certain lots are catalogued at (A.F.), damaged, restored etc., however the absence of any such notice does not imply that the piece is free from defects, nor does it indicate that other defects are not also present. Mention is not made of breakage, cracks, chips or any damage which can be noted by careful inspection, therefore, intending purchasers MUST, in all cases, be responsible for determining the condition of the lots themselves.

## 17. ESTIMATES

Presale estimates are intended only as a guide for intending purchasers, are given in good faith and subject to revision.

## 18. CONDITION REPORTS

Clarke and Simpson are unable to guarantee that requests for condition reports/images received after close of the viewing on the day prior to auction, will be responded to. Clarke and Simpson are happy to give a Condition Report on the physical condition of goods, this will be provided on behalf of the seller on the understanding that Clarke and Simpson are not entering into a contract with you in respect of the Condition Report and accordingly does not assume responsibility to you in respect of it. All lots are available for your own inspection or for inspection by an expert instructed by you, therefore these Condition Reports are for guidance only and all lots are sold "as found". Condition reports do not form part of a contract.

## 19. COMMISSION BIDS

The auctioneers will be pleased to execute bids for those unable to attend the sale. Lots will be purchased at the lowest bid the room bidding or any reserves will allow. In the event of identical bids, the earliest bid received will take precedence. There must always be a maximum limit indicated. Buy or unlimited bids will not be accepted. Commission bids placed by telephone are accepted at the client's risk. We urge our clients to place such bids before the start of the sale. All such commissions are left entirely at the buyer's risk.

## 20. VALUE ADDED TAX

The symbol \* after any lot number indicates that Value Added Tax is payable by the buyer on the hammer price.

## 21. AUCTIONEERS MARGIN SCHEME

The Auctioneers Margin Scheme allows auctioneers to sell items without VAT on the hammer price. Under the margin scheme an amount equivalent to VAT at the current rate is added to the buyer's premium. This amount cannot be refunded. The VAT element will not be shown separately on the buyer's invoice.

## 22. ATTRIBUTION OF PICTURES AND DRAWINGS

Every effort is made to ensure the accuracy of any statements as to authorship, attribution, origin, date, age, provenance and condition of any lot whether or not such statement forms part of the description of any such lot. Whether any such statement is made orally or in the catalogue it is an expression of opinion and not to be taken as being or implying any warranties or representations of facts by the auctioneers. Each buyer by making a bid for a lot acknowledges that he has satisfied himself fully as to the attribution and condition of the lot.

The following is for guidance only and does not form part of a contract.

- A. The forename (s) (or full stops where not known) and surname of an artist indicates in our opinion a work by the artist.
- B. The initials of the forename (s) and the surname of the artist indicates in our opinion a work of the period of the artist which may be wholly or in part his work.
- C. The surname of the artist indicates in our opinion a work of the school or by one of the followers of the artist or in his style and of uncertain date.
- D. *Signed, Dated, Inscribed* indicated in our opinion work signed/dated/inscribed by the artist.
- E. *Bears signature* indicates in our opinion that this is not the signature of the artist.
- F. *Attributed to* may be used to denote a traditional attribution based on style.
- G. *Manner of* indicates in our opinion a work executed in the artist/craftman's style but of a later date.
- H. *After* indicates in our opinion a copy (of any date) of work of an artist or craftsman.

The addition of a question mark after any of the cataloguing terms above indicates an element of doubt.

## 23. DRIOTE DE SUITE ROYALTY CHARGES

All United Kingdom Art Market professionals (which includes auctioneers) are required to collect a royalty payment for all qualifying Works of Art. This applies to living artists and those who have died in the last 70 years. This payment is calculated on qualifying Works of Art which are sold for a hammer price more than the UK sterling equivalent of €1,000 (the UK sterling equivalent will fluctuate in line with prevailing interest rates calculated by the Artist's Resale Right Service Hub, based on the European Central Bank reference rate published at 2.15pm on the day of the sale, and can be found on [www.dacs.org.uk](http://www.dacs.org.uk)).

All items in this catalogue that are marked "✓" are potentially qualifying items, and the royalty charge will apply if the hammer price is more than UK sterling equivalent of €1,000. The royalty charge will be added to purchase invoices, and must be paid before items can be cleared. All royalty charges are paid to the design and Artists Copyright Society (DACS) by the auctioneers and no handling costs or additional fees with respect to these charges will be retained by the auctioneer. This charge may also be applicable to lots not marked "✓" and buyers must satisfy themselves.

The royalty charge for qualifying items which achieve a hammer price of more than the UK sterling equivalent of €1,000, but less than the UK sterling equivalent of €50,000 is 4%. For qualifying items that sell for more than the UK equivalent of €50,000 a sliding scale of royalty charges will apply. For a complete list of the royalty charges and threshold levels please refer to [www.dacs.org.uk](http://www.dacs.org.uk). There is no VAT payable on this royalty charge.





Clarke & Simpson Auction Centre, Campsea Ashe  
Nr Wickham Market, Suffolk IP13 0PS  
T: 01728 746323 E: [auctions@clarkeandsimpson.co.uk](mailto:auctions@clarkeandsimpson.co.uk)  
[www.clarkeandsimpson.co.uk](http://www.clarkeandsimpson.co.uk)