

Clarke &  
Simpson

Ahmed Fawer  
June 1962.

*Art Deco,  
20th Century  
Design & Retro*

Monday 8th April  
at 9.30am





# Always open...

## Clarke & Simpson Auctions

### Valuation

Probate and  
other valuations

Call-in service  
5½ days a week



General Monday sales  
every week

Bespoke sales

In 2018 our lots sold  
to over 28 countries

Acting as agents for  
household clearances



### Special Sales

Antiques & Fine Arts

Art Deco & Retro

Domestic & Rural Bygones

Agricultural Collective



*Not free to come along...?*

Don't worry! All auctions are  
available for online bidding  
via **the-saleroom.com**  
or **i-bidder.com**



Clarke & Simpson Auction Centre, Campsea Ashe  
Nr Wickham Market, Suffolk IP13 0PS T: 01728 746323

[www.clarkeandsimpson.co.uk](http://www.clarkeandsimpson.co.uk) [CandSAuctions](#) [@CandSAuctions](#)

Clarke &  
Simpson

Auctions

*Art Deco, 20th Century Design  
& Retro*

*Monday 8th April 2019  
at 9.30am*

**Viewing:**

Saturday 6th April 9am - 12noon  
Morning of Sale from 8.30am

**Enquiries:**

James Shand, Auctioneer & Valuer  
Geoffrey Barfoot, Auction Centre Manager & Valuer

**Buyers' Premium:**

18% plus VAT

Please see [www.the-saleroom.com](http://www.the-saleroom.com)  
for further images

**the saleroom**  
The home of art & antiques auctions

Special attention is drawn to the  
Conditions of Sale printed at the back of  
this catalogue.



Campsea Ashe  
Nr Wickham Market  
Suffolk IP13 0PS  
Tel: 01728 746323 Fax: 01728 748173  
Email: [auctions@clarkeandsimpson.co.uk](mailto:auctions@clarkeandsimpson.co.uk)  
[www.clarkeandsimpson.co.uk](http://www.clarkeandsimpson.co.uk)



@CandSAuctions



CandSAuctions



Lot 1



Lot 3



Lot 6



Lot 23



Lot 30

**1**  
An Art Deco coll painted bronze figure, of a girl juggling balls, on unusual stylised base, 32cm high. £150-£200.  
See illustration.

**2**  
An Art Deco biscuit barrel, by James Kent, having chrome plated mounts. £10-£20

**3**  
An Art Deco cold painted bronze and marble figure group, depicting girl tennis players relaxing, 40cm long overall. £300-£400. See illustration.

**4**  
A bronzed Art Deco style figure of a dancing girl, 45cm high. £10-£20

**5**  
Colin Moss, study of hay tumbrils, signed oil on paper laid on board, 39cm x 56cm in extremes. £60-£80

**6**  
A Bernard Rooke pottery study of an elephant, 20cm high. £30-£40.  
See illustration.

**7**  
An Art Deco plated cigarette box, with enamel decoration and slide-out ashtrays, 16cm. £10-£20

**8**  
An Art Deco style bronzed figure, of a leaping deer, 18cm high. £10-£20

**9**  
A French Art Deco table lamp clock, with antelope decoration, 27cm long. £20-£30

**10**  
An Art Deco design chrome plated tray, and glass decanter set etc. £60-£80

**11**  
An Art Deco style wall clock, advertising "Gay double edged razor blades". £20-£30

**12**  
A six piece Art Deco plated tea set. £20-£30

**13**  
A 1920's metal dog nutcracker. £30-£50

**14**  
An Art Deco design Bakelite table lamp, having white glass globular shade. £15-£20

**15**  
An Art Deco design table lamp, in the form of a dancing girl. £10-£20

**16**  
A retro table lamp, in the form of a ship's wheel with fish and shell decoration. £10-£20

**17**  
A carved wooden figure of an eagle, 39cm high. £20-£30

**18**  
A pottery figure of a sheep, stamped CH to base, 24cm high. £20-£30

**19**  
A pottery figure of a boxer dog, signed to the under-side "K. Rudge", 26cm . £20-£30

**20**  
A Poole pottery vase, of squat baluster form, impressed mark to base, 27cm dia. overall. £20-£40

**21**  
Stella R Crofts, pottery study of rams, dated 1929, 30cm long. £100-£200

**22**  
Stella R Crofts, pottery study of cow and calves, 20cm long. £100-£200

**23**  
Stella R Crofts, pottery study of a roaring tiger, dated 1932, 24cm high x 22cm long. £200-£300. See illustration.

**24**  
A Royal Copenhagen study of an eagle, perched on a rock, stamped and signed to base, 41cm high. £100-£200

**25**  
A 19th Century brass Benson type adjustable table lamp, 28cm high. £30-£50

**26**  
A bronze figure of a bird in flight, on hardstone base, by Grace Critchley, 35cm high. £80-£120

**27**  
An Art Deco Palissy coffee set, with green banded and gilt decoration. £20-£30

**28**  
A large pair of Lyons' Art Deco period glass storage jars, with stamped Bakelite lids. £50-£70

**29**  
A Bernard Rooke pottery vase, of flask shape with stylised raised decoration; and a Bernard Rooke pottery lamp base with shell decoration, (2). £40-£60

**30**  
A large Zsolnay pécs jug, of baluster ribbed form, having trailing foliate decoration on a pink ground with raised flowerheads and leaves, 50cm high. £300-£400.  
See illustration.

**31**  
Anthony Brown, pencil signed woodcut, limited edition print "The owl", 9/50; and another "Saint Francis and the birds", dated 1959, (2). £40-£60

**32**  
Three Italian Art Deco style glass storage jars, with plastic screw tops. £10-£20

**33**  
A Metamec wall clock; a mantel clock; a Rumtoft jar in original box etc. £10-£20

**34**  
A box containing five pairs of 1960's/70's aluminium door handles, external locks and keys etc. £10-£20



**35**

**A box of various vintage handbags, scarves etc.** £10-£20

**36**

**A folder of Charles Rennie Macintosh posters; and a quantity of Art Glass reference books and others.** £10-£20

**37**

**A teak G plan design two tier coffee table, raised on rounded tapering supports, 91cm.** £40-£60

**38**

**Five bentwood and leather upholstered high stools.** £80-£120

**39 ✓**

**Greg Decker, initialled oil on canvas, "The Wheel", 172cm x 143cm.** £2,000-£3,000. See illustration.

**40**

**An Art Nouveau advertising poster, "Bières de la Meuse", 136cm x 88cm.** £60-£80

**41**

**A Louis Vuitton style suitcase.** £40-£60

**42**

**A large Eastern wool rug, having floral decoration on beige ground, approx. 3.06 x 2.48.** £60-£100

**43**

**A 1960's wool rug, decorated red, orange and brown circles on a beige ground, 60ins x 52ins.** £50-£80

**44**

**P.T. Morgan, triptych panel entitled "Love and all that", signed oil on canvas. Provenance Woodstock Gallery, Bond Street, London, panels 77cm x 50cm and 77cm x 100cm.** £100-£200

**45**

**P.T. Morgan, triptych study depicting brightly coloured surreal faces, signed oils on canvas, panels 30cm x 24cm and 40cm x 29cm.** £40-£60

**46**

**P.T. Morgan, triptych panel depicting faces of clowns, signed oil on canvas, panels 30cm x 24cm and 40cm x 29cm.** £40-£60

**47**

**Tony Poultney, "Spring comes once to all men", acrylic on canvas, initialled TP, 74cm x 49cm.** £40-£60. See illustration.

**48**

**Tony Poultney, "The Kings arrived bearing gifts", acrylic on canvas, 100cm x 77cm.** £40-£60. See illustration.

**49**

**Tony Poultney, "Uneasy Isolation", acrylic on canvas, 92cm x 66cm.** £40-£60. See illustration.

**50**

**Tom Morgan, triptych depicting Mediterranean landscape, signed acrylic on canvas, panels 40cm x 75cm.** £40-£60

**51**

**A light oak cased Master clock.** £200-£400

**52**

**An early 20th Century mahogany three tier revolving bookcase, 48cm wide x 88cm high.** £40-£60

**53**

**A pair of silvered stylised display busts, 30cm high.** £20-£30

**54**

**Tony Poultney, "Conflict is the Father of all things", acrylic on canvas, 127cm x 110cm.** £40-£60

**55**

**A retro chrome and PVC upholstered valet stand.** £40-£60

**56**

**An oak Gothic design church stand, 57cm wide x 86cm high overall.** £40-£60

**57**

**P.T. Morgan, a folio of various unframed drawings; together with Wandsworth Technical college diplomas and literature; an unframed watercolour study of Queen Elizabeth I; and a portrait of a lady with large brimmed hat etc.** £40-£60

**58**

**A 1930's oak folding fire screen/ occasional table, with floral embroidered panel.** £20-£30

**59**

**A G plan design teak dining table, the cross-banded top raised on shaped end supports, 163cm x 82cm.** £40-£60

**60**

**A teak long coffee table, with magazine under-tier, raised on square section tapering supports, 113cm wide.** £20-£40

**61**

**A green loom type two tier work table; and three wooden and chrome mounted cocktail trays decorated with recipes.** £20-£30

**62**

**A stylish 1970's plastic cigarette box, ashtray and table lighter; a leather mounted rocker blotter and a Celtic Lands collection pen and paper-knife set.** £20-£30

**63**

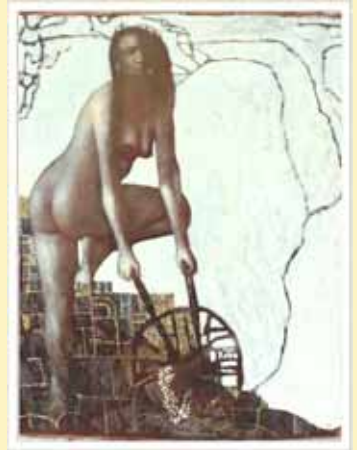
**A Royal Copenhagen shallow dish, with blue floral decoration.** £20-£30

**64**

**A Royal Copenhagen shallow dish, having stylised floral decoration on a yellow ground.** £20-£30

**65**

**A Royal Copenhagen faience vase, with stylised floral decoration on a yellow ground.** £30-£50



Lot 39



Lot 47



Lot 48



Lot 49



Lot 72



Lot 73



Lot 74



Lot 92

**66**

Seven various items of West German studio pottery. £20-£30

**67**

A West German pottery coloured enamel decorated jardinière and matching vase. £30-£40

**68**

A West German pottery coloured enamel decorated wall pocket; two matching jugs and two vases. £20-£30

**69**

A pair of coppered Art Deco design hexagonal lamp shades. £20-£30

**70**

A Quimper two handled baluster vase, 20cm high. £20-£30

**71**

A cloudy mottled glass pendant light fitting. £10-£20

**71A**

An Art Deco wooden and metal chain decorated light fitting. £20-£30

**72**

Morgan, study of a bishop, signed oil on canvas, inscribed verso No.12, 77cm x 51cm. £20-£30. See illustration.

**73**

Morgan, surrealist study of a figure dressed in Union Jack and evening attire under a glass dome, possibly Winston Churchill, signed oil on canvas, 100cm x 74cm. £40-£60. See illustration.

**74**

Morgan, "Goya woman", no.8, signed oil on canvas, 128cm x 76cm. £40-£60. See illustration.

**75**

A leather covered folding picnic set. £40-£60

**76**

A Crown Ducal child's bowl. £20-£30

**77**

A Hancock's ivory ware butterfly decorated plate. £10-£20

**78**

A Crown Ducal Charlotte Rhead design baluster vase. £30-£50

**79**

A 1950's Italian pottery study of a dog, with removable hat, brightly coloured floral decoration, (some damage), 65cm high; and a similar study of a seated cat, 58cm high. £20-£40

**80**

Five French Art glass animal figures. £30-£40

**81**

A blue tinted heavy etched glass bowl, stamped Amanda; a blue bubble glass baluster jug; and nine ruby glass tumblers. £20-£30

**82**

A H.J. Wood burslem Art Deco baluster water jug, with floral decoration; and a Poole pottery brightly coloured floral decorated jug. £10-£20

**83**

A Bernard Rooke tree stump shape pottery vase; and a Phyl Thomas cylindrical pottery vase. £20-£30

**84**

A large Mdina glass goblet, dated 1983; a pair of smaller goblets; a similar circular shallow bowl; two paper-weights etc., (8). £40-£60

**85**

P.T. Morgan, portrait study of a lady in fur coat, signed watercolour, 52cm x 38cm. £20-£30

**86**

P.T. Morgan, large study entitled "Party Game", signed oil on canvas, 100cm x 152cm. £60-£100

**87**

"Fabric swatches of the gate, New York 2005", installed by Christo and Jane-Claude, information verso. £40-£60

**88**

1930's floral print of roses. £10-£20

**89**

1930's floral print by G.M. Rowland, "Wallflowers". £10-£20

**90**

A Star Wars film poster. £40-£60

**91**

Tony Poultney, "Success", signed acrylic, 100cm x 75cm. £40-£60

**92**

Tony Poultney, "Winking clown", signed watercolour, 43cm x 30cm; another "Bubble clown", signed watercolour; and Tom Morgan unframed oil on canvas study of a clown, 61cm x 46cm, (3). £40-£60. See illustration.

**93**

Tom Morgan, "Mist over Westminster from Lambeth Palace", signed oil on canvas, dated 1979, 25cm x 29cm; and another "View across the Orwell", signed watercolour and pencil, dated 1989, 18cm x 26cm. £20-£40

**94**

Tony Poultney, study entitled "Flying Geese", watercolour; another "Green lady"; "Angel" and "lady with sea horse", (4). £30-£50

**95**

Claude Ronda, Mediterranean harbour study, signed oil on canvas, dated 80, 50cm x 65cm (unframed). £30-£40

**96**

P.M.P. Maxwell, Venetian canal study, signed oil on board, 45cm x 35cm. £30-£40



97

Late 19th/early 20th Century Continental school study of a seated man, playing pipes, unsigned oil on board, 34cm x 23cm. £30-£40

98

Rudolph Ihlee, portrait of "Einer Frau Blei", pencil drawing, information verso, 34cm x 23cm. £30-£50

99

Molly Molesworth, "Bridge of shops Srinagar", dated 1930, pencil signed watercolour, 24.5cm x 35cm; and a copy of "Ladakhi diary" with watercolours of a Himalayan trek in 1929 by Molly Molesworth. £40-£60

100

20th Century modern British school, mixed media study, initialled in pencil, JRW, 60cm x 48cm. £20-£40

101

20th Century school, study of St Tropez, indistinctly pencil signed watercolour, dated 1956, 49cm x 62cm. £40-£60

102

G. Hardstaffe, pastoral study with cattle, windmill and fields beyond, signed watercolour, 27.5cm x 41cm. £30-£50

103

A decorative metal framed wall mirror, with black swirl decoration, 75cm x 51cm in extremes; and another with coloured swirl decoration, 56cm square, (2). £20-£40

104

A 1960's G plan style two tier side table, raised on black rounded tapering supports, 68cm wide. £20-£40

105

A large brass corinthian column lamp standard, raised on square foliate decorated base, 125cm high overall. £60-£100

106

A modernist beaten metal comport, having applied scroll design, 34cm. £20-£30

107

An early 20th Century brass hall stick stand, in the form of an upturned umbrella, having foliate scroll decoration on circular base, 80cm high. £60-£60. See illustration.

108

A modern shaped glass writing desk, 130cm wide in extremes. £50-£80

109

A modern light wood revolving desk chair, having slatted back and solid seat, raised on adjustable base and castors. £20-£40

110

A Brexton picnic set. £80-£120

111

A chloride Gent slave clock. £30-£40

112

An Art Deco design metal and chrome smoker's stand. £15-£20

113

A Murano glass baluster vase, with green applied leaf decoration, 40cm high. £50-£80

114

A French pottery baluster vase, with coloured glazed stylised decoration, 20cm high. £20-£40

115

A decorative silvered unicorn head. £20-£40

116

A Clement Massier lustre decorated charger, of leaf pattern, 42cm dia. £200-£400. See illustration.

117

An Art Nouveau pewter easel wall mirror, with foliate and maiden decoration, 52cm x 31cm in extremes. £100-£150. See illustration.

118

A Bernard Rooke pottery mushroom shaped table lamp and shade. £50-£80

119

A Bernard Rooke pottery vase, of circular form with raised stylised decoration. £40-£60

120

An Art Nouveau alabaster plaque, decorated with dancing maiden and cherub. £30-£50

121

A David Moore studio pottery vase, 26cm high. £10-£20

122

A Winstanley pottery model of a seated cat; a Millefiore glass jug; and a similar vase, AF. £10-£20

123

An Art Deco blue tinted French glass table lamp, with raised floral decoration. £100-£150

124

A Victorian brass table oil lamp, with foliate embossed decoration and ruby tinted dimpled shade. £40-£60

125

A decorative French enamel foot bath, with floral decoration, 47cm overall. £40-£60

126

A pair of Art Deco prints, depicting fashionable 1920's ladies. £10-£20. See illustration.

127

A pair of children's nursery prints. £10-£20

128

A pair of mid Century coloured prints on fabric, in teak frames. £20-£40



Lot 107



Lot 116



Lot 117



Lot 126



Lot 133



Lot 139



Lot 156



Lot 157



Lot 158

**129**

A gilt framed Art Deco printed material picture. £10-£20

**130**

A pair of decorative French gilt twin branch wall lights, with ribbon tied decoration. £60-£80

**131**

An Art Deco black and green marble clock set. £70-£100

**132**

A set of four contemporary cut lino blocks, depicting fish. £40-£60

**133**

An oak Robert "Mouseman" Thompson drinks cabinet, enclosed by panelled doors and raised on square section supports, 130cm wide x 115cm high. £400-£600. See illustration.

**134**

A pair of wrought metal and brass candle stands, 90cm high. £20-£40

**135**

An Art Deco two tier coloured glass and chrome cake stand, inscribed "Bonnie Scotland"; and a single similar decorated with a desert scene. £20-£30

**136**

A Black Forest style figural hanging lamp. £20-£40

**137**

A bronze modernist study of an embracing couple, on black onyx base, 44cm high. £20-£30

**138**

A glass print depicting New York. £20-£30

**139**

Peter Burman, study of barges on a river, signed oil on board, 35cm x 44cm. £100-£150. See illustration.

**140**

John Noble Barlow, 1861-1917, river scene with boats, signed oil on canvas, 29cm x 39cm. £200-£300

**141**

Shirley Carnt, rural study at sunset, signed oil on board, 30cm x 40cm. £60-£80

**142**

An oak Globe Wernicke type three tier bookcase, 87cm wide, 122cm high. £100-£200

**143**

A Heals type golden oak chest, of two short and two long drawers, raised on square section supports 105cm wide. £80-£120

**144**

A good quality golden oak bureau, the fall front inset fielded panels with two short and two long drawers below, raised on square section supports, 76cm wide. £40-£60

**145**

A Grays Pottery Susie Cooper design plate. £30-£50

**146**

An Art Deco pot and cover, in the form of a lady in yellow crinoline dress. £30-£50

**147**

A large mid 20th Century coloured glass goblet, 30cm high. £10-£20

**148**

A mid 20th Century tinted glass charger, 34cm dia. £10-£20

**149**

Tom Morgan, surrealist landscape study, signed oil on canvas 45cm x 55cm. £20-£40

**150**

Tom Morgan, study of cactus in a desert landscape, signed oil on canvas, 41cm x 76cm. £20-£40

**151**

Tom Poultny, "On The Beach" signed acrylic, 76cm x 49cm. £40-£60

**152**

Tom Morgan, study of a lady wearing elaborate dress and wedding veil in interior setting, signed oil on canvas, 80cm x 65cm. £40-£60

**153**

Tom Morgan, study of surreal figures signed oil on canvas; and two others similar (3). £40-£60

**154**

Tony Poultny, "A Moment Before Sleep" initialled acrylic, 100cm x 75cm. £60-£80

**155**

P. T. Morgan, "Hero", label verso Catalogue number 11, signed oil on canvas, 92cm x 71cm. £40-£60

**156**

An unusual continental pottery fish tureen, red glazed 45cm long overall. £20-£40. See illustration.

**157**

A large Ampora ware baluster vase, 45cm high. £40-£60. See illustration.

**158**

A Clarice Cliff Newport Pottery baluster jug, with budgerigar decoration, 23cm high. £40-£60. See illustration.

**159**

A Beswick baluster vase, decorated palm trees on a red ground, 29cm high. £30-£50

**160**

An Adnet white glazed dog figure, 31cm long x 26cm high, AF. £80-£120

**161**

A Royal Lancastrian baluster vase, mottled orange and yellow glaze, 25cm high, AF. £30-£50



**162**

A brass pricket stick, having spot hammered decoration. £20-£30

**163**

A pair of large hand painted pottery models of dachshunds, impress to base SM painted mark B3, 55cm long. £60-£80

**164**

A brass and enamel decorated stylised pricket candlestick, of torpedo form, 34cm high. £20-£30

**165**

A pair of Doulton Lambeth ewers, decorated with fish and reptiles inscribed E.S. for Eliza Simmance, 34cm high one AF. £60-£80. See illustration.

**166**

A Rosenthal Versace porcelain vase, with floral decoration, 27cm high. £20-£40

**167**

An Art Deco cloudy glass bowl on stand, with flower holder and etched glass vase; a Murano type dish of triform shape; various paperweights; a ribbed Art Glass vase etc. £40-£60

**168**

A brass candle lantern, having flower head decoration, 49cm overall. £40-£60

**169**

Margaret J Hewitt, Norfolk Coastal scene, signed oil on board, 29cm x 39cm. £40-£60

**170**

T Hayt, study of the Wylde at Great Wishford, oil on board, 19cm x 24cm. £20-£40

**171**

H G L Reichenbach, study of a jackal buzzard, signed watercolour, 9cm x 5cm. £40-£60

**172**

Adelene Fletcher, "Pasque Flowers", signed watercolour, 205cm x 29cm. £40-£60

**173**

Peter Burman, "Storm Approaching the River Orwell", signed oil on board, 28cm x 38cm. £100-£200. See illustration.

**174 ✓**

Charles Edward Cox, river scene with fishing boats and houses along a bank, signed oil on board, 40cm x 50cm. £100-£200. See illustration.

**175 ✓**

Edward Wesson, "Westminster Abbey", signed ink and watercolour, 34cm x 24cm. £200-£300. See illustration.

**176**

W. T., study of a seated woman, charcoal and pastel, initialled, 32cm x 27cm. £40-£60

**177**

A 20th Century school, study of a ballet performing, indistinctly signed, oil on board 24cm x 27cm. £40-£60

**178**

20th Continental school, study of figures in the street, indistinctly signed oil on canvas, 39cm x 39cm. £40-£60

**179**

20th Century school, study of The Deben with fishing boats, indistinctly signed oil on canvas, 40cm x 60cm. £40-£60

**180**

A good quality 20th Century golden oak sideboard, enclosed by a pair of fielded panelled doors and raised on stylised square sectioned supports, 122cm wide. £100-£150. See illustration.

**181**

A 1960's light wood chest of four long drawers, raised on rounded tapering supports, 76cm wide. £30-£50

**182**

A 1960's light wood dressing table, having mirrored back, three drawers under, raised on rounded tapering supports 75cm wide. £20-£40

**183**

A 1930's oak bow fronted sideboard, having raised carved foliate decoration, 137cm wide. £40-£60

**184**

A West German pottery baluster vase, having lustre decoration of leaves, 20cm high; and another of squat form 13cm high. £20-£30

**185**

A large West German pottery vase, lustre decorated running glazes, 39cm high. £40-£60

**186**

An Art Deco glazed plaster model of an Alsatian dog, 45cm high. £20-£40

**187**

A Panasonic 55" LCD flat screen television. £200-£400

**188**

An Alphason teak and black glass bow fronted television and hi-fi stand, 132cm wide. £40-£60

**189**

An Art Deco bevel edged fan shaped wall mirror, 49cm. £20-£40

**190**

An Art Deco design light oak dressing table, with shaped mirror above recesses and drawers, 123cm wide. £40-£60

**191**

A vintage Marconi radiogram, 98cm wide. £40-£60

**192**

A Lebus Link light oak chest, of four long drawers raised on square tapering supports, 77cm wide. £20-£40



Lot 165



Lot 173



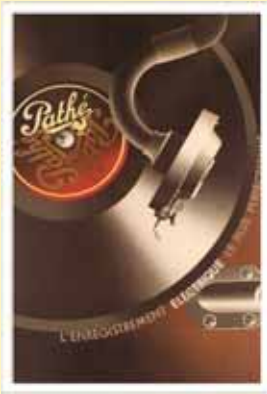
Lot 174



Lot 175



Lot 180



Lot 195



Lot 214



Lot 215



Lot 220



Lot 224

193

**A Sex Pistols "God Save The Queen" poster**, contained in an ornate white painted frame, 79cm x 109cm in extremes.

£200-£300

194

**Allan Braund**, West Country born 1915, abstract study signed oil on board, 88cm x 54cm. £30-£60

195

**A M Cassandre Pathe poster**, 99cm x 66cm. £300-£500. See illustration.

196

**A Scissor Ritual**, indistinctly pencil signed print, 37cm x 56cm. £40-£60

197

**Leonard Russel Squirrel**, mezzotint depicting a Gorge near Needham Market with cattle and windmill in background, 23cm x 31cm. £60-£100

198

**Alan Stenhouse Gourley**, study of a coastal scene with fishing boats and church nearby, 25cm x 34cm. £80-£120

199

**Alan Stenhouse Gourley**, coastal scene with fishing boats, oil on board, 24cm x 34cm. £80-£120

200

**Alan Stenhouse Gourley**, rural scene with cottages and fields, oil on board, 30cm x 39cm. £80-£120

201

**John Garbutt**, study of figures dancing, signed watercolour, label verso "July 8th, John Garbutt from 'The Day Book'". £20-£40

202

**J C Ranissen 1988**, study of brightly coloured flower heads, palette knife on board, 76cm x 44cm. £20-£40

203

**Miles Daniel**, study of bananas, egg tempera dated 1969. £20-£40

204

**Stanley Anderson**, etching of a river scene with figures punting beneath buildings, pencil signed etching circa 1930's. £20-£40

205

**A vintage limited edition screen print depicting swimmers**, No. 3/20. £20-£30

206

**Limited edition screen print depicting two owls**, pencil signed No 3/20. £20-£40

207

**1970's Athena poster**, "Isolde" after a Aubrey Beardsley lithograph print. £20-£40

208

**Evelyn Clare**, illustration for a child's book circa 1940, signed watercolour, 24cm x 19cm. £20-£40

209

**E Scott-Kilvert**, "Arabesque", study of objects on a table, initialled oil on canvas, 24cm x 34cm. £40-£60

210

**Widdup**, study of a Northern street scene, signed oil on board dated 1964, 51cm x 34cm. £40-£60

211

**John A McPaice**, artists proof entitled "Guardians", pencil signed to the margin dated 1981, plate 37.5cm x 23cm. £40-£60

212

**Robert Ixer**, study of cattle in a rural landscape, signed oil on canvas, 28.5cm x 39cm. £40-£60

213

**Stanley Lambert**, study of a figure driving a Governess cart along a country path, signed watercolour, 30cm x 39cm. £20-£40

214

**Bill Phillpott**, abstract study of a nude female, signed and dated '03, 48cm x 49cm. £100-£200. See illustration.

215

**Bill Phillpott**, abstract study of a nude female, signed and dated '02, 31cm x 39cm. £100-£200. See illustration.

216

**Peter Taylor**, pastel study entitled "A Waste Land II", signed and dated verso 1985, 35.5cm x 53.5cm. £20-£40

217

**Carl Johnson**, pencil signed print of a cockerel, limited edition 6/30. £10-£20

218

**James Dodds**, pencil signed artists proof "Aldeburgh Beach", 49cm x 72cm. £60-£100

219

**Zack**, a metal stylised table centrepiece, 22cm high. £10-£20

220

**A Newlyn school style twin handled copper vase**, decorated fish and lilies, 21cm high. £40-£60. See illustration.

221

**George Deakins 1911-1982**, "Beach At Sunset" scene signed and dated oil on board 1968, 29.5cm x 80cm; and another watercolour study by the same hand, signed and dated '54, 15cm x 18.5cm. £40-£60

222

**A pair of watercolour and feather peacock pictures**. £40-£60

223

**20th Century school**, abstract study Madonna and Child, pencil and watercolour inscribed verso "A Roma 22/6/77", 22cm x 16.5cm in extremes. £40-£60

224

**Margaret Hewitt**, Norfolk Coastal scene with figures on a beach, initialled oil on board, 34.5cm x 44.5cm. £40-£60. See illustration.



**225**

**Bob Broadley**, study of Bredfield Street from Haugh Lane, 31cm x 37cm. £20-£40. See illustration.

**226**

**Bob Broadley**, study of Sutton Hoo from Woodbridge, signed oil on board, 32cm x 37cm. £20-£40

**227**

**Bob Broadley**, abstract study of figures walking amongst flowers, signed oil on canvas, 76cm x 101cm. £40-£60

**228**

**An Art Deco pink tinted circular frameless bevel edged wall mirror**, with roundel decoration, 44cm dia. £20-£30

**229**

**A Murano style glass angel ornament**, 26cm high. £20-£30

**230**

**An Art Deco four piece toilet set by T.G.Green & Co.** £30-£50

**231**

**A pair of cold painted spelter figures**, depicting medieval soldiers, raised on wooden plinths, 60cm high. £60-£80. See illustration.

**232**

**An Art Deco design brass pricket candlestick**, 42cm high. £20-£40

**233**

**Four Swedish Bahia pottery vases**; and a large Studio pottery baluster water jug and matching vase. £20-£40

**234**

**An Art Deco design wooden and brass pricket stick**, 28cm high overall. £20-£40

**235**

**A Younger Volnay sideboard**, fitted four central drawers flanked by cupboards raised on square tapering supports, 167cm wide. £200-£400

**236**

**A Tapley teak Modular 33 wall unit**, comprising various sections. £100-£150

**237**

**A pair of Art Deco elbow chairs**, with leather upholstered seats and backs, raised on shaped front supports. £80-£120

**238**

**A pair of vintage enamel ceiling lights**. £80-£120

**239**

**A Peter Iredale panel**, painted in orange, signed and dated '73, 123cm x 60cm. £40-£60

**240**

**Richard Bawden**, pencil signed limited edition lithograph "The Parlour" 75/85, 41cm x 59cm. £60-£80

**241**

**20th Century Italian school**, watercolour and charcoal study of a chef cooking pizzas in a kitchen, signed Suburni 1976, 49cm x 33.5cm. £40-£60

**242**

**20th Century continental school**, study of a seated figure, mixed media inscribed verso 22/12/78, Quasi Papa S Albert, 46cm x 38cm. £40-£60

**243**

**An Art Nouveau painted glass panel**, depicting stork amongst foliage, 108cm x 33cm, contained in a polished wooden frame. £80-£120

**244**

**Edith Cowlshaw Australian**, pencil signed limited edition lithograph depicting "Kuring Gai in December" dated '91, edition 5/20, 45cm x 60cm. £60-£100

**245**

**Edith Cowlshaw Australian**, pencil signed lithograph triptych depicting Kurling Gai Water, edition 5/8, panels measuring 50cm x 33cm. £40-£60

**246**

**Edith Cowlshaw Australian**, pencil signed limited edition lithograph, "Flat Rock Creek" edition 5/16; and another "Observatory Hill" both unframed. £20-£40

**247**

**A 1930's oak draw leaf dining table**, raised on barleytwist supports. £30-£50

**248**

**Colin Pearson 1923-2007**, Studio Pottery bowl supported on four square feet, impress mark to base. £30-£50

**249**

**A Godfrey Newcombe slip ware shallow dish**, 33cm dia. £20-£40

**250**

**A wrought metal and copper Arts & Crafts design three division stick stand**, 47cm wide x 70cm high. £40-£60. See illustration.

**251**

**A large modern design decorative bevel edged shaped wall mirror**. £40-£60

**252**

**A modern wing back snuggle chair**, having red and grey floral scroll upholstery supported on turned feet. £100-£200. See illustration.

**253**

**A G-plan style oblong triple dressing table mirror**; and a similar wall mirror. £20-£30

**254**

**A Monika Mulder metal ware pierced fruit basket**, 43cm dia. £20-£30



Lot 225



Lot 231



Lot 250



Lot 252



Lot 255



Lot 282



Lot 283



Lot 284



Lot 285

**255**

An Art Deco Mappin & Webb canteen of plated cutlery, contained in a walnut two drawer cutlery table raised on reeded square supports, 77cm wide. £200-£400. See illustration.

**256**

A large decorative metal pendant light fitting, in the form of a large parrot cage containing twelve light electrolier hung with glass prism drops. £40-£60

**257**

An oak Art Deco design hall stand / seat, having mirrored back, 181cm high x 75cm wide. £40-£60

**258**

A teak fold over games table, having ex WD mark to the underside, 92cm wide. £20-£40

**259**

A WMF design plated four light candelabra; a similar square fruit dish; and a swing handled fruit basket. £20-£30

**260**

A pair of oak elbow chairs, by James Schoolbred & Sons. £70-£100

**261**

A G-plan design light oak tall boy, fitted three drawers and raised on black wood turned tapering supports, 76cm wide. £30-£40

**262**

A 1970's leather and wooden table lamp, decorated buffalo, having fabric shade. £20-£40

**263**

A John Citizen four drawer oak chest, 67cm wide. £20-£30

**264**

Four coloured glass brandy balloons, of various sizes. £10-£20

**265**

Cecil Aldin, early 20th Century coloured print depicting a hunt supper, contained in oak frame. £50-£80

**266**

A white painted dressing table, fitted single frieze drawer and raised on cabriole supports, 120cm wide. £40-£60

**267**

An Art Deco blue glass table centrepiece, with dolphin decorated flower holder. £20-£40

**268**

A Shapland & Petter hanging pipe rack, with inlaid decoration of vintage sailing ships, 46cm x 48cm. £80-£120

**269**

Three vintage world globes, and a miniature brass armillary sphere. £20-£40

**270**

An Arts & Crafts oak sideboard by Wylie & Lochhead, having raised back, three drawers and cupboards under on bold square supports with carved foliate stylised motifs and shaped drop handles, 198cm wide. £400-£600

**271**

A Loetz for Lobemeyer attributed cobalt blue glass goblet, and three other Wiener Werkstatte style glasses. £20-£30

**272**

A teak wall mounting display cabinet. £20-£40

**273**

A collection of Art Deco Steuben/Hawkes Champagne saucers, and other glasses etc. £380-£420

**274**

A tinsplate tractor, trailer and grass cutter; and a Sutcliffe model "Bluebird" clockwork speedboat in box. £40-£60

**275**

An Art Deco Harmersbach plate, having fruit decoration and raised leaf handle. £10-£20

**276**

An Eames style upholstered footstool. £30-£40

**277**

An Eames style bentwood and leather upholstered footstool on metal base. £60-£80

**278**

A French poster picture. £30-£50

**279**

A French poster picture. £30-£50

**280**

A French poster picture. £30-£50

**281**

A retro hall mirror. £10-£20

**282**

A Morris ware Hancock & Sons biscuit jar (lacking lid), 16cm high. £50-£80. See illustration.

**283**

A Royal Lancastrian baluster vase, with floral scroll decoration on a deep blue ground, 22cm high, chip to base. £40-£60. See illustration.

**284**

A Moorcroft Pomegranate patterned baluster vase, 26cm high, chip to base high. £40-£60. See illustration.

**285**

A Loetz style iridescent glass baluster vase, 18cm high. £60-£80. See illustration.

**286**

A red Art Glass bottle vase, by Siddi Langley dated 1993, 13cm high; and another of blue iridescent baluster form, marked to base SPL 19, 11cm high. £60-£80



**287**

A red Art Glass vase, by Siddy Langley, of baluster form, 13.5cm high; and a green Art Glass bottle vase by Siddy Langley dated 1995, 17cm high. £60-£80

**288**

A blue iridescent glass scent bottle, with stopper by Siddy Langley dated 1994, 20cm high; and another of squat baluster form, 9cm high (2). £60-£80. See illustration.

**289**

A blue iridescent Art Glass bowl, of squat form with line decoration by Siddy Langley, 18cm dia. £60-£80. See illustration.

**290**

A blue iridescent glass oval bowl, by Siddy Langley, 12cm high. £60-£80. See illustration.

**291**

An Art Glass goblet, decorated with band of peacocks and nymphs, raised on a circular spread foot, 20cm high. £30-£50

**292**

A Murano glass baluster ewer, raised on a pink tinted spread foot, 22cm high. £10-£20

**293**

An Art Nouveau iridescent green glass spill vase, in foliate scroll pewter mount. £30-£50

**294**

An Art Nouveau floral decorated jardiniere, 19cm dia. overall, 15cm high, some damage. £20-£40

**295**

A Murano glass ruby and gilt decorated tall goblet, 32cm high. £20-£40

**296**

Manner of Lorenzl, cold painted bronze figure of an Art Deco period dancing girl, raised on a marble domed base, 23cm high. £100-£200. See illustration.

**297**

A Troika slab shaped vase, 18cm high. £150-£200

**298**

A Troika slab shaped vase, 18cm high. £150-£200

**299**

A Troika slab shaped bottle vase, 20cm high. £150-£200

**300**

A Poole pottery jug; a similar preserve pot; and a sugar bowl. £20-£40

**301**

A Loetz style iridescent green glass baluster vase, having lobed border and ribbed decoration, 20cm dia. £40-£60

**302**

A Mosanic Gallé style figure of a bulldog, decorated blue heart shaped motifs on a yellow glaze ground, having glass eyes, 31cm, high. £300-£400

**303**

A Danish silver coffee pot, cream jug and sugar bowl, marked Sterling 925 Denmark SVT for Svend Toxaerd, approx 30oz total weight. £400-£600

**304**

A set of four Danish silver candlesticks, raised on oval stepped bases, marked S.V.T. for Svend Toxaerd, 20cm high. £200-£300

**305**

A coffee table by Sam Anderson, having illuminated display top, 126cm x 76cm. £450-£550

**306**

A West German pottery ewer, 45cm high. £15-£25

**307**

A Loetz or Lobemeyer attributed blue glass vase, decorated with prunts in the manner of Michael Powolny, 21cm high, 18cm dia. £20-£30

**308**

Two Coman design (Poland) blue glass vases, with applied leaf and berry decoration, 23cm high. £50-£80. See illustration.

**309**

Charles Schneider, green and blue glass dish, signed to base, 34.5cm. £100-£200

**310**

A French pottery figure group, Ste Vierge, 40cm high. £20-£40

**311**

An Art Deco stained glass hall lantern, 18cm high overall. £15-£25

**312**

A collection of Bloomsbury group style mid-20th Century tin glazed ceramics, with painted decoration, including vase, jug, cup and saucer, impressed PB mark to cup. £20-£30

**313**

A pair of Ault Pottery candlesticks, in turquoise Majolica ware; and a terracotta pair of candlesticks in the manner of Dr Christopher Dresser. £20-£30

**314**

A set of six French glass sundae dishes. £10-£20

**315**

Six various Murano glass sculptures, including a red free form example; Murano whale sculpture; Murano pink Hole sculpture; a Murano shaped teardrop; a Murano figure; and a Murano spike bowl. £40-£60

**316**

An Ault baluster vase, decorated swallows and foliage, 28cm high. £20-£30



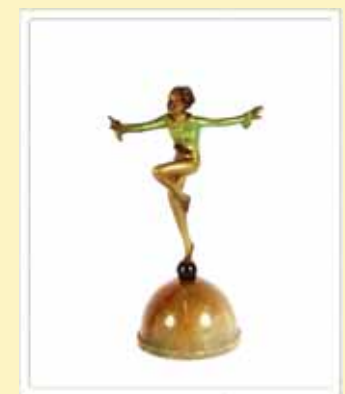
Lot 288



Lot 289



Lot 290



Lot 296



Lot 308



Lot 317



Lot 319



Lot 337



Lot 338



Lot 343

**317**

A Poole pottery baluster vase, having green foliate decoration, impressed Poole England to the base, initial G.E.P. and numbered 966, 26cm high. £40-£60.

See illustration.

**318**

A Murano glass Lavorazione bowl; a Lavorazione starfish dish; a Murano glass pumpkin; and a Murano hat bowl. £30-£50

**319**

A Coman design (Poland) blue glass vase, 23cm high. £30-£40. See illustration.

**320**

A Murano glass mushroom table lamp. £40-£60

**321**

A set of six Viners "Chelsea" coffee spoons, in original box. £15-£25

**322**

24 pieces of Viners "Chelsea" cutlery; and five Viners executive pieces. £15-£20

**323**

A 1970's BT beige Trimline phone. £20-£30

**324**

Two vintage ice buckets etc. £20-£30

**325**

A 1970's Philips transistor radio in box. £10-£20

**326**

A miscellaneous lot, comprising numerous watch straps, cassette holders, vintage car decorated place mats etc. £20-£30

**327**

A quantity of various cocktail sticks, cocktail forks, novelty bottle opener and corkscrew, place mats, egg cups etc. £15-£25

**328**

A Caithness "Orchid" vase; a Whitefriars "Amethyst" vase; and amethyst glass vase etched with an owl; and a heavy green tinted glass bowl. £10-£20

**329**

At set of four Art Deco style beakers by Tom Ford, contemporary, made from bamboo based recyclable plastic. £15-£20

**330**

An Optimus primus stove in tin. £30-£50

**330A**

A Hermes of Paris framed silk scarf, 87cm x 89cm. £80-£120

**331**

A Louis Roederer Champagne bucket; a glass Moet & Chandon ice bucket; and a Jean Marie similar. £20-£30

**332**

A Caithness "Viking Ship" vase; a green vase decorated with trees, signature indistinct; Andrew Holmes (Border Art) glass vase; an Alum Bay free form sculpture; a Jay Barton vase; and a small purple bowl. £40-£60

**333**

A large pottery chicken decorated jug; an Italian pottery baluster vase; an Art Deco leaf decorated jug; and a pottery vegetable ornament. £10-£20

**334**

A Murano glass tri dish; a Murano green and amber decorated dish; a large Murano splash bowl; A Murano frosted basket; and a Murano green leaf bowl. £40-£60

**335**

A pair of copper topped coopered wooden barrel seats, 56cm high. £20-£40

**336**

A plastic and chrome revolving high stool. £40-£60

**337**

A Swatch Maxi wall clock. £50-£80.

See illustration.

**338**

A pair of Cuban carved wooden figures, one depicting lady with parasol, the other a gentleman holding a cigar, 153cm high. £40-£60. See illustration.

**339**

A Danish teak framed wall mirror, stamped Made In Denmark, 44cm x 99cm. £20-£30

**340**

A large oak Art Deco design cheval mirror, with arched bevelled plate, 180cm high x 91cm wide. £40-£60

**341**

A retro heart shaped coffee table, with screw on legs; and an oblong similar. £15-£20

**342**

David Wren (Yorkshire Artist), "The Ploughing Match", signed oil on board, 50cm x 66cm. £40-£60

**343**

Eugene Hurter (South African), four South African landscape studies, signed oils, 30cm x 39cm. £40-£60. See illustration.

**344**

A Fidelity HF43 record player. £40-£60

**345**

An oval simulated walnut retro coffee table, with magazine under tier. £10-£20

**346**

A Baines, 20th Century study of a continental landscape, signed oil on board, dated 1957, 46cm x 30cm unframed. £40-£60. See illustration.

**347**

Gary Strutt, "Spring Term Report and Daffodils", signed oil dated verso '05, 25cm x 18.5cm. £100-£200. See illustration.

**348**

Tiggy Newcomb (Tessa Newcomb's daughter), study of a rural landscape, with river and meadows, unsigned oil on board, 30cm x 60.5cm. £40-£60



**349**

**Rosina Wachmeister**, framed print of a cat, 69cm x 52cm. £20-£30

**350**

**Paul S Sharp**, pencil signed black and white print of the boat "Clivden". £30-£50

**351**

**A large collection of silver and other items**, including a late Victorian silver cream jug Chester 1898; a silver sugar bowl by Birch and Gaydon London 1934; two cased pairs of salt and pepper pots; a silver four division toast rack; various silver napkin rings; a pair of silver fruit servers, teaspoons, condiment spoons, etc.; a silver sifter spoon; a cased set of continental cake forks; a cased set of six silver handled tea knives etc. £450-£500

**352**

**A cased continental white metal serving set**, with stylised decoration. £30-£40

**353**

**Sex by Madonna**, having sealed CD and original cover. £30-£50

**354**

**A continental bronze group**, depicting figures stood on a cross on Perspex base; another bronze stylised figure of a woman; and two bronze athlete groups. £20-£40

**355**

**Two stylised bronze figure groups of dancers**; another of a couple; and a heavy metal ware face sculpture (4). £20-£30

**356**

**A bronze figure of a dancing couple**; and another similar. £20-£40

**357**

**A Murano iridescent glass apple paperweight**; another Kosta Boda Hot Cross paperweight; another in the form of a shell; a Murano coloured glass huge sweet paperweight; another in the form of a globe; and another of a pear. £30-£50

**358**

**A Murano Salviati Aventurine bowl**; a Lar Murrina dish; and a Cose Belle Cose rare Murano dish. £25-£35

**359**

**A Nybro paperweight**, in the form of shepherds; another in the form of a snail; a Kosta Boda glass bowl; and an Orrefors wavy edged dish. £30-£50

**360**

**Two Adam Jablonski glass tear drops**. £30-£50

**361**

**A bronze figure group depicting gymnasts**, on a bar. £20-£30

**362**

**A bronze propeller on marble plinth**. £20-£30

**363**

**A modernist stylised bronze figure group of acrobats**; and another depicting figures on a sculpture. £20-£30

**364**

**A bronze figure group depicting gymnasts**, on marble plinth base; and another depicting a figure seated on top of a ladder, impressed CAH. £20-£30

**365**

**After Rodin bronze sculpture of "The Thinker"**, on marble plinth. £30-£50

**366**

**A Thorne Arts soapstone carving of a sea lion**, possibly Nancimo British Columbia. £40-£60

**367**

**An Art Deco chrome plated corkscrew**, in the form of two stylised terriers. £10-£20

**368**

**A set of six art magazines**, "The Art Of Louis Raemaekers". £80-£120

**369**

**A Victorian letter postal scale**, marked R.W. Winfield, Birmingham 1840. £50-£80

**370**

**An Art Deco yellow metal choker**. £20-£30

**371**

**A string of vintage amber coloured beads**. £40-£60

**372**

**An early 20th Century bronze plaque**, decorated with a naked maiden, inscribed "La Grande Source De Vittel". £70-£100

**373**

**A Renoir copper belt**; and two copper and brass bangles. £20-£30

**374**

**Two Fortnum & Mason storage jars**. £10-£20

**375**

**A circular mahogany cased wall calendar**. £30-£50

**376**

**A pair of vintage skis and poles**. £40-£60

**377**

**A Murano glass necklace**, with white metal clasp; and a mother of pearl similar. £40-£60. See illustration.

**378**

**A five peseta gold coin**, converted to a pendant; and an 18ct gold wedding band. £60-£80. See illustration.

**379**

**A pair of yellow metal cuff links**, marked 750, approx. 12gms total weight. £150-£200

**380**

**A 9ct gold cigar cutter**, with engine turned decoration; and a gold plated Consul cigarette lighter. £80-£120. See illustration.



Lot 346



Lot 347



Lot 377



Lot 378



Lot 380



Lot 382



Lot 383



Lot 394



Lot 395



Lot 407

**381**

A West End Watch Co. pocket watch; and a Refmetar stop watch. £40-£60

**382**

A ladies 9ct gold cased Rotary wrist watch, with 9ct gold strap and clasp, approx. weight 22gms. £150-£250. See illustration.

**383**

A yellow metal and enamel leaf shaped brooch, set with three small diamonds, approx. total weight 5gms. £40-£60. See illustration.

**384**

A 9ct gold and pearl set circular brooch, approx. 5.5gms total weight; and a yellow metal and pearl set pendant cameo brooch. £60-£80

**385**

A large tigers eye pendant brooch, in yellow metal mount; an unmarked yellow metal stylised scroll brooch; a 15ct gold scarf clip; and a yellow metal pear shaped pendant with faceted stone. £80-£120

**386**

A yellow metal pendant set red and white stone, hung to a yellow metal rope twist chain approx. 12gms total weight. £60-£80

**387**

An Art Deco cloak pin; and a quantity of various decorative brooches. £20-£30

**388**

A case containing white metal and mother of pearl set hat pins, buttons and a clip. £20-£40

**389**

An Elgin 10ct gold and diamond set cocktail watch. £50-£80

**390**

A collection of various vintage buckles, dress clips, and buttons. £20-£30

**391**

An amber and white metal bracelet. £10-£20

**392**

An Art Deco face brooch; a pink stone pendant set to a fine link chain, a blue stone similar; and a cased set of Lotus imitation pearls. £20-£40

**393**

A collection of various vintage ball point and fountain pens. £20-£30

**394**

A Mont Blanc ball point pen. £20-£30. See illustration.

**395**

A Tiffany silver necklace, with box and bag. £40-£60. See illustration.

**396**

An Art Deco silver ash tray, Chester 193. £40-£60

**397**

A three piece silver cruet, Chester 1937. £40-£60

**398**

An Art Deco silver letter opener, with ivory handle, inscription for December 2nd 1927, Hallmarked for Chester 192. £30-£50

**399**

A silver Tiffany & Co. ball point pen, with T clip, stamped 925, 10.5cm long. £40-£60

**400**

An enamel decorated lady and dog brooch. £10-£20

**401**

An Art Deco design gent's wrist watch. £50-£80

**402**

An Art Nouveau pendant, in the form of a lady's head with attached mirror. £40-£60

**403**

A modernist white metal necklace; a similar bracelet; and two torque bracelets. £20-£30

**404**

A Tiffany & Co. 925 mark silver pen, with T clip; and another Tiffany & Co. ball point pen. £60-£80

**405**

A Celtic design white metal brooch, with central stone. £10-£20

**406**

A white metal and diamond cluster ring, set with approx. 1ct round cut diamond with a surround of eight smaller diamonds, approx. total diamond weight 2ct 3gms. £2,200-£2,400

**407 ✓**

Ahmed Parvez 1926-1979, abstract study mixed medium, signed and dated June 1962, 49cm x 39cm. £2,000-£3,000. See front cover illustration.

**408**

A Watermans Ideal fountain pen with 18ct gold nib. £60-£100

**409**

A pair of silver plated dishes; a pair of silver plate posy vases; and two silver mustard pots. £50-£80

**410**

A silver powder compact, with engine turned decoration; and various other compacts. £30-£50

**411**

A copper table lighter, in the form of a knight; a Lorch plated Art Deco design cigar cutter; a wooden novelty cigarette dispenser; three plated table lighters; and various other smoking paraphernalia. £40-£60

**412**

Various pairs of silver and other cuff-links. £20-£30

**413**

An ivory Art Deco stamp box; four cigarette holders; and a set of Holland & Sherry blazer buttons. £10-£20



**414**

**An amber coloured necklace.** £100-£150

**415**

**A pair of silver and lapis grape decorated cuff-links.** £20-£30

**416**

**A quantity of various silver and other cuff-links.** £20-£30

**417**

**A 925 mark oval enamel decorated brooch;** another similar in the form of a swallow and others. £10-£20

**418**

**A Victorian silver bosuns whistle,** with foliate engraved decoration; an oval silver pill box; together with a quantity of old silver thru'penny pieces; silver decanter label for Gin; a silver sovereign case AF; and a continental white metal pot and cover in the form of an apple. £100-£150

**419**

**A pair of circular silver salts,** with blue glass liners London 1896; a silver mustard pot Hallmarks indistinct and various silver condiment spoons. £60-£100

**420**

**A pair of modern silver coasters,** by Braybrook & Britten having wooden bases and in original boxes. £60-£100

**421**

**Five silver napkin rings;** various silver cruet items; silver coffee spoons etc. £60-£100

**422**

**A small silver twin handled porringer,** London 1919; a pair of modern silver cased pepper and salt mills; a small silver toast rack; various silver spoons; butter knives; an Eastern knife etc. £40-£60

**423**

**A silver engine turned decorated clock,** Hallmarked for Birmingham 1930 engraved to Eddie Gray, "A Souvenir of Crazy Week at the Palladium, November 30th 1931, Thanks George Black". £200-£300.

See illustration.

**424**

**Keswick school of Industrial Arts,** a set of six hand made serviette rings; and an Arthur Price plated Christening mug. £30-£40

**425**

**An Edwardian silver pedestal sweetmeat stand,** London 1905. £40-£60.

See illustration.

**426**

**A silver pedestal bowl by Mappin & Webb,** having pierced border decoration raised on circular spread foot, Birmingham 1921. £60-£80

**427**

**An Art Nouveau cold painted bronze table centre piece,** in the form of a scantily clad maiden with flowing dress, 24cm long 15cm high. £60-£100. See illustration.

**428**

**Ten silver teaspoons,** Sheffield 1910; and two others, (cased). £40-£60

**429**

**A silver hip flask,** having engine turned decoration, Birmingham 1934. £40-£60.

See illustration.

**430**

**A silver engine turned cigarette case,** Birmingham 1936; a silver card case with engine turned decoration and monogram, London 1915; and a plated oval vesta case. £40-£60

**431**

**A plated wishbone design six division toast rack.** £20-£40

**432**

**A pair of silver four division toast racks by Edwin Viner,** Sheffield 1938. £60-£80

**433**

**A pair of silver serving spoons,** Sheffield 1949. £40-£60

**434**

**A silver cream jug with serrated border and flying sea scroll handle,** Sheffield 1937. £30-£50

**435**

**A cased silver three piece cruet set,** Birmingham 1962. £30-£50

**436**

**A silver and Bakelite powder bowl and cover,** Birmingham 1932. £40-£60

**437**

**A Danish silver model of "The Girl On The Rock",** 6cm high. £40-£60.

See illustration.

**438**

**A silver tea strainer on stand,** Birmingham 1961. £20-£30

**439**

**A silver and cut glass butter dish,** Hallmarked Edwin Viner, Sheffield 1936; and another similar Sheffield 1938. £40-£60

**440**

**A cased silver Christening fork and spoon;** a cased egg cup and spoon; a set of six silver handled tea knives; a silver handled magnifying glass; and a silver serviette ring. £40-£60

**441**

No Lot

**442**

**A Leitz Leica Flex SL camera Ser. No.1284568 with original operational instruction booklet.** £200-£400.

See illustration.

**443**

**A clockwork Dalek complete with box.** £30-£50

**444**

**A Beswick flying duck ornament No. 5961.** £30-£40



Lot 423



Lot 425



Lot 427



Lot 429



Lot 437



Lot 442



Lot 454



Lot 456



Lot 457



Lot 473



Lot 479

**445**

A Beswick flying duck ornament No.596/0. £60-£80

**446**

A 1920's Frankyl table lighter, decorated with a naked maiden. £10-£20

**447**

A small Royal Doulton pin tray; and a Doulton match striker. £20-£30

**448**

Four Royal Crown Derby bird paperweights. £80-£120

**449**

A small Lalique crystal fish ornament; and a Baccarat glass squirrel 12cm high. £40-£60

**450**

A pair of Kilcan ware baluster vases, 20cm high. £20-£40

**451**

Three butterfly and foliate etched drinking glasses, the bell shaped bowls raised on coloured spiral twist stems; and a Bohemian ruby flash pedestal dish. £20-£40

**452**

A Royal Crown Derby puffin paperweight; and a Royal Crown derby dragon paperweight (2). £80-£120

**453**

A Royal Crown Derby pheasant, partridge and duck paperweights. £80-£120

**454**

A Lladro porcelain figurine "Kitty Girl" 21cm high. £200-£300. See illustration.

**455**

A continental porcelain figure of a stylised monkey. £20-£30

**456**

A Clarice Cliff "Crocus" patterned bachelors teaset, comprising teapot, sugar bowl, cream jug, tea cup saucer and side plate. £400-£600. See illustration.

**457**

A Moorcroft "Toadstool Carnival" square twin handled pot and cover, limited edition 163/200 by Emma Bossons, signed and dated to base 2009, 13cm high. £200-£300. See illustration.

**458**

Four Royal Crown Derby animal paperweights, badger, hedgehog, squirrel and owl. £100-£150

**459**

A pair of small Royal Copenhagen stoneware vases of square section with stylised floral decoration, 12.5cm high. £20-£40

**460**

A Royal Crown Derby baby bottle nosed dolphin paperweight; and another of a frog. £60-£80

**461**

An alabaster figure of a seated child on bronze chair. £40-£60

**462**

A Wedgwood limited edition Clarice Cliff plate "Orange Erin". £20-£40

**463**

A Wedgwood limited edition Clarice Cliff plate "Blue Firs". £20-£40

**464**

Four various Wedgwood limited edition Clarice Cliff plates. £40-£60

**465**

An Art Deco design tile, 15.3cm square. £20-£40

**466**

A Green glazed Studio pottery baluster vase, 20cm high; and a Studio pottery baluster vase with floral banded decoration, impress mark to base (2). £40-£60

**467**

A S Hancock & Sons, Rubens ware "Pomegranate" patterned bowl and a parrot flower holder. £30-£50

**468**

Jane Smith, porcelain bowl decorated with fish, dated 1992; and a similarly decorated pot and cover. £20-£40

**469**

Studio Pottery bowl, impressed mark "P" to base, decorated running glazes, 18cm dia. x 13cm high. £20-£30

**470**

William Goebel wall plaque depicting lady dancing in pink dress. £30-£50

**471**

Five various Beatrix Potter figures. £80-£120

**472**

A Clarice Cliff "Biarritz" plate with house and flower decoration. £100-£150

**473**

A Clarice Cliff "Fantasque Bizarre" plate. £80-£120. See illustration.

**474**

A small Studio pottery shallow bowl, having bird decoration, impressed Chelsea to the base; and a large Studio Pottery bowl, indistinct signature to the base, having profuse floral decoration (2). £40-£60

**475**

Four Royal Copenhagen porcelain animal groups. £40-£60

**476**

A Millefiori glass paperweight. £20-£40

**477**

A black Art Glass baluster vase, having applied cherub face decoration, 13cm high; and a blue Art Glass baluster vase, 10cm (2). £20-£40

**478**

A pair of Carlton ware "Rouge Royale" baluster posy vases, 9cm high. £20-£40



**479**

An Edgar Campden Aldermaston pottery lustre decorated bowl with foliate scroll decoration, 21cm dia. £100-£200.

See illustration.

**480**

An Edgar Campden Aldermaston pottery lustre vase, decorated with flowers, signed to base R.A.W.A. 24cm high. £100-£200

**481**

A Keramos Austrian pottery face mask, "the lady with red hair", 15cm. £40-£60.

See illustration.

**482**

A David Leach celadon green pottery teapot, with wicker handle, stamped to base, 18cm overall, (AF). £40-£60

**483**

A John Leach Muchelney Studio pottery vase, buff and brown glaze with stylised decoration, 21cm dia. Overall. £20-£40

**484**

A green crackle glaze baluster vase, by Bridget Drakeford, inscribed to base, 15.5cm high. £60-£80 See illustration.

**485**

A blue and gilt heightened baluster vase, by Bridget Drakeford, inscribed to base.

£60-£80. See illustration.

**486**

A Royal Lancastrian pottery bowl, by Edward T. Radford, impressed ETR to base, blue scroll decoration on a mottled grey ground, 24cm dia., (slight chip to rim).

£20-£40

**487**

A Wedgwood Clarice Cliff design model of dancers. £30-£50

**488**

A Clarice Cliff Bizarre baluster jug, brightly coloured stylised decoration, 16cm high. £50-£80

**489**

A Clarice Cliff conical sugar shaker, 15cm high. £80-£120

**490**

An Herend blue fish net porcelain badger figure, Garrard 1989. £40-£60.

See illustration.

**491**

A Wemyss pig, retailed T. Goode & Co., South Audley Street, London, 16cm long. £300-£400

**492**

A Smith's Art Deco oak cased mantel clock, 30cm long x 17cm high. £20-£40

**493**

A pen and ink cartoon of a seated man, unsigned, 15cm x 9cm. £20-£30

**494**

Michael Norman, watercolour depicting Spring Lane, signed and dated 1994; and another of the Deben entitled "On the Mud", 1988. £40-£60

**495**

A Nathan teak circular nest of four tables. £50-£80

**496**

An Art Deco walnut three drawer bedside chest, of staggered form, 40cm wide x 60cm high. £40-£60. See illustration.

**497**

A 1930's oak three tier book table. £20-£40

**498**

An Art Deco oak octagonal coffee table, 56cm wide. £20-£30

**499**

A Shelley mayfair shape bluebell patterned no. 12395 decorated tea set, heightened in gilt, registration number 71299. £100-£150

**500**

A reproduction Clarice Cliff design baluster water jug. £20-£30

**501**

A West German pottery baluster vase, having stylised enamel decorated panels and a yellow and grey glazed squat shaped similar. £20-£30

**502**

A large West German pottery baluster vase, decorated with lustre heightened running glazes, 33cm high. £40-£60

**503**

A West German pottery vase, with enamelled segment decoration and turquoise interior; and another of waisted form, heightened in gilt. £20-£30

**504**

An Art Deco circular mirrored cake stand, 36cm dia. £20-£30

**505**

An original 1977 film poster for "The Lace Maker". £20-£40

**506**

An Art Deco design glazed plaster figure group, depicting three young children sat on a wall, 31cm. £30-£50

**507**

A West German pottery vase, with brightly coloured lustre decoration, 19cm high; and a smaller similar, 16cm high.

£20-£30

**508**

A French design classical bust, depicting a lady with plumed hat, raised on a marbleised plinth, 48cm high. £40-£60

**509**

An Art Deco plated table cigarette box, having Sun burst decoration, 24cm.

£20-£30

**510**

Two West German pottery jardinières, bearing label for Amano, 12cm dia. x 10.5cm high. £20-£30



Lot 481



Lot 484



Lot 485



Lot 490



Lot 496



Lot 513



Lot 525



Lot 531



Lot 533

**511**

A quantity of Shorter & Son Anemone ware, comprising three jugs, sugar bowl, roast rack, preserve jar and serving dish. £40-£60

**512**

A blonde Ercol drop leaf kitchen table, raised on tapering square section supports, 120cm x 110cm extended. £100-£150

**513**

A set of four blonde Ercol stick back kitchen chairs. £80-£120. See illustration.

**514**

An Ercol sideboard, fitted three central drawers flanked by cupboards, 155cm wide. £150-£250

**515**

A Harlequin of Salisbury Rhodesia walnut sideboard, the interior shelves enclosed by a pair of panelled doors, flanked by four long drawers, raised on shaped end supports, 182cm wide. £100-£150

**516**

A light oak narrow bookcase/cupboard, 33cm wide x 77cm deep x 91cm high. £20-£40

**517**

A 1930's light oak draw leaf extending dining table, raised on baluster end supports, 104cm wide. £40-£60

**518**

A set of four 1930's oak rail back dining chairs, having upholstered drop-in seats, raised on barley twist supports. £40-£60

**519**

A Georgian design painted donkey bookcase, flanked by brass side carrying handles, raised on bracket supports, 65cm wide x 86cm high. £50-£80

**520**

A modern design chrome towel rail, 82cm high. £20-£40

**521**

A Rorstrand Sweden red glazed pottery dish, of leaf shape; a blue glazed continental pottery vase with stylised panel, AF; a Falcon ware pottery fruit bowl and three glazed pottery apples. £20-£30

**522**

A Clarice Cliff Bizarre honey glazed fruit bowl; a Lalique style frosted glass vase; a glass baluster vase with brown mottled decoration; a copper lustre figure of a rearing horse; a 1950's design cruet etc. £30-£50

**523**

A Murphy vintage radio. £30-£50

**524**

An Art Deco oak bow fronted cabinet, 37cm wide x 29cm high. £20-£40

**525**

An Art Deco walnut occasional table, with shaped top and under-tier. £20-£30. See illustration.

**526**

A retro metamorphic two tier tea trolley. £20-£30

**527**

An Art Deco walnut book table, 61cm wide. £20-£30

**528**

An Art Deco oak two tier occasional table, the canted corner top raised on bowed supports, 49cm wide. £20-£30

**529**

A 1960's teak two tier tea trolley, 70cm wide in extremes. £20-£30

**530**

An Art Deco design oak and copper banded coal bucket, flanked by stylised carrying handles, 37cm dia. x 38cm high. £40-£60

**531**

A retro chrome framed kitchen chair, upholstered in sky blue and cream leatherette. £20-£40. See illustration.

**532**

A folio of 1980's French Exhibition posters; together with a folder of 1950's prints after famous artists. £20-£30

**533**

An Eames style chrome and leather chair and foot stool. £40-£60. See illustration.

**534**

A cream leather and chrome based swivel easy chair. £20-£40

**535**

A blue 1950's Lloyd loom chair. £40-£60

**536**

A 1930's oak reclining chair, with integral foot rest, label Norton Bros. Ltd., London. £60-£100

**537**

A pair of chrome based adjustable kitchen stools, with revolving bucket shaped seats. £50-£80. See illustration.

**538**

A retro design egg shaped swivel chair, on chrome base. £60-£80. See back cover illustration.

**539**

A set of light oak Danish dining chairs, impressed "KS, made in Denmark", to the base. £60-£100

**540**

An Art Deco walnut framed sofa, with label for the Co-operative Wholesale Society Limited, Vere Street, Salford. £200-£400. See illustration.

**541**

Angus McBean, framed and glazed photograph of an actress, pencil signed to mount Angus McBean, London. £100-£150

**542**

Four Angus McBean signed photographs, of actors on stage and cinema sets. £150-£250



**543**

A framed and glazed Gilbert and George signed exhibition poster, 83cm x 63cm. £40-£60

**544**

A Labour Student's Union poster, "Wave Goodbye to Thatcher". £40-£60

**545**

A "Great Circle Dx map" Radio Society of Great Britain framed and glazed poster. £20-£40

**546**

Stephen Griffin, born 1968, collage of coloured dots, framed and glazed. £20-£30

**547**

Bruce Nauman, born 1937, body pressure 1974, framed and glazed print. £10-£20

**548**

Fiona Banner, aka The Vanity Press, born 1966, "for the Becks Hill De la Warr Pavilion", a framed and glazed poster print. £10-£20

**549**

Shirley Felts, "Scabious", watercolour on paper, signed, 76cm x 56cm. £100-£200

**550**

After C.F. Hopkinson, coloured print, "RMS Queen Elizabeth Cunard White Star". £20-£30

**551**

A teak long sideboard, enclosed by sliding doors, raised on rounded tapering supports, 152cm wide. £60-£100

**552**

A teak "Room and Board Home Furnishings" bedside chest, fitted recess and single drawer, 66cm wide. £40-£60

**553**

A retro red formica top kitchen table, 80cm. £20-£40

**554**

A retro metal framed two tier coffee table, the top decorated with Romanesque scenes, 114cm. £10-£20

**555**

A Heal's type light oak refectory style kitchen table, the chamfered top raised on double column end supports and struts, 124cm long. £60-£100

**556**

An Empire porcelain Harlequinade part dinner service, comprising tureens, meat plate, dinner plates and side plates. £15-£30

**557**

A Maddock coffee set; matching soup bowls and side plates. £15-£20

**558**

A quantity of white and black bordered dinnerware to include, tureens, meat plates, dinner plates, side plates etc. £15-£20

**559**

An Ercol drop leaf kitchen table, raised on square tapering supports. £80-£120

**560**

Two Hornsea Heritage ware green glazed tureens, and meat plate. £20-£30

**561**

Two graduated Falcon ware jugs, decorated "The Dover Road". £20-£30

**562**

A metal and formica top coffee table; and a similar period sewing box. £10-£20

**563**

A 1970's figural lamp, raised on onyx column. £20-£40

**564**

An Art Deco green glass dessert set; and an Art Deco blue glass flower bowl and holder. £20-£40

**565**

A retro Barber health lamp. £20-£40

**566**

A Victorian Devon pattern meat plate. £20-£30

**567**

A 1960's plastic fruit bowl; two bamboo and wooden examples; and a plastic and metal retro plant holder. £10-£20

**568**

A bentwood rocking chair. £80-£120. See illustration.

**569**

A large Voysey design wool rug, 10ft x 14ft. £300-£500

**570**

A teak G plan design drop leaf dining table; and four matching chairs. £40-£60

**571**

A retro Pac-a-pic picnic hamper. £10-£20

**572**

A retro Pac-a-pic picnic hamper. £10-£20

**573**

An Oriental design black and gilt decorated sideboard, fitted three drawers with cupboards under, having Chinese design handles and fasteners, 142cm wide. £20-£40

**574**

A brass Art Deco design porch lamp, having bevelled glass panels, 24cm high. £20-£30

**575**

A James Powell & Sons Whitefriars opaline tumbler, decorated with Prunty; a green glass water jug and a glass vase having flared rim and ribbed design. £20-£30

**576**

An electro plated campana shaped wine cooler; a pair of ice tongs and a plated Five O'clock tea kettle on spirit heater stand. £40-£60

**577**

A circular teak extending dining table, in the G plan style and six matching chairs. £100-£150



Lot 537



Lot 538



Lot 540



Lot 568



Lot 595



Lot 596



Lot 599



Lot 601



Lot 609



Lot 611

**578**

An Arts & Crafts oak wine tray, decorated with Glasgow roses, signed with initials FCP, 52cm long. £15-£25

**579**

Glyn Thomas, coloured etching "St. Mawes", roof scape, 35/100. £15-£25

**580**

An Art Nouveau WMF style breakfast tray, 30cm long. £15-£25

**581**

An Arts & Crafts design copper wall charger, with finely pierced and raised decoration, 43cm dia. £20-£30

**582**

A vintage hat box, having various travel labels attached; a pair of Holmes of Norwich lizard effect shoes; and a Van dal pair, size 5. £15-£25

**583**

A coloured print after Constance Nash, 1921-2015, "Autumn leaves", 60cm x 49cm. £10-£20

**584**

A Younger Volnay dining table, raised on square section supports, 197cm x 71cm. £40-£60

**585**

A set of four Volnay by Younger rail back dining chairs. £40-£60

**586**

A pair of contemporary Mercury glass effect table lamps, complete with grey shades. £40-£60

**587**

A Dartington glass fruit bowl; a Dartington glass sugar bowl and cream jug, boxed; Irish coffee glasses; and Daisy butter platter. £15-£20

**588**

A 1970's rise and fall ceiling light, having brown acrylic shade. £40-£60

**589**

A set of six 1950's French light oak bar back dining chairs. £300-£400

**590**

A child's bentwood chair; and a child's 1950's painted chair. £30-£50

**591**

An Ercol Windsor coffee table, number 1459. £40-£60

**592**

A pair of plated oval champagne baths, with inscriptions. £40-£60

**593**

A mahogany turned column standard lamp, with floral tasselled shade. £20-£30

**594**

A walnut sewing table, of curved form, raised on rubber castors. £40-£60

**595**

A hardwood and metal bound trunk, having folding top and drawer to base, 110cm wide. £60-£80. See illustration.

**596**

An oak coopered barrel drinks cabinet, 40cm wide x 62cm high. £60-£80. See illustration.

**597**

An oak and metal bound coopered jardinière, on square section supports, 78cm. £60-£100

**598**

An Ekornes collection Stressless two seater sofa, high back, upholstered in Clementine leather. £400-£600

**599**

A similar low back two seater sofa. £400-£600. See illustration.

**600**

A Sofology three seater wing back sofa, upholstered in mauve buttoned velour and raised on turned baluster supports. £200-£400

**601**

A long stool, upholstered in pink segment velour, 137cm long x 68cm deep. £100-£200. See illustration.

**602**

A large Sofology square back three seat settee, upholstered in raised pink dralon. £200-£300

**603**

A modern design pierced metalware standard lamp and grey shade, 155cm high overall. £40-£60

**604**

A modern design pierced metalware flower holder/plant holder, 120cm high, AF. £30-£50

**605**

A good quality oak stool, having shaped peg end sections, 59cm. £30-£50

**606**

A teak oblong coffee table, with magazine rack under, 111cm. £20-£40

**607**

A yellow enamel finish retro design angle poise standard lamp. £40-£60

**608**

A Louis Starck Cartell ghost armchair and coffee table. £30-£50

**609**

A 1953 Coronation stool, with blue upholstered seat, (protected by loose cover), complete with original receipt and documentation. £200-£400. See illustration.

**610**

A good quality light oak and chequer inlaid octagonal occasional table, raised on a platform base and bracket feet, 76cm. £40-£60



**611**

**A Robert "Mouseman" Thompson coffee table**, of oval form, the pollard top raised on chamfered square section supports, 93cm long. £1,000-£1,500. See illustration.

**612**

**A Danish teak work/sewing table**, fitted four drawers and pull-out wicker cotton basket below, raised on square tapering supports, stamped "Danish Furniture Makers Control", to the base, 74cm wide. £80-£120. See illustration.

**613**

**A decorative two handled tray**, having glass panel decorated crinoline lady and roses. £10-£20

**614**

**A 1960's tile top coffee table**; and two vintage Italian ceramic bowls. £15-£25

**615**

**A modern design grey three seater sofa**, raised on square section supports. £100-£200

**616**

**A West German pottery jardinière**, decorated with running orange and brown glazes; and a turned teak fruit bowl. £30-£50

**617**

**A 1970's MFI dressing table mirror**. £10-£20

**618**

**A retro formica and gilded metal two tier tea trolley**, raised on rubber tyre castors. £30-£50

**619**

**A pair of Italian teak and plastic dining chairs**, raised on tubular metal legs. £20-£30

**620**

**An aluminium and plastic retro standard lamp**. £30-£50

**621**

**A set of six G plan teak dining chairs**; and a similar design extending dining table. £60-£100

**622**

**P.B. Thomas of Berwick**, floral decorated pottery baluster vase; and matching bowl. £20-£30

**623**

**A "Pandora's box" moulded glass biscuit jar**, AF; various items of Art Deco green and blue glassware etc. £20-£30

**624**

**A David Sharp rye pottery baluster milk jug**; a Studio pottery bowl with fluted decoration; and a Clive Pearson jug for Hartland pottery. £20-£30

**625**

**A Sylvac coffee pot and mug**; and a metalware teapot. £10-£20

**626**

**A Senja by Winge waage coffee set**. £20-£40

**627**

**A pair of Leeds ware candlesticks**, one AF; a Carlton ware ashtray; five Art Deco style side plates and a Spode Velamour ashtray. £20-£30

**628**

**Seven "Gien France" fondue plates**. £10-£20

**629**

**A retro folding trolley**. £20-£30

**630**

**Four Art Deco design cushions**. £10-£20

**631**

**An oak plant trough**, of Art Deco design, 76cm long. £20-£30

**632**

**A retro woven and metal framed tub shaped chair**. £10-£20

**633**

**A pair of vintage slatted steamer type chairs**. £80-£120. See illustration.

**634**

**A light Ercol plate rack**, 82cm wide. £40-£60

**635**

**A light Ercol plate rack**, 107cm wide x 53cm high. £40-£60

**636**

**A pair of light Ercol stick back armchairs**. £80-£120

**637**

**A light Ercol stick back deep seated armchair**. £60-£100

**638**

**A set of four light Ercol stick back kitchen chairs**. £80-£120

**639**

**A light Ercol day bed**. £200-£400

**640**

**A set of four light Ercol stick back kitchen chairs**. £60-£80

**641**

**A set of four light Ercol stick back kitchen chairs**, (two standards and two elbows). £100-£150. See illustration.

**642**

**A light Ercol day bed**. £200-£400

**643**

**A light Ercol day bed**. £200-£300

**644 ✓**

**Tessa Newcomb**, study of figure hanging washing, initialled TN and dated 05, 14.5cm x 20cm. £400-£600. See illustration.

**645 ✓**

**Tessa Newcomb**, "Rooks", oil painting, initialled TN dated 04, 23.5cm x 22.5cm. £400-£600. See illustration.

**646**

**James Henry Govier**, A.R.C., 1910-1974, study of a river scene, indistinctly signed, 20cm x 28cm. £60-£80



Lot 612



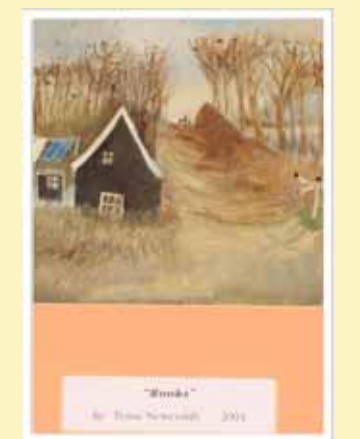
Lot 633



Lot 641



Lot 644



Lot 645



Lot 652

**647**

**Jason Gathorne Hardy**, signed pencil sketch, 10cm x 14cm. £40-£60

**648**

**Biro**, original signed rough cover design for the Hodder and Stoughton First Edition 1969, Eric Shipman an autobiography, "Untravelling World", 22cm x 17cm.

£80-£120

**649**

**David Thomas**, pencil sketch of the Tide Mill, Woodbridge, initialled DVT, 10cm x 17cm. £40-£60

**650**

**David Thomas**, pencil sketch view of Woodbridge, initialled DVT, 10cm x 17cm. £40-£60

**651**

**David Thomas**, pencil sketch, view of the Shire Hall, Woodbridge, initialled DVT, 10cm x 17cm. £40-£60

**652**

**A tan leather and spotted upholstered tub chair**, 63cm high. £40-£60. See illustration.



Lot 611

**Robert "Mouseman" Thompson.** 1876-1955 was a British furniture maker. He lived in Kilburn, North Yorkshire, where he set up a business manufacturing oak furniture, which featured a carved mouse on almost every piece.

It is claimed that the mouse motif came about accidentally in 1919 following a conversation about "being as poor as a church mouse", which took place between Thompson and one of his colleagues during the carving of a cornice for a screen. This chance remark led to him carving a mouse and this remained part of his work from this point onwards.

He was part of the 1920s revival of craftsmanship, inspired by the Arts and Crafts movement led by William Morris, John Ruskin and Thomas Carlyle.

Special attention is drawn to the Conditions of Sale printed at the back of this catalogue.

Clarke and Simpson are pleased to offer a packaging and shipping service worldwide through "the-saleroom.com Delivery Service". The professional team will pack and ship items from very small non-breakables such as jewellery and coins though to larger and more fragile items such as paintings and works of art. Shipping and insurance is at the buyer's expense.

Shipping payment must be made to "the-saleroom.com Delivery Service" prior to departure and excludes local duties and taxes. Please note that Clarke and Simpson do not pack or ship items - all requests are sent to our specialist handlers at "the-saleroom.com Delivery Service" who can be

the-saleroom.com  
delivery service





# TERMS AND CONDITIONS OF SALE

## 1. INTRODUCTION

The following defining terms are used in these conditions:-

“Auction”	Means any auction conducted by Clarke and Simpson Auctions Ltd. either at the premises owned by them or elsewhere (including any internet based auction);
“Auctioneer”	Means Clarke and Simpson Auctions Ltd. authorised auctioneer as appropriate;
“Bidder”	Means a bidder at an auction, including the bidders personally present at the venue and those bidding by telephone or over the internet or otherwise;
“Buyer”	Means the bidder whose bid was the last bid when the auctioneer concludes the bidding;
“Conditions”	Means these Terms and Conditions of Sale;
“Hammer Price”	Means the level of bidding reached (at or above any reserve) when the auctioneer brings the bidding to a close;
“Lot”	Means any property accepted by Clarke and Simpson Auctions Ltd. for offer at auction;

## 2. DESCRIPTION

No warranty is given or implied by the description in the catalogue. Each lot is sold in its condition at the time of sale with all faults, defects, imperfections and errors of description (if any). Whilst every endeavour has been made to describe the items adequately and properly, the purchaser shall deem to have inspected the lot at time of purchase. All catalogues and seller's and buyer's guides are for information only and do not form part of the contract.

## 3. STATUTORY REQUIREMENTS

Purchasers will be deemed to have satisfied themselves prior to purchasing regarding current legal requirements (e.g. Health & Safety at Work Act) and it is expressly brought to the bidders attention that equipment in the sale may not necessarily comply with such regulations. Any purchaser shall satisfy himself as to any statutory requirement for the use of any item and no liability shall rest with the vendors nor the Auctioneers.

## 4. THE AUCTION

All auctions are conducted at the absolute discretion of the auctioneer. The auctioneer shall conduct the auction with reasonable skill and care. The vendor reserves the right to sell subject to reserve price in respect of all lots. What constitutes a bid shall be at the absolute discretion of the auctioneer, acting with appropriate skill and care. The auctioneer shall have the right to refuse any bid in all cases but most notably when such a bid does not exceed the previous bid by at least 10% or such a proportion as the auctioneer shall in his absolute discretion direct. Where two or more bids at the same level are simultaneously received by the auctioneer, the auctioneer at his absolute discretion shall determine which bid to prefer. Subject to the foregoing where two or more bids are at the same level are simultaneously received by the auctioneer, the bid submitted in the room shall take preference over a bid submitted by telephone or internet at the same level. Any bid made or attempted by telephone or over the internet will only be deemed to have been made if received by the auctioneer. The auctioneer reserves the right to withdraw, consolidate or divide any lot or lots or submit them in any order that they desire. The auctioneer has the right at his absolute discretion to refuse admission to his premises or at-

tendance at (or participation in) any auction by any person. In the case of any dispute, the auctioneer shall be sole arbitrator in any matters arising during or out of the sale.

## 5. BIDDERS

All bidders will be required to register their particulars, bidders attending in person and those accompanying them may be required to provide photo ID and separate confirmation of address prior to viewing or taking any part of the sale and before entering any part of the premises to view. All bidders accept full liability for all bids submitted. Subject to the clause in this document headed “The Auction”, the highest bidder at the close of bidding shall be the buyer. Any dispute about a bid shall be settled at the auctioneer's absolute discretion.

Bidders are all deemed to act as principles unless there is prior written acknowledgement by Clarke and Simpson Auctions Ltd. that a bidder is acting as an agent for a named principle. Bidders are strongly encouraged to attend the auction in person. The bidders shall be responsible for any decision to bid for a particular lot and shall be deemed to have carefully inspected and satisfied themselves as to condition, neither Clarke and Simpson Auctions Ltd., their employees or agents shall be responsible for any neglect or default in doing or failing to do so. Bidders will be given ample opportunity to view and inspect before the sale and prospective buyers must satisfy themselves as to all matters.

## 6. DEFAULT

Clarke and Simpson Auctions Ltd. shall act as agent of the vendor only. Any contracts for the sale of a lot shall be formed between the vendor and the buyer. As agent only Clarke and Simpson Auctions Ltd. shall not be responsible for default by the vendor or the buyer. If any lot is not paid for in full and taken away in accordance with these conditions, or there is any other breach of the conditions, then Clarke and Simpson Auctions Ltd. as agents for vendor shall at its absolute discretion and without prejudice to any other rights it may have, be entitled to exercise all or any of the following rights and remedies:-

- 6.1 to proceed against the buyer for any action of debt or damages for breach of contract;
- 6.2 to rescind the sale of that lot or lots sold by Clarke and Simpson Auctions Ltd. to a defaulting buyer;
- 6.3 to resell the lot (by auction or private treaty) in which case the defaulting buyer shall be responsible for any resulting deficiency in the total amount due (after crediting any part payment and adding any resale costs), any possible surplus so arising shall belong to the vendor;
- 6.4 to remove, store and insure the lot at the expense of the defaulting buyer and, in the case of storage, the location of such storage shall be at Clarke and Simpson Auctions Ltd. discretion;
- 6.5 to charge interest at a rate not exceeding 2% per month of the total amount due to the extent that it remains unpaid for more than two working days after the sale;
- 6.6 to retain that or any lot sold to the defaulting buyer until the buyer pays the total amount due;
- 6.7 to reject or ignore bids from the defaulting buyer at future auctions or to impose conditions before any such bids are accepted;
- 6.8 to apply any proceeds of sale for any other lots due or in the future becoming due to the defaulting buyer towards the settlement of the total remaining due.

## **7 INDEMNITIES, PENALTIES AND LIMITATIONS OF LIABILITY**

Purchasers shall pay for any damage done by themselves or their agents during the removal of their lots. Attendance at the sale shall be at the risk of those attending in respect of both themselves and to their goods and vehicles.

Any indemnity under these conditions will extend to all actions, costs, expenses, claims and demand whatsoever suffered or incurred by the person entitled to the benefit of it and Clarke and Simpson Auctions Ltd. declare themselves to be a trustee of the benefit of such indemnity so far as it is expressed to be the benefit of its employees and agents.

Whilst Clarke and Simpson Auctions Ltd. endeavour to ensure that the information on their websites is correct, they do not warranty the accuracy and completeness of the material on their website. Also Clarke and Simpson Auctions Ltd. can make changes to the material on their website, or alter the products and prices described on it, at any time without notice. The material on the website may be out of date, Clarke and Simpson Auctions Ltd. make no commitment to update such material. All material on the websites is provided "as is" without any conditions, warranties or other terms at any time. Accordingly to the maximum extent permitted by law, the website is provided to all parties on the basis that Clarke and Simpson Auctions Ltd. exclude all representations, warranties, conditions and other terms which, but for this legal notice, might have effect in relation to the website.

## **8 ELECTRICAL SAFETY REGULATIONS**

All electrical lots are subject to electrical safety regulations and fall within "the low voltage electrical equipment (safety) regulations 1989" – all items have been pat tested for safety but are not guaranteed in working order.

## **9 GENERAL MATTERS**

Any notice to any buyer, vendor, bidder or viewer may be given by first class mail or email in which case it shall be deemed to have been received by the addressee forty eight hours after posting or sending. All notices to Clarke and Simpson Auctions Ltd. must be sent in writing and email is not acceptable. Any indulgence extended to any person by Clarke and Simpson Auctions Ltd., notwithstanding the strict terms of these conditions or the terms of consignment, shall affect the position at the relevant time only and the respect of that particular concession only; in all other respects these conditions shall be construed as having full force and effect. These conditions and any disputes or claims arising out or in connection with them or their subject matter or formation (including non-contractual disputes or claims) are governed by and construed in accordance with the law of England. The parties irrevocably agree that the courts of England have exclusive jurisdiction to settle any dispute or claim that arises out of or in connection with the agreement or its subject matter or formation (including non-contractual disputes or claims).

## **10 PUBLICITY**

Any catalogue and buyer and seller guides are provided for information only and do not form part of these conditions. The catalogue and the buyer and seller guides may contain additional terms and conditions. Clarke and Simpson Auctions Ltd. reserve the right to use any photographs, background information and research for publicity purposes both before and after the sale.

## **11 THE PURCHASE PRICE AND PAYMENT ARRANGEMENTS**

There is a buyer's premium 18% plus VAT payable in respect of the sale. Any purchases made via "[www.the-saleroom.com](http://www.the-saleroom.com)" or "[www.ibidder.com](http://www.ibidder.com)" shall be subject to an administration charge of 5% plus VAT on the price.

Preferred payment is cash, bank transfer or personal debit card. Such cards may only be used on a chip and pin basis with the owner present. No payment over £350 will be accepted by telephone. Payment will be accepted online via our secure e commerce account. We do not accept credit cards or international debit cards. Payment by cheque will only be acceptable subject to prior arrangement. No lot will be removed from the sale until any cheque has cleared. Payment is due on the day of the sale. Cash in excess of £7,500 (including V.A.T.) will not be accepted from any one person, this is not allowed due to Money Laundering Regulations 2007. All money received will be held in Clarke & Simpson Auctions Ltd. Clients No 2 Account at Barclays Bank plc, Framlingham, Suffolk. Account Number 83428591. Sort Code 20 98 07. Clarke and Simpson Auctions Ltd. have no responsibility for any lot between the close of bidding and payment being made and subsequent collection. All payments from overseas buyers shall be made by Bank Transfer and bank fees paid in addition. Please note all policy regarding payment will be enforced and suitable arrangements must be made.

## **12 REMOVAL OF LOTS**

The ownership of any lot purchased shall not pass to the relevant buyer until they have made payment in full to Clarke and Simpson Auctions Ltd. of the total amount due including any storage due.

The buyer shall at their own risk and expense take away any lot that they have purchased and paid for not later than two working days following the day of the auction after which they shall be responsible for any removal, storage and insurance charges.

Any lots not collected within four weeks of the date of sale will be resold by the auctioneer and all proceeds will be retained by the auctioneer to cover storage costs.

## **13 NUMBER BIDDING**

This will be used for speed and efficiency as in all our sales. All prospective purchasers must complete a registration form and register in the office on the viewday or morning of sale to receive a number for bidding.

**PLEASE ALSO NOTE THAT PHOTO ID AND ADDITIONAL CONFIRMATION OF ADDRESS WILL BE REQUIRED.**

## **14 ONLINE BIDDING**

Clarke & Simpson Auctions Ltd. offer an online bidding service via the-saleroom.com and ibidder.com for bidders who cannot attend the sale.

In completing the bidder registration on [www.the-saleroom.com](http://www.the-saleroom.com) or [ibidder.com](http://ibidder.com) and providing your payment card details and, unless alternative arrangements are agreed with Clarke & Simpson Auctions Ltd.:

1. authorise Clarke & Simpson Auctions Ltd., if they so wish, to charge the payment card given in part or full payment, including all fees, for items successfully purchased in the auction via [www.the-saleroom.com](http://www.the-saleroom.com) or [ibidder.com](http://ibidder.com), and
2. confirm that you are authorised to provide these payment card details to Clarke & Simpson Auctions Ltd. through [www.the-saleroom.com](http://www.the-saleroom.com) or [ibidder.com](http://ibidder.com) and agree that Clarke & Simpson Auctions Ltd. are entitled to ship the goods to the card holder name and card holder address provided in fulfilment of the sale.

**Please note that any lots purchased via the-saleroom.com or ibidder.com live auction service will be subject to an additional 5% buyer's premium + VAT at the rate imposed on the hammer price.**



## 15. TELEPHONE BIDDING

We offer a telephone bidding service where possible, but this service can never be guaranteed. No applications for telephone bids will be accepted after the end of the viewing prior to sale day for any sale. All potential telephone bidders must provide a valid landline number and email address and agrees that they have read and understood the Terms and Conditions. No phone bids will be accepted for any lot with a lower guide figure of less than £100.

All those who wish to bid by telephone will be expected to deposit the minimum guide for all lots that they wish to bid upon into the Clients Account for Clarke and Simpson Auctions Ltd before the sale starts. This payment is not acceptable by card. In the event of default, this sum shall be retained as part payment or any part may be retained to recover losses under clause 6 of these Terms and Conditions. We will expect payment of the balance owing by BACS on the following day, any payment not met within five working days will result in the forfeiture of the deposit paid.

## 16. AT FAULT (A.F.) LOTS

Certain lots are catalogued at (A.F.), damaged, restored etc., however the absence of any such notice does not imply that the piece is free from defects, nor does it indicate that other defects are not also present. Mention is not made of breakage, cracks, chips or any damage which can be noted by careful inspection, therefore, intending purchasers MUST, in all cases, be responsible for determining the condition of the lots themselves.

## 17. ESTIMATES

Presale estimates are intended only as a guide for intending purchasers, are given in good faith and subject to revision.

## 18. CONDITION REPORTS

Clarke and Simpson are unable to guarantee that requests for condition reports/images received after close of the viewing on the day prior to auction, will be responded to. Clarke and Simpson are happy to give a Condition Report on the physical condition of goods, this will be provided on behalf of the seller on the understanding that Clarke and Simpson are not entering into a contract with you in respect of the Condition Report and accordingly does not assume responsibility to you in respect of it. All lots are available for your own inspection or for inspection by an expert instructed by you, therefore these Condition Reports are for guidance only and all lots are sold "as found". Condition reports do not form part of a contract.

## 19. COMMISSION BIDS

The auctioneers will be pleased to execute bids for those unable to attend the sale. Lots will be purchased at the lowest bid the room bidding or any reserves will allow. In the event of identical bids, the earliest bid received will take precedence. There must always be a maximum limit indicated. Buy or unlimited bids will not be accepted. Commission bids placed by telephone are accepted at the client's risk. We urge our clients to place such bids before the start of the sale. All such commissions are left entirely at the buyer's risk.

## 20. VALUE ADDED TAX

The symbol \* after any lot number indicates that Value Added Tax is payable by the buyer on the hammer price.

## 21. AUCTIONEERS MARGIN SCHEME

The Auctioneers Margin Scheme allows auctioneers to sell items without VAT on the hammer price. Under the margin scheme an amount equivalent to VAT at the current rate is added to the buyer's premium. This amount cannot be refunded. The VAT element will not be shown separately on the buyer's invoice.

## 22. ATTRIBUTION OF PICTURES AND DRAWINGS

Every effort is made to ensure the accuracy of any statements as to authorship, attribution, origin, date, age, provenance and condition of any lot whether or not such statement forms part of the description of any such lot. Whether any such statement is made orally or in the catalogue it is an expression of opinion and not to be taken as being or implying any warranties or representations of facts by the auctioneers. Each buyer by making a bid for a lot acknowledges that he has satisfied himself fully as to the attribution and condition of the lot. The following is for guidance only and does not form part of a contract.

- A. The forename (s) (or full stops where not known) and surname of an artist indicates in our opinion a work by the artist.
- B. The initials of the forename (s) and the surname of the artist indicates in our opinion a work of the period of the artist which may be wholly or in part his work.
- C. The surname of the artist indicates in our opinion a work of the school or by one of the followers of the artist or in his style and of uncertain date.
- D. *Signed, Dated, Inscribed* indicated in our opinion work signed/dated/inscribed by the artist.
- E. *Bears signature* indicates in our opinion that this is not the signature of the artist.
- F. *Attributed to* may be used to denote a traditional attribution based on style.
- G. *Manner of* indicates in our opinion a work executed in the artist/craftman's style but of a later date.
- H. *After* indicates in our opinion a copy (of any date) of work of an artist or craftsman.

The addition of a question mark after any of the cataloguing terms above indicates an element of doubt.

## 23. DRIOTE DE SUITE ROYALTY CHARGES

All United Kingdom Art Market professionals (which includes auctioneers) are required to collect a royalty payment for all qualifying Works of Art. This applies to living artists and those who have died in the last 70 years. This payment is calculated on qualifying Works of Art which are sold for a hammer price more than the UK sterling equivalent of €1,000 (the UK sterling equivalent will fluctuate in line with prevailing interest rates calculated by the Artist's Resale Right Service Hub, based on the European Central Bank reference rate published at 2.15pm on the day of the sale, and can be found on [www.dacs.org.uk](http://www.dacs.org.uk)).

All items in this catalogue that are marked "✓" are potentially qualifying items, and the royalty charge will apply if the hammer price is more than UK sterling equivalent of €1,000. The royalty charge will be added to purchase invoices, and must be paid before items can be cleared. All royalty charges are paid to the design and Artists Copyright Society (DACS) by the auctioneers and no handling costs or additional fees with respect to these charges will be retained by the auctioneer. This charge may also be applicable to lots not marked "✓" and buyers must satisfy themselves.

The royalty charge for qualifying items which achieve a hammer price of more than the UK sterling equivalent of €1,000, but less than the UK sterling equivalent of €50,000 is 4%. For qualifying items that sell for more than the UK equivalent of €50,000 a sliding scale of royalty charges will apply. For a complete list of the royalty charges and threshold levels please refer to [www.dacs.org.uk](http://www.dacs.org.uk). There is no VAT payable on this royalty charge.



Clarke & Simpson Auction Centre, Campsea Ashe  
Nr Wickham Market, Suffolk IP13 0PS  
T: 01728 746323 E: [auctions@clarkeandsimpson.co.uk](mailto:auctions@clarkeandsimpson.co.uk)  
[www.clarkeandsimpson.co.uk](http://www.clarkeandsimpson.co.uk)