

Clarke &
Simpson



*Art Deco,
20th Century
Design & Retro*

Monday 2nd September
at 10am

Always open...

Clarke & Simpson Auctions

Valuation

Probate and
other valuations

Call-in service
5½ days a week



General Monday sales every week

Bespoke sales

In 2018 our lots sold
to over 28 countries

Acting as agents for
household clearances



Special Sales

Antiques & Fine Arts

Art Deco & Retro

Domestic & Rural Bygones

Agricultural Collective



Not free to come along...?

Don't worry! All auctions are
available for online bidding
via **the-saleroom.com**
or **i-bidder.com**



Clarke & Simpson Auction Centre, Campsea Ashe
Nr Wickham Market, Suffolk IP13 0PS T: 01728 746323

www.clarkeandsimpson.co.uk  CandSAuctions  @CandSAuctions

Clarke &
Simpson

Auctions

*Art Deco, 20th Century Design
& Retro*

*Monday 2nd September 2019
at 10am*

Viewing:

Saturday 31st August 9am - 12noon
Morning of Sale from 8.30am

Enquiries:

James Shand, Auctioneer & Valuer
Geoffrey Barfoot, Auction Centre Manager & Valuer

Buyers' Premium:

18% plus VAT

Please see www.the-saleroom.com
for further images

the saleroom
The home of art & antiques auctions

Special attention is drawn to the
Conditions of Sale printed at the back of
this catalogue.



Campsea Ashe
Nr Wickham Market
Suffolk IP13 0PS
Tel: 01728 746323 Fax: 01728 748173
Email: auctions@clarkeandsimpson.co.uk
www.clarkeandsimpson.co.uk



@CandSAuctions



CandSAuctions



Lot 10



Lot 11



Lot 12



Lot 22

- 1**
An Art Deco design plated cocktail shaker, in the form of a Zeppelin, 33cm long. £40-£60
- 2**
A mid 20th Century bus ticket holder and quantity of used and unused tickets. £20-£30
- 3**
An onyx and bronzed Egyptian tourist display. £40-£60
- 4**
An Art Deco design cloud mantel clock, 30cm high. £30-£40
- 5**
An Art Nouveau design brass spot hammered brass porch light. £5-£10
- 6**
An Art Deco style chrome plated model of a sea plane, 13cm high. £10-£20
- 7**
A small desk top Art Deco style model of an aeroplane, 13cm high. £5-£10
- 8**
A pair of copper ashtrays from the Odeon cinema. £40-£60
- 9**
A set of Art Deco design enamel and chrome plated ashtrays, in carrying container. £10-£20
- 10**
A Lorenzl style gilded bronze figure of a naked dancing girl on black marble base, 29cm high. £60-£80. See illustration.
- 11**
An Art Deco design stylised "Oscar" type figure on marble plinth, 29cm high. £20-£30. See illustration.
- 12**
A set of Salter cookery scales with original tray. £20-£30
- 13**
A polished metal model of the Chrysler building, 39cm high. £10-£20. See illustration.
- 14**
A pair of Art Deco design marble photo frames, 18.5cm long. £20-£30
- 15**
A Springfield USA outside/inside thermometer, 30cm dia. £30-£40
- 16**
A collection of various West German and other pottery mugs, vases, brightly coloured comport etc., (8). £10-£20
- 17**
An Art Deco design wooden stand, by Gascoigne and Davies, Birmingham; three retro plastic storage jars; a metal candle lamp in the form of a rush light and two copper cylindrical pots. £20-£30
- 18**
Four various spring balances. £20-£30
- 19**
An Art Deco design marble and bronzed lamp, with stylised swan decoration, 22cm long. £5-£10

- 20**
A copper Arts & Crafts design oblong two handled drinks tray, incised bird mark to the reverse, 40.5cm long. £10-£20
- 21**
A large Continental pottery twin handled lamp base, 47cm high. £20-£30
- 22**
A Continental pottery baluster vase, decorated with birds, dragons and flowers, 30cm high, £20-£30. See illustration.
- 23**
An Italian pottery charger, decorated with musical instruments and notes, heightened in gilt on a turquoise ground, 38cm dia. £10-£20
- 24**
Five French pottery money boxes, in the form of books. £10-£20
- 25**
A pair of French porcelain wall plaques with floral decoration, 22cm dia. £10-£20
- 26**
A Bernard Rooke pottery mantel clock, 32cm high. £20-£40
- 27**
A Bernard Rooke baluster vase, decorated with acorn leaves and squirrels; another similar; and another decorated with dragonfly. £20-£30
- 28**
A Bernard Rooke pottery plaque, decorated with acorn, 13.5cm dia.; another decorated with an owl; a small owl figure; and a frog figure, AF. £10-£20
- 29**
A Bernard Rooke pottery table lamp, with insect and leaf decoration, 38cm high overall. £20-£40
- 30**
A Bernard Rooke pottery figure of an owl, 48cm high. £40-£60
- 31**
A Bernard Rooke pottery jardinière on stand with leaf and butterfly decoration, 49cm high. £30-£40
- 32**
A pair of 19th Century prints depicting young beauties. £10-£20
- 33**
An Italian glass ceiling light, 19cm. £20-£30
- 34**
A collection of Vintage silk scarves. £20-£30
- 35**
A collection of Vintage handbags. £20-£40
- 36**
A Dutch style brass 8 branch chandelier. £20-£30
- 37**
A pottery and brass mounted baluster table oil lamp, having applied ram's head masks, garland and ribbon decoration, amber glass reservoir and tinted shade, 73cm high. £60-£80

38

Louise Harward, Suffolk ploughman and pair of Suffolk Punches, oil on canvas, 39cm x 54.5cm. £100-£200. See illustration.

39

Louise Harward, large study of Suffolk Punch mares and foals in expansive landscape, signed oil on canvas, 69cm x 195cm. £200-£300

40 ✓

Giovanni Barbaro, 1864-1915, a pair of still life studies depicting fruit, pitchers and wicker baskets on a kitchen table, signed watercolours, 76cm x 31cm. £200-£300

41

After L. Burleigh Bruhl, coloured print of the Bruges canal. £25-£35

42 ✓

Paul Binnie, "Simon and his faith", oil on canvas with inscription verso, Paul Binnie Edinburgh College of Art; complete with exhibition label, oil on canvas, 120cm x 105cm. £200-£300. See illustration.

43

A 19th Century floral embroidery contained in gilt frame, 35cm x 27cm. £20-£30

44

A 19th Century floral embroidery contained in an oak frame, 24.5cm x 35cm. £20-£30

45

A woolwork picture depicting a snowy village scene, 20cm x 35cm. £20-£40.

See illustration.

46

A needlepoint embroidery depicting country cottages, 49.5cm x 35cm. £20-£40

47

Four volumes, Art Past and Present magazines. £10-£20

48

A Vintage gold colour two tier drinks trolley, 82cm long and a gilt aluminium retro two handled drinks tray. £50-£60

49

A teak framed circular wall mirror, 60cm dia. overall. £20-£30

50

A G plan design coffee table, raised on square tapering supports and cross stretcher, 100cm wide. £20-£40

51

An enamel Rover sign, 40cm x 50cm. £60-£80. See illustration.

52

A Vintage mid 20th Century pastel portrait, 38cm x 26cm; a watercolour of nude lovers, 23cm x 18cm and an abstract oil, 12cm x 17cm. £15-£25

53

Three Vintage Mackintosh Quality Street tins. £20-£30

54

A large Eastern carpet in the Caucasian manner, approx. 10ft 9ins x 15ft 11ins. £60-£100

55

A mid 20th Century teak oblong coffee table, with magazine rack under-tier, 125cm. £30-£50

56

A G plan oblong coffee table, raised on square tapering supports and under-tier, 96cm wide. £20-£40

57

An unusual Studio pottery Sgraffito decorated vase, 17cm high; a slipware dish; and a similar jug, various marks. £15-£25

58

Attributed to Doctor Christopher Dresser, two James Dixon & Sons 19th Century electro plated stands. £30-£50

59

A Cotswold school style turned oak bowl, 25cm dia. and large candle holder, 18cm high. £15-£25

60

An Arts & Crafts pen and ink decorated wooden box, 19cm. £15-£25

61

A Thomas Burberry Vintage woollen jacket, approx. size 42. £20-£30

62

A Harris Tweed gentleman's "So Autumn" jacket and two others, approx. size 42. £15-£25

63

Two 1970's Vintage Sports jackets. £15-£25

64

A teak G plan design three tier tea trolley, with tile inserts, 78cm. £40-£60

65

A large circular Eastern brass tray with embossed floral and animal decoration, 90cm dia. £20-£30

66

An Eastern circular brass tray with shaped border and embossed leaf and berry decoration, 76cm dia. £20-£30

67

Chinwe Chukwuogo Roy, M.B.E., Nigerian 1952-2012, pencil study of a nude female, signed and dated 97. £100-£150

68

Chinwe Chukwuogo Roy, M.B.E., Nigerian 1952-2012, signed limited edition print of a reclining nude, 3/40. £30-£50

69

An enamel MG sign, of octagonal form, 40cm x 40cm. £40-£60. See illustration.

70

A teak Danish coffee table, raised on square section supports united by a slatted under-tier, 86cm wide. £20-£40

71

A Vintage psychedelic jump suite, size 38, AF. £20-£30



Lot 38



Lot 42



Lot 45



Lot 51



Lot 69



Lot 73



Lot 80



Lot 88



Lot 91



Lot 102

72 ✓

Greg Decker, initialled oil on canvas, "The Wheel", 172cm x 143cm, unframed. £800-£1,200

73

A Smith Sectric wall clock, in Bakelite case. £50-£80. See illustration.

74

Takadu Isreali, wooden C.D. storage rack by Reuts Shahar, 90cm high. £10-£20

75

A framed and glazed advertising poster for "Bringing out the Dead" starring Nicholas Cage, 75cm x 101cm. £40-£60

76

A framed and glazed advertising poster for "3 into 2 won't go", starring Rod Steiger, Claire Bloom and Judy Geeson, 75cm x 101cm. £40-£60

77

A late 19th early 20th Century woolwork embroidery depicting flowers, in ebonised frame, 34cm x 50cm. £20-£30

78

A circular floral embroidery, unframed, 39cm dia. £20-£30

79

A 20th Century woolwork embroidery depicting flowers, in gilt frame, 35cm square. £20-£30

80

An Art Deco pink glass fruit comport, the chrome base in the form of a naked dancing girl, 22cm high x 22cm dia. £20-£40. See illustration.

81

An Art Deco chrome and glass two tier cake stand. £20-£30

82

A pair of teak and ebonised bookends, in the Art Deco style. £10-£20

83

An Art Deco three piece plated tea set by Mappin & Webb. £20-£30

84

Den Phillips, black and white photograph depicting a river barge and another depicting sailing vessels on the Deben. £30-£50

85

A Dansette record player and a pair of speakers. £20-£40

86

A West German pottery plate with raised leaf decoration; and an oblong West German pottery plate with stylised orange and grey decoration. £10-£20

87

A Regent circular enamel sign, 50cm dia. £50-£80

88

An oval enamel BSA sign, 35cm x 40cm. £60-£80. See illustration.

89

A Nymolle Denmark Tjur wall plate, with hen decoration, 36cm dia. £20-£40

90

A Continental pottery shallow dish, having brightly coloured enamel stylised decoration, impressed GK to base, 36cm dia. £20-£40

91

A French Art Deco shallow glass bowl, having black decoration depicting continuous band of birds and stylised central motif, 32.5cm dia. £20-£40. See illustration.

92

A Scandinavian pottery dish, decorated with a stylised beast on blue ground. £10-£20

93

An Art Deco marquetry panel, label verso, A.J. Rowley, The Rowley Gallery, Church Street, Kensington, 27.5cm x 28cm overall. £20-£30

94

A pair of Dekor Zagres enamel dishes, 23cm dia., decorated with scenes of Dubrovnik and another with stylised decoration, 30cm dia. £20-£30

95

A copper dish decorated with brass vine borders, 34.5cm. £20-£30

96

An Arts & Crafts design spot hammered copper plate, 35cm dia. £20-£30

97

An Arabia Finland plate, decorated with figures and verse to the base 1977; and a pottery tile with stylised bird decoration on green ground. £20-£40

98

An Eastern copper and white metal circular wall plaque, having pierced border and embossed decoration of figures, 40cm dia. £10-£20

99

A large mid 20th Century brown and white glazed baluster vase, 26cm high. £30-£40

100

A large mid 20th Century Hillstonia pottery baluster vase with ring decoration, 32cm high. £20-£30

101 ✓

Hsiao-mei Lin "Visions of Worlds VI"; and another "Visions of Worlds VII", paintings on small wooden blocks. £40-£60

102 ✓

Susie Hamilton, oil on canvas, figure in grass and another figure in shade, 30.5cm x 30cm. £100-£200. See illustration.

103

A Schramberg porcelain banana plaque, 27cm dia. £10-£20

104

A West German pottery shallow bowl, with brightly coloured enamel decoration, 27.5cm dia. £10-£20

105

A large opalescent glass rolling pin, 79cm long. £20-£40

106

A brown glazed pottery "Tabac" jar and cover, with raised decoration, 19cm high. £20-£40

107

A Vintage rotary dial telephone, "Belgique Bell Telephone MFG Company". £30-£60

108

A brown glazed pottery rolling pin, with stylised leaf decoration. £20-£40

109

A Crown Devon Fieldings "ivoreen" study of a seated dog, 32cm long. £20-£40

110

An Art Deco design Limousin signed table lamp base, in the form of a naked girl, 40cm high. £150-£250. See illustration.

111

A Murano black and orange glass compot, 26cm high x 18cm dia. £15-£25. See illustration.

112

A 20th Century turned wooden fruit bowl, 23cm dia. £10-£20

113

A mid 20th Century green glazed pottery bowl, 20cm dia. £20-£30

114

A brown glazed West German pottery baluster vase, having ribbed decoration, 21cm high. £20-£30

115

A 20th Century Peruvian pottery baluster vase, with brown and cream glazed stylised decoration, inscribed to base Josh Lescano, 23.5cm high. £20-£30

116

A West German pottery vase, with grey speckled decoration, 20cm high. £20-£30

117

Nine treen toadstool ornaments. £20-£30

118

A small decorative carved wooden corner shelf with bird decoration. £20-£30

119

Three items of Ethnic carved wooden cutlery. £20-£30

120

A plated trumpet shaped spill vase. £10-£20

121

A blue Finnish glass vase; a circular mottled blue glass bowl and a blue glass goblet. £20-£30

122

A 20th Century pottery baluster vase, having stylised decoration, marked FR to base, 16cm high. £20-£30

123

A collection of treen leaf shaped bowls and dishes etc. £20-£30

124

A West German pottery green glazed baluster jug, 21cm high. £20-£30

125

A mid 20th Century Scottish pottery baluster vase, impressed mark to base, 21cm high. £20-£30

126

A pair of Art Nouveau pottery plates, 23cm dia. £10-£20

127

An Art Deco design oblong copper tray, 24cm long. £10-£20

128

An Art Deco green pottery Beswick bowl, 26cm dia. overall. £20-£30

129

A terracotta baluster vase of Eastern ribbed design, 21cm high. £20-£30

130

An Iden Rye pottery bowl, having brown glazed dimple decoration, 24cm dia. £20-£30

131

A Woburn brown glazed pottery bowl, 22cm dia. £20-£30

132

After Henry Moore, carved wooden figure group, 15cm high. £20-£30

133

A mid 20th Century G plan design five drawer chest, 85cm wide. £30-£60

134

A mid 20th Century G plan design chest of four drawers, 86cm wide. £30-£60

135

20th Century school, abstract study, unsigned oil on board, 71cm x 60cm. £10-£20

136

20th Century school, indistinctly signed, study of Rainbow Sands, watercolour, 36cm x 52cm. £20-£40. See illustration.

137 ✓

Peter Brook, born 1927, pen, ink and watercolour study, Danfield Church, signed, 31.5cm x 39.5cm. £200-£300. See illustration.

138 ✓

Norman Janes, born 1892, study of Fingal's cave, signed oil on board, 67cm x 78cm. £100-£150. See illustration.

139

After Pablo Picasso, two abstract figures entwined, possibly one of them the artist, bears signature, oil on board, 45cm x 35cm. £70-£100

140

Cavendish Morton, "Slaughden Quay, Aldeburgh", signed watercolour, dated 1967, 27cm x 37cm. £200-£400

141

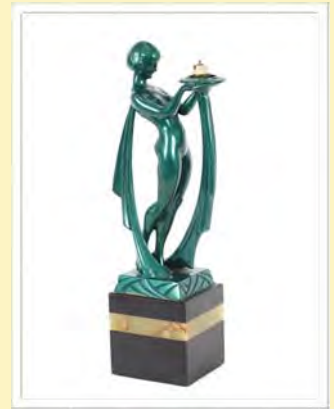
After John Piper, print of Snape Maltings, 45cm x 65cm. £10-£20

142

Shimming, study of shipping off Seacombe, 1970's, signed watercolour, 24cm x 48cm. £50-£80

143

Salviz, study of Venice, 50cm x 40cm, signed oil on canvas, unframed. £20-£30



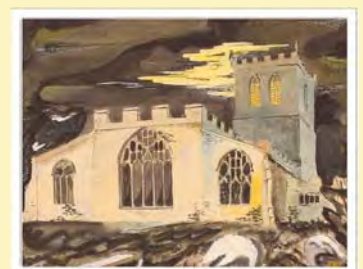
Lot 110



Lot 111



Lot 136



Lot 137



Lot 138



Lot 144



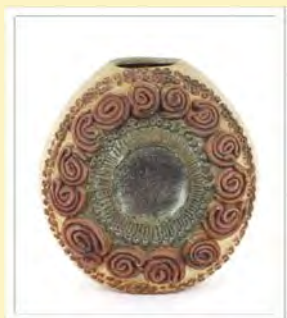
Lot 145



Lot 171



Lot 173



Lot 175

144

An Art Deco fashion print, Jean Patou, 43cm x 30cm. £20-£30. See illustration.

145

20th Century landscape study with tall trees and rolling countryside, acrylic on canvas, unsigned, 45cm x 64cm. £20-£30. See illustration.

146

Glynn Thomas, pencil signed coloured etching, "Iken", limited edition 46/200, 10.5cm x 46cm. £40-£60

147

Glynn Thomas, limited edition pencil signed coloured etching, "Aldeburgh roof tops", 156/200, 15cm x 43cm. £40-£60

148

Barbara Stuart, limited edition artist signed print, "To the Lighthouse", 27/195, 51cm x 48cm. £40-£60

149

Glynn Thomas, pencil signed limited edition coloured etching, "The Blyth", 151/200, 22cm x 12cm. £20-£30

150

Glynn Thomas, pencil signed artists proof, "Lighthouse Orford Ness", 29cm x 46cm. £30-£50

151

Glynn Thomas, pencil signed limited edition coloured etching, "Woodbridge Tide Mill", 196/200, 54.5cm x 21.5cm. £40-£60

152

Glynn Thomas, pencil signed limited edition coloured etching, "Southwold Summer", 79/200, 31cm x 64cm. £40-£60

153

Glynn Thomas, four pencil signed limited edition etchings, "Butley Woods", "Frog March", "Blythburgh Church" and "Ducks and Drakes". £40-£60

154

A small pencil abstract study, unsigned, 10cm x 9cm. £20-£30

155

Annabel Pope, mono print depicting figure riding a camel, possibly in sand storm, 25cm x 33cm. £20-£30

156

A 1960's teak frame hall mirror, 124cm x 32cm. £10-£20

157

A.B. Llewellyn Roberts, architectural drawing of a London residence; and another unframed. £20-£30

158

A bronze five light candelabra, 26cm high. £40-£60

159

A 20th Century metalware six light candelabra of tubular form. £20-£30

160

A pair of Arts & Crafts style brass candlesticks. £10-£20

161

An Art Deco design mirrored and brass mantel clock, 20cm high. £10-£20

162

A small collection of various Honiton pottery items; Carlton ware preserve pot on stand etc. £10-£20

163

An Art Deco design plated wine cooler; a plated muffin dish and cover; a cigarette box and a preserve pot. £20-£30

164

A pair of book-ends in the form of silvered seated bulldogs. £15-£25

165

An Art Deco design chrome table lamp with milk glass shade. £40-£60

166

An Art Deco design porcelain table lamp, in the form of two sailor girls, having frosted glass globular shade. £80-£120

167

A pair of Italian coloured glass ornate decanters, in mauve and amber, 57cm high. £15-£25

168

Four African wooden native figures. £20-£30

169

An Art Deco design pottery hors d'oeuvres dish, having mottled brown glazed decoration, 38cm. £10-£20

170

A bronze figure of an Arab street vendor, raised on a marble plinth base, 25cm high. £50-£80

171

A large blue glazed pottery study of a tiger, on square plinth base, stamped M&B to the reverse, 67cm long. £20-£40. See illustration.

172

An unusual decorative stoneware jug, having raised floral decoration, 24cm high. £20-£30

173

A bronze abstract figure of a naked girl on green marble plinth base, 36cm high. £80-£120. See illustration.

174

An Art Deco design three piece plated tea set. £20-£30

175

A large Bernard Rooke ovoid vase, with raised decoration, 29cm high. £40-£60. See illustration.

176

A Bernard Rooke baluster lamp, with raised decoration, 35cm high overall. £40-£60

177

A Bernard Rooke three section vase, having raised decoration, 22cm high. £40-£60. See illustration.

178

A silver plated cocktail shaker, in the form of a lighthouse, 36.5cm. £80-£120

179

A French green and brown glazed twin handled pottery jug, 25cm high; a West German pottery jug with floral decoration and a smaller similar. £30-£50

180

A large heavy silvered metalware Art Deco design figure of a reclining lady, 48cm long x 42cm high. £40-£60. See illustration.

181

A decorative amber coloured scull, 19cm long x 14cm high. £50-£80

182

A Black Forest style bear clock, 31cm high. £60-£80. See illustration.

183

An Art Deco limed oak tallboy, fitted with an arrangement of drawers and cupboards, 85cm wide. £60-£80

184

A teak G plan design dressing table, fitted four short and one long drawer, raised on rounded tapering supports, 142cm wide. £40-£60

185

A G plan design teak wall cabinet, fitted with drop down drinks compartment, bookshelves enclosed by glazed sliding doors and cupboards to base, raised on square section supports, 153cm wide. £40-£60

186

A teak effect G plan style sideboard, fitted two central drawers flanked by cupboards, raised on tapering square section supports terminating in castors, 152cm wide. £40-£60

187

A teak G plan kneehole dressing table, fitted four drawers and raised on square section supports, 103cm wide. £40-£60

188

A teak G plan design four drawer chest, raised on rounded tapering supports terminating in castors, 79cm wide. £40-£60

189

A teak G plan four drawer chest, 73cm wide. £40-£60

190

An Art Deco walnut cased Pilot radiogram with Garrard turntable. £50-£80

191

A French Art Deco painted kitchen dresser, with stylised floral decorated panels, 141cm wide x 160cm high. £80-£120

192

A teak G plan design sideboard, fitted six drawers, raised on rounded tapering supports, 168cm wide. £40-£60

193

A French oak Farinier cupboard, fitted with shelves and drawers, 110cm wide x 177cm high. £100-£150

194

A teak G plan low cabinet, fitted with sliding doors, raised on square section blackwood stand, stamped EG, 120cm wide x 84cm high. £40-£60

195

Two John Western prints depicting "Bass's dock" and "Tide Mill, Woodbridge".

£10-£20

196

Yvette, study of a seated woman feeding a baby, signed oil on board, dated 1955, 44cm x 36cm, unframed. £10-£20

197

Le Champion, study of a Chateau, signed watercolour, dated 1957, 23cm x 29cm. £10-£20

198

A round 1970's white plastic framed wall mirror, 68cm dia. £10-£20

199

Grace S. Pearson, abstract study, 70cm x 102cm. £20-£40

200

A pair of vintage metal framed window panels, 123cm x 49cm. £10-£20

201

A large and decorative foot stool, in the form of an upholstered lion, 76cm. £60-£80. See illustration.

202

Felix Gonzalez-Torres, 1957-1996, American, "Double Helix", framed and glazed print, 79cm x 110cm. £20-£40

203

Gilbert and George Tate Modern major exhibition 2007 signed poster, 74cm x 97cm. £20-£40

204

Steven Griffin, born 1968, "Dots", a framed and glazed collage of coloured dots, 61cm x 81cm. £20-£40

205

A limited edition signed print in the style of David Hockney, "Moving On", Mike Chambers Gallery, 55cm x 63cm. £20-£40

206

Durham Cathedral, 1971, indistinctly signed Fine Art limited edition print, 38/50, 57cm x 79cm. £20-£40

207

Bruce Nauman, born 1941, framed and glazed print, "Body Pressure 1974", 57cm x 77cm. £20-£40

208

"Wave goodbye to Thatcher", labour student's union framed and glazed poster, 53cm x 72cm. £20-£40

209

After Henry Moore, British, 1898-1986, standing figures cola type printed in colours, signed and dated 46, within plate 30cm x 24cm. £40-£60. See illustration.

210

An Art Nouveau style swinging clock, in the form of Diana, 30cm high. £60-£80

211

A Toleware style planter, with chinoiserie decoration, 28.5cm wide x 23cm high. £20-£30



Lot 177



Lot 180



Lot 182



Lot 201



Lot 209



Lot 244



Lot 245



Lot 246



Lot 247



Lot 248

212

A small brass telescope on tripod stand.

£20-£30

213

A pair of bronze Stag ornaments, 45cm high. £200-£300

214

A rose quartz obelisk ornament, 29cm high. £40-£60

215

Two diamond shaped glass paper-weights. £20-£30

216

A pair of Parian style lion book-ends. £50-£60

217

A tea caddy in the form of a house, 26cm wide x 22cm high. £50-£80

218

A plated letter rack, 19cm long. £15-£20

219

A brass telescope on folding base. £75-£100

220

A pair of Martini advertising boards, 26cm x 60cm. £10-£20

221

A late Victorian mahogany hall stand, with green glazed tiled decoration to the back, 93cm wide x 210cm high. £50-£80

222

A teak G-plan gentleman's wardrobe, 91cm wide. £40-£60

223

A G-plan teak wardrobe, enclosed by folding doors, 122cm wide. £40-£60

224

A teak illuminating china display cabinet, enclosed by sliding glass doors, 83cm wide. £30-£50

225

A quantity of Antiques Reference books. £10-£20

226

A James Bond (Pierce Brosnan) dummy board, 205cm high. £20-£40

227

A silvered model of a bulldog, 35cm long x 21cm high. £20-£30

228

A decorative diamanté skull, 26cm long x 20cm high. £25-£40

229

A Bequet pottery shallow bowl, having floral decoration, 33cm dia. £10-£20

230

A Bequet hat shaped shallow bowl with brightly coloured enamel floral decoration and gilt rim, 35cm dia. £10-£20

231

An Art Deco design ruby glass mannequin head, 28cm high. £20-£30

232

An Art Deco design green glass mannequin head, 28cm high. £20-£30

233

A pair of Louis Roederer design plated champagne coolers, 24cm high. £30-£50

234

An Art Deco Arthur Wood comport with floral and ball decoration silvered rim, 24cm dia. £10-£20

235

Attributed to Dr Christopher Dresser, a pair of brass stylised implement rests, 16cm high. £100-£150

236

A plastic Morris advertising sign, 40cm x 75cm. £10-£20

237

A large carved wooden figure of a stylised panther, 80cm long. £20-£30

238

A teak Ladderax unit, 240cm long x 200cm high. £200-£400

239

A quantity of Tapley 33 units. £30-£50

240

A Philips Disc Jockey Auto record player. £30-£50

241

A silvered "Love" sign. £125-£150

242

A wooden graduated six light candle stand, 35.5cm high x 54cm wide overall. £20-£30

243

A metal model of a Hurricane fighter plane, 50cm wide x 42cm long. £20-£30

244

A 1930's green glazed Susie Cooper vase, having ribbed decoration, 23cm high. £30-£50. See illustration.

245

A Keith Murray for Wedgwood Moonstone shouldered vase, signed to base, 27cm high. £200-£400. See illustration.

246

A pair of Grainger & Co Worcester baluster ewers, having rich gilt foliate decoration on a pale green ground, 30cm high. £100-£200. See illustration.

247

A large Moorcroft pottery floral decorated baluster vase, signed to base and dated 1951, 27cm high AF. £200-£300. See illustration.

248

A Troika square section vase, 15cm high. £200-£300. See illustration.

249

A large glass Eau De Toilette flask; and three various other scent bottles. £30-£50

250

A faux tortoiseshell and gilt metal mounted three bottle Tantalus. £150-£200

251

A Carlton ware money box in the form of a train; and a Carlton ware body egg cup and similar tea cup. £10-£20

252

An Art Deco starburst mirrored wall clock Af. £50-£80

253

A 1930's Bus Depot poster for Eastern National. £30-£50

254

A 1930's coloured Margaret Tarrant print; an "Elf to Tea", 53cm x 43cm. £20-£30

255

Four Art Deco perfume advertising posters, 43cm x 30cm. £40-£60

256

An Art Deco style coloured illustration print "La Nouvelle Mode" and another advertising Cigarini by Miss Elsie Randolph, 34cm x 24cm. £10-£20

257

A cast iron fire grate basket, 55cm wide x 58cm high. £40-£60

258

A vintage Danette Oxford record player on rounded tapering legs. £30-£50

259

An Art Deco design gilded horse sculpture, 43cm long x 31cm high. £30-£50

260

A pair of Burmantofts "Faience" baluster vases richly decorated flowers on a blue and cream ground, 36cm high. £40-£60. See illustration.

261

An antique copper samovar having brass handles and tap, 45cm high. £50-£60

262

A painted metalware Sandeman Port advertising figure impressed McCloud to the reverse, 37cm high. £30-£50

263

A plastic Johnny Walker advertising figure, 40cm high. £20-£20

264

A continental pottery ovoid baluster vase, having brightly coloured stylised decorated panels, 37cm high. £20-£30

265

A painted Art Nouveau metalware vase decorated dragonfly amongst swirling leaves, French circa. 1900, signed Nelson, 47cm high. £40-£60

266

Three French Dumas-Boudreau fashion prints, 34cm x 27cm. £20-£40

267

A pair of early 20th Century oak wall brackets. £20-£40

268

A Casa Bohemia decorative wall plate with rich decoration of gilt butterflies on a pale blue ground, 30cm dia. £10-£20

269

An Art Deco design plated circular tray with glass panel, 39cm dia. overall. £10-£20

270

A Guinness advertising tin tray; and a Lotus JPS advertising tray. £10-£20

271

A collection of glazed earthenware jugs; and a brown glazed earthenware teapot (lid missing), (6). £20-£30

272

Two Arthur Wood Art Deco water jugs with shaped borders and floral decoration. £20-£30

273

An Art Deco baluster sugar shaker with floral decoration; a brown glazed Studio pottery vase; various other colourful vases etc., (8). £20-£30

274

A heavy Art Deco design glass baluster vase with swirled orange line decoration, 26cm high. £20-£40

275

An Art Deco design clear glass baluster vase, with coiled decoration, 19cm high. £40-£60

276

A large brown glazed Studio pottery jug, impress marks to sides, 25cm. £20-£40

277

Eight vintage aluminium kitchen storage jars. £30-£50

278 ✓

J Judge, "December" signed oil on canvas, 92cm x 113cm. £200-£400. See illustration.

279

A large Carltonware baluster vase, blue glazed, 29cm high; and a large decorative yellow glazed baluster vase 41cm high. £40-£60

280

An Art Nouveau poker work decorated wall mirror, 53cm x 42cm in extremes. £30-£50. See illustration.

281

A Minton "Successionist" ware jug inscribed to base "Minton Ltd No.8", circa. 1880, 37cm high AF. £40-£60. See illustration.

282

A George Jones for Crescent & Sons "Pompeian" baluster vase, 32cm high. £30-£50. See illustration.

283

A pair of blue and white china storage boxes on the form of Dutch houses; a Villeroy & Boch circular bowl and cover; and a Faience pottery baluster vase decorated flowers and butterflies. £20-£30

284

A Yardley "English Lavender" soap dish with figural decoration; and a Yardley "Sweet Pea" ginger jar and cover. £5-£10

285

A Caithness paperweight, florally decorated; two others similar one decorated flowers and insects; and a coloured glass scent bottle signed "P 2004". £30-£50

286

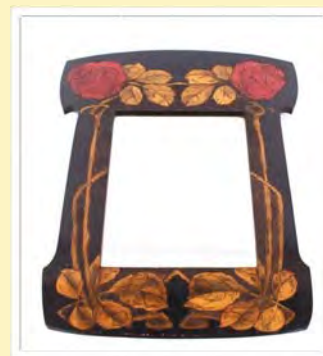
An early 20th Century golden oak stationery cabinet, having sloping front, fitted inkwell. £40-£60



Lot 260



Lot 278



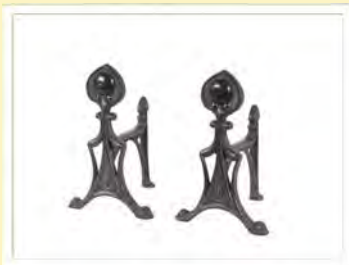
Lot 280



Lot 281



Lot 282



Lot 291



Lot 294



Lot 295



Lot 315



Lot 319

287

A set of six continental white metal spot hammered baluster beakers; a plated mustard pot; and two dishes. £20-£30

288

A retro "Sofono" circular electric heater. £20-£30

289

A heavy cast metal "Carnaby Street" sign, 110cm long. £40-£60

290

An iron companion stand with rose decoration and associated fire tools. £10-£20

291

A pair of Art Nouveau fire dogs. £20-£30. See illustration.

292

A leaded and coloured glass triple panel. £20-£40

293

Various continental pottery ewers; a stoneware Stein with pewter lid decorated figures; a 1970's ash tray; and a circular Italian pottery bowl and cover. £20-£30

294

A Roberts radio. £20-£30. See illustration.

295

An Art Deco smoked glass bowl with central figure flower holder, 33cm dia. £20-£40. See illustration.

296

A Roberts Rambler radio. £10-£20

297

An Art Nouveau tinted glass vase with applied green leaf decoration; a Moser style mottled glass vase; a small Sowerby glass posy vase; and a carved abalone shell ornament. £10-£20

298

A teak Macintosh design sideboard fitted three central drawers flanked by cupboard, raised on square section supports, 167cm wide. £40-£60

299

A M Cassandre, a Pathe poster 99cm x 66cm. £150-£200

300

John Peter Uht, American 1924 - 2010, "Clowns and Dancers" signed watercolour dated 1982, 12.5cm x 8.5cm. £20-£30

301

John Peter Uht, American 1924 - 2010, "The Dance", pencil signed watercolour 13.5cm x 8.5cm. £20-£30

302

John Peter Uht, American 1924 - 2010, "Call in The Extras", pencil signed watercolour 19cm x 26.5cm. £40-£60

303

John Peter Uht, American 1924 - 2010, "Dancers 3" pencil signed watercolour dated '83, 19cm x 26cm. £40-£60

304

John Peter Uht, American 1924 - 2010, "The Kieroff Troop" pencil signed watercolour dated '96, 13.5cm x 19cm. £40-£60

305

John Peter Uht, American 1924 - 2010, "Strings and Pipes" pencil signed watercolour dated '83, 25cm x 18cm. £40-£60

306

John Peter Uht, American 1924 - 2010, study of a seated clown with guitar and parasol, pencil signed dated '95, 26cm x 17cm. £40-£60

307

John Peter Uht, American 1924 - 2010, "Red Drum" pencil signed watercolour signed and dated '92. 27cm x 19.5cm. £40-£60

308

John Peter Uht, American 1924 - 2010, "Alright Already" pencil signed watercolour, 22cm x 28cm. £40-£60

309

John Peter Uht, American 1924 - 2010, "Pans People" pencil signed watercolour, 25cm x 35cm. £40-£60

310

A retro standard lamp / coffee table raised on rounded tapering supports. £20-£40

311

A quantity of various Art Deco design and retro ceiling lights and light shades. £20-£30

312

Three Art Deco pottery tiles. £10-£20

313

A pair of Art Deco wall lights, having amber glass shell shaped shades. £40-£60

314

Three orange tinted Vianne glass lamp shades; a mottled glass Art Deco design ceiling light shade; another; and two retro ceiling lights. £40-£60

315

An Art Deco design ceramic nursery rhyme wall clock. £10-£20. See illustration.

316

Charmian Edgerton, still life "With Nasturtiums" on a blue and white checked table cloth signed pastel, 23.5cm x 23.5cm. £30-£50

317

Randolph Schwabe RWS 1885-1948, study of fuchsias, pen and ink, 22cm x 29cm gallery label verso, provenance acquired from the artists daughter. £200-£300

318

Michael Cox, "Sheep In The Cotswolds", signed watercolour, 27.5cm x 50cm. £100-£200

319

M S Forrester, study of a highland landscape with cottage, signed watercolour dated 2014, 33cm x 50cm. £300-£400. See illustration.

320

A pair of oak Art Deco easel frames containing coloured prints. £20-£30

321

Sir Hugh Casson, "South Sea Fort" initialled watercolour. £50-£80

322

Five various lithographs by James H Dowd. £20-£30

323

A small pencil signed limited edition etching of a young Jewish boy 20/85.

£10-£20

324

A framed and glazed collage of Art Deco jewellery; and a small Art Deco print depicting a young lady from the 1920's.

£10-£20

325

A Maling ware vase with raised floral decoration; various Staffordshire pin dishes; Royal Winton comport; a pair of porcelain scent bottles; various decorative plates etc.

£20-£40

326

A Bernard Rooke pottery vase; an unusual pottery pitcher and cover inscribed to base C.B.N.Y.L.; a Faience ware Alberello jar; a Faience baluster vase; smaller similar; a pair of pottery boot ornaments etc. £30-£40

327

A Fischer style posy basket; similar baluster vase; an Art Nouveau posy basket in the form of a maiden and horse drawn shell; a continental pottery baluster vase; and five continental pin dishes. £10-£20

328

A Continental pottery dish in the form of a seated man; a Continental pottery flask in the form of a Turkish nobleman; and a Sargadelos pottery night light figure (3). £10-£20

329

An Art Nouveau pottery baluster vase with running blue and brown glazes, flanked by angular handles, impressed with a butterfly and L.G. to base, 32cm high. £10-£20. See illustration.

330

A Parker 25 pen; and a Parker Frontier fountain pen. £10-£20

331

A rare Seiko "Kakume" chronograph automatic stainless steel gentleman's wrist watch numbered 6138-0030,403836 with original booklets, the guarantee dated 1975, also with original bracelet AF. £400-£600. See front cover illustration.

332

A Sheaffer Sterling USA propelling pencil and pen, cased; and a Parker yellow metal fountain pen. £20-£30

333

A bead work flapper dress necklace; and a coral necklace. £40-£60. See illustration.

334

A Mont Blanc cased pen, spare nib and inkwell. £60-£100

335

A box containing various gent's watches. £40-£60

336

Various white metal rings, chains etc. £40-£60

337

A cased Mont Blanc pen. £20-£40

338

A collection of various silver and plated spoons, including a set of six Bowls related; an electroplate mounted scent bottle, napkin ring etc. £20-£40

339

A Pascal of Liberty silver necklace.

£100-£150

340

A collection of various smoking related items including pipes, Benson & Hedges dominoes, cigars, etc. £20-£30

341

An Arts & Crafts design small writing box. £10-£20

342

A collection of various scent bottles; Art Deco toast rack; photograph frame etc.

£20-£30

343

An Eastern copper two handled pot.

£20-£30

344

A cased Moorcroft scent bottle. £40-£60

345

Charlotte Read for Crown Ducal, a King George VI Coronation mug; and a Doulton Lambeth Queen Victoria Jubilee mug with silver mount and inscription. £40-£60

346

A Robert Mouseman Thompson of Kilburn ashtray; together with a booklet. £40-£60

347

An unusual modernist olive wood pepper mill in the form of a nut and bolt, probably Italian, 22cm high. £30-£50. See illustration.

348

A late 19th Century oak expanding book slide. £20-£30

349

A French Badatine chrome mounted manicure set. £40-£60

350

A pair of good quality plated salt and pepper castors, finely engraved, the bases containing musical tunes. £30-£50

351

Giacinto Melillo Napoli, a very fine Sterling silver tazza, with coiled snake decoration in the classical style, signed on plaque, circa. 1900, 18oz gross NB. Giacinto Melillo Napoli was work shop manager to the famous jewellery Castellani until 1875. £450-£550. See illustration.

352

A small circular silver compact with engine turned decoration; a silver Vesta case; a modern silver caddy spoon with Prince of Wales motif; and a miniature white metal chamber stick. £40-£60

353

A silver mounted nail buffer; various other manicure items; a pair of silver napkin rings, thimbles etc. £40-£60



Lot 329



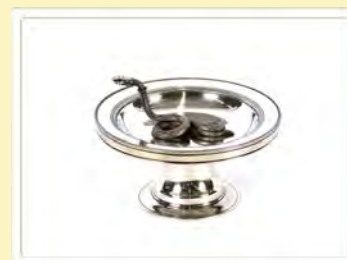
Lot 331



Lot 333



Lot 347



Lot 351



Lot 359



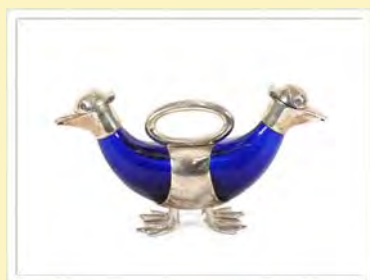
Lot 366



Lot 368



Lot 381



Lot 394

354

An Art Nouveau design enamel pen tray; and a brass figure in the form of a nude maiden impressed W to the base, 11cm high. £20-£40

355

A pair of plated knife rests in the form of recumbent greyhounds. £20-£40

356

A continental white metal letter rack. £30-£50

357

A silver cigarette box, engine turned decoration and wood lined interior, London 1920. £30-£50

358

A 1930's German made desk flip clock. £40-£60

359

A "Make A Date With The Beatles" calendar. £200-£250. See illustration.

360

A Kieze design Chronoquartz mantel clock. £10-£20

361

A Bakelite "Teofani" cigarette dispenser. £20-£30

362

A pair of modernist aluminium ash trays. £10-£20

363

An electroplated designer sauce boat; and a plated sugar bowl. £20-£30

364

A horn model of a crane on wooden base. £10-£20

365

A collection of antique bells. £20-£40

366

An Art Deco design compact in the form of a handbag with engine turned decoration. £20-£30. See illustration.

367

An onyx figure of a horse on plinth, 15cm. £10-£20

368

A WMF pewter bottle holder with pierced decoration. £20-£30. See illustration.

369

A 1970's treen cruet set. £10-£20

370

A wooden playing card box and contents. £10-£20

371

A circular red painted playing card tin. £20-£30

372

An oriental copper and plated circular snuff box. £10-£20

373

A 1930's painted wooden hinged pencil box. £10-£20

374

Three various treen boxes. £20-£30

375

A carved ethnic figure of a seated African naked woman, 22cm high. £20-£30

376

An oriental oblong lacquered hinged box with chinoiserie decoration. £10-£20

377

A carved ethnic figure of a crouching African native man, 15.5cm long. £20-£30

378

A carved ethnic figure with leather and shell decoration, 24cm long; and a small carved wooden eastern face mask. £20-£30

379

A pair of silver plated dog salt and pepper pots. £25-£40

380

A small Blue John type bowl, 12cm dia. £30-£50

381

A brass cased four dial swivel clock, barometer, thermometer Hygrometer, 14cm high. £50-£80. See illustration.

382

A pair of plated wine coasters. £25-£40

383

A large mother of pearl and brass decorated magnifying glass. £25-£40

384

A pair of plated dwarf candlesticks inscribed Guardian Liberty Group 1973; and a modernist plated posy vase. £20-£30

385

Four items of Goebel porcelain, having brightly coloured bird decoration. £20-£40

386

A treen articulated snake, 59cm long. £30-£50

387

Two decorative magnifying glasses. £10-£20

388

A bronze model of a carp. £20-£30

389

A small Edwardian amethyst glass hinged box with enamelled decoration; a similar period inkwell; and a soda glass tankard. £10-£20

390

A Hoegh Lines porcelain cigarette box and matching lighter; and a collection of various lighters and smoking related items. £20-£40

391

Two Bohemian type goblets; an Art Glass beaker with foliate decoration, indistinct signature to base; and a blue glass posy vase. £20-£40

392

An Orrefors of Sweden heavy glass ice bucket with chrome plated tongs. £30-£50

393

A Viners Devlin collection violet bowl and box. £10-£20

394

A silver plated blue glass double claret jug in the form of a duck. £75-£100. See illustration.

395

A novelty fish clock under glass dome, 11cm high. £35-£50

396

An electroplated spirit barrel in the form of a bear and sledge. £100-£150

397

A plated toast rack with cricket bat decoration. £25-£40

398

A silver and enamel decorated double photo frame. £35-£50

399

An Art Nouveau design silver mounted and enamel decorated photo frame.

£45-£60

400

A bronze figure group depicting an Arab and reclining nude. £90-£120

401

A spot hammered pewter coffee pot.

£20-£40

402

A collection of Sheaffer and other fountain pens. £20-£40

403

Three various white metal pendants on chains; and a jet type ring with monogram.

£10-£20

404

A Dunhill cigarette lighter in case.

£40-£60

405

A Zeitner Marine gent's chronograph and a ladies similar in original case and box.

£20-£30

406

A brass Vesta in the form of a pig. £20-£30

407

A silver pin cushion in the form of a chick.

£10-£20

408

A white metal and mother of pearl decorated dress ring. £10-£20

409

A white metal scent flask with pierced decoration of fish. £20-£30

410

A jade style hair pin. £40-£60

411

A white metal book mark in the form of a trowel. £10-£20

412

A jade style oriental belt hook. £40-£60

413

A white metal skull decorated dress ring. £10-£20

414

A circular brass snuff box with sailor decoration. £20-£30

415

A gilt metal snuff box in the form of a nut. £20-£30

416

A white metal and mother of pearl decorated heart shaped bracelet. £10-£20

417

A white metal pill box decorated with a risqué panel. £25-£40

418

A white metal Vesta case decorated with risqué panel. £40-£60

419

A brass Vesta case in the form of a horses hoof. £20-£30

420

A small white metal jointed Teddy bear pendant. £30-£50

421

A white metal and pink stone heart shaped pendant. £10-£20

422

A Masonic style pocket watch. £20-£30

423

A large white metal and amethyst coloured cabochon stone dress ring. £10-£20

424

A white metal cameo ring. £10-£20

425

A white metal dress ring with amber coloured stone. £10-£20

426

A white metal and malachite set ring.

£10-£20

427

A cubic zirconia and white metal pendant. £10-£20

428

A white metal and coral mounted baby's rattle. £40-£60

429

An oriental style bronze cat ornament.

£30-£50

430

A string of jade style beads. £20-£30

431

An Art Deco diamond set cocktail watch. £150-£250. See illustration.

432

A ladies 9ct gold Rolex wrist watch.

£250-£350. See front cover illustration.

433

An Omega gent's 9ct gold wrist watch, with mesh strap AF. £300-£400. See front cover illustration.

434

A silver cocktail watch. £40-£60

435

A diamond, sapphire and ruby set brooch with flower cluster and central seed pearl. £1,500-£1,800. See illustration.

436

A Rolex Oyster Speedking Precision gent's wrist watch AF. £400-£600. See illustration.

437

A silver Art Deco cigarette case, Birmingham 1934. £30-£40

438

An Art Deco design brooch depicting lady walking a dog. £10-£20

439

A Clarice Cliff "Crocus" patterned baluster jug. £60-£100



Lot 431



Lot 432



Lot 433



Lot 435



Lot 436



Lot 440



Lot 441



Lot 442



Lot 447



Lot 448

440

A Moorcroft "Pomander by Liberty".

£40-£60. See illustration.

441

A Troika vase, 17cm high. £35-£50.

See illustration.

442

A Troika square section vase, 10cm high.

£40-£60. See illustration.

443

A Nittsjo pottery dove by Thomas Helstrom, 17cm. £40-£60

444

A Robert Heron & Son Wemyss ware bowl with floral decoration, 19cm dia.

£40-£60

445

A vase by Shona Leitch, 19cm dia. £40-£60

446

A stylised pottery vase with faint line decoration, impress to base J.K.'95 £40-£60

447

A Troika vase of circular form, 11.5cm dia. £40-£60. See illustration.

448

After Geoffrey Baxter for Whitefriars, "a drunken bricklayer" pattern vase, 20cm high. £40-£60. See illustration.

449

Edgar Campden, for Aldemaston Pottery, lustre vase decorated with flowers signed to base R.A.W.A, 24cm high. £40-£60

450

An H&H Gasbeton Danish pottery square section vase, 19.5cm high. £30-£50

451

A Moorcroft baluster vase with floral decoration on a green and blue ground, 15cm high. £60-£100. See illustration.

452

A continental pottery vase of squat baluster form, decorated flowers on a blue ground, impress mark to base P.A.W. 11cm. £20-£30

453

A Gouda pottery baluster jardiniere of small size, bright floral coloured decoration, 10cm high. £20-£30

454

A Bernard Reynolds pottery vase of baluster shape with impress mark, 15cm high.

£50-£80

455

A red glazed Wemyss pig in seated position, 20cm long. £100-£150

456

A 20th Century blue and white line decorated baluster vase. £20-£30

457

An Art Deco design mug of large size, with transfer printed comical script. £20-£30

458

A 20th Century German pottery baluster jug having orange stylised band decoration, 16cm high. £20-£30

459

A Clarice Cliff "Bizarre" octagonal plate, 14cms. £30-£50

460

A Clarice Cliff "My Garden" patterned vase, 15cm high. £20-£30

461

A Keith Murray for Wedgwood green glazed mug, 12cm high. £20-£30

462

An oval pottery tureen with bird decorated lid, 17cm long. £10-£20

463

A John Guildford "Arabesque" patterned serving plate, 24.5cm. £10-£20

464

A Clarice Cliff preserve pot with multi coloured banded decoration and a Clarice Cliff oval dish with raised floral and bridge decoration. £20-£30

465

A Bernard Rooke "Lily Pad" plate having dragonfly decoration; a beaker impress mark to the base M.t.S.t.Bernard; and a similar pottery bird figure. £20-£30

466

Three various Poole pottery dishes. £20-£30

467

Sheila Stratton, pair of studies entitled "Farm Sheds at Back With Ducks", signed watercolours, 27cm x 35cm. £60-£100

468

John Western, study of The Deben with quay and numerous sailing vessels, signed and dated 1988 33cm x 47.5cm. £60-£80

469 ✓

Ditz, "The Apple Basket", signed oil dated 1987, 19.5cm x 24.5cm. £800-£1,000.

See illustration.

470

Ken Taylor, "Mine All Mine" signed watercolour, 7cm x 9cm. £30-£50

471

John King, "Snoozing", signed watercolour, 14cm x 16cm gallery label verso. £60-£80

472 ✓

Carla Steen, "Baltic Bloom Cabbage Life", signed watercolour 26cm x 37cm. £60-£80. See illustration.

473 ✓

Robert McAulay, "Pram", signed acrylic on board 46.5cm x 52.5cm.. £200-£300.

See illustration.

474 ✓

James Judge, "Island Sunset" oil on canvas, gallery label verso Adam Gallery Year 2000, signed and inscribed 46cm x 51cm. £200-£300. See illustration.

475

William Walcott R.A. 1847-1943, study of horse and cart, signed watercolour dated 1919, 40cm x 50cm. £800-£1,000

476

An Art Deco period wool work embroidery depicting flowers in ebonised frame, 29cm x 42cm. £20-£40

477

Joseph Maxwell R.S.W.D.A. "Brockhole, Lake District", signed watercolour dated 1978, 54cm x 75cm. £60-£100

478

P J Ashmore, study of a semi-naked girl on a sandy shoreline, signed watercolour 27cm x 45cm. £60-£80

479

L H Bonnar, study of boats on a river, 35cm x 101cm. £40-£60

480

20th Century school, continental port scene with fisherman and fishing vessels, indistinctly signed, 59cm x 73cm. £40-£60

481

A Retro metal and plastic hat and coat rack; and a shoe horn with seahorse handle. £10-£20

482

A pair of 1970's chrome and leather upholstered swivel high seat chairs. £60-£100

483

A Stressless Windsor high backed chair, upholstered in maroon leather. £60-£80

484

A Stressless Windsor high backed chair, upholstered in maroon leather. £60-£80

485

A Retro design egg chair. £100-£200

486

A Retro army box occasional table 83cm wide. £40-£60

487

A Beswick baluster jug; and a Maling ware oval fruit bowl. £20-£30

488

Ten 1970's french pottery oyster plates. £80-£120

489

A vintage oval Sharp's toffee tin. £20-£30

490

An Art Deco design baluster two handled vase, indistinctly signed, and decorated with stylised flowers, 33cm high. £40-£60

491

A pewter cocktail shaker, 24cm high. £10-£20

492

A model of a bronze dragon fish, 33cm long. £60-£80

493

A West German pottery vase having floral decoration, 31cm high. £10-£20

494

A 1970's Murano green glass ash tray, 16cm dia. £10-£20

495

A 1970's French green crystal glass vase, 26cm. £30-£50

496

A 1960's pottery vase, decorated brightly coloured leaves, signed to base Valcara '63, 31cm. £30-£50

497

A Vintage CWS biscuits tin. £20-£30

498

A Nathan teak sideboard fitted drawers and cupboards, raised on square section tapering supports, 183cm wide. £40-£60

499

A teak sideboard fitted three central drawers flanked by cupboards, raised on square tapering supports, 154cm wide. £40-£60

500

A teak low wall unit, having drop flap drinks compartment, shelves enclosed by sliding doors, raised on shaped supports, 138cm wide x 100cm high. £40-£60

501

Two decorative silvered unicorn heads. £20-£30

502

A pottery phrenology head, 29cm high. £10-£20

503

A plated polar bear cocktail shaker, 27cm high. £75-£100

504

A bronzed figure of a horse and jockey, 37cm long x 33cm high. £20-£40

505

Two model scooters, 31cm long. £20-£30

506

A cast iron figure of a pug dog, 22cm long x 25cm high. £15-£20

507

A pair of wooden novelty duck ornaments wearing green boots, 46cm high. £20-£30

508

A bronze figure of a bulldog raised on marble plinth, 16cm long x 14cm high. £40-£60

509

A teak long sideboard fitted three central drawers, flanked by cupboard enclosed by folding doors, 184cm long. £60-£80

510

A small light Ercol drop leaf coffee table, 60cm dia. £40-£60

511

A vintage Ercol style armchair; a white painted stool; and a light oak framed armchair upholstered in blue. £40-£60

512

A teak low bookcase enclosed by glazed sliding doors raised on tapering square section supports, 105cm wide. £40-£60

513

A vintage Peek Frean biscuit tin. £20-£40

514

A Vallarushe leaf shaped dish, 53cm long. £10-£20

515

A vintage McVitie & Price of Edinburgh biscuit tin. £20-£40



Lot 451



Lot 469



Lot 472



Lot 473



Lot 474



Lot 521



Lot 525



Lot 525



Lot 549



Lot 550

516

An Art Deco maple bedside cabinet, 39cm wide x 70cm high. £20-£30

517

A pair of light oak stools, upholstered in bold coloured swirling moquette. £20-£40

518

An industrial polished steel revolving office chair. £20-£40

519

A nest of three 1960's wrought iron and glass topped coffee tables. £10-£20

520

A nest of three Gordon Russell occasional tables (lacking labels). £25-£40

521

A set of six teak G-plan dining chairs, four standards, two elbows. £80-£120. See illustration.

522

A set of six Italian Vico Magistretti for Cartell dining chairs. £100-£150

523

A 20th Century Prie-Dieu chair, the top rail with brass plaque. £20-£30

524

A set of five Meredew teak dining chairs. £20-£40

525

A pair of Art Deco oak framed deep seated easy chairs, the scroll back upholstered in floral stamped linen. £20-£40. See illustration.

526

Three Ercol stick back armchairs and a matching stool. £40-£60

527

A 1970's revolving desk chair. £5-£10

528

A teak G-plan design coffee table with tile inset top, 123cm. £20-£30

529

A biscuit tin with chinoiserie decoration. £20-£30

530

A pair of Tolware style tea canisters, 36cm high. £80-£120

531

A quantity of Midwinter items; a Carlton ware Sunflower dish; a pair of Camel china comports; and similar salts etc. £20-£30

532

A quantity of Grindleys "Almond Petal" dinnerware. £10-£20

533

A Danish teak pedestal desk, fitted drawers and cupboard raised on square section supports, 130cm wide. £40-£60

534

A quantity of various decorative china to include Royal Winton, Tuscan teaware, Shelley, New Chelsea, Staffordshire etc. £20-£30

535

A quantity of vases including Shelley and Sylvac. £20-£30

536

A G-plan style teak effect sideboard fitted six drawers and raised on square section tapering supports, 144cm wide. £40-£60

537

A teak G-plan sideboard fitted three drawers and cupboards under raised on ebonised tapering supports, drawers stamped E.G. G-Plan, 149cm long. £100-£150

538

A Stateroom Furniture Ltd teak effect sideboard, fitted drawers and cupboards, raised on open end supports, 183cm long. £60-£80

539

An illuminating world globe. £20-£30

540

An unusual Huntley & Palmers biscuit tin, in the form of a decorated cash box. £20-£30

541

A large plated grape decorated punch bowl, 38.5cm dia. £80-£120

542

A Carr & Co's of Carlisle biscuit tin, in the form of a demi-lune cabinet. £20-£30

543

A collection of Hornsea fauna and other animal decorated china jardinières. £10-£20

544

A pair of Orangery lamps, 60cm high. £50-£80

545

A pink glass shell and foliate decorated fruit bowl; various moulded glass; vases etc. £10-£20

546

A pair of Tolware style chinoiserie decorated table lamps. £100-£150

547

A decorative mirrored and crystal five light candle holder, 55.5cm wide. £50-£80

548

A 1960's faux mahogany sideboard, fitted three central drawers flanked by cupboards, raised on turned tapering supports, 171cm wide. £60-£80

549

A Jindrich Halabala design armchair. £100-£150. See illustration.

550

A Jindrich Halabala design armchair. £100-£150. See illustration.

551

An Art Deco design heavy glass flask, 26cm high. £50-£80

552

An Art Deco design silver plated three bottle decanter stand. £100-£150

553

An Art Deco design fan shaped clear and amber glass heavy scent bottle, 24cm high. £50-£80

554

A rustic low elm coffee table, 104cm long. £20-£40

555

A G-plan design long teak sideboard, fitted three drawers and double cupboards, raised on square section supports, 168cm long. £100-£150

556

A light Ercol sideboard, fitted cupboards and single drawer, 113cm wide. £100-£200

557

Three Langley pottery casserole dishes; a similar coffee pot; and various items of Phoenix ware teaware decorated with children. £20-£30

558

A G-plan design six drawer sideboard, raised on rounded tapering supports, 145cm wide. £40-£60

559

An amber glass fish decorated serving plate; and four various moulded glass vases. £10-£20

560

A De Beukelaer Antwerp biscuit tin. £20-£30

561

A decorative heart shaped lantern. £20-£30

562

Two Myott jugs; and a basketweave pattern Myott vase. £20-£30

563

An Arthur Wood "Garden Wall" patterned baluster jug; a Sylvac fruit bowl; a floral decorated fruit bowl; a Doulton country scene decorated bowl; and a Ridgways "Coaching Days" jug. £20-£30

564

A G-plan design elm sideboard fitted three central drawers flanked by cupboards, raised on rounded tapering supports, 183cm wide. £40-£60

565

A large red and green pottery charger, 42cm dia. £30-£50. See illustration,

566

An Art Deco pink glass fruit bowl with elephant handles; a green glass similar; two other items of green glass; vases, jugs etc. £10-£20

567

Four light Ercol design stick back kitchen corner chairs. £40-£60

568

A light Ercol ladder back three piece suite - lacking cushions. £100-£200

569

An Ercol Renaissance two seater settee and matching easy chair of high backed design. £100-£200

570

An Ercol light colour Renaissance armchair. £30-£50

571

A large white painted bentwood Thonet style rocking chair. £40-£60

572

An Ercol stick back wing settee. £40-£60

573

A Hjellegjerde Fjords Admiral chair in brown leather. £60-£100. See illustration.

574

Two Bernard Rooke pictures featuring lily pads and dragonflies AF. £40-£60

575

A poster print "To The Concert Halls". £20-£30

576

A tubular chrome designer tub shaped armchair. £30-£50

577

A pair of plastic and metal revolving chairs. £20-£40

578

A set of four Danish teak dining chairs. £20-£40

579

A pair of 1960's bar back kitchen chairs. £20-£30

580

A pair of 20th Century bentwood dining chairs. £20-£30

581

An oval G-plan two tier coffee table, 113cm long. £35-£50

582

A cane glass topped two tier coffee table, 65cm dia. £10-£20

583

A Harrods brass framed oblong coffee table with plate glass top, 130cm x 60cm. £40-£60

584

A Vallarushe red glazed leaf shaped dish, 53cm long. £20-£30

585

A Bernard Rooke pottery occasional table, with smoked glass top, decorated leaves and butterflies, 51cm dia. AF. £20-£40

586

A Bernard Rooke pottery lamp table, having circular smoked glass top, the column decorated dragonflies, 53cm dia. AF. £40-£60

587

An Ercol stick back kitchen elbow chair. £40-£60. See illustration.

588

An Ercol oval coffee table having magazine rack under tier, and raised on rounded tapering supports, 96cm. £60-£100. See illustration.

589

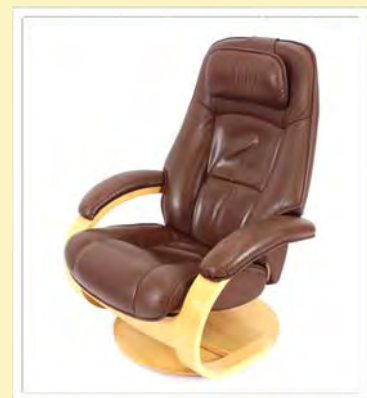
A collection of four Fine Art prints, 60cm x 80cm in extremes; and a "Motorail 78" British Rail Breakfast poster 63cm x 102cm. £20-£40

590

A good quality dark brown faux leather corner settee. £100-£200



Lot 565



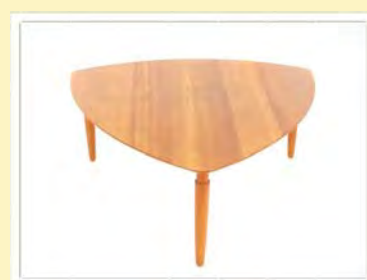
Lot 573



Lot 587



Lot 588



Lot 591



Lot 606



Lot 607



Lot 608

591

A Danish teak coffee table, by Gangso of triform shape, raised on rounded tapering supports, 94cm in extremes. £50-£80
See illustration page 19.

592

A Habitat light oak cross framed dining table with plate glass top, 140cm x 80cm. £40-£60

593

A Bernard Rooke pottery figure of a Hippopotamus; and smaller similar; and a shell decorated beaker AF. £20-£40

594

A Bernard Rooke baluster table lamp decorated dragonflies, butterflies, reeds and lilies. £20-£40

595

Four various Bernard Rooke table lamps, three with shades - all decorated frogs, leaves and butterflies. £40-£60

596

A Large Bernard Rooke pottery lamp decorated dragonflies. £10-£20

597

A large Poole pottery Aegaeon charger decorated with figure of knight on steed, 40cm dia. £40-£60

598

A pair of Art Deco deep seated armchairs and matching footstools raised on black square tapering legs. £100-£200

599

A light Ercol extending dining table raised on rounded tapering legs united by curved cross stretchers, 108cm x 210cm extended. £100-£200

600

A set of six light Ercol ladder back dining chairs, four standards, two elbows. £100-£200

601

A French pottery oyster set comprising platter and eleven side plates. £90-£120

602

A large Victorian Minton Majolica turquoise jardiniere on stand decorated birds and foliage, raised on scrolled feet, the jardiniere 48.5cm dia. x 36cm high, the stand 49cm dia. £150-£250

603

A large teak sideboard fitted three central drawers flanked by double cupboards, raised on square chamfered supports 220cm wide. £100-£200

604

A pair of Art Deco black and cream marble garnitures. £20-£40

605

An Art Deco design cold painted metalware study of a female charioteer on black and green marble plinth, 42cm long. £50-£80

606

After Pierre Le Farguays, a bronze figure lamp of a semi-naked tambourine girl, sign Fayral, raised on a marble plinth, 60cm high. £100-£200. See back cover illustration.

607

An Art Deco bronze table lamp, in the form of a semi-naked girl balancing a frosted glass globe, raised on stepped marble plinth, 59cm high overall. £100-£200. See illustration.

608

An Art Deco bronzed study of a recumbent dog, signed to base Ouline, possibly Alexander Ouline, active 1918-1940, raised on a black marble plinth, 50cm long. £100-£200. See illustration.

609

A G-plan design teak sideboard, fitted three central drawers flanked by cupboards, raised on rounded tapering supports, 143cm wide. £60-£100

610

A Bernard Rooke pottery standard lamp, decorated raised leaves and dragonflies, complete with shade, 121cm high. £50-£80

Special attention is drawn to the Conditions of Sale printed at the back of this catalogue.

Clarke and Simpson are pleased to offer a packaging and shipping service worldwide through "the-saleroom.com Delivery Service". The professional team will pack and ship items from very small non-breakables such as jewellery and coins through to larger and more fragile items such as paintings and works of art. Shipping and insurance is at the buyer's expense.

Shipping payment must be made to "the-saleroom.com Delivery Service" prior to departure and excludes local duties and taxes. Please note that Clarke and Simpson do not pack or ship items - all requests are sent to our specialist handlers at "the-saleroom.com Delivery Service" who can be contacted directly via delivery@atgmeadia.com

the-saleroom.com
delivery service



TERMS AND CONDITIONS OF SALE

1. INTRODUCTION

The following defining terms are used in these conditions:-

“Auction”	Means any auction conducted by Clarke and Simpson Auctions Ltd. either at the premises owned by them or elsewhere (including any internet based auction);
“Auctioneer”	Means Clarke and Simpson Auctions Ltd. authorised auctioneer as appropriate;
“Bidder”	Means a bidder at an auction, including the bidders personally present at the venue and those bidding by telephone or over the internet or otherwise;
“Buyer”	Means the bidder whose bid was the last bid when the auctioneer concludes the bidding;
“Conditions”	Means these Terms and Conditions of Sale;
“Hammer Price”	Means the level of bidding reached (at or above any reserve) when the auctioneer brings the bidding to a close;
“Lot”	Means any property accepted by Clarke and Simpson Auctions Ltd. for offer at auction;

2. DESCRIPTION

No warranty is given or implied by the description in the catalogue. Each lot is sold in its condition at the time of sale with all faults, defects, imperfections and errors of description (if any). Whilst every endeavour has been made to describe the items adequately and properly, the purchaser shall deem to have inspected the lot at time of purchase. All catalogues and seller's and buyer's guides are for information only and do not form part of the contract.

3. STATUTORY REQUIREMENTS

Purchasers will be deemed to have satisfied themselves prior to purchasing regarding current legal requirements (e.g. Health & Safety at Work Act) and it is expressly brought to the bidders attention that equipment in the sale may not necessarily comply with such regulations. Any purchaser shall satisfy himself as to any statutory requirement for the use of any item and no liability shall rest with the vendors nor the Auctioneers.

4. THE AUCTION

All auctions are conducted at the absolute discretion of the auctioneer. The auctioneer shall conduct the auction with reasonable skill and care. The vendor reserves the right to sell subject to reserve price in respect of all lots. What constitutes a bid shall be at the absolute discretion of the auctioneer, acting with appropriate skill and care. The auctioneer shall have the right to refuse any bid in all cases but most notably when such a bid does not exceed the previous bid by at least 10% or such a proportion as the auctioneer shall in his absolute discretion direct. Where two or more bids at the same level are simultaneously received by the auctioneer, the auctioneer at his absolute discretion shall determine which bid to prefer. Subject to the foregoing where two or more bids are at the same level are simultaneously received by the auctioneer, the bid submitted in the room shall take preference over a bid submitted by telephone or internet at the same level. Any bid made or attempted by telephone or over the internet will only be deemed to have been made if received by the auctioneer. The auctioneer reserves the right to withdraw, consolidate or divide any lot or lots or submit them in any order that they desire. The auctioneer has the right at his absolute discretion to refuse admission to

his premises or attendance at (or participation in) any auction by any person. In the case of any dispute, the auctioneer shall be sole arbitrator in any matters arising during or out of the sale.

5. BIDDERS

All bidders will be required to register their particulars, bidders attending in person and those accompanying them may be required to provide photo ID and separate confirmation of address prior to viewing or taking any part of the sale and before entering any part of the premises to view. All bidders accept full liability for all bids submitted. Subject to the clause in this document headed “The Auction”, the highest bidder at the close of bidding shall be the buyer. Any dispute about a bid shall be settled at the auctioneer's absolute discretion.

Bidders are all deemed to act as principles unless there is prior written acknowledgement by Clarke and Simpson Auctions Ltd. that a bidder is acting as an agent for a named principle. Bidders are strongly encouraged to attend the auction in person. The bidders shall be responsible for any decision to bid for a particular lot and shall be deemed to have carefully inspected and satisfied themselves as to condition, neither Clarke and Simpson Auctions Ltd., their employees or agents shall be responsible for any neglect or default in doing or failing to do so. Bidders will be given ample opportunity to view and inspect before the sale and prospective buyers must satisfy themselves as to all matters.

6. DEFAULT

Clarke and Simpson Auctions Ltd. shall act as agent of the vendor only. Any contracts for the sale of a lot shall be formed between the vendor and the buyer. As agent only Clarke and Simpson Auctions Ltd. shall not be responsible for default by the vendor or the buyer. If any lot is not paid for in full and taken away in accordance with these conditions, or there is any other breach of the conditions, then Clarke and Simpson Auctions Ltd. as agents for vendor shall at its absolute discretion and without prejudice to any other rights it may have, be entitled to exercise all or any of the following rights and remedies:-

- 6.1 to proceed against the buyer for any action of debt or damages for breach of contract;
- 6.2 to rescind the sale of that lot or lots sold by Clarke and Simpson Auctions Ltd. to a defaulting buyer;
- 6.3 to resell the lot (by auction or private treaty) in which case the defaulting buyer shall be responsible for any resulting deficiency in the total amount due (after crediting any part payment and adding any resale costs), any possible surplus so arising shall belong to the vendor;
- 6.4 to remove, store and insure the lot at the expense of the defaulting buyer and, in the case of storage, the location of such storage shall be at Clarke and Simpson Auctions Ltd. discretion;
- 6.5 to charge interest at a rate not exceeding 2% per month of the total amount due to the extent that it remains unpaid for more than two working days after the sale;
- 6.6 to retain that or any lot sold to the defaulting buyer until the buyer pays the total amount due;
- 6.7 to reject or ignore bids from the defaulting buyer at future auctions or to impose conditions before any such bids are accepted;
- 6.8 to apply any proceeds of sale for any other lots due or in the future becoming due to the defaulting buyer towards the settlement of the total remaining due.

7. INDEMNITIES, PENALTIES AND LIMITATIONS OF LIABILITY

Purchasers shall pay for any damage done by themselves or their agents during the removal of their lots. Attendance at the sale shall be at the risk of those attending in respect of both themselves and to their goods and vehicles.

Any indemnity under these conditions will extend to all actions, costs, expenses, claims and demand whatsoever suffered or incurred by the person entitled to the benefit of it and Clarke and Simpson Auctions Ltd. declare themselves to be a trustee of the benefit of such indemnity so far as it is expressed to be the benefit of its employees and agents.

Whilst Clarke and Simpson Auctions Ltd. endeavour to ensure that the information on their websites is correct, they do not warrant the accuracy and completeness of the material on their website. Also Clarke and Simpson Auctions Ltd. can make changes to the material on their website, or alter the products and prices described on it, at any time without notice. The material on the website may be out of date, Clarke and Simpson Auctions Ltd. make no commitment to update such material. All material on the websites is provided "as is" without any conditions, warranties or other terms at any time. Accordingly to the maximum extent permitted by law, the website is provided to all parties on the basis that Clarke and Simpson Auctions Ltd. exclude all representations, warranties, conditions and other terms which, but for this legal notice, might have effect in relation to the website.

8. ELECTRICAL SAFETY REGULATIONS

All electrical lots are subject to electrical safety regulations and fall within "the low voltage electrical equipment (safety) regulations 1989" – all items have been pat tested for safety but are not guaranteed in working order.

9. GENERAL MATTERS

Any notice to any buyer, vendor, bidder or viewer may be given by first class mail or email in which case it shall be deemed to have been received by the addressee forty eight hours after posting or sending. All notices to Clarke and Simpson Auctions Ltd. must be sent in writing and email is not acceptable. Any indulgence extended to any person by Clarke and Simpson Auctions Ltd., notwithstanding the strict terms of these conditions or the terms of consignment, shall affect the position at the relevant time only and the respect of that particular concession only; in all other respects these conditions shall be construed as having full force and effect. These conditions and any disputes or claims arising out or in connection with them or their subject matter or formation (including non-contractual disputes or claims) are governed by and construed in accordance with the law of England. The parties irrevocably agree that the courts of England have exclusive jurisdiction to settle any dispute or claim that arises out of or in connection with the agreement or its subject matter or formation (including non-contractual disputes or claims).

10. PUBLICITY

Any catalogue and buyer and seller guides are provided for information only and do not form part of these conditions. The catalogue and the buyer and seller guides may contain additional terms and conditions. Clarke and Simpson Auctions Ltd. reserve the right to use any photographs, background information and research for publicity purposes both before and after the sale.

11. THE PURCHASE PRICE AND PAYMENT ARRANGEMENTS

There is a buyer's premium 18% plus VAT payable in respect of the sale. Any purchases made via "www.the-saleroom.com" or "www.ibidder.com" shall be subject to an administration charge of 5% plus VAT on the price.

Preferred payment is cash, bank transfer or personal debit card. Such cards may only be used on a chip and pin basis with the owner present. No payment over £350 will be accepted by telephone. Payment will be accepted online via our secure e commerce account. We do not accept credit cards or international debit cards. Payment by cheque will only be acceptable subject to prior arrangement. No lot will be removed from the sale until any cheque has cleared. Payment is due on the day of the sale. Cash in excess of £7,500 (including V.A.T.) will not be accepted from any one person, this is not allowed due to Money Laundering Regulations 2007. All money received will be held in Clarke & Simpson Auctions Ltd. Clients No 2 Account at Barclays Bank plc, Framlingham, Suffolk. Account Number 83428591. Sort Code 20 98 07. Clarke and Simpson Auctions Ltd. have no responsibility for any lot between the close of bidding and payment being made and subsequent collection. All payments from overseas buyers shall be made by Bank Transfer and bank fees paid in addition. Please note all policy regarding payment will be enforced and suitable arrangements must be made.

12. REMOVAL OF LOTS

The ownership of any lot purchased shall not pass to the relevant buyer until they have made payment in full to Clarke and Simpson Auctions Ltd. of the total amount due including any storage due.

The buyer shall at their own risk and expense take away any lot that they have purchased and paid for not later than two working days following the day of the auction after which they shall be responsible for any removal, storage and insurance charges.

Any lots not collected within four weeks of the date of sale will be resold by the auctioneer and all proceeds will be retained by the auctioneer to cover storage costs.

13. NUMBER BIDDING

This will be used for speed and efficiency as in all our sales. All prospective purchasers must complete a registration form and register in the office on the viewday or morning of sale to receive a number for bidding.

PLEASE ALSO NOTE THAT PHOTO ID AND ADDITIONAL CONFIRMATION OF ADDRESS WILL BE REQUIRED.

14. ONLINE BIDDING

Clarke & Simpson Auctions Ltd. offer an online bidding service via the-saleroom.com and ibidder.com for bidders who cannot attend the sale.

In completing the bidder registration on www.the-saleroom.com or ibidder.com and providing your payment card details and, unless alternative arrangements are agreed with Clarke & Simpson Auctions Ltd.:

1. authorise Clarke & Simpson Auctions Ltd., if they so wish, to charge the payment card given in part or full payment, including all fees, for items successfully purchased in the auction via www.the-saleroom.com or ibidder.com, and
2. confirm that you are authorised to provide these payment card details to Clarke & Simpson Auctions Ltd. through www.the-saleroom.com or ibidder.com and agree that Clarke & Simpson Auctions Ltd. are entitled to ship the goods to the card holder name and card holder address provided in fulfilment of the sale.

Please note that any lots purchased via the-saleroom.com or ibidder.com live auction service will be subject to an additional 5% buyer's premium + VAT at the rate imposed on the hammer price.

15. TELEPHONE BIDDING

We offer a telephone bidding service where possible, but this service can never be guaranteed. No applications for telephone bids will be accepted after the end of the viewing prior to sale day for any sale. All potential telephone bidders must provide a valid landline number and email address and agree that they have read and understood the Terms and Conditions. No phone bids will be accepted for any lot with a lower guide figure of less than £100.

All those who wish to bid by telephone will be expected to deposit the minimum guide for all lots that they wish to bid upon into the Clients Account for Clarke and Simpson Auctions Ltd before the sale starts. This payment is not acceptable by card. In the event of default, this sum shall be retained as part payment or any part may be retained to recover losses under clause 6 of these Terms and Conditions. We will expect payment of the balance owing by BACS on the following day, any payment not met within five working days will result in the forfeiture of the deposit paid.

16. AT FAULT (A.F.) LOTS

Certain lots are catalogued at (A.F.), damaged, restored etc., however the absence of any such notice does not imply that the piece is free from defects, nor does it indicate that other defects are not also present. Mention is not made of breakage, cracks, chips or any damage which can be noted by careful inspection, therefore, intending purchasers MUST, in all cases, be responsible for determining the condition of the lots themselves.

17. ESTIMATES

Presale estimates are intended only as a guide for intending purchasers, are given in good faith and subject to revision.

18. CONDITION REPORTS

Clarke and Simpson are unable to guarantee that requests for condition reports/images received after close of the viewing on the day prior to auction will be responded to. Clarke and Simpson are happy to give a Condition Report on the physical condition of goods, this will be provided on behalf of the seller on the understanding that Clarke and Simpson are not entering into a contract with you in respect of the Condition Report and accordingly does not assume responsibility to you in respect of it. All lots are available for your own inspection or for inspection by an expert instructed by you, therefore these Condition Reports are for guidance only and all lots are sold "as found". Condition reports do not form part of a contract.

19. COMMISSION BIDS

The auctioneers will be pleased to execute bids for those unable to attend the sale. Lots will be purchased at the lowest bid the room bidding or any reserves will allow. In the event of identical bids, the earliest bid received will take precedence. There must always be a maximum limit indicated. Buy or unlimited bids will not be accepted. Commission bids placed by telephone are accepted at the client's risk. We urge our clients to place such bids before the start of the sale. All such commissions are left entirely at the buyer's risk.

20. VALUE ADDED TAX

The symbol * after any lot number indicates that Value Added Tax is payable by the buyer on the hammer price.

21. AUCTIONEERS MARGIN SCHEME

The Auctioneers Margin Scheme allows auctioneers to sell items without VAT on the hammer price. Under the margin scheme an amount equivalent to VAT at the current rate is added to the buyer's premium.

23 Art Deco

This amount cannot be refunded. The VAT element will not be shown separately on the buyer's invoice.

22. ATTRIBUTION OF PICTURES AND DRAWINGS

Every effort is made to ensure the accuracy of any statements as to authorship, attribution, origin, date, age, provenance and condition of any lot whether or not such statement forms part of the description of any such lot. Whether any such statement is made orally or in the catalogue it is an expression of opinion and not to be taken as being or implying any warranties or representations of facts by the auctioneers. Each buyer by making a bid for a lot acknowledges that he has satisfied himself fully as to the attribution and condition of the lot. The following is for guidance only and does not form part of a contract.

- A. The forename (s) (or full stops where not known) and surname of an artist indicates in our opinion a work by the artist.
- B. The initials of the forename (s) and the surname of the artist indicates in our opinion a work of the period of the artist which may be wholly or in part his work.
- C. The surname of the artist indicates in our opinion a work of the school or by one of the followers of the artist or in his style and of uncertain date.
- D. *Signed, Dated, Inscribed* indicated in our opinion work signed/dated/inscribed by the artist.
- E. *Bears signature* indicates in our opinion that this is not the signature of the artist.
- F. *Attributed to* may be used to denote a traditional attribution based on style.
- G. *Manner of* indicates in our opinion a work executed in the artist/craftman's style but of a later date.
- H. *After* indicates in our opinion a copy (of any date) of work of an artist or craftsman.

The addition of a question mark after any of the cataloguing terms above indicates an element of doubt.

23. DRIOTE DE SUITE ROYALTY CHARGES

All United Kingdom Art Market professionals (which includes auctioneers) are required to collect a royalty payment for all qualifying Works of Art. This applies to living artists and those who have died in the last 70 years. This payment is calculated on qualifying Works of Art which are sold for a hammer price more than the UK sterling equivalent of €1,000 (the UK sterling equivalent will fluctuate in line with prevailing interest rates calculated by the Artist's Resale Right Service Hub, based on the European Central Bank reference rate published at 2.15pm on the day of the sale, and can be found on www.dacs.org.uk).

All items in this catalogue that are marked "✓" are potentially qualifying items, and the royalty charge will apply if the hammer price is more than UK sterling equivalent of €1,000. The royalty charge will be added to purchase invoices, and must be paid before items can be cleared. All royalty charges are paid to the design and Artists Copyright Society (DACS) by the auctioneers and no handling costs or additional fees with respect to these charges will be retained by the auctioneer. This charge may also be applicable to lots not marked "✓" and buyers must satisfy themselves.

The royalty charge for qualifying items which achieve a hammer price of more than the UK sterling equivalent of €1,000, but less than the UK sterling equivalent of €50,000 is 4%. For qualifying items that sell for more than the UK equivalent of €50,000 a sliding scale of royalty charges will apply. For a complete list of the royalty charges and threshold levels please refer to www.dacs.org.uk. There is no VAT payable on this royalty charge.



Clarke & Simpson Auction Centre, Campsea Ashe
Nr Wickham Market, Suffolk IP13 0PS
T: 01728 746323 E: auctions@clarkeandsimpson.co.uk
www.clarkeandsimpson.co.uk