

Clarke &
Simpson



Selected Antiques & Fine Art

Wednesday 7th October 2020 at 10 am

Worldwide from Campsea Ashe

We have registered buyers from all of the fifty countries shown below in the last twelve months – what do you have to sell that would benefit from a worldwide audience!



Clarke & Simpson

Auctions

Selected Antiques & Fine Art

Wednesday 7th October 2020
at 10 am

Order of Sale:

Ceramics and Glass	1-139
Silver and Plate	141-247
Jewellery	250-331
Objects and Collectables	333-524
Pictures and Prints	527-596
Furniture	598-746

Viewing:

Saturday 3rd October, 9 am - 12 noon
Monday 5th October, 2 pm - 7 pm
Tuesday 6th October, 10 am - 4 pm
Morning of Sale from 8.30 am



@CandSAuctions



CandSAuctions

NB Attendance on sale day, bidders only and by appointment



Campsea Ashe
Nr. Wickham Market
Suffolk IP13 0PS
Tel: (01728) 746323 Fax: (01728) 748173
Email: auctions@clarkeandsimpson.co.uk
www.clarkeandsimpson.co.uk

Online bidding via:

the saleroom
The home of art & antiques auctions



Mendham £1,100,000

A superb Georgian fronted five bedroom village house with additional two bedroom studio and home office standing in impressive walled gardens of over an acre.

Ref: 6478



Blaxhall £925,000

An impressive barn conversion with annexe, building with PP for a holiday let and grounds of nearly 1½ acres, in the beautiful Parish of Blaxhall, close to Snape and the Heritage Coast.

Ref: 6499



Earl Soham £725,000

A spacious four bedroom former farmhouse that has recently been refurbished, occupying grounds of an acre. Ref: 6465



Aldeburgh £675,000

A four bedroom detached house with well laid out and spacious accommodation. Ref: 6496



Brundish £550,000

A former farmhouse in grounds of nearly an acre, that now requires renovation and refurbishment. Ref: 6488



Saxmundham £539,500

A modern Georgian style four bedroom house standing on a particularly large plot. Ref: 6486



Alderton £485,000

A charming four bedroom period cottage located on the boundary just a short distance from the Heritage Coast. Ref: 6477



Hoxne £425,000

A charming period house, with established garden to the rear, in the centre of the delightful rural village of Hoxne. Ref: 6504



Worlingworth £400,000

A charming three/four bedroom period property located opposite the church in the village of Worlingworth. Ref: 6360



Hacheston £340,000

A detached, architect designed two bedroom contemporary house tucked away off a small lane. Ref: 6474

Ceramics and Glass

1
A 19th Century Chinese hexagonal pedestal dish, seal mark to base, decorated symbols; two Canton saucers and a cup, a small teapot and a jar and cover (6) £40 - 60 †

2
A Japanese Imari scallop bordered charger; and two 18th Century Chinese Imari pattern plates (3) £40 - 60 †

3
An 18th Century Chinese tea bowl and saucer, with enamel decoration; two other saucers; and an 18th Century Chinese famille rose decorated bowl (5) £40 - 60 †

4
An 18th Century Chinese famille rose decorated baluster bird beak jug, 11cm high £40 - 60 †

5
An 18th Century Chinese blue and white octagonal dish, decorated in the pagoda pattern; a smaller example; and an 18th Century shallow bowl, decorated in the Oriental style, possibly bow (3) £40 - 60 †

6
A pair of Chinese tea bowls and saucers, with Buddhist chicken decoration and brown under glaze £30 - 50 †

7
An unusual Delftware barge shaped chamberstick / matchbox holder, 22cm long £40 - 60 †

8
An Arita ware blue floral painted brush pot, decorated foliage and crickets; and a small Chinese baluster pot of squat form with scenic decoration (2) £40 - 60 †

9
An unusual 19th Century blue and white sauce boat, on integral stand, having scroll handle and decorated foliate sprays, marked to base, 20cm long £40 - 60 †

10
A Chinese "Willow" pattern spoon tray, of shaped form heightened in gilt; and another larger similar with river decoration, possible Ch'ien Lung (2) £40 - 60 †

11
An 18th Century Chinese saucer dish, decorated in under glaze blue with flower heads £20 - 40 †

12
A small pair of baluster vases, decorated roundels on a crackle glazed ground, four character marks to base, 8cm high £40 - 60 †

13
A pair of late 18th Century Chinese circular dishes, with ribbed borders and floral decoration on a light celadon ground, 15cm dia. £40 - 60 †

14
An unusually shaped small Chinese saucer dish, with tree and bird decoration, four character mark to base £20 - 30 †

15
A late 18th Century Caughley blue and white cup, a Chinese tea bowl and saucer with scenic pagoda decoration, heightened in gilt; and a Chinese blue and white tea bowl with pagoda decoration (4) £30 - 50 †

16
Three 18th Century Chinese Kang Hsi saucer dishes, with floral and fence decoration; another pair of Chinese saucer dishes with scenic decoration and brown under glaze; and a shallow Chinese dish decorated with figures AF (6) £40 - 60 †

17
A set of six Royal Worcester shallow dishes, having lobed borders, painted floral spray decoration within rich blue and gilt bands £60 - 100 †

18
A Sceaux porcelain lidded box, decorated foliate sprays and a scene of ruins; and two Limoges porcelain scent bottle caskets (3) £40 - 60 †

19
An antique wine glass, the bell shaped bowl raised on baluster stem and circular spread foot, 14cm high; and another similar 13.5cm high (2) £40 - 60 †

20
An antique wine glass, having bell shaped bowl and cotton twist spiral stem on circular spread foot, 17cm high £40 - 60 †

21
An antique wine glass, having bell shaped bowl and twist stem on circular spread foot, 16cm £30 - 50 †

22
An antique wine glass, with bell shaped bowl raised on clear glass stem and circular spread foot, 17cm high £20 - 40 †

23
An antique wine glass, the bowl with etched decoration of birds and foliage on clear stem and circular spread foot, 14cm high £40 - 60 †

24
An antique wine glass, having vine decorated bowl and cotton twist stem, on circular spread foot, 15cm high £40 - 60 †



Lot 7



Lot 9



Lot 18



Lot 24



Lot 52

25

An antique wine glass, with foliate etched bowl and cotton twist stem on circular spread foot, 15cm £40 - 60 †

26

An antique wine glass, with half fluted tapering bowl on cotton twist spiral stem raised on circular spread foot, 16cm high £30 - 50 †

27

An antique wine glass, the tapering bowl on cotton twist spiral stem and circular spread foot, 16cm high £40 - 60 †

28

An antique wine glass, having tapering bowl, clear twist decoration to the stem and circular spread foot, 17.7cm high; and a small plainer example with tear drop to the stem raised on circular spread foot, 15.4cm high (2) £50 - 80 †

29

A small pair of Dresden porcelain easel mirrors, decorated cherubs and flowers; and a heart shaped German porcelain dish with floral spray decoration (3) £30 - 50 †

30

An 18th Century cream ware charger, 37cm dia.; a pair of Wedgwood cream ware oval platters with ivy borders; and a 19th Century porcelain oval serving dish with gilt heightened foliate decoration (4) £40 - 60 †

31

A Delftware blue and white baluster vase, decorated with windmills and canal; a Royal Bonn vase decorated with figures; a Delft shoe ornament; an Oriental circular blue and white box and cover; a Japanese four section cylindrical box and other items (8) £40 - 60 †

32

A large 18th Century Chinese blue and white plate, decorated with rural scene depicting deer and bird amongst foliage, 35cm dia.; and a smaller similar, some damage, 26cm dia. (2) £30 - 50 †

33

A blue and white Asiatic pheasant pattern meat plate; another blue and white transfer decorated plate with scenes of ruins; a "Wild Rose" pattern blue and white transfer plate; a Ridgway stone china plate; a pair of Copeland Spode beakers and a miniature chamber pot (7) £20 - 40 †

34

A 19th Century Canton porcelain charger, decorated famille rose, birds and insects, 38cm dia. AF; a mid 19th Century Chinese Canton plate decorated famille rose and figures heightened in gilt; and two others (4) £40 - 60 †

35

Two 19th Century blue glass rolling pins, 41cm long £20 - 40 †

36

A Chinese porcelain circular bowl and cover, decorated floral sprays, lid restored, 27cm dia. £40 - 60 †

37

Three Chinese ginger jars, and covers £20 - 40 †

38

Two slip ware pottery jars, in the form of owl chicks, one green glazed the other brown glazed, having detachable heads, 20cm high £40 - 60 †

39

A cream ware Masonic baluster jug, decorated verse and symbols, 12cm high; and a pair of blue and white transfer decorated Masonic plates depicting Freemasons Charity Institution, St Georges Fields, London (3) £40 - 60 †

40

A pair of green tinted specimen vases, with silver mounts; a green glass scent bottle; an enamel decorated posy vase; and a green glass coiled serpent ornament etc. (6) £30 - 50 †

41

A large Japanese Imari charger, having scallop border decorated in the traditional manner, heightened in gilt, 40cm dia.; and a small Imari fruit bowl (2) £40 - 60 †

42

A Coalport porcelain urn, decorated with a lake scene and foliate sprays on a rich blue ground; a large continental porcelain basket with flower decoration; and a Victorian tureen and matching comport (4) £80 - 120 †

43

A green glass candle lamp with dimpled shade; and a blue glass similar (2) £30 - 40 †

44

A pair of cranberry glass tapering posy vases, with raised decoration and clear glass icicle bases, 32cm high £40 - 60 †

45

A pair of cranberry glass flutes, with etched foliate decoration on clear glass stems and bases, 30cm high £20 - 30 †

46

An unusual cranberry glass lace makers lamp, raised on clear glass foot, 27cm high £60 - 80 †

47

A cranberry glass bowl and cover, with clear glass base; a cranberry and clear glass posy vase AF; and a cream jug £20 - 30 †

48

A cranberry glass trumpet shaped posy vase, with frilled rim and clear glass trailing foliage, raised on a clear glass spread foot, 31 cm high £20 - 40 †



Lot 54



Lot 56



Lot 59 (part)

- 49**
A pair of cranberry glass Cornucopia shaped posy vases, having raised decoration and clear glass icicle feet, 26cm high *£60 - 80 †*
- 50**
A pair of cranberry glass decanters, with clear glass stoppers; and a similar claret jug (3) *£40 - 60 †*
- 51**
A pair of cranberry glass cologne bottles, of stepped form having spike shaped stoppers, 22cm high *£60 - 80 †*
- 52**
A pair of 19th Century Meissen style continental porcelain figures, depicting dancing couples in brightly coloured enamelled dress, raised on floral encrusted bases, 22cm *£80 - 120 †*
- 53**
A pair of 19th Century Meissen style sweetmeat stands, in the form of reclining lady and beau, with floral encrusted baskets on Rocaille bases, 29cm AF *£100 - 200 †*
- 54**
A pair of continental porcelain figures, depicting lady and gallant shooting, both wearing brightly coloured enamel clothes reclining against tree stumps on rockwork bases, 25cm high *£100 - 200 †*
- 55**
A continental porcelain figure, of a maiden courtseying, 30cm high *£60 - 80 †*
- 56**
A pair of Derby porcelain figures, of a couple in brightly coloured enamel dress, the man carrying a plant pot, the lady with a feather duster, 18cm high in extremes *£100 - 200 †*
- 57**
A Royal Crown Derby bone china group of birds, perched on a branch with floral encrusted base, 10cm high *£40 - 60 †*
- 58**
A Sampson Hancock & Sons of Stoke Victorian dinner service, in the "Norman" floral pattern comprising six platters, two small tureens with standing plates, ladle, three large tureens, twelve dinner plates, eleven small dinner plates, and eleven side plates *£150 - 200 †*
- 59**
A collection of First Period Worcester teaware, of "Jabberwocky" pattern comprising teapot, covered milk jug, sucrier, slops bowl, cup and saucer, three serving dishes; and a baluster vase, underglaze blue seal mark to base, blue scale ground heightened in gilt. See Front Cover *£1,000 - 2,000 †*
- 60**
A Royal Copenhagen part teaset, having foliate decoration heightened in gilt; and a Hammersly cream jug *£60 - 100 †*
- 61**
A set of eight Minton cabinet plates, decorated flowers and insects *£100 - 200 †*
- 62**
A large Chinese famille rose punch bowl, the exterior decorated panels of exotic interior and garden scenes, 36cm dia. (restored) *£200 - 300 †*
- 63**
A late 19th Century large and impressive continental porcelain figure group, possibly Sitzendorf, 31cm wide x 40cm high *£300 - 400 †*
- 64**
A pair of Oriental Armorial style pots and covers, decorated birds, butterflies and flowers; a Canton side pouring coffee pot AF; and a Japanese sucrier (4) *£30 - 50 †*
- 65**
A small continental porcelain chocolate cup and cover; a larger similar (cover missing); a Dresden teacup and saucer; and various decorative porcelain (21) *£40 - 60 †*
- 66**
A 19th Century continental porcelain figure group, of two lovers 28cm high *£50 - 80 †*
- 67**
A continental porcelain oval dish, with folded rim and foliate spray decoration, 17cm *£20 - 40 †*
- 68**
A pair of pottery profiles, depicting Medieval figures 37cm in extremes, (some damage) *£20 - 40 †*
- 69**
A 19th Century green glazed Castle Hedingham tankard, raised castle mark to base, stamped "E. Bingham (1864-1901)" *£30 - 50 †*
- 70**
A large glass goblet, of tapering form on twist stem and circular spread foot, 27.5cm high *£20 - 40 †*
- 71**
An antique cut glass water jug; a heavy Victorian glass pedestal bowl; and a cut glass maul shaped decanter with mushroom stopper (3) *£60 - 100 †*
- 72**
A part suite of table glassware, comprising six claret glasses, six hock glasses, six liqueurs, and a matching decanter, Waterford circa 1970's *£80 - 120 †*
- 73**
Ten 19th Century glass ale flutes *£60 - 80 †*
- 74**
Fifteen antique glass ridders, various, raised on baluster stems and circular spread bases *£100 - 200 †*



Lot 62



Lot 63



Lot 66



Lot 69



Lot 87

75
Four cut glass ships decanters, three with decanter labels "Whisky", "Sherry" and "Brandy" £30 - 50 †

76
A pair of Masons ironstone white relief moulded jugs, having figural and mask head decoration; and a similar baluster relief moulded jug with Victorian registration mark (3) £30 - 50 †

77
A large collection of cut glass table ware, including various sized wine glasses, sherrys, ports and liqueurs, finger bowls, dessert glasses etc. £100 - 150 †

78
A 19th Century Davenport cheese dome, decorated in the Oriental manner heightened in gilt 26cm high AF £40 - 60 †

79
A pair of 19th Century Chinese blue and white shallow dishes, decorated with rural scenes, four character marks to base; a pair of Chinese blue and white dishes decorated rural scenes with giant crickets; two Chinese bowl covers; and a Kang Hsi saucer with brown glazed under rim (7) £80 - 120 †

80
A pair of Chinese blue and white Hawthorn pattern baluster vases, under glazed blue character marks to base, 23cm high; a blue and white Hawthorn pattern jar with character mark to base (no lid); and a Hawthorn pattern ginger jar, heavily restored with associated hard wood lid and stand (4) £40 - 60 †

81
A Chinese blue and white hexagonal box and cover, with all over floral and bird decoration; and a barrel shaped similar (2) £40 - 60 †

82
A pair of Chinese blue and white baluster vases, dragon decoration and four character mark to base AF; a smaller similar example, four character mark to base; another; a blue and white baluster vase and cover; and a small vase with dragon and cloud decoration (6) £40 - 60 †

83
A pair of 19th Century Chinese blue and white moon flasks, having figural decoration flanked by Dog of Fo handles, 25.5cm high £200 - 400 †

84
A pair of 19th Century German porcelain figures, of a lady and gallant wearing brightly coloured enamel decorated clothing raised on rocaille bases, 28cm high £20 - 40 †

85
A collection of five various Staffordshire figures and spill vases, some AF £20 - 40 †

86
A collection of Sitzendorf and other porcelain monkey band figures; various other continental porcelain figures etc. (19) £100 - 150 †

87
A pair of cranberry glass lidded jars, the domed lids with clear glass knob finials, ribbed bodies, 17cm high; and another similar (3) £30 - 50 †

88
A pair of cranberry spill vases, having crimped fold over rims and clear glass bases, 19cm high £30 - 50 †

89
A pair of cranberry dimpled glass claret jugs, having clear glass handles and stoppers; and another with blue floral enamel decoration heightened in gilt (3) £40 - 60 †

90
A pair of cranberry tinted Jack in the Pulpit vases, raised on clear glass circular spread feet, 23.5cm high £30 - 50 †

91
A cranberry posy basket, having clear glass handle and frilled rim; and another of triform shape with twist handle (2) £30 - 50 †

92
A cranberry glass ewer, of Venetian style having clear glass handle and white glass ribbed decoration to the flared neck, 24cm high; a cranberry glass milk jug having half ribbed body decoration and clear glass handle; a cranberry glass water jug with clear glass handle and a mottled glass example (5) £40 - 60 †

93
A pair of cranberry hock glasses, with clear glass ribbed columns and spread feet; and seven various cranberry wine glasses £30 - 50 †

94
A collection of cranberry Mary Gregory style decorated glass, including two ewers, beakers, ring stand, and a box and cover (6) £40 - 60 †

95
A pair of cranberry squat posy vases, fold over necks having clear glass spike decoration £20 - 40 †

96
A pair of cranberry glass trumpet shaped posy vases, with clear glass raised decoration and spread feet; and a pair of cranberry vases of lobed form, raised on clear glass leaf bases (4) £40 - 60 †

97
A set of six cranberry glass beakers, with gilt foliate decoration; and two similarly decorated pots and covers (8) £20 - 30 †

98
A heavy cranberry glass Tazza, with thumb press decoration; and a cranberry goblet on clear glass stem and circular spread foot (2) £20 - 40 †

99
A cranberry glass beaker vase, having frilled rim and raised prunts decoration; a cranberry and yellow tinted baluster posy vase, with clear glass leaf decorated rim; a cranberry ewer with clear glass handle and raised leaf and fruit decoration; a small cranberry and clear glass posy vase; and a plain baluster vase (5) £40 - 60 †



Lot 90



Lot 95



Lot 96



Lot 103

100

A cranberry green and Vaseline tinted baluster jug; another cranberry and clear glass example of similar design; and three various posy vases (5)

£40 - 60 †

101

A cranberry glass sugar bowl, and cream jug with white ribbed decoration and clear glass leaf supports; another similar cream jug and sugar bowl; a cranberry and clear glass posy vase with frilled rim and a smaller similar dish with lobed decoration (5)

£40 - 60 †

102

A cranberry glass bowl, having frilled rim and clear glass feet; another bowl with clear glass central girdle of leaves; a cranberry glass cup with frilled rim, clear glass handle and leaf base; and a cranberry handkerchief shaped posy vase (4)

£40 - 60 †

103

A cranberry glass scent flask, having octagonal faceted stopper and a small baluster scent flask with clear glass stopper (2)

£30 - 50 †

104

A set of six cranberry wine glasses, raised on green tinted clear glass stems, and frilled spread feet; and a pair of cranberry sherry glasses raised on green tinted stems and bases (8)

£40 - 60 †

105

A cranberry green and Vaseline tinted Jack in the Pulpit vase, a small posy vase on clear glass leaf shaped base; and two others

£40 - 60 †

106

A cranberry baluster glass bowl, with clear glass leaf decorated rim and feet; four other posy bowls of varying sizes; and three cranberry and clear glass salts (8)

£40 - 60 †

107

A cranberry glass and electroplate mounted preserve stand, having clear glass edging with swing handle raised on claw feet; and two cranberry glass and electroplate mounted salts and spoons (3)

£20 - 40 †

108

Four various cranberry and clear glass mounted bowls and covers

£40 - 60 †

109

A cranberry glass green tinted ewer, with fold over frilled neck and angular handle; a slim specimen vase with raised Vaseline coiled decoration; a baluster vase with clear glass twist decoration to the neck; two trumpet shaped vases; and a smaller example with clear glass raised coiled decoration (6)

£40 - 60 †

110

A collection of various cranberry glass baluster jugs, including one covered example; and an oil bottle with green tinted stopper and handle (8)

£40 - 60 †

111

A pair of clear glass specimen vases, with ruby flash line decoration; and four various cranberry and clear glass decorated specimen vases (5)

£40 - 60 †

112

A cranberry tinted baluster vase, with frilled rim and clear glass leaf decorated base; a cranberry tinted baluster vase with ribbed decoration and four other various cranberry and decorated posy vases (6)

£40 - 60 †

113

A pair of Latticino style salts, of shaped form; a sweetmeat dish with fold over rim; a plate mounted cranberry sugar shaker; an enamel decorated trinket box and cover; a similar pin dish; and three posy vases (9)

£30 - 50 †

114

A collection of various cranberry punch cups, and liqueur glasses; two pedestal bowls etc. (22)

£30 - 50 †

115

A collection of eight various cranberry and clear glass posy vases, including one with gilt enamel floral decoration (8)

£30 - 50 †

116

Seven green Majolica "Lily" pattern plates, and two vine leaf pattern plates in dark and pale green (8)

£100 - 200 †

117

A collection of 19th Century Spode blue "Italian" pattern dinnerware, to include nineteen dinner plates, six side plates, and five bowls, underglaze blue Spode mark and impressed Spode mark to base (30)

£200 - 300 †

118

A collection of 19th Century Spode blue "Italian" pattern dinnerware, to include seven dinner plates and six side plates, underglaze blue and impress marks to base (13)

£60 - 80 †

119

A Japanese teapot, decorated Geisha and scenic views heightened in gilt with integral strainer, 17cm high

£20 - 30 †

120

A Royal Doulton silver mounted tobacco jar, with figure decoration

£50 - 80 †

121

A Royal Worcester porcelain model of Prince's Grace and foal, modelled by Doris Lindner, limited edition of 750 copies No.634, 24cm long x 21cm high

£200 - 300 †

122

A Royal Worcester model of His Royal Highness Prince Charles on Pan's Folly, by Lorne McKean, limited edition No. 31 of 250 copies, on wooden plinth, 38cm high overall

£250 - 350 †



Lot 104



Lot 105



Lot 107



Lot 121



Lot 122



Lot 123

123
Michael Suttý, porcelain figure 16th (Queens Lancers) £300 - 400 †

124
An unusual glass Cidre decanter, 33cm high £20 - 40 †

125
A 19th Century Chinese blue and white platter, decorated pagodas and river scene, 28cm £20 - 40 †

126
Various 19th Century blue and white plates; and a pair of Wedgwood powder blue cameo decorated plates (16) £20 - 30 †

127
A pair of 18th Century Delft vases, of baluster form having floral decoration, 18cm high £60 - 80 †

128
An ornate 19th Century continental pottery ewer, decorated with a central band depicting a hawking scene beneath a mask decorated scroll handle, raised on circular spread foot, 45cm high £60 - 80 †

129
A pair of masonic heavy glass baluster vases, with hobnail cut bases etched with symbols, 15cm high - one AF; and a 19th Century Masonic mug decorated in gilt with foliage and symbols, 14cm high (3) £100 - 200 †

130
A Delft plaque, depicting winter canal scene with barges and windmills, cartouche shape, 60cm x 67cm overall £100 - 200 †

131
A pair of continental porcelain figures, depicting a shepherdess and huntsman standing in front of floral encrusted trees on naturalistic bases, 25cm high £30 - 50 †

132
A Japanese Imari charger, 31.5cm dia.; and four Japanese Imari scalloped border plates (5) £20 - 40 †

133
A collection of nine 19th Century amber and brown glass claret flagons, some with plated mounts £80 - 120 †

134
A 19th Century oriental scenic decorated plate, in under glaze blue; a 20th Century Chinese bowl decorated with immortals and beast; and a Japanese blue and white bowl (3) £40 - 60 †

135
A Herculaneum - Liverpool part tea service, circa 1810 £80 - 120 †

136
Six blue and white Delft wall tiles, depicting sailing vessels and canal scenes £40 - 60 †

137
A Classical design composition compot, with floral decoration supported on a three cherub base, 22cm high x 23cm dia. £20 - 40 †

138
A pair of late Victorian Doulton baluster vases, having floral spray decoration heightened in gilt, and raised central floral band, 20cm high £20 - 40 †

139
A 19th Century Samson porcelain figure, of a young man in brightly coloured enamelled costume carrying a note raised on Rocaille base, 23cm high £20 - 40 †

140
No Lot

Silver and Plate

141
Three George III silver salts, marks indistinct £60 - 100 †

142
A late Victorian silver trumpet shaped spill vase, all over foliate decoration, weighted base, London 1892, 20cm high £30 - 50 †

143
A Year 2000 cased silver napkin ring; and a 1977 Jubilee Year silver ingot hung to a fine link chain (2) £20 - 30 †

144
A plated baluster coffee pot, by Walker & Hall with presentation inscription; another similar with foliate engraved decoration; an oval plated biscuit barrel with hinged lid on integral base terminating in claw feet; a plated egg cruet; and a four bottle cruet (5) £20 - 40 †

145
A quantity of various plated teaware; an oval plated two handled tray; a salver; a three piece plated cruet etc. £40 - 60 †

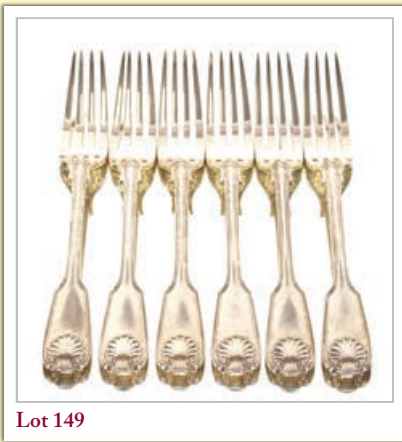
146
Various electroplated ware, to include sauce tureen, entree dishes, salvers etc. £40 - 60 †

147
A pair of 19th Century electroplated wine coolers, of Campana shape, 23cm dia. x 26cm high (one with liner) £300 - 400 †

148
An electroplated Corinthian column table lamp £60 - 100 †



Lot 127



Lot 149



Lot 152

149

A part suite of Victorian "Fiddle and Shell" pattern cutlery, by Francis Higgins, *London 1893*, comprising six table forks, three serving spoons, six dessert forks, six dessert spoons, approx. 52oz
£600 - 800 †

150

An Edwardian silver bowl, having raised foliate decoration on ringed column and circular spread foot by Fattorini of Bradford, *Birmingham 1901*, 15cm dia. x 12cm high
£100 - 150 †

151

A set of six each silver bladed fish knives and forks, the bone handles decorated with a family crest, *Sheffield 1931*; two silver butter knives; a set of six "Onslow" pattern silver teaspoons; seven shell decorated teaspoons; and three others
£60 - 100 †

152

A Danish silver Arts & Crafts spot hammered spoon, by Christian Heise
£100 - 200 †

153

A mid 20th Century silver Tazza, having shaped border and circular spread foot with presentation inscription, *Birmingham 1940*
£30 - 50 †

154

A pair of late Victorian silver dwarf Corinthian column candlesticks, *London 1893*, 15cm high
£100 - 150 †

155

An Edwardian silver three piece tea set, with pierced foliate and gadrooned border decoration, the teapot with wooden handle and lift, *London 1903*, 35oz
£400 - 600 †

156

A continental silver powder box, the hinged lid with enamel decoration of figures in a woodland, opening to reveal silver gilt interior, marked 925, 8cm long
£200 - 300 †

157

An Edwardian silver sugar shaker, with embossed floral scroll decoration, *London 1903*, 14cm high
£60 - 80 †

158

A George V silver inkwell, of elongated capstan shape, *Birmingham 1921*
£40 - 60 †

159

A Georgian toddy ladle, with whalebone twist handle (unmarked); a white metal fish slice AF; and a plated meat skewer / letter opener (3)
£30 - 50 †

160

A small silver cigarette case, by The Goldsmiths & Silversmiths Co. bearing monogram; a silver pill box with foliate engraved decoration; and a 19th Century silver vinaigrette (3)
£60 - 100 †

161

A modern silver mounted timepiece; a silver coaster with wooden base; a white metal hinged box with figural decoration; a silver napkin ring; and a squirrel decorated candle snuffer (4)
£30 - 50 †

162

A George V small silver card tray, by Walker & Hall, having pie crust border and raised on three scroll feet, *Sheffield 1927*, 6oz
£80 - 120 †

163

A pair of George V circular silver bon bon dishes, with pierced and beaded borders, *Birmingham 1923*; a small pair of Edwardian silver heart shaped dishes, with pierced foliate decoration, *Birmingham 1901*; and an oval silver dish with pierced border raised on pad feet (5)
£40 - 60 †

164

Five various George IV, William IV, and Victorian silver dessert forks, of "Fiddle" pattern, approx. 6oz
£80 - 120 †

165

A collection of various Georgian and Victorian flatware, including table spoons, dessert spoons, a tea strainer etc.; and a silver two handled trophy
£60 - 80 †

166

A Victorian pierced silver inkwell, of waisted form, decorated foliate scrolls, central cartouche with family crest, hinged lid surmounted by a foliate finial, blue glass liner AF, *Birmingham 1849*, by the Fox Bros.
£80 - 120 †

167

A cut glass and pewter mounted Art Nouveau claret jug, 30cm high
£40 - 60 †

168

Three George III silver "Fiddle" pattern table spoons, decorated family crest, *London 1810*, approx. 8oz
£60 - 80 †

169

Five William IV silver dessert spoons, *London 1833*; another similar; four various George III silver table spoons; a George III fork; a pair of silver sugar tongs with pierced decoration; a small plain pair; a white metal spoon with mother of pearl bowl etc.
£40 - 60 †

170

A George V silver rectangular drinks tray, probably *Birmingham 1921*, 29.5cm x 21.5cm; and a small modern circular silver dish with gadrooned border, 16oz total (2)
£200 - 300 †

171

A George V oval silver basket, having pierced sides, *Chester 1926*, 10oz, 33cm long
£100 - 200 †



Lot 154



Lot 155



Lot 156



Lot 166



Lot 171



Lot 180



Lot 184



Lot 186



Lot 191

172
A cut glass and silver mounted twin handled bowl, having finely etched decoration, foliate pierced folding hinged lid above entwined handles and raised on scrolled feet, maker William Comyns, *London 1905*, 21cm AF £60 - 100 †

173
A small collection of various silver and enamel decorated dressing table items, (7) £100 - 150 †

174
A late Victorian silver card tray, by The Goldsmiths & Silversmiths Co. having shaped gadrooned border, central monogram, raised on four ball and claw feet, *London 1896*, 7.5oz £80 - 120 †

175
A small silver salver, having presentation inscription relating to Stockport Golf Club 1914, beaded border raised on three claw and ball feet, retailed Finnegan Manchester, *London 1907*, 11oz, 20.5cm dia. £100 - 200 †

176
A set of six George III bright cut silver teaspoons, *London 1788* £40 - 60 †

177
An Art Deco design small silver trophy cup, inscribed A.C.L.F., *Birmingham 1928*; a pair of mid-20th Century small silver trumpet shaped posy vases; a silver napkin ring; a plated similar; two pairs of silver sugar tongs etc. £30 - 40 †

178
A silver sugar bowl, *London 1924*; a circular silver bon bon dish with pierced border, *Sheffield 1927*; a plain silver baluster Christening mug *Birmingham 1926*; and a silver tea strainer on stand, *London 1919* (4) £60 - 80 †

179
A silver sauce boat on stand, *Birmingham 1927*; a George III silver cream jug, raised on hoof feet, *London 1804*; and a George V silver cream jug, *London 1926* (3) £80 - 100 †

180
A silver jewellery box, in the form of a table the drawer sliding open to reveal blue velvet lined interior, maker William Comyns, *London 1901*, 15cm wide, 9.5oz total weight £200 - 400 †

181
An Edwardian silver crumb scoop, having bone handle engraved with monogram *Sheffield 1909*; and a silver mounted shoe horn (2) £40 - 60 †

182
A Sheffield plated wine funnel; a pair of antique plated scissor action sugar nips; and five 19th Century silver teaspoons £30 - 40 †

183
A collection of eight silver and plated cruet items £40 - 60 †

184
A George III silver six place egg cruet, complete with spoons, *London 1810* £200 - 300 †

185
Six Hallmarked Chanuka cups £160 - 200 †

186
A Victorian silver and crocodile leather mounted hip flask, *Sheffield 1888* £180 - 220 †

187
A large quantity of electroplated cutlery, including a quantity of "Rat Tail" pattern, "Kings" pattern, "Onslow" pattern, Elkington flatware, bone handled fish knives and forks etc. £60 - 100 †

188
Two electroplated soup ladles; and six various sauce ladles £20 - 40 †

189
A Stilton scoop, with ivory handle; two pairs of plated grape scissors; and a pair of plated tongs £30 - 50 †

190
A heavy cut glass powder bowl, with silver lid, having engine turned decoration £30 - 40 †

191
A George IV silver Kings pattern part canteen of cutlery, comprising six large table forks, four large table spoons, six dessert forks, five dessert spoons, eight teaspoons, four gilded bowl spoons, associated dessert spoons, dessert fork and teaspoon maker probably William Eaton, *London 1829*, approx. 90ozs £600 - 800 †

192
A pair of George III silver sauce ladles, *London 1819*; a pair of Georgian bright cut sugar tongs; a pair of modern silver mote spoons; three later decorated Georgian berry spoons etc. £100 - 150 †

193
A silver mounted easel photograph frame; and another with engine turned decoration Hallmarked for Birmingham (2) £40 - 60 †

194
A George III silver fish slice, of fiddle pattern having pierced blade, maker possibly Thomas Streetin, *London 1810* £20 - 30 †

195
A silver photograph frame, having heart shaped aperture with pierced cherub surround, maker William Comyns & Son, *London 1897*; a .800 mark pin dish; a silver hand mirror; and a plated egg cup (4) £30 - 50 †

196
A collection of various silver and plated napkin rings, a pair of plated and cut glass salad servers; a set of six each mother of pearl handled fruit knives and forks; a pair of cut glass and silver mounted knife rests (incomplete); various nominal silver and plated items etc. £60 - 100 †

- 197**
A late Victorian silver treffid end fork and spoon, *London 1895*; and two others *Sheffield 1928* (4) £40 - 60 †
- 198**
Nine seal end silver teaspoons, *Sheffield 1923*; a cased set of six silver teaspoons by Edwin Viner; and numerous other silver teaspoons £60 - 80 †
- 199**
Various glass and silver mounted scent bottles, tidy jars, silver mounted nail buffer, and various other manicure items etc. £100 - 150 †
- 200**
A silver engine turned cigarette case, having presentation inscription and initials; and another of Art Deco design, initialled (2) £40 - 60 †
- 201**
A pair of George III silver serving spoons 1798, with bright cut decoration and monogram by Peter and Anne Bateman; and two other George III table spoons 1804 (4) £40 - 60 †
- 202**
An 18th Century silver tea caddy, of bomb shape with shell and foliate decoration, the detachable lid with fruit and leaf finial, marks indistinct, but probably by Albartus Schurman; and an unassociated George III silver caddy spoon (2) £200 - 300 †
- 203**
A pair of Edwardian silver mounted glove stretchers, with rich embossed foliate decoration, *London 1902*; a Sterling silver backed hand mirror, decorated foliate scrolls; and three other items of silver backed dressing table ware (5) £60 - 100 †
- 204**
A Victorian ruby glass and silver mounted scent bottle, having soiled snake decoration inset with red stones, *Birmingham 1898*; a cut glass and ruby flash scent bottle, the hinged lid inset with a faceted glass roundel; a green tinted rouge pot with silver mount; and a white metal overlaid pink tinted scent glass (4) £60 - 100 †
- 205**
A pair of George V silver pedestal bon bon dishes, *Birmingham 1910*; and a swing handled bon bon dish, *Birmingham 1907* (3) £40 - 60 †
- 206**
A pair of Edwardian heavy cut glass scent bottles, of waisted form, hobnail cut bases with silver foliate embossed mounts, *Birmingham 1902*, 14cm high £100 - 150 †
- 207**
A set of four silver decanter lables, for "Noyeau", "Brandy", "Rum", "Liqueur", maker possibly John Reiley, *London 1815* £40 - 50 †
- 208**
An Edwardian miniature silver playing card box, with foliate engraved decoration, *Birmingham 1903*, 6cm high; complete with contents of playing cards £40 - 60 †
- 209**
A silver sugar shaker, of baluster panelled form, 17.5cm high, *Birmingham 1960* £40 - 60 †
- 210**
An Edwardian silver Art Nouveau dressing table tray, having central decoration of a maiden amongst flowers, gadrooned border, 29cm x 19cm, *Birmingham 1906* £60 - 100 †
- 211**
A continental white metal needle case, with hatched decoration and vacant cartouche; a pair of silver cased folding scissors, *London 1898*; various silver handled and other manicure items; button hooks; and two silver bladed and mother of pearl handled pen knives £40 - 60 †
- 212**
A silver mounted Art Nouveau design brush, *London 1901*; a silver handle shoe horn; and a dwarf silver candlestick AF (3) £20 - 30 †
- 213**
A Victorian silver card case, having foliate decoration, *Birmingham 1873* £40 - 60 †
- 214**
A late Victorian silver helmet shaped cream jug, and matching sugar bowl, *Sheffield 1896* (2) £60 - 80 †
- 215**
Three various silver trumpet shaped spill vases £40 - 60 †
- 216**
A Victorian silver baluster christening mug, with raised foliate embossed decoration and central cartouche with inscription, *London 1859*, maker George Eames £60 - 80 †
- 217**
An Edwardian horn and silver mounted beaker, 10cm high £20 - 40 †
- 218**
A pair of Victorian silver asparagus servers, by George Adams, *London 1967* £80 - 120 †
- 219**
A pair of cased silver napkin rings, with engine turned decoration; another pair with raised foliate decoration; and a single cased napkin ring with engine turned decoration and monogrammed cartouche (5) £30 - 60 †
- 220**
A heavy white metal and enamel decorated bangle, with stylised motifs; and a white metal filigree work and hardstone set bangle (2) £30 - 50 †
- 221**
A 19th Century white metal retractable pencil, set faceted stone to the terminal; a silver cased propelling pencil; and two silver decanter labels for "Port" and "Sherry" (4) £40 - 60 †



Lot 202



Lot 209



Lot 213



Lot 216



Lot 229

222

A set of six George V silver coffee spoons, Birmingham 1936; and another odd silver spoon (7) £20 - 30 †

223

Georg Jensen, Denmark, a silver handled stainless steel bottle opener £40 - 60 †

224

A Victorian silver sardine server, by James Dixon, Sheffield 1896 £20 - 40 †

225

A cased set of four late Victorian silver napkin rings, initialled "R" with foliate decoration £30 - 50 †

226

A pair of late Victorian cased silver napkin rings, having foliate decoration, Sheffield 1899; and another pair having foliate shaped borders, London 1909 £40 - 60 †

227

A plated Goliath pocket watch, in spot hammered silver travelling case, monogrammed cartouche dated 1880-1905, Birmingham 1903 (2) £60 - 100 †

228

A good quality late Victorian glass and silver mounted inkwell, having hobnail cut base, the hinged lid decorated with a monogram by John Grinsell & Sons, Birmingham 1890 £60 - 80 †

229

A late Victorian silver Christening mug, having foliate decoration and monogram cartouche by Edward & John Barnard 1867, 6.5oz £80 - 120 †

230

A late Victorian silver cylindrical vase, having raised foliate decoration and circular spread foot, retailed by the Goldsmiths and Silversmiths Co. 15cm high, London 1891 £80 - 120 †

231

A collection of various silver napkin rings, including a pair of filigree work examples by Edward Hutton, London 1889 etc. 18oz £150 - 200 †

232

A collection of various silver napkin rings, 14oz £100 - 150 †

233

A collection of various silver napkin rings, 16oz £150 - 200 †

234

A late Victorian silver dressing table tray, having rich foliate embossed decoration of cherubs and foliage, vacant central cartouche, 25.5cm x 15cm, 6oz £80 - 120 †

235

A Victorian silver butter knife, Sheffield 1849; a silver Christening spoon, fork and knife by Edward Hutton, London 1879; a silver pickle fork with bone handle Sheffield 1882; a pair of miniature silver sugar tongs; a silver sauce ladle etc. £80 - 120 †

236

A late Victorian silver card tray, having shaped beaded and shell border, foliate engraved reserve, initialled C.A.B., makers William Gibson & John Longman, London 1898, 26.5cm dia. 16oz £150 - 200 †

237

An Edwardian silver watch chain, Birmingham 1902, hung with a silver fob inscribed Hampton Hill & District Poultry & Rabbit Association Birmingham 1930; another watch chain with T bar; and a modern silver identity bracelet inscribed "Rob" £60 - 100 †

238

A late Victorian silver page mark, in the form of a miniature trowel, maker Chrisford & Norris Ltd, Birmingham 1896 £30 - 50 †

239

A small late Victorian silver pin dish, decorated in the "willow" pattern, maker William Neal, Birmingham 1892, 9.5cm dia. £20 - 30 †

240

A finely modelled study of a wart hog, 7.5cm long; a white metal model of a turtle; and another of a "Scottie" dog (3) £40 - 60 †

241

A set of six George V silver coffee spoons, London 1927; various souvenir spoons etc. (11) £40 - 60 †

242

A collection of silver ARP badges, including a miniature example by Charles Horner (8) £80 - 120 †

243

A late Victorian silver cased pen knife, with embossed decoration, Birmingham 1899; a late Victorian silver bladed and mother of pearl handled pen knife; a silver cased pen knife with steel blades by Walker & Hall; and another Victorian example inscribed "Watty" AF (4) £40 - 60 †

244

A Victorian small side pouring brandy saucepan, with gilded interior and turned ivory handle, London 1871, on later spirit heater stand £80 - 120 †

245

A pair of Victorian horn and silver mounted beakers, by H T Miles of Piccadilly, London 1870, 12cm high £80 - 120 †



Lot 230



Lot 236



Lot 239



Lot 246

246
A late Victorian silver jardinière by Walker & Hall, having rich foliate embossed decoration and vacant cartouche, baluster shaped beneath a crimped border, *Birmingham 1899*, 20.5cm dia. x 16cm high, 22oz £250 - 300 †

247
A late Victorian silver rose bowl, with shaped rim, decorated embossed masks, and trailing leaves raised on a circular spread foot, *London 1901*, 32cm dia. 21cm high, 50oz £600 - 800 †

248-249
No Lots

Jewellery

250
A bone and yellow metal stick pin, in the form of a skull £50 - 80 †

251
A string of cultured pearls, 128 approx. length 50" £30 - 50 †

252
A large 48 bead agate necklace; a Zodiac pendant necklace; an agate necklace; a coral necklace; a small agate and silver necklace; and a shell cameo £60 - 80 †

253
A 1930's graduated pearl necklace, with yellow metal clasp, 55cm long overall £600 - 800 †

254
A large carved amber pendant, with yellow metal ring approx. 6cm x 4cm £60 - 80 †

255
A large silver and amber brooch, approx. 6.5cm x 4cm £80 - 120 †

256
An amber and silver brooch, approx. 4cm x 2.6cm; and an amber pendant (2) £60 - 80 †

257
An amber oval bead necklace £80 - 120 †

258
An amber egg, approx. 4cm x 3cm £60 - 80 †

259
A fine quantity Victorian Memorial hair bracelet, with oval central piece containing a design of hair in fronzé, (tested high carat possibly 22ct) £200 - 300 †

260
Two silver Scottish brooches, one with Celtic motif, the other inset with mauve stone £60 - 80 †

261
A white and yellow metal brooch, with Pietra Dura panel; a 9ct gold locket; a yellow metal brooch in the form of a clam shell, with pearl; a yellow metal and seed pearl memorial brooch, with initials verso; a pair of amber and yellow metal mounted drop ear-rings; and two pairs of stud ear-rings £100 - 200 †

262
An 18ct gold signet ring, 8gms; a thin 22ct gold wedding band, 1gm; and a platinum wedding band 2.5gms (3) £250 - 350 †

263
An 18ct gold snap bangle, of entwined design, approx. 17gms £400 - 500 †

264
A yellow metal and pearl set flower head brooch, approx 8gms; and a 925 silver and polished stone oblong brooch £100 - 150 †

265
A white metal and sapphire diamond set eternity ring, approx. total weight 3gms £200 - 300 †

266
An Art Deco white metal diamond and sapphire set brooch, approx. 9gms total weight £1,000 - 1,500 †

267
A 1927 sovereign £300 - 350 †

268
A 1911 sovereign £300 - 350 †

269
A 9ct gold snap bangle, approx. 11gms £100 - 200 †

270
A 9ct gold signet ring, monogrammed; a smaller similar; a 9ct gold tie clip; a 9ct gold bar brooch decorated with a sailing boat; two pairs of 9ct gold cuff-links; a silver money clip, weighable gold approx. 32gms; and a pair of yellow metal stud earrings £500 - 600 †

271
A 9ct gold cased Accurist wrist watch, a rolled gold necklace and cuff-links etc. £60 - 80 †

272
A 9ct white gold bar brooch, with leaf and pearl decoration, approx. 3gms; a 15ct gold pearl set bar brooch; a small string of pearls; and an enamel box with a piece of raw amber (4) £80 - 120 †

273
A white metal ring, set with a 1carat diamond and chip shoulders, 2.5gms total weight £400 - 600 †

274
An 18ct white gold and diamond cluster ring, set central oval diamond, 3gms total weight £400 - 600 †



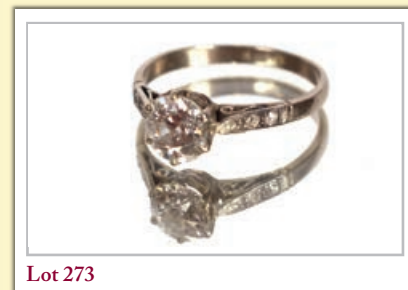
Lot 247



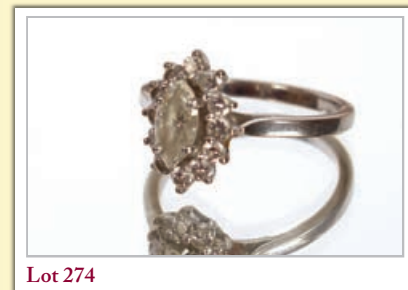
Lot 263



Lot 266



Lot 273



Lot 274



Lot 275

275
A white metal ring, set ½ carat diamond, flanked by baguette cut diamonds £200 - 400 †

276
A yellow metal ring, set three diamonds; and an 18ct platinum, diamond and red stone set ring (2) £300 - 400 †

277
A plated hat pin stand; and a small wooden hat pin stand and contents of various decorative hat pins £20 - 40 †

278
A tray of various costume beads, pendants etc. £40 - 60 †

279
A tray of various agate and other necklaces, bracelets etc. £40 - 60 †

280
Two fitted modern jewellery boxes and contents, to include diamanté and marquissette brooches, necklaces, and clips; various agate and other items; costume jewellery etc. £100 - 200 †

281
A collection of jade and other hardstone jewellery, including graduated necklaces and ear-rings £100 - 200 †

282
A large collection of various jet beads, and brooches etc. £100 - 200 †

283
A set of graduated ivory beads; various other carved bone and ivory necklaces, bangles; a cinnabar lacquer bangle etc. £100 - 200 †

284
An antique graduated crystal necklace, set to a 9ct gold clasp; a blue hardstone triple strand necklace; various other hardstone necklaces etc. £100 - 200 †

285
A collection of various coral necklaces; two unusual coral twist bangles; a pair of yellow metal and coral drop ear-rings etc. £100 - 150 †

286
A collection of various amber and amber coloured necklaces; an amber pendant hung to a fine link chain; various other pendants; yellow metal mounted drop ear-rings etc. £100 - 200 †

287
A collection of four simulated pearl necklaces, some with silver clasps; and other necklaces etc. £20 - 40 †

288
A yellow metal ring, inset cabochon mauve stone; a paste set yellow metal brooch; and a silver watch chain having Maltese Cross fob £150 - 250 †

289
A late Victorian black enamel and yellow metal locket brooch, with monogrammed decoration £40 - 60 †

290
An 18ct gold wrist watch, inscribed to the back plate "From Mother to Florence, 1916"; and a 9ct gold ladies wrist watch with Roman numeral enamelled dial (2) £40 - 60 †

291
A 9ct gold pocket watch, with white enamel Roman numeral dial, and seconds subsidiary £40 - 60 †

292
A plated pocket watch, by Waltham Massachusetts, the back plate with yellow metal inlaid motif of a dog £20 - 40 †

293
A yellow metal chain, marked 750 with repair and later clasp link £30 - 50 †

294
An 18ct gold ring, set with two sapphires £160 - 200 †

295
A 14ct white gold tourmaline set ring £90 - 120 †

296
An 18ct gold sapphire and two diamond ring £270 - 350 †

297
An 18ct gold three stone diamond ring £120 - 150 †

298
A silver ring set with large green stone £20 - 30 †

299
A silver leaf and amber ring £25 - 50 †

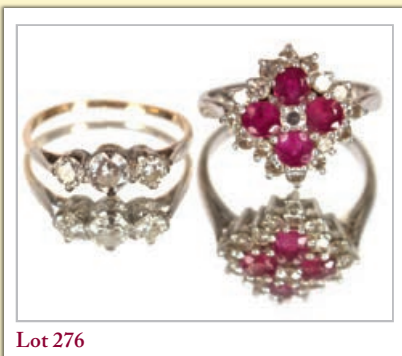
300
An 18ct gold diamond ring £100 - 150 †

301
An 18ct gold twist diamond set ring £120 - 150 †

302
A 9ct gold fine link necklace, hung with 9ct gold and white metal cuff-link type discs £60 - 100 †

303
A 9ct gold necklace, with double attachment and barrel clasp; and a small 9ct gold bracelet, 15.7gms £200 - 300 †

304
A 9ct gold mounted cameo brooch pendant, hung to a yellow metal fine link chain; a pair of cameo ear-rings; and a 9ct gold mounted cameo bracelet £40 - 60 †



Lot 276



Lot 291



Lot 313

- 305**
A Millefiori decorated pendant, hung to a yellow metal chain £60 - 80 †
- 306**
A 9ct gold bracelet, having elongated twist links £40 - 60 †
- 307**
A 9ct gold bracelet, with cross decoration and padlock clasp, 17.8gms £200 - 300 †
- 308**
A 9ct gold necklace, with twist elongated links, 14gms £180 - 220 †
- 309**
A 9ct gold circular foliate engraved locket, hung to a fine link chain, approx. 10.4gms £150 - 200 †
- 310**
A 9ct gold bar brooch, with heart shaped motif; a seed pearl set bar brooch; various other brooches and stick pins; a 9ct gold T bar; a 9ct gold pendant etc. £150 - 200 †
- 311**
An agate pendant, set to a 9ct gold chain with barrel clasp £60 - 80 †
- 312**
A 9ct gold snap bangle, with foliate engraved decoration, 26gms £300 - 400 †
- 313**
An 18ct gold ring, set with large central coral flanked by two diamonds £300 - 400 †
- 314**
An 18ct gold six stone diamond and sapphire ring £160 - 250 †
- 315**
A set of graduated cherry amber beads £100 - 150 †
- 316**
A pair of cased 9ct gold shirt studs; a pair of yellow metal clip on leaf decorated pendant earrings; a fine link chain set seed pearl and red stone pendant; a silver Christening bangle; a white metal pill box; another etc. £60 - 80 †
- 317**
A 15ct gold triform shaped pendant, set central emerald coloured stones surrounded by seed pearls, hung to a fine link chain, 6.5gms overall £100 - 150 †
- 318**
A yellow metal oblong pendant, hung to a 9ct gold chain, approx. 13.4gms £150 - 200 †
- 319**
A yellow metal cased gents pocket watch, hung to a brass easel stand with cherub decoration £40 - 60 †
- 320**
A Victorian 18ct gold fob watch, with foliate engraved case, contained in a ruby tinted glass watch case, having gilt metal mounts £200 - 300 †
- 321**
An 18ct white gold single ruby ring £180 - 220 †
- 322**
An 18ct aquamarine and diamond set ring £160 - 200 †
- 323**
An 18ct gold and coral set ring £160 - 200 †
- 324**
An 18ct gold three stone diamond ring £160 - 200 †
- 325**
An 18ct gold diamond cluster with large central stone, £160 - 200 †
- 326**
A gold bead and sapphire set bracelet £100 - 150 †
- 327**
An ornate gold pocket watch key £40 - 60 †
- 328**
Three Scottish brooches, one set with two stones £60 - 80 †
- 329**
A silver and enamel "Pixie" ring £15 - 20 †
- 330**
A silver and turquoise Navajo ring, inset with large stone £30 - 50 †
- 331**
A late 18th Century tortoiseshell and piqué work pocket watch, verge movement by James Exelby of London; together with a yellow metal pocket watch face, and three winding keys £200 - 400 †
- 332**
No Lot

Objects and Collectables

- 333**
A tortoiseshell and ivory trinket casket, (one foot missing); an ivory note book; a 9ct gold cigar cutter; a leather cased quill sharpener; and a silver bladed pen knife etc. £60 - 80 †
- 334**
A Victorian brass pocket barometer, by James Pitkin of London, inscribed verso on the case "F.J.Potter 1865" £40 - 60 †
- 335**
A brass hinged snuff box, the lid with pseudo dials; and a small brass folding vesta case (2) £20 - 40 †



Lot 315



Lot 317



Lot 327



Lot 331



Lot 334



Lot 336

336
A Victorian satin wood and rosewood stationery casket, of wedge shape with sloping lid, decorated in the Tunbridge manner, 17cm wide x 12cm high
£60 - 80 †

337
A Victorian rosewood satin wood and Tunbridge ware inlaid tea caddy, 13.5cm wide x 12cm high
£40 - 60 †

338
A 19th Century French gilt metal and porcelain panel carriage timepiece, the panels decorated romantic scenes, 15cm high
£100 - 200 †

339
A Staunton boxwood and ebony chess set, by Jaques of London in mahogany baize lined box
£100 - 200 †

340
Newbury Abbot Trent October 1885-August 1953, bronze figure of a seated child holding a hat, inscribed to the side N.A.Trent 1915, on a green marble plinth 9cm long x 16cm high
£300 - 400 †

341
A cased presentation plated trowel, relating to the laying of the foundation stone of the New Volunteer Lifeboat House in Gorleston, 10th August 1889, having turned ivory handle, 33cm long
£40 - 60 †

342
A Chinese carved Fluorite figure, of a maiden 19cm high; and a white hardstone figure of a Kylin, 9cm high (2)
£80 - 120 †

343
A vintage wax seal set, in leather case
£20 - 40 †

344
A finely carved Oriental ivory puzzle ball, raised on tall stand with turned column, rock work and pagoda base
£100 - 200 †

345
A small collection of Chinese mother of pearl gaming counters, mother of pearl buttons etc.
£30 - 50 †

346
A 19th Century brass cased drum clock, with eight day movement, Paris maker having visual platform escapement, 31cm high overall AF
£20 - 30 †

347
A Mouseman carved oak napkin ring
£20 - 40 †

348
A Mouseman carved oak bowl, 15cm dia.
£60 - 80 †

349
A Mouseman carved oak bowl, 15.5cm dia.
£60 - 80 †



Lot 337



Lot 338



Lot 339

350
A Victorian satinwood and Tunbridge ware decorated oblong jewellery box, the domed lid decorated with central scene of a house, 24cm long x 10cm deep
£60 - 100 †

351
A tortoiseshell card case; a tortoiseshell and leather needle case; a plated boot shaped pin cushion; a Victorian circular pin cushion with reverse print on glass of Netley Abbey with a mirror verso; a treen tape measure etc.
£60 - 80 †

352
A mahogany and bone mounted thimble stand, and various silver and white metal thimbles
£40 - 60 †

353
A Victorian ivory cased Stanhope viewer, in the form of an umbrella; various ivory and bone sewing items, bobbins etc.
£40 - 60 †

354
A quantity of various sewing items, including needle and crochet hook cases, pin cushions, mother of pearl buttons etc.
£20 - 40 †

355
An inlaid Tunbridge ware type pin cushion, of sarcophagus shape bearing label verso "Bedwells Furnishing Warehouse, Colchester"; various other Tunbridge type boxes and pin cushions; a similar clothes brush; and a stamp box (8)
£80 - 120 †

356
A 19th Century mother of pearl visiting card case
£40 - 60 †

357
An antique treen shoe snuff box, 10cm long
£60 - 80 †

358
An Eastern brass scribes case, with engraved decoration, 22cm
£30 - 50 †

359
A mother of pearl playing card case, fitted with four compartments and plush lined interior, 24.5cm
£40 - 60 †

360
A rare and interesting photographic deployment album, for the Far East, circa.1930 for H.M.S. Suffolk
£700 - 900 †

361
A fancy spoon, with mother of pearl bowl and pierced shell handle; a white metal spoon with coiled handle inscribed "Nagasaki"; a mother of pearl and white metal Misers purse; a chain link sovereign purse; a pair of folding Pinz Nez in leather case for George Spillar, Wigmore Street, London; and four gilt metal decorative napkin rings
£40 - 60 †

- 362**
A circular turned wooden pot, with detachable lid containing a rolled paper Islamic scroll, 10cm high
£20 - 40 †
- 363**
A mother of pearl card case; and a papier-mâché and mother of pearl inlaid similar
£50 - 80 †
- 364**
An R.M.S. Celtic White Star Line paperweight
£60 - 80 †
- 365**
A rare and unusual miniature brass plane, WW1 period with German markings, purportedly made by German Prisoner of War from of downed aircraft with supporting paperwork
£180 - 220 †
- 366**
A miniature Teddy Bear, seated on a metalwork chair, 9cm high
£20 - 30 †
- 367**
A carved ivory purse; and an Oriental carved and pierced ivory needle case
£50 - 80 †
- 368**
A white metal Masonic Order, cased; and a silver gilt example for the Royal Antediluvian Order of Buffalo's (2)
£20 - 30 †
- 369**
A quantity of various lace and other textile trimming, vintage cottons and silks, and other sewing items
£20 - 40 †
- 370**
A Japanese carved ivory figure of a street vendor, AF; an Indian ivory processional group AF; various other carved ivory items; and a Chinese hardstone miniature vase of Gu shape etc.
£40 - 60 †
- 371**
A collection of various miscellaneous wooden items, including native figure, model of a canoe, coconut vessel, various ethnic items and a drinking horn etc.
£40 - 60 †
- 372**
A USA proof set 1977, of one cent to one dollar (6 coins), plus one dollar Liberty
£20 - 40 †
- 373**
Sixteen silver and enamel topped spoons, approx. 8oz
£80 - 120 †
- 374**
Three silver and enamel decorated nail manicure buffs
£35 - 50 †
- 375**
Miscellaneous lot of coinage, to include 1/3rd shilling Jersey 1861; a 1/20th shilling Jersey 1894; and another for 1966; Hibernia coin etc.
£30 - 50 †
- 376**
A silver pendant, set with large stone; and another
£35 - 50 †
- 377**
An 18th Century horn beaker, 3.4cm dia.; and another similar 3.5cm dia.
£75 - 100 †
- 378**
Two Oriental bronze incense burners, 12cm high and 9cm high
£65 - 80 †
- 379**
An 18th Century horn beaker, 5.5cm dia.; and another 3.5cm dia.
£75 - 100 †
- 380**
A carved sandalwood figural chess set, King / Elephant approx. 9cm high, in original box
£100 - 150 †
- 381**
An unusual compass, in cube stand approx. 6cm x 4.5cm
£30 - 50 †
- 382**
A miniature German Pickelhaube, approx. 2cm x 1.5cm; a mother of pearl and silver pen knife, *Sheffield 1885*; and an 18th Century silver cross
£50 - 80 †
- 383**
A WW1 German Iron Cross with ribbon, 1913-14
£65 - 80 †
- 384**
A WW1 German Iron Cross 2nd Class, with ribbon
£45 - 60 †
- 385**
A WW1 German Iron Cross 2nd Class, with ribbon
£65 - 80 †
- 386**
A WW1 German Iron Cross 2nd Class, with ribbon
£65 - 80 †
- 387**
An interesting WW2 German Besitzzeugnis, to Leonhard Peters 3-SS Gren. Ausb. U. Er. BTL 1 for Fifty Hand-to-Hand Operations with SS photo of the same; together with two WW1 military post-cards
£50 - 80 †
- 388**
A cased ebony and silver mounted conductor's baton, 51.5cm long, Hallmarked for *London 1911*
£100 - 150 †
- 389**
An unusual Romanesque grotesque head ornament, possibly sandstone 27cm high
£60 - 80 †
- 390**
A stump work style embroidered sewing cabinet, with lifting top compartment and interior drawers enclosed by a pair of figure decorated doors, and contents including various costume jewellery, embroidered purses etc.
£80 - 120 †



Lot 342



Lot 347



Lot 349



Lot 350



Lot 390



Lot 391

391
A 19th Century Indian white metal jardinière, having raised decoration of figures and foliage, the base engraved with a pheasant amongst flowers, 15cm dia. overall x 8.5cm high £40 - 60 †

392
A Chinese snuff bottle, decorated with figures in an exotic garden (stopper missing); and a jade white metal mounted brooch of small size (2) £40 - 60 †

393
A pair of blue cloisonné baluster vases, having floral decoration, 16cm high; a green ground similar 12cm high; various other items of cloisonné ware (mostly damaged) (7) £60 - 80 †

394
A Chinese jade and silver bowl, marked to base £60 - 80 †

395
A 19th Century Chinese slender bronze vase, with applied mythical beast decoration; a Chinese Carnelian carving of Guan Yin riding a carp; and a green hardstone carving of a young maiden (3) £60 - 100 †

396
A late 18th / early 19th Century blue ground enamel box, decorated with flowers in a vase, probably Battersea, 8.5cm wide £70 - 100 †

397
A 19th Century Ottoman sherbet spoon; and an Ottoman silver coffee cup with blue glass liner; and a Middle Eastern green hardstone canister with brass fittings (3) £50 - 80 †

398
A Sino Tibetan large seated brass Buddha, inset with coloured semi-precious stones, 45cm high £350 - 450 †

399
A Tibetan bronze and gold splash kneeling figure of a priest at prayer, dark brown patination, 24cm high £100 - 200 †

400
An antique mother or pearl box; and an oval agate box with brass and enamelled sides (2) £40 - 60 †

401
A 19th Century English wide rack "Kings" corkscrew, the bronze barrel with lion and unicorn badge marked "Dowler Patent" £80 - 120 †

402
A small carved plaster plaque, having relief classical decoration in brass frame, 12.5cm dia. £20 - 40 †

403
A fine 19th Century miniature watercolour, head and shoulders portrait of a young lady, in ornament brass and shell inlaid frame £150 - 250 †

404
A fine late 18th / early 19th Century stained bamboo brush pot, carved with fisherman on a lake in a mountainous landscape, old collection label to base 16cm high £250 - 450 †

405
A Roman bronze belt buckle, in the form of a horse; and two Romano erotic bone cloak pins (3) £100 - 150 †

406
An antique Chinese white jade belt hook, forming part of an ornate enamel on copper libation cup, finely decorated side and calligraphy to the base £150 - 250 †

407
Three various Victorian walnut and rosewood sewing boxes £40 - 60 †

408
A Victorian rose wood and mother of pearl inlaid sewing box, and various contents, 30cm wide £40 - 60 †

409
A Victorian burr walnut and Tunbridge ware inlaid sewing box, 29.5cm wide £40 - 60 †

410
A 19th Century mahogany and boxwood strung sewing or jewellery box, the lid surmounted by a brass basket of fruit motif and ring handle raised on bun feet, 26.5cm wide £60 - 80 †

411
A 19th Century Coromandel brass inlaid jewellery box, having interior compartments and two secret sprung drawers, 30.5cm wide £60 - 100 †

412
An antique wooden maize bowl; and an unusual paperweight in the form of a drawer front (2) £30 - 50 †

413
A 19th Century brass and steel hearth stand, with wooden handle; and a collection of various other brass trivets and hearth stand (8) £40 - 60 †

414
A collection of various Indian brass trays; jardinière etc. (7) £40 - 60 †

415
An ornate brass desk stand, with foliate embossed decoration; another similar and various other desk top items (7) £40 - 60 †

416
A small French porcelain headed doll, dressed in lace trimmed dress and bonnet on stand, 25.5cm high £40 - 60 †



Lot 396



Lot 398



Lot 399

417
A large Armand Marseille porcelain headed doll, wearing lace trimmed dress and straw hat
£80 - 120 †

418
An Armand Marseille porcelain head doll, in lace trimmed Christening dress and bonnet
£80 - 120 †

419
A large Armand Marseille porcelain headed doll, in lace trimmed bonnet and Christening dress; together with a spare pair of leather shoes
£100 - 200 †

420
A 19th Century engraved ruby goblet, in gilt figure decorated stand, 17.5cm high; and a gilt tripod stand with rams head mask decoration, 16cm high (2)
£80 - 120 †

421
Three pairs of 19th Century gilt bronze Corinthian column candlesticks, having shell decorated bases terminating in claw supports; two pairs stamped for Elkington & Co. possibly Exhibition Period
£450 - 650 †

422
A 19th Century mahogany and ebony strung trinket box, of bow fronted form raised on gilt scrolled feet, 23cm
£40 - 60 †

423
An Edwardian wax work figure, of a fisherman under glass dome, 27cm high overall
£30 - 50 †

424
A 19th Century Grand Tour bronze Napoleonic column, 24cm high; and a Regency bronze China man candlestick 22cm high (2)
£80 - 120 †

425
A Folk Art spice box, having raised floral decoration and stepped lid, surmounted by a finial, 34cm high
£60 - 80 †

426
A 19th Century bronze bust, of a lady raised on a black wood plinth, 45cm high
£80 - 120 †

427
A cast iron door stop, depicting Mr Sloper, 29.5cm high; and a cast iron dog door stop 17cm high (2)
£30 - 50 †

428
A mid-20th Century Noah's Ark model, and contents
£60 - 80 †

429
Two late 19th / early 20th Century carved alabaster figures of seated maidens, 20cm high
£60 - 80 †

430
A 19th Century mahogany swing toilet mirror, raised on a turned column and circular spread foot, 43.5cm high
£80 - 120 †

431
A 19th Century mahogany candle box; and an Aspreys book stand with inlaid decoration (2)
£40 - 60 †

432
A 19th Century papier-mâché tray, decorated gilt and painted foliate sprays, 79cm x 60cm
£40 - 60 †

433
A 19th Century carved fruit wood pediment, with cherub and acanthus decoration, 38cm long x 21cm high
£40 - 60 †

434
A 19th Century wooden ship diorama, of triangular form, 54cm wide x 28cm high
£80 - 120 †

435
A Victorian Toleware sugar canister, 42cm high
£60 - 80 †

436
A pair of Folk Art decorated tall pricket candlesticks, 74cm high
£40 - 60 †

437
An Edwardian mahogany stationery box, having sloping lid and partitioned interior
£60 - 80 †

438
A Victorian porcelain and brass mounted oil lamp, having gilt Fleur de Lys decoration on a pink ground, 85cm high
£80 - 120 †

439
A sampler, depicting house, figures, birds trees etc. worked by Elizabeth Watts, Mrs Bailey's School, Blagden, Somerset 1839, provenance from the collection of Lady St. John Hope
£250 - 350 †

440
A 19th Century rosewood sarcophagus shaped tea caddy, having single compartment and glass mixing bowl, mother of pearl escutcheon raised on bun feet, 25.5cm wide
£100 - 150 †

441
A Georgian mahogany three compartment tea caddy, the hinged lid fitted with a brass handle, 28cm wide
£60 - 80 †

442
A 19th Century Swiss music box, playing eight airs, 43cm
£200 - 300 †

443
A Chinese carved soapstone figure, of a sage, 35.5cm high
£20 - 40 †

444
A late Victorian carved walnut circular barometer, 24cm dia.
£20 - 40 †



Lot 420



Lot 421



Lot 422



Lot 440

- 474**
A collection of ten various antique copper jelly moulds *£100 - 200 †*
- 475**
Three antique copper baluster measuring jugs, half pint, one gill and half a gill *£30 - 50 †*
- 476**
Two antique copper and brass ice cream pails; and two copper moulds (4) *£40 - 60 †*
- 477**
Three graduated copper measures, with iron loop handles for cider *£20 - 40 †*
- 478**
A circular copper colander; an oval copper and brass two handled jardinière; a copper scoop with turned wooden handle; and a copper dog bowl (4) *£30 - 50 †*
- 479**
Three graduated copper pots, of waisted form with iron swing handles *£30 - 40 †*
- 480**
Four various treen butter markers; a butter marking wheel; a lemon juicer; pastry cutters etc. *£60 - 80 †*
- 481**
Three graduated copper measures, with brass loop handles, two pint, one pint, and half pint *£20 - 40 †*
- 482**
An antique copper frying pan, with brass handle; two others with iron loop handles; and a copper kettle (4) *£40 - 60 †*
- 483**
A Scandinavian Folk Art painted box, 29cm *£20 - 40 †*
- 484**
A 19th Century rosewood brass and mother of pearl inlaid trinket box, by I Turrill Dressing and Writing Case Maker, 250 Regent Street, retailed by Williams & Co. New Bond Street, the interior incomplete *£20 - 40 †*
- 485**
A brass and champleve enamel striking carriage clock, with repeat movement 19cm high *£100 - 150 †*
- 486**
A fine 19th Century French brass and Ormolu mantel clock, the circular white enamel dial with blue Roman numerals, eight day movement striking on a bell, 30cm high *£200 - 300 †*
- 487**
An Eastern brass temple style bell, having foliate beast and figure decoration, 38cm high; and another similar gong (2) *£30 - 50 †*
- 488**
Two 19th Century oak and elm inlaid cutlery / candle boxes *£100 - 200 †*
- 489**
Two 19th Century rosewood sarcophagus shaped tea caddies *£30 - 50 †*
- 490**
A small late 19th Century oak nest of four short and two long drawers, 39cm wide x 23cm high *£40 - 60 †*
- 491**
A pair of antique carved oak figures, depicting a man playing pipes and a woman playing a lute, 34cm high *£100 - 150 †*
- 492**
A pair of Chinese hardwood figures, of immortals, 21cm high *£40 - 60 †*
- 493**
A gilded brass carriage timepiece, having richly decorated filigree panels and foliate chased dial, 15.5cm with handle up *£80 - 120 †*
- 494**
A pair of antique bronze cherub figures, raised on square marble plinths, 22cm high *£100 - 150 †*
- 495**
A 19th Century mahogany child's bar back standard chair, having solid seat raised on turned tapering supports *£30 - 50 †*
- 496**
A cased and preserved study of two tench, caught by S.R. Porter at Aldermaston 28th July 1940, bearing label for "Homers" Woodgrange Road, Forest Gate, London, the glazed bow fronted case 86cm x 44cm in extremes *£500 - 800 †*
- 497**
Four graduated copper mugs, with brass handles *£40 - 60 †*
- 498**
A large oblong copper pan, 52cm; and a brass preserve pan with lion loop handles, 40cm (2) *£40 - 60 †*
- 499**
An antique brass jardinière, decorated with a crest and flanked by lion mask handles, 33cm high x 32cm dia. *£20 - 40 †*
- 500**
A large copper fish kettle, flanked by iron loop handles, 53cm long *£30 - 50 †*
- 501**
A copper and brass banded churn, with swing handle, 40cm high *£20 - 40 †*
- 502**
A large Victorian copper kettle, 38cm high *£30 - 50 †*



Lot 483



Lot 485



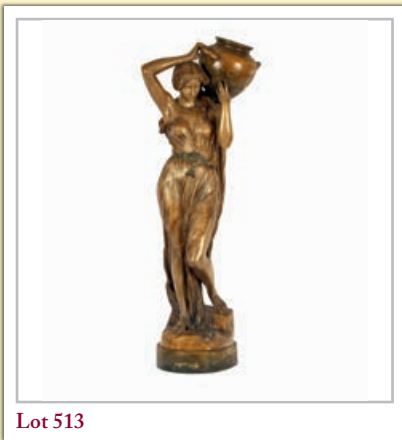
Lot 488



Lot 494



Lot 495



Lot 513

503
An antique Neapolitan bronze figure, 47cm high mounted on stone base £60 - 100 †

504
An antique leather fire bucket; and a pair of vintage wooden Indian clubs £40 - 60 †

505
A pair of 19th Century Japanese lacquer and shibayama panels, decorated birds and foliage, 60cm x 37cm overall; and a larger similar example with signature seal, 75.5cm x 44cm (3) £300 - 400 †

506
An antique Chinese Mandarin robe, decorated dragons and flaming pearls heightened with gilt thread, pale green lining (worn and torn in places) £200 - 400 †

507
An antique Chinese Mandarin cloak, having flower, butterfly and symbol decoration on a peach ground with blue borders, gilt metal fasteners £400 - 600 †

508
A short kimono, the interior lining decorated symbols, outer decoration of orange and silver stripes £60 - 80 †

509
A long ceremonial kimono, in bright colours and heightened with gilt thread £100 - 150 †

510
A collection of various Victorian and later walking sticks, a shooting stick etc. £60 - 80 †

511
An Art Nouveau plated wall plaque, depicting maiden amongst trailing foliage with shaped pierced border, 53cm dia. £100 - 150 †

512
A large Art Nouveau glazed bust, of a maiden raised on an Egyptianesque plinth, signed Morin and stamped Van Hasselt & Co. Paris, 55cm high £200 - 300 †

513
A large Goldscheider pottery figure, of a maiden carrying a water pitcher, signed Chere with Goldscheider stamp, 114cm high. See Back Cover £400 - 600 †

514
Bruno Zach, bronze figure "The Riding Crop", bears signature 75cm high £600 - 800 †

515
Bruno Zach bronze figure of a flapper, raised on a marble plinth, 73cm high, bears signature £600 - 800 †

516
A quantity of various antique pewter baluster measures, and various straight sided ale mugs £60 - 80 †

517
A Victorian wool work picture, depicting a paddle steamer and other boats approaching a harbour, 46.5cm x 56.5cm, contained in a birds eye maple frame £60 - 80 †

518
Twenty-nine volumes, "The Gentlemans Magazine 1880-1910" £20 - 30 †

519
A quantity of various lace doilies, other table napery etc. £20 - 40 †

520
A quantity of various table napery and other textiles, mostly lace bordered £20 - 40 †

521
A brass cased pocket compensated pressure gauge, by T.A.R.S&W Ltd. No.B6083 £30 - 50 †

522
19th Century school, miniature painting of ships in a harbour in plush frame, 6.5cm x 5.5cm £40 - 60 †

523
19th Century tortoiseshell and gold snuff box, the lid finely decorated with a carriage scene, 8cm long in fitted outer case £100 - 200 †

524
An 18th Century enamel patch box, the lid inscribed "Peace and Love United" with mirrored interior; two miniature relief carvings; and a cloisonné and white metal patch box (4) £60 - 100 †

525-526
No Lots

Pictures and Prints

527
Joe Crowfoot, study of 452 Bomb Group Deopham Green 1945, signed oil on board, 29cm x 40cm £40 - 60 †

528
Joe Crowfoot, "Racing For The Market, Lowestoft Steam Drifter Fore Runner In Heavy Seas" signed oil on board, 29cm x 40cm £40 - 60 †

529
19th Century school, pair of rural studies indistinctly signed watercolours, 34.5cm x 53.5cm £40 - 60 †

530
A small coloured print of Framlingham Castle, after Hooper and T Hall in decorative carved oak frame £20 - 30 †



Lot 514

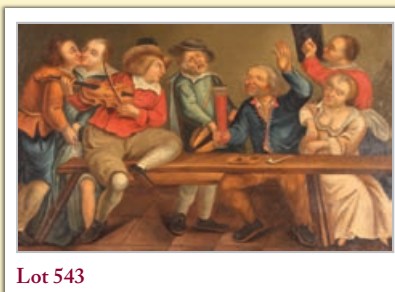


Lot 515



Lot 523

- 531**
Engraving of Castle Rising, Norfolk, "to the Right Honourable The Lady Viscountess Andover"; another of Castle Acre Priory Church; and a print of "Our Lady on the Mount" Lyn Norfolk (3) £40 - 60 †
- 532**
19th Century black and white engraving, of Earlham Hall birthplace and home of Joseph John Gurney Esq. 25cm x 34cm £40 - 60 †
- 533**
Robert Morden, antique coloured map of Suffolk, 37cm x 60cm; and another of Norfolk 38cm x 60cm (2) £80 - 120 †
- 534**
19th Century English school, study of figures in a rowing boat with large three masted ship and harbour nearby, unsigned watercolour, 16cm x 20.5cm £20 - 40 †
- 535**
After Edward William Cook, study of the beach at Cromer; a print after John Sell Cotman, "Moors Creek Abbey"; another "Featherstone" by Robson; and a black and white print "Le Moulin" (4) £30 - 40 †
- 536**
After Hodgson, engraving of Bishopgate and Bridge, Norwich; engraving of the Priory Church at Binham Norfolk; a print of Cromer and another of Yarmouth(4) £20 - 40 †
- 537**
A pair of 19th Century coloured Spanish prints, "Correo De Los Morros Grenada" and another "Pordova", contained in decorative gilt frames; a black and white print after David Roberts depicting interior of the Great Mosque at Cordova; and another "Plaza Real and Procession of the Corpus Christie at Seville" (4) £40 - 60 †
- 538**
E Horton, study of a figure crossing a river bridge, rural landscape beyond, signed oil on canvas, 29cm x 40cm £40 - 60 †
- 539**
Howard Shingler born 1953, a pair of still life studies depicting fruit and objects on a ledge; and a companion depicting fruit and objects on a table top, signed oils on canvas, 45cm x 60cm £300 - 400 †
- 540**
After Edwin Landseer, study of a sleeping hound, unsigned oil on canvas 102cm x 127cm in decorative gilt frame £300 - 400 †
- 541**
19th Century school, pair of large still life studies depicting fruit tumbling from a ledge, oils on canvas, 100cm x 75cm, contained in decorative gilt frames £400 - 600 †
- 542**
Dutch school 18th Century, Madonna and Child, unsigned oil on canvas (relined), 73cm x 43cm £800 - 1,200 †
- 543**
Dutch school late 17th Century / early 18th Century, scene of a bawdy tavern interior, unsigned oil on panel, 28cm x 45cm £1,500 - 2,000 †
- 544**
Attributed to Matthys Naiveu (Leigden 1647, circa 1721), portrait of a Dutch woman with hand in a water font, Amsterdam to the background, inscription to reverse, oil on canvas, 39cm x 32cm £100 - 1,500 †
- 545**
Dutch school late 18th early 19th Century, evening scene with lantern lit market, stall and figures, unsigned oil on panel, 23cm x 30cm £250 - 350 †
- 546**
School of Jan Wijnants (Haarlem circa 1635-1684, Amsterdam), landscape study with horse, cart and various figures unsigned oil on canvas, 34cm x 45cm £700 - 900 †
- 547**
Ian Armour-Chelu, "The Barn Across The Meadow", signed watercolour dated 1976, 10cm x 15cm £20 - 40 †
- 548**
20th Century school, Erigeron indistinctly pencil signed watercolour, dated 1967, 30cm x 17cm £20 - 40 †
- 549**
19th Century school, study of a rural church with figures outside, unsigned watercolour, 9.5cm x 13cm in rosewood frame £20 - 40 †
- 550**
W.G. Whitaker, study of figures outside a cottage, oil on board, 31cm x 39cm, contained in decorative gilt frame £100 - 200 †
- 551**
G H Jenkins, pair of studies depicting fishing vessels and a harbour scene, signed watercolours, 23cm x 40cm £80 - 120 †
- 552**
19th Century school, portrait study of a lady wearing dark blue dress with lace trim, framed as an oval 42cm x 32cm, unsigned oil on board £100 - 200 †
- 553**
Diana Mallett Veale, study of an African Village scene, signed watercolour, 14cm x 21cm £80 - 120 †
- 554**
Louise Repsold, study of a mountain scene, signed oil on board, 14.5cm x 29cm £40 - 60 †



Lot 543



Lot 544



Lot 546



Lot 550



Lot 562

555

An 18th Century map, of the "Sherifdome of Fyfe"; and another of "Sterlingshyr" (2) £60 - 80 †

556

A Williams, study of sailing vessels in heavy seas, signed oils on board, a pair 11cm x 30cm, contained in decorative gilt frames £30 - 50 †

557

A pair of antique black and white prints, depicting 17th Century equestrian scenes £40 - 60 †

558

19th Century Chinese watercolour, depicting flowers and butterflies 22cm x 34.5cm, contained in a decorative gilt frame £40 - 60 †

559

20th Century school, still life study indistinctly signed oil on canvas, 30cm x 22cm £40 - 60 †

560

A pair of 19th Century coloured prints after Knight, "Tom and His Pigeons" and "The Favourite Rabbit" in original foliate carved gilt frames £20 - 40 †

561

19th Century school, study of a interior parlour scene, unsigned oil on canvas, 60cm x 40cm £60 - 100 †

562

19th Century English school, three quarter length portrait of Jonathan Wise Lawson standing in landscape, oil on canvas, in original frame, label verso, 43cm x 33cm £200 - 300 †

563

Mid 19th Century Irish school, unusual interior scene with a family gathered around a table and a priest appearing to chastise a fallen woman, oil on board, unframed, 41cm x 51cm £150 - 200 †

564

William Henry Williamson 1820-1883, fishing vessels and other shipping off a rocky coastline, oil on board, initialled, 20cm x 35cm £180 - 220 †

565

William Crossley 1895, study of Cornish fishermen unloading the catch, signed oil on canvas and dated, also inscribed verso, 18cm x 38cm £80 - 120 †

566

Charles Vickers 1821-1895, a river landscape with fisherman in a punt by a bridge, mill beyond, signed oil on canvas, 30cm x 37cm £100 - 150 †

567

After Myles Birket Foster 1825-1899, study of children in a punt picking waterlily flowers, unsigned oil on canvas 24cm x 36cm, £100 - 150 †

568

After Landseer, study of a seated bull terrier; and another of a wolfhound, unsigned oils on canvas a pair, 39cm x 29cm in decorative gilt frames £60 - 100 †

569

A ship diorama model, in white painted glazed case, 66cm x 45cm overall £60 - 100 †

570

Joshua Dighton 1831-1908, pair of equine studies depicting grey horse in a stable, and a chestnut horse in landscape, signed watercolours, 28cm x 35.5cm £80 - 120 †

571

After Jean Moreau, "En Usez-Vous" and another "Une Bonne Histoire" £20 - 40 †

572

W.J. Callcott, study of Kilchurn Castle, Loch Awe and another study of Glen Nevis, oils on board a pair, dated 1894, 21cm x 10cm £50 - 80 †

573

19th Century school, signed oil on canvas of an expansive seascape study with figures on the beach bringing in the catch, indistinctly signed but possibly Bird, dated 1879, 73cm x 125cm, contained in an ornate gilt frame £600 - 800 †

574

Frederick John Widgery (English 1861-1942), extensive landscape study probably Dartmoor, signed watercolour, 63cm x 91cm £400 - 600 †

575

Enaid Jones 1888-1978, two conte crayon portrait studies, a pair, 17.5cm x 15cm £100 - 200 †

576

20th Century school, study of Gloucester Cathedral, indistinctly signed watercolour, 74cm x 55cm £60 - 100 †

577

William Lionel Wyllie (British 1851-1931), "Foreshore at Low Tide", signed watercolour, 10cm x 20cm £200 - 300 †

578

Albert Ernest Marks (British 1865-1901), study of sailing boats on the Thames, signed watercolours, a pair, 16cm x 32.5cm £400 - 600 †

579

EAG, seascape, initialled watercolour 1873, 34cm x 73cm £100 - 200 †

580

Arthur Henry Enoch (British flourished 1869-1912), "Springtime In Torquay", signed watercolour, 35cm x 52cm £100 - 200 †



Lot 568



Lot 570

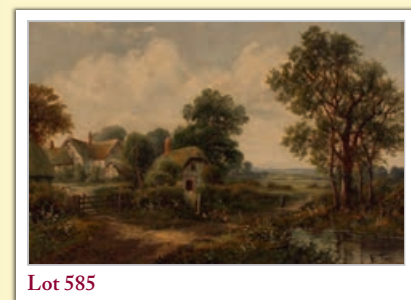
- 581**
George Lennie (Flourished 1860-1900), study of Walberswick, signed watercolour, dated 1878, 25.5cm x 40.5cm £200 - 400 †
- 582**
John Glover 1767-1849, extensive river landscape with figures, cattle and sheep in the foreground, farm beyond, watercolour, 61cm x 80cm in maple frame £800 - 1,200 †
- 583**
J Hohenberger, study of an extensive landscape with horse and cart on a track beside a pond, harvesters beyond with village in far ground 48cm x 99cm £100 - 150 †
- 584**
19th Century school, study of children blackberrying along a country path, unsigned watercolour, 51cm x 35.5cm £40 - 60 †
- 585**
E Torr, study of a rural cottage with figure and poultry beside a pond, signed oil on board, 29cm x 44cm £40 - 60 †
- 586**
Fitzroy Lock, study of Allied War / Hospital ship in Murdros Bay, Lemnos, 1st December 1915, signed watercolour, 16cm x 34.5cm £90 - 120 †
- 587**
R T Wilding, study of fishing vessels coming in to shore, signed watercolour 30.5cm x 50cm £80 - 120 †
- 588**
Richard Short 1882-1900, study of Dutch sailing ships on the Zuiden Zee, signed watercolour, 28.5cm x 45cm £150 - 200 †
- 589**
19th Century school, study of a cat and dog on a wall in moonlight, indistinctly signed oil on board and dated 1889 (unframed) £75 - 100 †
- 590**
Radcliffe W Radcliffe, study of a log hauling wagon with a team of horses crossing a bridge in country landscape, initialled oil on canvas dated '14, 24.5cm x 38cm £200 - 400 †
- 591**
19th Century school, study of a woman seated by an open fire in a bakery, unsigned oil on canvas, 26cm x 34cm £200 - 300 †
- 592**
J A Crawford, signed oil on board view of the sea from hill and castle ruin, 16cm x 22.5cm (9) £100 - 150 †
- 593 ✓**
Leonard Russell Squirrell (1893-1919), study of Debenham, signed watercolour dated 1965, 23cm x 37cm (6) £1,000 - 1,500 †
- 594**
Late 19th Century school, study of a seated elderly gentleman reading a book, unsigned oil on canvas, 50cm x 60cm, contained in a decorative gilt frame £200 - 300 †
- 595**
19th Century school, study of figures outside a rural thatched cottage, unsigned watercolour 21cm x 27cm £40 - 60 †
- 596**
W W Caffyn, study of rural cottages and figures beside a pond, signed oil on canvas dated 1897, 29.5cm x 44.5cm £60 - 100 †
- 597**
No Lots

Furniture

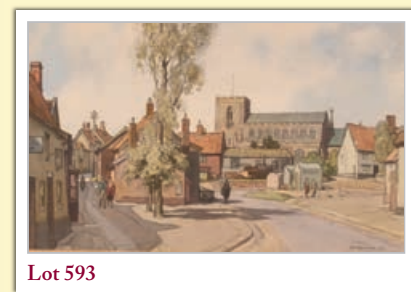
- 598**
A pair of decorative gilt framed wall mirrors, having foliate decoration 62cm x 47cm £40 - 60 †
- 599**
An 18th Century chinoiserie decorated cushion framed wall mirror, 47cm x 37cm in extremes £40 - 60 †
- 600**
An Eastern rug, 3.7m x 1.97m AF £30 - 60 †
- 601**
An 18th Century oak dresser, having separate open plate rack, the inverted break front base fitted five drawers and cupboards, raised on bracket feet, 179cm wide £200 - 400 †
- 602**
A celestial globe, by Newton & Berry raised on a turned baluster mahogany column and tripod base, terminating in brass castors (one missing), inscribed "A New Celestial Globe Whereon the Stars Are Laid Down From The Accurate Observations of The Best Astronomers" by J & W Newton 1818, 102cm high (some damage) £1,000 - 1,500 †
- 603**
A pair of burr oak and cross banded bedside chest, fitted four graduated drawers raised on platform plinths, 43.5cm wide x 41cm deep x 78cm high £500 - 600 †



Lot 575



Lot 585



Lot 593



Lot 602

Lots marked ✓ please refer to Droit de Suite royalty charges in Terms and Conditions

† Each lot is subject to a Buyer's Premium of 18% + VAT (21.6%)



604
A walnut and herringbone banded kneehole writing desk, in the 18th Century style fitted single long drawer, and three drawers to each pedestal, flanking a central cupboard raised on bracket supports, 83cm wide x 47.5cm deep
£300 - 400 †

605
A 19th Century mahogany dished snap top occasional table, raised on turned column and tripod base, 45cm dia.
£60 - 100 †

606
An oak joint stool, with overhanging top and moulded frieze, raised on turned baluster supports united by stretchers, 45cm wide
£60 - 100 †

607
A 19th Century mahogany rectangular tilt top occasional table, raised on ring turned column and tripod base, 60cm
£60 - 80 †

608
A part electro plated canteen of cutlery, and various other plated cutlery contained in a mahogany four drawer serpentine chest
£60 - 100 †

609
An Edwardian small pine table chest, of four short and one long drawer, raised on a stepped plinth, 54cm wide x 58cm high
£80 - 120 †

610
A Regency mahogany side cabinet, fitted blind frieze drawer above shelves enclosed by pair of brass grill and silk lined doors, within gilt metal mounted Egyptianesque columns, raised on reeded tapering supports, 109cm wide x 97cm high x 45.5cm deep
£200 - 300 †

611
A small carved hardwood Chinese cachepot stand, the circular beaded top with marble insert raised on pierced foliate and fruit decorated frieze, mask head legs terminating in claw feet, 30cm high x 21cm dia.
£40 - 60 †

612
A large Victorian mahogany pedestal pot cupboard, of octagonal form raised on a plinth base, 90cm high x 60cm wide overall
£200 - 300 †

613
An ornate Victorian carved oak dressing table, having lion mask and foliate decoration, the raised swing mirror above a four drawer platform, two frieze drawers below raised on spiral turned supports and stretchers terminating in scrolled feet, 122cm wide
£200 - 400 †

614
An 18th Century oak moulded panel chest, of four long drawers with brass butterfly handles and escutcheons, 103cm wide x 98cm high x 57cm deep
£200 - 400 †

615
A Georgian mahogany bow front chest, of two short and two long drawers raised on shaped apron and bracket feet, 92cm wide
£100 - 150 †

616
An 18th Century oak bureau, the fall front opening to reveal an interior arrangement of drawers and pigeon holes around a central cupboard, two short and two long drawers below raised on bracket feet, 94cm wide
£100 - 150 †

617
A 19th Century gilt framed wall mirror, in the Florentine manner having pierced foliate decoration, 59cm x 70cm
£100 - 150 †

618
A 19th Century mahogany chiffonier, of small size fitted single frieze drawer with cupboards below, raised on a platform plinth, 90cm
£60 - 80 †

619
A 19th Century mahogany Chippendale style wall mirror, having fret carved frame, gilt ho ho bird decoration and slip, 94cm x 51cm in extremes
£80 - 120 †

620
A large late Victorian bamboo sideboard, fitted with 29 original lacquer panels, mirrored shelved back fitted cupboards, drawer and shelves below, 103cm wide x 200cm high in extremes
£400 - 600 †

621
A 18th Century walnut chest on stand, fitted three short and three long drawers, the base raised on square section supports, 105cm wide
£200 - 300 †

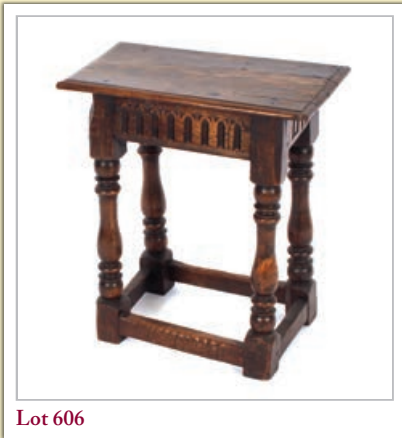
622
A 19th Century mahogany chest of two short and three log drawers, raised on bracket feet, 95cm wide
£100 - 200 †

623
A 19th Century mahogany chiffonier waterfall bookcase, having graduated upper shelves, enclosed below by silk and brass wire work doors raised on bracket feet 86cm wide x 124cm high
£100 - 200 †

624
A walnut framed wall mirror, in the 18th Century style having gilt decoration and Prince of Wales motif, 80cm x 45cm
£60 - 80 †

625
A 19th Century oak dresser of small proportions, with shelved and boarded back, three long drawers below above a dummy frieze drawer raised on square section supports, 82cm wide
£100 - 200 †

626
A 19th Century mahogany and box wood strung demi-lune hall table, raised on square section supports terminating in spade feet, 98cm wide
£30 - 50 †



Lot 606



Lot 610



Lot 620

627

A 19th Century mahogany serpentine fronted chest fitted brushing slide and three long graduated drawers raised on bracket feet, 97cm wide £100 - 200 †

628

A 19th Century ebony and brass inlaid Bureau de Dame, the fall front opening to reveal a fitted interior of drawers and a well, raised on French cabriole supports and sabots, 71cm wide £60 - 100 †

629

A 19th Century mahogany and boxwood strung side table, fitted two drawers and raised on ring turned tapering supports, 99cm wide £60 - 100 †

630

An unusual 19th Century leather and brass domed officers travelling trunk, by Thomas Handford, 62cm wide £500 - 800 †

631

A 19th Century mahogany bow fronted corner cupboard, the interior shelves enclosed by a pair of arched panelled doors, single drawer below, 87cm wide x 108cm high £50 - 80 †

632

An 18th Century oak dresser, having open plate rack above three drawers, pot board below raised on turned columns and rounded supports 157cm wide £200 - 400 †

633

A 19th Century plum pudding mahogany spider leg drop leaf dining table, raised on turned supports, 92cm £100 - 200 †

634

A 19th Century mahogany and glazed corner display cabinet, on single drawer stand, square tapering supports and spade feet united by an under tier, 81cm wide x 203cm high £80 - 120 †

635

A 19th Century walnut tallboy chest, the upper section fitted two short and three long drawers, two long drawers to the base fitted with pierced brass butterfly escutcheons and back plates, raised on bracket feet, 99cm wide x 135cm high £300 - 400 †

636

19th Century mahogany and satin wood cross banded fold-over card table, raised on ring turned tapering legs, 90cm wide £100 - 200 †

637

A Victorian mahogany shaving stand, with adjustable mirror, twin compartment top raised on turned column and tripod base £40 - 60 †

638

A 19th Century mahogany corner cupboard, the upper shelves enclosed by a single glazed panel door beneath a scroll arch pediment, shelf below enclosed by a moulded arch panelled door, raised on a shaped apron and bracket feet £60 - 100 †

639

A Georgian oak bureau, the fall front opening to reveal an interior arrangement of drawers and pigeonholes around a central cupboard, sunken well below above two short and two long drawers raised on bracket feet, fitted brass butterfly backplates and escutcheons, 87cm wide £100 - 200 †

640

An 18th Century walnut chest, on stand, the upper section fitted three short and three long graduated drawers, one long and two short drawers to the base, raised on cabriole supports, 114cm wide x 153cm high £200 - 300 †

641

A 19th Century mahogany bookcase, fitted adjustable enclosed by a pair of glazed panel doors, raised on shelves terminating in square section legs and spade feet AF, 118cm wide x 174cm high £100 - 150 †

642

A 19th Century mahogany bow front tallboy, fitted two short and two long drawers to the upper section, two long drawers below on turned supports, 105cm wide x 153cm high £200 - 300 †

643

A 19th Century mahogany china display cabinet, in the Chippendale manner, the upper adjustable shelves enclosed by a pair of glazed panel doors above a stand with blind cut front supports, 126cm wide x 199cm high overall £100 - 200 †

644

A late 18th Century oak and mahogany cross banded long case clock, having painted dial and eight day movement by John Thristle of Stogursey £100 - 200 †

645

A George III lacquered and chinoiserie decorated hanging corner cabinet, the hinged door depicting birds and figures enclosing shaped shelves, 83cm x 62.5cm £150 - 250 †

646

A set of Edwardian mahogany hanging wall shelves, of pegged construction, 63cm wide x 61cm high £20 - 40 †

647

A contemporary teak metamorphic library chair, and matching stool (2) £100 - 200 †

648

A 20th Century hardwood nest of eighteen drawers, 65cm wide x 34cm high £50 - 60 †

649

A 19th Century red lacquer Chinese folding scholars table, the top decorated with a dragon, 63cm wide £100 - 200 †



Lot 622



Lot 623



Lot 627



Lot 630

† Each lot is subject to a Buyer's Premium of 18% + VAT (21.6%)



Lot 654

650

A pair of George III mahogany Chippendale design side chairs, having pierced ladder backs, upholstered stuff over seats raised on chamfered supports £80 - 120 †

651

A pair of George IV mahogany bar back dining chairs, upholstered stuff over seats raised on turned front supports; a similar pair having carved bar backs; and a 19th Century mahogany Chippendale style elbow chair (5) £60 - 100 †

652

A mahogany and box wood strung bow fronted sideboard, central drawer above an arched frieze flanked by deep cupboards, raised on square tapering supports and spade feet, 140cm wide £100 - 150 †

653

A 19th Century mahogany Chippendale style wall mirror, having fret carved frame, the gilded pediment surmounted by a gilt ho ho bird, 115cm x 56cm in extremes £100 - 200 †

654

A 19th Century walnut marquetry and Ormolu mounted card table, the fold over swivel top raised on cabriole supports terminating in sabots, 82cm wide x 59cm deep £400 - 600 †

655

An antique gilt framed wall mirror, having foliate scroll decoration and flower heads, fitted bevel plate, 96cm x 67cm overall £200 - 400 †

656

A Georgian mahogany tray top night commode, tambour shutter AF above a pull out base section raised on square chamfered supports £60 - 80 †

657

An 18th Century oak coffer, having triple lozenge carved panelled front and iron lock plate raised on square section supports, 111cm wide £100 - 200 †

658

A 17th Century oak Bible box, the carved frieze with roundel decoration bearing dated 1656, 55.5cm wide £100 - 150 †

659

A 20th Century carved oak coffer, of small proportions, foliate decorated two panel frieze with a monogram and dated 1911, 70cm £100 - 150 †

660

A Victorian mahogany folding coaching table, raised on turned and cross supports, 48cm wide extended £40 - 80 †

661

A 19th Century mahogany supper table, fitted single end drawer and opposing dummy drawer, round drop leaves raised on a central column and quadruple splay, 91cm £80 - 120 †



Lot 659



Lot 666



Lot 670

662

A Victorian walnut writing table, raised on turned supports in need of restoration, 100cm wide £20 - 40 †

663

John Morley of London, Clavichord in mahogany case £200 - 300 †

664

A 19th Century mahogany and satin wood inlaid bureau, the fall front opening to reveal an interior arrangement of drawers and pigeon holes around a central cupboard, four long graduated drawers below raised on bracket feet, 95cm £100 - 200 †

665

A 19th Century mahogany bow fronted hanging corner cupboard, interior shelves enclosed by a pair of doors hung to brass H hinges, 103cm high x 72cm wide in extremes £80 - 120 †

666

A Georgian oak chest, of small proportions fitted two short over three long drawers, having brass butterfly back plates and drop handles, raised on bracket supports, 76cm wide £300 - 400 †

667

A late Victorian mahogany framed tub shaped armchair, raised on turned column and square section supports terminating in castors £40 - 60 †

668

A 19th Century mahogany and inlaid circular tilt top table, raised on a fluted baluster column and tripod base, 90cm dia. £80 - 120 †

669

A 19th Century mahogany and satinwood cross banded Pembroke table, fitted single end drawer and dummy drawer, the rounded drop leaves raised on square tapering supports terminating in brass caps and castors, 80cm £60 - 80 †

670

A Victorian rosewood work table, the overhanging top above single drawer and pull out silks bag on octagonal column and quatrefoil base, terminating in bun feet, 50cm £60 - 80 †

671

A George III circular mahogany tripod occasional table, raised on a turned baluster column terminating in pad feet, 81cm dia. £60 - 100 †

672

A George III mahogany tilt top occasional table, raised on a turned column tripod base, terminating in pad feet, 51cm dia. £60 - 100 †

673

An Edwardian mahogany bedside cupboard, enclosed by a single panelled door £40 - 60 †

674

A pair of George III style mahogany tray top bedside cabinets, raised on chamfered square section supports, 55cm wide £80 - 120 †

- 675**
A pair of unusual leather coptic type chairs
£100 - 150 †
- 676**
An oak joint stool, having carved frieze above turned baluster supports united by stretchers, 45cm wide
£40 - 60 †
- 677**
An antique oak joint stool, having carved frieze raised on turned baluster supports, 47cm wide
£100 - 150 †
- 678**
An antique oak coffer, of narrow proportions, the lid with iron strap hinges above a square lock plate and hasp, raised on end supports 135cm wide
£200 - 300 †
- 679**
An 18th Century oak coffer, of small proportions having candle box interior, square iron lock plate raised on shaped end supports, 80cm wide
£100 - 200 †
- 680**
A small Eastern hardwood box, having iron mounts and hinges, carved decoration, 41cm
£40 - 60 †
- 681**
An antique carved oak coffer, having candle box interior and triple panel carved front, iron strap work hinges, 110cm wide
£100 - 200 †
- 682**
A Victorian carved oak elbow chair, having profuse pierced foliate back, scrolled acanthus arms above upholstered seat, the bluster turned supports united by a wavy stretcher, and terminating in bun feet
£80 - 120 †
- 683**
No lot
- 684**
A 19th Century mahogany elbow chair, having wicker back panel and seat raised on cabriole front supports, complete with loose squab cushion
£40 - 60 †
- 685**
An antique oak wainscot chair, the scrolled cresting rail bearing date 1642, foliate carved panel back above solid seat raised on turned supports united by stretchers
£200 - 300 †
- 686**
A 19th Century Hepplewhite design elbow chair, having shaped cresting rail, pierced splat back and blue velvet upholstered drop in seat, raised on square section supports united by stretchers
£40 - 60 †
- 687**
A pair of 18th Century oak hall chairs, having foliate carved backs above solid seats raised on turned block supports united by stretchers
£100 - 200 †
- 688**
A Regency mahogany elbow chair, having reeded bar back, leather upholstered seat raised on sabre front supports
£40 - 60 †
- 689**
An antique oak wainscot chair, having carved foliate decoration, panelled back, swept arms above solid seat raised on turned supports united by stretchers
£100 - 200 †
- 690**
A George III mahogany circular snap top occasional table, raised on baluster column and tripod base
£100 - 150 †
- 691**
A set of six carved oak Jacobean style dining chairs, having scrolled cresting rails, panelled backs, green leather upholstered seats raised on turned supports united by stretchers
£150 - 200 †
- 692**
An oak draw leaf refectory dining table, in the Jacobean manner raised on carved baluster cup and cover supports and stretcher base, 79cm x 226cm
£100 - 200 †
- 693**
An antique carved oak spice cupboard, fitted five drawers and enclosed by a geometric moulded panel door, 33cm wide x 31cm high
£100 - 150 †
- 694**
An antique oak Bible box, of plain form having square iron lock plate, 46cm wide
£100 - 150 †
- 695**
An 18th Century oak gate leg tea table, the rounded drop leaves raised on single end turned column supports, 75cm
£100 - 200 †
- 696**
An Eastern hard wood and mother of pearl inlaid hanging corner shelf, 56cm high
£20 - 40 †
- 697**
A Victorian mahogany pot cupboard, of circular fluted form with white marble insert to the top, raised on an octagonal platform plinth, 47cm dia. in extremes x 77cm high
£150 - 200 †
- 698**
A quartetto of Chinese hardwood occasional tables, having pierced foliate and fruit decorated frieze raised on mock bamboo supports united by stretchers, 51cm wide overall
£200 - 400 †
- 699**
A 19th Century mahogany cross banded side table, fitted two short drawers above an arched frieze raised on ring turned supports, 82cm wide
£40 - 60 †



Lot 675



Lot 682



Lot 685



Lot 691



Lot 700

700
A 18th Century oak lowboy, the overhanging top above three drawers and shaped frieze raised on cabriole supports and pad feet, 80cm wide
£150 - 250 †

701
A 19th Century walnut swing toilet mirror, raised on a two drawer box base with ogee bracket feet, 42cm wide
£50 - 80 †

702
A 19th Century mahogany and ebony strung sofa table, raised on end supports terminating in sabre legs with brass caps and castors, 98cm wide
£60 - 100 †



Lot 703

703
A late Victorian bamboo and lacquered single pedestal desk, leather inset top above five drawers all with decorated lacquer fronts, raised on out swept supports, 89cm wide
£200 - 400 †

704
An Edwardian light oak pedestal desk, leather inset writing surface above three frieze drawers with six drawers to the pedestals, raised on platform plinths, 123cm wide
£200 - 300 †

705
A Victorian papier-mâché tray, having gilt foliate decoration and raised on a bamboo effect stand, 80cm x 61.5cm
£100 - 150 †



Lot 717

706
A mahogany hall table, of narrow proportions fitted five pharmacy drawers and raised on chamfered square section supports, 107cm wide x 30cm deep x 77cm high
£250 - 350 †

707
A 19th Century mahogany satinwood strung and chequer banded swing toilet mirror, the rectangular plate raised above a three drawer box base on bracket supports, 52cm
£30 - 50 †

708
A 19th Century mahogany and rosewood cross banded Pembroke table, of small size having rounded drop leaves, single end drawer raised on square tapering supports terminating in brass barrel castors, 70cm
£80 - 120 †

709
A late 19th Century inlaid mahogany side table, fitted with a single drawer, raised on square tapering supports, 74.5cm wide
£60 - 100 †

710
An antique carved oak coffer, the hinged lid above carved decoration and linen fold panel front, raised on square supports, 91cm wide
£60 - 100 †

711
An 18th Century oak gate leg dining table, fitted single end drawer raised on turned baluster supports, 105cm wide
£200 - 300 †



Lot 719

712
A 19th Century mahogany and ebony strung two tier night cupboard, raised on square tapering supports, 71cm wide
£40 - 60 †

713
A Georgian mahogany circular occasional table, the birdcage top raised on a turned baluster column and tripod base, 72cm dia.
£100 - 150 †

714
A Dick Burmby, rocking horse "Folly, 26th April 1987", complete with leather saddle and bridle on wooden stand, 108cm high
£300 - 400 †

715
A special Millennium limited edition Rocking Horse, Serial No. 050 of 500, complete with leather saddle and bridle on wooden stand 121cm high
£200 - 400 †

716
A 19th Century mahogany Sheraton style elbow chair, having pierced splat back, upholstered stuff over seat, raised on square tapering supports; and another of Hepplewhite design raised on square tapering supports and spade feet (2)
£80 - 120 †

717
A 19th Century rosewood work table, fitted single drawer and pull out silk bag below, raised on turned columns and pierced platform base, terminating in bun feet, 51cm
£100 - 150 †

718
A pair of walnut and cross banded single drawer lamp tables, raised on turned tapering fluted supports, 54cm wide x 45cm deep
£400 - 500 †

719
A 19th Century rosewood silver table, having shaped tray top above side drawers and pull out slide, raised on turned baluster supports terminating in acanthus scroll feet and united by a baluster stretcher, 69cm wide
£200 - 400 †

720
An Edwardian rosewood and satinwood inlaid Sutherland tea table, 62cm
£30 - 50 †

721
A 19th Century rosewood three tier whatnot, raised on spiral turned columns, 50cm wide x 91cm high
£30 - 50 †

722
An antique carved oak cradle, with lozenge and foliate decorated panels bearing date 1651, 80cm long
£100 - 200 †

723
An early 20th Century three piece suite, comprising arched two seat settee raised on cabriole supports and a pair of matching tub shaped chairs, upholstered in chequer tapestry
£200 - 300 †

724

A mahogany Chippendale style wall mirror, the fret carved frame decorated gilt ho ho bird and shell motif, 91cm x 58cm in extremes £40 - 60 †

725

A 19th Century painted satinwood Bergere chair, raised on square section supports terminating in spade feet, seat AF £40 - 60 †

726

An antique carved oak settle, having triple panel back 171cm wide £200 - 400 †

727

A William IV mahogany cock fighting / library chair £80 - 120 †

728

A Victorian circular mahogany occasional table, raised on turned baluster column terminating in reeded dished base and scrolled feet, 46cm dia. £30 - 50 †

729

A 19th Century mahogany tray top two tier washstand, fitted single drawer below and flanked by towel rails, complete with chamber pot, wash basin, and beaker £60 - 80 †

730

A good quality light oak refectory dining, table raised on turned baluster supports and block feet, 92cm x 198cm £200 - 300 †

731

A set of six George IV mahogany and ebony strung bar back dining chairs, having pierced centre rails, upholstered stuff over seats raised on ring turned tapering supports and peg feet £150 - 200 †

732

A George III mahogany and satinwood cross banded card table, having fold over canted top raised on square tapering supports terminating in spade feet, 90cm wide £100 - 150 †

733

A Mahogany umbrella stand, raised on turned columns, 34cm £60 - 100 †

734

A 19th Century mahogany boxwood strung and cross banded D end dining table, raised on square section tapering supports terminating in brass caps and porcelain castors, one extra leaf, 186cm x 120cm extended £100 - 150 †

735

A set of five Edwardian mahogany and boxwood strung rail back dining chairs, four standards, one elbow £60 - 100 †

736

A nest of four Edwardian mahogany and satinwood cross banded occasional tables, raised on square tapering supports terminating in spade feet, 43cm in extremes £40 - 60 †

737

An Edwardian inlaid mahogany salon elbow chair, having railed back, upholstered seat panel raised on slender tapering supports £40 - 60 †

738

An Edwardian walnut Sutherland table, raised on turned column supports, 60cm £20 - 40 †

739

A Mahogany folding towel rail, on turned supports £20 - 40 †

740

An Edwardian mahogany and satinwood banded nest of three graduated occasional tables, 53.5cm wide £40 - 60 †

741

A fruit wood drop leaf dining table, raised on square tapering supports, 148cm x 147cm fully extended £100 - 150 †

742

An 18th Century oak and elm lowboy, the top with sunburst motif and chequer banding, three short drawers above a shaped frieze flanked by chevron banding on cabriole supports and hoof feet, 73cm wide £400 - 600 †

743

A 19th Century burr elm miniature Pembroke table, fitted with single end drawer, rounded drop flaps raised on square tapering supports terminating in brass castors, 55.5cm £100 - 150 †

744

A large 19th Century oak trunk, flanked by brass carrying handles, 91cm wide £60 - 80 †

745

A Mouseman oak stool, of kidney shape raised on chamfered tapering supports, 36cm high x 30cm wide overall £100 - 200 †

746

A fabric four fold draught screen, decorated in coloured wool and silk work with exotic birds, butterflies and foliage £40 - 60 †



Lot 725



Lot 742



Lot 743



Lot 745

TERMS AND CONDITIONS OF SALE

1. INTRODUCTION

The following defining terms are used in these conditions:-

“Auction”	Means any auction conducted by Clarke and Simpson Auctions Ltd. either at the premises owned by them or elsewhere (including any internet based auction);
“Auctioneer”	Means Clarke and Simpson Auctions Ltd. authorised auctioneer as appropriate;
“Bidder”	Means a bidder at an auction, including the bidders personally present at the venue and those bidding by telephone or over the internet or otherwise;
“Buyer”	Means the bidder whose bid was the last bid when the auctioneer concludes the bidding; “Conditions” Means these Terms and Conditions of Sale;
“Hammer Price”	Means the level of bidding reached (at or above any reserve) when the auctioneer brings the bidding to a close;
“Lot”	Means any property accepted by Clarke and Simpson Auctions Ltd. for offer at auction;

2. DESCRIPTION

No warranty is given or implied by the description in the catalogue. Each lot is sold in its condition at the time of sale with all faults, defects, imperfections and errors of description (if any). Whilst every endeavour has been made to describe the items adequately and properly, the purchaser shall deem to have inspected the lot at time of purchase. All catalogues and seller's and buyer's guides are for information only and do not form part of the contract.

3. STATUTORY REQUIREMENTS

Purchasers will be deemed to have satisfied themselves prior to purchasing regarding current legal requirements (e.g. Health & Safety at Work Act) and it is expressly brought to the bidders attention that equipment in the sale may not necessarily comply with such regulations. Any purchaser shall satisfy himself as to any statutory requirement for the use of any item and no liability shall rest with the vendors nor the Auctioneers.

4. THE AUCTION All auctions are conducted at the absolute discretion of the auctioneer. The auctioneer shall conduct the auction with reasonable skill and care. The vendor reserves the right to sell subject to reserve price in respect of all lots. What constitutes a bid shall be at the absolute discretion of the auctioneer, acting with appropriate skill and care. The auctioneer shall have the right to refuse any bid in all cases but most notably when such a bid does not exceed the previous bid by at least 10% or such a proportion as the auctioneer shall in his absolute discretion direct. Where two or more bids at the same level are simultaneously received by the auctioneer, the auctioneer at his absolute discretion shall determine which bid to prefer. Subject to the foregoing where two or more bids are at the same level are simultaneously received by the auctioneer, the bid submitted in the room shall take preference over a bid submitted by telephone or internet at the same level. Any bid made or attempted by telephone or over the internet will only be deemed to have been made if received by the auctioneer. The auctioneer reserves the right to withdraw, consolidate or divide any lot or lots or submit them in any order that they desire. The auctioneer has the right at his absolute discretion to refuse admission to his premises or attendance at (or participation in) any auction by any person. In the case of any dispute, the auctioneer shall be sole arbitrator in any matters arising during or out of the sale.

5. BIDDERS

All bidders will be required to register their particulars, bidders attending in person and those accompanying them will be required to provide photo ID and separate confirmation of address prior to viewing or taking any part of the sale and before entering any part of the premises to view. All bidders accept full liability for all bids submitted. Subject to the clause in this document headed “The Auction”, the highest bidder at the close of bidding shall be the buyer. Any dispute about a bid shall be settled at the auctioneer's absolute discretion. Bidders are all deemed to act as principles unless there is prior written acknowledgement by Clarke and Simpson Auctions Ltd. that a bidder is acting as an agent for a named principle. Bidders are strongly encouraged to attend the auction in person. The bidders shall be responsible for any decision to bid for a

particular lot and shall be deemed to have carefully inspected and satisfied themselves as to condition, neither Clarke and Simpson Auctions Ltd., their employees or agents shall be responsible for any neglect or default in doing or failing to do so. Bidders will be given ample opportunity to view and inspect before the sale and prospective buyers must satisfy themselves as to all matters.

6. DEFAULT

Clarke and Simpson Auctions Ltd. shall act as agent of the vendor only. Any contracts for the sale of a lot shall be formed between the vendor and the buyer. As agent, only Clarke and Simpson Auctions Ltd. shall not be responsible for default by the vendor or the buyer. If any lot is not paid for in full and taken away in accordance with these conditions, or there is any other breach of the conditions, then Clarke and Simpson Auctions Ltd. as agents for vendor shall at its absolute discretion and without prejudice to any other rights it may have, be entitled to exercise all or any of the following rights and remedies:-

- 6.1 to proceed against the buyer for any action of debt or damages for breach of contract;
- 6.2 to rescind the sale of that lot or lots sold by Clarke and Simpson Auctions Ltd. to a defaulting buyer;
- 6.3 to resell the lot (by auction or private treaty) in which case the defaulting buyer shall be responsible for any resulting deficiency in the total amount due (after crediting any part payment and adding any resale costs), any possible surplus so arising shall belong to the vendor;
- 6.4 to remove, store and insure the lot at the expense of the defaulting buyer and, in the case of storage, the location of such storage shall be at Clarke and Simpson Auctions Ltd. discretion;
- 6.5 to charge interest at a rate not exceeding 2% per month of the total amount due to the extent that it remains unpaid for more than two working days after the sale;
- 6.6 to retain that or any lot sold to the defaulting buyer until the buyer pays the total amount due;
- 6.7 to reject or ignore bids from the defaulting buyer at future auctions or to impose conditions before any such bids are accepted;
- 6.8 to apply any proceeds of sale for any other lots due or in the future becoming due to the defaulting buyer towards the settlement of the total remaining due.

7. INDEMNITIES, PENALTIES AND LIMITATIONS OF LIABILITY

Purchasers shall pay for any damage done by themselves or their agents during the removal of their lots. Attendance at the sale shall be at the risk of those attending in respect of both themselves and to their goods and vehicles.

Any indemnity under these conditions will extend to all actions, costs, expenses, claims and demand whatsoever suffered or incurred by the person entitled to the benefit of it and Clarke and Simpson Auctions Ltd. declare themselves to be a trustee of the benefit of such indemnity so far as it is expressed to be the benefit of its employees and agents.

Whilst Clarke and Simpson Auctions Ltd. endeavour to ensure that the information on their websites is correct, they do not warranty the accuracy and completeness of the material on their website. Also, Clarke and Simpson Auctions Ltd. can make changes to the material on their website, or alter the products and prices described on it, at any time without notice. The material on the website may be out of date, Clarke and Simpson Auctions Ltd. make no commitment to update such material. All material on the websites is provided “as is” without any conditions, warranties or other terms at any time. Accordingly, to the maximum extent permitted by law, the website is provided to all parties on the basis that Clarke and Simpson Auctions Ltd. exclude all representations, warranties, conditions and other terms which, but for this legal notice, might have effect in relation to the website.

8. ELECTRICAL SAFETY REGULATIONS

All electrical lots are subject to electrical safety regulations and fall within "the low voltage electrical equipment (safety) regulations 1989" – all items have been pat tested for safety but are not guaranteed in working order.

9. GENERAL MATTERS

Any notice to any buyer, vendor, bidder or viewer may be given by first class mail or email in which case it shall be deemed to have been received by the addressee forty-eight hours after posting or sending. All notices to Clarke and Simpson Auctions Ltd. must be sent in writing and email is not acceptable. Any indulgence extended to any person by Clarke and Simpson Auctions Ltd., notwithstanding the strict terms of these conditions or the terms of consignment, shall affect the position at the relevant time only and the respect of that particular concession only; in all other respects these conditions shall be construed as having~ full force and effect. These conditions and any disputes or claims arising out or in connection with them or their subject matter or formation (including non-contractual disputes or claims) are governed by and construed in accordance with the law of England. The parties irrevocably agree that the courts of England have exclusive jurisdiction to settle any dispute or claim that arises out of or in connection with the agreement or its subject matter or formation (including non-contractual disputes or claims).

10. PUBLICITY

Any catalogue and buyer and seller guides are provided for information only and do not form part of these conditions. The catalogue and the buyer and seller guides may contain additional terms and conditions. Clarke and Simpson Auctions Ltd. reserve the right to use any photographs, background information and research for publicity purposes both before and after the sale.

11. THE PURCHASE PRICE AND PAYMENT ARRANGEMENTS

There is a buyer's premium 18% plus VAT payable in respect of the sale. Any purchases made via "www.the-saleroom.com" or "www.ibidder.com" shall be subject to an administration charge of 5% plus VAT on the price. Preferred payment is cash, bank transfer or personal debit card. Such cards may only be used on a chip and pin basis with the owner present. No payment over £350 will be accepted by telephone. Payment will be accepted online via our secure e commerce account. We do not accept credit cards or international debit cards. Payment by cheque will only be acceptable subject to prior arrangement. No lot will be removed from the sale until any cheque has cleared.

Payment is due on the day of the sale. Cash in excess of £7,500 (including V.A.T.) will not be accepted from any one person, this is not allowed due to Money Laundering Regulations 2007. All money received will be held in Clarke & Simpson Auctions Ltd. Clients No 2 Account at Barclays Bank plc, Framlingham, Ipswich, Suffolk. Account Number 83428591. Sort Code 20 98 07. Clarke and Simpson Auctions Ltd. have no responsibility for any lot between the close of bidding and payment being made and subsequent collection. All payments from overseas buyers shall be made by Bank Transfer and bank fees paid in addition. Please note all policy regarding payment will be enforced and suitable arrangements must be made.

12. REMOVAL OF LOTS

The ownership of any lot purchased shall not pass to the relevant buyer until they have made payment in full to Clarke and Simpson Auctions Ltd. of the total amount due including any storage due.

The buyer shall at their own risk and expense take away any lot that they have purchased and paid for, not later than seven days following the day of the auction.

Any purchaser shall be responsible for removal and insurance and lots stored and storage charges. All lots sold shall be subject to the following storage charges after seven days from the sale:

7-14 days	25% of the lot value + VAT whichever is the greater	or £7.50+VAT per lot
14-21 days	50% of the lot value + VAT whichever is the greater	or £15 +VAT per lot
21-28 days	75% of the lot value + VAT whichever is the greater	or £22.50 + VAT per lot

Any lots not collected after 35 days will be re-sold with immediate effect on behalf of the purchaser and the proceeds of the sale retained in lieu of outstanding storage charges. The policy shall be rigorously enforced and no lots shall be collected unless outstanding storage charges are met.

13. NUMBER BIDDING

This will be used for speed and efficiency as in all our sales. All prospective purchasers must complete a registration form and register in the office on the view day or morning of sale to receive a number for bidding.

Please also note that photo ID and additional confirmation of address will be required.

14. ONLINE BIDDING

Clarke & Simpson Auctions Ltd. offer an online bidding service via the-saleroom.com and ibidder.com for bidders who cannot attend the sale. In completing the bidder registration on www.the-saleroom.com or ibidder.com and providing your payment card details and, unless alternative arrangements are agreed with Clarke & Simpson Auctions Ltd.:

1. authorise Clarke & Simpson Auctions Ltd., if they so wish, to charge the payment card given in part or full payment, including all fees, for items successfully purchased in the auction via www.the-saleroom.com or ibidder.com, and
2. confirm that you are authorised to provide these payment card details to Clarke & Simpson Auctions Ltd. through www.the-saleroom.com or ibidder.com and agree that Clarke & Simpson Auctions Ltd. are entitled to ship the goods to the card holder name and card holder address provided in fulfilment of the sale.

Please note that any lots purchased via the-saleroom.com or ibidder.com live auction service will be subject to an additional 5% buyer's premium + VAT at the rate imposed on the hammer price.

15. TELEPHONE BIDDING

We offer a telephone bidding service where possible, but this service can never be guaranteed. No applications for telephone bids will be accepted after the end of the viewing prior to sale day for any sale. All potential telephone bidders must provide a valid landline number and email address and agrees that they have read and understood the Terms and Conditions and satisfied themselves regarding any lot in accordance with these Terms and Conditions. No phone bids will be accepted for any lot with a lower guide figure of less than £100.

All those who wish to bid by telephone will be expected to deposit an amount determined by Clarke and Simpson Auctions Limited and not less than the minimum guide for all lots that they wish to bid upon into the Clients Account for Clarke and Simpson Auctions Ltd before the sale starts. This payment is not acceptable by card. In the event of default, this sum shall be retained as part payment or any part may be retained to recover losses under clause 6 of these Terms and Conditions. We will expect payment of the balance owing by BACS on the following day, any payment not met within five working days will result in the forfeiture of the deposit paid.

16. AT FAULT (A.F.) LOTS

Certain lots are catalogued at (A.F.), damaged, restored etc., however the absence of any such notice does not imply that the piece is free from defects, nor does it indicate that other defects are not also present. Mention is not made of breakage, cracks, chips or any damage which can be noted by careful inspection, therefore, intending purchasers MUST, in all cases, be responsible for determining the condition of the lots themselves.

17. ESTIMATES

Presale estimates are intended only as a guide for intending purchasers, are given in good faith and subject to revision.

18. CONDITION REPORTS

Clarke and Simpson are unable to guarantee that requests for condition reports/images received will be responded to. Clarke and Simpson are happy to give a Condition Report where possible on the physical condition of goods, this will be provided on behalf of the seller on the understanding that Clarke and Simpson are not entering into a contract with you in respect of the Condition Report and accordingly does not assume responsibility to you in respect of it. All lots are available for your own inspection or for inspection by an expert instructed by you, therefore these Condition Reports are for guidance only and all lots are sold "as found". Condition reports do not form part of a contract.

19. COMMISSION BIDS

The auctioneers will be pleased to execute bids for those unable to attend the sale. Lots will be purchased at the lowest bid the room bidding or any reserves will allow. In the event of identical bids, the earliest bid received will take precedence. There must always be a maximum limit indicated. Buy or unlimited bids will not be accepted. Commission bids placed by telephone are accepted at the client's risk. We urge our clients to place such bids before the start of the sale. All such commissions are left entirely at the buyer's risk.

20. VALUE ADDED TAX

The symbol * after any lot number indicates that Value Added Tax is payable by the buyer on the hammer price.

21. AUCTIONEERS MARGIN SCHEME

The Auctioneers Margin Scheme allows auctioneers to sell items without VAT on the hammer price. Under the margin scheme an amount equivalent to VAT at the current rate is added to the buyer's premium. This amount cannot be refunded. The VAT element will not be shown separately on the buyer's invoice. This VAT is not recoverable as Import Tax.

22. ATTRIBUTION OF PICTURES AND DRAWINGS

Every effort is made to ensure the accuracy of any statements as to authorship, attribution, origin, date, age, provenance and condition of any lot whether or not such statement forms part of the description of any such lot. Whether any such statement is made orally or in the catalogue it is an expression of opinion and not to be taken as being or implying any warranties or representations of facts by the auctioneers. Each buyer by making a bid for a lot acknowledges that he has satisfied himself fully as to the attribution and condition of the lot. The following is for guidance only and does not form part of a contract.

A. The forename (s) (or full stops where not known) and surname of an artist indicates in our opinion a work by the artist.

B. The initials of the forename (s) and the surname of the artist indicates in our opinion a work of the period of the artist which may be wholly or in part his work.

C. The surname of the artist indicates in our opinion a work of the school or by one of the followers of the artist or in his style and of uncertain date.

D. *Signed, Dated, Inscribed* indicated in our opinion work signed/dated/inscribed by the artist.

E. *Bears signature* indicates in our opinion that this is not the signature of the artist.

F. *Attributed to* may be used to denote a traditional attribution based on style.

G. *Manner of* indicates in our opinion a work executed in the artist/craftman's style but of a later date.

H. *After* indicates in our opinion a copy (of any date) of work of an artist or craftsman.

The addition of a question mark after any of the cataloguing terms above indicates an element of doubt.

23. DRIOTE DE SUITE ROYALTY CHARGES

All United Kingdom Art Market professionals (which includes auctioneers) are required to collect a royalty payment for all qualifying Works of Art. This applies to living artists and those who have died in the last 70 years. This payment is calculated on qualifying Works of Art which are sold for a hammer price more than the UK sterling equivalent of €1,000 (the UK sterling equivalent will fluctuate in line with prevailing interest rates calculated by the Artist's Resale Right Service Hub, based on the European Central Bank reference rate published at 2.15pm on the day of the sale, and can be found on www.dacs.org.uk).

All items in this catalogue that are marked "✓" are potentially qualifying items, and the royalty charge will apply if the hammer price is more than UK sterling equivalent of €1,000. The royalty charge will be added to purchase invoices and must be paid before items can be cleared. All royalty charges are paid to the design and Artists Copyright Society (DACS) by the auctioneers and no handling costs or additional fees with respect to these charges will be retained by the auctioneer. This charge may also be applicable to lots not marked "✓" and buyers must satisfy themselves.

The royalty charge for qualifying items which achieve a hammer price of more than the UK sterling equivalent of €1,000, but less than the UK sterling equivalent of €50,000 is 4%. For qualifying items that sell for more than the UK equivalent of €50,000 a sliding scale of royalty charges will apply. For a complete list of the royalty charges and threshold levels please refer to www.dacs.org.uk. There is no VAT payable on this royalty charge.

24. ENDANGERED SPECIES

Lots sold at auction may include endangered or other species of wildlife and plant life, for example ivory, tortoiseshell, crocodile skin, whale bone, ebony or rosewood. Some countries restrict or prohibit import or export of objects containing these materials or require a licence/permit for their movement (e.g. a CITES Licence). Prior to bidding on a lot which may include these or similar materials, buyers must familiarise themselves with the relevant laws and regulations regarding their movement.

25. JEWELLERY

Gemstones are often treated to enhance colour and improve appearance. They may be heated or treated by oil or resin to intensify the colour and transparency. Other techniques like dyeing, irradiation, coating and impregnation can also be used. Buyers must be aware that unless the catalogue specifically states otherwise then the stone is natural, buyers must assume that any treatment may not be permanent, and that special care may be needed in the future.

26. EXPORT

Any lot purchased at auction may be subject to export restrictions and may require a licence for export out of the United Kingdom. The buyer is responsible for obtaining any licences that may be required (including any licence that may be required for import into the destination country) – any denial of such a licence will not be grounds for the buyer to cancel the purchase.

27. THIRD PARTY LIABILITY

All members of the public on Clarke and Simpson Auctions premises are there at their own risk and must note the layout of the buildings and site and the appropriate security arrangements. Accordingly, neither the Auctioneer nor its employees or agents shall incur liability for death or personal injury (except as required by law) or similarly for the safety of persons visiting the premises.

28. CONSIGNMENT

All sellers will have received a copy of Clarke & Simpson Auctions Terms regarding consignment of lots for sale and these Terms and Conditions should be read in accordance with this consignment documentation.



Westleton £850,000

Upon the instructions of the Diocese of St Edmundsbury & Ipswich
A handsome six bedroom vicarage standing in the heart of the village with grounds of 2¼ acres. **Ref: 5457**



Aldringham £750,000

An elegantly presented four bedroom detached period cottage sitting on approximately 2 acres, just a short drive from the Heritage Coast.
Ref: 6463



Pettaugh £650,000

An immaculately presented four bedroom detached family home located in the popular village of Pettaugh. **Ref: 6481**



Charsfield £650,000

A charming period four bedroom cottage and separate one bedroom contemporary lodge, finished to a high standard. **Ref: 6263**



Hacheston £569,995

A spacious five bedroom detached house with integral garage, standing in a pleasant location
Ref: 6500



Peasenhall £535,000

An elegantly presented, charming detached former mill house, on the edge of this popular and desirable village. **Ref: 6455**



Darsham £445,000

A modern and spacious four bedroom property, located in heart of the village of Darsham, close to the Heritage Coast **Ref: 6492**



Badingham £400,000

A recently renovated & refurbished three-bedroom semi-detached period cottage located near Framlingham. **Ref: 6507**



Middleton £360,000

A well-presented bungalow with exceptional garden, located just a short drive from the Heritage Coast at Dunwich **Ref: 6502**



Alderton £275,000

A three bedroom detached house with outstanding views to front and rear in the popular village of Alderton. **Ref: 6495**



Collective Machinery Auctions

Clarke and Simpson Auction Centre, Campsea Ashe, Suffolk

Next Sale: October 2020

- East Anglia's largest 'direct from farm' collective auction
- Competitive commission rates
- Timed on-line bidding via **i-bidder.com**
- Extensive marketing both online and in the press
- Excellent facilities - hard standing site, large buildings and car parks
- National and international buyers



Clarke & Simpson Auction Centre, Campsea Ashe, Nr Wickham Market, Suffolk IP13 0PS

T: 01728 746323

www.clarkeandsimpson.co.uk

Clarke &
Simpson

Auctions

Always open..



Valuation

Probate & other valuations
Call-in service 6 days a week

Special sales

Antiques & Fine Arts
Art Deco & Retro
Domestic & Rural Bygones
Agricultural Collective

General Monday sale

Bespoke sales
In 2019 our lots sold to 30 countries
and registered buyers from over 50
Acting as agents for household clearances

Can't make it?
All auctions are available
for online bidding via
the-saleroom.com
or i-bidder.com



Clarke & Simpson Auction Centre,
Campsea Ashe, Nr Wickham Market,
Suffolk IP13 0PS T: 01728 746323

www.clarkeandsimpson.co.uk

[f CandSAuctions](#) [@CandSAuctions](#)



Clarke and Simpson Auction Centre
Campsea Ashe
Nr. Wickham Market
Suffolk IP13 0PS
Tel: (01728) 746323 Fax: (01728) 748173
Email: auctions@clarkeandsimpson.co.uk
www.clarkeandsimpson.co.uk