



Clarke &
Simpson

Selected Antiques & Fine Art

Wednesday 9th October 2019 at 10 am



Hasketon £1,450,000

An impressive Victorian farmhouse with grounds of over 7½ acres, occupying a stunning position on the outskirts of the village of Hasketon, close to Woodbridge. **Ref: 6112**



Cransford £775,000

A substantial five bedroom barn conversion standing in a lovely rural location on the edge of the village of Cransford, 2.5 miles from Framlingham. **Ref: 6285**



Cranley £625,000

A substantial Grade II listed manor house, requiring renovation, in grounds of over half an acre, in a rural position. **Ref: 6155**



Ufford £600,000

An impressive and spacious four bedroom modern house set along a quiet road on the outskirts of Ufford. **Ref: 6271**



Sibton £500,000

A stunning Grade II Listed detached cottage located in Pouy Street, a small hamlet within the parish of Sibton. **Ref: 6220**



Horham £450,000

A beautifully presented three bedroom single storey dwelling standing in grounds of an acre and enjoying field views. **Ref: 6174**



Bedfield £429,000

A most impressive three double bedroom newly built house situated within the village of Bedfield. **Ref: 6208**



Worlingworth £359,950

A stunning four bedroom detached house of exceptional quality situated within Willow Tree Yard. **Ref: 6041**



Wickham Market £329,995

A charming three bedroom end-of terrace cottage with landscaped gardens, in a semi rural location. **Ref: 6249**



Fressingfield £299,500

A modern three bedroom detached bungalow situated close to the centre of the ever popular village of Fressingfield. **Ref: 6243**

Clarke & Simpson

Auctions

Selected Antiques & Fine Art

Wednesday 9th October 2019
at 10 am

Order of Sale:

Ceramics and Glass	1-123
Silver and Plate	130-182
Jewellery	190-229
Objects and Collectables	231-427
Pictures and Prints	429-525
Furniture	529-690

Viewing:

Saturday 5th October, 9 am - 12 noon
Monday 7th October, 2 pm - 7 pm
Tuesday 8th October, 10 am - 4 pm
Morning of Sale from 8.30 am



@CandSAuctions



CandSAuctions



Campsea Ashe
Nr. Wickham Market
Suffolk IP13 0PS
Tel: (01728) 746323 Fax: (01728) 748173
Email: auctions@clarkeandsimpson.co.uk
www.clarkeandsimpson.co.uk

Online bidding via:

the saleroom
The home of art & antiques auctions

Worldwide from Campsea Ashe

We have registered buyers from all of the fifty countries shown below in the last twelve months – what do you have to sell that would benefit from a worldwide audience!



Ceramics & Glass

- 1**
A Royal Dux planter, decorated with seated lovers and floral sprays, 37cm long £100 - 200 †
- 2**
Two Arts & Crafts design pottery vases, with green and blue mottled running glaze and stylised decoration with twist handles, 29cm and 19cm high £20 - 30 †
- 3**
A pair of 18th Century Delft plates, decorated in the Chinese manner with river scenes, 23cm dia.; and another decorated with Chinese figures in a garden, 22cm, (3) £100 - 150 †
- 4**
An 18th Century Delft plate, decorated with houses and flowers; and another decorated in the Chinese manner with seated figure beneath a tree, 22cm dia., (2) £40 - 60 †
- 5**
A Castleford type three piece tea set, AF £10 - 20 †
- 6**
A Victorian "Cadogan" teapot, brown glazed heightened with gilt floral decoration, 22cm high £30 - 50 †
- 7**
A Davenport plate, decorated with a rural scene; a pair of ironstone china plates with bird and flower decoration; a pair of Wedgwood floral decorated plates; and various others including Spode, Copeland and Garratt Italian garden pattern examples, (15) £80 - 120 †
- 8**
A quantity of various Victorian copper lustre jugs, mugs etc., (8) £100 - 200 †
- 9**
A 19th Century Limoges part dessert set, having floral spray decoration heightened in gilt, comprising 6 plates and a pair of oval comports; and a Coalport part dessert set, comprising of a pedestal comport, a pair of oval serving dishes, and 12 side plates £80 - 120 †
- 10**
An early 19th Century Castleford type teapot, with sliding lid; another similar; a transfer printed teapot decorated with Oriental scenes and a relief decorated baluster milk jug, (4) £40 - 60 †
- 11**
A pair of 19th Century English Pearlware plates, decorated with a pagoda within floral scroll and shell borders, 28cm dia.; and a smaller example, decorated with floral garlands and fruit, 24cm, (3) £40 - 60 †
- 12**
A set of six Waterford crystal liqueur glasses, and seven wine glasses £80 - 100 †
- 13**
A cut glass and plate mounted claret jug, 27cm high £20 - 30 †
- 14**
A ruby tinted decanter, of slender form and a blue tinted similar, 37cm high, (2) £40 - 60 †
- 15**
A pair of Chinese Canton style baluster vases, 23cm high £20 - 30 †
- 16**
Three 19th Century tea bowls and saucers, with floral decoration £20 - 30 †
- 17**
A Delft plate, decorated with a figure holding a branch; and another similar decorated with rural scene, (2) £40 - 60 †
- 18**
A Victorian porcelain jug, decorated in Etruscan manner with figures of maidens and Gods on a black ground, 15cm high £10 - 20 †
- 19**
A Meissen sauce boat, on integral stand, having floral and insect decoration with basketwork border, heightened in gilt, 25cm long; and a Continental porcelain oval tray with floral spray decoration, 29cm overall, (2) £60 - 80 †
- 20**
A Victorian Wedgwood Jasperware cheese bell, with classical maiden and floral decoration, surmounted by an acorn shaped finial, 29cm high x 28cm dia. £80 - 120 †
- 21**
A Japanese Kutani baluster vase, 16cm high; and a similar ginger jar 11cm high (2) £20 - 30 †
- 22**
Two heavy cut glass boat shaped fruit bowls, 23cm and 25cm long £20 - 40 †
- 23**
A pair of Burmantofts Sang de boeuf pottery vases, 19.5cm high £40 - 60 †
- 24**
A Doulton Series ware spittoon, 18cm high £30 - 50 †
- 25**
A pair of Staffordshire figure groups, depicting milk maid and cow herd; a 19th Century porcelain floral encrusted fruit basket and three various 19th Century figures, (6) £60 - 100 †
- 26**
A Newhall teacup and saucer; a 19th Century Worcester teapot AF; a Wedgwood octagonal tea cup and saucer decorated monogram and foliage, heightened in gilt; a continental porcelain teapot and two similar cups and saucers; various other decorative china etc. (14) £40 - 60 †



Lot 1



Lot 6



Lot 15



Lot 20



Lot 27

27
An 18th Century Delft charger, decorated with birds and insects amongst foliage, 32.5cm dia. £100 - 200 †

28
A 19th Century continental porcelain table lamp, decorated cherubs and flowers, with pink fluted and crimped satin glass shade, 37cm £40 - 60 †

29
A pair of Pearlware plates, decorated in the Chinese manner with figures holding parasols, 24.5cm £60 - 80 †

30
An Antique shallow Delft dish, decorated with houses, having continuous floral border, 26cm dia. £40 - 60 †

31
A Mosanic Fiance ware tea caddy and lid, of hexagonal form decorated in yellows, greens, and blue floral designs, painted marks to base, 13cm high £30 - 50 †

32
A late Victorian porcelain posy vase, decorated in the Chinese manner heightened in gilt, 18cm high £10 - 20 †

33
Various Spode, Wedgwood and other transfer printed plates, all decorated exotic Oriental garden scenes; and another "Mandarin opaque china" example, (7) £40 - 60 †

34
A quantity of late Victorian Worcester dinnerware, including a tureen, AF £10 - 20 †

35
A 19th Century Davenport platter, having pierced border, decorated with a scene of a country house; a transfer printed platter decorated with castle and garden; and another in the Oriental manner, (3) £40 - 60 †

36
A Vienna porcelain plate, decorated young beauty's in exotic garden, inscribed verso "Blumenorakel", with blue beehive mark, 29cm dia. £80 - 120 †

37
A pair of Victorian Staffordshire figures, depicting a highland couple, 33cm high £60 - 80 †

38
Four various 19th Century blue and white transfer printed serving dishes, all decorated in the Chinese manner £40 - 60 †

39
A glazed pottery figure of a seated Buddha, 16cm high £10 - 20 †



Lot 30



Lot 36



Lot 51

40
A pair of opaque china "Chinese scenery" pattern plates; another similar "Villa" pattern; an Imperial stone china plate with floral decoration and various other plates, (9) £40 - 60 †

41
A Victorian miniature green and white pottery part dinner service £50 - 80 †

42
A stone china vegetable tureen, on stand, decorated Asiatic pheasants and four various transfer printed tureen stands and platters, (5) £40 - 60 †

43
A pair of plates by D. Johnston "Bonaparte en Egypte and Guerre d'orient"; a collection of various 19th Century transfer decorated tea bowls and saucers; blue and white strainer etc., (12) £40 - 60 †

44
A Victorian Imari patterned dessert set, comprising three comports and six side plates £80 - 120 †

45
A pair of early 19th Century Derby dessert dishes, having floral spray decoration with shaped borders heightened in gilt; two Minton dessert plates having floral spray decoration on an apple green ground, shaped pierced borders heightened in gilt; and a 19th Century shallow dish decorated with a shepherdess, (5) £15 - 20 †

46
A Worcester fence patterned saucer, a Chinese blue and white plate; various tea bowls; continental porcelain floral encrusted cup and saucer etc. £50 - 80 †

47
A large 19th Century Imari bowl, decorated in traditional palette with scalloped border heightened in gilt, 29cm £40 - 60 †

48
A Continental porcelain baluster coffee pot, with scenic decoration heightened in gilt; three matching cups and two saucers £25 - 35 †

49
A Derby part dessert set, comprising a pair of comports and five plates, having profuse floral decoration heightened in gilt £80 - 120 †

50
A pair of transfer printed serving plates, decorated in the Chinese manner; a Granite china "Oriental Bird" pattern serving plate and various others, (7) £40 - 60 †

51
A large Chinese blue and white vase and cover, with Prunus decoration, restored, 44cm high £80 - 120 †

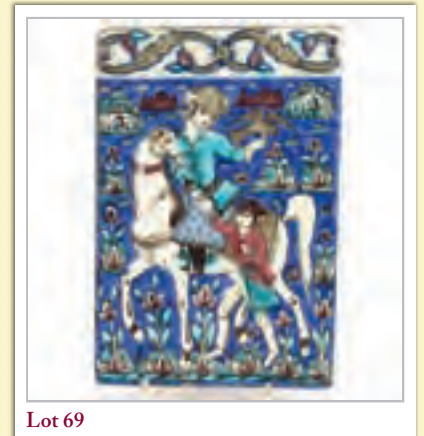
- 52**
A Limoges part dinner service, monogrammed and with foliate gilt and berry decoration, (19) £100 - 150 †
- 53**
A large 19th Century blue and white transfer printed meat plate, decorated with parkland; two other meat plates; a large circular Spode tureen stand and a "Granada" pattern vegetable dish, (5) £40 - 60 †
- 54**
A pair of 18th Century Albarello, inscribed E.MART:POM. and C:THYRiACA: with blue bird and basket decoration, 13cm high £300 - 400 †
- 55**
An 18th Century Delft wet drug jar, inscribed S:E.,SPIN:CERV. having blue floral and cherub decoration, raised on a circular spread foot, 20cm high £300 - 400 †
- 56**
An 18th Century English Delft dry drug jar, inscribed C:FL;AURANT, of baluster form, decorated blue floral scrolls and cherubs, 19cm high £300 - 400 †
- 57**
An 18th Century Delft wet drug jar, inscribed MEL:ROSACEUM; blue floral cherub and shell decoration, raised on a circular spread foot, 20cm high £300 - 400 †
- 58**
A pair of 18th Century Delft Albarello, inscribed HAMECH and DESICCAT. Rub. having blue floral and bird decoration of baluster form, raised on circular spread feet, 15.5cm high £300 - 400 †
- 59**
A 19th Century Spode feeding cup; a small strainer decorated in the Oriental manner; various blue and white transfer printed cups, tea bowls, plates etc. (19) £40 - 60 †
- 60**
A Davenport blue and white sauce tureen; three others; a Spode chestnut basket, AF; a 19th Century Spode style fruit bowl decorated in the Oriental manner; two Victorian slops bowls, ladles etc. (12) £40 - 60 †
- 61**
An opaque china wash bowl, decorated with rural scenes; a Royal Persian opaque china baluster jug; various other blue and white baluster water jugs, coffee pot etc., (14) £100 - 200 †
- 62**
A Royal Doulton cabinet cup and saucer, decorated floral sprays and heightened in gilt; a pair of floral decorated Dresden tea plates; and four side plates, (8) £30 - 60 †
- 63**
A Chinese blue and white koro, having Dog of Fo handles and floral decoration, 14cm high £100 - 200 †
- 64**
An Antique Chinese blue and white plate, decorated with a foliate scroll within cloud border, 28.5cm dia. £150 - 250 †
- 65**
An 19th Century Canton bowl, of large proportions decorated panels of figures, foliate scrolls and objects, 33cm dia. £200 - 300 †
- 66**
Two Chinese cylindrical blue and white vases, having dragon and foliate decoration, four character marks to base £150 - 250 †
- 67**
A Chinese baluster vase, with raised decoration of figures, flowers, butterflies and fish on celadon ground, 17cm high £50 - 80 †
- 68**
A near pair of Xing baluster vases, decorated dragons and flowers, 18cm high £150 - 250 †
- 69**
An Antique Persian safavid type tile, depicting a nobleman hawking with attendant servant, clouds, flowers and mosques in the background, 25cm x 17cm; and another depicting a seated nobleman holding a staff, 22cm x 16.6cm (2) £800 - 1,000 †
- 70**
A 19th Century porcelain chocolate cup, saucer and cover, having gilt heightened floral decoration; and an English porcelain possibly Worcester tea cup and saucer, with floral spray panels on a blue scaled ground £40 - 60 †
- 71**
An 18th Century English porcelain blue and white tea bowl and saucer, having tree and house decoration; a tea bowl with scenic vignettes on moulded leaf ground; and two blue and white tea cups with bird and floral decoration, (5) £40 - 60 †
- 72**
A 19th Century Spode blue and white cup and cover, decorated in the Chinese manner, 8cm high; a blue and white miniature teapot, 9cm high; a blue and white mug, 6.5cm high AF; and a 19th Century blue and white sauce ladle, (4) £40 - 60 †
- 73**
An 18th Century Worcester mug, decorated parrot, fruit and foliage, with reeded handle, 8.5cm high £40 - 60 †
- 74**
A 19th Century Derby oval dish, decorated with a Welsh scene, 19cm long; a porcelain pastel burner and cover heightened in gilt; and a small Derby scent flask with leaf decoration heightened in gilt, (3) £40 - 60 †
- 75**
An English porcelain blue and white tea bowl and saucer, decorated with a river scene with flowers and house; and a blue and white porcelain tea cup and saucer of fluted design; and a saucer with Prunus decoration, (5) £60 - 100 †



Lot 55



Lot 56



Lot 69



Lot 69



Lot 81



Lot 89



Lot 103



Lot 104

76
An 18th Century blue and white porcelain tea bowl and saucer, with floral spray decoration; and another similar, (4) £40 - 60 †

77
An 18th Century Worcester porcelain blue and white leaf shaped pickle dish, bird and floral decoration, 10cm £20 - 40 †

78
An 18th Century blue and white porcelain leaf form butter boat, of small size, 8cm long overall £40 - 60 †

79
An 18th Century Worcester blue and white tea bowl and saucer, decorated foliage and butterflies, crescent mark to base £40 - 60 †

80
An 18th Century blue and white porcelain oval cream boat, decorated in the Chinese manner of fluted form, scroll handle 14cm, label to the base for Reculvers Collection £40 - 60 †

81
An 18th Century English porcelain blue and white cream jug, decorated rural scenes of fluted form on oval foot, 10.5cm £30 - 50 †

82
An 18th Century Worcester tea cup and saucer, with floral decoration and leaf moulded ground, under-glazed blue crescent mark to base £40 - 60 †

83
An 18th Century blue and white cream jug, with decorated panels of figures fishing, moulded floral and shell ground, angular handle, elongated spout raised on hexagonal base, 11cm long £40 - 60 †

84
An English porcelain blue and white fruit basket, having floral decoration, 15cm dia.; and a small shallow example 12cm dia. (2) £40 - 60 †

85
An English porcelain baluster pedestal cream jug, having blue floral spray decoration above moulded flower head ground, circular spread foot, acanthus scroll handle, 12cm high overall £40 - 60 †

86
An 18th Century blue and white porcelain cream jug, fruit and leaf decoration on a moulded fluted leaf ground, scroll handle shaped border, 9cm high overall £40 - 60 †

87
An 18th Century Worcester blue and white cream jug, decorated scenic panels and floral sprays on moulded leaf ground, scroll handle and oval foot, 12cm long, 7.5cm high £40 - 60 †

88
A Worcester blue and white cylindrical mug, decorated in the Chinese manner, 9cm high £40 - 60 †

89
An 18th Century blue and white English porcelain feeding cup, in the form of a watering can, decorated foliate sprays and butterfly, 16cm long overall x 8cm high, AF £40 - 60 †

90
An 18th Century blue and white baluster mug, having floral decoration, 8cm high; and another baluster mug decorated in the Chinese manner, 9cm high, (2) £50 - 60 †

91
A Worcester cylindrical tea cup, with scenic decorated panels on fluted and floral ground, scroll handle; another similar with floral border decoration on fern ground; and two saucers, (4) £40 - 60 †

92
A Worcester tea bowl and saucer, decorated with pagodas and river scene, crescent mark to base £30 - 50 †

93
A miniature Worcester blue and white tea bowl and saucer, decorated pagoda and rural scenes, saucer 8cm dia., bowl 5cm dia., 3cm high £30 - 50 †

94
A Worcester tea bowl and saucer, decorated with a china-man figure and floral sprigs, under-glazed blue crescent mark to base £40 - 60 †

95
An 18th Century Worcester mustard pot, the cover with flower finial and scroll handle, decorated with fence pattern, under-glazed blue crescent mark to base, 9cm high £40 - 60 †

96
A Worcester barrel shaped cream jug, with floral decoration and scroll handle, 7cm high £40 - 60 †

97
A pair of late 18th Century Worcester tea bowls and saucers, decorated flowers and butterflies £60 - 100 †

98
A Worcester sparrow beak creamer, decorated with pagodas and river scene, AF, 8.5cm high £20 - 40 †

99
A blue and white baluster sparrow beak cream jug, having all over floral decoration, 7cm high £20 - 40 †

100
An 18th Century shallow Worcester dish, decorated with vignette panels, in the Chinese manner, 18cm dia. £40 - 60 †

101
A Worcester shallow bowl, decorated with fence pattern, under-glazed blue crescent mark to base, 15cm dia. £40 - 60 †

- 102**
An 18th Century Worcester cream jug, decorated with foliate sprays on a moulded ground, 13cm AF £30 - 50 †
- 103**
An 18th Century blue and white porcelain English sauce boat, decorated in the Chinese manner, of fluted form with angular handle, tapering spout, 21cm £100 - 150 †
- 104**
A late 18th Century Worcester teapot, decorated in the Chinese manner, under-glazed blue crescent mark to base, 14cm high £100 - 150 †
- 105**
An 18th Century English blue and white porcelain sauce boat, of baluster triangular shape, decorated with foliate sprays on a leaf and shell moulded ground, oval foot, AF, 17cm £40 - 60 †
- 106**
An 18th Century Worcester sauce boat, of triangular pattern, workman's mark to base, with raised moulded decoration and blue glazed trailing foliage, 19.5cm, (chip to rim) £200 - 400 †
- 107**
A 19th Century blue and white baluster jug, decorated with urns and foliate sprays, castellated rim, label verso "Sir Leslie Joseph Collection Swansea no. P626", 11cm high £100 - 150 †
- 108**
An 18th Century Worcester blue and white teapot and stand, "Prunus Root" decoration, workman's mark to the underside of the teapot £200 - 300 †
- 109**
An 18th Century English porcelain double lipped sauce boat, with ring handles, decorated in the Chinese manner, 17cm £100 - 150 †
- 110**
An 18th Century English porcelain sauce boat, decorated with blue foliate sprays on a moulded leaf and flowerhead ground, oval foot, 20cm £100 - 150 †
- 111**
A Chelsea sauce boat of oval panelled shape, with raised leaf and twig handle and feet, painted foliate sprays, red anchor mark, 20cm £200 - 400 †
- 112**
A 19th Century porcelain floral encrusted candlestick, with bird decoration on a scrolled base heightened in gilt, 17cm high; and a floral decorated cabinet plate, red anchor mark to base AF, (2) £30 - 50 †
- 113**
A.R. Helena Wolfsohn, late 19th Century porcelain cabinet plate, with pierced border decoration and Watteau style cherub decoration to the centre, 22cm dia. £20 - 40 †
- 114**
A Chinese porcelain stem cup, having dragon and cloud decoration, 9.7cm dia. x 10cm high £40 - 60 †
- 115**
A porcelain plaque of Othello, by Walter Paget £30 - 50 †
- 116**
A 19th Century transfer printed platter, "Byron Gallery The Dream", 26cm £40 - 60 †
- 117**
An oval Pearlware platter, with pierced border, decorated with a Chinese fishing scene, 25cm £30 - 50 †
- 118**
A brown glazed terracotta bowl, raised on tapering feet, 33.5cm dia. £20 - 30 †
- 119**
A Japanese Imari baluster vase and cover, having loop handles, decorated in the traditional palette, (lid AF), 29cm high £30 - 50 †
- 120**
Two 20th Century Chinese porcelain bowls, one decorated with children at play, blue seal mark to base, 15.5cm dia., and another decorated with numerous child figures, ochre seal mark to base, 16.5cm dia., (2) £60 - 80 †
- 121**
A Japanese satsuma baluster vase, decorated with figures, seal mark to base, 11.5cm high; a cloisonne baluster vase decorated with flowers on a rich blue ground, AF, 11.5cm high; and a larger cloisonne vase decorated with flowerheads, 18cm high, (3) £40 - 60 †
- 122**
A Royal Crown Derby Mansion House dwarf, his hat advertising "Auction of Elegant Household Furniture", 17cm high; and another, his hat advertising "Theatre Royal, Haymarket", 19cm high, (2) £200 - 300 †
- 123**
A pair of Grainger & Co., Worcester baluster ewers, having rich gilt foliate decoration on a pale green ground, 30cm high £100 - 150 †
- 124-129**
No lots

Silver & Plate

- 130**
An Edwardian pair of silver candlesticks, in the Adam style, *Sheffield 1908*, 29cm high £100 - 200 †
- 131**
A plate on copper coaster, having turned wooden base decorated cherubs and foliage, 17cm dia. £10 - 20 †



Lot 110



Lot 113



Lot 123



Lot 130



Lot 135

132

A cased set of twelve each plated fish knives and forks, by John Hall & Co., Manchester £30 - 40 †

133

A plated oval gallery two handled drinks tray, having foliate engraved decoration, raised on ball feet, 50cm overall £20 - 40 †

134

A plated muffin dish and cover, decorated family crest; a plated sauce boat; another with serrated border and similar cream jug and a three piece half fluted tea set, (7) £20 - 40 †

135

A good quality silver presentation tea set, in fitted light oak case, retailed by Longman & Strongitharm, Silversmiths 1 Albemarle Street, London, comprising an oval Edwardian silver two handled tray, *London 1901*, three piece tea set with scrolling serpent handles, *London 1924*; and a baluster hot water pot, *London 1932*, teapot and hot water jug with blackwood handles and lifts, the tray bearing presentation inscription "from Iron Trades Employers Insurance Association Ltd. to Miss Gladwell 17th March, 1934", 105ozs. gross £800 - 1,200 †

136

A cased set of six Royal Worcester coffee cans and saucers, the cans with silver holders, hallmarked *London 1911* £100 - 150 †

137

A cased set of six each mother of pearl handled shell picks; a pair of silver sugar tongs; and two pairs of plated tongs £20 - 40 †

138

A French silver mounted mirror, with embossed foliate scroll decoration, 27cm x 20cm £60 - 80 †

139

A late Victorian silver bon bon dish, having pierced foliate decoration, *London 1892*; a smaller similar, *Birmingham 1898*; and a pair of similar, *Chester 1899*, (4) £40 - 60 †

140

A silver cream jug and sugar bowl, having angular handles, on scrolled feet, makers mark HW, *Sheffield 1912*, (2) £60 - 80 †

141

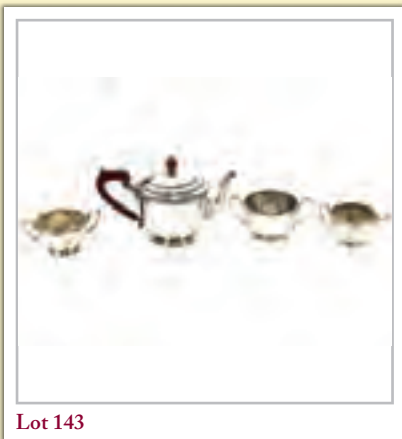
A Scottish silver strawberry dish, having pierced berry decoration flanked by loop angular handles, *Glasgow 1932*, 20ozs. £150 - 250 †

142

A cased set of four silver salts, by Mappin & Webb, Birmingham 1915 £40 - 60 †

143

An Art Deco silver teapot, having Bakelite handle and lift, *Birmingham 1933*; a silver cream jug and sucrier of panelled form, decorated with a beaded border, *Sheffield 1933*; a silver sucrier of panelled form, *Birmingham 1933*, 33ozs., (4) £250 - 350 †



Lot 143



Lot 150



Lot 159

144

A silver four piece tea set, of baluster form, having gadroon borders, raised on ball feet, *Birmingham 1922*, 55ozs. £300 - 400 †

145

A George IV silver cruet, containing various bottles, some AF, *London 1826* £150 - 250 †

146

A silver mustard and salt, *Birmingham 1923*; and a pair of silver baluster pepperettes, *Birmingham 1927*, (4) £40 - 60 †

147

A silver cream jug, *London 1915*; and a silver sauce ladle, *Birmingham 1921*, (2) £30 - 40 †

148

A silver sugar bowl, *Birmingham 1922*; a silver stand initialled JDLL; and a plated tankard, (3) £30 - 40 †

149

Five pieces of silver dressing table ware, with engine turned decoration £40 - 60 †

150

An Edwardian silver rose bowl trophy by Walker & Hall, *Chester 1906*, 44oz £350 - 450 †

151

A set of four Victorian cased silver salts, and two spoons, *Birmingham 1887* £40 - 60 †

152

Six Victorian mother of pearl handled fruit knives, and five forks; and a silver bladed fruit knife presented to Alfred Bannister on the occasion of his 1st Birthday, 1912 £20 - 40 †

153

A collection of mostly Georgian salt and condiment spoons, including two by Mappin & Webb, and one by Peter and Anne Bateman, caddy spoon and teaspoon etc. £60 - 80 †

154

A pair of Victorian silver salts, by Alexander MacRae, *London 1866* (one blue glass liner missing) £40 - 60 †

155

A cased set of 12 silver fruit spoons, and a serving spoon, *Sheffield 1936* £100 - 200 †

156

A George III toddy ladle, marks rubbed; three continental teaspoons, possibly German; and eight early 20th Century Indian white metal coffee spoons £40 - 60 †

157

A 19th Century plated meat skewer; a silver napkin ring; a silver butter knife; two plated fish knives; a silver handled cake fork; and a pair of plated sugar tongs £20 - 30 †

158

Various silver teaspoons; condiment spoons; silver engine turned napkin ring and a Continental similar

£60 - 100 †

159

A pair of Russian silver gilt and enamel decorated spoons; and a large continental white metal spoon, stamped Cheisler 800, (3)

£60 - 100 †

160

An oval plated swing handled fruit basket, with foliate raised border, pierced swing handle raised on four scrolled claw and ball feet

£20 - 30 †

161

A Victorian silver goblet, having rich engraved foliate and fruit decoration on tapering stem and spread foot, Sheffield 1873, 18cm high

£180 - 220 †

162

A late Victorian silver teapot, by the Goldsmiths and Silversmiths Co., having half fluted body decoration with shell and foliate border, blackwood handle and lift, London 1895, 19.5ozs.

gross £150 - 250 †

163

A Victorian silver gilt bachelor's tea set by Elkington & Co., having finely engraved foliate decoration; together with five teaspoons and a pair of sugar nips, Birmingham 1892, 19ozs.

£200 - 300 †

164

A pair of silver baluster pepperettes, London 1938

£50 - 80 †

165

An Edwardian silver hinged sugar box, makers mark G.F. probably George Fox, London 1906, 13cm wide, 9.6oz

£100 - 150 †

166

A pair of Georgian silver scissor action sugar nips, initialled RB

£20 - 40 †

167

An Edwardian silver sovereign case, Birmingham 1906

£40 - 60 †

168

Six Exeter silver dessert spoons, of Fiddle pattern monogrammed, maker probably W.R.Sobey, 1850

£80 - 120 †

169

A silver salver, by Elkington & Co., having pie crust border, raised on three hoof feet, Birmingham 1936, 27cm dia., 18ozs.

£150 - 200 †

170

Various silver and silver plated condiment spoons; four plated salts and a small plated salver etc.

£60 - 80 †

171

A pair of Edwardian silver salad servers, with raised shell and floral decoration, Sheffield 1907, 5.5ozs.

£40 - 60 †

172

A pair of George III oval silver salts, having pierced border decoration, raised on four claw and ball feet, complete with blue glass liners, London 1766 and 1768; and a George III baluster pepperette, London 1786 (3)

£60 - 100 †

173

A William IV silver drum shaped mustard pot, with foliate engraved decoration, the hinged lid with pierced thumb piece, blue glass liner, London 1837; a silver vase shaped pepperette, London 1953; and a plated drum shaped mustard pot with pierced sides and blue glass liner, (3)

£100 - 200 †

174

A circular silver pedestal dish, Birmingham 1937, approx. 8ozs.

£60 - 80 †

175

A silver shell shaped butter dish, Sheffield 1900; a small silver sugar bowl, Chester 1897; an Art Deco design silver engine turned cigarette case; and a glass silver topped toilet jar, AF, (4)

£40 - 60 †

176

A George III silver sauce ladle, having fluted bowl, bearing family crest, London 1782

£30 - 50 †

177

A George III silver cream jug and sucrier, having rich foliate embossed decoration and cartouche scrolls, London 1815, 17ozs., (2)

£150 - 250 †

178

A George IV silver mustard pot, of baluster form, having hinged lid and raised foliate decoration, London 1826; together with a silver condiment spoon and a white metal pedestal pepperette with foliate engraved decoration, (3)

£40 - 60 †

179

An Edwardian silver baluster sugar shaker, of large form, with profuse floral decoration and vacant cartouche, Chester 1905, 22cm high

£100 - 150 †

180

A Victorian silver salver, having foliate engraved centre within a flowerhead and beaded border, raised on three claw and ball feet, London 1867, 27ozs., 32cm dia.

£200 - 300 †

181

A Goliath pocket watch and pocket barometer, contained in a spot hammered travelling case, inset with a barometer

£40 - 60 †

182

An Arts & Crafts silver spoon; an 18th Century rat tail spoon; a silver paperweight decorated with a rearing horse; a plated bell, the handle in the form of a young boy with chamber stick and Teddy bear; a large white metal and agate pendant; an interesting silver fob given as a tennis award, dated 1897 Preston

£80 - 120 †

183-189

No lots



Lot 161



Lot 162



Lot 163



Lot 180

Jewellery



Lot 209

190

A collection of various beads and necklaces, including amber coloured and ivory examples; hardstone necklaces etc. £100 - 200 †

191

Two yellow metal necklaces; an oval white metal locket and a white metal tasselled watch chain, (4) £60 - 80 †

192

An amber necklace; a tigers eye necklace; a silver and turquoise necklace; a turquoise and gilt metal necklace; and a silver necklace set with semi-precious stones £80 - 120 †

193

A semi-precious stone and white metal necklace, hung to a twist link chain; and a Georg Jensen brooch in the form of a dolphin £100 - 150 †

194

A collection of approx. 60 semi-precious stones, a meteorite and a brooch £25 - 35 †

195

Two Chinese agate and enamel decorated necklaces £40 - 60 †

196

A Chrysoprase / Citrine necklace; together with silver / amber necklace £40 - 60 †

197

A silver pendant set with semi-precious stone; a silver, gold and amethyst set brooch; an enamel diamond and gold pendant; silver enamel cuff-links; and a tie pin in the form of a flag £120 - 160 †

198

An amethyst and white metal necklace; and a fine enamelled bead necklace £30 - 40 †

199

A lot comprising six natural amber necklaces £60 - 80 †

200

An Antique unusual metal cross, constructed from ancient nails; together with a finely carved Chinese mother of pearl panel £45 - 60 †

201

An amber necklace with gold clasp, eighteen beads £300 - 400 †

202

A white metal Niellaware and semi precious stone necklace; and a freshwater pearl necklace £40 - 60 †

203

Three various coral necklaces £15 - 20 †



Lot 210



Lot 215



Lot 218

204

An Antique garnet brooch; a pair of antique steel leg tweezers; a scrimmed pendant; a pair of agate and yellow metal ear-rings; a white metal and amethyst ring; a pair of white metal ear-rings; and a white metal and green heart shaped pendant (8) £70 - 100 †

205

An amber necklace, 29 beads £80 - 120 †

206

A silver gilt necklace; an amber necklace; an 18th Century coral and silver cross necklace; a turquoise sharks tooth necklace; and an Antique enamel and yellow metal pendant £90 - 120 †

207

An agate and silver bracelet; a silver heart shaped pendant and chain; and an agate gilt bracelet £80 - 120 †

208

A heavy silver ring; a Scandinavian silver brooch, bears signature; heavy solid silver Indian chief brooch, bears signature; and a large semi precious stone - possibly jadite £70 - 100 †

209

A Victorian silver cased gentleman's pocket watch, the engine turned case hallmarked for London 1853; and a yellow metal cased Hunter pocket watch with engine turned decoration, (2) £100 - 150 †

210

A George III silver pair cased pocket watch, the movement inscribed "Sam Smith Holywell 443", the case hallmarks indistinct £200 - 300 †

211

An 18th Century pair cased pocket watch, the movement inscribed "Joseph Kollmilla", the outer case decorated with tortoise shell and pique work; together with another un-associated tortoise shell and silver pique work part case, (in need of attention) £200 - 400 †

212

A silver pair cased pocket watch, the movement inscribed "JW Fecit, Birmingham No.858", the case hallmarked London 1820, AF £100 - 150 †

213

A George III silver pair cased watch, by Thomas Wagstaffe, London, number 10443, the case hallmarked London 1787

214

A pair of Austro Hungarian drop ear-rings, with enamel and multi coloured stone decoration £150 - 250 †

215

A large ruby and diamond cluster ring, the mount stamped 750 £1,500 - 2,000 †

216

An Austro Hungarian multi coloured stone pendant, hung to a fine link chain £200 - 300 †

- 217**
A Victorian yellow metal and coral necklace
£300 - 400 †
- 218**
A 9 carat gold and diamond floral spray brooch,
comprising 30 stones
£1,000 - 1,200 †
- 219**
A gentleman's stainless steel automatic wrist
watch, by Asprey No.99. 700081
£200 - 300 †
- 220**
A Danish sterling leaf brooch, by Egger
£20 - 40 †
- 221**
A yellow metal diamond set horseshoe brooch
£70 - 100 †
- 222**
A vintage yellow metal mounted oval agate
brooch
£20 - 40 †
- 223**
An 18ct gold fob watch, having foliate engraved
Roman numeral dial and scenic decorated back
plate
£100 - 200 †
- 224**
A diamond ring, set large central plateau stone,
and surrounded by numerous chip diamonds, the
white metal mount marked 750
£4,000 - 6,000 †
- 225**
A solitaire diamond ring, set tablet shaped
shoulders to a white metal mount
£800 - 1,000 †
- 226**
A 1927 Sovereign; an 1851 gold \$1; a Napoleon
III gold 5 Francs 1862, mounted on a ring with a
17th Century hammered coin etc.
£200 - 300 †
- 227**
A 1910 Sovereign
£180 - 220 †
- 228**
A 1911 Sovereign
£180 - 220 †
- 229**
A 1910 half Sovereign
£80 - 120 †
- 230**
No lot

Objects & Collectables

The Following lots relate to Frederick Robert "Bob" Gerard, (1914-1990) who was a racing driver and East Midlands' Businessman. He participated in numerous top-level motor racing events on either side of World War II, including eight World Championship Formula One Grand Prix

- 231**
British Racing Drivers Club member's car badge,
circa 1950, chrome and enamel, No. 914 F.R.
Gerard, badge face, 9cm, with bar mounting clamp
£100 - 150 †
- 232**
British Racing Drivers club member's car badge,
circa 1950, chrome and enamel, unnumbered but
named F.R. Gerard, badge face, 9cm
£70 - 100 †
- 233**
Brooklands Automobile Racing club member's
car badge, 1930's, marked Spencer London,
chrome and enamel, no. 1062, badge face 9cm,
with bar mounting clamp
£100 - 150 †
- 234**
Booklands Automobile Racing club member's car
badge, 1930's, marked Spencer London, chrome
and enamel, no. 1443, badge face 9cm, with bar
mounting clamp
£100 - 150 †
- 235**
Brooklands Automobile Racing club member's
car badge, 1930's, marked Spencer London,
chrome and enamel, No. 1061, enamel losses,
badge face 9cm, with bar mounting clamp
£70 - 100 †
- 236**
Bugatti Owners club car badge, post war, chrome
and red enamel, 9cm
£50 - 80 †
- 237**
Club International des Anciens Pilotes de Grand
Prix badge, Drago Paris, plated and enamel dia.
7cm, and three peel back CIAPGP badges, (4)
£70 - 100 †
- 238**
Royal Automobile club car badge, pre 1920 type,
chrome and enamel, enamel losses, 13cm with bar
mounting clamp; Royal Automobile club
Associate badge, Fry's Morton Abbey, No.
F68669; RAC Motor Sport member badge, MSM
1945; AA member's badge, (4)
£70 - 100 †
- 239**
North West London Motor club badge, chrome
and blue enamel, 9.5cm overall; five other motor
club badges - Forde Dover; Bristol MC & LCC;
Derby & District; Leicestershire and Mallory
Park, (6)
£50 - 80 †
- 240**
Two Riley Motor club lozenge shape badges;
Riley trial badges; two RAC rally badges,
Eastbourne 1935 and Torquay 1936; other badges,
(12)
£70 - 100 †
- 241**
A collection of Booklands Automobile Racing
club enamelled member's badges, 1935, 1936,
1938, 1939, 1940 and 1941; BARC enamelled pin,
1937; four BRDC member's badges 1955, 1956,
1958, 1959, (11)
£100 - 150 †



Lot 224



Lot 232



Lot 233



Lot 236



Lot 243

242

Racing medals to F.R. Gerard: two silver Motor Cycling club medals, London-Exeter 1934 and London-Land's End 1935; Junior Car club One-lap Final medal, 1935. Donnington Winner's medal, Derby & District Motor club 12 Hour Sports car race 1937; BRDC Road Race bronze medal, 1938, four boxed (5) £50 - 80 †

243

British Grand Prix programme, 1956, other motor racing ephemera, (a small collection) Footnote: Bob Gerard is listed amongst the race entries £20 - 30 †

244

A silver presentation baluster shaped mug, by Charles Boyton, *London 1937* with Frazer Nash enamel badge, engraved "Stanley Cup Competition June 19th 1937, Ten Lap Scratch Race won by F.R. Gerard", 11ozs., 13cm high; and a two handled conical shaped trophy by Charles Boyton, *London 1937*, United Hospitals and University of London Motor Club enamel badge, engraved "Donnington Meeting 29.5.37 F.R. Gerard", 3ozs. 15cm high, (2) £150 - 200 †

245

A small silver campana shaped trophy, by Mappin & Webb, *Sheffield 1935*, having gadrooned domed lid, twin leaf capped scroll handles, engraved "Jersey International Road Race, The Sunday Times Challenge Trophy replica presented to F.R. Gerard 1949", 6ozs., 14cm high; a two handled trophy cup by John Taylor & Co., *Birmingham 1948*, Bugatti Owners Club enamel badge, engraved The Other Makes Challenge cup F.R. Gerard 1948, fix on a plinth, 13cm high; and a two handled presentation rose bowl, Sharman D. Neill Ltd. *Chester 1924*, engraved "Ulster Automobile Club News of the World Race for the International Ulster Trophy 2nd June, 1951, Fourth Place", 10ozs. 12cm, (3) £200 - 300 †

246

A silver presentation cigarette case, Spencer & Co., *Birmingham 1932*, designed with the Motor Cycle Club badge and engraved "London-Land's End 1933 F.R. Gerard car", engine turned decoration, 8.5cm high; an ashtray, Spencer & Co., *Birmingham 1935*, designed with the Motor Cycle Club badge and engraved, "Edinburgh Trail 1935 F.R. Gerard car", 11cm; a presentation waiter, maker's mark JS, *Birmingham 1936*, engraved with facsimile signatures and dated July 24th 1937; a Motor Cycling Club lighter, Edinburgh Trail 1936 F.R. Gerard; and two Motor Cycle club silver medals, each case, (5) £150 - 200 †

247

A silver presentation cigarette box, indistinct maker's mark, London 1936, United Hospitals and University of London Motor Club enamel badge, engraved "Donnington Meeting 29.5.37 Hemographic Trophy F.R. Gerard", cedar wood lined, 12cm; a large cigarette box, William Suckling Ltd., *Birmingham 1946*, engraved "Ulster Automobile Club International Ulster Trophy Race Ballyclare 1947 Fastest Lap - Scratch Race", cedar wood lined, 18cm; two Motor Cycle club cigarette boxes, inscribed "One Hour High Speed Trial Brooklands 1933 F.R. Gerard, car speed 62.36mph" and "Brooklands 1935 One House Trial F.R. Gerard, speed 77.81mph"; and two other cigarette cases to F.R. Gerard, (6) £250 - 350 †

248

An electro plated cocktail shaker, Manco, engraved "Riley Motor Club Third Winter Trial, First Class Award", screw fitting top, 18cm high; an electro plated two handled trophy, Embassy, Sheffield, engraved, "Riley Motor Club Lullington Park 1936 Hill Climb Edgar Harrison trophy F.R. Gerard"; together with a small collection of medals and plaques £40 - 60 †



Lot 257

249

A small collection of various treen thimbles £30 - 50 †

250

A collection of various porcelain thimbles £40 - 60 †

251

A miscellaneous collection of various metalware thimbles, including commemorative examples, novelty examples etc. £40 - 60 †

252

A small collection of Royal Crown Derby and other porcelain thimbles £40 - 60 †

253

A small collection of silver and white metal enamel decorated thimbles £100 - 150 †

254

A collection of various silver and white metal thimbles, including filigree work examples £100 - 150 †

255

Various decorative glass thimbles, including Millefiore examples £40 - 60 †

256

A silver 1oz. thimble shaped measure, "Just a thimble"; a large plated example; a novelty porcelain musical thimble; various miniature porcelain thimbles and a white metal acorn shaped thimble holder £40 - 60 †

257

Five various gold and yellow metal thimbles £200 - 300 †

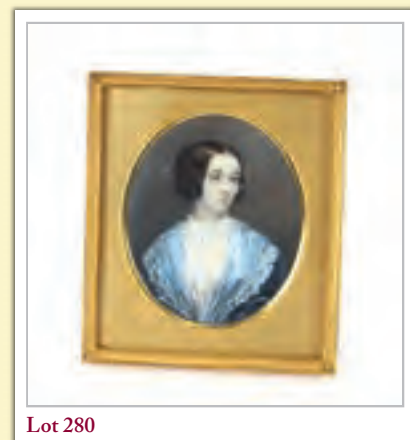


Lot 262



Lot 267

- 258**
A 19th Century gilt metal and mother of pearl handled posy holder, 13cm long £40 - 60 †
- 259**
A pair of vintage yellow metal framed sun glasses £25 - 35 †
- 260**
"Pretty Polly" a tale, illustrated by H.A.B. from the Grubbe collection £40 - 60 †
- 261**
A miniature on ivory of E.J.M. Grubbe, unframed; another etc. £50 - 80 †
- 262**
A pair of 19th Century Austrian jewelled and enamelled gilt metal candlesticks, 21cm high £80 - 120 †
- 263**
An M.E. Mayer glass scent bottle, in case £30 - 50 †
- 264**
A silver cased Tiffany biro £40 - 60 †
- 265**
A Japanese fan, having painted and embroidered panels on faux ivory sticks, inscribed "Selena Parthew", in fitted lacquered and painted chinoiserie box; and another fan having lace and decorated panels, AF, (2) £100 - 200 †
- 266**
An old leather and silver mounted belt, Hallmarked London 1929, 86cm long £40 - 60 †
- 267**
A brass cased French striking carriage clock, with repeat button, white enamelled Roman numeral dial and seconds subsidiary dial, inscribed "Howell James to the Queen London" £150 - 250 †
- 268**
An Antique Chinese rock crystal model of a pagoda; a Chinese Samurai sword fitting; a bronze fitting; and a 1795 bronze coin £70 - 100 †
- 269**
Three miniature models of German pickelhaubes £40 - 60 †
- 270**
Two souvenir spoons, one commemorating Hindenburg dated 1914; and another with enamel decoration "The Kensingtons" £30 - 50 †
- 271**
Three Russian painted boxes; together with a box of miniature playing cards £35 - 55 †
- 272**
A Stanhope viewer, in the form of a pair of miniature opera glasses; various carved bone and stoneware figures etc. £180 - 220 †
- 273**
Two 19th Century carved ivory puzzle ball chess pieces £40 - 60 †
- 274**
A 19th Century Chinese carved ivory needle container, with dragons and foliage designs; together with an ivory bookmark; and three other items £20 - 40 †
- 275**
A German faux tortoiseshell and white metal mounted paper knife, having Viking ship mount, originally belonged to the Gunnery officer of the Scharnhorst, 19cm long £30 - 50 †
- 276**
Seven white metal uniform buttons, by G & H Bullivant, Birmingham £20 - 30 †
- 277**
A brass and leather three draw telescope £40 - 60 †
- 278**
An ivory box, having monogrammed hinged lid, contents to include an ivory handled seal etc. £20 - 40 †
- 279**
A 19th Century tortoiseshell and white metal mounted folding card case, decorated family crest and entwined "A" and "E" initials £20 - 40 †
- 280**
A miniature portrait on ivory, depicting a lady in blue lace trimmed dress, contained in a brass easel frame £100 - 200 †
- 281**
A cloisonne censer, with all over floral and symbol decoration, 10.5cm dia. overall x 9.5cm high £40 - 60 †
- 282**
A Chinese bronze censer, the lid surmounted by a Dog of Fo, flanked by loop handles with raised foliate decoration on three claw feet, 16cm high £40 - 60 †
- 283**
PR Northcroft, a bronze study of a black tailed Godwit, no. 255/300 £40 - 60 †
- 284**
An Oriental carved ivory figure of a maiden holding a scroll, having mother of pearl and coloured stone decoration, 19cm high
See back cover illustration £300 - 400 †
- 285**
A brass cased carriage timepiece, having white enamel Roman numeral dial £40 - 60 †
- 286**
An Oriental brass articulated fish, 25cm long; a brass model of a carp; ethnic brass comb etc. (4) £40 - 60 †
- 287**
A Limoges enamel plaque, depicting figures harvesting with town in the background, 12cm x 9cm £60 - 80 †



Lot 280



Lot 283



Lot 284



Lot 287



Lot 308

288
A Japanese carved ivory figure, of a seated street vendor with staff, gourd and turtle and a carved ivory clam shell ornament, (2) £100 - 150 †

289
A Mouseman carved wooden napkin ring £40 - 60 †

290
An interesting German made oriental doll, in green dress £160 - 200 †

291
A Chinese glass and silk work table screen, decorated with a cat stalking a cricket, on hardwood stand, 27cm dia. £60 - 80 †

292
A Pantograph by W & S Jones, in fitted pine case £50 - 80 †

293
A Chinese tea plaque, decorated with a temple, symbols and calligraphy, 24cm x 19cm £100 - 200 †

294
A Sorrento type mirror, with decoration of flowers, figure heads and beasts, 26cm x 21cm £20 - 30 †

295
A plated flute, by Boosey & Hawkes, in fitted case £120 - 160 †

296
Thirteen painted metal soldiers, some in blue uniform, some in khaki £20 - 30 †

297
An Antique puppet in the form of a knight in armour; together with a collage of 1930's coloured metal farm animals, framed and glazed £30 - 50 †

298
An Antique Chinese soapstone figure, of an immortal, 21cm high £50 - 80 †

299
A Victorian dress sword, by Gandy & Sons, St George Street, Bath, having brass pierced basket hilt and leather scabbard £100 - 150 †

300
An 19th Century officer's sword, having brass hilt with cypher VRI (Victoria Queen Empress), engraved blade, 83cm, complete with steel scabbard £180 - 220 †

301
A 19th Century officer's sword, brass hilt with VR cypher, engraved blade, 81cm complete with steel scabbard £170 - 220 †

302
A 19th Century rustic sword stick, with diamond section blade, 69cm £80 - 120 †

303
A fruit wood fire officer's truncheon, 48cm long £20 - 30 †

304
A & N Auxiliary C.S. Limited plate camera, with tripod and accessories, contained in leather case £120 - 160 †

305
A Smith's chrome cased dashboard clock, 10cm dia. £20 - 30 †

306
A French brass cased carriage clock, having Roman numeral dial, 12cm high £80 - 120 †

307
A leather cased Mah Jong set, complete with stands for the tiles £50 - 80 †

308
A mahogany cased microscope, by Smith, Beck & Beck, No.3759, complete with spare lenses and accessories, microscope 43cm high, case 50cm high £150 - 200 †

309
Two mahogany cased sets of microscopic slides and samples £100 - 150 †

310
A brass telescope, by J.H. Steward of London, contained in a fitted wooden box £120 - 160 †

311
A leather suitcase, with silver fittings, stamped CEG No. 7 Park Lane, London, various luggage labels attached £50 - 80 †

312
A 19th Century mahogany and brass mounted Apothecary's box, the doors opening to reveal an arrangement of glass bottles and two fitted drawers including brass balance scale, glass mortar, secret compartment with bottles to the reverse, 22.5cm wide x 27cm high x 18cm deep £450 - 550 †

313
A Victorian mahogany cased wall clock, by Batty of Manchester, circular Roman numeral dial and single fusee movement £100 - 200 †

314
An 18th Century brass lantern clock, the bell surmounted by an urn finial above pierced sides, Roman numeral chapter ring, foliate decorated dial inscribed John Pennoc. "Nexsty Church in Bothbury, Londini, Fecit", 40cm high £600 - 800 †

315
A Victorian walnut cased regulator type wall clock, having circular brass mounted Roman numeral dial, visual weights and pendulum, 100cm £40 - 60 †

316
A late Victorian golden oak cased mantel clock, having circular engraved brass Roman numeral dial, and eight day movement striking on a bell, the visual pendulum enclosed by bevelled glass panel within spiral twist columns on inverted platform base, 42cm high £100 - 150 †



Lot 312



Lot 313



Lot 314

- 317**
A late Victorian oak chiming bracket clock, the temple case enclosing a brass spandrel dial with steel chapter rings, striking on a gong, 45cm high, 32cm wide, complete with bracket £100 - 200 †
- 318**
An early 20th Century oak cased mantel clock, of temple design, having 8 day movement striking on a gong, 35cm high £30 - 50 †
- 319**
An early 19th Century mahogany stick barometer, by M Berge London, having brass scale AF £100 - 200 †
- 320**
A 19th Century mahogany cased banjo barometer, having silvered dials and convex mirror panel, 90cm £80 - 120 †
- 321**
A 19th Century walnut stick barometer, by Cook & Sons of York and London, 91cm £100 - 200 †
- 322**
A Victorian inlaid walnut wall clock, by J. Eaton, Gnig Hill, Sheffield, 86cm £180 - 220 †
- 323**
A 19th Century mahogany tea caddy, of sarcophagus shape, 21.5cm long AF £20 - 40 †
- 324**
A Victorian brass table oil lamp, with cut glass reservoir and etched shade, 70cm high £80 - 120 †
- 325**
A copper figure, of a seated Buddha, 26cm high £30 - 50 †
- 326**
A Chinese carved hardwood figure, of an immortal 36cm high £20 - 30 †
- 327**
A marble bust, of a young girl wearing cloak and hood, 26cm high £80 - 120 †
- 328**
An oriental carved hardwood figure of a maiden with dragon, 36cm high £20 - 30 †
- 329**
A Coalbrookdale style pierced dish, decorated naked figures and foliage, 20cm dia. £20 - 30 †
- 330**
A 19th Century bronze figure of a mounted Lancer, 28cm high £80 - 120 †
- 331**
An unusual 19th Century carved novelty Black Forest travelling ladies boot pull, hinged to form a faux double barrelled flint lock pistol inscribed "Gute Nacht", with floral decoration, 31cm £60 - 80 †
- 332**
A pair of late 19th/early 20th Century Moorish style folding stands, 22cm high £20 - 30 †
- 333**
A 19th Century carved softwood Black Forest inkwell, in the form of an eagle owl with hinged lid and glass eyes, 12cm high £50 - 80 †
- 334**
A pair of Italian carved wooden book-ends, in the form of musicians; a bell hung to a carved hardwood elephant bracket; and a pair of bobbin candlesticks, (5) £40 - 60 †
- 335**
A hard stone Chinese figure, of an immortal 21cm high £20 - 30 †
- 336**
A 19th Century carved and coloured figure of a bearded Saint, in the 17th Century style, with gilt halo holding a marker with Roman numerals, red lobed body and indistinct lettering to the base, 39cm high £40 - 60 †
- 337**
A Victorian walnut cased chiming mantel clock, having brass spandrel dial and steel chapter ring, surmounted by a pierced gallery and orb finials, 8 day movement striking on a gong, 45cm high £100 - 150 †
- 338**
A late Victorian walnut cased wall clock, having leaf carved decoration to the case, circular dial within turned half columns, gilt visual pendulum, 8 day movement, 67cm £50 - 80 †
- 339**
A late 19th Century carved Black Forest box, the hinged lid with large foliage design; together with a carved figure of an eagle with outstretched wings, (2) £20 - 30 †
- 340**
An Ashanti carved striped ebony head rest, with out swept rest of four columns, 15cm; another similar headrest, 19cm; and a pair of slender ethnographic hardwood candlesticks, 21cm high, (4) £30 - 50 †
- 341**
A Victorian rosewood framed text, worked by Jane Curry dated 1855, 22.5cm x 32cm overall £20 - 30 †
- 342**
A 19th Century French gilded metal mantel clock, by Hersant Paris No. 4871, surmounted by an urn finial above a circular blue enamel Roman numeral dial, eight day movement striking on a bell, complete with keys and pendulum, 32cm high £100 - 150 †
- 343**
An Edwardian inlaid mahogany oval tea tray, with floral scroll decoration flanked by brass carrying handles, 65cm £20 - 40 †
- 344**
An early 19th Century Framlingham theatre poster; and another for Covent Garden, (2) £50 - 80 †



Lot 316



Lot 317



Lot 337



Lot 342



Lot 347



Lot 348



Lot 354



Lot 359

345
A Victorian rosewood and mother of pearl inlaid sewing box; and an Edwardian mahogany folding cutlery box, (2) £20 - 40 †

346
A 19th Century rosewood and satinwood inlaid tea caddy, raised on ball feet, 30cm, interior missing £30 - 50 †

347
A 19th Century figured mahogany and brass bound box, 33cm £40 - 60 †

348
A copper bound barrel coal bucket, having swing handle, 39cm high x 33cm dia. £30 - 50 †

349
An ethnic carved hardwood stool, with triple mask decoration, 46cm high, 30cm dia.; a carved ebony head 37cm high; and a carved hardwood antelope head 29cm high, (3) £30 - 40 †

350
A 19th Century carved softwood Black Forest spill holder, in the form of a dead tree trunk surmounted by an Alpine Ibex with glass eyes, 27cm high £40 - 60 †

351
A 19th Century carved softwood Black Forest spill holder, in the form of a tree trunk flanked by grasses and stepped stones on a naturalistic base and ebonised sockle, 28cm high £40 - 60 †

352
A carved oak pocket watch holder, in the 17th Century style having angled moulded pediment and hinged door with central aperture, 19cm high £30 - 50 †

353
A 19th Century carved Black Forest desk stand, surmounted by an eagle perched on rocks and chamois to the side, with reserve aperture and pen tray, 17cm high £60 - 80 †

354
A pair of oriental cloisonne dishes, having dragon and flower decoration, 30cm dia. £200 - 300 †

355
A large rustic wooden mortar, 19cm high £100 - 150 †

356
An 18th Century metal and gilded candelabra embellishment £30 - 60 †

357
A brass Anniversary clock, under glass dome, 32cm high £20 - 40 †

358
A pair of oriental cloisonne dishes, decorated with birds and flowers, 24.5cm dia. £150 - 250 †

359
A pair of Art Nouveau painted spelter busts, "Salome" and "Cleopatra", after Foretay, 34cm high £80 - 100 †

360
An Antique brass skeleton clock, having single fusee movement striking on a bell, under dome, 34cm high £300 - 400 †

361
An Edwardian mahogany and satinwood inlaid oval tea tray, having central decoration of musical instruments and notes, surrounded by trailing foliage, shaped gallery border and brass carrying handles, 66cm wide £30 - 60 †

362
An oriental enamel baluster vase, decorated with panels of birds and foliage, 36cm high £80 - 120 †

363
A pair of 19th Century silkwork embroideries, depicting young maidens in country landscapes, contained in oval gilt frames £30 - 60 †

364
A cloisonné tea set, with dragon and foliate decoration £60 - 80 †

365
An Edwardian mahogany oval tea tray, with conch shell inlay flanked by brass carrying handles £30 - 50 †

366
A pair of mid-20th Century carved ebony and ivory inlaid book ends, the upright with secret compartments and inlaid with "Lanka" and a map, 16cm high £30 - 50 †

367
A 1930's oak cased mantel timepiece, 24.5cm long x 15cm high £20 - 30 †

368
A Victorian papier-mâché and mother of pearl decorated tray, by Jennens & Bettridge, 44cm £50 - 80 †

369
A Zebra skin £100 - 150 †

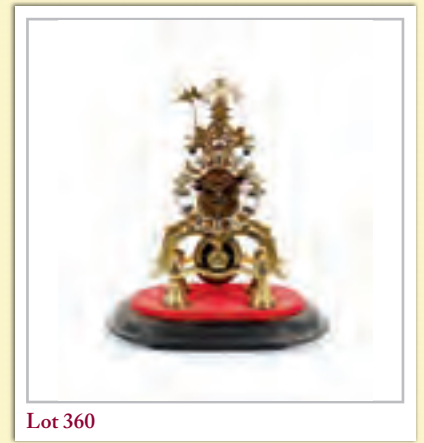
370
A large heavy wooden Indian bowl, of stylised form, flanked by wedge shaped handles, 60cm overall £100 - 150 †

371
An Art Deco bronze study of a recumbent dog, signed Outline, 50cm long £80 - 120 †

372
An alabaster Tazza, with copper liner, raised on a square plinth, 36cm dia. £40 - 60 †

373
A carved wooden Ethnic figure of a primitive man, 76cm high overall £40 - 60 †

- 374**
A decorative painted wooden candle scone, of square waisted form, 15cm high £20 - 40 †
- 375**
An Ethnic grotesque tribal mask, with carved decoration, 37cm; and another of elongated form raised on a turned wooden plinth, 60cm (2) £100 - 150 †
- 376**
A 19th Century Irish Killarney yew wood and inlaid lace box, with hinged lid decorated with harp, shamrocks and trailing foliage, 24cm £80 - 120 †
- 377**
An Antique rustic wooden dough trough, 97cm long £40 - 60 †
- 378**
A Victorian mahogany cased wall clock, having circular painted Roman numeral dial, 34cm dia. overall £40 - 60 †
- 379**
A collection of ten various Pelham puppets £80 - 120 †
- 380**
One large and one small Steiff Lion, one with button in ear, (2) £30 - 50 †
- 381**
A copper jug, in the manner of W.A.S.Benson 24cm high £10 - 20 †
- 382**
Two brass figures depicting storks £10 - 20 †
- 383**
A Black Forest style carved bear ornament, 40cm long £30 - 50 †
- 384**
A 19th Century copper jug, of baluster form with scroll handle, 25cm high £10 - 20 †
- 385**
An Eastern brass shield, with raised boss and foliate decoration, 25.5cm dia.; together with a WW1 Trench Art coal scuttle made from a shell, (2) £40 - 60 †
- 386**
A cased and preserved arrangement of a fox and rabbit, amongst foliage, the case 131cm wide in extremes, 54cm high £80 - 120 †
- 387**
Three various old turned wooden Indian bowls £40 - 60 †
- 388**
A Victorian circular painted metal flour bin, 53cm dia. x 81cm high £40 - 60 †
- 389**
A Pair of 19th Century French Ormolu three branch wall lights, with rams head and Bacchus mask decoration and trailing foliage, 65cm £300 - 400 †
- 390**
A 19th Century oak and mahogany cross-banded candle box, 50cm high overall, AF £20 - 30 †
- 391**
A 19th Century needlepoint embroidery, in birds eye maple frame £40 - 60 †
- 392**
Caroline Amelia Trowell, Victorian sampler depicting verse, flowers, figures and buildings, 45cm x 43cm £30 - 50 †
- 393**
A 19th Century silkwork and woolwork embroidery, depicting an urn of flowers, 32cm x 27cm, contained in a figured mahogany frame and a small oval gilt framed embroidery (2) £20 - 40 †
- 394**
A 19th Century woolwork embroidery of flowers, 29cm x 24cm, in maple frame £40 - 60 †
- 395**
A 19th Century sampler, worked by Charlotte Simpson 1847, decorated with a house, birds and flowers, 33cm x 35.5cm £30 - 60 †
- 396**
A large needlepoint embroidery, depicting flowers, 54cm x 56cm £40 - 60 †
- 397**
A pair of Oriental silk work embroideries, depicting fighting cockerel amongst foliage, 94cm x 58cm £100 - 200 †
- 398**
A framed souvenir napkin, Prince of Wales Silver Jubilee celebrations, Cardiff 1935 £20 - 40 †
- 399**
A framed text of the Absent Minded Beggar, by Kipling £20 - 40 †
- 400**
Two framed First World War commemorative silk handkerchiefs £20 - 40 †
- 401**
Approx. 100 volumes of Punch £40 - 60 †
- 402**
A leather bound Victorian Bible, and various other books £10 - 20 †
- 403**
Racing Illustrated bound, July 2nd 1895 - November 27th 1895 AF £20 - 30 †
- 404**
George Stubbs anatomical works by Terence Doherty, published Secker & Warburg £20 - 30 †
- 405**
Two volumes of Albrecht Durer prints, and other books £30 - 50 †
- 406**
A box of numerous early Grubbe family of Southwold photos £100 - 200 †



Lot 360



Lot 371



Lot 378



Lot 389



Lot 412



Lot 413



Lot 419



Lot 434

407
Various Jade and hardstone ornaments; a Jade leaf shaped Libation cup etc. £100 - 200 †

408
A Victorian bamboo framed mirror, 21cm x 34cm in extremes; and a Sorrento ware hanging letter rack with pierced compartments inscribed with the days of the week, having swallow decoration, 41cm, (2) £40 - 60 †

409
A quantity of English silver coins, 1919 and earlier, all denominations including 25 Crowns, weighing approx. 43ozs. £450 - 550 †

410
A 19th Century mahogany tea caddy, fitted canisters with sliding lids, central glass mixing bowl, raised on bun feet, 36cm wide £80 - 120 †

411
A large Chinese bronze censer, decorated with river scenes and pagoda, flanked by loop carrying handles, raised on three tapering pointed feet, 43cm dia. x 28cm high £100 - 150 †

412
A large Venetian micro mosaic and glass easel dressing table mirror, inscribed "Ricordo Venezia", 49cm x 38cm overall £1,500 - 2,000 †

413
A large 19th Century micro mosaic wall mirror, 34cm x 27cm overall £1,200 - 1,500 †

414
A pair of Tibetan white metal cups; a larger similar with copper decoration; and a circular brass dish profusely foliate engraved, (4) £20 - 30 †

415
A Thai bronze figure of a goddess, 14cm high £20 - 40 †

416
A Chinese jade pendant, of pierced design; and a set of graduated ivory beads, (2) £50 - 80 †

417
A pair of decorative Chinese resin figures, of an Emperor and Empress, 28cm high £40 - 60 †

418
An Antique oval metalware double sided painted pendant, decorated with Madonna and child and saint, 10cm x 8.5cm in extremes £50 - 60 †

419
A 19th Century French porcelain and ormolu rise and fall ink stand, the lid surmounted by a seated cherub flanked by scrolled handles above the reservoir with lifting top, raised on pierced foliate rococo design base, 20cm high £80 - 120 †

420
A First Edition of Dombey & Son, 1848, with original cover of the first part bound in at the back, full green leather binding £100 - 150 †

421
The Naval History of England, Thomas Lediard, 2 volumes £200 - 300 †

422
The Suffolk Chronicle, May 6th 1810, December 26th 1812 £80 - 120 †

423
The Essex Telegraph 1890-91, elephant folio A/F £50 - 80 †

424
Eastern Daily Press 1893, elephant folio A/F £100 - 150 †

425
Scarce 1747 First Edition, Works of William Shakespeare, edited by William Warburton, based on notes by Alexander Pope, 8 volumes £100 - 150 †

426
Dickens "Pickwick Papers, 1857", leather and gilt bound £40 - 60 †

427
Eight Volumes of Letters, "Writ By a Turkish Spy, Who Lived Five and Forty Years Undiscover'd" £100 - 150 †

428
No lot

Pictures & Prints

429
A 19th Century oval print after George Morland, depicting children at play with gilt and black mount, and gilt outer frame, 25.5cm x 30cm overall £40 - 60 †

430
An original Picasso poster, Hayward Gallery London 1981, illustrated with The Pipes of Pan, 80cm x 56cm £80 - 120 †

431
E J Wilson, study of a fisherman, signed oil on board, 14.5cm x 24cm £30 - 40 †

432
19th Century school, study of street urchin at Christmas, unsigned watercolour, 10.5cm x 9.5cm £20 - 40 †

433
19th Century school, oval portrait study of a lady, unsigned oil on board, framed as an oval, 37cm x 26cm £80 - 120 †

434
English school, study of Empress steam and sail vessel, unsigned oil on canvas, 23cm x 33cm £180 - 220 †

435
Continental school, miniature portrait study of Princess Ekaterina Golithayne, oil on card, 17.5cm x 12cm £80 - 120 †

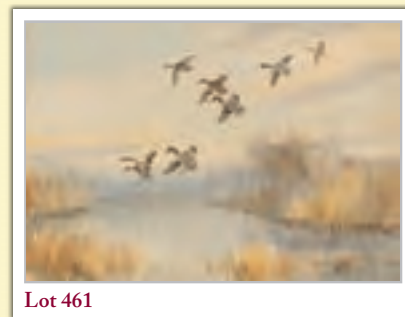
- 436**
Italian school, circa 1900 study of an Italian boy seated eating a plate of spaghetti, oil on panel, 38cm x 22cm £50 - 100 †
- 437**
Scottish school, extensive landscape with castle, lake, figures and deer, unsigned watercolour 21cm x 31cm £50 - 80 †
- 438**
Augustus Walford Weedon, landscape study with figures and cart, signed watercolour 22cm x 39cm £50 - 80 †
- 439**
E A Warmington, an extensive waterfall study, signed watercolour, 29cm x 46cm £50 - 80 †
- 440**
Ronald Frampton, study of Marston Church Norfolk, signed watercolour, 25cm x 35cm £50 - 80 †
- 441**
Rik de Stroumillo, study of a reclining nude, "Rachel 22nd Jan '93", initialled in pencil, watercolour, 26cm x 35.5cm £40 - 60 †
- 442**
John Anthony Horwood, study of a busy harbour side scene with figures walking in the rain, signed oil on canvas, 29cm x 44cm £100 - 200 †
- 443**
Thomas Rowlandson, study of figures in country landscape; pencil sketch bears signature and date 1789, 19cm x 24cm £150 - 250 †
- 444**
19th Century school, rural scene with figures walking along a country path beside a pond, cottage and fields in the background, 20cm x 28cm £100 - 150 †
- 445**
T Westcott, marine study with vessels at sunset, signed oil on board, 22cm x 29cm £100 - 200 †
- 446**
A pair of pencil drawings, depicting young girls in oval ebonised frames £20 - 30 †
- 447**
20th Century school, study of a highland loch scene, indistinctly signed watercolour, 33cm x 48cm £30 - 40 †
- 448**
Ian Armour-Chelu, 1928-2000, study of ducklings, pencil signed watercolour dated 1977, 22.5cm x 26cm £40 - 60 †
- 449**
Anne Paterson Wallace, "Moonlit river", signed watercolour, 14.5cm x 24.5cm £30 - 40 †
- 450**
Anne Paterson Wallace, "Snowy walk", signed watercolour, 17.5cm x 12.5cm; and lithograph "Old Chelsea street", (2) £30 - 40 †
- 451**
19th Century school, a pair of portrait studies of a lady and gentleman, unsigned watercolours, 20cm x 18cm £40 - 60 †
- 452**
Louise Armour-Chelu, study of a cat asleep in a tea chest, pen and ink, signed and dated 1984 £20 - 30 †
- 453**
20th Century school, study of a wounded owl, indistinctly signed watercolour, dated 1985, 18cm x 24cm £20 - 30 †
- 454**
Angela Barfoot, August 1967, Wild flowers and grasses, signed watercolour, 33.5cm x 22cm £20 - 30 †
- 455**
John Western, study of the Deben with quay and numerous sailing vessels, signed and dated 1988, 33cm x 47.5cm £60 - 80 †
- 456**
Alfred Morgan 1835-1924, study of daffodils in a jug, signed oil on canvas, 60cm x 40cm and a catalogue for Richard Green 19th Century Paintings Exhibition £200 - 300 †
- 457**
M. Shepherd Dale, 1905 pencil signed etching of a Continental street scene; a lithograph head and shoulders portrait of a young girl; M. Green, a pencil signed etching of a girl in evening dress; and a coloured print of partridge (4) £20 - 40 †
- 458**
Yvonne Hammond, study of a butterfly and flowers, initialled watercolour, contained in pollard frame; and another of a butterfly and thistles (2) £20 - 30 †
- 459**
Ian Armour-Chelu, 1928-2000, "Church tower in winter", (painted from near St. Peter's Hall, South Elmham), signed watercolour, 10.5cm x 16cm £40 - 60 †
- 460**
W. Ayrton, study of sailing vessels on a river, signed watercolour, 37cm x 32cm £40 - 60 †
- 461**
Roland Green, 1890-1972, study of ducks in flight, signed watercolour, 27cm x 38.5cm £100 - 200 †
- 462**
Roger Charles Desoutter, born 1923, "The Quay Side by Moonlight", signed oil on canvas, 45cm x 60cm £200 - 400 †



Lot 435



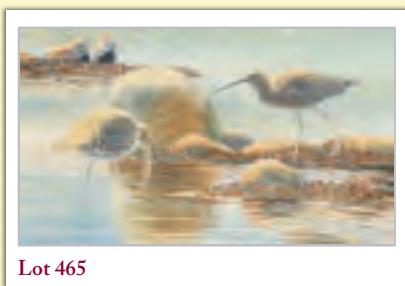
Lot 456



Lot 461



Lot 462



Lot 465

463

A pair of 18th Century black and white engravings, W Nutter after W Bigg, "Saturday Evening, The Husbands Return From Labour", and "Sunday Morning, a Cottage Family Going To Church", published 1795 W R Bigg, Gate Street, Lincolns Inn Field, London, 65cm x 73cm
£80 - 120 †

464

L A, study of vessels in stormy seas, initialled oil on canvas, dated 06, 40cm x 63cm
£80 - 120 †

465

20th Century school, indistinctly signed, study of wading birds, 25cm x 43cm
£40 - 60 †

466

John Burman, born 1936, landscape study with cattle in a meadow, signed watercolour, 33cm x 54cm
£100 - 150 †

467

Cavendish Morton, 1874-1939, study of boats on the Orwell, signed watercolour, 29.5cm x 47cm
£200 - 300 †

468

A folder of prints, photographs etc.
£30 - 40 †

469

Edouard Chimot, a collection of nude pastel illustrations, unframed
£30 - 50 †

470

A folder containing 19th Century school dog watercolour; double page Dressage print etc.
£70 - 100 †

471

Two Indian drawings, one depicting a tribesman and the other of a seated mogul, unsigned, 22cm x 17.5cm
£60 - 80 †

472

A coloured portrait print, pencil signed to mount, published Raphael Tuck & Sons, proof edition
£20 - 40 †

473

A pair of architectural prints, circa 1921
£20 - 40 †

474

An early 20th Century black and white print, of a harvesting scene
£20 - 30 †

475

Harriet Churchyard 1836-1927, a pair of doilies decorated with caricatures and humorous verse, framed and glazed
£80 - 120 †

476

Victorian school, study of a wooded valley unsigned watercolour 34cm x 46cm
£30 - 40 †

477

David Cox, study of rolling country landscape with figures, cottages and windmill, unsigned watercolour, label verso, 22cm x 35cm
£40 - 60 †

478

Alfred R Blundell, study of a woodland river scene, signed oil on canvas in simulated walnut painted frame, 34.5 x 44.5cm
£100 - 200 †

479

A collection of various prints, watercolours etc.
£10 - 20 †

480

Two trays of assorted early prints and photographs
£25 - 35 †

481

A small collection of hand coloured fashion prints etc.
£50 - 80 †

482

A small collection of early photographs and prints of Rembrandt works
£40 - 60 †

483

A folder of various old prints and watercolours
£25 - 35 †

484

No lot

485

Two Grubbe of Southwold sketch books etc.
£50 - 80 †

486

A dis-bound copy of Verve, containing Picasso prints 1954
£40 - 60 †

487

A vintage photograph of side saddle riders, in front of a golf course circa. early 20th Century with various signatures
£30 - 50 †

488

A vintage photograph of Waddon College rowing teams, circa 1925
£30 - 50 †

489

J.R.G.Gordon, pair of studies depicting polo ponies, signed pastels
£30 - 60 †

490

English school, early 19th Century portrait of a seated gentleman, oil on board, 16cm x 13cm
£80 - 120 †

491

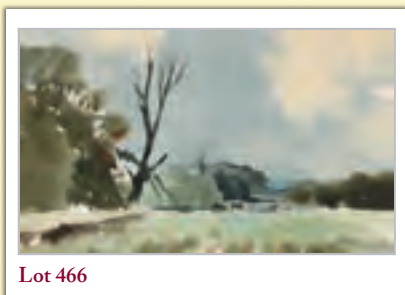
William J Callcott 1843 - 1890, a river landscape with an angler, oil on panel, signed, 15cm x 23cm
£100 - 150 †

492

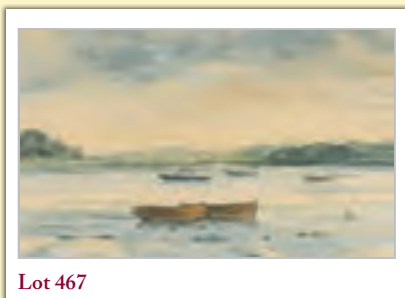
Alfred W Darby, an extensive heath land scene with a figure in the foreground, signed and dated 1903, oil on board, also inscribed verso "From a Sketch August 23rd/84", 16cm x 26cm
£80 - 120 †

493

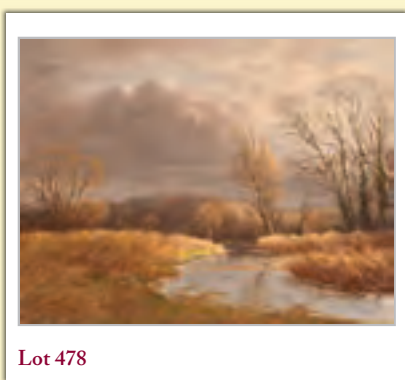
English school, mid 19th Century pastoral scene with a figure and her dog crossing a bridge by a country cottage, oil on canvas 19cm x 29cm
£80 - 120 †



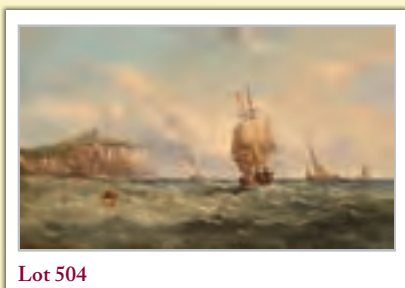
Lot 466



Lot 467



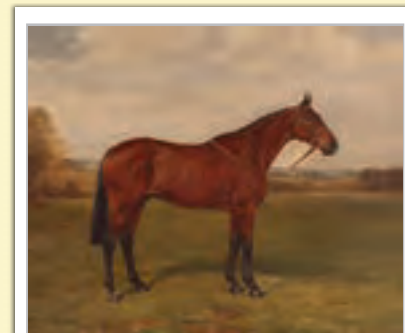
Lot 478



Lot 504

Lots marked ✓ please refer to Droit de Suite royalty charges in Terms and Conditions
† Each lot is subject to a Buyer's Premium of 18% + VAT (21.6%)

- 494**
19th Century school, miniature on ivory depicting The Return of the Prodigal Son, 15cm x 11cm
£80 - 120 †
- 495**
William Henry Lewis 1817 - 1879, study of a harvest scene with cattle watering at a river beyond, oil, on canvas signed, 19cm x 24cm
£120 - 160 †
- 496**
Henry Hadfield Cubley 1858 - 1934, "On The Banks of the Firth of Clyde, Isle of Arran", oil on panel signed and dated '01 also inscribed verso, 30cm x 40cm
£100 - 150 †
- 497**
Thomas James Purchas 1879 - 1891, horse and cart with men working in a stone quarry; and another of a river landscape, oils on board, one signed and dated 1885; and two smaller by the same hand each 22cm x 28cm (4) £200 - 300 †
- 498**
H Mackey, study of a coastal scene with fisherman counting their catch, oil on canvas signed, unframed 30cm x 50cm
£40 - 60 †
- 499**
William Stone 1842 - 1913, country scene with a figure seated under trees, farmhouse beyond, oil on canvas signed, 39cm x 59cm
£100 - 150 †
- 500**
G Metz, study of three dogs in an interior, oil on board signed 46cm x 59cm
£60 - 80 †
- 501**
Attributed to Richard Wilson 1714 -1782, figures by a cottage near cliffs with castle beyond, oil on panel, verso "From the Morrant Collection at Brockenhurst House", 14.5cm x 28cm
£200 - 300 †
- 502**
English school, early 19th Century, a country scene with travellers and donkey's on a path, oil on canvas, 35cm x 30cm
£120 - 180 †
- 503**
English school, 19th Century highland scenes with cattle and sheep, a pair of oils on canvas each 22cm x 37cm (2)
£60 - 80 †
- 504**
John James Wilson 1818 - 1825, Shipping off the Harbour Entrance said to be Polperro, Cornwall, oil on canvas, signed 31cm x 50cm
£300 - 400 †
- 505**
R. Anscome, Newmarket, study of the horse "Culworth", signed oil on canvas, 48cm x 58cm
£100 - 200 †
- 506**
H. Harris, study of a racehorse in rural landscape, signed oil on canvas, 48cm x 58cm
£100 - 200 †
- 507**
Edwin A Pettitt 1872, study of highland waterfall with mist shrouded mountains in the far ground, signed oil, 29.5cm x 44.5cm
£100 - 150 †
- 508**
A E Dunnam, study of the Parrot and Punch Bowl at Aldringham, signed oil on canvas, 30cm x 39cm
£40 - 60 †
- 509**
Late 19th Century school, study of castle ruins beside a lake, indistinctly signed oil on canvas, 50cm x 71cm, contained in an ornate gilt frame
£50 - 80 †
- 510**
J.K.G., Continental study of a man washing bottles, initialled watercolour, 46cm x 33cm
£50 - 80 †
- 511**
19th Century school, head and shoulders portrait study of a young girl, unsigned watercolour in decorative gilt frame, 30cm x 22cm
£40 - 60 †
- 512**
After Edward Seago, study of Norfolk coastal scene, unsigned pastel, 26cm x 30cm
£800 - 1,200 †
- 513**
19th Century school, study of a nude girl, unsigned oil on board, in decorative gilt frame, 25cm x 19cm
£80 - 120 †
- 514**
A 19th Century coloured print, of a girl holding a Bacchanalian mask 24cm x 20cm in decorative gilt frame
£40 - 60 †
- 515**
Brian Richard Entwistle, A Naval Captain standing in front of the ships wheel, oil on artists board, signed 29cm x 24cm
£100 - 150 †
- 516**
Eduardo Forlenza 1861 - 1934, study of a pretty Neapolitan girl with gold ear-rings, oil on canvas, signed 48cm x 32cm
£150 - 200 †
- 517**
English school, 19th Century study of a kitten sat by it's bowl, oil on canvas in carved wood Florentine type frame, 20cm x 25cm
£120 - 160 †
- 518**
Bruno Wiese 1865 - 1930, a three quarter length portrait of a seated young lady, oil on canvas laid on board, signed and dated 1909, 75cm x 50cm
£300 - 400 †
- 519**
Italian school, early 20th Century, a Capriccio view of the Grand Canal Venice, showing the Doges palace and The Dogana, oil on canvas 48cm x 70cm
£200 - 300 †



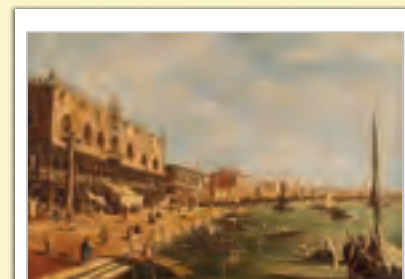
Lot 505



Lot 506



Lot 512



Lot 519

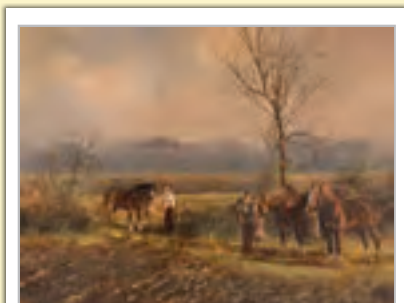


Lot 521

520
Charles Vickers 1821 - 1895, a village scene with country folk and animals, oil on canvas signed, 49cm x 75cm £150 - 250 †

521✓
Clive Madgwick, "Leading him home", signed oil on canvas, 29.5cm x 39.5cm £300 - 400 †

522✓
Clive Madgwick, "A Winter's day", signed oil on canvas, 29.5cm x 39.5cm £300 - 400 †



Lot 522

523
James Hardy, 20th Century extensive coastal sea battle, signed oil on canvas laid on board, 49cm x 77cm £200 - 300 †

524
F E Jamieson (W Richards), thatched cottage near Godalming Surrey, signed with F E Jamieson's pseudonym W Richards, oil on canvas, 50cm x 77cm £150 - 250 †

525
Winifred Austen, R.E., pencil signed dry point etching, "Into the Rye", 24.5cm x 30cm £100 - 150 †

526-528
No lots



Lot 523

Furniture

529
An Eastern runner, with Botch decoration within stylised floral borders, 406cm x 95cm £150 - 200 †

530
An 18th Century oak chest, fitted four long drawers with geometric moulded fronts, brass acorn drop handles and engraved escutcheons, 90cm wide £300 - 400 †

531
An 18th Century oak chest, of small proportions, fitted one long and four short moulded panelled drawers with brass acorn drop handles, raised on square section supports, 80cm wide £200 - 300 †

532
A Georgian style mahogany chest, fitted three drawers and a brushing slide, raised on bracket supports, 70cm wide £80 - 120 †

533
A Chippendale style walnut fret carved wall mirror, 71cm x 37cm £100 - 150 †

534
A George III mahogany and satin wood strung chest, fitted two short and three long drawers, raised on ogee bracket feet, 131cm wide £100 - 200 †



Lot 530



Lot 539

535
An Antique carved oak side cupboard, enclosed by a pair of foliate panelled doors, raised on turned supports united by an under-tier, 96cm wide £200 - 300 †

536
A 19th Century mahogany fret carved wall mirror, in the Chippendale manner, having gilt Ho Ho bird decoration, 70cm x 40cm in extremes £40 - 60 †

537
A Georgian oak bureau, the fall front opening to reveal an interior arrangement of drawers and pigeon-holes around a central cupboard, four long graduated drawers below, raised on bracket feet, 90cm wide £150 - 250 †

538
A 19th Century mahogany bow fronted chest, of two short and three long drawers raised on turned blaster supports, 108cm wide £100 - 150 †

539
An 18th Century oak and elm food cupboard, of narrow proportions, having turned spindle decoration and carved panels, enclosed by a single door and raised on bun feet, later converted, interesting labels verso, 150cm high x 77cm wide £100 - 200 †

540
A mahogany Chippendale style display cabinet, having blind fret decoration, the fabric lined shelves enclosed by a single glazed tracery door, raised on carved cabriole supports, 77cm wide x 164cm high £60 - 100 †

541
An 18th Century walnut chest, fitted two short over three long drawers, on bracket feet, 97cm wide £200 - 400 †

542
An 18th Century Florentine carved gilt wood and foliate painted wall mirror, 64cm x 46cm overall £350 - 450 †

543
An Antique oak chest, fitted three long moulded panelled drawers, having brass acorn drop handles and pierced oval escutcheons, raised on bun feet, (in two sections), 91.5cm wide £250 - 350 †

544
A Georgian oak and elm bureau, the fall front opening to reveal an interior arrangement of drawers and pigeon-holes, two short and three long drawers below, raised on bracket feet, 92cm wide £100 - 150 †

545
A late Victorian walnut chest, of two short and three long graduated drawers having brass Arts & Crafts design handles, 123cm wide £100 - 200 †

546

A Victorian mahogany secretaire bookcase, the upper adjustable shelves enclosed by a pair of glazed panelled doors with fully fitted writing drawer above three long drawers, (cornice missing and in need of restoration), 124cm wide x 220cm high £60 - 80 †

547

An Antique oak hall chair, having carved panel back raised on turned supports united by stretchers £50 - 80 †

548

A good quality reproduction oak dresser, having shelved and boarded back fitted with two small drawers, three drawers under, pot board below raised on turned supports, 138cm wide £200 - 300 †

549

An Antique oak storage cupboard, enclosed by a pair of quarter panel moulded doors, raised on square section supports, 127cm wide x 53cm deep x 133cm high £100 - 200 †

550

A 19th Century mahogany Pembroke table, fitted single end drawer, raised on turned tapering supports, 94cm wide £40 - 60 †

551

An Eastern carved hardwood three panel folding screen £30 - 40 †

552

An Antique oak dresser, having shelved and boarded plate rack, three drawers and cupboards below, fitted brass acorn drop handles, 140cm wide x 186cm high £250 - 350 †

553

A large Antique oak storage cupboard, enclosed by a single carved panel door, single drawer to base, raised on turned baluster supports, 99cm wide x 179cm high £200 - 300 †

554

A Georgian style oak corner cabinet, the upper shaped shelves enclosed by glazed panel doors, shelves below enclosed by a pair of fielded panelled doors, raised on bracket supports, 185cm high x 90cm wide £100 - 200 †

555

A small 19th Century walnut and gilt metal mounted vitrine, having brass gallery top around a bevelled glazed panel, glazed door above a shaped apron and French cabriole supports terminating in sabots, 48cm wide x 102cm high £100 - 200 †

556

A 19th Century painted leather folding boudoir screen £100 - 200 †

557

A 19th Century mahogany linen press, converted to a hanging wardrobe, two short and two long drawers, raised on bracket feet, 134cm £100 - 200 †

558

A Regency Irish mahogany linen press, surmounted by a scroll arch pediment with brass bosses, sliding trays enclosed by a pair of panelled doors, above two short and two long drawers below, raised on turned supports, 121cm wide £200 - 400 †

559

An Antique carved oak dresser, in the Jacobean style, having raised canopy back above cupboards and shelves, three long drawers below, on cabriole supports, 180cm wide x 204cm high £300 - 400 †

560

An oak long case clock, having brass spandrel dial and steel chapter ring, trunk panel door within reeded pilasters, raised on a box base and bracket feet, 195cm £200 - 400 †

561

A circular mahogany occasional table, the dished top raised on turned and fluted baluster column and tripod base, 45cm dia. £30 - 50 †

562

A small ethnic style carved hardwood occasional table, the canted corner top with stylised decoration, bobbin frieze raised on hexagonal column supports, 55cm £50 - 80 †

563

A circular mahogany occasional table, the dished top raised on turned baluster column and tripod base, 44.5cm dia. £30 - 50 †

564

A small 19th Century circular mahogany work table, on tripod base £40 - 60 †

565

An Antique oak joint stool, rectangular top on a shaped frieze, raised on baluster turned supports united by stretchers, 39cm wide x 53cm high £60 - 80 †

566

A long case clock, by Winstanley of Wirksworth, having circular brass dial, the carved case surmounted by a broken arch pediment, full length trunk panel door, raised on a box base, profusely decorated leaves and other foliage, 215cm high £200 - 400 †

567

A Georgian mahogany secretaire chest, having fitted writing drawer above two short and two long drawers, raised on bracket feet, 99cm wide £200 - 300 †

568

An 18th Century oak bureau, having stepped interior arrangement of pigeon holes and drawers above a sunken well, two short and two long drawers below raised on bracket feet, 92cm wide £150 - 250 †

569

An Arts & Crafts folding screen, the panels decorated with oranges within a Greek key border £150 - 250 †



Lot 547



Lot 555



Lot 560



Lot 562



Lot 565

† Each lot is subject to a Buyer's Premium of 18% + VAT (21.6%)



Lot 573

570
An Antique oak coffer, having square iron lockplate, raised on bracket supports, 115cm wide
£150 – 250 †

571
An 18th Century style oak dresser base, fitted six drawers, interior shelves enclosed by a pair of fielded panel doors raised on bracket feet, 182cm wide
£200 – 400 †

572
A 19th Century gilt framed ornate wall mirror, fitted triple candle sconces within foliate scrolls, AF
£150 – 250 †

573
A George III mahogany sewing table, fitted two short drawers and raised on ring turned tapering supports united by a cross stretcher, 43cm wide
£100 – 150 †

574
A Georgian oak plate rack, 129cm wide x 102cm high
£60 – 100 †

575
An Antique oak hanging corner cupboard, the interior shelves enclosed by a pair of moulded panelled doors, hung to brass H hinges, 78cm wide x 90cm high overall
£80 – 120 †

576
An Antique gilt wall mirror, surmounted by a wheat-ear pediment, having central motif of a head and shoulders bust of a gentleman, bevelled plate, 77cm x 52.5cm overall
£100 – 200 †

577
An Antique oak mule chest, the hinged lid above triple panel front, two drawers below raised on square section supports, 130cm wide
£100 – 200 †

578
An Antique oak hanging wall cupboard, the interior shelves enclosed by a single cross banded panel door, with central inlaid paterae, 90cm high, 54cm wide
£40 – 60 †

579
A Chippendale design double chair back settee, having needlepoint upholstered drop in seat raised above carved shoulders and cabriole supports, united by stretchers
£80 – 120 †

580
A Victorian rosewood card table, having rectangular swivel fold-over top, raised on a cylindrical tapering column, with carved acanthus decoration, triform base terminating in claw and ball feet and castors, 91cm wide
£80 – 120 †

581
A 19th Century French painted side chair, cane seat and back, raised on square tapering supports terminating in spade feet
£20 – 30 †

582
A 19th Century mahogany tray top wash stand, fitted with two drawers and raised on ring turned tapering supports, 110cm wide
£100 – 200 †

583
An 18th Century mahogany dining chair, having vase splat back, upholstered drop in seat raised on square section supports and an oak similar, (2)
£30 – 40 †

584
An 18th Century oak dresser base, fitted three drawers above fielded panelled doors, raised on square section supports, 179cm wide
£300 – 400 †

585
A 19th Century mahogany and chequered banded bow fronted hall table, raised on ring turned tapering supports, 73cm wide
£80 – 120 †

586
An Art Nouveau mahogany and inlaid display cabinet, in the manner of Shapland & Petter, fitted with mirrored shelves, fabric lined interiors enclosed by coloured and leaded glazed panel doors, inlaid with satin wood and mother of pearl flowers, raised on square section supports, 125cm wide x 156cm high
£300 – 400 †

587
A 19th Century oval gilt framed wall mirror, having reeded border, 57cm x 80cm
£40 – 60 †

588
An oak cottage long case clock, by Webb of Frome, painted dial and 30 hour movement
£200 – 300 †

589
An 18th Century oak hanging corner cupboard, interior shelves enclosed by a quarter panelled door, 87cm wide x 99cm high overall
£40 – 60 †

590
A Victorian mahogany four tier whatnot, fitted with a single drawer, raised gallery back having turned baluster columns terminating in castors, 63cm wide x 132cm high
£100 – 150 †

591
A walnut William and Mary style hall table, having shaped frieze, raised on baluster turned supports terminating in bun feet, united by a wavy cross-stretcher, 136cm wide
£150 – 250 †

592
A Georgian mahogany elbow chair, in the Chippendale manner having out swept arms, upholstered drop in seat raised on square section supports; and a Regency simulated rosewood dining chair having turned bobbin back, upholstered drop in seat raised on sabre front supports, (2)
£40 – 60 †

593
A Victorian rosewood dressing stool, upholstered stuff over seat raised on carved cabriole supports terminating in brass castors
£40 – 60 †

594
A harlequin set of twelve 19th Century country Hepplewhite design dining chairs, having upholstered drop in seats raised on square tapering stretchered supports
£60 – 100 †



Lot 580



Lot 585



Lot 596

595

A set of six Victorian mahogany balloon back dining chairs, upholstered stuff over seats raised on turned tapering supports, terminating in peg feet £100 - 150 †

596

An Antique oak Wainscot chair, having leaf carved scrolled cresting rail, geometric decorated arms, solid seat raised on baluster turned supports united by stretchers £100 - 200 †

597

A Victorian mahogany console wash stand, having white marble top, single frieze drawer, raised on scrolled supports united by an inverted under-tier, 117cm wide £40 - 60 †

598

A late Victorian fret carved mahogany revolving bookcase, raised on shaped supports, 50cm dia. £100 - 150 †

599

Three 19th Century mahogany bar back dining chairs, having scrolled central rails above solid seats on ring turned tapering supports £40 - 60 †

600

An elm Windsor elbow chair, having pierced splat back, raised on ring turned baluster tapering supports, united by an H stretcher £60 - 100 †

601

A harlequin set of five elm Suffolk ball back chairs £100 - 150 †

602

A set of eight Carolean style oak high back dining chairs, having arched cresting rails above turned columns, solid panels and seats, raised on turned baluster and block supports, (6 standards, 2 elbows) £250 - 350 †

603

An Antique stripped pine wine cooler, the hinged lid opening to reveal a zinc lined interior, raised on platform plinth and bun feet, 60cm wide £200 - 300 †

604

A Victorian nursing chair, of curved form, upholstered in green dralon and raised on tapering front supports, terminating in castors £50 - 80 †

605

A George III mahogany circular dished snap top occasional table, raised on turned and fluted baluster column and tripod base £100 - 200 †

606

An 18th Century oak and fruitwood gate leg dining table, the rounded drop leaves raised on barley twist supports £300 - 400 †

607

A Georgian mahogany card table, the fold-over canted corner top raised on carved shoulders and cabriole supports, terminating in claw and ball feet, 82cm wide £200 - 300 †

608

A Victorian rosewood occasional table, the shaped border top on spiral twist column and tripod base, 49cm dia. £40 - 60 †

609

A Victorian carved oak bench, having foliate decorated triple panelled back and solid seat, raised on turned baluster supports, 117cm wide £200 - 300 †

610

An 18th Century rustic elm seated comb back elbow chair, the shaped seat raised on baluster turned supports united by an H stretcher £100 - 150 †

611

A 19th Century mahogany bergere type child's high chair, raised on a square stand terminating in turned front supports and sabre back supports, AF £80 - 120 †

612

A Victorian mahogany extending dining table, fitted with an extra leaf raised on turned tapering baluster supports terminating in castors, 106cm x 145cm fully extended £100 - 150 †

613

An 18th Century oak gate leg tea table, fitted single end drawer, the rounded drop leaves raised on turned supports united by stretchers and raised on braganza type feet, 92cm £100 - 200 †

614

A pair of Victorian oak hall chairs, having shield shaped backs, solid seats raised on turned tapering front supports £80 - 120 †

615

An oak gate leg tea table, raised on barley twist supports, with rounded drop leaves, 70cm £60 - 80 †

616

A Georgian oak and mahogany cross-banded low boy, fitted three drawers above a shaped apron raised on cabriole supports and pad feet, 86cm wide £100 - 200 †

617

A 19th Century mahogany side table, having lifting top, dummy drawer above one single drawer, raised on square tapering supports, 81cm wide £100 - 150 †

618

An Antique oak pegged side table, raised on turned baluster supports and block feet, united by stretchers, 76cm wide £100 - 150 †

619

An Antique oak side table, fitted single drawer, raised on turned baluster supports united by stretchers, 61cm wide £60 - 80 †



Lot 598



Lot 600



Lot 602



Lot 614



Lot 621

620

A George III mahogany tea table, of serpentine shape, fitted single drawer, raised on square section supports terminating in spade feet, 85cm wide

£100 - 150 †

621

A miniature 18th Century oak coffer, the lid opening to reveal a candle box interior, panel front raised on square section supports, 66cm wide

£200 - 300 †

622

An Antique oak serving table, having raised shaped back above two geometric moulded panel front drawers, barley twist supports united by a curved under-tier terminating in club feet, 131cm wide

£200 - 300 †

623

A pair of Victorian mahogany framed tub shaped nursing chairs, raised on turned tapering front supports, terminating in castors

£150 - 200 †

624

A pair of Peter Dudgeon deep seated armchairs

£200 - 300 †

625

A 19th Century style mahogany buttoned leather upholstered nursing chair

£100 - 200 †

626

A 19th Century mahogany satin wood cross banded and box wood strung writing table, with ratchet adjustable top, opening to reveal and interior arrangement of drawers raised on ring turned tapering supports united by a cross stretcher, 49cm wide

£100 - 150 †

627

A Victorian circular rosewood pedestal table, raised on tapering octagonal column and triform base, terminating in scrolled feet, 47cm dia.

£60 - 100 †

628

A large good quality oak gate leg dining table, in the 18th Century style, the rounded drop leaves raised on baluster turned supports and block feet united by stretchers, 206cm wide

£300 - 400 †

629

An Antique oak refectory table, the thick top raised on bold cup and cover supports, united by stretchers, 184cm x 87cm

£200 - 300 †

630

A Victorian mahogany card table, the rectangular swivel top raised on a cylindrical column and circular platform base, terminating in scrolled feet and castors, 92cm wide

£150 - 250 †

631

An 18th Century oak coffer, having quadruple panelled lid opening to reveal a candle box interior, carved triple panelled front raised on square section supports, 110cm wide

£150 - 250 †

632

A Chippendale style mahogany fret carved wall mirror, with gilt ho ho bird decoration and inlaid conch shell paterae, 90cm x 50cm overall

£60 - 100 †

633

A mock bamboo fire screen, with floral and bird printed panel, 65cm wide x 106cm high

£60 - 100 †

634

A large black canvas and metal bound travelling trunk, initialled with a "B", 83cm wide

£40 - 60 †

635

A pair of French wing back armchairs, upholstered in peach floral brocade having loose cushions raised on serpentine supports, terminating in cabriole legs

£200 - 400 †

636

An Italian walnut Caquetoire chair, with leather upholstery, carved foliate scroll decoration to the back, raised on shaped front supports terminating in block feet united by a wavy cross stretcher

£200 - 300 †

637

A Victorian walnut spoon back nursing chair, with green buttoned upholstery raised on cabriole front supports

£60 - 100 †

638

A walnut Caquetoire chair, having Spanish leather embossed upholstery, the arms with fluted finials raised on twist supports terminating in a triform under tier

£200 - 400 †

639

A Regency mahogany card table, the fold over swivel top raised on ring turned baluster column with quadruple splay terminating in castors, 90cm wide AF

£60 - 80 †

640

A George IV mahogany bow fronted sideboard, fitted central drawer flanked by cupboard and deep drawer raised on six ring turned tapering legs, 122cm wide

£100 - 200 †

641

A 19th Century mahogany swing toilet mirror, raised on three drawer box base, terminating in ogee bracket supports, 40cm wide x 54cm high

£60 - 80 †

642

A small oak occasional table, raised on baluster turned supports, 45.5cm wide

£30 - 50 †

643

A 19th Century mahogany and boxwood strung breakfront sideboard, in the Gillows manner, central drawer flanked by two short drawers and a deep double drawer, shaped apron raised on turned reeded supports, 53cm deep, 109cm wide

£100 - 200 †



Lot 626



Lot 627



Lot 633

644

A 19th Century Folk Art type mirror, having faux bird's eye maple frame, 79cm x 52cm £40 - 60 †

645

An Antique long oak joint stool, raised on turned baluster supports and united by stretchers, 114cm long £100 - 150 †

646

A 19th Century Scumbled pine side table, fitted with a single drawer, raised on turned tapering supports, 76cm wide £40 - 60 †

647

An Edwardian inlaid mahogany piano stool, having upholstered lifting seat, raised on square tapering supports £30 - 50 †

648

A pair of Edwardian inlaid mahogany side chairs, having pierced lattice backs, upholstered stuff-over seats, raised on square tapering supports terminating in spade feet £40 - 60 †

649

A George III mahogany knee-hole desk, fitted two short frieze drawers above a recessed cupboard, flanked by four short drawers, raised on bracket supports, 78cm wide £200 - 300 †

650

A Victorian mahogany occasional table, the shaped top with inlaid games board raised on a baluster column and tripod base, 53cm dia. overall £60 - 80 †

651

A 20th Century walnut demi-lune fold over card table, raised on cabriole supports, 57cm wide £80 - 120 †

652

A pair of 18th Century elm side chairs, with pierced vase splat backs, leather upholstered serpentine seats raised on cabriole supports; and a 19th Century mahogany dining chair with rope twist back and solid seat, (3) £40 - 60 †

653

A Georgian mahogany circular snap top tea table, raised on turned baluster column and tripod base, 71cm dia. £60 - 100 †

654

A late Victorian bamboo stick stand, with tiled back and brass mounts, 40cm wide x 98cm high £60 - 80 †

655

An early 19th Century mahogany rosewood cross banded and satinwood strung card table, the D shaped fold over top raised on square tapering supports terminating in brass castors, 90cm wide £100 - 200 †

656

A 19th Century mahogany and boxwood strung bow fronted dressing table mirror, the rectangular plate raised on ring turned arms above a three drawer box base terminating in brass claw feet, 67cm wide £60 - 100 †

657

A late 18th Century Continental walnut and inlaid writing desk, the sliding top chequer banded and with central panel depicting an urn, single drawer below, raised on square tapering supports with gilt metal capitals, 66cm wide £400 - 600 †

658

An Antique oak small gate leg occasional table, the oval top raised on turned baluster columns united by stretchers, 78cm £60 - 80 †

659

An Antique French elm buffet cupboard, fitted with a single frieze drawer, shelves below enclosed by a pair of moulded panel doors, raised above a platform plinth terminating in square section feet, 126cm wide x 55cm deep x 98cm high £100 - 200 †

660

A large Victorian mahogany chest, fitted two short and three long drawers below a blind frieze drawer, flanked by turned columns, the handles with mother of pearl inserts, 137cm wide x 129cm high £100 - 150 †

661

An 18th Century japanned lacquered elliptical corner cupboard, decorated in the chinoiserie manner, 60cm wide x 92cm high £100 - 150 †

662

A Victorian mahogany chiffonier, the raised back with scrolled pediment, two drawers above cupboards below, raised on a platform plinth, 112cm wide £200 - 300 †

663

A Victorian walnut revolving piano stool, floral brocade upholstered seat on baluster column and tripod base £60 - 80 †

664

A small black canvas and leather bound travelling trunk, the lid with carrying handle, 46.5cm wide x 39cm deep x 35cm high £30 - 50 †

665

A Victorian papier-mâché and mother of pearl decorated occasional table, 70cm in extremes £100 - 150 †

666

An 18th Century oak side table, fitted with a single drawer raised on square section chamfered supports, 71cm wide £80 - 120 †

667

A Victorian mahogany writing table, fitted four opposing drawers and raised on baluster turned supports terminating in castors, 150cm x 89cm £100 - 200 †



Lot 636



Lot 638



Lot 650



Lot 663



Lot 687

668
A mahogany butler's tray, the shaped gallery with integral handles raised on chamfered legs, united by stretchers, 73cm wide £100 - 200 †

669
An 18th Century oyster veneered and inlaid lace box, 58cm wide x 47cm deep x 15cm high £200 - 400 †

670
A 19th Century circular mahogany tripod occasional table, raised on turned baluster column, 48.5cm £40 - 60 †

671
A William IV rosewood card table, the fold-over swivel top raised on a barrel column and quadruple scrolled base, terminating in castors, 92cm wide £100 - 200 †

672
A Victorian octagonal rosewood occasional table, with inlaid chess board top, raised on octagonal tapering column and triform base, terminating in bun feet, 44cm dia. £80 - 120 †

673
A pair of 19th Century papier-mâché and mother of pearl inlaid boudoir chairs, Dralon upholstered seats raised on ring turned supports £60 - 100 †

674
A 19th Century mahogany rectangular tilt top occasional table, raised on turned column and tripod base, 56cm £60 - 100 †

675
A 19th Century mahogany twin pillar dining table, having two extra leaves, AF £300 - 400 †

676
A set of six 19th Century elm seated rail back dining chairs £100 - 150 †

677
A 19th Century mahogany bow fronted chest, fitted three long drawers and raised on bun feet, 114cm wide £100 - 150 †

678
An 18th Century style walnut swing toilet mirror, the shaped plate raised above a serpentine stepped base, fitted various drawers, raised on bracket supports, 41cm wide x 66cm high overall £80 - 120 †

679
A George III mahogany and boxwood strung wash stand, the folding top opening to reveal a pull-up mirror and compartment, drawers and cupboards below, flanked by brass carrying handles, raised on square section supports, 50cm wide £100 - 200 †

680
A Continental mahogany commode, surmounted by a grey marble top, blind frieze drawer and three long drawers below, raised on a platform plinth and squat bracket feet, 122cm wide £150 - 250 †

681
An 18th Century oak Norfolk chest, fitted central cupboard and four short drawers above three long drawers, raised on bun feet, 84cm wide £300 - 400 †

682
A Georgian oak knee-hole desk, fitted with a long frieze drawer above a central cupboard, flanked by six short drawers, raised on bracket feet, 88cm wide x 50cm deep £100 - 200 †

683
A near pair of George III mahogany cross banded and ebony strung side tables, fitted single drawers and raised on slender square tapering supports, 60cm and 57cm wide respectively £300 - 500 †

684
A Georgian mahogany cellaret, flanked by brass carrying handles and raised on square section supports, terminating in castors, 45cm wide x 68cm high £160 - 200 †

685
A large Antique oak coffer, having quadruple panelled front, raised on square section supports, 160cm wide £200 - 400 †

686
A Georgian mahogany rectangular wine table, raised on turned baluster column and tripod base, 45cm x 49cm £60 - 100 †

687
A 19th Century Italian walnut bombe shaped commode / cabinet, the serpentine top above two short drawers with cupboard below raised on a shaped apron and carved cabriole supports, 92cm wide £200 - 400 †

688
An 18th Century Dutch marquetry commode, of serpentine shape, profusely decorated with trailing foliage, fitted four drawers, flanked by end cupboards, raised on square section supports, 83cm wide £600 - 800 †

689
A set of six 19th Century elm bar back dining chairs, having rush seats, raised on square section supports, united by stretchers £100 - 150 †

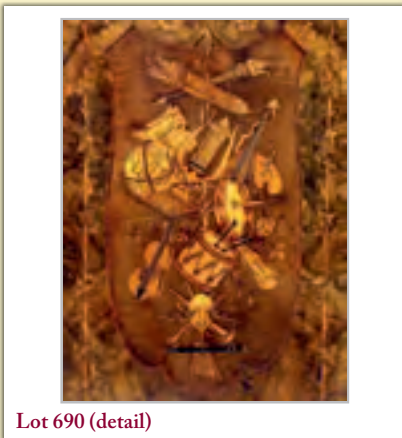
690
A Victorian burr walnut marquetry and gilt metal mounted serpentine front credenza, having mirrored end shelves and central cupboards, flanked by turned baluster columns and raised on a platform plinth, 190cm wide x 103cm high
See front cover detail £600 - 800 †



Lot 688



Lot 690



Lot 690 (detail)

Chartered Surveyors / Estate Agents / Auctioneers

Clarke &
Simpson



Collective Machinery Auction

Saturday 26th October 2019

Clarke & Simpson Auction Centre, Campsea Ashe, Suffolk IP13 0PS

In the region of 1000 lots to include modern, classic and vintage tractors, plant, implements, trailers, vehicles, spares, tools, literature and models

Catalogues available to download from the website three weeks before the auction

Live on-line via i-bidder.com



01728 621200

www.clarkeandsimpson.co.uk

Well Close Square, Framlingham, Suffolk, IP13 9DU

TERMS AND CONDITIONS OF SALE 1. INTRODUCTION

1. INTRODUCTION

The following defining terms are used in these conditions:-

“Auction”	Means any auction conducted by Clarke and Simpson Auctions Ltd. either at the premises owned by them or elsewhere (including any internet based auction);
“Auctioneer”	Means Clarke and Simpson Auctions Ltd. authorised auctioneer as appropriate;
“Bidder”	Means a bidder at an auction, including the bidders personally present at the venue and those bidding by telephone or over the internet or otherwise;
“Buyer”	Means the bidder whose bid was the last bid when the auctioneer concludes the bidding; “Conditions” Means these Terms and Conditions of Sale;
“Hammer Price”	Means the level of bidding reached (at or above any reserve) when the auctioneer brings the bidding to a close;
“Lot”	Means any property accepted by Clarke and Simpson Auctions Ltd. for offer at auction;

2. DESCRIPTION

No warranty is given or implied by the description in the catalogue. Each lot is sold in its condition at the time of sale with all faults, defects, imperfections and errors of description (if any). Whilst every endeavour has been made to describe the items adequately and properly, the purchaser shall deem to have inspected the lot at time of purchase. All catalogues and seller's and buyer's guides are for information only and do not form part of the contract.

3. STATUTORY REQUIREMENTS

Purchasers will be deemed to have satisfied themselves prior to purchasing regarding current legal requirements (e.g. Health & Safety at Work Act) and it is expressly brought to the bidders attention that equipment in the sale may not necessarily comply with such regulations. Any purchaser shall satisfy himself as to any statutory requirement for the use of any item and no liability shall rest with the vendors nor the Auctioneers.

4. THE AUCTION All auctions are conducted at the absolute discretion of the auctioneer. The auctioneer shall conduct the auction with reasonable skill and care. The vendor reserves the right to sell subject to reserve price in respect of all lots. What constitutes a bid shall be at the absolute discretion of the auctioneer, acting with appropriate skill and care. The auctioneer shall have the right to refuse any bid in all cases but most notably when such a bid does not exceed the previous bid by at least 10% or such a proportion as the auctioneer shall in his absolute discretion direct. Where two or more bids at the same level are simultaneously received by the auctioneer, the auctioneer at his absolute discretion shall determine which bid to prefer. Subject to the foregoing where two or more bids are at the same level are simultaneously received by the auctioneer, the bid submitted in the room shall take preference over a bid submitted by telephone or internet at the same level. Any bid made or attempted by telephone or over the internet will only be deemed to have been made if received by the auctioneer. The auctioneer reserves the right to withdraw, consolidate or divide any lot or lots or submit them in any order that they desire. The auctioneer has the right at his absolute discretion to refuse admission to his premises or attendance at (or participation in) any auction by any person. In the case of any dispute, the auctioneer shall be sole arbitrator in any matters arising during or out of the sale.

5. BIDDERS

All bidders will be required to register their particulars, bidders attending in person and those accompanying them will be required to provide photo ID and separate confirmation of address prior to viewing or taking any part of the sale and before entering any part of the premises to view. All bidders accept full liability for all bids submitted. Subject to the clause in this document headed “The Auction”, the highest bidder at the close of bidding shall be the buyer. Any dispute about a bid shall be settled at the auctioneer's absolute discretion. Bidders are all deemed to act as principals unless there is prior written acknowledgement by Clarke and Simpson Auctions Ltd. that a bidder is acting as an agent for a named principle. Bidders are strongly encouraged to attend the auction in person. The bidders shall be responsible for any decision to bid for a

particular lot and shall be deemed to have carefully inspected and satisfied themselves as to condition, neither Clarke and Simpson Auctions Ltd., their employees or agents shall be responsible for any neglect or default in doing or failing to do so. Bidders will be given ample opportunity to view and inspect before the sale and prospective buyers must satisfy themselves as to all matters.

6. DEFAULT

Clarke and Simpson Auctions Ltd. shall act as agent of the vendor only. Any contracts for the sale of a lot shall be formed between the vendor and the buyer. As agent, only Clarke and Simpson Auctions Ltd. shall not be responsible for default by the vendor or the buyer. If any lot is not paid for in full and taken away in accordance with these conditions, or there is any other breach of the conditions, then Clarke and Simpson Auctions Ltd. as agents for vendor shall at its absolute discretion and without prejudice to any other rights it may have, be entitled to exercise all or any of the following rights and remedies:-

- 6.1 to proceed against the buyer for any action of debt or damages for breach of contract;
- 6.2 to rescind the sale of that lot or lots sold by Clarke and Simpson Auctions Ltd. to a defaulting buyer;
- 6.3 to resell the lot (by auction or private treaty) in which case the defaulting buyer shall be responsible for any resulting deficiency in the total amount due (after crediting any part payment and adding any resale costs), any possible surplus so arising shall belong to the vendor;
- 6.4 to remove, store and insure the lot at the expense of the defaulting buyer and, in the case of storage, the location of such storage shall be at Clarke and Simpson Auctions Ltd. discretion;
- 6.5 to charge interest at a rate not exceeding 2% per month of the total amount due to the extent that it remains unpaid for more than two working days after the sale;
- 6.6 to retain that or any lot sold to the defaulting buyer until the buyer pays the total amount due;
- 6.7 to reject or ignore bids from the defaulting buyer at future auctions or to impose conditions before any such bids are accepted;
- 6.8 to apply any proceeds of sale for any other lots due or in the future becoming due to the defaulting buyer towards the settlement of the total remaining due.

7. INDEMNITIES, PENALTIES AND LIMITATIONS OF LIABILITY

Purchasers shall pay for any damage done by themselves or their agents during the removal of their lots. Attendance at the sale shall be at the risk of those attending in respect of both themselves and to their goods and vehicles.

Any indemnity under these conditions will extend to all actions, costs, expenses, claims and demand whatsoever suffered or incurred by the person entitled to the benefit of it and Clarke and Simpson Auctions Ltd. declare themselves to be a trustee of the benefit of such indemnity so far as it is expressed to be the benefit of its employees and agents.

Whilst Clarke and Simpson Auctions Ltd. endeavour to ensure that the information on their websites is correct, they do not warrant the accuracy and completeness of the material on their website. Also, Clarke and Simpson Auctions Ltd. can make changes to the material on their website, or alter the products and prices described on it, at any time without notice. The material on the website may be out of date, Clarke and Simpson Auctions Ltd. make no commitment to update such material. All material on the websites is provided “as is” without any conditions, warranties or other terms at any time. Accordingly, to the maximum extent permitted by law, the website is provided to all parties on the basis that Clarke and Simpson Auctions Ltd. exclude all representations, warranties, conditions and other terms which, but for this legal notice, might have effect in relation to the website.

8. ELECTRICAL SAFETY REGULATIONS

All electrical lots are subject to electrical safety regulations and fall within "the low voltage electrical equipment (safety) regulations 1989" – all items have been pat tested for safety but are not guaranteed in working order.

9. GENERAL MATTERS

Any notice to any buyer, vendor, bidder or viewer may be given by first class mail or email in which case it shall be deemed to have been received by the addressee forty-eight hours after posting or sending. All notices to Clarke and Simpson Auctions Ltd. must be sent in writing and email is not acceptable. Any indulgence extended to any person by Clarke and Simpson Auctions Ltd., notwithstanding the strict terms of these conditions or the terms of consignment, shall affect the position at the relevant time only and the respect of that particular concession only; in all other respects these conditions shall be construed as having full force and effect. These conditions and any disputes or claims arising out or in connection with them or their subject matter or formation (including non-contractual disputes or claims) are governed by and construed in accordance with the law of England. The parties irrevocably agree that the courts of England have exclusive jurisdiction to settle any dispute or claim that arises out of or in connection with the agreement or its subject matter or formation (including non-contractual disputes or claims).

10. PUBLICITY

Any catalogue and buyer and seller guides are provided for information only and do not form part of these conditions. The catalogue and the buyer and seller guides may contain additional terms and conditions. Clarke and Simpson Auctions Ltd. reserve the right to use any photographs, background information and research for publicity purposes both before and after the sale.

11. THE PURCHASE PRICE AND PAYMENT ARRANGEMENTS

There is a buyer's premium 18% plus VAT payable in respect of the sale. Any purchases made via "www.the-saleroom.com" or "www.ibidder.com" shall be subject to an administration charge of 5% plus VAT on the price. Preferred payment is cash, bank transfer or personal debit card. Such cards may only be used on a chip and pin basis with the owner present. No payment over £350 will be accepted by telephone. Payment will be accepted online via our secure e commerce account. We do not accept credit cards or international debit cards. Payment by cheque will only be acceptable subject to prior arrangement. No lot will be removed from the sale until any cheque has cleared.

Payment is due on the day of the sale. Cash in excess of £7,500 (including V.A.T.) will not be accepted from any one person, this is not allowed due to Money Laundering Regulations 2007. All money received will be held in Clarke & Simpson Auctions Ltd. Clients No 2 Account at Barclays Bank plc, Framlingham, Ipswich, Suffolk. Account Number 83428591. Sort Code 20 98 07. Clarke and Simpson Auctions Ltd. have no responsibility for any lot between the close of bidding and payment being made and subsequent collection. All payments from overseas buyers shall be made by Bank Transfer and bank fees paid in addition. Please note all policy regarding payment will be enforced and suitable arrangements must be made.

12. REMOVAL OF LOTS

The ownership of any lot purchased shall not pass to the relevant buyer until they have made payment in full to Clarke and Simpson Auctions Ltd. of the total amount due including any storage due.

The buyer shall at their own risk and expense take away any lot that they have purchased and paid for, not later than seven days following the day of the auction.

Any purchaser shall be responsible for removal and insurance and lots stored and storage charges. All lots sold shall be subject to the following storage charges after seven days from the sale:

7-14 days	25% of the lot value + VAT whichever is the greater	or £7.50+VAT per lot
14-21 days	50% of the lot value + VAT whichever is the greater	or £15 +VAT per lot
21-28 days	75% of the lot value + VAT whichever is the greater	or £22.50 + VAT per lot

Any lots not collected after 35 days will be re-sold with immediate effect on behalf of the purchaser and the proceeds of the sale retained in lieu of outstanding storage charges. The policy shall be rigorously enforced and no lots shall be collected unless outstanding storage charges are met.

13. NUMBER BIDDING

This will be used for speed and efficiency as in all our sales. All prospective purchasers must complete a registration form and register in the office on the view day or morning of sale to receive a number for bidding.

Please also note that photo ID and additional confirmation of address will be required.

14. ONLINE BIDDING

Clarke & Simpson Auctions Ltd. offer an online bidding service via the-saleroom.com and ibidder.com for bidders who cannot attend the sale. In completing the bidder registration on www.the-saleroom.com or ibidder.com and providing your payment card details and, unless alternative arrangements are agreed with Clarke & Simpson Auctions Ltd.:

1. authorise Clarke & Simpson Auctions Ltd., if they so wish, to charge the payment card given in part or full payment, including all fees, for items successfully purchased in the auction via www.the-saleroom.com or ibidder.com, and
2. confirm that you are authorised to provide these payment card details to Clarke & Simpson Auctions Ltd. through www.the-saleroom.com or ibidder.com and agree that Clarke & Simpson Auctions Ltd. are entitled to ship the goods to the card holder name and card holder address provided in fulfilment of the sale.

Please note that any lots purchased via the-saleroom.com or ibidder.com live auction service will be subject to an additional 5% buyer's premium + VAT at the rate imposed on the hammer price.

15. TELEPHONE BIDDING

We offer a telephone bidding service where possible, but this service can never be guaranteed. No applications for telephone bids will be accepted after the end of the viewing prior to sale day for any sale. All potential telephone bidders must provide a valid landline number and email address and agrees that they have read and understood the Terms and Conditions and satisfied themselves regarding any lot in accordance with these Terms and Conditions. No phone bids will be accepted for any lot with a lower guide figure of less than £100.

All those who wish to bid by telephone will be expected to deposit an amount determined by Clarke and Simpson Auctions Limited and not less than the minimum guide for all lots that they wish to bid upon into the Clients Account for Clarke and Simpson Auctions Ltd before the sale starts. This payment is not acceptable by card. In the event of default, this sum shall be retained as part payment or any part may be retained to recover losses under clause 6 of these Terms and Conditions. We will expect payment of the balance owing by BACS on the following day, any payment not met within five working days will result in the forfeiture of the deposit paid.

16. AT FAULT (A.F.) LOTS

Certain lots are catalogued at (A.F.), damaged, restored etc., however the absence of any such notice does not imply that the piece is free from defects, nor does it indicate that other defects are not also present. Mention is not made of breakage, cracks, chips or any damage which can be noted by careful inspection, therefore, intending purchasers MUST, in all cases, be responsible for determining the condition of the lots themselves.

17. ESTIMATES

Presale estimates are intended only as a guide for intending purchasers, are given in good faith and subject to revision.

18. CONDITION REPORTS

Clarke and Simpson are unable to guarantee that requests for condition reports/images received will be responded to. Clarke and Simpson are happy to give a Condition Report where possible on the physical condition of goods, this will be provided on behalf of the seller on the understanding that Clarke and Simpson are not entering into a contract with you in respect of the Condition Report and accordingly does not assume responsibility to you in respect of it. All lots are available for your own inspection or for inspection by an expert instructed by you, therefore these Condition Reports are for guidance only and all lots are sold "as found". Condition reports do not form part of a contract.

19. COMMISSION BIDS

The auctioneers will be pleased to execute bids for those unable to attend the sale. Lots will be purchased at the lowest bid the room bidding or any reserves will allow. In the event of identical bids, the earliest bid received will take precedence. There must always be a maximum limit indicated. Buy or unlimited bids will not be accepted. Commission bids placed by telephone are accepted at the client's risk. We urge our clients to place such bids before the start of the sale. All such commissions are left entirely at the buyer's risk.

20. VALUE ADDED TAX

The symbol * after any lot number indicates that Value Added Tax is payable by the buyer on the hammer price.

21. AUCTIONEERS MARGIN SCHEME

The Auctioneers Margin Scheme allows auctioneers to sell items without VAT on the hammer price. Under the margin scheme an amount equivalent to VAT at the current rate is added to the buyer's premium. This amount cannot be refunded. The VAT element will not be shown separately on the buyer's invoice. This VAT is not recoverable as Import Tax.

22. ATTRIBUTION OF PICTURES AND DRAWINGS

Every effort is made to ensure the accuracy of any statements as to authorship, attribution, origin, date, age, provenance and condition of any lot whether or not such statement forms part of the description of any such lot. Whether any such statement is made orally or in the catalogue it is an expression of opinion and not to be taken as being or implying any warranties or representations of facts by the auctioneers. Each buyer by making a bid for a lot acknowledges that he has satisfied himself fully as to the attribution and condition of the lot. The following is for guidance only and does not form part of a contract.

A. The forename (s) (or full stops where not known) and surname of an artist indicates in our opinion a work by the artist.

B. The initials of the forename (s) and the surname of the artist indicates in our opinion a work of the period of the artist which may be wholly or in part his work.

C. The surname of the artist indicates in our opinion a work of the school or by one of the followers of the artist or in his style and of uncertain date.

D. *Signed, Dated, Inscribed* indicated in our opinion work signed/dated/inscribed by the artist.

E. *Bears signature* indicates in our opinion that this is not the signature of the artist.

F. *Attributed to* may be used to denote a traditional attribution based on style.

G. *Manner of* indicates in our opinion a work executed in the artist/craftman's style but of a later date.

H. *After* indicates in our opinion a copy (of any date) of work of an artist or craftsman.

The addition of a question mark after any of the cataloguing terms above indicates an element of doubt.

23. DRIOTE DE SUITE ROYALTY CHARGES

All United Kingdom Art Market professionals (which includes auctioneers) are required to collect a royalty payment for all qualifying Works of Art. This applies to living artists and those who have died in the last 70 years. This payment is calculated on qualifying Works of Art which are sold for a hammer price more than the UK sterling equivalent of €1,000 (the UK sterling equivalent will fluctuate in line with prevailing interest rates calculated by the Artist's Resale Right Service Hub, based on the European Central Bank reference rate published at 2.15pm on the day of the sale, and can be found on www.dacs.org.uk).

All items in this catalogue that are marked "✓" are potentially qualifying items, and the royalty charge will apply if the hammer price is more than UK sterling equivalent of €1,000. The royalty charge will be added to purchase invoices and must be paid before items can be cleared. All royalty charges are paid to the design and Artists Copyright Society (DACS) by the auctioneers and no handling costs or additional fees with respect to these charges will be retained by the auctioneer. This charge may also be applicable to lots not marked "✓" and buyers must satisfy themselves.

The royalty charge for qualifying items which achieve a hammer price of more than the UK sterling equivalent of €1,000, but less than the UK sterling equivalent of €50,000 is 4%. For qualifying items that sell for more than the UK equivalent of €50,000 a sliding scale of royalty charges will apply. For a complete list of the royalty charges and threshold levels please refer to www.dacs.org.uk. There is no VAT payable on this royalty charge.

24. ENDANGERED SPECIES

Lots sold at auction may include endangered or other species of wildlife and plant life, for example ivory, tortoiseshell, crocodile skin, whale bone, ebony or rosewood. Some countries restrict or prohibit import or export of objects containing these materials or require a licence/permit for their movement (e.g. a CITES Licence). Prior to bidding on a lot which may include these or similar materials, buyers must familiarise themselves with the relevant laws and regulations regarding their movement.

25. JEWELLERY

Gemstones are often treated to enhance colour and improve appearance. They may be heated or treated by oil or resin to intensify the colour and transparency. Other techniques like dying, irradiation, coating and impregnation can also be used. Buyers must be aware that unless the catalogue specifically states otherwise then the stone is natural, buyers must assume that any treatment may not be permanent, and that special care may be needed in the future.

26. EXPORT

Any lot purchased at auction may be subject to export restrictions and may require a licence for export out of the United Kingdom. The buyer is responsible for obtaining any licences that may be required (including any licence that may be required for import into the destination country) – any denial of such a licence will not be grounds for the buyer to cancel the purchase.

27. THIRD PARTY LIABILITY

All members of the public on Clarke and Simpson Auctions premises are there at their own risk and must note the layout of the buildings and site and the appropriate security arrangements. Accordingly, neither the Auctioneer nor its employees or agents shall incur liability for death or personal injury (except as required by law) or similarly for the safety or persons visiting the premises.

28. CONSIGNMENT

All sellers will have received a copy of Clarke & Simpson Auctions Terms regarding consignment of lots for sale and these Terms and Conditions should be read in accordance with this consignment documentation.



Denham £740,000

A delightful Grade II Listed former farmhouse, with good range of outbuildings, that have planning to be converted, in gardens and grounds extending to over 5 acres, in the rural village of Denham. **Ref: 6258**



Stradbroke £685,000

A farmhouse standing in an idyllic location along a no-through road with gardens & grounds extending to over 4½ acres. **Ref: 6225**



Horham £675,000

A four bedroom house in grounds of over half an acre with swimming pool, within the Parish of Horham. **Ref: 6218**



Charsfield £650,000

A charming detached period four-bedroom cottage & separate one-bedroom contemporary annexe. **Ref: 6263**



Badingham £620,000

A versatile property currently used as a smallholding with a range of outbuildings. Grounds extending to 6 ½ acres. **Ref: 6248**



Wilby £595,000

A spacious four bedroom period property, with gardens and grounds of over an acre, in a rural location. **Ref: 6019**



Cretingham £495,000

A three bedroom cottage style house, close to the church, in the popular and desirable village of Cretingham **Ref: 6227**



Orford £435,000

A charming two bedroom end-of-terrace period cottage located in the popular & desirable coastal village of Orford. **Ref: 6270**



Blaxhall £340,000

A charming two-bedroom extended end-of-terrace cottage sitting on approximately 0.22 acres, located in this popular village. **Ref: 6234**



Framlingham £325,000

A detached three bedroom period property that now requires refurbishment. **Ref: 6273**



Clarke and Simpson Auction Centre
Campsea Ashe
Nr. Wickham Market
Suffolk IP13 0PS
Tel: (01728) 746323 Fax: (01728) 748173
Email: auctions@clarkeandsimpson.co.uk
www.clarkeandsimpson.co.uk