



Clarke &  
Simpson

Selected Antiques & Fine Art

Wednesday 23rd February 2022 at 10 am



Clarke &  
Simpson

Auctions

*Always open..*



### Valuation

Probate & other valuations  
Call-in service 6 days a week

### Special sales

Antiques & Fine Arts  
Art Deco & Retro  
Domestic & Rural Bygones  
Agricultural Collective

### General Monday sale

Bespoke sales  
In 2020 our lots sold to 30 countries  
and registered buyers from over 50  
Acting as agents for household clearances

### Can't make it?

All auctions are available  
for online bidding via  
**the-saleroom.com**  
or **i-bidder.com**



Clarke & Simpson Auction Centre,  
Campsea Ashe, Nr Wickham Market,  
Suffolk IP13 0PS T: 01728 746323

[www.clarkeandsimpson.co.uk](http://www.clarkeandsimpson.co.uk)

CandSAuctions @CandSAuctions

# Clarke & Simpson

Auctions

## Selected Antiques & Fine Art

Wednesday 23rd February 2022  
at 10 am

### Order of Sale:

Ceramics & Glass	1- 66
Silver & Plate	79-168
Jewellery	169-210
Objects & Collectables	210-349c
Paintings	350-459
Furniture & Rugs	460-605

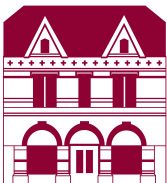
### Viewing:

Saturday 19th February, 9am – 12 noon  
Monday 21st February, 2pm – 7pm  
Tuesday 22nd February, 10am – 4pm  
Wednesday 23rd February from 8:30am

 CandSAuctions

 @CandSAuctions

 CandSAuctions



Campsea Ashe  
Nr. Wickham Market  
Suffolk IP13 0PS  
Tel: (01728) 746323  
Email: [auctions@clarkeandsimpson.co.uk](mailto:auctions@clarkeandsimpson.co.uk)  
[www.clarkeandsimpson.co.uk](http://www.clarkeandsimpson.co.uk)

BID ONLINE

**thesaleroom.com**

The home of art & antiques auctions

# Special Sales Calendar

## 2022

# Clarke & Simpson

ART DECO, DESIGN & RETRO -  
26th March -  
*Closing date: 4th March*

FINE ART -  
11th May -  
*Closing date: 15th April*

FARM MACHINERY -  
May -  
*Closing date: 8th April*

ART DECO, DESIGN & RETRO -  
18th June -  
*Closing date: 27th May*

RURAL BYGONES -  
16th July -  
*Closing date: 17th June*

FINE ART -  
27th July -  
*Closing date: 1st July*

ART DECO, DESIGN & RETRO -  
3rd September -  
*Closing date: 12th August*

RURAL BYGONES -  
17th September -  
*Closing date: 12th August*

FINE ART -  
5th October -  
*Closing date: 9th September*

FARM MACHINERY -  
October -  
*Closing date: 9th September*

ART DECO, DESIGN & RETRO -  
5th November -  
*Closing date: 14th October*

FINE ART -  
7th December -  
*Closing date: 11th November*



Campsea Ashe  
Nr. Wickham Market  
Suffolk IP13 0PS  
Tel: (01728) 74632  
Email: [auctions@clarkeandsimpson.co.uk](mailto:auctions@clarkeandsimpson.co.uk)  
[www.clarkeandsimpson.co.uk](http://www.clarkeandsimpson.co.uk)

## Ceramics & Glass

1

An Oriental crackle glazed baluster vase, decorated birds and foliage with a carved pierced hard wood lid and stand, height of vase 38cm  
£40-£60 †

2

A pair of Japanese Imari plates, decorated in the traditional manner, 25cm dia.  
£20-£40 †

3

A pair of Chinese baluster vases, profusely decorated blossom on a blue ground, seal marks to base, 42cm high  
£100-£200 †

4

A Royal Worcester part dessert set, decorated in the Chinese manner with scrolling flowers and jardinières, comprising of a pair of square shaped serving dishes, a circular dish and six plates  
£100-£150 †

5

An antique Rhenish ware pottery flagon, having stylised blue floral scroll decoration on a grey ground, 36cm high  
£40-£60 †

6

A Canton baluster vase, profusely decorated birds and flowers, 63cm  
£100-£200 †

7

A white glazed and gilt banded Copeland cheese dome  
£40-£60 †

8

A large blue and white Chinese moon flask decorated in the traditional manner, 35cm high  
£20-£40 †

9

An Art Glass bowl, decorated with lettering by Peter Furlonger, circa 1990  
£150-£250 †

10

A quantity of Lune Ville French dinnerware  
£100-£200 †

11

A quantity of Royal Worcester "Hop" pattern, tea and dinnerware  
£100-£200 †

12

Various T.G. Green & Co. plates, with garland decoration  
£20-£40 †

13

Two 19th Century Faience ware character jugs  
£80-£120 †

14

A large early 19th Century pearl ware plate, with scalloped border, decorated in the Chinese manner, 35.5cm dia.  
£40-£60 †

15

A 19th Century Chinese charger, decorated with figures beside a river within a floral and butterfly border, 42cm dia.  
£100-£150 †

16

A 19th Century Chinese baluster vase, decorated panels depicting various famille rose vases on a blue ground, six character mark to base, 44cm high  
£120-£160 †

17

A Chinese shallow dish, with shaped border and central mystic field, 20cm dia.; and five other Chinese and English shallow dishes  
£40-£60 †

18

A Meissen Imari pattern cup and saucer, and a continental porcelain covered bowl (lid AF)  
£20-£40 †

19

A German porcelain study of a parrot, perched on a tree stump, 31cm high  
£40-£60 †

20

A Victorian cranberry glass jug, with folded neck and clear glass loop handle; and a similar Champagne saucer  
£20-£30 †

21

A Chinese crackle glazed shallow dish, decorated warriors in brightly coloured enamels, seal mark to the base, 28cm dia.  
£40-£60 †

22

A glazed plaster head sculpture, 36cm  
£20-£40 †

23

A collection of 18th and 19th Century glassware, to include a Dutch hourglass shaped decanter and stopper with etched decoration of windmills and ships; an 18th Century glass candlestick; an etched rummer; a Mary Gregory type decorated baluster water jug; an enamel decorated bottle vase; a brandy lifter etc. (9)  
£80-£120 †

24

Attributed to Koloman Moser 1868-1918, Loetz green glass bowl decorated stripes and spots  
£200-£300 †

25

Constance Spry, for Fulham Pottery, a two handled jardinière, 43cm long overall  
£180-£220 †

26

A brown glazed earthenware dairy bowl, 43m dia.  
£60-£80 †



Lot 3



Lot 6



Lot 15



Lot 16





Lot 28



Lot 43



Lot 45



Lot 48

**27**  
A 20th Century glass dome, on circular painted base 48cm overall £80-£120 †

**28**  
A large Chinese celadon ground vase, having raised floral decoration, 45cm high £40-£60 †

**29**  
A Victorian Burgess & Leigh "Argos" pattern wash bowl, 38cm wide £20-£30 †

**30**  
Two unusual circular Chinese yellow glazed roof tiles, with dragon decoration, 15cm dia. £100-£150 †

**31**  
A circular flambé Chinese box and cover, 22cm dia. £40-£60 †

**32**  
A Chinese brown glazed pottery teapot, the lid surmounted by a bird finial, bamboo shaped handle and spout with raised floral decoration, 20cm high £20-£40 †

**33**  
A pair of black glazed pottery ewers, having profuse leaf decoration and scrolled handles, 28cm high AF £20-£40 †

**34**  
Three 18th Century Chinese bowls, AF £20-£30 †

**35**  
A pair of Dresden porcelain oval baskets, with floral spray decoration and pierced borders, flanked by twist handles, 23.5cm £30-£50 †

**36**  
A pair of Adams Calyx ware baluster jugs, 24cm £20-£40 †

**37**  
A Delft blue and white bowl, with stylised floral decoration, 17.5cm; and a Chinese blue and white ginger jar and cover, 18cm high £40-£60 †

**38**  
A pair of 19th Century Dresden bottle vases, decorated with panels of flowers and romantic couples in rural settings, 32cm high £40-£60 †

**39**  
A set of three 19th Century Mangers ironstone graduated jugs, decorated in the Imari pattern; and a Victorian Staffordshire flat back cottage group AF £30-£50 †

**40**  
An 18th Century Worcester tea cup and saucer, decorated flowers and ho ho birds AF; a similar period tea bowl and saucer decorated flowers and foliate scrolls; two 19th Century tea bowls and saucers AF; two heraldic decorated plates and two souvenir plates £40-£60 †

**41**  
Eight pieces of early 19th Century English blue and white pottery, to include chestnut basket and under plate, four tea bowls, and a pair of under plates £60-£80 †

**42**  
A 18th Century Chinese porcelain under glaze blue and iron red wine cup; and a Republic Period porcelain group of Ho Tei and children, 20cm high £80-£120 †

**43**  
A finely potted Chinese censer cover and stand, with all over hand carved designs under a bright green glaze, six character Chien Lung mark around base, 30cm high £150-£250 †

**44**  
An Art Nouveau K.P.M. Berlin porcelain vase, trailing floral decoration on a blue ground, orb and sceptre mark to base, 26cm high £150-£250 †

**45**  
A Chinese vase, of "Nine Peaches" pattern, 34cm high £100-£150 †

**46**  
A Chinese blue and white baluster vase, decorated figures in a garden, 30cm high £100-£150 †

**47**  
A pair of 18th Century Chinese shallow dishes, 17cm dia. £250-£350 †

**48**  
A Chinese baluster jar, having loop handles, brightly coloured enamel decoration of foliage, 33cm high £300-£400 †

**49**  
A Chinese pot, of globular squat form decorated dragon and profuse foliage AF £100-£150 †

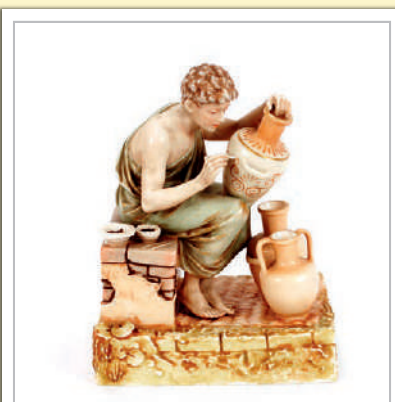
**50**  
A Chinese baluster blue and white vase, with four character mark to base; a famille rose pot and an Imari vase £30-£50 †

**51**  
A Chinese Sang de Boeuf lamp base, 51cm high overall £80-£120 †

- 52**  
A finely modelled Royal Dux porcelain figure, of a classical potter decorating urns, circa 1900, 19cm high £40-£60 †
- 53**  
An 18th Century Chinese porcelain blue and white footed shallow bowl, finely decorated with various figures, 23.5cm dia. £40-£60 †
- 54**  
Korean blue and white porcelain jar, of compressed globular form, Choson period 18th / 19th Century, 18.5cm high with wooden stand £200-£300 †
- 55**  
A Ming style Chinese porcelain blue and white bottle vase, painted with six fruiting and flowering branches, 18.3cm high, (having seal mark of Dao Guang) £400-£600 †
- 56**  
A Chinese porcelain baluster vase, painted with underglaze blue and copper red finish, the body with an oval crackleware glaze, 28cm high £120-£180 †
- 57**  
A Chinese blue and white stem cup, with under glaze blue mark to base; a hardstone and white metal mounted scent bottle; a Chinese pottery teapot; and a Yixing type teapot £40-£60 †
- 58**  
A blanc de china rabbit tureen and ladle £30-£50 †
- 59**  
A set of four early 19th Century glass rummers, of generous size, each inscribed with the name "R Ebbage", 16cm high, the bowls 12cm dia. £80-£120 †
- 60**  
A rare Bristol Delft plate, decorated in sponge ware with a seated male figure in a rural landscape wearing a red cloak and hat and green britches, circa 1730, 22.5cm dia. £400-£600 †
- 61**  
A rare Bristol Delft farmyard plate, with a peacock displaying in blue, yellow and ochre between sponged manganese trees, circa 1725, 22.5cm dia. £600-£800 †
- 62**  
A pair of bisque ware hollow figure groups, depicting a shepherdess and a maid feeding a seated dog £40-£60 †
- 63**  
A 19th Century French Parianware figure, of a young scantily clad female seated on rocks, 22cm high £20-£30 †
- 64**  
A Peking blue glass dish, of plain form £30-£50 †
- 65**  
William Wise, for Minton five farm animal tiles circa 1887, 15cm x 15cm, later mounted and framed £100-£150 †
- 66**  
A pair of Nankin Cargo plates, bearing seal marks and signatures, 18.5cm £40-£60 †
- 67-78**  
No Lots

## Silver & Plate

- 79**  
Four silver decanter labels, "Brandy", "Sherry", "Port" and "Whisky" £30-£50 †
- 80**  
A large plated tureen by Elkington & Co. 40cm long x 29cm high £40-£60 †
- 81**  
A Victorian electroplated table centrepiece, profusely decorated foliate scrolls and surmounted by a cut glass bowl, 53cm high £40-£60 †
- 82**  
A Victorian electroplated German claret jug, of tapering form, the glass body finely etched with leaves and garlands, the mounts profusely decorated Bacchanalian scenes, the domed hinged lid with a finial of a seated figure above similarly decorated scrolling handle, 33cm high £80-£120 †
- 83**  
A large quantity of various plated flatware, to include fish servers, silver handled fruit knives etc. £60-£100 †
- 84**  
A silver four piece tea set, Hallmarked for Birmingham 1937, the teapot and hot water jug with black wood handles and lifts, approx. 49oz gross £450-£550 †
- 85**  
Two George III silver sifter spoons, London 1801 and 1802; a silver bladed and mother of pearl handled butter knife; two Georgian silver sauce ladles and various silver Georgian and later silver condiment spoons, teaspoons, caddy spoon etc. 18oz £100-£150 †



Lot 52



Lot 55



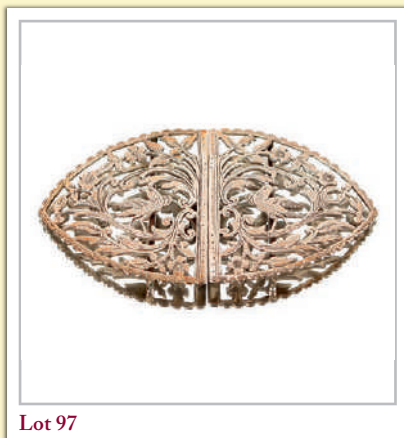
Lot 60



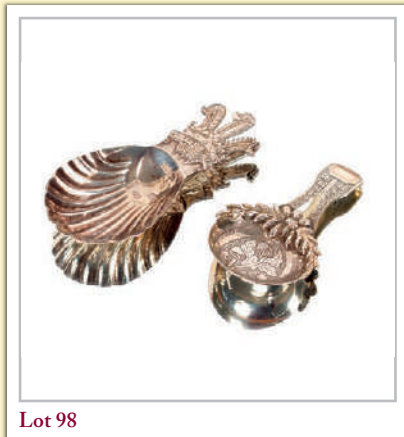
Lot 61



Lot 86



Lot 97



Lot 98



Lot 100

**86**  
A part matched suite of George III and later silver Fiddle pattern flatware, comprising eight table spoons *London 1801*, eight forks *London 1801 and 1810*, eight dessert forks *London 1805*, eight dessert spoons *London 1801 and 1796*, and six teaspoons *London 1833*, total weight 54oz  
£600-£800 †

**87**  
Six Victorian silver Fiddle pattern teaspoons, *London 1839*; and four William IV similar *London 1830*  
£40-£60 †

**88**  
A set of eight George III silver feather edge teaspoons, *London 1814*  
£50-£80 †

**89**  
A white metal pen tray, raised on fluted ball feet, 19cm long; various silver and plated decanter labels; and a silver thimble  
£80-£120

**90**  
A cased set of six silver gilt and enamel coffee spoons  
£40-£60 †

**91**  
A small collection of silver, enamel and other miniature spoons, some with filigree decoration etc.  
£30-£50 †

**92**  
A silver wooden line cigarette box, *Birmingham 1906*, with inscription to the lid  
£40-£60 †

**93**  
A modern silver coaster, and a wine taster with grape vine handle  
£30-£50 †

**94**  
A silver spoon, with owl motif, *London 1982*; various silver and white metal thimbles, napkin ring, silver pencil holder etc.  
£20-£30 †

**95**  
A silver three piece cruet, and matching spoons, *Birmingham 1972*; and three other silver cruet items  
£60-£100 †

**96**  
A silver visiting card case, *Birmingham 1911 AF*; a silver cigarette case *Birmingham 1920*, with foliate decoction and engraved monogram; and another *Birmingham 1900*, with inscription and monogram  
£60-£80 †

**97**  
A silver nurses buckle, *London 1982*  
£30-£50 †

**98**  
A Georgian silver caddy spoon, *Birmingham 1818*; and a modern silver caddy spoon with Prince of Wales Feathers motif  
£40-£60 †

**99**  
Eight Norwegian silver and enamel teaspoons  
£40-£60 †

**100**  
A Norwegian Sterling and enamel decorated spoon, by J Tostrup; a similar pair of servers; a David Andersen Sterling and enamel spoon; and a 925 mark gilded and enamel spoon (5)  
£40-£60 †

**101**  
A collection of Norwegian 925 mark silver and enamel teaspoons, two pronged forks and sugar nips  
£40-£60 †

**102**  
Two modern heavy silver paper knives; two George III Fiddle pattern table spoons; various other silver spoons; a cased pair of plated fish servers; a plated candle snuffer; and nominal plated cutlery etc.  
£100-£150 †

**103**  
An Edwardian silver mounted easel photograph frame, in the Art Nouveau taste with raised floral embossed decoration, *Birmingham 1904*; and a larger example, *Birmingham 1912*  
£60-£80 †

**104**  
An ivory page turner, with silver foliate embossed handle, 39cm  
£30-£50 †

**105**  
A plated entrée dish and cover, with gadrooned border decoration, 25cm; and a quantity of bone handled fruit knives and forks with plated blades and tines  
£20-£30 †

**106**  
A cased silver cruet set, *Birmingham 1960*  
£30-£50 †

**107**  
A silver cream jug, and matching sucrier, having profuse floral scroll decoration and vacant cartouche, *Birmingham 1947*, 18oz  
£200-£300 †

**108**  
A pair of oval silver napkin rings, *Sheffield 1963*, 4oz  
£40-£60 †

**109**  
A silver engine turned decorated cigarette box, *Birmingham 1961*  
£80-£100 †

**110**  
A silver engine turned decorated cigarette box, with wood lined interior, *Birmingham 1926*  
£40-£60 †

**111**  
A pair of silver mounted easel photograph frames, with raised floral decoration  
£40-£60 †



**112**

A late 19th Century continental 935 mark half hunter ladies watch, with enamel chapter ring; another ladies pocket watch with enamel Guilloche back; two other pocket watches and six enamel handled forks and spoons with Korean marks £50-£100 †

**113**

A miniature silver mirror; a silver four division toast rack; a silver pin tray; and various other nominal silver and plated items £40-£60 †

**114**

A pair of Victorian silver salts, having embossed floral decoration on three hoof feet, *London 1866*; a pair of later silver baluster pepperettes, *Birmingham 1898*; an Art Nouveau decorated oval silver mustard pot; and two associated spoons £50-£80 †

**115**

A cased set of six silver teaspoons, and a collection of various silver teaspoons and condiment spoons, approx. 5oz £60-£80 †

**116**

Various silver napkin rings; and silver mounted and wooden bottle stoppers £60-£80 †

**117**

A cased silver egg cup, spoon, and napkin ring £20-£30 †

**118**

A cased pair of silver backed hair brushes; various other silver dressing table items; a pair of dwarf candlesticks; spill vase; and a silver pot and cover £40-£60 †

**119**

A collection of various silver spoons and forks, paper knife etc. £100-£200 †

**120**

A presentation silver salver, with pie crust border raised on three scroll feet, *London 1948*; 18oz £150-£200 †

**121**

A silver trophy cup, by Edwin Viner *Sheffield 1927*, inscribed "Sun Life Assurance Co. of Canada, the Kershaw Trophy", 7oz, 11.5cm high £80-£120 †

**122**

A silver Art Deco engine turned cigarette case; a silver Sovereign case; buckle; rouge pot; silver and white metal dishes; two peppers; a continental beaker etc. £100-£200 †

**123**

A set of six silver teaspoons, *Birmingham 1928* /1929; and seven various Georgian dessert spoons £60-£80 †

**124**

A Chinese silver plated novelty cruet set, in the form of a sedan chair and attendant figures with pepper, salt and mustard pot on wheels, 21cm £30-£50 †

**125**

A silver heart shaped vesta case, *Birmingham 1897* £15-£25 †

**126**

A George III silver snuff box, the hinged lid inscribed J. Rogers, gilded interior, *London 1816*; and a small oblong silver hinged box *London 1935* £100-£200 †

**127**

Three small modern heavy silver bowls, of plain form, *London 1960* £60-£100 †

**128**

Two Georgian Irish silver Fiddle pattern table forks; four William IV and Victorian silver Fiddle pattern table forks; a George III silver fork; and a Victorian dessert fork, 18oz £150-£200 †

**129**

Three small silver trophy cups; a 19th century silver vase shaped pepperette; part of a silver shoe pin cushion; and other nominal items £40-£60 †

**130**

A small silver tea strainer, *probably Birmingham 1909*, having turned wooden handle; an ornate 19th Century Dutch silver straining spoon with pierced decoration; a pair of Scottish silver sugar tongs; a George III silver dessert spoon; a Victorian silver spoon and two plated sauce ladles £40-£60 †

**131**

A modern silver twin easel photograph frame, having floral decoration £30-£50 †

**132**

Four George III silver Old English pattern table spoons, *London 1803*; various other Georgian and Victorian Old English and Fiddle pattern tablespoons; a Scottish Kings pattern spoon, *Glasgow 1819*; five Georgian silver dessert forks, teaspoons, butter knife etc. £100-£200 †

**133**

A pair of George III tablespoons, *London 1808/1809*, Fiddle pattern with shell decorated terminals; a George III Old English pattern spoon, 1740; another, marks indistinct; and two others £60-£100 †

**134**

A cased set of six silver pistol grip handled tea knives, *Sheffield 1924* £20-£40 †



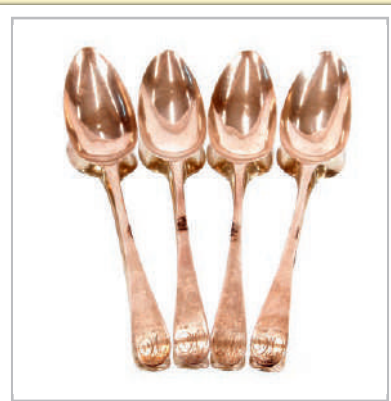
Lot 120



Lot 121



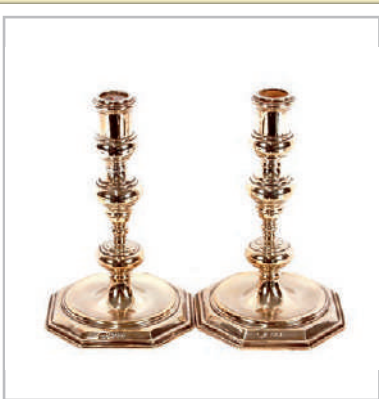
Lot 131



Lot 132



Lot 149



Lot 156



Lot 167



Lot 168

135

A continental oval white metal bread basket, with foliate embossed decoration raised on ball feet, marked to base .830, 30cm £60-£80 †

136

A continental white metal baluster bowl, with floral engraved decoration and twist loop handles, gilded interior, 19cm dia. overall, 12cm high £40-£60 †

137

A continental white metal ewer, with raised foliate decoration, 22cm high £60-£80 †

138

Fifteen small continental white metal dishes and ashtrays; and a tea infuser £20-£40 †

139

A silver wooden lined cigarette box, with engine turned decoration; and an engine turned decorated white metal cigarette case .800 mark £60-£80 †

140

A continental white metal bowl, having beaded loop handle and stylised floral panels, raised on four ivory feet, .800 mark; and a small flower embossed two handled bowl £40-£60 †

141

A continental white metal sauce boat, on integral stand; a small cream jug; a plated hot water jug etc. £20-£40 †

142

A continental white metal gravy boat, on integral stand stamped .800 mark, 22cm £40-£60 †

143

A George III silver spoon, initialled to the reverse I. F. M., London 1767; a pair of George III Old English pattern spoons, London 1782; another initialled I.B. marks indistinct but possibly 1736; and an Irish silver spoon, marks indistinct possibly 1789 £60-£80 †

144

A George III silver snuff box, probably Birmingham 1810, makers mark J.W.; a silver vesta case; two silver matchbox holders and a cigarette case AF £60-£100 †

145

A small silver toast rack, Birmingham 1924; six silver coffee spoons, Sheffield 1926; a Newcastle Georgian silver caddy spoon, 1822; two white metal pin dishes and a napkin ring £40-£60 †

146

A pair of Victorian silver tablespoons, London 1841; a pair of William IV silver tablespoons, London 1832; a Newcastle silver spoon, marks indistinct; and a late Victorian silver dessert spoon £40-£60 †

147

A collection of various silver teaspoons etc. some AF £40-£60 †

148

A pair of George V silver circular bowls, of plain form by Elkington & Co. London 1914, 16oz £150-£200 †

149

A set of six George V silver Old English pattern tablespoons, Sheffield 1924 £150-£200 †

150

A set of eight George V silver Old English pattern dinner forks, Sheffield 1924, 18oz £150-£200 †

151

A pair of George III silver Old English pattern sauce ladles, probably by Peter Ann and William Bateman, London 1800 £60-£80 †

152

A heavy silver table bell, London 1935 £50-£80 †

153

A late Victorian ivory and silver handled page turner, London 1898, 41cm long £40-£60 †

154

A silver wooden lined engine turned decorated cigarette box, with presentation inscription, 16cm long, Birmingham 1927 £40-£60 †

155

An unmarked Georgian toddy ladle, with whalebone twist handle £40-£60 †

156

A pair of good quality silver candlesticks, by The Goldsmiths & Silversmiths Co. with knop columns and octagonal spread bases, London 1938, 26oz, 20cm high £250-£350 †

157

A pair of circular silver candlesticks, with line decoration, loaded bases AF, Birmingham 1909, 13cm high £40-£60 †

158

A George V silver tankard shaped mustard pot, and associated spoon (liner missing); and a pair of small circular silver salts, London 1918 £40-£60 †

159

A set of six Victorian silver teaspoons, with hatched border decoration, Sheffield 1893 £30-£40 †

160

A George V silver baluster coffee pot, the domed lid surmounted by a turned finial and black wood handle, *Birmingham 1929*; and another *Birmingham 1935*, 21cm high, 34oz gross  
£300-£400 †

161

A pair of Sheffield plated coasters, the wooden bases AF; and an oval plated gadrooned bordered serving dish; a quantity of various plated flatware; a rose bowl etc.  
£40-£60 †

162

A George III silver sugar caster, of baluster form 13cm high, *London 1771*; a George III silver vase shaped pepperette, *London 1794*; and a smaller similar  
£60-£80 †

163

A small silver baluster cream jug, *London 1937*; a unmarked white metal beaker; a pair of small Edwardian silver salts; a plated cream jug; a plated stand by Mappin & Webb; and other nominal items  
£60-£80 †

164

A Victorian silver salver, having beaded pie crust border, foliate engraved central field around a family crest, raised on three hoof feet, *London 1850*; 14oz, 23cm  
£100-£200 †

165

A Victorian silver salver, with shell and foliate pie crust border, floral engraved centre around a family crest, raised on scrolled feet, later presentation inscription verso, *London 1857*; 25cm, 19oz  
£150-£250 †

166

A George III silver salver, having pie crust and gadrooned border, raised on three hoof feet, *London 1771*, the centre engraved with a family crest, 38oz, 35.5cm  
£500-£600 †

167

A George III silver baluster tankard, with scroll handle, engraved with family crest, *London 1785*, 12cm, 11oz  
£200-£400 †

168

A George II silver baluster tankard, having scroll handle raised on a circular spread foot, stamped to the base "M.P." with a makers mark of "J.W.", *London 1745*, 12.5cm high, 14½oz  
£200-£400 †

## Jewellery

169

A yellow metal necklace with 9ct gold clasp; a 9ct gold fine link necklace; various pocket watch keys etc.  
£100-£200 †

170

A woven hair and yellow metal mounted necklace, brooch and three bracelets  
£100-£200 †

171

A 19th Century yellow metal mounted cameo brooch, decorated with a carved female head profile, the hair with vines and mask below  
£100-£150 †

172

A 19th Century yellow metal cameo ring, decorated with head and shoulders profile of a gentleman  
£80-£120 †

173

A large yellow metal cameo brooch / pendant, carved with classical head of a maiden with flowers in her hair, filigree work frame  
£200-£200 †

174

A 15ct gold bar brooch, set three diamonds  
£100-£150 †

175

An 18ct gold wedding band; and a 9ct gold bar brooch inset with an "M"  
£40-£60 †

176

A Georgian yellow metal mourning ring  
£200-£300 †

177

An 18ct gold half hunter wrist watch, having blue enamelled numerals, inner white enamel dial with second subsidiary, later straps  
£300-£500 †

178

A yellow metal diamond and seed pearl set bangle  
£200-£300 †

179

An 18ct gold diamond and seed pearl set brooch, in the form of a tennis racket and net  
£200-£300 †

180

A gold plated pocket watch, with white enamel dial and seconds subsidiary  
£30-£50 †

181

A 9ct gold bar brooch, set with seed pearl; a silver Arts & Crafts design brooch; various ear-rings; fine link chain; blue stone set bracelet; a paste bracelet etc.  
£40-£60 †



Lot 171



Lot 173



Lot 178



Lot 179

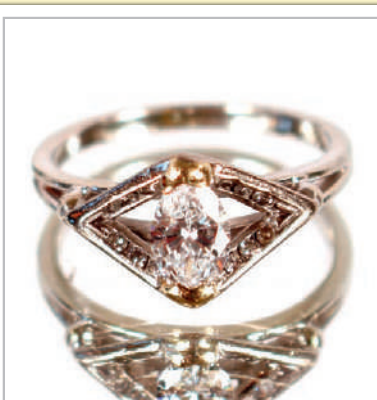




Lot 182



Lot 200



Lot 202



Lot 207

**182**

A yellow metal and diamond set circular brooch  
£800-£1,200 †

**183**

A Victorian yellow metal memorial brooch,  
decorated central seed pearl and enamel star with  
filigree work borders £40-£60 †

**184**

A butterscotch amber coloured graduated  
necklace; a Lola Rose purple hardstone necklace;  
two pearl necklaces; a graduated set of pink  
hardstone beads; and a triple strand of green  
hardstone beads £60-£100 †

**185**

A gold plated Dennison pocket watch, with  
enamel dial and seconds subsidiary £30-£50 †

**186**

A 925 leaf shaped ring, set with purple stone  
£30-£50 †

**187**

An 18ct gold and four stone set cluster ring  
£40-£60 †

**188**

A 9ct gold Tudor Royal ladies wrist watch  
£100-£150 †

**189**

A woven hair and yellow metal mounted bracelet,  
brooch and ring; various other woven hair type  
items etc. £200-£300 †

**190**

A collection of various jet and other beads,  
nominal items etc. £60-£80 †

**191**

A yellow metal stick pin, with turquoise encrusted  
figure of a parrot, its claw on a pearl £40-£60 †

**192**

A 1911 gold Sovereign £250-£300 †

**193**

A 9ct gold watch chain, of small size, complete  
with T bar, 11.9gms £150-£200 †

**194**

A pair of 18ct gold cuff-links, 18.3gms; and a pair  
of 15ct gold cuff- links, 12.5gms £300-£500 †

**195**

A gold white stone and mauve set cluster ring  
£100-£150 †

**196**

A gold cameo ring £40-£60 †

**197**

A gold sapphire and diamond set ring £70-£70 †

**198**

An Edwardian gold pearl and amethyst set  
pendant, hung to a fine link chain £50-£80 †

**199**

A gold sapphire and pearl set pendant, hung to a  
fine link chain £50-£80 †

**200**

An amber pendant, on fine link white metal  
chain; and two butterscotch amber necklaces on  
beaded chains £200-£400 †

**201**

A Hallmarked 9ct gold and multi diamond set  
bracelet £400-£600 †

**202**

An 18ct white gold and marquise cut diamond  
ring, the central stone approx. .54 carat,  
surrounded by twelve smaller diamonds  
£500-£800 †

**203**

A gold pearl and green stone set necklace  
£50-£80 †

**204**

Two pairs of 9ct gold cuff-links £100-£150 †

**205**

A 10ct gold swivel fob; a 15ct gold pin; and a  
yellow metal seed pearl bar brooch £80-£120 †

**206**

A 9ct gold ladies wrist watch £50-£80 †

**207**

A 9ct gold Rolex pocket watch; and a 9ct gold  
watch chain with elongated links and T bar,  
35gms £800-£1,200 †

**208**

An 18ct gold wedding band, approx. 9gms; and  
an 18ct gold diamond set ring, 2gms £300-£400 †

## Objects & Collectables

**210**

A large Masonic jewel by Abraham David Loewenstark; various other Masonic items etc. £100-£200 †

**211**

A pocket sundial, in turned wooden case; a silver bladed and mother of pearl handled fruit knife; in leather case; a horn acorn shaped thimble holder; various other items etc. £40-£60 †

**212**

A small Ethnic stone tablet, depicting a seated couple, 9cm high £20-£40 †

**213**

A Japanese carved ivory dagger, with relief decoration of warriors, 37cm long overall £100-£200 †

**214**

An oval 19th Century portrait, of a fashionable lady; a 19th Century portrait of a young gentleman in gilt frame; and another miniature portrait AF £40-£60 †

**215**

A small bronze Oriental figure of a Deity, 18cm high; and a small green hardstone dragon carving on wooden stand £30-£50 †

**216**

An oak trinket box, with silver mounts, the contents to include various seals £50-£60 †

**217**

A Russian Papier Mâché lacquered and painted box, the lid decorated with two girls in a rural landscape; and a similar oval brooch decorated with floral sprays £200-£300 †

**218**

An Eastern (possibly Indian) parasol, having painted decoration with ornate foliate white metal handle £60-£80 †

**219**

Eight antique ivory billiard balls; and a quantity of various carved ivory items to include a Stanhope viewer, sewing clamp, needle cases etc. £100-£200 †

**220**

A Chinese bronzed door knocker, centered by a dragon mask and loop below, 18cm £20-£30 †

**221**

A brass carriage timepiece, of serpentine shape with circular white enamel dial contained in a leather covered travelling case £70-£100 †

**222**

A tortoiseshell and brass inlaid easel picture frame, in the manner of Boulle, 13.5cm x 10.5cm overall £20-£40 †

**223**

A Chinese carved hardwood figure, of a seated fisherman on pierced stand, 27cm high; and a similar seated figure of Ho Tei, 15cm high £100-£200 †

**224**

A brass and copper pedestal comport, 19cm dia. x 17cm high £20-£40 †

**225**

Two ivory Netsukes; a white metal model of a windmill; babies rattle / teething ring etc. £60-£80 †

**226**

A good quality early to mid 20th Century Japanese cloisonné on white metal circular bowl and cover, with single pink flower and leaves on a Ginbari ground, 10cm dia. £40-£60 †

**227**

An early 20th Century carved ivory incense burner and lid, with reticulated top part surmounted by a ball and rings, the body with archaic motifs flanked by dragon handles (one missing) raised on three shaped legs, 10cm wide £50-£100 †

**228**

A Chinese bronze flask, of double gourd flattened shape, with screw on lid and swing frame handle, the body decorated with gilt dragons chasing a pearl, verso and lid with numerous character marks, 15cm £40-£60 †

**229**

An unusual 19th Century French Ormolu box, naturalistically formed as an oyster shell, the hinged lid opening to reveal and framed glazed recess for a miniature portrait £50-£80 †

**230**

A small antique Inca bronze figure, raised on a plinth, 16cm high £250-£350 †

**231**

A cast iron model of a Boston terrier, with head turned, 21cm high £30-£40 †

**232**

A Great War Trench Art brass valuable safe, in the form of a house, the roof with rippled edges and small hinged lockable door (no key), 9cm high £30-£50 †

**233**

A miniature apprentice made Windsor elbow chair, with spindle and vertical slat back, solid saddle seat on turned supports united by stretchers, 16cm high £40-£60 †



Lot 213



Lot 227



Lot 228



Lot 233



Lot 234



Lot 239



Lot 241



Lot 258

234

A late 19th early 20th Century cold painted novelty vesta box, in the form of a Moët & Chandon Champagne basket with sprung lid marked Déposé, 5cm long £30-£50 †

235

A Chinese terracotta figure of a warrior, with character marks to side of base, 21cm high £20-£30 †

236

An English mid 19th Century naive school miniature portrait, depicting two young girls in a landscape, watercolour, unframed, 15cm x 11cm £50-£100 †

237

A collection of six 19th Century Papier Mâché and pewter inlaid snuff boxes, each with a variety of decoration, various sizes £40-£60 †

238

A Vert de Gris bronze figure of Poseidon, in the manner reminiscent of Giacometti; together with another similar bronze figure £30-£50 †

239

A collection of Japanese Kanzashi and Kougai, with mother of pearl and floral decoration £60-£100 †

240

An Oriental gilded bronze figure of a warrior, decorated small coloured beads and raised on a wooden stand, 12cm high; and a small Siamese bronze figure of a Deity, 9cm £60-£80 †

241

A Russian Icon, in painted softwood surround, 25cm x 17cm, overall size with frame and mount 45cm x 27cm £100-£150 †

242

A bronze model of a Grand Tour type brazier; a small bronze conch shell; a small Chinese bronze censer; and a glass scent bottle of agate colour heightened in gilt (stopper missing) £40-£60 †

243

Two small carved Chinese boxwood figures, 14cm and 12cm high £40-£60 †

244

A Japanese carved ivory figure, of a street vendor, 17cm high, signature to base; and a small carved ivory figure of a immortal AF £200-£300 †

245

A set of oak and brass postal scales and weights £20-£40 †

246

A silhouette picture, of a young gentleman; an unusual picture of a spouted vessel in the form of a mans head; three daguerreotypes; and a small carved circular plaque entitled "Ludwig" £40-£60 †

247

A miniature portrait study of an Elizabethan period gentleman, inscribed verso "Regant Murray" in ebonised frame £40-£60 †

248

19th Century school, portrait miniature of a young lady with flowers in her hair and white lace dress £40-£60 †

249

A small 19th Century miniature portrait, of a military officer £30-£50 †

250

A small miniature portrait study, of a lady wearing blue dress and lace collar in ebonised frame £40-£60 †

251

An 18th Century European ivory carving of the Madonna and child, on an ebony and ivory base, 14cm high £80-£120 †

252

A 19th Century cloisonné vase, 18.5cm high; and a small group of various cloisonné and enamel items £120-£180 †

253

A bamboo brush pot of typical form, carved with scholars amongst rockwork, two lines of calligraphy, 17.5cm high £100-£200 †

254

A 19th Century ebony veneered and mother of pearl inlaid sarcophagus shaped tea caddy, the interior containing two tea boxes £80-£120 †

255

A set of five antique pewter measures, of cylindrical form £80-£120 †

256

A set of seven antique pewter measures, of baluster form £70-£100 †

257

Two circular stained glass and leaded panels £30-£50 †

258

A Chinese cylindrical box and cover, the celadon jade body cased in elaborate white metal mounts and cover, 14cm high £200-£300 †



259

An Art Nouveau WMF style plated ink well, of iris shape on a pool edged base, complete with inkwell liner, 25cm  
£50-£80 †

260

A gilded Art Nouveau bust, depicting young maiden with flowers in her hair, 47cm high  
£100-£150 †

261

A Victorian gilded bronze five branch chandelier  
£100-£150 †

262

An Edwardian oak banjo barometer / thermometer, 77cm  
£20-£40 †

263

An African carved wooden face mask, with bead and sack decoration  
£80-£120 †

264

A Victorian oak cased apothecary's cabinet, 33cm wide x 27cm high  
£200-£300 †

265

A collection of fourteen Oriental bronze Opium weights  
£60-£80 †

266

A 19th Century mahogany cased Admiral Fitzroy barometer  
£80-£120 †

267

A Regency pen work style decorated trinket box, of sarcophagus shape flanked by gilt carrying handles, 29cm  
£30-£50 †

268

A set of brass scales, by W. & T. Avery Birmingham, to weigh 2lbs, complete with three brass graduated weights  
£60-£80 †

269

A 19th Century Eastern copper pot, 30cm dia. x 21cm high  
£50-£80 †

270

A mid-20th Century bronze sculpture, of an abstract nude  
£120-£180 †

271

A 19th Century brass tazza, with raised foliate decoration, 23cm dia. x 18cm high  
£20-£40 †

272

A 19th Century brass doorstop, in the form of a huntsman and dog, 30cm high  
£20-£40 †

273

20th Century bronzed sculpture, of mother and child raised on a marble base, signed Agnes M. 36cm high  
£30-£50 †

274

An early 19th Century embroidery of flowers, in mahogany frame, 40cm x 40cm  
£30-£50 †

275

A 19th Century wool work embroidery, of a ship in oak Oxford style frame, 37.5cm x 40cm  
£30-£50 †

276

An antique oval needlework study, of flowers dated 1779, 57cm x 47cm contained in a gilt rope twist border frame  
£20-£30 †

277

Banks Geography, leather bound  
£40-£60 †

278

The Ipswich Journal 1788  
£200-£300 †

279

Legends in Japanese Art, one volume 1908  
£100-£150 †

280

Gustave Doré, "London, A Pilgrimage" leather and gilt bound  
£50-£80 †

281

A complete collection of "State Trials and Proceedings For High Treason and Other Crimes and Misdemeanours", eleven volumes; and three volumes "The Justice of The Peace and Parish Officer", by Richard Burn  
£150-£200 †

282

Two 19th Century silhouette miniature portraits, in ebonised frames  
£40-£60 †

283

A brass cased French carriage clock, with striking movement, the case with curved side glass panels and twist column decoration, white and blue enamel Roman numeral dial, 16cm high with handle extended, complete with key  
£100-£150 †

284

A brass cased carriage timepiece, in leather travelling case  
£40-£60 †

285

A 19th Century French ebonised tortoiseshell and cut brass cased mantel clock, in the manner of Boulle, the circular foliate embossed dial with blue enamel Roman numerals, eight day movement striking on a gong, 32cm high  
£100-£200 †

286

A spelter figure of a greyhound, on onyx plinth, 17cm long x 13cm high overall  
£20-£40 †



Lot 263



Lot 264



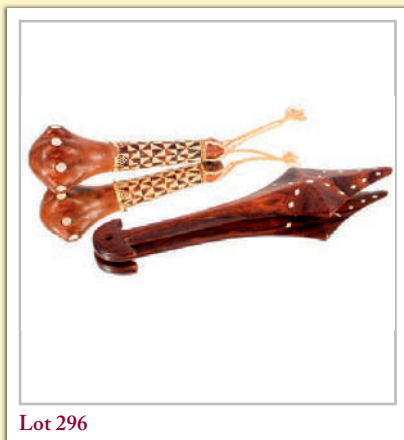
Lot 268



Lot 272



Lot 287



Lot 296



Lot 302



Lot 314

287

A mahogany and brass two division magazine rack, with pierced foliate and mask decoration, 33cm long x 31cm high £20-£40 †

288

An oak and silver plated gallery drinks tray, by Hammond Creak & Co. 57cm £30-£50 †

289

Three walking sticks, including a dogs head example; another with silvered crook handle; and an Ethnic example £80-£120 †

290

A hardstone and brass mounted table lamp base, with garland and foliate decoration and stepped plinth, 40cm high overall £65-£100 †

291

A 20th Century Japanese mottled lacquer and sparsely decorated three tier section Jubako box, with silver and gilt coloured bamboo leaves and stems on shaped recessed plinth base, three character mark to the inner lid, 18cm high £40-£60 †

292

An early 19th Century Chinese hardwood and mother of pearl inlaid vase stand, of square form, the frieze profusely decorated and centered by a single a single character mark on shaped feet (for restoration) 23cm £20-£30 †

293

Four decorative mother of pearl and gilt wood pineapple shaped finials, circa 1900 £250-£350 †

294

A late 19th Century Norwegian birch and decorated bridal tine, of circular form painted and branded with male and female figure, hearts and floral designs, one side inscribed "Anno 1898" base inscribed "Den Nordiske Kvinde", 17cm dia. £40-£60 †

295

A pair of Italian miniature prints, depicting the Ponte Vecchio Florence; and another general roof top view of Florence mounted as ovals in speckled gilt slips and oak frames, 6cm x 8cm £20-£30 †

296

An Oceanic hardwood club, (possibly Solomon Islands) with diamond shaped end inlaid with mother of pearl, 46cm; together with another hardwood mother of pearl inlaid Oceanic club £40-£60 †

297

A miniature "Comb Back" style Windsor elbow chair, with spindle back and arms, solid saddle seat on slender turned legs united by stretchers, 40cm high £40-£60 †

298

A late 19th early 20th Century earthenware Minoan style marine bowl, with pouring spout and flanked by handles, polychromatic stylised dolphin decoration (one handle repaired), 24cm dia. £40-£60 †

299

A mahogany bottle carrier, in the George III style surmounted by a carved pine cone turned tapered and ringed column, with square four divisions below, 50cm high £50-£80 †

300

An early 20th Century large cast iron door stop, in the form "The Old Cake Hatteras Lighthouse, North Carolina" with windows walk black and white spiral painted body on a half round base, 54cm high £100-£200 †

301

An 18th Century pierced brass cricket box, with hinged lid and carrying handle, having naive decoration together with another similar £30-£50 †

302

A 19th Century French Ormolu jardinière, in the Rococo style with cherubs, C and S scrolls flanked to either end by festooned upswept handles, bulbous base, scroll feet, 35cm wide £50-£80 †

303

A large collection of early to mid 20th Century black and white Oriental photographs, to include people, landscapes, show girls etc. £40-£60 †

304

A Georgian oak storage box, the hinged lid opening to reveal a removable divided tray, 25cm £40-£60 †

305

A Regency mahogany boxwood and ebony edged and strung workbox, the hinged lid opening to reveal the original blue paper interior with removable tray, flanked by gilt festooned handles on gilt ball feet, 25cm £50-£80 †

306

Two Ethnic wooden carved masks, and a smaller double mask £40-£60 †

307

A Black Forest style carved wooden corner shelf, with stag decoration £30-£50 †

308

A 19th Century country house oblong mahogany drinks tray, 91cm long £50-£80 †

309

A pair of 18th Century wrought iron fire dogs, 76cm high x 64cm long; and two fire irons £120-£160 †

**310**

A Chinese bronze twin handled baluster vase, with engraved dragon decoration and raised bosses, 11cm high £40-£60 †

**311**

A Chinese bronze and cloisonné vase, with raised decoration, 24.5cm high £40-£60 †

**312**

A Chinese carved ivory puzzle ball, of large size on stand 19.5cm high; and an ivory chess piece AF £40-£60 †

**313**

An Oriental bronze censer, raised on three beast feet, the body decorated with birds and foliage, 25cm high £40-£60 †

**314**

A bronze study of a Woodpecker, pecking a tree stump in half profile, loaded base, 24cm high £40-£60 †

**315**

A pair of cloisonné baluster vases; a pair of miniature cloisonné baluster vases; a cloisonné box and cover and an Imari bowl AF £30-£50 †

**316**

A large circular brass tray, with foliate decoration, 90cm dia. £30-£50 †

**317**

A pair of cast iron plaques, decorated in relief with Medieval courtyard scenes, contained in stepped oak frames, 49cm x 49cm in extremes £100-£150 †

**318**

A Polyphon Zonophone and discs £400-£500 †

**319**

A Victorian golden oak games compendium, and contents of chess, bridge and draughts £150-£250 †

**320**

An early 19th Century sampler, decorated with verse, trees and animals, worked by Hannah Spray Age 12 Years, dated 4th December 1804, 31.5cm x 31.5cm in mahogany frame £60-£100 †

**321**

A cased and preserved grass carp, in glazed case, approx. 25" long £100-£200 †

**322**

A cased and preserved bream, in glazed case, approx. 21" long £100-£200 †

**323**

A 19th Century ornate gilt and plush mounted picture frame, having oval insert framed and glazed, 74cm x 63cm overall £80-£120 †

**324**

A 19th Century mahogany and inlaid sewing box, of sarcophagus form fitted with a single drawer to base, the interior with original paper lining £60-£100 †

**325**

A mahogany cased barograph, 34cm long £180-£220 †

**326**

A cast iron figure, of a stag on wooden plinth, 48cm high overall £100-£150 †

**327**

A 19th Century rosewood and brass inlaid writing slope; and a rosewood and mother of pearl inlaid writing box, both in need of attention £40-£60 †

**328**

A Victorian brass oil lamp, with cut glass reservoir and etched shade, 66cm high £80-£120 †

**329**

A painted Noah's Ark model, and contents of various animals £250-£350 †

**330**

A 19th Century mahogany and brass mounted writing slope, 36cm wide £40-£60 †

**331**

A bronze circular plaque, of Sir Henry Irving contained in an oak frame, indistinctly signed, 37cm dia. overall £40-£60 †

**332**

Two oval portrait prints, of Longfellow and Tennyson in walnut cushion frames, 38cm x 33cm overall £40-£60 †

**333**

A set of four 19th Century brass ecclesiastical candlesticks, with spiral twist stems, and knopped central bands, on circular spread bases, 32cm high £120-£160 †

**334**

A pair of 18th Century Italian wooden alter pricket candlesticks, with painted and gilt decoration, 69cm high £100-£150 †

**335**

A 19th Century teak case, fitted with brass carrying handle and containing a collection of 70 Edison phonograph cylinders, case 70cm x 51cm £80-£120 †



Lot 319



Lot 325

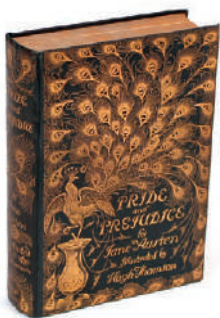


Lot 329

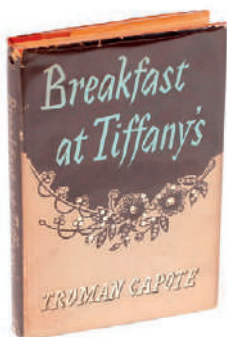


Lot 333





Lot 346



Lot 346A



Lot 349A



Lot 349B

336

A French marble and bronze clock, surmounted by dogs on a stepped base, eight day movement to the clock by Billard Le Rochelle, striking on a bell, 42cm wide x 55cm high £80-£120 †

337

Gori, Art Deco bronze figure group "The Guardians" depicting young semi-naked girl walking dogs raised on a green marble plinth, 125cm long overall x 90cm high £1,500-£1,800 †

338

Camdens History of England, two volumes leather bound £40-£60 †

339

Aesop's Fables illustrated Arthur Rackham, "The Ring of The Niblung", "The Rhinegold and The Valkyre", "Seigfried And The Twilight of The Gods", and "A Midsummers Night Dream", all illustrated Rackham £100-£200 †

340

"Cocksure" by Mordecai Richler, with personalised inscription and signature front cover £40-£60 †

341

Hilary Mantel, "Mantelpieces", signed by the author £20-£30 †

342

The Film Hamlet, signed by the cast, produced by Saturn Press, dated 1948 £40-£60 †

343

"Emma" by Jane Austen, illustrated by Hugh Thompson, Published MacMillan & Co. London 1901, in green and gilt leather with marbled boards £100-£150 †

344

Ben Hecht, "A Child Of The Century" with inscription to the inside cover, dated November 1968 £40-£60 †

345

Albert Lewin, "The Unaltered Cat", signed and dedicated by the author May 1967 £40-£60 †

346

Jane Austen, "Pride and Prejudice", illustrated H. Thomson in decorative green and gilt binding £100-£200 †

346A

Truman Capote, "Breakfast At Tiffany's", signed by the author £200-£400 †

346B

Truman Capote, "Other Voices, Other Rooms", paperback, signed and dedicated by the author; and Truman Capote, "The Muses Are Heard", signed and dedicated by the author, paperback £60-£100 †

347

Ray Bradbury, "Dandelion Wine", "Golden Apples Of The Sun", "The Halloween Tree", "Something Wicked This Way Comes", "The October Country" and "Ray Bradbury's Fahrenheit 451 A Reader Guide", all signed and dedicated by the author £100-£200 †

348

Ray Bradbury, "The Love Affair", signed and dedicated by the author, dated Christmas 1982 £100-£200 †

349

Ray Bradbury, "Death Is A Lonely Business", "Long After Midnight", "Something Wicked This Way Comes", "Dinosaur Tales", "That Ghost, That Bride of Time", "The Stories of Ray Bradbury" and "The Ghosts of Forever" all dedicated and signed by the author £600-£800 †

349A

Charles Dickens, "A Christmas Carol" in prose £40-£60 †

349B

Jules Verne, "Voyages Extraordinaires", three volumes £100-£200 †

349C

Charles Dickens, "The Mystery of Edwin Drood", leather bound AF; and "Nicholas Nickleby" £40-£60 †

## Paintings

**350**

After H Davey, Globe House Ipswich, fourteen prints of noted Suffolk Houses £150-£200 †

**351**

William Verner Longe 1857-1924, study of garden of a country house with steps and urns, watercolour dated 1915, 24cm x 32cm £30-£50 †

**352**

Late 19th / early 20th Century school, busy Oriental harbour shipping scene, with sail ships and paddle steamers, unsigned oil on canvas, 41cm x 30cm £40-£60 †

**353**

After Robert Morden, coloured map of Suffolk, 36.5cm x 42cm £40-£60 †

**354**

A pair of Japanese prints, depicting figures in interior court scenes, 23cm x 30cm £60-£100 †

**355**

Two interesting Chinese paintings, depicting dignitaries and family groups, signed, 55cm x 90cm overall £180-£220 †

**356**

A Japanese wood block print by Kunisada, depicting an actor in Heian court robes, under an open umbrella, 34.5cm x 23cm £40-£60 †

**357**

A Japanese wood block print, depicting ladies in an interior, 36.5cm x 25cm £40-£60 †

**358**

A Japanese wood block Diptych, after Kunisada, each panel 35.5cm x 25cm £40-£60 †

**359**

A Japanese triptych print, by Mosai "Heros Of Tokugawa Shogun Family", published by Tsujiokaya Ewnsuke, each panel 34cm x 24cm £100-£200 †

**360**

A Japanese wood block triptych, by Kunisada, scene of an evenings entertainment on a veranda overlooking Japanese water garden, each panel 36cm x 24.5cm £100-£200 †

**361**

19th Century school, study of an army officer, oil on canvas, AF and in need of restoration, contained in a gilt frame, 110cm x 75cm £40-£60 †

**362**

19th Century portrait study of a gentleman in ceremonial robes, mace by his side, unsigned oil on canvas, 98cm x 62cm £100-£200 †

**363**

19th Century school, portrait study of a gentleman in pink velvet jacket, sword and hat by his side, unsigned oil on canvas, 97cm x 58cm £100-£200 †

**364**

A Vaux, study head and shoulders portrait of a child, signed oil on canvas 35cm x 30cm £60-£80 †

**365**

Late 19th Century school, portrait study of a gentleman, 26cm x 20cm, unsigned oil on board £60-£80 †

**366**

19th Century school, study of fishing boats at sundown, unsigned oil on board, 46.5cm x 28cm £60-£80 †

**367**

Thomas Pyne, Looking Towards Felixstowe, The Martello Towers In The Distance, signed watercolour 11cm x 21cm; Abraham Hulk Jnr. study of water meadows Dorking, 25cm x 16cm; and Stephen John Batchelder "On The Broads" watercolour 13cm x 18cm £40-£60 †

**368**

Terence James Bond (Born 1946), study of Puffins seated on a rock, 60cm x 50cm, artist label verso £200-£400 †

**369**

After Jamieson, highland scene with figure fishing in a river, unsigned oil on canvas, 30cm x 60cm £100-£150 †

**370**

T.S. Barber, rural study with a figure wandering along a path by a river, signed oil on canvas, 30cm x 60cm £60-£100 †

**371**

Map of Suffolk, after Greenwood, 61cm x 71cm £40-£60 †

**372**

F. Jamieson, highland scene of mist shrouded mountain and cottages by a river, signed oil on canvas, 50cm x 75cm £60-£80 †

**373**

F. Jamieson, near Arrochar Loch Lomond and Ailsa Craig, signed oils on canvas, a pair, 50cm x 75cm £100-£200 †



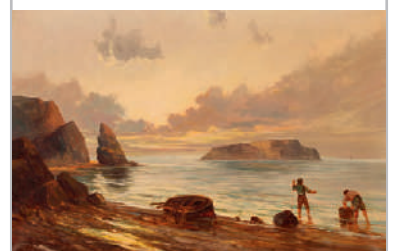
Lot 362



Lot 368



Lot 372



Lot 373



Lot 378



Lot 379



Lot 396



Lot 408

374

C.R.Fletcher Lutwidge, Mediterranean coastal scene, watercolour signed and dated 1884, 30cm x 46cm; and another depicting Fezzano Gulf of Spezzi, dated 1901, 30cm x 46cm £100-£200 †

375

Arthur Anderson Fraser, exhibited 1884-1891, "On The Ouse", monogrammed watercolour dated 1895, 18cm x 37cm; and Harriet (Lady George), Beresford study of a country house, unsigned label verso, 20cm x 29cm £40-£60 †

376

M.A. Sloane, study of a man seated by a fire reading, indistinct paper label verso making reference to Charterhouse, signed watercolour, 34cm x 24cm £40-£60 †

377

Mary Forster, study of Free School Lane, Cambridge, signed watercolour, 21.5cm x 17cm; another by the same artist "Boat Procession, Cambridge"; George Wyllie Hutchinson, Sunbury Lock; and George Wyllie Hutchinson, study of Teddington Weir 1908, 14cm x 24cm £60-£80 †

378

After Crome, study of sailing vessels with windmill and cottage in the foreground, unsigned oil on board in gilt frame £40-£60 †

379

M Kleist, still life study with a flagon, wine and fruit on a ledge, signed oil on canvas dated 1872, 39cm x 20cm £100-£200 †

380

19th Century school, study of a rural village scene with river, unsigned watercolour, 17cm x 24cm; and two others £30-£50 †

381

English school 1887, farmyard scene with a woman feeding chickens, oil on canvas, indistinctly signed and dated 1887, 26cm x 36cm £60-£80 †

382

Emilio Greco, study of flowers on a marble ledge, oil on board 60cm x 48cm £200-£250 †

383

Emilio Greco, study of flowers on a marble ledge, 60cm x 50cm £200-£250 †

384

Continental school 1912, study of ski-ing positions entitled "How To Ski, and How Not To", black and white print £30-£50 †

385

Late 19th Century French school, study of a landscape with buildings and figures, indistinctly signed, unframed oil on canvas, 51cm x 61cm £120-£180 †

386

Manner of Thomas Rose Miles, study of war ship and other vessels entering a harbour, unframed oil on canvas AF, 50cm x 77cm £120-£180 †

387

Chinese school, study of a river landscape with figures fishing, oil on board, 14cm x 22cm £30-£50 †

388

J Box, study of a prize bull, signed oil on canvas, laid on board, 19cm x 24cm £80-£120 †

389

J. Douglas, study of sailing vessels at sea, signed oil on canvas, 25cm x 45cm £150-£180 †

390

Fores's National Sports "Steeplechase Cracks", plate 53cm x 111cm £60-£100 †

391

Japanese woodblock print by Kunisada, from a series Seisho Nanatsu, 34cm x 24cm £40-£60 †

392

Diego Flores, late 19th Century oil on panel of a robed Arab man, signed, 27cm x 15cm £200-£300 †

393

J.H. Freish, figures skating on a frozen Dutch canal, oil on oak panel, signed, 18cm x 14cm £60-£100 †

394

English school, early 19th Century portrait of a gentleman, oil on panel in rosewood frame, 32cm x 37cm £150-£250 †

395

English school, 19th Century three quarter length portraits of an elegant lady and gentleman, a pair of indistinctly signed watercolours, 49cm x 34cm £120-£150 †

396

Continental school, 19th Century "The Conspirators", an interior scene with figures around a table, oil on panel, 60cm x 49cm £80-£120 †

397

Late 19th Century school, study of a Lowestoft Trawler "Constance LT137", unsigned watercolour, 40cm x 50cm £100-£200 †



398

**Late 19th Century school**, study of The Lowestoft Trawler "Our Boys, LT51", monogrammed J.G. dated 1899 watercolour, 45cm x 60cm

£100-£150 †

399

**Charles Collins 1867-1903**, "On The Port Head River, St Mawes", signed watercolour with inscription, 18cm x 26cm Fry Gallery label verso

£60-£80 †

400

**Philip Henry Delamotte FSA 1812-1889**, "The Ring Ouzel", signed pencil and grey wash Fry Gallery label verso

£60-£100 †

401

**Joseph Barber 1757-1811**, cottage in landscape watercolour with red pen, 19cm x 25cm Fry Gallery label verso

£60-£80 †

402

**Armour Chelu**, pencil study of a duck, signed and dated 1980, 11cm x 16cm

£20-£40 †

403

**Donna Webb**, two lithographic prints of ploughman, 8cm x 13cm, framed as one

£40-£60 †

404

**Eric George Fraser 1902-1983**, study of actors, signed pen and ink drawing, 17cm x 13cm

£60-£80 †

405

**Newton Braby**, study of Omphalopes Verner, signed watercolour, 17.5cm x 13cm Fry Gallery label verso

£60-£100 †

406

**Edward Thompson Davis**, study of Briony, signed with initials and dated, sepia watercolour, 12cm x 7cm Fry Gallery label verso

£20-£40 †

407

**An Oriental watercolour**, head and shoulders portrait of a young lady dated 1931, 39cm x 28cm

£30-£50 †

408

**19th Century Dutch school**, study of a young girl seated in a kitchen interior with doves around her feet, unsigned oil on tin, 20cm x 16cm

£150-£250 †

409

**Victorian school**, half length portrait study of a lady wearing a bonnet, oil on canvas, 74cm x 59cm

£60-£100 †

410

**Frederick E. J. Goff 1855-1931**, study of Blackfriars Bridge, London; and another of Biddenden Kent, signed watercolours a pair in ornate gilt frames, 11.5cm x 15cm

£400-£600 †

411

**English school**, late 19th Century "Views of Douglas Bay" and "Spanish Head" Isle of Man, a pair, oils on canvas indistinctly signed, each 45cm x 60cm

£60-£80 †

412

**J. Crompton**, 19th Century oil on canvas of a monk instructing a maid, 39cm x 34cm

£50-£80 †

413

**Dutch school**, early 18th Century, an interior scene with figures around a table, oil on oak panel, 64cm x 72cm

£120-£150 †

414

**Terence James Bond (Born 1946)**, study of a squirrel seated on a branch looking at a butterfly on blossom, signed watercolour, 50cm x 35cm

£150-£250 †

415

**Isolde Francis (Nee Borthwick) Lady Cooper 1903-1953**, still life oil on canvas, 50cm x 40cm

£60-£100 †

416

**Frank Moss Bennett 1874-1952**, study of a bridge over a river at Downton, Wiltshire, signed watercolour, 15cm x 21cm

£40-£60 †

417

**Frank Moss Bennett 1874-1952**, "Flood Water", signed watercolour dated 1915, 22cm x 30cm

£60-£80 †

418

**Frank Moss Bennett 1874-1952**, study of Castle Combe, oil on canvas signed and dated 1929, 25cm x 35cm

£100-£150 †

419

**E Geraldts**, a 19th Century study of ewes and lambs in landscape after Verboekhoven, oil on mahogany panel, 22cm x 30cm

£50-£100 †

420

**19th Century school**, study of a huntsman and dog, inscribed on the reverse by J.C. Beiderman, dated 1830, oil on canvas 78cm x 64cm

£600-£800 †

421

**19th Century school**, study of yellow poppies, indistinctly signed oil on canvas, 40cm x 13cm in decorative gilt frame

£200-£300 †

422

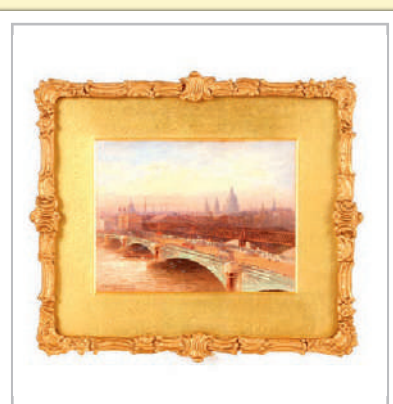
**Alf Lysaght**, study of a harbour scene with various vessels, signed oil on board, 20cm x 34cm

£40-£60 †

423

**A 19th Century print**, depicting figures in a garden observing classical maiden and cherubs, the whole strewn with garlands in gilt ribbon tied frame

£40-£60 †



Lot 410



Lot 413



Lot 414



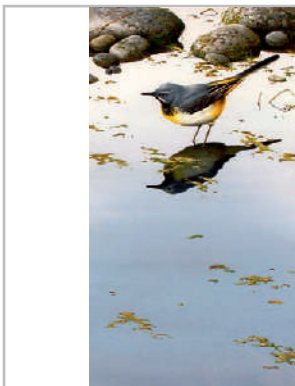
Lot 420



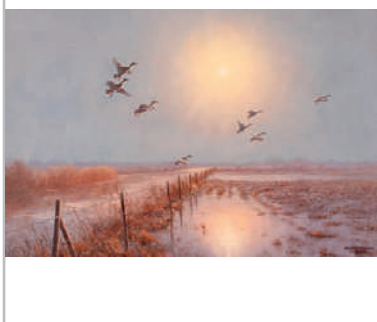
Lot 437



Lot 439



Lot 440



Lot 441

424

A 19th Century coloured print depicting Madonna and child, in decorative black and gilt frame, 72cm x 48cm overall £20-£40 †

425

J.B., early 20th Century school, study of a French harbour scene, initialled oil on canvas, 27cm x 34cm £60-£80 †

426

Albert Goodwin, study of Eaton, signed watercolour, 16cm x 23cm; and a watercolour "Kent's Close" by A. Burroughes £20-£40 †

427

A 18th Century coloured map of Scotland, "La Scozia Venezia 1779, Preffo Antonia Zatta", 32cm x 41cm £40-£60 †

428

Mayon, coastal scene with fishing vessels and figures on a shore, sailing ships and paddle steamer in the far ground, indistinctly signed watercolour, 24cm x 53cm £40-£60 †

429

S. T. Gleed, "The Wayside Cottage", signed watercolour, 32.5cm x 45.5cm £40-£60 †

430

19th century school, study of a waterfall, unsigned watercolour, 35cm x 25cm £20-£40 †

431

18th Century school, study of a Medieval scene with mother and child reading in front of a window, indistinctly signed watercolour, 17cm x 13cm £20-£40 †

432

19th Century school, study of a sandy cover beside a castle with fishing boats, unsigned watercolour, 19cm x 27cm £20-£40 †

433

19th Century school, study of a seaside pier, unsigned watercolour 11.5cm x 17.5cm; and another monochrome study of a coastal scene (2) £40-£60 †

434

A small 18th Century school, study of figures in a boat on a lake, various pencil annotations to the mount referring to C. Fox 1787, image 8cm x 9.5cm £20-£40 †

435

Attributed to William Mulready 1786-1803, man seated in front of a fire, pen and sepia ink, inscribed under mount "William Scutt Musto 1816", 16cm x 14cm £40-£60 †

436

Theatrical study, "The Witch" by Masefield, Mary Morris Anne Pedersdotter, Act II, indistinctly pencil signed watercolour, dated 1944, 38cm x 23cm £30-£50 †

437✓

John Knapp-Fisher 1931-2015, landscape with water and cattle, signed oil on paper dated 2000, 16cm x 23cm £200-£400 †

438

After J.M.W. Turner, watercolour study sea battle, 18cm x 25cm, bears pencil signature £20-£40 †

439

Terence James Bond (Born 1946), signed oil, study of a Thrush amongst stones and daisies, artist label verso 29cm x 23.5cm £200-£300 †

440

Terence James Bond (Born 1946), study of a Grey Wagtail in a pool, signed oil, artists label verso, 46.5cm x 25cm £200-£300 †

441

Julian Novorol, ducks in flight at first light, signed oil on canvas, dated 2007, 39cm x 58cm £100-£200 †

442

Charles Meer Webb 1930-1895, "Peeling Potatoes", signed oil on canvas label verso, 60cm x 48cm £600-£800 †

443✓

Charles Hepburn Scott 1886-1964, "The Market Hill, Framlingham, Suffolk", oil on board 45.5cm x 59cm. Cover illustration £1,000-£1,500 †

444

Marcel Clement 1873-1950, "La Dame En Rouge", signed oil on canvas, dated 1906, contained in a decorative gilt frame, with title label, 45cm x 59cm £800-£1,200 †

445

A collection of four Victorian coloured lithographs, of "Exaggerated Prize Farmers Cattle" by A.M. Gauci Strafford & Graf, each 12cm x 18cm £30-£50 †

446

19th Century school, portrait study of a gentleman with book in hand, unsigned oil on canvas, 76cm x 84cm (unframed) £150-£200 †

Lots marked ✓ please refer to Droit de Suite royalty charges in Terms and Conditions

† Each lot is subject to a Buyer's Premium of 18% + VAT (21.6%)

447

Saxton & Speed, coloured map of Norfolk, 38cm x 48cm £60-£80 †

448

A 19th Century Allegorical embroidery, in birds eye maple frame, 42cm x 34cm £60-£80 †

449

20th Century school, study of a grey hunter, oil on board, indistinctly signed, 40cm x 50cm £60-£80 †

450

An Accurate map, of the country of Essex divided into hundreds by Bowen, 52cm x 70cm £40-£60 †

451

After Nordan & Speede, coloured map of Essex and Colchester, image 38cm x 51cm £40-£60 †

452

A coloured map, of Herefordshire divided into hundreds after Bowen, 53cm x 70cm £40-£60 †

453

A black and white map, after Speede, county of Monmouthshire with alphabetical table of towns verso, 40cm x 53cm £20-£40 †

454

Two framed and glazed antique theatre advertising posters £20-£40 †

455

A coloured map of Essex, with coats of arms, 48cm x 58cm £40-£60 †

456

After Norden & Speede, black and white map of Essex divided into hundreds, and also showing the town of Colchester, 42cm x 53cm; and a small map of Derbyshire £40-£60 †

457

After Henry Alken, "The First Steeplechase on Record", engraved by Harris, set of 4 coloured aquatints £60-£100 †

458✓

John Knapp-Fisher 1931-2015, study of a rural landscape with church tower in the far ground, signed watercolour dated 1963, 27cm x 49cm, (frame AF) £2,000-£3,000 †

459✓

John Knapp-Fisher 1931-2015, landscape study, signed watercolour dated 1963, 28cm x 49.5cm (frame AF) £2,000-£3,000 †

## Furniture & Rugs

460

A Georgian mahogany bow fronted chest, of two short and three long drawers, raised on a shaped apron and bracket supports, 104cm wide £100-£150 †

461

An 18th Century inlaid oak Bible box, raised on a barley twist stand, 69cm wide x 104cm high £100-£150 †

462

An unusual Victorian mahogany chest, of four drawers, the upper drawer with drop down front revealing two shallow partition drawers, three normal drawers below raised on platform plinth, fitted brass escutcheons and turned wooden handles, 112cm wide x 53cm deep x 123cm high £100-£200 †

463

A late Victorian mahogany bureau, having fret carved decoration, the fall front opening to reveal an interior arrangements of drawers and pigeonholes with central pen tray and inkwells, arched frieze below, flanked by six drawers raised on cabriole supports and claw and ball feet, 126cm wide £200-£300 †

464

An unusual 19th Century bamboo sloping topped cabinet, having central lacquered panels decorated birds, 80cm wide £80-£120 †

465

A Georgian mahogany bureau, the fall front opening to reveal a fitted interior of drawers and pigeon holes around a central cupboard and secret drawers, two short and three long graduated drawers below, raised on bracket feet, 96cm wide £60-£100 †

466

A Georgian mahogany chest, fitted two short and three long drawers raised on turned supports, 92cm wide £80-£120 †

467

A Georgian mahogany tray top bedside cabinet, enclosed by a single door with drawer below, raised on square section tapering supports, 50cm wide £60-£100 †

468

A Georgian mahogany satin wood cross banded and ebony strung tray top bedside cabinet, enclosed by a pair of doors with a single drawer below raised on square section supports, 49cm wide £60-£80 †



Lot 442



Lot 443



Lot 444



Lot 449

Lots marked ✓ please refer to Droit de Suite royalty charges in Terms and Conditions

† Each lot is subject to a Buyer's Premium of 18% + VAT (21.6%)





Lot 486

469

A mahogany writing table, the green leatherette inset top above central drawer flanked by two dummy drawers, raised on ring turned tapering supports, 102cm wide £60-£100 †

470

A Victorian mahogany tray top side table, fitted two short drawers raised on turned supports, 106cm £100-£150 †

471

A Victorian mahogany kneehole writing desk, fitted with a central drawer above recessed cupboard, flanked by four drawers to each pedestal, 120cm wide £100-£200 †

472

A 19th Century mahogany demi-lune hall table, raised on square tapering supports, 122cm £60-£80 †

473

An 18th Century style large inlaid walnut chest on stand, fitted three drawers with a further drawer to the base, raised on bun supports, 115cm wide x 59cm deep x 116cm high £400-£600 †

474

Gillow & Co. Lancaster, a large late 19th Century ornately carved mahogany sideboard, the raised back inset with alcoves and mirrored panels, central cupboard enclosed by sunken panelled doors, two drawers below above a recess and a further long drawer, flanked by deep cupboards, the whole profusely decorated flowers, masks and stylised motifs, raised on turned supports, 229cm wide x 72cm deep x 194cm high £400-£600 †

475

A set of 19th Century mahogany hanging wall shelves, 189cm wide x 80cm high £100-£150 †

476

A 19th Century mahogany hanging wall cupboard, of breakfront form, the interior shelves enclosed by glazed tracery doors, 11cm wide x 62cm high £150-£250 †

477

A 1920's oak five section Globe Wernicke type bookcase, of gradating form enclosed by glazed leaded doors and raised on squat cabriole supports, 88cm wide x 215cm high £400-£600 †

478

A 19th Century carved stone column, (possibly a sundial plinth), 93cm high £200-£300 †

479

An Edwardian inlaid mahogany corner display cabinet, the interior shelves enclosed by a curved glazed panel door inlaid with floral scrolls, square tapering supports united by an under tier and terminating in spade feet, 69cm wide x 75cm high £100-£200 †

480

A 19th Century mahogany cabinet on chest, the upper section fitted shelves enclosed by a pair of moulded panel doors, two short and three long drawers to base, raised on turned supports, 125cm wide £100-£150 †

481

A 19th Century French walnut breakfront wardrobe, the pediment surmounted by gilded cresting, central interior shelves enclosed by a mirrored panel door, flanked by hanging compartments and raised on tapering supports, 200cm wide x 250cm high overall £100-£200 †

482

A late 19th Century walnut child's desk, in the Gothic style fitted single drawer, 55.5cm wide £30-£50 †

483

A walnut framed Chippendale design wall mirror, having fret carved pediment and cushion frieze, 77cm x 40cm overall £40-£60 †

484

A 19th Century French king wood vitrine, having gilt metal mounts, the interior glass shelves enclosed by curved ends and single bevelled glass panelled door raised on tapering supports, 122cm wide x 200cm high £300-£400 †

485

An early 20th Century circular bevel edged wall mirror, in mahogany frame, 52cm dia. £30-£50 †

486

A Chippendale style carved mahogany hanging wall shelf, with pierced fret work ends and bow fronted shelves, 81cm wide x 100cm high £150-£250 †

487

A Georgian mahogany long case clock, with painted dial and 30 hour movement, 194cm high £100-£200 †

488

A 19th Century mahogany long case clock, by Andrews New Buckenham, painted dial decorated hunting scenes, foliage and cottages, 8 day movement, second subsidiary dial, the arched hood surmounted by a brass orb £100-£150 †



Lot 488



Lot 489



Lot 492

489

**William Vise of Wisbech**, oak long case clock, the square brass spandrel dial with steel chapter ring supporting an eight day movement, striking on a bell, 188cm high £150-£200 †

490

**A pair of mahogany bed ends**, of arched gothic design, flanked by fluted columns, 103cm wide £75-£100 †

491

**An inlaid walnut torchere stand**, raised on a fluted column £30-£50 †

492

**A 19th Century ebonised gypsy table**, raised on bobbin turned supports £80-£120 †

493

**A wrought iron low occasional table**, inset with four antique encaustic tiles decorated exotic birds and foliage £100-£150 †

494

**A Victorian octagonal walnut occasional table**, raised on turned columns and quadruple splay terminating in castors, 52cm £80-£120 †

495

**A late Victorian satin wood and painted centre table**, raised on square tapering supports, terminating in brass caps and castors, united by an under tier, 61cm dia. £60-£80 †

496

**A Georgian mahogany drop leaf dining table**, fitted single end drawer raised on rounded tapering supports and pad feet, 89cm x 108cm extended £100-£150 †

497

**An Edwardian writing table**, with leather inset top above three drawers on square tapering legs and castors, 92cm wide £100-£150 †

498

**A mid 18th Century mahogany fold-over tea table**, fitted with a single drawer and raised on cabriole supports with pad feet, 75cm £80-£120 †

499

**A George III oak low boy**, the overhanging top above a single drawer, raised on a shaped frieze and cabriole supports terminating in pad feet, 76cm wide £200-£400 †

500

**A brightly coloured flat weave Kelim rug**, 3'6" x 5'3" £40-£60 †

501

**A Caucasian pattern rug**, with stylised motifs and geometric multi borders on a predominately red ground, 4'3" x 6' £60-£100 †

502

**An Eastern wool rug**, stylised tree of life pattern and geometric borders on a predominately red and orange ground, 6'1" x 3'9" £60-£100 †

503

**A small Eastern rug**, having central lozenge motif on a predominately red ground, 2'1" x 3'7" £20-£40 †

504

**An Eastern wool rug**, having central pink lozenge motif on a predominately pale blue ground, 3'10" x 4'1" £40-£60 †

505

**A Caucasian pattern rug**, with stylised floral decoration on a predominately blue ground (AF and faded), 6' x 4'1" £20-£40 †

506

**An Eastern wool rug**, of Caucasian design with geometric borders and central lozenge motifs on a predominately blue and red ground, 2'10 2/3" x 4'4" £40-£60 †

507

**A small Bokhara rug**, of traditional form on a rust ground, 4'7" x 3'4" £20-£40 †

508

**A small Eastern wool rug**, stylised motifs on a predominately blue ground, 2'2" x 2'11" £20-£40 †

509

**An Eastern wool rug**, decorated with animals and trees within geometric borders on a pale ground, 3'2" x 5'2" £40-£60 †

510

**A Turkomen Yomut carpet**, 11' x 7'4" £60-£100 †

511

**An Eastern wool rug**, with stylised chequered central field on a deep red ground, 5'8" x 3'6" £40-£60 †

512

**An Eastern wool rug**, having decorated lozenge motifs within geometric floral borders on a predominately red and blue ground, 6'7" x 5'2" £60-£100 †

513

**An Eastern wool rug**, with central lozenge shaped motifs surrounded by stylised animals and flowers within multi borders on a predominately red and blue ground, 7'3" x 4'9" £60-£100 †



Lot 494



Lot 495



Lot 497



Lot 499





Lot 524



Lot 529



Lot 531



Lot 537

514

A small Eastern wool mat, brightly coloured lozenge shaped motifs on a deep red ground, 3'4" x 2'1" £20-£40 †

515

A small Afghan Kazak pattern rug, 3' x 2'3" £30-£50 †

516

An Eastern wool rug, decorated stylised animals and people within geometric borders on a predominately brown and blue ground, 7'1" x 4'1" £40-£60 †

517

A small Eastern rug, having stylised motifs on a predominately deep red ground, flat weave ends, 4'3" x 2'9" £40-£60 †

518

An Eastern wool rug, having central stylised floral field within a lozenge motif, geometric multi borders on a predominately red and blue ground, 7'5" x 4'11" £60-£80 †

519

An Eastern wool rug, having central stylised lozenge decoration on a pale ground, 3'8" x 4'9" £40-£60 †

520

A large Eastern wool rug, having gul decoration upon a predominately red and pink ground, 5'2" x 9'3" £40-£60 †

521

A flat weave Kelim rug, of traditional pattern and colour, 4'6" x 6'4" £40-£60 †

522

A Baluchi type bag rug, 2'3" x 4' £40-£60 †

523

A small Kelim rug, (worn) 2'5" x 2'1" £20-£40 †

524

A flat weave Kelim rug, 4'4" x 3'2" £20-£40 †

525

A small Eastern yellow and orange decorated wall hanging, patterned with stylised motifs, 1'8" x 3'2" £20-£40 †

526

An Aubasson type floral hanging tapestry, 6'2" x 9' £60-£120 †

527

An Eastern wool prayer rug, having central Mihrab within foliate borders, 3'11" x 6' £60-£100 †

528

An Eastern flat weave wall hanging, having stylised motifs on a pale ground, 4'11" x 3'1" £60-£100 †

529

A Kelim rug, decorated stylised birds and animals within lozenge borders, 9'4" x 2'9" £100-£150 †

530

A Kashan type Tree of Life rug, (worn) 6'11" x 4'3" £60-£80 †

531

A Isfahan type Tree of Life rug, multi floral decoration on a predominately red and blue ground, 7'5" x 4'7" £100-£200 †

532

A Kashan type Tree of Life rug, AF, 6'10" x 4'4" £40-£60 †

533

A large Kelim flat weave rug, 5'7" x 9'10" £60-£100 †

534

A flat weave rug, with lozenge decoration on a predominately blue and red ground AF, 2'10" x 4'8" £20-£40 †

535

An Eastern wool runner, having central stylised floral field on predominately red and blue ground, 15'4" x 3'6" £100-£150 †

536

A small brightly coloured Eastern wool mat, 2' x 2'8" £20-£30 †

537

A large Kelim rug, of traditional form, 10'4" x 6'2" £100-£150 †

538

A Isfahan type rug, having multi floral decoration flanked by columns within foliate borders on predominately red and blue ground, 4' x 6'1" £60-£100 †

539

A large Hamadan runner, approx. 3'6" x 12'6" AF £40-£60 †

540

An Eastern rug, with multi stylised floral decoration and flat weave ends, 6' x 3'9" £40-£60 †

541

An Eastern wool runner, decorated central lozenge field and stylised multi borders on a predominately ochre and blue ground, 4' x 14'11" £60-£100 †



542

A Caucasian style runner, having central lozenge motif and geometric floral field, stylised multi borders on a predominately dark blue ground, 3'7" x 13'3" £60-£100 †

543

A Middle Eastern floral pattern rug, having profuse floral decoration on a red and blue ground 4'6" x 7'1" £40-£60 †

544

An Eastern wool rug, with stylised decoration on a deep red ground, 3'6" x 6'2" £40-£60 †

545

A small Bokhara carpet, of traditional pattern on deep red ground, 6'8" x 9'7" £60-£100 †

546

A large Eastern carpet, having central floral pelmet surrounded by foliate scrolls and multi borders on a predominately brick red and blue ground, 10'6" x 14'7" £200-£400 †

547

A Kashan type rug, with all over floral animal and object decoration on blue and red ground within multi floral borders, 6'3" x 4'3" £40-£60 †

548

A Baluchi type saddle bag rug, 5'1" x 2'4" £40-£60 †

549

An unusual Tekke style rug, with cream field stylised two rows of totems within a main geometric border, with inscription panel, 4'2" x 2'4" £50-£80 †

550

A needlework rug, the ivory field with a central flower head and foliate pendant medallion, within similar spandrels and border, 5'6" x 3'9" £50-£80 †

551

A Caucasian prayer rug, the plain hooked Mihrab with a geometric field and wide main hooked interlocking border, 5'2" x 3' £50-£80 †

552

A Japanese wall hanging, decorated with flowers, river and mountain scene £250-£300 †

553

A set of eight Victorian mahogany dining chairs, with arched cresting rails, carved bar backs and upholstered stuff over seats, raised on turned tapering supports £100-£200 †

554

A Victorian mahogany hall chair, with shield shaped back £20-£40 †

555

A Victorian child's button back chair, with red silk upholstery raised on turned supports terminating in castors £45-£70 †

556

A set of six 19th Century mahogany dining chairs, having bar backs, cane upholstered lift out seat panels raised on sabre front supports £200-£300 †

557

A 19th Century mahogany elliptical corner cupboard, enclosed by a pair of doors inlaid with conch shell patterae, 72cm wide x 105cm high £60-£80 †

558

An antique carved oak low cupboard, fitted single drawer, 66cm wide x 82cm high x 43cm deep £40-£60 †

559

An Arts & Crafts mahogany three fold screen, upholstered in Liberty's fabric £100-£150 †

560

An antique oak coffer, having quadruple panelled lid above a carved frieze, and three arched panelled front raised on square section supports, 143cm £100-£200 †

561

An antique oak coffer, enclosed by a plain panel lid, iron hinges and hasp, the quadruple panel front raised on square section supports, 153cm £100-£200 †

562

A Victorian mahogany extending dining table, raised on turned baluster supports terminating in brass caps and castors, fitted two extra leaves, 104cm x 216cm fully extended £300-£400 †

563

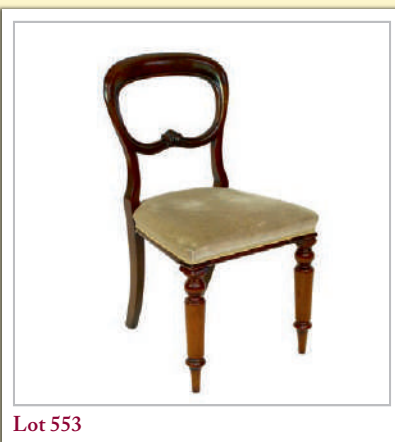
Ten 19th Century mahogany dining chairs, of Chippendale and Hepplewhite design, upholstered en suite with stuff over and lift out brocade floral stamped seats £100-£150 †

564

An early 19th Century mahogany framed scroll end settee, the curved back with foliate carved cresting, reeded arms raised on claw feet terminating in castors, 226cm long £200-£300 †

565

A late Victorian mahogany extending dining table, the canted corner top fitted two extra leaves raised on turned and fluted baluster supports terminating in castors, 118cm x 240cm fully extended £300-£500 †



Lot 553



Lot 554



Lot 555



Lot 556



Lot 567

**566**

A set of six Victorian mahogany balloon back dining chairs, green Draylon upholstered stuff over seats raised on turned and fluted front supports £150-£250 †

**567**

A French style demi-lune hall table, with marble top and pierced gallery above single drawer raised on bowed supports united by a parquetry under tier, 64cm wide £100-£150 †

**568**

A George III mahogany demi-lune side table, raised on square section tapering supports, 90cm wide £40-£60 †



Lot 579

**569**

A 19th Century rosewood occasional table, raised on a square section column with quatrefoil base, terminating in bun feet and castors, 61cm x 45cm £50-£80 †

**570**

A Victorian walnut framed button back nursing chair, raised on cabriole supports £50-£80 †

**571**

A Victorian walnut framed button back tub shaped nursing chair, raised on cabriole supports terminating in white china castors £50-£80 †



Lot 582

**572**

An antique oak settle, dated 1681 having foliate scroll decoration to the four panel back, the box seat with hinged lifting lid and escutcheon, triple panel front raised on square section supports, 131cm £600-£800 †

**573**

A pair of mahogany and box wood strung Pembroke tables, fitted single drawers and raised on square tapering supports, 65cm £80-£120 †

**574**

A pair of Chinese hard wood corner chairs, having foliate and bird decorated pierced splats on rounded tapering supports united by cross stretchers £40-£60 †

**575**

A Victorian walnut framed chaise longue, upholstered in buttoned pink Draylon and raised on carved cabriole supports £100-£150 †

**576**

A Regency style mahogany window seat, with scrolled arm rests raised on turned fluted supports, 134cm wide £200-£300 †



Lot 588

**577**

A 17th / 18th Century oak coffer, possibly a marriage chest, initialled M.B. either side of the lock plate, foliate scroll decoration, triple panel front carved with lozenges, raised on square section supports, 127cm wide £100-£150 †

**578**

An antique oak low boy, with over hanging top above three drawers, raised on cabriole supports (reduced), 94cm wide £60-£80 †

**579**

A mahogany bijouterie cabinet, of serpentine shape, raised on cabriole supports and united by an under tier, 58cm wide £40-£60 †

**580**

An antique elm coffer, of small size raised on shaped end supports, 69cm wide £60-£80 †

**581**

An antique carved oak coffer, with square iron lock plate, roundel and floral carved front raised on style end supports, 143cm wide £100-£150 †

**582**

A Georgian mahogany graduated three tier dumb waiter, raised on a turned column and tripod base, terminating in pad feet, the largest tier 61cm dia., 114cm high overall £80-£120 †

**583**

A pair of walnut and herringbone banded open fronted bookcases, 16cm wide £400-£600 †

**584**

A pair of mahogany and cross banded lamp tables, fitted single drawers raised on square tapering supports, 62cm wide £500-£700 †

**585**

A pair of mahogany and satinwood strung cylindrical marble topped chests, fitted three drawers, raised on shaped supports terminating in sabots, 31cm dia. x 72cm high £150-£250 †

**586**

An Oriental four fold draught screen, decorated figures and interiors in bright colours £250-£350 †

**587**

A Victorian mahogany extending dining table, wind out action, fitted three extra leaves raised on turned fluted supports and castors, 114cm x 220cm extended £300-£400 †

**588**

A pair of walnut four drawer bedside chests, 40cm wide £500-£700 †

**589**

A burr oak hall table, fitted four drawers, 131cm wide £400-£600 †

**590**

An early 19th Century rosewood bow fronted four tier graduated corner shelf, raised on turned supports, 72cm high £50-£80 †

**591**

An Edwardian mahogany and satinwood strung centre table, the shaped top raised on square tapering supports terminating in brass caps and castors united by an under tier and stretcher, 84.5cm £250-£350 †

**592**

A satinwood and painted circular occasional table, decorated foliate sprays, basket and garden tools, slender out swept supports united by a shaped under tier, 45cm dia. £250-£350 †

**593**

A circular mahogany and satin wood strung dining table, raised on a square section tapering column and carved quadruple splay base, 130cm dia. £200-£400 †

**594**

A mahogany graduated two tier wine table, raised on a tripod base, 71cm high £30-£50 †

**595**

A Victorian mahogany hanging wall cupboard, with shelf above, enclosed by a pair of arched panelled doors, 61cm wide x 50cm high £40-£60 †

**596**

A mahogany and satinwood banded Pembroke table, the rounded drop leaves raised on square section tapering supports, terminating in brass caps and castors, 71cm wide £50-£80 †

**597**

A Victorian rosewood circular snap top supper table, raised on carved column and tripod base, terminating in claw feet, 138cm dia. £100-£200 †

**598**

An Edwardian mahogany pedestal writing desk, the leather inset top fitted three drawers with three drawers to the pedestals £100-£150 †

**599**

A Victorian mahogany writing table, having leatherette inset top above two drawers, raised on turned tapering supports, terminating in brass castors, 103cm wide, 70cm deep £100-£150 †

**600**

A large Victorian mahogany D end extending dining table, raised on six tapering baluster octagonal supports, terminating in brass caps and castors, six extra leaves complete with a mahogany leaf cabinet / sideboard with end cupboards, flanked by acanthus scroll columns, the table measuring 141cm x 470cm fully extended, leaf cabinet / sideboard measuring 157cm wide x 67cm deep £1,000-£1,500 †

**601**

A 19th Century gilt wood and Pietra-Dura occasional table, raised on turned fluted column and quadruple base, the top 55cm x 40cm £400-£600 †

**602**

A 19th Century mahogany spider leg tea table, 71cm £80-£120 †

**603**

An ebonised plant stand, on elephant supports, 33cm dia. £20-£40 †

**604**

A pair of Victorian mahogany bedside cabinets, enclosed by arched panelled doors raised on platform plinths, 47cm wide £400-£600 †

**605**

A Victorian pitch pine linen press, fitted sliding trays and drawers and enclosed by two pairs of panelled doors, 134cm wide x 207cm high £200-£400 †



Lot 589



Lot 594



Lot 601



Lot 602



## TERMS AND CONDITIONS OF SALE 1. INTRODUCTION

### 1. INTRODUCTION

The following defining terms are used in these conditions:-

“Auction”	Means any auction conducted by Clarke and Simpson Auctions Ltd. either at the premises owned by them or elsewhere (including any internet-based auction);
“Auctioneer”	Means Clarke and Simpson Auctions Ltd. authorised auctioneer as appropriate together with any on-line platform;
“Bidder”	Means a bidder at an auction, including the bidders personally present at the venue and those bidding by commission bid, telephone or over the internet or otherwise;
“Buyer”	Means the bidder whose bid was the last bid when the auctioneer concludes the bidding;
“Conditions”	Means these Terms and Conditions of Sale;
“Hammer Price”	Means the level of bidding reached (at or above any reserve) when the auctioneer brings the bidding to a close;
“Lot”	Means any property accepted by Clarke and Simpson Auctions Ltd. for offer at auction;
“Vendor”	Means the seller of any lot offered by auction;

### 2. DESCRIPTION

No warranty is given or implied by the description in the catalogue. Each lot is sold in its condition at the time of sale with all faults, defects, imperfections and errors of description (if any). Where books are offered they have not been collated and not subject to return. Whilst every endeavour has been made to describe the items adequately and properly, the buyer shall deem to have inspected the lot at time of purchase in person. All catalogues, condition reports and sellers and buyers guides are for information only and do not form part of the contract.

### 3. STATUTORY REQUIREMENTS

Buyers will be deemed to have satisfied themselves prior to purchasing regarding current legal requirements (e.g. Health & Safety at Work Act) and it is expressly brought to the bidders attention that equipment in the sale may not necessarily comply with such regulations. Any buyer shall satisfy himself as to any statutory requirement for the use of any item and no liability shall rest with the vendors nor the Auctioneers.

### 4. THE AUCTION

All auctions are conducted at the absolute discretion of the auctioneer. The auctioneer shall conduct the auction with reasonable skill and care. The vendor reserves the right to sell subject to reserve price in respect of all lots. What constitutes a bid shall be at the absolute discretion of the auctioneer, acting with appropriate skill and care. The auctioneer shall have the right to refuse any bid in all cases but most notably when such a bid does not exceed the previous bid by at least 10% or such a proportion as the auctioneer shall in his absolute discretion direct. Where two or more bids at the same level are simultaneously received by the auctioneer, the auctioneer at his absolute discretion shall determine which bid to prefer. Subject to the foregoing where two or more bids are at the same level are simultaneously received by the auctioneer, the bid submitted in the room shall take preference over a bid submitted by telephone or internet at the same level. Any bid made or attempted by telephone or over the internet will only be deemed to have been made if received by the auctioneer. The auctioneer reserves the right to withdraw, consolidate or divide any lot or lots or submit them in any order that they desire. The auctioneer has the right at his absolute discretion to refuse admission to his premises or attendance at (or participation in) any auction by any person. In the case of any dispute, the auctioneer shall be sole arbitrator in any matters arising during or out of the sale.

### 5. BIDDERS

All bidders will be required to register their particulars, bidders attending in person and those accompanying them will be required to provide photo ID and separate confirmation of address prior to viewing or taking any part of the sale and before entering any part of the premises to view. All bidders accept full liability for all bids submitted. Subject to the clause in this document headed “The Auction”, the highest bidder at the close of bidding shall be the buyer. Any dispute about a bid shall be settled at the auctioneer’s absolute discretion.

Bidders are all deemed to act as principles unless there is prior written acknowledgement by Clarke and Simpson Auctions Ltd. that a bidder is acting as an agent for a named principle. Bidders are strongly encouraged to attend the auction in person. The bidders shall be responsible for any decision to bid for a particular lot and shall be deemed to have carefully inspected and satisfied themselves as to condition, neither Clarke and Simpson Auctions Ltd., their employees or agents shall be responsible for any neglect or default in doing or failing to do so. Bidders will be given ample opportunity to view and inspect before the sale and they must satisfy themselves as to all matters.

### 6. DEFAULT

Clarke and Simpson Auctions Ltd. shall act as agent of the vendor only. Any contracts for the sale of a lot shall be formed between the vendor and the buyer. As agent, only Clarke and Simpson Auctions Ltd. shall not be responsible for default by the vendor or the buyer. If any lot is not paid for in full and taken away in accordance with these conditions, or there is any other breach of the conditions, then Clarke and Simpson Auctions Ltd. as agents for vendor shall at its absolute discretion and without prejudice to any other rights it may have, be entitled to exercise all or any of the following rights and remedies:-

- 6.1 to proceed against the buyer for any action of debt or damages for breach of contract;
- 6.2 to rescind the sale of that lot or lots sold by Clarke and Simpson Auctions Ltd. to a defaulting buyer;
- 6.3 to resell the lot (by auction or private treaty) in which case the defaulting buyer shall be responsible for any resulting deficiency in the total amount due (after crediting any part payment and adding any resale costs), any possible surplus so arising shall belong to the vendor;
- 6.4 to remove, store and insure the lot at the expense of the defaulting buyer and, in the case of storage, the location of such storage shall be at Clarke and Simpson Auctions Ltd. discretion;
- 6.5 to charge interest at a rate not exceeding 2% per month of the total amount due to the extent that it remains unpaid for more than five working days after the sale;
- 6.6 to retain any lot sold to the defaulting buyer until the buyer pays the total amount due;
- 6.7 to reject or ignore bids from the defaulting buyer at future auctions or to impose conditions before any such bids are accepted;
- 6.8 to apply any proceeds of sale for any other lots due or in the future becoming due to the defaulting buyer towards the settlement of the total remaining due.

### 7. INDEMNITIES, PENALTIES AND LIMITATIONS OF LIABILITY

Buyers shall pay for any damage done by themselves or their agents during the removal of their lots. Attendance at the sale shall be at the risk of those attending in respect of both themselves and to their goods and vehicles.

Any indemnity under these conditions will extend to all actions, costs, expenses, claims and demand whatsoever suffered or incurred by the person entitled to the benefit of it and Clarke and Simpson Auctions Ltd. declare themselves to be a trustee of the benefit of such indemnity so far as it is expressed to be the benefit of its employees and agents.

Whilst Clarke and Simpson Auctions Ltd. endeavour to ensure that the information on their websites is correct, they do not warrant the accuracy and completeness of the material on their or any website. Also, Clarke and Simpson Auctions Ltd. can make changes to the material on their or any website, or alter the products and prices described on it, at any time without notice. The material on the website(s) may be out of date, Clarke and Simpson Auctions Ltd. make no commitment to update such material. All material on the website(s) is provided “as is” without any conditions, warranties or other terms at any time. Accordingly, to the maximum extent permitted by law, the website(s) is provided to all parties on the basis that Clarke and Simpson Auctions Ltd. exclude all representations, warranties, conditions and other terms which, but for this legal notice, might have effect in relation to the website(s).

## 8. ELECTRICAL SAFETY REGULATIONS

All electrical lots are subject to electrical safety regulations and fall within "The Low Voltage Electrical Equipment (Safety) Regulations 1989" – all items have been PAT tested for safety but are not guaranteed to be in working order.

## 9. GENERAL MATTERS

Any notice to any buyer, vendor, bidder or viewer may be given by first class mail or email in which case it shall be deemed to have been received by the addressee forty-eight hours after posting or sending. All notices to Clarke and Simpson Auctions Ltd. must be sent in writing and email is not acceptable. Any indulgence extended to any person by Clarke and Simpson Auctions Ltd., notwithstanding the strict terms of these conditions or the terms of consignment, shall affect the position at the relevant time only and the respect of that particular concession only; in all other respects these conditions shall be construed as having full force and effect. These conditions and any disputes or claims arising out or in connection with them or their subject matter or formation (including non-contractual disputes or claims) are governed by and construed in accordance with the law of England. The parties irrevocably agree that the courts of England have exclusive jurisdiction to settle any dispute or claim that arises out of or in connection with the agreement or its subject matter or formation (including non-contractual disputes or claims).

## 10. PUBLICITY

Any catalogue and buyer and seller guides are provided for information only and do not form part of these conditions. The catalogue and the buyer and seller guides may contain additional terms and conditions. Clarke and Simpson Auctions Ltd. reserve the right to use any photographs, videos, background information and research for any publicity purposes before, during and after the sale.

## 11. THE PURCHASE PRICE AND PAYMENT ARRANGEMENTS

There is a buyer's premium of 18% plus VAT payable in respect of the sale. Any purchases made via [www.the-saleroom.com](http://www.the-saleroom.com), [www.bidspotter.co.uk](http://www.bidspotter.co.uk) or "[www.ibidder.com](http://www.ibidder.com)" shall be subject to an additional internet surcharge. The current rate of being 5% of the hammer price plus VAT for The-Saleroom and 2% of the hammer price plus VAT for all other portals.

Preferred payment is cash, bank transfer, personal debit card or via the payment request from the on-line platform. No payment over £350 will be accepted by telephone. We do not accept cheques, credit cards, business debit cards or international debit cards. Payment is due on the day of the sale. Cash in excess of €10,000 (including VAT and premiums) will not be accepted from any one person, in accordance with The Money Laundering Regulations 2007. All money received will be held in Clarke & Simpson Auctions Ltd. Clients No 2 Account at Barclays Bank plc, Suffolk. Account Number 83428591. Sort Code 20 98 07. Clarke and Simpson Auctions Ltd. have no responsibility for any lot between the close of bidding and payment being made and subsequent collection. All payments from overseas buyers shall be made by Bank Transfer and bank fees paid in addition. Please note all policy regarding payment will be enforced and suitable arrangements must be made.

## 12. REMOVAL OF LOTS

The ownership of any lot purchased shall not pass to the relevant buyer until they have made payment in full to Clarke and Simpson Auctions Ltd.

The buyer shall be responsible for insuring their purchases and at their own risk and expense take away any lot that they have purchased and paid for no later than five working days following the day of the auction.

Any lot which remains uncollected by the buyer, regardless of payment status, after 10 working days following the day of the auction shall be resold. These lots shall be sold on behalf of the buyer if paid for and all proceeds retained in lieu of storage or on behalf of the vendor if not paid for. Buyers will not be chased to collect during this period and collection is entirely their responsibility to arrange.

Removal of items from the room will be the responsibility of the buyer and they will be liable for any damage arising from the removal.

## 13. NUMBER BIDDING

This will be used for speed and efficiency as in all our sales. All parties wishing to bid must complete a registration form and register in the office on the view day or morning of sale to receive a number for bidding. Please also note that photo ID and additional confirmation of address will be required.

## 14. ONLINE BIDDING

Clarke & Simpson Auctions Ltd. offer an online bidding service via [the-saleroom.com](http://the-saleroom.com), [bidspotter.co.uk](http://bidspotter.co.uk) and [ibidder.com](http://ibidder.com) for those wishing to bid but cannot attend the sale.

In completing the bidder registration on the-saleroom.com, bidspotter.co.uk or ibidder.com and providing your payment card details and, unless alternative arrangements are agreed with Clarke & Simpson Auctions Ltd.:

1. authorise Clarke & Simpson Auctions Ltd., if they so wish, to charge the payment card given in part or full payment, including all fees, for items successfully purchased in the auction via the-saleroom.com, bidspotter.co.uk or ibidder.com, and
2. confirm that you are authorised to provide these payment card details to Clarke & Simpson Auctions Ltd. through the-saleroom.com, bidspotter.co.uk or ibidder.com and agree that Clarke & Simpson Auctions Ltd. are entitled to ship the goods to the card holder name and card holder address provided in fulfilment of the sale.

Please note that any lots purchased through any of the online platforms will be subject to an additional internet surcharge of 5% + VAT of the hammer price (the-saleroom.com) or 2% + VAT of the hammer price (bidspotter.co.uk and ibidder.com).

## 15. TELEPHONE BIDDING

We offer a telephone bidding service where possible at specialist sales, but this service can never be guaranteed. No applications for telephone bids will be accepted after the end of the viewing prior to sale day for any sale. All potential telephone bidders must provide a valid landline number and email address and agrees that they have read and understood the Terms and Conditions and satisfied themselves regarding any lot in accordance with these Terms and Conditions. No phone bids will be accepted for any lot with a lower guide figure of less than £250.

All those who wish to bid by telephone will be expected to deposit an amount determined by Clarke and Simpson Auctions Ltd. and not less than the minimum guide for all lots that they wish to bid upon into the Clients Account for Clarke and Simpson Auctions Ltd before the sale starts. This payment is not acceptable by card.

In the event of default, this sum shall be retained as part payment or any part may be retained to recover losses under clause 6 of these Terms and Conditions. We will expect payment of the balance owing by BACS on the following day, any payment not met within five working days will result in the forfeiture of the deposit paid.

## 16. AT FAULT (A.F.) LOTS

Certain lots are catalogued at fault (A.F.), damaged, restored etc., however the absence of any such notice does not imply that the piece is free from defects, nor does it indicate that other defects are not also present. Mention is not made of breakage, cracks, chips or any damage which can be noted by careful inspection, therefore those wishing to bid MUST, in all cases, be responsible for determining the condition of the lots themselves, either in person or by request of condition reports or additional detailed photographs.

## 17. ESTIMATES

Presale estimates are intended only as a guide for those wishing to bid, are given in good faith and subject to revision.

## 18. CONDITION REPORTS

Clarke and Simpson are unable to guarantee that requests for Condition Reports/images received will be responded to. Clarke and Simpson are happy to give a Condition Report where possible on the physical condition of goods, this will be provided on behalf of the vendor on the understanding that Clarke and Simpson are not entering into a contract with you in respect of the Condition Report and accordingly does not assume responsibility to you in respect of it. All lots are available for your own inspection or for inspection by an expert instructed by you, therefore these Condition Reports are for guidance only and all lots are sold "as found". Condition Reports do not form part of a contract.

## 19. COMMISSION BIDS

The auctioneers will be pleased to execute bids for those unable to attend the sale. Lots will be purchased at the lowest bid the room bidding, internet bidding or any reserves will allow. In the event of identical bids, the earliest bid received will take precedence. There must always be a maximum limit indicated. Buy or unlimited bids will not be accepted. Commission bids placed by telephone are accepted at the client's risk. We urge our clients to place such bids before the start of the sale. All such commissions are left entirely at the client's risk.

## 20. VALUE ADDED TAX

The symbol \* or V after any lot number or description indicates that Value Added Tax is payable by the buyer on the hammer price.

## 21. AUCTIONEERS MARGIN SCHEME

The Auctioneers Margin Scheme allows auctioneers to sell items without VAT on the hammer price. Under the margin scheme an amount equivalent to VAT at the current rate is added to the buyer's premium. This amount cannot be refunded. The VAT element will not be shown separately on the buyer's invoice. This VAT is not recoverable as Input Tax. We do not allow buyers to opt out of the margin scheme.

## 22. ATTRIBUTION OF PICTURES AND DRAWINGS

Every effort is made to ensure the accuracy of any statements as to authorship, attribution, origin, date, age, provenance and condition of any lot whether or not such statement forms part of the description of any such lot. Whether any such statement is made orally or in the catalogue it is an expression of opinion and not to be taken as being or implying any warranties or representations of facts by the auctioneers. Each buyer by making a bid for a lot acknowledges that he has satisfied himself fully as to the attribution and condition of the lot. The following is for guidance only and does not form part of a contract.

A. The forename (s) (or full stops where not known) and surname of an artist indicates in our opinion a work by the artist.

B. The initials of the forename (s) and the surname of the artist indicates in our opinion a work of the period of the artist which may be wholly or in part his work.

C. The surname of the artist indicates in our opinion a work of the school or by one of the followers of the artist or in his style and of uncertain date.

D. Signed, Dated, Inscribed indicated in our opinion work signed/dated/inscribed by the artist.

E. Bears signature indicates in our opinion that this is not the signature of the artist.

F. Attributed to may be used to denote a traditional attribution based on style.

G. Manner of indicates in our opinion a work executed in the artist/craftman's style but of a later date.

H. After indicates in our opinion a copy (of any date) of work of an artist or craftsman.

The addition of a question mark after any of the cataloguing terms above indicates an element of doubt.

## 23. DROIT DE SUITE ROYALTY CHARGES

All United Kingdom Art Market professionals (which includes auctioneers) are required to collect a royalty payment for all qualifying Works of Art. This applies to living artists and those who have died in the last 70 years. This payment is calculated on qualifying Works of Art which are sold for a hammer price more than the UK sterling equivalent of €1,000 (the UK sterling equivalent will fluctuate in line with prevailing interest rates calculated by the Artist's Resale Right Service Hub, based on the European Central Bank reference rate published at 2.15pm on the day of the sale, and can be found on [www.dacs.org.uk](http://www.dacs.org.uk)).

All items in this catalogue that are marked “•” are potentially qualifying items, and the royalty charge will apply if the hammer price is more than UK sterling equivalent of €1,000. The royalty charge will be added to purchase invoices and must be paid before items can be cleared. All royalty charges are paid to the design and Artists Copyright Society (DACS) by the auctioneers and no handling costs or additional fees with respect to these charges will be retained by the auctioneer. This charge may also be applicable to lots not marked “•” and buyers must satisfy themselves.

The royalty charge for qualifying items which achieve a hammer price of more than the UK sterling equivalent of €1,000, but less than the UK sterling equivalent of €50,000 is 4%. For qualifying items that sell for more than the UK equivalent of €50,000 a sliding scale of royalty charges will apply. For a complete list of the royalty charges and threshold levels please refer to [www.dacs.org.uk](http://www.dacs.org.uk). There is no VAT payable on this royalty charge.

## 24. ENDANGERED SPECIES

Lots sold at auction may include endangered or other species of wildlife and plant life, for example ivory, tortoiseshell, crocodile skin, whale bone, ebony or rosewood. Some countries restrict or prohibit import or export of objects containing these materials or require a licence/permit for their movement (e.g. a CITES Licence). Prior to bidding on a lot which may include these or similar materials, buyers must familiarise themselves with the relevant laws and regulations regarding their movement.

## 25. JEWELLERY

Gemstones are often treated to enhance colour and improve appearance. They may be heated or treated by oil or resin to intensify the colour and transparency. Other techniques like dying, irradiation, coating and impregnation can also be used. Buyers must be aware that unless the catalogue specifically states otherwise then the stone is natural, buyers must assume that any treatment may not be permanent, and that special care may be needed in the future.

## 26. EXPORT

Any lot purchased at auction may be subject to export restrictions and may require a licence for export out of the United Kingdom. The buyer is responsible for obtaining any licences that may be required (including any licence that may be required for import into the destination country) – any denial of such a licence will not be grounds for the buyer to cancel the purchase.

## 27. THIRD PARTY LIABILITY

All members of the public on Clarke and Simpson Auctions Ltd. premises are there at their own risk and must note the layout of the buildings and site and the appropriate security arrangements. Accordingly, neither the Auctioneer nor its employees or agents shall incur liability for death or personal injury (except as required by law) or similarly for the safety of persons visiting the premises. .

## 28. CONSIGNMENT

All vendors will have received a copy of Clarke & Simpson Auctions Terms regarding consignment of lots for sale and these Terms and Conditions should be read in accordance with this consignment documentation.





## Saxmundham £750,000

A spacious and most impressive family house with independent annexe, located in a superb hidden position in the very centre of Saxmundham, adjacent to Waitrose.

Ref: 6687



## Earl Soham £575,000

An elegant, four-bedroom, detached Victorian family home, centrally located in the heart of the popular village of Earl Soham, a short drive from the market town of Framlingham

Ref: 6779



## Framlingham £400,000

An extended two-bedroom detached bungalow with ample off-road parking and enclosed garden to rear, located on the outskirts of the popular market town of Framlingham

Ref: 66741



## Framlingham £295,000

A well presented three-bedroom house forming part of the popular Castle Keep development, a short distance to the south of the town centre

Ref: 6705



## Linstead £225,000

A modern barn situated within a farmstead with Class Q Permitted Development for conversion to a dwelling, standing in grounds of nearly 0.2 acres.

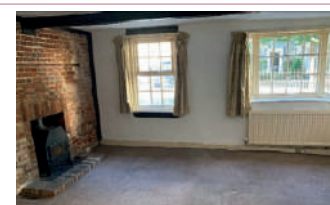
Ref: 6778



## Wickham Market £200,000

A three bedroom attached Grade II Listed house requiring significant renovation, situated in the heart of the village of Wickham Market.

Ref: 6691







## Boulge, Nr Woodbridge £1,450,000

An impressive Grade II\* Listed former farmhouse with range of barns and grounds of approximately 8.5 acres occupying the most wonderful rural location, just a few miles from Woodbridge.

Ref: 6685



## Hacheston £635,000

A newly refurbished four bedroom bungalow of 1,600 sq ft, set along Easton Lane on the edge of the village of Hacheston.

Ref: 6727



## Stradbroke £450,000

A two/three bedroom detached cottage with particularly spacious ground floor accommodation, located close to the centre of this well served village.

Ref: 6701



## Saxtead £385,000

A charming, four-bedroom, semi-detached Victorian cottage presented to an exceptionally high standard, situated in a semi-rural location, just a short drive from the market town of Framlingham.

Ref: 6732



## Bawdsey £225,000

A serviced plot with planning permission for an impressive detached house, on the edge of the village of Bawdsey and within walking distance of the sea.

Ref: 6627



## Saxmundham £220,000

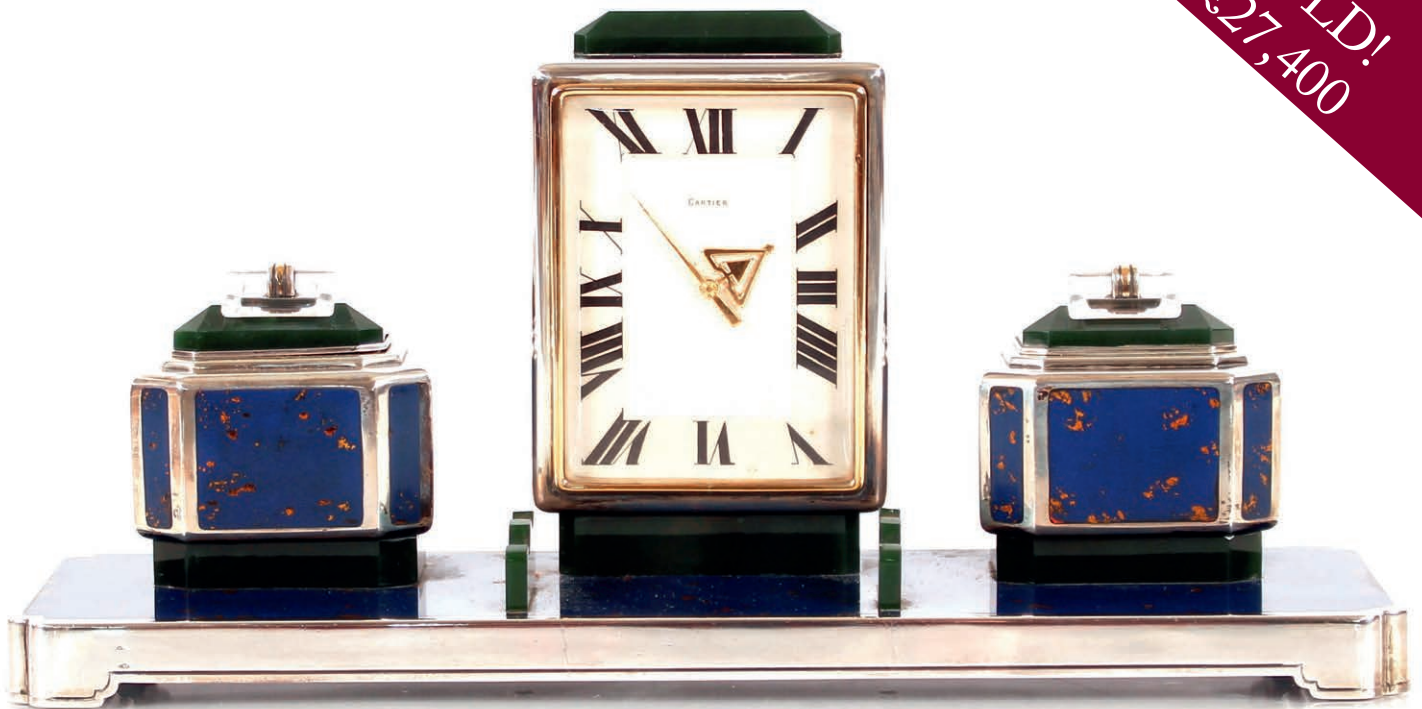
A mid-terraced three bedroom cottage situated within the heart of Saxmundham, within walking distance of all the town has to offer

Ref: 6772



# Art Deco, 20th Century Design & Retro

Next Auction 26th March 2022



BID ONLINE

**thesaleroom.com**

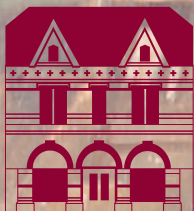
The home of art & antiques auctions

*Entries Invited*  
*Closing Date 4th March*

Clarke & Simpson Auctions, Campsea Ashe, Suffolk

[www.clarkeandsimpson.co.uk](http://www.clarkeandsimpson.co.uk) / 01728 746323





Clarke and Simpson Auction Centre  
Campsea Ashe  
Nr. Wickham Market  
Suffolk IP13 0PS  
Tel: (01728) 746323  
Email: [auctions@clarkeandsimpson.co.uk](mailto:auctions@clarkeandsimpson.co.uk)  
[www.clarkeandsimpson.co.uk](http://www.clarkeandsimpson.co.uk)