

Clarke &  
Simpson

*Art Deco,  
20th Century  
Design &  
Retro*



Saturday 19th June  
at 10am

# *Important Information*

Due to COVID-19 restrictions, we ask those attending our Auction Centre to please observe the following:

Face coverings must be worn in the salerooms and our office at all times.

Please be mindful of others and observe the minimum social distancing requirement of 1 metre.

If you feel unwell at all, please stay at home – you can follow the sale and bid online live via [www.the-saleroom.com](http://www.the-saleroom.com)

If you have any queries whatsoever, please do not hesitate to contact the office on 01728 746 323.

## *Viewing:*

Open viewing on

Friday 18th June 10am - 4pm

On the morning of the sale from 8am

We may ask those attending to wait if the room is busy.

# Clarke & Simpson

Auctions

## *Art Deco, 20th Century Design & Retro*

*Saturday 19th June  
at 10am*

### Viewing:

Friday 18th June 10am - 4pm

Morning of the sale from 8am

### Enquiries:

James Shand, Auctioneer & Valuer

Geoffrey Barfoot, Auction Centre Manager & Valuer

### Buyers' Premium:

18% plus VAT

Please see [www.the-saleroom.com](http://www.the-saleroom.com)  
for further images

**the saleroom**  
The home of art & antiques auctions

Special attention is drawn to the  
Conditions of Sale printed at the back of  
this catalogue.



Campsea Ashe  
Nr Wickham Market  
Suffolk IP13 0PS  
Tel: 01728 746323 Fax: 01728 748173  
Email: [auctions@clarkeandsimpson.co.uk](mailto:auctions@clarkeandsimpson.co.uk)  
[www.clarkeandsimpson.co.uk](http://www.clarkeandsimpson.co.uk)



@CandSAuctions



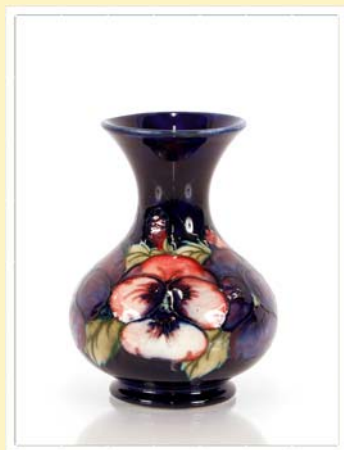
CandSAuctions



Lot 1



Lot 2



Lot 6



Lot 14

**1**  
A pair of Moorcroft "Finches and Fruit" pattern candlesticks designed by Sally Tuffin on a blue ground, various impress marks, date cypher for 1992, 50cm high. £150-£200. See illustration

**2**  
A large Moorcroft "Finches and Fruit" pattern vase of baluster form designed by Sally Tuffin on a blue ground, various impress marks, date cypher for 1995, 20cm high. £200-£300. See illustration.

**3**  
A Moorcroft "Anemone" pattern vase of slender baluster form, unmarked but green letter K to base, 10cm high. £30-£50

**4**  
A Moorcroft "Columbine" pattern vase of compressed squat form with variations of flowers and leaves, impress marks to base, 7cm high. £80-£120

**5**  
A Moorcroft "Columbine" pattern vase of compressed squat form, impress marks to base, 7cm high. £80-£120

**6**  
A Moorcroft "Pansy" pattern vase of baluster form, colourful flowers on a deep blue ground, impress marks and blue initials W.M. to base, 13cm high. £120-£180. See illustration.

**7**  
A Moorcroft "Hibiscus" pattern vase of unusual colour-way, with cream ground, pale blue, mauves and flowers, paper label to base, 7cm high. £60-£100

**8**  
A Moorcroft "African Lily" pattern vase of cylindrical form with open flowers and buds on a blue ground, impress marks to base, 8cm high. £60-£100

**9**  
A Moorcroft "Anemone" pattern vase of squat baluster form with purple and pink flowers, facsimile and impress marks to base, 7cm high. £60-£100

**10**  
A Moorcroft "Pansy" pattern cream jug with deep mauve purple and red flowers, impress marks, initials and England marks, 6.5cm high. £100-£200.

**11**  
A Moorcroft "Pink Magnolia" pattern vase of baluster form on cream ground, 9cm high. £60-£100

**12**  
A Moorcroft "Pansy" pattern fruit bowl, the interior with leaves and unopened buds, the exterior with a band of large flower heads, impress marks and W.M. initials to base, 18cm dia. £50-£80

**13**  
A collection of three Moorcroft "Berry and Leaf" pattern bowls, each with facsimile and impress marks, 11cm dia. £80-£120

**14**  
A Moorcroft "Clematis" pattern vase of large tapering form, the sea green graduating to deep blue ground with a band of large flowers, buds and leaves, impressed marks and painted initials to base, 21cm high. £150-£200. See illustration.

**15**  
A Moorcroft "Hibiscus" pattern bowl and cover, yellow and dark pink flowers and leaves on a cream ground, impress marks and paper label to base, 12cm dia. £70-£100

**16**  
A Moorcroft "Hibiscus" pattern shallow dish on a sea green ground, impress marks to base, 18.5cm dia. £50-£80

**17**  
A Moorcroft "Pink Magnolia" pattern vase of baluster form, blue ground, impress marks and gold Moorcroft label, 9cm high. £60-£100

**18**  
A Moorcroft "Hibiscus" pattern vase of ovoid form on a brown ground, impress marks, 9.5cm high. £60-£100

**19**  
A Moorcroft "Hibiscus" pattern bowl with brown ground and red flower impress marks, 14.5cm dia. £20-£30

**20**  
A Moorcroft "Pansy" pattern bowl, the blue ground with central flower, impress marks, 11cm dia. £30-£50

**21**  
A Moorcroft "Pomegranate" pattern miniature vase of baluster form decorated open fruit, small berries and leaves, impress marks and No.146 to base, 8.5cm high. £150-£200

**22**  
A Moorcroft "Pomegranate" pattern miniature vase of bottle shape with one open fruit, small berries and leaves, impress marks (3A possibly), 10cm high. £150-£200

**23**  
A Moorcroft "Pomegranate" pattern miniature vase of slender baluster form with plated rim, having one open fruit small berries and leaves, impress marks M45, 10.5cm high. £100-£150

**24**  
A Moorcroft "Pomegranate" vase of globe form with two open fruit, leaves and berries, painted initials W.M. and impress marks to base AF, 13cm high. £80-£100

**25**  
A substantial Moorcroft "Anemone" pattern vase with graduating sea green to deep blue ground, having a band of large flower heads and leaves painted initials W.M. impressed facsimile marks, 24cm high AF. £60-£100

**26**  
A Moorcroft "Pink Magnolia" pattern vase of good size and baluster form, decorated flower heads and leaves, impress marks S.T., dated and cypher for 1990, 19cm high. £100-£200

**27**

An Art Deco design bronze figure of a semi-naked dancing girl on marble plinth, 38cm high. £50-£80.

**28**

An Art Deco green onyx and chrome mounted desk set, including perpetual calendar, ash trays and rocking blotter.

£40-£60

**29**

A pair of late 19th early 20th Century watercolour and mother of pearl heightened pictures depicting fishing by moonlight with church and cottages in the background, 19.5cm x 24.5cm. £20-£40

**30**

A circa. 1920's Rototherm thermometer patent number 378314. £10-£20

**31**

An Art Deco design chrome plated candlestick and matchbox holder, 11cm high. £20-£30

**32**

An oak cased Art Deco Smiths eight day mantel clock, 17.5cm wide, 14cm high.

£10-£20

**33**

A model of the Empire State Building.

£10-£20

**34**

A plated Savoy Hotel Art Deco design ashtray / matchbox holder. £20-£30

**35**

An Art Deco design brass coal scuttle with integral shovel. £10-£20

**36**

An Art Deco design chrome model of a seaplane, 20cm high, 35cm wide. £30-£50. See illustration.

**37**

An Art Deco oak wall barometer / thermometer. £10-£20

**38**

A Reesmace Bakelite radio speaker.

£15-£20

**39**

An Art Deco design onyx pin tray in the form of a seated green spelter maiden, 16.5cm; and an amber glass powder jar cover in the form of a seated maiden. £30-£50

**40**

A brass Art Nouveau inkstand, stamped N Vidal. £10-£20

**41**

A bronze figure of a lady in crinoline dress, 25cm high. £10-£20. See illustration.

**42**

An Art Deco design metal jewellery stand. £10-£20

**43**

A gilded bronze strut clock by MacKay & Chisholm in original case. £40-£60

**44**

A small copper and brass mounted garden set. £10-£20

**45**

A plated table centrepiece, 24cm high.

£10-£20

**46**

An Art Deco design opaque glass conical shaped vase in metal stand. £10-£20

**47**

An Art Deco bevel edged wall mirror with chrome mounts, 40cm x 44cm overall.

£20-£30

**48**

A mid-20th Century ice cream set.

£20-£30

**49**

A printed linen table cloth; and a set of Harrods "Trellis" table stationery. £20-£30

**50**

A pair of Art Deco design cat and flower prints. £10-£20

**51**

An Arabia pottery tea kettle with wicker handle; and a collection of various Scandinavian stainless steel and other items of kitchenalia, hot plates etc. £40-£60

**52**

An amber glass cylindrical jar, 30cm high; a black glass bell shaped vase; and a smoked glass pitcher. £30-£50

**53**

A heavy Art Glass tapering vase indistinctly signed, 31cm high. £20-£30

**54**

A mid 20th century chrome companion set. £10-£20

**55**

A 1970's plastic cased five way Hi-Intensity lamp model NA-101. £10-£20

**56**

An Art Nouveau style figure of a semi draped maiden, 42cm high; and a smaller example of a kneeling girl. £10-£20

**57**

A plaster figure group depicting a boy and girl, 36cm high. £10-£20. See illustration.

**58**

An Art Nouveau style figural dressing table mirror, 51cm high. £10-£20

**59**

A Triang dolls house. £20-£30

**60**

C Slade, "Evening Tide Maldon" signed pastel 18cm dia. £100-£150

**61**

Peter Burman, abstract landscape study signed watercolour, 12cm x 28cm. £80-£120

**62**

Simon Fletcher born 1948, "A Coloured Scarf" pencil and pastel unframed, 44cm x 54cm. £80-£120

**63**

A bronze figure of Cupid, 51cm high. £60-£100. See illustration.



Lot 36



Lot 41



Lot 57



Lot 63

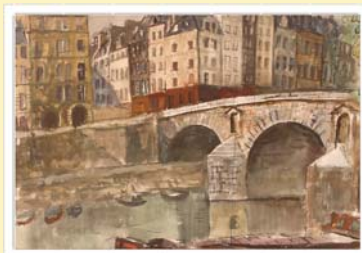




Lot 76



Lot 85



Lot 94



Lot 97



Lot 105



Lot 106

64

A continental porcelain study of a young girl seated on a bench, 11.5cm high.

£10-£20

65

A small Art Nouveau style gilded spelter planter, having scroll decoration, 32cm.

£20-£40

66

A Samson porcelain double cornucopia posy vase, decorated with dancing figures, a clown and a young girl, 19cm high. £20-£30

67

A pair of Art Deco painted plaster figures of bathing girls, 33cm high. £80-£120

68

A pair of gilded plaster figures of seminaked dancing girls, 35cm high, some damage. £20-£40

69

A pair of gilded spelter Blackamoor candle holders, 42cm high. £100-£150

70

A 19th Century French gilded mantel clock decorated with a figure of a reclining scholar and foliage, 8 day movement striking on a bell under glass dome, 43cm high overall. £150-£200

71

A French spelter and rouge marble three piece clock garniture, the clock having eight day movement striking on a bell, circular foliate enamel dial surmounted by a classical figure, 54cm high flanked by a pair of urns, 40cm high. £150-£250

72

An oil lamp with embossed brass base and Corinthian column, cranberry glass reservoir and etched ruby shade. £80-£120

73

An Art Deco marble and spelter photograph frame holder, having swallow decoration, 31cm long. £40-£60

74

A pewter Art Nouveau jardiniere holder in the WMF manner, decorated maidens and foliate scrolls, 33cm long x 20cm high. £40-£60

75

A pair of plated posy vases by Viskemann, of fluted form, 20cm high. £20-£30

76

A French gilded spelter and green marble mantel clock, surmounted by a figure of a maiden, circular enamel dial with eight day movement striking on a bell. £80-£100.

See illustration.

77

A pair of yellow opaque glass posy baskets of shopping bag shape; and another green glass similar. £20-£30

78

An Art Nouveau style cream and gilt decorated figure enclosing a timepiece, 54cm. £40-£60

79

A decorative spelter Art Nouveau style bust, 22.5cm high. £20-£30

80

A pair of twin handled brass baluster vases, raised foliate decoration, 31cm high. £20-£30

81

An Austin Productions sculpture of an Art Nouveau style lady with swirling cape and trailing foliage on square plinth, 50cm high. £60-£80

82

A spelter Art Deco style figurine of a dancing lady on onyx plinth base, 23cm high. £20-£30

83

After Moreau, spelter figure "Danse des Blés", 24cm high. £20-£30

84

A 19th Century gilded candlestick in the form of a figure of a maiden, 28cm high. £10-£20

85

A Clive Brooker a brown glazed two section pottery vase, having turquoise ribbed interior, 23.5cm high and 15cm high, 37cm long. £100-£150. See illustration.

86

A Clive Brooker cylindrical vase having relief panels of leaves on tapering foot, 33cm high. £100-£150

87

A French spelter figure, "La Cigale" after Moreau, 53cm high. £40-£60

88

An Art Deco brass mounted wall mirror, with stylised design and bevelled plate.

£20-£30

89

An oak and spot hammered copper mounted mirrored hanging coat rack. £20-£30

90

Attributed to Harry Berstecher, early 20th Century school study of a coastal scene, oil on board inscribed verso, 24cm x 35cm. £40-£60

91

Eugene Hastain, two unframed book illustrations. £10-£20

92

Goro Kunpp, pencil signed limited edition etching "Stolen Moon" 2/15. £20-£40

93

Clemence Wescoupe, signed abstract "Buffalo Spirit". £20-£30

94

William Wilson OBE RSA RSW Scottish 1905-1972, "Pont St Marie, Paris" signed watercolour 50cm x 62cm. £400-£600.

See illustration.

95 ✓

Attributed to the Hon Ralph Bathurst, watercolour study of a landscape, 24.5cm x 35cm, old paper label verso. £20-£40

96

Early 20th Century humorous Parisian watercolour, with inscription, 35cm x 50cm. £40-£60

97 ✓

William Wilson OBE RSA RSW Scottish 1905-1972, study of Torello, signed watercolour, 39cm x 58cm. £300-£400

98

Thelma Hulbert 1913-1995 British, "Early Morning Ischia", signed oil on board, 42cm x 73cm. £100-£200

99

TC, pair of oils on card depicting rural cottages 28cm x 36cm. £10-£20

100

A near pair of faux walnut and inlaid two drawer chests in the French style, raised on square tapering supports, 61cm wide, 35cm deep, one chest 64cm high and another 62cm high. £200-£300

101

A pair of black and white Art Deco design bedside cupboards, 59cm wide, 35cm deep, 67cm high. £150-£250

102

A pair of green onyx and brass occasional tables raised on square tapering fluted supports, 45cm x 45cm. £60-£80

103

An Art Deco bevel edged fan shaped wall mirror, 81cm x 72cm. £30-£50

104

A mid-20th Century teak framed wall mirror, 38cm x 66cm. £20-£30

105

A pair of Art Deco design circular faux walnut and inlaid occasional tables, raised on bowed supports and cylindrical block bases, 60cm dia. x 61cm high. £150-£200.

See illustration.

106

An Art Deco design faux burr walnut console table, raised on curved shaped support and oblong plinth, 140cm. £200-£300.

See illustration.

107

An early 20th Century mahogany Arts & Crafts design elbow chair, with upholstered seat and back panel. £20-£40

108

A decorative white plaster wall plaque, depicting boxing hares amongst foliage contained in a moulded light wood frame, 93cm x 61cm overall. £40-£60

109

A late 19th / early 20th Century oak cased barometer by Joseph Davis & Co. London, having silvered dials, centigrade and Fahrenheit thermometers, fret work surround and bobbin turned decoration, 125cm long x 34cm wide. £100-£200

110

A small oak octagonal Gothic style occasional table, 47cm wide. £30-£50

111

A circular copper topped occasional table raised on turned oak supports, 58cm dia. £20-£30

112

George Chappuis, study of Cannes with fishing vessels in port, signed watercolour, 50cm x 61cm. £100-£150. See illustration.

113

20th Century school, study of yachts in a harbour, unsigned watercolour, 68cm x 50cm. £60-£80. See illustration.

114

Ronald Dickinson, "Old Building at Galdbeck" signed crayon and pastel, 42cm x 58cm. £40-£60. See illustration.

115

George Cannon 1968, abstract pallet knife on board, study of a ship at sea, 46cm x 56cm. £20-£30

116

Roger Hammond, "Framsden Mill", signed watercolour dated 1988, 35cm x 47cm. £20-£40

117

A William Morris type embroidery, of scrolling flowers 60.5cm x 81cm. £60-£100. See illustration.

118

A G-Plan type teak chest fitted with three long drawers, 71cm high x 102cm wide x 41cm deep. £20-£40

119

An Art Deco frameless arched and bevelled wall mirror having foliated etched pink tinted side panels, 91cm x 75cm overall. £60-£80

120

A framed coloured Political poster "What We Want Is Tariff Reform" 73cm x 46cm. £60-£100

121

A printed poster "Publicity Establishes Reputation 1332 Heraldry 1932 Posters", 75.5cm x 53cm. £60-£100

122

Yves Brayer, study of SanTropez, pencil signed limited edition lithograph 163/175, plate 52.5cm x 68.5cm. £60-£80

123

Kevin O'Brien, mixed media study "Man On A Balcony" 103cm x 69cm. £100-£150

124

John Haskins British Born 1938, "Looking Towards Weston Hertfordshire" signed oil. £100-£150

125

John Haskins British Born 1938, rural study with huntsman and field workers, signed oil, 37cm x 51cm. £100-£150

126

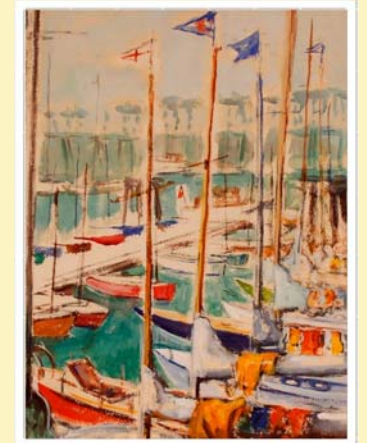
Annabel Gosling, "India Field", signed oil on canvas, 62cm x 85cm. £80-£120. See illustration.

127

Diana Calvert British Born 1941, study of a meadow, initialled oil on board 40cm x 50cm. £80-£120



Lot 112



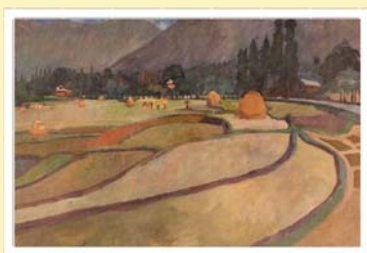
Lot 113



Lot 114



Lot 117

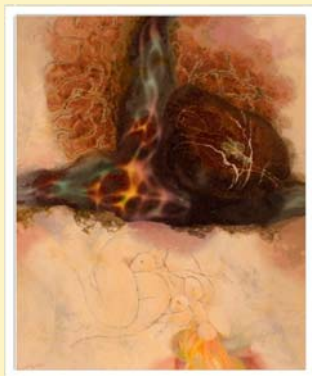


Lot 126





Lot 128



Lot 141



Lot 142



Lot 145



Lot 148

**128**

**Diana Calvert British Born 1941**, study of Brook Farm, Walsham Le Willows, initialled oil on board 77cm x 97cm. £80-£120. See illustration.

**129**

**Alison Pery**, blue abstract "Storm at Tintagel '99". £40-£60

**130**

**Kate Ackerley**, "The Pale Landscape of Not Knowing", oil on canvas, in deep frame and mount, 20cm x 24cm. £20-£40

**131**

**Kevin Curtis**, "Sunrise", signed oil, 20cm x 50cm. £40-£60

**132**

**Kevin Curtis**, "Summer Day" study of cornfields, poppies and a barn, signed oil on board dated '04, 40cm x 49cm. £40-£60

**133**

**Kevin Curtis**, "A New Day", signed oil dated '07, 18cm x 49cm. £40-£60

**134**

**Kevin Curtis**, "Poppies" signed oil, 28cm x 39cm. £30-£40

**135**

**Mary Jane Alexander**, study of musicians playing, signed oil on board, 42cm x 27cm. £40-£60

**136**

**Kate Ackerley**, "The Trembling Edge", oil on canvas 2010, 27.5cm x 37cm. £40-£60

**137**

**Peter Lang**, "Southwold The River", signed oil on board, 50cm x 60cm. £60-£80

**138**

**Margot Noyes**, "Picnic and Poppies", signed oil on canvas dated '82, 74cm x 74cm. £20-£40

**139**

**Emilie Tomanova Prague 1969**, "Fairy Birds", pencil signed etching, label verso, purchased Heals Mansard Gallery, Czech Exhibition 1970. £40-£60

**140**

**Eduardo Paolozzi**, "Additions Alecto London May 1965", signed coloured poster. £60-£100

**141 ✓**

**Glyn Morgan 1926-2015**, "The Pull of the Nereids V & VI", signed oil on canvas, dated 1970, 75cm x 62cm. £400-£600. See illustration.

**142**

**20th Century mixed media abstract study of buildings**, 30cm x 45.5cm. £40-£60. See illustration.

**143**

**20th century school**, charcoal and crayon study of a wintry street scene, indistinctly signed to the bottom left; and a coloured print depicting children and fairies at a table. £40-£60

**144**

**20th Century school**, interior study, indistinctly signed watercolour, 32.5cm x 51cm. £20-£40

**145**

**Inez Estella Hoyton 1903-1983 (St Ives Society of Artists)**, abstract study depicting nuns in a convent, oil on board, 50cm x 75cm. £100-£200. See illustration.

**146**

**An Art Nouveau mahogany satin wood cross banded and inlaid display cabinet**, having raised mirrored back shelf, central marquetry panel flanked by velvet lined shelves and enclosed by glazed bowed doors, raised on square tapering supports and spade feet united by stretchers, possibly by Shapland and Petter, 122cm wide x 160cm high. £200-£400

**147**

**A Liberty vintage picture frame**. £10-£20

**148**

**A Luxor quartz clock**, 28cm high. £40-£60. See illustration.

**149**

**A Mid 20th Century carved wooden sculpture of male and female heads**. £20-£30

**150**

**An Art Deco walnut sideboard fitted two long drawers above cupboards**, flanked by a deep single cupboard, 120cm wide. £60-£80

**151**

**A long G-plan design teak sideboard fitted four central drawers flanked by double cupboards and drop flap compartment raised on rounded tapering supports**, 206cm wide x 79cm high x 46cm deep. £100-£200

**152**

**An Art Deco moulded glass storage jar**, of fan shape by Factice, having plated lid 27cm long x 16cm high. £20-£40

**153**

**A tall mauve tinted glass chemist jar with spike shaped stopper**, 67cm high; and a green glass similar example 56cm high. £20-£30. See illustration.

**154**

**A large silvered baluster table lamp complete with shade**, 76cm high. £20-£40

**155**

**An Art Deco design barbola type easel dressing table mirror**, 42cm x 31cm in extremes. £20-£30

**156**

**Bouret**, bronze study of seated Mercury raised on a circular marble plinth, 30cm high. £100-£200. See illustration.

**157**

**A modern chrome table lamp raised on black base with shade**, 77cm high. £40-£60

**158**

**A Cliff Pottery of Youghal Ireland**, pottery dish and a Studio pottery bowl marked Kerry I.C. to base and five cups. £20-£40

**159**

**A large green pottery platter in the style of Keith Murray**, 36cm dia. £20-£30



**160**

**20th Century Spanish watercolour**, depicting a couple with angel; a coloured print of a lady; and a pair of Indian paintings on fabric.

£20-£30

**161**

**A modern chrome lamp with pierce roundel decoration and white silk shade**, 90cm high overall. £40-£60

**162**

**Elsie March 1884-1974**, study of rural lake scene, signed watercolour, 24.5cm x 29cm; and another of a woodland scene, signed watercolour (2). £20-£40

**163**

**A mid 20th Century walnut bedside cabinet fitted recess and cupboard enclosed by single door with Bakelite handle**, raised on cabriole supports, 40cm wide x 72cm high x 36.5cm deep. £20-£30

**164**

**A mid 20th Century burr walnut chest of five long graduated drawers fitted with Bakelite handles and raised on cabriole supports**, 77cm wide x 45cm deep x 108cm high. £40-£60

**165**

**A long teak sideboard in the manner of Archie Shine**, fitted four graduated drawers flanked by double cupboard, raised on rounded tapering supports, 191cm wide x 47.5cm deep x 80cm high. £100-£200

**166**

**Georg Jensen Denmark**, a plated Thermos flask 28cm high. £20-£40

**167**

**A Waterford glass and metal mounted table lamp having silk shade**, 50cm high overall. £40-£60

**168**

**A decorated brass gimballed candlestick**, bears stamp referring to Titanic and White Star Line, 28cm high. £20-£30

**169**

**An Art Deco style chrome and plastic graduated three tier shop display**, 62cm high. £20-£30

**170**

**A polished metal model of a Titanic type ocean liner**, 90cm long complete with stand, 27cm high. £100-£150. See illustration.

**171**

**A mid-20th Century white painted Horstman Angle Poise type table lamp**. £40-£60

**172**

**A tan crocodile skin effect vintage handbag**; another similar; and a Emma Trenter M3D type handbag. £40-£60

**173**

**A Louis Vuitton style purse**; and various other purses and clutch bags. £40-£60

**174**

**A leather crocodile effect handbag**; and a similar Italian clutch bag. £40-£60

**175**

**A Gucci style tan leather handbag**; a Chiltern handbag; and two others. £40-£60

**176**

**A quantity of various Russell Nash design and other fashion handbags**. £40-£60

**177**

**Frank Pearsons**, watercolour study of a river scene signed, 27.5cm x 37.5cm. £20-£30

**178**

**Oil on board**, study of a 1930's beauty, unframed, 65.5cm x 47.5cm excluding mount. £40-£60. See back cover illustration.

**179**

**A Churchman's No.1 advertising portrait**, recorded number 7999, unframed image 71cm x 51cm. £40-£60. See illustration.

**180**

**Geoffrey H Eglen**, study of Scottish Highlands, pastel 30cm x 44cm. £10-£20

**181**

**G.S.**, coloured print of a sailing boat, unframed; and C M Turner 1981, Criaeth Castle North Wales. £10-£20

**182**

**Indistinctly signed**, etching depicting a Wild West gun fight entitled "Northfield" 22/76, dated 1996. £20-£30

**183**

**Joe Foster**, watercolour study of fish, 29cm mx 41cm. £20-£40

**184**

**20th Century school**, abstract watercolour depicting feet soaking in a bowl, 24cm x 33cm. £20-£30

**185**

**Joe Foster 1983**, small unframed study of naked figures, fish and birds, 19cm x 15cm, in much larger glazed mount. £10-£20

**186**

**Mid 20th Century study of a French landscape with dedication indistinctly signed watercolour**, 20cm x 38cm. £10-£20

**187**

**J Chen**, study of Hong Kong waterfront, pallet knife on board, label verso. £20-£40

**188**

**Joe Foster**, portrait study 32cm x 25.5cm. £20-£40

**189**

**Joe Foster**, "Carpet One", pencil signed study dated '82, 41cm x 32cm. £40-£60

**190**

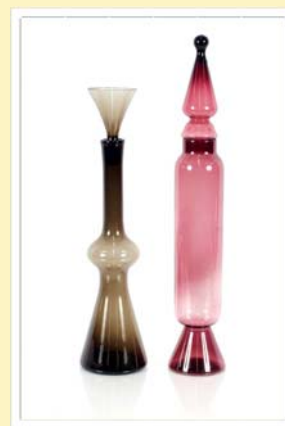
**Joe Foster**, study entitled "Girl" pencil signed dated '81, image 37cm x 29cm. £20-£40

**191**

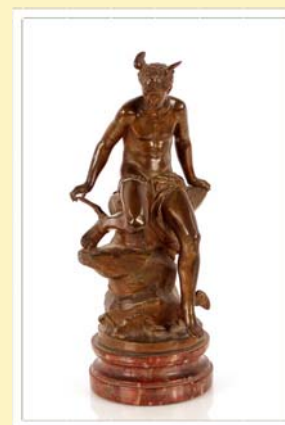
**H E Jackson**, study of a rural landscape possibly Ireland, signed oil on board, 35cm x 45cm, label verso Ryman & Co. Ltd. Oxford. £20-£40

**192**

**Sian Wynn**, "Edo" study of a mounted matador, signed watercolour dated 2000, 29cm x 38cm. £10-£20



Lot 153



Lot 156



Lot 170



Lot 178



Lot 179



Lot 200



Lot 201



Lot 202



Lot 203



Lot 212



Lot 218

**193**

**Helen Bradley**, pencil signed coloured print, figures in a snowy parkland, blind stamp to margin, 30cm x 39cm £20-£40

**194**

**Sanyu**, "Nude With Cat", print with stamp, 99cm x 49cm. £20-£30

**195**

**A silk fringed piano shawl**, having floral decoration on a pink ground. £80-£120

**196**

**A rustic pottery jug**, decorated with vines on a blue and green ground, initialled C.W. and U.U. to base, 16cm. £15-£20

**197**

**A Dutch pottery plate depicting boy and girl kissing in pewter mount**, marked to base M.S.2078, 28cm dia. £20-£30

**198**

**Pencil signed coloured limited edition etching**, "September". £20-£30

**199**

**A circa. 1920's Torck folding child's chair**. £20-£30

**200**

**Jannot**, circular watercolour of flowers in painted and gilt frame, 46cm overall. £40-£60. See illustration.

**201**

**Daphne Grierson**, "Porthiddy Farm" oil label verso, Langton Gallery Exhibition catalogue No.14, 34.5cm x 44.5cm. £40-£60. See illustration

**202**

**Daphne Grierson**, "Chiswick House Four" collage of hand painted paper waste, Langton Gallery Exhibited 1983 No.20, 37cm x 50cm. £40-£60. See illustration.

**203**

**Daphne Grierson**, "Potato Pickers" watercolour and crayon, 30cm x 43cm. £40-£60. See illustration.

**204**

**20th century school**, indistinctly signed, study of a rocky cove, crayon, 50cm x 37cm. £20-£30

**205**

**A stripped elm Ercol sideboard fitted two drawers and cupboards below**, raised on rounded tapering supports, 121cm wide x 47cm deep x 82cm high. £60-£100

**206**

**After E Picault**, a pair of spelter figures depicting shepherd and shepherdess raised on circular plinths, 66cm high AF. £40-£60

**207**

**An Art Deco oak cased chiming mantel clock**, 25cm high x 30cm wide. £20-£40

**208**

**An early 20th Century satin walnut dressing table / washstand**, having swing bevelled mirror tiled back and part marble top, fitted drawers and cupboard under, 122cm wide. £100-£150

**209**

**A large white glazed ceramic bowl**, having pierced floral decorated sides, 37cm dia. £10-£20

**210**

**A Smiths Art Deco walnut and chrome mounted electric mantel clock**, 29cm wide x 21cm high. £20-£40

**211**

**Three ceramic Arabia candle holders**; an Arabia pottery plaque inset with mirror; and three other porcelain plaques. £20-£40

**212**

**A chrome adjustable Angle Poise type lamp**. £40-£60. See illustration.

**213**

**A dark Ercol television cabinet enclosed by panelled doors with drop front compartment below**, 90cm wide x 55cm deep x 94cm high. £30-£50

**214**

**A dark Ercol dresser having shelved and boarded back**, two drawers and cupboards below, 120cm wide. £60-£100

**215**

**A pale blue opaque glass shallow dish**, having stylised decoration, 36cm dia. £20-£40

**216**

**A 20th Century bamboo dish**, raised on rounded tapering supports, 30cm. £10-£20

**217**

**Twelve Nymolle Denmark calendar plaques**. £40-£60

**218**

**A retro swivel tub chair on chrome stand**. £20-£40. See illustration.

**219**

**A dark Ercol glazed display cabinet**, fitted interior shelves and cupboards below, 101cm wide x 138cm high x 32cm deep. £60-£100

**220**

**A dark Ercol side cabinet fitted single drawer and cupboard below**, 52cm wide x 71cm high x 50cm deep. £40-£60

**221**

**A dark Ercol corner cabinet**, the upper section fitted open shaped shelves and cupboard below, 80cm wide x 183cm high. £40-£60

**222**

**An Art Deco mahogany and pine press cupboard**, hand written label to the interior "Token Hand Furniture Designed by Betty Joel, made at Token Works 1919", 152cm wide overall x 200cm high x 60cm deep. £400-£600

**223**

**A chrome angle poise type lamp**. £25-£40

**224**

**A large decorative wooden propeller**, 198cm long. £150-£200

**225**

**A bronze bust**, in the classical style on faux Malachite plinth. £50-£80

**226**

**A bronze study of a hound**, raised on marble plinth. £50-£80



**227**

A pair of silver plated bottle holders with embossed decoration. £30-£50

**228**

A table lamp in the form of a Vespa scooter. £35-£50

**229**

An Art Deco style bronze figure of a dancing girl, raised on stepped marble plinth. £100-£150

**230**

A large pair of pendant drop basket shaped chandeliers, decorated flowers and female mask heads. £150-£200

**231**

A set of folding wooden wine cellar type ladders. £55-£80. See illustration.

**232**

A Dom Perignon style wooden pail, with swing handle. £25-£40

**233**

A cast iron Beatrix Potter figure, 37cm high. £100-£150

**234**

A wooden figure of Guan Yin, 43cm high. £30-£50

**235**

A pair of small Lily Bollinger type wine coolers, 30cm high. £30-£50

**236**

A white and metal framed circular mirror, 73cm dia. £40-£60

**237**

A Banksy design mirrored print "Don't Grow Up, It's A Trap". £60-£100

**238**

A faux leather Union Jack decorated trunk. £75-£100. See illustration.

**239**

A pair of beaded glass and metal wall lights. £40-£60

**240**

A Michelin Man motorbike and side car group. £25-£40

**241**

A bronze figure of a pheasant on marble plinth, 29cm long. £75-£100

**242**

A Michelin Man money box, 23cm high. £10-£20

**243**

A Michelin Man money box, 23cm high. £10-£20

**244**

A bronze study of a pig on oval faux marble base, 44cm long. £150-£200

**245**

A Czechoslovakia United Upworks walnut wardrobe, 122cm wide; and matching double bed frame. £40-£60

**246**

A walnut Art Deco design drinks cabinet, having maple lined interior, partitioned drawer and cupboard below, 84cm wide x 133cm high x 52cm deep. £200-£250

**247**

An early 20th Century carved walnut sideboard, the mirrored back raised on Corinthian columns, two central drawers and cupboard below flanked by deep cupboards, one fitted with a cellarette, 150cm wide x 200cm high x 55cm deep. £60-£100

**248**

A smoked glass decanter; a blue tinted glass carafe; a French mottled glass vase; an Art Deco opaque glass flower holder; and a Venetian type squat line decorated glass vase. £20-£40

**249**

An angle poise lighting lamp. £70-£100. See illustration.

**250**

A large bespoke oak freestanding double corner cupboard, 145cm wide overall, 215cm high. £200-£300

**251**

Paul Evans, study of a landscape with oast houses and various flowers in the foreground, signed watercolour, 34cm x 48cm. £100-£150. See illustration.

**252**

Trevor Snowdon, "Blue Nets", acrylic pencil signed to mount, 19cm x 16cm. £50-£80. See illustration.

**253**

Paul Fischer, coloured French lithograph, 28cm x 20cm. £50-£80

**254**

A light oak finish G-plan design wall unit, having adjustable shelves and four drawers below, 139cm wide x 198cm high. £100-£200

**255**

A Henry Moore style mother and child Maquette AF, 27cm high. £20-£30

**256**

A mid-Century Italian pottery jug, with foliate and red glazed roundel decoration, 25cm. £10-£20

**257**

A metalware Liberty style frog candlestick, 28cm. £20-£30

**258**

An Art Deco moulded glass vase, with flower holder, 19cm high. £5-£10

**259**

A mid Century leaf shaped dish, 26cm. £10-£20

**260**

A glazed Studio pottery bowl, stamped R.M.'61, 21cm dia. £10-£20

**261**

An Arabia BRYK shallow dish, some chips to border, 24cm; an Arabia "Flora" pattern shallow dish; and a Arabia 1981 calendar plate. £20-£40

**262**

A Ruskin style vase with brown, blue and green running glazes, 17cm high. £10-£20

**263**

A mid-Century pottery dish decorated cream and brown. £10-£20



Lot 231



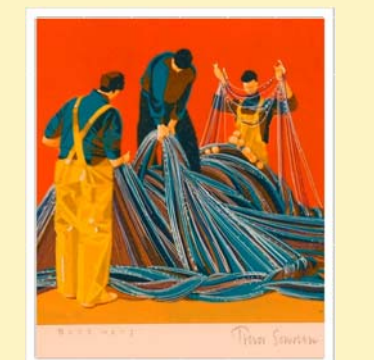
Lot 238



Lot 249



Lot 251



Lot 252





Lot 283



Lot 285



Lot 289



Lot 290



Lot 298

**264**

A Stephanie Kalan dish, 21cm dia. £10-£20

**265**

A Nina Watson Studio pottery dish, 21cm dia. £10-£20

**266**

Six Kersey Pottery bowls. £20-£30

**267**

A David Alexander Brackland pottery slipware bowl, 29cm dia. £20-£30

**268**

A set of eight framed prints taken from a 1940's Nursery Rhyme book. £20-£30

**269**

Six various coloured glass bowls and ashtrays. £10-£20

**270**

A quantity of various Carlton ware Beswick leaf ware items. £25-£40

**271**

A collection of Kilncraft and other pottery storage jars. £10-£20

**272**

A set of six Babycham glasses. £10-£20

**273**

A set of six 20th Century green and gilt decorated long stemmed glasses. £10-£20

**274**

A 1960's glass lemonade set with green tinted and gilt decoration. £10-£20

**275**

Two Austin Productions seated Chinese figures. £10-£20

**276**

A Boda glass bowl with line decoration, 22cm dia. x 17cm high. £20-£40

**277**

A Boda coloured glass goblet, signed Bertil Vallein Artist Collection No.48126, 20cm high. £20-£30

**278**

A Boda Artist Collection coloured glass goblet, signed Bertil Vallein No.98014, 21cm. £20-£30

**279**

A Boda coloured glass bottle of hexagonal body form with trumpet neck, signed to base, 28cm. £20-£30

**280**

A Boda glass bowl with blue wavy line decoration, signed to the base Vallein No.58170, dia. 22cm x 14cm high. £30-£50

**281**

A Boda Artist Collection frosted glass bottle, signed B Vallein to base No.47863, 25cm high; and a matching oval shaped beaker, signed B Vallein No.47967. £30-£50

**282**

A Boda glass Artist Collection ovoid vase, signed B Vallein No.78046, 21cm high. £30-£40

**283**

Rupert Andrews, Studio pottery vase decorated scenic decoration with trees and coastline, 24cm high. £40-£60. See illustration.

**284**

Antonia Salmon born 1959, two smoke fired dishes, marked to base. £80-£120

**285**

Elizabeth Raeburn born 1943, a Studio pottery vase of wedge shape, decorated with a Venetian canal scene, impress marks to base, 22cm long x 16cm high. £60-£80.

See illustration

**286**

A Studio pottery bowl, marked B'89, decorated blue leaves, 25cm. £20-£40

**287**

Martin Pettinger, Studio pottery bowl signed to the base, 24.5cm dia. £20-£40

**288**

A Rossmore Studio pottery bowl by Etain Hickey, 23cm dia. £20-£40

**289**

Les Cole, Studio pottery jardiniere decorated trees, 25.5cm dia. x 20cm high. £40-£60.

See illustration

**290**

A Troika pottery square section vase, 32cm high. £200-£300. See illustration

**291**

A Hundevad rosewood three section wall unit, fitted open shelves and cupboards, central glazed section with adjustable shelves, drop down drinks compartment, 348cm long overall, 197cm high with matching low cupboard, 70cm wide x 67cm high x 43cm deep; and a matching long stereo music and record cabinet, 183cm wide x 67cm high x 43cm deep. £300-£500

**292**

An Art Deco oak cased grand-daughter clock by Seth Thomas, 127cm high. £100-£150

**293**

A Habitat Gravonrie orange framed mirror. £30-£50

**294**

Frederick Hans Haargensen 1877-1943, dockyard study possibly Grimsby, charcoal on paper, 64cm x 40cm. £20-£40

**295**

A Wes Contree ware pottery vase with triform handles; a Studio pottery bowl with mottled decoration; a Scottish pottery oval platter; and a Denby shallow dish. £10-£20

**296**

A pair of Victorian blue opaque glass ewers with raised floral decoration and frilled rim; a similar smaller example; two blue glass chemist jars and a similar vase AF. £20-£30

**297**

A Studio pottery shallow bowl, having leaf decoration, stamped M.B. to base. £10-£20

**298**

A Peter Mook, humorous figure of policeman and burglar. £10-£20. See illustration

**299**

A graduated set of Losol ware "Magnolia" pattern jugs. £20-£30

**300**

**A pair of cast metal Gothic revival fire dogs.**  
£30-£50

**301**

**A green hour glass shaped decanter;** a clear glass similar; and a blue glass example of squat shape. £20-£30

**302**

**Five vintage bread and chopping boards;** and a rabbit shaped mould. £10-£20

**303**

**Two Art Deco coloured glass compots.**  
£10-£20

**304**

**A quantity of various light fittings;** retro lamps; ornaments etc. £10-£20

**305**

**A retro electric fire.** £5-£10

**306**

**A white glazed jardinière stand with cherub decoration,** the top 31cm dia. x 53cm high overall. £40-£60

**307**

**A large pair of French lamps,** decorated classical figures in front of Corinthian columns, 93cm high. £200-£300

**308**

**A Parian type cherub figure group,** 55cm high. £100-£200

**309**

**David Cox,** studies of figures on a beach, a pair, signed pastels. £10-£20

**310 ✓**

**Michael Osterweil,** study of an industrial landscape signed oil on canvas, dated 1962, 75cm x 100cm. £400-£600

**311**

**Four various coloured glass bowls and vases.**  
£20-£40

**312**

**A brass and buttoned leather upholstered club fender,** 136cm. £100-£200

**313**

**A polished metal aviation style large trunk,** flanked by leather handles, 97cm wide. £50-£80

**314**

**An amber tinted bevel edged hall mirror,** 138cm x 60cm in extremes. £20-£40

**315**

**20th Century school,** landscape study unsigned watercolour, 50cm x 60cm. £30-£50. See illustration.

**316**

**Margaret Loxton,** "Olive Harvest, Tuscany" and "Lunchtime San Gimignano" limited edition prints contained in faux birds eye maple frames. £20-£40

**317**

**An antique silvered and gilt decorated wall mirror,** with raised ornate foliate ornament, 72cm x 45cm. £40-£60

**318**

**A mid-20th Century walnut standard lamp and shade.** £10-£20

**319**

**A G-plan design teak stacking unit,** comprising drawers, cupboards, drop front cabinet and glazed sections. £100-£200

**320**

**An Art Deco brass adjustable table lamp with frosted foliate and shell moulded glass shade.** £40-£60

**321**

**A brass adjustable desk lamp,** having green glass shade. £30-£50

**322**

**A brass oil lamp with red and black opaque glass reservoir.** £30-£40

**323**

**An Art Deco design faux coromandel and satin wood two drawer hall table,** raised on a "U" shaped support and plinth, 102cm wide AF. £100-£200

**324**

**A Victorian 1889 silver crown;** a 1951 crown; a vintage fountain pen; a small leather belt purse; and a chinoiserie decorated dressing table tray. £40-£60

**325**

**A Fabergé ruby glass egg with gilt decoration.** £80-£120. See illustration.

**326**

**Three pearl and simulated pearl necklaces,** one with diamond clasp. £80-£120

**327**

**A yellow metal brooch;** a tooth pick; two silver brooches; a silver ring; and a yellow metal cameo ring. £100-£200

**328**

**A 18ct gold bracelet approx. 9gms.**  
£200-£300

**328A**

**A late Victorian circular yellow metal brooch set peridot and seed pearls;** an Art Nouveau style 9ct gold pendant set seed pearls and amethyst coloured stones hung to a fine link chain; three various brooches etc. £40-£60

**329**

**Two 9ct gold ladies wrist watches.**  
£100-£200

**330**

**A Cyma military pocket watch AF.**  
£20-£40

**331**

**A 9ct gold Waltham pocket watch;** and a 9ct gold chain with T bar approx. 36gms. £800-£1,000. See illustration.

**332**

**A quantity of various costume jewellery.**  
£20-£40

**333**

**A Jaeger-Le Coultre 1980's 210 baguette metal cased mantel clock,** 16cm wide overall x 17cm high. £200-£400. See illustration.

**334**

**A Cartier silver Nephrite and enamel mounted desk clock with integral pen tray and inkwells,** complete with original silk lined tolled leather case, 29.5cm. £4,000-£6,000  
See front cover illustration.



Lot 315



Lot 325



Lot 331



Lot 333



Lot 334



Lot 351



Lot 355



Lot 364



Lot 365



Lot 372



Lot 373

**335**

A 1931 Rolex Prince wrist watch in 9ct gold case; and a similar period Rolex Princess wrist watch. £2,000-£2,500

**336**

Various 9ct gold ear-rings and cuff-links; white metal ring etc. £60-£80

**337**

A 22ct gold wedding band, approx. 5.6gm; and an 18ct gold gent's signet ring 5.4gm. £200-£400

**338**

A yellow metal ring set central diamond and chip diamond shoulders. £100-£150

**339**

A yellow metal and carved ivory brooch, with revolving panel; two Victorian white and yellow metal brooches; two bar brooches set seed pearls and turquoise. £100-£150

**340**

A collection of various white metal brooches etc. £20-£40

**341**

A 50" blue glass flapper style necklace. £10-£20

**342**

An Art Deco style paste set bracelet; and a Corocraft necklace AF. £100-£150

**343**

A pearl and jade necklace with 14ct gold clasp. £75-£100

**344**

An Omega style ball watch. £15-£20

**345**

A miniature brass carriage clock with Sevres style panels. £90-£120

**346**

A Tibetan style hardstone pendant. £20-£30

**347**

A 9ct gold snap bangle with foliate engrave decoration, 23.5gm. £250-£300

**348**

A yellow metal and pearl set circular brooch, with leaf decoration and a white metal butterfly pendant. £40-£60

**349**

A pair of Peridot and diamond drop ear-rings. £80-£120

**350**

A pair of opal and diamond set drop ear-rings. £80-£120

**351**

An opal set bar brooch. £40-£60. See illustration.

**352**

A 9ct gold mounted cameo brooch; and a 9ct gold cameo ring. £60-£80

**353**

An 18ct gold and diamond ring. £150-£250

**354**

A ladies platinum and diamond cocktail watch with later strap. £200-£400

**355**

A gentleman's Longines manual wind 18ct gold wrist watch, the black face set with single diamond, and having 18ct gold strap, Movement No. L847-454888627 Case No. 11866001 847, overall total weight approx. 78gm. £1,500-£2,000. See illustration.

**356**

A mans Figaro 9ct gold necklace, approx. total weight 13.5gm. £200-£300

**357**

A Victorian 9ct gold snap bangle, approx. total weight 6gms. £70-£100

**358**

A 9ct gold torque bangle, approx. total weight 15.4gm. £175-£200

**359**

Two 9ct gold wedding bands approx. total weight 7.6gm. £100-£150

**360**

A 925 silver gilt Cartier tank watch with quartz movement. £150-£250

**361**

A yellow metal ring marked 585, set with white stones (one stone missing) approx. total weight 3gm. £50-£80

**362**

A pair of solitaire diamond ear-rings and various other ear-rings. £100-£150

**363**

An Italian 925 silver gilt bracelet, approx total weight 1.7gm; another 925 silver gilt bracelet; a Michael Kors wrist watch; a ladies Longines wrist watch; a 9ct gold St Christopher pendant hung to a fine link chain, approx. total weight 2.5gm; a 9ct gold chain with pearl drop, approx. total weight 1.4gm. £100-£150

**364**

A silver pocket watch, having enamel dial with various subsidiaries and watch chain. £100-£200. See illustration.

**365**

A large plated pocket watch. £40-£60. See illustration.

**366**

A 22ct gold wedding band approx. 7.5gm. £150-£200

**367**

A 22ct gold wedding band approx. 4gms; and a 9ct gold ring, approx. 1.5gm. £100-£150

**368**

A silver fob watch complete with key. £40-£60

**369**

A 9ct gold ladies watch with strap. £100-£200

**370**

Four various wrist watches and a pocket watch. £100-£150

**371**

A 9ct gold ladies wrist watch. £100-£200

**372**

An 18ct gold gent's wrist watch. £200-£400. See illustration.



**373**

A Bueche Girod ladies wrist watch.

£300-£400. See illustration.

**374**

A 9ct gold Victorian chain, approx. 5gm.

£80-£120

**375**

A mahogany and boxwood strung trinket box and contents of various costume jewellery. £20-£30

**376**

A mahogany trinket box and contents of various costume jewellery, a carved bone necklace, etc. £20-£40

**377**

A Kashmiri type box and contents of various gentleman's wrist watches. £20-£40

**378**

A pair of silver miniature candlesticks; a silver watch chain; silver napkin ring; silver handled nail file etc. £30-£50

**379**

A Persian type miniature painting.

£50-£80

**380**

A pearl choker necklace. £40-£60

**381**

A silver plated snowman ice cream scoop. £30-£50

**382**

A bag of various decorative thimbles.

£30-£50

**383**

An Oriental carved amber coloured pebble. £50-£80

**384**

A white metal pin cushion in the form of a pig. £35-£50

**385**

A pair of silver mounted easel photograph frames in the art Nouveau style. £90-£120

**386**

Various Christopher Wildman angel candleholders; a faux tortoiseshell serving spoon with continental white metal handle etc. £40-£60

**387**

A coral bracelet. £20-£30

**388**

A Susan Marie Designs necklace in fitted case. £400-£600

**389**

A silver mounted and enamel decorated double photograph frame in the Art Nouveau style. £35-£50

**390**

A white metal and jade coloured stone pendant. £30-£50

**391**

A white metal dolphin brooch. £25-£40

**392**

A bone lay doctors figure in the form of a naked woman. £30-£50

**393**

A white metal and enamel decorated pill box, the lid with horse and jockey scene. £35-£50

**394**

A carved bone and wooden Oriental pendant. £20-£30

**395**

A small jade coloured teapot. £15-£20

**396**

A boxed Christopher Wildman chocolate cup and saucer; a white metal napkin ring; a white metal bottle pourer and a pair of Dansk Designs miniature vases. £40-£60

**397**

A Christopher Wildman three piece tea set. £40-£60

**398**

A pair of silver mounted easel photograph frames. £90-£120

**399**

A silvered overlaid glass scent bottle (stopper missing); and a glass and silver mounted posy vase. £10-£20

**400**

An onyx desk top barometer. £20-£30

**401**

An Art Deco design chrome plated cruet set in the form of a ship. £20-£30.

See illustration.

**402**

An Art Deco design chrome table lighter in the form of a vintage aeroplane. £40-£60. See illustration.

**403**

Ferdinand Priest, an Art Deco cold painted bronze figure of a young girl wearing a red hat raised on an octagonal marble plinth, 18cm high. £1,000-£1,500. See illustration.

**404**

An Asprey of London Art Deco onyx rocker blotter; the bronze handle in the form of a hippopotamus. £40-£60. See illustration.

**405**

A silver Alms type dish inscribed 1990/2000 Jarvis Hotels; and a small modern silver trophy beaker, inscribed J C Superstar 1973-1976. £40-£60

**406**

A pair of Danish white metal dwarf candlesticks, the bases 6.5cm dia. x 5cm high. £20-£30

**407**

A vintage Bakelite microphone. £20-£30

**408**

Two Art Deco bronze figures of naked ladies, 15cm and 14cm high. £40-£60

**409**

A Kashmiri oval trinket box decorated with polo players. £10-£20

**410**

An Oriental brass twin handled baluster vase decorated branches. £10-£20

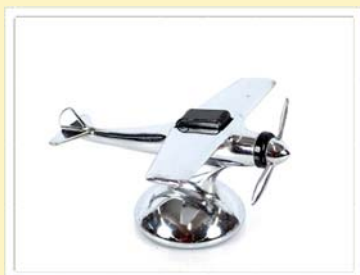
**411**

A bronze figure of a mouse seated on a toadstool, indistinctly signed and raised on wooden plinth, 18cm high. £80-£120.

See illustration.



Lot 401



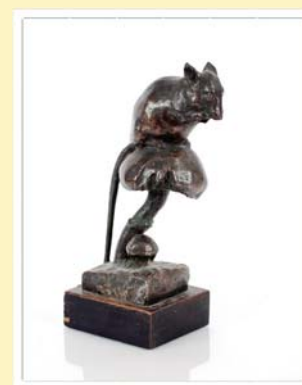
Lot 402



Lot 403



Lot 404



Lot 411



Lot 413



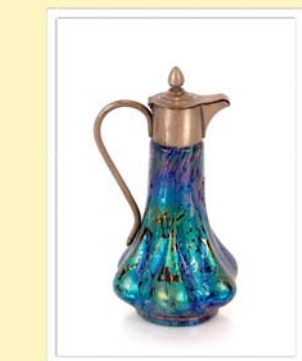
Lot 435



Lot 437



Lot 438



Lot 439

**412**

An Italian 1960's/70's Janeke Ladies set, with striped decoration, comprising mirror, comb and brush, in rolled case. £10-£20

**413**

A white metal study of a castle on rocks, raised on ebonised plinth base, 12cm high. £40-£60. See illustration.

**414**

A silver engine turned decorated cigarette box, inscribed "From Commanding Officer HMS Lundy, 3rd September 1947" having wood lined interior. £20-£30

**415**

A 9ct gold mounted easel miniature photograph frame, 7cm x 4.7cm overall. £100-£200

**416**

A silver mounted double miniature photograph frame. £30-£40

**417**

A Venetian style coloured glass plaque with floral decoration, indistinctly signed; a mottled glass cylindrical vase; a tinted glass vine decorated finger bowl etc. £20-£40

**418**

Ten miscellaneous Art Deco and other perfume bottles. £20-£30

**419**

A chrome plated Art Deco design breakfast set. £10-£20

**420 ✓**

Mark Ward, framed acrylic study, unsigned 14.5cm x 9.5cm; Rakhee Shah "Abstract" 10cm x 15.5cm laid on card with info verso; Sabine Blodom, mixed media "Michael" signed and dated 2013, info verso, 15cm x 10cm; and Yasodhara, acrylic abstract study "Narcissus", 10cm x 15cm. £200-£400

**421**

An oval Arts & Crafts pewter tray, 38.5cm. £40-£60

**422**

A pewter cased cigarette box with foliate decoration, and a similar match box holder decorated oak leaves and acorns; a silver mounted matchbox holder inscribed "Championship of England and Wales, Stage Winner 1939"; a pewter Arts & Crafts style matchbox holder inset with a hardstone; and another AF. £20-£30

**423**

A Rosenthal Studio Line Warhol Celebrities "Grace Kelly" dish 29.5cm in original box. £40-£60

**424**

A decorative amber skull. £25-£40

**425**

Two jade type pendants with carved decoration. £30-£50

**426**

A tassel ball watch. £10-£20

**427**

A Chinese white metal ball censer. £40-£60

**428**

A carved jade type bangle. £60-£80

**429**

A pair of Tiffany style belt buckles. £40-£60

**430**

A white metal and enamel pill box; the lid decorated with a scene of a vintage car. £30-£50

**431**

An orange glass fish ornament, 11.5cm. £10-£20

**432**

A Bohemian etched glass amber goblet, decorated with buildings and foliage, 13cm high. £20-£40

**433**

A Venetian type glass duck ornament with green streaked decoration; and a small pink glass pig ornament. £10-£20

**434**

An amber glass trinket box, the cover decorated with a scene of Leda and the Swan; and a small millefiori glass paperweight. £30-£40

**435**

An Art Deco green glass scent bottle, the clear glass stopper decorated with a lady in crinoline dress. £30-£40. See illustration.

**436**

A good quality cut glass vase by William Yeoward, 21cm high x 15.5cm dia. overall. £50-£80

**437**

A J Ditchfield glass form blue iridescent vase, gilt trailing foliage decoration, 26cm high. £100-£200. See illustration.

**438**

A J Ditchfield glass form green iridescent figure of a seated frog. £60-£80. See illustration.

See illustration.

**439**

A Kraliac iridescent glass claret jug with pewter lid and mount, 20cm high. £40-£60. See illustration.

**440**

A pair of iridescent glass baluster vases, having stylised white metal mounts, 18.5cm. £40-£60. See illustration.

**441**

A cut glass scent bottle, having silver mount and fan shaped stopper; another cut glass scent bottle with silver and enamel mount and a Restaurant Lalique glass cocktail stick with box. £40-£60

**442**

A Clarice Cliff "Bizarre" fruit bowl, 23cm dia. £100-£200

**443**

A Victorian green glass dump type paperweight and a blown glass lamp. £20-£40

**444**

A Clarice Cliff "Harvest" pattern bowl, 28cm dia. £100-£150

**445**

A pair of Moorcroft "McIntyre" globular scent bottles, having gilt overlaid decoration, silver collars and blue stoppers, 13cm high. £300-£500. See illustration.

**446**  
A Clarice Cliff "Crocus" pattern preserve jar, the lid with bee finial. £60-£80

**447**  
A Constance Spry Fulham Pottery vase. £80-£120

**448**  
A Mary Rich travelling teapot. £30-£50

**449**  
An Art Deco parrot decorated baluster jug. £30-£50. See illustration.

**450**  
A Rosenthal cylindrical vase, having multi floral decoration, 22cm high. £20-£30.  
See illustration.

**451**  
A Royal Doulton white glazed bust of Charles Dickens by Leslie Harradine. £100-£150. See illustration.

**452**  
A Poole pottery "Bluebird" vase by Carter Stabler Adams, 17cm high. £60-£80

**453**  
A small Poole pottery jardinière by Carter Stabler Adams. £30-£50

**454**  
A Poole pottery "Bluebird" decorated vase. £30-£50

**455**  
A Poole pottery squat vase, multi floral decoration by Carter Stabler Adams. £40-£60

**456**  
A Poole pottery shallow comport by Carter Stabler Adams, having foliate spray decoration, 25cm dia. £40-£60

**457**  
A Poole pottery "Bluebird" pattern bowl; and another Poole pottery shallow bowl. £30-£50

**458**  
A Poole pottery "Bluebird" pattern preserve pot with wicker handle; and another Poole pottery preserve jar with floral decoration. £30-£50

**459**  
A Poole pottery baluster vase having foliate decoration. £20-£30

**460**  
A Poole pottery vase with yellow and blue bird decoration. £20-£30

**461**  
A Poole pottery four piece cruet set. £20-£40

**462**  
A Poole pottery egg cruet. £20-£30

**463**  
A Wedgwood floral decorated breakfast set. £40-£60

**464**  
A pottery puzzle jug, inscribed "This Jug Was Made Your Skill To Try, Drink If You Can When You Are Dry". £20-£30

**465**  
Two Art Deco tiles, one in the form of a prancing horse, the other in the form of a puppet. £20-£40

**466**  
A Poole pottery trinket box and cover with floral decoration. £10-£20

**467**  
A Regal ware lustre decorated octagonal bowl; and a Royal Winton ash tray. £20-£30

**468**  
A Ricardia ware cigarette box / ash tray, decorated orange and black running glazes. £20-£30

**469**  
A Bernard Rooke pottery vase having raised stylised decoration. £30-£50

**470**  
A Bernard Rooke pottery vase having butterfly and leaf decoration. £30-£50

**471**  
A Maple & Co. mahogany revolving bookcase, 60cm wide x 120cm high. £100-£200. See illustration.

**472**  
A pair of modern design tubular metal and leather folding chairs. £80-£120

**473**  
An Art Deco child's chair with leatherette and striped upholstery. £20-£40

**474**  
A teak G-plan dressing table, 160cm wide x 46cm deep x 72cm high. £60-£100

**475**  
A David Frith Studio pottery platter with green stylised and leaf decoration on a brown glazed ground, 32.5cm dia. £50-£80

**476**  
A large yellow glass 20th Century dish with pierced decoration, 43.5cm dia. £10-£20

**477**  
A 20th Century blue pottery and copper Studio ware platter. £20-£30

**478**  
A vintage cream and green angle poise type lamp. £20-£40

**479**  
A pair of Bernard Rooke pottery wall plaques, 35cm. £60-£80

**480**  
A chrome sculpture of concentric rings, 34cm high. £20-£30

**481**  
A teak sideboard with central drop flap drinks compartment flanked by six drawers raised on rounded tapering supports, 143cm wide x 42cm deep x 89cm high. £40-£60

**482**  
A vintage Horstmann angle poise type lamp. £40-£60

**483**  
A Nambe tableware heavy metal serving dish, 43.5cm dia.; a smaller two section example and two other smaller dishes. £60-£100

**484**  
A William Lawrence of Nottingham teak three drawer chest, raised on square tapering supports, 107cm wide x 45cm deep c 71cm high. £40-£60



Lot 440



Lot 445



Lot 449



Lot 450



Lot 451



Lot 471





Lot 504



Lot 506



Lot 507



Lot 512



Lot 514

**485**

A set of three teak G-plan style oval coffee tables. £40-£60

**486**

A Ferguson teak effect cased radio / stereogram with Garrard 2025TC turntable, 132cm wide. £40-£60

**487**

A small plated twin handled entrée dish and cover with removable liner; plated muffin dish and cover and a small silver bowl. £20-£40

**488**

A Bang & Olufsen Beolink 1000 television on stand, complete with remote control. £20-£40

**489**

A 1930's Moebel Fabrik chest of two short and two long drawers, 105cm wide x 56cm deep x 81cm high. £40-£60

**490**

A walking stick, the brass handle in the form of a retriever with pheasant. £30-£50

**491**

A Shelley "Wild Anemone" tea set; and a pair of Villeroy & Boch preserve pots in the form of pears. £30-£50

**492**

An abstract bronze figure of a boy seated on a rock, 30cm high. £50-£80

**493**

A teak bookcase, the upper shelves enclosed by glazed sliding doors, solid sliding doors below, 77cm wide x 108cm high x 24cm deep. £20-£30

**494**

A dark Ercol drop leaf coffee table, 69cm x 102cm. £40-£60

**495**

A pair of miniature prints, contained in faux red lacquer style frames. £20-£30

**496**

A plated cocktail shaker. £30-£50

**497**

A large cut glass urn and cover, 57cm high. £60-£80

**498**

A plated Christopher Dresser style teapot. £75-£100

**499**

A large heavy cut glass scent bottle, in the art Deco style. £50-£80

**500**

A reproduction cast metal Rolls Royce sign. £10-£20

**501**

A Reproduction cast metal Bentley sign. £10-£20

**502**

A retro Formica topped drop leaf kitchen table. £10-£20

**503**

Dipnall, rural study depicting river and fields, signed oil on canvas, 50cm x 76cm. £100-£200

**504**

Margaret Glass, pastel study of a river scene, signed, 54cm x 75cm. £100-£200. See illustration.

**505**

Sir William Russell Flint, coloured print depicting a sailing ship in estuary, limited edition 321/1000. £40-£60

**506**

Tina Morgan, "Lifts Closing, Austria", signed oil on canvas, 45cm x 45 cm. £40-£60. See illustration.

**507**

Kenneth Denton, "Coming In With The Moon", signed oil on board, 40cm x 60cm NB. Exhibited Royal Society of Marine Artists 1986, Catalogue No.77. £100-£200. See illustration.

**508**

John Western, study of river barge at Woodbridge Tide Mill, signed watercolour dated 1986, 26cm x 40cm. £40-£60

**509**

Margaret Glass, "Valley Mist" signed pastel dated 1981 28cm x 28cm. £60-£100

**510**

John Western, watercolour study of the Deben with Woodbridge Tide Mill, signed in pencil and dated 1984, 19cm x 35cm. £40-£60

**511**

After L.S.Lowry, "V E Day Celebration". £40-£60

**512 ✓**

John Burman, "Cattle By The Orwell", signed oil, 49cm x 69cm. £200-£300. See illustration.

**513**

Sir William Russell Flint, "Clarissa Fishing", coloured artist proof, pencil signed with blind stamp to margin, 34cm x 25cm. £200-£300

**514**

D.C.P. Ward, study of Covent Garden; and another Kensington Gardens, signed watercolours dated 1931 and 1932, 26cm x 22cm. £60-£80. See illustration.

**515**

Della Chapman, "Margaret Catchpole's Cottage", pencil signed etching £20-£30

**516**

After Vladimir Tretchikoff, coloured print "Chinese Girl", 56cm x 48cm in gilt frame. £20-£40. See illustration.

**517**

A reproduction advertising mirror for Bovril. £10-£20

**518**

Imelda, oil on canvas depicting an iguana and flowers, signed 63cm x 66cm. £20-£40

**519**

After Banksy, three section print "There Is Always Hope". £10-£20

**520**

Phyllis MacKenzie, "The House On The Island Oretro Sweden", signed pastel. £40-£60

**521 ✓**

Andrew King, "Sunlight Through Clearing Mist Staithes", signed watercolour, 31cm x 43cm. £200-£250. See illustration.

**522**

**Margaret Glass**, rural riverbank scene, initialled oil on board, 44cm x 59cm.

£100-£200

**523**

**After Louis Wain**, print of a cat with chamber stick; Michael Carlo pencil signed limited edition print "Autumn"; pastel of a cat initialled M.N.; and humorous canine cartoon "Mort Aux Chats". £20-£40

**524**

**20th century school**, Cotswolds river landscape, unsigned watercolour, 23cm x 32cm. £20-£40

**525** ✓

**William Crosbie**, RSA Scottish 1915-1999, "The White Table", signed watercolour, 50cm x 30cm. £200-£400. See illustration.

**526**

**Hall**, abstract oil on board, colourful street study, 48cm x 69cm. £100-£200. See illustration.

**527**

**A Bar Code picture**, 60cm x 60cm. £20-£40

**528** ✓

**Jurgen Gorg**, a pair of pencil signed limited edition etchings, "Figar Mit Einhorn", 66/100 and "Mittle Rounkt", 78/100, plate 32cm x 24cm. £200-£300

**529** ✓

**20th Century continental school**, study of children on a beach, unsigned oil on canvas, 49cm x 59cm in decorative gilt frame.

£200-£300

**530**

**R W Garnham**, study of boats on a river at dusk, signed watercolour dated 1977, 34cm x 57cm. £100-£150

**531**

**R W Garnham**, study of a lake scene with buildings in the far ground at dusk, signed watercolour, 37cm x 63cm. £100-£150

**532**

**An elm G-plan design long sideboard**, fitted four central drawers flanked by double cupboards and drop flap compartment, 221cm wide x 46cm deep, 73cm high.

£100-£200

**533**

**A teak long sideboard fitted three central drawers flanked by double cupboard and drop flap compartment enclosed by louvre type doors raised on square section tapering supports**, 197cm wide x 44cm deep x 76cm high. £60-£80

**534**

**A teak sideboard**, fitted central drop flap compartment flanked by cupboards raised on square section supports united by stretchers, 165cm wide x 46cm deep x 51cm high.

£40-£60

**535**

**A 1960's oak hall stand / cupboard**, fitted with chrome hooks, mirror panel and enclosed section, 61cm wide x 181cm high. £40-£60

**536**

**A teak sideboard fitted three drawers and double cupboards**, raised on square section tapering supports, 138cm wide x 43cm deep x 72cm high. £40-£60

**537**

**A Portwood dining table raised on shaped end supports**, 136cm x 88cm. £60-£100

**538**

**A set of six Portwood dining chairs**, having wide splat backs, upholstered seats raised on shaped supports and stretchers. £60-£100

**539**

**A teak bookcase**, raised on metal end strut supports, the interior shelf enclosed by glazed sliding doors, 89cm wide x 31cm deep x 81cm high. £40-£60

**540**

**A pair of teak G-plan style bedside tables**, fitted single drawers and raised on square section tapering supports united by stretchers, 42.5cm wide. £30-£50

**541**

**A circular teak Nathan two tier coffee table**, 86cm dia. £40-£60

**542**

**A teak G-plan style oblong coffee table with tile inset top**, 70cm x 51cm. £20-£40

**543**

**A teak fold-out desk**, in the manner of Staples, 84cm wide x 112cm high, 53cm deep. £40-£60

**544**

**A long teak sideboard**, fitted three central drawers flanked by drop front compartments and double doors, 198cm wide x 43cm deep x 74cm high. £60-£80

**545**

**A teak sideboard**, fitted three central drawers flanked by cupboards, raised on square section brassed mounted supports, 166cm wide x 46cm deep x 75cm high. £60-£100

**546**

**A teak sideboard**, fitted two central drawers, flanked by cupboards raised on square section supports united by stretchers, 121cm wide x 42cm deep x 72cm high. £40-£60

**547**

**A 1970's teak effect sideboard**, fitted three drawers and flanked by cupboard raised on rounded tapering supports, 107cm wide x 75cm high. £30-£50

**548**

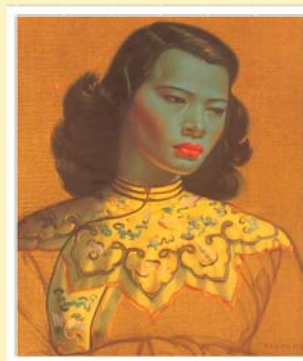
**A teak sideboard fitted three drawers with double cupboards under**, raised on ebonised rounded tapering supports, fitted brassed handles and feet, 150cm wide x 86cm high. £60-£100

**549**

**A teak bookcase**, enclosed by sliding glass doors with drawers under, raised on tapering supports, 94cm wide x 128cm high x 40cm deep overall. £40-£60

**550**

**A large Art Deco design fan chair**. £250-£300. See illustration.



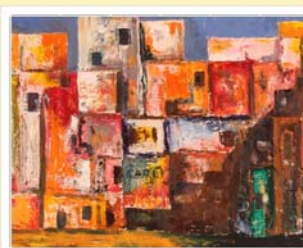
Lot 516



Lot 521



Lot 525



Lot 526



Lot 550





Lot 569

**551**

A small wooden propeller, 99cm long.  
£60-£80

**552**

A 20th Century light oak and elm chest, of two short and two long drawers, 92cm wide.  
£60-£80

**553**

A small bronze figure of a dog on marble plinth, 14cm long x 16cm high overall.  
£50-£80

**554**

A silvered figure of a knelling cherub, 29cm high. £10-£20

**555**

A bronze Art Deco style figure of a dancing girl, raised on circular marble plinth, 57cm high. £100-£150

**556**

A wooden house shaped tea caddy, 26.5cm wide x 20cm high. £60-£80

**557**

A decorative mirrored jewellery box, 31cm wide x 20cm high. £10-£20

**558**

A pair of miniature portrait prints in decorative gilt frames. £20-£30

**559**

An amber glass and plated claret jug, in the form of a bear 22cm high. £100-£150

**560**

A repro Gulf oil can. £20-£30

**561**

A Psychedelic decorated skull ornament.  
£10-£20

**562**

A pair of brass easels. £45-£60

**563**

A large amber style carved ornament.  
£80-£120

**564**

A large amber type paperweight. £30-£50

**565**

A teak G-plan style low sideboard, fitted interior cutlery drawer enclosed by a pair of flush panelled doors with turned wooden peg handles, 188cm wide x 47cm deep x 67cm high. £60-£100

**566**

A run of three Conran units, comprising four drawer chest 51cm wide x 36cm deep x 56cm high, a cupboard unit 51cm wide x 35.5cm deep x 56cm high, and an open shelf unit 51cm wide x 36cm deep x 51.5cm high. £30-£50

**567**

An Art Deco bronze lamp, in the form of a naked girl with outstretched arms supporting an urn with Tiffany style shade, 66cm high.  
£100-£200

**568**

A pair of gilt plaster urns of baluster form with cherub decoration and raised floral swags, the tops terminating in pineapple finials, 64cm high. £100-£200

**569**

Three black retro style high stools. £40-£60.  
See illustration.

**570**

An Ercol light occasional table, having circular top, shaped column and V shaped base, 43cm dia. x 50cm high. £40-£60.

See illustration.

**571**

A nest of three 20th Century teak occasional tables. £20-£30

**572**

A nest of Danish teak Silkeborg occasional tables, 60cm wide. £75-£100

**573**

A J.R.M.Design by Ian Logan "Salome" folding picnic table. £20-£30

**574**

A 20th Century teak sewing table, having lift-up top and single drawer below, 53cm wide. £20-£40

**575**

A pair of teak slatted occasional tables, raised on square tapering supports, 48cm wide. £20-£40

**576**

A set of four 1970's teak G-plan design string seat dining chairs. £40-£60.

See illustration.

**577**

A pair of black leatherette upholstered Stressless type armchairs. £40-£60

**578**

A 1970's tubular metal and floral upholstered low easy chair. £20-£40

**579**

A pair of Niels Larson tubular metal and ply interlocking chairs. £20-£40

**580**

A set of four 1970's black wood and rush seated dining chairs, three standards, one elbow; and a stripped pine effect similar elbow chair. £30-£50

**581**

An Art Deco oak and red leatherette upholstered deep seated easy chair of arched form. £100-£150. See illustration.

**582**

A mid 20th Century John Piper design "London Skyline" coffee table for Terence Conran, 115cm wide x 39cm deep x 35.5cm high. £40 - £60

**583**

A nest of three 1970's graduated teak coffee tables, raised on bowed supports, 61cm wide. £20-£40. See illustration.

**584**

A vintage decoupage decorated nest of four drawers, 38cm wide x 24cm deep x 26cm high. £30-£50

**585**

A pair of teak and Perspex topped two tier coffee tables, 60cm wide. £30-£40

**586**

A cantilever sewing basket, 42cm wide. £20-£40

**587**

Two gilt three tier retro tea trolley's, one with matching tray. £10-£20



Lot 570



Lot 576



Lot 581



Lot 583



**588**

A retro metal and wooden coffee table with magazine under tier; and two metalwork retro magazine racks. £10-£20

**589**

A 1960's tubular metal and iron based hat and coat stand. £20-£40

**590**

A late Victorian adjustable music reading stand by Harrods, having mahogany rest above brass and cast iron column terminating in claw feet, 145cm high. £100-£150

**591**

A teak and glass oblong coffee table, raised on square section tapering supports with under tier, 137cm long. £20-£40

**592**

A teak G-plan design coffee table with tile insert and smoked glass top, 121cm long. £40-£60

**593**

A teak coffee table, having smoked glass top and shaped under tier, 101cm long. £40-£60

**594**

A quantity of Encore teaware; vintage teaspoons etc. £20-£30

**595**

A 1930's oak draw leaf dining table raised on shaped end supports, 152cm wide x 84cm deep. £40-£60

**596**

A carved pine shaped top occasional table, raised on shaped pegged end supports, 76cm. £20-£40

**597**

An eleven piece Habitat "Scraffito Japan" dinner set. £50-£80

**598**

A 17 piece "Crown Clarence" tea/ dinner set. £30-£50

**599**

A quantity of Ridgway "Homemaker" dinnerware. £30-£50

**600**

A bamboo and wicker two tier tea / drinks trolley on associated castors. £20-£40

**601**

A quantity of Ridgway "Amanda" patterned teaware. £20-£40

**602**

Three vintage enamel saucepans. £20-£30

**603**

A circular teak G-plan design extending dining table. £40-£60

**604**

Ten Rosenthal Studio Line and Gallery plates. £40-£60

**605**

Two bronze garden herons. £100-£200. See illustration.

**606**

An aluminium stag decorated wine cooler, 104cm high, dia. of the cooler 40cm. £175-£200. See illustration.

**607**

A pair of faux walnut French design bedside cabinets, fitted three drawers with under tiers, 38.5cm wide x 80cm high. £150-£200

**608**

A pair of gilt French style pier mirrors, with bevel plates, figure and flower decoration, 176cm high. £175-£200

**609**

A teak effect retro oblong coffee table on metalwork base, with under tier, 91cm.

£20-£40. See illustration.

**610**

An Art Deco walnut cocktail cabinet, with fall front and cupboards below, 73cm wide x 110cm high. £60-£80

**611**

A teak television / stereo stand with record and cassette compartments underneath, 132cm wide. £20-£40

**612**

A pair of Oriental design pottery garden seats with bird and flower decoration, 46cm high x 30cm dia. £120-£150. See illustration.

**613**

A teak oblong coffee table, of G-plan design, 116cm. £40-£60

**614**

A pair of decorative large table lamps, in the form of Bacchanalian figures complete with shades, 113cm high overall. £100-£200

**615**

A teak and elm oblong coffee table raised on rounded tapering supports with brassed feet, 142cm. £20-£40. See illustration.

**616**

A Perspex, wicker and brass mounted two handled tray, 47cm. £20-£40

**617**

A nest of teak and tile top coffee tables, of G-plan design 50cm wide. £30-£50

**618**

An Art Deco walnut china display cabinet enclosed by glazed panelled doors, and raised on cabriole claw and ball supports, 117cm wide x 129cm high. £20-£40

**619**

An oak Gothic style expanding bookrack. £30-£50

**620**

An Art Deco oak side table with pierced decoration, raised on square tapering supports united by an under tier, 61cm wide. £20-£40

**621**

A maple Art Deco bedside cupboard raised on squat cabriole supports, 37cm wide. £20-£40

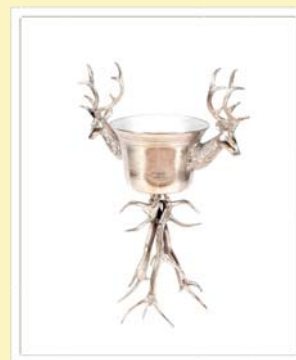
**622**

An Art Deco valet seat / stand by Papworth Industries with fold out hanger raised above a shaped seat and cabriole supports.

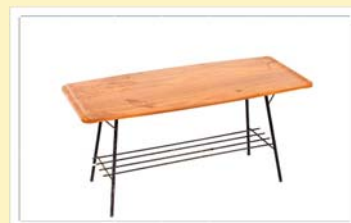
£70-£120



Lot 605



Lot 606



Lot 609



Lot 612



Lot 615



Lot 631



Lot 632



Lot 637



Lot 639



Lot 641

**623**

A teak dwarf bookcase, enclosed by glazed sliding doors and raised on shaped end supports, 107cm wide x 30cm deep x 76cm high. £30-£50

**624**

An Art Deco green lacquered and chinoiserie decorated table lamp. £30-£50

**625**

An Art Deco black lacquered and chinoiserie decorated table lamp. £30-£50

**626**

An Ercol cottage style two seater stick back settee and matching armchair. £40-£60

**627**

An Ercol cottage style stick back armchair. £20-£40

**628**

An oak Art Deco three piece suite in the Colonial style fitted with side carrying handles, folding back rests and wicker panelled seats. £200-£300

**629**

An Ercol cottage style two seat settee and matching armchair. £60-£80

**630**

A set of eight Schweppes advertising prints. £30-£50

**631**

A vintage rattan peacock chair. £200-£250. See illustration.

**632**

Walter Agsten for Bauhaus pair of bedside tables with black plate glass tops, fitted single drawers on tubular metal stands, 62cm high, plate glass tops 48cm x 45cm NB. see literature M:dasBauhaus 1919-1933 Weimar dessau Berlin. Page 535 Bauhaus-Archiv 1985 Page 99, 287 and 293 NB. Walter Agsten was grandfather of the current vendor. £100-£200. See illustration.

**633**

A bespoke craftsman made light oak refectory dining table, the plank top raised on bulb baluster columns united by stretchers, 123cm wide x 245cm long x 80cm high. £400-£600

**634**

A Denby "Savoy" pattern dinner / tea service. £100-£200

**635**

Five Ercol stick back dining chairs.

£40-£60

**636**

A bronze Joan of Arc lamp, signed J Monier, complete with silk shade, 95cm high overall, originally purchased from Liberty's. £400-£600

**637**

An Art Deco plaster figure of a lady with attendant hounds, 52cm high x 57cm long. £150-£250. See illustration.

**638**

A bronze figure of a semi-naked goddess, 70cm high AF. £100-£200

**639**

A bronze stick stand of rustic design, 57cm high. £60-£80. See illustration.

**640**

A glazed Roman style classical bust, 47cm, high. £40-£60

**641**

A large glazed plaster figure of a semi-naked lady, 88cm high. £100-£150.

See illustration.

**642**

A pair of glazed Art Nouveau design figural vases, 58cm high. £100-£150

**643**

A gilded spelter peacock lamp and shade, 56cm high overall. £80-£100

**644**

A set of four Ercol stick back kitchen chairs. £40-£60

**645**

A set of six Ercol stick back dining chairs with swan motifs, (four standards, two elbows). £60-£100

**646**

An Ercol refectory type dining table, raised on shaped end supports, 175cm x 81cm. £60-£100

**647**

A quantity of Poole pottery twin tone dinner and teaware. £50-£100

**648**

A glazed cherub figure group, 57cm high. £100-£200. See illustration.

**649**

A glazed plaster bust of an Art Nouveau lady with dove, 64cm high. £40-£60.

See illustration.

**650**

A vintage wicker and cane Colonial planters type chair. £100-£150

**651**

A Crown Devon serving dish; a Carlton ware leaf shaped fruit dish; a glazed pottery Moon flask shaped vase decorated peacock feathers; two coloured glass dolphin ornaments etc. £30-£40

**652**

A pair of faux marquetry French style bombe shaped chests fitted two drawers, raised on cabriole supports with gilt metal mounts, 46cm wide x 33cm deep x 85cm high. £150-£250

**653**

An Ercol stick back Windsor type chair. £40-£60

**654**

A decorative Japanese lacquer and hardstone fold screen. £300-£400

**655**

A silver plated dresser style three bottle Tantalus. £85-£120

**656**

An Art Deco chrome wall light, having white opaque shade. £20-£40

**657**

An Art Deco green glass dressing table set. £20-£30

**658**

An Art Deco faux burr walnut coffee / book table. £150-£200

**659**

A coffee table in the form of a large vintage style trunk, 121cm x 76cm.

£60-£100

**660**

A large pair of Lily Bollinger type wine coolers, 64cm long x 38cm wide x 30cm deep. £120-£150

**661**

A large walnut and sycamore bespoke circular centre table, having cross banded decoration and raised on a quadruple base, 180cm dia. £400-£600

**662**

A set of six modern white "Eiffel" design dining chairs. £60-£80

**663**

A contemporary bronze study of puma crouching on a tree stump, signed Rubin on a marble plinth, 63cm overall. £50 - £100



Lot 648



Lot 649

Special attention is drawn to the Conditions of Sale printed at the back of this catalogue.

Clarke and Simpson are pleased to offer a packaging and shipping service worldwide through "the-saleroom.com Delivery Service". The professional team will pack and ship items from very small non-breakables such as jewellery and coins through to larger and more fragile items such as paintings and works of art. Shipping and insurance is at the buyer's expense.

Shipping payment must be made to "the-saleroom.com Delivery Service" prior to departure and excludes local duties and taxes. Please note that Clarke and Simpson do not pack or ship items - all requests are sent to our specialist handlers at "the-saleroom.com Delivery Service" who can be contacted directly via [delivery@atgmeadia.com](mailto:delivery@atgmeadia.com)

the-saleroom.com  
delivery service





Auctions

Clarke &  
Simpson

# *Worldwide from Campsea Ashe*



We have registered buyers from all of the fifty countries shown below in the last twelve months – what do you have to sell that would benefit from a worldwide audience!



Clarke & Simpson Auction Centre, Campsea Ashe, Nr Wickham Market, Suffolk IP13 0PS T: 01728 746323  
[www.clarkeandsimpson.co.uk](http://www.clarkeandsimpson.co.uk) CandSAuctions @CandSAuctions

# TERMS AND CONDITIONS OF SALE

## 1. INTRODUCTION

The following defining terms are used in these conditions:-

“Auction”	Means any auction conducted by Clarke and Simpson Auctions Ltd. either at the premises owned by them or elsewhere (including any internet based auction);
“Auctioneer”	Means Clarke and Simpson Auctions Ltd. authorised auctioneer as appropriate;
“Bidder”	Means a bidder at an auction, including the bidders personally present at the venue and those bidding by telephone or over the internet or otherwise;
“Buyer”	Means the bidder whose bid was the last bid when the auctioneer concludes the bidding;
“Conditions”	Means these Terms and Conditions of Sale;
“Hammer Price”	Means the level of bidding reached (at or above any reserve) when the auctioneer brings the bidding to a close;
“Lot”	Means any property accepted by Clarke and Simpson Auctions Ltd. for offer at auction;

## 2. DESCRIPTION

No warranty is given or implied by the description in the catalogue. Each lot is sold in its condition at the time of sale with all faults, defects, imperfections and errors of description (if any). Whilst every endeavour has been made to describe the items adequately and properly, the purchaser shall deem to have inspected the lot at time of purchase. All catalogues and seller's and buyer's guides are for information only and do not form part of the contract.

## 3. STATUTORY REQUIREMENTS

Purchasers will be deemed to have satisfied themselves prior to purchasing regarding current legal requirements (e.g. Health & Safety at Work Act) and it is expressly brought to the bidders attention that equipment in the sale may not necessarily comply with such regulations. Any purchaser shall satisfy himself as to any statutory requirement for the use of any item and no liability shall rest with the vendors nor the Auctioneers.

## 4. THE AUCTION

All auctions are conducted at the absolute discretion of the auctioneer. The auctioneer shall conduct the auction with reasonable skill and care. The vendor reserves the right to sell subject to reserve price in respect of all lots. What constitutes a bid shall be at the absolute discretion of the auctioneer, acting with appropriate skill and care. The auctioneer shall have the right to refuse any bid in all cases but most notably when such a bid does not exceed the previous bid by at least 10% or such a proportion as the auctioneer shall in his absolute discretion direct. Where two or more bids at the same level are simultaneously received by the auctioneer, the auctioneer at his absolute discretion shall determine which bid to prefer. Subject to the foregoing where two or more bids are at the same level are simultaneously received by the auctioneer, the bid submitted in the room shall take preference over a bid submitted by telephone or internet at the same level. Any bid made or attempted by telephone or over the internet will only be deemed to have been made if received by the auctioneer. The auctioneer reserves the right to withdraw, consolidate or divide any lot or lots or submit them in any order that they desire. The auctioneer has the right at his absolute discretion to refuse admission to his premises or attendance at (or participation in) any auction by any person. In the case of any dispute, the auctioneer shall be sole arbitrator in any matters arising during or out of the sale.

## 5. BIDDERS

All bidders will be required to register their particulars, bidders attending in person and those accompanying them may be required to provide photo ID and separate confirmation of address prior to viewing or taking any part of the sale and before entering any part of the premises to view. All bidders accept full liability for all bids submitted. Subject to the clause in this document headed “The Auction”, the highest bidder at the close of bidding shall be the buyer. Any dispute about a bid shall be settled at the auctioneer's absolute discretion.

Bidders are all deemed to act as principles unless there is prior written acknowledgement by Clarke and Simpson Auctions Ltd. that a bidder is acting as an agent for a named principle. Bidders are strongly encouraged to attend the auction in person. The bidders shall be responsible for any decision to bid for a particular lot and shall be deemed to have carefully inspected and satisfied themselves as to condition, neither Clarke and Simpson Auctions Ltd., their employees or agents shall be responsible for any neglect or default in doing or failing to do so. Bidders will be given ample opportunity to view and inspect before the sale and prospective buyers must satisfy themselves as to all matters.

## 6. DEFAULT

Clarke and Simpson Auctions Ltd. shall act as agent of the vendor only. Any contracts for the sale of a lot shall be formed between the vendor and the buyer. As agent only Clarke and Simpson Auctions Ltd. shall not be responsible for default by the vendor or the buyer. If any lot is not paid for in full and taken away in accordance with these conditions, or there is any other breach of the conditions, then Clarke and Simpson Auctions Ltd. as agents for vendor shall at its absolute discretion and without prejudice to any other rights it may have, be entitled to exercise all or any of the following rights and remedies:-

- 6.1 to proceed against the buyer for any action of debt or damages for breach of contract;
- 6.2 to rescind the sale of that lot or lots sold by Clarke and Simpson Auctions Ltd. to a defaulting buyer;
- 6.3 to resell the lot (by auction or private treaty) in which case the defaulting buyer shall be responsible for any resulting deficiency in the total amount due (after crediting any part payment and adding any resale costs), any possible surplus so arising shall belong to the vendor;
- 6.4 to remove, store and insure the lot at the expense of the defaulting buyer and, in the case of storage, the location of such storage shall be at Clarke and Simpson Auctions Ltd. discretion;
- 6.5 to charge interest at a rate not exceeding 2% per month of the total amount due to the extent that it remains unpaid for more than two working days after the sale;
- 6.6 to retain that or any lot sold to the defaulting buyer until the buyer pays the total amount due;
- 6.7 to reject or ignore bids from the defaulting buyer at future auctions or to impose conditions before any such bids are accepted;
- 6.8 to apply any proceeds of sale for any other lots due or in the future becoming due to the defaulting buyer towards the settlement of the total remaining due.

## **7. INDEMNITIES, PENALTIES AND LIMITATIONS OF LIABILITY**

Purchasers shall pay for any damage done by themselves or their agents during the removal of their lots. Attendance at the sale shall be at the risk of those attending in respect of both themselves and to their goods and vehicles.

Any indemnity under these conditions will extend to all actions, costs, expenses, claims and demand whatsoever suffered or incurred by the person entitled to the benefit of it and Clarke and Simpson Auctions Ltd. declare themselves to be a trustee of the benefit of such indemnity so far as it is expressed to be the benefit of its employees and agents.

Whilst Clarke and Simpson Auctions Ltd. endeavour to ensure that the information on their websites is correct, they do not warranty the accuracy and completeness of the material on their website. Also Clarke and Simpson Auctions Ltd. can make changes to the material on their website, or alter the products and prices described on it, at any time without notice. The material on the website may be out of date, Clarke and Simpson Auctions Ltd. make no commitment to update such material. All material on the websites is provided "as is" without any conditions, warranties or other terms at any time. Accordingly to the maximum extent permitted by law, the website is provided to all parties on the basis that Clarke and Simpson Auctions Ltd. exclude all representations, warranties, conditions and other terms which, but for this legal notice, might have effect in relation to the website.

## **8. ELECTRICAL SAFETY REGULATIONS**

All electrical lots are subject to electrical safety regulations and fall within "the low voltage electrical equipment (safety) regulations 1989" – all items have been pat tested for safety but are not guaranteed in working order.

## **9. GENERAL MATTERS**

Any notice to any buyer, vendor, bidder or viewer may be given by first class mail or email in which case it shall be deemed to have been received by the addressee forty eight hours after posting or sending. All notices to Clarke and Simpson Auctions Ltd. must be sent in writing and email is not acceptable. Any indulgence extended to any person by Clarke and Simpson Auctions Ltd., notwithstanding the strict terms of these conditions or the terms of consignment, shall affect the position at the relevant time only and the respect of that particular concession only; in all other respects these conditions shall be construed as having full force and effect. These conditions and any disputes or claims arising out or in connection with them or their subject matter or formation (including non-contractual disputes or claims) are governed by and construed in accordance with the law of England. The parties irrevocably agree that the courts of England have exclusive jurisdiction to settle any dispute or claim that arises out of or in connection with the agreement or its subject matter or formation (including non-contractual disputes or claims).

## **10. PUBLICITY**

Any catalogue and buyer and seller guides are provided for information only and do not form part of these conditions. The catalogue and the buyer and seller guides may contain additional terms and conditions. Clarke and Simpson Auctions Ltd. reserve the right to use any photographs, background information and research for publicity purposes both before and after the sale.

## **11. THE PURCHASE PRICE AND PAYMENT ARRANGEMENTS**

There is a buyer's premium 18% plus VAT payable in respect of the sale. Any purchases made via "www.the-saleroom.com" or "[www.ibidder.com](http://www.ibidder.com)" shall be subject to an administration charge of 5% plus VAT on the price.

Preferred payment is cash, bank transfer or personal debit card. Such cards may only be used on a chip and pin basis with the owner present. No payment over £350 will be accepted by telephone. Payment will be accepted online via

our secure e commerce account. We do not accept credit cards or international debit cards. Payment by cheque will only be acceptable subject to prior arrangement. No lot will be removed from the sale until any cheque has cleared. Payment is due on the day of the sale. Cash in excess of £7,500 (including V.A.T.) will not be accepted from any one person, this is not allowed due to Money Laundering Regulations 2007. All money received will be held in Clarke & Simpson Auctions Ltd. Clients No 2 Account at Barclays Bank plc, Framlingham, Suffolk. Account Number 83428591. Sort Code 20 98 07. Clarke and Simpson Auctions Ltd. have no responsibility for any lot between the close of bidding and payment being made and subsequent collection. All payments from overseas buyers shall be made by Bank Transfer and bank fees paid in addition. Please note all policy regarding payment will be enforced and suitable arrangements must be made.

## **12. REMOVAL OF LOTS**

The ownership of any lot purchased shall not pass to the relevant buyer until they have made payment in full to Clarke and Simpson Auctions Ltd. of the total amount due including any storage due.

The buyer shall at their own risk and expense take away any lot that they have purchased and paid for, not later than seven days following the day of the auction. Any purchaser shall be responsible for removal and insurance and lots stored and storage charges. All lots sold shall be subject to the following storage charges after seven days from the sale:

7-14 days 25% of the lot value + VAT or £7.50+VAT per lot whichever is the greater

14-21 days 50% of the lot value + VAT or £15 +VAT per lot whichever is the greater

21-28 days 75% of the lot value + VAT or £22.50 + VAT per lot whichever is the greater

Any lots not collected after 35 days will be re-sold with immediate effect on behalf of the purchaser and the proceeds of the sale retained in lieu of outstanding storage charges. The policy shall be rigorously enforced and no lots shall be collected unless outstanding storage charges are met.

## **13. NUMBER BIDDING**

This will be used for speed and efficiency as in all our sales. All prospective purchasers must complete a registration form and register in the office on the viewday or morning of sale to receive a number for bidding.

PLEASE ALSO NOTE THAT PHOTO ID AND ADDITIONAL CONFIRMATION OF ADDRESS WILL BE REQUIRED.

## **14. ONLINE BIDDING**

Clarke & Simpson Auctions Ltd. offer an online bidding service via the-saleroom.com and ibidder.com for bidders who cannot attend the sale.

In completing the bidder registration on [www.the-saleroom.com](http://www.the-saleroom.com) or [ibidder.com](http://ibidder.com) and providing your payment card details and, unless alternative arrangements are agreed with Clarke & Simpson Auctions Ltd.:

1. authorise Clarke & Simpson Auctions Ltd., if they so wish, to charge the payment card given in part or full payment, including all fees, for items successfully purchased in the auction via [www.the-saleroom.com](http://www.the-saleroom.com) or [ibidder.com](http://ibidder.com), and
2. confirm that you are authorised to provide these payment card details to Clarke & Simpson Auctions Ltd. through [www.the-saleroom.com](http://www.the-saleroom.com) or [ibidder.com](http://ibidder.com) and agree that Clarke & Simpson Auctions Ltd. are entitled to ship the goods to the card holder name and card holder address provided in fulfilment of the sale.

**Please note that any lots purchased via the-saleroom.com or ibidder.com live auction service will be subject to an additional 5% buyer's premium + VAT at the rate imposed on the hammer price.**



## 15. TELEPHONE BIDDING

We offer a telephone bidding service where possible, but this service can never be guaranteed. No applications for telephone bids will be accepted after the end of the viewing prior to sale day for any sale. All potential telephone bidders must provide a valid landline number and email address and agree that they have read and understood the Terms and Conditions. No phone bids will be accepted for any lot with a lower guide figure of less than £100.

All those who wish to bid by telephone will be expected to deposit the minimum guide for all lots that they wish to bid upon into the Clients Account for Clarke and Simpson Auctions Ltd before the sale starts. This payment is not acceptable by card. In the event of default, this sum shall be retained as part payment or any part may be retained to recover losses under clause 6 of these Terms and Conditions. We will expect payment of the balance owing by BACS on the following day, any payment not met within five working days will result in the forfeiture of the deposit paid.

## 16. AT FAULT (A.F.) LOTS

Certain lots are catalogued at (A.F.), damaged, restored etc., however the absence of any such notice does not imply that the piece is free from defects, nor does it indicate that other defects are not also present. Mention is not made of breakage, cracks, chips or any damage which can be noted by careful inspection, therefore, intending purchasers MUST, in all cases, be responsible for determining the condition of the lots themselves.

## 17. ESTIMATES

Presale estimates are intended only as a guide for intending purchasers, are given in good faith and subject to revision.

## 18. CONDITION REPORTS

Clarke and Simpson are unable to guarantee that requests for condition reports/images received after close of the viewing on the day prior to auction, will be responded to. Clarke and Simpson are happy to give a Condition Report on the physical condition of goods, this will be provided on behalf of the seller on the understanding that Clarke and Simpson are not entering into a contract with you in respect of the Condition Report and accordingly does not assume responsibility to you in respect of it. All lots are available for your own inspection or for inspection by an expert instructed by you, therefore these Condition Reports are for guidance only and all lots are sold "as found". Condition reports do not form part of a contract.

## 19. COMMISSION BIDS

The auctioneers will be pleased to execute bids for those unable to attend the sale. Lots will be purchased at the lowest bid the room bidding or any reserves will allow. In the event of identical bids, the earliest bid received will take precedence. There must always be a maximum limit indicated. Buy or unlimited bids will not be accepted. Commission bids placed by telephone are accepted at the client's risk. We urge our clients to place such bids before the start of the sale. All such commissions are left entirely at the buyer's risk.

## 20. VALUE ADDED TAX

The symbol \* after any lot number indicates that Value Added Tax is payable by the buyer on the hammer price.

## 21. AUCTIONEERS MARGIN SCHEME

The Auctioneers Margin Scheme allows auctioneers to sell items without VAT on the hammer price. Under the margin scheme an amount equivalent to VAT at the current rate is added to the buyer's premium. This amount cannot be refunded. The VAT element will not be shown separately on the buyer's invoice.

## 22. ATTRIBUTION OF PICTURES AND DRAWINGS

Every effort is made to ensure the accuracy of any statements as to authorship, attribution, origin, date, age, provenance and condition of any lot whether or not such statement forms part of the description of any such lot. Whether any such statement is made orally or in the catalogue it is an expression of opinion and not to be taken as being or implying any warranties or representations of facts by the auctioneers. Each buyer by making a bid for a lot acknowledges that he has satisfied himself fully as to the attribution and condition of the lot. The following is for guidance only and does not form part of a contract.

- A. The forename (s) (or full stops where not known) and surname of an artist indicates in our opinion a work by the artist.
- B. The initials of the forename (s) and the surname of the artist indicates in our opinion a work of the period of the artist which may be wholly or in part his work.
- C. The surname of the artist indicates in our opinion a work of the school or by one of the followers of the artist or in his style and of uncertain date.
- D. *Signed, Dated, Inscribed* indicated in our opinion work signed/dated/inscribed by the artist.
- E. *Bears signature* indicates in our opinion that this is not the signature of the artist.
- F. *Attributed to* may be used to denote a traditional attribution based on style.
- G. *Manner of* indicates in our opinion a work executed in the artist/craftman's style but of a later date.
- H. *After* indicates in our opinion a copy (of any date) of work of an artist or craftsman.

The addition of a question mark after any of the cataloguing terms above indicates an element of doubt.

## 23. DRIOTE DE SUITE ROYALTY CHARGES

All United Kingdom Art Market professionals (which includes auctioneers) are required to collect a royalty payment for all qualifying Works of Art. This applies to living artists and those who have died in the last 70 years. This payment is calculated on qualifying Works of Art which are sold for a hammer price more than the UK sterling equivalent of €1,000 (the UK sterling equivalent will fluctuate in line with prevailing interest rates calculated by the Artist's Resale Right Service Hub, based on the European Central Bank reference rate published at 2.15pm on the day of the sale, and can be found on [www.dacs.org.uk](http://www.dacs.org.uk)).

All items in this catalogue that are marked "✓" are potentially qualifying items, and the royalty charge will apply if the hammer price is more than UK sterling equivalent of €1,000. The royalty charge will be added to purchase invoices, and must be paid before items can be cleared. All royalty charges are paid to the design and Artists Copyright Society (DACS) by the auctioneers and no handling costs or additional fees with respect to these charges will be retained by the auctioneer. This charge may also be applicable to lots not marked "✓" and buyers must satisfy themselves.

The royalty charge for qualifying items which achieve a hammer price of more than the UK sterling equivalent of €1,000, but less than the UK sterling equivalent of €50,000 is 4%. For qualifying items that sell for more than the UK equivalent of €50,000 a sliding scale of royalty charges will apply. For a complete list of the royalty charges and threshold levels please refer to [www.dacs.org.uk](http://www.dacs.org.uk). There is no VAT payable on this royalty charge.



Clarke & Simpson Auction Centre, Campsea Ashe

Nr Wickham Market, Suffolk IP13 0PS

T: 01728 746323 E: [auctions@clarkeandsimpson.co.uk](mailto:auctions@clarkeandsimpson.co.uk)

[www.clarkeandsimpson.co.uk](http://www.clarkeandsimpson.co.uk)