

Clarke &  
Simpson

*Art Deco,  
20th  
Century  
Design &  
Retro*



Saturday 5th September  
at 10am

# *Important Information*

Due to COVID-19 restrictions, we ask those attending our Auction Centre to please observe the following:

Face coverings must be worn in the salerooms and our office at all times.

Please be mindful of others and observe the minimum social distancing requirement of 1 meter.

If you feel unwell at all, please stay at home – you can follow the sale and bid online live via [www.the-saleroom.com](http://www.the-saleroom.com)

If you have any queries whatsoever, please do not hesitate to contact the office on 01728 746 323.

## *Viewing:*

By appointment on Thursday 3rd September

Open viewing on Friday 4th September 10:00 - 18:00 and on the day of sale from 08:30, but we may ask those attending to wait if the room is busy.

# Clarke & Simpson

Auctions

## *Art Deco, 20th Century Design & Retro*

*Saturday 5th September  
at 10am*

### Viewing:

Thursday 3rd September by appointment only

Friday 4th September 10am - 6pm

Morning of the sale from 8.30am

### Enquiries:

James Shand, Auctioneer & Valuer

Geoffrey Barfoot, Auction Centre Manager & Valuer

### Buyers' Premium:

18% plus VAT

Please see [www.the-saleroom.com](http://www.the-saleroom.com)  
for further images

**the saleroom**  
The home of art & antiques auctions

Special attention is drawn to the  
Conditions of Sale printed at the back of  
this catalogue.



Campsea Ashe  
Nr Wickham Market  
Suffolk IP13 0PS  
Tel: 01728 746323 Fax: 01728 748173  
Email: [auctions@clarkeandsimpson.co.uk](mailto:auctions@clarkeandsimpson.co.uk)  
[www.clarkeandsimpson.co.uk](http://www.clarkeandsimpson.co.uk)



@CandSAuctions



CandSAuctions



Lot 1



Lot 25



Lot 28



Lot 56



Lot 68



Lot 71

**1**  
A gilt Art Deco design female face wall mask, 28cm. £20-£30. See illustration.

**2**  
An Art Deco design chrome model of an aeroplane, on diamond shaped stand, 13cm. £10-£20

**3**  
An Art Deco design model a spitfire, raised on zigzag stand and Bakelite base, 12cm. £10-£20

**4**  
An Art Deco design stylised model of a spitfire, on wooden stand, 11cm. £10-£20

**5**  
A Model of a Blenheim bomber, on circular chrome plated stand, 23.5cm long. £10-£20

**6**  
An Art Deco design model of a spitfire, mounted on ash tray, 16cm. £10-£20

**7**  
An Art Deco model of a bomber, on tall zigzag stand AF, 28cm. £10-£20

**8**  
Eamon Shepherd pottery free form vase, 21cm; and another larger similar, in the form of a horned beast, 31cm. £10-£20

**9**  
An Art Deco design wooden cigarette box, the lid decorated with an areoplane. £10-£20

**10**  
Seven various horn animal figures. £20-£30

**11**  
A French cold painted spelter figure, of a young maiden with tambourine, 34cm. £10-£20

**12**  
A composite cocktail set. £10-£20

**13**  
Two Art Deco design brass models of sailing boats. £10-£20

**14**  
A French Art Deco design spelter inkwell, in the form of the Arc de Triomphe. £10-£20

**15**  
An Art Deco chrome figure of a naked girl with dinner gong. £10-£20

**16**  
An Art Deco period cinema seat ash tray; and a torch shaped polished metal wall appliqué. £10-£20

**17**  
An Art Deco design Bakelite twin branch wall light. £10-£20

**18**  
An Art Deco wooden lamp base of stepped form, 31cm. £10-£20

**19**  
An Art Deco chrome poker and tong set. £10-£20

**20**  
A brass Art Deco design "Studio 54" sign. £20-£40

**21**  
A metalware shop display stand, for Morley Stockings, 76cm high. £20-£30

**22**  
A composite figure of a scantily clad maiden, holding a ball aloft, 36cm. £10-£20

**23**  
An Art Deco design composite figure, of a seated bathing girl, 20 cm long. £5-£10

**24**  
An Art Deco child's deep seated chair, with Teddy bear upholstery. £10-£20

**25**  
A table lamp, in the form of female tennis players resting, after Max Vernier, signed Jance, 41cm long. £100-£150. See illustration.

**26**  
A cased Art Deco silver engine turned decorated dressing table set, Goldsmiths and Silversmiths Co. London 1939. £30-£50

**27**  
A mid-20th Century globe, in the form of an aeroplane, 39cm high. £30-£40

**28**  
An Art Deco skater lamp, with original landscape shade. £50-£70. See illustration.

**29**  
An Art Deco style composite figure of a dancing girl, 29cm high. £10-£20

**30**  
An Art Deco mahogany cased Smith electrical mantel clock, 24cm high. £10-£20

**31 ✓**  
Ann Patterson Wallace, rural landscape study dated 1976, signed watercolour, 52cm x 73cm. £30-£50

**32 ✓**  
Paul Oppenheim, "The Thames Near Henley" pencil and wash study initialled and dated 1985, Gallery label verso, 30cm x 40cm. £20-£40

**33 ✓**  
Peter Franklin, study of nymph and cherubs, oil on canvas 121cm x 90cm, in gilt oak leaf decorated frame. £200-£300

**34 ✓**  
Almardo Beccari, study of cherubs, signed oil on canvas, 126cm x 91cm in decorative gilt frame. £200-£300

**35**  
Eight treen mushrooms. £10-£20

**36**  
Three Wold Hutton-Le-Hole pottery bowls. £10-£20

**37**  
A Studio pottery bowl, decorated with a dove. £10-£20

**38**  
A Studio pottery charger, with striped decoration, 40cm dia. £10-£20

**39**  
A Liberty style frog decorated candelabra. £20-£30

**40**  
A Tiffany style table lamp, lily pad base and coloured glass shade. £10-£20

**41**  
Five treen posy vases. £10-£20

**42**  
Four Arts & Crafts design copper glass holders and glasses. £10-£20

**43**  
A pair of brass Arts & Crafts design candlesticks. £20-£30

**44**  
An Art Deco blue tinted glass and faux enamel part dressing table set; and an Art Deco design chrome tray. £20-£30



45

A Keith Murray style Studio pottery baluster vase, of ribbed design, 23cm high. £10-£20

46

An Arts & Crafts style brass bowl, with swing handle and foliate decoration with associated liner. £20-£30

47

Three treen ware oval pedestal dishes. £10-£20

48

A Barbara Hepworth style carved treen figure. £10-£20

49

Four vintage carved African native figures. £10-£20

50

A mid-20th Century teak fruit bowl. £10-£20

51

A carved hard wood African Art candle holder, in the form of a seated semi-naked woman. £10-£20

52

An Art Deco design copper vase with teak handle. £10-£20

53

A carved hard wood figure of "The Little Mermaid". £10-£20

54

A Guzzinia Italian glass red and cream flash shallow bowl, 40cm dia. £10-£20

55

A carved wooden mid-20th Century three section dish. £10-£20

56

A Henry Moore style carved wooden family group. £20-£30. See illustration.

57

An Art Deco design leaf decorated platter, with gilt decoration. £10-£20

58

A carved ebony African Art figure, of a seated nude female. £10-£20

59

A mid-20th Century teak framed wall mirror. £20-£30

60

A coloured print "RMS Queen Elizabeth Cunard White Star". £20-£30

61

An Art Deco period oak folding cake stand. £10-£20

62

Four various decorative vintage frames. £10-£20

63

An early 20th Century ebonised and gilt decorated picture frame, containing Paisley design fabric. £10-£20

64

A decorative frame containing a triptych of Klimt prints. £10-£20

65

Five various decorative vintage frames. £10-£20

66

An Arts & Crafts design oval oak framed wall mirror. £20-£30

67

A bronze table centre piece epergne in the Art Nouveau style, having central bowl supported on pierced and scrolled arms with three hanging baskets, 59cm high. £150-£200

68

An Art Nouveau pewter dish, decorated with a female figure with swirling hair and dress, raised foliate decoration with scrolled leaf handle, 32cm x 29.5cm in extremes. £30-£50. See illustration.

69

A vintage 78rpm record, "Rock Around the Clock", Bill Hailey and His Comets, Brunswick label; and a Parlophone 78rpm record Ron Goodwin and His Orchestra Limelight and the song from Moulin Rouge. £30-£50

70

A vintage wall mounted wooden calendar. £40-£60

71

An Art Nouveau plated wall plaque, decorated central figure of a maiden and cherub, leaf surround and shaped pierced border, 52cm dia. £100-£150. See illustration.

72 ✓

Robert Sadler, "Fieldworks" signed oil on board, unframed, 41cm x 46cm. £200-£400. See illustration.

73 ✓

Gyam, study of a mountainous landscape with trees in the foreground, signed oil on canvas. £100-£150

74 ✓

Mary Potter and William Plomer, "A Note From A Cello" (the Maltings restored) limited edition 41/75. £100-£200. See illustration.

75 ✓

After Charles Rennie Macintosh, coloured print "Japanese Witch Hazel, Walberswick" and "Fritillaria". £20-£30

76 ✓

After Daphne Odjig, pencil signed coloured print "A New Day Begins"; and 20th Century school, small oil on board of a Venetian scene. £20-£30

77 ✓

Christian Rohlfs, coloured abstract print; and John Calder, 2013, abstract study, (2). £20-£30

78 ✓

Mary Potter, "The Yew" small watercolour study, label verso. £60-£80. See illustration.

79 ✓

Robert Sadler, "Sunrise", small watercolour, 6.5cm x 12.5cm; and another similar, (2). £80-£120. See illustration.

80 ✓

Odec "Janjana", (big hills on plain), study on recycled paper, gallery label verso; and McHatten, artist proof "Advent". £40-£60

81 ✓

Richard Murrin, "Hot Air", study of hot air balloons flying over the West Pier, Brighton, signed oil on canvas, dated verso 3.5.1987, 118cm x 75cm. £40-£60

82

Study of a fish, oil on board, 43cm x 58cm. £50-£80

83

Study of a Wally Bird, oil on board, 50cm x 34cm. £50-£80



Lot 72



Lot 74



Lot 78



Lot 79



Lot 79-1



Lot 94



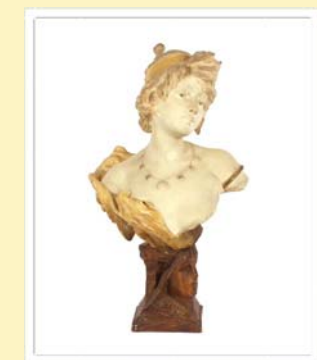
Lot 95



Lot 96



Lot 96 - 1



Lot 120

84 ✓

**A blue toned gelatin silver print**, self portrait by Alistair Thain, 40cm x 33cm. £200-£300

85 ✓

**Pat Cleary**, study of sheep on a hillside path, signed oil on board, 54cm x 90cm. £200-£300

86 ✓

**Gordon Lindsay**, study of cattle in a highland landscape, signed oil on canvas, 31cm x 74cm. £50-£60

87

**Emma Nash**, 20th Century school, study of a seated nude female, 59cm x 40cm. £20-£30

88 ✓

**Finsen**, coloured lithograph, embracing ballet dancers, signed limited edition, 238/250, 68cm x 58cm. £100-£150

89

**Albert Bowers**, sepia, watercolour studies of rural scenes, 43cm x 35cm, a pair. £20-£40

90 ✓

**Roland Hilder**, 1905-1993, study of buildings around a pond, signed oil on board, 37cm x 47cm. £300-£400

91 ✓

**James Derber**, a pair of seascapes, signed oils on board, 13cm x 16cm, in decorative gilt frames. £60-£100

92 ✓

**James Allen**, "Summer on the Yare", signed watercolour, 13.5cm x 24cm. £100-£200

93 ✓

**James Allen**, study of pink footed geese on the Norfolk Broads, signed watercolour, 18cm x 24cm. £100-£200

94 ✓

**Keith Baynes**, 1887-1977, study of "Riquewhir Alsace", signed watercolour, dated 1973, 26cm x 30cm. £150-£250. See illustration.

95 ✓

**Keith Baynes**, 1887-1977, study of Papighan, Gendarmes, signed watercolour, 20cm x 27cm. £100-£200. See illustration.

96 ✓

**Stanislaus Brien**, (active London 1930s), a pair of charcoal drawings of Tiger and Lynx, pencil signed, 20cm x 30cm. £150-£250. See illustration.

97

**An industrial style metal framed chair and coffee table set**, comprising pair of Loft style chairs with faux leather upholstery, a pair of matching foot stools and a glass top coffee table. £250-£350

98

**An Art Deco burr walnut secretaire**, the fall front opening to reveal a fitted interior, above three drawers with chrome handles, raised on a shaped apron and bracket supports, 73cm x 111cm. £150-£250

99

**An Art Deco walnut display cabinet**, of arched form, the interior glass adjustable shelves enclosed by a pair of gilt decorated glazed panelled doors, raised on bracket feet, 104cm x 125cm high. £60-£100

100

**A 1930's German desk lamp**, 30cm high. £40-£60

101

**A pair of German brass Art Nouveau folding candle sconces**. £50-£80

102

**A copper and brass tea kettle**, on spirit heater stand, with ebonised handle. £20-£40

103

**A Vasart style green glass shallow bowl**, 37.5cm dia. £20-£40

104

**An Art Deco amber tinted ribbed glass shallow bowl**, 29cm dia. £20-£30

105

**A heavy amber glass fruit bowl of oval form**, 25.5cm. £20-£40

106

**A Swedish design frosted glass vase of tapering oval form**, 17.5cm long overall x 12.5cm high. £20-£40

107

**An amethyst glass bowl with ribbed central band and a similar fruit bowl on pedestal foot**. £20-£40

108

**An Art Deco mottled glass bowl**, raised on three stylised angular feet, 25.5cm dia.; and a blue glass vase of conical tapering form, 14cm high. £20-£40

109

**A French Sarreguemines pottery baluster vase**, with green and blue mottled glazes, 28cm high; and a brown glazed earthenware baluster jug with raised decoration, 19cm high. £20-£40

110

**An Art Deco oak coal purdonium with chrome handles**. £20-£30

111

**A Minton majolica baluster water jug**, the spout with mask head decoration above stylised floral motifs, on a blue ground, 24cm high. £40-£60

112

**An electro plated two handled entree dish**; a Guernsey jug; a plated coaster; a pair of grape scissors and four pairs of nut crackers. £20-£30

113

**A 9 carat gold pendant hung to a fine link chain**; a Victorian Pietra Dura yellow metal mounted brooch; a ladies 9 carat gold wrist watch and a white metal tasselled watch chain. £60-£80

114

**A pair of Norwegian sterling and enamel decorated coffee spoons**; two white metal spoons decorated with windmills; and a brass pin tray with stylised dog decoration. £20-£40

115

**A sterling silver vase holder with pierced decoration**; a pair of Danish white metal candle holders; a white metal fruit ornament; and a brass dog's head paperweight. £20-£40

116

**A folder containing various drawings by J.M. Howarth**, mostly North Country scenes. £40-£60

117

**A quantity of various costume jewellery and beads**; a Caithness glass timepiece; a pair of Indian hardwood elephant book-ends etc. £20-£40

118

**A French Railway travel poster for the Basque country**. £40-£60

119

**An Arts & Crafts oak book holder**, having brass plaque, inscribed "Choose an author as you choose a friend", 25.5cm. £40-£60



**120**

A large Art Nouveau glazed bust of an elegant young lady, signed Morin and impressed with a stamp for Van Hasselt & Co., Paris, 60cm high. £200-£300. See illustration.

**121**

A glazed plaster bust, "Bohème", 36cm high. £60-£100. See illustration.

**122**

A Chloe designer handbag. £50-£80

**123**

Various silk dresses; velvet dress etc. £20-£30

**124**

A Poole pottery cigarette box/ashtray. £10-£20

**125**

A Poole pottery ashtray, shaped 468 by Ester Needs (Stephens). £10-£20

**126**

A Poole pottery baluster bowl, pattern KN, by Josephine Sydenham. £10-£20

**127**

A Poole pottery baluster vase of squat form, by Carter, Stabler Adams. £20-£30

**128**

A hob-nail cut glass and plated oil lamp, having opaque yellow glass shade, 28cm high. £40-£60

**129**

A Shelley porcelain vase of conical tapering form, 16.5cm high. £20-£40

**130**

A clear glass candle stand, 30cm high; and a smaller example with twist stem, 15cm high. £20-£40

**131**

A pair of glass square column candlesticks, raised on stepped bases, 17cm high. £20-£30

**132**

A Wedgwood glass owl ornament; various clear and coloured glass animal paper-weights, including Wedgwood. £20-£30

**133**

A Mdina mottled glass scent flask and stopper; and seven various coloured glass paper-weights. £20-£40

**134**

A pair of Wedgwood amber tinted glass candle holders; a blue glass example; a Wedgwood lead crystal candlestick; and another candlestick. £20-£30

**135**

A White Friars knobbly glass lamp base, pattern 9612, circa mid 1960's. £20-£40

**136**

A Dartington Crystal Capredoni glass paper-weight and two wild life decorated glass paper-weights. £10-£20

**137**

A pair of Thomas Nash cuff-links in the form of naked ladies; and an Art Nouveau design white metal brooch depicting a ladies head with flowing hair. £10-£20

**138**

A small silver and enamel decorated double photograph frame. £35-£45

**139**

A pair of silver and enamel Art Nouveau style easel photograph frames. £120-£160

**140**

A cut glass hinged dressing table powder jar with floral decoration, white metal mounts, 15cm dia. £50-£80

**141**

A square cut glass scent bottle with silver mounts. £40-£60

**142**

A silver plated four piece cruet in the form of a vintage car. £40-£60

**143**

In the style of Christopher Dresser, a plated teapot of circular form with angular ebonised handle. £40-£60

**144**

Style of Christopher Dresser, a plated teapot of square form with angular ebonised handle. £40-£60

**145**

An Omega style novelty ball watch. £15-£25

**146**

Three glass silver and white metal mounted scent bottles. £80-£120

**147**

A pair of Russian white metal and enamel decorated cuff-links, with male and female head decoration. £200-£300

**148**

A yellow metal mounted ring set rows of baguette diamonds alternating four brightly cut diamonds in squares, approx. total weight 9gms, (two stones missing). £500-£600

**149**

A Rolex Oyster Air-King gents wrist watch. £400-£600

**150**

A Waltham chrome plated sidereal pocket watch, contained in mahogany fitted box/stand. £300-£500. See illustration.

**151**

A Tag Heuer Monaco automatic chronograph calibre 12 gentleman's wrist watch, numbered to the reverse WEG8821CAW2111-0, strap and clasp heavily worn. £1,500-£200. See illustration.

**152**

Two white metal butterfly wing brooches and a loose hardstone. £20-£30.

**153**

A yellow metal charm bracelet, set various 9 carat gold charms, total gross weight 56gms. £300-£400

**154**

A ladies 9 carat gold wrist watch with white metal chapter ring and enamel numbers; and a Seiko 9 carat gold ladies watch and yellow metal strap. £50-£60

**155**

An Arts & Crafts silver and enamel floral brooch, by A.H. Darby & Son, Birmingham 1944; and a silver clip. £40-£60. See illustration.

**156**

A Sterling silver Mordan Everpoint Patent calendar pencil. £60-£80. See illustration.

**157**

A half sovereign, dated 1912, in 9 carat gold mount. £120-£180

**158**

A half sovereign, dated 1914, in 9 carat gold mount. £120-£180

**159**

Three silver and enamel decorated manicure nail buffs. £50-£80

**160**

A pair of silver mounted easel photograph frames, in the Art Nouveau style. £100-£150



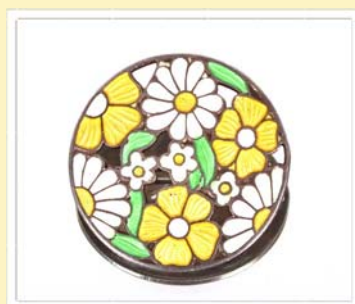
Lot 121



Lot 150



Lot 151



Lot 155



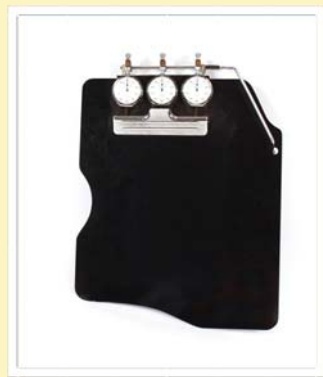
Lot 156



Lot 161



Lot 162



Lot 163



Lot 165



Lot 168

**161**

A pair of silver Charles Horner hat pins. £40-£60. See illustration.

**162**

A silver and amethyst set hat pin by Pierce & Thompson. £40-£60. See illustration.

**163**

A Nero Lemania triple stop watch clip board, with chrome mounts. £80-£120. See illustration.

**164**

A cased set of six silver Onslow pattern teaspoons, Sheffield 1911. £30-£40

**165**

A yellow metal and hardstone set Art Nouveau design bracelet; a silver snap bangle; a large white metal and blue stone set buckle brooch, AF; a filigree work butterfly brooch set with turquoise; a small enamel marcasite set bird brooch; a Scottish Cairngorm mounted brooch in the form of a dagger; a spot hammered boomerang shaped brooch, impressed ER; and another brooch in the form of a Celtic sword. £100-£200. See illustration.

**166**

A Cornelian set 18 carat white gold signet ring; a white metal pearl set dress ring; a small yellow metal heart shaped pendant locket on fine link chain; another fine link chain and a brooch with hair panel. £60-£100

**167**

An Edwardian 9 carat gold bow brooch, set with seed pearls; a 9 carat gold bar brooch, set with three small seed pearls; and another yellow metal bar brooch, set central amethyst flanked by seed pearls. £40-£60

**168**

A 9 carat gold green stone and seed pearl set heart shaped pendant, hung to a fine link chain with barrel clasp. £60-£80. See illustration.

**169**

Four various Swatch watches etc. £20-£30

**170**

A modern silver mounted easel photograph frame with original box; and six silver napkin rings with individual plastic boxes. £60-£100

**171**

A jade roundel; a ring and a hat pin. £80-£120

**172**

A triangular shaped pocket watch, with Masonic motif. £25-£35

**173**

A late Victorian baluster glass and silver mounted claret jug, Birmingham 1891, 20cm high. £60-£80

**174**

A silver mounted Art Deco cigarette box, the lid with engine turned decoration, Birmingham 1931; two plain silver cigarette boxes; and a plated and enamel similar. £60-£100

**175**

A collection of various silver items including a capstan shaped inkwell, a pair of dwarf candlesticks, various small trophy cups, two silver decanter labels, napkin ring etc., some AF. £40-£60

**176**

Various silver flatware including a sauce ladle by Mappin & Webb, a Continental fish slice, various condiment spoons etc. £40-£60

**177**

A pair of silver butter dishes with glass liners, Birmingham 1915; another similar, Birmingham 1930; and a Elkington & Co. silver pedestal sweet meat dish, Birmingham 1913. £60-£100

**178**

An Edwardian silver fruit bowl, having foliate decorated border, raised on scrolled feet, 23ozs. £200-£300. See illustration.

**179**

A silver engine turned cigarette case, with crest; a plain similar and a silver ashtray by Asprey, London. £60-£80

**180**

A 1930's electro plated hip flask, with screw cap. £20-£40

**181**

A silver helmet shaped cream jug, Birmingham 1912; and an Edwardian silver cream jug with gadrooned border, scroll handle, raised on claw feet. £60-£100

**182**

A pair of silver cream jugs, by Walker & Hall, having dimpled panelled bodies, angular scroll handles, raised on pad feet, Sheffield 1915, 10ozs. £100-£150

**183**

An oval silver swing handled fruit basket, Sheffield 1916, decorated with garlands, raised on a circular oval foot, 30ozs. £300-£400. See illustration.

**184**

A cased set of six Edwardian silver hour glass pattern coffee spoons, Sheffield 1910. £20-£40

**185**

A cased set of six silver teaspoons and matching sugar tongs, Birmingham 1915. £30-£50

**186**

A cased set of six silver gilt and enamel decorated bean top coffee spoons. £30-£50

**187**

A cased set of six silver bright cut decorated coffee spoons, Sheffield 1931. £30-£50

**188**

A cased set of 12 silver and mother of pearl handled fruit forks; together with 11 matching knives, in fitted light oak case and stamped for Curtis & Horspool, by special appointment to the King, Leicester. £60-£80

**189**

A set of six silver seal end teaspoons, by Mappin & Webb, Sheffield 1916. £30-£50

**190**

A cased set of six silver teaspoons, having pierced terminals, Sheffield 1912, supplied by Curtis & Horspool, Leicester. £30-£50

**191**

An Arts & Crafts pie crust bordered copper tray, with stylised leaf decoration, 23.5cm dia. £20-£40

**192**

A Smiths 30 hour alarm clock, with football decoration, in original box; a Westclox Baby Ben alarm clock; and another. £10-£20

**193**

An electro plated and marble three bottle perfume Tantalus. £60-£80

**194**

A cloisonne decorated bird cage clock. £35-£45



**195**

A Lalique circular glass dish, decorated with a central figure of entwined Bacchantes. £40-£60

**196**

A Lalique glass figure depicting a naked girl with long tresses on a black glass plinth.

£40-£60

**197**

A Lalique glass figure depicting Leda and the swan. £40-£60

**198**

A Lalique glass figure group of entwined Bacchantes. £60-£80

**199**

A Lalique glass figure of a maiden and fawn. £60-£80

### Works by "The Hat"

The following six lots are by the mysterious Suffolk artist known as "The Hat" and have all been left at various local locations where they have been donated to local charities. We are very pleased to offer these lots for sale at auction on behalf of these causes.

**200 ✓**

**From the Butley phone box,** A panel entitled "Social Distancing" depicting two figures separated by a 2 metre sign, on a Union Jack base, with cut out panel for the phone box handle and attached printed note from "The Hat", 195.5cm high x 76cm wide overall. £300-£500

**201 ✓**

**From the Butley phone box,** A panel depicting elderly couple walking, on Union Jack background, entitled "Was enough done?", 198cm high x 81cm wide overall. £300-£500

**202 ✓**

**From the Butley phone box,** A panel depicting father and child, on a Union Jack background, entitled "Are you going to be alright Dad?", 199cm high x 81cm wide overall.

£300-£500 See back cover illustration.

**203 ✓**

**From East Anglia Children's Hospice,** (EACH), "Exit" by "The Hat", dated November 19 verso, 26.5cm x 35cm, framed and glazed.

£400-£600

See back cover illustration.

**204 ✓**

**From East Anglia Children's Hospice,** (EACH), "Disquiet", by "The Hat", inscribed verso and dated 2020, unframed work on canvas, 55.5cm x 69cm. £400-£600

See back cover illustration.

**205 ✓**

**From the Village of Dennington,** A Pandemic mannequin, entitled "Infected", inscribed verso, "Infected May 2020", mannequin 72cm high x 39cm wide overall, mounted to a board, number 2 of 3 originals and donated to the Neathouse, Dennington, to be sold with T-shirt, "Who is the Hat?". £400-£600

See back cover illustration.

**206**

An Arts & Crafts design brass chamberstick, having raised back with foliate embossed decoration, 27cm high. £30-£50

**207**

A small bronze figure of a bull, on onyx base.

£40-£60

**208**

A 1950's green onyx box, the hinged lid stamp Betjenmann's patent number 449335. £20-£40

**209**

**Newbury Abbot Trent,** (October 1885-August 1953), a bronze figure of a seated child holding her hat, inscribed to the side N.A. Trent 1915, on a green marble plinth, 9cm long x 16cm high.

£400-£500. See illustration.

**210**

**After Auguste Moreau,** bronze figure of a cherub playing a pipe, raised on circular marble plinth, 20cm high. £60-£100. See illustration.

**211**

**An Antique bronze classical figure of Narcissus,** raised on a circular plinth, 21cm. £60-£100

**212**

**A Parian ware figure depicting a naked athlete,** 20cm high. £40-£60

**213**

**A 19th Century bronze figure of Mercury seated on a rock,** 20cm high. £60-£100

**214**

**Ferdinand Preiss,** Art Deco cold painted bronze figure of a young girl wearing red hat, raised on an octagonal marble plinth, 18cm high.

£2,000-£3,000

**215**

**A platinum 1 carat diamond ring,** having chipped diamond shoulders. £1,000-£1,500. See illustration.

**216**

**A Moncrief Monart ware bubbled blue tinted pedestal vase,** 13cm high; and an oval orange moulded glass bowl and cover, the lid decorated with doves of peace, (chipped to rim). £60-£80

**217**

**A blue and green Mdina glass ornament,** 20cm high. £40-£60

**218**

**A Mdina blue baluster vase and a smaller similar example.** £20-£40

**219**

**A Venetian blue opaque glass baluster ewer,** with spiral twist stem and scroll handle; and a similar Vaseline glass posy vase. £20-£40

**220**

**A blue swirled Art Glass bowl,** 12cm dia. and a matching cylindrical beaker vase, 16cm dia. £20-£40

**221**

**A Thorens walnut cased Swiss music box,** playing four airs, 15.5cm. £40-£60

**222**

**A burr maple cigarette box;** a Conway Stewart lever action fountain pen; a Waterman Ideal fountain pen; a small Mauchline ware box, decorated "Cleethorpes from the Sea"; and a vintage leather cigar case. £20-£40

**223**

**A pair of unusual brass candlesticks formed from World War II bomb detonators and raised on square socles and circular mahogany bases,** 21cm high. £20-£40



Lot 178



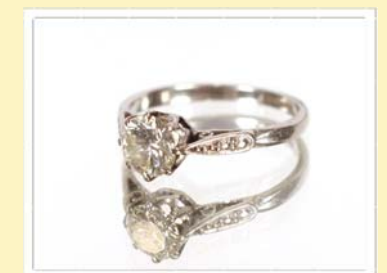
Lot 183



Lot 209



Lot 210



Lot 215



Lot 226



Lot 228



Lot 232



Lot 234



Lot 235

**224**

An Hawaiian lava "Coco Joe's" ashtray; and three Canadian wolf sculptures. £20-£30

**225**

An Isle of Wight glass fruit form paper-weight; another with orange cloud decoration; a floral decorated paper-weight; three bird paper-weights and another in the form of a puffa fish. £40-£60

**226**

A circular oak Mouseman shallow tray, 29.5cm dia. £100-£200. See illustration.

**227**

An Art Deco chrome and enamel decorated Ronson table lighter; a Colibri Webb Corbett crystal table lighter and a Colibri mono gas "25" table lighter with abalone shell finish. £40-£60

**228**

A Doulton Lambeth stoneware tobacco jar. £10-£20. See illustration.

**229**

An Edward VIII coronation mug by Burleyware, designed by Dame Laura Knight. £10-£20

**230**

A Gallé floral decorated glass baluster vase, AF; a Pilkington type lustre decorated baluster vase; a Burmantofts faience ware baluster vase with incised floral decoration; a Belgian Art Deco square section tapering vase, decorated with red, orange and blue running glazes; and a small Doulton Flambé posy pot. £60-£80

**231**

An Art Glass bowl of red and blue swirled design, 12cm dia. overall x 9cm high. £40-£60

**232**

A Rye pottery vase, with green and brown mottled glaze, 17cm high. £40-£60. See illustration.

**233**

A David Leach bowl, having floral spray decoration within lines border. £20-£30

**234**

A Burmantofts faience turquoise glazed spoon warmer, in the form of a seated grotesque frog. £40-£60. See illustration.

**235**

A Royal Doulton cabinet plate, with stylised floral decoration. £10-£20. See illustration.

**236**

A Beswick black and cream decorated floral vase. £20-£40

**237**

A Troika St. Ives pottery vase, circular geometric decoration by Sylvia Valence 1967-1969, 15.5cm high. £60-£80

**238**

A D'Amore Vietri pottery baluster vase of squat form, brightly coloured stylised decoration, 9.5cm high; and a larger example having stylised floral banded decoration on a pink ground, 19.5cm high. £20-£40

**239**

A Sylvac rabbit decorated ashtray and a pair of green Sylvac seated rabbits. £10-£20

**240**

A Crown Devon "Memphis" pattern vase by Colin Melbourne, 14cm. £40-£60

**241**

A Swedish Gustavsberg argenta shallow bowl, 15cm dia. £20-£40

**242**

A Studio pottery sang de boeuf baluster vase, impressed FH to the base, 13cm high; and a Minton Hollins & Co., blue and green mottled glass baluster pottery vase, 17cm high. £20-£40

**243**

A Poole pottery floral decorated bowl, 20cm. £20-£40

**244**

A Dutch pottery bowl, 20cm dia. £20-£40

**245**

A Bretby pottery red glazed night light; and an Allervale green pottery ewer. £20-£40

**246**

A Clarice Cliff Crocus pattern honeypot, 10cm high. £40-£60

**247**

A teak G plan design sideboard, fitted with a shallow drawer, double cupboard under, flanked by deep side cupboard, raised on rounded tapering supports, 138cm wide x 44.5cm deep x 94cm high. £100-£150

**248**

A teak G plan design sideboard, fitted three drawers and three cupboards under, raised on rounded tapering supports, 142cm wide x 45cm deep x 97cm high. £100-£200

**249**

A teak G plan design sideboard, fitted shallow drawer, double cupboards under and flanked by single deep cupboard, raised on rounded tapering supports, 139cm wide x 45cm deep x 93cm high. £100-£200

**250**

A teak G plan design sideboard, fitted three central drawers, flanked by cupboards, raised on square section tapering supports, 153cm wide x 40.5cm deep x 79cm high. £60-£100

**251**

An oak Globe Wernicke five section bookcase, raised on a platform plinth, 86cm wide x 168cm high. £300-£500

**252**

A Muchelnes Studio pottery side pouring bowl; and a collection of various other Studio pottery bowls. £20-£30

**253**

A Colin Kellam Totnes pottery lamp base; a smaller similar and a large brown glazed Studio pottery lamp base. £20-£40

**254**

A Usch Spettigu of Harkstead shallow dish; a matching bowl and two similar design covered pots. £20-£30

**255**

A large Studio pottery shallow dish, decorated with running glazes, impressed mark to base TH 1983; and two other Studio pottery shallow dishes. £30-£40

**256**

A brown glazed pottery square section vase, in the Bernard Rooke style; a baluster glazed pottery jug, impressed Adeb Jurg; and a shallow pottery pan dish. £20-£30

**257**

H.P. Stevenson, Cornish river scene, signed watercolour, dated 1894. £50-£80

**258 ✓**

Ellen Lang, 20th Century, still life study with plant and pots on a blue and mauve cloth, signed oil on board, dated 1961, 60cm x 48cm. £20-£40

259 ✓

**P. Lang**, still life study depicting objects in front of the Studio magazine, oil on board, signed and dated 1962, 44cm x 59cm. £20-£40

260 ✓

**John Paul Privet**, "Lady of Dreams", signed to lower left, oil and mixed media on canvas, French school, 24cm x 33cm. £30-£50

261

**St. Ives School**, Penzance boat in harbour, oil on board, signed lower right, 51cm x 60cm, in decorative gilt frame. £30-£50

262

**Roz Donaldson**, High Street scenes of Aldeburgh, 528/850. £20-£30

263 ✓

**I.D. Thyaha Raj**, study of figures planting in a field, signed watercolour, 46cm x 74cm. £40-£60

264 ✓

**D. St. John Mosse**, study of a gypsy family around a camp fire, signed oil on canvas, dated 1957, 91cm x 71cm. £100-£200

265 ✓

**Thanh Hai**, still life study, oil on canvas, 80cm x 80cm, signed and dated 05, gallery label verso, purchase Ho Chi Minh city. £40-£60

266

**20th Century Oriental school**, study of pots and vessels in shaded light, signed oil on canvas, 80cm x 80cm. £60-£80

267

**Print on canvas of a Rally Car**, 84cm x 120cm. £30-£50

268

**A print on fabric depicting native Indians**, 47cm x 132cm, contained in stripped pine frame. £40-£60

269

**A Silent Salesforth sweet machine**. £30-£40

270

**A Silent Salesforth sweet machine**. £30-£40

271

**A Silent Salesforth sweet machine**. £30-£40

272

**A telescope on tripod stand**. £25-£35

273

**A brass jardinière with stylised motif and ring carrying handles**, 31cm dia. x 31cm high. £30-£50

274

**A pair of red Toleware lamps and shades**, decorated in the chinoiserie manner. £120-£180

275

**A pair of copper angle poise lamps**. £40-£60

276

**A lion decorated pottery planter**, 47cm long overall x 35cm high. £30-£50

277

**A pair of composition decorative elephant book-ends**. £30-£50

278

**A mirrored diamante decorated two drawer trinket chest**, 32cm wide x 19cm high. £20-£30

279

**A silvered model of a carp**, 46cm long. £20-£30

280

**A pair of Toleware style tea canisters**, decorated in the chinoiserie manner, 18cm high. £30-£50

281

**A teak G plan design sideboard**, fitted central drawer and cupboards, flanked by deep cupboards, raised on square section supports, 188cm wide x 45cm deep x 89cm high. £100-£150

282

**A teak G plan design sideboard**, fitted single drawer and double cupboards, flanked by a deep single cupboard, raised on rounded tapering supports, 137cm wide x 47cm deep x 95cm high. £100-£200

283

**A teak sideboard**, fitted central cupboards with shelves and tray, flanked by deep cupboard and raised on square section supports, 177cm wide x 50cm deep x 85cm high. £100-£20

284

**A teak wall unit**, fitted adjustable bookshelves, four short drawers and pigeon-holes, 120cm wide x 27cm deep x 125cm high. £60-£80

285

**A teak bookcase**, fitted open adjustable shelves and raised on rounded tapering supports, 138cm wide x 30cm deep x 146cm high. £60-£80

286

**A good quality Art Deco period walnut three piece bedroom suite**, comprising double hanging wardrobe, 126cm, gents wardrobe, 88cm and a dressing chest with bevelled mirror, two short and two long drawers under, 110cm. £100-£200

287

**A 1970's teak effect wall unit**, having fall front drinks compartment and three drawers and cupboard below, raised on rounded tapering supports, 107cm wide x 176cm high. £20-£40

288

**A Bang & Olufsen television**, on swivel stand complete with remote control. £40-£60

289 ✓

**John Sutton**, watercolour study depicting vintage car being driven through a foreign landscape with heavily loaded train nearby, palaces in the far ground possibly India, signed watercolour, 36cm x 51cm. £100-£200. See illustration.

290 ✓

**John Tookey**, pastel study of a seaside town, probably Southwold, 25cm x 35cm. £60-£100. See illustration.

291 ✓

**John Sutton**, study of the Customs House, Poole, winter 1920's, signed watercolour, 35cm x 53cm. £100-£150. See illustration.

292 ✓

**A.G. Coleman**, study of Windsor, signed oil on canvas, 35cm x 50cm. £100-£200. See illustration.

293 ✓

**B. Buffet**, study of a Toreador, coloured print, 79cm x 24cm. £20-£30. See illustration.

294

**Early 20th Century French school**, study of a house by the sea, indistinctly signed oil on canvas, interesting label verso alluding to the fact that it was purchased in about 1949 at Eaton School for six pennies, 33cm x 42cm. £20-£30

295

**20th Century school**, study of rural cottages beside a rocky coastline, possibly Ireland, indistinctly signed oil on board, 24.5cm x 34cm. £20-£40. See illustration.



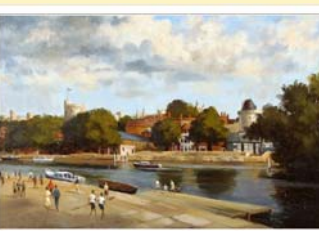
Lot 289



Lot 290



Lot 291



Lot 292



Lot 295





Lot 298



Lot 317



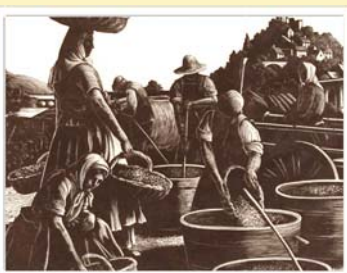
Lot 320



Lot 321



Lot 322



Lot 325

296

**K.A. Ling**, study of fishing boats on a river with figures unloading catch, signed watercolour, 34cm x 45cm. £20-£30

297

**20th Century school**, study of sunflowers in a blue pot, oil on board, 73cm x 66cm. £20-£30

298

**Marcella Smith**, study of flowers in a vase, signed watercolour, 52cm x 57cm. £20-£40.

See illustration.

299 ✓

**R. Govinda Rahj**, study of bullock carts along country roads, signed watercolour, 34cm x 47cm. £40-£60

300 ✓

**James Govier**, 1910-1974, Swansea school artist, study entitled "Setting the clock", watercolour, 36cm x 31cm. £40-£60

301 ✓

**James Govier**, 1910-1974 Swansea school artist, study of a girl reading a newspaper, signed pen and ink watercolour, 37cm x 34cm. £40-£60

302 ✓

**Michael D'Aguilar**, 1924-2011, 20th Century study of a mother and baby in landscape, signed oil on board, dated 1974, 62cm x 75cm. £100-£200

303

**An Antique Chinese watercolour depicting blossom**, inscribed with a poem and signed, 28cm x 16cm. £50-£80

304

**An Art Deco period wood block print**, influenced by Van Gogh, pencil signed and inscribed, signed in the image with CM monogram, possibly Dutch, 26cm x 33cm. £20-£40

305 ✓

**A. Norley**, a pair of rural studies depicting figures walking on a riverbank with cottages in the far ground, signed oils on board, 12cm x 16.5cm. £80-£120

306

**A pair of Toleware style tea canisters with chinoiserie decoration**, 36cm high. £80-£120

307

**A Chinese hardstone and lacquer roundel wall hanging**. £20-£30

308

**A chrome angle poise lamp**. £20-£30

309

**A pair of green composition studies of seated Chinese figures**, 22cm high. £25-£35

310

**A pair of plated candlesticks**, of tri-section form, raised on circular stepped bases, 37cm high. £60-£80

311

**A plated golf related cocktail shaker**, 32cm high. £50-£80

312

**A large pair of lidded cut glass baluster jars**, 58cm high. £150-£250

313

**A marble and onyx Art Deco style table lamp**, in the form of a seated girl skater. £150-£250

314

**Alphonse Mucha** coloured print of a dancer. £40-£60

315

**Alphonse Mucha**, coloured print of a seated lady. £40-£60

316

**Alphonse Mucha**, coloured print of a seated lady. £40-£60

317 ✓

**Robert Purvis Flint**, study of fishing boats beside a building with figure, 35.5cm x 51.5cm. £40-£60. See illustration.

318

**Sian Wynn**, "Edo", study of a matador, signed watercolour, dated 2000, 29cm x 38cm. £20-£40

319

**Limited edition print of a horse**, indistinctly pencil signed by the artist, limited edition 217/250, 23cm x 31cm. £20-£30

320 ✓

**Eric Sturgeon (1920-1999)**, study of figures beside a town gate, signed watercolour, 38cm x 55cm. £200-£400. See illustration.

321 ✓

**Eric Sturgeon (1920-1999)**, study of a rural church with figures and working horses in the near ground, signed watercolour, 41cm x 57cm. £200-£400. See illustration.

322 ✓

**Eric Sturgeon**, study of a town market place, with figures and horse, signed watercolour, 44.5cm x 58cm. £200-£400. See illustration.

323

**Francine Ocha Forins**, oil on board, 79cm x 57cm. £40-£60

324

**Colin Campbell**, mother and child, watercolour, 72cm x 52cm, dated 67. £40-£60

325

**Clare Leighton**, a pair of black and white prints, "Treading Grapes" and the "The Grape harvest". £200-£400. See illustration.

326

**Peter Resitt**, mixed media study, "On the Edge", signed 28.5cm x 39cm. £40-£60

327 ✓

**Robert Sadler**, pink bird, oil on panel, 78cm x 106cm. £1,000-£1,500. See illustration.

328

**Romy Jacob**, abstract watercolour study, initialled bottom right, 48cm x 62cm. £30-£50

329

**Glynn Jones**, pencil signed black and white print, Welsh hills, limited edition 10/75, image 30.5cm x 39cm. £30-£50

330

**Don Tibbenham**, double sided picture, "Cahors, France", palette knife on board, 50cm x 54cm. £40-£60

331

**A. Davies**, mixed media, "Revolutionary", dated 1964, 24cm x 19cm. £20-£40

332

**Trevor Mackinson**, portrait of Don Tibbenham, oil on canvas, 40cm x 30cm. £40-£60

333

**Pris Forrest**, pencil signed screen print, nude with mirror, limited edition 5/7. £40-£60

334

**Mid 20th Century school**, pastel study of a seated nude woman with red hair, unsigned, 61cm x 45cm, label verso John Whibley gallery. £40-£60

335 ✓

**Michael Coulter**, scenes from a busy railway platform, signed watercolours, a pair, initialled, 37.5cm x 23.5cm. £400-£600. See illustration.

336

**A dried flower arrangement collage**. £20-£30

337

**Beryl Jenkinson**, portrait of Zena Tibbenham, oil on canvas, 61cm x 50cm. £20-£40

338

**Zena Tibbenham**, picture for an Anniversary, dated 1983, signed watercolour, 27cm x 31.5cm. £10-£20

339 ✓

**Peter Newcombe**, study of Hardwater water mill, signed watercolour, dated 2002, 18cm x 24cm. £40-£60. See illustration.

340

**Frederick Lea**, "A winter's morning at Lower Slaughter", signed watercolour, 26cm x 35cm. £30-£50

341 ✓

**Bernard Sickert**, 1863-1932, study of a Venetian scene in moonlight, signed watercolour, 24cm x 37cm. £100-£200. See illustration.

342

**Mixed media collage of nude females**, 28.5cm x 22cm; and a print after Rubens of a young child. £10-£20

343

**W. Kikúts**, study of a cottage and barns by a riverbank, signed oil on canvas, dated 1946, 40cm x 49cm. £40-£60

344 ✓

**Ahmed Parvez**, 1926-1979, abstract mixed media study, signed and dated June 1962, 49cm x 38cm. £2,000-£3,000. See illustration.

345

**An Art Deco style bronze figure of a hoop girl**, raised on marble base, 49cm high. £100-£150

346

**A plated three section decanter stand**, containing three blue glass bottles with vine decoration, 38cm high. £150-£250

347

**A decorative silvered figure depicting an athlete with arms outstretched**, 58cm high. £25-£35

348

**A tan leather stationery box with brass sunken handles**, 38cm wide. £120-£180

349

**A blue leather vanity case**, 36cm wide. £80-£120

350

**A silver plated Art Deco design tea set.**

£120-£180

351

**A bronze Art Deco style figure of a dancing girl**, raised on marble plinth, 57cm high. £80-£120

352

**A bronze figure of a torso on oblong marble plinth**, 25cm high. £60-£80

353

**A bronze figure of a stretching nude female**, raised on marble plinth, 22cm long overall. £60-£80

354

**A bronze figure of a shot putter**, on circular marble plinth, 46cm high. £120-£180

355

**A bronze figure of a seated naked girl**, on marble plinth, 25cm high. £80-£120

356

**A bronze swing clock**, in the form of a pilot.

£80-£120

357

**A pair of cut glass storm lights.** £50-£80

358

**A plated ice bucket**, in the form of a pineapple. £80-£120

359

**A brass and enamel table lamp with vine leaf decoration**, 83cm high. £100-£150

360

**Three sections of teak Ladderax units including bookshelves**, drinks cabinet, display cabinet and three drawer chest, 276cm long x 200cm high. £300-£400

361

**Three sections of teak Ladderax units including display cabinet**, bookshelves, two drinks cabinets and a three drawer chest, 270cm long x 200cm high. £300-£400

362

**A vintage top hat**; a sailor's hat and a fez. £10-£20

363

**Three various vintage ladies hats etc.** £10-£20

364

**An Art Nouveau walnut overmantel mirror**, having slip panel with enamelled foliate scroll decoration, pierced sides and brackets, dated 1912, 111cm wide x 77cm high overall. £60-£100

365

**A pair of Art Nouveau design silver mounted easel photograph frames.** £100-£150

366

**A garniture of Art Deco orange glass vases**, with black glass prunus and piping decoration. £60-£100

367

**A silver mounted easel photograph frame**, profusely decorated with cherubs, maidens and foliage, 27cm x 22cm overall. £100-£150

368

**A Bovey Tracy Devon pottery figure of "Old Bill"**, 20cm high. £40-£60

369

**A pair of square glass decanters with white metal mounts and faceted stoppers**, silver Whisky and Sherry labels. £40-£60

370

**A good quality mauve tinted Art Glass vase**, with etched floral decoration, 29cm high. £40-£60

371

**Erich Jachmann for WMF**, amber tinted glass baluster vase with ribbed decoration, 17cm high. £40-£60

372

**Pierre D'Avesn**, green tinted dimple glass vase of tapering form, 18cm high. £40-£60

373

**A pair of Art Nouveau design silver mounted easel photograph frames.** £100-£150

374

**An Orrefors glass decanter and paper-weight.** £20-£40

375

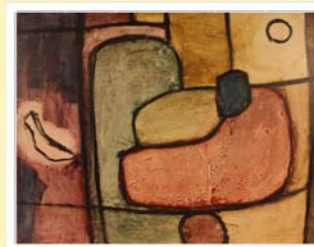
**A Catto's V.O.S.H. Whisky decanter**, Aberdeen. £20-£40

376

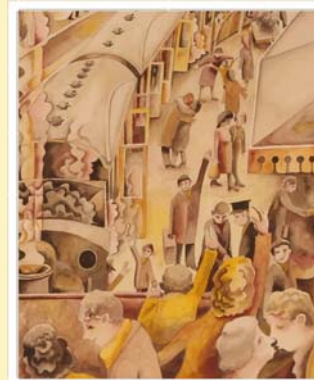
**A decorative carved conch shell**, with cameo decoration of a maidens head. £30-£50

377

**A bronzed figure of a male diver**, 26.5cm high. £20-£40



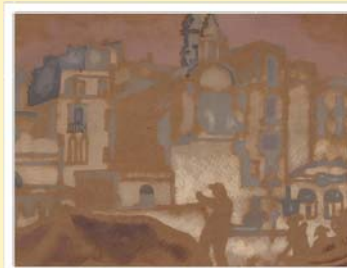
Lot 327



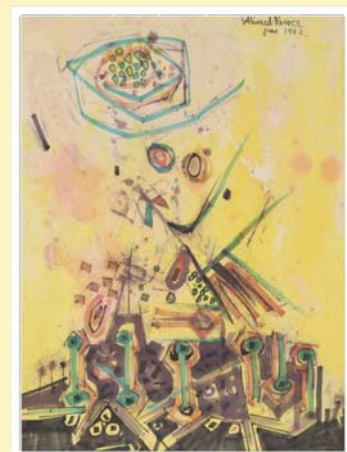
Lot 335



Lot 339



Lot 341



Lot 344





Lot 380



Lot 386



Lot 387



Lot 394

**378**

A Venini style handkerchief vase with green chequered decoration. £10-£20

**379**

An Art Glass baluster vase, with mottled decoration. £10-£20

**380**

An Alexandra porcelain baluster vase, with allover floral decoration heightened in gilt with triangular shaped enamel panels, 24cm high. £50-£80. See illustration.

**381**

Karen Hollinsworth, oil on board of an interior scene with snowbound landscape and birds through the window, 19cm x 27cm. £40-£60

**382**

A Marilyn Art Deco design radio. £60-£80

**383**

A Carlton ware chinoiserie decorated comport. £30-£60

**384**

A two tier moulded glass cake stand. £10-£20

**385**

A 1960's Cottonware collage, on hardboard panel. £10-£20

**386**

An original Alphonse Mucha poster, "F. Champenois, Paris 1898"; £200-£300. See illustration.

**387**

A Mucha print of a young girl with jewelled headdress in decorative black and gilt frame. £40-£60. See illustration.

**388**

A Mek Elek machine light with adjustable arm. £150-£200

**389**

An Arthur Wood baluster jug, with exotic bird decoration. £20-£30

**390**

A Masons ironstone fruit basket pattern teapot. £10-£20

**390A**

An Adam Jablonski blue and amber glass sculpture, 33cm high. £70-£100

**391**

An industrial style double ceiling light with cast iron frame. £50-£80

**392**

An industrial style double ceiling light with cast iron frame. £50-£80

**393**

An Art Deco spot hammered pewter four piece coffee set. £10-£20

**394**

A pair of Doultton stoneware baluster vases, having stylised banded decoration on a mottled green and blue ground, 27cm high. £40-£60. See illustration.

**395**

A pair of football boots, signed by Connor Wickham, embroidered Wickham 10. £20-£30

**396**

A Hermes silk scarf. £100-£150

**397**

A pair of L.K. Bennett nappa leather ladies shoes. £20-£30

**398**

A pair of Chinese baluster vases and covers, decorated in coloured enamels with interior scenes and foliage, 31cm high. £20-£30

**399**

A pair of Oriental octagonal baluster vases, 37cm high. £20-£30

**400**

A Japanese doll, in glazed cabinet. £10-£20

**401**

An unusual Japanese cherry tray. £10-£20

**402**

A set of six etched claret glasses. £10-£20

**403**

A lithograph, Henri Deschamps Grey, limited edition 51/200. £40-£60

**404**

An industrial style metal framed chair and coffee table set, to include two loft style chairs, two foot stools and a glass top coffee table. £200-£250

**405 ✓**

William Walcott, R.A., 1847-1943, study of a horse and cart, signed watercolour dated 1919, 40cm x 50cm. £400-£600. See illustration.

**406**

Stephanie Borg, coloured print entitled "Turkiya", 14/250. £40-£60

**407**

A pair of modern abstract oils consisting of stylised motifs with slogans round the outside, "Heavy Mind", "Swamp Donkey", "Go Bar Gas", "Mantappa" and others, a pair, 67cm x 63cm. £40-£60

**408 ✓**

Duncan Grant, study of church and houses seen through a park, oil on canvas, 45cm x 54cm. £40-£60. See illustration.

**409**

Pencil sketch of a partially dressed sleeping woman, indistinctly signed to mount, dated 1974. £40-£60

**410**

Martin Leman, pencil signed lithograph of a cat, entitled "Another rose bud", limited edition 13/75. £20-£30

**411**

Kerry Buck, artist proof, "Silver Moon". £20-£30

**412**

R.B. Lisser, pencil signed limited edition print of a cat, 25/100. £10-£20

**413**

Allen Watters, limited edition print of a hare, 5/250. £10-£20

**414**

A novelty lamp in the form of a Vespa motor scooter, 64cm high x 63cm wide. £120-£180

**415**

A novelty lamp in the form of a red Vespa scooter, 32cm high x 40cm wide. £40-£60

**416**

A pair of orangery lanterns, 60cm high. £50-£80

**417**

A bronze figure of an Alsatian, 37cm high. £80-£120

**418**

A bronze figure of a setter, 20cm long. £60-£80

**419**

A bronze abstract nude profile, 38cm high. £60-£80

**420**

A bronze elephant table lamp, 48cm high overall. £40-£60

**421**

A large bronze study of a leaping fish, raised on circular oak plinth, 52cm high. £100-£150



**422**

**A large circular Nathan teak coffee table**, 86cm dia. x 53cm high. £40-£60

**423**

**An Ercol three tier dark elm trolley**, 86cm wide x 74cm high. £40-£60

**424**

**A Torck child's folding bentwood and leather armchair**. £40-£60

**425**

**A teak G plan style kneehole desk**, fitted six drawers, raised on square section supports, 135cm wide. £40-£60

**426**

**A large Art Glass circular shallow dish with swirled decoration** 48cm dia. £30-£50

**427**

**An Art Deco marble and spelter deer group**. £40-£60. See illustration.

**428**

**A teak G plan design cupboard**, enclosed by sliding doors, raised on rounded tapering supports, 140cm wide x 78cm high x 44cm deep. £60-£100

**429**

**A large chrome angle poise floor lamp**. £80-£120

**430**

**A chrome angle poise desk lamp**. £25-£35

**431**

**An aluminium Retro kitchen plate rack and draining stand**. £10-£20

**432**

**A teak G plan design sideboard**, fitted central drawer and cupboards, flanked by deep drawers, 186cm wide x 44cm deep x 83cm high. £100-£200

**433**

**An Ewenny pottery baluster bowl**, with flared rim, mottled green and brown glazes, 13cm high; and an Art Deco pottery two handled baluster vase, 32cm high. £30-£50

**434**

**A pair of Art Deco table lamps**, in the form of seated semi naked ladies reading books, having cream mottled glass faceted shades, 48cm high. £60-£100

**435**

**An Art Deco design battery powered mantel clock**, decorated in the chinoiserie manner. £20-£30

**436**

**A swing clock in the form of an Art Nouveau style maiden**. £60-£80

**437**

**A bronze figure of a naked maiden seated on a rock**, 27cm high. £60-£80

**438**

**A bronze Art Nouveau figure of a dancing girl**. £80-£120

**439**

**A hand craft walnut sideboard**, fitted three central drawers, flanked by cupboards, 172cm wide x 49cm deep x 80cm high. £100-£200

**439A**

**A handcrafted extending dining table with centre leaf and four chairs**. £100-£200

**440**

**A teak sideboard enclosed by tambour shutter**, flanked by three short drawers, raised on square section tapering outswept supports, 107cm wide x 44.5cm deep x 85cm high. £40-£60

**441**

**A teak G plan design knee-hole desk**, fitted six drawers and raised on square tapering supports, 145cm wide x 74cm deep x 75cm high. £60-£80

**442**

**A bronze figure group depicting maid and youth on rocky hillside with sheep**, 34cm high. £300-£400. See illustration.

**443**

**A pair of light elm Ercol type stick back kitchen chairs**. £20-£40

**444**

**Six vintage cinema seats**. £100-£150

**445**

**A teak G plan style sideboard**, fitted three central drawers flanked by cupboards, raised on square tapering supports, 151cm wide x 45cm deep x 72cm high. £100-£150

**446**

**A vintage industrial style spot light and metal bracket**. £50-£80

**447**

**A vintage industrial style spot light and metal bracket**. £50-£80

**448**

**A vintage industrial style spot light and metal bracket**. £50-£80

**449**

**A vintage industrial style spot light and metal bracket**. £50-£80

**450**

**A teak effect sideboard**, fitted double cupboard and three long drawers, raised on rounded tapering supports, 177cm wide x 43cm deep x 74cm high. £40-£60

**451**

**A teak dressing table**, fitted four central drawers flanked by cupboards, raised on blackwood rounded tapering supports, 117cm wide. £30-£50

**452**

**A teak G plan design sideboard**, fitted four long drawers, flanked by cupboard enclosed by sliding doors, raised on square section supports, 120cm wide x 41cm deep x 84cm high. £60-£100

**453**

**A large Lily Bollinger type oval champagne cooler**. £60-£80

**454**

**A Sunbeam chrome coffee set**, manufactured by Chicago Flexible Shaft Company. £40-£60

**455**

**An Arts & Crafts design copper and brass tea kettle on bamboo style stand**. £20-£40. See illustration.

**456**

**A teak side cabinet enclosed by sliding doors**, raised on rounded tapering supports, 104cm wide x 27cm deep x 88cm high. £40-£60

**457**

**A set of six Heals of London stainless steel dining chairs**. £100-£200

**458**

**A pair of leather winged back club chairs**, with deep buttoned upholstery. £100-£150

**459**

**A Rolls Royce sofa**, formed from two 1970's Rolls Royce front seats. £400-£500. See illustration.

**460**

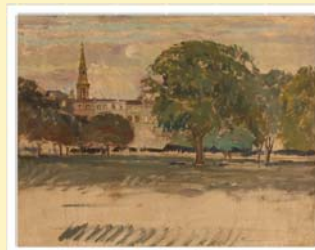
**A Victoria Ghost chair**, by Philippe Starck for Kartell. £40-£60

**461**

**A loom effect sewing box and contents**. £20-£30



Lot 405



Lot 408



Lot 427



Lot 442



Lot 455



Lot 459



Lot 483



Lot 496



Lot 497



Lot 500



Lot 506

**462**

A nest of Scheibe Product folding ebonised occasional tables. £40-£60

**463**

A Thermos ice bucket. £20-£30

**464**

A Guzzini bowling ball picnic set. £30-£60

**465**

An asymmetric wall mirror. £15-£25

**466**

A 1970's string and nail kit. £10-£20

**467**

A teak oblong coffee table with sliding top, 110cm x 55cm. £40-£60

**468**

A teak G plan design two tier coffee table, having wicker under-tier, 126cm wide x 52cm deep x 54cm high. £40-£60

**469**

A coffee table by Andrew Martin, 104cm x 80cm. £100-£150

**470**

Three Pirelli 1980's Glamour calendars, with some signatures of the models. £60-£100

**471**

A glass and silver mounted biscuit barrel; moulded glass fruit bowl; comport and shallow dish. £10-£20

**472**

A teak G plan design coffee table, raised on rounded tapering supports, 84cm square. £60-£80

**473**

A light oak G plan style bureau of narrow proportions. £10-£20

**474**

A teak G plan design low cabinet, enclosed by a pair of doors, 170cm wide x 42cm deep x 59cm high. £40-£60

**475**

A teak cocktail cabinet by Herbert E. Gibbs, the fall front opening to reveal an interior above cupboards space below, enclosed by sliding doors, raised on rounded tapering supports, 91cm wide x 44cm deep x 124cm high. £40-£60

**476**

A teak trolley, enclosed by a tambour shutter door, 73cm wide x 42cm deep x 65cm high. £30-£50

**477**

A teak open fronted bookcase, 90cm wide x 31cm deep x 84cm high. £30-£50

**478**

A teak sideboard, fitted two blind frieze drawers above cupboards to the base, raised on square section supports, 120cm wide x 45cm deep x 77cm high. £40-£60

**479**

A teak G plan design sideboard, fitted four drawers with cupboards to base, raised on square section tapering supports, 152cm wide x 46cm deep x 84cm high. £100-£150

**480**

An Avalon Yatton chest, fitted five drawers on rounded tapering supports, 77cm wide x 46cm deep x 102cm high. £40-£60

**481**

A teak side cabinet, fitted with drinks section and filing cabinet, raised on metal square supports, 120cm wide x 46.5cm deep x 77cm high. £30-£50

**482**

An industrial style double glass ceiling light on cast metal frame. £50-£80

**483**

An industrial style double glass ceiling light on cast metal frame. £50-£80. See illustration.

**484**

An industrial style double glass ceiling light on cast metal frame. £50-£80

**485**

An industrial style double glass ceiling light on cast metal frame. £50-£80

**486**

A teak G plan style oblong coffee table, 103cm wide. £40-£60

**487**

A teak G plan style coffee table, raised on square section U shaped supports, 108cm wide. £40-£60

**488**

A teak coffee table, with tile inset top, 51.5cm. £20-£40

**489**

A teak Nathan low cupboard, enclosed by a pair of panelled doors, 102cm wide. £20-£30

**490**

A teak Nathan low cabinet, enclosed by a drop front panelled door, 91cm wide. £20-£40

**491**

An Art Deco style dragonfly decorated table lamp, 57cm high. £80-£120

**492**

An Art Deco style Tiffany type table lamp with foliate decoration. £100-£150

**493**

A set of six 1960's/70's French beech dining chairs, with leatherette upholstered seat and back panels, raised on rounded tapering supports, terminating in metal tips. £200-£300

**494**

A set of six teak G plan dining chairs with rail backs, upholstered seats, raised on square tapering supports, (four standards, two elbows). £200-£300

**495**

A pair of Art Deco oak side chairs, with leatherette upholstered seats and backs. £20-£40

**496**

A set of four plastic and steel dining chairs. £40-£60. See illustration.

**497**

A set of six light Ercol stick back kitchen chairs; together with two medium coloured similar and a dark example. £200-£300. See illustration.

**498**

An Art Deco oak octagonal two tier occasional table. £20-£40

**499**

A Lloyd loom glass topped bedside cabinet. £40-£60

**500**

An Art Deco cold painted Spelter and marble figure, depicting a young lady with seagull, 68cm long overall. £60-£80. See illustration.

**501**

An Eames type leather and steel stool. £20-£40

**502**

A teak G plan design foot stool. £10-£20

**503**

A teak G plan circular coffee table with glass insert, 84cm dia. £40-£60

**504**

An early 20th Century oak two tier serving table, raised on baluster supports, 190cm. £40-£60

**505**

A teak framed deep seated armchair, circa 1970's. £40-£60



**506**

**A Mats Theselius for Ikea**, two steel and cane wicker elbow chairs. £150-£250. See illustration.

**507**

**A low charcoal grey two seat double end sofa**, raised on rounded tapering supports. £40-£60

**508**

**A chrome framed circular double framed swing toilet mirror**. £10-£20

**509**

**A Greiner barber's chair**. £80-£120

**510**

**A Greiner barber's chair**. £80-£120

**511**

**A set of three vintage cinema seats**. £300-£400

**512**

**A white Art Deco design hall table**, 137cm long. £100-£150

**513**

**An industrial style double glass ceiling light on cast metal frame**. £50-£80

**514**

**An industrial style double glass ceiling light on cast metal frame**. £50-£80

**515**

**A 1960's coffee table with embroidered top**. £20-£30

**516**

**A light elm dining table**. £20-£30

**517**

**A set of four Retro faux rosewood bar back dining chairs**. £20-£30

**518**

**A set of four teak G plan design dining chairs**, with string seats and backs. £40-£60

**519**

**A large metal framed industrial design stool with leather top**, 138cm x 125cm. £250-£350

**520**

**A large glass cloch**, 35cm high x 24cm dia. £25-£35

**521**

**A large glass cloch**, 67cm high x 29cm dia. £50-£80

**522**

**An Art Deco plated ice bucket**. £50-£80

**523**

**Three oak cube tables**, by Heals, 40cm square. £40-£60

**524**

**Glynn Thomas**, pencil signed etching, St. Catherine's dock, limited edition 51/150. £100-£150. See illustration.

**525**

**Glynn Thomas**, pencil signed etching, Norwich, limited edition 115/150. £100-£150. See illustration.

**526**

**Tony Pick**, photograph of Thorpeness on a snowy day. £20-£30

**527**

**Pencil signed etching**, sheep in the Cotswolds, limited edition 2/20. £20-£30

**528**

**A watercolour study of Irises**, monogrammed bottom right. £20-£30

**529**

**Kathleen Caddick**, "snow in the square", limited edition print 62/250. £40-£60

**530**

**Tony Pick**, photograph of a ploughed field. £20-£30

**531**

**Glynn Thomas**, "Mersea Boats", limited edition 44/75. £40-£60. See illustration.

**532**

**Tony Pick**, seagulls at Aldeburgh. £20-£30

**533**

**Kathleen Caddick**, woodland walk, limited edition 68/250. £40-£60

**534**

**Albert Perry**, 1926, study of cottage and bridge, signed watercolour. £20-£30. See illustration.

**535**

**Diana Mallett Veale**, study of an African Village scene, signed watercolour. £100-£150

**536**

**Louise Repsold**, study of an African valley scene, signed oil on board, dated 98. £60-£80

**537**

**An Art Deco mirrored hall table**, 154cm wide x 62cm deep x 80cm high. £150-£250

**538**

**A nest of three teak G plan design coffee tables**. £20-£40

**539**

**A Bernard Rooke pottery planter**, 90cm high. £30-£50

**540**

**A pair of leather and brass mounted three drawer bedside chests**, 51cm wide x 61cm high. £600-£800

**541**

**Four industrial style spot lights and a bracket**. £40-£60

**542**

**Four industrial type spot lights and a bracket**. £40-£60

**543**

**A pair of Eric Ravilious for Wedgwood "garden" pattern shallow bowls**. £20-£40

**544**

**An Art Deco design wall mirror**, having faux Coromandel cushion frame, 89cm x 79cm. £30-£50

**545**

**A faux leather and chrome based swivel adjustable chair**. £20-£40

**546**

**A glass model of an eagle**, 21cm high and a White Friars bark effect square section vase with cream overlaid interior. £20-£30

**547**

**A Susie Cooper coffee set**. £40-£60

**548**

**A Benson style brass desk lamp**, having adjustable glass shade, 34cm high. £40-£60

**549**

**A Clarice Cliff Newport pottery mug of ribbed design with black and orange line decoration**, 16cm high and a Fieldings Crown Devon musical mug, Widecombe Fair. £40-£60

**550**

**An Alvey Australia fishing reel**, of large size, 190cm dia. Overall. £20-£30. See illustration.

**551**

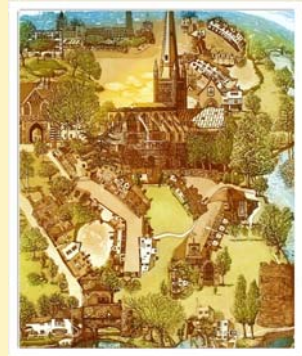
**A Growler flask**, in original box. £20-£30

**552**

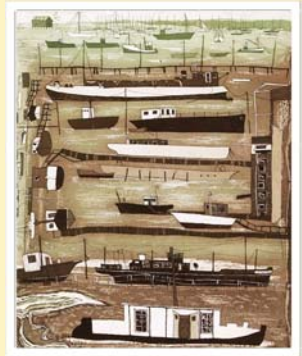
**A silver propelling pencil**, with engine turned decoration; and a silver handled paperknife. £20-£40



Lot 524



Lot 525



Lot 531



Lot 534



Lot 550





Lot 561



Lot 562



Lot 566



Lot 568

**553**

A full length mirror on industrial type frame, 183cm high x 36cm wide x 59cm deep overall. £100-£150

**554**

A full length double sided mirror on industrial type frame, 183cm high x 152cm wide x 62cm deep. £150-£250

**555**

A full length double sided mirror on industrial type frame, 183cm high x 52cm wide x 62cm deep. £150-£250

**556**

A papier maché female mannequin complete with stand. £50-£80

**557**

A papier maché mannequin complete with stand. £50-£80

**558**

A papier maché mannequin complete with stand. £50-£80

**559**

Two wooden topped metal framed stools. £40-£60

**560**

A boxed set of five Guinness advertising buttons, "With the compliments of Guinness". £20-£30

**561**

A Guinness Carlton ware Toucan water jug; and a Carlton ware Toucan Guinness advertising figure. £40-£60. See illustration.

**562**

An Art Deco period table lamp in the form of a sailing boat with celluloid shade sails. £40-£60. See illustration.

**563**

A pair of Beswick Guinness water jugs in the form of Lord Mayors. £40-£60

**564**

A Carlton ware Draught Guinness penguin advertising lamp. £40-£60

**565**

A Bass Beer advertising table lamp and shade. £40-£60

**566**

A Johnnie Walker bar top advertising figure. £60-£100. See illustration.

**567**

An Edwardian mahogany card tale, with label for Howard and Sons, London. £40-£60

**568**

A Howard and Sons type armchair, stamped Howard and Sons London to one brass castor and stamped WB 9118 on one back leg. £800 - £1200. See illustration.

Special attention is drawn to the Conditions of Sale printed at the back of this catalogue.

Clarke and Simpson are pleased to offer a packaging and shipping service worldwide through "the-saleroom.com Delivery Service". The professional team will pack and ship items from very small non-breakables such as jewellery and coins though to larger and more fragile items such as paintings and works of art. Shipping and insurance is at the buyer's expense. Shipping payment must be made to "the-saleroom.com Delivery Service" prior to departure and excludes local duties and taxes. Please note that Clarke and Simpson do not pack or ship items - all requests are sent to our specialist handlers at "the-saleroom.com Delivery Service" who can be contacted directly via [delivery@atgmeadia.com](mailto:delivery@atgmeadia.com)

the-saleroom.com  
delivery service



# Collective Machinery Auction

21st - 26th October 2020

Clarke & Simpson Auction Centre,  
Campsea Ashe, Suffolk. IP13 0PS

Entries invited – closing date 11th September 2020

- East Anglia's largest 'direct from farm' collective auction
- Competitive commission rates
- Timed on-line bidding via i-bidder.com
- Extensive marketing both online and in the press
- Hard standing site, large buildings and car parks
- National and international buyers



Clarke & Simpson Auction Centre, Campsea Ashe, Suffolk, IP13 0PS

01728 621200 / [www.clarkeandsimpson.co.uk](http://www.clarkeandsimpson.co.uk)

Auctions

Clarke &  
Simpson

# *Worldwide from Campsea Ashe*



We have registered buyers from all of the fifty countries shown below in the last twelve months – what do you have to sell that would benefit from a worldwide audience!



Clarke & Simpson Auction Centre, Campsea Ashe, Nr Wickham Market, Suffolk IP13 0PS T: 01728 746323  
[www.clarkeandsimpson.co.uk](http://www.clarkeandsimpson.co.uk) CandSAuctions @CandSAuctions



# TERMS AND CONDITIONS OF SALE

## 1. INTRODUCTION

The following defining terms are used in these conditions:-

“Auction”	Means any auction conducted by Clarke and Simpson Auctions Ltd. either at the premises owned by them or elsewhere (including any internet based auction);
“Auctioneer”	Means Clarke and Simpson Auctions Ltd. authorised auctioneer as appropriate;
“Bidder”	Means a bidder at an auction, including the bidders personally present at the venue and those bidding by telephone or over the internet or otherwise;
“Buyer”	Means the bidder whose bid was the last bid when the auctioneer concludes the bidding;
“Conditions”	Means these Terms and Conditions of Sale;
“Hammer Price”	Means the level of bidding reached (at or above any reserve) when the auctioneer brings the bidding to a close;
“Lot”	Means any property accepted by Clarke and Simpson Auctions Ltd. for offer at auction;

## 2. DESCRIPTION

No warranty is given or implied by the description in the catalogue. Each lot is sold in its condition at the time of sale with all faults, defects, imperfections and errors of description (if any). Whilst every endeavour has been made to describe the items adequately and properly, the purchaser shall deem to have inspected the lot at time of purchase. All catalogues and seller's and buyer's guides are for information only and do not form part of the contract.

## 3. STATUTORY REQUIREMENTS

Purchasers will be deemed to have satisfied themselves prior to purchasing regarding current legal requirements (e.g. Health & Safety at Work Act) and it is expressly brought to the bidders attention that equipment in the sale may not necessarily comply with such regulations. Any purchaser shall satisfy himself as to any statutory requirement for the use of any item and no liability shall rest with the vendors nor the Auctioneers.

## 4. THE AUCTION

All auctions are conducted at the absolute discretion of the auctioneer. The auctioneer shall conduct the auction with reasonable skill and care. The vendor reserves the right to sell subject to reserve price in respect of all lots. What constitutes a bid shall be at the absolute discretion of the auctioneer, acting with appropriate skill and care. The auctioneer shall have the right to refuse any bid in all cases but most notably when such a bid does not exceed the previous bid by at least 10% or such a proportion as the auctioneer shall in his absolute discretion direct. Where two or more bids at the same level are simultaneously received by the auctioneer, the auctioneer at his absolute discretion shall determine which bid to prefer. Subject to the foregoing where two or more bids are at the same level are simultaneously received by the auctioneer, the bid submitted in the room shall take preference over a bid submitted by telephone or internet at the same level. Any bid made or attempted by telephone or over the internet will only be deemed to have been made if received by the auctioneer. The auctioneer reserves the right to withdraw, consolidate or divide any lot or lots or submit them in any order that they desire. The auctioneer has the right at his absolute discretion to refuse admission to his premises or attendance at (or participation in) any auction by any person. In the case of any dispute, the auctioneer shall be sole arbitrator in any matters arising during or out of the sale.

## 5. BIDDERS

All bidders will be required to register their particulars, bidders attending in person and those accompanying them may be required to provide photo ID and separate confirmation of address prior to viewing or taking any part of the sale and before entering any part of the premises to view. All bidders accept full liability for all bids submitted. Subject to the clause in this document headed “The Auction”, the highest bidder at the close of bidding shall be the buyer. Any dispute about a bid shall be settled at the auctioneer's absolute discretion.

Bidders are all deemed to act as principles unless there is prior written acknowledgement by Clarke and Simpson Auctions Ltd. that a bidder is acting as an agent for a named principle. Bidders are strongly encouraged to attend the auction in person. The bidders shall be responsible for any decision to bid for a particular lot and shall be deemed to have carefully inspected and satisfied themselves as to condition, neither Clarke and Simpson Auctions Ltd., their employees or agents shall be responsible for any neglect or default in doing or failing to do so. Bidders will be given ample opportunity to view and inspect before the sale and prospective buyers must satisfy themselves as to all matters.

## 6. DEFAULT

Clarke and Simpson Auctions Ltd. shall act as agent of the vendor only. Any contracts for the sale of a lot shall be formed between the vendor and the buyer. As agent only Clarke and Simpson Auctions Ltd. shall not be responsible for default by the vendor or the buyer. If any lot is not paid for in full and taken away in accordance with these conditions, or there is any other breach of the conditions, then Clarke and Simpson Auctions Ltd. as agents for vendor shall at its absolute discretion and without prejudice to any other rights it may have, be entitled to exercise all or any of the following rights and remedies:-

- 6.1 to proceed against the buyer for any action of debt or damages for breach of contract;
- 6.2 to rescind the sale of that lot or lots sold by Clarke and Simpson Auctions Ltd. to a defaulting buyer;
- 6.3 to resell the lot (by auction or private treaty) in which case the defaulting buyer shall be responsible for any resulting deficiency in the total amount due (after crediting any part payment and adding any resale costs), any possible surplus so arising shall belong to the vendor;
- 6.4 to remove, store and insure the lot at the expense of the defaulting buyer and, in the case of storage, the location of such storage shall be at Clarke and Simpson Auctions Ltd. discretion;
- 6.5 to charge interest at a rate not exceeding 2% per month of the total amount due to the extent that it remains unpaid for more than two working days after the sale;
- 6.6 to retain that or any lot sold to the defaulting buyer until the buyer pays the total amount due;
- 6.7 to reject or ignore bids from the defaulting buyer at future auctions or to impose conditions before any such bids are accepted;
- 6.8 to apply any proceeds of sale for any other lots due or in the future becoming due to the defaulting buyer towards the settlement of the total remaining due.

## 7. INDEMNITIES, PENALTIES AND LIMITATIONS OF LIABILITY

Purchasers shall pay for any damage done by themselves or their agents during the removal of their lots. Attendance at the sale shall be at the risk of those attending in respect of both themselves and to their goods and vehicles.

Any indemnity under these conditions will extend to all actions, costs, expenses, claims and demand whatsoever suffered or incurred by the person entitled to the benefit of it and Clarke and Simpson Auctions Ltd. declare themselves to be a trustee of the benefit of such indemnity so far as it is expressed to be the benefit of its employees and agents.

Whilst Clarke and Simpson Auctions Ltd. endeavour to ensure that the information on their websites is correct, they do not warrant the accuracy and completeness of the material on their website. Also Clarke and Simpson Auctions Ltd. can make changes to the material on their website, or alter the products and prices described on it, at any time without notice. The material on the website may be out of date, Clarke and Simpson Auctions Ltd. make no commitment to update such material. All material on the websites is provided "as is" without any conditions, warranties or other terms at any time. Accordingly to the maximum extent permitted by law, the website is provided to all parties on the basis that Clarke and Simpson Auctions Ltd. exclude all representations, warranties, conditions and other terms which, but for this legal notice, might have effect in relation to the website.

## 8. ELECTRICAL SAFETY REGULATIONS

All electrical lots are subject to electrical safety regulations and fall within "the low voltage electrical equipment (safety) regulations 1989" – all items have been pat tested for safety but are not guaranteed in working order.

## 9. GENERAL MATTERS

Any notice to any buyer, vendor, bidder or viewer may be given by first class mail or email in which case it shall be deemed to have been received by the addressee forty eight hours after posting or sending. All notices to Clarke and Simpson Auctions Ltd. must be sent in writing and email is not acceptable. Any indulgence extended to any person by Clarke and Simpson Auctions Ltd., notwithstanding the strict terms of these conditions or the terms of consignment, shall affect the position at the relevant time only and the respect of that particular concession only; in all other respects these conditions shall be construed as having full force and effect. These conditions and any disputes or claims arising out or in connection with them or their subject matter or formation (including non-contractual disputes or claims) are governed by and construed in accordance with the law of England. The parties irrevocably agree that the courts of England have exclusive jurisdiction to settle any dispute or claim that arises out of or in connection with the agreement or its subject matter or formation (including non-contractual disputes or claims).

## 10. PUBLICITY

Any catalogue and buyer and seller guides are provided for information only and do not form part of these conditions. The catalogue and the buyer and seller guides may contain additional terms and conditions. Clarke and Simpson Auctions Ltd. reserve the right to use any photographs, background information and research for publicity purposes both before and after the sale.

## 11. THE PURCHASE PRICE AND PAYMENT ARRANGEMENTS

There is a buyer's premium 18% plus VAT payable in respect of the sale. Any purchases made via "www.the-saleroom.com" or "[www.ibidder.com](http://www.ibidder.com)" shall be subject to an administration charge of 5% plus VAT on the price.

Preferred payment is cash, bank transfer or personal debit card. Such cards may only be used on a chip and pin basis with the owner present. No payment over £350 will be accepted by telephone. Payment will be accepted online via

our secure e commerce account. We do not accept credit cards or international debit cards. Payment by cheque will only be acceptable subject to prior arrangement. No lot will be removed from the sale until any cheque has cleared. Payment is due on the day of the sale. Cash in excess of £7,500 (including V.A.T.) will not be accepted from any one person, this is not allowed due to Money Laundering Regulations 2007. All money received will be held in Clarke & Simpson Auctions Ltd. Clients No 2 Account at Barclays Bank plc, Framlingham, Suffolk. Account Number 83428591. Sort Code

20 98 07. Clarke and Simpson Auctions Ltd. have no responsibility for any lot between the close of bidding and payment being made and subsequent collection. All payments from overseas buyers shall be made by Bank Transfer and bank fees paid in addition. Please note all policy regarding payment will be enforced and suitable arrangements must be made.

## 12. REMOVAL OF LOTS

The ownership of any lot purchased shall not pass to the relevant buyer until they have made payment in full to Clarke and Simpson Auctions Ltd. of the total amount due including any storage due.

The buyer shall at their own risk and expense take away any lot that they have purchased and paid for, not later than seven days following the day of the auction. Any purchaser shall be responsible for removal and insurance and lots stored and storage charges. All lots sold shall be subject to the following storage charges after seven days from the sale:

7-14 days 25% of the lot value + VAT or £7.50+VAT per lot whichever is the greater

14-21 days 50% of the lot value + VAT or £15 +VAT per lot whichever is the greater

21-28 days 75% of the lot value + VAT or £22.50 + VAT per lot whichever is the greater

Any lots not collected after 35 days will be re-sold with immediate effect on behalf of the purchaser and the proceeds of the sale retained in lieu of outstanding storage charges. The policy shall be rigorously enforced and no lots shall be collected unless outstanding storage charges are met.

## 13. NUMBER BIDDING

This will be used for speed and efficiency as in all our sales. All prospective purchasers must complete a registration form and register in the office on the viewday or morning of sale to receive a number for bidding.

PLEASE ALSO NOTE THAT PHOTO ID AND ADDITIONAL CONFIRMATION OF ADDRESS WILL BE REQUIRED.

## 14. ONLINE BIDDING

Clarke & Simpson Auctions Ltd. offer an online bidding service via the-saleroom.com and ibidder.com for bidders who cannot attend the sale.

In completing the bidder registration on [www.the-saleroom.com](http://www.the-saleroom.com) or [ibidder.com](http://ibidder.com) and providing your payment card details and, unless alternative arrangements are agreed with Clarke & Simpson Auctions Ltd.:

1. authorise Clarke & Simpson Auctions Ltd., if they so wish, to charge the payment card given in part or full payment, including all fees, for items successfully purchased in the auction via [www.the-saleroom.com](http://www.the-saleroom.com) or [ibidder.com](http://ibidder.com), and
2. confirm that you are authorised to provide these payment card details to Clarke & Simpson Auctions Ltd. through [www.the-saleroom.com](http://www.the-saleroom.com) or [ibidder.com](http://ibidder.com) and agree that Clarke & Simpson Auctions Ltd. are entitled to ship the goods to the card holder name and card holder address provided in fulfilment of the sale.

**Please note that any lots purchased via the-saleroom.com or ibidder.com live auction service will be subject to an additional 5% buyer's premium + VAT at the rate imposed on the hammer price.**

## 15. TELEPHONE BIDDING

We offer a telephone bidding service where possible, but this service can never be guaranteed. No applications for telephone bids will be accepted after the end of the viewing prior to sale day for any sale. All potential telephone bidders must provide a valid landline number and email address and agree that they have read and understood the Terms and Conditions. No phone bids will be accepted for any lot with a lower guide figure of less than £100.

All those who wish to bid by telephone will be expected to deposit the minimum guide for all lots that they wish to bid upon into the Clients Account for Clarke and Simpson Auctions Ltd before the sale starts. This payment is not acceptable by card. In the event of default, this sum shall be retained as part payment or any part may be retained to recover losses under clause 6 of these Terms and Conditions. We will expect payment of the balance owing by BACS on the following day, any payment not met within five working days will result in the forfeiture of the deposit paid.

## 16. AT FAULT (A.F.) LOTS

Certain lots are catalogued as (A.F.), damaged, restored etc., however the absence of any such notice does not imply that the piece is free from defects, nor does it indicate that other defects are not also present. Mention is not made of breakage, cracks, chips or any damage which can be noted by careful inspection, therefore, intending purchasers MUST, in all cases, be responsible for determining the condition of the lots themselves.

## 17. ESTIMATES

Presale estimates are intended only as a guide for intending purchasers, are given in good faith and subject to revision.

## 18. CONDITION REPORTS

Clarke and Simpson are unable to guarantee that requests for condition reports/images received after close of the viewing on the day prior to auction, will be responded to. Clarke and Simpson are happy to give a Condition Report on the physical condition of goods, this will be provided on behalf of the seller on the understanding that Clarke and Simpson are not entering into a contract with you in respect of the Condition Report and accordingly does not assume responsibility to you in respect of it. All lots are available for your own inspection or for inspection by an expert instructed by you, therefore these Condition Reports are for guidance only and all lots are sold "as found". Condition reports do not form part of a contract.

## 19. COMMISSION BIDS

The auctioneers will be pleased to execute bids for those unable to attend the sale. Lots will be purchased at the lowest bid the room bidding or any reserves will allow. In the event of identical bids, the earliest bid received will take precedence. There must always be a maximum limit indicated. Buy or unlimited bids will not be accepted. Commission bids placed by telephone are accepted at the client's risk. We urge our clients to place such bids before the start of the sale. All such commissions are left entirely at the buyer's risk.

## 20. VALUE ADDED TAX

The symbol \* after any lot number indicates that Value Added Tax is payable by the buyer on the hammer price.

## 21. AUCTIONEERS MARGIN SCHEME

The Auctioneers Margin Scheme allows auctioneers to sell items without VAT on the hammer price. Under the margin scheme an amount equivalent to VAT at the current rate is added to the buyer's premium. This amount cannot be refunded. The VAT element will not be shown separately on the buyer's invoice.

## 22. ATTRIBUTION OF PICTURES AND DRAWINGS

Every effort is made to ensure the accuracy of any statements as to authorship, attribution, origin, date, age, provenance and condition of any lot whether or not such statement forms part of the description of any such lot. Whether any such statement is made orally or in the catalogue it is an expression of opinion and not to be taken as being or implying any warranties or representations of facts by the auctioneers. Each buyer by making a bid for a lot acknowledges that he has satisfied himself fully as to the attribution and condition of the lot. The following is for guidance only and does not form part of a contract.

- A. The forename (s) (or full stops where not known) and surname of an artist indicates in our opinion a work by the artist.
- B. The initials of the forename (s) and the surname of the artist indicates in our opinion a work of the period of the artist which may be wholly or in part his work.
- C. The surname of the artist indicates in our opinion a work of the school or by one of the followers of the artist or in his style and of uncertain date.
- D. *Signed, Dated, Inscribed* indicated in our opinion work signed/dated/inscribed by the artist.
- E. *Bears signature* indicates in our opinion that this is not the signature of the artist.
- F. *Attributed to* may be used to denote a traditional attribution based on style.
- G. *Manner of* indicates in our opinion a work executed in the artist/craftman's style but of a later date.
- H. *After* indicates in our opinion a copy (of any date) of work of an artist or craftsman.

The addition of a question mark after any of the cataloguing terms above indicates an element of doubt.

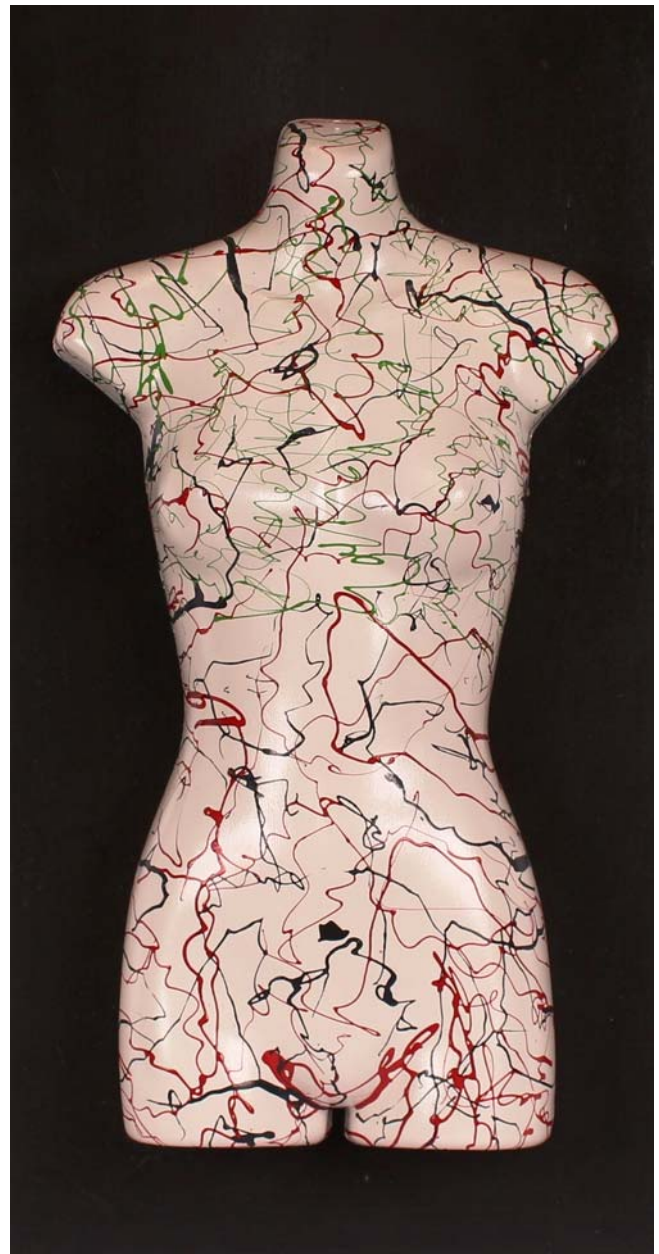
## 23. DRIOTE DE SUITE ROYALTY CHARGES

All United Kingdom Art Market professionals (which includes auctioneers) are required to collect a royalty payment for all qualifying Works of Art. This applies to living artists and those who have died in the last 70 years. This payment is calculated on qualifying Works of Art which are sold for a hammer price more than the UK sterling equivalent of €1,000 (the UK sterling equivalent will fluctuate in line with prevailing interest rates calculated by the Artist's Resale Right Service Hub, based on the European Central Bank reference rate published at 2.15pm on the day of the sale, and can be found on [www.dacs.org.uk](http://www.dacs.org.uk)).

All items in this catalogue that are marked "ü" are potentially qualifying items, and the royalty charge will apply if the hammer price is more than UK sterling equivalent of €1,000. The royalty charge will be added to purchase invoices, and must be paid before items can be cleared. All royalty charges are paid to the design and Artists Copyright Society (DACS) by the auctioneers and no handling costs or additional fees with respect to these charges will be retained by the auctioneer. This charge may also be applicable to lots not marked "ü" and buyers must satisfy themselves.

The royalty charge for qualifying items which achieve a hammer price of more than the UK sterling equivalent of €1,000, but less than the UK sterling equivalent of €50,000 is 4%. For qualifying items that sell for more than the UK equivalent of €50,000 a sliding scale of royalty charges will apply. For a complete list of the royalty charges and threshold levels please refer to [www.dacs.org.uk](http://www.dacs.org.uk). There is no VAT payable on this royalty charge.





Clarke & Simpson Auction Centre, Campsea Ashe  
 Nr Wickham Market, Suffolk IP13 0PS  
 T: 01728 746323 E: [auctions@clarkeandsimpson.co.uk](mailto:auctions@clarkeandsimpson.co.uk)  
[www.clarkeandsimpson.co.uk](http://www.clarkeandsimpson.co.uk)