

Clarke &  
Simpson



*Art Deco, 20th Century  
Design & Retro*

Monday 18th June at 10am

# Forthcoming Auctions

Domestic & Rural Bygones & Collectors Vehicles

Saturday 14th July

Closing date for entries 15th June

Antique & Fine Art

Wednesday 25th July

Closing date for entries 29th June

Art Deco, 20th Century Design & Retro

Monday 3rd September

Closing date for entries 3rd August

Domestic & Rural Bygones & Collectors Vehicles

Saturday 8th September

Closing date for entries 10th August

**Clarke &  
Simpson**

Auctions

*Art Deco, 20th Century Design  
& Retro*

*Monday 18th June 2018  
at 10am*

**Viewing:**

Saturday 16th June 9am - 12noon  
Morning of Sale from 8.30am

**Enquiries:**

James Shand, Auctioneer & Valuer  
Geoffrey Barfoot, Auction Centre Manager & Valuer

**Buyers' Premium:**

18% plus VAT

Please see [www.the-saleroom.com](http://www.the-saleroom.com)  
for further images

**the saleroom**  
The home of art & antiques auctions

Special attention is drawn to the  
Conditions of Sale printed at the back of  
this catalogue.



Campsea Ashe  
Nr Wickham Market  
Suffolk IP13 0PS  
Tel: 01728 746323 Fax: 01728 748173  
Email: [auctions@clarkeandsimpson.co.uk](mailto:auctions@clarkeandsimpson.co.uk)  
[www.clarkeandsimpson.co.uk](http://www.clarkeandsimpson.co.uk)



@CandSAuctions



CandSAuctions





Lot 3



Lot 5



Lot 6



Lot 8



Lot 10

**1**  
A Clarice Cliff "Celtic Harvest" patterned part teaset, comprising teapot, sugar bowl, preserve dish, cream jug, fruit bowl, and large sucrier. £60-£100

**2**  
A figure "Eve", raised on marble plinth 28cm high. £30-£40

**3**  
An Art Deco design polished metal candle holder, in the form of a female gymnast doing a handstand, raised on green marble base, 29cm high. £30-£40. See illustration.

**4**  
An Art Deco style figure of a dancing girl, 26cm high. £10-£20

**5**  
An Art Deco style group, depicting a girl and dog reclining on a chaise longue, 26cm long. £10-£20. See illustration.

**6**  
A pair of Art Deco Scottie dog bookends. £10-£20. See illustration.

**7**  
A Smiths white Bakelite Art Deco wall clock. £10-£20

**8**  
A Carltonware Guinness toucan table lamp, 30cm high AF. £40-£60. See illustration.

**9**  
A large Tremaen Pottery pebble lamp, complete with shade. £20-£30

**10**  
A vintage American Officers dial telephone. £30-£50. See illustration.

**11**  
A Bourne Denby pottery bowl, and a matching vase. £20-£40

**12**  
A Junghans wall clock, with seconds timer. £20-£30

**13**  
A Moorcroft pottery table lamp. £100-£150

**14**  
A Glyn Hugo Pottery teapot, milk jug, and sugar bowl with spoon. £10-£20

**15**  
A cut glass wine cooler; and three graduated glass candle holders. £20-£40

**16**  
Two Bernard Rooke pottery table lamps, with original shades. £40-£60

**17**  
Two Bernard Rooke pottery table lamps; a Bernard Rooke owl; and a Sylvac green glazed floral decorated vase. £20-£30

**18**  
A pair of American moulded glass sky scraper table lamps; and an Art Deco wall lamp having pink moulded glass shade. £30-£40

**19**  
A copper printing plate, decorated with a vase of flowers; a metal similar depicting rural scene; a wooden printing block with horse decoration; and another. £20-£30

**20**  
Caroline Meigh, "Moonlit Rose" limited edition print 3/20, and original printing plate. £20-£30

**21**  
Caroline Meigh, "Badingham Road to South", pencil signed print limited edition 3/4, and metal printing plate; another example 4/4; and a print of the same scene. £20-£40

**22**  
Caroline Meigh, two prints and a metal printing plate. £10-£20

**23**  
Caroline Meigh, "Noyes Fludde", pencil signed limited edition etching 2/4, and engraved etching plate. £20-£40

**24**  
Caroline Meigh, "Twas Brillig and The Spithy Toves Did Gyre and Gimble in the Wabe", pencil signed limited edition etching 3/20, and original metal plate. £20-£30

**25**  
Caroline Meigh, "Badingham Road to North", limited edition etching 2/5; another 3/5; and another 1/5; and original plate. £20-£40

**26**  
Caroline Meigh, pencil signed etching "Large Interior Form" (can be found at Snape Maltings) 1/4; two prints of the same; and original plate. £20-£40

**27**  
Caroline Meigh, pencil signed etching "Old Cart Shed France" 1/4, and original copper plate. £20-£40

**28**  
A collection of Oz and other underground magazines, including last edition of Oz. £50-£80

**29**  
A Liberty material single bedspread. £10-£20

**30**  
Six decorative cushions. £10-£20

**31**  
Caroline Meigh, wood block print of a horse with original rough sketch and printing block. £20-£40

**32**  
Nuala Brain, study of an elderly seated lady, signed oil on canvas, 88cm x 57cm; and an unframed abstract oil by the same artist, 46cm x 38cm. £20-£40

**33**

**Caroline Meigh, limited edition print "Before It Was Tate Modern", 3/20; L Henry limited edition coloured print "Towards Ferrusac" 7/12; Peter Polaine limited edition print "Tabby" 4/8; Caroline Meigh "Opus Sectile" artist proof; another "The Night Mail Crossing the Border" 5/10; and a crayon and pencil drawing head and shoulders study of a young woman. £40-£60**

**34**

**Caroline Meigh, pencil signed print "Derelict Beaumont Creek", artist proof. £10-£20. See illustration.**

**35**

**Caroline Meigh, a collection of various unframed prints and artists proofs. £40-£60**

**36**

**A collection of various etchings and prints of mixed media studies, including Chrysler Building New York, MOMA Museum of Modern Art; and Butterworth, crayon drawing "Carla". £20-£40**

**37**

**A collection of Susie Cooper dinnerware, to include tureens, soup bowls and saucers, and some plates. £30-£50**

**38**

**A silver and blue enamel cased dressing table set, comprising four brushes and a hand mirror; two similar compacts all with cornet decoration. £100-£150**

**39**

**A large and colourful Poole Pottery baluster vase, decorated with birds and flowers impressed "Poole England" and "A.W." marks to base, 34cm high. £100-£150. See illustration.**

**40**

**An Arts & Crafts style wrought iron hanging hall lamp, with tinted glass shade, 42cm high. £30-£50**

**41**

**A small vintage snakeskin handbag. £20-£40**

**42**

**A large crocodile skin vintage handbag. £60-£80**

**43**

**A cased set of six late Victorian silver teaspoons, matching sugar tongs, and a sifter spoon with stylised foliate terminals, Sheffield 1899. £40-£60**

**44**

**A cased set of six silver handled butter knives. £20-£40**

**45**

**A pair of Victorian plated fish servers, with foliate engraved decoration and ivory handles by Walker & Hall in silk lined fitted case. £30-£50**

**46**

**A case containing four matching silver teaspoons; another; and various plated spoons. £20-£40**

**47**

**A vintage African Tribal Art style carved wall mask; together with a pair of wooden candlesticks; and an 1960's onyx desk set. £10-£20**

**48**

**A Victorian Arts & Crafts abalone shell messenger doves decorated clasp; together with Art Deco silver yellow metal ear-rings and other jewellery. £10-£20**

**49**

**A Chinese vintage jade style hand mirror. £10-£20**

**50**

**A collection of vintage copper and enamel jewellery; together with a sun yellow necklace etc. £10-£20**

**51**

**An Art Deco brown running glazed pottery two handled vase, 24cm high. £20-£40. See illustration.**

**52**

**A Tiffany design bronzed effect table lamp, with opaque glass domed shade. £30-£50**

**53**

**A Newlyn School design copper trinket box, having enamel panel of a fish AF. £10-£20**

**54**

**A boxed silver presentation bell, with inscription and ebonised handle. £20-£30**

**55**

**A pair of small silver trumpet shaped spill vases, 10.5cm high; and a circular silver trinket box, with foliate embossed decoration of birds, flowers and mask around a vacant cartouche. £40-£60**

**56**

**An iridescent glass baluster vase with swag decoration; a cut glass claret jug; and a small ruby glass and gilt decorated tear shaped dish. £20-£40**

**57**

**John Pyrke, study of a figure stood on the foreshore, signed oil on board 60cm x 88cm. £250-£350. See illustration.**

**58**

**K Hinwood 1973, study of an artist painting in fields, signed and dated oil on canvas, 51cm x 60cm. £20-£40**

**59**

**John Burman, still life study depicting flowers in a bowl, signed oil on canvas, 60cm x 58cm. £100-£150. See illustration.**



Lot 34



Lot 39



Lot 51



Lot 57



Lot 59





Lot 63



Lot 64



Lot 71



Lot 76



Lot 83

60

**Margaret Glass, rural study signed and dated 1976, 25cm x 37cm. £100-£150**

61

**Jean Clarke, "Cool Morning On The Deben", watercolour signed in pencil 27cm x 36cm, gallery label verso and exhibition catalogue. £80-£120**

62

**Michael Potter, pair of studies depicting Chinese porcelain, signed watercolours, 37cm x 49cm. £40-£60**

63

**John Burman, study of a water meadow with cattle and trees, oil on canvas, 33cm x 49cm. £100-£150. See illustration.**

64

**John Burman, still life study, flowers in a vase, signed oil on canvas, 38cm x 49cm. £100-£150. See illustration.**

65

**Coté, pair of oval framed coloured prints "Pets and French Dolls". £80-£120**

66

**Ciza, Modernist School indistinctly signed, line paintings of reclining nude figures, 30cm x 30cm. £100-£150**

67

**A novelty clock, in the form of a vintage bi-plane. £50-£60**

68

**Elyse Ashe Lord, a pair of pencil signed limited edition artists proof etchings of flowers in oriental vases 18/75, 16/75. £20-£40**

69

**J Pender, Cornish still life; another P Curzon-Price 1960's abstract; and another abstract study oil on board. £10-£20**

70

**An Arts & Crafts vintage bevel edged wall mirror, with heart shaped motifs, later painted, 80cm x 59cm. £10-£20**

71

**A signed Art Deco design print, entitled "Red Stockings" after Ameleto Dalla Costa. £30-£40. See illustration.**

72

**A G-plan design sideboard, fitted drawers, cupboards and drop flap compartment raised on square section tapering supports, 184cm. £40-£60**

73

**A Sureline cocktail cabinet, by George Serlin & Sons with revolving section enclosed by glazed sliding doors, raised on square tapering supports, 119cm wide. £40-£60**

74

**A mahogany Art Deco design china display cabinet, having glazed adjustable shelves enclosed by a pair of stylised doors, raised on cabriole supports terminating in claw and ball feet, 104cm wide. £40-£60**

75

**1952 copy of Picture Post, 1957 edition of The Picture Goer, 1942 Railway magazine, Meccano magazine etc. £10-£20**

76

**An Art Deco design table lamp, in the form of a semi-naked dancing girl 37cm high. £10-£20. See illustration.**

77

**A bronzed effect figure of a naked crouching girl, 18cm high. £10-£20**

78

**A large block glass and black lined Art Deco design scent bottle, of fan shape, 23cm high. £60-£80**

79

**A stylised bronzed figure of a kneeling nude, 19cm high; and a spelter figure of a Greek warrior on onyx plinth 27cm high. £10-£20**

80

**A teak G-plan design side cabinet, enclosed by a pair of doors raised on rounded tapering supports, 81cm wide x 63cm high. £40-£60**

81

**A Tiffany style two light table lamp, 75cm high. £60-£80**

82

**An oak student's bureau, 60cm wide x 121cm high. £20-£30**

83

**A large German pottery baluster vase, decorated in orange, brown and cream running glazes, 50cm high. £20-£40. See illustration.**

84

**A glass compot, decorated with pink tinted swirling flowers, 34cm dia; and a large turquoise glass baluster vase, 46cm high. £20-£40**

85

**A silvered model of a standing bulldog, 38cm long. £25-£35**

86

**A pair of plated coasters, with pierced decoration. £25-£35**

87

**A pair of plated coasters, with grape vine decoration. £30-£40**

88

**A pair of G-plan design low side cabinets, enclosed by glazed sliding panel doors raised on rounded tapering supports, 80cm wide x 33cm deep x 54cm high. £60-£80**

**89**

**A G-plan design side cabinet, enclosed by a pair of sliding doors, raised on square section tapering supports, 80cm wide x 95cm high. £20-£30**

**90**

**A G-plan design chest of six drawers, raised on rounded tapering supports, 77.5cm wide. £30-£50**

**91**

**Ian Houston born 1934, "Calm Morning Treboule", signed oil on board, 24.5cm x 34.5cm. £150-£250. See illustration.**

**92**

**Ian Houston born 1934, Fishing Boats Unloading Catch, possible at Dunwich, signed oil on board, 21cm x 26cm. £150-£200. See illustration.**

**93**

**Frank Brangwen, pencil signed etching, depicting depicting moonlit house with figures, numbered 14 to the margin, image size 39cm x 51.5cm. £40-£60**

**94**

**Frank Brangwyn, pencil signed etching Messina No.61, image size 37cm x 49cm. £40-£60**

**95**

**R Kray, study of a kestrel, signed watercolour on paper, dated '98, label verso "Prisoner Application HM Prison Wayland", 33x22cm. £200-£300. See illustration.**

**96**

**R Kray, study of a parrot seated on a branch, signed oil on board dated '97, label verso "HM Prison Wayland & HM Prison Wandsworth, 31cm x 25cm. £200-£300. See illustration.**

**97**

**R Kray, study of a small boat, signed watercolour dated 1997, label verso "Prisoner Application HM Prison Wayland", 26cm x 37cm. £200-£300. See illustration.**

**98**

**A G-plan design teak low cabinet, enclosed by a pair of doors and raised on rounded tapering supports, 82cm wide x 67cm high. £40-£60**

**99**

**A faux ebonised Rococo style wall mirror, decorated foliate scrolls, 138cm x 84cm in extremes. £20-£30**

**100**

**A Poole Pottery shallow dish, decorated in red, orange and blue, 26.5cm dia.; and another with brown and grey stylised decoration. £20-£40**

**101**

**A pair of white glazed bookends, in the form of classical lions. £45-£55**

**102**

**A white glazed bust of a young boy, 26cm high. £35-£55**

**103**

**A Poole Pottery fruit bowl, with stylised decoration in orange and green; and a similar Poole Pottery posy vase (2). £20-£40**

**104**

**A pair of Holkham Pottery egg cups, and matching baluster cream jug; a Portmeirion "Botanic Garden" patterned fruit bowl; a fish hors d'oeuvres dish; and two side plates. £20-£40**

**105**

**An Art Deco design book / CD rack. £20-£30**

**106**

**A teak G-plan style side cabinet, enclosed by an tambour shutter door raised on rounded tapering supports, 116cm wide. £20-£40**

**107**

**A Poole Pottery vase of ovoid compressed form, rouge ground with stylised decoration of blue, green and orange, 27cm high; and an oval red and grey pottery fruit bowl, 54cm long. £20-£40**

**108**

**A G-plan design side cabinet, enclosed by a pair of sliding doors, raised on rounded tapering supports, 87cm wide. £80-£120**

**109**

**An Art Deco walnut display cabinet, enclosed by a pair of glazed starburst design doors, 99cm wide. £20-£40**

**110**

**A 1970's teak effect office cabinet, enclosed by a pair of flush panelled doors, 90cm wide x 150cm high. £20-£40**

**111**

**A pair of Louis Roederer style wine coolers. £30-£50**

**112**

**A limed oak hall cupboard, enclosed by a panelled door, 75cm wide x 185cm high. £30-£50**

**113**

**A teak effect wall unit, having glazed upper section, single drawer and cupboards below, 86cm wide. £10-£20**

**114**

**A modern light wood wardrobe, enclosed by a pair of panelled doors, 106cm wide. £40-£60**



Lot 91



Lot 92



Lot 95



Lot 96



Lot 97





Lot 143



Lot 146



Lot 147



Lot 148



Lot 149

**115**

A modern light wood chest, of two short and two long drawers, raised on square section supports, 82cm wide. £40-£60

**116**

A modern light wood bevel edged swing toilet mirror. £20-£30

**117**

A teak G-plan design three section wall unit, fitted open shelves, glazed compartments, drink compartment, drawers and cupboards, 252cm wide. £40-£60

**118**

A large iridescent glass Art Deco design globe shaped vase, in optique amethyst and black, possibly Austrian or Bohemian, 26cm. £20-£30

**119**

Morando Luque, study of a South American Gaucho, signed oil on canvas, 69cm x 49cm. £20-£40

**120**

A G-plan light wood sideboard, fitted two drawers and cupboards below raised on square section supports, 124cm wide. £40-£60

**121**

A pair of Alfred Gratién design oval Champagne buckets. £25-£35

**122**

A silvered skull. £20-£30

**123**

A large pink glass tinted fan shaped scent bottle, AF. £20-£30

**124**

A Japanese Art Deco egg shell porcelain part teaset, signed. £10-£20

**125**

A bronzed double dogs head ornament, 48cm long. £80-£120

**126**

A plated horn vase. £45-£55

**127**

A Tapley teak wall unit, in sections, with fittings. £60-£80

**128**

A Harris Lebus oak compactum type wardrobe, 93cm wide. £10-£20

**129**

A decorative mirrored jewellery cabinet, 25cm wide x 19cm high. £15-£20

**130**

An amber coloured skull, 14cm high. £50-£80

**131**

A run of Ladderax units, 250cm wide. £200-£400

**132**

Two plated Christopher Dresser style toast racks. £30-£50

**133**

A pair of silvered pineapple ornaments, 37cms high. £20-£30

**134**

A decorative iron mounted birdcage mirror, AF. £10-£20

**135**

A wooden model of a duck on skis. £15-£20

**136**

Five Vaseline glass lamp shades. £100-£150

**137**

A crystal skull, 12cm high. £40-£60

**138**

Two amethyst type obelisk ornaments. £40-£60

**139**

A Spiegelau West German glass baluster vase, with frosted and raised stylised decoration, 13cm high. £30-£50

**140**

A pair of bronze Art Nouveau style figures, of young girls on circular raised plinths, 19cm high. £50-£60

**141**

An Old Tupton Ware small baluster vase, in the Moorcroft style, 10cm high. £10-£20

**142**

An Old Tupton Ware jug, by Jean McDougall decorated in the Moorcroft style, 25cm high. £20-£30

**143 ✓**

A cold painted bronze figure by Lorenzl of a naked dancing girl, signed to socle, raised on green onyx stepped base 34cm high AF. £100-£200. See illustration.

**144**

A blue glass and plated claret jug, in the form of a parrot 25cm high. £120-£150

**145**

Six Wedgwood for Compton & Woodhouse, limited edition porcelain figures, "The Dancing Hours". £60-£80

**146 ✓**

A Lorenzl cold painted bronze figure of a dancing girl, raised on green onyx plinth, stamped to base Lorenzl Made In Austria Real Bronze, 30cm high. £200-£400. See illustration and back cover.

**147**

A William de Morgan vase, by James Hersey AF, 23 high. £400-£600. See illustration.

**148**

A Troika anvil vase, by Louise Jinks 1976 - 1981, 22cm high. £200-£400. See illustration.



**149**

A cold painted bronze figure of a dancing girl, after Lorenzl, 29cm high. £100-£200. See illustration.

**150**

Two small black glass decorated fan shaped scent bottles, boxed. £20-£40

**151**

An ironwork retro coat rack, with painted ball shaped decoration. £20-£30

**152**

A red Bakelite Metamec wall clock. £10-£20

**153**

A pair of terracotta wall plaques, decorated classical figure heads in profile, 49cm x 33cm. £30-£50

**154**

A pewter biscuit barrel, of octagonal form with spot hammered decoration, 17cm high. £5-£10

**155**

An Art Deco design walnut and chrome mantel clock. £30-£50. See illustration.

**156**

An Art Deco design desk lamp. £10-£20

**157**

A pyramid phone, for renovation. £20-£30. See illustration.

**158**

An Art Deco design mottled glass ceiling lamp. £5-£10

**159**

A large Art Deco walnut and chrome mounted mantel clock. £40-£60. See illustration.

**160**

A large collection of various coloured glassware, to include Carnival glass, Murano glass, cloud glass, Art Deco dressing table items etc. £20-£40

**161**

An Art Deco design arched bevel edged frameless wall mirror; and an oak framed wall mirror. £10-£20

**162**

An Edwardian brass magazine rack. £20-£30

**163**

A brass coal helmet, with spot hammered decoration. £20-£30

**164**

A large German pottery vase, a Hornsea pottery storage jar, various glazed pottery jugs, vases etc. £20-£30

**165**

A collection of Bohemia type coloured hock glasses, cut glass Champagne flutes etc. £20-£30

**166**

A rock crystal type ball. £50-£80

**167**

A large cut green glass and electroplate mounted casket, of hobnail pattern, 34cm. £200-£300

**168**

An Art Deco design spelter group, depicting two Alsations on marble plinth base, 46cm long. £20-£30

**169**

Various coloured glassware, to include Wedgwood and other paperweights, amber glass flower vase and others. £10-£20

**170**

An Arts & Crafts Christopher Dresser style kettle, a water jug; and a miniature white metal water jug. £10-£20

**171**

Four brass Art Deco design wall lights. £50-£70. See illustration.

**172**

A pair of Scheurich of West Germany pottery baluster vases, 42cm high. £40-£60

**173**

A large West German pottery lamp base, 50cm high. £50-£80. See illustration.

**174**

An Art Deco design shoe cleaning box, and contents. £5-£10

**175**

An Art Deco style small radio, of circular form. £20-£30

**176**

Four vintage Art Glass vases, together with 1950's Pyrex etc. £10-£20

**177**

A large frameless bevel edged wall mirror, with etched bird decoration, 92cm x 64cm. £20-£40

**178**

A pair of Parian type plaques, in the Art Nouveau style decorated scantily clad maidens and flowers. £30-£40

**179**

An Art Deco design black cased wall clock. £10-£20

**180**

A Vogue advertising mirror. £10-£20

**181**

Duncan A Baillie, watercolour and pencil abstract study, signed and dated 1971, 42cm x 37cm. £20-£40

**182**

A pair of Art Deco studies of fashionable ladies, 43cm x 30cm. £60-£80

**183**

20th Century school, study of trees with rocky far ground, unsigned oil on canvas, 50cm x 60cm. £20-£30



Lot 155



Lot 157



Lot 159



Lot 171



Lot 173



Lot 186



Lot 199



Lot 200



Lot 204

**184**

**A Bakelite cased Bush radio.** £20-£30

**185**

**A Bakelite cased Bush radio.** £20-£30

**186**

**A style of Raoh Schorr pottery torso vase,** 29cm high. £20-£30. See illustration.

**187**

**Two Studio pottery table lamp bases; and a Studio pottery milk jug, impressed C J to the base.** £20-£30

**188**

**A Noverdy frosted glass pendant ceiling light, with bird decoration, 35cm dia.** stamped and signed to rim. £100-£150

**189**

**Joy Kirton-Smith, "Cascade", limited edition print, 80/295 image size 60cm x 41cm.** £100-£150

**190**

**Michael Dunkell, study of a barn in rural landscape, signed oil on canvas dated '85,** 36cm x 45cm. £20-£40

**191**

**Tessa S Pryse, "Olive Tree in Tuscany" pencil signed artists proof, 39cm x 48cm.** £20-£30

**192**

**A collection of various unsigned modern watercolours; and a photograph of Edward Meigh, by Angus McBean.** £10-£20

**Memorabilia Relating to England's 1966 World Cup winning manager Sir Alf Ramsey. On instructions from the executors for the estate of the late Lady Victoria Ramsey. Lots 193 - 223 (382 and 410)**

**193**

**A set of six glass tumblers; and six smaller similar all monogrammed A.R.** £20-£40

**194**

**Felix White, for Orrefors Glass, heavy vase etched with heraldic crest; a pair of cut glass decanters with silver necks; and silver labels "Whisky" and "Sherry"; a block glass paperweight inscribed "Svenska Football Forbundet"; a glass tumbler decorated various continental football badges; and two wine glasses.** £40-£60

**195**

**A paper knife, to mark the Centenary of The F A Cup Competition 1872 - 1972; a plated revolving butter dish inscribed "From Wembley Stadium in Honour of the F A Centenary Cup Final 1972"; a set of car decorated plastic dishes in leather holder inscribed "Belgian League Versus Football League, Brussels 27/9/67; and a plated sugar bowl inscribed "OFB 1967".** £20-£30

**196**

**A large quantity of platedware, to include entree dishes, drinks trays, hors d'oeuvres dish, various goblets, ice bucket etc.** £40-£60

**197**

**An Oxford die cast limited edition 1966 World Cup Winners collection.** £40-£60

**198**

**An Oxford die cast limited edition 1966 World Cup Winners collection.** £40-£60

**199**

**A pair of silver George V baluster candlesticks, having foliate and shell decoration one initialled A.E.R. and A.P.C.; the other A.E.R. and J.C.C., Hallmarked for London 1912, 33cm high.** £300-£400. See illustration.

**200**

**A baluster coffee pot, having foliate decoration to the hinged lid, surmounted by a finial, raised on a circular floral cast spread foot, stamped to base Mexico Sterling 925, 40oz, 26cm high.** £400-£600. See illustration.

**201**

**A cased set of twelve silver handled shellfish forks, the case inset with a brass plaque inscribed to "Sir Alfred and Lady Ramsey 23rd September 1972, from the Chairman and Director's of Orient F.C** £40-£60

**202**

**A continental and white metal twin branch candelabra; and a white metal sucrier and cover.** £40-£60

**203**

**A Georg Jensen silver fork, inscribed verso Danmark-England 3-7-1966; a continental white metal dish inset with a coin and inscribed "England-Österreich Wien, 25.Mai 1952"; a miniature silver alms dish; a Mexican white metal embossed dish; various continental white metal souvenir spoons; a pair of silver sugar tongs; two Argentinian white metal pipes etc.** £60-£100

**204**

**A set of six Mexican napkin rings, with foliate cast decoration and inscribed "A.R.", 10.5oz.** £80-£120. See illustration.

**205**

**A pair of silver oval bon-bon dishes, having foliate decoration, Hallmarked for London 1972; and a Scandinavian white metal tea strainer and bowl.** £40-£60

**206**

**A four piece silver teaset, the tea pot and hot water jug with black wood handle and lift, gadrooned border raised on claw and ball feet by Edwin Viner, Sheffield Hallmarked for 1956, 1959 and 1961, total weight 67oz.** £400-£600



**207**

A small collection of England World Cup and other memorabilia to include, World Cup Final the official 8mm film; First Day covers; stamps; England The Alf Ramsey Years; and the Boys Book of World Cup. £20-£40

**208**

A silver cylindrical box and cover with inscription "Thanks For Everything, Alf, Harold, Les and Neil" (Harold Sheperdson, Les Cocker, and Neil Phillips), makers mark A.T.C. Birmingham 1973, 11 cm high. £200-£300. See illustration.

**209**

A white metal and wooden lined cigarette box, having interior presentation plaque inscribed "F.J.G.C.Inglitterre-Italia, London 30th November 1949", 18.5cm long. £40-£60

**210**

A cased set of enamel decorated Danish Sterling coffeespoons. £40-£60

**211**

A Mexican .925 Sterling stamped salver, with foliate raised border, bearing inscription for Sir Alfred and Lady Victoria Ramsey, Uni Royal Mexico 1969; and a copper tray inscribed "Presented to Sir Alf and Lady Ramsey by Waikato F.A. Hamilton, New Zealand 1984". £150-£200

**212**

Two gilt City of Detroit keys, inscribed "Colman A Young, Mayor City of Detroit". £40-£60

**213**

A silver tankard, with presentation inscription "Presented to Sir Alf Ramsey by Alderman Donald Savage On Behalf of The Royal Borough of Tunbridge Wells at The Opening of the Sir Alf Ramsey, 3rd December 1973", having scroll handle, makers mark B D Hallmarked for Sheffield 1971, 12.5cm high, 10oz. £80-£120

**214**

A pewter tankard, the base inset with dice and inscribed "Alf Ramsey From BSA Police Salisbury Rhodesia 1955", 15.5cm. £20-£40

**215**

A pewter presentation tankard, "England V FIFA" Wembley 23rd 1963, 12cm high. £20-£30

**216**

A plated tankard, presented to Sir Alf Ramsey on November 5th 1976 to commemorate the official opening of the Civic Social Club House; and a plated beaker with enamel crest for Dortmund; and a presentation shield "Gibraltar FA XI V FA Representative XI, 22nd May 1865". £20-£40

**217**

A silver medallion, "Daily Express National Sportsman of the Year 1966" presented to Alf Ramsey. £60-£100. See illustration.

**218**

A pen holder, inscribed "Sportsman of the Year 1966 Alf Ramsey(Manager)" with revolving medallion inscribed SWA; and a "1970 World Cup Winston" medallion. £40-£60

**219**

A plated rose bowl, with presentation inscription World Cup 1966, Presented to Sir Alf Ramsey by the Council of the London Borough of Barking, 8th March 1967, of half fluted form with garland decoration and lion mask handles, 25cm dia. x 19cm high. £60-£100

**220**

A silver presentation salver, inscribed "Alf Ramsey, to Commemorate The Occasion When the National Sporting Club Honoured Sir Stanley Rous C.B.E. Cafe Royale Tuesday 12th February 1963", Hallmarked for Birmingham 1962, having pie crust border, 30.5cm dia. 23oz. £300-£400

**221**

A silver presentation salver, presented by Ipswich Town FC Supporters Association to Mr & Mrs A E Ramsey to mark the Occasion of the Promotion of Ipswich Town FC to Division 1, and Winning Division 2 Championship 1960-61, having pie crust border raised on three claw and ball feet, Hallmarked for Birmingham 1934, 36oz, 36cm dia. £400-£600. See illustration.

**222**

A silver presentation salver, presented to Sir Alfred Ramsey by the Council of the Football Association as a Token of Esteem and Appreciation to mark the "One Hundredth Occasion on Which He Has Acted As Team Manger of the England team, Wales V England November 1972", decorated in coloured enamels with various Association flags, pie crust border raised on three claw and ball feet, Hallmarked for Birmingham 1972, 40oz, 36cm dia. £1,000-£1,500.

See illustration and front cover.

**223**

A letter from the Football Association, dated 26th October 1962, to A.E.Ramsey confirming the appointment as England Team Manager, signed by Denis Followes M.B.E., B.A., Secretary of The Football Association. £600-£800. See illustration.



Lot 208



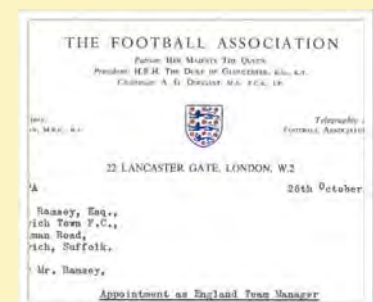
Lot 217



Lot 221



Lot 222



Lot 223





Lot 227



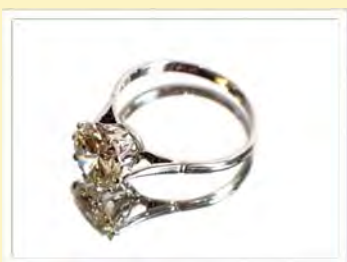
Lot 228



Lot 229



Lot 230



Lot 231



Lot 232

**224**

A Zippo "Lady Andorina" lighter; and a Penguin Aquarium lighter. £10-£20

**225**

A Jaeger Le Coultre pocket watch, mark to the reverse G.S.T.P.F009201 AF. £40-£60

**226**

A Parker Duo Fold Big Red pen set, in fitted case and box. £350-£450

**227**

An 18ct gold Rolex Oyster Perpetual gent's wrist watch, in fitted box. £2,000-£3,000. See illustration.

**228**

A Longines Automatic gent's wrist watch, cased, circa 1940's / 50's. £400-£600. See illustration.

**229**

An Omega Seamaster gent's wrist watch, circa 1960's with box. £400-£600. See illustration.

**230**

A box of various loose agate and semi-precious stones. £40-£60

**231**

A white metal and paste set Edwardian pendant, hung to a fine link chain; another similar; a circular paste set brooch; a leaf shaped diamanté brooch; and a clip ear-ring. £60-£100

**232**

A Victorian yellow metal and amethyst set bar brooch; another set three amethysts; a ruby and white stone set Art Deco style brooch; and an amethyst coloured four stone brooch. £80-£120

**233**

A moonstone set line brooch; a bar brooch with central cabochon moonstone; an Aquamarine set brooch; and a Lapis Lazuli set yellow metal bar brooch. £100-£150

**234**

A 9ct gold Tourmaline and seed pearl set brooch / pendant. £60-£100

**235**

A 9ct gold chain, approx. 20gms. £200-£300

**236**

A 15ct gold thimble; and two silver thimbles. £80-£120

**237**

An amethyst and white stone set pendant; and two yellow metal fine link chains. £80-£120

**238**

A 9ct gold bar brooch with enamel decorated coronet; and another similar. £100-£150

**239**

A white metal pencil lead holder by S Morden & Co. £20-£40

**240**

A silver and blue enamel ladies compact, with coronet decoration; a silver engine turned decorated compact; a pair of silver napkin rings initialled and dated 28/3/46; and another napkin ring with pierced decoration. £40-£60

**241**

A pair of 18ct gold cuff-links; and another pair indistinctly marked both monogrammed, approx. 15gms total. £200-£400

**242**

A pair of 18ct gold foliate engraved cuff-links; an 18ct gold dress stud; a pair of silver cuff-links; white metal and enamel decorated studs etc. £200-£300

**243**

A Tiffany & Co. red enamel cased travelling alarm clock, in original box. £30-£50

**244**

A 9ct gold snap bangle, with foliate engraved decoration, approx. 5.6gms in fitted case. £40-£60

**245**

An 18ct white gold solitaire diamond set ring, approx. 0.4 carat. £400-£500

**246**

A 9ct gold bangle, approx. 15.9gms. £100-£150

**247**

A yellow metal and diamond set locket, with horseshoe motif, approx. 14gms. £100-£200

**248**

A collection of 9ct gold and yellow metal chains, pendants, stick pin, charms etc. £200-£300

**249**

Two 18ct gold rings set with blue stones, approx. 6gms; a 9ct gold ring set with stone; and a silver ring. £80-£120

**250**

Two yellow metal solitaire diamond set rings, approx 2gms in total weight. £80-£120

**251**

Two 22ct wedding bands, approx 10gms; and another 22ct gold ring, approx 2gms. £200-£300

**252**

Three 9ct gold rings; and a ring marked 10K, 12gms in total. £80-£120

**253**

A yellow metal bangle 7.5gms total, set rubies and chip diamonds. £100-£200. See illustration.

**254**

**A small 9ct gold Victorian locket; a fob seal and watch key set with agate; an oval yellow metal locket frame; a Victorian yellow metal retracting pencil; a cameo brooch; a yellow metal and enamel decorated watch chain with T bar and clips; a yellow metal necklace with barrel link clasp; a yellow metal bracelet with elongated links etc.** £100-£200

**255**

**A silver snap bangle, with foliate engraved decoration; a white metal similar; two fob seals; a yellow metal pendant with floral decoration; a white metal padlock clasp; various brooches etc.** £40-£60

**256**

**A seed pearl and sapphire set bar brooch; a yellow metal bow brooch; and a silver leaf shaped brooch with central blue stone.** £40-£60

**257**

**A 9ct gold bar brooch, set with central opal; a turquoise cluster bar brooch with central white stone; and an oval turquoise brooch.** £60-£80

**258**

**A diamond solitaire ring, approx. 3 carat round cut diamond in claw setting on platinum band. total weight approx. 4gms. £3,000-£4,000. See illustration.**

**259**

**A pair of diamond ear-rings, each set approx. ¾ carat round cut diamond surrounded by right smaller diamonds in yellow and white metal mounts, total weight approx. 3.5gms. £600-£800. See illustration.**

**260**

**A silver engine turned cigarette case, initialed A.H.C.; a yellow metal inlaid cigarette decorated Eastern scenes; and a plated cigarette box, inscribed "From Grange Town to C.H. to Bob".** £40-£60

**261**

**A George V silver tankard, of baluster form having scrolled handle raised on circular spread foot, by The Goldsmiths and Silversmiths Company London 1917, cased.** £40-£60

**262**

**A cased silver egg cup and spoon; and a silver sugar bowl by Walker & Hall.** £40-£60

**263**

**A 19th Century cameo brooch, depicting a classical maiden with vine leaves in her hair; a Scottish silver brooch with thistle decoration; another Celtic style brooch with Cairngorm style stone; an agate and enamel decorated cornet brooch; and various others.** £100-£150. See illustration.

**264**

**A Ronsons Americano cocktail lighter, 16cm long 17cm high. £200-£300. See illustration.**

**265**

**A Leica camera, DBP No109220 in leather travelling case. £450-£550. See illustration.**

**266**

**A cased set of Art Deco tea knives.** £10-£20

**267**

**An Art Deco wooden jewellery box.** £5-£10

**268**

**A cased set of Art Deco coloured bean top coffee spoons.** £5-£10

**269**

**An Art Deco electric candle bedside light, 17cm high. £30-£40**

**270**

**An Art Deco bedside lamp, in the form of a miniature oil lamp. £5-£10**

**271**

**An Art Deco design gilt and enamel brooch, of a lady walking her dog.** £10-£20

**272**

**A small cold painted metal study, of a bulldog, 8cm long. £20-£30. See illustration.**

**273**

**A pair of Georg Jensen plated salts.** £20-£30

**274**

**A small bronze figure of a seated deer by Raoh Schorr, signed, 6cm long x 8cm high. £20-£30. See illustration.**

**275**

**An Art Deco bronze stylised figure, 18cm high. £30-£50**

**276**

**A Bakelite cased eight day clock, MKII ER6A/1150. £40-£60. See illustration.**

**277**

**A plated Art Deco rise and fall cigarette box, with engine turned decoration, 8.5cm x 8cm. £10-£20**

**278**

**A plated cruet in the form of an ocean liner. £10-£20**

**279**

**A Jaz alarm clock; and a Jaz travelling clock (2). £80-£120**

**280**

**Four white metal salts and spoons, stamped to base "Sterling Hand Made".** £20-£40

**281**

**A copper and brass cruet in the form of an ocean liner. £10-£20**

**282**

**A small chromed model of an aeroplane on plinth. £10-£20**



Lot 263



Lot 264



Lot 265



Lot 272



Lot 274



Lot 276





Lot 290



Lot 291



Lot 292



Lot 323



Lot 324

**283**

A white metal paperweight, in the form of a Matador and bull on marble plinth.

£10-£20

**284**

A plated cruet, in the form of a violin.

£25-£35

**285**

A bronze Speed Nymph car mascot figure, 18cm high. £50-£80

**286**

A metalware bird cage clock, 19cm high.

£25-£35

**287**

Two bronze figures of carp. £50-£80

**288**

An Art Deco design chrome and marble calendar. £10-£20

**289**

An Arts & Crafts design brass candlestick, 29cm high. £40-£60

**290**

A large Lalique glass Roscoff shallow dish, having fish head and raised point decoration, signed R Lalique, France 35.5cm dia. £400-£600. See illustration.

**291**

A French opaque glass bowl, signed G. Vallon, France, having fruit and leaf decoration, 24cm dia. £40-£60. See illustration.

**292**

A Lalique Coquilles shell decorated bowl, signed R Lalique France, 24cm dia. £100-£200. See illustration.

**293**

A large French amber glass fruit bowl, of fluted form, 30cm dia. £10-£20

**294**

A silver and enamel compact, having floral decoration to front and engine turned finish to the reverse. £30-£50

**295**

A plated cigarette box, with inlaid wooden panel depicting a figure seated smoking a cigar, 14cm long. £5-£10

**296**

A ruby glass and plated claret jug, in the form of an eagle, 25cm high. £100-£200

**297**

Two large pieces of raw amber, approx. 182gms. £100-£200

**299**

An Art Deco walnut cocktail cabinet, with rise and fall top revealing interior, 117cm high x 83cm wide x 39cm deep. £40-£60

**300**

A heavy hardwood coffee table. Vendor reports the table originates from Luzon in the Philippines and is hand carved from the Kalinga tribe, 105cm x 80cm, 46cm high. £60-£80

**301**

An amber coloured Art Glass vase, 41cm high. £10-£20

**302**

Five pieces of raw amber, approx. 200gms. £100-£200

**303**

A collection of various pieces of raw amber, approx. 181gms. £100-£200

**304**

Three pieces of raw amber, approx. 195gms. £200-£300

**305**

A small collection of five pieces of raw amber, approx. 194gms. £100-£200

**306**

Four pieces of raw amber, approx. 185gms. £100-£200

**307**

Five pieces of raw amber, approx. 199gms. £100-£200

**308**

A small collection of various raw amber pieces, approx. 194gms. £100-£200

**309**

A small collection of various raw amber pieces, approx. 195gms. £100-£200

**310**

A small collection of various sized pieces of raw amber, approx. 199gms. £100-£200

**311**

A small collection of various pieces of raw amber, approx. 194gms. £100-£200

**312**

A small collection of various pieces of raw amber, approx. 190gms. £100-£200

**313**

A small collection of various pieces of raw amber, approx. 193gms. £100-£200

**314**

A small collection of various pieces of raw amber, approx. 203gms. £100-£200

**315**

A collection of various pieces of raw amber, approx. 300gms. £100-£200

**316**

A small collection of various sized items of raw amber, approx. 301gms. £100-£200

**317**

A small collection of various sized pieces of raw amber, approx. 193gms. £100-£200

**318**

A large quantity of various sized pieces of amber, and other stones. £50-£80

**319**

Seven pieces of raw amber, approx. 244gms. £100-£200

**320**

Seven pieces of raw amber, approx. 223gms. £100-£200



**321**

**A large quantity of various sized pieces of raw amber, approx. 515gms. £100-£200**

**322**

**A large quantity of various sized raw amber stones, approx. 466gms. £100-£200**

**323**

**A Hermes backgammon set. £200-£400. See illustration.**

**324**

**A collection of six Royal Worcester Spode Palissy Fashionable Ladies plates. £40-£60. See illustration.**

**325**

**A collection of various Caithness and other paperweights; and an Alum Bay baluster vase. £40-£60**

**326**

**A Mesi Sole Italian porcelain plate, with conch shell and sun face decoration; and a John Buck British Fish & Chips plate (2). £10-£20**

**327**

**A Minton white porcelain and bronze figure, "The Fisherman", 25.5cm high. £40-£60**

**328**

**A Minton white porcelain and bronze figure, "Spellbound", 13cm high. £20-£40**

**329**

**A Minton white porcelain and bronze figure, "Travellers Tales", 16cm high. £40-£60**

**330**

**A Minton white porcelain and bronze figure, "Sea Breezes", 23cm high. £40-£60**

**331**

**A Minton white porcelain and bronze figure, "The Shiekh", 24cm high. £40-£60**

**332**

**A Minton white porcelain and bronze figure, "The Sage", 17cm high. £30-£50**

**333**

**A Sarreguemines Sandbow pottery ewer, 24cm high. £20-£40. See illustration.**

**334**

**A Denby stoneware baluster vase, with cream raised line decoration on a celadon ground, 20cm high. £20-£30**

**335**

**An Art Deco design continental glass and overlaid liqueur set, comprising decanter and six glasses, the decanter with enamel decoration of a knight in armour. £20-£30**

**336**

**A blue Whitefriars glass (Geoffrey Baxter) square section vase, with raised point decoration, 15cm high. £40-£60. See illustration.**

**337**

**An Art Deco Japanese pottery bust, of a young lady, 19cm high. £40-£60. See illustration.**

**338**

**A Winstanley pottery figure of a recumbent cat, 18cm long. £20-£30**

**339**

**An unmarked Russian porcelain baluster vase, having all over floral decoration, 20cm high. £20-£30**

**340**

**A Plichta figure of a seated cat, with thistle decoration; a Plichta figure of a seated pig with clover leaf decoration; a similarly decorated rabbit AF; and a giraffe AF. £40-£60**

**341**

**A modern Moorcroft baluster vase, 19.5cm high. £40-£60. See illustration.**

**342**

**A Troika cylindrical vase, with circular stylised banded panel decoration, on a blue and grey ground, 20cm high. £60-£80**

**343**

**A Peruvian white metal oval platter, stamped verso 925 Peru Plata, having foliate shell and floral border, 45cm long, 30oz. £150-£250**

**344**

**A Peruvian white metal bowl, having stylised handles, 34cm dia. overall, 19oz. £100-£150**

**345**

**A white metal circular bowl, having foliate border and scrolled feet, stamped to base Hecho Amano 800, 19cm dia. 11oz. £40-£60**

**346**

**An Edwardian silver crumb scoop, having ivory handle, Sheffield 1904; a pair of silver Capstan shaped pepperettes with loaded bases; and a pair of Georgian silver sugar nips. £60-£80**

**347**

**A collection of various South American and other white metal spoons; two Argentinian white metal and yellow metal inlaid pipes; a small white metal mounted nut vase; napkin rings etc. £40-£60**

**348**

**Various plated items to include sugar tongs, spoons, toast rack etc. £20-£40**

**349**

**A set of four Sterling and enamel decorated cased bridge pencils; and a Victorian yellow metal retractable pencil inset with a Cornelian finial. £60-£80**

**350**

**A continental white metal hand bell, of fluted form; and a silver stand. £20-£30**

**351**

**A continental white metal cream jug, on stand stamped to the base 925 Sterling; a pair of Peruvian white metal dishes monogrammed; a plain similar; and a glass salt on white metal stand with spoon. £30-£50**



Lot 333



Lot 336



Lot 337



Lot 341



Lot 375

**352**

A Peruvian white metal cigarette box, with wooden interior lining. £30-£50

**353**

A silver tea strainer on stand by Edwin Viner, Sheffield 1937; and a South American white metal two handled bowl. £40-£60

**354**

A cased set of six continental white metal liqueur cups, with raised foliate decoration. £60-£80

**355**

A pair of Chilean white metal baluster candle sticks, stamped Plata Fina Chile 900, 25cm high. £60-£100

**356**

A cut glass powder jar, with silver engine turned lid; a matching perfume atomiser; two graduated glass and white metal overlaid Art Nouveau design bon-bon dishes; a ring stand etc. £40-£60

**357**

A South American white metal baluster bowl, with spot hammered decoration raised on claw feet flanked by serpent handles, bearing monogram, 11oz. £60-£80

**358**

A Chilean white metal baluster water jug, stamped to base Hecho Amano Plata Fina 900, 13oz. £60-£80

**359**

A continental white metal baluster water jug, having angular handle raised on a circular spread foot, 900 mark to base, 20cm high overall, 26oz. £150-£250

**360**

A Le Coultre wrist watch. £100-£200

Items from the estate of the late John Alfred Green. Lots 361- 374.

See page 20 for artists biography.

**361** ✓

John Alfred Green 1932 - 2017, a head and shoulders sculpture of Pope John Paul, 64cm high, raised on an associated wooden plinth and base, 87cm high. £200-£300

**362** ✓

John Alfred Green 1932 - 2017, a sculpture of a King and Queen, seated back to back 64cm high. £100-£200

**363** ✓

John Alfred Green 1932 - 2017, a sandstone sculpture of "Leda and the Swan", Ancaster stone, 115cm high. £200-£300

**364** ✓

John Alfred Green 1932 - 2017, sculpture of an embracing couple "The Kiss", Ancaster stone, 124cm high. £200-£400

**365** ✓

John Alfred Green 1932 - 2017, a sculpture, head and shoulders study of a young girl with flowers in her long flowing hair, 78cm high. £100-£200

**366** ✓

John Alfred Green 1932 - 2017, a sculpture of a female violinist, raised on a sandstone plinth, 47 cm high. £100-£200

**367** ✓

John Alfred Green 1932 - 2017, a carved plaster tablet; another in Welsh slate depicting flowers and a face; a sculpture Lord Who Shall We Go To? 34cm high etc. £40-£60

**368** ✓

John Alfred Green 1932 - 2017, a stylised head and shoulders sculpture, 34cm high on slate plinth. £40-£60

**369** ✓

John Alfred Green 1932 - 2017, a plaster sculpture of Christ, 57cm high. £40-£60

**370** ✓

A plaster corbel depicting a lion; and another of a head. £40-£60

**371** ✓

John Alfred Green 1932 - 2017, a carved sandstone sculpture of a semi draped female, 158cm high, raised on a square plinth, 47cm high some frost damage to base. £200-£300

**372**

After the Antique and possibly of late Grand Tour period, a plaster cast frieze fragment of a Phoenician male AF, 113cm x 73cm. £100-£200

**373**

After the Antique, a Roman type figural plaster cast frieze fragment, 107cm x 75cm AF. £100-£200

**374**

After the Antique, a Phoenician type figure depicting a nubian, raised on a plinth, 114cm high AF. £100-£200

**375**

An oriental carved circular occasional table, decorated cranes and foliage raised on a bamboo stand, 61cm dia. x 72cm high. £60-£80. See illustration.

**376**

A leather upholstered 1930's deep seated armchair. £100-£150

**377**

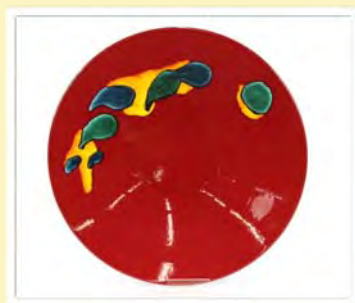
An Art Deco walnut bookcase, fitted with open shelves and cupboard below, 64.5cm wide x 74cm high. £40-£60

**378**

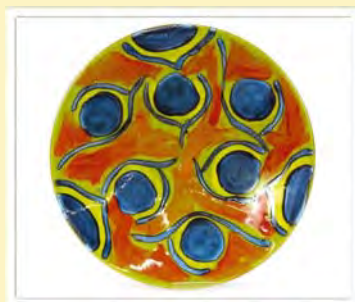
A Schreiber teak effect dressing table, fitted with a mirror three drawers and cupboards below on rounded tapering supports, 100cm wide. £10-£20



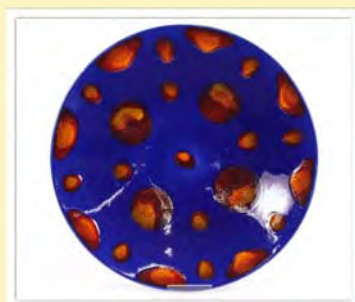
Lot 380



Lot 381



Lot 384



Lot 386



**379**

**A collection of various china, to include a Poole Pottery twin tone coffee set; a Crown Ducal Art Deco design coffee pot; a Grays Pottery "Sunbuff" bowl and cover; an Art Deco toast rack; a Susie Cooper cream jug and sugar bowl etc. £40-£60**

**380**

**A Poole Pottery brightly coloured charger, 41cm dia. £30-£50. See illustration.**

**381**

**A Poole Pottery brightly coloured charger, 41cm dia. £30-£50. See illustration.**

**382**

**A G-plan design teak three drawer writing table, 107cm wide (from the Estate of the late Lady Victoria and Sir Alf Ramsey). £100-£150**

**383**

**A teak G-plan design sideboard, fitted five central drawers flanked by cupboards raised on rounded tapering supports, 168cm wide. £60-£100**

**384**

**A Poole Pottery brightly coloured charger, 41cm dia. £30-£50. See illustration.**

**385**

**A large West German pottery vase, of baluster form 40cm high; and an orange and red glazed similar of tapering form 41cm high. £30-£60**

**386**

**A brightly coloured Poole pottery charger, 41cm dia. £30-£50. See illustration.**

**387**

**A large amber glass punch bowl, with vine decoration 32cm dia. x 18cm high; and a Murano type amber and ruby tinted glass vase, 25cm high. £20-£40**

**388**

**A teak G-plan design sideboard, having double cupboards raised on square tapering supports, 163cm wide. £80-£120**

**389**

**A silvered Spirit of Ecstasy model, 42cm high. £100-£150. See illustration.**

**390**

**Six Shelly Art Deco tea cups and saucers; two further saucers; and four Wedgwood teacups and saucers - some damage. £20-£40**

**391**

**A quantity of Susie Cooper dinnerware, to include a tureen, meat plates, soup bowls, dinner and side plates etc. £40-£60**

**392**

**A teak G-plan design knee-hole desk, fitted four short drawers, raised on rounded tapering supports, 121cm. £80-£120**

**393**

**A 1960's Formica topped kitchen table, 101cm x 71cm. £20-£40**

**394**

**A vintage circular leather suitcase, covered with numerous luggage labels. £50-£80. See illustration.**

**395**

**A stained glass window panel, by Xavier Combes. £30-£50. See illustration.**

**396**

**An Art Deco walnut writing desk, having leather inset top, pull out slide; and five drawers 106cm wide. £40-£60**

**397**

**An Art Deco three piece marble clock set, (with battery movement). £40-£60. See illustration.**

**398**

**An Art Deco chrome standard lamp. £40-£60**

**399**

**An Art Deco walnut cocktail cabinet, with rise and fall top revealing interior glasses and cocktail shaker. £40-£60**

**400**

**An early 20th Century mahogany pedestal writing desk, having leatherette inset top, fitted four drawers to each pedestal, raised on platform plinths 122cm wide. £60-£80**

**401**

**A large pair of bronze boxing hares, 85cm high. £600-£800**

**402**

**A G-plan teak four drawer chest, raised on square section tapering supports and disc feet 99cm wide. £30-£60**

**403**

**A bronze figure of a diver, 24cm high. £60-£80**

**404**

**A stylised ethnic sculpture, raised on a hardwood plinth 38cm high. £20-£40. See illustration.**

**405**

**A glass and plated claret jug, in the style of Dr Christopher Dresser, 24cm high overall. £50-£80**

**406**

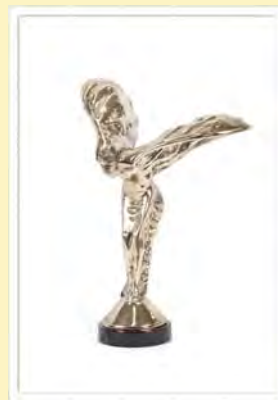
**An Austin Suite sideboard, fitted six drawers and raised on rounded tapering supports, 145cm wide. £40-£60**

**407**

**A bronze Art Deco style figure of a dancing girl, on stepped marble plinth, 40cm high. £60-£80**

**408**

**A plated double wine coaster, with cherub decoration on wheeled base. £80-£120**



Lot 389



Lot 394



Lot 395



Lot 397



Lot 404





Lot 415



Lot 437



Lot 442



Lot 444



Lot 445

**409**

**An Art Deco style bronze figure of a dancing girl, raised on a marble plinth, 58cm high. £100-£150**

**410**

**A nest of three light oak coffee tables, 92cm overall. £60-£80**

**411**

**A large decorative leather basket. £20-£40**

**412**

**A signed Italian tile topped coffee table, decorated with angel fish, 120cm long. £90-£150**

**413**

**An Art Deco design silver plated teaset. £120-£160**

**414**

**A Criterion teak record player cabinet, 61cm wide x 77cm high. £15-£20**

**415**

**A good quality oak coffee table, by GB Pegg, the rectangular cleated top with central carved panel, raised on shaped end supports 87cm. £40-£60. See illustration.**

**416**

**A set of four golden oak Art Nouveau design dining chairs, tapering supports with upholstered drop in seats raised on square. £80-£120**

**417**

**Style of Le Corbusier, LC4 type chaise longue. £60-£100**

**418**

**A set of six designer white plastic and beech dining chairs. £40-£60**

**419**

**A retro three section standard lamp, 145cm high. £30-£50**

**420**

**A black wood and chrome Danish coffee table, 70cm. £20-£30**

**421**

**A teak magazine rack, 52cm. £10-£20**

**422**

**An Art Nouveau design copper coal helmet, with brass twist handle. £20-£30**

**423**

**A Danish chrome and glass coffee table, 60cm. £20-£30**

**424**

**A pair of silvered angel wing appliques, 36cm. £15-£20**

**425**

**A Danish teak coffee table, 79cm. £20-£40**

**426**

**A vintage Angel Poise lamp. £10-£20**

**427**

**A light oak Danish coffee table, raised on block end supports 140cm. £20-£30**

**428**

**A Dartmouth Pottery jardinière; a Falconware similar; a Poole Pottery shell posy holder; a French porcelain box etc. £10-£20**

**429**

**An Art Nouveau brass oil lamp (converted to electricity). £30-£50**

**430**

**A pair of large decorative bronze stags, after J Moignier, 74cm high. £350-£450**

**431**

**A large teak dining table, 106cm x 275cm; and a set of twelve Danish dining chairs, stamps to the underside 1966. £200-£300**

**432**

**A large pewter planter, 50cm sq. £20-£30**

**433**

**A large pewter planter, 50cm sq. £20-£30**

**434**

**A large pewter planter, 50cm sq. £20-£30**

**435**

**A set of four Danish teak dining chairs, with slatted backs, upholstered drop in seats on square section supports. £40-£60**

**436**

**A G-plan design extending dining table; and a set of four matching chairs. £60-£80**

**437**

**A silvered Buddha head ornament, 45cm high. £25-£35. See illustration.**

**438**

**A beech Skovby SM 32 dining table, with pull out sections, 143cm overall. £100-£200**

**439**

**A pair of teak G-plan tile top coffee tables, 71cm x 41cm. £30-£50**

**440**

**Two Koch & Lowy style chrome adjustable standard lamps. £40-£60**

**441**

**A Danish Banana sofa, upholstered in pale floral stamped Velour. £200-£400**

**442**

**A light Ercol Pandora box coffee table, 80cm. £120-£160. See illustration.**

**443**

**A silvered Spirit of Ecstasy figure of large proportions, after Pasaier, 31cm high. £350-£450**

**444**

**A pair of comic cartoon decorated Bombe shaped bedside chests, fitted two drawers, 57cm. £200-£300. See illustration.**

**445**

**A teak extending dining table, with two extra leaves** 260cm x 99cm; and eight Glyngore Stolefabrik string seat chairs - six standards, two elbows. £300-£500. See illustration.

**446**

**An Art Nouveau Art Pottery vase, with running blue and brown glazes, impressed with a butterfly and LG to base.** £10-£20

**447**

**A quantity of TG Green Cornishware, comprising dinner and side plates, bowls, one tureen and a salt cellar.** £40-£60

**448**

**A pair of Art Nouveau design gilt framed easel mirrors, 51 x 28cm.** £30-£50

**449**

**A pair of French design children's armchairs, with comic book upholstery.** £70-£100

**450**

**An Art Deco design cheval mirror, 141cm.** £50-£60

**451**

**A 1930's light oak bookcase, with cupboard base, 68cm wide x 97cm high.** £20-£40

**452**

**A Lily Bolinger style Champagne cooler.** £30-£50

**453**

**A Danish walnut two tier side table, 64cm wide.** £10-£20

**454**

**A nest of three light oak occasional tables, 55cm wide in extremes.** £20-£30

**455**

**A plated cannon bottle holder.** £100-£150

**456**

**A Beecanese Product teak three drawer chest, 77cm.** £15-£20

**457**

**A Denby circular bowl, having four stylised handles, mark to base Denby W.T.L&S 1937.** £20-£30

**458**

**A pair of 1930's Airborne deep seated easy chairs.** £80-£120. See illustration.

**459**

**A teak dressing table, fitted five drawers raised on rounded tapering supports, 107cm wide.** £20-£30

**460**

**An Ercol design stick back rocking chair.** £400-£500. See illustration.

**461**

**A cream coloured leather two seater sofa.** £40-£60

**462**

**A teak fold over top two tier tea trolley, 70cm wide.** £15-£20

**463**

**A graduated set of three Harrods 1970's wicker baskets.** £40-£60. See illustration.

**464**

**A light oak bedside chest, fitted pull out slide and three drawers, raised on square tapering supports, 30cm wide x 30cm deep x 53cm high.** £40-£60. See illustration.

**465**

**A Susie Cooper "Kingfisher" coffee set.** £30-£50

**466**

**Holmes of Norwich, a pair of vintage patent suede lined handbags in copper and blue, original labels.** £10-£20

**467**

**A pair of vintage Laura Ashley curtains.** £10-£20

**468**

**A vintage psychedelic jumpsuit, size 38 AF.** £10-£20

**469**

**A vintage Laura Ashley, Made In Wales, cotton dress with lace detail, size 14.** £10-£20

**470**

**A 1960's circular pottery shallow dish, decorated flowers on a yellow ground, 33cm dia.** £10-£20

**471**

**A red telephone.** £20-£30

**472**

**A vintage Angle Poise style lamp.** £10-£20

**473**

**A Danish teak extending dining table, 220cm x 85cm; and four matching rail back dining chairs.** £60-£100

**474**

**A Royal Doulton figure, "Guy Fawkes" HN98, 27cm.** £200-£300. See illustration.



Lot 458



Lot 460



Lot 463



Lot 464



Lot 474

## John A. Green

Born in Ipswich in 1932, son of a Master Mason. John served a five year apprenticeship with his father Alfred Arthur Green who ran Saunders Stonemasons in Cemetery Road, Ipswich.

He studied at the Ipswich School of Art (1951-54) for his design diploma in sculpture where he gained a first class diploma and silver medal and was then encouraged by Prof. John Skeaping to study at the Royal College of Art in London (1954-57) where he gained a first-class carving diploma for stone and a silver medal for letter-cutting. From 1957 until 1959 John was assistant to Sir Jacob Epstein, one of the most celebrated sculptors of the 20<sup>th</sup> Century.

His main run of work was the restoration of church monuments around Great Britain including Church commissions in Bushey, Poole and Welwyn Garden City however examples of his work can be found locally in Ipswich too.

He taught part-time at Ipswich School of Art (1957-71) and was a senior tutor at the Orton Trust from 1969-2008 and also Director of Monument Conservation at Croydon College of Art & Design (1979-80).

His studio was at Washbrook near Ipswich where he cut and designed many commissions and sculptures. He had solo exhibitions at John Whibley Gallery in 1971 and also exhibited at Chappel Galleries, Essex. John died in June 2017.

Lots 361 - 374 on page 16

Special attention is drawn to the Conditions of Sale printed at the back of this catalogue.

Clarke and Simpson are pleased to offer a packaging and shipping service worldwide through "the-saleroom.com Delivery Service". The professional team will pack and ship items from very small non-breakables such as jewellery and coins through to larger and more fragile items such as paintings and works of art. Shipping and insurance is at the buyer's expense.

Shipping payment must be made to "the-saleroom.com Delivery Service" prior to departure and excludes local duties and taxes. Please note that Clarke and Simpson do not pack or ship items - all requests are sent to our specialist handlers at "the-saleroom.com Delivery Service" who can be contacted directly via [delivery@atgmeadia.com](mailto:delivery@atgmeadia.com)

the-saleroom.com  
delivery service





## TERMS AND CONDITIONS OF SALE

### 1. INTRODUCTION

The following defining terms are used in these conditions:-

“Auction”	Means any auction conducted by Clarke and Simpson Auctions Ltd. either at the premises owned by them or elsewhere (including any internet based auction);
“Auctioneer”	Means Clarke and Simpson Auctions Ltd. authorised auctioneer as appropriate;
“Bidder”	Means a bidder at an auction, including the bidders personally present at the venue and those bidding by telephone or over the internet or otherwise;
“Buyer”	Means the bidder whose bid was the last bid when the auctioneer concludes the bidding;
“Conditions”	Means these Terms and Conditions of Sale;
“Hammer Price”	Means the level of bidding reached (at or above any reserve) when the auctioneer brings the bidding to a close;
“Lot”	Means any property accepted by Clarke and Simpson Auctions Ltd. for offer at auction;

### 2. DESCRIPTION

No warranty is given or implied by the description in the catalogue. Each lot is sold in its condition at the time of sale with all faults, defects, imperfections and errors of description (if any). Whilst every endeavour has been made to describe the items adequately and properly, the purchaser shall deem to have inspected the lot at time of purchase. All catalogues and seller's and buyer's guides are for information only and do not form part of the contract.

### 3. STATUTORY REQUIREMENTS

Purchasers will be deemed to have satisfied themselves prior to purchasing regarding current legal requirements (e.g. Health & Safety at Work Act) and it is expressly brought to the bidders attention that equipment in the sale may not necessarily comply with such regulations. Any purchaser shall satisfy himself as to any statutory requirement for the use of any item and no liability shall rest with the vendors nor the Auctioneers.

### 4. THE AUCTION

All auctions are conducted at the absolute discretion of the auctioneer. The auctioneer shall conduct the auction with reasonable skill and care. The vendor reserves the right to sell subject to reserve price in respect of all lots. What constitutes a bid shall be at the absolute discretion of the auctioneer, acting with appropriate skill and care. The auctioneer shall have the right to refuse any bid in all cases but most notably when such a bid does not exceed the previous bid by at least 10% or such a proportion as the auctioneer shall in his absolute discretion direct. Where two or more bids at the same level are simultaneously received by the auctioneer, the auctioneer at his absolute discretion shall determine which bid to prefer. Subject to the foregoing where two or more bids are at the same level are simultaneously received by the auctioneer, the bid submitted in the room shall take preference over a bid submitted by telephone or internet at the same level. Any bid made or attempted by telephone or over the internet will only be deemed to have been made if received by the auctioneer. The auctioneer reserves the right to withdraw, consolidate or divide any lot or lots or submit them in any order that they desire. The auctioneer has the right at his absolute discretion to refuse admission to his premises or at-

tendance at (or participation in) any auction by any person. In the case of any dispute, the auctioneer shall be sole arbitrator in any matters arising during or out of the sale.

### 5. BIDDERS

All bidders will be required to register their particulars, bidders attending in person and those accompanying them may be required to provide photo ID and separate confirmation of address prior to viewing or taking any part of the sale and before entering any part of the premises to view. All bidders accept full liability for all bids submitted. Subject to the clause in this document headed “The Auction”, the highest bidder at the close of bidding shall be the buyer. Any dispute about a bid shall be settled at the auctioneer's absolute discretion.

Bidders are all deemed to act as principles unless there is prior written acknowledgement by Clarke and Simpson Auctions Ltd. that a bidder is acting as an agent for a named principle. Bidders are strongly encouraged to attend the auction in person. The bidders shall be responsible for any decision to bid for a particular lot and shall be deemed to have carefully inspected and satisfied themselves as to condition, neither Clarke and Simpson Auctions Ltd., their employees or agents shall be responsible for any neglect or default in doing or failing to do so. Bidders will be given ample opportunity to view and inspect before the sale and prospective buyers must satisfy themselves as to all matters.

### 6. DEFAULT

Clarke and Simpson Auctions Ltd. shall act as agent of the vendor only. Any contracts for the sale of a lot shall be formed between the vendor and the buyer. As agent only Clarke and Simpson Auctions Ltd. shall not be responsible for default by the vendor or the buyer. If any lot is not paid for in full and taken away in accordance with these conditions, or there is any other breach of the conditions, then Clarke and Simpson Auctions Ltd. as agents for vendor shall at its absolute discretion and without prejudice to any other rights it may have, be entitled to exercise all or any of the following rights and remedies:-

- 6.1 to proceed against the buyer for any action of debt or damages for breach of contract;
- 6.2 to rescind the sale of that lot or lots sold by Clarke and Simpson Auctions Ltd. to a defaulting buyer;
- 6.3 to resell the lot (by auction or private treaty) in which case the defaulting buyer shall be responsible for any resulting deficiency in the total amount due (after crediting any part payment and adding any resale costs), any possible surplus so arising shall belong to the vendor;
- 6.4 to remove, store and insure the lot at the expense of the defaulting buyer and, in the case of storage, the location of such storage shall be at Clarke and Simpson Auctions Ltd. discretion;
- 6.5 to charge interest at a rate not exceeding 2% per month of the total amount due to the extent that it remains unpaid for more than two working days after the sale;
- 6.6 to retain that or any lot sold to the defaulting buyer until the buyer pays the total amount due;
- 6.7 to reject or ignore bids from the defaulting buyer at future auctions or to impose conditions before any such bids are accepted;
- 6.8 to apply any proceeds of sale for any other lots due or in the future becoming due to the defaulting buyer towards the settlement of the total remaining due.

## **9. INDEMNITIES, PENALTIES AND LIMITATIONS OF LIABILITY**

Purchasers shall pay for any damage done by themselves or their agents during the removal of their lots. Attendance at the sale shall be at the risk of those attending in respect of both themselves and to their goods and vehicles.

Any indemnity under these conditions will extend to all actions, costs, expenses, claims and demand whatsoever suffered or incurred by the person entitled to the benefit of it and Clarke and Simpson Auctions Ltd. declare themselves to be a trustee of the benefit of such indemnity so far as it is expressed to be the benefit of its employees and agents.

Whilst Clarke and Simpson Auctions Ltd. endeavour to ensure that the information on their websites is correct, they do not warrant the accuracy and completeness of the material on their website. Also Clarke and Simpson Auctions Ltd. can make changes to the material on their website, or alter the products and prices described on it, at any time without notice. The material on the website may be out of date, Clarke and Simpson Auctions Ltd. make no commitment to update such material. All material on the websites is provided "as is" without any conditions, warranties or other terms at any time. Accordingly to the maximum extent permitted by law, the website is provided to all parties on the basis that Clarke and Simpson Auctions Ltd. exclude all representations, warranties, conditions and other terms which, but for this legal notice, might have effect in relation to the website.

## **8. ELECTRICAL SAFETY REGULATIONS**

All electrical lots are subject to electrical safety regulations and fall within "the low voltage electrical equipment (safety) regulations 1989" – all items have been pat tested for safety but are not guaranteed in working order.

## **9. GENERAL MATTERS**

Any notice to any buyer, vendor, bidder or viewer may be given by first class mail or email in which case it shall be deemed to have been received by the addressee forty eight hours after posting or sending. All notices to Clarke and Simpson Auctions Ltd. must be sent in writing and email is not acceptable. Any indulgence extended to any person by Clarke and Simpson Auctions Ltd., notwithstanding the strict terms of these conditions or the terms of consignment, shall affect the position at the relevant time only and the respect of that particular concession only; in all other respects these conditions shall be construed as having full force and effect. These conditions and any disputes or claims arising out or in connection with them or their subject matter or formation (including non-contractual disputes or claims) are governed by and construed in accordance with the law of England. The parties irrevocably agree that the courts of England have exclusive jurisdiction to settle any dispute or claim that arises out of or in connection with the agreement or its subject matter or formation (including non-contractual disputes or claims).

## **10. PUBLICITY**

Any catalogue and buyer and seller guides are provided for information only and do not form part of these conditions. The catalogue and the buyer and seller guides may contain additional terms and conditions. Clarke and Simpson Auctions Ltd. reserve the right to use any photographs, background information and research for publicity purposes both before and after the sale.

## **11. THE PURCHASE PRICE AND PAYMENT ARRANGEMENTS**

There is a buyer's premium 18% plus VAT payable in respect of the sale. Any purchases made via "[www.the-saleroom.com](http://www.the-saleroom.com)" or "[www.ibidder.com](http://www.ibidder.com)" shall be subject to an administration charge of 3% plus VAT on the price.

Preferred payment is cash, bank transfer or personal debit card. Such cards may only be used on a chip and pin basis with the owner present. No payment over £350 will be accepted by telephone. Payment will be accepted online via our secure e commerce account. We do not accept credit cards or international debit cards. Payment by cheque will only be acceptable subject to prior arrangement. No lot will be removed from the sale until any cheque has cleared. Payment is due on the day of the sale. Cash in excess of £7,500 (including V.A.T.) will not be accepted from any one person, this is not allowed due to Money Laundering Regulations 2007. All money received will be held in Clarke & Simpson Auctions Ltd. Clients No 2 Account at Barclays Bank plc, Martlesham Heath, Ipswich, Suffolk. Account Number 83428591. Sort Code 20 98 07. Clarke and Simpson Auctions Ltd. have no responsibility for any lot between the close of bidding and payment being made and subsequent collection. All payments from overseas buyers shall be made by Bank Transfer and bank fees paid in addition. Please note all policy regarding payment will be enforced and suitable arrangements must be made.

## **12. REMOVAL OF LOTS**

The ownership of any lot purchased shall not pass to the relevant buyer until they have made payment in full to Clarke and Simpson Auctions Ltd. of the total amount due including any storage due.

The buyer shall at their own risk and expense take away any lot that they have purchased and paid for not later than two working days following the day of the auction after which they shall be responsible for any removal, storage and insurance charges.

Any lots not collected within four weeks of the date of sale will be resold by the auctioneer and all proceeds will be retained by the auctioneer to cover storage costs.

## **13. NUMBER BIDDING**

This will be used for speed and efficiency as in all our sales. All prospective purchasers must complete a registration form and register in the office on the viewday or morning of sale to receive a number for bidding.

**PLEASE ALSO NOTE THAT PHOTO ID AND ADDITIONAL CONFIRMATION OF ADDRESS WILL BE REQUIRED.**

## **14. ONLINE BIDDING**

Clarke & Simpson Auctions Ltd. offer an online bidding service via the-saleroom.com and ibidder.com for bidders who cannot attend the sale.

In completing the bidder registration on [www.the-saleroom.com](http://www.the-saleroom.com) or [ibidder.com](http://ibidder.com) and providing your payment card details and, unless alternative arrangements are agreed with Clarke & Simpson Auctions Ltd.:

1. authorise Clarke & Simpson Auctions Ltd., if they so wish, to charge the payment card given in part or full payment, including all fees, for items successfully purchased in the auction via [www.the-saleroom.com](http://www.the-saleroom.com) or [ibidder.com](http://ibidder.com), and
2. confirm that you are authorised to provide these payment card details to Clarke & Simpson Auctions Ltd. through [www.the-saleroom.com](http://www.the-saleroom.com) or [ibidder.com](http://ibidder.com) and agree that Clarke & Simpson Auctions Ltd. are entitled to ship the goods to the card holder name and card holder address provided in fulfilment of the sale.

**Please note that any lots purchased via the-saleroom.com or ibidder.com live auction service will be subject to an additional 3% buyer's premium + VAT at the rate imposed on the hammer price.**

## 15. TELEPHONE BIDDING

We offer a telephone bidding service where possible, but this service can never be guaranteed. No applications for telephone bids will be accepted after the end of the viewing prior to sale day for any sale. All potential telephone bidders must provide a valid landline number and email address and agrees that they have read and understood the Terms and Conditions. No phone bids will be accepted for any lot with a lower guide figure of less than £100.

All those who wish to bid by telephone will be expected to deposit the minimum guide for all lots that they wish to bid upon into the Clients Account for Clarke and Simpson Auctions Ltd before the sale starts. This payment is not acceptable by card. In the event of default, this sum shall be retained as part payment or any part may be retained to recover losses under clause 6 of these Terms and Conditions. We will expect payment of the balance owing by BACS on the following day, any payment not met within five working days will result in the forfeiture of the deposit paid.

## 16. AT FAULT (A.F.) LOTS

Certain lots are catalogued at (A.F.), damaged, restored etc., however the absence of any such notice does not imply that the piece is free from defects, nor does it indicate that other defects are not also present. Mention is not made of breakage, cracks, chips or any damage which can be noted by careful inspection, therefore, intending purchasers MUST, in all cases, be responsible for determining the condition of the lots themselves.

## 17. ESTIMATES

Presale estimates are intended only as a guide for intending purchasers, are given in good faith and subject to revision.

## 18. CONDITION REPORTS

Clarke and Simpson are unable to guarantee that requests for condition reports/images received after close of the viewing on the day prior to auction, will be responded to. Clarke and Simpson are happy to give a Condition Report on the physical condition of goods, this will be provided on behalf of the seller on the understanding that Clarke and Simpson are not entering into a contract with you in respect of the Condition Report and accordingly does not assume responsibility to you in respect of it. All lots are available for your own inspection or for inspection by an expert instructed by you, therefore these Condition Reports are for guidance only and all lots are sold "as found". Condition reports do not form part of a contract.

## 19. COMMISSION BIDS

The auctioneers will be pleased to execute bids for those unable to attend the sale. Lots will be purchased at the lowest bid the room bidding or any reserves will allow. In the event of identical bids, the earliest bid received will take precedence. There must always be a maximum limit indicated. Buy or unlimited bids will not be accepted. Commission bids placed by telephone are accepted at the client's risk. We urge our clients to place such bids before the start of the sale. All such commissions are left entirely at the buyer's risk.

## 20. VALUE ADDED TAX

The symbol \* after any lot number indicates that Value Added Tax is payable by the buyer on the hammer price.

## 21. AUCTIONEERS MARGIN SCHEME

The Auctioneers Margin Scheme allows auctioneers to sell items without VAT on the hammer price. Under the margin scheme an amount equivalent to VAT at the current rate is added to the buyer's premium. This amount cannot be refunded. The VAT element will not be shown separately on the buyer's invoice.

## 22. ATTRIBUTION OF PICTURES AND DRAWINGS

Every effort is made to ensure the accuracy of any statements as to authorship, attribution, origin, date, age, provenance and condition of any lot whether or not such statement forms part of the description of any such lot. Whether any such statement is made orally or in the catalogue it is an expression of opinion and not to be taken as being or implying any warranties or representations of facts by the auctioneers. Each buyer by making a bid for a lot acknowledges that he has satisfied himself fully as to the attribution and condition of the lot. The following is for guidance only and does not form part of a contract.

- A. The forename (s) (or full stops where not known) and surname of an artist indicates in our opinion a work by the artist.
- B. The initials of the forename (s) and the surname of the artist indicates in our opinion a work of the period of the artist which may be wholly or in part his work.
- C. The surname of the artist indicates in our opinion a work of the school or by one of the followers of the artist or in his style and of uncertain date.
- D. *Signed, Dated, Inscribed* indicated in our opinion work signed/dated/inscribed by the artist.
- E. *Bears signature* indicates in our opinion that this is not the signature of the artist.
- F. *Attributed to* may be used to denote a traditional attribution based on style.
- G. *Manner of* indicates in our opinion a work executed in the artist/craftman's style but of a later date.
- H. *After* indicates in our opinion a copy (of any date) of work of an artist or craftsman.

The addition of a question mark after any of the cataloguing terms above indicates an element of doubt.

## 23. DRIOTE DE SUITE ROYALTY CHARGES

All United Kingdom Art Market professionals (which includes auctioneers) are required to collect a royalty payment for all qualifying Works of Art. This applies to living artists and those who have died in the last 70 years. This payment is calculated on qualifying Works of Art which are sold for a hammer price more than the UK sterling equivalent of €1,000 (the UK sterling equivalent will fluctuate in line with prevailing interest rates calculated by the Artist's Resale Right Service Hub, based on the European Central Bank reference rate published at 2.15pm on the day of the sale, and can be found on [www.dacs.org.uk](http://www.dacs.org.uk)).

All items in this catalogue that are marked "✓" are potentially qualifying items, and the royalty charge will apply if the hammer price is more than UK sterling equivalent of €1,000. The royalty charge will be added to purchase invoices, and must be paid before items can be cleared. All royalty charges are paid to the design and Artists Copyright Society (DACS) by the auctioneers and no handling costs or additional fees with respect to these charges will be retained by the auctioneer. This charge may also be applicable to lots not marked "✓" and buyers must satisfy themselves.

The royalty charge for qualifying items which achieve a hammer price of more than the UK sterling equivalent of €1,000, but less than the UK sterling equivalent of €50,000 is 4%. For qualifying items that sell for more than the UK equivalent of €50,000 a sliding scale of royalty charges will apply. For a complete list of the royalty charges and threshold levels please refer to [www.dacs.org.uk](http://www.dacs.org.uk). There is no VAT payable on this royalty charge.





Clarke & Simpson Auction Centre, Campsea Ashe  
Nr Wickham Market, Suffolk IP13 0PS  
T: 01728 746323 E: [auctions@clarkeandsimpson.co.uk](mailto:auctions@clarkeandsimpson.co.uk)  
[www.clarkeandsimpson.co.uk](http://www.clarkeandsimpson.co.uk)