

Clarke &
Simpson



*Art Deco, 20th Century
Design & Retro*

Monday 3rd September at 10am

Auctions

Clarke &
Simpson

Worldwide from Campsea Ashe



We have registered buyers from all of the fifty countries shown below in the last twelve months – what do you have to sell that would benefit from a worldwide audience!



Clarke & Simpson Auction Centre, Campsea Ashe, Nr Wickham Market, Suffolk IP13 0PS T: 01728 746323
www.clarkeandsimpson.co.uk CandSAuctions @CandSAuctions

Clarke &
Simpson

Auctions

*Art Deco, 20th Century Design
& Retro*

*Monday 3rd September 2018
at 10am*

Viewing:

Saturday 1st September 9am - 12noon
Morning of Sale from 8.30am

Enquiries:

James Shand, Auctioneer & Valuer
Geoffrey Barfoot, Auction Centre Manager & Valuer

Buyers' Premium:

18% plus VAT

Please see www.the-saleroom.com
for further images

the saleroom
The home of art & antiques auctions

Special attention is drawn to the
Conditions of Sale printed at the back of
this catalogue.



Campsea Ashe
Nr Wickham Market
Suffolk IP13 0PS
Tel: 01728 746323 Fax: 01728 748173
Email: auctions@clarkeandsimpson.co.uk
www.clarkeandsimpson.co.uk



@CandSAuctions



CandSAuctions



Lot 1



Lot 2



Lot 3



Lot 17



Lot 25

1
An Art Deco design composite model of the Chrysler Building New York, 50cm high. £20-£30. See illustration.

2
An Art Deco design figure of a dancing lady, 39cm high. £5-£10. See illustration.

3
An Art Deco style figure of a seated girl, holding a conch shell to her ear, 25cm long. £10-£20. See illustration.

4
An Art Deco boxed gent's travelling toilet set. £10-£20

5
Three small Poole Pottery dishes. £10-£20

6
A chromed mid-20th Century coat rack, 38cm long. £10-£20

7
A chrome Art Deco design shop hat stand, by Sage. £10-£20

8
A glass model of an Art Deco lady's head, 28cm high. £20-£30

9
A mid-20th Century Lucite shop display stand, stamped "Hult Quist, Copenhagen", 34cm high. £5-£10

10
An oak skyscraper design barometer / thermometer set, 31cm high. £10-£20

11
An oak magazine holder, with dog motif. £5-£10

12
A chrome Art Deco table lamp, and matching candle holders in the form of naked dancing girls. £30-£40

13
A mid-20th Century counter balanced Angle Poise style lamp. £30-£50

14
A large metal figure on marble base "Footsteps" After Shipares, 58cm high. £80-£120

15
A plated cocktail shaker, in the form of a penguin, 27cm high. £60-£80

16
A 1930's tinted glass baluster lemonade jug, 29cm high. £30-£50

17
A plated cocktail jug, in the form of a penguin, 32cm high. £60-£80. See illustration.

18
An Art Deco cast metal figure of a nude girl, 22cm high. £30-£50

19
A heavy ruby glass leaf shaped dish; and a smaller blue tinted glass example. £10-£20

20
A Poole Pottery turquoise glazed bottle shaped vase, 26cm high; and a Whitefriars design knobbly glass vase, 22cm high. £20-£40

21
Keith Waite, "Low Water on Troublesome Reach" signed watercolour, 29cm x 33cm. £30-£40

22
Keith Waite, "Westerley Wind At Iken", pen and wash, 26cm x 40cm; and a pencil signed limited edition print of the same view 21/500. £30-£40

23
A pair of cast iron and copper implement rests, having stylised floral decoration and ball finials, 32cm high. £10-£20

24
A pair of steel and copper implement rests, of Arts & Crafts design, 41.5cm high. £20-£40

25
A Cubist style model of a dog, 30cm long x 23cm high. £5-£10. See illustration.

26
A mid-20th Century metal magazine rack. £15-£20

27
Twelve Barbara Aston original watercolours. £40-£60

28
A collection of six composite wall hanging masks; and a plaster bust of Sir Lawrence Oliver. £40-£60

29
A Studio pitcher, of unusual design, 40cm high. £20-£40

30
A copper and brass coal helmet, having twist swing handle and integral shovel raised on bun feet, 50cm long. £40-£60

31
Glynn Thomas, limited edition etching "The Orwell", signed and numbered 86/150, 15cm x 43.5cm. £40-£60

32
A film poster for "Pirates of The Caribbean", bearing signatures for cast. £40-£60

33
A film poster for "Meet The Fockers", bearing signatures for cast. £40-£60

34
A "2005 Oscar" poster, bearing signatures. £40-£60

35
A poster "Robert Pattinson", bears signature. £40-£60

36
A film poster for "Million Dollar Baby", bearing signatures for cast. £40-£60

37

Great Western Railway Co., The Router For The Cambrian Coast, watercolour poster, 100cm x 62cm overall. £400-£600. See back cover illustration.

38

Keith Waite, study of trees, signed watercolour dated 26/4/84, with dedication to Renee, 23cm x 29cm. £20-£40

39

Keith Waite, watercolour, humorous study inscribed "Burnham on Crouch", signed 32cm x 37.5cm. £40-£60. See illustration.

40

Keith Waite, study entitled "Spring In The Park", signed watercolour 38.5cm x 38.5cm. £30-£50

41

Keith Waite, "Sunday Morning In Greenwich Park", signed watercolour 30cm x 50cm. £40-£60

42

Keith Waite, "The Slate Quarry", signed watercolour, 33.5cm x 37cm. £20-£40

43

Keith Waite, study of ships sailing at St. Mawes, signed watercolour dated 1974, 19.5cm x 49cm. £30-£50

44

Keith Waite, Tintagel Head with figures climbing, 46cm x 27cm. £40-£60

45

Keith Waite, "Rush Hour Over Chelmondiston", initialled oil on canvas, dated '91, 40cm x 49cm; another "Beachy Head", 49cm x 24cm; and three other works by the artist. £40-£60

46

A Wedgwood black basalt bust, of Robbie Burns, 38cm high. £200-£300. See illustration.

47

A 1930's brass planter, bearing monogram and number "19" underneath, having decoration of swags and garlands flanked by ring handles, 37cm dia. x 31cm high. £40-£60

48

A pair of Art Deco planters, by R A Lister & Co. 32cm dia overall. £80-£120

49

A pair of Art Deco marble garnitures. £20-£40

50

An Art Deco study of cold painted spelter dogs, on a marble plinth 43cm long. £60-£80

51

A 1930's novelty cigar box, in the form of a dog in a kennel, 16cm high x 20cm long. £60-£80. See illustration.

52

An Art Nouveau pewter tazza, in the form of a wind nymph, stood before a giant lily pad, 30cm long overall. £60-£80

53

A novelty ice bucket, in the form of antiquarian books. £30-£50

54

A late Victorian gentleman's leather travelling toilet case, containing numerous silver mounted bottles, jars and other accessories. £80-£120

55

A brass and copper oil lamp, in the manner of W.A.S. Benson, raised on stylist foliate triform base, later converted to electricity, 47cm high overall. £40-£60

56

A 19th Century veined marble, bronze and gilt metal mounted clock garniture, the clock surmounted by cherub in chariot pulled by lions above a circular white enamel garland decorated dial with eight day movement striking on a gong, flanked by columns, 57cm high; flanked by a pair of urns - some damage. £250-£350

57

An Art Deco French marble and cold painted spelter clock, of Odeanesque design decorated with a kneeling figure of a girl enticing a fawn, 88cm. £200-£300

58

A Poole Pottery charger, with leaf decoration in orange and brown running glazes, 40cm dia. £25-£35

59

A Mosanic Fiance pottery model of a seated cat, with comical expression having blue heart shaped devices and roundels on a mottled green ground, 33cm high, with provenance letter. £150-£250. See illustration.

60

A large tin plate Art Deco style world globe. £30-£40

61

John Alfred Green 1932 - 2017, a sculpture of a female violinist raised on a sandstone plinth, 47cm high. £40-£60

62

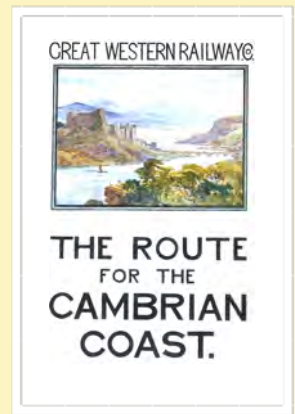
John Alfred Green 1932 - 2017, a carved plaster tablet; another in Welsh slate depicting flowers and a face; a sculpture "Lord Who Shall We Go To", 34cm high etc. £20-£40

63

A brass and bronzed oil lamp, having clear glass font and etched shade. £40-£60

64

An unusual oak standard lamp / up lighter, in the form of a raised jardinière on turned column and circular base. £40-£60



Lot 37



Lot 39



Lot 46



Lot 51



Lot 59



Lot 66



Lot 73



Lot 74



Lot 75



Lot 78



Lot 94

65

A wrought iron and brass mounted adjustable lamp standard, with Vaseline glass shade converted to electricity. £60-£80

66

A leather double travelling case, by Asprey & Co. London, patent No. 33009, 64cm x 39cm. £200-£400. See illustration.

67

Mamela, crayon and pastel study of a musician, signed, 64cm x 54cm. £20-£40

68

K Swinguard, pencil portrait inscribed with slogans, 60cm x 45cm. £20-£30

69

Style of Degio Valazquez, portrait study "J", framed as an oval. £80-£120

70

An Arts & Crafts vintage bevel edged wall mirror, with heart shaped motifs, later painted 80cm x 59cm. £10-£20

71

Keith Waite, cartoon "Say's Here Britain Will Be Completely In The Black By 1980", watercolour 42cm x 29cm in extremes. £40-£60

72

Keith Waite, watercolour "Rome Ancient and Modern", initialled 28cm x 9.5cm. £20-£40

73

Emma Wood, original illustration for Punch 1957 Gilbert Harding and Dame Edith Sitwell, 24cm x 28cm overall. £40-£60. See illustration.

74

Keith Waite, cartoon "Not Much e Can Do About Them Mr Powell, Now The Falklands Have Got British Citizenship", watercolour 43cm x 27.5cm. £40-£60. See illustration.

75

Keith Waite, cartoon "There Might Be A Job For You, If You Don't Mind Being Treated Like One Of Us", watercolour originally Daily Mirror 28/4/1983, 41cm x 26cm. £40-£60. See illustration.

76

Keith Waite, "A Night Out At The Hi Spot", signed watercolour 23cm x 27cm. £40-£60

77

Keith Waite, "Bus Stop Moscow", line and wash drawing signed, 18cm x 20cm. £20-£40

78

Keith Waite, "Back Seat Drivers, Eastbourne 1974", signed watercolour, 15.5cm x 33cm. £40-£60. See illustration.

79

Keith Waite, study of St Katherine's Dock dated 1976, signed watercolour, 27.5cm x 37.5cm. £20-£40

80

Margaret Glass, "At Low Tide, Harstead", signed pastel, 38cm x 27.5cm. £40-£60

81

Keith Waite, "Turkish Donkey", signed watercolour 28cm x 20cm. £40-£60

82

Keith Waite, humorous study of a tourist, signed watercolour, 24cm x 15cm. £20-£40

83

Keith Waite, "Patmoss" humorous study, signed watercolour, 33cm x 18cm. £20-£40

84

Keith Waite, "Maritime Pine", pencil signed lithograph, dated 1992, 38cm x 27cm. £20-£40

85

Keith Waite, artists proof, "The Bishop's House, Iona", 39cm x 27cm. £20-£40

86

Keith Waite, artists proof, "ETA of Lowestoft", 39cm x 25cm. £20-£40

87

Keith Waite, pencil signed artists proof, "Sunhat By Moonlight", 38cm x 54cm. £20-£40

88

Keith Waite, artists proof depicting "The Ramshackle Barn", 22.5cm x 48cm. £20-£40

89

Keith Waite, artists proof "Dinghy" 29.5cm x 19.5cm. £20-£40

90

Keith Waite, limited edition hand printed wood cut "ETA of Lowestoft" 3/6, 39.5cm x 26.5cm. £20-£40

91

Keith Waite, hand printed woodcut, "Night Tide at Blakeney" dated '93, 22cm x 31cm. £20-£40

92

Keith Waite, pencil signed woodcut, "Boats At Southwold" dated '92, 25cm x 37.5cm. £20-£40

93

A pair of pineapple shaped glass and gilt metal ceiling lights. £100-£150

94

A blonde Ercol coffee table, raised on rounded tapering supports united by an under tier, 102cm long. £40-£60. See illustration.

95

A teak coffee table, with under tier, 122cm long. £10-£20

96

A teak and beech pedestal desk, having shaped top with four drawers and cupboards below, 130cm wide. £60-£80

97

A low teak bookcase, raised on steel legs, 102cm wide. £40-£60

98

A G-plan design sideboard, fitted single drawer flanked by deep cupboard and cupboards below, raised on tapering section supports, 138cm wide. £80-£120

99

A teak G-plan design long sideboard, fitted drawers and cupboards, raised on rounded tapering supports, 185cm long. £80-£120

100

A teak open fronted bookcase, raised on steel legs, 102cm wide x 119cm high. £40-£60

101

A blonde Ercol coffee table, raised on rounded tapering supports, 71cm wide. £30-£50

102

A stained pine twin pedestal desk, fitted four drawers and raised on rounded tapering supports, 124cm wide. £60-£80

103

A Danish light oak single pedestal writing desk, fitted three drawers raised on rounded tapering supports, 111cm wide. £60-£80

104

A teak G-plan design sideboard, enclosed by four doors and raised on rounded tapering supports. £80-£120

105

An oak Arts & Crafts design stick stand, with floral embossed copper plaque, 59cm wide x 110cm high. £60-£100. See illustration.

106

A Chinese carved hardwood side cabinet, the panels decorated with maidens and flowers raised on square section supports with brass hinges and lock plate, 120cm wide x 117cm high. £100-£200

107

A Majolica design cheese dish, 36cm high. £30-£50. See illustration.

108

A pair of chrome and brass column table lamps. £50-£80

109

A bronze abstract figure of a dancing girl. £100-£150

110

A G-plan light oak chest, of three drawers raised on square tapering supports, 75.5cm. £40-£60

111

A G-plan gents wardrobe, fitted hanging compartment, three drawers and small cupboard, 87cm wide x 122cm high. £40-£60

112

A G-plan light oak bedside cabinet, 37cm wide. £40-£60

113

Elizabeth Stewart Jones, B1905, study of a seated nude lady, unsigned charcoal drawing, 47cm x 41cm. £40-£60. See illustration.

114

After William Russell Flint, coloured print of young ladies on a beach. £20-£30

115

Sturgeon, pencil signed print of a reclining beauty, entitled "Day Dreams", 34cm x 49cm. £30-£50. See illustration.

116

20th Century school, study of Framlingham Castle initialled C.A.R., 24cm x 35cm. £10-£20

117

Digby, pair of watercolours depicting country scenes, 18cm x 25.5cm. £20-£40

118

A pair of Art Deco prints, depicting fashionable ladies. £10-£20

119

An oak and inlaid Arts & Crafts design dressing chest, the raised back with bevelled mirror and trinket drawers above two short and two long drawers, raised on square tapering supports terminating in castors, 107cm wide. £40-£60

120

A pair of red Tolware type table lamp columns, decorated in the chinoiserie manner, 61cm high. £100-£150

121

A bronze group depicting kick boxers, raised on a marble plinth, 27cm high. £60-£80. See illustration.

122

Jack Rigg, "Sunday Morning On The River Hull", oil on board signed and dated 1987, 44cm x 65cm. £100-£150

123

Jack Rigg, study of boats in an harbour, signed oil on board, 29cm x 39cm. £50-£80

124

A late 19th early 20th Century carved mahogany dressing table, by Maple & Co. 129cm wide. £150-£250

125

A late 19th early 20th Century carved mahogany washstand, with marble top by Maple & Co. 129cm wide. £150-£250

126

An Andy Capp type cartoon, "Yer Might Wait Until They've Taken Their Coats Off", 34cm x 48cm. £20-£30

127

A bell shaped plated cocktail shaker, 28cm high. £30-£50

128

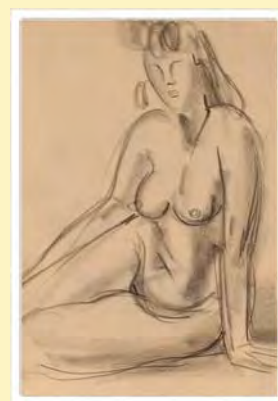
A Paramount World Globe. £20-£30



Lot 105



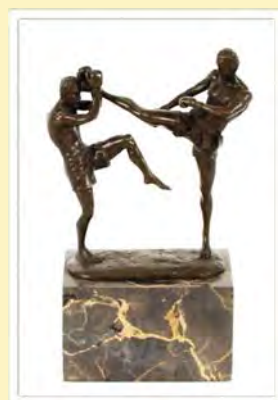
Lot 107



Lot 113



Lot 115



Lot 121



Lot 129



Lot 131



Lot 137



Lot 142



Lot 150

129

An abstract bronze torso. £80-£120.
See illustration.

130

A Conran / Habitat type lamp. £30-£50

131

An amber coloured skull. £50-£80.
See illustration.

132

Maxwell Parsons, study of a cottage by a stream, signed oil on canvas; and another of a girl weeping beside a river. £40-£60

133

A decorative coloured print, Parisian street scene in pine frame. £20-£30

134

A pair of Tolware type baluster table lamps and shades, decorated in the chinoiserie manner. £160-£200

135

A plated triple wine coaster, with cherub decoration. £100-£150

136

A small Ercol sideboard, enclosed by a pair of sunken panel doors, single drawer to base, raised on rounded tapering supports, 86cm wide. £60-£80

137

A bronze abstract style figure of a horse, raised on oval plinth, 50cm high. £100-£150. See illustration.

138

An Art Nouveau design swing clock, 33cm high overall. £60-£80

139

An Art Deco design plated table cruet. £25-£35

140

A decorative green painted metalware mirror, 99cm x 38cm in extremes. £25-£35

141

A mirrored two handled tray, 47cm. £20-£30

142

An early 20th Century oak Art Nouveau design washstand, with marble top and tiled back raised on rounded tapering supports, 92cm wide. £60-£80. See illustration.

143

A modern light wood chest of three drawers, 80cm wide. £20 - £30.

144

A pair of cut glass baluster urns, 24cm high. £40-£60

145

A large plated punch bowl, with grape decoration. £80-£120

146

A piece of Mœt Chandon decorated mirrored wall art. £30-£40

147

An oak Arts & Crafts design hall mirror, with integral shelf, 80cm x 65cm in extremes. £20-£40

148

A pair of Victorian opaque glass vases, with enamel decoration of flowers; and another similar. £10-£20

149

A wooden duck heart ornament. £40-£60

150

A pair of Limoges baluster vases, having floral decoration within angular handles AF, 29cm high. £50-£80. See illustration.

151

A bronzed Art Deco style dancer figurine, 39cm high. £50-£80.

152

A framed coloured print of an Art Deco period ocean liner. £10-£20

153

A coloured print of Marilyn Monroe. £10-£20. See illustration.

154

A coloured print, "Peter Kelly Art of an Era". £10-£20

155

A coloured print, "Pullman, Golden Arrow". £25-£35

156

A GWR Air Services coloured print. £25-£35

157

A modern light wood chest, of two short and four long drawers, 80cm wide. £20-£30

158

A modern light wood chest, of two short and four long drawers, 80cm wide. £20-£30

159

A tall Murano glass amethyst tinted vase, 54cm high. £60-£80. See illustration.

160

A mirrored glass trinket cabinet, 30cm wide. £25-£35

161

A large Art Deco design figural table mirror, signed Erte. £100-£150

162

An oak Art Deco mantel clock, with presentation inscription. £10-£20

163

An oak Art Deco design dressing chest, with raised mirrored back fitted with a trinket drawer, two short and three long drawers below, 107cm wide. £40-£60

164

A bronze figure of a pixie holding a lily pad, 99cm high. £250-£350

165

An Art Deco frameless bevel edged wall mirror, having floral decoration. £15-£20

166

A pair of cream laminate and sycamore effect locker chests. £40-£60

167

A pair of wooden novelty duck ornaments, 64cm high. £40-£60

168

A terracotta Art Nouveau style figure, of a veiled semi-naked girl, 62cm high. £45-£55

169

An Easiwork vintage kitchen cabinet, 106cm wide. £60-£100

170

A pair of bronze boxing hare ornaments, 79cm high. £550-£650

171

A set of teak tall open fronted bookshelves, 78cm wide x 180cm high. £60-£80

172

An Edwardian carved walnut secretaire bookcase, 118cm wide. £60-£100

173

A walnut cased granddaughter clock, with chiming movement. £60-£80

174

An oak cased Art Deco granddaughter clock, with chiming movement. £35-£55

175

A Stonehill Furniture two door wardrobe, 121cm wide. £40-£60

176

A Stonehill Furniture two door wardrobe, 121cm wide. £40-£60

177

A Stonehill Furniture dressing table, with illuminating mirrored back, 150cm. £20-£40

178

A 1950's light oak wardrobe, 93cm wide. £20-£40

179

A teak effect bookcase, of steeped form enclosed by glazed sliding doors and fitted single cupboard, 80cm wide. £20-£40

180

A quantity of Selex units. £100-£200

181

A model of a bi-plane. £10-£20

182

A model of a camper van. £10-£20

183

A plated biscuit box / server. £40-£60

184

A pair of Alfred Gartien Champagne coolers. £30-£50

185

A Kevin Francis Ltd., Ed Young Clarice Cliff figurine, 701/900. £100-£150. See illustration.

186

An Andy Moss Clarice Cliff, "The Artisan" limited edition figurine 106/500. £100-£150. See illustration.

187

An Alan Sexton pottery vase, having blue and silvered leaf decoration, 16cm high.

£20-£40

188

A Wade Heath Pottery wall jug, with budgerigar decoration, 26cm high. £20-£40

189

John Alfred Green 1932-2017, a sculpture depicting a King and Queen seated back to back, 64cm high. £60-£100

190

A G-plan design tile top coffee table, 71cm x 71cm. £20-£40

191

A small teak G-plan design tile topped coffee table, 43cm wide. £20-£30

192

A marble style bust of Clite. £35-£45

193

Three Vaseline glass lampshades. £60-£80

194

Three ruby tinted Vaseline glass lampshades. £60-£80

195

Four brass Art Deco design industrial wall lights. £100-£150

196

A pair of large glass diamond shaped paperweights. £30-£50

197

A decorative mirrored clock. £30-£50

198

A Murano green, red and Vaseline tinted flower shaped vase, 26cm high; a ruby tinted cut glass vase, 22cm high; and a coloured dimple glass vase 22.5cm high. £30-£60

199

An Art Deco "Fairfield" teapot; and an Art Deco Royal Doulton tureen and cover; a floral decorated vase with flared rim; and a transfer decorated Myott & Sons jardinière. £20-£40

200

A Cauldon ware Art Deco design coffee set, in powder blue. £20-£30

201

A France Daverkosen Danish teak coffee table, raised on square section tapering supports with magazine rack under tier, 74cm x 49cm. £60-£80. See illustration.

202

An Art Deco circular burr walnut coffee table, 59cm dia. Overall. £20-£40

203

An Art Deco design black and clear bevelled glass wall mirror, 53cm x 43cm. £20-£40

204

A large Art Deco style black and clear bevelled glass wall mirror, 120cm x 91cm. £40-£60

205

John Alfred Green 1932 - 2017, a sculpture in anacaster stone "The Kiss", 124cm high. £100-£200



Lot 153



Lot 159



Lot 185



Lot 186



Lot 201



Lot 206



Lot 209



Lot 213



Lot 220



Lot 224

206

A designer bucket shaped canvas and leather upholstered chair. £50-£80.

See illustration.

207

An Art Deco design tub shaped easy chair, with striped upholstery. £40-£60

208

Papas, pen and ink humorous cartoon "Breezy Day at Aldeburgh, Boats Sinking and Things Like That", 56cm x 76cm.

£100-£200

209 ✓

Giles "Carl Ronald", pen and ink cartoon "Ah Well If They Wont Let Us Have A Motorbike 'Til We're 17, There's Always The Sea". Signed to the mount, To Keith Waite, Best wishes and admiration from Giles. 31.5cm, x 52cm. £400-£600.

See illustration.

210

Peter Jamieson born 1945, "Royal Ascot", signed charcoal drawing, 40cm x 49cm.

£100-£200

211

Peter Jamieson born 1945, study of carriage driving, signed charcoal drawing, 40cm x 30cm. £60-£100

212

A mid-20th Century German faux tortoiseshell mantel clock; and a chinoiserie decorated Swiss alarm clock.

£20-£40

213

A continental pottery figure, depicting a minstrel seated with a lute, 62cm high.

£60-£100. See illustration.

214

An Art Nouveau design copper tea kettle, on spirit heater stand. £20-£40

215

An Art Deco oak cased barometer.

£20-£40

216

A Crown Ducal baluster vase, having stylised decoration in pink, orange, mauve and red heightened in gilt, 18cm high; and a Bourne Denby Glyn Colledge stoneware vase, 19cm high. £20-£40

217

A pair of Art Nouveau Royal Doulton stoneware vases, having raised foliate decoration beneath flared rims, numbered 3166 to base, 28cm high. £30-£60

218

A pair of Royal Doulton stoneware leaf impressed vases, numbered 1677 to base, 33cm high. £40-£60

219

A large Royal Doulton stoneware baluster vase, with impressed leaf decoration, numbered 3159 to base, 41cm high. £40-£60

220

A pair of Royal Doulton stoneware vases,

of baluster form with flared neck having raised prints and stylised foliate decoration, numbered 3008 to base, 35cm high.

£60-£100. See illustration.

221

A Royal Doulton stoneware vase, of baluster form with impressed leaf decoration, 30cm high; and a Royal Doulton Lambeth vase 13.5cm high (2) some damage. £20-£40

222

A Wedgwood green and black decorated Art Deco design part dinner service, comprising graduated meat plates, four tureens, ladle, tea and dinner plates etc. £60-£100

223

An Adderley ware floral decorated teaset; a quantity of Royal Grafton bone china teaware; a Sylvac type rabbit ornament; and a similar of a dog. £20-£40

224

Bernard Rooke, study of an orchestra in full flow, signed oil, 85cm x 78cm.

£100-£200. See illustration.

225

Bernard Rooke, study of a concert pianist, signed oil, 43cm x 59cm. £50-£80

226

Ciza, modernist school, indistinctly signed line paintings of reclining nude figures, a pair 30cm x 30cm. £100-£150

227

A Royal Staffordshire Clarice Cliff jug, 20cm. £60-£80

228

A ruby Art Glass vase, of whorled design raised on a circular spread foot, 18cm high. £20-£40

229

A Royal Worcester jug, having floral decoration on a blush ivory ground, heightened in gilt. £40-£60

230

A Royal Doulton Dewers Whisky pottery flask; and another decorated with George The Guard (2). £40-£60

231

A Graingers Royal Worcester shell vase. £40-£60

232

A Clarice Cliff "Bizarre" cup and saucer. £80-£120

233

An Art Deco porcelain figurine of a dancing girl. £150-£250

234

A William Geobel porcelain plaque, depicting a dancing girl. £100-£150

235

A Clarice Cliff "Bizarre" plate 23cm dia. £150-£250. See front cover illustration.

236

A Clarice Cliff "Bizarre" conical sugar shaker, 14cm. £80-£120

237

A Clarice Cliff "Bizarre" Fantasque plate of octagonal form, 19cm dia. £100-£150.
See illustration.

238

A Latticino glass bowl with raised decoration, 13.5cm dia. Overall. £20-£30

239

A Lalique style shell decorated bowl; and a Tiffany glass plate with heart shaped decoration. £80-£120

240

A Clarice Cliff "Crocus" patterned honey pot. £100-£150. See illustration.

241

A Loetz style glass jardinière. £40-£60

242

A rock crystal skull. £40-£60

243

A Fulham pottery Constance Spry style vase. £20-£40

244

A pair of Wade Heath baluster jugs, of ribbed design. £30-£50

245

A pair of Art Nouveau green pottery vases, impress to base AP121. £30-£50

246

A fabric panel of Art Nouveau design, contained in a gilt frame. £20-£30

247

Three Old Master style coloured prints, in decorative gilt heightened frames. £30-£50

248

A Studio Laurana Rame D'Art enamelled copper bowl, Italian Circa. 1960's. £20-£30

249

An Expertic enamelled coppered candelabra, German Circa. 1960's. £20-£40.

250

A white metal and enamel decorated easel picture frame. £50-£80. See illustration.

251

A ship lighter, in the Dunhill style. £50-£80

252

A pair of plated salts, in the form of terriers at their feeding bowl. £20-£30

253

Two decorative bronze fish ornaments. £50-£80

254

Seven silver topped toilet bottles and jars. £120-£160

255

A novelty plated golf club toast rack. £25-£35

256

A pair of plated coasters, with grape vine decoration. £20-£30

257

A silver plated spirit barrel with bear decoration. £40-£60

258

A set of three bronze Art Nouveau style figurines of maidens. £100-£150.

259

A pair of Art Nouveau design brass candlesticks. £20-£30

260

Two blue glass silver mounted match strikers, of ribbed form. £80-£120

261

A bronze figure of a young boy raised on a marble plinth, 22cm high. £50-£80. See illustration.

262

A set of six silver teaspoons, with shaped terminals, Birmingham 1925; and a set of six plated seal end coffee spoons. £20-£30

263

A set of six silver "Old English" patterned teaspoons, Sheffield 1943; and six silver coffee spoons by Mappin & Webb, Sheffield 1921. £30-£50

264

A cased silver Christening set comprising egg cup, spoon and napkin ring, various dates. £40-£60

265

An Edwardian silver beaker, of stylised form. monogrammed London 1903, 6cm high. £20-£40

266

A late Victorian silver posy vase, with floral and cherub decoration beneath a crimped ase, border, 10cm high, London 1897. £30-£50

267

An Art Deco silver cream jug, by Mappin & Webb, Birmingham 1934. £30-£50

268

An Art Deco silver and blue enamel cigarette box, presentation inscription and wooden lined interior, 18cm long, Birmingham 1927. £40-£60

269

A small Edwardian silver mounted prayer book, with angel head decoration, Birmingham 1903; a small silver ring box, AF; various silver mounted toilet jars and boxes; pedestal bonbon dish etc. £60-£80

270

Four various silver and white metal napkin rings; a pair of silver vase shaped pepperettes; various other cruet items; silver egg cup; spoons etc. £30-£50

271

Four various items of silver backed dressing tableware. £40-£60

272

Four various large magnifying glasses. £25-£35



Lot 235



Lot 237



Lot 240



Lot 250



Lot 261



Lot 275



Lot 281



Lot 282



Lot 283



Lot 293

273

A yellow metal cased pocket watch, by H Samuel Manchester. £20-£30

274

A silver cased half Hunter pocket watch, Birmingham 1920. £30-£50

275

An 18ct gold fob watch, with engine turned and foliate decoration; 9ct gold chain with T bar; and a watch key. £100-£200. See illustration.

276

An 18ct gold ladies fob watch, with foliate engraved decoration. £100-£200

277

A yellow metal Waltham pocket watch. £20-£30

278

A continental white metal ladies fob watch, with decorated enamel dial; and a larger similar with foliate engraved dial (2). £60-£80

279

Two 9ct gold cased ladies wrist watches; and another similar on mesh strap. £40-£60

280

A silver cased Hebdomas style pocket watch, with visual escapement; and a large plated cased pocket watch stamper "Régulateur". £60-£80

281

An 18ct gold fob watch, with engine turned decoration, blue steel hands and roman numeral dial in fitted case, total weight 57.6gms; together with a 9ct gold watch chain with T bar and a watch key, total weight 15.5gms. £500-£800. See illustration.

282

An Omega Geneve gent's wrist watch. £100-£150. See illustration.

283

A gent's steel Omega Geneve automatic wrist watch, boxed. £100-£150. See illustration.

284

Various jewellery to include a 9ct gold cross, an Art Nouveau white metal and enamel pendant on fine link chain, various silver brooches, yellow metal locket etc. £60-£100

285

Two continental white metal fob watches, with foliate engraved decoration; an old J W Benson watch receipt, various watch chains, keys etc. £60-£100

286

A platinum three stone diamond ring with certificate. £2,000-£2,500

287

A 1964 sovereign, in 9ct gold mount and fine link chain. £180-£220

288

An 18ct gold ruby and diamond set ring; and a dress ring set white faceted stone with 18ct gold mount. £50-£80

289

A 22ct gold wedding band; a 9ct gold signet ring; a 9ct gold wedding band; and an unmarked filigree work ring (4). £60-£100

290

A 9ct gold mounted ring, fashioned from a 1914 half sovereign. £100-£200

291

An 18ct gold ring, set opals (one stone missing); another set turquoise, AF; and an 18ct gold opal and ruby set cluster ring (one stone missing). £40-£60

292

A silver and mother of pearl babies rattle; a continental white metal similar; a part silver babies rattle AF; a small silver whistle; a silver pencil holder by S Morden & Co. etc. £100-£150

293

A plated cigarette case, with enamel decoration depicting a nude girl beside a lake. £200-£300. See illustration.

294

Two white metal vesta cases, with enamelled panels depicting scantily clad ladies. £50-£80

295

Two strings of amber coloured beads. £40-£60

296

An Art Deco design enamel decorated brooch, depicting a lady walking a dog. £10-£20

297

An Art Deco silver cigarette box, with engine turned decoration, Birmingham 1930. £20-£40

298

An Art Deco silver cigarette case, with engine turned decoration, London 1930. £20-£40

299

An Art Deco silver cigarette case, with engine turned decoration, Birmingham 1926. £20-£30

300

An early George V silver cigarette case, with foliate engraved decoration, Birmingham 1913. £10-£20

301

An Art Deco silver cigarette case, with engine turned decoration, Birmingham 1920. £20-£30

302

An Edwardian silver gilt and enamel decorated buckle and button set, by Mappin & Webb, cased, AF. £80-£120

303

A pair of 18ct white gold and diamond ear studs, each diamond approx. 1 carat. £1,500-£2,000

304

A large Wedgwood jasperware vase, with classical decoration and trailing vines, on powder blue ground, 26cm high x 23cm dia. £50-£80

305

A danish teak sideboard, enclosed by sliding doors, raised on rounded tapering supports, 90cm wide. £60-£80

306

A danish teak sideboard, enclosed by sliding doors, raised on rounded tapering supports, 90cm wide. £60-£80

307

An Art Deco light oak sideboard, of breakfront form enclosed by four doors and raised on cup and cover supports, 123cm wide. £40-£60

308

An Art Deco design Smiths mantel clock, with battery movement. £20-£30

309

A Grays Pottery part coffee set, having leaf decoration heightened in gilt. £40-£60

310

A quantity of Clarice Cliff dinnerware, having foliate gilt decoration. £40-£60

311

John and Sylvia Reid for Stag "S" range sideboard, fitted double cupboard and four drawers, 137cm wide. £200-£400. See illustration.

312

John and Sylvia Reid for Stag "S" range sideboard, fitted single cupboard and four drawers, 91cm wide. £200-£300. See illustration.

313

A Uniflex teak dressing chest, fitted with mirror above drop flap compartment flanked by three drawers on rounded tapering supports, 90cm wide. £40-£60

314

A vintage Romac radio. £20-£40

315

A quantity of Susie Cooper "Venetia" coffeeware. £20-£40

316

A vintage Everoak motor racing helmet and goggles. £20-£30. See illustration.

317

A 1950's / 60's teak sideboard / drinks cabinet, of curved form 140cm wide. £25-£35

318

A Nathan teak Pandora box coffee table. £50-£80

319

A 1930's oak metamorphic chair bed, having slatted decoration. £60-£80

320

A 1930's oak reclining armchair, slatted sides and back. £40-£60

321

Two teak tea trollies. £15-£20

322

A pair of Lily Bolinger style Champagne coolers. £60-£80

323

An oak Arts & Crafts design students bureau, 84cm wide. £20-£30

324

A pair of G-plan bedside tables, 51cm wide. £80-£120

325

A G-plan three drawer chest, 81cm wide. £30-£50

326

A G-plan two door sideboard, 81cm wide. £30-£50

327

A G-plan two door sideboard, 81cm wide. £30-£50

328

An oak pegged occasional table, with oak leaf carved decoration, 46cm wide. £10-£20. See illustration.

329

A set of six Edwardian carved walnut dining chairs, by T Wallace & Co. having floral tapestry upholstered seats, raised on turned tapering supports. £60-£100. See illustration.

330

A pair of iron and leather designer side chairs. £40-£60

331

A pair of wooden and iron designer bedside tables, 42cm wide. £40-£60

332

A wooden and steel designed side table, 109cm wide. £40-£60

333

A retro toilet mirror. £20-£30

334

A Danish teak bookcase, with open compartments and sliding doors, raised on rounded tapering supports, 90cm wide x 124cm high. £40-£60

335

A Danish teak bookcase, with drop flap door, 90cm wide x 125cm high. £40-£60

336

An Ercol drop leaf kitchen table, raised on square tapering supports, 132cm. £40-£60

337

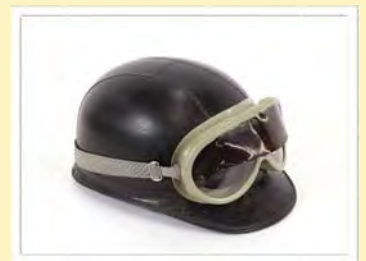
A quantity of Parrot & Co. Coronet ware Art Deco design dinnerware; and a quantity of Midwinter floral patterned dinnerware. £20-£30



Lot 311



Lot 312



Lot 316



Lot 328



Lot 329



Lot 339



Lot 340



Lot 350



Lot 353



Lot 374

338

An Ercol drop leaf kitchen table, raised on square tapering supports, 107cm. £70-£100

339

A pair of oak rush seated side chairs, in the Arts & Crafts style with heart shaped motifs. £20-£30. See illustration.

340

A stag extending dining table, on tubular metal base, 192cm fully extended, and a set of four dining chairs - possibly by John and Sylvia Reid. £100-£200. See illustration.

341

An Edwardian inlaid mahogany bedroom chair. £20-£30

342

A nest of teak G-plan design coffee tables, 61cm in extremes. £40-£60

343

A walnut Art Deco folding two tier trolley. £20-£30

344

An Arts & Crafts design oak armchair, with floral upholstered seat and back, raised on square tapering front supports. £20-£30

345

A teak O'Donnell design coffee table, 59cm wide. £20-£40

346

A large teak G-plan design coffee table. £40 - £60

347

A pair of oak effect and inlaid consul tables, 170cm wide x 90cm high x 40cm deep. £100-£200

348

A modern design steel and plate glass dining table, 150cm x 75cm. £60-£80

349

An unusual burr walnut and brass mounted overmantel mirrored shelf, with pierced gallery, 135cm wide x 55cm high. £50-£80

350

A brass cased congrue clock. £300-£500. See illustration.

351

A 1940's Danish beech and upholstered sofa, having shaped arms raised on rounded tapering supports. £100-£150

352

A 1940's Danish beech and upholstered armchair, having fluted arms and raised on tapering metal supports. £50-£80

353

An oak Arts & Crafts design magazine rack / bookshelf, 51cm wide. £40-£60. See illustration.

354

An oak Arts & Crafts design hall stand, fitted with a single drawer, flanked by slatted ends with heart motifs, tile inset base, 80cm wide. £80-£120

355

An early 1950's Danish floral upholstered sofa. £200-£300

356

An armchair, upholstered en-suite with previous lot. £100-£150

357

A pair of Art Deco walnut three drawer bedside chests, 28cm wide x 60cm high. £40-£60

358

A pair of Next Art Deco style mirrored glass side tables, AF. £20-£40

359

A Next Art Deco style mirrored glass lamp table, AF. £10-£20

360

A circular oak Art Deco style two tier occasional table, 51cm dia. £10-£20

361

A 1920's oak square two tier occasional table, raised on rounded supports and club feet, 59cm. £20-£40

362

A pair of Alfred Meakin Art Deco tureens. £10-£20

363

A teak blanket box / ottoman, 111cm wide. £40-£60

364

An Art Deco bevelled glass frameless wall mirror, 35cm x 60cm. £10-£20

365

A pair of decorative silvered wings, 71cm. £50-£80

366

A modern teak effect extending dining table, 99cm x 200cm fully extended; and a set of five Nathan slat back dining chairs. £60-£80

367

A Danish design teak dining chair, with string seat and a foot stool. £10-£20

368

A quantity of floral decorated Art Deco design dinnerware; and a quantity of Wedgwood Art Deco dinnerware. £20-£30

369

A porcelain part teaset, decorated gilt flowers and inscribed "A Present From Great Yarmouth", to include eleven place teaset, tea pot, sucrier, milk jug, two bread and butter plates. £50-£80

370

A brass telescope, on tripod stand. £100-£150

371

An Angle Poise design standard lamp. £25-£35

372

A cantilever sewing box. £15-£25

373

A G-plan style teak four seater put you up settee. £40-£60

374

An early 20th Century walnut tub shaped desk chair, with wicker back, rails and canework seat. £30-£50. See illustration.

375

A modern aluminium adjustable standard lamp. £10-£20

376

A silvered model of a bulldog, 38cm long x 22cm high. £20-£40. See illustration.

377

A bronze figure depicting a man, carrying a lamp and staff, 29cm high. £120-£160

378

An Art Deco design walnut cased canteen of plated cutlery. £60-£80

379

A Wedgwood glass paperweight, in the form of an elephant; another of a whale; and another of a penguin. £40-£60

380

A Wedgwood glass duck paperweight; a larger similar; and another of a small bird. £30-£50

381

A Wedgwood glass paperweight of a squirrel; another of a snail; and another. £30-£40

382

A Wedgwood amber glass, candle holder; and a mushroom shaped paperweight. £30-£40

383

Three Bernard Rooke pottery flower holders. £30-£40

384

A Waterford glass paperweight; a blue glass paperweight by Caithness; and another Loetz style similar. £20-£40

385

Four various Bernard Rooke style pottery vases. £40-£60

386

A Giuseppe Armani Florence figure, of a lady with dog on wooden plinth, 50cm high. £30-£50

387

A Galleria Florence Studio figure, of a fashionable lady with leopard on wooden plinth, 34cm high. £30-£50

388

Kenneth James Saterlay, "Germander Speedwell", signed oil on canvas, 25cm x 17cm. £60-£80. See illustration.

389

Kenneth James Saterlay, "Absent Friend", 25cm x 17cm. £60-£80. See illustration.

390

Kenneth James Saterlay, "Mountain Air", signed oil on canvas, 25cm x 17cm. £60-£80

391

Kenneth James Saterlay, "Spear Thistle", signed oil on canvas, 25cm x 17cm. £60-£80

392

Kenneth James Saterlay, "Pimpernel", signed oil on canvas, 25cm x 17cm. £60-£80

393

Kenneth James Saterlay, "Summer Evening", signed oil on canvas, 17cm x 24.5cm. £60-£80

394

A set of oak Arts & Crafts style hanging bookshelves, of pegged construction, 48cm wide x 52cm high. £20-£40

395

A set of oak open fronted bookshelves, in the Arts & Crafts style of pegged construction, 65cm wide x 103cm high. £40-£60

396

A set of six modern design light wood chapel chairs. £60-£100

397

A Danish beech and upholstered armchair, with crook shaped arms raised on square section supports. £50-£80

398

A set of six French chrome crocodile effect kitchen chairs. £50-£60

399

A set of four Italian steel and leather ladder back kitchen chairs. £40-£60

400

A Danish teak dining chair, with string work seat. £20-£30

401

A set of four Ercol stick back dining chairs. £40-£60. See illustration.

402

An Ercol design low armchair. £40-£60

403

A set of four light Ercol stick back kitchen chairs. £60-£80

404

An oak Arts & Crafts design elbow chair, with leather upholstered drop in seat. £60-£80. See illustration.

405

A Fischel bent wood elbow chair. £20-£30

406

A swivel revolving easy chair, and matching stool. £60-£100

407

A 1930's oak reclining armchair. £20-£30

408

A 1930's oak low easy chair. £20-£30

409

A Nesto design Lena Larsson style stick back rocking chair. £100-£150



Lot 376



Lot 388



Lot 389



Lot 401



Lot 404



Lot 411



Lot 426



Lot 429



Lot 436



Lot 437

410

A 1960's retro cream leather upholstered curved stool. £10-£20

411

A Thonet bent wood chaise longue, stamped Thonet Paris and serial number to the underneath, having ratchet adjustable headrest. £200-£400. See illustration.

412

A Cornwell-Norton model No. N3 teak armchair. £40-£60

413

Eight framed 1920's/30's black and white photos, relating to Gordons Hosiery, images from 15cm x 21cm to 16.5cm x 22cm. £150-£200

414

A quantity of raw amber, approx. 382gms. £100-£150

415

A quantity of raw amber, approx. 570gms. £150-£200

416

A quantity of raw amber, approx. 773gms. £200-£250

417

A quantity of raw amber, approx. 780gms. £200-£250

418

A quantity of raw amber, approx. 997gms. £200-£250

419

A quantity of raw amber, approx. 933gms. £150-£200

420

A signed Ed Sheeran poster for Madison Square Garden, 2013, total size unframed 42.5cm x 61cm. £50-£80

421

Three Ercol stick back chairs; another Ercol stick back chair; and a similar bar back chair. £40-£60

422

John McCutcheon, oil on canvas study of town scene, signed J McCutcheon, unframed 45.5cm x 66cm. £60-£80

423

John McCutcheon, oil on board study of town scene, signed J McCutcheon, unframed 45.5cm x 66cm. £60-£80

424

John McCutcheon, oil on board study of town scene with trees in foreground, signed J McCutcheon, unframed 45.5cm x 66cm. £60-£80

425

John McCutcheon, oil on board study of figures by a bridge, unsigned and unframed 45.5cm x 61cm. £60-£80

426

20th Century school, oil on canvas, abstract study of woodland scene, signed Mann, unframed, 60.5cm x 50cm. £40-£60. See illustration.

427

M Godfrey, oil on canvas still life study of flowers, signed M Godfrey, unframed, 51cm x 61cm. £20-£30

428

George Deakins, oil on board study of figures and mountainous landscape signed, Deakins, 36.5cm x 24cm. £40-£60

429

George Deakins, oil on board study of a coastal scene, signed Deakins, 50cm x 60cm. £40-£60. See illustration.

430

After G Hunt, a framed engraving entitled "Billiards" image 24cm x 39cm. £30-£40

431

Veronica Dusson, oil on board still life study of flowers, signed V Dusson with label verso for Norfolk and Norwich Art Circle, 44cm x 59cm. £40-£60

432

Cecil Mullen, oil on board still life study, initialled C.M., 50cm x 62.5cm. £40-£60

433

An Arts & Crafts brass oval framed and bevel edged wall mirror, 58cm x 83cm. £40-£60

434

An Art Nouveau silver backed dressing table hand mirror, having floral decoration. £20-£30

435

A carved oak swing framed mirror, raised on ring turned supports. £20-£40

436

An Art Deco French model of two pheasants raised on marble base, 36cm wide in extremes. £30-£40. See illustration.

437

A bronze study depicting Art Deco female, seated on a stool, 82cm high in extremes. £100-£200. See illustration.

438

Douglas Burrage, gouache still life study entitled "Cottage Garden Flowers", signed Burrage, 62cm x 47cm. £40-£60

Keith Waite

Keith Waite, 1927 - 2014. Born Roy Keith Waite in New Plymouth, New Zealand.

At the age of 9, Waite won a newspaper cartoon competition. He then later attended Auklands Teacher Training College. At the same time studying art in the evening at the Elam School of Fine Arts in Auckland.

He commenced work as a cartoonist on the Taranaki Daily News and Auckland Weekly News, and then Otago Daily Times. He moved to London in 1951 to work for the Kemsley Newspaper Group. He was then assigned to the groups Glasgow papers, but then left to freelance for Punch and other publications.

In 1956 he took position as editorial/political cartoonist on the Daily Sketch. In 1963 he was voted CC GB cartoonist of the year. In 1965 he left the Daily Sketch for the newly created Sun. In 1969 he moved to the Daily Mirror. He retired in 1997 and lived at Pin Mill.

He was influenced by Ronald Carl Giles. One of the lots in this collection from Waites Studio is a Giles cartoon signed to the mount "To Keith Waite With Best Wishes and Admiration, from Giles", along with many of his original works.

Lots: 21 - 22
38 - 45
71 - 92
208 - 209

Clarke and Simpson are pleased to offer a packaging and shipping service worldwide through "the-saleroom.com Delivery Service". The professional team will pack and ship items from very small non-breakables such as jewellery and coins through to larger and more fragile items such as paintings and works of art. Shipping and insurance is at the buyer's expense. Shipping payment must be made to "the-saleroom.com Delivery Service" prior to departure and excludes local duties and taxes. Please note that Clarke and Simpson do not pack or ship items - all requests are sent to our specialist handlers at "the-saleroom.com Delivery Service" who can be contacted directly via delivery@atgmeadia.com

the-saleroom.com
delivery service



Special attention is drawn to the Conditions of Sale printed at the back of this catalogue.

Forthcoming Auctions

Domestic & Rural Bygones & Collectors Vehicles
Saturday 8th September
Entries Closed

Antiques & Fine Art
Wednesday 3rd October
Closing date 7th September

Collective Machinery
Saturday 27th October
Closing date 7th September

Art Deco, 20th Century Design & Retro
Monday 29th October
Closing date 5th October

Antiques & Fine Art
Wednesday 5th December
Closing date 9th November

Forthcoming Machinery Auctions

Chartered Surveyors / Estate Agents / Auctioneers

Clarke & Simpson



On behalf of G Nicholls Esq

Dispersal Sale of Vintage
& Classic Tractor Collection

Campsea Ashe, Suffolk

15th September 2018

To include: Cockshutt 30, David Brown 770 x2, David Brown 885, Ford County 4000-4, Ford 3000, Ford 4000, Ford 4100, Ford 8100, Ferguson TEA, Ferguson TEK, Ferguson FE35, Massey Ferguson 35 TVO, Massey Ferguson 35 Diesel, Massey Ferguson 50, Massey Ferguson 65, Massey Ferguson 135, John Deere 2030 & John Deere 3130.



On behalf of B Morton Esq

Dispersal Sale of Tractors & Machinery

Wilby, Suffolk

19th September 2018

Tractors: New Holland TM140 (56), John Deere 6200 (L), Ford 4000 with loader (74), JCB 520/4 Loadall (D). **Implements:** Maschio drill combination (11), Lely spreader, Gem trailed sprayer, Agip power harrow, Dowdeswell 4F, International 554 baler, Bomford hedge cutter, Spearhead flail mower, range of cultivators. **Trailers:** Griffiths 10T, Western 10T, T&F 8T, Western 10T muck spreader, 2x Vicon slurry tankers, 2x trailed 56 bale carriers. Together with range of wheels & tyres, straw, workshop & livestock equipment.



On behalf of Blakenham Farms

Dispersal Sale of Modern Tractors & Machinery

Ipswich, Suffolk

26th September 2018

Combine: NH CX8060 (08). **Tractors:** Challenger MT755 (04), Claas Arion 640 (10), NH 8360 (P), MF 135, MF 35, Iseki 320. **Vehicles:** Defender 110 double cab (03), 110 (D), Honda Quad. **Implements:** Vaderstad 6m drill (16), Great Plains DTX (15), Stocks seeder, KRM spreader (13), JD trailer sprayer, Dowdeswell 8F (11) & 5F, Shelbourne Reynolds hedge cutter (15), Hesston 4750 baler and sledge, Vaderstad 10m rolls, Simba discs & 6.6m Cultipress, Maschio power harrow, 2x Feraboli power harrows, various cultivators. **Trailers:** Bailey 16T (07), Agri-Hire 17T, Marston 10T, straw trailers. Together with an excellent range of wheels and tyres and workshop equipment.

Collective Machinery Auction

Campsea Ashe, Suffolk

Saturday 27th October 2018

Entries Invited—Closing Date 7th September

- East Anglia's largest 'direct from farm' collective auction
- Competitive commission rates
- Live on-line bidding via i-bidder.com
- Extensive marketing both online and in the press
- Excellent facilities - hard standing site, large buildings and car parks
- Illustrated colour catalogue
- National and international buyers



Catalogues available to download from the website three weeks prior to the auctions- www.clarkeandsimpson.co.uk

Clarke and Simpson, Framlingham, Suffolk / 01728 621200

Live online bidding available via www.i-bidder.com

i-bidder.com

Clarke &
Simpson

*Go on,
take a
closer look...*



www.clarkeandsimpson.co.uk

T: 01728 724200

TERMS AND CONDITIONS OF SALE

1. INTRODUCTION

The following defining terms are used in these conditions:-

| | |
|----------------|---|
| “Auction” | Means any auction conducted by Clarke and Simpson Auctions Ltd. either at the premises owned by them or elsewhere (including any internet based auction); |
| “Auctioneer” | Means Clarke and Simpson Auctions Ltd. authorised auctioneer as appropriate; |
| “Bidder” | Means a bidder at an auction, including the bidders personally present at the venue and those bidding by telephone or over the internet or otherwise; |
| “Buyer” | Means the bidder whose bid was the last bid when the auctioneer concludes the bidding; |
| “Conditions” | Means these Terms and Conditions of Sale; |
| “Hammer Price” | Means the level of bidding reached (at or above any reserve) when the auctioneer brings the bidding to a close; |
| “Lot” | Means any property accepted by Clarke and Simpson Auctions Ltd. for offer at auction; |

2. DESCRIPTION

No warranty is given or implied by the description in the catalogue. Each lot is sold in its condition at the time of sale with all faults, defects, imperfections and errors of description (if any). Whilst every endeavour has been made to describe the items adequately and properly, the purchaser shall deem to have inspected the lot at time of purchase. All catalogues and seller's and buyer's guides are for information only and do not form part of the contract.

3. STATUTORY REQUIREMENTS

Purchasers will be deemed to have satisfied themselves prior to purchasing regarding current legal requirements (e.g. Health & Safety at Work Act) and it is expressly brought to the bidders attention that equipment in the sale may not necessarily comply with such regulations. Any purchaser shall satisfy himself as to any statutory requirement for the use of any item and no liability shall rest with the vendors nor the Auctioneers.

4. THE AUCTION

All auctions are conducted at the absolute discretion of the auctioneer. The auctioneer shall conduct the auction with reasonable skill and care. The vendor reserves the right to sell subject to reserve price in respect of all lots. What constitutes a bid shall be at the absolute discretion of the auctioneer, acting with appropriate skill and care. The auctioneer shall have the right to refuse any bid in all cases but most notably when such a bid does not exceed the previous bid by at least 10% or such a proportion as the auctioneer shall in his absolute discretion direct. Where two or more bids at the same level are simultaneously received by the auctioneer, the auctioneer at his absolute discretion shall determine which bid to prefer. Subject to the foregoing where two or more bids are at the same level are simultaneously received by the auctioneer, the bid submitted in the room shall take preference over a bid submitted by telephone or internet at the same level. Any bid made or attempted by telephone or over the internet will only be deemed to have been made if received by the auctioneer. The auctioneer reserves the right to withdraw, consolidate or divide any lot or lots or submit them in any order that they desire. The auctioneer has the right at his absolute discretion to refuse admission to his premises or at-

tendance at (or participation in) any auction by any person. In the case of any dispute, the auctioneer shall be sole arbitrator in any matters arising during or out of the sale.

5. BIDDERS

All bidders will be required to register their particulars, bidders attending in person and those accompanying them may be required to provide photo ID and separate confirmation of address prior to viewing or taking any part of the sale and before entering any part of the premises to view. All bidders accept full liability for all bids submitted. Subject to the clause in this document headed “The Auction”, the highest bidder at the close of bidding shall be the buyer. Any dispute about a bid shall be settled at the auctioneer's absolute discretion.

Bidders are all deemed to act as principles unless there is prior written acknowledgement by Clarke and Simpson Auctions Ltd. that a bidder is acting as an agent for a named principle. Bidders are strongly encouraged to attend the auction in person. The bidders shall be responsible for any decision to bid for a particular lot and shall be deemed to have carefully inspected and satisfied themselves as to condition, neither Clarke and Simpson Auctions Ltd., their employees or agents shall be responsible for any neglect or default in doing or failing to do so. Bidders will be given ample opportunity to view and inspect before the sale and prospective buyers must satisfy themselves as to all matters.

6. DEFAULT

Clarke and Simpson Auctions Ltd. shall act as agent of the vendor only. Any contracts for the sale of a lot shall be formed between the vendor and the buyer. As agent only Clarke and Simpson Auctions Ltd. shall not be responsible for default by the vendor or the buyer. If any lot is not paid for in full and taken away in accordance with these conditions, or there is any other breach of the conditions, then Clarke and Simpson Auctions Ltd. as agents for vendor shall at its absolute discretion and without prejudice to any other rights it may have, be entitled to exercise all or any of the following rights and remedies:-

- 6.1 to proceed against the buyer for any action of debt or damages for breach of contract;
- 6.2 to rescind the sale of that lot or lots sold by Clarke and Simpson Auctions Ltd. to a defaulting buyer;
- 6.3 to resell the lot (by auction or private treaty) in which case the defaulting buyer shall be responsible for any resulting deficiency in the total amount due (after crediting any part payment and adding any resale costs), any possible surplus so arising shall belong to the vendor;
- 6.4 to remove, store and insure the lot at the expense of the defaulting buyer and, in the case of storage, the location of such storage shall be at Clarke and Simpson Auctions Ltd. discretion;
- 6.5 to charge interest at a rate not exceeding 2% per month of the total amount due to the extent that it remains unpaid for more than two working days after the sale;
- 6.6 to retain that or any lot sold to the defaulting buyer until the buyer pays the total amount due;
- 6.7 to reject or ignore bids from the defaulting buyer at future auctions or to impose conditions before any such bids are accepted;
- 6.8 to apply any proceeds of sale for any other lots due or in the future becoming due to the defaulting buyer towards the settlement of the total remaining due.

7. INDEMNITIES, PENALTIES AND LIMITATIONS OF LIABILITY

Purchasers shall pay for any damage done by themselves or their agents during the removal of their lots. Attendance at the sale shall be at the risk of those attending in respect of both themselves and to their goods and vehicles.

Any indemnity under these conditions will extend to all actions, costs, expenses, claims and demand whatsoever suffered or incurred by the person entitled to the benefit of it and Clarke and Simpson Auctions Ltd. declare themselves to be a trustee of the benefit of such indemnity so far as it is expressed to be the benefit of its employees and agents.

Whilst Clarke and Simpson Auctions Ltd. endeavour to ensure that the information on their websites is correct, they do not warranty the accuracy and completeness of the material on their website. Also Clarke and Simpson Auctions Ltd. can make changes to the material on their website, or alter the products and prices described on it, at any time without notice. The material on the website may be out of date, Clarke and Simpson Auctions Ltd. make no commitment to update such material. All material on the websites is provided "as is" without any conditions, warranties or other terms at any time. Accordingly to the maximum extent permitted by law, the website is provided to all parties on the basis that Clarke and Simpson Auctions Ltd. exclude all representations, warranties, conditions and other terms which, but for this legal notice, might have effect in relation to the website.

8. ELECTRICAL SAFETY REGULATIONS

All electrical lots are subject to electrical safety regulations and fall within "the low voltage electrical equipment (safety) regulations 1989" – all items have been pat tested for safety but are not guaranteed in working order.

9. GENERAL MATTERS

Any notice to any buyer, vendor, bidder or viewer may be given by first class mail or email in which case it shall be deemed to have been received by the addressee forty eight hours after posting or sending. All notices to Clarke and Simpson Auctions Ltd. must be sent in writing and email is not acceptable. Any indulgence extended to any person by Clarke and Simpson Auctions Ltd., notwithstanding the strict terms of these conditions or the terms of consignment, shall affect the position at the relevant time only and the respect of that particular concession only; in all other respects these conditions shall be construed as having full force and effect. These conditions and any disputes or claims arising out or in connection with them or their subject matter or formation (including non-contractual disputes or claims) are governed by and construed in accordance with the law of England. The parties irrevocably agree that the courts of England have exclusive jurisdiction to settle any dispute or claim that arises out of or in connection with the agreement or its subject matter or formation (including non-contractual disputes or claims).

10. PUBLICITY

Any catalogue and buyer and seller guides are provided for information only and do not form part of these conditions. The catalogue and the buyer and seller guides may contain additional terms and conditions. Clarke and Simpson Auctions Ltd. reserve the right to use any photographs, background information and research for publicity purposes both before and after the sale.

11. THE PURCHASE PRICE AND PAYMENT ARRANGEMENTS

There is a buyer's premium 18% plus VAT payable in respect of the sale. Any purchases made via "www.the-saleroom.com" or "www.ibidder.com" shall be subject to an administration charge of 3% plus VAT on the price.

Preferred payment is cash, bank transfer or personal debit card. Such cards may only be used on a chip and pin basis with the owner present. No payment over £350 will be accepted by telephone. Payment will be accepted online via our secure e commerce account. We do not accept credit cards or international debit cards. Payment by cheque will only be acceptable subject to prior arrangement. No lot will be removed from the sale until any cheque has cleared. Payment is due on the day of the sale. Cash in excess of £7,500 (including V.A.T.) will not be accepted from any one person, this is not allowed due to Money Laundering Regulations 2007. All money received will be held in Clarke & Simpson Auctions Ltd. Clients No 2 Account at Barclays Bank plc, Framlingham, Suffolk. Account Number 83428591. Sort Code 20 98 07. Clarke and Simpson Auctions Ltd. have no responsibility for any lot between the close of bidding and payment being made and subsequent collection. All payments from overseas buyers shall be made by Bank Transfer and bank fees paid in addition. Please note all policy regarding payment will be enforced and suitable arrangements must be made.

12. REMOVAL OF LOTS

The ownership of any lot purchased shall not pass to the relevant buyer until they have made payment in full to Clarke and Simpson Auctions Ltd. of the total amount due including any storage due.

The buyer shall at their own risk and expense take away any lot that they have purchased and paid for not later than two working days following the day of the auction after which they shall be responsible for any removal, storage and insurance charges.

Any lots not collected within four weeks of the date of sale will be resold by the auctioneer and all proceeds will be retained by the auctioneer to cover storage costs.

13. NUMBER BIDDING

This will be used for speed and efficiency as in all our sales. All prospective purchasers must complete a registration form and register in the office on the viewday or morning of sale to receive a number for bidding.

PLEASE ALSO NOTE THAT PHOTO ID AND ADDITIONAL CONFIRMATION OF ADDRESS WILL BE REQUIRED.

14. ONLINE BIDDING

Clarke & Simpson Auctions Ltd. offer an online bidding service via the-saleroom.com and ibidder.com for bidders who cannot attend the sale.

In completing the bidder registration on www.the-saleroom.com or ibidder.com and providing your payment card details and, unless alternative arrangements are agreed with Clarke & Simpson Auctions Ltd.:

1. authorise Clarke & Simpson Auctions Ltd., if they so wish, to charge the payment card given in part or full payment, including all fees, for items successfully purchased in the auction via www.the-saleroom.com or ibidder.com, and
2. confirm that you are authorised to provide these payment card details to Clarke & Simpson Auctions Ltd. through www.the-saleroom.com or ibidder.com and agree that Clarke & Simpson Auctions Ltd. are entitled to ship the goods to the card holder name and card holder address provided in fulfilment of the sale.

Please note that any lots purchased via the-saleroom.com or ibidder.com live auction service will be subject to an additional 3% buyer's premium + VAT at the rate imposed on the hammer price.

15. TELEPHONE BIDDING

We offer a telephone bidding service where possible, but this service can never be guaranteed. No applications for telephone bids will be accepted after the end of the viewing prior to sale day for any sale. All potential telephone bidders must provide a valid landline number and email address and agree that they have read and understood the Terms and Conditions. No phone bids will be accepted for any lot with a lower guide figure of less than £100.

All those who wish to bid by telephone will be expected to deposit the minimum guide for all lots that they wish to bid upon into the Clients Account for Clarke and Simpson Auctions Ltd before the sale starts. This payment is not acceptable by card. In the event of default, this sum shall be retained as part payment or any part may be retained to recover losses under clause 6 of these Terms and Conditions. We will expect payment of the balance owing by BACS on the following day, any payment not met within five working days will result in the forfeiture of the deposit paid.

16. AT FAULT (A.F.) LOTS

Certain lots are catalogued at (A.F.), damaged, restored etc., however the absence of any such notice does not imply that the piece is free from defects, nor does it indicate that other defects are not also present. Mention is not made of breakage, cracks, chips or any damage which can be noted by careful inspection, therefore, intending purchasers MUST, in all cases, be responsible for determining the condition of the lots themselves.

17. ESTIMATES

Presale estimates are intended only as a guide for intending purchasers, are given in good faith and subject to revision.

18. CONDITION REPORTS

Clarke and Simpson are unable to guarantee that requests for condition reports/images received after close of the viewing on the day prior to auction, will be responded to. Clarke and Simpson are happy to give a Condition Report on the physical condition of goods, this will be provided on behalf of the seller on the understanding that Clarke and Simpson are not entering into a contract with you in respect of the Condition Report and accordingly does not assume responsibility to you in respect of it. All lots are available for your own inspection or for inspection by an expert instructed by you, therefore these Condition Reports are for guidance only and all lots are sold "as found". Condition reports do not form part of a contract.

19. COMMISSION BIDS

The auctioneers will be pleased to execute bids for those unable to attend the sale. Lots will be purchased at the lowest bid the room bidding or any reserves will allow. In the event of identical bids, the earliest bid received will take precedence. There must always be a maximum limit indicated. Buy or unlimited bids will not be accepted. Commission bids placed by telephone are accepted at the client's risk. We urge our clients to place such bids before the start of the sale. All such commissions are left entirely at the buyer's risk.

20. VALUE ADDED TAX

The symbol * after any lot number indicates that Value Added Tax is payable by the buyer on the hammer price.

21. AUCTIONEERS MARGIN SCHEME

The Auctioneers Margin Scheme allows auctioneers to sell items without VAT on the hammer price. Under the margin scheme an amount equivalent to VAT at the current rate is added to the buyer's premium. This amount cannot be refunded. The VAT element will not be shown separately on the buyer's invoice.

22. ATTRIBUTION OF PICTURES AND DRAWINGS

Every effort is made to ensure the accuracy of any statements as to authorship, attribution, origin, date, age, provenance and condition of any lot whether or not such statement forms part of the description of any such lot. Whether any such statement is made orally or in the catalogue it is an expression of opinion and not to be taken as being or implying any warranties or representations of facts by the auctioneers. Each buyer by making a bid for a lot acknowledges that he has satisfied himself fully as to the attribution and condition of the lot. The following is for guidance only and does not form part of a contract.

- A. The forename (s) (or full stops where not known) and surname of an artist indicates in our opinion a work by the artist.
- B. The initials of the forename (s) and the surname of the artist indicates in our opinion a work of the period of the artist which may be wholly or in part his work.
- C. The surname of the artist indicates in our opinion a work of the school or by one of the followers of the artist or in his style and of uncertain date.
- D. *Signed, Dated, Inscribed* indicated in our opinion work signed/dated/inscribed by the artist.
- E. *Bears signature* indicates in our opinion that this is not the signature of the artist.
- F. *Attributed to* may be used to denote a traditional attribution based on style.
- G. *Manner of* indicates in our opinion a work executed in the artist/craftman's style but of a later date.
- H. *After* indicates in our opinion a copy (of any date) of work of an artist or craftsman.

The addition of a question mark after any of the cataloguing terms above indicates an element of doubt.

23. DRIOTE DE SUITE ROYALTY CHARGES

All United Kingdom Art Market professionals (which includes auctioneers) are required to collect a royalty payment for all qualifying Works of Art. This applies to living artists and those who have died in the last 70 years. This payment is calculated on qualifying Works of Art which are sold for a hammer price more than the UK sterling equivalent of €1,000 (the UK sterling equivalent will fluctuate in line with prevailing interest rates calculated by the Artist's Resale Right Service Hub, based on the European Central Bank reference rate published at 2.15pm on the day of the sale, and can be found on www.dacs.org.uk).

All items in this catalogue that are marked "✓" are potentially qualifying items, and the royalty charge will apply if the hammer price is more than UK sterling equivalent of €1,000. The royalty charge will be added to purchase invoices, and must be paid before items can be cleared. All royalty charges are paid to the design and Artists Copyright Society (DACS) by the auctioneers and no handling costs or additional fees with respect to these charges will be retained by the auctioneer. This charge may also be applicable to lots not marked "✓" and buyers must satisfy themselves.

The royalty charge for qualifying items which achieve a hammer price of more than the UK sterling equivalent of €1,000, but less than the UK sterling equivalent of €50,000 is 4%. For qualifying items that sell for more than the UK equivalent of €50,000 a sliding scale of royalty charges will apply. For a complete list of the royalty charges and threshold levels please refer to www.dacs.org.uk. There is no VAT payable on this royalty charge.

CREAT WESTERN RAILWAY©.



THE ROUTE FOR THE CAMBRIAN COAST.

Clarke & Simpson Auction Centre, Campsea Ashe
Nr Wickham Market, Suffolk IP13 0PS
T: 01728 746323 E: auctions@clarkeandsimpson.co.uk
www.clarkeandsimpson.co.uk