

Clarke &
Simpson

Selected Antiques & Fine Art

Wednesday 15th May 2019 at 10 am



Auctions

Clarke &
Simpson

Worldwide from Campsea Ashe

We have registered buyers from all of the fifty countries shown below in the last twelve months – what do you have to sell that would benefit from a worldwide audience!



Clarke & Simpson

Auctions

Selected Antiques & Fine Art

Wednesday 15th May 2019
at 10 am

Order of Sale:

| | |
|--------------------------|---------|
| Ceramics and Glass | 1-58A |
| Silver and Plate | 59-147 |
| Jewellery | 150-181 |
| Objects and Collectables | 182-342 |
| Pictures and Prints | 343-443 |
| Furniture | 449-557 |

Viewing:

Saturday 11th May, 9 am - 12 noon
Monday 13th May, 2 pm - 7 pm
Tuesday 14th May, 10 am - 4 pm
Morning of Sale from 8.30 am



@CandSAuctions



CandSAuctions



Campsea Ashe
Nr. Wickham Market
Suffolk IP13 0PS
Tel: (01728) 746323 Fax: (01728) 748173
Email: auctions@clarkeandsimpson.co.uk
www.clarkeandsimpson.co.uk

Online bidding via:

the saleroom
The home of art & antiques auctions



Framlingham £975,000

A superb, sympathetically restored, six bedroom town house located in the centre of the most desirable town of Framlingham
Ref: 6129



Ilketshall St. Andrew £795,000

An impressive four bedroom barn conversion with potential for ancillary accommodation, together with an income producing business centre. Ref: 5864



Framlingham £675,000

A spacious, four bedroom, detached house of over 2,600 sq ft plus garaging. Ref: 5870



Middleton £550,000

An architecturally designed four bedroom detached village house with elevated garden to rear, with stunning views Ref: 6091



Stoke Ash £499,500

A pretty, Grade II Listed cottage with numerous outbuildings and grounds extending to just under 4 acres Ref: 6151



Horham £489,500

A stunning new house of over 2,000 square feet, backing onto open agricultural land. Ref: 6079



Ufford £475,000

A light and spacious three bedroom bungalow with landscaped gardens, set along a no-through road. Ref: 6117



Earl Soham £350,000

A most attractive Grade II Listed detached village house situated in the village of Earl Soham Ref: 5818



Westleton £310,000

A charming detached bungalow standing in a quiet position and within walking distance of the village centre. Ref: 6111



Monewden £269,500

A charming, two bedroom, detached cottage within the centre of Monewden, near Brandeston. Ref: 6083

Ceramics & Glass

1

A 19th Century Chinese shallow dish, decorated with dragons and clouds, heightened in gilt, 31cm dia. £60 - 100 †

2

A Pearlware type plate, decorated in the oriental manner with a man beneath a parasol, having foliate scroll border, 36cm dia.; and an 18th Century Delft plate, AF £40 - 60 †

3

A Japanese Satsuma baluster vase, having profuse floral decoration heightened in gilt, signature to base, 19cm high £60 - 80 †

4

A 19th Century Berlin porcelain plate, having finely painted central panel of a young girl within floral border, heightened in gilt, 24.5cm dia. £60 - 80 †

5

A 19th Century Chinese crackle glaze baluster jardinière, having continuous dragon and foliage band of decoration between incised bronzed floral strips, 22.5cm dia. x 20cm high £40 - 60 †

6

A 19th Century Chinese charger, having shaped blue and white border, central panel depicting mother and child and dog on a garden terrace amongst flowers and artefacts, (some chips to rim), 35cm dia. £60 - 100 †

7

Four Chinese beakers, decorated with oval panels of dragons, six character marks to bases, (some damage) £20 - 40 †

8

A Canton famille rose plate, decorated with exotic birds and foliage, 28.5cm dia.; a smaller similar plate, 22.5cm dia. and a pair of shallow dishes, 16.5cm £60 - 100 †

9

A continental porcelain serving dish, of leaf shape, decorated with a busy harbour scene, raised on a gilt metal pierced foliate scroll base, 52cm long £40 - 60 †

10

A 19th Century Bargeware teapot, decorated in the traditional manner with clusters of posies on treacle glazed ground, with inscription "God Bless our Home", 30cm high £60 - 80 †

11

A Worcester blush ivory trio, with bamboo leaf decoration; and a similar fruit basket, 27cm long £60 - 100 †

12

An 18th Century Chinese blue and white plate, the body profusely decorated with exotic birds and foliage, in under-glazed blue, the base with Kangxi reign four character marks, 28.5cm dia. £150 - 250 †

13

A large double handled porcelain mug, painted with floral decoration and script, heightened in gilt, 13cm high £25 - 60 †

14

A pair of 19th Century Meissen salts, in the form of a reclining maid and youth holding baskets, with finely painted and encrusted decoration of flowers and insects, 18cm long £180 - 220 †

15

A 19th Century continental porcelain figural decorated twin branch candle holder, in the form of a maiden, decorated to the underside with initials JP in under-glazed blue, 20cm high £40 - 60 †

16

A 19th Century figural decorated spill holder, in the form of a Jester reclining on a tree stump, 20cm high £60 - 80 †

17

A 19th Century Dresden porcelain hinged box, decorated with raised panels of cherubs in landscapes, heightened in gilt, 12.5cm long £100 - 150 †

18

A pair of Chinese blue and white porcelain salts, decorated with bats, river scenes and prunus, raised on stem bases, 10cm dia. x 7cm high; and a blue and white oriental ginger jar, 17cm high £40 - 60 †

19

A 19th Century Mocha ware mug, 10cm high; and a pink lustre mug decorated with a scene of Rebecca at the well, 11.5cm high, (2) £30 - 50 †

20

A Victorian Staffordshire figure group, of a highland couple; another similar; another; a Staffordshire figure of a girl playing a lute and three other Staffordshire ornaments, (7) £40 - 60 †

21

A pair of 19th Century Staffordshire spill holders, in the form of running Zebras and hounds, 20cm high £40 - 60 †

22

Three 19th Century Coalport style porcelain two handled mugs, decorated with flowers and inscriptions £40 - 60 †

23

A pair of late 19th Century Meissen style figures, depicting maid and youth, raised on floral decorated bases, 40cm high, AF £100 - 150 †

24

A 19th Century Japanese shallow bowl, decorated with peacocks and foliage, six character mark to base, 39.5cm dia. £80 - 120 †

25

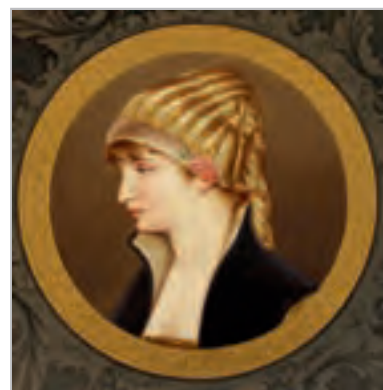
A pair of 19th Century Metlach ewers, decorated with painted panels of hunting scenes with raised foliate decoration, 42cm high, (one AF) £40 - 60 †

26

A 19th Century Chinese blue and white baluster vase and cover, with Hawthorn decoration, six character mark to base, 32cm high £100 - 150 †

27

A late 19th/early 20th Century Chinese porcelain ovoid vase, the domed cover decorated with a dignitary on a horse and various figures to the body, 27cm high £100 - 200 †



Lot 4



Lot 10



Lot 12



Lot 17



Lot 29



Lot 34



Lot 35



Lot 37

28
A 19th Century Chinese porcelain vase, of square section, having polychrome decoration of bats, foliate sprays and archaic symbols, standing on a carved wood base, 30.5cm high overall

£180 - 220 †

29
A 19th Century Chinese porcelain famille verte Yan Yan vase, finely painted with an archer and musician surrounded by precious objects, standing on a 19th Century carved wood base, 37.5cm high

£250 - 350 †

30
Four various Antique oriental pottery bowls; and an unusual square section teapot with raised floral decoration

£30 - 50 †

31
A pair of 19th Century Japanese Imari vases, of waisted form, decorated foliage, 30cm high

£60 - 80 †

32
A 19th Century Imari vase, of baluster panelled form, decorated in the traditional palette, 16.5cm high

£60 - 80 †

33
A 19th Century Chinese porcelain bowl and cover, decorated with figures in a garden, red seal mark to base, 11cm dia.; and a Chinese porcelain bowl painted with a dragon and phoenix, red painted four character Quianlong mark to base, 10.5cm dia., (2)

£100 - 150 †

34
A large brightly coloured Iznici pottery bowl, having all over stylised decoration, 49.5cm dia.

£60 - 100 †

35
A pair of 19th Century Chinese Canton baluster vases, having enamelled decoration depicting warriors and flowers, 45cm high, (one handle AF)

£100 - 200 †

36
A pair of 19th Century Japanese Imari chargers, having scallop borders, panels decorated with foliate scrolls, birds and beasts, 40cm dia.

£100 - 200 †

37
A large 19th Century Meissen style six branch candelabra, decorated with cherubs and foliage on scrolled base, 83cm high

£200 - 400 †

38
An extensive Wedgwood Florentine pattern dinner service, comprising various sized plates, tureens, meat plates, sauce boat and stand, dessert bowls etc.

£250 - 350 †

39
A large 19th Century etched glass goblet, having foliate and fruit decoration, raised on a circular spread foot, 22cm high

£60 - 80 †

40
A Mosan Galle style bulldog, decorated blue heart shaped motifs on a yellow glazed ground with glass eyes, 31cm high

£150 - 250 †

41
An Antique stoneware bellarmine, 44cm high; and a similar stoneware jug, 36cm high, (2)

£60 - 80 †

42
An Antique glass rummer, the baluster shaped stem inset with a silver coin on circular spread foot, 17cm high

£30 - 50 †

43
A Victorian Davenport "Nankin" pattern baluster toilet jug, 36cm high

£40 - 60 †

44
A vine etched glass rummer; and another

£20 - 40 †

45
A Chinese green glazed dish, having raised floral decoration, seal mark to base

£20 - 30 †

46
A 19th Century Wedgwood oval serving dish, decorated in the Chinese vase pattern, 32cm, AF

£30 - 40 †

47
A quantity of 20th Century Chinese blue and white dinnerware, decorated dragons and clouds; together with various other similar china etc.

£100 - 200 †

48
Four various 19th Century Chinese Canton bowls, some AF

£100 - 150 †

49
Two 19th Century Chinese Canton baluster vases, with famille rose, bird and insect decoration, 24.5cm high and 26.5cm high

£80 - 120 †

50
A 19th Century Chinese blue and white double gourd shaped vase, with prunus decoration, 21cm high; and a baluster vase decorated with panels of figures and prunus, 20cm high

£60 - 80 †

51
Four various 19th Century Chinese blue and white plates, one with figure and dragon decoration

£100 - 150 †

52
Various Wedgwood dessert plates; two Sampson armorial plates etc.

£30 - 50 †

53
A Wemyss pottery pig, retailed by T. Goode & Co. South Audley Street, London, 16cm long

£200 - 300 †

54
A large Victorian shaded pink opaque glass vase, baluster shape, painted floral decoration, 48cm

£40 - 60 †

55
A Victorian opaque glass vase, shouldered form, painted with cranes and foliage in a blue palette, 31cm

£30 - 50 †

56
A Chinese blue and white plate, press moulded floral sprays to the flange, centre panel painted with a willow tree, peonies and other flowers by a bridge, 27cm dia.; and another Chinese blue and white plate, (2)

£70 - 100 †

57

A pair of Royal Doulton stoneware vases, designed by Francis Pope, shouldered form, scroll work decoration to the collar, no. 8138 and incised EB, 26cm £70 - 100 †

58

A collection of six various porcelain and enamel decorated patchboxes, and an enamel purse, AF £40 - 60 †

58A

A First Period Worcester porcelain Mulberry leaf shaped dish, the finely vein moulded ground painted in the famille rose pallet, shaped pale green border, 19cms £700 - 900 †

Silver & Plate

59

A quantity of various plated cutlery; a plated syphon stand; a pair of continental white metal servers etc. £60 - 80 †

60

A Victorian electro plated "Five O'clock" tea kettle on spirit heater stand, with foliate decoration and shell feet £60 - 80 †

61

A mahogany cased set of 12 each ivory handled fruit knives and forks £30 - 50 †

62

An oak and electro plate mounted two handled tea tray, 48cm £20 - 40 †

63

A cut glass decanter, in white metal stand; and a silver plated Daimler Benz rally salver, dated 1958, (2) £15 - 20 †

64

A large plated candlestick, with foliate embossed decoration; two cut glass and plate mounted cruet bottles; a plated teapot and a cream jug, (5) £20 - 30 †

65

A large 19th Century ornate silver plated ten branch candelabra, decorated with cherubs and foliate scrolls, 88cm high £100 - 200 †

66

A George V pierced silver bowl, Sheffield 1910, raised on three pad feet, 21cm dia., approx. weight 10ozs. £80 - 120 †

67

A silver candlestick, Birmingham 1919; and a pair of plated candlesticks with gadroon bordered sconces, (3) £20 - 40 †

68

A pair of modern silver baluster sugar shakers, Birmingham 1962, 19cm high, approx. total weight 8ozs. £80 - 12 †

69

A George V silver sugar caster, Birmingham 1933 £40 - 60 †

70

Nathaniel Mills, a pierced silver card case, marks rubbed, Birmingham Assay £100 - 200 †

71

A George V silver card case, with engine turned decoration and monogram, hung to a fine link chain, London 1912 £40 - 60 †

72

A silver tea strainer, having shell and gadroon decoration, London 1958 £20 - 40 †

73

An Art Deco silver cigarette case, with engine turned decoration, Birmingham 1933; another similar; and four other silver cigarette cases, (6) £60 - 100 †

74

A small pair of late Victorian silver pepperettes, of fluted baluster form, Sheffield 1889; and a silver example having profuse foliate decoration, (3) £20 - 40 †

75

A set of four 20th Century Danish silver candlesticks, raised on oval stepped bases, marked SVT for Svend Toxaerd, 20cm high £150 - 200 †

76

A 20th Century Danish silver coffee pot, cream jug and sugar bowl, marked Sterling 925 Denmark SVT for Svend Toxaerd, approx. 37ozs. total weight £350 - 450 †

77

A George III silver baluster coffee pot, by Hester Bateman, having floral scroll decoration and vacant cartouche, the domed lid surmounted by a pineapple finial, blackwood handle, London 1785, 23.5cm high, 28ozs. £500 - 800 †

78

A George III silver baluster coffee pot, maker Samuel Hennell, of half fluted body design with monogram, wooden handle and ivory lift, London 1811, 20cm high overall, 23ozs. gross £250 - 350 †

79

A pair of fine Victorian silver chamber candlesticks, by George Fox, London 1865, bearing crest for Ibbotson, approx. 20ozs. total weight £600 - 800 †

80

A pair of Victorian silver salts, having floral embossed decoration, shaped borders, raised on ball feet; and a pair of shell shaped salt spoons, Birmingham 1898, (cased) £40 - 60 †

81

A George III silver spoon, 1814; a George III pair of silver miniature tongs, London 1813; and a Victorian silver spoon, Newcastle hallmarks, (3) £60 - 100 †

82

A set of six William IV silver dinner forks, crested London 1837, weight 16ozs. £120 - 160 †

83

Two silver spoons, decorated with enamelled heraldic crests £50 - 100 †

84

Six silver and enamel souvenir spoons £30 - 50 †

85

An Edwardian silver sifter spoon, London 1902; and another Birmingham 1904, (2) £60 - 80 †



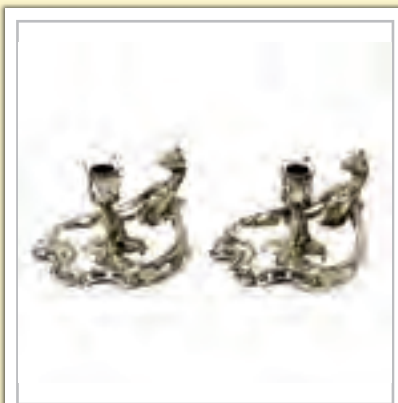
Lot 65



Lot 77



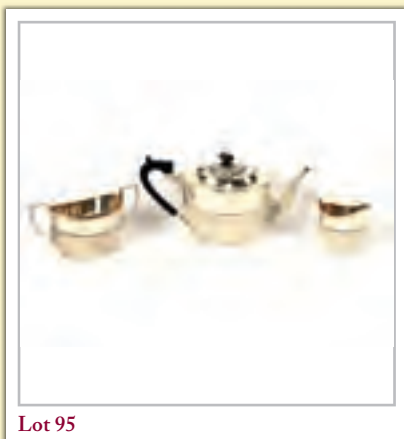
Lot 78



Lot 79



Lot 93



Lot 95



Lot 102



Lot 130

86
A George III silver berry spoon, *London 1780*; and another hallmarked for Newcastle 1815, with gilded bowl, (2) £50 - 80 +

87
A silver three piece cruet, *Birmingham 1987*; with associated spoons, cased £60 - 80 +

88
A pair of modern silver dwarf candlesticks, *London 1972*; a plated tea caddy and an Elkington & Co., plated coddler £80 - 120 +

89
A case containing six various silver condiment spoons £20 - 30 +

90
A quantity of various George III and other teaspoons, caddy spoon etc. £40 - 60 +

91
A late Victorian heavy block glass ink well, with hobnail pattern base, silver embossed lid hallmarked for *Birmingham 1897* £40 - 60 +

92
A George V silver floral and heart decorated Vesta, *Birmingham 1911*; a small silver purse, *London 1886*; three various silver thimbles; and a small silver dish with pierced borders £60 - 80 +

93
An ornate silver plated sauce boat, having Phoenix handle, raised on hoof feet with beaded border £20 - 30 +

94
A late Victorian silver miniature Monteith bowl, having presentation inscription for "Thorpeness Golf Club Captain's prize 1925", lion mask and ring decoration, on a circular stepped foot, *London 1893*, 9ozs. £60 - 100 +

95
A late Victorian silver three piece tea set, having half fluted body decoration, the teapot with blackwood handle and lift, *Birmingham 1900*, 26ozs. £200 - 300 +

96
A silver three piece cruet, by Mappin & Webb, *Birmingham 1954*; two Victorian silver Fiddle pattern tablespoons; various silver teaspoons; silver napkin ring; silver bladed folding fruit knife with mother of pearl handle; silver and mother of pearl handled fork; plated tankard etc. £60 - 80 +

97
A Victorian silver and leather mounted hip flask £60 - 80 +

98
A small silver sweetmeat dish, by Mappin & Webb, *Birmingham 1929* £30 - 50 +

99
A silver octagonal baluster sugar shaker, by Mappin & Webb, *London 1907* £80 - 120 +

100
A pair of George III silver Old English pattern spoons, by William Sumner, *London 1799* £40 - 60 +

101
A pair of Victorian silver Old English pattern spoons, by Francis Higgins, *London 1894* £40 - 60 +

102
Three George III silver tablespoons, by Peter & William Bateman, *London 1813* £60 - 80 +

103
A cased pair of silver serving spoons, by Mappin & Webb, *Sheffield 1924* £40 - 60 +

104
A cased set of six silver teaspoons, by Roberts & Belk, *Sheffield 1919* £20 - 40 +

105
A silver baluster pepper pot, *London 1922*; another of vase shape, marks indistinct; a matching mustard and another oval mustard, *Birmingham 1894*; and a silver handled preserve spade £30 - 50 +

106
A late Victorian silver baluster cream jug, with embossed foliate decoration and vacant cartouche, raised on three shell decorated pad feet, 13cm high, hallmarked for Chester dated letter rubbed £40 - 60 +

107
A George V cut glass and silver mounted sugar shaker, hallmarked for *Birmingham 1912* £20 - 30 +

108
A silver mustard pot, retailed by Jayes, Oxford Street, *Birmingham 1932*; and a Victorian silver mustard spoon, *London 1858* £30 - 60 +

109
Seven various silver cruet items £30 - 40 +

110
A George V silver sugar bowl, of plain baluster form, *London 1919*; four Fiddle pattern silver teaspoons, *Sheffield 1900*; and a silver mounted hair brush £30 - 50 +

111
A small George IV silver photograph frame, having ribbon tied decoration, 7.5cm x 9cm overall, *Birmingham 1919* £20 - 40 +

112
A small George V silver pin cushion, *Birmingham 1911* £20 - 30 +

113
A late Victorian silver stamp box, having embossed foliate decoration and vacant cartouche to the lid, *Birmingham 1894* £30 - 40 +

114
Four various silver topped dressing table jars £40 - 60 +

115
An Edwardian silver handled magnifying glass, *Sheffield 1901*; and a George V silver handled shoe horn, *Chester 1912* £20 - 30 +

116
A late Victorian silver pounce pot, *London 1895*, £30 - 50 +

117
A small George V circular silver ring box, *Birmingham 1917* £20 - 40 +

118

Four various George IV, William IV and Victorian silver Fiddle patterned dessert spoons; and a George II silver Old English patterned spoon marks indistinct £40 - 60 †

119

A George II silver small sauce ladle, bearing crest of lion and sceptre ; a George IV silver teaspoon Fiddle and Shell pattern, by William Elliott, London 1822; a silver napkin ring; and a silver butter knife £30 - 40 †

120

A George III silver mustard spoon, probably by Joseph Preedy, London 1871; a George III Scottish silver large mustard spoon Edinburgh 1807; a pair of Edwardian silver mustard spoons by Mappin & Webb, Sheffield 1903; and two others £30 - 50 †

121

A small modern silver stamp box; and a silver book mark £20 - 30 †

122

A small continental silver baluster cream jug, import marks London 1903; a modern silver coaster with turned wooden base; and a miniature silver trophy cup £40 - 60 †

123

A five piece Eastern white metal cruet; three various silver cruet spoons; a silver baluster shaped pepperette; a pair of glass and silver mounted pepperettes, a plated mustard pot and spoon; and two Eastern white metal bowls £40 - 60 †

124

A pair of late Victorian silver serving spoons, having shaped pierced terminals and floral embossed bowls; and a pair of plated berry spoons £30 - 50 †

125

A modern silver tea strainer, having turned wooden handle and a bowl, raised on three pad feet £20 - 30 †

126

A Mappin & Webb silver replica of the Traprain Law, Roman spoon £20 - 30 †

127

Three modern silver Old English pattern soup spoons; five silver soup spoons, having tapering handles, makers mark RC; a set of six cased silver teaspoons; three silver bladed fish knives and forks; an 18th Century silver spoon, marks indistinct; and 18 silver handled knives £70 - 100 †

128

A pair of Victorian silver Fiddle pattern fish servers, with foliate engraved decoration £40 - 60 †

129

A pair of Victorian silver Fiddle pattern tablespoons, London 1838; and a similar pair, London 1841 £40 - 60 †

130

A Victorian plated oval trinket box, with cherub, mask and foliate scroll decoration £40 - 60 †

131

A part suite of late Victorian silver flatware, Fiddle pattern, monogrammed, Sheffield 1897-1899, comprising 12 table forks, 12 dessert forks, 12 dessert spoons, and 12 teaspoons, approx. 72ozs. £600 - 800 †

132

A pair of 18th Century French silver square based candlesticks, having detachable sconces 16cm high, 17ozs £100 - 200 †

133

A Georgian silver helmet shaped pedestal cream jug, marks indistinct; and a silver gilt and glass jar, the hinged lid with applied lions head decoration, Birmingham 1896 £60 - 100 †

134

A 19th Century silver table snuff box, with gilded interior, the lid dated with monogram January 19th 1887, 8.5cm long £60 - 100 †

135

An Antique Goliath pocket watch, in a silver hallmarked travel case, Birmingham 1918 £50 - 80 †

136

An antique Gorham & Co. Sterling pin cushion, in the shape of a shoe; and an electroplated heart shaped trinket box £40 - 60 †

137

A late 19th early 20th Century electroplated four division toast rack, in the form of a swan raised on ball feet, 15cm long £20 - 40 †

138

A 19th Century continental silver punch ladle, having foliate embossed decoration to the oval bowl, leaf surmounts and turned wooden handle £40 - 60 †

139

A George III silver apple corer, London 1792 £80 - 120 †

140

A silver cased travelling watch holder, with engine turned decoration and monogram, containing a timepiece, Birmingham 1927 £40 - 60 †

141

An Edwardian silver cased scent flask, with embossed decoration, Chester 1901; and a silver cased pen £40 - 60 †

142

A George III Scottish silver sifter spoon, Edinburgh 1812; and a 19th Century white metal side pouring ladle with turned ivory handle £40 - 60 †

143

An Antique Dutch spoon, depicting a court figure, having London import marks £60 - 80 †

144

A small Victorian silver tray, William Aitkin, Birmingham 1900, gadrooned rim, pierced flange, engraved centre, 11ozs., dia. 22cm £100 - 150 †

145

A silver square shape cigarette box, W.H. Leather & Son, Birmingham 1924, yellow metal banded and engine turned decoration to the lid, cedar lined, width 9cm, boxed £50 - 80 †



Lot 131



Lot 138



Lot 140



Lot 141



Lot 167



Lot 171



Lot 175



Lot 178

146

A set of four silver beakers, A & J Zimmerman, *Birmingham 1914*, fluted and flared, 7ozs, 7cm; a rectangular card stand, George Unite & Sons, *Birmingham 1915*; a pair of circular sweetmeat dishes, William Hutton & Sons Ltd. *Birmingham 1902*; and a heart shape sweetmeat dish, Henry Williamson Ltd. *Birmingham 1900* (8)
£100 - 150 †

147

A Victorian electro plated lamp shape teapot, Elkington & Co., 1881, engraved and beaded decoration, 10cm; and an Elkington & Co., jug, (2)
£20 - 30 †

148-149

No Lots

Jewellery

150

A silver and amethyst set necklace £30 - 50 †

151

A Venetian glass bead necklace; together with a natural pearl necklace £50 - 100 †

152

An enamel and silver articulated shrimp pendant £50 - 80 †

153

A large silver and amethyst necklace £30 - 60 †

154

A silver and Cornelian set ring; a silver snake ring; and a large silver star shaped stone set ring £40 - 60 †

155

A 9 carat gold and amethyst set ring; a mother of pearl oblong counter with figural decoration; and a heart shaped silver pendant £80 - 100 †

156

A miniature portrait on ivory, of a young woman and an amber and silver mounted dress ring £40 - 60 †

157

A turquoise and shark's tooth set ethnic necklace; and one other £30 - 50 †

158

A heavy silver bracelet; and another £40 - 60 †

159

A silver Masonic medal, "Lord Wolsey Lodge"; an Irish silver bracelet; brass advertising aspirin paper-weight; and a railway medal £80 - 120 †

160

A silver hallmarked Vesta case; a silver sovereign case; a whisky label; a gin label; a Bakelite vesta decorated with horse's head; and five various badges including two silver examples £70 - 100 †

161

Five silver doll's house dishes; a silver doll's house sofa and two chairs; and six miniature doll's house bunches of wax fruit £40 - 60 †

162

A silver ring; together with a green gem stone set ring £30 - 60 †

163

An 18 carat gold and diamond set ring £80 - 120 †

164

An 18 carat gold diamond and sapphire set ring £80 - 120 †

165

A 9 carat gold opal and garnet set ring £80 - 120 †

166

A 9 carat gold signet ring £80 - 120 †

167

A fine quality micro Mosaic brooch, depicting a recumbent spaniel in yellow metal scrolled frame £100 - 200 †

168

A 9 carat gold brooch, decorated with a bird and two stick pins £40 - 60 †

169

A yellow metal foliate engraved sovereign case; and a rolled gold bangle with floral scroll decoration £20 - 30 †

170

A pair of Georg Jensen stylised cuff-links; a pair of yellow metal drop ear-rings; a yellow metal dress ring; various items of costume jewellery; a George V coronation medallion; and a silver golfing medal dated April 1907 £40 - 60 †

171

A vintage Chinese silver gilt and enamelled Tiger's eye set bracelet £100 - 150 †

172

A pair of late Victorian rose gold hat pins, stamped 9 carat, in a fitted box for C. Packer & Co., Regent Street, London £100 - 200 †

173

A vintage silver and enamelled ladies compact, decorated with red roses £60 - 80 †

174

A 10 carat gold fob watch, the back plate monogrammed; a 9 carat gold chain, approx. 30gms.; and a yellow metal chain, 30.6gms. £400 - 600 †

175

A silver cased half Hunter pocket watch, maker Ormsby Irvin of Enniskillen, case hallmarked for London 1803 £100 - 150 †

176

A 19th Century silver pair cased pocket watch, hallmarked for London 1862 £60 - 80 †

177

A silver pair cased pocket watch, by Richard Grant, East Hoathly, hallmarked for London 1853 £100 - 150 †

178

A 19th Century silver cased pocket watch, with verge escapement, maker J. Bowan, hallmarks for London 1853 £60 - 80 †

179

Two yellow metal fob seals, inset with cornelian and one with citrine £80 - 120 †

180

An agate and silver brooch, in the form of an anchor, 8cm long £70 - 100 †

181

An 18 carat gold diamond cluster ring £300 - 400 †

Objects & Collectables

182

Two old Eastern leather powder flasks, patterned design, metal fittings, 26cm and 21cm, (2) £30 - 50 †

183

An Eastern flintlock pistol, 28cm damascened barrel, full stock with inlaid decoration, brass furnishings £150 - 200 †

184

A Chinese cloisonne charger, shaped outline, centre decorated with a phoenix, 30cm dia. £50 - 80 †

185

A pair of Japanese cloisonne chargers, centre panels decorated with storks against a blue ground, 30cm dia. £150 - 200 †

186

A Japanese carved hardwood and ivory okimono, Meiji, modelled as a seated figure, restored, 13cm; and two Chinese lead glazed stoneware figures of immortals, (3) £40 - 60 †

187

A Swift Nine Fifty series microscope, no. 693490, x4, x10, x40 objectives, 32cm £20 - 30 †

188

A French brass cased carriage clock, with white enamel dial, signed L'Epee Sainte Suzanne, platform escapement, 11 jewel movement striking on a gong, 15cm £100 - 150 †

189

A brass cased carriage clock, with white enamel dial, signed Imperial, platform escapement, 13 jewel movement, hours striking on a bell, 13cm £100 - 150 †

190

An Antique carved Japanese ivory figure of a street vendor, 14cm high £300 - 400 †

191

An Antique Indian ivory model of a bullock cart, 16cm long £40 - 60 †

192

A circular carved oriental ivory two section clasp, with figural and insect decoration and signature, 5cm dia. £40 - 60 †

193

An ivory paper-knife, decorated with a gilt coiled snake, 24cm long £20 - 40 †

194

A pair of enamelled opera glasses, in a pouch £80 - 120 †

195

Two old interesting Antique Eastern daggers £40 - 80 †

196

A Vintage corkscrew, with turned wooden handle and crank mechanism; four old fossils to include trilobite £40 - 80 †

197

A small bronze figure of a period soldier, with part cannon at his feet, raised on a stone base £40 - 60 †

198

A Chinese silver spoon, the bowl decorated with bamboo shoots, the handle with stylised symbols £50 - 80 †

199

A Georgian silver and tortoise shell penknife £20 - 30 †

200

An Antique bone chess set £40 - 80 †

201

A scrimshaw marine ivory tusk, dated 1845 "H.M.Frigate Cambria" depicting ships of various nations on a hardwood base, 29cm overall £60 - 100 †

202

No Lot

203

An unusual Persian erotic watercolour, having script to the borders, framed and glazed, image 12.5cm x 20cm £50 - 80 †

204

A continental trinket box, in the form of a miniature Cassone with carved head decoration, 21cm long £20 - 30 †

205

A small cold painted bronze figure of a pigeon, 8cm long £30 - 50 †

206

A Victorian ruby glass and gilded double ended scent bottle £50 - 80 †

207

An oriental bronze stand, in the form of a dragon, 15cm long £30 - 50 †

208

Six various silver and enamel patch boxes £40 - 60 †

209

A 19th Century miniature painting, depicting two cherubs, contained in brass mounted easel frame £200 - 300 †

210

An oriental lacquered glove box and contents of various ivory and bone sewing items, mother of pearl paper-knife etc. £50 - 80 †

211

Three carved ivory Netsuke £80 - 120 †

212

A 19th Century engraved horn hunting beaker; a small hunting beaker engraved with a whale; and a teeen snuff box with horse and rider to lid £30 - 60 †



Lot 195



Lot 196



Lot 198



Lot 206



Lot 228

213

A large brass cased carriage clock, with alarm movement, striking on a bell, 16cm overall
£40 - 60 †

214

A brass cased carriage timepiece, 12cm high
£30 - 50 †

215

A wooden peg doll; Antique dominoes in box; and a decorative glass paper-weight decorated with polar bear
£40 - 60 †

216

A large novelty clay pipe, depicting figures playing football and rugby, registration number 241693; and another with curved stem, (2)
£40 - 60 †

217

A quantity of Chinese mother of pearl gaming counters
£80 - 120 †

218

A 19th Century oriental ivory carving, depicting mother and child in a boat, 6cm long
£50 - 80 †

219

An Italian glass intaglio disc seal, of Paulus II
£50 - 80 †

220

An 18th Century bronze Medic seal, of oval form
£70 - 100 †

221

A 19th Century carved wooden lime spatula, probably Oceanic, 36cm long
£80 - 120 †

222

A 19th Century vizigapatum card case
£40 - 60 †

223

An early 20th Century ivory carving of a Chinese junk, on carved wooden stand, 6.5cm long; and an ivory carving of a seated Buddha on stand 7.5cm high
£40 - 60 †

224

Three various early 20th Century Indian ivory carvings, of figures on ebonised plinth bases
£60 - 100 †

225

A 19th Century treen nutcracker, carved as a squirrel sitting on a post 19cm long; and a 19th Century hardwood carving of a naked figure asleep against a tree trunk, 9cm high (2)
£50 - 80 †

226

A small gilded bronze figure of a recumbent cat, on green and black marble base, signed G Bourcart, 14cm long overall
£40 - 60 †

227

A 19th Century Egyptian white metal study of a bird, constructed by joined calligraphic symbols; and a 19th Century Middle Eastern pottery scribes inkwell
£40 - 60 †

228

An Eastern bronze figure of a native man, on carved plinth 18cm high
£40 - 60 †

229

A figured mahogany cigar humidior; a leather cigar case; and a Sterling silver cigar piercer by Baker
£40 - 60 †

230

A Victorian Parian type section of classical frieze, contained in two glazed gilt frames, AF
£20 - 40 †

231

A Victorian painted silhouette picture, depicting a coach and horses contained in burr maple frame
£40 - 60 †

232

A Victorian shield shaped mirror, the surround decorated ferns contained in an ebonised frame
£20 - 40 †

233

An Indian 19th Century wood carving of a female dancer, 15cm long; an unusual figural bronze oil lamp with five spouts supported on an elephant base; and an Antique bronze circular stand
£40 - 60 †

234

A pair of 19th Century Chinese bronze censers, of square section, decorated with dragons amongst stylised waves, 12cm
£120 - 180 †

235

A Chinese olive green jade carving of a wine pot, 11cm
£60 - 100 †

236

A small 18th Century blue ground Battersea enamel oval snuff box, decorated with flowers and inscribed "A Present from Southwold", 5.5cm long
£120 - 180 †

237

A pair of small 19th Century Chinese turquoise ground and gilded cloisonne vases, decorated with flowers and butterflies, 11cm high
£40 - 60 †

238

A 19th Century Chinese well carved group of boys riding a water Buffalo, standing on a carved wood plinth base, 39cm long overall
£80 - 120 †

239

Two 18th Century walnut based iron spiral candlesticks, of typical form, 19cm high
£80 - 120 †

240

A finely worked Indian white metal square box, profusely decorated with birds and flowers, 20cm wide
£30 - 50 †

241

A late 17th/early 18th Century Chinese carved bamboo figure of a Buddhist priest, on bronzed base, 18cm high; and a 19th Century Chinese bamboo brush pot, carved with figures in a landscape, 13cm high
£180 - 220 †

242

A Victorian wool work embroidery, of a ship with light house and rocks nearby, contained in a maple frame, 34cm x 52cm
£40 - 60 †

243

A Victorian wool work picture of a sailing ship, 34cm x 43cm contained in a maple frame
£60 - 80 †

244

A Victorian wool work embroidery, of a three masted ship 34cm x 45cm contained in maple frame
£100 - 150 †



Lot 235



Lot 236



Lot 238

245

A Victorian wool work embroidery, of the sailing vessel "Devon", 41cm x 49cm *£100 - 150 †*

246

A 19th Century woolwork picture, depicting shepherd and flock, 40.5cm x 70cm, contained in a pine frame *£80 - 120 †*

247

An early 20th Century woolwork picture, depicting a farm worker and girl in rural landscape, 56.5cm x 37cm *£60 - 80 †*

248

An early 19th Century sampler, with verse, flowers and birds, worked by Sarah Creak, Little Horksley, 1826, 30cm x 29cm, contained in a mahogany frame *£40 - 60 †*

249

A small 19th Century sampler, with alphabet, numbers and verse, worked by Maria Gooda, Aged 10 years, 29.5cm x 19.5cm *£40 - 60 †*

250

An early 19th Century sampler, with text, alphabet, numbers and flowers, worked by Sarah Daynes, 1st May 1827, 37.5cm x 30cm *£80 - 120 †*

251

An 18th Century brass warming pan, having engraved pierced lid and iron hook handle *£20 - 30 †*

252

An arrangement of Victorian waxed fruit, under a glass dome 52cm high *£60 - 80 †*

253

A pair of antique brass slide action candlesticks, raised on circular bases 17cm high; an antique brass chamber stick with integral snuffer; and an 18th Century petal based brass candlestick, 20cm high *£40 - 60 †*

254

A pair of 19th Century brass and cast iron andirons or firedogs; surmounted by putti, 41cm high, 30cm deep *£120 - 160 †*

255

A pair of scrimshaw decorated teeth, with figure and animal decoration *£50 - 80 †*

256

An Antique treen maize bowl, 54cm dia., AF *£40 - 60 †*

257

An oak and plate mounted three bottle Tantalus, stamped PBS *£60 - 80 †*

258

An oak and electro plate mounted three bottle Tantalus *£40 - 60 †*

259

A Vintage wicker cased coracle picnic set, (incomplete) *£40 - 60 †*

260

An HBM & Co., brass and leather bound four draw telescope, engraved Tele Sgt. REGT OS126 GA number 5129 *£80 - 120 †*

261

A fine 18th Century twisted wrought iron toasting fork *£30 - 50 †*

262

A late 17th/early 18th Century wrought iron down-hearth trivet *£30 - 50 †*

263

An Antique copper coal scuttle and scoop *£40 - 60 †*

264

A decorative cast metal wall mirror, with cherub and dolphin decoration, 36cm x 26cm *£20 - 30 †*

265

A Japanese bronze vase, of baluster form with raised decoration and scrolled beast handles, converted to a table lamp base, 35cm high *£30 - 50 †*

266

An unusual Japanese painted wooden puzzle box *£80 - 120 †*

267

A Japanese cast iron Tetsubin *£50 - 80 †*

268

A copper Arts & Crafts tray, having shaped border, 35cm x 20cm *£20 - 30 †*

269

A Kashmir papier-mâché box, decorated with figures, 11.5cm *£20 - 30 †*

270

A small Art Nouveau pewter dish, decorated with head of a young girl with flowing hair, 12cm *£20 - 30 †*

271

A musical globe, playing "Around the world in 80 days" *£20 - 30 †*

272

An unusual terracotta hollow figure of a man with staff, 35cm high *£50 - 80 †*

273

A carved dark wood religious figure, 27cm *£20 - 30 †*

274

A small Gothic revival style desk tidy *£20 - 30 †*

275

A pair of brass Arts & Crafts design chamber sticks *£20 - 30 †*

276

An ornate brass frame, with William Morris type material panel, 42cm x 31cm overall *£20 - 30 †*

277

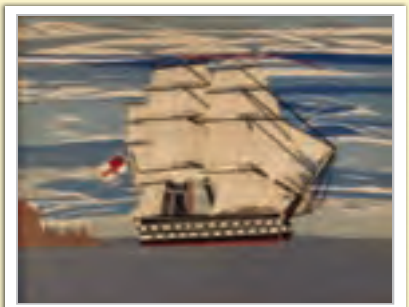
An Eastern circular brass dish, decorated with red and turquoise cabouchon stones and raised motifs, 25cm dia. *£20 - 30 †*

278

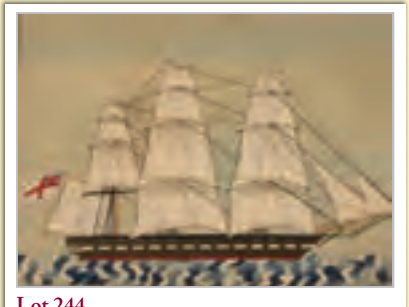
An old Chinese carved wooden wall mounting figure of an immortal, 17.5cm *£20 - 30 †*

279

A Japanese bronze tea caddy of shaped form, with foliate decoration, 12cm wide *£20 - 30 †*



Lot 243



Lot 244



Lot 245



Lot 247



Lot 283



Lot 291



Lot 296



Lot 304

280

An Antique carved wooden wall bracket, with fluted and pineapple decoration, 32cm wide
£20 - 30 †

281

An Arts & Crafts circular copper lobed shallow dish, 25cm dia.
£20 - 30 †

282

A copper ship's double mast head lamp, Meteorite C35431, 60cm high
£200 - 400 †

283

A copper ship's double starboard lamp, Meteorite P139711, 65cm high
£200 - 300 †

284

A copper ship's double mast head lamp, Meteorite C35434, 60cm high
£200 - 400 †

285

A 19th Century wool work embroidery, depicting an Elizabethan musician contained in broad figured mahogany frame, 64cm x 64cm in extremes
£60 - 80 †

286

A 19th Century mahogany cased banjo barometer, by Belotti & Guger, surmounted by a scrolled arch pediment, silvered dials, 92cm
£80 - 120 †

287

An oak mantel clock, by Junghans of Wurttemberg, retailed by John Purser & Sons, Portsmouth, having inscription "Presented to D.F. Jenkins from crew submarine L23, 28.5.25", fitted with 8 day movement striking on a gong, 35cm high
£100 - 150 †

288

An 18th Century silk thread embroidered Monstrance, within a cartouch surround depicting angels and a sheep, 73cm x 59cm in extremes
£200 - 400 †

289

An Antique carved oak six bottle decanter box, having marblised paper lined interior and two small glasses
£80 - 120 †

290

A 19th Century figured mahogany two compartment tea caddy, having central glass mixing bowl, mother of pearl escutcheon, 31cm wide
£80 - 120 †

291

A set of carved wooden coat hooks, in the Black Forest manner, decorated with fighting bulls, 68cm long
£100 - 200 †

292

An early 20th Century ivory walking cane, having carved dog's head handle, 92cm, AF
£40 - 60 †

293

A late Victorian oak and silver plate mounted dinner gong, raised on antler supports, 44cm long x 32cm high
£80 - 120 †

294

A Chinese silk and needlework panel, depicting Panda amongst bamboo shoots, having stylised motif border, 29.5cm x 28cm
£50 - 80 †

295

An unusual plaque, decorated with the head of an American Indian chief, by Hardest and Sharpest Ltd., inscription verso, "Given to a boy on his 8th Birthday in 1939"
£50 - 80 †

296

A large ammoite fossil, well formed, 33cm x 28cm in extremes
£100 - 150 †

297

Two Medieval hand written music sheets on velum, 52cm x 38cm and 32cm x 45cm respectively
£80 - 120 †

298

A large Chinese 19th Century hand painted hanging scroll, depicting a family of monkeys in various positions; and a flying insect, calligraphy and seal mark
£80 - 120 †

299

A Duplex brass corinthian column oil lamp, having moulded glass reservoir and ruby tinted shade, 78cm high overall
£80 - 120 †

300

A cased ebony and silver mounted dressing table set
£60 - 80 †

301

An Islamic marble box and cover, having inlaid floral decoration 20.5cm x 16.5cm
£80 - 120 †

302

A set of brass letter scales and weights, with plaque depicting postal rates
£40 - 60 †

303

Five various unframed Indian paintings
£100 - 150 †

304

A large and unusual ammonite fossil, 54cm x 50cm in extremes - some damage
£100 - 200 †

305

An ethnic wooden club, having hatched decoration to the handle inlaid with bone and mother of pearl motifs, 58cm long
£40 - 60 †

306

A brass microscope, complete with spare lenses, in fitted mahogany case
£50 - 80 †

307

An Antique flintlock musket, by Ryan & Watson, integral ram rod, 141cm long
£300 - 400 †

308

A small stained leaded and coloured glass panel, "Antiques", 71cm x 31cm
£40 - 60 †

309

An Antique stained glass leaded panel, with coloured bosses and central foliate motif (some damage), 87cm x 53cm
£40 - 60 †

310

A 19th Century French brass and porcelain cased mantel clock, surmounted by floral and fruit finials above corinthian columns and panels decorated with figures, Arabic numeral dial with 8 day movement striking on a gong, 34cm high
£500 - 800 †

- 311**
A 19th Century mahogany and chequer-banded small circular tray, inscription to label verso; an oak similar, a fruitwood example; and a small Lignum Vitae pot £40 - 60 †
- 312**
A pair of 19th Century coloured dentistry prints, "Fellow Feeling" and "Acute Pain", contained in circular gilt and ebonised frames £40 - 60 †
- 313**
An 18th Century enamel patchbox, the lid decorated with a figure entitled "The Vicar and Moses"; a continental porcelain patchbox having figural and scenic decoration; and a Chinese octagonal patchbox, (3) £60 - 80 †
- 314**
After Barye, bronze figure of a mountain goat, having gilt FB foundry mark, 11cm long x 17cm high £100 - 200 †
- 315**
A 19th Century bronze bust, of a Roman Emperor, 13cm high £60 - 80 †
- 316**
The Universal Penman or the Art of Writing, engraved by George Bickham, London 1743 £150 - 250 †
- 317**
"Old Times Under Arms", one volume, rebound in embossed leather with additional later illustrations £40 - 60 †
- 318**
The complete works of Flavius Josephus, in Greek and Latin, vellum bound, two volumes £200 - 400 †
- 319**
A pair of ebony and silver mounted candlesticks; and a pair of turned wooden 19th Century stethoscope candlesticks £50 - 80 †
- 320**
A 19th Century tinsel picture, "Mr Clair as Matthioli", 22cm x 17cm; and three others including Polonus, Maid Marian, and an army officer AF £60 - 100 †
- 321**
A 19th Century tinsel picture, "Mr Smith as The Pirate of the Black Sea", 25cm x 22cm, contained in a Hogarth style frame; and another depicting a figure with sword in ermine trimmed cape £60 - 100 †
- 322**
A pair of tinsel pictures, depicting "Mr Hicks as Mazeppa"; and "Mr Gomersal as Gilderoy", contained in stained pine frames £60 - 100 †
- 323**
A tinsel picture, depicting "Mr Keene as Richard III", 25cm x 18.5cm contained in a Hogarth style frame £60 - 100 †
- 324**
A 19th Century tinsel picture, "Mr Elscgood as Quicksand in the Silver Palace", 24cm x 19cm £60 - 100 †
- 325**
A Victorian tinsel picture, "Mr Horn as Casper" in the incantation scene, 24cm x 17.5cm in oak frame £60 - 100 †
- 326**
A 19th Century tinsel picture, with raised printed decoration of a young girl holding a chalice, inscribed "As Barb", 31.5cm x 22.5cm in burr maple frame £60 - 100 †
- 327**
19th Century tinsel picture, "Mr C Hill as Sir Rupert", contained in maple frame, 25.5cm x 19.5cm £60 - 100 †
- 328**
A 19th Century tinsel picture, "Mr King as Little John", 28cm x 20cm £60 - 100 †
- 329**
A 19th Century tinsel picture, depicting "Mr Wallis as Rolla in Pizarro", contained in burr maple frame, 28cm x 21.5cm £60 - 100 †
- 330**
A 19th Century brass door stop, with loop handle, 47cm high £30 - 50 †
- 331**
A 19th Century brass door stop, having twist column and loop handle, 46cm high £30 - 50 †
- 332**
A 19th Century brass and cast iron door stop, in the form of a fox's head with riding whip handle, 47cm high £40 - 60 †
- 333**
A stamp album, containing penny blacks, 1d Mulreadys, penny reds, and others £1,000 - 1,500 †
- 334**
A stamp album, containing 1 penny reds, 2 penny blues, etc. £400 - 600 †
- 335**
A stamp album, containing numerous GB, Victorian stamps and postal history £200 - 400 †
- 336**
A stamp album, containing GB perforated 1 penny line, engraved issues 1850, 1852, 1864 on covers etc. £200 - 400 †
- 337**
Two stamp albums and extensive contents, of 1 penny red stamps, including Maltese Cross cancellations on covers £200 - 400 †
- 338**
Three Ideal postage stamp albums, and contents including British Empire, City of London, Commonwealth and World stamps etc. £100 - 200 †
- 339**
Four various stamp albums, and contents of various world stamps etc. A/F £60 - 100 †
- 340**
A pair of 19th Century gilt and bronze candlesticks; and a pair of Sheffield plated candlesticks £30 - 50 †
- 341**
A pair of Victorian giltwood face protectors, with printed floral panels £20 - 40 †



Lot 308



Lot 314



Lot 332



Lot 333



Lot 351

342

A stained bone and shagreen casket, 46cm long
£80 - 120 †

Pictures & Prints

343

19th Century school, study of a figure on a bridge beside sluice gates, indistinctly signed and monogrammed, 15.5cm x 23cm
£30 - 50 †

344

Geoffrey Burrows, (born 1934), pen and ink studies, "Stracey Arms windpump, Norfolk" and "Wherry Albion, Norfolk", signed, 20cm x 15cm
£80 - 120 †

345

W. Foster, study of corn stooks in rolling landscape, signed watercolour, 27cm x 23cm
£100 - 150 †

346

Arthur Barkway, study of Southwold, signed and dated 1934, 27cm x 42cm
£100 - 150 †

347

Frederick Russell, study of Wolsey Gate, Ipswich, watercolour signed and dated 1850, 32cm x 22cm
£100 - 150 †

348

A framed black and white etching, Notre Dame Cathedral, Paris, 57cm x 44cm
£20 - 40 †

349

George Soper, 1870-1942, drypoint etching on laid paper, "Going to Work" 1926, signed in pencil, plate 17.5cm x 27cm
£100 - 150 †

350

C. & I. Greenwood, map of the county of Essex with vignette of Audley End House, plate 62cm x 72cm
£60 - 80 †

351

L.S. Lowry, pencil signed coloured print depicting sailing vessels, back stamp to margin, image 28.5cm x 34cm
£200 - 400 †

352

Victorian school, study of a lady and King Charles spaniel, charcoal and pencil, 53.5cm x 43cm, contained in a gilt frame
£100 - 150 †

353

F. Allen, studies of highland mountainous lake scenes, oils on canvas, signed, 24cm x 35cm, a pair
£100 - 150 †

354

Attributed to John Crome, 19th Century school, study of a courtyard with figure, unsigned oil, inscribed to the gilt frame, "Old Crome" and paper label verso 752 Crome, Norwich, 31cm x 24cm
£400 - 600 †

355

George Alfred Race, 1872-1957, study of the Lowestoft drifter "Fair Breeze", LT222, signed oil on board, dated 1927, 28cm x 42cm
£300 - 400 †

356

Hugh Brandon Cox, (born 1917), study of a heron in a garden, signed watercolour, 36cm x 47cm
£200 - 300 †

357

J. Salmon, study of "Bow and Arrow" castle, Portland; and another of Berwick, watercolours, (a pair), each signed and dated 1879, 52cm x 74cm
£400 - 600 †

358 ✓

William Walcot, 1847-1943, study of a horse and cart, signed watercolour dated 1919, 40cm x 50cm
£1,500 - 2,000 †

359

Grainger Smith, Conway Castle, oil on board 29cm x 34cm
£150 - 250 †

360

E. Pococke, "Old corner post, Fore Street", signed watercolour, 32cm x 24cm
£100 - 150 †

361

Elsie Haward, study of street scene, signed watercolour, 29cm x 39cm
£40 - 60 †

362

19th Century school, study of cattle with adjacent windmill and ruin, unsigned watercolour, 50cm x 75cm
£100 - 150 †

363

A coloured engraving after Henderson, "Going To The Meet"
£20 - 30 †

364

Edward Wesson, "Westminster Abbey", signed ink and watercolour, 34cm x 24cm
£150 - 200 †

365

19th Century school, rocky coastal scenes with sea birds amongst crashing waves, indistinctly signed, 24.5cm x 11.5cm
£40 - 60 †

366

19 Century school, study of a Cathedral City with river and fishing boats in the near ground, monogrammed J.H. '98, watercolour 33cm x 19cm
£20 - 30 †

367

Clive Madgwick, R.B.A., 1934-2005, study of Venice, view to Santa Maria, signed oil on canvas, 29.5cm x 44.5cm
See front cover illustration
£200 - 400 †

368

19th Century school, highland loch scene with fishing vessels, monogrammed J.H. dated '85, watercolour, 22.5 cm x 45.5cm
£40 - 60 †

369

Alfred Saunders, 1908-1986, evening river scene, signed oil on board, 25cm x 34cm
£80 - 120 †

370

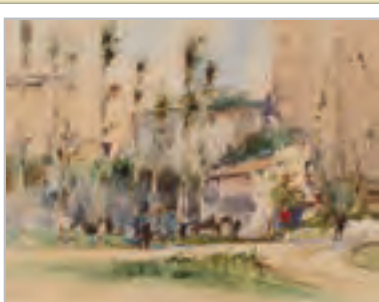
Alfred Saunders, 1908-1986, study of a Suffolk river scene, signed oil on board, 18cm x 33cm
£80 - 120 †

371

Alfred Saunders, 1908-1986, storm sunset on Westleton moor, Suffolk, oil on board, 19cm x 27cm
£80 - 120 †

372

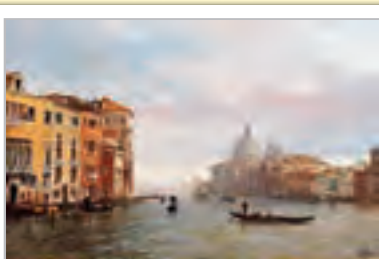
Alfred Saunders, 1908-1986, study of a figure forking hay, signed oil on board, 22cm x 29cm
£80 - 120 †



Lot 358



Lot 362



Lot 367

373

Alfred Saunders, 1908-1986, "The Mill and Quay at Cley-next-to-the-sea", signed oil on board, 27cm x 49cm £100 - 150 †

374

Alfred Saunders, 1908-1986, "Autumn Day", signed oil on board, 37cm x 47cm £100 - 200 †

375

Leonard Russell Squirrell, 1893-1979, etching "Blackfriars Bridge" £30 - 50 †

376

19th Century school, "A view on the Clyde", Dunbarton rock and castle, unsigned oil on canvas, 33cm x 63cm £200 - 400 †

377

Sir William Russell Flint, 1880-1969, coloured print depicting women bathing, pencil signed with back stamp to margin, image 48cm x 66.5cm £40 - 60 †

378

Sir William Russell Flint, 1880-1969, pencil signed coloured print, women in a pool area, back stamp to margin, image 44.5cm x 60.5cm £40 - 60 †

379

Sir William Russell Flint, 1880-1969, coloured print depicting ballerinas practising and dressing, pencil signed with back stamp to margin, image 36cm x 48cm £40 - 60 †

380

L. Harris Smith, shoreline scene, signed oil on panel, 19cm x 29cm £100 - 200 †

381

Pierre Adolphe Valette, continental landscape, signed oil on board dated 1933, 25cm x 37cm £150 - 200 †

382

Marianne Mansell, East Anglian evening landscape with windmill, oil on canvas, 34cm x 61cm £80 - 120 †

383

20th Century continental school, study of a French street scene with horse-drawn carriages, flower stall and figures, oil on canvas laid on board, 50cm x 61cm £80 - 120 †

384

Follower of Antoine Blanchard, Parisian street scene with figures, oil on canvas laid on board, 34cm x 51cm £80 - 120 †

385

Marianne Mansell, East Anglian river landscape with moored barges, oil on canvas, 25cm x 60cm £80 - 120 †

386

A 19th Century humorous coloured print, by William Heath, "The Highland Light Cart", image 25cm x 37.5cm £20 - 40 †

387

H and C Shayer, "A Summer's Day", country scene with children, a dog, sheep and donkey, oil on canvas, 29cm x 39cm £300 - 400 †

388

19th Century French school, Goethe in the Roman Campagne, oil on canvas, signed Lagrenée, 60cm x 90cm £100 - 150 †

389

David Cox Jnr. 1809-1885, Sunset after a storm near Arundel, Sussex, signed watercolour, dated 1851, also inscribed verso, 24.5cm x 39cm £100 - 150 †

390

H. Waldek, 19th Century oil on canvas, Mediterranean coastal scene, signed, 50cm x 29cm £80 - 120 †

391

Continental school, study of a town street scene with figures, mountainous background, watercolour, initialled FCN dated 1875, 24cm x 38cm £40 - 60 †

392

Oliver Campion 1920-2000 British, study of a canal and riverbank scene in a city, signed oil on canvas, 76cm x 101cm £200 - 300 †

393

Late 18th early 19th Century naive school, study of a large country house in parkland, mountains in the far ground, figures and animals in the fore ground, unsigned oil on canvas, 48cm x 57cm, in simulated walnut frame £100 - 200 †

394

John White, late 19th Century view near Queenstown, South Island, New Zealand, signed oil on board, inscription verso, 26cm x 38cm £80 - 120 †

395

C. Mosel, still life of fruit, oil on canvas, oval, 30cm x 40cm £100 - 150 †

396

19th Century English school, a wooded river landscape with figures by a watermill, oil on canvas, oval, 50cm x 60cm in extremes, contained in a decorative gilt frame £150 - 250 †

397

19th Century English school, study of a leaping hooked salmon, unsigned oil on canvas, 36cm x 56cm £120 - 160 †

398

19th Century English school, portrait of "Emma Grimke", nee Evans, wife of Theodore Dedham Grimke of South Carolina U.S.A., oil on canvas, inscribed verso, 74cm x 63cm £150 - 250 †

399

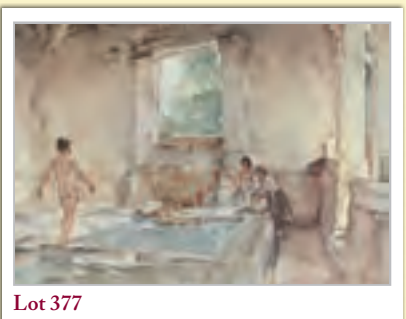
Samuel Joseph Clarke, 1834-1912, rural landscape with horses, chickens, ducks, a dog and two rustic figures stood by a farm gateway, signed oil on canvas, monogrammed, 30cm x 40cm £150 - 250 †

400

Edward John Pointer, signed pencil sketches of figures £40 - 60 †

401

Attributed to Ahmed Mahoud, study of five naked woman figures and a study of game birds, watercolour and body colour on paper, (6) £50 - 100 †



Lot 377



Lot 388



Lot 398



Lot 399

Lots marked ✓ please refer to Droit de Suite royalty charges in Terms and Conditions

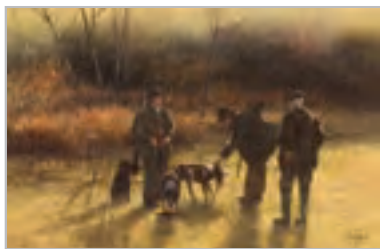
† Each lot is subject to a Buyer's Premium of 18% + VAT (21.6%)



Lot 403



Lot 404



Lot 405



Lot 406



Lot 407



Lot 408

402

George G. Kilburne, 1839-1924, a set of three watercolours depicting various figure subjects
£150 - 250 +

403

Clive Madgwick, R.B.A., 1934-2005, "Taking a High Bird", signed oil on canvas, 29.5cm x 44.5cm
£450 - 550 +

404

Clive Madgwick, R.B.A., 1934-2005, "Your Bird", signed oil on canvas dated 1987, 29.5cm x 44.5cm
£450 - 550 +

405

Clive Madgwick, R.B.A., 1934-2005, "The Pick Up", signed oil on canvas, 29.5cm x 44.5cm
£450 - 550 +

406

Clive Madgwick, R.B.A., 1934-2005, "Discussing the Arrangements for the First Drive", signed oil on canvas, 29cm x 44cm
£450 - 550 +

407

Clive Madgwick, R.B.A., 1934-2005, "End of a Good Days Shot", signed oil on canvas, 29cm x 44.5cm
£450 - 550 +

408

Clive Madgwick, R.B.A., 1934-2005, "On to the Next Drive", signed oil on canvas, 30.5cm x 45.5cm
£450 - 550 +

409

19th Century continental school, expansive landscape with ruins, clock tower and figures in the fore ground, mountains in the back ground, unsigned oil on canvas, 63cm x 74cm
£200 - 300 +

410

Late 19th Century school, study of figures ice skating on a lake with parkland, indistinct pencil signed watercolour, dated December 1870, 27.5cm x 36cm
£40 - 60 +

411

W.J. Hardy, study of terriers in landscape, signed oil on canvas, 44.5cm x 59cm
£200 - 400 +

412

After Myles Birkett Foster, study of a woman drawing water from the well with attendant kittens, monogrammed watercolour, 13.5cm x 9cm, contained in a decorative gilt frame
£40 - 60 +

413

Montague Dawson, a coloured print "The Gallant Mayflower", pencil signed to margin
£100 - 200 +

414

A coloured print "Sovereign of the Seas" after Payne, in rosewood cushion frame
£40 - 60 +

415

A 19th Century black and white print depicting Thames River scene
£40 - 60 +

416

Carl Becker, a large portrait study of Canon Miller, signed oil on canvas, 140cm x 110cm
£100 - 150 +

417

19th Century school, study of figures and cattle in a rural landscape, unsigned oil on canvas, 46cm x 76cm
£150 - 250 +

418

Attributed Edwin Nichol, 1855-1923, rural study depicting girl with geese, cottage and hilltop church in the far ground, unsigned oil on canvas, 33.5cm x 58.5cm
N.B. Given to the current vendors father by the artist's daughter in 1966
£150 - 250 +

419

Eight decorative prints, after the antique depicting Thames River scenes including Greenwich Hospital, Battersea, and the South West Prospect of London
£100 - 200 +

420

Late 19th/early 20th Century school, study of a "Middleton" garden with many examples of topiary, 28cm x 39cm; and another depicting ladies playing badminton, dancing and singing in a garden setting, indistinctly monogrammed, 37cm x 47cm both unframed
£60 - 80 +

421

A large framed lithograph, limited edition 20/28 of a ploughing scene by J. Walter West, 1860-1933, 96cm x 147cm
£50 - 80 +

422

A set of four 19th Century hand coloured horse racing prints, "Preparing to Start", "At Speed", "Weighing and Rubbing Down", "Winning"
£80 - 120 +

423

Samuel and Nathaniel Buck, "The East Prospect of St. Edmunds-Bury"
£100 - 200 +

424

Samuel and Nathaniel Buck, "The South West Prospect of Ipswich in the County of Suffolk"
£100 - 200 +

425

T. Caspers, still life with strawberries, signed oil on canvas laid on board, 16cm x 22cm
£50 - 100 +

426

D'Angelo, Italian street scene study, signed oil on wood panel, 22cm x 16cm
£50 - 100 +

427

A pair of Indian paintings, depicting figures in exotic gardens, having trailing floral borders, 54cm x 39cm
£40 - 60 +

428

C.J. Keats, "On the Avon", a pair of signed watercolours, 30cm x 50cm
£200 - 300 +

429

W. Sand, a pair of coastal studies depicting St. Ives, signed watercolours, 30cm x 17cm; and another pair probably by the same hand, unsigned, 24cm x 18cm
£100 - 150 +

430

John Adam Houston RSA RI 1802-1884, watercolour of Margate signed and dated September 1868, 16.6cm x 28.8cm
£60 - 100 +

431

Italian school, study of lake Como, unsigned oil on canvas, 47cm x 66cm
£150 - 250 +

432

Edwin Earp, country scenes, a pair, signed oils on canvas, 62cm x 50cm
£80 - 120 +

433

Austin Winterbottom, 1860-1919, a large oil on canvas depicting sheep in landscape, signed and dated 1896, 88cm x 122cm, contained in gilt frame £400 - 600 †

434

Peter Burman, (born 1950), study of a Suffolk church in landscape, signed watercolour, 23.5cm x 39cm £80 - 120 †

435

Peter Burman, (born 1950), study of fishing vessels, signed oil on board, 29cm x 39cm £100 - 150 †

436

Leonard Russell Squirrell, 1893-1979, "The road from the shore, Walberswick", signed and dated watercolour, dated 1977, 17.5cm x 37cm £600 - 800 †

437

John Moore of Ipswich, 1820-1902, study of fishing vessels at moonlight, signed oil on board, 17cm x 24cm £200 - 400 †

438

John Moore of Ipswich, 1820-1902, study of fishing vessels at sea; and a companion, signed oils on board, a pair, 23cm x 17cm £800 - 1,200 †

439

19th Century school, study of a young child with watering can, monogrammed and dated 1875, 49cm x 35cm £40 - 60 †

440

19th Century school, ships at moonlight, unsigned oil on canvas, 31cm x 45cm, in maple frame £40 - 80 †

441

Elliott, study of rough seas on rocky coastline at Newquay, signed watercolour, 18cm x 38cm £50 - 80 †

442

Attributed to T. Walmsley, study of a church on a hillside, unsigned watercolour, 18cm x 24cm £30 - 50 †

443

19th Century school, studies of sailing vessels, a pair, unsigned watercolours, 9.5cm x 14.5cm £40 - 60 †

444-448

No Lots

Furniture

449

A Yazd Persian carpet, allover traditional floral pattern, 3.14m x 2.20m £100 - 150 †

450

A 19th Century gilt framed wall mirror, having foliate decoration, 116cm x 67cm overall £100 - 150 †

451

A late 19th Century ornate gilt framed wall mirror, having scrolled foliate and shell pediment, 111cm x 65cm in extremes £100 - 150 †

Lots marked ✓ please refer to Droit de Suite royalty charges in Terms and Conditions

† Each lot is subject to a Buyer's Premium of 18% + VAT (21.6%)

452

A 19th Century mahogany bureau, the fall front opening to reveal an interior arrangement of drawers and pigeon-holes above four long graduated drawers, raised on bracket supports, 91.5cm wide £150 - 250 †

453

A 19th Century mahogany bow fronted chest, fitted two short and three long graduated drawers and scrolled feet, 100cm wide £100 - 150 †

454

A 19th Century mahogany bow fronted chest, of two short and two long drawers, 105cm wide £150 - 250 †

455

A Georgian walnut and cross-banded chest, of small proportions, fitted four long graduated drawers within blind fret angles and raised on ogee bracket supports, 86cm wide £400 - 600 †

456

A Georgian oak bureau, of small proportions, having a stepped interior arrangement of drawers and pigeon-holes above a well, two short and two long drawers below, raised on bun feet, 77cm wide £250 - 350 †

457

A William and Mary walnut side table, with chequer banded cushion frieze top, single drawer below above an arched frieze raised on barley twist supports united by an H stretcher, 94cm wide £800 - 1,200 †

458

A Victorian mahogany ships washstand, with fold over top and cupboards below, raised on a platform plinth, 75cm wide £40 - 60 †

459

An 18th Century Irish walnut side table, the overhanging top above a shaped frieze raised on cabriole supports with shell shoulders, terminating in scrolled feet, 96cm wide £600 - 800 †

460

An Antique walnut swing toilet mirror, raised on a three drawer box base, supported on bracket feet, 45cm wide £120 - 160 †

461

A 19th Century mahogany pedestal writing desk, the leather inset top above three frieze drawers, having six drawers to the pedestals, raised on platform plinths, 122cm wide £100 - 200 †

462

An oak bureau, of small proportions, having fitted interior above four long graduated drawers, raised on bracket feet, 76cm high £100 - 150 †

463

An 18th Century oak and elm food cupboard, of narrow proportions, having turned spindle decoration and carved panels, enclosed by a single door and raised on bun feet, later converted, interesting labels verso, 150cm high x 77cm wide £400 - 600 †

464

An 18th Century walnut chest in two sections, fitted two short and three long drawers with brass acorn drops and embossed escutcheons, 102cm wide £400 - 600 †



Lot 411



Lot 435



Lot 438



Lot 463



Lot 466



Lot 471



Lot 480



Lot 487

465

A large 18th Century oak gate leg dining table, fitted with a single end drawer, the rounded leaves raised on baluster turned supports, united by stretchers, 151cm x 186cm £500 - 800 †

466

An 18th Century oak geometric moulded panelled chest, fitted two short and three long drawers, raised on bracket feet, 98cm wide £300 - 500 †

467

A 19th Century mahogany and rosewood square piano, by John Broadwood and Sons, London, having brass inlaid decoration and raised on tapering reeded supports, terminating in brass caps and castors, 122cm wide £400 - 600 †

468

An Antique dark stained oak console table, in the manner of William Kent, decorated lion masks raised on a platform plinth, 102cm £300 - 500 †

469

An early 20th Century oak pedestal writing desk, with leather inset top, gadroon border above three frieze drawers, with six drawers to the pedestals, raised on carved cabriole supports terminating in claw and ball feet, 153cm wide x 91cm deep £150 - 250 †

470

A Jacobean chest on stand, fitted two geometric moulded panelled drawers, the base raised on barley twist supports united by stretchers, 87cm wide, 86.5cm high £400 - 600 †

471

An Antique walnut and cross-banded chest, fitted three short and three long drawers within reeded canted angles, raised on ogee bracket supports, 105cm wide £200 - 400 †

472

An 18th Century oak chest, fitted two short and four long graduated drawers, raised on bracket feet, 100cm wide £200 - 300 †

473

A 19th Century mahogany chest, of two short and three long graduated drawers, fitted turned ebony handles and escutcheons, raised on a shaped apron and bun feet, 120cm wide £100 - 200 †

474

A Victorian mahogany pedestal writing desk, the leather inset top above three frieze drawers, with six drawers to the pedestals, raised on platform plinths terminating in castors, 119cm wide, 64cm deep £100 - 150 †

475

An 18th Century oak two door hanging cupboard, enclosed by fielded panels, two drawers to the base, 136cm wide x 283cm high £200 - 400 †

476

A George III mahogany chest on chest, with dentil cornice above two short and three long drawers between reeded quarter pilaster stiles, the lower section fitted three long drawers, raised on bracket feet, 120cm wide £400 - 600 †

477

A mid 19th Century German figured mahogany fall front secretaire desk, the raised upper section fitted with a drawer above turned finials and blind frieze drawer, the fall front opening to reveal a fully fitted concave interior of drawers and central cupboard, two drawers and one long frieze drawer below, raised on turned supports flanked by spiral twist columns. Provenance with cabinet. 180cm high x 116cm wide £300 - 400 †

478

A 19th Century mahogany secretaire chest, the writing drawer fitted pigeon-holes and small drawers around a central cupboard, fitted three long graduated drawers under, raised on bracket supports, 127cm wide £200 - 400 †

479

A 19th Century mahogany Chippendale style fret carved wall mirror, 87cm x 59cm overall £40 - 60 †

480

An Edwardian mahogany chequer strung triple wardrobe, having painted classical figure and foliate decoration to the frieze, central mirrored door flanked by hanging compartments, fitted drawers to the base, raised on bracket feet, 204cm wide £200 - 400 †

481

A 19th Century mahogany and inlaid secretaire chest, flanked by spiral columns, the writing drawer with fully fitted interior above four short and one long drawer around a central deep drawer, raised on bracket feet, having associated satinwood cross-banded glazed bookcase top, AF, 120cm wide overall £100 - 200 †

482

A George III mahogany secretaire bookcase, the writing drawer flanked by Egyptianesque columns with cupboard to base, fitted shelves, raised on outswept supports, the bookcase top fitted adjustable shelves enclosed by glazed panelled doors, 121cm wide £300 - 400 †

483

A George III mahogany bureau bookcase, the upper adjustable shelves enclosed by a pair of glazed panelled door, the fall front opening to reveal a fitted interior of drawers and pigeon holes around an central cupboard, two short and three long graduated drawers below, raised on bracket feet, 108cm wide £200 - 400 †

484

An oak Arts & Crafts sideboard, by Wylie & Lochhead, having raised back, three drawers and cupboards under, on bold square supports with carved foliate stylised motifs and shaped drop handles, 198cm wide £300 - 400 †

485

R. Cole of Ipswich, a mahogany and inlaid long case clock, having painted dial with Cornhill vignette, 8 day movement, surmounted by a pierced scrolled fretwork pediment and central brass orb, flanked by brass strung columns with capitals, case with arched trunk door, decorated conch shells, raised on ogee bracket supports to the box base, 220cm high £400 - 600 †

486

A 19th Century mahogany drop leaf supper table, of small proportions, the rectangular leaves raised on square chamfered supports £40 - 60 †

487

A George III oak low boy, fitted three drawers above a shaped frieze, 71cm wide £120 - 160 †

488

A large 19th Century gilt framed convex wall mirror, having eagle surmount, the circular plate having ebonised slip and ball surround, foliate scrolls under, 116cm x 70cm in extremes £200 - 300 †

489

An 18th Century oak dresser rack, with boarded back, fitted shelves flanked by cupboard, 200cm wide, 130cm high £60 - 100 †

490

A pair of antique fruit wood long benches, raised on turned baluster supports, united by stretchers, 237cm long £300 - 400 †

491

An 18th Century oak coffer, with square iron lock-plate and foliate carved front, single drawer to base, fitted with brass pear drop handles, raised on bun feet £100 - 150 †

492

An 18th Century fruit wood side table, fitted with a single drawer raised on turned baluster supports, united by square stretchers, 72cm wide £300 - 400 †

493

An 18th Century lacquered and chinoiserie decorated long case clock, the arched hood enclosing a brass spandrel dial having steel chapter ring by Wallis May of London, eight day movement striking on a bell, full length trunk panelled door and box base, 214cm high £400 - 600 †

494

An Antique joined oak box on stand, the lid opening to reveal a fabric lined interior above mock moulded panel drawer front with two short drawers below, fitted brass pear drop handles, the stand raised on baluster supports united by stretchers, terminating in block feet £100 - 150 †

495

An ornately carved Indian frame, having later mirrored plate, 69cm x 52cm overall £30 - 50 †

496

A 19th Century mahogany serpentine fronted card table, the baize lined fold over top supported on a swing action, foliate carved frieze raise don square section tapering supports, 95cm wide £100 - 200 †

497

A 19th Century mahogany chest, of two short and three long graduated drawers, raised on a shaped apron and bracket feet, 107cm wide £100 - 200 †

498

A 19th Century carved hardwood framed mirror, having profuse foliate decoration, 50cm x 59cm £40 - 60 †

499

A set of four George I walnut dining chairs, having vase splat backs, drop in seats raised on cabriole front supports terminating in pad feet, in need of re-upholstery, AF £200 - 400 †

500

A harlequin set of eight Yorkshire spindle back dining chairs, having rush seats, raised on turned front supports united by stretchers, (6 standards, 2 elbows) £150 - 250 †

501

A Victorian button back nursing chair, upholstered in pink dralon and raised on turned tapering front supports, terminating in castors £40 - 60 †

502

An early 19th Century oak foldover card table, raised on octagonal column and quatrefoil base, terminating in scrolled feet, 92cm wide £60 - 80 †

503

A set of eight carved mahogany Chippendale design dining chairs, having arched cresting rails, pierced splat backs and upholstered drop-in seats, raised on cabriole supports and claw and ball feet, (six standards, two elbows) £100 - 200 †

504

A set of eight George III mahogany dining chairs, having arched cresting rails, pierced fan splat backs, brown leather upholstered stuff over seats raised on square section supports, united by stretchers, six standards, two elbows £500 - 800 †

505

A set of six 19th Century mahogany bar back dining chairs, by Holland & Sons, with red leather upholstered stuff-over seats, raised on turned tapering supports £100 - 200 †

506

A Victorian mahogany extending dining table, fitted two extra leaves, raised on turned reeded supports, 195cm x 110cm £200 - 300 †

507

A set of four antique oak dining chairs, with leather and studded upholstered seats and back, raised on turned baluster and block supports, united by stretchers £80 - 100 †

508

A Victorian mahogany pull up fire screen, having embroidered panels raised on scrolled supports united by a turned baluster stretcher, 60cm wide, 111cm high £40 - 60 †

509

An Antique oak joint stool, the rectangular top raised on turned columns united by stretchers, 46cm £70 - 100 †

510

An Antique oak coffer, having triple panelled lid above carved frieze and panels, raised on square section supports, 126cm wide £200 - 300 †

511

An Antique oak joint stool, the rectangular moulded top raised above a shaped frieze, on turned baluster supports united by stretchers, 46cm £70 - 100 †



Lot 488



Lot 499



Lot 503



Lot 504



Lot 523

512

A 17th Century oak mule chest, the lid opening to reveal candle box interior, carved triple panels above two short drawers raised on square section supports, 112cm wide £300 - 400 †

513

An Antique oak joint stool, the rectangular carved top raised on turned baluster supports united by stretchers, 46cm £70 - 100 †

514

A Georgian mahogany drop leaf dining table, raised on square section supports, 105cm £60 - 80 †

515

An Antique oak joint stool, having rectangular moulded top, raised on turned supports united by stretchers, 46cm £70 - 100 †

516

A pair of late Victorian carved oak hall chairs, having leather upholstered back panels and seats, raised on turned fluted supports united by H stretchers £40 - 60 †

517

A 19th Century mahogany Pembroke table, fitted single end drawer and opposing dummy drawer, raised on ring turned supports terminating in brass caps and castors, 98cm wide £40 - 60 †

518

An Antique pine mule chest, fitted triple fielded panel front above two short drawers, raised on a cushion frieze and squat square section supports, 119cm, the interior of the lid with paper label "This Chest Has Been Given to Cuthbert Edward Pickering, Emily Mary Wood, October 18th 1926" £200 - 300 †

519

A 19th Century mahogany drop leaf cottage dining table, raised on square section supports, 93cm £30 - 50 †

520

An Edwardian carved mahogany elbow chair; and a pair of similar dining chairs upholstered en suite in green leatherette £40 - 60 †

521

An 18th Century mahogany and cross banded triple games table, baize lined top with sunken counter wells and inlaid chequers and backgammon board below, fitted single drawer and raised on rounded tapering supports and pad feet, 83cm wide £400 - 600 †

522

An Antique oak and inlaid three panelled coffer, the lid with iron hasp and lock above a foliate frieze, 127cm £100 - 200 †

523

A heavy carved oak Wainscot type elbow chair, having foliate carved arched panel back, scroll arms and solid seat, raised on square section supports united by stretchers £100 - 150 †

524

A Georgian mahogany circular snap top occasional table, raised on a baluster turned column and tripod base, terminating in pad feet, 57cm dia. £100 - 150 †

525

A large Georgian style circular mahogany dining table, raised on pedestal base and reeded legs, terminating in brass caps and castors, 183cm dia. £200 - 300 †

526

A Victorian burr walnut oval occasional table, with carved border, raised on foliate decorated baluster column and tripod base, 61cm £100 - 150 †

527

A set of four 19th Century mahogany bar back dining chairs, with upholstered drop-in seats, raised on sabre front supports, (3 standards, 1 elbow) £60 - 100 †

528

A pair of 18th Century continental high back armchairs, the seats and backs upholstered in original needlepoint tapestry, raised on turned baluster supports united by wavy stretchers £1,000 - 1,500 †

529

A satinwood bow fronted hall table, fitted three drawers, raised on turned tapering fluted supports, terminating in peg feet, 153cm wide £300 - 400 †

530

A Victorian mahogany writing table, leather inset top above three drawers, fitted brass pulls, raised on turned tapering supports, terminating in brass caps and porcelain castors, 134cm wide £100 - 150 †

531

A pair of antique fruit wood long benches, raised on turned baluster supports united by stretchers, 179cm long £300 - 400 †

532

A good quality Ipswich oak dwarf bookcase, the frieze decorated with stylised flowers, two adjustable shelves, raised on bracket feet, 182cm wide x 31cm deep x 108cm high £100 - 150 †

533

A Victorian walnut and boxwood strung open fronted bookcase, with adjustable shelves, 91cm wide x 108cm high, AF £150 - 200 †

534

A Georgian oak low boy, fitted two short and one long drawer, raised on rounded tapering supports and pad feet, 72cm wide £200 - 300 †

535

An 18th Century oak side table, with overhanging top fitted single drawer, raised on baluster supports united by stretchers, 81cm wide £300 - 400 †

536

An early 20th Century mahogany dwarf breakfront bookcase, the adjustable shelves enclosed by three glazed panelled doors, raised on ogee bracket supports, 190cm wide x 125cm high x 44cm deep £200 - 400 †

537

An 18th Century oak low boy, fitted three drawers above a shaped frieze on rounded tapering supports and pad feet, 81cm wide £300 - 400 †



Lot 526



Lot 528

538

A large George IV mahogany drop leaf dining table, raised on turned baluster supports, terminating in brass caps and castors, 130cm
£100 - 200 †

539

A Victorian tub shaped chair, the curved back raised on carved and pierced brackets, serpentine seat on turned tapering supports, upholstered in buttoned red leatherette
£40 - 60 †

540

A walnut and cross-banded side table, fitted three drawers, raised on square section supports, 145cm wide
£250 - 350 †

541

A pair of Regency style mahogany window seats, with turned scroll ends, raised on ring turned tapering supports, terminating in peg feet, 108cm wide
£400 - 500 †

542

An early 19th Century mahogany and rosewood cross banded square piano, by Henry Lawson Manufacturer of Grand Square Piano Fortés To His Majesty, No.3645, raised on ebonised and brass mounted ring turned baluster supports terminating in brass castors, 170cm wide, 65cm deep
£200 - 300 †

543

A Georgian mahogany chest, of small proportions, fitted three long drawers, raised above shaped apron and bracket feet, 64cm wide
£100 - 150 †

544

A 19th Century scumbled pine occasional table, fitted with a single drawer above a shaped frieze raised on square section tapering supports, 73cm wide
£100 - 150 †

545

A pair of walnut and cross-banded single drawer lamp tables, raised on reeded tapering supports, 54cm wide
£450 - 550 †

546

A 19th Century elm child's paddle back elbow chair, the solid seat raised on ring turned tapering supports united by an H stretcher, 57cm high
£50 - 80 †

547

A Victorian mahogany framed chaise longue, with buttoned down floral pink damask upholstery, raised on cabriole supports
£100 - 150 †

548

A large Victorian mahogany pedestal writing desk, the green leatherette inset top above four long drawers, having three drawers to each pedestal with opposing cupboards, 168cm wide x 113cm deep
£400 - 600 †

549

An 18th Century continental walnut elbow chair, with green Dralon upholstered seat and back, raised on chamfered supports united by an H stretcher
£100 - 200 †

550

A mahogany side table, fitted five spice drawers, raised on square chamfered supports, 108cm wide
£200 - 300 †

551

A Victorian papier-mâché folding tray table, decorated with exotic birds and foliage, heightened in mother of pearl, 74cm wide
£40 - 60 †

552

A Victorian walnut framed button back rocking chair, upholstered in floral velour
£60 - 100 †

553

A late Victorian Gothic carved oak side table, fitted with a single drawer above lion masks and foliate scrolls, oak leaf and acorn finials, raised on twin cup and cover baluster supports terminating in dolphin feet, 110cm wide x 79cm deep
£200 - 400 †

554

A walnut and cross-banded serpentine fronted chest, of small proportions, fitted three graduated drawers, raised on cabriole supports terminating in pad feet, 61cm wide
£100 - 200 †

555

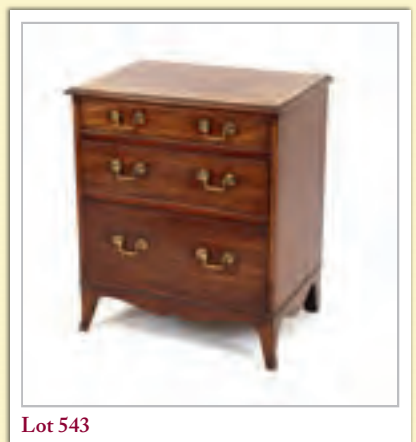
An early 20th Century mahogany twin pedestal partner's desk, fitted opposing drawers, 152cm wide x 108cm deep
£100 - 200 †

556

A late Victorian Gothic carved oak side table, fitted with a single drawer, having lion mask decoration, raised on baluster supports terminating in scrolled dolphin feet, united by a stretcher, 95cm wide x 68cm deep
£200 - 400 †

557

A fine quality Edwardian mahogany and satinwood inlaid chiming long case clock, the hood surmounted by an arched pediment and fluted orb, the brass and silvered dial decorated with foliate engraved decoration with moon phase above, subsidiary dials for chime silent, Whittington and Westminster strikes, above an arched bevelled glass door with Mercury adjustable pendulum and pierced foliate back panel, raised on a box base and bracket supports, decorated with floral garlands and urn and flanked by reeded columns with brass capitals, 250cm high
£1,000 - 2,000 †



Lot 543



Lot 554



Lot 556



Lot 557

TERMS AND CONDITIONS OF SALE

1. INTRODUCTION

The following defining terms are used in these conditions:-

| | |
|----------------|---|
| “Auction” | Means any auction conducted by Clarke and Simpson Auctions Ltd. either at the premises owned by them or elsewhere (including any internet based auction); |
| “Auctioneer” | Means Clarke and Simpson Auctions Ltd. authorised auctioneer as appropriate; |
| “Bidder” | Means a bidder at an auction, including the bidders personally present at the venue and those bidding by telephone or over the internet or otherwise; |
| “Buyer” | Means the bidder whose bid was the last bid when the auctioneer concludes the bidding; |
| “Conditions” | Means these Terms and Conditions of Sale; |
| “Hammer Price” | Means the level of bidding reached (at or above any reserve) when the auctioneer brings the bidding to a close; |
| “Lot” | Means any property accepted by Clarke and Simpson Auctions Ltd. for offer at auction; |

2. DESCRIPTION

No warranty is given or implied by the description in the catalogue. Each lot is sold in its condition at the time of sale with all faults, defects, imperfections and errors of description (if any). Whilst every endeavour has been made to describe the items adequately and properly, the purchaser shall deem to have inspected the lot at time of purchase. All catalogues and seller's and buyer's guides are for information only and do not form part of the contract.

3. STATUTORY REQUIREMENTS

Purchasers will be deemed to have satisfied themselves prior to purchasing regarding current legal requirements (e.g. Health & Safety at Work Act) and it is expressly brought to the bidders attention that equipment in the sale may not necessarily comply with such regulations. Any purchaser shall satisfy himself as to any statutory requirement for the use of any item and no liability shall rest with the vendors nor the Auctioneers.

4. THE AUCTION

All auctions are conducted at the absolute discretion of the auctioneer. The auctioneer shall conduct the auction with reasonable skill and care. The vendor reserves the right to sell subject to reserve price in respect of all lots. What constitutes a bid shall be at the absolute discretion of the auctioneer, acting with appropriate skill and care. The auctioneer shall have the right to refuse any bid in all cases but most notably when such a bid does not exceed the previous bid by at least 10% or such a proportion as the auctioneer shall in his absolute discretion direct. Where two or more bids at the same level are simultaneously received by the auctioneer, the auctioneer at his absolute discretion shall determine which bid to prefer. Subject to the foregoing where two or more bids are at the same level are simultaneously received by the auctioneer, the bid submitted in the room shall take preference over a bid submitted by telephone or internet at the same level. Any bid made or attempted by telephone or over the internet will only be deemed to have been made if received by the auctioneer. The auctioneer reserves the right to withdraw, consolidate or divide any lot or lots or submit them in any order that they desire. The auctioneer has the right at his absolute discretion to refuse admission to his premises or attendance at (or participation in) any auction by any person. In the case of any dispute, the auctioneer shall be sole arbitrator in any matters arising during or out of the sale.

5. BIDDERS

All bidders will be required to register their particulars, bidders attending in person and those accompanying them will be required to provide photo ID and separate confirmation of address prior to viewing or taking any part of the sale and before entering any part of the premises to view. All bidders accept full liability for all bids submitted. Subject to the clause in this document headed “The Auction”, the highest bidder at the close of bidding shall be the buyer. Any dispute about a bid shall be settled at the auctioneer's absolute discretion. Bidders are all deemed to act as principles unless there is prior written acknowledgement by Clarke and Simpson Auctions Ltd. that a bidder is acting as an agent for a

named principle. Bidders are strongly encouraged to attend the auction in person. The bidders shall be responsible for any decision to bid for a particular lot and shall be deemed to have carefully inspected and satisfied themselves as to condition, neither Clarke and Simpson Auctions Ltd., their employees or agents shall be responsible for any neglect or default in doing or failing to do so. Bidders will be given ample opportunity to view and inspect before the sale and prospective buyers must satisfy themselves as to all matters.

6. DEFAULT

Clarke and Simpson Auctions Ltd. shall act as agent of the vendor only. Any contracts for the sale of a lot shall be formed between the vendor and the buyer. As agent, only Clarke and Simpson Auctions Ltd. shall not be responsible for default by the vendor or the buyer. If any lot is not paid for in full and taken away in accordance with these conditions, or there is any other breach of the conditions, then Clarke and Simpson Auctions Ltd. as agents for vendor shall at its absolute discretion and without prejudice to any other rights it may have, be entitled to exercise all or any of the following rights and remedies:-

- 6.1 to proceed against the buyer for any action of debt or damages for breach of contract;
- 6.2 to rescind the sale of that lot or lots sold by Clarke and Simpson Auctions Ltd. to a defaulting buyer;
- 6.3 to resell the lot (by auction or private treaty) in which case the defaulting buyer shall be responsible for any resulting deficiency in the total amount due (after crediting any part payment and adding any resale costs), any possible surplus so arising shall belong to the vendor;
- 6.4 to remove, store and insure the lot at the expense of the defaulting buyer and, in the case of storage, the location of such storage shall be at Clarke and Simpson Auctions Ltd. discretion;
- 6.5 to charge interest at a rate not exceeding 2% per month of the total amount due to the extent that it remains unpaid for more than two working days after the sale;
- 6.6 to retain that or any lot sold to the defaulting buyer until the buyer pays the total amount due;
- 6.7 to reject or ignore bids from the defaulting buyer at future auctions or to impose conditions before any such bids are accepted;
- 6.8 to apply any proceeds of sale for any other lots due or in the future becoming due to the defaulting buyer towards the settlement of the total remaining due.

7. INDEMNITIES, PENALTIES AND LIMITATIONS OF LIABILITY

Purchasers shall pay for any damage done by themselves or their agents during the removal of their lots. Attendance at the sale shall be at the risk of those attending in respect of both themselves and to their goods and vehicles.

Any indemnity under these conditions will extend to all actions, costs, expenses, claims and demand whatsoever suffered or incurred by the person entitled to the benefit of it and Clarke and Simpson Auctions Ltd. declare themselves to be a trustee of the benefit of such indemnity so far as it is expressed to be the benefit of its employees and agents.

Whilst Clarke and Simpson Auctions Ltd. endeavour to ensure that the information on their websites is correct, they do not warranty the accuracy and completeness of the material on their website. Also, Clarke and Simpson Auctions Ltd. can make changes to the material on their website, or alter the products and prices described on it, at any time without notice. The material on the website may be out of date, Clarke and Simpson Auctions Ltd. make no commitment to update such material. All material on the websites is provided “as is” without any conditions, warranties or other terms at any time. Accordingly, to the maximum extent permitted by law, the website is provided to all parties on the basis that Clarke and Simpson Auctions Ltd. exclude all representations, warranties, conditions and other terms which, but for this legal notice, might have effect in relation to the website.

8. ELECTRICAL SAFETY REGULATIONS

All electrical lots are subject to electrical safety regulations and fall within “the low voltage electrical equipment (safety) regulations 1989” – all items have been pat tested for safety but are not guaranteed in working order.

9. GENERAL MATTERS

Any notice to any buyer, vendor, bidder or viewer may be given by first class mail or email in which case it shall be deemed to have been received by the addressee forty-eight hours after posting or sending. All notices to Clarke and Simpson Auctions Ltd. must be sent in writing and email is not acceptable. Any indulgence extended to any person by Clarke and Simpson Auctions Ltd., notwithstanding the strict terms of these conditions or the terms of consignment, shall affect the position at the relevant time only and the respect of that particular concession only; in all other respects these conditions shall be construed as having full force and effect. These conditions and any disputes or claims arising out of or in connection with them or their subject matter or formation (including non-contractual disputes or claims) are governed by and construed in accordance with the law of England. The parties irrevocably agree that the courts of England have exclusive jurisdiction to settle any dispute or claim that arises out of or in connection with the agreement or its subject matter or formation (including non-contractual disputes or claims).

10. PUBLICITY

Any catalogue and buyer and seller guides are provided for information only and do not form part of these conditions. The catalogue and the buyer and seller guides may contain additional terms and conditions. Clarke and Simpson Auctions Ltd. reserve the right to use any photographs, background information and research for publicity purposes both before and after the sale.

11. THE PURCHASE PRICE AND PAYMENT ARRANGEMENTS

There is a buyer's premium 18% plus VAT payable in respect of the sale. Any purchases made via “www.the-saleroom.com” or “www.ibidder.com” shall be subject to an administration charge of 5% plus VAT on the price.

Preferred payment is cash, bank transfer or personal debit card. Such cards may only be used on a chip and pin basis with the owner present. No payment over £350 will be accepted by telephone. Payment will be accepted online via our secure e commerce account. We do not accept credit cards or international debit cards. Payment by cheque will only be acceptable subject to prior arrangement. No lot will be removed from the sale until any cheque has cleared.

Payment is due on the day of the sale. Cash in excess of £7,500 (including V.A.T.) will not be accepted from any one person, this is not allowed due to Money Laundering Regulations 2007. All money received will be held in Clarke & Simpson Auctions Ltd. Clients No 2 Account at Barclays Bank plc, Framlingham, Ipswich, Suffolk. Account Number 83428591. Sort Code 20 98 07. Clarke and Simpson Auctions Ltd. have no responsibility for any lot between the close of bidding and payment being made and subsequent collection. All payments from overseas buyers shall be made by Bank Transfer and bank fees paid in addition. Please note all policy regarding payment will be enforced and suitable arrangements must be made.

12. REMOVAL OF LOTS

The ownership of any lot purchased shall not pass to the relevant buyer until they have made payment in full to Clarke and Simpson Auctions Ltd. of the total amount due including any storage due.

The buyer shall at their own risk and expense take away any lot that they have purchased and paid for not later than two working days following the day of the auction after which they shall be responsible for any removal, storage and insurance charges.

Any lots not collected within four weeks of the date of sale will be resold by the auctioneer and all proceeds will be retained by the auctioneer to cover storage costs.

13. NUMBER BIDDING

This will be used for speed and efficiency as in all our sales. All prospective purchasers must complete a registration form and register in the office on the view day or morning of sale to receive a number for bidding.

Please also note that photo ID and additional confirmation of address will be required.

14. ONLINE BIDDING

Clarke & Simpson Auctions Ltd. offer an online bidding service via the-saleroom.com and ibidder.com for bidders who cannot attend the sale. In completing the bidder registration on www.the-saleroom.com or ibidder.com and providing your payment card details and, unless alternative arrangements are agreed with Clarke & Simpson Auctions Ltd.:

1. authorise Clarke & Simpson Auctions Ltd., if they so wish, to charge the payment card given in part or full payment, including all fees, for items successfully purchased in the auction via www.the-saleroom.com or ibidder.com, and
2. confirm that you are authorised to provide these payment card details to Clarke & Simpson Auctions Ltd. through www.the-saleroom.com or ibidder.com and agree that Clarke & Simpson Auctions Ltd. are entitled to ship the goods to the card holder name and card holder address provided in fulfilment of the sale.

Please note that any lots purchased via the-saleroom.com or ibidder.com live auction service will be subject to an additional 5% buyer's premium + VAT at the rate imposed on the hammer price.

15. TELEPHONE BIDDING

We offer a telephone bidding service where possible, but this service can never be guaranteed. No applications for telephone bids will be accepted after the end of the viewing prior to sale day for any sale. All potential telephone bidders must provide a valid landline number and email address and agrees that they have read and understood the Terms and Conditions and satisfied themselves regarding any lot in accordance with these Terms and Conditions. No phone bids will be accepted for any lot with a lower guide figure of less than £100.

All those who wish to bid by telephone will be expected to deposit an amount determined by Clarke and Simpson Auctions Limited and not less than the minimum guide for all lots that they wish to bid upon into the Clients Account for Clarke and Simpson Auctions Ltd before the sale starts. This payment is not acceptable by card.

In the event of default, this sum shall be retained as part payment or any part may be retained to recover losses under clause 6 of these Terms and Conditions. We will expect payment of the balance owing by BACS on the following day, any payment not met within five working days will result in the forfeiture of the deposit paid.

16. AT FAULT (A.F.) LOTS

Certain lots are catalogued at (A.F.), damaged, restored etc., however the absence of any such notice does not imply that the piece is free from defects, nor does it indicate that other defects are not also present. Mention is not made of breakage, cracks, chips or any damage which can be noted by careful inspection, therefore, intending purchasers MUST, in all cases, be responsible for determining the condition of the lots themselves.

17. ESTIMATES

Presale estimates are intended only as a guide for intending purchasers, are given in good faith and subject to revision.

18. CONDITION REPORTS

Clarke and Simpson are unable to guarantee that requests for condition reports/images received will be responded to. Clarke and Simpson are happy to give a Condition Report where possible on the physical condition of goods, this will be provided on behalf of the seller on the understanding that Clarke and Simpson are not entering into a contract with you in respect of the Condition Report and accordingly does not assume responsibility to you in respect of it. All lots are available for your own inspection or for inspection by an expert instructed by you, therefore these Condition Reports are for guidance only and all lots are sold “as found”. Condition reports do not form part of a contract.

19. COMMISSION BIDS

The auctioneers will be pleased to execute bids for those unable to attend the sale. Lots will be purchased at the lowest bid the room bidding or any reserves will allow. In the event of identical bids, the earliest bid received will take precedence. There must always be a maximum limit indicated. Buy or unlimited bids will not be accepted. Commission bids placed by telephone are accepted at the client's risk. We urge our clients to place such bids before the start of the sale. All such commissions are left entirely at the buyer's risk.

20. VALUE ADDED TAX

The symbol * after any lot number indicates that Value Added Tax is payable by the buyer on the hammer price.

21. AUCTIONEERS MARGIN SCHEME

The Auctioneers Margin Scheme allows auctioneers to sell items without VAT on the hammer price. Under the margin scheme an amount equivalent to VAT at the current rate is added to the buyer's premium. This amount cannot be refunded. The VAT element will not be shown separately on the buyer's invoice. This VAT is not recoverable as Import Tax.

22. ATTRIBUTION OF PICTURES AND DRAWINGS

Every effort is made to ensure the accuracy of any statements as to authorship, attribution, origin, date, age, provenance and condition of any lot whether or not such statement forms part of the description of any such lot. Whether any such statement is made orally or in the catalogue it is an expression of opinion and not to be taken as being or implying any warranties or representations of facts by the auctioneers. Each buyer by making a bid for a lot acknowledges that he has satisfied himself fully as to the attribution and condition of the lot. The following is for guidance only and does not form part of a contract.

A. The forename (s) (or full stops where not known) and surname of an artist indicates in our opinion a work by the artist.

B. The initials of the forename (s) and the surname of the artist indicates in our opinion a work of the period of the artist which may be wholly or in part his work.

C. The surname of the artist indicates in our opinion a work of the school or by one of the followers of the artist or in his style and of uncertain date.

D. *Signed, Dated, Inscribed* indicated in our opinion work signed/dated/inscribed by the artist.

E. *Bears signature* indicates in our opinion that this is not the signature of the artist.

F. *Attributed to* may be used to denote a traditional attribution based on style.

G. *Manner of* indicates in our opinion a work executed in the artist/craftman's style but of a later date.

H. *After* indicates in our opinion a copy (of any date) of work of an artist or craftsman.

The addition of a question mark after any of the cataloguing terms above indicates an element of doubt.

23. DRIOTE DE SUITE ROYALTY CHARGES

All United Kingdom Art Market professionals (which includes auctioneers) are required to collect a royalty payment for all qualifying Works of Art. This applies to living artists and those who have died in the last 70 years. This payment is calculated on qualifying Works of Art which are sold for a hammer price more than the UK sterling equivalent of €1,000 (the UK sterling equivalent will fluctuate in line with prevailing interest rates calculated by the Artist's Resale Right Service Hub, based on the European Central Bank reference rate published at 2.15pm on the day of the sale, and can be found on www.dacs.org.uk).

All items in this catalogue that are marked "✓" are potentially qualifying items, and the royalty charge will apply if the hammer price is more than UK sterling equivalent of €1,000. The royalty charge will be added to purchase invoices and must be paid before items can be cleared. All royalty charges are paid to the design and Artists Copyright Society (DACS) by the auctioneers and no handling costs or additional fees with respect to these charges will be retained by the auctioneer. This charge may also be applicable to lots not marked "✓" and buyers must satisfy themselves.

The royalty charge for qualifying items which achieve a hammer price of more than the UK sterling equivalent of €1,000, but less than the UK sterling equivalent of €50,000 is 4%. For qualifying items that sell for more than the UK equivalent of €50,000 a sliding scale of royalty charges will apply. For a complete list of the royalty charges and threshold levels please refer to www.dacs.org.uk. There is no VAT payable on this royalty charge.

24. ENDANGERED SPECIES

Lots sold at auction may include endangered or other species of wildlife and plant life, for example ivory, tortoiseshell, crocodile skin, whale bone, ebony or rosewood. Some countries restrict or prohibit import or export of objects containing these materials or require a licence/permit for their movement (e.g. a CITES Licence). Prior to bidding on a lot which may include these or similar materials, buyers must familiarise themselves with the relevant laws and regulations regarding their movement.

25. JEWELLERY

Gemstones are often treated to enhance colour and improve appearance. They may be heated or treated by oil or resin to intensify the colour and transparency. Other techniques like dyeing, irradiation, coating and impregnation can also be used. Buyers must be aware that unless the catalogue specifically states otherwise then the stone is natural, buyers must assume that any treatment may not be permanent, and that special care may be needed in the future.

26. EXPORT

Any lot purchased at auction may be subject to export restrictions and may require a licence for export out of the United Kingdom. The buyer is responsible for obtaining any licences that may be required (including any licence that may be required for import into the destination country) – any denial of such a licence will not be grounds for the buyer to cancel the purchase.

27. THIRD PARTY LIABILITY

All members of the public on Clarke and Simpson Auctions premises are there at their own risk and must note the layout of the buildings and site and the appropriate security arrangements. Accordingly, neither the Auctioneer nor its employees or agents shall incur liability for death or personal injury (except as required by law) or similarly for the safety of persons visiting the premises.

28. CONSIGNMENT

All sellers will have received a copy of Clarke & Simpson Auctions Terms regarding consignment of lots for sale and these Terms and Conditions should be read in accordance with this consignment documentation.

Collective Sale of Combine, Tractors, Plant, Vehicles, Machinery and Spares

Saturday 25th May 2019

Sale One commencing at 9am
Sale Two commencing at 9.30am

Clarke & Simpson
Auction Centre,
Campsea Ashe,
Nr Wickham Market,
Suffolk.
IP13 0PS

Viewing: Friday 24th May from 2.00pm to 6.00pm and on the morning of sale from 8am



Lot 1515



Lot 1126



Lot 1501



Lot 1426

Live online bidding at both sales available via

i-bidder.com

Tea Shop open for refreshments on viewing and sale days
Free on site parking available

 Clarke and Simpson
Well Close Square
Framlingham
Suffolk
IP13 9DU
T: 01728 621200
F: 01728 724667

And The London Office
40 St James Street
London SW1A 1NS
email@clarksandsimpson.co.uk
www.clarksandsimpson.co.uk



Clarke and Simpson Auction Centre
Campsea Ashe
Nr. Wickham Market
Suffolk IP13 0PS
Tel: (01728) 746323 Fax: (01728) 748173
Email: auctions@clarkeandsimpson.co.uk
www.clarkeandsimpson.co.uk