

Clarke &
Simpson



Selected Antiques & Fine Art

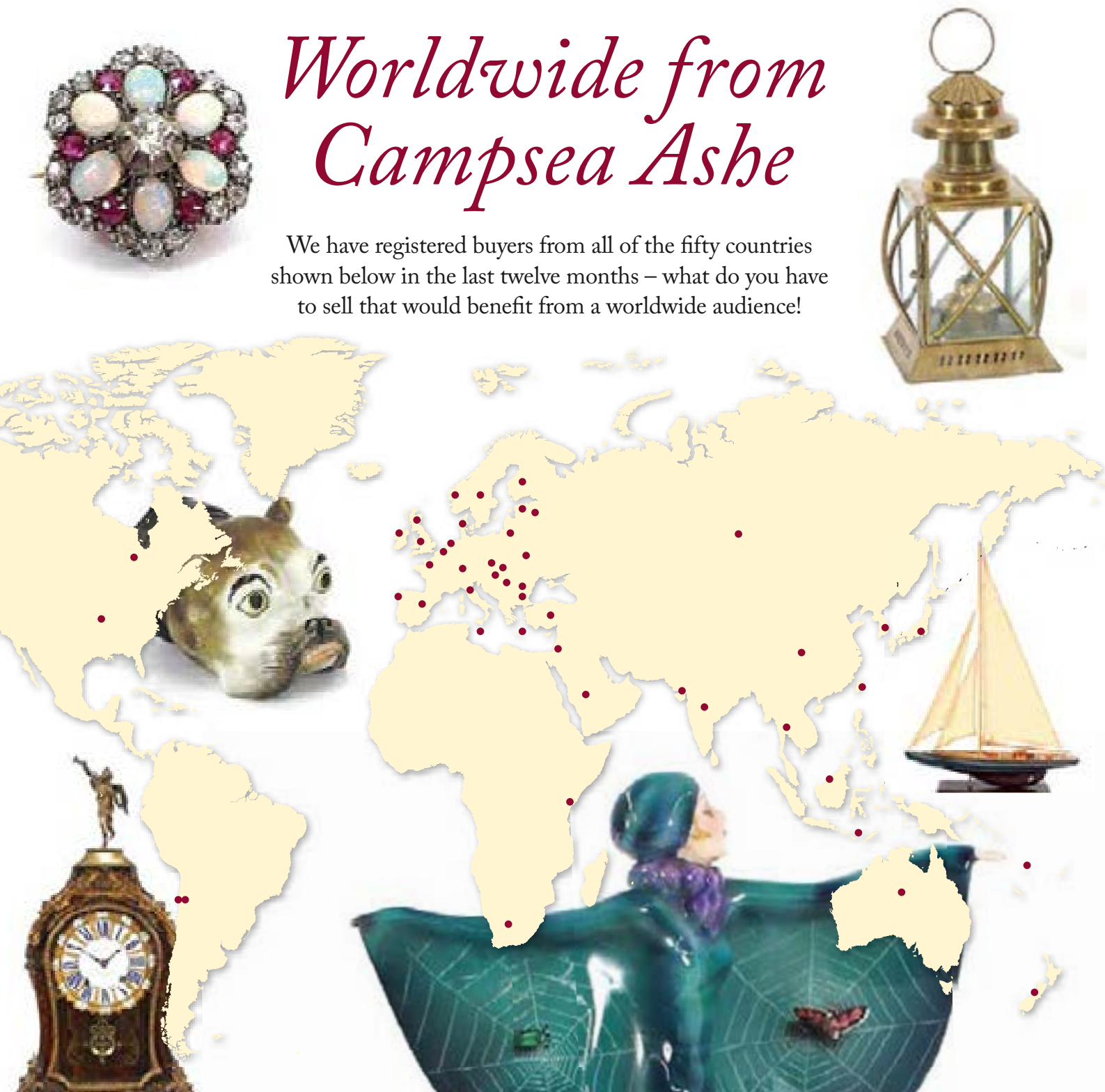
Wednesday 24th July 2019 at 10 am

Auctions

Clarke &
Simpson

Worldwide from Campsea Ashe

We have registered buyers from all of the fifty countries shown below in the last twelve months – what do you have to sell that would benefit from a worldwide audience!



Clarke & Simpson

Auctions

Selected Antiques & Fine Art

Wednesday 24th July 2019
at 10 am

Order of Sale:

Ceramics & Glass	1-110
Silver & Plate and Jewellery	111-160
Objects & Collectables	162-310
Pictures & Prints	311-399
Furniture	420-540

Viewing:

Saturday 20th July, 9 am - 12 noon
Monday 22nd July, 2 pm - 7 pm
Tuesday 23rd July, 10 am - 4 pm
Morning of Sale from 8.30 am



@CandSAuctions



CandSAuctions



Campsea Ashe
Nr. Wickham Market
Suffolk IP13 0PS
Tel: (01728) 746323 Fax: (01728) 748173
Email: auctions@clarkeandsimpson.co.uk
www.clarkeandsimpson.co.uk

Online bidding via:

the saleroom
The home of art & antiques auctions

Special Sales Calendar

2019

Clarke &
Simpson

ART DECO, DESIGN & RETRO

2nd September, 2019

RURAL BYGONES

7th September, 2019

FINE ART

9th October, 2019

FARM MACHINERY

26th October

ART DECO, DESIGN & RETRO

4th November, 2019

FINE ART

4th December, 2019



Campsea Ashe
Nr. Wickham Market
Suffolk IP13 0PS
Tel: (01728) 746323 Fax: (01728) 748173
Email: auctions@clarkeandsimpson.co.uk
www.clarkeandsimpson.co.uk

Ceramics & Glass

1

A pair of 19th Century Imari baluster vases, having raised decoration of dragon's on a traditional palette, heightened in gilt, 36cm high
£150 - 250 †

2

A pair of moulded glass tureens, in the form of turkeys, 22cm high
£20 - 40 †

3

An 18th Century Chinese porcelain bottle vase, 23cm high
£60 - 80 †

4

A 19th Century Chinese baluster vase, decorated with prunus and moon, seal marks to the elongated neck, 26cm high; a Chinese ginger jar and cover, decorated with figures in an exotic gardens, four character mark to base, 16cm high; and four oriental tea bowls, (6)
£60 - 100 †

5

Four various 19th Century Chinese Canton and other bowls, some damage
£80 - 120 †

6

An Antique majolica urn, decorated with classical figures, raised on a later metalware base, 29cm high x 20cm dia.
£60 - 80 †

7

A small Royal Worcester posy vase, decorated with scenes of highland cattle by Stinton, 13cm high
£40 - 60 †

8

A Royal Worcester baluster posy vase, decorated with roses by N. Hunt, 21cm high
£40 - 60 †

9

A Royal Worcester baluster posy vase, painted with foliate sprays, 6cm high
£20 - 40 †

10

A Royal Worcester octagonal pin dish, painted with fruit by Albert Shuck, 11.5cm
£40 - 60 †

11

A large 19th Century etched glass goblet, having foliate and fruit decoration, raised on a circular spread foot, 22cm high
£40 - 60 †

12

An iridescent green glass comport, 29.5cm dia. x 21.5cm high
£40 - 60 †

13

A pair of 19th Century Japanese Imari chargers, having scallop borders, panels decorated with foliate scrolls, birds and beasts, 40cm dia.
£60 - 100 †

14

A pair of Sèvres compots, inscribed "Les Confitures" and "Les Fruits", gilt banded decoration, 21.5cm dia. x 7cm high
£100 - 150 †

15

A large antique French pottery baluster vase, decorated with a central armorial surrounded by flowers and fruit, 34cm high
£40 - 60 †

16

A quantity of Royal Crown Derby Imari pattern teaware, (14)
£40 - 60 †

17

An early 19th Century part tea set, comprising teapot on stand, cream jug, sugar bowl and nine tea bowls and saucers, having black and white floral and line decoration, (23)
£60 - 80 †

18

A pair of late 18th Century blue and white Delft ware plates, 23cm dia.; a late 18th Century blue and white English pottery baluster jug, decorated in the Chinese manner, 13cm high; a Worcester coffee cup decorated with foliage, crescent mark to base; and four 19th Century blue and white saucer dishes, (8)
£60 - 100 †

19

An Islamic earthenware vase, of slender baluster form, the blue ground painted with black flowers and trailing designs, script to base, 33cm high
£30 - 50 †

20

A small late 19th Century German porcelain figure, depicting a cherub riding on a stylised dolphin's back, blue marks to base, 12cm high
£30 - 50 †

21

A quantity of various Royal Commemorative pressed glassware, some AF
£20 - 30 †

22

A quantity of glass dessert ware, with raised blackberry pruntz decoration
£20 - 30 †

23

Five vine etched glass rummers; and various other similarly decorated glasses
£30 - 50 †

24

A pair of Eichwald pottery pipe racks, in the form of figures and horses, AF
£20 - 30 †

25

A pair of Victorian Sowerby type turquoise glass posy baskets; a similar white glass jug with Prince of Wales plume and floral decoration; a shell decorated plate and a pair of opalescent glass posy baskets, (6)
£20 - 30 †

26

A Burmantofts pink glazed Corinthian column candlestick, 28cm high; and a small KPM porcelain candlestick in the form of three claw feet, (2)
£20 - 30 †

27

A 19th Century German porcelain plaque, decorated with portrait study of a nun, within pierced cast foliate and mask decorated frame, 43cm dia. overall
£30 - 50 †

28

A pair of 19th Century Canton baluster vases, decorated interior scenes, birds, insects and flowers, raised Dog of Fo and Kylin decoration, heightened in gilt, 21cm high; and a pair of similar plates 20cm dia. AF
£80 - 120 †

29

James Hadley for Worcester, "The Irishman" printed and impress mark for 1896 in orange and green clothes, 18cm high
£50 - 80 †

30

James Hadley for Worcester, "The Water Carrier" printed and impressed mark for 1896, 18cm high
£50 - 80 †



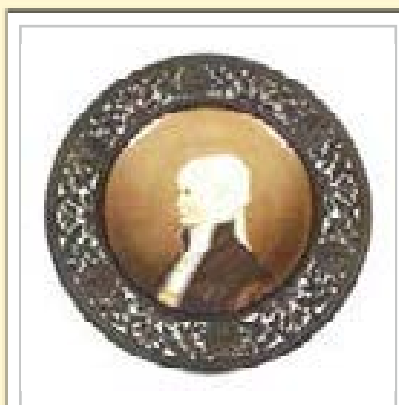
Lot 3



Lot 6



Lot 12



Lot 27



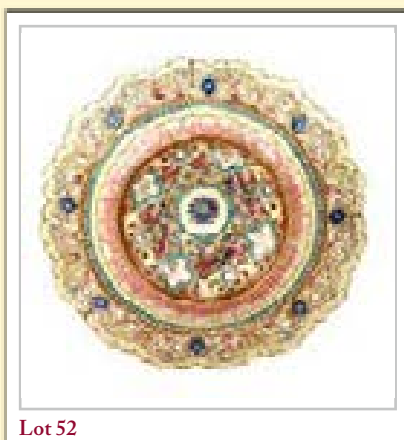
Lot 40



Lot 47



Lot 49



Lot 52

31
A Royal Doulton figurine, "The Paisley Shawl" HN1392 Reg. No. 753120, 22cm high £30 - 50 †

32
A Royal Doulton figurine, "Marjorie" HN1413, 28cm high £30 - 50 †

33
A Royal Doulton figurine, "Fortune Teller", HN2159, 16cm high; another "The Puppet Maker", HN2253, 19cm, high; and a Royal Doulton Nursery Rhyme cup and saucer, (4) £40 - 60 †

34
A Bing & Grondahl figure of two children reading a book; a Lladro figure of a sleeping baby; and an F.G. Doughty Worcester figure "May", (3) £40 - 60 †

35
A famille rose decorated baluster table lamp, having gilt metal foliate base, the body decorated with dragons and flowers, 53cm high overall, AF £40 - 60 †

36
A pair of good quality cut glass and silvered overlay champagne saucers; and a pair of hobnail cut glass rummers on square bases, (4) £40 - 60 †

37
A continental pottery dish, of triform folded shape, having central decoration of swallows, borders with foliate sprays heightened in gilt, 35cm; and a Samson porcelain jardinière with famille rose decoration on ormolu base, (2) £60 - 100 †

38
A blue Moorcroft baluster vase, decorated with pomegranates and leaves, 13cm high; and a smaller baluster vase with leaf decoration, bearing paper label, W. Moorcroft Pottery to the late Queen Mary, 10cm high, (2) £80 - 120 †

39
A Chinese baluster vase, decorated with prunus, character mark to base, 31.5cm high £200 - 300 †

40
A large Victorian Minton Majolica turquoise jardinière on stand, decorated birds and foliage raised on scrolled feet, the jardinière 48.5cm dia. x 36cm high, stand 49cm dia. £200 - 400 †

41
A pair of Victorian tureens on stands, retailed by Sharpus & Cullum, Coxspur Street, London, having green banded Greek key borders, heightened in gilt; and two matching oval platters £40 - 60 †

42
A Spode Copelands china part tea set, decorated with roses heightened in gilt, retailed by T. Goode & Co. £40 - 60 †

43
A Coalport urn and cover, flanked by gilt ram's head mask handles, the domed lid with pineapple finial, decorated with butterflies, birds and foliage, 21cm high; a similar posy vase, 10cm high; and a matching cake plate with scalloped border, 23.5cm dia., (3) £50 - 80 †

44
A part Copelands Grosvenor china tea set, having painted floral spray decoration and apple green border; and a Crescent ware part tea set retailed by Phillip's Ltd. New Bond Street, London £40 - 60 †

45
A small quantity of Copeland Spode Newstone Kings pattern dinner ware £30 - 40 †

46
A Noritake Imari pattern part dessert set, comprising four compots, (one AF); and five dessert plates £40 - 60 †

47
A Fine 19th Century Sèvres coffee set, variously decorated with portraits of Marie Antoinette and courtiers on powder blue ground, decorated trailing foliate borders and painted floral spray vignettes heightened in gilt, comprising coffee pot, hot milk jug, sucrier and six coffee cans and 8 saucers
See back cover illustration £800 - 1,200 †

48
A Japanese Imari baluster vase and cover, having loop handles decorated in tradiitonal pallet, lid AF, 29cm high £40 - 60 †

49
A 19th Century Chinese baluster vase and cover, decorated all over with objects and antiquities, 42cm high £400 - 600 †

50
A pair of Nanking Cargo tea bowls and saucers, with original certificate and boxes £40 - 60 †

51
No Lot

52
Fisher of Budapest, porcelain fruit dish with pierced decoration and shaped border, 24cm dia. £20 - 40 †

53
A First Period Worcester "Mulberry" leaf shaped dish, the finely vein moulded ground painted in the famille rose palette, shaped pale green border, 19cm £400 - 600 †

54
An 18th Century Chinese blue and white shallow dish, decorated with warriors, under-glazed blue leaf mark to base, 17cm dia. £150 - 250 †

55
Two 20th Century Chinese porcelain bowls, one decorated with children at play, blue seal mark to base, and another decorated with numerous child figures, ochre seal mark to base, (2) £80 - 120 †

56
A pair of Imari scallop bordered plates, decorated figures on a garden terrace, within borders depicting symbols, flowers and figures, 27cm dia., (one AF) £20 - 40 †

57
Five various Imari pattern tea bowls; and an Imari spoon dish £20 - 40 †

- 58**
A Japanese satsuma baluster vase, decorated with figures, seal mark to base, 11.5cm high; a cloisonne baluster vase decorated with flowers on a rich blue ground, AF, 11.5cm; and a larger cloisonne vase decorated with flowerheads, 18cm high, (3) £60 - 80 †
- 59**
A Meissen posy vase, with painted floral panel on a rich blue ground, heightened in gilt, 14cm high; another similar with flowerhead decoration; a circular Meissen bowl and cover, floral decorated, 9cm dia. and a Meissen pot and cover, the domed lid with flower finial, (4) £150 - 200 †
- 60**
A Chinese yellow glazed baluster vase, decorated with clouds and prunus, 9.5cm high £30 - 50 †
- 61**
An early 19th Century Staffordshire pearlware figure, in the manner of Ralph Wood, Charlotte at the tomb of Werther, 24cm high and another Hygeia, (2) £150 - 250 †
- 62**
A large glazed oriental jar, the panels decorated with birds and flowers, 38cm high £50 - 80 †
- 63**
A Chinese baluster mug, with foliate decoration, 14cm high; an Imari shallow dish; a Kutani ware side pouring pot; an oriental figure; and a small circular blue and white oriental dish £30 - 60 †
- 64**
A quantity of various oriental ceramics, to include: a blue and white sauce boat, a famille rose decorated mug, Kutani teapot and various miniature vases £40 - 60 †
- 65**
A quantity of various 19th Century blue and white Nankin and other plates, including Imari and famille rose decorated examples, (10) £50 - 80 †
- 66**
Two octagonal 18th Century Nankin blue and white meat platters; and a blue and white charger with fence and prunus decoration, 35.5cm dia., (3) £80 - 120 †
- 67**
A 19th Century blue and white Canton tureen, the lid decorated with pagodas and river scene surmounted by a floral finial, flanked by beast handles, 33cm £80 - 120 †
- 68**
An Imari scallop bordered bowl, decorated in the traditional manner, 28cm dia.; a smaller similar, 25cm dia.; and a famille rose fruit bowl, 24cm dia., (some damage) £50 - 80 †
- 69**
A 19th Century glass ring neck decanter, with mushroom stopper, 23cm high; a candle holder with etched thistle decoration and faceted baluster stem, 17cm high; and a larger similar, 22cm high £60 - 80 †
- 70**
A blue glazed Burmantofts conservatory seat, 30.5cm dia. x 45cm high £30 - 50 †
- 71**
A continental pottery fish set £20 - 30 †
- 72**
A Doulton Burslem tureen on stand, having floral and ribbon tied decoration £20 - 30 †
- 73**
A fine pair of Worcester "patent metallic" baluster vases, the elongated necks having floral decoration above angular handles, decorated with birds amongst foliage, the base having puce Worcester mark and a stamp for Goode & Co. London, 40cm high £400 - 600 †
- 74**
A pair of oriental double gourd shaped blue and white porcelain vases, decorated with symbols, bamboo shoots and foliage, 20cm high £40 - 60 †
- 75**
A Chinese baluster vase, with elongated neck, decorated with dragons and flaming pearls, under-glazed blue leaf mark to the base, 16cm high £40 - 60 †
- 76**
A Chinese porcelain small squat tea dust vase, 7cm high £30 - 50 †
- 77**
A Royal Crown Derby Mansion House dwarf, his hat advertising "Auction of Elegant Household Furniture", 17cm high; and another his hat advertising "Theatre Royal, Haymarket", 19cm high, (2) £200 - 300 †
- 78**
A French porcelain patchbox and cover, the lid decorated with romantic couple in a garden with floral spray decoration, having puce mark to base, "Lille 1767" £20 - 40 †
- 79**
A Doulton Burslem ewer, decorated in blue with scenes of children playing, having gilt handle and flared neck, 16cm high £100 - 150 †
- 80**
A Doulton Burslem gourd shaped vase, decorated scenes of Caernarfon Castle, 21cm high £100 - 150 †
- 81**
A set of three Ridgways Chinese "Japan" patterned graduated jugs £30 - 50 †
- 82**
A Victorian Toast Masters glass; cordial glass, a pair of champagne flutes etc. £20 - 30 †
- 83**
A small Chinese glass jar and cover, having raised decoration of beasts and foliage, AF; a circular hardstone pot and contents of various ivory and hardstone emblems etc. £20 - 40 †
- 84**
A Meissen porcelain figure group, depicting two young children with a bird cage, 14cm high; and a collection of various continental porcelain bocage and cherub figures, (8), (some damage) £100 - 200 †
- 85**
A pottery drug jar, of squat baluster form, inscribed "Sack 1659" £40 - 60 †
- 86**
A Bursley Ltd., Fabrique en angleterre "oriental birds" pattern hot water jug, 18cm high £20 - 40 †



Lot 61



Lot 62



Lot 73



Lot 77



Lot 92



Lot 106



Lot 109



Lot 110

87

A Doulton stoneware ewer, decorated in the Art Nouveau manner, with raised floral heads, 23cm high £20 - 60 †

88

A Doulton stoneware baluster ewer, registration mark to base no.4817, having raised floral banded decoration and cameo figure of lady with pig on brown mottled glazed ground, 24cm high, AF £20 - 60 †

89

Three Wedgwood "W.Argonauta Argo and T. Tellina Radiata" oval pink porcelain seafood platters, 31.5cm long £40 - 60 †

90

An oriental red glazed bowl, with gilt lustre decoration of birds and foliage, four character mark to base, 21cm high £40 - 60 †

91

A shallow Chinese dish, decorated with dragons and foliage, character mark to base, 19.5cm dia., AF, contained in fabric lined case £20 - 40 †

92

A 19th Century famille rose plate, with pagoda and fence decoration, heightened in gilt, 22.5cm dia. £30 - 50 †

93

A Victorian amber coloured mercury glass ball, of fluted form £40 - 60 †

94

A Minton majolica comport, having leaf decoration, 33cm dia. £60 - 100 †

95

A 19th Century Wedgwood meat plate, of oval shape, gilt feather border, having central armorial crest, 36cm £30 - 50 †

96

A faience ware model of a dog, 22cm long £20 - 40 †

97

A 19th Century Spode bough pot, decorated with exotic birds and foliage on a rouge ground, AF, 14cm high £20 - 40 †

98

A circular Japanese satsuma box and cover, having figural decoration heightened in gilt, 8cm dia. £20 - 40 †

99

A 19th Century Chinese blue and white bowl, decorated with flaming pearls and flowerhead motifs, six character mark to base, 17cm dia. £40 - 60 †

100

A Wedgwood Iris Kenlock ware baluster vase, having brightly coloured enamelled floral decoration, on a black basalt ground, 13cm high £40 - 60 †

101

A 19th Century Whieldon pottery tea bowl and saucer £100 - 200 †

102

An early 19th Century Pearlware tea canister, decorated with satirical scenes, 13cm high, (no lid) £20 - 40 †

103

An unusual old stoneware figure of a coiled snake, 9cm high £40 - 60 †

104

A collection of various good quality cut glass items, to include: an oval pedestal fruit bowl, various other fruit bowls, vases, water jugs, hors d'oeuvre dishes etc. £100 - 150 †

105

A Chinese sang de boeuf baluster vase, 17cm high £30 - 50 †

106

A large Chinese blue and white shallow dish, decorated with dragons and flowers on a yellow ground, six character mark to base, 40cm dia. £50 - 80 †

107

A Chinese enamel baluster vase, profusely decorated with flowers on a pink ground, 20cm high £40 - 60 †

108

A Meissen porcelain cabinet plate, decorated floral spray within pierced border; a Worcester cabinet plate; decorated insects; a Worcester blue scale vase with exotic pheasant painted panels; and seven various Worcester vases, boxes and jugs, (11) £100 - 200 †

109

A pair of Grainger & Co., Worcester baluster ewers, rich gilt foliate decoration on pale green ground, 30cm high £200 - 300 †

110

A pair of Grainger & Co., Worcester orb shape vases and covers, crown finials, gilt overlaid leaf and berry decoration on coiled serpents triform bases, 20cm high £200 - 300 †

Silver & Plate and Jewellery

111

A late Victorian heavy block glass inkwell, with hobnail pattern base, silver embossed lid, hallmarked for Birmingham 1897 £30 - 50 †

112

A pair of modern silver dwarf candlesticks, London 1972; a plated tea caddy and an Elkington & Co. plated coddler £50 - 80 †

113

A pair of oval white metal salts, raised on scrolled feet; a Sheffield plated oval bread basket; and a plated baluster coffee pot £40 - 60 †

114

A 19th Century brown glass and silver mounted claret jug £40 - 60 †

115

A small silver Christening mug, with inscription, London 1923 £30 - 40 †

116

A silver cigarette case, with engine turned decoration; and another similar with foliate decoration, (2) £20 - 40 †

117

Four various silver napkin rings; and three cut glass cruet items with silver mounts, (7) £20 - 40 †

118

A cased set of six silver teaspoons; various other silver spoons etc. £40 - 60 †

119

A silver backed dressing table brush and mirror; a silver butter knife with bone handle; two pairs of silver sugar tongs; a pair of plated similar and a plated preserves spade £30 - 50 †

120

A small silver strainer, having foliate border decoration; a white metal oval cup, having side clips, stamped Grish; and an abalone shell salt, raised on a silver base, (3) £30 - 50 †

121

An early Victorian silver baluster cream jug, London 1839 £40 - 60 †

122

A silver napkin ring, Birmingham 1910; and another Birmingham 1913, with foliate decorated borders and monogrammed, (2) £20 - 30 †

123

A good quality cut glass and electro plate mounted claret jug, decorated bands of hobnail and foliate etched scrolls, the lid with mask decorated spout and domed lid, surmounted by a lion above a maiden decorated scroll handle, 31cm high £60 - 80 †

124

A continental silver posy vase, with floral pierced decoration and cartouche, import marks for Birmingham 1899, blue glass liner, 9cm high £40 - 60 †

125

A silver based table lamp, by Mappin & Webb complete with silk tasselled shade, 42cm high overall, AF £50 - 80 †

126

A George V silver cigarette case, with foliate decoration and monogram, inscription to the interior, Hallmarked for silver Chester 1917 £20 - 40 †

127

A George III Scottish silver sifter spoon, Edinburgh 1812; and a 19th Century white metal side pouring ladle with turned ivory handle £40 - 60 †

128

An Antique Dutch spoon, depicting a court figure, with London import marks £60 - 80 †

129

A small silver baluster tankard, 4.5cm high and four various silver condiment spoons £20 - 40 †

130

A pair of plated coasters, with turned wooden handles; a silver topped toilet jar; a silver topped powder jar with integral brush; and a miniature plated fork and spade with bone handles £60 - 100 †

131

An early Victorian silver baluster cream jug, having foliate scroll decoration raised on three pad feet, London 1838, 13cm high £60 - 80 †

132

A set of six George III silver "Old English" patterned teaspoons, initialled E.S., London 1781, and a white metal and green stone filigree work necklace £40 - 60 †

133

An oval plated entrée dish; a small plate on copper hinged box; a plated cigarette stand and a lid, (4) £60 - 80 †

134

A George III silver teapot, having half fluted body decoration, bone handle and lift raised on ball feet, London 1808 £200 - 400 †

135

An Edwardian silver fruit compot, having gadroon border decoration, raised on octagonal spread foot, Chester 1908 £80 - 120 †

136

A silver cigarette box, having engine turned decoration and a cigarette holder etc. £40 - 60 †

137

A late Victorian silver ink stand, with gadrooned border decoration, presentation inscription "Watford Horse Show", Hallmarked for Chester 1898 £20 - 40 †

138

A three piece silver cruet, of octagonal form, with gadroon border decoration, London 1948 £30 - 50 †

139

A George V silver cream jug, having gadroon border decoration, acanthus scroll handle, raised on three shell feet, Birmingham 1933 £40 - 60 †

140

A pair of Sterling silver pierced bon bon dishes; a white metal shell shaped dish; a pair of early 20th Century silver teaspoons by Mappin & Webb; a silver backed dressing table mirror with fleur de lys and lined decoration; various other silver spoons, sugar tongs, white metal items etc. £40 - 60 †

141

A Victorian plated coffee pot, with foliate engraved decoration, 25cm high £20 - 40 †

142

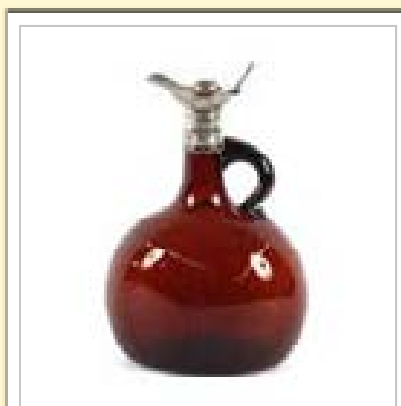
A silver golf trophy, presented by the Dunlop Sports Company Ltd.; a silver Test Cricket centenary medallion, Melbourne Cricket ground 1877-1977 Austria versus England; a silver presentation key, relating to the opening of the Otley UDC waterworks; and a silver pickle fork with mother of pearl handle £40 - 60 †

143

A silver three piece cruet, Birmingham 1987, with associated spoons, cased £60 - 80 †

144

A matched suite of George III and later Old English pattern flatware, various dates, makers and assays, to include 12 each teaspoons, dessert forks, table forks, dessert spoons, 9 table spoons, a soup ladle, three basting spoons, a pair of sauce ladles, a pair of small Scottish sauce ladles, condiment spoons etc., approx. 103ozs.; and bone and ivory handled table knives, dessert knives, steak knives etc., partly contained in a walnut and brass mounted box £800 - 1,200 †



Lot 114



Lot 123



Lot 135



Lot 144



Lot 145

145

A Victorian silver whistle, in the shape of a dog's head, by George Unite, *Birmingham 1874*

£80 - 120 †

146

A small silver hinged Teddy Bear box; a continental white metal and enamel circular pill box; a heart shaped similar; and a white metal lipstick holder

£30 - 50 †

147

A Victorian yellow metal retracting pencil, inset cornelian; a brooch made from a clock wheel and sundry items etc.

£20 - 30 †

148

A fine pair of Fabergé cuff-links, in 18ct gold, set diamonds with blue enamel decoration in original box, with certificate

£2,000 - 3,000 †

149

An 18k ring, set white and blue stones

£40 - 60 †

150

An 18ct gold three stone diamond ring

£60 - 80 †

151

An 18ct gold and platinum diamond ring

£150 - 250 †

152

An 18ct white gold and diamond ring, 0.82 carat, 8.3gms total weight

£1,000 - 1,200 †

153

A yellow metal and diamond cluster ring

£1,500 - 2,000 †

154

A 18ct gold and diamond three stone ring

£1,000 - 1,200 †

155

An 18ct gold diamond and 5ct aqua marine set dress ring

£1,500 - 1,800 †

156

A 9ct gold and diamond set ring, approx 1 carat

£600 - 800 †

157

An unusual 18ct gold Japanese Toshikane bracelet, having seven enamelled porcelain panels depicting gods

£1,400 - 1,600 †

158

An amber and ebony necklace

£500 - 800 †

159

An amber necklace, with yellow metal clasp

£250 - 350 †

160

A decorative green and white stone set pendant brooch; an opal set stick pin and a 9 carat gold dress ring set pale blue stone

£60 - 80 †

161

No Lot

Objects & Collectables

162

A Philips' 8 inch Challenge globe, on stand

£20 - 40 †

163

A 19th Century sampler, worked by Ada B. Clarke 1898, decorated with animals, birds, flowers, buildings and verse, 26.5cm x 61cm

£30 - 50 †

164

An Indian tortoise shell and ivory inlaid trinket box, the hinged lid decorated with a central seated figure amongst pierced foliage, raised on claw feet, 15cm

£40 - 60 †

165

A tray containing various Georgian, Victorian and later silver and other coins

£100 - 150 †

166

A collection of various medals, Police badges, cap badges etc.

£200 - 300 †

167

Two yellow metal fob seals, inset with cornelian and one with citrine

£80 - 120 †

168

An oriental lacquered glove box, and contents of various ivory and bone sewing items, mother of pearl paper-knife etc.

£50 - 80 †

169

An Italian glass intaglio seal of Paulus II

£50 - 80 †

170

A 19th Century vizigapatum card case

£40 - 60 †

171

An Antique carved Japanese ivory figure, of a street vendor, 14cm high

£300 - 400 †

172

A large novelty clay pipe, depicting figures playing football and rugby, registration number 241693; and another with curved stem, (2)

£40 - 60 †

173

L Casella, an English Equinoctial travelling compass sundial, having folding latitude arc, the hour ring inscribed "L Casella, London" contained in a mahogany folding case

£300 - 400 †

174

A collection of tortoiseshell hair combs, including an Art Nouveau design example with gold mount

£200 - 200 †

175

An unusual Eastern bronze mask, 18cm

£60 - 80 †

176

An Indian ebony figure, of a street vendor 17cm high

£40 - 60 †

177

A Chinese bronze censer, having loop handles decorated calligraphy flanked by beast handles, raised on grotesque mask supports, seal mark to base, 11.5cm high overall x 11.5cm dia.

£60 - 80 †



Lot 148



Lot 153



Lot 155

178

A George III silver crown, 1821; another 1819; and a large quantity of Victorian and later silver coinage, old copper coinage etc. £100 - 200 †

179

A Chinese metalware teapot, having overlaid dragon and symbol decoration, seal mark to base £40 - 60 †

180

A 19th Century leather cased travelling campaign set, to include bone handled folding fork, knife and spoon, condiment case and needle case £60 - 100 †

181

A. Bryant, a coloured folding map of the county of Suffolk including ecclesiastical divisions, published March 1st 1826, 80cm x 195cm in extremes, in two sections, contained in a leather book shaped case £200 - 300 †

182

Two French military commemorative plates, "Gard Nationale" and "Marechal de Camp"; and a sarregumines pottery military commemorative plate, "Les Grandes Manoeuvres", (3) £30 - 50 †

183

A small white metal statue, depicting Lord Mountbatten in uniform, dated 1945, 9cm high £20 - 40 †

184

An Antique carved wooden Chinese figure of a seated immortal, with painted and gilded decoration, AF, 17cm high £40 - 60 †

185

19th Century school, watercolour study of a castle on a loch with mountainous background, in octagonal mount, 8cm x 9.5cm overall; and a Le Blond coloured print of Little Red Riding Hood, (2) £20 - 30 †

186

19th Century school, study of a castle ruin with river and woodland nearby, unsigned oil on board, 17.5cm x 16cm £20 - 40 †

187

19th Century school, miniature portrait study of a lady, AF, contained in an easel frame £70 - 100 †

188

Miniature portrait study, of Louisa Cornwallis (nee Gordon), wife of the Marquis of Cornwallis, Culford Hall, Suffolk, contained in oval white metal frame £100 - 150 †

189

Five various Indian bronze figures of gods and deities; and an ethnic bronze knife with stylised symbol decoration, (6) £60 - 100 †

190

A shagreen cased part set of drawing instruments £40 - 60 †

191

A pair of white metal folding spectacles, contained in filigree work Victorian spectacle case, hung to chain with clip; another pair with elongated folding side arms, contained in leather part case; and a pair of silver similar in leather case £40 - 60 †

192

A brass cased carriage timepiece, having white enamel Roman numeral dial £30 - 50 †

193

A Regimental sporran £30 - 50 †

194

A 19th Century teeen shoe snuff box, having minute brass stud decoration and inscribed to the sole J.P.; and a small Regency mahogany trinket box of sarcophagus shape, raised on bun feet, (2) £100 - 200 †

195

A 19th Century silhouette miniature, of a gentleman with broad rimmed hat, contained in faux rosewood frame £40 - 60 †

196

A 19th Century marble and enamel decorated chamber stick, 16.5cm long £60 - 80 †

197

A 17th Century oval double sided allegorical painting on copper, 16.5cm x 17cm overall £60 - 100 †

198

An Eastern brass articulated fish, 26cm long £40 - 60 †

199

A yellow metal crucifix, 21cm long £40 - 60 †

200

A carved wooden trench art figure of a soldier, 9cm high £60 - 80 †

201

A satirical Act of Parliament caricature, "On the Stool of Repentance" £20 - 40 †

202

A 19th Century copper Birmingham fire mark £30 - 50 †

203

A 19th Century Canton carved ivory page turner, 30cm long £30 - 50 †

204

A quantity of various Chinese mother of pearl gaming counters £80 - 120 †

205

An earthenware Cambodian figurehead, raised on later brass plinth, 20cm high £60 - 80 †

206

A pair of Tibetan white metal wine cups; a larger similar with copper decoration; and a circular brass dish, profusely foliate engraved, (4) £30 - 50 †

207

A 19th Century cloisonne plate, decorated bird amongst prunus, 24cm dia. £20 - 40 †

208

A Thai bronze figure of a goddess, 14cm high £30 - 50 †

209

An Antique oval metalware double sided painted pendant, decorated with Madonna and child and saint, 10cm x 8.5cm £60 - 80 †

210

A jade pendant, of pierced design; and a set of graduated ivory beads £60 - 80 †



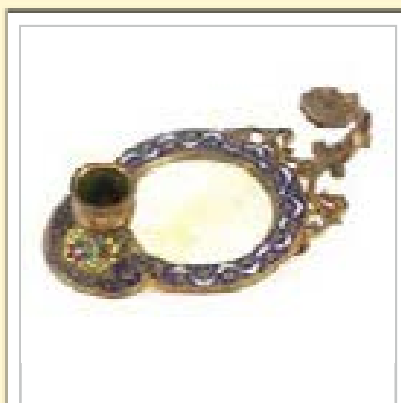
Lot 177



Lot 183



Lot 184



Lot 196



Lot 213



Lot 216



Lot 243



Lot 244

211

A soapstone seal, in the form of an immortal with staff, 9.5cm high £30 - 50 †

212

A pair of decorative oriental resin figures of an Emperor and Empress, 28cm high £50 - 80 †

213

A 19th Century Chinese lacquered puzzle box, the outer case and lid decorated river scenes in gilt, the interior forming an arrangement of various miniature boxes, 38.5cm overall £400 - 600 †

214

A bronze and onyx Corinthian column table lamp, having applied swag decoration raised on a square base, terminating in scrolled claw feet; and another similar lamp 57cm high overall, (2) £80 - 100 †

215

A Negretti & Zambra "Farmers barometer", patent No.718, 95cm £100 - 200 †

216

A Victorian mahogany cased drop dial wall clock, with fusee movement, 35cm dia. overall £250 - 350 †

217

An unframed sampler, worked by Hannah Norrie, 12 years old in 1890, 34cm x 29cm £20 - 40 †

218

Illustrated by Leach and Phiz, "Mr Romford's hounds"; Handley Cross or Mr Jorrocks' Hunt and others, 6 volumes £40 - 60 †

219

Book of Classic Ornament from Greece and Rome, illustrated Lewis Vulliamy; and Anatomy of the Female Human body 1939, (2) £40 - 60 †

220

Brothers Grimm, Little Brother and Little Sister, illustrated Arthur Rackham 1917 £40 - 60 †

221

Ten volumes of "The Silent Traveller", by Chiang Yee including Boston, New York, London etc. £150 - 200 †

222

A Comic Account book, "Explorations in the sit-tee Desert", and Discovery of the Great Temple of the Bull and Bear, by F.C. Gould £80 - 120 †

223

A Dutch style brass 8 branch chandelier £30 - 50 †

224

A 19th Century mahogany and brass mounted travelling toilet box, some interior fittings, 27.7cm dia. £40 - 60 †

225

A small Japanese lacquered and parquetry decorated trinket cabinet, 15cm wide x 13.5cm high £20 - 30 †

226

An Antique iron, wood and brass mounted ethnic axe, 56cm long £40 - 60 †

227

Two 19th Century plaster wall brackets, having scrolled foliate decoration £100 - 200 †

228

An Edwardian mahogany cased chiming mantel clock, the silvered dial with strike silent subsidiary, 41cm high £80 - 120 †

229

A pottery and brass mounted baluster table lamp, having applied rams head mask, garland and ribbon decoration, amber glass reservoir and tinted shade, 73cm high £100 - 150 †

230

A rustic carved wooden Shillelagh, 46cm long £30 - 50 †

231

A Kashmir papier-mâché and brass lined bowl, 25cm dia. £20 - 40 †

232

A 19th Century ornate brass letter rack, 20cm high x 26.5cm wide £20 - 40 †

233

A 19th Century pewter lidded jug, 30cm high £20 - 40 †

234

An Eastern white metal beaker, profusely decorated with foliage, 18cm high £20 - 30 †

235

An Antique Japanese iron kettle, with raised decoration and swing handle, 16cm high overall £30 - 50 †

236

A set of Victorian brass letter scales and weights, with plaque, depicting postal rates £40 - 60 †

237

A map of Europe, by George Kendall of hanging scroll form, mahogany top and bottom rail £40 - 60 †

238

A Victorian walnut cased banjo barometer, 90cm £40 - 60 †

239

A walnut cased chiming mantel clock, by Garrard, raised on gilt bracket supports, 29cm high £80 - 120 †

240

An Italian marble and onyx inlaid chess board, 34cm square £40 - 60 †

241

An Antique ivory wooden and white metal mounted crucifix, 42cm high £40 - 60 †

242

An Antique copper samovar, having brass handles and tap, 45cm high £50 - 80 †

243

After the antique, a stoneware classical style bust of a maiden, 33cm high £40 - 60 †

244

A mahogany cased mantel timepiece, having arched silvered dial, 16.5cm high £40 - 60 †

245

A 19th Century carved wooden lime spatula, probably Oceanic, 36cm long £80 - 120 †

246

A 19th Century mahogany tea caddy, fitted canisters with sliding lids, central glass mixing bowl raised on bun feet, 36cm wide £100 - 150 †

247

Two oriental bronze Buddha heads, 17cm high £60 - 80 †

248

Attributed to Doctor Christopher Dresser, a pair of brass stylised implement rests, 16cm high £100 - 150 †

249

An oriental carved soapstone figure, of an immortal; and another similar 24.5cm high, (2) £40 - 60 †

250

A Chinese cloisonne baluster vase, decorated with birds, insects and foliage on carved hardwood stand, 45cm high £60 - 100 †

251

An oval mahogany and satinwood inlaid Sheraton design tea tray, with brass carrying handles, 64cm £30 - 50 †

252

A decorative brass telescope on folding wooden tripod base £30 - 50 †

253

A brass pantagraph, in fitted mahogany case £100 - 150 †

254

A domed top tortoiseshell framed easel mirror, with bevel edged plate, 45cm high x 28cm wide overall £80 - 120 †

255

A Chinese Republic period circular porcelain table screen, painted with birds amongst fruit and flowers in ornate carved hardwood revolving stand, 32cm high £150 - 250 †

256

A late 17th/early 18th Century bronze figure, of Guan Yin with infant on her knee, 14cm high £200 - 400 †

257

A carved Chinese libation cup, in the form of a bird, 11cm high £50 - 80 †

258

A 19th Century Asian bronze figure, of a warrior brandishing an axe, 38cm high overall £180 - 220 †

259

A 19th Century Chinese carved ivory model of a junk, and a carved ivory Buddha, (2) £30 - 50 †

260

A large white metal enamel and coloured glass cloak pin, North African probably Tuareg, 23cm long £40 - 60 †

261

An unusual 19th Century European filigree work white metal belt buckle, dated and signed 1868, 10cm £40 - 60 †

262

A 19th Century oriental bronze censer, with loop handles raised on three squat feet £100 - 150 †

263

An impressive antique North West Pacific Coast Haida Indian wooden carved figure, of a duck, 47cm long; and an antique bone and walrus ivory Inuit knife, 24cm long, (2) £200 - 400 †

264

A small 19th Century Sino Tibetan silver amulet, finely decorated with a bird and fruit, seal mark to reverse; and a small Chinese pale celadon jade carving of a boy with wood stand, (2) £50 - 80 †

265

A Gothic oak carving of a recumbent mythical beast, circa 15th Century, 28cm long, raised on a later wooden stand £100 - 200 †

266

"The Twelfth Suffolk Regiment" reverse painted mirror, listing various campaigns etc. circa 1900, 37cm x 29cm £40 - 60 †

267

A mahogany baluster vase shaped table lamp, flanked by lion mask ring handles, on square plinth, 42cm high £20 - 40 †

268

A Victorian burr walnut stationery slope, the hinged doors opening to reveal a fitted interior with letter racks, pen tray, and ink wells, 32cm wide x 30cm high £80 - 120 †

269

A late 19th/early 20th Century Indian copper plaque, depicting Shiva dancing upon a demon with mountains beyond, 33cm x 25cm in extremes £20 - 30 †

270

A mid 20th Century bronze bowl, of heavy form, with abstract designs, indistinct triangular mark to base, 14cm dia. £30 - 60 †

271

A brass Binnacle and spirit burner on gimble, by C. Plath, Hamburg, Germany, having angled glazed viewing section, flanked by the burner, 20cm high £60 - 80 †

272

A Chinese carved bamboo brush pot, deeply carved with seated figures amongst foliage and bamboo, large six character marks, 16cm high £40 - 60 †

273

A Chinese carved bamboo brush pot, decorated with flowerheads and leaves, six character mark, 17cm high £40 - 60 †

274

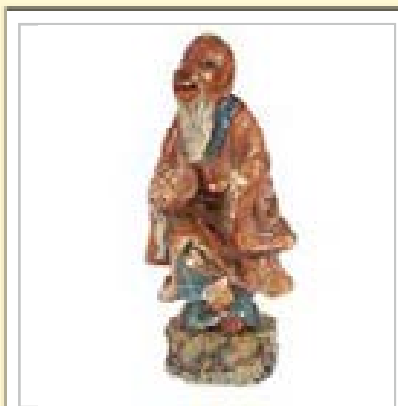
A collection of three pewter spoons, in the 17th Century style with acorn finials; and another Antique ladle with wooden handle, (4) £40 - 60 †

275

A Norwegian folk Art Tine, painted with the National flag, and flanked by up-swept supports, 21cm; another Norwegian Folk Art Tine, labelled Husfliden, Oslo, 18cm high and a cheese container decorated with rosemaling, (3) £60 - 80 †

276

A pair of Arts & Crafts brass andirons, possibly designed by Dr. Christopher Dresser, on outswept angular supports, 17cm high £30 - 50 †



Lot 249



Lot 255



Lot 256



Lot 263



Lot 299



Lot 300



Lot 303



Lot 304

277

Two oriental ivory napkin rings, decorated with tigers; a pair of signed ivory chopsticks; various other ivory items and a Chinese bronzed pipe
£30 - 50 †

278

A late 19th Century treen military tankard, for the Indian Engineers, having silver plated liner and regiment emblem, 13cm high
£30 - 40 †

279

A late 19th Century Japanese table cabinet, the whole with lacquered decoration, surmounted by hinged lid revealing compartments, having six drawers below, enclosed by doors, further long drawer to the base, 34cm high x 30cm wide
£30 - 50 †

280

A miniature painting, depicting coach and horses with passengers at speed, unsigned watercolour, oval in gilt slip, papier-mâché frame and acorn finial, 9cm x 7cm in extremes
£40 - 60 †

281

A miniature print of a young girl, the ebonised wooden frame with gilt slip, 5cm x 4cm
£20 - 30 †

282

A bronze figure of a discus thrower, after the Antique with foundry mark to base, Garanti, Paris, on a marble socle, 24cm high
£60 - 100 †

283

After the Antique, a bronzed figure of a Spartan warrior, with spear and shield on rectangular marble base, 18cm high
£20 - 30 †

284

A WMF silvered metal model of a Bull Mastiff dog, naturally modelled in an alert pose, marks to feet, 18cm long x 14cm high
£40 - 60 †

285

A brown leather Liberty's jewellery box, in the form of a book, with leaf designs and divided interior, stamped Liberty to base, 23.5cm
£30 - 40 †

286

A pair of Toleware type candlesticks, with metalwork entwined lily flowers and leaves, 24.5cm high
£30 - 50 †

287

A Blackamoor type figure, depicting young boy holding a bowl out-stretched and raised on circular socle, 53cm high
£50 - 80 †

288

An Antique elm and iron bread cutter, dated 1770
£60 - 80 †

289

A bronze and cloisonné decorated baluster vase, flanked by angular handles, bands of decoration depicting mythological figures 30cm high; and a smaller example of ovoid form, 16cm (2)
£60 - 80 †

290

A bronze and cloisonné decorated pitcher, of baluster form decorated bands of figures and foliage 26cm high
£60 - 80 †

291

A Chinese cloisonné baluster vase, decorated scrolling foliage on a green ground; and another similar on a blue ground 32.5cm high, (2)
£60 - 80 †

292

A Japanese bronze baluster vase, having raised decoration of birds and foliage on circular spread foot, 46.5cm high
£60 - 80 †

293

A large Eastern brass engraved tray, decorated with panels of gods within stylised border, 60cm dia.
£20 - 40 †

294

A Victorian bamboo framed mirror, 41cm x 34cm in extremes; and a Sorrento ware hanging letter rack, with pierced compartments inscribed with the days of the week, having swallow decoration, 41cm, (2)
£60 - 80 †

295

A finely carved Cameo shell, having angel decoration
£20 - 30 †

296

A cast metal anamaler study of a reclining deer hound, signed A. Deva, 16cm long
£20 - 40 †

297

A silk embroidered study of a peacock, amongst foliage, 55cm x 45cm
£20 - 40 †

298

A 19th Century miniature portrait study, of a young girl wearing mop cap, in gilt easel frame with ribbon tied surmount
£40 - 60 †

299

A 19th Century continental yellow metal hinged box, the lid with filigree work and enamel decoration, having central watercolour panel depicting maidens, foliate engraved decoration to the sides and base, 7.5cm
£60 - 80 †

300

A gilded hinged box, the lid with enamel decoration and central miniature portrait, 9.5cm high; and a small gilt metal easel with cherub decoration, 11cm high, (2)
£60 - 100 †

301

A framed and glazed silk work triptych, decorated with a lake scene
£20 - 40 †

302

A Japanese carved ivory temple ornament, 19cm high; three various Antique oriental ivory figures; a lace work fan; and an oriental hardstone perfume bottle, decorated with turquoise and semi precious stones, (6)
£60 - 80 †

303

A 19th Century French Fluorspar and ormolu clock garniture, the timepiece surmounted by doves above applied foliate and ribbon tied scrolls, having circular enamel dial, raised on a plinth base and bun feet, 25cm high; together with a pair of candlesticks with urn sconces, 18.5cm high
£400 - 600 †

304

A pair of ormolu posy vases, having blue glass inserts, floral body decoration, raised on stepped plinth bases, 14cm high
£100 - 200 †

305

A 19th Century French porcelain and ormolu rise and fall ink stand, the lid surmounted by a seated cherub, flanked by scrolled handles above a reservoir with lifting top, raised on pierced foliate rococo design base, 20cm high £100 - 200 †

306

A 19th Century French ormolu trinket casket, inset with Sevres porcelain panels, the hinged lid surmounted by a figure seated on a cushion on top of scrolled foliage, raised above shaped supports with maiden terminals, by Susse Frères, 21cm wide x 20cm high £600 - 800 †

307

A large Chinese bronze censer, decorated river scenes and pagoda, flanked by loop carrying handles raised on three tapering pointed feet, 43cm dia. x 28cm high £150 - 250 †

308

A cased and preserved arrangement of Jays £100 - 150 †

309

A Victorian copper kettle; and a 19th Century brass and steel trivet, with turned wooden handle, (2) £40 - 60 †

310

A 19th Century rosewood cased Swiss music box, the movement playing six airs and striking on twin bells, 36cm long £200 - 300 †

Pictures & Prints

311

Norwich school, early 19th Century woodland scene, oil on canvas, 32cm x 43cm £120 - 160 †

312

Neapolitan school, 19th Century Italian coastal scene, oil on canvas, indistinctly signed 50cm x 29cm £50 - 80 †

313

Italian school, 19th Century shepherdess and sheep, dog and donkey by a pool, oil on canvas 47cm x 32cm £80 - 120 †

314

19th Century English school, a pointer dog in landscape, oil on artists board 19cm x 32cm £100 - 150 †

315

French school, 19th Century portrait of a bewigged gentleman, oval oil on canvas, 29cm x 24cm £80 - 120 †

316

Louis B Hunt 1856-1929, highland cow oil on canvas, signed and dated '93, 21cm x 31cm £300 - 400 †

317

After Titian, 19th Century study of The Venus of Urbino, oil on board, 25cm x 36cm £120 - 140 †

318

French school, 19th Century, "The Road To Calvary", oil on brass embossed oval topped metal plaque, 47cm x 31cm £60 - 80 †

Lots marked ✓ please refer to Droit de Suite royalty charges in Terms and Conditions

† Each lot is subject to a Buyer's Premium of 18% + VAT (21.6%)

319

Arthur Goodwin, 1922-1998, view of a river bridge with steam tug, pastel, 25cm x 37cm, labels verso £40 - 60 †

320 ✓

Louise Harward, "Suffolk Ploughman and pair", oil on canvas, 39cm x 54.5cm. Sale proceeds donated to The Suffolk Punch Trust £100 - 200 †

321 ✓

Louise Harward, large study of Suffolk Punch mares and founs in expansive landscapes, signed oil on canvas, 69cm x 195cm. Sale proceeds donated to The Suffolk Punch Trust £200 - 400 †

322 ✓

John Western, study of the Deben with Woodbridge Tide Mill and the Town in the far ground, signed watercolour dated 1986, 28.5cm x 72.5cm £100 - 150 †

323 ✓

John Western, study of the Deben with quay and numerous sailing vessels, signed and dated 1988, 33cm x 47.5cm £80 - 120 †

324 ✓

Anthony Osler, study of Thames river barges leaving the Orwell including The Memory built in 1904, see labels verso, signed watercolour dated 1987, 34.5cm x 53cm £100 - 200 †

325

D.V. Spofforth, "A grey day Waberswick", signed watercolour, 21cm x 31.5cm, Royal Institute of painters in watercolour exhibitors label verso, dated March 1936 No.337. Miss D.V. Spofforth was the daughter of Fred Spofforth, Australian fast bowler £40 - 60 †

326 ✓

William Benner, 1884-1964, a pair of studies depicting continental port scenes, signed watercolours, 26.5cm x 34.5cm £100 - 150 †

327

J. Raffles, French street scene and marketplace with people going about their daily business, signed watercolour, dated 1856, 46cm x 33cm £100 - 150 †

328

E. Wiegman, study of busy shipping scene with steam ships and sail boats coming into port, signed oil on canvas, 50cm x 79cm £100 - 200 †

329

19th Century school, study of musketeers in tavern interiors, unsigned oils on panel, 19cm x 14cm £40 - 60 †

330

Two allegorical prints on glass, "The Holy family" and "The Infant St. John", published W.B. Walker April 1804, (one damaged) £40 - 60 †

331

A pair of coloured military prints, Third Regiment of Foot and Second (for the Queens Regiment of Foot); and a pair of coloured ornithological engravings, "The Black cat" and "White Throat"; and "Hirundo Domestica", (4) £30 - 50 †

332

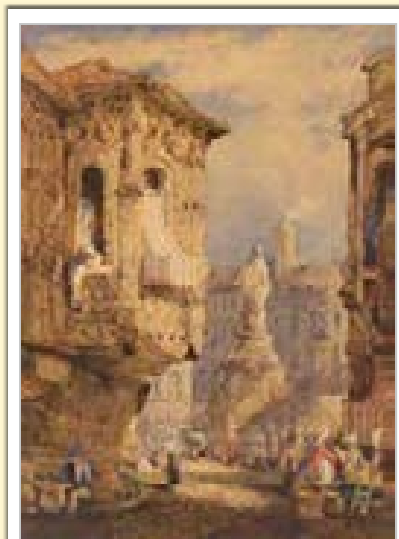
A set of four 19th Century coloured hunting prints, "Going Out", "Drawing Covert", "The Chase", "The Death", contained in ebonised and gilt frames, 28.5cm x 39cm £150 - 250 †



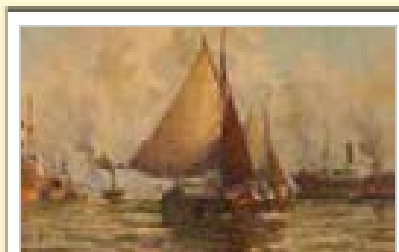
Lot 305



Lot 306



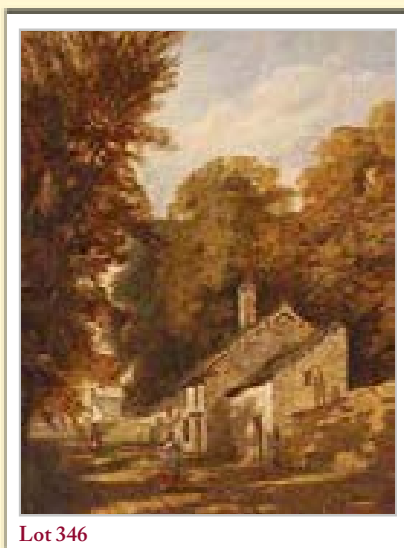
Lot 327



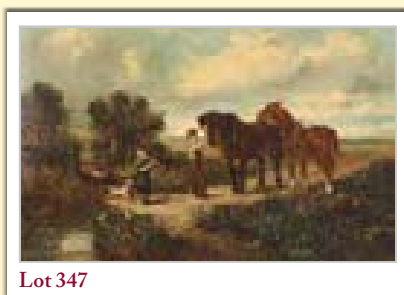
Lot 328



Lot 343



Lot 346



Lot 347



Lot 351

333

19th Century school, pencil sketch of a seated lady with ringlets in her hair, unsigned, 13.5cm x 10cm; and a coloured mezzotint of "St. James's beauty", mounted as an oval, (2) £20 - 30 †

334

T. Woolnough, exhibited 1828-1857, study of a seated lady in white and pink satin trimmed dress, pencil signed watercolour, 26.5cm x 18cm £30 - 50 †

335

F.G. Fraser, "On the Sark at Barton", Suffolk, signed watercolour, 23.5cm x 36cm £60 - 80 †

336

Edward Pococke 1843-1901, study of Angel Lane, Ipswich, pencil and watercolour study; and a pair, Fore Hamlet and Cross Keys, Carr Street, Ipswich, (3) £80 - 120 †

337

19th Century Dutch school style still life study, depicting large urn of flowers on a ledge, unsigned oil on canvas, 60cm x 50cm £30 - 50 †

338

An Antique coloured map, by Ogilby, the roads from Chelmsford in Essex; a small coloured map of Suffolk; and another depicting a plan of streets and roads in London, (3) £30 - 50 †

339

A.J. Munnings, study of boats and figures on a lake, watercolour, bears pencil signature, 17cm x 22cm; and 3 volumes "An Artist's life", "The Second Burst", "The Finish" and one volume "The Englishman", by Reginald Pound £100 - 200 †

340

F.M. Anderson, study of a harbour scene, signed watercolour, 18.5cm x 25.5cm £20 - 40 †

341

19th Century school, study of cattle grazing by a river at sunset, indistinctly signed oil on canvas, AF, 29.5cm x 39cm £20 - 40 †

342

Peter Jamieson, born 1945, study of carriage driving, signed charcoal drawing, 40cm x 30cm £40 - 60 †

343

Suffolk school, study of figures on a country path, windmill and cottage nearby, unsigned oil on board, 14cm x 20cm, contained in a decorative gilt frame £60 - 100 †

344

Giovanni Barbaro 1864-1915, a pair of still life studies depicting fruit and pitchers and a wicker basket on a kitchen table, 76cm x 31cm £200 - 300 †

345

W. Richards, study of a highland loch scene with Crofter's cottage and figure on the fore shore, signed oil on canvas, 49cm x 59cm £100 - 200 †

346

Attributed to Frederick Henry Henshaw, study of figures outside of cottages in a country lane, 39cm x 29cm £100 - 200 †

347

John Locker, 19th Century school, rural scene with man and horse team returning home at the end of day attendant child and dog, signed oil on canvas, 50cm x 77cm £300 - 400 †

348

J. Smythe, winter scene with figures snow-balling, signed oil on canvas, 19cm x 30cm £50 - 80 †

349

An 18th Century map of the British Isles, in French by S. Robert, 49cm x 59cm £80 - 120 †

350

18th Century Naive school, study of a nativity scene, unsigned oil on canvas, 60cm x 71cm £200 - 300 †

351

Attributed to John Moore, study of fishing boats at sea, oil on board, 24.5cm x 32cm £400 - 600 †

352

19th Century school, rocky coastal scenes with sea birds amongst crashing waves, indistinctly signed watercolours, a pair, 24.5cm x 11.5cm £20 - 40 †

353

19th Century school, study of a figure on a bridge beside sluice gates, indistinctly signed and monogrammed, 15.5cm x 23cm £20 - 40 †

354

Attributed to John Crome, 19th Century school, study of a courtyard with figure, unsigned oil, inscribed to the gilt frame "Old Crome", paper label verso, "752 Crome, Norwich", 31cm x 24cm £300 - 400 †

355

Continental school, study of a town street scene with figures, mountainous background, watercolour initialled FCN, dated 1875, 24cm x 38cm £20 - 40 †

356

Victorian school, oval study of flowers, unsigned watercolour £40 - 60 †

357 ✓

Edith Todd, "A peaceful spot on the Norfolk Broads", signed oil on canvas, dated 1955, 45cm x 65cm £150 - 200 †

358

After John Moore, study of sailing vessels in heavy seas, unsigned oil on canvas, 40cm x 30cm £100 - 150 †

359

W M Easter, study of Blue Mountains Australia, oil on canvas 33cm x 48cm £70 - 100 †

360

P Fletcher-Watson, "Andernack on the Rhine" signed watercolour, 51.5cm x 36cm £80 - 120 †

361

19th Century naïve school, study of the Steam Yacht "Eagle" built 1875, gouache 37cm x 50cm £50 - 100 †

362

19th Century school, study of young couple in cottage interior with attendant dog, unsigned oil on canvas, 27cm x 23.5cm £50 - 80 †

363

A set of eight David Lucas after Constable prints; and Constable and Lucas mezzotints in folio

£200 - 300 †

364

After Robert Morden, coloured map of Suffolk

£20 - 30 †

365

Gudrum Sibbons, coastal scene at sunset, signed oil on canvas, 41cm x 50cm

£150 - 200 †

366

John Moore of Ipswich, 1820-1902, study of fishing vessels at moonlight, signed oil on board, 17cm x 24cm

£100 - 200 †

367

Kenneth A. Brundle, study of the Royal Courts of Justice, London; and another of the Theatre Royal Haymarket, labels verso, signed watercolours, a pair, 23cm x 34cm

£60 - 80 †

368

M. Kawakubo, a pair of studies depicting Eastern temples, signed watercolours, 31cm x 22cm

£40 - 60 †

369

E.S. Hardy, study of a figure preaching to natives on the shore, signed gouache and watercolour, 69cm x 50cm

£150 - 250 †

370

A 19th Century silhouette profile, of a gentleman, contained in decorative gilt frame

£20 - 40 †

371

A 19th Century alabaster profile, depicting angels, indistinct label verso, dated 1843

£30 - 50 †

372

A small woolwork embroidery, depicting an infant child, 14.5cm x 17cm

£20 - 40 †

373

K. Palmer, 19th Century study of a fox approaching a baited trap, signed oil on canvas, dated 1887, 60cm x 91cm

£200 - 300 †

374

An antique woolwork and silkwork picture, depicting Mary, Joseph, and the baby Jesus making their escape to Egypt on a donkey, 63cm x 45cm

£150 - 250 †

375

A pair of 19th Century Dalmatian prints, contained in maple frames

£30 - 50 †

376

A pair of early 19th Century coloured engravings, depicting the four seasons, contained in rosewood frames

£40 - 60 †

377

19th Century school, study of Framlingham Castle, unsigned oil on canvas, 19cm x 22.5cm, (in need of restoration)

£20 - 40 †

378

17th Century school, European depiction of the Crucifixion, oil on panel, initialled C.R. and dated 1671, 53cm x 37cm

£500 - 800 †

379

E. Nevil, study of Petergate, York; and Church Street, Staithes, signed watercolours, a pair, 37cm x 26cm

£80 - 120 †

380

Attributed Francis E Dicksee (Frank) 1853-1928, oil on canvas portrait of a society lady, initialled F.D. and inscribed verso "Frank Dicksee 1927", oil on canvas, 40cm x 30cm

£400 - 600 †

381

Late 19th Century school, study of the Royal Mail steamer "Clyde" at full steam, signed T Robinson in a beaten copper oval frame, 48cm wide overall

£100 - 150 †

382

Three 19th Century prints, "The Recruit", "Pardoned" and "Deserter"; together with a coloured print of the Duchess of Devonshire, (4)

£30 - 50 †

383

19th Century school, study of woodpeckers in a nest, unsigned oil on board, 25.5cm x 14cm

£20 - 40 †

384

A woolwork embroidery of a seated spaniel, in burr maple cushion frame, 24.5cm x 32.5cm

£40 - 60 †

385

Late 19th Century school, partially worked still life study, unsigned oil on canvas, 30.5cm x 35.5cm; 19th Century school study of figures in the dark, unsigned oil on panel, 31cm x 27cm; and early 20th Century school, study of objects on a sideboard, unsigned oil on board, 27cm x 35cm, (3)

£30 - 50 †

386

Sir Muirhead Bone, 1876-1953, war drawings 1917, in six volumes, lithographs

£800 - 1,200 †

387

A pair of small pencil signed etchings, by Cuthbertson of shipping scenes

£20 - 30 †

388

After Thomas Whitcombe, Naval ships off Cape Town with Table Mountain, watercolour, 34cm x 65cm

£70 - 100 †

389

Austin Winterbottom, 1860-1919, a large oil on canvas depicting sheep in landscape, signed and dated 1896, 88cm x 122cm, contained in a gilt frame

£200 - 400 †

390

Attributed to Norda of Hilversum, continental river scene with figure in boat and windmill and houses on bank, unsigned oil on board, 28cm x 22cm

£40 - 60 †

391

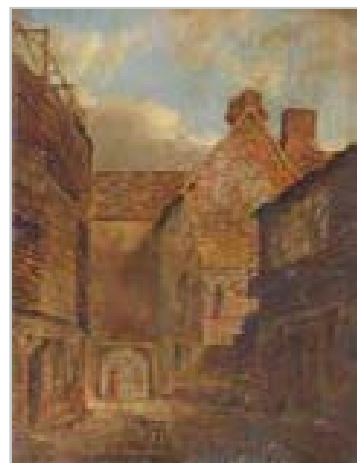
Boucher 1703-1770, soft ground etching depicting cherubs and naked figure

£40 - 60 †

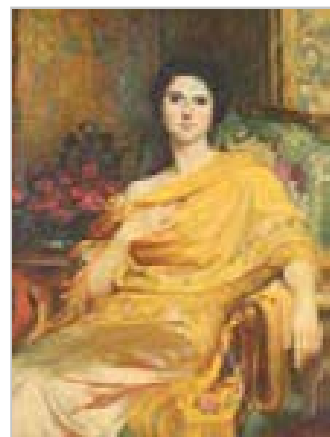
392

Thomas Barker of Bath, 1769-1847, study of a blind beggar seated in a landscape, pencil and monogram wash, inscribed verso, 25cm x 19cm

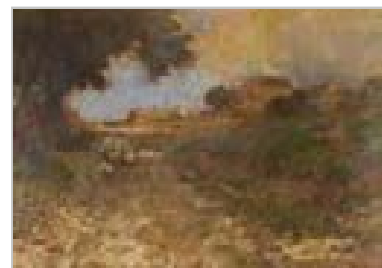
£100 - 200 †



Lot 354



Lot 380



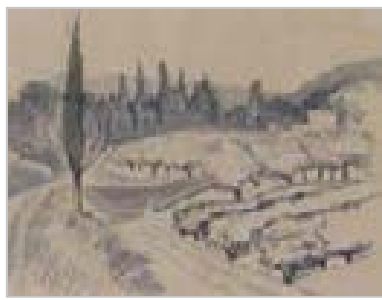
Lot 389



Lot 390

Lots marked ✓ please refer to Droit de Suite royalty charges in Terms and Conditions

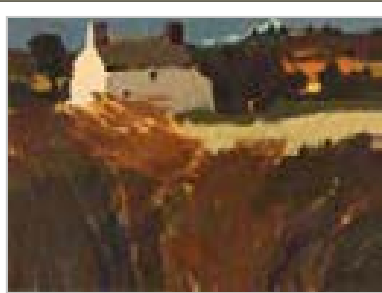
† Each lot is subject to a Buyer's Premium of 18% + VAT (21.6%)



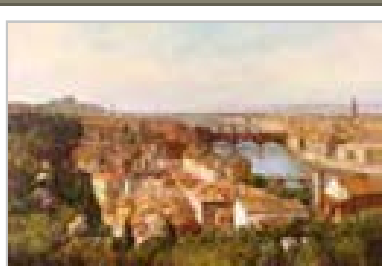
Lot 397



Lot 408



Lot 409



Lot 415



Lot 419

393

David Cox Jnr., study of a punt on a river, unsigned watercolour, 27cm x 35cm £80 - 120 †

394

Claude Hayes, 1852-1922, study of a landscape with sheep, horse and rider, signed watercolour, 33cm x 50cm £100 - 200 †

395

Thomas Rowlandson, 1756-1827, study of a hunt in full cry through wooded landscape, watercolour, 18cm x 24cm. Gallery label verso Abbott & Holder, Museum Street, London £600 - 800 †

396

Alfred Vickers Snr. 1786-1868, The Stowe near Dovercourt, watercolour, 17cm x 24cm £100 - 150 †

397 ✓

John Northcote Nash, C.B.E., R.A., 1893-1977, "A view from our bedroom at Clavier, Provence" pen and wash, 22.5cm x 28cm £500 - 600 †

398

Lance Corporal G.H. Cook, 11th Observer Group, Aniche, "After the Gail", dated 23.12.2018, label verso £20 - 30 †

399 ✓

Bruce Bairnsfather, 1887-1959, "Mein Friend", signed ink and wash caricature, 21cm x 12.5cm, initialled and dated 1916 £200 - 300 †

400

Dominique Charles Fouqueray, 1869-1956, "Lesoir de la Victoire" at Haclon, 1918, pen and ink drawing, 16.5cm x 13cm £40 - 60 †

401

James Govier, "Winding the clock", 35.5cm x 31cm £50 - 80 †

402

James Govier, beach scene at Dunwich, watercolour, 33cm x 53cm £50 - 80 †

403

James Govier, study of a girl reading at tea break, pen, ink and watercolour, 37.1cm x 34.8cm, see labels verso £60 - 80 †

404

James Govier, study of a girl stood by a wash basin, signed oil on board, 35cm x 28cm £50 - 80 †

405

James Govier, study of a nude girl, signed oil on board, 34cm x 30cm £50 - 80 †

406

Edwin Cooper of Beccles, an ink and wash drawing of a dog, unframed £40 - 60 †

407

WHT, three studies of sailing vessels, initialled watercolours dated 1907, 20cm x 15.5cm £40 - 60 †

408 ✓

William Walcot RA, 1847-1943, study of a horse and cart, signed watercolour, dated 1919, 40cm x 50cm £1,000 - 1,500 †

409 ✓

Donald McIntyre, British, 1923-2009, "The white farmhouse", initialled oil, 29cm x 39cm £800 - 1,200 †

410

Montague Dawson, a coloured print "The Gallant Mayflower", pencil signed to margin £60 - 80 †

411

A 19th Century black and white print, depicting Thames river scene £20 - 40 †

412

A Chinese silk and needlework panel, depicting Panda amongst bamboo shoots, having stylised motif border £50 - 80 †

413

20th Century school, study of an expansive beach scene, possibly Scotland, with horse and cart and figures on the beach, steam ship and jetty in the far ground, indistinctly signed watercolour, dated 09, 29cm x 44cm £30 - 50 †

414

Ian Houston, "Away at sea, Ayr", oil on board, 25cm x 34.5cm £200 - 400 †

415

Clive Madgwick, study of Florence, signed oil on canvas, 50cm x 75cm £300 - 400 †

416

J Whitmore, study of a long horned bull standing in a landscape, signed oil on canvas, 32cm x 42cm £200 - 400 †

417

J Whitmore, study of a prize pig by Sty, signed oil on canvas, 30cm x 39cm £200 - 300 †

418

Vincent Clare 1855 -1930, still life of fruit on a mossy bank, signed oil on canvas 22cm x 17cm £200 - 300 †

419

A Richards, shire horses and dog in stable, oil on panel, 20cm x 26cm £80 - 120 †

Furniture

420

A large Eastern carpet, in the Caucasian manner, approx. 10ft 9ins x 15ft 11ins £100 - 200 †

421

An Antique walnut framed wall mirror, having bevelled plate, 74cm x 47cm overall £60 - 80 †

422

A 19th Century mahogany chest, fitted three long drawers raised on bracket feet, 90cm wide £100 - 150 †

423

A 19th Century gilded overmantel mirror, in three sections, having raised floral decoration with ebonised reeded slip panels, 58cm x 136cm £100 - 200 †

424

An 18th Century mahogany and cross-banded triple games table, the baize lined top with sunken counter wells and inlaid chequers and backgammon board below, fitted single drawer and raised on rounded tapering supports and pad feet, 83cm wide £400 - 600 †

425

A Victorian walnut pedestal writing desk, the top fitted with a raised bank of 8 small drawers, enclosed by locking stiles, leather inset surface with lifting hinged centre section, two drawers and one dummy drawer below, fitted six drawers to the pedestals, raised on platform plinths, 136cm wide £300 - 400 †

426

A 19th Century oval gilt wall mirror, with egg and dart and beaded stepped borders, 77cm x 98cm overall £60 - 100 †

427

An Oriental red lacquered low tea table, inlaid with hardstone figures, horse, clouds and temple, with mother of pearl stylised border, raised on folding cabriole supports, 103cm wide x 51cm deep £150 - 250 †

428

A late 18th Century oak longcase clock, the stepped hood enclosing a brass spandrel dial and steel chapter ring, supporting an eight day movement above a full length trunk panelled door raised on box base, 210cm high £300 - 400 †

429

An Antique joined oak box on stand, the lid opening to reveal a fabric lined interior above mock moulded panelled drawer front with two short drawers below, fitted brass pear drop handles, the stand raised on baluster supports united by stretchers, terminating in block feet £80 - 120 †

430

A 19th Century mahogany secretaire chest, the writing drawer fitted pigeon-holes and small drawers around a central cupboard, fitted three long graduated drawers under, raised on bracket supports, 127cm wide £200 - 400 †

431

A Georgian mahogany knee-hole desk, fitted single long drawer above a recessed cupboard flanked by six small drawers, raised on bracket feet, 79cm wide x 48cm deep £200 - 400 †

432

A 19th Century five tier rosewood whatnot, with hinged adjustable top, single drawer below, the tiers raised on baluster turned supports, terminating in brass castors, 52cm wide x 144cm high £350 - 450 †

433

An 18th Century oak geometric moulded panelled chest, fitted two short and three long drawers, raised on bracket feet, 98cm wide £300 - 400 †

434

A George III mahogany swing toilet mirror, raised on single drawer box base with ogee bracket feet, 32cm wide x 50cm high £60 - 80 †

435

A late 18th/early 19th Century oak and inlaid wall mirror, of oblong form with raised stylised motif decoration, 63cm x 90cm £120 - 140 †

436

A 20th Century walnut chest, of two short and three long graduated drawers, raised on bracket feet, 90cm wide £50 - 80 †

437

An 18th Century oak and elm food cupboard, of narrow proportions, having turned spindle decoration and carved panels, enclosed by a single door and raised on bun feet, later converted. Interesting labels verso, 150cm high x 77cm wide £200 - 300 †

438

An 18th Century oak chest, fitted two short and four long graduated drawers, raised on bracket feet, 100cm wide £100 - 200 †

439

A Georgian mahogany bureau, the fall front opening to reveal an interior arrangement of drawers and pigeon-holes, two short and three long drawers below, raised on bracket feet, 92cm wide £80 - 120 †

440

A Regency style mahogany window seat, having turned scroll ends raised on tapering turned supports terminating in peg feet, 166cm wide £200 - 300 †

441

A 19th Century French gilt wood pier glass, having arched bevelled rectangular mirrored plate, the tied wreath frame having ribbon tied swag top above egg and dart moulded cornice 128cm wide x 275cm high £300 - 500 †

442

A 19th Century pine kitchen dresser, the upper section enclosed by a pair of glazed leaded panel doors with cupboards below, decorated circular cut out motifs, raised on a plinth base, 142cm wide x 224cm high £200 - 400 †

443

An Edwardian mahogany and satinwood banded cabinet on stand, the upper section fitted shelves enclosed by a glazed panelled door on bow fronted base, fitted with a single cupboard, raised on square tapering supports united by an under tier 103cm wide x 183cm high £150 - 200 †

444

A Georgian mahogany press cupboard, the upper section converted to hanging compartment above two short and two long drawers, raised on shaped apron and bracket feet, 130cm wide £100 - 200 †

445

A pair of birdseye maple and cross-banded bookcase cabinets, in the 18th Century manner, the glazed upper section surmounted by broken arched pediments and enclosed by astragal glazed doors, cupboards to base raised on bracket feet, 106cm wide x 230cm high £300 - 400 †



Lot 431



Lot 432



Lot 433



Lot 437



Lot 461

446

A George IV mahogany linen press, the upper section surmounted by a stepped cornice, four interior sliding trays enclosed by a pair of arched panelled doors, two short and two long drawers below, raised on bulbous turned supports, 136cm wide £200 - 400 †

447

A George III mahogany cross-banded and satinwood strung secretaire bookcase, the upper adjustable shelves enclosed by a pair of glazed astragal doors, fully fitted secretaire drawer above three long graduated drawers, raised on bracket feet, 114cm wide x 224cm high £400 - 600 †

448

A mahogany cheval mirror, having worn bevelled plate, 151cm high x 67cm wide £80 - 120 †

449

A George III mahogany chest on chest, with dentil cornice above two short and three long drawers between reeded quarter pilaster stiles, the lower section fitted three long drawers, raised on bracket feet, 120cm wide £300 - 400 †

450

A George III mahogany secretaire bookcase, the writing drawer flanked by Egyptianesque columns with cupboard to base, fitted shelves, raised on outswept supports, the bookcase top fitted adjustable shelves and enclosed by glazed panelled doors, 121cm wide £200 - 300 †

451

An antique carved oak dresser, in the Jacobean style having raised canopy back above cupboards and shelves, three long drawers below, raised on cabriole supports, 180cm wide 204cm high £400 - 600 †

452

An 18th Century lacquered and chinoiserie decorated longcase clock, the arched hood enclosing a brass spandrel dial, having steel chapter ring, by Wallis May of London, 8 day movement, striking on a bell, full length trunk panelled door and box base, 214cm high £200 - 400 †

453

A 19th Century mahogany and marquetry decorated jardinière stand, the circular top raised on scrolled supports and triform base, 40cm dia. x 80cm high £60 - 100 †

454

A small ornately carved Eastern hardwood occasional table, decorated with dragon and foliage, 37cm wide x 36cm high £20 - 40 †

455

An antique oak court cupboard, the upper section surmounted by a canopy above fielded panelled doors and three shallow drawers, three deeper drawers and cupboards below, raised on square section supports, 170cm wide x 187cm high £250 - 350 †

456

A Victorian oak three tier whatnot, fitted single drawer and raised on baluster turned column supports terminating in brass caps and castors, 44cm wide x 101cm high £60 - 80 †

457

An 18th Century oak coffer, with square iron lock-plate and foliate carved front, single drawer to base, fitted with brass pear drop handles, raised on bun feet, 87cm wide £80 - 120 †

458

A mahogany framed wall mirror, in the Chippendale manner, having fret carved frieze and cushion surround, 74cm x 50cm in extremes £20 - 40 †

459

An antique oak coffer, having inlaid triple panel front, square section supports on later castors, 126cm wide £100 - 200 †

460

A Victorian mahogany pull-up fire screen, having embroidered panels, raised on scroll supports united by a turned baluster stretcher, 60cm wide x 111cm high £30 - 50 †

461

A set of 8 Edwardian mahogany and satinwood cross-banded dining chairs, having crossed rail backs, upholstered stuff-over seats, raised on square tapering supports, (6 standards and 2 elbows) £200 - 400 †

462

A George III mahogany tray top bedside commode, fitted sliding doors, raised on square section supports terminating in brass barrel castors, 64cm wide £100 - 150 †

463

A Victorian rosewood work table, fitted with a single drawer, raised on slat end supports, terminating in bun feet and castors, united by a turned stretcher, 60cm wide £100 - 150 †

464

A harlequin set of 8 Yorkshire spindle back dining chairs, having rush seats, raised on turned front supports united by stretchers, (6 standards, 2 elbows) £150 - 200 †

465

A Sheraton style demi-lune two tier side table, with marquetry style decoration, 90cm wide £30 - 50 †

466

A George III mahogany D end dining table, with extra centre leaf, raised on ring turned tapering supports terminating in castors, 120cm x 160cm, AF £100 - 150 †

467

A set of six 19th Century elm bar back dining chairs, having rush seats, raised on square section supports united by stretchers £150 - 250 †

468

A pair of Regency mahogany hall chairs, having fan shaped backs, raised on ring turned tapering front supports and sabre back supports £100 - 150 †

469

A 19th Century rosewood circular library table, having leather inset top raised on a turned baluster column and scrolled tripod base, terminating in castors, 75cm dia. £200 - 300 †



Lot 469



Lot 470



Lot 471

470

An Edwardian mahogany and satinwood cross-banded three tier revolving bookcase, 46cm
£100 - 200 †

471

A Chinese hardwood Cachepot stand, having marble inset square top raised above a carved and pierced frieze and undertier, raised on square section supports and claw feet united by stretchers, 38cm wide x 89cm high
£80 - 120 †

472

An 18th Century oak side table, fitted with a single drawer above shaped frieze, raised on rounded turned supports united by stretchers, terminating in square section feet, 82cm wide
£100 - 200 †

473

A 19th Century mahogany side table, fitted two short drawers, raised on square section tapering supports, 72cm wide
£100 - 150 †

474

A Georgian oak side table, the overhanging plank top above a single drawers, raised on square section supports, 80cm wide
£80 - 120 †

475

A Victorian burr walnut Sutherland tea table, raised on fluted baluster column and foliate carved scroll feet, terminating in porcelain castors, 88cm
£100 - 150 †

476

An 18th Century oak tea table, having rounded drop flaps above single drawer, raised on turned supports united by stretchers, outswept feet, 67cm wide
£60 - 80 †

477

A 20th Century oak two tier side table, raised on barley twist supports, 61cm wide
£20 - 30 †

478

A Victorian carved rosewood framed chaise longue, with Dralon buttoned upholstery, the serpentine seat raised on cabriole supports terminating in castors, 161cm wide
£200 - 300 †

479

A Victorian rosewood spoon back armchair, upholstered in buttoned dralon, acanthus scroll arms, raised above a serpentine seat on cabriole supports terminating in castors
£80 - 120 †

480

A Victorian carved walnut spoon back armchair, with upholstered seat, back and armrests above scrolled arms raised on cabriole supports, terminating in brass castors
£80 - 120 †

481

A Georgian mahogany and rosewood cross-banded D shaped card table, the rectangular fold over top raised on ring turned tapering supports terminating in brass caps and castors, 86cm wide
£150 - 250 †

482

An antique Yorkshire elm spindle back elbow chair, with rush seat raised on rounded tapering supports united by stretchers
£30 - 50 †

483

A mahogany and ebony strung bow fronted sideboard, in the George III manner, fitted central drawer and tambour front cupboard, flanked by deep drawers and raised on tapering square supports, terminating in spade feet, 122cm wide
£40 - 60 †

484

A 19th Century mahogany side cupboard, the interior shelf enclosed by a pair of moulded panelled doors, raised on turned spool feet, 103cm wide x 36cm deep x 88cm high
£80 - 120 †

485

A late 18th Century oak cottage longcase clock, by Mayhew of Parham, painted dial supporting a 30 hour movement above a full length trunk door, raised on box base and plinth, 203cm high
£200 - 400 †

486

A set of four antique oak dining chairs, with leather and studded upholstered seats and backs, raised on turned baluster and block supports, united by stretchers
£40 - 60 †

487

An Edwardian carved mahogany nursing chair, having pink dralon upholstered seat and back, raised on ring turned tapering supports, terminating in castors
£30 - 50 †

488

A pair of good quality walnut lamp tables, fitted single drawers and raised on out-swept supports united by cross stretchers, 55.5cm wide
£400 - 600 †

489

A 19th Century French walnut bonheur de jour, having raised upper section, fitted four drawers, pull-out writing surface and single drawer below, raised on French cabriole supports with gilt metal foliate mounts, 78cm wide x 98cm high
£200 - 300 †

490

A walnut dressing stool, raised on cabriole supports with floral needlepoint upholstery
£20 - 30 †

491

An oak framed Orkney chair, of traditional form having scrolled outswept arms above a base fitted with a single drawer raised on square section supports
£200 - 300 †

492

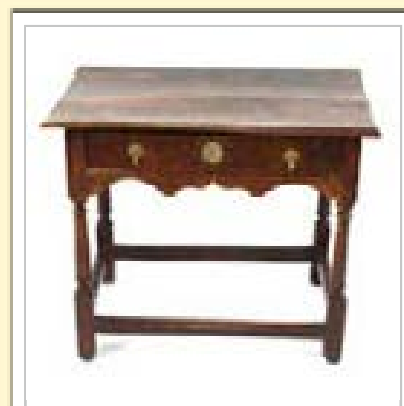
A walnut bow fronted chest, of four long drawers, raised on bracket feet, 77cm wide
£100 - 150 †

493

A 19th Century mahogany side table, fitted with a single drawer and raised on square section tapering supports, 74cm wide
£100 - 150 †

494

A Georgian mahogany card table, the shaped fold over baize lined top with sunken counter wells, single drawer below, raised on rounded tapering supports terminating in pad feet, 83cm wide
£100 - 200 †



Lot 472



Lot 480



Lot 489



Lot 491



Lot 519

495

An Edwardian mahogany, amboyna and satinwood cross-banded fold over tea table, by Howard & Sons, raised on square tapering supports, 52cm wide £100 - 200 †

496

A Victorian mahogany extending dining table, fitted three extra leaves, raised on turned baluster reeded supports, terminating in brass caps and castors, 131cm x 294cm £200 - 400 †

497

Three Victorian mahogany dining chairs, having upholstered seats and backs, raised on turned fluted front supports; a set of three other Victorian dining chairs, having carved bar backs and upholstered stuff-over seats; and two further Victorian chairs, (8) £100 - 150 †

498

A 19th Century mahogany boxwood strung and chequer-banded swing toilet mirror, the oval bevelled plate raised on shaped arms, serpentine box base, fitted with three drawers, 53cm £40 - 60 †

499

A Victorian walnut three tier graduated corner whatnot, raised on barley twist supports, 58cm wide in extremes x 86cm high £50 - 80 †

500

An oak joint stool, raised on turned baluster supports, united by stretchers, 46cm wide £30 - 50 †

501

An oak stool, raised on U shaped supports united by chamfered stretchers, 47cm £20 - 40 †

502

An oak joint stool, raised on turned baluster supports united by stretchers, 43cm wide £40 - 60 †

503

A William IV mahogany tea table, the rectangular fold over top raised on a baluster column and quatrefoil base terminating in bun feet and castors, 95cm wide £100 - 150 †

504

A 19th Century mahogany wash stand, fitted with a folding two section top, cupboard and drawer below, square section supports united by a stretcher, flanked by brass carrying handles, 36cm wide £30 - 50 †

505

A mahogany trinket cabinet, fitted four short drawers and blind base drawer, raised on an inverted platform and bun feet, 27cm high x 49cm high £40 - 60 †

506

An 18th Century oak plank top side table, raised on barley twist columns, united by chamfered stretchers terminating in club feet, 100cm wide x 70cm deep £100 - 200 †



Lot 521



Lot 524



Lot 536

507

An early 19th Century mahogany and rosewood cross-banded snap top tea table, the canted corner top raised on a turned baluster column and quadruple splay, 60cm £40 - 60 †

508

A 19th Century elm and yew wood stick back Windsor chair, the shaped seat raised on turned supports united by a crinoline stretcher - in need of attention £40 - 60 †

509

A Victorian walnut and inlaid three tier whatnot, 54cm wide x 68cm high £40 - 60 †

510

A satinwood bow fronted hall table, fitted two drawers and raised on turned tapering fluted supports, 119cm wide £250 - 350 †

511

A mahogany piano stool, having needlepoint seat, raised on square tapering outswept supports, 54cm £20 - 40 †

512

A Victorian oak knee-hole writing desk, having leather inset top, three frieze drawers and six drawers to the pedestals, raised on platform plinths, 122cm wide x 63cm deep £150 - 250 †

513

A Georgian mahogany demi-lune fold over tea table, raised on rounded tapering supports and pad feet, 69cm wide £100 - 200 †

514

A set of three early 19th Century mahogany bar back dining chairs; and another similar, (4) £40 - 60 †

515

A walnut hall table, fitted three drawers, raised on square section tapering supports, 145cm wide £150 - 250 †

516

A long foot stool, raised on cabriole supports, having tapestry seat, 90cm £30 - 50 †

517

A 19th Century mahogany Pembroke table, fitted with a single end drawer and dummy opposing drawer, raised on round tapering supports terminating in peg feet, 78cm £40 - 60 †

518

A circular mahogany tilt top supper table, raised on a turned baluster central column and quadruple splay, terminating in brass castors, 125cm dia. £100 - 200 †

519

A 19th Century mahogany sarcophagus shaped wine cooler, the stepped hinged lid opening to reveal a zinc lined interior, flanked by lion mask brass ring carrying handles, raised on claw feet, 66cm wide £500 - 600 †

520

An 18th Century oak hanging spice cupboard, enclosed by a single panelled door, 50cm wide x 70cm high £60 - 80 †

521

A William IV rosewood swivel top Davenport, fitted four drawers and raised on bun feet, 54cm wide x 52cm deep x 81cm high £450 - 550 †

522

A pair of good quality walnut and cross-banded side tables, fitted single drawers and raised on turned fluted tapering supports, 70cm wide £300 - 400 †

523

An oak window seat, in the Regency style having turned ends raised on tapering baluster turned supports and peg feet, 165cm long £200 - 300 †

524

A lacquered and bone inlaid circular occasional table, raised on a baluster turned column and tripod base 78cm dia. £200 - 300 †

525

An imposing marble side table, having white veined black rectangular top on a grey oval section column terminating in carved plinth base, 166cm wide x 81cm deep x 87cm high, AF £300 - 500 †

526

A 19th Century oak circular snap top tea table, raised on baluster central column and tripod base, 58cm dia. £40 - 60 †

527

A Victorian walnut side cabinet, the interior shelves enclosed by a pair of moulded panel doors, with two short drawers below, raised on a platform plinth, 98cm wide x 105cm high £60 - 80 †

528

A 19th Century mahogany circular snap top tea table, raised on turned baluster column and tripod base, terminating in pad feet, 81cm dia. £80 - 120 †

529

A 19th Century mahogany and satinwood strung Pembroke table, fitted single end drawer and opposing dummy drawer, raised on square section tapering supports terminating in brass caps and castors, 83cm £60 - 100 †

530

A 19th Century mahogany writing table, fitted opposing arrangements of one long and four short drawers, gilt leather writing surface, raised on baluster turned supports terminating in porcelain castors, 114cm wide x 107cm deep x 76cm high £200 - 400 †

531

A Victorian walnut three tier graduated whatnot, of small proportions, the shaped shelves raised on open barley twist supports, 53cm wide x 58cm high £20 - 40 †

532

An Edwardian mahogany foot stool, raised on spindle turned supports with lifting top, 50cm wide £20 - 40 †

533

A Victorian walnut tub shaped library chair, upholstered in buttoned green leather raised on turned fluted front supports, terminating in castors £80 - 120 †

534

A 19th Century mahogany cellaret, 50cm x 39cm £60 - 80 †

535

A walnut and cross-banded hall table, fitted five short drawers raised on square section chamfered supports, 106cm wide £200 - 300 †

536

A French walnut and kingwood cross-banded work table, having marquetry panels and applied gilt metal embellishments, the shaped top opening to reveal a compartment above shaped supports, terminating in sabots, 52cm wide x 71cm high £300 - 400 †

537

A 19th Century carved hardwood framed mirror, having profuse foliate decoration, 50cm x 59cm £30 - 40 †

538

A William IV rosewood drop leaf sewing table, fitted two short drawers and pull-out silks well, raised on a carved column and quatrefoil base, terminating in claw feet and castors, 53cm £100 - 200 †

539

A late 19th Century French rosewood and ormolu mounted serpentine fronted vitrine, inset with Vernis Martin type panels depicting young maidens and courting couple, surmounted by a pierced gallery above floral scrolls, flanked by reclining cherubs, raised on cabriole supports terminating in sabots, 110cm wide x 164cm high x 36cm deep £800 - 1,000 †

540

A pair of late 19th Century fine quality French walnut and ormolu mounted vitrines, the upper sections enclosed by a pair of glazed doors with foliate scroll and mask decoration, single drawers below, flanked by winged maidens, on shaped supports terminating in sabots, 55cm wide x 147cm high

See front cover illustration

£2,000 - 3,000 †



Lot 538



Lot 539



Lot 540

TERMS AND CONDITIONS OF SALE

1. INTRODUCTION

The following defining terms are used in these conditions:-

“Auction”	Means any auction conducted by Clarke and Simpson Auctions Ltd. either at the premises owned by them or elsewhere (including any internet based auction);
“Auctioneer”	Means Clarke and Simpson Auctions Ltd. authorised auctioneer as appropriate;
“Bidder”	Means a bidder at an auction, including the bidders personally present at the venue and those bidding by telephone or over the internet or otherwise;
“Buyer”	Means the bidder whose bid was the last bid when the auctioneer concludes the bidding;
“Conditions”	Means these Terms and Conditions of Sale;
“Hammer Price”	Means the level of bidding reached (at or above any reserve) when the auctioneer brings the bidding to a close;
“Lot”	Means any property accepted by Clarke and Simpson Auctions Ltd. for offer at auction;

2. DESCRIPTION

No warranty is given or implied by the description in the catalogue. Each lot is sold in its condition at the time of sale with all faults, defects, imperfections and errors of description (if any). Whilst every endeavour has been made to describe the items adequately and properly, the purchaser shall deem to have inspected the lot at time of purchase. All catalogues and seller's and buyer's guides are for information only and do not form part of the contract.

3. STATUTORY REQUIREMENTS

Purchasers will be deemed to have satisfied themselves prior to purchasing regarding current legal requirements (e.g. Health & Safety at Work Act) and it is expressly brought to the bidders attention that equipment in the sale may not necessarily comply with such regulations. Any purchaser shall satisfy himself as to any statutory requirement for the use of any item and no liability shall rest with the vendors nor the Auctioneers.

4. THE AUCTION

All auctions are conducted at the absolute discretion of the auctioneer. The auctioneer shall conduct the auction with reasonable skill and care. The vendor reserves the right to sell subject to reserve price in respect of all lots. What constitutes a bid shall be at the absolute discretion of the auctioneer, acting with appropriate skill and care. The auctioneer shall have the right to refuse any bid in all cases but most notably when such a bid does not exceed the previous bid by at least 10% or such a proportion as the auctioneer shall in his absolute discretion direct. Where two or more bids at the same level are simultaneously received by the auctioneer, the auctioneer at his absolute discretion shall determine which bid to prefer. Subject to the foregoing where two or more bids are at the same level are simultaneously received by the auctioneer, the bid submitted in the room shall take preference over a bid submitted by telephone or internet at the same level. Any bid made or attempted by telephone or over the internet will only be deemed to have been made if received by the auctioneer. The auctioneer reserves the right to withdraw, consolidate or divide any lot or lots or submit them in any order that they desire. The auctioneer has the right at his absolute discretion to refuse admission to his premises or attendance at (or participation in) any auction by any person. In the case of any dispute, the auctioneer shall be sole arbitrator in any matters arising during or out of the sale.

5. BIDDERS

All bidders will be required to register their particulars, bidders attending in person and those accompanying them will be required to provide photo ID and separate confirmation of address prior to viewing or taking any part of the sale and before entering any part of the premises to view. All bidders accept full liability for all bids submitted. Subject to the clause in this document headed “The Auction”, the highest bidder at the close of bidding shall be the buyer. Any dispute about a bid shall be settled at the auctioneer's absolute discretion. Bidders are all deemed to act as principles unless there is prior written acknowledgement by Clarke and Simpson Auctions Ltd. that a bidder is acting as an agent for a

named principle. Bidders are strongly encouraged to attend the auction in person. The bidders shall be responsible for any decision to bid for a particular lot and shall be deemed to have carefully inspected and satisfied themselves as to condition, neither Clarke and Simpson Auctions Ltd., their employees or agents shall be responsible for any neglect or default in doing or failing to do so. Bidders will be given ample opportunity to view and inspect before the sale and prospective buyers must satisfy themselves as to all matters.

6. DEFAULT

Clarke and Simpson Auctions Ltd. shall act as agent of the vendor only. Any contracts for the sale of a lot shall be formed between the vendor and the buyer. As agent, only Clarke and Simpson Auctions Ltd. shall not be responsible for default by the vendor or the buyer. If any lot is not paid for in full and taken away in accordance with these conditions, or there is any other breach of the conditions, then Clarke and Simpson Auctions Ltd. as agents for vendor shall at its absolute discretion and without prejudice to any other rights it may have, be entitled to exercise all or any of the following rights and remedies:-

- 6.1 to proceed against the buyer for any action of debt or damages for breach of contract;
- 6.2 to rescind the sale of that lot or lots sold by Clarke and Simpson Auctions Ltd. to a defaulting buyer;
- 6.3 to resell the lot (by auction or private treaty) in which case the defaulting buyer shall be responsible for any resulting deficiency in the total amount due (after crediting any part payment and adding any resale costs), any possible surplus so arising shall belong to the vendor;
- 6.4 to remove, store and insure the lot at the expense of the defaulting buyer and, in the case of storage, the location of such storage shall be at Clarke and Simpson Auctions Ltd. discretion;
- 6.5 to charge interest at a rate not exceeding 2% per month of the total amount due to the extent that it remains unpaid for more than two working days after the sale;
- 6.6 to retain that or any lot sold to the defaulting buyer until the buyer pays the total amount due;
- 6.7 to reject or ignore bids from the defaulting buyer at future auctions or to impose conditions before any such bids are accepted;
- 6.8 to apply any proceeds of sale for any other lots due or in the future becoming due to the defaulting buyer towards the settlement of the total remaining due.

7. INDEMNITIES, PENALTIES AND LIMITATIONS OF LIABILITY

Purchasers shall pay for any damage done by themselves or their agents during the removal of their lots. Attendance at the sale shall be at the risk of those attending in respect of both themselves and to their goods and vehicles.

Any indemnity under these conditions will extend to all actions, costs, expenses, claims and demand whatsoever suffered or incurred by the person entitled to the benefit of it and Clarke and Simpson Auctions Ltd. declare themselves to be a trustee of the benefit of such indemnity so far as it is expressed to be the benefit of its employees and agents.

Whilst Clarke and Simpson Auctions Ltd. endeavour to ensure that the information on their websites is correct, they do not warranty the accuracy and completeness of the material on their website. Also, Clarke and Simpson Auctions Ltd. can make changes to the material on their website, or alter the products and prices described on it, at any time without notice. The material on the website may be out of date, Clarke and Simpson Auctions Ltd. make no commitment to update such material. All material on the websites is provided “as is” without any conditions, warranties or other terms at any time. Accordingly, to the maximum extent permitted by law, the website is provided to all parties on the basis that Clarke and Simpson Auctions Ltd. exclude all representations, warranties, conditions and other terms which, but for this legal notice, might have effect in relation to the website.

8. ELECTRICAL SAFETY REGULATIONS

All electrical lots are subject to electrical safety regulations and fall within “the low voltage electrical equipment (safety) regulations 1989” – all items have been pat tested for safety but are not guaranteed in working order.

9. GENERAL MATTERS

Any notice to any buyer, vendor, bidder or viewer may be given by first class mail or email in which case it shall be deemed to have been received by the addressee forty-eight hours after posting or sending. All notices to Clarke and Simpson Auctions Ltd. must be sent in writing and email is not acceptable. Any indulgence extended to any person by Clarke and Simpson Auctions Ltd., notwithstanding the strict terms of these conditions or the terms of consignment, shall affect the position at the relevant time only and the respect of that particular concession only; in all other respects these conditions shall be construed as having full force and effect. These conditions and any disputes or claims arising out or in connection with them or their subject matter or formation (including non-contractual disputes or claims) are governed by and construed in accordance with the law of England. The parties irrevocably agree that the courts of England have exclusive jurisdiction to settle any dispute or claim that arises out of or in connection with the agreement or its subject matter or formation (including non-contractual disputes or claims).

10. PUBLICITY

Any catalogue and buyer and seller guides are provided for information only and do not form part of these conditions. The catalogue and the buyer and seller guides may contain additional terms and conditions. Clarke and Simpson Auctions Ltd. reserve the right to use any photographs, background information and research for publicity purposes both before and after the sale.

11. THE PURCHASE PRICE AND PAYMENT ARRANGEMENTS

There is a buyer's premium 18% plus VAT payable in respect of the sale. Any purchases made via “www.the-saleroom.com” or “www.ibidder.com” shall be subject to an administration charge of 5% plus VAT on the price.

Preferred payment is cash, bank transfer or personal debit card. Such cards may only be used on a chip and pin basis with the owner present. No payment over £350 will be accepted by telephone. Payment will be accepted online via our secure e commerce account. We do not accept credit cards or international debit cards. Payment by cheque will only be acceptable subject to prior arrangement. No lot will be removed from the sale until any cheque has cleared.

Payment is due on the day of the sale. Cash in excess of £7,500 (including V.A.T.) will not be accepted from any one person, this is not allowed due to Money Laundering Regulations 2007. All money received will be held in Clarke & Simpson Auctions Ltd. Clients No 2 Account at Barclays Bank plc, Framlingham, Ipswich, Suffolk. Account Number 83428591. Sort Code 20 98 07. Clarke and Simpson Auctions Ltd. have no responsibility for any lot between the close of bidding and payment being made and subsequent collection. All payments from overseas buyers shall be made by Bank Transfer and bank fees paid in addition. Please note all policy regarding payment will be enforced and suitable arrangements must be made.

12. REMOVAL OF LOTS

The ownership of any lot purchased shall not pass to the relevant buyer until they have made payment in full to Clarke and Simpson Auctions Ltd. of the total amount due including any storage due.

The buyer shall at their own risk and expense take away any lot that they have purchased and paid for not later than two working days following the day of the auction after which they shall be responsible for any removal, storage and insurance charges.

Any lots not collected within four weeks of the date of sale will be resold by the auctioneer and all proceeds will be retained by the auctioneer to cover storage costs.

13. NUMBER BIDDING

This will be used for speed and efficiency as in all our sales. All prospective purchasers must complete a registration form and register in the office on the view day or morning of sale to receive a number for bidding.

Please also note that photo ID and additional confirmation of address will be required.

14. ONLINE BIDDING

Clarke & Simpson Auctions Ltd. offer an online bidding service via the-saleroom.com and ibidder.com for bidders who cannot attend the sale. In completing the bidder registration on www.the-saleroom.com or ibidder.com and providing your payment card details and, unless alternative arrangements are agreed with Clarke & Simpson Auctions Ltd.:

1. authorise Clarke & Simpson Auctions Ltd., if they so wish, to charge the payment card given in part or full payment, including all fees, for items successfully purchased in the auction via www.the-saleroom.com or ibidder.com, and
2. confirm that you are authorised to provide these payment card details to Clarke & Simpson Auctions Ltd. through www.the-saleroom.com or ibidder.com and agree that Clarke & Simpson Auctions Ltd. are entitled to ship the goods to the card holder name and card holder address provided in fulfilment of the sale.

Please note that any lots purchased via the-saleroom.com or ibidder.com live auction service will be subject to an additional 5% buyer's premium + VAT at the rate imposed on the hammer price.

15. TELEPHONE BIDDING

We offer a telephone bidding service where possible, but this service can never be guaranteed. No applications for telephone bids will be accepted after the end of the viewing prior to sale day for any sale. All potential telephone bidders must provide a valid landline number and email address and agrees that they have read and understood the Terms and Conditions and satisfied themselves regarding any lot in accordance with these Terms and Conditions. No phone bids will be accepted for any lot with a lower guide figure of less than £100.

All those who wish to bid by telephone will be expected to deposit an amount determined by Clarke and Simpson Auctions Limited and not less than the minimum guide for all lots that they wish to bid upon into the Clients Account for Clarke and Simpson Auctions Ltd before the sale starts. This payment is not acceptable by card.

In the event of default, this sum shall be retained as part payment or any part may be retained to recover losses under clause 6 of these Terms and Conditions. We will expect payment of the balance owing by BACS on the following day, any payment not met within five working days will result in the forfeiture of the deposit paid.

16. AT FAULT (A.F.) LOTS

Certain lots are catalogued as (A.F.), damaged, restored etc., however the absence of any such notice does not imply that the piece is free from defects, nor does it indicate that other defects are not also present. Mention is not made of breakage, cracks, chips or any damage which can be noted by careful inspection, therefore, intending purchasers MUST, in all cases, be responsible for determining the condition of the lots themselves.

17. ESTIMATES

Presale estimates are intended only as a guide for intending purchasers, are given in good faith and subject to revision.

18. CONDITION REPORTS

Clarke and Simpson are unable to guarantee that requests for condition reports/images received will be responded to. Clarke and Simpson are happy to give a Condition Report where possible on the physical condition of goods, this will be provided on behalf of the seller on the understanding that Clarke and Simpson are not entering into a contract with you in respect of the Condition Report and accordingly does not assume responsibility to you in respect of it. All lots are available for your own inspection or for inspection by an expert instructed by you, therefore these Condition Reports are for guidance only and all lots are sold “as found”. Condition reports do not form part of a contract.

19. COMMISSION BIDS

The auctioneers will be pleased to execute bids for those unable to attend the sale. Lots will be purchased at the lowest bid the room bidding or any reserves will allow. In the event of identical bids, the earliest bid received will take precedence. There must always be a maximum limit indicated. Buy or unlimited bids will not be accepted. Commission bids placed by telephone are accepted at the client's risk. We urge our clients to place such bids before the start of the sale. All such commissions are left entirely at the buyer's risk.

20. VALUE ADDED TAX

The symbol * after any lot number indicates that Value Added Tax is payable by the buyer on the hammer price.

21. AUCTIONEERS MARGIN SCHEME

The Auctioneers Margin Scheme allows auctioneers to sell items without VAT on the hammer price. Under the margin scheme an amount equivalent to VAT at the current rate is added to the buyer's premium. This amount cannot be refunded. The VAT element will not be shown separately on the buyer's invoice. This VAT is not recoverable as Import Tax.

22. ATTRIBUTION OF PICTURES AND DRAWINGS

Every effort is made to ensure the accuracy of any statements as to authorship, attribution, origin, date, age, provenance and condition of any lot whether or not such statement forms part of the description of any such lot. Whether any such statement is made orally or in the catalogue it is an expression of opinion and not to be taken as being or implying any warranties or representations of facts by the auctioneers. Each buyer by making a bid for a lot acknowledges that he has satisfied himself fully as to the attribution and condition of the lot. The following is for guidance only and does not form part of a contract.

A. The forename (s) (or full stops where not known) and surname of an artist indicates in our opinion a work by the artist.

B. The initials of the forename (s) and the surname of the artist indicates in our opinion a work of the period of the artist which may be wholly or in part his work.

C. The surname of the artist indicates in our opinion a work of the school or by one of the followers of the artist or in his style and of uncertain date.

D. *Signed, Dated, Inscribed* indicated in our opinion work signed/dated/inscribed by the artist.

E. *Bears signature* indicates in our opinion that this is not the signature of the artist.

F. *Attributed to* may be used to denote a traditional attribution based on style.

G. *Manner of* indicates in our opinion a work executed in the artist/craftman's style but of a later date.

H. *After* indicates in our opinion a copy (of any date) of work of an artist or craftsman.

The addition of a question mark after any of the cataloguing terms above indicates an element of doubt.

23. DRIOTE DE SUITE ROYALTY CHARGES

All United Kingdom Art Market professionals (which includes auctioneers) are required to collect a royalty payment for all qualifying Works of Art. This applies to living artists and those who have died in the last 70 years. This payment is calculated on qualifying Works of Art which are sold for a hammer price more than the UK sterling equivalent of €1,000 (the UK sterling equivalent will fluctuate in line with prevailing interest rates calculated by the Artist's Resale Right Service Hub, based on the European Central Bank reference rate published at 2.15pm on the day of the sale, and can be found on www.dacs.org.uk).

All items in this catalogue that are marked "✓" are potentially qualifying items, and the royalty charge will apply if the hammer price is more than UK sterling equivalent of €1,000. The royalty charge will be added to purchase invoices and must be paid before items can be cleared. All royalty charges are paid to the design and Artists Copyright Society (DACS) by the auctioneers and no handling costs or additional fees with respect to these charges will be retained by the auctioneer. This charge may also be applicable to lots not marked "✓" and buyers must satisfy themselves.

The royalty charge for qualifying items which achieve a hammer price of more than the UK sterling equivalent of €1,000, but less than the UK sterling equivalent of €50,000 is 4%. For qualifying items that sell for more than the UK equivalent of €50,000 a sliding scale of royalty charges will apply. For a complete list of the royalty charges and threshold levels please refer to www.dacs.org.uk. There is no VAT payable on this royalty charge.

24. ENDANGERED SPECIES

Lots sold at auction may include endangered or other species of wildlife and plant life, for example ivory, tortoiseshell, crocodile skin, whale bone, ebony or rosewood. Some countries restrict or prohibit import or export of objects containing these materials or require a licence/permit for their movement (e.g. a CITES Licence). Prior to bidding on a lot which may include these or similar materials, buyers must familiarise themselves with the relevant laws and regulations regarding their movement.

25. JEWELLERY

Gemstones are often treated to enhance colour and improve appearance. They may be heated or treated by oil or resin to intensify the colour and transparency. Other techniques like dying, irradiation, coating and impregnation can also be used. Buyers must be aware that unless the catalogue specifically states otherwise then the stone is natural, buyers must assume that any treatment may not be permanent, and that special care may be needed in the future.

26. EXPORT

Any lot purchased at auction may be subject to export restrictions and may require a licence for export out of the United Kingdom. The buyer is responsible for obtaining any licences that may be required (including any licence that may be required for import into the destination country) – any denial of such a licence will not be grounds for the buyer to cancel the purchase.

27. THIRD PARTY LIABILITY

All members of the public on Clarke and Simpson Auctions premises are there at their own risk and must note the layout of the buildings and site and the appropriate security arrangements. Accordingly, neither the Auctioneer nor its employees or agents shall incur liability for death or personal injury (except as required by law) or similarly for the safety or persons visiting the premises.

28. CONSIGNMENT

All sellers will have received a copy of Clarke & Simpson Auctions Terms regarding consignment of lots for sale and these Terms and Conditions should be read in accordance with this consignment documentation.



Collective Machinery Auctions

Clarke and Simpson Auction Centre, Campsea Ashe, Suffolk

Next Sale: Saturday 26th October 2019

- East Anglia's largest 'direct from farm' auction
- Competitive commission rates
- Live on-line bidding via i-bidder.com
- Extensive marketing both online and in the press
- Excellent facilities - hard standing site, large buildings and car parks
- Illustrated colour catalogue
- National and international buyers



Clarke & Simpson Auction Centre, Campsea Ashe, Nr Wickham Market Suffolk IP13 0PS

T: 01728 746323

www.clarkeandsimpson.co.uk



Clarke and Simpson Auction Centre
Campsea Ashe
Nr. Wickham Market
Suffolk IP13 0PS
Tel: (01728) 746323 Fax: (01728) 748173
Email: auctions@clarkeandsimpson.co.uk
www.clarkeandsimpson.co.uk