



Clarke &  
Simpson

Selected Antiques & Fine Art

Saturday 8th August 2020 at 11 am



Auctions

Clarke &  
Simpson

# *Worldwide from Campsea Ashe*

We have registered buyers from all of the fifty countries shown below in the last twelve months – what do you have to sell that would benefit from a worldwide audience!



Clarke & Simpson Auction Centre, Campsea Ashe, Nr Wickham Market, Suffolk IP13 0PS T: 01728 746323  
[www.clarkeandsimpson.co.uk](http://www.clarkeandsimpson.co.uk)  CandSAuctions  @CandSAuctions

# Clarke & Simpson

Auctions

## Selected Antiques & Fine Art

**Saturday 8th August 2020**  
**at 11 am**

### Order of Sale:

Ceramics and Glass	1-121
Silver and Plate	127-199
Jewellery	200-245
Objects and Collectables	250-475
Pictures and Prints	476-588
Rugs and Furniture	589-698

### Viewing:

Thursday 6th August, 10 am - 4 pm by appointment only  
Friday 7th August, 10 am - 6 pm  
Morning of Sale from 8.30 am - 10.45 am strictly by appointment only



@CandSAuctions



CandSAuctions

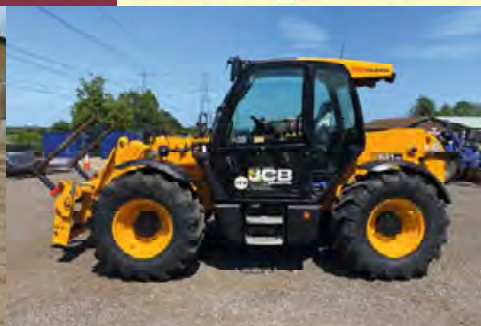
NB Attendance on sale day, bidders only and by appointment



Campsea Ashe  
Nr. Wickham Market  
Suffolk IP13 0PS  
Tel: (01728) 746323 Fax: (01728) 748173  
Email: [auctions@clarkeandsimpson.co.uk](mailto:auctions@clarkeandsimpson.co.uk)  
[www.clarkeandsimpson.co.uk](http://www.clarkeandsimpson.co.uk)

Online bidding via:

**the saleroom**  
The home of art & antiques auctions



## Collective Machinery Auctions

Clarke and Simpson Auction Centre, Campsea Ashe, Suffolk

Next Sale: October 2020

- East Anglia's largest 'direct from farm' collective auction
- Competitive commission rates
- Timed on-line bidding via [i-bidder.com](https://www.i-bidder.com)
- Extensive marketing both online and in the press
- Excellent facilities - hard standing site, large buildings and car parks
- National and international buyers



Clarke & Simpson Auction Centre, Campsea Ashe, Nr Wickham Market, Suffolk IP13 0PS

T: 01728 746323

[www.clarkeandsimpson.co.uk](http://www.clarkeandsimpson.co.uk)



## Ceramics and Glass

1

An early 18th Century Japanese Arita ware porcelain polychrome decorated bottle vase, decorated flowers and rockwork, 35cm high  
£60 - 100 †

2

A pair of Doulton baluster vases, having raised floral decoration on a mottled blue, brown and green ground, by Rawlings, 32cm high £40 - 60 †

3

A pair of 19th Century German porcelain figures, of a lady and gallant, wearing brightly coloured enamel decorated clothing, raised on rocaille bases, 28cm high £40 - 60 †

4

A French spelter figure, 34cms high; and a cut glass rose bowl on stand 20cm high overall (2)  
£20 - 30 †

5

An ornate 19th Century Continental pottery ewer, decorated with a central band depicting a hawking scene beneath a mask decorated scroll handle, raised on circular spread foot, 45cm high  
£80 - 120 †

6

A pair of antique Chinese baluster vases, converted to table lamps, decorated bronzed raised dragons, clouds and flaming pearls on a cream crackle glazed base, 48cm high £100 - 200 †

7

A pair of German salt glazed Westerwald pottery tavern steins, having blue foliate scroll and squared decoration on a grey ground, central GR seals, 19cm high £40 - 60 †

8

A Japanese maple leaf decorated baluster vase, 18cm high £20 - 30 †

9

A pair of 19th Century Chinese baluster vases, decorated with figures and calligraphy, raised butterfly surmounts beneath folded ring necks, 24cm high £100 - 150 †

10

A Japanese Imari bowl, decorated in the traditional manner, 24cm dia. £20 - 30 †

11

Three pieces of 19th Century French polychrome decorated faience ware, to include an octagonal jardinière and a pair of scallop bordered shallow dishes with cornucopia decoration £30 - 60 †

12

A Chinese baluster vase, decorated with lines of calligraphy, flanked by kylin handles, having scenic panels of figures in rural landscapes, 44cm high  
£200 - 300 †

13

A decorative hob-nail cut glass and gilt mounted table lamp, (converted to electricity), the font supported by four monopodia with mask heads, on a circular stepped base, 44cm dia., (some damage)  
£60 - 100 †

14

A 19th Century Paris porcelain vase and cover, profusely decorated with exotic birds perched on foliage, interspersed with sprays of flowers, flanked and surmounted by rococo design entwined handles, 55cm high overall £100 - 200 †

15

A large pair of Chinese baluster vases, decorated with figures and flowers on a yellow and green ground, 54cm high £400 - 600 †

16

A 19th Century German porcelain clock garniture, decorated with scenes of romantic couples and foliate sprays, heightened in gilt, the clock surmounted by an urn and flanked by masks above a circular enamel Roman numeral dial, supporting an 8 day movement, 35cm high; and a pair of matching posy vases, 18cm long x 12cm high, (some damage) £100 - 200 †

17

A 19th Century Chinese famille rose baluster vase, 26cm dia., and a large Chinese famille rose punch bowl, (extensively restored), 37cm dia. (2)  
£200 - 300 †

18

A small collection of 18th Century Worcester, famille rose and other tea bowls, modern Chinese tea bowls and saucers etc. £100 - 150 †

19

An Antique Staffordshire pearlware cottage moneybox, decorated with figures beside a cottage, 13cm high; and a smaller similar (2)  
£60 - 80 †

20

A 19th Century white Bisque ware pastille burner, in the form of a church with detachable top £20 - 30 †

21

A 19th Century Coalport pastille burner, of cottage form, having detachable roof with floral encrusted decoration and a smaller similar (2)  
£80 - 100 †

22

Five various Victorian Staffordshire and Coalport pastille burner cottages, mostly with floral encrusted decoration £40 - 60 †

23

Five various floral encrusted Staffordshire pastille burner cottages, some damage £40 - 60 †

24

A Leeds pottery model cottage; and four Staffordshire pastille burner cottages (6)  
£40 - 60 †

25

A Victorian Staffordshire floral encrusted pastille burner cottage, having removable burner; and three others (4)  
£60 - 80 †



Lot 1



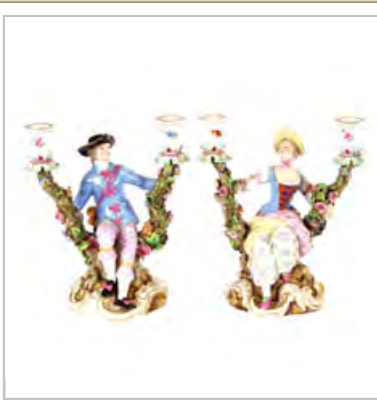
Lot 5



Lot 14



Lot 16



Lot 48



Lot 49



Lot 52



Lot 56

26

A Victorian Coalport pastille burner cottage, having pierced top and floral encrusted decoration, 15cm high; a smaller similar, 14cm high; another smaller example with detachable top; another in the form of a circular turreted building with detachable top; and another in the form of a castle, (5) £100 - 150 †

27

A Victorian Staffordshire pastille burner of pagoda form, 24cm high; another cottage example; and a Staffordshire corner cottage example, (3) £60 - 80 †

28

A Masonic etched glass rummer, decorated with symbols, raised on a circular spread foot, 12.5cm high £40 - 60 †

29

A Masonic etched glass rummer, decorated with symbols, raised on a circular spread foot, 12.5cm high £60 - 80 †

30

An etched glass Masonic rummer, decorated with symbols and monogrammed "CC", raised on a circular spread foot, 12.5cm high; and a smaller similar, (damaged), 12cm high (2) £40 - 60 †

31

Four Masonic etched glass tumblers, all decorated with symbols and initialled "G" £60 - 80 †

32

Four Masonic etched glass spirit tumblers, monogrammed GM and a hob-nail cut decorated spirit tumbler, central panel decorated with symbols and an initial "G" £60 - 100 †

33

A Masonic etched wine glass, decorated with various symbols, inscribed "INRI" and initialled with a T £60 - 80 †

34

A Masonic etched glass tumbler, of waisted form, 10.5cm high £40 - 60 †

35

A pair of Masonic etched heavy glass baluster vases, with hob-nail cut bases, etched with symbols, 15cm high, one AF £40 - 60 †

36

Three Masonic etched wine glasses, having shield motifs, raised on circular spread bases, some chips, 13cm high £30 - 50 †

37

A heavy Masonic etched glass tumbler, decorated with symbols and numbered 900, initialled "G", 8cm high £40 - 60 †

38

Four Masonic etched glass tumblers, of waisted form, 7cm high £40 - 60 †

39

Three Masonic glasses, of tapering form, etched with symbols and raised on circular spread feet, tallest 9.5cm, smallest 8cm £60 - 80 †

40

An old Framlinghamians Lodge 50th Anniversary glass, number 6646, 11cm; a small Masonic etched glass tumbler, a Southend on Sea Memorial Temple toasting glass, and various other glasses (7) £40 - 60 †

41

Twelve 19th Century tin glazed Majolica tiles, the panels depicting colourful cartouches amongst armorial style motifs, possibly Spanish, some replacements, each tile 12cm x 12cm £20 - 30 †

42

A 19th century Iznik style bowl, predominately in blue heightened with yellow and green within a panelled border, 32cm dia. £40 - 60 †

43

Two pairs of ebony candlesticks; a pair of fine opaque glass oil lamp reservoirs; and three glasses engraved with perch, trout and rudd (9) £60 - 100 †

44

A pair of late 19th Century Royal Worcester vases, decorated floral sprays heightened in gilt on a blush ivory ground, raised on circular spread feet, one AF, 20cm high £50 - 80 †

45

A pair of 19th Century French porcelain bough pots, of demi lune shape, the panels decorated with country scenes, 24cm £80 - 120 †

46

A set of four Antique cut glass pedestal salts, of boat shape, raised on faceted bases with diamond cut bands £30 - 40 †

47

Three hob-nail cut glass pedestal urns; a heavy cut glass water jug; and an ice pail (5) £60 - 80 †

48

A pair of 19th Century Meissen porcelain figural candlesticks, depicting maid and youth seated on floral encrusted branches raised on Rocaille bases, 20cm high £200 - 300 †

49

A pair of yellow tinted Loetz Art Glass vases, having dimpled effect, 20cm high £250 - 350 †

50

Three 18th Century English drinking glasses, of conical form; three smaller drinking glasses of similar date; and an engraved Antique glass mixing bowl (7) £30 - 50 †

51

A Chinese blue and white shallow dish, the central field decorated with flowers, 20.5cm dia. six character mark to base; and a Japanese plate with dragon and blossom decoration, 28cm dia. (2) £40 - 60 †

52

A Worcester baluster ewer, in the ascetic manner decorated floral sprays and butterflies heightened in gilt with branch handle, 26cm high £50 - 70 †

- 53**  
A pair of 19th Century Masonic glass decanters, with hob-nail and split decoration, triple ring necks etched with various symbols and initialled "JT", 22cm high, (odd stoppers) £100 - 200 †
- 54**  
A near pair of Masonic etched glass tumblers, decorated with symbols and etched with a monogram and initial "G" £60 - 100 †
- 55**  
An Antique drinking glass, the bell shaped bowl etched with flowers and butterflies, supported on a cotton twist stem and circular spread foot, 16cm high £100 - 150 †
- 56**  
A 19th Century Masonic mug, decorated in gilt with foliage and symbols, 14cm high £200 - 300 †
- 57**  
A 19th Century Masonic baluster mug, decorated with symbols and inscribed "No.790 Lodge BF", having enamelled floral decoration, scrolled handle, 15cm high £200 - 300 †
- 58**  
A late 18th/early 19th Century Masonic porcelain mug, decorated with symbols and scenes of figures, 12cm high £200 - 400 †
- 59**  
A late 18th/early 19th Century Masonic porcelain mug, decorated with symbols and inscribed "A heart that conceals, the tongue that never reveals", 10cm high £200 - 400 †
- 60**  
A rare and unusual Masonic creamware bullet shaped teapot, decorated with symbols, the spout and handle with moulded leaf decoration, the lid with pierced finial, with string attachment, 12cm high £200 - 400 †
- 61**  
A collection of various Doulton Harvest ware items, to include tobacco jar, jugs, teapot etc. (9) £20 - 40 †
- 62**  
Five various Doulton tobacco jars; two match strikers; a Slaters patent jug; matching sucrier; Doulton Lambeth Silicon ware; fruit bowl and a similar posy bowl (11) £40 - 60 †
- 63**  
A 19th Century ironstone "Britannicus Dresden" pattern part dinner/dessert service, comprising comports, other serving dishes, plates, pair of tureens etc., (some damage) £80 - 120 †
- 64**  
A collection of 19th Century and later glassware, to include cut glass finger bowls, etched glass examples, cut glass liqueurs, ports, kidney shaped side dishes etc., and a pair of rummers £40 - 60 †
- 65**  
A collection of various 19th Century and later Chinese tea bowls and saucers etc., (some damage) £50 - 80 †
- 66**  
A large Doulton flambe vase, decorated with desert scenes, AF, 42cm high £60 - 100 †
- 67**  
A Delft plaque, depicting winter canal scene with barges and windmills, of cartouche shape, 60cm x 67cm overall £200 - 300 †
- 68**  
A pair of Continental porcelain figures, depicting a shepherdess and a huntsman standing in front of floral encrusted trees, on naturalistic bases, 24cm high £40 - 60 †
- 69**  
A Royal Worcester tea set, contained in original silk lined box with six silver gilt spoons, circa 1930s £125 - 165 †
- 70**  
A Doulton Slaters patent baluster vase, with gilt decoration on a rich blue ground, 34cm high; a Doulton baluster vase with raised prunts decoration on a blue mottled ground; another Doulton vase of tapering form decorated flower heads on green and buff ground; and a similar jardinière 18cm high, 22cm dia. (4) £40 - 60 †
- 71**  
A Chinese blue and white plate, with central decoration of a basket of flowers with foliate and scale segment borders, 25.5cm £50 - 80 †
- 72**  
An Art Deco style smoked glass vase, with mask decoration, 19cm high x 16cm dia. £50 - 80 †
- 73**  
An Oriental Art Deco porcelain figure of a Geisha girl, in brightly coloured robes, 29cm high £40 - 60 †
- 74**  
A yellow glazed Chinese porcelain bowl, with raised decoration of dragons and prunus, 16cm dia. x 9cm high £100 - 150 †
- 75**  
A Chinese sang de boeuf double gourd shaped vase, 37cm high £100 - 150 †
- 76**  
A pair of blanc de chine figures of Guanyin, 41cm high £40 - 60 †
- 77**  
A pair of Imari baluster vases, decorated in the traditional palette, 25cm high £100 - 150 †
- 78**  
A large Imari pattern charger, 40cm dia. £80 - 120 †
- 79**  
A Chinese terra cotta teapot, of squat form, with raised floral decoration entwined bamboo shape handle and spout, 20cm £50 - 80 †
- 80**  
A large Oriental blue and white ovoid vase, decorated with dragons and foliage, 46cm high £300 - 500 †



Lot 57



Lot 58



Lot 59



Lot 60

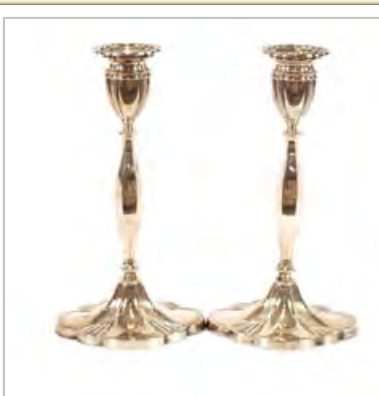




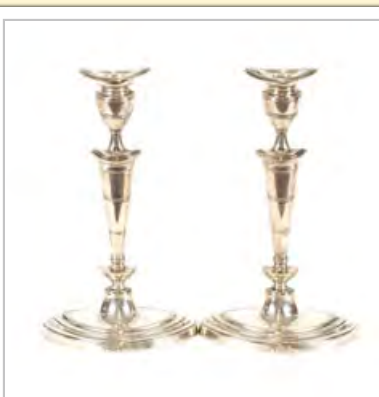
Lot 104



Lot 107



Lot 129



Lot 130

**81**  
A Chinese sang de boeuf onion shaped vase,  
38cm high £100 - 150 †

**82**  
A blue Chinese porcelain ink pot, 9cm high, the  
base 10cm dia. with six character under-glazed  
blue mark £50 - 80 †

**83**  
A cranberry glass bell, having clear glass turned  
handle, 35cm high £40 - 60 †

**84**  
A silver plated and blue opaque glass cake stand,  
with ring handle, 38cm high £40 - 60 †

**85**  
A pair of large Japanese "Kutani" pattern baluster  
table lamps, 62cm high overall £100 - 150 †

**86**  
A Chinese cloisonne baluster vase; three Oriental  
pedestal salts, decorated with brightly coloured  
enamels; and a 19th Century Chinese Imari  
pattern plate, 32cm dia.(5) £40 - 60 †

**87**  
A collection of various Victorian blue and white  
china, including Asiatic pheasant pattern plates  
etc. £60 - 100 †

**88**  
A pair of early 20th Century prism glass light  
fittings, in blue and clear glass £60 - 80 †

**89**  
A collection of various Antique glass decanters,  
some without stoppers £40 - 60 †

**90**  
A pair of heavy Antique cut glass dishes; two  
similar and two cut glass serving plates £40 - 60 †

**91**  
Seven various Victorian rummers; a double lipped  
glass rinser and a Greek key decorated pedestal  
bowl £40 - 60 †

**92**  
A large cut glass and ormolu mounted sweet meat  
jar and cover, with hob-nail decoration AF; a  
Georgian heavy glass bowl and cover; and similar  
stand; a large floral etched glass goblet inscribed  
Fiat; and a 19th Century etched glass flask,  
inscribed R. Roberts (5) £40 - 60 †

**93**  
A 19th Century Wedgwood cane ware basket; an  
18th Century double lipped sauce boat, blue and  
white with floral spray decoration, (restored); a  
Parian ware type plaque; a James Powell and Sons  
Wedgwood tureen and cover; a Victorian blue  
glazed jug with raised cameo decoration and a  
majolica cream jug with heron decoration (6)  
£60 - 80 †

**94**  
Nine Chinese Imari plates, and an oriental  
cloisonné ware bowl £40 - 60 †

**95**  
A 19th Century Imari patterned teacup and  
saucer; A Masons ironstone cram jug decorated in  
the Imari pattern with serpent handle; a pair of  
Wedgwood Majolica plates; and a Masons  
ironstone cabinet plate decorated with a parakeet  
amongst foliage (5) £40 - 60 †

**96**  
An unusual set of twelve 19th Century Chinese  
blue and white tea bowls, painted Phoenix and a  
small 19th Century Chinese Canton baluster vase  
of typical form £50 - 80 †

**97**  
Six Antique Chinese porcelain plates £60 - 100 †

**98**  
A late 18th/early 19th Century Chinese blue and  
white squat vase, densely painted with dragon,  
flaming pearl and clouds, 9cms high; and a blue  
and white provincial bowl decorated calligraphy  
(2) £80 - 120 †

**99**  
Three large decorative porcelain buttons, each  
depicting head and shoulders study of young  
beauties £20 - 30 †

**100**  
an 18th Century Meissen Marcolini period  
porcelain Brandy warmer, with wooden handle;  
another 18th Century Brandy warmer; and a  
finely painted circular French porcelain box and  
cover, decorated with landscape and ruins (3)  
£80 - 120 †

**101**  
A finely detailed late 19th Century/early 20th  
Century bisque ware nude model, having natural  
hair, 11cm long £40 - 60 †

**102**  
A Herend porcelain bullet shaped teapot; two  
Herend oval pin dishes with bird and floral  
decoration; a miniature Royal Worcester pot and  
cover; and a vintage porcelain thimble (5)  
£40 - 60 †

**103**  
A Meissen desk set, decorated with various scenes  
on a turquoise ground heightened in gilt,  
comprising ink well, pounce pot and quill holder  
on a shaped tray £100 - 150 †

**104**  
A Carlton ware 1920's lustre decorated vase,  
depicting barges on a river, 21cm high £40 - 60 †

**105**  
Three pottery chargers, decorated with designs of  
various fish; and a small unframed watercolour of  
a dog, dated 1928 (4) £30 - 60 †

**106**  
A Samson porcelain salt, in the Meissen style  
depicting a large shell supported on a swan's back,  
(some damage); a Flight Bar & Bar Worcester  
porcelain campana shaped urn, painted with floral  
sprays and gilt scrolls on a rich blue ground; a  
similarly decorated Coalport tea cup and saucer;  
and a pair of Worcester coffee cups and saucers,  
decorated birds and flowers (8) £60 - 100 †



107

A 19th Century English porcelain figure, depicting a poacher, 13cm high £40 - 60 †

108

A pair of 19th Century German porcelain figures, of male and female flower sellers, 19.5cm high; various other figures of street vendors; study of a ballerina in crinoline dress; and a romantic couple group etc., (some damage) (10) £60 - 80 †

109

A pair of blanc de chine figures of Guanyin, 17.5cm high, AF; a Chinese shallow saucer dish decorated with figures in a garden; and a Japanese bowl decorated with carp on a lake, character mark to base (4) £40 - 60 †

110

A Japanese Imari charger, 31.5cm dia.; and four Japanese Imari scalloped plates (4) £40 - 60 †

111

No Lot

112

A pair of 19th Century Chinese baluster vases, decorated in coloured enamels with scenes of warriors fighting, bronzed raised decoration to the borders with Dogs of Fo, 45cm high £300 - 400 †

113

A cut glass hinged dressing table powder jar, with floral decorated white metal mounts, 15cm dia. £50 - 80 †

114

A jade fruit carving, on hardwood base, the carving 15cm high x 20cm long £80 - 120 †

115

A jade figure of a bird, seated on a branch, raised on a carved hardwood stand, 23cm high £80 - 120 †

116

A jade baluster vase, decorated with stylised motifs, 21cm high £100 - 150 †

117

An oblong jade box and cover, 9.5cm £100 - 150 †

118

A square cut glass scent bottle, with silver mounts £40 - 60 †

119

Three glass silver and white metal mounted scent bottles £80 - 120 †

120

A 19th Century Iznik style shallow bowl, of large size painted in greens, blues and yellows with geometric ornament, 37cm dia. £40 - 60 †

121

A quantity of blanc de chine 19th Century German porcelain teaware £100 - 150 †

122-126

No Lots

## Silver and Plate

127

A Russian white metal and ivory page turner, having elephant head handle, 25cm long £40 - 60 †

128

A cased set of twelve each silver bladed fish knives and forks, *Sheffield 1930*, one knife missing; a cased set of six each plated fish knives and forks; a cased set of six each mother of pearl handled fruit knives and forks; and a quantity of steel bladed Harrods dinner knives £100 - 150 †

129

A pair of silver candlesticks, of lobed form, *Birmingham 1935*, 30cm high £300 - 500 †

130

A pair of silver candlesticks, in the 18th Century style, having detachable sconces, reeded decoration to the tapering columns and oval feet, hallmarked for *Birmingham 1919*, 29cm high £250 - 350 †

131

A Victorian silver teapot, having foliate engraved decoration, with blackwood handle and lift, 13cm high, (marks rubbed) £100 - 200 †

132

A set of four George III silver pedestal salts, having shell and beaded borders, raised on shaped feet, *London 1760* £200 - 400 †

133

A quantity of various plated cutlery, including boxed sets etc. £50 - 80 †

134

A cased set of Edwardian silver teaspoons, sugar tongs and a sifter spoon, *Birmingham 1908* £50 - 80 †

135

A set of twelve Victorian silver rose pattern dessert forks, by John & Henry Lias, *London 1860*, 24ozs. £200 - 300 †

136

A small pierced silver Dutch slice, having bird and foliate decoration £40 - 60 †

137

A pair of Edwardian silver "wishbone" sugar nips, *Birmingham 1905* £40 - 60 †

138

A late Victorian silver shell shaped butter dish, *Sheffield 1898*; and a pair of Edwardian silver shell shaped salts, *Chester 1901* (3) £40 - 60 †

139

A Continental white metal side pouring chocolate pot, of baluster form, raised on three pad feet with turned wooden handle, 17.5cm high £40 - 60 †

140

A cut glass and silver mounted powder bowl and cover, with engine turned decoration; a white metal hand mirror with bird decoration and an oval Edwardian silver hinged trinket box with gilded interior, *Birmingham 1903* (3) £60 - 100 †



Lot 131



Lot 135



Lot 136



Lot 139



Lot 141



Lot 146



Lot 149



Lot 174

**141**

A late Victorian hip flask, with leather mount, having detachable silver cup and lid, *Sheffield 1896* £60 - 80 †

**142**

An Edwardian silver cheroot case, with foliate scroll decoration and vacant cartouche, *Birmingham 1904*; and a silver mounted cigar cutter, *Birmingham 1909* (2) £60 - 80 †

**143**

A George III silver sauce boat, of oval form, raised on three hoof feet, *London 1801* £40 - 60 †

**144**

A silver Apostle handled spoon, *London 1906*; and a Dutch sifter spoon, circa 1865 (2) £60 - 80 †

**145**

A Dutch silver oval twin handled bowl, of lobed form, having import marks for *Chester 1903*, 23cm £60 - 80 †

**146**

A pair of silver knife rests, decorated with swan finials, *Sheffield 1903* £60 - 100 †

**147**

A cased silver four piece cruet set, with matching spoons, by Vale Bros. & Sermon, *Birmingham 1887*, in plush and silk lined fitted case £40 - 60 †

**148**

A Victorian silver travelling communion water jug, of baluster shape, *Sheffield 1882*, maker Walker & Hall, 11cm high £40 - 60 †

**149**

A Victorian silver table lighter, in the form of a Roman lamp, by James Charles Edington, having foliate decoration, *London 1853*, 13cm long £60 - 80 †

**150**

A collection of various silver napkin rings, 13ozs. gross £100 - 150 †

**151**

An Edwardian silver baluster cream jug, having bird beak spout with raised floral embossed decoration, central monogram and family crest, *London 1903*, 10cm high £30 - 60 †

**152**

A Dutch silver caddy, decorated with figures in an exotic garden amongst foliage scrolls, detachable lid, import marks *London 1897*, 10cm high £60 - 80 †

**153**

A Victorian silver gilt cigarette case, by George Henry James, *London 1885* £60 - 80 †

**154**

A Victorian silver and mother of pearl handled butter knife; a bone similar; a pair of silver teaspoons, possibly Newcastle 1843; a pair of silver grape scissors etc. £60 - 80 †

**155**

A collection of various silver and white metal napkin rings, including Eastern filigree work examples etc. £60 - 100 †

**156**

Nine silver hallmarked and enamel topped souvenir spoons £30 - 60 †

**157**

A pair of cased silver napkin rings, monogrammed *Chester 1918*; a pair of modern silver napkin rings, cased, *London 1989*; and a cased single silver napkin ring decorated with children on a see-saw £40 - 60 †

**158**

A Sterling silver and blue enamel salt pot; pepper bowl and spoon by David Anderson Norway and five .925 Mexico Sterling iced tea straws £40 - 60 †

**159**

A late 18th/early 19th Century Continental white metal circular box, decorated with buildings, fruit and two hoofed figures; and a small German snuff box, .800 mark to base (2) £60 - 100 †

**160**

An Edwardian silver capstan shaped inkwell, monogrammed to the lid, hallmarked *Birmingham 1910* £30 - 50 †

**161**

A pair of Antique "Gorham" Sterling grape scissors; and a pair of "Gorham" novelty tongs in the shape of a wishbone, marked Sterling (2) £60 - 100 †

**162**

A boxed silver caviar set, *Sheffield 1923* £30 - 50 †

**163**

Ten silver and enamel topped spoons, decorated horses, elephants etc. £50 - 100 †

**164**

Six Georgian silver teaspoons, *London 1796* £25 - 35 †

**165**

A set of Frank Whiting & Co. Sterling mounted glass coasters £40 - 60 †

**166**

A cased set of Swedish silver rose decorated spoons £40 - 60 †

**167**

A pair of Art Deco cut glass scent bottles, the silver mounts with engine turned decoration £70 - 100 †

**168**

A pair of Georgian silver scissor action sugar nips; two silver butter knives; various silver spoons, forks, preserve spade etc. £40 - 60 †

**169**

A silver four division toast rack, *Sheffield 1919*, by The Goldsmiths & Silversmiths Co. £40 - 60 †

**170**

A silver drum shaped mustard pot, with beaded border and crest, *London 1802*, having associated spoon and liner £40 - 60 †

**171**

Four silver and enamel miniature vases by Gorham £50 - 80 †



172

A George V silver drum shaped mustard pot, having gadrooned border blue glass liner and associated spoon, *London 1933* £30 - 50 †

173

Two silver pepper mills by Mappin & Webb, *Sheffield 1929* £30 - 50 †

174

A pair of silver fish servers, *London 1932*, having cast tail terminals £60 - 100 †

175

A silver porringer, by The Goldsmiths & Silversmiths Co. *London 1935*, with inscription £40 - 60 †

176

A small Victorian silver baluster cream jug, *Chester 1898*; and a smaller similar, marks indistinct but maker George Unite (2) £40 - 60 †

177

A block glass inkwell, with silver mount *Birmingham 1958*; and a small continental white metal stamp box £20 - 40 †

178

A George III silver swing handled sugar basket, by Peter and Ann Bateman, with foliate trailing decoration and cartouche, with associated sifter spoon, *London 1794* (2) £200 - 300 †

179

An oblong silver cased cigarette box, a smaller square shaped similar; and a presentation silver inkwell (3) £40 - 60 †

180

Six Indian white metal bowls, decorated elephants and other beasts amongst foliage £100 - 150 †

181

A Continental white metal peacock, bearing mark to fan tail, 12cm high £50 - 80 †

182

An Edwardian silver baluster pepper, *Birmingham 1902*, 12cm high £30 - 50 †

183

A Chinese silver napkin ring, with dragon decoration; and a similar Chinese silver teaspoon (2) £70 - 100 †

184

An oval silver bon bon dish, *London 1928*; and two Persian white metal pin dishes, marked (3) £40 - 80 †

185

A late Victorian glass baluster perfume bottle, with swirled decoration, silver mount, *London 1889* £80 - 120 †

186

A small Antique unmarked quaiche, decorated with a Queen Anne coin, the handles with raised foliate decoration, 14.5cm overall £60 - 80 †

187

Five various Eastern white metal items, including drink measures, two boxes, and model junk £40 - 60 †

188

A collection of various Victorian and later silver cruet items; posy vases etc. £100 - 200 †

189

An unusual Indian white metal mounted toasting fork, made from a black buck horn, the base decorated with 7 incarnations of Vishna, the terminal with black buck head motif, 50cm £60 - 100 †

190

A large glass and silver mounted powder bowl, *London 1922*; a cut glass and silver mounted cologne bottle; an oval silver trinket box, the hinged lid decorated with cherubs *Birmingham 1897*; a glass and silver mounted dressing table tidy jar, *Birmingham 1910*; a ribbed glass and silver mounted match striker; a silver posy vase; and three cruet items £70 - 100 †

191

A silver backed dressing table hand mirror, with engine turned decoration, *Birmingham 1928*; a cased set of six silver tea spoons, *Birmingham 1932*; a silver backed brush; a silver napkin ring; miscellaneous silver and plated cutlery etc. £40 - 60 †

192

A collection of various silver and plated sugar tongs, including scissor action nips £60 - 100 †

193

A set of twelve silver teaspoons and sugar tongs, by The Goldsmiths & Silversmiths Co. *London 1912* £40 - 60 †

194

A cased silver matched seven piece cruet, with matched associated spoons mostly by Walker & Hall £40 - 60 †

195

A pair of modern silver candlesticks, having detachable sconces raised on tapering column and octagonal spread feet, 25cm high, *Sheffield 1967* £160 - 200 †

196

An electro plated two handled entree dish; a plated coaster with mahogany base; a pair of plated grape scissors; a plated Guernsey jug and four pairs of nut crackers (4) £40 - 60 †

197

A George III Irish silver cream jug, having beaded border with C scroll handle, raised on hoof feet, marks indistinct £100 - 200 †

198

An Antique silver Dutch cow creamer, 10cm long £200 - 300 †

199

Two silver mounted easel photograph frames, with gadrooned border and vacant cartouche £90 - 120 †



Lot 181



Lot 189

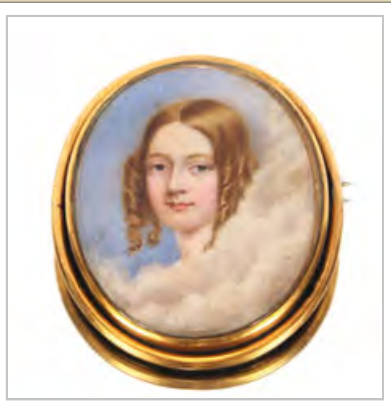


Lot 195



Lot 198

## Jewellery



Lot 200



Lot 201



Lot 214



Lot 233

**200**

A finely painted early Victorian watercolour miniature, of a young girl's head amongst clouds and sky, mounted as a brooch, 7cm £80 - 120 †

**201**

An Antique ladies 14 carat gold cased wrist watch, stamped .585; and an unusual Antique Waltham pocket watch £70 - 100 †

**202**

A heart shaped gold, enamel and pearl set pendant brooch; a double heart shaped amethyst and pearl set brooch; and a 9 carat gold chain (3) £80 - 120 †

**203**

A heavy stylised Mexican white metal bangle £30 - 60 †

**204**

A 9 carat gold ring, set with Zircons £40 - 60 †

**205**

A tortoiseshell and yellow metal pique brooch, approx. 3cm x 2cm; and a gold pendant (2) £70 - 100 †

**206**

A gentleman's heavy silver chain, approx. 50cm, 5ozs. £100 - 150 †

**207**

A silver and enamel bracelet, decorated with Viking scenes, marked .925 £80 - 120 †

**208**

A tortoiseshell and yellow metal pique brooch, approx. 4cm x 3cm £60 - 100 †

**209**

An oval enamel miniature or photograph frame, the reverse with sapphire coloured studs, by Cartier, in original box £150 - 200 †

**210**

Seven Continental yellow and white metal filigree work butterflies £20 - 30 †

**211**

A silver watch case; various miscellaneous items to include retractable quill cleaners, miniature button hook, mother of pearl handled pen knives, small glass scent bottle, a monocle etc. £60 - 80 †

**212**

A large green stone pendant, by Givenchy, Paris and New York £40 - 60 †

**213**

A bracelet, silver hallmarked with stones; and a .925 marked fossil pendant and matching ring (3) £50 - 100 †

**214**

A 14 carat gold mounted citrine and smokey topaz pendant, hung to a 14 carat gold fine link chain, total 7.8gms £100 - 150 †

**215**

A 9 carat hallmarked yellow gold ladies bracelet, set with 144 small cut diamonds, total weight 10.8gms £150 - 250 †

**216**

An antique fancy yellow diamond and 18 carat white gold ring, the central stone approx. 1/2 carat, set with six small diamonds £200 - 400 †

**217**

A finely carved 19th Century Chinese rectangular gaming counter; a similar circular counter in white metal mounts, fitted as a brooch; and a large piece of raw "butterscotch" amber, 60.2gms in weight £60 - 100 †

**218**

A vintage silver and enamel Greek order, hung to a light blue ribbon, edged in white, in fitted box, (Paris retailer) £100 - 200 †

**219**

A silver bracelet £30 - 50 †

**220**

A .925 Scandinavian silver and enamel brooch, decorated with a sleigh scene £40 - 60 †

**221**

A Scandinavian .925 silver and enamel brooch, decorated with a winter scene £40 - 60 †

**222**

An 18 carat gold sapphire and diamond ring, dated 1916, size M £100 - 150 †

**223**

A 14 carat white gold sapphire ring, marked S & M; together with a large silver and amber coloured ring £120 - 200 †

**224**

A Victorian silver brooch, decorated with an engraving of the Ancient House, Ipswich £30 - 50 †

**225**

A Scandinavian silver and enamel bracelet, decorated with Viking ships, bears etc. £40 - 60 †

**226**

A semi precious stone and white metal necklace; an amethyst necklace; a large amethyst necklace; and an American Navajo Indian tortoiseshell necklace £60 - 100 †

**227**

A Sterling silver and blue enamel bracelet, decorated with red flowers £80 - 120 †

**228**

A large silver heart shaped pendant, engraved with a ship, "Anna"; together with a silver gilt bracelet (2) £40 - 80 †

**229**

An large amethyst and silver pendant; together with a Mexican figural pendant (2) £180 - 200 †

**230**

A burr walnut trinket box, with coronet decoration to the top, stamped M & P; an amber coloured necklace with small faceted stones; and a native amber necklace £60 - 100 †

**231**

A cased set of enamel and mother of pearl decorated dress studs; various others, and a tie clip £20 - 40 †



232

An antique gold and agate bracelet; together with an amber necklace and various beads £150 - 250 †

233

A late Victorian pierced silver nurse's buckle, having profuse foliate decoration, *London 1896*, by William Hutton and Sons Ltd.; and a silver watch chain and fob (2) £60 - 100 †

234

A late Victorian silver chatelaine, the clip with pierced cherub decoration, hallmarked for *Chester 1899*, hung with Vesta, pen case and various attachments £100 - 150 †

235

A white metal pierced filigree work dish, 13cm dia., 6ozs. £60 - 100 †

236

An Antique silver and enamel decorated squeeze action snuff box, decorated with a hunting scene amongst foliate scrolls, *Chester* hallmark, 9.5cm £100 - 150 †

237

An unusual Georgian silver framed claw pendant, hallmarked *London 1803* £60 - 100 †

238

A tortoiseshell and yellow metal pique work pair of ear-rings, circa 1900s £120 - 180 †

239

A blue uncut opal and two cut opals £50 - 100 †

240

An Antique Turban pin, set coloured stones £100 - 150 †

241

A jade roundel; a ring and a hair-pin (3) £80 - 120 †

242

An Oriental glass and white metal mounted powder bowl and cover, with green hardstone terminal, profusely decorated with pierced scenes of figures and foliate, 11.5cm dia. £250 - 300 †

243

A pair of Russian white metal and enamel decorated cuff-links, with male and female head decoration £200 - 300 †

244

A yellow metal ring, set rows of baguette diamonds alternating four brilliant cut diamonds in squares, approx total weight 9gms (two stones missing) £500 - 800 †

245

An 18 carat gold ring, set approx. ¾ carat diamond with diamond set shoulders, flanked by two 18 carat white gold and diamond set eternity rings, approx. total weight 9gms (one stone missing AF) £800 - 1,200 †

246-249

No Lots

## Objects & Collectables

The following three lots relate to Frederick Robert "Bob" Gerard, 1914 - 1990 who was a racing driver and East Midlands business man who participated in numerous top level motor racing events on either side of World War 11 including 8 World Championship Formula 1 Grand Prix

250

Club International des Anciens Pilotes de Grand Prix badge, Drago Paris, plated and enamel, dia. 7cm, and three peel back CIAPGP badges, (4) £80 - 120 †

251

North West London Motor club badge, in chrome and blue enamel, 9.5cm overall; five other motor club badges - Forde Dover; Bristol MC & LCC; Derby & District; Leicestershire and Mallory Park, (6) £50 - 80 †

252

An electro plated cocktail shaker, Manco, engraved "Riley Motor Club Third Winter Trial, First Class Award", screw fitting top, 18cm high; an electro plated two handled trophy, Embassy Sheffield, engraved "Riley Motor Club Lullingstone Park 1936 Hill Climb Edgar Harrison trophy F.R. Gerard; together with a small collection of medals and plaques £40 - 60 †

253

A Japanese tin plate mechanical marionette theatre, 24cm long x 25cm high £80 - 120 †

254

A Mouseman of Kilburn cheeseboard, of octagonal form 19cm £60 - 100 †

255

A collection of Grand Tour Period plaster miniatures £40 - 60 †

256

A brass cased striking carriage clock, with white enamel Roman numeral chapter ring and foliate engraved dial, swing handle, 17cm high overall, complete with key £100 - 150 †

257

A brass tobacco box, having feint engraved decoration of Delft, 15.5cm long £20 - 40 †

258

A small Peitra-Dura platter, decorated trailing foliage, 20.5cm dia. £20 - 40 †

259

A burr walnut and gilt metal mounted scent flask carrier, with turned swivel action AF; and a cut glass perfume set in wooden and silk lined book effect box (2) £40 - 60 †

260

A Malachite chess board, and hard stone chess men £40 - 60 †



Lot 234



Lot 236



Lot 254



Lot 260



Lot 262



Lot 270



Lot 274



Lot 294

**261**

A set of modern Chinese jade chopsticks; a pair of rests in the form of dragon turtles; and a Cinnabar type red lacquered tray decorated birds and foliage  
£25 - 35 †

**262**

A Jaques of London, turned wooden chess set  
£40 - 60 †

**263**

A faux tortoiseshell and silver mounted photograph frame, decorated coronets and garlands, 20cm x 14.5cm overall  
£40 - 60 †

**264**

A pair of mother of pearl snails; a bird tureen; two miniature dolls; strawberry pin cushion and two interesting metal frames  
£30 - 50 †

**265**

A stained bone chess set, in wooden box  
£40 - 60 †

**266**

An Oriental bronze study of a seated Buddha, 10.5cm  
£125 - 175 †

**267**

An oriental resin Netsuke, in the form of a recumbent cat  
£40 - 60 †

**268**

A small lacquered album, decorated in the chinoiserie manner, containing numerous oriental watercolours on rice paper, some AF  
£40 - 60 †

**269**

An Antique miniature white metal fireman's helmet; a tape measure advertising MacFarlane Lang & Co., Rich Tea biscuits; two medical items; and an interesting miniature fishing reel made from old pennies (5)  
£40 - 60 †

**270**

A miniature vintage Teddy Bear, 7cm high  
£30 - 60 †

**271**

Interesting Boy Scouts signalling cards; four motoring cards depicting cars for hire in Portmadoc; and De La Rue pocket chess/draughts board etc.  
£45 - 65 †

**272**

An ivory cross, with scrimmed ship decoration; and a mother of pearl lucet, inscribed "Anna" (2)  
£30 - 60 †

**273**

A seal "High Admiralty of Britain"  
£50 - 100 †

**274**

A Chinese bronze censer, having stylised pierced handles, three rounded tapering feet, seal mark to base, 14cm dia.  
£80 - 120 †

**275**

Two Antique horn beakers, with scrimmed decoration, one with white metal mount  
£70 - 100 †

**276**

A 19th Century cloisonne charger, with exotic bird and floral symbol decoration, 30cm dia.  
£70 - 100 †

**277**

Four finely decorated circular mother of pearl white metal and enamel decorated military place settings  
£80 - 120 †

**278**

A silver Maltese cross decorated paper-knife; an Antique bone pen with carved dog's head terminal; a white metal oblong box inset with malacite lid; and a round stud box, the lid decorated souvenir of Great Yarmouth (4)  
£50 - 80 †

**279**

Ten Britains lead soldier figures, depicted wearing gas masks  
£25 - 35 †

**280**

A set of ebony and bone dominoes, in original box  
£25 - 35 †

**281**

Fifty five engraved circular mother of pearl gaming counters  
£60 - 80 †

**282**

Twenty figural engraved mother of pearl Oriental gaming counters, approx. 6cm x 2cm  
£40 - 60 †

**283**

A white metal stylised model of a racing car, on wooden base, bears signature  
£70 - 100 †

**284**

A carved coconut teapot, having floral decoration and a matching cup and saucer (3)  
£40 - 60 †

**285**

A 19th Century pierced brass cylindrical Eastern document case, hung to a fine link chain, 15cm long; and a 19th Century gilded copper Tibetan deity figure, having painted face, 9cm high (2)  
£30 - 50 †

**286**

An unusual mother of pearl German marked miniature World War I model bi-plane, formed as a thimble holder, complete with silver thimble; a bag of British Army badges and buttons; Football badge relating to Bolton; various other football badges etc.  
£40 - 80 †

**287**

Twenty Oriental figure engraved mother of pearl gaming counters, and ten smaller similar  
£50 - 80 †

**288**

Two Antique ivory games markers, with moving hands  
£30 - 60 †

**289**

Five interesting early coins, together with 1935 five shilling piece; enamel badge etc.  
£40 - 60 †

**290**

An 18th Century four fold Russian brass and enamel travelling icon, with fine detailed decorated, 16cm high  
£80 - 120 †

**291**

A 19th Century Mauchline ware thimble case, with transfer decoration to the lid, depicting "Sir Walter Scott's monument, Edinburgh" and containing a silver thimble; and a Victorian tartan ware cover book, "The Story of Sir William Wallace", circa 1890 (3)  
£40 - 60 †



292

A 19th Century card case, inlaid with diamond shaped mother of pearl and abalone shell  
£30 - 50 †

293

A William IV half crown, 1698; and sixpence 1887; various Victorian four pence pieces and two shillings  
£100 - 150 †

294

A leather cased travelling barometer, by C Marcks & Co.  
£40 - 60 †

295

A Liberty & Co., spot hammered pewter fruit bowl, with raised stylised decoration, designed by Oliver Baker, 23.5cm dia.  
£50 - 80 †

296

A silver Winchester College medal of merit, dated 1809, inscribed "Princeps Proponit Honorem"; a silver medallion relating to the Burgesses of Evesham; a Victorian silver crown; and various other coins  
£100 - 150 †

297

A horn beaker with silver rim, *London 1810*, having scrimmed decoration of a sailing ship  
£60 - 100 †

298

A horn beaker, with silver crest depicting a sailing ship  
£60 - 100 †

299

A horn beaker, with silver crest depicting a sailing ship  
£60 - 100 †

300

A pair of Continental .925 mark red enamel spoons, in box  
£20 - 40 †

301

A white metal box, with playing cards and a wooden miniature travelling chess set  
£40 - 60 †

302

An Iron Cross First Class, circa 1870; a spoon with Iron Cross finial and Hindenberg decorated bowl; French World War I brass gorget and an 1918 Buckingham Palace letter (4)  
£60 - 100 †

303

An Antique bone cribbage board, with scrimmed decoration of a sailing ship, inscribed "Emma"; and an Antique whale bone fid with whale decoration (2)  
£60 - 100 †

304

Six bone dice; and an advertising mirror for "Southend Kursaal"  
£20 - 40 †

305

Two Antique R.S.P.C.A. horse brasses, "Van Horse Parades 1909 and 1920"; and two large brass ornate spoons (4)  
£60 - 100 †

306

An Antique bronze plaque, depicting two women's heads  
£30 - 80 †

307

An oval box, with painted sheep decoration; and a papier-mâché nodding dog ornament (2)  
£30 - 60 †

308

A Meerschaum pipe, depicting a reclining nude female, in original fitted case  
£180 - 220 †

309

A whale bone tooth with scrimshaw ship decoration; and a scrimmed paper-knife (2)  
£50 - 100 †

310

Two Matchbox toys, in original boxes, 47 Jaguar and 73 model A Ford  
£40 - 60 †

311

An Antique silver miniature mug; and two Antique pewter measures (3)  
£40 - 60 †

312

Four rare and unusual miniature cold painted bronze flower pots, place settings marked under R & G Geschutzt, circa. early 1900's  
£280 - 320 †

313

Five rare and unusual miniature cold painted bronze flower pots place settings, marked under R & G Geschutzt, early 1900's  
£320 - 360 †

314

An 18th Century fan, with elaborately decorated struts painted on both sides with fine scenery depicting ladies and gentlemen in country landscapes  
£300 - 400 †

315

An interesting enamel bronze plaque, in red and blue dated 1939 for the Germany vs England Athletics held in Koln/Cologne in original box, approx. size 8cm x 6.5cm  
£100 - 200 †

316

An interesting silver magnifier / pencil / seal, by Sampson Mordan of *London 1903*  
£120 - 180 †

317

An 18th Century silver reliquary, in the form of a cross with figure of Christ on it, Russian marks, approx. length 6.5cm x 4.5cm wide  
£180 - 220 †

318

An 18th Century silver reliquary, in the form of a cross with various engraving including a cup, a heart, and I.H.S. approx. length 6.5cm x 4.5cm wide  
£180 - 220 †

319

A quantity of crested livery buttons, for Sandes  
£20 - 40 †

320

A 19th Century brass cased drum clock, 8 day movement, Paris maker, having visual platform escapement, 13cm high overall AF  
£40 - 60 †

321

A quantity of Britains and other lead toy soldiers  
£30 - 50 †

322

A set of four 19th century Scottish horn spoons, with white metal cartouches; a beaker; another horn and silver spoon with a thistle terminal *Chester 1948* and other Scottish horn items  
£30 - 50 †



Lot 300



Lot 308



Lot 312



Lot 313



Lot 333



Lot 334



Lot 336



Lot 337

**323**

A Japanese Meiji period ivory and shibayama brush pot and lid, surmounted by carved flowers and body inlaid with mother of pearl flowers, insects and leaves, mother of pearl signature to base, in need of some restoration including some loose decoration, 15cm high £30 - 40 †

**324**

A pair of late 19th Century coconut and overlaid cut brass sweetmeat bowls, in the manner of Erhard & Sohne decorated with scrolls and trefoil decoration on angled splayed feet, stamped M.179, 8.5cm dia. £40 - 60 †

**325**

A 19th Century French (possibly tortoiseshell) ladies patch box, of circular form, the lid inset with a miniature painting of a young lady, signed Augustin with gilt edge, plain base dia. 8cm overall £40 - 60 †

**326**

A Chinese bronze pouring vessel, in the form of a fish, the tail looping to form the handle on splayed fin feet, 17cm £30 - 50 †

**327**

A porcelain and silver mounted boot cocktail stick holder; and a wooden trinket box with applied bronzed ornamentation (2) £30 - 50 †

**328**

An unusual 19th Century mahogany boxed instrument, used for parfilage, 29cm long £100 - 200 †

**329**

A carved olive wood trinket box, and contents to include a mother of pearl needle case, silver and plated napkin rings, a silver handled button hook etc. £20 - 30 †

**330**

A lacquered and gilt decorated box, and contents of bone chess pieces £60 - 100 †

**331**

A painted wooden matchbox holder, decorated with a coat of arms; a Bryant & May tin matchbox holder, decorated with a picture of Fairfield Works, Bow; and a silver matchbox holder decorated with a Yarmouth scene 1902 £80 - 100 †

**332**

A pair of 19th Century Eastern carved spherical Areca Palm nuts, in the 18th Century style, finely decorated with song birds amongst foliage, the tops with faux white metal stiff leaf capitals, 10cm dia. £40 - 60 †

**333**

An Antique bronze model of a field cannon, makers mark to base £150 - 250 †

**334**

A bronze model of a cannon, makers mark to base £150 - 250 †

**335**

A pair of 19th Century portrait miniatures, of the Rvd Russell Skinner and Mrs Russell Skinner, information on labels verso; and a small oval miniature portrait study of Annie Victoria Sophia Skinner (3) £100 - 150 †

**336**

A small Chinese carving of a frog, seated with a serpent £40 - 60 †

**337**

Two half shillings, South Africa 1896; two half shillings South Africa 1897; German five mark coin, 1936; and a Nelson coin, 1812 (5) £80 - 120 †

**338**

A gold stick pin, with bone skull terminal £30 - 60 †

**339**

A pair of Oriental cloisonne shallow bowls, having prunus decoration, 14cm dia. £20 - 40 †

**340**

A large Japanese cloisonne baluster vase, decorated with flowers and geese on a pink ground, 34cm high, (some damage) £30 - 40 †

**341**

A Chinese bronze censer, with raised decoration of figures and symbols, flanked by beast handles, the lid surmounted by a kylin, with seal mark to base, 13cm high £40 - 60 †

**342**

A 19th Century fruitwood travelling watch case, of temple shape £60 - 100 †

**343**

An ivory necessaire, with some fittings, bearing white metal plaque with inscription £60 - 100 †

**344**

Thirteen volumes of antiquarian leather bound music scores £200 - 300 †

**345**

A box of miscellaneous antique engravings £20 - 40 †

**346**

Sixteen volumes of bound Victorian and Edwardian newspapers, The Graphic Pall Mall Budget etc. £150 - 200 †

**347**

Two boxes of miscellaneous antiquarian books £150 - 250 †

**348**

Twenty eight volumes of The London Illustrated News £300 - 400 †

**349**

Ten volumes of antiquarian books, including History of Somerset, History of Essex, Historic Memoirs of Tiverton; Family Bible; History of Dorset etc. £100 - 150 †

**350**

A large quantity of French antique fine bindings £150 - 250 †

**351**  
Four Volumes French Fashion Catalogues, circa.  
1900 £100 - 150 †

**352**  
"A Sportsmans Bag", Country Life limited  
edition £20 - 40 †

**353**  
1679 The Holy Bible, J O Bill red ruled fine  
binding, Old Testament only £150 - 250 †

**354**  
Ordnance Survey, quarter inch Atlas of Great  
Britain; Cottam Charts of the Constellations; and  
a Victorian Scrap book £40 - 60 †

**355**  
An 18th Century leather bound book of  
Common Prayer £50 - 80 †

**356**  
1811 Book of Common Prayer, in fine binding  
£300 - 400 †

**357**  
Boswell, Picturesque Views and Antiquities of  
England and Wales 1786 £120 - 180 †

**358**  
Lloyds Register of British and Foreign Shipping,  
1st July 1855 - 30th June 1856, bound in full dark  
green leather £100 - 150 †

**359**  
Pacata Hibernia; Or A History of the Wars in  
Ireland During the Reign of Queen Elizabeth,  
two volumes £200 - 300 †

**360**  
Gardner F Williams, Diamond Mines of South  
Africa 1905, two volumes bound in three quarter  
leather with marbled boards £40 - 60 †

**361**  
A King James Bible, with copper mounts and  
clasps £150 - 250 †

**362**  
1798 The History of Framlingham, calf leather  
over marblised boards, lacking plate of Saxtead  
Church £40 - 60 †

**363**  
Arthur Rackhams Book of Pictures 1913  
£50 - 80 †

**364**  
1814 Nymphidia The Court of Fairy, by Michael  
Drayton limited to 100 copies, bound in full  
leather £40 - 60 †

**365**  
R Hunt & Co., nine bound Agricultural  
Equipment catalogues 1907, fine binding  
£40 - 60 †

**366**  
Syria and The Holy Land, illustrated in a series of  
magnificent engravings, two volumes bound in  
one, red half leather over cloth boards  
£200 - 300 †

**367**  
1650 Pseudodoxia Epidemica: Or Enquiries Into  
Very Many Recieved Tenents and Commonly  
Presumed Truths, 2nd edition hardback,  
professionally rebound in brown cloth £20 - 40 †

**368**  
The Works of Tennyson, Eversley edition nine  
volumes, signed presentation by Hallam Tennyson  
£40 - 60 †

**369**  
A late Victorian / Edwardian photographic  
album, in Velum fine binding £40 - 60 †

**370**  
16th Century part complete back letter copy of  
Volume 1 of Froissart's Chronicles £40 - 60 †

**371**  
A 19th Century woolwork picture, of a ship in full  
sail, contained in a maple frame, image 21cm x  
27cm; and a small 19th Century framed and  
glazed sampler (2) £60 - 100 †

**372**  
A late 19th Century Egyptian textile wall  
hanging, depicting an ancient Egypt scene, 142cm  
long £40 - 60 †

**373**  
A brass universal equinoctial ring dial, the  
meridian ring with sliding suspension, circa  
18th/19th Century, 23cm dia.; a "Groskerys"  
Station or position finder and another dialled  
scientific instrument, (3) £60 - 100 †

**374**  
A 19th Century South Sea Islands wooden hand  
club, with geometric decoration, 69.5cm long  
£200 - 300 †

**375**  
A William IV painted wooden truncheon, or life  
preserver, the painted black shaft with Crown and  
W.R.IV, 55cm long £50 - 80 †

**376**  
A 19th Century mahogany banjo barometer,  
having silvered dials, 110cm £80 - 120 †

**377**  
A Victorian mahogany drop dial wall clock, by  
F.E. Last of Abergavenny, having single fuse  
movement and visual pendulum, 53cm overall  
£150 - 250 †

**378**  
A pair of 19th Century copper and plated three  
light candelabra, of rustic design, surmounted by  
bird finials, 33cm high £40 - 60 †

**379**  
A pair of unusual brass candlesticks, formed from  
WW2 bomb detonators and raised on square  
socles and circular mahogany bases, 21cm high  
£30 - 40 †

**380**  
A Tudric pewter for Liberty & Co. mantel  
timepiece, having stylised floral decoration, 24cm  
high £1,000 - 1,500 †

**381**  
An Edwardian eight day mantel clock, in  
mahogany case £30 - 50 †



Lot 340



Lot 341



Lot 379



Lot 380





Lot 387



Lot 389



Lot 393



Lot 405

382

A late 19th / early 20th Century Lignum tobacco jar and cover, of circular form, slender finial and reeded edges, 14cm high x 17cm dia. overall  
£30 - 40 †

383

A George III mahogany, rosewood and brass banded writing slope, flanked by sunken carrying handles, 40.5cm wide  
£50 - 100 †

384

George Jensen, Denmark, white metal and light wood candleholder, 36cm high; and another smaller example, 29cm high (2)  
£50 - 80 †

385

A Victorian mahogany cased Admiral Fitzroy's barometer, 96cm overall  
£100 - 150 †

386

A pair of late 18th Century brass chargers, with Fleur de Lys and stag designs within a Prince of Wales feathers border and folded rims, 30cm dia.  
£20 - 40 †

387

A 19th Century French brass mantel clock, surmounted by an urn with ram's head mask and pineapple finials, the whole decorated with scrolling ribbon and swags, circular dial with enamel Roman numerals, supporting an 8 day movement striking on a bell, 38cm high  
£80 - 120 †

388

A 19th Century Chinese carved wood mould, finely tooled with emblems, 47cm long; and a circular Chinese hand-painted porcelain plaque suspended on a carved rosewood stand, 32cm high (2)  
£80 - 120 †

389

A 19th Century French ormolu mantel clock, with Sevres type panels, decorated with flowers and objects, surmounted by an urn finial, circular Roman numeral dial supporting an 8 day movement striking on a bell, raised on a gilt platform base, 40cm high overall  
£100 - 200 †

390

An early 20th Century oak cased and brass mounted bracket clock, having pierced foliate decoration with pineapple finials, the top surmounted by a carrying handle enclosing a brass engraved 8 day movement, striking on a gong, raised on scrolled feet, 37cm high x 23.5cm wide overall  
£100 - 150 †

391

An early 20th Century gilt bronzed figure, possibly of the cowboy Wyatt Earp with hat, pistol, belt and boots on slate circular sockle, 24cm high  
£30 - 50 †

392

A pair of late 18th / early 19th Century French Ormolu candlesticks, in the Rococo manner decorated with C scrolls and rocaille design, 27cm high  
£40 - 60 †

393

A 19th Century French gilt metal mantel clock, decorated with Sevres style porcelain panels, surmounted by doves and ornaments, circular Roman numeral dial supporting an 8 day movement striking on a bell, 29cm high  
£100 - 200 †

394

A late 19th Century oak cased circular wall clock, the painted dial inscribed "K.R. Ingram, Braintree", spring driven movement, 27cm dia., AF  
£30 - 50 †

395

A 19th Century mahogany banjo barometer, of slim proportions, by R.D. Gant of Woodbridge, with silvered dials beneath a scrolled broken arch pediment with brass urn finial, 97cm  
£100 - 200 †

396

A 19th Century mahogany and satinwood inlaid elliptical tea caddy, the lid with conch shell paterae and oval inlaid panel around the escutcheon, 15.5cm long x 11.5cm high; and a 19th Century mahogany sarcophagus shaped two compartment tea caddy, AF (2)  
£60 - 80 †

397

A cased display of Great Barrier Reef coral  
£30 - 50 †

398

Two Antique copper coal helmets; a pair of elm bellows etc.  
£20 - 40 †

399

An Antique elm doll's cradle, complete with a celluloid doll  
£40 - 60 †

400

An Antique copper two gallon jug, 34cm high  
£30 - 60 †

401

A pair of Antique brass ecclesiastical candlesticks, of circular fluted form, decorated with coloured hardstones, converted to table lamps, 45cm high  
£80 - 120 †

402

A brass Arts & Crafts design three handled planter, 18cm high, 22cm dia. overall  
£20 - 40 †

403

A late 19th Century Japanese parquetry table cabinet, enclosed by lacquered hinged doors revealing an arrangement of interior drawers, deep drawer below flanked by carrying handles, 24cm wide  
£30 - 50 †

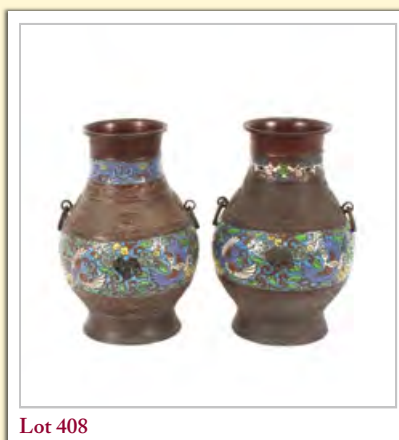
404

A Chinese red lacquered table cabinet, of small size, the doors opening to reveal an interior arrangement of small drawers, further drawer below on bracket feet, 14cm wide; together with another limed oak table cabinet with doors and drawers (2)  
£30 - 60 †

405

P.J. Mene, a bronze figure group depicting fighting stags, raised on oval marble plinth, 43cm long, 19cm high overall  
£500 - 800 †

- 406**  
A large book, "Vivian Westwood Green Eyes"  
limited edition £200 - 400 †
- 407**  
An Antique flintlock rifle, of Indian manufacture,  
having brass mounts with integral ram rod, 165cm  
long £60 - 80 †
- 408**  
A pair of late 19th / early 20th Century Chinese  
bronzed and cloisonné panel vases, of baluster  
form decorated with mythical birds, Greek key  
and mask designs flanked by a pair of ring  
handles, 30cm high £50 - 80 †
- 409**  
A Chinese carved soapstone figure of a Sage,  
35.5cm high £40 - 60 †
- 410**  
A leather covered dispatch box, by W. Leuchars &  
Son, Piccadilly; and a leather travelling toilet case  
(2) £20 - 40 †
- 411**  
A decorative carved wooden rocking horse,  
124cm long x 84cm high £60 - 80 †
- 412**  
A 19th Century French marble mantel clock, of  
architectural form, the circular white enamel  
Roman numeral dial with visual escapement,  
supporting an 8 day movement striking on a bell,  
43.5cm wide x 27cm high £40 - 60 †
- 413**  
A pair of Coalbrookdale pricket sticks, having  
pierced decoration and raised on figural supports,  
18cm £120 - 160 †
- 414**  
Two Eastern wooden circular boxes, with naive  
painted decoration £20 - 30 †
- 415**  
An enamelled glass goblet, with cavalier  
decoration; a Russian papier-mâché and lacquered  
egg; and a gilt frame decorated with coronet (3)  
£40 - 60 †
- 416**  
An Antique grained pine doll's crib, 47cm long x  
34cm high, containing a vintage monkey toy and  
bed linen £40 - 60 †
- 417**  
An Antique Aboriginal boomerang, kangaroo and  
other decoration, 53cm long £20 - 60 †
- 418**  
A large African figurely carved polychrome  
decorated mask, 84cm long £40 - 60 †
- 419**  
An antique wooden and metal mounted dough  
trough, 72cm long £50 - 80 †
- 420**  
An unusual late 18th/early 19th Century Chinese  
carved hardstone footed bowl and cover, in  
celadon green and russet, with finely tooled lapets,  
18cm dia. x 16cm high overall £300 - 500 †
- 421**  
An Antique Chinese pottery figure of a female  
attendant, olive green glaze, 30cm high; and a  
similar pottery model of a chest of drawers, 22cm  
high, traces of iridescent green glaze, both possibly  
Tang dynasty (2) £80 - 120 †
- 422**  
A Chinese hardwood and white metal inlaid  
figure, of an immortal, 30cm high £40 - 60 †
- 423**  
An Antique Plique-A-Jour glass bowl; and a  
Chinese metal mounted jade bowl (2) £80 - 120 †
- 424**  
A 19th Century Masonic carved horn and white  
metal mounted beaker, decorated various symbols  
and inscribed "5755", 10cm high £100 - 200 †
- 425**  
An Oriental bronze figure of a seated Buddha,  
28cm; and a smaller example, 17cm, (2) £30 - 60 †
- 426**  
A Chinese green hard stone figure of an  
immortal, 24cm high; and a similar study of a  
horse 13.5cm high, 16.5cm long £40 - 60 †
- 427**  
A 19th Century brass and iron footman, with  
pierced top edge and frieze with moulded edge on  
bulbous cabriolet front supports and trefoil out  
swept feet united by stretchers, 39cm wide  
£40 - 60 †
- 428**  
A pair of wrought iron "Pig Tail" candlesticks, in  
the 18th Century taste, with spiral stems, rotating  
adjusters and swept tripod supports, 36cm high  
£30 - 50 †
- 429**  
A 19th Century brass fender, having pierced  
decoration, 156cm £40 - 60 †
- 430**  
A large Oriental brass figure, depicting a deity,  
90cm high £300 - 500 †
- 431**  
A French biscuit ware blanc de chine figure of a  
naked maiden, drying herself, 78cm high  
£250 - 350 †
- 432**  
A Chinese gilt bronze figure, of a seated deity,  
32cm high £400 - 600 †
- 433**  
A preserved Rudd in bow fronted gilt decorated  
case, inscribed to the front, "Rudd 1lb 12ozs.",  
with paper label "Rudd 1lb 12ozs. taken by S.R.  
Porter on Horsey Mere, 6th August, 1935", case  
47cm x 29cm overall £300 - 400 †
- 434**  
A preserved Roach in bow fronted gilt decorated  
case, labelled "Roach 1lb 13ozs. taken by S.R.  
Porter at Pankborn 30th October, 1932", case  
49cm x 29cm overall £300 - 400 †



Lot 408



Lot 432



Lot 433



Lot 434



Lot 435



Lot 436



Lot 442



Lot 450

435

A preserved Perch in straight fronted gilt decorated case, inscribed "Perch 2lbs 2ozs" with paper label "Perch 2lb 2ozs. taken by S.R. Porter, Claydon 4th September 1927", case 49cm x 30cm  
£300 - 400 †

436

A preserved Chubb, in glazed bow fronted case, inscribed "Chubb, 3lb 8ozs. catch by S.R. Porter, March 1956 at Downton" with paper label on the interior for W.F. Homer, London, case 67cm x 34cm overall  
£300 - 400 †

437

A pair of decorative copper and spelter baluster ewers, 25cm high  
£20 - 30 †

438

An Antique wooden decoy duck  
£20 - 30 †

439

A pair of hammered copper Arts & Crafts design posy vases, 21cm high  
£20 - 30 †

440

A quantity of various large sea shells, including a scrimmed example depicting whales and a whaling ship  
£20 - 40 †

441

A 19th Century Indian heavily decorated copper spice canister and lid, with snake finial; a brass figure of an Indian lady and a 19th Century Hindu mask with loop suspension (3)  
£30 - 50 †

442

A Chinese bronze Dog of Fo seal, 19cm high  
£100 - 150 †

443

A carved wooden figure of Guanyin, 58cm high  
£50 - 80 †

444

A Chinese blue and white porcelain plaque, depicting figures in a garden, 91cm x 37cm  
£150 - 250 †

445

A pair of Chinese watercolours, depicting figures in landscapes, 74cm x 46cm  
£200 - 400 †

446

A 19th Century carved wooden three section herb box, 35.5cm  
£80 - 120 †

447

Two 19th Century Middle Eastern engraved tinned copper ewers, the tallest 40cm and an early spherical shaped tinned copper bowl, engraved with animals within roundels, 15cm high  
£40 - 60 †

448

Two heavily carved 19th Century South Asian Buddhist brass bowls, the largest 15cm high  
£30 - 50 †

449

A late 19th Century Russian brass ewer, marked under lid; two Islamic copper bowls; a copper under-plate and an Hindu mixed metal bowl (4)  
£30 - 50 †

450

A large finely carved 19th Century Chinese hardwood figure of Guanyin, 55cm high  
£100 - 200 †

451

A well carved West African wood fertility figure, having glass eyes, 44cm high  
£60 - 100 †

452

A 17th Century style sheet copper charger, the borders with embossed stylised artichoke, strawberry and leaf ornament with beaten centre, possible South European 31cm dia.  
£30 - 50 †

453

A 19th Century vizagapatum oblong box, with cube decoration, 29cm  
£60 - 80 †

454

Four Regency reverse paintings on glass, depicting country pursuits  
£200 - 300 †

455

A Victorian burr walnut Tunbridge ware banded jewellery box; a small Indian hardwood brass inlaid trinket box; a pair of Victorian brass candlesticks; and a Victorian papier-mâché swing handled fruit basket  
£40 - 60 †

456

A large Chinese carved hardwood box, profusely decorated with flowers, 36cm x 29cm  
£150 - 200 †

457

A pair of Chinese bronze vases, decorated with calligraphy flanked by angular handles, 22cm high  
£200 - 300 †

458

A carved soapstone group on wooden base, 17cm long overall x 14cm high  
£50 - 80 †

459

A large Chinese bronze baluster censer, with ring handles and floral motifs, 26cm high x 37cm dia. overall  
£300 - 400 †

460

A Chinese hardwood table screen, with hardstone central panel, 23.5cm high x 22cm wide  
£100 - 150 †

461

An Oriental cloisonne octagonal vase, profusely decorated with flowers, 15cm  
£40 - 60 †

462

A small Chinese bronze censer, having elongated handles, raised on a separate base, 16cm long overall x 11cm high  
£200 - 300 †

463

A pair of classical style bronze campana shaped urns, decorated with semi naked figures and foliage, on square plinth bases, 33cm high  
£450 - 550 †

464

A gilded iron model of a seated Buddha, 35cm high  
£100 - 150 †

465

A small bronze figure of a crab, 10cm long overall  
£80 - 120 †



466

A small bronze figure of a bulldog, 8cm long x 6cm high £50 - 80 †

467

A small Japanese bronze articulated figure of a Locust £100 - 150 †

468

A Chinese ball shaped white metal censer, having pierced decoration depicting birds and foliage, hung to a fine link chain £50 - 80 †

469

An unusual miniature bronze plane, 8.5cm long £50 - 80 †

470

A French fan, having painted decorated panels depicting figures playing cards £80 - 120 †

471

A Chinese bronze pierced censer, having swing handle, 14cm dia. x 13cm high £150 - 250 †

472

A set of Antique bone dominoes £20 - 40 †

473

An antique iron rush light stand, with ratchet adjust (later conversion) £40 - 60 †

474

A 19th Century mahogany and brass inlaid drop dial wall clock, circular white enamel dial with Roman numerals, single fusee movement with visual pendulum, 47cm overall £100 - 200 †

475

A large Chinese bronzed circular gong, decorated calligraphy, 48cm overall £100 - 150 †

## Pictures & Prints

476

Seven Chinese watercolours, on fabric, each one depicting flowers and artefacts, 52.5cm x 32cm £800 - 1,000 †

477

Late 19th / early 20th Century school, rural studies depicting a village street with huntsman and hounds and figures in a cart, unsigned watercolours, a pair 27cm x 42cm £60 - 100 †

478

John, study of a pointer in wooded landscape, signed oil on canvas, 40cm x 49cm £20 - 30 †

479

Houston Smith, study of fishing vessels and a steam tug at a busy harbour, signed watercolour dated 1911, 24cm x 36cm £40 - 60 †

480

19th Century school, study of a scholar with book walking along country lane, unsigned oil on canvas, unframed, 22.5cm x 28cm £40 - 60 †

481

Follower of Thomas Gainsborough, East Anglian woodland stream with cattle at dusk, unsigned oil on canvas, unframed 30cm x 22cm £80 - 120 †

482

John Piper, limited edition embroidery, Coventry Cathedral 1940, designed and woven by J & J Cash Ltd. pencil signed on mount No.228/500, 11.5cm x 14cm £200 - 300 †

483

William Russell Flint, pencil signed coloured print, semi naked girl seated by the fore shore, blind stamp to margin, (unframed) £40 - 60 †

484

William Russell Flint, pencil signed print, study of a reclining naked girl, blind stamp to margin £40 - 60 †

485

A 1742 Antique Cityscape engraving, AF (unframed) £30 - 50 †

486

Manner of George Armfield, "Terriers at A Rabbit Hole" oil on canvas laid on board Tondo 32cm £100 - 150 †

487

English school 19th Century, study of a pretty girl holding a birds nest oil on canvas, 45cm x 55cm £150 - 250 †

488

Attributed to Paul Van Liender, Travellers on a country road, sepia watercolour, 31.5cm x 28cm £40 - 60 †

489

Paul Oppenheim, Thames near Henley, pencil and wash study, initialled and dated 1985, gallery label verso, 30cm x 40cm £40 - 60 †

490

Late 19th Century school, study of a seated elderly gentleman reading a book, unsigned oil on canvas, 50cm x 60cm, contained in a decorative gilt frame £300 - 400 †

491

Victorian school, portraits of a lady and gentleman, oils on canvas a pair, unframed 53cm x 43cm £120 - 160 †

492

19th Century school, study of Stirling Castle, unsigned oil on canvas, 42cm x 52cm, label verso relating to the Lupton family £100 - 200 †

493

After J. Houbraken and Van Dyke, portrait engraving prints of William Russell Earl of Bedford and John Pym, Esq., and an Antique French court print entitled "L'Heure du Midi" £40 - 60 †

494

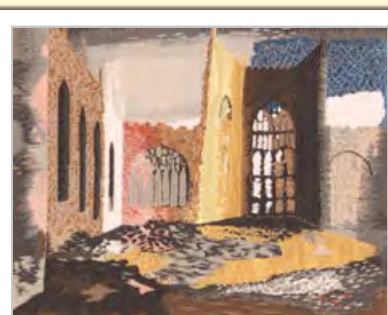
Kovacic 1972, reverse painting on glass, wintry landscape with bird in the foreground, buildings and river beyond' signed' 34cm x 38cm £100 - 150 †

495

David Holleman, (American), framed mosaic picture, mainly in blue, entitled "Joker and Warrior", circa 1960, 52cm x 47cm overall £100 - 200 †



Lot 476



Lot 482



Lot 490

Lots marked ✓ please refer to Droit de Suite royalty charges in Terms and Conditions

† Each lot is subject to a Buyer's Premium of 18% + VAT (21.6%)



Lot 499



Lot 517



Lot 525

496

Attributed to E.R.Smythe, study of a horse and rider outside a snow bound country cottage, unsigned oil on board, 23cm x 34cm £150 - 250 †

497

Early 20th Century school, study of ducks in flight disturbed by a fox; and another of ducks swimming with fox watching in the background, a pair, unsigned oils on canvas, 35cm x 24cm (2) £40 - 60 †

498

Indian (Mogul) school, painting on fabric depicting ruler on throne surrounded by courtiers, floral decorated border, 71cm x 92cm £50 - 80 †

499

Dutch school, a study depicting a market place in summer and another depicting a winter scene, indistinctly signed, oils on canvas, 60cm x 49cm, a pair £100 - 150 †

500

W.L. Wylie, A.R.A., etching depicting an extensive view of the battle of Trafalgar, published 1893 by the Fine Arts Society, 110cm x 61.5cm in extremes £40 - 80 †

501

James Govier, A.R.C.A. (1910-1974), Swansea school artist, study of young calves beneath a tree on a windy day, oil on canvas, 89cm x 61cm N.B. Exhibited Swansea 1937 £100 - 200 †

502

Six late 18th/early 19th Century Japanese wood cuts, depicting ladies in various pursuits, (two framed as one) £100 - 200 †

503

Valerio Rotini, oil on canvas rural study with a figure on a path, 39cm x 80cm £20 - 40 †

504

Jules Jacquet, pencil signed etching of a artist sketching French soldiers in a courtyard, pencil signed with back stamp to margin and vignette, plate 47cm x 38cm £40 - 60 †

505

J.Box 20th Century, study of a King Charles spaniel, signed oil on canvas laid on board, 29.5cm x 41cm £30 - 50 †

506

Tom Caspers, still life with fruit and basket on a stone ledge, signed oil on canvas laid on board, 46cm x 60cm £50 - 80 †

507

18th Century school, Old Master pen and ink drawing of a nude man on rockwork £30 - 50 †

508

Arturo Orselli, "A New Pair of Shoes", signed watercolour, 22cm x 35cm £40 - 60 †

509

Two 18th Century hand coloured maps, one of Essex by John Kerry; the other, Exeter to Truro by John Ogilby, the image 34cm x 45cm £50 - 100 †

510

After Constable, study of Dedham Lock, unsigned oil on canvas, 60cm x 49cm £80 - 120 †

511

Sidney Vale, studies of trains signed watercolours, 13cm x 17cm (4) £70 - 100 †

512

19th Century school, study of a woodman, watercolour, 50cm x 35cm, contained in a gilt frame; and an Antique silkworks study of a similar subject, AF, (2) £60 - 80 †

513

Albert Bowers, sepia, watercolour studies of rural scenes, signed, 43cm x 35cm, a pair £40 - 60 †

514

19th Century school, study of village with church and figures walking across a heath, signed watercolour, oval, 9cm x 12cm in extremes; and a pair of pencil and charcoal sketches depicting country cottage and an Inn with figures, ovals, 9cm x 13cm (3) £30 - 50 †

515

19th Century school, study of a figure outside of a cottage, indistinctly signed watercolour, 27.5cm x 24cm; and another similar depicting figures and horses outside a thatched country cottage, 23cm x 34cm (2) £40 - 60 †

516

English school 19th Century, study of a fighting cock, oil on canvas, 49cm x 23cm £200 - 400 †

517

Manner of Claude Monet, study of a train station, oil on panel unframed, 32cm x 39cm £100 - 150 †

518

Manner of William Mulready, ragamuffin boy with dog and broomstick leaning against a wall, oil on canvas, 56cm x 40cm £120 - 160 †

519

After Pollard, a set of four 19th Century coloured cock fighting prints £100 - 150 †

520

H.F. Silburn, "Cumberland House, St. Helen's Street, Ipswich" and "Major's corner, Ipswich", oils on board, monogrammed, 11cm x 14cm (2) £40 - 60 †

521

Attributed to Wilson, study of a young boy with basket of produce balanced on his head, attendant dog nearby, unsigned watercolour, 17cm x 14.5cm, contained in an ornate gilt frame £50 - 80 †

522

Attributed to George Frost, pencil sketches of work-horses, a pair £60 - 100 †

523

William Cruickshank, a pair, still life with pheasants and hare in game larder, signed watercolours on ivory, 11cm x 8cm £200 - 300 †

524

After James Hardy, "Spare dogs on the moor"; and another "Spare dogs the Stubbles", coloured prints, a pair £40 - 60 †

Lots marked ✓ please refer to Droit de Suite royalty charges in Terms and Conditions  
† Each lot is subject to a Buyer's Premium of 18% + VAT (21.6%)



525

**John Lochhead**, R.B.A., study of a river scene with boats in the foreground and cottages, possibly Cambridgeshire, signed oil, 30cm x 39cm

£100 - 150 †

526

**Garnham**, study of boats at low tide, signed watercolour, 32cm x 46cm

£30 - 50 †

527

**Terence James Bond**, born 1946, study of a kingfisher, signed watercolour, 25cm x 32cm

£100 - 200 †

528

**Terence James Bond**, born 1946, study of a grey wagtail, signed watercolour, 32cm x 22cm

£100 - 150 †

529

**Terence James Bond**, born 1946, study of a house sparrow, signed watercolour, 13cm x 22cm

£100 - 200 †

530

**Mark Meynell**, duck in flight, signed watercolour dated 1936, 30cm x 24cm

£60 - 80 †

531

**P. Bigny**, study of squirrels, signed watercolour, 25cm x 35cm

£40 - 60 †

532

**After George Armfield**, a pair of studies depicting terriers hunting, unsigned oils on canvas, 19.5cm x 24.5cm

£200 - 300 †

533

**Pablo Morbiducci 1889-1963**, study of an old lady reading a book, oil on canvas signed and dated '44, 33cm x 30cm

£80 - 120 †

534

**Abraham Hulk Junior 1851-1922**, wooded winter landscape with a child collecting faggots, oil on canvas signed 45cm x 30cm

£100 - 150 †

535

**Manner of John Ferneley 1781-1860**, study of a chestnut hunter in a landscape, oil on canvas 29cm x 45cm

£180 - 220 †

536

**Sidney F Cook**, steamer and fishing boats off the coast, oil on canvas signed and dated 1918, 34cm x 61cm

£60 - 80 †

537

**After H. Pether**, Ship at moonlight with figures on a beach, castle in the far ground, unsigned oil on canvas, 35cm x 29cm

£100 - 200 †

538

**Herbert St John Jones 1870-1939**, prize bull in a landscape, oil on board inscribed verso 11cm x 17cm

£100 - 150 †

539

**Continental school 19th Century**, cockerel and chicks in a landscape, oil on heavy panel 26cm x 34cm

£120 - 160 †

540

**William Thornley 1857-1935**, coastal scene with shipping, Whitby Abbey beyond; and another coastal scene, oils on canvas a pair, both signed 30cm x 60cm

£300 - 400 †

541

**English School mid 19th Century**, ship wreck in a storm, wreckers under cliffs on the foreshore, oil on canvas 24cm x 35cm

£120 - 160 †

542

**Attributed to Philip Reinagle 1749-1833**, a wooded landscape with a spaniel and two pheasants, oil on canvas, 29cm x 44cm

£200 - 400 †

543

**A. Tripp**, study of a woodland river scene, signed oil on canvas, 24cm x 34cm

£60 - 80 †

544

**G Horway**, study of flowers on a bank, signed watercolour dated 1877, an oval 23cm x 27cm in extremes

£40 - 60 †

545

**English school circa. 1900**, a long horned bull in landscape, oil on canvas 50cm x 60cm

£300 - 400 †

546

**An 18th Century map of the "Sherifdome of Fyfe"; and another of Sterlinshyr (2)**

£100 - 150 †

547

**Francis E Jamieson 1895-1950**, "View on the Lower Reaches of The Thames", oil on canvas signed 50cm x 75cm

£80 - 120 †

548

**Edward Charles Williams 1807-1881**, extensive landscape with ducks on a pond in the foreground with figure by a cottage beyond, oil on panel 53cm x 79cm

£250 - 350 †

549

**W. Kikúts**, study of cottage and barns by a river bank, signed oil on canvas, dated 1946, 40cm x 49cm

£60 - 100 †

550

**William Marsden**, 19th Century oil on canvas laid on board, study of a gentleman with a hawk on his arm and dog at his feet, signed 64cm x 44cm

£120 - 160 †

551

**Flemish school late 18th Century**, head and shoulders portrait of a cavalier oil on canvas 52cm x 45cm

£120 - 160 †

552

**Neapolitan school 19th Century**, head and shoulders portrait study of a pretty girl, oil on canvas indistinctly signed 35cm x 23cm

£80 - 120 †

553

**19th Century school**, study of a rural scene with cottage, man and dog, and sheep, church in the far ground, label verso, "By Appointment to H.R.H Prince of Wales, George IV", circa 1830, 33cm dia. overall, in fine gilt frame

£40 - 60 †

Lot 532

Lot 535

Lot 537

Lot 548

Lots marked ✓ please refer to Droit de Suite royalty charges in Terms and Conditions

† Each lot is subject to a Buyer's Premium of 18% + VAT (21.6%)

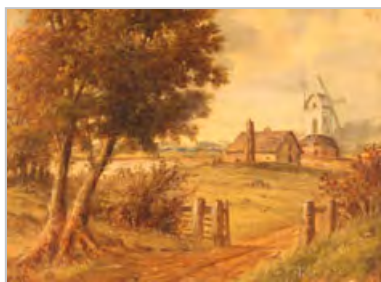




Lot 564



Lot 565



Lot 567



Lot 569

554

A folder of etchings and engravings, various  
£40 – 60 †

555

C.F. Rump, 1853–1924, three various Norfolk rural scenes, signed oils on board £50 – 80 †

556

19th Century French school, small study of horses and figures outside of a coaching Inn, oil on panel, approx. 6cm x 9cm and a miniature study of an elderly gentleman with cloak, hat and walking stick, oil on card, contained in a rosewood and gilt frame, (2) £60 – 80 †

557

American school 19th Century, head and shoulders portrait of Abraham Lincoln oil on thin wood, 6cm x 9cm £80 – 120 †

558

Manner of William Callow, study of a rocky waterfall, unsigned watercolour unframed 28cm x 22cm £30 – 50 †

559

Frederick Strachan, charcoal and watercolour, study of a wrecked vessel on the fore shore, signed and dated 1857, 19cm x 28cm; and C.E.D.W. study of a sailing barge in choppy seas, signed watercolour dated 1900 (2) £20 – 40 †

560

19th Century school, study of cattle watering beside a ruined castle, sailing vessels in the far ground, unsigned watercolour, 22cm x 30cm £30 – 50 †

561

After George Frost, a print depicting Stoke Bridge, 20th Century school, unsigned watercolour of a boat shed; and a modern watercolour depicting elephants, monogrammed KCG (3) £20 – 30 †

562

James Hardy 20th Century, a naval sea battle signed oil on canvas laid on board, 50cm x 76cm £200 – 300 †

563

Ann Paterson Wallace, rural landscape study dated 1976, 52cm x 73cm £40 – 60 †

564 ✓

Cavendish Morton, 1911–2015, scene on the river Alde with boat in the near ground, signed and dated 1966, 36cm x 53cm £100 – 200 †

565

T. Smythe, a pair of rural studies depicting cottage and figure by a duck pond; and another of figures crossing a river on a wooden bridge with windmill and cottages in the far ground, signed watercolours, 28.5cm x 44cm, contained in birds eye maple frames £100 – 200 †

566

20th Century school, a pair depicting mallards at evening and pheasants in a landscape, indistinctly signed, watercolours, 21cm x 33cm £40 – 60 †

567

Christopher Mark Maskell, “Mendham Mill”, and “Billingford Mill”, a pair of initialled oils on canvas, 22cm x 29cm £100 – 200 †

568

C. Rackham, study of sailing barges with town in the far ground, signed watercolour dated 1892, 15cm x 31cm £30 – 50 †

569

Margaret Glass, “Early morning, Ipswich Docks”, monogrammed pastel, 39cm x 67cm £100 – 200 †

570

Frank Holmes, study of sailing vessels with minarets and towers in the background, possibly Istanbul, 26.5cm x 42cm £40 – 60 †

571

19th Century Suffolk school, study of figures on a country path, cottage in the near ground, river in the far ground, 24cm x 33cm; and another study of a windmill (2) £30 – 50 †

572

Henry Sylvester Stannard 1870–1951, tranquil river landscape with deer on a grassy bank, signed watercolour 70cm x 52cm £180 – 220 †

573

V.J. Collinson, eight vignettes of horses and horse racing, watercolours each signed or initialled and dated 1896, 46cm x 63cm £60 – 80 †

574

A set of three engravings, depicting famous cricketers £100 – 150 †

575

Attributed to George Morland, 1763–1804, study of gypsies and a donkey resting beneath a tree, watercolour, 16cm x 21cm, inscribed verso £200 – 400 †

576

George Turner, 1841–1910, study of a family by a country stream, signed oil on canvas, 60cm x 89cm £1,500 – 2,000 †

577

Frank H. Edegecombe, 19th Century school, study of a watermill with cattle and figure in foreground, signed and dated 1876, oil on canvas, 50cm x 74cm £200 – 300 †

578

Charles Bool, waterfall scenes, signed watercolours, a pair, 27cm x 38.5cm (2) £30 – 50 †

579

Attributed to Edward Armfield, “The Chase” and “Caught” studies of terriers ratting, a pair, oil on artist board 21cm x 27cm £200 – 300 †

580

19th Century school, portrait study of a child in blue and white lace dress, unsigned crayon and pencil, mounted as an oval and contained in a gilt rope twist frame, image 58cm x 48cm overall £80 – 120 †

581

James Hardy 20th century, war ships at sea signed oil on canvas laid on board, 50cm x 69cm £200 – 300 †

Lots marked ✓ please refer to Droit de Suite royalty charges in Terms and Conditions  
† Each lot is subject to a Buyer's Premium of 18% + VAT (21.6%)

582

**W.J. Brown**, study of a musical joker oil on board, unsigned 23cm x 15cm £80 - 120 †

583 ✓

**Charles Tunnicliffe**, 1901-1979, study of Welsh mountain ponies on a hillside, signed watercolour, 41cm x 54cm £2,000 - 3,000 †

584 ✓

**Leonard Russell Squirrell**, 1893-1979, pastel study of Wymondham Abbey, Norfolk 36cm x 56cm £1,500 - 2,000 †

585

**Continental school**, head and shoulders portrait study of a bearded nobleman, indistinctly signed oil on panel, 38.5cm x 28cm £40 - 60 †

586

**Marion Edwards**, study of a young child gathering wood along a stream path, signed watercolour in arched mount, 45cm x 35cm, contained in decorative gilt frame £30 - 40 †

587

**F. Storey**, study of figures in a street with church in the background, signed watercolour dated 1862, 61cm x 42cm £50 - 80 †

588 ✓

**Roland Hilder 1905 - 1993**, Study of buildings around a pond, signed oil on board, 37cm x 47cm £400 - 600 †

## Rugs & Furniture

589

**A Victorian walnut Sutherland tea table** £20 - 40 †

590

**An antique oak hall chair**, having shaped back, solid panel and seat, raised on turned block supports £30 - 50 †

591

**An Eastern wool and silk rug**, having floral decoration on a red ground, 146cm x 98cm £100 - 200 †

592

**An Eastern carpet of Caucasian design**, decorated stylised medallions and geometric borders, on predominately red and blue ground £100 - 200 †

593

**An Eastern wool rug**, decorated with linked central lozenges and profuse stylised floral surround on predominately red and blue ground £100 - 200 †

594

**A Teke type bag rug**, having stylised decoration, flat weave centre and tasselled ends, 157cm x 71cm £30 - 60 †

595

**A Georgian mahogany bow front chest**, of two short and three long drawers, raised on bracket feet, 100cm wide £100 - 150 †

596

**A miniature Ipswich oak court cupboard**, having carved decoration, wedge shaped upper cupboard supported on baluster columns, double cupboard below, raised on turned supports united by stretchers, 71cm wide x 116cm high £80 - 120 †

597

**A Victorian mahogany chiffonier**, with raised back, blind frieze drawer and cupboards below on platform plinth £100 - 150 †

598

**A 19th Century continental walnut chest**, fitted four long drawers and brushing slide, flanked by fluted columns and raised on bun feet, 96cm wide £150 - 200 †

599

**A late 19th / early 20th Century mahogany writing table**, in the aesthetic movement style fitted two drawers, decorated with painted roundels raised on turned supports, united by an under tier, 121cm wide; and a similar period desk chair having scroll back and cane seat on sabre front supports £150 - 250 †

600

**A mahogany serpentine fronted tall boy chest**, fitted seven drawers and a brushing slide, raised on bracket supports, 70cm wide, 156cm high £100 - 200 †

601

**A 19th Century mahogany fret carved framed wall mirror**, in the Chippendale manner, having gilt shell decoration £30 - 50 †

602

**An 18th Century Dutch marquetry cylinder bureau**, the front opening to reveal an interior arrangement of drawers and pull-out writing surface, three drawers below raised on bracket feet, 115cm wide £500 - 600 †

603

**A 19th Century mahogany D shaped hall table**, fitted single drawer, 105cm wide £60 - 80 †

604

**An early 19th Century gilt framed pier mirror**, having breakfront pediment above a panel decorated with acorns and oak leaves, flanked by turned columns, 105cm x 74cm £100 - 200 †

605

**A George III mahogany bureau**, of small proportions, the fall front opening to reveal an interior arrangement of drawers and pigeon-holes, four long graduated drawers below, raised on bracket feet, 77cm wide £100 - 150 †

606

**A pair of George III mahogany side cabinets**, each fitted with seven oak lined dispatch box drawers, having brass escutcheons and ring pull handles, enclosed by a pair of sunken moulded panelled doors with brass butterfly escutcheons, raised on bracket feet and flanked by brass carrying handles, 91cm wide x 99cm high £600 - 800 †



Lot 575



Lot 576



Lot 583



Lot 584



Lot 588

Lots marked ✓ please refer to Droit de Suite royalty charges in Terms and Conditions

† Each lot is subject to a Buyer's Premium of 18% + VAT (21.6%)





Lot 607

607

A 19th Century mahogany and satinwood cross-banded bow front sideboard, of Sheraton design, fitted single drawer above an arched frieze, flanked by deep drawers and raised on square tapering supports and spade feet, 107.5cm wide

£200 - 400 †

608

A mahogany trinket chest, fitted four drawers and raised on a platform plinth, 21cm wide x 22.5cm deep x 35cm high

£50 - 80 †

609

An Antique oak low boy, having carved leaf decoration, fitted three drawers above a shaped apron and raised on cabriole supports, 79cm

£100 - 150 †



Lot 609

610

A large Victorian mahogany pedestal sideboard, of inverted breakfront form, fitted central drawer and cupboards flanked by deep cellarette cupboards, 193cm wide

£100 - 200 †

611

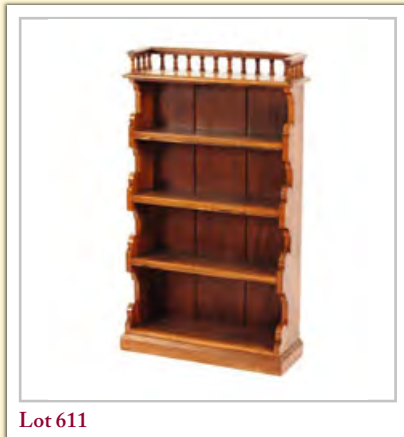
A pair of late Victorian walnut and pitched pine open fronted graduated bookcases, surmounted by spindle column galleries with shaped ends, raised on platform plinths, 70cm wide x 124cm high overall

£150 - 200 †

612

A 19th Century walnut and cross-banded bow front chest on stand, fitted two short and three long graduated drawers, stand with shaped apron and raised on cabriole supports and pad feet, 101cm wide x 124cm high

£200 - 300 †



Lot 611

613

A Victorian mahogany chiffonier, with raised shelved back, single frieze drawer below, the interior shelf enclosed by a pair of arched panelled doors, flanked by columns on a inverted platform plinth, 101cm wide

£80 - 120 †

614

A walnut open fronted bookcase, of tall proportions, fitted adjustable shelves, raised on a platform plinth, 95cm wide x 102cm high

£200 - 400 †

615

An antique continental corner cabinet, profusely decorated masks, lozenges and foliate roundels, the upper display section enclosed by a pair of arched panelled doors with shelves below enclosed by a quarter panel door, flanked by spiral turned columns and raised on fluted bun feet, 194cm high, 100cm wide overall

£200 - 400 †

616

A 19th Century mahogany china display cabinet, in the Chippendale manner, the upper adjustable shelves enclosed by a pair of glazed panelled doors, above a stand with blind cut decorated front supports, 126cm wide x 199cm high overall

£300 - 400 †



Lot 629

617

A George III oak mahogany cross-banded and inlaid cabinet on chest, the upper section fitted shelves and drawers, enclosed by a pair of fielded panel doors with conch shell paterae, two short and three long drawers below, flanked by columns and brass capitals, raised on bracket feet, 120cm wide

£100 - 200 †

618

An Edwardian inlaid mahogany china display cabinet, the interior fabric lined shelves enclosed by a pair of glazed astragal doors above two drawers, raised on a shaped apron and square tapering supports, 108cm wide x 171cm high

£60 - 100 †

619

An 18th Century cottage long case clock, the brass and steel dial inscribed, Robert Thompson Warrington and Richard Parry, 8 day movement, 193cm high

£300 - 400 †

620

An 18th Century walnut and marquetry long case clock, by Andrew Dunlop of London, the arched fret carved hood flanked by spiral turned columns, brass spandrel dial with steel chapter ring, 8 day movement striking on a bell, full length trunk panelled door profusely inlaid with flowers and birds, 237cm high

£1,500 - 2,000 †

621

A George III mahogany long case clock, by John Matheny Shaston, (Shaftsbury), brass spandrel dial enclosed by an arched hood, full length trunk panel door below, raised on bracket feet

£300 - 400 †

622

An Antique corner cabinet, the interior shelves enclosed by a single moulded panelled door, 84cm wide x 112cm high overall

£60 - 100 †

623

A 19th Century mahogany North Country long case clock, having circular painted dial supporting an 8 day movement striking on a bell, the hood with scrolled arch pediment above a Gothic style trunk panelled door, within fluted half columns, 200cm high

£100 - 200 †

624

A Georgian mahogany butler's tray, having folding sides, with brass mounts complete with folding stand and a table stand with chamfered legs and stretchered supports

£100 - 150 †

625

A French provincial carved walnut long case clock, having brass and enamel dial supporting an eight day movement

£100 - 200 †

626

Wm Elsegood of Norwich, carved oak long case clock, brass and steel spandrel dial inscribed Tempist Fugit, the arched hood surmounted by brass eagle orb finials, full length trunk panel door, 230cm high

£200 - 300 †



627

A Georgian oak long case clock, the arched hood enclosing brass spandrel dial with steel chapter rings, by Adam Gibson of Dunse, supporting an 8 day movement, full length trunk door, raised on a box base with bracket feet, 200cm £300 - 400 †

628

A William IV mahogany drop leaf dining table, fitted single end drawer and opposing dummy drawer raised on turned tapering reeded supports, terminating in brass caps and castors £40 - 60 †

629

A set of six George IV mahogany rope twist back dining chairs, having upholstered drop in seats raised on ring turned tapering supports £100 - 200 †

630

A good quality mahogany framed three piece suite, in the Regency style upholstered in Greek Key and floral pattern Damask, raised on tapering fluted supports £100 - 150 †

631

A good quality mahogany framed corner seat, in the Regency style, upholstered in floral stamped Damask £60 - 100 †

632

A pair of walnut and satinwood cross-banded lamp tables, fitted single drawers and raised on turned fluted supports, 54cm wide x 77cm high £250 - 350 †

633

A Georgian oak low boy, the overhanging top above two short drawers above a shaped frieze raised on rounded tapering supports and pad feet £150 - 250 †

634

A pair of walnut and herringbone banded bedside chests, of narrow proportions, fitted four drawers, raised on platform plinths, 34cm wide x 70cm high £400 - 500 †

635

A pair of Chinese hardwood chairs, having carved and pierced foliate decoration, raised on cabriole supports £400 - 600 †

636

An early 19th Century mahogany circular tilt top dining table, raised on a leaf carved baluster column and quatrefoil base terminating in bold gilt claw feet, 131cm dia. £100 - 200 †

637

A Georgian mahogany and gilt wood applied wall mirror, with floral decoration, 79cm x 46cm overall £20 - 40 †

638

A mahogany Regency style window seat, having turned scrolled ends, raised on tapering turned supports, terminating in peg feet, 114cm £150 - 250 †

639

An early 20th Century oak revolving desk chair, having rail back, upholstered seat on quatrefoil base £60 - 80 †

640

An Edwardian inlaid mahogany tub shaped chair, having upholstered seat, raised on square section tapering supports terminating in spade feet £30 - 50 †

641

An 18th Century oak coffer, having candle box interior, square iron lock plate and hasp raised on stile end supports, 122cm wide £100 - 200 †

642

An 18th Century oak coffer, with four panelled front, raised on square section supports, 139cm wide £100 - 200 †

643

A large 18th Century carved oak coffer, 126cm wide £250 - 350 †

644

A 19th Century mahogany oblong snap top occasional table, raised on a turned baluster column and tripod base, the top 60cm x 46cm £200 - 300 †

645

A Georgian mahogany circular snap top table, raised on turned column and tripod base, 65cm dia. £160 - 200 †

646

A 19th Century circular oak snap top occasional table, raised on a turned column and tripod base, 72cm dia. £200 - 300 †

647

A Georgian mahogany drop leaf dining table, the rounded leaves raised on square tapering supports, terminating in brass caps and castors, 113cm x 170cm £60 - 100 †

648

A set of six Regency mahogany bar back dining chairs, with upholstered drop-in seats, raised on sabre front supports, (5 standards and one elbow); and a Regency design mahogany and brass inlaid D end dining table £100 - 150 †

649

A Victorian mahogany counter top display cabinet, of curved form, with hinged drop-down door, 75cm wide x 42cm deep £80 - 120 †

650

A 19th Century mahogany tilt top occasional table, raised on a tripod base and pad feet, 81cm dia. £40 - 60 †

651

A Chinese hardwood low occasional table, 46cm wide x 42cm high £50 - 80 †

652

A Victorian walnut chaise longue, upholstered in pale dralon, having acanthus scrolled decoration, raised on a shaped apron with cabriole supports, 195cm long £100 - 150 †



Lot 634



Lot 644



Lot 645



Lot 648



Lot 656

653

A pair of 19th Century inlaid side chairs, the top rails with trailing marquetry decoration, foliate carved and reeded centre rails, upholstered drop in seats on sabre front supports £50 - 80 †

654

A 19th Century rosewood framed nursing chair, upholstered in floral printed Damask and raised on cabriole front supports £40 - 60 †

655

A pair of Edwardian inlaid tub shaped chairs, raised on turned tapering front supports terminating in castors £120 - 160 †

656

A Victorian carved oak elbow chair, having leaf decoration and barleytwist columns £40 - 60 †

657

An antique mahogany pole screen, with embroidered banner raised on turned and fluted column and tripod base £80 - 120 †

658

A mahogany Pharmacy cabinet, fitted sixteen drawers, 18cm wide x 86cm high x 23.5cm deep £300 - 400 †



Lot 658

659

A late Victorian oak two tier serving table, raised on bold baluster turned supports, 191cm wide £100 - 150 †

660

An 18th Century style mahogany long stool, with needlepoint upholstery, raised on cabriole supports with carved shell shoulders, terminating in hoof feet, 94cm long £60 - 80 †

661

A 19th Century music chair, having lyre shaped back splat above a circular upholstered stuff over seat, raised on turned supports £50 - 80 †

662

A Victorian mahogany extending dining table, fitted three extra leaves and raised on bold acanthus carved cabriole supports terminating in castors, 122cm x 302cm extended £200 - 300 †

663

A 19th Century walnut marquetry and Ormolu mounted card table, the fold over swivel top raised on cabriole supports terminating in sabots, 82cm wide x 59cm deep £600 - 800 †

664

A late 18th/early 19th Century carved mahogany elbow chair, in the Chippendale manner, the vase splat back decorated with Masonic symbols above scrolled arms and upholstered stuff-over seat, raised on square section chamfered supports united by stretchers £400 - 500 †



Lot 663



Lot 664

665

A Regency rosewood and brass inlaid card table, the fold over swivel top raised on a square tapering column and quatrefoil base terminating in sabre legs with brass claw caps and castors. 90cm wide £200 - 300 †

666

A Georgian circular mahogany tripod occasional table, raised on a turned baluster column and tripod base, 77cm dia. £100 - 150 †

667

A small Chinese hardwood child's chair, the central panel having decoration of a fawn above wicker seat £150 - 200 †

668

A good quality mahogany tripod occasional table, in the Chippendale manner, having pie crust bordered top, raised on a turned fluted central column, on carved legs, terminating in claw and ball feet, 52cm dia. £100 - 150 †

669

A Victorian rosewood card table, the fold over swivel top raised on a turned column, quatrefoil base terminating in scroll feet, 92cm £100 - 150 †

670

A late Victorian golden oak writing table, having leather inset top above two drawers with opposing dummy drawers, raised on octagonal tapering supports, terminating in brass caps and porcelain castors, 119cm wide x 87cm deep £150 - 250 †

671

An early 19th Century rosewood card table, the foldover swivel top raised on a cylindrical leaf carved column and quatrefoil base, terminating in scrolled feet, 91cm wide £150 - 200 †

672

A Victorian mahogany and pine circular occasional table, raised on turned column and tripod base, the top 96cm dia. £80 - 120 †

673

An Edwardian mahogany Sutherland tea table £20 - 40 †

674

An 18th Century oak sloping top desk, opening to reveal an interior fitted with pigeon-holes above an iron lockplate and initials, "RB", raised on square tapering supports, 56.5cm wide x 94cm high £100 - 200 †

675

A 19th Century mahogany two tier night table, fitted single drawer, 75cm wide x 82cm high £30 - 50 †

676

A Victorian rosewood card table, the fold-over swivel top raised on a turned fluted baluster column and quatrefoil base, terminating in scrolled feet and castors, 91cm wide £200 - 300 †

677

A 19th Century mahogany tilt top occasional table, raised on turned baluster column and tripod base £40 - 60 †

678

A mahogany Sutherland type tea table, raised on spider leg supports terminating in pad feet, 53.5cm x 70cm extended £30 - 50 †

679

A pair of Jacobean carved oak figures, depicting a lady semi naked carrying a torch and another depicting lady carrying an anchor, 48cm high £300 - 500 †

680

A Victorian mahogany pedestal writing desk, of serpentine shape, the leatherette inset top above three frieze drawers and six drawers to each pedestal, raised on platform plinth and castors, 119cm wide £150 - 200 †

681

A late 17th/early 18th Century small ottoman hardwood chest, finely inlaid with mother of pearl triangular form motifs, 59cm wide x 28.5cm deep x 27cm high £150 - 250 †

682

A rustic root carved occasional table, 62cm x 48cm overall £200 - 300 †

683

A walnut ladies writing bureau, of small proportions, the inlaid drop front revealing an interior arrangement of drawers and pigeon holes, two drawers below raised on cabriole supports terminating in claw and ball feet, 51cm wide £80 - 120 †

684

An Antique oak love seat settle, having double fielded panelled back above scrolled arms and solid seat, raised on cabriole front supports and square section back supports, 79cm £100 - 200 †

685

A 19th Century mahogany occasional table, the rectangular tilt top raised on a turned baluster column and triple splay, 72cm wide £80 - 120 †

686

A Georgian mahogany and satinwood cross-banded tea table, the foldover top raised on square section moulded supports, 89cm £80 - 120 †

687

An Oriental low root-wood occasional table, having rock crystal top £300 - 500 †

688

A pair of garden urns, having leaf decoration on square bases, 46cm dia. x 42cm high £40 - 60 †

689

An 18th Century walnut side chair, having vase splat back, upholstered drop-in seat, raised on cabriole front supports £40 - 60 †

690

An antique oak hall chair, having carved cresting rail, solid panel back and seat, raised on turned supports terminating in block feet united by stretchers £50 - 80 †

691

A painted metal garden seat, having scrolled branch work and dog's head decoration, wooden slats, 150cm long, AF £200 - 300 †

692

A 19th Century walnut and satinwood inlaid pier cabinet, having gilt metal mounts, the interior shelves enclosed by a glazed panel door, on platform plinth, 80cm wide x 100cm high £100 - 200 †

693

A 19th Century mahogany and gilt dwarf bookcase, raised on baluster column supports, 142cm wide x 83cm high £200 - 300 †

694

A 19th Century circular gilt and ebonised convex wall mirror, 70cm dia. £60 - 100 †

695

An Antique oak court cupboard, the upper section surmounted by a canopy above fielded panelled doors and three shallow drawers, three deeper drawers and cupboards below, raised on square section supports, 170cm wide x 184cm high £100 - 200 †

696

A late 19th early 20th Century continental mahogany and brass mounted dressing table, with triple mirror back above two short drawers, floral silk inset top above one long and four short drawers, raised on reeded tapering supports united by a curved stretcher, 124cm wide £100 - 200 †

697

A 19th Century mahogany tilt top occasional table, raised on a spiral turned column and tripod base terminating in bun feet, the top 50cm x 46cm £60 - 100 †

698

A Victorian walnut oval occasional table, having games board top raised on turned baluster column and quadruple scrolled legs, the top 60cm x 45cm overall £60 - 100 †



Lot 679



Lot 681



Lot 684



Lot 698



## TERMS AND CONDITIONS OF SALE 1. INTRODUCTION

### 1. INTRODUCTION

The following defining terms are used in these conditions:-

"Auction"	Means any auction conducted by Clarke and Simpson Auctions Ltd. either at the premises owned by them or elsewhere (including any internet based auction);
"Auctioneer"	Means Clarke and Simpson Auctions Ltd. authorised auctioneer as appropriate;
"Bidder"	Means a bidder at an auction, including the bidders personally present at the venue and those bidding by telephone or over the internet or otherwise;
"Buyer"	Means the bidder whose bid was the last bid when the auctioneer concludes the bidding; "Conditions" Means these Terms and Conditions of Sale;
"Hammer Price"	Means the level of bidding reached (at or above any reserve) when the auctioneer brings the bidding to a close;
"Lot"	Means any property accepted by Clarke and Simpson Auctions Ltd. for offer at auction;

### 2. DESCRIPTION

No warranty is given or implied by the description in the catalogue. Each lot is sold in its condition at the time of sale with all faults, defects, imperfections and errors of description (if any). Whilst every endeavour has been made to describe the items adequately and properly, the purchaser shall deem to have inspected the lot at time of purchase. All catalogues and seller's and buyer's guides are for information only and do not form part of the contract.

### 3. STATUTORY REQUIREMENTS

Purchasers will be deemed to have satisfied themselves prior to purchasing regarding current legal requirements (e.g. Health & Safety at Work Act) and it is expressly brought to the bidders attention that equipment in the sale may not necessarily comply with such regulations. Any purchaser shall satisfy himself as to any statutory requirement for the use of any item and no liability shall rest with the vendors nor the Auctioneers.

**4. THE AUCTION** All auctions are conducted at the absolute discretion of the auctioneer. The auctioneer shall conduct the auction with reasonable skill and care. The vendor reserves the right to sell subject to reserve price in respect of all lots. What constitutes a bid shall be at the absolute discretion of the auctioneer, acting with appropriate skill and care. The auctioneer shall have the right to refuse any bid in all cases but most notably when such a bid does not exceed the previous bid by at least 10% or such a proportion as the auctioneer shall in his absolute discretion direct. Where two or more bids at the same level are simultaneously received by the auctioneer, the auctioneer at his absolute discretion shall determine which bid to prefer. Subject to the foregoing where two or more bids are at the same level are simultaneously received by the auctioneer, the bid submitted in the room shall take preference over a bid submitted by telephone or internet at the same level. Any bid made or attempted by telephone or over the internet will only be deemed to have been made if received by the auctioneer. The auctioneer reserves the right to withdraw, consolidate or divide any lot or lots or submit them in any order that they desire. The auctioneer has the right at his absolute discretion to refuse admission to his premises or attendance at (or participation in) any auction by any person. In the case of any dispute, the auctioneer shall be sole arbitrator in any matters arising during or out of the sale.

### 5. BIDDERS

All bidders will be required to register their particulars, bidders attending in person and those accompanying them will be required to provide photo ID and separate confirmation of address prior to viewing or taking any part of the sale and before entering any part of the premises to view. All bidders accept full liability for all bids submitted. Subject to the clause in this document headed "The Auction", the highest bidder at the close of bidding shall be the buyer. Any dispute about a bid shall be settled at the auctioneer's absolute discretion. Bidders are all deemed to act as principles unless there is prior written acknowledgement by Clarke and Simpson Auctions Ltd. that a bidder is acting as an agent for a named principle. Bidders are strongly encouraged to attend the auction in person. The bidders shall be responsible for any decision to bid for a

particular lot and shall be deemed to have carefully inspected and satisfied themselves as to condition, neither Clarke and Simpson Auctions Ltd., their employees or agents shall be responsible for any neglect or default in doing or failing to do so. Bidders will be given ample opportunity to view and inspect before the sale and prospective buyers must satisfy themselves as to all matters.

### 6. DEFAULT

Clarke and Simpson Auctions Ltd. shall act as agent of the vendor only. Any contracts for the sale of a lot shall be formed between the vendor and the buyer. As agent, only Clarke and Simpson Auctions Ltd. shall not be responsible for default by the vendor or the buyer. If any lot is not paid for in full and taken away in accordance with these conditions, or there is any other breach of the conditions, then Clarke and Simpson Auctions Ltd. as agents for vendor shall at its absolute discretion and without prejudice to any other rights it may have, be entitled to exercise all or any of the following rights and remedies:-

- 6.1 to proceed against the buyer for any action of debt or damages for breach of contract;
- 6.2 to rescind the sale of that lot or lots sold by Clarke and Simpson Auctions Ltd. to a defaulting buyer;
- 6.3 to resell the lot (by auction or private treaty) in which case the defaulting buyer shall be responsible for any resulting deficiency in the total amount due (after crediting any part payment and adding any resale costs), any possible surplus so arising shall belong to the vendor;
- 6.4 to remove, store and insure the lot at the expense of the defaulting buyer and, in the case of storage, the location of such storage shall be at Clarke and Simpson Auctions Ltd. discretion;
- 6.5 to charge interest at a rate not exceeding 2% per month of the total amount due to the extent that it remains unpaid for more than two working days after the sale;
- 6.6 to retain that or any lot sold to the defaulting buyer until the buyer pays the total amount due;
- 6.7 to reject or ignore bids from the defaulting buyer at future auctions or to impose conditions before any such bids are accepted;
- 6.8 to apply any proceeds of sale for any other lots due or in the future becoming due to the defaulting buyer towards the settlement of the total remaining due.

### 7. INDEMNITIES, PENALTIES AND LIMITATIONS OF LIABILITY

Purchasers shall pay for any damage done by themselves or their agents during the removal of their lots. Attendance at the sale shall be at the risk of those attending in respect of both themselves and to their goods and vehicles.

Any indemnity under these conditions will extend to all actions, costs, expenses, claims and demand whatsoever suffered or incurred by the person entitled to the benefit of it and Clarke and Simpson Auctions Ltd. declare themselves to be a trustee of the benefit of such indemnity so far as it is expressed to be the benefit of its employees and agents.

Whilst Clarke and Simpson Auctions Ltd. endeavour to ensure that the information on their websites is correct, they do not warrant the accuracy and completeness of the material on their website. Also, Clarke and Simpson Auctions Ltd. can make changes to the material on their website, or alter the products and prices described on it, at any time without notice. The material on the website may be out of date, Clarke and Simpson Auctions Ltd. make no commitment to update such material. All material on the websites is provided "as is" without any conditions, warranties or other terms at any time. Accordingly, to the maximum extent permitted by law, the website is provided to all parties on the basis that Clarke and Simpson Auctions Ltd. exclude all representations, warranties, conditions and other terms which, but for this legal notice, might have effect in relation to the website.

## 8. ELECTRICAL SAFETY REGULATIONS

All electrical lots are subject to electrical safety regulations and fall within "the low voltage electrical equipment (safety) regulations 1989" – all items have been pat tested for safety but are not guaranteed in working order.

## 9. GENERAL MATTERS

Any notice to any buyer, vendor, bidder or viewer may be given by first class mail or email in which case it shall be deemed to have been received by the addressee forty-eight hours after posting or sending. All notices to Clarke and Simpson Auctions Ltd. must be sent in writing and email is not acceptable. Any indulgence extended to any person by Clarke and Simpson Auctions Ltd., notwithstanding the strict terms of these conditions or the terms of consignment, shall affect the position at the relevant time only and the respect of that particular concession only; in all other respects these conditions shall be construed as having~ full force and effect. These conditions and any disputes or claims arising out or in connection with them or their subject matter or formation (including non-contractual disputes or claims) are governed by and construed in accordance with the law of England. The parties irrevocably agree that the courts of England have exclusive jurisdiction to settle any dispute or claim that arises out of or in connection with the agreement or its subject matter or formation (including non-contractual disputes or claims).

## 10. PUBLICITY

Any catalogue and buyer and seller guides are provided for information only and do not form part of these conditions. The catalogue and the buyer and seller guides may contain additional terms and conditions. Clarke and Simpson Auctions Ltd. reserve the right to use any photographs, background information and research for publicity purposes both before and after the sale.

## 11. THE PURCHASE PRICE AND PAYMENT ARRANGEMENTS

There is a buyer's premium 18% plus VAT payable in respect of the sale. Any purchases made via "www.the-saleroom.com" or "www.ibidder.com" shall be subject to an administration charge of 5% plus VAT on the price. Preferred payment is cash, bank transfer or personal debit card. Such cards may only be used on a chip and pin basis with the owner present. No payment over £350 will be accepted by telephone. Payment will be accepted online via our secure e commerce account. We do not accept credit cards or international debit cards. Payment by cheque will only be acceptable subject to prior arrangement. No lot will be removed from the sale until any cheque has cleared.

Payment is due on the day of the sale. Cash in excess of £7,500 (including V.A.T.) will not be accepted from any one person, this is not allowed due to Money Laundering Regulations 2007. All money received will be held in Clarke & Simpson Auctions Ltd. Clients No 2 Account at Barclays Bank plc, Framlingham, Ipswich, Suffolk. Account Number 83428591. Sort Code 20 98 07. Clarke and Simpson Auctions Ltd. have no responsibility for any lot between the close of bidding and payment being made and subsequent collection. All payments from overseas buyers shall be made by Bank Transfer and bank fees paid in addition. Please note all policy regarding payment will be enforced and suitable arrangements must be made.

## 12. REMOVAL OF LOTS

The ownership of any lot purchased shall not pass to the relevant buyer until they have made payment in full to Clarke and Simpson Auctions Ltd. of the total amount due including any storage due.

The buyer shall at their own risk and expense take away any lot that they have purchased and paid for, not later than seven days following the day of the auction.

Any purchaser shall be responsible for removal and insurance and lots stored and storage charges. All lots sold shall be subject to the following storage charges after seven days from the sale:

7-14 days	25% of the lot value + VAT	or £7.50+VAT per lot
	whichever is the greater	
14-21 days	50% of the lot value + VAT	or £15 +VAT per lot
	whichever is the greater	
21-28 days	75% of the lot value + VAT	or £22.50 + VAT per lot
	whichever is the greater	

Any lots not collected after 35 days will be re-sold with immediate effect on behalf of the purchaser and the proceeds of the sale retained in lieu of outstanding storage charges. The policy shall be rigorously enforced and no lots shall be collected unless outstanding storage charges are met.

## 13. NUMBER BIDDING

This will be used for speed and efficiency as in all our sales. All prospective purchasers must complete a registration form and register in the office on the view day or morning of sale to receive a number for bidding.

**Please also note that photo ID and additional confirmation of address will be required.**

## 14. ONLINE BIDDING

Clarke & Simpson Auctions Ltd. offer an online bidding service via the-saleroom.com and ibidder.com for bidders who cannot attend the sale. In completing the bidder registration on www.the-saleroom.com or ibidder.com and providing your payment card details and, unless alternative arrangements are agreed with Clarke & Simpson Auctions Ltd.:

1. authorise Clarke & Simpson Auctions Ltd., if they so wish, to charge the payment card given in part or full payment, including all fees, for items successfully purchased in the auction via www.the-saleroom.com or ibidder.com, and
2. confirm that you are authorised to provide these payment card details to Clarke & Simpson Auctions Ltd. through www.the-saleroom.com or ibidder.com and agree that Clarke & Simpson Auctions Ltd. are entitled to ship the goods to the card holder name and card holder address provided in fulfilment of the sale.

**Please note that any lots purchased via the-saleroom.com or ibidder.com live auction service will be subject to an additional 5% buyer's premium + VAT at the rate imposed on the hammer price.**

## 15. TELEPHONE BIDDING

We offer a telephone bidding service where possible, but this service can never be guaranteed. No applications for telephone bids will be accepted after the end of the viewing prior to sale day for any sale. All potential telephone bidders must provide a valid landline number and email address and agrees that they have read and understood the Terms and Conditions and satisfied themselves regarding any lot in accordance with these Terms and Conditions. No phone bids will be accepted for any lot with a lower guide figure of less than £100.

All those who wish to bid by telephone will be expected to deposit an amount determined by Clarke and Simpson Auctions Limited and not less than the minimum guide for all lots that they wish to bid upon into the Clients Account for Clarke and Simpson Auctions Ltd before the sale starts. This payment is not acceptable by card. In the event of default, this sum shall be retained as part payment or any part may be retained to recover losses under clause 6 of these Terms and Conditions. We will expect payment of the balance owing by BACS on the following day, any payment not met within five working days will result in the forfeiture of the deposit paid.

## 16. AT FAULT (A.F.) LOTS

Certain lots are catalogued at (A.F.), damaged, restored etc., however the absence of any such notice does not imply that the piece is free from defects, nor does it indicate that other defects are not also present. Mention is not made of breakage, cracks, chips or any damage which can be noted by careful inspection, therefore, intending purchasers MUST, in all cases, be responsible for determining the condition of the lots themselves.

## 17. ESTIMATES

Presale estimates are intended only as a guide for intending purchasers, are given in good faith and subject to revision.

## 18. CONDITION REPORTS

Clarke and Simpson are unable to guarantee that requests for condition reports/images received will be responded to. Clarke and Simpson are happy to give a Condition Report where possible on the physical condition of goods, this will be provided on behalf of the seller on the understanding that Clarke and Simpson are not entering into a contract with you in respect of the Condition Report and accordingly does not assume responsibility to you in respect of it. All lots are available for your own inspection or for inspection by an expert instructed by you, therefore these Condition Reports are for guidance only and all lots are sold "as found". Condition reports do not form part of a contract.

## 19. COMMISSION BIDS

The auctioneers will be pleased to execute bids for those unable to attend the sale. Lots will be purchased at the lowest bid the room bidding or any reserves will allow. In the event of identical bids, the earliest bid received will take precedence. There must always be a maximum limit indicated. Buy or unlimited bids will not be accepted. Commission bids placed by telephone are accepted at the client's risk. We urge our clients to place such bids before the start of the sale. All such commissions are left entirely at the buyer's risk.

## 20. VALUE ADDED TAX

The symbol \* after any lot number indicates that Value Added Tax is payable by the buyer on the hammer price.

## 21. AUCTIONEERS MARGIN SCHEME

The Auctioneers Margin Scheme allows auctioneers to sell items without VAT on the hammer price. Under the margin scheme an amount equivalent to VAT at the current rate is added to the buyer's premium. This amount cannot be refunded. The VAT element will not be shown separately on the buyer's invoice. This VAT is not recoverable as Import Tax.

## 22. ATTRIBUTION OF PICTURES AND DRAWINGS

Every effort is made to ensure the accuracy of any statements as to authorship, attribution, origin, date, age, provenance and condition of any lot whether or not such statement forms part of the description of any such lot. Whether any such statement is made orally or in the catalogue it is an expression of opinion and not to be taken as being or implying any warranties or representations of facts by the auctioneers. Each buyer by making a bid for a lot acknowledges that he has satisfied himself fully as to the attribution and condition of the lot. The following is for guidance only and does not form part of a contract.

A. The forename (s) (or full stops where not known) and surname of an artist indicates in our opinion a work by the artist.

B. The initials of the forename (s) and the surname of the artist indicates in our opinion a work of the period of the artist which may be wholly or in part his work.

C. The surname of the artist indicates in our opinion a work of the school or by one of the followers of the artist or in his style and of uncertain date.

D. *Signed, Dated, Inscribed* indicated in our opinion work signed/dated/inscribed by the artist.

E. *Bears signature* indicates in our opinion that this is not the signature of the artist.

F. *Attributed to* may be used to denote a traditional attribution based on style.

G. *Manner of* indicates in our opinion a work executed in the artist/craftman's style but of a later date.

H. *After* indicates in our opinion a copy (of any date) of work of an artist or craftsman.

The addition of a question mark after any of the cataloguing terms above indicates an element of doubt.

## 23. DRIOTE DE SUITE ROYALTY CHARGES

All United Kingdom Art Market professionals (which includes auctioneers) are required to collect a royalty payment for all qualifying Works of Art. This applies to living artists and those who have died in the last 70 years. This payment is calculated on qualifying Works of Art which are sold for a hammer price more than the UK sterling equivalent of €1,000 (the UK sterling equivalent will fluctuate in line with prevailing interest rates calculated by the Artist's Resale Right Service Hub, based on the European Central Bank reference rate published at 2.15pm on the day of the sale, and can be found on [www.dacs.org.uk](http://www.dacs.org.uk)).

All items in this catalogue that are marked "✓" are potentially qualifying items, and the royalty charge will apply if the hammer price is more than UK sterling equivalent of €1,000. The royalty charge will be added to purchase invoices and must be paid before items can be cleared. All royalty charges are paid to the design and Artists Copyright Society (DACS) by the auctioneers and no handling costs or additional fees with respect to these charges will be retained by the auctioneer. This charge may also be applicable to lots not marked "✓" and buyers must satisfy themselves.

The royalty charge for qualifying items which achieve a hammer price of more than the UK sterling equivalent of €1,000, but less than the UK sterling equivalent of €50,000 is 4%. For qualifying items that sell for more than the UK equivalent of €50,000 a sliding scale of royalty charges will apply. For a complete list of the royalty charges and threshold levels please refer to [www.dacs.org.uk](http://www.dacs.org.uk). There is no VAT payable on this royalty charge.

## 24. ENDANGERED SPECIES

Lots sold at auction may include endangered or other species of wildlife and plant life, for example ivory, tortoiseshell, crocodile skin, whale bone, ebony or rosewood. Some countries restrict or prohibit import or export of objects containing these materials or require a licence/permit for their movement (e.g. a CITES Licence). Prior to bidding on a lot which may include these or similar materials, buyers must familiarise themselves with the relevant laws and regulations regarding their movement.

## 25. JEWELLERY

Gemstones are often treated to enhance colour and improve appearance. They may be heated or treated by oil or resin to intensify the colour and transparency. Other techniques like dyeing, irradiation, coating and impregnation can also be used. Buyers must be aware that unless the catalogue specifically states otherwise then the stone is natural, buyers must assume that any treatment may not be permanent, and that special care may be needed in the future.

## 26. EXPORT

Any lot purchased at auction may be subject to export restrictions and may require a licence for export out of the United Kingdom. The buyer is responsible for obtaining any licences that may be required (including any licence that may be required for import into the destination country) – any denial of such a licence will not be grounds for the buyer to cancel the purchase.

## 27. THIRD PARTY LIABILITY

All members of the public on Clarke and Simpson Auctions premises are there at their own risk and must note the layout of the buildings and site and the appropriate security arrangements. Accordingly, neither the Auctioneer nor its employees or agents shall incur liability for death or personal injury (except as required by law) or similarly for the safety or persons visiting the premises.

## 28. CONSIGNMENT

All sellers will have received a copy of Clarke & Simpson Auctions Terms regarding consignment of lots for sale and these Terms and Conditions should be read in accordance with this consignment documentation.





## **Yoxford £1,100,000**

A stunning example of a Tudor house with Medieval origins, that has been meticulously restored, yet largely unaltered, with gardens and grounds extending to over 18 acres, close to the Heritage Coast.

**Ref: 6448**



## **Wickham Market £795,000**

A handsome Grade II Listed farmhouse with unconverted former dairy, workshop building and grounds extending to over three acres, in a semi-rural location.

**Ref: 6415**



## **Framlingham OIEO £645,000**

An impressive four bedroom townhouse, that forms part of the exclusive White Horse Mews development. **Ref: 5633**



## **Brandeston £600,000**

A delightful, beautifully presented detached house situated within the centre of the popular village of Brandeston **Ref: 6379**



## **Woodbridge £545,000**

A three bedroom bungalow occupying a large, south facing plot and set along Through Duncans in Woodbridge. **Ref: 6431**



## **Sibton £500,000**

A stunning Grade II Listed 4/5 bedroom detached cottage located in a small hamlet within the parish of Sibton **Ref: 6220**



## **Somersham £445,000**

A four bedroom detached period property maintained to a high standard, located within walking distance of the pub. **Ref: 6372**



## **Aldringham £440,000**

A stunning 3/4 bedroom barn style house, built to a very high specification in 2012.

**Ref: 6267**



## **Parham £425,000**

A 4/5 bedroom sem-detached extended cottage standing in grounds of 3/4 of an acre.

**Ref: 63452**



## **Dennington £395,000**

A charming 2 bedroom detached Grade II Listed cottage with gardens extending to quarter of an acre.

**Ref: 6445**





## Foxhall £1,350,000

A wonderfully located six bedroom house with extensive range of former agricultural outbuildings, together with gardens and grounds of over 12 acres, in an accessible location to the east of Ipswich. **Ref: 6354**



## Laxfield £695,000

A beautifully appointed, five bedroom house, offering stunning accommodation of over 2,000 sq ft, on a generous landscaped plot, a short distance from Laxfield's village centre. **Ref: 6049/9**



## Framlingham £625,000

A four bedroom detached house with 2,218 sq ft of accommodation, standing on the outskirts of Framlingham **Ref: 6380**



## Eye £595,000

A five bedroom detached house enjoying a rural position yet within a mile of the popular market town of Eye. **Ref: 6343**



## Laxfield £525,000

An impressive and well appointed four bedroom house forming part of the exclusive Felgate Close development. **Ref: 6049/10**



## Brandeston £499,995

A beautifully presented and extended period home sitting in established and attractive grounds. **Ref: 6444**



## Framlingham £445,000

A newly built 2/3 bedroom house, with stunning open plan reception room, forming part of White Horse Mews. **Ref: 5633**



## Framsden £440,000

A delightful 3 bedroom detached period cottage standing in lovely grounds of approx. 1/4 of an acre **Ref: 6435**



## Heveningham £425,000

A charming four bedroom detached house in the centre of this delightful village. **Ref: 6402**



## Worlingworth £395,000

A charming, extended period detached cottage, with stunning rural views to front and rear **Ref: 6407**

# Clarke & Simpson

Auctions

## *Always open..*



### Valuation

Probate & other valuations  
Call-in service 6 days a week

### Special sales

Antiques & Fine Arts  
Art Deco & Retro  
Domestic & Rural Bygones  
Agricultural Collective

### General Monday sale

Bespoke sales  
In 2019 our lots sold to 30 countries  
and registered buyers from over 50  
Acting as agents for household clearances

Can't make it?  
All auctions are available  
for online bidding via  
**the-saleroom.com**  
or **i-bidder.com**

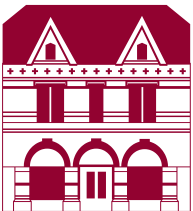


Clarke & Simpson Auction Centre,  
Campsea Ashe, Nr Wickham Market,  
Suffolk IP13 0PS T: 01728 746323

[www.clarkeandsimpson.co.uk](http://www.clarkeandsimpson.co.uk)

CandSAuctions @CandSAuctions





Clarke and Simpson Auction Centre  
Campsea Ashe  
Nr. Wickham Market  
Suffolk IP13 0PS  
Tel: (01728) 746323 Fax: (01728) 748173  
Email: [auctions@clarkeandsimpson.co.uk](mailto:auctions@clarkeandsimpson.co.uk)  
[www.clarkeandsimpson.co.uk](http://www.clarkeandsimpson.co.uk)