

The background of the entire page is a painting. It depicts a large, light-colored stone building with a red-tiled roof and arched windows in the foreground. Behind it is a tall, multi-tiered cathedral with Gothic-style windows. The scene is framed by large, leafy trees on the left and right. In the lower right foreground, two figures are walking on a path. The overall style is that of a 19th-century landscape painting.

Clarke &
Simpson

Selected Antiques & Fine Art

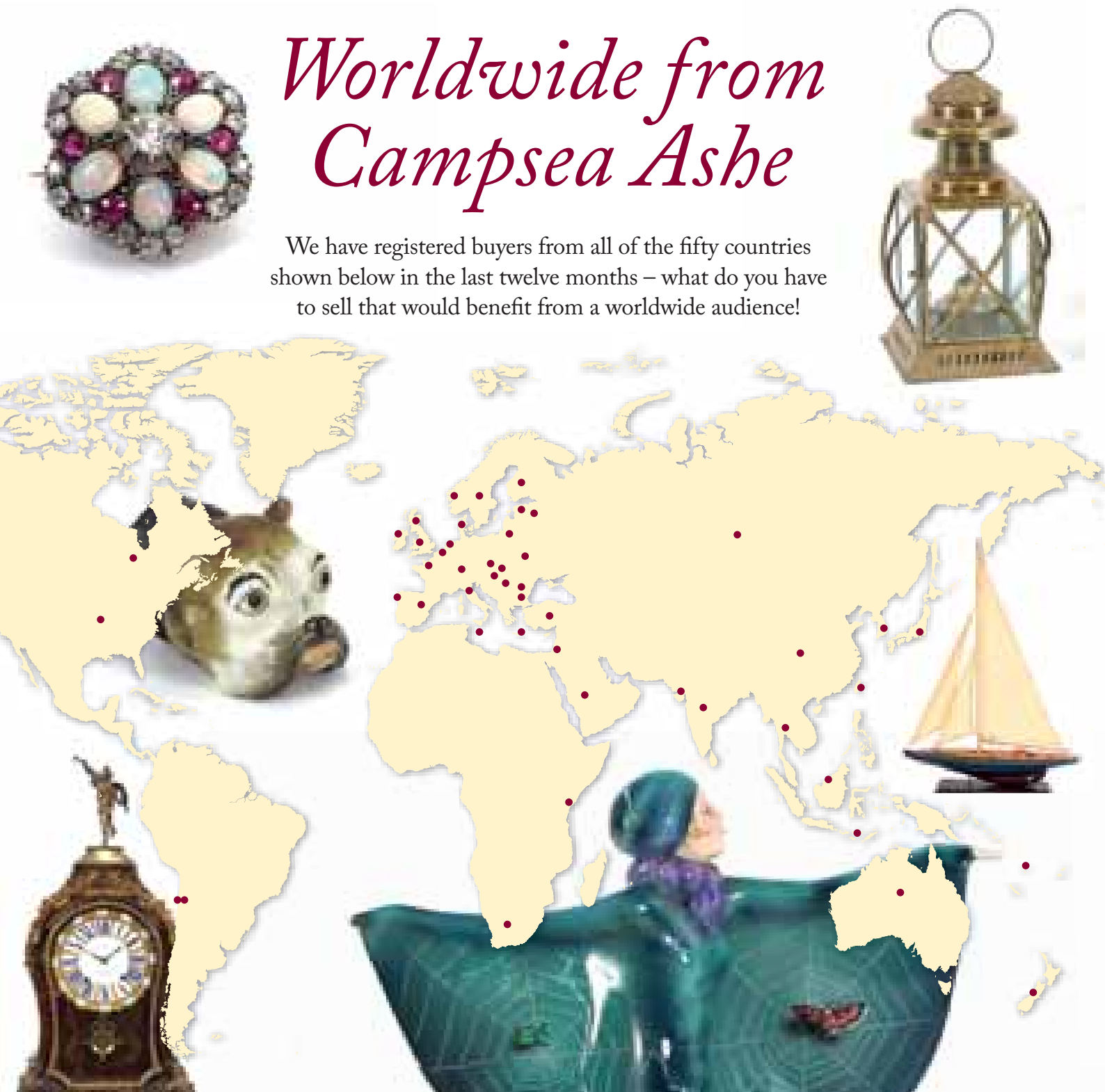
Wednesday 5th December 2018 at 10 am

Auctions

Clarke &
Simpson

Worldwide from Campsea Ashe

We have registered buyers from all of the fifty countries shown below in the last twelve months – what do you have to sell that would benefit from a worldwide audience!



Clarke & Simpson

Auctions

Selected Antiques & Fine Art

Wednesday 5th December 2018
at 10 am

Order of Sale:

Ceramics and Glass	1-81
Silver and Plate	85-150
Jewellery	153-193
Objects and Collectables	195-326
David Heckels Collection	336-555
Pictures and Prints	560-637
Rugs and Furniture	638-748

Viewing:

Saturday 1st December, 9 am - 12 noon
Monday 3rd December, 2 pm - 7 pm
Tuesday 4th December, 10 am - 4 pm
Morning of Sale from 8.30 am



@CandSAuctions



CandSAuctions



Campsea Ashe
Nr. Wickham Market
Suffolk IP13 0PS
Tel: (01728) 746323 Fax: (01728) 748173
Email: auctions@clarkeandsimpson.co.uk
www.clarkeandsimpson.co.uk

Online bidding via:

the saleroom
The home of art & antiques auctions

Special Sales Calendar

2019

Clarke &
Simpson

RURAL BYGONES

23rd February, 2019

FINE ART

24th July, 2019

FINE ART

6th March, 2019

ART DECO, DESIGN & RETRO

2nd September, 2019

ART DECO, DESIGN & RETRO

8th April, 2019

RURAL BYGONES

7th September, 2019

FINE ART

15th May, 2019

FINE ART

9th October, 2019

FARM MACHINERY

25th May, 2019

FARM MACHINERY

26th October

ART DECO, DESIGN & RETRO

17th June, 2019

ART DECO, DESIGN & RETRO

4th November, 2019

RURAL BYGONES

13th July, 2019

FINE ART

4th December, 2019



Campsea Ashe
Nr. Wickham Market
Suffolk IP13 0PS
Tel: (01728) 746323 Fax: (01728) 748173
Email: auctions@clarkeandsimpson.co.uk
www.clarkeandsimpson.co.uk

Ceramics and Glass

1

A Zsolnay Pecs wall plate, having foliate pierced decoration within a pink shell border, painted central floral panel, 32cm dia. £60 - 80 †

2

A Zsolnay Pecs fruit basket, of crescent shape, having pierced decoration and brightly coloured leaf motifs, raised on a circular foot, 22cm long £40 - 60 †

3

A Zsolnay Pecs style bowl, by Fischer, having folded pierced border, floral spray decoration heightened in gilt, 24cm long £30 - 40 †

4

A 19th Century Sunderland lustre bowl and cover, decorated with rural scenes, 17cm high £20 - 30 †

5

A Samson porcelain ink stand, in the form of a cornucopia having famille rose and gilt decoration, 9cm long x 8cm high £40 - 60 †

6

A Chinese Hatcher Cargo collection blue and white bowl, 6.5cm dia.; and a blue and white baluster vase, 12cm high, labelled Christie's June 1984, (2) £60 - 80 †

7

A Chinese famille verte saucer dish, with six character mark to base, 18cm dia. £200 - 300 †

8

A pair of 19th Century Parian ware figures, depicting a semi naked female grape carrier and companion water carrier, stamped to base "Keys and Mountford", 26cm high, (2) £40 - 60 †

9

A Royal Doulton figurine, "Priscilla" HN1340, 22cm high £30 - 50 †

10

A Victorian bisque ware doll, 23cm long; and a smaller example of a crawling baby, 11cm long, (2) £40 - 60 †

11

An 18th Century Worcester sauce boat, with moulded relief panels and floral decoration, crescent mark to base, 16cm; and a larger similar, (restored), (2) £60 - 80 †

12

A Royal Worcester bowl, with scenic decoration and crescent mark to base, 15.5cm dia.; and a Worcester mug decorated in the Chinese pattern, AF, (2) £60 - 80 †

13

Two 18th Century Worcester blue and white tea bowls; and two similar saucers; a small Worcester floral and insect decorated tea cup; and a similar sugar bowl, raised on circular footed base; and a famille rose tea bowl, AF, (7) £80 - 120 †

14

An 18th Century Worcester bird beak cream jug, crescent mark to the base, 10cm high £50 - 80 †

15

An Antique drinking glass, having twist column stem, bell shaped bowl, raised on a stepped circular spread foot, 15cm high £80 - 120 †

16

A 19th Century Continental porcelain small cabinet plate, finely painted with a study of a young girl wearing a 17th Century dress, 10.5cm £30 - 40 †

17

A Russian glass paperweight, with etched scenic decoration, inscribed "Mockba, Moscow", 9cm high £50 - 60 †

18

A finely painted 19th Century Japanese satsuma pottery buckle, with signature and white metal mounts; and a small 18th Century Japanese porcelain Kakiemon style saucer dish, (2) £100 - 150 †

19

An 18th Century Worcester blue and white cannon-ball pattern tea bowl and saucer; and a Newhall porcelain helmet shaped cream jug, decorated floral sprigs, (2) £50 - 80 †

20

A small 18th Century Chinese porcelain vase, of Mei Ping shape, having polychrome decoration; and an 18th Century Chinese blue and white porcelain vase of baluster form, 15cm high, (2) £100 - 200 †

21

An 18th Century Chinese porcelain blue and white square box and cover, decorated with figures and horse in a landscape, surmounted by Dog of Fo finial to the lid, 11cm high x 12cm wide £30 - 50 †

22

A rare 19th Century English agate ware bird whistle, of primitive form, modelled as a bird on a tree stump, 18cm high £40 - 60 †

23

An Antique drinking glass, with cotton twist stem, raised on a circular spread foot, 17cm high £80 - 120 †

24

A Royal Doulton figure "Good King Wenceslas" HN2118, 21cm high £50 - 80 †

25

A Bohemian covered glass goblet, the lid surmounted by a faceted finial above a ruby flash panel, depicting stag in a forest, baluster stem and circular lobed foot, 25cm high £30 - 50 †

26

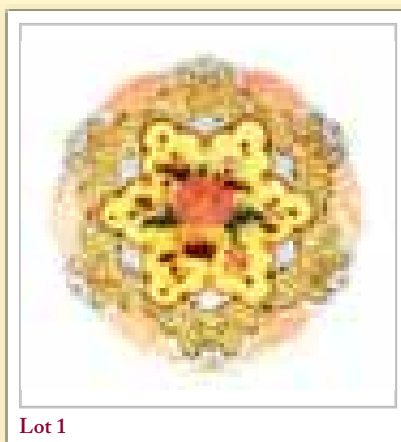
A Lalique glass powder bowl and cover, the lid with raised leaf and heart decoration 12cm dia. £150 - 250 †

27

A Chinese famille rose shallow dish, decorated figures in exotic garden setting playing games, seal mark to base, 23cm dia. £200 - 400 †

28

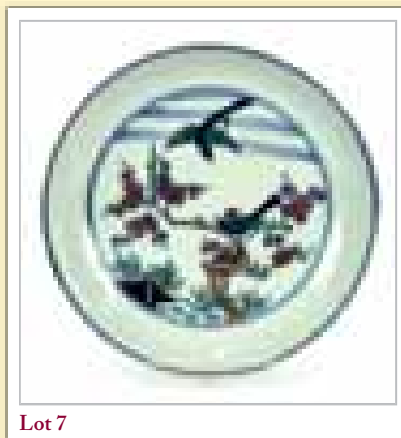
A Chinese porcelain black glazed bowl, painted six character mark to base, 18cm dia. £50 - 80 †



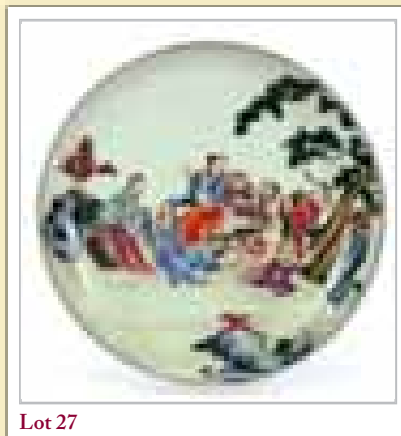
Lot 1



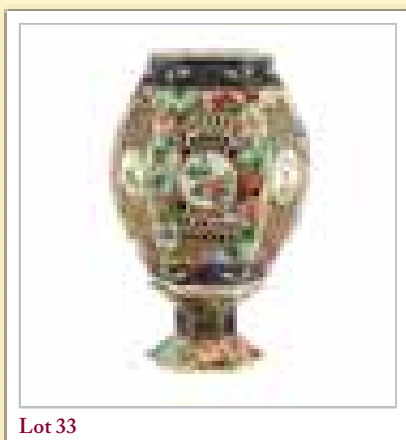
Lot 5



Lot 7



Lot 27



Lot 33



Lot 34



Lot 36



Lot 45

29

An Antique blue and white Chinese porcelain decagonal floral decorated shallow bowl, under-glazed blue seal mark to base, 20cm dia. £30 - 50 †

30

An Antique Chinese Yixing teapot, and another with polychrome enamel decoration, (2) £20 - 30 †

31

A Chinese Canton baluster vase, with famille rose and figure decoration, flanked by gilt handles, 19cm high; two Chinese blue and white saucer dishes; a Canton plate and a blue and white octagonal plate, (5) £40 - 60 †

32

A large 19th Century etched glass goblet, having foliate and fruit decoration, raised on a circular spread foot, 22cm high £80 - 120 †

33

A 19th Century Chinese porcelain night light on stand, of hexagonal form with famille rose and pierced decoration, 28cm high £600 - 800 †

34

A Goldscheider porcelain smokers companion, in the form of a page boy, 23cm high £100 - 150 †

35

Two small Plichta pig ornaments, decorated thistles and shamrock £40 - 60 †

36

A Mosanic Galle style bulldog, decorated blue heart shaped motifs on a yellow ground with glass eyes, 31cm high £500 - 800 †

37

A Sarreguemines pottery character jug, depicting John Bull, 20cm high £20 - 30 †

38

A modern Moorcroft baluster vase, 16cm high £40 - 60 †

39

A Royal Crown Derby kangaroo paperweight; a Royal Crown Derby Imari patterned pin dish; and a porcelain World War Peace mug 1914-19, (3) £30 - 40 †

40

Five Royal Worcester boxed candle snuffers, including polar bear with certificate, China man, girl with bonnet, seated Japanese girl, and an apple £80 - 120 †

41

Two Oriental glazed pottery garden seats, with dragon decoration and motifs, 50cm high; and a smaller similar, (3) £60 - 100 †

42

A pair of Japanese glazed earthenware lamps, in the form of warriors, 51cm high £60 - 100 †

43

A pair of 19th Century Japanese floor vases, decorated with exotic birds, foliage and scenic panels, flared necks with shaped rims, 75cm high (some damage) £60 - 100 †

44

A suite of Edinburgh crystal glassware £100 - 150 †

45

A 19th Century Parian ware bust, inscribed verso "M. Noble, Ceramic and Crystal Palace Art Union, November 1869", 30cm high £40 - 60 †

46

An oriental glazed stoneware figure of a seated man, drinking tea, 29cm high £30 - 50 †

47

A contemporary Korean baluster vase, having floral decoration, 26cm high £40 - 60 †

48

An 18th Century Chinese porcelain barbers bowl, decorated in the Imari palette, (chip to rim) £120 - 150 †

49

A pair of Japanese Kutani baluster vases, 38cm high £60 - 80 †

50

An Iznici pottery vase, decorated in blues, reds and greens, having panels of flowers, 27cm high; and a small oval pottery plaque depicting a winged warrior, 15cm x 11.5cm overall, AF, (2) £100 - 150 †

51

A pair of ornate glass sweet meat jars and covers, 42cm high £40 - 60 †

52

A 19th Century Chinese Canton teapot, having domed lid surmounted by a gilt finial, 21cm high, AF £80 - 120 †

53

A heavy glass and silvered overlay vase, 21cm high; an amber glass bubble vase, 22cm high; a cut glass tankard having hinged pewter lid and a square glass decanter, (4) £40 - 60 †

54

Three 19th Century square cut decanters, with gilt foliate and vine leaf decoration; a pair of hob-nail cut glass rummers; and a large cut glass goblet, (6) £40 - 60 †

55

A 19th Century Chinese blue and white platter, decorated with pagoda and river scenes, 42cm; a 19th Century Chinese mug decorated with country scenes, the dragon handle AF; two Chinese Imari plates; and an 18th Century teapot with white metal spout and wicker handle, (lid missing), (5) £60 - 100 †

56

A Bohemian ruby glass decanter, six coloured hock glasses; various other cut glass tumblers etc. £40 - 60 †

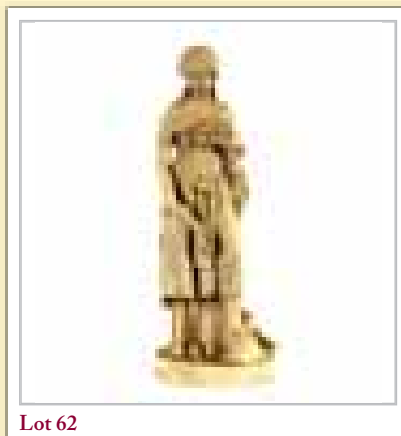
- 57**
A collection of various Antique Oriental and other porcelain, to include Chinese turquoise crackle-glazed bottle vase of small size, 11cm high, various Canton and Imari saucer dishes, Chinese blue and white ginger jar, AF, Imari pattern onion shaped vase, a pair of Chinese hors d'oeuvre dishes, a blue and white cylindrical jar and cover, Staffordshire cottage figure etc. £40 - 60 †
- 58**
A pair of 19th Century French porcelain drug jars, one AF, 24cm high £30 - 50 †
- 59**
A 19th Century Continental faience ware coffee pot, of baluster fluted form, with decoration of birds, flowers and ruins, 31cm high, AF £40 - 60 †
- 60**
A French Parian ware bust, depicting "Candeur", signed A de Raniery, 27cm high £100 - 200 †
- 61**
A Copeland Parian ware figure, of a semi draped female holding a tambourine and garland of flowers, signed Marshall, 47cm high £100 - 200 †
- 62**
A Copeland Parian ware figure, depicting Ruth carrying sheaves of corn, 48cm high £100 - 200 †
- 63**
Three pieces of 19th Century blue and white china, to include a large bowl, a platter and a dinner plate, makers Adams of Tunstall £50 - 80 †
- 64**
A Staffordshire pottery jug, depicting Nelson, 30cm high; and a Staffordshire novelty teapot, (2) £20 - 40 †
- 65**
A Victorian cranberry glass table epergne, 55cm high, (some damage) £100 - 200 †
- 66**
A quantity of Wedgwood Ulander pattern teaware and coffee ware £100 - 150 †
- 67**
A quantity of 19th Century frosted table glassware, having gilt rim and family crest depicting a stag's head above a coronet; and other various glassware £60 - 100 †
- 68**
A 19th Century Chinese vase, decorated with birds amongst foliage on a green ground lacking lid, 36cm high £150 - 200 †
- 69**
A Chinese famille verte baluster vase, profusely decorated with figures and foliage, (restored), 45cm high £100 - 200 †
- 70**
A large collection of Coalport Hong Kong pattern porcelain teaware, dinnerware, vases etc. £250 - 350 †
- 71**
A large quantity of 19th Century Coalport Imari pattern fruit and serving plates £250 - 350 †
- 72**
A quantity of Royal Crown Derby Imari pattern teaware £150 - 250 †
- 73**
A part suite of hob-nail cut and floral decorated glassware, including a decanter, finger bowls, tumblers, wine and sherry glasses; various other table glassware etc. £40 - 60 †
- 74**
A Chinese famille verte baluster vase, decorated with panels of vases and other artefacts on a orange ground, 41cm high £100 - 200 †
- 75**
A 19th Century Chinese blue and white ovoid vase, having floral decoration, Greek key border, 25cm high £80 - 120 †
- 76**
A quantity of 19th Century porcelain tea and dinnerware, having sky blue banded and gilt heightened borders, with family crest and monograms, comprising comport, serving dishes, plates, various cups and saucers, hot water jug etc. £80 - 120 †
- 77**
A Meissen teapot, of small size, squat form with floral encrusted decoration, 30.5cm overall £40 - 60 †
- 78**
A pair of 18th Century blue and white tea bowls, decorated in the Chinese manner £40 - 60 †
- 79**
A Royal Copenhagen porcelain figure of a mouse, seated on a corn cob; two others depicting mice seated on rocks and various bird ornaments £60 - 100 †
- 80**
A Royal Copenhagen figure of a terrier; two puppy groups and a duck group £60 - 100 †
- 81**
A German porcelain figure of a seated lady, with floral decorated dress; another of a lady seated at a harpsichord; and another of a lady sewing, (3) £40 - 60 †
- 82-84**
No Lots

Silver and Plate

- 85**
A pair of silver plated coasters, with turned wooden bases; an oblong silver plated serving tray; a cased pair of mother of pearl handled plated fish servers; a plated ladle; sauce ladles and basting spoon; a plated muffin dish on spirit heater stand; an oval meat dish cover; a pair of brass twist column candlesticks etc. £40 - 60 †
- 86**
A large Victorian electro plated spirit kettle on stand, with foliate engraved decoration, terminating in shell feet, 39cm high £100 - 150 †



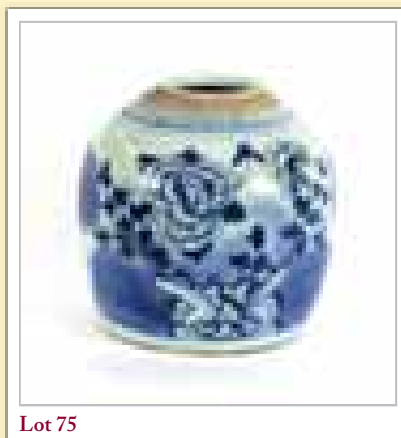
Lot 61



Lot 62



Lot 74



Lot 75



Lot 88



Lot 89



Lot 103



Lot 107

87

A pair of Hukin & Heath plated sauce boats; an entree dish and cover; oval serving dish with beaded border and a plated tankard, (5) £30 - 40 †

88

A late Victorian silver four piece tea set, by Walker and Tollhurst Ltd., having reeded band and raised floral decoration, *London 1896/1897*; a pair of Scottish silver sugar tongs, *Glasgow 1837*, total weight 73ozs.; and an electro plated two handled tray profusely decorated with foliate scrolls and shells and gadrooned border, 63cm long, (6) £400 - 600 †

89

A Hong Kong silver tea set, comprising kettle on spirit heater stand, (incomplete), cream jug, sucrier and large two handled tray, having bamboo leaf decoration, total weight 98ozs., (4) £1,000 - 1,500 †

90

An Edwardian silver sugar bowl, *Chester 1907*; a pair of white metal Art Nouveau decorated sugar nips; a large pair of plated similar; a silver condiment spoon; a silver handled shoe horn; a silver mounted bottle stop; another pearl handled butter knife; and a glass Lavender water phial with enamel decoration, (7) £40 - 60 †

91

A George IV silver Aide de Memoire case, *Birmingham 1910* £20 - 40 †

92

An Edwardian silver toast rack, *Sheffield 1902*; a set of seven silver seal end coffee spoons; a silver napkin ring; and a plated condiment spoon £40 - 60 †

93

An Edwardian silver cased desk calendar, *Birmingham 1903*, 9cm high £40 - 60 †

94

A quantity of various silver white metal and plated items, to include a baluster tankard, card tray, various cutlery etc. £80 - 120 †

95

A good quality Scandinavian white metal Art Deco ladies compact, with reeded design, marked 830S £40 - 60 †

96

A set of Chinese white metal export spoons, and en suite sugar tongs, decorated character marks £40 - 60 †

97

A George IV silver jewellery or ring box, by Adie Bros., *Birmingham 1922*, 6cm dia. overall £40 - 60 †

98

A 19th Century Eastern, possibly Burmese, rose coloured metal tea canister, of circular form with engraved initial M to the lid, embossed in relief with village inhabitants, palm trees, huts and animals, 9cm dia. £50 - 100 †

99

An 18th Century Continental white metal beaker, marked to rim and base, 7.5cm high £80 - 120 †

100

An Eastern white metal model of a horse and carriage, with driver, 20cm long £20 - 30 †

101

A silver mounted easel photograph frame, decorated with garlands and vacant cartouche, 18cm x 12.5cm overall £20 - 30 †

102

A silver mounted Art Nouveau photograph frame, 20cm x 15cm £20 - 40 †

103

A George III silver teapot, of oval form, having wooden handle and lift, foliate scroll decoration, *London 1784* £100 - 150 †

104

An Eastern white metal openwork purse, with swing handle, pierced floral and bird decoration, indistinct mark to clasp, 16cm long £30 - 50 †

105

A 19th Century Continental white metal travelling Ciborium, the lid surmounted by a cross, gilded interior and raised on a baluster floral stem and circular rush decorated base, two indistinct marks to rim possibly French, 14cm high £50 - 70 †

106

A Scottish silver bowl, decorated with panels of animals and stylised leaves, initialled cartouche, *Glasgow 1919* £60 - 80 †

107

A pair of George II silver sauce boats, having raised acanthus decoration to the scroll handles, on hoof feet, *London 1738*, 26ozs., 19cm long £200 - 400 †

108

A George III silver Old English pattern serving spoon, marks indistinct; and a large quantity of silver teaspoons, condiment spoons, plated flatware etc. £40 - 60 †

109

Six George III Fiddle pattern dessert forks, crested, *London 1811*; a pair of similar, *London 1820*; another pair, *London 1811*; and five Exeter examples 1854, 18ozs. £100 - 150 †

110

Seventeen George II and George III silver Old English pattern dessert spoons, crested, various dates and makers, some indistinctly marked, 16ozs. £100 - 150 †

111

Three George III silver Old English pattern table forks, crested, *London 1813*; a pair, *London 1793*; another pair, *London 1808*; and a single example 1816, 17ozs. £100 - 150 †

112

A collection of 16 George II and George III Old English pattern tablespoons, bearing family crest, various dates and makers, some indistinct, 32ozs. £200 - 400 †

113

A pair of George V silver sugar nips, of scissor action with shell terminals, *Sheffield 1936*; a pair of plated asparagus tongs and a pair of plated grape scissors, (3) £30 - 50 †

114

A George III silver Stilton scoop, *London 1791*, with ivory handle £60 - 80 †

115

A George III silver vinaigrette, having wriggle work decorated borders, *Birmingham 1799*; a circular silver patchbox with foliate decorated border and central cartouche, *Birmingham 1796*; and a plain similar, *London 1804*, (3) £80 - 120 †

116

An Edwardian silver Cafe au lait set, by Asprey & Co., of octagonal tapering form, the hinged lid surmounted by urn finials, blackwood side pouring handles, *London 1909*, 22cm high, 17ozs. gross £100 - 200 †

117

A silver shell shaped dish, *London 1896*; and a continental white metal wine taster inset with coin to base, (2) £30 - 50 †

118

A small George III silver ladle, having whale bone twist handle, the oval bowl hallmarked for *Birmingham 1806*; a silver Christening mug, *London 1899*, having later inscription; a silver egg cup initialled "EAH"; a plain silver napkin ring; and a small collection of various silver teaspoons and condiment spoons £60 - 80 †

119

A pair of Victorian silver Corinthian column candlesticks, raised on square stepped beaded bases, *London 1890*, 24cm high £80 - 120 †

120

A pair of George V rat-tail pattern silver soup spoons, *London 1926* £20 - 30 †

121

Two white metal seal end spoons, marks indistinct £40 - 60 †

122

An Edwardian silver visiting card case, having allover flowerhead decoration and central vacant cartouche, shaped hinged lid, *Birmingham 1901*, contained in a fitted silk and velvet lined case for Mappin & Webb £60 - 100 †

123

A medallion for the National Rose Society, in fitted case, by John Pinches, medallist Oxendon Street, London; and three silver presentation fobs, (4) £20 - 40 †

124

A small silver sweet meat stand, with pierced border decoration, raised on a circular spread foot, *Sheffield 1925*; a pair of modern circular silver pin dishes, with gadrooned and leaf decorated borders; and a modern silver mustard pot and salt with associated spoons £40 - 60 †

125

A George V silver Capstan shaped inkwell, *Birmingham 1911*, 17.5cm dia. £60 - 80 †

126

A pair of Edwardian silver dwarf candlesticks, with stylised decoration on stepped beaded bases, 14cm high, *Sheffield 1908* £80 - 120 †

127

A pair of Edwardian silver Corinthian column dwarf candlesticks, raised on stepped beaded bases, 12.5cm high, *Sheffield 1907* £80 - 120 †

128

A George V silver cream jug, with reeded border and C scroll handle, *Birmingham 1932*; and another with gadrooned border and acanthus decorated handle, *Birmingham 1990*, (2) £60 - 80 †

129

An Edwardian silver fruit basket, with swing handle, having shaped border and pierced foliate decoration, *Sheffield 1906* £100 - 150 †

130

A George II silver pedestal fruit basket, having pierced shaped border, raised on a circular spread oval foot with foliate embossing, *Sheffield 1912* £120 - 160 †

131

A set of six George IV silver Old English pattern teaspoons, bearing monograms, *London 1826* £30 - 50 †

132

An Edwardian silver tea caddy, profusely decorated with rural scenes and raised on ball feet, *Chester 1907*, 11cm high £80 - 120 †

133

A silver sauce boat, with gadroon border and flying C scroll handle, raised on three hoof feet, *Birmingham 1973*, 9ozs. £50 - 80 †

134

An Edwardian silver rose bowl, having profuse foliate scrolled decoration and vacant cartouche panels, 22cm dia. 15cm high, *Sheffield 1905*, 18ozs. £300 - 500 †

135

A set of six Edwardian silver Old English pattern forks, *Sheffield 1903*; and a set of six silver handled knives, *Birmingham 1935* £150 - 200 †

136

A pair of George III silver berry spoons, *London 1793*; and a pair of plated grape scissors £40 - 60 †

137

Various silver sugar nips; silver handled fruit knives and forks; five cased silver teaspoons and matching sugar tongs etc. £40 - 60 †

138

A set of four late Victorian silver bon bon dishes, with raised floral and beaded borders, on circular spread feet, *London 1897* £80 - 120 †

139

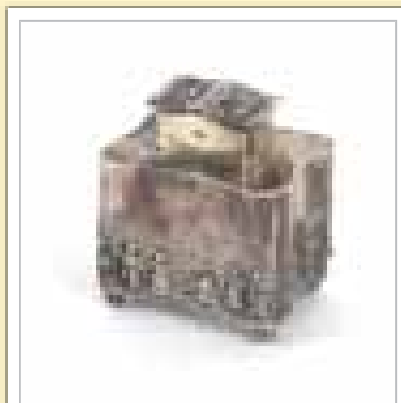
19th Century plated chafing dish and cover, the domed lid surmounted by a rock crystal finial with armorial crest and ivory handle, 45cm overall; and another similar example with turned ebonised handle, (some damage) £20 - 30 †



Lot 126



Lot 130



Lot 132



Lot 134



Lot 150



Lot 156



Lot 159



Lot 160

140
Eleven George IV Fiddle pattern dessert forks, *London 1827/28*, 18ozs. £100 - 150 †

141
Four George III silver Old English pattern table forks, *London 1812*; four 20th Century similar, *Sheffield 1931*; and another, *London 1901*, 19ozs. £100 - 150 †

142
A pair of George III silver Old English pattern tablespoons, *London 1787*; another, *London 1807*; two others; a Fiddle pattern example and a quantity of various teaspoons etc. £40 - 60 †

143
A set of six Victorian silver Fiddle pattern teaspoons, monogrammed *London 1854* £30 - 50 †

144
A set of six Edwardian silver teaspoons, of Fiddle pattern with engraved leaf decoration, *London 1909* £30 - 50 †

145
A Victorian silver Old English pattern soup ladle, *London 1847* £40 - 60 †

146
An Edwardian silver salver, having pie-crust border, raised on three scrolled feet, *London 1907*, 24cm dia., 16ozs., retailed by A. Heberlein & Co. Rawalpindi £100 - 150 †

147
A set of six Edwardian silver Old English pattern dessert spoons, *London 1908/9*; and four similar *Sheffield 1932*, 16.5ozs. £80 - 120 †

148
Twelve George III silver Kings pattern teaspoons, mostly *London 1816*, 13ozs. £80 - 120 †

149
A set of six George III silver Old English pattern table forks, *London 1816*, 13ozs. £80 - 120 †

150
A George IV silver vinaigrette, having raised foliate border and hatched decoration, gilded interior complete with grill, makers Reily & Storer, *London 1831* £100 - 150 †

151-152
No Lots

Jewellery

153
A cased set of 18 carat gold and diamond set dress studs, in fitted case, retailed by Harrods £150 - 250 †

154
A yellow metal graduated link necklace, 22.6gms £100 - 200 †

155
A 9ct gold watch chain, complete with T bar, 20.2gms £150 - 250 †

156
A Victorian gun metal and brass mounted gents pocket watch, the white enamel dial inscribed "The Essex W.C. Webber Saltmarsh & Co. Chelmsford" £40 - 60 †

157
A gold plated gents pocket watch, inscribed to the Roman Numeral dial "Best Patent Lever" £40 - 50 †

158
Three 15ct gold and enamel decorated shirt studs; another unmarked etc. £40 - 60 †

159
A Dunhill cigarette lighter, bearing initials L.B. £40 - 50 †

160
A 9ct gold cigarette case, having engine turned decoration, 13cm x 8cm, 161.7gms £1,500 - 1,800 †

161
A ladies Longines wrist watch £100 - 200 †

162
A Victorian silver cased pocket watch, having engine turned decoration and vacant cartouche, white enamel dial with Roman numerals and second subsidiary, inscribed on the back plate J.E.S. Bunn 1877, hallmarked *Chester 1875* £40 - 60 †

163
A military pocket watch £40 - 60 †

164
A silver cased pocket watch, the dial inscribed Pain Bros. Hastings, "True Briton", hallmarked for *Chester 1900*; together with a silver watch chain and pendant decorated with a lion £40 - 60 †

165
An 18 carat gold Tanzanite and diamond cluster ring £500 - 800 †

166
A 9ct gold dress ring, set smoky quartz type stone; and a 9ct gold dress ring having pierced decoration and pink stones, (2) £40 - 60 †

167
Three white metal bracelets; a tie clip in the form of a riding crop, set graduated stone; and a Sterling silver scent bottle and funnel £20 - 40 †

168
A 1986 United Kingdom gold proof set, £2 coin, Sovereign and half Sovereign £750 - 850 †

169
A vintage Swiss Bucherer mechanical dress watch, with plated bracelet, circa 1970s £25 - 35 †

170
A novelty Continental white metal lipstick mirror, in the form of a handbag, marked JL and pseudo papal marks £30 - 40 †

171
A white gold and diamond cluster ring £50 - 80 †

172
A 9 carat gold amethyst set ring £60 - 80 †

173

A silver novelty pendant, in the form of beetle which opens holding guitar, circa 1960s £25 - 35 †

174

A silver novelty pendant, in the form of a beetle which opens, circa 1960s £25 - 35 †

175

Three natural amber necklaces £100 - 150 †

176

Twelve 925 marked crystal and stone dress rings; a silver cuff bangle; a white metal pocket corkscrew and an oval miniature box £100 - 150 †

177

An Antique Clichy glass paperweight; together with an unusual Millefiori glass and fine white metal bracelet, (possibly Murano) £20 - 30 †

178

A pair of Victorian jet bracelets, in the form of belts and buckles £40 - 60 †

179

A set of cut steel jewellery, comprising of a diadem, half moon hair ornament and two large star brooches, circa 1900 £100 - 200 †

180

A 9 carat gold and citrine ring £60 - 80 †

181

A 9 carat gold diamond cluster ring £100 - 150 †

182

A large white metal turquoise Navajo ring £25 - 30 †

183

A white metal turquoise set Navajo ring; together with a white metal turquoise set bracelet £35 - 55 †

184

A heavy silver Albert chain, each link marked; a silver Vesta and silver fob £70 - 100 †

185

Six white metal novelty silver spoons, £40 - 60 †

186

Four tie pins, decorated fox mask, horse, cross, horse shoe, a gold mounted shark's tooth, miniature Samurai figure; a stamp case pendant; and a silver and enamel ladies ring £40 - 60 †

187

A yellow metal and coral necklace, with matching ear-rings £100 - 200 †

188

An Edwardian pierced silver nurse's buckle, Birmingham 1903, having foliate scroll decoration £20 - 40 †

189

A Victorian yellow metal pierced and scrolled brooch, broad set with three faceted stones £100 - 150 †

190

A 19th Century yellow metal mourning brooch, with a decorative panel formed from hair £100 - 200 †

191

A Tiger claw brooch, having foliate yellow metal mounts and a row of three sapphires £100 - 200 †

192

An Italian cameo brooch, depicting a classical female figure head, contained in Whitby jet surround £60 - 100 †

193

An unusual yellow metal bar brooch, set with a coral apple finial and coiled serpent with diamond head, 6.5cm long £100 - 200 †

194

No Lot

Objects and Collectables

195

A Victorian brass and steel lever barrel corkscrew, having ivory handle, 19cm long £150 - 200 †

196

A mahogany cased Sike's hydrometer £30 - 50 †

197

A Victorian musical photo album, playing two tunes, leather cased with brass clasp £100 - 150 †

198

19th Century school, study of a young boy carrying a pitcher on his back, unsigned oil on board, 21cm x 16.5cm; and a similar study depicting a seated girl with a hat, unsigned oil on board, 23.5cm x 19cm, (2) £100 - 150 †

199

A collection of natural and red stained ivory chess pieces £80 - 120 †

200

A brass cased carriage clock, 15cm high £100 - 150 †

201

A brass cased carriage timepiece, 12cm high £100 - 150 †

202

An icon, 23cm x 18cm £100 - 200 †

203

A Georgian miniature portrait of a military officer, after George Engleheart, within gilt frame and red leather case, (in need of restoration) £40 - 60 †

204

A 19th Century circular papier-mâché snuff box, the lid painted with figures in conversation before a doorway, 9cm dia. £20 - 30 †

205

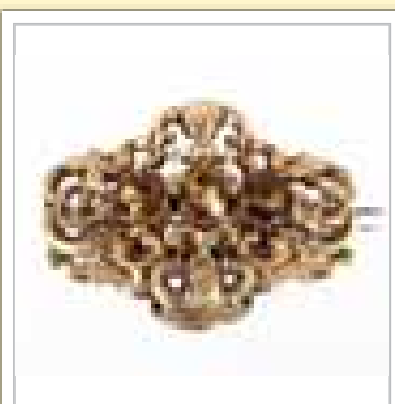
A pair of 19th Century gilt and bronze campana shaped urns, 13cm high £40 - 60 †

206

A collection of three Indian bronze figures of deities £60 - 100 †

207

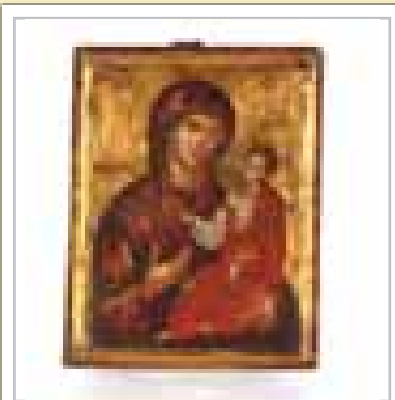
A hard stone model of an elephant, 20cm long 14cm high £20 - 40 †



Lot 189



Lot 191



Lot 202



Lot 204



Lot 219



Lot 220



Lot 230



Lot 236

208

A Victorian decoupage decorated bilboquet game
£30 - 50 †

209

A turned ivory gavel, 14cm long; and another smaller similar, 11cm long, (2)
£80 - 120 †

210

An oriental carved ivory snuff bottle, decorated with animals; another in the form of a nut decorated animals and foliage; and a continental Meersham type cigarette holder with wolf decoration and silver mount
£40 - 60 †

211

An Antique Chinese ivory carving of an immortal, on wooden stand, 13cm
£20 - 30 †

212

A collection of iron wood and tagua nut Netsukes
£40 - 60 †

213

A collection of various miniature items to include: doll's house cakes and pastries, two Coronation coaches, a pair of candlesticks, coins, skittles in a box etc.
£20 - 30 †

214

A miniature porcelain doll's tea set, with floral decoration on a primrose ground
£20 - 40 †

215

A Queen Victoria Jubilee commemorative medallion; a yellow metal commemorative coin brooch; a Temperance medal etc.
£30 - 50 †

216

Two silver replica Coronation throne chairs, both inscribed "Anne Boleyn"
£15 - 20 †

217

An Antique pierced and carved ivory model of a Mosque, complete with glass dome and ebonised stand; and another ebonised stand, AF
£20 - 40 †

218

A brass cased carriage timepiece, with swing handle, 16cm high overall
£50 - 80 †

219

A postage stamp box, by D. H. Greening of Brighton; and a tartan cotton reel box, (2)
£25 - 35 †

220

A Chinese jade carving, in the form of a miniature wine pot and cover, 11cm long
£100 - 150 †

221

An Antique Chinese jade 14k gold mounted pendant; a jade bangle and an old wooden snuff box, (3)
£50 - 80 †

222

A Victorian silver bladed and mother of pearl handled folding knife; a miniature cut-throat razor; a bone Vesta case; a brass folding needle case; a brass sovereign case; a Georgian fob seal; a wooden cased tape measure; a brass similar and a micro mosaic mandolin brooch etc.
£80 - 120 †

223

An 1841 miniature bible; and a tortoise shell mounted miniature magnifying glass in fitted case; a miniature leather cased holy bible and a miniature Pears dictionary in fitted fob case, (4)
£100 - 200 †

224

An Indian bronze figure, of a seated deity, 19cm high
£60 - 80 †

225

A pair of Chinese boxwood figures, 14cm high
£30 - 50 †

226

A 19th Century Chinese white metal snuff bottle, set with turquoise and coral stones; and a 19th Century Tibetan wood and white metal mounted bowl, (2)
£100 - 150 †

227

A set of miniature ivory dominoes
£40 - 60 †

228

A paper mâché snuff box, with painted floral decoration; an ebony hinged trinket box and a circular ebony dressing table tidy jar, (3)
£20 - 30 †

229

An Art Nouveau pewter posy vase, by Liberty & Co., 15cm high; and a Victorian white metal trumpet shaped spill vase with profuse foliate scroll decoration, AF, (2)
£20 - 40 †

230

A bronze figure of a young child kneeling on a stool, 22cm high
£70 - 100 †

231

A pair of Continental gilt metal candlesticks, profusely decorated with birds and foliage; and a spelter cased carriage timepiece having foliate decoration, (3)
£40 - 60 †

232

A 19th Century teeen snuff box, in the form of a boot with swing lid, 10cm long
£30 - 50 †

233

A pair of early 20th Century ivory salad servers, decorated with ebony bands
£20 - 30 †

234

A carved hardwood "bubble eye" fancy Goldfish ornament, with heightened glass eyes and another smaller similar, (2)
£20 - 30 †

235

An Eskimo bone knife; and other items
£30 - 50 †

236

A 19th Century American Indian pipe, in the form of a Tomahawk, the wood shaft inlaid with lead decoration and the pipe blade engraved with a wigwam and crosses, 35cm long
£250 - 350 †

237

A 19th Century Chinese bronze and white metal inlaid censer, in the form of a Sage astride a stag, and a terrapin type mythical beast scroll weight, (2)
£80 - 120 †

238

Three Chinese carved soapstone ornaments
£50 - 80 †

239

A pair of 19th Century Continental porcelain oval portrait miniatures, contained in ebonised frames; and a circular Continental porcelain study of a naked nymph and satyr, (3) £40 - 60 †

240

A Victorian officer's dress sword, by Henry Wilkinson of Pall Mall, having pierced basket hilt and shagreen grip, contained in a leather scabbard £100 - 150 †

241

A Victorian hawthorn walking stick, with foliate embossed silver handle; and an Oriental white metal parasol handle, profusely decorated with scrolling foliage, (2) £40 - 60 †

242

A knobkerrie, a carved Indian stick; and a hard wood staff, (3) £40 - 60 †

243

The Herbal or General History of Plants, John Gerarde 1636, bound in later quarter brown leather with raised bands and gilt title over marbleised boards, and additional end papers £1,500 - 2,000 †

244

A 19th Century carved Black Forest jewellery box, surmounted by birds, 14cm long; and a 19th Century carved Black Forest expanding bookslide with leaf decoration, 33cm, (2) £50 - 80 †

245

An unusual Continental bronze plaque, in the form of a sword and cross surrounded by oak leaves, 73cm high £80 - 120 †

246

A set of three graduated wooden barrels, brass bound with boxwood taps and raised on a decorative pierced wooden stand, 64cm wide x 50cm high £100 - 150 †

247

Two large old copper water/oil cans, possibly originally from Lowestoft Lighthouse £150 - 250 †

248

A Victorian brass and wirework nursery fireguard, 95cm wide x 68cm high £100 - 150 †

249

Two late 19th Century cartoon strip books, one French and one German £80 - 120 †

250

A 19th Century brass and mahogany cased Circumferenter, the dial 19cm dia., box 21.5cm x 25cm £50 - 80 †

251

A 19th Century brass Circumferenter, the dial 13cm dia., 23cm long overall £50 - 80 †

252

An unusual walnut cased musical whistling canary trainer £100 - 150 †

253

An Edison Ideal cylinder phonograph, in oak case, (horn missing), and two wax cylinders £100 - 150 †

254

A walnut cased Polyphon, 28cm wide x 16.5cm high and 12 discs £200 - 30 †

255

A gentleman's leather toilet case, by J.C. Vickery of Regent Street, London, hallmarked silver topped pieces etc. £100 - 150 †

256

A 19th Century mahogany and brass strung drop dial wall clock, by Brownridge Felixstowe, convex Roman numeral dial and fusee movement, 40cm high overall, the dial 33cm dia. £200 - 400 †

257

A cranberry and clear glass oil lamp, decorated with hanging prism drops on a baluster column and circular spread foot £180 - 220 †

258

A brass column table oil lamp, with pink opaque glass foliate reservoir and tinted Vaseline glass shade, 72cm high overall £150 - 250 †

259

An Antique Chinese Buddhist Sino Tibetan Tanka, in gilt on paper and silk £80 - 120 †

260

A 19th Century mahogany tea caddy, (interior missing), and contents of various turned wooden and stained ivory chess pieces £20 - 40 †

261

A Mah Jong set, in fitted case, AF £30 - 50 †

262

A late 19th Century rosewood French truffle carrier, of fretwork design, with sloping hinged lids and central handle, 28cm long overall £20 - 40 †

263

A copper Arts & Crafts Newlyn type tray, with leaf decoration and spot hammered border, 43.5cm sq. £40 - 60 †

264

A Victorian burr walnut brass and bone mounted stationery casket, decorated turquoise cabochon stones, silk lined interior, 20cm wide £60 - 80 †

265

A brass Corinthian column table oil lamp, having floral decorated opaque glass reservoir and green tinted etched shade, 85cm high overall £200 - 300 †

266

A brass Corinthian column table oil lamp, having cut clear glass reservoir and frosted foliate shade, 82cm high overall £150 - 250 †

267

A pair of Victorian brass Griffin candlesticks, 16cm high; a brass desk stand with mask and foliate decoration; and a circular brass tobacco jar and cover, having profuse floral bands, (4) £30 - 50 †

268

A brass Art Nouveau table plant stand, 38cm high £50 - 80 †



Lot 250



Lot 254



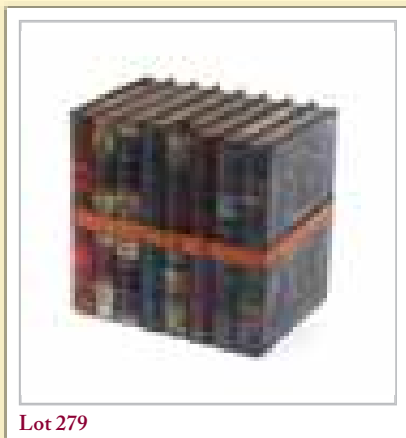
Lot 256



Lot 264



Lot 271



Lot 279



Lot 283



Lot 284

269

A 19th Century Chinese vase, decorated with cloisonne Egyptianesque bands, flanked by ring mask handles, 28cm high £30 - 40 †

270

A Victorian copper jelly mould, by Barron & Wilson, The Strand, 15.5cm long x 12cm high £30 - 40 †

271

A 19th Century marble figure of a classical maiden, carrying water pitcher and bowl, 67cm high £200 - 400 †

272

A Chinese cloisonne baluster vase and cover, surmounted by a Kylin finial and profusely decorated dragons and foliage, 17.5cm high overall £80 - 120 †

273

A pair of Oriental cloisonne vases, profusely decorated with flowers, 32cm high £50 - 80 †

274

A Victorian doll's pram, with folding hood and spoked metal wheels; a vintage toy dog and a child's rattle £40 - 60 †

275

A pair of Chinese brass baluster vases, with raised frog decoration, the necks with foliate engraved stylised calligraphy, 24cm high £40 - 60 †

276

A pair of Chinese brass baluster vases, having floral engraved decoration, seal marks to bases, 20cm high £30 - 50 †

277

A modern Chinese cloisonne baluster vase, profusely decorated with flowerheads, 32cm high £20 - 40 †

278

A Japanese cloisonne box and cover, decorated with flowers and birds, 22cm dia. overall £100 - 200 †

279

A Huntley & Palmers "Literature" biscuit tin, in the form of a bound run of Walter Scott novels, 16cm long £50 - 80 †

280

An Antique oak candlebox, with sliding lid, 44cm high £40 - 60 †

281

A treen book shaped moneybox, 16cm x 11cm £20 - 40 †

282

A pair of decorative cream and gilt baluster table lamps, on square stepped plinths with metal shades, 87cm high £70 - 100 †

283

A glazed plaster Goldscheider style figure, of a Moor with outstretched hand, raised on a naturalistic base, 96cm high £100 - 200 †

284

A light oak Tantalus, having plated mounts and fitted three square cut bottles, 34cm wide £60 - 100 †

285

A pair of gilt and silvered cherub table centre pieces, in the 18th Century Italian baroque style, 40cm high £50 - 100 †

286

A Regency japanned wig box, with brass handle, inscribed "Gerald Thesiger Esq.", 24cm high £70 - 100 †

287

A 19th Century Continental elm shallow bowl, 65cm dia. £60 - 80 †

288

A large Victorian family bible, part leather bound, marbleised boards £40 - 60 †

289

A pair of octagonal Oriental cloisonne wall plates; a circular pair; and a pair of cloisonne baluster vases, AF £100 - 200 †

290

A Victorian leather mounted photograph album, containing numerous portrait and family photographs £100 - 150 †

291

A 19th Century tortoise shell and inlaid trinket box, on oval wooden base £80 - 120 †

292

A Victorian walnut cased regulator wall clock, by Stephenson of Leiston, circular white enamel dial with Roman numerals flanked by turned columns and finials, 115cm £150 - 250 †

293

A 19th Century mahogany and rosewood cross-banded two compartment tea caddy, fitted with a central glass mixing bowl, 27cm £60 - 100 †

294

A 19th Century rosewood and satinwood inlaid sarcophagus shaped tea caddy, the interior fitted two compartments and a central glass mixing bowl, raised on bun feet, 33cm £80 - 120 †

295

An Antique Indian wall hanging, depicting figures, elephants, horses and dogs, 121cm square £200 - 300 †

296

Three 19th Century graduated oval papier-mâché tea trays, with gilt decoration £40 - 60 †

297

A collection of treen medicine bottle holders; and other pots £100 - 150 †

298

A George III mahogany and coopered wine cooler, with interior liner, flanked by handles, 50cm £70 - 100 †

299

A pair of gilt metal horse ornaments, raised on oblong malachite plinths, 27cm high x 26cm long overall £200 - 300 †

300

A pair of 19th Century marble busts, of Apollo and Clytie, Apollo inscribed to the back Jes Mitchell 1884, 39cm high £300 - 500 †

301

An unusual bronzed bell shaped mantel clock, profusely decorated with foliate scrolls and Latin inscriptions, the circular gilt brass and enamelled Roman numeral dial supporting an 8 day movement striking on a gong, 36cm high
£100 - 200 †

302

Two late 19th Century Norwegian Kasa or ale bowls, painted with Nordic script and rosemaling
£60 - 100 †

303

An Antique carved wooden figure of a knight, dressed in a suit of armour, on square plinth, 37cm high
£30 - 40 †

304

A set of Victorian brass postal scales, on shaped platform base, weights incomplete; and a circular inlaid mahogany barometer, (2)
£20 - 40 †

305

An early 20th Century carved wooden eagle head, 25cm high
£40 - 60 †

306

A 19th Century salt box
£30 - 50 †

307

A 19th Century carved wooden wine cooler, or planter, raised on metal claw and ball supports, 22cm high
£60 - 80 †

308

An early 20th Century brass hand and ball door knocker
£30 - 50 †

309

A Japanese cloisonne vase and cover, with gold coloured ground, bird, butterfly and floral decoration, 16cm high. Possibly by Namikawa Yasuyuki, (slight damage to foot)
£100 - 150 †

310

A French walnut cased barograph, complete with spare charts, fitted with a brass carrying handle, 29.5cm wide x 16cm high
£150 - 250 †

311

A late Victorian dolls half tester bed, 43cm long, 42cm high
£80 - 120 †

312

An Antique silk work embroidery, depicting flowers, 65cm x 93cm
£50 - 80 †

313

A Chinese cast iron tea pot; and a bronze censer raised on three supports AF (2)
£150 - 200 †

314

A pair of rococo style gilt wall brackets, 28cm high x 27cm wide
£100 - 150 †

315

A 19th Century gilt metal easel photograph frame, with foliate decoration
£30 - 40 †

316

A 19th Century carved soapstone figure of a Buddha, decorated with original gilding, on a wooden plinth, 27cm high
£150 - 200 †

317

A pair of 19th Century carved walnut Griffin decorated corbels, 57cm high
£130 - 150 †

318

A pair of iron fire dogs, with foliate and urn decoration, raised on claw feet, 42cm long x 43cm high
£40 - 60 †

319

An 18th Century sampler, dated 1779, by Mabel Tuke
£40 - 60 †

320

A 19th Century mahogany and boxwood strung wheel barometer, surmounted by a scroll arch pediment and finial above a thermometer and convex mirror
£100 - 200 †

321

An ethnic mask, carved and with brightly coloured decoration of grotesque form, 40cm; and another of elongated stylised form, 40cm (2)
£200 - 400 †

322

A Chinese silk embroidered picture, depicting cranes and foliage, 56cm x 32cm
£50 - 80 †

323

A Chinese painting on silk, depicting an exotic bird on a fruit and foliage laden branch, seal marks within a floral and cloud decorated border, 36cm x 44cm in extremes
£200 - 400 †

324

An Antique Eastern painting on fabric, depicting seated figures in a woodland clearing, 56cm x 79cm, (possibly Siamese)
£200 - 400 †

325

A framed and glazed citation for an OBE, signed by Queen Elizabeth II; and another citation for an officer of Foreign Service and Diplomatic Establishments, (2)
£80 - 120 †

326

A rare Elizabeth I Great Seal and Document
£500 - 800 †

327-335

No Lots

David Heckels Collection

336

Louis Raemaekers, 1869-1956, one hundred cartoons, "The Great War: A Neutral's Indictment", Fine Art Society 1916
£400 - 600 †

337

Sir Muirhead Bone, 1876-1953, War drawings 1917, in six volumes, lithographs
£1,500 - 2,000 †

338 ✓

Leonard Russell Squirrell, 1893-1979, study of Alton Mill, Suffolk, signed watercolour, dated 1972, 24cm x 37cm
£800 - 1,200 †

339

Leonard Russell Squirrell, 1893-1979, pencil sketch of Alton Mill, near Tattingstone, signed and dated 30.12.72, 15cm x 24cm
£150 - 250 †



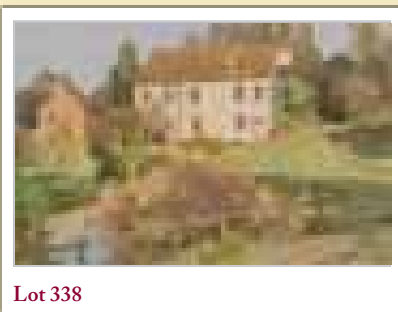
Lot 301



Lot 310



Lot 311



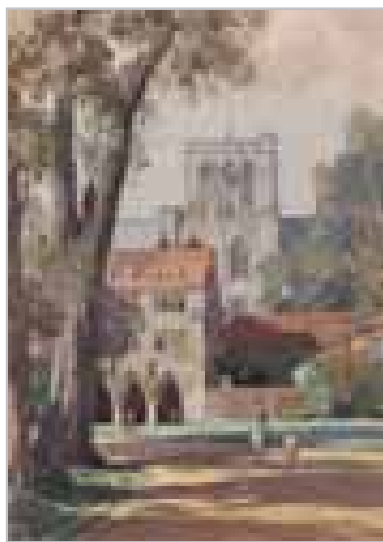
Lot 338

Lots marked ✓ please refer to Droit de Suite royalty charges in Terms and Conditions

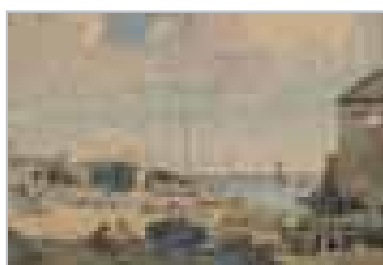
† Each lot is subject to a Buyer's Premium of 18% + VAT (21.6%)



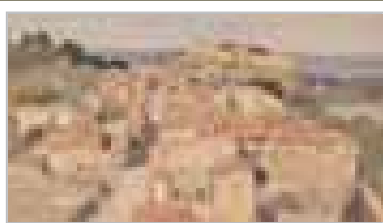
Lot 340



Lot 346



Lot 347



Lot 348



Lot 350

340 ✓

Leonard Russell Squirrell, 1893-1979, study of Barden Tower, Wharfedale, Yorkshire, signed pen, ink and watercolour, dated 1956, 24.5cm x 35.5cm
£400 - 600 †

341 ✓

Leonard Russell Squirrell, 1893-1979, study of Barden Tower, Wharfedale, pencil sketch, 11.5cm x 20cm
£100 - 150 †

342

Leonard Russell Squirrell, 1893-1979, study of Rievaulx Abbey, pencil sketch, 13cm x 21cm
£150 - 250 †

343

Leonard Russell Squirrell, 1893-1979, study of the Ancient House, Ipswich, pencil sketch, signed on the reverse, 17cm x 15cm; and a coloured print after Leonard Russell Squirrell depicting Alms Houses, (2)
£150 - 250 †

344

Leonard Russell Squirrell, 1893-1979, the Old Neptune Inn, Ipswich, pencil sketch, dated 1927, 20cm x 14cm
£200 - 300 †

345

Leonard Russell Squirrell, 1893-1979, study of St. Lawrence and the Ancient House, Ipswich, dated 1927, pencil sketch, 20cm x 15cm
£200 - 300 †

346 ✓

Leonard Russell Squirrell, 1893-1979, study of the Deanery and cathedral Winchester, signed watercolour, 26cm x 18cm, label verso, R.W.S. Exhibition 11th July - 12th September, 1953, Russell Coates Art Gallery Bournemouth; and a small coloured print of The High Street, Winchester, (2) *See front cover illustration.*
£600 - 800 †

347 ✓

Leonard Russell Squirrell, 1893-1979, a harbour scene with figures and boats, signed and dated 1934, 20cm x 30cm
£600 - 800 †

348 ✓

Leonard Russell Squirrell, 1893-1979, "Villeneuve les Avignon", watercolour, signed and dated 1960, 26cm x 43cm
£400 - 600 †

349

Leonard Russell Squirrell, 1893-1979, rough working sketch, Dovedale, 12cm x 20cm
£150 - 200 †

350 ✓

Sir Muirhead Bone, 1876-1953, Market Hill, Woodbridge, circa 1937, pencil signed etching, 16.5cm x 25cm; and a print, (2)
£100 - 150 †

351

Isaac Johnson of Woodbridge, 1754-1835, Chilton Hall Gateway near Sudbury, with cattle being herded, watercolour, 11cm x 15.5cm
£80 - 120 †

352

Edward Thomas Pococke, 1842-1905, study of Fore Hamlet, Ipswich, signed watercolour, 13cm x 10cm
£40 - 60 †

353

Attributed to Myles Birkett Foster, "The wood cutter", watercolour, 8cm x 8.5cm
£100 - 150 †

354 ✓

Marc (Mark Boxer), 1931-1988, humorous cartoon "No Darling I Never Read The Reviews Myself, But My Lawyer Does", pen and ink, 19cm x 11cm
£60 - 100 †

355 ✓

Donald Fraser Gould McGill, 1875-1962, humorous cartoon signed watercolour, 22cm x 16cm *See back cover illustration.*
£200 - 300 †

356 ✓

Donald Fraser Gould McGill, 1875-1962, a humorous cartoon "A Lovely View behind This Door", signed watercolour, 26cm x 17cm
£200 - 300 †

357

James Wilson Carmichael, 1800-1868, study of sailing vessels, initialled in pencil, 8.5cm x 11cm
£20 - 40 †

358

Frederick George Cotman, R.I., 1850-1920, Gunhill, Dedham, signed oil on canvas, 24cm x 19cm. Provenance: Abbot & Holder
£300 - 400 †

359 ✓

Hugh Boycott Brown, 1909-1990, study of Lifeboat on Aldeburgh beach, initialled oil on board, 17cm x 22cm
£150 - 250 †

360

Joanna Dunham, 1936-2014, still life oil on board, 14.5cm x 19cm
£20 - 30 †

361

John Moore of Ipswich, 1820-1902, study of fishing vessels at sunset, signed oil on board, 17cm x 21cm
£400 - 600 †

362

John Moore of Ipswich, 1820-1902, study of sailing boats with a buoy in the fore ground, signed oil on board, 16cm x 23cm
£400 - 600 †

363

E.C. Pococke, 1846-1905, study of Wolsey Gate, Ipswich, pencil signed watercolour, 31cm x 23cm
£100 - 150 †

364

Thomas Churchyard, 1798-1865, study of the Moot Hall, Aldeburgh, watercolour, 15cm x 22cm
£400 - 600 †

365

Thomas Churchyard, 1798-1865, study of Blythburgh Church across the meadows, watercolour, 11cm x 18.5cm
£200 - 400 †

366

Thomas Churchyard, 1798-1865, study of Hemley marshes with cattle grazing, 11.5cm x 15cm
£200 - 400 †

367

Thomas Churchyard, 1798-1865, study of the river Deben, watercolour, 16.5cm x 26cm
£200 - 400 †

368

Thomas Churchyard, 1798-1865, portrait study of a young girl, 14.5cm x 10.5cm; and young boy to the verso, 18cm x 12.5cm £200 - 300 †

369

Isaac Johnson of Woodbridge, 1754-1835, study of Leiston Abbey ruins with cattle in the fore ground, 18cm x 27cm £150 - 250 †

370

George Frost of Ipswich, 1745-1821, pencil sketch depicting two figures in conversation, 16.5cm x 13cm, label verso Abbot & Holder, ex. collection Cornish Torbock £100 - 150 †

371

Thomas Barker of Bath, 1769-1847, study of a blind beggar seated in a landscape, pencil and monochrome wash, inscribed verso, 25cm x 19cm £200 - 300 †

372

19th Century school, study of figures seated by a capstan looking out to sea, unsigned watercolour, 14.5cm x 23cm, (possibly Aldeburgh beach) £60 - 80 †

373

Alfred Vickers Snr. 1786-1868, The Stour near Dovercourt, watercolour, 17cm x 24cm £150 - 250 †

374

George Frost of Ipswich, 1745-1821, study of a landscape with figure and cattle, 13cm x 11.5cm £60 - 80 †

375

Attributed to Robert Burrows, pencil sketch of woodland with buildings in the far ground, bears signature, inscribed Bolton's 1854, 20cm x 30cm £30 - 50 †

376

George Frost of Ipswich, 1745-1821, study of a track lined with trees, pencil drawing, 18.5cm x 24cm £80 - 120 †

377

George Frost of Ipswich, 1745-1821, study of a laden cart and figures in wooded landscape, pencil drawing, 31cm x 23cm £80 - 120 †

378

J. McPherson, active 1858-1864, marine study with sailing vessels, signed watercolour, 11cm x 18cm £40 - 60 †

379

Albert Stevens, 1872-1893, study of cattle watering in a river, unsigned watercolour, 25cm x 42cm £100 - 150 †

380

Thomas Myles Richardson, 1784-1848, study of Naughton Castle, Northumberland, watercolour, pencil inscription verso, 25cm x 36cm £80 - 120 †

381

F.B. Russell, 1815-1864, study of Angel Lane, Ipswich, signed and dated watercolour, 43.5cm x 28cm in extremes £80 - 120 †

382

F.B. Russell, 1815-1864, Ipswich street scene, unsigned watercolour, 37cm x 26cm £60 - 100 †

383

David Cox Jnr, study of a punt on a river, unsigned watercolour, 27cm x 35cm £150 - 250 †

384

Sir Alfred East, R.A., 1844-1913, study of meadows near Arundel, signed watercolour, 22cm x 30cm £50 - 80 †

385

Sir Alfred East, R.A., 1844-1913, figures walking beside a river, signed watercolour, 13cm x 19cm £50 - 80 †

386

George Frost, 1745-1821, study of a cow, pencil drawing, 13cm x 11.5cm £60 - 80 †

387

Charles Samuel Keene, 1823-1891, a Suffolk creek, pencil signed, 14.5cm x 9cm £20 - 40 †

388

Leonard Russell Squirrell, 1893-1979, study of Florence from Fiosele, dated 1923, pencil sketch, 11cm x 17cm £150 - 200 †

389

Isaac Johnson of Woodbridge, 1754-1835, study of ruins at Trimley, Suffolk £150 - 250 †

390

Frederick Hans Haagenzen, 1897-1943, study of tanks and soldiers in a battle scene, charcoal and wash, 45cm x 55.5cm, from the collection of Audrey Haagenzen widow of the artist £300 - 500 †

391 ✓

James M. Hockey, 1904-1990, study of helmets and coats hanging in a porch, 1942, signed and dated, oil on canvas, 60cm x 51cm £100 - 200 †

392 ✓

Sir Muirhead Bone, 1876-1953, study of Captain J.D. Kelly, December 1918, watercolour with inscription, 25cm x 16cm £100 - 150 †

393 ✓

Larry (Terence Parkes), 1927-2003, "To the Battle of the Somme", signed pen, ink and monochrome watercolour, 24cm x 35cm £80 - 120 †

394 ✓

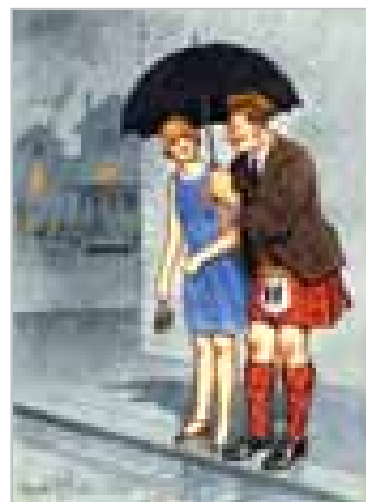
Dominique Charles Fouqueray, 1869-1956, study of First World War soldiers involved in loading heavy artillery, ink and wash, 20cm x 16cm £60 - 80 †

395 ✓

Arthur Edwards (Hamish) Milne, 1888-1981, "The weird barrier", gouache on board, 24cm x 35cm £200 - 300 †

396

Sir Alfred East, R.A., 1844-1913, "Sketch on the Somme", depicting figures punting on a river at sunset, signed oil on canvas, 40cm x 54cm £300 - 400 †



Lot 355



Lot 356



Lot 361

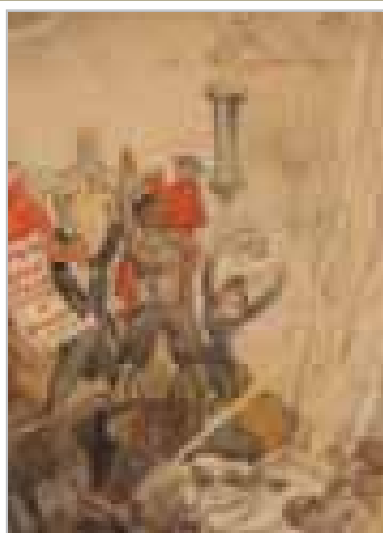


Lot 362

Lots marked ✓ please refer to Droit de Suite royalty charges in Terms and Conditions
† Each lot is subject to a Buyer's Premium of 18% + VAT (21.6%)



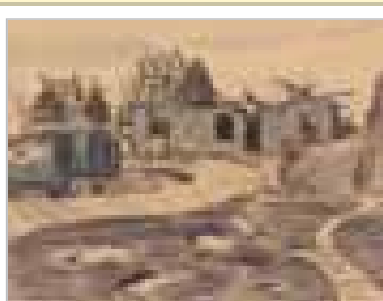
Lot 397



Lot 398



Lot 403



Lot 404

397 ✓

Lucy Elizabeth Kemp Welch, 1869-1958, sketch for the Captain The Hon. Elydir Herbert Memorial, charcoal and pencil, gallery label verso David Messum Fine Art £300 - 400 †

398 ✓

Eustace Nash, 1886-1969, Great Italian Victory at Abyssinia, watercolour, satirical cartoon, 52cm x 38cm £200 - 400 †

399 ✓

William Farley, c. 1891-1961, 20th Century, "Woodland music", signed oil on canvas, inscription verso, 52cm x 67cm £200 - 400 †

400

Thomas Barclay Hennell, R.W.S., 1903-1945, "Building an airfield near Pegu, Burma", circa 1945, watercolour, 39cm x 45cm £600 - 800 †

401

Frederick Hans Haagensen, 1877-1943, "Aircraft In District", charcoal and wash, 52cm x 73cm £200 - 400 †

402

Edward Handley-Read, 1870-1935, "The Somme", signed watercolour, 32cm x 47cm £100 - 150 †

403 ✓

Felix Topolski, R.A., 1907-1989, Hyde Park During An Air Raid, watercolour, pen, ink and brush, signed, 43cm x 58cm £600 - 800 †

404

Ernest Proctor, 1886-1935, Section Saintaire Anglaise 19 - the Poste at Paratonnere, signed watercolour, 24cm x 32cm. Provenance: David Cohen Fine Art, the Great War Exhibition November, 1991 £300 - 400 †

405

Ernest Proctor, 1886-1935, German dug-outs in a churchyard at Peronne, signed watercolour, 26cm x 19cm. Provenance: David Cohen Fine Art, Great War Exhibition 1991 £200 - 400 †

406

Ernest Proctor, 1886-1935, Section Sanitaire Anglaise 9 - Nieuport, Bains, December 31st 1917, signed watercolour, 20cm x 16cm. Provenance: David Cohen Fine Art Great War Exhibition November 1991 £300 - 400 †

407

Ernest Proctor, 1886-1935, Section Sanitaire Anglaise 19, "Early morning at the Poste de Secours Nieuport Ville, signed watercolour, 20cm x 27cm. Provenance: David Cohen Fine Art, The Great War Exhibition November 1991, catalogue number 160 £300 - 400 †

408 ✓

Dominique Charles Fouqueray, 1869-1956, study of two World War I soldiers, ink drawing, 15cm x 11.5cm £80 - 120 †

409

Sir William Rothenstein, 1872-1945, study of Havrincourt, gouache, 52cm x 35cm £300 - 500 †

410 ✓

Albert Rutherfordstone, 1887-1953, "Democracy and Tyranny", watercolour 43cm x 71cm £100 - 150 †

411 ✓

Captain Bryan de Grineau, 1883-1957 R.F.A., study of a battle scene at Beaumont Hamel, drawing with annotation below, 37cm x 62cm, Illustration London News 13th October, 1917, (page 14) £400 - 600 †

412

Lieutenant R Borlase Smart (Machine Gun Corps.) ROI, RBA, RWA, RBC, SGA, 1881 - 1947, "Town Hall Arras 1917", charcoal and watercolour, 43cm x 60cm. Provenance David Cohen Fine Art Great War Exhibition 1988, Catalogue No. 122 £300 - 500 †

413

Thomas Barclay Hennell, R.W.S., 1903-1945, "Ruins In Normandy", watercolour 24cm x 32cm £300 - 400 †

414

Sir William Rothenstein, 1872-1945, study of stretcher bearers in the First World War, pencil drawing, annotation verso by the artist's son, 24cm x 26.5cm £300 - 400 †

415 ✓

Leon Underwood, 1890-1975, looking towards Ardregne, 1917, watercolour and pen, 23cm x 30cm £100 - 150 †

416 ✓

Snaffles, (Charles Johnson Payne, 1884-1967), "Wipers", signed and dated 1914, tinted print with vignette, image 28.5cm x 19.5cm £200 - 300 †

417 ✓

J.W. Taylor, (John Whitfield), 1908-1985, humorous cartoon, "Could we have our bomb back please?", Punch 18.8.1943, charcoal/graphite, label verso, David Cohen Fine Art part of the 2nd World War exhibition 1992, catalogue number 185, 19cm x 24.5cm £60 - 80 †

418 ✓

Dominique Charles Fouqueray, 1869-1956, "Le Soir de la Victoire at Haclon 1918", pen and ink drawing 16.5cm x 13cm £100 - 200 †

419 ✓

John Hodgson Lobley, 1878-1954, aircraft going up the line 1918, signed oil on canvas, 32cm x 36cm £200 - 400 †

420

Ernest Proctor, 1886-1935, study of Nieuport, Baines, from an opening near Bristol tunnel, signed watercolour, dated 1918, 16.5cm x 23.5cm £200 - 300 †

421

Christopher Wood, 1901-1930, "Breton woman", pencil sketch, 16.5cm x 11.5cm, label verso Redfern Gallery and Abbot & Holder £150 - 250 †

422

Dora Carrington, 1893-1932, study of circus figures, pen study, 10cm x 15cm, label verso Anthony d'Offay, Dering St. London £300 - 400 †

Lots marked ✓ please refer to Droit de Suite royalty charges in Terms and Conditions
† Each lot is subject to a Buyer's Premium of 18% + VAT (21.6%)

423 ✓

Edward Ardizzone, C.B.E., R.A., 1900-1979, initialled sketch, "Best Wishes for Christmas and the New Year", pen and ink, 12cm x 12cm

£400 - 600 †

424

Thomas Barclay Hennell, R.W.S., 1903-1945, Mondeville, pen and ink, 16cm x 24cm, information verso

£100 - 200 †

425 ✓

Tessa Newcomb, born 1955, House and a shadow, pencil study, 11.5cm x 15cm

£200 - 300 †

426 ✓

Edward Ardizzone, C.B.E., R.A., 1900-1979, "Bleak House", Lady Dedlock reveals herself to Esther, pen and ink study, 19cm x 13cm

£100 - 150 †

427 ✓

John Northcote Nash, C.B.E., R.A., 1893-1977, "Wet Evening dissipated poet", pen, brush and ink, 24.5cm x 22cm, inscription verso. Provenance: The artist to Simon Heneage

£500 - 600 †

428

Walter Richard Sickert, R.A., 1860-1942, study of Jo Haynes, Chairman of the Old Bedford Music Hall, black and white chalk, signed and inscribed, 38cm x 30cm. Provenance: Thomas Agnew & Sons and Abbot & Holder, various labels and information verso

£2,500 - 3,500 †

429 ✓

Augustus John, O.M., R.A., 1878-1961, study of two nude women, black chalk, label verso for the McClean Gallery, 16cm x 18cm

£500 - 600 †

430 ✓

Augustus John, O.M., R.A., 1878-1961, pen and ink drawing depicting two women and a child, label verso Abbot & Holder. Provenance Edgar Montgomery Scott, 21cm x 17cm

£500 - 600 †

431

Thomas Barclay Hennell RWS 1903 - 1945, Kentish landscape scene, signed watercolour, 48cm x 63cm

£300 - 400 †

432 ✓

David Walsh, born 1958, Tuscan scene, oil on canvas, dated 2001 verso, 38cm x 56cm

£40 - 60 †

433 ✓

Sula Rubens, born 1967, Sabinanigo, North Spain, acrylic on paper, 29cm x 32cm

£60 - 100 †

434 ✓

Michael Ayrton, 1921-1975, study of the Acropolis and Cumae, pen, brush and ink, signed and dated 17th April, 1956, 33cm x 50cm

£300 - 400 †

435 ✓

Sula Rubens, born 1967, landscape, signed watercolour, 31.5cm x 49cm

£100 - 200 †

436 ✓

Ken Cuthbert, born 1929, the Royal military canal, oil on board, 30cm x 50cm

£200 - 300 †

437 ✓

Dame Laura Knight, R.A., 1877-1970, Two boxers Blackfriars ring, charcoal study, 35cm x 25cm, presented to Jimmy Walsh of the Arts Club, London 1969, information verso

£300 - 400 †

438 ✓

Dame Laura Knight, R.A., 1877-1970, "The Richards Old Vic", signed drawing, 35.5cm x 25cm, label verso Abbot & Holder October 1993

£200 - 300 †

439 ✓

Tessa Newcomb, born 1955, "Boats on the beach 2", oil on board, 14cm x 15cm

£500 - 600 †

440 ✓

Caroline McAdam Clarke, born 1947, Orford Ness testing laboratory, signed oil and pencil

£200 - 300 †

441 ✓

Caroline McAdam Clarke, born 1947, "Rough passage, Orford Haven", mixed medium and pencil on canvas, 24cm x 29cm

£200 - 300 †

442 ✓

Caroline McAdam Clarke, born 1947, "Abandoned", oil and pencil on paper and canvas, signed 31cm x 30cm

£200 - 300 †

443 ✓

Caroline McAdam Clarke, born 1947, "East Coast Trotternish Sky", oil and pencil on paper, 15.5cm x 30cm

£300 - 400 †

444 ✓

Caroline McAdam Clarke, born 1947, study of Orford Ness, oil and pencil, 15cm x 25cm

£200 - 300 †

445

Thomas Sunderland, 1744-1823, on the road from Albano to Levier, pen and wash study, 17cm x 27cm

£150 - 250 †

446

John Varley, 1778-1842, river study with mountainous background, signed watercolour, date indistinct, 12.5cm x 22cm

£200 - 300 †

447

Attributed to Samuel Prout, 1783-1852, Village scene with medieval Guild Hall, watercolour, 18.5cm x 29cm; and another, figure studies of Italian fishermen, circa 1824, pencil drawing, 20cm x 28cm

£200 - 300 †

448 ✓

Michael Norman, born 1943, "Iken Church", dated May 1988, signed watercolour, 15.5cm x 27cm

£40 - 60 †

449

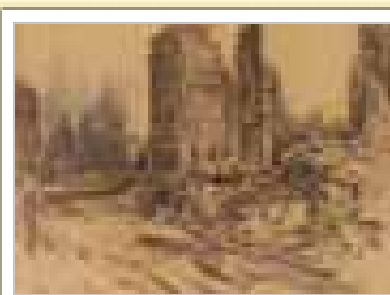
Joseph Edward Southall, 1861-1944, "After the bath 1929", watercolour and pencil, Fine Art Society label verso, 15cm x 24cm. Provenance: Exhibited in Suffolk 66 Aldeburgh Festival June 1981, Mrs E. Baker the artist daughter

£300 - 400 †

450

T. Churchyard, 1798-1865, study of boats on a beach, probably Aldeburgh, unsigned watercolour, 14cm x 19.5cm. Provenance, Simon Carter Gallery

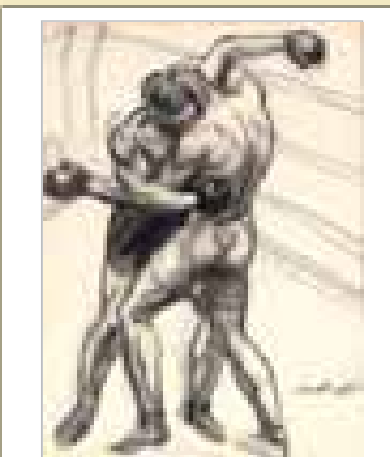
£300 - 400 †



Lot 412



Lot 428



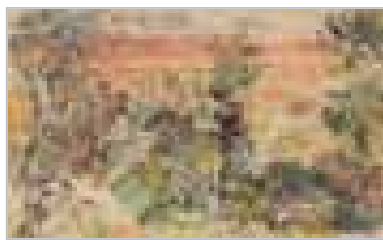
Lot 437



Lot 438

Lots marked ✓ please refer to Droit de Suite royalty charges in Terms and Conditions

† Each lot is subject to a Buyer's Premium of 18% + VAT (21.6%)



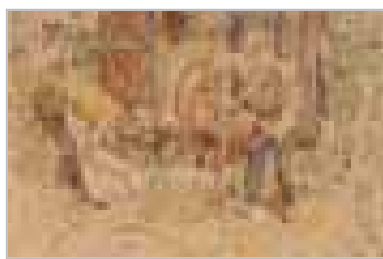
Lot 452



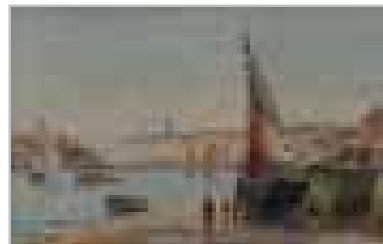
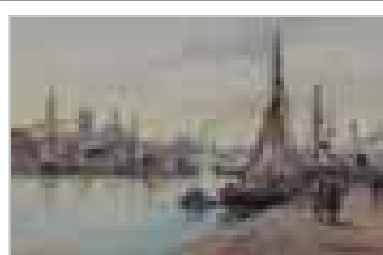
Lot 459



Lot 467



Lot 470



Lot 474

451 ✓

Leonard Russell Squirrell, 1893-1979, study of Harwich harbour from Shotley Point, pencil signed aquatint, 21cm x 30cm £100 - 150 †

452

Thomas Barclay Hennell, R.W.S., 1903-1945, a landscape study with figure, pencil signed watercolour, dated August 1940, 26cm x 39cm £200 - 300 †

453

R. Righetty, study of a Continental street scene with figures, signed watercolour, 24cm x 14.5cm £40 - 60 †

454

Lance Corporal G.H. Cook 11th Observer Group, Aniche after the gale, dated 23rd 12th 18, sketch made while on active service, 17.5cm x 12.5cm, label verso. David Cohen Fine Art Great War Exhibition at the King Street Galleries, November 1988, catalogue number 38 £40 - 60 †

455

George Frost of Ipswich, 1745-1821, study of a gorge, pencil sketch, 27cm x 18cm £60 - 80 †

456

Thomas Barclay Hennell, R.W.S., 1903-1945, "Clearing The Tree Stumps", pen, ink and pencil, 49.5cm x 30.1cm

NB. Illustrated page 39 "The Land Is Yours" £200 - 300 †

457

Thomas Barclay Hennell, R.W.S., 1903-1945, "Wattle and Daub Barn, Kent", pen, ink and pencil, 52cm x 32cm

NB. Front Piece to Miles from Anywhere £300 - 400 †

458

Thomas Barclay Hennell, R.W.S., 1903-1945, "Newington Gathering The Harvest", pen and ink inscribed verso by the artist, 32cm x 47cm £300 - 400 †

459

Sir William Rothenstein, 1872-1945, "Digging Potatoes", pencil sketch 30cm x 48cm, circa 1915 ex. collection of the artists family £300 - 400 †

460

Thomas Barclay Hennell, R.W.S., 1903-1945, "Threshing Machine" with study verso "Earthing Up Potatoes", pen, ink and watercolour, 28cm x 45cm £200 - 300 †

461

Thomas Barclay Hennell, R.W.S., 1903-1945, "Faggot Making" pen, ink and pencil, initialled T.H. 46cm x 28cm

NB. Illustrated in "The Land Is Yours" page 8 £200 - 300 †

462

Thomas Barclay Hennell, R.W.S., 1903-1945, "Man Laying Under A Tree", pen and ink drawing, 20cm x 32cm

NB. Illustrated in A Countryman's Journal by H J Massingham, Page 49 £150 - 250 †

463

Thomas Barclay Hennell, R.W.S., 1903-1945, "Gathering Potatoes, Folkestone" dated 1930-1931, pen and ink, 28cm x 45cm £200 - 400 †

464

Thomas Barclay Hennell, R.W.S., 1903-1945, "Women Pricking Out Sugarbeet", pen and ink and pencil, 28cm x 44.5cm

NB. Illustrated page 55 "The Land Is Yours", purchased from Simon Carter Gallery 1993 £200 - 400 †

465

Thomas Barclay Hennell, R.W.S., 1903-1945, study of Tintern Abbey, pen, ink and pencil, 21.5cm x 31.5cm

NB. Illustrated in A Countryman's Journal by H J Massingham page 15 £200 - 300 †

466

Thomas Barclay Hennell, R.W.S., 1903-1945, "Hedger At Work", pen and ink and pencil, 30cm x 40cm £200 - 300 †

467

Sir William Rothenstein, 1872-1945, "Digging Potatoes", circa 1914, pencil drawing, ex collection Michael Rothenstein's son, 32cm x 44cm £300 - 400 †

468

Thomas Barclay Hennell, R.W.S., 1903-1945, "The Old Chair Maker", pen, ink and pencil initialled T.H. 1939, 39cm x 26cm £200 - 300 †

469 ✓

John Northcote Nash, C.B.E., R.A., 1893-1975, study of a fallen tree, signed pencil drawing, 23cm x 29.5cm £700 - 800 †

470

Thomas Barclay Hennell, R.W.S., 1903-1945, sheep shearing 1937, watercolour, 32cm x 46cm £400 - 600 †

471 ✓

Edward Ardizzone, C.B.A., R.A. 1900-1979, the private bar at the Goat, pen and ink, inscribed, 21cm x 14cm £200 - 300 †

472 ✓

Edward Ardizzone, C.B.E., R.A., 1900-1979, "Under the greenwood tree", pen and ink drawing, 17cm x 21cm £200 - 300 †

473

Sir George Clausen, R.A., R.W.S., 1852-1944, man with lantern, chalk drawing, 25.5cm x 18cm £500 - 600 †

474

Louis Etienne Timmermans, 1846-1910, study of Dieppe Harbour, watercolour, signed 15.5cm x 24cm; and another companion study (a pair) £200 - 300 †

475 ✓

Robert Eadie, R.S.U., 1877-1954, "Market Place Le Cateau", signed watercolour dated 1918, 25cm x 34cm £200 - 300 †

Lots marked ✓ please refer to Droit de Suite royalty charges in Terms and Conditions
† Each lot is subject to a Buyer's Premium of 18% + VAT (21.6%)

476

John Craig, six wood engravings from "Britten's Aldeburgh" depicting fisherman's huts, pencil signed dated 1996-97, 9cm x 14cm and smaller, framed as one £60 - 80 †

477

After J.M.W. Turner, "Winander mere and Rievaulx Abbey", black and white engravings £40 - 60 †

478

Ros Donaldson, "There's Nowt as daft as folk", study of cafe 152 Aldeburgh, watercolour, 26cm x 38cm; and a companion, "Thorpeness Fantasy", 37cm x 28cm, (2) £40 - 60 †

479

Ros Donaldson, "Fresh Fish Daily", study of Aldeburgh, pencil signed lithograph, 24cm x 20cm £40 - 60 †

480

Ros Donaldson, "South Lookout II", watercolour 19cm x 26cm £40 - 60 †

481 ✓

Mary Potter, O.B.E., 1900-1981, Aldeburgh beach, exhibited Fine Art Society 1998, 19cm x 28cm £400 - 600 †

482

David Gentleman, born 1930, study of boats on Aldeburgh beach, pen and wash, signed, 16.5cm x 29cm £40 - 60 †

483 ✓

Bernard Cheese, 1925-2013, "The Market Stall", pencil signed watercolour, 20cm x 29cm £200 - 300 †

484

Josiah Wood Whymper, 1813-1903, river scene with man by a loch, signed watercolour, 18cm x 27cm £100 - 150 †

485

Michael Norman, born 1943, study Canterbury Cathedral, signed watercolour, dated April '90 £20 - 30 †

486

R. Righetty, study of a continental street scene, signed watercolour, 25cm x 17cm £40 - 60 †

487

Claude Hayes, 1852-1922, study of a landscape with sheep, horse and rider, signed watercolour 33cm x 50cm £200 - 300 †

488

David Cox, 1783-1859, a Welsh farmyard by a river, watercolour, 36cm x 52cm £100 - 200 †

489

Thomas Collier, 1840-1891, study of a Walberswick landscape, watercolour, 23.5cm x 35cm, label verso, Gerald M. Norman Gallery, Duke Street, St. James, London £100 - 150 †

490

Thomas Collier, 1840-1891, landscape study of Southwold, Walberswick area, signed watercolour and dated July 30th 1878, 24cm x 35cm £80 - 120 †

491 ✓

Cecil Arthur Hunt, 1873-1965, landscape study Picardy, watercolour, inscription verso stating that the picture is near Montreuil Sur Mer, exhibited at the Fine Art Society in 1919 £100 - 150 †

492

Allan Walton, 1891-1948, study of a Suffolk cottage interior, oil on canvas, 50cm x 60cm. Provenance: Russell Gallery and Simon Carter Gallery £200 - 400 †

493 ✓

Jacob Kramer, 1892-1962, "Deposition", circa. 1915 charcoal and pastel, 32cm x 45cm £250 - 350 †

494

Thomas Barclay Hennell, R.W.S., 1903-1945, study of a farmstead dated 18th February 1940, 6.15pm, signed watercolour, 25cm x 38cm £200 - 400 †

495

Sir William Rothenstein, 1972-1945, French market scene, sanguine 26cm x 43cm £300 - 400 †

496 ✓

David Walsh, born 1958, study of Church of Madonna De Bango, Cortona, Tuscany, oil on canvas, 31cm x 41cm £40 - 60 †

497

Thomas Barclay Hennell, R.W.S., 1903-1945, "Wintry Landscape, Ridley", circa. 1937, watercolour signed and dated, 20cm x 27cm £200 - 300 †

498

Thomas Barclay Hennell, R.W.S., 1903-1945, landscape with figure, pencil signed watercolour dated August 1940 £200 - 300 †

499

Thomas Barclay Hennell, R.W.S., 1903-1945, "Orchard Cottage", pencil, ink and watercolour, signed and dated 1938 £200 - 300 †

500

J.A. Rogers, "Brotherilkeld Farm, Eskdale", watercolour, signed in pencil, 25cm x 33cm £40 - 60 †

501 ✓

Peggy Somerville, 1918-1975, "Gypsies on the Move in the Evening", pencil drawing, 21cm x 27cm £100 - 200 †

502

Sir Frank Short, R.A., 1857-1945, pencil signed etching depicting Canterbury cathedral, plate 26.5cm x 36cm £60 - 100 †

503

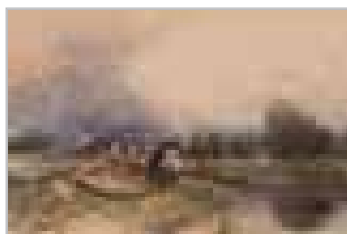
Thomas Barclay Hennell, R.W.S., 1903-1945, "Digging Carrots" watercolour and ink, 41cm x 50cm, Gallery Labels verso for The Fine Art Society and Guillaume Gallozzi New York £400 - 600 †

504

Thomas Barclay Hennell, R.W.S., 1903-1945, study of Derbyshire near Chapel on Le Frith, September 1941, provenance Artists sister, 36cm x 31cm £250 - 350 †



Lot 475



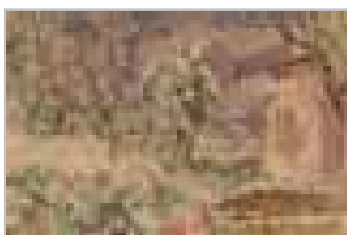
Lot 484



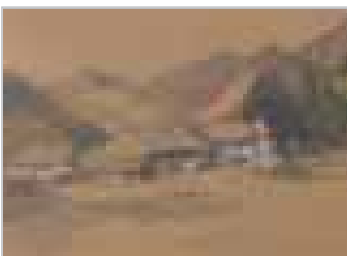
Lot 488



Lot 492



Lot 499



Lot 500

Lots marked ✓ please refer to Droit de Suite royalty charges in Terms and Conditions

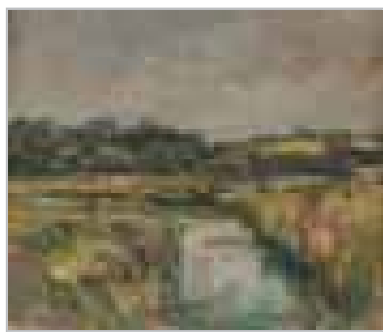
† Each lot is subject to a Buyer's Premium of 18% + VAT (21.6%)



Lot 506



Lot 516



Lot 518



Lot 524



Lot 544

505

Edward Lear, 1812 - 1888, Bussano, pencil, pen and ink drawing, Gallery label verso Thomas Agnew & Sons No.43816 £1,000 - 1,500 †

506 ✓

John Northcote Nash, C.B.E., R.A., 1893-1975, dis-used sandpits Little Blakenham, near Ipswich, watercolour, 23cm x 29cm £800 - 1,000 †

507

Dora Carrington, 1893-1932, study of circus figures, pencil study, label verso, Anthony d'Offay, Dering Street, London, and Abbot & Holder, 10cm x 15cm £300 - 500 †

508

George Frost, 1745-1821, "Trees Near The River Orwell, Suffolk", chalk drawing, 27cm x 42cm, ex. collection Willaim Esdaile £200 - 300 †

509

Thomas Barclay Hennell, R.W.S., 1903-1945, Farmer With Plough and Horses, signed watercolour 20cm x 45cm £300 - 400 †

510

Sir William Rothenstein, 1872-1945, landscape in Flanders, sanguine and pencil, 26cm x 39cm £300 - 400 †

511

Paul Sandby, R.A., 1831-1809, study of a Castle Tower surrounded by trees, watercolour 23cm x 28cm, label verso Abbott & Holder £200 - 300 †

512

Morton Matthews, pencil signed etching "The Three Decker, Kedington Parish Church, Suffolk", 40.5cm x 23cm £30 - 50 †

513

Morton Mathews, 1866-1953, pencil signed etching "The Guildhall, Boston" plate 28cm x 34cm £40 - 60 †

514 ✓

Mary Potter, O.B.E., 1900-1981, "The Old Mill, Aldeburgh", signed watercolour 21cm x 33cm, label verso "Thompson's Gallery, Aldeburgh" £600 - 800 †

515

Sir William Rothenstein, 1872-1945, "Devise January 1918", gouache, 33cm x 51cm £300 - 400 †

516 ✓

John Northcote Nash, C.B.E., R.A., 1893-1975, wintry landscape, signed pencil drawing, 30cm x 51cm, label verso, New Grafton Gallery, Old Bond Street, London £1,000 - 1,500 †

517 ✓

John Northcote Nash, C.B.E., R.A., 1893-1977, "The pear tree", circa 1930, pen and ink initialled, label verso for the New Grafton Gallery, Bond Street, 7.5cm x 11cm £200 - 300 †

518 ✓

Ken Cuthbert, born 1929, "The Royal Military Canal", oil on board, 30cm x 50cm £200 - 300 †

519

Peter Hayman, study of a golden plover and a ring ouzel, pair of signed watercolours, ovals 18cm x 15cm in extremes £40 - 60 †

520

Polly Ballon, "Anthony Carrick as Mr Micawber, pencil sketch, 29cm x 20cm £20 - 40 †

521 ✓

Eric Fraser, 1902-1983, "The Pursuit Of Pleasure", signed pen and ink, 14.5cm x 53cm

NB. Illustration For Good Housekeeping, June 1931 £200 - 300 †

522 ✓

Allan Walton, 1891-1948, study of Polstead, oil on canvas, 27cm x 33cm £100 - 150 †

523

No Lot

524 ✓

John Northcote Nash, C.B.E., R.A. 1893-1977, a view from our bedroom at Clavier, Provence, pencil and wash, 22.5cm x 28cm £1,000 - 1,500 †

525 ✓

Mary Potter, O.B.E., 1900-1981, view from Crag House window, watercolour, 22cm square £400 - 600 †

526 ✓

John Northcote Nash, C.B.E., R.A., 1893-1977, stone quarries at St. Austell, pencil and watercolour, signed and dated 1919, 24cm x 35cm £800 - 1,200 †

527 ✓

Felix Topolski, R.A., 1907-1989, Nuremberg trial, depicting Goering, Hess, Jodl, Keitel and others in the dock, pen and ink, inscribed and dated 1946, 26cm x 36cm £200 - 300 †

528

Edward Lear, 1812-1888, study entitled "Wady", January 21 4pm 1849, "All rox infinitely broken", pen and ink drawing, 31cm x 50cm £1,000 - 1,500 †

529

Edward Morrison Wimperis, 1835-1900, study of the footbridge Bray, initialled watercolour, 15.5cm x 24cm £100 - 150 †

530

John Nixon, 1750-1818, study of Copdock near Ipswich, watercolour and pencil, 16.5cm x 30cm £300 - 400 †

531 ✓

Stanley Cooke, 1913-1987, beach landing craft, signed watercolour, dated 24th July, 1944, 14cm x 18cm £100 - 150 †

532

Edwin Hayes, 1820-1904, shipping scene with three sailing ships, signed watercolour, 15.5cm x 24cm £100 - 150 †

533 ✓

Frank Reynolds, 1876-1953, character study of an actor, charcoal and pencil drawing, signed, 21.5cm x 17cm £150 - 250 †

534

Kenneth Green, 1905-1986, "Elderly Couple" woodcut dated 1926 £40 - 60 †

Lots marked ✓ please refer to Droit de Suite royalty charges in Terms and Conditions
† Each lot is subject to a Buyer's Premium of 18% + VAT (21.6%)

535

Samuel Prout, 1783-1852, figure studies depicting fishermen in various poses, pencil sketch, 21cm x 28.5cm £60 - 100 †

536 ✓

Mary Potter, O.B.E., 1900-1981, Sand dunes with marram grass, watercolour, 16cm x 16cm, gallery labels verso New Arts Centre, Sloane Street, London and the John Russell Gallery, exhibited 44th Aldeburgh Festival Exhibition 1991 £400 - 600 †

537 ✓

William Roberts, R.A., 1895-1980, "At the launderette", pencil, 19cm x 13cm, label verso Abbott & Holder £800 - 1,000 †

538 ✓

Henry Lamb R.A., 1883-1960, Galipoli 1916, pencil sketch, 16cm x 23.5cm £60 - 80 †

539

Edward Lear, 1812-1888, "Tindarow, Italy circa 1847", pencil and ink, 15cm x 42cm £1,000 - 1,500 †

540

John Leech, 1817-1864, "The end of law", watercolour, 22cm x 27.5cm, inscription verso £100 - 150 †

541

Isaac Cruikshank, 1764-1811, "The huntsman's relish at the Stag Inn", watercolour, inscribed and signed verso, 18cm x 23cm £150 - 250 †

542

Thomas Rowlandson, 1756-1827, "The Quailing Cleric", watercolour 22cm x 17cm £800 - 1,200 †

543

Thomas Rowlandson, 1756-1827, study of a hunt in full cry through wooded landscape, watercolour, 18cm x 24cm £800 - 1,200 †

544

Thomas Rowlandson, 1756-1827, Doctor In Music, pen and watercolour, 27cm x 20cm £800 - 1,200 †

545

Thomas Barclay Hennell, R.W.S., 1903-1945, study of three men in front of a window, signed oil on canvas, 47cm x 30cm £500 - 600 †

546

Thomas Barclay Hennell, R.W.S., 1903-1945, "Sower", oil on canvas, 39cm x 31.5cm £500 - 600 †

547

Thomas Barclay Hennell, R.W.S., 1903-1945, "The Saw Horse", oil on canvas, 35cm x 45cm £600 - 800 †

548

Thomas Barclay Hennell, R.W.S., 1903-1945, study of farm workers with forks, oil on canvas 33cm x 41cm £500 - 600 †

549

Thomas Barclay Hennell, R.W.S., 1903-1945, study of five agricultural workers resting, oil on canvas, signed, 39.5cm x 50cm £600 - 800 †

550 ✓

Jeremy Young, "Downstream at Snape, July 1999", black and white photo, 20cm x 36cm; another "Snape Maltings", 29cm x 23cm and "Towards Iken Church", 29cm x 23cm, (3) £100 - 200 †

551 ✓

Sir Osbert Lancaster, C.B.E., 1908-1986, "All Things Bright and Beautiful", pen and ink signed, 25cm x 13cm £150 - 250 †

552 ✓

Marie Scott, "Haystacks II", oil on card, dated 2006, 23.5cm square £100 - 200 †

553 ✓

Margaret Mellis, 1914-2009, "Cornflowers and shadows", mixed media on an envelope, dated 1988, 33cm x 25.5cm in extremes £1,500 - 2,000 †

554 ✓

Bruce Bairnsfather, 1887-1959, "Mein Friend", signed ink and wash caricature, 21cm x 12.5cm, initialed and dated 1916 £600 - 800 †

555 ✓

Bruce Bairnsfather, 1887-1959, "Best of Luck Arry", signed ink and wash, information verso, 33cm x 22cm £800 - 1,000 †

556-559

No Lots

Pictures and Prints

560

A Chinese rice paper picture, depicting butterflies, cricket and other insets £60 - 80 †

561

A 20th Century Scandinavian painting on wooden panel, depicting a young Prince holding a branch, 71cm x 34cm £20 - 40 †

562

19th Century school, study of a rural scene with horse, cart and figures, village in the far ground, unsigned monochrome watercolour, 12.5cm x 18cm £30 - 40 †

563

An ornate Antique gilt picture frame, with mirror insert, 105cm x 120cm £150 - 250 †

564

Charles Watson, 1887, watercolour study depicting a river scene with boats, 24.5cm x 36cm £200 - 300 †

565

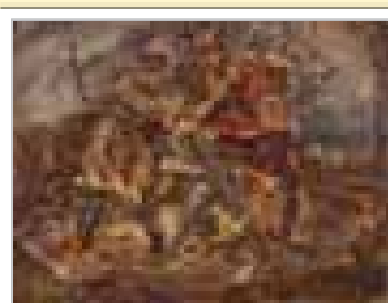
Victorian school, study of a figure walking along a country path, unsigned oil on canvas, 51cm x 35cm £40 - 60 †

566

Late 19th/early 20th School, portrait study of a young man wearing black coat and stock, mounted as an oval, unsigned oil on canvas, 35cm x 27cm in extremes, contained in a decorative gilt frame £60 - 100 †

567

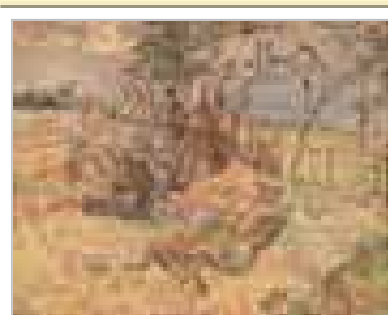
Rowland Langmaid, "Sea Fever" by John Masefield, pencil signed, (2) £100 - 150 †



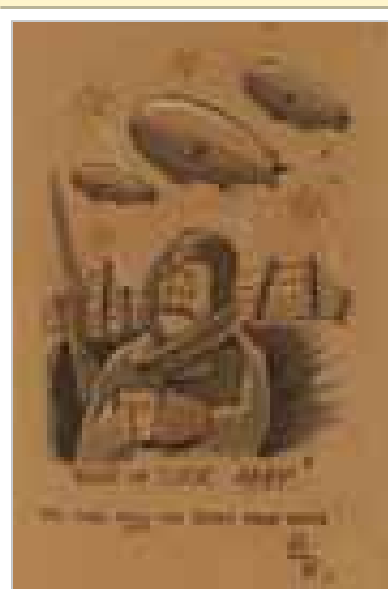
Lot 547



Lot 548



Lot 549



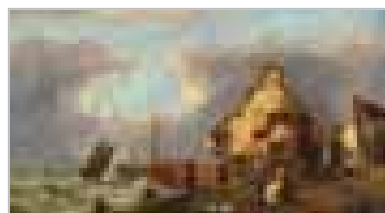
Lot 555

Lots marked ✓ please refer to Droit de Suite royalty charges in Terms and Conditions

† Each lot is subject to a Buyer's Premium of 18% + VAT (21.6%)



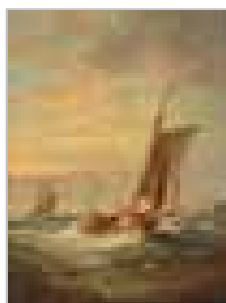
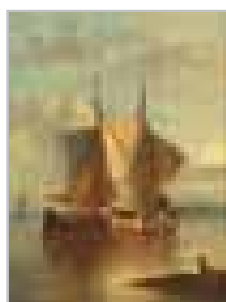
Lot 571



Lot 573



Lot 574



Lot 576

568

June Berry, a multi media engraving entitled, "Sunday Afternoon" limited edition 4/75, pencil signed to mount, plate 41cm x 48cm £200 - 300 †

569 ✓

Helen Kiddall, (British 1880-1980), "The Reading Lesson", signed oil on canvas with exhibition label verso, 63cm x 40cm £100 - 200 †

570

Four coloured hunting prints, after Cunliffe £30 - 50 †

571

19th Century school, portrait study of a military officer wearing red tunic, 28cm x 23cm £100 - 200 †

572

Robert Burrows, scene on the banks of the Orwell with figure and donkey, signed oil on canvas; and a companion depicting a seated figure gathering wood along a country path, a pair, framed in the round, 40cm dia., (2) £400 - 600 †

573

Attributed to John Moore, fishing port with figures and buildings, unsigned oil on canvas, 22cm x 38cm £100 - 200 †

574

19th Century school, attributed to F. Maresca, study of a street urchin, oil on canvas, 38cm x 24cm, label verso £100 - 150 †

575

Attributed to William Henry Hunt, boy with a fishing rod, unsigned oil on canvas, 42cm x 28cm £120 - 180 †

576

After John Moore, study of sailing ships in heavy seas off a coast, unsigned oil on canvas, 30cm x 22cm; and a companion picture of sailing vessels in calm seas, both contained in pierced gilt frames, (2) £300 - 400 †

577

Boden, study of a thatched cottage with figures and ducks; and a companion painting of a girl on a country path, meadows and cattle in the far ground, signed watercolours, 24cm x 33cm, (2) £200 - 300 †

578

Henry George Todd, 1846-1898, view of an Ipswich Lane, signed oil on canvas dated 1882, 40cm x 60cm £300 - 400 †

579

Henry George Todd, 1846-1898, view of an Ipswich Lane, signed oil on canvas dated 1882, 40cm x 60cm £300 - 400 †

580

A pair of Antique Persian paintings, with inscriptions, 16cm x 10.5cm; and a larger equestrian study, 22cm x 13cm, (3) £30 - 60 †

581

A late 19th/early 20th Century Continental school, a pair of portrait studies of an elderly lady and gentleman, indistinctly signed, oils on canvas, 46cm x 34cm £150 - 250 †

582

Maria Fischer 1788, still life study with fruit on a silver platter on stone ledge in an alcove, signed and dated 1788, oil on canvas, 41cm x 30cm £180 - 250 †

583

A pair of North Indian still life paintings, 40cm x 29cm overall £80 - 120 †

584

Victorian school, study of a lady and King Charles spaniel, charcoal and pencil, 53.5cm x 43cm, contained in a gilt frame £100 - 150 †

585

C.W.B., early 20th Century school, study of a river with bridge and buildings, inscribed pencil verso, C.W.B, C.J. Watson and M Bollingbroke circa 1920, 20cm x 30cm £40 - 60 †

586

A pair of oval Oriental silk panels, one depicting a lady in exotic garden setting, the other depicting insects and foliage, 20cm dia. £20 - 40 †

587

P L Harvey, equestrian study "Miss Dinah Cooper on Rufus", signed watercolour, 22cm x 28cm £50 - 80 †

588

S.R. Peach, watercolour of a dipper, 16cm x 21cm £20 - 40 †

589

19th Century engraving, of arched rock on the coast of New Zealand and with Vignettes of a New Zealand chief and warrior, 29.5cm x 20cm £40 - 60 †

590

A 19th Century engraving of His Majesty Duke of York, label verso dated 1809, contained in a gilt frame £30 - 50 †

591

A pair of Japanese prints, depicting young ladies, 26cm x 23cm £20 - 40 †

592

Antony Ostler, study of river barges, signed watercolour, 47cm x 33cm £120 - 160 †

593

After Sir Edwin Landseer, "The Whisky Distillery", coloured engraving, 55cm x 70cm £60 - 100 †

594

A Japanese coloured wood cut, in three sections depicting Geisha girls in exotic garden terrace, 36cm x 75cm, inscription verso relating to "Toyokuni" £150 - 250 †

595

Victorian school, study of a seated girl at a spinning wheel, unsigned oil on canvas, 19cm x 25cm, contained in a gilt frame £30 - 50 †

596

A framed and glazed map, depicting the Gulf of Mexico, by Robert Sayer, 53cm x 116cm £400 - 600 †

Lots marked ✓ please refer to Droit de Suite royalty charges in Terms and Conditions
† Each lot is subject to a Buyer's Premium of 18% + VAT (21.6%)

597

Thomas Smythe of Ipswich, 1825-1902, study of figures outside a cottage by the sea, signed oil on board in gilt frame, mounted in the round, 31cm dia. £600 - 800 †

598

Thomas Smythe of Ipswich 1825-1902, study of a country cottage beside a duck pond with figure washing, cottages and church in the far ground, signed oil on canvas 15cm x 67cm £800 - 1,000 †

599

18th Century Dutch school, still life study of flowers on a ledge, unsigned oil on canvas, 46cm x 35cm in simulated walnut and ebonised cushion frame £100 - 150 †

600

19th Century school, study of figures on a lake with castle and other buildings in the far ground, unsigned oil on board, 40cm x 54cm £100 - 200 †

601

After Myles Birkett Foster, study of a woman drawing water from the well with attendant kittens, monogrammed watercolour, 13.5cm x 9cm, contained in a decorative gilt frame £100 - 200 †

602

19th Century school, a pair of country landscapes with figures, river and buildings, unsigned oils on board, 10cm x 12.5cm £60 - 80 †

603

19th Century school, "A Musical Party", oil on board, 30cm x 31.5cm, (AF) £30 - 40 †

604

F. Sil, 1894, Continental school, river landscape with a girl washing near a waterfall, signed and dated, oil on canvas, 78cm x 58cm £100 - 200 †

605

Edith Cottam, study of saddled horses outside of a country house, signed oil on canvas, dated 1895, AF, 60cm x 82cm £100 - 200 †

606

French school, circa 1920/30, study of a flooded French town with river and steam digger, oil on canvas, 72cm x 94cm, unframed, (further painting on reverse depicting a market scene) £100 - 200 †

607

20th Century Continental school, study of Hollyhocks, unsigned oil on canvas, 94cm x 73cm £50 - 80 †

608

A three fold hand painted boudoir screen, decorated with rural scenes, signed E. Griffiths, dated 1889 £200 - 300 †

609

John Moore of Ipswich 1820-1902, study of cattle, framed in the round, 23cm dia. £300 - 400 †

610

E.R. Smythe, 1810-1899, study of a tethered donkey and dogs in country landscape, oil on canvas, 26cm x 35cm £600 - 800 †

611

Harry Becker, 1865-1928, etching with later ink additions, study of a rural scene, 8.5cm x 11.5cm £150 - 250 †

612

Macbeth Raeburn, pencil signed etching of a cathedral at night, 20cm x 12.5cm £30 - 50 †

613

Leonard Russell Squirrell, 1893-1979, study of "Alstonefield Old Hall, in the Dales", preliminary pencil sketch, 17cm x 22cm £100 - 150 †

614

Edmund Lawrence Van Someron of Woodbridge, 1875-1963, study of Greatbridge Yorkshire, after the original by John Sell Cotman, watercolour 10cm x 15cm, labels verso £30 - 50 †

615

Early 19th Century school, portrait miniature study of a young gentleman, inscribed to verso, "Adolph Senn from Szoffingen, Naples 1836"; also "artist B. Nom de Guerard Court miniaturist to Francis 2nd of Austria", unsigned watercolour and pencil, 10cm x 7.5cm, contained in a gilt frame £50 - 60 †

616

A humorous satirical cartoon, contained in a pollard oak frame, image 17cm x 14cm £30 - 50 †

617

Henry Bright, 1810-1873, watercolour study of a figure in rural landscape, pencil signed and dated 1875, 27cm x 36.5cm £200 - 300 †

618

John Bates Noel, 1870-1927, "On the Conway", signed watercolour, 26cm x 37cm, unframed £100 - 200 †

619

19th Century school, head and shoulders portrait study of a young man, indistinctly inscribed verso, unsigned watercolour, 16cm x 13cm £40 - 60 †

620

19th Century Continental school, study of a soldier and woman embracing, indistinctly signed watercolour, contained in a burr walnut mounted frame, image 11.5cm x 9cm £30 - 50 †

621

Early 20th Century school, study of a fishing vessel on the Thames with St. Paul's cathedral in the background, indistinctly signed watercolour, dated 29, 12.5cm x 8.5cm £20 - 40 †

622

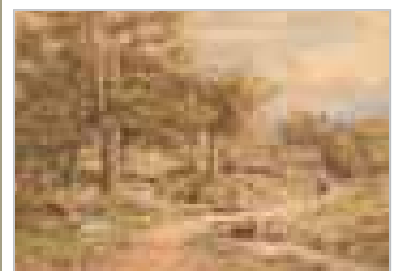
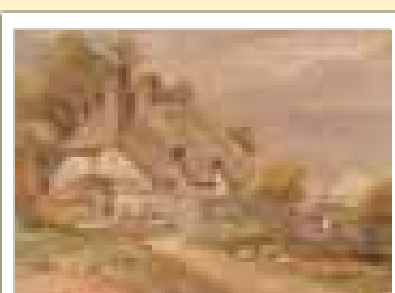
Christopher Hughes, study of a bird amongst flowers, (possibly Royal Worcester porcelain design), information verso, mounted as an oval, 28cm x 21cm in extremes £20 - 30 †

623

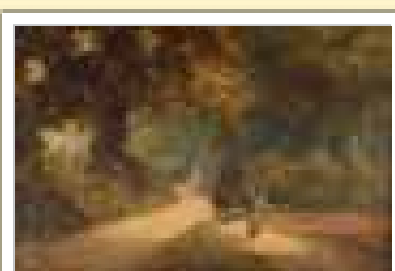
In the Old Master style, pencil drawing on vellum, portrait study, 27cm x 21cm, possibly Russian £20 - 30 †

624

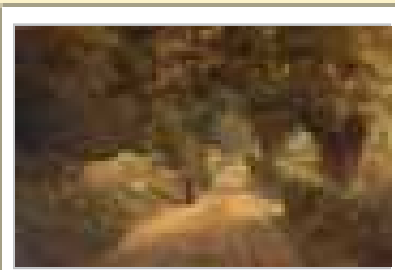
19th Century Continental school, finely painted oil on tin study of a young lady with governess in an interior setting, 28cm x 23cm £150 - 250 †



Lot 577



Lot 578



Lot 579



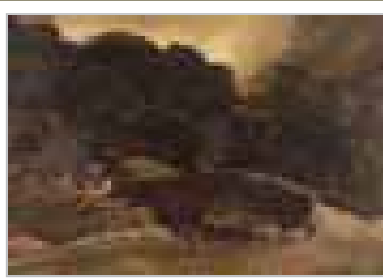
Lot 624

Lots marked ✓ please refer to Droit de Suite royalty charges in Terms and Conditions

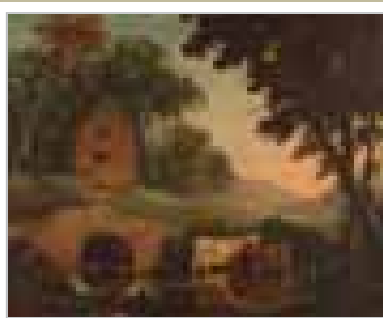
† Each lot is subject to a Buyer's Premium of 18% + VAT (21.6%)



Lot 628



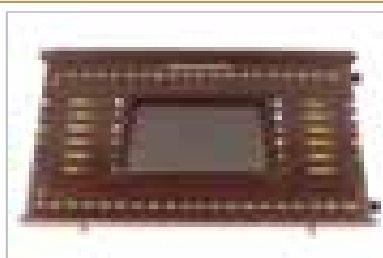
Lot 634



Lot 635



Lot 636



Lot 640

625

Harry Stevens, "Abandoned Cottage in Kerry", signed watercolour 20.5cm x 29.5cm £30 - 50 †

626

Lady Joan de Bethel, two 1950's stage designs £100 - 150 †

627 ✓

Roland Green, study of pheasants in flight, signed watercolour, 32cm x 44cm; and another study of ducks in flight across a pond, 26cm x 33cm, (2) £100 - 200 †

628 ✓

James Longveville, R.S.B.A., study of Aldeburgh beach, signed watercolour, 25.5cm x 36cm £150 - 250 †

629

After Ansdell, coloured engraving, "Gaffing a salmon", image 35.5cm x 66cm, contained in a maple frame; and a 19th Century French print "La Comparaison", contained in a maple frame, (2) £40 - 60 †

630

Follower of Henry Scott Tuke, small folio of six naked male and female figures, various studies and mediums £80 - 150 †

631

Italian school, portrait of a young Italian girl, three quarter length study, indistinctly signed oil on canvas laid on board, unframed, 38cm x 24cm £100 - 150 †

632

Michael Collins, a folio of drawings depicting naked females, some signed, various mediums £50 - 100 †

633

Nine various duck and wildfowl coloured prints £40 - 60 †

634

Late 19th/early 20th Century school, expansive landscape with figures fishing from a bridge, cottage and rolling hills in far ground, unsigned oil on canvas, 52cm x 75cm £80 - 120 †

635

19th Century school, study of cattle watering with attendant figure and buildings, unsigned oil on canvas, 50cm x 60cm £100 - 200 †

636

Manner of Pether, 19th Century study of ruins by a lake at moonlight with figures on the shore and church in the far ground, unsigned oil on canvas, 50cm x 60cm, contained in a decorative gilt frame £100 - 200 †

637

Carl Becker, a large portrait study of Canon Miller, signed oil on canvas, 140cm x 110cm £200 - 400 †

Rugs and Furniture

638

An Eastern carpet, having stylised floral decoration on a predominantly red and cream ground, 335cm x 237cm £100 - 150 †

639

A mahogany and brass mounted two tier etagere £80 - 120 †

640

A late 19th/early 20th Century mahogany snooker score-board, by Burroughes & Watts, London, 117cm x 67cm £150 - 250 †

641

An Edwardian mahogany salon settee, having shaped carved and pierced back, upholstered serpentine fronted seat, raised on cabriole supports; and a pair of matching curved foot stools, (3) £150 - 250 †

642

A large late Victorian carved oak hall stand, having mirrored back, profusely decorated with lion masks and foliate scrolls, cupboard to base, raised on turned supports united by a platform, 136cm wide x 220cm high £200 - 400 †

643

A marbled effect Corinthian column jardinière stand, 116cm high £60 - 80 †

644

An 18th Century elm and mahogany corner cupboard, having blind fret frieze, the interior shaped shelves enclosed by a moulded panel door, 64cm wide in extremes x 100cm high £40 - 60 †

645

A Victorian mahogany pedestal writing desk, with leather inset top fitted three drawers with six drawers to the pedestals, raised on platform plinths, 136cm wide £200 - 400 †

646

A Victorian ebonised and walnut cross-banded bow front credenza, the centre section enclosed by a pair of glazed panelled doors, curved glazed doors to the end sections, raised on a shaped platform plinth, decorated with foliate heart shaped motifs and gilded metal banding, 154cm wide £400 - 600 †

647

An Antique gilt wall mirror, profusely decorated with shells, fish and foliate scrolls, 95cm x 56cm £100 - 150 †

648

A 19th Century Dutch marquetry commode chest, fitted four long drawers, profusely inlaid with a basket of flowers, garlands and trailing foliage, mother of pearl heightened in places, 96cm wide £500 - 800 †

649

An 18th Century Dutch oak bureau, the shaped fall front revealing a fitted interior of drawers and pigeon-holes above a sunken well, three long drawers below, raised on a shaped apron and bun feet, flanked by columns with brass capitals, 100cm wide £200 - 300 †

Lots marked ✓ please refer to Droit de Suite royalty charges in Terms and Conditions
† Each lot is subject to a Buyer's Premium of 18% + VAT (21.6%)

650

An 18th Century style walnut bachelors chest, having fold over top, three graduated drawers below, inlaid starburst motifs raised on bracket supports, 92cm wide £400 - 600 †

651

An 18th Century oak chest, of two short and three long drawers, raised on bun feet, 90cm wide £100 - 200 †

652

A George III mahogany chest, fitted with three long graduated drawers, raised on a shaped apron and bracket feet, 88cm wide £100 - 200 †

653

An Antique oak chest, having carved decoration, fitted two short and three long drawers, raised on bun feet, 114cm wide £150 - 250 †

654

A 19th Century marquetry inlaid wall mirror, with bevelled plate, 87cm wide x 67cm £100 - 150 †

655

A 19th Century mahogany bow fronted chest, fitted two short and three long graduated drawers, raised on a shaped apron and bracket feet, 100cm wide £60 - 100 †

656

A 19th Century mahogany chest, fitted three long drawers and raised on bracket feet, 97cm wide £80 - 120 †

657

A 19th Century mahogany satin wood strung and inlaid chest of tall proportions, fitted six drawers flanked by ebonised columns with brass capitals, raised on square tapering supports terminating on brass ball feet, 98cm wide, 149cm high £300 - 400 †

658

A good quality large Victorian burr walnut round cornered chest, fitted two short and four long graduated drawers, turned bun handles, raised on a platform plinth, 123cm wide x 137cm high £300 - 500 †

659

A 19th Century mahogany cross-banded and marquetry inlaid bureau, the fall front opening to reveal an interior arrangement of drawers around a central cupboard, four long graduated drawers below, raised on bracket feet, 92cm wide £350 - 450 †

660

A late 19th Century mahogany and satinwood inlaid wall mirror, in the Chippendale manner, having fret carved pediments, surmounted by brass ho ho bird ornament, containing an oval bevelled plate, 92cm x 56cm in extremes £40 - 60 †

661

An Edwardian mahogany and satinwood cross-banded dwarf linen press, the upper section fitted sliding trays and enclosed by a pair of moulded panelled doors, two short and one long drawer below, 113cm wide x 122cm high £100 - 200 †

662

A 19th Century mahogany bureau, the fall front opening to reveal a fitted interior above a well, three long and two short drawers below, raised on bracket supports, 93cm wide £100 - 150 †

663

A mid 19th Century German mahogany fall front secretaire desk, the raised upper section fitted with a drawer above turned finials and blind frieze drawer, the fall front opening to reveal a fully fitted concave interior of drawers and central cupboard, two drawers and long frieze drawer below, raised on turned supports flanked by spiral columns. Provenance with cabinet. 180cm high x 116cm wide £600 - 800 †

664

A George III mahogany and box wood strung linen press, fitted interior sliding trays, two short and two long drawers below raised on shaped apron and bracket feet, 130cm wide £200 - 300 †

665

An 18th Century walnut and cross-banded chest on stand, fitted two short and three long graduated drawers with a single drawer to the base, raised on bun feet, 92cm wide x 131cm high £350 - 450 †

666

An 18th Century walnut and chequer banded swing toilet mirror, raised on a two drawer box base, above ogee bracket feet, 42cm wide x 58cm high £80 - 120 †

667

An oak dresser, having shelved and boarded back, three drawers below, the cupboards enclosed by carved panelled doors raised on bracket feet, 146cm wide £200 - 300 †

668

A decorative Continental painted four fold screen, with pierced vine leaf decoration, 184cm high £200 - 300 †

669

A 19th Century mahogany coaching table, the folding base united by turned stretchers, 90cm x 45cm fully extended £60 - 80 †

670

An unusual Georgian oak clock dresser, having shelved and boarded back, three drawers below, raised on a shaped apron and cabriole supports, the clock by Edward Wickstead of Wolverhampton, having brass spandrel dial, eight day movement striking on a bell, trunk door below, 190cm wide, 230cm high £600 - 800 †

671

An Antique elm floor standing corner cupboard, enclosed by moulded panelled doors, the side panels with pierced and roundel decoration, raised on a plinth base, 210cm high x 115cm wide overall £100 - 200 †

672

An 18th Century oak two door hanging cupboard, with fielded panels and two drawers to the base, 136cm wide x 283cm high £300 - 500 †



Lot 646



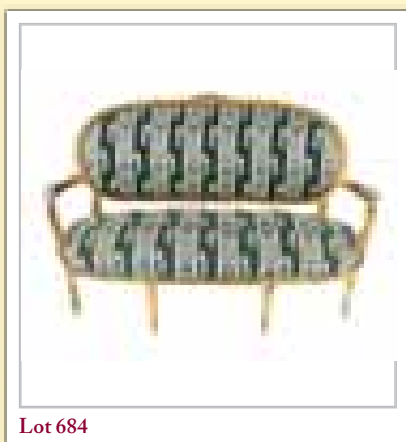
Lot 648



Lot 649



Lot 659



Lot 684



Lot 686



Lot 687



Lot 699

673

An 18th Century style oyster veneered cushion framed wall mirror, 61cm x 53cm in extremes
£200 - 300 †

674

A 19th Century mahogany Chippendale style wall mirror, the fret carved pediment with gilt Ho Ho bird decoration, 61cm x 43cm in extremes
£60 - 80 †

675

A 19th Century mahogany Chippendale style wall mirror, the fret carved frame with gilt basket of flowers motif, 76cm x 46cm
£60 - 80 †

676

A 19th Century mahogany and satinwood inlaid wall mirror, in the Chippendale manner with fret carved decoration, Ho Ho bird motif, 91cm x 51cm in extremes
£30 - 50 †

677

A 19th Century gilt oval wall mirror, decorated with a central cartouche and foliate scrolls, 99cm x 58cm overall
£60 - 80 †

678

A George III mahogany tallboy, having Greek key decorated stepped pediment above two short and three long drawers, within cross-banded canted angles, two drawers to base, raised on a shaped apron and bracket feet, 114cm wide
£400 - 600 †

679

An 18th Century walnut and herringbone banded chest on stand, fitted long frieze drawer above three short and three deep drawers with an arrangement of drawers to the base, 107cm wide, 139cm high
£300 - 400 †

680

A George III mahogany tall boy, the upper section fitted two short and three long graduated drawers, with three long drawers to the base, raised on a shaped apron and bracket supports, 112cm wide x 195cm high
£400 - 600 †

681

A lacquered chinoserie and gilt decorated long case clock, having plain painted dial supporting an 8 day movement, 225cm high
£300 - 400 †

682

George Johnson of Grantham, 30 hour long case clock, the painted dial with floral and bird decoration, the oak and mahogany cross-banded case surmounted by a scroll arch pediment with central orb, 210cm high
£200 - 400 †

683

A Georgian mahogany hanging corner cupboard, the interior shelves enclosed by a glazed tracery door, 114cm high, 67cm wide overall

684

A 19th Century gilt salon sofa, with floral upholstered seat, back panel and arm rests, acanthus leaf decoration, raised on six tapering supports
£100 - 200 †

685

A 19th Century carved mahogany demi-lune hall table, profusely decorated with leaves and foliage, 117cm long
£80 - 120 †

686

A set of eight 19th Century elm rail back dining chairs, having upholstered drop-in seats, raised on square tapering supports united by stretchers
£200 - 300 †

687

A set of eight late 19th Century Hepplewhite design mahogany dining chairs, having leather upholstered stuff-over seats, raised on square tapering supports, (6 standard, 2 elbows)
£200 - 400 †

688

Five 19th Century carved mahogany dining chairs, in the Chippendale manner, having shaped cresting rails and pierced splat backs, upholstered drop-in seats raised on square sectioned supports united by stretchers, Stamped TG; and a similar style elbow chair, (6)
£100 - 200 †

689

A 17th Century oak coffer, of plain form, square iron lock-plate, raised on shaped end supports, 140cm
£200 - 400 †

690

An 18th Century carved oak bible box, having leaf decorated frieze, 59cm wide
£100 - 200 †

691

An oak extending dining table, fitted an extra leaf, raised on tapering reeded supports terminating in brass caps and porcelain castors, 148cm x 104cm
£120 - 160 †

692

An oak refectory type dining table, raised on turned baluster supports united by a stretcher, 211cm x 86cm
£100 - 200 †

693

A 17th Century oak Bible box, with sloping hinged lid, later inscription and initials for 1783, foliate carved frieze with square lock plate, 63cm wide, 45cm deep, 29cm high
£100 - 200 †

694

A Georgian oak side table, fitted with single drawer, raised on square section tapering supports, 71cm wide
£40 - 60 †

695

An 18th Century oak side table, with overhanging top above single drawer, raised on turned supports, united by stretchers, 71cm wide
£60 - 80 †

696

An Antique oak hall table, fitted with a single drawer, having brass butterfly backplates and escutcheon, raised on square tapering supports, 70cm wide
£60 - 80 †

697

A George III mahogany card table, the fold-over top fitted counter wells, single drawer below raised on rounded tapering supports and pad feet, 83cm wide
£60 - 100 †

698

A 20th Century mahogany bow fronted music cabinet, fitted five drawers, raised on a shaped apron and cabriole supports, 53cm wide x 90cm high
£80 - 120 †

699

A pair of Antique carved and gilded Italian side chairs, serpentine shaped upholstered seats raised on cabriole supports £100 - 200 †

700

A Georgian mahogany D end dining table, with drop leaf centre section, raised on square tapering supports, 245cm x 143cm £100 - 200 †

701

A set of four mahogany 19th Century dining chairs, in the Chippendale style, (3 standards and 1 elbow); and a set of six similar mahogany dining chairs with upholstered drop-in seats, raised on square section supports united by stretchers, (10) £100 - 200 †

702

A Continental decorated pine box seat settle, the raised back with central crest, scrolled arms, raised on a carved plinth and bracket feet, 80cm wide £200 - 300 †

703

A 19th Century mahogany occasional table, with rectangular snap top on turned baluster column and tripod base, 54cm £60 - 80 †

704

A golden oak Wellington chest, fitted seven graduated drawers, flanked by locking bar and raised on a platform plinth, 51cm wide x 103cm high £350 - 450 †

705

A 19th Century mahogany square snap top occasional table, raised on turned baluster column and tripod base, 48cm wide £40 - 60 †

706

An early 19th Century rosewood framed chaise longue, having scrolled back and raised on octagonal supports, terminating in castors £250 - 350 †

707

A 19th Century mahogany bedside cupboard, enclosed by a single door and raised on turned tapering supports, 41cm high £80 - 120 †

708

A Victorian burr walnut Sutherland tea table, the rounded drop leaves raised on turned baluster fluted columns, terminating in scrolled feet with white porcelain castors, 92cm wide £60 - 100 †

709

An 18th Century oak gate leg dining table, fitted with a single end drawer beneath rounded drop leaves, raised on turned supports £100 - 200 †

710

A 20th Century mahogany and cross-banded serpentine shaped fold-over card table, raised on cabriole supports, 77cm wide £80 - 120 †

711

A 19th Century mahogany square drop leaf dining table, raised on square section supports, 91cm £40 - 60 †

712

A 19th Century mahogany swing toilet mirror, 48cm wide x 42cm high, AF £20 - 30 †

713

An Edwardian mahogany and inlaid drop leaf side cupboard, enclosed by a pair of satinwood cross-banded doors, raised on slender outswept supports, 47cm wide £60 - 100 †

714

A Georgian mahogany and boxwood strung card table, the fold-over D shaped top raised on square tapering supports terminating in spade feet, 96cm wide £80 - 120 †

715

A Regency mahogany hall chair, with pierced shield shaped back on sabre front supports £40 - 60 †

716

A Georgian oak bachelor's chest, with fold-over top, two short and two long drawers below, raised on bracket feet, 89cm wide £100 - 200 †

717

A Victorian walnut salon sofa, with carved foliate and pierced panel back, upholstered in pink buttoned dralon, raised on cabriole supports with acanthus shoulders terminating in castors £350 - 450 †

718

A Victorian walnut framed nursing chair, upholstered in green buttoned dralon, raised on turned front supports terminating in castors £30 - 50 †

719

A 19th Century oak wash stand, with folding top and cupboard below, raised on ring turned tapering supports, 51cm wide £40 - 60 †

720

An Edwardian inlaid mahogany corner chair, in the Art Nouveau taste, raised on cabriole supports united by a cross stretcher £40 - 60 †

721

A 19th Century gaming chair, the carved back decorated with pipes, cigars and scrolled foliage, upholstered seat raised on turned and block front supports united by stretchers £80 - 120 †

722

A 19th Century elm elbow chair, having shaped bar back above solid seat, raised on square section supports united by stretchers £20 - 40 †

723

A pair of Chinese hardwood barrel shaped seats, 40cm dia. overall x 36cm high £80 - 120 †

724

A Victorian rosewood serpentine fronted chiffonier, having raised mirrored back with fret carved pediment, shelves below enclosed by a pair of mirrored doors, raised on a platform plinth, 120cm wide £200 - 300 †

725

A large 19th Century mahogany serving table, stamped W & C Wilkinson, 14 Ludgate Hill, numbered 5394, fitted two drawers, raised on turned and fluted front supports and platform plinth, 183cm wide x 61cm deep £200 - 400 †



Lot 704



Lot 708



Lot 718



Lot 721



Lot 729

726

An 18th Century walnut side chair, having vase shaped splat back, upholstered drop in seat raised on cabriole supports, terminating in pad feet
£20 - 30 †

727

A Georgian mahogany, boxwood strung and rosewood cross-banded elliptical corner cupboard, the interior shelves enclosed by a pair of doors, 72cm wide in extremes x 132cm high £100 - 150 †

728

A 19th Century mahogany cheval mirror, in reeded stand, surmounted by turned finials, the shaped legs terminating in brass claw caps and castors, 78cm wide x 170cm high £200 - 400 †

729

A late 19th Century bamboo and lacquer graduated whatnot, 48cm wide x 136cm high
£60 - 80 †

730

A good quality reproduction oak joint stool, raised on turned baluster supports united by a stretcher, 97cm long
£60 - 80 †

731

An Antique oak coffer, having candlebox interior, iron hasp and lock-plate above triple panelled front, raised on square section supports, 110cm wide
£60 - 100 †

732

An Antique gilt oval wall mirror, with scrolled leaf and garland decoration, 105cm x 64cm
£150 - 250 †

733

A large reproduction mahogany twin pillar extending dining table, with two extra leaves, 302cm x 122cm
£200 - 400 †

734

An Edwardian mahogany two seater salon settee, upholstered in floral stamped brocade; and a pair of matching tub shaped chairs, raised on turned tapering supports terminating in castors
£100 - 200 †

735

A 19th Century mahogany turned folding towel rail
£30 - 50 †

736

A satinwood and cross banded bow fronted hall table, fitted two drawers and raised on reeded tapering supports, 143cm wide
£250 - 350 †

737

A 19th Century walnut extending dining table, having brass mounts, raised on turned fluted supports terminating in castors and united by shaped and turned stretchers, with extra leave, 177cm x 76cm
£200 - 400 †

738

A Sheraton period mahogany and satinwood cross-banded card table, raised on square tapering supports and spade feet, 92cm wide
£60 - 80 †

739

A 19th Century mahogany bow front chest, fitted two short and two long drawers with brass foliate embossed handles, raised on a shaped apron and bracket feet, 91cm
£80 - 120 †

740

A 19th Century mahogany chest, fitted two short and three long drawers, raised on bracket feet, 87cm wide
£100 - 200 †

741

A mahogany elbow chair, with reeded decoration and pierced back splat, upholstered stuff-over seat, raised on unusual U shaped front supports united by stretchers
£40 - 60 †

742

A 19th Century oak rocking cradle, having panelled sides, 92cm long
£80 - 120 †

743

A mahogany window seat, in the Regency style raised on turned reeded tapering supports, 112cm long
£200 - 300 †

744

A Regency mahogany tilt top dining table, raised on a turned baluster column and reeded quadruple splay, terminating in brass caps and castors, 125cm x 164cm
£200 - 300 †

745

A Victorian mahogany four door sideboard, fitted three frieze drawers and raised on inverted platform plinth, 178cm wide
£100 - 200 †

746

A George III mahogany and cross-banded serpentine fronted chest, fitted two short over three long drawers, 112cm wide
£200 - 400 †

747

A Victorian burr walnut and boxwood inlaid card table, the rectangular fold-over swivel top raised on turned carved foliate columns and quadruple splay, terminating in porcelain castors, 91cm wide
£100 - 150 †

748

A 19th Century satinwood and rosewood cross-banded writing desk, enclosed by a tambour shutter opening to reveal an interior arrangement of drawers and pigeon-holes, pull-out writing surface, two drawers below, raised on square tapering supports terminating in brass caps and castors, 91cm wide
£300 - 500 †



Lot 741



Lot 746



Lot 748

TERMS AND CONDITIONS OF SALE

1. INTRODUCTION

The following defining terms are used in these conditions:-

“Auction”	Means any auction conducted by Clarke and Simpson Auctions Ltd. either at the premises owned by them or elsewhere (including any internet based auction);
“Auctioneer”	Means Clarke and Simpson Auctions Ltd. authorised auctioneer as appropriate;
“Bidder”	Means a bidder at an auction, including the bidders personally present at the venue and those bidding by telephone or over the internet or otherwise;
“Buyer”	Means the bidder whose bid was the last bid when the auctioneer concludes the bidding;
“Conditions”	Means these Terms and Conditions of Sale;
“Hammer Price”	Means the level of bidding reached (at or above any reserve) when the auctioneer brings the bidding to a close;
“Lot”	Means any property accepted by Clarke and Simpson Auctions Ltd. for offer at auction;

2. DESCRIPTION

No warranty is given or implied by the description in the catalogue. Each lot is sold in its condition at the time of sale with all faults, defects, imperfections and errors of description (if any). Whilst every endeavour has been made to describe the items adequately and properly, the purchaser shall deem to have inspected the lot at time of purchase. All catalogues and seller's and buyer's guides are for information only and do not form part of the contract.

3. STATUTORY REQUIREMENTS

Purchasers will be deemed to have satisfied themselves prior to purchasing regarding current legal requirements (e.g. Health & Safety at Work Act) and it is expressly brought to the bidders attention that equipment in the sale may not necessarily comply with such regulations. Any purchaser shall satisfy himself as to any statutory requirement for the use of any item and no liability shall rest with the vendors nor the Auctioneers.

4. THE AUCTION

All auctions are conducted at the absolute discretion of the auctioneer. The auctioneer shall conduct the auction with reasonable skill and care. The vendor reserves the right to sell subject to reserve price in respect of all lots. What constitutes a bid shall be at the absolute discretion of the auctioneer, acting with appropriate skill and care. The auctioneer shall have the right to refuse any bid in all cases but most notably when such a bid does not exceed the previous bid by at least 10% or such a proportion as the auctioneer shall in his absolute discretion direct. Where two or more bids at the same level are simultaneously received by the auctioneer, the auctioneer at his absolute discretion shall determine which bid to prefer. Subject to the foregoing where two or more bids are at the same level are simultaneously received by the auctioneer, the bid submitted in the room shall take preference over a bid submitted by telephone or internet at the same level. Any bid made or attempted by telephone or over the internet will only be deemed to have been made if received by the auctioneer. The auctioneer reserves the right to withdraw, consolidate or divide any lot or lots or submit them in any order that they desire. The auctioneer has the right at his absolute discretion to refuse admission to his premises or attendance at (or participation in) any auction by any person. In the case of any dispute, the auctioneer shall be sole arbitrator in any matters arising during or out of the sale.

5. BIDDERS

All bidders will be required to register their particulars, bidders attending in person and those accompanying them will be required to provide photo ID and separate confirmation of address prior to viewing or taking any part of the sale and before entering any part of the premises to view. All bidders accept full liability for all bids submitted. Subject to the clause in this document headed “The Auction”, the highest bidder at the close of bidding shall be the buyer. Any dispute about a bid shall be settled at the auctioneer's absolute discretion. Bidders are all deemed to act as principles unless there is prior written acknowledgement by Clarke and Simpson Auctions Ltd. that a bidder is acting as an agent for a

named principle. Bidders are strongly encouraged to attend the auction in person. The bidders shall be responsible for any decision to bid for a particular lot and shall be deemed to have carefully inspected and satisfied themselves as to condition, neither Clarke and Simpson Auctions Ltd., their employees or agents shall be responsible for any neglect or default in doing or failing to do so. Bidders will be given ample opportunity to view and inspect before the sale and prospective buyers must satisfy themselves as to all matters.

6. DEFAULT

Clarke and Simpson Auctions Ltd. shall act as agent of the vendor only. Any contracts for the sale of a lot shall be formed between the vendor and the buyer. As agent, only Clarke and Simpson Auctions Ltd. shall not be responsible for default by the vendor or the buyer. If any lot is not paid for in full and taken away in accordance with these conditions, or there is any other breach of the conditions, then Clarke and Simpson Auctions Ltd. as agents for vendor shall at its absolute discretion and without prejudice to any other rights it may have, be entitled to exercise all or any of the following rights and remedies:-

- 6.1 to proceed against the buyer for any action of debt or damages for breach of contract;
- 6.2 to rescind the sale of that lot or lots sold by Clarke and Simpson Auctions Ltd. to a defaulting buyer;
- 6.3 to resell the lot (by auction or private treaty) in which case the defaulting buyer shall be responsible for any resulting deficiency in the total amount due (after crediting any part payment and adding any resale costs), any possible surplus so arising shall belong to the vendor;
- 6.4 to remove, store and insure the lot at the expense of the defaulting buyer and, in the case of storage, the location of such storage shall be at Clarke and Simpson Auctions Ltd. discretion;
- 6.5 to charge interest at a rate not exceeding 2% per month of the total amount due to the extent that it remains unpaid for more than two working days after the sale;
- 6.6 to retain that or any lot sold to the defaulting buyer until the buyer pays the total amount due;
- 6.7 to reject or ignore bids from the defaulting buyer at future auctions or to impose conditions before any such bids are accepted;
- 6.8 to apply any proceeds of sale for any other lots due or in the future becoming due to the defaulting buyer towards the settlement of the total remaining due.

7. INDEMNITIES, PENALTIES AND LIMITATIONS OF LIABILITY

Purchasers shall pay for any damage done by themselves or their agents during the removal of their lots. Attendance at the sale shall be at the risk of those attending in respect of both themselves and to their goods and vehicles.

Any indemnity under these conditions will extend to all actions, costs, expenses, claims and demand whatsoever suffered or incurred by the person entitled to the benefit of it and Clarke and Simpson Auctions Ltd. declare themselves to be a trustee of the benefit of such indemnity so far as it is expressed to be the benefit of its employees and agents.

Whilst Clarke and Simpson Auctions Ltd. endeavour to ensure that the information on their websites is correct, they do not warrant the accuracy and completeness of the material on their website. Also, Clarke and Simpson Auctions Ltd. can make changes to the material on their website, or alter the products and prices described on it, at any time without notice. The material on the website may be out of date, Clarke and Simpson Auctions Ltd. make no commitment to update such material. All material on the websites is provided “as is” without any conditions, warranties or other terms at any time. Accordingly, to the maximum extent permitted by law, the website is provided to all parties on the basis that Clarke and Simpson Auctions Ltd. exclude all representations, warranties, conditions and other terms which, but for this legal notice, might have effect in relation to the website.

8. ELECTRICAL SAFETY REGULATIONS

All electrical lots are subject to electrical safety regulations and fall within “the low voltage electrical equipment (safety) regulations 1989” – all items have been pat tested for safety but are not guaranteed in working order.

9. GENERAL MATTERS

Any notice to any buyer, vendor, bidder or viewer may be given by first class mail or email in which case it shall be deemed to have been received by the addressee forty-eight hours after posting or sending. All notices to Clarke and Simpson Auctions Ltd. must be sent in writing and email is not acceptable. Any indulgence extended to any person by Clarke and Simpson Auctions Ltd., notwithstanding the strict terms of these conditions or the terms of consignment, shall affect the position at the relevant time only and the respect of that particular concession only; in all other respects these conditions shall be construed as having full force and effect. These conditions and any disputes or claims arising out or in connection with them or their subject matter or formation (including non-contractual disputes or claims) are governed by and construed in accordance with the law of England. The parties irrevocably agree that the courts of England have exclusive jurisdiction to settle any dispute or claim that arises out of or in connection with the agreement or its subject matter or formation (including non-contractual disputes or claims).

10. PUBLICITY

Any catalogue and buyer and seller guides are provided for information only and do not form part of these conditions. The catalogue and the buyer and seller guides may contain additional terms and conditions. Clarke and Simpson Auctions Ltd. reserve the right to use any photographs, background information and research for publicity purposes both before and after the sale.

11. THE PURCHASE PRICE AND PAYMENT ARRANGEMENTS

There is a buyer's premium 18% plus VAT payable in respect of the sale. Any purchases made via “www.the-saleroom.com” or “www.ibidder.com” shall be subject to an administration charge of 5% plus VAT on the price.

Preferred payment is cash, bank transfer or personal debit card. Such cards may only be used on a chip and pin basis with the owner present. No payment over £350 will be accepted by telephone. Payment will be accepted online via our secure e commerce account. We do not accept credit cards or international debit cards. Payment by cheque will only be acceptable subject to prior arrangement. No lot will be removed from the sale until any cheque has cleared.

Payment is due on the day of the sale. Cash in excess of £7,500 (including V.A.T.) will not be accepted from any one person, this is not allowed due to Money Laundering Regulations 2007. All money received will be held in Clarke & Simpson Auctions Ltd. Clients No 2 Account at Barclays Bank plc, Framlingham, Ipswich, Suffolk. Account Number 83428591. Sort Code 20 98 07. Clarke and Simpson Auctions Ltd. have no responsibility for any lot between the close of bidding and payment being made and subsequent collection. All payments from overseas buyers shall be made by Bank Transfer and bank fees paid in addition. Please note all policy regarding payment will be enforced and suitable arrangements must be made.

12. REMOVAL OF LOTS

The ownership of any lot purchased shall not pass to the relevant buyer until they have made payment in full to Clarke and Simpson Auctions Ltd. of the total amount due including any storage due.

The buyer shall at their own risk and expense take away any lot that they have purchased and paid for not later than two working days following the day of the auction after which they shall be responsible for any removal, storage and insurance charges.

Any lots not collected within four weeks of the date of sale will be resold by the auctioneer and all proceeds will be retained by the auctioneer to cover storage costs.

13. NUMBER BIDDING

This will be used for speed and efficiency as in all our sales. All prospective purchasers must complete a registration form and register in the office on the view day or morning of sale to receive a number for bidding.

Please also note that photo ID and additional confirmation of address will be required.

14. ONLINE BIDDING

Clarke & Simpson Auctions Ltd. offer an online bidding service via the-saleroom.com and ibidder.com for bidders who cannot attend the sale. In completing the bidder registration on www.the-saleroom.com or ibidder.com and providing your payment card details and, unless alternative arrangements are agreed with Clarke & Simpson Auctions Ltd.:

1. authorise Clarke & Simpson Auctions Ltd., if they so wish, to charge the payment card given in part or full payment, including all fees, for items successfully purchased in the auction via www.the-saleroom.com or ibidder.com, and
2. confirm that you are authorised to provide these payment card details to Clarke & Simpson Auctions Ltd. through www.the-saleroom.com or ibidder.com and agree that Clarke & Simpson Auctions Ltd. are entitled to ship the goods to the card holder name and card holder address provided in fulfilment of the sale.

Please note that any lots purchased via the-saleroom.com or ibidder.com live auction service will be subject to an additional 5% buyer's premium + VAT at the rate imposed on the hammer price.

15. TELEPHONE BIDDING

We offer a telephone bidding service where possible, but this service can never be guaranteed. No applications for telephone bids will be accepted after the end of the viewing prior to sale day for any sale. All potential telephone bidders must provide a valid landline number and email address and agrees that they have read and understood the Terms and Conditions and satisfied themselves regarding any lot in accordance with these Terms and Conditions. No phone bids will be accepted for any lot with a lower guide figure of less than £100.

All those who wish to bid by telephone will be expected to deposit an amount determined by Clarke and Simpson Auctions Limited and not less than the minimum guide for all lots that they wish to bid upon into the Clients Account for Clarke and Simpson Auctions Ltd before the sale starts. This payment is not acceptable by card.

In the event of default, this sum shall be retained as part payment or any part may be retained to recover losses under clause 6 of these Terms and Conditions. We will expect payment of the balance owing by BACS on the following day, any payment not met within five working days will result in the forfeiture of the deposit paid.

16. AT FAULT (A.F.) LOTS

Certain lots are catalogued at (A.F.), damaged, restored etc., however the absence of any such notice does not imply that the piece is free from defects, nor does it indicate that other defects are not also present. Mention is not made of breakage, cracks, chips or any damage which can be noted by careful inspection, therefore, intending purchasers MUST, in all cases, be responsible for determining the condition of the lots themselves.

17. ESTIMATES

Presale estimates are intended only as a guide for intending purchasers, are given in good faith and subject to revision.

18. CONDITION REPORTS

Clarke and Simpson are unable to guarantee that requests for condition reports/images received will be responded to. Clarke and Simpson are happy to give a Condition Report where possible on the physical condition of goods, this will be provided on behalf of the seller on the understanding that Clarke and Simpson are not entering into a contract with you in respect of the Condition Report and accordingly does not assume responsibility to you in respect of it. All lots are available for your own inspection or for inspection by an expert instructed by you, therefore these Condition Reports are for guidance only and all lots are sold “as found”. Condition reports do not form part of a contract.

19. COMMISSION BIDS

The auctioneers will be pleased to execute bids for those unable to attend the sale. Lots will be purchased at the lowest bid the room bidding or any reserves will allow. In the event of identical bids, the earliest bid received will take precedence. There must always be a maximum limit indicated. Buy or unlimited bids will not be accepted. Commission bids placed by telephone are accepted at the client's risk. We urge our clients to place such bids before the start of the sale. All such commissions are left entirely at the buyer's risk.

20. VALUE ADDED TAX

The symbol * after any lot number indicates that Value Added Tax is payable by the buyer on the hammer price.

21. AUCTIONEERS MARGIN SCHEME

The Auctioneers Margin Scheme allows auctioneers to sell items without VAT on the hammer price. Under the margin scheme an amount equivalent to VAT at the current rate is added to the buyer's premium. This amount cannot be refunded. The VAT element will not be shown separately on the buyer's invoice. This VAT is not recoverable as Import Tax.

22. ATTRIBUTION OF PICTURES AND DRAWINGS

Every effort is made to ensure the accuracy of any statements as to authorship, attribution, origin, date, age, provenance and condition of any lot whether or not such statement forms part of the description of any such lot. Whether any such statement is made orally or in the catalogue it is an expression of opinion and not to be taken as being or implying any warranties or representations of facts by the auctioneers. Each buyer by making a bid for a lot acknowledges that he has satisfied himself fully as to the attribution and condition of the lot. The following is for guidance only and does not form part of a contract.

A. The forename (s) (or full stops where not known) and surname of an artist indicates in our opinion a work by the artist.

B. The initials of the forename (s) and the surname of the artist indicates in our opinion a work of the period of the artist which may be wholly or in part his work.

C. The surname of the artist indicates in our opinion a work of the school or by one of the followers of the artist or in his style and of uncertain date.

D. *Signed, Dated, Inscribed* indicated in our opinion work signed/dated/inscribed by the artist.

E. *Bears signature* indicates in our opinion that this is not the signature of the artist.

F. *Attributed to* may be used to denote a traditional attribution based on style.

G. *Manner of* indicates in our opinion a work executed in the artist/craftman's style but of a later date.

H. *After* indicates in our opinion a copy (of any date) of work of an artist or craftsman.

The addition of a question mark after any of the cataloguing terms above indicates an element of doubt.

23. DRIOTE DE SUITE ROYALTY CHARGES

All United Kingdom Art Market professionals (which includes auctioneers) are required to collect a royalty payment for all qualifying Works of Art. This applies to living artists and those who have died in the last 70 years. This payment is calculated on qualifying Works of Art which are sold for a hammer price more than the UK sterling equivalent of €1,000 (the UK sterling equivalent will fluctuate in line with prevailing interest rates calculated by the Artist's Resale Right Service Hub, based on the European Central Bank reference rate published at 2.15pm on the day of the sale, and can be found on www.dacs.org.uk).

All items in this catalogue that are marked "✓" are potentially qualifying items, and the royalty charge will apply if the hammer price is more than UK sterling equivalent of €1,000. The royalty charge will be added to purchase invoices and must be paid before items can be cleared. All royalty charges are paid to the design and Artists Copyright Society (DACS) by the auctioneers and no handling costs or additional fees with respect to these charges will be retained by the auctioneer. This charge may also be applicable to lots not marked "✓" and buyers must satisfy themselves.

The royalty charge for qualifying items which achieve a hammer price of more than the UK sterling equivalent of €1,000, but less than the UK sterling equivalent of €50,000 is 4%. For qualifying items that sell for more than the UK equivalent of €50,000 a sliding scale of royalty charges will apply. For a complete list of the royalty charges and threshold levels please refer to www.dacs.org.uk. There is no VAT payable on this royalty charge.

24. ENDANGERED SPECIES

Lots sold at auction may include endangered or other species of wildlife and plant life, for example ivory, tortoiseshell, crocodile skin, whale bone, ebony or rosewood. Some countries restrict or prohibit import or export of objects containing these materials or require a licence/permit for their movement (e.g. a CITES Licence). Prior to bidding on a lot which may include these or similar materials, buyers must familiarise themselves with the relevant laws and regulations regarding their movement.

25. JEWELLERY

Gemstones are often treated to enhance colour and improve appearance. They may be heated or treated by oil or resin to intensify the colour and transparency. Other techniques like dyeing, irradiation, coating and impregnation can also be used. Buyers must be aware that unless the catalogue specifically states otherwise then the stone is natural, buyers must assume that any treatment may not be permanent, and that special care may be needed in the future.

26. EXPORT

Any lot purchased at auction may be subject to export restrictions and may require a licence for export out of the United Kingdom. The buyer is responsible for obtaining any licences that may be required (including any licence that may be required for import into the destination country) – any denial of such a licence will not be grounds for the buyer to cancel the purchase.

27. THIRD PARTY LIABILITY

All members of the public on Clarke and Simpson Auctions premises are there at their own risk and must note the layout of the buildings and site and the appropriate security arrangements. Accordingly, neither the Auctioneer nor its employees or agents shall incur liability for death or personal injury (except as required by law) or similarly for the safety or persons visiting the premises.

28. CONSIGNMENT

All sellers will have received a copy of Clarke & Simpson Auctions Terms regarding consignment of lots for sale and these Terms and Conditions should be read in accordance with this consignment documentation.



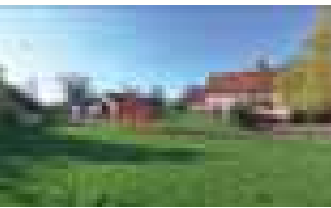
Parham £1,500,000

A stunning Grade II listed country house in a wonderful rural location to the south of Framlingham, with traditional Suffolk barn, annexe, swimming pool & grounds of over 5 acres. **Ref: 5964**



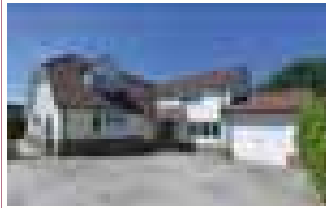
Holton £695,000

A 3 bedroom detached bungalow with a one bedroom self-contained annexe, range of buildings and just under 5 acres. **Ref: 6035**



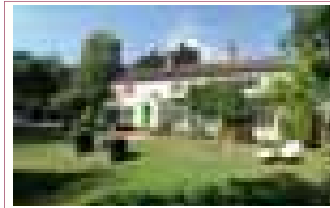
Nr Eye £645,000

A Grade II listed Suffolk farmhouse, with a 2 bedroom annexe barn conversion set in lovely grounds of 3.5 acres. **Ref: 6065**



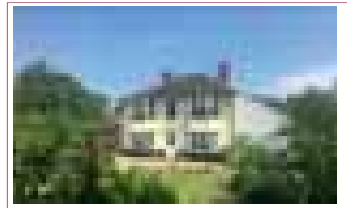
Stonham Aspal £575,000

An impressive & spacious, detached house located in the centre of the village of Stonham Aspal. **Ref: 5974**



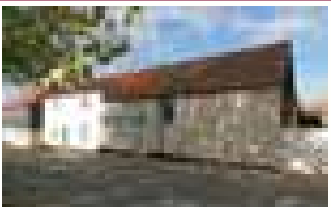
Stradbroke £535,000

A delightful 4 bedroom cottage, that has been recently refurbished, in a rural location and occupying a site of over half an acre. **Ref: 6008**



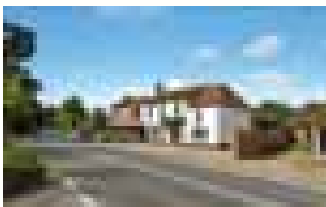
Occold £460,000

A detached period house standing in a lovely position in grounds of 0.4 acres, 3 miles from Eye & 5 miles from Debenham. **Ref: 6026**



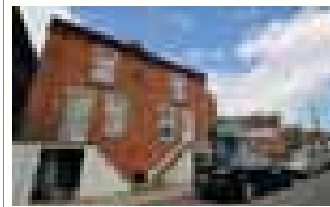
Framlingham £420,000

A townhouse requiring renovation, along with substantial former shop & barns with great scope for conversion. **Ref: 6064**



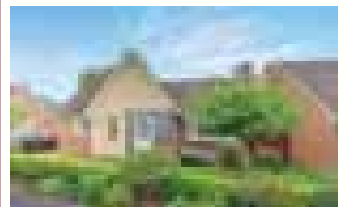
Little Glemham £365,000

A 5 bedroom detached cottage with garden & ample parking, situated in the centre of the village of Little Glemham. **Ref: 6039**



Framlingham £285,000

A beautifully presented 4 bedroom attached cottage, which has been renovated to a high standard. **Ref: 5973**



Stradbroke £235,000

A detached two bedroom bungalow, forming part of the Drapers Hill development, a short distance from the centre of Stradbroke. **Ref: 6057**



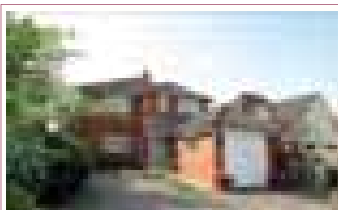
Helmingham £925,000

A highly impressive barn conversion with two detached holiday cottages & a range of excellent outbuildings, standing in a rural yet convenient location within the parish of Helmingham **Ref: 6043**



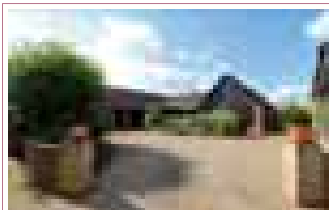
Framlingham £675,000

A most impressive five-bedroom house, with garaging, extending to approximately 3,000 sq ft, located on Millers Way, Framlingham, and built by Hopkins & Moore. **Ref: 5827**



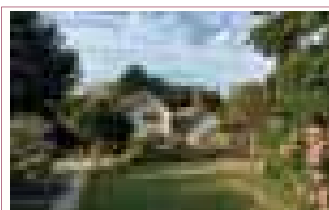
Woodbridge £595,000

An extremely spacious 4 bedroom detached family home within walking distance of the popular town of Woodbridge. **Ref: 6016**



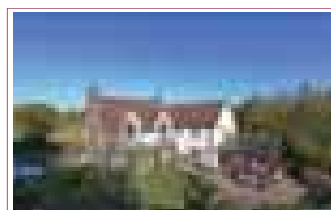
Benhall Green £549,000

An extremely well-presented 4 bedroom property, forming part of the exclusive Beeches development in the centre of Benhall. **Ref: 5993**



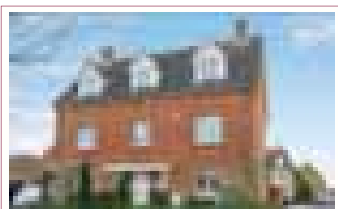
Framsdon £475,000

A 3 bedroom detached house in grounds of over an acre with an excellent range of buildings & ample parking. **Ref: 6062**



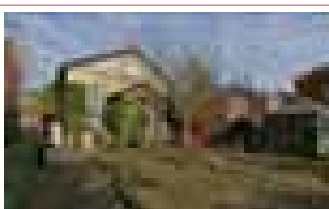
Pettaugh £435,000

A spacious 5-bedroom detached house requiring modernisation, in gardens and grounds of just under 3/4 of an acre. **Ref: 6060**



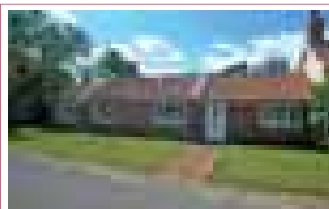
Rendlesham £410,000

A light and spacious 5 bedroom family home, a short distance from the primary school and playing fields. **Ref: 6056**



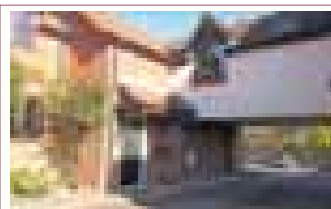
Wissett £350,000

A most attractive former chapel converted to a 3 bedroom detached house, within walking distance of the village pub. **Ref: 6068**



Laxfield £250,000

An attached 3 bedroom single storey cottage, renovated in a sympathetic style, in the rural parish of Laxfield. **Ref: 6032**



Laxfield £220,000

A surprisingly spacious three bedroom end of terrace house situated in the pretty North Suffolk village of Laxfield. **Ref: 6069**



Clarke and Simpson Auction Centre
Campsea Ashe
Nr. Wickham Market
Suffolk IP13 0PS
Tel: (01728) 746323 Fax: (01728) 748173
Email: auctions@clarkeandsimpson.co.uk
www.clarkeandsimpson.co.uk