

Clarke &  
Simpson

*Art Deco,  
20th  
Century  
Design &  
Retro*



Monday 4th November  
at 10am

# Always open...

## Clarke & Simpson Auctions

### Valuation

Probate and  
other valuations

Call-in service  
5½ days a week



General Monday sales  
every week

Bespoke sales

In 2018 our lots sold  
to over 28 countries

Acting as agents for  
household clearances



### Special Sales

Antiques & Fine Arts

Art Deco & Retro

Domestic & Rural Bygones

Agricultural Collective



*Not free to come along...?*

Don't worry! All auctions are  
available for online bidding  
via [the-saleroom.com](http://the-saleroom.com)  
or [i-bidder.com](http://i-bidder.com)

Clarke & Simpson Auction Centre, Campsea Ashe  
Nr Wickham Market, Suffolk IP13 0PS T: 01728 746323

[www.clarkeandsimpson.co.uk](http://www.clarkeandsimpson.co.uk) CandSAuctions @CandSAuctions

**Clarke &  
Simpson**

**Auctions**

*Art Deco, 20th Century Design  
& Retro*

*Monday 4th November 2019  
at 10am*

**Viewing:**

Saturday 2nd November 9am - 12noon  
Morning of Sale from 8.30am

**Enquiries:**

James Shand, Auctioneer & Valuer  
Geoffrey Barfoot, Auction Centre Manager & Valuer

**Buyers' Premium:**

18% plus VAT

Please see [www.the-saleroom.com](http://www.the-saleroom.com)  
for further images

**the saleroom**  
The home of art & antiques auctions

Special attention is drawn to the  
Conditions of Sale printed at the back of  
this catalogue.



Campsea Ashe  
Nr Wickham Market  
Suffolk IP13 0PS  
Tel: 01728 746323 Fax: 01728 748173  
Email: [auctions@clarkeandsimpson.co.uk](mailto:auctions@clarkeandsimpson.co.uk)  
[www.clarkeandsimpson.co.uk](http://www.clarkeandsimpson.co.uk)



@CandSAuctions



CandSAuctions



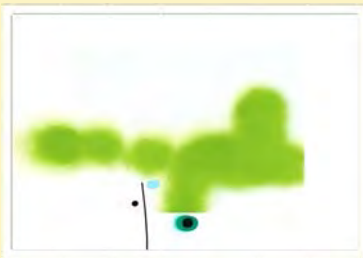
Lot 1



Lot 2



Lot 13



Lot 33



Lot 35

**1**  
A plated three piece cocktail shaker, in the form of a Zeppelin, 30cm. £40-£60. See illustration.

**2**  
An Art Deco design bronze figure of a tambourine dancer, 19cm high. £60-£80. See illustration.

**3**  
An Art Deco design composite study of a seated girl, with conch shell. £10-£20

**4**  
A pair of Art Nouveau design silvered candlesticks, 26cm high. £10-£20

**5**  
An Art Deco design table lamp, in the form of a bronzed Lorenzl type bathing girl, 28cm high. £50-£70

**6**  
A pair of 1920's design book ends, in the form of seated naked girls on onyx plinths, 19cm high. £80-£120

**7**  
An Art Deco walnut cigarette dispensing box, decorated Bay of Naples scene, 21cm. £5-£10

**8**  
An Art Deco design table lamp, in the form of a lady standing beside a street lamp, 45cm high. £20-£30

**9**  
An Art Deco design table lamp, in the form of two naked dancing girls on a stepped base, 29cm high. £10-£20

**10**  
A Max Le Verrier style table lamp, in the form of seated tennis players on marble plinth, 40cm long. £200-£300

**11**  
Four Art Deco glass shop sweet jars. £10-£20

**12**  
An Art Deco green glass fruit bowl, 23cm dia. £10-£20

**13**  
An Art Deco design pottery cheese dish, in the form of a camera, 22cm. £10-£20. See illustration.

**14**  
An Art Deco design decanter set, with tray and accessories. £10-£20

**15**  
A large amber tinted glass baluster vase, having clear glass piped scrolled decoration, 55cm high. £10-£20

**16**  
A white glazed pottery onion shaped vase, with golf ball style decoration, 27cm high. £10-£20

**17**  
An Art Deco design plated three piece teaset. £20-£30

**18**  
A porcelain lustre decorated ornament of circular form, 31cm high. £10-£20

**19**  
A Murano green glass baluster vase, having Latticino type orange decoration, 22cm high. £10-£20

**20**  
A Daum free form glass bowl, 23cm dia. £10-£20

**21**  
A large amber tinted glass bowl, of handkerchief shape, 35cm dia. £10-£20

**22**  
A Studio pottery vase, with stylised decoration inscribed M.P.10 to base; and two continental pottery baluster vases. £10-£20

**23**  
An Art Deco design pottery teapot, 18cm high. £15-£20

**24**  
A pottery Art Deco figure of a girl and dog, seated on a wooden chair by A De Ranieri - see attached label. £100-£150

**25**  
An Art Deco design wrought iron chandelier, decorated rose motifs, having frosted glass light shades. £40-£60

**26**  
A brass table oil lamp, in the style of W.A.S.Benson, the base in the form of ivy leaves, white opaque globular shade, 72cm high. £80-£120

**27**  
An Arts & Crafts design brass candlestick, raised on stylised triform base, 29cm high. £20-£40

**28**  
A Picquot ware four piece teaset, and tray. £20-£40

**29**  
A vase by Shona Leitch, 19cm dia. £30-£40

**30**  
An Art Deco design glass pendant light bowl with frosted decoration and a globular pendant light fitting with etched foliate decoration. £30-£50

**31 ✓**  
Russell Baker, "Lydian I" screen print pencil signed, numbered edition 56/350, 54cm x 18cm. £40-£60

**32 ✓**  
Russell Baker, "Lydian II" screen print pencil signed, numbered edition 57/350, 55cm x 18cm. £40-£60

**33 ✓**  
Victor Pasmore 1908 - 1998, untitled screen print, pencil signed numbered 4/70, dated 1990, 73cm x 104cm. £300-£400. See illustration.

**34 ✓**  
Victor Pasmore 1908 - 1998, untitled screen print, pencil signed numbered 19/70, dated 1990, Kelp Studios Blind Stamp, 63cm x 45cm. £300-£400

**35 ✓**  
Russell Baker, "Ember I", screen print, pencil signed, 46cm x 58cm. £40-£60. See illustration.

**36 ✓**  
Russell Baker, "Ember II", screen print, pencil signed, 246/350, 42.5cm x 58cm. £40-£60

**37 ✓**  
James Cox born 1956, "Orient II", pencil signed monoprint, numbered 214/250, 33cm x 61cm overall. £40-£60

**38 ✓**  
James Cox born 1956, "Kashmir I", signed monoprint, 38cm x 32cm. £40-£60

**39 ✓**  
James Cox born 1956, "Kashmir II", monoprint signed artist proof, 38cm x 32cm. £40-£60

**40 ✓**  
Shoichi Hasegawa, Japanese born 1929, "Ballet De Lunes", coloured etching, signed and numbered 79/110, 59cm x 49cm. £100-£200

**41 ✓**  
Shoichi Hasegawa, Japanese born 1929, "Emeraude Symphony" coloured etching signed and numbered 101/110, 48cm x 59cm. £100-£200

**42 ✓**  
Russell Baker, "Totem I", screen print, pencil signed and numbered 14/350, 61cm x 25cm. £40-£60

**43 ✓**  
Russell Baker, "Totem II" pencil signed screen print, numbered 254/350, 61cm x 25cm. £40-£60

**44 ✓**  
David Dodsworth born 1952, "Hancis I" signed etching on textured paper, numbered 14/350, 38cm x 90cm. £40-£60

**45 ✓**  
**David Dodsworth born 1952**, "Hancis II", etching on textured paper, signed and numbered 97/350. £40-£60

**46 ✓**  
**David Dodsworth born 1952**, "Quadra I", etching on textured paper, pencil signed numbered 16/350, 37cm x 56cm. £40-£60

**47 ✓**  
**David Dodsworth born 1952**, "Quadra II", pencil signed etching on textured paper, 27/350, 38cm x 55cm. £40-£60

**48 ✓**  
**Mary Rose O'Neill born 1961**, "Leaf I", pencil signed composite print, numbered 19/20, dated 1997, 46cm x 33cm. £40-£60

**49 ✓**  
**Mary Rose O'Neill born 1961**, "Leaf II", pencil signed composite print, numbered 19/20, dated 1997, 46cm x 34cm. £40-£60. See illustration.

**50 ✓**  
**Mary Rose O'Neill born 1961**, "Birch" pencil signed composite print, numbered 15/20, dated 1998, 55cm x 54cm. £40-£60

**51 ✓**  
**Mary Rose O'Neill born 1961**, "Rowan" pencil signed composite print, 15/20, dated 1998, 55cm x 54cm. £40-£60. See illustration.

**52 ✓**  
**Jean Davey Winter**, "Threshold I", signed print with collage, numbered 20/25, 39cm x 48cm. £30-£40

**53 ✓**  
**Jean Davey Winter**, pencil signed print with collage, numbered 20/25, 35cm x 50cm. £30-£40

**54**  
**A pair of Art Deco book ends**, in the form of silvered kneeling naked lady's on ebonised plinths.. £40-£60

**55**  
**A pair of dumb waiters**. £80-£120

**56**  
**A plaster wall sculpture, in the Aztec manner**, 63cm high. £40-£60

**57**  
**A pair of 1960's tall clear glass vases**, 91cm high. £20-£40

**58**  
**A bronze study of an eagle**, raised on marble plinth, 54cm high x 51cm long overall. £100-£150. See illustration.

**59**  
**An Art Deco design green onyx desk stand**, surmounted by a bronzed buffalo, 38cm long, AF. £80-£120. See illustration.

**60**  
**A pottery charger decorated continuous outer band of acorns**, impressed to the base L&Co. initialled "K.C. from K.H. 1878", 42cm dia. £40-£60. See illustration.

**61**  
**An Art Deco blue mirrored glass circular wall clock**. £50-£80

**62**  
**An Arts & Crafts carpet**, floral pattern on green ground. £50-£80

**63**  
**A G-plan design light wood bedside cabinet**, having raised back enclosed by a single door, raised on out swept supports AF, 37cm wide x 36.5cm deep. £10-£20

**64**  
**A G-plan design sideboard fitted four drawers and raised on tapering square section supports**, 132cm wide x 67cm high. £20-£40

**65**  
**A G-plan design teak low cupboard**, closed by a pair of doors and raised on rounded tapering supports 81cm wide x 46cm deep x 63cm high. £40-£60

**66**  
**An Ercol sideboard enclosed by three doors above two base drawers**, raised on castors, 130cm wide x 50cm deep. £100-£200

**67**  
**A late 19th Century decorative gilt framed wall mirror**, 43cm x 37cm overall. £10-£20

**68**  
**A continental porcelain and electro plate mounted oval two handled drinks tray**, of Art Nouveau design, 46.5cm. £10-£20

**69**  
**An Art Glass circular dish**, having branch decoration and shaped rim, 35cm dia. £10-£20

**70**  
**An illuminating table globe**. £10-£20

**71**  
**An Art Deco design porcelain table lamp**, in the form of two sailor girls, having frosted glass globular shade, 45cm high, AF. £80-£120

**72**  
**A Finland glass blue tinted vase**, of cylindrical tapering form, 29.5cm high; a smaller similar 23cm high; a carafe and three tumblers. £40-£60

**73**  
**A Denby stoneware Studio pottery jug**, decorated mauve and green stylised flowers with scroll handle, 35cm high. £30-£50

**74**  
**A retro Smiths electric mantel clock**, 21cm long x 19cm high. £20-£30

**75**  
**A Cranston pottery baluster vase**, having raised floral decoration on a mottled ground, 30cm high; and another similar 26cm high. £20-£40

**76**  
**A Troika vase**, by Lewis Jinks, 26cm high. £100-£200

**77**  
**A Warner Bros. brass star logo**. £250-£350

**78**  
**A Mdina coloured glass cylindrical vase**, 20cm high. £20-£30

**79**  
**A Gallé style green glazed cat**; a pink lustre decorated model of a bird; and a Elbogen pottery figure of a young girl in yellow dress carrying posies of flowers. £20-£30

**80**  
**An Ivan Martin of Cricklade pottery lidded pot**. £20-£30

**81**  
**Three pieces of Davidson cloud glass**. £10-£20

**82**  
**A vintage wooden Koh-i-noor advertising box**. £10-£20

**83**  
**Style of Henry Moore**, wooden carving 15cm high. £10-£20

**84**  
**An Art Deco turned wooden bowl**, 21cm dia. £10-£20

**85**  
**A Stretton Brentleigh ware pottery vase**, with floral decoration, 33cm high. £10-£20

**86**  
**A mid-20th Century frosted glass light shade**, 27cm. £10-£20

**87**  
**A Celtic pottery vase**, 18cm high. £10-£20



Lot 49



Lot 51



Lot 58



Lot 59



Lot 60



Lot 101



Lot 103



Lot 111



Lot 133

**88**  
A mid-Century frosted glass light shade, with floral decorated rim. £10-£20

**89**  
A heavy Studio pottery vase, having striped decoration, 20cm high. £10-£20

**90**  
A Grays pottery vase, of baluster form, 22cm high. £10-£20

**91**  
A teak bookcase, having adjustable shelves and enclosed by a pair of glazed sliding doors, 121cm wide x 106cm high. £30-£50

**92**  
A teak folding two tier tea trolley, 70cm wide. £20-£40

**93**  
A pair of 1960's white painted two drawer bedside chests, raised on light wood tapering supports, 62cm. £30-£50

**94**  
A teak drinks cabinet, with drop flap front raised on rounded tapering supports, 82cm wide. £20-£40

**95**  
A teak side cabinet, enclosed by a pair of folding doors raised on metal stand and castors, 83cm wide x 37.5cm deep. £20-£30

**96**  
Angus McBean, circa 1960, black and white photograph of Framsdon Church, 114cm x 90cm. £40-£60

**97 ✓**  
Paul Fowler, "Thames Series, Thames at Dawn" oil and gold leaf on rag paper, 100cm x 60cm. £100-£200

**98 ✓**  
Paul Fowler, abstract study, oil and gold leaf, signed and dated 2001, 25cm x 69cm. £100-£200

**99 ✓**  
Paul Fowler, abstract study, "Thames Series" oil and gold leaf, signed and dated 2003, 64cm x 94cm. £100-£200

**100 ✓**  
Paul Fowler, study of semi-naked figure, abstract oil signed and dated 2004, 62cm x 44cm. £100-£200

**101 ✓**  
Paul Fowler, abstract study of a figure signed and dated 2004, 40cm x 26cm. £100-£200. See illustration.

**102 ✓**  
Paul Fowler, nude study from the "Stone to Flesh" series, signed oil on paper No.0018; and another No.0029 (2), 14.5cm x 28cm. £100-£200

**103**  
A faux marble statue, of a semi-naked classical maiden holding an urn raised on oblong octagonal plinth, 84cm high. £30-£50. See illustration.

**104**  
A pair of amber glass mirrored slip panels, with foliate decoration. £10-£20

**105**  
A nest of three G-plan design teak coffee tables, raised on bowed supports, 100cm wide overall. £40-£60

**106**  
A Danish teak tray top sideboard, fitted three short frieze drawers with two long drawers below, raised on square tapering supports, 133cm wide. £100-£200

**107**  
A long teak sideboard, fitted drop flap drinks compartment, double cupboard and three drawers, raised on slender tapering supports united by stretchers, 184cm long. £60-£100

**108**  
A G-plan design sideboard of curved shape, having central glazed display cabinet flanked by cupboards with two drawers and cupboards below beneath a pull-out serving slide, raised on rounded tapering supports, 136cm wide. £60-£80

**109**  
An early 20th Century satin birch dressing table, by Gillows of Lancaster, having swing mirror raised on baluster turned arms, single drawer below on square section tapering supports terminating in rounded feet, 92cm wide. £100-£150

**110**  
A Bakelite cased early electric mantel clock. £10-£20

**111**  
A 20th Century West German pottery square section vase, having zigzag decoration, 50cm high. £20-£30. See illustration.

**112**  
A West German pottery ewer, of tapering form having brightly coloured panel decoration, 31cm high; and a similar baluster two handled vase 26cm high. £20-£30

**113**  
A decorative coloured glass plafonnier with brightly coloured flower head decoration, signed L.Viale, 37.5cm in extremes. £20-£40

**114**  
A Studio pottery jug, having stylised decoration with incised inscription to base, 26cm high; an earthenware pottery pitcher 30cm high; an unusual terracotta hanging pot with inscription Hygenic N.C. Paris - Nice; and a pottery puzzle jug AF. £20-£30

**115**  
A small Chinese pottery tea pot, with pierced decoration to the spout, and stylised motifs to the body, seal mark to base. £20-£30

**116**  
A pair of glass tumblers decorated with New Orleans style jazz musicians; a heavy clear glass candle holder of twist form 16cm high; and a green tinted block glass spill vase, 17cm high. £20-£30

**117**  
A Czechoslovakian glass scent bottle of Odeonesque shape, having pink tinted stopper with etched foliate decoration, 18cm high. £20-£40

**118**  
An early 20th Century walnut cased mantel clock, the spring driven movement striking on a bell, having circular Roman Numeral dial with brass embellishments, 39cm high. £20-£30

**119**  
A blue and gilt decorated glass bowl, signed B. Vallien; a similar baluster vase; and a mauve tinted bubble glass candle holder. £20-£30

**120**  
A Villeroy & Boch baluster milk jug, with entwined handle; a pair of Delft type dishes; two Quimper type dishes; and a Delft baluster vase. £10-£20

**121**  
A Chinese Lotus leaf decorated jardiniere, heightened in pink and gilt with turquoise interior, 17cm dia. 13cm high; and an oriental baluster vase decorated exotic birds and foliage with a pierced border, 10cm dia. 11.5cm high. £20-£30

**122**  
A small Ashtead Pottery spill vase; a continental pottery vase with conifer tree decoration; various other vases; humorous pottery figures etc. £20-£30

123

A set of faux bamboo wooden coat hooks; and a spot hammered and chrome mounted similar on oak plinth. £10-£20

124

A Victorian brass table oil lamp, with cut glass reservoir and etched shade, 70cm high. £80-£120

125

A Vallures Pottery wall posy holder, in the form of an insect; and a Vercor glazed pottery serving dish with leaf decoration. £30-£50

126

A mid-20th Century West German pottery baluster vase, with raised stylised decoration on a yellow ground; and a similar multi coloured goblet vase (2). £30-£50

127

A Winstanley pottery figure of a seated hare, 26cm high. £20-£30

128

A vintage electroplate and mirrored glass wedding cake stand, having bell, bow and floral decoration raised on shaped supports, 43.5cm. £40-£60

129

A 1950's heavy glass bell shaped vase with dimpled decoration, 20cm high. £30-£50

130

A continental pottery ewer, with fish and reed decoration heightened in gilt, 38cm high; and a pottery baluster ewer having incised decoration of leaves with turquoise interior, 29cm high. £40-£60

131

Four various mid-20th Century West German pottery ewers and vases. £40-£60

132

A Japanese "Rhythm" chrome and plastic alarm clock. £50-£70

133

A green marble figure of an elephant, 54cm long x 28cm high. £40-£60. See illustration.

134

A large chrome Angle Poise style lamp. £30-£50

135

S.C., continental study depicting bridge across a river, initialed oil on board, 32cm x 40cm. £80-£120

136 ✓

Jo Berry, "Spring" signed watercolour, 34cm x 35cm. £40-£60

137 ✓

David Grosvenor, "Snowdon and Crib Goch", signed watercolour with exhibition booklet 49cm x 30cm. £100-£150

138

An unusual printed collage picture of a bee.

£50-£80

139

A decorative print of a Grand Prix, Bugatti type 59 in shaped leaf carved frame. £20-£30

140

A pencil signed etching by Glynn Thomas, "Horsey Mill", 86/100. £20-£30

141 ✓

Raymond Coxon, "Welsh Bathers" signed watercolour, 45cm x 60cm. £100-£200

142 ✓

Raymond Coxon, abstract oil on board, 73cm x 53cm. £100-£200. See illustration.

143 ✓

Elizabeth Stewart Jones, (born 1905), charcoal drawing of a reclining naked woman, 47cm x 41cm. £60-£80. See illustration.

144 ✓

Cavendish Morton, (1911-2015), study of boats on the Orwell, signed watercolour, 29.5cm x 47cm. £100-£150

145

A long teak sideboard, by Vanson fitted double cupboards enclosed by fold back doors, three central drawers raised on square section tapering supports, 158cm wide. £60-£100

146

An Ercol television cabinet, 85cm. £40-£60

147

An Art Deco walnut china display cabinet, the interior glass shelves enclosed by pair of decorated shaped glazed doors, illuminating central panel, 130cm wide x 126.5cm high. £60-£100

148

An Art Nouveau mahogany and inlaid display cabinet in the manner of Shapland & Petter fitted with mirrored shelves, fabric lined interior, enclosed by coloured and leaded glazed panel doors inlaid with satin wood and mother of pearl flowers, raised on square section supports, 125cm wide x 156cm high. £200-£400

149

A late 19th Century satin birch aesthetic design bedroom suite, comprising wardrobe fitted hanging sections enclosed by central mirrored panel door above a single drawer to base; a large chest of two short and four long graduated drawers raised on bun feet; a dressing table with central swing mirror flanked by brass adjustable candle sconces above two short drawers, and a matching headboard. £400-£600

150

A 1920's oak Art Deco design hall stand / seat, with central mirrored panel, flanked by coat hooks above shaped arms over a lifting box seat compartment, 100cm wide x 193cm high. £100-£150

151

A small chrome Angle Poise style lamp. £15-£20

152

An Art Deco style bronzed figure, of a torch dancing girl on stepped marble base, 52cm high. £100-£150. See illustration.

153

A large copper Angle Poise style lamp. £25-£40

154

A Bakelite and metal framed circular occasional table, stamped Utility 55cm dia. £20-£40. See illustration.

155

A continental brightly coloured pottery leaf shaped dish, 50cm long; and another similar.

£20-£40

156

A Dior hand bag. £20-£40

157

A small copper Angle Poise style lamp. £20-£30

158

A pine kitchen dresser, the shelved and boarded back with pegged ends, three drawers and cupboards under, 152cm wide. £100-£150

159

A G-plan wall unit, having separate shelved back and cupboard base, 77cm wide x 200cm high.

£40-£60

160

An unusual teak desk unit, comprising shelves, pigeon holes, and drop flap compartments, 71cm wide x 122cm high. £30-£50

161

An oak Art Deco side cabinet, having tray top, shelves enclosed by a pair of glazed coloured leaded panel doors, pull out slides, drawers and cupboard below raised on bracket feet, 122cm wide x 174cm high. £60-£80

162

A reproduction Gulf fuel can. £20-£30

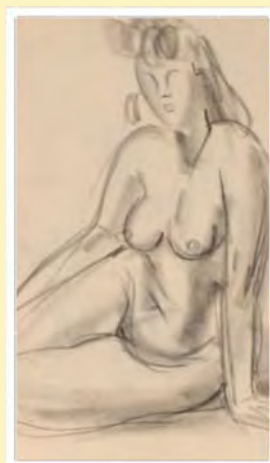
163

A reproduction Harley Davidson fuel can.

£20-£30



Lot 142



Lot 143



Lot 152



Lot 154



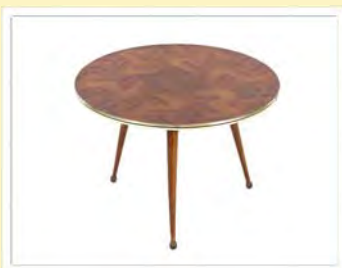
Lot 186



Lot 191



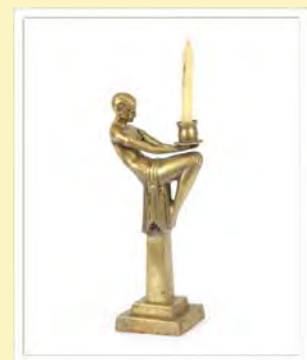
Lot 192



Lot 198



Lot 199



Lot 202

164

A Wrighton teak fitted wardrobe, 125cm wide. £40-£60

165

A G-plan teak hanging wardrobe, 86cm wide. £40-£60

166

An Art Deco walnut kidney shaped dressing table, having bevelled oval mirror above sliding trinket compartments, drawers and cupboard below 132cm wide. £60-£80

167

A pair of silvered effect lanterns, 62cm high. £100-£150

168

A leather watch box. £75-£100

169

A Beutality walnut gent's wardrobe, 92cm wide. £40-£60

170

A Beutality double wardrobe fitted with revolving rota-unit, patent No.695132, 130cm. £60-£100

171

A set of three graduated map decorated trunks. £80-£120

172

An Art Deco design hall cupboard, in the form of a long case clock fitted battery powered movement by Roger Lascelles Clocks, the circular Roman numeral dial printed "Alex R Mitchell, Glasgow". £60-£100

173

A novelty Carltonware "Blue Max" teapot. £20-£30

174

A chinoiserie decorated porcelain ginger jar and cover. £10-£20

175

A 1930's oak cased chiming grandfather clock, enclosed by a glazed panel door, 197cm high. £40-£60

176

A nest of three teak coffee tables. £10-£20

177

An early 20th Century walnut hexagonal occasional table, raised on turned supports united by an undertier. £20-£30

178

Six brightly coloured decorated retro beer glasses. £10-£20

179

A blue glass mannequin head. £20-£30

180

A mid-20th Century 12" dia. world globe on stand. £10-£20

181

A clear glass mannequin head. £20-£30

182

A mid-20th Century square glass decanter and stopper with dimpled decoration. £10-£20

183

A Susie Cooper breakfast set, and a Susie Cooper tea plate. £20-£30

184

A French advertising shop card for Tho-Radia. £10-£20

185

A model of a London taxi. £10-£20

186

French school, study of a South of France fishing village with figures in boats, unsigned oil on board, 52cm x 73cm. £100-£150. See illustration.

187

After Dalhi, study of a Maiden balancing a basket of fruit surrounded by cherubs. £50-£80

188

A set of four graduated reproduction Shell oil jugs. £40-£60

189

A garniture of three Sylvac floral decorated vases. £30-£50

190

A large collection of Emma Bridgewater floral and fruit decorated mugs; and an Emma Bridgewater milk jug and a bowl. £100-£200

191

A Bernard Rooke pottery study of a cockerel, 31cm long overall, 33cm high. £20-£40.

See illustration.

192

A Bernard Rooke pottery vase with frog and lily pad decoration, 24cm dia. Overall. £20-£30.

See illustration.

193

A Bernard Rooke pottery baluster vase of squat form decorated frogs and lily pads; a similar decorated plaque; another AF; and a candle holder similarly decorated. £10-£20

194

Five various Bernard Rooke vases and planters, decorated acorns, owls, squirrels and butterflies.

£30-£40

195

A Bernard Rooke pottery wall plaque having insect and spiders web decoration; and another decorated with dragon fly. £20-£40

196

A pair of Bernard Rooke butterfly decorated wall lamps. £20-£40

197

A Lily Bollinger style Champagne cooler.

£25-£40

198

A circular faux parquetry French occasional table, 60cm dia. £75-£100. See illustration.

199

A French retro triform occasional table, raised on three rounded tapering supports, 61cm overall. £85-£110. See illustration.

200

An Eastern copper and white metal swing handled pot. £20-£30

201

A vintage porch light. £10-£20

202

A large brass Art Deco design candlestick in the form of a seated 1920's dancing girl on stepped base, 41cm high. £40-£60. See illustration.

203

A vintage Roberts portable radio. £10-£20

204

An Art Deco marble clock garniture. £10-£20

205

A silvered plate study of a horse and jockey, 32cm long x 31cm high. £50-£80. See illustration.

206

A French poster decorated bathing girls, 83cm x 59cm. £20-£30

207

An unusual vintage building society poster, for the Landore Building society Swansea, 72cm x 47cm. £30-£40

208

An Art Deco chrome standard lamp. £80-£120

209

A chrome Art Deco design uplighter. £50-£80

210

An oriental framed embroidered picture, depicting a young girl carrying a flower. £10-£20



**211**  
A printed fabric panel contained in gilt oak leaf decorated frame. £10-£20

**212**  
A framed woolwork embroidery depicting country cottages. £10-£20

**213**  
A Doulton figurine; a Doulton character jug depicting Dick Whittington; and a Doulton stoneware milk jug (3). £30-£40

**214**  
A Royal Cauldon pottery mug decorated flower heads, 18.5cm high. £20-£40

**215**  
A Beswick figure of a terrier, 8.5cm long. £10-£20

**216**  
Three mid-20th Century treen pots. £10-£20

**217**  
A Bakelite Linsden ware revolving desk tidy, 15cm long. £20-£30

**218**  
A Shanklin ware vase, having floral decoration and red interior, 18cm long. £10-£20

**219**  
A Bassett & Co. tin, 21cm long. £20-£30

**220**  
A mid-20th Century green pottery vase, with pierced decoration, 41cm. £10-£20

**221**  
A mid-20th Century Burleighware vase, with stylised decoration and red interior, 24cm. £10-£20

**222**  
A mid-20th Century black and white vase, having foliate scroll decoration, marks indistinct, 22cm. £10-£20

**223**  
A chinoiserie decorated biscuit tin, 14cm. £10-£20

**224**  
A Carn Pottery, Penzance Cornwall, Studio vase of tube form, 17cm. £10-£20

**225**  
An unusual round pottery vase with striped and dimpled decoration, 25cm overall. £10-£20

**226**  
A Clarice Cliff "Bizarre" bowl decorated brightly coloured rings, 13.5cm. £40-£60

**227**  
An oriental design jade style bangle. £40-£60

**228**  
A coral coloured hardstone pendant; and a green jade coloured carved pendant. £20-£30

**229**  
A Vienna style figure, of a fox playing cards, 10.5cm long x 8cm high. £50-£80

**230**  
A Vienna style figure, of a cat polishing boots, 5.5c. £50-£80

**231**  
An Art Nouveau design white metal dish, decorated with naked female figure, 13cm. £25-£40

**232**  
A bronzed inkwell, in the form of a Rhinoceros, 16cm long. £50-£80

**233**  
A novelty plated and glass decanter, in the form of two ducks. £100-£150

**234**  
A carved wooden figure of a naked girl, 20cm high. £40-£60

**235**  
A bronzed oriental decorated triptych. £50-£80

**236**  
A bird cage style clock. £25-£40

**237**  
A 2007 half sovereign; and a small George VI coin. £80-£120

**238**  
A Tissot Seastar wrist watch; an Oris anti-shock wrist watch; another; a silver cased propelling pencil etc. £20-£40

**239**  
A silver fob; a 925 mark silver leaf brooch; a yellow metal and enamel decorated leaf pendant hung to a fine link chain; a silver ingot pendant on chain etc. £20-£40

**240**  
A pair of silver engine turned cuff-links; and one other. £10-£20

**241**  
A yellow metal and diamond set pendant hung to a 9ct gold chain, approx. 12gms total weight £100-£150

**242**  
An 18ct gold ring set five graduated diamonds. £200-£300

**243**  
A 9ct gold pendant approx. 6gms total weight. £50-£80

**244**  
An 18ct gold necklace, approx 14gms total weight. £200-£300

**245**  
A 9ct gold brooch, having scrolled pierced decoration, approx. 6gms total weight. £40-£60. See illustration.

**246**  
A yellow metal and pearl set oval brooch. £40-£60

**247**  
A 9ct gold watch chain, with T bar approx. 30gms total weight. £300-£400

**248**  
A yellow metal ring, set seven turquoise stones. £20-£30

**249**  
A 15ct gold and pearl set ring. £20-£30

**250**  
A 22 carat gold wedding band; another, AF; and a 9 carat gold wedding band. £60-£80

**251**  
A large white metal and amber brooch; a yellow metal leaf brooch; and another. £30-£50

**252**  
A white metal "Rose" ring. £20-£40

**253**  
An amber coloured pendant set to a fine link chain; a pair of white metal knot patterned ear-rings; and a pearl necklace. £30-£40

**254**  
An Art Deco design yellow metal brooch, in the form of a lady with dog. £10-£20

**255**  
An Attwood Collection bangle. £50-£80. See illustration.

**256**  
A 9ct gold link charm bracelet hung with various gold and other charms, total weight 46.4gms. £200-£300. See illustration.

**257**  
A 1907 gold sovereign. £200-£250

**258**  
A white metal blue enamel and marquissette decorated swallow brooch; and a 925 and enamel decorated leaf brooch. £20-£30. See illustration.

**259**  
A 9ct gold mounted cameo brooch; a yellow metal similar; a pendant cameo hung to a fine link chain; a 9ct gold leaf brooch; and a small yellow metal rope twist bracelet. £100-£150



Lot 205



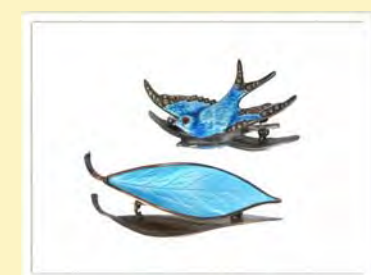
Lot 245



Lot 255



Lot 256



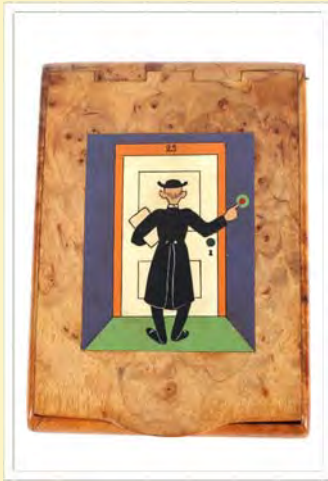
Lot 258



Lot 279



Lot 282



Lot 286



Lot 291



Lot 293

**260**

A small collection of die-cast toys, petrol pumps etc. £20-£30

**261**

A pair of etched glass goblets with foliate and wildlife decoration, 13cm. £10-£20

**262**

A Clarice Cliff for Royal Staffordshire turkey plate. £10-£20

**263**

A brass Art Nouveau design hand mirror. £10-£20

**264**

A pair of Art Deco Carlton ware dishes. £20-£30

**265**

Eight various glass scent bottles. £20-£30

**266**

A John S Derbyshire & Son tin. £10-£20

**267**

A Crawfords gilt decorated sarcophagus shaped biscuit tin. £10-£20

**268**

Six pieces of various treen, including egg cups and candlesticks. £10-£20

**269**

A small painted papier maché pen box, decorated flowers. £10-£20

**270**

A papier maché pen box, the lid with decoration of ships. £20-£30

**271**

A small inlaid box with flower decoration, inscribed to the base SZCZECIN. £10-£20

**272**

A small copper pot and lid, with ribbed decoration. £10-£20

**273**

A yellow metal Dunhill lighter, in original box and bag. £20-£30

**274**

A Sheaffer gold plated Targa pen, in original case; two Parker pens, (cased); and a Cross biro and propelling pencil set. £20-£30

**275**

A vintage metal flip calendar. £5-£10

**276**

A chrome cased flip calendar, in the form of a miniature one armed bandit. £10-£20

**277**

A Ronson Art Deco design lighter; and two engine turned decorated metal cigarette cases. £10-£20

**278**

A chrome cigarette case, decorated with a panel depicting a bathing beauty and a greyhound. £20-£30

**279**

A carved cameo glass baluster vase, bears signature, 15cm high AF. £30-£50. See illustration.

**280**

A "Make A Date With The Beatles" calendar. £200-£300

**281**

An Art Deco design cold painted brass parrot group on marble plinth, 16cm high. £10-£20

**282**

A 1930's novelty clock in the form of a dog, impressed verso Germany. £80-£120. See illustration.

**283**

An Art Deco burr wood and inlaid souvenir box, decorated risqué scene, 11cm x 7.8cm. £150-£200

**284**

An Art Deco burr wood souvenir box, inlaid decoration of a risqué scene, 11cm x 8cm. £150-£200

**285**

An Art Deco burr wood and inlaid souvenir box, decorated to the lid and interior with risqué scene, 11cm x 8.4cm. £150-£200

**286**

An Art Deco burr wood souvenir box, the hinged lid and interior decorated risqué scene and verse, and stamped "Made In France" to the interior, and initialled T.V.W., 11.3cm x 8cm. £150-£200. See illustration.

**287**

A Clarice Cliff blue Chintz plate, 17.5cm dia. £60-£80

**288**

A Clarice Cliff octagonal orange decorated plate, 9cm dia. £60-£80

**289**

A Clarice Cliff Pansy pattern plate, 22cm dia. £60-£80

**290**

A Clarice Cliff Bizarre plate, 23cm dia. £80-£120

**291**

A continental enamelled glass bowl, profusely decorated figures, foliage and castles, 35cm dia. £200-£300. See illustration.

**292**

A white glazed Helsingborg pottery vase, having raised floral decoration and face, 24cm high. £40-£60

**293**

A Bavarian porcelain ash tray, in the form of a naked girl reclining beside a pool, 17cm long. £20-£30. See illustration.

**294**

An Art Deco green glass mantel timepiece, having figure decoration, 17.5cm high. £40-£60. See illustration.

**295**

A Carlton ware Rouge Royale dish, 22cm long. £20-£40

**296**

A Lalique opalescent glass bowl, decorated flowers heads forming into stem feet, signed R.Lalique France, 24cm dia. slight chip to rim £100-£200

**297**

A cameo glass vase, signed Galle, 19cm high. £80-£120. See illustration.

**298**

A Lalique opalescent glass shallow dish, having scrolling leaf decoration, signed R.Lalique France, 26cm dia. £250-£350. See illustration.

**299**

A Lalique "Coquille" patterned bowl, signed R.Lalique France, 21cm dia. £250-£350

**300**

An electroplated cocktail jug, of Art Deco design, 34cm high. £40-£60. See illustration.

**301**

An unusual bead work bag, decorated pandas. £40-£60

**302**

A large earthenware Studio pottery platter, of oval form, marked to base J.H.E., 43cm long; and a Royal Copenhagen Faience pottery dish. £40-£60

**303**

A vintage Angle Poise style lamp. £20-£40

**304**

A Victorian style copper street lamp lantern. £40-£60

**305**

A blonde Ercol sideboard, fitted an arrangement of cupboards and single drawer below, raised on rounded tapering supports, 114cm wide. £100-£200

**306**

An Armillary sphere, raised on seahorse base, 68cm high overall. £60-£100

**307**  
A large Bernard Rooke pottery vase, with raised leaf decoration, 32cm high. £30-£40

**308**  
A Bernard Rooke baluster jug, having insect and leaf decoration; a Bernard Rooke pottery preserve jar and cover; and a circular Bernard Rooke pottery bowl with leaf and insect decoration. £20-£40

**309**  
Nine various early 20th Century magazines and periodicals, including Pears Annual for 1905. £20-£30

**310 ✓**  
Susie Hamilton, oil on canvas "Figure in Grass"; and another "Figure in Shade" a pair, 30.5cm x 30cm, (unframed. £40-£60

**311 ✓**  
William Russell Flint, pencil signed print "Victorian Diversion", 56cm x 41cm. £100-£150

**312 ✓**  
Baron D'Aguilar 1922 - 2011, pastel study of a woman in a blue swimsuit, 58cm x 42cm. £100-£150

**313 ✓**  
Baron D'Aguilar 1922 - 2011, study of a reclining lady in blue swimsuit, 41cm x 49cm. £100-£150

**314 ✓**  
Cavendish Morton, "Slaughden Quay, Aldeburgh" signed watercolour dated 1967, 27 cm x 37cm. £100-£200

**315 ✓**  
Donald McGill, (1875-1962), watercolour "No Ole German Steals This Reservoir!", 13cm x 22.5cm. £150-£200

**316 ✓**  
Donald McGill, (1875-1962), "Take Me Back to Dear Old Blighty", signed watercolour, 26cm x 21cm. £150-£200

**317 ✓**  
Donald McGill, (1875-1962), "This is Just To Let You Know I've Reached Here Alright", monogrammed watercolour, 16cm x 25cm. £150-£200

**318 ✓**  
Donald McGill, (1875-1962), "The Latest Thing Out In Silk Stockings", signed watercolour, 28cm x 17.5cm. £150-£200. See illustration.

**319 ✓**  
Donald McGill, (1875-1962), humorous cartoon, "What Did You Do In The Great War, Daddy", signed watercolour 33cm x 21cm. £150-£200

**320 ✓**  
Donald McGill, (1875-1962), "C One B Won", signed watercolour, 32cm x 20cm. £150-£200

**321 ✓**  
Donald McGill, (1875-1962), "National Service Act", signed watercolour, 30cm x 22cm. £150-£200

**322 ✓**  
Donald McGill, (1875-1962), "Ate Mustard - Nasty Without Meat On It", signed watercolour 28.5cm x 19cm. £150-£200

**323 ✓**  
Donald McGill, (1875-1962), "Why Aren't You At The Front My Man - Cos There Aint No Milk That End Miss", signed watercolour 19cm x 28cm. £150-£200

**324 ✓**  
Donald McGill, (1875-1962), "This Aint 'Alf A Windy Place", signed watercolour, 28cm x 18.5cm. £150-£200

**325 ✓**  
Donald McGill, (1875-1962), "When Shall I Be Old Enough To Wear Short Frocks Mum?", signed watercolour 26cm x 17cm. £150-£200. See back cover illustration.

**326 ✓**  
A.A.Nash, study of young children in army uniforms, signed watercolour, 28cm x 38cm. £100-£150

**327 ✓**  
A.A.Nash, "Well Protected By The Navy", signed watercolour, 31cm x 20.5cm. £100-£150

**328 ✓**  
A.A.Nash, "Don't Forget To Drop Me A Line", signed watercolour, 38cm x 27cm. £100-£150

**329 ✓**  
A.A.Nash, "By The Sword United", signed watercolour, 22.5cm x 34cm. £100-£150

**330 ✓**  
A.A.Nash, "Caught Napping", signed watercolour, 34.5cm x 22cm. £100-£150

**331 ✓**  
A.A.Nash, "I'll Count The Hours 'Til You Return", signed watercolour, 35cm x 22cm. £100-£150

**332 ✓**  
A.A.Nash, "Calling For Attention", signed watercolour, 36cm x 25cm. £100-£150

**333 ✓**  
A.A.Nash, "You Are The Boy For Me", signed watercolour, 38cm x 27cm. £100-£150

**334 ✓**  
A.A.Nash, untitled study of a soldier from a Highland Regiment with his sweetheart, signed watercolour, 37.5cm x 27cm. £100-£150

**335 ✓**  
A.A.Nash, untitled, young boy in military uniform and young girl seated by the fire, signed watercolour 38cm, x 27c. £100-£150

**336 ✓**  
A.A.Nash, "There's Something I Like About You", signed watercolour, 38.5cm x 30cm. £100-£150

**337 ✓**  
A.A.Nash, "No Advance Without Seeing", signed watercolour, 35cm x 25cm. £100-£150

**338 ✓**  
A.A.Nash, "You've Lots of Friends In Blighty", signed watercolour 35cm x 24.5cm. £100-£150

**339 ✓**  
A.A.Nash, untitled study of seated soldier and young family by the hearth, signed watercolour, 25cm x 37cm. £100-£150

**340 ✓**  
Attributed to Donald McGill but unsigned, humorous study entitled "Medical Board" with inscription, unsigned watercolour, 25cm x 15.5cm. £150-£200

**341 ✓**  
First World War period study of seated dogs with Army and Naval caps, unsigned watercolour, 27cm x 18cm; another by the same hand depicting a terrier with Army cap. £100-£150

**342 ✓**  
Dudley Buxton, small study of a First World War period courting couple, signed watercolour; another possibly by the same hand "Now George Don't Get Mushy"; and another similar period portrait study of a seated lady. £100-£150

**343**  
Three vintage Strand Theatre spot lights, in original boxes; three others; and two spot light stands and accessories. £100-£150

**344**  
An Ercol drop leaf kitchen table, and four Ercol stick back chairs. £100-£200

**345**  
20th Century school, study of a wounded owl, indistinctly pencil signed watercolour, dated 1985, 18cm x 24cm. £10-£20

**346**  
A mid-20th Century abstract study, unsigned oil on canvas. £10-£20



Lot 294



Lot 297



Lot 298



Lot 300



Lot 318



Lot 359

**347**

A Trena Lewis & Marjon Couture evening dress, size 12. £20-£40

**348**

A 1980's Laura Ashley evening dress, size 12. £20-£40

**349**

A limited edition Michael Kors silver hand bag. £10-£20

**350**

A Michael Kors cross body handbag; and two purses. £20-£30

**351**

An across the body cream print Michael Kors hand bag and a purse. £20-£30

**352**

A black and white Michael Kors handbag. £20-£30

**353**

A DKNY black bag. £20-£30

**354**

A 1930's oak revolving bookcase, 64cm wide x 80cm high. £60-£100

**355**

A Danish teak hall table, fitted two frieze drawers and raised on square section supports united by stretchers, 102cm wide. £60-£80

**356**

A teak sideboard, fitted display shelf enclosed by glazed sliding doors, cupboards and two short drawers below, raised on slender out swept supports, 120cm wide. £30-£50

**357**

A teak Domino sideboard, enclosed by a pair of sliding doors, raised on rounded tapering supports, 172cm wide x 70cm high x 39cm deep. £30-£50

**358**

A 19th Century chinoiserie decorated black lacquered work box, 28cm wide. £10-£20

**359**

An Art Deco design mannequin head, 46cm high. £40-£60. See illustration.

**360**

A MacFarlane Lang & Co. biscuit tin, decorated with a Dutch skating scene. £20-£30

**361**

A decorative wooden trinket box. £10-£20

**362**

A large Bernard Rooke pottery vase, decorated dragonfly and flowers, 32cm high. £40-£60. See illustration.

**363**

A pair of oriental bronzed Dog of Fo decorated baluster table lamps, 40cm high overall. £60-£80

**364**

A long teak sideboard, enclosed by louvre panels doors, three short drawers to the side raised on rounded tapering supports, 200cm wide X 78cm high. £60-£100

**365**

A teak sideboard, fitted end cupboards and six short drawers by Avalon Yatton, 167cm wide x 72cm high. £60-£100

**366**

After Chiparus, a bronze Art Deco design dancing figure raised on a marble plinth, 51cm high. £100-£150. See illustration.

**367**

A dimpled amber glass bottle and stopper, 50cm high. £15-£20

**368**

A Winstanley pottery figure of a hare, 39cm high. £30-£40

**369**

A vintage walnut cased radio, 42cm wide x 52cm high. £20-£40

**370**

A large Bernard Rooke pottery table lamp, decorated lily pads with globular pierced shade. £40-£60. See illustration.

**371**

A Winstanley pottery figure of a hare, 37cm high. £30-£50

**372**

An Art Deco design bronze figure of a dancing girl on marble plinth, 57cm high. £100-£150

**373**

A G-plan design teak sideboard fitted double cupboards, raised on rounded tapering supports, 162cm wide x 63cm high. £100-£150

**374**

A teak G-plan sideboard, bearing retailers label for Clarksmith Bros. Earlsfield, fitted arrangement of cupboards and single drawer raised on square tapering supports, 122cm wide x 86cm high. £30-£50

**375**

A teak iron framed kneehole writing desk, fitted one shallow and one deep drawer, 122cm wide. £20-£30

**376**

A nest of three G-plan design teak coffee tables. £20-£40

**377**

A pair of Art Deco oak three drawer bedside chests, 56cm wide x 46cm deep x 55cm high. £30-£50

**378**

An unusual teak coffee table / magazine rack, raised on square section supports, 92cm wide. £30-£50. See illustration.

**379**

A pair of circa.1970's municipal Urban Stone planters. £60-£80

**380**

An Art Deco design bronze figure of a hoop girl, raised on marble plinth, 48.5cm high. £100-£150

**381**

A large decorative wooden model of a stork, 90cm high. £20-£40

**382**

A Bernard Rooke pottery table lamp, with raised floral and pierced decorated baluster body, complete with tassled shade, 64cm high overall. £20-£40

**383**

A vintage Teddy bear, seated in an oak Art Deco adjustable child's chair. £20-£40

**384**

A large pencil signed limited edition coloured print "Silent Breeze" 62/350, 70cm x 52cm. £75-£100

**385**

A pair of Bernard Rooke pink glazed wall plaques, with raised floral frog and insect decoration, 34cm. £20-£40

**386**

A large Bernard Rooke table lamp, having dragonfly and floral decoration, 65cm high overall. £30-£50

**387**

A Bernard Rooke pottery table lamp, having mushroom shaped shade, decorated frogs and lily pads, 34cm high. £30-£50

**388**

A teak G-plan design four drawer sideboard, raised on square section tapering supports, 132cm wide x 68cm high. £40-£60

**389**

A G-plan design teak sideboard, fitted three frieze drawers and cupboards to base, raised on trestle end supports, 168cm wide x 73cm high. £60-£80



Lot 362



Lot 366



Lot 370



Lot 378

390

A G-plan design teak sideboard, fitted three central drawers, flanked by double cupboards raised on square section supports, 168cm wide x 76cm high. £40-£60

391

A large continental pottery vase with floral decoration AF; various West German and other pottery to include a Stein, posy vases etc. £20-£40

392

A plated and enamel decorated leaf shaped fruit dish; and a collection of decorative plated rose ornaments. £20-£30

393

Two Arthur Wood Art Deco water jugs, with shaped borders and floral decoration. £10-£20

394

A plated wine cooler with line body decoration; and a smaller similar. £10-£20

395

Three various Champagne buckets; and two others. £20-£30

396

A Bodum design by Jorgensen tea kettle with ply handle. £10-£20

397

A collection of various 20th Century decorative plates and platters. £10-£20

398

A circular decorative black and white glass segment wall mirror. £60-£80

399

A Tiffany design leaded and coloured glass panel. £80-£120

400

A good quality oak bench, the thick top raised on shaped end supports united by peg stretchers, 120cm. £40-£60

401

A mahogany Arts & Crafts design two tier occasional table, having folding pull out slides, raised on reeded square section supports, 59cm wide x 67cm high. £20-£30

402

A set of four Ercol style stick back kitchen chairs. £40-£60

403

An Art Deco design high back beech chair, having floral upholstered seat and back panel, raised on rounded tapering stretchers supports. £30-£50

404

A pair of Willy Rizzo polished stainless steel chairs, signed on the rail, covered in Paul Smith design striped fabric, circa 1975 with accompanying catalogue. £400-£600. See illustration.

405

A pair of light oak high back chairs, the shaped rails above upholstered serpentine seats, having scrolled arms and square section supports, signed "L". £300-£500. See illustration.

406

A pair of chrome and black leather Scandinavian armchairs. £100-£150. See illustration.

407

A designer leather and hide upholstered tub shaped armchair. £150-£250

408

A circular occasional table, having painted top raised on tripod base, 49cm dia. £30-£50

409

A Meredew light oak blanket box, having lift-up lid raised on square section supports, 92cm. £30-£40

410

A Minty teak low bookcase, enclosed by two pairs of glazed sliding doors, 136cm wide. £30-£40

411

William Walcott RA 1847 - 1943, study of horse and cart, signed watercolour dated 1919, 40cm x 50cm. £600-£800

412 ✓

Guy Gladwell, (1946-2014), "Art Work", oil on board, signed bottom right, 78.5cm x 58cm. £2,000-£3,000. See illustration.

413 ✓

Guy Gladwell, (1946-2014), "Joe, Nearly Done" oil on canvas, circa 1993, 83cm x 59cm. £1,200-£1,500

414 ✓

Guy Gladwell, (1946-2014), cats study, signed bottom right, dated 1997, 69cm x 51cm. £600-£800

415 ✓

Guy Gladwell, (1946-2014), "Turkish Delight", oil on board, signed bottom right, 37cm x 26cm, circa 1991. £250-£350

416 ✓

Guy Gladwell, (1946-2014), "Miles", oil on board, signed bottom right, 45.5cm x 32cm, circa 1986 and a dry point etching "Miles". £1,200-£1,500

417 ✓

Guy Gladwell, (1946-2014), "Nude", oil on canvas, signed bottom left, 41cm x 28cm. £300-£500

418 ✓

Guy Gladwell, (1946-2014), "Grey painting", pencil signed artist's proof, 38.5cm x 28cm. £250-£350

419 ✓

Guy Gladwell, (1946-2014), dry point etching, study of Peter Langan, 39cm x 30cm. £300-£600

420 ✓

Guy Gladwell, (1946-2014), three vintage poster prints, pencil signed including the "Langans painting". £200-£300

421 ✓

Guy Gladwell, (1946-2014), dry point etchings, "Table cloth", "Closing time", two nude studies, "Communication Breakdown" and "Walking around", pencil signed limited editions. £1,500-£2,000

422 ✓

Guy Gladwell, (1946-2014), pencil signed artist's proof, "Banana boat"; "Towel Rail", pencil signed print; artist's proof "Artwork", "Coloured Tree" mixed media on paper; and "Green Moggie" pencil signed print dated 1991. £150-£250

423

A resin and African burr wood side table, 40cm x 42cm. £100-£200. See illustration.

424

Two vintage Angle Poise lamps; and two angle poise style lamps. £60-£100

425

A large teak extending draw leaf dining table, raised on square section supports, 225cm x 92cm. £100-£150

426

A vintage Formica topped kitchen table, fitted cutlery drawer; and four matching chairs. £40-£60

427

A teak G-plan design coffee table, having curved top and black wood magazine rack and supports under, 111cm. £20-£40

428

A set of four vintage kitchen stools, with lift up seats. £25-£40

429

Four various magnifying glasses. £20-£30

430

A Pilot swing type clock. £80-£120

431

A metal and leather model of a scooter. £50-£80



Lot 404



Lot 405



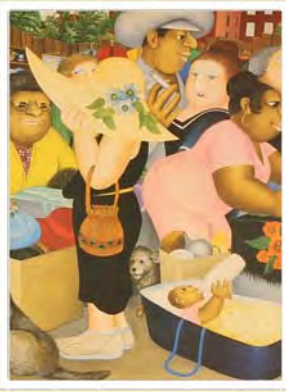
Lot 406



Lot 412



Lot 423



Lot 443



Lot 444



Lot 450



Lot 455



Lot 462

**432**

An Art Deco design plated teapot. £35-£50

**433**

A metalware model of a 1960's scooter. £10-£20

**434**

A pair of plated coasters, with turned wooden bases. £25-£40

**435**

A small brass telescope on stand. £20-£30

**436**

A pair of rectangular plated and faux tortoiseshell trays. £40-£60

**437**

A large heavy clear glass scent flask, 26cm high. £50-£80

**438**

A large plated cocktail shaker, in the form of a lighthouse. £75-£100

**439**

A Vienna bronze style risqué Arab tower figure group. £180-£220

**440**

A large amber tinted heavy glass fan shaped scent bottle. £50-£80

**441**

A large pink tinted heavy glass fan shaped scent bottle. £50-£80

**442**

A small amber tinted glass fan shaped scent bottle AF. £10-£20

**443** ✓

Beryl Cook, pencil signed coloured print depicting a market scene, 39cm x 37cm. £100-£150. See illustration.

**444** ✓

Beryl Cook, pencil signed print depicting a striptease, 52cm x 60cm. £200-£300. See illustration.

**445**

Lewis Todd, pencil signed coloured print "The May Races, Cambridge University". £10-£20

**446**

Esposito, Mediterranean study depicting fishing boats, signed pastel, 29cm x 31cm. £20-£40

**447**

A folio of various drawings, watercolours, prints etc. £40-£60

**448**

Josephine Harris, pencil signed gouache study depicting a Meissen porcelain figure group, 21.5cm x 23cm. £10-£20

**449**

Study of a clown, signed Lucien Taci, dated 1967, palette knife on canvas, 50cm x 59cm. £20-£40

**450**

Indistinctly signed surrealist mixed media study, 24.5cm x 30cm. £20-£30. See illustration.

**451** ✓

Eugene Hurter, six unframed oils on canvas depicting South African scenes; another framed and glazed; and a watercolour study. £80-£120

**452**

A teak oblong coffee table, raised on square section tapering supports, 122cm x 46cm. £30-£40

**453**

A large teak oblong coffee table, raised on rounded tapering supports, 134cm x 60cm. £20-£30

**454**

A Bernard Rooke pottery biscuit barrel, having frog and lily pad decoration, swing cane handle, 16cm. £20-£40

**455**

A Troika square section vase, 15cm high x 15cm wide. £150-£200. See illustration.

**456**

A cast iron Pig moneybox, 20cm. £15-£25

**457**

A pair of bronze boxing hares, 31cm high. £200-£300

**458**

An amber coloured skull ornament. £50-£80

**459**

A cast iron novelty dog money bank, 22cm. £20-£30

**460**

A bronze figure group depicting footballers, on a marble plinth, 24cm. £50-£80

**461**

A large Champagne bath, 65cm. £50-£80

**462**

A Goldscheider porcelain figure group, depicting seated lady in blue dress, her foot resting on a cushion, 34cm high, AF. £200-£300. See illustration.

**463**

A large composite Art Deco style figural lamp, retailed by Biba, 60cm. £40-£60. See front cover illustration.

**464**

A G plan elliptical corner cupboard; and another similar, 65cm wide x 54cm high. £60-£80

**465**

An Eames style foot stool, on cross base, terminating in castors. £30-£50

**466**

An oak Arts & Crafts occasional table, raised on bow supports and under-tier, 48cm. £30-£50

**467**

A teak nest of five coffee tables, on caster supports, 62cm wide. £30-£50

**468**

A set of retro chrome and plastic hanging coat hooks. £10-£20

**469**

A glazed plaster figure of a fox, 58cm. £10-£20

**470**

A pencil signed fashion picture, 36cm x 20cm overall. £10-£20

**471**

A continental pottery candlestick, in the form of a seated monkey with top hat, 14cm high. £20-£30

**472**

A 1960's Digsmed Danish teak Lazy Susan and a boxed 1960's Pifco vacette. £10-£20

**473**

A Rino Valido Colore Colore picture and book, cased. £10-£20

**474**

A retro designer jumper, Patrick Groenendaal and Stanley Steinberg for Marieubach. £10-£20

**475**

A decorative silver and bronze effect oblong wall mirror, with eye shaped insert; a floral collage and a copper and enamel flowerhead wall plaque. £10-£20

**476**

A 1960's walnut and teak sideboard, having three louvre shaped drawers and interior shelf enclosed by a pair of sliding doors, raised on rounded brass tipped supports, 137cm wide x 81cm high. £40-£60

**477**

A G plan design five drawer chest, raised on rounded tapering supports, 76cm wide x 93cm high. £40-£60

**478**

A teak sideboard, the interior shelves enclosed by glazed sliding doors with drop flap drinks compartment and cupboard to the base, raised on square section black supports with brass feet, 122cm wide x 100cm high. £40-£60

479

A teak chest of four long drawers, raised on blackwood rounded tapering supports, 78cm wide x 98cm high. £40-£60

480

An oak drinks cabinet, with fall front, shallow drawer and cupboards below, 77cm wide x 110cm high. £20-£40

481

A British John Herbert design for A. Younger teak sideboard, the bow fronted top above two cupboards and four drawers, raised on rounded tapering supports, 200cm wide. £100-£200

482

A set of eight modern light oak slat back dining chairs, with upholstered seats, raised on square section supports. £100-£200

483

A large marble dining table, having canted corner top, 223cm x 104cm. £200-£400

484

An early 20th Century brass adjustable desk lamp, 37cm high. £80-£120

485

A Burslem pottery stoneware figure of a fat cat, 17cm high. £20-£30

486

A large continental pottery 1970's table lamp; a Lakes Cornish pottery Truro ware vase; and a small pottery bowl. £10-£20

487

An unusual Carlton ware pipe holder. £20-£30

488

An unusual pottery horse's head group. £20-£30

489

A modern faux leather tub shaped two seat settee. £40-£60

490

A 1960's teak Vanson extending dining table and six matching chairs. £100-£200

491

A collection of various Bernard Rooke pottery to include vases, planters, triple candleholder etc. £60-£80

492

A retro walnut kidney shaped work table. £10-£20

493

A pair of good quality modern light oak two drawer bedside chests. £60-£80

494

A teak five drawer chest, 100cm wide. £30-£50

495

A Dyson cool and a modern table lamp with faux plant decoration. £10-£20

496

A pair of Eames style swivel easy chairs and matching foot stools, upholstered in grey/brown flecked material. £60-£100

497

A faux leather tub shaped chair. £20-£40

498

A charcoal grey upholstered ottoman. £20-£40

499

An elm bespoke rustic style refectory table and set of six matching chairs. £100-£200

500

A good quality leather upholstered swivel easy chair. £60-£100

501

A rustic yew wood high back chair, raised on metal supports. £160-£200. See illustration.

502

A large Copeland porcelain tile, having portrait decorated panel and floral border. £40-£60

503

Seven Minton farm animal tiles by Wise.

£200-£400

504

Four Victorian blue decorated Season tiles.

£40-£60. See illustration.

505

Eight Malkin & Edge Sporting tiles.

£300-£400

506

A pair of white metal Art Nouveau plaques depicting head and shoulders studies of young beauties, 22cm x 20cm. £80-£120. See illustration.

507

A William Crawford & Sons biscuit tin moneybox, in the form of a cottage "The Lucie Attwell Kiddiebics". £40-£60

508

A small Edwardian leather and electro plate mounted bag. £40-£60

509

Two cast iron figures of French bulldogs.

£150-£250

510

A set of four Ercol kitchen chairs, having cross over stick-backs. £100-£200. See illustration.

511

A blonde Ercol plate rack. £40-£60

512

An Edwardian ebonised tub shaped salon chair, upholstered in floral tapestry and raised on turned feet. £60-£100

513

A pair of decorative crystal style wall lights.

£50-£80

514

A decorative crystal style pineapple shaped hanging ceiling light. £30-£50

515

A copper heart shaped lantern. £20-£30

516

A bronze figure of a highland stag, 36cm.

£100-£150

517

A bronze figure of a pair of kick boxers, on marble plinth, 26.5cm. £50-£80

518

A pair of orange 1970's lamp shades. £40-£60

519

A teak G plan design extending dining table and a set of six matching chairs. £60-£100

520

A G plan design two tier coffee table with glass insert, 110cm wide. £30-£50

521

A leather cased chess set. £150-£200

522

A leather cased poker set. £150-£200

523

A retro polished metal framed circular kitchen stool. £15-£25

524

A set of four modernist tub shaped armchairs, raised on tubular metal supports. £60-£80

525

A set of six Cattelan Italia chairs. £60-£80

526

A set of six Knoll tulip dining chairs.

£100-£200

527

An Ercol stick back rocking chair. £80-£120



Lot 463



Lot 501



Lot 504



Lot 506



Lot 510



Lot 533

**528**

A set of four Ercol stick back kitchen chairs.  
£100-£150

**529**

A Beaver & Tapley Ltd., penguin bookcase, 71cm wide x 87cm high. £40-£60

**530**

An unusual circular plastic and metal revolving C.D. rack, in the form of a reel. £10-£20

**531**

A pair of Art Deco walnut and painted bedside cabinets, 36cm wide x 69cm high. £40-£60

**532**

A nest of three teak G plan design graduated coffee tables, 53cm wide in extremes. £30-£50

**533**

A blonde Ercol coffee table, raised on rounded supports and under-tier, 102cm wide. £40-£60.  
See illustration.

**534**

A nest of three teak G plan coffee tables, 53cm wide in extremes. £30-£40

**535**

An oak roll top writing desk, the tambour shutter revealing a fitted interior with six drawers below, 121cm wide. £100-£200

**536**

A blonde Ercol extending dining table, fitted with two extra leaves,, 223cm x 87cm. £200-£300

**537**

A set of six blonde Ercol stick back dining chairs. £200-£300

**538**

A Carlton ware jug and matching dish. £20 -£30

**539**

An oak and silver plate mounted Tantalus. £30-£40

Special attention is drawn to the Conditions of Sale printed at the back of this catalogue.

Clarke and Simpson are pleased to offer a packaging and shipping service worldwide through "the-saleroom.com Delivery Service". The professional team will pack and ship items from very small non-breakables such as jewellery and coins though to larger and more fragile items such as paintings and works of art. Shipping and insurance is at the buyer's expense.

the-saleroom.com  
delivery service



Shipping payment must be made to "the-saleroom.com Delivery Service" prior to departure and excludes local duties and taxes. Please note that Clarke and Simpson do not pack or ship items - all requests are sent to our specialist handlers at "the-saleroom.com Delivery Service" who can be

Clarke &  
Simpson



Guiding you  
in the right  
direction



www.clarkeandsimpson.co.uk T: 01728 724200



# TERMS AND CONDITIONS OF SALE

## 1. INTRODUCTION

The following defining terms are used in these conditions:-

“Auction”	Means any auction conducted by Clarke and Simpson Auctions Ltd. either at the premises owned by them or elsewhere (including any internet based auction);
“Auctioneer”	Means Clarke and Simpson Auctions Ltd. authorised auctioneer as appropriate;
“Bidder”	Means a bidder at an auction, including the bidders personally present at the venue and those bidding by telephone or over the internet or otherwise;
“Buyer”	Means the bidder whose bid was the last bid when the auctioneer concludes the bidding;
“Conditions”	Means these Terms and Conditions of Sale;
“Hammer Price”	Means the level of bidding reached (at or above any reserve) when the auctioneer brings the bidding to a close;
“Lot”	Means any property accepted by Clarke and Simpson Auctions Ltd. for offer at auction;

## 2. DESCRIPTION

No warranty is given or implied by the description in the catalogue. Each lot is sold in its condition at the time of sale with all faults, defects, imperfections and errors of description (if any). Whilst every endeavour has been made to describe the items adequately and properly, the purchaser shall deem to have inspected the lot at time of purchase. All catalogues and seller's and buyer's guides are for information only and do not form part of the contract.

## 3. STATUTORY REQUIREMENTS

Purchasers will be deemed to have satisfied themselves prior to purchasing regarding current legal requirements (e.g. Health & Safety at Work Act) and it is expressly brought to the bidders attention that equipment in the sale may not necessarily comply with such regulations. Any purchaser shall satisfy himself as to any statutory requirement for the use of any item and no liability shall rest with the vendors nor the Auctioneers.

## 4. THE AUCTION

All auctions are conducted at the absolute discretion of the auctioneer. The auctioneer shall conduct the auction with reasonable skill and care. The vendor reserves the right to sell subject to reserve price in respect of all lots. What constitutes a bid shall be at the absolute discretion of the auctioneer, acting with appropriate skill and care. The auctioneer shall have the right to refuse any bid in all cases but most notably when such a bid does not exceed the previous bid by at least 10% or such a proportion as the auctioneer shall in his absolute discretion direct. Where two or more bids at the same level are simultaneously received by the auctioneer, the auctioneer at his absolute discretion shall determine which bid to prefer. Subject to the foregoing where two or more bids are at the same level are simultaneously received by the auctioneer, the bid submitted in the room shall take preference over a bid submitted by telephone or internet at the same level. Any bid made or attempted by telephone or over the internet will only be deemed to have been made if received by the auctioneer. The auctioneer reserves the right to withdraw, consolidate or divide any lot or lots or submit them in any order that they desire. The auctioneer has the right at his absolute discretion to refuse admission to his premises or attendance at (or participation in) any auction by any person. In the case of any dispute, the auctioneer shall be sole arbitrator in any matters arising during or out of the sale.

## 5. BIDDERS

All bidders will be required to register their particulars, bidders attending in person and those accompanying them may be required to provide photo ID and separate confirmation of address prior to viewing or taking any part of the sale and before entering any part of the premises to view. All bidders accept full liability for all bids submitted. Subject to the clause in this document headed “The Auction”, the highest bidder at the close of bidding shall be the buyer. Any dispute about a bid shall be settled at the auctioneer's absolute discretion.

Bidders are all deemed to act as principles unless there is prior written acknowledgement by Clarke and Simpson Auctions Ltd. that a bidder is acting as an agent for a named principle. Bidders are strongly encouraged to attend the auction in person. The bidders shall be responsible for any decision to bid for a particular lot and shall be deemed to have carefully inspected and satisfied themselves as to condition, neither Clarke and Simpson Auctions Ltd., their employees or agents shall be responsible for any neglect or default in doing or failing to do so. Bidders will be given ample opportunity to view and inspect before the sale and prospective buyers must satisfy themselves as to all matters.

## 6. DEFAULT

Clarke and Simpson Auctions Ltd. shall act as agent of the vendor only. Any contracts for the sale of a lot shall be formed between the vendor and the buyer. As agent only Clarke and Simpson Auctions Ltd. shall not be responsible for default by the vendor or the buyer. If any lot is not paid for in full and taken away in accordance with these conditions, or there is any other breach of the conditions, then Clarke and Simpson Auctions Ltd. as agents for vendor shall at its absolute discretion and without prejudice to any other rights it may have, be entitled to exercise all or any of the following rights and remedies:-

- 6.1 to proceed against the buyer for any action of debt or damages for breach of contract;
- 6.2 to rescind the sale of that lot or lots sold by Clarke and Simpson Auctions Ltd. to a defaulting buyer;
- 6.3 to resell the lot (by auction or private treaty) in which case the defaulting buyer shall be responsible for any resulting deficiency in the total amount due (after crediting any part payment and adding any resale costs), any possible surplus so arising shall belong to the vendor;
- 6.4 to remove, store and insure the lot at the expense of the defaulting buyer and, in the case of storage, the location of such storage shall be at Clarke and Simpson Auctions Ltd. discretion;
- 6.5 to charge interest at a rate not exceeding 2% per month of the total amount due to the extent that it remains unpaid for more than two working days after the sale;
- 6.6 to retain that or any lot sold to the defaulting buyer until the buyer pays the total amount due;
- 6.7 to reject or ignore bids from the defaulting buyer at future auctions or to impose conditions before any such bids are accepted;
- 6.8 to apply any proceeds of sale for any other lots due or in the future becoming due to the defaulting buyer towards the settlement of the total remaining due.

## **7. INDEMNITIES, PENALTIES AND LIMITATIONS OF LIABILITY**

Purchasers shall pay for any damage done by themselves or their agents during the removal of their lots. Attendance at the sale shall be at the risk of those attending in respect of both themselves and to their goods and vehicles.

Any indemnity under these conditions will extend to all actions, costs, expenses, claims and demand whatsoever suffered or incurred by the person entitled to the benefit of it and Clarke and Simpson Auctions Ltd. declare themselves to be a trustee of the benefit of such indemnity so far as it is expressed to be the benefit of its employees and agents.

Whilst Clarke and Simpson Auctions Ltd. endeavour to ensure that the information on their websites is correct, they do not warrant the accuracy and completeness of the material on their website. Also Clarke and Simpson Auctions Ltd. can make changes to the material on their website, or alter the products and prices described on it, at any time without notice. The material on the website may be out of date, Clarke and Simpson Auctions Ltd. make no commitment to update such material. All material on the websites is provided "as is" without any conditions, warranties or other terms at any time. Accordingly to the maximum extent permitted by law, the website is provided to all parties on the basis that Clarke and Simpson Auctions Ltd. exclude all representations, warranties, conditions and other terms which, but for this legal notice, might have effect in relation to the website.

## **8. ELECTRICAL SAFETY REGULATIONS**

All electrical lots are subject to electrical safety regulations and fall within "the low voltage electrical equipment (safety) regulations 1989" – all items have been pat tested for safety but are not guaranteed in working order.

## **9. GENERAL MATTERS**

Any notice to any buyer, vendor, bidder or viewer may be given by first class mail or email in which case it shall be deemed to have been received by the addressee forty eight hours after posting or sending. All notices to Clarke and Simpson Auctions Ltd. must be sent in writing and email is not acceptable. Any indulgence extended to any person by Clarke and Simpson Auctions Ltd., notwithstanding the strict terms of these conditions or the terms of consignment, shall affect the position at the relevant time only and the respect of that particular concession only; in all other respects these conditions shall be construed as having full force and effect. These conditions and any disputes or claims arising out of or in connection with them or their subject matter or formation (including non-contractual disputes or claims) are governed by and construed in accordance with the law of England. The parties irrevocably agree that the courts of England have exclusive jurisdiction to settle any dispute or claim that arises out of or in connection with the agreement or its subject matter or formation (including non-contractual disputes or claims).

## **10. PUBLICITY**

Any catalogue and buyer and seller guides are provided for information only and do not form part of these conditions. The catalogue and the buyer and seller guides may contain additional terms and conditions. Clarke and Simpson Auctions Ltd. reserve the right to use any photographs, background information and research for publicity purposes both before and after the sale.

## **11. THE PURCHASE PRICE AND PAYMENT ARRANGEMENTS**

There is a buyer's premium 18% plus VAT payable in respect of the sale. Any purchases made via "www.the-saleroom.com" or "[www.ibidder.com](http://www.ibidder.com)" shall be subject to an administration charge of 5% plus VAT on the price.

Preferred payment is cash, bank transfer or personal debit card. Such cards may only be used on a chip and pin basis with the owner present. No payment over £350 will be accepted by telephone. Payment will be accepted online via

our secure e commerce account. We do not accept credit cards or international debit cards. Payment by cheque will only be acceptable subject to prior arrangement. No lot will be removed from the sale until any cheque has cleared. Payment is due on the day of the sale. Cash in excess of £7,500 (including V.A.T.) will not be accepted from any one person, this is not allowed due to Money Laundering Regulations 2007. All money received will be held in Clarke & Simpson Auctions Ltd. Clients No 2 Account at Barclays Bank plc, Framlingham, Suffolk. Account Number 83428591. Sort Code

20 98 07. Clarke and Simpson Auctions Ltd. have no responsibility for any lot between the close of bidding and payment being made and subsequent collection. All payments from overseas buyers shall be made by Bank Transfer and bank fees paid in addition. Please note all policy regarding payment will be enforced and suitable arrangements must be made.

## **12. REMOVAL OF LOTS**

The ownership of any lot purchased shall not pass to the relevant buyer until they have made payment in full to Clarke and Simpson Auctions Ltd. of the total amount due including any storage due.

The buyer shall at their own risk and expense take away any lot that they have purchased and paid for, not later than seven days following the day of the auction. Any purchaser shall be responsible for removal and insurance and lots stored and storage charges. All lots sold shall be subject to the following storage charges after seven days from the sale:

7-14 days 25% of the lot value + VAT or £7.50+VAT per lot whichever is the greater

14-21 days 50% of the lot value + VAT or £15 +VAT per lot whichever is the greater

21-28 days 75% of the lot value + VAT or £22.50 + VAT per lot whichever is the greater

Any lots not collected after 35 days will be re-sold with immediate effect on behalf of the purchaser and the proceeds of the sale retained in lieu of outstanding storage charges. The policy shall be rigorously enforced and no lots shall be collected unless outstanding storage charges are met.

## **13. NUMBER BIDDING**

This will be used for speed and efficiency as in all our sales. All prospective purchasers must complete a registration form and register in the office on the viewday or morning of sale to receive a number for bidding.

PLEASE ALSO NOTE THAT PHOTO ID AND ADDITIONAL CONFIRMATION OF ADDRESS WILL BE REQUIRED.

## **14. ONLINE BIDDING**

Clarke & Simpson Auctions Ltd. offer an online bidding service via the-saleroom.com and ibidder.com for bidders who cannot attend the sale.

In completing the bidder registration on [www.the-saleroom.com](http://www.the-saleroom.com) or [ibidder.com](http://ibidder.com) and providing your payment card details and, unless alternative arrangements are agreed with Clarke & Simpson Auctions Ltd.:

1. authorise Clarke & Simpson Auctions Ltd., if they so wish, to charge the payment card given in part or full payment, including all fees, for items successfully purchased in the auction via [www.the-saleroom.com](http://www.the-saleroom.com) or [ibidder.com](http://ibidder.com), and
2. confirm that you are authorised to provide these payment card details to Clarke & Simpson Auctions Ltd. through [www.the-saleroom.com](http://www.the-saleroom.com) or [ibidder.com](http://ibidder.com) and agree that Clarke & Simpson Auctions Ltd. are entitled to ship the goods to the card holder name and card holder address provided in fulfilment of the sale.

**Please note that any lots purchased via the-saleroom.com or ibidder.com live auction service will be subject to an additional 5% buyer's premium + VAT at the rate imposed on the hammer price.**

## 15. TELEPHONE BIDDING

We offer a telephone bidding service where possible, but this service can never be guaranteed. No applications for telephone bids will be accepted after the end of the viewing prior to sale day for any sale. All potential telephone bidders must provide a valid landline number and email address and agrees that they have read and understood the Terms and Conditions. No phone bids will be accepted for any lot with a lower guide figure of less than £100.

All those who wish to bid by telephone will be expected to deposit the minimum guide for all lots that they wish to bid upon into the Clients Account for Clarke and Simpson Auctions Ltd before the sale starts. This payment is not acceptable by card. In the event of default, this sum shall be retained as part payment or any part may be retained to recover losses under clause 6 of these Terms and Conditions. We will expect payment of the balance owing by BACS on the following day, any payment not met within five working days will result in the forfeiture of the deposit paid.

## 16. AT FAULT (A.F.) LOTS

Certain lots are catalogued at (A.F.), damaged, restored etc., however the absence of any such notice does not imply that the piece is free from defects, nor does it indicate that other defects are not also present. Mention is not made of breakage, cracks, chips or any damage which can be noted by careful inspection, therefore, intending purchasers MUST, in all cases, be responsible for determining the condition of the lots themselves.

## 17. ESTIMATES

Presale estimates are intended only as a guide for intending purchasers, are given in good faith and subject to revision.

## 18. CONDITION REPORTS

Clarke and Simpson are unable to guarantee that requests for condition reports/images received after close of the viewing on the day prior to auction, will be responded to. Clarke and Simpson are happy to give a Condition Report on the physical condition of goods, this will be provided on behalf of the seller on the understanding that Clarke and Simpson are not entering into a contract with you in respect of the Condition Report and accordingly does not assume responsibility to you in respect of it. All lots are available for your own inspection or for inspection by an expert instructed by you, therefore these Condition Reports are for guidance only and all lots are sold "as found". Condition reports do not form part of a contract.

## 19. COMMISSION BIDS

The auctioneers will be pleased to execute bids for those unable to attend the sale. Lots will be purchased at the lowest bid the room bidding or any reserves will allow. In the event of identical bids, the earliest bid received will take precedence. There must always be a maximum limit indicated. Buy or unlimited bids will not be accepted. Commission bids placed by telephone are accepted at the client's risk. We urge our clients to place such bids before the start of the sale. All such commissions are left entirely at the buyer's risk.

## 20. VALUE ADDED TAX

The symbol \* after any lot number indicates that Value Added Tax is payable by the buyer on the hammer price.

## 21. AUCTIONEERS MARGIN SCHEME

The Auctioneers Margin Scheme allows auctioneers to sell items without VAT on the hammer price. Under the margin scheme an amount equivalent to VAT at the current rate is added to the buyer's premium. This amount cannot be refunded. The VAT element will not be shown separately on the buyer's invoice.

## 22. ATTRIBUTION OF PICTURES AND DRAWINGS

Every effort is made to ensure the accuracy of any statements as to authorship, attribution, origin, date, age, provenance and condition of any lot whether or not such statement forms part of the description of any such lot. Whether any such statement is made orally or in the catalogue it is an expression of opinion and not to be taken as being or implying any warranties or representations of facts by the auctioneers. Each buyer by making a bid for a lot acknowledges that he has satisfied himself fully as to the attribution and condition of the lot. The following is for guidance only and does not form part of a contract.

- A. The forename (s) (or full stops where not known) and surname of an artist indicates in our opinion a work by the artist.
- B. The initials of the forename (s) and the surname of the artist indicates in our opinion a work of the period of the artist which may be wholly or in part his work.
- C. The surname of the artist indicates in our opinion a work of the school or by one of the followers of the artist or in his style and of uncertain date.
- D. *Signed, Dated, Inscribed* indicated in our opinion work signed/dated/inscribed by the artist.
- E. *Bears signature* indicates in our opinion that this is not the signature of the artist.
- F. *Attributed to* may be used to denote a traditional attribution based on style.
- G. *Manner of* indicates in our opinion a work executed in the artist/craftman's style but of a later date.
- H. *After* indicates in our opinion a copy (of any date) of work of an artist or craftsman.

The addition of a question mark after any of the cataloguing terms above indicates an element of doubt.

## 23. DRIOTE DE SUITE ROYALTY CHARGES

All United Kingdom Art Market professionals (which includes auctioneers) are required to collect a royalty payment for all qualifying Works of Art. This applies to living artists and those who have died in the last 70 years. This payment is calculated on qualifying Works of Art which are sold for a hammer price more than the UK sterling equivalent of €1,000 (the UK sterling equivalent will fluctuate in line with prevailing interest rates calculated by the Artist's Resale Right Service Hub, based on the European Central Bank reference rate published at 2.15pm on the day of the sale, and can be found on [www.dacs.org.uk](http://www.dacs.org.uk)).

All items in this catalogue that are marked "ü" are potentially qualifying items, and the royalty charge will apply if the hammer price is more than UK sterling equivalent of €1,000. The royalty charge will be added to purchase invoices, and must be paid before items can be cleared. All royalty charges are paid to the design and Artists Copyright Society (DACS) by the auctioneers and no handling costs or additional fees with respect to these charges will be retained by the auctioneer. This charge may also be applicable to lots not marked "ü" and buyers must satisfy themselves.

The royalty charge for qualifying items which achieve a hammer price of more than the UK sterling equivalent of €1,000, but less than the UK sterling equivalent of €50,000 is 4%. For qualifying items that sell for more than the UK equivalent of €50,000 a sliding scale of royalty charges will apply. For a complete list of the royalty charges and threshold levels please refer to [www.dacs.org.uk](http://www.dacs.org.uk). There is no VAT payable on this royalty charge.



**"WHEN SHALL I BE OLD ENOUGH  
TO WEAR SHORT FROCKS, MUM?"**

Clarke & Simpson Auction Centre, Campsea Ashe  
Nr Wickham Market, Suffolk IP13 0PS

T: 01728 746323 E: [auctions@clarkeandsimpson.co.uk](mailto:auctions@clarkeandsimpson.co.uk)  
[www.clarkeandsimpson.co.uk](http://www.clarkeandsimpson.co.uk)