

Clarke &
Simpson

*Art Deco,
20th
Century
Design &
Retro*



Saturday 7th November
at 10am

ONLINE SALE ONLY

Important Information

Due to COVID-19 restrictions, we ask those attending our Auction Centre to please observe the following:

Face coverings must be worn in the salerooms and our office at all times.

Please be mindful of others and observe the minimum social distancing requirement of 1 meter.

If you feel unwell at all, please stay at home – you can follow the sale and bid online live via www.the-saleroom.com

If you have any queries whatsoever, please do not hesitate to contact the office on 01728 746 323.

Viewing:

Open viewing on

Tuesday 3rd November 10am - 4pm

Wednesday 4th November 10am - 4pm.

We may ask those attending to wait if the room is busy.

**Clarke &
Simpson**

Auctions

*Art Deco, 20th Century Design
& Retro*

*Saturday 7th November
at 10am*

Online Sale Only

Viewing:

Tuesday 3rd November 10am- 4pm

Wednesday 4th November 10am -4pm

Enquiries:

James Shand, Auctioneer & Valuer

Geoffrey Barfoot, Auction Centre Manager & Valuer

Buyers' Premium:

18% plus VAT

Please see www.the-saleroom.com
for further images

the saleroom
The home of art & antiques auctions

Special attention is drawn to the
Conditions of Sale printed at the back of
this catalogue.



Campsea Ashe
Nr Wickham Market
Suffolk IP13 0PS
Tel: 01728 746323 Fax: 01728 748173
Email: auctions@clarkeandsimpson.co.uk
www.clarkeandsimpson.co.uk





Lot 3



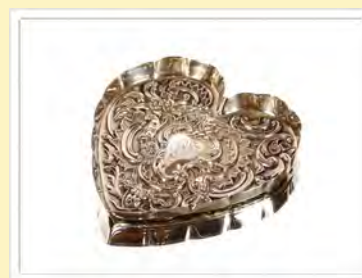
Lot 16



Lot 20



Lot 24



Lot 31



Lot 34

1
A brass Art Deco design tape dispenser. £10-£20

2
A Bakelite and chrome Temco electric mantel clock. £10-£20

3
An Art Deco design brown Bakelite cased electric mantel clock. £20-£30. See illustration.

4
A Masons ironstone white glazed McDougalls flour container. £10-£20

5
An Art Deco green glass and gilt decorated lampshade. £10-£20

6
A pair of Cinema type Art Deco design wall lights. £40-£60

7
Attributed to Aubrey Williams, study of landscape watercolour, with artists mark, dated '84, 25.5cm x 13cm. £20-£30

8
A Whitefriars style clear glass vase with raised bark decoration; and a quantity of various porcelain flowers. £20-£40

9
A green tinted glass Art Deco lampshade with frilled rim, 28cm dia. £20-£30

10
A Brackland Pottery dish with slipware decoration, 33cm. £20-£30

11
A Studio pottery mushroom shaped vase; and a Moorcroft design pottery charger. £10-£20

12
A Doulton leaf patterned pottery jardinière; and a pair of Doulton Slaters patent posy vases. £30-£50

13
An Arts & Crafts design copper flat bottomed kettle. £10-£20

14
A cut glass and brass globular pendant ceiling lamp. £20-£40

15
Dr Christopher Dresser, a Perry & Son metalware chamber stick with original ceramic bobèche, makers mark to base No.38. 15cm high. £80-£120

16
A copper and brass Arts & Crafts design tea kettle on spirit heater stand. £20-£40. See illustration.

17
Four Wade porcelain figures of dancing Art Deco girls. £40-£60

18
An Art Deco bronzed figure of a naked girl; and a composition figure of an Art Deco style dancing girl AF. £10-£20

19
A large Art Deco walnut wall barometer thermometer set. £10-£20

20
A pair of Art Deco chrome figural mirrors. £20-£40. See illustration.

21
A pair of chrome and frosted glass shell shaped Art Deco wall lights. £30-£60

22
An Art Deco porcelain figural mirror; a porcelain hat pin holder in the form of a lady wearing a fur coat; two Art Deco porcelain dancing girls; and a dancing couple - some damage. £40-£60

23
Attributed to Dr Christopher Dresser, a pair of Minton encaustic tiles; and a further panel of four green Minton tiles circa 1870's. £30-£50

24
A large heavy Art Glass amethyst tinted vase of ovoid form; and a small smoked tinted baluster vase. £20-£40. See illustration.

25
After Dr Christopher Dresser, a pair of solid brass implement rests of modernist form, probably for Benham & Froud circa 1890 but unmarked, 20cm x 25cm. £90-£120

26
A decorative late 19th Century enamelled glass and white metal baluster vase decorated with a central scene of a European building, 26cm high. £10-£20

27
An Art Nouveau spot hammered coppered light fitting of foliate scrolled form, complete with three opalescent glass shades of flower head shape - one AF. £60-£80

28
H Gumpert, a part canteen of white metal cutlery stamped .800 comprising dinner and dessert forks, serving spoons, dessert spoons, fruit knives and forks, fish knives and forks, various fish slices, servers, soup ladle, and numerous other items of cutlery and flatware contained in a light wood seven drawer fitted cabinet with locking bar. £400-£600

29
An Art Deco silver mounted engine turned decorated two compartment cigarette box, London 1934. £40-£60

30
An Edwardian silver backed dressing table hand mirror and matching brush, having cherub head decoration, Birmingham 1905. £40-£60

31
A small silver heart shaped pin dish, having foliate scrolls and central monogrammed cartouche. £30-£50. See illustration.

32
A silver baluster pepper pot, having foliate embossed decoration Sheffield 1898; various other late Victorian and early 20th Century silver cruets items. £100-£150

- 33**
A quantity of various silver and plated spoons etc. £40-£60
- 34**
A walnut Art Nouveau two handled tea tray with stylised pokerwork type decoration. £30-£50. See illustration.
- 35**
Two plated canteens of Butler cutlery in polished wooden cases. £100-£150
- 36**
A Leonardo bronzed effect plaster figure of naked embracing lovers, 52cm high. £40-£60
- 37**
A teak G-plan dressing table of curved form with recess fitted cupboard and two drawers under, raised on shaped supports, 153cm wide x 47cm deep x 69cm high. £60-£100
- 38**
A teak effect sideboard fitted five drawers around a central recess, raised on rounded tapering supports and brass disc feet, 152cm wide x 46cm deep x 76cm high. £40-£60
- 39**
A teak sideboard fitted three central drawers, flanked by deep cupboards, raised on square section supports, 158cm wide x 50cm deep x 85cm high. £60-£80
- 40**
A 1960's / 70's design woollen hearth rug of semi-circular form. £10-£20
- 41**
An oak Inglesants three section bookcase Reg. No. 467666, 87cm wide x 115cm high. £150-£250
- 42**
A Herbert E Gibbs Autographed Furniture teak low bookcase, the top shelf enclosed by a pair of sliding doors, open compartment below raised on rounded tapering supports, 136cm wide x 95cm high. £60-£80
- 43**
A teak G-plan sideboard fitted central drawer and cupboard, flanked by deep cupboards raised on tapering triform legs, 130cm wide x 43cm deep x 89cm high. £60-£80
- 44**
A pair of painted Spelter candlesticks in the form of Nubian women holding sconces aloft, 39cm high. £100-£150. See illustration.
- 45**
A large late 19th Century Royal Doulton blue glazed vase of baluster form, decorated country scenes heightened in gilt, 58cm high. £250-£350. See illustration.
- 46**
Nicholas, 20th Century school study of a common grey squirrel on fungus, a pair mounted as ovals, signed watercolours dated '78, 23cm x 18cm. £30-£50

- 47**
Nicholas, 20th Century school, study of hedgehog amongst leaves and fungi, signed watercolour, 28cm x 35cm. £40-£60
- 48**
S T Tunder, study of nesting woodcock, signed watercolour, 25cm x 36cm. £40-£60. See illustration.
- 49**
Trevor Stark, study of an owl, signed watercolour, 20cm x 22cm. £20-£40
- 50**
Trevor Stark, study of ruined barns in a meadow, signed watercolour, 9cm x 14cm. £20-£30
- 51**
Brian C Day, "Misty Morning, The Second Drive" signed watercolour, 25cm x 35cm. £20-£40
- 52**
A large study of a Wally bird, in the style of Martin Bros. oil on board, 69cm x 49cm. £60-£80
- 53**
Wodger & Co. Billingsgate painted advertising picture, 49cm x 68cm. £70-£100
- 54**
"Smoked Fish Southwold", painted advertising picture, 83cm x 58cm. £70-£100
- 55**
A study of a wild boars head, oil on board, 39cm x 49cm. £50-£80
- 56**
"Black Dog Bungay", mixed medium on board, 42cm x 50cm. £40-£60
- 57**
"Swan Inn Barnby", mixed medium on board, 62cm x 50cm. £70-£100
- 58**
"Pest Control" mixed medium on board, 58cm x 42cm. £30-£50
- 59**
Contemporary School, study of three ladies in hats, unsigned pastel, 40cm x 57cm. £180-£220
- 60**
A pair of modern abstract oils consisting of stylised motifs with slogans around the outside "Heavy Mind", "Swamp Donkey", "Go Bar Gas" "Mantappa" and others a pair, 67cm x 63cm. £20-£40
- 61**
Alistair Thain, blue toned gelatin silvered print, self portrait, 40cm x 33cm. £40-£60
- 62 ✓**
Pat Cleary, study of sheep on a hillside path, signed oil on board, 54cm x 90cm. £100-£200
- 63**
Gyam, study of a mountainous landscape with trees in the foreground, signed oil on canvas. £80-£120
- 64**
Roland Green, study of Peewits and young, unsigned watercolour, 22cm x 17cm. £40-£60. See illustration.



Lot 44



Lot 45



Lot 48



Lot 64



Lot 80



Lot 88



Lot 113



Lot 114



Lot 116

65

A.L.B., initialled artists proof, "Body Parts on Holiday, Heart in Monmartre" dated 2015, 29cm x 27cm plate. £20-£40

66 ✓

Richard Murray 1902-1984, study of The Grand Union Canal, signed and dated '38, purchased Sally Hunter Fine Arts Ltd. 23cm x 29cm. £300-£500

67

Thanh Hai, still life study oil on canvas, 80cm x 80cm, signed and dated '05, Gallery label verso, purchased Ho Chi Min City. £30-£50

68

Bill Jacklin born 1943, etching of a man eating at a table, pencil signed limited edition 6/35. £20-£40

69

Logang, study of a seated figure, pallet knife on canvas, 28cm x 23cm. £30-£50

70

R Barges, "Senior de Regla", pencil signed artists proof limited edition 24/28. £20-£40

71

M Dyer, study of a hare, pencil signed limited edition print 311/500. £10-£20

72

Peter Jander, landscape study with colourful flowers and trees, signed oil on board, 34cm x 43cm. £40-£60

73

Peter Jander, landscape study with river and mountainous background, signed oil on board, 40cm x 53cm. £40-£60

74

Peter Jander, landscape study hillside with multi coloured flowers, signed oil on board 30cm x 40cm. £40-£60

75

Peter Jander, colourful garden scene, signed oil on board, 33cm x 42cm. £40-£60

76

Peter Jander, oil on board, landscape study with buildings in the far ground, 21cm x 35cm. £30-£50

77

Peter Jander, landscape study, signed oil on board, 32cm x 42cm, contained in a broad golden oak frame. £40-£60

78

An antique Chinese watercolour depicting blossom inscribed with a poem and signed, 28cm x 15cm. £50-£80

79

1970's Scandinavian school, mixed media study of a high pitched house in treelined landscape, indistinct pencil signature, limited edition 83/200, dated 1973, 37.5cm x 27cm. £40-£60

80

William Walcott R.A. 1847-1943, study of a Mediterranean house with horse, cart and figures outside, signed watercolour dated 1919, 40cm x 50cm. £300-£500. See illustration.

81

John Sutton, study of The Customs House, Poole in winter circa. 1920's, signed watercolour, 35cm x 53cm. £60-£100

82

Sian Wynn, "Edo" study of a mounted matador, signed watercolour dated 2000, 29cm x 38cm. £20-£40

83

James Allen, "Summer on the Yare" signed watercolour 13.5cm x 24cm. £60-£80

84

James Allen, study of pink footed geese on the Norfolk Broads, signed watercolour, 18cm x 24cm. £60-£80

85 ✓

Eric Sturgeon 1920-1999, study of a rural church with figures and working horses in the near ground, signed watercolour, 41cm x 57cm. £100-£200

86 ✓

Eric Sturgeon 1920-1999, study of figures beside a town gate, signed watercolour, 38cm x 55cm. £100-£200

87

Gordon Lindsay, study of cattle in a highland landscape, signed oil on canvas, 31cm x 74cm. £50-£60

88

John Sutton, study depicting a vintage car being driven through continental landscape with a heavy loaded train passing nearby, palaces in the far ground possibly India, signed watercolour, 36cm x 51cm. £40-£60.

See illustration.

89

Robert Purvis-Flint, study of fishing boats beside a building with figure nearby, 31.4cm x 51.5cm. £60-£100

90

James Derber, a pair of seascapes, signed oils on board, 13cm x 16cm contained in decorative gilt frames. £60-£100

91

Peter Jander, large expansive landscape study with river in foreground, oil on board, 53cm x 83cm. £40-£60

92

An Art Deco design wall mirror, having faux coromandel cushion frame, 89cm x 79cm. £30-£50

93

Mid-20th Century school, brightly coloured studies of tribal dancers, indistinctly signed, watercolours on board, 35cm x 41cm. £20-£40

94

Late 19th / early 20th Century school, study of horse and cart on rain swept country road, unsigned watercolour, 22cm x 30cm. £20-£40

95

Candida Blyth, charcoal and crayon study of a woman seated in a kitchen chair, reading, signed, 55.5cm x 40cm. £30-£50

96

E Horton, study of Dunn Kerron Co. Kerry, signed watercolour 27cm x 44cm. £40-£60

97

V Longe, harvesting study, signed watercolour. £20-£40

98

H E Jackson, study of a rural landscape, possibly Ireland, signed oil on canvas, 35cm x 45cm. £40-£60

99

Dorothy Brown, windswept landscape study possibly Ireland, signed watercolour, 25cm x 37cm. £20-£40

100

Style of L.S.Lowry, charcoal sketch of a crouching naked male figure, bears signature and dated 1967; and another depicting the entrance to a church. £20-£40

101

A small cased sextant. £20-£30

102

A small brass cased compass. £10-£20

103

An ethnic style carved lidded box and contents of various decorative beads, necklaces, etc.; and a partitioned tray box with contents of bangles etc. £20-£30

104

A leather jewellery box AF; and contents to include a white metal dress ring with mauve faceted stone, various ear studs, costume jewellery etc. £40-£60

105

Two strings of graduated pearls set to white and yellow metal decorated clasps; a yellow metal Celtic pendant on fine link chain; a yellow metal snap bangle; a cameo brooch; two 9ct gold shirt studs; and a bar brooch. £60-£100

106

A set of Malachite beads; a pair of similar stud ear-rings; an oval blue stone set and white metal brooch etc. £60-£80

107

A 14ct gold necklace with oval links, approx.10.2gms. £150-£200

108

A Keswick School of Industrial Art, Firth Staybright dressing table tray No. Z831. £30-£50

109

A pair of silver and enamel decorated Art Nouveau style photograph frames. £120-£150

110

Five various decorative magnifying glasses. £25-£40

111

A cut glass scent bottle with yellow metal hinged lid and stopper. £140-£180

112

A cut glass baluster scent bottle with yellow metal; hinged lid and glass stopper. £140-£180

113

A Versace DV1 pink watch (cased). £600-£800. See illustration.

114

A silver two handled bowl of fluted design, retailed by Selfridge & Co.1940; and a silver spoon Sheffield Assay. £40-£60. See illustration.

115

A silver posy vase of hexagonal waisted form, Birmingham 1938, 18cm high. £40-£60

116

An Art Deco silver pedestal bowl of Celtic design by Walker & Hall, Sheffield 1926, 15.5cm dia. x 10cm high. £40-£60. See illustration.

117

An Edwardian silver mustard pot, Birmingham 1905, having pierced sides and blue glass liner; another London 1907, and various silver condiments spoons etc. £60-£80

118

A Victorian silver baluster sugar shaker, London 1889. £50-£80

119

A silver and enamelled square brooch by Sheila McDonald . £40-£60. See illustration.

120

A Swarovski crystal necklace, ear-rings, ring and a window drop. £20-£30

121

An Art Nouveau carnelian necklace. £25-£40

122

A Georg Jensen, bird brooch, inscribed verso Georg Jensen 925 S Denmark 309. £100-£150. See illustration.

123

A Georg Jensen flower brooch, stamped verso Georg Jensen 925 S Denmark 925. £100-£150. See illustration.

124

A Georg Jensen silver spiral brooch, stamped verso, George Jensen 925 S Denmark 392 Toron. £150-£200

125

A white metal and turquoise set brooch in the form of corn stalks; and three other white metal brooches. £40-£60

126

A Cambray enamel decorated circular brooch. £20-£30. See illustration. See illustration.

127

A silver floral decorated buckle. £20-£30

128

A decorative plated buckle in the form of an insect. £10-£20. See illustration.

129

A white metal baby's rattle having coral type teether. £35-£50

130

Four carved bone Netsukes. £20-£30

131

A baby's rattle in the form of a cat; and another in the form of a jester. £25-£40

132

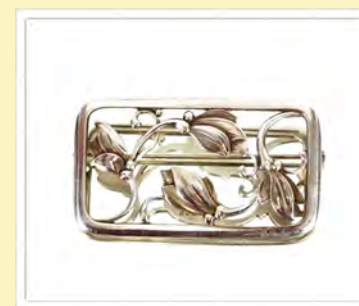
A white metal and opal coiled snake pendant. £45-£60



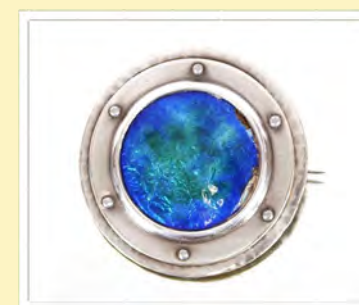
Lot 119



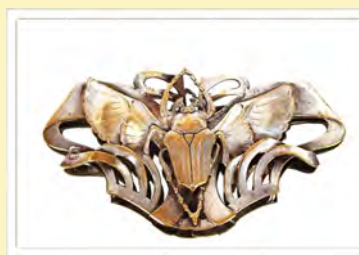
Lot 122



Lot 123



Lot 126



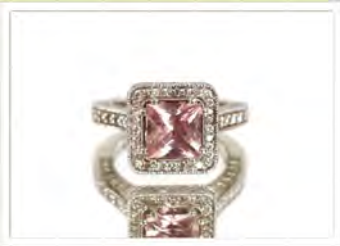
Lot 128



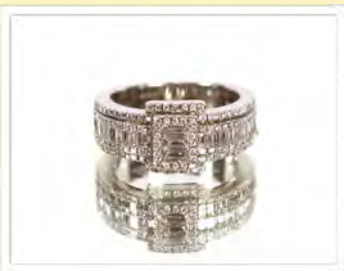
Lot 149



Lot 150



Lot 151



Lot 152



Lot 154

133

A Laliqre red glass ring; and a heart shaped pendant hung to a silk cord. £80-£120

134

A small silver Christening mug by Edwin Viner, Sheffield 1954; a silver egg cup; a silver tea strainer on stand; two small silver ash trays and a Scandinavian cream jug. £60-£100

135

A white metal, opal and cubic zirconia ring. £15-£20

136

A silver jockey cap pin cushion. £40-£60

137

A brass vesta case in the form of a boot. £25-£40

138

A brass pig vesta case. £20-£30

139

A silver rocking horse pin cushion. £45-£60

140

A pin cushion in the form of a miniature silver sofa. £30-£50

141

A silver pin cushion in the form of a rabbit. £55-£80

142

A brass dog vesta case. £25-£40

143

A Masonic design pocket watch. £25-£40

144

A silver dog brooch. £25-£40

145

A silver pill box, the lid decorated with a scene of girl and cat. £40-£60

146

A jade type pendant. £20-£30

147

A silver and enamel horse decorated pendant. £35-£50

148

A silver pill box with Masonic decoration. £40-£60

149

A yellow metal mounted ring set rows of baguette cut diamonds, alternating for brightly cut diamonds in squares, approx. total weight 9gms (2 stones missing). £500-£800. See illustration.

150

A platinum solitaire ring set with a 1 carat diamond . £1,000-£1,500. See illustration.

151

An 18ct white gold and rose quartz set ring. £500-£800. See illustration.

152

A 14ct white gold and diamond set ring. £600-£800. See illustration.

153

A platinum ring set small single diamond. £200-£300

154

Danish silver Arts & Crafts spot hammered spoon by Christian Heise. £80-£120. See illustration.

155

An Art Deco design cigarette case with integral lighter and clock. £40-£60

156

A silver cigarette case Chester 1926, the lid with enamel decoration depicting a huntress. £80-£120

157

An Art Nouveau gold brooch / pendant set with opals and seed pearls. £50-£80

158

A 1970's 18ct gold two stone diamond ring; and a wedding band. £100-£150

159

An oriental cloisonné and white metal baluster vase decorated roses, 18cm high. £60-£80. See illustration.

160

A Sterling silver baluster posy vase with raised foliate border bands, weighted base, 19cm high, Birmingham 1950; and an oval white metal serving dish with lobed border. £40-£60

161

A white metal and gilded two handled bowl, having raised lobed decoration and a circular white metal and gilded shallow dish raised on three scrolled feet. £40-£60

162

A silver dog whistle. £35-£50

163

A silver cat whistle. £35-£50

164

A three piece continental white metal tea set impresso to base .800 mark. £100-£150. See illustration.

165

A brass and green enamel decorated Art Deco design cigarette box, having three section wood lined interior. £10-£20

166

A silver plated cocktail shaker in the form of a zeppelin, 32cm long. £80-£120. See illustration.

167

A chrome desk set comprising scissors and letter opener. £10-£20

168

A Bakelite and chrome Art Deco design cruet set. £10-£20

169

An Art Deco bronze figure of a fan dancer (no base). £20-£30

170

A pair of copper Odeon cinema ash trays. £10-£20

171

A continental white metal bonbon basket with inscription for 1909, stamped 800 mark to base. £20-£40

172
Three continental white metal dishes, 15cm dia. stamped .800 mark to base; and a filigree work tazza of small size. £40-£60

173
Various silver and white metal napkin rings; a continental white metal cruet set; salt; and a glass and white metal mounted matchbox holder etc. £40-£60

174
A silver backed four piece dressing table set; and a pair of dwarf silver candlesticks one AF. £40-£60

175
An Art Deco ash tray decorated with stylised bird. £20-£30

176
A chrome Art Deco cruet set in the form of an ocean liner. £10-£20

177
A cigarette lighter in the form of boat, 15cm long x 20cm high. £20-£30

178
A composite cubist style group of a family. £10-£20

179
A mid Century composite study of a kneeling girl with hand mirror. £20-£30

180
An Art Deco gilded spelter figure of a dancing girl on onyx plinth, 16.5cm high. £40-£60

181
A Jaeger Recital 8 onyx and gilt metal strut clock. £70-£100. See illustration.

182
A pair of Arts & Crafts design spot hammered white metal candlesticks, 18cm high. £20-£40

183
Ferdinand Preiss, an Art Deco cold painted bronze figure of a young girl wearing a red hat, raised on an octagonal marble plinth, 18cm high. £2,000-£3,000. See illustration.

184
An Art deco design silver cigarette case having engine turned decoration, the gilded interior with inscription dated 1945; and a silver matchbox holder initialled H.A.K. £40-£60

185
A silver photograph frame with engine turned decoration and foliate chased borders, 21cm x 15.5cm overall. £40-£60

186
A continental white metal mounted photograph frame, stamped with 800 mark, inscribed 25th Oktober 1917; a smaller similar; and two circular photograph frames. £40-£60

187
A silver engine turned cigarette case of Art Deco design having wood lined two section interior. £40-£60

188
A cased set of six silver "Old English" pattern teaspoons . £20-£30

189
A silver Plique A Jour enamel decorated parrot brooch. £30-£50

190
A pair of silver and enamel egg shaped earrings. £200-£300

191
A mini ball watch. £10-£20

192
A silver boot pin cushion. £40-£60

193
A silver Teddy bear pin cushion. £30-£50

194
A silver Plique A Jour enamel decorated fly brooch. £25-£40

195
A Masonic design white metal ring. £15-£20

196
Two yellow metal mounted jade style pendants. £30-£50

197
A silver Plique A Jour enamel decorated butterfly brooch. £30-£50

198
A silver Plique A Jour enamel girl butterfly brooch. £25-£40

199
A small bronzed figure of a Staffordshire terrier. £45-£60

200
A bronze figure of a bull AF, 14cm long; and a pair of 19th Century bronze lion figures, 15cm. £40-£60

201
A bronze figure of a boy with bird, Paris foundry mark on black marble base, 22.5cm high. £40-£60

202
Two modern bronze figure groups. £40-£60

203
A small bronze figure of a bulldog. £50-£80

204
A plated skull ornament. £25-£40

205
A bronze crocodile paperclip. £40-£60

206
A plated teapot in the style of Dr Christopher Dresser. £35-£50

207
A bronze dog inkwell. £40-£60

208
A novelty ball pocket watch in the Omega style. £15-£20

209
A plated spirit barrel in the form of a bear on skis. £90-£120

210
An amber coloured skull ornament. £50-£80

211
A plated toast rack in the manner of Dr Christopher Dresser. £20-£30

212
A plated teapot in the manner of Dr Christopher Dresser. £35-£50

213
A plated elephant cruet. £35-£50



Lot 159



Lot 164



Lot 166



Lot 181



Lot 183



Lot 226



Lot 228



Lot 243



Lot 244



Lot 247

214

A plated cricket bat toast rack. £25-£40

215

A pair of plated cruets in the form of cats in top hats. £25-£40

216

A French opalescent glass bubbles bowl, 28cm dia.; and a Jobling bowl with flower head decoration, 21cm dia. £20-£30

217

A small etched glass vase with fish decoration. £20-£30

218

An opalescent glass posy holder in the form of a swan. £10-£20

219

A pair of Murano type Millefiori glass paperweights in the form of birds. £20-£30

220

A small Etling glass dish; a Brolac palm plate; and a Lalique figure of the Madonna signed Lalique France, 25cm high. £50-£80

221

Three 19th Century faceted glass cruet bottled in the manner of Dr Christopher Dresser. £10-£20

222

A green Murano type glass baluster tankard; and an orange glass baluster posy vase on blue pad feet. £10-£20

223

An unusual Arts & Crafts double gourd glass vase in rainbow colours with mantellic inclusions, possibly Stevens & Williams or Bohemian, 22cm high. £80-£120

224

Dr Christopher Dresser, a James Cowper & Sons Glasgow Clutha Arts & Crafts glass vase in emerald green with opaque white and aventurine inclusions, 19cm high. £300-£400

225

An Art Glass bowl of red and blue swirled design, 12 cm dia. overall, 9cm high. £40-£60

226

A Whitefriars design baluster vase having raised decoration and clear glass foot, 17cm high. £40-£60. See illustration.

227

A Maltese Art Glass vase of flask shape, with white flecked decoration on an amethyst ground, 20cm high. £20-£40

228

A green Lalique glass frog ornament, 6cm long. £30-£50. See illustration.

229

An Art Glass vase with coloured pebble decoration on a frosted ground, 20cm dia. £20-£40

230

A pair of Orrefors block glass candlesticks, 19.5cm high. £40-£60

231

A mauve tinted Art Glass vase and a glass shallow dish with etched floral decoration, indistinct signature to base. £20-£30

232

A Sabine opalescent scent bottle; a blue glass scent bottle; another with silver top and enamelled decoration and a blue glass bowl signed Christian Dior. £50-£80

233

A glass baluster vase, having etched decoration of a child stood on Saturn, 14cm high. £20-£30

234

An Orrefors glass vase of tapering form, 14cm high. £20-£30

235

A shallow Studio pottery bowl with lined decoration under glazed blue mark to base, 23cm dia.; and a small Studio pottery bowl inscribed to base "Reet 2003". £20-£40

236

A Japanese Sumida Gawa glazed earthenware bowl decorated figures of children on the edges, 28cm dia. Overall. £50-£80

237

A Japanese Studio pottery brush washer on stand, in Tenmoku glaze, signed in the style of Bernard Leech, 8cm high; and a Japanese Studio pottery bowl, 9cm high. £30-£40

238

A Clarice Cliff Newport pottery Queen Elizabeth II coronation trio. £10-£20

239

A Dutch pottery bowl, 20cm dia. £10-£20

240

A Watcombe pottery baluster vase, having painted floral decoration on a mottled green and blue ground, brown glazed interior, 22cm high. £20-£30

241

A Crown Devon "Memphis" pattern vase by Colin Melbourne, 14cm high. £20-£40

242

A Rye pottery vase with green and brown mottled glaze, 17cm high. £40-£60

243

A Moorcroft pottery bowl, with leaf and berry decoration, 16cm dia. £40-£60. See illustration.

244

A Moorcroft "Finch and Fruit" patterned plate, 26cm dia. £40-£60. See illustration.

245

A Wedgwood lustre bowl decorated butterflies, 23cm dia. £100-£150

246

A Doulton Lambeth Faience baluster vase, 15.5cm high; and a Doulton Slaters patent baluster vase, with raised floral decoration on a buff ground. £30-£50

247

A Moorcroft pottery oval box and cover. £30-£40. See illustration.

248

A Mintons black glazed model of a reclining panther, 19cm. £20-£40

249

An Alexandra porcelain baluster vase with all over floral decoration, heightened in gilt, triangular shaped enamel panels, 24cm high. £50-£80

250

A Clarice Cliff Newport pottery mug of ribbed design with black and orange line decoration, 16cm high; and an Fielding's Crown Devon musical mug "Widdecombe Fair". £30-£40

251

A small Moorcroft pottery baluster vase having leaf and fruit decoration paper label to base "By Appointment W Moorcroft potters to Queen Mary", 9.5cm high. £40-£60

252

A Poole pottery baluster vase, having brightly coloured running glaze decoration, marked N.L. to base 11cm high. £20-£40

253

A Clarice Cliff "Delecia Pansies" pattern preserve jar. £40-£60

254

An Italian porcelain model of a pink flamingo, 101cm high. £40-£60

255

A Royal Doulton baluster vase decorated lady in a winter landscape; a similar ewer decorated children AF; a large baluster vase depicting lady and girl flying a kite; and an oval plaque. £75-£100

256

A decorative model of a bulldog with graffiti type decoration. £25-£40

257

A Winstanley pottery model of a seated cat, 29cm high. £20-£40

258

A Royal Worcester model of Prince's Grace and Foal, modelled by Doris Lindner, limited edition No. 634 of 750 copies, 24cm long x 21cm high. £150-£200

259

Michael Suttly, a porcelain figure 16th (Queens) Lancers, 29cm high x 28cm long. £200-£300

260

A large continental pottery fish tureen and stand, 49cm long overall. £30-£50. See illustration.

261 ✓

Etienne Ret, "The Clown" signed oil on board, 54cm x 34cm. £100-£200

262 ✓

Drew Hewitt, mixed media study of Sigmund Freud, 56cm x 75cm. £60-£80. See illustration.

263 ✓

Dorothy Colles, pastel study of two seated ladies, 74cm x 99cm. £100-£200

264 ✓

Kevin O'Brien mixed media study, "Man on a Balcony" 103cm x 69cm. £100-£150

265

Yves Brayer, lithograph study of a French coastal town, pencil signed to margin, 163/175, 52cm x 69cm. £40-£60

266

Christine Slade, "Smacks Against the Evening Sky", signed pastel 18.5cm x 28cm. £80-£120

267

Christine Slade, "Barges Racing to Windward" signed pastel 32cm x 49cm. £100-£200

268 ✓

Roy Petlay British Born 1950, "Sunlight and Shadows", signed oil 29cm x 43cm. £400-£600. See illustration.

269 ✓

Malcolm Edwards RCA, "Keldside Barn, Swaledale" mixed media 24.5cm x 42cm. £200-£400

270 ✓

Jason Spence, "Looe Hooker", signed oil on canvas, 37cm x 46cm, Gallery label verso. £100-£200

271 ✓

Meriel Campbell, study of Venice, signed watercolour, 28cm x 43cm. £40-£60

272 ✓

Cavendish Morton, study of Cley Beach, oil on board, 19cm x 32cm. £100-£150. See illustration.

273 ✓

Meriel Campbell, lake study, signed watercolour dated 1968, 37cm x 54cm. £40-£60

274

Ethel Keane, still life study signed watercolour, 30cm x 24cm. £20-£30

275

Godfrey Sayers, study of boats on a river, signed watercolour, 36cm x 48cm. £40-£60

276

Mary Gundry, watercolour study figures sat in a deck chair on a beach, pencil signed watercolour, 16cm x 22cm. £40-£60. See illustration.

277

Richard Morgan, study of a country lane with church in the far ground, signed watercolour, 30cm x 36cm. £40-£60

278

R Campbell, study of a figure in a garden, signed watercolour dated '99, 30.5cm x 27.5cm. £30-£50

279

Liz Moon, "Beach Duet, Aldeburgh" signed watercolour, 38cm x 26cm. £40-£60

280

Michael Philpott, "Staircase Patterns", mixed media, 28cm x 38cm. £20-£40

281

Joanna Dunham, watercolour study of flowers in a vase, pencil signed dated '91, 40cm x 25cm. £20-£40



Lot 260



Lot 262



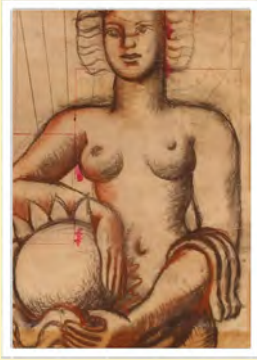
Lot 268



Lot 272



Lot 276



Lot 285



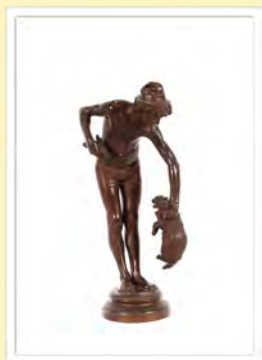
Lot 286



Lot 293



Lot 295



Lot 306

282

R E Campbell, study of Leiston Abbey, signed watercolour; unsigned gouache of a garden scene; watercolour depicting a country cottage and another still life study by Margaret James. £40-£60

283 ✓

John Burman Born 1936, "The Sandy Bay, Holcombe", signed oil on board, 45cm x 54cm. £100-£200

284

20th Century continental school, study of winding country road with mountains in the background, house in the foreground, 22cm x 30cm, unsigned oil on board. £10-£20

285

Modernist school, study of a naked figure, unsigned crayon and charcoal, 42cm x 31cm. £40-£60. See illustration.

286

Abstract study, oil on board, 47cm x 57cm. £30-£50. See illustration.

287

Helen Bradley, "The Four Seasons" a set of four coloured pencil signed prints with blind stamp to margin. £100-£200

288

Helen Bradley, pencils signed coloured print, figures in a snowy parkland, blind stamp to margin. £30-£50

289

Celia Russell, still life study, signed watercolour dated '79, 55cm x 66cm. £100-£150

290

Celia Russell, still life study signed watercolour, dated '79, 54cm x 66cm. £100-£150

291

Celia Russell, still life study signed and dated '79, 54cm x 64cm. £100-£150

292 ✓

John Haskins, British born 1938, "Looking Toward Weston Hertfordshire", signed watercolour, 36cm x 50cm. £200-£250

293 ✓

John Haskins, British born 1938, rural study with huntsman and field workers, signed watercolour, 37cm x 51cm. £200-£250. See illustration.

294

"Halcyon Days", limited edition print from the original for Wedding Box. £10-£20

295

A Maple teak drinks cabinet, the interior glass shelves and drawers raised on square section and rounded tapering supports united by stretchers, 89cm wide x 135cm long x 39cm deep. £100-£200. See illustration.

296

A teak G-plan design long sideboard fitted four central drawers flanked by sliding doors, raised on rounded tapering supports, 200cm wide x 81cm high x 50cm deep. £100-£200

297

A teak G-plan design sideboard fitted three central drawers and flanked by cupboards raised on square tapering supports 141cm wide x 88cm high x 48cm deep. £100-£200

298

A 1930's oak dressing table, having raised bevelled mirror above three short drawers, recess flanked by two deep drawers raised on square section supports 107cm wide. £60-£100

299

A Lebus oak sideboard fitted two drawers above cupboards enclosed by tambour shutter doors, raised on bracket supports 123cm wide x 90cm high x 47cm deep. £100-£200

300

An aesthetic movement ebonised side cabinet by George Maddox of 21 Baker Street London, glazed doors and mirrored back in two tiers raised on ring turned tapering supports 114cm wide x 165cm high. £200-£300

301

A quantity of Villeroy & Boch "Skyblue" porcelain teaware . £10-£20

302

A rare Martin Bros. Art Pottery vase having dragon decoration - in need of restoration AF. £50-£100

303

A heavy clear glass shallow bowl, probably Scandinavian with etched decoration of naked swimmers, 31cm dia. £30-£50

304

A set of eleven green tinted long stem wine glasses and two similar. £10-£20

305

A 1930' moulded green glass two tier cake stand with naked figure decoration; and a smaller similar period comport. £10-£20

306

Guilbert, bronze figure depicting young hunter grabbing a wild cat, 40cm high. £100-£150. See illustration.

307

Four 1960's Britvic fruit juice glasses; four coloured glass liqueurs and a Portmeirion pottery plate "Where Did You Get That Hat?". £10-£20

308

A cast iron study of a bulldog, 19cm long x 15cm high. £15-£20

309

An Art Deco spelter and marble group depicting leaping deer, 40cm long overall; and a similar photo frame containing a YWCA leaflet (2). £10-£20

310

After S Jones, glazed pottery figure of a seated boy, 47cm high. £20-£40

311

A 1950's cocktail set and a Combi Cup set in original packaging. £10-£20

312

A Bernard Rooke pottery three section vase; and an ecclesiastical composition sculpture. £10-£20

313

A pair of Langley Pottery baluster vases, 33cm high. £20-£40

314

A Cauldon porcelain trio having floral decoration; a similar cup and saucer and a plate. £20-£30

315

A Shelley "Wild Flowers" pattern tea set. £40-£60

316

After F W Baldwin, a coloured carriage print depicting Cavendish Suffolk; another St Osyth's Priory Clacton on Sea in original frame; H Denham two unframed carriage prints Blythburgh Nr Halesworth Suffolk and Leonard Russell Squirrell unframed carriage print Richmond Yorkshire. £40-£60

317

An Ercol court cupboard 145cm wide x 140cm high. £40-£60

318

A G-plan teak chest of six drawers raised on shaped end supports 50cm wide x 116cm high x 46cm deep. £60-£80

319

A teak G-plan design sideboard fitted four central drawers flanked by double cupboard and drop flap deinks compartment, raised on rounded tapering supports, 205cm wide x 79cm high x 46cm deep. £100-£200

320

A 1960's Danish teak fridge cabinet designed by Bernadotte & Bjorn Scan-Atlas & Silke Borg Mobile Factory, circa. 1960's 113cm wide x 79cm high x 55cm deep. £100-£200

321

An Arts & Crafts design carved oak dresser, the raised back with open shelves and display section enclosed by bevelled panelled door, spot hammer coppered hinges drawers and cupboards below, above a central recess, 138cm wide x 171cm high. £150-£200

322

A blonde Ercol corner unit, with open upper section and cupboard below, 75cm wide x 180cm high. £80-£120

323

A large bronzed four faced Buddha head. £50-£80

324

A ruby cut glass and electroplated casket. £90-£120

325

A silvered skull ornament. £20-£30

326

A bronze figure of a carp. £50-£80

327

A 1930's frameless bevel edged wall mirror. £10-£20

328

An oriental embroidery in ebonised Oxford type frame; and a pair of William Russell Flint coloured prints. £20-£30

329

A large teak G-plan design sideboard fitted four central drawers, flanked by double cupboards, raised on rounded tapering supports 212cm wide x 80cm high x 46cm deep. £100-£200

330

A pair of leather and brass mounted three drawer bedside chests, 51cm wide x 61cm high. £600-£800

331

A full length cast iron and wooden industrial style mirror, on adjustable angled supports. £150-£200

332

A full length double sided mirror on industrial design metal frame. £75-£100

333

A full length double sided mirror on industrial design metal frame. £75-£100

334

A cast iron industrial style clothes rail raised on circular stepped base, 188cm wide x 155cm high. £100-£150

335

A cast iron industrial design clothes rail raised on circular stepped base, 186cm wide x 155cm high. £100-£150

336

A pair of red lacquer and gilt decorated open fronted bookcases of narrow proportions, 58cm wide x 189cm high. £100-£200

337

A teak wall unit, 92cm wide x 179cm high. £20-£40

338

An Art Deco birds eye maple and walnut cross banded bedroom suite, comprising double wardrobe, tallboy, dressing table with large circular mirror, dressing table stool and bedstead. £100-£200

339

An advertising poster for Wolsey Pagent Ipswich, "Travel By LNER" 100cm x 63cm. £300-£400. See illustration.

340

A large framed poster print for Lido Indoor Swimming Pool, Lytham Road Blackpool. £40-£60. See illustration.

341

A glass and electroplate mounted claret jug in the form of an owl. £100-£150. See illustration.

342

A pair of silver and enamel decorated photograph frames in the Art Nouveau style. £120-£150. See illustration.

343

A Myott & Sons Art Deco jug with pinched neck; another; and a Myott & Sons candlestick. £40-£60



Lot 339



Lot 340



Lot 341



Lot 342



Lot 345

344

A pair of Ringtons George VI Coronation tea caddies. £10-£20

345

A Susie Cooper green glazed jug. £10-£20. See illustration.

346

A Royal Copenhagen porcelain baluster vase, decorated with scenes of a sailing yacht, 19cm high. £20-£30

347

A Wadeheath ware Art Deco baluster jug with pinched neck. £10-£20

348

A Katzhutte porcelain figure of an Art Deco dancing girl in mauve dress 27.5cm high AF. £40-£60

349

A Katzhutte porcelain figure of two fashionable ladies in evening gowns AF. £100-£200. See front cover illustration.



Lot 349

350

A glass decanter of pinched waisted form, having silver mount. £30-£50

351

A teak framed hall mirror. £10-£20

352

A pottery two handled baluster vase with pastel colour decoration 32cm high. £20-£30. See illustration.



Lot 352

353

A Mdina coloured glass bottle vase, 46cm high. £30-£50

354

A Pru Green of Wivenhoe pottery jug and bowl, having floral decoration; another baluster jug with multi coloured shell and anemone decoration; and a black glass vase with pinched rim. £20-£30

355

A teak framed dressing table stool. £10-£20

356

A 1930's chrome and Bakelite three piece coffee set. £25-£40



Lot 369

357

An Italian glass decanter; a chrome plated ice bucket; and a pair of cocktail shakers. £15-£20

358

A large Art Deco lustre ware Arthur Wood jug; and a Newhall Boumier ware fruit bowl. £20-£30

359

A large Francis pottery vase, Cawtry Cambridgeshire; a Windmill pottery of Harleston bowl by M Frewin; a Studio pottery wall pocket signed J.S.; and a pottery Cache Pot. £20-£30

360

A near pair of 20th Century blue and white Chinese ginger jars. £20-£30

361

A mid-20th Century health lamp in original box with instructions. £10-£20



Lot 370

362

A Lady Schick Consolette; a 1960's hair dryer - sold as collector's item; a retro flat iron; another etc. £10-£20

363

A pair of L.K.Bennett Napper leather lady's shoes. £10-£20

364

A pair of Douulton stone ware baluster vases, having stylised banded decoration on mottled green and blue ground. £10-£20

365

An inlaid wooden biscuit barrel and tea caddy set. £10-£20

366

A matching Wilkinson biscuit barrel and preserve pot. £10-£20

367

An Art Deco blue glass vase; a black glass vase with enamel foliate decoration and integral flower holder; and a green glass table lamp base. £20-£30

368

An Art Deco Burleigh ware jug with fox handle; a Royal Winton biscuit barrel; a Ruskin Art pottery biscuit barrel with wicker handle; a Carlton ware oval fruit dish; and a fruit bowl. £20-£30

369

A Garantirt canvas travelling trunk with removable interior tray and leather handle. £30-£40. See illustration.

370

A Whitefriars tinted glass vase, 26cm high. £20-£40. See illustration.

371

A large Chinese blue and white vase and cover. £20-£30

372

A Chinese blue and white pottery moon flask, ginger jar and cover; and a baluster vase and cover. £20-£30

373

A teak framed hall mirror. £10-£20

374

A teak G-plan style kneehole desk fitted four drawers and cupboard raised on rounded tapering supports 148cm wide. £40-£60

375

A teak G-plan design sideboard fitted two drawers and a double cupboard, raised on square section supports 131cm wide x 70cm high x 46cm deep. £40-£60

376

A Bush vintage Bakelite cased radio. £30-£50

377

A Pilot Bakelite cased radio. £20-£40

378

A pair of Bakelite cased speakers. £20-£40

379

An Art Deco Bakelite extending fireplace fender. £20-£40. See illustration.

380

A Bakelite smokers companion stand on wrought metal base. £10-£20

381

A brass three draw telescope. £40-£60

382

A brass telescope on tripod stand. £25-£40

383

A tall early 20th Century Art Deco carved wooden sculpture depicting a mother and child signed in initials S.F. and dated 1919, 57cm high. £30-£50

384

Attributed to Dr Christopher Dresser, a 19th Century copper and brass ewer of typical form, stamp marks D3 to the base, 25cm high. £50-£80

385

An Orrefors Nils Landberg bowl, 36cm dia. £20-£30

386

A light oak circular two tier coffee table with Greek key decoration, 86cm dia. £20-£40. See illustration.

387

A teak sideboard, the upper section fitted shelves enclosed by pair of sliding doors, drop flap drinks compartment above three drawers and double cupboard base, raised on rounded tapering supports 137cm wide x 130cm high x 29cm deep. £40-£60

388

A pair of Royal Venton ware preserve pots and stand and a Majolica type green glazed asparagus dish. £15-£20

389

A decorative silvered cherub ornament. £15-£20

390

A plated folding biscuit box / stand. £60-£80

391

A Remploy teak bureau the fall opening to reveal a fitted interior, two short drawer and cupboard below, 92cm wide. £40-£60

392

A teak Uniflex kneehole desk, 153cm wide x 46cm deep x 68cm high. £40-£60

393

A vintage Goblin Teas Made. £10-£20

394

A vintage Bakelite telephone, earpiece AF; and a Bakelite revolving desk tidy. £10-£20

395

A collection of Bakelite and plastic Thermos jugs; a Bel cream maker; a Bakelite chocolate mould and other kitchenalia. £20-£40

396

A 1930's oak cheval mirror with bevelled plate. £20-£40

397

A teak G-plan style sideboard of concave shape, fitted three central drawers flanked by cupboards raised on square section supports 152cm wide x 77cm high x 39cm deep. £40-£60

398

A Losol ware "Claremont" part dinner service comprising vegetable and sauce tureens and two graduated meat plates. £40-£60

399

A fruit wood drop leaf dining table raised on square tapering supports 148cm x 147cm fully extended. £60-£100

400

A Studio pottery bowl initialled to the base D. H.W. with Latin inscription to the rim; and a blue and white stylised floral decorated Studio pottery bowl, makers mark to base in underglaze blue. £30-£40

401

A pair of small copper coloured angle poise lamps. £30-£50

402

A teak G-plan design sideboard, fitted three central drawers flanked by cupboards enclosed by sliding doors, raised on rounded tapering supports and brass feet, 131 cm wide x 76cm high x 43.5cm deep. £60-£80

403

A teak side cabinet, open recess above cupboard and shelf enclosed by a pair of glazed sliding doors, 125cm wide x 101cm high x 31cm deep. £40-£60

404

A dark teak sideboard, fitted three drawers above cupboards and drop flap central compartment raised on square tapering supports 145cm wide x 79cm high x 43cm deep. £40-£60

405

A 1940's burr walnut bookcase, the adjustable shelves enclosed by glazed panelled door, 61cm wide x 101cm high x 26cm deep. £40-£60

406

A teak kneehole writing desk with leatherette inset top above two drawers fitted with chrome loop handles 122cm wide x 66cm deep. £60-£80

407

A retro design picnic hamper, with fitted contents. £20-£40. See illustration.

408

A pair of silvered stag wine coolers, 33cm high. £60-£80

409

A teak office cabinet fitted filing section, drawers and cupboards 120cm wide x 72cm high x 46cm deep. £20-£30

410

Three brightly coloured Isnic style pottery chargers. £30-£60

411

A Doulton Lambeth Art Nouveau jardinière AF. £20-£40. See illustration.

412

A bronzed swing clock in the form of classical maiden. £60-£80. See illustration.



Lot 379



Lot 386



Lot 407



Lot 411



Lot 412



Lot 423

413

An Art Deco plated tureen by Walker & Hall. £10-£20

414

An Art Deco style Tiffany type table lamp, with foliate decoration to the shade. £90-£120

415

A teak low bookcase, enclosed by glazed sliding doors, 122cm x wide x 86cm high. £40-£60

416

A mid-20th Century Marilyn radio £20-£30

417

A 1970's orange and white plastic stacking picnic set. £10-£20

418

A Fidelity auto change record player circa 1960's. £20-£30

419

A Nathan teak sideboard, having central pull out drinks compartment flanked by cupboards, two long drawers above, 130cm wide x 64cm high x 46cm deep. £60-£80

420

An oak magazine rack / occasional table, raised on upturned V shaped supports, 54cm. £10-£20

421

A teak kneehole dressing table, fitted six drawers and raised on square section supports 163cm wide x 64cm high x 44cm deep; and an upholstered stool. £40-£60

422

A Vanson teak stepped workbox with lifting lid and single drawer, 77cm long x 33.5cm deep x 29cm high. £20-£30

423

A 1970's wicker rocking chair. £20-£40. See illustration.

424

A contemporary teak metamorphic library step chair; and matching stool. £60-£80

425

A teak rail back elbow chair, raised on square section supports. £20-£30

426

An early 20th Century oak framed two seat salon settee, raised on scrolled tapering supports terminating in castors. £100-£150

427

A pair of 20th Century Danish leather upholstered tub shaped armchairs. £120-£150

428

A dark Ercol refectory type dining table raised on shaped end supports united by a pegged stretcher, 177cm x 78cm. £40-£60

429

A set of six dark Ercol carved dining chairs, with spindle rail backs, four standards, two elbows. £80-£120

430

A collection of 1930's / 40's coloured glassware, including fruit bowls, vases, etc. £20-£30

431

A Finn Juhl for France and Son of Denmark teak elbow chair. £100-£200. See illustration.

432

A leather upholstered ottoman. £40-£60

433

A good quality tan leather armchair, raised on turned supports. £100-£200. See illustration.

434

A cantilever sewing box raised on shaped supports. £20-£40

435

A teak G-plan side cabinet fitted single drawer and cupboard below raised on square section supports, 84cm wide x 98cm high x 46cm deep. £60-£80

436

A Kavin plated four piece Art Deco teaset. £20-£30

437

A pair of marble obelisks, 47cm high. £80-£120

438

A teak G-plan style extending dining table with extra leaf, 187cm x 92cm fully extended; and a set of six bar back chairs. £100-£150

439

A Newhall Nirvana shaped dinner service manufactured exclusively for Harrods. £100-£150

440

A teak drinks cabinet, with drop down compartment, cupboards under, 76cm wide x 110cm high x 33cm deep. £40-£60

441

An Edwardian Maple & Co. chest of two short and two long drawers, 105cm wide. £100-£200

442

A Ducon fold out record player, in mahogany case raised on square tapering supports, 60cm wide x 62cm high x 39.5cm deep. £20-£40

443

A Studio pottery shallow bowl, with fruit and flower decoration, seal marks to the rim. £20-£30

444

A pair of plated top hat wine coolers, 16cm high x 24cm dia. £140-£180

445

A large plated punch bowl, having vine decoration, 40cm dia. x 25cm high. £75-£100

446

A yellow and black mottled glass lampshade, in the Art Deco style, 35cm dia. £10-£20

447

A stoneware Louisville Kentucky charger, with decoration of the Kentucky Derby, 39.5cm dia. £20-£40

448

A teak G-plan design draw leaf extending dining table, raised on rounded tapering supports, 237cm x 85.5cm fully extended; and a set of four matching dining chairs. £100-£200



Lot 431



Lot 433



Lot 451



Lot 459

449

A teak G-plan design side table fitted single drawer, raised on rounded tapering supports, 81cm wide x 37cm deep x 50cm high. £20-£40

450

A teak drop front secretaire, raised on square section stretchered supports, 82cm wide x 92cm high x 43.5cm deep. £40-£60

451

A pair of Baccarat glass table lamps, in the form of fish, complete with shades, 43cm high overall. £150-£200. See illustration.

452

A quantity of various 20th Century coloured and other glassware. £20-£30

453

A teak Tapley 33 side cabinet, enclosed by a pair of doors and raised on rounded tapering supports, 84cm wide x 77cm high x 40cm deep. £20-£30

454

An Art Deco style dragon decorated table lamp, 57cm high. £75-£100

455

A light wood kitchen dining table, the shaped top raised on trestle end supports, 80cm x 177cm; and for matching ladder back chairs. £100-£150

456

A teak bookcase, enclosed by a pair of glass sliding doors and raised on rounded supports, 81.5cm wide x 80cm high x 31cm deep. £40-£60

457

A set of three graduated brass easel photograph frames in the Rococo manner. £30-£50

458

An Eloi glazed shallow bowl, with running glaze decoration and pinched rim. 31cm dia. £20-£30

459

A Hutschenreuther porcelain study of a peregrine falcon, 60cm high overall. £150-£200. See illustration.

460

An Art Nouveau pewter four section Dushanbe decorated with a central female figure signed to the base. £200-£400. See illustration.

461

A teak G-plan two tier coffee table with glass insert top, raised on square section tapering supports, 137cm x 51cm. £40-£60

462

A teak and tubular metal framed oblong coffee table, 92cm x 52cm. £20-£40

463

A teak G-plan extending dining table with extra leaf, 197cm x 100cm fully extended; and a set of six matching rail back dining chairs. £200-£300

464

A silvered bronze figure (Tireuse a L'arc) circa 1926, signed to base P Le Faguays, 49cm high. £350-£500. See illustration.

465

A large turquoise crackle glazed porcelain study of a tiger, 68cm long. £30-£50.

See illustration.

466

A bronze figure (Tireuse a L'arc) circa 1925, signed to base Le Faguays Sussi, foundry mark, 66cm high. £1,000-£1,500. See illustration.

467

A teak G-plan sideboard, fitted three long drawers and cupboards under, raised on square section supports, 152cm wide x 85cm high x 46cm deep, paper label on the reverse E Gomme Ltd, 14.1.77. £200-£300

467A

A 1960's Formica and tubular metal draw leaf kitchen dining table, 99cm x 59cm. £30-£50

468

A teak G-plan design sideboard fitted three drawers with cupboards under, raised on square section supports, 151cm wide x 46cm deep x 90cm high. £100-£200

469

A decorative silvered figure depicting an athlete with arms outstretched, 58cm high. £25-£40

470

A plated ice bucket in the form of a silvered pineapple. £75-£100

471

A mirrored Diamanté decorated two drawer trinket chest, 32cm wide x 19cm high. £20-£30

472

A teak G-plan design chest of three long drawers, raised on rounded tapering supports, 81cm wide. £40-£60

473

Six rolls of Sandberg wallpaper. £10-£20

474

A pair of large chrome angle poise style lamps. £50-£80

475

A teak hall table fitted three drawers, raised on square section supports, 117cm wide x 46cm deep. £40-£60

476

A teak dwarf bookcase enclosed by glazed sliding doors, and raised on rounded tapering supports, 163cm long x 60cm high x 31cm deep. £40-£60

477

A pair of Chinese silk embroidered panels depicting flowers and butterflies, probably originally cloak sleeves, 49cm x 29cm. £30-£60

478

Initials J.B. "April" watercolour study. £20-£30

479

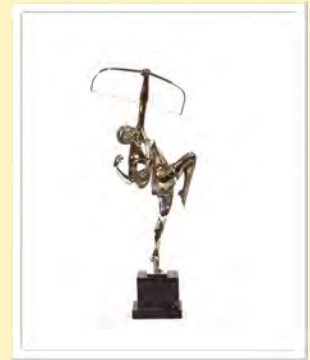
George Mackley, Sow Thistle 1963 wood engraving, signed under mount. £20-£30

480

F Porter, study of birds, signed oil on canvas, 30cm sq. unframed. £30-£50. See illustration.



Lot 460



Lot 464



Lot 465



Lot 466



Lot 480



Lot 481

481

John Hall Thorpe (1874-1947), pencil signed woodblock Cowslips in vase. £100-£150. See illustration.

482

John Hall Thorpe (1874-1947), pencil signed woodblock Crocus and Snowdrops in vase. £100-£150. See illustration.

483

John Hall Thorpe (1874-1947), pencil signed woodblock Primroses in vase. £100-£150. See illustration.

484

John Hall Thorpe (1874-1947), pencil signed woodblock Primulas and Forget-me-Nots in vase. £100-£150. See illustration.

485

A novelty lamp, in the form of a red Vespa scooter, 32cm high x 40cm wide. £40-£60

486

A tan leather stationery box with brass sunken handles 38cm wide. £125-£150

487

A teak G-plan design sideboard, fitted four short drawers to the side flanked by double cupboard enclosed by sliding doors, raised on square section supports, 136cm wide x 72cm high x 40cm deep. £100-£200

488

A teak G-plan design sideboard fitted three central drawers, flanked by double cupboard and drop flap drinks compartment raised on square section supports, 184cm wide x 75cm high x 44cm deep. £100-£200



Lot 482



Lot 483

489

A teak open fronted bookcase, raised on rounded tapering supports, 87cm wide x 99cm high x 27cm deep. £30-£50

490

Three etchings depicting Ancient Greek scenes. £40-£60

491

A plated and leather bound golf cocktail set. £40-£60

492

Phillippa Doring, study of Andalusia initialled watercolour dated 1987, 52cm x 71cm. £20-£40

493

A teak G-plan design sideboard, fitted four drawers and raised on square tapering supports, 137cm wide x 66cm high x 42cm deep. £40-£60

494

A blue leather vanity case, 26cm wide. £85-£110

495

A novelty lamp, in the form of a Vespa motor scooter, 64cm high x 63cm wide. £120-£160

496

A nest of three teak G-plan coffee tables with tile inserts. £20-£30

497

A teak G-plan design coffee table, with tile inserts 138cm x 77cm. £20-£30



Lot 484

498

A John Morley of London clavichord No. 1753 in mahogany case, raised on turned fluted legs, 112cm. £100-£200

499

A pair of Toleware type table lamps complete with shades, 56cm high. £120-£150

500

An Art Deco design bronze figure of a semi-naked dancing girl raised on marble plinth, 50cm high. £90-£120

501

Two graduated brass bells. £25-£40

502

An Art Deco design bronze figure, raised on marble plinth. £90-£120

503

Hagop K Kasparian, early 20th Century school, study of Seven Sisters Kent, watercolour, 11cm x 16cm. £20-£30

504

A pair of glass storm lamps, with dimpled decoration raised on square stepped bases, 34.5cm high. £40-£60

505

A mid-20th Century Hadleigh Studio pottery stoneware coffee set impressed with seal marks. £20-£30

506

A teak G-plan design sideboard, fitted three central drawers flanked by double cupboards raised on square tapering supports, 207cm wide x 78cm high x 45cm deep. £100-£200

507 ✓

David Lemon, a painted bronze figure group depicting American cowboy and horse on rockwork base, entitled "Thirty and Found", raised on a marble plinth and wooden stand, 62cm high overall. £350-£500. See back cover illustration.

508

A pair of Toleware style tea cannisters. £25-£40

509

A Clarice Cliff "Taormina" dish, 32.5cm. £50-£80

510

A teak G-plan design hall table, fitted two drawers raised on shaped end supports 92cm wide. £60-£100

511

A Monika Mulder polished metal fruit bowl, with pierced leaf decoration, 43cm dia. £10-£20

512

A wicker bombe shaped chest, of four graduated drawers raised on a shaped apron and cabriole supports, 49cm wide. £70-£100. See illustration.

513

A brass and Bakelite based tellers style lamp; a pair of Bakelite and plastic twist candlesticks; a green Bakelite table lamp; two brown similar etc. £30-£50

514

A coloured horror film advertising poster "Guerra de Los Satelites". £20-£30

515

A Nathan teak home entertainment cabinet, enclosed by a panelled drop flap 90cm wide x 46cm deep x 52cm high. £20-£30

516

Ronald Homes 1985, watercolour study of the Aldeburgh Lifeboat and buildings, 9cm x 12cm; and a miniature watercolour by M J Norton No.368 "A Gaffer Enters The Deben". £30-£50

517

A faux teak two tier display table, 110cm wide x 52cm high x 50cm deep. £40-£60

518

A nest of three G-plan design occasional tables, raised on shaped end supports, the largest table 45cm wide in extremes. £40-£60

519

A nest of three G-plan design occasional tables raised on shaped end supports, the largest table 50cm wide in extremes. £40-£60

520

A Christian Dior lady's wrist watch with original box DR3859. £80-£120

521

A Zenith Elite wrist watch, automatic with original box and paperwork 901010050680, in working order. £600-£800

522

An amethyst necklace. £20-£30

523

A G-plan teak chest fitted three long drawers, raised on square section tapering supports, the top drawer with removable divisions and stamped E.G. 76cm wide x 46cm deep x 77cm high. £60-£80

524

A Hørjre Rosen Garden teak extending dining table, with two extra leaves 220cm x 120cm fully extended; and a set of four similar rail back dining chairs. £100-£200

525

A G-plan design teak sideboard, fitted three drawers and cupboards below, raised on a platform plinth 142cm wide x 44cm deep x 76cm high. £200-£300

526

A set of sixteen Johnson Bros. fish plates. £30-£60

527

A Bing & Grondahl Copenhagen porcelain part dinner service, comprising large serving plate, five dessert bowls, sauce boat on stand, and an oval dish. £20-£40

528

A Bernard Rooke pottery model of a frog AF; A Bernard Rooke pottery vase. £20-£40

529

A G-plan style teak trolley. £20-£30

530

A set of four Ercol stick back chairs. £100-£200. See illustration.

531

A Mulberry back pack, finished in pressed brown leather, crocodile skin effect with tartan fabric lining No. 177545 & 228529 to the interior. £250-£350

532

After Charles and Ray Eames, an EA108 style chair, manufactured by Luxy of Italy. £60-£80

533

After Charles and Ray Eames, an EA108 style chair, manufactured by Luxy of Italy. £60-£80

534

After Charles and Ray Eames, an EA108 style chair, manufactured by Luxy of Italy. £60-£80

535

A teak effect sideboard fitted three drawers, central cupboard and dop front compartment, 182cm wide x 72cm high x 42 cm deep. £60-£80



Lot 507



Lot 512



Lot 530

Special attention is drawn to the Conditions of Sale printed at the back of this catalogue.

Clarke and Simpson are pleased to offer a packaging and shipping service worldwide through "the-saleroom.com Delivery Service". The professional team will pack and ship items from very small non-breakables such as jewellery and coins though to larger and more fragile items such as paintings and works of art. Shipping and insurance is at the buyer's expense.

Shipping payment must be made to "the-saleroom.com Delivery Service" prior to departure and excludes local duties and taxes. Please note that Clarke and Simpson do not pack or ship items - all requests are sent to our specialist handlers at "the-saleroom.com Delivery Service" who can be contacted directly via delivery@atgmeadia.com

the-saleroom.com
delivery service



Auctions

Clarke &
Simpson

Worldwide from Campsea Ashe



We have registered buyers from all of the fifty countries shown below in the last twelve months – what do you have to sell that would benefit from a worldwide audience!



Clarke & Simpson Auction Centre, Campsea Ashe, Nr Wickham Market, Suffolk IP13 0PS T: 01728 746323
www.clarkeandsimpson.co.uk  CandSAuctions  @CandSAuctions

TERMS AND CONDITIONS OF SALE

1. INTRODUCTION

The following defining terms are used in these conditions:-

“Auction”	Means any auction conducted by Clarke and Simpson Auctions Ltd. either at the premises owned by them or elsewhere (including any internet based auction);
“Auctioneer”	Means Clarke and Simpson Auctions Ltd. authorised auctioneer as appropriate;
“Bidder”	Means a bidder at an auction, including the bidders personally present at the venue and those bidding by telephone or over the internet or otherwise;
“Buyer”	Means the bidder whose bid was the last bid when the auctioneer concludes the bidding;
“Conditions”	Means these Terms and Conditions of Sale;
“Hammer Price”	Means the level of bidding reached (at or above any reserve) when the auctioneer brings the bidding to a close;
“Lot”	Means any property accepted by Clarke and Simpson Auctions Ltd. for offer at auction;

2. DESCRIPTION

No warranty is given or implied by the description in the catalogue. Each lot is sold in its condition at the time of sale with all faults, defects, imperfections and errors of description (if any). Whilst every endeavour has been made to describe the items adequately and properly, the purchaser shall deem to have inspected the lot at time of purchase. All catalogues and seller's and buyer's guides are for information only and do not form part of the contract.

3. STATUTORY REQUIREMENTS

Purchasers will be deemed to have satisfied themselves prior to purchasing regarding current legal requirements (e.g. Health & Safety at Work Act) and it is expressly brought to the bidders attention that equipment in the sale may not necessarily comply with such regulations. Any purchaser shall satisfy himself as to any statutory requirement for the use of any item and no liability shall rest with the vendors nor the Auctioneers.

4. THE AUCTION

All auctions are conducted at the absolute discretion of the auctioneer. The auctioneer shall conduct the auction with reasonable skill and care. The vendor reserves the right to sell subject to reserve price in respect of all lots. What constitutes a bid shall be at the absolute discretion of the auctioneer, acting with appropriate skill and care. The auctioneer shall have the right to refuse any bid in all cases but most notably when such a bid does not exceed the previous bid by at least 10% or such a proportion as the auctioneer shall in his absolute discretion direct. Where two or more bids at the same level are simultaneously received by the auctioneer, the auctioneer at his absolute discretion shall determine which bid to prefer. Subject to the foregoing where two or more bids are at the same level are simultaneously received by the auctioneer, the bid submitted in the room shall take preference over a bid submitted by telephone or internet at the same level. Any bid made or attempted by telephone or over the internet will only be deemed to have been made if received by the auctioneer. The auctioneer reserves the right to withdraw, consolidate or divide any lot or lots or submit them in any order that they desire. The auctioneer has the right at his absolute discretion to refuse admission to his premises or attendance at (or participation in) any auction by any person. In the case of any dispute, the auctioneer shall be sole arbitrator in any matters arising during or out of the sale.

5. BIDDERS

All bidders will be required to register their particulars, bidders attending in person and those accompanying them may be required to provide photo ID and separate confirmation of address prior to viewing or taking any part of the sale and before entering any part of the premises to view. All bidders accept full liability for all bids submitted. Subject to the clause in this document headed “The Auction”, the highest bidder at the close of bidding shall be the buyer. Any dispute about a bid shall be settled at the auctioneer's absolute discretion.

Bidders are all deemed to act as principles unless there is prior written acknowledgement by Clarke and Simpson Auctions Ltd. that a bidder is acting as an agent for a named principle. Bidders are strongly encouraged to attend the auction in person. The bidders shall be responsible for any decision to bid for a particular lot and shall be deemed to have carefully inspected and satisfied themselves as to condition, neither Clarke and Simpson Auctions Ltd., their employees or agents shall be responsible for any neglect or default in doing or failing to do so. Bidders will be given ample opportunity to view and inspect before the sale and prospective buyers must satisfy themselves as to all matters.

6. DEFAULT

Clarke and Simpson Auctions Ltd. shall act as agent of the vendor only. Any contracts for the sale of a lot shall be formed between the vendor and the buyer. As agent only Clarke and Simpson Auctions Ltd. shall not be responsible for default by the vendor or the buyer. If any lot is not paid for in full and taken away in accordance with these conditions, or there is any other breach of the conditions, then Clarke and Simpson Auctions Ltd. as agents for vendor shall at its absolute discretion and without prejudice to any other rights it may have, be entitled to exercise all or any of the following rights and remedies:-

- 6.1 to proceed against the buyer for any action of debt or damages for breach of contract;
- 6.2 to rescind the sale of that lot or lots sold by Clarke and Simpson Auctions Ltd. to a defaulting buyer;
- 6.3 to resell the lot (by auction or private treaty) in which case the defaulting buyer shall be responsible for any resulting deficiency in the total amount due (after crediting any part payment and adding any resale costs), any possible surplus so arising shall belong to the vendor;
- 6.4 to remove, store and insure the lot at the expense of the defaulting buyer and, in the case of storage, the location of such storage shall be at Clarke and Simpson Auctions Ltd. discretion;
- 6.5 to charge interest at a rate not exceeding 2% per month of the total amount due to the extent that it remains unpaid for more than two working days after the sale;
- 6.6 to retain that or any lot sold to the defaulting buyer until the buyer pays the total amount due;
- 6.7 to reject or ignore bids from the defaulting buyer at future auctions or to impose conditions before any such bids are accepted;
- 6.8 to apply any proceeds of sale for any other lots due or in the future becoming due to the defaulting buyer towards the settlement of the total remaining due.

7. INDEMNITIES, PENALTIES AND LIMITATIONS OF LIABILITY

Purchasers shall pay for any damage done by themselves or their agents during the removal of their lots. Attendance at the sale shall be at the risk of those attending in respect of both themselves and to their goods and vehicles.

Any indemnity under these conditions will extend to all actions, costs, expenses, claims and demand whatsoever suffered or incurred by the person entitled to the benefit of it and Clarke and Simpson Auctions Ltd. declare themselves to be a trustee of the benefit of such indemnity so far as it is expressed to be the benefit of its employees and agents.

Whilst Clarke and Simpson Auctions Ltd. endeavour to ensure that the information on their websites is correct, they do not warrant the accuracy and completeness of the material on their website. Also Clarke and Simpson Auctions Ltd. can make changes to the material on their website, or alter the products and prices described on it, at any time without notice. The material on the website may be out of date, Clarke and Simpson Auctions Ltd. make no commitment to update such material. All material on the websites is provided "as is" without any conditions, warranties or other terms at any time. Accordingly to the maximum extent permitted by law, the website is provided to all parties on the basis that Clarke and Simpson Auctions Ltd. exclude all representations, warranties, conditions and other terms which, but for this legal notice, might have effect in relation to the website.

8. ELECTRICAL SAFETY REGULATIONS

All electrical lots are subject to electrical safety regulations and fall within "the low voltage electrical equipment (safety) regulations 1989" – all items have been pat tested for safety but are not guaranteed in working order.

9. GENERAL MATTERS

Any notice to any buyer, vendor, bidder or viewer may be given by first class mail or email in which case it shall be deemed to have been received by the addressee forty eight hours after posting or sending. All notices to Clarke and Simpson Auctions Ltd. must be sent in writing and email is not acceptable. Any indulgence extended to any person by Clarke and Simpson Auctions Ltd., notwithstanding the strict terms of these conditions or the terms of consignment, shall affect the position at the relevant time only and the respect of that particular concession only; in all other respects these conditions shall be construed as having full force and effect. These conditions and any disputes or claims arising out of or in connection with them or their subject matter or formation (including non-contractual disputes or claims) are governed by and construed in accordance with the law of England. The parties irrevocably agree that the courts of England have exclusive jurisdiction to settle any dispute or claim that arises out of or in connection with the agreement or its subject matter or formation (including non-contractual disputes or claims).

10. PUBLICITY

Any catalogue and buyer and seller guides are provided for information only and do not form part of these conditions. The catalogue and the buyer and seller guides may contain additional terms and conditions. Clarke and Simpson Auctions Ltd. reserve the right to use any photographs, background information and research for publicity purposes both before and after the sale.

11. THE PURCHASE PRICE AND PAYMENT ARRANGEMENTS

There is a buyer's premium 18% plus VAT payable in respect of the sale. Any purchases made via "www.the-saleroom.com" or "www.ibidder.com" shall be subject to an administration charge of 5% plus VAT on the price.

Preferred payment is cash, bank transfer or personal debit card. Such cards may only be used on a chip and pin basis with the owner present. No payment over £350 will be accepted by telephone. Payment will be accepted online via

our secure e commerce account. We do not accept credit cards or international debit cards. Payment by cheque will only be acceptable subject to prior arrangement. No lot will be removed from the sale until any cheque has cleared. Payment is due on the day of the sale. Cash in excess of £7,500 (including V.A.T.) will not be accepted from any one person, this is not allowed due to Money Laundering Regulations 2007. All money received will be held in Clarke & Simpson Auctions Ltd. Clients No 2 Account at Barclays Bank plc, Framlingham, Suffolk. Account Number 83428591. Sort Code

20 98 07. Clarke and Simpson Auctions Ltd. have no responsibility for any lot between the close of bidding and payment being made and subsequent collection. All payments from overseas buyers shall be made by Bank Transfer and bank fees paid in addition. Please note all policy regarding payment will be enforced and suitable arrangements must be made.

12. REMOVAL OF LOTS

The ownership of any lot purchased shall not pass to the relevant buyer until they have made payment in full to Clarke and Simpson Auctions Ltd. of the total amount due including any storage due.

The buyer shall at their own risk and expense take away any lot that they have purchased and paid for, not later than seven days following the day of the auction.

Any purchaser shall be responsible for removal and insurance and lots stored and storage charges. All lots sold shall be subject to the following storage charges after seven days from the sale:

7-14 days 25% of the lot value + VAT or £7.50+VAT per lot whichever is the greater

14-21 days 50% of the lot value + VAT or £15 +VAT per lot whichever is the greater

21-28 days 75% of the lot value + VAT or £22.50 + VAT per lot whichever is the greater

Any lots not collected after 35 days will be re-sold with immediate effect on behalf of the purchaser and the proceeds of the sale retained in lieu of outstanding storage charges. The policy shall be rigorously enforced and no lots shall be collected unless outstanding storage charges are met.

13. NUMBER BIDDING

This will be used for speed and efficiency as in all our sales. All prospective purchasers must complete a registration form and register in the office on the viewday or morning of sale to receive a number for bidding.

PLEASE ALSO NOTE THAT PHOTO ID AND ADDITIONAL CONFIRMATION OF ADDRESS WILL BE REQUIRED.

14. ONLINE BIDDING

Clarke & Simpson Auctions Ltd. offer an online bidding service via the-saleroom.com and ibidder.com for bidders who cannot attend the sale.

In completing the bidder registration on www.the-saleroom.com or ibidder.com and providing your payment card details and, unless alternative arrangements are agreed with Clarke & Simpson Auctions Ltd.:

1. authorise Clarke & Simpson Auctions Ltd., if they so wish, to charge the payment card given in part or full payment, including all fees, for items successfully purchased in the auction via www.the-saleroom.com or ibidder.com, and
2. confirm that you are authorised to provide these payment card details to Clarke & Simpson Auctions Ltd. through www.the-saleroom.com or ibidder.com and agree that Clarke & Simpson Auctions Ltd. are entitled to ship the goods to the card holder name and card holder address provided in fulfilment of the sale.

Please note that any lots purchased via the-saleroom.com or ibidder.com live auction service will be subject to an additional 5% buyer's premium + VAT at the rate imposed on the hammer price.

15. TELEPHONE BIDDING

We offer a telephone bidding service where possible, but this service can never be guaranteed. No applications for telephone bids will be accepted after the end of the viewing prior to sale day for any sale. All potential telephone bidders must provide a valid landline number and email address and agree that they have read and understood the Terms and Conditions. No phone bids will be accepted for any lot with a lower guide figure of less than £100.

All those who wish to bid by telephone will be expected to deposit the minimum guide for all lots that they wish to bid upon into the Clients Account for Clarke and Simpson Auctions Ltd before the sale starts. This payment is not acceptable by card. In the event of default, this sum shall be retained as part payment or any part may be retained to recover losses under clause 6 of these Terms and Conditions. We will expect payment of the balance owing by BACS on the following day, any payment not met within five working days will result in the forfeiture of the deposit paid.

16. AT FAULT (A.F.) LOTS

Certain lots are catalogued as (A.F.), damaged, restored etc., however the absence of any such notice does not imply that the piece is free from defects, nor does it indicate that other defects are not also present. Mention is not made of breakage, cracks, chips or any damage which can be noted by careful inspection, therefore, intending purchasers MUST, in all cases, be responsible for determining the condition of the lots themselves.

17. ESTIMATES

Presale estimates are intended only as a guide for intending purchasers, are given in good faith and subject to revision.

18. CONDITION REPORTS

Clarke and Simpson are unable to guarantee that requests for condition reports/images received after close of the viewing on the day prior to auction, will be responded to. Clarke and Simpson are happy to give a Condition Report on the physical condition of goods, this will be provided on behalf of the seller on the understanding that Clarke and Simpson are not entering into a contract with you in respect of the Condition Report and accordingly does not assume responsibility to you in respect of it. All lots are available for your own inspection or for inspection by an expert instructed by you, therefore these Condition Reports are for guidance only and all lots are sold "as found". Condition reports do not form part of a contract.

19. COMMISSION BIDS

The auctioneers will be pleased to execute bids for those unable to attend the sale. Lots will be purchased at the lowest bid the room bidding or any reserves will allow. In the event of identical bids, the earliest bid received will take precedence. There must always be a maximum limit indicated. Buy or unlimited bids will not be accepted. Commission bids placed by telephone are accepted at the client's risk. We urge our clients to place such bids before the start of the sale. All such commissions are left entirely at the buyer's risk.

20. VALUE ADDED TAX

The symbol * after any lot number indicates that Value Added Tax is payable by the buyer on the hammer price.

21. AUCTIONEERS MARGIN SCHEME

The Auctioneers Margin Scheme allows auctioneers to sell items without VAT on the hammer price. Under the margin scheme an amount equivalent to VAT at the current rate is added to the buyer's premium. This amount cannot be refunded. The VAT element will not be shown

separately on the buyer's invoice.

22. ATTRIBUTION OF PICTURES AND DRAWINGS

Every effort is made to ensure the accuracy of any statements as to authorship, attribution, origin, date, age, provenance and condition of any lot whether or not such statement forms part of the description of any such lot. Whether any such statement is made orally or in the catalogue it is an expression of opinion and not to be taken as being or implying any warranties or representations of facts by the auctioneers. Each buyer by making a bid for a lot acknowledges that he has satisfied himself fully as to the attribution and condition of the lot. The following is for guidance only and does not form part of a contract.

- A. The forename (s) (or full stops where not known) and surname of an artist indicates in our opinion a work by the artist.
- B. The initials of the forename (s) and the surname of the artist indicates in our opinion a work of the period of the artist which may be wholly or in part his work.
- C. The surname of the artist indicates in our opinion a work of the school or by one of the followers of the artist or in his style and of uncertain date.
- D. *Signed, Dated, Inscribed* indicated in our opinion work signed/dated/inscribed by the artist.
- E. *Bears signature* indicates in our opinion that this is not the signature of the artist.
- F. *Attributed to* may be used to denote a traditional attribution based on style.
- G. *Manner of* indicates in our opinion a work executed in the artist/craftman's style but of a later date.
- H. *After* indicates in our opinion a copy (of any date) of work of an artist or craftsman.

The addition of a question mark after any of the cataloguing terms above indicates an element of doubt.

23. DRIOTE DE SUITE ROYALTY CHARGES

All United Kingdom Art Market professionals (which includes auctioneers) are required to collect a royalty payment for all qualifying Works of Art. This applies to living artists and those who have died in the last 70 years. This payment is calculated on qualifying Works of Art which are sold for a hammer price more than the UK sterling equivalent of €1,000 (the UK sterling equivalent will fluctuate in line with prevailing interest rates calculated by the Artist's Resale Right Service Hub, based on the European Central Bank reference rate published at 2.15pm on the day of the sale, and can be found on www.dacs.org.uk).

All items in this catalogue that are marked "✓" are potentially qualifying items, and the royalty charge will apply if the hammer price is more than UK sterling equivalent of €1,000. The royalty charge will be added to purchase invoices, and must be paid before items can be cleared. All royalty charges are paid to the design and Artists Copyright Society (DACS) by the auctioneers and no handling costs or additional fees with respect to these charges will be retained by the auctioneer. This charge may also be applicable to lots not marked "✓" and buyers must satisfy themselves.

The royalty charge for qualifying items which achieve a hammer price of more than the UK sterling equivalent of €1,000, but less than the UK sterling equivalent of €50,000 is 4%. For qualifying items that sell for more than the UK equivalent of €50,000 a sliding scale of royalty charges will apply. For a complete list of the royalty charges and threshold levels please refer to www.dacs.org.uk. There is no VAT payable on this royalty charge.



Clarke & Simpson Auction Centre, Campsea Ashe
Nr Wickham Market, Suffolk IP13 0PS
T: 01728 746323 E: auctions@clarkeandsimpson.co.uk
www.clarkeandsimpson.co.uk