



Clarke &  
Simpson

Selected Antiques & Fine Art

Wednesday 8th December 2021 at 10 am

# Clarke & Simpson

Auctions

# *Always open..*



## Valuation

Probate & other valuations  
Call-in service 6 days a week

## Special sales

Antiques & Fine Arts  
Art Deco & Retro  
Domestic & Rural Bygones  
Agricultural Collective

## General Monday sale

Bespoke sales  
In 2020 our lots sold to 30 countries  
and registered buyers from over 50  
Acting as agents for household clearances

Can't make it?  
All auctions are available  
for online bidding via  
**the-saleroom.com**  
or **i-bidder.com**



Clarke & Simpson Auction Centre,  
Campsea Ashe, Nr Wickham Market,  
Suffolk IP13 0PS T: 01728 746323

[www.clarkeandsimpson.co.uk](http://www.clarkeandsimpson.co.uk)

CandSAuctions @CandSAuctions

# Clarke & Simpson

Auctions

## Selected Antiques & Fine Art

Wednesday 8th December 2021  
at 10 am

### Order of Sale:

Ceramics and Glass	1- 87
Silver and Plate	91-157
Jewellery	158-203
Coins	210-237
Objects and Collectables	238-399
Paintings	400-488A
Furniture & Rugs	489-618

### Viewing:

Saturday 4th December, 9am – 12 noon  
Monday 6th December, 2pm – 7pm  
Tuesday 7th December, 10am – 4pm  
Wednesday 8th December from 8:30am

 @CandSAuctions

 CandSAuctions



Campsea Ashe  
Nr. Wickham Market  
Suffolk IP13 0PS  
Tel: (01728) 746323  
Email: [auctions@clarkeandsimpson.co.uk](mailto:auctions@clarkeandsimpson.co.uk)  
[www.clarkeandsimpson.co.uk](http://www.clarkeandsimpson.co.uk)

Online bidding via:

BID ONLINE

**thesaleroom.com**

The home of art & antiques auctions

# Special Sales Calendar

2022

Clarke &  
Simpson

RURAL BYGONES - 5th February -  
*Closing date: 17th December*

FINE ART - 27th July -  
*Closing date: 1st July*

FINE ART - 23rd February -  
*Closing date: 28th January*

ART DECO, DESIGN & RETRO -  
3rd September -  
*Closing date: 12th August*

ART DECO, DESIGN & RETRO -  
26th March -  
*Closing date: 4th March*

RURAL BYGONES - 17th September -  
*Closing date: 12th August*

FINE ART - 11th May -  
*Closing date: 15th April*

FINE ART - 5th October -  
*Closing date: 9th September*

FARM MACHINERY - MAY -  
*Closing date: 8th April*

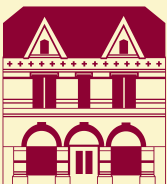
FARM MACHINERY - OCTOBER -  
*Closing date: 9th September*

ART DECO, DESIGN & RETRO -  
18th June -  
*Closing date: 27th May*

ART DECO, DESIGN & RETRO -  
5th November -  
*Closing date: 14th October*

RURAL BYGONES - 16th July -  
*Closing date: 17th June*

FINE ART - 7th December -  
*Closing date: 11th November*



Campsea Ashe  
Nr. Wickham Market  
Suffolk IP13 0PS  
Tel: (01728) 746323  
Email: [auctions@clarkeandsimpson.co.uk](mailto:auctions@clarkeandsimpson.co.uk)  
[www.clarkeandsimpson.co.uk](http://www.clarkeandsimpson.co.uk)

## Ceramics and Glass

- 1**  
J Durham 1862, Parian ware figure of young girl holding a dog, entitled "Go To Sleep", 46cm high  
£100 - 200 †
- 2**  
A Wedgwood type game dish, having raised decoration of foliage and various game birds, complete with interior liner, 30cm  
£60 - 80 †
- 3**  
A Sitzendorf group of King Henry VIII, and his six wives, 20cm high  
£100 - 150 †
- 4**  
Two Royal Worcester "The Birds of Dorothy Doughty", limited edition plates, boxed  
£30 - 40 †
- 5**  
A pair of 19th Century Chinese porcelain saucer dishes, decorated in the famille rose palette, 23cm dia.  
£80 - 120 †
- 6**  
An 18th Century French Luneville biscuit porcelain figure, of a classical semi draped maiden holding a water pitcher, stamped "Terre De Lorraine", incised repairers mark separate wood base, 35cm high overall, circa. 1770  
£40 - 60 †
- 7**  
A Chinese porcelain blue ground rectangular shaped mixing block for ink, six character mark to base and calligraphy to side, 18.5cm long  
£80 - 120 †
- 8**  
A 19th Century Japanese porcelain ovoid vase, the body painted with three Geisha in landscape in polychrome colours, 21cm high  
£40 - 60 †
- 9**  
An 18th Century Worcester porcelain blue and white sparrow beak jug, decorated in the fence pattern, crescent mark to base, 11.5cm high; and a similar tea bowl decorated fruit and flowers 8.5cm dia. 6cm high (2)  
£30 - 50 †
- 10**  
Six various 19th Century English and Chinese blue and white porcelain tea bowls  
£40 - 60 †
- 11**  
Three 19th Century German porcelain busts of children, with floral encrusted decoration, 6cm high  
£40 - 60 †
- 12**  
A blanc de chine figure of Guan Yin; a 19th Century blue glazed porcelain figure depicting cherubs; and a Faience ware salt in the form of a double faced lady (3)  
£40 - 60 †
- 13**  
A 19th Century Coalport tea cup and saucer; a similar saucer; a Victorian nursery plate with inscription and other items (8)  
£40 - 60 †
- 14**  
A small Canton tea bowl; a Chinese blue and white baluster vase and cover, 13cm high; an English porcelain pickle dish decorated in the Chinese manner; a Meissen vase and cover, 10cm high; and four other items of ceramics (7)  
£40 - 60 †
- 15**  
A finely decorated Chinese famille verte porcelain Rouleau vase, 48.5cm high  
£250 - 350 †
- 16**  
A Moorcroft fruit decorated vase and cover, circa. 2000, 21cm high  
£100 - 150 †
- 17**  
A Moorcroft "Hibiscus" pattern plate, impress mark and W.M. signature to the reverse, 21cm dia.  
£100 - 150 †
- 18**  
A Moorcroft baluster vase, having floral and butterfly decoration, circa 2010, 17cm high  
£50 - 80 †
- 19**  
A Chinese Peking glass vase, with raised decoration of flowers and carp, 24cm high, circa. 1900  
£100 - 150 †
- 20**  
A pair of decorative pottery lion ornaments, 52cm long, 29cm high  
£40 - 60 †
- 21**  
A large 18th Century salt glazed flagon, 50cm high  
£50 - 80 †
- 22**  
A pair of Leeds type creamware oval dishes, having pierced lattice borders; and a Wedgwood oval planter with pierce heart and roundel decoration (3)  
£40 - 60 †
- 23**  
Two Wood & Sons limited edition character jugs, "Toby Philpott" and "Martha Gunn", 27cm high  
£40 - 60 †
- 24**  
A 19th Century famille rose decorated bird beak cream jug; and two other 19th Century pedestal cream jugs (3)  
£40 - 60 †
- 25**  
A Chinese blue and white jug, of elongated form decorated river scene and pagoda, 11cm long; a similar design leaf shaped dish, 19cm long; and a small blue and white Chinese baluster vase, 10cm high (3)  
£40 - 60 †



Lot 1



Lot 2



Lot 15



Lot 19



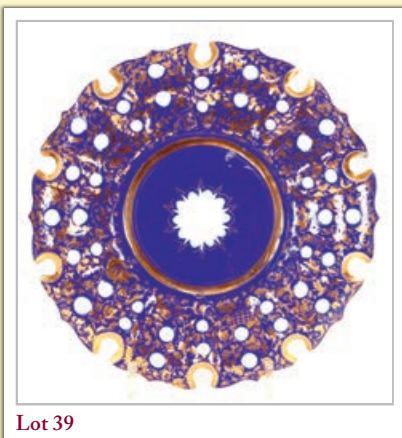
Lot 26



Lot 28



Lot 33



Lot 39

**26**  
An oval Delft plaque, of cartouche shape decorated canal scene, 54cm x 39cm    £60 - 80 †

**27**  
A Chinese blue and white double gourd shaped vase, having six character mark to base, 19cm high    £40 - 60 †

**28**  
A Chinese blue and white baluster vase, decorated with artefacts, 19cm high    £40 - 60 †

**29**  
A Dresden chocolate cup and saucer, the panels decorated with foliate sprays and romantic scene; an oval continental porcelain hinged box decorated figures and cherubs; and a circular Dresden style box and cover (3)    £30 - 50 †

**30**  
An antique drinking glass, tapering bowl with vine decoration on a coloured cotton twist stem; another drinking glass, the ogee shaped bowl raised on cotton twist stem and circular spread base; and a large example with clear glass twist stem (some chips); and a pair of small glass candlesticks (5)    £60 - 100 †

**31**  
A Georgian drinking glass, the bell shaped bowl raised on a cotton twist stem and circular spread foot; and a similar example, 15cm high    £80 - 120 †

**32**  
A pair of miniature Bristol blue glass decanters, having gilt decoration and inscribed "Lemon. P. and Cayan", 11cm high    £40 - 60 †

**33**  
A Moorcroft Pottery baluster vase, leaf decoration on a deep blue ground, paper label to base "By Appointment Moorcroft Potters To The Late Queen Mary", 14cm high    £40 - 60 †

**34**  
A pair of Chinese green hard stone vases, flanked by ring handles and raised on weighted carved hardwood stands, 10cm high    £40 - 60 †

**35**  
Two antique glass rummers; two finger bowls; a glass brandy lifter; two tumblers; a ruby flash decanter with vine decoration; and a small mug (9)    £40 - 60 †

**36**  
A 1930's iridescent glass baluster water jug, 29cm high    £30 - 50 †

**37**  
A 19th Century porcelain flask and stopper (possibly Coalport), having foliate spray painted cartouche on a green ground, the stopper with gilt finial; a glass Cornucopia posy vase with gilt hand terminal raised on marble plinth; and a 19th Century pottery jug with cherub decoration and mask spout (3)    £30 - 50 †

**38**  
A 19th Century porcelain baluster water jug (possibly Coalport) painted with foliate sprays and butterflies with scroll handle, 33cm high overall    £40 - 60 †

**39**  
A set of eight Victorian blue and gilt overlaid glass ice plates, having shaped borders (some damage)    £40 - 60 †

**40**  
A pair of Victorian cut glass decanters; two cut glass lustre candlesticks AF; and various other glassware    £40 - 60 †

**41**  
A pair of Staffordshire pottery cats, sitting on cushions, circa.1900, 18cm high    £30 - 50 †

**42**  
An 18th Century Chinese porcelain silver shaped blue and white jug, and an under glazed blue and iron red 18th Century Chinese bowl, 20cm dia. (2)    £80 - 120 †

**43**  
A London Delftware dish, painted in blue with three sailing ships on a stylised sea, rockwork and trees within blue banded border, circa 1720, 27.5cm dia.    £300 - 400 †

**44**  
An English Delftware plate, painted with a large yellow stylised bird seated on a branch within blue circles and hatched borders, circa 1730, 22.5cm dia.    £400 - 600 †

**45**  
A rare Delftware blue and white marriage plate, inscribed "John and Elizabeth Haslope, Yarmouth 1743", decorated with three fish within floral panels, the underside with two concentric blue bands, 22cm dia.    £400 - 600 †

**46**  
Two antique glass rummers; and two decanters (4)    £20 - 30 †

**47**  
Four early 19th Century porcelain cups and saucers, by Minton, Miles, Mason and Worcester    £60 - 80 †

- 48**  
A pair of Staffordshire lion figures, 32cm long, 28cm high £60 - 80 †
- 49**  
A Chinese Imari pattern plate, 26cm dia. £20 - 40 †
- 50**  
Three 19th Century Derby soup plates AF £20 - 40 †
- 51**  
A pair of Royal Worcester blanc de chine shell shaped posy vases £20 - 40 †
- 52**  
A Japanese shallow dish, decorated figures, 21.5cm dia. £20 - 40 †
- 53**  
A set of six continental porcelain hand painted dessert plates £20 - 40 †
- 54**  
A Parian ware posy vase, in the form of a fisher boy carrying a basket, 20cm high £20 - 40 †
- 55**  
A small blue and white Japanese pot, 7cm high £10 - 20 †
- 56**  
A 19th Century Chinese Imari scallop bordered bowl, decorated in the traditional palette, 14cm dia. £20 - 40 †
- 57**  
A blanc de chine posy vase, depicting woodland children seated on a fence feeding attendant bird, 17cm high, 15cm long overall AF £20 - 40 †
- 58**  
A Chinese shallow dish, with cloud decoration, 15.5cm dia. underglaze blue mark to base £20 - 40 †
- 59**  
An 18th Century Delft plate, with floral decoration AF and restored; a miniature Worcester mug painted floral decoration on a blush ivory ground; a Worcester miniature character jug of a Welsh lady; a Continental porcelain study of a putti; a blue and white Adamsware jug and a posy vase (6) £40 - 60 †
- 60**  
Eight late 19th Century Royal Staffordshire dessert plates, with garland decoration £20 - 40 †
- 61**  
A Linthorpe style pottery baluster vase, pinched shoulders running blue, green and brown glazes, 22cm high £40 - 60 †
- 62**  
An antique glass urn and cover, 33cm high; five penny lick glasses; a heavy cut glass fruit bowl; a moulded similar; and various other glassware (16) £30 - 40 †
- 63**  
Six various 19th Century and later glass soot shades £60 - 100 †
- 64**  
An antique Dutch glass decanter, of hour glass shape, etched decoration of windmill, ships and foliate scrolls, 34cm high £100 - 150 †
- 65**  
A Chinese pottery jug, decorated running glazes and raised figure, 10cm high £40 - 60 †
- 66**  
A Chinese cylindrical bowl, decorated birds, butterflies and flowers; a smaller similar; a two section incense burner decorated birds, flowers and calligraphy; and an Imari pattern shallow dish (4) £40 - 60 †
- 67**  
A pair of Chinese baluster vases, decorated figures and flowers, 14cm high £50 - 80 †
- 68**  
An extensive Spode "Fleur De Lys" dinner service £100 - 200 †
- 69**  
A 67 piece Copeland Spode dinner service £40 - 60 †
- 70**  
An extensive collection of Copeland dinnerware £40 - 60 †
- 71**  
An opaque glass lamp base, in the form of a seated naked lady, 25cm high £35 - 50 †
- 72**  
A Staffordshire spill holder, in the form of three children reading, seated beside a floral encrusted tree stump, 15cm high; and another spill holder and quill holder with sheep decoration (2) £30 - 40 †
- 73**  
A pair of Victorian Staffordshire spill holders, decorated swans and flowers, 12cm high £30 - 50 †



Lot 43



Lot 44



Lot 45



Lot 61



Lot 74

**74**  
An Oriental pottery double gourd shaped vase, with dragon decoration, 25cm high £40 - 60 †

**75**  
A Chinese octagonal garden seat, decorated dragons, clouds and objects, 51cm high, 30cm wide overall £80 - 120 †

**76**  
A pair of Canton baluster jars, red underglaze seal mark to base decorated figures and foliage, 23cm high £100 - 200 †

**77**  
An unusual Oriental pottery and metal mounted vessel, in the form of a recumbent beast, 12cm long £20 - 40 †

**78**  
A large Chinese celadon ground vase, having floral decoration, 45cm high £60 - 100 †

**79**  
A 19th Century French glass and gilt bronze mounted powder jar, with Limoges panel inset to lid, 12cm dia. overall £60 - 80 †

**80**  
A Majolica urn of classical form, 32cm high £30 - 50 †

**81**  
A large Mocha ware mug, with cream decoration and raised boss, 12.5cm high £30 - 50 †

**82**  
A Chinese blue and white bowl, decorated with panels of figures and scenery, four character mark to base, 15cm dia. 6cm high £80 - 120 †

**83**  
A 20th Century Chinese famille rose decorated bowl and cover, 20cm dia. overall, 15cm high £80 - 120 †

**84**  
A small Chinese famille verte square shaped bowl, with decoration of flowers and clouds, 10cm dia. £20 - 30 †

**85**  
A Continental porcelain table centre piece, comprising basket with pierced borders and foliate decoration, raised on a floral encrusted and cherub decorated tree stump 37cm high; and a porcelain baluster table lamp (2) £30 - 40 †

**86**  
A pair of 19th Century Canton vases, one AF, 26cm high £80 - 120 †

**87**  
A Gouda Drago pattern baluster vase, 26cm high £200 - 300 †

**88 - 90**  
No lots



Lot 75



Lot 80



Lot 87

## Silver and Plate

**91**  
A pair of late Victorian circular silver bon bon dishes, having foliate embossed and pierced shaped borders, *Sheffield 1895*, 8oz; and a silver dwarf candlestick £80 - 120 †

**92**  
A small silver pie crust bordered card tray, by Carrington & Co. *London 1913* 16cm dia. 5oz £50 - 80 †

**93**  
A George V silver tea pot, with shaped border, black wood handle and lift, raised on three hoof feet, *Chester 1914*, 14oz £100 - 150 †

**94**  
A small circular silver rouge pot, the hinged lid decorated with a angel; a white metal circular lobed pin dish; a plated goose egg cup; and a plated measure (4) £20 - 30 †

**95**  
An Art Nouveau plated crumb scoop; another with ivory handle; a pair of plated knife rests and other platedware £20 - 30 †

**96**  
A small silver gilt cream jug, *Hallmarked for Birmingham 1963*, 9cm high £20 - 40 †

**97**  
A Continental white metal side pouring brandy saucepan, fitted with a turned wooden handle £30 - 40 †

**98**  
A plated wine bottle holder, having pierced foliate and swag decoration, raised on tapering legs terminating in claw feet, 17.5cm dia., 23cm high £40 - 60 †

**99**  
A small Victorian silver bowl, by William Comyns, having gadrooned border and half fluted body decoration, 8cm dia. £20 - 40 †

**100**  
A pair of continental white metal fish servers; a white metal ladle; various other items to include plated asparagus servers; a plated Stilton scoop; Danish silver items etc. £60 - 80 †

**101**  
A cased set of six British Hallmarked silver teaspoons, *for London, Birmingham, Sheffield, Chester, Glasgow and Edinburgh* £40 - 60 †

**102**  
A set of six Wellner spot hammered decorated table forks, a matching dessert fork, and four American Sterling teaspoons £40 - 60 †



103

An Edwardian silver baluster coffee pot, having gadrooned border with black wood handle and lift, the base of octagonal form, 18cm high, 30oz gross  
£200 - 300 †

104

A silver engine turned decorated cigarette case, wood lined interior, *London 1952*; 17cm long  
£20 - 40 †

105

A modern silver coaster; an oval silver stand; various silver and white metal spoons; butter knife; pickle fork etc.  
£40 - 60 †

106

A collection of various silver teaspoons, condiment spoons, mother of pearl handled and silver bladed fruit knives etc.  
£40 - 60 †

107

A continental white metal hand mirror, having tapering handle and spike shaped terminal; an Oriental white metal circular bowl, the border decorated with Deities, 10cm dia.; a white metal dish with stylised mask decoration (possibly South American); a pair of silver backed hair brushes; a silver and enamel backed mirror AF etc.  
£40 - 60 †

108

An amber cheroot holder, with 9ct gold band contained in a silver foliate engraved case, *Hallmarked for Birmingham 1912*; and an Eastern white metal cheroot case having foliate engraved decoration and monogram, 800 mark (2)  
£40 - 60 †

109

A George V oval silver mustard pot, *Chester 1928*; complete with blue glass liner  
£20 - 30 †

110

A late Victorian silver snuff box, with foliate engraved decoration and gilded interior, *Birmingham 1900*  
£60 - 80 †

111

A vesta case, in the form of a pig, stamped 925  
£50 - 80 †

112

A small George V silver cream jug, *London 1933*  
£40 - 60 †

113

Seven various 18th and 19th Century silver "Old English" and "Fiddle" pattern table spoons, 16oz  
£100 - 150 †

114

A set of six Edwardian "Old English" pattern silver dessert spoons, monogrammed *London 1908*, 10oz  
£80 - 120 †

115

A white metal pin dish; a mother of pearl and silver bladed pen knife; a silver cased pen knife; a white metal pen knife; a silver cigarette holder case; a silver propelling pencil etc.  
£30 - 50 †

116

A silver hip flask, having screw cap. monogrammed F.G. to the front, 8oz  
£80 - 120 †

117

A pair of silver wishbone shaped sugar tongs, *Birmingham 1921*; a silver napkin ring; a silver scent bottle top; a small silver open ended vessel decorated with a boy climbing a wall and a sign saying "Trespassers Beware", 4.5cm long; a white metal whistle; and a cased Queens Silver Jubilee Sterling silver thimble  
£20 - 30 †

118

Three various silver foliate engraved vesta cases; a small silver pin box with hinged lid; a white metal compact inscribed "India 1946"; a silver Christening Bell; a Mexican white metal scent bottle etc.  
£40 - 60 †

119

A cased set of six each silver handled fruit knives and forks  
£30 - 40 †

120

A silver Queens 1952-1977 Silver Jubilee commemorative salver, 13oz  
£100 - 150 †

121

A pair of 20th Century silver candlesticks, of octagonal tapering form, *London 1972*, 22cm high, 30oz  
£400 - 500 †

122

A 20th Century silver pie crust bordered salver, raised on three scrolled feet, *Sheffield 1974*; 17oz  
£200 - 300 †

123

A silver miniature syphon stand, *Sheffield 1928*; and a circular Arts & Crafts dish with stylised handle, 9cm dia.(2)  
£40 - 60 †

124

A modern silver coaster, with turned wooden base  
£40 - 60 †

125

A pair of Georgian silver bright cut decorated sugar tongs; a silver mustard pot; a silver posy holder; Dutch caddy spoon; a small glass jar with silver mount etc.  
£30 - 50 †

126

A pair of George V silver candlesticks, of octagonal tapering form, *Hallmarked for Sheffield 1921*  
£40 - 60 †



Lot 96



Lot 111



Lot 116



Lot 122

† Each lot is subject to a Buyer's Premium of 18% + VAT (21.6%)



Lot 129

127

A silver three piece cruet, of early Georgian design, having foliate borders raised on cabriole supports and hoof feet, salt and mustard complete with blue glass liners and a plated condiment spoon, *London 1932* £60 - 100 †

128

A George III silver sucrier, having foliate engraved decoration, *London 1815* £60 - 100 †

129

A Victorian silver mug, by Edward Ker Reid, having raised foliate panels and bosses, scrolled handle on circular spread foot, *London 1870* £80 - 120 †



Lot 139

130

A silver circular salt, raised on hoof feet complete with blue glass liner, *London 1938*; a matching baluster pepper pot, *London 1939*; and a silver napkin ring (3) £20 - 40 †

131

A small silver Christening mug, of baluster form, *Birmingham 1915*; a pair of Edwardian silver trophy shaped pepperettes, of Art Nouveau design, by Walker & Hall *Sheffield 1907*; and a white metal baluster cream jug, marks indistinct (4) £40 - 60 †

132

Four various silver and white metal mounted photograph frames £60 - 100 †

133

A cut glass and silver mounted swan posy holder, 13cm long, 12cm high £40 - 60 †

134

A George III Irish silver "Fiddle" pattern fish slice, *Dublin 1821* £40 - 60 †

135

A George III silver basting spoon, *London 1778*; various Georgian and later silver forks and spoons, approx. 18oz £100 - 150 †



Lot 140

136

A George III silver oval mustard pot, with foliate pierced body decoration, blue glass liner, *London 1801* £40 - 60 †

137

Two silver vesta cases; an oblong silver snuff box of curved form; a silver cigarette case; a silver cricket trophy spoon; and a silver dagger shaped bookmark (6) £100 - 200 †

138

A George III silver salt, *London 1768*; a circular silver sugar bowl, marks rubbed; a silver shell decorated stand; a silver cigarette box; two cigarette cases; and an oval white metal tea pot stand, unmarked (7) £80 - 120 †



Lot 144

139

A pair of Edwardian Corinthian column silver candlesticks, *London 1902*, 24cm high £200 - 300 †

140

A Victorian four piece silver tea and coffee service, of baluster form, the lids of the tea pot and coffee pot surmounted by a foliate finial, scrolled handles raised on shell decorated shaped feet, *London 1841-1842*; 69oz £600 - 800 †

141

A moulded glass baluster claret jug, with gilt metal mounts, 26cm high £20 - 30 †

142

An early Victorian silver "Fiddle" pattern soup ladle, bearing family crest, *London 1838* £60 - 80 †

143

A silver and wood lined cigarette case, *London 1945*; and a silver mounted glass dressing table tidy (2) £40 - 60 †

144

A pair of late Victorian cased silver bon bon dishes, of shell shape with gadrooned borders and foliate scroll decoration, fitted silk lined case for Oldfield Church Street, Liverpool, *Hallmarked for Sheffield 1895* £150 - 200 †

145

A George III silver toast rack, of oval boat shape, having scrolled ends, wire work divisions raised on tapering feet by Robert Hennell, *London 1786* £150 - 200 †

146

A pair of late Victorian silver bon bon dishes, having pierced border and swag decoration on shell feet, *London 1896* £100 - 200 †

147

A silver sugar shaker, *Birmingham 1962*, 16cm high £40 - 60 †

148

A cased set of twelve silver apostle handled tea spoons, and matching sugar tongs £40 - 60 †

149

A plated Art Nouveau style easel photograph frame, 25.5cm x 21cm in extremes £20 - 40 †

150

A 19th Century burr walnut oval tray, with silver plated galleried border, central paterae inset with a monogrammed oval plated disc, and raised on ball feet, 36.5cm wide overall £70 - 100 †

151

A pair of small plate on copper taper sticks, in the George I manner, 13cm high £40 - 60 †

**152**  
A 19th Century Sheffield plated Argyle, of baluster form, having foliate decoration and scrolled handle £60 - 80 †

**153**  
A pair of Navette shaped silver salts, with blue glass liners *Hallmarked for Chester* £50 - 60 †

**154**  
A silver three piece cruet, *London 1949*; and a pair of associated silver condiment spoons (cased) £100 - 150 †

**155**  
A pair of Victorian silver grape scissors, *Sheffield 1889* £150 - 200 †

**156**  
A George V silver three piece cruet, having pierced foliate borders, *Birmingham 1928/29*; and two associated condiment spoons (cased) £100 - 150 †

**157**  
An oval silver snuff box, makers mark M.W., having gilded interior and faint crest to the lid, 8.5cm £70 - 100 †

## Jewellery

**158**  
An unusual cased enamel duck's head parasol handle; together with seven parasol tips, fitted case stamped for Edwards & Sons Regent Street £20 - 40 †

**159**  
An oval Victorian yellow metal locket, set seed pearl and turquoise stones, 17gms £100 - 200 †

**160**  
A pair of yellow metal cuff-links, approx. total weight 7gms; a cameo decorated yellow metal stick pin and a pair of ear-rings set with circular jade panels (5) £100 - 200 †

**161**  
A 9ct gold gate link bracelet, with padlock clasp; a 9ct gold wedding band AF; and a yellow metal pendant £100 - 200 †

**162**  
A 18ct white gold ring, set with two 0.25 carat diamonds and central green stone, approx. weight 4gms £300 - 400 †

**163**  
A yellow metal and turquoise set bracelet, approx. 30gms £400 - 600 †

**164**  
A 9ct gold ring, set with a central opal and surrounded by green stones, 5.5gms £100 - 200 †

**165**  
An antique gold ring; and a 22ct gold wedding band (2) £100 - 200 †

**166**  
A 19th Century miniature double sided pendant, inset with portrait of lady and gentleman; and an agate seal (2) £100 - 200 †

**167**  
Two silver decanter labels, "Whisky" and "Sherry" to commemorate the Queen's Silver Jubilee, limited edition £20 - 40 †

**168**  
A small oval yellow metal and enamel decorated pendant, having central panel of a maiden amongst doves; an oval yellow metal brooch frame; a yellow metal watch key; and miscellaneous items of jewellery £80 - 120 †

**169**  
A Grande Jubilee medallion, commemorating George III, dated 1810, in an oval leather and plush mounted case £20 - 40 †

**170**  
A leather cased set of four yellow metal and enamel decorated buttons; and an oval leather cased part set of buttons and studs £20 - 40 †

**171**  
A ladies Must de Cartier tank quartz wrist watch, in fitted case and outer box with certificate £100 - 200 †

**172**  
A large oval cameo brooch; a yellow metal enamel and seed pearl decorated oval brooch with memorial panel to the back; a diamanté and pearl set floral spray brooch; and another brooch in the form of a swordsman (4) £100 - 200 †

**173**  
A yellow metal lovers knot brooch; a yellow metal locket with anchor motif; a pair of yellow metal and red stone set drop ear-rings; various other brooches; miniature hand painted porcelain panel etc. £30 - 50 †

**174**  
A collection of various coral beads £30 - 50 †

**175**  
Various jet style beads £30 - 50 †

**176**  
A string of graduated amber coloured beads; a white and semi-precious stone set bracelet; a string of pearls; and two other seats of decorative beads £40 - 60 †

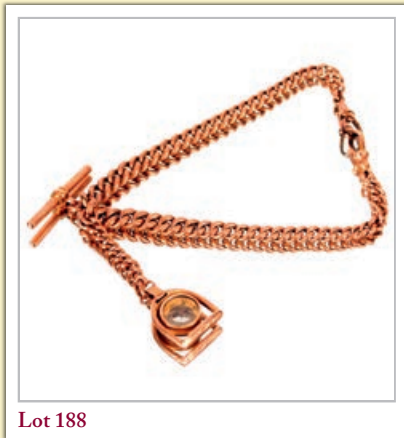




Lot 180



Lot 183



Lot 188



Lot 191

**177**  
A Cartier case, and outer box                    £20 - 30 †

**178**  
A yellow metal and enamel decorated Hunter fob watch, hung to a fine link chain with key, approx. 20gms total weight                    £200 - 300 †

**179**  
A yellow metal diamond set and coloured stone bracelet, approx. 5.5gms                    £60 - 80 †

**180**  
A gold and turquoise set ring, approx. 3gms; and a yellow metal plated locket on chain (2)                    £100 - 150 †

**181**  
Two fine link yellow metal chains, approx. 20gms                    £100 - 150 †

**182**  
A 9ct gold twist link chain, 7.6gms; and a yellow and white metal chain (unmarked) 17.9gms                    £100 - 150 †

**183**  
A large oval yellow metal locket, with pierced decoration marked to base "A. August 15th 1861 R"                    £60 - 80 †

**184**  
A 22ct gold ring, set central faceted white stone, 5gms                    £150 - 250 †

**185**  
A 9ct gold pendant, on fine link chain set amethyst and peridot coloured stones, approx. 4gms                    £60 - 80 †

**186**  
A 15ct gold and diamond set bar brooch                    £200 - 300 †

**187**  
A 9ct gold chain, approx. 9.6gms                    £100 - 150 †

**188**  
A 9ct gold watch chain, with attached stirrup shaped fob, inset with a compass, total approx. weight 19gms                    £200 - 300 †

**189**  
A cameo brooch; a boxed 9ct gold cameo ring; and a bracelet                    £20 - 40 †

**190**  
A Delphine Paris twist necklace; a leaf shaped example and other items                    £40 - 60 †

**191**  
A 9ct gold twist bangle, 5.7gms                    £80 - 120 †

**192**  
A 9ct gold bangle, set central diamond, approx. 5.3gms                    £100 - 150 †

**193**  
Two 9ct gold bar brooches; and a stick pin with yellow metal terminal (3)                    £40 - 60 †

**194**  
Four various cameo brooches; a small cameo pendant; and a pair of ear-rings (7)                    £60 - 100 †

**195**  
Two coral necklaces; a coral brooch; various yellow metal jewellery to include ear-rings, a locket frame, agate set brooch etc.                    £40 - 60 †

**196**  
A Victorian yellow metal and diamond set ring, having central memorial panel (one diamond missing)                    £60 - 100 †

**197**  
A 14ct gold fob watch, with foliate engraved decoration, the dial with enamel numerals and floral scrolls                    £80 - 120 †

**198**  
A yellow metal bracelet, marked 585, 12.5gms; and a pair of ear-rings 5gms (3)                    £300 - 400 †

**199**  
Two pairs of 9ct gold ear-rings, 3.5gms; a 9ct gold ring 2gms; and a yellow metal and white metal ring marked 4K (6)                    £100 - 200 †

**200**  
A 9ct gold Figaro necklace, 44cm long, 5.5gms                    £60 - 80 †

**201**  
A 9ct gold and pearl pendant, hung to a 9ct gold chain, 4gms                    £60 - 80 †

**202**  
A 9ct gold bracelet with padlock clasp, 23gms                    £250 - 300 †

**203**  
A 9ct gold ladies Omega wrist watch on mesh strap                    £350 - 450 †

**204 - 209**  
No lots

## Coins

- 210**  
A silver £5 coin commemorating 100 Years of Naval Aviation; a Concorde commemorative coin and various other commemorative coins £40 - 60 †
- 211**  
“A Century of US Silver Coins” (19 coins in fitted display case) £100 - 150 †
- 212**  
“The House of Windsor” silver coin collection (18 coins cased) £100 - 150
- 213**  
“British Coins of WW2”, cased in fitted eight drawer cabinet (63 coins) £100 - 200 †
- 214**  
“The last Four decades of The Florin” (35 coins in fitted five drawer cabinet) £50 - 100 †
- 215**  
A silver half dollar “Treasury”, 3 coins contained in sixteen brick shaped cardboard containers (43 coins in total, in fitted mahogany case with side carrying handles) £200 - 300 †
- 216**  
A platinum and gold plated Presidential coin collection (38 coins in fitted display case) £100 - 150 †
- 217**  
The Complete Morgan Dollar Silver Mint Mark collection (4 coins in fitted wooden case) £100 - 150 †
- 218**  
US Silver “Hot Lips” Morgan Dollar Error £50 - 100 †
- 219**  
US silver Morgan Dollar, with certificate and fitted box £30 - 40 †
- 220**  
“US Coins of The 19th Century” (15 coins in fitted wooden case) £50 - 100 †
- 221**  
“The Secagawea US Dollar Collection” (60 coins in fitted wooden display case) £100 - 200 †
- 222**  
Queen Elizabeth II Royal Silver Crown collection (32 coins in fitted wooden display case) £100 - 200 †
- 223**  
A South African gold 1oz Krugerrand, dated 1981 £1,000 - 1,200 †
- 224**  
A South African gold 1oz Krugerrand, dated 1981 £1,000 - 1,200 †
- 225**  
A South African gold 1oz Krugerrand, dated 1981 £1,000 - 1,200 †
- 226**  
A South African gold 1oz Krugerrand, dated 1981 £1,000 - 1,200 †
- 227**  
A South African gold 1oz Krugerrand, dated 1981 £1,000 - 1,200 †
- 228**  
A South African gold 1oz Krugerrand, dated 1981 £1,000 - 1,200 †
- 229**  
A South African gold 1oz Krugerrand, dated 1981 £1,000 - 1,200 †
- 230**  
A South African gold 1oz Krugerrand, dated 1981 £1,000 - 1,200 †
- 231**  
A South African gold 1oz Krugerrand, dated 1981 £1,000 - 1,200 †
- 232**  
A South African gold 1oz Krugerrand, dated 1981 £1,000 - 1,200 †
- 233**  
An 1890 gold sovereign £300 - 350 †
- 234**  
A Westminster gold proof three coin set, 2010, Queen Elizabeth Bailiwick of Jersey £5, £2 and Sovereign (cased) £2,500 - 3,000 †
- 235**  
A Royal Mint 2009 gold proof Sovereign five coin collection, comprising £5, £2, Sovereign, Half Sovereign, and Quarter Sovereign, cased and with certificate of authenticity £2,600 - 3,000 †
- 236**  
A Royal Mint 500th Anniversary of the First Gold Sovereign 1489-1989 gold proof collection, comprising £5, £2, Sovereign and Half Sovereign, cased and with certificate £2,800 - 3,200 †
- 237**  
A 1937 George VI four coin gold proof set, comprising £5, £2, Sovereign, and Half Sovereign (not cased) £6,500 - 8,500 †



Lot 232



Lot 235



Lot 236



Lot 237

## Objects and Collectables



Lot 246

238

A Victorian tapestry, romantic study with man playing a mandolin, contained in ornate gilt frame  
£50 - 80 †

239

A Victorian tapestry, depicting courting couple, in carved mahogany frame  
£30 - 50 †

239A

A pair of Victorian tapestries, depicting rural scenes  
£30 - 50 †



Lot 249

240

A quantity of Daguerreotypes, and other photos  
£40 - 60 †

241

A pair of small cloisonné baluster vases; a cloisonné posy pot; various other cloisonné and enamel items including a fountain pen, miscellaneous jewellery and other small items  
£40 - 60 †

242

A 19th Century bronze figure of a lion; a pewter figure of a recumbent lion; a carved wooden similar; and a small bronzed figure depicting a lion with it's paw on a ball (4)  
£60 - 100 †

243

Three volumes of "Les Artistes Celebres", contained in marbled boards  
£20 - 30 †

244

A green shoe shaped needle case; a 9ct gold thimble; a white metal thimble in shoe shaped carrying case; a similar brass thimble; and an acorn shaped thimble case  
£80 - 120 †

245

A silver mounted leather House Keepers spectacles case, with attached silver thimble and holder; and a small silver oval box (part missing)  
£40 - 60 †



Lot 250

246

A bronze figure of a street entertainer, and monkey, 17cm high (one arm AF)  
£40 - 60 †

247

A large piece of raw amber, approx. 9cm long  
£20 - 30 †

248

Two mesh work ladies evening bags  
£20 - 40 †



Lot 273

249

An Oriental green hardstone figure of a lion, with ball; and a similar elephant figure (2)  
£40 - 60 †

250

A jade vase and cover, of tree form with scrolling foliage, raised on hard wood plinth, height of vase 14cm  
£250 - 350 †

251

A finely carved ivory inro, having foliate pierced decoration, 6.5cm  
£40 - 60 †

252

Six various carved ivory Netsukes  
£40 - 60 †

253

A 19th Century portrait miniature, most probably of Field Marshal Sir Alured Clarke 1745-1832, contained in an oval brass frame  
£60 - 100 †

254

Edmund Wingate, leather bound volume "A Book Of Common Arithmetic 1726" AF  
£20 - 40 †

255

A burr walnut cased Alexander Clark & Co. Elliott alarm clock, with presentation plaque, 22cm high overall  
£20 - 40 †

256

A brass cased carriage timepiece, in serpentine shaped case, white enamel Roman numeral dial complete with key, 15cm high with handle up  
£40 - 60 †

257

An ivory paper knife, with silver mount, Birmingham 1903; 35.5cm long  
£40 - 60 †

258

An antique wicker sewing basket, contents of various lace fragments; and a small Victorian walnut sewing box and some contents  
£60 - 80 †

259

A folding map of Middlesex, divided into hundreds by Carey 1801 (AF and contains some later writing) with outer case  
£20 - 40 †

260

A pair of unframed Oriental watercolours on fabric, depicting ladies in landscapes, overall size 18cm x 18cm  
£20 - 40 †

261

A collection of various vintage pamphlets, to include Germany's Fight For Western Civilisation, Franco British Exhibition Official Souvenir 1908, The History of Convict Hulk, Fire Arms Acts etc.  
£20 - 40 †

262

Eleven small Zulu watercolours  
£40 - 60 †

263

A Knight & Gibbins mahogany cased sedan style clock (battery operated)  
£20 - 40 †

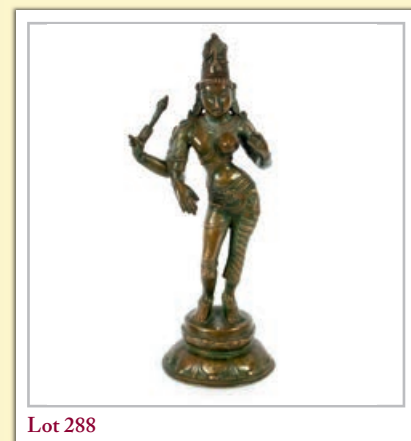
- 264**  
An **Oriental fan**, the folded paper panels decorated scenes of a reclining figure in countryside, with calligraphy and another similar decorated butterflies and foliage (2) £30 - 50 †
- 265**  
A **quantity of treen items**, including a figure of a man playing the cello, a pair of turned pedestal bowls, a smaller similar, a dice shaking cup, and a larger wooden bowl (6) £40 - 60 †
- 266**  
An **Ethnic carved wooden mask**, and an ebony fertility symbol figure (2) £20 - 40 †
- 267**  
An **Indian carved sandalwood and bone inlaid box**, contents to include a white metal mounted double ended scent bottle, a silver mounted dressing table tidy jar with cherub decoration, a white metal caddy spoon, a silver and yellow metal fob, various other items of costume jewellery etc. £60 - 80 †
- 268**  
A **quantity of various miscellaneous items**, to include a white metal hinged box, a small circular dish, a yellow metal filigree work basket, a bronze skull, a white metal filigree work hinged box, a mother of pearl brooch, an agate box, costume jewellery etc. £40 - 60 †
- 269**  
A **Mauchline ware sewing box**, of oblong form, and contents of various small treen items to include a pin cushion, miniature urn, thimble holder etc. £40 - 60 †
- 270**  
A **collection of vintage fountain pens**, with gold nibs £20 - 40 †
- 271**  
A **collection of vintage propelling pencils** £20 - 40 †
- 272**  
A **collection of vintage fountain pens** £20 - 40 †
- 273**  
A **continental porcelain decorated panel**, in the manner of Angelica Kaufmann depicting semi-naked seated maid with attendants and cherub, in gilt scrolled easel frame £40 - 60 †
- 274**  
A **19th Century Oriental embroidery**, depicting a dragon and clouds £30 - 50 †
- 275**  
A **19th Century silk work embroidery**, depicting a lady walking along a path carrying a basket of birds on her head £40 - 60 †
- 276**  
A **case of Chateau Bel Air Saint-Estephe 2000 Claret** (in wooden case) £200 - 300 †
- 277**  
A **well loved Steiff Teddy bear**, 37cm high in a sitting position AF in need of restoration and button missing £20 - 40 †
- 278**  
An **Austrian gilt picture frame clock**, 45.5cm x 36cm overall £800 - 1,200 †
- 279**  
A **decorative pine and gilt metal mounted picture frame**, enclosing a printed chinoiserie panel £20 - 30 †
- 280**  
An **unusual necklace**, of graduated amber coloured pebbles £60 - 100 †
- 281**  
An **Oriental bronze figure of a crane**, stood on a giant turtle, 42cm high £50 - 80 †
- 282**  
An **unusual Chinese bronze incense burner**, having seal mark to base with raised foliate decoration, floral pierced lid and stand £50 - 80 †
- 283**  
An **Oriental white metal tea pot**, with embossed foliate decoration, 14cm high £20 - 30 †
- 284**  
An **Ethnic bronze figure**, of a woman with staff, 14cm high; and another Ethnic bronze figure, 17cm high (2) £40 - 60 †
- 285**  
A **small classical bronze figure**, depicting a cherub holding a dolphin on onyx plinth, 17cm high; and a hollow metal ware figure of a medieval Queen and child 13cm high (2) £40 - 60 †
- 286**  
An **unusual Ethnic bronze figure group**, 11cm high £40 - 60 †
- 287**  
A **heavy cast metal figure**, depicting a man with large hands, 13cm high £20 - 40 †
- 288**  
An **Indian bronze figure**, of a Goddess, 32cm high £40 - 60 †
- 289**  
An **unusual Ethnic bronze fertility figure**, 27cm high £30 - 50 †



Lot 278



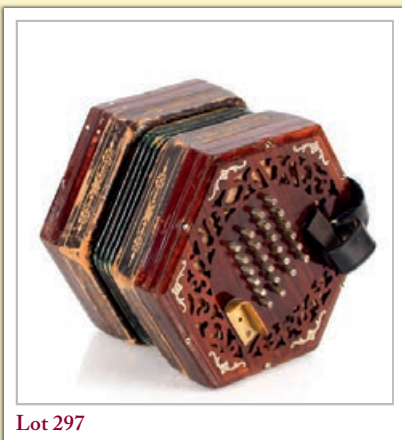
Lot 287



Lot 288



Lot 289



Lot 297

**290**  
A pair of Japanese brass vases, 12cm high  
£30 - 50 †

**291**  
Three unusual carved wooden and bronze mounted Ethnic figures  
£40 - 60 †

**292**  
A small 19th Century humorous embroidery, depicting child musicians, 23.5cm x 26cm  
£40 - 60 †

**293**  
Three late Victorian various sized wooden hat stands  
£30 - 50 †

**294**  
Six early 20th Century mostly leather bound photograph albums, some with portrait contents  
£40 - 60 †

**295**  
A Victorian bronze five branch chandelier  
£150 - 200 †

**296**  
An arrangement of preserved humming birds, set amongst foliage under glass dome, 53cm  
£80 - 120 †

**297**  
A rosewood cased concertina, by Lachenal & Co. London, 24 buttons (one missing), mother of pearl inlaid decoration in leather mounted outer carrying case  
£100 - 200 †

**298**  
A limited edition walnut cased month going and quarter chiming bracket clock, in the manner of Daniel Quare by Elliott of London with Garrards, having brass spandrel dial, steel chapter rings to the subsidiaries, raised on bracket feet with pierced brass handle, 44cm high overall  
£1,000 - 1,500 †

**299**  
A 19th Century Persian silver model of an articulated fish, red coral eyes, 29cm long  
£250 - 350 †

**300**  
A 20th Century bronze figure of a young semi naked reclining female, in the Art Nouveau style, plaque to reverse L'Art Bronze Qualité France, raised on a marble plinth base, 22cm long  
£100 - 150 †

**301**  
An Eastern slate box and cover, with mother of pearl temple decoration; a micro mosaic decorated paperweight; a micro mosaic easel miniature frame; and a shoe shaped pen stand (4) £30 - 50 †

**302**  
A 19th Century circular Papier Mâché box and cover, the lid decorated with an interior scene; a circular horn box and cover; a leather covered trinket box and cover; and a horn and yellow metal snuff box AF (4) £30 - 50 †

**303**  
An 18th Century enamel patch box, of waisted form AF; an enamel heart shaped patch box cover decorated with an American ship; a Servis type porcelain hinged box and cover with floral decoration and a small enamel stand (4) £30 - 50 †

**304**  
A Sino Tibetan gilt bronze seated Buddha, 20cm high  
£100 - 200 †

**305**  
A late 18th / 19th Century bronze Tibetan four armed Deity figure, having traces of gilding, 14.5cm high  
£150 - 200 †

**306**  
A Chinese bamboo and white metal mounted opium pipe, 55cm long  
£20 - 40 †

**307**  
A Ming Dynasty bronzed two handled censer, decorated with lion heads and impressed symbols, calligraphy to the base, 15.5cm high  
£100 - 200 †

**308**  
A large 19th Century copper preserve pan, having brass handles, 43cm dia. overall  
£50 - 80 †

**309**  
An early 20th Century South African gourd, with coloured beaded decoration, 37cm  
£50 - 80 †

**310**  
A WW2 period military protractor in box, by Sutton and Straker Ltd.  
£50 - 80 †

**311**  
A Chinese hardwood mirror box, with gilt and lacquered decoration, 22.5cm wide  
£90 - 120 †

**312**  
A Franz Hermle gilt and porcelain mounted clock garniture, with decorative panels, the clock having eight day movement striking on a bell, 42cm high, flanked by urns 34cm high  
£100 - 150 †

**313**  
A Victorian brass oil lamp, having Corinthian column, opalescent glass shade, 66cm high overall  
£100 - 200 †

**314**  
A 19th Century Rococo style brass desk stand, having profuse foliate scrolled decoration, green glass inkwells, 35cm long  
£40 - 60 †



Lot 298



Lot 315



Lot 316



**315**  
A pair of bronze baluster urns, having garland and ribbon tied decoration, raised on marble plinths, 49cm overall *£100 - 150 †*

**316**  
A Japanese cloisonné vase, by Ando circa. 1900, decorated tree trunk and crane in flight, 37cm high AF *£300 - 400 †*

**317**  
A Chinese ivory Netsuke, in the form of a crouching figure with a large seed pod, bears signature *£40 - 60 †*

**318**  
A large Oriental snuff bottle, with relief decoration, character mark to base; a Malachite snuff bottle with figural decoration; a miniature cloisonné baluster vase with dragon decoration; a miniature Imari bottle vase; and a miniature Satsuma vase (5) *£60 - 80 †*

**319**  
A large late 19th Century gilded bronze figure, of Guan Yin, 59cm high *£500 - 800 †*

**320**  
A Chinese silk embroidered panel, AF, approx. 6' x 8' *£80 - 120 †*

**321**  
A pair of 19th Century brass candlesticks, having rams head and Greek key decoration, hung with faceted glass prism drops, 22cm high *£40 - 60 †*

**322**  
A 19th Century mahogany boxwood strung banjo barometer, by G.Negretti, Liverpool, 93cm *£80 - 120 †*

**323**  
A 19th Century mahogany clock bracket, 54.5cm long, 40cm deep *£40 - 60 †*

**324**  
A mahogany replica country house letter box, of octagonal form surmounted by a turned finial, 47cm high *£250 - 350 †*

**325**  
Two early 19th Century silk work flower pictures, in Eglomise frames *£30 - 50 †*

**326**  
A small quart grain measure; two Victorian wooden measures with handles; a treen funnel; a rustic carved spoon; a carved wooden plaque; and a small rustic elm stool etc (8) *£60 - 80 †*

**327**  
An 18th Century Chinese naturalistically carved wood brush pot, 14cm high *£150 - 250 †*

**328**  
A rare and unusual Confederate States America \$100 bill *£50 - 80 †*

**329**  
A brass cased pocket aneroid barometer *£40 - 60 †*

**330**  
An early 20th Century wrought metal hanging ceiling light *£60 - 80 †*

**331**  
An early 19th Century silk work picture, commemorating Queen Charlotte in an Eglomise frame *£30 - 50 †*

**332**  
A 19th Century circular papier mâché snuff box, the lid painted with a portrait, 9cm dia. *£30 - 50 †*

**333**  
A pair of enamel and gilt opera glasses, having foliate decoration and mother of pearl eye pieces *£30 - 50 †*

**334**  
A pair of bronze dolphin decorated candlesticks, hung with glass prism lustres and raised on marble plinths, 25cm high *£60 - 80 †*

**335**  
An oval Regency style japanned gallery drinks tray, 57cm *£30 - 50 †*

**336**  
A 19th Century tinsel picture, depicting MacBeth, 28cm x 17cm, contained in a maple frame *£120 - 150 †*

**337**  
A 17th Century carved wooden figure of a youth, clutching a sheaf of corn seated on a tree stump, traces of green paint, emblematic of summer, 79cm high *£100 - 150 †*

**338**  
A mahogany bow front miniature chest, of two short and three long graduated drawers, raised on shaped apron and bracket feet, 38cm wide, 25.5cm deep, 37cm high *£350 - 450 †*

**339**  
An 18th Century cow horn, inscribed with heart and arrow, sailing ship and palm tree, initialled and dated 1777, 48cm *£100 - 150 †*

**340**  
A cased violin, by Duke of London with a bow marked Le Blanc; and one other for restoration *£100 - 150 †*

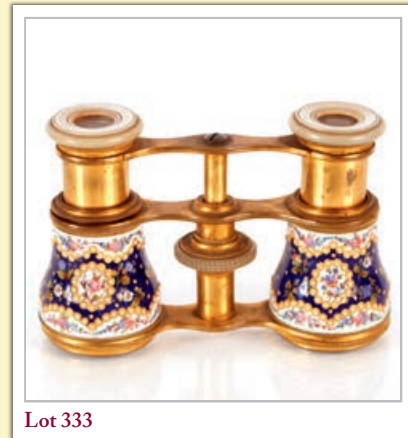
**341**  
An 18th Century Japanese finely carved wooden headrest, 21cm long *£50 - 80 †*



Lot 319



Lot 332



Lot 333



Lot 337



Lot 355

342

A wooden Kava bowl, raised on four legs, Fiji Melanesia, 34cm dia. £50 - 80 †

343

An African wood stool, inlaid with trade beads and copper, supported on three figural legs, 27.5cm high £80 - 120 †

344

A Hezzanith sextant, in fitted oak case £60 - 80 †

345

A sextant, by W Loudolph, in fitted mahogany case, labelled Bremerhaven 1928, brass and silvered scale £100 - 200 †

346

A sextant, in fitted mahogany case by Carey of London No.2091, the case with certificate of examination Kew Observatory, Richmond, Surrey £100 - 200 †

347

A German sextant, by C. Plath, Hamburg No.20834, in fitted polished wood case with certificate £40 - 60 †

348

A sextant, in fitted mahogany case by Lerieux, Paris No.1370 £60 - 100 †

349

An oak cased brass sextant, by A. Harris, West Hartlepool, brass and silvered scale £100 - 200 †

350

A sextant by J.H. Hardy, London, brass and silvered scale in fitted mahogany case £100 - 200 †

351

An Octant, having ebony frame and ivory scale, marked S. F. Harrison to the case £60 - 100 †

352

A sextant, by Felix Martin, Swansea in fitted oak case £100 - 200 †

353

A sextant, by Parnell, London in fitted oak case £100 - 200 †

354

A 19th Century gilt metal and marble mantel clock, decorated with a reclining figure of a classical female scholar, 8 day movement striking on a bell, the base with garland and swag decoration on gilt plinth, 44cm long overall x 35cm high £100 - 200 †

355

A barograph by Negretti & Zambra, in walnut case complete with chart drawer to the base, 37cm £150 - 200 †

356

A 19th Century framed sampler, worked by Ann Petter, March 31st 1834, 25cm x 19cm £40 - 60 †

357

An antique wool work study of a fish, contained in an oak frame, 33cm x 49cm overall £20 - 40 †

358

A piece of Nottingham antique lace, framed and glazed £20 - 30 †

359

An early 19th Century mahogany and box wood strung safe box, with secret compartment, 24.5cm wide, 12cm high, 21cm deep £60 - 80 †

360

An unusual Chinese bronze wine pot, having raised stylised panels, beast head spout, the circular lid attached with chain to the scrolled handle, character mark to base, 17cm high £100 - 150 †

361

A 17th Century carved walnut Saintry figure, 47cm high £200 - 400 †

362

A 17th Century remnant Saintry figure AF, 65cm high £100 - 200 †

363

An early 19th Century sampler, with verse, figures and flowers, worked by Mary Elizabeth Bobby, September 20th, 1832, contained in a figured mahogany frame £60 - 80 †

364

A sextant, by Harris Thomas & Co. Middlesbrough, in fitted mahogany case £100 - 150 †

365

A Victorian Family Bible, brass bound AF £20 - 40 †

366

An Arts & Crafts style leather stick stand, having thistle decoration, 24cm dia. 39cm high £30 - 50 †

367

A Victorian copper coal scuttle; a copper coal scoop with turned wooden handle; and two candle snuffers £30 - 50 †

368

An Admiral Fitzroy barometer / weather station, in oak case, 105cm deep £100 - 150 †

369

An unusual Tramp Art wooden casket, raised on brass claw feet, 34cm £100 - 150 †



Lot 360



Lot 361



Lot 362

- 370**  
A gilt metal twin branch mirrored wall light, with leaf decoration £60 - 80 †
- 371**  
A Grand Tour Pietra Dura desk weight, 10cm x 7cm £40 - 60 †
- 372**  
An early 20th Century gilt bronze inkwell, in the form of a bird's nest in the style of Tiffany, the hinged lid with five chicks being fed by parent birds, raised on entwined branches and leaves, 17cm high overall £250 - 350 †
- 373**  
A pair of brass Chinese baluster vases, with raised entwined dragon decoration, 24cm high £100 - 150 †
- 374**  
A Norwegian polychrome decorated wooden food box, 26cm long £30 - 50 †
- 375**  
A Deer Slot double snuff mull, the hinged unmarked white metal lids inset with Cairngorm type stones, attached snuff spoon, 11cm £100 - 150 †
- 376**  
A wooden Black Forest book slide, 34cm un-extended £20 - 40 †
- 377**  
A W.M.F. style Art Nouveau pewter dish, 32cm overall £20 - 40 †
- 378**  
A mounted North African manuscript, "Page of Prayers" £20 - 40 †
- 379**  
A mounted Persian manuscript, page of poetry by the Sufi Muslim poet Jalal-el-Din £20 - 40 †
- 380**  
A mounted Indian manuscript, page from a miniature Koran £20 - 40 †
- 381**  
A mounted manuscript, page of Indian Love Lyrics £20 - 40 †
- 382**  
A Victorian leather and brass bound family Bible £40 - 60 †
- 383**  
A Staunton chess set, by Jaques of London, complete with baize lined Staunton chessmen box, and mahogany and inlaid folding Jaques & Son London board, height of King 11cm £800 - 1,200 †
- 384**  
A brass pocket sextant, by Negretti & Zambra, London, Ex-War Department, No. 2883, 6.5cm dia. £40 - 60 †
- 385**  
Westminster Collection Ltd. 1840 Penny Black stamp, with certificate and paperwork £100 - 150 †
- 386**  
A table bell, on copper stand with turned ebonised handle, 20cm high £20 - 40 †
- 387**  
An Oriental cast metal figure, of a Deity carrying a staff, 38cm high £100 - 200 †
- 388**  
A Chinese bronze censer, having mask decoration and raised on scroll feet, seal mark to base, 8.5cm dia. 7cm high £80 - 120 †
- 389**  
A Chinese soapstone dragon seal, 13cm high £20 - 30 †
- 390**  
An unusual Japanese iron pot, with hatched decoration to the top band, leaf decorated body flanked by loop handles, 14cm high, 13cm dia. overall £20 - 30 †
- 391**  
A pair of 19th Century brass and cast iron hearth ends, of urn form, 24cm long, 29cm high £40 - 60 †
- 392**  
Two Chinese scroll pictures £20 - 30 †
- 393**  
A Chinese circular embroidered panel, depicting pagodas and garden scenes, 16.5cm dia. and another similar depicting butterflies, unframed, 21cm x 42cm £20 - 30 †
- 394**  
A pair of Chinese portrait paintings, in gilt faux bamboo frames, 50cm x 35cm overall £60 - 80 †
- 395**  
A 19th Century mahogany and boxwood strung banjo shaped barometer, having silvered dial and central convex mirror, Braintree maker, 93cm £40 - 60 †
- 396**  
A 19th Century green leather shagreen effect cased etui, with yellow metal monogram, contents including scissors, a thimble, a bobbin case, needle etc; and a miniature silver comb, nail file and pair of steel scissors £100 - 150 †



Lot 372



Lot 383



Lot 386



Lot 387



Lot 408

397

A 19th Century French marble and gilt metal mounted mantel clock, of large proportion, the architectural style case with mask and cherub decoration, circular Roman numeral dial with visual escapement, 49cm high, 50cm wide

£50 - 80 †

398

A 19th Century French marble cased mantel clock, of architectural form, having Malachite inserts, the circular white enamel Roman numeral dial with visual escapement, 8 day movement striking on a bell, 38.5cm high, 41.5cm wide

£50 - 80 †

399

A Chinese cloisonné dish, decorated with fish and a border of floral pelmets, 30.5cm dia. £60 - 100 †



Lot 409

## Paintings

400

Attributed to G.B. Campion 1796-1870, study of Eton in Moonlight with figure punting in the foreground, unsigned watercolour, 31cm x 52cm; and John Doyle, pencil signed print of Eton from Romneys Lock, plate, 33cm x 43cm (2)

£80 - 120 †

401

A coloured aquatint, "Pigeon Match", after H Alken; and another of a golfing scene "To the Society of Coffers at Blackheath" (2) £30 - 50 †

402

A Relievo map of "Palestine or the Holy Land, illustrating the Sacred Scriptures and the Researches of Modern Travellers", contained in a birds eye maple frame, 55cm x 45cm £60 - 80 †

403

Seven various Persian miniature paintings on plastic or mica, depicting various scenes including a camel ride, polo, hunting, all contained in inlaid frames £100 - 200 †

404

A leather cased pencil drawing of a classical maiden; and an ornate Edwardian gilt and diamanté decorated easel photo frame, containing picture of a lady in mourning dress (2) £40 - 60 †

405

Three various silhouette miniatures, in ebonised and brass mounted frames; and an empty miniature frame (4) £40 - 60 †

406

After H. Davy, Globe Street, Ipswich, fourteen prints of noted Suffolk Houses £150 - 250 †

407

Y Gianni, study of the Greek temples at Paestum, signed watercolour, 12cm x 33cm; and a similar period study of Valetta Malta, indistinctly signed watercolour (2) £60 - 100 †

408

Henri Schafer 1854-1915, a pair of French town scenes depicting figures going about their daily business with Church and Cathedrals in the background, monogrammed oils on canvas, dated 1890, 25cm x 20cm in gilt pierced frames £300 - 500 †

409

Continental school, portrait study of a noble woman indistinctly signed, oil on canvas, 65cm x 45cm £100 - 200 †

410

Max Schneider (Karlsbad), still life study depicting charger, urn, glass and fruit on a table top with red curtain in the background, signed oil on canvas, 66cm x 91cm in a decorative carved gilt frame £300 - 400 †

411

19th Continental school, study of street urchins playing dice, unsigned oil on canvas, 78cm x 63cm £400 - 600 †

412

Gertrude Jamieson Barnes 1865-1939, still life of fruit on a mossy bank, signed oil on board, 31cm x 24cm £120 - 180 †

413

D Farnsley 1887, farmyard scene with a girl and a dog seated on the grass, oil on canvas, signed and dated, 26cm x 36cm £80 - 120 †

414

French school, 19th Century, still life study, summer flowers in an urn, unsigned oil on canvas, 60cm x 42cm £100 - 150 †

415

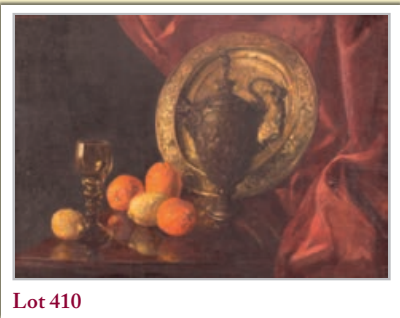
A silhouette by John Raw, of his wife Sarah, inscribed verso in decorative gilt frame £40 - 60 †

416

20th Century continental school, study of a market town street scene with mountains to the background, unsigned oil on canvas, 57cm x 76cm £100 - 200 †

417

English school, 19th Century, portrait study of a pretty girl with long hair holding a posy, unsigned oil on panel, 30cm x 23cm £120 - 180 †



Lot 410



Lot 411

- 418**  
**J. Wallace**, 19th Century, a marshland scene with fox stalking ducks on a pond, signed oil on canvas, 22cm x 31cm £60 - 80 †
- 419**  
**English school**, mid 19th Century "Pair of Hanging Grouse", oil on board, 32cm x 28cm in original gilt frame £120 - 140 †
- 420**  
**John W. Eyres**, 19th Century, wooded landscape with children on a path by a pond, signed oil on canvas, 40cm x 60cm £80 - 120 †
- 421**  
**W.L. Penk 1910**, still life of fruit and flowers on a table, signed and dated oil on canvas, 30cm x 60cm, contained in an original Watts frame £120 - 180 †
- 422**  
**After John Frederick Herring**, 19th Century oil on board of a farmyard scene with horses and chickens, in circular ornate gilt frame, dia. 38cm £250 - 350 †
- 423**  
**English school**, early 19th Century portrait study of a gentleman wearing a white cravat and standing by a window, oval oil on canvas laid on board, 36cm x 28cm £140 - 180 †
- 424**  
**Amy Grampietri**, pair of late 19th Century family portraits of a man and woman, signed pastel and charcoal, oval, dated 1890, 65cm x 45cm in extremes, framed in decorative gilt frames £80 - 120 †
- 425**  
**Marjorie Cox**, canine study of C. H. Jenny of Aldercarr, Elphin and Gold crest, signed watercolour, dated 1967, 48cm x 50cm; another by the same artist, C. H. Jenny of Aldercarr dated 1972; and another Poppin of Aldercarr, dated 1972; and an associated plated tankard (4) £100 - 200 †
- 426**  
**F.H. Elliott**, 19th Century oil on canvas, study of a lion drinking at a waterhole, signed, 47cm x 60cm, Christies stencil verso £100 - 150 †
- 427**  
**After Richard Pattern and James Fittler**, coloured engraving depicting "The Representation Of The Brave And Gallant Defence of Gibraltar, Against The United Force of Spain and France on 14th September 1782", plate 49.5 x 65cm £200 - 400 †
- 428**  
**English school**, circa. mid-20th Century, "Sail Against Steam", oil on canvas, 40cm x 50cm £80 - 120 †
- 429**  
**Humbert**, study of cattle and goats watering in a rural landscape, signed oil on panel, 14cm x 21cm contained in a decorative gilt frame £200 - 300 †
- 430**  
**A 19th Century coloured print**, entitled "Mort du Prince Joseph Poniatowski" after Vernet, plate 56.5cm x 56.5cm, contained in ornate gilt frame £200 - 300 †
- 431**  
**F.E. Jamieson A.K.A. Graham Williams**, flourished 1910-1940, Highland Loch scene, with mist shrouded mountains and crofters cottage, signed oil on canvas, 50cm x 76cm £200 - 300 †
- 432**  
**A Bartolozzi style engraving**, depicting young family with bird; a similar portrait; and three others (5) £40 - 60 †
- 433**  
**Three Oriental printed needlework studies**, depicting river scenes £20 - 40 †
- 434**  
**Attributed to Samuel Colkett**, river landscape with figures and cows, indistinctly signed oil on canvas, 35cm x 45cm £80 - 120 †
- 435**  
**Chloe Preston**, study of puppies, signed mixed media, 26cm x 42cm £40 - 60 †
- 436**  
**Cheverton White 1830-1905**, a pair of studies depicting English Cottages with figures outside, signed watercolours, a pair, 26cm x 37cm £40 - 80 †
- 437**  
**19th Century English school**, study of a game larder, oil on canvas, 61cm x 47cm £150 - 250 †
- 438**  
**19th Century continental school**, still life study with bowl, book and jug, oil on canvas, 41cm x 51cm, unframed £40 - 60 †
- 439**  
**J. Box**, study of a prize bull and attendant farmer, 20cm x 25cm £120 - 180 †
- 440**  
**James Hardy**, 20th Century extensive naval sea battle, oil on canvas laid on board, 49cm x 75cm £250 - 350 †



Lot 414



Lot 417



Lot 428



Lot 440



Lot 441

**441**  
**Emilio Greco**, study of "Summer Blooms", oil on wood board, unframed 91cm x 70cm £150 - 250 †

**442**  
**Ernest Walbourn**, "A Hertfordshire Lane", oil on board, label verso, 44cm x 60cm £40 - 60 †

**443**  
**James Peel**, river landscape with figures on a path, oil on canvas, 23.5cm x 36cm £80 - 120 †

**444**  
**A pair of cut paper pictures**, depicting hunting scenes contained in maple frames £40 - 60 †

**445**  
**A 19th Century engraving of a woodland scene**, with various nesting birds, contained in maple frame £20 - 40 †

**446**  
**A 19th Century engraving**, of Jean Baptiste Isabey (portrait painter after Mecon, circa. 1817 £30 - 50 †

**447**  
**Brigid Wright 1939-2000**, oil and pencil study on heavy card, "Shropshire Border 1967" £85 - 120 †

**448**  
**An antique coloured map**, by Thomas Durham Isle of Man; a John Speed map of Leicestershire; another of Monmouth; and a view of London and the Thames (4) £100 - 150 †

**449**  
**Late 19th Century school**, pastel portrait study of a Spanish lady, unsigned 30cm x 22 cm £10 - 20 †

**450**  
**After Angelica Kaufmann**, "Poetry" in gilt frame; another similar; various engravings after Joshua Reynolds etc. £40 - 60 †

**451**  
**A 19th Century print of His Grace Charles Spencer Duke of Malborough**, in gilt frame; another after Cosway of the Prince Regent, and two 19th Century portrait prints of young French beauties £30 - 50 †

**452**  
**After Bartolozzi**, allegorical study, watercolour, 31cm x 24cm £40 - 60 †

**453**  
**Frank Moss Bennett 1874-1952**, "Discussing The Hunt", signed oil on board dated 1927, 37cm x 51cm contained in ornate gilt frame £1,500 - 2,000 †

**454**  
**G Gnauf**, study of a naked girl beside a pond, large black crow in attendance, signed oil on canvas, 74cm x 49cm contained in a leaf carved painted frame £200 - 300 †

**455**  
**Alfour**, "The Harem", signed oil on canvas, 52cm x 121cm £200 - 400 †

**456**  
**19th Century school**, portrait study of a gentleman with book in hand, unsigned oil on canvas, 76cm x 84cm £200 - 400 †

**457**  
**Attributed to Sir David Wilkie R.A.**, study of figures entering a church door, unsigned oil on board, 22cm x 17cm, in ornate gilt frame £400 - 600 †

**458**  
**Whistler**, etching of a busy harbour scene, plate 17.5cm x 24cm £200 - 300 †

**459**  
**E. Moore**, study of riverside cottages, signed pencil sketch dated 18th March 1902, 21cm x 28cm £40 - 60 †

**460**  
**19th Century school**, portrait study of a family group, unsigned pastel and crayon, contained in decorative gilt frame £60 - 100 †

**461**  
**19th Century school**, study of a dramatic sea rescue with ship being towed into harbour, indistinctly signed oil on canvas, 48cm x 79cm. Cover illustration. £600 - 800 †

**462**  
**Five humorous Victorian prints**, from the Tutor's Assistant Series, etc. £20 - 40 †

**463**  
**A miniature watercolour study**, of flowers in an ebonised and brass mounted frame; and another miniature portrait of a child (2) £30 - 50 †

**464**  
**20th Century school**, portrait study of a young girl, unsigned oil, 26cm x 18cm £40 - 60 †

**465**  
**An oval reverse silhouette on glass**, inscribed verso by H. Gibbs Beds Militia, in ebonised and brass mounted frame £40 - 60 †

**466**  
**A 19th Century silhouette miniature**, inscribed verso H. Bird Esq. and various other inscriptions contained in ebonised and brass acorn mounted frame £40 - 60 †



Lot 449



Lot 453



Lot 456

**467**  
A 19th Century miniature silhouette portrait, of a lady with lace bonnet £20 - 30 †

**468**  
A 19th Century silhouette miniature, head and shoulders profile of a gentleman in ebonised and brass acorn mounted frame £20 - 30 †

**469**  
Four Chinese watercolours, on pith paper £100 - 200 †

**470**  
An Edwardian study of a young girl, amongst flowers with ribbon in her hair, indistinctly pencil signed "Webb" and dated 1905, contained within a gilt cartouche shaped frame £30 - 50 †

**471**  
A. G. B. S. 1894, pair of Middle Eastern battle scenes, one with pyramids in the far ground, initialled watercolours, 29.5cm x 44cm £60 - 100 †

**472**  
Vaux, early 20th Century study of a seated lady with bird in a cage, signed oil on canvas, 72cm x 59cm £100 - 200 †

**473**  
Early 20th Century school, portrait study of a lady wearing fur coat and hat, unsigned oil on canvas, 66cm x 45cm £100 - 200 †

**474**  
Late 19th / early 20th Century school, portrait study of a gentleman, 56cm x 40cm, unsigned oil on canvas £100 - 200 †

**475**  
19th Century school, study of an Elizabethan lady wearing a dress adorned with pearls and flowers in her hair, unsigned oil on canvas, 71cm x 58cm contained in a leaf carved oak frame, Canadian Gallery label verso for McKenzie & Co. in need of restoration £100 - 200 †

**476**  
19th Century school, portrait study of an elderly gentleman framed as an oval, unsigned oil on canvas, 58cm x 44cm in extremes, in ornate pierced gilt frame £100 - 200 †

**477**  
19th Century school, portrait study of Rembrandt, unsigned oil on canvas, 61cm x 50cm £100 - 200 †

**478**  
A pair of 19th Century coloured prints, one depicting a battle scene at Waterloo with Napoleon centre ground, the other of Scottish Regiment departing a town, in ornate gilt frames, 40cm x 58cm £60 - 100 †

**479**  
J. W. McCleay, rural study with figures by a river, mountains and castle in the far ground, signed oil on canvas, 40cm x 60cm (some paint flaking) £100 - 200 †

**480**  
19th Century school, half length portrait study of a young girl with ringlets in her hair wearing a red cloak, unsigned oil on canvas, 62cm x 49cm in gilt shell decorated frame £200 - 400 †

**481**  
A quantity of various unframed prints, watercolours and drawings £50 - 80 †

**482**  
An 18th Century print in gilded frame £20 - 40 †

**483**  
Three Chinese scroll paintings; and a panoramic photograph of Tsingraa (4) £100 - 150 †

**484**  
A Chinese watercolour abstract, depicting rooftops and figures, seal signature to the bottom left, 47cm x 39cm £60 - 100 †

**485**  
19th Century school, coloured aquatint study of Fred Archer aboard "Iroquois", winner of the Epson Derby, St Ledger and Prince of Wales Stakes, 1881, 50cm x 71cm in gilt frame £40 - 60 †

**485A ✓**  
Theronda Hoffman, "Just Aldeburgh" signed oil, 47cm x 57cm £200 - 400 †

**486**  
After John Varley, study of a rural lake scene with cattle watering, figure in the fore ground, unsigned watercolour, 16cm x 21cm £40 - 60 †

**487**  
P. Constable 1981, study of a dragonfly amongst foliage, signed watercolour, 37.5cm x 27cm £20 - 40 †

**488**  
19th Century school, study of figures in a horse carriage, large country house in the background, unsigned watercolour, 37cm x 57cm £60 - 80 †

**488A**  
T.C. Dibdin 1861, study of farm workers, horses and cattle on a path in front of a house, signed watercolour, 53cm x 73cm £50 - 80 †



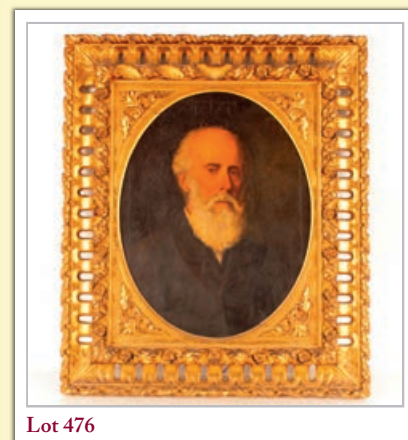
Lot 457



Lot 461



Lot 472



Lot 476

Lots marked ✓ please refer to Droit de Suite royalty charges in Terms and Conditions

† Each lot is subject to a Buyer's Premium of 18% + VAT (21.6%)

## Furniture and Rugs



Lot 509

489

A **Dosnealti carpet**, South West Turkey, the red field with overall column of hooked and stepped gulfs between angular vines, blue border, approx. 410cm x 310cm £400 - 600 †

490

A **Georgian mahogany and satin wood cross banded bow fronted chest**, fitted brushing slide and three drawers, raised on a shaped apron, 92cm wide £100 - 200 †

491

A **19th Century oak and mahogany cross banded chest**, of two short and three long drawers, raised on bracket feet, 96cm wide £100 - 150 †

492

A **George III mahogany and boxwood strung bureau**, the fall front opening to reveal a fitted interior of drawers and pigeon holes around a central cupboard, four long graduated drawers below, raised on bracket feet, 100cm wide £100 - 200 †

493

A **19th Century oak and mahogany cross banded chest**, of two short and three long drawers. 113cm wide £100 - 150 †

494

An **18th Century Italian walnut and inlaid commode**, of serpentine shape, fitted two short and two long drawers raised on cabriole supports, 112cm wide £800 - 1,000 †

495

An **18th Century walnut chest**, fitted four long graduated drawers and raised on bracket feet £200 - 400 †

496

A **Sheraton design mahogany satin wood and rosewood inlaid bow fronted sideboard**, the top having central conch shell paterae within banding, two central drawers flanked by deep drawer and cupboard, raised on square tapering supports and spade feet, 150cm wide, 62cm deep in extremes, 93cm high £200 - 300 †

497

A **19th Century mahogany and satinwood cross banded swing toilet mirror**, fitted two drawers to the box base, raised on bracket supports, 45.5cm wide £40 - 60 †

498

A **19th Century mahogany bow front chest**, fitted two short and three long drawers, raised on a shaped apron and bracket feet, 106cm wide £80 - 120 †



Lot 515



Lot 516



Lot 517

499

A **George III mahogany and rosewood cross banded bureau**, of large proportions, the fall front opening to reveal an interior arrangement of drawers and pigeon holes around a central cupboard, four long graduated drawers below raised on bracket feet, 107cm wide, 58cm deep, 123cm high £200 - 400 †

500

A **19th Century mahogany swing toilet mirror**, the rectangular plate raised on reeded supports, fitted two drawers to the box base, terminating in bracket feet, 50cm wide £40 - 60 †

501

A **19th Century oak chest**, fitted four long drawers within canted reeded angles, 96cm wide £100 - 200 †

502

A **Georgian mahogany bureau**, the fall front opening to reveal a stepped interior arrangement of drawers and pigeon holes around a central cupboard, four long graduated drawers below, raised on bracket feet, 122cm wide £50 - 80 †

503

A **19th Century mahogany two drawer serving table**, raised on square section supports, 114cm wide, 67cm deep, 79cm high £150 - 200 †

504

A **19th Century mahogany bureau**, the fall front opening to reveal a fitted interior; four graduated drawers below raised on bracket feet, 90cm wide £50 - 80 †

505

An **early 20th Century mahogany seven drawer music cabinet**, raised on cabriole supports, 53cm wide, 97cm high; and a quantity of sheet music £50 - 80 †

506

A **19th Century oak corner cupboard**, the interior shelves enclosed by a fielded panel door £40 - 60 †

507

A **19th Century walnut armoire**, surmounted by a stepped pediment, shelves to the interior enclosed by a pair of quarter panel doors with brass hinges and escutcheons, raised on shape apron and cabriole supports, 140cm wide in extremes £100 - 200 †

508

An **oak Globe Wernicke five section bookcase**, fitted single drawer to base, 88cm wide, 177cm high £200 - 300 †

509

An **antique blue painted blanket box**, with iron lock plate and carved foliate frieze, raised on square tapering front supports, 85cm wide £120 - 180 †



510

An 18th Century walnut tall boy, the upper section fitted three short drawers above three long drawers, the further long drawers to the lower section, raised on ogee bracket supports, 106cm wide, 175cm high, 58cm deep £400 - 600 †

511

An 18th Century oak dresser, the shelved and boarded back fitted with cup hooks, three drawers below, raised on square section supports, united by a pot board, 180cm wide £400 - 600 †

512

A 19th Century French walnut break front wardrobe, the pediment surmounted by gilded cresting, central interior shelves enclosed by a mirrored panel; door, flanked by hanging compartments and raised on tapering supports, 200cm wide, 250cm high £100 - 200 †

513

A 19th Century mahogany folding clothes airer £30 - 50 †

514

A 19th Century mahogany tapestry hanger, 83cm wide x 139cm high £30 - 50 †

515

An 18th Century oak long case clock, the hood surmounted by a stepped pediment and gilt finials enclosing brass dial inscribed Joshua Wilson, London, supporting an 8 day movement striking on a bell, full length trunk panel door and box base, 225cm high £200 - 400 †

516

An antique oak metal bound plate chest, having brass plaque "H Price Esq.", 66cm wide, 47cm deep, 50cm high £60 - 80 †

517

A 19th Century mahogany sarcophagus shaped wine cooler, of small size, having metal lined interior raised on bun feet, 48cm wide, 39cm deep, 34cm high £200 - 400 †

518

An 18th Century oak long case clock, by George Chambers, Gateshead, the arched brass spandrel dial with foliate scroll decoration, date aperture and seconds subsidiary, eight day movement striking on a bell, full length trunk panel door raised on a box base, 200cm £200 - 300 †

519

A 19th Century mahogany chiffonier, having raised shelved back and cupboards below, 109cm wide £60 - 80 †

520

A large 19th Century gilt picture frame, 163cm x 224cm overall £100 - 200 †

521

A 19th Century gilt framed wall mirror, the oval bevelled plate having surmount and a central urn, flanked by tied ribbons and garlands, 110cm x 55cm overall £100 - 200 †

522

A late Victorian ebonised and gilt over mantel mirror, 145cm x 112cm overall £60 - 80 †

523

A large 18th Century style cream and gilt decorated wall mirror, the frieze with gilt leaf decoration flanked by half capital reeded columns, 1678cm high x 140cm wide £200 - 300 †

524

A pair of 18th Century style pier mirrors, the pediments with break front outline, gilt urn and ball decoration, flanked by leaf tied reeded columns, 156cm x 78cm £200 - 400 †

525

An Anglo Indian coromandel chest, having compartment interior, brass mounts flanked by iron carrying handles, 53cm x 35cm £300 - 400 †

526

A carved oak long case clock, by J Baddely of Albrighton, the arched brass spandrel dial supporting an 8 day movement striking on a bell, the foliate decorated case with full length trunk panel door within fluted columns raised on a box base and bracket feet, 200cm high £300 - 400 †

527

A 19th Century mahogany long case clock, by Andrews, New Buckenham, painted dial decorated hunting scenes, foliage and cottages, 8 day movement, second subsidiary dial, the arched hood surmounted by brass orb finials £200 - 300 †

528

A 19th Century oak long cased clock, having painted dial supporting an 8 day movement striking on a bell, the hood surmounted by a scroll arch pediment with orb finial, 192cm £100 - 200 †

529

William Vise of Wisbech, oak long case clock, the square brass spandrel dial with steel chapter ring, supporting an eight day movement striking on a bell, 188cm £200 - 300 †

530

An Edwardian inlaid mahogany over mantel mirror, arched scroll pediment surmounted by an urn, shelf above bevelled plated raised on turned spindle supports, 180cm wide, 100cm high £40 - 60 †

531

An early 20th Century golden oak library cabinet, enclosed by sliding panelled doors and raised on a platform plinth, 142cm wide, 34cm deep, 107cm high £100 - 150 †



Lot 525



Lot 526



Lot 527



Lot 529



Lot 535

**532**  
A 19th Century marble column, the hexagonal top raised on three cluster columns, 116cm high  
£100 - 150 †

**533**  
An oak folding Savonarola type chair, decorated lion mask terminals  
£80 - 120 †

**534**  
A set of eight William IV style mahogany bar back dining chairs, having carved foliate motifs to the central rails, upholstered stuff over seats raised on turned tapering supports and peg feet (six standard, two elbows)  
£200 - 300 †

**535**  
A pair of Qing Dynasty elm elbow chairs, of horseshoe shape, having brass mounts raised on rounded supports, united by stretchers  
£200 - 400 †

**536**  
An early 20th Century leather upholstered deep seated easy chair, raised on turned front supports terminating in castors  
£100 - 150 †

**537**  
A set of six 19th Century rosewood dining chairs, having carved bar backs, upholstered stuff over seats raised on sabre front supports  
£100 - 150 †

**538**  
A 19th Century gilt stool, the needlepoint upholstered seat raised on turned tapering supports, terminating in brass caps and castors, 117cm long, 48cm deep  
£100 - 200 †

**539**  
An early 19th Century mahogany framed scroll end settee, the curved back with foliate carved cresting, reeded scroll arms, raised on scrolled claw supports terminating in castors, 226cm  
£300 - 400 †

**540**  
A Victorian inlaid walnut oval occasional table, raised on turned supports united by cross stretchers, terminating in claw feet with glass ball terminals, 75cm  
£60 - 80 †

**541**  
A mahogany tripod table, the circular dished top raised on a turned column and tripod base, 32cm dia.  
£40 - 60 †

**542**  
A late 19th Century oak hall seat, having brass mounts and galleried back, raised on sabre front supports united by stretchers, 56cm wide  
£100 - 200 †

**543**  
An oak plant stand, the circular dish top raised on four turned columns and plinth base terminating in ogee bracket supports, 175cm high, 35cm dia.  
£150 - 250 †

**544**  
An Edwardian mahogany and satin wood strung folding cake stand, having three tiers inlaid with a central patera  
£30 - 50 †

**545**  
A 19th Century mahogany and rosewood cross banded breakfast table, having gadrooned border raised on tapering column and quadruple splay, terminating in brass claw caps and castors, 87cm x 130cm  
£100 - 200 †

**546**  
A Georgian mahogany circular occasional table, the dished snap top raised on turned baluster column and tripod base, 60cm dia.  
£60 - 100 †

**547**  
An early 20th Century mahogany sewing table, the lifting lid enclosing a silk lined interior fitted with a single drawer and raised on slender out swept supports, 37cm wide, 63cm high  
£20 - 40 †

**548**  
A Victorian rosewood pole screen, the embroidered panel decorated with a parrot amongst foliage, raised on a turned column and tripod scroll base, 167cm high  
£100 - 150 †

**549**  
A Biedermeier type scroll end sofa, upholstered in Regency stripe and raised on shaped supports, 217cm long  
£100 - 200 †

**550**  
A 19th Century mahogany framed wing back armchair, in the Chippendale style, raised on square section front supports with blind fret decoration and united by a stretcher  
£100 - 150 †

**551**  
A pair of burr ash cross banded lamp tables, fitted single drawers raised on turned tapering supports, 63cm wide, 49cm deep; 75cm high  
£500 - 800 †

**552**  
An Eastern carved low occasional table, with bobbin turned frieze, and square section supports  
£40 - 60 †

**553**  
A walnut boxwood and ebony strung D end hall table, fitted two drawers and raised on turned tapering supports, 120cm wide  
£300 - 400 †



Lot 542



Lot 550

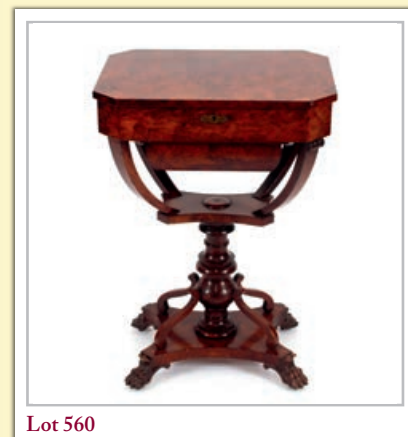


Lot 555

- 554**  
A Regency mahogany supper table, the rectangular top raised on a turned baluster column and quadruple reeded splay terminating in brass caps and castors, 152cm x 90cm £100 - 200 †
- 555**  
A Victorian walnut, boxwood and ebony strung sewing table, the lifting top opening to reveal a fitted interior, silks well below, raised on turned fluted supports and triform base, terminating in scrolled feet, 49cm £60 - 100 †
- 556**  
A 19th Century mahogany and boxwood strung wine cellarette, of sarcophagus form, six bottle interior flanked by brass carrying handles, raised on square tapering supports, 35.5cm wide, 71cm high, 25cm deep £100 - 200 †
- 557**  
A mahogany Chippendale style side table, the shaped top having carved frieze and raised on cluster column supports and stretchers, 90cm wide, 60cm deep, 72cm high £200 - 300 †
- 558**  
A pair of Victorian circular beaded footstools £20 - 40 †
- 559**  
A 19th Century mahogany rosewood and satinwood cross banded oval occasional table, with hinged lifting top, inlaid profusely with flowers, raised on shaped out swept supports united by an under tier, 52cm £100 - 200 †
- 560**  
A 19th Century mahogany work table, the hinged top lifting to reveal partitioned interior, raised on shaped supports, quatrefoil platform and turned column terminating in claw feet, 52cm wide, 41cm deep, 74cm high £100 - 200 †
- 561**  
Three Victorian walnut Gillows dining chairs, having oval backs on scrolled supports, serpentine fronted seats raised on turned tapering fluted front supports and out swept back supports, each chair stamped "Gillows 691" £100 - 150 †
- 562**  
A Victorian circular rosewood snap top supper table, raised on a turned fluted baluster column and triform base, terminating in bun feet, 121cm £100 - 200 †
- 563**  
A 19th Century mahogany drop leaf supper table, raised on square section supports, 96cm £40 - 60 †
- 564**  
An antique mahogany child's rocking / commode chair £70 - 100 †
- 565**  
A Regency style mahogany window seat, having scroll ends raised on turned tapering supports, terminating in peg feet, 113cm long £200 - 300 †
- 566**  
An early 19th Century mahogany and satin wood strung D shaped fold over tea table, raised on square tapering supports, 90cm wide £40 - 60 †
- 567**  
A 19th Century satin wood inlaid occasional table, fitted with a single drawer, raised on tapering supports, 58cm wide £40 - 60 †
- 568**  
A Victorian walnut and inlaid Davenport, fitted open shelves below and raised on turned supports, 54cm wide £60 - 80 †
- 569**  
An early 20th Century light oak writing table, fitted two drawers with angular brass handles, raised on square section tapering supports terminating in spade feet £200 - 300 †
- 570**  
A Victorian walnut two tier whatnot, 55cm wide, 57cm high £20 - 40 †
- 571**  
A Victorian oak Davenport desk, the gallery top and leather inset sloping lid opening to reveal a fitted interior, secret side door revealing fitted drawers, raised on barley twist columns, platform plinth terminating in bun feet, 58cm wide, 59cm deep, 88cm high £450 - 550 †
- 572**  
A small Victorian inlaid walnut whatnot, raised on turned columns and fitted with a single drawer to base, 54cm wide £40 - 60 †
- 573**  
An 18th Century oak low boy, fitted three drawers above a shaped frieze raised on square chamfered supports, 85cm wide £120 - 180 †
- 574**  
An antique oak spice cabinet, the cross banded fielded panel door opening to reveal an interior arrangement of seven drawers and pigeon holes, long drawer to base, 52cm wide, 68cm high £100 - 200 †



Lot 556



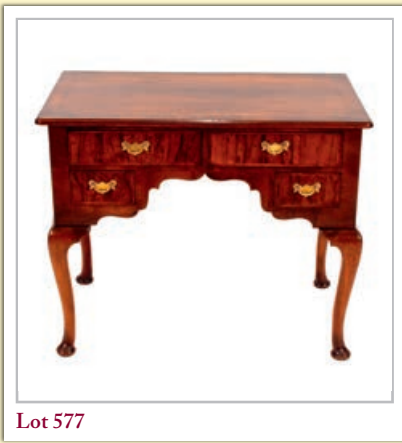
Lot 560



Lot 571



Lot 573



Lot 577

575

An 18th Century mahogany side table, fitted with single drawer and raised on square chamfered legs, 76cm wide £100 - 150 †

576

A 19th Century pine kneehole desk, with central drawer flanked by eight short drawers, raised on turned supports, 86cm wide, 49cm deep, 78cm high £60 - 100 †

577

An antique walnut herringbone and cross banded low boy, fitted two short and two long drawers, raised on cabriole supports terminating in pad feet, 92cm wide, 50cm deep, 77cm high £350 - 450 †



Lot 580

578

A pair of 19th Century carved wooden cherub wall brackets, 57cm £100 - 150 †

579

An antique oak and elm Bible box, having carved frieze initialled A.W., square iron lock plate raised on square section supports, 64cm wide, 73cm high £100 - 150 †

580

A Victorian burr walnut card table, with fold over swivel top, raised on turned columns terminating in scrolled feet and castors £60 - 100 †



Lot 587

581

A mahogany shield shape swing toilet mirror, 60cm high, 40cm wide £20 - 40 †

582

An 18th Century oak gate leg tea table, having rounded drop leaves, end drawer, raised on turned baluster tapered supports terminating in Braganza type feet, 90cm £140 - 180 †

583

An Edwardian mahogany two drawer writing table, raised on chamfered supports, 58cm wide £40 - 60 †

584

A Georgian walnut and cross banded low boy, fitted three drawers raised on square section supports terminating in pad feet, 70cm wide, 49cm deep £200 - 300 †

585

A 19th Century mahogany swing toilet mirror, the rectangular plate raised on turned columns above a three drawer bow fronted box base, 51cm wide £30 - 50 †



Lot 599

586

A 19th Century chinoiserie decorated bow front corner cupboard, having figural decoration, 56cm wide, 93cm high overall £180 - 220 †

587

A Victorian ebonised and walnut cross banded Davenport, having stationery compartment, fitted interior, four side drawers and opposing mock drawers, raised on shaped platform supports terminating in turned feet and castors, 54cm wide £100 - 200 †

588

A mahogany bow fronted chest, of three drawers raised on bracket feet, 79cm £50 - 80 †

589

An 18th Century oak coffer, of small proportions with iron hasp hinges and central lock plate, raised on flat end supports, 84cm wide £100 - 200 †

590

An Edwardian mahogany card table, with fold over rectangular top, raised on square section supports, with beaded edges, 73cm x 84cm £40 - 60 †

591

A Georgian mahogany sofa table, fitted two opposing drawers and raised on shaped end supports united by a stretcher; 94cm wide £100 - 200 †

592

A Victorian mahogany drop leaf supper table, fitted single end drawer raised on turned tapering supports terminating in brass castors £50 - 80 †

593

An 18th Century style walnut and chevron cross banded side table, fitted single drawer on tuned baluster supports united by a wavy cross stretcher, 76cm wide, 39cm deep, 71cm high £60 - 80 †

594

A 19th Century oak and inlaid stretcher table, fitted two short drawers having horn handles and mother of pearl decoration (in need of attention) 79cm x 40cm £300 - 400 †

595

A 19th Century mahogany table, the circular dish top raised on baluster turned column and tripod base, 50cm dia. £60 - 100 †

596

A 19th Century mahogany swing toilet mirror, the rectangular plate raised on turned columns and two drawer box base, terminating in bun feet, 46cm wide, 47cm high £30 - 50 †

597

An oak refectory dining table, raised on turned baluster supports, united by stretchers, 256cm long, 70cm deep £200 - 400 †

598

An unusual Georgian mahogany and ebony strung writing table, with rise and fall centre section, fitted drawers and pigeon holes, raised on square tapering supports, 100cm wide, 56cm deep £100 - 200 †

599

A circular tilt top occasional table, raised on turned column and tripod base, the top 75cm dia. £40 - 60 †

600

A 19th Century oak chest, fitted two short and three long drawers flanked by reeded pilasters and raised on bracket feet, 104cm wide £100 - 150 †

601

A 19th Century mahogany chest, fitted two short and three long drawers, 101cm wide £60 - 100 †

602

A large 19th Century wall mirror, in figured mahogany frame, 83cm x 86cm overall £100 - 150 †

603

A pair of oak single half tester beds, with panelled head boards and shaped canopies, drapes and mattresses, 94cm wide, 204cm long £200 - 400 †

604

An Edwardian Art Nouveau inlaid mahogany child's chair, with pierced splat back raised on square tapering supports £30 - 50 †

605

An Arts & Crafts style golden oak open fronted bookcase, with pegged ends, 64cm wide £100 - 150 †

606

A pair of burr oak and cross banded bedside chests, fitted brushing slide and four graduated drawers, raised on platform plinths, 39.5cm wide, 37.5cm deep, 73cm high £600 - 800 †

607

A Victorian mahogany swing toilet mirror, raised on spiral turned columns and serpentine platform plinth; and another similar (2) £40 - 60 †

608

An antique elm trunk, 73cm wide £60 - 100 †

609

A burr Madrona wood and cross banded side table, fitted four drawers and raised on chamfered supports, 131cm wide £350 - 500 †

610

A cherrywood window seat, in the Regency style, raised on turned tapering reeded supports, 104cm wide £120 - 180 †

611

A set of mahogany four tread spiral library steps, having tooled leather inserts, turned tapering hand rail with brass finial, 169cm high, 50cm wide overall £200 - 300 †

612

A carved gilt wood oval wall mirror, with pierced foliate decoration, 15cm x 40cm in extremes £20 - 40 †

613

A pair of gilt framed Florentine style cartouche shaped wall mirrors, 40cm x 22cm long overall £40 - 60 †

614

An 18th Century Dutch marquetry bureau, the fall front opening to reveal an interior arrangement of stepped drawers and pigeon holes above a central well, two short and two long drawers below on a cushion frieze terminating in bun feet, 103cm wide £200 - 400 †

615

A Victorian walnut framed nursing chair, upholstered in pale buttoned fabric, raised on turned tapering front supports £40 - 60 †

616

A 19th Century mahogany linen press, the upper section surmounted by a cornice, the base fitted two short and two long drawers, 137cm wide £100 - 150 †

617

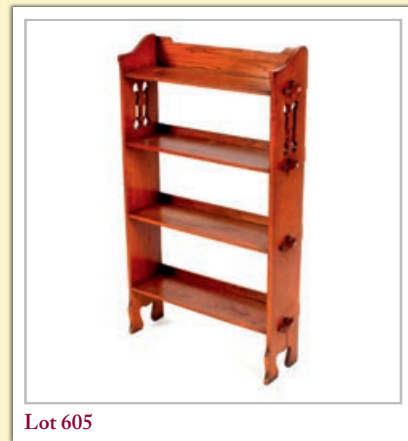
A 19th Century mahogany secretaire, the drop down front revealing a fitted interior with three drawers below, 94cm wide £100 - 150 †

618

A Victorian walnut stretcher table, the shaped top raised on turned supports terminating in scrolled feet; and a mahogany side table raised on a turned column and quatrefoil base, terminating in bun feet and castors (2) £80 - 120 †



Lot 604



Lot 605



Lot 606



Lot 611

# TERMS AND CONDITIONS OF SALE 1. INTRODUCTION

## 1. INTRODUCTION

The following defining terms are used in these conditions:-

“Auction”	Means any auction conducted by Clarke and Simpson Auctions Ltd. either at the premises owned by them or elsewhere (including any internet based auction);
“Auctioneer”	Means Clarke and Simpson Auctions Ltd. authorised auctioneer as appropriate;
“Bidder”	Means a bidder at an auction, including the bidders personally present at the venue and those bidding by telephone or over the internet or otherwise;
“Buyer”	Means the bidder whose bid was the last bid when the auctioneer concludes the bidding; “Conditions” Means these Terms and Conditions of Sale;
“Hammer Price”	Means the level of bidding reached (at or above any reserve) when the auctioneer brings the bidding to a close;
“Lot”	Means any property accepted by Clarke and Simpson Auctions Ltd. for offer at auction;

## 2. DESCRIPTION

No warranty is given or implied by the description in the catalogue. Each lot is sold in its condition at the time of sale with all faults, defects, imperfections and errors of description (if any). Whilst every endeavour has been made to describe the items adequately and properly, the purchaser shall deem to have inspected the lot at time of purchase. All catalogues and seller's and buyer's guides are for information only and do not form part of the contract.

## 3. STATUTORY REQUIREMENTS

Purchasers will be deemed to have satisfied themselves prior to purchasing regarding current legal requirements (e.g. Health & Safety at Work Act) and it is expressly brought to the bidders attention that equipment in the sale may not necessarily comply with such regulations. Any purchaser shall satisfy himself as to any statutory requirement for the use of any item and no liability shall rest with the vendors nor the Auctioneers.

**4. THE AUCTION** All auctions are conducted at the absolute discretion of the auctioneer. The auctioneer shall conduct the auction with reasonable skill and care. The vendor reserves the right to sell subject to reserve price in respect of all lots. What constitutes a bid shall be at the absolute discretion of the auctioneer, acting with appropriate skill and care. The auctioneer shall have the right to refuse any bid in all cases but most notably when such a bid does not exceed the previous bid by at least 10% or such a proportion as the auctioneer shall in his absolute discretion direct. Where two or more bids at the same level are simultaneously received by the auctioneer, the auctioneer at his absolute discretion shall determine which bid to prefer. Subject to the foregoing where two or more bids are at the same level are simultaneously received by the auctioneer, the bid submitted in the room shall take preference over a bid submitted by telephone or internet at the same level. Any bid made or attempted by telephone or over the internet will only be deemed to have been made if received by the auctioneer. The auctioneer reserves the right to withdraw, consolidate or divide any lot or lots or submit them in any order that they desire. The auctioneer has the right at his absolute discretion to refuse admission to his premises or attendance at (or participation in) any auction by any person. In the case of any dispute, the auctioneer shall be sole arbitrator in any matters arising during or out of the sale.

## 5. BIDDERS

All bidders will be required to register their particulars, bidders attending in person and those accompanying them will be required to provide photo ID and separate confirmation of address prior to viewing or taking any part of the sale and before entering any part of the premises to view. All bidders accept full liability for all bids submitted. Subject to the clause in this document headed “The Auction”, the highest bidder at the close of bidding shall be the buyer. Any dispute about a bid shall be settled at the auctioneer's absolute discretion. Bidders are all deemed to act as principals unless there is prior written acknowledgement by Clarke and Simpson Auctions Ltd. that a bidder is acting as an agent for a named principle. Bidders are strongly encouraged to attend the auction in person. The bidders shall be responsible for any decision to bid for a

particular lot and shall be deemed to have carefully inspected and satisfied themselves as to condition, neither Clarke and Simpson Auctions Ltd., their employees or agents shall be responsible for any neglect or default in doing or failing to do so. Bidders will be given ample opportunity to view and inspect before the sale and prospective buyers must satisfy themselves as to all matters.

## 6. DEFAULT

Clarke and Simpson Auctions Ltd. shall act as agent of the vendor only. Any contracts for the sale of a lot shall be formed between the vendor and the buyer. As agent, only Clarke and Simpson Auctions Ltd. shall not be responsible for default by the vendor or the buyer. If any lot is not paid for in full and taken away in accordance with these conditions, or there is any other breach of the conditions, then Clarke and Simpson Auctions Ltd. as agents for vendor shall at its absolute discretion and without prejudice to any other rights it may have, be entitled to exercise all or any of the following rights and remedies:-

- 6.1 to proceed against the buyer for any action of debt or damages for breach of contract;
- 6.2 to rescind the sale of that lot or lots sold by Clarke and Simpson Auctions Ltd. to a defaulting buyer;
- 6.3 to resell the lot (by auction or private treaty) in which case the defaulting buyer shall be responsible for any resulting deficiency in the total amount due (after crediting any part payment and adding any resale costs), any possible surplus so arising shall belong to the vendor;
- 6.4 to remove, store and insure the lot at the expense of the defaulting buyer and, in the case of storage, the location of such storage shall be at Clarke and Simpson Auctions Ltd. discretion;
- 6.5 to charge interest at a rate not exceeding 2% per month of the total amount due to the extent that it remains unpaid for more than two working days after the sale;
- 6.6 to retain that or any lot sold to the defaulting buyer until the buyer pays the total amount due;
- 6.7 to reject or ignore bids from the defaulting buyer at future auctions or to impose conditions before any such bids are accepted;
- 6.8 to apply any proceeds of sale for any other lots due or in the future becoming due to the defaulting buyer towards the settlement of the total remaining due.

## 7. INDEMNITIES, PENALTIES AND LIMITATIONS OF LIABILITY

Purchasers shall pay for any damage done by themselves or their agents during the removal of their lots. Attendance at the sale shall be at the risk of those attending in respect of both themselves and to their goods and vehicles.

Any indemnity under these conditions will extend to all actions, costs, expenses, claims and demand whatsoever suffered or incurred by the person entitled to the benefit of it and Clarke and Simpson Auctions Ltd. declare themselves to be a trustee of the benefit of such indemnity so far as it is expressed to be the benefit of its employees and agents.

Whilst Clarke and Simpson Auctions Ltd. endeavour to ensure that the information on their websites is correct, they do not warrant the accuracy and completeness of the material on their website. Also, Clarke and Simpson Auctions Ltd. can make changes to the material on their website, or alter the products and prices described on it, at any time without notice. The material on the website may be out of date, Clarke and Simpson Auctions Ltd. make no commitment to update such material. All material on the websites is provided “as is” without any conditions, warranties or other terms at any time. Accordingly, to the maximum extent permitted by law, the website is provided to all parties on the basis that Clarke and Simpson Auctions Ltd. exclude all representations, warranties, conditions and other terms which, but for this legal notice, might have effect in relation to the website.

## 8. ELECTRICAL SAFETY REGULATIONS

All electrical lots are subject to electrical safety regulations and fall within "the low voltage electrical equipment (safety) regulations 1989" – all items have been pat tested for safety but are not guaranteed in working order.

## 9. GENERAL MATTERS

Any notice to any buyer, vendor, bidder or viewer may be given by first class mail or email in which case it shall be deemed to have been received by the addressee forty-eight hours after posting or sending. All notices to Clarke and Simpson Auctions Ltd. must be sent in writing and email is not acceptable. Any indulgence extended to any person by Clarke and Simpson Auctions Ltd., notwithstanding the strict terms of these conditions or the terms of consignment, shall affect the position at the relevant time only and the respect of that particular concession only; in all other respects these conditions shall be construed as having full force and effect. These conditions and any disputes or claims arising out or in connection with them or their subject matter or formation (including non-contractual disputes or claims) are governed by and construed in accordance with the law of England. The parties irrevocably agree that the courts of England have exclusive jurisdiction to settle any dispute or claim that arises out of or in connection with the agreement or its subject matter or formation (including non-contractual disputes or claims).

## 10. PUBLICITY

Any catalogue and buyer and seller guides are provided for information only and do not form part of these conditions. The catalogue and the buyer and seller guides may contain additional terms and conditions. Clarke and Simpson Auctions Ltd. reserve the right to use any photographs, background information and research for publicity purposes both before and after the sale.

## 11. THE PURCHASE PRICE AND PAYMENT ARRANGEMENTS

There is a buyer's premium 18% plus VAT payable in respect of the sale. Any purchases made via "www.the-saleroom.com" or "www.ibidder.com" shall be subject to an administration charge of 5% plus VAT on the price. Preferred payment is cash, bank transfer or personal debit card. Such cards may only be used on a chip and pin basis with the owner present. No payment over £350 will be accepted by telephone. Payment will be accepted online via our secure e commerce account. We do not accept credit cards or international debit cards. Payment by cheque will only be acceptable subject to prior arrangement. No lot will be removed from the sale until any cheque has cleared.

Payment is due on the day of the sale. Cash in excess of £7,500 (including V.A.T.) will not be accepted from any one person, this is not allowed due to Money Laundering Regulations 2007. All money received will be held in Clarke & Simpson Auctions Ltd. Clients No 2 Account at Barclays Bank plc, Framlingham, Ipswich, Suffolk. Account Number 83428591. Sort Code 20 98 07. Clarke and Simpson Auctions Ltd. have no responsibility for any lot between the close of bidding and payment being made and subsequent collection. All payments from overseas buyers shall be made by Bank Transfer and bank fees paid in addition. Please note all policy regarding payment will be enforced and suitable arrangements must be made.

## 12. REMOVAL OF LOTS

The ownership of any lot purchased shall not pass to the relevant buyer until they have made payment in full to Clarke and Simpson Auctions Ltd. of the total amount due including any storage due.

The buyer shall at their own risk and expense take away any lot that they have purchased and paid for, not later than seven days following the day of the auction.

Any purchaser shall be responsible for removal and insurance and lots stored and storage charges. All lots sold shall be subject to the following storage charges after seven days from the sale:

7-14 days	25% of the lot value + VAT whichever is the greater	or £7.50+VAT per lot
14-21 days	50% of the lot value + VAT whichever is the greater	or £15 +VAT per lot
21-28 days	75% of the lot value + VAT whichever is the greater	or £22.50 + VAT per lot

Any lots not collected after 35 days will be re-sold with immediate effect on behalf of the purchaser and the proceeds of the sale retained in lieu of outstanding storage charges. The policy shall be rigorously enforced and no lots shall be collected unless outstanding storage charges are met.

## 13. NUMBER BIDDING

This will be used for speed and efficiency as in all our sales. All prospective purchasers must complete a registration form and register in the office on the view day or morning of sale to receive a number for bidding.

**Please also note that photo ID and additional confirmation of address will be required.**

## 14. ONLINE BIDDING

Clarke & Simpson Auctions Ltd. offer an online bidding service via the-saleroom.com and ibidder.com for bidders who cannot attend the sale. In completing the bidder registration on www.the-saleroom.com or ibidder.com and providing your payment card details and, unless alternative arrangements are agreed with Clarke & Simpson Auctions Ltd.:

1. authorise Clarke & Simpson Auctions Ltd., if they so wish, to charge the payment card given in part or full payment, including all fees, for items successfully purchased in the auction via www.the-saleroom.com or ibidder.com, and
2. confirm that you are authorised to provide these payment card details to Clarke & Simpson Auctions Ltd. through www.the-saleroom.com or ibidder.com and agree that Clarke & Simpson Auctions Ltd. are entitled to ship the goods to the card holder name and card holder address provided in fulfilment of the sale.

**Please note that any lots purchased via the-saleroom.com or ibidder.com live auction service will be subject to an additional 5% buyer's premium + VAT at the rate imposed on the hammer price.**

## 15. TELEPHONE BIDDING

We offer a telephone bidding service where possible, but this service can never be guaranteed. No applications for telephone bids will be accepted after the end of the viewing prior to sale day for any sale. All potential telephone bidders must provide a valid landline number and email address and agrees that they have read and understood the Terms and Conditions and satisfied themselves regarding any lot in accordance with these Terms and Conditions. No phone bids will be accepted for any lot with a lower guide figure of less than £100.

All those who wish to bid by telephone will be expected to deposit an amount determined by Clarke and Simpson Auctions Limited and not less than the minimum guide for all lots that they wish to bid upon into the Clients Account for Clarke and Simpson Auctions Ltd before the sale starts. This payment is not acceptable by card. In the event of default, this sum shall be retained as part payment or any part may be retained to recover losses under clause 6 of these Terms and Conditions. We will expect payment of the balance owing by BACS on the following day, any payment not met within five working days will result in the forfeiture of the deposit paid.

## 16. AT FAULT (A.F.) LOTS

Certain lots are catalogued at (A.F.), damaged, restored etc., however the absence of any such notice does not imply that the piece is free from defects, nor does it indicate that other defects are not also present. Mention is not made of breakage, cracks, chips or any damage which can be noted by careful inspection, therefore, intending purchasers MUST, in all cases, be responsible for determining the condition of the lots themselves.

## 17. ESTIMATES

Presale estimates are intended only as a guide for intending purchasers, are given in good faith and subject to revision.

## 18. CONDITION REPORTS

Clarke and Simpson are unable to guarantee that requests for condition reports/images received will be responded to. Clarke and Simpson are happy to give a Condition Report where possible on the physical condition of goods, this will be provided on behalf of the seller on the understanding that Clarke and Simpson are not entering into a contract with you in respect of the Condition Report and accordingly does not assume responsibility to you in respect of it. All lots are available for your own inspection or for inspection by an expert instructed by you, therefore these Condition Reports are for guidance only and all lots are sold "as found". Condition reports do not form part of a contract.

## 19. COMMISSION BIDS

The auctioneers will be pleased to execute bids for those unable to attend the sale. Lots will be purchased at the lowest bid the room bidding or any reserves will allow. In the event of identical bids, the earliest bid received will take precedence. There must always be a maximum limit indicated. Buy or unlimited bids will not be accepted. Commission bids placed by telephone are accepted at the client's risk. We urge our clients to place such bids before the start of the sale. All such commissions are left entirely at the buyer's risk.

## 20. VALUE ADDED TAX

The symbol \* after any lot number indicates that Value Added Tax is payable by the buyer on the hammer price.

## 21. AUCTIONEERS MARGIN SCHEME

The Auctioneers Margin Scheme allows auctioneers to sell items without VAT on the hammer price. Under the margin scheme an amount equivalent to VAT at the current rate is added to the buyer's premium. This amount cannot be refunded. The VAT element will not be shown separately on the buyer's invoice. This VAT is not recoverable as Import Tax.

## 22. ATTRIBUTION OF PICTURES AND DRAWINGS

Every effort is made to ensure the accuracy of any statements as to authorship, attribution, origin, date, age, provenance and condition of any lot whether or not such statement forms part of the description of any such lot. Whether any such statement is made orally or in the catalogue it is an expression of opinion and not to be taken as being or implying any warranties or representations of facts by the auctioneers. Each buyer by making a bid for a lot acknowledges that he has satisfied himself fully as to the attribution and condition of the lot. The following is for guidance only and does not form part of a contract.

A. The forename (s) (or full stops where not known) and surname of an artist indicates in our opinion a work by the artist.

B. The initials of the forename (s) and the surname of the artist indicates in our opinion a work of the period of the artist which may be wholly or in part his work.

C. The surname of the artist indicates in our opinion a work of the school or by one of the followers of the artist or in his style and of uncertain date.

D. *Signed, Dated, Inscribed* indicated in our opinion work signed/dated/inscribed by the artist.

E. *Bears signature* indicates in our opinion that this is not the signature of the artist.

F. *Attributed to* may be used to denote a traditional attribution based on style.

G. *Manner of* indicates in our opinion a work executed in the artist/craftman's style but of a later date.

H. *After* indicates in our opinion a copy (of any date) of work of an artist or craftsman.

The addition of a question mark after any of the cataloguing terms above indicates an element of doubt.

## 23. DRIOTE DE SUITE ROYALTY CHARGES

All United Kingdom Art Market professionals (which includes auctioneers) are required to collect a royalty payment for all qualifying Works of Art. This applies to living artists and those who have died in the last 70 years. This payment is calculated on qualifying Works of Art which are sold for a hammer price more than the UK sterling equivalent of €1,000 (the UK sterling equivalent will fluctuate in line with prevailing interest rates calculated by the Artist's Resale Right Service Hub, based on the European Central Bank reference rate published at 2.15pm on the day of the sale, and can be found on [www.dacs.org.uk](http://www.dacs.org.uk)).

All items in this catalogue that are marked "✓" are potentially qualifying items, and the royalty charge will apply if the hammer price is more than UK sterling equivalent of €1,000. The royalty charge will be added to purchase invoices and must be paid before items can be cleared. All royalty charges are paid to the design and Artists Copyright Society (DACS) by the auctioneers and no handling costs or additional fees with respect to these charges will be retained by the auctioneer. This charge may also be applicable to lots not marked "✓" and buyers must satisfy themselves.

The royalty charge for qualifying items which achieve a hammer price of more than the UK sterling equivalent of €1,000, but less than the UK sterling equivalent of €50,000 is 4%. For qualifying items that sell for more than the UK equivalent of €50,000 a sliding scale of royalty charges will apply. For a complete list of the royalty charges and threshold levels please refer to [www.dacs.org.uk](http://www.dacs.org.uk). There is no VAT payable on this royalty charge.

## 24. ENDANGERED SPECIES

Lots sold at auction may include endangered or other species of wildlife and plant life, for example ivory, tortoiseshell, crocodile skin, whale bone, ebony or rosewood. Some countries restrict or prohibit import or export of objects containing these materials or require a licence/permit for their movement (e.g. a CITES Licence). Prior to bidding on a lot which may include these or similar materials, buyers must familiarise themselves with the relevant laws and regulations regarding their movement.

## 25. JEWELLERY

Gemstones are often treated to enhance colour and improve appearance. They may be heated or treated by oil or resin to intensify the colour and transparency. Other techniques like dyeing, irradiation, coating and impregnation can also be used. Buyers must be aware that unless the catalogue specifically states otherwise then the stone is natural, buyers must assume that any treatment may not be permanent, and that special care may be needed in the future.

## 26. EXPORT

Any lot purchased at auction may be subject to export restrictions and may require a licence for export out of the United Kingdom. The buyer is responsible for obtaining any licences that may be required (including any licence that may be required for import into the destination country) – any denial of such a licence will not be grounds for the buyer to cancel the purchase.

## 27. THIRD PARTY LIABILITY

All members of the public on Clarke and Simpson Auctions premises are there at their own risk and must note the layout of the buildings and site and the appropriate security arrangements. Accordingly, neither the Auctioneer nor its employees or agents shall incur liability for death or personal injury (except as required by law) or similarly for the safety or persons visiting the premises.

## 28. CONSIGNMENT

All sellers will have received a copy of Clarke & Simpson Auctions Terms regarding consignment of lots for sale and these Terms and Conditions should be read in accordance with this consignment documentation.





**Debenham £750,000**

On an exclusive new development of just eight houses, Plot 5 is an impressive four bedroom detached house occupying a stunning site just a short distance from the centre of Debenham.

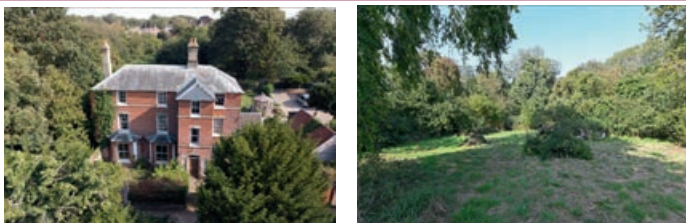
**Ref: 6631/5**



**Orford £525,000**

A detached house located within walking distance of all Orford has to offer. Hall, sitting/dining room, kitchen & cloakroom. Three bedrooms & bathroom. Garden, parking space & garage. Contents available. EPC = E

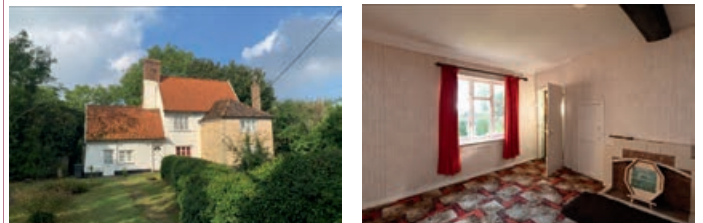
**Ref: 6598**



**Halesworth OIEO £550,000**

A rare & exciting opportunity to acquire a principal townhouse that requires complete renovation & refurbishment. EPC = E

**Ref: 6518**



**Horham £400,000**

A pretty Grade II Listed former farmhouse with outbuildings, requiring complete renovation in a stand alone position within the parish of Horham, near Stradbroke.

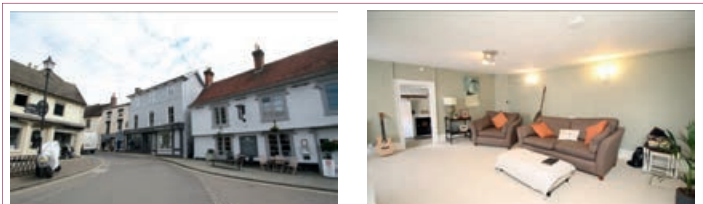
**Ref: 6720**



**Halesworth from £280,000**

Blyth Vale, an outstanding collection of 2, 3 & 4 bedroom new homes, by the award-winning Hopkins Homes, close to the centre of this popular market town and within 8 miles of the Suffolk Coast at Southwold.

**Ref: 6446**



**Framlingham £230,000**

A spacious Grade II Listed two bedroom apartment extending to over 1,000 sq ft occupying a central position in Framlingham with two allocated parking spaces.

**Ref: 6653**



### Boulge, Nr Woodbridge £1,450,000

An impressive Grade II\* Listed former farmhouse with range of barns and grounds of approximately 8.5 acres occupying the most wonderful rural location, just a few miles from Woodbridge.

Ref: 6685



### Wickham Market £545,000

A superbly located four-bedroom detached bungalow occupying a mature, secluded plot only a short walk from the heart of the popular village of Wickham Market. EPC = C

Ref: 6737



### Stradbroke £450,000

A two/three bedroom detached cottage with particularly spacious ground floor accommodation, located close to the centre of this well served village. EPC = D

Ref: 6701/C



### Saxtead £375,000

A charming, four-bedroom, semi-detached Victorian cottage presented to an exceptionally high standard, situated in a semi-rural location, just a short drive from the market town of Framlingham. EPC = E

Ref: 6732



### Debenham - From £375,000

Otters Holt is an exclusive new development of just eight impressive houses, occupying a stunning site and only a short distance from the centre of the popular and desirable village of Debenham.

Ref: 6631/3



### Framlingham £375,000

A spacious two-bedroom detached bungalow located on the popular Castle Brooks development, close to the heart of the market town of Framlingham. EPC = C

Ref: 6736

# Art Deco, 20th Century Design & Retro

Next Auction 26th March 2022



BID ONLINE

**thesaleroom.com**

The home of art & antiques auctions

*Entries Invited*  
*Closing Date 4th March*

Clarke & Simpson Auctions, Campsea Ashe, Suffolk

[www.clarkeandsimpson.co.uk](http://www.clarkeandsimpson.co.uk) / 01728 746323



Clarke and Simpson Auction Centre  
Campsea Ashe  
Nr. Wickham Market  
Suffolk IP13 0PS  
Tel: (01728) 746323  
Email: [auctions@clarkeandsimpson.co.uk](mailto:auctions@clarkeandsimpson.co.uk)  
[www.clarkeandsimpson.co.uk](http://www.clarkeandsimpson.co.uk)