

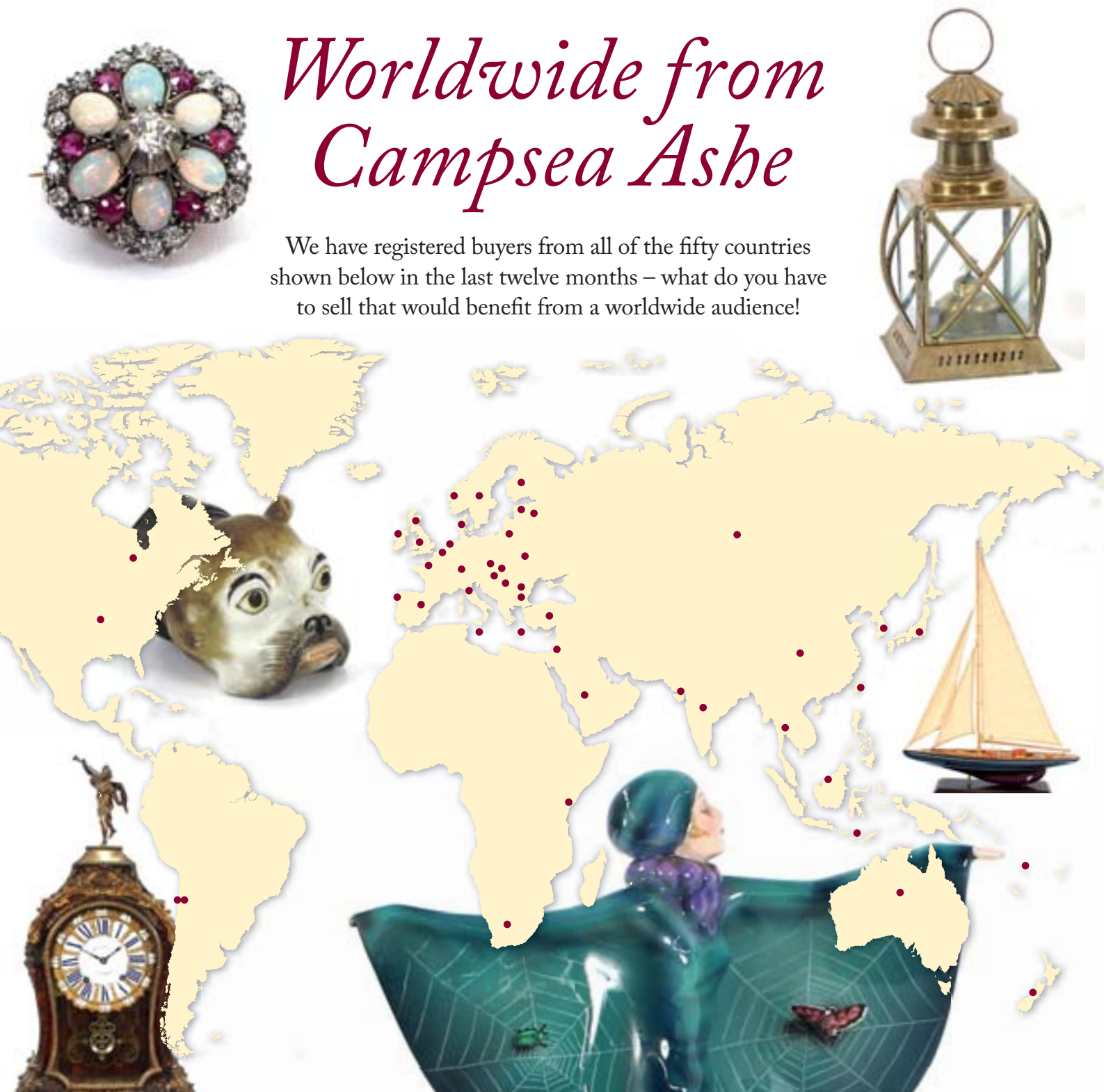


Selected Antiques & Fine Art

Wednesday 4th December 2019 at 9.30 am

Worldwide from Campsea Ashe

We have registered buyers from all of the fifty countries shown below in the last twelve months – what do you have to sell that would benefit from a worldwide audience!



Clarke & Simpson

Auctions

Selected Antiques & Fine Art

Wednesday 4th December 2019
at 9.30 am

Order of Sale:

Ceramics & Glass	1-150
Silver & Plate	154-199
Jewellery & Coins	200-273
Objects & Collectables	274-519
Pictures & Prints	520-643
Furniture	646-774

Viewing:

Saturday 30th November, 9 am - 12 noon
Monday 2nd December, 2 pm - 7 pm
Tuesday 3rd December, 10 am - 4 pm
Morning of Sale from 8.30 am



@CandSAuctions



CandSAuctions



Campsea Ashe
Nr. Wickham Market
Suffolk IP13 0PS
Tel: (01728) 746323 Fax: (01728) 748173
Email: auctions@clarkeandsimpson.co.uk
www.clarkeandsimpson.co.uk

Online bidding via:

the saleroom
The home of art & antiques auctions

Special Sales Calendar 2020

Clarke & Simpson

RURAL BYGONES

22nd February, 2020

ANTIQUES & FINE ART

4th March, 2020

ART DECO &

20th CENTURY DESIGN

4th April, 2020

ANTIQUES & FINE ART

13th May, 2020

FARM MACHINERY

23rd May, 2020

ART DECO &

20th CENTURY DESIGN

13th June, 2020

RURAL BYGONES

11th July, 2020

ANTIQUES & FINE ART

22nd July, 2020

ART DECO &

20th CENTURY DESIGN

5th September, 2020

RURAL BYGONES

12th September, 2020

ANTIQUES & FINE ART

7th October, 2020

FARM MACHINERY

17th October, 2020

ART DECO &

20th CENTURY DESIGN

7th November, 2020

ANTIQUES & FINE ART

9th December, 2020



Campsea Ashe
Nr. Wickham Market
Suffolk IP13 0PS
Tel: (01728) 746323 Fax: (01728) 748173
Email: auctions@clarkeandsimpson.co.uk
www.clarkeandsimpson.co.uk

Ceramics & Glass

- 1**
A pair of 19th Century Staffordshire groups, "Elijah" and "Widow", 30cm high £100 - 200 †
- 2**
A 19th Century Staffordshire lion figure, right paw resting on a ball, 34cm long £60 - 80 †
- 3**
A 19th Century Staffordshire figure of a lion, in red glaze, it's right paw with foot on ball, 14cm high x 15cm long; another of a zebra, sheep in bocage and a cow and calf group, 40cm x 60cm, (4) £40 - 60 †
- 4**
A 19th Century Staffordshire figure of Elijah, 27cm high £40 - 60 †
- 5**
A Victorian Staffordshire flatback clock tower spill holder; another in the form of a castle and four various Staffordshire animal and figure group spill holders, (6) £60 - 100 †
- 6**
A pair of Victorian Staffordshire rabbit ornaments, with brown patches, an elephant with green coat and a collection of various Staffordshire and other animal figures including sheep spill holders, (14) £40 - 60 †
- 7**
A Staffordshire flatback figure group, depicting Daniel and the lion, 26cm high £40 - 60 †
- 8**
A Wedgwood basalt study of a Raven £20 - 40 †
- 9**
A Royal Worcester porcelain figure, "The Parakeet"; a Worcester figure "Four eyed Fish"; and another of a canary seated on a tree stump, (3) £40 - 60 †
- 10**
A Doulton figure group, "Masquerade" HN600 £30 - 40 †
- 11**
A W.H. Goss bust of Lady Godiva £20 - 40 †
- 12**
A Staffordshire spaniel; a small similar; a pair of Dalmatians; a miniature hen crock, etc., (7) £40 - 60 †
- 13**
A Staffordshire inkwell, in the form of a seated maiden playing a lute; a Staffordshire cottage ornament; a highland spill holder group; figure of shepherdess with lamb and various others, (13) £40 - 60 †
- 14**
A Pearlware harvest festival group; another Pearlware figure, AF; and a 19th Century porcelain inkwell in the form of a lady wearing a bonnet; a Bacchus jug, (4) £20 - 40 †
- 15**
A late 19th Century German porcelain figure, of a young man holding a rose, 38cm high £30 - 50 †
- 16**
A pair of Victorian Staffordshire figures depicting a highland couple, 33cm high £50 - 60 †
- 17**
A Georgian glass baluster storm lamp, of large proportions, 41.5cm high; a small glass decanter and stopper; a dram glass and a tumbler, circa 18th Century, (4) £100 - 150 †
- 18**
A rare 17th Century Facon de Venice fragmentary glass, the intact stem of similar form to the marriage goblet of Emperor Leopold circa 1666 and engraved in the manner of Peter Wollfe, (see European glass 1500-1800, the Ernesto Wolf collection plate 40), 19cm high £50 - 80 †
- 19**
An unusual Antique Calcedonia glass baluster bottle; and another wrythen olive green bottle, probably 18th/19th Century, max. 22cm, (2) £30 - 50 †
- 20**
A Meissen Art Deco wall plate, finely painted under glaze landscape with figure, cross swords mark, impressed and incised marks verso, 25cm dia. £200 - 300 †
- 21**
An 18th Century French faience figure, of Mary and Jesus, some losses to base, 21cm £50 - 80 †
- 22**
A Powell, Bishop & Stonier part dinner service, decorated with dragons in the oriental ivory pattern, early 20th Century £20 - 30 †
- 23**
A Doulton Lambeth shallow dish, Isnic style decoration, monogrammed ED, 32cm dia. £80 - 120 †
- 24**
A pair of 19th Century Chinese baluster vases, decorated in coloured enamels with scenes of warriors fighting, bronzed raised decoration to the borders with dogs of Fo, 46cm high £400 - 600 †
- 25**
A 20th Century Chinese baluster vase, decorated carp with gilt dragons, butterflies and foliage on a deep blue ground, 42.5cm high £200 - 400 †
- 26**
A Chinese porcelain cricket box, with pierced decoration and a pair of fruit decorated Chinese shallow dishes £40 - 60 †
- 27**
A pair of oriental Imari chargers, decorated in the traditional manner, 37cm dia. £60 - 80 †
- 28**
A French porcelain Imari pattern baluster jar, 24cm high £40 - 60 †
- 29**
A pair of 18th Century pearlware plates, decorated in the Chinese manner, 24cm dia. £30 - 50 †
- 30**
A pair of 18th Century Caughley octagonal blue and white plates, decorated in the Chinese manner, 23cm £30 - 50 †



Lot 1



Lot 18



Lot 24



Lot 25



Lot 33



Lot 40



Lot 51



Lot 63

- 31**
A 20th Century Korean blue and white porcelain baluster jar, decorated with birds and foliage, 17cm high £30 - 50 †
- 32**
A near pair of Japanese Imari vases, 20cm high; and a Chinese porcelain cylindrical vase with flaming pearl decoration, character mark to base, 20cm high, (3) £30 - 60 †
- 33**
A pair of Chinese Canton ginger jars and covers, decorated with figures in exotic garden settings, foliage and butterflies, 26cm high £100 - 150 †
- 34**
A 19th Century Chinese blue and white baluster vase, having continuous dragon decoration, four character mark to base, 19cm high; and another similar, (restored), (2) £40 - 60 †
- 35**
A 19th Century Chinese Canton circular box and cover; two Imari baluster vases, 19cm high; and a pair of Imari scallop border plates, (5) £60 - 80 †
- 36**
An oriental bowl and cover, with floral decoration; another Chinese bowl with character mark to base; a small blue and white oriental bowl, AF; a small Imari baluster vase; two carved stands and a modern oriental plate £20 - 40 †
- 37**
A pair of mid 19th Century Staffordshire pottery spaniels, with copper lustre patches and painted faces, separated front legs, 20cm high £40 - 60 †
- 38**
A pair of Staffordshire pottery lions, decorated in grey with manes and moulded bodies, 24cm £30 - 50 †
- 39**
A collection of five Chinese porcelain miniature vases, decorated in under-glazed blue with prunus blossoms, various shapes, all approx. 10cm high £30 - 50 †
- 40**
An Imari cylindrical four section stacking food container, 24cm high £40 - 60 †
- 41**
A large 19th Century Imari bowl, decorated in the traditional palette, with scallop borders heightened in gilt, 29cm £30 - 50 †
- 42**
A glazed earthenware figure of Hotei, 28cm high £40 - 60 †
- 43**
A George Jones majolica lily decorated dessert dish, 28cm £40 - 60 †
- 44**
An Antique Chinese glazed earthenware bowl, having foliate decoration, 11.5cm dia. £30 - 50 †
- 45**
A pair of Imari chargers, having scalloped borders, decorated in the traditional manner and heightened in gilt, 30cm dia. £30 - 50 †

- 46**
A pair of Imari onion shaped vases, decorated in the traditional manner, heightened in gilt, 35cm high £60 - 80 †
- 47**
A Beswick Dulux advertising dog, 33cm high £200 - 300 †
- 48**
A Chinese Canton travelling teapot, 16.5cm high £30 - 40 †
- 49**
A Meissen harlequin figure, 23cm high £150 - 200 †
- 50**
A small faience ware salt, depicting a seated gentleman with vine hod, brightly coloured, 9cm high £20 - 30 †
- 51**
A pair of 19th Century Sevres style gilt metal mounted urns and covers, surmounted by foliate and pineapple finials, flanked by mask handles, 23cm high £100 - 150 †
- 52**
A Continental enamel glass bowl, profusely decorated with figures, foliage and castles, 35cm dia. £200 - 300 †
- 53**
Three early 19th Century Spode saucer dishes, pattern 557 £30 - 40 †
- 54**
A near pair of Antique wine glasses, the conical shaped bowls raised on cotton twist stems and circular spread feet, 17.5cm high £60 - 100 †
- 55**
An Antique wine glass, having conical shaped bowl, raised on tear drop stem and circular spread base, 14.5cm £40 - 60 †
- 56**
A small oriental celadon ground bowl, decorated with bats, character mark to base, 9cm dia. £40 - 60 †
- 57**
A Chinese yellow porcelain bowl, having raised dragon and flower decoration, six character mark to base, 16cm dia. £100 - 150 †
- 58**
A pair of Chinese pottery studies of small elephants, being ridden by warriors, on naturalistic bases, 33cm high £60 - 80 †
- 59**
A Chinese porcelain blue double gourd shaped vase £60 - 80 †
- 60**
A Chinese cream glazed earthenware bowl, 18cm dia. £100 - 150 †
- 61**
An unusual Chinese light blue porcelain censer, of shallow form, having gilt metal rim, 14cm dia. £100 - 150 †

- 62**
Four amethyst glass scent bottles, 10cm high; and a cut glass and pewter mounted flagon, probably Bohemian, decorated with etched scenes of a horse in forest, 16cm high £100 - 150 †
- 63**
A pair of 19th Century Chinese Canton baluster vases, decorated with interior scenes, exotic birds, butterflies and foliage, 25cm high £100 - 150 †
- 64**
A pair of 19th Century Chinese Canton baluster vases, decorated with panels depicting interior scenes, surrounded by exotic birds and foliage, gilt beast handles, 45cm high, together with a pair of carved hardwood stands £300 - 500 †
- 65**
A 19th Century Chinese Y-Hsing porcelain footed dish, decorated in pink and green enamels of lilies and lily pads, 16cm dia. overall £60 - 80 †
- 66**
A 19th Century oriental porcelain green ground double gourd shaped vase, finely decorated with gourds and leaves in black, with carved wooden stand, vase 27cm high £40 - 60 †
- 67**
A large Chinese blue and white ginger jar and cover, decorated with carp, 38cm high, (cover AF) £50 - 80 †
- 68**
A 19th Century Staffordshire bust of "Locke", 18cm high £40 - 60 †
- 69**
A 19th Century Chinese ginger jar, decorated coloured enamels, (lid missing), 21cm high, AF £30 - 60 †
- 70**
A 19th Century Persian design cut glass decanter, having bohemian hand-painted decoration and spike shaped stopper, 46cm high £100 - 150 †
- 71**
A Fischer of Budapest baluster ewer, having foliate decoration heightened in gilt, 34cm high £40 - 60 †
- 72**
A 19th Century Parian ware figurine, depicting a seated girl with dog, entitled "Go to Sleep" by J. Durham Copeland, published by Art Union of London, 47cm £200 - 400 †
- 73**
A 19th Century Chinese blue and white jardinière, decorated with figures of tradesmen, four character mark to base, 20cm high x 23cm dia. £60 - 100 †
- 74**
A 19th Century Chinese rose pattern baluster jug; and a blue satin glass baluster vase with floral decoration, (2) £20 - 40 †
- 75**
A Bohemian ruby glass goblet and cover, decorated with stags in a forest scene, (chip to base and rim of cover), 29cm high £20 - 30 †
- 76**
A late 19th/early 20th Century fruit decorated tea set, retailed by T. Goode & Co., South Audley Street, London £40 - 60 †
- 77**
A cranberry and clear glass posy basket; an opaque and blue glass similar; a satin glass baluster vase with frilled rim and a small pink glass baluster vase, (4) £40 - 60 †
- 78**
A floral painted baluster glass lemonade jug; a square section green iridescent glass vase with Art Deco design floral decoration; and an unusual iridescent glass knot design posy holder with applied floral decoration, (3) £60 - 100 †
- 79**
A small 19th Century amethyst glass decanter; another similar of swirled design; two green glass scent flasks; a Latachino style decorated baluster beaker and a blue glass mug with floral enamel decoration, (6) £30 - 50 †
- 80**
An Art Nouveau frosted glass and enamel decorated biscuit barrel, having gilt metal mounts, lid and swing handle, 18cm high £40 - 60 †
- 81**
A Daum of Nancy glass vase, ruby coloured with overlaid gilt foliate decoration, 14cm high, (chipped); a small Gallé style cameo glass vase with mauve overlaid floral decoration, 8cm high; another Art Glass vase with thistle decoration, raised on a white metal rimmed foot, 13cm, (3) £40 - 60 †
- 82**
An unusual 19th Century Mercury glass cloaked figure, 22cm high £40 - 60 †
- 83**
A Victorian green opaque glass baluster vase, with coloured bead decoration and gilt rim, 35cm high; and a small blue glass baluster vase, 28.5cm high, (2) £40 - 60 †
- 84**
A Sabino iridescent glass baluster vase, with foliate and fruit ribbed decoration, 23cm £40 - 80 †
- 85**
A Vienna porcelain blanc de chine figure of a street vendor; a German porcelain figure of a wine vendor; and a Victorian Staffordshire spill vase decorated couple seated beneath an arbour, (3) £60 - 100 †
- 86**
A 19th Century Newhall baluster cream jug; various other Newhall teaware; English porcelain cup decorated in the Chinese manner; copper lustre mug; various other decorative porcelain, (20) £40 - 60 †
- 87**
Thomas Wolf, (Factory Z), early 19th Century part tea service, comprising teapot, slops bowl, creamer, two saucer dishes, six tea bowls and three saucers £60 - 80 †



Lot 64



Lot 70



Lot 75



Lot 84



Lot 89



Lot 90



Lot 91



Lot 94

88
A pair of Morris ware by S. Hancock & Sons mushroom shaped baluster vases, signed G. Cartlidge, having flowerhead decoration, 18.5cm high £100 - 150 †

89
A Morris ware by S. Hancock & Sons vase, having blue floral decoration, signed G. Cartlidge, 22cm high £80 - 100 †

90
A pair of Morris ware by S. Hancock & Sons vases, having thistle decoration, 16cm high £100 - 150 †

91
A pair of Chelsea figurines, having raised anchor mark, depicting seated flower sellers on rocaille bases, 16.5cm high £200 - 300 †

92
A Meissen porcelain figure of a lady, in brightly coloured crinoline dress on shell decorated base, 18cm high £60 - 100 †

93
A Morris ware by S. Hancock & Sons fruit bowl, signed G. Cartlidge, with raised foliate decoration, 30cm dia. overall £40 - 60 †

94
An Antique blue and clear glass Venetian goblet, raised on circular spread foot, 15.5cm high; and a larger similar example, 24.5cm high, (2) £100 - 150 †

95
A cut glass and white metal mounted baluster claret jug, having entwined rope twist handle, the body with hob-nail and garland decoration, 30cm high £40 - 60 †

96
An Antique glass rummer, on twist stem and circular spread foot; and a cut glass long stemmed champagne saucer, (2) £20 - 30 †

97
A Bohemian amber flash goblet, decorated with forest scenes and foliage; and a heavy amber flash glass decanter with spike shaped stopper, (2) £40 - 60 †

98
A Lalique glass bowl, having ribbed decoration raised on floral prunts base, 30.5cm dia. £100 - 200 †

99
A Berlin porcelain cabinet plate, decorated with an artist and classical figures, the rich blue border heightened in gilt, 24cm dia. £40 - 60 †

100
A large oriental jardinière, decorated with fish and foliage, 38cm dia. x 33cm high £40 - 60 †

101
A pair of Vienna porcelain urns and covers, decorated with cherubs on a pink and red ground heightened in gilt, 24cm high £40 - 60 †

102
A Fenton stoneworks baluster water jug, decorated in the oriental manner, 23cm £20 - 30 †

103
A pair of continental porcelain figures, depicting a man and woman with attendant dog and lamb, carrying fruit on rocaille bases, 28cm high £60 - 100 †

104
A large Victorian white glazed relief moulded jug, having silvered lip, scroll handle and cherub decoration, 40cm high, AF £20 - 40 †

105
An 18th Century creamware cider jug, with hand painted scenes, named "William & Jane Evans", and dated 1790, 22cm high £80 - 120 †

106
A pair of 19th Century Staffordshire cow groups, 16.5cm long x 18cm high £50 - 80 †

107
A pair of Victorian pale blue opaque glass and enamel decorated lustre vases, complete with some spike shaped prism drops £40 - 60 †

108
A 19th Century green glass claret jug, with vine decorated stopper; a brown glass similar; and a small clear etched glass claret jug, (stopper missing), (3) £30 - 50 †

109
A cut glass and white metal mounted champagne cooler, 24cm high, (chip to base); a pinched glass decanter with silver mount; a pair of modern heavy glass decanters and two others, (6) £40 - 60 †

110
Nine Victorian green wine glasses, raised on baluster stems and circular spread feet; five conical shaped similar and four others, (18) £60 - 100 †

111
Six Victorian glass rummers £80 - 120 †

112
Twelve hob-nail and star cut wine glasses; and a set of four Tudor etched and cut foliate pattern large wine glasses £20 - 40 †

113
A small collection of Limoges miniature porcelain and doll's house furniture £20 - 30 †

114
Three etched glass decanters, Brandy, Gin and Whisky £20 - 30 †

115
Various cut glass ware, to include four hob-nail and split cut flutes, four matching tumblers, eight matching wines, two jelly glasses and various others, (34) £30 - 50 †

116
A set of six champagne flutes, and eight vine etched wine glasses, (14) £40 - 60 †

117
Six star cut Port glasses, various others and four green tinted glasses with faceted stems, (16) £20 - 40 †

118

A pair of cut and etched glass thistle shaped beakers; two Victorian decanters; a cut glass candlestick and various other glassware, (10)
£20 - 40 †

119

A Chinese porcelain cylindrical vase, decorated with figures in exotic landscapes, 30cm high
£80 - 120 †

120

An oriental twin handled baluster vase, with dragon, flaming pearl and foliate decoration, 30cm high
£100 - 150 †

121

A large Chinese pink pottery onion shaped vase, 43cm high
£100 - 150 †

122

A Chinese blue and white porcelain plaque, decorated with calligraphy and foliate scrolls in a carved hardwood stand, the plaque 51cm x 44cm
£250 - 350 †

123

An oriental blue and white china ink stand, having foliate decoration, 15.5cm high
£50 - 80 †

124

A large slipware dish, brown glazed with cream scroll decoration, 41cm
£60 - 100 †

125

A Worcester blanc de chine table lamp, of baluster form, 33cm high; and a painted earthenware classical figure on marble plinth, intalised CB, 31cm, (2)
£60 - 80 †

126

A large glazed earthenware baluster jug, having floral and green line decorated on a cream ground, 30cm high; and a circular earthenware shallow bowl with stylised decoration, 32cm, (2)
£40 - 60 †

127

Various 19th Century ceramics, including Newhall tea bowls, various saucers, decorative plates, breakfast cup and saucer etc.
£20 - 30 †

128

Two graduated 19th Century Derby campana shaped urns, decorated in the Imari palette
£250 - 350 †

129

A finely decorated pair of 19th Century cut glass and polychrome enamel Hookah bases, probably made for the Turkish market, 31cm high
£100 - 200 †

130

A Meissen cabinet plate, having foliate spray decoration and pierced border; a later German porcelain floral decorated plate; and a Sampson famille rose decorated plate, (3)
£30 - 50 †

131

Nine 19th Century continental opaque glass tankards, decorated with flowers and figures, various sizes, (some AF)
£40 - 60 †

132

A Limoges part dinner service, monogrammed and with foliate gilt and berry decoration, (19)
£40 - 60 †

133

Two Antique Persian Safavid type tiles, one depicting a Nobleman Hawking with attendant servant, clouds, flowers and mosque in the far ground, 25cm x 17cm, the other depicting a seated Nobleman holding a staff, 22cm x 16.5cm, (2)
£200 - 400 †

134

A Japanese Imari baluster vase and cover, having loop handles, decorated in the traditional palette, (lid AF), 29cm high
£20 - 30 †

135

Five various Faience ware plates, variously decorated and dated
£40 - 60 †

136

A large Copeland porcelain tile, having central portrait decoration within leaf border, 23cm x 23cm
£20 - 40 †

137

A pair of 19th Century Chinese Canton famille rose decorated baluster floor vases, decorated in the traditional manner with figures in an interior setting, flowers and butterflies flanked by gilt Kylin handles, 61cm high, (both restored)
£50 - 100 †

138

An unusual 19th Century glazed pottery Japanese incense burner, in the form of an elephant, 44cm long x 33cm high, AF
£100 - 200 †

139

A rare 18th Century Capo di Monte silver mounted lidded tankard, decorated lion surmount and battle scenes to the body, AF, 21cm high
£250 - 350 †

140

Two Chelsea Cheyne figures, depicting Cries of London street vendors, dated 1923, 19cm high
£100 - 200 †

141

A 19th Century Chinese blue and white baluster vase, decorated with a central panel of figures surround by prunus blossom, 49cm high
£200 - 300 †

142

A pair of Chinese Canton baluster vases, decorated panels depicting figures in interiors, surrounded by floral bird and butterfly decoration with applied gilt dragon and Dogs of Fo, 45cm high
£200 - 300 †

143

A Doulton Lambeth Slater's patent baluster jug, 23cm high
£30 - 50 †

144

A pair of Doulton stoneware baluster vases, with Art Nouveau decoration on blue, green and brown running glazes with applied stylised floral decoration, 36cm high
£80 - 120 †

145

A Royal Worcester commemorative limited edition porcelain plaque, modelled by Arnold Machin to commemorate the Silver Jubilee of Queen Elizabeth II 1952-1977, no.199/1000, size of plaque 33cm x 22.5cm
£60 - 100 †



Lot 99



Lot 129



Lot 137



Lot 139



Lot 161



Lot 166



Lot 182



Lot 185

- 146**
A Victorian porcelain headed doll £60 - 100 †
- 147**
A small Jade figure of a seated Buddha £60 - 80 †
- 148**
A small carved ivory Monkey group, on carved wooden stand, 10cm high £20 - 30 †
- 149**
A carved ivory study of a Buddhist temple, 10cm high £60 - 80 †
- 150**
A carved ivory study of an oriental horseman, 13.5cm high £40 - 60 †
- 151-153**
No lots

Silver & Plate

- 154**
A small Victorian silver vinaigrette, having finely chased decoration, maker Francis Clark, Birmingham 1841, 2.6cm long £80 - 120 †
- 155**
A small George III silver octagonal shaped vinaigrette, having foliate decoration, makers mark J.L., Birmingham 1814, 3cm long £80 - 120 †
- 156**
A 19th Century Continental white metal miniature watering can, 5.8cm long overall; and a 19th Century Continental miniature white metal coffee grinder, 3cm high, (2) £80 - 120 †
- 157**
A Georgian silver vinaigrette, in the form of a simulated wicker bag, suspended by a chain, the gilded interior with finely chased grill, maker T. Simpson & Son, Birmingham 1821, 4.2cm long £200 - 300 †
- 158**
A George III silver vinaigrette, with ornate gilded grill to the interior, having foliate decoration to the exterior, Birmingham 1798, 4cm wide £150 - 200 †
- 159**
A small Victorian silver vinaigrette, maker Francis Clark, suspension loop to side, 2.5cm long, Birmingham 1844 £80 - 120 †
- 160**
A large Victorian plated hot meat dish and cover, with acanthus decoration and raised on scrolled feet, with family crest, 70cm long x 40cm high, (2) £100 - 200 †
- 161**
Four silver Turkey menu holders, one AF; and a plated conserve pot in the form of a quail, (5) £60 - 80 †
- 162**
A small Victorian silver vase shaped pepperette, of fluted baluster form, London 1882; and a pair of plated dwarf candlesticks, (3) £30 - 40 †
- 163**
A silver boat shaped cream jug, with beaded border, scroll handle and hoof feet, Sheffield 1926 £30 - 40 †
- 164**
A silver wine funnel, London 1978 £30 - 60 †
- 165**
A small silver brandy saucepan on spirit heater stand, London 1910 £40 - 60 †
- 166**
A silver model of a turkey, bearing import marks, 13.5cm high
See front cover £40 - 60 †
- 167**
A silver wine taster with lion handle, Britannia standard, London 1977, (Queens Silver Jubilee year), 14cm £60 - 80 †
- 168**
A cased set of six silver coffee spoons, with Prince of Wales plume terminals; seven various cased silver and plated teaspoons; a plated patent hand warmer; silver handled button hook; plated ladle and various other plated cutlery including cased fish knives and forks £40 - 60 †
- 169**
A large quantity of plated Kings pattern cutlery £100 - 150 †
- 170**
A small continental white metal beaker, with foliate decoration; a white metal nosegay holder, AF; a cut glass and silver mounted perfume bottle with enamel Eau de cologne label; a silver Port decanter label etc. £40 - 60 †
- 171**
An Edwardian silver card case, of curved form, Birmingham 1904; a small silver Vesta case, initialled FG, Birmingham 1896; an engine turned decorated silver cigarette case; a small Christofle circular rouge box; and a white metal compact, (5) £60 - 100 †
- 172**
An ornately decorated white metal model of a shoe, the heel marked .800 with various other marks, 16cm long £80 - 120 †
- 173**
A set of three Indian white metal condiments, comprising a salt, pepper and mustard; a plated Guernsey salt and pepper pots; a miniature hand mirror; and a set of 8 plated coffee spoons etc. £30 - 50 †
- 174**
An early dog nose silver spoon, with rat-tail back, initialled CS, marks indistinct; and two silver napkin rings, (3) £30 - 40 †
- 175**
A white metal Art Nouveau circular snuff box, with female figure head decoration £10 - 20 †
- 176**
A pair of French silver Art Nouveau design sugar nips; and a pair of sprung scissor action sugar nips, (2) £30 - 50 †
- 177**
Three various silver golfing spoons £30 - 60 †

178

A Scottish silver Christening spoon, of Luckenbooth pattern, with entwined stem and heart terminal; a Portuguese white metal spoon and a white metal long guard chain, marked 800
£30 - 50 †

179

An Art Deco silver Vesta case, AF, London 1927; and a small silver pill box, London 1887, (2)
£40 - 60 †

180

A cut glass and silver mounted perfume bottle, having faceted stopper, hallmarked for London 1921, 18cm
£40 - 60 †

181

A Victorian silver baluster mug, having foliate engraved decoration, presentation inscription, Birmingham 1875
£30 - 50 †

182

A late Victorian silver double lipped cream jug, having foliate embossed decoration, flanked by scrolled handles, London 1897
£40 - 60 †

183

A Victorian silver serving fork; a silver bladed and mother of pearl handled cake knife; three various napkin rings; a pair of Georgian silver sugar tongs; a silver handled button hook etc.
£40 - 60 †

184

A pair of George III silver tablespoons, Old English pattern, London 1801; another similar, London 1791; two Irish silver Fiddle pattern tablespoons and a pair for Exeter 1867 etc.
£40 - 60 †

185

A silver teapot, with blackwood handle and lift; and a matching hot water jug, Birmingham 1836/37, 34ozs. gross
£250 - 350 †

186

A Victorian etched glass and silver mounted claret jug, the body having leaf and butterfly decoration, the mounts with scroll shell handle and foliage, domed lid surmounted by a butterfly, Sheffield 1870, 27cm high
£100 - 200 †

187

A silver foliate engrave visiting card case, Birmingham 1901
£40 - 60 †

188

Eleven cased silver teaspoons, by the Goldsmiths & Silversmiths Company
£30 - 50 †

189

A pair of Georgian silver sugar tongs, various silver teaspoons, silver napkin ring, silver engine turned cigarette case and a plated stilton scoop
£30 - 50 †

190

A cased set of twelve silver teaspoons, with stylised decoration to the handles, retailed by Reid & Sons of Newcastle, 1939
£40 - 60 †

191

A cased set of six each silver and mother of pearl handled fruit knives and forks, London 1903
£60 - 80 †

192

Six each silver and bone handled fruit knives and forks, Birmingham 1803; five silver handled butter knives and a pair of plated fish servers
£80 - 120 †

193

A pair of four division plated toast racks
£30 - 50 †

194

A cased set of 12 each agate handled fruit knives and forks, contained in a fitted mahogany case with brass cartouche plaque, inscribed "Mrs D. Bowman from M. Stovell, Esq., September 1836"
£150 - 200 †

195

A late Victorian silver card case, the front opening to reveal a photograph aperture, having gilded interior, Birmingham 1899
£60 - 80 †

196

A George III silver baluster tankard, having foliate scroll decoration, later chased and inscribed, London 1771
£50 - 60 †

197

A quantity of various silver and plated cruets, napkin ring, button hook, child's pusher etc.
£50 - 60 †

198

Two Victorian mahogany cased sets of fish knives and forks; and a cased set of 12 each plated fruit knives and forks
£60 - 100 †

199

A late Victorian silver tea kettle, raised on spirit heater stand, having raised foliate decoration, London 1896, approx. 55ozs. total weight
£400 - 600 †

Jewellery & Coins

200

"The Genius of Rembrandt", sterling silver proof medal set 519, by John Pinches Ltd., contained in mahogany presentation case with one extra medal and appropriate documentation and certificates
£800 - 1,000 †

201

A small collection of silver coinage, to include 1889 double Florin, 1887 Florin, 1818 Sixpence, various others, USA half dollar 1937 and 51 Crown, two 1935 Crowns, various copper coinage and a cased Edward VIII Coronation medal
£200 - 300 †

202

John Pinches "The 100 Greatest Cars" silver miniature collection, with accompanying booklet, boxed
£100 - 200 †

203

A large amethyst 9 carat gold mounted ring
£30 - 50 †

204

A three stone sapphire and diamond 18 carat gold ring, size O
£100 - 150 †



Lot 185



Lot 186



Lot 199



Lot 204



Lot 216



Lot 217



Lot 221



Lot 222

205

An Art Deco silver green stone ring; and a large citrine 9 carat gold mounted ring, size N, (2)
£100 - 150 †

206

A large Cornelian set silver ring; and an amber and silver mounted ring, (2)
£40 - 60 †

207

An unusual blue stone silver mounted ring; and an amber silver mounted ring, (2)
£40 - 60 †

208

An unusual blue stone silver and yellow metal mounted ring; and a garnet and opal 9 carat gold mounted ring, (2)
£60 - 100 †

209

A "Fern" stone silver mounted ring; and a large blue stone mounted ring, (2)
£40 - 60 †

210

A large citrine 9 carat gold mounted ring; and a diamond set gold mounted ring, (2)
£40 - 60 †

211

A ruby set 18 carat gold ring; a three stone diamond set 18 carat gold ring and a large crystal yellow metal set ring, (3)
£100 - 150 †

212

An 18 carat gold and hardstone set signet ring; a 9 carat gold shirt stud; a 9 carat gold cuff-link; a retractable pen; an Oris gent's wrist watch; two pairs of pearl ear-rings and various costume jewellery etc., contained in a red leather jewellery box
£100 - 200 †

213

A small diamond set eternity ring; a white metal and paste set buckle and a pair of marcasite and green stone decorated drop ear-rings, (3)
£60 - 100 †

214

A stick pin in the form of a horse's hoof; another in the form of a hunting horn; and a cased yellow and white metal horseshoe stock pin, (3)
£60 - 80 †

215

An 18 carat gold fox head stick pin, with Intaglio crystal decoration
£100 - 200 †

216

A large yellow metal, enamel and diamond set dress ring, (stone missing)
£150 - 250 †

217

An amethyst and peridot set star shaped brooch, with yellow metal mount
£100 - 200 †

218

A jade and chip diamond set dress ring; and a pair of turquoise set ear-rings, (2)
£100 - 200 †

219

A double strand of graduated pearls, set with a white metal and diamond clasp; another set with a diamond and emerald clasp; and a double strand of seed pearls, the circular yellow metal clasp set with a single diamond and seed pearls, (3)
£100 - 200 †

220

A yellow metal and pink stone long necklace
£60 - 100 †

221

A blister pearl, ruby and white stone set tortoise brooch
£200 - 300 †

222

A Baroque Revival mother of pearl and enamel decorated pendant brooch, stamped Palfrey, hung to a white metal bar and decorated with figure of a warrior spearing a beast
£60 - 100 †

223

Three micro mosaic pendants; a yellow metal green and pink stone set cross hung to a fine link chain; green stone set bar brooch etc.
£60 - 80 †

224

A part rough cut diamond set white and yellow metal necklace AF
£200 - 300 †

225

An 18 carat white gold and diamond set ring
£500 - 800 †

226

A 9 carat gold necklace; and a 9 carat gold bracelet, approx. 30gms total weight, (2)
£300 - 400 †

227

A white and yellow gold bracelet, approx. 23gms; and a silver gilt pendant on chain
£200 - 300 †

228

An 18 carat gold diamond set ring, approx. 1/4 carat. 2.5gms total weight
£200 - 300 †

229

A 925 silver dragonfly brooch
£20 - 40 †

230

A 9 carat gold diamond and sapphire set ring, approx. 3gms; an 18 carat gold and diamond set ring, AF, approx. 2gms; and an 18 carat gold ring (lacking stones), approx. 2gms, (3)
£150 - 200 †

231

A pair of yellow and white metal diamond set cuff-links, stamped 9k
£100 - 200 †

232

A gent's Omega rolled gold wrist watch, cased and boxed
£250 - 350 †

233

A 9 carat gold wrist watch, with gold plated strap; and a silver cased fob watch, (2)
£80 - 120 †

234

A 1912 sovereign in 9 carat gold mount, hung to a yellow metal chain, approx. 17gms total
£250 - 350 †

235

A 9 carat gold bracelet, with padlock clasp, approx. 15gms
£100 - 150 †

236

A 9 carat gold sapphire and pearl set pendant, hung to a 9 carat gold fine link chain
£40 - 60 †

237

An oriental carved mother of pearl brooch, set to a yellow metal mount; and an oval yellow metal and mother of pearl pendant, initialled "B", (2)
£60 - 80 †

238

A 9 carat gold watch chain, approx. 8gms
£80 - 120 †

- 239**
A 22 carat gold wedding band, approx. 4gms
£80 - 120 †
- 240**
A chain hung with various white metal coins; and two silver pocket watches
£100 - 200 †
- 241**
A yellow metal ruby and diamond set ring
£100 - 150 †
- 242**
An 18 carat gold emerald and diamond set cluster ring
£1,000 - 1,500 †
- 243**
A 1902 half sovereign
£100 - 150 †
- 244**
A 1904 half sovereign
£100 - 150 †
- 245**
A 1911 half sovereign
£100 - 150 †
- 246**
A 1914 half sovereign
£100 - 150 †
- 247**
A gold wedding band, AF; a 9 carat gold signet ring, AF; a white metal dress ring; a Timeco watch ring; a silver sovereign case etc.
£100 - 150 †
- 248**
A George V sovereign 1911
£200 - 300 †
- 249**
An 18 carat gold ruby and diamond dress ring
£100 - 150 †
- 250**
A 9 carat gold Albert with T bar and swivel fob, set with agate stone, approx. 28gms total weight; and a foliate engraved yellow metal sovereign case, (2)
£200 - 300 †
- 251**
A 9 carat gold gated bracelet, inset with a 1913 sovereign, total weight approx. 29.5gms
£250 - 350 †
- 252**
A pair of pendant ear-rings, set George V sovereigns dated 1910
£200 - 300 †
- 253**
A George V half sovereign 1913
£100 - 150 †
- 254**
A Victorian half sovereign 1901
£100 - 150 †
- 255**
A diamond and ruby three stone ring
£40 - 60 †
- 256**
A 9 carat gold long guard chain, with fine twist and elongated links, approx. 27gms
£250 - 350 †
- 257**
A heavy 9 carat gold Albert chain, with T bar, approx. 40gms
£400 - 500 †
- 258**
A 9 carat gold necklace, having box clasp and oval links, approx. 21.5gms
£200 - 300 †
- 259**
A 9 carat gold ladies bracelet, of gated form with padlock clasp, approx. 10gms
£100 - 150 †
- 260**
A long 9 carat gold guard chain, comprising various heavy links, approx. 33.5gms
£300 - 400 †
- 261**
A small 19th Century yellow metal pendant, set with diamonds and peridot drop
£60 - 80 †
- 262**
A pair of yellow metal and blue stone drop ear-rings
£60 - 80 †
- 263**
A Victorian yellow metal bracelet, decorated pink stones and filigree work, the four strand chain with clasp and inscribed "Heaven Preserve My Child"
£100 - 200 †
- 264**
A heavy gold fine link guard chain, approx. 34gms
£300 - 400 †
- 265**
An arrow brooch, set diamonds and central flower motif with red stone
£100 - 200 †
- 266**
A decorative and inlaid musical jewellery box
£30 - 50 †
- 267**
A Chinese yellow metal bracelet, set with oval jade stones
£200 - 300 †
- 268**
A Chinese chased Vintage white metal cuff, with two character mark; together with a lavender jadeite bangle and a filigree work pendant, (3)
£30 - 50 †
- 269**
A 9 carat gold ring, set with a single pearl and a yellow metal seed pearl and ruby set brooch, (2)
£60 - 80 †
- 270**
A white and yellow metal Niello decorated half hunter ladies fob watch, hung to a fine white metal link chain, with blush easel stand, (3)
£60 - 80 †
- 271**
A gent's 9 carat gold Certina automatic wrist watch
£150 - 200 †
- 272**
An amber and ebony necklace
£200 - 300 †
- 273**
An amber necklace, with yellow metal clasp
£200 - 300 †

Objects & Collectables

- 274**
Three boxed Parker pens
£50 - 80 †
- 275**
A collection of Waterman's pens, some numbered 512MB, 512V, 513 including one silver, AF and one gold banded
£100 - 150 †
- 276**
Two Waterman's fountain pens
£50 - 80 †
- 277**
Two Mont Blanc fountain pens
£50 - 80 †



Lot 229



Lot 232



Lot 242



Lot 250



Lot 281



Lot 284



Lot 304



Lot 310

278
Seven Conway Stewart fountain pens £50 - 80 †

279
A Conway Stewart fountain pen; and one pen and pencil boxed £50 - 80 †

280
Four Parker gold and maroon pens, in two boxes £60 - 80 †

281
Three Vacumatic Parker pens, various colours £80 - 120 †

282
Eight Sheaffer pens £50 - 80 †

283
Six maroon Parker pens £50 - 80 †

284
Three Parker pens, Televisor, Victory and one other £80 - 120 †

285
A box of 16 propelling pencils, four silver £80 - 120 †

286
Six stainless steel top Parker pens £50 - 80 †

287
Three gold top Parker pens £50 - 80 †

288
Two gold Parker pens £50 - 80 †

289
A tortoiseshell and horn snuff box, 9cm £30 - 50 †

290
A small Chinese bronze bowl, with animal and figural decoration, 6cm dia. £20 - 30 †

291
An oriental white metal ball censer £50 - 80 †

292
Five Chinese white metal tokens £30 - 60 †

293
An oriental bronze figure of a crab, 10cm £80 - 120 †

294
A small oriental cloisonne baluster vase, decorated with symbols, flowers and butterflies, 9cm high £40 - 60 †

295
An oriental small bronze censer, having elephant head handles, seal mark to base, 14cm dia. £80 - 120 †

296
An oriental bronze deity figure, 20cm £50 - 80 †

297
An oriental gilt bronze figure of a fierce three headed god, inset with coloured stones, 29cm high £200 - 400 †

298
A Chinese bronze brush pot, having relief decoration of pagodas, figures and foliage, 14cm high £120 - 160 †

299
A pair of Japanese brass plates, decorated with birds and foliage within Greek key surround, 24.5cm dia. £100 - 150 †

300
A brass cased striking carriage clock, with repeat button and angular swing handle, 17cm high overall £200 - 300 †

301
A Scottish ram's horn snuff mull, of small size, with white metal thistle mounts; a cased cigar holder; and a novelty brass cigar piercer in the form of a lady seated in an outside toilet, (3) £60 - 100 †

302
An Edwardian brass ladies hem-lifter £30 - 40 †

303
A 19th Century dagger, the blade with foliate engraved decoration, the bronzed handle decorated with figures and foliage; a mahogany cased set of Guinea scales, AF; two enamel decanter labels; an Antique seal; two small enamel bowls; a medal etc. £40 - 60 †

304
A small Staffordshire enamel oval hinged box, the lid decorated with doves around an urn; another with scenic decoration to the lid, AF; a small example, the lid decorated with a continental town scene, mirrored interior and another with floral decoration, (4) £60 - 100 †

305
A 19th Century Toleware cased time piece, 19cm high £40 - 60 †

306
A small Antique carved ivory leaf shaped dish, inscribed "Grace"; an ivory fruit shaped box; an Antique carved ivory kneeling figure; a small ivory cherub figure, AF; and an Antique carved ivory religious figure plaque, (5) £40 - 60 †

307
An Eastern mother of pearl and abalone shell inlaid card case; a mother of pearl octagonal trinket casket; and a oblong similar, (3) £100 - 150 †

308
A miniature portrait on ivory, circa 1800, depicting a lady in evening dress, signed Ross, contained in an ebonised brass mounted frame £150 - 250 †

309
A finely painted 19th Century miniature circular oil painting, depicting a ship wreck on the high seas with people on shore in distress, contained in an oak frame, 18cm overall £80 - 120 †

310
A Victorian Pietra Dura paper-weight, 13.5cm x 8cm £30 - 50 †

311
Three 19th Century Chinese soapstone carved figures, raised on square bases £60 - 80 †

312
A small carved oriental hardstone figure of a duck, 7cm £30 - 50 †

- 313**
An Antique Chinese hardstone bowl, 18cm dia.
£100 - 150 †
- 314**
An Antique carved crucifix, AF, 91cm x 45cm in extremes
£150 - 250 †
- 315**
A pair of 19th Century wooden bathing slippers, inlaid with white metal wire decoration, in the shape of fish; another smaller pair; and a 19th Century bronze model of a child's bathing slipper, (5)
£60 - 100 †
- 316**
A large intricately cast bronze African anklet; a plainer smaller similar; and an African bronze basket design box and cover with animal terminal, (3)
£60 - 100 †
- 317**
An 18th Century circular Southern Indian bronze plaque, depicting Hanuman the Monkey God within a flaming wheel of fire, 11cm dia.; and four smaller plaques of a similar image, (5)
£60 - 100 †
- 318**
An unusual 19th Century European carved wooden mould, depicting a figure wrapped in elaborate clothing, initialled F.B. and D.F. and dated 1843, 32cm high
£40 - 60 †
- 319**
Two unusual 19th Century Indian copper Libation vessels, in the shape of a Yoni, the largest 29cm long
£100 - 200 †
- 320**
A good quality hardstone box, with specimen stone to the lid, brass fittings, circa 1920, 12cm
£40 - 60 †
- 321**
A finely carved 19th Century Indian sandalwood card case, decorated with deities, birds and foliage, 13cm
£30 - 50 †
- 322**
A 19th Century carved coconut cup, having foliate decoration, 11cm high; and a finely decorated snuff container, in the form of bellows with removal lid, 8cm long, (2)
£60 - 80 †
- 323**
A rare 17th Century snuff box, of oval shape, the tortoiseshell lid moulded with a portrait of King Charles I, 7.3cm long
£100 - 200 †
- 324**
A 19th Century Hindu bronze figure, depicting Khandoba astride a Nandi bull, raised on circular base, 23cm high
£40 - 60 †
- 325**
An 18th/19th Century Hindu standing figure of Ganesh, with four arms, 23.5cm high
£40 - 60 †
- 326**
A 19th Century Indian bronze lamp, in the form of a Falcon, 13cm high; and a 19th Century bronze oil lamp in the form of a Hindu shrine, 14cm high, (2)
£40 - 60 †
- 327**
A pair of oriental cloisonne baluster vases, having panels decorated with cranes nesting, all over foliate decoration, 34cm high
£100 - 200 †
- 328**
A 19th Century Chinese silver octagonal box, profusely decorated with dragons, seal marks to base, 9.8cm wide overall
£200 - 300 †
- 329**
A fine 18th/19th Century Middle Eastern brass bowl, engraved with cartouches of script and geometric designs, 10cm high; and another small brass rimmed dish with silvered onlaid script, 4.5cm high, (2)
£100 - 150 †
- 330**
An 18th Century Chinese polychrome painted porcelain seated figure of Hoe Tei, 17.5cm high; and a soapstone baluster censer with ribbed body decoration, angular handles, raised on three legs, 12.5cm, (2)
£80 - 120 †
- 331**
A 19th Century tinned copper mosque lamp; and a bronze figure of a cat, the body decorated with pierced foliate decoration and hinged head, 18cm high, (2)
£60 - 100 †
- 332**
A 1950's lever action fountain pen
£30 - 50 †
- 333**
A pair of Kashmir candlesticks, having floral decoration and pierced twist stems, 40cm high
£150 - 250 †
- 334**
A 19th Century burr walnut and chequer banded writing slope/sewing box, having agate pen and inkwell, 30cm wide
£50 - 80 †
- 335**
A fine quality late 19th Century mahogany oval tea tray, with central conch shell inlay, flanked by brass carrying handles, 58cm
£40 - 60 †
- 336**
A 19th Century Burmese manuscript, (Kamma Vaca), consisting of five leaves, 47.5cm x 11.5cm
£50 - 80 †
- 337**
A pair of baluster Pollard oak effect table lamps and shades
£40 - 60 †
- 338**
A 19th Century French black marble perpetual calendar clock, by Le Roy et Fils, Paris, 42cm high
£200 - 300 †
- 339**
A 19th Century classical bronze and gilt decorated three branch candelabrum, raised on three claw feet, 53cm high
£60 - 80 †
- 340**
A green and gilt decorated late 19th Century Italian casket, decorated with foliate scrolls, figures and deer, 15cm
£60 - 80 †
- 341**
An early 20th Century Scandinavian wooden box, 24cm
£60 - 80 †



Lot 320



Lot 327



Lot 338



Lot 340



Lot 342



Lot 344



Lot 354



Lot 360

342
A 19th Century gilt bronze three branch candelabrum, with cherub and foliate decoration, 40cm high £40 - 60 †

343
A Grand Tour type model of Cleopatra's needle, 21cm high £40 - 60 †

344
A Pietra dura and enamel decorated paper clip £80 - 120 †

345
A 19th Century treen goblet; a treen brass bound miniature tub; and a treen needle case £30 - 50 †

346
Three bronzed plaques of cherubs and other figures in relief, 11cm x 14cm £40 - 60 †

347
An early 20th Century bronze Burmese elephant, 16cm high x 18cm long overall £20 - 40 †

348
A pair of wooden and polychrome decorated pricket sticks, 81cm high £40 - 60 †

349
A Japanese bronze plaque, depicting a figure on horseback, 39.5cm dia. £40 - 60 †

350
An Art Deco bronze figure group, depicting naked crouching lady and a lamb, signed Silvestre, on a marble plinth, 43cm £100 - 150 †

351
A copper coal helmet, with brass wing handle; a Victorian copper kettle and two fire implements, (4) £20 - 40 †

352
A rare and usual 19th Century James Watt copying machine, contained in mahogany and brass mounted fitted case £1,000 - 1,500 †

353
A German dagger, the blade inscribed "Karlburgs Muller, Berlin", complete with metal scabbard, 37cm long overall £200 - 300 †

354
An Antique pin fire pistol, 27cm long overall £60 - 100 †

355
A 19th Century papier-mâché and mother of pearl inlaid two compartment tea caddy, 21cm; and another with faux tortoiseshell decoration and pierced brass mounts, 17cm, (2) £100 - 150 †

356
A pair of peg oil lamps, having electro plated bases, cut glass reservoirs and pink opaque glass shades, (some damage), 47cm high £150 - 250 †

357
A bronze figure of a seated Buddha, 18cm high £40 - 60 †

358
A brass cased carriage timepiece, having foliate engraved decoration and circular white enamel Roman numeral dial, swing handle, 14cm high £100 - 150 †

359
A set of 19th Century steel and brass fire irons £80 - 120 †

360
A good quality pair of carved Black Forest cow and bull figures, 16cm long x 13cm high £500 - 800 †

361
A bronze table lamp, having ram's head mask decoration and Corinthian column, raised on a triform base, 37cm high overall £50 - 80 †

362
A Victorian golden oak stationery cabinet, enclosed by a tambour shutter front, integral calendar, 41cm wide x 36cm high £80 - 120 †

363
A set of mahogany and brass mounted Fire bellows £80 - 120 †

364
A 19th Century mahogany and boxwood strung writing box, 37cm £40 - 60 †

365
A 19th Century elm and boxwood strung deed box, the hinged lid with brass handle, inscribed to the front "S.H. Hunt", raised on a platform plinth, 36cm wide x 23cm deep x 23cm high £50 - 80 †

366
A Victorian mahogany stationery slope, the hinged doors enclosing a fitted interior, 40cm wide x 33cm high £50 - 80 †

367
A 19th Century mahogany and brass mounted Bursar's box, 28.5cm £100 - 150 †

368
A 19th Century mahogany and brass bound surgeon's box, with contents of various associated and unassociated tools and implements £50 - 80 †

369
A 19th Century coromandel writing box, 36cm £40 - 60 †

370
A cast iron doorstep, in the form of a humorous sailor; another depicting a highland dancing couple; and a Victorian iron and brass trivet, (3) £40 - 60 †

371
An oriental circular papier-mâché tray, decorated with a scene of a carp, 53.5cm dia. £50 - 80 †

372
A Victorian brass oil lamp, with ruby glass reservoir and floral shade, 70cm £40 - 60 †

373
A 19th Century ottoman boxwood swagger stick, finely decorated with flowers and birds, the panels with portraits of soldiers and dignitaries, 65cm long; and a horn walking stick having silver collar, 92cm long, (2) £60 - 100 †

374
An oriental bronze incense bowl, with raised stylised motifs; and an associated lacquer stand £30 - 50 †

375

A 19th Century oval miniature portrait of a young lady; another depicting an allegorical scene; a portrait of a young gentleman in gilt frame, (faded); and a Victorian photograph of a lady in mourning dress, contained in a leather folding frame, (4) £40 - 60 †

376

An Antique copper, 43cm dia. £60 - 80 †

377

An Antique copper, 51cm dia. £80 - 120 †

378

A rare Papa-Polynesia paddle, (Koa or nee), decorated stylised anthropomorphic design, 177cm long £400 - 600 †

379

An Antique carved wooden figure, AF, 46cm; and an Antique wooden club, 40cm, (2) £60 - 80 †

380

A pair of unusual decorative wooden grotesque bird ornaments, 35cm long x 39cm high £60 - 100 †

381

A pair of late 19th/early 20th Century spelter lamps, in the form of cupids, raised on green onyx bases, originally for gas later converted to electricity, 45cm high, AF £20 - 40 †

382

A brass Corinthian column table oil lamp, having etched glass shade, later converted to electricity, 52cm high £40 - 60 †

383

A banjo, by Clifford Essex & Son, dated 8.6.1940, trademark "Dulcet" with original leather carrying case £100 - 200 †

384

An oriental carved ivory figure of a maiden holding a scroll, mother of pearl and coloured stone decoration, 19cm high £200 - 300 †

385

Two unusual South African ethnic carved wooden figures, one of a seated figure with sack-cloth clothing, 30cm high; and a smaller ebonised example, 19cm high, (2) £200 - 300 †

386

A bronze animalier study of a hound, raised on black onyx plinth, 47cm long £100 - 200 †

387

An oriental bronze baluster vase, character mark to base, 24cm high £40 - 60 †

388

A pair of oriental bronze baluster vases, 11cm high £30 - 50 †

389

A pair of circular 19th Century miniature paintings, depicting courting couple in landscapes, 6cm dia., contained in gilt frames £30 - 50 †

390

A Victorian glass and silver mounted hinged powder box, the lid with cameo shell decoration of horses, London 1887 £80 - 120 †

391

A Victorian burr walnut and chequer-banded two compartment tea caddy; a rosewood and conch shell similar; and a walnut and boxwood strung example, (interior missing), (3) £60 - 100 †

392

A Victorian plated table oil lamp, having fluted baluster column supported on mythological scrolling horses, on a square balustrade base, terminating in scrolled feet, clear glass reservoir and etched shade, 67cm high overall £70 - 100 †

393

A brass convex ball, decorated porthole type mirror, 39cm dia. overall £20 - 30 †

394

A mahogany, boxwood and ebony edged barometer, of small size, by Comitti, London, with a scale plate and thermometer below, 66cm £30 - 50 †

395

A mid Victorian leather Solicitors Office box, having hinged lid and front opening to reveal a red interior of pigeon-holes with registration mark for 1862, stamped F. West, Manufacturer, 1 St. James £40 - 60 †

396

A Persian enamel and painted Kashkul, the boat shaped pierced body with centre panel depicting a play of worship and trees, flanked by painted birds, on an oval base, 30cm £30 - 50 †

397

A Middle Eastern papier-mâché box and cover, the lid decorated with figures in relief, in conversation, gilt heightened Arabic script to the edge, 18cm long £30 - 50 †

398

An early 20th Century vizagapatum tortoiseshell and ivory fretwork box, the hinged lid with a central panel depicting an open landscape, 20cm; together with another smaller vizagapatum tortoiseshell box, 9cm, (2) £50 - 80 †

399

A 19th Century silvered metal bowl, of compressed circular form, raised on stylised finned dolphin feet, 26cm dia. £40 - 60 †

400

A Chinese lacquer and chinoiserie decorated dressing box, in the 18th Century style, the double hinged lid opening to reveal a bevelled mirror, flanked by carrying handles, three drawers below, 23cm wide £40 - 60 †

401

A 19th Century brass wine cooler, of elliptical form, flanked by ring handles, baluster body on splayed legs and paw feet, 35cm £40 - 60 †

402

A pair of lacquered metal urns, in the neo-classical taste, decorated with a band of garlands and swags, flanked by handles, circular bases, 34cm high £30 - 50 †

403

A 19th Century lacquered brass baluster Sander, with lozenge and spiral decoration on stiff lily leaf spreading circular base, 16cm high £30 - 50 †



Lot 362



Lot 367



Lot 378



Lot 386



Lot 416 (detail)



Lot 416



Lot 432



Lot 444

404

A 19th Century gilt metal Pandan or jewellery box, of elongated canted form, the moulded domed lid and body decorated with interlaced floral designs, 13cm £50 - 80 †

405

A pair of late 18th/early 19th Century French ormolu rococo candlesticks, of heavy gauge, in the manner of Meissonnier, finely decorated with rocaille, C and S scrolls, baluster stems, conforming triangular bases, 28cm high, (one lacking drip pan) £200 - 400 †

406

A set of 10 brass place setting/menu holder stands, with lyre shaped tops, on turned columns and circular platform bases, 32cm high £30 - 50 †

407

A pair of bronze archaic Chinese Libation cups, having elongated spouts, flanked by a side handle, raised on three slender splayed supports, 15cm high £60 - 100 †

408

A late Victorian leather cased silver plated telescopic stirrup cup, with gilded interior and folding hinged handle £30 - 40 †

409

A 19th Century gilt bronze Cassolette and lid, in the Regency style, the body suspended on three angular animal leg monopodia, hoof feet headed by ram's masks, 10cm high £40 - 60 †

410

A pair of 19th Century black metal and Niello work candlesticks, of baluster form, the white metal inlay depicting fish and trailing floral designs, raised on square bases, 15cm high £40 - 60 †

411

A pair of gilt metal wall appliques in the Louis XV style, the twin scrolling branches with C scroll rococo style decoration, 30cm high £40 - 60 †

412

A 19th Century carved Black Forest inkwell, in the form of a Boxer dog's head, the hinged lid with liner, glass eyes and naturalistic face, 7cm high £80 - 120 †

413

An early 20th Century folk art treen model of an articulated Circus Terrier dog, with adjustable head, ruff, ears, legs and tail, possibly North American, 34cm long £60 - 100 †

414

A late 19th Century gilt metal and blue agate pill box, with a hinged lid on conforming feet, 4.5cm; a Chinese spinach Jade bowl on stand, A/F; an apple Jade figure; and a bone Netsuke, (4) £40 - 70 †

415

An early 20th Century Syrian box, of elongated canted form, inlaid with a variety of exotic woods, bone and mother of pearl, with hinged lid, 35cm £40 - 60 †

416

A Victorian papier-mâché cake basket, with gilt metal handle, decorated with a painted scene inscribed Aldeburgh £120 - 180 †

417

Two 19th Century brass models of soldiers, 12cm high £60 - 80 †

418

Four Eastern copper and silvered plates, with figural foliate and beast decoration, 23cm dia. £20 - 40 †

419

A box of miscellaneous items, including a brass cased tape measure, a bone game marker, pin cushion, mother of pearl aid de memoir and various other items £40 - 50 †

420

An oriental carved hardwood figure of a recumbent buffalo, with figure on it's back, on pierced hardwood stand, 25cm long £30 - 40 †

421

An Indian bronze figural incense burner; and two Indian bronze figures of deities, (3) £40 - 60 †

422

Three treen Folk art hand carved spoons £30 - 60 †

423

A small painted Persian bone panel, decorated with figures in an interior, 9cm x 6cm £80 - 120 †

424

A pair of 19th Century Chinese baluster bronze vases, 12.5cm high £30 - 60 †

425

A Vienna style bronze figure of Bedouins, with a camel, 20cm high £60 - 80 †

426

A Chinese bronze figure of a seated Buddha, 14cm high £30 - 60 †

427

Two Ethnic carved ebony figures, depicting native women and an Ethnic group of figures in a boat £20 - 30 †

428

A faux bone sectional walking stick, in the oriental manner, decorated with rural scenes and figures, having faux horn knob handle, 84cm long £80 - 120 †

429

An Eastern metal shallow dish, with foliate engraved decoration, 31cm dia. £40 - 60 †

430

A Chinese hardwood stool, the scrolled curved top raised on square section supports, united by stretchers, 46cm wide x 54cm high £40 - 60 †

431

An oriental scroll painting £80 - 120 †

432

A Chinese baluster bronze vase, having raised bird and foliate decoration, 31cm high £60 - 80 †

433

A circular Arts & Crafts design pewter mounted wall mirror, 44cm overall £20 - 30 †

434

A printed Icon of Madonna and Child, in decorative enamel frame, 14cm x 10cm overall £10 - 20 †

435

A ten section Russian doll, with painted decoration, 25cm high £150 - 250 †

436

A decorative lozenge shaped mirror, with coloured foliate border, 29cm x 24cm overall £10 - 20 †

437

An oriental lacquered papier-mâché pen box, with chinoiserie decoration to the hinged lid £20 - 30 †

438

A tortoiseshell and white metal mounted oblong snuff box £20 - 30 †

439

A Chinese glass snuff bottle, with bird and floral enamel decoration, turquoise stopper, 7cm £40 - 60 †

440

A 19th Century Canton carved ivory circular box and cover, decorated in relief with figures and foliage, 3.6cm dia. £30 - 50 †

441

An interesting display of numerous Antique and later cork screws, and bottle openers £250 - 350 †

442

Three early printed manuscript pages, one by Martin Luther, another by Wynkyn De Worde, circa 1493 who was apprentice to William Caxton; and another by Hendick Gran with rubricated incunabula. Details verso and labels for Sotherans, Sackville Street, framed and glazed, largest page 33cm x 23cm £150 - 250 †

443

A Chinese cloak, having gilt thread decoration of dragon, blue flaming pearls and clouds £300 - 400 †

444

An Edwardian mahogany inlaid and chequer banded balloon cased mantel clock, circular steel dial supporting an 8 day movement striking on a gong, retailed by Camerer Cuss & Co., 123 High Street, Peckham, 31cm high £100 - 150 †

445

A 19th Century Indian hardstone bell shaped flask, with pierced brass mounts, 13cm high; and two octagonal foliate engraved brass boxes, (3) £60 - 100 †

446

A fine 19th Century Indian copper vase and cover, onlaid with silvered decoration depicting Hindu deities and foliage, 16cm high; and a similarly decorated small bowl, 6cm dia., (2) £40 - 60 †

447

A fine quality 19th Century "Bidri" ware vase, decorated with foliage and birds, 19cm high and four various smaller Bidri ware items, (5) £60 - 80 †

448

Two 19th Century Indian solid cast figures of Shiva, 22cm high £60 - 100 †

449

An early Antique Indian bronze figure, of a seated Ganesh; and an Indian bronze multi armed Ganesh, 15cm and 15.5cm respectively, (2) £60 - 100 †

450

A bronze multi armed figure of Shiva, raised on a square base, 25cm high £40 - 60 †

451

An unusual Middle Eastern 19th Century bronze flask, in the form of a fish and an unusual bronze lamp decorated with five headed cobra, (2) £60 - 100 †

452

Two 19th Century Indian "Bidri" ware vases, of identical shape and similar size, the iron bodies decorated with onlaid silvered panels, 23.5cm high £60 - 80 †

453

An 18th Century Indian bronze figure of a recumbent Nandi bull, 13cm long; another on circular stepped base formed as a lamp, 24cm high; and a bronze horse figure standing on a rectangular base, 14cm high, (3) £150 - 250 †

454

A 19th Century floral needlepoint picture; an Antique fabric panel with heavy gilt thread decoration in pierced gilt frame; another silkwork embroidered panel depicting flowers in a basket; and a small embroidered panel, (4) £40 - 60 †

455

A 19th Century sampler, worked by Julia Rebecca Bucke, 1882; and another, (2) £40 - 60 †

456

A Victorian brass column oil lamp, having opaque floral reservoir and Vaseline glass shade, 69cm high overall £150 - 250 †

457

A plated Corinthian column oil lamp, having hob-nail cut reservoir and etched blue tinted shade, 90cm high overall £500 - 600 †

458

A Victorian brass column oil lamp, having leaf decoration, clear glass reservoir, raised on a marble plinth with yellow tinted shade, 83cm high overall £200 - 400 †

459

A large plated alms dish, having central armorial crest, 51cm dia. £100 - 150 †

460

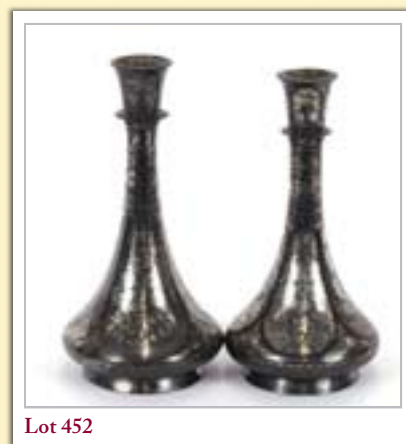
Two cast iron French cold painted studies of bull dogs, the largest 23cm long x 25cm high £150 - 250 †

461

A decorative marble and spelter mantel clock, in the Art Nouveau style, having figural and floral decoration, circular foliate decorated dial and 8 day movement, .5cm high £60 - 80 †

462

A bronze figure group, depicting a hunter and dog, raised on circular faux marble plinth, 55cm high £80 - 120 †



Lot 452



Lot 457



Lot 458



Lot 462



Lot 464

463
Jacques Antoine Theodore Coinchon, a large bronze figure of a seated shepherd with bagpipes, 43cm high £300 - 400 †

464
A gilded classical bronze figure group, signed "L. Liso", 38cm £100 - 150 †

465
An Antique elm candle box £30 - 50 †

466
A Victorian papier-mâché and mother of pearl inlaid stationery casket, with silk lined interior, 21cm wide; a 19th Century mahogany and rosewood tea canister; and a walnut trinket box with flower decoration and paper lined interior, (3) £40 - 60 †

467
A pair of Chinese bronze urns, with raised stylised floral decoration, flanked by beast handles, 27.5cm £100 - 200 †

468
A pair of 19th Century japanned metal tea canisters, converted to table lamps £60 - 100 †

469✓
Charles Octave Levy, bronze study of a farm worker, 43cm high £600 - 800 †

470
A pair of classical bronze urns, decorated satyr and cherubs, flanked by foliate handles, 15cm high £100 - 150 †

471
A Francois Du Quesnoy pottery plaque, depicting cherubs amongst foliage, circa 1892, 29cm x 40cm £60 - 100 †

472
A 19th Century spelter figure of a seated geographer, on carved ebonised plinth, 31cm high x 38cm long overall £100 - 200 †

473
After Auguste Moreau, figure of cupid, 51cm high £100 - 200 †

474
A large bronze study of a German shepherd dog, on rockwork base, after L. Carvin, 14cm high £300 - 500 †

475
An imposing pair of copper Medieval style lidded flagons, surmounted by heraldic lion finials, decorated griffins, mask heads and dolphins, raised on circular spread feet, 60cm high £200 - 300 †

476
A pair of decorative papier-mâché plates, with mother of pearl inlay depicting church exterior and interior, 32cm dia. £40 - 60 †

477
A large oriental brown cloisonne vase, having gilt foliate scroll decoration and turquoise interior, 40cm high £100 - 150 †

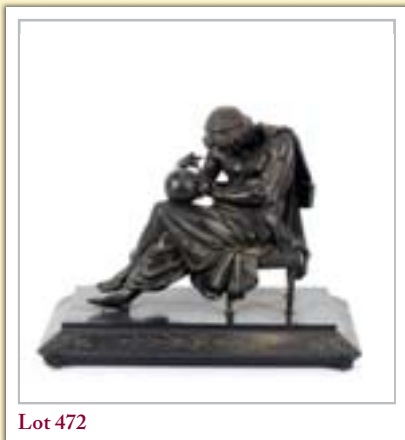
478
A pair of heavy Chinese bronze censers, having raised foliate decoration, seal marks to base, 18cm dia. £800 - 1,200 †



Lot 467



Lot 469



Lot 472

479
A Victorian cast iron stick stand, having pierced floral and fruit decoration, 65cm wide x 67cm high £150 - 200 †

480
Three brass porch lanterns £60 - 100 †

481
Voyage Pittoresque de Constantinople, illustrated; and Hunername Minyaturleri, folio size, in gilt foliate decorated covers, (2) £40 - 60 †

482
"Chinese export silver 1785-1885", by H.A. Crosby Forbes £100 - 150 †

483
"The Directory of Gold & Silversmiths", volumes 1 and 2, by John Culme £50 - 80 †

484
Four leather bound volumes of British Zoology by Thomas Pennant, published 1842 £100 - 150 †

485
The History of Herodotus, Nonsuch Press, limited edition 473/675 copies £100 - 150 †

486
William Blakes illustrations to the bible, compiled by Geoffrey Keynes, the Trianon Press 1957, limited edition, This copy has a limitation number marked as review £250 - 350 †

487
A Sportsman's Bag, by Lionel Edwards, elephant folio limited to 650 copies, published by Country Life £150 - 250 †

488
Philip Norman, F.S.A., 1843-1931, a sketch book of various watercolours £50 - 80 †

489
Circa 1890 French Trade Fashion catalogues, folios, four volumes, numbers 12,14,16 and 20, Maison a.bultao Gaillard Lecomte et cie, Fabricants, Paris, Robes and Manteaux, Bals-soirees £500 - 600 †

490
The Spectator Volume No.1, First Edition and Poems from Punch, First Edition, (2) £30 - 50 †

491
A 19th Century mahogany cased banjo wheel barometer, having silvered dials beneath a scroll arch pediment, 110cm £80 - 120 †

492
A large mahogany wheel barometer, by Tarell, Northampton, fitted with a fuse clock by Durrant Byfield, also fitted dry/damp meter, thermometer and level, 116cm £300 - 500 †

493
A 19th Century Indian bronze pot and cover, in the form of a Nandi bull; and a 19th Century Indian toy of a boy astride a horse, on four wheeled base, 16cm high, (2) £40 - 60 †

494
A set of four plated twin branch wall lights, the back plates decorated with cherubs and foliage £250 - 350 †

- 495**
Two Antique Coptic fragments, framed and glazed, AF, probably 16th Century £150 - 250 †
- 496**
An oriental white hardstone censer, having raised stylised decoration, loop handles with Greek key borders on rounded supports, 20cm high x 15.5cm long £150 - 250 †
- 497**
A Chinese hardwood figure, depicting a man fighting with a wild cat, carrying club and libation cup, 33cm high £30 - 60 †
- 498**
An oriental carved wooden brush pot, decorated with figures and pagodas in relief, 15cm high £40 - 60 †
- 499**
A cloisonne rectangular box and cover, decorated with flowers on a green and blue ground, 13cm £20 - 40 †
- 500**
A pair of bronze oriental vases, decorated with dragons, 18cm high £250 - 350 †
- 501**
A circular Chinese bronze box, the lid decorated with calligraphy, 7.5cm dia. £30 - 60 †
- 502**
A Chinese bronze censer, of circular baluster form, with pierced lid, flanked by beast handles, raised on three tapering supports, 15cm dia. overall £200 - 300 †
- 503**
An oriental cloisonne double gourd shaped vase, with all over foliate decoration, 16cm high £30 - 50 †
- 504**
A bronzed cherub table lamp, raised on a marble plinth, 72cm high £60 - 100 †
- 505**
An Antique steel and copper fender; a late 19th Century copper fender; a set of three steel and brass fire implements; other fireplace accoutrements £100 - 150 †
- 506**
19th Century school, miniature portrait study of an elderly gentleman, in oval pierced brass frame, AF £30 - 50 †
- 507**
A large ornate silver plated 19th Century dish, decorated with cherubs and foliate scrolls with a vacant central cartouche, 45cm £150 - 200 †
- 508**
A large red folio album, containing 19th Century Italian cities £50 - 80 †
- 509**
Battle of Colenso, eight page hand written document and map £50 - 80 †
- 510**
John Felton, (Killer of the Duke of Buckingham), hand written note £50 - 80 †
- 511**
A Victorian golden oak stationery cabinet, with a sloping front, 32cm wide £80 - 100 †
- 512**
A late Victorian oak mantel clock, in architectural style case, with brass spandrel dial and steel chapter ring, 8 day movement striking on a gong, 46cm high £80 - 120 †
- 513**
A pair of oriental brass baluster vases, with raised leaf decoration, on turned hardwood bases, 44cm high £40 - 60 †
- 514**
A Victorian alabaster and enamel mantel clock, surmounted by an urn, 8 day movement striking on a bell, 40cm high £40 - 60 †
- 515**
A Japanese parquetry decorated trinket box, 22cm wide x 21cm high; and a pair of Japanese lacquered three drawer trinket chests, 17cm high x 13cm wide £60 - 80 †
- 516**
Three Victorian oil lamps £100 - 150 †
- 517**
Two late 19th Century Japanese lacquered and mother of pearl inlaid postcard albums, and contents £40 - 60 †
- 518**
A Victorian walnut writing slope; and a walnut sewing box A/F £30 - 40 †
- 519**
A 20th Century Louis Vuitton wardrobe trunk, with monogrammed decoration, brass caps and studded bands, the monogrammed brass lockplate, numbered 1013792. The fitted interior bearing label Louis Vuitton 943 047 Av Marceau 78 Paris Nice 2 Av De Suede, 87cm high x 55cm wide x 23cm deep
See back cover £1000 - 2000 †

Pictures & Prints

- 520**
Oswald Garniss, "Returning Home", oil on canvas, signed and dated 1907, 75cm x 55cm £100 - 150 †
- 521**
English school 19th Century, an interior scene with cavaliers playing cards at the table, oil on canvas, 40cm x 50cm £60 - 80 †
- 522**
English school 19th Century, portraits of two seated gentleman, unsigned watercolours, a pair, 32cm x 24cm, (2) £80 - 120 †
- 523**
Sydney Pike, 1847-1907, the Stour near Christchurch, oil on canvas, 20cm x 40cm £200 - 300 †
- 524**
Phillip F. Walker, "Thames steam tug", signed oil on canvas, 27.5cm x 20cm £60 - 100 †



Lot 473



Lot 475



Lot 478



Lot 519

Lots marked ✓ please refer to Droit de Suite royalty charges in Terms and Conditions

† Each lot is subject to a Buyer's Premium of 18% + VAT (21.6%)



Lot 526

525

John Syer, 1815-1885, heather covered heathland scene with sheep on a rural track, signed oil on canvas, 25cm x 40cm £100 - 150 †

526

Thomas Churchyard, landscape study depicting figures on a path with nearby gate, oil on board, inscription verso to Harriet Churchyard, 13.6cm x 16cm £400 - 600 †

527

C.M. Wigg, 1889-1969, "The Tower Bridge", signed watercolour, dated 1911, 28cm x 38cm £100 - 200 †

528

J.M. Barber, study of Lindsay Wharf, signed watercolour dated 1891, 17cm x 29cm £60 - 80 †

529

G.W. Collins, study of a figure in pony and trap along a country track, seated figures nearby, farmhouse in the far ground, signed watercolour, 24cm x 16cm £40 - 60 †

530

Marguerite A. Stone, 1885-1972, still life study depicting roses in a vase, 27.5cm x 20cm £60 - 80 †

531

E. Blampied, pencil signed etching of children at play; and another depicting figures with a work-horse, (2) £40 - 60 †

532

Charles James McCall, ROI, (1907-1989), (Scottish but settled in London), study in the Black Forest, circa 1937; and a churchyard in High Wycombe, pencil drawings, signed, 31cm x 24.5cm £40 - 60 †

533

Walter Duncan, study of the Thames with the houses of Parliament, signed watercolour dated 1918, 12cm x 18cm £60 - 80 †

534

Henry Bright, pencil drawing of fishing boats on a beach; and another fishermen with their lobster pots on a beach, pencil sketches, a pair, label verso relating to the collection of Lord Mackintosh with copy of a letter, 11.5cm x 14cm, (2) £40 - 60 †

535

Paul Pelouse, small landscape study with farmhouse and figure, signed watercolour, 12cm x 18cm £30 - 50 †

536

M. D. Ansell, coastline at sunset, signed watercolour, 24cm x 17cm £40 - 60 †

537

John Semple, (Scottish), still life study, oil on canvas, initialled JS, 50cm x 60cm
N.B. Exhibited at Royal Scottish Academy in the early 1940's £40 - 60 †

538

Gusev, (Russian), woman seated in a studio, signed watercolour, title and date indistinct, possibly 1950's, 43cm x 30cm £40 - 60 †

539

English school, study of three guinea pigs eating a lettuce leaf by a tree, unsigned oil on canvas, 46cm x 51cm £200 - 250 †

540

English school, circa 1900, study of a pair of fighting cocks, oil on canvas, 36cm x 46cm £80 - 120 †

541

English school 19th Century, A tethered terrier trying to catch a rat, unsigned oil on canvas, 26cm x 30cm £250 - 350 †

542

English school 19th Century, country scene, cattle watering by a bridge, unsigned oil on canvas, 40cm x 60cm £60 - 80 †

543

20th Century school, study of figure amongst corn stooks, in broadland scene, with wherry and windmill in the far ground, titled "St. Olaves" and indistinctly signed, 13.5cm x 26.5cm £20 - 30 †

544

English school 19th Century, study of a billy goat's head, unsigned oil on panel, 30cm x 36cm £150 - 250 †

545

H. Knight, shipping on the Thames with Tower bridge beyond, oil on canvas, signed, 19cm x 39cm £150 - 250 †

546

A 19th Century Moghal watercolour, depicting horse riders and figures taking tea, 26cm x 16.5cm £30 - 50 †

547

A set of four 19th Century ethnic prints £60 - 80 †

548

Adelio Zagni (Zeelie), 1911-1991, Venice by night, signed oil on board, 40cm x 55cm £80 - 120 †

549

An Antique coloured engraving depicting Arthur Annesley, Earl of Anglesey, the plate 42cm x 23cm £40 - 60 †

550

Charles A. Bool, waterfall scenes in mountainous landscapes, signed watercolours, (a pair), 26.5cm x 39cm £80 - 120 †

551

Brian Rawling 1931-, deer in a mountainous landscape by a stream, signed watercolour, 37.5cm x 44.5cm £60 - 80 †

552

Tom Caspers, "Summer Fruits", signed oil on canvas laid on board, 50cm x 59cm £80 - 120 †

553

P. Lockwood, study of a windmill near Eye, and a companion, a pair, signed oils on canvas, 29cm x 39cm £50 - 80 †

554

Evie Bland, still life study, signed oil on board, 20cm x 14.5cm, in a decorative gilt frame £40 - 60 †



Lot 530



Lot 551



Lot 552

555

Jan Van Couver, Dutch coastal scene, inscribed on the verse, signed oil on canvas, 51cm x 78cm, unframed £150 - 200 †

556

James Hardy, 20th Century, "Broadships", a naval sea battle, signed oil on canvas laid on board, 50cm x 76cm £180 - 220 †

557

A book illustration, depicting Don Quixote beating the carrier at the Inn, unsigned watercolour, 11.5cm x 22.5cm £40 - 60 †

558

19th Century continental school, portrait study head and shoulders of a young lady with ringlets in her hair, unsigned oil on board, 14cm x 9cm £40 - 60 †

559

Robert Blackwood, study of game, signed oil on panel, 18cm x 23cm £80 - 120 †

560

J. Box, 20th Century, study of a prize pig in a sty, signed oil on canvas laid on board, 19cm x 25cm £80 - 120 †

561

Early 20th Century school, portrait study of a young girl in blue floral dress, pastel, signed C. Blackingward, 60cm x 48cm £70 - 100 †

562

After Hayter, portrait study of Baron Wrottesley, unsigned oil on canvas, 76cm x 63cm, contained in a gilt frame by Nixon of Birmingham. N.B. Baron Wrottesley of Wrottesley in the county of Stafford is a title in the Peerage of the United Kingdom created in 1838, the original painting by Hayter is listed in the National Portrait gallery £500 - 800 †

563

19th Century school, portrait study of a lady wearing lace bonnet and holding a monocle, unsigned oil on canvas, 68cm x 52cm £300 - 400 †

564

A 19th Century painting on convex glass, of a young beauty with flowers in her hair, 90cm x 75cm overall, contained in an ornate gilt leaf and fruit decorated cushioned frame £300 - 400 †

565

19th Century school, portrait study of Doctor Charles Berney, 1726-1814, reading a musical score by Handel, Doctor Charles Berney was a musical historian friend of Samuel Johnson and father of the novelist and diarist Fanny Berney, (Madame de Arblay), unsigned oil on canvas, 75cm x 62cm, contained in an ornate gilt frame £200 - 400 †

566

Thirty-two small black and white prints, depicting various Suffolk country houses and churches, contained in two frames £60 - 100 †

567

19th Century school, study of a family outside a rural cottage, unsigned watercolour, 35cm x 32cm £80 - 120 †

568

C.H. Harrison, study of a broadland river scene with cottage in the far ground, signed and dated 1891, 26cm x 47cm £50 - 80 †

569

After J.B. Corot, "The Lake", coloured heliogravure, in decorative black and gilt frame £20 - 30 †

570

After Bartolozzi, circular coloured print depicting maiden and cherubs, contained in a gilt frame £20 - 30 †

571

After F. Boucher, "Pensent-ils au Raisin", black and white print, contained in a gilt frame £20 - 40 †

572

Seven humorous Henry Alken hunting engravings £100 - 200 †

573

Henry Alken, a set of four coloured engravings, "The First Steeple Chase on Record" £100 - 200 †

574

A Mogul type watercolour, depicting a young woman decorated with various jewellery carrying fly swish, 24cm x 17cm £40 - 80 †

575

Rooney, watercolour study entitled "Two girls and a fish", signed and dated 86, 22cm x 16cm £100 - 200 †

576

Keith Johnson, 1931-2018, an expansive East Anglian landscape, watercolour, 55cm x 38cm £20 - 30 †

577

W. Richards, (F.E. Jamieson), an extensive highland scene, oil on canvas, signed W. Richards, label verso "Queens view, Killiecrankie", 76cm x 50cm. N.B. W. Richard is a pseudonym for F.E. Jamieson £150 - 250 †

578

C. Bestland, oil on canvas portrait study of a seated lady wearing a shawl with bonnet, signed oil on canvas, dated 1785, 75cm x 58cm £400 - 600 †

579

A 19th Century decorative coloured print of Napoleon, on horseback leading his army, in mahogany gilt embellished frame £100 - 150 †

580

A 19th Century print, "Congres de Vienne", contained in a decorative gilt frame £50 - 80 †

581

Scott Rankin, study of a highland loch scene with crofter's cottage and sheep in the fore ground, mist shrouded mountains in the far ground, signed watercolour, 48cm x 66cm £100 - 150 †

582

Derrick Pearson, "The Misogynist" humorous pencil signed limited edition print, 57/250 £40 - 60 †



Lot 562



Lot 563



Lot 578



Lot 581

Lots marked ✓ please refer to Droit de Suite royalty charges in Terms and Conditions

† Each lot is subject to a Buyer's Premium of 18% + VAT (21.6%)



Lot 593



Lot 594



Lot 596



Lot 607

583

Ian Armour-Chelu, watercolour study, thatched cottage, signed and dated 1967 £40 - 60 †

584

Anne Paterson Wallace, "Melting snow", watercolour; and another "Break in the clouds", (2) £20 - 40 †

585

John Bacon, study of bridge over a river, watercolour, information verso, 14.5cm x 19cm £20 - 30 †

586

Anthony Osler, small watercolour of a barge, signed and dated 79 £20 - 30 †

587

A. Froggatt, six small studies of scenes near Cideswell, signed watercolours, in two frames £30 - 50 †

588

19th Century school, portrait study of a young woman with lace collar, 24cm x 18cm £60 - 100 †

589

Glynn Williams, born 1939, study of a cow standing in landscape, oil on board, signed, 15cm x 20cm £50 - 80 †

590

Phylis May Morgans, 1911-2001, Study of a Suffolk harbour scene, signed oil on board, 15cm x 20 £40 - 60 †

591

A Japanese wood block print, depicting a Kabuki actor, by Toyokuni, circa 1854, image 37cm x 25cm, (not glued to mount) £40 - 60 †

592

Manner of Charles Napier Hemy, a busy harbour with steam ships and barges, oil on canvas, 23cm x 33cm £100 - 150 †

593

Robert Nightingale 1888, "Uninvited", signed oil on canvas, 43cm x 59cm £1,500 - 2,000 †

594

Charles Thomas Bale, still life study of fruit, game and artefacts on a wooden ledge, signed oil on canvas, 60cm x 50cm £300 - 400 †

595

19th Century school, study of a seated young woman darning socks, oil on canvas, monogrammed TCB, 1864, 34.5cm x 29cm £100 - 200 †

596

19th Century school, study of the ship "Trade Winds", unsigned oil on canvas, 44cm x 58cm £200 - 400 †

597

A. Coleman, rural landscape with figures by a cottage, river, cattle and hills in the far ground, signed oil on canvas, dated 1885, 40cm x 50cm £100 - 200 †

598

19th Century school, a pair of studies depicting boats and figures on a lake, unsigned oils on board, 12.5cm x 15cm contained in decorative gilt frames £80 - 120 †

599

A 19th Century coloured print of a girl holding a bacchanalian mask, 24cm x 20cm in decorative gilt frame £20 - 30 †

600

W.E. Mayes, Norfolk Broad studies, a pair, signed watercolours, 22cm x 32cm £60 - 80 †

601

R.A. Richardson, watercolour and pencil study of birds, signed, 24cm x 36cm £100 - 150 †

602

After Vernon Ward, study of tulips and daffodils in a French porcelain vase, unsigned oil, 35cm x 45cm £20 - 40 †

603

Henry Hay Hunter, "Blackshore, Southwold", oil on board, 39.5cm x 49.5cm £30 - 50 †

604

19th Century school, horse racing study, unsigned watercolour, 13cm x 24cm £30 - 50 †

605

Flemish school, after the Old Master, study of Coronation of a King with Arch Bishop and assembled dignitaries, unsigned watercolour, see label verso, 10.5cm x 7.5cm £40 - 60 †

606

Late 19th/early 20th Century Suffolk school, study of farm buildings, indistinctly signed verso, oil on canvas, 26cm x 36cm £80 - 120 †

607

Leonard Russell Squirrell, six various etchings including Lincoln's Inn, London's canal, Liverpool Street Station, Admiralty archway, Lambeth Palace from the Thames and another £100 - 150 †

608

20th Century school, study of cattle in a pond with farm buildings beyond, 10cm x 18cm; and another landscape study with trees, unsigned watercolour, 9cm x 11.5cm £20 - 30 †

609

Attributed to Thomas Churchyard, study of a country house through woodland, watercolour, 10cm x 12cm £30 - 50 †

610

Attributed to Thomas Churchyard, study of a figure with sheep in landscape, watercolour, 13.5cm x 18cm £30 - 50 †

611

A small unframed pen and ink cartoon, "A Tragedy in Real Life" £10 - 20 †

612

Thomas Churchyard, pencil drawing study of St. Mary's church, Woodbridge, 13.5cm x 16.5cm £50 - 80 †

613

Attributed to Thomas Churchyard, study of an angler above a waterfall, oil on board, 15.5cm x 20cm £30 - 50 †

614

Attributed to Thomas Churchyard, "A lane near Yoxford", pencil sketch, 10cm x 13cm £20 - 30 †

615

Attributed to Thomas Churchyard, landscape with St. Mary's church beyond, oval watercolour, 15cm x 19.5cm £30 - 50 †

Lots marked ✓ please refer to Droit de Suite royalty charges in Terms and Conditions
† Each lot is subject to a Buyer's Premium of 18% + VAT (21.6%)

616

Circle of Thomas Churchyard, study of a pony and trap with church beyond, possibly Walberswick, watercolour, 9cm x 11.5cm
£40 - 60 †

617

Attributed to Thomas Churchyard, country house and parkland, possibly the Abbey at Woodbridge, watercolour, 18cm x 22cm
£40 - 60 †

618

Attributed to Thomas Churchyard, "A view at Bromeswell", watercolour, 13cm x 18cm
£40 - 60 †

619

Manner of Thomas Churchyard, landscape with castle and figures, 15.5cm x 22.5cm
£40 - 60 †

620

Manner of Thomas Churchyard, figure and livestock by a bridge over a stream, 11.5cm x 16.5cm
£40 - 60 †

621

Style of Thomas Churchyard, study of a country house with man and dog in the garden, 16cm x 13cm
£200 - 300 †

622

Manner of Thomas Churchyard, study of sheep grazing beside the river Deben, oil on board, 12cm x 22cm
£200 - 300 †

623

20th Century Chinese school, gouache, study of a naked woman and child, 82cm x 22cm
£80 - 120 †

624

Henry Saunders, study of a rural cottage, signed oil on canvas, 40cm x 59cm, in decorative white painted frame
£30 - 50 †

625

Circle of Thomas Churchyard, still life of summer flowers and verso, landscape, pencil and wash sketch, double sided, possibly by Ellen Churchyard, 24cm x 16cm
£80 - 120 †

626✓

Edward Seago, 1910-1974, "Waveney Valley" study, signed oil on board, 50cm x 67cm. Verso: a partly finished sketch of water meadow
£10,000 - 15,000 †

627

Thomas Churchyard, study of Woodbridge Abbey with sheep in the parkland, 19cm x 28.5cm
£300 - 400 †

628

Thomas Churchyard, landscape study near Woodbridge with shepherd and sheep in the foreground, 13cm x 18.5cm
£250 - 350 †

629

Thomas Churchyard, a lane scene at Martlesham, watercolour, 11cm x 8cm
£200 - 300 †

630

Thomas Churchyard, Stoke by Nayland church, oil on board, 13cm x 19cm
£700 - 800 †

631

Thomas Churchyard, study of horses in a paddock, farmhouse to the distance, 13cm x 10cm
£200 - 300 †

632

Thomas Churchyard, small landscape study with fields and trees, watercolour, 9cm x 11cm
£150 - 200 †

633

Thomas Churchyard, study of the Deben and Tide Mill with various boats, watercolour, 14cm x 18.5cm
£200 - 300 †

634

Thomas Churchyard, study of Melton Dock, 12.5cm x 19cm
£100 - 200 †

635

Thomas Churchyard, Woodbridge from the river Deben, 8.5cm x 11cm
£200 - 300 †

636

19th Century school, oval portrait study of a lady, unsigned oil on board, framed as an oval, 37cm x 26cm
£30 - 60 †

637✓

Guy Taplin (born 1939), painted wood study of an Egret, 67cm high
£500 - 800 †

638

20th Century study of Hector Berlioz, oil on board, indistinctly initialled, 49cm x 36cm
£40 - 60 †

639

20th Century school, study of an artist seated in a window, initialled oil on canvas, 70cm x 60cm
£40 - 60 †

640

19th Century school, study of a seated lady wearing red cloak, unsigned oil on canvas, mounted as an oval, 53cm x 42cm
£100 - 200 †

641

Cecil Aldin, hunting print, "Frank Freeman at Crick", pencil signed; another "The Meynell", and four others, "Gone Away from Badby Woods", "The Pitchley", "Full Cry from Lotland Wood", "A fox away from Berrydale", (6)
£300 - 400 †

642

After Hopner, a large portrait study of a lady wearing a bonnet sitting in front of a woodland, unsigned oil on canvas, 126cm x 99cm, (in need of restoration)
£300 - 400 †

643

Cavendish Morton, "Slaughden Quay, Aldeburgh", signed watercolour, dated 1967, 27cm x 37cm
£100 - 200 †

644-645

No lots

Furniture

646

An Edwardian chiming mantel clock, having silvered dial
£60 - 100 †

647

A good quality 19th Century mahogany and brass mounted microscope cabinet, complete with drawers containing various slides, 50cm wide x 53cm high x 27cm deep
£200 - 400 †



Lot 626



Lot 627



Lot 630



Lot 633

Lots marked ✓ please refer to Droit de Suite royalty charges in Terms and Conditions

† Each lot is subject to a Buyer's Premium of 18% + VAT (21.6%)



Lot 650



Lot 652



Lot 653



Lot 659

648

A 19th Century single fusee wall clock, painted Roman numeral dial, originally marked Thomas Read, Cambridge, dial 29cm dia. (re-painted)
£200 - 300 †

649

A Victorian walnut spoon back nursing chair, upholstered in fawn buttoned dralon, serpentine seat raised on cabriole front supports, terminating in castors
£80 - 120 †

650

An 18th Century style walnut low boy, fitted five drawers above a shaped apron, raised on cabriole supports and pad feet, 108cm wide
£150 - 250 †

651

An early 18th Century walnut chest, fitted two short and three long drawers, raised on bracket feet, 90cm wide
£200 - 300 †

652

A carved mahogany two tier dumb waiter, raised on a turned baluster column and acanthus tripod base
£100 - 150 †

653

A 19th Century rosewood fold-over games table, the swivel top above single drawer, raised on pierced shaped end supports, terminating in bun feet, united by a turned stretcher, 52.5cm wide
£200 - 300 †

654

An 18th Century style walnut bachelor's chest, fitted brushing slide and four graduated drawers, raised on bracket feet, 78cm wide
£300 - 400 †

655

An early 18th Century scarlet lacquer chest on stand, decorated in the chinoiserie manner, two drawer below, raised on a shaped apron stand and cabriole supports, 104cm wide
£200 - 400 †

656

A George III mahogany chest, fitted two long drawers within canted reeded styles and raised on square chamfered supports, 115cm wide x 81cm high
£100 - 150 †

657

An Edwardian inlaid mahogany and satinwood cross-banded bureau, the fall front opening to reveal a fitted interior, three long drawers below, raised on bracket feet, 77cm wide
£80 - 120 †

658

A 19th Century mahogany bow fronted chest, fitted three long drawers and raised on bun feet, 114cm wide
£60 - 80 †

659

An 18th Century Dutch marquetry commode, of serpentine shape, profusely decorated with trailing foliage, fitting four drawers flanked by end cupboards, raised on square section supports, 83cm wide
£400 - 600 †

660

A George III mahogany and chequer banded chest, fitted four long graduated drawers, raised on bracket feet, 90cm wide
£100 - 200 †

661

An 18th Century walnut and cross-banded chest on stand, fitted three long drawers, raised on cabriole supports and pad feet, 96cm wide x 94cm high
£100 - 200 †

662

An 18th Century walnut and cross-banded chest, of two short and three long drawers, raised on bracket feet, 97cm wide
£100 - 200 †

663

A 19th Century continental walnut and marquetry chest, of three drawers with urn and floral scroll decoration, shallow drawer to the frieze, 129cm wide
£200 - 400 †

664

A 19th Century continental walnut chest, of four long drawers, flanked by ebonised pillars and canted corners, 135cm wide
£200 - 400 †

665

A 19th Century rosewood plant stand, raised on baluster turned supports and tripod base
£40 - 60 †

666

A 19th Century stripped pine standing corner cupboard, the upper painted section fitted shaped shelves, single panelled door below, raised on a platform plinth, 114cm wide x 209cm high
£100 - 200 †

667

An 18th Century walnut tallboy, the upper section surmounted by a stepped cornice, three short and three long drawers below, the lower section fitted three long drawers, all with brass drop handles, pierced butterfly backplates and escutcheons, raised on bracket supports, 105cm wide x 181cm high
£400 - 600 †

668

A 19th Century figured mahogany and gilt metal mounted secretaire a abbatant, with marble top above single frieze drawer, the fall front opening to reveal a fitted interior, three long drawers below, raised on square section supports, 97cm wide x 141cm high
£200 - 400 †

669

A 19th Century mahogany bow fronted chest, of two short and three long graduated drawers, raised on bracket feet, 106cm wide
£100 - 150 †

670

A good quality oak standing corner cabinet, the upper display shelves enclosed by a pair of glazed panelled doors with cupboards below, 130cm wide
£100 - 200 †

671

A 19th Century rosewood side cabinet, with marble top, two drawers and cupboards under, raised on a platform plinth on bun feet, 128cm wide x 62cm deep x 80cm high
£200 - 300 †

672

A 19th Century mahogany and satinwood cross-banded linen press, (converted to a hanging wardrobe), surmounted by a blind fret pediment, the doors with oval panels, two short and two long drawers below, raised on bracket feet, 125cm wide
£100 - 200 †

673

A George III mahogany linen press, the upper section fitted five trays and enclosed by a pair of oval panelled doors, two short and three long drawers below, raised on bracket feet, 132cm wide
£150 - 250 †

674

A George III East Anglian elm standing corner cupboard, the shelves enclosed by two panelled doors, 90cm wide x 196cm high overall
£60 - 100 †

675

An oak cottage long case clock, by Webb of Frome, painted dial and 30 hour movement
£150 - 200 †

676

A 19th Century papier-mâché and lacquered work table, with tray top, drawer and silks well below, raised on octagonal column and quadruple splay, 75cm wide
£100 - 200 †

677

A 19th Century ebonised tripod table, the top formed from a papier-mâché tray, AF
£40 - 60 †

678

An ethnic carved elephant stool, 35cm dia. x 43cm high
£100 - 200 †

679

An Antique oak joint stool, raised on baluster turned supports, 44cm wide x 46cm high
£60 - 100 †

680

An oak long case clock, the brass dial inscribed "Mary Cole, Barnstaple", brass spandrel dial supporting an 8 day movement striking on a bell, full length trunk panel door above a box base
£200 - 300 †

681

A carved oak sideboard, in the Jacobean manner, shallow back above two central drawers, flanked by cupboards, raised on a pot board base with baluster cup and cover supports, terminating in block feet, the whole profusely decorated with foliate decoration, 187cm
£200 - 300 †

682

A pair of Victorian oak hall chairs, shield shaped back above solid seats, raised on turned tapering front supports
£60 - 80 †

683

A carved Middle Eastern hardwood occasional table, with mother of pearl decoration, raised on a tripod base, 61cm high
£30 - 60 †

684

An 18th Century oak and mahogany cross-banded mule chest, fitted with an arrangement of dummy drawers and three base drawers, flanked by half columns, raised on bracket feet, 156cm wide
£300 - 400 †

685

A 19th Century style oak serving table, raised on turned tapering supports, 197cm wide
£200 - 300 †

686

A long oak window seat, in the Regency style, having scrolled ends, raised on tapering turned supports and peg feet, 121cm wide
£150 - 250 †

687

An oak dresser, of small proportions, having shelved and boarded plate rack, fitted three spice drawers and two larger drawers below, raised on turned baluster supports united by a pot board, 91cm wide x 162cm high
£300 - 400 †

688

A stripped pine long case clock, having painted dial and 8 day movement
£200 - 300 †

689

A 19th Century mahogany chiffonier, the interior shelves enclosed by a pair of moulded panelled doors, flanked by scrolled monopodia and fluted pilasters, raised on breakfront platform base, 132cm wide
£100 - 200 †

690

Three various small Edwardian inlaid mahogany occasional tables
£40 - 60 †

691

A Victorian carved walnut framed armchair, with needlepoint upholstered back and serpentine seat, raised on cabriole supports terminating in stretchers
£50 - 80 †

692

A late 19th/early 20th Century Arts & Crafts design ebonised and gilt decorated mirrored wall cupboard, having pierced sides, cupboard enclosed by a pair of doors, painted scenes of young couples, 62cm wide x 90cm high
£150 - 200 †

693

An Italian walnut Caquetoire chair, with leather upholstery, carved foliate scroll decoration to the back, raised on shaped front supports, terminating in block feet, united by a wavy cross-stretcher
£100 - 200 †

694

A walnut Caquetoire chair, having Spanish leather embossed upholstery, the arms with fluted finials, raised on twist supports terminating in a triform under-tier
£100 - 200 †

695

A large Antique oak coffer, having quadruple panelled front, raised on square section supports, 160cm wide
£100 - 200 †

696

A George III mahogany bureau bookcase, the upper section surmounted by an architectural broken arch pediment above adjustable shelves enclosed by glazed tracery doors, the fall front opening to reveal a fitted interior arrangements of drawers and pigeon-holes around a central cupboard, two short and three long graduated drawers below, raised on bracket feet, 106cm wide
£400 - 600 †

697

An 18th Century Pollard oak and walnut low boy, the shaped top above five frieze drawers, raised on cabriole supports and pad feet, 76cm wide
£400 - 600 †



Lot 678



Lot 693



Lot 694



Lot 697



Lot 705



Lot 707



Lot 709



Lot 736

698

A 19th Century mahogany rectangular occasional table, raised on spindle supports united by stretchers, 66cm wide £100 - 150 †

699

No lot

700

A George IV mahogany tray top wall standing serving table, of bow fronted form, fitted two drawers and raised on turned fluted supports, terminating in four claw and ball feet, 155cm £400 - 600 †

701

A 19th Century gilt framed convex wall mirror, with eagle surmount £100 - 200 †

702

A Victorian oval rosewood breakfast table, raised on turned baluster column and triple carved splay, 117cm £100 - 150 †

703

An Antique oak gate leg dining table, raised on baluster turned supports, terminating in club feet, 107cm £100 - 200 †

704

A Colonial carved mahogany drop leaf table, raised on rounded tapering supports and pad feet, 94cm, AF £60 - 100 †

705

An Antique carved oak hall chair, having mask and foliate scroll decorated back within barley twist columns, upholstered seat and back panel, raised on turned block supports, united by a pierced stretcher £40 - 60 †

706

A pair of Yorkshire style spindle back elbow chairs, having rush work seats, raised on rounded tapering supports united by stretchers £60 - 80 †

707

A Victorian rosewood Prie dieu, with needlepoint upholstered back, pierced foliate scroll decoration, raised on turned tapering front supports, terminating in brass castors £40 - 60 †

708

A George III mahogany hanging corner cupboard, the shelves enclosed by a single glazed tracery door, 90cm wide overall x 108cm high £80 - 120 †

709

A set of 14 19th Century Edwards & Roberts carved oak dining chairs £1,000 - 1,500 †

710

An Antique oak gate leg dining table, raised on baluster supports, fitted single drawer, 118cm £100 - 200 †

711

A Regency rosewood and satinwood cross-banded sofa table, fitted two short drawers and opposing dummy drawers, raised on shaped end supports, terminating in scrolled feet with brass caps and castors, 95cm wide x 63cm deep £100 - 150 †

712

An oak and elm refectory type dining table, raised on baluster end carved cup and cover supports, 193cm long £100 - 200 †

713

An elm refectory type table, of narrow proportions, raised on shaped ends pegged, united by stretchers, 151cm wide x 50cm deep £200 - 400 †

714

An early 19th Century mahogany and ebony strung square piano, converted to a sideboard, fitted three drawers raised above four square section legs, terminating in brass caps and castors united by stretchers, 165cm long £60 - 100 †

715

A large good quality oak gate leg dining table, in the 18th Century style, rounded drop leaves raised on baluster turned supports and block feet, united by stretchers, 206cm £200 - 300 †

716

A 19th Century Padouk wood circular top tripod table, 80cm dia. £100 - 150 †

717

A pair of mahogany Trafalgar type dining chairs, having curved bar backs, rope twist centre rails, cane seats raised on sabre front supports, fitted with brass carrying handles £60 - 80 †

718

An oriental rug, having all over floral decoration on a celadon green and cream ground £100 - 150 †

719

A small Edwardian walnut salon settee, with beaded and leaf carved decoration, 110cm wide £100 - 150 †

720

An Edwardian mahogany and inlaid nursing chair; and a similar period towel rail, (2) £50 - 80 †

721

A Georgian mahogany winged back armchair, upholstered in rust coloured dralon, raised on square section supports united by stretchers, terminating in castors £200 - 300 †

722

A late 18th Century Continental walnut and inlaid writing desk, the sliding top chequer-banded and with central panel depicting an urn, single drawer below, raised on square tapering supports with gilt metal capitals, 66cm wide £200 - 400 †

723

A 19th Century style mahogany library chair, upholstered in green buttoned leather, fold-out arm rest, raised on turned tapering supports terminating in castors £300 - 500 †

724

An Antique oak small gate leg occasional table, the oval top raised on turned baluster columns united by stretchers, 78cm £40 - 60 †

725

A Victorian papier-mâché and mother of pearl decorated occasional table, 70cm in extremes
£100 - 150 †

726

A George III style mahogany D end dining table, raised on ring turned tapering supports, 180cm x 120cm
£200 - 300 †

727

A set of six 19th Century mahogany Hepplewhite style dining chairs, with arched cresting, pierced splat backs and upholstered drop-in seats, raised on square section stretchered supports
£100 - 200 †

728

A Regency mahogany card table, the foldover swivel top raised on ring turned baluster column with quadruple splay, terminating in castors, 90cm wide, AF
£40 - 60 †

729

A 19th Century black and red lacquered chinoiserie decorated snap top occasional table, raised on a turned baluster column and triform base, terminating in claw supports, 91cm dia.
£100 - 200 †

730

A Victorian ebonised and gilt decorated wall mirror, 73cm x 59cm
£60 - 80 †

731

An 18th Century oak gate leg dining table, of joined construction, raised on turned baluster columns and block feet, united by stretchers, 116cm
£100 - 150 †

732

An 18th Century continental walnut elbow chair, having cane seat and back-panels, scrolled and foliate carved cresting rail, raised on cabriole front supports united by wavy stretchers
£60 - 80 †

733

A carved oak settle, having three panel back with lozenge decoration, lifting box seat, 106cm wide
£100 - 200 †

734

A 19th Century mahogany side cabinet, surmounted by a brass rail, central shelves flanked by cupboards, 185cm wide
£100 - 200 †

735

A set of eight Carolean style oak high back dining chairs, having arched cresting rails above turned columns, solid back panels and seats, on turned baluster and block supports, (6 standards, 2 elbows)
£100 - 150 †

736

A set of eight mahogany Chippendale style dining chairs, having pierced splat backs, green dralon upholstered seats, raised on cabriole front supports, (6 stands, 2 elbows)
£200 - 300 †

737

A good quality early 20th Century oak refectory table, raised on square section chamfered supports and block feet, united by peg stretchers, 152cm x 70cm
£150 - 250 †

738

A Georgian mahogany low boy, fitted three drawers, raised on slender tapering supports, 91cm wide
£80 - 120 †

739

A Victorian walnut revolving piano stool, with floral brocade upholstered seat on baluster column and tripod base
£40 - 60 †

740

A 19th Century drop leaf dining table, raised on baluster turned tapering supports terminating in castors, 107cm wide
£60 - 100 †

741

An Antique carved oak bible box, with sloping hinged lid and foliate decoration, iron lockplate complete with key, 61cm wide
£80 - 120 †

742

A mahogany extending dining table, fitted three extra leaves, raised on turned tapering fluted supports, 136cm x 300cm fully extended
£300 - 400 †

743

A set of 10 mahogany bar back dining chairs, in the Gillows style, upholstered stuff-over seats, raised on turned fluted front supports, (8 standards and 2 elbows)
£400 - 600 †

744

An early 19th Century walnut and brass mounted scroll end day bed, upholstered in pink dralon, raised on sabre supports terminating in brass caps and castors
£100 - 200 †

745

A 19th Century gilt French elbow chair, having carved cresting rail, floral embroidered serpentine seat, back and armrests, raised on cabriole supports
£100 - 200 †

746

A Victorian mahogany framed spoon back armchair, upholstered in red buttoned dralon, scroll arms above serpentine seat, raised on cabriole front supports
£120 - 160 †

747

A large early 20th Century three seater Country House wing back settee, upholstered in floral printed pink silk brocade
£60 - 100 †

748

A late 19th Century Howard style deep seated armchair, upholstered in pink floral printed brocade and raised on turned supports, terminating in castors
£60 - 100 †

749

An unusual long velvet and needle-point covered fender stool, raised on square section supports united by stretchers, 181cm long
£100 - 200 †

750

A Victorian mahogany extending dining table, raised on octagonal tapering supports, 121cm x 203cm
£300 - 500 †

751

A set of 8 19th Century mahogany bar back dining chairs, with upholstered lift-out seats, raised on octagonal turned tapering supports, (6 standards, 2 elbows)
£150 - 250 †



Lot 743



Lot 745



Lot 746



Lot 751



Lot 757

752

A Victorian mahogany tray top bedside cupboard, enclosed by a single door, raised on ring turned tapering supports, 38cm wide £30 - 50 †

753

A walnut five drawer hall table, of shallow proportions, raised on square section supports, 107cm wide x 30cm deep x 76cm high £200 - 300 †

754

A 19th Century mahogany two tier night stand, shaped frieze, single drawer, raised on square chamfered supports, united by a star shaped under-tier, 39cm wide x 80cm high £30 - 50 †

755

A 19th Century mahogany two tier night stand, fitted with a single drawer, raised on square section supports, 56cm wide £20 - 40 †

756

A Victorian walnut spoon back nursing chair, with green buttoned upholstery, raised on cabriole front supports £40 - 60 †

757

A near pair of George III mahogany cross-banded and ebony strung side tables, fitted single drawers and raised on slender square supports, 60cm x 57cm wide respectively £200 - 300 †

758

A large Victorian walnut stool, with floral damask upholstery, raised on turned supports, 94cm x 59cm £60 - 80 †

759

An Edwardian satinwood and mahogany cross-banded oval occasional table, in the Sheraton Revival manner, having inlaid and painted decoration of a central urn within ribbon tied borders, slender out-swept supports united by an under-tier, bearing label for S. & H. Jewell, Holbourn, 75cm £100 - 150 †

760

A pair of 19th Century papier-mâché and mother of pearl inlaid boudoir chairs, dralon upholstered seats raised on ring turned supports £40 - 60 †

761

A Victorian walnut and inlaid work table, the hinged lid with marquetry panel, opening to reveal a fitted interior, with silks well, raised on a foliate carved quadruple base, 41cm wide x 72cm high £200 - 300 †

762

A 19th Century circular rosewood snap top supper table, raised on a circular column with acanthus carved decoration, the trifirm base raised on claw and ball feet, 140cm dia. £300 - 400 †

763

A set of four Victorian mahogany balloon back dining chairs, with buttoned leather upholstery, raised on cabriole supports £100 - 150 †

764

A 19th Century mahogany ottoman, needlepoint upholstered seat decorated pheasant in landscape, pleated silk side panels, raised on brass castors, 59cm £60 - 80 †

765

An Antique Chinese elm high chair, having curved and scrolled back rail, central splat with foliate carved motif, raised on square section supports with slide out foot rest £80 - 120 †

766

An Antique stripped pine wine cooler, the hinged lid opening to reveal a zinc lined interior, raised on platform plinth and bun feet, 60cm wide £150 - 250 †

767

A George III mahogany D end dining table, having later centre leaf, raised on square section supports, 170cm long x 120cm wide, AF £60 - 80 †

768

A set of four William IV mahogany dining chairs, having carved bar backs, green leather upholstered seats, raised on turned fluted front supports £60 - 80 †

769

A mahogany butler's tray, the shaped gallery with integral handles, raised on chamfered legs united by stretchers, 73cm wide £60 - 100 †

770

A walnut knee-hole pedestal writing desk, leather inset top fitted three frieze drawers with three drawers to each of the pedestals and opposing cupboards, raised on bracket supports, 146cm wide £200 - 400 †

771

A Victorian carved oak elbow chair, having pierced leaf decorated back, scrolled outswept arms, green dralon upholstered seat and back panel, raised on mask supports united by bobbin turned stretchers £120 - 160 †

772

An early 20th Century oak spindle back desk chair; and a Regency mahogany and brass inlaid dining chair, raised on sabre front supports £40 - 60 †

773

A large late 18th Century walnut framed sofa, having shaped back, upholstered in printed floral brocade and raised on seven shell carved cabriole supports, terminating in scrolled toes, 200cm long £600 - 800 †

774

A Victorian mahogany dressing stool, with needlepoint upholstery, raised on turned tapering supports and peg feet, 36cm wide x 45cm high £30 - 50 †



Lot 761



Lot 765



Lot 771

TERMS AND CONDITIONS OF SALE 1. INTRODUCTION

1. INTRODUCTION

The following defining terms are used in these conditions:-

"Auction"	Means any auction conducted by Clarke and Simpson Auctions Ltd. either at the premises owned by them or elsewhere (including any internet based auction);
"Auctioneer"	Means Clarke and Simpson Auctions Ltd. authorised auctioneer as appropriate;
"Bidder"	Means a bidder at an auction, including the bidders personally present at the venue and those bidding by telephone or over the internet or otherwise;
"Buyer"	Means the bidder whose bid was the last bid when the auctioneer concludes the bidding; "Conditions" Means these Terms and Conditions of Sale;
"Hammer Price"	Means the level of bidding reached (at or above any reserve) when the auctioneer brings the bidding to a close;
"Lot"	Means any property accepted by Clarke and Simpson Auctions Ltd. for offer at auction;

2. DESCRIPTION

No warranty is given or implied by the description in the catalogue. Each lot is sold in its condition at the time of sale with all faults, defects, imperfections and errors of description (if any). Whilst every endeavour has been made to describe the items adequately and properly, the purchaser shall deem to have inspected the lot at time of purchase. All catalogues and seller's and buyer's guides are for information only and do not form part of the contract.

3. STATUTORY REQUIREMENTS

Purchasers will be deemed to have satisfied themselves prior to purchasing regarding current legal requirements (e.g. Health & Safety at Work Act) and it is expressly brought to the bidders attention that equipment in the sale may not necessarily comply with such regulations. Any purchaser shall satisfy himself as to any statutory requirement for the use of any item and no liability shall rest with the vendors nor the Auctioneers.

4. THE AUCTION All auctions are conducted at the absolute discretion of the auctioneer. The auctioneer shall conduct the auction with reasonable skill and care. The vendor reserves the right to sell subject to reserve price in respect of all lots. What constitutes a bid shall be at the absolute discretion of the auctioneer, acting with appropriate skill and care. The auctioneer shall have the right to refuse any bid in all cases but most notably when such a bid does not exceed the previous bid by at least 10% or such a proportion as the auctioneer shall in his absolute discretion direct. Where two or more bids at the same level are simultaneously received by the auctioneer, the auctioneer at his absolute discretion shall determine which bid to prefer. Subject to the foregoing where two or more bids are at the same level are simultaneously received by the auctioneer, the bid submitted in the room shall take preference over a bid submitted by telephone or internet at the same level. Any bid made or attempted by telephone or over the internet will only be deemed to have been made if received by the auctioneer. The auctioneer reserves the right to withdraw, consolidate or divide any lot or lots or submit them in any order that they desire. The auctioneer has the right at his absolute discretion to refuse admission to his premises or attendance at (or participation in) any auction by any person. In the case of any dispute, the auctioneer shall be sole arbitrator in any matters arising during or out of the sale.

5. BIDDERS

All bidders will be required to register their particulars, bidders attending in person and those accompanying them will be required to provide photo ID and separate confirmation of address prior to viewing or taking any part of the sale and before entering any part of the premises to view. All bidders accept full liability for all bids submitted. Subject to the clause in this document headed "The Auction", the highest bidder at the close of bidding shall be the buyer. Any dispute about a bid shall be settled at the auctioneer's absolute discretion. Bidders are all deemed to act as principles unless there is prior written acknowledgement by Clarke and Simpson Auctions Ltd. that a bidder is acting as an agent for a named principle. Bidders are strongly encouraged to attend the auction in person. The bidders shall be responsible for any decision to bid for a

particular lot and shall be deemed to have carefully inspected and satisfied themselves as to condition, neither Clarke and Simpson Auctions Ltd., their employees or agents shall be responsible for any neglect or default in doing or failing to do so. Bidders will be given ample opportunity to view and inspect before the sale and prospective buyers must satisfy themselves as to all matters.

6. DEFAULT

Clarke and Simpson Auctions Ltd. shall act as agent of the vendor only. Any contracts for the sale of a lot shall be formed between the vendor and the buyer. As agent, only Clarke and Simpson Auctions Ltd. shall not be responsible for default by the vendor or the buyer. If any lot is not paid for in full and taken away in accordance with these conditions, or there is any other breach of the conditions, then Clarke and Simpson Auctions Ltd. as agents for vendor shall at its absolute discretion and without prejudice to any other rights it may have, be entitled to exercise all or any of the following rights and remedies:-

- 6.1 to proceed against the buyer for any action of debt or damages for breach of contract;
- 6.2 to rescind the sale of that lot or lots sold by Clarke and Simpson Auctions Ltd. to a defaulting buyer;
- 6.3 to resell the lot (by auction or private treaty) in which case the defaulting buyer shall be responsible for any resulting deficiency in the total amount due (after crediting any part payment and adding any resale costs), any possible surplus so arising shall belong to the vendor;
- 6.4 to remove, store and insure the lot at the expense of the defaulting buyer and, in the case of storage, the location of such storage shall be at Clarke and Simpson Auctions Ltd. discretion;
- 6.5 to charge interest at a rate not exceeding 2% per month of the total amount due to the extent that it remains unpaid for more than two working days after the sale;
- 6.6 to retain that or any lot sold to the defaulting buyer until the buyer pays the total amount due;
- 6.7 to reject or ignore bids from the defaulting buyer at future auctions or to impose conditions before any such bids are accepted;
- 6.8 to apply any proceeds of sale for any other lots due or in the future becoming due to the defaulting buyer towards the settlement of the total remaining due.

7. INDEMNITIES, PENALTIES AND LIMITATIONS OF LIABILITY

Purchasers shall pay for any damage done by themselves or their agents during the removal of their lots. Attendance at the sale shall be at the risk of those attending in respect of both themselves and to their goods and vehicles.

Any indemnity under these conditions will extend to all actions, costs, expenses, claims and demand whatsoever suffered or incurred by the person entitled to the benefit of it and Clarke and Simpson Auctions Ltd. declare themselves to be a trustee of the benefit of such indemnity so far as it is expressed to be the benefit of its employees and agents.

Whilst Clarke and Simpson Auctions Ltd. endeavour to ensure that the information on their websites is correct, they do not warrant the accuracy and completeness of the material on their website. Also, Clarke and Simpson Auctions Ltd. can make changes to the material on their website, or alter the products and prices described on it, at any time without notice. The material on the website may be out of date, Clarke and Simpson Auctions Ltd. make no commitment to update such material. All material on the websites is provided "as is" without any conditions, warranties or other terms at any time. Accordingly, to the maximum extent permitted by law, the website is provided to all parties on the basis that Clarke and Simpson Auctions Ltd. exclude all representations, warranties, conditions and other terms which, but for this legal notice, might have effect in relation to the website.

8. ELECTRICAL SAFETY REGULATIONS

All electrical lots are subject to electrical safety regulations and fall within "the low voltage electrical equipment (safety) regulations 1989" – all items have been pat tested for safety but are not guaranteed in working order.

9. GENERAL MATTERS

Any notice to any buyer, vendor, bidder or viewer may be given by first class mail or email in which case it shall be deemed to have been received by the addressee forty-eight hours after posting or sending. All notices to Clarke and Simpson Auctions Ltd. must be sent in writing and email is not acceptable. Any indulgence extended to any person by Clarke and Simpson Auctions Ltd., notwithstanding the strict terms of these conditions or the terms of consignment, shall affect the position at the relevant time only and the respect of that particular concession only; in all other respects these conditions shall be construed as having full force and effect. These conditions and any disputes or claims arising out of or in connection with them or their subject matter or formation (including non-contractual disputes or claims) are governed by and construed in accordance with the law of England. The parties irrevocably agree that the courts of England have exclusive jurisdiction to settle any dispute or claim that arises out of or in connection with the agreement or its subject matter or formation (including non-contractual disputes or claims).

10. PUBLICITY

Any catalogue and buyer and seller guides are provided for information only and do not form part of these conditions. The catalogue and the buyer and seller guides may contain additional terms and conditions. Clarke and Simpson Auctions Ltd. reserve the right to use any photographs, background information and research for publicity purposes both before and after the sale.

11. THE PURCHASE PRICE AND PAYMENT ARRANGEMENTS

There is a buyer's premium 18% plus VAT payable in respect of the sale. Any purchases made via "www.the-saleroom.com" or "www.ibidder.com" shall be subject to an administration charge of 5% plus VAT on the price. Preferred payment is cash, bank transfer or personal debit card. Such cards may only be used on a chip and pin basis with the owner present. No payment over £350 will be accepted by telephone. Payment will be accepted online via our secure e commerce account. We do not accept credit cards or international debit cards. Payment by cheque will only be acceptable subject to prior arrangement. No lot will be removed from the sale until any cheque has cleared.

Payment is due on the day of the sale. Cash in excess of £7,500 (including V.A.T.) will not be accepted from any one person, this is not allowed due to Money Laundering Regulations 2007. All money received will be held in Clarke & Simpson Auctions Ltd. Clients No 2 Account at Barclays Bank plc, Framlingham, Ipswich, Suffolk. Account Number 83428591. Sort Code 20 98 07. Clarke and Simpson Auctions Ltd. have no responsibility for any lot between the close of bidding and payment being made and subsequent collection. All payments from overseas buyers shall be made by Bank Transfer and bank fees paid in addition. Please note all policy regarding payment will be enforced and suitable arrangements must be made.

12. REMOVAL OF LOTS

The ownership of any lot purchased shall not pass to the relevant buyer until they have made payment in full to Clarke and Simpson Auctions Ltd. of the total amount due including any storage due.

The buyer shall at their own risk and expense take away any lot that they have purchased and paid for, not later than seven days following the day of the auction.

Any purchaser shall be responsible for removal and insurance and lots stored and storage charges. All lots sold shall be subject to the following storage charges after seven days from the sale:

7-14 days	25% of the lot value + VAT whichever is the greater	or £7.50+VAT per lot
14-21 days	50% of the lot value + VAT whichever is the greater	or £15 +VAT per lot
21-28 days	75% of the lot value + VAT whichever is the greater	or £22.50 + VAT per lot

Any lots not collected after 35 days will be re-sold with immediate effect on behalf of the purchaser and the proceeds of the sale retained in lieu of outstanding storage charges. The policy shall be rigorously enforced and no lots shall be collected unless outstanding storage charges are met.

13. NUMBER BIDDING

This will be used for speed and efficiency as in all our sales. All prospective purchasers must complete a registration form and register in the office on the view day or morning of sale to receive a number for bidding.

Please also note that photo ID and additional confirmation of address will be required.

14. ONLINE BIDDING

Clarke & Simpson Auctions Ltd. offer an online bidding service via the-saleroom.com and ibidder.com for bidders who cannot attend the sale. In completing the bidder registration on www.the-saleroom.com or ibidder.com and providing your payment card details and, unless alternative arrangements are agreed with Clarke & Simpson Auctions Ltd.:

1. authorise Clarke & Simpson Auctions Ltd., if they so wish, to charge the payment card given in part or full payment, including all fees, for items successfully purchased in the auction via www.the-saleroom.com or ibidder.com, and
2. confirm that you are authorised to provide these payment card details to Clarke & Simpson Auctions Ltd. through www.the-saleroom.com or ibidder.com and agree that Clarke & Simpson Auctions Ltd. are entitled to ship the goods to the card holder name and card holder address provided in fulfilment of the sale.

Please note that any lots purchased via the-saleroom.com or ibidder.com live auction service will be subject to an additional 5% buyer's premium + VAT at the rate imposed on the hammer price.

15. TELEPHONE BIDDING

We offer a telephone bidding service where possible, but this service can never be guaranteed. No applications for telephone bids will be accepted after the end of the viewing prior to sale day for any sale. All potential telephone bidders must provide a valid landline number and email address and agrees that they have read and understood the Terms and Conditions and satisfied themselves regarding any lot in accordance with these Terms and Conditions. No phone bids will be accepted for any lot with a lower guide figure of less than £100.

All those who wish to bid by telephone will be expected to deposit an amount determined by Clarke and Simpson Auctions Limited and not less than the minimum guide for all lots that they wish to bid upon into the Clients Account for Clarke and Simpson Auctions Ltd before the sale starts. This payment is not acceptable by card. In the event of default, this sum shall be retained as part payment or any part may be retained to recover losses under clause 6 of these Terms and Conditions. We will expect payment of the balance owing by BACS on the following day, any payment not met within five working days will result in the forfeiture of the deposit paid.

16. AT FAULT (A.F.) LOTS

Certain lots are catalogued at (A.F.), damaged, restored etc., however the absence of any such notice does not imply that the piece is free from defects, nor does it indicate that other defects are not also present. Mention is not made of breakage, cracks, chips or any damage which can be noted by careful inspection, therefore, intending purchasers MUST, in all cases, be responsible for determining the condition of the lots themselves.

17. ESTIMATES

Presale estimates are intended only as a guide for intending purchasers, are given in good faith and subject to revision.

18. CONDITION REPORTS

Clarke and Simpson are unable to guarantee that requests for condition reports/images received will be responded to. Clarke and Simpson are happy to give a Condition Report where possible on the physical condition of goods, this will be provided on behalf of the seller on the understanding that Clarke and Simpson are not entering into a contract with you in respect of the Condition Report and accordingly does not assume responsibility to you in respect of it. All lots are available for your own inspection or for inspection by an expert instructed by you, therefore these Condition Reports are for guidance only and all lots are sold "as found". Condition reports do not form part of a contract.

19. COMMISSION BIDS

The auctioneers will be pleased to execute bids for those unable to attend the sale. Lots will be purchased at the lowest bid the room bidding or any reserves will allow. In the event of identical bids, the earliest bid received will take precedence. There must always be a maximum limit indicated. Buy or unlimited bids will not be accepted. Commission bids placed by telephone are accepted at the client's risk. We urge our clients to place such bids before the start of the sale. All such commissions are left entirely at the buyer's risk.

20. VALUE ADDED TAX

The symbol * after any lot number indicates that Value Added Tax is payable by the buyer on the hammer price.

21. AUCTIONEERS MARGIN SCHEME

The Auctioneers Margin Scheme allows auctioneers to sell items without VAT on the hammer price. Under the margin scheme an amount equivalent to VAT at the current rate is added to the buyer's premium. This amount cannot be refunded. The VAT element will not be shown separately on the buyer's invoice. This VAT is not recoverable as Import Tax.

22. ATTRIBUTION OF PICTURES AND DRAWINGS

Every effort is made to ensure the accuracy of any statements as to authorship, attribution, origin, date, age, provenance and condition of any lot whether or not such statement forms part of the description of any such lot. Whether any such statement is made orally or in the catalogue it is an expression of opinion and not to be taken as being or implying any warranties or representations of facts by the auctioneers. Each buyer by making a bid for a lot acknowledges that he has satisfied himself fully as to the attribution and condition of the lot. The following is for guidance only and does not form part of a contract.

A. The forename (s) (or full stops where not known) and surname of an artist indicates in our opinion a work by the artist.

B. The initials of the forename (s) and the surname of the artist indicates in our opinion a work of the period of the artist which may be wholly or in part his work.

C. The surname of the artist indicates in our opinion a work of the school or by one of the followers of the artist or in his style and of uncertain date.

D. *Signed, Dated, Inscribed* indicated in our opinion work signed/dated/inscribed by the artist.

E. *Bears signature* indicates in our opinion that this is not the signature of the artist.

F. *Attributed to* may be used to denote a traditional attribution based on style.

G. *Manner of* indicates in our opinion a work executed in the artist/craftman's style but of a later date.

H. *After* indicates in our opinion a copy (of any date) of work of an artist or craftsman.

The addition of a question mark after any of the cataloguing terms above indicates an element of doubt.

23. DRIOTE DE SUITE ROYALTY CHARGES

All United Kingdom Art Market professionals (which includes auctioneers) are required to collect a royalty payment for all qualifying Works of Art. This applies to living artists and those who have died in the last 70 years. This payment is calculated on qualifying Works of Art which are sold for a hammer price more than the UK sterling equivalent of €1,000 (the UK sterling equivalent will fluctuate in line with prevailing interest rates calculated by the Artist's Resale Right Service Hub, based on the European Central Bank reference rate published at 2.15pm on the day of the sale, and can be found on www.dacs.org.uk).

All items in this catalogue that are marked "✓" are potentially qualifying items, and the royalty charge will apply if the hammer price is more than UK sterling equivalent of €1,000. The royalty charge will be added to purchase invoices and must be paid before items can be cleared. All royalty charges are paid to the design and Artists Copyright Society (DACS) by the auctioneers and no handling costs or additional fees with respect to these charges will be retained by the auctioneer. This charge may also be applicable to lots not marked "✓" and buyers must satisfy themselves.

The royalty charge for qualifying items which achieve a hammer price of more than the UK sterling equivalent of €1,000, but less than the UK sterling equivalent of €50,000 is 4%. For qualifying items that sell for more than the UK equivalent of €50,000 a sliding scale of royalty charges will apply. For a complete list of the royalty charges and threshold levels please refer to www.dacs.org.uk. There is no VAT payable on this royalty charge.

24. ENDANGERED SPECIES

Lots sold at auction may include endangered or other species of wildlife and plant life, for example ivory, tortoiseshell, crocodile skin, whale bone, ebony or rosewood. Some countries restrict or prohibit import or export of objects containing these materials or require a licence/permit for their movement (e.g. a CITES Licence). Prior to bidding on a lot which may include these or similar materials, buyers must familiarise themselves with the relevant laws and regulations regarding their movement.

25. JEWELLERY

Gemstones are often treated to enhance colour and improve appearance. They may be heated or treated by oil or resin to intensify the colour and transparency. Other techniques like dying, irradiation, coating and impregnation can also be used. Buyers must be aware that unless the catalogue specifically states otherwise then the stone is natural, buyers must assume that any treatment may not be permanent, and that special care may be needed in the future.

26. EXPORT

Any lot purchased at auction may be subject to export restrictions and may require a licence for export out of the United Kingdom. The buyer is responsible for obtaining any licences that may be required (including any licence that may be required for import into the destination country) – any denial of such a licence will not be grounds for the buyer to cancel the purchase.

27. THIRD PARTY LIABILITY

All members of the public on Clarke and Simpson Auctions premises are there at their own risk and must note the layout of the buildings and site and the appropriate security arrangements. Accordingly, neither the Auctioneer nor its employees or agents shall incur liability for death or personal injury (except as required by law) or similarly for the safety or persons visiting the premises.

28. CONSIGNMENT

All sellers will have received a copy of Clarke & Simpson Auctions Terms regarding consignment of lots for sale and these Terms and Conditions should be read in accordance with this consignment documentation.



Little Bealings £795,000

A contemporary four bedroom bungalow set within a mature plot of nearly an acre, and in an elevated position within the desirable village of Little Bealings. **Ref: 6315**



Purdis Farm Ipswich £675,000

An impressive four bedroom family house that has been extended & improved during recent years, forming part of the popular Purdis Farm development, on the outskirts of Ipswich. **Ref: 6228**



Stradbroke £599,500

A substantial six bedroom house, within walking distance of the centre of Stradbroke, close to the school and leisure centre. **Ref: 6266**



Framlingham £500,000

An extended 5-bedroom detached family home a short walk from the centre of Framlingham **Ref: 6278**



Wilby £485,000

A range of barns with permission to be converted to four dwellings, standing in a lovely rural position. **Ref: 6274**



Frostenden £475,000

A beautifully presented detached cottage, located on a small no-through road at Frostenden Corner, 4 miles from Southwold **Ref: 6204**



Old Felixstowe £415,000

A spacious two bedroom ground floor mews style apartment enjoying fabulous views over the sea, located in Old Felixstowe. **Ref: 6293**



Ufford £395,000

A spacious 1930s three bedroom bungalow, with delightful established gardens, close to the centre of Ufford. **Ref: 6283**



Otley £395,000

A well presented, detached, three bedroom 1970s bungalow with delightful rear garden, close to the centre of Otley **Ref: 6282**



Debenham £375,000

An impressive four bedroom family house, forming part of the established Gardeners Road development **Ref: 6308**



Monk Soham £1,750,000

A stunning, part thatched Grade II Listed extended farmhouse in a lovely rural setting with extensive outbuildings and grounds of over 28 acres.

Ref: 6309



Bredfield £725,000

A substantial house, renovated and extended in a contemporary style, situated within the village of Bredfield, just 3 miles from Woodbridge.

Ref: 6294



Kenton £499,500

A spacious five bedroom detached house, extending to 2,200 sq ft and enjoying field views, just 2.5 miles from Debenham **Ref: 6254**



Fordham £475,000

A detached four bedroom house requiring renovation, enjoying lovely field views, just 6 miles from Colchester. **Ref: 6077**



Framlingham £459,500

A high specification, newly completed, five-bedroom detached house on the popular Castle Keep development. **Ref: 6265**



Mendlesham £425,000

An impressive, partly converted barn and stable block, with planning permission to create a stunning four bedroom dwelling, **Ref: 6209**



Bedfield £399,995

A recently refurbished three bedroom detached bungalow tucked away in the popular village of Bedfield **Ref: 6260**



Framlingham £395,995

A four bedroom detached property located on the popular Castle Brooks development. **Ref: 6280**



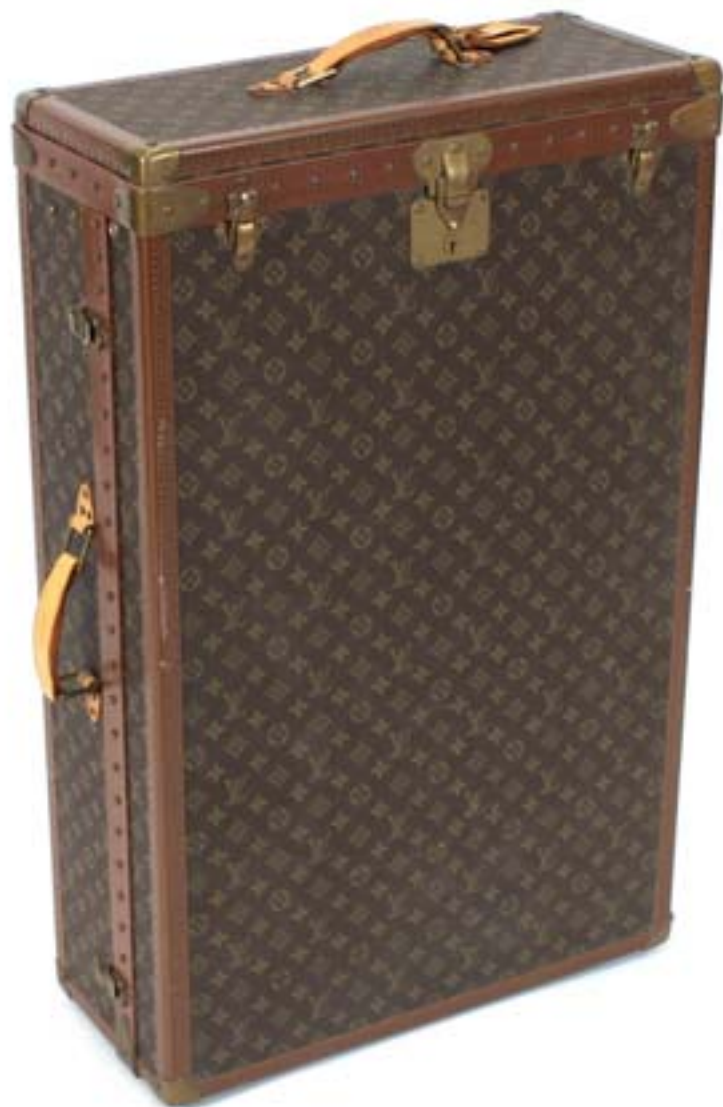
Framlingham £395,000

A well located detached 4 bedroom modern house on the popular Fulchers Field development. **Ref: 6300**



Martlesham £350,000

An impressive, light and spacious bungalow that has recently undergone an extensive programme of renovation. **Ref: 6291**



Clarke and Simpson Auction Centre
Campsea Ashe
Nr. Wickham Market
Suffolk IP13 0PS
Tel: (01728) 746323 Fax: (01728) 748173
Email: auctions@clarkeandsimpson.co.uk
www.clarkeandsimpson.co.uk