

# Commercial & Development List

Date: August 2020

*For full colour particulars of any of the properties, please telephone our office or send us an email.*



Wickham Skeith

Ref: P6388/J

*A range of recently converted, high specification office units, close to the A140 and well located for Ipswich, Norwich and Bury St Edmunds.*

*TO LET from £8,500  
PAX*

*Within this leaflet are brief details of Development opportunities and Commercial properties in the Suffolk area.*

*Full particulars of each are available on request.*

*The particulars and the descriptions and measurements herein do not form part of any contract and whilst every effort has been made to ensure accuracy this cannot be guaranteed.*

## Contact Us



Clarke and Simpson  
Well Close Square  
Framlingham  
Suffolk IP13 9DU  
T: 01728 724200  
F: 01728 724667

*And The London Office*  
87 St James Street  
London SW1A 1PL

email@clarkeandsimpson.co.uk  
www.clarkeandsimpson.co.uk

# Commercial Properties

## Wickham Skeith—close to A140



A range of recently converted, high specification office units, close to the A140 and well located for Ipswich, Norwich and Bury St Edmunds  
**TO LET from £8,500 PAX**  
Ref: P6388/J

## Framlingham



A modern industrial unit with office and production area, located in an established employment area, just to the south of Framlingham.  
**TO LET £9,000 PAX**  
Ref: P5691/J

## Friston



A range of former barns, that will be converted into high quality office premises with ultra-fast broadband, between Aldeburgh and Saxmundham.  
**TO LET from £7,000 PAX**  
Ref: P6281/J

## Saxmundham



A ground floor retail unit or office premises located along the High Street in the centre of Saxmundham.

**TO LET £7,000 PAX**  
Ref: P6072/J

## Aldeburgh



An office or retail unit arranged over ground and basement floors, set along the High Street close to the centre of the popular coastal town of Aldeburgh.

**TO LET £10,000 PAX**  
Ref: P6172/J

## Framlingham



A brand new office premises or business unit. Extending to over 900 sq ft (85 sq m). Available on either a rolling month licence arrangement at £200pcm (as seen) or **TO LET £10,500 PAX**  
Ref: P5804/J

## Framlingham



An office building and yard extending to over half an acre, forming part of an established commercial area on the edge of Framlingham.

**FOR SALE £200,000 SSTC**  
Ref: P6426/J

## Aldeburgh



A rare opportunity to acquire a prime, vacant retail unit in the centre of the popular and highly regarded coastal town of Aldeburgh in Suffolk.

**FOR SALE £375,000**  
Ref: P5932/J

# Commercial & Development Properties

## Athelington, Nr Eye



A modern agricultural barn occupying a wonderful rural location and with grounds of approximately 5 acres, benefitting from prior approval for conversion to a four bedroom dwelling of nearly 3,000 square feet. Further land available by separate negotiation.

**Guide Price £365,000 SSTC**  
**Ref: P6356/C**

## Cretingham, Nr Debenham



A Suffolk barn with permission to be converted to a dwelling, in a stunning location on the edge of Cretingham, with wonderful grounds of 6 acres, with fine views over a wild flower meadow.

**Guide Price £485,000 SSTC**  
**Ref: P6268/C**

## Wilby, Nr Stradbroke



A range of barns with permission to be converted to four dwellings, standing in a lovely rural position, 2.5 miles from Stradbroke. Grounds of just under one and a half acres with a further circa one acre available by negotiation.

**Guide Price £449,000**  
**Ref: P6274/C**

## Leiston



A substantial former guest house, extending to over 4,000 square feet, that now requires renovation and refurbishment, occupying a site of half an acre in the centre of the town.

**Guide Price £495,000**  
**Ref: P6337/J**

## Dennington



A building plot with planning permission for the demolition of the existing building & replacement with a single storey 2 bedroom dwelling.

**Guide Price £95,000 SSTC**  
**Ref: P6047/J**

## Yoxford



A building plot with the benefit of planning permission for a charming two bedroom barn-style dwelling, that is well located for the Heritage Coast.

**Guide Price £97,500 SSTC**  
**Ref: P6288/J**

## Campsea Ashe



SOUTH ELEVATION

An edge of village building plot with planning permission for a detached three bedroom chalet house, backing onto farmland at the rear on the outskirts of Campsea Ashe

**Guide Price £140,000**  
**Ref: P6422/J**

# Development Opportunities

## Otley



An exciting opportunity to acquire a building plot with the benefit of planning permission for a three bedroom detached chalet style house, close to the centre of the village of Otley .

**Guide Price £165,000**

**Ref: P6374/J**

## Wingfield, Nr Stradbroke



EAST ELEVATION

An exciting opportunity to acquire a building plot in the centre of Wingfield, with outline planning permission for a five bedroom detached house.

**£165,000 SSTC**

**Ref: P6355/J**

## Newbourne



A former agricultural building with permitted development for conversion to a 3 bedroom single storey dwelling, standing in grounds of approximately one third of an acre.

**Guide Price £175,000**

**Ref: P6429/J**

## Norton, Nr Bury St Edmunds

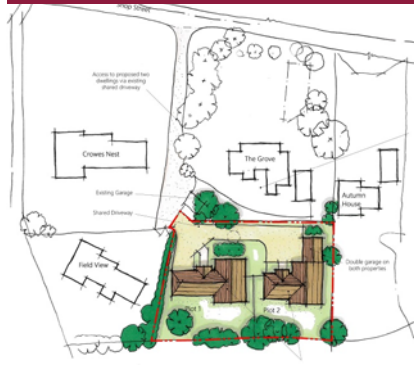


A building plot in a semi-rural location, with outline planning permission for a detached dwelling and new vehicular access.

**£175,000 SSTC**

**Ref: P6121/J**

## Worlingworth



Building Plots - Outline planning permission for two detached chalet style houses in grounds of approximately 0.45 acres.

**£225,000 SSTC**

**Ref: P6394/C**

## Easton, Nr Framlingham



A stunning development opportunity on the edge of village of Easton, with the benefit of planning permission for a three bedroom barn-style house.

**£295,000**

**Ref: 6418**

## Little Stonham



A prominent residential development site with planning permission to create four detached 4 bedroom dwellings with large gardens in Little Stonham.

**£400,000**

**Ref: P6441/J**

## Fressingfield, Nr Harleston



Outline pp has been granted to provide a new access road and development of up to 28 residential dwellings, on a site of approx 3 acres (1.21 hectares).

**OIEO £600,000 SSTC**

**Ref: P6156/J**

## Worlingworth, Nr Eye



Outline planning permission for the development of 26 dwellings inc. access road arrangements on a site extending to approx. 3.75 acres (1.5 hectares).

**£850,000 SSTC**

**Ref:P5925/J**