

Interiors & Art

Clarke &
Simpson

£2



Wednesday 26th June 2024 at 10am

Viewing

Saturday 22nd June 9am – 12 noon

Monday 24th June 2pm – 7pm

Tuesday 25th June 10am – 4pm

& from 8.30am on the morning of the sale

i-bidder.com

Live in the room and online



Clarke & Simpson Auctions, Suffolk

01728 746 323 | www.clarkeandsimpson.co.uk

INTERIORS & ART IMPORTANT INFORMATION

As well as bidding in person, we encourage prospective buyers to bid via clarkeandsimpson.co.uk or the-saleroom.com or by leaving commission bids directly with the Auction Centre.

Please be aware that we cannot guarantee that any condition reports/image requests received after 3pm on the Tuesday before the sale will be responded to. We will upload additional images to the website at regular intervals upon request.

It is the responsibility of any perspective bidder to view any lot in person and satisfy themselves as to the condition before making a bid.

Payment, Collection & Shipping:

Successful buyers will receive an invoice when the auction closes. We request that payment and collection of items purchased is undertaken by lunchtime the day following the auction.

Payment can be made by using the post-sale link provided through the-saleroom.com, by personal debit card or bank transfer.

PLEASE NOTE THAT WE ARE UNABLE TO ACCEPT PAYMENT BY CREDIT CARD, BUSINESS DEBIT CARD, CASH OR CHEQUE.

For those buying through the online portals, we reserve the right to take payment on the third working day after the auction, if payment has not been received.

Specific attention is drawn to Paragraph 12 under our Terms & Conditions, which has been revised and will be rigidly enforced due to lack of storage space. Buyers will not be chased to collect their purchased lots during the 10 working day period and collection is solely the responsibility of the buyer. If it is unlikely that you will not be able to meet the collection window specified in Paragraph 12, please do not bid.

Clarke & Simpson Auctions do not provide a packing or shipping service and all buyers will need to make their own arrangements.

Independent shipping companies include:

MAILBOXES - 01206 368881 / shipping@mbecolchester.co.uk

JENTEL PACKING - 01268 776777 / enquiries@jentelpacking.co.uk

Coins & Notes

1	Bank of England, six Ten Shilling notes, 49X530456-61, two others D13N555666 and D13N555667, three others 17W332211-332212-332213, cashier Fforde	£25-£35
2	Bank of England, two £1 notes X71B112439 and twelve various numbered £1 notes, cashier Beale	£80-£100
3	Bank of England, three £1 notes N62B094289-91, another H99B846251, another M30B405166, C93C317680 and 58B077569, cashier Beale	£50-£80
4	Bank of England, three £1 notes A95J260372-4, and another B76J001431, cashier Beale	£60-£80
5	Bank of England, £1 note N65C288612, and another U10E395962, cashier Fforde	£80-£120
6	Bank of England, £5 note 96A774456, another 32B560966 and another 37B815658, cashier Fforde	£80-£100
7	Bank of England, forty Ten Shilling notes various numbers, cashier Fforde	£80-£100
8	A run of seven Ten Shilling notes 13Z313289-95, two 66Z097849-50, two 46Z474437-8, cashier Fforde	£40-£60
9	A run of ten Ten Shilling notes 17Y109841-50, two Ten Shilling notes 65X629835-6 and five 49X531616-20, cashier Fforde	£60-£80
10	Bank of England, eleven Ten Shillings notes, 49X531601-11, cashier Fforde	£50-£60
11	Bank of England, six Ten Shilling notes, 49X530735-40, and 9X531258-67 run of ten, cashier Fforde	£60-£100
12	Bank of England, twenty-eight Ten Shilling notes, C45N467248, cashier Fforde	£150-£250
13	Bank of England, fifty Ten Shilling notes, C21N625970, cashier Fforde	£250-£300
14	Bank of England, ten Ten Shilling notes A23N614009, cashier Fforde	£50-£80
15	Bank of England, three Ten Shilling bank notes, A23N611594, cashier Fforde	£20-£30
16	Bank of England, three Ten Shilling banknotes, 327565, 327566, and 494936, cashier Fforde	£20-£30
17	Bank of England, nineteen Ten Shilling bank notes, AO89110210, cashier Fforde	£100-£150
18	Bank of England, five Ten Shilling notes; four AO5N890709 and one 890715, cashier Fforde	£40-£60
19	Twenty five Bank of England £1 notes, various numbers, cashier O'Brien	£80-£120
20	Two Bank of England Ten Shilling notes, H54Y50664950, cashier O'Brien	£20-£40
21	Two Bank of England Ten Shilling notes, H77Y871776-7, cashier O'Brien	£20-£40
22	Bank of England Ten Shilling notes, T74Y609596, Y967406428, Z23X325553, Z03X575755 and seven various other numbers	£40-£60
23	Twenty six Bank of England Ten Shilling notes, cashier O'Brien, various numbers	£20-£30
24	Eighteen Bank of England Ten Shilling notes, cashier O'Brien, various numbers	£20-£30



Lot 2



Lot 6

Order of Sale

<i>Coins & Notes</i>	<i>1 – 83</i>
<i>Ceramics & Glass</i>	<i>90-177</i>
<i>Silver & Jewellery</i>	<i>179 – 221</i>
<i>Objects & Collectables</i>	<i>229 – 308</i>
<i>Pictures</i>	<i>311 – 365</i>
<i>Furniture</i>	<i>369 – 450</i>



Lot 13



Lot 19

Each lot is subject to a Buyer's Premium of 20% + VAT (24%)

Lots marked † please refer to Droit de Suite royalty charges in Terms and Conditions

25	Bank of England two £1 notes, cashier Peppiatt, D32A282921-2	£30-£50
26	Bank of England three £1 notes, cashier Peppiatt, C39A915904-6	£40-£60
27	A Bank of England "White" £5 note, cashier L.K. O'Brien, numbered 840A039783, dated 1st August 1955, with certificate of authenticity	£200-£400
28	A Bank of England "White" £5 note, cashier K.O. Peppiatt, numbered L82076386, dated 3rd April 1947	£200-£400
29	A Bank of England "White" £5 note, cashier L.K. O'Brien, numbered D81A003273, dated 30th August 1956	£200-£400
30	A Bank of England "White" £5 note, cashier L.K. O'Brien, numbered Y80030309, dated 27th January 1955	£200-£400
31	A Bank of England "White" £5 note, cashier K.O. Peppiatt, number L67083203, dated 17th March 1947	£200-£400
32	A Bank of England "White" £5 note, cashier K.O. Peppiatt, numbered E94020598, dated 20th December 1944	£250-£350
33	A Bank of England "White" £5 note, cashier K.O. Peppiatt, numbered L62069177, dated 11th March 1947	£80-£120
34	A small mahogany and brass mounted coin cabinet fitted seventeen drawers, enclosed by a single glazed panel door, having sunken brass lifting handle, 21cm x wide x 22cm deep x 27cm high	£100-£150
35	An Eanred Anglo-Saxon Kings of Northumberland sceat	£100-£150
36	Nine various tokens and other coins contained in a pair of gilt metal Windsor Castle decorated containers	£30-£50
37	A Victorian cased silver medal for The Royal Academy of Arts Study	£40-£60
38	An English George III penny 1797 and another of the same date	£40-£60
39	A George II half penny 1734	£40-£60
40	A Saxony square Thaler	£40-£60
41	A George III sixpence, 1790	£20-£40
42	A quantity of French silver coinage to include 1587 quarter Ecu; a 1643 half Ecu; a double Tournois etc. (6)	£60-£100
43	Lockington's half penny, 1794; 1790 Masonic half penny; 1794 Newgate half penny; 18th Century Duke of York half penny; Middlesex Prince of Wales half penny; two others and a 1771 Isaac Newton Farthing	£40-£60
44	An Edward VII half crown 1906; an Edward VII 1906 shilling; a George VI 1946 shilling; a Victoria 866 third of a farthing; George V and George VI threepences; George VI sixpences; Victorian half farthings; and 1848 quarter farthings (13)	£60-£80
45	Two George III shillings, 1787 possibly uncirculated	£40-£60
46	A George III crown, Bank of England 1804; and a George IV crown 1822	£40-£60
47	A Victorian Maundy penny 1855; an 1869 threepence; an 1855 half groat; a George III 1818 threepence; and a George III 1762 threepence	£60-£80
48	A George III Three shilling bank token, 1815; a Victorian crown 1845; a George IV shilling 1835; a William IV shilling 1834; an Edward VII 1910 sixpence; and an Edward VII 1902 florin	£60-£100
49	Two George III 1787 sixpences	£40-£60
50	A George I threepence piece 1717; a George II threepence piece 1740 and a George II sixpence 1746	£60-£80



Lot 28



Lot 32

Order of Sale

Coins & Notes	1 – 83
Ceramics & Glass	90-177
Silver & Jewellery	179 – 221
Objects & Collectables	229 – 308
Pictures	311 – 365
Furniture	369 – 450



Lot 35



Lot 48

Each lot is subject to a Buyer's Premium of 20% + VAT (24%)

Lots marked † please refer to Droit de Suite royalty charges in Terms and Conditions

51	A George III half crown 1817 and a William IV half crown 1831	£60-£80
52	A George IV half crown 1820 and a George III half crown 1817	£40-£60
53	A George III shilling 1763 and another 1787	£30-£60
54	A Victorian three halfpence 1839	£20-£40
55	A Queen Anne (1702-1714) shilling 1708; another 1718; a Queen Anne sixpence 1708; another 1711; and two others 1705	£100-£200
56	A William III crown, 1695 (converted to a brooch), one silver token, 1824 Nova Scotia one penny token, Newfoundland R & IS Rutherford token, A William III token, four 20th Century threepence pieces etc.	£60-£80
57	A William IV silver twopence 1837; a George IV silver penny, 1822; and a George III silver penny 1772	£60-£80
58	Seven George I shillings, 1718-1725; a George II shilling 1758; and a George III example 1816	£60-£100
59	A George I sixpence, 1726; another 1723; a George II sixpence 1731; another 1741; another 1757; a George III sixpence 1820 and a George III threepence 1763	£40-£60
60	A large collection of Georgian copper coinage to include Charles II farthing, a George II 1806 penny, a George III 1797 tuppence etc.	£40-£60
61	A large collection of mixed pre-decimal coinage	£40-£60
62	A Louis XVI Ecu 1781; a Napoleon 10cent; and a Louis Phillippe 1830-1848 five franc piece	£40-£60
63	A collection of mostly 19th Century French coinage to include five franc pieces, quarter francs, 50 and 20 centimes pieces and various others	£60-£100
64	A George V crown, 1935 and six half crowns, dated ranging 1918-1940	£60-£80
65	Six florins ranging from 1908-1937; seven shillings 1915-1946; and a collection of various threepence and sixpence pieces	£60-£100
66	A George III Isle of Man penny 1786; a half penny 1733; another 1798 and a Victorian example 1839	£20-£40
67	A Roman Empire Sestertius; another; an early Greek Athens coin; and an Electra type copy of a Syracuse	£40-£60
68	Two 18th Century Norfolk half penny tokens, undated; a 1793 token Norwich half penny; a 1793 North Wales token half penny; a 1789 Wicklow token half penny and another	£40-£60
69	A 1787 Anglesey penny; a 1788 Anglesey half penny and another 1789	£20-£40
70	A collection of various foreign coinage to include a Canadian dollar 1935; another 1953; a New Zealand crown 1949; a USA half dollar 1966 and various other coinage	£40-£60
71	Mixed English coinage to include George III 1820 crown; George I 1720 half crown; a large collection of pre and post decimal silver coinage to include mostly half crowns and shillings; and a quantity of pre and post decimal copper coinage	£40-£60
72	A large collection of 17th, 18th and 19th Century farthings	£40-£60
73	Sixteen 18th Century English provincial half penny tokens, including Colchester, Macclesfield, Chichester, Emsworth, Huddersfield, etc.	£40-£60
74	A small collection of 17th Century traders tokens	£20-£40
75	A George I half penny, 1720; another 1821; a George II Half penny 1733 and a Charles II copper medallion	£40-£60
76	Two 18th Century Essex tokens; a Norfolk token and a large collection of others	£40-£60



Lot 55



Lot 58

Order of Sale

<i>Coins & Notes</i>	<i>1 - 83</i>
<i>Ceramics & Glass</i>	<i>90-177</i>
<i>Silver & Jewellery</i>	<i>179 - 221</i>
<i>Objects & Collectables</i>	<i>229 - 308</i>
<i>Pictures</i>	<i>311 - 365</i>
<i>Furniture</i>	<i>369 - 450</i>



Lot 60



Lot 63

Each lot is subject to a Buyer's Premium of 20% + VAT (24%)

Lots marked † please refer to Droit de Suite royalty charges in Terms and Conditions

77	Channel Islands, Jersey and Guernsey collection including 13th, 12th, and 26th of a shilling; eight doubles; two doubles; and others	£40-£60
78	A collection of various company commemorative and souvenir medallions and coins, mostly 19th Century	£30-£50
79	A tetradrachm; various other coins and fragments	£30-£50
80	A collection of Victorian Channel Islands coinage to include doubles, various other Victorian and later coinage including some foreign	£40-£60
81	A collection of Guernsey and Jersey coinage including Victorian, Edwardian and George V various denominations, and Coronation commemorative medals	£40-£60
82	A large quantity of world coinage and bank notes	£40-£60
83	A Spanish one Reale; a small rectangular Indian coin; and a continental hammered silver penny	£20-£40



Lot 80



Lot 90

<i>Ceramics & Glass</i>		
90	A Chinese crackle glazed baluster vase, decorated with warriors and having raised dragon decoration to the neck and handles, seal mark to base, 33cm high	£40-£60
91	A 19th Century Mintons baluster cup, decorated with finely painted foliate panels flanked by gilt handles on a pink ground, 20cm high AF	£20-£30
92	A pair of Rockingham style candlesticks, with bird and floral decoration, heightened in gilt on a green ground	£30-£40
93	A large 20th Century Chinese baluster vase and cover, having multi coloured floral decoration on a blue ground, raised on circular wooden plinth, 49cm high	£40-£60
94	A large 20th Century Chinese baluster vase, having famille rose decoration on a green ground, raised on circular hardwood base, 50cm high	£40-£60
95	A decorative resin statue of Pallas Athene, 72cm high	£20-£40
96	Two large 20th Century Chinese blue and white vases and covers, one surmounted by a kylin finial, 43cm high, the other with pineapple shaped finial, 46cm high	£40-£60
97	A set of eight Bohemian multi coloured wine glasses, having cut decoration on faceted stems and circular spread feet	£40-£60
98	A 20th Century Oriental blue and white baluster vase and cover, of fluted form with floral decoration raised on a wooden plinth, 30cm high; and another of melon shape on wooden plinth, 31cm high	£40-£60
99	Six various Yixing pottery tea pots of squat form mostly with seal marks to base	£40-£60
100	A Yixing pottery tea pot in the form of a beast, the lid with coiled serpent handle; another in the form of a fruit; another with script and toad finial and two others	£40-£60
101	Three small square section Yixing tea pots; another similar and another in the form of an elephant	£30-£50
102	A 20th Century Chinese ginger jar, profusely decorated with objects on a mauve ground, raised on carved wooden stand, 30cm high; and another decorated flowers and interiors on a green ground, 27cm high	£40-£60
103	A Chinese blue and white double gourd shaped table lamp, complete with shade, 64cm high overall	£30-£50
104	Four Yixing pottery tea pots, decorated symbols and writing, seal marks to base	£60-£80

Order of Sale

<i>Coins & Notes</i>	<i>1 – 83</i>
<i>Ceramics & Glass</i>	<i>90-177</i>
<i>Silver & Jewellery</i>	<i>179 – 221</i>
<i>Objects & Collectables</i>	<i>229 – 308</i>
<i>Pictures</i>	<i>311 – 365</i>
<i>Furniture</i>	<i>369 – 450</i>



Lot 93



Lot 104

Each lot is subject to a Buyer's Premium of 20% + VAT (24%)

Lots marked † please refer to Droit de Suite royalty charges in Terms and Conditions

105	A small baluster Yixing tea pot with blue foliate decoration on a buff ground; another of circular form with symbol decoration and various others	£60-£100
106	A Yixing tea pot in the form of a pumpkin and seven others of small plain baluster form	£60-£80
107	Six Yixing pottery tea pots of varying squat baluster form	£40-£60
108	A Yixing pottery tea pot of circular form decorated symbols and script; another with raised floral decoration and pierced lid; another with intertwined bamboo shoot handle; various cups and a coffee pot	£40-£60
109	A Yixing pottery tea pot having bamboo decoration; another of shaped form with figures and symbol decoration and five others mostly of plain form	£40-£60
110	A large 19th Century Chinese Canton floor vase, decorated panels of warriors amongst famille rose, flanked by dragon handles, flared leaf neck with turquoise interior raised on a wooden stand, vase 87cm high, 115cm overall	£400-£600
111	A 19th Century Chinese blue and white bowl, the interior and exterior with scenic decoration within a prunus border, 40cm dia.	£100-£150
112	A Yixing blue and brown glazed teapot of squat form with arched handle decorated with script; another with twist handle; another of bamboo section and another squat elongated tea pot of plain form with character marks to base	£40-£60
113	A Yixing red ware tea pot of squat form, raised floral and beast decoration; another with squirrel finial and various other red ware examples of small size	£40-£60
114	A Yixing tea pot of squat baluster form with blue glazed script decoration; two others with bamboo leaf decoration and another with white glazed script and foliate decoration	£40-£60
115	Two Chinese blue and white gourd shaped table lamps, complete with shades, each 64cm high overall	£40-£60
116	Two Chinese blue and white pottery pillow bricks; and a Chinese oblong box and cover profusely decorated with dragons on a yellow ground, 27cm	£40-£60
117	Two giant Murano glass brandy balloons, in green and blue raised on baluster stems and spread feet, 34cm high	£30-£50
118	Two Georgian drinking glasses with spiral twist stems; another with foliate etched vine and bird decoration; another decorated with a hunting scene and four bell shaped glasses (some damage)	£150-£200
119	A blue glazed baluster table lamp and shade, 59cm high overall	£20-£40
120	A Chinese Imari pattern baluster table lamp and shade, 64 cm high overall	£40-£60
121	A 20th Century Chinese octagonal jar and cover, with prunus and figural decoration, 20cm high; and a large cylindrical jar and cover with bird and foliate decoration, 25cm high	£20-£40
122	A pair of 20th Century Chinese blossom and dragon decorated flower bricks, 16cm high and a larger example decorated with calligraphy, 22cm high	£20-£40
123	A large Oriental pottery figure of "Prowling Tiger", 53cm long	£20-£40
124	A pair of brown glazed Oriental Dogs of Fo, 20cm long	£40-£60
125	A 20th Century Chinese blue and white wine flagon, with beast decoration 19cm high; and a Chinese tea pot decorated flowers and symbols on a hardwood stand, 12cm high	£20-£40



Lot 105



Lot 110

Order of Sale

<i>Coins & Notes</i>	<i>1 – 83</i>
<i>Ceramics & Glass</i>	<i>90-177</i>
<i>Silver & Jewellery</i>	<i>179 – 221</i>
<i>Objects & Collectables</i>	<i>229 – 308</i>
<i>Pictures</i>	<i>311 – 365</i>
<i>Furniture</i>	<i>369 – 450</i>



Lot 111



Lot 118

Each lot is subject to a Buyer's Premium of 20% + VAT (24%)

Lots marked † please refer to Droit de Suite royalty charges in Terms and Conditions

126	A pair of 20th Century Chinese terracotta figures of seated immortals and a collection of various Chinese porcelain figures depicting immortals and dignitaries	£40-£60
127	A pair of 20th Century Chinese cylindrical vases, having butterfly decoration, 14.5cm; a single famille juane example 16cm, and a pair of diamond shaped famille juane vases	£40-£60
128	A pair of Chinese square section teapots, decorated flowers on an egg and spinach ground raised on hardwood plinths, 24cm high	£20-£40
129	An Oriental eggshell porcelain bowl, having profuse foliate and dragon decoration on a yellow ground AF; a novelty ice bucket in the form of a bronzed incense burner and three various decorative white metal mounted pipes	£30-£40
130	Four 19th Century Minton dessert plates, pattern 5212, circa 1849, impress marks	£30-£40
131	A Chinese "Canton" pattern circular bowl, having central symbol motif, 25cm dia. seal mark to base; a Chinese famille juane type bowl, blue six character mark to base, 16cm dia. and a smaller bowl decorated in the Imari palette, seal mark to base	£40-£60
132	A large Chinese green glazed terracotta tea pot of squat form, having all over decoration of calligraphy, seal mark to base, 30cm dia.	£40-£60
133	An unusual Chinese carved hardwood stand, hung with numerous soapstone, hardstone and other pendants etc.	£40-£60
134	An Oriental blanc de chine figure of a Bodhisattva of Compassion, 36cm high contained in a glazed mahogany case	£40-£60
135	A Yixing pottery tea pot with beast handle and spout, bird decoration to the base with seal mark and three other Yixing tea pots	£40-£60
136	A modern Oriental blue and white baluster table lamp, 44cm high	£30-£50
137	A Chinese famille juane table lamp, decorated warriors, clouds and beast heads, 47cm high	£40-£60
138	An Oriental Canton pattern table lamp, decorated in the traditional manner, complete with shade, 68cm high	£30-£40
139	A large Art Glass circular shallow dish with amethyst and frosted finish, clear glass baubles to the rim and an insert with spherical vase, 60cm dia.	£60-£80
140	A Wilkinson's "Spring Time" pattern tea and fruit set, circa 1930's retailed by Lawleys	£40-£60
141	An early 19th Century English porcelain part tea set, of fluted design comprising numerous cups, saucers, tea bowls, slops bowl, and a sugar bowl	£30-£50
142	A Lalique glass bowl, decorated leaves, signed to the base "R. Lalique, France" 24cm dia.	£150-£250
143	A mid-20th Century Murano opalescent glass easel table mirror, 25cm x 22cm in extremes	£30-£50
144	An opalescent glass shallow dish, having raised grapevine decoration and inset with a figural motif, 20cm dia.; and an opalescent glass perfume bottle, 12cm high	£20-£40
145	A Royal Worcester cabinet plate profusely decorated butterflies and birds, on a blue scale ground with gilt scallop border, 22cm dia.	£20-£30
146	A Chinese heart shaped dish, with figure and bird decoration, blue character mark to base, 15cm dia.; and an Oriental shallow dish with bird decoration, 25.5cm dia.	£50-£80
147	A cased set of six Royal Doulton "Dickensian" figure napkin rings	£100-£200



Lot 127



Lot 139

Order of Sale

<i>Coins & Notes</i>	<i>1 - 83</i>
<i>Ceramics & Glass</i>	<i>90-177</i>
<i>Silver & Jewellery</i>	<i>179 - 221</i>
<i>Objects & Collectables</i>	<i>229 - 308</i>
<i>Pictures</i>	<i>311 - 365</i>
<i>Furniture</i>	<i>369 - 450</i>



Lot 142



Lot 147

Each lot is subject to a Buyer's Premium of 20% + VAT (24%)

Lots marked † please refer to Droit de Suite royalty charges in Terms and Conditions

148	A Chinese Ming style Kendi of traditional form with blue glazed floral and bird decoration, 18cm high	£80-£120
149	A 19th Century Chinese Canton plate decorated in the traditional palette with famille rose birds and butterflies on a celadon ground, underglaze blue seal mark to the reverse	£30-£40
150	A rare and unusual 19th Century Chinese Canton incense pot, decorated with enamel decoration of flower heads on a waisted column with French silver gilded mounts, raised on circular spread foot, 12.5cm high x 10cm dia., overall	£100-£200
151	A Meissen style porcelain figure of a young boy; three German porcelain figures of two maids and youth in brightly coloured costume; and a pair of German porcelain blue and white figures of street vendors	£20-£30
152	A Staffordshire spill holder in the form of a maid and youth beside a stook of corn, 17cm high; and another Staffordshire figure group of a maid and youth seated on a fence with basket of flowers	£20-£30
153	A continental porcelain figure group of a gentleman in breeches reclining against a tree stump; another similar; and a small continental porcelain figure of an angel	£20-£30
154	A blanc de chine figure group of a seated male and female musician with attendant dog AF	£20-£30
155	Eight Chinese decorated glass snuff bottles	£40-£60
156	A Chinese green hardstone figure of a seated goddess, 16cm high; a carved hardstone figure of monkeys; a green soapstone figure group of a monkey tree and various other items	£40-£60
157	A small collection of jade and jade coloured animal ornaments	£40-£60
158	A collection of various hardstone figures and ornaments	£40-£60
159	A collection of various porcelain and other snuff bottles, four miniature Oriental porcelain items etc.	£40-£60
160	A quantity of various porcelain and other (mostly Chinese) snuff bottles	£40-£60
161	A small jade coloured tea pot of squat form; a carved soapstone vessel with figural lid; a small circular green hardstone box and cover; a miniature brown and green hardstone tea pot and two miniature Yixing type teapots	£40-£60
162	Four Chinese enamelled opaque glass snuff bottles	£40-£60
163	Two large Chinese decorated glass snuff bottles	£20-£40
164	A small Chinese Yixing clay tea pot, having raised foliate decoration, seal mark to base, 16cm	£40-£60
165	A Yixing tea pot in the form of a squat beast with blue eyes and four others with bamboo section decoration	£40-£60
166	A Yixing pottery tea pot in the form of a crouching beast with tail handle, and another of squat form the lid surmounted by a frog on a lily pad	£30-£50
167	A Yixing tea pot, with pierced reticulated body; another similar square section example with pierced foliate decoration; another with raised dragon and floral decoration and a square squat shaped similar, all with seal marks to base	£40-£60
168	A small 19th Century porcelain whistle, in the form of a dogs head; a pair of miniature porcelain studies of parrots; a porcelain zebra; a Davenport Imari pattern miniature cauldron etc.	£30-£40
169	A pair of Oriental resin figures of a dignitary and wife, 26cm high; a resin group depicting rats, 13cm long; and another of a naked reclining woman, 20cm long	£40-£60



Lot 148



Lot 150

Order of Sale

<i>Coins & Notes</i>	<i>1 – 83</i>
<i>Ceramics & Glass</i>	<i>90-177</i>
<i>Silver & Jewellery</i>	<i>179 – 221</i>
<i>Objects & Collectables</i>	<i>229 – 308</i>
<i>Pictures</i>	<i>311 – 365</i>
<i>Furniture</i>	<i>369 – 450</i>



Lot 158



Lot 160

Each lot is subject to a Buyer's Premium of 20% + VAT (24%)

Lots marked † please refer to Droit de Suite royalty charges in Terms and Conditions

170	A Yixing pottery tea pot, having raised dragon decoration, the lid with articulated dragon head, a Yixing pottery tea pot with raised beast and painted scroll decoration, seal mark to base; another similar, the lid surmounted by a Kylin and another with raised foliate decoration	£60-£80
171	A 19th Century creamware basket and cover with fruit finial, flanked by twist handles	£50-£80
172	Four early 19th Century Minton cups and saucers, pattern 30, two with Dresden moulding and bat prints	£30-£40
173	A pair of early 18th Century blue and white Chinese porcelain "Aster" pattern chargers, Kangxi period 1661-1722, 27cm dia.	£400-£500
174	An 18th Century English blue and white delftware plate, 30cm dia.; and an 18th Century polychrome decorated tin glazed jug, 21.5cm high	£40-£60
175	Three antique glass wine bottles, one iridescent, one AF, the tallest 28cm	£40-£60
176	A Moorcroft pottery table lamp and shade, 64cm overall	£50-£80
177	An 18th Century Chinese porcelain tea caddy, decorated in the Imari style, having white metal cylindrical lid, 11cm high	£60-£100



Lot 173



Lot 182

Silver & Jewellery

179	A pair of plate on copper candlesticks, detachable Campana shaped sconces on fluted columns and spread feet, 30cm high	£40-£60
180	An oak canteen case by Army & Navy CSL and contents of various plated cutlery; and an oak cased set of six each bone handled fish knives and forks	£30-£40
181	A cased set of twelve silver bladed fruit forks and eleven knives, by Carrington & Co. Sheffield 1911, contained in a golden oak plush lined case	£100-£150
182	A George V silver four piece tea set by Roberts & Belk, contained in a fitted two door oak case, total weight 53oz, the case labelled for Curtis & Horspool Leicester, Specialist Appointment To His Majesty The King, and also with silver presentation plaque inscribed "Walter John and Rosa Lovell, Mayor and Mayoress of Leicester"	£700-£900
183	A 19th Century Augsburg rock crystal and silver salt, with dragon handles, 12cm long; and a small 19th Century continental silver tazza 7.5cm dia. x 8cm high, approx. 80.7gms	£100-£150
184	A late Victorian silver bachelors tea set with half fluted body decoration raised on ball feet, the tea pot with black wood handle and lift, Sheffield 1897, 17oz gross	£200-£300
185	An Edwardian silver baluster water jug by Mappin & Webb, the hinged lid with floral finial, scrolled handle raised on three pad feet, Sheffield 1908, 19cm high, 15oz	£200-£300
186	An Edwardian silver three piece tea set, with half fluted body decoration, the tea pot with black wood handle and lift, Sheffield 1904, 14oz gross	£400-£500
187	A silver bachelor's tea set of baluster form raised on ball feet, the tea pot with Bakelite handle and lift, Birmingham 1925, 16oz	£200-£300
188	A silver comport by Asprey & Co. having pierced foliate and vine decorated border, London 1936, 16oz, 23cm dia.	£200-£300
189	A pair of silver fighting cocks, by Edward Barnard & Sons Ltd. 13cm long, London 1966, 14oz	£600-£800
190	A pair of silver models of partridges, by Edward Barnard & Son Ltd. 11cm high, London 1973, 14oz	£600-£800

Order of Sale

<i>Coins & Notes</i>	<i>1 - 83</i>
<i>Ceramics & Glass</i>	<i>90-177</i>
<i>Silver & Jewellery</i>	<i>179 - 221</i>
<i>Objects & Collectables</i>	<i>229 - 308</i>
<i>Pictures</i>	<i>311 - 365</i>
<i>Furniture</i>	<i>369 - 450</i>



Lot 186



Lot 189

Each lot is subject to a Buyer's Premium of 20% + VAT (24%)

Lots marked † please refer to Droit de Suite royalty charges in Terms and Conditions

191	A silver model of a snipe by Edward Barnard & Son Ltd, Hallmarked for London 1961, 25cm long, 25oz	£800-£1,200
192	A pair of Queen Elizabeth II silver pheasants by Edward Barnard & Son. 24cm long, London 1976, 26oz	£600-£800
193	A silver and cedar lined two compartment cigarette box, Chester 1906, 18cm long	£40-£60
194	A 19th Century continental .800 mark silver jewel box, finely engraved all over and inset with an oval hand painted porcelain plaque to the lid, 13cm	£250-£300
195	A silver vase shaped salt and pepper by Edwin Viner, Sheffield 1935; a cut glass and electroplate mounted mustard pot and a Victorian silver condiment spoon Newcastle Hallmarked	£40-£60
196	A Victorian silver Christening fork and spoon, London 1867; and a similar pattern knife Sheffield 1910	£30-£40
197	A modern silver hand forged caddy spoon; and a small circular white metal bowl, unmarked with naïve style decoration	£30-£40
198	A small silver oblong pin box with fluted decoration, Birmingham 1894; and a circular silver and tortoiseshell pin box	£30-£50
199	A pair of Christoffel shell shaped butter dishes	£20-£30
200	A late Victorian silver cased table bell, having pierced foliate decoration, maker William Comyns, London 1900	£80-£120
201	A late Victorian silver trumpet shaped spill vase, Birmingham 1897, 16.5cm high	£10-£20
202	A Tudric style plated fruit bowl, having raised blue stone decoration on a circular spread foot, 26cm dia. x 15cm high	£50-£80
203	A Jaeger Le Coultre gent's wrist watch on leather strap	£150-£200
204	A graduated pearl necklace, set to a 9ct gold and ruby clasp	£100-£150
205	An 18ct white gold and platinum three stone diamond ring, with central stones approx. .75 carat, side stones approx. .70 carats the pair, 3gms	£400-£600
206	An 18ct white gold five stone diamond ring, with graduated stones totalling approx. 1 carat	£300-£500
207	A platinum and .25carat solitaire diamond ring, 2.80gms	£120-£180
208	An 18ct gold cocktail ring set with rows of diamonds, sapphires, rubies and emeralds	£300-£500
209	A 18ct gold emerald and baguette diamond ring, 3.91gms	£200-£300
210	An 18ct gold sapphire and diamond flower head ring, 5gms	£200-£300
211	An 18ct gold ring with a large single pearl mounted to the centre, 5.10gms	£250-£400
212	An 18ct gold and dual cut citrine ring, 8.7gms	£120-£180
213	A Victorian yellow metal and black enamel mourning brooch	£45-£60
214	A ladies 18ct gold fob watch, 35gms total weight	£350-£450
215	An 18ct gold and diamond cross over ring, 2.5gms, ring size L	£100-£150
216	A 9ct gold ruby seven stone half eternity ring, 3gms, ring size R	£150-£200
217	A pair of 9ct gold Masonic cuff-links, 5.5gms	£100-£150
218	A circular silver photograph frame, a silver bladed mother of pearl handled pen knife and a Art Nouveau design buckle	£20-£30
219	A pair of slender Chinese silver trumpet shaped spill vases, decorated with hand worked floral and key pattern, circa 1900, marks to base	£150-£200



Lot 191



Lot 205

Order of Sale

<i>Coins & Notes</i>	<i>1 - 83</i>
<i>Ceramics & Glass</i>	<i>90-177</i>
<i>Silver & Jewellery</i>	<i>179 -221</i>
<i>Objects & Collectables</i>	<i>229 - 308</i>
<i>Pictures</i>	<i>311 - 365</i>
<i>Furniture</i>	<i>369 - 450</i>



Lot 208



Lot 214

Each lot is subject to a Buyer's Premium of 20% + VAT (24%)

Lots marked † please refer to Droit de Suite royalty charges in Terms and Conditions

220	A large ornate Victorian silver tray, having cast foliate scroll borders engraved floral field, raised on four acanthus supports, bearing inscription, "Bequeathed By John Henry V Duke of Rutland KG. To The Rt. Hon. John Wilson Crocker, In Remembrance Of The Long Course of Unremitted Friendship and Regard That Had Existed Between Them, Will dated 6th July 1856", Hallmarked for London 1856, 50cm dia. overall, 80oz	£1000—£1500
221	A Georgian rams horn and silver mounted table snuff mull, inset agate and semi-precious stone, raised on wooden castors	£400 —£600



Lot 220

<i>Objects & Collectables</i>		
229	A Britain's boxed model of a Coronation Chair dated 1953	£20-£30
230	A brass and leather mounted five draw telescope by Broadhurst Clarkson & Co. Ltd. Farringdon Road, London, 105cm fully extended	£60-£100
231	A brass cased striking carriage alarm clock, the white enamel Roman numeral dial inscribed Lechner Jo'zsef, Budapest, striking on a gong, 17cm high with handle up	£100-£150
232	A brass cased striking carriage clock complete with leather travelling case, 17cm high AF	£40-£60
233	A French Grand Tour gilt bronze model of The Luxor Obelisk, mounted on a black marble plinth with pierced gallery inset with a barometer, the column decorated hieroglyphics, 21.5cm high	£100-£200
234	A small collection of GER and LNER luggage labels, many relating to Essex and Suffolk stations including Aldeburgh, Felixstowe and Chingford	£20-£40
235	A 19th Century brass and millefiori glass mounted snuff box, inscribed verso "Richard Preston Pritchard Esq. died 7th November 1836"; a Pietra Dura panel; a miniature tortoiseshell and mother of pearl inlaid guitar; two fans etc.	£30-£40
236	A small Asian bronze double spouted hanging lamp with chevron banded decoration, 12cm	£30-£40
237	A 19th Century bronze figure of Andromeda, 52cm high	£100-£200
238	An antique copper samovar, 41cm high	£40-£60
239	A French Ormolu mantel clock, by Julian Leroy, Paris surmounted by figures of a maiden and cherub above Sevres type panels, circular Roman numeral dial supporting an 8 day movement striking on a bell, under glass dome, 43cm high	£900-£1,200
240	A pair of Indian embroidered pictures depicting elephants, 55cm x 54cm overall; and a smaller pair 26.5cm x 26.5cm	£40-£60
241	A Chinese lacquered dressing table cabinet, having hinged mirrored section, all over chinoiserie decoration fitted three drawers below, 34cm wide x 39cm high overall	£100-£150
242	A Chinese hardwood and brass mounted table chest, fitted three drawers and a cupboard, surmounted by a carrying handle 31cm wide x 23cm high x 19cm deep (with key)	£100-£150
243	A 19th Century French gilded and champleve enamel mantel clock, the circular dial supporting an 8 day movement striking on a gong, 35cm high	£200-£300
244	A mantel clock by J.W. Benson, London contained in chinoiserie decorated case, 21cm high	£200-£300
245	A 19th Century French gilded mantel clock, the case surmounted by a seated figure, circular white Roman numeral enamel dial by Henry Marc, Paris supporting an 8 day movement striking on a bell, 35cm high	£200-£300
246	A Swiss rosewood and inlaid cased music box playing eight airs, 49cm wide	£150-£200
247	A 19th Century Repousse work gilded copper panel, depicting cherubs in an oak frame, 121cm	£150-£200
248	An antique terracotta bust of a lady scantily draped on circular socle base, 70cm high	£100-£150
249	19th Century ebonised and gilt decorated Corinthian column jardiniere stand, 112cm high	£100-£150



Lot 221

Order of Sale

<i>Coins & Notes</i>	1 - 83
<i>Ceramics & Glass</i>	90-177
<i>Silver & Jewellery</i>	179 -221
<i>Objects & Collectables</i>	229 - 308
<i>Pictures</i>	311 - 365
<i>Furniture</i>	369 - 450



Lot 239



Lot 245

Each lot is subject to a Buyer's Premium of 20% + VAT (24%)

Lots marked † please refer to Droit de Suite royalty charges in Terms and Conditions

250	A large Eastern brass tray, having ornate stylised foliate decoration, 96cm dia.	£40-£60
251	A pair of lead and Haddon stone garden figures, of an elegant 18th Century man and woman, 115cm high	£200-£400
252	A Victorian walnut cased regulator type wall clock, surmounted by an eagle finial and enclosing a circular enamelled Roman numeral dial supporting an 8 day movement, 83cm	£40-£60
253	A Chinese wooden table stand in the form of a miniature altar table, 35cm long; and a small painted and lacquered table trinket cabinet 23cm long	£40-£60
254	A Chinese wooden brass mounted and hardstone inlaid table trinket cabinet, 19cm wide x 28cm high	£40-£60
255	A bronzed horse figure, 94cm long, 67cm high	£100-£150
256	Lawson Wood, coloured unframed advertising print "It's The Hornflowa Way", "Our Motto, You Can't Have Too Much Of A Good Thing", 47cm x 33cm and a Fyffes banana advertising card, 30cm x 23cm	£20-£40
257	A large taxidermy arrangement of preserved heron, woodcock, snipe and kingfisher, set amongst foliage and rocks in a glazed case, 76.5cm wide x 91cm high overall	£500-£600
258	An Indian specimen marble octagonal chess board, 38cm dia.	£40-£60
259	An antique copper gallon measuring jug	£20-£40
260	A large antique copper preserve pan, flanked by loop handles, 58cm dia. overall; complete with a copper ladle, impressed with the letter C	£60-£100
261	A Victorian brass fender, having reeded decoration, 130cm long	£40-£60
262	A set of three Victorian brass fire implements; an implement rest and a brass trivet	£40-£60
263	A large antique copper saucepan and lid, the lid stamped "No.12"	£40-£60
264	A large antique copper saucepan, the lid with a brass loop handle flanked by brass carrying handles, 31cm dia. overall	£40-£60
265	An Indian copper jardiniere decorated figures and animals 25cm dia. overall	£20-£40
266	An antique brass and iron door porter, having fruit and floral decoration with loop handle, 37cm high; a 19th Century brass and iron hearth trivet with turned wooden handle and a brass coal scoop with wooden handle	£30-£60
267	A Victorian pewter country house hot meat dish with reservoir and central drainer, flanked by Rococo style handles, 61cm and a large plated meat dish cover	£40-£60
268	An unusual antique relief carved wall mounting bracket, having later additions, 48cm wide x 27cm deep overall	£60-£80
269	A 19th Century carved oak panel having a central crest and shield with monogramme, all over floral and fruit decoration, 59cm x 160cm	£200-£300
270	A gilded resin coat of arms	£20-£30
271	A Victorian ornately carved wall bracket, in the form of a bird, 38cm x 39cm in extremes	£60-£80
272	A 19th Century figured mahogany wheel barometer by West of Charing Cross, London having large circular silver dial beneath thermometer and dry damp meter, 117cm	£80-£120
273	An antique copper milk churn with swing handle, marked (30), 53cm high	£80-£120



Lot 251



Lot 255

Order of Sale

<i>Coins & Notes</i>	<i>1 – 83</i>
<i>Ceramics & Glass</i>	<i>90-177</i>
<i>Silver & Jewellery</i>	<i>179 – 221</i>
<i>Objects & Collectables</i>	<i>229 – 308</i>
<i>Pictures</i>	<i>311 – 365</i>
<i>Furniture</i>	<i>369 – 450</i>



Lot 257



Lot 269

Each lot is subject to a Buyer's Premium of 20% + VAT (24%)

Lots marked † please refer to Droit de Suite royalty charges in Terms and Conditions

274	A large antique copper saucepan and lid, having steel handles the lid impressed with a crown above a C, 31.5cm dia. x 60cm long overall	£40-£60
275	An antique copper milk churn, inscribed "Keith Wright Ltd, Fenstanton and Hunts and Oakdale Creameries (Poole) Ltd.", 51cm high	£100-£200
276	A 19th Century carved wooden column depicting bearded man in robes, 70cm long	£40-£60
277	A pair of Ethnic carved wooden paddle spears, having carved hatched decoration 158cm long	£60-£100
278	Four Ethnic painted face masks, having hessian and woven headpieces, painted tribal markings above straw work ruffs	£40-£60
279	An Ethnic face mask with painted seashell and bone decoration to the face, within a wicker and a straw work surround, feather headdress motif, 47cm	£40-£60
280	A softwood carved and painted Ethnic tribal face mask with husk decoration, 29cm	£20-£40
281	A brightly coloured Ethnic face mask having horns supporting a central bell with brightly coloured braid, 22cm	£20-£30
282	An Ethnic carved wooden goats head face mask, with painted carved decoration, 58cm	£40-£60
283	A carved wooden Ethnic face mask with plaited straw work decoration, the forehead with carved motif, 28cm	£20-£40
284	An Ethnic carved face mask with plaited straw work back, painted and carved pierced decoration with etched motifs to the forehead, 30cm	£20-£40
285	A large oval shield shape Ethnic face mask, having painted decoration and wicker work borders	£40-£60
286	A 20th Century fireplace dummy board with painted decoration of a basket of flowers, 83cm x 63cm in extremes	£20-£40
287	An 18th Century iron inglenook fireplace pot crane	£100-£200
288	A Victorian oak cased drop dial wall clock, having single fuseé movement by Burrell Sheffield, dial 30.5cm dial	£60-£80
289	A pair of Chinese framed and glazed silk embroideries, having figural and procession decoration, 64cm x 31cm	£40-£60
290	A bronze figure of a naked man balancing on a log, set on a wooden base, 17cm high	£20-£40
291	An antique bronze twin handled cup, having classical decoration of centaurs and cherubs, raised on a square plinth, 14cm high	£20-£40
292	A 19th Century rosewood travelling toilet box, with sunken brass handles, 25.5cm wide x 16cm high	£30-£40
293	A 19th Century mahogany and satinwood strung sewing box, having lift-out tray, flanked by brass lion mask handles, 34cm wide	£30-£40
294	A pair of French spelter figures raised on circular wooden plinths, 33cm high	£20-£40
295	Five 19th Century silhouette portraits of members of the Nash family, by H. Gibbs profilist, contained in a papier mâché common frame, brass acorn mounts, each miniature 8.5cm x 6.5cm, the frame 33.5cm x 29cm	£60-£100
296	A 19th Century silhouette miniature of Thomas Gibbs of Saffron Waldron, label verso, "Striking Likenesses In Profile Shade" by H. Gibbs, contained in ebonised and brass mounted frame	£40-£60
297	A 19th Century silhouette portrait miniature of Anne Backhouse of Darlington, label verso, contained in ebonised and brass frame; and another silhouette miniature of a young gentleman	£20-£40



Lot 275



Lot 277

Order of Sale

<i>Coins & Notes</i>	<i>1 - 83</i>
<i>Ceramics & Glass</i>	<i>90-177</i>
<i>Silver & Jewellery</i>	<i>179-221</i>
<i>Objects & Collectables</i>	<i>229 - 308</i>
<i>Pictures</i>	<i>311 - 365</i>
<i>Furniture</i>	<i>369 - 450</i>



Lot 287



Lot 295

Each lot is subject to a Buyer's Premium of 20% + VAT (24%)

Lots marked † please refer to Droit de Suite royalty charges in Terms and Conditions

298	A 19th Century portrait miniature of Mrs Thomas Nash of saffron Walden, contained in ebonised and brass mounted frame, label verso, "Striking Likeness and Profile Shade" by H. Gibbs; and a 19th Century portrait miniature of an elderly gentleman in frock coat, contained in an ebonised and brass mounted frame with acorn mount	£40-£60
299	A large 19th Century silhouette portrait of a gentleman with frock coat and hat, labelled verso "From the Wellesley Collection" and contained in an ebonised frame, 34cm x 17cm overall	£40-£60
300	Five various violin bows, some AF	£40-£60
301	F. P Barraud, after Walter Cox, pencil signed print of a Public School, with figures walking across meadows, published Dickinson and Foster with painted crest to the top of the margin, 48cm x 62cm	£20-£40
302	T.P Barraud, after F.G. Stevenson, study of Public School cricket match, published by Dickinson and Foster, having painted crests to the top, 50cm x 63cm	£20-£40
303	A Bugatti Owners Club trophy, inscribed "Silverstone 1952", 12cm high	£40-£60
304	A brass cased library telescope by Charles Tulley, on folding tripod stand complete with pine carrying case	£60-£100
305	A Chinese hardwood and porcelain table screen circa. 1900, the porcelain panel approx. 39c, x25.5cm	£400-£500
306	A 19th Century cast bronze portico figure depicting a muse holding a lyre, 46cm long	£60-£80
307	A pair of 19th Century Grand Tour type classical male and female figures set on marble column bases, 30.5cm high overall	£150-£250
308	A Chinese hardwood and mother of pearl inlaid table screen, profusely decorated figures in a garden and foliate sprays, pierced panel raised on shaped end supports, 81cm high x 78cm wide overall	£250-£350



Lot 305



Lot 308

Order of Sale

<i>Coins & Notes</i>	1 – 83
<i>Ceramics & Glass</i>	90-177
<i>Silver & Jewellery</i>	179 – 221
<i>Objects & Collectables</i>	229 – 308
<i>Pictures</i>	311 – 365
<i>Furniture</i>	369 – 450

Pictures

311	An antique folio sized scrap book, containing various caricatures and prints by Rowlandson and others	£80-£120
312	Sunderland Rollinson 1872-1950, study of a steam train crossing a viaduct, signed watercolour 22.5cm x 30cm unframed	£30-£50
313	20th Century school, abstract study of a woman ironing, oil on canvas, 55cm x 38cm	£40-£60
314	Douglas Thompson, "House In Provence, Cassis", dated 1936, Ruskin Gallery label verso, 51cm x 61cm	£60-£80
315	Sir James Dromgole Linton 1840-1916, "Peveril" portrait study of a man in Medieval costume with armoured breast plate and red cloak, signed watercolour, 36.5cm x 27cm, dated 1883	£200-£300
316	Sir James Dromgole Linton 1840-1916, portrait study Michael Lambourne in period dress with court sword, signed watercolour dated 1880, 46cm x 30cm	£200-£300
317	Attributed to J. Opie R.A., head and shoulders portrait study of a young girl, unsigned oil on canvas, 34cm x 29cm contained in an decorative gilt frame	£200-£300
318	19th Century school, portrait study of a lady with landscape beyond, unsigned oil on board, 27.5cm x 22cm	£100-£200
319	Arthur Croft 1828-1902 British, landscape study, signed watercolour 62cm x 35cm	£150-£250



Lot 316



Lot 317

Each lot is subject to a Buyer's Premium of 20% + VAT (24%)

Lots marked † please refer to Droit de Suite royalty charges in Terms and Conditions

320	J.J. Hill, watercolour study of two young girls, pencil signed bottom right, framed as an oval, 38cm x 40cm	£200-£300
321	19th Century school, study of a figure walking along a country path with ruins and mountains in the far ground, unsigned oil on board, 45cm x 62cm, framed	£150-£250
322	H. Barnett, watercolours depicting rural scenes dated 1918 and 1920, 18cm x 24cm (2)	£60-£80
323	Leonard Russell Squirrell, "At Fen Drayton" black and white print, image 16.5cm x 22cm	£20-£40
324	Edward Armfield, study of terriers hunting a pair, signed oils on board, 16.5cm x 22cm contained in decorative gilt frames	£300-£400
325	Christopher Mark Maskell 1846-1933, study of a rural cottage with figure on a path, sheep and church in the far ground, signed oil on board, 19cm x 17cm in decorative gilt frame	£80-£120
326	Alexander Wallace-Rimington 1854-1918, study of a busy shipping harbour, signed watercolour, 18cm x 34.5cm	£80-£120
327	Margaret Glass born 1950, "Fisherman's Boats at Southwold", signed pastel 30cm x 40.5cm	£50-£100
328	Margaret Glass born 1950, "Sailing Barges Off Harwich" signed pastel, 34cm x 47cm	£80-£120
329	Margaret Glass born 1950, "River Mist At Woodbridge", signed pastel, 30.5cm x 40cm	£100-£150
330	Margaret Glass born 1950, "Clearing Mist" signed pastel, 27.5cm x 37.5cm	£60-£80
331	Christopher Mark Maskell 1846-1933, rural study of cottage beside a river, cattle in the far ground, signed oil on board, 24.5cm x 30cm	£60-£80
332	Christopher Mark Maskell 1846-1933, rural study depicting sheep beside a river, oil on board, 19cm x 27cm	£40-£60
333	Christopher Mark Maskell 1846-1933, study of a figure on a country path, cottage in the far ground, 19cm x 26cm	£40-£60
334	Christopher Mark Maskell 1846-1933, study of figures outside a country cottage, sheep in the far ground, 22cm x 20.5cm	£40-£60
335	Christopher Mark Maskell 1846-1933, rural study depicting young child stood in front of a thatched cottage, church in the far ground oil on board, 22cm x 20.5cm	£40-£60
336	Christopher Mark Maskell 1846-1933, study of woman and child on a rural path, cottage and sheep in the far ground, signed oil on board, 25cm x 30cm	£60-£100
337	G. Hemmingway, still life studies, a pair, depicting fruit in a hedgerow, signed oil on canvas, 24.5cm x 28.5cm in pierced gilt decorative frames	£100-£200
338	A 19th Century naïve school, study of pigs in a sty, unsigned oil on canvas, 23cm x 27cm	£150-£250
339	Alex Lefort, study of trees in a landscape, signed oil on canvas, 53.5cm x 44cm, contained in a leaf decorated cream frame	£100-£200
340	20th Century school, study of fruit on a chair, indistinctly pencil signed, dated '50, 47cm x 63cm	£40-£60
341	French school, 19th Century study of a landscape at sunset, oil on canvas, 51cm x 61cm	£60-£80
342	After Samuel John Lamorna Birch, study entitled "Over Looking St Ives Bay" bears signature and inscription verso, oil on board, 24cm x 37.5cm contained in a gilt frame	£40-£60



Lot 320



Lot 324

Order of Sale

<i>Coins & Notes</i>	<i>1 – 83</i>
<i>Ceramics & Glass</i>	<i>90-177</i>
<i>Silver & Jewellery</i>	<i>179 – 221</i>
<i>Objects & Collectables</i>	<i>229 – 308</i>
<i>Pictures</i>	<i>311 – 365</i>
<i>Furniture</i>	<i>369 – 450</i>



Lot 329



Lot 338

Each lot is subject to a Buyer's Premium of 20% + VAT (24%)

Lots marked † please refer to Droit de Suite royalty charges in Terms and Conditions

Interiors & Art – 26th June 2024

Clarke & Simpson

343	Naïve school, study of a sailing vessel leaving port, the pennant flag inscribed "Bonde", unsigned oil on canvas, 39cm x 49cm, contained in a birds eye maple frame	£100-£150
344	Naïve school, study of an American sailing ship coming into port, the pennant inscribed "Mary D. Lane", unsigned oil on canvas, 39cm x 49cm, contained in a birds eye maple frame	£100-£150
345	Charles H. Scott, study of Castle Street, Framlingham, signed oil on board, 29cm x 39cm (frame AF)	£100-£150
346	Manner of Keith Vaughan, brightly coloured abstract oil on canvas, faint inscription verso, 74cm x 60cm	£100-£200
347	Tony Matthews, study "Don Bradman At The Crease", oil on canvas, 102cm x 75cm	£60-£80
348	Fredrick Walters Watts 1800-1962, rural study of an old mill with figures fishing, oil on canvas, 50cm x 73cm	£400-£600
349	Herbert Dicksee, three etchings of a lion, tiger and wolfhound, contained in common frame	£20-£40
350	Richard Wilson, James Bond and George Smiley cartoon with certificate of authenticity verso, 32.5cm x 40.5cm	£40-£60
351	Richard Wilson, satirical cartoon, "Bush / Blair Iraq War, Twelve Drummers Drumming" with certificate of authenticity verso, plate 34cm x 51cm, dated 6th 16th '01, with inscriptions	£40-£60
352	An Indian watercolour depicting a lion hunting scene, 11.5cm x 15cm; another depicting a battle scene with inscription, 24cm x 12cm; another depicting figures on a terrace 27cm x 14cm; and two Chinese prints	£60-£100
354	A Tracey Emin print; and a volume of 1000 Drawings By Tracy Emin	£40-£60
355	Raymond James Coxon, mixed media "Storm Off Florida" 35.5cm x 53cm	£100-£150
356	French Impressionist school, study of a beach scene with pavilion and figures bathing, indistinctly signed watercolour, 49cm x 59cm framed and glazed	£60-£100
357	A rare 19th Century European study of Singapore, dated 1852, indistinctly signed watercolour, 53cm x 54.5cm, framed and glazed	£40-£60
358	An Australian native Aborigine painting, titled "Hunting Grounds Djumulla" with integral mount and frame, 53cm x 63cm overall	£40-£60
359	Gloria Little, Australian Aboriginal study painting with integral mount and frame, 43cm x 55cm overall	£40-£60
360	Four Old Master drawings to include study of a skeleton entitled "Judices", "Juste", "Judicate", 16cm x 36cm	£400-£600
361	John Western, watercolour study, "Sailing Barge Dawn At The Tide Mill Jetty", signed and dated '86, 15.5cm x 26cm	£40-£60
362	Ellen Churchyard, study of Seckford Hall, watercolour 14.5cm x 18.5cm	£100-£150
363	Ellen Churchyard, study of The Abbey School and St Mary's Church Woodbridge, watercolour, 14cm x 18.5cm	£100-£150
364	A Canadian limited edition silk screen print "Early Morning" indistinctly signed	£25-£40
365	Phyllis Kapp, abstract watercolour American landscape scene, signed and dated 1988, 45cm x 60cm	£200-£300



Lot 346



Lot 348

Order of Sale

<i>Coins & Notes</i>	<i>1 - 83</i>
<i>Ceramics & Glass</i>	<i>90-177</i>
<i>Silver & Jewellery</i>	<i>179-220</i>
<i>Objects & Collectables</i>	<i>229 - 308</i>
<i>Pictures</i>	<i>311 - 365</i>
<i>Furniture</i>	<i>369 - 450</i>



Lot 355



Lot 360

Each lot is subject to a Buyer's Premium of 20% + VAT (24%)

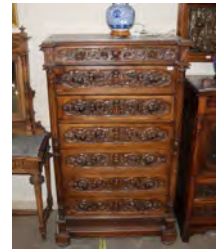
Lots marked † please refer to Droit de Suite royalty charges in Terms and Conditions

Furniture

369	A mid-20th Century oak fender stool, raised on cabriole supports, 118cm	£20-£40
370	A George III mahogany chest fitted four long graduated drawers raised on bracket feet, 84cm wide x 47cm deep x 83cm high	£100-£150
371	A 19th Century mahogany chest of two short and three long drawers, fitted embossed brass handles raised on turned feet, 92cm wide x 48cm deep x 108cm high	£100-£150
372	A 19th Century mahogany chest of two short and three long drawers, raised on bracket feet 102cm wide	£60-£80
373	A Chinese hardwood low sideboard, fitted central shelves flanked by cupboards enclosed by carved motif doors, 183cm wide x 52cm deep x 63cm high	£40-£60
374	A Chinese hardwood side cabinet, the central shelf enclosed by glazed panelled doors, flanked by drawers and cupboards decorated with carved motif, 153cm wide x 49cm deep x 88cm high	
375	A Chinese hardwood side cabinet, fitted four frieze drawers and cupboards under, having carved symbol decoration, 183cm wide x 50cm deep x 87cm high	£40-£60
376	A Chinese carved hardwood side cabinet, the interior shelf enclosed by a carved and pierced glazed panel door, 52cm wide x 52cm deep x 72cm high	£40-£60
377	A 19th Century continental walnut side cabinet of inverted breakfront form, fitted single frieze drawer and cupboard below, flanked by columns and raised on claw and ball feet, 42cm wide	£40-£60
378	A 19th Century continental walnut three drawer chest, of inverted breakfront form flanked by columns and raised on bold claw supports, 93cm wide x 96cm high x 57cm deep	£100-£150
379	A 19th Century carved continental walnut escritoire, having a marble top above frieze drawer, drop down writing compartment below above two further drawers, raised on bracket feet, flanked by turned columns, 97cm wide x 130cm high x 53cm deep overall	£100-£150
380	A 19th Century continental carved walnut tall chest, fitted six drawers, foliate decoration within turned baluster columns and raised on bun feet, 98cm wide x 162cm high	£100-£200
381	A 19th Century carved walnut dressing table, the raised back fitted swing mirror above a marble inset top, single drawer above turned tapering reeded supports united by a cross stretcher, 87cm wide x 170cm high	£60-£100
382	A continental carved walnut bedhead or overmantel with profuse foliate decoration, 180cm wide x 130cm high	£40-£60
383	A Chinese lacquered six fold screen, with chinoiserie decoration, 184cm high	£200-£300
384	A 19th Century mahogany Chippendale design display cabinet surmounted by a scrolled pierced pediment, the adjustable shelves enclosed by a pair of astragal glazed doors on a blind fret carved stand terminating in square section supports, 125cm wide x 236cm high	£200-£300
385	A late 19th / early 20th Century golden oak bookcase by Maple & Co. having raised mirrored back section above two drawers, open adjustable shelves on bracket feet, 122cm wide x 153cm high x 31cm deep	£100-£200
386	A 19th Century rosewood chiffonier, having raised shelved back above a single frieze drawer and cupboards below on an inverted plinth flanked by columns, 122cm wide x 160cm high x 48cm deep	£100-£150



Lot 370



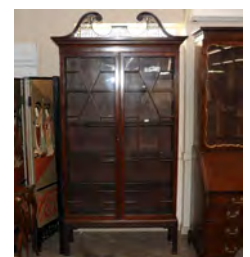
Lot 380

Order of Sale

<i>Coins & Notes</i>	<i>1 – 83</i>
<i>Ceramics & Glass</i>	<i>90-177</i>
<i>Silver & Jewellery</i>	<i>179 – 221</i>
<i>Objects & Collectables</i>	<i>229 – 308</i>
<i>Pictures</i>	<i>311 – 365</i>
<i>Furniture</i>	<i>369 – 450</i>



Lot 383



Lot 384

Each lot is subject to a Buyer's Premium of 20% + VAT (24%)

Lots marked † please refer to Droit de Suite royalty charges in Terms and Conditions

387	A large and impressive late 20th Century painted Chinese six fold screen, each panel measuring 43cm x 179cm	£100-£200
388	A Chinese hardwood room divider, having open stepped shelves with double cupboards below, carved symbol decorations to the panel doors, 124cm wide x 191cm high x 32cm deep	£40-£60
389	A Chinese carved hardwood bookcase, fitted adjustable shelves and cupboard below, 117cm wide x 199cm high x 38cm deep	£60-£100
390	A large oak French armoire with interior shelf and hanging compartment, two long drawers below raised on squat cabriole supports, 166cm wide x 227cm high	£40-£60
391	A 19th Century gilt wood and Gesso triple overmantel mirror, with leaf and swag decoration, 64cm x 136cm in extremes	£150-£250
392	A 19th Century oak and mahogany cross banded long case clock, the hood with scroll arched pediment and reeded columns enclosing a painted dial inscribed "Northwood & Son" supporting a 30 hour movement above a trunk panel door and box base, terminating in bracket supports, 200cm high	£100-£200
393	Desmond Ryan, a 1870's rosewood side cabinet fitted adjustable glass shelves and cupboards below, 245cm wide Desmond Ryan was a Master's Graduate from the Royal College of Art. He was well-known for his small-scale woodwork as well as furniture commissions, of which this is an early example in Indian Rosewood and Cherry. He has a games board in the permanent collection of the Victoria & Albert Museum.	£200-£400
394	A pair of Chinese hardwood wall hanging display cabinets, the stepped interior shelves enclosed by glazed panel doors beneath carved and pierced friezes, 49cm wide x 86cm high x 10cm deep overall	£40-£60
395	A Chinese hardwood graduated hanging display shelf, 43cm wide x 83cm high; and a round mirrored display shelf, 57cm dia.	£20-£40
396	A 19th Century continental walnut spinning chair, having shaped back above octagonal seat on pegged base	£20-£40
397	A 19th Century carved oak stool having cane panel seat and a walnut and brass mounted coal scuttle	£30-£50
398	A continental oak and pine spinning chair, having carved decoration to the tapering back and an ebonised Prie-dieu chair	£40-£60
399	A pair of continental carved oak Savonarola type chairs, the detachable backs with foliate scroll and shell decoration above folding bases	£60-£100
400	An early 20th Century carved walnut salon suite, comprising of curved three seater settee with foliate cresting raised on hairy claw and ball supports; and a pair of matching tub shaped easy chairs	£225-£275
401	A Chinese hardwood demi-lune shaped hall table, with stepped base, 80cm wide, 41cm deep, 80cm high	£40-£60
402	A Chinese hardwood side cabinet, the curved top above two frieze drawers and cupboards below, 91cm wide, 39cm deep, 80cm high overall	£40-£60
403	A Chinese hardwood alter table, having scrolled curved top above a pierced frieze, raised on square section supports united by stretchers, 122cm wide x 41cm deep x 92cm high	£40-£60
404	A Chinese hardwood side table of stepped form, fitted with a single drawer, raised on square section supports united by a lower tier, 62cm wide x 36cm deep x 82cm high overall	£40-£60
405	A nest of four Chinese painted and lacquered occasional tables, decorated birds and prunus, the smallest table fitted with a single drawer, 50cm wide x 35cm deep x 70cm high overall	£40-£60



Lot 387



Lot 391

Order of Sale

<i>Coins & Notes</i>	<i>1 – 83</i>
<i>Ceramics & Glass</i>	<i>90-177</i>
<i>Silver & Jewellery</i>	<i>179 – 221</i>
<i>Objects & Collectables</i>	<i>229 – 308</i>
<i>Pictures</i>	<i>311 – 365</i>
<i>Furniture</i>	<i>369 – 450</i>



Lot 393



Lot 400

Each lot is subject to a Buyer's Premium of 20% + VAT (24%)

Lots marked † please refer to Droit de Suite royalty charges in Terms and Conditions

406	A nest of four Chinese graduated hardwood occasional tables, decorated with a pierced frieze, raised on section supports, the largest table 51cm wide x 36cm deep x 67cm high overall	£40-£60
407	A 19th Century elm seated ladder back child's chair	£40-£60
408	A 19th Century mahogany child's chair	£40-£60
409	A 19th Century elm seated Windsor stick back child's chair	£40-£60
410	A 19th Century carved oak folding Hamlet style chair, with foliate carved decoration and leather back and seat raised on claw supports	£60-£80
411	A pair of 19th Century carved oak hall chairs, having foliate decorated splat backs above solid seats, raised on cabriole supports	£40-£60
412	A 19th Century carved mahogany elbow chair with tapestry upholstered back panel, arm rest and seat raised on turned fluted front column supports	£60-£80
413	A large 19th Century carved oak framed fire screen, having crewel work panel depicting trailing foliage and birds around an urn, 90cm wide x 99cm high	£150-£200
414	An Arts & Crafts style tub shaped desk chair	£30-£50
415	A Victorian mahogany drop leaf supper table, the rounded drop leaves raised on turned tapering supports	£30-£40
416	A 19th Century mahogany cheval mirror in turned stand raised on reeded supports terminating in brass claw caps and castors, 72cm wide, 174cm high	£200-£400
417	A 20th Century lacquered and chinoiserie decorated Carlton House desk, 133cm wide	£400-£600
418	A 19th Century walnut snap top pedestal supper table, the radially veneered top with a gadrooned border raised on ornately carved central baluster column and tripod splay, terminating in scrolled feet and castors, 132cm dia.	£400-£600
419	A Victorian carved mahogany fire screen, having wool work embroidered panel, 60cm wide x 116cm high	£40-£60
420	A pair of Chinese hardwood side cabinets, enclosed by pierced doors, 60cm wide x 59cm deep x 93cm high	£40-£60
421	A pair of Chinese hardwood bedside cabinets, fitted single drawers and cupboards, 51cm wide x 51cm deep x 51cm high	£40-£60
422	A large Chinese hardwood coffee table, having pierced dragon decorated frieze, raised on claw and ball supports, 126cm wide x 77cm deep x 37cm high	£40-£60
423	A pair of Chinese hardwood corner chairs, having carved and pierced backs, raised on shaped supports united by an under tier	£40-£60
424	A 19th Century mahogany and cross banded sewing table fitted with a single drawer and pull out silks well below, raised on lyre end supports terminating in brass caps and castors, 56cm wide x 43cm deep x 74cm high	£65-£90
425	A 19th Century lacquered wooden two tier whatnot having brass gallery decorated in the chinoiserie manner, 62cm wide x 59cm high x 44cm deep overall	£50-£80
426	A 19th Century domed canvas metal mounted and studded travelling trunk, 76cm	£30-£50
427	A continental carved walnut Cassoné, the front panel with raised carved decoration of birds amongst foliage beneath a hinged lid, raised on claw supports 152cm wide	£100-£150
428	A rustic pine curved stool, raised on cross supports 110cm long	£60-£80
429	An Edwardian mahogany wall cupboard, the interior adjustable shelf enclosed by a pair of sliding doors, 63cm wide x 56cm high	£20-£40
430	A set of six carved mahogany Chippendale style dining chairs, having pierced splat back upholstered drop in seats, raised on square section supports united by stretchers	£150-£200



Lot 413



Lot 417

Order of Sale

<i>Coins & Notes</i>	<i>1 – 83</i>
<i>Ceramics & Glass</i>	<i>90-177</i>
<i>Silver & Jewellery</i>	<i>179 – 221</i>
<i>Objects & Collectables</i>	<i>229 – 308</i>
<i>Pictures</i>	<i>311 – 365</i>
<i>Furniture</i>	<i>369 – 450</i>



Lot 418



Lot 430

Each lot is subject to a Buyer's Premium of 20% + VAT (24%)

Lots marked † please refer to Droit de Suite royalty charges in Terms and Conditions

431	A Victorian armchair, raised on turned tapering front supports terminating in castors and out swept back supports	£40-£60
432	A 19th Century mahogany rail back elbow chair with tapestry seat	£30-£40
433	An antique carved oak hall or side chair, with pierced foliate decoration flanked by turned columns, green Dralon upholstered seat on turned baluster supports united by a stretcher; and a similar smaller chair with crown and dolphin motif upholstered ensuite	£150-£200
434	Louis XV style gilt wood armchair, having foliate cresting and scrolled arms raised on cabriole supports	£120-£180
435	A Victorian walnut spoon back nursing chair, upholstered in pale green Dralon and raised on cabriole supports	£20-£40
436	A Victorian gilt framed settee, having old gold Dralon button upholstered back, raised on cabriole front supports	£40-£60
437	A Victorian oak framed nursing chair with pink Dralon button upholstered curved back, the serpentine seat raised on turned tapering front supports	£40-£60
438	An oak framed Arts & Crafts design armchair, upholstered in brown Dralon and raised on turned tapering club shaped supports terminating in castors	£30-£50
439	A 19th Century continental carved oak hall or serving table, fitted with two frieze drawers above mask supports, terminating in bold claw feet, united by a stretcher 187cm wide x 89cm deep x 80cm high	£200-£300
440	A Chinese hardwood D end extending dining table, with carved decoration to the frieze, raised on square section supports 200cm x 112cm	£100-£150
441	A set of seven Chinese hardwood dining chairs, having curved backs, splats with carved motif decoration raised on square section supports	£100-£150
442	An Edwardian mahogany framed tub shaped salon chair, having carved decoration, green Dralon upholstered back and seat	£30-£50
443	A Regency gilt framed and Verre Eglomise decorated pier mirror, 94cm x 53cm	£200-£300
444	A 19th Century carved Padauk circular snap top dining table, raised on foliate baluster column and tripod base, terminating in fluted bun feet, 151cm dia.	£1,500-£2,000
445	A "Mouseman" oak corner cabinet, the interior shelves enclosed by a panelled door with iron hinges and latch, 106cm high x 71cm wide overall	£100-£150
446	A "Mouseman" style oak plate rack, having adzed finish, 160cm wide x 109cm high	£60-£100
447	An oak Globe Wernicke four tier sectional bookcase, fitted single drawer to the base, 87cm wide x 151cm high x 31cm deep overall	£150-£250
448	An oak Globe Wernicke type four tier sectional bookcase, fitted single drawer to the base, 87cm wide x 147cm high x 31cm deep	£150-£250
449	An early 20th Century leather club chair raised on bun front supports terminating in castors	£150-£250
450	A rosewood dining suite by Gordon Russell Broadway Worcester, comprising sideboard fitted shelved interior, enclosed by a pair of sunken panelled doors, flanked by eight short drawers on rounded tapering supports, 160cm wide; a draw leaf extending dining table, 97cm x 225cm fully extended, and eight elbow dining chairs	£400-£600



Lot 433



Lot 443

Order of Sale

<i>Coins & Notes</i>	<i>1 – 83</i>
<i>Ceramics & Glass</i>	<i>90-177</i>
<i>Silver & Jewellery</i>	<i>179 – 221</i>
<i>Objects & Collectables</i>	<i>229 – 308</i>
<i>Pictures</i>	<i>311 – 365</i>
<i>Furniture</i>	<i>369 – 450</i>



Lot 444



Lot 445

Each lot is subject to a Buyer's Premium of 20% + VAT (24%)

Lots marked † please refer to Droit de Suite royalty charges in Terms and Conditions

Calendar 2024

<i>Rural Bygones</i>	<i>27th July 2024</i>
<i>Interiors & Art</i>	<i>7th August 2024</i>
<i>Militaria, Airguns & Firearms</i>	<i>17th August 2024</i>
<i>Rural Bygones</i>	<i>21st September 2024</i>
<i>Interiors & Art</i>	<i>25th September 2024</i>
<i>Farm Machinery</i>	<i>30th October – 6th November 2024</i>
<i>Interiors & Art</i>	<i>13th November 2024</i>
<i>Militaria, Airguns & Firearms</i>	<i>7th December 2024</i>

Entries now open for the next Bygones

Closing date 5th July 2024

Entries now open for the next Interiors & Art

Closing date 19th July 2024

Entries now open for the next Militaria, Airguns & Firearms

Closing date 19th July 2024