

A detailed oil painting of a fisherman in a dark blue sweater and a brown hat with earflaps, kneeling on a rocky shore. He is holding a fishing net and a small wooden tool, possibly a needle or a hook, to mend it. The net is spread out on the ground around him. In the background, there is a small wooden boat on the shore, a small building with a thatched roof, and a body of water with several sailboats in the distance. The sky is a soft, hazy blue.

Clarke &  
Simpson

**Fine Art & Interiors**

Wednesday 25th June 2025 at 10 am

Clarke &  
Simpson

Auctions

*Always open..*



**Valuation**

Probate & other valuation  
Call-in service 6 days a week

**Special Sales**

Bespoke Auctions  
Fine Art & Interiors  
Domestic & Rural Bygones  
Agricultural Collective

**General Monday sale**

In 2024 we sold lots to, and registered buyers  
from over 70 countries world wide  
Acting as agents for household clearances

**Can't make it?**

All auctions are available  
for online bidding via  
**the-saleroom.com**  
or **i-bidder.com**



Clarke & Simpson Auction Centre,  
Campsea Ashe, Nr Wickham Market,  
Suffolk IP13 0PS T: 01728 746323

**[www.clarkeandsimpson.co.uk](http://www.clarkeandsimpson.co.uk)**

CandSAuctions

CandSAuctions



# Clarke & Simpson

Auctions

## Fine Art & Interiors

Wednesday 25th June 2025  
at 10 am

### Order of Sale:

|                                |            |
|--------------------------------|------------|
| Ceramics & Glass               | 1 - 99     |
| Lowestoft Porcelain Collection | 101 - 180  |
| Silver & Plate                 | 190 - 312  |
| Jewellery, Coins & Watches     | 315 - 430  |
| Objects & Collectables         | 432 - 507  |
| Pictures & Prints              | 508 - 608B |
| Furniture                      | 609 - 695  |

### Viewing:

Saturday 21st June, 9am – 12 noon  
Monday 23rd June, 2pm – 7pm  
Tuesday 24th June, 10am – 4pm  
Morning of Sale from 8.30am



CandSAuctions



CandSAuctions

BID ONLINE

**thesaleroom.com**

The home of art & antiques auctions



Campsea Ashe  
Nr. Wickham Market  
Suffolk IP13 0PS  
Tel: (01728) 746323  
Email: [auctions@clarkeandsimpson.co.uk](mailto:auctions@clarkeandsimpson.co.uk)  
[www.clarkeandsimpson.co.uk](http://www.clarkeandsimpson.co.uk)



# Special Sales Calendar 2025

VINTAGE MACHINERY

26th July

MILITARIA, AIRGUNS & FIREARMS

16th August

FINE ART & INTERIORS

17th September

RURAL BYGONES

27th September

FARM MACHINERY

5th - 12th November

FINE ART & INTERIORS

26th November

MILITARIA, AIRGUNS & FIREARMS

13th December



## Ceramics & Glass



Lot 1

**1**  
A fine quality Rockingham type 19th Century porcelain dessert service, decorated with scenes of castles and stately homes on a pale blue ground heightened in gilt, comprising eight differently sized comports and seventeen serving plates

£400-£600 †

**2**  
A large Canton bowl, with famille rose and green leaf decoration 37cm dia.

£60-£80 †

**3**  
A set of eight Continental porcelain dessert plates, having pierced borders, foliate spray and insect decoration heightened in gilt, blue cross swords mark to bases; a similar pattern square serving dish and a similar comport

£60-£80 †

**4**  
An extensive Wedgwood 'Renaissance' pattern dinner service, to include numerous size plates, tureens, sauce boat and stand, platter and meat dish

£200-£400 †

**5**  
A collection of various 19th Century blue and white china, to include willow pattern meat plates and platters, a Chinese pedestal cream jug, various other cream jugs and sauceboats, leaf shaped pickle dish etc.

£40-£60 †

**6**  
A Minton part tea set; various other Victorian and later tea cups and saucers etc.

£40-£60 †

7

A large Continental pottery charger, decorated with a sailing ship, 35cm dia.; and a large Continental porcelain cache pot decorated figures in interior setting and bird and foliate panel with faux Sèvres mark to base AF £40-£60 †

8

A Wedgwood lustre ware circular bowl, having dragon decoration, 12cm dia. £40-£60 †

9

Two stoneware rabbit ornaments, the largest 15cm long x 18cm high £60-£80 †

10

A 19th Century floral encrusted vase and cover, possibly Coalport; a 20th Century Coalport Caughley mask head jug; a 19th Century Chamberlains Worcester serving dish with rose decoration AF; two Royal Crown Derby floral decorated heart shaped dishes and a blue and gilt chocolate cup £40-£60 †

11

A 19th Century Derby tea set, having rich gilt foliate scroll decoration on a pink ground, comprising sucrier, tea pot, slops bowl, various cups and saucers £100-£200 †

12

A collection of various Continental porcelain figures, mostly depicting young ladies and gallants; also English porcelain figure of a flower girl possibly Derby AF £100-£200 †

13

Two Royal Worcester coffee cups and saucers, painted with pheasants by James Stinton, manufactured for H.G. Stephenson Ltd, Manchester and a saucer £60-£100 †

14

An 18th Century Delft blue and white charger, having a central roundel of stylised flowers within floral and symbol decorated border, 35cm dia. £60-£80 †

15

An 18th Century Delft blue and white charger, having all over floral dot and scroll decoration, 36.5cm dia. £60-£100 †



Lot 7

16

A 18th Century blue and white Delft charger, having circular central panel of bird and foliage on a ledge within floral trailing border, 35cm dia. £60-£80 †

17

A 18th Century Delft blue and white charger, having all over flower head decoration, underglaze blue signature to the base, 34cm dia. £60-£80 †

18

An 18th Century Delft blue and white shallow dish, having all over floral decoration AF; and another with central floral motif within fruit and floral border, 35.5cm dia. AF £30-£50 †

19

A large 19th Century Japanese buff ground double gourd shaped pottery vase, painted in enamels with flora and a central bow, 31cm high £50-£80 †

20

A good pair of large 19th Century glass rummers, and a near pair of rummers of typical form £120-£180 †

21

A Bristol Delft Polychrome painted dish, circa 1740, 29cm dia. information label verso; and an 18th Century English Delft blue and white 'Fence' pattern plate, 23cm dia. £80-£120 †

22

A rare Wedgwood porcelain botanical dish of boat shape, the borders heightened in gilt, 'Wedgwood' printed in red to the underside, circa 1812-1822, 24.5cm long £40-£60 †

23

A pair of Lalique glass doves, 12cm long £80-£120 †



Lot 19



24

A Whitefriars orange bark vase,  
15cm high £50-£80 †

25

A Whitefriars ruby bark vase, 15cm  
high £50-£80 †

26

A Whitefriars ruby bark vase, 15cm  
high £50-£80 †

27

A Whitefriars Kingfisher blue bark  
vase, 15cm high £50-£80 †

28

A pair of 19th Century small green  
glass spirit decanters and stoppers,  
both with silver labels for 'Rum' and  
'Brandy' circa 1840; and a pair of  
19th Century wine goblets with  
finely engraved trailing lily  
decoration £50-£80 †

29

A large coloured glass chemist jar,  
33cm high £30-£50 †

30

A pair of 18th Century wine  
glasses, with lace work air twist  
stems, 14.5cm high; and two  
antique conical shaped glasses  
£100-£150 †

31

A large 18th Century wine glass,  
with a trumpet shaped bowl, on a  
drawn stem with a tear inclusion,  
17cm high; and a fine 18th Century  
wheel cut and engraved hollow  
stemmed goblet, with folded foot,  
15cm high £80-£120 †



Lot 24



Lot 27



Lot 29

32

Two 19th Century green glass eye  
baths; a Bristol blue 19th Century  
eye bath; four green glass wine  
goblets and a trumpet shaped wine  
glass £60-£100 †

36

A large Sunderland lustre ware  
baluster jug, decorated with 'The  
Sailor's Farewell' and 'Shields, The  
Mouth Of River Tyne', 19.5cm  
high £120-£160 †

38

A pair of Chinese baluster vases,  
decorated with figures in exotic  
garden settings carrying flags and  
lanterns, having pierced carved  
wooden lids, 24cm high  
£200-£400 †

33

A pair of Victorian Thomas Webb  
yellow ground overlay glass vases,  
9.5cm high £200-£300 †

37

A pair of Chinese baluster vases,  
decorated figures in gardens and  
calligraphy; a pair of Oriental  
famille rose decorated saucer dishes;  
and an Imari pattern bowl of  
globular shape with eight character  
mark to the base £40-£60 †

39

A pair of Chinese blue and white  
porcelain 'Aster' pattern early 18th  
Century Kang Hsi period plates,  
chip to one edge, 27cm dia.  
£100-£200 †

34

An 18th Century glass chemist  
bottle, converted to a table lamp,  
48cm high overall £90-£120 †

35

A large Victorian Davenport  
'Nankin' pattern baluster water jug,  
35cm high £100-£150 †



Lot 33



Lot 39

40

A pair of 19th Century Chinese famille rose chargers, decorated deer in landscape, 35.5cm dia. AF  
£200-£300 †

41

A heavy antique bronze pot, of round form, 18cm; and an unusual Middle Eastern turquoise jar, 16.5cm high £40-£60 †

42

A brightly enamelled Chinese porcelain figure of a cockerel, 25cm high; a small blue glazed double gourd shaped vase marked to base; a small tea bowl and two blue and white porcelain dishes £60-£80 †

43

A Chinese porcelain blanc de chine bowl, formed as a lily, 20.5cm dia. and a blanc de chine figure of Guan Yin, 36cm high £40-£60 †

44

An early 20th Century Schwarzburger Werkstätten porcelain figure of a Duchess, with ornate headdress and colourful flowing robes on a white glazed plinth, incised mark to the underside of the base of 'Running Fox' motif and 'U7', 45cm high overall £100-£200 †



Lot 44

45

A Wedgwood and Barlaston embossed Queens ware vase, 32.5cm high £40-£60 †

46

A Chinese blue and white charger, decorated foliate sprays and hatched border, 36cm dia. and a pair of similar (some damage) £100-£150 †

47

A delft shallow dish, with all over floral decoration within blue bands, 34.5cm dia. £60-£80 †



Lot 52

48

A Japanese scallop bordered plate, decorated in the Imari pattern heightened in gilt.; a Japanese charger with scenic and floral decoration; an Oriental blue and white mug with foliate decoration; an Oriental bowl with floral band decoration; a small Japanese blue and white cream jug and a Spode stone china platter £30-£50 †

49

A pair of Chinese yellow ground dished plates, decorated with roundels of lantern and vases, reverse floral borders and six character Guangxu marks, each 18.5cm dia. £80-£120 †

50

A 19th Century Chinese bowl, decorated figures and foliage, heightened in gilt within a floral border and single flower decorated interior, 21.5cm AF £40-£60 †

51

A 19th Century etched glass rummer, foliate decoration and initials, 14cm high £20-£40 †

52

A Derby baluster vase, decorated overlaid gilt foliate scrolls and Dogs of Fo on a red ground, AF, 13cm high £40-£60 †



Lot 53

53

A 19th Century Chinese blue and white double gourd shaped vase, having foliate and object decoration, 25cm high £40-£60 †

54

An Imari shallow dish, 39cm dia. AF £40-£60 †

55

An antique famille rose decorated octagonal dish, with central armorial crest, 24cm dia. AF £40-£60 †

56

A 19th Century Japanese Imari oval platter, having floral pierced border decorated in the traditional palette heightened in gilt, 31cm £20-£40 †

57

A 19th Century etched glass pedestal goblet, the fluted bowl with leaf decoration on spiral twist column and circular spread foot, 36cm high £40-£60 †

58

Three Bristol blue glass rummers, and five blue flash tumblers with thumb press decoration £40-£60 †

59

A pair of Bohemian style ruby flash goblets, 18cm high and four Villeroy & Boch ruby glass dishes, 15.5cm overall £40-£60 †





Lot 64

60

A 19th Century hobnail cut glass bowl on stand, 17cm dia., 20cm high overall; and a similar bell shaped vase, 22cm high £40-£60 †

61

A collection of various 19th Century glassware, including a pair of pedestal salts, oil bottles in plated stands, decanters, bowls etc. £20-£40 †

62

A collection of Bristol blue coloured glassware, including finger bowl, circular plates, rolling pin, a pair of enamel foliate decorated vases, bell etc. £40-£60 †

63

Five green tinted glasses of conical shape; a pair of similar sherry glasses with clear stems and foot; a pair of green glass posies and a baluster jug with green tinted handle £20-£40 †

64

A Victorian blue jasperware cheese bell, having raised fern decoration, the lid with fruit finial, 31cm high AF £40-£60 †

65

A Majolica ware cheese dish, the domed lid with raised basket work and floral decoration, 21cm high overall £40-£60 †

66

A collection of various 19th Century ceramics, to include a Charles Meigh relief moulded jug in the Gothic style; a Basalt ware cream jug; a pair of Victorian blue and gilt dwarf candlesticks; tea ware etc. £20-£40 †

67

A quantity of Royal Crown Derby 'Imari' pattern tea ware, comprising seven cups, saucers, side plates, a serving plate; and a Royal Worcester saucer £80-£120 †

68

Three Limoges dessert plates, having rich gilded floral spray decoration with coloured enamels £20-£30 †

69

A pair of Victorian Staffordshire pottery equestrian figures, 35cm high £40-£60 †

70

An unusual Royal Worcester pottery baluster vase, having fish decoration on a ruby and blue mottled ground, 46cm high £40-£60 †

71

A Victorian hour glass shaped decanter, with silver mount, 32cm high; and a cut glass decanter with faceted stopped £20-£40 †

72

A French Art Deco glass vase, with sunburst decoration, 27cm high; a heavy cut glass vinegar bottle; a dimple glass carafe; a glass pedestal sweetmeat dish; a moulded nursery plate etc. £20-£40 †

73

A Continental Majolica ware plaque, decorated lobster and other crustacea, 30cm dia.; and a smaller example 24cm dia. £40-£60 †

74

A pair of Continental porcelain nodding figures, depicting seated Orientals £20-£40 †

75

A pair of Staffordshire black glazed seated spaniel ornaments, with gilt collars, 18cm high £20-£40 †

76

A small blue and white Faience ware study of a cat, 11cm long £20-£40 †

77

A pair of Chinese black hard stone studies of Kylins, 7.5cm high £30-£50 †

78

A Japanese porcelain figure of a dressed nodding monkey, 23cm high £40-£60 †

79

A rare late 18th Century Pratt ware type pottery sauce boat, with fox head body and swan handle, 16cm long £60-£80 †

80

A small collection of six late 18th Century Pratt ware type pottery figures £180-£220 †

81

Six various 18th Century blue and white tea bowls, including Worcester £40-£60 †

82

Two similar Newhall style jugs, painted with flowers circa 1800, the tallest 12cm high £30-£60 †

83

A pair of Newhall porcelain helmet shaped cream jugs, painted with sprigs of flowers circa 1800, the tallest 11cm high £30-£60 †



Lot 70

84

An 18th Century Worcester 'Fence' pattern bowl, circa 1770, 15.5cm dia. £30-£50 †

85

An 18th Century blue and white wall pocket, of Cornucopia form Worcester circa 1770, hand painted with flowers and rockwork with rare painted blue mark to the reverse, 22cm long £60-£80 †

86

Two 18th Century blue and white butter boats, circa 1770, the largest 8cm long £80-£120 †

87

An 18th Century Worcester blue, iron red and puce swirling pattern cup and saucer, seal mark to base; and two polychrome decorated tea bowls £40-£60 †

88

An 18th Century Worcester petal edged blue scale dish, painted with flowers and two applied floral handles, seal mark to base, 20.5cm wide; and a similarly decorated scallop bordered plate, 19cm wide £40-£60 †

89

A large 18th Century Worcester petal edged deep dish, with sky blue border and polychrome decoration of flowers to the centre, 24.5cm dia. with rare blue mark verso; and a Worcester Imari pattern plate, 21.5cm dia. rare pseudo Chinese mark to the reverse £40-£60 †

90

A fine quality hand painted mid 20th Century Chinese porcelain vase, decorated with pagoda in a mountainous landscape beside a lake, line of calligraphy and seal mark to base, 35.5cm high £100-£150 †

91

A 19th Century Chinese Canton porcelain hand painted blue and white dish, 19.5cm decorated with eight female musicians and a small 19th Century Canton vase painted with figures at leisure, 10.5cm £40-£60

92

A finely painted Republic period small Chinese porcelain bulbous vase, with long neck, the body decorated with lilies, four character mark to base, 16cm including hardwood stand £60-£80 †

93

A pair of Doulton stoneware bookends, in the form of owls standing in front of bushes, 16cm high £100-£150 †

94

A Doulton Lambeth vase, of baluster form having flared rim, the body with shell decoration, 10cm dia. overall £40-£60 †

95

An early 20th Century Japanese Satsuma slender ovoid shaped vase, decorated with a waterfall and water mill in landscape, heightened in gilt, 18cm high £40-£60 †

96

A late 19th Century Islamic Khorasan Afghanistan ceramic painted pottery bowl, depicting a figure on horseback, 27cm dia. £30-£40 †

97

An 18th Century green glass bottle with raised circular plaque, inscribed 'John Holberton 1773' concave base with pontil mark, attached old hand written label with history of the Holberton family, 23cm high £100-£200 †

98

A 19th Century Coalport type twin handled mug, having foliate decoration, inscribed to the reverse cartouche 'E.F. Murphy Esq.' 23cm dia. overall x 15cm high; a Victorian floral decorated baluster jug, 14cm high and a Worcester shell shaped dish, 11.5cm dia. £30-£50 †

99

A collection of miscellaneous cranberry glass, including claret jugs, celery vase, posy vases, wine glass etc. £80-£120 †

## Lowestoft Porcelain Collection



Lot 103

101

A Lowestoft porcelain blue and white trio, decorated in the pagoda and fence pattern £60-£80 †

102

An unusual Lowestoft porcelain coffee cup and saucer, having painted foliate spray decoration, the cup of long ogee shape £40-£60 †

103

A Lowestoft porcelain blue and white coffee pot, decorated in the 'Mansfield' pattern, crescent mark to the base, knop missing to the lid, 23cm high £200-£400 †

104

Two Lowestoft porcelain tea bowls, a coffee cup; and a sparrow beak jug, polychrome decorated possibly by Rose £80-£120 †

105

A polychrome dolphin cream ewer, having moulded body, 8cm high overall £60-£80 †

106

A Lowestoft porcelain blue and white small tea pot, the lid with acorn finial, blue and white floral decoration; a similar decorated tea bowl and saucer; and an early saucer all decorated in the 'Mansfield' pattern £60-£100 †

107

A Lowestoft porcelain 'Mandarin' pattern tea pot and cover, tea bowl and coffee cup £80-£120 †

108

Three Lowestoft porcelain blue and white slop bowls, all with painted decoration (some damage) £60-£80 †

109

A Lowestoft porcelain blue and white tea pot and cover, decorated with 'Long Fence' pattern AF £60-£100 †

110

Various Lowestoft porcelain polychrome tea bowls and saucers, and a coffee cup, all with some damage £60-£100 †



- 111**  
Two Lowestoft porcelain saucers, tea bowl and coffee can with striking dark blue decoration  
£60-£100 †
- 112**  
Two Lowestoft porcelain blue and white painted sparrow beak jugs, three tea bowls, two saucers and a coffee cup AF  
£100-£150 †
- 113**  
Four Lowestoft porcelain blue and white painted saucers, and a similar tea bowl  
£40-£60 †
- 114**  
Two Lowestoft porcelain polychrome decorated tea bowls and saucers, with flowering root decoration; and a sparrow beak jug AF  
£60-£100 †
- 115**  
A Lowestoft porcelain lid size slop bowl, decorated in 'The Blackbird' pattern  
£40-£60 †
- 116**  
A rare Lowestoft porcelain tea bowl and saucer, with printed decoration with 'Woman and Squirrel' pattern  
£80-£120 †
- 117**  
A Lowestoft porcelain blue and white printed tea bowl and saucer, decorated with 'Pheasant' pattern  
£40-£60 †
- 118**  
A rare early Lowestoft porcelain blue and white printed saucer, and a blue and white printed tea bowl and saucer  
£60-£100 †
- 119**  
Two Lowestoft porcelain 'Two Bird' pattern tea bowls and saucers, firing faults and damage; and a 'Two Bird' pattern saucer, naively decorated  
£60-£100 †
- 120**  
A Lowestoft porcelain 'Dolls House' pattern tea pot and cover, 15cm high  
£60-£80 †
- 121**  
A Lowestoft porcelain 'Two Bird' pattern slop bowl, 15cm dia. and a matching sparrow beak cream jug, 8.5cm high  
£80-£120 †
- 122**  
A pair of Lowestoft porcelain blue and white fluted tea bowls, and saucers, cross swords and crescent marks to bases  
£60-£100 †
- 123**  
A Lowestoft porcelain blue and white tea pot and cover, painted with 'Fence and Pagoda' pattern, possible decorator's mark to the base  
£100-£150 †
- 124**  
Three Lowestoft porcelain blue and white tea pot lids, and a possible unglazed example  
£80-£120 †
- 125**  
A Lowestoft porcelain polychrome decorated tea pot, (cover missing); and a polychrome tea bowl and saucer  
£80-£120 †
- 126**  
A Lowestoft porcelain large blue and white sparrow beak type baluster jug, decorated with 'The Boy On The Bridge' pattern, 18cm high, AF  
£60-£100 †
- 127**  
A Lowestoft porcelain blue and white slops bowl and saucer, both decorated with 'The Boy On The Bridge' pattern  
£80-£120 †
- 128**  
A Lowestoft porcelain Hughes blue and white moulded tea bowl, saucer and coffee cup  
£100-£150 †
- 129**  
A Lowestoft porcelain 'Dolls House' pattern slop bowl; and two tea bowls and saucers (one tea bowl broken)  
£60-£80 †
- 130**  
A Lowestoft porcelain late sprig decorated trio; a late polychrome decorated tea bowl and saucer and another saucer  
£40-£60 †
- 131**  
A large sparrow beak cream jug, printed in the 'Zig Zag Fence' pattern, 11.5cm high overall with a matching saucer, crescent marks to both bases  
£60-£80 †
- 132**  
A Lowestoft porcelain 'Dolls House' pattern tea bowl and saucer, and two tea bowls  
£40-£60 †
- 133**  
A Lowestoft porcelain 'Dolls House and Fern' pattern tea pot and cover, and a tea bowl and saucer  
£60-£100 †
- 134**  
Four pieces of late printed blue and white Spode porcelain, to include coffee cup and saucer, a small shallow bowl and a larger shallow bowl decorated pagodas and river  
£80-£120 †
- 135**  
Blank Lot
- 136**  
A Lowestoft porcelain early miniature blue and white tea bowl and saucer, decorators mark in foot rim; another blue and white miniature tea bowl and saucer; and miniature teapot (missing lid) AF  
£60-£80 †
- 137**  
Two Lowestoft porcelain tea bowls and saucers, decorated in 'The Blackbird' pattern  
£40-£60 †
- 138**  
A collection of late Factory tea bowls and saucers, coffee cup and tea pot all with gilt decoration  
£100-£150 †
- 139**  
A Lowestoft porcelain blue and white painted tea pot, (lid missing) and a blue and white tea bowl and saucer, all with similar decoration  
£50-£80 †
- 140**  
Two Lowestoft porcelain blue and white printed tea bowls and saucers, with 'The Flower' pattern  
£80-£120 †
- 141**  
Two Lowestoft porcelain polychrome decorated tea bowls, two coffee cups and a sparrow beak jug  
£80-£120 †
- 142**  
A Lowestoft porcelain 'Two Bird' pattern tea bowl and saucer; and a small slops bowl  
£40-£60 †
- 143**  
Four pieces of pencil gilt decorated Lowestoft porcelain, to include sparrow beak jug, tea bowl and saucer and slop bowl  
£40-£60 †
- 144**  
A miniature tea bowl and saucer and tea pot, (lid missing) all with printed 'Three Flower' pattern  
£60-£100 †
- 145**  
Two Lowestoft porcelain polychrome decorated tea pots, and covers one decorated in the 'Top Hat' pattern  
£100-£150 †
- 146**  
Two Lowestoft porcelain tea pots, with polychrome decoration in the 'Curtis' pattern AF  
£100-£150 †
- 147**  
A Lowestoft porcelain late polychrome tea bowl, saucer and slop bowl, decorated turquoise loop and pink flower pattern  
£60-£100 †
- 148**  
A late factory tea bowl, saucer, two tea bowls and coffee cup and saucer, extensively damaged  
£40-£60 †
- 149**  
A Lowestoft porcelain Hughes moulded tea pot and cover; and a matching tea bowl and saucer  
£100-£150 †
- 150**  
A small Lowestoft porcelain moulded blue and white sauce boat, and a blue and white dolphin ewer  
£80-£120 †
- 151**  
A Lowestoft porcelain blue and white Chelsea ewer, and a small cream ewer  
£80-£120 †



Lot 153

152

A Lowestoft porcelain mall teapot and cover, with clobbered decoration in Imari colours, (chips and old staples); and a similar coffee cup £80-£120 †

153

A rare Lowestoft porcelain blue and white shallow dish, painted with 'The Dragon' pattern, 19cm dia. £200-£400 †

154

A pair of rare Lowestoft porcelain blue and white printed shallow dishes, spur marks to rims, 19.5cm £100-£150 †

155

A Lowestoft porcelain blue and white printed tea pot and cover, with flower decoration, 15cm high £100-£200 †

156

A Lowestoft porcelain blue and white printed sucrier and cover, in 'The Three Flower and Butterfly' pattern (crack to lid and chip to rim) £40-£60 †

157

A Lowestoft porcelain large blue and white moulded sauce boat, and a smaller example £80-£120 †

158

A rare Lowestoft porcelain blue and white painted tea cup and saucer, decorated with 'Long Fence' pattern, spur marks to rim of saucer, small crack to handle £200-£300 †

159

A Lowestoft porcelain blue and white printed ewer, decorated with 'The Three Flower' pattern, 14cm overall; and a printed slops bowl, 15.5cm dia. £60-£100 †



Lot 168



Lot 174

160

A Lowestoft porcelain blue and white printed tea pot, having ear shaped handle, 15cm high £60-£100 †

161

A pair of Lowestoft porcelain clam shell dishes, decorated with peony blooms to the centre £100-£200 †

162

A pair of blue and white painted pickle leaf dishes, with vine decoration, decorator's mark to base £200-£400 †

163

A Lowestoft porcelain tea pot and cover, the clobbered decoration in Imari colours, decorator's mark on the foot rim, 16cm high £200-£300 †

164

A Lowestoft porcelain blue and white painted tea bowl and saucer, with unusual Greek key decorated border £100-£150 †

165

A Lowestoft porcelain 'Tobacco' pattern coffee cup and saucer, and another Imari pattern coffee cup and saucer, both with decorators marks to rim £80-£120 †

166

A Lowestoft porcelain blue and white printed tea caddy, with 'Zig Zag Fence' pattern and crescent mark to base £60-£100 †

167

A Lowestoft porcelain 'Two Bird' pattern tea pot and cover, (cover restored) 14cm high £60-£80 †

168

Two Lowestoft porcelain blue and white printed chestnut baskets, one with handle restored, one with handle missing £400-£600 †

169

A rare Lowestoft porcelain blue and white painted barrelled tea pot and cover, with decorator's mark to base, 10cm high £200-£400 †

170

A Lowestoft porcelain blue and white printed plate, having Chippendale rim and crescent mark to base, 24cm dia. £100-£200 †

171

A large Lowestoft porcelain blue and white cider mug, with printed decoration, 14cm AF £100-£200 †

172

A Lowestoft porcelain mid size cabbage leaf jug, with blue and white painted decoration, 20cm £200-£400 †





Lot 176



Lot 177

**173**  
A large Lowestoft porcelain chocolate / coffee pot, (lid missing), printed in blue with 'Zig Zag Fence' pattern, 22cm high, crescent mark to base £200-£300 †

**174**  
A large Lowestoft porcelain masked cabbage leaf jug, painted in blue slightly flowed with moulded rim, 22cm high £400-£600 †

**175**  
A Lowestoft porcelain blue and white baluster coffee pot, and lid with ear shaped handle, decorated in the manner of Robert Browne, 23cm high £200-£400 †

**176**  
A rare pair of Lowestoft porcelain blue and white printed plates, with fence and sprouting root decoration £600-£800 †

**177**  
A rare and unusual large Lowestoft porcelain bowl, printed decoration to the outside and painted inside with 'The Mansfield' pattern, tall foot rim, 26cm dia. £400-£600 †

**178**  
A rare Lowestoft porcelain 'Reindeer' pattern polychrome bowl, believed to be from one unique service, (small crack), 11cm dia. £400-£600 †

**179**  
A rare Lowestoft porcelain blue and white plate, painted with 'The Boy On A Bridge' pattern, 22cm dia. £100-£200 †

**180**  
A collection of various Lowestoft reference books and catalogues etc. £40-£60 †

## Silver & Plate

**190**  
A large plated gallery drinks tray, with scroll handles; an oval plated revolving breakfast dish and a large plated punch bowl £40-£60 †

**191**  
A rectangular plated tray; a pair of Art Deco plated entrée dishes; a similar period tea kettle on stand; a plated hot dish and an oval plated swing handled fruit basket etc. £40-£60 †

**192**  
A cased set of six silver handled butter knives; a cased set of six each plated fish knives and forks; a cased set of six fruit spoons; a cased set of six plated cake knives; and two pairs of plated knife rests £40-£60 †

**193**  
A pair of cased cut glass butter dishes, and silver butter knives, Birmingham 1939, retailed by Harrods £20-£40 †

**194**  
A set of six each mother of pearl handled fruit knives and forks £20-£40 †

**195**  
A pair of cased silver preserve spoons, of Rat Tail pattern, Sheffield 1939, 37gms £20-£40 †

**196**  
A cased set of six silver coffee spoons, Birmingham 1939, 58gms £20-£40 †

**197**  
A quantity of silver Kings pattern flatware, comprising six table forks, six dessert spoons, six teaspoons, a pair of table spoons and a pair of sugar tongs various dates and makers, mostly Victorian, 1,397gms; together with six similar plated forks and a sauce ladle £600-£800 †

**198**  
A silver octagonal presentation dish, with inscription, Hallmarked for Birmingham 1935, 316gms £200-£300 †

**199**  
A three piece silver tea set, tea pot with presentation inscription, having black wood handle and lift, Hallmarked for Birmingham 1931, 551gms £300-£400 †

**200**  
A cased set of six silver coffee spoons, with bean terminals, Birmingham 1936 £30-£40 †

**201**  
A cased set of six silver bladed fruit knives, by Walker & Hall, Sheffield 1919; four silver bladed and mother of pearl handled cake knives and forks; a pair of cased silver butter knives and a cased set of six small butter knives with green handles; and a quantity of various other plated cutlery and flatware £60-£80 †

**202**  
A George V silver mustard pot, of oval form having blue glass liner, Birmingham 1920; four various silver napkin rings and a silver salt pot AF, weighable silver 151gms £60-£80 †



197 (part)



Lot 212

**203**

A Victorian silver mustard pot, of octagonal form having foliate decoration, domed lid and pierced sides with blue glass liner, *London 1844* £40-£60 †

**204**

A late Victorian silver pedestal cream jug, *London 1888*, 76gms £60-£80 †

**205**

A George III silver sauce boat, having shaped border flying 'C' scroll handle, raised on three hoof feet, *London 1762*; and a similar late Victorian example, *Birmingham 1897*, 377gms £200-£300 †

**206**

A late Victorian silver inkwell, having half fluted body design, *Hallmarked for Birmingham 1889*, having hinged lid and cut glass liner, 11.5cm dia. in extremes £40-£60 †

**207**

An Edwardian cut glass and silver mounted dressing table tidy, the lid with cherub head and foliate scroll decoration, *Hallmarked for Birmingham 1906* £20-£30 †

**208**

A George V silver cigarette case, with twin compartment wood lined interior, having engine turned decoration and vacant cartouche, *Birmingham 1922*, 15cm £40-£60 †

**209**

An Eastern white metal and inlaid beaker, with foliate engraved decoration, 11.5cm high £20-£40 †

**210**

A Gorham & Co. circular dish, having pierced border and central crest, 18.5cm dia. 213gms £40-£60 †

**211**

A silver mounted glass tea pot stand, by Adie Bros. Birmingham, *London 1927*, and a larger example AF £30-£50 †

**212**

A Victorian silver fruit basket, having shaped beaded border and pierced decoration, swing handle, bearing presentation inscription, *Hallmarked for Sheffield 1859*, 31cm long, 550gms £200-£300 †

**213**

A George V silver salver, having gadrooned pie crust border raised on three scrolled feet, *London 1922*, 596gms, 25.5cm dia. £300-£400 †

**214**

A George V silver twin handled tray, with pie crust border, *Sheffield 1912*, makers mark H.W., 16cm long overall, 75oz £800-£1,200 †

**215**

A George IV silver eight bottle cruet stand, having gadrooned border, acanthus scroll decorated central handle raised on four scrolled feet, *London 1826*, 517gms; and eight various associated bottles £200-£400 †

**216**

A Victorian silver coffee pot, of pedestal form having half fluted body decoration, black wood handle and lift, *Hallmarked for London 1880*, total weight 538gms, 25cm high £250-£350 †

**217**

A silver mounted Art Nouveau easel photograph frame, *Chester 1904*, 32cm x 25.5cm; and a smaller silver photograph frame *Birmingham 1906*, 18cm x 15cm £180-£220 †

**218**

A rectangular silver tray, having gadrooned border, *London 1913*; and a three piece silver cruet, *Birmingham 1933*, total weight 245gms £70-£100 †

**219**

A late Victorian silver trumpet shaped spill vase, *Birmingham 1899*, with loaded base 13.5cm high, hobnail cut glass tidy jar having silver Art Nouveau decorated lid, *Birmingham 1905*; and a circular Queen Elizabeth II silver ash tray £50-£80 †

**220**

A silver four piece tea / coffee set, of panelled baluster form, the tea pot and coffee pot with black wood handle and lift, *Sheffield 1975*, 45oz total weight £750-£850 †

**221**

A George V silver swing handle fruit basket, having shaped border raised on a spread foot, *London 1919*, 30.5cm long, 20oz £350-£450 †

**222**

A large silver twin handled tray, 60cm long overall, *Sheffield 1923*, 90oz £1,500-£2,000 †

**223**

19th Century Continental white metal sugar basket, having foliate pierced borders and panels decorated with cherubs making merry, swing handle, glass liner raised on a quatrefoil base, 17cm high with handle up, 14cm long £60-£100 †

**224**

A suite of silver Kings pattern cutlery, comprising twelve dinner forks, twelve dessert spoons and forks, *London 1897*, six table spoons various dates and makers, six teaspoons and match sugar tongs *Sheffield 1872*, weighable silver 3,705gms, complete with twelve each steel bladed dinner and dessert knives £2,000-£2,500 †

**225**

The Royal Society For The Protection of Birds, silver spoon collection, cased with certificate £150-£250 †

**226**

A Medallion History of London, silver 50 coin set by Franklin Mint Ltd. £600-£800 †

**227**

A silver spirit flask, *Sheffield 1940* £180-£220 †

**228**

A pair of Hanoverian pattern silver table spoons, with scroll backs by *Elizabeth Oldfield, London 1750*, 20cm long, 124gms £150-£200 †

**229**

A good pair of silver dog nose table spoons by *Lawrence Jones, Hallmarked for London 1702*, 19.5cm long, 118.6gms £500-£600 †

**230**

A cut glass and silver mounted toilet bottle, with foliate embossed lid, *Hallmarked for Birmingham 1904*; a silver napkin ring AF; and a plated trumpet shape spill vase £40-£60 †

**231**

A small Victorian silver baluster pepper pot, with raised foliate embossed decoration and vacant cartouche, *London 1892*, 9cm high, 42.9gms £50-£80 †





Lot 238

**232**

A George III silver baluster pepper pot, the domed top surmounted by an acorn finial raised on circular spread foot, Hallmarks indistinct, 83.6gms

£80-£120 †

**233**

A George III silver baluster pepperette, having raised foliate decorated and vacant cartouche, London 1806, 10cm high, 87gms

£100-£150 †

**234**

A Victorian silver baluster cream jug, having shell decorated spout and scrolled handle above a baluster body raised on circular spread foot, London 1878, 12.5cm high overall, 195gms, 6oz

£100-£150 †

**235**

A small silver patch box, with cherub and foliate decoration and gilded interior; a circular silver and enamel hinged pill box; a smaller example and various enamel patch boxes including Halcyon Days and others

£60-£80 †

**236**

A pair of George III silver salts, of shaped outline having swag engraved decoration and monogram, blue glass liners, London 1808I, 10cm long

£200-£300 †

**237**

A George V silver twin handled Christening porridge bowl, with inscription, Birmingham 1927, 5.5oz

£100-£150 †

**238**

A Victorian silver baluster water jug, decorated garlands and swags and half fluted body decoration, acanthus scrolled handle on a spread foot, Hallmarked for London 1888, 18cm high, 823gms

£500-£600 †

**239**

A George III silver tea pot, of cushion shape, having half fluted body decoration and vacant cartouche, raised on four paw feet, date letter rubbed, total weight 570gms

£300-£400 †



Lot 240

**240**

A George V silver tea kettle, of baluster panel form with black wood handle and lift, Sheffield 1922, raised on a stand having spirit heater base, 1011gms total weight

£500-£700 †

**241**

An Irish silver punch ladle, second half of the 18th Century, Hallmarks for Dublin, maker Michael Keating, 33.5cm long

£180-£220 †

**242**

A George I silver mug, maker Joseph Clare, having gilded interior and foliate embossed decoration with vacant cartouche, 4.5oz

£120-£180 †

**243**

A silver 'Jockey Cap' caddy spoon, of typical form, Sheffield 1904; and a Victorian silver caddy spoon, the bowl engraved with a flower, London 1899

£80-£120 †

**244**

A pair of silver and cut glass individual whisky noggins, makers Hukin & Heath, Birmingham 1911, one with silver 'Whiskey' label Hallmarked for London 1904

£180-£220 †

**245**

A suite of Victorian silver Fiddle pattern flatware, comprising six table spoons, six table forks, six each dessert forks and spoons, six breakfast spoons, a pair of sauce ladles, a soup ladle, a pair of sugar tongs, butter knife and four condiment spoons, each pieces with family crest, London 1886/1887, 2.268gms total weight

£1,000-£2,000 †

**246**

A cased set of twelve each mother of pearl handled fruit knives and forks

£40-£60 †

**247**

A suite of silver foliate decorated flatware, comprising six spoons, six forks and six teaspoons, maker probably George Adams, 965gms total weight

£300-£400 †



Lot 239



Lot 257



Lot 262

**248**  
Six each silver foliate embossed handled dessert knives and forks, with silver blades and tines, total weight 554gms £100-£200 †

**249**  
Nine various silver table / serving spoons, total weight 630gms; and a silver plated spoon £250-£350 †

**250**  
Ten various Georgian and Victorian silver Fiddle and Old English pattern table forks, total weight 706gms £250-£350 †

**251**  
A George III Old English pattern basting spoon, *London 1788*; and a Sterling basting spoon stamped 'Whelpley', total weight 216gms £80-£120 †

**252**  
A collection of various English and Irish silver flatware; and a white metal fish knife, 395gms total weight £150-£250 †

**253**  
A collection of sixteen various silver and white metal teaspoons £100-£200 †

**254**  
Six Georgian silver teaspoons, the terminals initialled I.W.H., 80gms total weight £30-£40 †

**255**  
A late Victorian silver mustard pot, with raised foliate decoration and vacant cartouche, blue glass liner, *Birmingham 1896* £20-£40 †

**256**  
A Year 2000 silver candlestick, in the George II style, loaded base, 531gms total weight, 19.5cm high £40-£60 †

**257**  
A pair of George V silver baluster candlesticks, having detachable sconces on loaded shaped bases, 26cm high, 2,390gms total weight £600-£800 †

**258**  
Three late Victorian silver Fiddle and Shell pattern table forks, *London 1898*; six similar dessert forks, various dates and three dessert spoons, *London 1898*, 897gms £300-£400 †

**259**  
Seven George IV silver Fiddle and Shell pattern teaspoons, (various dates) 257gms £80-£120 †

**260**  
Five George III silver Fiddle and Shell pattern dessert spoons, *London 1804*; one other and five George III silver Fiddle and Shell pattern dessert forks, *London 1809*, 694gms total weight £200-£300 †

**261**  
A cased set of twelve French silver gilt sorbet spoons, initialled L.P. £80-£120 †



Lot 263

**262**  
A Victorian silver six division toast rack, with central foliate handle raised on four pierced scrolled feet, *London 1866*, 382gms £150-£200 †

**263**  
A George IV silver six division toast rack, having central foliate decorated handle above a gadrooned rim and four scrolled feet, maker probably Joseph Angel, *London 1825*, 278gms £100-£200 †

**264**  
Twelve William IV silver Fiddle and Shell pattern table spoons, *London 1836*, 1,126gms £600-£800 †

**265**  
A cased pair of silver serviette rings, with raised foliate decoration and monogram cartouche, *Birmingham 1897*; another cased pair of silver napkin rings with engine turned decoration, *Birmingham 1926*, 187gms total weight £60-£80 †

**266**  
An Edwardian silver tea pot and sugar bowl, having foliate and shell decoration, the tea pot with black wood handle and lift, *Chester 1904*, 1,127gms total weight £400-£600 †





Lot 268

**267**

A silver bachelors tea pot, with black wood handle and lift and gadrooned border, *London 1905*, 421gms £180-£220 †

**268**

A George III silver baluster mug, probably by Peter Anne and William Bateman, *London 1804*, 14cm high, 361gms £200-£300 †

**269**

A silver twin handled trophy cup, inscribed 'T.S. Cleopatra, Senior Shooting, Harrogate 1948', 158gms, 15.5cm high in extremes £60-£80 †

**270**

A late Victorian silver half fluted tea pot, with black wood handle and lift, 552gms total weight £200-£300 †



Lot 275

**271**

A pair of Queen Elizabeth II silver twin branch candelabra, with detachable arms raised on turned knop columns and circular bases, *London 1965*, 26cm high £200-£400 †

**272**

A George V silver baluster hot milk jug, having black wood handle and lift, presentation inscription, *London 1916*, total weight 721gms, 20cm high in extremes £300-£400 †

**273**

A silver Capstan shaped inkwell, *Birmingham 1925* £20-£40 †

**274**

A small late Victorian silver Capstan shaped inkwell, *Birmingham 1897* £20-£40 †

**275**

An Edwardian four piece silver tea set, by The Goldsmiths and Silversmiths Company, *London 1909*, the hot water jug and tea pot with black wood handle and lift, 1,264gms total weight £500-£800 †

**276**

A George V silver twin handled trophy cup, having central reeded band flanked by pierced scroll handles on a circular spread foot, *Hallmarked Birmingham 1913*, 23.5cm dia. overall, 14cm high in extremes, 408gms £150-£200 †

**277**

A George V silver twin handled trophy cup, inscribed 'The Cromwell Challenge Cup, (10th Lindsey) Home Guard Battalion, Presented by Captain Frank Dawson' with further presentation inscription verso, *Hallmarked Sheffield 1923*, 22cm dia. overall, 18cm high in extremes, 526gms £200-£300 †

**278**

An Edwardian silver twin handled trophy, by Carrington & Co. *London*, having central double band flanked by pierced scrolled handles raised on a circular spread foot, inscribed 'Seagers Dart Challenge Trophy, Presented to the Scarborough and District Licensed Victuallers Association' *Hallmarked London 1902*, 37cm dia. overall, 19cm high in extremes, 1,314gms £600-£800 †



Lot 271



Lot 279

**279**  
A George V silver twin handled tazza, having stylised loop handles raised on a circular spread foot, London 1927, 33cm dia. overall, 13cm high, 577gms £250-£300 †

**280**  
A Queen Elizabeth II silver fruit basket, having pierced foliate and grape vine decoration with swing handle, Sheffield 1979, 21cm dia. 431gms £100-£200 †

**281**  
A George VI silver salver, having shaped border raised on four scrolled feet, Sheffield 1944, 27cm wide overall, 687gms £250-£300 †

**282**  
A pair of Queen Elizabeth II silver dwarf candlesticks, Birmingham 1987, 10cm high, bases loaded £40-£60 †

**283**  
A George V silver engine turned cigarette case, Birmingham 1921, monogrammed R.M. 18cm long overall, 288gms £100-£150 †

**284**  
A heavy block glass inkwell, having hobnail cut base, silver lid with presentation inscription, dated 1927 £30-£50 †

**285**  
A George V silver snuff box, with engine turned decoration and gilded interior, London 1923, 7.7cm long, 114gms £80-£120 †

**286**  
A George III silver Fiddle pattern fish slice, maker William Eley and William Fearn, bearing crest, London 1806, 149gms £60-£80 †



Lot 287

**287**  
A late Victorian silver embossed spectacle case, having foliate scroll decoration and vacant cartouche, London 1899, 15cm long, 101gms £80-£120 †

**288**  
A small silver hip flask, possibly late Victorian, makers marks rubbed, having crest and monogram, 12cm long, 92gms £60-£80 †

**289**  
A pair of Queen Elizabeth II silver three light candelabra, detachable sconces, scrolled arms with acanthus leaf decoration raised on shaped square bases, maker Edwin Viner, Sheffield 1959, 20cm high overall £200-£300 †

**290**  
A Victorian silver folding cheroot case, having gilded interior, Birmingham 1888, 11cm long, 63gms £60-£80 †

**291**  
A silver cigarette case, Birmingham 1927, 88gms £40-£60 †

**292**  
A George V silver bachelors tea pot, of baluster form with gadrooned border, wooden handle and lift, Birmingham 1919, 419gms £200-£300 †



Lot 293

**293**  
A George V silver swing handled basket, having pierced border decoration, detachable blue glass liner, London 1915, 19cm long, 142gms £60-£100 †

**294**  
A pair of oval white metal salts, with pierced foliate scroll and cherub decorated borders, having ruby glass detachable liners, stamped to base 'Sterling' £40-£60 †

**295**  
A George V silver sugar shaker, of baluster form, 17cm high, Birmingham 1932, AF; a silver baluster pepperette, marks indistinct but probably George III, 12cm high and a smaller silver pepperette, having garland and swag decoration, Sheffield 1904, total weight 218gms £100-£150 †

**296**  
An Edwardian silver Capstan shaped inkwell, Birmingham 1908, 8.5cm dia. overall £20-£40 †



Lot 294





Lot 298

**297**

A small horn beaker, having silver rim, *Hallmarked for London 1880*, 9cm high £20-£30 †

**298**

A set of four Britannia Standard silver salts, of Adam design having blue glass liners, makers mark T.B. £100-£200 †

**299**

A Victorian silver four piece tea set, having foliate engraved decoration, *London 1874/1875*, 1,798gms total weight £800-£1,200 †

**300**

A set of four late Victorian silver apostle handled serving spoons, *London 1895*, 256gms £100-£200 †

**301**

A good quality modern silver napkin ring, *Birmingham 1967*, boxed; and three various other silver napkin rings, 95gms £40-£60 †

**302**

A silver bladed and mother of pearl handled pen knife; an amber type cheroot holder contained in silver case; four silver and white metal thimbles; a continental white metal retractable tooth pick; and a miniature white metal cloak hook £40-£60 †

**303**

A cased set of six silver seal end coffee spoons, *Birmingham 1936*, retailed by J.A. Haskell, Tavern Street, Ipswich £30-£60 †

**304**

A continental white metal (possibly Dutch) tea strainer, and a silver fluted stand, *Hallmarked for Birmingham 1904*, 99gms £40-£60 †

**305**

A Victorian silver sifter spoon; a pair of Victorian silver sugar nips; various other silver fancy spoons, teaspoons, paper knife etc. 292gms £60-£100 †

**306**

A small Edwardian silver bowl, with pierced and fluted border decoration; an oval silver hinged box, *Birmingham 1895*; a Queen Elizabeth II silver hinged pill box; a silver money clip; a foliate engraved silver locket etc. £80-£120 †

**307**

A silver backed dressing table mirror, having foliate embossed decoration; a similar hair brush; a boot hook and various other silver and enamelled backed dressing table items £40-£60 †

**308**

A silver canteen contained in inlaid mahogany four drawer cutlery case, having presentation plaque to the hinged lid, comprising fifteen teaspoons, fourteen table forks, seventeen dessert spoons, sixteen dessert forks, eighteen fish knives, eighteen fish forks, twelve soup spoons, two sauce ladles, two table spoons, two jam spoons, twelve mother of pearl handled fruit knives and forks with silver blades and tines, two plated ladles and various steel bladed knives, *Hallmarked for Birmingham 1925/1926*, weighable silver 6,059gms £2,500-£3,500 †

**309**

A George V silver three piece tea set, of half fluted body design, the tea pot with black wood handle and lift, makers Goldsmiths & Silversmiths Company, *London 1926*, total weight 849gms £200-£300 †

**310**

A pair of silver four division toast racks, by Mappin & Webb, *Sheffield 1950*, 131gms £50-£80 †

**311**

A modern silver sweetmeat dish, having shaped border and pierced foliate decoration, *Sheffield 1993*, 18cm dia. 254gms £100-£150 †

**312**

A pair of engine turned silver napkin rings; another of octagonal form; a small silver toast rack; a silver salt and spoon, caddy spoon, a pair of sugar nips; and an oval silver pin tray, 182gms £100-£150 †

## Jewellery, Coins & Watches

**315**

An Elizabeth II Canadian gold \$30 coin, 2006, the reverse with Maple Leaf around Canada 9999 Fine Gold, 1oz or PUR, 31gms £1,200-£1,500 †

**316**

A Victorian half Sovereign, dated 1892 contained in a 9ct gold mount and hung to a fine link chain, total weight 10.54gms £300-£400 †

**317**

A Victorian 1876 Sovereign £400-£500 †

**318**

A George IV (1820-1830) Sovereign, 1821 Laureate Head Left £800-£1,200 †

**319**

A late Victorian Sovereign, 1900 £400-£500 †

**320**

A Victorian Sovereign, 1896 £400-£500 †

**321**

A Victorian Sovereign, 1876 £400-£500 †

**322**

An Edwardian Sovereign, 1905 £400-£500 †

**323**

An Edwardian Sovereign, 1907 £400-£500 †

**324**

An Edwardian Sovereign, 1908 £400-£500 †

**325**

An Edwardian Sovereign, 1910 £400-£500 †

**326**

A George V Sovereign, 1912 £400-£500 †

**327**

A Queen Elizabeth II Sovereign, 1958 £400-£500 †

**328**

An Edwardian half Sovereign, 1903 £200-£300 †

**329**

An Edwardian half Sovereign, 1910 £200-£300 †

**330**

An Edwardian half Sovereign, 1907 £200-£300 †

**331**

An Edwardian half Sovereign, 1904 £200-£300 †

**332**

A George V half Sovereign, 1913 £200-£300 †

**333**

A George V half Sovereign, 1914 £200-£300 †

**334**

A George V half Sovereign, 1911 £200-£300 †

**335**

A George V half Sovereign, 1911 £200-£300 †



Lot 339



Lot 342



Lot 343

**336**  
A Queen Elizabeth II half  
Sovereign, 1982 £200–£300 †

**337**  
A George V half Sovereign, 1911  
£200–£300 †

**338**  
A Victorian Sovereign, 1880 in 9ct  
gold mount £450–£550 †

**339**  
A 1911 Sovereign, in 9ct gold  
mount, 12.5gms total weight  
£500–£600 †

**340**  
A Royal Mint 1980 proof half  
Sovereign, in fitted case  
£200–£300 †

**341**  
A Royal Mint 1980 proof half  
Sovereign, in fitted case  
£200–£300 †

**342**  
A 1980 four coin gold proof  
Sovereign set, £5 to half Sovereign  
£4,000–£6,000 †

**343**  
A 9ct gold belcher link guard chain,  
72" total length, 44.5gms  
£800–£1,200 †

**344**  
A 9ct gold rope twist link bracelet,  
16.8gms £300–£400 †

**345**  
A yellow metal necklace, marked  
9ct, 7gms £100–£200 †

**346**  
A yellow metal necklace, marked  
375, 16gms £300–£400 †

**347**  
A ladies Omega Deville wrist  
watch, with 9ct gold strap and  
clasp, 19.2gms total weight  
£200–£300 †

**348**  
A ladies Omega 9ct gold cased  
wrist watch, with 9ct gold strap and  
clasp, 25gms total weight engraved  
to back of case £400–£600 †

**349**  
A 9ct gold brooch in the form of a  
rose, set with central red stone,  
4gms total weight £40–£60 †

**350**  
A 9ct gold mounted cameo brooch,  
5gms total weight £40–£60 †



Lot 344



Lot 347



Lot 348





Lot 351

**351**  
A 9ct gold and diamond set heart shaped pendant, hung to a 9ct gold fine link chain, 1.8gms total weight  
£40-£60 †

**352**  
An 18ct gold and diamond three stone ring, ring size Q/R, 1.8gms total weight  
£100-£200 †

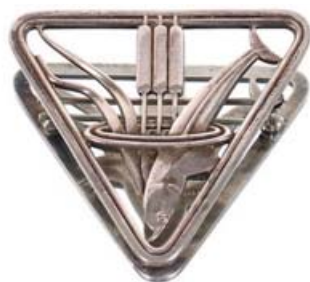
**353**  
An 18ct gold and diamond five stone ring, ring size Q/R, 3.2gms total weight  
£150-£250 †

**354**  
An 18ct gold and diamond solitaire ring, ring size M, 2gms total weight  
£80-£120 †

**355**  
A yellow metal diamond set half eternity ring, (marks rubbed) ring size P, 2.5gms total weight; and an 18ct gold and diamond cluster ring, ring size R, 1.8gms total weight  
£100-£200 †

**356**  
A 9ct old and opal ring, ring size O, 1.8gms total weight  
£40-£60 †

**357**  
A 9ct gold ring AF, ring size J, 1.8gms; and a yellow metal ring AF, ring size P/Q, 3gms  
£80-£120 †



Lot 359

**358**  
A 9ct gold solitaire ring, set with white stone, ring size S/T, 3gms total weight; a 9ct gold and garnet five stone ring, ring size Q/R, 3.5gms total weight; a pair of similar earrings, 2gms and an 18ct ring set with red stone, ring size N, 1.8gms total weight  
£100-£200 †

**359**  
A Georg Jensen silver brooch, No.257, 11gms  
£80-£120 †

**360**  
A 9ct gold propelling tooth pick, 5.5gms total weight and a 9ct gold mounted cigar cutter  
£100-£200 †

**361**  
A 9ct gold and opal eternity ring, ring size O/P, 3gms; and a pair of 9ct gold and opal earrings, 1.5gms total weight  
£80-£120 †

**362**  
A pearl necklace, with 9ct gold clasp set with amethyst and pearls, 33.5gms total weight, contained in Mikimoto box  
£80-£120 †



Lot 363

**363**  
A 9ct gold necklace, 17gms  
£300-£400 †

**364**  
A 18ct gold Masonic medal, 3.5gms, hung to a ribbon in case; a 9ct gold Masonic medal on T bar, 6.8gms; another 9ct gold medal, 3.8gms; a cased silver and enamel Suffolk medal; another cased Masonic medal etc.  
£300-£400 †

**365**  
A hinged silver snap bangle, with foliate engraved and stylised decoration  
£30-£40 †

**366**  
A continental white metal bangle, set with green stone; a white metal dress ring set with a faceted smoky quartz type stone and two other dress rings, 53.7gms  
£100-£150 †

**367**  
A lapis lazuli and yellow metal mounted pendant, hung to a yellow metal chain, 31.5gms total weight; and a yellow metal and lapis lazuli set ring, band marked G.A.J., ring size L/M, 5.5gms  
£400-£500 †

**368**  
A diamond and sapphire cluster ring, 2.4gms total weight  
£150-£200 †

**369**  
A 22ct gold wedding band, 3gms  
£100-£150 †

**370**  
A platinum wedding band, 3.4gms  
£100-£150 †

**371**  
A 18ct gold and blue enamel decorated ring, having central white faceted stone, 4.7gms  
£100-£150 †



Lot 364



Lot 373



Lot 376



Lot 378



Lot 374

**372**  
A yellow metal pendant hung to a 9ct gold chain, 11.5gms total weight £100-£150 †

**373**  
A 18ct gold and platinum ruby and diamond set ring, size R, stamped 18ct/plat £180-£250 †

**374**  
A 9ct gold watch chain, with T bar and 9ct gold fob, 51gms total weight £800-£1,200 †

**375**  
A 9ct gold cased Tudor gentleman's wrist watch, retailed by H.L. Brown & Son Ltd. £200-£400 †

**376**  
A 18ct gold flower brooch, set with seven diamonds, stamped C&F 18.750, 10.4gms £350-£450 †



Lot 375

**377**  
A 9ct gold rope twist necklace, bracelet and matching earrings, 13.5gms total weight £200-£300 †

**378**  
A 9ct gold and jade brooch, in the form of an ivy leaf, 8gms total weight £40-£60 †

**379**  
A 9ct gold emerald and diamond set pendant, hung to a 9ct gold chain and a pair of matching earrings, 3.8gms total weight £40-£60 †

**380**  
A 9ct gold and hardstone cameo brooch, decorated with a horses head, 6.5gms total weight £40-£60 †

**381**  
A 9ct gold cameo ring, size L, 3.5gms total weight £40-£60 †

**382**  
A 9ct gold heart shaped pendant, set with red and white stones hung to a 9ct gold chain, 4.23gms total weight £60-£80 †

**383**  
A 9ct gold and opal set pendant, hung to a 9ct gold chain; and a pair of matching earrings, 2.2gms total weight £40-£60 †

**384**  
A ladies 9ct gold cased Accurist wrist watch, with 9ct gold strap and clasp, 10gms total weight £100-£200 †

**385**  
A 9ct gold diamond and gem stone set ring, size P, 1.5gms total weight; a 9ct gold sapphire and diamond set ring, ring size P/Q, 1.5gms total weight; and a yellow metal; ring set with blue stones, ring size N, 3.2gms total weight £80-£120 †

**386**  
A malachite pendant, hung to a yellow metal chain marked 9ct; a pair of earrings; a collection of 9ct gold and yellow metal earrings, some set with gemstones; and a yellow metal marked 750 pendant, 0.2gms £100-£200 †

**387**  
A yellow metal mesh effect bracelet, marked 18K 750, 45.5gms £1,500-£2,000 †





Lot 392



Lot 393



Lot 394

**388**  
A yellow metal mounted cameo brooch, and a silver snap bangle  
£40-£60 †

**389**  
An 18ct gold and diamond solitaire ring, approx. 0.25 carat stone, ring size T, 3.2gms total weight; and a 9ct gold ring set with green stone, ring size Q/R, 1.8gms total weight  
£200-£300 †

**390**  
Two 18ct gold solitaire diamond rings, ring sizes N and P, 4.2gms total weight  
£200-£300 †

**391**  
A 9ct gold ring set with blue stone, ring size N, 3gms total weight; and a 9ct gold ring set with turquoise and blue stone stones, ring size X, 5gms total weight  
£100-£150 †

**392**  
A 9ct gold and enamel decorated snap bangle, 19gms  
£300-£400 †

**393**  
A 9ct gold bracelet, 14.8gms  
£250-£350 †

**394**  
A heavy yellow metal crucifix pendant, set with a single diamond and hung to a 9ct gold chain, 18gms total weight  
£300-£400 †

**395**  
A ladies Omega Geneva wrist watch, in original box  
£60-£80 †

**396**  
A yellow metal pendant, marked 18K, hung to a 9ct gold chain, 6gms total weight; and a yellow metal and pearl set pendant hung to a 9ct gold chain, 7gms total weight  
£200-£300 †



Lot 401

**397**  
A ladies 9ct gold cased wrist watch, on yellow metal expanding strap, 20gms total weight  
£150-£200 †

**398**  
A 1980 proof Sovereign, in fitted box with certificate  
£500-£600 †

**399**  
A ladies Verity 9ct gold wrist watch, with 9ct strap and clasp, 11gms total weight  
£100-£150 †

**400**  
A yellow metal crucifix, hung to a 9ct gold chain, 2.5gms total weight; and two other yellow metal necklaces  
£40-£60 †

**401**  
An 1887 Sovereign, in yellow metal filigree work pendant mount, 11gms total weight  
£500-£600 †

**402**  
A 1912 half Sovereign, and an 1887 coin mounted on a stick pin  
£200-£300 †

**403**  
A 9ct gold necklace, 15gms  
£250-£350 †

**404**  
A diamond pendant set with approx. 0.50 carat, the diamond hung to a 9ct white gold chain, 3gms total weight; and a pair of diamond earrings each stone approx. 0.25 carat, 1.8gms total weight  
£300-£400 †

**405**  
A 9ct gold pendant, in the form of a shell, 7.8gms; a yellow metal pendant in the form of a hand set with a blue stone, 1gm total weight; a polished stone pendant and a yellow metal pendant set with blue stone, 1.5gms total weight  
£150-£200 †

**406**  
A 9ct gold pendant, decorated with a stylised bull, 7gms  
£100-£150 †

**407**  
An 18ct gold and diamond three stone ring, ring size O, 2.5gms total weight  
£100-£150 †

**408**  
A yellow metal eternity ring, marked 18ct set with white stone, ring size N, 3.5gms total weight and an 18ct gold ring set with blue and white stones, ring size P/Q, 2.2gms total weight  
£100-£150 †

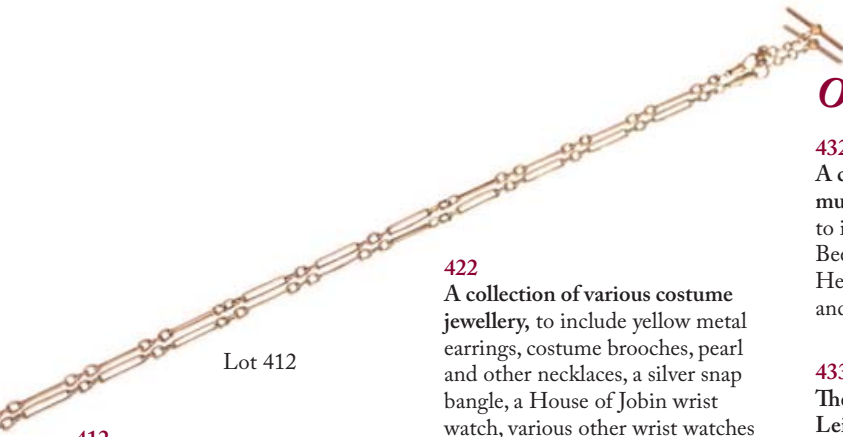
**409**  
Two 9ct gold bracelets, one AF 8.2gms total weight  
£100-£200 †

**410**  
Four 9ct gold cased wrist watches, two with rolled gold straps and a Waltham USA gold plated pocket watch  
£100-£200 †

**411**  
A 15ct gold and enamel Royal Artillery brooch, 3.5gms total weight; a 9ct gold brooch with safety chain, 3.5gms total weight and a yellow metal brooch, 1.5gms total weight  
£100-£200 †



Lot 406



Lot 412

**412**  
A 9ct gold watch chain, with T bar,  
13.5gms £200-£300 †

**413**  
A 9ct gold rope twist necklace,  
4.5gms £60-£80 †

**414**  
A 9ct gold gate link bracelet, with  
padlock clasp 11.5gms  
£150-£200 †

**415**  
A yellow metal bracelet marked  
585, 8.5gms £200-£300 †

**416**  
A Cartier of London yellow metal  
cocktail swizzle stick, 5gms in fitted  
case £100-£200 †

**417**  
A diamond and pearl set brooch,  
the white metal mount marked 585,  
12.5gms total weight, 5.5cm x 3cm  
£200-£400 †

**418**  
An 18ct gold and diamond solitaire  
ring, ring size N. 2.5gms total  
weight £80-£120 †

**419**  
A 9ct gold Sovereign mount; a 9ct  
gold dress stud, a 9ct gold heart  
shaped pendant; a 9ct gold charm in  
the form of a saxophone 5.8gms  
total weight; and a yellow metal  
front and backed locket  
£80-£120 †

**420**  
A 9ct gold and opal doublet ring,  
AF, ring size O/P, 2.5gms total  
weight; and a 9ct gold ring  
decorated with elephants, ring size  
L/M, 1.8gms £60-£80 †

**421**  
A collection of miscellaneous GB  
coinage, including 1970 proof set,  
Royal Commemorative crowns, and  
an 1885 \$1 coin £40-£60 †

**422**  
A collection of various costume  
jewellery, to include yellow metal  
earrings, costume brooches, pearl  
and other necklaces, a silver snap  
bangle, a House of Jobin wrist  
watch, various other wrist watches  
and a yellow metal mounted cameo  
brooch £100-£150 †

**423**  
A silver pair cased pocket watch, by  
B. Blagborough Thorn, No. 272  
with enamelled 'Speed The Plough'  
dial £200-£300 †

**424**  
A silver pair cased pocket watch, by  
J.P. Saddleton, High Street, Lynn,  
No. 14273 £100-£200 †

**425**  
A 19th Century silver pair cased  
pocket watch, by J.A.S. Dunville St.  
Ives No. 96032 £100-£200 †

**426**  
A silver pair cased pocket watch, by  
Maurice Tobias, London No.7904  
£100-£200 †

**427**  
A silver pair cased half hunter  
pocket watch, by James Robinson  
of Chesterfield £100-£200 †

**428**  
A Continental white metal fob  
watch, with foliate engraved case,  
Roman numeral enamelled dial and  
an Omega white metal cased lapel  
watch, with foliate engraved  
decoration and Roman numeral dial  
£60-£80 †

**429**  
A 9ct gold crucifix, hung to a 9ct  
gold chain, 7.5gms total weight  
£100-£150 †

**430**  
A pair of late 19th Century yellow  
metal lorgnettes £40-£60 †

## Objects & Collectables

**432**  
A collection of various bound  
musical scores, circa 19th Century  
to include Mendelssohn, Webber,  
Beethoven, and a Genealogical and  
Heraldic Dictionary of the Peerage  
and Baronetage 1903 £20-£30 †

**433**  
The Builders Practical Director  
Leipzig & Dresden, A.H. Payne,  
heavy foxing and annotations  
throughout £20-£30 †

**434**  
A New and Enlarged Military  
Dictionary, for alphabetical  
explanation of technical terms by  
Charles James, library binding with  
Hampshire Library stamp to title  
page £80-£120 †

**435**  
A List Of All The Officers Of The  
Army and Royal Marines, on full  
and half pay with an index and  
succession of Colonels, 1803,  
leather bound £100-£150 †

**436**  
Collections For The History of  
Worcestershire by Treadway  
Russell Nash, two volumes dated  
1799, leather bound with various  
illustrations and fold out plates  
£200-£300 †

**437**  
A framed and glazed collection of  
25 John Payer & Sons cigarette  
cards, depicting hunting scenes  
£20-£30 †

**438**  
A framed and glazed collection of  
25 Carreras cigarette cards,  
depicting 1929 Politicians  
£20-£30 †

**439**  
John Speed, coloured map of  
Hertfordshire, 36cm x 52cm  
£30-£60 †

**440**  
A Queen Elizabeth II (1953-62)  
General Service medal with Malaya  
clasp, to 22826607 CFN  
R. Warner R.E.M.E. £60-£80 †

**441**  
An 18th Century sedan chair clock,  
of typical form, the finely tooled  
movement by Thomas Cartwright  
of London £350-£450 †

**442**  
A 19th Century Chinese cinnabar  
rectangular box, finely worked with  
figures in a landscape, 14cm wide  
£30-£40 †

**443**  
A Japanese bronze stick stand, with  
raised foliate decoration, 58cm high  
x 22cm dia. overall £50-£80 †

**444**  
A 1982 Russell of London  
barograph, limited edition in  
mahogany and satin wood strung  
case fitted chart drawer, 37cm wide  
overall £80-£120 †

**445**  
A Victorian walnut cased regulator  
wall clock £60-£80 †

**446**  
A 19th Century mahogany and  
boxwood strung banjo barometer,  
94cm £40-£60 †

**447**  
A 20th Century burr walnut mantel  
clock, by Elliott £40-£60 †

**448**  
A mahogany and brass mounted  
signal box indicator, 'Line  
Occupied, Line Clear and Line  
Blocked' 47cm high £100-£200 †

**449**  
A Baldwin Son & Co. Improved  
coffee mill No.2 £50-£80 †

**450**  
A pair of 19th Century bronze  
pricket candlesticks, raised on  
baluster supports and trifirm bases  
terminating in scroll feet, 57cm  
high overall £100-£150 †

**451**  
A Chinese carved hardwood trinket  
box, the lid decorated with dragons  
around a central monogrammed  
cartouche and stylised border, 30cm  
wide x 19cm deep x 8cm high  
£30-£50 †





Lot 454



Lot 462



Lot 472

**452**

A late 18th / early 19th Century Scottish horn and unmarked silver snuff mull, of typical form 10cm long £80-£120 †

**453**

Two coopered elm butter tubs £80-£120 †

**454**

A Victorian papier mâché table cabinet, having mother of pearl and gilt foliate decoration, a pair of doors opening to reveal three interior drawers on a cushion frame, 24cm wide x 26cm high £150-£250 †

**455**

A 19th Century leather covered brass cornered and studded travelling trunk, fitted carrying handles, 67cm wide £150-£250 †

**456**

A large fabric African wall hanging, with tassel decoration, 153cm x 73cm £150-£200 †

**457**

Two volumes Early English Furniture and Woodwork, by Cescinsky and Gribble 1922 £80-£120 †

**458**

The Pheasant Studies in Words and Pictures, author Brian P. Martin, Illustrated by Richard Robjnt limited edition No.293, signed by author and illustrator with original sepia drawing by Richard Robjnt, half leather binding with slip case and original box £150-£250 †

**459**

An Inuit green hardstone carving of a seal, 22cm long; and an Inuit stone carving of a fisherman, 18cm high £150-£250 †



Lot 469

**460**

A late 18th / early 19th Century Chinese small cylindrical brush pot, carved with figures and calligraphy with a 19th Century wood carving of an emaciated man, 18.5cm high £40-£60 †

**461**

A carved bamboo brush pot, with hole for suspension and signature to reverse, circa 19th Century, 28cm high £40-£60 †

**462**

A large Russian papier mâché tea box, the lid decorated with hand painted scene of a village party, circa 1900, maker mark on the lid, 21.5cm wide £60-£80 †

**463**

A 19th Century Persian dagger or Jambiya, the steel hilt and scabbard decorated with on laid white metal, watered blade, the hilt set with bone and tiger head terminal, 31cm overall £120-£180 †

**464**

A finely carved 19th Century Chinese wooden box, the panels decorated figures and animals in landscapes, 16.5cm high, 16cm wide £50-£80 †

**465**

A Robert Morden, map of Middlesex £40-£60 †

**466**

A coloured map of Great Britain, the 'Type of the Saxon Heptarchy' £60-£80 †

**467**

John Blaeu, antique map of Suffolk £40-£60 †

**468**

A Chinese painted on silk scroll, depicting a young lady in robes with characters and red seal mark, 177cm x 41cm £30-£50 †

**469**

After P.J. Mené, a bronze of a pointer dog on naturalistic base and stopped black marble socle, bears signature, 25cm £40-£60 †

**470**

A good quality mid-20th Century carved hardwood figure, of a dragon with flaming pearl upon it's back, on scroll decorated wooden base, 40cm long £40-£60 †

**471**

An early 20th Century bronze figure, of a classical naked female After The Antique, standing on winged and waisted socle, rouge marble base, 34cm high £40-£60 †

**472**

A 19th Century bronze figure of David, After The Antique on circular socle, 38cm high £80-£120 †

**473**

A Toleware Regency style tea tray, with elliptical plateau painted with primitive spaniel dogs in landscape, gilt heightened gallery, 56cm overall £40-£60 †

**474**

An Oriental hardstone frog ornament; and an amber coloured resin frog £40-£60 †

**475**

A folio edition 'Antique Chinese Prints', featuring ten ancestral portraits £60-£80 †



Lot 477

**476**  
Folio book, Japanese coloured wood engravings, fourteen plates  
£60-£80 †

**477**  
A 17th Century part porcelain doll, with embroidered and velvet lined dress, 27cm  
£100-£150 †

**478**  
A Victorian burr walnut stationery box, with sloping lid, the interior fitted open tray, inkwell, and divisions, 30cm wide  
£100-£150 †

**479**  
A 19th Century burr walnut tea caddy, complete with detachable canisters; and a cut glass mixing bowl AF, 36cm wide  
£60-£80 †

**480**  
Laurence Stern, A Sentimental Journey Through France and Italy, published by the Golden Cockerel Press Limited Edition 205/500. In contemporary Art Deco binding by Madeleine Kohn, embossed signatures / initials on rear turn-in. Six full page copper engravings by Laboureur (Madeleine Kohn trained with Dumont and Maurice La Haye, and was much influenced by Art Deco and the designs of Pierre Legrain)  
£300-£400 †

**481**  
Five unframed erotic Kama Sutra inspired paintings, with script, various sizes  
£40-£60 †

**482**  
A 19th Century papier mâché face screen, decorated exotic garden scene with turned gilded handle AF  
£20-£40 †

**483**  
An Art Deco style bronze plaque of a girl, and a painted copper plaque depicting humming birds  
£20-£40 †

**484**  
Joseph Heu, Austrian 1876-1952, bronze plaque depicting a young girl with pony  
£60-£100 †

**485**  
A bronze plaque depicting a young girl with ribbon in her hair, inscribed Betty Mortimer, dated 1907, 11cm x 8.5cm, mounted in gilt frame, 22cm x 17cm overall  
£30-£40 †

**486**  
After Millais, bronze plaque 'The Sower', 17cm x 17cm  
£20-£40 †

**487**  
A small Victorian cast iron door stop, in the form of two children holding a dog, 16cm high  
£10-£20 †

**488**  
Joseph Krautwald 1914-2003, bronze plaque 'Nativity' dated 1972  
£40-£60 †

**489**  
An 18th Century pewter ink stand, with pounce pot etc.  
£20-£30 †

**490**  
An antique French pewter plaque, decorated in relief with head and shoulders study of Napoleon Bonaparte within foliate scroll decoration, impressed initial 'N' and touch mark to the reverse, 33cm high  
£30-£40 †

**491**  
A 20th Century bronze plaque, depicting Christ and Disciples fishing, stamped to the reverse, 15/2, 20cm x 21cm  
£20-£40 †

**492**  
A Indonesian Gambang Kayu of boat shape, complete with beaters  
£50-£80 †

**493**  
A carved wooden figure of a girl dancer, possibly Balinese, 20cm high  
£40-£60 †

**494**  
An Eastern carved wood figure, of a seated crowned male, 18cm high  
£40-£60 †

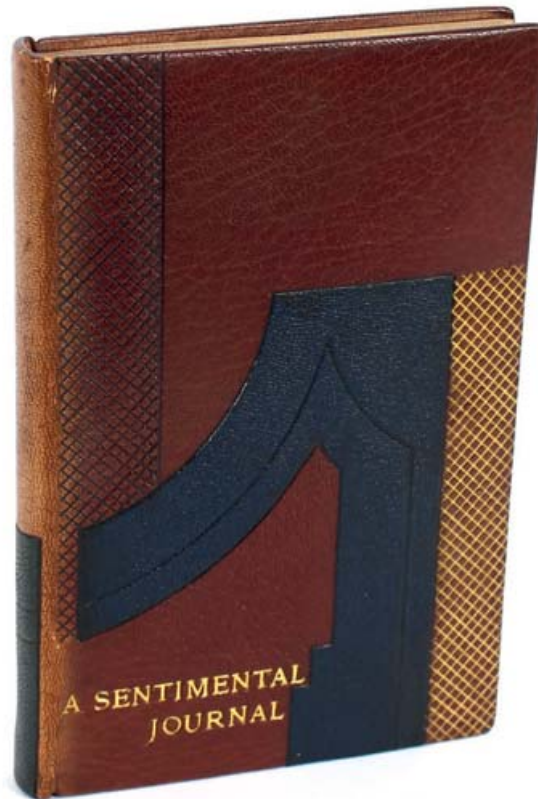
**495**  
A carved figure of Garuda, possibly Indonesian, 20cm high  
£40-£60 †

**496**  
A pair of 19th Century pewter baluster mugs; and a pewter jug with filter spout  
£10-£20 †

**497 ✓**  
Josef Lorenzl, cold painted bronze figure of a dancing girl signed, on a stepped marble plinth  
£600-£800 †

**498 ✓**  
Josef Lorenzl, cold painted bronze and ivory figure of a dancing girl raised on green onyx column, signed to base, 31cm high overall  
£1,000-£1,500 †

**499**  
A 19th Century gilded brass study of 'The Black Eagle' prancing horse, in shadow frame, 56cm x 61cm overall  
£200-£300 †



Lot 480





Lot 500

500

Edward Hodges Baily R.A., FRS, 1788-1867, marble sculpture head and shoulders study of Edward Fitzgerald, in white Carrara marble, inscribed verso 'E.H. Baily R.A. 1845', 80cm high £6,000-£8,000 †



Lot 501

**501**

A microscope by Bate of London, based on 'The Jones Most Improved Model' in a fitted mahogany box with all accessories including lenses, slides, etc. circa 1825, labelled 'R.B. Bate Mathematical Instrument Maker, Wholesale, Retail and For Exportation, No.17 Poultry, London'

£1,000-£1,500 †





Lot 505

**502**  
Marjorie Wrentmore, modernist granite study of a woman on marble plinth, 24cm high x 21cm long  
£40-£60 †

**503**  
A volume of Modern Practical Farriery, published William McKenzie  
£40-£60 †

**504**  
First Issue of Country Life magazine dated January 8th 1879  
£20-£40 †

**505**  
A pair of Art Deco style bronzed pagoda shaped hanging lamps, 67cm high  
£150-£200 †

**506**  
A pair of brass triple scone wall mirrors, having mask and pierced foliate decoration  
£80-£120 †

**507**  
An antique bronze figure group, depicting a girl filing a water pitcher, 63cm high  
£800-£1,200 †

## Pictures & Prints

**508**  
19th Century school, a pair of oval portrait studies of ladies in black mourning dress, 9cm x 6.5cm contained in oval gilt frames  
£80-£120 †

**509**  
Leopold Rivers, rural scene with figures on a country path at harvest time, signed watercolour  
£100-£150 †

**510**  
A 19th Century Chinese silk painting, depicting a pair of red crested cranes perched in a fir tree, calligraphy to right hand side, information verso, 47cm x 117cm  
£100-£150 †

**511**  
A 19th Century reverse painting on glass, depicting figures in amorous pursuits and at play in classical landscape, 45cm x 54cm  
£120-£180 †

**512**  
W. Manners, a pair of rural studies with figures beside a river, signed oils on canvas, dated 1891, 19cm x 32cm  
£100-£200 †

**513**  
19th Century school, rural study river scene with boat and figure on the foreshore, mountainous background and a companion depicting a figure walking along a riverside path, unsigned oils on canvas, a pair contained in decorative pierced gilt frames, 29cm x 24cm  
£100-£150 †

**514**  
Colin Moss, signed acrylic 'Refugees', 74cm x 60cm  
£400-£500 †



Lot 514

**515**  
William Heycoop, study of a busy street scene with figures, signed oil on canvas, 50cm x 39cm  
£60-£100 †

**516**  
John G. Stanton 1822-1894, study of a river near Bruges, watercolour signed lower right, gallery label verso, 'For Betty Williams, Gwent' 16cm x 24cm  
£50-£70 †

**517**  
Paul Beck ARCA, coloured limited edition lino cut 'Barnaby's Orchard' 86/100, plate 13cm x 18.5cm  
£20-£30 †

**518**  
E.R. Sturgeon, 'Gold Hill' limited edition of 850, pencil signed by the artist and stamped by The Fine Arts Club, image 47cm x 69cm  
£20-£30 †

**519**  
L. Blood, still life study of flowers in a hedgerow, signed oil on canvas, dated 1886, 50cm x 60cm in ornate gilt frame  
£50-£100 †

**520**  
Edward Robert Smythe British 1810-1899, 'An Artist At Work In The Farmyard', signed watercolour and pencil, 30.5cm x 48cm  
£300-£500 †



Lot 519



Lot 540

**521**  
Edward Robert Smythe British  
1810-1899, pencil and charcoal  
study of an encampment with lady,  
donkey and attendant dog, 31.5cm x  
38cm £300-£500 †

**522**  
19th Century school, 'A Musical  
Evening', unsigned watercolour,  
unframed, 25cm x 30cm £20-£30 †

**523**  
Rosalind Bieber, 'Penguin Party'  
signed charcoal study 41cm x 47cm  
£60-£80 †

**524**  
Rosalind Bieber, 'Two Fish'  
monoprint collage pigment, 40cm x  
55cm £60-£80 †

**525**  
Rosalind Bieber, 'Gorilla and Baby'  
mixed media with natural materials  
57cm x 74cm £120-£180 †

**526**  
Rosalind Bieber, study of giraffes,  
mixed media including sand and  
pigments, 40cm x 54cm  
£70-£100 †

**527**  
Rosalind Bieber, 'Lemur', mixed  
media collage, 53cm x 64cm  
£70-£100 †

**528**  
Rosalind Bieber, 'Leopard and Cub'  
mixed media signed and inscribed  
verso, 45cm x 72cm £150-£200 †

**529**  
Rosalind Bieber, 'Penguin Party',  
pigment study, unframed, 40cm x  
55cm £40-£60 †

**530**  
Suffolk school, three oils on canvas  
two woodland scenes and one  
possibly of Pin Mill, indistinctly  
signed, 28.5cm x 17.5cm  
£100-£150 †

**531**  
Janet Graham Johnstone 1928-  
1979, study of seated red setters  
amongst flowers, initialled J.J.,  
signed watercolour, 44cm x 56cm  
£50-£80 †

**532 ✓**  
Kenneth Webb born 1927, study of  
a barn interior with dog and  
chickens, signed oil on canvas,  
50cm x 75.5cm £800-£1,000 †

**533**  
20th Century school, 'The Orange  
Porch', unsigned pastel £20-£40 †

**534**  
18th Century Dutch school, study  
of figures in a boat with cottage and  
bridge in the background, unsigned  
oil on panel, 38cm x 46cm  
£400-£600 †

**535**  
19th Century school, study of  
'Bubblebrook, Worcestershire',  
monogrammed watercolour, dated  
1884, 19cm x 28cm in gilt frame  
£20-£40 †



Lot 543

**536**  
19th Century school, 'Wimbledon  
Road' watercolour monogrammed  
A.T.B., dated 1884, 20cm x 28cm  
in decorative frame £20-£40 †

**537 ✓**  
Kenneth Webb born 1927, study of  
a rural landscape, river and cottages  
in the fore ground, mist shrouded  
mountains in the far ground,  
probably Ireland, 50cm x 40cm  
£800-£1,000 †

**538**  
538 Ferdinand Marohn 1810-  
1865, 'The Young Carrier' signed  
watercolour, 26cm x 21cm  
£40-£60 †

**539**  
Cor Visser 1903-1982, charcoal  
study 'Trees In Winter', 73cm x  
54cm £50-£80 †

**540**  
A 19th Century painting on  
porcelain plaque, depicting a  
fisherman mending his nets,  
monogrammed J.M.C., 30cm x  
22.5cm, contained in a gilt frame  
£80-£120 †

**541**  
Thomas Smythe 1825-1906, a pair  
of rural studies with figures by a  
signpost; and another of a figure  
outside a cottage with donkey and  
dog bringing home wood, signed  
oils Tondo, 33cm dia. £200-£300 †

**542**  
Wilhelm Widdell 1893-1969,  
Swedish snowbound landscape with  
cottages, signed oil on canvas, 46cm  
x 62cm £40-£60 †

**543**  
Derwent Lees 1884-1931  
Australian/British, study of Creech  
Heath, Dorset circa 1911, inscribed  
Lees, oil on canvas, 50cm x 70cm,  
originally from the collection of Sir  
Cyril Kendall Butler, provenance  
Morris & Son 2024  
£8,000-£10,000 †

**544**  
Charles Frederick Tunnicliffe  
OBE, R.A. 1901-1979, 'Eagle and  
Child'. graphite on buff paper,  
studio stamp verso, Christies stencil  
to rear, 63cm x 45cm £300-£500 †

**545**  
Cor Visser 1903-1982, study of a  
lady seated at a table, charcoal  
unsigned, 64cm x 46cm £50-£80 †

**546**  
Anthony Eyton, R.A. Born 2023,  
'Dawn Urbino, Italy', watercolour  
signed and dated bottom right,  
48cm x 70cm £300-£500 †

**547**  
George Henry, R.A., RSA 1858-  
1943, 'The Greenwood Tree'  
coloured chalks over watercolour,  
circa 1930, signed bottom right  
£600-£800 †

**548**  
A study of Cor Visser, in his studio,  
unsigned, possibly self portrait, oil  
on canvas, 75cm x 92cm  
£80-£120 †

**549**  
19th Century Dutch school, study  
of a mother and child, watercolour  
initialled D.H., 65cm x 48cm  
contained in a continental gilt  
frame £100-£200 †



550

19th Century school, large study depicting a huntsman taking aim with his gun, landscape beyond, unsigned oil on canvas, 124cm x 93cm, contained in an oak frame  
£100-£200 †

551

Denis Aldridge 1891-1985, watercolour study of pointers with their handler on moorland, signed, 37cm x 53cm  
£50-£80 †

552

Cor Visser 1903-1982, portrait charcoal drawing, 'Emmy, Wife Of Cor Visser', unsigned charcoal, circa 1935  
£50-£80 †

553

Cor Visser 1903-1982, page from the sketch book, fishermen mending nets, pencil study, unsigned, 25cm x 43cm  
£30-£50 †

554

Cor Visser 1903-1982, self portrait study at the age of 43, signed and dated 1946, black conté, pencil on buff paper  
£40-£60 †

555

K Edmunds, portraits study of Cor Visser dated 1938, signed charcoal with annotation verso, 41cm x 30cm  
£80-£120 †

556

Cor Visser 1903-1982, portrait study, signed charcoal and dated 1936, 27cm x 17cm  
£50-£80 †

557

Cor Visser 1903-1982, small pencil study 'Emmy', 12.5cm x 9.5cm framed and glazed, with large white mount  
£30-£50 †

558

20th Century English school, 'Crown Hotel' unsigned watercolour 35cm x 44cm  
£20-£30 †

559

Ann Graham Johnstone 1928 - 1998, icon type study of Madonna and child, watercolour and mixed media, initialled A.G., 20cm x 18cm in gilt frame  
£60-£100 †

560

Seven various prints, including 'Spy', 'Vanity Fair', humorous caricatures of the Judiciary etc.  
£20-£40 †

561

Cor Visser 1903-1982, portrait of Emmy, signed charcoal dated 1956, 45cm x 33cm  
£50-£80 †

562

Cor Visser 1903-1982, 'Fishing Boats, Zeebrugge Harbour', charcoal study signed bottom right, dated '34, 36cm x 46cm  
£50-£80 †

563

Fourteen small 18th Century black and white prints, each measuring 10cm x 14.5cm, framed and mounted as one, frame AF  
£40-£60 †

564

After Sir Edwin Landseer, study of a dog recumbent in a kennel with bird and bone, unsigned oil on canvas in ornate gilt frame, 76cm x 62cm the frame 112cm x 97cm in extremes  
£100-£200 †

565

Jean Lavasseur Jardin, 'At Trocadero', oil on canvas, 64cm x 53cm  
£60-£80 †

566

Talbot Davenport, extensive river landscape study, signed watercolour, 32cm x 50cm  
£40-£60 †

567

Albany Wiseman, watercolours, sketches in The Luberon, executed and framed as one  
£30-£50 †

568

Aiden Kirkpatrick, pencil signed limited edition 'Convoy On Pin Mill Hard' dated 1980  
£40-£60 †

569

A Commemorative 617 Squadron Dam Busters print, signed by surviving air crew  
£40-£60 †

570

A pair of 40th Anniversary of The Battle of Britain Spitfire prints, signed by survivors dated 'Summer 1980'  
£40-£60 †

571

A C & G Greenwood, map of Suffolk  
£40-£60 †

572

Robert Horn, study of sailing barge 'Caddy' on Snape Quay  
£40-£60 †

573

A WWI American poster, advertising US Government bonds 'Over The Top For You'  
£40-£60 †

574

A pair of limited edition prints after Robert Taylor, 'Crewing Up' and 'Climbing Out', signed by A.M. (Arthur Bomber) Harris  
£60-£100 †



Lot 564

575

Two Vanity Fair tennis prints, 'Thrice Champion' pencil signed H.L. Doherty and 'Michael Michailovitch'  
£20-£40 †

576

After Anne H MacIntosh, pencil signed limited edition print of Seve Ballesteros No.273/850, blind stamp to margin  
£40-£60 †

577

A set of four Vanity Fair, jockey prints, in original oak frames  
£30-£50 †

578

A pair of black and white Frank Brangwyn prints  
£40-£60 †

579

After Charles Hunt, Coloured print 'Grandstand Goodwood'  
£40-£60 †

580

A pair of Michael Carlo limited edition prints, 'Morning' and 'Afternoon'  
£20-£30 †

581

19th Century school, landscape study, unsigned oil on canvas in decorative gilt frame  
£20-£30 †

582

An incomplete folio of 1870 Vanity Fair prints  
£20-£30 †

583

John Reay, pencil signed limited edition print of children crabbing, 21/500, image 60cm x 45cm; and another 'Family Changing, Evening Southwold' 20/250, 60cm x 45cm  
£120-£160 †

584

Simon Palmer (Born 1956), 'Going To Church' pencil signed watercolour, image 22.5cm x 19.5cm  
£200-£300 †

585

Fred Dubery British 1926-2011, study of pelicans in a park, signed oil on board, 33.5cm x 75cm  
£200-£300 †

586

Giovanni Battista 1858-1925, watercolour of fisherman in boats in the Bay of Naples, Vesuvius in the background, 21cm x 38cm  
£80-£120 †

587

Late 18th Century school, study of a pastoral scene with figures and cattle, country road and cottage nearby, watercolour label on frame and paper label verso for F. Nash 1782-1836, contained in ornate gilt frame, 26cm x 35cm  
£100-£200 †

588

After George Robson, 'Prebends Bridge and Durham Cathedral' and another 'Durham Abbey' contained in gilt frames, 21cm x 29cm  
£40-£60 †

589

Attributed to F. Nicholson, watercolour study depicting abbey ruins with figures in the near ground, 22.5cm x 32cm  
£40-£60 †

590

Attributed to Sir Francis Chantrey, pencil sketch of Sir George Nayler, Garter King of Arms 1822-1831, 22.5cm x 14cm, inset with title label and label verso  
£40-£60 †

591

**18th Century school**, unusual study of three profiles of King Charles I, unsigned watercolour, hand written label verso with gallery label for Old Bond Street Galleries, Piccadilly, 21cm x 24cm with outer gilded frame £100-£200 †

592

**R. Camplon**, study of a ruined castle beside a Scottish Loch, signed oil on canvas dated 1884, 62cm x 73cm £60-£100 †

593

**An impressive 16th Century engraving of Maximilian, Holy Roman Emperor 1459-1519** surround by his entourage, image 39cm x 58cm and an engraving after Michael Angelo 'The Temptation Of Adam And Eve' by Antonio Capellan 1740-1793, 41cm x 63cm, bearing date 1772 £100-£200 †

594

**A Chinese watercolour of a cockerel and hen**, 19th Century signed to left, 41cm x 53cm; and a Japanese watercolour of Quail under a full moon, 48cm x 48cm £80-£120 †

595

**Abstract study**, oil on card indistinctly signed, 20cm x 25cm £40-£60 †

596

**John Wills**, pair of limited edition abstract prints, pencil signed to mount, dated 1973 £60-£100 †

597

**Mari French**, mixed media on canvas, 'Not For Now', 39cm x 39cm; and another 'Out Of The Blue' mixed media on paper, signed 29cm x 29cm £300-£400 †

598 ✓

**Padraig MacMaidhachain, Irish 1929-2017**, 'Two Boats and a Chapel' signed oil on canvas, 23.5cm x 28.5cm £800-£1,200 †

599

**Bernard Duncan R.A.**, 'The Friends Room', pencil signed lithograph 199/200, 44cm x 47.5cm £200-£300 †

600

**Abstract study of a nude**, palette knife on card, 45cm x 33cm £100-£200 †

600A

**After Sir William Beechy**, and engraved by Ward, His Majesty Reviewing The Prince of Wales Regiment of Dragoon Guards, 54cm x 64cm £40-£60 †

600B

**Coloured lithograph**, 'Group of Glass' by Count Harrach of Bohemia; another group of enamels from the Royal Manufactory at Sevres; and a pair of decorative still life prints after The Old Masters in gilt frames £40-£60 †

600C

**John Mellor**, watercolour study of Greenwich From The Thames, signed 36cm x 51cm £60-£100 †

601

**Mari French**, 'Time And Place' mixed media on canvas, 70cm £100-£200 †

602

**20th Century school**, study of shutters, oil on canvas dated 1949, 60cm x 37cm £100-£200 †

603

**A 1970's print of Arthur Negus**, 54cm x 30cm; and another similar period caricature print of a T.U.C. leader 51cm x 278cm £40-£60 †

604

**John Emanuel**, mixed media study, 40cm x 78cm £100-£200 †

605

**A pair of 19th Century oils on canvas**, depicting country gentleman, 15.5cm x 11.5cm in gilt frames £100-£150 †

606

**Early 19th Century school**, study of a seated lady and child both wearing hats with plumes, landscape beyond, unsigned oil on canvas, 56cm x 62cm £200-£400 †

607

**Sylvia Wishart**, 'Norwegian Boats, Kirkwall Harbour', oil on board, 83cm x 56cm £200-£400 †

608

**Basil Besler**, 'Hortus Eystettensis', engravings with descriptions and verse verso £200-£400 †

608A

**Roland Green**, 'Pintails In Flight', signed watercolour, 31cm x 43cm £150-£250 †

608B

**Thomas Rowlandson**, 'Rustic Courtship', sepia study 9.5cm x 14.5cm, label verso Fine Arts Society No. 9506 £400-£600 †



Lot 617

## Furniture

609

**A 19th Century mahogany bookcase on cabinet**, the upper section fitted adjustable shelves enclosed by a pair of glazed Gothic style glazed panel doors, cupboards below raised on bracket feet, 88cm wide x 217cm high x 52cm deep £100-£200 †

610

**A Georgian style mahogany pie crust bordered occasional table**, raised on an acanthus baluster column and tripod base, 61cm dia. x 66cm high £100-£200 †

611

**A 19th Century mahogany torchere stand**, of small size, the circular top raised on a fluted baluster column with wheat ear decoration and plinth base, 67cm high £40-£60 †

612

**An oak military chest**, fitted two short and three long drawers, brass mounted with label for 'Army & Navy CSL Makers', in two sections 99cm wide x 45cm deep x 96cm high £250-£300 †

613

**An antique walnut standing corner cupboard**, the upper shelves enclosed by a glazed panel door with cupboard to base, raised on bracket feet, 88cm wide x 187cm high £40-£60 †

614

**A Harlequin set of ten 19th Century oak spindle back dining chairs**, with rush seats raised on rounded tapering front supports £200-£300 †

615

**A 19th Century mahogany and brass bound coopered jardinière stand**, on tripod scrolled support, 30cm dia. x 52cm high £80-£120 †

616

**A Victorian mahogany drop leaf supper table**, fitted single end drawer, raised on a turned baluster column and reeded quadruple splay terminating in brass caps and castors, 91cm x 121cm extended £60-£100 †

617

**A gilt Rococo style hall table of serpentine shape**, having mirrored top raised on a pierced frieze and cabriole supports, 137cm long x 83cm high £100-£200 †

618

**A 19th Century mahogany and cross banded side table**, fitted two drawers and raised on square tapering supports terminating in spade feet, 82cm wide x 53cm deep x 75cm high £100-£150 †

619

**A large Victorian mahogany swing toilet mirror**, having barrel shape cylinder compartment, the shaped plate raised on barley twist supports terminating in turned finials, 73cm wide x 89cm high £40-£60 †





Lot 623

**620**  
A Georgian mahogany tray top bedside cupboard, enclosed by a pair of doors with chequer banded oval panels, single drawer below, raised on square section supports, 52cm wide x 52cm deep x 77cm high £40-£60 †

**621**  
A 19th Century mahogany satin wood and rosewood cross banded demi-lune shaped card table, raised on square section tapering supports, 90cm wide £60-£80 †

**622**  
A 19th Century mahogany occasional table, the rectangular top with gadrooned border raised on reeded tapering column and trefoil base, terminating in bun feet, some damage, 51cm wide x 72cm high £40-£60 †

**623**  
A 19th Century mahogany and satin wood cross banded bow front chest, of three drawers raised on bracket feet, 98cm wide £60-£100 †

**624**  
A Victorian mahogany swing framed toilet mirror, raised on reeded scroll supports, the base fitted with a pair of barrel shaped drawers raised on bun feet, 55cm wide x 73cm high £40-£60 †

**625**  
A Chinese side cabinet, fitted five drawers and cupboards under, 96cm wide x 55cm deep x 88cm high £100-£200 †

**626**  
An early 20th Century mahogany breakfront bookcase, in the Chippendale style having blind fret frieze above cluster columns, fitted adjustable shelves on a platform plinth base, 166cm x 37cm deep x 113cm high £100-£150 †

**627**  
An antique carved oak settle, with foliate carved back, shaped arms above turned baluster supports united by stretchers, 181cm long £300-£400 †

**628**  
A good quality mahogany hanging shelf, in the Chinese Chippendale manner, pierced gallery top and fluted out swept frieze, 90cm wide x 117cm high £100-£150 †

**629**  
A 19th Century Chinese painted and lacquered cabinet, having pierced and relief carved panels, fitted drawers and cupboards around recessed shelves, 110cm wide x 170cm high £200-£400 †

**630**  
A 19th Century rosewood bookcase, the upper glazed section fitted shelves with cupboards below, raised on bracket feet, 112cm wide £100-£150 †

**631**  
A 19th Century Continental mahogany cabinet, the upper section fitted shallow drawers with cupboard below, raised on a platform plinth and bun feet, 96cm wide x 49cm deep x 187cm high £200-£300 †

**632**  
A Georgian mahogany linen press, the upper section fitted two sliding trays, three long drawers below on bracket feet, 122cm wide £100-£200 †

**633**  
A pair of Chinese hardwood demi-lune shaped hall tables, with marble inset tops, raised on pierced scroll friezes and rounded supports united by stretchers, 82cm wide x 88cm high £150-£200 †

**634**  
A decorative marble column, 108cm high £100-£150 †

**635**  
A Victorian mahogany spoon back armchair, with buttoned flecked upholstery, having scrolled arms raised on cabriole front supports, A/F terminating in castors and a matching modern stool upholstered en suite £60-£80 †

**636**  
A set of eight elm spindle back dining chairs, with rush seats £80-£120 †

**637**  
A Victorian rosewood three tier whatnot, fitted with a single drawer raised on turned supports AF, 67cm wide x 87cm high £40-£60 †

**638**  
A 19th Century lacquered cabinet on stand, with chinoiserie decoration, the doors opening to reveal a multi drawer interior, having engraved brass hinges and mounts, the stand on square section half supports united by pierced stretchers, 97cm wide x 162cm high £600-£800 †

**639**  
A pair of mahogany and rosewood cross banded side or lamp tables, having rectangular canted corner tops, raised on turned columns and tripod bases, labelled for Redman & Hales, Hatfield Peveril, 53cm wide x 69cm high overall £100-£150 †

**640**  
A 19th Century mahogany elliptical hanging corner cupboard, with inlaid decoration, the shelves enclosed by a pair of doors hung to brass H shaped hinges, 78cm wide x 113cm high £40-£60 †



Lot 638

**641**  
A 18th Century domed topped trunk, with brass studded and leather decoration, 79cm  
£150-£250 †

**642**  
An 18th Century Continental walnut chest, fitted four drawers raised on moulded cushion frieze, terminating in bracket feet, approx. 54cm wide x 84cm high x 34cm deep  
£200-£300 †

**643**  
A George III style mahogany wing back sofa, raised on a gadroon frieze with cabriole claw and ball supports  
£100-£200 †

**644**  
A Victorian burr walnut breakfront wardrobe, the arched pediment with pierced cresting above a centre section fitted sliding trays and drawers, enclosed by a mirror panelled door, flanked by hanging compartments, 210cm wide x 250cm high in extremes  
£100-£200 †

**645**  
A Victorian burr walnut breakfront wardrobe, the centre section fitted sliding trays and drawers enclosed by an arched mirror panel door, flanked by hanging sections, raised on a plinth base, 210cm wide x 240cm high  
£100-£200 †

**646**  
A 19th Century mahogany four poster bed, with cushion moulded canopy, raised on leaf carved turned end supports, 150cm wide x 200cm long x 240cm high AF  
£200-£300 †

**647**  
An early 19th Century gilt framed overmantel mirror, with foliate and ball decorated break front frieze above half pilasters, 144cm x 73cm  
£200-£300 †

**648**  
A good quality contemporary mahogany six drawer filing chest, fitted with a locking bar, raised on square section supports, 44cm wide  
£60-£100 †

**649**  
A late 18th / early 19th Century gilt chimney mirror, having breakfront pediment above shell and classical frieze decoration within spiral twist acanthus capped columns, triple plate AF  
£150-£200 †

**650**  
A 19th Century mahogany pole screen, the shield shaped banner covered with William Morris style fabric, raised on a turned baluster column and tripod base, 154cm  
£40-£60 †

**651**  
A French walnut and marble topped bedside cabinet, fitted single drawer and cupboard below, raised on cabriole supports, 40cm wide x 40cm deep x 84cm high  
£60-£80 †

**652**  
A Victorian mahogany card table, the fold over swivel top raised on a gun barrel column above a circular pedestal base terminating in scrolled feet, 92cm wide x 46cm deep x 72cm high  
£50-£80 †

**653**  
An Edwardian rosewood writing table, fitted single drawer raised on square tapering supports, 65.5cm wide x 43cm deep x 76cm high overall  
£100-£150 †

**654**  
An Edwardian inlaid mahogany side table, with parquetry top and ebony stringing, raised on square tapering supports united by an under tier, 60cm wide x 39cm deep x 75cm high  
£40-£60 †

**655**  
A pair of Edwardian mahogany and inlaid armchairs, in the Art Nouveau style raised on square tapering supports terminating in spade feet with castors  
£80-£120 †

**656**  
A large Victorian mahogany extending dining table, fitted four extra leaves and raised on bold turned and fluted baluster supports terminating in brass castors, 138cm x 330cm fully extended, complete with a table leaf stand 54cm wide x 155cm high  
£200-£300 †

**657**  
A 19th Century mahogany D end extending dining table, with drop leaf centre section, raised on square tapering supports, 300cm x 137cm fully extended  
£100-£200 †



Lot 670

**658**  
An 18th Century Dutch marquetry wedge shaped hanging china display cabinet, surmounted by a broken arch pediment with central urn finial, the shaped shelves enclosed by a four panel glazed central door, 100cm wide x 104cm high  
£200-£300 †

**659**  
A pair of Regency mahogany hall chairs, with shaped fluted backs above shield motifs, raised on turned reeded tapering supports  
£100-£150 †

**660**  
A 19th Century mahogany barrel back armchair, upholstered in floral printed Damask and raised on square tapering supports terminating in brass castors, 118cm high  
£150-£250 †

**662**  
An antique oak coffer, having plain lid and triple panel front, raised on square section supports, 129cm wide x 59cm deep x 76cm high  
£80-£120 †

**662**  
An early 20th Century oak settle, in the Jacobean style having foliate pierced crestings with crown motifs, raised on spiral twist supports, cane panel seat, back and sides, 150cm long  
£200-£300 †

**663**  
A carved oak coffer, 107cm wide x 48cm deep x 49cm high  
£80-£120 †

**664**  
A 19th Century walnut inlaid and cross banded curio cabinet, with gilded metal mounts raised on shaped supports terminating in sabots, 72cm wide  
£100-£150 †

**665**  
A 19th Century burr walnut side cabinet, of small proportions, the top surmounted by a pierced brass gallery, the interior shelves enclosed by a pair of panelled doors, 92cm wide x 92cm high  
£100-£150 †

**666**  
An Edwardian walnut cylinder bureau, having raised gallery back, the fall opening to reveal a fitted interior with cupboards below, 79cm wide x 132cm high  
£60-£100 †

**667**  
A 19th Century carved oak octagonal centre table, the frieze with pierced foliate and cherub decoration, raised on a bold acanthus central column with quatrefoil base, terminating in scrolled feet and castors, 130cm wide x 76cm high  
£100-£200 †

**668**  
A 18th Century carved oak hall chair, the foliate pierced back flanked by spiral turned columns with figurehead terminals, leatherette upholstered seat raised on spiral turned and block supports united by a figural front stretcher; and three Victorian carved oak dining chairs with leaf and berry decoration  
£40-£60 †

**669**  
A mahogany spider leg drop leaf table, 84cm x 81cm fully extended  
£180-£220 †

**670**  
A French mahogany sewing table, of bombe shape with lacquer decoration depicting romantic scene to the hinged lid, opening to reveal a mirrored velvet lined interior, two drawers below, raised on shaped supports terminating in sabots, 29cm wide x 71cm high  
£100-£150 †

**671**  
A Victorian walnut spoon back armchair, with foliate cresting above buttoned upholstered back, raised on scrolled arms and feet  
£40-£60 †





Lot 677

**672**  
An antique gilt framed and painted pier mirror, having break front pediment above classical frieze, flanked by cluster columns, 65cm x 103cm £100-£150 †

**673**  
An antique elm butter barrel, 53cm dia. x 71cm high £40-£60 †

**674**  
A pair of decorative cream painted window seats, the railed ends raised on turned tapering supports, the seats with striped upholstery, 104cm long £80-£120 †

**675**  
A set of four decorative cream painted elbow chairs, having rail backs, shaped arms above red linen up[holstered seats on turned tapering supports £100-£200 †

**676**  
A Victorian croquet set on stand, comprising eight mallets, eight balls, two posts and hoops £150-£250 †

**677**  
A Regency mahogany scroll end couch, raised on bold claw supports, 205cm long £100-£200 †

**678**  
A 19th Century teak and brass mounted campaign chest, the lifting lid above two drawers with sunken brass handles, raised on platform plinths, flanked by brass carrying handles, approx. 124cm wide x 63cm deep x 80cm high £200-£300 †



Lot 683

**679**  
A 19th Century mahogany fret carved wall mirror, in the Chippendale manner 68cm x 36cm in extremes £40-£60 †

**680**  
A Regency gilt framed pier mirror, with three bevelled plates, Romanesque frieze beneath a breakfront pediment with ball decoration, flanked by reeded and acanthus pilasters, 99cm x 130cm £200-£300 †

**681**  
A Victorian child's bamboo cheval mirror, 104cm high x 48cm wide £120-£160 †

**682**  
A 19th Century painted French salon settee, with white linen sheet upholstery to the back, armrests and serpentine seat, raised on turned tapering fluted front supports, 122cm wide £130-£160 †

**683**  
A French mahogany rosewood cross banded, boxwood strung and parquetry inlaid occasional table, the shaped oval top with brass banding above gilded foliate frieze and mounts, raised on square tapering supports united by an under tier, 51cm x 74cm high £150-£250 †

**684**  
A nest of three reproduction mahogany coffee tables, raised on turned spindle supports, 50cm wide overall £30-£50 †

**685**  
A Savonarola chair, having carved and painted back raised on crossed supports £100-£150 †

**686**  
An early 20th Century beech and elm elbow chair, having cane seat and back, raised on turned supports terminating in hoof feet, united by stretchers £40-£60 †

**687**  
A 19th Century mahogany cross banded supper table, the rectangular top raised on square section column and quatrefoil base, terminating in scroll feet and castors, 99cm x 124cm £200-£300 †

**688**  
A Victorian walnut spoon back nursing chair, having acanthus carved decoration, tapestry upholstered seat button back and seat raised on scrolled front supports £60-£80 †

**689**  
An unusual carved Balinese dowry chest, having foliate decoration raised on rounded baluster supports, 90cm wide £350-£450 †

**690**  
A Victorian mahogany stretcher table, fitted central blind drawer raised on lyre shaped end supports terminating in bun feet, 110cm wide £150-£250 †

**691**  
An Edwardian inlaid mahogany display cabinet, having garland decorated raised back, the interior shelves enclosed by a glazed panel door on out swept supports, 62cm wide £40-£60 †

**692**  
A Victorian walnut and marquetry inlaid credenza, surmounted by a white marble top, 153cm wide £400-£600 †

**693**  
A Georgian mahogany circular snap top tea table, raised on a turned column and tripod base, 82cm dia. £100-£200 †

**694**  
A good quality carved oak open fronted bookcase, fitted adjustable shelves raised on square section supports, 90cm wide x 114cm high £80-£120 †

**695**  
A pair of Victorian rosewood footstools, floral upholstered seats on cabriole supports, 43cm £80-£120

# TERMS AND CONDITIONS OF SALE

## 1. INTRODUCTION

The following defining terms are used in these conditions:-

|                |   |
|----------------|---|
| “Auction”      | Means any auction conducted by Clarke and Simpson Auctions Ltd. either at the premises owned by them or elsewhere (including any internet-based auction);             |
| “Auctioneer”   | Means Clarke and Simpson Auctions Ltd. authorised auctioneer as appropriate together with any on-line platform;   |
| “Bidder”       | Means a bidder at an auction, including the bidders personally present at the venue and those bidding by commission bid, telephone or over the internet or otherwise; |
| “Buyer”        | Means the bidder whose bid was the last bid when the auctioneer concludes the bidding;  |
| “Conditions”   | Means these Terms and Conditions of Sale;   |
| “Hammer Price” | Means the level of bidding reached (at or above any reserve) when the auctioneer brings the bidding to a close;   |
| “Lot”          | Means any property accepted by Clarke and Simpson Auctions Ltd. for offer at auction;   |
| “Vendor”       | Means the seller of any lot offered by auction;   |

## 2. DESCRIPTION

No warranty is given or implied by the description in the catalogue. Each lot is sold in its condition at the time of sale with all faults, defects, imperfections and errors of description (if any). Where books are offered, they have not been collated and not subject to return. Whilst every endeavour has been made to describe the items adequately and properly, the buyer shall deem to have inspected the lot at time of purchase in person. All catalogues, condition reports and sellers' guides are for information only and do not form part of the contract.

## 3. STATUTORY REQUIREMENTS

Buyers will be deemed to have satisfied themselves prior to purchasing regarding current legal requirements (e.g. Health & Safety at Work Act) and it is expressly brought to the bidder's attention that equipment in the sale may not necessarily comply with such regulations. Any buyer shall satisfy himself as to any statutory requirement for the use of any item and no liability shall rest with the vendors nor the Auctioneers.

## 4. THE AUCTION

All auctions are conducted at the absolute discretion of the auctioneer. The auctioneer shall conduct the auction with reasonable skill and care. The vendor reserves the right to sell subject to reserve price in respect of all lots. What constitutes a bid shall be at the absolute discretion of the auctioneer, acting with appropriate skill and care. The auctioneer shall have the right to refuse any bid in all cases but most notably when such a bid does not exceed the previous bid by at least 10% or such a proportion as the auctioneer shall in his absolute discretion direct. Where two or more bids at the same level are simultaneously received by the auctioneer, the auctioneer at his absolute discretion shall determine which bid to prefer. Subject to the foregoing where two or more bids are at the same level are simultaneously received by the auctioneer, the bid submitted in the room shall take preference over a bid submitted by telephone or internet at the same level. Any bid made or attempted by telephone or over the internet will only be deemed to have been made if received by the auctioneer. The auctioneer reserves the right to withdraw, consolidate or divide any lot or lots or submit them in any order that they desire. The auctioneer has the right at his absolute discretion to refuse admission to his premises or attendance at (or participation in) any auction by any person. In the case of any dispute, the auctioneer shall be sole arbitrator in any matters arising during or out of the sale.

## 5. BIDDERS

All bidders will be required to register their particulars, bidders attending in person and those accompanying them will be required to provide photo ID and separate confirmation of address prior to viewing or taking any part of the sale and before entering any part of the premises to view. All bidders accept full liability for all bids submitted. Subject to the clause in this document headed “The Auction”, the highest bidder at the close of bidding shall be the buyer. Any dispute about a bid shall be settled at the auctioneer's absolute discretion.

Bidders are all deemed to act as principles unless there is prior written acknowledgement by Clarke and Simpson Auctions Ltd. that a bidder is acting as an agent for a named principle. Bidders are strongly encouraged to attend the auction in person. The bidders shall be responsible for any decision to bid for a particular lot and shall be deemed to have carefully inspected and satisfied themselves as to condition, neither Clarke and Simpson Auctions Ltd., their employees or agents shall be responsible for any neglect or default in doing or failing to do so. Bidders will be given ample opportunity to view and inspect before the sale and they must satisfy themselves as to all matters.

## 6. DEFAULT

Clarke and Simpson Auctions Ltd. shall act as agent of the vendor only. Any contracts for the sale of a lot shall be formed between the vendor and the buyer. As agent, only Clarke and Simpson Auctions Ltd. shall not be responsible for default by the vendor or the buyer. If any lot is not paid for in full and taken away in accordance with these conditions, or there is any other breach of the conditions, then Clarke and Simpson Auctions Ltd. as agents for vendor shall at its absolute discretion and without prejudice to any other rights it may have, be entitled to exercise all or any of the following rights and remedies:-

- 6.1 to proceed against the buyer for any action of debt or damages for breach of contract;
- 6.2 to rescind the sale of that lot or lots sold by Clarke and Simpson Auctions Ltd. to a defaulting buyer;
- 6.3 to resell the lot (by auction or private treaty) in which case the defaulting buyer shall be responsible for any resulting deficiency in the total amount due (after crediting any part payment and adding any resale costs), any possible surplus so arising shall belong to the vendor;
- 6.4 to remove, store and ensure the lot at the expense of the defaulting buyer and, in the case of storage, the location of such storage shall be at Clarke and Simpson Auctions Ltd. discretion;
- 6.5 to charge interest at a rate not exceeding 2% per month of the total amount due to the extent that it remains unpaid for more than five working days after the sale;
- 6.6 to retain any lot sold to the defaulting buyer until the buyer pays the total amount due;
- 6.7 to reject or ignore bids from the defaulting buyer at future auctions or to impose conditions before any such bids are accepted;
- 6.8 to apply any proceeds of sale for any other lots due or in the future becoming due to the defaulting buyer towards the settlement of the total remaining due.

## 7. INDEMNITIES, PENALTIES AND LIMITATIONS OF LIABILITY

Buyers shall pay for any damage done by themselves or their agents during the removal of their lots. Attendance at the sale shall be at the risk of those attending in respect of both them and to their goods and vehicles.

Any indemnity under these conditions will extend to all actions, costs, expenses, claims and demand whatsoever suffered or incurred by the person entitled to the benefit of it and Clarke and Simpson Auctions Ltd. declare themselves to be a trustee of the benefit of such indemnity so far as it is expressed to be the benefit of its employees and agents.

Whilst Clarke and Simpson Auctions Ltd. endeavour to ensure that the information on their websites is correct, they do not warrant the accuracy and completeness of the material on their or any website. Also, Clarke and Simpson Auctions Ltd. can make changes to the material on their or any website, or alter the products and prices described on it, at any time without notice. The material on the website(s) may be out of date, Clarke and Simpson Auctions Ltd. make no commitment to update such material. All material on the website(s) is provided “as is” without any conditions, warranties or other terms at any time. Accordingly, to the maximum extent permitted by law, the website(s) is provided to all parties on the basis that Clarke and Simpson Auctions Ltd. exclude all representations, warranties, conditions and other terms which, but for this legal notice, might have effect in relation to the website(s).



## 8. ELECTRICAL SAFETY REGULATIONS

All electrical lots are subject to electrical safety regulations and fall within "The Low Voltage Electrical Equipment (Safety) Regulations 1989" – all items have been PAT tested for safety but are not guaranteed to be in working order.

## 9. GENERAL MATTERS

Any notice to any buyer, vendor, bidder or viewer may be given by first class mail or email in which case it shall be deemed to have been received by the addressee forty-eight hours after posting or sending. All notices to Clarke and Simpson Auctions Ltd. must be sent in writing and email is not acceptable. Any indulgence extended to any person by Clarke and Simpson Auctions Ltd., notwithstanding the strict terms of these conditions or the terms of consignment, shall affect the position at the relevant time only and the respect of that particular concession only; in all other respects these conditions shall be construed as having full force and effect. These conditions and any disputes or claims arising out or in connection with them or their subject matter or formation (including non-contractual disputes or claims) are governed by and construed in accordance with the law of England. The parties irrevocably agree that the courts of England have exclusive jurisdiction to settle any dispute or claim that arises out of or in connection with the agreement or its subject matter or formation (including non-contractual disputes or claims).

## 10. PUBLICITY

Any catalogue and buyer and seller guides are provided for information only and do not form part of these conditions. The catalogue and the buyer and seller guides may contain additional terms and conditions. Clarke and Simpson Auctions Ltd. reserve the right to use any photographs, videos, background information and research for any publicity purposes before, during and after the sale.

## 11. THE PURCHASE PRICE AND PAYMENT ARRANGEMENTS

There is a buyer's premium of 22% plus VAT payable in respect of the sale. Any purchases made via one of the online portals shall be subject to an additional internet surcharge. The current rates being as follows:

Monday, Fine Art, Art Deco and Rural Bygones being 5% of the hammer price plus VAT (3% through [www.clarkeandsimpson.co.uk](http://www.clarkeandsimpson.co.uk)). Farm Machinery being 2% of the hammer price plus VAT.

Preferred payment is bank transfer, personal debit card or via the payment request from the on-line platform. No payment over £350 will be accepted by telephone. We do not accept cash, cheques, credit cards, business debit cards or international debit cards. Payment is due on the day of the sale, and no later than two working days following the day of sale. All money received will be held in Clarke & Simpson Auctions Ltd. Clients No 2 Account at Barclays Bank plc, Suffolk. Account Number 83428591. Sort Code 20 98 07. Clarke and Simpson Auctions Ltd. have no responsibility for any lot between the close of bidding and payment being made and subsequent collection. All payments from overseas buyers shall be made by Bank Transfer and bank fees paid in addition. Please note all policy regarding payment will be enforced and suitable arrangements must be made.

## 12. REMOVAL OF LOTS

The ownership of any lot purchased shall not pass to the relevant buyer until they have made payment in full to Clarke and Simpson Auctions Ltd.

The buyer shall be responsible for ensuring their purchases and at their own risk and expense take away any lot that they have purchased and paid for no later than five working days following the day of the auction.

Any lot which remains uncollected by the buyer, regardless of payment status, after 10 working days following the day of the auction shall be resold. These lots shall be sold on behalf of the buyer if paid for and all proceeds retained in lieu of storage or on behalf of the vendor if not paid for. Buyers will not be chased to collect during this period and collection is entirely their responsibility to arrange.

Removal of items from the room will be the responsibility of the buyer and they will be liable for any damage arising from the removal.

## 13. NUMBER BIDDING

This will be used for speed and efficiency as in all our sales. All parties wishing to bid must complete a registration form and register in the office on the view day or morning of sale to receive a number for bidding.

Please also note that photo ID and additional confirmation of address will be required.

## 14. ONLINE BIDDING

Clarke & Simpson Auctions Ltd. offer an online bidding service via [clarkeandsimpson.co.uk](http://clarkeandsimpson.co.uk), [the-saleroom.com](http://the-saleroom.com), [bidspotter.co.uk](http://bidspotter.co.uk) and [ibidder.com](http://ibidder.com) for those wishing to bid but cannot attend the sale.

In completing the bidder registration on [clarkeandsimpson.co.uk](http://clarkeandsimpson.co.uk), [the-saleroom.com](http://the-saleroom.com), [bidspotter.co.uk](http://bidspotter.co.uk) or [ibidder.com](http://ibidder.com) and providing your payment card details and, unless alternative arrangements are agreed with Clarke & Simpson Auctions Ltd.:

1. authorise Clarke & Simpson Auctions Ltd., if they so wish, to charge the payment card given in part or full payment, including all fees, for items successfully purchased in the auction via [clarkeandsimpson.co.uk](http://clarkeandsimpson.co.uk), [the-saleroom.com](http://the-saleroom.com), [bidspotter.co.uk](http://bidspotter.co.uk) or [ibidder.com](http://ibidder.com), and
2. confirm that you are authorised to provide these payment card details to Clarke & Simpson Auctions Ltd. Through [clarkeandsimpson.co.uk](http://clarkeandsimpson.co.uk), [the-saleroom.com](http://the-saleroom.com), [bidspotter.co.uk](http://bidspotter.co.uk) or [ibidder.com](http://ibidder.com) and agree that Clarke & Simpson Auctions Ltd. are entitled to ship the goods to the card holder name and card holder address provided in fulfilment of the sale.

Please note that any lots purchased through any of the online platforms will be subject to an additional internet surcharge: Monday, Fine Art, Art Deco and Rural Bygones being 5% of the hammer price plus VAT (3% through [www.clarkeandsimpson.co.uk](http://www.clarkeandsimpson.co.uk)). Farm Machinery being 2% of the hammer price plus VAT.

## 15. TELEPHONE BIDDING

We offer a telephone bidding service where possible at specialist sales, but this service can never be guaranteed. No applications for telephone bids will be accepted after the end of the viewing prior to sale day for any sale. All potential telephone bidders must provide a valid landline number and email address and agrees that they have read and understood the Terms and Conditions and satisfied themselves regarding any lot in accordance with these Terms and Conditions. No phone bids will be accepted for any lot with a lower guide figure of less than £250.

All those who wish to bid by telephone will be expected to deposit an amount determined by Clarke and Simpson Auctions Ltd. and not less than the minimum guide for all lots that they wish to bid upon into the Clients Account for Clarke and Simpson Auctions Ltd before the sale starts. This payment is not acceptable by card.

In the event of default, this sum shall be retained as part payment or any part may be retained to recover losses under clause 6 of these Terms and Conditions. We will expect payment of the balance owing by BACS on the following day, any payment not met within five working days will result in the forfeiture of the deposit paid.

## 16. AT FAULT (A.F.) LOTS

Certain lots are catalogued at fault (A.F.), damaged, restored etc., however the absence of any such notice does not imply that the piece is free from defects, nor does it indicate that other defects are not also present. Mention is not made of breakage, cracks, chips or any damage which can be noted by careful inspection, therefore those wishing to bid MUST, in all cases, be responsible for determining the condition of the lots themselves, either in person or by request of condition reports or additional detailed photographs.

## 17. ESTIMATES

Presale estimates are intended only as a guide for those wishing to bid, are given in good faith and subject to revision.

## 18. CONDITION REPORTS

Clarke and Simpson are unable to guarantee that requests for Condition Reports/images received will be responded to. Clarke and Simpson are happy to give a Condition Report where possible on the physical condition of goods, this will be provided on behalf of the vendor on the understanding that Clarke and Simpson are not entering into a contract with you in respect of the Condition Report and accordingly does not assume responsibility to you in respect of it. All lots are available for your own inspection or for inspection by an expert instructed by you, therefore these Condition Reports are for guidance only and all lots are sold "as found". Condition Reports do not form part of a contract.

## 19. COMMISSION BIDS

The auctioneers will be pleased to execute bids for those unable to attend the sale. Lots will be purchased at the lowest bid the room bidding, internet bidding or any reserves will allow. In the event of identical bids, the earliest bid received will take precedence. There must always be a maximum limit indicated. Buy or unlimited bids will not be accepted. Commission bids placed by telephone are accepted at the client's risk. We urge our clients to place such bids before the start of the sale. All such commissions are left entirely at the client's risk.

## 20. VALUE ADDED TAX

The symbol \* or V after any lot number or description indicates that Value Added Tax is payable by the buyer on the hammer price.

## 21. AUCTIONEERS MARGIN SCHEME

The Auctioneers Margin Scheme allows auctioneers to sell items without VAT on the hammer price. Under the margin scheme an amount equivalent to VAT at the current rate is added to the buyer's premium. This amount cannot be refunded. The VAT element will not be shown separately on the buyer's invoice. This VAT is not recoverable as Input Tax. We do not allow buyers to opt out of the margin scheme.

## 22. ATTRIBUTION OF PICTURES AND DRAWINGS

Every effort is made to ensure the accuracy of any statements as to authorship, attribution, origin, date, age, provenance and condition of any lot whether or not such statement forms part of the description of any such lot. Whether any such statement is made orally or in the catalogue it is an expression of opinion and not to be taken as being or implying any warranties or representations of facts by the auctioneers. Each buyer by making a bid for a lot acknowledges that he has satisfied himself fully as to the attribution and condition of the lot. The following is for guidance only and does not form part of a contract.

- A. The forename (s) (or full stops where not known) and surname of an artist indicates in our opinion a work by the artist.
- B. The initials of the forename (s) and the surname of the artist indicates in our opinion a work of the period of the artist which may be wholly or in part his work.
- C. The surname of the artist indicates in our opinion a work of the school or by one of the followers of the artist or in his style and of uncertain date.
- D. Signed, Dated, Inscribed indicated in our opinion work signed/dated/inscribed by the artist.
- E. Bears signature indicates in our opinion that this is not the signature of the artist.
- F. Attributed to may be used to denote a traditional attribution based on style.
- G. Manner of indicates in our opinion a work executed in the artist/craftman's style but of a later date.
- H. After indicates in our opinion a copy (of any date) of work of an artist or craftsman.

The addition of a question mark after any of the cataloguing terms above indicates an element of doubt.

## 23. DROIT DE SUITE ROYALTY CHARGES

All United Kingdom Art Market professionals (which includes auctioneers) are required to collect a royalty payment for all qualifying Works of Art. This applies to living artists and those who have died in the last 70 years.

All items in this catalogue that are marked "✓" are potentially qualifying items, and the royalty charge will apply if the hammer price is more than £1,000. The royalty charge will be added to purchase invoices and must be paid before items can be cleared. All royalty charges are paid to the design and Artists Copyright Society (DACS) by the auctioneers and no handling costs or additional fees with respect to these charges will be retained by the auctioneer. This charge may also be applicable to lots not marked "✓" and buyers must satisfy themselves.

The royalty charge for qualifying items which achieve a hammer price of more than £1,000, but less than £50,000 is 4%. For qualifying items that sell for more than £50,000 a sliding scale of royalty charges will apply. For a complete list of the royalty charges and threshold levels please refer to [www.dacs.org.uk](http://www.dacs.org.uk). There is no VAT payable on this royalty charge.

## 24. ENDANGERED SPECIES

Lots sold at auction may include endangered or other species of wildlife and plant life, for example, tortoiseshell, crocodile skin, whale bone, ebony or rosewood. Some countries restrict or prohibit import or export of objects containing these materials or require a licence/permit for their movement (e.g. a CITES Licence). Prior to bidding on a lot which may include these or similar materials, buyers must familiarise themselves with the relevant laws and regulations regarding their movement.

## 25. JEWELLERY

Gemstones are often treated to enhance colour and improve appearance. They may be heated or treated by oil or resin to intensify the colour and transparency. Other techniques like dyeing, irradiation, coating and impregnation can also be used. Buyers must be aware that unless the catalogue specifically states otherwise then the stone is natural, buyers must assume that any treatment may not be permanent, and that special care may be needed in the future.

## 26. EXPORT

Any lot purchased at auction may be subject to export restrictions and may require a licence for export out of the United Kingdom. The buyer is responsible for obtaining any licences that may be required (including any licence that may be required for import into the destination country) – any denial of such a licence will not be grounds for the buyer to cancel the purchase.

## 27. THIRD PARTY LIABILITY

All members of the public on Clarke and Simpson Auctions Ltd. premises are there at their own risk and must note the layout of the buildings and site and the appropriate security arrangements. Accordingly, neither the Auctioneer nor its employees or agents shall incur liability for death or personal injury (except as required by law) or similarly for the safety of persons visiting the premises.

## 28. CONSIGNMENT

All vendors will have received a copy of Clarke & Simpson Auctions Terms regarding consignment of lots for sale and these Terms and Conditions should be read in accordance with this consignment documentation.





# Hop to it!

## SUFFOLK 2025



A Wild in Art event brought to  
Suffolk by St Elizabeth Hospice



# CHARITY AUCTION

[www.HopToltSuffolk.co.uk](http://www.HopToltSuffolk.co.uk)



Supporting Partner

**Clarke &  
Simpson**



# Own your own hare and support your local hospice!



Our Presenting Partners



**Suffolk**  
County Council



**Milsoms, Kesgrave Hall**  
**17 September 2025**



Clarke & Simpson Auction Centre  
Campsea Ashe  
Nr. Wickham Market  
Suffolk IP13 0PS  
Tel: (01728) 746323  
Email: [auctions@clarkeandsimpson.co.uk](mailto:auctions@clarkeandsimpson.co.uk)  
[www.clarkeandsimpson.co.uk](http://www.clarkeandsimpson.co.uk)